

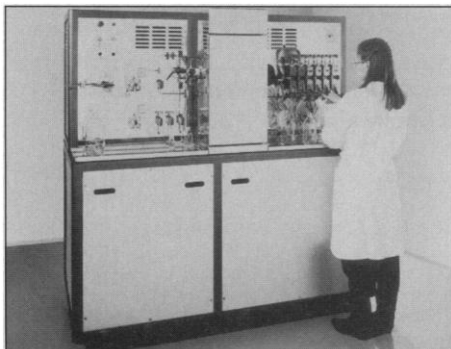
PRODUCTS & MATERIALS

Transfected Cell Isolation

Immunomagnetic separation with Dynabeads can be used to isolate transfected cells. After transfection and cell membrane expression of the desired marker, cell isolation is performed using Dynabeads coated with an antibody specific for that marker. The Dynabeads will bind to the desired cells, forming a complex that can be easily separated from the sample using a magnet. The pure isolated cells can then be used for other research applications. **Dynal.** For information call 800-638-9416 or circle 137 on the reader service card.

Supercritical Fluid Chromatography System

SuperC 20 is a fully automatic system for preparative scale supercritical fluid chromatography (SFC). Fraction collection is assured by six high efficiency traps. In its explosion-proof version, it can make use of any mobile phase used in analytical SFC



(carbon dioxide, chlorofluorocarbons, light hydrocarbons, etc.) with operating conditions up to 90°C. The eluent flow ranges from 0.5 to 3 liters per hour and the modifier flow rate is from 0.05 to 20 milliliters per min. **Prochrom.** For information call (33) 383 312 244 or circle 138 on the reader service card.

Monoclonal Antibodies

Several new monoclonal antibodies (mAbs) are available for use in formalin-fixed, paraffin-embedded tissue sections. The mAb BNH9 reacts with H and Y antigens, which are widely distributed on many different nor-

mal cells, carcinoma cells of diverse origins, and some soft tissue tumors. The mAb stains positive for endothelial cells in all organs as well as in squamous cells of skin, tonsil, and esophagus. The mAb A103 reacts specifically with Melan-A (also known as MART-1), a differentiation antigen that is expressed in all melanocytes, most melanomas, and 50 to 60% of melanoma cell lines. The mAb C11 reacts with most cytokeratin subsets, which form a part of the cytoskeleton of epithelial cells. The mAb 67A4 reacts with E-cadherin, a cell surface glycoprotein responsible for CA^{2+} -dependent intercellular adhesion between epithelial cells. **BioGenex.** For information call 510-275-0550 or circle 139 on the reader service card.

Pharmacokinetics Studies Software

SQL*Protocol is a pharmacokinetics studies management software package designed to integrate with the SQL*LIMS Client Server laboratory information management system. The new software is a full-featured package that manages pharmacokinetics, toxicokinetics, absorption, impact analysis, and metabolism studies. The software's features include the ability to rapidly develop study protocols, handle adverse events, and provide a full audit trail of changes. The software has hot links to protocol operating procedure documents and sample schemes to identify samples and barcoded sample receipts. **Perkin-Elmer.** For information call 800-762-LIMS or circle 140 on the reader service card.

Nonstick Spatulas, Spoons, and Forceps

Chemware brand nonstick, fluoropolymer-coated utensils make it easier to perform crucial but tedious steps such as transferring powder, media, or materials in small quantities. At cryogenic temperatures, samples resist sticking to the implement. The fluoro-

polymer coating is nonreactive, even when dealing with chemically active materials. The coating also prevents scratching of glassware. The spatulas, spoons, tongs, and forceps are made of an alloy of nickel and stainless steel. The ends are coated with fluoropolymer polytetrafluoroethylene. **Norton Performance Plastics.** For information call 800-798-1545 or circle 141 on the reader service card.

mRNA Isolation Kit

The mRNA Isolation Kit contains 25 mg of high capacity magnetizable cellulose-dT₃₀ particles, binding buffer, and magnetic separator rack. With up to 25 separate isolations per kit and 2 µg to 5 µg of mRNA purified per mg particle, researchers can isolate up to 125 µg mRNA per kit. **Vector Laboratories.** For information call 415-697-3600 or circle 142 on the reader service card.

Antibiotic Sensitivity Testing

The Turner Designs TD-700 Laboratory Fluorometer, in combination with Molecular Probes' SYTOX Green Nucleic Acid Stain, provides a rapid and convenient alternative to traditional methods for assessment of bacterial sensitivity to antibiotics and bactericidal agents. The incubation time is only 1 hour. Bacterial viability can be monitored in real-time. The fluorometer is a benchtop instrument with multi-wavelength operation and multi-point calibration capabilities. Other applications of the instrument include RNA, DNA, protein, and green fluorescent protein measurements. **Turner Designs.** For information call 408-749-0994 or circle 143 on the reader service card.

Simulation Modeling Software

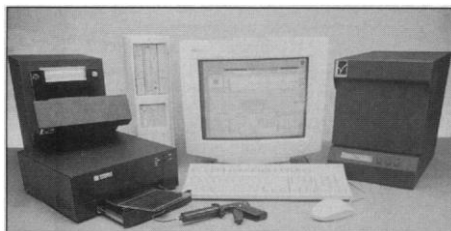
Version 3.0 of ModelMaker simulation modeling software for Windows can now be used under Windows 95 and Windows NT. This new version includes powerful model development tools and analysis capabilities, such as optimization using multiple datasets and Simplex and Marquardt optimization. ModelMaker lets users design experiments, demonstrate concepts, visualize complex systems, and test the effects of changes in ways that are impossible with spreadsheets and flowcharts. ModelMaker brings a simple vi-

Newly offered instrumentation, apparatus, and laboratory materials of interest to researchers in all disciplines in academic, industrial, and government organizations are featured in this space. Emphasis is given to purpose, chief characteristics, and availability of products and materials. Endorsement by *Science* or AAAS is not implied. Additional information may be obtained from the manufacturers or suppliers named by circling the appropriate number on the Readers' Service Card and placing it in a mailbox. Postage is free.

sual solution to the production of even the most complex systems and removes computing and mathematical difficulties associated with constructing and analyzing models. **Cherwell Scientific.** For information call 415-852-0720 or circle 144 on the reader service card.

Automated DNA Sequencing

The OpenGene automated DNA sequencing system is designed for mutation detection in the clinical research lab. Based around an ultrathin disposable MicroCel cassette, the system provides unmatched



speed and simplicity for automated sequencing and fragment analysis. MicroCel cassettes are filled and polymerized in just over 3 min and 300 bases are sequenced in 30 min. **Visible Genetics.** For information call 416-813-3240 or circle 145 on the reader service card.

Literature

Fundamental Facts: Cell Adhesion Molecules provides information on the main cell adhesion molecules, including cadherins, CD44 family, immunoglobulin superfamily, integrins, and selectins. The publication provides details on R&D Systems' products in applications such as adhesion blockade, adhesion assay, immunocytochemistry, flow cytometry, immunoprecipitation, immunofluorescence, and protein immunoblotting. **R&D Systems Europe.** For information call +44 1235 529449 or circle 146 on the reader service card.

Molecular Biology Made Easy offers a line of products in the categories of DNA purification, nucleic acid labeling, transfer membranes, gene expression analysis, polymerase chain reaction product tools, bioluminescent label conjugates, covalent attachment, immobilization of biomolecules, magnetic separation equipment, electrophoresis reagents, hybridization reagents, and phenol solutions. **CPG.** For information call 800-362-2740 or circle 147 on the reader service card.

Sapphire Detecting Units for X-Ray Microanalysis covers the high sensitivity, optimal geometry, and best standard resolution of this detector, which was designed for varied applications. The Sapphire allows a choice

of detector window materials. Advantages of the unit include improved resolution of low energy spectra, a high peak-to-background ratio, and a mean time between failure of more than 8 years. **EDAX.** For information call 201-529-4880 or circle 148 on the reader service card.

Fitzgerald Industries International 1997-1998 Product Catalog includes 3,500 immunodiagnostic reagents, including more than 1,000 new products. Categories include cardiac markers, infectious disease reagents, thyroid reagents, steroids, human serum proteins, fertility and pregnancy reagents. Also included are cytokines and growth factors, bone and metabolism reagents, environmental reagents, lipoprotein and apolipoprotein reagents, tumor markers and cancer reagents, and neuroscience reagents. **Fitzgerald Industries International.** For information call 508-371-6446 or circle 149 on the reader service card.

1997/98 Laboratory Chemicals Catalog features detailed product descriptions for chromatography, trace-metal analysis, histology, biotechnology, and general analytical applications. It features more than 3,000 products. **Mallinckrodt.** For information call 800-354-2050 or circle 150 on the reader service card.

1996/97 AAAS SCIENCE AND TECHNOLOGY POLICY YEARBOOK

Albert H. Teich, Stephen D. Nelson and Celia McEnaney, editors

Covering major developments during 1996, the new *AAAS Yearbook* is a concise yet comprehensive source of information on current policy issues affecting science and technology. Included are papers from the 1996 AAAS Science and Technology Policy Colloquium together with other key articles and speeches and excerpts from reports by the National Academy of Sciences, the Council on Competitiveness, and the National Science Board.

1997; 456 pages; \$24.95 (AAAS member price \$19.96)
Purchase the 1995 *Yearbook* for \$12.50 (half price) and the 1991-1994 *Yearbooks* for only \$5.00 each.
Postage/handling per order \$4.00.
AAAS Distribution Center, PO Box 521, Annapolis Junction, MD 20701.
Order by phone (VISA/MasterCard only) call 1-800-222-7809. Fax orders to 301-206-9789.

HAWAII HEPTACHLOR RESEARCH & EDUCATION FOUNDATION Hawaii Heptachlor Health Effects Research Program

REQUEST FOR PROPOSALS

In 1981-82, Heptachlor epoxide contaminated a considerable part of Hawaii's milk supply. This has led to concern that adverse health effects might result from consumption of contaminated dairy products, particularly among children. Studies to identify potential disease problems, and to develop measures to prevent or ameliorate them are sought and will be supported.

The Foundation is especially interested in two laboratory-based research areas: 1) The study of the effects of prenatal exposure to Heptachlor Epoxide and related compounds on the development and function of the immune system, nervous system and the endocrine system; 2) Mechanistic studies on how Heptachlor Epoxide and related compounds might influence signal transduction, gene expression and neuro transmitters in ways that are relevant to the toxicology of these compounds.

Projects up to two years duration will be considered for funding. For some background information see: Smith, R. Jeffrey, *Science*, Vol. 217, 9 July 1982, p. 137, and Baker, Dean B., et al., *Hawaii Medical Journal*, Vol. 50, No. 3, March 1991, p. 108. To apply: Submit a letter of intent of less than 500 words, which includes an estimated budget, to the Foundation. All letters of intent will be reviewed by the Foundation's Scientific Advisory Council for relevance and quality. The Scientific Advisory Council is chaired by Dr. David P. Rall. Only letters of intent received by July 31, 1997 will be reviewed. Submitters will be notified by October 15, 1997 on whether or not to submit full applications for consideration. Copies of the Foundation's research policies are available upon request to the Foundation office.

Send all letters of intent to **Hawaii Heptachlor Research & Education Foundation**, attn. Rick Scudder, Executive Director, 1188 Bishop Street, Suite 2308, Honolulu, HI 96813. phone (808) 531-2963, fax (808) 531-3050. Email: rscudder@igc.apc.org

Circle No. 23 on Readers' Service Card

DISPLAY CLASSIFIED ADVERTISEMENTS

Call for rate and deadline information on display classified advertisements.

Email: science_displays@aaas.org

Bren Peters-Minnis
Recruitment Display Advertising
Telephone: (202) 326-6541
FAX: (202) 289-6742
Email: science_displays@aaas.org

Gabrielle Boguslawski
Recruitment Sales Manager
Telephone: (718) 491-1607
FAX: (202) 289-6742

Debbie Cummings
European Recruitment Advertising
Telephone: +44 (0) 1223 302067
FAX: +44 (0) 1223 576208

For **MEETINGS AND ANNOUNCEMENTS** display advertisements, see page 1138.

LINE CLASSIFIED ADVERTISEMENTS

How to Submit a Line Classified Ad: Submit double-spaced typewritten copy. Do not include any abbreviations. SCIENCE will edit and typeset ads according to SCIENCE guidelines. Include billing information and desired publication date. Available categories: Positions Open, Meetings, Announcements, Courses and Training, Services. SCIENCE cannot provide proofs of typeset line ads. Line advertisements are not commissionable.

Estimates: SCIENCE will provide a cost estimate for line ads. This is an approximate cost only. Allow for variation between estimated lines and actual typeset lines and resulting final cost. Purchase orders must allow for some degree of flexibility and/or adjustment.

For line advertising deadlines, call Eric Banks. Telephone: (202) 326-6555; FAX: (202) 289-6742. Email: science_classifieds@aaas.org

Credit Cards: SCIENCE accepts American Express, MasterCard and VISA. Discount does not apply to credit cards.

Cancellations: Deadline for cancellation is Tuesday, 10 days prior to issue date.

Discounts: A 3% cash discount is granted to all prepaid ads.

Ads from Outside the U.S.: A discount of \$30 will be offered to advertisers making payment in U.S. dollars by checks drawn on U.S. banks. Contact Debbie Cummings. Telephone: +44(0) 1223 302067; FAX: +44(0) 1223 576208.

SCIENCE Professional Network: Unless otherwise instructed, every classified advertisement submitted for publication in SCIENCE is automatically posted on SCIENCE's on-line classified advertising service, SCIENCE Professional Network, at no additional charge.

www.sciencemag.org

Mail, FAX or Email materials to:
SCIENCE Classified Advertising
1200 New York Avenue, N.W., Room 911
Washington, DC 20005
FAX: 202-289-6742
Email: science_classifieds@aaas.org (please include your telephone number in Email)

SCIENCE reserves the right, at its discretion, to edit or decline to publish advertisements submitted to it.

POSITIONS OPEN

MANAGER DNA SEQUENCING FACILITY EMORY UNIVERSITY SCHOOL OF MEDICINE

A manager is sought to run a new DNA sequencing core facility at Emory University. The manager will have one assistant and be responsible for all aspects of the core facility, including performing the DNA sequencing, communication of results to end-users, billing, and running the laboratory. Prior experience with automated DNA sequencing is required. The sequencing facility includes two ABI Prism sequencers and dedicated PCR machines, computers, etc., to be housed in the Rollins Building on the Emory University School of Medicine campus. Competitive salary will be negotiated, based on experience.

Emory University is a private institution located in suburban Atlanta with a modern college campus contiguous to the Medical Center, a hospital system serving a population base of over 3 million, with an outstanding faculty, a highly competitive student body, and a generous endowment. The biomedical research programs occupy over 500,000 square feet of new or renovated research space and garner in excess of \$100 million per year in peer-reviewed research support.

Applications will be accepted until the position is filled. Send résumé and three letters of recommendation to: **Dr. Richard A. Kahn, Department of Biochemistry, Emory University School of Medicine, 1510 Clifton Road, Atlanta, GA 30322-3050. Telephone: 404-727-3561, FAX: 404-727-3746.**

Emory University is an Equal Employment Opportunity/Affirmative Action Employer.

Troy State University, Troy, Alabama has a **DEPARTMENT CHAIR** vacancy in biology. A Ph.D. in biological science is required. The successful candidate must have documented administrative and leadership abilities as well as appropriate credentials to teach undergraduate and graduate courses in two or more of the following areas: anatomy and physiology; morphology, embryology, hematology, or parasitology. The chair will coordinate the transition from the current science facility to a new, modern science complex. Evaluation of applications will begin on May 15, 1997, and continue until the position is filled. Appointment date is September 1, 1997. Applicants should submit a letter of application, current curriculum vitae, transcripts of all graduate study, and the names and telephone numbers of three references to: **Office of Personnel Services, Troy State University, Troy, AL 36082.** *Troy State University is an Affirmative Action/Equal Employment Opportunity employer and encourages applications from females, African Americans and other minorities.*

RESEARCH POSITION

The Department of Obstetrics and Gynecology at Rush-Presbyterian-St. Luke's Medical Center invites applications for the position of **DIRECTOR** of the Gynecologic Oncology laboratory. Our laboratory currently focuses on cell-cell interaction and signal transduction pathways in cervical carcinoma and intraepithelial neoplasia. We are seeking candidates who would translate this research into fundable clinical research projects. Qualifications: M.D. or M.D./Ph.D., board certification in gynecologic oncology, advanced laboratory research experience in cell-cell interaction and signal transduction pathways in cervical carcinoma and intraepithelial neoplasia, documented by publications in peer-reviewed journals, and expertise in clinical gynecologic oncology trials. Academic rank will be commensurate with experience. Applicants should send a curriculum vitae to: **Dr. S. Faro, Chairman, Department of Obstetrics and Gynecology, 1653 West Congress Parkway, Chicago, IL 60612.**

DIRECTOR, GASTROENTEROLOGY RESEARCH

Opportunity available with our Division of Gastroenterology, Hepatology, and Nutrition. Ph.D. in physiology/pharmacology with minimum two years postdoctoral experience with expertise in electrophysiology (specifically patch clamp technique of epithelial cells) and general background in molecular biology. Fully equipped and funded basic science lab studies intestinal transport in inflammatory bowel diseases and has full-time technical support. Located on Long Island, approximately 30 minutes from Manhattan.

Send curriculum vitae and three letters of professional/academic reference to: **Executive Recruiter, Human Resources Department, Winthrop-University Hospital, 259 First Street, Mineola, NY 11501.** *Equal Opportunity Employer, Minorities/Females/Disabled/Veterans.*

POSITIONS OPEN



DEPARTMENT OF BIOCHEMISTRY AND MOLECULAR BIOLOGY FACULTY POSITION AVAILABLE

The Department of Biochemistry and Molecular Biology at the University of Nebraska Medical Center invites applications for a tenure-leading position made available as part of a planned expansion and enhancement of current research programs. Preference will be given to outstanding candidates employing biochemical, structural and/or molecular biological approaches to investigate fundamental processes necessary for understanding development, prevention or treatment of human diseases.

It is expected that the appointments will be at the rank of **ASSISTANT PROFESSOR**. Qualifications include a Ph.D. or M.D. degree and relevant postdoctoral experience. The successful applicant will be expected to have or develop a funded, independent research program and to contribute significantly to the teaching programs of the department.

Collaborative research opportunities exist with the faculty at the UNMC/Eppley Cancer Center, UNMC Transplant Center, University of Nebraska-Lincoln, Creighton University, and the V.A. Medical Center. UNMC is located in a metropolitan area of more than one-half million people with diverse business, educational, cultural and recreational opportunities. See <http://www.unmc.edu/biochemistry/> for further information.

Applicants should submit curriculum vitae, selected reprints, a brief description of current and future research interests and teaching experience and the names, addresses and telephone numbers of four references to:

**Dr. Jamboor K. Vishwanatha, Chair
Biochemistry and Molecular Biology
Search Committee
University of Nebraska Medical Center
600 South 42nd Street
Omaha, NE 68198-4525**

The deadline for receipt of applications is July 31, 1997. UNMC is an Equal Opportunity/Affirmative Action Employer. Minorities and women are encouraged to apply.

University of Alberta—Lipid and Lipoprotein Research Group. We are an interdisciplinary group seeking candidates for two positions at an **ASSISTANT PROFESSOR** level. One candidate must have a Ph.D. and/or M.D. degree and three or more years of postdoctoral experience. The other candidate must have a M.D. degree and be qualified in a clinical specialty. The salary range would be \$39,230-\$55,526. The positions will be long-term and funded through an external agency, but the incumbents will enjoy the privileges of the University academic rank at which the appointment is made. The granting of these awards is by competition and is made on the basis of excellence. Significant startup funds would be made available to the successful candidates. All faculty in the Group spend at least 75% of their time on research. *In accordance with Canadian Immigration requirements, priority will be given to Canadian citizens and permanent residents of Canada. If suitable Canadian citizens and permanent residents cannot be found, other individuals will be considered.* Candidates should forward a curriculum vitae, list of publications, a statement of research interests and the names of three referees to: **Dr. Dennis Vance, Director, Lipid and Lipoprotein Research Group, 328 Heritage Medical Research Centre, Edmonton, Alberta T6G 2S2 Canada.** Closing date: June 15, 1997. *The University of Alberta is committed to the principle of equity in employment. As an employer we welcome diversity in the workplace and encourage applications from all qualified women and men, including Aboriginal peoples, persons with disabilities, and members of visible minorities.*

RESEARCH ASSOCIATE

A research associate position is available to investigate molecular mechanisms underlying thiol mediated chemoprevention. The applicant should be familiar with current molecular-based technologies as well as sterile culture technique for either yeast or mammalian cell systems. Work will focus on gene expression, transcriptional and post-translational controls, and DNA repair. Experience in polyamine research an advantage. Please send curriculum vitae along with three letters of recommendation to: **Dr. David J. Grdina, Department of Radiation and Cellular Oncology, University of Chicago, MC 1105, 5841 South Maryland Avenue, Chicago, IL 60637.**



TROPICAL AGRICULTURE RESEARCH AND HIGHER EDUCATION CENTER CENTRO AGRONÓMICO TROPICAL DE INVESTIGACIÓN Y ENSEÑANZA

POSITION ANNOUNCEMENTS

CATIE is an autonomous, non-profit, international research and graduate education Center, with mandate in Latin America and the Caribbean. It is headquartered in Costa Rica and has been operating continuously since 1943. CATIE's mission is to improve the well-being of humankind by applying scientific research and higher education to the development, conservation, and sustainable use of natural resources in the Americas.

CHIEF, AREA OF TROPICAL FORESTRY

The successful applicant will work and lead a multidisciplinary team of professionals doing research, graduate education, and outreach in tropical forest management, tropical forest plantations, and related matters. He/she will be a recognized scientist and manager as proven by peer-reviewed publications in recognized journals. He/she should have sensitivity to poverty alleviation and should be familiar with such trends as certification, carbon storage/sequestration, joint implementation, and the like.

CHIEF, UNIT OF BIODIVERSITY MANAGEMENT AND CONSERVATION

The successful applicant will manage a small group of scientists and lead the Unit towards a sustained growth so as to become the best in this matter in Latin America and the Caribbean. Areas of interest are: wetlands management; buffer zone management; non-wood forest products domestication and marketing; indigenous and local community empowerment through knowledge; socioeconomic of conservation; and ecological functions associated with integrated natural resources management as they associate with biological diversity. The candidate should have a proven research record as shown in peer-reviewed publications and international journals.

GIS SPECIALIST

The successful candidate should have experience on geographical information systems as they apply to: land use planning, crop forecasting; monitoring deforestation, erosion, and land or ecosystem degradation; combining socioeconomic with biophysical and environmental factors dealing with agricultural/natural resources decision-making. The professional should have knowledge of modern teledetection technologies and practical experience in their application. Peer-reviewed publication in recognized journals is a must.

QUALIFICATIONS

All applicants for these positions should have a Ph.D. degree or equivalent, a strong interest in research, and graduate education demonstrated through publications of different kinds. Experience in developing countries, with particular interest in Latin America, is highly desirable. Candidates must have an excellent command of written and spoken English and Spanish.

Salary and Benefits vary from US\$40K to US\$80K tax free, and mission international standards. Benefits include subsidized house and education, biannual home leave, and an excellent retirement and health package.

Applicants: Please send resume, with a list of publications and professional presentations, with a cover letter plus names and contact addresses of their referees to: CATIE c/o Viviana Sanchez, Head of Human Resources, CATIE 7170, Tarrialba, Costa Rica. Fax: (506) 556-1533; phone: (506) 556-0811; email: vsanchez@catie.ac.cr; Web-page: <http://www.catie.ac.cr>

Applications would be accepted until June 15th, 1997 or until the positions are filled.

CATIE is an equal opportunity employer and is keen to further diversify its staff in terms of both gender and nationality.

Messerli Foundation, Switzerland Wildlife Veterinarian for the Serengeti National Park in Tanzania

The Messerli Foundation, Zurich, Switzerland, is looking for an experienced wildlife veterinarian with clinical, research, teaching and managerial skills to head a project based at the Serengeti Wildlife Research Institute, Tanzania. The successful applicant will be required to conduct research on the role of disease within the Serengeti ecosystem, provide short-term courses on aspects of wildlife veterinary science, assist research scientists and wildlife managers with veterinary issues and to maintain the veterinary laboratory at the Serengeti Wildlife Research Center.

The initial contract will be for 2 years with the option for extension. The salary will be commensurate with experience. Accommodation and transport to Serengeti will be free. Interested applicants should provide a full curriculum vitae, a description of their clinical experience with wild animal species; research, teaching and managerial skills; a list of publications plus the names of 2 referees. The closing date for applications is June 15, 1997.

Applications should be addressed to:

Dr. Heinz Schweizer, Vice President
Messerli Foundation
Am Guggenberg 20
Postfach 89
8053 Zurich, Switzerland

Additional information may be obtained from

Prof. Hans Lutz, Clinical Laboratory
Dept. of Internal Veterinary Medicine
University of Zurich, Winterthurerstrasse 260
CH-8057 Zurich
email: hanslutz@vetklinik.unizh.ch.

Postdoctoral Scientist

Molecular Neurobiology/Functional Genomics

Bayer, a worldwide leader in the discovery and development of innovative pharmaceuticals, has immediate career opportunities for Postdoctoral Fellows at the Central Research facility in Leverkusen.

The successful candidate will join a research group focused on exploring the molecular biology of G-protein coupled receptors. The project involves cloning and functional characterization of novel receptors and the identification of natural ligands in the CNS.

The activities of the research group form an essential part of a multidisciplinary effort aiming to develop new and effective therapies for a wide variety of human CNS-diseases.

Applicants should have a strong expertise in Molecular Biology and Neurobiology.

Candidates should send a brief description of research experience, CV including a list of publications and names of two references to:

Bayer AG
Personnelmarketing
attn. Frau Redmer
ref. no. 280
D-51368 Leverkusen
Germany





Nestlé

THE NESTLÉ RESEARCH CENTER AT LAUSANNE IN SWITZERLAND

has a two year position for a
MASS SPECTROSCOPIST

in the department of
Quality and Safety assurance.

Candidates should have a Ph.D. in chemistry, strong background in analytical chemistry and mass spectrometry. Experience with HPLC/electrospray, capillary electrophoresis and other chromatographic techniques is highly desirable in one or more of the following areas: biomarkers, dietary contaminants and product authenticity.

Interested candidates should send their curriculum vitae and names of three referees (address and telephone) to the following address:

**Nestlé Research Center
Human Resources
Attn. Mr. M. Juillerat
P.O. Box 44
CH-1000 Lausanne 26**



Nestlé

THE NESTLÉ RESEARCH CENTER AT LAUSANNE IN SWITZERLAND

is looking for a
LIPID NUTRITIONIST

with a strong analytical background

The successful candidate will join a team of lipid specialists working on nutritional effects of dietary lipids. Excellent knowledge of lipid metabolism is essential. The work will require excellent analytical skills in chromatography and experience with mass spectrometry is an asset.

Candidates should have earned a Ph.D. in nutritional biochemistry, with a background in chemistry or food science and at least one year postdoctoral training in Research and Development.

The successful candidate will be an independent researcher and is expected to be involved in international projects requiring good communication abilities. Essential is excellent written and oral skills in English; other languages are considered an advantage.

Interested candidates should send their curriculum vitae and names of three referees (address and telephone) to the following address:

**Nestlé Research Center
Human Resources
Attn. Mr. M. Juillerat
P.O. Box 44
CH-1000 Lausanne 26**



Nestlé

THE NESTLÉ RESEARCH CENTER AT LAUSANNE IN SWITZERLAND

is looking for a
RESEARCH SCIENTIST

to participate in projects in the Micronutrients team. Applicants should have a Ph.D. in nutritional sciences or related area, with research experience in mineral and trace element nutrition. The successful candidate will be expected to develop an innovative research program utilising stable-isotope, molecular biology and cell culture techniques to study mineral and trace element metabolism, to work both independently and in collaboration with others. Experience in at least one of the above techniques is expected.

Interested candidates should send their curriculum vitae and names of three references (address and telephone) to the following address:

**Nestlé Research Center
Human Resources
Attn. Mr. M. Juillerat
P.O. Box 44
CH-1000 Lausanne 26**

PROPOSAL

REQUEST FOR PROPOSALS FROM THE INTERNATIONAL SPINAL RESEARCH TRUST

The ISRT is a grant giving charity (number 281325) with the purpose of funding research aimed at resolving the non- or partial-functioning of the injured spinal cord.

The field of spinal cord repair has developed to the stage at which we now have demonstrable regeneration of damaged nerve fibres in the adult mammalian cord. Accordingly we feel that we have sufficient knowledge to plan a research strategy which will guarantee genuine progress. To proceed further it is recommended that ISRT funding is restricted to projects that are conducted in adult mammalian spinal cord.

We now invite applications that address the anatomical, electrophysiological, and functional assessment of spinal cord connectivity, especially in regenerative or repair situations. Thus, we are particularly interested in the development of robust, sensitive and quantitative methodologies that will distinguish between effector tissue innervation patterns derived from full-length nerve fibres surviving partial spinal cord lesions; from the collateral sprouting of adjacent, undamaged nerve tracts; and from the true regeneration of severed axons. Methods to demonstrate functional innervation patterns will be favoured. Studies in intact spinal cord are acceptable if they extend or significantly refine our present understanding of relevant motor, sensory, and autonomic pathways.

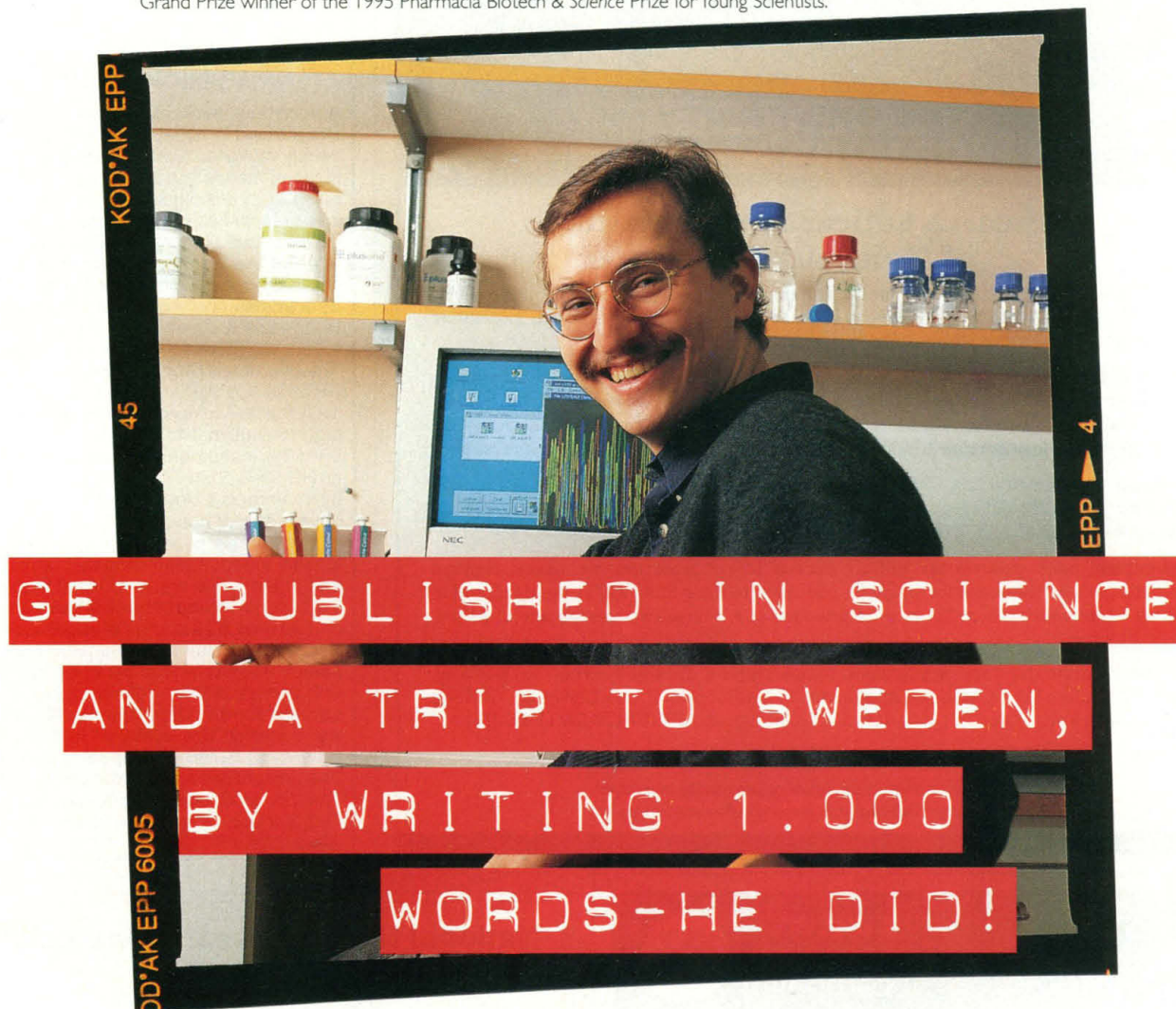
Applicants should submit five copies of a letter of intent (c. two sides) summarising the proposed research and background of the laboratory. Five copies of an approximate budget and curriculum vitae of the Principal Investigator(s) should be appended.

All letters should arrive by first post on 23 June 1997. No faxed or electronic letters of intent will be accepted. Awards will average up to £250,000 over three years and, following a preliminary review, detailed proposals will be requested from a limited number of applicants.

Address letters of intent to: **The International Spinal Research Trust, Unit 7 Bramley Business Centre, Station Road, Bramley, Guildford, Surrey GU5 0AZ UK. Enquiries: Tel: +44 (0) 1483 898786; Fax: +44 (0) 1483 898763; email: isrt@dial.pipex.com.**

Dr. Michael Hengartner, a staff member at Cold Spring Harbor Laboratory in New York, was the first Grand Prize winner of the 1995 Pharmacia Biotech & Science Prize for Young Scientists.

PHC MALMO



(OH YEAH, AND \$20.000)

If you're a recent Ph.D. graduate whose thesis work was in molecular biology, we'd like to congratulate you. We'd also like to give you a little recognition for a job well done. All you have to do is enter an essay based on your graduate thesis to the 1997 Pharmacia Biotech & Science Prize for Young Scientists.

Your essay will be reviewed by a panel of distinguished scientists—who will then select one Grand Prize winner and up to seven other winners. The Grand Prize winner will receive the rewards mentioned above; all other winners will receive \$5,000 each and a free trip to Sweden to attend the award ceremony.

CALL FOR ENTRIES

To be eligible, you must have received your Ph.D. between 1 January and 31 December 1996. Your thesis work must have

been in the field of molecular biology. To enter, you must submit a 1,000 word essay that describes your thesis work and places it in perspective with regard to the field of molecular biology. The essay may be submitted in either English, French, German, Spanish, Japanese, or Chinese (Mandarin).

The closing date for entries is 30 June 1997. All prizes will be presented in Sweden in December 1997. Full details and the required entry form can be obtained from:

- the administrator of the Award Committee at the address below
- within the Science homepage at <http://www.aaas.org/science/prize.htm>
- within the Pharmacia Biotech homepage at <http://www.biotech.pharmacia.se>

Pharmacia
Biotech & SCIENCE
Prize for
Young Scientists
IN MOLECULAR BIOLOGY 1997

The Award Committee
Pharmacia Biotech & Science Prize for Young Scientists

Enquiries from Europe – Science International, 14 George IV Street, Cambridge, CB2 1HH, UK. Tel: +44 1223 302067, Fax: +44 1223 302068
Enquiries from USA and other regions – Science, 1200 New York Avenue, NW, Washington, DC 20005 USA. Tel: 202-326-6504, Fax: 202-289-7562



Research Officer in the Institute of Molecular Biology

Applications are invited for appointment as Research Officer in the Institute of Molecular Biology (RF-96/97-70), tenable from as soon as possible. Appointment will initially be made on a two-year fixed-term contract, with a possibility of renewal.

Applicants should have a PhD degree in related fields. Post-doctoral research experience in molecular genetics or cell biology related to diabetes would be helpful but not essential. The appointee will be responsible for carrying out research in molecular biology or gene knockout mice models to study the mechanism of diabetic complications.

Annual salary [attracting 15% (taxable) terminal gratuity] is on a 9-point scale, with starting salary depending on qualifications and experience: HK\$303,360 - HK\$554,820 (approx US\$39,397 - US\$72,054; US dollar equivalents as at 30 April 1997).

At current rates, salaries tax will not exceed 15% of gross income. Leave, medical benefits, and an allowance for children's education in Hong Kong will be provided; and in some cases housing benefits may be provided at a charge of a percentage of salary, currently 7.5%.

Further particulars and application forms may be obtained either on WWW at <http://www.hku.hk>, or from the Appointments Unit, Registry, The University of Hong Kong, Hong Kong (Fax (852) 2540 6735/2559 2058; E-mail: APPTUNIT@REG.HKU.HK).

Closes 18 July 1997.

*The University is an equal opportunity employer
and is working towards a smoke-free environment*

POSTDOCTORAL POSITION IN NMR-MICROSCOPY

A position is available immediately at the Department of Chemistry, Swedish University of Agricultural Sciences (SLU) for implementation and development of NMR-microscopy techniques. The main research involves studies of biopolymers, microorganisms and plant metabolism as well as of polymers and formulations of pharmaceutical interest. Collaborations with Bruker Spectrospin and Analytical Chemistry at Pharmacia & Upjohn are ongoing. Possibilities are given to initiate own research. The instrumentation consists of a Bruker DRX600 and DRX400 spectrometer, both instruments equipped for microimaging and high-resolution NMR-spectroscopy. The 600 MHz instrument is also equipped with an HR-MAS probe. The position is financed by Pharmacia & Upjohn. Applicants should have a strong background in NMR imaging, preferably microimaging, and ability to work independently and play an active role in the collaborations. Initial inquiries via email to lennart.kenne@kemi.slu.se or herbert.baumann@eu.pnu.com. Send curriculum vitae, summary of research interest and experience together with names of three references to: **Prof. Lennart Kenne, Department of Chemistry, Swedish University of Agricultural Sciences, S-750 07 Uppsala, Sweden.** The University is situated outside Uppsala. The city of Uppsala has a population of 160,000 and is situated 70 km north of Stockholm.

cancer
research
campaign



CRC Senior Cancer Research Fellowship 1997

Following the interest in the first round of the CRC Senior Cancer Research Fellowship scheme, the Cancer Research Campaign is pleased to announce the second round. The aim of this Fellowship scheme is to support outstanding young investigators who have shown special promise in their initial studies in a cancer relevant research field and to provide them with an opportunity to establish an independent research group.

Candidates should have a PhD, have completed at least 3 years postdoctoral work and should not normally be over 35 years of age. However, equal consideration will be given to those over this age where their career has been affected by a late start, or by interruption for personal or family reasons.

A CRC Senior Cancer Research Fellowship may be held in any CRC-funded Research Institute, Laboratory or Research Group, or alternatively in an appropriate UK university department, subject to the usual CRC funding restrictions.

The Fellowship will provide both personal and research support (salary for technical support plus consumables), plus a set-up equipment grant in the first year and will be tenable for five years in the first instance.

Applicants are invited to submit a two page preliminary proposal outlining their proposed programme of research, plus a full CV. Successful applicants will then be invited to submit a full application.

For an informal discussion of your application, please telephone Dr Fiona Hemsley on 0171 224 1333. Closing date: Friday 13th June 1997.

Fighting cancer on all fronts

National Health Research Institutes Taiwan, R.O.C.

POSTDOCTORAL POSITIONS SIGNAL TRANSDUCTION

The newly established Molecular and Genomic Medicine Division of the National Health Research Institutes is launching a program to study genes involved in the development of gastric and liver cancers. Several postdoctoral posts are available for individuals with strong background in kinases, signal transduction, and cell cycle. The Institutes provides excellent resources, state-of-the-art instruments, and highly competitive salaries. Please send C.V. to **Dr. Chen-Kung Chou or Dr. Hsing-Jien Kung, MGM Division, NHRI, (E-mail: ckchou@mail.pmf.org.tw, fax: 886-2-873-5850)** and arrange three reference letters sent directly to Dr. Chou at the above address.



Antex Biologics Inc. is committed to improving human health by developing products for the prevention and treatment of infectious diseases and related disorders.

Antex's growing research and development program has created opportunities for talented scientists to join a multidisciplinary team focused on human vaccines.

Antex Biologics Inc. offers an environment of opportunity, challenge and achievement where you can make significant contributions to the research and development of innovative healthcare products for unmet clinical needs.

IMMUNOLOGY

The mission of this group is to evaluate and characterize the humoral and cellular immune responses elicited in animals and humans administered prototype whole cell and subunit vaccines. Candidates must possess a thorough knowledge of immunology and a strong background in various immunology procedures such as: animal model development, antibody/ASC analysis, quantitative cytokine analysis, proliferation assays, T-cell isolation and enrichment, ELISPOT, generation and maintenance of B- and T-cell hybridomas, and analysis of lymphocyte populations.

Director: The Director will be responsible for planning and managing the experimental activities of the group in addition to conducting his/her own laboratory program. The Director's position requires an M.D. or Ph.D. degree in Immunology or related field and a minimum of 6 years of relevant post graduate laboratory and managerial experience, preferably in a pharmaceutical or biotechnology environment. **Code: IMM #1**

Senior Scientist: Candidates should have experience in developing colonization and disease models in animals and evaluating immune responses induced by prototype vaccines to respiratory and gastrointestinal pathogens. The Senior Scientist position requires a Ph.D. degree in Immunology or related field and a minimum of 3 years of relevant post graduate laboratory experience. Experience in developing and implementing animal disease models is essential. **Code: IMM #2**

Research Associate: Research Associate positions are available for individuals having either a B.S. or M.S. degree in Microbiology or a related field and 0-3+ years of demonstrated laboratory experience. Positions require previous experience performing basic immunological analyses (ELISA, Western blotting), general tissue culture techniques, and growing infectious organisms. These individuals will also be required to assist in animal evaluation studies. **Code: IMM #3**

MICROBIOLOGY

The microbiology effort is focused on the discovery of novel vaccine candidates for respiratory and gastrointestinal pathogens and novel antimicrobial agents. Research areas include microbial pathogenesis, adhesin identification, and molecular mechanisms for bacterial infection and disease progression.

Senior Scientist: Candidates should have expertise in microbial genetics, molecular biology and disease models. Areas of research will include adhesin discovery, signal transduction, bacterial physiology, virulence factors and characterization of bacterial membrane components. The Senior Scientist position requires a Ph.D. degree in Microbiology and a minimum of 3 years relevant post-graduate experience. Previous experience in vaccine and antibiotic research is a plus. **Code: MIB #1**

Research Associate: Research Associate positions are available for qualified individuals having either a B.S. or M.S. degree in Microbiology or a related field with 0 - 3+ years of laboratory experience. Previous experience should include growing and isolating pathogens and various microbial assay procedures; work with animal disease models is a definite plus. **Code: MIB #2**

MOLECULAR BIOLOGY

Research Associate: To assist in the identification and cloning/expression of genes encoding novel subunit antigen candidates. Qualified individual must have a B.S. or M.S. degree in a Life Science field; 0-3+ years of experience in the cloning and sequencing of procaryotic genes using contemporary recombinant DNA procedures is essential. Individuals with a background in Microbiology would be preferred. **Code: MOB #1**

CHEMISTRY

Senior Scientist: The desired candidate will have a Ph.D. in synthetic organic chemistry and a minimum of 5 years pharmaceutical research experience. Experience in cross-functional research programs such as pharmacology and medicinal chemistry development is a plus. Previous experience in the synthesis of polyaromatic compounds and rational drug design are preferred. **Code: CHEM #1**

These positions are located at Antex Biologics' greater Washington, D.C. facility located in Gaithersburg, Maryland. We offer competitive compensation and benefits, including medical, dental and life insurance, paid vacation and a 401(k) program. For consideration, send your resume indicating the position code number being applied for to: **Human Resources Dept., Antex Biologics Inc., 300 Professional Drive, Gaithersburg, MD 20879.**



INTERNATIONAL CENTRE FOR RESEARCH IN AGROFORESTRY

VACANCY ANNOUNCEMENT

GLOBAL COORDINATOR FOR THE ALTERNATIVES TO SLASH-AND-BURN PROGRAMME

The International Centre for Research in Agroforestry (ICRAF) has a challenging position open for coordinator of the global Alternatives to Slash-and-Burn (ASB) agriculture programme. ICRAF is an international research organization supported by the Consultative Group on International Agricultural Research (CGIAR). Its ultimate purpose is to contribute to improving human welfare and environmental resilience through agroforestry systems. ICRAF acts as the convening centre for the ASB programme for the CGIAR. The programme aims to develop sustainable alternatives to shifting cultivation, through technological and policy options that improve human welfare and protect the environment. The programme focuses on the humid lowland zones of Southeast Asia, Latin America, and West Africa. The multi-institutional research consortium that implements the research and training for ASB is comprised of 9 international research centres and 62 national research institutes, universities, and other governmental and non-governmental organizations in these regions — and effective coordination is thus the key to its continued success.

The Coordinator for ASB provides leadership for the development and implementation of the Programme. Specific tasks include monitoring of the activities and agreed outputs of the Programme; coordinating work plans and budgets together with partner institutions; organizing meetings; and preparing proposals for donor funding, progress reports for donors and other publications. The Coordinator acts as secretary to the Donor Support Group and to the ASB Global Steering Group. The Coordinator will make periodic visits to the 8 ASB benchmark sites to monitor progress of research and dissemination activities and also on the strategic development of the programme.

Candidates are expected to have a Ph.D. in environmental or natural resource science or an MBA, and should also have at least 5 years of practical experience in Africa, Southeast Asia, or Latin America. Applicants should have demonstrated administrative ability to design, formulate, establish, and coordinate research to development activities. They should be communicators, with excellent speaking and writing/editing skills in English; a working knowledge of Spanish or French is highly desirable. The rigors of this position also require excellent organizational skills and a flair for working well in a cross-cultural and multidisciplinary environment is essential.

An internationally competitive salary and benefits package are provided. The position is based at ICRAF headquarters in Nairobi, Kenya. ICRAF offers a collegial and gender-sensitive working environment. The contract is for continuing appointment up to 10 years, subject to a 1-year probationary period, satisfactory performance and adequate funding.

To apply, send a detailed CV, including salary details, date of birth, and names and addresses of 3 referees (with telephone, email, and fax numbers). All correspondence should be addressed to the **Head of Human Resources, International Centre for Research in Agroforestry, P.O. Box 30677, Nairobi, Kenya; tel: 254 2 521450; fax: 254 2 521001; email: r.lecuyer@cgnet.com.**

The closing date for applications is 1 June 1997. *Women are particularly encouraged to apply.*



Texas A&M University Associate Provost for Information Technology

Position Description

Texas A&M University is accepting applications for the position of Associate Provost for Information Technology.

General Responsibilities

The Associate Provost for Information Technology will provide leadership for the effective integration of appropriate information technologies into research, instructional, and administrative activities of the University that are consistent with the institution's distributed approach to information technology resources and decision-making. The successful candidate will provide leadership by: (1) managing academic and administrative information technology personnel and budgets; (2) planning and coordinating information technology services and entities within the University; (3) working with faculty to develop and expand both instructional and research technologies as well as working with The Texas A&M University System, state, and national organizations to plan and develop information resources and networks; (4) providing oversight for the state's largest video-conference network and the public broadcast facilities; (5) recommending budget priorities to the provost; (6) working with faculty, staff, and students to develop policies and procedures that meet the information and technology needs of both academia and administration; (7) developing and implementing the "next generation" strategic plan for information technology; (8) working with the provost, vice presidents, directors, and deans to integrate traditional, new, and emerging information resources and technologies into the University's teaching, research, and outreach mission; (9) working with the University's statewide information technologies and related information resources including budget, human resources, strategic planning, and policy development; and (10) coordinating with the library's role in information and computing technologies.

Qualifications

Applicant must be an individual with an advanced degree in information technologies or a closely related discipline, and would preferably be eligible to be a tenured faculty member at Texas A&M University. Applicant must have extensive, successful experience in information technologies, including a proven record of leadership in an information management environment and an understanding of emerging trends such as video-conferencing and communication to facilitate distance learning and public broadcasting with a well developed knowledge of national initiatives. Strong administrative, interpersonal, and leadership skills, as well as high ethical standards and a commitment to excellence and diversity are required.

Applications

For consideration, please submit a letter of interest (or nomination) and a curriculum vita or resume to:

Robert A. Kennedy
Vice President of Research
Chair, Search Advisory Committee for
Associate Provost for Information Technology
312 Administration Building
Texas A&M University
College Station, Texas 77843-1112
E-mail: hr@admin.tamu.edu

by August 1, 1997. Position open until filled. For additional information go to the web site: <http://www.tamu.edu/infotech/>

Texas A&M University is an affirmative action, equal opportunity employer, committed to diversity.

At **Schering-Plough Research Institute**, we are pursuing scientific research that will ultimately help improve the health and extend the lives of millions of people around the world. At our Drug Discovery Facility in Kenilworth, NJ, scientists are focused on developing increasingly advanced treatments for cancer, allergies, cardiovascular disease, central nervous system disorders, respiratory disease and infectious diseases. You could play an integral role in our next breakthrough by joining us in our state-of-the-art research laboratories.

We have exceptional opportunities for **Scientists** in our expanding **Chemical Research Department**. We seek Scientists with a PhD and 0-10 years of experience, or Scientists with BS/MS degrees and 0-6 years of experience in synthetic organic chemistry. A strong knowledge of modern spectroscopic and chromatographic techniques is essential. A background in high-speed synthetic methods is desirable but not essential.

Chemical Research at Schering-Plough

We offer an excellent compensation package including a competitive salary and comprehensive benefits. For prompt, confidential consideration, we invite you to apply on-line at <http://www.sp-research.com> or send a scannable resume and cover letter, original copy only, to our Resume Scanning Center at: Dept. CR-BG, P.O. Box 92101, Los Angeles, CA 90009. We are an equal opportunity employer. *We regret we are unable to respond to each resume. Only those selected for an interview will be contacted.*



**Schering-Plough
Research Institute**

Using Science for Human Advantage



POSITIONS OPEN

FACULTY POSITION

The University of North Carolina at Chapel Hill invites applications for a tenure-track faculty position at the Associate Professor level in the School of Medicine, Department of Cell Biology and Anatomy. The appointee must have a Ph.D. or M.D. degree, a funded research program in the area of mammalian spermatogenesis, an established reputation and leadership role in reproductive biology as demonstrated by service to editorial boards, national organizations and funding agencies in this discipline. The successful candidate must have a strong background in research devoted to the regulation of germ cell differentiation and gene expression in the testis, including the analysis of transgenic and knockout animals. The appointee will interact with reproductive biologists in the Department of Cell Biology and Anatomy and the Laboratories for Reproductive Biology and will direct a cell separation and tissue culture core laboratory. This requires expertise in the culture of mammalian lines, isolation of spermatogenic cells, maintenance of primary cultures of spermatogenic and Sertoli cells, immunohistochemistry, and identification of spermatogenic stages in testicular sections. The appointee must have experience teaching medical histology and medical cell biology and will participate in teaching these courses to first-year medical and doctoral students. *Women and minorities are encouraged to apply and identify themselves.* Send curriculum vitae, a description of research plans, and have three letters of recommendation sent independently by June 30, 1997 to: **Dr. Charles R. Hackenbrock, Chair, Department of Cell Biology and Anatomy, School of Medicine, 108 Taylor Hall, CB# 7090, University of North Carolina at Chapel Hill, Chapel Hill, NC 27599-7090.** An Equal Opportunity/Affirmative Action Employer.

FULL PROFESSOR

Duke University invites applications or nominations for a scholar at the rank of full professor—beginning January 1, 1998, or later, as negotiated—to direct a major initiative in cognitive neuroscience in arts and sciences and engineering, and to supervise the hiring of additional faculty into funded positions. Areas considered for teaching and research include but are not limited to human attention, emotion, language, memory, motor control, perception, and vision. We expect to attract a person of prominence who has some combination of computational, developmental, experimental, mathematical, or neuroscience perspectives; interest in fMRI; ability to work with the Center for Brain Imaging and Analysis being formed in Duke's Medical Center; and ability to interact with university faculty in various departments who are working in cognitive neuroscience. Please send curriculum vitae and names of references to: **Cognitive Neuroscience Search Committee, c/o Dean of the Graduate School, Box 90067, 127 Allen Building, Duke University, Durham, NC 27708-0067, USA.** Applications will be considered until the position is filled. *Duke University is an Equal Opportunity/Affirmative Action Employer.*

RESEARCH ASSOCIATE WISTAR INSTITUTE

We invite applications for a research associate to study structural conformational switches in the p53 tumor suppressor protein using biochemical and structural biology approaches. Must have hands-on experience in NMR spectroscopy, conformational analysis by protease sensitivity, protein expression, and purification and analysis of p53 from tissue culture cells. Background in chemistry and biochemistry is required, as well as working experience with the p53 tumor suppressor protein. Must have a Ph.D. degree and at least two years of postdoctoral training. Applicants should submit a curriculum vitae and have three letters of references sent directly to: **Human Resources, The Wistar Institute, 3601 Spruce Street, Philadelphia, PA 19104-4268.**

SENIOR SCIENTISTS

Require a Ph.D. in biochemistry, immunology, pharmacodynamics, molecular biology, or a related area with 2+ years of postdoctoral or industrial experience in drug development or gene therapy. Will have overall responsibility of designing and testing novel folate derivatives of imaging and/or anticancer agents in cell culture and in animal models. Endocyte, Inc. is a rapidly expanding biotechnology company located near Purdue University. Send résumé to: **Dr. R.J. Lee, Vice President of Research and Development, Endocyte, Inc., 1291 Cumberland Avenue, Suite E, West Lafayette, IN 47906.**

POSITIONS OPEN



CORE STAFF, WASHINGTON REGIONAL PRIMATE RESEARCH CENTER, AND PROFESSOR, DEPARTMENT OF PHARMACEUTICS, SCHOOL OF PHARMACY, UNIVERSITY OF WASHINGTON, SEATTLE, WASHINGTON

Applications are invited for a core staff position at the Washington Regional Primate Research Center (WaPRC) with a joint appointment at the Professional level (non-tenure track) in the Department of Pharmaceutics, School of Pharmacy, University of Washington. The successful candidate will lead, complement, and strengthen the current research program in antiviral vaccines and therapeutics at the Primate Center and will coordinate and expand this field of research into a multidisciplinary research program involving investigators both within and outside of the WaPRC and the Department of Pharmaceutics. Areas of research emphasis include the development and use of nonhuman primate models to develop novel immunization technologies and antiviral (including AIDS) therapeutics and vaccines and use of these models to study the pathogenic and protective mechanisms of such experimental prophylactic/therapeutic strategies. The candidate is expected to contribute to teaching and mentoring of graduate students in the Department of Pharmaceutics.

Applicants must have an outstanding international reputation and record of accomplishments in the field of antiviral (including HIV) vaccines and therapeutics. They must also have an established track record in attracting extramural grant support. Experience in leading and organizing a multidisciplinary research program is highly desirable.

The closing date for applications is June 16, 1997. Nominations and applications with a letter of interest and curriculum vitae should be sent to: **Dr. Milo Gibaldi, Chair, Search Committee, School of Pharmacy, Box 357610, University of Washington, Seattle, WA 98195.**

The University of Washington is an Equal Opportunity, Affirmative Action Employer.

RESEARCH ENTOMOLOGIST

The United States Department of Agriculture (USDA), Agriculture Research Service (ARS), Bee Biology and Systematics Laboratory, Logan, Utah is accepting applications for a permanent, full-time **RESEARCH ENTOMOLOGIST**. Personal research programs will emphasize identification of natural products responsible for gregarious nesting behavior of bees that nest in the soil. Applicants must have: 1) Demonstrated knowledge and ability in semiochemicals in insect systems, with special emphasis on chemically mediated behavior in bees native to North America; 2) Experience with field-based ecological studies focused on determining the importance of non-Apis bee species as pollinators in natural and agricultural systems; and 3) Knowledge of insect morphology and physiology, with special emphasis in non-Apis bees. A Ph.D. in entomology or related discipline with emphasis in natural products chemistry is desired. Experience with statistical methods and computer programs are essential. Applicants must be U.S. citizens. Salary commensurate with experience (\$37,507 to \$69,492). For more information call: **Dr. William Kemp, Telephone: 801-797-2525.** For information on "how to apply", call: **John Watterson, Telephone: 801-797-3071**, or on the Internet at <http://www.ars.usda.gov/afm/hrd/vac2.html>. Applications in response to this advertisement must be marked ARS-X7W-0149 and postmarked by July 7, 1997. *USDA/ARS is an Equal Opportunity Employer.*

POSTDOCTORAL/RESEARCH INVESTIGATOR IN VIROLOGY

Position available to study the mechanisms of sexual transmission of human immunodeficiency virus. Emphasis is on using *in vitro* systems to study productively infection of genital tract epithelia. Research involves cell culture, ELISA, RT, and PCR. Send curriculum vitae to: **Dr. David Phillips, The Population Council, Center for Biomedical Research, 1230 York Avenue, New York, NY 10021.** An Equal Opportunity Employment/Affirmative Action Employer, Minorities/Females.

POSITIONS OPEN



BAYLOR COLLEGE OF MEDICINE THE CAIN FOUNDATION LABORATORIES ASSOCIATE OR FULL PROFESSOR MOLECULAR/DEVELOPMENTAL NEUROSCIENTIST

In seeking to uncover the basic causes for severe neurological disorders in children, The Gordon and Mary Cain Research Foundation has secured a substantial endowment to support laboratory studies. Candidates currently directing highly productive, extramurally funded research programs in molecular neuroscience are encouraged to apply. Outstanding facilities, startup funds, generous space and benefits package are available. Send curriculum vitae, reprints, summary of research interests and names of three references to: **Dr. John W. Swann, Ph.D., Director, Cain Foundation Laboratories, Department of Pediatrics, Baylor College of Medicine, One Baylor Plaza, Houston, TX 77030.** Email: jswann@bcm.tmc.edu. *BCM is an Equal Opportunity, Affirmative Action, Equal Access Employer.*

PROFESSOR COGNITIVE NEUROSCIENCE

Applications are invited for a senior tenured faculty position in the Center for Neurobiology and Behavior at Columbia University College of Physicians and Surgeons. Applicants must have demonstrated a record of sustained research excellence. The successful candidate will be expected to maintain a vigorous, independent research program and to provide leadership in the development of cognitive neuroscience at Columbia. Resources will be provided for the future recruitment of additional junior faculty in this area. Submit curriculum vitae, names and addresses of three references, and summary of research objectives, to:

**Search Committee
Center for Neurobiology and Behavior
Columbia University
New York State Psychiatric Institute
722 West 168th Street
New York, NY 10032**

An Affirmative Action/Equal Opportunity Employer.

ASSISTANT DIRECTOR ENVIRONMENTAL SCIENCE AND RESEARCH FOUNDATION

We seek candidates who can combine a strong role in any discipline related to the Foundation's mission with a broad range of managerial activities including developing new opportunities and roles for the Foundation. The Foundation is a private nonprofit organization which conducts environmental research, surveillance, public education, and various environmental service projects (NEPA, etc.). We often involve university affiliates in our programs. Position announcement available from **Ms. Weisflog (weisflog@env.esrf.isu.edu or 208-525-7038).** Please send letter addressing qualifications, résumé, salary requirements, transcripts, and at least three reference names and addresses to: **Dr. Doyle Markham, Executive Director, Environmental Science and Research Foundation, PO Box 51838, Idaho Falls, ID 83405-1838.**

POSTDOCTORAL POSITION PENN STATE

Position available immediately for motivated Ph.D. to study wingless signal transduction pathway in *Drosophila* development. Experience in molecular biology or genetics required. Please send curriculum vitae and names (with Email addresses) of three references to: **Dr. Esther Siegfried, Department of Biology, 208 Mueller Lab, The Pennsylvania State University, University Park, PA 16802; FAX: 814-865-9131.** An Affirmative Action/Equal Opportunity Employer. *Women and minorities encouraged to apply.*

**ON THE
JOURNEY
OF**

Discovery

At Glaxo Wellcome, we believe that the future of drug discovery depends on our ability to successfully identify critical information in the vast volumes of data generated by genomics and genetics research programs and to convert it into new knowledge. To this end, we have created one of the leading Bioinformatics Groups in the pharmaceutical industry. We are now expanding our activities and are seeking highly motivated individuals to join this interdisciplinary team of Molecular Biologists and Computer Scientists in one of the following openings.

These positions are available at our U.S. Corporate Headquarters located in Research Triangle Park, N.C.

Glaxo Wellcome Has The Formula for the Ultimate Career in Bioinformatics

GROUP LEADER Biological Information Systems

Individual will lead an international group of database developers to design and build integrated molecular biological information systems that will make complex genomics information more readily available to research scientists. Requires a Master's degree in Computer Science, a minimum of 5 years demonstrated experience in developing databases/information systems, and the ability to lead a technical project team. A background or experience in biology is necessary; prior experience with genomic databases is a plus. **Refer to Job # ASC3049-1 on all resumes.**

BIOINFORMATICS SCIENTISTS

Working in close collaboration with our research scientists, you will identify and create opportunities to find better drug targets by using bioinformatics tools and databases more efficiently. Requires a Ph.D. in Biology, Pharmacology or Bioinformatics and 2+ years of postdoctoral experience. Candidates must have a thorough knowledge of sequence, gene expression, mapping and related databases and be familiar with state-of-the-art bioinformatics software. A background in pharmaceutical drug discovery or experience in the genomics or biotechnology industry is highly desirable. Demonstrated software development skills (C, Java, Perl) or database experience (ORACLE) is a plus. **Refer to Job # ASC3141-1 on all resumes.**

STATISTICAL GENETICIST

Working closely with the Genetics Departments, individual will perform statistical analysis of data generated in support of our genetic research programs. This will include developing and improving existing statistical genetic analysis methods and software, interacting with researchers to define and implement genetics strategy, and evaluating statistical aspects of new technologies. Requires a Ph.D. in Statistics or Genetic Epidemiology with applied analysis experience using parametric and nonparametric linkage analysis methods and a background in genetics. Experience with the UNIX file system and SAS or other statistical analysis packages is required. **Refer to Job # ASC3142-1 on all resumes.**

STATISTICAL ANALYST

Working closely with the Genetics Departments, individual will perform statistical analysis of data, write reports summarizing and interpreting results, and interact with researchers to define and implement genetic analysis plans. Candidates must have a Master's degree in Statistics with experience analyzing biological data and using the C programming language on the UNIX file system. Experience with SAS or other statistical analysis packages is required. **Refer to Job # ASC3050-4 on all resumes.**

SCIENTIFIC PROGRAMMER

Individual will design and develop new bioinformatics software in support of our genome research programs with a focus on large scale sequence analysis and sequence data management. Requires a BS/BA in Computer Science or Biology with a minimum of 2 years experience in scientific software development (C, Java, Perl, UNIX). A background or experience in bioinformatics would be helpful. **Refer to Job # ASC3143-1 on all resumes.**

SCIENTIFIC PROGRAMMER/POSTDOC - Data Mining

Individual will work in our Knowledge Discovery and Data Mining Group and help implement data mining algorithms for drug discovery. This position offers an exciting opportunity to develop innovative software to help discover drugs faster. Requires excellent knowledge of C/C++/Java, databases, user-interface design, and optimizing code for high performance. A background in artificial intelligence is highly desirable. **Refer to Job # ASC3144-1 on all resumes.**

If you enjoy working in a team environment, are highly motivated and have excellent communication skills, then these are the positions for you.

In exchange for your considerable skills, we offer excellent salaries and benefits package, opportunity for career growth, and the energy and excitement of working in an excellent location in the Raleigh-Durham area of North Carolina. For confidential consideration, send your resume, **which must include position title/corresponding job number and salary history, to: Human Resources, Glaxo Wellcome, P.O. Box 13398, Research Triangle Park, NC 27709.** (No Phone Calls or Agency Referrals, Please.) An Equal Opportunity Employer M/F/D/V.

GlaxoWellcome

You'll Learn, You'll Create, You'll Discover

POSITIONS OPEN

BIOLOGICAL APPLICATIONS OF NANOFABRICATION TECHNOLOGY

The National Nanofabrication Users Network (NNUN), a collaboration of 5 university nanofabrication facilities (Cornell, Howard, Penn State, Stanford, and UC-Santa Barbara), seeks to add two additional **STAFF MEMBERS**, to be located at an East Coast and a West Coast site respectively. They will play a hands-on role supporting biology and biomedical NNUN users via training, guidance, and process development for biological applications. They will play an outreach role in helping to raise awareness of the potential of nanofabrication among the biology community.

Appointments will be for 3 years (renewable). Successful candidates will hold the Ph.D. or M.D. in a relevant biology or biomedical field, or will hold the Ph.D. in engineering or a physical science with a strong background and interest in a relevant area of biology. Hands-on clean room experience in nano- or microfabrication would be a strong plus. Some travel required. Please submit applications by June 1, 1997 for the East Coast to: Prof. Noel C. MacDonald, Director, Cornell Nanofabrication Facility, Knight Laboratory, Cornell University, Ithaca, NY 14853. For the West Coast: Prof. James D. Plummer, Director, Stanford Nanofabrication Facility, CIS 114, MC 4070, Stanford University, Stanford, CA 94305.

EXECUTIVE OFFICER

The American Society for Pharmacology and Experimental Therapeutics (ASPET) is a 4,500 member society of the Federation of Experimental Biologists (FASEB) located in Bethesda, MD. The Executive Officer manages a staff of six, carries the fiscal responsibilities and implements Society program and policy activities. Details of the position and application procedure may be found at: <http://www.faseb.org/aspnet> or at: <http://www.faseb.org/hr/hrjobop>. Applicants should submit a curriculum vitae with a covering letter summarizing relevant experience and salary expectations to:

ASPET Executive Officer Search Committee
c/o FASEB Office of Human Resources
9650 Rockville Pike
Bethesda, MD 20814-3998

Other inquiries may also be directed to this address. Application deadline is June 15, 1997; the position will remain open until a selection is made.

ASPET is an Equal Opportunity/Affirmative Action Employer

SOIL SCIENTIST

The National Research Initiative Competitive Grants Program of the U.S. Department of Agriculture seeks a qualified scientist to serve as **PROGRAM DIRECTOR** for grants administration in the area of soil science, rhizosphere biology, or wetland, riparian, forest or agroecology. Candidates must have an advanced degree with major study in one of the areas listed above or a closely related field. It is preferable that the candidate have a Ph.D. or equivalent specialized experience. This is a competitive vacancy, open to all United States citizens.

Closing date is June 9, 1997. For information on the position, contact: Dr. Anne Datko, Division Director, National Research Initiative Competitive Grants Program, CSREES/USDA, STOP 2241, 1400 Independence Avenue S.W., Washington, D.C. 20250-2241. Telephone: 202-401-4871; Email: adatko@recusda.gov. For information on application procedures/forms, contact the Human Resources Division, Telephone: 301-344-3960. The U.S. Department of Agriculture is an Equal Opportunity Employer.

UNIVERSITY OF ABERDEEN RESEARCH STUDENTSHIPS

Two 3-year research studentships are available from October 1997 in the Departments of: (1) Molecular and Cell Biology/Medicine & Therapeutics/Pathology. "Local inhibition of Thrombin and other coagulation factors by plasminogen activator inhibitor 1 (PaI-1) in human thrombi and the vessel wall." (2) Biomedical Sciences/Ophthalmology: "Sprouting Nerves and Healing Cornea."

Further details are available from: Debbie Ingram, Telephone: 01224 681818, ext. 54258 or Email: d.ingram@admin.abdn.ac.uk. Closing Date: 6 June 1997.

POSITIONS OPEN

DANA-FARBER CANCER INSTITUTE HARVARD MEDICAL SCHOOL POSTDOCTORAL POSITIONS IN T-CELL IMMUNOLOGY

The Division of Immunopathology at the Dana-Farber Cancer Institute seeks to fill several positions at the postdoctoral level for studies of gene products which control activation and function of T-cell subsets (*Science* 271:509, 1996; *Immunity* 2:363, 1995; *Nature* 376:431, 1995).

Background and experience in cellular and genetic analysis of T-cells preferred. A joint appointment will be held in an appropriate department of the Harvard Medical School.

Positions are immediately available.

Please forward a curriculum vitae, bibliography and names of three references to:

Harvey Cantor
Chief, Division of Immunopathology
Dana-Farber Cancer Institute
44 Binney Street
Boston, MA 02115
FAX: 617-632-4630
aa%grtmgr%dfci@eye.dfci.harvard.edu

DFCI is an Equal Opportunity Employer.

POSTDOCTORAL FELLOWSHIP IN MOLECULAR ONCOLOGY AND IMMUNOLOGY AT NEW YORK UNIVERSITY MEDICAL CENTER

A position is available to study mechanisms of complement inhibition and the role of complement inhibitors in tumorigenesis. Some experience in molecular biological techniques would be desirable. *Fellows will be supported by an NIH training grant, requiring U.S. citizenship or resident status. Minority applicants are encouraged.* The University offers a prestigious and highly active research environment. Please send curriculum vitae and names and addresses of three referees to: Dr. Stephen Tomlinson, New York University Medical Center, Department of Pathology, MSB 127, 550 First Avenue, New York, NY 10016. Email: stephen.tomlinson@ccmail.med.nyu.edu.

CLEVELAND CLINIC FOUNDATION POSTDOCTORAL POSITIONS

Two postdoctoral positions are available in an NIH-funded project, one immediately and one in the next several months, to determine the mechanism by which vitamin K-dependent proteins are post-translationally modified by the gamma-carboxylase. Combined biochemical and molecular biological approaches will be used for structure-function analysis of the carboxylase and vitamin K-dependent proteins and for defining the role of these proteins in hemostasis and other biological systems. A recent Ph.D. with experience in protein biochemistry is preferred. Send curriculum vitae and the names of three references to: Dr. Kathleen L. Berkner, Department of Molecular Cardiology, NC 10, Cleveland Clinic Foundation Research Institute, 9500 Euclid Avenue, Cleveland, OH 44195. FAX: 216-444-9404. Email: berknek@cesmtp.ccf.org.

Immediate opening for **POSTDOCTORAL POSITION** to study the molecular neurobiology of nicotine addiction. Qualifications include Ph.D. in pharmacology or related field, with experience in ligand binding assays and molecular biology techniques. Send curriculum vitae, summary of research experience, and names, addresses, and telephone numbers of three references by July 1, 1997 to: Dr. Sherry Leonard, Department of Psychiatry, Campus Box C-268-71, University of Colorado Health Sciences Center, 4200 East Ninth Avenue, Denver, CO 80262. Email: sherry.leonard@uchsc.edu. UCHSC is an Equal Opportunity/Affirmative Action Employer.

SENIOR MICROBIOLOGIST

Requires Ph.D. degree, advanced academic knowledge of microbiology, and strong experience in bacteriology and virology. Must have strong experience with immunological assays, bacterial and viral culture. Apply to: Division of Allergy/Internal Medicine, University of Michigan Medical Center, 1520 MSRB I, 1150 West Medical Center Drive, Ann Arbor, MI 48109-0666. FAX: 313-936-2990. Email: cverweij@umich.edu. A non-discriminatory Affirmative Action Employer.

POSITIONS OPEN

POSTDOCTORAL POSITIONS

Postdoctoral positions available immediately at the Harvard Institutes of Medicine to study the biology of cancer and aging. Join a team of enthusiastic, interactive scientists working in an excellent research environment at Harvard Medical School. Project 1 (Dr. Jan Vijg): To study somatic mutations as a function of age in transgenic mice deficient in DNA processing. The successful candidates will work on the generation of new transgenic models harboring inducible fusion genes that can be recovered from chromosomal DNA. Project 2 (Dr. Sam W. Lee): To study signaling mechanisms of p53- or BRCA1-mediated apoptosis in normal and cancer breast cells. We are also interested in studying the molecular mechanisms of cellular senescence and aging. Interested candidates who have previous experience in molecular biology, transgenic and/or signal transduction should send their curriculum vitae and the names of three referees to: Attn: Marissa Watson, Harvard Institutes of Medicine, Room 921, 77 Avenue Louis Pasteur, Boston, MA 02115. Telephone: 617-667-0974, FAX: 617-667-0980. *Harvard Medical School is an Equal Opportunity/Affirmative Action Employer. Women and members of minority groups are encouraged to apply.*

POSTDOCTORAL POSITION available to carry out the sequencing, analysis and overexpression of genes associated with antibiotic biosynthesis in *Streptomyces*. Previous experience with molecular biology required; previous experience with *Streptomyces* highly desirable. Send curriculum vitae and the names and telephone numbers of three references to: Professor Ronald Parry, Department of Chemistry, Rice University, P.O. Box 1892, Houston, TX 77251.

POSTDOCTORAL POSITION JOSLIN DIABETES/ HARVARD MEDICAL SCHOOL

Postdoctoral position available immediately for NIH-funded studies of polyendocrine autoimmune diseases (diabetes, thyroiditis and adrenalitis) and diabetic kidney complications in mice. Requires a Ph.D. with zero to two years postdoctoral experience in molecular biology or immunogenetics and expertise in breeding studies, gene mapping, cloning sequencing and expression. Please send curriculum vitae and the names, addresses and telephone numbers of three references to: Dr. Masakazu Hattori, Section on Immunology and Immunogenetics, Joslin Diabetes Center, One Joslin Place, Boston, MA 02215. Email: hattorim@joslab.harvard.edu FAX: 617-732-2589.

POSTDOCTORAL POSITION Perlmutter Laboratory/Children's Hospital Harvard Medical School

Several positions are available immediately to study G-protein coupled receptors in host defense and inflammation (*Science* 273, September 1996, *Nature* 383,5: September 1996, *Cell* 85, June 28, 1996). Particular interests involve the role of chemokines and their receptors in viral pathogenesis, including herpesvirus and HIV. Position will be limited to U.S. citizens or permanent residents, although exceptional candidates with independent funding will be considered. Please submit curriculum vitae and names of three individuals who can be contacted to: Dr. Craig Gerard, Children's Hospital, 320 Longwood Avenue, Boston, MA 02115. *Equal Opportunity Employer.*

POSTDOCTORAL POSITION to study intracellular cholesterol transport and regulation of cellular cholesterol metabolism. Experience in molecular biology, strong background in cell biology essential. *Candidates must be U.S. citizens/permanent residents as position is supported by NIH training grant.* Send application letter, research experience summary, curriculum vitae and names of three references to: Dr. Laura Liscum, Tufts University School of Medicine, Department of Physiology, 136 Harrison Avenue, Boston, MA 02111.

POSTDOCTORAL POSITION available immediately to study molecular mechanisms of cardiac responses to oxidative injury. Experience in gene regulation, molecular cloning, signal transduction, and transgenic animals are preferred. Send curriculum vitae and names of three references to: Dr. Y. James Kang, Department of Medicine, University of Louisville, 550 South Jackson Street-ACB A3L15, Louisville, KY 40292. FAX: 502-852-0846. Email: yjkang01@homer.louisville.edu.

Chairperson, Natural History and Epidemiology
Coordinating Committee

**HEALTH SCIENTIST ADMINISTRATOR/
MEDICAL OFFICER, GS-14/15**

National Institutes of Health • Office of AIDS Research

Serves as a senior advisor to the Director, Office of AIDS Research (OAR), on issues concerning Natural History and Epidemiology research on HIV infection and its sequelae; participates in the preparation of the National Institutes of Health (NIH) AIDS Natural History and Epidemiology budget; represents the Director, OAR in this area to NIH and Agency level staff, research institutions, academia, media, and the general public; examines proposed policy changes to the conduct of HIV/AIDS research and advises NIH management on the impact and possible interpretation by a diverse range of groups and organizations including health care providers and the government.

Facilitates and coordinates the efforts of the committee; identifies scientific opportunities; setting research priorities, and enhancing trans-NIH coordination and collaboration. Serves as an OAR ad hoc member of task forces or groups or chairs special purpose groups dealing with HIV/AIDS related research.

Candidates should have knowledge of natural history and epidemiology research of infectious agents, specifically related to HIV; skill in preparing organizational budgets; the ability to prepare verbal and written reports on complex scientific issues; skill in facilitating and coordinating committees.

This is a civil service position with a salary commensurate with experience. Please send a curriculum vitae, resume or an Optional Application for Federal Employment, OF-612 to the **National Institutes of Health, OD/OE, Building 31, Room 1C27, 31 Center Drive MSC 2264, Bethesda, Maryland 20892-2264, Attn: Mr. Nelson Rodriguez, Announcement #OD-97-1005.** For additional information please call Mr. Rodriguez at 301-496-2511. Full qualification requirements may be obtained by calling 301-402-4111. U.S. citizenship is required. **APPLICATIONS MUST BE POSTMARKED BY JUNE 3, 1997.** NIH is an Equal Opportunity Employer.

Postdoctoral Fellow

Skin Biology

We are in search of a Postdoctoral Fellow to join a research group involved in mapping and positional cloning of genes relevant to skin physiology and disease. A PhD in biology, biochemistry or molecular biology with demonstrated skills in genomics and recombinant DNA technology are essential as is the ability to compose reports and scientific papers. Experience in linkage analysis and bioinformatics would be desirable.

We are committed to finding new insights and targets for drug discovery. The Skin Biology Research Center, located just north of Princeton, conducts leading-edge scientific research by PhDs, MDs and a supporting research staff in a supportive environment.

We offer a competitive salary, comprehensive benefits, and the opportunity to learn from and work alongside side of the best minds in the field. For consideration, please send a scannable copy of your curriculum vitae to: Dept. 1344, Johnson & Johnson Recruiting, P.O. Box 16597, New Brunswick, NJ 08906-6597. We are an equal opportunity employer and support diversity in the workplace.

Johnson & Johnson

A Recipient of the 1996 National Medal of Technology Recipient

NATIONAL CANCER INSTITUTE NATIONAL INSTITUTES OF HEALTH, PUBLIC HEALTH SERVICE CANCER PREVENTION FELLOWSHIP PROGRAM

The Division of Cancer Prevention and Control (DCPC), NCI, is accepting applications for the Cancer Prevention Fellowship Program (CPFP). The purpose of the program is to train individuals from a multiplicity of health science disciplines in the field of cancer prevention and control. The program provides for: Master of Public Health training (at accredited one year university programs); Participation in the DCPC Cancer Prevention and Control Academic Summer Course (open to physicians and scientists interested in specialized instruction on the principles and practice of cancer prevention and control); Working at DCPC directly with individual preceptors on cancer prevention and control projects; Brief field assignments in cancer prevention and control programs at other institutions. Funding permitting, Fellows will be accepted for up to three years of training, beginning July 1, 1998. Benefits include selected relocation and travel expenses, paid federal holidays, and participatory health insurance.

ELIGIBILITY

M.D., D.D.S., or D.O. from a U.S., territorial, or Canadian Medical School. Foreign medical graduates must have current USMLE or ECFMG certification and appropriate experience, e.g., one year residency in a training program approved by the Accreditation Council for Graduate Medical Education.

OR

Ph.D. or other doctoral degree in a related discipline (epidemiology, biostatistics, and the biomedical, nutritional, public health or behavioral sciences). Foreign education must be comparable to that received in accredited U.S., territorial, or Canadian institutions.

PLUS

The applicant must be a citizen or resident alien of the United States eligible for citizenship within four years.

For details and an application catalog either call, fax, e-mail, or send a postcard or letter with your name, home address, and where you heard about the program to:

Douglas L. Weed, M.D., M.P.H., Ph.D.

Director

Cancer Prevention Fellowship Program

Division of Cancer Prevention and Control

National Cancer Institute

Executive Plaza South, Suite T-41

6130 Executive Blvd. MSC 7105

Bethesda, MD 20892-7105

Further Inquiries: **Mrs. Barbara Redding**

Telephone (301) 496-8640

Fax (301) 402-4863

Email reddingb@dcpcpn.nci.nih.gov

Deadline for receipt of applications: September 1, 1997

NIH is an Equal Opportunity Employer

POSITIONS OPEN

ELECTROPHYSIOLOGIST/MOLECULAR BIOLOGIST

A POSTDOCTORAL position is immediately available to study *Drosophila* mutants defective in synaptic transmission (similar as in: *Science* 263:977-980, 1994). The project involves: 1) Genetic analysis and mapping of fly mutations, 2) Molecular cloning of genetically identified genes, 3) Electrophysiological analysis of novel fly mutants. The successful candidate will have a Ph.D. and extensive experience in molecular biology and/or genetics. A background in electrophysiology is a plus. Send curriculum vitae, a statement of research experience, and three letters of reference to: Konrad E. Zinsmaier, Ph.D., Department of Neuroscience, University of Pennsylvania School of Medicine, 232a Stenmler Hall, Philadelphia, PA 19104-6074. FAX: 215-573-2015; Email: zinsmaie@mail.med.upenn.edu. Affirmative Action/Equal Opportunity Employer.

POSTDOCTORAL FELLOWSHIP IN AUDITORY DEVELOPMENTAL BIOLOGY

Position available to study the cellular and molecular mechanisms regulating the formation of neural projections to developing mammalian auditory hair cells (with emphasis on the role of neurotrophins in these processes). Experience in one or more of the following areas is expected: cell and tissue culture, *in situ* hybridization, immunocytochemistry, time-lapse video microscopy, and neuroanatomical pathway tracing. Two-year minimum commitment expected. Applicants must be U.S. citizens or permanent residents to meet funding criteria. Please send curriculum vitae and three letters of reference to: Dr. Stephen M. Echter, Room 510D, Abramson Research Center, The University of Pennsylvania, 3400 Civic Center Boulevard, Philadelphia, PA 19104-4318. FAX: 215-590-5202. The University of Pennsylvania is an Equal Opportunity Employer.

POSTDOCTORAL POSITION available immediately at the Barbara Ann Karmanos Cancer Institute to study the molecular and cellular mechanisms of T cell production and of T cell activation with applications in hematopoietic cell transplantation and cancer. Candidates should have a Ph.D. and a strong background in immunology and hematology. Send curriculum vitae, statement of research accomplishments and names of three references to:

Anne Galy, Ph.D.,
Karmanos Cancer Institute,
110 East Warren Avenue,
Detroit, MI 48201.

Wayne State University School of Medicine, the country's largest single-campus medical school, is an Equal Opportunity/Affirmative Action Employer.

POSTDOCTORAL POSITION in neuroscience to study the neuronal cytoskeleton and neuronal morphogenesis. A major goal of our work is to define the mechanisms that establish the cytoskeleton during axonal and dendritic growth. Previous research experience in neuroscience or the cytoskeleton strongly preferred. Interested individuals should send curriculum vitae, statement of research experience and interests, and the names and telephone numbers of three references to: Dr. Mark M. Black, Department of Anatomy and Cell Biology, Temple University School of Medicine, Philadelphia, PA 19140. FAX: 215-707-2966. Email: black@sgil.fels.temple.edu.

POSTDOCTORAL POSITIONS are available to study the role of molecular chaperones in cellular protein folding and to characterize yeast heat-shock proteins involved in the regulation of signal transduction and the cell cycle. Candidates should have experience in yeast molecular biology; a strong background in protein biochemistry is desirable. Please send curriculum vitae and names and addresses of three references to: Jörg Martin, Ph.D., Department of Molecular Biology, Cell Biology and Biochemistry, Brown University, Box G-J2, Providence, RI 02912. Email: jorg_martin@brown.edu. Brown University is an Equal Opportunity/Affirmative Action Employer.

POSTDOCTORAL FELLOWSHIPS in Cardiovascular Biology, Harvard School of Public Health. We seek Ph.D. or M.D. with physiology, biochemistry, cell or molecular biology background for ongoing studies of: 1) Thrombosis *in vivo* using novel molecular probes; or 2) Novel molecular mechanisms linking platelet activation to secretion. Reply with curriculum vitae, and names of three referees to: Dr. Guy Reed, HSPH II-127, 665 Huntington Avenue, Boston, MA 02115 or Email: reed@cvtlab.harvard.edu.

POSITIONS OPEN

UNIVERSITY OF WASHINGTON POSTDOCTORAL POSITION/ RESEARCH SCIENTIST MOLECULAR ONCOLOGY

A postdoctoral research scientist position is available to study the mechanisms of protein transport in tumorigenesis and the role of GAP proteins in human neoplasia (PNAS 93:9154, 1996; JBC 272:6097, 1997). Strong background in cell and molecular biology or biochemistry required. Send curriculum vitae and names of referees to: Dr. Raymond Yeung, Department of Surgery and Division of Medical Genetics, c/o Kay Wicks, Department of Surgery Box 356410, University of Washington Medical Center, Seattle, WA 98195. FAX: 206-543-8136. An Equal Opportunity Employer.

JOHNS HOPKINS UNIVERSITY SCHOOL OF MEDICINE

POSTDOCTORAL POSITION to study genomic imprinting in normal development and its effect on tumor suppressor genes (*Nature* 362:747-749, 1993; *Science* 260:361-364, 1993; *PNAS* 93:3026-3030, 1996; *Cancer Res.* 56:5723-5727, 1996; *Nature Genetics* 15:181-185, 1997). Recent or pending Ph.D. in molecular biology or genetics required. Please send curriculum vitae, a description of research experience and goals, and names and addresses of three references to: Dr. Andrew P. Feinberg, Johns Hopkins University School of Medicine, 720 Rutland Avenue, Ross 1064, Baltimore, MD 21205.

POSTDOCTORAL POSITIONS are immediately available for candidates with a M.D. or Ph.D. to use brain imaging techniques (PET, SPECT, MRI and fMRI) to study alcoholism and substance abuse. Selected candidates will work with a multidisciplinary team from Brookhaven National Laboratory and SUNY at Stony Brook that includes Drs. Nora Volkow, Joanna Fowler, Charles Springer, John Gately and Robert Hitzemann. Experience in neuropharmacology, brain imaging and image analysis desirable but not necessary. Send curriculum vitae and the names of three references to: Dr. Robert Hitzemann, Department of Psychiatry, SUNY at Stony Brook, Stony Brook, NY 11794-8101. FAX: 516-444-2903; Email: rhitzemann@epo.som.sunysb.edu.

POSTDOCTORAL POSITION

A POSTDOCTORAL position in pharmacology is available. Candidates should have a Ph.D. in either biology, biochemistry, or pharmacology to join a research team to study new CNS receptor tracers for functional imaging with PET and SPECT. Major emphasis will be on using products of molecular biology to characterize new ligands. Experience in *in vitro* receptor binding assays, autoradiography, neuroanatomy and tissue culture will be helpful. Send résumé to: Dr. Hank F. Kung, Departments of Radiology and Pharmacology, University of Pennsylvania, 3700 Market Street, Room 305, Philadelphia, PA 19104. Email: kunghf@sunmac.spect.upenn.edu. Equal Opportunity Employer.

POSTDOCTORAL POSITION available immediately to investigate the structure-function activity relationships among the ATP-sensitive potassium channels. We are seeking an experienced electrophysiologist to express and study cloned K_{ATP} channels and to investigate the physiological effect of mice null for K_{ATP} channel expression. Due to funding restrictions, the position is open to U.S. citizens or permanent residents only. Candidates should send a letter of interest, a curriculum vitae and the names of three references to: Charles Burant, M.D., Ph.D., MC1027 or Deborah Nelson, Ph.D., MC2030, Department of Medicine, 5841 South Maryland Avenue, Chicago, IL 60637. The University of Chicago is an Equal Opportunity Employer.

POSTDOCTORAL POSITIONS HIV BIOCHEMISTRY

Seeking highly motivated and industrious scientists to participate in structure-function studies of drug-resistant HIV reverse transcriptase and mechanistic analyses of novel antiviral drug action. Ph.D. in biochemistry/chemistry required; strong background in enzymology preferred. Send curriculum vitae and the names and addresses of three references to: Dr. Michael A. Parniak, Lady Davis Institute/McGill University AIDS Centre, 3755 Cote Ste-Catherine Road, Montreal, Quebec H3T 1E2 Canada. FAX: 514-340-7502; Email: mparniak@ldi.jgh.mcgill.ca.

POSITIONS OPEN

POSTDOCTORAL POSITIONS DEPARTMENT OF BIOCHEMISTRY

Mount Sinai School of Medicine has positions available immediately to study apoptosis, cell signaling and gene expression in HepG2 liver-derived cell lines expressing the human cytochrome P450E1 isoform, with the major focus being the role of oxidative stress in toxicity of ethanol. Experience with molecular techniques necessary.

Interested individuals are encouraged to forward curriculum vitae and the names and addresses of three references to:

Dr. Arthur I. Cederbaum
Department of Biochemistry
Mount Sinai School of Medicine
Box 1020, One Gustave L. Levy Place
New York, NY 10029-6574

An Equal Opportunity Employer. We foster diversity in the workplace.

THE JACOB BLAUSTEIN INTERNATIONAL CENTER FOR DESERT STUDIES BLAUSTEIN POSTDOCTORAL FELLOWSHIP

A two-year FELLOWSHIP, to be taken up on or close to October 1, 1997, is available for basic or applied research in physical, life or social sciences related to arid zones. Deadline for application is July 1, 1997. A decision will be announced by July 25, 1997. Please send curriculum vitae, letter describing research interests, and have three letters of reference forwarded to: Prof. Joseph Gale, The Jacob Blaustein Institute for Desert Research, Ben Gurion University of the Negev, Sede Boker Campus, 84990, Israel; Telephone: 972 (7) 6596717; FAX: 972 (7) 6596718; Email: inter@bgumail.bgu.ac.il.

A POSTDOCTORAL POSITION to study HLA B27-restricted antigen processing and presentation of bacterial and host proteins is available immediately. Studies will incorporate molecular biology, protein biochemistry and cell biology to study proteasome processing of bacterial and host gene products *in vivo* and *in vitro*. Experience in molecular/cell biology and protein biochemistry is preferred. Send curriculum vitae, names and telephone numbers of three references to: Dr. Walter Maksymowicz, Division of Rheumatology, Department of Medicine or Dr. Kevin Kane, Department of Medical Microbiology and Immunology, University of Alberta, Edmonton, Alberta, T6G 2H7 Canada. FAX: 403-492-7521. Email: kevin.kane@ualberta.ca.

POSTDOCTORAL POSITIONS available immediately to study molecular mechanisms mediating depolarization-dependent and synapse-specific gene expression during development of the neuromuscular junction and in aged and long-term denervated muscle. Applicants must have received their Ph.D. within the last three years and should have a strong background in molecular biology. Send curriculum vitae, statement of research interests and experience, along with names and addresses of three references to: Daniel Goldman, University of Michigan, Mental Health Research Institute, 205 Zina Pitcher Place, Ann Arbor, MI 48109. The University of Michigan is an Equal Opportunity/Affirmative Action Employer.

POSTDOCTORAL POSITION (Research Associate 3) available immediately to study *in vivo* mutagenesis in a transgenic model system. Experience in molecular biology, DNA sequencing, as well as microbiological techniques is desired. Please send curriculum vitae, copies of publications and names of three references to: Barbara S. Shane, Ph.D., Institute for Environmental Studies, 34 Atkinson Hall, Louisiana State University, Baton Rouge, LA 70803. Telephone: 504-388-4302, FAX: 504-388-4286. Email: bshane@unix1.sncc.lsu.edu. Louisiana State University is an Equal Employment Opportunity/Affirmative Action Employer.

POSTDOCTORAL position available to study mechanisms of K channel function, ionic permeation, and selectivity in both plant and animal channels through a collaboration of Drs. S. Korn (Physiology and Neurobiology) and G. Berkowitz (Plant Science). Experience in electrophysiological techniques required. Send curriculum vitae, description of research interests, and names of three referees to: Dr. Stephen Korn, University of Connecticut, Department of Physiology and Neurobiology, U-156, 3107 Horsebarn Hill Road, Storrs, CT 06266. Telephone: 860-486-4554 or 5940. (Search 97A317)

At
Pfizer,
Scientific
Pursuit is
a Part of
Life.



At Pfizer, our commitment to serious scientific discovery has some extremely beneficial side effects – enhanced life and health for millions of people around the world. We are a company of professional, entrepreneurial individuals dedicated to bringing new pharmaceuticals to those who need them most. And nowhere is that focus more keenly evident than in the resources we pledge to research and development – more than \$2.0 billion annually. We have brought six major new drugs to the market in the US in as many years and our efforts continue to uncover promising innovations, many in late stage development today. At Pfizer, science is more than a passionate career, it's a passion for life and the potential to enhance it for everyone.

We currently have a variety of BS/MS opportunities for chemists with strong academic achievements, excellent communication and interpersonal skills, and research experience in the following disciplines:

- | | |
|---|-------------------------------|
| ■ Analytical Chemistry | ■ Mass Spectrometry |
| ■ Bioanalytical Chemistry | ■ Process Development |
| ■ Computational Chemistry | ■ Protein Chemistry |
| ■ Formulation Chemistry | ■ Radiochemistry |
| ■ Nuclear Magnetic Resonance Spectroscopy | ■ Synthetic Organic Chemistry |

You'll find the environment at Pfizer stimulating and collegial, where collaboration in our multidisciplinary scientific community is the inspiration for unlimited professional achievement. We also offer extremely competitive compensation and the superior benefits you would expect from a Fortune 100 company. **To see the impact we're having on people's lives and learn more about these and other opportunities available at Pfizer, see us on the Internet at: <http://www.pfizer.com>.** For confidential consideration, please forward your resume to: **Employee Resources, Pfizer Inc, Job Code #2126, Central Research Division, Eastern Point Road, Groton, CT 06340.** We are an equal opportunity employer dedicated to diversity M/F/D/V.



We're part of the cure.

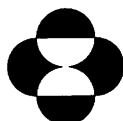
MOLECULAR/CELLULAR BIOLOGIST

Merck Research Laboratories in West Point, Pennsylvania, a world leader in biological and pharmaceutical research, has an immediate opening for a highly qualified molecular biologist in the Department of Pharmacology.

The position requires an individual with expertise in eukaryotic gene cloning to work on the development of gene therapeutic applications in the area of vascular biology. Cell culture experience would be an asset.

A BS/MS degree or equivalent in molecular biology, biochemistry, biology or related field and a minimum of two years of directly relevant laboratory experience are required. Successful candidates must be able to work independently, as well as in a team environment, and possess good communications skills.

Excellent salary and benefit programs accompany this position at our modern research facilities located 25 miles northwest of Philadelphia. Please send curriculum vitae with cover letter and the names of three references to **Ad# B-97, MRL Human Resources, WP42-2, Merck Research Laboratories, P.O. Box 4, West Point, PA 19486.** Only candidates considered for interviews will receive responses. EEO/AA/VH/Employer.



MERCK
Research Laboratories



**GENAISSANCE
PHARMACEUTICALS**

Genaissance is a growing biopharmaceutical company committed to the discovery of personalized medicines by isolating gene variants and utilizing them to develop novel therapeutic targets and clinically predictive gene profiles. We are presently seeking candidates to fill several positions available at our New Haven, CT facility.

Business Development - Candidates must have experience in marketing and structuring corporate alliances with biotechnology and pharmaceutical companies. A track record of successful corporate development activities, as well as excellent written and oral communication skills are essential.

Genome Expression and Variation: Ph.D. Level Scientists - We are seeking innovative, highly motivated, and team-oriented Ph.D. molecular biologists to fill postdoctoral and staff scientist positions. We are developing integrated systems for profiling gene expression, expression of large-insert genomic clones, comparative gene variability studies, and high throughput screening of expressed targets. Experience in any or all of these areas is required.

Opportunities exist to join a fast-growing company in a stimulating research environment, with close ties to Yale University and the University of Connecticut. Genaissance offers an excellent compensation and benefits package commensurate with qualifications. Interested candidates should send their curriculum vitae and the names and phone numbers of three references to: **Personnel Manager, Genaissance Pharmaceuticals, Five Science Park, New Haven, CT 06511, or FAX materials to: (203) 562-9377.** *Genaissance is an Equal Opportunity Employer.*

POSITIONS OPEN

POSTDOCTORAL POSITION

Available for up to three years from October 1997 to work on an EEC project aimed to clone novel maize seed specific genes and perform promoter analysis. Please send curriculum vitae and three reference letters to: **Dr. Mario Motto, Istituto Sperimentale Cerealicoltura, via Stezzano 24, 2123 Bergamo, Italy.**

POSTDOCTORAL POSITION DEPARTMENT OF HUMAN GENETICS

Mount Sinai School of Medicine has a position available immediately to investigate the functions of thyroid hormone receptors in the developing auditory system, brain and endocrine system (see *EMBO J.* 15:3006; *Nat. Genet.* 13: 354, 1996). The project concerns phenotypic characterization of receptor-deficient knock-out mice and the identification of novel target genes regulated by these receptors. Experience with molecular biology and/or transgenic mice is desirable but not essential.

Interested individuals are encouraged to forward curriculum vitae and the names and addresses of three references to:

Dr. Douglas Forrest
Department of Human Genetics
Mount Sinai School of Medicine
One Gustave L. Levy Place
New York, NY 10029-6574

Informal enquiries can contact 212-241-1539 or Email: dforrest@msvax.mssn.edu. An Equal Opportunity Employer. We foster diversity in the workplace.

POSTDOCTORAL POSITION MOLECULAR NEUROBIOLOGY

Postdoctoral fellowship available immediately to study the expression and regulation of a glutamate receptor gene. Analyses are performed in a variety of cultured cells and in transgenic mice in order to characterize the regulatory DNA elements and transcription factors. Salary commensurate with experience; candidates must have a Ph.D. or M.D. in molecular biology and less than five years postdoctoral training. Please send curriculum vitae, description of research experience and names of three references to: **Vittorio Gallo, Ph.D., Laboratory of Cellular and Molecular Neurophysiology, NICHD, Building 49, Room 5A78, 49 Convent Drive MSC 4495, Bethesda, MD 20892-4495. Telephone: 301-402-4776. FAX: 301-402-4777.** Applications must be received by July 31, 1997. NIH is an Equal Opportunity Employer.

ANTICIPATED POSTDOCTORAL RESEARCHER

The Pennington Biomedical Research Center, a research facility of Louisiana State University, has positions available to conduct research on proteins involved in DNA repair (*EMBO J.* 15:2306; *NAR* 24:4298). Candidates should have experience in molecular biology and nucleic acid biochemistry. Qualified applicants should forward curriculum vitae and the names and telephone numbers of three references by June 16, 1997 to:

Evelyn Bennett, Assistant Director, HRM
Ref: Deutsch
Pennington Biomedical Research Center
6400 Perkins Road
Baton Rouge, LA 70808

LSU/PBRC is an Equal Opportunity/Affirmative Action Employer.

POSTDOCTORAL POSITIONS available immediately in NIH-funded projects to investigate: 1. The area of lung development and extracellular matrix. 2. The role of growth factor-mediated signaling in breast cancer progression, and 3. Signal transduction mechanism in calcium-mediated cell proliferation and apoptosis. Experience in cellular and molecular biology is essential. Experience in protein purification is also desired. Send a curriculum vitae and three letters of recommendation to: **Dr. Lucia Schuger** (lung development); **Dr. Kaladhar B. Reddy** (breast cancer); **Dr. Tuan H. Kuo** (calcium signaling), Department of Pathology, Wayne State University School of Medicine, 540 East Canfield, Detroit, MI 48201. For additional information, please contact by Email: Dr. Schuger@med.wayne.edu; Dr. Reddy@med.wayne.edu; Dr. Kuo@med.wayne.edu.

POSITIONS OPEN

MOLECULAR BIOLOGY OPPORTUNITY

POSTDOCTORAL POSITION is available immediately for a candidate with a strong background in molecular biology and an interest in hair follicle stem cells. Research will initiate application of a novel strategy for lineage mapping to determine target cells for carcinogens. Approaches require knowledge of RNase protection, in situ hybridization, and molecular cloning. The Lankenau Medical Research Center is a member of the Jefferson Health System located in suburban Philadelphia. Interested candidates are requested to send a curriculum vitae and three letters of reference to: **Dr. Rebecca J. Morris, The Lankenau Medical Research Center, 100 Lancaster Avenue, Wynnewood, PA 19096; FAX: 610-645-8299 or Email to: ricercar@tiger.jvnc.net. An Equal Opportunity Employer.**

POSTDOCTORAL RESEARCH STAFF MEMBER

Our Biology and Biotechnology Research Program is seeking a postdoctoral scientist. This is a two-year appointment with possible extension to a third year. In this research position, you will design, conduct, and publish the results of studies to characterize the structures of DNA adducts formed following exposure to heterocyclic amines. Ph.D. in chemistry, toxicology, pharmacology or related field is required. You must have solid knowledge of HPLC and solid phase extraction techniques, as well as the ability to work in a collaborative environment. The ideal candidate will have experience with a wide range of disciplines, including gas chromatography, derivatization, and DNA chemistry.

ELECTRONICS ENGINEER

Our Engineering Directorate is currently seeking an electronics engineer for a three-year appointment with possible extensions into five years. In this position, you will co-develop technical advances necessary for cutting-edge biological research involving automated fluorescence microscopy, confocal microscopy, and microarray techniques. An M.S. in physics, applied physics, electrical engineering, or biomedical engineering and experience with lasers, microscope optics, and designing software algorithms for image processing are required. The ideal candidate will have experience with UNIX, DOS, Windows, NT, system programming and administration and Web programming.

POSTDOCTORAL FELLOW

Our Molecular and Structural Biology Division is currently seeking a postdoctoral research fellow to investigate the mechanisms of induction of genetic damage in human sperm and genetic risk factors of fathering chromosomally defective children. This is a two-year term position with possible extension for one more year. The successful candidate should have a strong background in human genetics or related field, be technically experienced in molecular and cell biology, and have strong communication skills.

Lawrence Livermore National Laboratory offers a competitive salary/benefits package. Send your résumé to: **Lawrence Livermore National Laboratory, Attn: Mary Anne Holman, L-725, P.O. Box 5510, Department AJSC5G7MH, Livermore, CA 94551-5510. LLNL is an Equal Opportunity Employer.**

POSTDOCTORAL POSITIONS are available to study the biology of blood coagulation and thrombosis, with an emphasis on the properties of factor XI and the intrinsic pathway. Projects incorporate protein chemistry, site-directed mutagenesis techniques, and studies in knockout mice. A strong background in enzymology, molecular biology, or animal studies is preferred. Send curriculum vitae and names of three references to: **Dr. David Gailani, Division of Hematology, Vanderbilt University, 547 MRB II, 2220 Pierce Avenue, Nashville, TN 37232-6305. FAX: 615-936-1812, Email: dave.gailani@mcmail.vanderbilt.edu.**

POSTDOCTORAL POSITION available to study the mechanism of induced differentiation of transformed cells/cell cycle. Candidates with experience in molecular and cell biology should send letter, curriculum vitae and names of three references to: **Dr. Richard Rifkin, Chairman, Sloan-Kettering Institute, Memorial Sloan-Kettering Cancer Center, 1275 York Avenue, New York, NY 10021. FAX: 212-639-2861 or Email: v-richon@ski.mskcc.org.**

POSITIONS OPEN

POSTDOCTORAL POSITION available to study molecular mechanisms and intracellular pathways involved in antigen presentation. Strong molecular biology background preferred. Send curriculum vitae with references to: **Elizabeth Mellins, H306B Department of Pediatrics, Stanford University Medical Center, Stanford, CA 94304-5119.**

POSTDOCTORAL POSITION

Funded position available fall 1997 to study mechanisms of eosinophil recruitment and degranulation in transgenic/gene knockout mice as well as established models of allergic and chemically induced inflammation. (*Journal of Immunology* 158:1322, 1997; *Journal of Experimental Medicine*, in press, 1997). Projects include investigations into the roles of cell adhesion molecules, specific eosinophil granular proteins and cytokines/chemokines leading to disease (e.g., asthmas, allergic dermatitis, ocular conjunctivitis). Applicants should possess a strong background in molecular biology and tissue culture. Previous mouse experience is not required but is an asset. The Mayo Clinic Scottsdale offers competitive stipends commensurate with experience and an excellent benefits package. Please send a curriculum vitae and names of three references to: **Drs. Jamie and Nancy Lee, Department of Biochemistry, Samuel C. Johnson Medical Research Building, Mayo Clinic Scottsdale, 13400 East Shea Boulevard, Scottsdale, AZ 85259. Email: jlee@mayo.edu or nlee@mayo.edu. FAX: 602-301-7017. Further information is available at <http://www.mayo.edu>.**

POSTDOCTORAL POSITIONS IN NEUROSCIENCE HARVARD MEDICAL SCHOOL AND CHILDREN'S HOSPITAL

NEOCORTICAL TRANSPLANTATION AND DEVELOPMENT PROJECTS: 1) cellular and molecular controls over neuronal precursor differentiation in cortex; 2) neuronal precursor modification and transplantation for complex cellular circuit reconstruction in cortex. Strong background in cellular and molecular neuroscience required; training in neuronal/precursor culture, transplantation, and/or neocortical development desired. Reply with statement of research interests for summer (1) or fall/winter (1) positions to: **Jeffrey D. Macklis, Division of Neuroscience, 354 Enders Building, 320 Longwood Avenue, Boston, MA 02115.**

POSTDOCTORAL RESEARCH ASSOCIATE: Position immediately available for a Ph.D. familiar with vascular biology and possibly having skills in molecular biology to participate in studies of the action and regulation of cytokines in the vascular system. Interested candidates should send curriculum vitae and names of three references to: **Dr. Walter H. Newman, Mercer University School of Medicine, 1550 College Street, Macon, GA 31207. Affirmative Action/Equal Opportunity Employer.**

ANNOUNCEMENT

AAAS invites nominations for the 1997 Mentor Award and the 1997 Lifetime Mentor Award. These annual awards honor individuals who during their careers have demonstrated extraordinary leadership to increase the participation of women of all racial/ethnic groups; African-American, American Indian, and Hispanic men; and/or people with disabilities in science and engineering fields and careers. The Lifetime Mentor Award, a prize of \$5,000, will recognize an individual who has mentored and guided a significant number of students from these groups for a period of ten years or longer. The Mentor Award, a prize of \$2,500, will recognize an individual who has served in such a role for less than ten years. The deadline for nominations is August 1, 1997. For more information or for a nomination form, please contact: **Nathan Bell, Program Assistant, AAAS, 1200 New York Avenue N.W., Washington, DC 20005. Telephone: 202-326-7019. Email: nbell@aaas.org.**

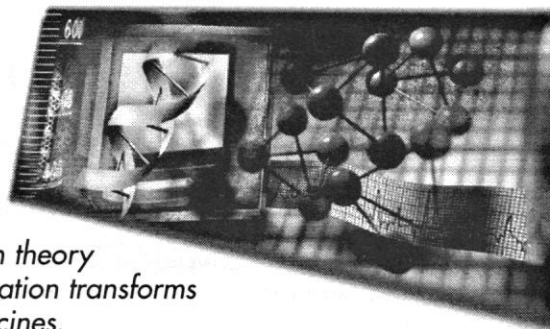
Classified Ads continue on page 1158.

ANNOUNCEMENT EDITOR Journal of the American College of Medical Genetics

The American College of Medical Genetics and Williams & Wilkins are proud to announce the establishment of a new Journal of the American College of Medical Genetics, to begin publication in 1998, and are seeking an individual for the position of Founding Editor. Qualifications include an earned M.D. or Ph.D. or both degrees, membership in the College, certification by the American Board of Medical Genetics, and publication or editing experience. Duties for this position will include working with the Publication Committee and the Board of the College to define the scope of the journal, nominating the Board of Associate Editors, selecting and supervising the managing editor, establishing the editorial policy and design of the journal, and performing all additional duties incumbent upon a journal editor, including manuscript and author recruitment, so as to place the new journal at the forefront of publishing in medical genetics.

Williams & Wilkins and the College will work closely with the Founding Editor to develop the journal. A letter of interest outlining ideas and suggestions for this new journal, a curriculum vitae, and the names and addresses of three references should be submitted by July 1, 1997, to:

Richard A. King, M.D., Ph.D.,
Publication Committee Chair,
American College of Medical
Genetics, Box 485, University of
Minnesota, 420 Delaware Street
S.E., Minneapolis, MN 55455.
Additional information regarding
this journal can be obtained from
Richard King at:
kingx002@maroon.tc.umn.edu.



*The transition from theory
to practical application transforms
molecules to medicines.*

PHARMACEUTICAL DEVELOPMENT AT SCHERING-PLOUGH

At Schering-Plough's Pharmaceutical Development Facilities in Kenilworth, NJ, scientists skillfully develop innovative formulations and drug delivery systems to bring quality pharmaceutical products to market. In this technologically advanced environment, you will provide the vital link between research and manufacturing.

FORMULATIONS RESEARCH

Senior/Principal Scientist or Section Leader

As a key contributor to our R&D group, you will conceptualize and develop dosage forms and drug delivery systems for proteins and conventional compounds for therapeutic application in injectable, nasal and/or oral solids. To qualify, you will need a PhD in a related field with appropriate experience. Product development experience with gene therapy, solid dosage forms and/or parenterals is desired. Strong oral and written communication skills, combined with supervisory experience/potential are essential. Qualified candidates with prior supervisory experience will be considered for Section Leader. To be considered for these positions, please reference Dept. PH97A-JW.

Associate Scientist

We seek a talented individual to join a team of professional scientists involved in Pharmaceutical Formulations Research and Development. To qualify, you will need a BS in Pharmacy, Chemistry or related discipline and at least 4 years of experience or an MS and at least 2 years of experience. Background must include laboratory research experience using GLP/GMP techniques. Hands-on experience with formulations and processing is highly desirable. Excellent organization, communication and interpersonal skills are essential. To be considered for this position, please reference Dept. PH97B-JW.

PACKAGE DEVELOPMENT

Package Development Manager

As a project manager and key contributor to our R&D group, you will conceptualize and develop pharmaceutical packaging and drug delivery systems for therapeutic applications including biotechnology, injectable and inhalation technologies. To qualify, you will need a PhD in Pharmaceutical Sciences, Engineering, Physical Chemistry or a related science. At least 5 years of pharmaceutical package or product development experience with dry powder/metered dose inhalers and parenterals is desired. Knowledge and expertise in the behavior and properties of materials used for packaging and device components (e.g., plastics, metals, films, etc.) is needed. Strong oral and written communication skills, combined with excellent interpersonal and project management skills, are essential. To be considered for this position, please reference Dept. PH97C-JW.

We offer an excellent compensation package including a competitive salary and comprehensive benefits. For prompt, confidential consideration, we invite you to apply online at <http://www.sp-research.com> or send a scannable resume and cover letter referencing the Dept. Code for your position of interest, original copy only, to our Resume Scanning Center at: P.O. Box 92101, Los Angeles, CA 90009. We are an equal opportunity employer. We regret we are unable to respond to each resume. Only those selected for an interview will be contacted.



**Schering-Plough
Research Institute**

Using Science for Human Advantage



Novartis Crop Protection, Inc. (formed by the merger of Ciba and Sandoz), the world's leading life sciences company and a leader in the development, manufacture and marketing of agricultural chemicals, is seeking several motivated individuals to join us at our Biotechnology and Genomics center in RTP. Successful candidates will be interested in basic research and development of novel technologies in an industrial research unit.

DIRECTOR - INSECT CONTROL BIOTECHNOLOGY (JOB 9724)

DIRECTOR - ANIMAL HEALTH BIOTECHNOLOGY (JOB 9725)

We are seeking two outstanding scientists to develop and directly supervise rapidly growing multidisciplinary groups in the area of genomics and bioinformatics for insect control and animal health. A Ph.D. in a biological science and combined research and management experience is required. Industrial experience is desirable. The primary goal for both insect control and animal health projects is to develop valid targets for high throughput screening using model organisms to bridge the gap between gene sequence and function. We are particularly interested in dynamic leaders with proven managerial and leadership skills who are internationally recognized for research excellence in biochemistry and molecular or cellular biology. Extensive experience with genetic and molecular techniques used for the analysis of genes and pathways in *Drosophila* or *C. elegans* is highly desirable. Successful candidates will determine the research direction and staff the projects to meet the research goals. The leaders will be research interfaces between their respective projects, assay development groups and upper management. In addition, the Director for Insect Control will have the responsibility of interfacing with an ongoing program in biological insect control.

**POSTDOCTORAL ASSOCIATE IN MOLECULAR BIOLOGY AND
METABOLIC PATHWAY ENGINEERING (JOB 9711)**

The successful candidate will be a member of our combinatorial biochemistry team and will investigate molecular and biochemical aspects of polyketide and/or cyclic peptide biosynthesis. Projects include the elucidation of polyketide biosynthesis and engineering of the biosynthetic gene clusters. A strong doctoral background in molecular biology, biochemistry, microbiology, or genetics is required.

Novartis offers a competitive salary commensurate with qualifications and experience, a comprehensive benefits package, and an environment conducive to professional achievement. Qualified candidates should forward a CV and cover letter (which should include the job number), and a list of three (3) references to: **Novartis Crop Protection, Inc., Biotechnology and Genomics Center, HR, P.O. Box 12257, Research Triangle Park, NC 27709-2257.** Principles only. *We are an Equal Opportunity Employer, m/f/d/v.*

**University of California
NATIONAL INSTITUTE for GLOBAL ENVIRONMENTAL CHANGE (NIGEC)
DIRECTOR**

The search is being reopened for the position of Director of the National Institute for Global Environmental Change (NIGEC) at the University of California (UC). Applications and nominations are invited. NIGEC consists of a national office at UC Davis and six regional centers located at Harvard University (Northeast), Indiana University (Midwestern), University of Alabama-Tuscaloosa (Southeast), Tulane University (South central), University of Nebraska at Lincoln (Great Plains), and University of California at Davis (Western). Established in 1989, NIGEC's mission is to foster multidisciplinary research at academic institutions on global environmental change, focusing particularly on the DOE's research priorities within the federally-funded U.S. Global Change Research Program.

The NIGEC Director is responsible for administration and coordination of the global change research supported by NIGEC through the National Office and the six regional centers, and in particular to facilitate the development of focused and coherent global change research programs within NIGEC.

Requirements: The Director should have distinguished him/herself in some aspects of global environmental change research. He/she will provide visionary leadership and international visibility for the Institute; administer operations of the Institute; supervise its staff; and provide liaison with the Department of Energy and with the NIGEC Board of Trustees and National Technical Advisory Committee, entities that support and advise the NIGEC program. The Director will report to the University of California Office of the President. He/she will promote planning, coordination, and integration of NIGEC-supported research within and among the regional centers. In addition, the Director will seek to broaden financial support for NIGEC programs beyond that provided by DOE, and seek ways to enhance NIGEC programs with the wider and international communities of global change researchers.

Salary Range: Commensurate with qualifications and experience. It is expected that the successful candidate will begin work no later than January 1, 1998. The University of California has anticipated that the successful candidate may wish to establish a formal affiliation with an appropriate academic department at UC Davis and a special faculty position has been established for that purpose. Upon appointment to the Directorship, the successful candidate may choose to be considered for an appointment to the faculty. If so, such an appointment will take place in accordance with the University's standard academic and administrative review for new faculty appointments. Review of nominations and applications will commence on June 30, 1997, and should be submitted to:

Vice Provost for Research
Office of the President
University of California
300 Lakeside Drive, 18th Floor
Oakland, CA 94612-3550



**CANCER
EPIDEMIOLOGIST
Mayo Foundation**

The Section of Clinical Epidemiology and the Mayo Clinic is seeking a physician epidemiologist to fill a new position in our large and active group. This position presents an exciting opportunity for the successful candidate to participate in population-based studies of the frequency, etiology, and natural history of cancers, as well as evaluations of the impact of diagnostic and therapeutic interventions in these conditions.

Applicants should have strong methodologic training in epidemiology with evidence of research productivity in terms of peer-reviewed publications and a demonstrated ability to attract extramural research funding. This individual will be expected to act as a nidus for the development of a cohesive working group of investigators, clinicians, and research fellows, and to serve as a catalyst to encourage interested clinicians to become actively involved in research relevant to cancer epidemiology. The successful candidate must also have the interest and ability to function as a methodologic consultant on selected clinician-initiated epidemiologic studies across a wide range of clinical problems.

Academic rank for the successful applicant will depend on qualifications and experience. There are no clinical responsibilities associated with this position. Salary and benefits are most competitive.

Rochester, Minnesota provides an exceptionally high quality of life, as evidenced by its #1 (1993) and #2 (1994, 1995) rankings in Money Magazine.

Qualified applicants should submit a current curriculum vitae to:

**W. Michael O'Fallon, Ph.D.
Chair, Search Committee
Mayo Clinic
200 First Street Southwest
Rochester, MN 55905
(507) 284-2720**

*Mayo Foundation is an Affirmative
Action and Equal Opportunity
Educator and Employer.*

PROVOST
ASSOCIATE PROVOST FOR
RESEARCH DEVELOPMENT AND
ADMINISTRATION

Provides support and management direction in sustaining and enhancing the environment for research at the College and its professional schools. Advises the Provost and faculty Deans on initiatives and management practices needed in this regard. Works directly, and through other institutional development functions, to expand and improve relationships with external sponsors. Directly oversees and is responsible for the performance of several departments of the College involved in research support and administration. At least 10 years of experience in research administration; or the equivalent. Ph.D. in a field requiring in-depth participation in original, independently supported research preferred. Ability to communicate with external sponsors and the entire Dartmouth/DHMC research community to better understand and promote the interests of both. Experience in the development and implementation of innovative institutional management practices for technology transfer, clinical trials, and similar external relationships. Familiarity with the mechanics and protocols of governmental relationships supporting research. **Review of credentials will begin June 1, 1997. Please submit resume, cover letter, and references to: Associate Provost Search, Dartmouth College, 204 Parkhurst, Hinman Box 6004, Hanover, NH 03755.**

Dartmouth College is an Affirmative Action/Equal Opportunity Employer. Women and minorities are encouraged to apply.



**TENURE TRACK/
TENURED POSITION
NIMH**

The National Institute of Mental Health invites applications for a tenure track or tenured investigator in magnetic resonance imaging physics in the Laboratory of Brain and Cognition, Division of Intramural Research Programs. The candidate is expected to develop an independent research program and will be provided with personnel and budget to conduct the research. The successful candidate will take a lead role in coordinating research activity on the NIH 3.0 Tesla magnetic resonance imaging system and support NIMH's expanding MRI research program on human brain function. The candidate should have a Ph.D. in MRI physics or a related discipline and postdoctoral experience. Applicants should send a curriculum vitae, statement of research interests, and three letters of recommendation. Applications must be received within six weeks of the publication of this advertisement. Submit information to: **Rene Williams, NIMH/Personnel Office, Bldg. 45/Room 3AN-32, NIH, 9000 Rockville Pike, Bethesda, MD 20892. Contact person for ad: Robert S. Balaban, Ph.D. 301-496-3658.**

NIH is an Equal Opportunity Employer

University of Wisconsin-Madison
College of Agricultural and Life Sciences
PVL 27263

The University of Wisconsin-Madison, College of Agricultural and Life Sciences invites applicants for the position of Associate Dean for Agriculture and Natural Resource Extension. As Associate Dean, the individual has responsibility to provide leadership for the organization, content, and effectiveness of extension programs relating to agriculture and natural resources. The individual in the position reports jointly to the Dean of Cooperative Extension (CE) and the Dean of the College of Agricultural and Life Sciences (CALs).

Specific Statewide Extension Responsibilities Include:

1) Provide leadership for statewide program planning, implementation, evaluation, and reporting of agricultural and related natural resources areas. Collaborators in these tasks may include faculty and staff in the counties, and other campuses within the UW system. 2) Foster both ad hoc and ongoing issue-focused teams of county and campus based personnel, UW research faculty/staff and, when appropriate, expertise in neighboring states. 3) Serve as a member of the CE Administrative Committee, and other administrative groups as appointed by the Dean of the CE.

Specific CALS, UW-Madison Responsibilities Include:

1) Serve as the primary CALS and CE representative in matters relating to budget and personnel for all Extension appointments in CALS, manage interinstitutional agreements and seek new funding from public and private sources in support of CE activities. 2) Serve as a member of the CALS Executive Committee, and other administrative groups as appointed by the Dean of CALS. 3) Encourage innovation in Extension/outreach programming within CALS and ensure that Extension/outreach activities are recognized as an important and integral component of departmental responsibilities and receive appropriate recognition in the performance appraisal process for CALS faculty and staff.

Qualifications:

1) Ph.D. and qualifications necessary to be tenured in a college department. 2) Distinguished extension/research career and evidence of administrative ability. 3) Evidence of successful partnerships with government units and/or private sectors. 4) Appreciation for extension/outreach excellence and contributions. 5) Understanding of the mission of extension and a land grant university.

Availability:

The position will be available immediately. The closing date for nominations and applications is July 1, 1997. Please submit a resume, cover letter, and names and addresses of five references to:

**Search Committee for Associate Dean for
Agriculture and Natural Resource Extension
c/o J.H. von Elbe, Search Committee Chair
Department of Food Science
103 Babcock Hall
University of Wisconsin-Madison
Madison, WI 53706**

The University of Wisconsin-Madison is an Equal Opportunity and Affirmative Action Employer. Women and minorities are encouraged to apply. Unless confidentiality is requested in writing, names and other information regarding applicants and nominees must be released upon request. Finalists cannot be guaranteed confidentiality.

GENEMEDICINE THE GATEWAY TO NON-VIRAL GENE THERAPY



GENEMEDICINE, INC. is developing several novel, non-viral gene therapies which capitalize on new advances in gene delivery and expression. Join the group of highly creative and motivated researchers we are assembling and apply your curiosity and expertise in molecular biology, molecular genetics and biochemistry to the discovery of novel ways to improve our plasmid-based expression systems.

GENEMEDICINE, INC. offers career growth and a highly competitive compensation and benefits package. For confidential consideration, please fax or e-mail resumes to:
GENEMEDICINE, INC. at (281) 364-0858,
Attn: Human Resources or
recruitmentmanager@genemedicine.com
EOE

SENIOR SCIENTIST/GROUP LEADER, EXPRESSION SYSTEMS DISCOVERY

You will lead and direct a talented group of Ph.D., M.S. and B.S. researchers that are engaged in discovering ways to increase the level, duration, specificity and regulation of expression of therapeutic genes. Your scientific track record will evidence significant creativity and productivity, expertise in eukaryotic gene expression, and an understanding of gene therapy issues. Experience in bioinformatics or genetic approaches is desirable. You will have a Ph.D. in Molecular Biology or related field, at least 8 years of experience, including three years of management experience. Ideally you will be an Asst. or Assoc. Prof. or will be managing a group of researchers in a fast-growing, challenging biotechnology company.

SENIOR SCIENTIST, TRANSCRIPTION

You will apply your expertise in eukaryotic gene expression and structure/function relationships of chromatin, enhancers, promoters and other functional elements to improve tissue- or cell-specific gene expression systems for non-viral gene therapy applications. You will have a Ph.D. in Molecular Biology or related field and at least 4 years of relevant experience.

SENIOR SCIENTIST, GENE REGULATION

You will apply your expertise in eukaryotic gene expression, transcription factor structure/function relationships, and protein biochemistry to improve the regulation of genes by novel, drug-controllable, steroid receptors, such as our patented GeneSwitch™. You will have a Ph.D. in Molecular Biology or related field and at least 4 years of relevant experience.

All candidates should have excellent oral and written communication skills, experience working within interdisciplinary teams and proficiency with software applications such as GCG, Excel, WordPerfect and PowerPoint.



GENEMEDICINE, INC.

NOVARTIS

Agricultural Biotechnology

Novartis, recently formed by the merger of Ciba-Geigy and Sandoz, is a global leader in the application of biotechnology to agriculture. The Novartis Seeds Biotechnology Research Unit (Research Triangle Park, North Carolina) is developing novel transgenic solutions to enhance agronomic performance of major crops worldwide. Successful candidates will join an interdisciplinary group of highly motivated scientists devoted to maintaining leadership in the area of agricultural biotechnology. We currently seek outstanding candidates for scientist positions the following areas:

MOLECULAR PATHOLOGIST Candidates should possess a Ph.D. and 3+ years of post-graduate experience. A proven record of interest and accomplishment in the area of plant disease resistance, pathogen biology or related field is required. This person is expected to design and implement disease evaluation methods in support of the development of disease resistant plants, and will contribute to designing novel strategies for engineering crop disease resistance. Previous experience with fungal pathogens of maize is helpful.

BIOCHEMIST Candidates for the second position should possess a Ph.D. with 3+ years of related experience. Extensive protein biochemistry and enzymology experience with a proven ability to purify, characterize and develop assays for enzymes is required. Previous experience with biosynthetic pathways, preferably in plants, is desirable. Supervisory responsibilities and international travel are anticipated.

ENTOMOLOGIST The position requires an adaptable, innovative person with experience in insect and nematode bioassay design and performance, data analysis, communication skills, and ability to work well in a team based research environment. The incumbent will also be responsible for maintaining insect colonies for exploring modes of resistance to insecticidal proteins. Successful candidates will have a M.S. degree or a B.S./B.A. with 2-3 years relevant experience with an emphasis in insect pathology or insect physiology. Experience with a diverse number of insect orders is a plus. Additional experience in microbiology and molecular techniques preferred.

Novartis Seeds offers competitive salaries and attractive benefits packages. Please send cover letter and résumé to: Novartis Seeds, Inc., attn: Human Resources, P.O. Box 12257, Research Triangle Park, NC 27709-2257

HILLESÖG

NK

ROGERS

S.G.

KEAN COLLEGE OF NEW JERSEY

Anticipated Biology Position 1997-98 (Search Extended)

Contingent on Budgetary Approval
and Appropriate Funding

ASSISTANT PROFESSOR. Full-time 10-month tenure-track assignment effective 9/1/97. Required: Ph.D. in Biology or related discipline and teaching experience in anatomy. Primary responsibility is the teaching of gross anatomy to Occupational Therapy majors. Other instruction may be human anatomy and physiology, neuroscience, tissue culture or cell biology. Research encouraged; modest facilities and support available. Candidacy review begins immediately; priority consideration given to applications received before 6/6/97. Send letter of interest; up-to-date resume; names, addresses, telephone numbers of three references. Official transcripts and three current letters of recommendation required before appointment. Apply directly to **Dr. Denise Mancarella, Chair, Department of Biological Sciences, Kean College of New Jersey, Morris Ave., Union, New Jersey 07083.** Salary competitive and commensurate with qualifications and experience. Comprehensive benefits program included. **KEAN COLLEGE IS AN EEO/AA INSTITUTION.**



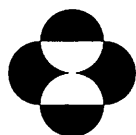
FERMENTATION SCIENTIST/BIOCHEMIST

Merck Research Laboratories in West Point, Pennsylvania, a world leader in biological and pharmaceutical research, has an immediate opening for a highly qualified Fermentation Scientist/Biochemist in the Department of Bioprocess Research and Development.

The successful candidate must have experience operating research scale fermentors and exhibit a high degree of mechanical aptitude. An understanding of microbial physiology is essential. A knowledge of molecular biology and protein purification techniques would also be beneficial.

A B.S./M.S. degree or equivalent in Biochemistry or related field with 2-4 years experience is required.

Excellent salary and benefit programs accompany this position at our modern research facilities located 25 miles northwest of Philadelphia. Please send curriculum vitae with cover letter and the names of three references to: **MRL Human Resources, Ad # B-96, WP42-2, Merck Research Laboratories, P.O. Box 4, West Point, PA 19486.** Only candidates considered for interviews will receive responses. EEO/AA/VH/Employer.



MERCK

Research Laboratories

DIRECTOR OF RESEARCH

San Francisco, California

Shriners Hospitals for Children (SHC) is seeking a Director of Research for its newly opened Northern California Hospital in Sacramento. The individual must hold a Ph.D. or M.D. and be qualified for the rank of associate or full professor in an appropriate academic department at the University of California, Davis, with which SHC is affiliated. Institutional interests of SHC in basic research include wound healing and repair of skin, skeletal and neural tissue, regeneration or bypass of spinal cord lesions, sensory feedback, and control of spasticity. Institutional interests of SHC in clinical research include biomechanical and rehabilitation engineering with development of devices enhancing mobility, seating, electronic communication and robotic assistance to activities of daily living. The candidate should have demonstrated leadership qualities as an administrator as well as a distinguished record of contributions in the field of either cell and developmental biology, physiology, molecular biology or bioengineering. Preference will be given to individuals who have a history of sustained extramural funding and who are interested in both basic and clinically useful research.

Approximately 40,000 square feet of laboratory space and recruitment of the appropriate research team await development in the Shriners Hospital located next to the U.C. Davis Medical Center in Sacramento. The annual research budget for the 22-hospital SHC system is presently in excess of \$20 million. This particular hospital is an 80-bed facility serving children with orthopaedic problems, burns, and spinal cord injuries.

Interested applicants should forward a current Curriculum Vitae to: **William W. Monato, M.D., Chairman, Search Committee for Research Director, Northern California Hospital of SHC, c/o Elwood W. Speckmann, Ph.D., Director of Research Programs, International Shrine Headquarters, 2900 Rocky Point Drive, Tampa, FL 33607-1460.**



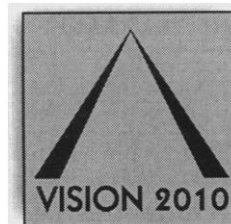
Shriners Hospitals FOR Children

*Applications and nominations will be accepted until August 1, 1997,
or until an acceptable candidate is found.*

EEO M/F/D/V - Drug Free Workplace

SCIENTIFIC EDITOR

THE BAYER FACTS:



Bayer:

**A premier
healthcare
company for
the 21st
century.**

Our business is
to significantly improve
health worldwide.

People are the heart
of our company.

Our corporate
culture inspires
and commits all
to do their best.

Bayer

Pharmaceutical
Division

■ There are many "Bayer Facts" which distinguish us as a leader. To name one, we are part of Bayer Corporation...a \$26.8 billion organization which is one of the most broadly-based healthcare companies in the U.S.

■ You will plan, develop, write, revise, produce and place articles and other publications in the scientific press and medical literature based on Bayer strategies and objectives. You will also plan, develop and implement continuing education programs and materials in accordance with Bayer strategies and in conjunction with professional societies and continuing education agencies, as well as develop and implement appropriate U.S. components of the international publication strategies and objectives.

■ A strong scientific/medical background, a PhD or PharmD in a scientific/medical discipline, plus a minimum of five years of experience in a related scientific/medical/pharmaceutical area required. A minimum of four years of experience must include medical writing. Demonstrated ability to interpret scientific and clinical trial data, strong scientific writing ability and excellent editorial and interpersonal skills essential. Must be independent, creative, innovative and able to juggle a variety of projects. Must also be a self-starter and able to maintain a high level of productivity with minimal supervision. Ability to supervise consultants and motivate individuals along with knowledge of computerized bibliographic, abstract, and database services necessary.

■ Please forward your resume including salary history to: **Bayer Corporation, Pharmaceutical Division, Department GD-C28-AB, 400 Morgan Lane, West Haven, CT 06516.**

No agencies or phone calls please.
For more information on Bayer, search:
www.careermosaic.com/cml/bayer/

■ An Equal Opportunity Employer M/F/D/V. Bayer Corp. is committed to establishing and maintaining cultural diversity within our work environment.



*Working at the molecular level
to conquer, treat, or prevent
debilitating diseases.*

INFECTIOUS DISEASES DISCOVERY RESEARCH AT SCHERING-PLOUGH

At the Schering-Plough Research Institute in Kenilworth, NJ, scientists are discovering innovative therapeutic agents that challenge humankind's most debilitating diseases. If you are seeking an opportunity to be on the cutting edge of exploratory pharmaceutical discovery, become part of an advanced multidisciplinary research group focused on infectious diseases.

POSTDOCTORAL FELLOW Antiviral Chemotherapy

We seek a PhD in Molecular and Cellular Biology/Virology to be involved in the study of viral gene products and their role in viral replication. Experience in gene expression, mutagenesis and tissue culture is required. Working experience with RNA viruses is preferred, but not essential.

We offer an excellent compensation package including a competitive salary and comprehensive benefits. For prompt, confidential consideration, we invite you to apply on-line at <http://www.sp-research.com> or send a scannable resume and cover letter, original copy only, to our Resume Scanning Center at: Dept. PFID-DMS, P.O. Box 92101, Los Angeles, CA 90009. We are an equal opportunity employer. *We regret we are unable to respond to each resume. Only those selected for an interview will be contacted.*



**Schering-Plough
Research Institute**

Using Science for Human Advantage

CHAIRPERSON Department of Laboratory Animal Resources

Roswell Park Cancer Institute invites applications for the position of Chairperson of the Department of Laboratory Animal Resources. Applicants should have a DVM, VMD or equivalent degree; a PhD degree and/or board certification (ACLAM)/board eligibility will also be considered. Demonstrated aptitude/experience in teaching and demonstrated ability to attract extramural funding and conduct independent research will factor into the recruitment process. Opportunities exist for academic appointment in an appropriate Institute department.

Specific duties include (but are not limited to) clinical care of research and teaching animals (rodents, rabbits, dogs, sheep, goats), animal health surveillance, participation in the protocol review process, ensuring compliance with animal welfare regulations, oversight of a diagnostic laboratory, personnel deployment (37 department members, professional and technical) and training programs, fiscal programs, and the development of research programs in collaboration with researchers at this Institute. The department will occupy a new 41,000 nsf transgenic barrier (ABSL 1/2) animal facility in the Fall of 1997. Ongoing programs of this Department include toxicology, experimental surgery, microvascular surgery, hematology research, and murine rederivation and breeding programs.

Qualified applicants should submit curriculum vitae to Dr. Youcef Rustum, Roswell Park Cancer Institute, Elm and Carlton Streets, Buffalo, New York 14263. Roswell Park is a M/F/H/V Affirmative Action/Equal Opportunity Employer.



CAREER Workshops

"PROFESSIONAL PRESENTATION AND INTERVIEWING SKILLS"

An Interactive Career Workshop
on

SCIENCE Professional Network

15 May - 15 June

Our NEW Career Workshop, "Professional Presentation and Interviewing Skills," starts today. John Timpane, Ph.D., and his guest, Peter Lasky, Associate Director of Human Resources for Genetics Institute, will lead an interactive, ongoing discussion about the interviewing process as well as other professional settings.

Looking for scientific jobs can be challenging. Our experts in charge of this Career Workshop will offer suggestions on how to best present yourself to prospective employers. They will also talk about real-life situations that will help you gain insight into mastering all aspects of your job search.

A new Career Workshop appears on the 15th of each month! Check back often and visit SCIENCE Professional Network for the most up-to-date scientific career resources.

Bookmark our Website: Go to www.sciencemag.org, click on "SCIENCE Professional Network," and click on "Career Workshops." Feel free to join in the dialogue - we look forward to hearing from you!

TODAY'S JOB LISTINGS

Find the latest Science Classified Career Opportunities under this heading on SCIENCE Professional Network. Search for your perfect job in our database of positions open from the pages of SCIENCE.

www.sciencemag.org



MOLECULAR/CANCER EPIDEMIOLOGIST **Mayo Foundation**

The Section of Clinical Epidemiology at Mayo Clinic, in collaboration with the Mayo Cancer Center, is seeking a molecular/cancer epidemiologist to fill a new position in our large and active group. This position presents an exciting opportunity for the successful candidate to conduct population-based molecular epidemiologic studies of the occurrence, etiology, and outcomes of cancers, as well as evaluations of the impact of diagnostic and therapeutic interventions in these conditions.

Applicants should have strong methodologic training in epidemiology with evidence of research productivity in molecular epidemiology as demonstrated by an ability to attract extramural research funding and as reflected by peer-reviewed publications. This individual will be expected to develop an independent program of research in collaboration with clinical and laboratory investigators.

The Mayo Clinic, with a research budget in excess of \$130 million per year, provides an outstanding environment for the conduct of molecular epidemiologic research. Resources include: The Rochester Epidemiology Project, with its linkage of medical records for residents of Olmsted County back to the early 1900s; a large referral practice of over 300,000 patients per year; over 150,000 cases recorded in the Mayo Tumor Registry; and both fresh and archived tissue samples from the local and referral practices enhanced by the recent development of a population-based serum and blood repository. There is a large productive core of geneticists, physicians, basic scientists, epidemiologists, and biostatisticians committed to collaboration in cancer research. These individuals contribute to, and take advantage of, a large number of tissue handling and laboratory cores made available through the Mayo Cancer Center.

Academic rank for the successful applicant will depend on qualifications and experience. There are no clinical practice responsibilities associated with this position. Salary and benefits are most competitive.

Rochester, Minnesota provides an exceptionally high quality of life, as evidenced by its #1 (1993) and #2 (1994, 1995) rankings in Money Magazine.

Qualified applicants should submit a current curriculum vitae to:

W. Michael O'Fallon, Ph.D.
Chair, Search Committee
Mayo Clinic
200 First Street Southwest
Rochester, MN 55905
(507) 284-2720

Mayo Foundation is an Affirmative Action and Equal Opportunity Educator and Employer.



Megabios Corp.

Megabios Corp. provides proprietary gene delivery systems and preclinical development expertise to help create gene-based therapeutics designed for the treatment or prevention of genetic and acquired diseases. Our continued growth has created several employment opportunities for qualified candidates.

Scientist, Molecular Oncology

To qualify you will need a Ph.D. in molecular biology, biochemistry or cell biology. The successful candidate must be highly motivated and versatile. In-depth experience with molecular biology and molecular biochemistry techniques is essential. The successful candidate will have a strong record of publication and accomplishment, preferably in the area of Molecular Oncology and signal transduction. Demonstrated proficiency at analytical and problem solving skills is necessary. This position reports to the Principal Scientist, head of the Molecular Oncology group.

Scientist, Pharmaceuticals and New Delivery Systems

The successful individual will possess a Ph.D. in pharmaceutical sciences, physical chemistry, chemical engineering or biophysics and have 3+ years experience in an industrial biotechnology setting. This individual will be responsible for the development of DNA formulations suited for pulmonary delivery. Their efforts will be directed toward non-viral lipid and non-lipid based formulations. A background in colloid and/or surface chemistry would be beneficial. The individual will also be expected to develop external collaborations and to work within a team framework. This position reports to the Director, Pharmaceuticals and New Delivery Systems.

Scientist, Cardiovascular Gene Therapy Group

To qualify you will need a Ph.D. in biochemistry, pharmacology, physiology or related discipline with at least one year of research experience post graduation. Experience with cardiovascular animal models is necessary. This key scientist will initiate and perform animal model experiments in collaboration with other members of the cardiovascular gene therapy group. Included will be models for restenosis, angiogenesis, and transplant atherosclerosis/rejection. The candidate will be responsible for training and directing at least one junior level scientist. This position reports to the Principal Scientist, head of the Cardiovascular Gene Therapy Group.

Megabios offers a highly competitive compensation and benefits package, and values the contributions of its diverse workforce. Qualified candidates are strongly encouraged to forward their C.V.'s to:

Megabios Corp.
Human Resources Department
863-A Mitten Road
Burlingame, CA 94010
fax (415) 652-1990
www.megabios.com

CHEMISTRY POSITIONS

POSTDOCTORAL and TECHNICAL POSITIONS. Chemistry (chromatography and macromolecular spectroscopy, lipid and polymer-based material science, drug synthesis) for research projects in the area of pharmaceutical biotechnology. Send curriculum vitae to: **T. G. Burke, University of Kentucky, ASTeCC Building, Lexington, KY 40506.** Affirmative Action/Equal Opportunity Employer.

CONFERENCE

THIRD INTERNATIONAL CONFERENCE ON GENE REGULATION/ONCOGENESIS/AIDS ISLAND OF SPETSES, GREECE SEPTEMBER 25-28, 1997

Topics: Transcription Factors—Growth Factors/Receptors—Oncogenes—Tumor Suppressor Genes—Cancer Vaccines—Cellular and Molecular Aspects of HIV—Gene Therapy—Immunotherapy

Organizers: T. S. Papas and S. D. Kottaridis

Some Invited Speakers: S. Aaronson, G. C. Barrett, N. Bhat, W. Cavanee, B. C. Clark, C. Croce, M. Essex, P. Fischinger, R. Gallo, J. Ihle, F. Kafatos, K. Khalili, I. Kola, A. Levine, M. Liberman, E. Moudrianakis, T. S. Papas, W. Parks, T. Parsons, R. Rauscher, M. Rosenberg, C. Schweinfest, A. Seth, I. Taylor, J. Vournakis, S. Wilson, F. Wong-Staal, H. Zur Hausen

For information and registration contact: **Dr. Steve Kottaridis, Hellenic Anti-Cancer Institute, Department of Virology, 171 Alexandres Avenue, 11522 Athens GREECE; Telephone: 30-1-6437210; FAX: 30-1-6421022.**

For scientific correspondence contact: **Dr. Takis S. Papas, Center for Molecular and Structural Biology, MUSC, 171 Ashley Avenue, Charleston, SC 29425, USA. Telephone: 803-792-1484; FAX: 803-792-3940.**

MARKETPLACE

PRINCETON BIOMOLECULES
Your most reliable source of
PEPTIDES
Phone: 614-487-3663 Fax: 614-487-3664
E-mail: PBCpeptide@aol.com

Circle No. 2 on Readers' Service Card


Automated Sequence Quality Plasmids
6 MINUTE MINIPREPS
all tubes supplied! all reagents ready to use!
MO BIO Labs, Inc.
800-606-6246/760-944-7190/fax 760-944-7134
email: orders@mobio.com / http://www.mobio.com

Circle No. 17 on Readers' Service Card

NEW for 1997 Cell Systems
Serum-Free Human Cell Systems
Venous, Arterial, Microvascular Cells
1-800-697-1211 www.cellsystems.com

Circle No. 8 on Readers' Service Card

MARKETPLACE

DNA Primers from \$0.85/base
Ready to Use
No Setup Charge
No Hidden Costs

Institutional Discounts Available
The Great American Gene Company
http://www.geneco.com
email: geneco@ix.netcom.com fax: (800) 816-5517

Circle No. 6 on Readers' Service Card

- Automated DNA sequencing
- Custom DNA/RNA synthesis
- Protein/peptide synthesis & sequencing
- Spectroscopy/calorimetry
- Mass spec services

Commonwealth Biotechnologies, Inc.
Your one stop biotech shop

LET US QUOTE YOUR SPECIAL PROJECTS
Comprehensive biotech services. For information please call:
1-800-735-9224
Visit our web page at:
www.cbi-biotech.com
Fax: 804-648-2641 E-mail: CBI@i2020.net

Circle No. 7 on Readers' Service Card

CUSTOM DNA SYNTHESIS
PURE & SIMPLE
• Superb Technical Support
• Impeccable Quality
• World's Fastest Service
• Cap Gel & TOF Mass Spec
* Some restrictions apply. Please call for details.

\$1.19* per base
\$10 setup
50 nmole scale

MIDLAND
STILL THE UNDISPUTED #1 CUSTOM DNA SYNTHESIS SERVICE
THE MIDLAND CERTIFIED REAGENT COMPANY
Phone 1-800-247-8766 FAX 915-694-2387
email mcr@oligos.com

Circle No. 4 on Readers' Service Card

Attention:
Oxidative Stress Researchers

Why risk the non-specificity of thiobarbituric methods for evaluating lipid peroxidation when there's a better way?

The **BIOXYTECH® LPO-586** assay offers:
Specific results for malonaldehyde plus 4-hydroxyalkenals
Simple, easy-to-use protocol

Other assays available:
Superoxide dismutase
Human myeloperoxidase
Glutathione
Human lactoferrin
Human pl. glutathione peroxidase

OXIS International, Inc.
voice: USA 1-800-547-3686
e-mail: info@oxis.com
home page: http://www.oxis.com

Circle No. 10 on Readers' Service Card

MARKETPLACE

SINCE 1984, SERVING YOU WITH QUALITY PRODUCTS

PRIMERS PURIFIED**
65¢ BASE
NO SET-UP FEES

- 50 nmole
- Full QC
- Guaranteed Quality
- Just order > 400 bases at the same time

PEPTIDES FREE MASS SPEC
\$15.00 RESIDUE**
ANTIPEPTIDES ANTIBODY PRODUCTION SERVICES & MORE.
Internet: http://www.biosyn.com E-mail: biosyn@onramp.net

BIO•SYNTHESIS
TEL: 800-227-0627 FAX: 972-420-0442

Circle No. 5 on Readers' Service Card

Custom Polyclonal Antibodies
BEST PRICES • BEST ANIMALS
ANIMAL PHARM SERVICES
(800) 808-0550

Circle No. 13 on Readers' Service Card

BioSource International
• Custom Oligos
• 0.2mm Scale of Synthesis
• Other Services Available - Please INQUIRE
• Expires 8/31/97 • Use Quote #KY90
Order On-Line: **KEYSTONE LABS**
www.keydna.com
Fax: 800-786-4362 • e-mail: dna@keydna.com • Tech: 800-242-0607

Circle No. 14 on Readers' Service Card

DNA Sequencing
as low as \$40/run
Single & Double Stranded DNA
Plasmid or PCR DNA
Fast Turn Around
1-800-OLIGOS-1
http://www.ana-gen.com
ANA-GEN
Ana-Gen Technologies, Inc.

Circle No. 18 on Readers' Service Card

Express Peptides
15-40 mg in 5 days
\$18 per residue
Research Genetics, Inc.
1-800-533-4363

Circle No. 3 on Readers' Service Card

"Good morning, Gary. Did that last set of primers work OK?"

"Well, not exactly."

"You did order them from Midland, didn't you?"

"No, sir, not exactly."

"Did the molecular weights agree with the calculated values?"

"Um, well, not exactly."

"You did check the molecular weights, didn't you?"

"No, not exactly."

"You can compare calculated AND measured molecular weights, yes?"

"No, sir, not exactly."

"So, did we save any money on these primers?"

"I guess not....not exactly."

Midland makes primers and checks the molecular weight of every single primer. With a mass spectrometer. The calculated and measured values must agree to within 0.2% or the primer is resynthesized. So whether you order a single primer or hundreds of them at a time, you get primers that work.

Every time.

Exactly.

The Midland Certified Reagent Company is centrally located at 3112-A West Cuthbert Avenue in Midland, Texas. We welcome your technical and pricing inquiries at 800-247-8766. Contact us by FAX at 915-694-2387. Our e-mail address is info@oligos.com and our complete catalog is online at <http://www.mcrc.com>.

Human BAC Release IV[†]

14 fold coverage of the Human Genome

The human BAC DNA Pools Release IV are now available. The row and column pools for the Human BAC library are included with the DNA pools. The screening of the superpools will total 96 reactions, and the screening of the plate, row and column pools will total another 48 reactions per positive superpool. After 144 total reactions, the researcher will have a complete clone address. Sufficient DNA is provided for 50 screenings.

In addition, high density membranes, which allow for efficient hybridization screening of entire libraries, are also available. After spotting and growing, the high density membranes are processed by lysing the colonies and UV bonding the released DNA. Each 22cm x 22cm membrane is double spotted allowing unambiguous clone identification of over 27,000 clones double spotted on a single membrane.



Catalog No.	Description	Price
96011	Human BAC DNA pools	\$3,550.00
96055	11 HD Human BAC DNA Membranes	\$3,850.00



BAC Custom Screening

Research Genetics' custom hybridization and PCR screening services locate genomic clones from our human BAC library. To date, over 95% of all custom hybridization screenings have been successful.

- Charge for the basic service for hybridization screening is \$1,650 and for screening by PCR is \$1200.
- Up to 3 clones are included in the screening price. Additional clones may be purchased for \$24 each
- Service is guaranteed - if no clones are located, there is no charge!

BAC End Sequencing

Sequencing the ends of BAC clones requires special methods not required for the sequencing of M13 or Plasmids. You can avoid developing these methods by using our new BAC End Sequencing service. The service costs \$180 per end. Please e-mail donna@resgen.com for details.

[†] originally released as Shizuya, H. et al. (1992) *Proc. Natl. Acad. Sci. USA* 89 8794-8797.

Research Genetics, Inc.
 2130 Memorial Pkwy, SW • Huntsville, AL 35801
 U.S. or Canada 800-533-4363 Worldwide 205-533-4363
 U.K. 0-800-89-1393 FAX 205-536-9016

<http://www.resgen.com>

Circle No. 28 on Readers' Service Card