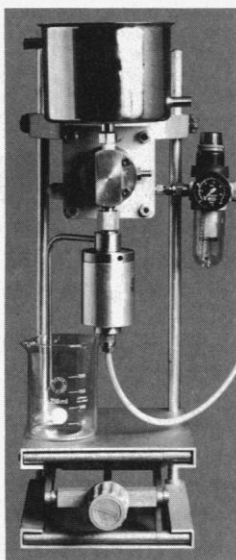


DISRUPT VIRTUALLY ANY TYPE OF CELL



With the Unique Stansted Cell Disrupter

Yeast, bacteria, fungi, algae, mammalian cells, etc. are disrupted in a continuous operation for the intact extraction of all types of cellular components.

The Stansted cell disrupter provides disruption from 0 to 100% breakage which is reproducible within 15% from batch to batch of equivalent material. Batch sizes can vary from 1/2 ml. to whatever is needed.

All parts in contact with cellular material can be sterilized, and no external energy is introduced during this usually single pass disruption process. Disruption pressures are obtainable up to 40,000 psi in either motor driven or air operated units. Large scale equipment is also available.

Distributed exclusively in North America by:

ENERGY SERVICE COMPANY

B200 Walker Building, 734 15th St., NW, Washington D.C. 20005
Telephone: (202) 737-6018

Circle No. 31 on Readers' Service Card

AP Academic Press

SCIENCE

Start Your Day with inScight

Science and **Academic Press** invite you to start your day with **inScight**, the online information service devoted specifically to late-breaking science news. Located at www.apnet.com/inscight, the site is a free service featuring daily topical news items of interest to researchers, practitioners, students, and anyone with an interest in current science issues. The experienced and preeminent news team of the weekly **Science** compiles and provides **inScight** with the day's primary science news stories which are then formatted and maintained online through the Academic Press electronic production services department.

inScight—
www.apnet.com/inscight

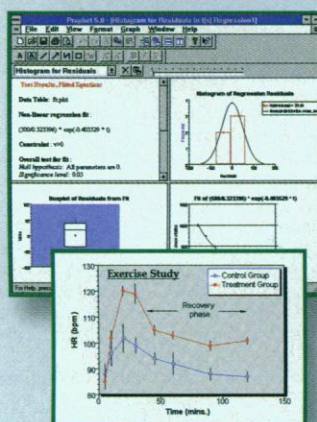
Science—
www.sciencemag.org

Academic Press—
www.apnet.com/ or www.europe.apnet.com/

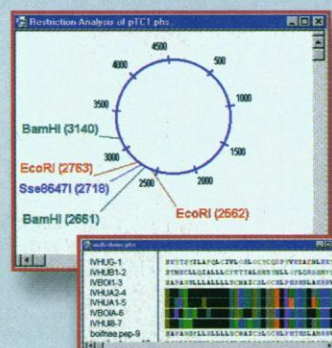
LK/KJ/FF 18116

PROPHET

Data Management, Analysis and Visualization for the Life Scientist



Prophet offers the researcher advanced, easy-to-use software tools for data management and visualization, and statistical analysis—from simple descriptive statistics to multifactor ANOVA, logistic regression, and nonlinear modeling.



Prophet offers the life scientist advanced, easy-to-use software tools for analyzing biological sequences, including alignment, translation, restriction enzyme and proteolytic cleavage analyses, PCR analysis, BLAST searches and other remote database retrievals, and more.

For Windows 95™, Windows NT™, and UNIX platforms.

Find out more at our web site at <http://www-prophet.bbn.com/>

The Prophet Group • BBN Systems and Technologies • 10 Moulton Street • Cambridge, MA 02138 • 800-940-0103

The National Center for Research Resources at the NIH sponsors the continuing improvement of Prophet.

Circle No. 36 on Readers' Service Card



The Coolest Kids' Show on Radio, Now on Tape!

The *Kinetic City Super Crew* is a group of curious kids that travel the world in their express train to solve brain-teasing science mysteries!

Order a copy of the Super Crew's latest adventure "Concrete Jungle or The Case of the City Safari" and discover the wild side of the city.

To order, call toll-free
1-888-GET-CREW

\$8.95
plus \$4 s&h (per order)



Check out our Website for your local KCSC station, and for other cool Super Crew stuff.
<http://www.aaas.org/EHR/KCsuper.html>

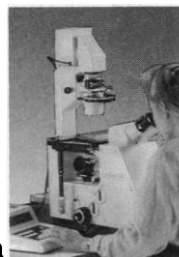
Kinetic City Super Crew is a production of the American Association for the Advancement of Science. Funding is provided by the National Science Foundation and support from other contributors.

Think of us as your research foundation.

When you're probing or recording at the single-cell level, there's no room for error, or vibration.

Our patented Gimbal Piston® Air Isolator System effectively eliminates both vertical and horizontal floor vibration. When it's combined with our unique, highly damped, stainless steel laminate tops or steel honeycomb, spillproof CleanTop®, you are assured of unequalled performance.

That's why leading researchers worldwide specify TMC vibration isolation systems: laboratory tables, optical tables, table-top

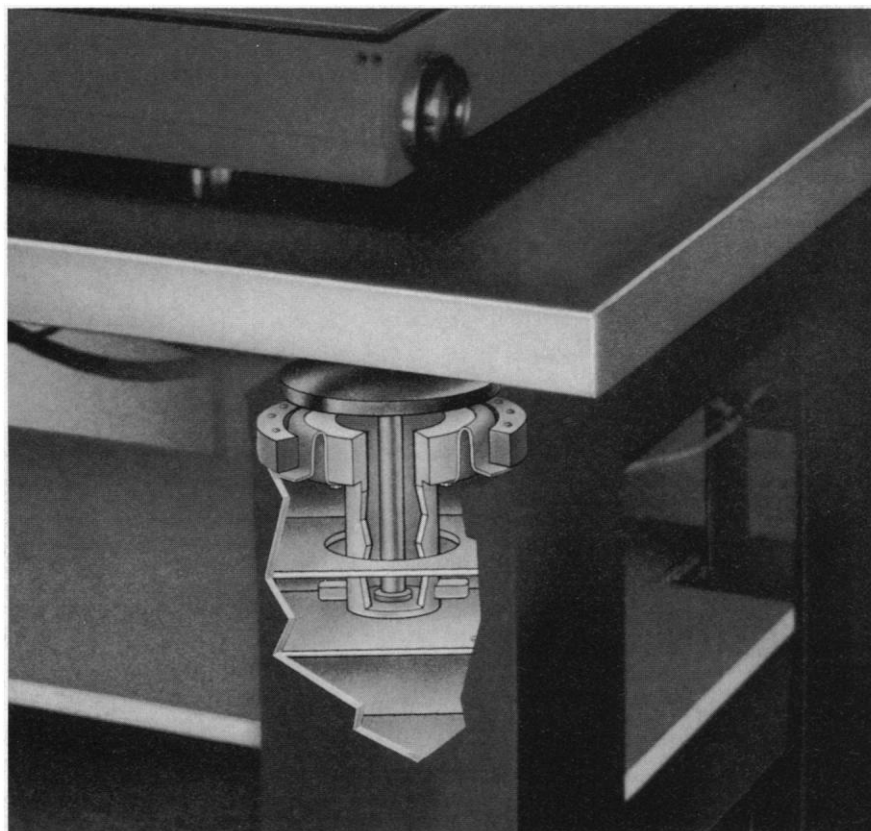


and floor platforms. Each component of these precision systems is designed to assure the most effective vibration protection possible for your most critical applications.

For support you can count on, move up to TMC vibration isolation systems. Contact our Technical Sales Group today.

TMC

Technical Manufacturing Corporation
15 Centennial Drive • Peabody, MA 01960, USA
Tel: 508-532-6330 • 800-542-9725 Fax: 508-531-8682
Email: sales@techmfg.com
Vibration Solutions



Circle No. 39 on Readers' Service Card

Introducing a DNA Ligation Kit that offers more than just "Fast".

With Epicentre's new Fast-Link™ DNA Ligation & Screening Kit, DNA ligation, transformation and recombinant screening can be done in 24 hours. Using the unique *Fast-Link* Kit, ligation of any type of insert can be performed quickly with resultant high transformation efficiency. Recombinants can be easily identified with the *Fast-Link* in-well lysis screening reagents and protocol.

Fast & Easy Ligation.

Ligate DNAs with either restriction enzyme-generated cohesive or blunt ends in just 5 minutes and PCR products containing 3' A-overhangs in 1 hour or less.

High Percentage of Recombinants Using the Fast-Link Kit.

Representative Results.			
	Ligation Time	% White Colonies	Recombinants per μg DNA
Overhang	5 min.	93	2.0×10^6
Blunt	5 min.	71	4.4×10^5
PCR product	1 hr.	68	1.2×10^4

Fast & Easy Screening.

Use the unique in-well lysis reagents and protocol to screen colonies for inserts easily and quickly without the need to grow cultures or perform minipreps.

Fast-Link™ In-Well Lysis Screening Protocol.

1. Pick colonies with a toothpick. Swirl the toothpick in the well of a microtiter dish containing Protoplast Buffer (provided) and incubate 10 minutes.
2. Add protoplasts to agarose gel wells containing Lysis Buffer (provided) and incubate 15 minutes.
3. Separate the supercoiled DNAs by electrophoresis to identify colonies with insert-containing plasmids.



Epicentre's No Risk Guarantee:

If you are not satisfied with any Epicentre product, we will refund your money.

Contact Epicentre for more information on the new Fast-Link Kit.

Circle No. 41 on Readers' Service Card

Fast-Link™



EPICENTRE® TECHNOLOGIES

1202 Ann Street, Madison, WI 53713

800-284-8474

...when you need to be sure of the quality

Outside of the U.S. contact the distributor in your country, or call 608-258-3080 or fax 608-258-3088.
E-mail: techhelp@epicentre.com • World Wide Web: <http://www.epicentre.com>

Argentina/Uruguay:
1-822-6164

Australia: 02-540-2055
Austria: 0222-74040-190
Benelux: 045-532-7755
Brazil: 021-592-6642
Canada: 800-268-5058

Finland: 17-6822-758
France: 1-34-84-62-52
Germany: 5152-2075
Greece: 1-6005977
Hong Kong/China:
852-2-896-6283
Israel: 02-335599

Italy: 02-891391
Japan: 03-3545-5720 OR
06-441-5103
Korea: 82-2-924-8697
Mexico: 8-371-60-50
Norway, Denmark, Finland,
Iceland, Sweden: 22-200137

New Zealand: 9-443-1284
Singapore: 266-1884
South Africa: 011-792-3428
Spain: 93-450-2601 OR
93-490-7440
Sweden: 8-35-90-40
Switzerland: 56-624-0100

Taiwan: 2-381-0844
Turkey: 312-435-0775
United Kingdom:
1-223-366500

EPICENTRE TECHNOLOGIES

CAREERS FOR WOMEN IN SCIENCE

Advertising Supplement
21 February 1997

A Look at the Challenges Facing Women...

In this advertising supplement, **SCIENCE** looks at women in the biotechnology and pharmaceuticals industry, including prominent women scientific leaders.

Benefits for Advertisers...

- Exclusive option to participate in the bioSCIENCE Career Fair, 28 February-1 March, MIT Campus, Cambridge, MA
- Bonus distribution to the Association for Women in Science (AWIS) and the bioSCIENCE Career Fair at MIT.

For More Information...

Contact Celeste Miller,
phone: (202) 326-6543;
fax: (202) 289-6742;
email:
science_classified@aaas.org

SCIENCE

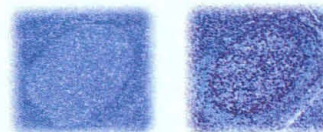
<http://www.sciencemag.org>

Enhanced protein detection has a new contender.

When tough protein detection problems have you up against the ropes, move to the **DAKO® Catalyzed Signal Amplification (CSA) System for immunohistochemistry.**

It's powered by the same CSA technology as the DAKO GenPoint™ system.

That power enables you to locate proteins in over-fixed tissue samples, detect small amounts of antigen, and enhance the performance of low-affinity antibodies.



Without CSA

With CSA

For routine protein expression studies, try the DAKO LSAB®+ system. It combines the sensitivity and simplicity you want with the reliability and affordability you need.

Put the power of DAKO detection systems in your corner.

Call 800-424-0021. Or visit our web site at <http://www.dakousa.com>.



DAKO

Greater value through innovation.



For a free calendar, call 800-424-0021, or visit our web site at <http://www.dakousa.com>.

DAKO and DAKO LSAB are registered trademarks of DAKO A/S.
DAKO GenPoint is a trademark of DAKO Corporation.

©1997 DAKO Corporation, USA

Circle No. 23 on Readers' Service Card

United States
800-424-0021
<http://www.dakousa.com>

Denmark
45-44-92-00-44
<http://www.dako.com>

Canada
800-387-8257

Australia
FREECALL:
1800-653-103

The World's Best Science Journal Just Got Better

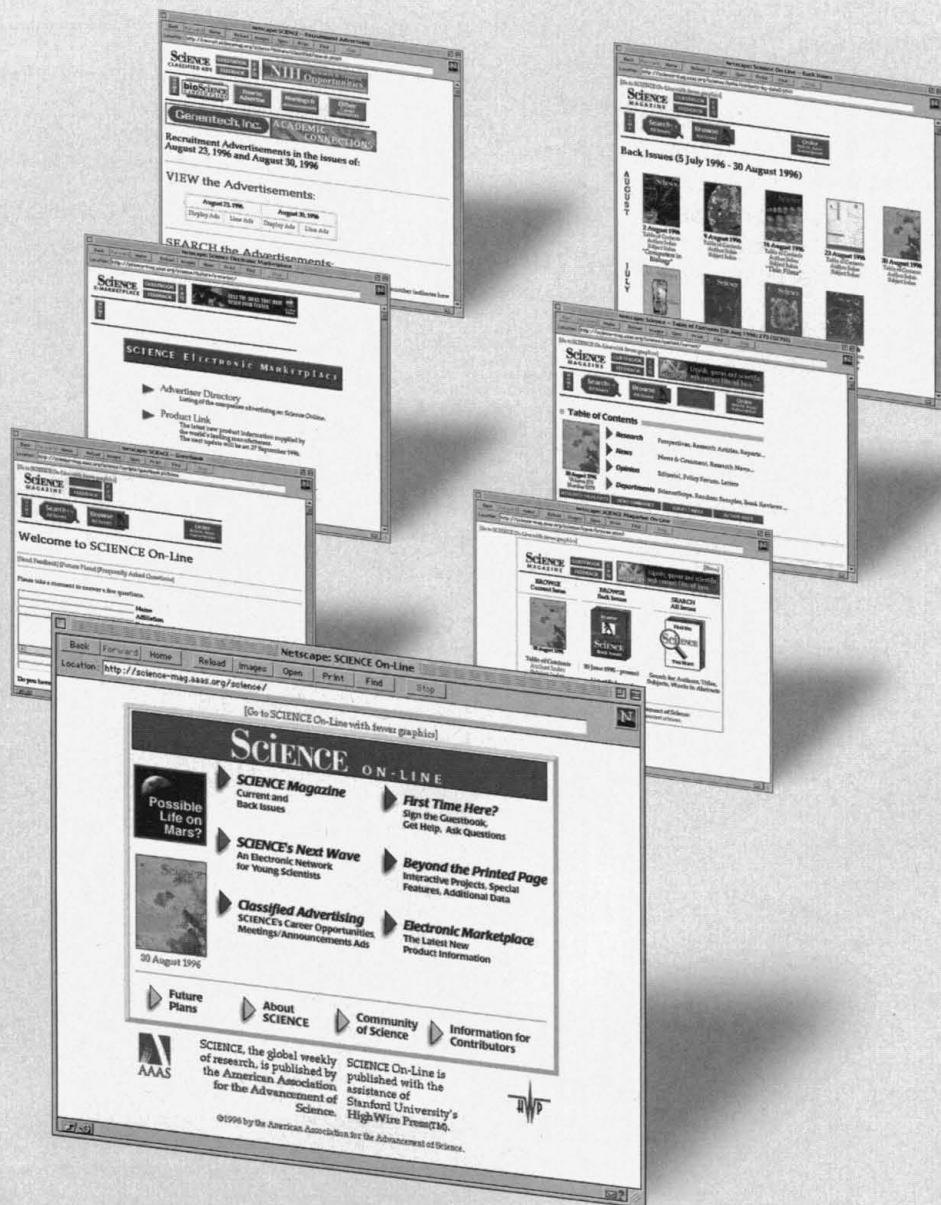
INTRODUCING

Full Text SCIENCE ONLINE

• IMMEDIACY

• INTERACTIVE

• SEARCHABILITY



SEE FOR YOURSELF

<http://www.sciencemag.org>

PRODUCTS & MATERIALS

Microplate Counter

The TopCount HTS Microplate Scintillation and Luminescence Counter has a new counting mode that can increase ^3H counting efficiency up to 70%. This feature can significantly increase sample throughput for using both 96- and 384-well microplates by enabling shorter counting times per microplate. In addition, the higher counting efficiency improves the statistical accuracy of samples counted for the same amount of time as in the normal counting mode. **Packard Instrument.** For information call 800-323-1891 or circle 142 on the reader service card.

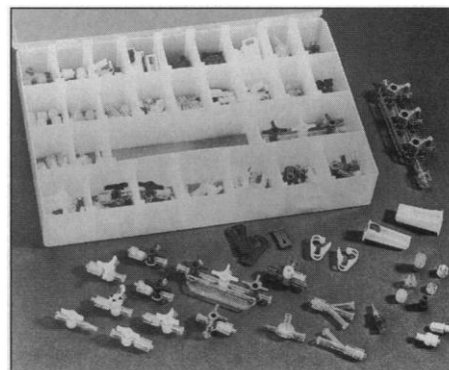
Antimicrobial Soap

In Vitro Medicated Lotion Soap is active against mycoplasma, a persistent contaminant that can compromise cell culture sys-

tems. Contamination is easily spread by contact, so hand decontamination is important for prevention. The soap is gentle to the skin and can be used regularly without discomfort. The antimicrobial agent, Triclosan, is effective against mycoplasma, Gram-negative and Gram-positive bacteria, yeast, and fungi. **In Vitro Scientific Products.** For information call 314-963-1993 or circle 143 on the reader service card.

Luer Valve Assortment Kit

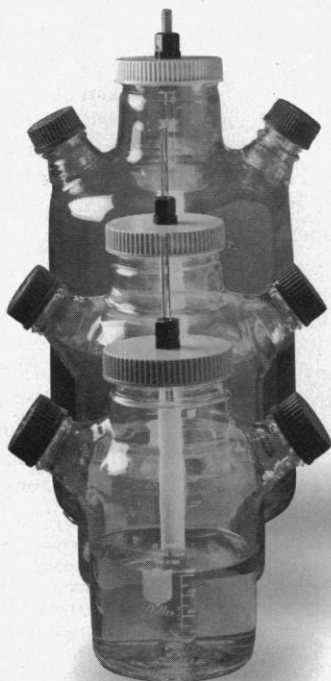
This plastics-fitting kit can help the user start, stop, add, divide, and control the flow of liquid or gas. It includes more than 200 assorted parts such as two-way and three-way stopcocks, manifolds, Y-connectors, injection sites, male and female luer caps, check valves, syringe-activated check valves, slide clamps, roller clamps, pinch clamps, and



various sizes of male and female luer adapters with barbed fittings for flexible tubing. All parts except clamps have luer fittings for quick and easy connecting. **World Precision Instruments.** For information call 941-371-1003 or circle 144 on the reader service card.

Math Software Understands Plain English

Macsyma 2.2 math software lets users solve mathematical problems by posing questions using "plain" English, in contrast to the arcane command language used in most math software. For example, the request "Show me how to find the roots of my polynomial" pro-



The Cell Culture Center A National Resource

The Cell Culture Center is a national resource facility established by the NIH to provide customized, large scale, cell culture services for basic research laboratories.

The Center is supported by the NIH to give you access to large scale cell culture at minimal cost. This enables you to focus more of your valuable resources on fundamental research problems. In addition, the Center provides access to large quantities of cells or protein so you are not limited by the cell culture capacities of your own facility.

Your cell line or custom protocol is adapted to large scale production, and cells are delivered in the quantity and frequency you desire. Numerous common cell lines, such as HeLa, CHO, Sf9/baculovirus, hybridomas, etc. are also routinely produced at the Center.

All investigators from basic research laboratories and institutions are eligible to use this national non-profit resource.

For more information, please visit our home page on the worldwide web or contact:

Mark Hirschel, Ph.D.
National Cell Culture Center
8500 Evergreen Boulevard
Minneapolis, MN 55433
Phone: 800-325-1112 • Fax: 612-786-0915
E-mail: ncccinfo@nccc.com • <http://www.nccc.com>



Cell Culture Center

The Cell Culture Center is sponsored by the National Center for Research Resources, National Institutes of Health.

duces a collection of solutions with textual descriptions and corresponding input commands. These commands can usually be executed without typing anything. The software runs on Intel personal computers with Windows 3.1, Windows 95, or Windows NT. **Macsyma.** For information call 800-622-7962 or circle 145 on the reader service card.

Four-in-One Liquid Handler

The Programmable Liquid-Processor is a diluter, dispenser, pipettor, and titrator. The patented rotary-axial dispensing mechanism delivers as little as 10 μ l. A microprocessor-controlled keypad can be used for inputting variables such as volume, flow rate, air gaps, and flow direction. Several programs can be stored. The unit can be activated by handset, foot switch, or computer. **PolyScience Division of Preston Industries.** For information call 800-229-7569 or circle 146 on the reader service card.

Pocket-Size Datalogger

The XR340 Pocket Logger is a portable, four-channel datalogger with more than 25 sensors. Designed for remote, unattended opera-

tion, the logger can power itself and any combination of sensors for more than 2 years on an internal, user-replaceable battery. It can store more than 21,000 readings and features fast 19.2k baud data transfer to a computer. Sensors available include thermistor probes accurate to $\pm 0.15^\circ\text{C}$, pressure sensors, a relative humidity probe accurate to $\pm 2\%$ RH, a light sensor, and split-core ac current sensors with ranges from 0 to 100 amp and 0 to 1500 amp. **Pace Scientific.** For information call 704-568-3691 or circle 147 on the reader service card.

PCR Vectors

New pTARGET vectors are designed to provide convenience for researchers analyzing expression of polymerase chain reaction (PCR) products in mammalian cells by combining the versatility of mammalian expression with the convenience of "T"-vector cloning and blue/white screening. PCR products generated by such popular enzymes as Taq DNA polymerase typically contain a deoxyadenosine residue ("A") on the 3' end. The linear pTARGET vector has 3' complementary "T" overhangs allowing direct ligation of PCR products into the vector. Blue/white screening permits the rapid identification of positive clones through disruption of

the α -peptide sequence of the β -galactosidase gene when the gene of interest is successfully inserted. Inserted DNA can be readily excised in a single restriction digest using the enzyme Not I. **Promega.** For information call 608-277-2582 or circle 148 on the reader service card.

DNA Processing System

The DNA Processing System dries DNA extracts and electrophoresis gels. In the space-saving system, the concentrator, pump, and trap are on the top shelf, while the gel dryer fits underneath on a pullout shelf. The system features a solid Teflon pump with a continuous molded diaphragm that keeps its shape and maintains a good vacuum and



flow rate. The pump is oil free, which eliminates the use of dry ice. The rotor can hold 1.5- and 0.5-ml tubes simultaneously. The large slab gel dryer has a silicon sealing sheet, variable temperature, and timer. **Appropriate Technical Resources.** For information call 800-827-5931 or circle 149 on the reader service card.

Literature

Immunohistochemistry Catalog 1996-97 features an expanded range of 147 primary antibodies. Detection systems and ancillary products are also included. **Immunotech.** For information call 800-458-5060 or circle 150 on the reader service card.

Newly offered instrumentation, apparatus, and laboratory materials of interest to researchers in all disciplines in academic, industrial, and government organizations are featured in this space. Emphasis is given to purpose, chief characteristics, and availability of products and materials. Endorsement by *Science* or AAAS is not implied. Additional information may be obtained from the manufacturers or suppliers named by circling the appropriate number on the Readers' Service Card and placing it in a mailbox. Postage is free.

High Speed Wavelength Switching

The **Lambda DG-4** is the ideal light source for your fluorescence ratio imaging experiments. The **DG-4** is the first wavelength switcher to achieve 1 millisecond switching using up to 4 standard interference filters. Easy to install, easy to use and highly integrated, the **DG-4** extends the capabilities of your imaging system.

One millisecond wavelength switching for real time video imaging

Accommodates up to 4 standard interference filters and neutral density filters

Integral 125 watt, pre-focused xenon lamp requires no alignment

No mechanical vibration transmitted to microscope

Fiber optic output adaptable to most microscopes

Sub-millisecond shuttering of excitation light

Arbitrary dwell time at any one wavelength

Can be triggered by video sync pulse

Parallel or serial computer interface

Programmable intensity



SUTTER INSTRUMENT COMPANY

40 LEVERONI COURT, NOVATO, CA 94949

PHONE: 415.883.0128 FAX: 415.883.0572 INFO@SUTTER.COM HTTP://WWW.SUTTER.COM

Circle No. 22 on Readers' Service Card

DISPLAY CLASSIFIED ADVERTISEMENTS

Call for rate and deadline information on display classified advertisements.

Email: science_displayads@aaas.org

Bren Peters-Minnis
Recruitment Display Advertising
Telephone: (202) 326-6541
FAX: (202) 289-6742
Email: science_displayads@aaas.org

Terri Seiter Azie
Operations Manager
Telephone: (202) 326-6537
FAX: (202) 289-6742

Debbie Cummings
European Recruitment Advertising
Telephone: +44 (0) 1223 302067
FAX: +44 (0) 1223 576208

For MEETINGS AND ANNOUNCEMENTS display advertisements, see pages 870 and 885.

LINE CLASSIFIED ADVERTISEMENTS

How to Submit a Line Classified Ad:

Submit double-spaced typewritten copy. Do not include any abbreviations. SCIENCE will edit and typeset ads according to SCIENCE guidelines. Include billing information and desired publication date. Available categories: Positions Open, Meetings, Announcements, Courses and Training, Services. SCIENCE cannot provide proofs of typeset line ads. Line advertisements are not commissionable.

Estimates: SCIENCE will provide a cost estimate for line ads. This is an approximate cost only. Allow for variation between estimated lines and actual typeset lines and resulting final cost. Purchase orders must allow for some degree of flexibility and/or adjustment.

For line advertising deadlines, call Eric Banks. Telephone: (202) 326-6555; FAX: (202) 289-6742. Email: science_classifieds@aaas.org

Credit Cards: SCIENCE accepts American Express, MasterCard and VISA. Discount does not apply to credit cards.

Cancellations: Deadline for cancellation is Tuesday, 10 days prior to issue date.

Discounts: A 3% cash discount is granted to all prepaid ads.

Ads from Outside the U.S.: A discount of \$30 will be offered to advertisers making payment in U.S. dollars by checks drawn on U.S. banks. Contact Debbie Cummings. Telephone: +44(0) 1223 302067; FAX: +44(0) 1223 576208.

SCIENCE Professional Network: Unless otherwise instructed, every classified advertisement submitted for publication in SCIENCE is automatically posted on SCIENCE's on-line classified advertising service, SCIENCE Professional Network, at no additional charge.

<http://www.sciencemag.org>

Mail, FAX or Email materials to:
SCIENCE Classified Advertising
1200 New York Avenue, N.W., Room 911
Washington, DC 20005
FAX: 202-289-6742

Email: science_classifieds@aaas.org (please include your telephone number in Email)

SCIENCE reserves the right, at its discretion, to edit or decline to publish advertisements submitted to it.

POSITIONS OPEN

DIRECTOR OF TECHNOLOGY LICENSING THE UNIVERSITY OF GEORGIA

The Office of the Vice President for Research at The University of Georgia is seeking applications for the **DIRECTOR OF TECHNOLOGY LICENSING**. The primary role of the Director, who will report to the Associate Vice President for Research, is to manage the intellectual property portfolio of the University, which includes assessment of the commercial potential of new inventions, handling of confidentiality and materials transfer agreements, participation in licensing negotiations with companies, and maintenance of relational databases for invention and licensing portfolios. The person who is offered this position will have the opportunity to work with the Associate Vice President in a search for the Assistant Director of Technology Licensing, which is currently vacant.

The University of Georgia is a land-grant university with total research expenditures totaling over \$200 million. Currently, there are approximately 90 active license/option agreements and about 20 patent applications filed per year.

Candidates for the position should have an earned, advanced degree in a research field. Experience in database development and use, technology evaluation, patentability assessment and the patent process, marketing approaches, and licensing negotiations with established and start-up companies is required. Salary will be commensurate with experience.

Applications, including curriculum vitae and letters from three references, should be submitted to:

Dr. John Ingle
Associate Vice President for Research
The University of Georgia
630 Boyd Graduate Studies Research Center
Athens, GA 30602-7411

and must be received by March 14, 1997, to be assured full consideration. *The University of Georgia is an Equal Opportunity/Affirmative Action Institution.*

A TENURE-TRACK POSITION is available immediately in the Craniofacial and Skeletal Diseases Branch (formerly the Bone Research Branch), National Institute of Dental Research, National Institutes of Health. This position is for a developmental biologist with a strong background in morphogenetic proteins and signaling molecules to head a new program focusing on the role of these molecules in skeletal development (bone, teeth and cartilage).

The candidate must have an advanced degree (D.D.S., M.D., or Ph.D.), or possess an equivalent degree with a clear indication of outstanding activity in basic research) and must demonstrate an outstanding scientific record in developmental biology. A strong commitment to skeletal research will be required. The successful candidate will be expected to establish an independent program addressing problems related to skeletal development in health and in disease. Salary ranges from \$54,629 to \$83,922. Support for at least two postdoctoral positions will be available for this program.

A two-page statement of research interest and goals should be submitted along with a curriculum vitae and three letters of recommendation to:

Ms. Faye Harbrant
Personnel Management Specialist
National Institute of Dental Research
National Institutes of Health
31 Center Drive, MSC 2290
Building 31, Room 2C23
Bethesda, MD 20892
Telephone: 301-496-6971

Application materials must be postmarked and sent by the closing date of March 15, 1997.

NIH is an Equal Opportunity Employer.

RESEARCH SCIENTISTS

Inflazyme Pharmaceuticals Ltd. is offering the following research positions within the organization in the following areas:

- Pulmonary Pharmacology
- Toxicology
- Pharmacokinetics

Candidates are required to have at least a Masters Degree and demonstrated experience in a relevant field. Candidates interested in applying for any of the positions should send a complete résumé, with projected availability and salary expectations to: **Inflazyme Pharmaceuticals Ltd., 880-999 West Broadway, Vancouver, B.C., V5Z 1K5 Attn: Human Resources. FAX: 604-733-5281.**

POSITIONS OPEN

The Department of Mechanical Engineering at MIT is seeking applications for a tenure-track **FACULTY POSITION** in thermal engineering. Applications at the level of assistant or associate professor (without tenure) are preferred, although tenured appointments may be considered where appropriate.

Applicants should hold a doctoral degree in mechanical engineering or a related discipline. We are interested in candidates from all areas of thermal engineering, including heat transfer and thermodynamics, as well as those involved in thermal research related to energy conversion and storage, two-phase flow, microscale engineering, biological systems, supercritical fluids, and manufacturing processes. Candidates having a background outside traditional mechanical engineering are also encouraged to apply, if their interests are relevant to thermal technologies.

Applications should include:

- A complete curriculum vitae, including citizenship and/or visa status.
- The names of at least three references who are familiar with the candidate's research abilities.
- A detailed statement of the candidate's research interests. This statement should indicate the scope of the research and its importance to basic technical and scientific knowledge or to specific technological needs.
- A statement of teaching interests.
- One or two representative publications.
- Summary of the candidate's course work (transcript if convenient).

Applications received after 30 April 1997 may not receive full consideration. Address all correspondence to:

Thermal Engineering Faculty Search
Department of Mechanical Engineering, Room 3-173
Massachusetts Institute of Technology
77 Massachusetts Avenue
Cambridge, MA 02139-4307

MIT is an Equal Opportunity Employer and invites applications from women and underrepresented minorities.

DONALD J. CRAM TEACHER-SCHOLAR

The Department of Chemistry and Biochemistry at the University of California, Los Angeles, is pleased to announce the solicitation of nominations for the 1997 **Donald J. Cram Teacher-Scholar**. The Donald J. Cram Teacher-Scholar award honors Professor Cram and recognizes his many contributions to the advancement of chemistry. Promising chemists who have received their doctorate in any area of chemistry are eligible for nomination. The Donald Cram Teacher-Scholar Fellow is a two- to three-year, non-renewable appointment at the rank of Adjunct Assistant Professor. The Fellow is expected to teach a reduced course load at the undergraduate and graduate level and to carry out personal and collaborative research. A small fund is available to support travel and other research expenses. The appointment can start on or after July 1, 1997.

Direct applications will not be accepted. Letters of nomination should be sent to:

Selection Committee, Donald J. Cram
Teacher-Scholar
c/o C. M. Knobler, Chair
Department of Chemistry and Biochemistry
University of California, Los Angeles
405 Hilgard Avenue
Los Angeles, CA 90095-1569

Nominators are requested to supply the names of at least two additional people who can be contacted for further information on nominees.

The University of California is an Equal Opportunity/Affirmative Action Employer.

The Department of Pediatrics, University of California San Francisco (UCSF), is seeking a Board certified/eligible pediatric cardiologist at the **ASSISTANT PROFESSOR** in Residence level to participate in its research, teaching, and clinical care activities. The successful candidate will be expected to establish an independent research program in molecular cardiology, with special emphasis on signal transduction and its relationship to regulating gene expression in the cardiovascular system. Prior success in obtaining extra-mural grant support is highly desirable. Excellence in teaching and clinical care is required. Please submit curriculum vitae to: **Dr. David Teitel, Chair, Search Committee, UCSF, San Francisco, CA 94143-0544.** *UCSF is an Affirmative Action/Equal Opportunity Employer. The University undertakes affirmative action to assure equal employment opportunity for under-utilized minorities and women, for persons with disabilities, and for Vietnam-era veterans and special disabled veterans.*



Bristol-Myers Squibb

Pharmaceutical Research Institute

*We hire scientists who
ask what's **possible...***

*and have the **courage**
to find the answer.*

Join Bristol-Myers Squibb
Pharmaceutical Research Institute,
the R&D division of Bristol-Myers
Squibb, a worldwide leader in the
discovery and development
of innovative pharmaceuticals.

Infectious Diseases Virology Group Leader

Candidates should have a Ph.D. in Molecular Biology, Virology or Biochemistry and 8-10 years of post-Ph.D. laboratory experience. Candidates will be expected to direct/coordinate the basic research efforts of research scientists in the identification and evaluation of viral targets for therapeutic intervention, and in the design of high throughput screens for discovery of antiviral agents. Prior industrial research experience is preferred. **Reply to Dept. HD-V167.**

Molecular Biologist/ Biochemist

Candidates should have a Ph.D. in Molecular Biology, Virology, Microbiology or Biochemistry with previous postdoctoral experience. Successful candidates are expected to conduct independent research studies to define novel viral and bacterial targets for intervention, and collaborate with other research groups in the design and development of novel antiviral and antimicrobial agents. **Reply to Dept. HD-M548.**

Associate Research Scientist

Candidates should have a B.S./M.S. degree and previous experience working in a research laboratory. Prior training in Molecular Biology, Biochemistry, Microbiology or Virology is highly desirable. **Reply to Dept. HD-MO726.**

Central Nervous System

Research Investigator

Candidates should have a Ph.D. in Neuroscience or a related discipline and a minimum of 2 years postdoctoral experience which includes experience in the in vivo electrophysiological evaluation of the actions of drug candidates in the rodent central nervous system. We are particularly interested in the regulation of hippocampal and cortical neuronal excitability by brain stem nuclei and its modulation by acute and chronic treatment with drugs affecting these systems. Experience in in vivo models of LTP would also be desirable. **Reply to Dept. HDCNS-0529.**

Biomolecular Screening and Natural Products Research

Research Investigator

Candidates should have a B.S./M.S./Ph.D. to join our rapidly expanding department. M.S./Ph.D. level scientists with a background in Biochemistry/Microbiology are desired for positions in Microbial Fermentation and in Microbial Screening. **Reply to Dept. HD-NP796.**

Associate Research Scientist

Candidates should have a B.S./M.S. with a background in Biochemistry/Cell Biology/Molecular Biology to work in the high throughput screening area. Familiarity with automation and robotics and assay miniaturization is desirable.

Reply to Dept. HD-NP797.

Research Scientist

Candidates should have a Ph.D./M.S./B.S. with expertise in the area of automation and robotics. The incumbent will be part of a centralized high throughput screening department for several research areas within Bristol-Myers Squibb. The successful candidate will be responsible for leading a team of automation/robotics and new technology specialists, and will collaborate and interface with several multi-disciplinary scientific groups. The department offers state-of-the-art technology including several kinds of robotics. Reply to Dept. HD-NP872.

These positions are located in our Wallingford, Connecticut research facility. If your skills and qualifications are aligned with our needs, please forward your resume with Dept. # to: Bristol-Myers Squibb Pharmaceutical Research Institute, P.O. Box 5101, 5 Research Parkway, Wallingford, CT 06492-7661. FAX: (203) 284-7762.

Macromolecular Computer Assisted Drug Design

Research Investigator

Candidates should have a Ph.D. in Computational Chemistry, Chemistry or related field with a minimum of 1-5 years experience that includes computer-assisted drug design, structure-activity relationships of pharmaceutical molecules, 2D/3D database searching, lead optimization and computer docking of small molecules into macromolecules. In this position, you will support chemists and therapeutic area biologists in chemical lead discovery and optimization. Knowledge of UNIX, Macintosh and PC operating systems and networks is essential to maintain computer-assisted drug design software on the desktop machines of clients of the modeling department. Computer language skills such as Fortran and a proficiency in other programming languages would be a considerable asset. Familiarity with molecular biology and biochemistry is desirable. These positions are available in both our Princeton, New Jersey and Wallingford, Connecticut research facilities. Reply to Dept. BM-34.

Cardiovascular

Associate Research Scientist

Candidates should have a B.S./M.S. with 6-8 years of industry experience and skills in molecular biology (DNA cloning, etc.). A working knowledge of mammalian cell culture, protein expression and protein purification is desired. Reply to Dept. BM-934.

If your skills and qualifications are aligned with our needs, please forward your resume with Dept. # to: Bristol-Myers Squibb Pharmaceutical Research Institute, Human Resources, P.O. Box 11279, Trenton, NJ 08620-0279. FAX: (609) 581-8841.

Immunological Diseases

Receptor Protein Engineer

Candidates should have a Ph.D. in biological science, postdoctoral experience, and the demonstrated ability to implement protein engineering approaches in a highly interdisciplinary setting. We seek an independent, creative and motivated scientist to modulate the specificities and binding affinities of cell surface receptors for therapeutic applications. The successful candidate will be experienced in state-of-the-art protein engineering techniques which include codon-based mutagenesis, construction and screening of combinatorial libraries and multi/monovalent phage display. Reply to Dept. PL1.

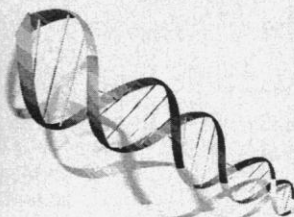
Cell Biology/ Immunology

Postdoctoral Fellow

Candidates should have a Ph.D. in a biological science with relevant experience in techniques of modern molecular and cellular biology. If you have the talent and motivation we are looking for, you can continue your research in an environment which genuinely encourages creativity and originality. Here, you will study functional and molecular aspects of intracellular trafficking of the CTLA-4 receptor on T lymphocytes. Reply to Dept. PL2.

These positions are located in our Seattle, Washington research facility. If your skills and qualifications are aligned with our needs, please forward your resume with Dept. # to: Bristol-Myers Squibb Pharmaceutical Research Institute, Human Resources, 3005 First Avenue, Seattle, WA 98121. FAX: (206) 727-3606.

THE FUTURE Is HERE!



You are looking at the future. The future in biomedical research, industrial and clinical diagnostics, and genomics. We are the creators of GeneChip™ technology — a new revolutionary system that is transforming how we acquire, analyze and manage genetic information. It's what we are working on at Affymetrix and it could just launch your career in a whole new exciting direction!

STAFF SCIENTIST

We will rely on you to develop quantitative and qualitative methods for analyzing complex nucleic acid mixtures using high-density oligonucleotide probe arrays. Additionally, you will develop methods of sample preparation, probe design and data analysis, and develop new applications of DNA probe arrays in areas such as sequencing, mapping, genetics, medical diagnostics and cell biology. The ideal candidate will possess a PhD in Molecular Biology, Genetics, Biochemistry, Biophysics or related field, along with demonstrated experience with DNA/RNA and standard molecular biology procedures and concepts. Experience with the genetics of cancer, tissue typing or bacterial identification and antibiotic resistance is highly desirable. Experience in diagnostic assay development is also preferred.

Offering a small company atmosphere with big scientific potential, Affymetrix provides attractive salaries, comprehensive benefits, and the exhilarating synergy of our world-class multidisciplinary team. For consideration, please send or fax your resume to Affymetrix, Human Resources, 3380 Central Expressway, Santa Clara, CA 95051; Fax (408) 481-0422; or visit us at www.affymetrix.com. We are an equal opportunity employer.



Talent Technology Teamwork!

To create, develop and market products that target specific cancers requires professionals who have the enthusiasm and imagination to find new solutions, and the skills to implement them. When this is backed by a mission to deliver value and earn trust by providing quality pharmaceutical products and technologies, much more is possible and much more is achieved.

Today, we are one of only eight biotechnology companies that have received more than one FDA drug approval. We have another cancer product under review, and late stage products in the pipeline for cancer and other diseases.

To continue to set the standards that have set us apart from other biopharmaceutical companies, we have outstanding opportunities in many areas. If you are of a mind to venture further and interact with the finest scientific minds, you can make a difference that will be measured in the quality of life.

For more information about current career opportunities, visit us at our website, <http://www.cytogen.com/humres.html>. You may also mail resumes to: Manager, Employment

CYTOGEN Corporation
600 College Road East CN 5308
Princeton, NJ 08540-5308

CYTOGEN

Equal Opportunity Employer

IDEXX, a leader in the development of advanced biotechnology-based detection systems for animal health and food and environmental applications, currently has opportunities for:

Research Scientists

We currently have 3 positions available in the area of Microbiology. In this challenging role, you will lead the new product development process. The ideal candidates will have experience in one or more of the following:

Rapid bacterial detection
ATP based bioluminescence test development
Development of media for microbial detection

A Ph.D. in Microbiology/Biochemistry and 2+ years of relevant experience and ability to work in a team environment is a must.

Please send a resume to: IDEXX Laboratories, Inc., Human Resources, Code AN-RS, One IDEXX Drive, Westbrook, ME 04092. We are an EOE M/F/V/D.

IDEXX
Innovators in Diagnostics



UNITED STATES FOOD AND
DRUG ADMINISTRATION

SCIENTISTS

THE CENTER FOR DRUG EVALUATION AND RESEARCH (CDER) IS SEEKING TO RECRUIT SCIENTISTS AS DRUG APPLICATION REVIEWERS AT FDA'S HEADQUARTERS LOCATION IN ROCKVILLE MARYLAND. POSITIONS ARE IN THE FOLLOWING DISCIPLINES:

* CONSUMER SAFETY OFFICER * CHEMIST *
PHARMACOLOGIST * TOXICOLOGIST AND MICRO/BIOLOGIST *

The Center for Drug Evaluation and Research promotes, protects and enhances the health of the public through the review and evaluation of new drugs prior to their release for use in commerce. This review is accomplished by multidisciplinary scientific teams. These teams evaluate studies submitted by manufacturers in support of New Drug Applications (NDAs) and Investigational New Drug Applications (INDs). They evaluate the quality and adequacy of the manufacturers' tests, determine the validity of drug safety and efficacy claims, write reviews of application data, and evaluate marketed events on approved drugs.

QUALIFICATIONS: Specific course work in the field of study and directly related professional experience is required. For the chemist, pharmacologist, toxicologist and micro/biologist positions, a doctorate degree in the discipline and experience in the research, development and manufacture of pharmaceuticals are highly desired. Candidates for Civil Service or Commissioned Corps appointments must be U.S. citizens. Candidates for Staff Fellowships may be either U.S. citizens or permanent resident aliens. Graduates of foreign colleges/universities must show proof of U.S. education equivalency certification.

SALARY: Civil Service salary range for GS-11 through GS-13 is \$38,330 to \$71,017, plus an excellent benefits package and flexible work schedule. Salary, benefits and level of responsibility are commensurate with education and experience. Positions may also be filled by appointment in the U.S. Public Health Service, Commissioned Corps with commensurate salary and benefits.

HOW TO APPLY: Submit curriculum vitae to:

DHHS/Food and Drug Administration
7520 Standish Place, MPN1, Room 225, HFD-64
Rockville, Maryland 20855
Attn: Recruitment Staff (SRC 97012)
FAX #(301) 827-2860

AN EQUAL OPPORTUNITY EMPLOYER AND A SMOKE FREE ENVIRONMENT

The solution has been around for millions of years...

but the discovery has just begun



Join our multi-disciplinary team and work in a dynamic, entrepreneurial environment.

We offer a competitive compensation package and opportunities for growth. Please send resume to: **Human Resources, Phytera, Inc., Four Biotech Park, 377 Plantation Street, Worcester, MA 01605 or fax to (508) 792-1339.**

An equal opportunity employer.

The solutions to some of today's most serious medical problems... have always been here. You just need to know where and how to look. Fortunately, we have an exceptional sense of direction at Phytera. As a young and growing global biopharmaceutical company, we are engaged in the discovery and development of novel plant and marine microbe-derived pharmaceutical products. Although natural species have always been used for medicinal purposes, today, at Phytera, we are unlocking the chemical diversity of plants and marine microbes in amazing ways. Our novel technology platform is being directed towards the discovery of important new medicines for infectious, inflammatory, pulmonary and other serious diseases. When you put this powerful technology platform in the right hands, the result is exciting innovation. The world needs breakthrough drugs. You can help us provide them at... **Phytera.**

Natural Product Chemists

Our proprietary plant and marine microbial culture technologies and novel screening programs are identifying many bioactive extracts with pharmaceutical potential. We, therefore, have several opportunities for talented and innovative natural product chemists. You will develop and implement procedures that isolate and identify the responsible bioactive molecules in these extracts. You will contribute to development of structure activity relationships via analog and derivative synthesis. Our state of the art laboratories are equipped with LC/Mass Spec. and high-field NMR instruments. Successful candidates have a Ph.D. in Natural Product Chemistry with 1-5+ years post doctoral experience. Industry experience an asset.

Medicinal Chemist

You will be responsible for the development and execution of synthetic paths to natural products discovered within our proprietary cell culture and pharmaceutical screening programs. You will develop structure activity relationships and design economically feasible syntheses for chemical leads and drug candidates. Combinatorial or medicinal chemistry experience and a Ph.D. in synthetic or medicinal chemistry with 2-5+ years post doctoral experience are required. Industry experience an asset.

Molecular Biologist

You will lead the identification of novel molecular screening targets and interface with internal resources and external academic and industrial collaborators to implement new screens. Thorough knowledge of molecular cloning technology and experience in both the construction of expression vectors and expression of recombinant proteins in eukaryotic and prokaryotic cells are critical. Prior application of these techniques in the design and implementation of molecular screening systems is advantageous. Ideal candidates have a Ph.D. in Molecular Biology or Biochemistry with 3-5+ years post doctoral experience.

Marine Microbiologist

You will supervise and contribute to the realization of an innovative research program seeking novel pharmaceuticals from marine microorganisms. You will source, isolate, ferment, manipulate and preserve marine microorganisms in conjunction with internal resources and collaborators at the Scripps Institution of Oceanography. You will develop and apply methods to optimize chemical diversity and be involved in larger scale fermentation of selected microbes which produce important bioactive compounds. This position requires a Ph.D. in Microbiology or related field with 3-5+ years post doctoral experience. Prior supervisory role and marine focused research are beneficial.



PHYTERA

AS A SENIOR ENGINEER AT IMMUNEX, YOU'LL DO THE USUAL, AND HELP SAVE LIVES

It's all part of our "traditional" approach to immune system science. Immunex Corporation is a biopharmaceutical company performing revolutionary research aimed at treating cancer and autoimmune diseases. We're developing ground-breaking treatments and marketing them to progressive healthcare professionals.

SENIOR ENGINEER: In this leadership role, you will be responsible for the large scale development/transfer of cell culture processes to manufacturing. Involves troubleshooting, identifying/evaluating new equipment/technology and contributing to large scale process validation. Will also provide input to development and manufacturing project teams.

Qualified candidate will have a Ph.D. and 5+ years experience with large scale cell culture manufacturing processes (BS/MS and 10+ years experience will be considered). Familiarity with SIP/CIP operations and GMPs required. Knowledge of large scale downstream processing and the interface between upstream and downstream processing is highly desirable.

Immunex — there's nothing "traditional" about it! For an uncommon career experience, see us at the **AAAS bioScience Career Fair** in Seattle. If unable to attend, please submit CV (Immunex utilizes scanning technology) to: **Immunex Corporation, Attn: Human Resources, Job #9999, 51 University Street, Seattle, WA 98101. FAX: (206) 623-4572. JOBLINE: (206) 389-4060. Visit our website at <http://www.immunex.com>.** Equal Opportunity Employer.

IMMUNEX
THE CURE FOR THE COMMON COMPANY

RESEARCH SCIENTISTS Obesity Research

Merck Research Laboratories in Rahway, New Jersey, a world leader in biological and pharmaceutical research, seeks applications for a post-doctoral position and a more senior position within the Pharmacology Department. Both appointees will participate in ongoing multi-disciplinary efforts aimed at identifying and implementing novel approaches and modalities for the therapy of obesity, and the senior appointee will have important responsibilities for the *in vivo* aspects of obesity research. For the post-doctoral position, the successful candidate will have a Ph.D. or equivalent in Pharmacology or a related discipline, with background and expertise in peripheral or central mediators and mechanisms regulating food intake. For the senior position, the successful candidate ideally will have an M.D., Ph.D. or equivalent in Pharmacology or a related discipline, significant (5 years) post-doctoral experience with background and expertise in the physiology and pharmacology of appetite regulation.

Merck offers exceptional facilities, a competitive salary, an excellent benefits package, opportunities for professional growth, and pleasant working conditions at our Rahway, NJ location. Please send curriculum vitae with cover letter to **Merck Research Laboratories, Human Resources, Ad# 21, P.O. Box 2000, RY 80-A3, Rahway, NJ 07065.** Only candidates considered for interviews will receive responses. EEO/AA/VH Employer.



FACULTY POSITIONS Microbial Biology

The Department of Microbiology, University of Pennsylvania School of Medicine invites applications for tenure-track positions at all levels in an ongoing expansion in the fields of microbial pathogenesis and microbial molecular genetics. Major responsibilities of successful applicants will include supervision of an active research program and the teaching of microbiology to graduate and medical students. Applicants should submit a curriculum vitae, summary of research accomplishments, description of future plans and three letters of reference by April 15, 1997 to:



**Dr. Fred R. Frankel, Chair
Microbial Biology Search Committee
Department of Microbiology
University of Pennsylvania
811 Abramson Building
34th & Civic Center Boulevard
Philadelphia, PA 19104-4318**

AN EQUAL OPPORTUNITY/AFFIRMATIVE ACTION EMPLOYER

NEW ENGLAND BIOLABS Postdoctoral Positions

New England Biolabs, a world leader in the production of restriction endonucleases and other related products for the recombinant DNA field, seeks applicants for:

Protein Engineering

Immediate postdoctoral position for a recent Ph.D. is available to study the protein-DNA interface of restriction endonucleases with the goal of altering specificity. The research involves the design and biochemical analysis of various restriction endonuclease variants. Applicants should have a strong background in enzyme kinetics and protein structure. Send a resume and three references to: Dr. Ira Schildkraut, Director of Research.

Biochemist/Geneticist

Immediate postdoctoral position for a recent Ph.D. is available to study protein splicing. Experience with protein folding, protein engineering, chemistry, or molecular biology is required. After establishing an *in vitro* splicing system and determining the chemical mechanism of protein splicing, we are interested in using inteins for protein engineering. Among the projects under study are the control of splicing, splicing of intein fragments, and intein structure/function. Send a resume and three references to: Dr. Francine Perler.

NEB offers competitive salaries, benefits, and a bonus plan. Attendance at national meetings, publication of research results and open communication is encouraged.

**New England Biolabs, Inc.
32 Tozer Road
Beverly, MA 01915**

An Equal Opportunity Employer



LILLY POSTDOCTORAL FELLOWSHIP PROGRAM

As a Postdoctoral Fellow at Eli Lilly and Company you will gain sound practical experience and focused training to significantly expand your scientific knowledge and abilities. The professional environment at Lilly offers a balance of independence and flexibility along with collaborations and partnership with a mentor. Your fellowship is designed to provide you with the breadth and caliber of experience which will prepare you for a career in industry or academia.

Send responses to:
Corporate Recruiting,
Eli Lilly and Company,
Attn: ADSCMPD02,
Lilly Corporate Center,
Indianapolis, IN 46285.

For more *Postdoctoral* opportunities, please access our Job Bank at: <http://www.lilly.com>

We are an equal opportunity employer dedicated to diversity and the strength it brings to the workplace.


Eli Lilly and Company

*Several Postdoctoral Fellowships are currently available in our **Cardiovascular Division**. As a part of the cardiovascular discovery team, you will be involved in finding ways to help patients live better, longer lives through innovative cardiovascular pharmaceutical products and services.*

You will become a member of a multi-disciplinary team focused on one of the following:

- ◆ Atherosclerosis
- ◆ Congestive Heart Failure
- ◆ Stroke
- ◆ Thrombosis

We are looking for:

- Molecular Biochemists with experience in receptor binding studies - any experience with lipoprotein metabolism would also be useful.
- Individuals with experience both in the production of genetically manipulated animals and experimental cardiovascular physiology.
- Biochemists to study the stress-induced mechanisms that protect against and/or repair cellular damages in the setting of stroke.
- Cell Biologists to investigate and understand the biology of the microglial cell.
- Individuals to explore the gene expression and biological relevance of NO or homologs of phospholipase A2 as related to cardiovascular research.
- Synthetic Organic Chemists to explore novel synthetic reactions on model compounds and develop structural activity relationships.
- Biochemist, or an organic chemist with strong biochemical training, to carry out enzymatic modifications of proteins.

All positions require a Ph.D. and are located in Indianapolis, Indiana.

KNOWLEDGE IS POWERFUL MEDICINE

POSITIONS OPEN

PROFESSOR AND CHAIR DEPARTMENT OF PHARMACEUTICAL SCIENCES

Northeastern University seeks applications and nominations for a **CHAIR** of the Department of Pharmaceutical Sciences, Bouvé College of Pharmacy and Health Sciences. The department is the preclinical component of the Pharmacy Program, and houses the Ph.D. program in Biomedical Sciences. Northeastern University is a Carnegie II Research Institution, and benefits from its central Boston location. A competitive package of salary, benefits, and support facilities will be provided.

Applicants must have a Ph.D. or equivalent degree, and be eligible for tenure at the Full Professor level. An internationally recognized record of scholarly research and the ability to maintain a well-funded research program are required. Possible areas of expertise include: pharmacology, pharmacology, toxicology, medicinal chemistry, drug targeting, neuroscience, bioanalytical chemistry, immunology, cell biology, or any field appropriate to the preclinical department of a pharmacy program; the specific field is less important than is scholarly distinction within that field. Applicants must have a proven record of excellent administrative and leadership skills, with a commitment to the principles of diversity, and be able to provide outstanding leadership of teaching programs at both the undergraduate and graduate levels.

Applicants should submit a curriculum vitae, a letter describing their qualifications and interests, and three letters of recommendation to: **Jonathan E. Freedman, Ph.D., Associate Professor and Pharmaceutical Sciences Search Committee Chair, Faculty Senate Office, 442 Ryder Hall, Northeastern University, Boston, MA 02115. Telephone: 617-373-4201; Email: j.freedman@nuneu.edu.** Applications received by March 31, 1997 will be given full consideration. *Northeastern University is an Affirmative Action/Equal Opportunity/Title IX Employer. Women and minorities are encouraged to apply.*

FACULTY POSITIONS

Department of Biochemistry and Molecular Biology Penn State University College of Medicine

Applications are invited for two tenure-track positions to begin on or after June 1, 1997. We seek individuals who have demonstrated excellence in the areas of structure/function of proteins, focusing on eukaryotic macromolecules of physiological importance. Examples of preferred research emphasis are: macromolecular biosynthesis, targeting, processing and assembly, protein folding, signal transduction, molecular immunology or recognition, homo and hetero-interactions of proteins, protein-nucleic acid, -carbohydrate, and -drug interactions, transcriptional and posttranslational regulation of enzyme activity. Technologies of molecular biology, cell biology and genetics, physical chemistry, and computer modeling are all appropriate for the position. Preference will be given to applicants at the **ASSISTANT PROFESSOR** level although outstanding individuals at the **ASSOCIATE PROFESSOR** level will be considered. Applicants must hold a Ph.D. and/or M.D. degree and must have had postdoctoral research experience. Successful applicants are expected to establish an independent, extramurally funded research program and to participate in the education of graduate and medical students and programs at the Life Science Consortium of Penn State University. Applicants should send a curriculum vitae, a synopsis of research plans, and the names and addresses of three individuals who will provide letters of reference to: **Chair, Search Committee, Department of Biochemistry and Molecular Biology, The Milton S. Eshelby Medical Center, Penn State University, P.O. Box 850S, Hershey, PA 17033.** Applications should be submitted by February 28, 1997.

An Affirmative Action/Equal Opportunity Employer. Women and minorities are encouraged to apply.

MICROBIOLOGIST: ASSISTANT PROFESSOR, tenure-track. Ph.D. required. Expertise in determinative or environmental bacteriology. Experience with molecular techniques desirable. Responsibilities: Teach courses and develop a research program involving B.S. and M.S. students. Start August 1997. Review begins February 28, 1997 and continues until position is filled. Send application letter, curriculum vitae, transcripts, statement of teaching and research interest, and three letters of recommendation to: **Dr. Janice Coons, Chair, Botany Department, Eastern Illinois University, Charleston, IL 61920. Telephone: 217-581-6243. Email: cfjmc1@eiu.edu; FAX: 217-581-7141.** *Equal Opportunity/Equal Access/Affirmative Action Employer.*

POSITIONS OPEN

FACULTY POSITIONS IN BIOMEDICAL ENGINEERING

The University of Rochester invites applications for two new tenure-track positions in Biomedical Engineering to be filled at the **ASSISTANT PROFESSOR** level. One of these is to be appointed in the Department of Pharmacology and Physiology in the School of Medicine and Dentistry and one is to be appointed in the Department of Mechanical Engineering in the School of Engineering and Applied Sciences. Candidates qualified for higher ranks will also be considered. Applicants must have earned the Ph.D. or M.D. degree and have completed significant postdoctoral training. Preference will be given to applicants whose research interests complement existing strengths in the areas of cell signaling, biosolid mechanics, biofluid mechanics, and cellular mechanics, although outstanding candidates with general research interests in cell and tissue engineering will also be considered. The University of Rochester has recently instituted degree programs in Biomedical Engineering at the doctoral, masters, and bachelor of science levels, and new faculty are needed to help support these programs. In addition, the leadership of the University of Rochester Medical Center has recently embarked on an exciting Strategic Plan which includes the recruitment of new faculty, the construction of a new biomedical research building, commitments to existing departments, and significant growth in the interdisciplinary areas of aging and development, cancer, and vaccine biology and immunology. The successful candidates will be expected to develop independent, extramurally-funded research programs and participate fully in biomedical engineering teaching programs. Review of candidates will begin immediately and will continue until the positions are filled. Applicants should send their curriculum vitae, three recent reprints, a statement of research interests and plans, and the names of three referees to: **Dr. Richard E. Waugh, Chair, Faculty Search Committee, Department of Pharmacology and Physiology, University of Rochester Medical Center, 601 Elmwood Avenue, Box 711, Rochester, NY 14642.** For information about the program, see our Web site at <http://www.seas.rochester.edu:8080/bme>. *The University of Rochester is an Equal Opportunity/Affirmative Action Employer; applications from women and underrepresented minorities are encouraged.*

FACULTY POSITIONS IN COMPARATIVE MEDICINE BASIC SCIENTISTS

DEPARTMENT OF COMPARATIVE MEDICINE STANFORD UNIVERSITY SCHOOL OF MEDICINE

The Department of Comparative Medicine has tenure-track faculty positions in the basic sciences as **ASSISTANT OR ASSOCIATE PROFESSOR**. Candidates must have received the Ph.D. degree and have a demonstrable record of research productivity as evidenced by grant support and publications in peer reviewed journals. The D.V.M. or V.M.D. degree from an institution accredited by the American Veterinary Medical Association is highly desirable, and preference will be given to veterinary candidates with board certification in recognized specialties of veterinary medicine. The Department of Comparative Medicine is a basic science department within the School of Medicine. Areas of particular relevance to the mission of the department include pathology, neuroscience, transgenic mouse biology, molecular biology, and gene therapy. In addition to its academic functions, the Department of Comparative Medicine provides the clinical care and management for a large, modern, Association for Assessment of Laboratory Animal Care-accredited, central animal facility which includes a 24-hour critical care unit staffed by veterinary technicians. Research strengths at Stanford include organ transplantation, immunology, genetics, infectious diseases, neuroscience, molecular biology, non-invasive nuclear and magnetic imaging, canine inherited diseases, anesthesia, primate behavior, and transgenic mouse studies among others. Interested candidates should send a letter containing a description of their career goals and research interests, their curriculum vitae, and names and addresses of five references, to: **Linda C. Cork, D.V.M., Ph.D., Professor and Chairman, Department of Comparative Medicine, MSOB X347, Stanford University Medical Center, Stanford, CA 94305-5415.** Applications will be reviewed upon receipt and searches will be continued until all positions have been filled. *Stanford University is committed to increasing representation of women and members of minority groups on its faculty, and particularly encourages applications from such candidates.*

POSITIONS OPEN

FACULTY POSITION SIGNAL TRANSDUCTION/CELL CYCLE

The Department of Molecular Genetics, Biochemistry, and Microbiology invites applications or nominations for a **TENURE-TRACK ASSISTANT PROFESSOR** in signal transduction and/or cell cycle regulation. We are particularly interested in adding individuals with novel approaches and who will take advantage of the new genomics. Our 26 full-time faculty maintain strong active research programs in a variety of disciplines including gene expression; human genetics; membrane transport; molecular and cellular immunology; structural biology; virology; and differentiation and cancer biology. We support an active graduate program and maintain core facilities for production of transgenic and knockout mice and DNA synthesis and sequencing. We are the lead department in the NHLBI-sponsored Program of Excellence in Molecular Biology of the Heart and Lung, and have recently made a major commitment to development of structural biology. In addition to underscoring our commitment to the development and growth of outstanding research programs, these factors contribute to a collegial atmosphere in which synergistic interactions among programs is greatly facilitated. Interested applicants should submit a curriculum vitae, brief description of research program, and the names of three qualified references to: **Jerry B. Lingrel, Ph.D., Professor and Chair, Department of Molecular Genetics, Biochemistry and Microbiology, University of Cincinnati College of Medicine, 231 Bethesda Avenue, Cincinnati, OH 45267-0524.**

MICROBIOLOGIST/CELL BIOLOGIST. One-year sabbatical-replacement position as a visiting **ASSISTANT PROFESSOR**, beginning August 1997 in the Department of Biology at Colorado College: a private, undergraduate, highly-selective, liberal arts institution enrolling 1900 students. Responsibilities include teaching microbiology (bacteriology), cell biology and molecular biology in the Colorado College block plan. Ph.D. required. The College particularly seeks candidates who understand the perspectives of women and minorities in the curriculum and invites candidates to identify their strengths or experiences in these areas. By February 28, 1997 applicants should send: 1) application letter describing professional background, teaching experience and research, 2) brief statement of teaching philosophy, 3) curriculum vitae, 4) photocopies of college and graduate transcripts, and 5) two letters of recommendation to: **Richard Storey, Chair, Department of Biology, Colorado College, Colorado Springs, CO 80903.** *Colorado College is an Equal Opportunity Employer and a participant in the minority faculty registry.*

ASSISTANT PROFESSOR OF CLINICAL PUBLIC HEALTH

Columbia School of Public Health seeks a candidate for a non-tenure faculty position as **ASSISTANT PROFESSOR** of Clinical Public Health: cancer epidemiology.

The candidate will be expected to obtain research funding, conduct high quality research, and teach epidemiologic methods courses. Experience with the analysis of large data sets is required. Desirable areas of interest include molecular and genetic epidemiology and epidemiology of CNS malignancies.

Qualifications necessary include an M.D. or Ph.D. and at least two years of postdoctoral experience in cancer epidemiology.

Send curriculum vitae and names of three references to: **Geoffrey R. Howe, Head, Division of Epidemiology, Columbia School of Public Health, 600 West 168 Street, Room PH18-119, New York, NY 10032; FAX: 212-305-9413.**

Columbia University is an Equal Opportunity/Affirmative Action Employer.

FACULTY POSITION CARDIOVASCULAR RESEARCH JOHNS HOPKINS SCHOOL OF MEDICINE

The Division of Cardiology in the Department of Medicine at the Johns Hopkins University School of Medicine is searching for candidates for an **ASSISTANT PROFESSOR** tenure-track position. Applicants should have a strong record of research in vascular biology, with experience in molecular biology techniques. Send a brief statement of research interests, curriculum vitae, and names of three references to: **Ken Baughman, Director, Cardiology Division, Department of Medicine, Johns Hopkins University School of Medicine, 536 Balloch, 600 North Wolfe Street, Baltimore, MD 21205.**

ONLY THREE OTHER COMPANIES SPEND MORE
RESEARCH DOLLARS PER EMPLOYEE.



AND THEIR NEIGHBORS AREN'T NEARLY AS INTERESTING.

It's all part of our "traditional" approach to immune system science.

For over 15 years, Immunex has maintained a very non-traditional level of investment in biomedical research. Which has helped make us one of the most advanced companies in the fight against cancer and immune system diseases.

Science in a professional atmosphere. At our Seattle headquarters, you'll find 300 of the world's most prolific scientists. Plus specialists in business disciplines like accounting, marketing, MIS and regulatory affairs — all dedicated to saving lives.

We currently have openings for these uncommon jobs:

- Staff Scientists (in Bioinformatics and Immunobiology)
- Sr. Engineer (in Cell Sciences) • Viral Immunologist • Scientific Programmers • Manager, Quality Assurance • Clinical Systems Analysts • Clinical Research Associates • Technical Operators
- Research Assistants

Anything but a sterile environment. Immunex is just as advanced when it comes to the well-being of our employees. Our "work life" programs won awards in 1995 & 1996.

All of which takes place in one of the most dynamic, picturesque cities in the country. From a daily ferry commute where the roadside attractions might include a pod of Orcas, to its world-class restaurant and entertainment scene, Seattle is a most uncommon place in which to live. Just as Immunex is a most uncommon place in which to work.

See us at the **AAAS bioSCIENCE Career Fair** in Seattle. If unable to attend, please submit resume (Immunex utilizes scanning technology) to: **Immunex Corporation, Attn: Human Resources, Job #SM99990297, 51 University St., Seattle, WA 98101-2936. FAX: (206) 623-4572. Jobline: (206) 389-4060.** For more information, visit our web site at <http://www.immunex.com>. Equal Opportunity Employer.



IMMUNEX®

THE CURE FOR THE COMMON COMPANY

POSITIONS OPEN

Environmental Sciences: The University of Tennessee at Chattanooga, beginning August 1, 1997 pending final budgetary approval. **TWO ASSISTANT PROFESSOR POSITIONS.** Environmental Management/Law and Regulations (full-time, tenure-track). Ph.D. or equivalent. Responsibilities include lectures/laboratories in environmental law and regulations, environmental management, environmental impact statements, environmental public policy, and introductory environmental science. Introductory Environmental Science Coordinator (full-time). M.S. or equivalent. Responsibilities include lectures/laboratories in introductory environmental science and development of laboratory activities as needed. Preference will be given to candidates with demonstrated excellence in college or university teaching. Send curriculum vitae, transcripts, and three reference letters to: **Dr. Charles H. Nelson, Head, Department of Biological and Environmental Sciences, 615 McCallie Avenue, The University of Tennessee at Chattanooga, Chattanooga, TN 37403.** Screening of credentials will begin on March 15, 1997 and will continue until the positions are filled. *The University of Tennessee at Chattanooga is an Equal Opportunity/Affirmative Action/Title VI & IX/Section 504/Americans with Disabilities Act/Age Discrimination in Employment Act.*

ASSISTANT PROFESSOR, YALE UNIVERSITY

The Department of Pharmacology, Yale University School of Medicine invites applications for a faculty appointment at the **ASSISTANT PROFESSOR** level. The Department currently has strong programs in biochemical and molecular pharmacology, neuroscience, and cancer chemotherapy, and is building a program in the area of protein structure. Applications from candidates with experience that would strengthen or complement these areas would be particularly welcome. Candidates should have a Ph.D. or M.D. degree, postdoctoral experience, and a strong commitment to research. Applications by 1 April 1997 should include curriculum vitae, description of research interests, and three letters of reference sent to: **Joyce A. Chase, Executive Assistant to the Chairman, Department of Pharmacology, Faculty Search Committee, Yale University School of Medicine, 333 Cedar Street, New Haven, CT 06520.** *Yale University is an Equal Opportunity/Affirmative Action Employer.*

FACULTY POSITION—INSTRUCTOR OR SENIOR INSTRUCTOR Department of Biology University of Oregon

The Department of Biology at the University of Oregon invites applicants for a tenure-track faculty position as **SENIOR INSTRUCTOR.** We seek candidates who wish to develop an innovative curriculum in biology. The successful applicant will have demonstrated excellence in effective classroom teaching, in innovative biology education, and in administration. Applicants should submit a curriculum vitae; a bibliography; the names and addresses of four references; a statement including teaching accomplishments and philosophy; and thoughts on curriculum development to: **Instructor Search Committee, Department of Biology, 1210 University of Oregon, Eugene, OR 97403-1210,** to arrive by March 1, 1997. *The University of Oregon is an Affirmative Action/Equal Opportunity Employer committed to compliance with Americans with Disabilities Act and cultural diversity. We encourage women and minorities to apply.*

ASSISTANT PROFESSOR (TENURE-TRACK)

The Institute of Chemical Toxicology at Wayne State University invites applications for the position of **ASSISTANT PROFESSOR** (tenure-track) in the area of immunotoxicology. Candidates should have a strong background in immunotoxicology, with evidence of mechanistic research on chemical effects on immune function, T-cell subpopulations, antigen presenting cells, intracellular signaling and/or apoptosis. Applicants should have high quality peer-reviewed publications, evidence of independent research and competitive funding. Applications, including a curriculum vitae, statement of research interests, and the names and addresses of three references, should be sent to:

**Dr. Raymond F. Novak, Director
Institute of Chemical Toxicology
2727 Second Avenue, Room 4000
Detroit, MI 48201**

Wayne State University is an Equal Opportunity/Affirmative Action Employer. Women and minorities are encouraged to apply.

POSITIONS OPEN

ROSE-HULMAN INSTITUTE OF TECHNOLOGY

A tenure-track position in Life Sciences/Biology is anticipated for Fall 1997. A candidate is sought who has the ability to develop an innovative class and laboratory program for general biology and teach courses in microbiology. **ASSISTANT PROFESSOR** preferred, but all ranks considered. The successful candidate will hold a Ph.D. in biology and be encouraged to develop their specialty in these or other areas, e.g., genetics, physiology, or an area which complements faculty with expertise in biologically oriented engineering.

Contact 812-877-8942 for additional information. Initial screening will begin mid-February with the application process open until position is filled.

Send letter of application describing your philosophy of education and scholarship, curriculum vitae, and names, addresses, and telephone numbers (FAX or Email, if available) of three references to:

**Dr. Rita K. Hessley, Chair
Department of Chemistry and Life Sciences
Rose-Hulman Institute of Technology
5500 Wabash Avenue, Box 65
Terre Haute, IN 47803**

Equal Opportunity Employer. Women and minorities are encouraged to apply.

The Ohio State University College of Pharmacy, Division of Pharmacology, invites applications for a tenure-track position at the **ASSISTANT OR ASSOCIATE PROFESSOR** level. Candidates should have a Ph.D. in pharmacology, toxicology, or related field. Areas of high priority include biochemical, molecular or cellular studies involved in the pharmacological or toxicological actions of drugs. Applicants at the Assistant Professor level should have significant postdoctoral research experience and demonstrated excellence in conducting research. This position offers excellent opportunities for an individual who is committed to quality research and teaching and willing to work in a collaborative environment within our health science community. A curriculum vitae, a description of research interests, and the names and addresses of at least three persons, from whom letters of recommendation can be solicited, should be sent to: **Dennis B. McKay, Ph.D., Chair of Search Committee, Division of Pharmacology, College of Pharmacy, The Ohio State University, Columbus, OH 43210.** *Ohio State University is an Equal Opportunity/Affirmative Action Employer.*

ASSISTANT PROFESSOR QTL MAPPING/QUANTITATIVE GENETICS

The Department of Pediatrics of the University of Louisville Medical School seeks applicants for the position of **ASSISTANT PROFESSOR** to conduct research in QTL mapping utilizing the larger longitudinal sample of the Louisville Twin Family Study. The position will be supported initially by an NIH award for a three-year program to develop new, collaborative research to map and identify QTLs for complex traits and common health disorders. The successful candidate will have a Ph.D. in genetics or related field. Expertise in QTL linkage methods and structural equation model-fitting preferred. Attractive salary and benefits provided, commensurate with experience. Interested individuals should send a letter of application, curriculum vitae and statement of research interests, and have three letters of reference sent to: **Dr. Kay Phillips, CDU, MDR, HSC, University of Louisville, Louisville, KY 40292-0001.** Deadline March 1, 1997. *The University of Louisville is an Affirmative Action/Equal Opportunity Employer.*

ASSISTANT PROFESSOR MICROBIAL ECOLOGY

The Dyson College of Arts and Sciences of Pace University anticipates a full-time tenure-track position for the Fall of 1997. Teaching responsibilities: general introductory and advanced undergraduate courses, as well as graduate courses in a new M.S. program in Environmental Science. Candidates must have Ph.D., and postdoctoral experience is desired. The development of a research program is expected, ideally with a molecular emphasis. Support for research is available. For full consideration, send letter of application, curriculum vitae (citing specialty), statements of teaching and research interests, one publication, and the names of three professional references to: **Office of the Dean, The Dyson College of Arts and Sciences, Pace University, Bedford Road, Pleasantville, NY 10570-2799.** *An Affirmative Action/Equal Opportunity Employer. Women and minorities are encouraged to apply.*

POSITIONS OPEN

FACULTY POSITION AT BRIGHAM & WOMEN'S HOSPITAL AND HARVARD MEDICAL SCHOOL MOLECULAR ASPECTS OF PAIN

Applications are invited for a tenure-track position at **ASSISTANT OR ASSOCIATE PROFESSOR** level, to join a multidisciplinary group studying the basic mechanisms and pharmacotherapies of acute and chronic pain. We have a particular interest in molecular biological, immunological and morphological approaches. Applicants for the position should have an established, independently funded research program. Generous start-up support is available. Space will be provided at a level commensurate with the size of the applicant's existing extramural support. Academic rank will be commensurate with experience and status. The successful candidate will join the Anesthesia Research Laboratories comprised of 15 independent investigators working in pain research, molecular neuropharmacology, and ischemia and reperfusion injury.

Applicants should send a letter describing their interests, curriculum vitae, and the names of three references to: **Professor Igor Kissin at the Department of Anesthesia, Brigham & Women's Hospital, 75 Francis Street, Boston, MA 02115.**

Brigham & Women's Hospital and Harvard Medical School are Equal Opportunity/Affirmative Action Employers. Women and minority candidates are especially encouraged to apply.

FACULTY POSITION Division of Pharmacology and Experimental Therapeutics University of Kentucky College of Pharmacy

The Division of Pharmacology and Experimental Therapeutics in the College of Pharmacy at the University of Kentucky invites applications for a tenure-track position at the **ASSISTANT/ASSOCIATE PROFESSOR** level. Candidates should have research credentials in the area of cardiovascular pharmacology with research specialization in cell biology. Minimum requirements are a Ph.D. degree in pharmacology or related field of study and two or more years of postdoctoral experience. Responsibilities include the establishment of a strong extramurally funded research program and a commitment to innovative teaching at the professional, graduate, and postdoctoral levels. Application deadline is April 15, 1997.

Send curriculum vitae, statement of teaching and research interests, up to three reprints and three letters of recommendation that address the candidate's teaching and research potential to: **Dr. Lisa Cassis, Search Committee Chairman, Division of Pharmacology and Experimental Therapeutics, College of Pharmacy, University of Kentucky Medical Center, Lexington, KY 40536-0082.** For additional information contact Web site: <http://www.uky.edu/Pharmacy>. *An Equal Opportunity/Affirmative Action Institution.*

The Department of Chemistry at the University of Florida is seeking applications for a tenure-track appointment at the **ASSISTANT OR ASSOCIATE PROFESSOR** level to strengthen its program in post-genomic science. The successful candidate will establish a multidisciplinary teaching and research program at the interface of bioinformatics and biochemistry, applying genome sequence information to solve chemical, biochemical, or biomedical problems and to complement existing strengths in the department. The candidate will have the support of modern core facilities in molecular biology, protein and nucleic acid chemistry, and genome sequence database management, and work in an environment supportive of innovative ideas and research directions.

Candidates should send by March 15 a curriculum vitae, a short outline of planned research, and arrange to have sent three letters of recommendation to: **Prof. Steven Benner, Chairman, Search Committee, Department of Chemistry, P.O. Box 117200, University of Florida, Gainesville, FL 32611-7200.** *The University of Florida is an Equal Opportunity/Affirmative Action Employer. Women and minorities are encouraged to apply. Anyone requiring special assistance in completing the application should contact the Search Committee Chairman.*

RESEARCH ASSISTANT in molecular biology of cancer (postdoctoral salary range \$23,000 to 28,000). To investigate mechanisms of action of novel differentiation inducing fatty acids, with a focus on transcriptional control mediated by nuclear steroid receptors. Contact: **Dr. D. Samid, University of Virginia, Department of Medicine, Charlottesville, VA 22908.** Email: dvorit@virginia.edu. *The University of Virginia is an Affirmative Action/Equal Opportunity Employer.*

Astra Research Center Boston

Astra is a rapidly expanding international leader in pharmaceutical research and development, responsible for creating the #1 selling drug in the world, Prilosec®.

With over \$5 billion in sales and more than 16,000 employees worldwide, Astra's mission is to improve human health and the quality of life.

Astra Research Center Boston, an integral part of Astra, is initially focusing its research on the development of small molecule drugs and vaccines to improve therapies against *Helicobacter pylori*. Working on a broad range of international collaborations, our excellent scientists exploit *H. pylori* genomic information to identify targets for pharmaceutical and biological intervention. With a long-term commitment to the research and development of novel therapeutics in additional disease targets, we offer you the opportunity to be part of innovative, creative multidisciplinary project teams.

ASTRA

Astra Research Center Boston
ASTRA HÄSSLE

Pursuing knowledge through the power of equal opportunity.

DRUG AND VACCINE RESEARCH AND DEVELOPMENT

Research Scientist - High Throughput Screening

Design and establish robotic assay systems for assay of chemical libraries against novel bacterial targets. Participate in multidisciplinary discovery teams to develop assays and evaluate hits from screening. Ph.D. in Biochemistry or related area required, along with 2-4 years' experience in high throughput screening. (Code: S97-02BC)

Research Scientist - Molecular Biology

Develop and optimize expression systems for vaccine antigens in a range of microbial host systems. Apply a range of molecular techniques for vaccine investigations. Ph.D. in Molecular Biology with experience in expressing recombinant proteins and analyzing gene expression required. (Code: S97-01)

Research Scientist - Fermentation

Scale up recombinant microbial cells expressing recombinant vaccine antigens. Develop and analyze research processes and design in-process assays. Ph.D. in Biological Sciences with experience in microbiology and the growth of microorganisms required. (Code: S97-07)

Research Scientist - Immunology

Develop immunological analyses of novel vaccine antigens and protein formulations as oral delivery systems. Develop immunological structure activity relationships for new formulations. Provide biological input to the program. Ph.D. in Immunology with experience in developing immunological assays and delivery systems required. (Code: S97-11)

Research Scientist - Biochemistry

Establish purification processes and design in-process assays for recombinant vaccine antigens. Analyze expression and structure of antigens. Ph.D. in Biochemistry with experience in protein purification and analysis required. (Code: S97-12)

Research Associate - Pharmaceutical Research

The candidate will be part of a team that develops oral formulations of proteins and delivery systems into vaccine candidates. BS/MS in Pharmaceutical Sciences or Physical Chemistry with experience in formulations including polymers and/or colloid systems required. (Code: S97-10)

Research Associate - Biochemistry

Work in different areas of vaccine projects involving protein purification, analysis, development of assays, and formulation in novel physical systems. BS/MS in Biochemistry or related scientific field with experience in protein biochemistry and associated assays required. (Code: S97-06-09)

Research Associate - Molecular Biology

Clone, sequence, and express recombinant proteins in a range of systems. Analyze gene expression. BS/MS in Molecular Biology with experience in a broad range of molecular biological techniques required. (Code: S97-05)

Research Associate - Immunology

Test new candidate vaccines in *in vivo* models and conduct supporting *in vitro* immunological analyses. BS/MS in Biological Sciences with experience in *in vitro* immunological techniques and *in vivo* models required. (Code: S97-08)

Research Associate - Microbiology

BS/MS in Microbiology to support *in vivo* studies. Candidate will grow bacteria for *in vivo* studies and perform microbiological evaluations of tissues following therapeutic intervention. Experience in all aspects of *in vivo* and *in vitro* microbiology required. (Code: S97-11M)

Qualified candidates please send your C.V., indicating appropriate job code, to: Astra Research Center Boston, Human Resources, 128 Sidney Street, Cambridge, MA 02139; FAX (617) 576-4668.

PRIZM Pharmaceuticals is a privately held biotechnology company focused on the regulation of cell growth utilizing our growth factor biology expertise. Our focus is in the areas of oncology and cardiovascular diseases. We seek the following individuals:

SCIENTIST CELL BIOLOGY

You will be responsible for cell biology assays as they pertain to gene therapy especially to ligand mediated delivery and adenoviral delivery of genes. Primary responsibility will be to design/implement appropriate assays, tissue culture conditions to be able to evaluate a particular ligand, tissue-specific promoter and toxicity of the drug. Requires PhD in cell biology/virology or related field plus 4-8 years experience in a research environment. Code SCB

SCIENTIST MOLECULAR BIOLOGY

You will identify, design and create ligand-linker combinations that can be used in specific clinical indications. Ideal candidate will have knowledge of ligand/receptor relationships and gene therapy with emphasis in molecular virology. Requires strong working knowledge in gene therapy field as it pertains to ligand mediated gene delivery; expert skills in DNA cloning, PCR, RT-PCR and RNA expression analysis (Northern analysis and RNase Protection Assays); SDS-PAGE Western analysis in vitro transcription/translation assays; DNA mutagenesis and clone evaluation such as restriction mapping, DNA sequence and expression analysis. Must have PhD in molecular biology, cell biology or related field plus 3-6 years experience in research environment. Code SMB

Please send your resume to: **PRIZM Pharmaceuticals, Inc., Human Resources/SCI/Code (see above), 11035 Roselle St., San Diego, CA 92121; fax (619) 625-0050. EOE.**



P R I Z M
PHARMACEUTICALS



DEAN, SCHOOL OF ARTS AND SCIENCES

The University of Pennsylvania invites nominations and applications for the position of Dean of the School of Arts and Sciences. The School is responsible for the scholarly research and both undergraduate and graduate education in the humanities, social sciences and natural sciences. The Dean is the chief academic officer of the School and its faculty, and has overall responsibility for its educational and research programs, as well as administration and development of financial support, and the review of faculty appointments. The School of Arts and Sciences is one of 12 schools within the University, eight of which are professional schools.

Candidates should possess exceptional leadership ability, a record of distinguished scholarship and significant administrative experience. The dean is expected to provide the vision and leadership necessary to further the school's academic excellence, increase its endowment, and guide it successfully into the next century. The successful candidate should expect to assume office on or before September 1, 1997. Letters of inquiry and application should be accompanied by a curriculum vitae. Nominations should be accompanied by a short paragraph describing the qualifications of the candidate. Please send all materials to:



Douglas S. Massey
Professor of Sociology and Chair SAS
Dean Search Committee
c/o Office of the Secretary
Mellon Bank Building
133 S. 36th Street, 4th Floor
Philadelphia, PA 19104-3246

AN EQUAL OPPORTUNITY/AFFIRMATIVE ACTION EMPLOYER

RESEARCH INVESTIGATOR CLINICAL PHARMACOKINETICS AND METABOLISM



At Sanofi Pharmaceuticals, Inc., we believe a promising future can be a reality, and we have made a commitment to serve the cause of life and good health for people throughout the world.

We currently have an opportunity at our suburban Philadelphia facility for a Research Investigator in our Clinical Pharmacokinetics and Metabolism Department.

In this position, you will support the development of Sanofi compounds by assisting in the design of study protocols, as well as analyzing and reporting clinical pharmacokinetic data. This will involve interacting with scientists and other departments and participating in all aspects of clinical pharmacokinetic data analysis. You will prepare/assist in the preparation of IND and NDA documentation and formal company reports for internal dissemination or submission to regulatory agencies.

Requirements include a Ph.D. with 1-5 years experience, or a Master's degree in Pharmacokinetics, Drug Metabolism, Statistics, Biostatistics, Mathematics, Computer Science, Engineering or equivalent, with 8+ years experience that must include 1-5 years industrial/academic experience, preferably in clinical pharmacokinetics. Candidates must have a strong background in Computer Science with an emphasis on pharmacokinetic/pharmacodynamic modeling, as well as experience in the use of Excel. Familiarity with SAS and/or RS1 is desirable.

At Sanofi Research, you'll enjoy a highly competitive salary and benefits package. For confidential consideration, please forward your resume and salary requirements to: **Human Resources, Position # V094/95/JRC, Sanofi Pharmaceutical, Inc., Sanofi Research Division, 9 Great Valley Parkway, P.O. Box 3026, Malvern, PA 19355. FAX: 610-889-8850.** Equal Opportunity Employer, M/F/D/V.

sanofi

Evolutionary Genomics at the Marine Biological Laboratory Woods Hole, Massachusetts

The newly formed **Josephine Bay Paul Center for Comparative Molecular Biology and Evolution** at the Marine Biological Laboratory at Woods Hole invites applications and nominations for positions in **Molecular Evolution**. Appointments will be made at the level of **Assistant** or **Associate Scientist**. Candidates are expected to have an outstanding, innovative research program in **Comparative Molecular Biology and Evolution** that is capable of attracting external support. Preference will be given to candidates with interests in computational and functional studies of microbial genome evolution. We will also consider candidates with interests in molecular diversity of protists and marine invertebrates. Startup packages and salaries are competitive.

Applicants should submit a *curriculum vitae*, statement of research interests, and a list of five references to: **Dr. Mitchell L. Sogin, Director, Josephine Bay Paul Center for Comparative Molecular Biology and Evolution, Marine Biological Laboratory, 7 MBL Street, Woods Hole MA 02543-1015.** The search will remain open until successful candidates are identified. Review of applicants will begin on **March 27th, 1997.**



**MARINE
BIOLOGICAL
LABORATORY**

MBL is an Equal Opportunity/Affirmative Action/
Non-smoking Institution



NPS PHARMACEUTICALS, INC.

NPS Pharmaceuticals, Inc is a rapidly growing pharmaceutical company focusing on the development of novel therapeutics for the treatment of hyperparathyroidism, osteoporosis, stroke, pain and other debilitating diseases. NPS is pleased to announce the following open positions:

ELECTROPHYSIOLOGIST

Primary Responsibilities

The selected individual will perform electrophysiological examinations of central nervous system receptors and pharmacologically characterize novel small molecules that modulate these receptors. This individual is expected to have extensive experience with the application of electrophysiological techniques to the study of centrally acting drugs; and will be responsible for the implementation of project strategies requiring these techniques. A strong background in experimental design and data interpretation is required; as is a current knowledge of the relevant scientific literature and emerging electrophysiological techniques. The individual will effectively participate as a member of a multi-disciplinary project team; and is expected to work independently.

Specific Responsibilities

- Perform electrophysiological assays in *Xenopus* oocytes to support expression cloning strategies
- Electrophysiological studies of synaptic neurotransmission using brain slice preparations
- Electrophysiological studies of receptor-mediated responses in dissociated neuronal preparations
- Perform experimental design, data analysis and data interpretation; as well as preparation and communication of technical reports and scientific publications

Job Qualifications

- Ph.D. in Physiology, Pharmacology or Neuroscience with 0-4 years relevant experience or an M.S. with 7-10 years of relevant experience
- Extensive experience with voltage clamp and patch clamp techniques; excellent understanding of pharmacological principles, and experience with mammalian tissue culture

Please reference job #197TS2 within your cover letter

MANAGER: CELL CULTURE FACILITY

Primary Responsibilities

Manage the cell culture core facility for pharmacology, molecular biology and high-throughput screening groups.

Specific Responsibilities

- In-depth knowledge of modern tissue culture techniques
- Train and supervise cell culture facility personnel
- Maintenance and propagation of established cell lines
- Maintenance and propagation of primary mammalian cells
- Isolation of cells from human tissues
- Perform minor surgeries
- Knowledge of different techniques for generating hybridomas and clonal cell lines
- Trouble-shooting of equipment used in a tissue culture facility
- Excellent organizational skills
- Maintain an accurate record of cell lines and their use
- Maintain an accurate and up-to-date laboratory research notebook
- Supervise the preparation of various media and buffers
- Use of various computer programs
- Strong interpersonal skills

Job Qualifications

- Bachelor's or Master's degree in biological science
- Minimum of 3-6 years experience in tissue culture required, preferably as a manager in a high-volume tissue culture facility

Please reference job #1096EN within your cover letter

PLEASE SEND YOUR RESUME TO:
NPS Pharmaceuticals, INC
420 Chipeta way
Salt Lake City, UT 84108
e-mail jobs@npsp.com
NPS is an equal opportunity employer

MOLECULAR BIOLOGIST

Primary Responsibilities

The selected individual will perform molecular biological studies on central nervous system receptors to assist the discovery of novel small molecules that modulate these receptors. This individual is expected to have extensive experience with the application of molecular biological techniques to the study of receptor proteins; and will be responsible for the implementation of project strategies requiring these techniques. A strong background in experimental design and data interpretation is required; as is a current knowledge of the relevant scientific literature and emerging molecular biological techniques. The individual will effectively participate as a member of a multi-disciplinary project team; and is expected to work independently and supervising other team members.

Specific Responsibilities

- Carry out expression cloning strategies to isolate cDNA's encoding novel G-protein coupled receptors
- Isolate cDNA clones encoding human receptor homologs and prepare DNA constructs encoding chimeric receptor proteins
- Prepare synthetic cRNAs from DNA constructs for expression in *Xenopus* oocytes
- Transiently or stably transfect mammalian cells with DNA constructs
- Isolate and propagate stably-transfected clonal cell lines overexpressing chimeric receptors
- Conduct preliminary characterizations of novel cell lines by utilizing western blot analysis and second messenger assays
- Perform experimental design, data analysis and data interpretation; as well as prepare and communicate technical reports and scientific publications

Job Qualifications

- B.S., M.S. or Ph.D. in molecular biology, biochemistry or relevant discipline
- B.S. with 10 to 15 years relevant experience; M.S. with 7 to 10 years relevant experience; or Ph.D. with 1 to 4 years relevant experience
- Extensive experience with basic molecular biological techniques including cDNA cloning, PCR, *in vitro* transcription, other relevant nucleic acid manipulations, and relevant computer skills; as well as DNA transfection techniques and mammalian tissue culture

Please reference job # 1096TS within your cover letter

EXOBIOLGISTS & ORIGINS SCIENTISTS

The Jet Propulsion Laboratory (JPL) is a federally-funded research and development center operated for NASA by the California Institute of Technology located in Pasadena, California. JPL is embarking on an expansion of its science interests in the areas of exobiology and the origins of life, and the origins of galaxies, stars and planetary systems, and is accepting applications for research positions as described below. Several qualified candidates at both senior and junior levels are sought in each of the two areas described.

The *NASA Origins Program* encompasses research in the origins of galaxies, stars, and planets as well as the search for, and exploration of, neighboring planetary systems. JPL has on-going research programs in the formation of stars and planetary systems utilizing a number of existing infrared, optical and radio telescopes and interferometers, as well as a theory program in protostar formation. Related missions in progress or under development include the Space Infrared Telescope Facility (SIRTF), the Palomar and Keck Interferometers, and the Space Interferometry Mission (SIM). JPL seeks to strengthen and broaden these efforts through this solicitation. Successful candidates will be expected to carry out a program of research in the broad area of the NASA Origins Program, with emphasis on the Laboratory's unique capabilities in technology, observatories, theory, and space missions. Further inquiries about origins research opportunities may be directed to Dr. Michael Janssen at michael.a.janssen@jpl.nasa.gov

The *NASA Solar System Exploration Program* encompasses robotics exploration and research into the origins and evolution of the solar system. JPL has responsibility for the robotic missions and has a significant research program in solar system science. Currently, we are seeking to expand our expertise in the broad area of the origin and evolution of life in the solar system. Areas of interest include prebiotic evolution (Pathways and processes leading from planetary formation to the potential origin of life); the early evolution of life (the nature of the most primitive organisms, the environment in which they evolved, and the way in which they influenced that environment as evidenced by the molecular record in living organisms and the geological record of the Earth or Mars); and the evolution of advanced life. Applicants who are interested in participating in a multi-disciplinary research effort focusing on the origin and evolution of life on Mars and elsewhere in the solar system are particularly sought. Further inquiries in this area may be directed to Dr. Jeffrey Plescia at: jeff@lithos.jpl.nasa.gov

Applications should be sent to **Dr. Daniel J. McCleese, Earth and Space Sciences Division, Mail Stop 183-335, T-71, Jet Propulsion Laboratory, 4800 Oak Grove Drive, Pasadena, CA 91109**, and should include a curriculum vitae, statement of research interests, list of publications, and the names and addresses of at least three references. Applications will be evaluated as they are received and will be accepted until May 1, 1997.

The Jet Propulsion Laboratory and California Institute of Technology are equal opportunity employers.

JPL
Jet Propulsion Laboratory
California Institute of Technology

CONFERENCE

Second Announcement
1997 Biotechnology Conference

Vector Targeting Strategies for Therapeutic Gene Delivery

March 14 - 16, 1997

Arranged by:

David T. Curiel

University of Alabama, Birmingham

Wayne Marasco

Dana Faber Cancer Institute

- **In Vivo Targeted Gene Delivery (Retroviruses, Adenoviruses, Liposomes)**
- **Macromolecule Entry into Cells**
- **Mechanisms of Viral Entry into Cells**
- **Optimizing Trans Effects for Cancer Therapy**

Selected Topics / Invited Speakers:

- **Immunotoxin Cellular Entry**
(I. Pastan)
- **Viral Entry into Cells**
(R. Lamb)
- **Target Definition - Peptides**
(S. Johnston; R. Pasqualini)
- **Target Definition - sFvs** (J. Marks)
- **Target Definition - FISH**
(H. Hoogenboom)
- **Targeted Retrovirus**
(S. Russell)
- **Pseudotyped Retrovirus**
(T. Friedmann)
- **Targeted Adenovirus**
(R. Hawkins, T.J. Wickham)
- **Molecular Conjugates**
(E. Wagner, W. Wels, S. Hart)
- **Targeted Liposomes**
(J. Wolff, L. Huang)

This conference aims to provide a forum for discussion regarding the *rational design of vectors for gene therapy*, to stimulate future research studies, and to promote interaction amongst researchers and modalities.

Extended Abstract Deadline:
February 28, 1997

Online registration and abstract submission is encouraged via the World Wide Web.



**Cold
Spring
Harbor
Laboratory**



Meetings & Courses, 1 Bungtown Rd.
Cold Spring Harbor, NY 11724
Email: meetings@csHL.org
Fax: 516-367-8845 Phone: 516-367-8346
<http://www.csHL.org/meetings/>

Oncogene Science, Inc. is an integrated drug discovery company with a mission to discover and develop novel pharmaceutical products. We have combined sophisticated molecular biology with industry pioneering robotics to become the leader in the field of small molecule drug discovery by automated high-throughput screening.

Research Scientist/ Sr. Research Scientist Drug Discovery Opportunities

These scientists will be key members of a team that will design multiple assays for the identification and development of novel drugs. As part of a multi-disciplinary drug discovery effort, these scientists will interact with different teams within the company; will directly supervise one or more research associates; and will communicate with external collaborators (i.e. large pharmaceutical companies, leading academic and industrial research groups). All positions require a Ph.D. and relevant post-doctoral experience in either virology, biochemistry, molecular biology, or neuroscience. Additional requirements include:

• Virology

This position requires a background in nucleic acid-protein interactions and protein purification. Additional experience in cell culture, in vitro transcription/replication assays or immunoassays is a plus. Knowledge of influenza is preferred.

• Cancer

This individual must have a strong academic or industry background in research into the molecular basis of cancer. Additional experience in cell biology, cell cycle, apoptosis and/or angiogenesis is preferred.

• Neuroscience

This position requires strong interpersonal skills to foster communication among the project members and actively participate in planning scientific strategies. Knowledge of neuronal cell culture and a broad basis in molecular biology is required.

Oncogene Science offers a superb benefits package and opportunities for career development in a highly participative environment. Qualified candidates may send resumes (please specify the position of interest) to: **Director, Human Resources, Oncogene Science, Inc., 106 Charles Lindbergh Blvd., Uniondale, NY 11553-3649; Fax (516) 222-0114.** Equal Opportunity Employer M/F/D/V.



CELLULAR AND MOLECULAR NEUROBIOLOGY

Postdoctoral Positions

Postdoctoral positions are available at the University of Pennsylvania to study molecular biology, biochemistry, and regulation of glutamatergic transmission, developmental neurobiology, and myelin gene expression in Schwann cells. At least four positions are available and are funded through NIH grants. Faculty and their research interests are:

DAVID R. LYNCH: NMDA receptors and excitotoxicity

JEFFREY A. GOLDEN: Segmental patterning and cell migration in the developing nervous system.

MICHAEL B. ROBINSON: Na⁺-dependent glutamate transporters, metabotropic glutamate receptors, glutamate metabolism, glutamate release, and excitotoxicity. Metabolic and neurochemical correction of urea cycle disorders using adenoviral vectors.

GIHAN TENNEKON: *In vitro* differentiation of Schwann cells

Eligibility for NIH training grants (US citizen) strongly preferred. Send curriculum vitae, a letter of interest stating research goals, and three letters of reference to the faculty member of interest at:

Room 502
Abramson Research Building
University of Pennsylvania
34th St. and Civic Center Blvd.
Philadelphia, PA 19104-4318

An equal opportunity employer.



NATIONAL INSTITUTES OF HEALTH

NATIONAL INSTITUTE ON ALCOHOL ABUSE AND ALCOHOLISM ETHANOL PHARMACOKINETICS

Projects are underway to explore the effect of genotype, gender, and body composition on ethanol metabolism in humans and to determine changes in oxidative-reductive pathways with long-term ethanol consumption in rats. Applicants should have a strong background in quantitative analytical techniques and/or molecular biology, a Ph.D. and/or M.D. and less than five years postdoctoral experience. Address inquiries to **Susan Shoaf, Ph.D., Chief, Unit of Pharmacokinetic Studies, Laboratory of Clinical Studies, NIAAA, 10 Center Drive, MSC-1256, Bethesda, MD 20892-1256; (301) 496-4936; or shoaf@clinpharm.niaaa.nih.gov.** The NIH is an Equal Opportunity Employer.

NEW LEADS

IN DRUG DISCOVERY

LIGAND Pharmaceuticals Inc. is a leader in the discovery and development of drugs that regulate gene transcription, particularly through intracellular receptor (IR) technology and Signal Transducers and Activators of Transcription (STATs). Join us as we create pharmaceutical products aimed at cancer and women's health as well as cardiovascular, blood, skin, and inflammatory diseases.

RESEARCH SCIENTIST

We are seeking a Research Scientist to join our New Leads Discovery group and be responsible for evaluating, developing and implementing cellular and cell-free assays for high throughput screening programs. This position will explore novel assay and reporter technologies for analysis of signal transduction and transcriptional regulation. We require a PhD with a minimum of 2 years' relevant postdoctoral experience. Independent work skills and excellent communication abilities are a must. Dept. 730-105

ASSAY AUTOMATION SCIENTIST

In this position, you will develop and help support "turnkey" high throughput screening systems that incorporate QC/QA principles and perform validation procedures. Acting as the departmental interface with Information Systems and Computational Chemistry, you will help design, debug and validate new data management and database procedures. This will include integrating our fully automated robotics systems and laboratory workstations with our biological, chemical and structural databases. Significant hands-on lab automation and modern information skills are required; experience with Oracle, SAS and ISIS/PCF would be a plus. You must be articulate, work well in a cross-functional environment and have supervisory experience overseeing the work of BS/MS-level scientists. Dept. 730-62

LIGAND, located in San Diego, near La Jolla's Golden Triangle, offers an attractive salary and benefits package, including stock options. Please fax or mail your resume, referencing appropriate Dept., to: LIGAND Pharmaceuticals, Dept. , 9393 Towne Centre Drive, San Diego, CA 92121. Fax: (619) 550-7800. EOE.



MOLECULAR BIOLOGY SIMON FRASER UNIVERSITY

Applicants are sought for a tenure track position at the rank of Assistant Professor. Applicants will be expected to establish a program of original research and graduate education. Teaching duties will include undergraduate courses in molecular biology, cell biology, and/or genetics and graduate teaching in the applicant's area of expertise. Excellent laboratory space and facilities in a new building will be provided. A Ph.D. and relevant postdoctoral experience is required. Applicants should send a curriculum vitae, a concise statement of research plans, up to five reprints, and the names and addresses of three referees to: **Molecular Biology Search Committee, Institute of Molecular Biology and Biochemistry (IMBB), Simon Fraser University, 8888 University Drive, Burnaby, B.C. V5A 1S6, Canada.** Applications submitted for the Genetics position, Dept. of Biological Sciences, will also be considered for this position - no need to reapply. Review of applications will commence immediately and continue until the position is filled. All positions are subject to budgetary authorization.

In accordance with Canadian Immigration requirements, this ad is directed to citizens and permanent residents of Canada. Simon Fraser University is committed to the principle of equity in employment and offers equal employment opportunities to qualified applicants.

The Science of Agricultural Genetics

SENIOR RESEARCH ASSOCIATE

**Crop Protection - Disease Resistance
(Job #CP-705)**

An individual is needed to support the identification, isolation and expression of genes conferring resistance to fungal diseases. Responsibilities include assisting in the isolation of genes and promoters needed to meet the goals of the Disease Resistance group. Duties include construction of genomic and cDNA libraries; screening of libraries with nucleic acid and protein probes; cloning and analysis of genes using PCR; preparation of plant, phage and plasmid DNAs, and of RNA. Experience in nucleic acid hybridizations and gel electrophoresis of nucleic acids and proteins is desired as well as expertise in computer software for office and lab applications, especially DNA sequence analysis. A Ph.D. with no additional experience or an M.S. with two years of experience or a B.S. with four years of lab experience is required. The successful candidate must have extensive experience in molecular biology. Expertise in plant biology and plant pathology is also desirable.

Pioneer Hi-Bred International, Inc. offers competitive salaries and excellent, comprehensive benefits. Des Moines is a prospering heartland city that ranks well above the national averages in affordability and education. Our location provides a mix of beautiful open spaces and city life advantages. For confidential consideration send 3 copies of your cover letter and current resume, indicating job number, by February 21, 1997 to: Pioneer Hi-Bred International, Inc., Attn: PERSONNEL (Job #CP-705), P.O. Box 1004, Johnston, IA 50131-1004.

Pioneer Hi-Bred International, Inc., is the world leader in agricultural genetics. Founded in 1926, we are a publicly held company that invests more than \$115 million in research and product development. Pioneer® brand products are grown in almost every crop-producing continent in the world. At our headquarters in Des Moines, Iowa, we're adding to our Research team.



**PIONEER HI-BRED
INTERNATIONAL, INC.**
An Equal Opportunity
Employer



HUMAN GENETICS GENE THERAPY

Assistant, Associate, and Full Professor - The Center for Molecular Medicine and Genetics is expanding its research and training programs in human genetics and gene therapy. Although all research areas will be considered, candidates with expertise in cancer genetics, neurogenetics, vascular genetics, reproductive genetics, stem cell biology, and gene therapy and their animal models are especially encouraged to apply. Collaborations with our active clinical genetics programs and our well-known fetal therapy programs are encouraged. Both tenure-track and University funded research-track positions are available. Senior candidates should be established independent investigators with outstanding research accomplishments and demonstrated ability to obtain extramural research funding. Excellent research laboratories and support facilities are available in the School of Medicine, which is part of one of the largest medical centers in the United States (home page <http://cmmg.biosci.wayne.edu>). Applicants should send a complete curriculum vitae, a brief description of current and future research interests (3-4 pages), a bibliography and reprints of significant publications, and recommendations from at least three references by April 15, 1997, to:

**Dr. John Kamholz, Chair of the Search Committee
Center for Molecular Medicine and Genetics
Wayne State University School of Medicine
3216 Scott Hall
540 East Canfield
Detroit MI 48201**

Wayne State University is an equal opportunity/affirmative action employer and invites applications from all qualified individuals. All buildings, structures and vehicles at WSU are smoke-free. Wayne State University - People working together to provide quality service

Excellence in Science.

Sigma-Aldrich
Corporation
is looking
forward to
the new



millennium for

continued
success. Backed

by over 50
years of

success and
financial

security, the
future looks

brighter than
ever. We

attribute our
fortune to our

commitment to
the success of

our customers
through

science,
technology

and service.

Sigma Chemical Company

We are Sigma-Aldrich, a St. Louis based multinational, billion dollar corporation experiencing 16% growth in sales and profits over the past 10 years. Our employees are proud to work for the largest manufacturer of research chemicals in the world. If you are interested in becoming part of our company, you are welcome to apply. We are searching for:

Molecular Biology Developmental Chemist

Requirements include:

- B.S., M.S., or Ph.D. in the biological sciences
- Experience in cDNA isolation, plasmid construction, nucleic acid sequencing, and protein analysis techniques
- Knowledge of recombinant protein expression methods

Molecular Biology QC-Chemist

- B.S., or M.S. in the biological sciences
- Experience in cDNA isolation, plasmid construction, nucleic acid sequencing, and protein analysis techniques
- An understanding of enzymology is desirable

Cell Culture Developmental Scientist

- M.S., or Ph.D. in the biological sciences
- Minimum of five years of development experience in a cell/tissue culture environment
- Familiarity with cGMP and ISO 9000 quality systems is desired

Our benefits package includes one of the best 401(K) programs in the St. Louis area. In addition, you will enjoy the following: excellent relocation package, comprehensive medical, dental, life and disability insurance, non-contributory pension plan, and tuition reimbursement. If you are interested, then please fax your resume to: (314) 286-

7863, or send your resume to:

Human Resources(SC), Sigma-Aldrich Corporation, 3050 Spruce Street, St. Louis, MO 63103. Visit us on our homepage at: <http://www.sigma.sial.com>.



SIGMA-ALDRICH
CORPORATION

Equal Opportunity Employer

Working on the molecular level
to conquer, treat, or prevent
debilitating diseases.

DRUG DISCOVERY RESEARCH AT SCHERING-PLOUGH

At the Schering-Plough Research Institute, insightful scientists are discovering innovative therapeutic agents that challenge humankind's most debilitating diseases. If you are seeking an opportunity to be on the cutting edge of pharmaceutical discovery, become part of an advanced multidisciplinary research group.

SENIOR PRINCIPAL SCIENTIST Immunology

To support our drug discovery efforts, we have an excellent opportunity for an Immunologist to plan and conduct in vivo and ex vivo experiments in the areas of autoimmunity and tumor immunology. To qualify, you will need a PhD in Immunology and at least 5 years' experience in in vivo immunology, preferably in autoimmunity. Background must include significant research accomplishments in in vivo immunology along with skills in cytokine biology, immunohistochemistry and immunopharmacology. Familiarity with models of tumor immunity and a working knowledge of flow cytometry are desirable. Strong verbal/written communication skills along with an ability to supervise others are essential.

We offer an excellent compensation package including a competitive salary and comprehensive benefits. For prompt, confidential consideration, we invite you to forward a resume with salary requirements to: Human Resources-BG, Dept. DD99-62, Schering-Plough Research Institute, 2015 Galloping Hill Road, K-15, Kenilworth, NJ 07033-0539. You may also respond via E-mail to: spri@spcorp.com. Please include the Department Code for your position of interest in the Subject Line. We are an equal opportunity employer. We regret we are unable to respond to each resume. Only those selected for an interview will be contacted.



Schering-Plough
Research Institute

Using Science for Human Advantage

Post Doctoral Positions in Fungal and Plant Biology

DuPont Central Research and Development has the following immediate openings:

FUNGAL BIOLOGIST

The ideal candidate will characterize the role of P-glycoprotein and other MDR-related transport processes in fungal pathogenicity and fungicide trafficking. Expertise in the expression, purification, and functional reconstitution of membrane proteins is essential, in addition to a working knowledge of state-of-the-art molecular biology techniques. PSS-0178

PLANT BIOLOGIST

The suitable candidate will carry out the genetic, molecular, and biochemical characterization of steps regulating plant starch biosynthesis and degradation. An extensive collection of Arabidopsis mutants with lesions in starch metabolism is available in the lab for use by the candidate. Expertise is required in molecular biology and one or more of the following: Plant genetics, biochemistry, or physiology. PSS-0179

For both positions the successful candidates will have a Ph.D. or equivalent in molecular biology, genetics, biochemistry, cell biology, or a related area. Excellent communication skills, a flexible, team-oriented approach to scientific discovery, and a strong record of accomplishment are a must.

You will enjoy our state-of-the-art Experimental Station facilities. These positions offer a highly competitive salary and an excellent benefits package. We are located in Wilmington, DE, an area that offers an attractive lifestyle with easy access to all the cultural, academic and recreational activities of the Eastern Seaboard. For consideration, please send your resume with salary history to: DuPont Human Resources, PSS Code, Wilmington, DE 19898 OR you may fax it to: 800-631-2206, Attn: PSS Code. An equal opportunity employer.



DuPont Central Research
and Development

COMPUTATIONAL SCIENTIST

Amgen, the world leader in biotechnology, has an immediate career opportunity for a Computational Scientist at our expanding Southern California facility.

In collaboration with laboratory Research Scientists and other staff in the Computational Biology department, the selected individual will develop novel tools for the evaluation of genome data generated at Amgen or available in the public domain. Other duties include identifying sources of error and proposing mechanisms to eliminate or correct errors.

This position requires a Ph.D. degree in Life Sciences and a minimum of four years of DNA and protein sequence analysis experience. Two years of writing UNIX or DCL scripts is also essential. Knowledge of the use of relational databases and statistical analyses is essential, as is the ability to work well with a multi-disciplinary team. Experience in genome research, computer programming and writing SQL queries is preferred.

We value and encourage the diverse perspectives essential to the process of discovery.

At Amgen, your accomplishments are rewarded. We offer a highly competitive compensation and benefits package that includes a retirement and savings plan, an on-site fitness center and three weeks' vacation. For immediate consideration, mail your resume to: Amgen, Staffing, Job Code: TPSC, P.O. Box 2569, Thousand Oaks, CA 91319-2569. E-mail: jobs@amgen.com Principals only, please. Visit our new web site at: www.amgen.com for detailed information on other opportunities.

EEO/AA Employer M/F/D/V



CHAIR IN COMPUTATIONAL AND EXPERIMENTAL GENOMICS

The University of Southern California has initiated a program to expand its Center for Computational and Experimental Genomics. The immediate goal of the Center is to solicit applications for the newly endowed Hedco Chair in Biological Sciences. We seek a distinguished experimental biologist with an outstanding research record who is interested in using genomic data and associated technologies as a point of departure for developing novel experimental approaches to important biological problems. The successful candidate will be expected to participate in our undergraduate and graduate educational programs.

Candidates should send a curriculum vitae to:

**Hedco Chair Search Committee
University of Southern California
172 SHS**

Los Angeles, CA 90089-1340

Applications will be accepted upon publication of this advertisement and until the position is filled.

USC is an Equal Opportunity/Affirmative Action Employer.

Research Immunologist Opportunities

Boehringer Ingelheim

Pharmaceuticals, Inc. is seeking

outstanding Scientists to conduct biomedical research in our Immunological Diseases Department. Explore the opportunities

in surroundings where creativity and innovation drives the search for novel drug therapies targeting critical human diseases with unmet therapeutic needs.

Senior Scientist, Immunobiologist

The successful candidate will conduct innovative research in drug discovery, in particular in-depth analysis of animal models of immunobiology/inflammation and immune-mediated diseases. To qualify, you must have a Ph.D. in Immunology or a related discipline and at least 2 years of post-doctoral experience. A strong background in cellular immunology and animal models of immunobiology are essential, as is experience in molecular biology and biochemistry. Strong communication skills are essential, and the ability to function in a dynamic, interactive, interdisciplinary team environment is critical. **(Respond to job code: JP-GN)**

Research Scientist, Immune Regulation

We are seeking an individual with a B.A., or a B.S. Degree in Biology, Biochemistry or related discipline with at least 3 years experience in molecular biology techniques, including PCR and DNA sequence analysis. Basic training in cell culture, protein biochemistry methods, and/or BIAcore technology is highly desirable. Duties include: the construction and sequencing of recombinant genes and expression vectors and protein expression in insect cells and bacteria; the analysis of expression by ELISA and biochemical methods, as well as protein purification, functional and biochemical characterization of recombinant proteins; and the establishment of screening assays for protein - protein interactions. **(Respond to job code: JP-MK)**

Research Scientist, Cell Adhesion

The ideal candidate must hold a B.A., or B.S. Degree in Biology, Biochemistry or a related scientific discipline. Basic training in cell culture, molecular biology, protein analysis as well as experience in assay and method development is desirable. Additional experience in protein purification would be a plus. Responsibilities would include: assisting in drug discovery, assay development, compound screening and evaluation. Other duties will include the production, isolation, and characterization of natural and recombinant proteins for the use in method development. **(Respond to job code: JP-KB)**

Boehringer Ingelheim's R&D facility is located in a campus-like setting in a beautiful area of Western Connecticut. We offer excellent facilities and a supportive and challenging environment. For an opportunity to contribute to our innovative programs, please send your curriculum vitae to: **Boehringer Ingelheim Pharmaceuticals, Inc., Dept. JP—, 900 Ridgebury Road, P.O. Box 368, Ridgefield, CT 06877-0368; or email: jpetraglia@bi-pharm.com** We are an equal opportunity employer. As a progressive health care company, we have a non-smoking environment.

Positions will be posted at FASEB Career Resources Placement Services, in Hall B, Mascone Center, San Francisco, CA. AAAI/AAI/CIS joint meeting. February '97.



**Boehringer
Ingelheim**

POSTDOCTORAL RESEARCH ASSOCIATES

U.S. Meat Animal Research Center (MARC), Clay Center, Nebraska Agricultural Research Service, U.S. Department of Agriculture

Postdoctoral Research Associate positions are available immediately at MARC in the following areas:

- **Genetics** Molecular biology and molecular/quantitative genetics. Opportunities to apply gene mapping, differential display, YAC technology and related genomic techniques.
- **Meats** Effects of microbial decontamination and sanitizing agents on potential pathogens, meat quality, product shelf life and interactions with processing techniques.
- **Nutrition** Enhancement of nitrogen efficiency in meat animals for economic and environmental sustainability.
- **Animal Health** Molecular biology, ecology and control of food-safety related bacteria, especially enterohemorrhagic *Escherichia coli* and *Salmonella* species, in populations of domestic livestock.
- **Production Systems** Integrate experimentally derived information from traditional animal sciences into simulation models for use by animal scientists and production agriculture.
- **Biological Engineering** Energetics and modeling of generation, collection, treatment and utilization of cattle waste in support of environmental quality.
- **Reproduction** Ovarian, testicular, uterine and fetal physiology, endocrinology and molecular biology of livestock.

MARC is a modern, well-funded research facility located in south-central Nebraska. The 50+ researchers currently working at the center represent a wide range of scientific disciplines, from basic molecular genetics and mathematical modeling to population biology and biological engineering. Large reference populations of beef cattle, swine and sheep present at MARC, an interdisciplinary approach to problems of animal production and state-of-the-art laboratories present unique opportunities for creative researchers. For further information about MARC see <http://www.marc.usda.gov>.

A Ph.D. or DVM/Ph.D. degree is required for these positions. Minimum starting salary is \$36,426. Candidates with a strong background in any of the above areas are encouraged to apply by sending a C.V. and names of three references to: **Research Associate Search Committee, U.S. Meat Animal Research Center, P.O. Box 166, Clay Center, NE 68933**. Candidates must be U.S. citizens or citizens of countries with defense agreements with the U.S. *USDA-ARS is an affirmative action/equal opportunity employer.*

POSITIONS OPEN

BIOLOGY FACULTY POSITIONS: Penn State Erie, Behrend College. Two tenure-track assistant professor positions for Fall 1997. Candidates must have a strong commitment to undergraduate education and have the potential to develop a research program which involves undergraduates and is externally funded. Teaching includes biology courses for majors and non-majors.

Developmental Biologist: Specific research area open. Teaching duties will include upper-division biochemistry and the development of a biochemistry teaching laboratory.

Organismal or Population Biologist: Specific research area open. Teaching duties will include comparative vertebrate anatomy.

Ph.D. required; postdoctoral and teaching experience desirable. Penn State-Behrend is a four-year and graduate college offering the B.S. in biology. Application deadline is March 3, 1997. Candidates should indicate the position for which they are applying; send résumé, transcripts, and brief descriptions of teaching and research interests; and arrange for three letters of reference to be sent to: **Dr. Roger Knacke, Division of Science, Department BIOL-2, The Pennsylvania State University at Erie, Erie, PA 16563-0203.** An Affirmative Action/Equal Opportunity Employer. Women and minorities encouraged to apply.

The U.S. Environmental Protection Agency (EPA) is seeking candidates for an Ecologist (GS-0408-11/12) position in its Atlantic Ecology Division (AED) in Narragansett, Rhode Island. AED's mission is to develop and evaluate theory, methods, and data needed to understand and quantify the environmental effects of anthropogenic stressors on the coastal waters and watersheds of the Atlantic seaboard. As a researcher in AED, the incumbent will apply current concepts, theory, and experimental methods in order to study coastal wetland communities and the role that plants play in determining the structure and function of those communities. Candidates must have a bachelor's degree in biology or a related field of science underlying ecological research; a master's degree or a Ph.D. in ecological sciences with an emphasis on coastal wetlands or community ecology is preferred. Candidates must have a knowledge of wetlands and community ecology and should also be able to plan, conduct, coordinate, and interpret research studies and communicate both orally and in writing. If you are interested in learning more about this position, please contact us at the following address for an application package no later than March 7, 1997.

U.S. Environmental Protection Agency
Attention: AED Ecologist Recruitment
Human Resources Management Division (MD-29)
Research Triangle Park, NC 27711
Telephone: 919-541-3014

EPA is an Equal Opportunity Employer.

FACULTY POSITION IN PHARMACOLOGY

The Department of Pharmacology is accepting applications for a full-time position as a **RESEARCH ASSOCIATE** or Junior Faculty with research experience in molecular biology or molecular pharmacology, and a record of excellent scientific publications. The primary research projects include studies on molecular biology of nucleolar proteins and enzymes and their relationship to nucleolar RNA synthesis and processing. Salary and rank will be based upon individual qualifications and experience. Candidates should send a curriculum vitae, a brief statement of research goals and accomplishments, record of funding, and a list of five references. Applications should be sent to: **Professor Harris Busch, Department of Pharmacology, Baylor College of Medicine, One Baylor Plaza, Houston, TX 77030-3498.** Baylor College of Medicine is an Equal Opportunity/Affirmative Action Employer.

POSTDOCTORAL POSITION: MUSCLE PHYSIOLOGY/ANIMAL LOCOMOTION AT PENN. Positions for highly motivated individuals. We study molecular design of muscle for different motor functions (see *PNAS* 15:8095-8100, 1996 and *Science* 263:370-372, 1994). We use muscle fiber mechanics, skinned fiber ATP utilization, intracellular Ca^{2+} transients and musculoskeletal modeling. Skills in computer programming and electronics are helpful. PENN houses the Pennsylvania Muscle Institute, with many individuals working on cellular/biophysical aspects of muscle contraction. Please send curriculum vitae to: **Dr. Larry Rome, Department of Biology, University of Pennsylvania, Philadelphia, PA 19104, USA.** Telephone: 215-898-9915; FAX: 215-898-8780; Email: lrome@mail.sas.upenn.edu.

POSITIONS OPEN

COLUMBIATM Colorado Division

TRAUMA RESEARCH

Applications from M.D. and/or Ph.D. to develop a program in basic or clinically related trauma research within a currently functioning research program. Salary and start-up funds available. Two thousand square feet of fully equipped research space available. Application letter, including curriculum vitae and names of three references, should be sent to:

Richard Lester Yukl, M.D.
Columbia-HealthONE Trauma Service
501 East Hampden Avenue
Englewood, CO 80110
FAX: 303-788-6928

ASSOCIATE RESEARCH SCIENTIST

The Division of Autoimmune and Molecular Disease in the Department of Pediatrics at Columbia University is seeking applications for the position of **ASSOCIATE RESEARCH SCIENTIST**, available immediately. The successful applicant must hold the Ph.D. degree or its professional equivalent, with at least two years of experience in performing and interpreting all aspects of sequence-based HLA typing using an ABI DNA sequencer. The applicant should have demonstrable skill in developing PCR methods for amplifying class I and class II MHC templates, and be familiar with sequencing methods used for HLA allele determination involving heterozygous templates. A working knowledge of the software necessary to perform these analyses, including assignment of alleles, is expected. The laboratory's research focuses on immunogenetics and the relation of HLA polymorphisms to disease susceptibility. Applicants should send a curriculum vitae, a brief description of research experience, and names of three references to: **Dr. Robert Winchester, Director, Division of Autoimmune and Molecular Diseases, Department of Pediatrics, BHS 116, 630 West 168th Street, New York, NY 10032.** We take affirmative action toward equal employment opportunity. Columbia University is particularly interested in applications from women and minorities.

The Child Psychiatry Branch is seeking candidates for a tenure-track **RESEARCH POSITION** in the neurobiological basis of childhood psychiatric disorders. Candidates should have a Ph.D. degree and postdoctoral training in cognitive neuroscience, neuropsychology, or developmental psychology with an interest in brain imaging, or a M.D. degree with training in neurology, pediatrics, pediatric neurology, or child psychiatry, together with expertise in structural and/or functional brain imaging. The candidate is expected to develop an independent research program and will be provided with resources to conduct the research. The research will take place in a multidisciplinary setting. Populations currently under study in the Branch include healthy children and adolescents as well as those with schizophrenia, attention deficit hyperactivity disorder, and obsessive compulsive disorder. Send a curriculum vitae, statement of research interests, and have three reference letters sent by March 28, 1997 to: **Chair, Search Committee, Child Psychiatry Branch, National Institute of Mental Health, 10 Center Drive, MSC 1800, Building 10, Room 6N240, Bethesda, MD 20892-1800.** Attn: Ms. Bell. Telephone: 301-496-6081. NIH is an Equal Opportunity Employer.

POSTDOCTORAL RESEARCH POSITION—DuPont's Haskell Laboratory for Toxicology and Industrial Medicine is seeking a qualified individual to participate in a research program involving the generation and analysis of fluoropolymer combustion aerosols. The successful applicant will be expected to develop and use low-level aerosol measurement and chemical analysis techniques to support ongoing toxicology studies of ultrafine perfluoropolymer aerosols; experience in toxicology is desirable. This full-time position is for one year with a competitive salary, commensurate with experience. Please send curriculum vitae and names of three references to: **Mary Jane Hudson, Haskell Laboratory, P.O. Box 50, Elkton Road, Newark, DE 19714.** DuPont is an Equal Opportunity/Affirmative Action Employer.

POSITIONS OPEN

RESEARCH ENVIRONMENTAL HEALTH SCIENTIST AND RESEARCH BIOLOGIST

The U.S. Environmental Protection Agency's National Health and Environmental Research Laboratory, Human Studies Division in Chapel Hill, North Carolina is seeking qualified applicants for two positions: one in the area of **MOLECULAR BIOLOGY** and the other in the area of **DOSIMETRY**. The duties of the Research Environmental Health Scientist (GS-601-12/13) in the area of dosimetry will be to carry out independent research on the respiratory deposition of inhaled particles and gases and particle clearance from the lung in humans. Candidates must have a strong background in aerosol generation and measurement systems, on-line data acquisition and analysis for respiratory flow and aerosol/gas signals. Experience in mathematical/numerical modeling in fluid flow, exposure-dose or dose-response relationships and on lung imaging using a gamma camera, and knowledge of respiratory physiology and health effects of inhaled pollutants would also be desirable. The duties of the Research Biologist (GS-401-12/13) in the area of molecular biology will be to carry out independent research using molecular biology techniques to assess mechanisms by which pollutants damage cells. Candidates must have a strong background in the use of cutting-edge molecular techniques and at least some experience in the area of pollutant research on the pulmonary system. Experience in exposure of humans or animals to inhaled pollutants *in vivo* would also be desirable. Both positions require U.S. citizenship. The salary range for these positions is \$44,953 to \$58,442 at the GS-12 level and \$53,456 to \$69,492 at the GS-13 level. If you are interested in obtaining information on how to apply for these positions, please contact Suzanne Roberts at the following address by February 27, 1997, and specify the position in which you are interested:

U.S. Environmental Protection Agency
ATTN: HSD/CRB Recruitment
Human Resources Management Division (MD-29)
Research Triangle Park, NC 27711
Telephone: 919-541-3014

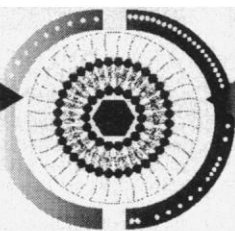
The U.S. Environmental Protection Agency is an Equal Opportunity Employer.

VERTEBRATE ANATOMIST/PHYSIOLOGIST

The Department of Biology at Moorhead State University invites applications for a tenure-track faculty position at the **ASSISTANT PROFESSOR** level, to begin August 21, 1997, pending funding. We seek a Vertebrate Anatomist/Physiologist to teach introductory human anatomy and physiology, upper-level vertebrate/human anatomy, a survey class in human biology for the University's liberal studies program, and laboratory sections in the introductory biology sequence. Experience with computers is required as is evidence of potential for excellence in undergraduate teaching. The successful candidate is expected to engage in research activities that involve undergraduates. Qualifications for the position include a Ph.D. with specialization in vertebrate anatomy and physiology, research experience, and broad training in the biological sciences. Visit the Moorhead State University web page (<http://www.moorhead.msus.edu/admin/vac/index.htm>) for details on the application procedure. Screening of completed applications will begin March 21 and continue until the position is filled. Apply to: **Dr. Mary A. Shimabukuro, Department of Biology, Moorhead State University, Moorhead, MN 56563.** Telephone: 218-287-5000; Email: Shima@mhd1.moorhead.msus.edu. Moorhead State University is an Equal Opportunity/Affirmative Action Employer and Educator.

MOLECULAR BIOLOGIST/ VASCULAR BIOLOGY

Wanted: Ph.D. molecular biologist (U.S. citizen) to work in a laboratory studying ion channels in vascular smooth muscle. Skills needed by the successful applicant include: immunohistochemistry, fluorescent microscopy and dyes to measure calcium, Northern analysis, *in situ* hybridization, PCR, transfection and cell culture. Should be familiar with the use of cDNAs, design of antisense probes. Experience with patch clamp electrophysiology would be helpful. Position funded by VA Merit review grant 1996-1999. The successful applicant will be expected to apply for grant support after a transitional period. Salary is commensurate with experience. Position to begin April/May, if possible. Please submit curriculum vitae, addresses and telephone numbers of three referees to: **E. Kenneth Weir, M.D., VA Medical Center (111C), One Veterans Drive, Minneapolis, MN 55417.**



At SEQUUS, We're Excited About the Challenges That Lie Ahead

SEQUUS Pharmaceuticals, Inc., is a leader in the development, manufacture, and commercialization of liposomal drugs and lipid-based biopharmaceutical products primarily to treat cancer and certain fungal infections. Proud to be among the 2 percent of biotech companies formed in the last 20 years with approved products on the U.S. market, we are building our talented team for further success.

Challenging opportunities currently exist in the following areas:

CLINICAL RESEARCH, REGULATORY AFFAIRS & DATA MANAGEMENT

Regulatory Affairs Associate
Sr. Director, Regulatory Affairs
Clinical Research Associates (II & Senior)
Director, Clinical Research
Programmer Analyst
Senior Director, Biostatistics and Clinical Data Management
Biostatistician
Data Entry Supervisor
Documentation Clerk

MARKETING, SALES & CORPORATE DEVELOPMENT

Director, Oncology Business Unit
Director, Corporate Development
Associate Product Managers
Contract Administrator

FINANCE & ADMINISTRATION

Controller

RESEARCH & DEVELOPMENT

Research Associates, QC
Group Leader, Analytical Chemistry
Cell Culture Scientist
Formulations Scientist
Formulations Development Engineer
Plant Supervisor
Validation Engineer
Distribution Coordinator
Toxicology Study Coordinator

To achieve SEQUUS's mission of improving patients' lives, we are building teams and empowering the best talent in our industry, providing a productive professional environment, and rewarding performance linked to the achievement of goals. Please send your resume, indicating position of interest, to: SEQUUS Pharmaceuticals, Inc., Professional Staffing, 960 Hamilton Court, Menlo Park, CA 94025, fax 415/463-3124 or visit us on the WWW at <http://www.sequus.com>. We promote a diverse workforce/EOE.

A Matter Of Life And Life

SEQUUS

PHARMACEUTICALS, INC.

WHERE POSSIBILITIES BECOME

At Eli Lilly and Company, every achievement is preceded by a world of possibilities. As a \$64 billion leader in the pharmaceutical industry, it's our job to define new ways to deliver health care solutions. We turn the most promising possibilities into the most remarkable results, with the true measure of our success being the achievements of everyone who lives a healthier, more active life because of our products. Join Lilly today, where you can achieve everything you thought possible - and some things you never even imagined.

We offer an excellent salary, comprehensive benefits and the chance to advance with a global leader. Please send your resume to: Corporate Recruiting, (Dept. - position of interest code), Eli Lilly and Company, Lilly Corporate Center, Indianapolis, IN 46285. We are an equal opportunity employer dedicated to diversity and the strength it brings to the workplace.

For other job opportunities, please access our Job Bank at: <http://www.lilly.com>.

Lilly
 Eli Lilly and Company

ACHIEVEMENTS

BIOPHARMACEUTICAL DEVELOPMENT - BIOANALYTICAL PROTEIN CHEMISTRY

We have an immediate opening in our Biopharmaceutical Development Division of Lilly Research Laboratories. A Senior Scientist is sought to serve as team leader on the Protein Characterization Team. The successful candidate will lead a team of 5-7 scientists focusing on primary structure elucidation of peptides and proteins. The team has responsibility as well for the Proof of Structure sections of global regulatory documents. Requirements include a Ph.D. in analytical chemistry or a related field with focus on analytical aspects of protein chemistry. Besides strong technical skills and deep knowledge of techniques such as protein mass spectrometry, protein sequencing, amino acid compositional analysis, micropreparative and semipreparative techniques, and database searching, the individual is also expected to bring outstanding leadership and communication skills to the team.

DEPT. ADSCMPH32

SKELETAL DISEASES RESEARCH - GENETICS/BONE BIOLOGY

We currently have openings in leadership roles in our Skeletal Diseases Discovery Research Program. Each position requires a Ph.D., MD, or equivalent degree with postdoctoral and appropriate work experience. Successful candidates will have a demonstrated record of scientific creativity and a published record of productivity.

SR. SCIENTIST POSITION #1

We are seeking an outstanding investigator to lead a group of 8-10 scientists to implement and manage collaborations with biotechnology and academic partners to map susceptibility genes in genetically complex diseases of the skeleton, to identify pathways to target for novel drug discovery. Preference will be given to someone who has trained and worked in the areas of human genetics or statistical and/or mathematical human genetics.

SR. SCIENTIST POSITION #2

We are seeking an outstanding investigator with training and work experience in molecular and biochemical mechanisms associated with skeletal and/or connective tissue disorders to lead a group of 6-8 scientists in developing a genomics program to identify critical biochemical and molecular pathways in bone biology. Applying functional genomics, this knowledge will be used to develop novel therapeutic targets for drug development. This group will play a critical role in target identification efforts. Preference will be given to a scientist with expertise in bone biology.

SR. SCIENTIST POSITION #3

We are seeking an outstanding investigator in a leadership position who has experience in developing and evaluating transgenic and knock-out animals to lead a group of 4-6 scientists in developing novel animal models for complex diseases of the skeleton, and to characterize the genotype-phenotype relationships of chronic diseases of the skeleton. This group will play a critical role in target identification efforts. Preference will be given to a scientist with expertise in bone biology.

DEPT. ADSCMPH33

DIABETES AND OBESITY RESEARCH - CELL BIOLOGY

We currently are recruiting for a Senior level Scientist to support our research program in insulin action. This program, which is centered in the Endocrine Division of Lilly Research Laboratories, has as its goal developing novel therapeutics for the treatment of NIDDM. Applicants should have a Ph.D. in cell biology, molecular biology, or biochemistry, several years of postdoctoral experience, and a strong research record in the areas of signal transduction and/or insulin resistance. Excellent interpersonal skills to produce results in a highly collaborative, team-oriented research environment are required.

DEPT. ADSCMPH31

KNOWLEDGE IS POWERFUL MEDICINE

POSITIONS OPEN

MANAGER FOR SHARED CELL IMAGING FACILITY

Dynamic scientist sought to manage the Cell Imaging Core facility: confocal microscopy, neurobiological imaging, time lapse cinematography, microinjection, et cetera. The individual is expected to develop/expand capabilities of the facility; introduce new imaging tools; upgrade computers and cell imaging software; develop/present training lectures and mini-courses; train individual users; assist scientists with varying imaging needs; participate in research projects; develop budgets; and assist in preparing applications to raise funds for facility expansion. Desired background: Training in Embryology, Cellbiology or Neurobiology; Extensive expertise in microscopy and computing. Must have good written, oral, and interpersonal communication skills. Salary and type of appointment depends upon background and experience. Interested candidates please send curriculum vitae and names of three references to: **Dr. Barbara Ranscht, The Burnham Institute, 10901 North Torrey Pines Road, La Jolla, CA 92037. FAX: 619-646-3197; Email: ranscht@ljcrf.edu.**

THE BURNHAM INSTITUTE
La Jolla Cancer Research Center
An Equal Opportunity Employer

ASSISTANT RESEARCH SCIENTIST MEDICAL COLLEGE OF GEORGIA

Position available (non-tenure) February 1997 to study the mechanism of action of peptides, such as endothelin and substance P, on lipid-derived second messenger production in iris smooth muscle. Candidate should have a Ph.D. in biochemistry or pharmacology and about two years of postdoctoral experience. He or she will be encouraged to apply for extramural funding. Salary range is between \$30,000 and \$35,000, depending upon experience. Applicants should submit a curriculum vitae plus the names and addresses of three references to: **Professor Ata Abdel-Latif, Department of Biochemistry and Molecular Biology, Medical College of Georgia, Augusta, GA 30912-2100.**

The Medical College of Georgia is an Equal Opportunity/Affirmative Action Employer.

A&PC, a rapidly expanding biotech company involved in drug discovery design and manufacturing with a large bioorganic chemistry department, seeks self-motivated, well-trained **CHEMISTS** with at least three years of postdoctoral experience related to X-ray crystallography, molecular design and modeling. The successful candidates must have a Ph.D. or an equivalent degree, along with an outstanding publication record.

Send curriculum vitae with cover letter by February 14, 1997 to:

A&PC Human Resources
P.O. Box 130517
St. Paul, MN 55113

DATABASE PRODUCTS ASSOCIATE

The Genetics Computer Group (GCG) is seeking an individual with a strong background in computing (UNIX), familiarity with molecular biology, and an interest in learning the technical and scientific aspects of bioinformatic databases. This person will be responsible for assembling and producing the Database Update Service that is provided to the international community of scientists that use the GCG Wisconsin Package for sequence analysis.

Submit curriculum vitae with references to:

Genetics Computer Group, Inc.
575 Science Drive
Madison, WI 53711

Genetics Computer Group is an Equal Opportunity Employer.

PLANT CELL BIOLOGIST

One year, full-time position with possibility for up to two additional years pending funding. Teaching responsibilities for cellular and molecular semester of General Biology and a one-semester course in General Botany. Other courses as needed by the department which would likely include a course in an area of the candidate's special expertise. Qualifications for the position include a Ph.D. and demonstrated experience, interest and ability teaching undergraduates. Coe College is a four-year liberal arts college granting a B.A. degree in biology. Send curriculum vitae, statement of teaching interests, and three letters of recommendation to: **Dr. Wendy Dunn, Interim Dean, Coe College, Cedar Rapids, IA 52402.** Deadline for applications: March 1, 1997. Coe College is an Equal Opportunity Employer.

POSITIONS OPEN

RESEARCH SCIENTIST AGRICULTURAL RESEARCH SERVICE (ARS)

The Immunology and Disease Resistance Laboratory (ARS) U.S. Department of Agriculture, in Beltsville, Maryland, is seeking a **RESEARCH SCIENTIST** to study protozoan parasites affecting food animals and public health. Scientist will conduct independent and collaborative research to develop diagnostic tests for *Cryptosporidium parvum* to aid in the epidemiologic and ecologic studies and to prevent disease spread in animals and the environment. Research will focus on understanding the mechanisms by which protozoan parasitic infections of livestock can be controlled. Candidate must have experience in animal disease research with knowledge of molecular biology, immunology and biochemistry. Ph.D. is desirable. Must be a U.S. citizen. Salary is commensurate with experience (\$45,939 to \$54,629 per annum). For information on the research program contact: **Dr. Joan Lunney, Research Leader, Telephone: 301-504-8201.** For announcement and forms, call **Ms. Robin Mazzyk, Telephone: 301-344-0102.** Mail résumé: **ATTN: ARS-D7B-059-04** not later than March 24, 1997, to **USDA-ARS, BAHQOB, 6305 Ivy Lane, Room 361, Greenbelt, MD 20770.** USDA is an Equal Opportunity Employer.

POSTDOCTORAL POSITION available now to investigate the regulation of vascular smooth muscle cell proliferation and lymphocyte activation during the induction of atherosclerosis and hypertension with particular focus on the regulation of cyclin dependent kinases and telomerase. Theoretical background in signal transduction or transcription preferred. Technical background in molecular biology and/or protein chemistry required. Please send curriculum vitae, brief summary of research interests, and three letters of recommendation to: **Dr. Karen Buchkovich, University of Illinois at Chicago, Department of Pharmacology (M/C 868), 835 South Wolcott, Room E403, Chicago, IL 60612-7343.**

POSTDOCTORAL POSITIONS are open for research on 1) neuronal physiology and synaptic plasticity in transgenic mouse models of disease (available immediately) and 2) molecular physiology of ion channel gating and regulation (available 7/97). Electrophysiology experience is helpful. Please send curriculum vitae, statement of research interests, and the names and telephone numbers of three references to: **Dr. Linda Boland, Physiology Department, 6-255 Millard Hall, University of Minnesota, Minneapolis, MN 55455. Telephone: 612-625-8613; FAX: 612-625-5149; Email: boland@neuro.med.umn.edu.** The University of Minnesota is an equal opportunity educator and employer.

POSTDOCTORAL POSITIONS are available to study synaptic signaling. Research projects focus on cellular mechanisms for synaptic plasticity and neurodegeneration mediated by nitric oxide (NO) and glutamate receptors in brain. (*Cell* 82:743-752 (1995), *Cell* 84:757-767 (1996), *Neuron* 17:759-767 (1996)). Please send curriculum vitae and the names of references to: **David S. Bredt, M.D., Ph.D., Department of Physiology, University of California at San Francisco, 513 Parnassus Avenue, San Francisco, CA 94143-0444. Telephone: 415-476-4929; FAX: bredt@itsa.ucsf.edu.**

POSTDOCTORAL ASSOCIATE position is available to design and carry out experiments involving antisense DNA therapy of lymphoma *in vitro* and in acid mouse/human lymphoma model. Expertise in cell culture, DNA/RNA/protein analysis, flow cytometry required; experience with mouse models helpful. Send curriculum vitae and three letters of reference to: **Mitchell Smith, M.D., c/o Human Resources Department, Fox Chase Cancer Center, 7701 Burholme Avenue, Philadelphia, PA 19111.** We are an Equal Opportunity/Affirmative Action Employer.

POSTDOCTORAL FELLOW/ RESEARCH FELLOW

Available June 1997 for recent graduates with a Ph.D. in molecular biology or cell biology interested in malignant transformation and cellular differentiation. Send curriculum vitae and names of three references to: **Mark A. Israel, PIBS Graduate Program in Developmental Biology and Department of Neurological Surgery, University of California, San Francisco (UCSF), 513 Parnassus Avenue, San Francisco, CA 94143-0520. Email: israel@cgl.ucsf.edu.** UCSF is an Equal Opportunity/Affirmative Action Employer.

POSITIONS OPEN

POSTDOCTORAL POSITION GENETIC CONTROL OF GENE SILENCING IN PLANTS

POSTDOCTORAL POSITION available immediately to study *cgsl* and *egs2* genes which regulate post-transcriptional gene silencing in Arabidopsis. Project involves characterization of mutants and continuation of ongoing map based cloning projects. Applicant with a Ph.D. and a strong plant molecular biology background is desirable. Send curriculum vitae with three references to: **Sarah Grant, Ph.D., Department of Biology, Coker Hall, CB#3280, University of North Carolina, Chapel Hill, NC 27599-3280. FAX: 919-962-1625; Email: sgrant@email.unc.edu.**

POSTDOCTORAL POSITION available immediately to study ribosome structure and function using three-dimensional cryo-electron microscopy. Requirements: Ph.D. or equivalent, background in math/physics. Special focus of the research project is to obtain 3D data enabling precise ribosomal RNA modeling. Oligo-probes are localized using cryo-EM and 3D reconstruction of ribosomes.

All applications to: **Dr. Joachim Frank, Wadsworth Center, New York State Department of Health, P.O. Box 509, Albany, NY 12201-0509. FAX: 518-486-2191.** The Wadsworth Center/Health Research, Inc. is an Equal Opportunity/Affirmative Action Employer.

M.D. OR M.D./PH.D. with strong research experience in basic immunology and vaccine development. Good package, technical support, hard money salary, near Bethesda NIH research community, spacious laboratories, tenure-track open rank position. Salary negotiable. Available July 1, 1997. Applications must be received by March 15, 1997. Send curriculum vitae with references to: **Civilian Human Resources, Uniformed Services University, 4301 Jones Bridge Road, Bethesda, MD 20814-4799.** The Uniformed Services University of the Health Sciences is an Equal Opportunity/Affirmative Action Employer.

POSTDOCTORAL POSITION is available to undertake novel immunotherapy experiments at progressive stages of melanoma in transgenic mice whose cutaneous and metastatic disease closely parallels human malignant melanoma. T-cell peptide vaccines will be based on our recent discovery that the tumors have consistent changes in RNA processing of melanocyte-specific genes. Expertise in molecular biology and/or immunology is required. Send curriculum vitae and names of references to: **Dr. Beatrice Mintz, Fox Chase Cancer Center, 7701 Burholme Avenue, Philadelphia, PA 19111.** We are an Equal Opportunity/Affirmative Action Employer.

POSTDOCTORAL POSITION available to study the molecular mechanism of virus-membrane fusion (*J. Cell Biol.* 134:863-872 1996). Experience in molecular biology, protein biochemistry and/or virology required. Send curriculum vitae, summary of relevant experience, and names of three references to: **Dr. Margaret Kielian, Department of Cell Biology, Albert Einstein College of Medicine, Jack and Pearl Resnick Campus, 1300 Morris Park Avenue, Bronx, NY 10461. Email: kielian@acom.yu.edu.** Equal Opportunity Employer.

POSTDOCTORAL POSITIONS-UCLA: A) Function and regulation of novel secreted forms of human IgE produced by alternative RNA splicing. Ligand binding and biologic functions of isoforms and molecular studies on the regulation of alternative ϵ RNA splicing. Contact: **Dr. A. Saxon, FAX: 310-206-8107.** B) T-cell activation. MAP kinase cascades in TCR signaling—transcriptional regulation of genes involved in T-cell growth, cytokine production and apoptosis. Contact: **Dr. A. Nel, FAX: 310-206-8107.** Equal Opportunity Employer.

POSTDOCTORAL RESEARCH FELLOWSHIP available for studies on bone cell regulatory proteins. Experience in protein purification, basic biochemistry, molecular biology techniques, and signal transduction mechanisms desirable. Ph.D. required. Two to three years of previous postdoctoral experience desirable. Salary and benefits competitive; possibility exists for long-term position. Send résumé and cover letter to: **Dr. S. Mohan, P.O. Box 7210, Loma Linda, CA 92354.**

NIH grant supported **POSTDOCTORAL POSITION** available to study the novel functions of lecithin-cholesterol acyltransferase (LCAT) and its significance in atherogenesis. Experience in cell culture and molecular biology techniques desirable. Salary commensurate with experience. Send curriculum vitae and list of references to: **Dr. P. V. Subbiah, Rush Medical College, 1653 West Congress Parkway, Chicago, IL 60612. FAX: 312-455-9814; Email: psubbiah@rpslmc.edu.**

Terrapin Technologies, Inc., is a privately held biotechnology company with a fully integrated drug discovery portfolio of technologies. These technologies are being applied to signal transduction pathways impacting diseases such as diabetes, allergy and asthma. Currently, we have several exciting positions in our Departments of Biological Research and Separation Sciences. The successful candidates will work in a highly collaborative atmosphere on new and existing projects.

TERRAPIN **SCIENTIST/SENIOR** **SCIENTISTS**

Gene Expression Scientist

You'll lead a group and be responsible for the expression needs of all of the projects at Terrapin. The position requires a PhD or equivalent experience as well as the demonstrated ability to engineer microorganisms to overexpress recombinant proteins. Required technical skills include a detailed knowledge of expression vectors and strategies, as well as benchtop or small fermentor production approaches. Experience with prokaryotic expression systems is required, as well as the additional experience or interest in working with eukaryotic expression systems such as insect cells. Industrial experience is a plus. Job: DLH-ES

Immunologist

Applying your expertise in cell biology, you will be responsible for identifying and understanding significant protein interactions required for T cell activation. A PhD and demonstrated record of productivity in the area of immunology and/or signal transduction are required. Industrial experience would be ideal. Hands-on experience with T cell activation is a plus as is knowledge of animal models commonly used in the asthma/allergy field. Depending on your qualifications, this will be a senior scientist-level position and include project team management. Job: DLH-CBI

Biochemist

You'll lead a group specializing in protein purification and characterization. Experience in the quantification of protein-protein interactions highly desirable. Knowledge of signal transduction is a plus. A PhD in biochemistry or related field is required. The successful candidate will participate in work directed to the identification of targets of interest, as well as be involved in the design of high-throughput and secondary screens aimed at identifying compounds of pharmacological significance. Job: DES-BST

Terrapin offers an attractive salary and benefits package. We invite you to send your resume with the appropriate job title to: **Terrapin Technologies, 750 Gateway Blvd., South San Francisco, CA 94080.** Terrapin Technologies is an Equal Opportunity/Affirmative Action Employer.

Career Opportunities!!

Located in the Pacific Northwest, ICOS Corporation is discovering and developing new pharmaceuticals by seeking points of intervention in the inflammatory process that may lead to more specific and efficacious drugs. The company's research targets both acute & chronic conditions such as ARDS, cardiovascular disease, hemorrhagic shock, ischemic stroke, male erectile disorder and multiple sclerosis, and our continued growth & success has created the following career opportunities:

Senior Clinical Research Associate

We're seeking a detail-oriented CRA to join our Clinical Affairs team. Candidates must possess a BS/MS in biology or health science; 3+ years of experience managing and/or monitoring clinical trials; and proven experience serving as a liaison with clinical sites, contract research and data management groups. The demonstrated ability to contribute in a team setting & strong written/verbal communication skills are essential. Frequent travel required. (Job# YU0796C-SCI)

Statistical Programmer/Application Developer

We have a great opportunity for a hands-on professional to support our Clinical Department. You will maintain all statistical & graphics software; analyze clinical data; and write applications to capture CRF data. You will also help maintain the clinical database system, and coordinate statistical services with CROs. Candidates must possess a BS/MS in statistics, biological science or closely allied discipline; 3-5 years of extensive statistical analysis experience using SAS, SPSS and S-PLUS; familiarity with the biotech and/or CRO environment; and the demonstrated ability to shift focus & work well under pressure. Experience with SAS programming, database programming and application development software (C++, Visual Basic, etc.) strongly preferred. Familiarity with BBN Clintrial and Oracle a plus. Knowledge of medical terminology desired. (Job# SA00197-SCI)

We offer attractive compensation & benefits, including stock options. Qualified candidates are encouraged to send their resumes to the address below. All of our job postings may be referenced at www.bio.com/companies/icos.html

i

còs

ICOS Corporation
Human Resources, Attn: Job# _____
22021 20th Avenue SE
Bothell, WA 98021

EOE

Associate Scientist

At Parke-Davis Pharmaceutical Research Division of the Warner Lambert Company, inspired science, a strategy of innovation, the newest technology and our dedicated team members have made us an international leader in the pharmaceutical industry.

The Road to
Discovery Runs
Through Parke-Davis.



Currently, we are seeking an experienced and self-motivated individual to join our Cancer Research team in the evaluation of new anticancer agents against murine tumors and human tumor xenografts. The chosen individual will join a multidisciplinary team dedicated to the discovery and development of novel cancer therapies.

A BS or MS degree in the scientific disciplines with 2-4 years' experience in the in vivo evaluation of new therapeutic agents, including the identification and documentation of toxicological signs in small animals is required. Experience in the design and development of pharmacokinetic assays to quantitate new agents in biological matrices is highly desirable.

Additional expertise in the following areas

would be advantageous: tissue culture, biochemical assays, computers, molecular biology and small animal survival surgery.

Members of our world-class team enjoy competitive salaries, benefits and career growth potential. For consideration, please mail, fax or e-mail a resume to: **Parke-Davis Pharmaceutical Research, JOB CODE RJB-96228, Human Resources Department, 2800 Plymouth Road, Ann Arbor, MI 48105. Fax: (313) 998-3394. E-mail: resume@aa.wl.com.**

When submitting your resume please follow these guidelines to ensure that your resume will electronically scan legibly: Please use white laser quality paper; standard fonts such as Courier or Helvetica in 10 point or larger; and avoid the use of bold, italics, underlines, borders, boxes and graphics.

Equal Opportunity in action.
Smoke-free work environment.

 **PARKE-DAVIS**

POSITIONS OPEN

GRADUATE FELLOWSHIPS (three years) in the Avian Biotechnology Interdisciplinary Graduate Programs at Purdue University are available beginning July 1, 1997. Students may pursue a Ph.D. degree in the Departments of Basic Medical Sciences or Veterinary Pathobiology in the School of Veterinary Medicine or in the Departments of Animal Sciences or Food Science in the School of Agriculture. General areas of research include: 1) diagnosis and treatment of infectious disease of poultry or 2) avian growth and reproduction. Applicants must be U.S. citizens with B.S. or D.V.M. or equivalent degree. For more information, contact: **Dr. C. C. Wu, Department of Veterinary Pathobiology, ADDL, Purdue University, West Lafayette, IN 47907-1175. Email: wu@addl.purdue.edu; Telephone: 317-494-7459 or Dr. P. Y. Hester, Department of Animal Sciences, 1026 Poultry Building, Purdue University, West Lafayette, IN 47907. Email: PHester@ansc.purdue.edu; Telephone: 317-494-8019.** Announcement also is available at <http://www.ansc.purdue.edu>. *Purdue University is an Affirmative Action/Equal Opportunity Employer.*

POSTDOCTORAL TRAINING POSITIONS

POSTDOCTORAL TRAINING POSITIONS available for both human and experimental animal research studies. The training positions are funded by an NIMH training grant. Human studies are evaluating: 1) the effects of psychosocial factors on immune function and susceptibility to infectious disease and 2) the interaction between psychosocial factors, immune function and clinical parameters in patients with multiple sclerosis. Experimental animal studies are evaluating: 1) the discrete neuronal pathways that mediate stress-induced changes in splenic nerve activity resulting in alterations of cellular and humoral immune responses and 2) effects of the immune response and cytokines on central nervous system function. Further information can be obtained from: **Bruce S. Rabin, M.D., Ph.D., University of Pittsburgh Medical Center. Telephone: 412-647-3787; FAX: 412-647-7741; Email: bsr+@pitt.edu.** *An Equal Opportunity Employer.*

POSTDOCTORAL POSITION available immediately to study the actions of pregnancy, sex hormones and hypoxia on endothelial and vascular smooth muscle function. NIH-funded research programs in the lab focus on the regulation of the nitric oxide/cGMP pathway in both the fetal and maternal circulations. The candidate will use a combination of biochemical and molecular biology techniques such as enzyme assays, mRNA isolation, PCR and RPA to study the mechanisms involved in gene expression and product formation. Send curriculum vitae, statement of research interests and names of three references to: **Dr. Loren P. Thompson, University of Maryland School of Medicine, Department of Obstetrics, Gynecology, and Reproductive Sciences, Bressler Research Building, Room 11-040, 655 West Baltimore Street, Baltimore, MD 21201.**

POSTDOCTORAL FELLOWSHIP to study the role of protein kinase C isozymes in neural plasticity and neurodegenerative disorders, using transgenes or homologous recombination to target individual isozymes in cell culture and mouse models. Background in biochemistry, cell biology and techniques of molecular biology required. Applicant should have gained a Ph.D. or M.D. within the last three years. Please send curriculum vitae, description of past research, and at least two to three references with telephone numbers to: **Dr. Robert O. Messing, Gallo Research Center, University of California, San Francisco, Building 1, Room 101, 1001 Potrero Avenue, San Francisco, CA 94110. FAX: 415-648-7116.** *Equal Opportunity Employer.*

POSTDOCTORAL POSITION available to study immunologic approaches to the treatment of drug abuse. Experience in immunology, pharmacokinetics or behavioral pharmacology required. Send curriculum vitae, names of three references and a brief description of research experience to: **Dr. Paul Pentel, Division of Clinical Pharmacology and Toxicology, Hennepin County Medical Center, 701 Park Avenue South, Minneapolis, MN 55415. FAX: 612-904-4299; Email: pente001@maroon.tc.umn.edu.**

POSTDOCTORAL POSITION available immediately for a Ph.D. and/or M.D. to identify and study prostate-specific genes. Experience in molecular cloning is strongly preferred. Send curriculum vitae and names of three references to: **Dr. Xue-Ru Wu, Department of Urology, New York University Medical Center, 550 First Avenue, New York, NY 10016. FAX: 212-263-8561.**

POSITIONS OPEN

POSTDOCTORAL POSITION to study male germ cell culture, genetic modification and transplantation (*Nature* **381**, 418; *Nature Med.* **2**, 693). Send curriculum vitae, names of three references, and description of research skills and interests to: **R. L. Brinster, School of Veterinary Medicine, University of Pennsylvania, 3850 Baltimore Avenue, Philadelphia, PA 19104.**

POSTDOCTORAL RESEARCH POSITION

Available immediately for Ph.D., M.D. in strong interdisciplinary group of scientists within the East Carolina University School of Medicine Center for Alcohol and Drug Abuse Studies. Research experience desired in areas of psychopharmacology and neurochemistry with background helpful in CNS techniques including microinjection, cerebral dialysis, push-pull perfusion, and chromatographic separation of serotonin and catecholamine neurotransmitters. State-of-the-art procedures including peptide synthesis, radioligand receptor analysis, and antisense technology are available. Send curriculum vitae and three letters of recommendation to: **Prof. R. D. Myers, Department of Pharmacology, School of Medicine, East Carolina University, Greenville, NC 27858.** Federal law requires proper documentation of identity and employability at the time of employment. *Affirmative Action/Equal Opportunity Employer.*

POSTDOCTORAL POSITIONS—CANCER BIOLOGY/IMMUNOLOGY

Immediate openings for two, full-time **POSTDOCTORAL FELLOWSHIPS** at the Hines VA/Loyola Medical Center Campus to study: 1) mechanisms by which cancers subvert T-cell function, with emphasis on tumor-induced immune suppressor cells; 2) mechanisms of site-specific metastasis. Applicants should have experience in cellular immunology or cell biology, and training in molecular biology. Send curriculum vitae, letter describing background and training, and addresses of three references to: **Dr. M. Rita Young, Research Service, Hines VA Hospital, P.O. Box 7003, Hines, IL 60141-7003. Email: myoung1@wpo.it.luc.edu.** U.S. citizenship required. *Equal Opportunity Employer, Minorities/Females/Disabled.*

POSTDOCTORAL POSITION MASSACHUSETTS INSTITUTE OF TECHNOLOGY

POSTDOCTORAL POSITION available in a laboratory at the Massachusetts Institute of Technology for structural studies of multi-protein complex (ORC) that binds to eukaryotic DNA replication origins or for crystallographic study of other protein-DNA complexes. Please forward a cover letter and curriculum vitae to:

**Professor Carl O. Pabo
Department of Biology, 68-580
Massachusetts Institute of Technology
77 Massachusetts Avenue
Cambridge, MA 02139
*An Equal Opportunity Employer.***

The Wisconsin Regional Primate Research Center, University of Wisconsin, has a **POSTDOCTORAL POSITION** in the laboratory of Dr. James Thomson. Emphasis will be on the differentiation of primate embryonic stem cells to tissues of human clinical significance, including trophoblast, neural and endoderm derivatives. We seek a highly motivated individual with a background in molecular biology and enthusiasm for developmental biology. Please send a curriculum vitae, an introductory letter containing a brief description of research experience, three references, and contact information to: **Dr. James Thomson, c/o Susan Carlson, Wisconsin Regional Primate Research Center, 1220 Capitol Court, Madison, WI 53715-1299. FAX: 608-263-4031.** *The University of Wisconsin is an Equal Opportunity Employer.*

POSTDOCTORAL POSITIONS are available for candidates with recent Ph.D. training in cell biology, molecular biology, or biochemistry. The NIH funded project is aimed at understanding the structure-function relationships and the signaling roles of Rho family small GTP-binding proteins and their regulatory proteins, particularly the Dbp-1 oncogene like small G-protein activators. Send curriculum vitae and names of two references to: **Dr. Yi Zheng, Department of Biochemistry, University of Tennessee, Memphis, TN 38163. FAX: 901-448-7360; Email: yzheng@utmem1.utmem.edu.**

POSITIONS OPEN

POSTDOCTORAL POSITION is available immediately to investigate metabolic and molecular aspects of mammary gland carcinogenesis and chemoprevention in the rat. Research projects are concerned with 1) identification of activation pathways in metabolism of environmental nitrofluorenes by the mammary gland (epithelium and adipocytes) and 2) modulations of cytochromes P450-CYPs and estrogen metabolism in the mammary gland and tumors in response to treatment with chemopreventive agents. Applicants with strong background in medicinal chemistry or biochemistry and experience in organic syntheses (reduced nitro aromatic derivatives), HPLC and standard molecular techniques are preferred. The appointment is for three+ years through the University of Minnesota Medical School, Minneapolis, Minnesota. Mail or fax curriculum vitae, a brief summary of salient research experience, and names and addresses of three references to: **Dr. Danuta Malcicka-Giganti, VA Medical Center (151), One Veterans Drive, Minneapolis, MN 55417. Telephone: 612-725-2000 X4583; FAX: 612-725-2255.** *University of Minnesota is an Equal Opportunity Employer.*

POSTDOCTORAL FELLOW EARLE A. CHILES RESEARCH INSTITUTE PORTLAND, OR

Three year Molecular and Cellular Immunology postdoctoral position is available for a Ph.D. to study CD4+T cell costimulation in a tumor setting. We have recently been funded to study a novel costimulatory pair OX-40/OX-40 ligand (which generates a comparable signal to CD28:B7) in order to generate a tumor vaccine.

Experience in cellular immunology, molecular biology, FACScan operation and animal models will be helpful. The Institute offers a highly interactive group that would like to translate basic immunology findings to the clinic.

Send curriculum vitae, brief description of research interests, and names of three references to: **Andrew Weinberg, Ph.D., Earle A. Chiles Research Institute, Providence Portland Medical Center, 4805 Northeast Glisan Street, Portland, OR 97312.** *Equal Opportunity Employer. Committed to a Culturally Diverse Workplace.*

POSTDOCTORAL POSITIONS PROTEIN/DNA INTERACTIONS AND CANCER GENETICS

Positions available to study (i) thermophilic DNA recognition proteins and their use in genetic disease detection, especially the Ligase Chain Reaction, and (ii) mutations associated with tumor development. Applicants should have a Ph.D., preferably with experience in protein-DNA interactions, structural biology, automated DNA sequencing, DNA synthesis and nucleic acid chemistry, PCR, and cancer or human genetics. Salary based on experience. Send curriculum vitae and names of three references to: **Professor Francis Barany, Program of Biochemistry and Structural Biology, Department of Microbiology, Box 62, Cornell University Medical Center, 1300 York Avenue, New York, NY 10021. FAX: 212-746-8587.** *Equal Opportunity Employer.*

POSTDOCTORAL POSITION THE UNIVERSITY OF CHICAGO PRITZKER SCHOOL OF MEDICINE

A postdoctoral position is immediately available to study role of recombination proteins in cellular resistance to radiation-induced DNA damage in yeast and human cells. Preference will be given to candidates with experience in biochemistry and molecular biology. Please fax curriculum vitae, description of research experience, and a list of three references to:

**Douglas Bishop, Ph.D.
Department of Radiation and Cellular Oncology
University of Chicago Medical Center
5841 South Maryland Avenue, MC1105
Chicago, IL 60637
FAX: 312-702-1968**

The University of Chicago is an Equal Opportunity Employer.

POSTDOCTORAL FELLOW FUNCTION OF RAS AND RELATED GTPases

Postdoctoral position available to study 1) the role of Ras-GRF in calcium induced Ras activation in brain neurons (see *Nature* **376**:524, 1995); and 2) the role of Ras GTPases as newly identified effectors of Ras (see *EMBO* **16**:810, 96 and *Nature* **378**:409, 95). Please send curriculum vitae to: **Dr. Larry Feig, Ph.D., Department of Biochemistry, Tufts University School of Medicine, Boston, MA 02111. Email: lfeig@opal.tufts.edu.**

Genzyme Genetics is a \$50 million, full service genetic testing laboratory with facilities throughout the U.S.

RESEARCH SCIENTIST

The successful candidate will plan, manage, and execute a project plan aimed at the identification of genes responsible for specific inherited diseases. We seek an experienced scientist with demonstrated expertise in molecular genetics, positional cloning, transcriptional mapping and automated DNA sequencing. Ph.D. in biological sciences with 2 or more years' relevant postdoctoral training and an additional 2-4 years' industrial academic required. Supervisory experience is helpful. **Job Code: BB-R781.**

Genzyme Genetics offers an excellent compensation and benefits package. Please send or fax your c.v. to: **Human Resources Dept., Genzyme Genetics, One Mountain Road, Framingham, MA 01701. Fax: (508) 872-2460. An equal opportunity employer.**

genzyme
GENETICS

DEAN OF THE NEW YORK STATE COLLEGE OF VETERINARY MEDICINE AT CORNELL UNIVERSITY

Cornell University is seeking applications or nominations for dean of the New York State College of Veterinary Medicine at Cornell University.

The mission of the College of Veterinary Medicine is one of veterinary education, service, and research. At present 327 veterinary students are enrolled in a curriculum leading to the DVM degree. In addition, there are 96 graduate students carrying out advanced study and research. The college has 148 faculty members, 158 academic professionals, 132 nonacademic professionals, 431 support staff, and 38 interns and residents. The budget for the college is nearly \$53.5 million annually, including grants and contracts. The college has initiated a new curriculum for veterinary students this past year, emphasizing new methods of educational teaching and delivery. A new education building was completed in 1994, and a new hospital, research, and teaching facility was completed in 1995. The college has a major commitment to biomedical research and veterinary service, and has extensive research laboratory and clinical facilities.

Cornell is seeking a dean who is a distinguished teacher, clinician, and researcher. The candidate must possess outstanding leadership qualities, excellent communication skills, and proven administrative ability, and be a person who is committed to high standards of education, service, and research involving a diversified faculty, staff, and student body. The dean must deal effectively with external constituencies which would include practitioners, alumni, veterinary and other related groups, and agencies of the State and Federal government. The dean must provide leadership for the educational programs and clinical veterinary services of the college, and create an atmosphere of support for the wide range of research programs of the college. The candidate must possess a DVM degree.

Cornell University is an affirmative action/equal opportunity employer and complies with the American with Disabilities Act of 1990. Nominations, applications, and inquiries should be directed to: **Provost Don M. Randel, Chair, Search Committee for Dean of the College of Veterinary Medicine, 300 Day Hall, Cornell University, Ithaca, New York 14853-2801; Phone: (607) 255-2364; Fax: (607) 255-9924.**

Applications will be evaluated starting immediately, and the target starting date will be at the beginning of the next academic year.

CORNELL
UNIVERSITY

Education/Research

Three Faculty Positions in Molecular Cell Biology

The University of Delaware

The Department of Biological Sciences is proceeding with a major initiative to strengthen cellular and molecular biology. In addition to the hiring of a number of new faculty members, we are building a state-of-the-art cell biology core facility with capabilities for automated DNA sequencing and confocal microscopy. At this time, we invite applications for three tenure-track faculty positions at the ASSISTANT, ASSOCIATE OR FULL PROFESSOR level. Candidates must have a PhD or equivalent and a minimum of two years post-doctoral experience. The successful individuals will establish strong extramurally-funded research programs and participate in undergraduate and graduate-level teaching. Preference will be given to outstanding candidates who are supported by federally funded grants. We seek individuals with a research interest in:

- 1) Cell Signaling (Signal transduction or cell-cell communication using a eukaryotic model)
- 2) Gene Transfer and Expression (Delivery and expression of foreign genes in eukaryotic cells and/or organisms)
- 3) Mammalian Development (Preferably using transgenic and/or knockout technologies)

The starting date for these positions is Sept. 1, 1997 or earlier. Review of applications will begin upon receipt and will continue until the positions are filled. Applications received by March 22, 1997 will receive full consideration. Applicants should submit a complete curriculum vitae, selected reprints, a description of research interests and goals, and have three letters of reference sent to: **Dr. Daniel Simmons, Chair, Faculty Search Committee, Department of Biological Sciences, University of Delaware, Newark, DE 19716-2590. Telephone: 302 831-6977, FAX: 302-831-2281, e-mail: dsimmons@udel.edu**

The UNIVERSITY OF DELAWARE is an Equal Opportunity Employer which encourages applications from Minority Group Members and Women.



Medical Analysis Systems has excellent opportunities for dynamic professionals at its Camarillo facility, located in beautiful Ventura County, CA.

PROTEIN CHEMIST

We have an opportunity for a results-oriented scientist with extensive knowledge of the purification and characterization of biomolecules such as proteins, polysaccharides and peptides.

Your research skills should include a working knowledge of purification techniques such as chromatography, electrophoresis, and filtration and concentration. Must also know common biochemical and physical methods of characterizing macromolecules.

RESEARCH IMMUNOLOGIST

This challenging position requires knowledge of protein biochemistry and/or immunology with experience in immunoglobulin structure, function and biochemical derivatization. Experience with the development of solid and liquid phase immunoassays utilizing direct and competitive binding approaches is very helpful. Relevant experience with development of immunostrip point-of-care diagnostic devices would be a significant asset.

Your research skills should include a working knowledge of common protein derivatization techniques. Must also have the ability to characterize these modified antigens and/or antibodies utilizing both solid and liquid phase immunoassays.

Outstanding salary and benefits. Please send your resume and salary history to: **MEDICAL ANALYSIS SYSTEMS, INC., 542 Flynn Road, Camarillo, CA 93012, Attn: Human Resources. EOE M/F/D/V.**

**Wanted: Committed, ambitious
scientist. Must be a team player
with a vision for the future.
M.D./Ph.D., Ph.D., M.S. or
B.S. degree necessary.**

Does this describe you?

If it does, then plan to attend the bioSCIENCE Career Fairs sponsored by SCIENCE. The bioSCIENCE Career Fairs offer the perfect opportunity for scientific professionals to meet in person with representatives from top biotechnology and pharmaceutical companies, universities, governmental agencies and institutions.

Next 1997 bioSCIENCE Career Fairs

AAAS/bioSCIENCE Career Fair

Seattle, WA at the Washington Convention Center

18 February: 11am - 5pm

Cambridge, MA on the MIT Campus

84 Massachusetts Ave., Stratton Bldg. Student Center, 2nd Floor, La Salla Room

28 February: 11am - 4 pm

1 March: 11am - 3 pm

To pre-register, please submit your resume or CV via fax: (202) 289-6742, or via e-mail: bioscience@aaas.org. Indicate the career fair location you are submitting it for. **Remember to bring multiple copies of your CV or resume with you to the Career Fair, a copy will be necessary to register.** Admission to all of the events is FREE.

For more information, please call (202) 326-7018

bioSCIENCE CAREER FAIRS

bioSCIENCE Career Fair Information Online: <http://www.sciencemag.org>
(Choose SCIENCE Professional Network from the menu)

Do not contact MIT directly. They are not responsible for organizing this event.

**Position Available for the Director of Biotechnology
and
Pharmaceutical Technology Division
National Health Research Institutes
Taiwan Republic of China**

The National Health Research Institutes (NHRI) is a newly established, non-profit research organization supported by the Government. The aim of NHRI is to promote medical, pharmaceutical and public health research in Taiwan for the needs of the Country. NHRI plays the role of funding agency for extramural research as well as conducting intramural research in the following research divisions:

- Biomedical Engineering
- Biostatistics
- Biotechnology and Pharmaceutical Technology
- Cancer Research
- Clinical Research
- Environmental Health and Occupational Disease
- Gerontology
- Health Policy
- Mental Health and Drug Abuse
- Molecular and Genomic Medicine

The Director of the Biotechnology and Pharmacology Division should be an administratively strong leader, in charge of development of a well focused research program and future recruitment of professional staff in the Division. In addition, the Director should be able to interact and carry out successful collaborative research programs both domestically and internationally. The applicant should have an advanced degree, such as an M.D. or Ph.D., and have 10 years or more of academic and industrial experience with an excellent publication record and with certain demonstration of administrative experience. The applicant should be familiar with the Chinese language and system and know how to function as a leader in Taiwan.

Applications or nominations should consist of a cover letter describing the vision and aspirations of the applicant for this Division in NHRI, a curriculum vitae, including a list of publications and copies of representative reprints, and a research proposal and/or business plan for the Division. This proposal should include a three year research plan, priority of the research area, size of research group and needed financial resources, budget and space. The address, telephone and fax number, and Email address, as well as any nomination or reference letter, should be sent to:

**Cheng-Wen Wu, President
National Health Research Institutes
128, Yen-Chiu-Yuan Road, Sec. II
Taipei 11529, Taiwan, R.O.C.
Tel: 886-2-6513712
Fax: 886-2-6513742**

The deadline for the application is April 10, 1997.

Recombinant BioCatalysis, Inc.

Recombinant BioCatalysis, Inc., is a leader in the discovery, development and commercialization of enzyme catalysts used for chemical synthesis and industrial processes. RBI is consolidating its offices in sunny San Diego, the heart of the California biotech community, offering excellent work and leisure opportunities. We are seeking motivated, results-oriented professionals to work in an exciting and fast-paced environment:

Automation Specialist A multitasking individual to help design, maintain and upgrade new and existing robotic assay systems. Candidates must be familiar with Sagian IID device driver, programming Sagian MDS software, HP ORCA robotic arm, Visual Basic Programming including serial communications, and simple electrical wiring skills including troubleshooting, new wiring and working with Opto22 modules, solenoids and relays. Excel macro writing in VBA, database experience including SQL and Oracle 7, and experience with automated liquid handlers are a plus. Basic knowledge of molecular biology, biochemistry and/or chemistry will be helpful.

Molecular Biologists/Geneticists Several positions anticipated, from Postdoctoral Fellow through Staff Scientist, for highly motivated individuals with experience in prokaryotic molecular biology and genetics with emphasis on expression cloning from diverse microbial sources; genomic and cDNA library construction; directed evolution; pathway engineering, expression and characterization of secondary metabolites; and prokaryotic mutagenesis. Ph.D. or 3-5 years of relevant industrial experience in the design, execution and analysis of experiments in the above areas.

Biochemist/Enzymologist Several positions open, from Postdoctoral Fellow through Staff Scientist, for individuals who have worked in enzyme assay development, enzyme kinetics and enzyme purification. Experience with the use of enzymes in organic synthesis or in molecular biology techniques, combinatorial screening or automated screening platforms is highly desirable. Ph.D. or 3-5 years of relevant laboratory experience.

Analytical Biochemist Position open for an individual with experience in small molecule separations using HPLC, GC, capillary electrophoresis. Knowledge of enzymology, enzyme assay development and enzyme characterization is a plus. B.S. to Ph.D.

Chemist Experience in one or more of the following areas: enzymology, including enzyme structure, kinetics, and mechanism; biocatalysis and biotransformation; analytical chemistry with emphasis on HPLC, GC, NMR, or capillary electrophoresis. B.S. through Ph.D. level. Experience or familiarity with organic synthesis is a plus.

Protein Purification and Expression Positions available at all levels for individuals with experience in processing and large-scale purification/chromatography of recombinant proteins. Previous industrial experience and molecular biology background desirable.

Molecular Biologist Positions open for individuals with experience in basic molecular biology lab techniques, expression cloning, expression screening, subcloning, and/or PCR. B.S. or equivalent.

Genomics/Sequencing Positions open for individuals with experience in one or more of the following areas: molecular biology, lab techniques, automated nucleotide sequencing, protein and nucleic acid sequence analysis, and/or PCR. B.S. to Ph.D. or equivalent.

Recombinant BioCatalysis, Inc., offers a small company atmosphere with big scientific potential and provides attractive salaries, comprehensive benefits and stock ownership. For consideration, please send your resume to **Recombinant BioCatalysis, Inc., 505 Coast Boulevard South, Suite 405, La Jolla, CA 92037 Attention: Human Resources.** We are an equal opportunity employer.



Recombinant BioCatalysis™ Inc.

POSTDOCTORAL FELLOW

Derald H. Ruttenberg Cancer Center

An outstanding postdoctoral opportunity is available immediately with the Derald H. Ruttenberg Cancer Center of the Mount Sinai School of Medicine.

**Mount
Sinai**®

Join an NIH-funded study of growth factor regulation of intestinal epithelial cell growth and function in inflammatory bowel disease. Investigations focus on signal transduction, identification of growth factor regulated genes and control of gene expression. A strong background in cellular and molecular biology required.

Send curriculum vitae, summary of research accomplishments and names of three references to: **Dr. Paul Finch, Derald H. Ruttenberg Cancer Center, The Mount Sinai Medical Center, Box 1130, One Gustave L. Levy Place, New York, NY 10029-6574; e-mail: pfinch@smtplink.mssm.edu; fax: 212-987-2240; Equal Opportunity Employer. We foster diversity in the workplace.**

The Mount Sinai Medical Center



PRINCETON UNIVERSITY

DEPARTMENT OF GEOSCIENCES

FACULTY POSITIONS

The Department is seeking applicants for one or two tenure track faculty appointments. While we encourage outstanding applicants in all areas of the earth sciences, the search will concentrate on the following areas of existing departmental strength:

- **Active Tectonics**—including crustal deformation, paleoseismology, geomorphology, erosional processes.
- **Solid-Earth Geophysics**—including mantle dynamics, earthquake source processes, structural geology, and the interface between petrology and tectonophysics.
- **Paleoclimate and Atmospheric & Oceanic Sciences**—including atmospheric and oceanic chemistry, dynamics, air-sea interactions and climate studies on all time scales.
- **Biogeochemistry and Low Temperature Geochemistry**—chemical and biological processes on the earth and in the ocean.

Applicants may add strength to and benefit from related programs at Princeton that support numerical modeling of atmospheric and oceanic processes and of present and past climate in the Program in Atmospheric and Oceanic Sciences and the Geophysical Fluid Dynamics Laboratory of NOAA, geochemistry and numerical modeling of porous-media and surface flow in the Program in Water Resources, and research at the interface of biology, chemistry, and geosciences in the new Princeton Environmental Institute. Applicants are strongly encouraged to apply by March 14, 1997; however there is no formal deadline.

Send resume, statement of teaching and research interests, and the names, addresses, and phone numbers of at least three references to **Professor George H. Philander, Chairman, Department of Geosciences, Princeton University, Princeton, NJ 08544-1003, (609) 258-4100, FAX (609) 258-5275. Princeton University is an Affirmative Action Equal Opportunity Employer: women and members of minority groups are encouraged to apply.**



CRAINE PROFESSOR AND HEAD

DEPARTMENT OF BIOCHEMISTRY

QUEEN'S UNIVERSITY HEALTH SCIENCES CENTRE

As a result of the appointment of Dr. T. Geoffrey Flynn as Vice-Dean of the Faculty of Medicine, applications are invited for the now vacant position of Craine Professor and Head of the Department of Biochemistry at Queen's University. Applicants will have achieved international recognition in research and scholarship, have proven skills in academic leadership and management, a record of professional accomplishments in teaching, and a commitment to graduate and medical education.

In accordance with Canadian Immigration requirements, this advertisement is directed to Canadian citizens and permanent residents. Queen's University has an employment equity program, welcomes diversity in the workplace and encourages applications from all qualified women and men, including visible minorities, aboriginal people, people with disabilities, gay men and lesbians.

Nominations and letters of application, in the latter case accompanied by a curriculum vitae, a description of research interests and the names of three referees, should be directed, by Friday, March 14, 1997 to:

Dr. B.T. Smith
Dean, Faculty of Medicine
and Vice-Principal (Health Sciences)
Queen's University
Kingston, Ontario
K7L 3N6

Postdoctoral Opportunities

in Enzymology at

Fox Chase Cancer Center

In the laboratories of Eileen K. Jaffe, George D. Markham, Anna Marie Skalka and Anthony T. Yeung

The Institute for Cancer Research of Fox Chase Cancer Center has postdoctoral openings in mechanisms of enzyme action and structural/function relationships of enzymes, including ones involved in DNA repair, nucleotide metabolism, retroviral integrase and tetrapyrrole biosynthesis.

For information about the FCCC postdoctoral training program, visit our home page at www.fccc.edu and view our Scientific Report.

Please respond to individual investigators at Fox Chase Cancer Center, 7701 Burholme Ave., Phila., Pa. 19111, or by e-mail (EK_Jaffe@fccc.edu, GD_Markham@fccc.edu, AM_Skalka@fccc.edu, AT_Yeung@fccc.edu).

Fox Chase Cancer Center is an Affirmative Action/ Equal Opportunity Employer.

ASSISTANT PROFESSOR

Developmental Neurobiology

The Pennsylvania State University

The Department of Biology invites applications for a tenure-track faculty position in developmental neurobiology. We seek a developmental biologist with a strong research program focusing on any aspect of neurogenesis using genetic and/or molecular approaches that would complement existing strengths in developmental biology and neuroscience. The Pennsylvania State University has made a commitment to expanding research and education in biological sciences through a new, University-wide Life Sciences Consortium (see <http://www.lsc.psu.edu>). The successful candidate will be expected to develop an active research program and participate in undergraduate and graduate teaching.

Applicants should submit a curriculum vitae, reprints of three key publications, a brief statement of research goals (three pages maximum), and arrange to have three letters of recommendation sent to:

Developmental Neurobiology

Search Committee

Department of Biology

208 Mueller Laboratory

The Pennsylvania State University

University Park, PA 16802

Review of applications will begin immediately and continue until the position is filled.

An Affirmative Action/Equal Opportunity Employer.

Women and Minorities Encouraged to Apply.



POSTDOCTORAL POSITIONS
Genome Technology Branch
National Human Genome
Research Institute
National Institutes of Health

Postdoctoral research positions are available for individuals interested in mammalian genetics and genome analysis at the National Human Genome Research Institute (NHGRI), formerly the National Center for Human Genome Research (NCHGR):

- Isolation of genes associated with inherited diseases
- Human genetic linkage analysis
- Human chromosome mapping and sequencing
- Sequence and structure analysis using computational techniques

More information on research programs and investigators within the Genome Technology Branch can be found at <http://www.nhgri.nih.gov/DIR/GTB>

Candidates should possess an MD and/or PhD and have less than five years of postdoctoral experience. Please send a letter, CV, and the names of three references to: **Renée Gamborg, Genome Technology Branch, NHGRI/NIH, 49 Convent Drive, Room 2C-72, MSC 4431, Bethesda, Maryland 20892-4431.** *The NIH is an Equal Opportunity Employer and applications by women and minorities are strongly encouraged.*

SYMPOSIA

We are pleased to announce that the
7th International Symposium on
Mechanisms of Vasodilatation

will be held in Maastricht (The Netherlands)
between July 6-9, 1997.

This symposium will be presided by Prof. P.M. Vanhoutte (France), and will be held under the auspices of the Cardiovascular Research Institute of Maastricht (CARIM).

The symposium will consider the vascular wall in its totality, and thus discuss autonomic innervation, vascular smooth muscle and the endothelium. We intend to discuss physiology, pathophysiology and pharmacology. We hope to open up the symposium also to structural aspects.

If you would like to participate in this important meeting, and to submit an abstract(s), please contact the Organization Secretariat. The scientific program of the symposium will be constructed based on submitted Abstracts.

Deadline for receipt of abstracts, registration and hotel accommodation forms: March 1, 1997

Organization Secretariat: Mrs. Denise Maggi
I.R.I.S., 6 Place des Pléiades
92415 Courbevoie Cedex (FRANCE)
Phone: (33.0)01.46.41.61.35 / 01.46.41.66.11
Fax: (33.0) 01.46.41.68.77

ANNOUNCEMENT



Consortium for
Plasma Science. LLC

\$4 Million over Three Years
for Plasma Pathogen
Inactivation Research

The Consortium for Plasma Science, LLC, a research collaborative of five plasma fractionation companies, announces availability of grants totaling \$4 million over a three-year period for research and development into methods to inactivate or remove pathogens in plasma and plasma derivatives, preferably with a focus on initial sterilization technologies.

The Consortium seeks to license and support broadly applicable technologies or methods that inactivate or remove pathogens without adversely affecting the efficacy of plasma or plasma derivatives. Primary emphasis should be placed on non-enveloped viruses, which may include Parvovirus, Hepatitis A, Vaccinia and SV40.

First round technology assessment grants will be in the \$25–50,000 range; up to \$250,000 is available to develop advanced technologies. Renewed funding will depend on progress.

First round proposals are due April 30, 1997; grants will be awarded beginning in June. Second round proposals are due September 30, 1997; grants will be awarded beginning in January, 1998. For information or grant applications contact:



Consortium for Plasma Science, LLC

Laura E. Bradford, Interim Director,
505 King Ave., Columbus, OH 43210-2693.
(614) 424-7716 (phone) (614) 424-3279 (fax)
or, bradford@battelle.org (e-mail)

The Division of Visual and Circulatory Biophysics in the Department of Biomedical Engineering at Boston University is offering a number of **Senior Postdoctoral Fellowships** for exceptional candidates from several disciplines. Under the direction of Dr. Mark W. Bitensky, we are developing an eclectic, multidisciplinary group, ranging from organic chemists and engineers to cardiac surgeons, to address a variety of fundamental questions and carry them through clinical applications. Recent work has included projects on the red blood cell storage lesion, methods for extending red cell storage and novel anti-thrombotic coatings for vascular grafts. We also have ongoing projects that address fundamental questions in the imaging and treatment of tumors.

Cell Biology — A major focus is the development of advance expression systems capable of influencing the mature set of gene products expressed in circulating erythrocytes. Other facets of our work pertain to endothelial and smooth muscle cell growth, both *in vivo* and *in vitro*.

Immunology — We are now interested in exploring some of the immunologic and inflammatory issues related to our stored red cells and vascular grafts. In other work, we will require the development of highly specialized immunoglobulin constructs with precise control over their affinities and specificities.

Molecular Biology — A major focus is on the design and production of highly specialized fusion macromolecules that combine unique domains from separate proteins into novel functional ensembles.

Microbiology — We are especially interested in examining the structure and function of the bacterial membrane surface and periplasmic space and those gene products related to transport functions and the establishment of a proton gradient.

Protein Chemistry — A major focus here is on the development of chemistries to create advanced protein designs that combine extreme stability with retention of functionality.

Boston University is an equal opportunity employer that offers a competitive salary scale. Qualified applicants should send their curriculum vitae and three reference letters to: **Mark Wolfe Bitensky, MD, Boston University, Biomedical Engineering Department/Visual and Circulatory Biophysics, 36 Cummington Street, Room 310, Boston, MA 02215; FAX 617/353-7216; email: venuto@enga.bu.edu**

Head, Ecology & Evolutionary Biology UNIVERSITY OF ARIZONA

The Department of Ecology and Evolutionary Biology is conducting a search for a person to be appointed Head of the Department. Review of applications will begin on March 1, 1997 and will continue until the position is filled. Applications should be sent to **Professor Nancy Moran, Chair, Head-Search Advisory Committee, Department of Ecology and Evolutionary Biology, The University of Arizona, Tucson, Arizona 85721.**

The department conducts a broad integrated program of education and research, and has undergraduate programs leading to the bachelors degree, and graduate programs aimed at advanced education and research. The degree programs serve students with varied career goals and aspirations in biology.

The department head reports to the Dean of the College of Science, and is responsible for providing proactive academic leadership, for planning and administration of the department's educational and research programs, for managing the department's budgets, facilities and personnel, and for leading the faculty in long-term strategic planning that responds to changing environments, needs, opportunities and realities affecting academic and research programs. The successful candidate must have an established record of research and productivity in any area of ecology and evolutionary biology as evidenced by national and international recognition. The successful candidate must also demonstrate promise developing a collegial, constructive partnership with the faculty and the University administration. It is expected that the department head will maintain active research and teaching.

Applicants/nominees must submit an up-to-date curriculum vitae and publication list, and the names of at least three references. It would be helpful if application letters included a 1- or 2-page statement giving an assessment of challenges and opportunities confronting an ecology and evolutionary biology department in its mission as part of a major public research university, and in terms of the evolving discipline in the context of the current and anticipated environment for scientific research and education. *The University of Arizona, an Equal Opportunity/Affirmative Action/ADA Employer, encourages applications from women and members of underrepresented minority groups.*

PURDUE UNIVERSITY WALTHER PROFESSOR OF NUTRITION AND CANCER

The Department of Foods and Nutrition at Purdue University, in collaboration with the Purdue Cancer Center and with the support of the Walther Cancer Institute, is seeking a nationally recognized scientist to fill a new position in the area of nutrition and cancer, preferably carcinogenesis or chemoprevention. The position offers an opportunity to expand a strong research program through collaborations with more than 100 campus scientists currently engaged in basic cancer research who possess expertise in biological, biochemical and chemical sciences, engineering, pharmacology, veterinary medicine and nutrition. The successful candidate will have an appointment in the Department of Foods and Nutrition, but will be closely affiliated with the Purdue Cancer Center (a National Cancer Institute designated basic laboratory research center since 1978 housing programs in experimental therapeutics and diagnostics, structural biology, cell growth and differentiation and carcinogenesis). The position will be available July 1, 1997.

The successful candidate is expected to qualify for the rank of **Full Professor**. He/she will have a Ph.D., D.V.M., or M.D. degree with a distinguished track record in research as measured by extramural research funding, peer-reviewed publications and evidence of productive collaborative research activities. Teaching experience is also desirable. There are no clinical practice responsibilities. Significant support funds are available for this position. A highly competitive salary and benefits package is available.

An application should include a description of interest outlining current and planned research and scholarly activities, three representative reprints, curriculum vitae and names, addresses and phone numbers of three references. The review of applications will begin on January 30, 1997 and will continue until the position is filled. Send materials to:

**Richard Mattes, Ph.D., RD or William Baird, Ph.D.
Co-Chairs, Search Committee
Purdue University
Department of Foods and Nutrition
Stone Hall, Room 209
West Lafayette, IN 47907-1264**

Purdue University provides the resources and amenities of a Big Ten university in a setting that offers a high quality of life. *Purdue is an Equal Opportunity, Affirmative Action Employer.*

UNIVERSITY OF ILLINOIS AT CHICAGO COLLEGE OF ENGINEERING ANNOUNCES A POSITION OPENING FOR A NEW DIRECTOR/HEAD OF THE BIOENGINEERING PROGRAM/DEPARTMENT

The University of Illinois at Chicago (UIC) has opened a search for a new Director/Head of the Bioengineering Program/Department. The University is adding new faculty resources to this area and has begun the process to move the program to department status. The individual chosen must qualify for the rank of Professor and have a strong record of sponsored research in his/her field of expertise. A doctorate in engineering or its equivalent is required. As Professor and Director/Head of Bioengineering, the individual selected will be expected to provide leadership to guide the growth of Bioengineering. A history of interaction with the medical sciences is desired. Bioengineering has strong interactions with the UIC Medical Center and Rush Presbyterian-St. Luke's Medical Center. Currently, Bioengineering draws its faculty from the College of Engineering and the medical sciences and consists of 21 faculty, 8 adjunct faculty, 48 graduate students and 88 undergraduate students.

Bioengineering offers Ph.D., M.S., and B.S. degrees. Research thrusts are biomedical imaging, biomechanics, biomedical microfluidics and sensors, biomaterials, rehabilitation, and biotransport.

Applications will begin to be reviewed March 7, 1997 but the position will remain open until filled. Applicants should submit their resumes with the names of four references to the following:

**Professor Daniel Graupe, Chairman
Bioengineering Program Director/Head Search Committee
c/o Office of the Dean
College of Engineering (MC 159)
University of Illinois at Chicago
851 S. Morgan, Chicago, IL 60607-7043
Ph: (312) 996-3085; Fax: (312) 996-8664
E-mail: graupe@eecs.uic.edu**

The University of Illinois at Chicago is an affirmative action/equal opportunity employer and encourages all qualified candidates to apply.

Microbiologist/Manager R & D

STC Technologies, Inc., a rapidly growing medical diagnostics company based in Bethlehem, PA, has several exciting and challenging full-time opportunities.



Microbiologist Position requires: experience in assay design including; slide preparation, cell culture, conjugate synthesis and antibody production. Experience using latex or colloidal gold preferred. MS or Ph.D. in Microbiology and 2 or more years related experience required.

Manager R & D Hands on leadership in the development of diagnostic products for drugs of abuse and other analytes. Position requires; an advanced degree in Chemistry or Biology or related field, 5-8 years working experience (min. 3 years of supervision), proven product development experience, strong interpersonal skills, proven ability to manage multiple priorities, and experience in the medical diagnostics field preferred.

Qualified applicants should send their resume and salary history to:



STC Technologies, Inc.

Attn: R&DSCI

1745 Eaton Avenue • Bethlehem, PA 18018

EOE/M/F/H/V

COME TO NIH AND HELP SHAPE THE FUTURE OF BASIC AND CLINICAL NEUROSCIENCE HEALTH SCIENTIST ADMINISTRATOR

The National Institute of Neurological Disorders and Stroke (NINDS), located in Bethesda, MD, is seeking a Health Scientist Administrator or Medical Officer in the Division of Stroke, Trauma and Neurodegenerative Disorders. The person holding this position will advise and assist NINDS grantees performing basic, applied and clinical research related to neurological diseases, and will be responsible for evaluating and planning the extramural research program of the Institute in this scientific area. Applicants who have a broad knowledge of, and interest in, neurodegeneration are particularly sought, in order to develop this important area. Successful applicants must possess a Ph.D. or MD (or equivalent degrees), with post-doctoral training in research, and several years of research experience and accomplishment relative to the responsibilities described above.

This is a GS 14-15 civil service position, at a salary range of \$62,473 to \$73,486 per year for Ph.D.s and \$68,735 to \$73,920 for MDs. Physicians may be additionally eligible for a Physician's Comparability Allowance.

Applicants should submit a letter of application with a brief description of career interests, along with a curriculum vitae and bibliography to:

Ms. Christine Steyer, National Institutes of Health, NINDS Personnel Office, Building 31, Room 8A23, 31 Center Drive, MSC 2540, Bethesda, MD 20892-2540, or you may fax your application to (301) 402-2818. Applicants are encouraged to obtain information concerning the position description and qualification requirements, by contacting Ms. Steyer at (301) 496-6334.

U.S. citizenship is required. Applications must be submitted by March 31, 1997.

**National Institutes of Health
Department of Health and Human Services
NIH is an Equal Opportunity Employer**



Postdoctoral Fellowship at NIH HIV Research

A postdoctoral position is available for molecular studies on replication of HIV and other mammalian retroviruses. Research projects include: structure-function analysis of reverse transcriptase; analysis of individual steps in reverse transcription; and the role of the viral nucleocapsid protein in reverse transcription. Studies are performed with model systems and HIV-infected cells. Applicants should have a strong background in molecular biology and either protein biochemistry or virology and less than five years of postdoctoral experience. Please send a curriculum vitae, bibliography, and names and addresses of three references to: **Dr. Judith G. Levin, Chief, Section on Viral Gene Regulation, Laboratory of Molecular Genetics, NICHD, Building 6B, Room 216, NIH, Bethesda, MD 20892. Fax: (301) 496-0243. Email: jlevin@imgvax.nichd.nih.gov**

NIH is an Equal Opportunity Employer.

Monsanto LIFE SCIENCES

The Agricultural Sector of Monsanto Life Sciences has immediate openings for highly motivated individuals to conduct research in the rapidly expanding Plant Growth and Development group. Monsanto is a world class organization with strong commitment to the discovery of novel traits for crop plants using biotechnology. The qualified individuals will join scientists with expertise in molecular biology, plant physiology, plant transformation, biochemistry, and chemistry to contribute to research to develop products that provide value to agriculture worldwide.

Successful candidates will be involved in research in the areas of regulation of gene expression, pollination, seed development, germination, or flowering for use in developing novel plant traits. Positions are available for scientists of all levels: Project Team Leader (requires Ph.D., postdoctoral research, and at least 3-5 years professional experience), Sr. Scientist (requires Ph.D. with at least 3 years postdoctoral experience or equivalent), Scientist (requires M.S. or equivalent research experience), and Postdoctoral Fellow. A strong scientific record and the ability and willingness to work in a multi-disciplinary research team environment is required for all positions.

Plant Molecular Biology -- Candidates will conduct research on the identification and manipulation of genes that regulate key processes in plant development. Strong molecular biology skills are a must; experience in pollen biology, seed development or germination, plant hormones, or plant physiology is a plus.

Biochemistry -- Candidates will conduct research on proteins involved in key plant pathways as well as develop assays for the characterization of transgenic plants. Broad biochemical skills including protein purification/characterization, enzyme assay, or immunoassay development experience are required.

Regulation of Gene Expression -- Candidates will conduct research to identify and develop gene regulation systems to regulate key developmental processes in transgenic plants. Strong molecular biology skills are required, with extensive experience in detailed analysis of transcriptional regulation in eukaryotic or prokaryotic systems preferred.

Plant Physiology/Seed Biology -- Candidates will perform studies on the physiology of key plant developmental processes. Requires extensive background in plant physiology with experience in pollination, seed development or germination, seedling vigor, or phytohormone analysis a plus.

For consideration please send a detailed resume and names of three references to: Sherri Brown, Ph.D. c/o Ms. Sarah Fischer, Monsanto/AA2G, 700 Chesterfield Parkway North, St. Louis, MO 63198. Please indicate preferred position by name.

Monsanto is an Equal Opportunity employer. Minorities, females, disabled, and veterans are encouraged to apply. We will provide reasonable accommodations upon request.

**UCR/UCLA PROGRAM IN BIOMEDICAL SCIENCES
DIVISION OF BIOMEDICAL SCIENCES
UNIVERSITY OF CALIFORNIA, RIVERSIDE
FACULTY POSITIONS IN THE
MOLECULAR BASIS OF DISEASE**

The Division of Biomedical Sciences at the University of California, Riverside, wishes to recruit a highly productive group(s) of scientists whose interests target the molecular mechanisms of human disease. Preference will be given to those investigators most committed to the use of molecular biological methods to complement the research efforts of the independent faculty in the Division and others on the campus. Very productive individual investigators or groups of investigators engaged in collaborative research (i.e., program projects) are encouraged to apply. Currently, four full-time ladder-rank faculty positions are available to support fully or partially up to six M.D.- or Ph.D.-level scientists working within 1-3 investigative groups. The level of appointment will be commensurate with experience. We anticipate filling these positions with a mixture of senior- and junior-level faculty where the number of senior faculty appointments will not exceed two. Each faculty group would be expected to generate significant extramural salary and research support. Space and start-up funds are available commensurate with the productivity and resource capacity of the group.

The Division of Biomedical Sciences administers the initial 5 years of the UCR/UCLA Program in Biomedical Sciences, an accelerated 7-year B.S./M.D. program culminating in the award of an M.D. degree to 24 students/year by the UCLA School of Medicine. The primary teaching duties of the faculty at UCR are equivalent to the first two years of medical school instruction. Teaching responsibilities for each faculty level appointment will be in the medical and graduate curriculum. Teaching opportunities include immunology, histology, gross anatomy, and pathology. All academic faculty appointments must meet the criteria of the University of California for rank and carry a requirement for research, teaching and service. Initial review of applications will begin in February 1997 and the positions will remain open until filled.

The principal investigators should submit an application including: a curriculum vitae; a delineation of the members and research focus of the group; a history and the status of current funding, and three letters of reference. Please include your email address and fax number. **Craig V. Byus, Ph.D., Chairman, Search Committee, Division of Biomedical Sciences, University of California, Riverside, CA 92521-0121. Telephone: (909) 787-4535; FAX: (909) 787-5504; email: craig.byus@ucr.edu.**

The University of California is an Equal Opportunity/Affirmative Action Employer.



**Cancer Geneticist
Department of Genetics**

The Genetics Department of the University of Pennsylvania School of Medicine is continuing its recent expansion and plans to make an appointment of a senior level Cancer Geneticist. The successful candidate will lead the collaborative effort between the Department of Genetics and the Comprehensive Cancer Center to build a strong program in the molecular genetics of cancer. Attractive new laboratory space and substantial resources are available.

The deadline for applications is June 1, 1997. Applications should include a curriculum vitae and a statement of research interests. In addition, candidates should arrange for three letters of recommendation to be sent to:



**Chair, Cancer Geneticist Search Committee
Department of Genetics
University of Pennsylvania
475 Clinical Research Building
415 Curie Boulevard
Philadelphia, PA 19104-6145**

AN EQUAL OPPORTUNITY/AFFIRMATIVE ACTION EMPLOYER

**Osteoporosis
& Frailty Research**

**Ph.D. Research Scientists
Age-Related Frailty**

We are seeking a creative scientist who can establish a laboratory for the investigation of age-related frailty including establishment of screens for compound identification. The ideal candidate will have a Ph.D. in Cell Biology with 2 years' postdoctoral experience in muscle research as demonstrated by a solid publication record. Additionally, in vivo experience in tissue harvest and molecular analyses is sought. Pharmaceutical experience in this area is a plus.
Job Code: #2061

Bone Fracture Healing

This successful scientist will establish and run a laboratory in the area of bone fracture healing and be responsible for evaluating the ability of compounds to improve fracture healing. The ideal candidate will have a Ph.D. in Biology with 2 years' postdoctoral experience in bone biology with in vivo expertise. Pharmaceutical experience in radiological, histological and molecular techniques is desirable. **Job Code: #2062**

In addition to a fast-paced, yet collegial environment, we offer very competitive salaries and excellent benefits including relocation assistance. Please forward resume to: **Employee Resources, Pfizer Inc, Job Code _____, Central Research Division, Eastern Point Road, Groton, CT 06340. For more information about Pfizer, see us on the Internet at: <http://www.pfizer.com>. We are an equal opportunity employer M/F/D/V.**



We're part of the cure.

Right now an ever growing number of the pharmaceutical industry's most respected research scientists are making history at Pfizer's Central Research Division in Groton, Connecticut. Backed up by the unparalleled financial and technical resources of a progressive Fortune 100 multinational company, these professionals are pioneering the development of a new generation of pharmaceutical and healthcare products. Already, their findings have contributed immeasurably to the fields of drug discovery and the development of human and animal health products. And while their work has radically improved the quality of life for millions around the world, much remains to be done. All successful candidates will be able to work well in a team environment and have sound communication skills, both written and oral. Flexibility and the ability to adapt to a dynamic work environment are also critical.

**CELLULAR
PHYSIOLOGIST
Research Scientist**

The focus of this position is regulation of cellular permeability and transport. The candidate should be creative, knowledgeable, and able to design, implement and interpret experiments. Working knowledge of a variety of physiology methodologies, specifically electrophysiology, and experience working with cells and tissues are a must. Ph.D. in Cellular Physiology from an approved university is required, with at least two additional years of experience. You must be lab-bench oriented. GLP experience a plus.

The state-of-the-art Cohn Biology Laboratory is located at The West Company's corporate headquarters in suburban Philadelphia. The West Company is the world leader (\$500 million, NYSE) in the manufacture of packaging and delivery components for pharmaceuticals, and is well established in the pharmaceutical industry. We have recently established a Novel Drug Delivery System section, in which the Cohn Laboratory is located. The Cohn Biology Laboratory supports formulation development activities through deciphering mechanisms of action, and is fully equipped with tissue culture, biochemical, and microscopic instrumentation. A sophisticated diffusion chamber has been recently added.

We offer competitive salary and benefits, including a world-class fitness center at our beautiful headquarters. Please send CV to: **Dr. June Rae Merwin, Associate Director, Research, The West Company, Inc., 101 Gordon Dr., Lionville, PA 19341-0645. FAX: 610-594-3016. E-mail: June_Merwin@WestCompany.COM**

THE WEST COMPANY

The West Company is an equal opportunity employer.



POSITIONS OPEN

NIH POSTDOCTORAL POSITION Novel Expression Systems for Engineered Antibody-Toxin Fusion Proteins

We have developed anti-T cell immunotoxins that deplete blood and lymph node T cells by two to three logs *in vivo*. A single course produces long term tolerance to mismatched renal allografts in rhesus monkeys (Knechtle *et al.*, *Transplantation* 53:1, 1997). Current work centers on engineering these immunotoxins as both single fusion and coupled proteins for use in pre-clinical and clinical trials. Novel *Pichia* and *Corynebacterium* expression systems are under development. Applicants should have a solid foundation in molecular biology and microbiology. Previous experience in non-*E. coli* protein expression systems would be helpful. Collaborations with clinical departments and the pharmaceutical industry are maintained. Please forward curriculum vitae, the names of three references, and a one page description of career goals, research interests by mail, Email or FAX to: **Dr. David M. Neville, Jr., Laboratory of Molecular Biology, National Institute of Mental Health, Building 36 Room 1B08, 36 Convent Drive, Bethesda, MD 20892-4034. FAX: 301-402-0245; Email: davidn@helix.nih.gov. NIH is an Equal Opportunity Employer.**

POSTDOCTORAL FELLOW POSITIONS STRUCTURAL BIOLOGY

POSTDOCTORAL POSITIONS are available to perform the structural study of the mechanism and function of DNA methylation in prokaryotic and eukaryotic systems. The positions will be in a new state-of-the-art X-ray crystallography and biochemistry laboratory supported by the Georgia Research Alliance and the National Institutes of Health at the Emory University School of Medicine, Biochemistry Department, Atlanta, Georgia. Applicants should have a Ph.D. with experience in macromolecular crystallography, or in biochemical or molecular biology with structural interests. The starting date could be as early as April 1, 1997. Send curriculum vitae and references to: **Prof. Xiaodong Cheng's current address at Cold Spring Harbor Laboratory, Cold Spring Harbor, NY 11724. Email: cheng@cshl.org; FAX: 516-367-8880.** Prof. Cheng has been recently recruited as a Georgia Research Alliance Eminent Scholar in Structural Biology.

Emory University is an Equal Employment Opportunity/Affirmative Action Employer.

POSTDOCTORAL TRAINING IN MOLECULAR AND CELLULAR BIOLOGY

The University of Michigan Cardiovascular Research Center seeks applicants for NRSA positions starting July 1, 1997. Research areas are gene expression in the vasculature and in cardiac muscle, gene transfer/therapy for cardiovascular diseases and developmental biology of the cardiovascular system. Applicants should send a curriculum vitae, the names and addresses of three individuals willing to write letters of recommendation, and a statement concerning research interests to: **Elizabeth G. Nabel, M.D., Program Director, CVRC Training Program, Department of Internal Medicine, The University of Michigan, 7301 MSRB III, 1150 West Medical Center Drive, Ann Arbor, MI 48109/0644 by April 1, 1997. Email address is CVRC@umich.edu.** Applicants must be U.S. citizens or permanent residents. We strongly encourage résumés from women and minority applicants. A non-discriminatory, affirmative action employer.

POSTDOCTORAL FELLOWSHIP in the area of receptor-mediated gene transfer. Specific areas available for concentration including trafficking of complex in target cells, optimization of the protein portion of the complex, optimization of the plasmid DNA for transfection. NIH fellowship requires U.S. citizen or permanent resident. Please send curriculum vitae and names of three references to: **P. Davis, M.D., Ph.D., Case Western Reserve University School of Medicine, Department of Pediatrics, BRB 8th floor, 2109 Adelbert Road, Cleveland, OH 44106. CVRU is an Equal Opportunity Employer. Applications from women and minorities are encouraged.**

POSTDOCTORAL POSITIONS to study the molecular events during the progression of cancer and transcriptional regulation of cellular differentiation. Recent Ph.D. with experience in cellular and molecular biology. Please send curriculum vitae to: **Dr. Dennis K. Watson, Center for Molecular and Structural Biology, Medical University of South Carolina, 171 Ashley Avenue, Charleston, SC 29425. Email: watsondk@musc.edu.**

POSITIONS OPEN

POSTDOCTORAL RESEARCH POSITION in cellular and molecular neuroendocrinology available for a period of two years for studying the fetal alcohol effects on cell differentiation and gene transcription in neuroendocrine tissues. Experience with RNase protection assay, PCR, *in situ* hybridization and transfection assays is required. Send curriculum vitae and three letters of reference to: **Dr. Dipak K. Sarkar, Department of Veterinary & Comparative Anatomy Pharmacology & Physiology, Washington State University, College of Veterinary Medicine, Pullman, WA 99164-6520. FAX: 509-335-4650; Email: sarkar@vctmed.wsu.edu.** Application review will begin February 15, 1997. *Washington State University is an Affirmative Action/Equal Opportunity Employer.*

POSTDOCTORAL TRAINING IN THE IMMUNOBIOLOGY OF NORMAL AND NEOPLASTIC LYMPHOCYTES

This NIH sponsored program offers training in a wide variety of cancer related areas of immunology including immune recognition, regulation, and tolerance; lymphocyte development; cell signaling and adhesion; and cancer immunotherapy. Positions are open immediately for Ph.D. graduates and for those who expect to graduate in the next six months. Applicants must be American citizens or permanent residents. Send curriculum vitae and three references to: **Dr. Yvonne Paterson, Program Director, Department of Microbiology, 802G Abramson Research Building/4318, University of Pennsylvania Medical Center, Philadelphia, PA 19104. FAX: 215-573-9068; Email: yvonne@mail.med.upenn.edu.** *Equal Opportunity/Affirmative Action Employer.*

ANNOUNCEMENT

MASTER OF ARTS IN TEACHING PROGRAM AT CORNELL UNIVERSITY

Cornell University's Department of Education offers a one year Master of Arts in Teaching program for individuals with extensive backgrounds in science who lack coursework in education and student teaching to be eligible for teaching certification. For details, contact: **607-255-9255 or Email: mss13@cornell.edu.**

WORKSHOPS

MOLECULAR TECHNIQUES WORKSHOP UNIVERSITY OF WISCONSIN-MILWAUKEE JUNE 23-JULY 12, 1997

Designed for faculty, graduate students, postdoctorals and other professionals interested in applying molecular biological approaches to their research. Techniques include: cloning, sequencing, PCR, methods for analysis of gene expression, and more. Tuition: \$1650. Housing: \$255/dbl, meals not included. Contact: **Barb Wimpee, NIEHS Marine and Freshwater Biomedical Sciences Center. Telephone: 414-382-1746; FAX: 414-382-1705; Email: bwimpee@csl.uwm.edu.**

THIRD ANNUAL WORKSHOP ON TEACHING SURVIVAL SKILLS AND ETHICS TO EMERGING RESEARCHERS

June 7-11, 1997, Oglebay Resort & Conference Center, Wheeling, West Virginia. An intensive workshop to assist faculty in the establishment of a comprehensive course in professional development and ethics for junior researchers. For registration information please contact: **Survival Skills and Ethics Program, University of Pittsburgh, 4K26 Forbes Quadrangle, Pittsburgh, PA 15260. Telephone: 412-624-7098; Email: survival+@pitt.edu.**

GRANTS

Funds for Study of Reflex Sympathetic Dystrophy Syndrome (RSDS)

The National Organization for Rare Disorders (NORD) announces the availability of funds for clinical research in RSDS. Maximum funding is \$30,000 for one or two years. A one page letter of intent, curriculum vitae, and brief budget outline due by May 1, 1997. **Executive Vice President, NORD, P.O. Box 8923, New Fairfield, CT 06812. Telephone: 203-746-6518; FAX: 203-746-8728.**

GRANTS

BRAIN TUMOR RESEARCH FUNDING

The Brain Tumor Society will fund basic science **RESEARCH PROJECTS** for up to a two-year period, at a maximum of \$50,000 per year. For 1997, GRANTS will be limited to research being conducted in the following states: Connecticut, Maine, Maryland, Massachusetts, New Hampshire, New Jersey, New York, Pennsylvania, Rhode Island, Vermont, and Washington, DC. Any project with the potential to advance basic scientific research in brain tumors will be considered for funding. Funds may be used for start-up projects of supplementary funding. Funds will not be granted for indirect costs. For information and application forms, please contact: **Judi Taylor Cantor, The Brain Tumor Society, 84 Seattle Street, Boston, MA 02134-1245. Telephone: 617-783-0340, 800-770-8287. Visit the Web site at www.tbts.org. Email: info@tbts.org.** Projects must be submitted no later than April 16, 1997.

REQUEST FOR PROPOSALS GENETIC SEXING STRAINS OF THE MEDITERRANEAN FRUIT FLY

The Animal and Plant Health Inspection Service (APHIS) of the USDA invites proposals to fund the construction of stable genetic sexing strains of the mediterranean fruit fly (*Ceratitis capitata*). The grant award will be up to \$100,000 and may be renewed annually for up to five years depending on Congressional funding and continued APHIS interest in the project. Applications must be received by April 1, 1997. For a complete copy of the request for proposals including application instructions, please contact: **Douglas Prasher, USDA, Building #1398, Otis ANGB, MA 02542-5008. Telephone: 508-563-9303; FAX: 508-564-4398; Email: dprasher@capecod.net.**

MARKETPLACE

EBERBACH LABTOOLS

a BRAND NEW line of lab equipment—direct from the factory!
CENTRIFUGES, shakers, stirrers, water baths & so much more!
All backed by a No-Nonsense Unconditional Guarantee
and a company with a 155 YEAR HISTORY in American Science
Call and reserve your FREE 1997 catalog (e-mail: eberbach@aol.com)

1.800.422.2558

Circle No. 57 on Readers' Service Card

Our Symbol Means
QUALITY ANTIBODIES
Custom MAbs/PAb's/Hybridoma
Many other services & products available
Call for your new catalog today!
1-800-824-8540 or Fax 1-916-758-6307
Antibodies Incorporated
Davis, CA

Circle No. 43 on Readers' Service Card

 **PEPTIDE
CRYSTAL GROWTH**
FREE CATALOG & SAMPLE
800-452-3899 Fax (714)-5861453
E-mail: xtalrox@aol.com
<http://www.hamptonresearch.com>

Circle No. 6 on Readers' Service Card

DNA SEQUENCING
Longest reads available
Up to 1000 bp/read
Only \$50 per read
MacConnell Research 800-466-7949

Circle No. 9 on Readers' Service Card

Marketplace ads continue on page 890

MARKETPLACE



**MORE PRODUCTS
ON PREVIOUS PAGE**

CUSTOM ANTIBODIES TO PEPTIDES AND PROTEINS

- Purification • Conjugation
- ELISA Titration



HTI BIO-PRODUCTS, INC.

Phone (800) 481-9737

Fax (619) 788-9694

e-mail antibodies@htibio.com

http://www.htibio.com

Circle No. 10 on Readers' Service Card

SFM-Human Keratinocyte Cell System

Start up a 75 for LESS than a 25
More Cells / Lowest Price / Highest Quality
CSC Certificate™ #30467



1-800-697-1211

Circle No. 21 on Readers' Service Card

PEG

**Derivatives for Pharmaceutical and
Biotechnical Applications**
Activated for Protein Modification

Monofunctional Methoxy,
Homobifunctional and
Heterobifunctional Derivatives

Exclusive Products:

Vinylsulfone, Aldehyde, SPA,
ω-Amino-α-Carboxyl,
ω-NHS-α-Vinylsulfone
and PEG2-NHS

**Chromatographically Pure
Derivatives, GMP, Bulk and Custom
Synthesis Available**

Shearwater Polymers, Inc.

(800) 457-1806 (US)

(205) 533-4201 (Int)

(205) 533-4805 (fax)

2307 Spring Branch Rd.

Huntsville, AL 35801

swpolymers@aol.com

Circle No. 7 on Readers' Service Card

PhageScreen

INCORPORATED

We will screen ≥15 peptide libraries comprising a total of > 4 billion peptides with your target molecule, and provide you with sequence and binding data (ELISA and phage enrichment).

Web site: <http://www.sfu.ca/uilo/phage/index.html>

E-mail: phagescreen@sfu.ca • Fax: 1-(604)-291-5583

Circle No. 54 on Readers' Service Card

MARKETPLACE

DNA Primers from \$0.85/base

Ready to Use
No Setup Charge
No Hidden Costs



Institutional
Discounts
Available

The Great American Gene Company

<http://www.geneco.com>

e-mail: geneco@ix.netcom.com fax: (800) 816-5517

Circle No. 19 on Readers' Service Card

CUSTOM DNA SYNTHESIS

PURE & SIMPLE

- Superb Technical Support

- Impeccable Quality

- World's Fastest Service

- Cap Gel & TOF Mass Spec

* Some restrictions apply. Please call for details.

\$1.19*
per base
\$10 setup
50 nmole
scale

MIDLAND

STILL THE UNDISPUTED #1 CUSTOM DNA SYNTHESIS SERVICE

THE MIDLAND CERTIFIED REAGENT COMPANY

Phone 1-800-247-8766

FAX 915-694-2387

e-mail mrcr@oligos.com

Circle No. 17 on Readers' Service Card

Chimerization of monoclonal antibodies

- From mouse to human in 90 days
- Exchange of mAb-isotype
- Our new TASSILO vector system for high level expression in mammalian cells

CONNEX

Tomorrow's solutions for today's problems
in immunology

D-82152 Martinsried, Germany

Phone ++49-89-895 00 160 • Fax ++49-89-895 00 161

<http://www.connex.de>

Team up with us clearing new paths in immunology!

Circle No. 51 on Readers' Service Card

Molecular Images
4541 Hidalgo Ave, San Diego, CA
92117 • (619) 483-2051
missoftware@aol.com
Free demo at <http://www.concentric.net/~molimage>

Macromolecular Modeling
Windows 3.1/95 • Mac 68K/PPC
Mutate • Fit • Overlay • Dock
\$195 (non-commercial)

Circle No. 27 on Readers' Service Card

QUALITY CUVETTES!!!

Inexpensive Electroporation Cuvettes
*Each sterile package includes a free
pipette for easy sample removal!*



1-800-289-2465

FAX: 619-597-9594

Circle No. 28 on Readers' Service Card

MARKETPLACE

SINCE 1984, SERVING YOU WITH QUALITY PRODUCTS

PRIMERS **PURIFIED****

65¢
BASE

NO SET-UP FEES

- 50 nmole
- Full QC
- Guaranteed Quality
- Just order > 400 bases at the same time

PEPTIDES **FREE MASS SPEC**

\$15.00
RESIDUE**

- 10-20 mgs
- 8-15 residues
- Shipped in 5 days

ANTIPEPTIDES ANTIBODY PRODUCTION SERVICES & MORE.

Internet: <http://www.biosyn.com>

E-mail: biosyn@onramp.net

BIO•SYNTHESIS

TEL: 800-227-0627 FAX: 972-420-0442

Circle No. 18 on Readers' Service Card

- Automated DNA sequencing
- Custom DNA/RNA synthesis
- Protein/peptide synthesis & sequencing
- Spectroscopy/calorimetry
- Mass spec services

Commonwealth Biotechnologies, Inc.

Your one stop biotech shop

LET US QUOTE YOUR SPECIAL PROJECTS

Comprehensive biotech services. For information please call:

1-800-735-9224

Visit our web page at:

www.cbi-biotech.com

Fax: 804-648-2641

E-mail: CBI@richnet.com

Circle No. 20 on Readers' Service Card

DNA Sequencing

as low as \$40/run

Single & Double Stranded DNA

Plasmid or PCR DNA

Fast Turn Around

1-800-OLIGOS-1

<http://www.ana-gen.com>



Circle No. 40 on Readers' Service Card

Express Peptides

**15-40 mg in 5 days
\$18 per residue**

Research Genetics, Inc.

1-800-533-4363

Circle No. 13 on Readers' Service Card

BioLogic

chromatography systems

just
what
you need

You don't have to be a rocket scientist to recognize the value in a chromatography system that suits your needs and still helps you stay within budget. That's why our BioLogic systems have just what you need for fast, efficient, easy biomolecule purification. And that's all. Features that truly make a difference in the real world. But there is one big thing you don't get – a high price. So learn all about our BioLogic chromatography systems – contact your local Bio-Rad representative today.

{This is what BioLogic is all about.}

BIO-RAD

**Bio-Rad
Laboratories**

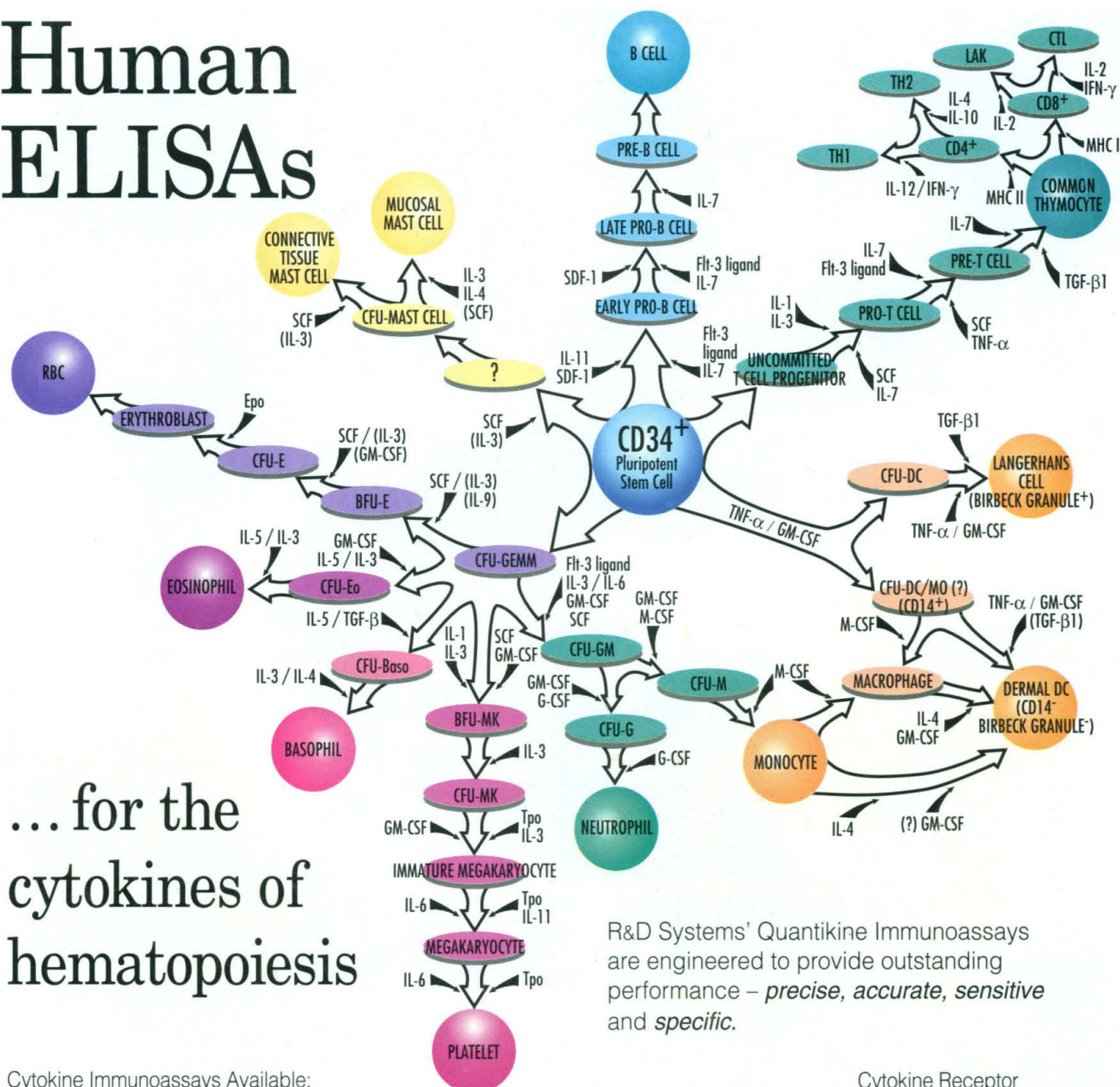
Life Science Group

U.S. (800) 4BIORAD California (510) 741-1000 Australia 02-9914-2800 Austria (1)-877 89 01 Belgium 09-385 55 11 Canada (905) 712-2771 China (86-10) 2046622 Denmark 39 17 9947
Finland 90 804 2200 France Ph. (1) 43 90 46 90 Germany 089 31884-0 Hong Kong 7893300 India 91-11-461-0103 Italy 02-21609 1 Japan 03-5811-6270 The Netherlands 031318-540666
New Zealand 09-443 3099 Singapore (65) 272-9877 Spain (91) 661 70 85 Sweden 46 (0) 8 627 50 00 Switzerland 01-809 55 55 United Kingdom 0800 181134

Circle No. 34 on Readers' Service Card

SIG 101796

Human ELISAs



...for the
cytokines of
hematopoiesis

R&D Systems' Quantikine Immunoassays are engineered to provide outstanding performance – *precise, accurate, sensitive and specific.*

Cytokine Immunoassays Available:

ANG	G-CSF ✓	IL-1α ✓	IL-4 ✓	IL-10 ✓	LIF	OSM	TGF-β2
CNTF	GDNF	IL-1β ✓	IL-5 ✓	IL-11 ✓	M-CSF ✓	PDGF-AB	TNF-α ✓
EGF	GM-CSF ✓	IL-1ra	IL-6 ✓	IL-12 ✓	MCP-1	RANTES	TNF-β
ENA-78	GROα	IL-2 ✓	IL-7 ✓	IL-13	MIP-1α	SCF ✓	Tpo ✓
FGF basic	HGF	IL-3 ✓	IL-8	IL-15	MIP-1β	TGF-β1 ✓	VEGF
FGF-4	IFN-γ ✓	(✓ indicates a factor involved in hematopoiesis)					

Cytokine Receptor

Immunoassays Available:

sgp130 ✓	IL-2 sRα ✓
sTNF RI ✓	IL-4 sRα ✓
IL-1 sRII ✓	IL-6 sR ✓
sTNF RII ✓	

FOR RESEARCH USE ONLY. NOT FOR USE IN DIAGNOSTIC OR THERAPEUTIC PROCEDURES.

North America
R&D Systems, Inc.
614 McKinley Place NE
Minneapolis, MN 55413, USA.
Tel: 612 379-2956
Fax: 612 379-6580
info@randsystems.com

Europe
R&D Systems Europe Ltd.
4-10 The Quadrant, Barton Lane
Abingdon, OX14 3YS, UK.
Tel: +44 (0)1235 531074
Fax: +44 (0)1235 533420
info@randsystems.co.uk

Germany
R&D Systems GmbH
Borsigstrasse 7
65205 Wiesbaden, Germany
Tel: +49 06122 90980
Fax: +49 06122 909819
info@randsystems.co.uk

Japan
Funakoshi, Co., Ltd.
9-7, 2-Chome
Hongo, Bunkyo-ku
Tokyo 113, Japan
Tel: 81-3 5684-1622
Fax: 81-3 5684-1633

International Distributors – Argentina: (54-1) 942-3654. Australia: (61-2) 9521-2177. Austria: 01 292 35 27.
Chile: (56-2) 671-9369. Greece: 031 322 525. Hong Kong: (852) 2649-9988. Israel: (972-9) 764-8787. Italy: 39 2 25 75 377.
Korea: (82-02) 569-0781. Mexico: (52-5) 612-0085. New Zealand: (64-9) 377-3336. Spain: 34 1 535 39 60. Poland: 48 22 720 44 54.
Portugal: 01 352 87 74. South Africa: 021 981 1560. Taiwan: (866-02) 368-3600. Venezuela: (58-2) 239-07-80.

Europe Free Phone – Belgique/België: 0800 10 468. Danmark: 80 01 85 92. France: 0800 90 72 49. Nederland: 060 225607.
Norge: 800 11033. Sverige: 020 79 31 49. Switzerland: 0800 55 2482.

Circle No. 56 on Readers' Service Card

R&D
SYSTEMS
1-800-343-7475

 www.randsystems.com