

DISPLAY CLASSIFIED ADVERTISEMENTS

Call for rate and deadline information on display classified advertisements.

Email: science_displayads@aaas.org

Bren Peters-Minnis
Recruitment Display Advertising
Telephone: (202) 326-6541
FAX: (202) 289-6742
Email: science_displayads@aaas.org

Janis Crowley
Recruitment Advertising Manager
Telephone: (212) 496-7704
FAX: (202) 289-6742

Debbie Cummings
European Recruitment Advertising
Telephone: +44 (0) 1223 302067
FAX: +44 (0) 1223 576208

For **MEETING AND ANNOUNCEMENT** display advertisements, see pages 2144, 2147, and 2161.

LINE CLASSIFIED ADVERTISEMENTS

How to Submit a Line Classified Ad:

Submit double-spaced typewritten copy. Do not include any abbreviations. SCIENCE will edit and typeset ads according to SCIENCE guidelines. Include billing information and desired publication date. Available categories: Positions Open, Meetings, Announcements, Courses and Training, Services. SCIENCE cannot provide proofs of typeset line ads. Line advertisements are not commissionable.

Estimates: SCIENCE will provide a cost estimate for line ads. This is an approximate cost only. Allow for variation between estimated lines and actual typeset lines and resulting final cost. Purchase orders must allow for some degree of flexibility and/or adjustment.

For line advertising deadlines, call Eric Banks. Telephone: (202) 326-6555; FAX: (202) 289-6742. Email: science_classifieds@aaas.org

Credit Cards: SCIENCE accepts American Express, MasterCard and VISA. Discount does not apply to credit cards.

Cancellations: Deadline for cancellation is Tuesday, 10 days prior to issue date.

Discounts: A 3% cash discount is granted to all prepaid ads.

Ads from Outside the U.S.: A discount of \$30 will be offered to advertisers making payment in U.S. dollars by checks drawn on U.S. banks. Contact Debbie Cummings. Telephone: +44(0) 1223 302067; FAX: +44(0) 1223 576208.

SCIENCE Professional Network: Unless otherwise instructed, every classified advertisement submitted for publication in SCIENCE is automatically posted on SCIENCE's on-line classified advertising service, SCIENCE Professional Network, at no additional charge.

<http://www.sciencemag.org>

Mail, FAX or Email materials to:
SCIENCE Classified Advertising
1200 New York Avenue, N.W., Room 911
Washington, DC 20005
FAX: 202-289-6742

Email: science_classifieds@aaas.org (please include your telephone number in Email)

SCIENCE reserves the right, at its discretion, to edit or decline to publish advertisements submitted to it.

POSITIONS OPEN



The Biology Department of the University of North Carolina at Charlotte invites applications for an **ASSISTANT PROFESSOR** position in physiology. The Department has an emphasis in biomedicine/biotechnology, with a developing focus on stress biology. The Biology department currently grants M.A. and M.S., and a Ph.D. program is under development. The successful applicant will be expected to develop a vigorous, independently funded research program that complements those ongoing in the department, and that involves undergraduate and graduate students. Teaching duties include rotating responsibility for a one-semester mammalian physiology survey course for majors, and teaching undergraduate and graduate specialty courses. Interest in advising pre-professional students is helpful. Please send an application letter stating your qualifications, a curriculum vitae, and statements on teaching and future research plans to: **Chairman, Physiology Search Committee, Department of Biology, University of North Carolina at Charlotte, 9201 University City Boulevard, Charlotte, NC 28223-0001.** Review of applications will begin immediately and will continue until the position is filled. *The University of North Carolina at Charlotte is an Affirmative Action/Equal Employment Opportunity Employer, and complies fully with the Immigration Reform and Control Act of 1986. Women and minority applicants are especially encouraged to apply.*

QUEEN'S UNIVERSITY KINGSTON, ONTARIO—CANADA Department of Anatomy and Cell Biology Faculty of Medicine

Applications are invited for a tenure-track appointment at the rank of **ASSISTANT PROFESSOR**. A Ph.D. and/or M.D. or D.D.S. degree and a minimum of two years of postdoctoral experience are essential. This advertisement is directed to outstanding candidates with strong interdisciplinary research programs in neuroscience, although individuals with research programs in cell biology and human biomechanics are encouraged to apply. Ability to teach neuroanatomy and either human gross anatomy, embryology, or histology would be an asset.

Candidates should arrange to have a copy of their curriculum vitae sent to: **Dr. Stephen C. Pang, Professor and Head, Department of Anatomy and Cell Biology, Faculty of Medicine, Queen's University, Kingston, Ontario K7L 3N6 Canada.** Letters of recommendation will be requested from those candidates who are short-listed. *In accordance with Canadian Immigration requirements, this advertisement is directed to Canadian citizens and permanent residents. Queen's University has an employment equity programme, welcomes diversity in the workplace, and encourages applications from all qualified candidates, including women, aboriginal peoples, people with disabilities, and visible minorities. Applications should be forwarded as soon as possible and no later than February 14, 1997.*

ASSISTANT PROFESSOR Department of Biology and Microbiology Berry College

We seek to fill a **TENURE-TRACK** assistant professor position beginning August 1997. We are seeking a microbial ecologist with experience in molecular systematics, environmental microbiology and/or soil microbiology. The successful applicant will be expected to teach an undergraduate course in microbiology, introductory biology courses, and at least two courses in the applicant's area of specialty. We encourage applications from individuals committed to undergraduate teaching and research who have an interest in contributing to the development of a planned environmental science program. The biology department currently has seven full-time faculty with an overall emphasis in ecology and environmental biology. Applicants should hold a Ph.D.; postdoctoral experience is desired. Berry College is an independent, coeducational college with over 1800 undergraduate students and a comprehensive curriculum that stresses academic excellence, practical work experience, and an interdenominational religion-in-life program. Applicants should send curriculum vitae, a statement of teaching and research interests, and copies of two recent publications, and should arrange to have three letters of recommendation sent separately to: **Dr. Martin Cipollini, Berry College, Department of Biology, P.O. Box 490430, Mt. Berry, GA 30149-0430.** *Berry College is an Equal Opportunity Employer.*

POSITIONS OPEN

RESEARCH INSTRUCTOR Department of Molecular Genetics The University of Texas Southwestern Medical Center at Dallas

Successful applicant will perform molecular cell biology research, specifically concerning the subcellular localization and trafficking of the endothelin converting enzymes. Applicant must have an M.D. and/or biology Ph.D. degree(s). At least five years of hands-on experience in laboratory research (including periods for thesis work) is highly desirable. Applicant with experience in all of the following techniques is highly desirable: immunocytochemistry; purification of native and recombinant proteins; baculovirus-mediated gene expression; yeast two-hybrid screen; transient and stable transfection of mammalian cells; and general protein biochemistry and recombinant DNA techniques. It is desirable that applicant have previous publications regarding the molecular aspects of endothelin converting enzyme in peer-reviewed journals.

Please forward cover letter, curriculum vitae, bibliography, and three letters of recommendation to:

Masashi Yanagisawa, M.D., Ph.D.
Department of Molecular Genetics
The University of Texas
Southwestern Medical Center at Dallas
5323 Harry Hines Boulevard
Dallas, TX 75235-9050 U.S.A.

The closing date for completed applications is December 31, 1996.

The University of Texas Southwestern Medical Center at Dallas is an Equal Opportunity/Affirmative Action Employer.

ENVIRONMENTAL SCIENTIST AND EVOLUTIONARY GENETICIST

ASSISTANT PROFESSOR, two positions: Washington State University: tenure-track, start August 16, 1997. Ph.D. in appropriate discipline by August 16, 1997, and ability to develop a quality externally funded research program and effectively teach upper-division and graduate courses required. Those hired will join the rapidly growing faculty at the new Vancouver campus (Portland, Oregon, metro area) and help develop the B.S. and M.S. degree programs. Position 1: Applied Environmental Scientist. Interest in impact of surface or subsurface hydrologic systems (such specializations as applied limnology, watershed/fluvial hydrology, hydrogeology, transport of aquatic contaminants, physical aspects of water resource issues). To teach environmental impact assessment and courses in specialization. Position 2: Experimental Evolutionary Geneticist. Interest in evolutionary genetics, preferably of plants, with broad training in molecular, organismal, and population genetics. To teach courses in genetics and evolution. Letter of application; curriculum vitae; statement of research/teaching interests (four-page limit); up to five publications; and names, addresses, telephone numbers, and Email addresses of five references to: **Dr. J. Scott Cameron, Evolutionary Genetics or Environmental Science Search Chair, Washington State University, Vancouver, 14204 NE Salmon Creek Avenue, Vancouver, WA 98686. Telephone: 360-546-9635; Email: cameron@wsu.edu.** Application deadline: January 31, 1997. *Washington State University is an Equal Opportunity/Affirmative Action Employer and Employer. Members of protected groups are encouraged to apply.*

ASSISTANT PROFESSOR/Assistant Nematologist. Applications are invited for an 11-month, tenure-track faculty position in molecular biology, Department of Nematology; 75% research and 25% teaching. Appointment level and salary commensurate with experience. Ph.D. and demonstrated ability to conduct independent research is required; two years of postdoctoral research experience with plant-parasitic nematodes is desirable. Molecular-based research program will center on regulating parasitic nematode biology in the context of the host plant and the rhizosphere; may include mate signal-recognition processes and mechanisms of host resistance and susceptibility. Research and teaching will interact with department and campus programs in molecular biology and genetics. Send curriculum vitae, bibliography, undergraduate and graduate transcripts, Ph.D. dissertation summary, reprints and manuscripts in press, a statement of research goals and teaching interests, and three letters of reference to: **J. G. Baldwin, Department of Nematology, University of California, Riverside, CA 92521-0415. Email: james.baldwin@ucr.edu; FAX: 909-787-3719.** Additional information about Nematology and associated departments is available at <http://nemweb.ucr.edu/nemhp.html>. Applications will be reviewed beginning on February 15, 1997. *The University of California is an Equal Opportunity/Affirmative Action Employer.*

POSTDOCTORAL RESEARCHERS



The Genentech Postdoctoral Program consists of more than 50 Researchers and is a vibrant and intensive environment for advanced scientific training. Postdoctoral Researchers conduct basic research in the areas of our scientific interest, publish in scientific journals, and attend and present work at scientific meetings. All candidates should have a PhD and/or MD degree with a strong background in the appropriate field.

Immunology

A position is available to investigate lymphocyte cell surface protein interactions with endothelial cells associated with inflammatory diseases. See *J. Immunol.* 155:5257 (1995); *J. Cell Biology* 125:1395 (1994); *J. Biol. Chem.* 269:14411 (1994). Manager: Dr. Sherman Fong. Reference: PDSF

Bioorganic Chemistry

A position is available to join an interdisciplinary team studying protein-small molecule binding energetics and the design of peptidic or non-peptidic inhibitors of protein-protein interactions based on structural and mutational strategies. A background in organic synthesis and the ability to conduct routine structural characterization by NMR is required. See *J. Am. Chem. Soc.* 106:5077-5083 (1994); *Science* 267:383-386 (1995). Manager: Dr. Robert McDowell. Reference: PDRM

Neuroscience

A position is available to define the role of neurotrophic factors and eph tyrosine kinase receptor ligands in the survival, differentiation, axon guidance and synaptogenesis of CNS neurons. See *Neuron*, 14:973-981 (1995); *Ann. Neurol.* 38:30-37 (1995); *J. Biol. Chem.* 269:27679-27686 (1994); *Neuron* 7:695-702 (1991); *Neuron* 4:767-773 (1990). Manager: Dr. John Winslow. Reference: PDJW

A position is available to study the actions of trophic factors on neuronal survival and function in the central nervous system. Trophic effects on basal forebrain cholinergic neurons and midbrain dopaminergic neurons are under investigation by a combination of molecular, neuroanatomical, behavioral, and biochemical techniques. See *Neuron* 13:1245-1252 (1994); *Cell* 76:1001-1011 (1994); *Nature* 382:76-79 (1996); *ibid.* 382:80-83. Manager: Dr. Heidi Phillips. Reference: PDHP

Pharmacokinetics & Metabolism

A position is available to study the mechanisms of uptake and intracellular transport of growth factors, focusing on understanding the specific function(s) that ligands targeted to the nucleus play(s) in the overall biological response of the cell. Manager: Dr. Gilbert Keller. Reference: PDGK

Metabolism

A position is available for a molecular/cellular biologist to study the development and function of the beta cell or the control of insulin signaling. See *Nature* 373:448 (1995); *Cell* 83:69-78 (1995); *J. Biol. Chem.* 270:22085-22088 (1995). Manager: Dr. Tim Stewart. Reference: PDTS

Molecular Biology

A position is available to work on aspects of protein translocation and secretion in yeast. Experience required in yeast genetics or molecular biology and experience in membrane biogenesis and/or protein secretion is highly desirable. Manager: Dr. Kevin Baker. Reference: PDKB

Cardiovascular Research

A position is available to carry out independent research on acute ischemic stroke. Minimum 2 years' experience working with models of acute ischemic stroke. Prefer experience with molecular biology techniques and/or MRI imaging. See *Stroke* 24:2072 (1994); *Stroke* 26:1039 (1995). Manager: Dr. Roger Thomas. Reference: PDRT

Immunology

A position is available to study the inflammatory cascades associated with asthma and ARDS. In particular, the candidate will evaluate the role of various chemokines in the pathophysiology of those diseases. Protein engineering, as well as disease modeling, will be a focus of the work. See *J. Biol. Chem.* 268:18549-18553 (1993); *J. Clin. Invest.* 96:107-116 (1995). Manager: Dr. Caroline Hebert. Reference: PDCH

Protein Engineering

A position is available to develop new phage-display strategies for identifying and optimizing novel ligands having therapeutic potential and/or having potential for small-molecule development leads. Experience in molecular biology and in either protein chemistry or physical methods of protein characterization is preferred. See *Current Opinion in Structural Biology* 2:597-604 (1992). Manager: Dr. Henry Lowman. Reference: PDHL

Join us and enjoy our exciting success and progressive benefit package that includes fully paid medical/dental/vision coverage, 3 weeks paid vacation, 6 weeks sabbatical after every 6 years, stock purchase opportunities for full time employees, and free health club membership. **Please send your C.V. with 3 letters of recommendation to Genentech, Inc., Human Resources, Attn: Reference (see code in above job description), 460 Pt. San Bruno Blvd., South San Francisco, CA 94080.** Please avoid bold, underline or italic type faces. You may also e-mail your resume indicating Reference to **jobs@gene.com** (ASCII files only with a maximum line width of 76 characters). For more information, see us at <http://www.gene.com>. Genentech is an Equal Opportunity Employer. We value the contributions of our diverse workforce.

Genentech, Inc.



15th American Peptide Symposium on Frontiers of Peptide Science

June 14-19, 1997, Nashville, Tennessee

Call for
Papers (Oral and Poster Presentations), Merrifield Award Nominations, Exhibitors
Topics
Combinatorial Libraries, Peptide Mimetics, Drug Delivery, Synthesis and Ligation Methods,
Ligand-Receptor Interaction, Protein Folding, *De Novo* Design

Jointly Sponsored Sessions with
American Association of Pharmaceutical Sciences, The Biophysical Society, The Protein Society

For more information write: James P. Tam, Chairman, 15th American Peptide Symposium,
A5119 MCN, 1161 21st Ave. S., Vanderbilt University, Nashville, TN 37232-2363
Tel: (615) 343-1465 • Fax: (615) 343-1467 • E-Mail: vicki.gates@mcmail.vanderbilt.edu
<http://www.chem.umn.edu/orgs/ampepsoc/apshome.html>

University of Florida POSTDOCTORAL FELLOWSHIPS



College of Medicine postdoctoral positions are available in the following NIH-funded programs:

- 1) Study of **molecular mechanisms of HIV-1 gene regulation** in primary cells. Project provides training in gene expression, transcriptional activation, and HIV-1 pathogenesis. Ph.D. and/or M.D.; strong theoretical background in cell and molecular biology, genetics, or virology; and eligibility for support by NIH training grants are required. (*M.M. Goodenow & T.P. Yang*)
- 2) Study of the role of chromatin structure and its **regulation in mammalian X chromosome inactivation**. Studies will focus on regulation of the HPRT gene and its chromatin structure on the active and inactive X chromosomes. Strong background in molecular biology required. Experience in gene regulation, chromatin structure, mouse genetics, and/or ES cells desirable. (*T.P. Yang*)
- 3) Study of the **physiological and molecular regulation of H,K-ATPase** and the **ion channels** that regulate these pumps in **renal tubules**. Experience in patch clamp required and molecular biological techniques desired. (*C.S. Wingo*)
- 4) Study of the **identification of regulatory sites within genes** that are transcribed in an amino acid-dependent manner. A high salary will be paid to an individual who has experience with *in vivo* footprinting techniques, although applicants experienced in other aspects of gene promoter analysis will be considered. (*M.S. Kilberg*)
- 5) Study of the **molecular biology of Adeno-associated virus (AAV)** and the use of AAV vectors for gene therapy. Projects include *in vitro* studies of AAV DNA replication and *in vitro* viral DNA packaging. Also studying the biochemical activities of the viral Rep proteins and the elements involved in the control of AAV transcription. AAV vectors are used for gene therapy in several disease models. (*N. Muzyczka*)
- 6) Investigation of **gene delivery and expression in the mammalian retina** with emphasis on viral vectors and genes of potential therapeutic value in Retinitis Pigmentosa. Experience in molecular virology of DNA viruses and in construction of recombinant DNA preferred. (*W.W. Hauswirth*)

Identify position(s) of interest by number(s) and send your curriculum vitae, career goals, and the names of at least three references to:

Regina A. Smith, Ph.D., Associate Dean for Research, College of Medicine
PO Box 100215, JHMHC, Gainesville, FL 32610
Fax: (352) 392-7427 email: rsmith@dean.med.ufl.edu

Penn State College of Medicine

Graduate Studies and Postdoctoral Training

Physiology

Areas of research interest include:
Hormonal regulation of gene expression;
Regulation of protein synthesis and degradation; Transcriptional regulation;
Metabolic effects of sepsis; Cell-cell and cell-extracellular matrix interactions; Role of calcium in metabolic control; DNA repair and carcinogenesis; Mitochondrial biogenesis

College of Medicine Programs

Anatomy
Biochemistry and Molecular Biology
Cell and Molecular Biology
Microbiology and Immunology

Neuroscience
Pharmacology
MD/PhD Program
PhD/MBA Program

Inter-College Programs

Bioengineering
Genetics
Nutrition

Physiology
Integrative Biosciences

For more detailed information and to apply
visit our WWW site at <http://www.hmc.psu.edu> or contact

Assistant Dean for Graduate Education, Penn State College of Medicine,
Hershey, PA 17033-0850, Telephone: (717) 531-8892
Fax: (717) 531-4582; E-mail: grad-hmc@psu.edu

PENNSTATE



College of Medicine
University Hospital - Children's Hospital
The Milton S. Hershey Medical Center

Penn State is an affirmative action, equal opportunity university.

Opening Date: December 16, 1996

Closing Date: January 10, 1997

Announcement Number: CA-96-0324

CHIEF, LABORATORY OF POPULATION GENETICS

The Division of Cancer Epidemiology and Genetics (DCEG), National Cancer Institute (NCI), National Institutes of Health (NIH) is seeking an outstanding scientist to fill a Senior Scientist position as Chief of the Laboratory of Population Genetics (LPG). Candidates should be internationally recognized for their expertise, leadership and collaborative capabilities in the area of complex trait genetics and informatics, and should have the ability to apply molecular genetic tools to the study of human phenotypes in population-based studies of cancer susceptibility.

LPG is a new intramural laboratory being established in NCI's Human Genetics Program. The research program of LPG is directed at studies of populations, families and individuals at high risk of cancer to identify genetic and interacting environmental mechanisms associated with elevated cancer risk. Emphasis will be placed on molecular technology to map genes that affect cancer risk, elucidate their functions, and uncover interactions with environmental agents. Other critical activities include using and developing high throughput genetic assays and informatics systems capable of meeting the demands of population-based studies.

The Laboratory Chief will be responsible for establishing and staffing the new laboratory, and for ensuring its effective functioning by creating and maintaining a stimulating and interactive scientific environment that supports and enhances the laboratory, clinical and epidemiologic research projects of investigators in the Human Genetics Program. The selected scientist is someone who possesses a strong interdisciplinary orientation, outstanding scientific judgement and leadership skills, ability to recruit and mentor scientists with exceptional potential, and strong managerial skills.

Candidates must possess a medical and/or other doctoral-level degree in a biomedical or related field. In addition, candidates must be either a U.S. citizen, a citizen of a treaty allied country, or a nonresident alien with a valid work visa. Total annual compensation will be commensurate with education and experience and ranges from \$52,867 to \$148,400.

Applicants should send a cover letter of interest in the position; a statement of research interests; curriculum vitae and bibliography, and the names and addresses of five individuals who can be contacted as references. Letters of reference should not be submitted by the applicant. This material should be sent to:

Ms. Toni McKeown (0324), National Cancer Institute, Human Resources Management Consulting Branch, 6120 Executive Boulevard, Room 537, EPS, Rockville, MD 20852

Applications may also be faxed to (301) 402-9333. If you need additional information, please call Ms. Toni McKeown, NCI Human Resources Management Consulting Branch on (301) 402-2812.

Selection for this position will be based solely on merit, with no discrimination for non-merit reasons such as race, color, gender, national origin, age, religion, sexual orientation, or physical or mental disability.

NCI is an Equal Opportunity Employer

POSTDOCTORAL POSITION IN PRIMATE PSYCHOBIOLOGY

A position is available for a postdoc in the Primate Unit of the National Institute on Alcohol Abuse and Alcoholism in Poolesville, MD. Applicant is expected to develop a program of research in primate psychobiology and social behavior. Expertise in primate social behavior and behavior neurobiology, interest in developmental psychopathology, and willingness to integrate concepts with alcohol research is necessary. Interest in investigating interindividual differences and gene-environment interactions preferred. Candidate must be willing to work as a team member while developing an independent program. Research includes both laboratory and field settings.

The deadline for submission of applications is January 15, 1997. Applicants must have less than five years of postdoctoral training and should submit a curriculum vitae, a detailed statement of research interest, and three letters of reference to:

Dr. J. Dee Higley, NIH Animal Center, PO Box 529, Building 112, Poolesville, MD 20837.

THE NATIONAL INSTITUTES OF HEALTH (NIH) NATIONAL CENTER FOR HUMAN GENOME RESEARCH

THE NATIONAL CENTER FOR HUMAN GENOME RESEARCH (NCHGR) SEEKS TO RECRUIT A SCIENTIST INTERESTED IN RESEARCH GRANT ADMINISTRATION.

The Human Genome Project is well under way: it has successfully met several of its goals and is now scaling up DNA sequencing to determine the complete sequence of human DNA. NCHGR is also beginning to explore the development of innovative technologies for the study of sequence variation and the interpretation of genomic DNA sequence. The successful candidate will have the opportunity to be involved in planning future directions and administering a portfolio of grants in the area of large-scale genomic sequencing and technological innovation for the development of new genomic resources. NCHGR is looking for a creative, flexible individual interested in working in a multi-disciplinary environment.

Candidates should have a Ph.D. degree and experience in an area relevant to genomic science, including biological sciences, information science, chemistry, mathematics, physics, or engineering; have at least three years of post-graduate experience in leading an independent research project; and be interested in applying these skills to the present and future challenges offered by human genome research. The salary range is from \$54,629 to \$83,922 depending on experience and current salary.

NIH is an Equal Opportunity Employer and applications by women and minorities are strongly encouraged. Please submit a curriculum vitae and three letters of recommendation to:

Shelley Woods, Personnel Management Specialist, National Center for Human Genome Research, Building 31, Room 4B25, 9000 Rockville Pike, Bethesda, Maryland 20892; Fax: 301-402-0837; E-mail: ShelleyW@OD.NCHGR.NIH.GOV; Closing Date: 01/27/97

ARTHROPOD SYSTEMATIST

William M. and Esther G. Schlinger Endowed Chair

The University of California at Berkeley, Department of Environmental Science, Policy and Management, invites applications for a position as Assistant, Associate, or Full Professor of Insect Biology with concurrent appointment in the Agricultural Experiment Station. The ladder-rank appointment will be on a nine-month basis. The appointee will be awarded the William M. and Esther G. Schlinger Chair for an initial period of 5 years, which is subject to renewal. The position will be available July 1, 1997.

Applicants must have earned a doctoral degree in a field appropriate for the research area. The successful applicant should have a broad interest in the biology and systematics of terrestrial arthropods. A strong background in quantitative methods of phylogenetic and biodiversity analyses is preferred. Applicants in the early stages of their careers who have established national and international reputations for excellence in research are strongly encouraged to apply.

The appointee will be expected to contribute to general undergraduate courses in insect or environmental biology and to a graduate course in his/her area of specialization, as well as to the administration of the Essig Museum of Entomology (<http://www.mip.berkeley.edu/essig/>). The appointee will also be expected to provide professional and academic leadership to Master's and Ph.D. level graduate students.

Interested persons should apply by submitting a curriculum vitae, a statement of research interests, statement of teaching interests and experience, copies of recent publications, and the names of three references (with telephone numbers, postal and email addresses) to:

Professor Vincent H. Resh, Chair
Arthropod Systematist Search Committee
ESPM--Division of Insect Biology
201 Wellman Hall
University of California
Berkeley, CA 94720-3112

The closing date for applications is February 15, 1997.

The University of California is an Equal Opportunity Affirmative Action Employer



University of Pennsylvania

School of Medicine

Faculty Positions in Physiology

The Department of Physiology seeks to fill tenure-track positions, at the Assistant or Associate Professor level, with researchers who use modern biophysical and/or molecular biology techniques in the study of basic signaling mechanisms in cell physiology, such as stimulus-secretion coupling, stimulus-contraction coupling of cardiac or smooth muscle cells, membrane/cytoskeleton and membrane/extracellular matrix interactions, regulation of membrane cycling, control of intracellular calcium stores, G protein-coupled signal transduction, or sensory transduction.

Please send a curriculum vitae, a statement of research interests, two reprints or preprints, and the names of three persons prepared to send letters of reference to:

Search Committee

Department of Physiology

University of Pennsylvania

Philadelphia, PA 19104-6085

Applications from female and minority candidates are particularly encouraged.

The University of Pennsylvania is an Affirmative Action/Equal Opportunity Employer.

Four Technician (II) Positions

The University of Georgia Marine Institute has immediate openings for four technicians to work on a federally-funded research project investigating the sublethal responses of several indigenous marsh species to environmental stress. The project is funded from October 1996 to September 1999. Specific areas required are:

Microbial Ecology: Duties include collecting samples in impacted and unimpacted marshes; processing of the samples, including reflux extractions of sterol, liquid chromatography, direct microscopy of fungal reproductive structures, measurement of CO₂ release; and data recording and reduction, including statistical processing via an SPSS computer statistical package. Mycological or microbiological training and experience in field-microbiological research desirable. **Contact: Dr. Steven Y. Newell.**

Plant Photosynthesis: Duties include measuring photosynthetic rates of salt marsh plants in the field using an infrared gas analyzer (IRGA); counting and measuring plant stems; data reduction and analyses. Considerable experience in operating an IRGA is strongly desired. **Contact: Dr. Steven C. Pennings.**

Invertebrate Ecology: Duties include assisting in a project to evaluate variation in reproductive potential within a suite of salt marsh crustaceans. Applicants should possess organizational skills necessary to coordinate the collection and processing of semimonthly field samples from multiple locations, be willing to supervise temporary helpers, and be free to travel overnight when required. Experience in the collection and identification of salt marsh invertebrates is desirable. **Contact: Dr. Ronald T. Kneib.**

Chemistry/Toxicology: Duties include conducting laboratory and field experiments on the impacts of natural organic matter and perturbants on the sensitivity of the standard Microtox[®] assay. Applicants should have a strong background in chemistry, analytical techniques, and QA/QC protocols. Experience in conducting Microtox[®] assays required. **Contact Dr. James J. Alberts.**

All applicants should have at least a bachelor's degree in an appropriate scientific discipline. Post-baccalaureate experience and training are desirable. Successful candidates will be required to reside on Sapelo Island in University of Georgia housing. Interested candidates should send a CV and the names, addresses, and phone numbers of three references to the contact person listed above at: **The University of Georgia Marine Institute, Sapelo Island, GA 31327.** Applications will be considered until the positions are filled.

The University of Georgia is an Equal Opportunity/Affirmative Action Institution.

UNIVERSITY OF PITTSBURGH Department of Mechanical Engineering CHAIR

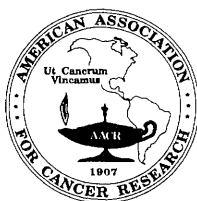
The University of Pittsburgh is seeking nominations and applications for the position of Chair of the Department of Mechanical Engineering. The School of Engineering, which was recently noted as the third most improved School of Engineering in the Nation (Gourman Report, 1996), was founded in 1846, and has more than 100 faculty, nearly 1,400 undergraduate students and 700 graduate students. The Department of Mechanical Engineering has 15 faculty and 441 students, of which 141 are graduate students. Current active research programs are focused in the areas of biomechanical engineering, vibration control, solid mechanics, and fluid mechanics. Given the strong commitment of the University and the School for strengthening the Department of Mechanical Engineering, this position presents a unique opportunity for a scholarly leader to have a major impact. The new chair will be expected to lead the Department toward its vision for Mechanical Engineering research and education in the next century. The School of Engineering expects to invest considerable resources, including the addition of at least two new faculty members, in strengthening the Department of Mechanical Engineering. The successful candidate will have a strong background in funded research, an established reputation as a scholar, and a willingness to continue research activities in this position. An earned doctorate in engineering, demonstrated administrative and organizational skills, and the ability to lead, are also prerequisites. The search committee will carefully consider each candidate's ability to communicate and teach effectively, as well as industrial experience and activity in professional societies. Interviews will be scheduled during February, with the expectation that the successful candidate will join the faculty before September 1997. Nominations and applications should include a detailed résumé, a brief statement regarding the applicant's research interests and vision for the future of Mechanical Engineering, and the names of at least three referees. We will respect any candidate's desire for confidentiality.

Please send complete nominations and applications to:

Professor Alan J. Russell, Professor and Chairman
Mechanical Engineering Chair Search Committee
1249 Benedum Hall, University of Pittsburgh
Pittsburgh, PA 15261

The University of Pittsburgh is an Affirmative Action, Equal Opportunity Employer.

AMERICAN ASSOCIATION FOR CANCER RESEARCH
88th Annual Meeting



Frederick P. Li, Program Committee Chairperson
Clara Derber Bloomfield, Program Committee Co-Chairperson
Stephen H. Friend, Program Committee Co-Chairperson

San Diego Convention Center, San Diego, California
April 12-16, 1997

Titles of Major Sessions

(Names of confirmed session organizers are in parentheses)

PLENARY SESSION

Genetic Predisposition to Cancer (Louise C. Strong)

SYMPOSIA

Genes, Cell Proliferation, and Antineoplastic Drugs
(George F. Vande Woude)

Diagnostic, Prognostic, and Therapeutic Aspects of Tumor
Suppressor Genes (David Sidransky)

Cell Cycle Regulation (Peggy J. Farnham)

Breast Cancer Genes (Barbara L. Weber)

Metastasis, Invasion, and Angiogenesis: Mechanisms and
Therapeutic Strategies (Marilyn M. Cornwell and Elise
C. Kohn)

Novel Clinical Trials Based on Genetics and Molecular
Therapeutics (Stephen H. Friend)

Apoptosis and Cancer Therapy (Michael B. Kastan)
Identification and Management of Genetic-High-Risk
Individuals (Albert de la Chapelle)

Demystifying the Role of Cytokines in Tumor
Immunobiology: Status and Future Utility (Michael A.
Caligiuri)

Telomerase and Clinical Applications (Titia de Lange)
Acute Myelocytic Leukemia (Clara Derber Bloomfield)

Prostate Cancer (Donald S. Coffey)

Colon Cancer (Margaret A. Tempero)

Signaling Pathways for Novel Therapeutics (Anthony J.
Pawson)

Animal Models for Functional Analysis of Tumor
Suppressor Genes (Terry A. Van Dyke)

New Techniques for Molecular Diagnostics (Eric S.
Lander)

Mechanisms of Cellular Senescence (J. Carl Barrett)

Damage Response Pathways (Philip C. Hanawalt)

Gene Interactions with the Environment/Carcinogenesis
(Allan Balmain)

Epidemiology and Pathogenesis of Secondary Cancers
(Frederick P. Li)

CONTROVERSY SESSIONS

What Are the Appropriate Therapeutic Uses of
Hematopoietic Growth Factors? (Peter J. Quesenberry)
Estrogen Replacement Therapy: Beneficial or Harmful?
(Larry Norton)

What is the Value of Mammography in Young and
Genetically Susceptible Women?

Is the Time Right for Cancer Chemoprevention? (Edward
Bresnick)

Gene Patents: Help or Hindrance to Conquering Cancer?

What is the Role of Prophylactic Surgery in Breast and
Ovarian Cancer? (Samuel A. Wells, Jr.)

What Are the Appropriate Guidelines for the Use of
Archived Human Tissue?

How Robust Are Antisense/Third Strand Techniques for
Gene Disruption?

"MEET-THE-EXPERT" SUNRISE SESSIONS

Angiogenesis

Gene Therapy (Jack A. Roth)

Strategies for Drug Development (Daniel D. Von Hoff)

Advances in Our Molecular Understanding of

Lymphoproliferative Disease (A. Thomas Look)

FHIT Gene Alterations in Cancer (Kay Huebner)

Cancer Vaccines (David P. Carbone)

Lung Cancer

Costimulatory Molecules in Tumor Immunity

New Approaches to Overcoming Multidrug Resistance

(Alan F. List)

Advances in Oncologic Imaging (Michael J. Welch)

Retinoids and Cancer Chemoprevention (Waun Ki Hong)

Mechanisms of Regulation of p53 Function (Guillermina
Lozano)

p53 and Genetic Instability (Geoffrey Wahl)

Farnesyl Transferase Inhibitors (Allen I. Oliff)

Human Cancer Genetics Travels to Cyberspace (Kenneth
H. Buetow)

DNA Methylation in Cancer (Stephen B. Baylin)

Chemoprevention in Transgenic Animals (James M.
Phang)

Advances in Stem Cell Transplantation

Psychosocial Issues in Cancer

Advances in the Management of AIDS-related

Malignancies (Ellen G. Feigal)

Recent Developments in Our Understanding of Minimal
Residual Disease (John G. Gribben)

Ovarian Cancer Update (Robert C. Bast, Jr.)

The Biological Basis of the New International

Classification of Lymphoma (Elaine S. Jaffe)

Recent Developments in Radiotherapy (Ralph R.
Weichselbaum)

Colon Cancer Genes (Stanley R. Hamilton)

Extracellular Connections (Mina J. Bissell)

Barrett's Esophageal Cancer and Tumor Progression
Models (Brian J. Reid)

H. Pylori and Gastric Carcinogenesis (Pelayo Correa)

Transcriptional Models and Drug Discovery (William G.
Kaelin)

**METHODS WORKSHOPS AND EDUCATIONAL
SESSIONS**

To be announced

Further Information: AACR Office · Public Ledger Building
Suite 816 · 150 S. Independence Mall West · Philadelphia,
PA 19106-3483 · **TELEPHONE:** (215) 440-9300 · **FAX:**
(215) 440-9313 · **Email:** aacr@aacr.org · For up-to-date
information visit the AACR Website at <http://www.aacr.org>

Cellular/Molecular Immunology

The University of Calgary Faculty of Medicine invites applications for a full-time academic position at the Assistant Professor level or higher for research in cellular or molecular immunology. Qualifications include a PhD, MD or equivalent, and interest and experience in immunology at the cellular or molecular level, particularly related to autoimmune pathogenesis of Type 1 Diabetes. Opportunities will be available for graduate and medical school teaching. Rank and salary commensurate with qualifications and experience.

The successful candidate must compete successfully for salary and establishment grant support from the Alberta Heritage Foundation for Medical Research and/or the Medical Research Council, and will have 75% of time protected for research.

In accordance with Canadian immigration requirements, priority will be given to Canadian citizens and permanent residents of Canada. The University of Calgary is committed to Employment Equity.

Please submit a curriculum vitae and statement of research and goals, and arrange for three letters of reference to be sent directly, by February 28, 1997, to:

Dr. Ji-Won Yoon
Julia McFarlane Diabetes Research Centre
The University of Calgary, 3330 Hospital Drive N.W.
Calgary, Alberta Canada T2N 4N1.



www.ucalgary.ca

Dean College of Arts and Science University of Missouri-Columbia

MU seeks a dynamic and innovative individual to provide leadership for the College of Arts and Science, which comprises 30 academic departments and 425 regular faculty. The Dean serves the university in multiple roles and, through the campus-wide Council of Deans, actively contributes to decisions affecting the university-at-large as well as the College of Arts and Science. The new Dean will provide vision and leadership to help guide this strong college toward increased national prominence and service to Missouri.

MU is the flagship of the four-campus University of Missouri System; it is a land-grant institution and also Missouri's only major public research university. It was established in 1839 as the first public university west of the Mississippi River. Today it is one of the most comprehensive and diverse universities in the United States, having attained both AAU membership and Carnegie Research I status. With a thriving 24,000 student campus and a faculty dedicated to excellence in teaching and research, MU is located in the attractive community of Columbia, nationally ranked as one of the five most livable American cities. The University of Missouri currently enjoys exceptional support from the State of Missouri, providing opportunity, growth, and flexibility for our next Dean of Arts and Science.

MU seeks candidates with a fundamental understanding of, and commitment to, academic excellence and intercollegiate collaboration. Applications and nominations are invited. Candidates must have a strong record of accomplishment in research and creative achievement, teaching, and service appropriate to academic appointment as full professor in one of the College's departments, as well as a record of successful academic leadership, program building, and resource management. Salary will be competitive and commensurate with experience and qualifications. The target date for starting the position is August 1, 1997.

Review of applications and nominations will begin February 1, 1997, and will continue until the position is filled. Applications should include a detailed curriculum vitae, addresses and telephone numbers of three references, and a two-page statement of the applicant's administrative philosophy as it applies to this position. Correspondence should be addressed to: **Dean H. Richard Adams, Attn: Arts and Science, College of Veterinary Medicine, University of Missouri, Columbia, MO 65211; Telephone: (573) 882-3768; FAX: (573) 884-5044; email: vmdean@vetmed.missouri.edu**

The University of Missouri is an equal opportunity, affirmative action institution and complies with guidelines set forth by the Americans with Disabilities Act of 1990.

POSTDOCTORAL POSITION Laboratory of Bacterial Toxins Center for Biologics Evaluation and Research (CBER) Food and Drug Administration

A postdoctoral position (Staff Fellowship) is available immediately within CBER's Laboratory of Bacterial Toxins to study the pathogenesis of *Corynebacteria*. Qualified candidates must have an M.D. or Ph.D. degree, with no more than 5 years of postdoctoral research experience. Experience with prokaryotic gene expression and recombinant DNA technology is required; experience with bacterial gene regulation and bacterial pathogenesis is desirable.

The Laboratory of Bacterial Toxins is located on the main research campus of the National Institutes of Health in Bethesda, MD; the Laboratory conducts research on the biochemistry and immunochemistry of bacterial virulence factors and has the responsibility for regulating toxoid vaccines. The postdoctoral appointment is for two years, with possible extension for a third year; the starting salary is in the range of \$35,000 to \$45,000 per annum, depending on experience. The position is available to citizens or permanent residents of the United States.

Interested candidates should, by January 3, 1997, send their curriculum vitae with bibliography and the names of three references to: **Dr. Willie F. Vann, Chief, Laboratory of Bacterial Toxins, Office of Vaccines Research and Review, CBER, 1401 Rockville Pike, Rockville, MD 20852. Tel: (301) 496-9695.**

The Center for Biologics Evaluation and Review is an Equal Opportunity Employer. FDA is a smoke-free workplace.

NEUROSCIENTISTS

Neurocrine Biosciences Inc. has several positions available for talented scientists to join its Neuroscience Department.

Electrophysiology: An experienced scientist is required to establish an *in vitro* electrophysiology laboratory and contribute to basic and applied research projects. Candidates should have a PhD with 2-6 years of postdoctoral experience and demonstrated expertise in one or more of the following areas: extracellular/intracellular recording from brain/spinal cord slices; patch clamp techniques; recording from neurons in culture; recording from the *Xenopus* oocyte expression system. A knowledge of molecular biology techniques associated with expression of receptors and ion channels would be an advantage.

Cerebral Ischemia: An experienced scientist is required to undertake a key role in cerebral ischemia research. Candidates should have a PhD with 0-4 years of post-doctoral experience, demonstrated practical skills in performing rodent surgery, and knowledge of histopathological techniques. Experience with middle cerebral artery occlusion would be a distinct advantage.

Research assistant positions are also available for those with an aptitude for behavioral studies and small animal surgery.

Based in San Diego, California, **Neurocrine Biosciences, Inc.** is a leading biopharmaceutical company focused on developing novel therapeutic agents for the treatment of central nervous system and immunological diseases. The company offers competitive terms and conditions of employment, including full health coverage, and provides an outstanding research environment in which career development is encouraged. Please send your curriculum vitae to: **Dr. Alan C. Foster, Neurocrine Biosciences Inc., 3050 Science Park Road, San Diego, CA 92121; FAX: (619) 658-7696.**

ASSISTANT, ASSOCIATE, SENIOR SCIENTISTS

The Department of Physical Oceanography invites applications for Assistant, Associate or Senior Scientist positions in the general areas of global ocean circulation and climate, for example, climatology, remote sensing, or global ocean modelling. Opportunities exist to interact with strong departmental programs in air-sea interaction, global ocean circulation and mixing measurements, circulation theory and modelling as well as related programs in other departments such as paleoceanography.

Applicants should have a doctoral degree in Physical Oceanography, Meteorology/Climatology, or closely allied fields, and should have postdoctoral experience and demonstrated expertise in the aforementioned general research areas. Appointments can be made at the Assistant, Associate or Senior Scientist level, depending upon background, experience and tenure suitability. Curriculum vitae including publication list and a short statement of research interests should be sent to: **Dr. Philip L. Richardson, Department of Physical Oceanography, Box 54PSC11, Woods Hole Oceanographic Institution, Woods Hole, MA 02543..**

WOODS HOLE
OCEANOGRAPHIC
INSTITUTION

EOE/M/F/D/V.



FACULTY APPOINTMENTS

Mount Sinai School of Medicine Institute for Gene Therapy and Molecular Medicine

We are recruiting basic science faculty to this new academic Institute at all tenure-track levels. Successful applicants will be expected to develop – or have in place –

**Mount
Sinai**

strong, independent research programs in the broad areas of (1) the uptake of macromolecules by cells, (2) the intracellular transport and trafficking of DNA, RNA and proteins or (3) homologous recombination or episomal DNA persistence in cellular nucleus. Secondary appointments and active participation in any of several basic science departments and centers will be strongly encouraged. Opportunities for exceptionally productive collaborations exist with other Institute faculty whose primary interests are immunology, molecular virology, stem cell biology and gene therapy in animal models of disease. New, well-designed laboratory space and excellent start-up and benefits packages are offered.

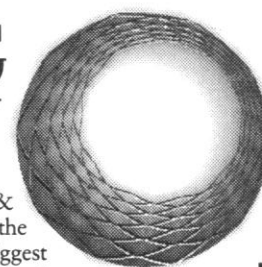
Please forward curriculum vitae, a summary of research interests and three letters of recommendation by February 1, 1997 to: **David R. Colman, Ph.D., Chair; GTI/Molecular Medicine Faculty Search, The Mount Sinai School of Medicine, One Gustave L. Levy Place, Box 1126, New York, NY 10029-6574.** Equal Opportunity Employer. We foster diversity in the workplace.

The Mount Sinai Medical Center

The National Institutes of Health, National Cancer Institute, has a postdoctoral position available in the Laboratory of Drug Discovery Research and Development, Developmental Therapeutics Program, for an M.D. or Ph.D. applicant interested in the use of drug-polymer conjugates as a therapeutic strategy in cancer chemotherapy. The candidate should have experience and/or strong interest in research related to microcirculation of malignant tumors and their interaction with macromolecules, and/or anti-cancer drugs in the blood stream. A working knowledge of the cellular and molecular biology of tumor angiogenesis, drug-induced apoptosis, cell pinocytosis, extracellular and intracellular protease activity, and regulation of intra- and extracellular pH of tumor cells are of importance for this project. Our objective is to study in animal models with localized and disseminated cancer, as well as suitable *in vitro* systems, the scientific basis by which drug-polymer conjugates exert their selective accumulation and/or activation in tumoral tissues, and to use that information to optimize their development and therapeutic use in cancer. Our ultimate goal is to create polymer conjugates with novel anticancer drugs, as a therapeutic strategy to maximize their accumulation and bioactivity in malignant tissues, and to minimize toxicity of normal tissues.

The candidate with documented commitment to the cancer problem and with demonstrated achievements, innovations and creativity in the fields above will be selected for this position. For consideration, please submit your resume, along with the names of three references and a cover letter indicating why you think you are a suitable candidate for this position, to **Edward A. Sausville, M.D., Ph.D., at the National Cancer Institute, Laboratory of Drug Discovery Research and Development, DTP, DCTDC, Building 1052, Room 121, Frederick, MD 21702, or Fax (301) 846-6177.**

OPENING THE WAY



We're Cordis, a Johnson & Johnson company and one of the medical device industry's biggest success stories. Our innovative products are changing the way interventional cardiologists treat cardiovascular disease and related conditions, and provide patients with the least invasive surgery resulting in shorter hospital stays. As a result of our success, we are seeking the following individuals to join our team in scenic central New Jersey:

Senior/Principal Scientist, Drug Delivery Systems

You will investigate release, uptake and disposition of therapeutic agents into blood vessels from coated stents and vascular infusion devices as well as develop *in vitro* and *in vivo* models and bioanalytical techniques; evaluate novel drug formulations and participate in the development of new cardiovascular drug delivery systems. Requires a PhD in pharmacology or a related medical science with 2+ years of postdoctoral research training, and some experience in local drug delivery. Dept. 1047

Senior/Principal Scientist, Experimental Pathology

You will establish quantitative methods for analyzing vascular injury and repair as well as manage key external collaborations. Knowledge of mechanisms of vascular remodeling and neointimal formation and advanced histologic techniques are important. Requires a PhD in pathology or a related medical science with 2+ years of postdoctoral training. Industrial experience is preferred. Dept. 1048

Sr. Scientist, Biosurfaces

Develops evaluation procedures in support of new and established programs to characterize and optimize drug delivery coatings for blood contacting applications. Position requires a PhD in polymer science, chemistry or a related discipline. Current or previous experience in the medical device industry or an industrial or academic polymer research group is preferred. Dept. 1049

We offer competitive salaries, comprehensive benefits which include medical/dental, 401(k) and our LIVE FOR LIFE Wellness program with on-site fitness center. For consideration, please forward resume, indicating position of interest and department number from above to: Johnson & Johnson Recruiting, P.O. Box 16597, New Brunswick, NJ 08906-6597. We are an equal opportunity employer m/f/d/v.

Cordis

a Johnson & Johnson company

WE'RE OPENING A WORLD OF POSSIBILITIES



Yale UNIVERSITY

Announces the creation of a DEPARTMENT OF ECOLOGY & EVOLUTIONARY BIOLOGY

in its Faculty of Arts & Sciences

The new department, expected to grow substantially in the years to come, augments Yale's long-standing institutional strengths in the:

PEABODY MUSEUM OF NATURAL HISTORY

A major research museum housing over 11 million specimens

SCHOOL OF FORESTRY & ENVIRONMENTAL STUDIES

The nation's oldest forestry school which, while retaining its original mission, serves today as a meeting ground for environmental sciences and policy and a training ground for environmental managers

FAS DEPARTMENTS OF ANTHROPOLOGY, GEOLOGY & GEOPHYSICS, and BIOLOGY

With groups in primatology; global climate change and paleontology; and molecular, cellular, developmental, neuro-biology and genetics, respectively

INSTITUTE FOR BIOSPHERIC STUDIES

An interdisciplinary research and education unit, sponsoring centers for Computational Ecology, Earth Observation, Ecosave and Global Change and administering the newly endowed Dorothy and Gaylord Donnelly Postdoctoral Fellows in Biodiversity

The new department will be housed in recently renovated facilities in **OSBORN MEMORIAL LABORATORY** and will join groups from the above-listed units in a new \$30 million **ENVIRONMENTAL SCIENCE FACILITY**. This new facility will provide laboratory space and collection-based teaching facilities for anticipated new faculty recruitments.

Yale University is seeking an outstanding scholar and educator to **CHAIR** the new unit. We are seeking experienced candidates studying whole organisms or ecological systems. The President and Provost invite nominations of suitable candidates, forwarded to:

**Provost Allison Richard
EEB Chair Search
Yale University,
New Haven, CT 06520-8236**

Yale University is an equal opportunity/affirmative action employer. Nominations of minority, women and candidates with disabilities are especially welcome.

ALABAMA STATE UNIVERSITY

Assistant Professor of Biology (MOLECULAR GENETICS). The selected person will teach molecular genetics, molecular biology techniques, and other related courses; develop an externally funded research program; and participate in the training of undergraduate and graduate students in the laboratory. **Qualifications:** Ph.D. in biological sciences with significant expertise in recombinant DNA technology. **Salary:** Competitive. **Starting Date:** 1997 Fall Semester. **Application Deadline:** February 15, 1997.

Assistant Professor of Biology (MICROBIOLOGY). The selected person will teach population ecology, applied microbiology, and other related courses; develop an externally funded research program; and participate in the training of undergraduate and graduate students in the laboratory. **Qualifications:** Ph.D. in biological sciences with substantial training in microbial ecology and molecular techniques. **Salary:** Competitive. **Starting Date:** 1997 Fall Semester. **Application Deadline:** February 15, 1997.

APPLICATION PROCEDURES: Submit an ASU job application (request by mail, fax, or telephone); three letters of recommendation; transcripts; and resume to **Beverly A. Rudolph, Employment Manager, Alabama State University, 915 South Jackson Street, Montgomery, AL 36101. Fax: (334) 265-0697. Applications from minorities, women, and people with disabilities are encouraged to apply.** For other employment opportunities call the ASU Job Line: (334) 229-JOBS or (334) 229-5627

An Affirmative Action, Equal Opportunity Employer

POSTDOCTORAL POSITIONS School of Public Health Program in Infectious Diseases and Immunity

University of California Berkeley

Available in the laboratories of:

Lee Riley, M.D., Mycobacterial and Enteric Diseases Laboratory: Position to conduct research in microbial pathogenesis with emphasis in mycobacterial organisms. The laboratory studies the interaction of microbes with mammalian cells, with the goal of identifying bacterial products that may serve as candidates for new vaccines, diagnostic reagents, and molecular strain-typing tools. Candidates should have a Ph.D. in microbiology or biochemistry, or an M.D. with a strong research background in infectious diseases. Preference will be given to those with at least one year of postdoctoral experience and a strong interest in epidemiology and/or public health.

Richard S. Stephens, Ph.D., Chlamydia Research Laboratory: Position to study the molecular pathogenesis of *Chlamydia trachomatis*. Use of molecular genetic focus to investigate the host immune response to infection and the mechanisms of protection and disease. Recent Ph.D. or M.D. graduates with productive research background in microbiology, cell biology, and/or immunology are encouraged to apply.

Fenyong Liu, Ph.D., Viral Research Laboratory: Position to study the pathogenesis and gene functions of cytomegalovirus (CMV) and herpes simplex virus (HSV), and the use of ribozymes to inhibit viral gene expression and viral replication both in tissue culture and in animals. A doctoral degree with research experience in molecular biology is required and experience with CMV or HSV is desirable.

Send curriculum vitae and the names of three references to: **Drs. Riley, Stephens, or Liu, 140 Warren Hall, School of Public Health, University of California, Berkeley, CA 94720-7360.**

SPECTR_X

SpectRx, Inc, an Atlanta based leader in developing minimally invasive medical diagnostic systems, is seeking several highly motivated creative individuals for a multi-disciplinary R&D program. Engineers and scientists experienced in mechanical wave propagation through biological material, non-imaging ultrasound applications and acoustic streaming, simulation and modeling of mechanical and fluid motion in biological tissues, electro-optical diagnostic design and computer modeling, bio-statistics, and execution of in-vitro and in-vivo experiments are invited to apply. Previous medical device development experience preferred. SpectRx currently controls more than 30 patents, and offers significant long-term career opportunities. Send resumes to **Dr. Dail L. Fields, SpectRx, Inc., 6025A Unity Drive, Norcross, GA 30071.**

No telephone calls please
Equal Opportunity Employer
See our website at
www.spectrx.com

Leighton E. and Mary N. Orr Professorship School of Engineering The University of Pittsburgh

The School of Engineering at the University of Pittsburgh invites applications and nominations of individuals to be appointed to a newly established Endowed Chair in Mechanical Engineering. The successful candidate should possess a Ph.D. in an Engineering discipline and be currently active in the field of Mechanical Engineering or a related discipline. The incumbent will be charged with an important leadership role at the School in expanding an already active and highly regarded research program. The Leighton E. and Mary N. Orr Professorship is funded by an endowment from Leighton E. Orr, an alumnus of the School of Engineering at the University of Pittsburgh and a distinguished researcher in industry for many years. Earnings from the endowment contribute to a competitive salary and generous discretionary funds to the appointee.

The School of Engineering at the University of Pittsburgh enrolls 1350 undergraduate and 800 graduate students in six major disciplines: Mechanical Engineering, Electrical Engineering, Industrial Engineering, Chemical and Petroleum Engineering, Civil and Environmental Engineering and Materials Science and Engineering. In addition, a growing Bioengineering Program, which has already achieved distinction, is joined by an all-new Computer Engineering Program this year. Address nominations or applications of inquiries to:

Chair, Leighton E. and Mary N. Orr Professorship Search, School of Engineering, University of Pittsburgh, 1249 Benedum Hall, O'Hara and Thackeray Streets, Pittsburgh, PA 15261

The University of Pittsburgh is an Affirmative Action, Equal Opportunity Employer

NIH Has A New Address.

The National Institutes of Health has introduced a new web site. Now, the latest news about clinical and research training opportunities at NIH can be accessed by visiting us at <http://helix.nih.gov:8001/oe/>

At the site, you can quickly obtain information regarding clinical and postdoctoral training. Review the NIH tenure-track openings. Take a look at the NIH Postdoctoral Research Fellowship Opportunities Catalog which chronicles research being conducted in all NIH laboratories. You can even apply electronically for positions.

All from the convenience of your keyboard.

Plus, the web site links to all NIH institute and laboratory home pages, provides a calendar of events, and offers links to many other areas.

We used to ask you to call us or send your *curriculum vitae*. Now, the best way to find out about world class opportunities at NIH is through the world wide web.



National Institutes Of Health

Office Of Education

<http://helix.nih.gov:8001/oe/>

The NIH is an Equal Opportunity Employer

VICE PRESIDENT FOR RESEARCH

The State University of New York at Stony Brook invites nominations and applications for the position of Vice President for Research.

The Vice President for Research is the senior academic administrator responsible for the advancement of the University's research mission and administration of campus funds for the Research Foundation of the State University of New York. As the administrator responsible for encouraging and facilitating research throughout the campus, the Vice President must be familiar with the objectives and procedures of the major public and private funding agencies that support scholarly and creative activities. The Vice President reports to the President and Provost on all matters that pertain to research on the campus and is the major advocate both within and outside the University on research matters.

Stony Brook is a major national research university according to the National Research Council rankings. The University enrolls about 17,000 students, including 6,000 graduate and professional students, and consists of a College of Arts and Sciences, a College of Engineering and Applied Sciences, a Marine Sciences Research Center, a Health Sciences Center that includes Schools of Medicine, Dental Medicine, Nursing, Social Welfare and Allied Health Professions and a 540-bed University Hospital. There are currently about 80 graduate programs. In 1995, sponsored research program expenditures amounted to \$122 million. The University enjoys close ties with its neighboring research institutions--Cold Spring Harbor Laboratories and Brookhaven National Laboratories.

Qualifications include an earned doctorate, a record of academic distinction and scholarly achievement, as well as evidence of outstanding administrative abilities.

Review of applications and nominations will begin on January 2, 1997. Please address them to: Chair, Search Committee for the Vice President for Research, Office of the Provost, 407 Administration Building, SUNY Stony Brook, NY 11794-1401. Further information can be obtained on our WEB site: <http://www.research.sunysb.edu/research/vprsearch>

SUNY at Stony Brook is an AA/EEO employer and educator. Women and members of minority groups are encouraged to apply.



CHANCELLOR

University of California

San Francisco

The President and The Regents of the University of California invite nominations and applications for the position of Chancellor of the San Francisco campus. The appointment will be effective July 1, 1997.

The University of California, San Francisco, is one of the nine campuses of the University, and the only one devoted solely to the health sciences. It is one of the world's foremost health sciences universities. Its schools of Dentistry, Medicine, Nursing, and Pharmacy and the Graduate Division award advanced professional degrees and doctoral degrees in the basic natural and behavioral sciences relevant to health. The campus is a major clinical and research center for cancer treatment, transplantation, AIDS, pediatric specialties and for research in the basic biomedical sciences. The 1996-97 student enrollment is approximately 3,600; faculty and staff number about 15,000. The campus annual budget is approximately \$1.25 billion.

There are three general acute-care hospitals, an Ambulatory Care Center, and the Langley Porter Psychiatric Institute which is devoted to psychiatric patient care, teaching, and research. In addition, the campus has affiliated programs in some 150 institutions throughout California. By recent action of the UC Regents, plans are underway to merge the campus clinical activities with those of Stanford University and create a not for profit public benefit corporation. The Chancellor will serve as a member of the Board of Directors of the merged entity.

The Chancellor is the chief executive officer of the campus and is responsible to the President. Within the scope of University policy the Chancellor exercises very broad delegated powers and is responsible for all aspects of campus administration. Candidates should have demonstrated experience in the administration of substantial organizations, preferably research universities, and should have a strong scholarly record. Nominations and applications, accompanied by current resumes, may be addressed to **The President, UCSF Chancellor Search, 300 Lakeside Drive, University of California, Oakland, California 94612-3550**, and should be received no later than January 31, 1997, to be given full consideration.

An Equal Opportunity/Affirmative Action Employer

THE FUTURE IS HERE!



You are looking at the future. The future in biomedical research, industrial and clinical diagnostics, and genomics. We are the creators of GeneChip™ technology — a new revolutionary system that is transforming how we acquire, analyze and manage genetic information. It's what we are working on at Affymetrix and it could just launch your career in a whole new exciting direction!

POSTDOCTORAL SCIENTIST

The individual we select will be responsible for the design, development and execution of scientific research and development in collaboration with a research team. This work will focus on the investigation of polymorphic genotypes among the human drug metabolizing enzymes, particularly the cytochromes P450, sulfotransferases and acetylases. Responsibilities include investigating the feasibility of applying a wide variety of scientific principles and theories to potential inventions and products. A PhD in Molecular Biology, Molecular Pharmacology or related discipline required. Good computer and computational abilities and excellent communication skills are also essential.

Offering a small company atmosphere with big scientific potential, Affymetrix provides attractive salaries, comprehensive benefits, and the exhilarating synergy of our world-class multidisciplinary team. For consideration, please send or fax your resume to Affymetrix, Human Resources, 3380 Central Expressway, Santa Clara, CA 95051; Fax (408) 481-0422. We are an equal opportunity employer.



CALIFORNIA INSTITUTE OF TECHNOLOGY

Assistant Professor of Molecular Geobiology

Caltex is seeking qualified candidates for a tenure-track position in the area of molecular geobiology at the Assistant Professor level. Completion of the Ph.D. or equivalent is required. The initial appointment is for four years. It is possible that a candidate with exceptional qualifications may be considered for a position at a higher level. The position is conceived as an interface between the Division of Biology and the Division of Geological and Planetary Sciences, and an appointment may be made in either Division or jointly in both Divisions, depending on expertise, interest, and background of the successful candidate. Candidates of extraordinary ability and potential for innovation and leadership in teaching and research in any area of molecular geobiology are encouraged to apply. We shall be especially drawn to individuals whose intellectual interests in evolutionary science are engaged over broad, interdisciplinary areas of knowledge, and whose research naturally links the tools of molecular biology and biochemistry with those necessary for an understanding of the earth, its history, and the history of life. Examples (not inclusive) would be an evolutionary biologist who seeks to integrate experimental evidence from molecular developmental biology with evidence from paleontology, paleoecology, systematics, and comparative anatomy; a molecular biogeochemist whose interests lie in the metabolic signatures of given groups of organisms and the traces they have left as indicators in geological or fossil systems; or a molecular paleontologist who utilizes sequence relationships to illuminate systematic and phylogenetic problems.

A curriculum vitae including a list of publications, a brief discussion of proposed research activities, and three letters of reference should be sent to **Prof. E.M. Stolper, Chairman, Division of Geological and Planetary Sciences, MS170-25, California Institute of Technology, Pasadena, CA 91125** or to **Prof. Melvin Simon, Chairman, Division of Biology, MS156-29, California Institute of Technology, Pasadena, CA 91125**.

The California Institute of Technology is an Equal Opportunity/Affirmative Action Employer. Women, minorities, veterans, and disabled persons are encouraged to apply.



**DANA-FARBER
CANCER INSTITUTE**

POSTDOCTORAL TRAINING OPPORTUNITIES IN

T-CELL IMMUNOLOGY

The Dana-Farber Cancer Institute seeks to fill postdoctoral training positions for research into T-cell development and function in AIDS-related research projects. Background and/or experience in cellular and biochemical analysis of T-cells preferred. Candidates must be citizens/permanent residents of the U.S. and must commit to a minimum two-year training period. A joint appointment will be held in an appropriate department of the Harvard Medical School. Please forward a CV to:

**Harvey Cantor, Director
AIDS Postdoctoral Training Program
Dana-Farber Cancer Institute
44 Binney Street, LHRB 210
Boston, MA 02115**

DFCI is an Equal Opportunity Employer

Imagine The Possibilities

At Berlex, we've built our reputation on FDA-approved product successes and a proven track record in the pharmaceutical industry. Currently, we are seeking a Cardiovascular Scientist to join our team in the beautiful San Francisco Bay Area.

Cardiovascular Scientist

As a member of our Cardiovascular Department, you will perform independent research to identify novel molecular targets for the prevention/treatment of cardiovascular diseases. You must have a PhD with at least 3 years of postdoctoral experience demonstrating skills in molecular and cell biology. Expertise in vascular biology with a focus on arteriosclerosis preferred; experience with gene transfer/gene therapy/transgenic animals is a plus.

As a US subsidiary of an international Fortune 500 company, Berlex is proud to offer competitive salaries and a generous benefits package. To apply, send your CV/resume to: **BERLEX, HUMAN RESOURCES EMPLOYMENT, DEPT. CVS, 15049 SAN PABLO AVE., RICHMOND, CA 94804-0099**. Principals only, please. EOE.

BERLEX

THE BEST IS YET TO COME

SECTION MANAGER Skin Care Clinical Research

Allergan leads the way to healthcare innovation. We're known for excellence in the development, manufacture and marketing of pharmaceutical drugs for a variety of skin and eye care as well as neuromuscular disorders. Clinical research plays a major role in our ongoing success. We currently have an excellent opportunity in our Skin Care Division for an individual to assist in the clinical development/support of new and existing skin care products.

As a leader in our organization, you will manage research planning, budgeting and scheduling; coordinate investigators; make key decisions based on findings; and ensure compliance with scientific and legal requirements. Requires a combined education and clinical research experience equivalent to a Bachelor's degree in science/health-related discipline and 10+ years of experience, or a Ph.D./Pharm.D. and 4+ years of experience. Candidates must have in-depth knowledge of clinical trials, design, monitoring, and regulatory compliance; and a solid grasp of statistical reporting. Superior interpersonal and written/verbal communication skills are also essential. Must have excellent basic computer skills (word processing, spreadsheets, graphics).

Other clinical opportunities are also available.

If you meet our qualifications, join us in enhancing the quality of life for millions. We reward our employees with a competitive salary, an excellent benefits package and a great working environment. For consideration, send your resume to: **Allergan, Human Resources Dept., Attn: J. Smith, 2525 Dupont Dr., T2-1B, Irvine, CA 92612. EOE.**

Advancing the Science of Health Care.



CytoTherapeutics

Cytotherapeutics, Inc. is a leader in the development of proprietary products and technology designed to deliver therapeutic substances to the central nervous system (CNS). The Company's CNS-focused technology is designed to provide controlled, site-specific and safe delivery of a variety of novel therapeutic substances across the blood-brain barrier, thereby overcoming a fundamental obstacle in the effective treatment of CNS diseases. The Company is currently developing products for the treatment of chronic pain, ALS, and Parkinson's disease with additional research efforts directed to several other CNS disorders, including the treatment of ophthalmic disorders.

Scientist - Ophthalmology Research

As a scientist in our Cell and Molecular Biology group, you will be responsible for large and small animal safety testing and toxicology, histological analysis, development of intraocular imaging techniques for protein distribution studies, development/coordination of ERG studies and psychophysical testing in large animals, coordination of device design efforts, and the development of ELISA methods for vitreal sampling. Requires a Ph.D. in cell and molecular neuroscience, neuro-pharmacology or a related field.

Bioassay Research Associate (Protein Chemistry Laboratory)

As a member of the exploratory research team, the Bioassay Research Associate will work closely with the protein chemistry group, perform microdissection, prepare primary neuronal cultures and perform neurochemical assays on cell cultures. In this position, you will grow primary neuronal and glial cell cultures, perform cell-based bioassays for growth factors, perform immunocytochemistry, and prepare figures/reports and communicate experimental results. Requires a BS/MS in a relevant field and at least 2 years' experience in neuronal cell cultures. Candidate is expected to generate highly reproducible and consistent numbers from heterogeneous systems in a meticulous manner.

CytoTherapeutics is a rapidly expanding biotechnology company in Providence, Rhode Island (just 45 minutes south of Boston). We offer extensive professional challenge and encourage your ideas and professional development. We also offer a competitive compensation and benefits package. Please send your resume in confidence to: CytoTherapeutics, Human Resources, 2 Richmond Square, Providence, RI 02906 or fax to: (401) 272-3485. CTI Website <http://www.cyto.com/> We are an equal opportunity employer.

BIOSTATISTICIANS

Applications are invited for three or more faculty positions for biostatisticians in the Division of Public Health Sciences of the Fred Hutchinson Cancer Research Center. The Fred Hutchinson Cancer Research Center is a comprehensive cancer center with large and active research programs in epidemiology, cancer prevention, and biostatistics. Strong methodologic skills are essential. Participation in ongoing population studies as well as development of methodology expected. Consideration will be given to candidates with training and interest in any area of statistics relevant to the population sciences. One position will provide statistical support for activities in Clinical Research. One position will provide statistical support to the Women's Health Initiative, a large ongoing program that includes an intervention trial and an observational study. For one of the positions preference will be given to individuals with a background in statistical genetics or genetic epidemiology. Positions at the Assistant or Associate Member (equivalent to Assistant or Associate Professor) level depending on qualifications. A joint appointment in the School of Public Health and Community Medicine's Biostatistics Department as a Research Assistant Professor or Research Associate Professor is possible depending on interests and qualifications.

Please send applications including curriculum vitae, a letter describing research interests, and the names of four references by March 15, 1997, to: **Suresh H. Moolgavkar, M.D., Ph.D. (Search Chair), Fred Hutchinson Cancer Research Center-MP 665, 1124 Columbia Street, Seattle, WA 98104.**

The Fred Hutchinson Cancer Research Center and the University of Washington are equal opportunity/affirmative action employers. Both institutions are building culturally diverse faculty and strongly encourage applications from female and minority candidates.

DRUG DISCOVERY AT THE MERCK FROSST CENTRE FOR THERAPEUTIC RESEARCH

Senior Research Biologists

Merck Frosst is a leading research-based pharmaceutical company in Canada with state-of-the-art facilities located in Montreal, Quebec. Merck Frosst has research projects in the areas of inflammation, respiratory disease, immunosuppression, diabetes, and apoptosis, encompassing a variety of G-protein-coupled receptor and enzyme targets. Novel gene discovery is a core activity in each of these areas. The Department of Biochemistry and Molecular Biology is seeking innovative individuals to join one of its multidisciplinary teams focused on the discovery of new therapeutic agents.

Qualified candidates will possess a Ph.D., two or more years of postdoctoral experience, and a strong publication record. The successful candidates will have excellent technical skills and expertise in one or more of the following areas: molecular biology, protein biochemistry, and cell biology. Candidates with experience in G-protein-coupled receptor biology or signal transduction would be particularly suitable for immediate openings. Excellent oral and written communication skills and the ability to collaborate with scientists from many disciplines are essential.

For more information on Merck and Co., visit our website at <http://www.merck.com>. If you are a creative and dynamic individual and are interested in this position, please send your curriculum vitae in full confidence to: **Staffing Associate, Merck Frosst Canada Inc., P.O. Box 1005, Pointe Claire-Dorval, Quebec, Canada H9R 4P8.** Preference will be given to Canadian citizens or individuals with Canadian Landed Immigrant status.

We are committed to diversity in our workforce and offer a smoke-free work environment.



MERCK FROSST

**PROFESSOR AND HEAD
DEPARTMENT OF HORTICULTURE**

Applications are invited from individuals with outstanding leadership qualities for the position of Professor and Head, Department of Horticulture. Qualified candidates for this 12-month position will have an earned Ph.D. or equivalent academic degree in horticulture, or related plant science discipline, and will have demonstrated strong administrative and academic leadership skills. Professional and/or academic experience in horticulture or plant sciences is expected, as is in-depth knowledge of university teaching, research, and extension functions. The Department Head reports to the Dean of the College of Agricultural Sciences and has responsibility for maintaining and enhancing the growth of programs in resident instruction, extension, and research, as well as administrative responsibility for academic affairs, personnel, finances, and facilities. Additional responsibilities include strengthening relationships with other departments, horticultural industries, government, and other public and private clientele. The Department is recognized worldwide for excellence in a broad array of research, extension, and resident education programs conducted by 28 faculty and 35 staff members; 300 undergraduates seek B.S. degrees in horticulture and landscape contracting, and 47 graduate students are active in M.S. and Ph.D. programs. Outstanding facilities for horticultural research include modern laboratory and greenhouse space, The Fruit Research and Extension Center, and research orchards and/or field test sites at four locations throughout Pennsylvania. University Park and the town of State College are home to 38,000 students with another 31,000 students distributed among 20 commonwealth campuses. Nestled in the hardwood forest of the Appalachian mountains, the central Pennsylvania region, with a population of 110,000, hosts many cultural and sporting events, offers high quality K-12 education programs, and supports a variety of outdoor recreation opportunities. Salary is commensurate with background and experience. An attractive benefits package is available. Applicants should submit a letter of application, including a statement of leadership and administrative philosophy, and the names and addresses of five professional references to: **Dan T. Stearns, Department of Horticulture, 103 Tyson Building, Box Sci, The Pennsylvania State University, University Park, PA 16802. Phone: (814) 865-2571, or Fax: (814) 863-6139.** Applications will be accepted until March 15, 1997, or until a qualified candidate is identified. *An Affirmative Action/Equal Opportunity Employer. Women and minorities encouraged to apply.*



**FACULTY LEVEL
POSITIONS IN GENETICS**

The Southwest Foundation for Biomedical Research invites applications for two faculty-level positions in the Department of Genetics. One of the positions will require an interest in the genetics of cancer; the other position will require an interest in the molecular genetics of other research areas complementary to our existing programs. Ongoing research in the Department of Genetics includes genetic studies of common diseases (atherosclerosis, diabetes, obesity, hypertension, osteoporosis), gene mapping (nonhuman primates and marsupials), gene regulation during development, X-chromosome inactivation, and genetics of infectious diseases. Our existing program in cancer focuses on UV-induction of melanoma in experimental animal models. The successful candidates will be expected to develop strong independent research programs, and will have opportunities to collaborate in ongoing research. Unique resources available to our department include large human pedigrees and large pedigreed colonies of nonhuman primates and marsupials. Ample opportunities exist for affiliations with local academic institutions. Applications are invited from scientists at any academic level. A doctoral level degree in a biological science is required. The positions present an excellent opportunity for creative scientists in an established genetics department. Please mail curriculum vitae; statement of research interests; and names, addresses, and telephone numbers of three references to: **Director of Human Resources (632-S), SFBR, P.O. Box 760549, San Antonio, Texas 78245-0549.** *Equal Opportunity Employer.*

**SCIENTIST, ANALYTICAL
METHODS DEVELOPMENT**

Prizm Pharmaceuticals is a privately held biotechnology company focused on the regulation of cell growth utilizing our growth factor biology expertise.

We seek an individual to develop analytical methods for the biochemical characterization of plasmid DNA and protein-DNA conjugates for potential clinical use in targeted gene delivery. Work involves developing analytical methods (laser light scattering, CD, HPLC, and microscopy) to characterize DNA-protein interactions, process-intermediates and final products.

Requires a PhD in Biochemistry or related discipline, and 3+ years' relevant industry experience in nucleic acid chemistry, purification and characterization. Strong hands-on experience in DNA condensation reactions, toroid formation and use of agents affecting base pair interaction. Knowledge of electron and atomic force microscopy for visualization of DNA and DNA-protein conjugates desirable.

Prizm Pharmaceuticals, Inc. offers excellent compensation and benefits. Please submit your resume to: **Prizm Pharmaceuticals, Inc., Human Resources, Ref: SCI-PD/DNA, 11035 Roselle Street, San Diego, CA 92121; fax (619) 625-0050.** EOE.



New & Improved web site

you



**What's the
shortest distance
between two points?**



**great career
opportunities**

**SCIENCE CLASSIFIED
ADVERTISING ON-LINE**

<http://www.sciencemag.org>

Select SCIENCE Classified Advertising from the menu

SCIENCE



BC Cancer Agency

Four Postdoctoral Positions Available

B.C. Cancer Agency, Vancouver Molecular Biologist

Our laboratory is focused on the development of lipid-based carrier systems for use in the treatment of cancer. One component of this program concerns research on the delivery of plasmid DNA and oligonucleotides to tumor cells *in vivo*. Although there is extensive in-house expertise in the development and characterization of lipid based carrier systems, we want to broaden our technology base to include research on the design of novel and effective plasmids for gene therapy applications.

Membrane Biochemist

A recently funded MRC/Industry operating grant proposal focused on development and characterization of channel forming peptides for use in the treatment of cancer requires the expertise of a recent Ph.D. with an understanding of peptide-membrane interactions. The initial studies will involve *in vitro* and *in vivo* studies on the specificity of these channel forming peptides in terms of their cytotoxic activity against normal versus tumor cells.

Cell Biologist

Applications of lipid-based carrier systems for use in the treatment of cancer requires an understanding of the biological mechanisms defining therapeutic activity. This often requires detailed pharmacokinetic/pharmacodynamic characterizations of both the carrier and the associated therapeutically active molecule. In regards to research evaluating gene transfer, there is a surprising lack of such basic information. For this reason we want to initiate research programs defining the intracellular pharmacodynamics of lipid-based plasmid delivery systems.

Biochemist/Pharmacologist

A central problem in the treatment of cancer concerns the development of multidrug resistance (MDR). A variety of agents are being developed in an effort to reverse MDR in a second MRC/Industry research program. There are several research programs ongoing in our laboratory that concern characterization of the pharmacodynamic behavior of novel agents, produced through combinatorial chemistry, that are effective in modulating resistance. The proposed research will involve both *in vitro* and *in vivo* analysis of these multidrug resistance inhibitors.

Each successful candidate responsible for these research programs will have an outstanding academic record as well as a publication list that will ensure success in obtaining individual fellowship support. Funds are available for one year (rate of funding is set according to current Medical Research Council of Canada guidelines). There is the expectation that each program will be extended for an additional two years.

If you wish to apply for any of the above research programs, please indicate which position you are interested in and send your complete c.v. along with three letters of support to:

Dr. Marcel Bally,
Senior Research Scientist
Department of Medical Oncology
Section of Advanced Therapeutics
British Columbia Cancer Agency
600 West 10th Avenue
Vancouver, BC V5Z 4E6 CANADA
Tel: (604) 877-6098, ext. 3191
Fax: (604) 877-6011
e-mail: Mbally@unixg.ubc.ca

Sr. Scientist, Fermentation and Cell Culture

At BASF Bioresearch Corporation we're not people who like to wait, especially when it comes to offering highly rewarding careers that put you in the thick of the action. At BASF, we recognize that our success is created by talented, committed people operating in an environment of mutual trust and esteem. An immediate need exists for experienced personnel to work in one of the most advanced facilities for the production of biologics.

The successful candidate will be responsible for developing fermentation and cell culture processes for the production of recombinant therapeutic proteins. You will develop and optimize cell lines, growth media, and control strategies for both microbial and mammalian expression systems. Additional responsibilities include oversight of scale up, cGMP documentation, process qualification, and manufacturing support activities. The ideal candidate must have a proven track record in the successful design and execution of fermentation and cell culture development projects; expertise in large-scale centrifugation is also desirable. A Ph.D. in Biochemical Engineering with 2-4 years industrial experience is required for this position.

Stop waiting for a good opportunity to come to you. Find out what BASF Bioresearch Corporation has to offer. In addition to a new, \$100 million state-of-the-art research facility, an open and supportive environment and plenty of room to grow, we also offer one of the industry's finest compensation and benefits package including: three weeks' vacation; matching 401(k) plan, pension plan, tuition reimbursement, medical, dental and life insurance benefits, as well as health and dependent care reimbursement accounts. Please forward resume to: Human Resources Department, BASF Bioresearch Corporation, 100 Research Drive, Worcester, MA 01605. An Equal Opportunity Employer.

BASF Bioresearch Corporation

BASF

PRESIDENT CALIFORNIA INSTITUTE OF TECHNOLOGY

The Board of Trustees of the California Institute of Technology invites nominations and applications for the position of President. The appointment will be effective approximately September, 1997.

The California Institute of Technology (Caltech) is a private university that carries on instruction and research, primarily in science and engineering. With a student body of 900 undergraduates and 1,100 graduate students, a faculty of 280 professors and 325 other Ph.D. level researchers, off-campus facilities such as the Palomar Observatory and the W.M. Keck Observatory, and its management of NASA's Jet Propulsion Laboratory, Caltech is one of the world's major educational and research centers in science and engineering. Caltech aspires to the highest quality in all fields on which it concentrates, as epitomized, for example, by the 24 Nobel Prizes awarded to its faculty and alumni.

The President is the Chief Executive Officer of the Institute and is accountable to the Board of Trustees. Candidates should possess the accomplishment, intellect, and integrity to command the respect of the Caltech community and the International Science and Engineering communities, and the managerial talent and experience to lead Caltech.

Nominations and applications, accompanied by curricula vitae, may be sent to: **Presidential Search Committee, Caltech, P.O. Box 60070, Pasadena, CA 91116. Fax: (818) 584-7198.** E-mail: Nominations@pressearch.caltech.edu The search will continue until an appointment is made.

Caltech is an AA/EOE. Women, minorities, veterans and disabled persons are encouraged to apply.



POSITIONS OPEN

MICHIGAN STATE UNIVERSITY Tenure-Track Fishery Management Position Position Number AG-1423

The Department of Fisheries and Wildlife at Michigan State University (MSU) invites applications for a 12-month, tenure-track, fishery management position at the **ASSISTANT PROFESSOR** level. This is a collaborative position with the Fisheries Division of the Michigan Department of Natural Resources (MDNR), and is part of the Partnership for Ecosystem Research and Management (PERM) at MSU. The Ph.D. is required, and preference will be given to applicants with strong quantitative skills and experience in applications of fishery management theory and methods for regulating commercial and recreational harvest. Additionally, the candidate selected should be able to successfully integrate the influence of fish habitat and human influences on the production of fish populations and communities. The ability to teach graduate- and undergraduate-level courses in fishery management or a closely related topic is required, as is the ability to work effectively with state, federal, and private organizations; obtain research grants; conduct research in the area of fishery management with applications to exploited, unexploited, and protected species; and publish the findings.

Application deadline: February 10, 1997, or until a suitable candidate is found. Salary is competitive, commensurate with education, experience, and demonstrated ability. Interested persons should submit a letter of application stating professional goals and objectives, a résumé with supporting materials including transcripts, and three letters of reference to: **Dr. Daniel Hayes, Search Committee Chairperson, Department of Fisheries and Wildlife, 13 Natural Resources Building, Michigan State University, East Lansing, MI 48824-1222. Telephone: 517-432-3781; FAX: 517-432-1699; Email: hayesdan@pilot.msu.edu.** *Michigan State University is an Equal Opportunity/Affirmative Action Employer. Minority and women candidates are encouraged to apply. Disabled persons have the right to request and receive reasonable accommodation.*

A tenure-track position in Molecular/Cell Biology is available at the **ASSISTANT** or **ASSOCIATE PROFESSOR** level in the Biology Department at the University of Indianapolis, to begin fall 1997. Applicants must have a Ph.D. (postdoctoral experience is preferred) and have strong commitment to excellence in undergraduate teaching and scholarship. We are especially interested in candidates with additional skills in developmental biology, environmental science, or anatomy and physiology. The successful candidate will teach upper-level courses in cell and molecular biology as well as additional biology courses at the undergraduate and/or graduate level. The appointee is expected to complement existing departmental strengths in anatomy, physiology, genetics, and human biology. Salary/rank commensurate with experience. The University of Indianapolis is a medium-size, independent, church-related, residential, liberal arts university on the south side of Indianapolis, offering degrees at the undergraduate and graduate levels. Additional information is available at the University of Indianapolis Web site: <http://www.uindy.edu/>. Please send cover letter, curriculum vitae, graduate and undergraduate transcripts, and a list of three references to: **Molecular/Cell Biology Search Committee, Department of Biology, University of Indianapolis, 1400 East Hanna Avenue, Indianapolis, IN 46227.** Review of applications begins January 31, 1997, and continues until position is filled. *We encourage applications from women and minorities. Equal Opportunity Employer.*

ASSISTANT PROFESSOR DEPARTMENT OF NEUROSURGERY Harvard Medical School/ Children's Hospital—Boston

Harvard Medical School/Children's Hospital, Department of Neurosurgery, is seeking qualified applicants for a **TENURE-TRACK ASSISTANT PROFESSOR** position with expertise in conducting laboratory research in molecular and cellular biology of tumors with specific emphasis on one or more of the following areas: signal transduction, gene therapy, oncogene and tumor suppressor genes, and molecular strategies for solid tumor therapy. Experience in brain tumor research is encouraged but not required. Ph.D. and/or M.D. required. Candidates are expected to establish a high-quality, productive research program and to have their own funding. Send curriculum vitae, summary of research interests, and references to: **Peter M. Black, M.D., Ph.D., Department of Neurosurgery, Children's Hospital, 300 Longwood Avenue, Boston, MA 02115.**

POSITIONS OPEN

WASHINGTON UNIVERSITY DEPARTMENT OF ANESTHESIOLOGY

The Anesthesiology Research Unit seeks to fill a tenure-track position for a basic research scientist at the **ASSISTANT/ASSOCIATE PROFESSOR** level. The successful candidate will be expected to use innovative cellular and/or molecular approaches to problems relevant to the broad areas of pain or sleep. Generous start-up funds and space will be provided. The Unit provides a unique research environment with ongoing programs in the molecular biology of G-proteins, structure and function of ion channels, molecular targets of anesthetics, cellular physiology of excitable cells, and pain. Faculty members have joint appointments in a basic science department and are part of the strong graduate training program at Washington University. Candidates must have Ph.D. and/or M.D. degrees with appropriate postdoctoral experience. The application deadline is February 28, 1997. Interested individuals should submit a curriculum vitae, a statement of research plans, and names of three referees to: **Search Committee, Anesthesiology Research Unit, Washington University School of Medicine, 660 South Euclid Avenue, Box 8054, St. Louis, MO 63110.**

MICROBIOLOGY AND IMMUNOLOGY Saint Mary's University of Minnesota

The department of biology at Saint Mary's University of Minnesota seeks applications for a tenure-track **ASSISTANT PROFESSOR** position in microbiology/immunology beginning in the fall of 1997. Responsibilities of this position include teaching microbiology and immunology with respective laboratory sessions for each. An introductory biology class and/or other classes within the applicant's expertise will be assigned. Successful candidates for this search will hold a Ph.D. and document successful teaching experience. Applications must include curriculum vitae, official transcripts, description of research interests, a personal philosophy of teaching, and three letters of recommendation. Nominations and applications should be submitted to: **Richard Kowles, Ph.D., Chair of the Biology Department Search Committee, Saint Mary's University of Minnesota, 700 Terrace Heights, Winona, MN 55987.** Screening of candidates will begin 31 January 1997 and continue until the position is filled. *Saint Mary's University of Minnesota is an Equal Employment Opportunity/Affirmative Action Employer.*

FACULTY POSITION—Pathogenesis of Opportunistic Bacterial and Fungal Infections: The Department of Microbiology and Immunology at the University of Arkansas for Medical Sciences seeks to fill a 12-month, tenure-track, state-supported faculty position at the Assistant or Associate Professor level. Research interests should emphasize molecular approaches to the study of the pathogenesis, cell biology, or immunology of opportunistic bacterial or fungal organisms. The individual will become part of a newly developed Center for the Study of Opportunistic Infections. The applicant must have a Ph.D. or M.D. with postdoctoral experience. The individual will be expected to develop an independent research program and participate in teaching activities within the department's graduate and medical student programs. Generous start-up funds and laboratory space in a new Biomedical Research Building will be provided. Address inquiries, along with curriculum vitae, statement of present and future research interests, and the names of three references to: **Roger G. Rank, Ph.D., Department of Microbiology and Immunology, University of Arkansas for Medical Sciences, 4301 West Markham, Little Rock, AR 72205.** *The University of Arkansas for Medical Sciences is an Equal Opportunity Employer.*

CARNEGIE MELLON UNIVERSITY

The Departments of Mechanical Engineering and of Engineering and Public Policy seek a 50:50 **JOINT FACULTY** member to address such technical and policy issues as green design, manufacturing, quality, the management of technical innovation, environmental modeling, pollution control, noise control, energy systems, or similar topics. Résumé with list of publications and three references to: **Granger Morgan, EPP, Carnegie Mellon, Pittsburgh, PA 15213.**

POSITIONS OPEN

MOLECULAR BIOLOGIST/BIOCHEMIST

The Department of Biochemistry and Molecular Biology is seeking applications for a 12-month, **TENURE-TRACK ASSISTANT PROFESSOR** position. The successful candidate will be expected to develop a productive, externally funded molecular biology research program; contribute effectively to the Department's teaching and service responsibilities at the medical, undergraduate, and graduate levels; and participate in the University-wide Biochemistry/Molecular Biology/Biophysics and University of Minnesota, Duluth, chemistry graduate programs. An exciting opportunity exists for developing an independent and interdisciplinary research program in an attractive community. Competitive salary and start-up funds are available. The qualified applicant must have a Ph.D. (or M.D. with equivalent training) in biochemistry or in molecular biology or a related field that includes strong training in biochemistry, and postdoctoral experience in molecular biology. The earliest appointment date is July 1, 1997, and applications must be postmarked no later than January 31, 1997. Interested individuals should submit a letter of application, curriculum vitae, and statement of proposed research directions, and have three letters of recommendation sent directly to:

**Paul M. Anderson
Chair, Search Committee
Department of Biochemistry and Molecular Biology
University of Minnesota, Duluth
School of Medicine, 10 University Drive
Duluth, MN 55812-2487**

Equal Opportunity/Affirmative Action Employer.

ENTOMOLOGY: ASSISTANT PROFESSOR

Entry-level **TENURE-TRACK** position, Ph.D. required. Responsibilities include: teaching an upper-level undergraduate survey course in entomology with emphasis on field experience; participation in general biology program; teaching graduate classes in entomology and related areas; serving as a mentor for undergraduate research and Master's theses; seeking extramural funding. Research expertise in areas such as plant-insect and/or host-parasite interactions, forest entomology, systematics, or biological control; use of molecular techniques would complement other departmental research activities. Appalachian State University, a member of the University of North Carolina (UNC) System, has an enrollment of 12,000. Among the 16 UNC campuses, Appalachian ranks in the top four in SAT scores, retention, and graduation rates. The Biology Department has 21 faculty, 600 majors, and 35 graduate students. Send letter of application; curriculum vitae; description of research interests; and names, addresses, and telephone numbers of three references to: **Dr. Douglas Meikle, Chair, Department of Biology, Appalachian State University, 572 Rivers Street, Boone, NC 28608. Telephone: 704-262-3025.** Completed applications due by January 21, 1997. *Appalachian State University is an Equal Opportunity Employer.*

Biology: The Department of Biology, Exercise Science, and Cardiac Rehabilitation at Northeastern Illinois University seeks a tenure-track **ASSISTANT PROFESSOR** in zoology beginning fall 1997. The Ph.D. is required. Area of specialization is open. Teaching undergraduate and graduate courses in mammalian anatomy, vertebrate physiology, general biology, and in areas of specialization. Research and service are supported and expected. Send curriculum vitae, letter of application, and three letters of reference, at least one concerning teaching effectiveness, to: **Dr. Simon Chung, Chair, Department of Biology, Exercise Science, and Cardiac Rehabilitation, Northeastern Illinois University, 5500 North St. Louis Avenue, Chicago, IL 60625.** Review of applications begins January 6, 1997, and continues until position is filled. *An Affirmative Action/Equal Opportunity Employer.*

RECREATION/WILDLIFE

The University of Montana's (UM's) School of Forestry seeks **ASSISTANT/ASSOCIATE PROFESSOR** of Recreation/Wildlife. Tenure-track position to develop research/instruction program examining interactions between wildlife and recreation or how humans perceive and value wildlife, including policy implications. Responsible for graduate/undergraduate instruction and advising in Recreation Management and Wildlife Biology. Review will begin February 15, 1997, continuing until successful candidate is identified. For application information and position description, contact: **Steve McCool, School of Forestry, The University of Montana, Missoula, MT 59812.** *UM is an Equal Opportunity/Affirmative Action Employer.*

TRUDEAU INSTITUTE, INC.

The Trudeau Institute has **Postdoctoral Positions in Immunology** for individuals with training in immunology and cellular or molecular biology to study the basic biology of immune responses and immunity to bacterial infections.

The **Trudeau Institute** is a well-endowed, not-for-profit, basic biomedical research institute with an active faculty, and seminar and visiting scientist programs. Operating in modern facilities, with in-house animal production, and international reputation for excellence, it is located in an upstate New York resort community in the Adirondack Mountains, overlooking mountain vistas and a private beach on Saranac Lake. Competitive salary and fringe benefits are offered with possibility of on-site institute housing.

Telephone: (518)891-3080

Fax: (518)891-5126

E-mail: trudeau1@northnet.org

FACULTY

Dr. D. Dalton—Molecular, Cellular and Genetic Analysis of Regulation of Immune Responses by IFN γ . Differential Gene Expression in WT and IFN γ KO Mice.

Dr. J. Drake—Cell Biology and Molecular Mechanisms of B-Cell Receptor-Mediated Ag Response and the Processing and Presentation of Ag.

Dr. R. Dutton—Functions of CD8 T Cell Subsets, T Cell Memory, Homeostasis.

Dr. A.G. Harmsen—Immunopathogenesis, Infectious Diseases of the Lung.

Dr. L.L. Johnson—Innate and Acquired Host Resistance to *Toxoplasma gondii* and other Microbial Pathogens

Dr. R.J. North—T Cell-Mediated Immunity, Intracellular Bacterial Pathogens.

Dr. B. Rogerson—Somatic Hypermutation of Lg Genes, B Cell Memory.

Dr. S.L. Swain—T Cell Subsets, T and B Cell Memory, Regulation of T Cell Differentiation and Anergy.

Please send a curriculum vitae, indicating three references and a letter describing research interests to individual faculty at **Trudeau Institute, Inc., P.O. Box 59, Saranac Lake, NY 12983**, or to **Dr. Susan L. Swain, Director**. Further information is available at [www://trudeauinstitute.org](http://www.trudeauinstitute.org), or by written or telephone request.

Research Scientist High Throughput Screening



COMMITTED TO
WORLDWIDE
LEADERSHIP IN
HEALTHCARE



Wyeth-Ayerst Research, a major division of Fortune 150 American Home Products Corporation, has an opportunity currently available in our Pearl River, New York pharmaceutical research facility for a laboratory supervisor in the High Throughput Screening Department.

Responsibilities include coordinating the activities of several automation technologists as they develop and implement a wide variety of automated biological assays. The selected candidate will have the expertise to provide leadership and troubleshoot in the areas of biological assays, automation devices and automated data collection systems. Your highly developed interpersonal skills will enable you to consult with in-house experts and collaborate with therapeutic area scientists in the development of new screening technologies and in the analysis of assay results to identify new therapeutic leads.

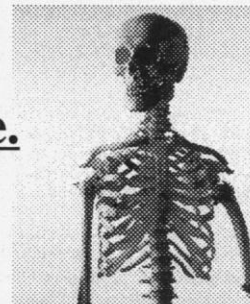
Requirements include a B.S. degree in Biochemistry with 7-8 years related experience, of which 6 years should include pharmaceutical industry experience, and 4 years should include direct supervision of technical assistants in High Throughput Screening Laboratories. Candidates must have the ability to participate in the development of innovative High Throughput Screening Technology and to stay current with technical developments in the field.

Wyeth-Ayerst Research offers an excellent compensation and benefits package in a highly professional environment. Please send your resume with salary requirements to: **Wyeth-Ayerst Research, Human Resources Dept., Position #OPSCI-2308, P.O. Box 7886, Philadelphia, PA 19101-7886**, or fax your resume (in fine mode if possible) directly into our centralized Research resume database at (610) 989-4854. E-mail: jobs@RAMAIL1.wyeth.com (ASCII format, no attachments, subject: resume). Principals Only. Equal Opportunity Employer, M/F/D/V.

Scientist

Join the world's leader in allograft tissue science.

Our research focus is to develop novel allograft bone and demineralized matrix materials for a variety of clinical applications. We're seeking two professionals to assume significant responsibilities in our Research and Development Department.



ANIMAL SCIENTIST (Ph.D./D.V.M./M.S.) Allograft Development

To qualify, you will have extensive background using animal models to study bone healing with allograft materials. Experience in developing osteoinductive and osteoconductive models is required. Familiarity with demineralized bone matrix, bone growth factors, and cartilage would be a plus. This position requires the ability to analyze tissue response using histological, pathological, and immunological methods. Position level will be commensurate with experience.

ALLOGRAFT SCIENTIST (Ph.D./M.D.)

Extensive understanding of bone repair is essential. The ability to design and manage research projects to demonstrate the performance of allografts is required. This includes establishing and maintaining collaborative research relationships, publishing and presenting findings and scientific meetings. Responsibilities will include presenting medical education on bone graft physiology to surgeons and nurses. Experience with regulated medical devices a plus.

Excellent oral/written communication skills and the ability to work on a broad range of projects in a team environment are essential for both positions.

We offer competitive salaries and benefits and a Jersey shore location halfway between New York City and Philadelphia. For confidential consideration, send your curriculum vitae, indicating position of interest, to: **Human Resources, Osteotech Inc., 51 James Way, Eatontown, NJ 07724**. We are an equal opportunity employer m/f/d/v.



POSITIONS OPEN

UNIVERSITY OF SOUTHERN MAINE THREE BIOLOGY FACULTY POSITIONS Department of Biological Sciences

Applications are invited for three **TENURE-TRACK** assistant professor appointments to begin September 1997, contingent upon available funds: 1) Microbiologist, specializing in either molecular microbiology or microbial ecology; 2) Developmental Biologist, specializing in any area of vertebrate development; and 3) Vertebrate Biologist, specializing in any area of ecology or systematics of vertebrates. Successful candidates will teach an upper-level course in their areas of expertise, and will participate in teaching Departmental introductory and University core curriculum courses. Candidates must have a productive research program that will involve undergraduate participation. Candidates must have completed all requirements of a Ph.D., including thesis defense, by June 30, 1997. Letters of application should state the position of interest, discuss teaching philosophy and experience, and explain research interests and goals. Send complete application materials including a curriculum vitae and three letters of recommendation, postmarked by January 31, 1997 to: (Position 1) Dr. Thomas Knight, Chair, Microbiologist Search Committee; (Position 2) Dr. Kenneth Weber, Chair, Developmental Biologist Search Committee; or (Position 3) Dr. Theresa Theodore, Chair, Vertebrate Biologist Search Committee; at Department of Biological Sciences, University of Southern Maine, P.O. Box 9300, Portland, ME 04104-9300. *University of Southern Maine is an Equal Opportunity Employer/Affirmative Action Employer committed to diversity, quality, and reasonable accommodation.*

The University of Pittsburgh is expanding its active Program in Bioengineering, which has been designated as one of the thrust areas for the School of Engineering. The Bioengineering Program, which is jointly sponsored by the School of Medicine, offers B.S., M.S., and Ph.D. degrees in Bioengineering, as well as certificates in Rehabilitation Engineering and Clinical Cardiovascular Engineering.

Currently there are 25 faculty closely associated with Bioengineering. Their respective disciplines span the fields of biomechanical engineering, biochemical engineering, tissue engineering, rehabilitation engineering, ergonomics, control systems, and biomedical imaging.

We are seeking four individuals who will hold faculty positions in Bioengineering within the School of Engineering. **FACULTY** appointments will be commensurate with the qualifications of the candidates, i.e., at the assistant, associate, or full professorial level. These faculty will have a key leadership role in the further enhancement of our research and educational programs, particularly in conjunction with our Medical Center, which ranks in the top 10 in NIH funding. Applicants should hold a Ph.D. and have significant experience in an academic setting, including a proven track record of leadership and scholarly accomplishment. These are full-time, tenure stream appointments. Full consideration of applications will begin on January 1, 1997, and will continue until the positions are filled. A complete dossier should be sent to:

Dr. Jerome S. Schultz, Chairman
Bioengineering Program
The University of Pittsburgh
300 Technology Drive
Pittsburgh, PA 15219

The University of Pittsburgh is an Affirmative Action/Equal Opportunity Employer.

The Diabetes and Research Training Center (DRTC) at Vanderbilt University invites applications for a full-time academic position at the **ASSISTANT PROFESSOR** (tenure-track) level or higher. We are seeking candidates who use innovative genetic, cellular, molecular, and/or transgenic approaches to study contemporary problems in the pathogenesis, etiology, or complications of diabetes or obesity. Applicants must have a Ph.D. and/or M.D. degree, at least two years of postdoctoral training, and the potential to develop a competitive independent research program. The successful applicant will be assigned newly constructed laboratory space and will jointly hold an appropriate academic appointment in a basic science and/or clinical department. The position is highly competitive with regard to start-up funds, salary, and benefits. Applicants should submit 1) curriculum vitae, 2) three reference letters, and 3) a concise statement of research interests and plans. Apply to: DRTC Search Committee c/o Maylene Long, 702 Light Hall, Vanderbilt University School of Medicine, Nashville, TN 37232.

Vanderbilt University is an Affirmative Action/Equal Opportunity Employer. Women and minorities are encouraged to apply.

POSITIONS OPEN

PLANT ECOLOGIST

ASSISTANT PROFESSOR/tenure-track, beginning September 1997. Ph.D. required. The successful candidate is expected to establish an active research program involving undergraduates. Teaching responsibilities include introductory and upper-level courses in the area of ecology and evolution for the Biology Department and an interdisciplinary Environmental Studies Program. The usual teaching load is five courses across three 10-week terms. Department facilities include a greenhouse; the 110-year-old Hurd herbarium of over 10,000 specimens (including the Mead collection from the mid-1800s); and a 720-acre field station with a lake, several ponds, a small stream, old-growth and secondary growth forest, and one of the oldest restored prairies in the country. Knox is a highly selective liberal arts college, with a third of the student body majoring in the sciences. Candidates should submit curriculum vitae, statements of research interests and teaching philosophy, and three letters of recommendation to: Dr. Linda Dybas, Chair, Department of Biology, Knox College, Galesburg, IL 60401 by March 1, 1997. Email: ldybas@knox.knox.edu. *Affirmative Action/Equal Opportunity Employer. In keeping with the college's 159-year commitment to equal rights, Knox particularly invites applications from women and minorities. www.knox.edu.*

MOLECULAR GENETICIST/ CELL BIOLOGIST

The Biology Department of Boise State University (BSU) has extended the search deadline and expanded the areas of expertise to be considered for a tenure-track faculty position at the rank of **ASSISTANT PROFESSOR** for fall 1997. A Ph.D. and relevant postdoctoral experience are required. The candidate's research should utilize advanced molecular techniques to investigate questions in populations, evolution, development, or pathogenesis. It is expected that an extramurally funded research program involving Master's level and undergraduate students be established and that teaching responsibilities will include general genetics, genetics laboratory, and cell biology. For further information see *Science*, October 18, 1996. Submit curriculum vitae, statements of research and teaching objectives, and three relevant reprints, and have three letters of reference forwarded to: Dr. Russell J. Centanni, Department of Biology, Boise State University, Boise, ID 83725-1515 by January 24, 1997. *BSU is an Equal Opportunity Employer/Affirmative Action Institution.*

CHANNEL REGULATION Tenure-Track Faculty Positions Case Western Reserve University School of Medicine

The School of Medicine at Case Western Reserve University invites applications for several tenure-track positions at the level of **ASSISTANT PROFESSOR**. We seek candidates with a strong background in membrane ion channel regulation who will augment the School's existing strengths in this area. We offer a highly competitive compensation package, state-of-the-art research facilities, and ample start-up funds provided by the Research Resources Program of the Howard Hughes Medical Institute. Candidates should submit curriculum vitae, a statement of research interests, three representative reprints, and the names and addresses of four references by January 31, 1997, to: Anne D. Dick, Program Administrator, School of Medicine Research Office, Case Western Reserve University, 10900 Euclid Avenue, Cleveland, OH 44106-4919.

Case Western Reserve University is an Equal Opportunity/Affirmative Action Employer.

KENNESAW STATE UNIVERSITY

Kennesaw State University invites applications for two positions for fall 1997: **ECOLOGIST**, preferably with background in aquatic ecology, tenure-track, assistant professor rank, Ph.D. required; Master's-level **INSTRUCTOR**, all areas of biology considered. Candidates should have a strong commitment to teaching undergraduates, conducting applied research, and participating in service activities.

To guarantee consideration, a letter describing teaching interests and scholarly plans; a curriculum vitae; a copy of graduate transcripts; and the names, addresses, and telephone numbers of three references must be received by January 31, 1997. Send to: Dr. Joseph Dirnberger, Chair, Search Committee, Department of Biological and Physical Sciences, Kennesaw State University, 1000 Chastain Road, Kennesaw, GA 30144-5591; Telephone: 770-423-6158.

An Affirmative Action/Equal Opportunity Employer.

POSITIONS OPEN

BIOLOGY FACULTY

The Department of Biology, University of Southwestern Louisiana (USL), invites applications for a **TENURE-TRACK** position in **FISH BIOLOGY** in support of the doctoral program in environmental and evolutionary biology. This position is for a research faculty member with postdoctoral experience, and offers a competitive salary. Faculty members are expected to develop active research programs, seek extramural funding, and participate in undergraduate and graduate education. The Department of Biology consists of 30 professorial faculty, with research interests ranging from molecular to ecosystem studies, and more than 65 graduate students. USL has an exceptionally well-equipped Microscopy Center and Center for Advanced Computer Studies. Other resources include the Primate Research Center, Laboratory for Crustacean Research, Center for Molecular Evolution, Louisiana Universities Marine Consortium (LUMCON) Marine Laboratory and research vessels, the National Wetlands Research Center (USGS), and the National Marine Fisheries Service's Estuarine Habitats and Coastal Fisheries Research Center.

Applicants should submit curriculum vitae; selected reprints; a concise statement of research goals; and names, addresses, and telephone numbers of three referees. Review of applications will begin 15 January 1997 and continue until the position is filled. Direct application to: Faculty Development Search Coordinator, Department of Biology, University of Southwestern Louisiana, Lafayette, LA 70504-2451. *Affirmative Action/Equal Opportunity Employer.*

University of Wisconsin (UW)—La Crosse: Plant Ecologist, **ASSISTANT PROFESSOR**. The Department of Biology and Microbiology, University of Wisconsin—La Crosse invites applications for an academic year, tenure-track position to begin August 25, 1997. Applicants must have a strong commitment to undergraduate education. The successful candidate will be expected to teach a course in the ecology and taxonomy of aquatic vascular plants. This person will also be expected to develop a course in his or her area of expertise and participate in one or more of the following courses: ecology, plant biology, and introductory biology. The successful candidate will be expected to develop an externally funded research program and direct undergraduate and graduate (M.S.) research. The department has a 50,000-specimen herbarium. A Ph.D. in botany with an emphasis in plant ecology is required; experience with wetland ecology/systematics of aquatic vascular plants is preferred. Send curriculum vitae, statement of teaching philosophy and research interests, graduate and undergraduate transcripts, and three letters of recommendation to: Dr. James E. Parry, Chair, Department of Biology and Microbiology, University of Wisconsin—La Crosse, La Crosse, Wisconsin 54601. Deadline: Materials must be received by February 1, 1997. *The University of Wisconsin—La Crosse is an Affirmative Action/Equal Opportunity Employer. Women and minorities are strongly encouraged to apply.*

TENURE-TRACK FACULTY POSITION Department of Pharmacology, Toxicology and Therapeutics University of Kansas Medical Center

Applicants are sought for a full-time, tenure-track faculty position at the level of **ASSISTANT** or **ASSOCIATE PROFESSOR**. Candidates must have a Ph.D. or M.D. degree, postdoctoral experience, and a record of research productivity. Particular emphasis is placed on recruiting neuropharmacologists and neurotoxicologists with experience in transgenic technology. Application material, including curriculum vitae and the names of three references, should be sent to: S. J. Enna, Ph.D., Chair, Department of Pharmacology, Toxicology and Therapeutics, University of Kansas Medical School, 3901 Rainbow Boulevard, Kansas City, KS 66160-7417. *The University of Kansas is an Affirmative Action/Equal Opportunity Employer.*

SCIENTISTS for identification and analysis of toxins and pathogens. Two immediate openings: Position 96-5 in virology, Position 96-6 in Raman analysis of proteins. Both require Ph.D. plus up to two years of experience or equivalent, and strong laboratory and communication skills. Technicians also needed; Position 96-7 in biochemistry; B.S. plus up to two years or equivalent. *U.S. citizenship mandatory.* Unusual opportunity to profit from growth of new company; attractive benefits package. Send résumé to: Recruitment Department, Biopraxis, Inc., P.O. Box 910078, San Diego, CA 92191-0078. *Equal Opportunity Employer.*

Cephalon, Inc. is a leader in the discovery & development of products to treat neurological diseases and disorders. Continued growth has created this career opportunity in our corporate location in West Chester, PA:

Sr. Research Scientist Biochemistry

Qualified candidate will possess 5+ years' postdoctoral experience; protein purification experience; experience purifying membrane proteins in functional form; the ability to work independently in designing projects and complete research goals in a timely manner; and excellent organizational and communication skills.

Job Code: BG

Cephalon is committed to your professional development and offers a stimulating and exciting work environment. Please send resume, including salary history and indicating Job Code, to: **Recruitment Manager, Cephalon, Inc., 145**



Brandywine Parkway, West Chester, PA 19380-4245.
EOE

RESEARCH UPDATE

Postdoctoral Position (1 year with option for 2nd year)

American Cyanamid, a subsidiary of Fortune 150 American Home Products Corporation, and Sunbor Institute for Bioorganic Research, internationally known for its work in bioorganic chemistry and natural products, are working together on a research initiative to discover insecticidal compounds from natural product sources. To further our progress and ensure our success on this project, Sunbor has an immediate opportunity in **Kansai, Japan**.

The successful candidate will possess a PhD in Biochemistry and have a strong background in protein chemistry including purification and sequencing as well as familiarity with mass spectrometry techniques. A willingness to work with insects is essential. **There is no requirement to speak Japanese** as the company regularly employs foreign scientists.

Sunbor offers state-of-the-art facilities, a salary of \$28,000 (3,180,000 Yen) and generous benefits including medical insurance, 13 days vacation, housing and transportation to and from Japan. For consideration, send your resume to: Human Resources, Dept. KK/PD, American Cyanamid, Agricultural Product Research Division, P.O. Box 400, Princeton, NJ 08543-0400. Equal Opportunity Employer m/f/d/v.



CYANAMID

SUNBOR

COUNCIL ON UNDERGRADUATE RESEARCH EXECUTIVE OFFICER

Applications, nominations or inquiries are invited for the position of Executive Officer of the Council on Undergraduate Research. CUR is a national society dedicated to the advancement of scientific research by students and faculty at primarily undergraduate colleges and universities. Membership is open to anyone with such an interest, and the organization currently has almost 4,000 individual members and over 250 institutional members. CUR is currently organized into disciplinary divisions governed by Councilors elected by the membership. CUR publishes a scholarly journal, disciplinary directories of research, and "How to" booklets; holds biennial summer conferences, a biennial April Dialogue in Washington, and smaller Institutes; sponsors undergraduate summer research fellowships; maintains a national database on undergraduate research; provides consultants to undergraduate institutions; maintains a speakers bureau; and participates in science policy matters in Washington. The Executive Officer, assisted by a permanent staff (currently eleven), coordinates the activities of the volunteer councilors and other members and administers all CUR programs. Candidates should have both organizational talent and experience with scientific research at primarily undergraduate institutions. The initial appointment is for a three year term, renewable after review. The salary is competitive with academic salaries at professorial levels.

Starting date is as early as July 1, 1997. Applications, inquiries, and nominations should be addressed to **Professor Thomas J. Wenzel, President, Council on Undergraduate Research, Department of Chemistry, Bates College, Lewiston, ME (Phone: 207-786-6296, FAX: 207-786-8336, email: twenzel@bates.edu)**. Applications should include a cover letter summarizing qualifications for the position and a statement of goals as the Executive Officer, a current CV, and the names, addresses and phone numbers of at least three references. All applications will be held confidential until otherwise notified. Review of applications will begin immediately and continue until the position is filled.

DEPARTMENT OF PHARMACOLOGICAL AND PHYSIOLOGICAL SCIENCE SAINT LOUIS UNIVERSITY HEALTH SCIENCES CENTER

Saint Louis University, a Catholic Jesuit Institution dedicated to education, research and health care, is seeking applicants for a faculty position in the Department of Pharmacological and Physiological Science at Saint Louis University Health Sciences Center. The position is a tenure track appointment at the Assistant or Associate Professor level. We offer an environment rich in senior level scientific experience, start up funds, laboratory space and a record of highly successful and continuing extramural research funding. Preference will be given, but not restricted, to individuals with demonstrated experience in the application of modern techniques in research of the nervous or cardiovascular systems. Interested persons should send a curriculum vitae, three letters of reference and a description of research interests and objectives to:

Dr. Thomas C. Westfall
Professor and William Beaumont Chair
Department of Pharmacological and
Physiological Science
Saint Louis University Health Sciences Center
1402 South Grand Boulevard
St. Louis, MO 63104

Saint Louis University is an Equal Opportunity Affirmative Action Employer. Women and minorities are encouraged to apply.

POSITIONS OPEN

ENVIRONMENTAL SCIENCE/ CONSERVATION BIOLOGY

The Organization for Tropical Studies has a resident **FACULTY** position for its Undergraduate Semester Abroad program in Costa Rica. Applicants with a background in botany, forestry, or ethnobotany are encouraged. Faculty will design courses and teach in classroom and field settings. Ph.D. in biology or environmental science and commitment to undergraduate teaching required. Field experience in tropical biology and ability to communicate in Spanish necessary. Successful candidate will start June 1, 1997, and reside in Costa Rica for 10 months per year. Send résumé, letter of teaching experience and interests, and three letters of reference to: **OTS, Faculty Search, Box 90630, Durham, NC 27708**. Review of applications begins January 31, 1997. *Equal Opportunity Employer.*

RECEPTOR PHARMACOLOGIST

The Molecular Research Institute invites applicants for a **STAFF SCIENTIST** position available January 1997. Qualified candidates must hold a doctoral degree in pharmacology or biochemistry, preferably with a neuroscience background, and have excellent computer skills, including direct experience in data analysis. Special consideration will be given to candidates with expertise and publications in opioid and/or GABA_A/benzodiazepine pharmacology. The successful candidate will be responsible for design, execution, and analysis of experiments probing receptor heterogeneity, ligand recognition, and activation of opioid and GABA_A/benzodiazepine receptors as part of a small interdisciplinary team that also includes *in vivo* pharmacology and computational and medicinal chemistry. Send résumés to: **Gilda Loew, Molecular Research Institute, 845 Page Mill Road, Palo Alto, CA 94304**. *The Molecular Research Institute is an Equal Opportunity Employer.*

ASSISTANT MOLECULAR BIOLOGY SPECIALIST

The University of California at Berkeley seeks a specialist in analysis of bilin biosynthesis and attachment to cyanobacterial phycobiliproteins. A Ph.D. and expertise in molecular biology, purification and characterization of recombinant proteins, spectroscopic techniques, HPLC, and DNA sequencing required. Expertise in cyanobacterial genetics, especially in transposon and interposon mutagenesis, is advantageous. Salary range: \$32,556 to \$37,284 per annum. Send résumé and names of three references by January 20, 1997, to: **Dr. A. N. Glazer, Department of Molecular and Cell Biology, 229 Stanley Hall, University of California, Berkeley, CA 94720-3206**. *The University of California is an Equal Opportunity/Affirmative Action Employer.*

SCIENTIFIC DIRECTOR DELTA WATERFOWL FOUNDATION

Full-time **SCIENTIFIC DIRECTOR** for a private, non-profit organization with waterfowl and wetlands research and student training as its primary mission. Job involves oversight of a diverse graduate research program including: making funding decisions, guiding research, hiring assistants, promoting a stimulating research environment, communicating research results, and representing Delta at meetings. Ph.D. required; postdoctoral preferred. Application review begins mid-January. For more information **Telephone: 204-239-1900** or **Email: dw4ducks@portage.net**. Send curriculum vitae, letter stating interests, four references, and reprints to: **Jonathan Scarth, Delta Waterfowl Foundation, RR1, Box 1, Portage, Manitoba R1N 3A1 Canada**.

POSTDOCTORAL POSITION Department of Biochemistry University of Connecticut Health Center

POSTDOCTORAL POSITION is available February 1, 1997, to study the degradation, glycosylation, and trafficking of ER proteins. Experience in modern molecular techniques is required and strong background in chemistry is desirable. Send curriculum vitae and the names of three references to:

**Dr. Juris Ozols
Department of Biochemistry
University of Connecticut
Health Center
Farmington, CT 06032**

An Affirmative Action/Equal Opportunity Employer; Minorities/Females/Persons with Disabilities/Veterans.

POSITIONS OPEN

FORDHAM COLLEGE AT LINCOLN CENTER

ASSISTANT PROFESSOR (Ph.D. with emphasis in biological chemistry): The Department of Natural Sciences plans to fill a tenure-track position beginning fall 1997 (subject to final authorization). Teaching responsibilities include undergraduate courses in biology and chemistry for non-science majors, and major-level courses in molecular biology or biochemistry. Participation in undergraduate research is encouraged. Teaching experience is essential; postdoctoral experience is desirable. Send curriculum vitae, statement of teaching and research goals, and three references to: **Dr. Mark Botton, Chair, Natural Sciences Department, Fordham College at Lincoln Center, 113 West 60 Street, New York, NY 10023**. Deadline: January 15, 1997. *Affirmative Action/Equal Opportunity Employer.*

The U.S. Department of Agriculture (USDA), Agricultural Research Service (ARS), Corn and Soybean Research Unit, Wooster, Ohio, has a permanent full-time position for a **RESEARCH GENETICIST** (Plants). The incumbent will have primary responsibility to develop a research program studying the molecular interactions between plants and viruses that lead to resistance or susceptibility in corn. Also, the scientist will conduct cooperative research with plant pathologists, breeders, and geneticists to identify and characterize genes controlling host-plant response to virus diseases. Candidate must have professional knowledge of plant genetics, molecular and cellular biology, biochemistry, plant pathology, and plant virology. Ph.D. is desirable. *Must be U.S. citizen.* Salary is commensurate with experience (\$36,426 to \$56,759 per annum). For information concerning the research program contact: **Dr. Raymond Louie, Telephone: 330-263-3834**. For information on application procedures/forms, contact: **Richard A. Bergole, Telephone: 330-263-3774**. (Note: A response to the Selective Placement Factors is required for consideration. Failure to provide this information may result in non-consideration. Individuals should request a copy of the vacancy announcement, ARS-D6N-164, which contains these factors.) Applications must be postmarked by December 30, 1996. *USDA/ARS is an Equal Opportunity Employer.*

RESEARCH PLANT PATHOLOGIST GS-0434-11/12/13

The Natural Products Utilization Research Unit, Agricultural Research Service, USDA, in Oxford, Mississippi, has an opening for a permanent full-time **RESEARCH PLANT PATHOLOGIST** responsible for conducting research to discover naturally occurring phytotoxins from microbes and antimicrobial compounds from plants and to discover the molecular site of action of these toxins. The scientist must have 1) a knowledge of plant pathology and plant physiology, 2) a knowledge of plant and microbial biochemistry and fungicide mode of action, and 3) knowledge and experience with quantitative structure-activity relationships. The scientist will work as a member of a research team of plant scientists and chemists to accomplish these objectives. *Applicants must be U.S. citizens.* Salary commensurate with experience (\$36,426 to \$67,491). For information on the research assignment, contact **Dr. Stephen O. Duke, Telephone: 601-232-1036**; **Email: sduke@ag.gov**. For an application package contact **Margaret B. Rushing, Telephone: 601-232-2900**. Applications in response to this advertisement must be marked ARS-S-6-022 and postmarked by January 8, 1997. *USDA/ARS is an Equal Opportunity Employer.*

POSTDOCTORAL POSITIONS Tumor Suppressors, Cell Cycle, and Cancer

POSTDOCTORAL POSITIONS are immediately available for candidates interested in cell cycle control, oncogenes, and tumor suppression. These positions will focus around the role of DNA tumor virus-mediated effects on gene expression, mammalian cell cycle control, and differentiation, with a major emphasis on the adenovirus associated proteins, including the retinoblastoma protein family (pRb, p107, p130), p300/CBP cyclins, CDKs and its inhibitors.

Ideally, candidates should have a strong research background in transcription systems, molecular biology, or biochemistry. Interested applicants should send a curriculum vitae; a description of research experience; and names, addresses, fax and telephone numbers of three references to: **Antonio Giordano, M.D., Ph.D., Pathology, Anatomy and Cell Biology, Kimmel Cancer Institute, Jefferson Medical College, Philadelphia, PA 19107**. **Telephone: 215-503-0781; FAX: 215-923-9626; Email: agiordan@lac.jci.tju.edu**. *Equal Opportunity Employer.*

POSITIONS OPEN

PHYSIOLOGIST

Tenure-track **ASSISTANT PROFESSOR** to teach Human Anatomy and Physiology, Animal Physiology, and specialty courses; mentor M.S. and undergraduate research; and develop a research program. Ph.D. required. Starts September 1997. Send letter, curriculum vitae, statement of teaching experience and philosophy, and list of three references by January 31, 1997, to: **Search Committee, Department of Biology, Eastern Washington University, Cheney, WA 99004**. *Eastern Washington University is committed to increasing the diversity of its faculty, staff, and students, and to strengthening sensitivity to diversity throughout the institution. We are an Affirmative Action/Equal Opportunity Employer, and applications from members of historically underrepresented groups are especially encouraged. The successful candidate will be required to show proof of eligibility to work in the U.S. pursuant to U.S. immigration laws.*

RESEARCH CHEMIST GS-1320-11/12/13

The Natural Products Utilization Research Unit, Agricultural Research Service, USDA, in Oxford, Mississippi, has an opening for a permanent full-time **RESEARCH CHEMIST** responsible for conducting research to discover naturally occurring phytotoxins and antimicrobial compounds from plants and microbes. The scientist must have 1) a knowledge of natural product chemistry and organic chemistry, 2) a knowledge of synthetic chemistry, quantitative structure-activity relationships, and 3) experience with NMR, MS, HPLC, and other modern analytical methods. The scientist will work as member of a research team of plant scientists to accomplish objectives. *Applicants must be U.S. citizens.* Salary commensurate with experience (\$36,426 to \$67,491). For information on the research assignment call **Dr. Stephen O. Duke, Telephone: 601-232-1036**. For an application package call **Margaret Rushing, Telephone: 601-232-2900**. Applications in response to this advertisement must be marked ARS-S-6-021 and postmarked by January 8, 1997. *USDA/ARS is an Equal Opportunity Employer.*

POSTDOCTORAL RESEARCH ASSOCIATE Insect Molecular Biology

U.S. Department of Agriculture, Agricultural Research Service, Wheat, Peanut and Other Field Crops Research Unit, Stillwater, Oklahoma, seeks a temporary two-year **POSTDOCTORAL RESEARCH ASSOCIATE**, Insect Molecular Biology, GS-11/12 (salary commensurate with experience). The incumbent will develop species-specific DNA hybridization probes to detect endoparasitism and arthropod predation on cereal aphids. Experience is required in animal DNA extraction, amplification, cloning and labeling; experience is desirable in insect molecular biology. Receipt of Ph.D. within the last four years is desirable. Send curriculum vitae and arrange for three letters of reference to be sent to: **Dr. M. H. Greenstone, USDA-ARS-PSWCRL, 1301 North Western Street, Stillwater, OK 74075**. For information, **Email: mattg@ag.gov**, or **Telephone: 405-624-4119**. *USDA/ARS is an Equal Opportunity Employer. Women and minorities are encouraged to apply.*

FUNGAL MOLECULAR BIOLOGIST

TerraGen Diversity Inc. is a new drug discovery company at the forefront of the quest for novel lead pharmaceuticals from natural sources. We are seeking two scientists at the **POSTDOCTORAL** or **RESEARCH SCIENTIST** level to join our lichen biology program. Applicants should have thorough knowledge of fungal genetics and experience with library construction, transformation, and heterologous gene expression in filamentous fungi. Please send curriculum vitae, including details of accomplishments and relevant publications, to: **Dr. Joe McDermott or Dr. Vivian Miao** by January 31, 1997. **TerraGen Diversity Inc., Suite 300, 2386 East Mall-UBC, Vancouver, BC V6T 1Z3 Canada. FAX: 604-221-8881; Email: joe@terragen.com.**

POSTDOCTORAL POSITIONS Washington University, St. Louis

POSTDOCTORAL POSITIONS available for studies of DNA motor proteins (helicases) involved in DNA repair and SSB protein-DNA interactions using biochemical, biophysical, and mutational approaches. Particular emphasis is on mechanistic studies using transient kinetic methods (fluorescence, stopped-flow, quenched-flow) as well as thermodynamic approaches. Send curriculum vitae and have three letters of reference sent to: **Prof. Timothy M. Lohman, Biochemistry and Molecular Biophysics, Box 8231, Washington University School of Medicine, 660 South Euclid Avenue, St. Louis, MO 63110**.

SCIENTIST



Genentech is a pace-setting biotechnology company that discovers, develops, manufactures and markets human pharmaceuticals for significant unmet medical needs. Our product pipeline is the richest in the industry and we are the only biotech company with five marketed products.

Working in the Medicinal and Analytical Chemistry Department, you will conduct research and development for the characterization of recombinant DNA-derived polypeptides, proteins, and glycoproteins. This will involve problem solving related to product characterization using electrophoretic, chromatographic, and mass spectral techniques.

Requirements include a PhD in Biochemistry with an analytical or chemical emphasis, and familiarity with general protein biochemical methodology and operation and maintenance of analytical equipment, such as CE and HPLC. Experience in the use of capillary electrophoretic methods including capillary isoelectric focusing and non-gel sieving is strongly preferred. Experience with the preparation of peptides and proteins for amino acid, sequence, and mass spectral analysis is also necessary. A proven record of good laboratory practices, strong communication skills, and the ability to conduct independent research are essential. At least 2 years of postdoctoral study is highly desirable.

Join us and enjoy our exciting success and progressive benefit package that includes fully paid medical/dental/vision coverage, 3 weeks paid vacation, 6 weeks sabbatical after every 6 years, stock purchase opportunities for full time employees, and free health club membership. **For consideration, send your resume, indicating Job Code MCECD, to Genentech, Inc., Human Resources, 460 Pt. San Bruno Blvd., South San Francisco, CA 94080.** Please avoid bold, underline or italic type faces. You may also e-mail your resume indicating Job Code to: jobs@gene.com (ASCII files only with a maximum line width of 76 characters). For more information, see us at <http://www.gene.com>. Genentech is an Equal Opportunity Employer. We value the contributions of our diverse workforce.

Genentech, Inc.

Cadus Pharmaceutical Corporation, a company pioneering in the discovery of drugs which regulate G-protein mediated signaling pathways, is expanding its discovery programs based upon its unique proprietary screening technologies and has openings for motivated scientists in the following areas:

Biochemistry

BS/MS level scientist with minimum 3 years experience in protein analysis and biochemistry. Experience in Western blot, ligand binding and cellular localization analyses is preferred. **Job Code: S-B**

Yeast Genetics

BS/MS level scientist with minimum 2 years experience in yeast genetics and/or molecular biology to aid in the development and adaptation of novel yeast strains to high throughput screening format. **Job Code: S-YG**

Molecular Biology

BS/MS level scientist with minimum 2 years laboratory experience in molecular biology. Expertise in DNA cloning and gene expression (yeast and mammalian) is essential, with expertise in protein analysis preferred. **Job Code: S-MB**

Biochemical Pharmacology

BS/MS level scientist with experience in receptor binding and second messenger assays. Expertise with yeast and/or mammalian cell culture techniques, peptide receptors and protein biochemistry is desirable. **Job Code S-BP2**

Expression Cloning

BS/MS level scientist with minimum 2 years experience in molecular biology and gene cloning. Expertise in cDNA library construction and screening is essential. **Job Code: S-PL**

Cadus offers competitive salaries and benefits as well as excellent career growth in a stimulating collaborative environment. Send CV and List of References, indicating Job code, to: Cadus Pharmaceutical Corporation, 777 Old Saw Mill River Road, Tarrytown, NY 10591-6705. Cadus is an Equal Opportunity Employer.

CADUS

PHARMACEUTICAL CORPORATION



SYMPOSIA



Fundación Barceló Second Annual Symposium Advances in Immunologic and Genetic Bases

CYTOKINES IN AUTOIMMUNE DISEASE: PATHOGENS AND IMMUNOTHERAPY

Palma de Majorca, June 2-4, 1997

Director: Dr. Melchor Alvarez de Mon Soto (UAH, Madrid)

TOPICS AND SPEAKERS:

T cell Subsets: Hugh McDavitt (Stanford), Gary Fathman (Stanford) and W. Paul (NIH)

Cytokines and Chemokines: E. Unanue (Washington), Jose Carlos Gutiérrez-Ramos (Boston), and Philipa Marrak (Denver)

Transgenic Mouse Models: Richard Flavell (Yale), Tak Mak (Toronto), and Diane Mathis (Strasbourg).

Apoptosis: Carlos Martinez-Alonso (CSIC, Madrid), Ann Marshak-Rothstein (Boston), and Abul K. Abbas (Harvard)

Immunotherapy: R. Noelle (Dartmouth), Jeff Bluestone (Chicago), Melchor Alvarez de Mon (UAH, Madrid), W.J. Koopman (Alabama), and J.J. Garaud (Schering-Plough)

Limited seats available

For information and registration please contact:

Fundación Barceló

C. Sant Jaume, 4

Vox: 34 71 721837/722467/721116

Fax: 34 71 720380



**BASSETT
HEALTHCARE**

DIRECTOR RESEARCH INSTITUTE

Bassett Healthcare is seeking a Director of the Research Institute. The institute serves as the hub of the research enterprise of an expanding multi-site academic system. Separately endowed internal funding is available. Responsibilities are to foster research ranging from basic science to preventive medicine and epidemiological outcome studies and to assure a balanced program in the best interest of the institution and its missions. Bassett is a major teaching affiliate of Columbia University College of Physicians and Surgeons. Senior academic appointment is included. Cooperstown is a unique rural village with outstanding recreational and cultural activities and excellent schools. Please send C.V. or nominations to:

Michael S. Gold, M.D.

Surgeon-in-Chief

Chair Search Committee

Research Institute

One Atwell Road

Cooperstown, NY 13326

(607) 547-3968; Fax: (607) 547-4786

POSITIONS OPEN

HORN POINT POSTDOCTORAL INVESTIGATOR

The Horn Point Environmental Laboratory (HPEL) of the University of Maryland Center for Environmental and Estuarine Studies invites applications for a **POSTDOCTORAL INVESTIGATOR**. This is a two-year appointment available 1 June 1997. The successful candidate must hold a Ph.D., or equivalent, and is expected to conduct research in collaboration with a member(s) of the HPEL faculty. General areas of research include coastal physical oceanography, estuarine ecology, plankton dynamics, benthic ecology, geochemistry, algal physiology, coastal plant ecology and aquaculture (list of faculty is on the website <http://www.hpel.cees.edu>). By 1 February 1997, send a two- to three-page letter outlining a proposed research program, the name(s) of faculty the candidate would like to work with, a résumé, and a list of four references to: **Chairperson, Postdoctoral Investigator Committee, HPEL, P.O. Box 775, Cambridge, MD 21613. UMS is an Affirmative Action/Equal Opportunity Employer.**

POSTDOCTORAL FELLOWS

The Pediatric Bone Research Center at Cincinnati Children's Hospital is seeking M.D. and/or Ph.D. trained scientists for research fellowships in basic or clinical research. Individuals with backgrounds in clinical nutrition, gastrointestinal physiology, or epidemiology are sought for projects involving effects of calcium and vitamin D intake and metabolism on bone accretion in childhood and adolescence. Individuals with training in molecular and cellular biology or receptor biology signal transduction are sought for projects relating to extracellular matrix-mediated signal transduction pathways that regulate osteoblast differentiation. Interested candidates should send curriculum vitae and three references to: **Dr. Reginald Tsang, Room 6165, University of Cincinnati College of Medicine, Cincinnati, OH 45267 U.S.A. Telephone: 513-558-0543; FAX: 513-221-8061; Email: reginald.tsang@uc.edu.**

POSTDOCTORAL POSITION

University of North Carolina, Chapel Hill

Departments of Anesthesiology and Pharmacology

A **POSTDOCTORAL POSITION** is available in neurophysiology (patch clamp, PT-PCR, and neuroanatomy techniques are primary) to study the mechanism of anesthetic effects on ligand and voltage gated ion channels. The successful candidate must have a Ph.D. degree with a neurophysiology/pharmacology focus. Experience with patch clamp or molecular biology techniques is desirable. Interested applicants should send their curriculum vitae and names of three references to: **George R. Breese, Ph.D., c/o Linda Hunt, Department of Anesthesiology, 223 Burnett-Womack, CB Number 7010, UNC at Chapel Hill, Chapel Hill, NC 27599-7010. University of North Carolina is an Equal Opportunity Employer.**

POSTDOCTORAL FELLOW position is available immediately for the study of characterization of mosquito salivary antigens. Experience in gene cloning, sequencing, and expressing in baculovirus system is required. *The University exercises a Canadian-first policy; however, non-Canadians are encouraged to apply.* Send curriculum vitae and names or letters of three references to: **Dr. Zhikang Peng, Departments of Pediatrics and Immunology, University of Manitoba, M5746A-820 Sherbrook Street, Winnipeg, Manitoba R3E 1R9 Canada. FAX: 204-787-4547.**

POSTDOCTORAL FELLOWSHIP at Wellman Laboratories of Photomedicine, Massachusetts General Hospital (MGH), Harvard Medical School, Boston, Massachusetts. Should have a Ph.D. in biology or biochemistry as well as an interest and/or experience in tumor biology. The project is focused on photoimmunotherapy of cancer. Send curriculum vitae to: **Tayyaba Hasan, Ph.D., Wellman Laboratories, Massachusetts General Hospital, 50 Blossom Street, Boston, MA 02114. Telephone: 617-726-6996. MGH is an Equal Opportunity Employer; women, minorities, disabled persons, and veterans are encouraged to apply.**

POSTDOCTORAL position available immediately for NIH-funded investigation into toxicant-induced cell proliferation in liver. Investigations focus on signal transduction, immediate early genes, growth factors, cytokines, and related molecular biology of tissue repair mechanisms in animal and cell systems. Send curriculum vitae and references to: **Dr. Harihara M. Mehendale, Division of Toxicology, School of Pharmacy, Northeast Louisiana University, Monroe, LA 71209. Email: pymehendale@alpha.nlu.edu.**

POSITIONS OPEN

ASSOCIATE POSTDOCTORAL POSITION Molecular Endocrinology Harvard Medical School Massachusetts General Hospital

Applications are invited for a **POSTDOCTORAL POSITION** as an **ASSOCIATE** to work in the laboratory of **Dr. Joel F. Habener**. A candidate with outstanding potential and dedication to a career in discovery-oriented biomedical research is sought to undertake challenging research into the cellular mechanisms involved in the developmental and metabolic regulation of key genes in the endocrine pancreas. The emphasis of the research program is to understand the genetic and regulatory defects that contribute to the disease Diabetes Mellitus. The qualifications for the position restrict qualified applicants to individuals who are within one year of obtaining the Ph.D. degree or M.D.s within one year of finishing their formal clinical training program.

Please forward curriculum vitae and three letters of recommendation to: **Dr. Joel F. Habener, Massachusetts General Hospital, 50 Blossom Street, Wellman, 306, Boston, MA 02114. Equal Opportunity Employer.**

POSTDOCTORAL/RESEARCHER POSITIONS

POSTDOCTORAL/RESEARCHER positions are available immediately in exciting multi-disciplinary research programs to develop peptide and non-peptide drugs. Applicants must have skills in one of the following areas: 1) molecular biology and immunology techniques and biological assays; 2) synthesis and structural study of peptides and peptidomimetics and combinatorial chemistry; 3) molecular modeling and computer-aided drug design. A Bachelor's/Master's degree is required for a researcher position. Salary/benefits are competitive. Send résumé (including telephone number) to: **Dr. Ziwei Huang, Kimmel Cancer Institute, Thomas Jefferson University, 233 South 10th Street, Philadelphia, PA 19107. FAX: 215-923-2117; Email: zhuang@lac.jci.tju.edu. Equal Opportunity/Affirmative Action Employer.**

POSTDOCTORAL POSITION available July 1997 for studies of the structure and function of mammalian voltage-gated chloride channels. Candidates should have M.D. or Ph.D. and two years of prior postdoctoral training in molecular biology and/or electrophysiology. Candidates having prior experience with site-directed mutagenesis, construction of chimeric recombinant proteins, raising polyclonal antibodies for immunohistochemical localization, and patch clamp recording will be given high priority. Send curriculum vitae and names of three references to: **Dr. A. L. George, S-3223 MCN, Vanderbilt University Medical Center, 1161 21st Avenue South, Nashville, TN 37232-2372. Vanderbilt University is an Equal Opportunity Employer.**

POSTDOCTORAL FELLOW

POSTDOCTORAL ASSOCIATE to study CNS remyelination. *In vivo* and *in vitro* cellular and molecular techniques will be integrated to identify signals mediating proliferation and migration of remyelinating cells in experimentally demyelinated mice. The incumbent will work in the Department of Anatomy and Cell Biology, Uniformed Services University of the Health Sciences. Send curriculum vitae, a summary of research interests/experience, and names and telephone numbers of three references to: **Henry M. Jackson Foundation—Human Resources Department, Attention: PL2960500, 1401 Rockville Pike, Suite 600, Rockville, MD 20852. Email: hr@mail.hjfr.org. Affirmative Action/Equal Opportunity Employer.**

POSTDOCTORAL POSITION available immediately to study ion channel mechanisms of cardiac arrhythmia, with focus on defects in sodium channel gating associated with long QT syndrome. Background in patch clamp electrophysiology essential; molecular biology experience desirable. Send curriculum vitae and names of three references to: **Dr. Glenn E. Kirsch, MetroHealth Medical Center, Rammelkamp Building R327, 2500 MetroHealth Drive, Cleveland, OH 44109-1998. Email: gek3@po.cwru.edu; FAX: 216-778-8282; Telephone: 216-778-8968. MetroHealth is an affiliate of Case Western Reserve University. Candidates must meet all requirements to work within the U.S. Equal Opportunity Employer.**

POSITIONS OPEN

POSTDOCTORAL POSITION

Cardiac Physiology
University of Maryland School of Medicine

A **POSTDOCTORAL POSITION** is available immediately for research in electrophysiology and excitation-contraction coupling of cardiac muscle. The research will involve the use of patch clamp techniques, fluorescent ion-indicators, and confocal microscopy. Applicants should have a Ph.D. or M.D., and experience in electrophysiology.

Interested individuals should send curriculum vitae and names of three references to: **Dr. C. William Balke or Dr. Stephen R. Shorofsky, Department of Physiology, University of Maryland at Baltimore, 660 West Redwood Street, Room 590, Howard Hall, Baltimore, MD 21201. University of Maryland at Baltimore is an Equal Opportunity/Affirmative Action Employer.**

POSTDOCTORAL FELLOWSHIP

Biochemical Genetics and Molecular Biology
Carl R. Merrill, M.D., Chief

The Laboratory of Biochemical Genetics is seeking a **POSTDOCTORAL** candidate with experience in biochemical genetics and molecular biology to participate in studies of somatic mutations in the mammalian central nervous system. These studies involve the use of tissue culture and animal model systems. Candidates must have less than five years of postdoctoral experience. Send current curriculum vitae/bibliography and three letters of reference to the Laboratory of Biochemical Genetics, NIMH, NIH, Building 10, Room 2D54, 10 Center Drive, 9000 Rockville Pike, Bethesda, MD 20892. Email: merrill@helix.nih.gov.

NIMH is an Equal Opportunity Employer.

POSTDOCTORAL POSITION

Columbia University in the City of New York

Immediate opportunity available to study the *in vivo* expression of mammalian olfactory receptors, induced by viral vectors. A combination of molecular and electrophysiological tools, including adenovirus construction and single cell patch clamp recording, will be utilized. Preference given to candidates with experience in molecular/cellular neurobiology. Send curriculum vitae, brief description of research interests, and telephone/Email addresses of three references to: **Stuart Firestein, Ph.D., Department of Biological Sciences, Columbia University, 922 Fairchild Center, MC2438, New York, NY 10027. We take Affirmative Action toward Equal Opportunity.**

DEPARTMENT OF PEDIATRICS STANFORD UNIVERSITY SCHOOL OF MEDICINE

POSTDOCTORAL position available immediately to study the *in vivo* gene regulation of heme oxygenase, an enzyme important in bilirubin production and during oxidative stress, using novel *in vivo* imaging technology. Applicants with experience in molecular biology, cell biology, and/or molecular microbiology may apply to: **Dr. Pamela Contag c/o Dr. David Stevenson, Department of Pediatrics, Division of Neonatology, Stanford University Medical Center. Telephone: 415-725-8781 or 415-498-7247; FAX: 415-725-7724; Email: PRContag@CMGM.Stanford.edu.**

POSTDOCTORAL FELLOW

Virginia Mason Research Center
Seattle, Washington

Two-year **POSTDOCTORAL POSITIONS** available for recent Ph.D. or M.D. to study genetics and immunopathogenesis of human autoimmunity. Experience in molecular biology, cellular immunology, or transgenic animal systems required. Highly interactive multidisciplinary programs emphasizing studies of IDDM and RA. Send curriculum vitae, brief description of research interests, and names of three references to: **Dr. William Kwok or Dr. Gerald Nepom, Virginia Mason Research Center, 1000 Seneca Street, Seattle, WA 98101.**

POSTDOCTORAL POSITIONS available immediately to study the regulation of steroidogenic enzyme expression and steroid synthesis in human ovarian cells. Experience in recombinant DNA techniques and steroid biochemistry preferred. Send curriculum vitae to: **Jan M. McAllister, Ph.D., The Pennsylvania State University College of Medicine, Department of Cellular and Molecular Physiology, 500 University Drive, Hershey, PA 17033. Telephone: 717-531-3588; FAX: 717-531-7667. For your health, Hershey Medical Center is a smoke-free campus. We are an Equal Opportunity/Affirmative Action Employer and encourage minority and female applicants to apply.**

BROWN UNIVERSITY MOLECULAR PHARMACOLOGIST

A position is open at the rank of Assistant Professor (tenure-track), Associate Professor (tenured) or Professor (tenured), for an innovative individual with research interests in the structure-function relationships of drug targets such as cell surface receptors, ion channels, enzymes, or other signal transduction elements. Individuals with particular expertise in the application of heteronuclear NMR methodologies or X-ray diffraction analysis for macromolecular structure-function studies and who are familiar with the use of molecular biological techniques are encouraged to apply. Applicants should have at least two years of postdoctoral training and the potential or demonstrated ability to develop an independent externally-funded research program. General teaching responsibilities include pharmacology instruction for medical students, as well as participation in undergraduate and graduate education. Opportunities exist for interactions with a wide range of excellent faculty throughout the University. The appointment will begin on or after July 1, 1997. Applications received by January 31, 1997 will receive full consideration.

Applicants should submit a résumé including research and teaching experience, future research plans, and a list of publications; enclose representative reprints; and have three letters of reference sent to **Dr. Edward Hawrot, Chairman, Department of Molecular Pharmacology, Physiology and Biotechnology, Box G-B487, Division of Biology and Medicine, Brown University, Providence, RI 02912.** Applicants for a tenured position need not provide the three letters of reference with the application but should be prepared to provide the names of five references if requested.

We encourage women and minority candidates.

Brown University is an equal opportunity/affirmative action employer.

BOSTON UNIVERSITY POSTDOCTORAL FELLOWSHIPS: BIOMEDICAL ENGINEERING

Postdoctoral positions are available to study erythrocyte biophysics and biochemistry, with emphasis upon the lipid membrane and its protein skeleton. We have elucidated important molecular pathogenetic factors that drive the deterioration of red cells during refrigerated storage. By taking counter measures against this specific group of factors, we have significantly prolonged the refrigerated storage life of human erythrocytes. We are funded by the Naval Medical Research and Development Command to further define the fundamental implications of our findings in order to develop blood storage and transfusion technologies in support of combat casualty care. Our studies have provided a new perspective on the biochemical and biophysical properties of red cell membrane components, and novel investigations of the remarkable structure and function of the red cell are now underway. Experience in membrane, molecular and cell biology, protein chemistry, organic chemistry, and circulatory physiology are desirable. We can make a two-year commitment, with additional postdoctoral research time and academic appointment as distinct possibilities.

Postdoctoral positions are available to study the protein ensembles that confer light sensitivity upon the retinal rod photoreceptor cell. We place emphasis upon rod outer segment proteins that play a role in visual signal transduction and the regulation of rod sensitivity. We have recently demonstrated a link between the capability of visual excitation to regulate rod cytosolic Ca^{++} levels, the activity of a Ca^{++} sensitive adenylyl cyclase and the regulation of phosducin activity. We have found that the complex between phosducin and the beta, gamma subunits of the rod G-protein physically embodies a short-term molecular memory of recent light signalling events. This work is supported by the National Eye Institute. Experience in membrane, molecular and cell biology, protein chemistry, organic chemistry and visual physiology are desirable. We can make a two year commitment, with additional postdoctoral research time and academic appointment as distinct possibilities.

Boston University is an equal opportunity employer that offers a competitive salary scale. Interested applicants should send their CV and three reference letters to: **Mark Wolfe Bitensky, M.D., Boston University, Biomedical Engineering Department/Circulatory and Visual Biophysics, 36 Cummings Street, Room 310, Boston, MA 02215. Fax: 617-353-7216**

SCIENCE announces the pounds sterling rate card! Advertisers not based in the United States may choose to pay in U.S. dollars or pounds sterling.

For advertising information:

In Europe,

Phone: +44 (0) 1223 302 067,

Fax: +44 (0) 1223 302 068

In the U.S.,

Phone: (202) 326-6532,

Fax: (202) 682-0816.

In Japan,

Phone: +81 3 3235-5961,

Fax: +81 3 3235-5852

In Australia,

Phone: +61 02 922 2977,

Fax: +61 02 922 1100

SCIENCE
COVERS THE WORLD

PURDUE UNIVERSITY MOLECULAR PHARMACOLOGY

The Department of Medicinal Chemistry and Molecular Pharmacology at Purdue University is embarking upon a major building program and seeks to expand significantly its research in molecular pharmacology. Applications are invited for the first two tenure-track positions at the Assistant Professor level. Candidates should hold a Ph.D. in pharmacology or a related area of molecular science and should have at least two years of postdoctoral training; legal authority to work indefinitely in the United States is also required. The department is particularly interested in candidates whose research interests bridge the biology/chemistry interface in the areas of neuropharmacology and cancer pharmacology. Successful candidates will be expected to establish a strong research program with extramural funding and to have a commitment to excellence in teaching at the undergraduate and graduate levels. Minority and women scientists are especially encouraged to apply. Applicants should submit a curriculum vitae, a detailed description of research plans, and the names and addresses of three references to: **Search Committee, Department of Medicinal Chemistry and Molecular Pharmacology, Purdue University, West Lafayette, IN 47907-1333, by February 26, 1997, or until position is filled.** *Purdue University is an Equal Opportunity/Equal Access University.*

DEPARTMENT OF AGRICULTURE (USDA) AGRICULTURAL RESEARCH SERVICE (ARS)

The Gene Evaluation and Mapping Laboratory in Beltsville, Maryland, is seeking an animal research geneticist to work in the area of molecular biology in dairy cattle with particular focus on developing contig maps of chromosomal regions containing quantitative trait loci. Candidate must have experience in genetics, molecular biology, and contig construction and be able to characterize large insert clones. Ph.D. is desirable. Must be a U.S. citizen. Salary is commensurate with experience (\$37,094 to \$44,458 per annum). For information on the research program, contact **Caird Rexroad, Research Leader (301-504-8534).** For announcement and forms, call **301-344-4639.** Mail resume: **ATTN. DB-7-001** not later than February 1, 1997, to **USDA-ARS, BAHQOB, 6305 Ivy Lane, Room 361, Greenbelt, MD 20770.**

USDA is an Equal Opportunity Employer

RPI, a leader in the development of ribozyme-based pharmaceutical and agricultural products is currently seeking an experienced scientist to join the Pharmacology Group at our state-of-the-art facility in Boulder, Colorado:

SCIENTIST

We seek a Ph.D. level Scientist with three to five years of broad, post-graduate experience in histochemistry, histopathology and the development of microscopic techniques at the single cell and tissue levels. Specific experience in immunohistochemistry, in situ hybridization histochemistry, and quantitative confocal microscopic analysis is desirable. The position requires the ability to interact with a diverse group of scientists across several disciplines including pharmacology, drug delivery, oligonucleotide chemistry, and cell biology. Please refer to Job #088.

We offer a competitive salary and benefits package, including a stock option plan and a flexible benefits program. For consideration, please send a Curriculum Vitae and the names of three references to:

Ribozyme Pharmaceuticals, Inc., 2950 Wilderness Place, Boulder, CO 80301. FAX: (303) 449-6995. E-mail: jobs@rpi.com Please refer to Job #088.

No phone calls accepted. We are an equal opportunity employer.



DIRECTOR OF THE BIODIVERSITY RESEARCH CENTER OF THE CALIFORNIAS San Diego Natural History Museum

The San Diego Natural History Museum invites nominations and applications for the position of Director of the Biodiversity Research Center of the Californias (BRCC). A major renovation and expansion of the Museum building and programs is currently in the design and fund-raising phase. The BRCC represents a refocusing of the Museum's research program and is the product of a 122-year tradition of systematics research, scientific collecting (botanical, zoological, paleontological, and mineralogical), and scientific publication in this region (southern California and Baja California).

Qualifications: Ph.D. in the Life Sciences; professional standing and demonstrated research accomplishments in one or more of the Museum's research areas; museum experience including curatorial responsibilities; demonstrated managerial and administrative abilities; strong interpersonal skills; bilingual (verbal and written; Spanish and English). Bicultural (Mexico and USA) experience preferred. **Responsibilities:** scientific and administrative leadership of research and support staff; planning and implementation of scope and direction of BRCC; maintenance of active research program; and development and facilitation of grants and contracts by and for BRCC staff. Send for information packet to: **BRCC Search Committee; San Diego Natural History Museum; PO Box 1390; San Diego, CA 92112. Email: paleosdnhm@earthlink.net.** Closing date is 15 April 1997.

SDNHM is an equal opportunity employer.

GLOBAL CAREER OPPORTUNITIES



UPPSALA UNIVERSITY

Professor and Chair of Surface Biotechnology

Applications are invited for a new Chair of Surface Biotechnology at the Faculty of Science and Technology of Uppsala University, Uppsala, Sweden.

The professorship is connected to a new Center for Surface Biotechnology (CSB) at the Uppsala Biomedical Center, established jointly by Pharmacia Biotech AB and Uppsala University.

The aim of CSB is to conduct fundamental and applied research within the field of surface biotechnology (including separation and analysis of biomolecules) and to participate in the various undergraduate and graduate educational biotechnology programs of the faculty. CSB shall also develop new means of cooperation between industry and academy, including contract research.

Potential applicants are encouraged to request the complete recruitment documentation for the professorship from the **Office of the Faculty of Science and Technology, Uppsala University, Box 256, S-751 05 Sweden; Tel: +46(0)18 18 18 69; Fax: +46(0)18181999; E-mail: Margareta.Sollenberg@uadm.uu.se.**

The closing date for applications is 30 January 1997.



UNIVERSITY OF CAMBRIDGE

Department of Pathology University Lecturer in Immunology

Applications are invited for a University Lectureship in Immunology in the Department of Pathology.

Applicants should hold a Ph.D. or equivalent and have an outstanding record in research.

He or she should also be enthusiastic about teaching, and should provide evidence of being able to attract research support funding. Any aspect of immunology will be considered if it complements existing work in the Division or if it provides interesting new approaches. The Immunology Division has established programmes of research in autoimmunity (Anne Cooke), antibody structure/function (Mike Clark), CD45 function (Nick Holmes) and immunogenetics (John Trowsdale). This new post is to coincide with the appointment of Professor Trowsdale. Salary scale £18,294 - £28,215.

Further information and application form from: The Secretary, Appointments Committee for the Faculty of Biology, 19 Trumpington Street, Cambridge CB2 1QA. Tel: 01223 334999, fax: 01223 332355. E-mail: sbs@mole.bio.cam.ac.uk or on the appointments webpage:

<http://www.bio.cam.ac.uk/appointments>.

Closing date: 28 February 1997.

The University follows an equal opportunities policy.

KUWAIT UNIVERSITY Faculty of Pharmacy

ASSOCIATE OR ASSISTANT PROFESSORSHIPS IN PHARMACEUTICS, PHARMACEUTICAL CHEMISTRY, AND APPLIED THERAPEUTICS

The Faculty of Pharmacy, Kuwait University, invites applications for full-time faculty positions in:

- 1)Pharmaceutics: Applicants should have teaching experience in physical pharmacy, pharmaceutics, or biopharmaceutics and related research experience.
- 2)Pharmaceutical chemistry: Applicants should have teaching experience in analytical, medicinal, or natural product chemistry and related research experience.
- 3)Applied therapeutics: Applicants should have teaching experience in pharmacology, toxicology, pharmacotherapeutics, or clinical pharmacokinetics. They should present evidence of their ability to initiate and conduct basic or clinical research.

Applicants should preferably have a first degree in pharmacy. Successful applicants will be expected to teach at both the undergraduate and graduate levels, to contribute to the development of the Faculty, and to establish an active collaborative research program within the Health Science Faculties. Rank and salary will be commensurate with experience and qualifications. Appointments are subject to contract. Kuwait University offers:

- 12 months' tax-free salary depending on years of experience
- 2 months' paid summer vacation
- Other benefits including housing and furniture allowance; annual air tickets for appointee, spouse and 3 children up to the age of 18; free national health care; free tuition for dependent children under the age of 18 up to high school in accordance with Kuwait University regulations
- End-of-service gratuity equal to one month of basic salary for each year of service
- Financial support for research through a competitive awards system
- Excellent academic environment in a newly established faculty

Letters of application accompanied by a complete curriculum vitae and the names and addresses, telephone and fax numbers, and email addresses of three referees should be submitted to:

David Biggs, Ph.D.

Dean, Faculty of Pharmacy

Health Sciences Centre, Kuwait University

P.O. Box 24923, Safat 13110, Kuwait

Deadline: March 1, 1997

THE CHINESE UNIVERSITY OF HONG KONG FACULTY OF MEDICINE

The University (founded 1963) offers comprehensive programmes up to PhD level. Student enrolment in 1996-97 is around 12,600. The Faculty of Medicine offers undergraduate and postgraduate programmes in Medicine, Nursing and Pharmacy. The MBChB programme admits 160 students annually and is fully recognised by the General Medical Council of the United Kingdom. Clinical courses are taught at the Faculty's 1,450-bed teaching hospital, the Prince of Wales Hospital (which is one of the regional hospitals in Hong Kong) and at the Lek Yuen Health Centre. English is used in teaching and administration in the Faculty of Medicine.

Applications are invited for the following post:

DEPARTMENT OF BIOCHEMISTRY

LECTURER (HUMAN GENETICS/ BIOINFORMATICS)

(carrying the academic title of Assistant Professor or Associate Professor, as appropriate)

(Ref. 96/113(665)/2)

Applicants should have a PhD degree and postdoctoral experience in (i) human genetics, with substantial research emphasis on the genes responsible for inherited and somatic diseases or (ii) data analysis, programming and database development, particularly in relation to gene discovery and development of diagnostic algorithm. The appointee is expected to develop externally-funded research programmes and to participate in graduate training and teaching of undergraduate science and medical students. He/she will be provided with laboratory space and start-up funds in a well-equipped Department which offers tissue/cell culture facilities and analytical equipment including automated DNA sequencer, DNA synthesizer, flow cytometer, confocal microscope, mass spectrometer as well as opportunities for collaborative work. The specific area of research is open but demonstrable expertise in genome mapping and gene knock-out which can complement the Department's existing research interests will be a definite advantage.

Annual Salary and Fringe Benefits

Lecturer HK\$489,060 to HK\$816,960 by 10 increments (approx. exchange rate in December 1996: US\$1= HK\$20.8). Starting salary and grade will be commensurate with qualifications and experience.

Benefits include leave with full pay, medical and dental care, children's education allowance, housing benefit for eligible appointee (with appointee contributing 7.5% of salary towards the provision of housing). Appointment may be made either on regular or fixed-term contract basis. Under regular contract, retirement benefits are provided by the University, while fixed-term contract carries where appropriate a contract-end gratuity (15% of basic salary).

Further information about the University and the general terms of service for teaching appointees is available at our World Wide Web home page <<http://www.cuhk.edu.hk>>.

Application Procedure

Please send full resume, copies of academic credentials, a publication list and/or abstracts of selected published papers, together with names and addresses (fax numbers/email addresses as well, if available) of three referees, to the Personnel Office, The Chinese University of Hong Kong, Shatin, NT, Hong Kong (Fax: (852) 2603 6852) before **15 January 1997**. Please quote the reference number and mark "Recruitment" on cover.

NASA Life Science Fellowships at the Marine Biological Laboratory Woods Hole, Massachusetts

1997 Summer Fellowships, sponsored by the Center for Advanced Studies in the Space Life Sciences at the Marine Biological Laboratory, are available to young investigators pursuing research related to the overall mission of the National Aeronautics and Space Administration Life Sciences Program. These fellowships provide travel, housing, and research expenses for investigators at the Marine Biological Laboratory. Applications from investigators interested in pursuing research at the MBL during off-season months are also encouraged.

Application Deadline: January 15, 1997. Applications are reviewed by the MBL Fellowship Committee. Notification of decisions will be mailed by **March 15**.

For forms and additional information, please contact:
**Fellowship Coordinator, Office of Research Administration,
Marine Biological Laboratory, 7 MBL Street, Woods
Hole, MA 02543-1015 • Phone: (508) 289-7441 • Fax (508)
457-1924 • E-mail: skaufman@mbi.edu • Internet/Web:
<http://www.mbl.edu/html/NASA/www.nasa.html>**



**MARINE
BIOLOGICAL
LABORATORY**

MBL is an EEO/Affirmative Action Institution

Faculty Position in General Biology. The Department of Biology, Middle Tennessee State University, invites applications for a tenure-track position (Number 103390) Assistant/Associate Professor, Doctorate required, starting August 1997. The successful applicant must have a broad background in biology. Primary teaching duties in a one-semester general education course. Evidence of excellence in teaching is essential. Expertise in application of instructional technology required. Research/public service is expected. *EO/AA/ADA Employer.* Applicant reviews begin 15 February 1997. Send applications referencing position number, resume, transcripts, and three letters of reference to: **Dr. Sarah Barlow, Committee Chair, Box 60, MTSU, Murfreesboro, TN 37132.** Email inquiries to sbarlow@frank.mtsu.edu

Faculty Position in Conservation Biology. The Department of Biology, Middle Tennessee State University, invites applications for a tenure-track position (Number 103150) Assistant/Associate Professor, Doctorate required, starting August 1997. The successful applicant must have a broad background in botany and plant ecology. Research/public service is expected as is the teaching of a lecture/laboratory in the above areas and in a non-majors course. *EO/AA/ADA Employer.* Applicant reviews begin 15 February 1997. Send application referencing position number, resume, transcripts, and three letters of reference to: **Dr. Kurt Blum, Committee Chair, Box 60, MTSU, Murfreesboro, TN 37132.** Email inquiries to flbailey@frank.mtsu.edu

Faculty Position in Anatomy and Physiology. The Department of Biology, Middle Tennessee State University, invites applications for two tenure-track positions. Assistant/Associate Professor, Doctorate required, starting August 1997. Environmental physiologist to teach human anatomy and physiology and other vertebrate courses (Number 103280). Second position to teach human anatomy and physiology, histology, and others according to need (Number 103360). Research/public service is expected. Applicant reviews begin 15 February 1997. Send application referencing position number, resume, transcripts, and three letters of reference to: **Dr. Amy Jetton, Committee Chair, Box 60, MTSU, Murfreesboro, TN 37132.** Email inquiries to ajetton@frank.mtsu.edu

Wanted: Committed, ambitious scientist. Must be a team player with a vision for the future. M.D./Ph.D., Ph.D., M.S. or B.S. degree necessary.

Does this describe you?

If it does, then plan to attend the AAAS bioSCIENCE Career Fair on February 18, 1997 from 11am-5pm in Seattle, WA at the Washington State Convention Center. This fair, sponsored by the American Association for the Advancement of Science and SCIENCE, offers the perfect opportunity for scientific professionals to meet in person with representatives from top organizations.

In addition to the career fair (which is free to all) there will be on-site career development workshops conducted by top science recruiters and human resource professionals (workshops are \$10 AAAS member/\$25 non-member).

To pre-register, please submit your resume or CV via fax: (202) 289-6742, or via e-mail: bioscience@aaas.org. Please remember to bring multiple copies of your CV or resume with you to the Career Fair, a copy will be necessary to register. Admission to the event is free.

AAAS bioSCIENCE CAREER FAIR

For more information, please call (202) 326-7018.

bioSCIENCE Career Fair Information On-Line:
<http://www.sciencemag.org>
(Choose SCIENCE Classified Advertising from the menu)



Modex Therapeutics is a newly formed Swiss biotechnology company located in Lausanne, Switzerland. Our goal is to develop new therapies for systemic diseases such as type I and type II diabetes, obesity and anemias. Our core technology is based on genetically modified cells secreting bioactive polypeptides and their implantation into patients following encapsulation in biopolymers. We are a multidisciplinary team able to carry these projects from the discovery stage to clinical trials. We strongly encourage publication in scientific journals.

We are now seeking highly motivated scientists to join our expanding team. The positions open are:

Molecular Biologist. This position is for a scientist with a Ph.D. and 2-3 years of postdoctoral experience in gene cloning, construction of mammalian expression vectors, establishment of transfected cells and their characterization using various analytical cell biological techniques.

Cell Biologist. This individual should have a M.D. or Ph.D. and 2-3 years of postdoctoral experience. Preferably he/she would have relevant experience in the molecular physiology of diabetes or obesity. Previous experience in pancreatic B cell physiology and the development and use of animal models of diabetes would be preferred.

Biomaterial Engineer. This position is for an individual with a Ph.D. and 2-3 years of postdoctoral experience in the chemistry of polymers and their use in biological systems. Experience in cell encapsulation/transplantation would be a strong asset.

Please send your letter of intent and a curriculum vitae to **Ms. Myriam Rège, Modex Thérapeutiques, 27, rue du Bugnon, 1005 Lausanne, Switzerland.**



**POSTDOCTORAL POSITION IN
X-RAY CRYSTALLOGRAPHY OR
MOLECULAR BIOLOGY
SWEDISH UNIVERSITY OF
AGRICULTURAL SCIENCES (SLU)
Department of Molecular Biology
Uppsala Biomedical Centre**

Applications are invited for a postdoctoral position to work on the structure determination and mutagenesis of enzymes in the penicillin/cephalosporin biosynthetic pathway. The successful candidate should have a Ph.D. in protein crystallography or molecular biology. Experience with anaerobic techniques would be an advantage.

The post is available immediately for three years. The position is funded by the European Union. The postholder will be part of a research team consisting of Swedish, Belgian, and U.K. participants concerned with the production, characterisation, crystallisation and structure determination of iron dependent oxidases/oxygenases in the penicillin/cephalosporin biosynthetic pathway.

The laboratory is a member of a consortium incorporating two other X-ray laboratories in Uppsala: one headed by Prof. Janos Hajdu (Department of Biochemistry, Uppsala University), and another one headed by Prof. Alwyn Jones (Department of Molecular Biology, Uppsala University). A wide range of X-ray and wet laboratory facilities are available for the work within this consortium together with up to date computing systems.

For further information contact **Dr. Inger Andersson, tel: 46-18-17 42 88; Fax: 46-18-53 69 71. (email: inger@xray.bmc.uu.se)**

Send your application with reference nbr 5479/96-4369, CV, publication list, reprints of 3 selected papers, and two letters of reference to: **The Registrar, SLU, Box 7070, S-750 07 Uppsala, Sweden, before 31 January 1997.**



**NATIONAL UNIVERSITY OF SINGAPORE
INSTITUTE OF MATERIALS RESEARCH AND
ENGINEERING**

The Institute of Materials Research and Engineering (IMRE) is initiating a comprehensive materials research programme with commercial aims.

IMRE will develop competence in strategic areas in order to position Singapore for new opportunities and key technologies in the next century which depend critically on innovative applications of advanced materials and processes.

We invite applications for research appointments in one of the following areas:

Characterization / Instrumentation

Modeling and Simulation

Electronic Materials

- Microelectronic Materials, Processing & Packaging
- Optoelectronics and Photonic Materials/Devices

Advanced Engineering Materials

- Functional & Structural Materials
- Advanced Ceramics

Advanced Polymers / Electrochemistry

- Liquid Crystal Polymers/Display
- Functional & Electroactive Polymers
- Electrochemistry/Energy Storage

Biomaterials

Nanotechnology

Gross annual emoluments range as follows:

A. Research Officer/ Senior Research Officer	S\$27,600 - 68,400
B. Postdoctoral Research Associate	S\$36,000 - 60,000
Research Fellow/ Senior Research Fellow	S\$51,600 - 138,000
Principal Fellow	S\$122,400 - 204,000

(US\$1.00 = S\$1.40 approximately)

Initial appointments are on one to three year contracts. In some cases, joint appointments with University departments are possible. The minimum qualifications for appointments under category A is a first degree and for appointments under category B is a Ph.D. degree or equivalent. Appointees under category A could register for part-time studies leading to a Masters or Ph.D. degree in a field within the core areas of IMRE.

The commencing salary will depend on the candidate's qualifications, experience and the level of appointment offered. In addition, a 13th month Annual Allowance (of one month's salary) and a performance bonus may be payable at year end.

Leave and medical benefits will be provided. Depending on the type of contract offered, other benefits may include: provident fund benefits or an end-of-contract gratuity, a settling-in allowance, housing subsidy, education allowance for up to three children subject to a maximum of S\$16,425 per annum per child, passage assistance and baggage allowance for the transportation of personal effects to Singapore.

Interested applicants may submit their resume to:

**The Recruitment Officer
Institute of Materials Research & Engineering
National University of Singapore
10 Kent Ridge Crescent
Singapore 119260
Fax: (65) 7773537
Email: mrehead@leonis.nus.sg.**

The advertisement can be found on the web site: <http://www.nus.sg/NUSinfo/Appoint/RESAPPT.HTML>

Application forms may be obtained from web site: <http://www.nus.sg/NUSinfo/Appoint/res1.html>

Only shortlisted candidates will be notified.

European Scientists: for

immediate service and instant response

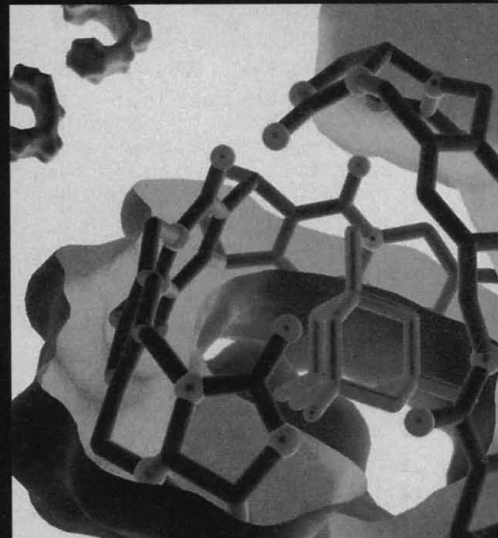
contact **Science International**



E d i t o r i a l

Manuscripts: *Richard Gallagher*
News: *Dan Clery*

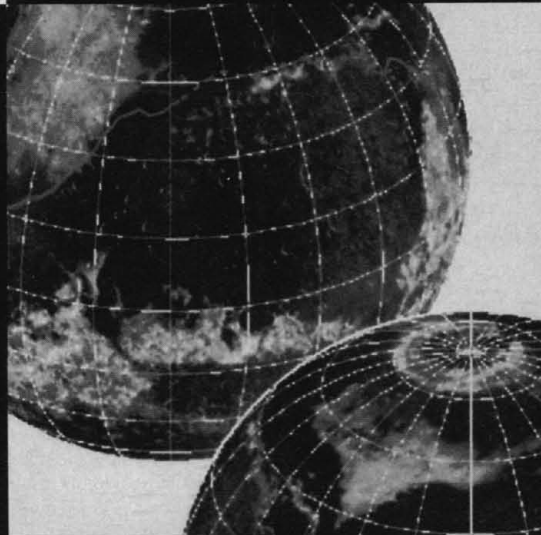
- First point of contact for all editorial queries
- Editors covering biological and physical sciences available to talk to you throughout your working day
- A network of news correspondents across Europe bringing you in depth analysis of the latest scientific stories



M a r k e t i n g

Contact: *Jane Pennington*

- Making subscription easy for international scientists
- Staff ready to answer your subscription queries
- Providing a full customer service to subscribers outside the US



A d v e r t i s i n g

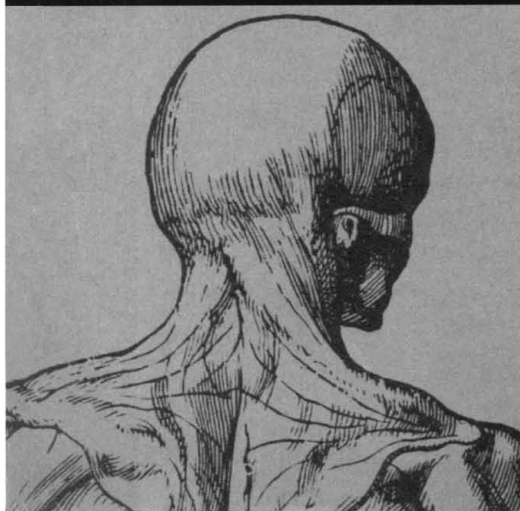
Display:

Andrew Davies: +44 (0) 1457 838519

Tracey Peers: +44 (0) 1260 297530

Recruitment: *Deborah Cummings*

- Giving the readers the best product information
- Offering a comprehensive selection of global career opportunities and events
- Providing innovative advertising solutions in print and on-line



Authors, Subscribers and Advertisers

can contact the European team at:

Science International (Europe Office),
Thomas House, 14 George IV Street,
Cambridge, CB2 1HH, UK.

Tel: +44 (0) 1223 302067

Fax: +44 (0) 1223 302068

Email: science@science-int.co.uk

SCIENCE

POSITIONS OPEN

POSTDOCTORAL FELLOWSHIP Fred Hutchinson Cancer Research Center

A POSTDOCTORAL POSITION is available immediately to investigate retinoic acid receptor activity in hematopoiesis. Experience in cellular and molecular biology is required. Please send curriculum vitae and the names of three references to: **Dr. Steve Collins, Director, Molecular Medicine Division, Fred Hutchinson Cancer Research Center, 1124 Columbia Street, Seattle, WA 98104. FAX: 206-667-6523; Email: scollins@fhcrc.org.**

POSTDOCTORAL RESEARCH ASSOCIATE with USDA, Agricultural Research Service, Western Regional Research Center, Albany, California, at GS 11/12 (\$38,119 to \$45,687 plus benefits). Position involves research on the molecular biology of natural rubber biosynthesis and plant transformation. Candidate to join a project working to develop new, temperate, rubber-producing crops. A strong background in molecular biology and plant tissue culture is desired. Position is for two years with possibility of renewal. Submit résumés to: **USDA, ARS, WRRRC, CIU, Attention: Dr. Katrina Cornish, 800 Buchanan Street, Albany, CA 94710. Telephone 510-559-5950. USDA is an Equal Opportunity Employer.**

POSTDOCTORAL POSITION available to study: 1) signaling through receptors for tumor necrosis factor and the induction of cell death; 2) the role of vascular endothelial cell growth factor in angiogenesis and the progression of cancer. Experience in signal transduction and molecular biology is preferred. Send curriculum vitae and names, with telephone and FAX numbers, of three references to: **Dr. David B. Donner, Department of Physiology and Biophysics and the Walther Oncology Center, Indiana University School of Medicine, 635 Barnhill Drive, Indianapolis, IN 46202. FAX: 317-274-3318.**

POSTDOCTORAL POSITION is available immediately to study structure/function and metabolism of two acyltransferases critical for the synthesis of triacylglycerol and phospholipids. Applicants should have a strong background in molecular biology. Interest in membranes, signal transduction, and lipid or lipoprotein metabolism is a plus. Please send curriculum vitae, statement of research interests, and names of two referees to: **Dr. Rosalind A. Coleman, Department of Nutrition, CB 7400, University of North Carolina, Chapel Hill, NC 27599. Equal Opportunity Employer.**

POSTDOCTORAL FELLOW/ RESEARCH ASSOCIATE

Position for two to three years in studies of proteoglycans (matrix) degrading enzymes and animal models of atherosclerosis. Ph.D. or equivalent required, with evidence of scientific productivity in biochemistry, cell biology, or molecular biology. Letter and curriculum vitae to: **Ms. Irene Franck, Administrator, Division of Preventive Medicine, 630 West 168th Street, Room 9-510, New York, NY 10032.**

We take Affirmative Action toward Equal Opportunity.

POSTDOCTORAL/RESEARCH ASSOCIATE position is available to investigate the stem cell model of cellular replacement in normal epidermis and in cutaneous hyperplasia, neoplasia, and aging. Requires a recent Ph.D. with expertise in molecular biology and an interest in keratinocyte biology. Send résumé and three references to: **Dr. Rebecca Morris, The Lankenau Medical Research Center, 100 Lancaster Avenue, West of City Line, Wynnewood, PA 19096. FAX: 610-645-8299. Equal Opportunity Employer.**

POSTDOCTORAL RESEARCH POSITION is available immediately to study alterations in G-protein-mediated cell signaling pathways in *in vitro* models of atherosclerosis. Experience in arterial smooth muscle cell culture, cellular and molecular biology, G-protein biochemistry, and lipid chemistry is required. Please send curriculum vitae to: **Dr. David P. Hajjar, Department of Pathology, Cornell University Medical College, 1300 York Avenue, Room A-626, New York, NY 10021.**

POSTDOCTORAL OPPORTUNITIES FOR PROTEIN CHEMISTS

The Dana-Farber Cancer Institute seeks individuals with expertise and interest in the application of protein chemistry to the biochemical basis of T-cell function. A joint appointment will be held in an appropriate department of the Harvard Medical School. Direct curriculum vitae/inquiries to: **Harvey Cantor, 44 Binney Street, Boston, MA 02115.**

POSITIONS OPEN



UNIVERSITY OF CINCINNATI

POSTDOCTORAL POSITION available immediately to study pneumocystis carinii lipid biochemistry and metabolism. Biochemistry, parasitology or microbiology, and lab animal experience desired. Please send curriculum vitae and the names and telephone numbers of three references to: **Dr. Edna S. Kaneshiro, Department of Biological Sciences, University of Cincinnati, Cincinnati, OH 45221. FAX: 513-556-5280.**

COURSES AND TRAINING

Medical University of South Carolina

Medical University of South Carolina (MUSC) offers programs leading to Ph.D. and M.D./Ph.D. degrees in the basic biomedical sciences (biochemistry, microbiology/immunology, pathology, pharmacology, physiology) and molecular and cellular biology, biometry/epidemiology, and pharmaceutical sciences. Competitive stipends of \$15,000 available. Contact: **College of Graduate Studies, MUSC, 171 Ashley Avenue, Charleston, SC 29425-2501.**

NASA PLANETARY BIOLOGY INTERNSHIPS

The Marine Biological Laboratory, Woods Hole, Massachusetts, invites applications from graduate students and seniors accepted into graduate programs. Interns will receive awards of \$2,200 plus travel to participate in research at NASA centers and collaborating institutions for approximately eight weeks. Typical intern programs include global ecology, remote sensing, microbial ecology, biomineralization, origin and early evolution of life. Application deadline: March 3, 1997. For information/applications contact: **Michael Dolan, Planetary Biology Internship, Department of Biology, Box 3-5810, University of Massachusetts, Amherst, MA 01003-5810. Email: pbi@bio.umass.edu; Telephone: 413-545-3223. An Equal Opportunity/Affirmative Action Institution.**

SERVICES

IMMIGRATION—FOREIGN RESEARCHERS

You may be able to obtain a U.S. green card quickly and without a job offer, based on your achievements.

**The Law Offices of David M. Kramer
12121 Wilshire Boulevard, Suite 1201
Los Angeles, CA 90025
Telephone: 310-820-5320**

For information, send request with name and address via FAX: 310-820-6522 or Email: 73344.137@compuserve.com and visit my website at <http://www.internetimpact.com/kramer>.

MARKETPLACE

Dopamine Receptor Antibodies D₁-D₅ isoform specific

- Immunocytochemistry
- ELISA • Western Blots

Research & Diagnostic Antibodies

800-858-RDAb R&D[®] Ab Fax: 510-262-9127

Circle No. 29 on Readers' Service Card



HIGH QUALITY PEPTIDES ENZYME SUBSTRATES / INHIBITORS ANTIBODIES

ANASPEC

1-800-452-5530 FAX (408) 452-5059

Circle No. 57 on Readers' Service Card

MARKETPLACE

THE FASTEST WAY TO GET CUSTOM ANTIBODY

PolyQuik™

~ 1 MONTH!

Ordered Peptide
And PolyQuik
Antibody

Received
PolyQuik
Ab!

Finished
Experiments
2 months
ahead of Plan!!

ZYMED LABORATORIES INC.
458 Carlton Court • South San Francisco • CA 94080
Customer Service: 1-800-874-4494 • Fax: 415-871-4499
E-Mail: tech@zymed.com • Web Site: <http://www.zymed.com>

Circle No. 38 on Readers' Service Card

NEW NO ANALYZER

Chemiluminescence Model 280

• Exhaled Breath • Cell Culture • Plasma
Phone (303) 444-2009 Fax (303) 444-9543 USA

SIEVERS

Circle No. 16 on Readers' Service Card

DNA SYNTHESIS

• \$0.80 per base for 5-10 OD

DNA SEQUENCING

• As low as 50¢ per base

Retrogen
TEL: 1-800-RETROGEN • Retrogen@electriciti.com

Circle No. 24 on Readers' Service Card

- Automated DNA sequencing
- Custom DNA/RNA synthesis
- Protein/peptide synthesis & sequencing
- Spectroscopy/calorimetry
- Mass spec services

Commonwealth Biotechnologies, Inc.

Your one stop biotech shop

LET US QUOTE YOUR SPECIAL PROJECTS

Comprehensive biotech services. For information please call:

1-800-735-9224

Visit our web page at:

www.cbi-biotech.com

Fax: 804-648-2641

E-mail: CBI@richnet.com

Circle No. 28 on Readers' Service Card

Marketplace ads continue on page 2170

MARKETPLACE



**MORE PRODUCTS
ON PREVIOUS PAGE**

CUSTOM ANTIBODIES TO PEPTIDES AND PROTEINS

- Purification • Conjugation
- ELISA Titration



HTI BIO-PRODUCTS, INC.

Phone (800) 481-9737

Fax (619) 788-9694

e-mail antibodies@htibio.com

http://www.htibio.com

Circle No. 44 on Readers' Service Card

Custom Polyclonal Antibodies
BEST PRICES • BEST ANIMALS
ANIMAL PHARM SERVICES
(800)808-0550

Circle No. 26 on Readers' Service Card

SFM-Human Endothelial Cell System
More Cells / Lowest Price / Highest Quality
Start up a 75 cm Flask / Recombinant Mitogen
CSC Certificate™ #30566

cell systems 1-800-697-1211

Circle No. 15 on Readers' Service Card

PEPTIDES NEW 1996-97 CATALOG

Many new peptides. Comprehensive Selection of Amyloids, Endothelins, Neuropeptides, Substrates, Toxins & many more. Call / Fax for a free copy!

60-1-11	NPY, human	0.5mg	85.00	1.0mg	150.00
62-0-78	β-Amyloid (1-40)	0.5mg	150.00	1.0mg	275.00
62-0-72	β-Amyloid (25-35)	0.5mg	30.00	1.0mg	50.00
88-1-10	Endothelin-1	0.5mg	175.00	1.0mg	285.00

CUSTOM SYNTHESIS

Quality Peptides, Competitive Prices, Years of Experience

- ★ Small Scale
- ★ Bulk
- ★ GMP Facility

- ✦ Special amino acid containing peptides
- ✦ Phospho peptides
- ✦ Biotinylated peptides
- ✦ Fluorescent labeling
- ✦ Peptide conjugation



American Peptide Company

777 E. Evelyn Ave. Sunnyvale, CA 94086 USA
Tel: 408-733-7604 Fax: 408-733-7603
Email: Sales@americanpeptide.com

Come see us!! Booth 324, Neuroscience, Washington, DC

Circle No. 17 on Readers' Service Card

MARKETPLACE

PeptidoGenic

The Peptide Engineering Specialist

E-mail: pkim@ccnet.com
Fax: 510-371-1156
Voice: 800-597-7873
510-371-1070

**Custom
Peptide**

\$20/residue/crude/5days

No Setup Fee,
Free HPLC &
IonSpray Mass.

Circle No. 27 on Readers' Service Card

DNA Primers from \$0.85/base

Ready to Use
No Setup Charge
No Hidden Costs



Institutional
Discounts
Available

The Great American Gene Company

http://www.geneco.com

email: geneco@ix.netcom.com fax: (800) 816-5517

Circle No. 6 on Readers' Service Card

CUSTOM DNA SYNTHESIS

PURE & SIMPLE

- Superb Technical Support
- Impeccable Quality
- World's Fastest Service
- Cap Gel & TOF Mass Spec

\$1.19*
per base
\$10 setup
50 nmole
scale

* Some restrictions apply. Please call for details.

MIDLAND

STILL THE UNDISPUTED #1 CUSTOM DNA SYNTHESIS SERVICE

THE MIDLAND CERTIFIED REAGENT COMPANY

Phone 1-800-247-8766 FAX 915-694-2387

email mrcr@oligos.com

Circle No. 10 on Readers' Service Card

DNA	PEPTIDES
89¢ Deprotected and Desalted 5-10 OD per base	\$15 Quantity 15 to 40 mg per residue

No Set-up Charge. Quality Guaranteed.

Some Restrictions May Apply. Please Call.

GENEMED BIOTECHNOLOGIES

1 (800) 344-5337 • Fax (415) 952-9540

Circle No. 21 on Readers' Service Card

DNA SEQUENCING

Longest reads available

Up to 1000 bp/read

Only \$50 per read

MacConnell Research 800-466-7949

Circle No. 47 on Readers' Service Card

Automated Sequence Quality Plasmids

6 MINUTE MINIPREPS

all tubes supplied! all reagents ready to use!
MO BIO Labs, Inc.

800-806-6246/619-944-7190/fax 619-944-7134
email: orders@mobio.com / http://www.mobio.com

Circle No. 50 on Readers' Service Card

MARKETPLACE

PEPTIDES

- Fast Turnaround
- Peptide Antibodies
- Large Tru-put
- Simple to Complex
- Mass Spec, HPLC, AAA, Sequencing

"Your reliable full service industrial/academic partner"

BIO-SYNTHESIS, INC.
1-800-227-0627
Fax 214-420-0442
E-Mail: biosyn@onramp.net
INet: http://www.biosyn.com

Circle No. 12 on Readers' Service Card

Attention: Oxidative Stress Researchers

Free Catalog Now Available

Comprehensive menu of innovative technologies for oxidative stress research

- ♦ Assays for Markers of Oxidative Stress
- ♦ Nitric Oxide Assays
- ♦ Fine Chemicals
- ♦ Spin Traps
- ♦ Antibodies
- ♦ Proteins



voice: USA 1-800-547-3686
voice: France 33.1.49.80.4565
home page: http://www.oxis.com
e-mail: info@oxis.com

Circle No. 51 on Readers' Service Card

Widely Recognized **KlenTaq1** **8¢/u**
Original & Guaranteed
Truncated Taq DNA Polymerase
Withstand 99°C

US Pat # 5,436,149
Call: **Ab Peptides** 1-800-383-3362
Fax: 314-968-8988 abpeps@icon-stl.net

Circle No. 5 on Readers' Service Card

DNA Sequencing
as low as \$40 run
Custom Oligos
\$0.89/base Restrictions may apply

1-800-OLIGOS-1 **AAA-GEN**
e-mail: anagen@svpal.org **Ana-Gen Technologies, Inc.**

Circle No. 43 on Readers' Service Card

Express Peptides

15-40 mg in 5 days
\$18 per residue

Research Genetics, Inc.
1-800-533-4363

Circle No. 7 on Readers' Service Card

IT MAY BE 1997 BUT.....

2001 IS ALREADY HERE

ELECTRO CELL FUSION & ELECTROPORATION IN ONE INSTRUMENT!



APPLICATIONS:

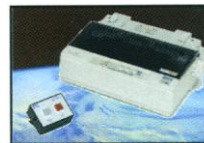
- ▶ Hybridoma & Quadroma Formation to Produce Bispecific Antibodies¹
- ▶ Fusion of Plant Protoplasts²
- ▶ Animal Embryo Manipulation³
- ▶ Electroporation of Plant, Mammalian, Bacteria, Yeast and Fungi

Monitor experiments with the Optimizer*



Included with "Super System"
Optional with other systems

Print results immediately



Printer and remote control included
with all ECM® 2001 Systems



THE PRODUCTION OF BISPECIFIC ANTIBODIES... The "Wave" Of The Future!

- ▶ Electrofuse hybridomas to produce bispecific antibodies - simpler, faster, and more economically.
- ▶ Produce quadromas in as little as 2 to 4 weeks!
- ▶ Does not require drug selection markers.
- ▶ Non-invasive, non-toxic, non-chemical procedure.
- ▶ Improves yields and hybridoma recovery by as much as 100-fold¹.

¹JOURNAL OF IMMUNOLOGICAL METHODS, vol. 187: 1-7, (1995). "A Rapid Non-Selective Method to Generate Quadromas by Microelectrofusion"; Y. Cao, T. Vinayagamoorthy, A.A. Noujaim, M.R. Suresh.

²MOLECULAR BIOTECHNOLOGY, vol. 3: 181-189 (1995). "Rapid Optimization of Electroporation Conditions for Plant Cells, Protoplasts, and Pollen"; Saunders J.A. et al

³ANALYTICAL BIOCHEMISTRY, vol. 208: 1-9 (1993). "Preparation of Nuclear Transplant Embryos by Electroporation"; Robl, J.M. et al.



Genetronics, Inc.



Instrument Division of Genetronics, Inc.

THE ELECTROPORATION EXPERTS
11199 Sorrento Valley Road
San Diego, CA 92121-1334 U.S.A.
(619) 597-6006 • Fax: (619) 597-9594

For Additional Info, Call:

1-800-289-2465

Visit our website at:
<http://www.genetronics.com>

Distributed In The U.S.A. By: VWR Scientific: 1-800-932-5000
Intermountain Scientific: 1-800-999-2901

INTERNATIONALLY DISTRIBUTED IN: AUSTRALIA: Tel. 02/9975-7582 BRAZIL: Tel. 21/592-6642 CANADA: Tel. 800/932-5000
CHINA: Tel. 10/65234385 CZECH REPUBLIC: Tel. 02/57-21-14-67-8 DENMARK: Tel. 86/10-10-55 EGYPT: Tel. 02/348-0526
FINLAND: Tel. 0/584121 FRANCE: Tel. 01/49-42-20-30 GERMANY, AUSTRIA: Tel. 49/06221-83-10-23 GREECE: Tel. 01/522-6547
HONG KONG: Tel. 2578-5839 INDIA: Tel. 44/828-3782 ISRAEL: Tel. 03/532-1715 ITALY: Tel. 02/3310-6630
JAPAN: Tel. 03/3352-2371 or 06/674-2222 KOREA: Tel. 02/538-4441 MALAYSIA: Tel. 03/703-1888 MEXICO: Tel. 05/341-7764
THE NETHERLANDS, BELGIUM, LUXEMBOURG: Tel. 31/33/495-0094 NEW ZEALAND: Tel. 04/385-7699 NORWAY: Tel. 22-71-50-90
PAKISTAN: Tel. 51/517138 POLAND: Tel. 71/735-813 SINGAPORE, INDONESIA: Tel. 65/273-0898 SLOVAK REPUBLIC: Tel. 07/3707-358
SOUTH AFRICA: Tel. 11/789-3932 SPAIN, PORTUGAL: Tel. 34/01/630-0379 SWEDEN: Tel. 43-51-30-60
SWITZERLAND: Tel. 56/484-80-80 TAIWAN: Tel. 02/880-2913 THAILAND: Tel. 02/308-0611 TURKEY: Tel. 312/231-51-34
UNITED KINGDOM: Tel. 01670/73-29-92

Circle No. 56 on Readers' Service Card

*We join together
in wishing you
Happy Holidays and
warm wishes for the New Year.*



Front Row: Heather, Angie, Kelly, Teresa, Denise, Anna, Shannon, Allison, Lisa, Stephanie, Jay, Gwen, Phoebe, Amy, Daniel, Lisa, James, Jennifer, Jim
2nd Row: Lori, Jimmy, Mr. Hudson, Crystal, Becca, Grace, Joanna, Carla, Judy, Mei, B.J., Rhonda, Becky, Parker, Emily, Angi, Tami, Joann, Frank Brian
3rd Row: J.D., Kel, Stephanie, Chris, Kay, Katherine, Maria, Cathy, Kelley, Mary, Markus, Troy, Rob, Bobby, Michelle, Rhonda, Terry, Cindy, Heather, Georgette, Kelli
Back Row: Melissa, Donna, Kevin, David, Chris, Chris, John, Brett, Bill, Jason, Roger, Kathy, Terrell, Jerrold, Bob, Elaine, Bryan, Deb, Steve, Anita, Blake, Randy, Jeff, Jeff, Stacey, Anthony, Jeff, Matt, Rick, Laura, Shannon, Deborah
Not Pictured: Traci, Leigh, Pete, Cindi, Marcus, Amanda, Scott, Allen, Kaye, Ben, Terry, Neely, Caja



Research Genetics, Inc.
2130 Memorial Pkwy, SW • Huntsville, AL • 35801
U.S. or Canada 800-533-4363 Worldwide 205-533-4363
U.K. 0-800-89-1393 FAX 205-536-9016

<http://www.resgen.com>
Circle No. 49 on Readers' Service Card