

DISPLAY CLASSIFIED ADVERTISEMENTS

Call for rate and deadline information on display classified advertisements.

Email: science_displayads@aaas.org

Bren Peters-Minnis
Recruitment Display Advertising
Telephone: (202) 326-6541
FAX: (202) 289-6742
Email: science_displayads@aaas.org

Janis Crowley
Recruitment Advertising Manager
Telephone: (212) 496-7704
FAX: (202) 289-6742

Debbie Cummings
European Recruitment Advertising
Telephone: +44 (0) 1223 302067
FAX: +44 (0) 1223 576208

FOR MEETINGS AND ANNOUNCEMENTS

display advertisements, turn to page 1561, 1563 & 1569.

LINE CLASSIFIED ADVERTISEMENTS

How to Submit a Line Classified Ad:

Submit double-spaced typewritten copy. Do not include any abbreviations. SCIENCE will edit and typeset ads according to SCIENCE guidelines. Include billing information and desired publication date. Available categories: Positions Open, Meetings, Announcements, Courses and Training, Services. SCIENCE cannot provide proofs of typeset line ads. Line advertisements are not commissionable.

Estimates: SCIENCE will provide a cost estimate for line ads. This is an approximate cost only. Allow for variation between estimated lines and actual typeset lines and resulting final cost. Purchase orders must allow for some degree of flexibility and/or adjustment.

For line advertising deadlines, call Eric Banks. Telephone: (202) 326-6555; FAX: (202) 289-6742. Email: science_classifieds@aaas.org

Credit Cards: SCIENCE accepts American Express, MasterCard and VISA. Discount does not apply to credit cards.

Cancellations: Deadline for cancellation is Tuesday, 10 days prior to issue date.

Discounts: A 3% cash discount is granted to all prepaid ads.

Ads from Outside the U.S.: A discount of \$30 will be offered to advertisers making payment in U.S. dollars by checks drawn on U.S. banks. Contact Debbie Cummings. Telephone: +44(0) 1223 302067; FAX: +44(0) 1223 576208.

SCIENCE Professional Network: Unless otherwise instructed, every classified advertisement submitted for publication in SCIENCE is automatically posted on SCIENCE's on-line classified advertising service, SCIENCE Professional Network, at no additional charge.

<http://www.sciencemag.org>

Mail, FAX or Email materials to:

SCIENCE Classified Advertising
1200 New York Avenue, N.W., Room 911
Washington, DC 20005
FAX: 202-289-6742

Email: science_classifieds@aaas.org (please include your telephone number in Email)

SCIENCE reserves the right, at its discretion, to edit or decline to publish advertisements submitted to it.

POSITIONS OPEN

FACULTY POSITIONS

Molecular, Cell, and Developmental Biology
Emory University School of Medicine

The Department of Anatomy and Cell Biology invites applications for tenure-track positions at the ASSISTANT and ASSOCIATE PROFESSOR levels. The Department and School of Medicine are under new leadership and are greatly expanding their research programs and laboratory facilities. The Department seeks investigators who are applying molecular approaches to problems in cell, developmental, and neurobiology, using systems ranging from yeast to mammals. Faculty participate in strong interdepartmental graduate student training programs. The School of Medicine is located on the main university campus, in a desirable residential community within minutes of the many cultural and recreational opportunities of Atlanta and Georgia. Send curriculum vitae, a brief description of the proposed research program, and the names and addresses of three references to: **Barry D. Shur, Ph.D., Department of Anatomy and Cell Biology, Emory University School of Medicine, 1648 Pierce Drive, Room 100, Atlanta, GA 30322.** Applications should be received by January 1, 1997 to receive full consideration. *Emory University is an Equal Opportunity/Affirmative Action Employer.*

FACULTY POSITION MOLECULAR VIROLOGIST

The Department of Medical Microbiology and Immunology at The Ohio State University is seeking applications for a tenure-track, hard-money faculty position at the ASSISTANT/ASSOCIATE PROFESSOR level in Molecular Virology. Individuals whose research emphasizes molecular, biochemical, and/or genetic approaches using any virus model are encouraged to apply. The Ohio State University is in the midst of an aggressive recruitment effort and expansion in Molecular Life Sciences, including Molecular Medicine. Opportunities exist for interaction with molecular virologists within the department and throughout one of the most comprehensive universities in the country. Affiliations with the University's Comprehensive Cancer Center, Retrovirus Center, AIDS Clinical Trials Unit, Heart and Lung Institute, Children's Hospital Research Foundation, and other interdisciplinary programs are encouraged. Candidates hired at the rank of Assistant Professor will be expected to develop and maintain a high quality, funded research program. Individuals at the rank of Associate Professor will have a proven track-record of peer-reviewed funding with strong potential for a nationally recognized research program. Applicants should forward a curriculum vitae, statement of research interests/goals, and the names of three references to: **Dr. Marshall Williams, Chairperson, Virology Search Committee, Department of Medical Microbiology and Immunology, 333 West 10th Avenue, The Ohio State University, Columbus, OH 43210.** Consideration of applications will begin on January 2, 1997, and continue until the position is filled. *The Ohio State University is an Equal Opportunity/Affirmative Action Employer. Qualified women, minorities, Vietnam-era veterans, disabled veterans, and individuals with disabilities are encouraged to apply.*

The Departments of Chemistry and Biochemistry at the University of Missouri-Columbia (MU) invite applications for a TENURE-TRACK FACULTY position in protein crystallography. While appointment at the associate professor level is anticipated, all candidates with demonstrated excellence in both research and teaching are invited to apply. We seek an outstanding candidate who will assume a leadership role in macromolecular structure determination, actively participate in the further development of a department that is in the midst of institutional enhancement, and take advantage of a rich variety of interdisciplinary research opportunities on the MU campus. Candidates should submit a curriculum vitae, a brief summary of current research activities and plans, a description of teaching interests and experience, and the names and addresses of three references. Initial screening of candidates will begin in mid-December. All materials should be sent to: **Dr. Peter A. Tipton, Crystallography Search Chair, University of Missouri, 123 Chemistry Building, Columbia, MO 65211-0002.** Applications from women and minorities are particularly encouraged. *MU is an Equal Opportunity/Affirmative Action Employer.*

POSITIONS OPEN

CHAIR AND PROFESSOR OF BIOLOGICAL SCIENCES University of Maryland

The College of Life Sciences at the University of Maryland-College Park invites applications for the position of PROFESSOR and CHAIR of the new Department tentatively called Biological Sciences. This Department is being formed from a merger of portions of our Zoology and Plant Biology Departments. It consists of 33 tenure-track faculty and four full-time instructors with research and teaching interests in areas such as behavior, cell biology, developmental biology, ecology, evolution, genetics, neurobiology, and physiology. The department has an operating budget in excess of \$3 million, \$2.5 million in external funding, and is a key participant in the undergraduate Biological Sciences program with 2,000 majors. We seek an individual to provide academic and administrative leadership of the teaching and research programs in this vibrant new department. The successful candidate will also be expected to continue his or her research program in their specific area of expertise. Candidates must have an earned doctorate in an appropriate area of biology and have internationally recognized academic accomplishments. Candidates should send a letter of application accompanied by a curriculum vitae to the address below. For best consideration, completed applications should be received by January 15, 1997. The earliest anticipated starting date for this position is July 1, 1997. Applications or nominations should be sent to: **Biological Sciences Search Committee, College of Life Sciences, Room 1118 Symons Hall, University of Maryland, College Park, MD 20742-5815.** Additional information is available on the World Wide Web at <http://www.life.umd.edu/positions>.

The University of Maryland is an Affirmative Action/Equal Opportunity Employer. Women and minority candidates are encouraged to apply.

ZOOLOGISTS

The Department of Biological Sciences at Northern Arizona University invites applications for two tenure-track ASSISTANT PROFESSOR positions starting August 1997. These positions emphasize teaching. 1) A field vertebrate zoology position, which will include introductory zoology, vertebrate biology, mammalogy, and wildlife ecology/management. 2) An anatomy/physiology position, which will include courses in the allied health sciences. Successful candidates will be expected to develop a research program that involves undergraduate and graduate students. Qualifications include a Ph.D., evidence of research accomplishments, and the ability to teach and communicate effectively. Collaboration with colleagues in teaching and research is expected. The Northern Arizona University community is composed of faculty, staff, and students from a wide range of culturally diverse backgrounds. Applicants should be experienced with and committed to work in, and with, such a diverse population. Applications should include a curriculum vitae, a summary of research goals, a statement of teaching interests and philosophy, and three letters of reference. Review of applications will begin January 6, 1997. Forward all application materials to: **Zoology Search Committee, Department of Biological Sciences, Box 5640, Northern Arizona University, Flagstaff, AZ 86011.** Telephone: 520-523-2381; FAX: 520-523-7500; <http://www.nau.edu/biology/>.

Northern Arizona University is an Equal Opportunity/Affirmative Action Employer.

MOLECULAR PHARMACOLOGIST

The University of Pittsburgh School of Medicine invites applications for two tenure-track positions at the ASSISTANT/ASSOCIATE PROFESSOR level. We seek individuals trained in the techniques of molecular and cellular pharmacology whose research interests focus on signal transduction and/or contemporary approaches to drug discovery and novel targets. Current areas of expertise in the department include neuropharmacology, cardiopulmonary pharmacology, and cancer pharmacology.

Applicants must have a Ph.D. and/or M.D. and relevant postdoctoral experience. It is expected that the successful applicant will seek and obtain independent extramural research funds. Send curriculum vitae, summary of research interests, and the names of three references to: **John S. Lazo, Ph.D., c/o Jeff A. Walker, M.B.A., Department of Pharmacology, University of Pittsburgh School of Medicine, W1343 Biomedical Science Tower, Pittsburgh, PA 15261.**

The University of Pittsburgh is an Equal Opportunity/Affirmative Action Employer.

STRIVING TO MAKE PEOPLE'S LIVES BETTER ...

SmithKline Beecham Biologicals is the world's leading vaccine manufacturer. Rixensart, just South of Brussels, Belgium, is the headquarters for SB's vaccines business. Basic research, clinical development, manufacturing, quality control, regulatory affairs and strategic marketing are all based in Rixensart allowing an integrated, multidisciplinary, team approach to vaccine development, which we believe is unique in the industry. Working languages are French and English.

ASSOCIATE DIRECTOR SCIENTIFIC DATA MANAGEMENT BACTERIAL VACCINES (Ref.: 1311/96)

You will be responsible for the preparation of preclinical files and parts II, III and related expert reports of the registration files.

Additional responsibilities include: ■ to maintain and update technical files for existing products; ■ to build, coach and supervise the work of a scientific data

management team; ■ to organise and participate in technical meetings, to provide information on and interpret the requirements of regulatory bodies.

The successful candidate will have a PhD - or equivalent - in life science, with post-doctoral experience in bacteriology and immunology. At least 5 years experience in the biotechnological pharmaceutical industry is required, ideally with a regulatory background. Experience in "project team" operating is a distinct asset.

SENIOR ASSOCIATE MANAGER - DEVELOPMENT PROJECT COORDINATION (ref. 1316/96)

As a member of an established team, the successful candidate will provide planning support to R & D project teams and ensure efficient coordination of operational activities of late development projects for timely completion of registration dossiers. He/she will also maintain and distribute - to internal and external customers - technical project plans, overall plan analysis and Regulatory milestones.

Responsibilities include ■ logistical support and coordination input to Process

development and Project Teams/Task forces; ■ follow-up of development projects to ensure proper prioritisation and optimisation of timing; ■ detailed analysis of requirements to support study objectives; ■ monitoring of development activities.

Candidates will hold a PhD in Biology or Applied Sciences. At least 5 years experience within the pharmaceutical industry in a R & D function and a proven track record of R & D Project Management experience are required. Candidates will have I.T. expertise, including experience with project management software. Working languages are French and English

REGULATORY AFFAIRS MANAGER IMMUNO THERAPEUTICS (Ref. 1720/96)

Based on acquired experience in anti-viral and/or oncology products, you will be responsible for developing and implementing the regulatory strategy for a new range of vaccines aimed at controlling chronic infectious diseases and cancer.

Your responsibilities will include: ■ preparation of documentation necessary to

obtain and maintain clinical trial applications; ■ work with Preclinical and Clinical R & D in order to develop highest standards of quality in regulatory submissions, while defining appropriate strategies for optimal development timings.

The successful candidate will be a PhD or MD with experience in life sciences. Experience in the pharmaceutical/biotechnology industry with a regulatory or R&D background is required. Familiarity in immunological products/vaccines would be a distinct asset.

HEAD R&D PILOT PLANT (ref. 177/96)

As head of the R & D Pilot Plant, the successful candidate will ensure preparation of clinical lots. Responsibilities include managing the pilot plant production team, maintenance and upgrading of GMP facilities in addition to co-ordinating activities with supplier and client groups.

The individual we seek should have an engineering qualification and extensive experience (PhD + 8 years of bachelors/masters + 12 years) in the pharmaceutical, biotechnology or food industry with proven achievements in pilot plant operation early development of manufacturing processes. Experience in managing a team is essential. Fluent command of English and French and very good communication skills are required.

SCIENTIST/BACTERIAL IMMUNOLOGIST (ref. 1725/96)

The candidate will report to the Head of Pre-clinical Bacteriology and be responsible for the pre-clinical development of new combination bacterial vaccines for paediatric use. The candidate will lead the pre-clinical immunology aspects of the combination vaccine project. He/she will supervise technicians for the in vitro and in vivo immunological and bacteriological tests, will ensure a close co-ordination of development efforts with collaborating groups and in particular with clinical immunology.

will represent the R&D Immunology/Bacteriology group at Project team meetings, will review data, providing information and data for regulatory submissions as well as make presentations to the regulatory agencies ...

The successful candidate will have a PhD in the field of immunology/biochemistry with at least three years of relevant postdoctoral experience in immunology and bacteriology. Previous industrial experience is desirable and experience in working with antigens is a definite asset. The candidate will speak French and English.

All positions carry a competitive salary/incentive package and comprehensive benefits. Would you like to take part in our success? Please send your application, curriculum vitae and a recent photograph, quoting the relevant reference, to: SmithKline Beecham Biologicals, Human Resources Department, rue de l'Institut 89, B-1330 Rixensart, Belgium. E-mail vancraye@sb.bio.be

SB
SmithKline Beecham

UNIVERSITY OF ILLINOIS URBANA-CHAMPAIGN

College of Applied Life Studies

Timothy Nugent Chair

of Rehabilitation Science

CALL FOR NOMINATIONS

The College of Applied Life Studies seeks nominations of distinguished rehabilitation scientists for appointment to the Timothy Nugent Chair of Rehabilitation Science. This is a fully endowed Chair in Rehabilitation Science which honors Timothy Nugent, who established a program shortly after WWII to bring the benefits of a University of Illinois education to students with disabilities.

The Timothy Nugent Professor will be expected to lead and develop a program of applied disability and rehabilitation research that promotes the health, functional capacity and independence of individuals throughout the life course.

The appointee is expected to be nationally recognized, have an active research program and be eligible for the rank of Professor in the appropriate academic department of the College.

The appointee will be expected to play a major role in the development of an endowed Center for Integrated Rehabilitation Science and to conduct research within the Center.

The appointee will receive a competitive nine-month salary paid over 12 months with opportunity for summer employment. The endowment will support start-up and remodeling funds, as well as some recurring operating expenses. The position will be available at the conclusion of the review and subject to negotiations. Full consideration of nominations will begin January 1, 1997 and will continue until a suitable candidate is identified.

Nominations should be sent to:

Chair, Review Committee

Timothy Nugent Chair of Rehabilitation Science

University of Illinois at Urbana-Champaign

College Applied Life Studies

1206 South Fourth Street, Champaign, IL 61821

Phone: 217-333-2131 Fax: 217-333-0404

e-mail address: joycewol@uiuc.edu

The University of Illinois is an affirmative action/equal opportunity employer and, upon request, provides reasonable accommodations to individuals with disabilities.

RESEARCH AND EDUCATION

FACULTY POSITION IN GENOME SCIENCE UNIVERSITY OF DELAWARE

The University of Delaware Department of Animal and Food Sciences and the Agricultural Biotechnology Center invite applications for a 12 month, tenure-track ASSISTANT PROFESSOR faculty position in genome science. The position is approximately 80% research and 20% teaching and advising. Applicants must have a Ph.D., post-doctoral experience, and a record of research productivity. The successful applicant will be expected to develop an innovative research program in the applications of genome science to understanding the molecular mechanisms of poultry disease and the evolution of pathogens. Effective communication with academic, government and industry colleagues is essential. Duties also include developing a course consistent with the individual's background and the needs of the university. The Agricultural Biotechnology Center is an excellent academic opportunity and the individual selected for this position will have the opportunity to interface with a world-class effort in high throughput gene expression analysis undertaken as a major initiative of the new Agricultural Biotechnology Center. Send a letter of application, curriculum vitae, a list of three to five references, and a brief description of current research interests to: **Dr. Robin W. Morgan, Search Committee Chair, Department of Animal and Food Sciences, 040 Townsend Hall, College of Agricultural Sciences, University of Delaware, Newark, DE 19717-1303. Review of applications will begin January 31, 1997.**

The UNIVERSITY OF DELAWARE is an Equal Opportunity Employer which encourages applications from Minority Group Members and Women.



Position Announcement

Electron Microscopist/Research Fellow

Auburn University is seeking an electron microscopist who is experienced in biological electron microscopy and has a working knowledge of current techniques. A working knowledge of and experience with advanced light microscopic techniques are desirable. It is also desirable for the candidate to be able to apply electron microscopy to other fields.

Rank and Salary: Appointment is a non-tenure track research fellow position. The position is a 2-year appointment, renewable upon satisfactory performance and available funding. Salary is commensurate with training and experience.

Qualifications: Ph.D. in the biological sciences with an emphasis in electron microscopy.

Responsibilities: This position involves both research and teaching. The appointee is expected to manage and operate an electron microscope facility that has a Zeiss DSM 940 scanning electron microscope that is equipped with an X-ray unit, a Zeiss EM-10 transmission electron microscope, and ancillary equipment such as Porter-Blum microtomes, critical point dryer, vacuum evaporator, sputter coater, etc. Assist faculty, staff and graduate students in sample preparation and operation of the electron microscopes. Teach and/or assist in teaching courses in electron microscopy. Collaborate with researchers and actively participate in writing research proposals and performing research. Write competitive research proposals and conduct original research. Take the lead role in writing equipment proposals for upgrading the electron microscope facility. Interact well with users of the electron microscope facility and provide outreach to members of the community. Establish a working relationship with and attract funds from industry.

Application: Please send a resume and names, addresses and telephone numbers of three references to:

Christine W. Curtis, Chair, Search Committee

Office of the Associate Provost and Vice President for Research

202 Samford Hall, Auburn University, AL 36849-5112

(334) 844-4784 (Phone), (334) 844-5971 (Fax)

curticw@mail.auburn.edu

Review of candidates will begin on February 15, 1997.

Auburn University is an Affirmative Action/Equal Opportunity Employer

Minorities and Women are Encouraged to Apply

BIOLOGY

Mercer University has two positions open in the biological sciences. A **tenure-track assistant professor position** requires a Ph.D. in the biological sciences with broad training in vertebrate biology and promise of excellence in teaching and scholarly activity. Duties will consist of teaching five courses per year to include introductory biology and comparative vertebrate anatomy and one or more of the following: ecology, field biology (e.g., ornithology, herpetology), and conservation biology. A **visiting assistant professor** or **visiting instructor position** requires a graduate degree (Ph.D. preferred) with broad training in molecular biology or genetics and promise of excellence in teaching and scholarly activity. Duties will consist of teaching five courses per year to include introductory biology and genetics. In both positions, we are especially interested in candidates able to contribute to general science education and/or the University's interdisciplinary studies programs. Faculty are expected to assist in advising, and in department and university service. Research involving undergraduates is encouraged. Salary is commensurate with experience and qualifications.

Send a letter of application (clearly indicating the position of interest), a current c.v., and statements of teaching philosophy, teaching interests and experience, and research interests, and arrange to have official graduate transcripts and three confidential letters of reference sent to: **Thomas A. Huber, Chair, Department of Biology, Mercer University, 1400 Coleman Avenue, Macon, Georgia 31207. Review of completed applications will begin on January 1, 1997, and will continue until the positions are filled.**

Mercer University is a comprehensive institution of 6,800 students enrolled in eight colleges and schools. The historic core of the University, the College of Liberal Arts, is a selective, residential institution serving nearly 1,900 students and enrolling 1,450 undergraduate majors. The University and College are associated with a rich Baptist heritage and educational programs distinguished by their rigor and their commitment to academic freedom. *An AA/EOE Employer, Mercer strongly encourages applications from females and members of minority groups.*



4TH INTERNATIONAL
MARINE
BIOTECHNOLOGY
CONFERENCE



Under the aegis
of the European
Union

Organized by
Stazione Zoologica
'Anton Dohrn' Naples



4th International Marine Biotechnology Conference IMBC '97

22-29 September 1997

Sorrento, Paestum, Capo Rizzuto, Otranto, Pugnochiuso - Italy

International Organizing Committee

Harlyn O. Halvorson, Dartmouth, USA, *Chair*
David Attaway, Silver Spring, USA
Joe T. Baker, Canberra, Australia
Rita R. Colwell, College Park, USA
Ricardo Guerrero, Barcelona, Spain
Jennie C. Hunter-Cevera, Berkeley, USA
Yves LeGal, Concarneau, France
Tadashi Matsunaga, Tokyo, Japan
Shigetoh Miyachi, Tokyo, Japan
Jan A. Olafsen, Tromsø, Norway
Dennis A. Powers, Pacific Grove, USA
Harold Rosenthal, Kiel, Germany
Gaetano Salvatore, Naples, Italy

National Organizing Committee

Lucio Cariello, Naples, Italy, *Chair*
Lorenzo Colombo, Padua, Italy
Gioacchino De Vivo, Naples, Italy
Roberto Di Lauro, Naples, Italy
Donato Marino, Naples, Italy
Franco Rollo, Camerino, Italy
Bruno Tota, Cosenza, Italy
Silvana Vallergera, Torregreande, Italy

International Program Committee

Frank Gannon, Heidelberg, Germany, *Chair*
Daniel Chourrout, Jouy en Josas, France
Roberto Di Lauro, Naples, Italy
Hillel Gordin, Eilat, Israel
Shigeaki Harayama, Iwate, Japan
Jennie C. Hunter-Cevera, Berkeley, USA
Holger W. Jannasch, Woods Hole, USA
Peter Murphy, Townsville, Australia
Jay Parsons, St. John's, Canada
Manfred Scharlt, Würzburg, Germany
Kazuo Tachibana, Tokyo, Japan

IMBC'97 will be held in Southern Italy starting in Sorrento on September 22, 1997. This very innovative Conference has been designed to develop a multidisciplinary, highly interactive program. It will consist of two phases: Phase I will take place in Sorrento from September 22 to 25 and will focus on research presentations and poster sessions - the program will be based on the abstracts selected after stringent peer review by an *ad hoc* International Program Committee; Phase II will consist of a four-day scientific working tour of southern continental Italy: Stopovers are scheduled in Paestum on September 25, in Capo Rizzuto on 26, in Otranto on 27 and finally in Pugnochiuso on September 28. In the evenings, Keynote Lectures will be delivered by: *B.S. Blumberg*, Philadelphia, USA, *A. Kornberg*, Stanford, USA, *J. Lederberg*, New York, USA, *M. Rodbell*, Research Triangle Park, USA, *H.K. Schachman*, Berkeley, USA, *M. Smith*, Vancouver, Canada. The Keynote Lectures will be followed by round-table discussions and interactive sessions with representatives of local marine biotechnology industries and research facilities. Phase II has been

designed to generate new collaborations and improve academia, industry and to identify opportunities where Biotechnology can contribute sustaining marine natural generate the economic marine biotechnology industries, communicate to society in Marine Biotechnology can play quality of life and the Speakers will be selected from Abstracts may be submitted in the box below. Acceptance is review by the International presentations will be allotted 10 minutes

Abstracts selected for poster presentation will also undergo strict peer review. Each participant may submit only one abstract and may not coauthor more than two abstracts. Deadline for abstract submission is January 15, 1997.

Conference accommodation, meals and transportation during the program will be covered by a grant from the European Union, the Italian Government and the Stazione Zoologica 'Anton Dohrn'. The program is totally integrated and attendance for both phases is mandatory. A fee of US\$ 300 (not refundable) is due for organizational expenses. A limited number of fees will be waived for scientists from developing countries and emerging investigators including students. No travel grants are foreseen, consequently, participating scientists need to obtain travel funds from their own sources.



specifically
research
links between
government,
Marine
to solutions in
resources, to
development of
and
to general the role
in enhancing the
environment.

submitted abstracts.
any of the topics listed in
subject to stringent peer
Program Committee. Oral
plus 5 minutes for discussion.

Topics

I. Marine Organisms as Biological Models for Marine Biotechnological Biomedical Applications

- Cell and Molecular Biology
- Developmental Biology
- Biomedical Implications
- Environmental Adaptation and Evolution
- Others

III. Marine Biotechnological Interactions

- Bioremediation
- Extremophiles
- Host-Pathogen Interactions
- Biodiversity
- Symbiosis
- Viruses
- Others

II. Natural and Cultural Industrial Marine Resources in Marine Biotechnology

- Aquaculture
- Fisheries: Biology and Management
- Natural Products
- Conservation
- Others

IV. Social-Economic and Regulatory Aspects of Marine Biotechnology

- Marine Policy Issues
- UN Convention of Law of the Sea
- Intellectual Property
- UN Convention on Biodiversity
- Others

For further information and advance registration contact: **IMBC '97**, Attn. **Donatella Capone**, Stazione Zoologica 'Anton Dohrn', Villa Comunale, I-80121 Naples, Italy. Tel.: +39-(0)81-5833.215 - Fax: +39 - (0)81 - 764.1355 E-mail: imbc@alpha.szn.it

**CHAIR
DEPARTMENT OF CHEMISTRY**

The University of North Carolina at Wilmington (UNCW) invites applications and nominations for the position of Professor and Chair of the Department of Chemistry in the College of Arts and Sciences. A growing regional, comprehensive university, UNCW currently enrolls more than 9,000 students and is situated on a beautiful 640-acre campus located in an historic port city on the Cape Fear River and within 5 miles of the Atlantic Ocean. Enrollment at the university is projected to reach 12,000 students by the year 2005.

In addition to courses and research in the traditional subdisciplines of chemistry, the department is active in marine and environmental chemistry and offers B.A., B.S., and M.S. degrees. Its faculty also participate in an interdisciplinary undergraduate degree program in environmental studies, in an interdisciplinary science program leading to the Master of Arts in Teaching, and in cooperative Ph.D. programs in marine science with North Carolina State University and the University of North Carolina at Chapel Hill. The department recently moved into a new science building containing state-of-the-art classrooms and laboratories, and some faculty will also have offices and labs at a new \$18 million marine science research facility soon to be constructed on the Atlantic Intracoastal Waterway. Applicants should have a strong record of externally funded scientific research, effective instruction of both undergraduate and graduate students, and successful administrative experience. The successful candidate will possess a vision for future excellence in chemical education and research, strong interpersonal skills with the ability to communicate effectively with a variety of constituencies, and a commitment to the professional development of a diverse faculty. Review of applications will begin December 9 and continue until the position is filled; a start date of July 1, 1997 is expected. Applicants should submit a curriculum vitae, a statement of vision for a growing department, a description of administrative philosophy, and the names, addresses, and telephone numbers of three references to:

Dr. Jack Levy, Chair, Search Committee
Department of Chemistry
University of North Carolina at Wilmington
601 South College Road, Wilmington, NC 28403-3297
Telephone: (910) 962-3451; FAX: (910) 962-3013
Email: LEVYJB@uncwil.edu; Homepage: www.uncwil.edu

The University of North Carolina at Wilmington is an Equal Opportunity/Affirmative Action employer. Women and minorities are encouraged to apply.

**POSTDOCTORAL RESEARCH OPPORTUNITIES
IN BREAST CANCER RESEARCH**

**Lombardi Cancer Center
Georgetown University Medical Center**

An integral component of the Specialized Programs of Research Excellence in Breast Cancer grant (SPORE) awarded to the Lombardi Cancer Center is the training of new investigators for a career in translational research. The goals of the program include the development of individuals having the capability to move basic research findings into applied research settings with patients and populations. Two postdoctoral positions are immediately available. Successful applicants will have the opportunity to choose a mentor from among an interactive group of 14 peer reviewed and funded investigators who are currently committed to breast cancer research. Research programs cover the development of novel anticancer therapies, the evaluation of prognostic indicators, dissemination of the genetic and molecular mechanisms that underlie the malignant progression, prevention models, loss of estrogen sensitivity, and increased metastatic potential of breast cancer cells. Complete descriptions of individual research programs are available upon request. Salary is competitive and commensurate with qualifications and experience.

Applications from women and minorities are encouraged. Applicants should have a Ph.D. or M.D. Please send curriculum vitae, a short statement of research interests and goals, and the name and addresses of three references to:

Breast Cancer SPORE Postdoctoral Training Program
c/o Marc E. Lippman, M.D.
Lombardi Cancer Center
Research Building, 3970 Reservoir Rd., NW
Washington, DC 20007-2197

A National Cancer Institute Designated Comprehensive Cancer Center

**UNIVERSITY OF ROCHESTER
SCHOOL OF MEDICINE AND
DENTISTRY**

**Position Announcement
Chair, Department of Pathology and
Laboratory Medicine**

The University of Rochester School of Medicine and Dentistry is accepting applications for the position of chair of the Department of Pathology and Laboratory Medicine. We seek a dynamic and visionary academic leader with a commitment to excellence in research and educational programs. The successful candidate will possess superior administrative skills and will also have significant accomplishments in research, teaching, and patient care. A letter of interest or nominations together with an updated curriculum vitae should be sent to:

Lawrence A. Tabak, D.D.S., Ph.D.
Chair, Search Committee for the Chair
of the Department of Pathology and
Laboratory Medicine
University of Rochester
School of Medicine and Dentistry
Department of Dental Research
601 Elmwood Avenue, Box 611
Rochester, New York 14642

*The University of Rochester is an equal
opportunity employer.*

**The College of William and Mary
Virginia Institute of Marine Science
School of Marine Science
Faculty Position Advertisement
Fisheries Stock Assessment Scientist**

The Department of Fisheries Science, School of Marine Science, is seeking candidates for a tenure-track position in fisheries stock assessment. A Ph.D. in fisheries science, population biology, ecology, or a related field is desirable. Candidates should have a strong background in applied statistics, quantitative methods, modeling and time-series analysis. The successful candidate will be expected to develop a rigorous grant-supported research program, teach a graduate-level course in stock assessment, mentor M.A. and Ph.D. graduate students, and provide advice to state and federal management agencies. We are seeking an established scientist with leadership skills. The department will fill two additional positions over the next 18 months. Level of appointment is dependent upon qualifications and experience. Letter of application and curriculum vitae accompanied by the names, addresses and phone numbers of three references should be sent by 14 February 1997 to: **Dr. John E. Graves, Chair, Fisheries Search Committee, Virginia Institute of Marine Science, The College of William and Mary, Gloucester Point, VA 23062.**

The College of William and Mary is an Equal Opportunity/Affirmative Action employer. Members of under-represented groups (including people of color, persons with disabilities, Vietnam veterans, and women) are encouraged to apply.



BEHAVIORAL BIOLOGIST

William Paterson College supports a welcoming and nurturing campus climate for a diverse faculty, staff and student body. In this spirit, we invite talented, committed professionals to join our college community.

The Department of Biology at William Paterson College invites applications for a tenure-track position at the level of Assistant Professor in Behavioral Biology, to begin September 1, 1997. A Ph.D. degree is required and postdoctoral experience is preferred. We seek someone whose research and teaching interests are in the molecular bases of behavior, preferably in mammals. The successful candidate will join a group whose interests are in the genetics of the nervous system and behavior, and a department with foci in biotechnology, behavioral biology and ecology. The department is committed to faculty-student research collaboration. Teaching responsibilities will include: service courses (e.g., anatomy and physiology), an upper level course(s) in his or her specialty and graduate teaching in molecular biology. Applications will be accepted until position is filled. Please send curriculum vitae, a statement of teaching and research interests, selected reprints and three letters of reference to: **Dr. Jane Voos, Chair, Department of Biology, WILLIAM PATERSON COLLEGE, 300 Pompton Road, Wayne, NJ 07470.**

William Paterson College is an Affirmative Action/Equal Opportunity Institution and actively seeks applications from women and minorities.

San Francisco

AAAAI/AAI/CIS JOINT MEETING
FEBRUARY 21-26, 1997

Moscone Convention Center

Be sure to attend this one-of-a-kind conference. Both the investigator and the clinician can count on a full agenda of significant educational activities.

Complete program and registration materials are now available.
Contact the 1997 Joint Meeting Secretariat for more information.

American Academy of Allergy,
Asthma and Immunology
611 East Wells Street, Milwaukee, WI 53202
Tel: 414/272-6071, Fax: 414/272-6070
E-Mail: info@aaaai.org

A SHORT LIST OF SESSION TOPICS FOR THE RESEARCHER:

- Positive and Negative Signaling through Receptors
- Immunology and Immunotherapy of Cancer
- Molecular Pathways of Autoimmunity
- Hematopoietic Stem Cells: Biology, Lymphopoiesis and Transplantation
- HIV Pathogenesis
- Mucosal Immunology and Tolerance
- Effector Cells in Allergic Inflammation

A SHORT LIST OF SESSION TOPICS FOR THE PRACTITIONER:

- Strategies for the Allergist in Managed Care
- Dermatologic Aspects of Allergic Disease
- Risks and Benefits of Asthma Therapies: Addressing the Bookends of the Patient Population
- Childhood Asthma: Causes and Concepts
- The Skin as an Immune Effector Organ in Clinical Disease
- Immunotherapy for the Future
- Role of the Clinical Immunology Laboratory in Monitoring and Evaluation of Disease

Don't miss this unique educational venture!

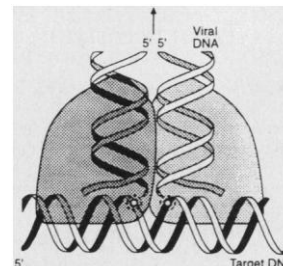


UCLA TENURE-TRACK POSITIONS IN GENE THERAPY AND RELATED TOPICS

The Department of Molecular and Medical Pharmacology of the UCLA School of Medicine, in conjunction with the UCLA Interdepartmental Program in Gene Therapy, announces a search for two faculty members with research interests in gene therapy and related topics. Interests might include (but are not limited to) development of novel viral gene delivery systems, approaches to preventing extinguishment of long-term expression of therapeutic genes, animal models of human diseases as research tools in genetic therapy, clinical applications of gene therapy, development of recombinant DNA vaccines, and applications of stem cell biology.

The Department of Molecular and Medical Pharmacology is undergoing a continuing expansion and modernization, with recent recruitments in the areas of macromolecular structure and infectivity of adenoviruses (Phoebe Stewart), RNA viral integration and replication (Samson Chow), auto-immune diseases and tolerization (Dan Kaufman), systems biology and Positron Emission Tomography (PET) imaging of normal and pathological function (Sam Gambhir), development of high-resolution microPET for *in vivo* study of mammalian genetics in the mouse (Simon Cherry), molecular basis of brain development and neuronal plasticity (Harley Kornblum), genetically modified cell transplants to reverse degenerative processes in the central nervous system (William Melega), and gene disruption and molecular studies of erythropoiesis (Hong Wu). The Department of Molecular and Medical Pharmacology is committed to melding the technologies of structural biology, molecular and cell biology, genetics, systems physiology, and biological imaging to study fundamental biological processes, to improve diagnosis of disease, and to effect their cures. The department views gene therapy and gene-based manipulation of biological processes as a part of the natural evolution of molecular and medical pharmacology. The departmental gene therapy program is under the direction of Harvey Herschman, Crump Professor and Vice Chairman, and Michael Phelps, Norton Simon Professor and Chairman.

Appointments will be at the level of assistant professor or, for appropriate candidates, associate professor. Applicants should submit a *curriculum vitae* and a statement describing their research interests and proposed initial research program to Ms. Judith Amos, Center for the Health Sciences, Department of Molecular and Medical Pharmacology, UCLA School of Medicine, Box 951735, Los Angeles, CA 90095-1735. Applicants should have three letters of reference sent to the same address. All applications should be complete by January 15, 1997.



POSITIONS OPEN

FACULTY POSITION MOLECULAR BIOLOGY/BOTANY

The Department of Biology at Carthage College invites applications for a **TENURE-TRACK**, Assistant Professor position in molecular biology and botany. Carthage is a dynamic liberal arts college with a commitment to developing the potential of each student. The college is located between Chicago and Milwaukee, allowing the faculty to take advantage of the academic environments of both cities. The successful candidate will have a strong background in experimental biology, experience in applying molecular techniques to problems in botany, commitment to teaching at the undergraduate level, enthusiasm for involving students in research projects, and a desire to pursue external funding. The Department is well-equipped for state-of-the-art teaching and research. Applications, including a current curriculum vitae, transcripts, and three letters of reference, should be submitted to:

Dr. Charlotte Chell, Chairperson
Division of Natural Sciences
Carthage College, Kenosha, WI 53140

Review of applications will begin on December 15, 1996.

Carthage is an Equal Opportunity Employer and specifically invites and encourages applications from women and minorities.

LANDSCAPE ECOLOGIST

The Department of Biological Sciences in the Faculty of Science at the University of Alberta invites applications for a tenure-track position in landscape ecology. Large scale studies of terrestrial systems are a major focus of this Department and we seek applicants who will add strength at the landscape scale to this very active group of researchers. However, excellent candidates in related areas are also encouraged to apply. The effective date of employment will be July 1, 1997. Appointments will be made at the level of **ASSISTANT PROFESSOR** and candidates must have a Ph.D. and postdoctoral research experience. Candidates should forward a curriculum vitae, list of publications, a one-page statement of research and teaching interests, and the names of three referees to: **Dr. Susan E. Jensen, Department of Biological Sciences, CW405 Biological Sciences Building, University of Alberta, Edmonton, Alberta T6G 2E9 Canada. Email: susan.jensen@ualberta.ca.** For additional information about the department see: <http://www.biology.ualberta.ca>. Closing date: January 31, 1997.

The University of Alberta is committed to the principle of equity in employment. As an employer we welcome diversity in the workplace and encourage applications from all qualified women and men, including Aboriginal peoples, persons with disabilities, and members of visible minorities.

ORNITHOLOGIST

The Department of Biological Sciences, University of North Carolina at Wilmington, welcomes applications for a tenure-track position at the **ASSISTANT PROFESSOR** level. A Ph.D. with postdoctoral experience in teaching and research is required. Primary responsibility is teaching undergraduate and graduate courses in ornithology, vertebrate natural history, and coastal ecology. The successful candidate is also expected to develop and maintain an externally funded, field-oriented research program involving coastal or marine birds. Send curriculum vitae, statement of teaching and research interests, graduate transcripts, and names of three references by 15 February 1997 to: **Ornithologist Search Chair, Department of Biological Sciences, University of North Carolina, Wilmington, NC 28403-3297.** *Equal Opportunity/Affirmative Action Employer. Women and minorities encouraged to apply.*

FACULTY POSITION BIOLOGY (PLANT ECOLOGY)

Keuka College invites applications for a tenure-track **ASSISTANT PROFESSOR** position to begin August 1997. Doctorate expected; ABD's considered at Instructor rank. Responsibilities include teaching undergraduate environmental science and plant biology. Expertise in plant ecology is required; background in plant physiology and/or aquatic biology is desirable. College teaching experience preferred.

Materials review begins January 10, 1997, and will continue until the position is filled. Send letter of application, résumé, copies of graduate transcripts, and three letters of recommendation to: **Dr. Gary Hickernell, Chair, Natural Sciences, c/o Personnel Office, Keuka College, Keuka Park, NY 14478.** *Minority candidates are encouraged to apply.*

POSITIONS OPEN



UCLA

TENURE-TRACK FACULTY POSITION Molecular and Cellular Cardiovascular Physiology (Second Announcement)

The Department of Physiology at the UCLA School of Medicine invites applications for a tenure-track faculty position, preferably at the level of **ASSISTANT PROFESSOR**, for an individual with a Ph.D. and/or M.D. degree interested in applying modern approaches to understand physiology of the cardiovascular system. Candidates are expected to have strong training and background in the biomedical sciences. The successful candidate will be expected to develop an independent research program as part of the UCLA Cardiovascular Research Laboratory and to participate in the teaching mission of the Department. An excellent environment exists in the Laboratory, Department, and School to build an academic career. This includes laboratory space, set-up funds, core resources, and other active research programs in molecular, membrane, cell, and cardiovascular biology. Applicants should send a letter with a statement of research interests and goals, their curriculum vitae, and names of three references to: **Chair, Cardiovascular Search Committee, UCLA School of Medicine, Department of Physiology, 10833 LeConte Avenue, Los Angeles, CA 90095-1751. Email: dmoorehe@physiology.medsch.ucla.edu.**

Review of applications is underway and will continue until a suitable candidate has been identified.

FACULTY POSITIONS STRUCTURAL BIOLOGY

The State University of New York at Stony Brook has allocated several **TENURE-TRACK** positions for a new initiative in Structural Biology. This program, with state-of-the-art facilities for x-ray crystallography, high resolution NMR spectroscopy, and computational biology, will be housed in the Center for Molecular Medicine. A close working relationship is envisioned between Stony Brook faculty and scientists based at Brookhaven National Laboratory and Cold Spring Harbor Laboratory.

Initial faculty recruitment will take place in the area of x-ray crystallography. The successful candidate is expected to have or to establish an externally funded research program and to participate in departmental teaching activities. A Ph.D. degree and postdoctoral research experience are required. Salary will be commensurate with qualifications and experience.

A curriculum vitae, list of publications, description of research interests, and names of four referees should be sent to: **Dr. Arthur Grollman, Search Committee Chair, Department of Pharmacological Sciences, State University of New York at Stony Brook, Stony Brook, NY 11794-8651. FAX: 516-444-7641; Email: apg@pharm.som.sunysb.edu.** Priority deadline is January 3, 1997. The search will remain open until all positions are filled.

The University at Stony Brook is an Equal Opportunity/Affirmative Action Employer.

ASSISTANT PROFESSOR. The Department of Physiology, University of Florida College of Medicine, seeks an outstanding individual to become a tenure-track faculty member at the level of Assistant Professor. Initial support will be provided by the Howard Hughes Medical Institute Research Resources Program for Medical Schools. Applicants must have an M.D., Ph.D., or equivalent and postdoctoral experience, and should develop a high quality, independent research program with extramural support in the area of growth factors and growth related processes. We are seeking individuals with expertise in molecular, cellular, and/or genetic approaches to this research area. The primary appointment will be in the Department of Physiology and it is expected that the successful candidate will complement current department and college strengths in the areas of hypertension research, neuroendocrinology, mammalian genetics, wound healing, neural signal transduction, and neonatal physiology. Future responsibilities will include participation in departmental teaching. Applicants should submit a curriculum vitae including a statement of research plans and have three letters of reference sent to: **Dr. Colin Sumners, Department of Physiology, P.O. Box 100274, University of Florida, Gainesville, FL 32610-0274.** Salary is negotiable. Deadline for receipt of application is February 28, 1997. Anticipated start date is July 1997. *Equal Opportunity/Affirmative Action Employer.*

POSITIONS OPEN

FACULTY POSITION Environmental Microbiology and Microbial Ecology

The Department of Civil and Environmental Engineering at MIT invites applications for a **TENURE-TRACK FACULTY** position in the area of environmental microbiology and microbial ecology. The candidate must have a strong background in microbiology. We will entertain applications from diverse interests such as microbial diversity and population dynamics, biogeochemistry, contaminated transformations, and environmental biotechnology. Experience with the tools of molecular biology is essential. The candidate should have an interest in interdisciplinary work and in collaborating with other faculty and students at MIT working on problems in oceanography, limnology, ground water hydrology, fluid mechanics, environmental remediation, ecology, and toxicology. The successful candidate will be expected to develop a strong sponsored research program and to teach both basic and advanced subjects. Applicants should send curriculum vitae, description of teaching and research interests, and a list of references to:

Professor Rafael L. Bras
Head, Department of
Civil and Environmental Engineering
MIT, Room 1-290
Cambridge, MA 02139

Applications are due by January 15, 1997.

MIT is an Equal Opportunity/Affirmative Action Employer.

Physical limnology/oceanography. The University of Minnesota has established the Large Lakes Observatory (LLO) on its Duluth Campus as part of its institution-wide lake studies program. The mission of LLO is to study large lakes of the world. The LLO invites applications for a **TENURE-TRACK FACULTY** position at the Assistant Professor level in Physical Limnology. Six new tenure-track positions, carrying nine-month salaried appointments, are being filled between 1995 and 2000. Three of these positions have been filled in the areas of isotope geometry, geophysics, and circulation dynamics. Two more are to be filled in physical limnology and the other position will be filled in aquatic chemistry.

We are particularly interested in candidates with previous field experience in turbulent mixing, coupled biological/chemical and physical processes, or the use of remote sensing and optics or tracers to examine physical processes in oceans and lakes. Candidates should have a strong background in physics and hold a Ph.D. in oceanography, limnology, or a related field.

The appointment will be split between the LLO and the Physics Department on the Duluth Campus, where the tenure line will reside. A commitment to teaching at the graduate and undergraduate levels is required. The teaching load will be commensurate with the departmental portion of the appointment.

Send a statement of research and teaching interests; curriculum vitae; and names, addresses, and telephone numbers of at least three references by January 15, 1997 to: **Prof. Thomas C. Johnson, Director, Large Lakes Observatory, University of Minnesota, Duluth, MN 55812.** Prospective candidates with questions about the position may view our web site at <http://www.d.umn.edu/llo> or contact Tom Johnson, Email: tcj@d.umn.edu.

The University of Minnesota is an Equal Opportunity Educator and Employer.

WILDLIFE PHYSIOLOGIST: The Department of Biology at Montana State University-Bozeman invites applications for a teaching/research position, tenure-track, **ASSISTANT PROFESSOR**, starting August 15, 1997. Salary is \$32,000 or higher for nine months. Candidates must have a Ph.D. in biological sciences with training or experience as a systems physiologist and experience working with wildlife species. Successful candidate's responsibilities will include teaching courses in physiology, wildlife physiology, ecology, or nutrition, and developing a nationally competitive research program in wildlife physiology. All applications must include a letter of application; curriculum vitae; statement of teaching and research interests; official transcripts from all institutions conferring graduate degrees; three representative reprints; and the names, addresses, telephone numbers, and Email addresses of three to five references. Send applications to: **Wildlife Physiologist Search Committee, Biology Department, Montana State University, Bozeman, MT 59717. Telephone: 406-994-4481.** Full position announcement at: <http://www.montana.edu/wwwbi>. Deadline for complete applications is January 15, 1997. *ADA/Equal Opportunity/Affirmative Action/Veterans Preference.*

Tenure-Track Positions Assistant Professor Equivalent

Developmental Biologist

An independent position is available in the Laboratory of Reproductive and Developmental Toxicology for a creative and productive investigator to develop a research program in cellular and molecular mechanisms of mammalian development. Applicants should have an interest in using rodent models to study cell interactions, imprinting or other basic biomedical problems relating to the impact of the environment on development. Submit applications by January 3, 1997 to Ms. Lisa Rogers (HNV96-23) (OE-122), NIEHS, Mail Drop 1-01, P.O. Box 12233, Research Triangle Park, NC 27709.

Signal Transduction in Endocrine Cells

The Endocrinology and Reproduction Research Branch seeks an MD or PhD investigator to establish an independent research program in the area of molecular endocrinology. Applicants should have a strong background in endocrine research and expertise in the investigation of signal transduction mechanisms, including receptor activation, polyphosphoinositide metabolism, and calcium signaling. Current research areas include the renin-angiotensin system, regulation of pituitary function, molecular characterization of GPCRs, and identification of new components of the phospholipid-calcium system. Applications must be submitted within six weeks to Dr. Michael Beaven, ERB Search Committee (OE-122), Building 49, Room 6A36, 49 CONVENT DR MSC 4510, BETHESDA MD 20892-4510.

Protein X-Ray Crystallographer

A position with intramural funding is available to conduct an original research program and to interact with other scientists within the NIH intramural program. PhD and MD applicants should have a record of achievement in solving protein structures by X-ray crystallography. Salary and appointment commensurate with credentials and research experience. Qualified and interested candidates should send *curriculum vitae* including three letters of reference by December 31, 1996 to Chair, X-ray Crystallography Search Committee (OE-122), NIAID, Building 10, Room 4A31, 10 CENTER DR MSC 1356, BETHESDA MD 20892-1356.

To Apply

Please send a cover letter, *curriculum vitae*, bibliography, a one- to two- page statement of research interests and goals, and selected publications to the address listed with each position. In addition, please arrange to have letters of recommendation sent from three references who can provide an evaluation of your professional qualifications.

New WWW Site

Visit the new NIH Office of Education web site listing tenure-track positions, postdoctoral positions, and much more. Converse by e-mail with NIH investigators and apply electronically. Find us at <http://helix.nih.gov:8001/oe>



National Institutes Of Health

Office Of Education

<http://helix.nih.gov:8001/oe>

The NIH is an Equal Opportunity Employer

UNIVERSITY OF CALIFORNIA, SANTA CRUZ Ph.D. PROGRAM IN MOLECULAR, CELLULAR AND DEVELOPMENTAL BIOLOGY

The Ph.D. program in MCD Biology at UC Santa Cruz provides rigorous training opportunities in basic biological research. The hallmarks of our program are an outstanding, young and highly interactive faculty. Research in the MCD Biology program is organized in clusters of faculty with related interests, including:

Molecular Biology of RNA
Cell Biology
Developmental Genetics
Structural Biology
Plant Molecular Biology

Financial support covering stipends, tuition and health costs is available from a variety of fellowships.

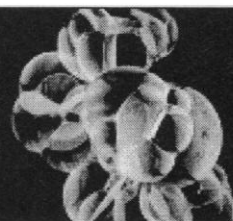
We believe diversity in our student body is important, and encourage applications from students of diverse backgrounds, including women and members of under-represented minority groups. For further information, contact:

Susan Thuringer (408) 459-4715
susan@biology.ucsc.edu

Visit the UCSC Biology Web site at:
<http://www-biology.ucsc.edu/>

For application forms, contact:
Graduate Admissions, 399 Applied Sciences Bldg,
UCSC, Santa Cruz CA 95060
gradadm@cats.ucsc.edu

<http://graddiv-19.ucsc.edu/GradStudies/index.html>



R&D Scientist Molecular Genetics

Promega Corporation, an established world leader in biotechnology, consistently recognized as one of the country's most progressive employers, has an immediate opening for an experienced Research Scientist in Molecular Genetics. This person will perform research and development of products related to analysis of nucleic acids.

Qualified candidates will have a B.S. or M.S. in molecular biology or related area and a minimum of 5 years laboratory experience with molecular biology of nucleic acids. Preference will be given to candidates with experience with DNA sequencing, cloning, DNA probes, nucleic acid purification and amplification methods; experience handling clinical or forensic materials is beneficial, but not required.

Promega, recently cited as one of "The Best Companies To Work For In Dane County" by "In Business" magazine and designated "Top 100 Companies for Working Mothers" by "Working Mother" magazine, strives to provide a rewarding work experience for our employees and to provide unparalleled excellence, quality and prosperity in our business. We seek to preserve a balance between work and life activities, reflected in our on-site fitness and daycare facilities and comprehensive benefit package. To apply, please send a resume with salary requirements to: Promega Corporation, Human Resources (11100JS), P.O. Box 7879, Madison, WI 53707-7879. EOE



Promega

To hear about current employment opportunities, please call our Career Opportunities Line at 800-356-9526 or visit our home page at www.promega.com.

POSITIONS OPEN

HEAD, BIO-MATERIALS SPECIALIST Required Immediately

There is an immediate opening for a bio-materials specialist with extensive experience in the field. Extensive experience in development, testing, and utilization of bio-materials. Knowledge of a wide range of bio-materials currently in use in the industry and with medical devices; capacity to analyze and interpret data from material testing techniques, materials surface analysis, and material biological response; design and develop *in vitro* reliability and biocompatibility tests and associated procedures for materials used in implantables, tissue, and blood contacting devices; ability to formulate and develop bio-materials suited for use in implantable medical devices. Information Processing: Synthesizes, analyzes information to maximize effectiveness of functions. Research skills including: characterization of materials by physical methods; computer modeling of mechanical properties of biomaterials and biological systems; mechanical influences on tissues in tissue and cell cultures using various proven techniques; mechanical testing.

We are looking for a **HEAD** of a section to continue development of an implantable medical device that is moving into a critical testing period. This is a hands-on position for a results-oriented person. There is an attractive compensation package to match capabilities and experience. Position is in Ottawa, Ontario, Canada. Please contact:

The Search Committee
962 Chaleur Way
Orleans, Ontario K1C 2S1 Canada
Telephone: 613-837-9761
FAX: 613-824-0724

RESEARCH ASSOCIATE/RESEARCH ASSISTANT PROFESSOR

The Living State Physics Group in the Department of Physics and Astronomy at Vanderbilt University invites applications for a **RESEARCH ASSOCIATE** or **RESEARCH ASSISTANT PROFESSOR**. Responsibilities include computational and experimental studies of cardiac and smooth muscle electrophysiology. The candidate should have experience in both high resolution multisite optical mapping of transmembrane potentials in isolated and cultured tissue and theoretical analysis of wavefront dynamics in cardiac tissue. Interested individuals should submit a curriculum vitae and names of three references to: **Dr. John P. Wikswo, Department of Physics and Astronomy, Vanderbilt University, Box 1807, Station B, Nashville, TN 37235 U.S.A. Email: wikswojp@ctr.vanderbilt.edu.** Review of applications will begin on December 15, 1996 and will continue until the position is filled. *Vanderbilt University is an Equal Employment Opportunity/Affirmative Action Employer.*

RESEARCH SPECIALISTS FOREST TREE GENETIC TRANSFORMATION Westvaco Corporation, Forest Science Laboratory Summerville, South Carolina, U.S.A.

The Genetics and Biotechnology Section of Westvaco Forest Research has two openings for **RESEARCH SPECIALISTS** in its forest tree genetic transformation program. These positions are available immediately and will involve laboratory research on genetic transformation of southern pine species. Responsibilities include assisting in all phases of research, detailed record keeping, and maintenance of lab equipment.

Applicants should possess a B.S. or M.S. degree. A strong background in plant genetic transformation is required. Experience in either Agrobacterium-mediated transformation, Biolistic transformation, or vector construction is essential. Working experience with woody plants is helpful, but not required.

U.S. citizenship or permanent residency is required. Please send résumé, college transcripts, and three letters of recommendation by December 20, 1996 to: **Cindy L. McCord, Forest Science Laboratory, Westvaco Corporation, P.O. Box 1950, Summerville, SC 29484.**

Westvaco is an Equal Opportunity Employer; Minorities/Females.

RESEARCH POSITIONS

RESEARCH positions available in the areas of molecular biology and genetics. Ph.D. required. Applicants should send curriculum vitae, references, and a brief description of research interests to: **Lynn Egloff, Department of Molecular Biology, Princeton University, Lewis Thomas Laboratory, Princeton, NJ 08544.** *Princeton University is an Equal Opportunity/Affirmative Action Employer.*

POSITIONS OPEN

BioGenex

BioGenex, a leader in the development, manufacturing, and worldwide distribution of cellular and molecular diagnostic products, has the following openings:

MANAGER, Molecular Probe Diagnostics. The candidate should have a doctoral degree (Ph.D., M.D., or equivalents) and several years of postdoctoral experience in molecular biology, microbiology, biochemistry, immunology, or related disciplines. The candidate should have significant achievement in at least one of the following areas: oligonucleotide probe based diagnostics, signal amplification, FISH, or cytogenetics, preferably in an industrial setting.

MANAGER/SUPERVISOR, Cell Pathology. The candidate should have earned an advance degree in anatomic pathology, cell biology, or related biological sciences. This person should have working knowledge in the areas of immunohistochemistry, monoclonal antibody production and processing, or optimization of *in situ* hybridization protocols. Supervisory and project management experience in an industrial environment is preferred.

BioGenex offers a competitive salary and excellent benefits package with 401(K) plan. Send résumé to: **Attention: Human Resources, BioGenex, 4600 Norris Canyon Road, San Ramon, CA 94583. FAX: 510-275-0580.**

DEPARTMENT OF VETERANS AFFAIRS VETERANS HEALTH ADMINISTRATION HEALTH SCIENCE SPECIALIST

Medical Research Service, Department of Veterans Affairs (VA), is recruiting for the position of Health Science Specialist in the Program Development and Review Section. The **HEALTH SCIENCE SPECIALIST** will be responsible for the peer review and administration of mental health and substance abuse research programs. Candidates must have a Ph.D. degree with a background in behavioral science. The position is offered as a term appointment not to exceed four years. Appointment from Interagency detail or Intergovernmental Personnel Act (IPA) will be considered. Competitive salary, benefits package, and limited relocation assistance available. Applicants should send recent curriculum vitae and a letter summarizing research and administrative experience to: **Program Development and Review Section (121F), VA Headquarters, 810 Vermont Avenue, NW, Washington, DC 20420.** For further information contact **LeRoy Frey, Telephone: 202-565-5942.** *Equal Opportunity Employer.*

ASSISTANT PROFESSOR of Biology (Geneticist). Wingate University seeks an Assistant Professor of Biology to teach Genetics, Microbiology, introductory-level biology courses, and courses in his or her area of expertise. Ph.D. required; specialty in eukaryotic genetics preferred. Effectiveness in undergraduate teaching is the main criterion. Interest in involving students in collaborative research is expected. Appointment begins August 1997. Send letter of application, a statement of teaching philosophy, curriculum vitae, and three letters of recommendation to: **Dr. Lee Hadden, Chair, Department of Biology, Box 3004, Wingate University, Wingate, NC 28174.** Screening begins January 15, 1997. Wingate University is a private, church-related institution near Charlotte, North Carolina. *It does not discriminate on any basis other than objective qualifications and demonstrated merit.*

LECTURER IN BIOLOGY

A non-tenure-track position (annually renewable) is available for a biology Lab **INSTRUCTOR/COORDINATOR**. Responsibilities include teaching some laboratory sections of Principles of Biology I and II, coordinating all lab sections of these courses, and assisting with the training of graduate assistants. A Ph.D. is preferred, and some university-level teaching experience is expected. Experience with laboratory computer integration would be an asset. By February 4, 1997, submit curriculum vitae, statement of teaching philosophy, evidence of teaching effectiveness, and the names of three references to: **Dr. Paul Hamilton, Department of Biology, University of Central Arkansas, Conway, AR 72035.** *An Equal Opportunity/Affirmative Action Employer.*

POSITIONS OPEN

RESEARCH SCIENTIST

MK Industries (MKI) is a multidisciplinary research, development, and applications company located in Tucker, Georgia, an Atlanta suburb. MKI's mission is to create, develop, and commercialize a variety of innovative technologies, including biomedical materials and devices. Xcellex and Targeted Pharmaceuticals, both subsidiaries of MKI, are currently looking for applicants to fill several positions. Xcellex concentrates on the separation of various biomolecules, e.g. cells, bacteria, proteins, viruses, etc. Targeted Pharmaceuticals (TPI) is working on a unique system to target and control the release of therapeutic reagents essential to both human and veterinary medicine. Applicants must have a Ph.D. in any one of the following areas: biochemistry, cell biology, immunology, or microbiology. Postdoctoral experience is not a requirement. For prompt, confidential consideration, we invite you to forward your curriculum vitae to either **Dr. Carmen D. Eilertson** for Xcellex, **Email: ceilert@mk-inc.com**; or **Dr. Mark E. Rothenberg** for TPI, **Email: mer@mk-inc.com**, at **MK Industries, 2137-E Flintstone Drive, Tucker, GA 30084.** *MKI is an Equal Opportunity/Affirmative Action Employer.*

RESEARCH SPECIALIST X-RAY CRYSTALLOGRAPHY

The Howard Hughes Medical Institute (HHMI), the nation's largest private philanthropic organization, conducts scientific research in leading academic medical centers throughout the United States. Currently, we have an opening for a **RESEARCH SPECIALIST** to work with a dynamic group studying protein structure-function, protein folding, protein design, and viral membrane fusion at our site at MIT/Whitehead Institute.

Responsibilities include assisting in solving high-resolution protein structures by X-ray crystallographic methods, including operation of X-ray crystallography equipment and data analysis with crystallography software. Duties also include the training of lab personnel. Requirements include M.S. and four years of relevant experience or Ph.D. and two years of relevant experience, prior experience with macromolecular X-ray crystallographic methods, computer programming skills, and excellent interpersonal skills.

HHMI offers a competitive salary and excellent benefits package. Please forward your résumé and the names of three references to: **J. O'Connor, Job 525B, HHMI/MIT, 77 Massachusetts Avenue, 68-171, Cambridge, MA 02139.** *Equal Opportunity Employer.*

IMMUNOLOGIST/PHYSIOLOGIST: The Department of Biological Sciences at California State University, Chico, invites applications for a tenure-track assistant professorship beginning in the 1997-98 academic year. Candidates must have a Ph.D., specialization in immunology/physiology, experience with both traditional and molecular immunological techniques, a demonstrated knowledge of human physiology, a demonstrated ability to develop a research program, teaching experience at the undergraduate level, and a strong interest in teaching excellence. Responsibilities include teaching courses in immunology and human physiology, developing a graduate course in area of specialization, establishing a research program with potential for external funding that will involve undergraduate and graduate students, and participation in the departmental program as needed. Normal faculty duties include undergraduate advising and teaching two to three classes per semester. Applicants should submit a letter of application, curriculum vitae, a statement of teaching philosophy, complete academic transcripts, representative reprints, and three letters of reference to: **Dr. Michael A. Abruzzo, Chair, Department of Biological Sciences, California State University, Chico, CA 95929-0515** by February 7, 1997. *An Equal Opportunity/Affirmative Action/ADA/IRCA Employer.*

NEUROPHYSIOLOGIST

A **TENURE-TRACK** position is available at the Assistant Professor level for a neurophysiologist, contingent upon funding. Teaching responsibilities will include an introductory neuroscience course, contribution to the lower-division curriculum, and upper-division electives or graduate courses in the candidate's area of specialty. A Ph.D. is required and an active research program is expected. By February 4, 1997, submit curriculum vitae, statements of teaching philosophy and research plans, and the names of three references to: **Dr. Paul Hamilton, Department of Biology, University of Central Arkansas, Conway, AR 72035.** *An Equal Opportunity/Affirmative Action Employer.*

Director of Research

Aeivos Sciences Group is a start-up venture in Seattle, Washington, focusing on the genomics of aging. We are seeking a talented, entrepreneurial, and aggressive molecular biologist who is searching for an opportunity to further a career in senior scientific management and organizational leadership.

This opportunity requires prior experience managing a research team focused on gene discovery and gene expression.

Requirements for this position are:

- Experience designing, establishing, and staffing a state-of-the-art research laboratory.
- Experience designing, planning, and monitoring multi-year research programs.
- Experience managing research budgets tied to performance milestones
- Experience establishing and collaborating with a Scientific Advisory Board.
- Ability to participate in a multidisciplinary senior management team.
- Demonstrable ability to identify, evaluate, and integrate new technologies in the areas of gene discovery, gene expression, functional analysis, and bioinformatics.
- Excellent publication record.
- Excellent interpersonal skills.
- Excellent entrepreneurial desire.

We offer a very competitive compensation package, equity participation, and an opportunity to shape your own destiny. Please send or fax your resume in confidence to: **(206) 547-3380, ATTN: DOR. Aeivos Sciences Group, P.O. Box 31083, Seattle, WA 98103-1083. EOE.**

Who has
one of the most
impressive
pharmaceutical
pipelines in
the business?

S e a r l e .

Today, Searle continues to produce some of the world's most outstanding pharmaceutical products. And as a quickly expanding, wholly-owned subsidiary of the Fortune 100 Monsanto Company, we're constantly impacting the lives of people around the world, and improving the career opportunities for our professionals.

Research Investigator

An opportunity is currently available for a research investigator to join a multi-disciplinary team focused on the discovery of novel oncology therapeutics. The successful candidate will provide expertise and experimental support including the conceiving, designing and conducting of experiments.

We seek an individual with a Doctoral degree in a relevant area along with experience in tumor biology of angiogenesis or vascular biology and 0-5 years post-doctoral training. Skill with animal models of solid tumor growth is expected, as is experience in cell-based models of tumor and endothelial cell function. You must be an innovative, adaptable person with strong communication skills.

When you consider our record financial performance and commitment to innovation, you'll see that the global Monsanto Company is positioned for even more success. We can offer a competitive compensation package and exceptional career opportunity. For consideration, please send a resume to: **The Monsanto Company, LMH, Job Code-RIWW, 800 N. Lindbergh Blvd., Mail Zone C2NB, St. Louis, MO 63167. EEO/AA Employer M/F/D/V.**

SEARLE

THE NATIONAL EYE INSTITUTE, NATIONAL INSTITUTES OF HEALTH, HAS AN OPENING FOR A POSTDOCTORAL FELLOW IN THE LABORATORY OF MOLECULAR AND DEVELOPMENTAL BIOLOGY. This laboratory performs basic research on the regulation of gene expression during development of the eye and other tissues (e.g. Bioessays, 18:621, 1996). Particular attention is given to tissue-specific expression of crystallin genes in the lens and cornea (e.g. J Biol. Chem., 271:23029, 1996; Dev. Dyn., 207:75, 1996). Applicants must have a Ph.D. or M.D. and less than 5 years of post-doctoral experience. Applicants should have training in molecular biology and/or protein biochemistry. Candidates must be either a U.S. citizen, a permanent resident, or a foreign national. Starting salary ranges from \$30,000 to \$38,000 per year depending upon experience. Please submit a curriculum vitae and the names of three references to:

**DR. JORAM PIATIGORSKY, CHIEF
LABORATORY OF MOLECULAR AND
DEVELOPMENTAL BIOLOGY
NATIONAL EYE INSTITUTE
6 CENTER DRIVE MSC 2730
BUILDING 6, ROOM 201
BETHESDA, MD 20892-2730
TELEPHONE: 301-496-9467
FAX: 301-402-0781**

NIH is an Equal Opportunity Employer

Rider 
University

Environmental Scientist

The Department of Geological and Marine Sciences is seeking an Assistant Professor in programs offering the BS degree in both Marine Sciences and Geosciences. The position is tenure-track in a growing department and requires a Ph.D. In addition to Ground Water Hydrology, teaching may include Environmental Geology, other environmentally oriented courses, team-taught field marine science courses, and supervision of student research in the area of specialty of the applicant. Excellence and versatility in teaching, use of sophisticated instrumentation, and computer skills are required. Information about the department is available at www.rider.edu. Rider University is an affirmative action/equal opportunity employer, and does not discriminate on the basis of age, race, sex, disability, sexual orientation, national origin, religion, or any other non-job related criteria. Applications and names/ addresses of three references must be received by February 17, 1997 and sent to: **Dr. Richard R. Alexander, Chair, Department of Geological and Marine Sciences, Rider University, 2083 Lawrenceville Road, Lawrenceville, NJ 08648-3099.**



**St. Jude Children's
Research Hospital**

ALSAC • Danny Thomas, Founder

Postdoctoral Research Associate
position is available immediately for a project on DNA-repair gene transfer as a means to protect bone marrow against anti-cancer alkylating agent toxicity (see Blood 88:2298-2305, 1996). Qualified candidates must have a recent Ph.D in biochemistry, molecular biology or related field and a strong background in molecular genetics. Experience with use of viral vector systems is highly desirable.

Send c.v. and names (e-mail address, fax and phone numbers) of three references to: **Dr. Thomas P. Brent, Department of Molecular Pharmacology, St. Jude Children's Research Hospital, 332 N. Lauderdale, Memphis, TN 38105. e-mail: brent@stjude.org Fax: 901-521-1668.** An equal opportunity/affirmative action employer.

POSITIONS OPEN

POSTDOCTORAL POSITION MOLECULAR BIOLOGY

Study of reverse transcription by retroviruses with a focus on the roles of RNase H and the mechanism of strand displacement synthesis. Emphasis will be on understanding enzyme design in relation to substrate and accessory factor recognition. Methodologies include standard cloning techniques, PCR, mutagenesis, protein expression and purification, macromolecular crosslinking, enzyme kinetics, and gel analyses. Position available immediately but applications will be considered until the position is filled. Please send curriculum vitae, a brief statement of prior research experience, and three references to: **Dr. James J. Champoux, Department of Microbiology, Box 357242, University of Washington, Seattle, WA 98195.**

The University of Washington is an Affirmative Action/Equal Opportunity Employer.

POSTDOCTORAL AND RESEARCH ASSOCIATE POSITIONS Fluorescence Analysis of Transcription Complexes

Available immediately for application of fluorescence methods (FP, FRET, NSOM-FRET) in analysis of protein-protein and protein-nucleic acid interactions in transcription complexes. Requires experience in at least two of the following areas: 1) FP, FRET, NSOM, stopped-flow; 2) preparation and modification of proteins; 3) preparation and modification of nucleic acids. Salary: \$22,000 or above (postdoctoral fellow), or \$32,648 or above (research associate) plus benefit package. Send curriculum vitae, research summary, and references to: **Richard H. Ebright, Waksman Institute, Rutgers University, New Brunswick, NJ 08855. FAX: 908-445-5735.**

POSTDOCTORAL ASSOCIATE: Position available to study the cell biology of HIV infection in T-cell lines, peripheral blood T-cells, and lymph node tissue and to work on related projects including the role of syncytium formation, chemoattractants, and chemokines in the pathogenesis of AIDS. Requires a Ph.D. in cell biology or a related field. Extensive experience in one or more of the following areas highly desirable: virology, immunology, tissue culture, molecular biology, and immunohistochemistry. Send curriculum vitae and names of three references to: **Dr. David R. Soll, Department of Biological Sciences, 138 Biology Building, University of Iowa, Iowa City, IA 52242-1324. The University of Iowa is an Equal Opportunity/Affirmative Action Employer. Women and minorities are encouraged to apply.**

A POSTDOCTORAL POSITION is available for an animal pharmacologist starting January 1, 1997 to study carbohydrate mediated targeting in animals (**M. Chiu et al., J. Biol. Chem., 270:24024, 1995**). Applicants should have demonstrated technical skill in working with mice and rats and familiarity with pharmacokinetic and biodistribution experiments. A starting salary of \$25,000 per year with benefits is being offered and is renewable for up to three years. To apply, please send your curriculum vitae and the names of three references to: **Dr. Kevin Rice, College of Pharmacy, University of Michigan, 428 Church Street, Ann Arbor, MI 48109-1065. The University of Michigan is a non-discriminatory Affirmative Action Employer.**

UNIVERSITY OF CALIFORNIA SAN FRANCISCO POSTDOCTORAL POSITION

Available for recent Ph.D. to study mechanisms of chromosome healing by addition of telomeres to the ends of broken chromosomes. Background in mammalian cell biology and expertise in techniques in molecular biology required. Applicants must be U.S. citizens or permanent residents. Send curriculum vitae and names of three references to: **Dr. John Murnane, Radiation Oncology Research Laboratory, University of California, San Francisco, 1855 Folsom Street, MCB 200, San Francisco, CA 94103.**

POSTDOCTORAL FELLOWSHIP available immediately to investigate the effects of alcohol on hepatocyte pathology, fibrogenesis, and liver-specific gene regulation. Applicants should have an M.D. or Ph.D. degree, and be citizens or permanent residents of the U.S. Please send your curriculum vitae and the names and telephone numbers of three references to: **Dr. Esteban Mezey, Professor of Medicine, 921 Ross Research Building, The Johns Hopkins University School of Medicine, 720 Rutland Avenue, Baltimore, MD 21205.**

POSITIONS OPEN

TRANSPORT AND FATE MODELERS

Sciences International, Inc. is seeking transport and fate modelers to join our quantitative risk assessment team. Applicants must have strong quantitative, statistical, programming, and communication skills. We are looking for:

1) **SENIOR-LEVEL** individual with extensive experience in applying EPA-approved models and developing or refining models for site-specific applications, to address the relationship between exposure and risk in coordination with the project team.

2) **JUNIOR-LEVEL** fate and transporter modeler with at least two years of experience in the application of EPA-approved models. Emphasis in emission and air dispersion models applicable to industrial sources preferred.

Send or fax résumé, with salary history, to: **Sciences International, Inc., King Street Station, 1800 Diagonal Road, Suite 500, Alexandria, VA 22314. FAX: 703-684-2223. Equal Opportunity Employer.**

CYTOGENETIC TECHNOLOGIST, \$27,388 per year. 40 hours per week, 8:00 a.m. to 5:00 p.m. Prepare, harvest, examine, analyze chromosomes found in amniotic fluid, bone marrow, blood, and tissue to aid in diagnosis and treatment of genetic diseases. Select and dissect suitable tissue, microscopy, karyology, imaging of specimens, primary responsibility for amniotic fluids setup, tissue culture and harvest selection, routine banding of specimen types and notation of observed anomalies. B.S. in biology or medical technology required, plus two years of experience in job offered and certification as clinical laboratory specialist in cytogenetics by National Certification Agency for Medical Laboratory Personnel. Résumés to: **New Mexico Department of Labor, 301 West DeVargas, Santa Fe, NM 87501. Job Number 426542.**

POSTDOCTORAL CLINICAL RESEARCH FELLOWSHIPS

Harvard Medical School, Consolidated Department of Psychiatry: Two-year, NIMH-funded, postdoctoral **FELLOWSHIPS** involving independent research under supervision of experienced clinical researchers in biological and social/developmental fields, participation in integrative seminars, and related courses. Diverse research opportunities including brain imaging techniques, psychopharmacology, psychiatric epidemiology, and longitudinal studies of development. Open to psychiatrists, residents in psychiatry, other physicians, and Ph.D.'s in biological/social sciences who are U.S. citizens or permanent residents. Positions open July 1, 1997; stipends range from \$19,600 to \$32,300. Application deadline: February 1, 1997. Contact: **Program Administrator, Clinical Research Training Program, Judge Baker Children's Center, 3 Blackfan Circle, Boston, MA 02115. Telephone: 617-232-8390, x2559. Minority applicants encouraged.**

A POSTDOCTORAL FELLOW position is available immediately to participate in cell biology and tumor differentiation research on brain tumors and neuroblastomas. Requires M.D. or Ph.D. degree, with prior experience in tissue culture and molecular biology. Prior work in this area is very desirable. Send curriculum vitae, summary of research interests and experience, and at least three references to: **Susan Blaney, M.D., Texas Children's Cancer Center, 6621 Fannin Street, MC3-3320 Houston, TX 77030. FAX: 713-770-4202. Baylor College of Medicine is an Equal Opportunity/Affirmative Action/Equal Access Employer.**

POSTDOCTORAL RESEARCH GS-11 (\$38,119, plus benefits) position to work on wheat molecular biology and transformation. Successful candidate to join a project working to bioengineer wheat fungal resistance and to improve wheat transformation technology. Candidates must have strong background in molecular biology and plant tissue culture experience is desired. Position is currently funded for one year with anticipated extension for additional one to three years. *Must be a citizen of an allied nation.* Contact: **Dr. Olin D. Anderson, WRR, ARS, USDA, 800 Buchanan Street, Albany, CA 94710. Telephone: 510-559-5773; Email: oanderson@pw.usda.gov. The USDA is an Equal Opportunity Employer. Minorities are encouraged to apply.**

POSITIONS OPEN

POSTDOCTORAL POSITIONS

Positions available (Ph.D. or M.D.) for research training in experimental hematology and vascular biology in an NIH-sponsored training program at the Cardeza Foundation for Hematologic Research, Thomas Jefferson University. Areas of interest include: molecular and cellular aspects of angiogenesis, gene expression by endothelial and smooth muscle cells, vascular biology of the platelet and endothelial GpIb complexes, megakaryopoiesis and gene expression during megakaryocytic development, oxygen regulated gene expression, the role of lipid-binding proteins in thrombosis, and immunology of bone marrow transplantation. Please send curriculum vitae to: **Cardeza Foundation for Hematologic Research, 1015 Walnut Street, Philadelphia, PA 19107-5099. U.S. citizenship or permanent residency required. Equal Opportunity Employer.**

POSTDOCTORAL RESEARCH position available immediately to study the use of peptides as ligands for the large-scale affinity purification of proteins from human serum, and for the development of sensor-based assays. This is a joint industry/university research project aimed at identifying suitable peptide sequences from chemically synthesized combinatorial peptide libraries, and to optimize operating conditions for purification and detection of proteins. Doctoral degree in biochemical engineering or biochemistry with prior experience in protein purification and characterization, affinity chromatography, and peptide synthesis is desirable. Salary \$30,000 per year; position renewable on a yearly basis. Send curriculum vitae and three letters of recommendation to: **Prof. Ruben G. Carbonell, Department of Chemical Engineering, North Carolina State University, Box 7905, Raleigh, NC 27695-7905. North Carolina State University is an Affirmative Action/Equal Opportunity Employer.**

POSTDOCTORAL POSITIONS

TWO POSTDOCTORAL positions are available in an NIH-funded project, one immediately and one in the next several months, to determine the mechanism by which vitamin K-dependent proteins are post-translationally modified by the gamma-carboxylase using combined biochemical and molecular biological approaches. Studies will include structure-function analysis of the carboxylase and vitamin K-dependent proteins and defining the role of these proteins in hemostasis and other biological systems. A recent Ph.D. with experience in protein biochemistry is preferred. Send curriculum vitae and the names of three references to: **Dr. Kathleen L. Berkner, Department of Cell Biology, NC 10, Cleveland Clinic Foundation Research Institute, 9500 Euclid Avenue, Cleveland, OH 44195. FAX: 216-444-9404; Email: berknek@cesmtp.ccf.org.**

POSTDOCTORAL RESEARCH ASSOCIATE

Position available immediately for candidate with experience in genetic linkage analysis and positional cloning, to study a novel human tumor suppressor gene locus. Ph.D. should be in molecular biology, genetics, or a related field. Must have firm commitment to academic research, excellent communication skills, and the ability to work well with a variety of people. Mail curriculum vitae (no telephone calls accepted) for review to: **Carolyn Cole, University of Wisconsin Comprehensive Cancer Center, K4/666, 600 Highland Avenue, Madison, WI 53792-0001.**

POSTDOCTORAL POSITION HEMOSTASIS AND THROMBOSIS

POSTDOCTORAL POSITION available immediately to study the protein chemistry/enzymology of coagulation/thrombolysis. Candidates should have a Ph.D. in chemistry or biochemistry and relevant research experience. Send curriculum vitae, a description of research experience and interests, and three letters of reference to: **Dr. Kenneth G. Mann, Department of Biochemistry, College of Medicine, University of Vermont, Burlington, VT 05405.**

POSTDOCTORAL POSITION for Ph.D./M.D. to study neural gene expression and regulatory mechanisms from gene transcription through functional protein. Requires experience in molecular biology, biochemistry, neurosciences, and *in vitro* and *in vivo* methodologies. Salary commensurate with experience. Send curriculum vitae and three letters of reference to: **Dona Lee Wong, Ph.D., Nancy Pritzker Laboratory, Department of Psychiatry and Behavioral Sciences, Stanford University School of Medicine, MSLS Building, P-106, Stanford, CA 94305-5485.**

Department of Physiology and Biophysics
The University of Iowa
Iowa City, Iowa

Postdoctoral Opportunities

The Department provides training for selected individuals who have demonstrated promise for research at the postdoctoral level. Openings are advertised individually as they become available. The emphasis of research in the Department is in molecular and cellular physiology, neurobiology, and genetics. Training faculty of the department and their research interests are:

- **Francois M. Abboud**—Mechanisms of activation of baroreceptors and regulation of sympathetic nerve activity.
- **Brett A. Adams**—Physiological roles and structure-function relationships of voltage-gated ion channels.
- **Nikolai O. Artemyev**—Molecular mechanisms of sensory signal transduction; photoreceptors and visual transduction.
- **Kevin P. Campbell**—Molecular studies of voltage-gated calcium channels and the dystroglycan complex in skeletal muscle.
- **Carl Gisolfi**—Molecular mechanisms of thermotolerance, and the effects of age on catecholamine and amino acid brain neurotransmitters.
- **Toshinori Hoshi**—Biophysical and molecular mechanisms of ion channel protein function.
- **Wayne A. Johnson**—Developmental neurobiology; regulation of neuron-specific transcription.
- **Gary Koretzky**—Signal transduction; regulation of T-cell antigen receptor-mediated production of second messengers.
- **W. Scott Moye-Rowley**—Transcriptional control of oxidative stress tolerance; eukaryotic multidrug resistance.
- **Jeffrey E. Pessin**—Regulation of the glucose transport system and intracellular targets of insulin action nutritional states.
- **Andrew F. Russo**—Transcriptional control of phenotypic specification in the neural crest.
- **Thomas J. Schmidt**—Subunit structure of glucocorticoid receptors; pharmacology of glucocorticoid antagonists; regulation of receptor gene expression.
- **Deborah L. Segaloff**—Mechanism of action and regulation of the LH/CG and FSH receptors in the ovary.
- **Erwin F. Shibata**—Molecular and cellular cardiac electrophysiology; receptor mediated signal transduction; coronary artery smooth muscle ion channels.
- **Curt D. Sigmund**—Transgenic and knockout models of human cardiovascular disease; regulation of gene expression in transgenic mice.
- **Michael J. Welsh**—Biology of Cl^- and Na^+ channels and their dysfunction in diseases such as cystic fibrosis and hypertension; gene transfer to the lung.

For further information contact:

Dr. Robert E. Fellows, Professor and Head
Department of Physiology and Biophysics
5-660 Bowen Science Building, Iowa City, Iowa 52242
<http://www.physlog.uiowa.edu>

*The University of Iowa is an Equal Opportunity
 Affirmative Action Employer.*

MEETINGS

Biology of Proteolysis

April 23 - 27, 1997



Organized by:

Charles S. Craik, University of California, San Francisco
Susan Gottesman, National Cancer Institute
Mark Hochstrasser, University of Chicago
Yuri Lazebnik, Cold Spring Harbor Laboratory

Topics and Session Chairs Include:

Spatial and Temporal Controls in Development	(Kathryn Anderson)
Signal Transduction	(Tom Maniatis)
Protein Quality Control and Chaperones	(Ulrich Hartl)
Cell Cycle	(Joan Ruderman)
Cellular Transformation and Neoplasia	(Peter Howley)
Antigen Presentation/Immune System	(Hidde Ploegh)
Gene Regulation and DNA Replication	(Tania Baker)
Cell Death	(Vishva Dixit)

CSHL particularly encourages junior scientists to present their data at the meeting. All oral and poster presentations will be selected on the basis of scientific merit.

Abstract Deadline: January 29, 1997

Other CSHL 1997 Spring Meetings

Meeting Dates / Abstracts Due

Cell & Molecular Biology of *Aplysia* & Related Invertebrates

April 16 - 20 / January 22

Regulation of Liver Gene Expression in Health and Disease

April 30 - May 4 / February 5

Tyrosine Phosphorylation & Cell Signaling

May 7 - 11 / February 12

Genome Mapping & Sequencing

May 14 - 18 / February 19

Retroviruses

May 20 - 25 / February 26

62nd Symposium: Pattern Formation During Development

May 28 - June 2 / March 5

Cold Spring Harbor Laboratory

Meetings & Courses Office

1 Bungtown Rd, Cold Spring Harbor, NY 11724-2213

Email: meetings@cschl.org

Fax: 516-367-8845 Phone: 516-367-8346

<http://www.cshl.org/meetings/>



LOGAN RESEARCH FELLOWSHIPS

Applications are invited, from suitably qualified women and men, for five Logan Research Fellowships for 1997.

Monash University is among the top research institutions in Australia with one of the highest records of published research in recent years compared with other universities in the country.

To build on its research reputation and to mark the retirement in December 1996 of vice-chancellor, Professor Mal Logan, Monash University last year established the Logan Fellowship scheme to attract the best postdoctoral researchers in the world in any field.

The terms and conditions of appointment compare very favourably with other schemes at this level. Depending on experience, the initial appointment salary is based on a research fellow Level B (A\$46,269 - \$51,113 pa) with the opportunity to advance to a level C (commencing salary is A\$52,726). Applicants should have at least two and not more than six years of postdoctoral research experience. The initial appointment is for three years, extendable to six years. Commencement date is 1 July 1997.

Research support grants are equally attractive and range from A\$5,000 to \$20,000 pa depending on the needs of the research program.

Applications must be lodged by **Friday, 28 February 1997**.

For guidelines, conditions of appointment, application forms and information about research at Monash contact the Monash University Research Grants and Ethics Branch Home Page on the World Wide Web at <http://www.monash.edu.au/resgrant>

Inquiries: (email) christina.perrett@adm.monash.edu.au
(fax) + 61 3 9905 3831; (telephone) + 61 3 9905 9016.



CRS0122

UNIVERSITY OF ST. ANDREWS

Research Fellowship Structural and Molecular Biology

A three-year Wellcome Trust funded position is available immediately. The fellow will work with Dr. Jim Naismith and Professor Ron Hay on proteins essential in adenoviral replication. Postgraduate experience in molecular biology is required; manipulation of baculo virus/insect cell expression systems would be a considerable advantage. Experience in protein crystallography is NOT required, but would be helpful.

Salary will be at the appropriate point on the RAIA scale, i.e. £14,317-£21,519 per annum.

Informal enquiries to **Jim Naismith** (naismith@st-and.ac.uk, tel: (44) 1334-403792).

Application forms and further details from **Personnel Services, University of St. Andrews, College Gate, North Street, St. Andrews, Fife KY1 69AJ** (tel: (44) 1334-462571; fax: (44) 1334-462570; email: jobline@st-andrews.ac.uk).

Applications cannot be made by email.

Please quote reference ML129/ACHO. Closing date: Friday 20 December 1996.

The University operates Equal Opportunities and No Smoking Policies.

Looking for the missing pieces to your recruitment puzzle?

Growing Opportunities:
European Careers and Graduate Programs for Life Scientists
31 January 1997 • A SCIENCE Advertising Supplement

Find what you're looking for in the upcoming European Careers Advertising Supplement. By advertising in this issue, you'll reach European scientists focused on their careers. You'll also receive bonus distribution to over 20 university science programs in Europe and the UK.

Be sure to ask about Internet advertising opportunities on SCIENCE Professional Network's Current Career Workshop that also explores European Careers.

In Europe:

DEBBIE CUMMINGS

Phone: +44(0)1223 302067

Fax: +44(0)1223 576208

In the US:

JANIS CROWLEY

Phone: (212)496-7704

Fax: (202)289-6742

SCIENCE

<http://www.sciencemag.org>

STRATAGENE, a leader in the development and manufacture of molecular biology research products in La Jolla, currently offers the following opportunity:

BIOLOGICAL PROCESS IMPROVEMENT SPECIALIST/ SCIENTIST

This position will collaborate with the Production and R&D departments to troubleshoot biological process issues. Requires Master's in Biochemistry, Chemistry, or Molecular Biology (PhD preferred) with 5 years' relevant experience. Strong understanding of protein purification procedures, experimental design and statistics essential. Experience with thermophilic and DNA binding proteins is desirable.

Qualified candidates are invited to send a resume to: Stratagene, 11011 N. Torrey Pines Rd., La Jolla, CA 92037, Attn: Professional Staffing Req. 21098-96R. AA/EOE.



STRATAGENE®

The Science of Agricultural Genetics

POST-DOCTORAL RESEARCH ASSOCIATE

Crop Protection - Disease Resistance (Job #CP-702)

The successful candidate will join a team to identify and characterize the proteins responsible for remodeling chromatin in response to pathogen attack. Engineering the genes that encode these proteins to provide disease resistance is a long-term goal. We are employing a reverse genetics approach that exploits our maize EST database. The candidate will identify and characterize ESTs that are likely to play a role and then evaluate mutants in the corresponding genes. The candidate will be expected to integrate the literature from all relevant systems, propose innovative experiments, and conduct research with the highest rigor. Proper record keeping, insightful interpretation of results, clear and timely reports, preparation of publication-quality manuscripts and patent applications, and productive interaction with colleagues is required. Ph.D. in molecular biology or a related discipline is required. The candidate must be skilled at: conducting and interpreting DNA and protein sequence homology searches; PCR primer and reaction design and radioactive-based Southern blotting for complex genomes; immunology experience is desirable.

RESEARCH ASSOCIATE

Crop Protection Disease - Resistance (Job #CP-704)

The successful candidate will join a team investigating the biology of maize ear molds and mapping and cloning disease resistance genes. The candidate will contribute to the design, execution and reporting of experiments. The candidate will also manage routine lab operations and train and supervise part-time help. M.S. in plant sciences or B.S. with equivalent experience. Requirements include: research experience in plant pathology and genetics, efficient use of computers, solid mathematical skills, experience in critical analysis of data and preparation of manuscripts for publication, proven organizational skills, capacity to drive experiments to successful completion, excellent interpersonal skills. Working knowledge of statistics and molecular biology techniques will be an asset.

Pioneer Hi-Bred International, Inc. offers an opportunity to interact among hundreds of scientists with diverse backgrounds. We offer competitive salaries and excellent, comprehensive benefits. Des Moines is a prospering heartland city that ranks well above the national averages in affordability and education. For confidential consideration send 3 copies of your current resume and cover letter indicating job number by December 16, 1996 to: Pioneer Hi-Bred International, Inc., Attn: PERSONNEL (Job #CP-702 or #CP-704), P.O. Box 1004, Johnston, IA 50131-1004.

Pioneer Hi-Bred International, Inc., is the world leader in agricultural genetics. Founded in 1926, we are a publicly held company that invests more than \$115 million in research and product development. Pioneer® brand products are grown in almost every crop-producing continent in the world. At our headquarters in Des Moines, Iowa, we're adding to our Research team.



**PIONEER HI-BRED
INTERNATIONAL, INC.**
An Equal Opportunity
Employer

GLOBAL CAREER OPPORTUNITIES

University of Heidelberg

The Zentrum Für Molekulare Biologie Heidelberg (ZMBH) at the University of Heidelberg (FRG) invites applications from young scientists for a five-year

GROUP LEADER POSITION

The successful candidate will have the opportunity to establish an independent research group. It is expected that his/her research program will contribute to the ZMBH's research activities which focus on molecular aspects of gene regulation and development, cell biology, neurobiology, and mechanisms of pathogenicity. The holder of the position is expected to participate in the department's teaching program.

The ZMBH presently houses 15 independent research groups and offers excellent central facilities which include DNA- and peptide synthesis, protein micro-sequencing, transgenic facility, biocomputing, and centralized administrative services.

Further details may be obtained from Prof. Dr. Stefan Jentsch, telephone 49-6221-548716, telefax 49-6221-545891.

Applications should be sent to the Director of the ZMBH, Im Neuenheimer Feld 282, D-69120 Heidelberg by December 30, 1996.

University of California San Diego School of Medicine Tenure Track or Tenured Position in Immunology

The deadline for an available faculty position in immunology has been extended to February 1, 1997. Areas of interest should include: signal transduction in immunological functions, protein trafficking related to receptor assembly and antigen presentation, structure related to function in immunospecific molecules, the role of cytokines, cell adhesion molecules and inflammatory reactions in immune responses, mechanisms of host-pathogen interactions, development of immune systems, functional organization of immunity-relevant organs and mechanisms, and genetics of autoimmune responses. Academic rank and salary will be based on qualifications and experience based on UC scale.

Applicants should have M.D. or Ph.D. degrees with relevant postdoctoral experience and demonstrated ability to conduct an independent research program using modern techniques. They should also have skills and interest in teaching. Submit curriculum vitae, bibliography, statement of professional goals and research interests, and names and addresses of 5 references to:

Immunology Search Committee
c/o Gordon N. Gill, M.D.

University of California, San Diego

9500 Gilman Drive

#119, CMM-W Bldg.

La Jolla, CA 92093-0650

Application deadline: February 15, 1997.

EOE/AA

The MIT-WHOI Joint Program in Oceanography and Applied Ocean Sciences and Engineering

NSF GRADUATE RESEARCH TRAINEESHIPS IN COASTAL OCEAN PROCESSES

The National Science Foundation has awarded five Graduate Research Traineeships in Coastal Ocean Processes to The Massachusetts Institute of Technology-Woods Hole Oceanographic Institution Joint Program in Oceanography and Applied Ocean Sciences and Engineering for interdisciplinary research leading to the Ph.D. or D.Sc. in Oceanography or Ocean Engineering. We invite applications from individuals who are U.S. citizens or permanent residents and who have a Bachelors or Masters degree in a relevant discipline; e.g., Physics, Mathematics, Geology, Geophysics, Chemistry, Biology, Engineering and Oceanography. Women, minorities and individuals with disabilities are strongly encouraged to apply.

Some examples of the many interdisciplinary research areas are: Air-sea interactions in the coastal ocean; Biogeochemistry and effects of chemicals of environmental concern; Wetlands research; Ecosystem field studies and modeling; Coastal fisheries; Instrumentation for coastal ocean studies; Benthic processes and benthos-water column interactions; Rivers and the coastal ocean; Plankton dynamics.

For more information and application forms, please contact: Education Office, MS 31 Woods Hole Oceanographic Institution Woods Hole, MA 02543-1541 Phone: (508) 289-2219 Email: education@whoi.edu.

MIT and WHOI are Equal Opportunity/Affirmative Action Employers. MIT and WHOI are non-smoking environments.

**Wanted: Committed, ambitious
scientist. Must be a team player
with a vision for the future.
M.D./Ph.D., Ph.D., M.S. or
B.S. degree necessary.**

Does this describe you?

If it does, then plan to attend the AAAS bioSCIENCE Career Fair on February 18, 1997 from 11am-5pm in Seattle, WA at the Washington State Convention Center. This fair, sponsored by the American Association for the Advancement of Science and SCIENCE, offers the perfect opportunity for scientific professionals to meet in person with representatives from top organizations.

In addition to the career fair (which is free to all) there will be on-site career development workshops conducted by top science recruiters and human resource professionals (workshops are \$10 AAAS member/\$25 non-member).

Workshops include:

- Alternative Career Paths: AAAS Fellowship Programs in Science Policy and Mass Medicine: 8:30am - 11:30am
- Requirements for a Successful Career in Science & Technology: 2:30pm - 5:30pm
- New Directions: Transitions to Alternative Careers: 2:30pm - 5:30pm

To pre-register, please submit your resume or CV via fax: (202) 289-6742, or via e-mail: bioscience@aaas.org. Please remember to bring multiple copies of your CV or resume with you to the Career Fair, a copy will be necessary to register. Admission to the event is free.

AAAS bioSCIENCE CAREER FAIR

For more information, please call (202) 326-7018.

bioSCIENCE Career Fair Information On-Line: <http://www.sciencemag.org>
(Choose SCIENCE Classified Advertising from the menu)



The College of Oceanic and Atmospheric Sciences (COAS) announces the availability of two tenure-track positions at the Assistant or Associate Professor level. Applicants within the following fields of expertise will be considered:

Benthic Ecology, with emphasis on subtidal or deep habitats, and interactions of Benthic communities with oceanographic processes.

Isotope Biogeochemistry, with emphasis on application of isotopes in water and sediments as tracers of oceanographic and biogeochemical processes.

Physical Oceanography, with emphasis on theory and observation of large- and regional-scale ocean circulation processes and ocean-atmosphere interaction.

The appointee(s) will be expected to develop and maintain a vigorous, externally funded research program in his/her specialty, to interact with faculty colleagues and graduate students, and to participate in the teaching program of COAS. Essential qualifications include a Ph.D. in a relevant science, a record of significant and exciting research within an appropriate field, and either the potential or the demonstrated ability to attract external funding. Rank and salary will be commensurate with qualifications. Starting date is anticipated to be summer 1997, but is negotiable.

COAS is one of the leading oceanographic graduate research institutions in the country, with more than 200 faculty and staff, and a wide variety of analytical and oceanographic facilities, including excellent computing facilities, a variety of modern analytical laboratories, and two research vessels. OSU is located in an area known for its beauty and quality of life. For more information about the college, OSU, Corvallis, and the environment please consult our web page at <http://www.oce.orst.edu>.

Applications should consist of a letter of interest, a current curriculum vitae that includes a description of current research interests, funding history, list of publications, and the names and addresses of at least five references, and should be sent to **G. Brent Dalrymple, Dean, College of Oceanic and Atmospheric Sciences, 104 Ocean Admin. Bldg., Corvallis, OR 97331-5503**, by 15 February 1997. Inquiries should be addressed to Dr. Dalrymple by phone at (541) 737-5195, fax (541) 737-2064 or email gbd@oce.orst.edu. OSU is an AA/EEO employer and has a policy of being responsive to the needs of dual career couples.

REGENERON PHARMACEUTICALS, INC.

Two Postdoctoral/Scientist Positions Available

Several Research Associate Positions Available

Regeneron Pharmaceuticals, Inc. is a leader in the application of molecular and cell biological approaches to the discovery of novel trophic factors.

The two Postdoctoral/Scientist positions are part of our Discovery laboratory. One position requires skills in the areas of ELISA development & execution, the ability to write an IACUC protocol and perform in vivo experiments such as IV and IP injections into mice, inoculation of rodents with human tumors, SDS PAGE and Western Blotting. Particular consideration will be given to those with experience in setting up models of human disease in rodents. We are looking for a Ph.D. with 0-3 years of postdoctoral experience.

The second opening requires skills in the areas of ELISAs, mammalian cell culture and transfection, gene induction reporter assays, design and engineering of cDNA constructs, SDS PAGE and Western Blotting. We are seeking a Ph.D. with 0-3 years postdoctoral experience. Particular consideration will be given to candidates with experience in Signal Transduction and Cytokine Receptors.

Successful candidates for both available positions will have a proven publication record and demonstrate the ability to integrate into, and work well with, a project team. Good oral and written communication skills are also crucial.

Research Associates

We are always looking for skilled RAs to join our company in full-time and long-term temporary assignments. Our entry-level positions require a BA/BS in a science related field and 0-3 years of lab experience. Some other positions require more specific skills/experience, such as molecular cloning, recombinant DNA, tissue cultures, cell cultures, fermentation and bioreactors.

Regeneron's modern research facilities are located in a suburban setting with ready access to the cultural and business centers of New York City.

Qualified candidates should send their resumes, *including salary requirements*, to: **Regeneron Pharmaceuticals, Inc., 777 Old Saw Mill River Road, Tarrytown, NY 10591**. Post Doc/Scientist applicants send to **Bin NS**, Research Associates applicants send to **Bin RA**. Fax: (914)347-2847. **EO/EM/F/H/V No phone calls please.**

New & Improved web site

you



**What's the
shortest distance
between two points?**



**great career
opportunities**

**SCIENCE CLASSIFIED
ADVERTISING ON-LINE**

<http://www.sciencemag.org>

Select SCIENCE Classified Advertising from the menu

SCIENCE

CALIFORNIA STATE UNIVERSITY

Department of Biology

Assistant Professors

The Department of Biology, California State University, Northridge, invites applications for two tenure track faculty positions available August 1997. **Application deadline is January 29, 1997.**

Eukaryotic Molecular Biologist — The successful applicant will be expected to teach cell biology, techniques in recombinant DNA research, genetics, molecular genetics, molecular biology, and introductory biology. A Ph.D. in biology or related field is required with postdoctoral experience preferred. Candidates must show 1) teaching experience with university undergraduate and/or graduate students, 2) evidence of outstanding teaching skills, 3) a commitment to teaching, supported by the innovative use of teaching technology, 4) research experience in eukaryotic molecular biology, with publications, 5) strong potential for establishing an externally funded research program in molecular biology that interfaces with the diverse interests of the department and that involves both undergraduate and graduate students.

Microbiologist — The successful applicant will be expected to teach courses in undergraduate general microbiology, graduate-level microbiology in area of specialty, and occasionally undergraduate general biology. Applicants must have a Ph.D. in microbiology or related area, postdoctoral research experience, demonstrated research ability, evidence of teaching effectiveness, and strong commitment to teaching. Candidates must have extensive background in microbiology and in protein structure and function (e.g. protein analysis, expression, folding and assembly; recombinant, cell surface, or viral proteins; microbial toxins). The appointee will be expected to develop a research program involving undergraduate and graduate students, supervise M.S. graduate research, and solicit extramural funding.

Applicants should send a letter of application outlining research interests, relevant course background, curriculum vitae, summary of teaching experience, copies of publications, and three letters of reference to: **Dr. Mary Corcoran, Chair, Department of Biology, CSU, Northridge, 18111 Nordhoff Street, Northridge, CA 91330-8303. CSU Northridge is an Equal Opportunity/Affirmative Action Employer.**

POSITIONS OPEN

POSTDOCTORAL POSITION

POSTDOCTORAL POSITION available immediately to study enhanced recognition by modified oligonucleotides. Projects include hybridization to duplex DNA, probing telomerase, and intracellular delivery. Please send curriculum vitae and a brief statement of relevant research interests to:

Dr. David Corey
University of Texas Southwestern Medical Center
5323 Harry Hines Boulevard
Dallas, TX 75235-9050
Email: Corey@howie.swmed.edu
Equal Opportunity Employer

BIOPHYSICS POSTDOCTORAL POSITIONS

Washington University Medical School

POSTDOCTORAL POSITIONS are available for:
1) computational studies of protein-ligand interactions;
2) site-directed mutagenesis and kinetic studies of thrombin and related serine proteases. Send curriculum vitae and three letters of reference to: Dr. Enrico Di Cera, Department of Biochemistry and Molecular Biophysics, Washington University School of Medicine, Box 8231, St. Louis, MO 63110. Email: enrico@caesar.wustl.edu; FAX: 314-362-7183.

POSTDOCTORAL POSITION available immediately to study the nature of interprotein interactions between cyt P450 and its redox partners cyt b5 and cyt P450 reductase. A molecular biologist with an interest in enzymology is required to generate and characterize the structure and function of mutant proteins. Send résumé and three letters of reference to: Dr. Waskell, Department of Anesthesia, UCSF, VA Medical Center, San Francisco, CA 94121. FAX: 415-750-6946. Equal Opportunity Employer.

POSTDOCTORAL POSITION available immediately to study protein-protein interactions by NMR. The structure and dynamics of the cyt b5-cyt c complex in solution will be evaluated. Experience with multidimensional NMR and protein purification desirable. Send résumé and three letters of reference to: Dr. Basus, Department of Pharmaceutical Chemistry, University of California San Francisco, San Francisco, CA 94111. Email: basus@picasso.ucsf.edu.

MARKETPLACE

SFM-Human Keratinocyte Cell System

Start up a 75 for LESS than a 25
More Cells / Lowest Price / Highest Quality
CSC Certificate™ #30467



1-800-697-1211

Circle No. 32 on Readers' Service Card

PROTEIN / PEPTIDE SEQUENCING

1-800-481-0790

Midwest Analytical, Inc.
11139B South Towne Square
St. Louis, MO 63123

Circle No. 36 on Readers' Service Card

ANTIBODIES TO PHOSPHORYLATED PROTEINS

Zymed has developed specific antibodies to phosphoserine, phosphothreonine, and phosphotyrosine. PY7E1 is an excellent low-cost alternative to 4G10. Contact Zymed for information.



ZYMED LABORATORIES INC.

458 Carlton Court • South San Francisco • CA 94080
Customer Service: 1-800-874-4494 • Fax: 415-871-4499
E-Mail: tech@zymed.com • Web Site: http://www.zymed.com

Circle No. 33 on Readers' Service Card

MARKETPLACE

PeptidoGenic

The Peptide Engineering Specialist
E-mail: pkim@ccnet.com
Fax: 510-371-1156
Voice: 800-597-7873
510-371-1070

Custom Peptide

\$20/residue/crude/5days

No Setup Fee
Free HPLC &
IonSpray Mass.

Circle No. 16 on Readers' Service Card

Custom DNA from \$1.00/base



ransom hill bioscience, inc.

http://www.ransomhill.com

no setup, no minimum, no baloney!

email: visla@ix.netcom.com fax: (800) 597-8509

Circle No. 2 on Readers' Service Card

CUSTOM DNA SYNTHESIS

PURE & SIMPLE

• Superb Technical Support

• Impeccable Quality

• World's Fastest Service

• Cap Gel & TOF Mass Spec

* Some restrictions apply. Please call for details.

\$1¹⁹*
per base
\$10 setup
50 nmole
scale

MIDLAND

STILL THE UNDISPUTED #1 CUSTOM DNA SYNTHESIS SERVICE

THE MIDLAND CERTIFIED REAGENT COMPANY

Phone 1-800-247-8766 FAX 915-694-2387

email mcrc@oligos.com

Circle No. 5 on Readers' Service Card

Now just \$1.00 a base...
with no set-up charge.*

* 50 nmole scale, standard purity

GIBCO BRL
CUSTOM PRIMERS™
\$1¹⁰⁰
PER BASE

- High quality
- High capacity
- Fast turnaround

Internet ordering on the World Wide Web:
http://www.lifetech.com

Call for easy fax ordering form: (800) 828-6686

LIFE TECHNOLOGIES.

Producer of Gibco BRL Products

Circle No. 20 on Readers' Service Card

ONLY DNA

No frills, just good DNA at very low prices

69¢ per base, NO setup charge

Ultra-small scale synthesis gives 1 A₂₆₀ unit

Some restrictions apply; Call for details

1-800-359-5794 e-mail onlydna@oligos.com

Circle No. 6 on Readers' Service Card

MARKETPLACE

PRIMERS

\$1¹⁹
• 200 NMOLS (15-20 ODU)
• NO Restrictions
• NO Setup
• Purified
• Full Q.C., Page on every oligo
• 24-48 Hours

or
65¢

• 50 NMOLS (5 ODU)
• Full Q.C.
• Just order > 400 bases aTsT
• Guaranteed Quality

"From the people that first introduced oligos in 1984."

BIO-SYNTHESIS, INC.
1-800-227-0627
Fax 214-420-0442
E-Mail: biosyn@onramp.net
INet: http://www.biosyn.com



Circle No. 8 on Readers' Service Card

DNA Sequencing

as low as \$40/run

Custom Oligos

\$0.89/base Restrictions may apply

1-800-OLIGOS-1

e-mail: anagen@svpal.org

ANA-GEN
Ana-Gen Technologies, Inc.

Circle No. 25 on Readers' Service Card

QUALITY CUVETTES!!!

Inexpensive Electroporation Cuvettes
Each sterile package includes a free
pipette for easy sample removal!

BTX

1-800-289-2465

FAX: 619-597-9594

Circle No. 17 on Readers' Service Card

The Custom Peptide Authority

- Research Grade
- GMP Grade
- Peptide Antibodies
- Libraries



Multiple
Peptide
Systems

Phone: 800-338-4965 • Fax: (619) 455-3713
e-mail: mps@mps-sd.com

Circle No. 31 on Readers' Service Card

Custom DNA

Purified & Delivered in 48 Hours

\$1.20 per base • Purified

http://www.resgen.com

Research Genetics, Inc.

1-800-533-4363

Circle No. 4 on Readers' Service Card

CUSTOM OLIGONUCLEOTIDE SYNTHESIS
MOLECULAR BIOLOGY SERVICES
GENE CONSTRUCTION
DNA POLYMERS
RNA POLYMERS
PRIMERS
LINKERS

*Oligos-
as low as
69¢
per base*

THE MIDLAND CERTIFIED REAGENT COMPANY

THE MIDLAND CATALOG #104

Circle No. 7 on Readers' Service Card

Enter A New World of Performance

With the *BioMax* Family of Films ...

BioMax MS film/screen for Maximum Sensitivity

Utilizing advanced emulsion technology, *BioMax* MS film optimally detects the 540 nm wavelength light emitted by the *BioMax* MS intensifying screen to provide 4 to 8 times increased sensitivity for detection of ^{32}P and ^{125}I labeled samples.

BioMax MR film for Maximum Resolution

The advanced *BioMax* MR emulsion, coated on only one side of the film, delivers maximum resolution of images on a clear background. The film also yields maximum sensitivity for detection of ^{35}S , ^{33}P , and ^{14}C .

BioMax Light film for Chemiluminescence

Designed specially for detection of chemiluminescent-labeled samples to provide maximum clarity and sensitivity.

and Intensifying Screens

BioMax MS intensifying screen for ^{32}P and ^{125}I

For use with all films to provide a two-fold increase in sensitivity compared to the DuPont Lightning Plus intensifying screen. Maximum sensitivity achieved in combination with *BioMax* MS film.

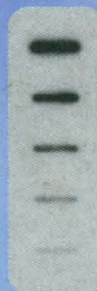
BioMax TranScreen -LE for ^3H , ^{35}S , ^{33}P , ^{14}C

Introducing the first intensifying screen for detection of low-energy isotopes. Use with *BioMax* MS film to achieve sensitivity comparable to direct detection but in one-sixth the time.

For more information, contact Kodak Scientific Imaging Systems at 1-800-225-5352 or 716-722-5813. Or visit us on the Worldwide Web at <http://www.kodak.com>.

Circle No. 26 on Readers' Service Card

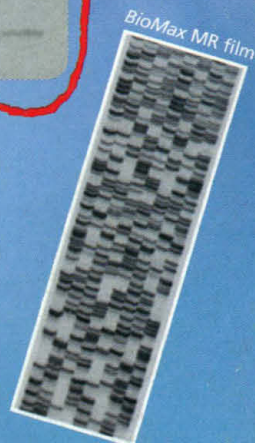
XAR film/
L+ screen
BEFORE
72 hours



BioMax MS
film/screen
NOW
16 hours



BioMax MR film



Australia/NZ Integrated Sciences Ltd. +61 (0) 2 94177866
Austria INTEGRA Biosciences AG +41 (0) 1 830 22 77
Belgium INTEGRA Biosciences AG +41 (0) 1 830 22 77
•Sigma-Aldrich +32 (0) 3-8991301
•Amersham +32 92415270
Canada InterSciences Inc. (905) 940-1831 or (800) 661-6431
•VWR Canlab (905) 813-7377 or (800) 565-2051
•Amersham (416) 847-1166
Denmark Struers KEBO Lab AS +45 43 86 87 88
•Amersham +45 4582022
Finland KEBO Lab OY +358 (9) 0804 551
France INTEGRA Biosciences S.A. +33 (1) 39 59 84 42
•Sigma-Aldrich +33 74-82 28 00
•Amersham +33 (1) 69182800
•PolyLabo +33 88 65 80 20
Germany INTEGRA Biosciences GmbH +49 (0) 6404 8090
•Sigma-Aldrich +49 (0) 89-6513-0
•Amersham +49 (0) 53079300
Hong Kong Amersham +852 26021288
India Biotech India +91 (542) 311473
Israel TAMAR Ltd. +972 (0) 2 6 520 279
Italy M-Medical srl +39 (0) 55 55001871
•Sigma-Aldrich S.r.l. +39 (0) 2 33417-310
•Amersham +39 (0) 2 5088220
Japan Cosmo Bio Co. Ltd. +81 (0) 3 5632 9610
•Amersham +81 338161091
•Kodak Japan Ltd (03) 5488-2319
Korea LRS Labs +82 (0) 2 924 86 97
Netherlands INTEGRA Biosciences AG +41 (0) 1 830 22 77
•Sigma-Aldrich +31 (0) 78 6205411
Norway KEBO Lab AS +47 (0) 22 90 00 00
•Amersham +47 67546318
Singapore Research Instruments Pte. Ltd. +65 775-7284
Spain Quimigrafi s.a. +34 (9) 1 556 16 14
•Amersham +34 (9) 13044200
Sweden KEBO Lab AB +46 (0) 8 621 34 00
•Amersham +46 (0) 84447180
Switzerland INTEGRA Biosciences AG +41 (0) 1 830 22 77
•Sigma +41 (0) 81 755 2721
•Amersham +41 (0) 13157050
Taiwan Long Chain +886 2 552-2605
United Kingdom Anachem Ltd. +44 (0) 1582 456666
•Sigma-Aldrich +44 (0) 1202 733114
•Amersham +44 (0) 1494544000
United States Sigma (314) 771-5750 or (800) 325-3010
•VWR Scientific (800) 932-5000
•Amersham (800) 323-9750
•Fisher Scientific (800) 766-7000

