

PRODUCTS & MATERIALS

Countercurrent Chromatograph

Model RLCC-1000 is capable of liquid-liquid separation based on the partitioning of solutes between a steady stream of mobile phase and the stationary phase filled in the locular column system. The mobile phase can be easily switched to migrate in the ascending mode or in the descending mode.



The system consists of 16 locular columns, each consisting of 37 chambers. The rotation speed is adjustable from 0 to 100 rpm with digital readout of the speed. The angle of the columns is adjustable from 0° to 90°. The system is biocompatible, with all wetted parts made of Teflon, polyetherketone, or glass. **DyChrom. Circle 139.**

Monoclonal Antibodies

Anti-human annexin V monoclonal antibody (mAb), clone RUU-WAC2A, is for use in apoptosis research. It is suitable for immunoprecipitation of soluble annexin V, enzyme-linked immunosorbent assay, immunofluorescence, and immunohistochemistry. Also for apoptosis research, anti-human granzyme B mAb, clone GrB-7, specifically recognizes the human serine protease granzyme B and does not react with granzyme A. Biotin-labeled anti-human P-glycoprotein mAb MRK16 reacts specifically with a surface epitope on this glycoprotein involved in multidrug resistance. It can be used on live cells. For cancer research, a mAb recognizes the 86-kD subunit of the human Ku protein. Ku is a nuclear protein thought to function

in cell signaling, DNA replication, and transcriptional activation. **Kamiya Biomedical. Circle 140.**

DNA and Oligonucleotide Purification Kits

The DNA Purification Kit II is suitable for purification of DNA from 200 bp to 300 kb; the Oligo Purification Kit II is for the purification of smaller DNA fragments and oligonucleotides from 10 to 200 bp. The kits purify DNA from solutions in less than 10 min and from agarose gels in less than 15 min. The procedure yields pure DNA suitable for all applications, including fluorescent sequencing. Further applications include removal of radioisotopes and organic substances and DNA purification following enzymatic reactions. **Hybaid. Circle 141.**

Table of Contents Database

SWETSCAN TOC is an online database offering tables of contents of more than 13,000 international scholarly and research journals. Coverage from 1993 onward includes social sciences, technology, medicine, science, and humanities. The database contains more than 260,000 records and is updated weekly with 1500 new records. A record contains all the bibliographic data necessary for providing the journal article of interest, including journal title, ISSN, volume and issue numbers, and publication date. **STN International. Circle 142.**

Magnetic Coupling Kit

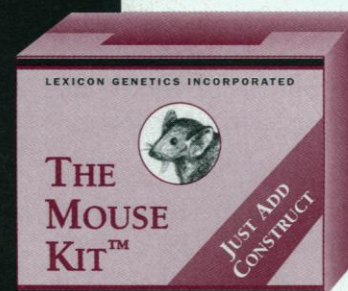
The Solid Phase Oligo COUPLE-IT Kit is for convenient coupling of primary amine-labeled oligonucleotides and other primary amine-labeled nucleic acids to a magnetic solid support. The kit contains all the reagents and magnetic solid support needed to carry out two coupling reactions. The resulting product can be stored for future use

Newly offered instrumentation, apparatus, and laboratory materials of interest to researchers in all disciplines in academic, industrial, and government organizations are featured in this space. Emphasis is given to purpose, chief characteristics, and availability of products and materials. Endorsement by *Science* or AAAS is not implied. Additional information may be obtained from the manufacturers or suppliers named by circling the appropriate number on the Readers' Service Card and placing it in a mailbox. Postage is free.

Lexicon
Genetics
Incorporated

introduces

THE COMPLETE
REAGENT SYSTEM
FOR ENGINEERING
KNOCKOUT MICE



THE
MOUSE
KIT™

- First knockout (KO) system including ES cells, feeder cells and qualified FBS
- Kit features The ESQ Reagent System™—medias and other components optimized for KO production
- Includes comprehensive guide of protocols for gene targeting, ES cell and KO technologies

Also available:
pKO Scrambler Series™
of gene targeting vectors
and Lexicon's complete
line of KO services



4000 Research Forest Drive
The Woodlands, Texas 77381
713-364-0100
www.lexgen.com

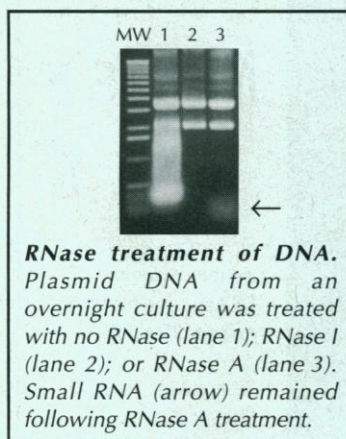
RNase I

better than RNase A

Epicentre's highly purified RNase I degrades RNA (preferentially single-stranded) to 3' mononucleotides regardless of the nucleotide sequence. Unlike RNase A, RNase I is thermolabile and completely inactivated by heating at 70°C for 15 minutes, avoiding the need for organic extractions.

RNase I is useful for:

- **RNA removal from DNA preparations.** As shown below, RNase I degrades contaminating RNA more completely than RNase A.



- **Mismatch detection.** RNase I can be used in RNase protection assays to detect single basepair mismatches in RNA:RNA and RNA:DNA hybrids.

If you are not satisfied with any Epicentre product, we will refund your money.

Money Back
100%
Guarantee

RNase I



**EPICENTRE
TECHNOLOGIES**
800-284-8474

...when you need to be sure of the quality

Outside of the U.S. contact the distributor in your country, or call 608-258-3080 or fax 608-258-3088.
E-mail: techhelp@epicentre.com
World Wide Web: <http://www.epicentre.com>

Circle No. 51 on Readers' Service Card

and re-used. The coupled product can be used in solid phase nucleic acid-based applications including reverse-transcriptase polymerase chain reaction, subtractive hybridization, purification of specific messages or RNA species, isolation of specific DNA molecules, hybridization-based assays, and purification and identification of nucleic acid binding proteins. Coupling with the magnetic solid support enhances the efficiency and convenience of downstream applications by enabling rapid, single tube assays and in most cases eliminating the need for centrifugation and column chromatography. **CPG. Circle 143.**

DNA Enzyme Remover

Micropure-EZ enzyme remover eliminates 36 restriction and other enzymes from DNA samples in one 30-s centrifugation. Enzymes from the reaction mix are selectively adsorbed and DNA is recovered in a vial, undiluted and enzyme-free. For simultaneous concentration or desalting of the sample, a Microcon concentrator can be inserted, providing DNA purification, concentrating, and desalting in a single unit. DNA recovery typically exceeds 85%. **Amicon. Circle 144.**

DNA and RNA Probe Labeling Kits

The ULYSIS Labeling Kits are designed for improved binding of marker groups to DNA, RNA, and other oligonucleotides routinely used in in situ hybridization procedures. The kits feature the proprietary Universal Linkage System, a nonradioactive method that makes use of a novel platinum derivative as the linkage between nucleic acids and the nonradioactive marker of choice. The platinum compound links to single-stranded DNA, double-stranded DNA, RNA, chromosomes, or oligonucleotides. The unique, noncovalent interaction of the system allows optimal probe labeling with a variety of markers including biotin, fluorochromes, digoxigenin, chemiluminescent labels, and enzymes. **Signet Laboratories. Circle 145.**

Agaroses

A new line of agaroses is DNase-, RNase-, and protease-free. AquaPör LE is a low electroendosmosis (EEO) agarose for routine DNA analyses. AquaPör ES, with low EEO and high gel strength, can be used for electrophoresis of DNA from 1 kb to 10 Mb. AquaPör HR is a high-resolving matrix for 20 bp to 25 kb DNA, and can be used for in-gel polymerase chain reaction (PCR) re-amplifica-

tion. AquaPör LM is a low-melting agarose for 20 bp to 25 kb DNA and can be used for both in-gel ligation and PCR re-amplification. **National Diagnostics. Circle 146.**

High Ambient CCD Camera

The AX-HAL is a high-performance, 16-bit camera designed to deal with high ambient background light levels. It incorporates a user-programmable offset to remove ambient



intensity before signal digitization. This avoids the limiting trade-off between sensitivity and dynamic range inherent to conventional charge-coupled device cameras. Applications include film digitization and qualitative and quantitative bioimaging, such as fluorescence in situ hybridization. **Axiom Research. Circle 147.**

Literature

IRIS/AP Plasma Spectrometer is a color brochure on innovative inductively coupled plasma emission instrumentation. The Charge Injection Device solid state detector observes the entire emission spectrum simultaneously. Axial plasma technology improves detection limit performance. **Thermo Jarrell Ash. Circle 148.**

A Complete Guide to Digital Imaging and Analysis Systems presents an overview of this technology. The 12-page color brochure addresses imaging of a wide variety of research samples, including gels, blots, chemiluminescent samples, and bacterial plates. **Alpha Innotech. Circle 149.**

Safety Training Programs is a brochure that describes a line of audiovisual and computer-based programs for compliance with Occupational Safety and Health Administration chemical hazard and biohazard regulations. **SAVANT Audiovisuals. Circle 150.**

Science

DISPLAY CLASSIFIED ADVERTISEMENTS

Call for rate and deadline information on display classified advertisements.

Email: science_displayads@aaas.org

Bren Peters-Minnis
Recruitment Display Advertising
Telephone: (202) 326-6541
FAX: (202) 289-6742
Email: science_displayads@aaas.org

Janis Crowley
Recruitment Advertising Manager
Telephone: (212) 496-7704
FAX: (202) 289-6742

Debbie Cummings
European Recruitment Advertising
Telephone: +44 (0) 1223 302067
FAX: +44 (0) 1223 576208

For MEETINGS AND ANNOUNCEMENTS display advertisements, turn to page 453.

See *SCIENCE Classified Ads on-line at*
<http://www.sciencemag.org>

LINE CLASSIFIED ADVERTISEMENTS

How to Submit a Line Classified Ad:

Submit double-spaced typewritten copy. Do not include any abbreviations. *SCIENCE* will edit and typeset ads according to *SCIENCE* guidelines. Include billing information and desired publication date. Available categories: Positions Open, Meetings, Announcements, Courses and Training, Services. *SCIENCE* cannot provide proofs of typeset line ads. Line advertisements are not commissionable.

Estimates: *SCIENCE* will provide a cost estimate for line ads. This is an approximate cost only. Allow for variation between estimated lines and actual typeset lines and resulting final cost. Purchase orders must allow for some degree of flexibility and/or adjustment.

For line advertising deadlines, call Eric Banks. Telephone: (202) 326-6555; FAX: (202) 289-6742. Email: science_classifieds@aaas.org

Credit Cards: *SCIENCE* accepts American Express, MasterCard and VISA. Discount does not apply to credit cards.

Cancellations: Deadline for cancellation is Tuesday, 10 days prior to issue date.

Discounts: A 3% cash discount is granted to all prepaid ads.

Ads from Outside the U.S.: A discount of \$30 will be offered to advertisers making payment in U.S. dollars by checks drawn on U.S. banks. Contact Debbie Cummings. Telephone: +44(0) 1223 302067; FAX: +44(0) 1223 576208.

SCIENCE Global Career Network: Unless otherwise instructed, every classified advertisement submitted for publication in *SCIENCE* is automatically posted on *SCIENCE*'s on-line classified advertising service, *SCIENCE* Global Career Network, at no additional charge. *SCIENCE* Global Career Network address: <http://www.sciencemag.org>

Mail, FAX or Email materials to:
SCIENCE Classified Advertising
1200 New York Avenue, N.W., Room 911
Washington, DC 20005
FAX: 202-289-6742
Email: science_classifieds@aaas.org (please include your telephone number in Email)

SCIENCE reserves the right, at its discretion, to edit or decline to publish advertisements submitted to it.

POSITIONS OPEN

ASSISTANT PROFESSOR BOTANY

The Department of Biological Sciences at Northern Arizona University invites applications for a **TENURE-TRACK** Assistant Professor in Botany to commence August 1997. Teaching of two courses per semester, with a special emphasis on instructional technology, will include introductory biology, plant biology, wetlands ecology, and microbial ecology. The successful candidate will be expected to develop a research program that involves undergraduate and graduate students. Qualifications include a Ph.D., evidence of research accomplishments, and the ability to teach and communicate effectively. Collaboration with colleagues in teaching and research is expected. The Northern Arizona University community is composed of faculty, staff, and students from a wide range of culturally diverse backgrounds. Applicants should be experienced with and committed to work in, and with, such a diverse population. Applications should include a curriculum vitae, a summary of research goals, a statement of teaching interests and philosophy, and three letters of reference. Review of applications will begin December 1, 1996. Forward all application materials to:

Botany Search Committee
Department of Biological Sciences—Box 5640
Northern Arizona University
Flagstaff, AZ 86011
Telephone: 520-523-2381
FAX: 520-523-7500
<http://www.nau.edu/biology/>

Northern Arizona University is an Equal Opportunity/Affirmative Action Employer.

DEPARTMENT OF MICROBIOLOGY Faculty Positions in Molecular Microbiology

TENURE-TRACK FACULTY positions are available at the Assistant Professor or Associate Professor levels in the area of microbiology with emphasis on pathogenesis, structural biology, and/or genetics. The Department of Microbiology at Duke University Medical Center has a scientifically diverse faculty who study virus structure and function, virus-host interactions, DNA replication and recombination, RNA transcription and processing, protein-nucleic acid interactions, molecular diversity and combinatorial chemistry, X-ray crystallography and NMR, *Drosophila* genetics, mouse embryogenesis, and microbial pathogenesis. The Department is well-funded and has a strong graduate program emphasizing molecular genetics. Interactions with the Duke Comprehensive Cancer Center, the Cell and Molecular Biology Program, the University Program in Genetics, and eight other basic medical science departments help provide a rich intellectual climate. In addition, the Research Triangle Park, surrounded by three excellent universities and containing pharmaceutical and biotechnology companies, provides a high quality living environment. Successful applicants are expected to participate in the teaching of graduate and medical students and to develop an outstanding and innovative research program. Information on the Department is available on the Web at <http://www.duke.edu>. Please send a curriculum vitae, statement of research interests, and the names of three potential references to: Department of Microbiology Search, Jack D. Keene, Professor and Chair, Department of Microbiology, Duke University Medical Center, Durham, NC 27710.

Duke University Medical Center is an Equal Opportunity/Affirmative Action Employer.

JOINT POSITION Anthropology and Biology

Emory University's Departments of Anthropology and Biology announce a joint, tenure-track, **ASSISTANT** or **ASSOCIATE PROFESSOR** position. Departments are especially interested in anthropologists or biologists with active non-laboratory-based research programs in behavioral biology, behavioral ecology, population genetics, or disease ecology and evolution. Candidates must be able to interact effectively with faculty in both Anthropology and Biology programs, have a strong research record, and be committed to quality teaching at the undergraduate as well as the graduate level in both departments. Review commences November 15, 1996. Please send curriculum vitae, description of current and planned research and teaching interests, and names of four referees to: Dr. Carol M. Worthman, Search Committee Chair, Department of Anthropology, Emory University, Atlanta, GA 30322. *Emory is an Affirmative Action/Equal Opportunity Employer.*

POSITIONS OPEN



Wayne State University WAYNE STATE UNIVERSITY Department of Chemistry Faculty Position

Wayne State University, Department of Chemistry, invites applications for a **TENURED** or **TENURE-TRACK** faculty position. This position is associated with the Institute for Manufacturing Research and its Center for Automotive Materials Processing Control and Reliability (CAMPCAR). CAMPCAR is a cross-disciplinary research initiative between Wayne State University engineering/science faculty and industrial partners in automotive manufacturing and supplier companies with emphasis on developing state-of-the-art automotive materials analysis capabilities. Rank, tenure status, and salary commensurate with credentials. Qualifications include Ph.D. in chemistry and commitment to undergraduate and graduate teaching. Candidates for the tenured full professor position should be accomplished researchers with an outstanding record of research funding and scholarly publications. Applicants for a junior faculty position should have potential for developing an externally funded research program that would lead to national recognition. All research areas should focus on materials analysis that has application to the automotive industry. Substantial funding will be available for start-up. Preferred starting date is September 1997. Please send a résumé, a statement of research plans, and names of three references to: Prof. Richard L. Lintvedt, Chair, Department of Chemistry, Wayne State University, Detroit, MI 48202. *Wayne State University is an Equal Opportunity/Affirmative Action Employer. Women and minorities are especially encouraged to apply.*

FACULTY POSITION HUMAN NUTRITION AND METABOLISM University of California, Berkeley

The Department of Nutritional Sciences is seeking an **ASSOCIATE** or **FULL PROFESSOR** for a nine-month, tenured position beginning July 1, 1997. The appointee will be an established investigator with an active research program in the general area of metabolic regulation, nutritional biochemistry, or human nutritional disorders. Areas of interest include, but are not limited to, obesity, carbohydrate or lipid metabolism, cellular differentiation and growth, endocrine-nutrition interactions, and genetic aspects of nutrition and metabolism. The appointee may work with graduate students seeking advanced degrees in nutrition, toxicology, comparative biochemistry, endocrinology, or related fields. Teaching assignments will be in the area of human nutrition and health. Applicants should send a complete curriculum vitae, a statement of research interests, copies of two to three publications related to current research interests, a brief description of teaching and professional experience, and the names of three references who are able to evaluate their academic, teaching, and research accomplishments. Applications should be submitted by December 31, 1996 to: Chair, Human Nutrition and Metabolism Search Committee, 119 Morgan Hall, University of California, Berkeley, CA 94720-3104.

The University of California is an Equal Opportunity/Affirmative Action Employer.

FIELD BIOLOGIST/ANIMAL ECOLOGIST

The Department of Biology at the University of Richmond, a highly selective, private liberal arts institution, invites applications for a tenure-track **ASSISTANT PROFESSOR** position to begin August 1997. We seek Ph.D. applicants with broad interests in areas such as conservation biology, population ecology, or behavioral ecology. Primary teaching responsibilities include courses in the biology core program and in the specialty area. Development of a research program that actively engages both undergraduates and Master's students is expected. Applicants should submit a curriculum vitae, statements of teaching philosophy and research interests, copies of graduate and undergraduate transcripts, and a sample of writings, and have three letters of recommendation sent directly to: Dr. Valerie M. Kish, Department of Biology, University of Richmond, VA 23173-9998. FAX: 804-289-8233; Email: Kish@urvx.urich.edu. To ensure full consideration, applications should be received by December 6, 1996. *The University of Richmond is an Equal Opportunity/Affirmative Action Employer and strongly encourages women and minorities to apply for its positions.*

POSITIONS OPEN

COMPARATIVE PHYSIOLOGIST

The Department of Zoology, University of Oklahoma, has a tenure-track **ASSISTANT** or **ASSOCIATE PROFESSOR** position beginning in the fall of 1997 for a comparative physiologist working at the organismal or organ systems level. Areas of research interest might include, but are not limited to, thermoregulatory, osmoregulatory, metabolic, reproductive, or endocrine systems. The successful candidate will strengthen our existing graduate programs and should complement faculty interests in one or more of our areas of emphasis. The primary teaching responsibility will be one regular course each semester and will include rotating responsibility for an undergraduate introductory physiology course, a human physiology course, and upper-division or graduate courses in comparative physiology. Candidates must have Ph.D. with proven record of excellent teaching and research abilities (demonstrated by publications). Postdoctoral experience preferred. Screening begins 13 January 1997 and will continue until position is filled. Send curriculum vitae, four letters of recommendation, representative reprints, summary of teaching experience, and description of research interests to: **Dr. James N. Thompson, Jr., Chair, Department of Zoology, University of Oklahoma, Norman, OK 73019.** An Equal Opportunity/Affirmative Action Employer. University of Oklahoma has a policy of being responsive to needs of dual-career couples.

TWO ASSISTANT PROFESSOR FACULTY POSITIONS University of Wisconsin-Green Bay Department of Human Biology

Two **TENURE-TRACK** positions in an interdisciplinary department: 1) Microbiology with emphases in virology, immunology, or epidemiology; 2) Reproductive and Developmental Biology with emphases in endocrinology or aging. The successful candidate will demonstrate potential for excellence in teaching and ability to establish a research program and to guide undergraduate research. Normal teaching load is 21 credits per year. Review of applications will begin on December 16, 1996 and positions will remain open until filled. Please send letter of application, curriculum vitae, transcripts, recent reprints, and three letters of reference to: **Microbiologist Position or Reproductive Biologist Position, Human Biology Office, University of Wisconsin-Green Bay, 2420 Nicolet Drive, Green Bay, WI 54311. Telephone: 414-465-2681; FAX: 414-465-2769.** Unless confidentiality is requested in writing, information regarding the applicants must be released upon request. Finalists cannot be guaranteed confidentiality. University of Wisconsin-Green Bay is an Affirmative Action/Equal Opportunity Employer; minority candidates and women are encouraged to apply.

FACULTY POSITION IN NEUROBIOLOGY

The Department of Biology, University of Pennsylvania, invites applications for a tenure-track position at the level of **ASSISTANT PROFESSOR** from outstanding scientists with research interests in neurobiology. Individuals whose work employs genetic, molecular, cellular, biophysical, or biochemical approaches to the investigation of the development and function of the nervous system and behavior are encouraged to apply. The Biology Department is broadly based in animal and plant molecular, cellular, developmental, and evolutionary biology. Candidates are expected to have demonstrated excellence and productivity in research and must have an interest in undergraduate and graduate education. Please send curriculum vitae, statement of research and teaching interests, copies of two to five representative publications, and three letters of recommendation to: **Neurobiology Search Committee, Department of Biology, University of Pennsylvania, Philadelphia, PA 19104-6018.**

The application deadline is November 15, 1996.
The University of Pennsylvania is an Equal Opportunity Employer. Women and minorities are encouraged to apply.

FACULTY POSITION ANIMAL PHYSIOLOGY

Maryville College (Tennessee), a selective four-year liberal arts college committed to superior teaching, invites applications for a tenure-track position in the Department of Biology at the **ASSISTANT/ASSOCIATE PROFESSOR** level; available late August 1997. Full application information is available at <http://www.maryville-college.edu/naylor/vacancy.htm>. Application deadline is January 6, 1997. Maryville College is an Equal Opportunity Employer.

POSITIONS OPEN

FACULTY POSITIONS Molecular, Cell, and Developmental Biology Emory University School of Medicine

The Department of Anatomy and Cell Biology invites applications for tenure-track positions at the **ASSISTANT** and **ASSOCIATE PROFESSOR** levels. The Department and School of Medicine are under new leadership and are greatly expanding their research programs and laboratory facilities. The Department seeks investigators who are applying molecular approaches to problems in cell, developmental, and neurobiology, using systems ranging from yeast to mammals. Faculty participate in strong interdepartmental graduate student training programs. The School of Medicine is located on the main university campus, in a desirable residential community within minutes of the many cultural and recreational opportunities of Atlanta and Georgia. Send curriculum vitae, a brief description of the proposed research program, and the names and addresses of three references to: **Barry D. Shur, Ph.D., Department of Anatomy and Cell Biology, Emory University School of Medicine, 1648 Pierce Drive, Room 100, Atlanta, GA 30322.** Applications should be received by January 1, 1997 to receive full consideration. Emory University is an Equal Employment Opportunity/Affirmative Action Employer.

FACULTY POSITION Department of Biochemistry, Molecular Biology and Cell Biology Northwestern University

The Department of Biochemistry, Molecular Biology and Cell Biology seeks an outstanding candidate for a full-time **FACULTY** appointment at the junior or senior level. Scientists in any area of biochemistry and biophysics, cell and molecular biology, and developmental biology and genetics are welcome to apply. Candidates should submit a curriculum vitae, a list of publications, statements of research accomplishments and future research objectives, and letters of reference from three persons knowledgeable of the candidate's research and teaching abilities to: **Chairman, Faculty Search Committee, Department of Biochemistry, Molecular Biology and Cell Biology, 2153 North Campus Drive, Evanston, IL 60208-3500.** Applications will be reviewed as they are received, but to ensure full consideration, complete applications should be received no later than December 31, 1996.

Women and minority scientists are especially encouraged to apply. Northwestern University is an Affirmative Action/Equal Opportunity Employer.

The Department of Biology, University of Puerto Rico (UPR), Río Piedras, is expanding and invites applications for four tenure-track positions at the **ASSISTANT PROFESSOR** level:

Geneticist, population geneticist preferred.
Zoologist, behavior or comparative preferred.
Plant Physiologist, ecophysiologist preferred.
Developmental Biologist.

The candidates are expected to develop active research programs and to teach at both the graduate and undergraduate level. Candidates must hold a Ph.D. and have postdoctoral experience. Interested candidates should send résumé, a statement of current and future research goals, and three letters of reference before December 15, 1996 to: **Dr. José E. García-Arrarás, Chair, Box 23360, San Juan, PR 00931-3360.** An Affirmative Action/Equal Opportunity Employer.

Marquette University Biology Department invites applications for a tenure-track **ASSISTANT PROFESSOR**, beginning August 16, 1997, to teach a one-semester introductory biology course annually and a graduate course or seminar in alternate years. The successful candidate should have at least two years of postdoctoral research experience and must develop an extramurally funded research program that takes a molecular approach to evolution and/or ecology, preferably of microbes. Send curriculum vitae, a statement of research, and three letters of recommendation by December 16, 1996, to: **Dr. Walter Fredricks, Marquette University, Department of Biology, WLS 112, P.O. Box 1881, Milwaukee, WI 53201-1881.** Marquette is an Equal Employment Opportunity/Affirmative Action Employer.

POSITIONS OPEN

EVOLUTIONARY BIOLOGIST

The Department of Biology seeks an evolutionary biologist at the level of **ASSISTANT PROFESSOR** to fill a three-year position with possibility of reappointment for an additional two years. Research funds will be available. Provisions for a sabbatical pending reappointment. The successful candidate will conduct research on the mechanisms of evolution and will incorporate undergraduates in that research. The candidate will teach three undergraduate courses each year, including beginning and more advanced courses about evolution. The Department maintains several biological field stations and will occupy a new science building in 1997. Bowdoin College is a highly selective coeducational liberal arts college located on the coast 25 miles northeast of Portland, Maine, two hours north of Boston.

Review of application materials will begin November 15, 1996. Please send a current curriculum vitae, a statement about teaching and research philosophy, and the names of three references to: **Evolutionary Biology Search Committee, Department of Biology, Bowdoin College, Brunswick, ME 04011.** Bowdoin College is committed to Equal Opportunity through Affirmative Action. Women and members of minority groups are encouraged to apply.

BIOLOGY CHAIRPERSON: Towson State University is seeking a dynamic Ph.D. biologist, with demonstrated leadership qualities, administrative abilities, and distinguished records in undergraduate-graduate teaching and research, to serve in a tenure-track position as the Chairperson of the Department of Biological Sciences. The successful candidate will be expected to be familiar with current technologies; to enhance departmental activities by promoting external funding; and to expand relationships with regional industry, governmental agencies, and educational institutions. Administrative responsibilities and scholarly activities are facilitated by a reduced teaching load. Senior rank, tenure, and salary are negotiable commensurate with credentials. Appointment will begin July 1, 1997. The department offers B.S. and M.S. degrees, includes 26 full-time faculty and in excess of 800 undergraduate majors, and maintains well-equipped facilities for teaching and undergraduate-graduate research. Towson State University, a member of the University of Maryland System, is a liberal arts based comprehensive university offering Bachelor's and Master's degree programs. Towson State University is a growing institution of approximately 15,000 students and over 600 FTE faculty. The campus is situated on 330 acres of beautifully landscaped and wooded grounds in north suburban Baltimore, with easy access to Washington, D.C. An application should include a detailed résumé; names, addresses, and telephone numbers of six references; and a one- to two-page statement of the applicant's perception of the role of a departmental chairperson at a public, comprehensive university. Applications must be completed and postmarked by December 3, 1996. Correspondence should be sent to: **Biology Department Chairperson Search Committee, Office of Dean, College of Natural and Mathematical Sciences, Towson State University, 8000 York Road, Towson, MD 21252-7097.** Towson State University is an Equal Opportunity/Affirmative Action Employer and has a strong institutional commitment to diversity. Women, minorities, persons with disabilities, and veterans are encouraged to apply.

VISUAL NEUROSCIENCE

The Department of Ophthalmology and Visual Science of the University of Texas Houston Health Science Center (UTHSC) is recruiting to fill one or two **TENURE-TRACK** positions. Areas of interest include, but are not limited to: neurobiology, molecular biology, cell biology, and development of the visual system, particularly retina. Emphasis will be placed on recruiting at the Assistant Professor level but applications from exceptional senior candidates will be considered. A Ph.D. or M.D. and at least two years of postdoctoral experience are required. External research support or the strong potential to obtain research support is essential. Some teaching is required but the main responsibility will be to conduct basic research in the area of vision. Application review will begin on December 1, 1996. Send curriculum vitae, reprints of three papers, names of three references, and summary of research plans to: **Dr. S. C. Massey, Search Committee Chair, The University of Texas Medical School, Ophthalmology and Visual Science, 6431 Fannin Suite 7.024, Houston, TX 77030.** UTHSC is an Equal Opportunity Employer; applications from qualified women and minority candidates are encouraged.



Graduate Programs in Biomedical Sciences

The University of Cincinnati • College of Medicine



Cincinnati is a cultural and recreational delight. Situated on wooded hills along the Ohio river, this beautiful and friendly city of 1.5 million offers a wide variety of activities and events. The University of Cincinnati with its 16 colleges and 36,000 students (including 6,000 graduate students) is only ten minutes from the vibrant downtown area and riverfront. Graduate students in the Biomedical Sciences have the best of both worlds: the resources of a major university combined with the excellent and innovative research and teaching resources of an outstanding and much smaller College of Medicine.

Graduate programs at the University of Cincinnati Medical College currently have over 400 Masters and Doctoral students in training programs with excellent research opportunities, and ranks in the top 10th percentile in size nationally. Faculty in the College of Medicine and associated Children's Hospital Medical Center have over 75 million research dollars, and a wide variety of research interests that provide graduate students exceptional opportunities for unique research projects and career training. Over 200 renowned scientists are potential graduate student mentors. Doctoral programs provide graduate students with paid tuition and fees, and up to \$16,500 in an annual stipend.

Cell Biology: Over 75 faculty offer exciting research opportunities ranging from basic cell structure and function to gene therapy of brain tumors.

Developmental Biology: Research opportunities in developmental molecular genetics, cell biology and teratology are offered by the 40 faculty in this interdisciplinary program.

Environmental Health Sciences: 100 faculty are involved in broad training programs on the effects of the environment on human health, including Environmental and Industrial Hygiene, Safety and Ergonomics, Epidemiology, Biostatistics and Toxicology.

M.D./ Ph.D: An integrated program which combines the breadth of medical education with the depth of graduate training and biomedical research.

Molecular and Cellular Physiology:

Transgenic animal approaches are used to evaluate the physiology of the major organ systems. Gene regulation, signal transduction and biophysical approaches are utilized.

Molecular, Cellular and Biochemical

Pharmacology: Cardiovascular muscle and excitable membrane pharmacology research training is provided by 15 core faculty using molecular biology, transgenic biology, cell biology, biochemical, organ and organismal biology levels of organization.

Molecular Genetics, Biochemistry, and

Microbiology: Includes gene chromosome structure; regulation of gene expression; protein chemistry and engineering; differentiation and development; oncogenes and growth factors; pathogenic mechanisms; immunology; human and mouse genetics and structural biology.

Neuroscience: An interdisciplinary program, with faculty from 15 different departments and colleges, reflecting many state of the art approaches towards understanding the nervous system.

Pathobiology and Molecular Medicine:

Brings together basic scientists and academic physicians to study the molecular and cellular foundations of human disease.

also offering programs in:

Blood Transfusion Medicine
Cellular and Molecular Pathophysiology
Genetic Counseling
Radiological Sciences (Medical Physics)

For more information contact Linda Moeller:

phone: 513. 558. 7343 • fax: 513. 558. 2850 • e-mail: linda.moeller@UC.edu
University of Cincinnati P.O. Box 670555 Cincinnati, Ohio 45267-0555
visit our web page! <http://www.med.uc.edu/pages/infograd.htm>

POSITIONS OPEN

BIOGEOLOGY Arizona State University

The Department of Geology at Arizona State University invites applications for a tenure-track **FACULTY POSITION** in Biogeology. Rank is open. We encourage applications from persons with research interests in fields such as paleontology, biostratigraphy, biogeochemistry, paleoecology, paleoclimatology, origin and molecular history of life, and exobiology. Requirements are a Ph.D. in the geological or related sciences, evidence of research and teaching achievement or potential appropriate to rank, and the ability to teach an undergraduate majors' course that provides a comprehensive understanding of the role of biologic processes in geology. The successful candidate will be expected to sustain a vigorous research program and to be strongly committed to quality teaching at the undergraduate and graduate levels. Applicants for Associate or Full Professor must demonstrate an outstanding, established research program. Starting date: 16 August 1997.

Send letters of application describing current research and teaching interests, curriculum vitae, and names and addresses of three potential references to: **Edmund Stump, Search Committee Chair, Department of Geology, Box 871404, Arizona State University, Tempe, AZ 85287-1404. Telephone: 602-965-5081; FAX: 602-965-8102.** The closing date for applications is 1 December 1996 and the first day of each month thereafter until the position is filled. *Arizona State University is an Equal Opportunity/Affirmative Action Employer.*

THE CLEVELAND CLINIC FOUNDATION Program in Macular Degeneration and Inherited Retinal Diseases

RESEARCH SCIENTIST positions at levels equivalent to Assistant, Associate, or Full Professor are available in Ophthalmic Research in the newly expanding Eye Institute. Basic investigators or research clinicians with training in molecular biology, cell biology, biochemistry, or human genetics, with research interests that relate to the clinical areas of macular degeneration and inherited retinal diseases, will be seriously considered. Generous start-up funds and outstanding salary and benefit packages are available. Applicants for positions at the Associate level and above should have a record of independent funding. Interested applicants should send curriculum vitae; names of three references; and a statement of past research activities, current interests, and career goals to: **Joe G. Hollyfield, Ph.D., Director of Ophthalmic Research, Research Institute Ffb, The Cleveland Clinic Foundation, 9500 Euclid Avenue, Cleveland, OH 44195-5245. FAX: 216-445-3670; Email: hollyjf@ccsmtp.ccf.org.** *Cleveland Clinic Foundation is an Equal Opportunity/Affirmative Action Employer.*

FACULTY POSITION IN GASTROENTEROLOGY

The Department of Medicine in Michigan State University's College of Human Medicine is seeking a qualified full-time **ASSISTANT/ASSOCIATE PROFESSOR**, Board-certified/eligible in Gastroenterology, as fourth member of Gastrointestinal (GI) Section. Responsibilities include teaching students, residents, and GI fellows, as well as patient care and scholarly activity. Many opportunities for research, including collaboration in liver toxicology and clinical epidemiology. Applications due November 15, 1996. Position available July 1, 1997, or before. Address inquiries with a copy of curriculum vitae to: **Joel Kupersmith, M.D., Professor and Chairperson, Department of Medicine, B-338 Clinical Center, Michigan State University, East Lansing, MI 48824-1315.** Please refer to position HM001. *Michigan State University is an Affirmative Action/Equal Opportunity Institution.*

EVOLUTIONARY BIOLOGIST

A tenure-track position is available at the **ASSISTANT PROFESSOR** level for an evolutionary biologist with interests in areas such as systematics, population biology, biogeography, or paleontology. Teaching responsibilities will include a course in evolution, contribution to the lower-division curriculum, and upper-division electives or graduate courses in the candidate's area of specialty. A Ph.D. is required and an active research program is expected. By December 18, 1996, submit curriculum vitae, statements of teaching philosophy and research plans, and three letters of recommendation to: **Dr. Paul Hamilton, Department of Biology, University of Central Arkansas, Conway, AR 72035.** *An Equal Opportunity/Affirmative Action Employer.*

POSITIONS OPEN

ACADEMIC PHYSICIAN

The Respiratory Sciences Center and the Department of Cell Biology and Anatomy at the University of Arizona Health Sciences Center (HSC) seek a physician trained in adult or pediatric medicine with subspecialty training in pulmonary or allergy for a **TENURE-TRACK** faculty position. Preference will be given to applicants at the level of assistant professor but those qualifying at the level of associate professor with exceptional credentials will also be considered. Responsibilities will include conducting a productive research program in lung cell biology, molecular genetics of asthma, or a closely related area; teaching medical, graduate, and undergraduate students in cell biology or histology; and performing a limited amount of clinical service. The University of Arizona offers exceptional opportunities for collaborative studies and a variety of core molecular biology and imaging facilities. The M.D. or M.D./Ph.D. candidate must be subspecialty trained and show strong evidence of a developing research program. Persons interested in applying must send a curriculum vitae with a statement of professional goals and request that letters of reference be sent to:

**The Pulmonary/Cell Biology Search Committee
Department of Cell Biology and Anatomy
P.O. Box 245044
University of Arizona HSC
Tucson, AZ 85724**

Application review begins December 2, 1996 and continues until position is filled. *The University of Arizona is an Equal Opportunity/Affirmative Action/ADA Employer and encourages applications from women and minorities.*

EXECUTIVE DIRECTOR: The Ecological Society of America (ESA) invites applicants for the position of Executive Director. The Executive Director will manage the society's headquarters in Washington, D.C., with its staff of 23 and operating budget of \$2.5 million. Primary responsibilities will include: management of the business and financial affairs of the society, including oversight of the financial office, public affairs office, membership and subscriptions office, publications office in Ithaca, New York, and other programs sponsored by the society; representation of the society and the science of ecology to the executive and legislative branches of government, federal and state agencies, tribes, public and private foundations, and the general public; and identification of opportunities to seek foundation, corporate, and private support to expand the sponsored programs and build the working capital of the society. Seeking candidates who have demonstrated ability to manage complex organizations, associations, or programs; direct supervisory experience; strong written and oral communication skills; and experience in networking with the scientific community, government agencies, and non-governmental organizations. Preference will be given to candidates with a Ph.D. in ecology or a related scientific field who also have experience in administration/management of scientific organizations. Individuals without Ph.D.'s will be considered. The position will be filled in early 1997. Applications, including a letter of interest, résumé, salary history, and names of three references, should be sent to: **Dr. Ann M. Bartuska, USDA Forest Service, Forest Health Protection, P.O. Box 96090, Washington, DC 20090-6090—Attention: ESA Search Committee. FAX: 202-205-1139.** Deadline for submission is December 1, 1996.

FACULTY POSITION—OPEN RANK DEPARTMENT OF BIOLOGY Institute of Molecular Biology University of Oregon

The Department of Biology at the University of Oregon invites applicants at the junior or senior level for a **TENURE-TRACK** faculty position with affiliation with the Institute of Molecular Biology or the Institute of Neuroscience. We are particularly interested in candidates who are using genetic and/or molecular approaches to investigate fundamental issues in developmental biology. The successful applicant will have demonstrated the potential for excellence in both teaching and research. Applicants should submit, by December 1, 1996, a curriculum vitae, a bibliography, and a statement of research interests and plans, and should have four letters of recommendation sent to: **Molecular Biology Search Committee, Department of Biology, 1210 University of Oregon, Eugene, OR 97403-1210.** *The University of Oregon is an Affirmative Action/Equal Opportunity Employer committed to compliance with ADA and cultural diversity. We encourage women and minorities to apply.*

POSITIONS OPEN

ECOLOGIST

The Department of Biology seeks an ecologist, at the level of **ASSISTANT PROFESSOR**, to fill a one-year position. The successful candidate will be expected to teach three courses a year, including upper- and lower-level courses in ecology. Bowdoin College is a highly selective coeducational liberal arts college located on the coast 25 miles northeast of Portland, Maine. The college maintains several biological field stations.

Review of application materials will begin November 15, 1996. Please send a current curriculum vitae, a statement of teaching and research philosophy, and the names of three references to:

**Ecologist Search Committee
Department of Biology
Bowdoin College
Brunswick, ME 04011**

Bowdoin College is committed to Equal Opportunity through Affirmative Action. Women and members of minority groups are encouraged to apply.

ASSISTANT PROFESSOR (TENURE-TRACK) MICROBIOLOGY AND IMMUNOLOGY Medical College of Ohio

We invite applications for a tenure-track, full-time **FACULTY POSITION**. Applicants should have a doctoral degree, postdoctoral experience, and a record of research productivity. The successful candidate is expected to establish a strong research program in the areas of immunology and microbiology. We are particularly interested in, but not limited to, a research program that characterizes molecular targets for antimicrobial (mycotic, bacterial, parasitic, viral) agents. Competitive salary, space, and start-up funds will be provided. Applicants should send a statement of research goals with a representative reprint, a curriculum vitae, and three letters of recommendation to: **Garry T. Cole, Ph.D., Chairman, Department of Microbiology and Immunology, Medical College of Ohio, Toledo, OH 43699-0008.** Deadline is December 31, 1996. Visit our home page at <http://www.mco.edu:80/micro/index.html>. *Affirmative Action/Equal Opportunity Employer.*

GENETICIST

The University of South Florida (USF) and the Department of Biology has a full-time, nine-month tenure-track position at the level of **ASSISTANT PROFESSOR**, Ph.D. and postdoctoral research experience required. The successful candidate will be expected to train graduate students and establish an externally funded research program employing modern molecular techniques in any area of genetics. Teaching will be mostly in undergraduate genetics and specialty graduate courses. Intra- and inter-departmental collaboration is facilitated through the Institute for Biomolecular Science. Salary will be commensurate with qualifications. USF is a comprehensive teaching and research university. Applicants should forward a letter of intent, curriculum vitae, reprints, and statements of research and teaching interests, and should arrange for three letters of recommendation to be forwarded. Deadline for receipt of all materials is December 20, 1996. Address materials to: **Chair of Genetics Search Committee, Department of Biology, University of South Florida, Tampa, FL 33620-5150.** Position is contingent upon funding. *USF is an Affirmative Action/Equal Opportunity Employer and encourages applications from minorities and women.* For disability accommodation please call 813-974-3250.

ASSISTANT/ASSOCIATE PROFESSOR BIOLOGY

Transylvania University invites applications for a **TENURE-TRACK** position in Molecular Biology to teach undergraduate courses, direct student research, and develop curriculum. Ph.D. required; teaching experience preferred. Transylvania is a small, private, residential liberal arts college. Teaching responsibilities include Molecular Genetics, Microbiology, and General Biology. Bingham Awards for Excellence in Teaching may provide salary supplements for exceptional senior candidates or smaller start-up grants for especially promising junior candidates. Send application letter, curriculum vitae, statement of teaching philosophy, and three letters of recommendation by January 15, 1997 to: **Dr. James E. Miller, Division of Natural Sciences and Mathematics, Transylvania University, Lexington, KY 40508-1797.** See our web page at <http://winserve.transy.edu>. *Transylvania is an Equal Opportunity Employer.*



JAPAN SCIENCE AND TECHNOLOGY CORPORATION

<http://www2.jst-c.go.jp/jst/erato/erato-e/NewPositions/>

BASIC RESEARCH LONG-TERM POSITIONS IN-DEPTH RESEARCH INTERNATIONAL EXPERIENCE

The Japan Science and Technology Corporation (formerly Research Development Corporation of Japan), a statutory agency of the Japanese Government, invites young researchers interested in recognized, well-funded, multidisciplinary research to join the new ERATO projects listed below. ERATO projects operate for five-year terms and are independent from the Project Directors' home institutions.

Kawato DYNAMIC BRAIN Project

Fields: ROBOTICS, NEUROPHYSIOLOGY, ELECTROPHYSIOLOGY, COMPUTATIONAL THEORY, ARTIFICIAL INTELLIGENCE
Research: Neurophysiological events involved in training the brain, especially the cerebellum to control motor skills, including implementation of theories in robots
Director: Dr. Mitsuo Kawato, ATR

Inoue PHOTOCHIRO- GENESIS Project

Fields: PHOTOCHEMISTRY, ORGANIC CHEMISTRY, PHYSICAL CHEMISTRY, SUPRAMOLECULAR CHEMISTRY, LASER CHEMISTRY
Research: Creation of chiral compounds using circularly polarized light, including circularly polarized VUV light, chiral photosensitizers and chiral hosts
Director: Professor Yoshihisa Inoue, Osaka University

Yokoyama CYTOLOGIC Project

Fields: BIOCHEMISTRY, MOLECULAR BIOLOGY, COMPUTING THEORY, STRUCTURAL BIOLOGY
Research: Amino acyl-tRNA synthetases as keys to altering the genetic code and elucidating the autocompiling responses of cells to their environment
Director: Professor Shigeyuki Yokoyama, The University of Tokyo

Tsukita CELL AXIS Project

Fields: CELL BIOLOGY, MOLECULAR BIOLOGY, NEUROPHYSIOLOGY, MEMBRANE BIOLOGY, BIOCHEMISTRY
Research: The mechanisms by which cells arrange their internal structures in response to their environment, with emphasis on epithelial and nerve cells
Director: Professor Shoichiro Tsukita, Kyoto University

Information Qualifications Applications

Deadline: 1 February 1997

The **1996 ERATO GUIDE FOR PROSPECTIVE RESEARCHERS** is available on the Internet(<http://www2.jst-c.go.jp/jst/erato/erato-e/NewPositions/>) or from the ERATO Overseas Representative. Applicants must hold a **Ph.D. or equivalent** degree with **less than 5 years of postdoctoral experience**, be willing to **stay at least one year**, and be **fluent in English or Japanese**. Applications must include **1) a letter describing background and interests (important!), 2) curriculum vitae, 3) list of publications, 4) copies of representative publications, and 5) names and addresses of references**. Send applications by post only, not by electronic mail.

Send Applications for Research Positions To

ERATO Overseas Representative, 950 Conestoga Road, Rosemont, Pennsylvania 19010-1347 USA
Voice: +1-610-527-4538, Fax: +1-610-527-2041, Internet: engel@jst-c.go.jp

Etiology of Airway Infections Request for Applications

Application Deadline: February 3, 1997

Recent evidence has indicated that abnormal bactericidal-like factors in the airways of cystic fibrosis (CF) patients may play a central role in the etiology and pathogenesis of their chronic infections. The Cystic Fibrosis Foundation (CFF) is soliciting research applications to examine the relationships between bacterial infection and the basic cellular and genetic defects that could lead to new therapeutic approaches to treating CF-related infections.

Projects will be considered for review by the Foundation that address these issues, but are not limited: the relationship between the CFTR defect and bacterial colonization; exploration of the initial bacterial-host interactions; the role of defensins and other bactericidal agents in CF infection; *in vitro* and animal models to elaborate abnormal bactericidal properties and relevant physiological properties of CF lung; characteristics of CF pathogens which permit airway colonization; and, development of therapies directed at prevention of infection and colonization in CF airways.

Review and Award

Applications submitted for the RFA will be reviewed by a special *ad hoc* committee of the CFF's Research Training Committee. Projects will be peer-reviewed in a manner analogous to the NIH system for grant review. Projects will be evaluated for scientific merit as well as the potential relevance to CF. Approved applications will be funded for a maximum of three years at a level of \$100,000 per year. An additional eight percent for indirect costs will be provided.

Submission

An original plus 16 copies of the application must be postmarked by midnight, February 3, 1997. The earliest start date is June 1, 1997. Late applications will not be accepted, and the receipt date will not be waived.

For additional information, contact the Cystic Fibrosis Foundation, Office of Grants Management, 6931 Arlington Road, Bethesda, MD 20814 or call (301) 951-4422.



University of California NATIONAL INSTITUTE FOR GLOBAL ENVIRONMENTAL CHANGE DIRECTOR

Applications and nominations are invited for the position of Director of the National Institute for Global Environmental Change (NIGEC) at the University of California, Davis. NIGEC is funded by the U.S. Department of Energy (DOE) through a cooperative agreement with the University of California (UC). It consists of a National Office at UC Davis and six regional centers located at Harvard University (Northeast), Indiana University (Midwestern), University of Alabama—Tuscaloosa (Southeast), Tulane University (Southcentral), University of Nebraska at Lincoln (Great Plains) and University of California Davis (Western). NIGEC's mission is to foster multidisciplinary research at academic institutions on global environmental change, focusing particularly on the DOE's research priorities within the federally funded U.S. Global Change Research Program. The NIGEC Director is responsible for administration and coordination of the global change research supported by NIGEC through the National Office and the six regional centers. One of the Director's responsibilities is to facilitate the development of focused and coherent global change research programs within and across the six NIGEC regions.

REQUIREMENTS: The Director should have distinguished him/herself in some aspects of global environmental change research. He/she will provide intellectual leadership and international visibility for the Institute; administer operations of the Institute; supervise its staff; and provide liaison with the Department of Energy and with the NIGEC Board of Trustees and National Technical Advisory Committee, entities that support and advise the NIGEC program. The Director will report to the University of California Office of the President. He/she will promote planning, coordination, and integration of NIGEC-supported research within and among the regional centers. In addition, the Director will seek to broaden financial support for NIGEC programs beyond that provided by DOE, and seek ways to enhance NIGEC programs with the wider and international communities of global change researchers.

SALARY RANGE: Commensurate with qualifications and experience.

It is expected that the successful candidate will begin work no later than July 1, 1997. Nominations and resumes/curricula vitae should be submitted by December 31, 1996, to:

Vice Provost for Research
University of California, Office of the President
300 Lakeside Drive, 18th Floor
Oakland, CA 94612-3550

Research

SENIOR PROGRAM OFFICER

The Board on Radioactive Waste Management of the National Research Council seeks a scientist or engineer to manage technical studies on radioactive waste management and disposal issues. Responsibilities include: management of committee studies and committee selection process; preparing prospectuses and proposals; monitoring budgets; maintaining liaison with researchers, policymakers, and sponsors; supporting committee and program meetings; writing a wide variety of technical documents; supervising support staff associated with projects; and performing other assigned duties. Requires a Ph.D. or equivalent in a scientific or engineering discipline relevant to the management and disposal of radioactive waste, (preferably chemistry or chemical or nuclear engineering), plus at least 4-6 years of research or program management experience. Requires demonstrated ability to manage complex scientific and technical committee studies; and excellent oral and written communication skills. Prior direct and relevant industrial, academic, or governmental experience is highly desirable. A statement of interest; a curriculum vitae; and names, addresses, and phone numbers of three references should be submitted in confidence to:

NRC, BRWM, (KC-HA 456),
2101 Constitution Avenue,
NW, Washington, D.C. 20418.
Screening of applicants will
begin around November 15, 1996.
Equal Opportunity Employer.



NATIONAL INSTITUTES OF HEALTH
NATIONAL INSTITUTE ON AGING
GERONTOLOGY RESEARCH CENTER
BALTIMORE, MARYLAND

POSTDOCTORAL FELLOW

The Office of the Scientific Director, National Institute on Aging, is seeking a postdoctoral fellow interested in studying mammalian cell cycle regulation. The candidate should have training in cellular and molecular biology. Experience in protein purification and biochemistry is very helpful. Starting salary will be commensurate with qualifications and experience. For more information, contact Dr. Douglas K. Ferris at (301) 846-1427. Interested candidates should submit a curriculum vitae, relevant reprints, and names of three references to:

NATIONAL INSTITUTE ON AGING
ATTN: KAREN MABEN
PERSONNEL OFFICE, ROOM 1D09
GERONTOLOGY RESEARCH
CENTER, 4940 EASTERN AVENUE
BALTIMORE, MD 21224

NIH is an Equal Opportunity Employer

NOTICE: This is a REVISED
posting of ad originally in Science
issues 9/13/96 & 9/20/96.

DEPARTMENT CHAIR

Department of Biological Resources
Engineering
University of Maryland

The Department of Biological Resources Engineering of the University of Maryland at College Park is seeking applications for the position of Department Chair. The Chair is responsible for leadership and administrative oversight of all departmental programs, which include Biological Resources Engineering, Natural Resources Management and General Agricultural Sciences. The successful candidate must have a Ph.D. in engineering with a strong background in biological sciences, and a distinguished record of research, teaching, and/or extension sufficient to be tenurable as a full professor. The position is a 12 month appointment. Salary commensurate with qualifications, and includes excellent fringe benefits. A letter of application, vitae, and the names of three referees should be submitted to: Professor Gregory B. Baecher, Chairman ENBE Search Committee, Room 1173 - Building 088, University of Maryland, College Park, MD 20742. Evaluation of applications will begin January 1, 1997 and continue until the position is filled.

*The University of Maryland is an equal
opportunity, affirmative
action employer.*

REWARDING CAREER OPPORTUNITIES. AWARD-WINNING DISCOVERIES. THIS IS AMGEN...

At Amgen, you will discover a research environment that emphasizes collaboration, intellectual honesty, scientific integrity, and a supportive culture. Our unique approach has helped us grow into a global biotechnology leader in just 16 years.

MOLECULAR GENETICS

Post Doc

We seek an individual with an interest in postdoctoral training. The ideal candidate will have a recent Ph.D. in Molecular Biology or a related field and a proven record of productivity that is supported by published works in peer-reviewed journals. Experience and an interest in molecular genetics are preferred.

MOLECULAR STRUCTURE AND DESIGN

Macromolecular Crystallographer

Qualified candidates for this position will assist in leading research efforts to determine the structure of protein and protein/small molecule complexes using X-ray crystallography, and actively participate in the small molecule design process using structural and other biophysical data.

This position requires a Ph.D. or the equivalent in Macromolecular Crystallography and 5 years' experience with a sustained record of outstanding research in Macromolecular Crystallography and structure-based drug design. Critical skills include expertise in all areas of protein crystallography and the ability to interact well with chemists, molecular biologists and other structural scientists. Ideal candidate will have demonstrated structural expertise in a team-based environment to optimize lead structures and a strong background in small molecule pharmaceutical research.

We value and encourage the diverse perspectives essential to the process of discovery.

At Amgen, your accomplishments are rewarded. We offer a highly competitive compensation and benefits package that includes a retirement and savings plan, an on-site fitness center and 3 weeks' vacation. For immediate consideration, mail your resume to: **Amgen, Staffing, Job Code: TPSC, P.O. Box 2569, Thousand Oaks, CA 91319-2569.** E-mail: jobs@amgen.com Consult our Job Bulletin Board at amgen.bio.com for more information on other career opportunities available at Amgen. Principals only, please.

EEO/AA Employer M/F/D/V

AMGEN®



Genentech is a pacesetter company, internationally known for discovering, developing, manufacturing and marketing human pharmaceuticals for significant unmet medical needs. Our product pipeline is the richest in the industry, and we are the only biotech company with five marketed products.

Scientist/Virologist

We seek a Scientist/Virologist to lead a laboratory in the design and performance of studies on viral safety and validation of virus clearance by manufacturing processes, as well as in the development of state-of-the-art technology in this area. You will also support regulatory submission for licensing of biopharmaceuticals. The successful candidate will have a PhD with significant experience in virology, virus testing and virus clearance validation. Familiarity with GLPs and regulatory requirements for studies supporting INDs and licensing in the US and internationally, and supervisory experience will be assets. Job Code MCMD3

Research Associate

The successful candidate will work in the identification, characterization and study of the biological activity and mechanism of action of new polypeptide factors/hormones, and the interaction of these factors with their receptors. You must have a BS/MS in Biochemistry, or related biological sciences with 2+ years' experience in basic biochemical and molecular biological techniques. Experience with tissue culture is preferred. Job Code EOPO

Join us and enjoy our exciting success and progressive benefit package that includes free health club membership, 3 weeks paid vacation, 6 weeks sabbatical after every 6 years, fully paid medical/dental/vision coverage, and Company stock purchase opportunities for full time employees. Send your resume, with the Job Code of Interest, to **Genentech, Inc., Human Resources, 460 Pt. San Bruno Blvd., South San Francisco, CA 94080**. If possible, please avoid bold, underline or italic type faces. You may also e-mail your resume with the Job Code to jobs@gene.com (ASCII files only with a maximum line width of 76 characters). Find out about additional job opportunities available at Genentech online at <http://www.gene.com>. Genentech is an Equal Opportunity Employer. We value the contributions of our diverse workforce.

Genentech, Inc.

Since 1992, Ontogen has established itself as a leader in the development of automated organic synthesis technologies. Our mission is to utilize modern tools of chemistry and biology to discover and develop small molecule therapeutics. Our research facility is located 30 miles north of San Diego in Carlsbad, CA. We currently have the following opening:

Molecular Discovery Research Scientist

Ph.D. in Biochemistry, Pharmacology or a related discipline with 2-5 years of practical postdoctoral experience is required. Extensive experience in enzyme kinetics and working knowledge of protein purification are essential. The successful applicants will be expected to characterize, develop, and validate novel enzyme, receptor binding and whole cell assays for high throughput screening of chemical libraries for small molecule discovery.

All applicants should possess excellent written and oral communication skills and the ability to work effectively in a multi-disciplinary team. Ontogen offers competitive compensation and benefits packages including a stock option plan. Qualified candidates are invited to send or fax resumes to: **HR-BIO/RS, Ontogen Corporation, 2325 Camino Vida Roble, Carlsbad, CA 92009**; Fax: (619) 930-0200. Ontogen is an Equal Opportunity/Affirmative Action Employer.

Ontogen Corporation



3 POSTDOCTORAL & 3 RESEARCH ASSOCIATE POSITIONS

For Grace Wong, Ph.D., Dept. for Molecular Oncology, Millennium

RESEARCH FOCUS

- To identify new proteins (genes) that regulate apoptosis.
- To elucidate the mechanism(s) of action of genes involved in apoptosis.
- To examine novel genes responsible for drug resistance in cancer cells.

REQUIREMENTS

Postdoc: Ph.D. thesis submitted

RA: 2-3 yrs. lab experience in molecular and cell biology

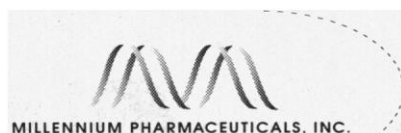
PREFERENCES

Postdoc: lab experience in the apoptosis, cancer or protease fields

RA: experience in techniques measuring apoptosis, in vitro or in vivo biology

Millennium Pharmaceuticals is a rapidly growing company using expertise in genetics and molecular biology to identify and elucidate the function of genes involved in a variety of diseases.

Please send or fax C.V. to **Dr. Grace Wong, c/o Shani Stickney, Millennium Pharmaceuticals, Inc., 640 Memorial Drive, Cambridge MA 02139; FAX (617) 225-0884**. EOE.



President and Chief Executive Officer Monterey Bay Aquarium Research Institute

MBARI is a privately funded research organization dedicated to ocean science. In the words of David Packard, MBARI's founder,

The mission of MBARI is to achieve and maintain a position as a world center for advanced research and education in ocean science and technology, and to do so through the development of better instruments, systems and methods for scientific research in the deep waters of the ocean.

MBARI is funded by the David and Lucile Packard Foundation. With two ships, two remotely operated vehicles with depth capability to 4000m, and a new laboratory building, MBARI has a remarkable opportunity to contribute to the science of the ocean.

MBARI seeks an outstanding scientist who recognizes and appreciates the revolution in ocean exploration that can result from application of modern technology, one who can maintain and build a first-class team of scientists and engineers who will work well together to address first-order problems of ocean science. The position of president requires exceptional leadership and management skills in addition to scientific eminence achieved in research.

Please send a statement of interest and curriculum vitae before November 12, 1996 to

Franklin M. Orr, Jr.

Chair, MBARI Board Search Committee

c/o The David and Lucile Packard Foundation

300 Second Street, Suite 200

Los Altos, CA 94022

MBARI is an equal opportunity employer and hires staff without regard to race, color, religion, national origin, gender, sexual orientation, disability, or marital status. Minority candidates are encouraged to apply.

NIH Has A New Address.

The National Institutes of Health has introduced a new web site. Now, the latest news about clinical and research training opportunities at NIH can be accessed by visiting us at <http://helix.nih.gov:8001/oe/>

At the site, you can quickly obtain information regarding clinical and postdoctoral training. Review the NIH tenure-track openings. Take a look at the NIH Postdoctoral Research Fellowship Opportunities Catalog which chronicles research being conducted in all NIH laboratories. You can even apply electronically for positions.

All from the convenience of your keyboard.

Plus, the web site links to all NIH institute and laboratory home pages, provides a calendar of events, and offers links to many other areas.

We used to ask you to call us or send your *curriculum vitae*. Now, the best way to find out about world class opportunities at NIH is through the world wide web.



National Institutes Of Health

Office Of Education

<http://helix.nih.gov:8001/oe/>

The NIH is an Equal Opportunity Employer



St. Jude Children's
Research Hospital

ALSAC • Danny Thomas, Founder

POSTDOCTORAL FELLOW

The Comparative Medicine Division at St. Jude Children's Research Hospital, a premier research center for catastrophic diseases of childhood and biomedical research, offers a FELLOWSHIP IN BASIC SCIENCE RESEARCH.

The fellowship is open to postdoctoral candidates who wish to study the pathobiology and therapeutics of Cryptosporidiosis. Experience in protozoan pathobiology is advantageous. The fellowship award is made for up to three years and is based on merit, recommendations and promise of a productive career in biomedical research. Stipend available is highly competitive and based on qualifications.

Applicants should provide a curriculum vitae, a brief description of their research interests and the names of three individuals who have agreed to serve as references.

Jerold E. Rehg, D.V.M.
Comparative Medicine Division
St. Jude Children's Research Hospital
P.O. Box 318
Memphis, Tennessee 38101-0318 USA

All information to be received by December 1, 1996

An Equal Employment/Affirmative Action Employer

We have a challenging opportunity for a proactive professional to join us at our headquarters in Des Moines, Iowa as:

INFORMATION MANAGEMENT USER SERVICES MANAGER

You will be part of a team providing primary computer support to research scientists in the Research and Product Development division. Working closely with scientists and information management professionals, you will identify information management needs, suggest solutions, and assist in the development/implementation/support of information management systems. Some overnight travel will be involved.

Qualifications include a Ph.D. or equivalent experience in Plant Breeding, Genetics, or Agronomy. Course work in Computer Science, Statistics, and Molecular Biology is desirable. You will need proven project management skills, advanced PC proficiency, and excellent communication abilities.

We offer a competitive salary and excellent, comprehensive benefits such as 401(k), tuition and relocation reimbursement, and more. Des Moines is a prospering heartland city that ranks well above the national averages in affordability and education. Our location provides a mix of beautiful open spaces and city life advantages. For confidential consideration, please send 3 copies of your resume and cover letter indicating job number by Nov. 1, 1996 to: Jon Day, Job #96-0061, Pioneer Hi-Bred International, Inc., 4445 Corporate Drive, Box 65000, West Des Moines, IA 50265-5000.

Pioneer Hi-Bred International, Inc. is the world leader in agricultural genetics. Founded in 1926, we are a publicly held company that invests more than \$115 million in research and product development. Pioneer brand products are grown on almost every crop producing continent in the world.

Pioneer is an equal opportunity
employer M/F/D/V.

Scannable resumes preferred



PIONEER HI-BRED INTERNATIONAL, INC.

SCIENTISTS

NeXstar Pharmaceuticals, Inc. is an integrated drug discovery, delivery and development company based in Boulder, Colorado. We are a world leader in combinatorial chemistry and liposomal drug delivery and are currently seeking creative individuals with excellent problem-solving skills to join our scientific team.

Position #361: As a scientist in our drug discovery group, you will be responsible for large scale purification of oligonucleotides and methods development.

To succeed in this position you will need a Ph.D. in Chemistry with 1-2 years experience in purification of oligos or peptides by HPLC. An M.S. with 3-5 years experience will also receive serious consideration.

Position #362: Responsibilities for this position will include designing and synthesizing modified nucleotide and nucleoside monomers and other conjugates.

The ideal candidate will have a Ph.D. with 1-2 years experience and solid knowledge of organic synthesis, specifically in the field of nucleotide chemistry. An M.S. with 2 or more years related experience will also be considered.

Position #287: Our process chemistry group is looking for a Ph.D. level synthetic organic chemist. The successful candidate will be highly motivated and contribute synthetic chemistry expertise to devise novel processes and improve process efficiency. Synthesis, methods development and process optimizations as they relate to the scale-up of chemical intermediates will be primary responsibilities of the position. Key qualifiers include solid knowledge of process chemistry as evidenced by a strong publication and industrial record. Experience in a process environment and nucleoside chemistry is particularly desirable.

All positions require excellent communication skills and the ability to effectively interact with other associates.

This is your chance to join a growing, exciting company at the right time. In addition to a challenging career opportunity, you will have all the advantages of living in Boulder, Colorado, with its stunning scenic beauty, healthy lifestyle and stimulating university atmosphere. We value employee ideas and reward efforts with competitive salaries and a generous package of benefits. Please send your resume to:

NeXstar Pharmaceuticals, Inc.
2860 Wilderness Place
Boulder, CO 80301
Attn: PNM and position #
EOE

NEXSTAR
Pharmaceuticals, Inc.

MOLECULAR PHARMACOLOGY

Mayo Medical School invites applications for a senior faculty position in the Department of Pharmacology, available immediately. The Department of Pharmacology provides a diverse, intense, and collaborative environment for basic research. The institution has recently also launched major initiatives in the areas of molecular medicine, broadly defined, and cancer biology, providing great opportunities for synergism. The ideal candidate for the position in pharmacology will have a cutting edge research program with clear relevance to the molecular actions of drugs. Special consideration will be given to individuals working on rational drug design, gene therapy, novel approaches to cancer treatment, receptor biology, or pharmacology of the central nervous system. The precise area of interest remains open, however, and candidates pursuing other pharmacologically relevant research topics may be welcome. Mayo will provide the successful candidate with generous space and significant hard money support in addition to an attractive salary and benefits package. Academic rank will be determined on the basis of qualifications. Established investigators are preferred, but younger scientists with outstanding promise should also apply. Applications from women and underrepresented minorities are encouraged.

Please submit a curriculum vitae along with names and addresses of three or more references to **Stephen Brimjo, Ph.D., Professor and Chair, Department of Pharmacology, Mayo Medical School, 200 First St. Southwest, Rochester, MN 55905.** There is no specific deadline, but applications received before January 1 are more likely to be competitive.

Mayo Foundation is an affirmative action and equal opportunity educator and employer.

Assistant/Associate Professorships Neuroscience/Neuropharmacology

Department of Pharmacology The George Washington University Medical Center

Several tenure-track positions in the NEUROSCIENCES are available in association with new leadership and expansion of the Pharmacology department at George Washington University. The successful applicants will have outstanding records of research accomplishment using modern techniques to explore functional aspects of the nervous system. An interdisciplinary approach to research is encouraged, with opportunities for collaboration with colleagues who are using state-of-the-art methodologies in neurophysiological, neuropharmacological, molecular genetic and developmental studies of the brain. There are a number of extramurally-funded neuroscientists at the Medical Center, which is situated in an attractive neighborhood near the Kennedy Center and five blocks from the White House. Other research scientist members of The George Washington University Institute for Biomedical Science are located at Children's Research Institute of the Children's National Medical Center and the Holland Laboratory of the American Red Cross. The successful candidates will participate in the teaching of medical and graduate students, and will provide training opportunities for students and postdoctoral fellows in the interdepartmental Ph.D. programs in Neuroscience and Pharmacology. Candidates will be expected to develop a strong, extramurally funded research program. Competitive salaries and start-up funds are available for these positions. Faculty rank and salary will be commensurate with prior experience. Applicants with a Ph.D. and/or M.D. degree and substantial postdoctoral experience should submit a letter of intent, a detailed statement of research accomplishments and future research plans, teaching experience, a curriculum vitae, and the names, addresses and telephone numbers of three to five references to: **Prof. Vincent A. Chiappinelli, Chair of the Search Committee, Department of Pharmacology, 2300 Eye Street, N.W., Washington, D.C. 20037.** Review of applications will begin on December 6, 1996, and continue until positions are filled. *The George Washington University is an Equal Opportunity/Affirmative Action Employer.*

ASSISTANT PROFESSOR BIOLOGY

Developmental Invertebrate Biologist. The Department of Biology invites applications for a tenure-track position at the Assistant Professor level, effective July 1, 1997 (subject to budgetary approval). Candidates must have a recent Ph.D., at least one year of postdoctoral experience and a productive research record. The research focus must be on animal development, using cellular/molecular techniques and employing invertebrate organisms as experimental systems. As well as establishing an externally-funded research program, the successful candidate will be expected to participate in the teaching of undergraduate and graduate classes, including the development of a third-year majors course in invertebrate biology and an advanced course in his/her area of expertise. Start-up research funds will be provided. The new appointee can expect a reduced teaching load in the first two years.

Submit a letter of application, outlining research goals, a summary of teaching experience and a curriculum vitae to **Dr. W. Chapco, Head, Department of Biology, University of Regina, Regina, Saskatchewan, S4S 0A2, Canada. FAX (306)585-4894 Tel: (306) 585-4231. E-Mail: William.Chapco@uregina.ca.** Candidates should arrange to have at least three letters of reference sent to the address above. The closing date for application is December 31, 1996. Further information on the department is available on the world-wide site at <http://www.biol.uregina.ca>.

The University of Regina is committed to employment equity and welcomes applications from all qualified candidates. Aboriginal people, persons with disabilities, members of visible minorities and women are invited to identify themselves as members of the designated groups on their applications. In accordance with Canadian immigration requirements, this advertisement is directed to Canadian citizens and permanent residents.



Bristol-Myers Squibb Company

Pharmaceutical Research Institute

We offer you the opportunity to continue your research in an environment which genuinely encourages creativity and originality. We have Postdoctoral positions currently available in the following areas:

Oncology

Successful candidates should possess a Ph.D. in molecular biology or related discipline. The Oncology Division of Drug Discovery & Exploratory Research seeks postdoctoral fellows to conduct basic research on the molecular mechanisms by which oncogenes induce and tumor suppressor genes control malignant transformation of normal cells. Research will involve the generation of targeted mice by homologous recombination to study the role of key signaling molecules such as cell surface receptors, and transcription factors involved in mammalian development and tumorigenesis.

For Princeton, New Jersey positions, please forward/fax your resume to: **Bristol-Myers Squibb Pharmaceutical Research Institute, Human Resources Dept. BM-666, P.O. Box 11279, Trenton, NJ 08620-0279. FAX: 609-581-8841.**

Equal Opportunity Employer

Postdoctoral Positions

Inflammation

Successful candidates should possess a Ph.D. and background in biochemistry, molecular biology, structural biology, and/or protein engineering. A strong interest in the analysis of protein sequences, structures, and structure-function relationships using theoretical and experimental approaches is essential. Basic research will be carried out to study cell surface receptors of the immune system and their ligands. These include members of the scavenger receptor cysteine rich and immunoglobulin superfamilies.

For Seattle, Washington positions, please forward/fax your resume to: **Bristol-Myers Squibb Pharmaceutical Research Institute, Human Resources Dept. JB, 3005 First Avenue, Seattle, WA 98121. FAX: 206-727-3606.**

Central Nervous System

Successful candidates should possess a Ph.D. with a strong background in neurochemistry, neuropharmacology, cell biology, and/or molecular biology. Positions are available to study novel signal transduction pathways involved in programmed cell death, molecular mechanisms of VIP-mediated neuroprotection, and molecular and cellular biology of proteins implicated in early-onset Alzheimer's disease. Additional opportunities include cloning and characterization of novel brain-specific potassium channels, examination of molecular mechanisms that underlie agonist- and antagonist-mediated regulation of receptors for dopamine and serotonin, and regulation of neurotransmitter release by satiety factors.

For Wallingford, Connecticut positions, please forward/fax your resume to: **Bristol-Myers Squibb Pharmaceutical Research Institute, Human Resources Dept. HD-94364, P.O. Box 5101, 5 Research Parkway, Wallingford, CT 06492-7661. FAX: 203-284-7762.**

PHD RESEARCH SCIENTIST, MAMMALIAN EXPRESSION SYSTEMS

Agouron Pharmaceuticals, Inc. is a recognized pioneer and leader in the field of protein structure-based drug design and development. We have a current opening for a Molecular Biologist with proven experience utilizing mammalian expression systems for large scale production of diverse recombinant proteins.

The successful candidate will participate in highly interactive project teams including Biochemists and X-ray Crystallographers to obtain 3-dimensional structures for proteins of therapeutic interest. Most important is a demonstrated capacity to obtain milligram amounts of protein. Required technical skills include detailed knowledge of expression vectors and cell-line optimization. Qualified candidates will have 2+ years' postdoctoral experience and preferably experience in an industrial eucaryotic expression facility. Experience with additional eucaryotic expression systems (insect cells and/or yeast) is a plus. Preference will be given to candidates with prior experience facilitating structure determinations via domain mapping and mutagenesis.

We offer competitive salaries and benefits in addition to an intellectually stimulating environment. Please send resume to: Human Resources/CCK, Agouron Pharmaceuticals, Inc., 10350 N. Torrey Pines Road, La Jolla, CA 92037-1020; e-mail: jobs@agouron.com. Homepage: <http://www.agouron.com>. EOE.



Agouron
Pharmaceuticals, Inc.

OPPORTUNITIES IN RNA RESEARCH

SmithKline Beecham Pharmaceuticals, a world leader in pharmaceutical research and development, is currently seeking to appoint graduate scientists (BS and MS levels) in an expanding research group focusing on the application of RNA research in drug development. Topics under investigation include both RNA-based chemotherapeutic targets and the use of RNA as a research tool to probe macromolecular interactions.

Applicants should have one to two years' experience in one or more of the following technologies: phage display, RNA-ligand structure probing, *in vitro* translation systems, molecular biology, general RNA and protein biochemistry.

These appointments will provide the opportunity to work at the forefront of this exciting area in a highly motivating work environment and in conjunction with leading academic departments worldwide.

Located in our state-of-the-art research facility in suburban Philadelphia, SmithKline Beecham offers an excellent compensation/benefits/relocation package and a stimulating team environment in which to grow and excel. For confidential consideration, please send your resume and salary requirements to: SmithKline Beecham Pharmaceuticals, Job Code B6-RNA, P.O. Box 2645, Bala Cynwyd, PA 19004. We are an Equal Opportunity Employer, M/F/D/V.



SmithKline Beecham
Pharmaceuticals

Challenging the natural limits.

University of Colorado at Boulder Molecular, Cellular, and Developmental Biology

RNA

We seek tenure-track faculty candidates working on the structure and/or function of RNA in any fundamental biological event. Applications for Assistant Professor are particularly sought, but senior candidates will also be considered for positions that begin in Summer or Fall 1997. Notable skills in research and education will be the decisive considerations. All materials must be postmarked by 1/1/97. Please send curriculum vitae, publications, and an outline of future research, and also have three or more letters of evaluation sent to:

Tom Cech and Mike Yarus, Chairs
RNA Molecular Biology Recruiting
Dept. of MCD Biology
University of Colorado
Boulder, CO 80309-0347

Developmental Biology

Applications are invited for a tenure-track faculty position from individuals with research interests in the developmental biology of multicellular organisms. Although the position is for an Assistant Professor, all outstanding applications will be considered. Applications should include a curriculum vitae, reprints of publications, and a statement of current and future research plans (1-3 pages). Complete applications and three letters of recommendation, solicited by the applicant, must be postmarked by 1/1/97. Send all relevant materials to:

Developmental Biology Search
Dept. of MCD Biology
University of Colorado
Boulder, CO 80309-0347

The University of Colorado at Boulder is an equal opportunity/affirmative action employer.

Postdoctoral Scientist

Pharmacia & Upjohn Animal Health is currently seeking a postdoctoral scientist to work in its Animal Health Antibacterial Discovery Program. The position is for a maximum of three years, renewable each year. The postdoctoral scientist will study the molecular pathogenesis of the Pasteurellaceae and will be expected to have specific genetic and molecular experience with *Pasteurella* spp. Previous experience with molecular biological techniques and animal models of *Pasteurella* induced diseases are highly desirable. The successful applicant will be expected to have a Ph.D. in the relevant field and evidence of research productivity.

Pharmacia & Upjohn, Inc. offers a competitive salary, and benefits. For confidential consideration please send your resume to: **Pharmacia & Upjohn Company, Corporate Recruiting, Position #333, 7000 Portage Road, Kalamazoo, MI 49001, or e-mail to: RECRUIT@AM.PNU.COM.** You must refer to Position #333 in all correspondence. We are an equal opportunity employer with a commitment to workplace diversity.



Pharmacia & Upjohn



FACULTY POSITION X-Ray Crystallography

The Boston Biomedical Research Institute invites applications from candidates with documented expertise in protein x-ray crystallography, and interest in aspects of cell growth, signalling, or motility. Generous start-up funds are available. The Boston Biomedical Research Institute is an independent biomedical research center that offers an exceptionally collegial and intellectually stimulating environment with opportunity for collaboration. Applicants should submit, by December 15, 1996, a curriculum vitae, a description of research interests, and names of three references to: **Ms. Barbara Zillman, Secretary—Search Committee, Boston Biomedical Research Institute, 20 Staniford Street, Boston, MA 02114-2500.**

Animal Molecular Systematics Position—University of Nebraska.

The School of Biological Sciences invites applications for a tenure-track faculty position at the Assistant Professor level in Animal Molecular Systematics. Research expertise in phylogenetic and comparative biology using molecular techniques is sought. Candidates will be expected to develop vigorous research programs and assume teaching responsibilities in both undergraduate and graduate level courses in organismal and evolutionary biology. Scientists with a Ph.D. and postdoctoral experience may apply by sending a curriculum vitae and statement of research and teaching interests and arranging for three letters of reference by November 18 to: **T. Jack Morris, Director, School of Biological Sciences, 348 Manter Hall, University of Nebraska-Lincoln, Lincoln, NE 68588-0118.** The position will be open until a suitable candidate is selected. Check <http://bs-biosci.unl.edu> for more information. UNL is committed to a pluralistic campus community through AA/EEO, and is responsive to the needs of dual career couples. We ensure reasonable accommodation under ADA; contact Dr. T. Jack Morris for assistance at (402) 472-6676.



Director, Whitney Laboratory University of Florida

Applications are invited for the position of Director of the Whitney Laboratory, a marine research institute of the University of Florida. The Whitney Laboratory uses the advantages of marine models to solve problems in basic biology, primarily applying the techniques of molecular and cell biology. Applicants for Director should have an earned doctorate, an active research program in some aspect of the molecular or cell biology of marine animals, and demonstrated ability to provide administrative and scientific leadership for a multidisciplinary marine biological laboratory. The Whitney Laboratory is located 18 miles south of St. Augustine, Florida. The Director will have a faculty appointment in an academic unit of the University of Florida. The twelve-month state supported salary is negotiable and dependent upon qualifications. Applicants should send their curriculum vitae and the names of three professional references by December 31, 1996 to: **Dr. M. Ian Phillips, Chairman of Search Committee, Department of Physiology, P.O. Box 100274, University of Florida, Gainesville, FL 32610-0274.** The University of Florida is an Affirmative Action/Equal Employment Opportunity Employer. The selection process will be conducted under the provisions of Florida's "Government in the Sunshine" and Public Records laws.

ANNOUNCING THE UNCF•MERCK SCIENCE RESEARCH FELLOWSHIPS

GRADUATE SCIENCE RESEARCH DISSERTATION FELLOWSHIPS

12 awards will be made in 1997.
Each award consists of

- FELLOWSHIP STIPEND UP TO \$25,000
- DEPARTMENT GRANT UP TO \$15,000

Applicants must be:

- African American
- Enrolled full time in a Ph.D. or equivalent doctoral program in the life or physical sciences
- A third- or fourth-year graduate student in the academic year 1997-98
- A U.S. Citizen or permanent resident.

POSTDOCTORAL SCIENCE RESEARCH FELLOWSHIPS

10 awards will be made in 1997.
Each award consists of

- FELLOWSHIP STIPEND UP TO \$40,000
- INSTITUTIONAL GRANT UP TO \$15,000

Applicants must be:

- African American
- Appointed as a postdoctoral fellow during the 1997 calendar year at an academic or a non-academic research institution (private industrial laboratories are excluded).
- A U.S. Citizen or permanent resident.

For application packets, contact: Jerry L. Bryant, Ph.D., The College Fund/UNCF, 1-800-331-2244

Applications must be postmarked by January 15, 1997

"A mind is a terrible thing to waste."

BUILD ON OUR
RESEARCH
EXCELLENCE



COMPUTER SCIENTIST/ BIOINFORMATICS

The Jackson Laboratory is a Mammalian Genetics/ Biomedical Research Institution located adjacent to Acadia National Park in Bar Harbor, Maine.

The Jackson Laboratory Informatics Group seeks a Computer Scientist to participate in the design and implementation of biological databases that support the use of the laboratory mouse as a model in biomedical research. The goals of our database projects, fully funded by the National Institutes of Health, are to develop and maintain comprehensive, centralized information resources for the scientific research community. The successful applicant will be a leader in our software group and will interact with other computer scientists, geneticists, developmental biologists, and molecular biologists. Applicants with a Ph.D. degree in computer science who have managed software teams in a scientific environment are strongly preferred. Broad technical experience in data management, database systems, and user interfaces is required. Background in biology a plus; eagerness to learn biology a must.

Qualified applicants may send resume to:

Human Resources
The Jackson Laboratory
600 Main Street
Bar Harbor, ME 04609
Fax: 207-288-6106
email: jobs@jax.org



The
Jackson
Laboratory

*The Jackson Laboratory is an Equal
Opportunity/Affirmative Action Employer*



EXECUTIVE DIRECTOR BIOLOGICAL RESEARCH

Corvas International, Inc., a biopharmaceutical company based in La Jolla, CA, is engaged in the design and development of a new generation of therapeutic agents for the prevention and treatment of major cardiovascular and inflammatory diseases. We are seeking a dynamic individual to lead our entire Biological Research Group.

The seasoned professional will play an active role in the formulation and implementation of new scientific projects, as well as oversee ongoing research activities; act as key source of scientific expertise; and have an active role on the Research Management Committee. Fosters highly professional and productive scientific atmosphere with focus on the discovery and development of novel therapeutic approaches.

Candidate will have a Ph.D. or M.D. and minimum 6 years of postdoctoral experience. Requires expertise in vascular and/or tumor biology or related. Recognized contributions in a designated area of research as evidenced by key publications and/or patents essential. Must have strong leadership skills and the ability to raise/set the standard of scientific knowledge and its application. Experience in Pharmaceutical Research environment preferred.

Our beautiful Torrey Pines location places us in the midst of academic and institutional research excellence, as well as the area's prominent biotech industry. We offer an attractive compensation package, equity participation, and a highly interactive and stimulating scientific environment. For consideration, please send/fax CV and cover letter to: **Corvas International, Inc., Attn: Human Resources, 3030 Science Park Road, San Diego, CA 92121; Fax: (619) 455-5169.** Equal Opportunity Employer.

CORVAS
INTERNATIONAL

POSITIONS OPEN

NEUROBIOLOGIST

The Department of Zoology, University of Oklahoma, has a tenure-track **ASSISTANT** or **ASSOCIATE PROFESSOR** position beginning in the fall of 1997 for a neurobiologist working at the organ systems or cellular level. The successful candidate will strengthen our graduate program in physiology, neurobiology, and animal behavior and should complement faculty interests in these areas. The primary teaching responsibility will be one regular course each semester and will include rotating responsibility for an undergraduate human physiology course and undergraduate or graduate courses in neurobiology and physiology. Candidates must have Ph.D. with proven record of excellent teaching and research abilities (demonstrated by publications). Postdoctoral experience preferred. Screening begins 13 January 1997 and will continue until position is filled. Send curriculum vitae, four letters of recommendation, representative reprints, summary of teaching experience, and description of research interests to: **Dr. James N. Thompson, Jr., Chair, Department of Zoology, University of Oklahoma, Norman, OK 73019.** *An Equal Opportunity/Affirmative Action Employer. University of Oklahoma has a policy of being responsive to needs of dual-career couples.*

UNIVERSITY OF ALABAMA AT BIRMINGHAM Department of Nutrition Sciences

JUNIOR FACULTY position in the Department of Nutrition Sciences, School of Health Related Professions, University of Alabama at Birmingham (UAB). Candidates must possess at least a Ph.D. degree in a related field of study. The new faculty will join an interdisciplinary research team investigating the etiology of obesity and related disease-risk. This new position will be a 12-month, full-time position with a start date of January 1, 1997. Salary and rank will be commensurate with qualifications and experience. The candidate is expected to have demonstrated success in obtaining extramural funding. Send a letter of intent, curriculum vitae, and names of three references to: **Michael I. Goran, Ph.D., Department of Nutrition Sciences, 1675 University Boulevard, UAB, Birmingham, AL 35294.** *Minorities and women are encouraged to apply.*

MOLECULAR POPULATION GENETICIST

The Department of Biology of Boise State University (BSU) invites applications for a tenure-track faculty position at the level of **ASSISTANT PROFESSOR** for the fall of 1997. A Ph.D. and relevant postdoctoral experience are required. The candidate will be expected to establish an extramurally funded research program involving Master's-level and undergraduate students and to teach general genetics, genetics laboratory, and cell biology. The opportunity exists to develop an upper-division/graduate level course in one's area of expertise. Further information available at <http://www.idbsu.edu/biology/biohome.htm>. Submit curriculum vitae, statements of research and teaching objectives, three relevant reprints, a list of three references (with addresses, email, and telephone numbers) to: **Dr. Russell J. Centanni, Department of Biology, Boise State University, Boise, ID 83725-1515** by December 20, 1996. *BSU is an Equal Opportunity/Affirmative Action Institution.*

Turfgrass Entomologist, **ASSISTANT PROFESSOR**: Department of Entomology, Ohio Agricultural Research and Development Center (OARDC), The Ohio State University seeks applicants for tenure-track faculty position (75% research, 25% extension) available January 1997 to conduct research in basic and applied aspects of turfgrass entomology. Experience in IPM, biological control, population models, or soils ecology preferred. Expectations: develop nationally recognized research and extension programs, attract extramural funding, advise graduate students, publish, work closely with professional turf industries, and possibly participate in undergraduate instruction. Ample opportunity to work with agronomists, pathologists, and other turf scientists. Send letter of application describing turfgrass entomology interests and career goals, curriculum vitae, transcripts (undergraduate and graduate), reprints, and manuscripts to: **David Shetlar, Department of Entomology, OARDC, 1680 Madison Avenue, Wooster, OH 44691.** Applicants should solicit four to five letters of reference. Application deadline: November 15, 1996, or until a suitable candidate is identified. *The Ohio State University is an Equal Opportunity/Affirmative Action Employer.*

POSITIONS OPEN

FACULTY POSITION IN IMMUNOLOGY

The Department of Microbiology and Immunology of the Bowman Gray School of Medicine, Wake Forest University, invites applications for a tenure-track position at the **ASSISTANT** or **ASSOCIATE PROFESSOR** level, beginning July 1, 1997, for an individual with a research program that focuses on the cellular or molecular aspects of the immune response against pathogenic bacteria or viruses. Applicants wishing to be considered for a position at the Associate Professor level should have an established record of funding for their research program. The successful candidate will be expected to establish a strong, independent research program and to participate in the training of Ph.D. students and the teaching of medical students. The Department has strong research programs in the areas of bacterial and viral pathogenesis, cytokines, neutrophil biochemistry, and mRNA metabolism. The Department as well as the Comprehensive Cancer Center of Wake Forest University and the Program in Molecular Genetics provide outstanding core facilities for a range of research needs and offer outstanding opportunities for research collaborations. Applicants should send a curriculum vitae, description of research plans, and the names and addresses of three references to: **Dr. Steven B. Mizel, Department of Microbiology and Immunology, Bowman Gray School of Medicine, Medical Center Boulevard, Winston-Salem, NC 27157-1064.** *Wake Forest University is an Equal Opportunity/Affirmative Action Employer.*

ASSISTANT PROFESSORS DEPARTMENT OF BIOLOGY VALDOSTA STATE UNIVERSITY

The Department of Biology is seeking applicants with a Ph.D. for three tenure-track positions at the **ASSISTANT PROFESSOR** level: 1) Plant Ecologist; 2) Aquatic Biologist; and 3) Developmental Biologist. The successful candidates will teach upper-division courses related to their areas of specialty as well as some combination of lower-level classes and/or human anatomy and physiology. Appointments begin 1 September 1997. Research preferences are open for all positions. Applicants should submit a letter of application identifying the position for which they are applying, statements of their teaching philosophy and research interests, curriculum vitae, copies of transcripts, and three letters of reference by 18 November 1996 to: **David L. Bechler, Department of Biology, Valdosta State University, Valdosta, GA 31698.** *Valdosta State University is an Equal Opportunity/Affirmative Action Employer.*

The University of Wisconsin-Madison Department of Psychology anticipates making one or more appointments at the **ASSISTANT PROFESSOR** level in perceptual and cognitive science and/or affective science beginning in fall 1997. Perceptual and cognitive science is broadly construed to include developmental, neurobiological, and computational approaches, in addition to more classical methodologies. Affective science, including the study of emotion and motivation, is similarly viewed in broad terms. Applications will be accepted until November 25, 1996, although interviewing may begin earlier. Send research statement, three letters of recommendation, curriculum vitae, and selected reprints to: **Cognitive Science or Affective Science Search Committee, Department of Psychology, University of Wisconsin, 1202 West Johnson Street, Madison, WI 53706-1611.** Unless confidentiality is requested in writing, information regarding the applicants must be released upon request. Finalist cannot be guaranteed confidentiality. *The University of Wisconsin is an Equal Opportunity/Affirmative Action Employer and women and minorities are encouraged to apply.*

SCIENCE STUDIES

Eugene Lang College, a small liberal arts college that is a division of the New School for Social Research, seeks a full-time **FACULTY** member to teach innovative interdisciplinary courses in biology, chemistry, or physics/mathematics to non-scientists and to offer leadership in curriculum development in science studies. Courses should situate scientific topics in social/historical/political contexts. Qualifications: Ph.D. in one of the above-named fields, with a strong interest in technology and, in the absence of laboratory facilities, the uses of computers, including the internet, in undergraduate instruction and research. Send letter of application and curriculum vitae with three references and two course proposals by December 2, 1996 to: **Monica Kassar, Dean's Office, Eugene Lang College, New School for Social Research, 65 West 11th Street, New York, NY 10011.** *Affirmative Action/Equal Opportunity Employer.*

POSITIONS OPEN

FACULTY POSITION Marine Phytoplankton Ecology

The Department of Marine Science and the Marine Science Institute of the University of Texas at Austin invite applications for a phytoplankton ecologist to hold a joint appointment as a tenure-track **ASSISTANT PROFESSOR** in the Department and as a Research Scientist at the Institute. We seek applicants with interests in the roles of phytoplankton in ecosystem dynamics, nutrient and carbon cycling, and food webs. Preference will be given to candidates with postdoctoral experience and a strong publication record. The successful candidate will be expected to develop externally funded research programs and to contribute to graduate and undergraduate education through course instruction and student advising. The position receives 75% of annual salary support from the State. For more information about the Marine Science Institute see our web site: <http://www.utmsi.zo.utexas.edu>. Applicants should send a curriculum vitae, a statement of research and teaching interests, and the names and addresses of five references by January 6, 1997 to: **Search Committee Chairman, The University of Texas Marine Science Institute, 750 Channelview Drive, Port Aransas, TX 78373-5015.** *The University of Texas at Austin is an Equal Opportunity Employer.*

TULANE UNIVERSITY MEDICAL CENTER TULANE REGIONAL PRIMATE RESEARCH CENTER Department of Parasitology

The Department of Parasitology is seeking an **ASSOCIATE SCIENTIST** (Assistant Professor) to begin January 1, 1997. The successful candidate will hold a Ph.D. degree and have an interest and track record in the molecular biology of tick-borne bacterial diseases as applied to issues of bacterial development and disease pathogenesis and immunophylaxis.

Please send curriculum vitae and names of three references by November 15, 1996 to: **Dr. Mario T. Philipp, Chairman, Search Committee, Tulane Regional Primate Research Center, 18703 Three Rivers Road, Covington, LA 70433.**

Tulane University is an Equal Opportunity/Affirmative Action Employer. Women and minorities are encouraged to apply.

ASSISTANT PROFESSOR

The Department of Chemistry and Biochemistry at The University of Texas at Arlington invites applications for a tenure-track position in biochemistry at the level of **ASSISTANT PROFESSOR** to begin fall 1997, subject to budgetary approval. Candidates must possess a Ph.D. in biochemistry or closely related area and have postdoctoral experience. A commitment to excellence in teaching at both the undergraduate and graduate levels, as well as conducting a vigorous, externally funded research program, is expected. Specific research area is open, but it is expected that modern methodologies will be utilized. Our Web site at <http://www.uta.edu/cos> contains more information on the University and the Department. Applicants should submit a curriculum vitae and a description of the proposed research program, and arrange to have at least three letters of recommendation and an official transcript sent to: **Search Committee (Biochemistry), Department of Chemistry and Biochemistry, University of Texas at Arlington, Arlington, TX 76019-0065.** Review of applications will begin December 1, 1996 and will continue until the position is filled. *The University of Texas at Arlington is an Equal Opportunity/Affirmative Action Employer and encourages applications from women and minorities.*

The Department of Biological Sciences of Benedictine University is seeking a broadly trained environmental biologist/ecologist with a strong commitment to undergraduate, liberal arts education. This is a tenure-track position at the **ASSISTANT PROFESSOR** level beginning either spring semester 1997 or fall semester 1997. The successful applicant will be an important part of a new undergraduate environmental science program in which he or she will teach specialty courses in environmental science and introductory biology and will direct undergraduate research. Ph.D. required. Send curriculum vitae (including statement of teaching in a liberal arts environment and research interests), three letters of recommendation, and all transcripts to: **Dr. Al Martin, Department of Biological Sciences, Benedictine University, 5700 College Road, Lisle, IL 60532.** Email amartin@ben.edu. Completed applications will be evaluated as received until the position is filled. *Women and minorities are especially encouraged to apply.*

UNIVERSITY OF CALIFORNIA, SANTA CRUZ
DEPARTMENT OF BIOLOGY
ASSISTANT PROFESSOR POSITIONS
www-biology.ucsc.edu

Applicants are invited for tenure-track assistant professor positions in the three areas listed below. Successful candidates will be expected to establish strong extramurally funded research programs and to participate in graduate and undergraduate teaching in their respective areas. Positions available Fall 1997, subject to final administrative and budgetary approvals. Candidates must have a Ph.D. (see areas below), plus postdoctoral research and university teaching experience or demonstrated potential for university research and teaching. Applicants should submit a curriculum vitae, brief description of research and teaching interests, and copies of reprints, and should arrange for three letters of recommendation to be sent to

Chair, _____ Search Committee
Department of Biology
225 Sinsheimer Laboratories
University of California
Santa Cruz, CA 95064

If applying for more than one position, you may send only one application, but you **MUST** state in a cover letter which position(s) you are applying for:

FINAL FILING DATE: December 13, 1996

Plant/Algal Ecology: We seek applicants whose research employs both field and laboratory-based experimental approaches and whose program can take advantage of the extraordinarily diverse terrestrial and/or marine coastal environments of Central California. We are looking for candidates who can participate in undergraduate and graduate teaching in the areas of plant sciences, ecology, and evolution. Refer to Provision #62 in your application.

Marine Ecology: We seek a marine vertebrate or invertebrate ecologist using modern experimental approaches who will augment existing strengths in marine biology, who is field oriented, and who is able to take advantage of the extraordinary marine environments of Central California. Teaching responsibilities for this position will be in the areas of ecology and either invertebrate or vertebrate biology. Refer to Provision #234 in your application.

Environmental Toxicology: We seek a candidate focusing on fundamental molecular, biochemical, or physiological mechanisms involved in the adaptations and responses of animals, plants, or microorganisms to environmental toxins or pathogens. The successful candidate will be expected to actively participate in the development of a new graduate program in Environmental Toxicology. The position will initially reside with the Department of Biology and will be the fourth of several appointments in a proposed Environmental Toxicology Program. Refer to Provision #507 in your application.

The University of California is an Equal Opportunity Employer.



FACULTY POSITION

Department of Molecular and Medical Genetics
Oregon Health Sciences University
Portland, Oregon

Applications are invited for an Assistant/Associate Professor position. The Department seeks individuals who have demonstrated research excellence in eukaryotic molecular, cellular, or developmental genetics. Applicants with special expertise in molecular mammalian genetics are encouraged to apply, in order to complement existing programs. Applicants should include a curriculum vitae, a brief description of research accomplishments and future research goals and the names of three references. Deadline is December 1, 1996. Please address applications to:

Markus Grompe, M.D.
Department of Molecular
and Medical Genetics, L103
Oregon Health Sciences University
3181 S.W. Sam Jackson Park Road
Portland, OR 97201-3098

OHSU is an EEO/AA Employer

Web Site Address: <http://www.ohsu.edu/som-MedGen/genpage.htm>

Senior Applications Scientist

Packard Instrument Company is a leader in the design and manufacture of life science research equipment. We are currently seeking a Senior Applications Scientist to join our marketing team.

In a fast-paced environment, you will use your experience with biological research to help develop instrument and reagent systems for both radioisotopic and non-radioisotopic detection. Strong emphasis will be placed on synergy between novel fluorescent reagents and state-of-the-art instrumentation to provide enabling technology for biological research. Your responsibilities will involve hands-on research, management of external R&D projects, close collaboration with the engineering development team, and publication of results. A Ph.D. in life sciences with four years' laboratory experience is strongly preferred. A Master's level scientist with relevant experience will be considered. In addition to a broad knowledge of life sciences, familiarity with analytical instrumentation, fluorescence, and computer software is desirable. Substantial domestic and international travel will be required.

If you have the background we require and are ready for a challenge, please send your resume with salary requirements to: **Director of Human Resources, Packard Instrument Company,**
800 Research
Parkway, Meriden, CT
06450. EOE M/F/V/D.



POSITIONS OPEN

MICROBIOLOGIST

The Department of Biological Sciences at the University of Alabama in Huntsville (UAH) announces a tenure-track faculty position in microbiology beginning in August 1997. We are recruiting an **ASSISTANT PROFESSOR** able to teach undergraduate and graduate courses in microbiology and related areas. The applicant should be broadly trained in microbiology and possess a Ph.D. in an appropriate area of the discipline. Postdoctoral experience is very desirable. Although the area of research interest is open, individuals with expertise in environmental microbiology or immunology are particularly encouraged to apply. The development of a strong, independent research program and the ability to attract extramural funding is required. The successful candidate will be expected to involve undergraduates as well as graduate students in his or her research program. Salary is competitive. Send letter of application, curriculum vitae, statement of teaching and research interests, and four letters of reference to: **Chair, Search Committee, Department of Biological Sciences, Wilson Hall, The University of Alabama in Huntsville, Huntsville, AL 35899**. Applications will be accepted for review through January 31, 1997. UAH is an Affirmative Action/Equal Opportunity Institution.

VISITING ASSISTANT PROFESSOR

A non-tenure-track **VISITING ASSISTANT PROFESSOR** position is available in the Department of Animal Sciences, University of Illinois. A Ph.D. in physiology or animal science with specialization in reproductive physiology is required. Postdoctoral training is preferred and teaching experience is required. The candidate is expected to teach graduate courses and laboratory techniques used in reproductive endocrinology and to establish an independent research program, and will have the opportunity to direct graduate student research. Applicants should send a letter explaining interest in the position, résumé, and names of three references to: **Dr. Janice Bahr, Department of Animal Sciences, University of Illinois, 1207 West Gregory Drive, Urbana, IL 61801-3838**. Application deadline is November 21, 1996. Affirmative Action/Equal Opportunity Employer.

Animal Ecologist, Eastern Michigan University: The Department of Biology is seeking an **ASSISTANT PROFESSOR** for a tenure-track faculty position available fall 1997 in the area of animal ecology with expertise in biostatistics. We are particularly interested in applicants capable of teaching one or more of the following: 1) invertebrate zoology, 2) ornithology, or 3) parasitology. The department has 22 faculty with graduate program concentrations in Ecology and Organismal Biology, Molecular and Cellular Biology, Physiology, and General Biology. Successful applicants will be expected to develop a research program capable of attracting external funding and to participate in graduate programs and an emerging new undergraduate curriculum. The position requires a Ph.D., teaching experience, and productive research. Submit letter of interest, curriculum vitae, statement of teaching interests and philosophy, description of research, recent reprints, and three letters of reference by November 25, 1996 to: **Chair, Search Committee, Position F9712, 318 King Hall, Eastern Michigan University, Ypsilanti, MI 48197**. For additional information contact: **Dr. Douglas Shapiro, Department Head, Telephone: 313-487-4242; FAX: 313-487-9235**. Women and members of minority groups are encouraged to apply. Affirmative Action/Equal Opportunity Employer.

HEAD, DEPARTMENT OF BIOLOGY

We are seeking a Department Head for the Department of Biology, University of North Carolina at Greensboro. This is a tenured position at the rank of **PROFESSOR** with duties to begin 1 July 1997. We seek an energetic academic leader with demonstrated excellence in teaching and research, effective interpersonal skills, and administrative ability. Our Department requires and supports faculty research and offers varied Bachelor's and Master's degree programs, including training in biotechnology. By 20 December 1996, send curriculum vitae and letter describing: 1) teaching and research philosophies; 2) your own program of research; and 3) skills, vision, and experience you would bring to this position. Please address applications, including the names and addresses of four references, to: **Biology Department Head Search Committee, University of North Carolina at Greensboro, Dean of Arts and Sciences Office, 105 Foust Building, Greensboro, NC 27412-5001**. Equal Opportunity/Affirmative Action Employer. Women/Minorities/Veterans/Disabled.

POSITIONS OPEN



THE CLEVELAND CLINIC FOUNDATION

THE RESEARCH INSTITUTE OF THE CLEVELAND CLINIC FOUNDATION FACULTY POSITION

Renal Physiology/Cell Biology Research

We are seeking an individual at the level of **ASSISTANT, ASSOCIATE, or FULL PROFESSOR** to establish a basic laboratory research program in renal physiology/cell biology. The position is jointly sponsored by the Research Institute and the Department of Urology—a partnership that has previously established research programs in renal cell carcinoma and transplantation. The successful candidate (Ph.D. or M.D.) will possess, or exhibit the potential to develop, an outstanding national reputation as a basic scientist using state-of-the-art cellular/molecular approaches to study the physiology of the kidney or the pathogenesis of renal diseases. Generous start-up support and a highly competitive salary and fringe benefits will be provided. The Cleveland Clinic Research Institute, comprising over 90 independent investigators and over 600 employees, has a long-standing commitment to excellence in basic and applied biomedical research with an annual budget in excess of \$50 million. The Department of Urology is a nationally recognized center of excellence for kidney disease.

Send curriculum vitae and names and addresses of three references to: **Dr. Andrew C. Novick, Chair, Renal Physiology Search Committee, A100, Cleveland Clinic Foundation, 9500 Euclid Avenue, Cleveland, OH 44195**. The Cleveland Clinic Foundation is an Equal Opportunity Employer.

ASSISTANT PROFESSOR SOUTHWEST TEXAS STATE UNIVERSITY DEPARTMENT OF BIOLOGY

Tenure-track faculty position available at the **ASSISTANT PROFESSOR** level, nine-month appointment, in the area of invertebrate biology. The successful candidate will have a strong background in marine biology, organismic level, with research expertise in estuarine wetland biology. The individual will teach courses in marine biology and freshman-level biology, coordinate the undergraduate marine major program (100 students), develop an independent research program, and supervise graduate students. Postdoctoral experience and evidence of ability to obtain extramural funding required. The Biology Department has 33 faculty, over 100 graduate (M.S.) students, and 1,300 undergraduate majors. Southwest Texas State University (21,000 students) is located in San Marcos, Texas, midway between Austin and San Antonio. Review of applications will begin on 15 December 1996. Applicants should send a statement of qualifications and interests for teaching and research; a curriculum vitae; names, addresses, telephone numbers, and e-mail addresses of three potential references; up to five reprints; copies of college transcripts; and evidence of teaching experience to: **Francis L. Rose, Search Committee, Biology Department, Southwest Texas State University, San Marcos, TX 78666**. Telephone: 512-245-2178; FAX: 512-245-8713. Southwest Texas State University is an Affirmative Action/Equal Opportunity Employer.

FACULTY POSITION BIOMEDICAL SENSORS Biomedical Engineering The University of Michigan Ann Arbor, Michigan

Applications are solicited for **FACULTY POSITIONS** at all ranks in the Department of Biomedical Engineering in the area of technology and engineering of biomedical sensors and micro material handling and processing devices with applications. Qualifications include an outstanding academic record, significant publications in major peer-reviewed journals, a doctorate in biomedical engineering or some associated discipline, and strong commitment to teaching and research.

Please send résumé and names of five references to:

**Professor David Anderson
Chair of Search Committee
Department of Biomedical Engineering
University of Michigan
2350 Hayward
3304 G. G. Brown
Ann Arbor, MI 48109-2125**

An Equal Opportunity/Affirmative Action Employer.

POSITIONS OPEN

ORGANISMAL BIOLOGIST UNIVERSITY OF ARIZONA

Department of Ecology and Evolutionary Biology

The Department of Ecology and Evolutionary Biology invites applications for a tenure-track position at the **ASSISTANT PROFESSOR** level. Ph.D. required. We seek an individual who studies the functional biology of organisms, with interests in areas including physiology, physiological ecology, functional or quantitative morphology, ecomorphology, biomechanics, and developmental morphology and/or physiology. The candidates should have an ecological or evolutionary focus that complements existing strengths in our department. We expect the successful candidate to develop excellence in research and teaching at the undergraduate and graduate levels. Review of applications begins November 15, 1996, and continues until filled. Please send curriculum vitae and three letters of recommendation to: **Dr. Daniel Papaj, Chair, Search Committee, Department of Ecology and Evolutionary Biology, Biological Sciences West 310, University of Arizona, Tucson, AZ 85721-0088**. (EEB home page <http://eebweb.arizona.edu>) The University of Arizona, an Equal Opportunity/Affirmative Action/ADA Employer, encourages applications from women and members of under-represented minority groups.

TENURE-TRACK FACULTY POSITION Cardiovascular Molecular Biologist

The Department of Pharmacology at the SUNY Health Science Center at Syracuse invites applications for a tenure-track, full-time, position at the **ASSISTANT PROFESSOR** level. The candidate will be expected to develop an independent research program focusing on cellular/molecular biology of the cardiovascular system. We have a highly interactive scientific environment and numerous facilities that support basic cardiovascular research. Ph.D. degree or equivalent, postdoctoral experience, and a record of research productivity are required. Salary, space, and start-up funds are competitive with national levels. Send applications, including a statement of research interests and goals, a curriculum vitae, and three letters of reference to: **Mario Delmar, M.D., Ph.D., Search Committee Chair, Department of Pharmacology, SUNY Health Science Center at Syracuse, 750 East Adams Street, Syracuse, NY 13210**. The deadline for applications is January 1, 1997.

An Affirmative Action/Equal Employment Opportunity/ADA Employer, committed to excellence through diversity.

Department of Biology tenure-track position with an emphasis on ecology, to begin August 1997. Anticipated rank of **ASSISTANT PROFESSOR**. Salary is favorably competitive with National BA II (Carnegie Classification) institutions. Requirements include an earned doctorate by date of appointment, expertise in some branch of ecology (systems or population ecology preferred), ability to teach introductory and advanced courses in biology, and commitment to establish a research program suitable for involving undergraduate students. Qualified applicants should send a letter of application addressing the above criteria, curriculum vitae, copies of transcripts of undergraduate and graduate work, a statement of teaching philosophy, and five references (names, addresses, and telephone numbers) to: **Dr. Leonard Schulze, Academic Dean, Texas Lutheran University, Seguin, TX 78155**. Telephone: 210-372-8002; FAX: 210-372-8008. Review of applications will begin January 6, 1997, and will continue until the position is filled. Equal Opportunity/Affirmative Action Employer. Women and minority candidates are encouraged to apply.

The Johns Hopkins University, Department of Chemistry, invites applications for a tenure-track position of **ASSISTANT PROFESSOR** in experimental physical chemistry. We are seeking a person who will establish a vigorous research program that complements the interests of the current faculty, and who will participate effectively in teaching at the graduate and undergraduate levels. Specific research interests are of less importance than scientific promise; scientists specializing in condensed matter studies as well as research involving interfaces and small molecules are encouraged to apply. Applicants should submit their curriculum vitae and a summary of research plans, and should arrange for three letters of recommendation to be sent to: **Professor Dean W. Robinson, Department of Chemistry, The Johns Hopkins University, 3400 North Charles Street, Baltimore, MD 21218**. To ensure full consideration, materials should be received by December 1, 1996. The Johns Hopkins University is an Equal Opportunity/Affirmative Action Employer.

Postdoctoral Research at The Wistar Institute

A Postdoctoral Fellowship is available immediately at The Wistar Institute, an independent biomedical research institute located on the campus of the University of Pennsylvania. The Fellowship is designed to train individuals for an independent research career in cancer related areas. Applicants may choose to perform their research from amongst 27 laboratories engaged in both basic and translational research focused on understanding the cellular processes of normal and malignant cells at the molecular level. The Institute's interdisciplinary approach to Basic Cancer Research is supported by programs in:

- 1) **Molecular Genetics:** Oncogenes, gene expression and chromosomal translocations in cancer;
- 2) **Immunology:** The molecular basis of the immune response as it applies to tumor immunity, cancer vaccines and immunotherapy;
- 3) **Cell and Developmental Biology:** Proliferation, cytokine-mediated differentiation, cytoskeleton, cell adhesion and migration, embryogenesis and oncogenesis;
- 4) **Structural Biology:** 3-D structure and function of proteins, peptides and viruses.

The successful candidate will be funded by a training grant awarded by the National Cancer Institute of the National Institutes of Health. Applicants must be a citizen or national of the United States or a permanent resident. Minority applicants are strongly encouraged to apply. Interested individuals are requested to send a C.V., summary of research interests, and three letters of reference to:

Coordinator of Research Training
The Wistar Institute
3601 Spruce Street
Philadelphia, PA 19104

Equal Opportunity Employer



Invertebrate Paleontologist. University of Oklahoma announces 12-month tenure-track position starting August 1, 1997 for Assistant/Associate Curator of Invertebrate Paleontology in Oklahoma Museum of Natural History and Assistant/Associate Professor in School of Geology and Geophysics. State-of-the-art facilities available in School of Geology and Geophysics housed in Sarkeys Energy Center and in new Sam Noble Oklahoma Museum of Natural History now under construction. Salary commensurate with experience. Seek dynamic individual with commitment to develop research and teaching programs using fossils to examine questions of broad significance in paleobiology, biostratigraphy, and evolutionary biology. Duties as faculty member in School include: teaching (one course/year); graduate-student supervision; thesis and dissertation committee participation; and research. As Museum curator, individual responsible for scholarly research, collection care, and interpretation. Curator to conduct original research, making results available to scientific community and public through publication, presentations at scientific meetings, and work with other specialists. Curator responsible for collection care, including: implementation of museum collections policies; specimen preservation, identification and cataloguing; supervision of assistants; and collection development. Curator assists in interpretation of paleontology to students and public, working with museum's exhibit and education staff to design displays and develop public programs. Ph.D. required. Successful applicant must demonstrate: (1) mastery of invertebrate paleontology as shown by research productivity through published scholarly works, record of funded research (or high potential for funding), and participation in professional societies; (2) collection care and management skills as demonstrated through prior work with repository collections, assembling of collections, or use of collections; (3) interpretive skills as shown by experience in display work, public programming, public speaking, or related activities requiring effective written and oral communication; (4) teaching skills as shown through previous teaching experience. Screening begins on December 2, 1996, continuing until position filled. Provide resume, written summary indicating how criteria outlined above are met, reprints, and three recommendation letters to: **Gary D. Schnell, Search Committee Chair, Oklahoma Biological Survey, 111 E. Chesapeake St., University of Oklahoma, Norman, Oklahoma 73019. Telephone (405) 325-4034. Fax (405) 325-7702. Email: gschnell@ou.edu. Equal opportunity/affirmative action employer. Women and minorities encouraged to apply. University has policy of being responsive to needs of dual-career couples.**



UCLA Neuroscience

The University of California, Los Angeles, as part of a major initiative in neuroscience, is seeking to fill three faculty positions. Appointments will be at the Assistant (tenure-track) Professor level. Appointments at the Associate (tenured) Professor level will be considered for exceptional candidates.

Department of Neurobiology

Molecular Neurobiology: Molecular analysis of processes such as synaptic transmission, neural integration, and behavior.

Cellular/Synaptic Neurobiology: Studies of signal transmission at synapses and/or of control of neuronal excitability.

Departments of Neurobiology and Psychology - Joint Appointment

Behavioral Neuroscience: Studies of the neural basis of vertebrate learning and memory that focus jointly at cellular and behavioral levels.

All appointees will be expected to teach in their areas of expertise. Ph.D. and/or M.D. and postdoctoral experience are required. For all positions, submit a CV (include phone, fax, and email), 2 copies of reprints and preprints, and a statement of research interests and professional goals. Also arrange for three letters of recommendation to be sent. The application deadline is 1 December 1996. Send application materials to: **Neuroscience Searches, Department of Neurobiology, UCLA, Box 951763, Los Angeles, CA 90095-1763.** Please identify the position for which you are applying. *The University of California is an Equal Opportunity Employer.*



HESKA

Heska Corporation

Exciting science, innovative technology, and dramatic potential are characteristics of Heska Corporation. Our research teams have created unique products in companion animal health and we continue to apply new technologies to create new product opportunities. We are seeking select individuals to help make Heska the dominant biotechnology company in companion animal care. Two immediate openings are available:

Scientist, Cytokine Research

To focus on the cloning and expression of cytokines and chemokines. The successful candidate will have a Ph.D. in molecular biology or immunology, 2-3 years of post-doctoral research in immunology, and a strong background in molecular biology with prior experience in constructing and screening cDNA libraries. Knowledge of eukaryotic expression systems and cytokine biology preferred.

Scientist, Immunology

To focus on characterizing the molecular aspects of T cell activation, and the role of co-stimulatory molecules. The successful candidate will possess a Ph.D. degree, and will have significant post-doctoral experience and a record of publication in T cell biology.

Heska is located at the foot of the Rocky Mountains, in Fort Collins, Colorado, sixty miles north of Denver. We offer a highly competitive salary and benefits package, including stock options. To apply, please send resume, publication list, and three references to **Diane McCoy, Director of Human Resources, Heska Corporation, 1825 Sharp Point Drive, Ft. Collins, CO 80525.** Please include job title in all correspondence.

POSITIONS OPEN

NEUROBIOLOGIST

Tenure-track position starting 1 July 1997 at the ASSISTANT PROFESSOR level. The successful candidate is expected to demonstrate appropriate training and experience and to develop and maintain an active teaching and research program. Teaching responsibilities include an introductory neuroscience course, an introductory biology core course, and an upper-level elective course in the area of specialty. The successful candidate will also participate in the biological Foundations of Behavior Program, a major jointly created by the Biology and Psychology Departments. Commitment to research, with undergraduate involvement, is expected. Send curriculum vitae, teaching and research statements, and graduate and undergraduate transcripts by December 1, 1996, and have three reference letters sent to: **Professor Richard Fluck, Chair, Neurobiology Search Committee, Department of Biology, Franklin and Marshall College, P.O. Box 3003, Lancaster, PA 17604-3003. Telephone: 717-291-4118; FAX: 717-399-4548.** *Franklin and Marshall College is committed to cultural pluralism through the hiring of minorities and women, and encourages all individuals to apply. Equal Opportunity/Affirmative Action Employer.*

FACULTY POSITIONS—Maharishi Medical College—a new model for complete medical education—is being established under the auspices of Maharishi University of Management and is seeking qualified basic science and clinical faculty. Maharishi Medical College will supplement modern medical education with the Maharishi Vedic Approach to Health—a time-tested, comprehensive system of prevention-oriented natural health care that has been well-researched and is fully complementary to modern medicine. Applications are invited for full-time positions in all basic sciences as well as in internal medicine, family practice, and preventive medicine for positions beginning spring/summer 1997. M.D., Ph.D., or equivalent and previous medical school teaching experience required. Responsibilities include teaching and curriculum development. Send curriculum vitae and statement of teaching and research interests to: **Robert H. Schneider, M.D., Dean, Maharishi Medical College, Maharishi University of Management, Fairfield, IA 52557. Telephone: 515-472-1150; FAX: 515-472-1167; Email: dean-mmcc@mum.edu.** *Equal Opportunity Employer.*

SIGNAL TRANSDUCTION PROTEIN CHEMISTRY

Applications are invited for a tenure-track position at the ASSISTANT PROFESSOR level in the area of protein biochemistry in signal transduction. Postdoctoral experience and research publications in this area are required. Candidates will be evaluated for their abilities to develop a strong extramurally funded research program and to teach effectively at the undergraduate and graduate level. Starting in August 1997, this appointment will be in the Department of Biochemistry and will be for nine months with two months of summer salary covered in the first year. The position is in the College of Arts and Sciences and is partially supported by the Agricultural Experiment Station. Applicants should send their résumé including relevant experience, future research plans, and the names of three references by November 30, 1996 to: **Thomas E. Roche, Head, Department of Biochemistry, Willard Hall, Kansas State University, Manhattan, KS 66506-3702.** *Kansas State University is an Equal Opportunity/Affirmative Action Employer and seeks diversity among its faculty.*

SCIENCE WRITER/STAFF WRITER

The Biotherapy Institute at the University of Minnesota Academic Health Center is seeking applicants to fill three science writer/staff writer positions. Eligible applicants should have a Ph.D. in immunology, molecular biology, or biochemistry and/or extensive professional experience in writing manuscripts, preparing grant applications, and editing. Five years of experience in writing articles in health sciences is required. Applicants should submit a curriculum vitae; reprints of selected publications; and the names, addresses, and telephone numbers of three individuals whom the applicant has asked to submit letters of recommendation by November 21, 1996, to:

Search Committee
c/o Dr. F. M. Uckun
University of Minnesota
Biotherapy Institute
2625 Patton Road
Roseville, MN 55113

The University of Minnesota is an Equal Opportunity Educator and Employer.

POSITIONS OPEN

ASSISTANT PROFESSOR CHEMICAL ENGINEERING Massachusetts Institute of Technology

Applicants are sought for a junior-level, **TENURE-TRACK FACULTY** position in the Department of Chemical Engineering at the Massachusetts Institute of Technology (MIT). Applicants should have a Ph.D. in chemical engineering or a closely related field, should have demonstrated excellence in academic research, and should have a strong interest in teaching graduate and undergraduate chemical engineering students. Send résumé including the names of at least three references, graduate transcripts, and a description of research interests to: **Dr. Robert C. Armstrong, Head, Department of Chemical Engineering, Massachusetts Institute of Technology, 66-350, Cambridge, MA 02139.** Material should be received by January 1, 1997. *MIT is an Equal Opportunity/Affirmative Action Employer.*

PROGRAM MANAGER SCIENCE AND TECHNOLOGY MEETINGS

In this new position, you will work closely with scientific leaders to develop programs of interest and utility to regional Academy members and other scientists in more than 20 different scientific disciplines; you will also participate in national and international conference development. Position responsibilities include short/long range planning, program development, proposal reviews and selection, and program logistics.

Qualified candidates will have a science degree, preferably Master's or above, and minimum of two years of relevant experience in an academic or professional organization. Competitive compensation package (relocation costs not reimbursed). Respond with curriculum vitae giving salary requirements to: **New York Academy of Sciences, 2 East 83rd Street, New York, NY 10021. FAX: 212-838-5810; Email: skennedy@nyas.org.** *Equal Opportunity Employer/Minorities/Females/Disabled.*

CELL CULTURE AND HYBRIDOMA CORE TECHNOLOGIST

Selected candidate will possess at least a Bachelor's degree in biology, biochemistry, or related field, in addition to five or more years of experience in hybridoma production and eukaryotic cell culture. Responsibilities include production of monoclonal antibodies (immunization, fusion, cloning, expansion *in vitro* and *in vivo*, and purification) and cell culture, quality control, production and freezing, and identification of microbial contaminants.

Qualified candidates please mail your résumé including cover letter indicating Job Posting Number 960827sci to:

David Kinsella
Mayo Clinic Scottsdale
13400 East Shea Boulevard
Scottsdale, AZ 85259

Email: Scottsdale.Recruitment@Mayo.edu

Affirmative Action Employer and Educator.

ENVIRONMENTAL SPECIALIST III Position Number 43010693

Palatka, Florida—Minimum \$27,700. This is a professional position working with a large wetland and lake restoration project. Duties include water quality monitoring design, coordination of data collection, data analyses, and reviewing data quality assurance. Qualifications include a bachelor's degree in chemistry, biology, limnology, botany, or environmental science and four years of professional experience in the environmental field. An advanced degree can substitute for a portion of the required experience. Preference will be given to applicants possessing advanced training and experience in water quality chemistry, water quality monitoring, wetlands ecology, and statistics. Send résumé identifying source of ad and position number by November 8, 1996 to: **St. Johns River Water Management District, Office of Human Resources, P.O. Box 1429, Palatka, FL 32178-1429.** *Equal Employment Opportunity/Veterans Preferred/Drug-Free Workplace.*

SYSTEMATIC BOTANIST/ ENVIRONMENTAL EDUCATOR

Southern Oregon State College (SOSC), Ashland, Oregon. For position description, requirements, salary, and other particulars, contact <http://www.sosc.osshe.edu/biology/jobs.htm> or write: **SBEE, Department of Biology, SOSC, Ashland, OR 97520. Telephone: 541-552-6341.** *An Affirmative Action/Equal Opportunity Employer committed to development of an inclusive multicultural community.*

POSITIONS OPEN

Biology: The Department of Biology invites applications for a tenure-track **ASSISTANT PROFESSOR** position at the University of Wisconsin Center (UWC)—Rock County in Janesville starting fall 1997. A Ph.D. is required with strengths in teaching human anatomy and physiology plus zoology. Quality teaching and being professionally active in biology are expected. Send a curriculum vitae, graduate transcripts, and three letters of reference by December 2, 1996 to: **Dr. Ned Grossnickle, Chair, Department of Biology, UWC-Marathon, 518 South 7th Avenue, Wausau, WI 54401.** *The University of Wisconsin is an Equal Opportunity/Affirmative Action Employer.*

TOXICOLOGISTS

Mine Safety and Health Administration (MSHA) U.S. Department of Labor

MSHA is seeking qualified candidates for **TOXICOLOGIST**, GS-415-13 positions. The Agency conducts a variety of programs to reduce the unique occupational hazards in the nation's mining and milling operations. Duties involve conducting multidisciplinary research studies and evaluations, advising Agency officials and members of the mining community on a wide range of toxicological and industrial hygiene matters including risk assessment of contaminants, sampling, and control. Incumbents also perform applied toxicological investigations in connection with a wide range of mining activities. Work requires travel and underground mine visits. Candidates must possess the requisite education and experience levels as provided in the Office of Personnel Management Minimum Qualification Standard for GS-415 Toxicologist positions. Salary range is from \$52,867 to \$68,729. *U.S. citizenship required.* For more information please contact: **Human Resources Division, MSHA, 4015 Wilson Boulevard, Arlington, VA 22203-1984. Telephone: 703-235-1352.** *An Equal Opportunity Employer.*

PLANT ECOLOGIST

Drury College is seeking applications for a Plant Ecologist at the **INSTRUCTOR** or **ASSISTANT PROFESSOR** rank. Candidates must have a strong commitment to high quality undergraduate teaching. Responsibilities include introductory and advanced botany courses, environmental biology, and participation in the interdisciplinary general education science curriculum. To apply send curriculum vitae and names of three references to: **Dr. Barbara Wing, Chair, Department of Biology, Drury College, 900 North Benton, Springfield, MO 65802. Email: bwing@lib.drury.edu; Telephone: 417-873-7237; FAX: 417-873-7432.** *Women and minorities are encouraged to apply.*

BIostatistician

Biostatistician to provide statistical analysis and reporting of biological data from analytical and clinical laboratory experiments on pharmaceutical compounds, including drug levels, rates of excretion, blood concentrations, etc; act as liaison with research scientists on experimental goals and parameters of statistical analysis; prepare reports and develop and maintain Statistical Analysis Software (SAS); build SAS databases; and customize SAS programs. Bachelor's in statistics or math plus two years of experience in statistical research or teaching. Also requires coursework in biometry or biostatistics and demonstrated ability to use SAS software and program modifications for data manipulation. \$34,172 per year. 40 hours per week. Send résumé to: **Nebraska Job Service, 550 South 16th Street, P.O. Box 94600, Lincoln, NE 68509.** Refer to Job Order Number: NE 0169656.

PART-TIME MICROSCOPE SALES POSITION

Manufacturer of an important new high-resolution 3D microscope seeks sales representatives. **MICROSCOPISTS** who will continue to work in disciplines benefiting from 3D analysis such as cell biology, developmental biology, neurobiology, and microbiology are especially desired. Send résumé to:

InGen Corporation
235 Montgomery Street, Suite 300
San Francisco, CA 94104

ELECTRON MICROSCOPIST RESEARCH TECHNICIAN

Full- or part-time to start immediately. Salary commensurate with qualifications. Please send résumé, letter of intent, and three references to: **Dr. Elaine Fuchs, Howard Hughes Medical Institute, The University of Chicago, 5841 South Maryland, MC1028, Room N314, Chicago, IL 60637.** *The University of Chicago is an Equal Opportunity/Affirmative Action Employer.*

Boston College Tenure Track Positions in Biology

Continuing its growth and development, the Department of Biology at Boston College is seeking applications to fill two tenure track positions for the Fall of 1997. It is expected that at least one of these positions will be at the Assistant Professor level; one appointment at the Associate Professor level may be considered for an exceptionally well-qualified candidate. Boston College is a university with seven separate schools and colleges and over 14,000 students. The Biology Department has an active graduate program with approximately 50 Ph.D. and M.S. students, and over 600 undergraduate majors. Further information about the University and the Department can be found at <http://www.bc.edu> and <http://darkstar.bc.edu>.

The successful candidates will be expected to develop strong extramurally funded research programs in aspects of cellular or developmental biology that complement our current research programs in: cellular and molecular biology; neurobiology; developmental and reproductive biology; and immunology. The Department is committed to excellence in teaching, and the new faculty members will be expected to contribute to lecture courses at the undergraduate and graduate levels.

Salary levels, start-up funds, and laboratory resources are competitive with other research universities; a major renovation and expansion of the Departmental facility is currently in the design phase. Applicants must have a Ph.D. degree and at least 3-4 years of postdoctoral experience. Applications including curriculum vitae, a list of publications, and a two-page summary of current and future research plans should be sent to the search committee. Applicants must also arrange for three letters of recommendation to be sent. The application deadline is November 22, 1996; however, early application is recommended as applications will be reviewed when received. Mail applications to:

**Search Committee
Department of Biology
Boston College
Chestnut Hill, MA 02167**

Boston College is an Equal Opportunity/Affirmative Action Employer. Women and minorities are encouraged to apply.



School of Medicine

Chair, Department of Radiology

The University of Pennsylvania School of Medicine seeks outstanding candidates for the position of Professor and Chair of the Department of Radiology.

The successful applicant will be of international stature in his/her area of research and will provide academic leadership in the broadly defined area of Radiology. Applicants who have demonstrated qualifications in the creation, implementation and administration of large programs in clinical care, research, and education will have priority.

The University is an Equal Opportunity/Affirmative Action employer. Women, minority, and international candidates are encouraged to apply. Letters of interest, CV, and names of references should be sent to:



**David W. Kennedy, M.D.
Chair, Radiology Search Committee
Chair Department of
Otorhinolaryngology:
Head and Neck Surgery
University of Pennsylvania
School of Medicine
3400 Spruce Street
5th floor Ravidin
Philadelphia, PA 19104-4283**

AN EQUAL OPPORTUNITY/AFFIRMATIVE ACTION EMPLOYER

SYMPOSIA

Serono Symposia USA, Inc.

**XIVth Testis Workshop:
Germ Cell Development,
Division, Disruption and Death
February 19-22, 1997
Baltimore, Maryland
Barry R. Zirkin, Ph.D., Chair**

This symposium will offer basic and clinical scientists state-of-the-art analyses of the mechanisms regulating the development, differentiation, aging and death of spermatogenic cells. The molecular mechanisms regulating germ cell division, development, and differentiated function will be emphasized as will how these are disrupted by xenobiotics and by aging.

The participant will learn: how spermatogonial cells divide and function; mechanisms by which cells enter and proceed through meiosis; systems controlling gene expression during spermatogenesis; how cell death is regulated; how senescence and aging affect germ and Leydig cell function; and, how toxicants affect germ cell function. Deadline for submission of abstracts is December 13, 1996.

For more information on
XIVth Testis Workshop
please contact Leslie Nies,
Serono Symposia USA, Inc.,
100 Longwater Circle, Norwell, MA 02061
Telephone 800-283-8088 or 617-982-9000
FAX 617-982-9481

ANNOUNCEMENT

Equipment Grant Opportunity

Ultrasensitive mRNA and Amplified DNA Quantitation

Molecular Devices Corporation is offering an equipment grant to scientists at non-profit institutions to acquire the Threshold Assay System for nucleic acid quantitation at a significantly reduced cost in exchange for future publication. To learn more about the Threshold System and receive a grant application package, please contact:

Molecular Devices Corporation
Attn: Threshold System Grant
1311 Orleans Drive
Sunnyvale, CA 94089 USA
Tel: (408) 747-1700, Fax: (408) 747-3602
e-mail: info@moldev.com

Application deadline: December 15, 1996



POSITIONS OPEN

FELLOWSHIPS IN REPRODUCTIVE BIOLOGY NORTHWESTERN UNIVERSITY

POSTDOCTORAL and PREDOCTORAL FELLOWSHIPS are available in reproductive biology for highly qualified applicants. A diverse but integrated program offers research training in molecular, biochemical, cellular, physiological, and behavioral aspects of reproduction. Participating faculty include: **James Bartles** (sperm surface polarity); **Erwin Goldberg** (molecular biology of the testis); **Mary Hunzicker-Dunn** (ovarian signal transduction); **J. Larry Jameson** (hormonal regulation of gene expression); **Jon Levine** (neuroendocrinology of peptidergic neurons); **Daniel Linzer** (molecular endocrinology); **Kelly Mayo** (gene regulation in reproductive systems); **Neena Schwartz** (gonadal-pituitary endocrinology); and **Fred Turek** (seasonal cycles/circadian clocks). Send curriculum vitae and names of three references to: **Dr. Jon E. Levine, Department of Neurobiology and Physiology, Northwestern University, 2153 North Campus Drive, Evanston, IL 60208-3520.** Applicants must be eligible for NIH training support (U.S. citizen or permanent resident).

An Equal Opportunity Employer.

POSTDOCTORAL POSITION Cox Laboratory for Biomedical Engineering Rice University

A position is available in an NIH-funded laboratory investigating the effects of rheological forces on platelets. The project focuses on the expression and functional analyses of molecules involved in cellular responses to shearing forces. This work is part of an established interdisciplinary research program comprising engineers and biomedical scientists from Baylor College of Medicine and Rice University. Send curriculum vitae and two references to: **Dr. M. H. Kroll, Hematology-Oncology (111H), VA Medical Center, 2002 Holcombe Boulevard, Houston, TX 77030. Telephone: 713-794-7111; FAX: 713-794-7733; Email: kroll.michael.h@Houston.va.gov.** Rice University is an Affirmative Action/Equal Opportunity Employer.

POSTDOCTORAL ASSOCIATE UNIVERSITY OF MIAMI SCHOOL OF MEDICINE Sylvester Comprehensive Cancer Center

Seeking Ph.D. in molecular biology. Should be experienced in cloning, gene regulation, and cellular signaling. Will be responsible for projects in tumor immunology. Salary commensurate with previous publications and experience. Must exhibit excellence in research. Please forward curriculum vitae and names of three references to: **Amitabha Mazumder, M.D., Associate Director for Clinical Research, c/o Susan Martin, Sylvester Comprehensive Cancer Center, 1475 NW 12th Avenue (D8-4), Miami, FL 33136.** Affirmative Action/Equal Opportunity Employer.

THE NEUROSCIENCES INSTITUTE SAN DIEGO Cellular Neurophysiology

Applications are invited for the **POSTDOCTORAL POSITION** of Junior Fellow in Experimental Neurobiology to study cellular and synaptic physiology in mammalian neocortex. Applicants should have a background in electrophysiology, preferably with brain slice and patch-clamp experience. Fellows will receive stipends appropriate to their qualifications and experience. Submit a curriculum vitae, statement of research interests, and names of three references to: **Dr. Ronald B. Langdon, The Neurosciences Institute, 10640 John J. Hopkins Drive, San Diego, CA 92121. FAX: 619-626-2099.**

A **POSTDOCTORAL POSITION** in Reproductive Biology is available in the Department of Obstetrics/Gynecology at the University of Illinois at Chicago. The focus of the research program is to study conceptus-regulated gene expression in the primate endometrium. These studies will include both *in vivo* regulation and cellular and molecular regulation *in vitro*. A strong background in biochemistry and molecular biology is highly desirable. Please forward a curriculum vitae and names and addresses of three references to: **Dr. Asgi Fazleabas, Department of OB/GYN, University of Illinois at Chicago, 820 South Wood Street (M/C 808), Chicago, IL 60612-7313. Telephone: 312-996-0994; FAX: 312-996-4238; Email: asgi@uic.edu.** Application deadline is October 30, 1996.

POSITIONS OPEN

POSTDOCTORAL and RESEARCH ASSOCIATE positions in microbiology and immunology available immediately. Projects related to molecular biology and characterization of retroviral regulatory fragments. Emphasis will be on their interactions with the host immune system. Experience in molecular biology and cell culturing techniques required. Send curriculum vitae and reference list to: **Terry McNearney, M.D., Division of Rheumatology, 405 Clinical Sciences Building, University of Texas Medical Branch, Galveston, TX 77555-0759.** University of Texas Medical Branch is an Equal Opportunity/Affirmative Action Employer. Minorities/Females/Disabled/Veterans.

Applied Microbiology, Inc. is an entrepreneurial biotechnology company with an active research and development program in the area of infectious disease. Our headquarters and laboratories are located on an attractive corporate campus 20 miles north of New York City.

We currently have the following openings in our Microbiology Group:

POSTDOCTORAL SCIENTIST: The successful candidate will have a Ph.D. in microbiology and up to two years of postdoctoral experience. Hands-on skills in working with bacteria of medical interest are required and a knowledge of the infectious disease area is desirable.

RESEARCH ASSISTANTS: The successful candidates will have laboratory experience in microbiology. One position requires an M.S. or M.A. degree plus relevant experience. Candidates with B.S. or B.A. degrees should apply only if they have at least two years of experience in microbiology/bacteriology.

We offer a comprehensive benefits package, including incentive stock options, 401K, and a pension plan. Send curriculum vitae and cover letter with salary requirements to: **771 Old Saw Mill River Road, Tarrytown, NY 10591. FAX: 914-347-7695, Attention: Human Resources.**

POSTDOCTORAL ASSOCIATE UNIVERSITY OF MIAMI SCHOOL OF MEDICINE Sylvester Comprehensive Cancer Center

Seeking Ph.D. in cellular immunology. Should be experienced with cytokine assays and cellular manipulation *in vitro* and *in vivo*. Salary commensurate with previous publications and experience. Must exhibit excellence in research. Please forward curriculum vitae and names of three references to: **Amitabha Mazumder, M.D., Associate Director for Clinical Research, c/o Susan Martin, Sylvester Comprehensive Cancer Center, 1475 NW 12th Avenue (D8-4), Miami, FL 33136.** Affirmative Action/Equal Opportunity Employer.

POSTDOCTORAL POSITION

Recent Ph.D. graduate with extensive experience in the HPLC analysis of vitamins A and E is sought for a position as a **POSTDOCTORAL RESEARCH SCIENTIST** to explore vitamin A and E metabolism in mouse liver cells. This position requires someone who is experienced in normal and reverse phase HPLC analysis of vitamins A and E, who is able to isolate lipoprotein fractions and subfractions, and who has experience in working with mice. Interested persons should send a letter and curriculum vitae to: **Dr. William S. Blaner, Department of Medicine, Columbia University, 630 West 168th Street, New York, NY 10032.**

POSTDOCTORAL POSITION

Position available immediately to study molecular regulation of tumor progression from hormone (growth factor)-dependency to autonomy. We employ several *in vitro* model systems to assess transcription of genes associated with proliferation, apoptosis, and drug resistance. Background in molecular biology preferred. Please send curriculum vitae and names of three references to: **Dr. Arthur R. Buckley, Department of Pharmacology and Toxicology, University of North Dakota School of Medicine and Health Sciences, P.O. Box 9037, Grand Forks, ND 58202-9037.**

POSTDOCTORAL POSITION available for study of molecular and biochemical characterization of stress-activated protein kinases. Expertise with kinase assays essential. Send curriculum vitae to: **Dr. D. Drucker, The Toronto Hospital, 200 Elizabeth Street, CCRW3-838, Toronto M5G 2C4 Canada.**

POSITIONS OPEN

POSTDOCTORAL FELLOW POSITION (SEARCH REOPENED)

A **POSTDOCTORAL FELLOW** position funded by the Auburn University Biogrants Program is available for up to two years to conduct basic studies on development of combinatorial chemistry approaches to identifying new anti-protozoal agents. Ph.D. degree in biochemistry/enzymology is required. A strong background in enzymology or parasitology and experience with proteases and/or parasites is desirable. The minimum starting salary is \$25,200 plus benefits. Please send curriculum vitae and names of three references to: **Dr. Christine C. Dykstra, Department of Pathobiology, 264 Greene Hall, Auburn University, AL 36849-5519.**

Auburn University is an Affirmative Action/Equal Employment Opportunity Employer. Minorities and women are encouraged to apply.

A **POSTDOCTORAL POSITION** is available January 1, 1997 to study the molecular mechanisms by which macrophage migration inhibitory factor (MIF) regulates the activation of macrophages and T-cells. Previous work suggests that MIF counter-regulates the anti-inflammatory effects of steroids on immune cells (*Nature*, 377:68, 1995). The candidate (Ph.D. or M.D.), who should have expertise in molecular biology (Northern/Southern/Western blotting, gel shift assay, PCR-based and antisense technology, cloning), will be working with **Dr. Thierry Calandra**. The appointment will be initially for two years with possibility of extension. Salary commensurate with qualifications and experience and according to the scale of the University of Lausanne. Send curriculum vitae, a statement of research interests, and names of three references to: **Prof. Michel P. Glauser, Head, Division of Infectious Diseases, Centre Hospitalier Universitaire Vaudois, CH-1011 Lausanne, Switzerland. Telephone: 41-21-314-1010; FAX: 41-21-314-1018.**

POSTDOCTORAL FELLOW

Training in molecular biology required. Experience with heterologous gene expression systems, *in situ* hybridization, immunologic methods, ligand-binding studies, and/or electrophysiology desirable. If interested, please send your curriculum vitae to: **Raymond S. Roginski, M.D., Ph.D., Department of Anesthesia, University of Medicine and Dentistry of New Jersey-Robert Wood Johnson Medical School, 125 Paterson Street, Suite 3100, New Brunswick, NJ 08901-1977.** University of Medicine and Dentistry of New Jersey is an Affirmative Action/Equal Opportunity Employer. Minorities/Females/Disabled/Veterans, and a member of the University Health System of New Jersey.

POSTDOCTORAL FELLOWSHIP available (NIH-funded) to study the immunopathogenesis of acute simian immunodeficiency virus (SIV) infection, using SIV strain PBj14. Studies will include analysis of the mechanism(s) of virally induced T cell proliferation, and experiments to determine the role of pro-inflammatory cytokines in virally induced acute disease. Send curriculum vitae and names of three references to: **Steve Dewhurst, Department of Microbiology and Immunology, University of Rochester Medical Center, 601 Elmwood Avenue, Box 672, Rochester, NY 14642. Email: dwrt@bphvax.biophysics.rochester.edu.**

ELECTROPHYSIOLOGY OF EXOCYTOSIS

POSTDOCTORAL POSITION is available to study the effects of specific transfected proteins on distinct steps in Ca^{2+} -dependent exocytosis in adrenal chromaffin and other cells. Applicant should have expertise in patch-clamp techniques (experience in molecular biology also desirable). Send curriculum vitae and references to: **Dr. Ronald W. Holz, Department of Pharmacology, University of Michigan Medical School, Ann Arbor, MI 48109-0632. FAX: 313-763-4450.** Equal Opportunity Employer.

POSTDOCTORAL POSITION in Neuropsychology/Cognitive Neuroscience: Neurobehavioral recovery from brain injury, morphometric MRI and fMRI research. Position will be under the mentorship of **Harvey S. Levin, Ph.D.** For application packet contact: **Karen A. Hart, Ph.D., Director of Education, Department of Physical Medicine and Rehabilitation, Baylor College of Medicine, 1333 Moursund, Room B107, Houston, TX 77030.**

Baylor College of Medicine is an Equal Opportunity/Affirmative Action/Equal Access Employer.

BIOLOGICALS AVAILABLE FROM THE NATIONAL CANCER INSTITUTE

The repository of the Biological Resources Branch, NCI, announces the availability of recombinant human cytokines and monoclonal antibodies against mouse and human antigens.

HUMAN CYTOKINES CURRENTLY AVAILABLE:

IL-1 α IL-1 β IL-2

The cytokines are aliquoted in 100 μ g amounts ($>10^6$ units) and are available to investigators with peer-reviewed support only (manufacturers' restrictions prohibit distribution of these materials to for-profit institutions or commercial establishments).



HeFi-1: Murine Anti-Human CD30 Monoclonal Antibody OTHER MONOCLONAL ANTIBODIES CURRENTLY AVAILABLE:

3ZD: Murine anti-human IL-1 β
11B.11: Rat anti-mouse IL-4

The monoclonal antibodies are available to peer-reviewed investigators, for-profit institutions or commercial establishments. The 3ZD and the 11B.11 antibodies are available in either 5 or 20 mg vials. The HeFi-1 antibody is available only in 1 mg amounts.

Use of these materials is limited solely to *in vivo* and *in vitro* basic research studies and is **not** intended for administration to humans.

Investigators wishing to obtain any of these materials should send requests to:

Dr. Craig W. Reynolds
Biological Resources Branch
NCI-FCRDC
Building 1052, Room 253
Frederick, MD 21702-1201
FAX: 301-846-5429
e-mail: REYNOLDSC@mail.ncifcrf.gov

All requests should be accompanied by:

(1) A brief paragraph outlining the purpose for which materials are to be used, (2) the amount desired, (3) description of investigator's peer-reviewed support. Recipients will be required to sign a Materials Transfer Agreement and to pay shipping and handling costs. Please allow 4 to 6 weeks for delivery.

NATIONAL CANCER INSTITUTE-FREDERICK CANCER RESEARCH & DEVELOPMENT CENTER

PRINCIPAL INFORMATION SCIENTIST

At SmithKline Beecham, our commitment to scientific excellence results in products that promote health and well-being throughout the world. Because innovative research is critical to our ability to deliver new healthcare solutions, we are seeking a Scientist with superior analytical skills to provide expert consulting support to our drug discovery team.

As a value-added provider of consulting services, the selected candidate will use a variety of analytical and visualization software to assess both genomic information and scientific and patent literature. This individual will also use intra/internet agent software to identify new information sources; develop expertise in knowledge management and genomic science; and be a proactive contributor to current and future Information Management genomics products and services.

In addition to an MSC or PhD degree or their equivalent, the successful candidate will be familiar with cellular and molecular biology applications to biotechnology and pharmaceutical research. In-depth understanding of gene and protein sequence analysis and good computer, communication and problem solving abilities are essential. The ability to work well under deadlines and pressure is a must.

Located at our state-of-the-art research facility in suburban Philadelphia, SmithKline Beecham offers a competitive compensation/benefits/relocation package as well as a stimulating work environment in which to grow and excel. For confidential consideration, please send resume and salary requirements to: SmithKline Beecham Pharmaceuticals, Job Code A6-0468S, P.O. Box 2676, Bala Cynwyd, PA 19004. We are an Equal Opportunity Employer, M/F/D/V.



SmithKline Beecham
Pharmaceuticals

Challenging the natural limits.

The Science of Agricultural Genetics

POST-DOCTORAL ASSOCIATE

Discovery Research Analytical Biochemistry (Job #AB-703)

The candidate will carry out research directed at characterizing and employing epitope tags (peptide and RNA) in transgene expression studies. Efforts will focus on characterizing tags for their general utility and applicability in transgene expression studies and then developing the tools by which a tag-based analytical approach can be incorporated into routine transgenic plant analysis. We require a Ph.D. or equivalent in biochemistry, immunochemistry, or related field. Experience in applied immunochemistry (including ELISA development), protein biochemistry, and molecular biology are essential. Excellent communication skills, both technical and interpersonal, and a willingness to work as a part of a team of researchers are also required. Appointment is for two years.

Pioneer offers an opportunity to interact among hundreds of scientists with diverse backgrounds. We offer competitive salaries and excellent, comprehensive benefits. Des Moines is a prospering heartland city that ranks well above the national averages in affordability and education. Our location provides a mix of beautiful open spaces and city life advantages. For confidential consideration send 3 copies of your resume and cover letter indicating job number by November 4, 1996 to: Pioneer Hi-Bred International, Inc., Attn: PERSONNEL (Job #AB-703), P.O. Box 1004, Johnston, IA 50131-1004.

Pioneer Hi-Bred International, Inc., is the world leader in agricultural genetics. Founded in 1926, we are a publicly held company that invests more than \$115 million in research and product development. Pioneer® brand products are grown in almost every crop-producing continent in the world. At our headquarters in Des Moines, Iowa, we're adding to our Research team.



**PIONEER HI-BRED
INTERNATIONAL, INC.**
An Equal Opportunity
Employer

**Experimental Division Director
Laboratory for Laser Energetics
University of Rochester**

The Laboratory for Laser Energetics (LLE) at the University of Rochester has an immediate opening for the Experimental Division Director. LLE is part of the National Inertial Confinement Fusion (ICF) program and is a world-class research facility centered around the recently upgraded 60-beam, 40-kJ, UV OMEGA laser-fusion experimental system. The principal ICF research carried out at LLE is devoted to investigating the direct-drive approach to ICF. Additional collaborative research into indirect-drive ICF is also performed at LLE. The responsibilities associated with the position of Experimental Division Director include overall guidance of the LLE experimental program and extensive collaborations with the ICF programs at the Lawrence Livermore National Laboratory and the Los Alamos National Laboratory in the areas of both direct- and indirect-drive ICF research.

Responsibilities associated with this position encompass all laser-fusion-related target physics experiments, target fabrication research and development and production, and research in high-power solid-state glass laser physics issues such as beam smoothing techniques. The Experimental Division Director reports directly to the Director of the Laboratory.

The Experimental Division consists of 40 scientific personnel, including 15 Ph.D.'s, the remainder consists of engineers and technicians. The division works in partnership with the LLE Theory Division, which is composed of a number of theoretical physicists and experts in numerical simulations. The LLE Engineering Division provides extensive mechanical, electronics, optical design shop, and OMEGA operations support. There are approximately 160 staff members overall at LLE.

Primary funding of LLE is provided through five-year contracts with the Inertial Confinement Fusion Office of the US Department of Energy. The present annual operating budget for the Laboratory is in excess of \$25M. As part of the University of Rochester, LLE draws extensively from its undergraduate and graduate student population for thesis work in related fields such as physics, optics, engineering, chemistry, etc. Presently, there are 60 Ph.D. candidates and 40 undergraduates engaged in research at the Laboratory.

The Experimental Division Director position is the research equivalent of a full professor at the University and may include teaching duties depending on personal preference and experience. The successful candidate must either hold or be eligible to obtain a DOE Q clearance.

Interested scientists with extensive scientific and managerial credentials should apply directly to Prof. Robert L. McCrory, Director of the LLE, 250 East River Road, Rochester, NY 14623. Include a CV, a complete list of publications, salary objective, references, and projected time of availability. See the LLE Web site for more information (<http://www.lle.rochester.edu>).

The University of Rochester is an Equal Opportunity Employer

**MOLECULAR
CARCINOGENESIS**

Postdoctoral fellowship available in the Molecular Carcinogenesis Section. Our research interests concern the functions of tumor suppressor proteins and cell cycle regulators, with emphasis on the role of p53.

The ABL-Basic Research Program at the Frederick Cancer Research and Development Center is located in Frederick, MD (45 miles north of Washington, DC) and offers a full complement of benefits, competitive postdoctoral stipends, and an excellent work environment.

To apply please send a curriculum vitae, and introductory letter containing a brief description of research experience and contact information for three references to:

Dr. Karen Vousden
c/o Personnel Department/SC
ABL-Basic Research Program
NCI-FCRDC
P.O. Box B, Building 428
Frederick, MD 21702-1201



*An Equal Opportunity/
Affirmative Action Employer*

Immunologist

The Department of Medical Microbiology and Immunology, University of Alberta, invites applications for a Faculty position in Immunology. Any area of immunology or host resistance is appropriate, including microbial immune evasion strategies. Applicants require a PhD and/or MD degree and research training at a postdoctoral level. The successful applicant will have demonstrated outstanding potential as an independent investigator and will be expected to develop a dynamic research program while contributing to both undergraduate and graduate teaching in immunology.

The Department of Medical Microbiology and Immunology has excellent research and training programs in virology, bacteriology, immunity and pathogenesis in a research milieu that includes several internationally recognized research groups and programs in basic and clinical sciences. Further information on the research programs can be found at the Department's Website (<http://www.ualberta.ca/~mmid>). The initial appointment will be at the Assistant Professor level for three years, and the applicant will be expected to apply for external salary support from the AHFMR or MRC during this time. Remuneration (\$39,230 to \$55,526 per annum) will be commensurate with qualifications and experience. Successful applicants will devote 75% of their time to research.

In accordance with Canadian Immigration requirements, priority will be given to Canadian citizens and permanent residents of Canada. If suitable Canadian citizens and permanent residents cannot be found, other individuals will be considered. Applicants should submit their curriculum vitae and list of three references by November 30, 1996, to: Immunology Search Committee, c/o Dr. James R. Smiley, Chair, Medical Microbiology and Immunology, I-41 Medical Sciences Building, University of Alberta, Edmonton, Alberta, Canada T6G 2H7.

The University of Alberta is committed to the principle of equity in employment. As an employer we welcome diversity in the workplace and encourage applications from all qualified women and men, including Aboriginal peoples, persons with disabilities, and members of visible minorities.



**NEUROBIOLOGY FACULTY
POSITIONS**

Two new tenure-track positions in cellular, developmental, or molecular neurobiology are available in the Department of Cell Biology, Neurobiology and Anatomy at the University of Cincinnati Medical Center. We will consider outstanding individuals at any level but will fill at least one position at the Assistant Professor level. Applicants should have postdoctoral experience and robust publication records. Successful applicants will be expected to develop funded independent research programs and contribute to medical and graduate teaching programs. Candidates with expertise in state-of-the-art microscopy approaches are especially encouraged to apply. Generous start-up packages are available. Applicants should send curriculum vitae, brief statement of accomplishments and research plans, and names of three references to:

Nancy Ratner, Ph.D.
Neurobiology Search Committee
University of Cincinnati College of
Medicine
PO Box 670521
Cincinnati, Ohio 45267

*The University of Cincinnati is an Affirmative
Action/Equal Opportunity Institution*

Postdoctoral Position

Cell and Molecular Immunology

The Wistar Institute

A postdoctoral position is available to study: 1) Early signal transduction events that mediate ligand induced antigen receptor internalization in B lymphocytes, 2) The molecular basis for the regulated function of cell adhesion molecules (CAM) on lymphocytes, and 3) CAM mediated signal transduction in lymphocytes. Individuals possessing a Ph.D. and/or M.D. and who have a background in signal transduction or cell and molecular immunology are encouraged to apply.

Interested applicants are requested to send a C.V. and three letters of reference to:

E. Puré, Ph.D.
The Wistar Institute
3601 Spruce Street
Philadelphia, PA 19104
e-mail:
pure@wista.wistar.upenn.edu



Northwestern University

Department of Neurobiology
and Physiology

A **tenure-track** faculty position is available in the area of:

Molecular and Cellular Neurobiology

The Department expects to hire a new faculty member with interests in areas such as (but not restricted to) the molecular, genetic or cellular basis of neuronal signalling, signal transduction, plasticity, development, or learning. This position is likely to be filled at the junior level, but outstanding senior candidates will also be considered. Faculty will be expected to maintain a strong independent research program, and to participate in graduate and undergraduate teaching. Applicants should send a curriculum vitae and statement of research interests by November 15 and have at least three letters of reference sent to the address below.

Jon E. Levine, Ph.D.
Chair, Search Committee
Department of Neurobiology & Physiology
Northwestern University
2153 North Campus Drive
Evanston, IL 60208

*Women and members of minority groups are especially encouraged to apply.
Northwestern University is an Affirmative Action/Equal Opportunity Employer.*



Pharmaceuticals

Head of Drug Metabolism Laboratory

Our Profile

The mission of the Drug Metabolism & Pharmacokinetics Group at F. Hoffmann-La Roche Ltd. in Basel, Switzerland, is to provide information on the fate of potential new drugs in the body. As part of Preclinical Development, our responsibilities range from assisting drug discovery groups in their efforts to identify promising new drug candidates to ensuring optimal support for the development of portfolio compounds.

The Task

To plan, conduct and report on human and animal metabolic studies relevant to the registration of new drugs. To collaborate closely with specialists in other areas in the selection of active ingredients for further development. To provide fellow researchers with a 'drug metabolism perspective', and to train and supervise several technicians. To stay abreast of the latest advances in drug metabolism research and develop new methods for answering questions in this field as they arise. The publication and presentation of research findings are strongly encouraged.

Your Profile

You have a Ph.D. in biochemistry, a solid grounding in chemistry and analytics and post-doctoral experience in working with drug-metabolizing enzymes. You are fluent in English and have a good command of a second language, preferably German or French.

Contact Address

If the above profile fits your background and experience and you are interested in this challenging position then please forward your full application documentation to our Human Resources Department, attn. of Mr W. Aschwanden, F. Hoffmann-La Roche Ltd, CH-4070 Basel, quoting reference As2177.



VACANCY ANNOUNCEMENT DIRECTOR OF RESEARCH

The International Centre for Research in Agroforestry (ICRAF), supported by the Consultative Group on International Agricultural Research (CGIAR), fosters food security and conservation of natural resources through better use of trees and shrubs in crop and livestock production systems in the tropics. The Director of Research oversees ICRAF's Research Division and its work in Africa, Latin America, and Asia and heads up a multidisciplinary team of 42 senior scientists and their support staff. The annual research budget is approximately US\$10 million.

The Director of Research ensures high scientific standards through multidisciplinary research. This requires a strong sense of mission, participatory decision-making, delegating authority with responsibility, nurturing professional growth, and strong commitment to ICRAF's ultimate purpose. The Director is a key member of ICRAF's senior management team. Duties include implementing ICRAF's strategy and mid-term plan, administering an efficient research management system, and preparing proposals for donor agencies.

The successful candidate must have a Ph.D. or equivalent in biophysical or social science and be an internationally recognized scientist in a field related to agroforestry, ecology, or natural resource management. Candidates must have keen research instincts, proven management experience, and deep understanding of the role of people and trees in integrated land use, be an independent problem solver, team player, a good writer, motivator, and communicator. Fluency in English is essential; a working knowledge of Spanish or French is highly desirable.

Salary and benefits are internationally competitive. The posting is at ICRAF's headquarters in Nairobi, Kenya, with frequent travel. The contract is for continuing appointment up to 10 years, subject to satisfactory performance. To apply, send a detailed curriculum vitae, including salary details, date of birth, and names and addresses of 3 referees (including telephone, email and fax numbers). Address correspondence to the **Head of Human Resources, ICRAF, PO Box 30677, Nairobi, Kenya; tel: +254 2 521 450; email: r.lecuyer@cgnet.com; fax: +254 2 521001.** Applications will be considered until 1 December 1996, or until the position is filled. *Women are particularly encouraged to apply.*

DEPARTMENT OF MICROBIOLOGY ASSISTANT PROFESSOR

An Assistant Professor on the tenure track is sought. Current areas of research in the department include DNA replication, regulation of gene expression, genetic recombination, telomere synthesis, gene therapy, latent viral infection, DNA protein interactions, and molecular epidemiology. Of particular interest are candidates with research interest in lentiviruses or herpesviruses. The Department teaches medical students in the areas of microbiology and molecular genetics and graduate students in molecular biology. A new faculty member would be expected to develop a successful research program and to participate in the teaching of both medical and graduate students. The position includes resources for initiation of the research program. Applicants should send a *curriculum vitae*, statement of research accomplishments and plans, and the names of three references to: **Kenneth I. Berns, M.D., Ph.D., Department of Microbiology, CORNELL UNIVERSITY MEDICAL COLLEGE, 1300 York Avenue, New York, NY 10021. Cornell University Medical College is an Equal Opportunity Affirmative Action Employer.**

**CORNELL
UNIVERSITY
MEDICAL
COLLEGE**



SULTAN QABOOS UNIVERSITY - SULTANATE OF OMAN COLLEGE OF AGRICULTURE *Head of Department Food Science & Nutrition*

Sultan Qaboos University, the national university of Oman, invites applications for Head of Department of Food Science and Nutrition, College of Agriculture.

The incumbent will provide leadership for the overall organization and administration of teaching, research, and service activities of the Department. The successful candidate is expected to develop, improve, promote, and stimulate quality and relevant academic programs in the Department, and to provide leadership, active participation in curriculum development, and inspiration to the staff and students to pursue high standards of learning and scholarship. The incumbent is responsible for the selection, training, assignment, and evaluation of personnel; planning and budgeting for facilities and equipment; recommending the hiring, promotion, termination, and discipline of staff; liaison with relevant departments in the University and government agencies and private sectors; exploiting extramural support and collaborative research; and implementing research projects and disseminating research findings.

Applicants should possess a Ph.D. degree in food science, food technology, food engineering, or related disciplines from a reputable university, with professional credentials of a high order, sufficient to meet the criteria for full or associate professorship. Proficiency in spoken and written English is required. Candidates with at least 10 years of experience in a full-time appointment on the academic staff of a recognized and reputable academic institution, who have demonstrated the professional growth and potential for leadership, are desirable.

Apart from a very attractive tax-free salary, the University offers free furnished accommodation, annual leave with round trip first class air tickets, end of service gratuity and free medical treatment in Government Hospitals in the Sultanate.

Interested candidates are requested to submit a letter of application and full resume, quoting our Ref: ADV/AGRI/08/96, to: **The Director, Personnel Affairs, Sultan Qaboos University, P.O. Box 50, Al-Khod-123, Sultanate of Oman. Fax: (968) 513255.** Closing date for applications is 20th October, 1996, or until a suitable candidate is identified.



FACULTY POSITIONS Central Institute for the Deaf Sensory Neuroscience

The Research Department at the Central Institute for the Deaf is seeking three new faculty members with a record of excellence in research emphasizing molecular and cellular approaches to degeneration, rescue, and repair, with a focus on the auditory system preferred. Candidates are invited to apply for positions at all levels: **Assistant, Associate, and/or Full Research Scientists.** CID is a major research and education center founded in 1914 to address the needs of the hearing impaired. We are an affiliate of Washington University Medical Center; joint appointments are encouraged. Required qualifications: earned doctorate (Ph.D. or equivalent degree); minimum of three years of postdoctoral training; publication record in peer-reviewed journals; and evidence of scholarly activity at level of proposed rank. Multidisciplinary research a plus. The successful candidate will be expected to develop a program of externally funded research. Opportunities are available for teaching and/or clinical responsibilities depending on personal interests and training. Salary and rank will be commensurate with qualifications and experience. For fullest consideration, applications should be received by Dec. 20, 1996. Submit statement of research interests, curriculum vitae, and names and addresses of three references to: **Judith Mosinger Ogilvie, Ph.D., Neuroscience Search Committee, Central Institute for the Deaf, 818 South Euclid Avenue, St. Louis, MO 63110. FAX: 314-977-0030 EOE/M/FH/V.**

B R S AUSTRALIA**BUREAU OF RESOURCE SCIENCES**

The Bureau of Resource Sciences (BRS) is a professionally independent scientific bureau within the Australian Department of Primary Industries and Energy. Its mission is to enhance the sustainable development of Australia's resource industries by providing high quality scientific and technical advice to government, industry and the community.

SCIENTIFIC FELLOWSHIPS

BRS seeks applications from eminent scientists for appointment as a BRS Fellow to contribute to its mission.

Fellowships are offered in the following key areas:

- *quantitative quarantine risk assessment*
- *greenhouse gas abatement technologies*
- *decision support systems for planning multiple and sequential land use*
- *analytical techniques to assess the performance of fisheries management*
- *application of exploratory data analysis techniques and visualisation to integrate production and environmental sustainability*
- *impact of land use change on productivity and viability of rural communities*
- *sustainability certification and labelling systems for agricultural and forests products*
- *adaptive management of renewable resources*

We seek applicants who have made outstanding contributions in their fields. Fellows will be chosen on merit, based on the applicant's skill and the needs of the BRS. Fellowships will be for 1-12 months, located in Canberra.

A salary and allowances package is negotiable and may include salary; travel costs; and accommodation assistance.

Full details available from the Human Resources Manager: ph +616 272 5056, fax +616 272 3652, email fellow@mailhost.brs.gov.au, PO Box E11, Kingston ACT 2604, Australia.

Closing date: 26 November 1996.

BRS is an equal opportunity employer

B R S**MASSEY UNIVERSITY**

Massey University is an innovative academic institution with a history of growth since its foundation in 1927. Today, through its eight faculties, three schools and the Massey University College of Education, it teaches over 11,000 full-time equivalent students in New Zealand and throughout the Pacific Basin. The main campus is situated in beautifully landscaped grounds in a park like setting surrounded by University farmland. The City of Palmerston North (population 74,000) is centrally located in the southern half of the North Island, and hosts three tertiary education institutions and several major government and private research institutions. The lifestyle is cosmopolitan but relaxed and friendly. A second campus of Massey University was opened at Albany, on the North Shore of Auckland, in 1993.

**"IDENTIFICATION
OF PATHOGENICITY-RELATED
CANDIDA GENES BY
FINGERPRINTING-ENABLED
GENOMIC SUBTRACTION"**

Applications are invited for a two year Post-doctoral position in the Department of Microbiology and Genetics to work on a project aimed at identification of pathogenicity-related *Candida albicans* genes using genomic subtraction. Applicants should have a strong molecular biology background (preferably in *Candida* and/or yeast).

Enquiries of a scientific nature should be directed to Dr Jan Schmid, Department of Microbiology and Genetics (phone 64-6-350 4018, fax 64-6-350 5637).

Reference number: SCI 76/96L must be quoted.
Closing date: 30 October 1996.

The University reserves the right not to make an appointment or to appoint by invitation.

An information package including Conditions of Appointment is obtainable by telephoning 64-6-350 5299.

Applications, including a full curriculum vitae and the names, addresses and fax numbers of three referees must be sent to 'Academic Vacancies', Human Resources Section before the closing date specified.

Equality of opportunity is University policy.

Private Bag 11-222
Palmerston North • New Zealand
Telephone 64-6-356 9099
Fax 64-6-350 5615

PALMERSTON NORTH
CAMPUS

Computational Chemist at Bayer

In our German Pharmaceutical Research Centre at Wuppertal an opportunity has arisen for a computational chemist to join our Structural Research Group.

Our Profile

Bayer is a recognized research-based healthcare company headquartered in Leverkusen, Germany. (For more details refer to: <http://www.bayer-ag.de>)

Your Task

The successful candidate will collaborate in a multidisciplinary team responsible for Structural Analysis (including High Field NMR and X-Ray Analysis) and Molecular Modelling in close cooperation with medicinal chemists and pharmacologists. State-of-the-art equipment for computational chemistry is available as well as almost complete access to virtually all TRIPOS and MSI/Biosym software modules.

Your Profile

We are currently seeking a Ph.D. research scientist (Computational Chemist) with significant professional expertise in at least one of the following areas:

- Use and/or development of molecular modelling methods for proteins, protein/small molecule interaction or indirect drug design techniques.
- Use of De Novo Drug Design and/or Structure Activity Relationship methodology.
- Usage of 2D/3D-Databases and calculated molecular properties in course of drug finding process, high throughput screening analysis, and/or structure and property-based design of libraries for automated synthesis.
- Bio-informatics or biochemistry including homology modelling of proteins.

Working experience in a pharmaceutical company's molecular modelling group will be an advantage. The successful applicant must have a good working knowledge of chemistry. UNIX experience and C-programming skills are desirable. Demonstrable expertise and experience in available commercial modelling software packages (e.g. the TRIPOS and MSI suite of programs) will be an advantage too.

Your Application

If your background and personal experience fits this profile, please apply with full CV to:

Bayer AG
Mr. G. Ritter
Personalmarketing
Hauptstraße 119
D-51368 Leverkusen



International Centre for Theoretical Physics

Trieste, Italy

Senior Scientist Position in Physics of Weather and Climate

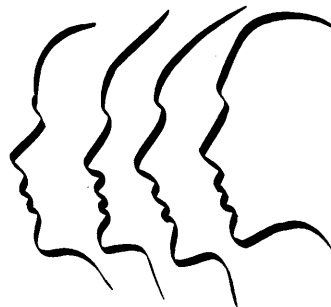
The ICTP, a UNESCO-IAEA organisation, is in the process of establishing a group to study the physics of weather and climate, and to assist developing countries in their efforts to cope with related environmental problems, both regional and global. The Centre is intended to be a source of scientific information and of tools (especially mathematical models) for studying weather and climate. The ICTP invites applications for the position of senior scientist to head this group. The incumbent is expected to have done recognised research in the field of atmospheric and oceanic sciences, should be versed in the computer modelling of oceans and atmospheres, should be interested in assisting the advancement of science in developing countries, and should be willing to collaborate with visiting scientists. The salary will depend on the successful candidate's qualifications and will fall within the United Nations salary scales for Professional Staff. Moving expenses, a family allowance, and a small annual travel grant may also be included.

Applicants should send a detailed curriculum vitae with a full list of publications, and should arrange for three letters of recommendation to be sent, to:

Professor M.A. Virasoro
Director

International Centre for Theoretical Physics
Strada Costiera 11
34100 Trieste
Italy

The closing date for applications is 31 January 1997.



DIALOGUE



DIVERSITY

A SPECIAL ADVERTISING SUPPLEMENT

Issue date: 1 November 1996

Advertising space available on a first come,
first served basis until October 28.

**Bonus distribution to
27 minority organizations.**

.....

In this special supplement, SCIENCE explores what biotechnology and pharmaceutical companies are doing to increase the number of minority scientists in their organizations.

Benefits for full page advertisers:

- Prime positioning in the editorial section of the advertising supplement
- Listing on the full page ad index appearing in the regular recruitment section

Benefits for all advertisers:

- Bonus distribution to 27 minority scientific organizations
- Free listing for two weeks on SCIENCE Classified Advertising On-line

SCIENCE

<http://www.sciencemag.org>

POSITIONS OPEN

POSTDOCTORAL POSITION University of Pennsylvania

POSTDOCTORAL POSITION available for an individual to study the regulation of expression and function of the cell cycle inhibitor p21 in pathways of cellular differentiation and human carcinogenesis. Highly motivated individuals with a Ph.D. or M.D./Ph.D. in molecular biology or related field should immediately forward a curriculum vitae and the names of three references to:

University of Pennsylvania School of Medicine
Attn: Dr. Wafik S. El-Deiry
437A CRB
415 Curie Boulevard
Philadelphia, PA 19104-6148
FAX: 215-573-9139
Equal Opportunity Employer

POSTDOCTORAL RESEARCH BIOPULPING

The U.S. Forest Products Laboratory seeks candidates for research in the biotreatment of non-woody plant material and the biotreatment of wood for kraft pulping. Suitable backgrounds are wood chemistry, pulp and paper science, chemical engineering, or closely related fields. Position is funded for a two-year term at \$36,000 to \$40,000 per annum; full benefits. Send résumé, transcripts, and references to: **Dr. Gary M. Scott, USDA-Forest Service, Forest Products Laboratory, One Gifford Pinchot Drive, Madison, WI 53705.** Application material must be postmarked no later than October 28, 1996. *An Equal Opportunity Employer.*

POSTDOCTORAL POSITION: Available to study the structure and mechanisms of telomerase from both *Saccharomyces cerevisiae* and *Schizosaccharomyces pombe*, especially with regard to the protein components of these complexes. A strong background in yeast molecular biology and/or biochemical purification techniques is essential. Send curriculum vitae and a list of references to: **Neal Lue, M.D., Ph.D., Department of Microbiology, Box 62, Cornell University Medical College, 1300 York Avenue, New York, NY 10021.** *Equal Employment Opportunity/Affirmative Action/Minorities/Females/Disabled/Veterans.*

POSTDOCTORAL POSITION available immediately to study molecular interactions of HIV-1 integrase with drugs and DNA using *in vitro* assays. Our goals are to elucidate enzyme molecular interactions and to discover new antiviral drugs. Experience in molecular biology and biochemistry. Inquiries to: **Dr. Y. Pommier, M.D., Ph.D., Laboratory of Molecular Pharmacology, NCI, Building 37, Room 5C25, NIH, Bethesda, MD 20892-4255.** FAX: 301-480-4988; Email: pommier@box-p.nih.gov. *NIH is an Equal Opportunity Employer.*

POSTDOCTORAL SCIENTIST position available immediately to study spiral ganglion (SG) neuron neurobiology. Starting stipend range from \$35,699 per year. Projects study the ion channels/receptors of cultured mammalian SG neurons during development. Applicants should have a Ph.D. or equivalent. Candidate with experience in patch clamp, single cell PCR techniques, and ion channel kinetics modeling is preferred. Send curriculum vitae, publications, and three references to: **Dr. X. Lin, House Ear Institute, 2100 West Third Street, Los Angeles, CA 90057.** FAX: 213-483-5675.

POSTDOCTORAL POSITION available immediately for molecular analysis of genes related to initiation of solvent production and sporulation and in butanol resistance in saccharolytic clostridia. Molecular biology experience is essential. Please send a curriculum vitae and names of three references to: **Eva R. Kashket, Ph.D., Department of Microbiology, Boston University School of Medicine, 80 East Concord Street, Boston, MA 02118-2394.** FAX: 617-638-4286; Email: ekashket@bu.edu. *Affirmative Action/Equal Opportunity Employer.*

POSTDOCTORAL POSITION available studying electrophysiology of inhibitory interneurons in the dentate gyrus of the *in vitro* hippocampal slice, using whole cell voltage clamp and immunohistochemistry. Beginning salary \$24,700 plus fringe benefits; duration is two to three years. Submit curriculum vitae and references to: **Dr. Darrell Lewis, Box 3430, Duke University Medical Center, Durham, NC 27710.** Email: Lewis013@mc.duke.edu. *Duke University is an Equal Opportunity/Affirmative Action Employer.*

POSITIONS OPEN

POSTDOCTORAL POSITION for studies of signal transduction in mouse T lymphocyte subsets, with emphasis on aging and T cell memory. A strong background in cellular and molecular biology is required. Send curriculum vitae, brief statement of research interests, and names and telephone numbers of three referees to: **Richard A. Miller, University of Michigan, Box 0642, MSRB-3, Ann Arbor, MI 48109.** *An Equal Opportunity Employer.*

POSTDOCTORAL POSITION California Institute of Technology

Opportunity available for an individual with demonstrated experience in NMR solution structure determination of proteins. Systems under study are those resulting from computational protein design efforts. Facilities include a Varian Unity Plus 600 MHz NMR spectrometer equipped with a triple resonance probe and several Silicon Graphics workstations. Qualified candidates should possess a Ph.D. in chemistry, biology, or related field. Please forward curriculum vitae, publications list, and the names and telephone numbers of three references to:

Dr. Stephen L. Mayo
Division of Biology
m/c 147-75
California Institute of Technology
1200 East California Boulevard
Pasadena, CA 91125
Equal Opportunity Employer.

Immediate opening for **POSTDOCTORAL** with experience in molecular or cell biology and interest or experience in the study of cancer, preferably breast cancer. One year of salary support for the authoring and managing of a breast cancer database to be distributed over the World Wide Web. No prior computer experience required. You will be listed as an author of this database, which will be carefully read by many hundreds of scientists world wide and which is citeable on your curriculum vitae. Opportunity to gain an excellent knowledge of the breast cancer literature as well as professional recognition beyond that generated by paper publication. No relocation funds available. Send résumé via Email: wheeler@bcm.tmc.edu.

Baylor College of Medicine, Houston, Texas, is an Equal Opportunity/Affirmative Action/Equal Access Employer.

POSTDOCTORAL POSITION available to study mitochondrial changes associated with neuronal injury beginning January 1, 1997. Applicants should have a strong biochemistry background, preferably with experience working with mitochondria. The laboratory offers training in cellular physiology, fluorescence microscopy, and electrophysiology in a neuroscience environment. Send curriculum vitae and statement of research interests to: **Janet M. Dubinsky, Ph.D., Department of Physiology, University of Minnesota, 6-255 Millard Hall, 435 Delaware Street SE, Minneapolis, MN 55455.** Telephone: 612-625-8447; Email: dubin001@maroon.tc.umn.edu. *The University of Minnesota is an Equal Opportunity Educator and Employer.*

POSTDOCTORAL POSITION in RNA processing available immediately to study novel splicing enhancers isolated using an *in vivo* selection scheme. Project goals include isolation of factors mediating enhanced splicing and selection for cell-specific enhancers. A strong background in molecular biology or protein biochemistry is required. Send curriculum vitae, a one-page description of research experience and future goals, and names of three references to: **Dr. Tom Cooper, Department of Pathology, Baylor College of Medicine, One Baylor Plaza, Houston, TX 77030.** Telephone: 713-798-3141; FAX: 713-798-5838; Email: tcooper@bcm.tmc.edu.

Baylor College of Medicine is an Equal Opportunity/Affirmative Action/Equal Access Employer.

POSTDOCTORAL POSITION to work on the molecular biology of ion channels in cells of the cerebral vascular wall and astrocytes. Must be familiar with molecular techniques. Knowledge of ion channel expression systems valuable but not necessary. Send curriculum vitae to: **David R. Harder, Ph.D., Cardiovascular Research Center, Medical College of Wisconsin, 8701 Watertown Plank Road, Milwaukee, WI 53226.** *Equal Opportunity/Affirmative Action Employer.*

POSITIONS OPEN

POSTDOCTORAL RESEARCH FELLOW

The Department of Neurosurgery at LSU Medical Center is seeking an individual with experience in focal or global ischemia research (animal surgery, histochemistry, and molecular or cell biology). The Brain Tumor and Stroke Research Laboratory studies the role of growth factors and stress-induced factors in cerebral ischemia. This appointment is for one year with renewal dependent upon productivity. Please send curriculum vitae, summary of research interests, three letters of reference, and publications to: **LSU Medical Center, Department of Neurosurgery, c/o Dr. Anil Nanda, P.O. Box 33932, Shreveport, LA 71130-3932.** *LSU Medical Center is an Equal Opportunity Employer.*

POSTDOCTORAL POSITIONS are available immediately for highly motivated individuals interested in the regulation of phosphorylation of cytoskeleton proteins in aging and Alzheimer's disease. Recent Ph.D., expertise in protein biochemistry or recombinant DNA techniques is desirable. Please send curriculum vitae and names of three references to: **Dr. Mervyn J. Monteiro, Medical Biotechnology Center, University of Maryland, 725 West Lombard Street, Baltimore, MD 21201.** FAX: 410-706-0186; Email: monteiro@umbi.umd.edu.

POSTDOCTORAL POSITION available in laboratory of **Dr. E. Hamel**, Developmental Therapeutics Program, National Cancer Institute (NCI). Laboratory interests include mitosis and cytokinesis, interactions of small ligands and proteins in microtubule structure and function, and drug interactions with microtubules and microfilaments. Prior cytoskeletal research experience is highly desirable. Inquiries (curriculum vitae and bibliography) to: **Building 37/5C25, 37 Convent Drive, MSC 4255, Bethesda, MD 20892-4255.** *NIH is an Equal Opportunity Employer.*

URL MARKETPLACE



Circle No. 40 on Readers' Service Card

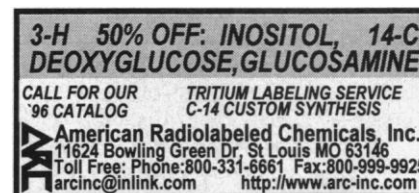
MARKETPLACE

Custom Antibodies to Peptides & Proteins

We do it better for less \$\$. Get The Facts
Alpha Diagnostic Intl.

Ph (800)786-6777; Fax (210) 521-8346; Email: ADIALI@AOL.COM

Circle No. 15 on Readers' Service Card



Circle No. 54 on Readers' Service Card

Marketplace ads continue on page 462

MARKETPLACE



**MORE PRODUCTS
ON PREVIOUS PAGE**

CUSTOM HYBRIDOMA DEVELOPMENT

- Ascites Production Available
- Purification • Conjugation



HTI BIO-PRODUCTS, INC.

Phone (800) 481-9737 • Fax (619) 788-9694
e-mail: antibodies@htibio.com
http://www.htibio.com

Circle No. 25 on Readers' Service Card

Coming December 13...
STATISTICAL SOFTWARE
A SCIENCE Advertising Supplement

QUALITY CUVETTES!!!

Inexpensive Electroporation Cuvettes
Each sterile package includes a free
pipette for easy sample removal!



1-800-289-2465
FAX: 619-597-9594

Circle No. 28 on Readers' Service Card

Custom Peptides \$17/Residue

- Free HPLC & Mass Spec. ▼
- Fast Turn-Around Time ▼
- No Set-Up Charge ▼
- Crude, 5-25mg ▼

Voice: (800) 445-1544, x35 ▼

Antibody Production, \$950

2 Rabbits w/ Conjugation &
Delivery (10 weeks)



**COAST
SCIENTIFIC**
Fax: (619) 450-1157

Circle No. 27 on Readers' Service Card

Plasmid-prep kits Super low price

miniprep midiprep maxiprep
\$0.74/prep \$3.44/prep \$5.75/prep

Viogenic TEL: 800-225-3402
inet: http://www.viogenic.com

Circle No. 21 on Readers' Service Card

SFM-Human Keratinocyte Cell System

Start up a 75 for LESS than a 25
More Cells / Lowest Price / Highest Quality
CSC Certificate™ #30467



1-800-697-1211

Circle No. 48 on Readers' Service Card

MARKETPLACE

PeptidoGenic

MS, LC/MS Custom Analysis

IonSpray Mass Spec

\$30/Sample (MS), \$250/Sample (LC/MS)

Please inquire for terms and conditions

(E mail): pkim@ccnet.com (Fax): 510-371-1156
(Voice): 800-597-7873, 510-371-1070

Circle No. 24 on Readers' Service Card

Custom DNA from \$1.00/base



ransom hill bioscience, inc.

http://www.ransomhill.com

no setup, no minimum, no baloney!
email: visla@ix.netcom.com fax: (800) 597-8509

Circle No. 4 on Readers' Service Card

CUSTOM DNA SYNTHESIS

PURE & SIMPLE

- Superb Technical Support
- Impeccable Quality
- World's Fastest Service
- Cap Gel & TOF Mass Spec

* Some restrictions apply. Please call for details.

MIDLAND

STILL THE UNDISPUTED #1 CUSTOM DNA SYNTHESIS SERVICE

THE MIDLAND CERTIFIED REAGENT COMPANY

Phone 1-800-247-8766 FAX 915-694-2387
email mcrc@oligos.com

Circle No. 9 on Readers' Service Card

- Automated DNA sequencing
- Custom DNA/RNA synthesis
- Protein/peptide synthesis & sequencing
- Spectroscopy/calorimetry
- Mass spec services

Commonwealth Biotechnologies, Inc.

Your one stop biotech shop

LET US QUOTE YOUR SPECIAL PROJECTS

Comprehensive biotech services. For information please call:

1-800-735-9224

Visit our web page at:

www.cbi-biotech.com

Fax: 804-648-2641

E-mail: CBI@richnet.com

Circle No. 26 on Readers' Service Card

FLUORESCENT MICROSPHERES

Distinctive colors for biology, diagnostics, physiology, aerosol, and filter testing applications

- Diameters from 0.025 µm to 10 µm in red, green, blue fluorescence
- Assorted surface properties for protein coupling
- Free catalog available

Call 800-334-3883 Toll Free or in Calif. 415-424-1177. FAX 415-424-1158



P.O. BOX 50005
2463 FABER PLACE
PALO ALTO, CA 94303

Circle No. 2 on Readers' Service Card

MARKETPLACE

PRIMERS



\$1.19

- 200 NMOLS (15-20 ODU)
- NO Restrictions
- NO Setup
- Purified
- Full Q.C., Page on every oligo
- 24-48 Hours

65¢

- 50 NMOLS (5 ODU)
- Full Q.C.
- Just order >400 bases aTsT
- Guaranteed Quality

"From the people that first introduced oligos in 1984."

BIO-SYNTHESIS, INC.
1-800-227-0627
Fax 214-420-0442
E-Mail: biosyn@onramp.net
INet: http://www.biosyn.com



Circle No. 11 on Readers' Service Card

CUSTOM PEPTIDES

**High quality at unbeatable prices
starting from \$195***

Order with confidence knowing that you'll
get the quantity and purity you require with
no hidden extras.

US: West Coast

Tel: 800 644 1866

Fax: 800 655 1866

US: East Coast

Tel: 800 633 8161

Fax: 800 424 3970

* 10-30 mg, 8-15 residues, unpurified with mass spec. CM 1173.



CHIRON

INTERNATIONAL:

Tel: +61 3 9565 1111

Fax: +61 3 9565 1199

Europe:

Tel: +33 141 38 9400

Fax: +33 141 38 9409

Circle No. 1 on Readers' Service Card

GOLD PROBES ★ Nanogold ★

Fab conjugates penetrate 40 µm
covalent gold reagents to link to peptides
Colloidal gold conjugates: best quality, best prices

Nanoprobe, Inc. 25 East Loop Rd, Ste. 124
Stony Brook, NY 11790.
Tel. 516-444-8815 Fax 516-444-8816 www.nanoprobe.com

Circle No. 23 on Readers' Service Card

ONLY DNA

No frills, just good DNA at very low prices

69¢ per base, NO setup charge

Ultra-small scale synthesis gives 1 A₂₆₀ unit

Some restrictions apply; Call for details

1-800-359-5794 e-mail onlydna@oligos.com

Circle No. 10 on Readers' Service Card

Custom DNA

Purified & Delivered in 48 Hours

\$1.20 per base • Purified

<http://www.resgen.com>

Research Genetics, Inc.

1-800-533-4363

Circle No. 6 on Readers' Service Card

ELECTROPORATION NEWS

GENE THERAPY AND BTX ELECTROPORATION SYSTEMS:

* ELECTRO-GENE TRANSFER THERAPY

In vivo gene transfer using *in vivo* electroporation in rat brain tumors, with the BTX T 820 and the Optimizor® 500

* ELECTRO-IMMUNO GENE THERAPY

In vitro genetic modification of 9 L cells with pCEP-4/TGF- β antisense vector... using a BTX T 820



In a recent experiment, researchers combined *in vivo* electroporation and intraarterial plasmid DNA injection for high efficiency *in vivo* gene transfer. "This method, 'electro-gene therapy', which does not require viral genes or particles, allows genes to be transferred and expressed in desired organs or tissues, and it may lead to the development of a new type of highly effective gene therapy."¹

In another separate experiment, researchers using electroporation demonstrated that the efficacy of tumor cell vaccines may be significantly enhanced by genetic modification to suppress tumor cell TGF- β expression. "Our findings suggest that strategies to inhibit the expression of these immunosuppressive factors may be important in the development of future immuno-gene therapies for cancer"²

¹Nishi, T., et al, "High Efficiency *In Vivo* Gene Transfer Using Intraarterial Plasmid DNA Injection Following *In Vivo* Electroporation", *CANCER RESEARCH*, 56, 1050-55 (1996)

²Fakhrai, H., et al, "Eradication of established intracranial rat gliomas by transforming growth factor β antisense gene therapy" *Proc. Natl Acad. Sci., U.S.A.* Vol. 93, pp 2909-2914 (April 1996)



GENETRONICS, INC.
11199 Sorrento Valley Road
San Diego, CA 92121-1334 U.S.A.
<http://www.genetronics.com>

1-800-289-2465
BTX Instrument Division
(619) 597-6006
fax: (619) 597-9594

NEW!

Accelerating Discovery through Resource Distribution



Genotyping, Genomic Libraries and Mapping Services

Research Genetics offers a variety of Genomic Library resources and services. These include human and mouse YAC, BAC, and cDNA libraries available as individual clones, DNA pools or high density colony membranes. Custom services include genotyping of humans and a number of model organisms, custom hybridization and/or PCR based screening of BAC, YAC or cDNA libraries, and custom mapping based on Radiation Hybrid panels.

MAPPAIRS™ & GENEPAIRS™

MAPPAIRS™ are microsatellite markers consisting of a pair of PCR primers which flank a simple sequence repeat that is polymorphic. Research Genetics currently stocks over 20,000 markers in a variety of organisms including human, mouse, and rat. Recently two new genome wide human screening sets were released (sets 8 & 8a), and we now have those new markers in stock.

GENEPAIRS™ are our newest collection of PCR primers. These primers amplify portions of known genes and are being used to generate a human transcript map. Gene-specific STS primer pairs are available for each transcript that has been mapped.



Custom Peptides and Antibodies

Research Genetics offers custom peptides at a price that is hard to beat. Customers receive 15-40mg of resin cleaved peptide in 5 days for only \$18/residue. With our antibody service, researchers can contract for either monoclonal or polyclonal antibodies, or take advantage of our newly developed monospecific polyclonal antibodies. Flexibility and personal attention make these services second to none.

**Please stop by our booth (#414) at ASHG in San Francisco Oct. 30-Nov.1
to receive additional information on any of these products or services.**

Research Genetics, Inc.

2130 Memorial Pkwy, SW • Huntsville, AL • 35801

U.S. or Canada 800-533-4363

Worldwide 205-533-4363

U.K. 0-800-89-1393

FAX 205-536-9016

Homepage <http://www.resgen.com>

Circle No. 50 on Readers' Service Card