

The "Gold Standard" in Hematopoietic Culture Reagents

- Methylcellulose-based media for colony assays of hematopoietic progenitors
- Long-term culture media for assays of the most primitive progenitors
- Pre-selected Sera and Serum Substitutes
- Pre-tested Tissue Culture Supplies

ClonaCell™-HY

Faster and more efficient than conventional methods for generating hybridomas

HAT selection and cloning of hybridomas are performed in a single step

No more limiting dilutions!

StemSep™

The Simpler, Cleaner Alternative

Lineage Depletion one step magnetic cell separation

Cells are never labeled with antibody
Reproducibly high recoveries
(70%-85%) of CD34⁺ cells

In Canada and the U.S. available direct from:



StemCell Technologies Inc

808 - 777 West Broadway
Vancouver, BC
Canada V5Z 4J7
Tel: (604) 877-0713
Fax: (604) 877-0704
Toll Free Tel: 1-800-667-0322
Toll Free Fax: 1-800-567-2899

International Distributors

- **Australia:** AMRAD Pharmacia Biotech Ltd., Tel: 008-252-265, Fax: 03-9887-3912
- **Austria:** CellSystems, Tel: 02228-8057, Fax: 02228-8555
- **Czech Republic:** LV-BIOMED, Fax: 02-2491-1011
- **France:** TEBU, Tel: 1-34 84 62 52, Fax: 1-34 84 93 57
- **Germany:** CellSystems, Tel: 02228-8057, Fax: 02228-8555
- **Greece:** ANTI-SEL, Tel: 031-322 525, Fax: 031-321 912
- **Italy:** FORMEDIC, srl, Tel: 02-58001, Fax: 02-502269
SPA, BioSPA Division, Tel: 02-89139-533/547, Fax: 02-8132983
- **Japan:** Veritas Corp., Tel: 03-3435-1558, Fax: 03-3435-1526
- **Korea:** Bio-Medical & Science Co. Ltd., Tel: 02-569-6902, Fax: 02-553-9670
- **The Netherlands:** ITK Diagnostics bv, Tel: 02975-68693, Fax: 02975-63458
- **Spain:** LABCLINICS, Tel: 03-435-3601, Fax: 03-348-1039
- **UK:** Metachem Diagnostics Ltd., Tel: 01604-870370, Fax: 01604-870194

ALL PRODUCTS ARE FOR RESEARCH USE ONLY

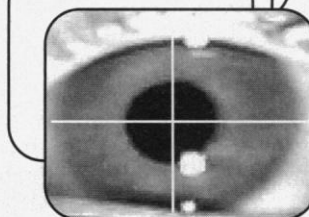
Circle No. 12 on Readers' Service Card

ISCAN®

EYE MOVEMENT MONITORING SYSTEMS

ISCAN eye tracking products set the pace for performance and affordability in the research marketplace. Applications include fixation monitoring, vision research, advertising research, psycho-visual experiments, reading studies, toxicology, human factors evaluation and drug or alcohol response.

Non-invasive, real-time video image processors automatically measure pupil position and size and compute subject's point of



gaze. Benchtop, head mounted and high speed versions as well as computer data analysis software are available. Complete Eye Movement Monitoring Laboratories or component systems can be provided to suit any research application.

ISCAN, Inc.

P.O. Box 382076

Cambridge, MA 02238-2076 USA

Tel: 617-273-4455 Fax: 617-273-0076

Circle No. 11 on Readers' Service Card



The Coolest Kids' Show on Radio, Now on Tape!

The *Kinetic City Super Crew* is a group of curious kids that travel the world in their express train to solve brain-teasing science mysteries!

Order a copy of the Super Crew's latest adventure "Concrete Jungle or The Case of the City Safari" and discover the wild side of the city.

To order, call toll-free 1-888-GET-CREW
\$8.95 plus \$4 s&h (per order)

Check out our Website for your local KCSC station, and for other cool Super Crew stuff.
<http://www.aas.org/EHR/KCsuper.html>

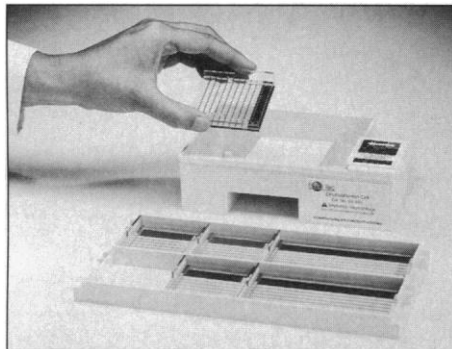
Kinetic City Super Crew is a production of the American Association for the Advancement of Science.

Funding is provided by the National Science Foundation and support from other contributors.

PRODUCTS & MATERIALS

Electrophoresis System

The Easy Electrophoresis System allows the user to cast and run horizontal agarose and acrylamide gels in the same unit. The molded plastic casting tray is divided into six distinct compartments so six different gels can be poured simultaneously without leaking.



Gels can be cast as either wide or mini with sample wells of either 6 or 8 for the mini and 12 or 17 for the wide. The system's running unit fits in the palm of the hand and requires minimal buffer. The unit can run one wide gel or two mini gels at the same time. **Embi Tec.** Circle 141.

DNA Sequencing Kits

SequiTherm EXCEL Kits allow researchers to sequence a broad range of templates, including very difficult templates with regions of high GC content, inverted or direct repeats, dinucleotide repeats, homopolymeric stretches, hairpin loops, and localized areas of interstrand re-annealing. Stops, ambiguous base calls, and nonspecific background are reduced, resulting in clearer, more accurate data for all types of DNA templates. The kits are available for manual sequencing using internal or end labeling with ^{32}P , ^{33}P , or ^{35}S , and for automated sequencing on LI-COR instruments. **Epicentre Technologies.** Circle 142.

Nucleic Acid Quantitation Kit

The Spot-On Kit allows quantitation of DNA or RNA in solution in less than 15 min. The kit requires only 2 μl of sample. It is also highly sensitive and can detect 0.25 ng/ μl of double-stranded DNA. The sample and

three standards provided are spotted onto a strip of membrane. The membrane is then passed through four different solutions in cuvettes. The concentration of nucleic acid in the sample can then be deduced by visual comparison with the standards. Because the standards appear on every strip, the color comparison is easy and variation of results from strip to strip is reduced. **R&D Systems Europe.** Circle 143.

DNA Decontaminant

DNA-OFF is a nonalkaline cleansing solution that is highly active against DNA contamination. It is intended for use at polymerase chain reaction workstations for cleaning countertops, apparatus, and pipettors. The solution contains a surfactant plus an agent that destroys DNA. It is stable, heat-resistant, and noncorrosive and does not contain carcinogenic compounds. **CPG.** Circle 144.

Messenger RNA Purification Kits

The Poly (A) Pure and Micro Poly (A) Pure Kits are for the rapid purification of mRNA directly from tissue or cells without prior total RNA isolation. Both kits make use of oligo (dT) cellulose, which has a high binding capacity for mRNA. Yields of poly (A+) RNA from 1 g of tissue are in the range of 60 μg . The Poly (A) Pure Kit contains enough reagents for seven isolations from samples of 0.2 to 1.0 g of tissue or 0.2 to 2 mg of total RNA. The Micro Poly (A) Pure Kit contains enough reagents for 20 isolations from samples of 10 to 200 mg tissue or 2 to 400 μg of total RNA. **Ambion.** Circle 145.

Evolutionary Conservation Blots

Evolutionary Blots can be used to determine the evolutionary conservation of a gene or DNA fragment; to derive species-specific probes and DNA segments for comparative

mapping and molecular phylogenetics; and to evaluate heterologous contamination in DNA amplifications or hybridizations. A Mammalian Group Blot and a Genetic Model Group Blot are available. **BIOS Laboratories.** Circle 146.

Monoclonal Antibody Service

A complete monoclonal antibody (mAb) service is designed to develop hybridomas secreting antibody against proteins, peptides, organic haptens, and other antigens of interest. This customized program is tailored for the production of mAbs to meet a range of applications, including basic research, medical diagnostics, and detection and quantitation of industrial and agricultural compounds. The hybridoma development program is carried out in strict confidentiality and the cell lines become the exclusive property of the researcher. Complete characterization of the antibody is available. In addition, ascites scale-up of mAbs is also available in small and large quantities. **Berkeley Antibody, BABCO.** Circle 147.

Literature

Atomic Spectroscopy is a peer-reviewed journal that presents applications in a variety of fields, such as ecology, environmental studies, and food testing. Inorganic analytical techniques employed in these applications include flame atomic absorption spectroscopy (AAS), graphite furnace AAS, hydride generation AAS, inductively coupled plasma (ICP) spectrometry, ICP atomic emission spectrometry, and ICP mass spectrometry. **Perkin-Elmer.** Circle 148.

Digital Imaging Systems & Solutions describes the steps of acquiring and manipulating images: data acquisition, haze removal and deconvolution, two-dimensional image processing, and three-dimensional visualization and measurement. **VayTek.** Circle 149.

Molecular Biology Catalog lists more than 1000 products. Areas covered include DNA and RNA isolation products, DNA and RNA analysis products, fermentation products, polymerase chain reaction reagents, antibodies for molecular biology, nucleic acid-modifying enzymes, restriction endonucleases, and more. **Sigma Chemical.** Circle 150.

Newly offered instrumentation, apparatus, and laboratory materials of interest to researchers in all disciplines in academic, industrial, and government organizations are featured in this space. Emphasis is given to purpose, chief characteristics, and availability of products and materials. Endorsement by *Science* or AAAS is not implied. Additional information may be obtained from the manufacturers or suppliers named by circling the appropriate number on the Readers' Service Card and placing it in a mailbox. Postage is free.

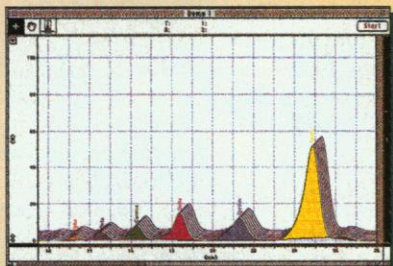
PowerChrom

The chromatography data station for Apple lovers.

Now you can do your best chromatography and keep your Mac, too. With PowerChrom, the world's most powerful Mac-based data station — and the only one optimized for PowerPC.

PowerChrom consists of a hardware interface and a full-featured software application that lets you acquire, analyze and manipulate data from any HPLC, FPLC, GC, IC, LC or CE system. It gives you all the analytical capability of any Windows workstation, plus the Mac's friendly, familiar interface.

Call today for a free demo disk. See for yourself how easy it is to turn a Mac into a chromatography data station.



MacLab

Division of ADInstruments, Inc.

Australia & International
Telephone: +61 2 899 5455
Fax: +61 2 899 5847
maclab@adi.com.au

Europe
Telephone: +44 1 424 424 342
Fax: +44 1 424 460 303
enquiries@maclab-europe.com

North America
Telephone: (800) 234-1757
Fax: (508) 634-8869
inquiries@maclab-usa.com

Japan
Phone: +81 3 5820 7556
Fax: +81 3 3861 7022
adijapan@po.ijnet.or.jp

MacLab and PowerChrom are registered trademarks of ADInstruments Pty. Ltd.
Apple, Macintosh and the Apple logo are registered trademarks of Apple Computer, Inc.

T's for Two!

NEW SIZES Available: Adult Small & Baby

Science Roll-up Sleeve T-shirt, Style #1501
Features:

Super heavyweight 100% cotton jersey knit
Available in medium, large and extra large sizes
Ash shirt with blue trim roll-up sleeves
Crew neck & hemmed bottom
Oversized, relaxed fit
Made in the USA
Full front imprint of SCIENCE logo in blue

Child's size available **\$12.00**

\$18.00

AAAS Member Price.
Includes shipping in U.S.
Non-member price: \$20

Science Pictogram T-shirt, Style #1201
Features:

White Hanes Beefy-T, super heavy-weight 100% cotton jersey knit
Available in medium, large, extra large sizes; child's size available
Crew neck & hemmed bottom
Slightly oversized fit
Made in the USA
Full front and left sleeve imprint in blue

\$15.00

AAAS Member Price.
Includes shipping in U.S.
Non-member price: \$16.50

Special Offer: Order two or more T-shirts and receive a 10% discount!

Its easy to order!

Call (202) 326-6526, or fax (202) 682-0816
or mail your order to: SCIENCE Tee-Shirt
1200 New York Ave., NW, Room 906
Washington, DC 20005 USA

SCIENCE

Yes! I want to show my support for SCIENCE. Please send me the SCIENCE T-shirts I've checked off below. I have enclosed a check for the amount of the shirts (plus shipping charges for non-US orders). I understand my order is refundable if I am not completely satisfied.

Shipping Address (please print)

Name _____

Address _____

City, State/Province, Country, Postal Code _____

Telephone and Fax _____

Payment Information

☐ US dollar check
☐ Visa ☐ AmEx
☐ MasterCard

Important: All payments must be made in US dollars. \$25 minimum order for all credit card orders. Make check payable to AAAS Science Publications, Inc.

Please allow 4 weeks for delivery inside the US. Outside the US please allow 6 weeks for delivery. Prices and shipping charges subject to change without notice. Shirts returned must be in salable condition. Wash., D.C. residents please add sales tax.

Credit card number _____

Expiration date _____

Signature _____

AAAS Membership No. _____

Discount: Less 10% for two or more T-shirts

Subtotal

Outside the US: Add \$3.50 per shirt/air delivery

Total Enclosed

SCIENCE

DISPLAY CLASSIFIED ADVERTISEMENTS

Call for rate and deadline information on display classified advertisements.

Email: science_displayads@aaas.org

Bethany Ritchey
Recruitment Display Advertising
Telephone: (202) 326-6541
FAX: (202) 289-6742
Email: science_displayads@aaas.org

Janis Crowley
Recruitment Advertising Manager
Telephone: (212) 496-7704
FAX: (202) 289-6742

Debbie Cummings
European Recruitment Advertising
Telephone: +44 (0) 1223 302067
FAX: +44 (0) 1223 576208

For GLOBAL CAREER OPPORTUNITIES display advertisements, turn to pages 135, 137, and 139.

See SCIENCE Classified Ads on-line at
<http://www.sciencemag.org>

LINE CLASSIFIED ADVERTISEMENTS

How to Submit a Line Classified Ad: Submit double-spaced typewritten copy. Do not include any abbreviations. SCIENCE will edit and typeset ads according to SCIENCE guidelines. Include billing information and desired publication date. Available categories: Positions Open, Meetings, Announcements, Courses and Training, Services. SCIENCE cannot provide proofs of typeset line ads. Line advertisements are not commissionable.

Estimates: SCIENCE will provide a cost estimate for line ads. This is an approximate cost only. Allow for variation between estimated lines and actual typeset lines and resulting final cost. Purchase orders must allow for some degree of flexibility and/or adjustment.

For line advertising deadlines, call Eric Banks. Telephone: (202) 326-6555; FAX: (202) 289-6742. Email: science_classifieds@aaas.org

Credit Cards: SCIENCE accepts American Express, MasterCard and VISA. Discount does not apply to credit cards.

Cancellations: Deadline for cancellation is Tuesday, 10 days prior to issue date.
Discounts: A 3% cash discount is granted to all prepaid ads.

Ads from Outside the U.S.: A discount of \$30 will be offered to advertisers making payment in U.S. dollars by checks drawn on U.S. banks. Contact Debbie Cummings. Telephone: +44(0) 1223 302067; FAX: +44(0) 1223 576208.

SCIENCE Global Career Network: Unless otherwise instructed, every classified advertisement submitted for publication in SCIENCE is automatically posted on SCIENCE's on-line classified advertising service, SCIENCE Global Career Network, at no additional charge. SCIENCE Global Career Network address: <http://www.sciencemag.org>

Mail, FAX or Email materials to:
SCIENCE Classified Advertising
1200 New York Avenue, N.W., Room 911
Washington, DC 20005
FAX: 202-289-6742
Email: science_classifieds@aaas.org (please include your telephone number in Email)

SCIENCE reserves the right, at its discretion, to edit or decline to publish advertisements submitted to it.

POSITIONS OPEN

TENURE-TRACK POSITION RESOURCE/ENVIRONMENTAL MANAGEMENT

Department of Earth and Atmospheric Sciences
University of Alberta

The Department of Earth and Atmospheric Sciences plans to strengthen its research programs in resource/environmental management. We are particularly interested in an individual with expertise in the social dimensions of environmental earth science and geological activity. The Department is exceptionally well-equipped and has an international reputation for teaching and research excellence. The person selected for this position will develop an active research program that includes the supervision of M.S. and Ph.D. students and interaction with other faculty members who are engaged in research in this area. For further information on the position, please contact: **Dr. E. Jackson, Telephone: 403-492-0342; Email: Ed.Jackson@ualberta.ca**. Detailed information about the department can be found on the World Wide Web at: <http://www.ualberta.ca/~cas/home.html>.

The appointment will be at the ASSISTANT PROFESSOR level (salary range: \$39,230 to \$55,526). Applicants must hold a Ph.D. degree and have a proven research record. Previous teaching experience would be a significant asset. Applications, including a résumé, a statement of research interests, and the names and addresses of three referees, should be addressed to: **Dr. Brian Jones, Chair, Department of Earth and Atmospheric Sciences, University of Alberta, Edmonton, Alberta T6G 2E3 Canada. FAX: 403-492-2030; Email: bjones@gpu.srv.ualberta.ca**. Deadline for receipt of applications is December 1, 1996. The appointment will commence on July 1, 1997 providing a suitable candidate can be found. *The University of Alberta is committed to the principle of equity in employment. As an employer we welcome diversity in the workplace and encourage applications from all qualified women and men, including Aboriginal peoples, persons with disabilities, and members of visible minorities.*

ASSISTANT PROFESSORS UNIVERSITY OF IDAHO

We invite applications for two TENURE-TRACK positions in the Department of Biological Sciences. Candidates for the first position, in plant molecular systematics and evolution, must have postdoctoral research experience and will be expected to establish a vigorous, externally funded research program. The successful applicant will teach an undergraduate course in plant systematics and a second course in his or her area of specialization.

Candidates for the second position should be using molecular and/or genetic approaches to study questions in animal cell biology and/or development. Postdoctoral research experience using molecular techniques is required and candidates will be expected to establish a competitive, externally funded research program. The successful applicant will teach an undergraduate course in human physiology to students planning health-related careers, and a second course in his or her area of expertise.

Send curriculum vitae; statement of research interests and teaching philosophy; and the names, addresses, telephone numbers, and Email addresses of at least three references to: **Patricia McCarroll, Coordinator for Search Committee, Department of Biological Sciences, University of Idaho, Moscow, ID 83844-3051 U.S.A. by November 15, 1996. Email: patm@aspen.csr.uidaho.edu; http://www.uidaho.edu/Letters_and_Science/BioSc/.**

To enrich education through diversity, the University of Idaho is an Equal Opportunity/Affirmative Action Employer.

MEDICAL GENETICIST: The Department of Pediatrics at the University of Utah is seeking applications for a tenure-track position at the Professor level. Candidates must be Board-certified in pediatrics/medical genetics with active research interests in evolutionary genetics and human limb development. Individuals with a strong background in developmental biology and genetics are preferred. Candidates with extramural funding are desired. The appointee will be expected to participate in clinical services and the education of housestaff, and to maintain an active research program. Contact:

John Carey, M.D.
Department of Pediatrics
50 North Medical Drive
Salt Lake City, UT 84112

The University of Utah is an Equal Opportunity/Affirmative Action/Equal Access Employer and encourages women and minorities to apply.

POSITIONS OPEN

WILDLIFE ECOLOGY AND CONSERVATION DEPARTMENT CHAIR University of Florida

Applications and nominations are invited for the position of PROFESSOR and CHAIR of Wildlife Ecology and Conservation at the University of Florida. The Department offers the B.S., M.S., and Ph.D. degrees in Wildlife Ecology with programs in conservation biology, landscape ecology and restoration, wildlife management, tropical conservation, urban wildlife relations, and conservation education. Must have earned doctorate, with one or more degrees in ecological science or natural resource management. Should demonstrate exceptional record of scholarly and leadership abilities to foster the department's regional, national, and international programs. Candidates must have vision and ability to enhance relationships with the greater scientific and resource management community, and to develop and strengthen interdisciplinary ties within the university.

Applications should include letter of intent; curriculum vitae; university transcripts; and names, addresses, and telephone numbers of five references, to be sent to: **Dr. Susan K. Jacobson, Chair, Search and Screen Committee, Department of Wildlife Ecology and Conservation, P.O. Box 110430, Institute of Food and Agricultural Sciences, University of Florida, Gainesville, FL 32611-0430. Telephone: 352-392-4851; FAX: 352-392-6984; Email: skj@gnv.ifas.ufl.edu**. Applications will close on January 3, 1997. *Women and minorities are encouraged to apply.*

TENURE-TRACK FACULTY POSITIONS NEUROSCIENCE Case Western Reserve University

The Department of Neurosciences at Case Western Reserve University School of Medicine invites applications for two tenure-track positions to be filled at the ASSISTANT PROFESSOR level. While outstanding candidates in any area of neuroscience will be considered, we are especially interested in areas that would complement existing strengths in developmental and molecular neuroscience; these include, but are not limited to, mechanisms of signal transduction; integrative neuroscience; and molecular mechanisms of synaptic plasticity, learning, and memory. Candidates will also be expected to participate in teaching medical and graduate students. The department is housed in newly renovated space and provides state-of-the-art facilities. Excellent opportunities exist for interaction with both the 12 primary faculty and with a number of neuroscientists from other departments that actively participate in research and teaching endeavors. Please submit a curriculum vitae and a summary of research interests by November 15, 1996, as well as arrange to have four letters of reference sent to: **Dr. Lynn Landmesser, Search Committee, Department of Neurosciences, Case Western Reserve University Medical School, 10900 Euclid Avenue, Cleveland, OH 44106-4975.** *Case Western Reserve University is an Equal Opportunity/Affirmative Action Employer.*

TENURE-TRACK FACULTY POSITION Biomedical Engineering Rice University

The Department of Bioengineering at Rice University invites applications for a TENURE-TRACK faculty position in laser biomedical engineering. Applicants should have a strong multidisciplinary background in laser bioengineering including such fields as photoacoustics, photothermodynamics, photochemistry, optics, and imaging, and substantial experience in independent research and competitive funding. We are particularly interested in researchers with exceptionally strong research expertise at both the macro level of tissues and the micro/nanoscale level of cells, organelles, and molecules. The successful applicant would establish research collaborations with institutions at the Texas Medical Center and groups at the Institute of Biosciences and Bioengineering at Rice University. Applicants would be expected to develop and teach courses in the area of biomedical engineering at the undergraduate and graduate levels. Applicants should send a curriculum vitae that includes a list of publications, a statement describing a research program in laser biomedical diagnostics and therapy, and names of at least three references to: **Professor Larry V. McIntire, Chair, Institute of Biosciences and Bioengineering, Rice University, 6100 Main Street, Houston, TX 77005-1892.** For full consideration, applications should be received by January 1, 1997. *Rice University is an Equal Opportunity/Affirmative Action Employer; women and minority candidates are encouraged to apply.*

Scientists and Engineers

MBI International has openings for experienced candidates with advanced degrees and strong scientific/engineering expertise to fill key project leadership positions. MBI is interested in entrepreneurial individuals with capabilities for the development and potential commercialization of novel products in the areas of nutraceuticals, biomaterials, cellular and molecular biology, fermentation, animal feeds/nutrition and environmental biotechnology. Qualified candidates will have experience in developing technology and ability to attract external R&D funding from government and private industry.

MBI is also looking for bright, energetic postdocs and junior scientists/engineers with degrees in the science and engineering disciplines who possess 0-3 years of relevant work experience.

Regarded as one of the Nation's top 10 independent R&D institutes, MBI possesses state-of-the-art equipment and a 120,000 square foot facility, including a 20,000 square foot, 3-story pilot plant for commercial scale up, validation and toll manufacturing.

MBI offers a competitive salary/benefits package. Send your resume to: **MBI International – HR, P.O. Box 27609, Lansing, MI 48909.** MBI is an Equal Opportunity Employer.



ASSISTANT PROFESSORS LOUISIANA STATE UNIVERSITY

Louisiana State University has recently established a new Department of Biological Sciences by merging its Departments of Biochemistry, Microbiology, Plant Biology, and Zoology and Physiology. Pending final approval, this sixty-member academic and research department anticipates filling three tenure-track assistant professor positions for August 1997. Responsibilities for all positions include developing a successful research program, directing students, and teaching undergraduate and graduate courses. The successful applicants for these positions will have the Ph.D. or equivalent degree in a biological science or related field. A complete application will consist of a curriculum vitae, selected reprints, plus a brief statement of research goals and teaching interests and experience. In addition, three letters of reference should be sent directly to the search committee chair. Official review of applications will begin on November 15, 1996, and will continue until each position is filled. Anticipated positions are:

Developmental Genetics: Applications are invited from individuals with postdoctoral research experience in the field of developmental genetics. Complete applications should be sent to: **Dr. Thomas Moore, Developmental Genetics Search Committee Chair, Department of Plant Biology, Baton Rouge, LA 70803.**

Signal Transduction: Applications are invited from individuals working in the area of signal transduction in non-mammalian systems. Candidates must have a minimum of two years of postdoctoral experience. Complete applications should be sent to: **Dr. Terry Bricker, Signal Transduction Search Committee Chair, Department of Microbiology, Baton Rouge, LA 70803.**

Evolutionary Theory: Applications are invited from individuals conducting research in one or more of the following areas: molecular evolution theory and analysis; systematic theory and analysis; computational evolutionary biology. Development of computer-based models to study genome evolution, development of state-of-the-art methods for biological sequence analysis, and application of high performance computing to phylogenetic analysis are among the areas in which we are most interested. LSU has outstanding computer facilities including advanced parallel computing laboratories. Complete application should be sent to: **Dr. Mark Hafner, Evolutionary Theory Search Committee, Museum of Natural Science, Louisiana State University, Baton Rouge, LA 70803.** *LSU is an Equal Opportunity/Affirmative Action Employer*

NORTHWESTERN UNIVERSITY INSTITUTE FOR NEUROSCIENCE

Assistant Director. The Northwestern University Institute for Neuroscience (NUIN) is a large and active interdepartmental program which, in addition to offering a Ph.D. in neuroscience, serves in general to coordinate and promote neuroscience at Northwestern. The present newly created position provides a great challenge to the right individual. Duties include initiation and development of Institute strategies for seeking funds for academic and research programs, project management, responsibility for upkeep and renewal of facilities, computer-assisted administrative procedures, linkage with other Centers and Programs, editing a newsletter for the NUIN constituency, and coordination of activities on the Evanston and Chicago campuses of Northwestern. Candidates must have a Ph.D. degree in the life sciences and previous experience in writing research grant proposals. Academic administrative experience is preferable but not required. The Assistant Director has a non-tenure track faculty level appointment at the University. Information on NUIN can be viewed at

<http://nuinfo.nwu.edu/nuin>

Screening of applications will begin immediately and continue until the position is filled. The start date is negotiable. With the cover letter, please include curriculum vitae, list of publications, and 2-3 representative reprints, and arrange for three references to be sent to: **Enrico Mugnaini, M.D., NUIN Director, Searle 5-474, 320 E. Superior St., Chicago, IL 60611.**

Women and members of minority groups are encouraged to apply. Northwestern University is an AA/EEO Employer. Hiring is contingent upon eligibility to work in the United States. For informal inquiries: email: j-brunet@nwu.edu

Postdoctoral Training In Immunology

**Kimmel and Fox Chase
Cancer Centers
Philadelphia, PA**

Developmental Immunology Training Program, Kimmel Cancer Center, Thomas Jefferson University and Fox Chase Cancer Center: T. Manser (Director), *antigen-driven B cell development, autoimmunity*; M. Bosma (Co-director), *V(D)J recombination, immunodeficiencies*; C. Croce, *aberrant V(D)J recombination*; L. Eisenlohr, *class I and II antigen processing and presentation*; K. Hayakawa, *generation of memory B and T cells*; R. Hardy, *fetal and adult B cell development*; D. Kappes, *CD3 in T cell development*; H. Koprowski, *anti-viral vaccine design*; R. Korngold, *CD4 function, autoimmunity*; R. Perry, *regulation of immunoglobulin gene transcription*; B. Perussia, *Fc receptor function, NK cell development*; R. Pomerantz, *immunobiology of HIV*; J. Rothstein, *early hematopoiesis*; L. Siracusa, *mouse genetics, autoimmunity*.

Program support requires USA citizenship or permanent residence status. Applicants should send curriculum vitae and three letters of reference to Ms. Joanne Balitzky, Kimmel Cancer Center, 233 S. 10th Street, Rm. 910 BLSB, Philadelphia, PA 19107-5541. Phone: 215-503-6687; Fax: 215-923-1098; e-mail: J_Balitzky@lac.jci.tju.edu. We are an equal opportunity institution.

Faculty Positions, Anatomy and Cell Biology, University of North Dakota, School of Medicine and Health Sciences

Applications are invited for two tenure track positions at the Assistant/Associate Professor level to begin July 1, 1997. The first position is sponsored jointly by the Departments of Anatomy and Cell Biology, Physical Therapy, and Occupational Therapy, and carries teaching responsibilities in an interdepartmental gross anatomy course for physical and occupational therapy students. Candidates for this position with recent experience in teaching PT/OT anatomy (or other allied health sciences anatomy with emphasis on extremities/function) will be given high consideration. A second position, sponsored solely by the Department of Anatomy and Cell Biology, requires expertise in human histology and cell biology, and developmental anatomy, and the successful candidate will contribute equally to team-taught courses in those fields. Candidates for both positions will be expected to contribute to graduate student education and must have a Ph.D., or equivalent with at least two (2) years of postdoctoral training. Research experience is preferred in cell and developmental biology, molecular biology, and/or related fields. Successful applicants will be expected to carry on vigorous extramurally funded research programs. Review of applications will begin immediately and continue until the positions are filled. Candidates for the first position should send curriculum vitae, descriptions of research and teaching experience, and three (3) letters of reference to **Dr. Edward C. Carlson, Chairman.** Candidates for the second position should send the same information to **Dr. Mark D. Olson, Search Committee Chair, Department of Anatomy and Cell Biology, Box 9037, University of North Dakota School of Medicine and Health Sciences, Grand Forks, North Dakota 58202.** *The University of North Dakota is an equal opportunity/affirmative action employer and invites applications from all qualified individuals.*



**PENN STATE UNIVERSITY
DEPARTMENT OF BIOCHEMISTRY
AND MOLECULAR BIOLOGY
ASSISTANT PROFESSOR
Two Faculty Positions (Tenure Track)**

Penn State has made a commitment to expanding education and research in the biological sciences through a new, university-wide Life Sciences Consortium. As part of this research emphasis, the Department of Biochemistry and Molecular Biology invites applications for two positions at the **ASSISTANT PROFESSOR** level. The Department has excellent research facilities and provides competitive startup packages and state-funded salaries.

PROTEIN CRYSTALLOGRAPHY

A protein crystallographer is sought to strengthen the structure/function group at Penn State. Preference will be given to candidates with research interests that complement existing strengths of the Department including protein-nucleic acid interactions, electron transport pathways and enzymology. The successful candidate will be eligible to participate in a recently funded NSF training grant. The application should include current curriculum vitae, list of publications and a brief statement of research interests (three pages or fewer). In addition, three letters of reference on applicant's behalf should be sent to:

Dr. Gregory K. Farber

**Department of Biochemistry and Molecular Biology
108 Althouse Laboratory, Box PX-S
Penn State University
University Park, PA 16802**

YEAST CELL BIOLOGY

We seek a cell biologist to join an expanding group of faculty interested in genetic and biochemical approaches to gene regulation, signal transduction, differentiation and development. Preference will be given to candidates addressing fundamental questions in cell biology using *Saccharomyces cerevisiae* as the organism of study. The application should include current curriculum vitae, list of publications and a brief statement of research interests (three pages or fewer). In addition, three letters of reference on applicant's behalf should be sent to:

Dr. Robert T. Simpson

**Department of Biochemistry and Molecular Biology
108 Althouse Laboratory, Box YB-S
Penn State University
University Park, PA 16802**

Review commences 1 December 1996; applications accepted until positions filled.

An Affirmative Action/Equal Opportunity Employer. Women and Minorities Encouraged to Apply.



**St. Jude Children's
Research Hospital**

ALSAC • Danny Thomas, Founder

**The Morrison Memorial
Postdoctoral Fellowship**

The Department of Biochemistry, St. Jude Children's Research Hospital, is engaged in research in the area of molecular and cellular biology. To promote research in the Department, the Board of Governors has established a memorial fellowship in honor of Dr. Martin Morrison, the founding chairman of the Department. The research programs within the Department are well supported and offer recent Ph.D. or M.D. graduates the opportunity to join in energetic multidisciplinary groups dealing with a range of basic and clinically oriented research. Salaries are commensurate with experience. Competition for the fellowship will begin October 15, 1996 and remain open until a candidate is selected. Current research programs within the Department include:

Paul Brindle: Regulation of transcription factor interactions with the transcriptional co-activators CBP and P300.

John Cleveland: Oncogene control of apoptosis, cell cycle progression and gene expression in cancer and development.

James N. Ihle: Mechanisms of hematopoietic stem cell growth regulation, differentiation and transformation.

Paul Ney: Globin gene regulation and erythroid differentiation studied through homologous recombination in ES cells.

Suzanne Jackowski: Regulation of membrane formation and trafficking during the cell cycle.

Charles Rock: Regulation of growth factor-initiated phosphatidylcholine and phosphatidylinositol turnover.

Brian Sorrentino: Retrovirally mediated transfer of drug resistance genes to hematopoietic cells, for myeloprotection and in vivo selection.

Gerard Zambetti: Function of p53 in the regulation of gene expression, tumor suppression and oncogenesis.

Applicants should submit a brief statement of their research interests, curriculum vitae, reprints, and the names of three references to: **The Morrison Postdoctoral Fellowship, Department of Biochemistry, St. Jude Children's Research Hospital, 332 North Lauderdale, Memphis, TN 38101.**

An Equal Opportunity/Affirmative Action Employer

CHAIR, DEPARTMENT OF CHEMISTRY

The Department of Chemistry at the University of Nebraska-Lincoln invites applications and nominations for Department Chair. This Department is regarded as a premier center within the University, with special strengths in biophysical chemistry, mass spectrometry, NMR, organic chemistry, and separations science. In addition, most of the 30 faculty are key participants in one or more interdisciplinary programs, which include biotechnology, cancer research, materials science, and toxicology. The Department of Chemistry anticipates a major role in the new university-wide signature science initiative in plant research. With responsibility for nearly 3,000 undergraduate students, the Department strongly supports the university initiative in math/science education. This Department is of special importance within the Nebraska educational system because it has the only Ph.D. chemistry program in the state of Nebraska. The faculty is committed to enhancing the status of the Chemistry Department as an outstanding regional program, with national prominence, and international recognition in several areas. The role of the new chair is to provide academic and administrative leadership as the Department strives to achieve these goals. The ideal candidate will have demonstrated outstanding achievement in education and research, and will have substantial administrative accomplishments and/or show promise for excellence in administration. The position is available July 1, 1997. Applications and nominations should be sent to: **Professor David Smith, Chair, Chemistry Search Committee, Department of Chemistry, University of Nebraska-Lincoln, Lincoln, NE 68588-0304.** Applications should include a curriculum vitae and a letter indicating the applicant's interest in the position. Although the Search Committee will meet to review applications on December 13, it will continue to accept applications until the position is filled. The highest level of confidentiality will be maintained throughout the search. *The University of Nebraska-Lincoln is committed to a pluralistic campus community through Affirmative Action and Equal Opportunity and is responsive to the needs of dual career couples. We ensure reasonable accommodation under the Americans with Disabilities Act; contact Dr. David Smith at (402) 472-2794 for assistance.*



Director, Hawai'i Institute of Marine Biology School of Ocean and Earth Science and Technology

University of Hawai'i at Mānoa

The University of Hawai'i at Mānoa, a land-, sea-, and space-grant institution with an enrollment of approximately 20,000 students, is seeking a distinguished scientist to assume the directorship of its Hawai'i Institute of Marine Biology (HIMB). The Institute's permanent staff currently includes nine state-funded research faculty and 16 support staff. In addition, faculty from various University of Hawai'i colleges are affiliated with HIMB, as are three scientists from Federal agencies. The number of short-term visiting scientists averages about 40-50 annually. The Institute's Director reports directly to the Dean of the prestigious School of Ocean and Earth Science and Technology (SOEST), the largest school within the University.

The Institute's principal facilities and operations are located on Coconut Island, a coral reef island in Kane'ohe Bay on the windward side of the island of O'ahu, about 15 miles from the Mānoa campus. At present the general research program encompasses basic and applied aspects of tropical marine biology and coral reef ecology, including areas of emphasis in aquaculture, coastal ecology and resource management, conservation biology and biodiversity, and marine endocrinology and biotechnology. The Institute is in the process of planning a \$9 million expansion of its facilities, funded by a gift from the Edwin Pauley Foundation.

Candidates are sought with vision and leadership skills; with broad, progressive views of marine biology; with a proven ability to compete for research funds; and with thorough dedication to the Institute's wide range of research, education, and service activities. Appointed by the President of the University, the Director is expected to foster close interaction between HIMB and other units of SOEST and the University. Applicants must have: a doctoral degree in a relevant field; a distinguished, nationally established reputation in marine-related research; and experience in obtaining programmatic support and in the administration of a research institute or large research program.

Collaborative experience with other institutions, including those of other countries, is highly desirable. The salary will be competitive and commensurate with qualifications and experience. Application letters, including a resume and the names, addresses, and telephone numbers of at least four professional references, and requests for information should be sent to: **Dr. Edward Laws, Chair, HIMB Director Search Committee, University of Hawai'i at Mānoa, 2444 Dole Street, Bachman Hall 105, Honolulu, Hawai'i 96822.**

The University of Hawai'i at Mānoa is an Equal Opportunity/Affirmative Action employer. Women and minority candidates are encouraged to apply.



FACULTY POSITION BIOMEDICAL LASER RESEARCH



A faculty position at the level of Assistant, Associate, or Full Professor is available at the New England Eye Center, Tufts University School of Medicine, to conduct ophthalmic laser research and to develop novel techniques for optical tomography and laser surgery. Potential candidates should have a strong background in optics and lasers, good communication skills, and an ability to work closely with clinical investigators. A Ph.D. degree in physics, biomedical engineering, biophysics, optics, or related field is preferred. Successful candidate will develop his or her own independent research program. Please send CV and three letters of recommendation to Carmen A. Puliafito, M.D., Director, New England Eye Center, 750 Washington Street, Boston, MA 02111, FAX 617-636-4215.



Columbia University

College of Physicians & Surgeons

Columbia University Center For Reproductive Sciences is seeking a full-time Scientific Director to oversee day-to-day operations vital to the Center. The individual should be committed to primary investigation in reproductive biology. Interested applicants should forward their curriculum vita to: Rogerio A. Lobo, M.D., Director, Center for Reproductive Sciences, Columbia University College of Physicians and Surgeons, 630 West 168th St., 16th Floor, Rm. 28 E, NYC 10032.

Columbia University is an equal opportunity employer.

FACULTY POSITION TENURE TRACK Plant Molecular Genetics Department of Biology

University of California, San Diego

The Department of Biology at the University of California, San Diego invites applications for a tenure-track faculty position at the Assistant Professor level. We are seeking exceptional candidates pursuing imaginative approaches to any basic problem in plant biology using contemporary techniques in biochemistry, genetics, and cell biology. The successful candidate is expected to develop an innovative and vigorous research program and to participate in undergraduate and graduate teaching.

A Ph.D. degree and two or more years of productive postdoctoral research experience are required. Salary (based on the UC pay scale) will be commensurate with qualifications and experience. This position is subject to availability of funds.

Applicants should send curriculum vitae with your phone and fax numbers and e-mail address, bibliography, and statement of research interests; and the names, fax numbers, and e-mail addresses of three references by November 25, 1996, to:

**Plant Biology Search Committee
University of California, San Diego
Department of Biology 0346
9500 Gilman Drive
La Jolla, CA 92093-0346**

The University of California is an Equal Opportunity/Affirmative Action Employer.

Department of Pharmacology



Astra is a pharmaceutical company in a phase of rapid growth. Operations, which are highly international, encompass research, production and marketing of pharmaceuticals through subsidiaries, agents and licensees around the world. The Group has approximately 17,000 employees, of whom 6000 are in Sweden. Sales in 1995 totalled 7 billion Canadian dollars.

Astra Pain Control in Sweden is a research company within the Astra Group with about 270 employees. Its products dominate the world market for local anesthetics. The company has recently established a research and development centre in Montreal, a division of Astra Pharma Inc. Canada, and is actively recruiting for the following positions:

General Pharmacology

As the successful candidate, you will be a dynamic scientist leading a small team involved in 1) evaluating the in vivo General Pharmacology of new drugs and in 2) the development of new models which predict therapeutic application. You will possess a Ph.D. with experience in quantitative in-vivo measures of drug action on the cardiovascular and respiratory systems as well as other system functions such as kidney or gastrointestinal tract. Experience with automated and telemetric methods of measuring drug activity would be an asset as would previous experience in the industry. **Ref: LP-GP**

Cellular Electrophysiology

As the successful candidate, you will work in collaboration with pharmacologists and molecular biologists characterizing drug action on membrane receptors and ion channels. The work will be related to the developing of new analgesics and studying mechanisms of nociception. You will possess a Ph.D. degree with experience of quantitative measures of drug effects on nerves and nerve membranes. **Ref: LP-CE**

Astra offers a professional work environment to the successful candidates. If you are motivated by the challenges of this position, please send your résumé, *quoting the appropriate reference code*, to: **Astra Research Centre Montreal, Pharmacology, 275 bis boul., Armand-Frappier, Edifice 3000, Laval, Quebec H7V 4A7.**

We thank all applicants for their interest, however, only those being considered will be contacted. No telephone enquiries or agencies, please. An Equal Opportunity Employer.



BS/MS Biochemist

Biopharmaceutics

Pfizer scientists are involved in some of the most critical research in the world today. As a Fortune 100 company, we have established a product pipeline that is unparalleled, and an intellectual, collaborative environment that inspires scientific achievement. Join us, and participate in creating innovative solutions to disease and illness.

In addition to a fast-paced, yet collegial environment, we offer very competitive salaries and excellent benefits including relocation assistance. For confidential consideration, please forward resume suitable for electronic scanning (i.e., eliminate italics, bullets, bolds, underlines and staples) to: **Employee Resources, Pfizer, Inc., Job Code #2009, Central Research Division, Eastern Point Road, Groton, CT 06340.** For more information about Pfizer, see us on the Internet at: <http://www.pfizer.com>. We are an equal opportunity employer M/F/D/V.

You will carry out in vivo and ex vivo drug absorption studies in support of new drugs and controlled release dosage forms. You will design and execute experiments, analyze data, and prepare progress reports. HPLC experience is a must. Experience with canine and rodent pharmacokinetics is highly desirable. This position requires a BS or equivalent in Biochemistry, Chemistry or Pharmacy. MS preferred.



We're part of the cure.



WE'RE SEARLE.

Every day, Searle produces some of the world's most revolutionary products. And as an expanding, wholly-owned subsidiary of Monsanto, a \$16 billion, Fortune 100 leader in agricultural products, pharmaceuticals, food ingredients and chemicals, we're constantly impacting the lives of people around the world, and improving the career opportunities for our professionals.

Senior Programmer/Analyst

Working closely with chemists, biologists, and programming specialists in the analysis, design and development of client/server applications, you will provide scientific programming support to the Searle Discovery unit. This will all be done in support of the discovery of novel therapeutics.

We require an MS with experience or a PhD with some post-doctoral experience in computational chemistry or biology. You'll also need knowledge and experience in applications design, UNIX, Oracle, C/C++, Windows 95, HTML and script languages. An ability to learn and apply new languages, tools and environment is a must, as are excellent communication skills and a knowledge of chemical structure. Experience in the pharmaceutical/agrochemical discovery process is strongly desired.

There's only one thing more diverse than our business units, our team of talented professionals. To join them in a unique environment that's specifically designed for communication and innovation, send your resume to: **Monsanto Company, LMH, Job # JGSPA, 800 N. Lindbergh, Mail Zone C2NB, St. Louis, MO 63672.** EEO/AA Employer M/F/D/V.

SEARLE

SKIRBALL INSTITUTE OF BIOMOLECULAR MEDICINE

The Molecular Neurobiology and Molecular Pathogenesis Programs at the Skirball Institute of Biomolecular Medicine, an affiliate of NYU Medical Center, have tenure track positions available at the Assistant and Associate Professor levels. We are seeking to build strong interdisciplinary programs, and are interested in outstanding individuals whose research interests and experience are based in biochemistry, genetics, cellular biology or molecular biology. The Molecular Neurobiology Program also wishes to encourage applications from system neurobiologists who have a strong interest in using cellular and molecular approaches to study the nervous system. Research interests of the Molecular Pathogenesis Program include immunology, microbial pathogenesis, basic cell biology, and the regulation of cell growth and differentiation. The Skirball Institute is a new initiative at NYU Medical Center, consisting of Programs in Developmental Genetics (coordinated by Alex Joyner and Ruth Lehmann), Structural Biology (coordinated by Lennart Philipson, who is also Director of the Institute), Molecular Neurobiology (coordinated by Steve Burden) and Molecular Pathogenesis (coordinated by Dan Littman). Applicants should submit by November 4, 1996 a curriculum vitae, a statement of research interests, and the names and addresses of three references to:

Mark Shepard
Administrative Director
Skirball Institute of
Biomolecular Medicine
NYU Medical Center
540 First Avenue
New York, NY 10016

WHERE EXCELLENCE IS A WAY OF LIFE.

POSITIONS OPEN

CORNELL UNIVERSITY BIOLOGY OF VERTEBRATES

The Section of Ecology and Systematics at Cornell University invites applications for a **TENURE-TRACK** faculty position in vertebrate biology, specializing in herpetology or mammalogy, beginning fall 1997. We are particularly interested in candidates who have research interests in areas such as physiological ecology, functional morphology, developmental mechanisms underlying evolutionary change, or the study of character evolution in a phylogenetic context, but other conceptual areas will be considered. Primary teaching responsibilities will be an introductory course in comparative vertebrate biology and, eventually, an advanced course in herpetology or mammalogy. The successful candidate will likely be appointed as curator of either the herpetology or mammalogy research collections. Postdoctoral experience is desirable. It is expected that the position will be filled at the rank of assistant professor.

Applicants should submit a curriculum vitae, a statement of teaching interests and experience, statements of current and future research interests, and copies of representative publications. Applicants should arrange to have at least three letters of recommendation sent on their behalf to: **Dr. Amy McCune, Chair, Search Committee, Section of Ecology and Systematics, Cornell University, Corson Hall, Ithaca, NY 14853-2701.** Please include names, telephone numbers, and Email addresses of the referees with application materials. We will begin reviewing applications on November 15, 1996, and will continue until a suitable candidate is found. *Cornell University is an Equal Opportunity/Affirmative Action Employer. Applications from women and minorities are encouraged.*

EASTERN CONNECTICUT STATE UNIVERSITY

Eastern Connecticut State University is currently searching for a qualified individual to serve as a tenure-track **ASSISTANT PROFESSOR—Cell Biology/Biochemistry.** Duties include teaching introductory and advanced courses to majors and non-majors, academic advising, professional development, and working with the Physical Sciences Department to establish a biochemistry program. Information about the department can be found at <http://biology.ecsu.ctstateu.edu>.

Qualifications: Qualifications include Ph.D. and postdoctoral training; expertise in plant, fungal, or insect systems an advantage. Demonstrated interest in undergraduate teaching essential.

Screening of completed applications will begin immediately and close December 1, 1996. Please send curriculum vitae and the names of three references to:

Dr. Charles Booth
Cell Biology/Biochemistry Biology
Search Chair, Biology Department
83 Windham Street
Eastern Connecticut State University
Willimantic, CT 06226

Eastern Connecticut State University is an Affirmative Action/Equal Employment Opportunity Employer and is aggressively recruiting female and minority applicants in an effort to bring greater diversity to its work force and community.

Four ASSISTANT PROFESSORSHIPS (tenure-track) to start September 1, 1997. Must possess Ph.D. in biology. Maintain research programs with B.S./M.S. student participation; pursue grants. Excellent teaching and computer expertise required.

Eukaryotic Molecular Biology (V19)—Teach B.S./M.S. courses in cell and molecular biology. Research interests in eukaryotic molecular biology.

Genetics/Developmental Biology (V21)—Teach B.S./M.S. courses in genetics and developmental biology. Research interests in developmental biology.

Evolutionary Biology (V22)—Teach M.S. evolutionary biology, systematics, and introductory zoology. Research interests in animal biology at the organismal/population level. Expertise in the application of molecular techniques preferred.

Biology/Science Education (V20): Associate rank may possibly be considered)—Ph.D. or Ed.D. with graduate level courses in biology; research in science teacher education required; experience in 5–12 science teaching preferred. Teach introductory biology, general education, and M.S. science education. Help develop doctoral program in science education for 5–12 teachers.

Subject to available funding. Screening begins immediately until positions are filled. Positions will be filled after October 22, 1996. Send résumé, statement of teaching philosophy and research interests, transcripts, and three letters of recommendation to: **Dr. Bonnie Lustigman, Biology Department, Montclair State University, Upper Montclair, NJ 07043.** *Equal Opportunity/Affirmative Action Employer.*

POSITIONS OPEN

BIOLOGY

The University of Minnesota, Morris seeks to fill a **TENURE-TRACK** position in invertebrate zoology and evolutionary biology beginning September 1997. The selected candidate will: teach a broad range of undergraduate courses; advise undergraduates; pursue research; and share in the governance and development of the biology program as well as the campus at-large.

Candidates must expect a Ph.D. in invertebrate zoology or a closely related field, with expertise in evolutionary biology and systematics, by September 1997. Two years of experience teaching at the undergraduate level is required. (Graduate TA experience is acceptable.)

The University of Minnesota, Morris is a small, selective, residential, undergraduate liberal arts college of the University of Minnesota. Salary range: \$32,000 to \$40,000 depending upon qualifications. Applications must include a letter of application, résumé, transcript(s), three reference letters, and two statements: 1) a teaching statement in which approaches to teaching are described and past teaching experiences are evaluated, and 2) a research proposal in which the applicant proposes a research program that is viable and accessible to advanced undergraduates at a small liberal arts institution. Send applications to: **Biology Search Chair, Division of Science and Mathematics, University of Minnesota, Morris, MN 56267-2128.** Applications must be received by December 6, 1996. *The University of Minnesota is an Equal Opportunity Educator and Employer.*

FACULTY POSITION HUMAN/MAMMALIAN GENETICS

As part of a continued expansion in human and mammalian genetics, the Laboratory of Genetics, University of Wisconsin-Madison (<http://www.wisc.edu/genetics/>), seeks to hire an **ASSISTANT PROFESSOR.** Candidates should possess an M.D. and/or Ph.D. degree and direct an active research program in human or mammalian genetics. Joint appointments with appropriate clinical departments are possible for M.D. applicants.

Please send curriculum vitae, a statement of research interests, and representative reprints or preprints, and arrange to have three letters of recommendation sent to: **Human Genetics Search Committee, c/o Dr. William Dove, 118 Genetics, 445 Henry Mall, Madison, WI 53706.** Application deadline is November 30, 1996.

The University of Wisconsin-Madison is an Affirmative Action Employer. Women and minority scientists are encouraged to apply. Unless confidentiality is requested in writing, information regarding the applicants must be released upon request. Finalists cannot be guaranteed confidentiality.

The Department of Chemistry at Georgetown University invites applications for a tenure-track position in biochemistry at the level of **ASSISTANT PROFESSOR.** Individuals pursuing a multidisciplinary approach to structural or mechanistic aspects of biochemistry are encouraged to apply. A Ph.D. in chemistry or biochemistry is required. The successful candidate is expected to develop a strong, independent research program and to have a commitment to excellence in undergraduate and graduate teaching. Please send a curriculum vitae, a summary of research accomplishments, and a plan of proposed research, and arrange to have three letters of reference sent directly to: **Chair, Faculty Recruiting Committee-S, Georgetown University, Department of Chemistry, Box 571227, Washington, DC 20057-1227.** Preference will be given to applications received on or before November 30, 1996. *Georgetown University is an Equal Opportunity/Affirmative Action Employer; applications from women and underrepresented minorities are encouraged.*

<http://www.georgetown.edu/departments/chemistry/chemistry.html>.

Tenure-track **ASSISTANT PROFESSOR** position is available. We seek an individual with expertise in the application of NMR spectroscopy to biomolecular structure/function problems. Development of an extramurally funded research program and teaching at the undergraduate and graduate levels are expected. A successful candidate will also be involved in providing NMR expertise for mutually beneficial collaborative projects with our faculty. Send a curriculum vitae, a summary of a research proposal, and three letters of recommendation by December 15, 1996 to: **Dr. Gary W. Elmer, Department of Medicinal Chemistry, Box 357610, University of Washington, Seattle, WA 98195.** *The University of Washington is building a culturally diverse faculty and strongly encourages applications from female and minority candidates. The University is an Equal Opportunity/Affirmative Action Employer.*

Merck Research Laboratories, a world leader in biological and pharmaceutical research, has two excellent career opportunities available at modern research facilities in suburban Montgomery County Pennsylvania.

FERMENTATION SCIENTIST

Working in our Department of Vaccine Bioprocess R&D, the successful candidate will perform specialized laboratory duties to support the safe and efficient operation of the Biologics Fermentation Development Laboratory to include independent operation and supervised research related to and including fermentation and primary cell recoveries of pathogenic and recombinant microbes at the laboratory to pilot-scale. Previous experience with molecular biology techniques, culture of pathogenic bacteria, and fermentation equipment and process troubleshooting is highly desirable. The position requires a BS or MS degree or equivalent in Microbiology, Biochemical Engineering, or a related field with 0-4 years industrial experience. Excellent interpersonal skills, proven strong technical writing abilities (e.g. SOP's and other GMP documents), demonstrated knowledge of computers and data acquisition are required. **Ad#B-69.**

SYBASE DATABASE ADMINISTRATOR

Working in support of genomic sequencing efforts in our Department of Human Genetics, the selected individual will be responsible for the administration of a Sybase Database, database design, data acquisition, and database maintenance. The position requires a BS or MS degree or equivalent in computer science or a related field with at least two years experience with Sybase and software development on a UNIX platform. Good communication skills and the ability to work with others are necessary. Experience with DNA sequence databases is desirable. **Ad#B-70.**

Excellent salary and benefit programs accompany these positions at our modern research facilities located 25 miles northwest of Philadelphia. Please send curriculum vitae with cover letter indicating Ad# on correspondence and envelope to: **MRL Human Resources (please indicate Ad#), WP42-2, Merck Research Laboratories, P.O. Box 4, West Point, PA 19486.** Only candidates considered for interviews will receive responses. EEO/AA/VH Employer.



Glaxo Wellcome, the world's largest pharmaceutical company, continues to reinforce its commitment to pioneering research and development efforts that respond to the existing and emerging needs of the global community. To explore new challenges in healthcare research, bring your expertise to our team in one of the following openings at our Corporate Headquarters located in Research Triangle Park, N.C.

POSTDOCTORAL FELLOWSHIPS

Basic Research Project on Establishment of Transgenic Xenogeneic Mouse Model

Two postdoctoral positions are being recruited. One position requires experience and knowledge of liver function, development, and differentiation and will involve working with human hepatocytes, transfections, and selection of permanent transformants for xenografts. The second position requires experience with transgenic mice, and mouse molecular developmental genetics and will involve development and characterization of transgenic mice, expression of selectable markers, and induction of gene transcription with a tetracycline inducible promoter. Both positions require experience in cell biology, molecular biology, and small animal surgery.

The successful candidates will have available to them core facilities including, pathogen free (barrier) transgenic mouse facility, sequencing and oligo-synthesizing facility, and protein production. Additionally, they will have the opportunity to interact with many diverse areas of drug discovery, and will be expected to maintain academic connections and collaborations.

Requirements: Must have recently (3-4 years) been awarded a Ph.D./D.V.M./M.D. degree(s), excellent communication skills, good publication record, and the ability to work in a team. Positions are available immediately, are for two years with an optional third year extension. Applications should include a C.V. and a cover letter with references. Send to: Michael P. Rosenberg, Ph.D., Section Head, Genomics, or Lynn Condroy, Ph.D., Group Leader, Virology, Glaxo Wellcome Research, Inc., P.O. Box 13398, Research Triangle Park, NC 27709. Fax: (919) 483-0171. email: rosenberg-mp@glaxo.com An Equal Opportunity Employer M/F/D/V

GlaxoWellcome

Working Together for A Healthier World

The Science of Agricultural Genetics

POST-DOCTORAL ASSOCIATE

Discovery Research (Job #GT-702)

Post-doctoral position in molecular physiology is available immediately to head an investigation directed toward understanding plant productivity using transgenic approaches. Target areas include photosynthesis, photosynthetic carbon reduction and assimilate partitioning. The candidate should have strong knowledge and bench experience in expression of genes in plastids and subsequent analyses of transgene expression. Expertise in current molecular-biology-related technologies, physiology and metabolism is desired. Experience with gas-exchange analysis is a plus. Good communication skills are essential, as the candidate is expected to present and publish research findings. This position requires a Ph.D. in molecular biology/biochemistry or a related field. Review of applications will begin immediately.

POST-DOCTORAL ASSOCIATE

Discovery Research (Job #CP-701)

Available starting immediately for an individual with interests in the area of plant transcription factor/DNA interaction. Education/Experience: Ph.D. or equivalent with demonstrated expertise in molecular biology or related field not necessarily in plant systems. Specific expertise in nuclear protein preparation, protein/DNA interaction including footprinting, mobility gel shifts, Southwestern assays, protein purification and PCR technology is essential. Familiarity with various sequence analysis programs is highly desirable. Ability to work independently with strong interpersonal, organizational and communication skills is necessary.

We offer competitive salaries and excellent, comprehensive benefits. Des Moines is a prospering heartland city that ranks well above the national averages in affordability and education. Our location provides a mix of beautiful open spaces and city life advantages. For confidential consideration send 3 copies of your resume and cover letter indicating job number by November 1, 1996 to: Pioneer Hi-Bred International, Inc., Attn: PERSONNEL (Job # _____), P.O. Box 1004, Johnston, IA 50131-1004.

Pioneer Hi-Bred International, Inc., is the world leader in agricultural genetics. Founded in 1926, we are a publicly held company that invests more than \$115 million in research and product development. Pioneer® brand products are grown in almost every crop-producing continent in the world. At our headquarters in Des Moines, Iowa, we're adding to our Research team.



PIONEER HI-BRED INTERNATIONAL, INC.
An Equal Opportunity Employer

POSITIONS OPEN

UNIVERSITY OF CALIFORNIA, LOS ANGELES TENURE-TRACK JUNIOR FACULTY POSITION

Cell and Molecular Biology of Women's Cancer

The Division of Gynecologic Oncology of the Department of Obstetrics and Gynecology, the Department of Biological Chemistry, and the UCLA-Jonsson Comprehensive Cancer Center at UCLA are searching for a **JUNIOR FACULTY** member who will work in the area of cellular and molecular biology of women's cancer. Appropriate interest areas include, but are not limited to, signal transduction, tumor immunology, cell cycle, transformation, genetics, and tumor progression of gynecologic cancer, especially ovarian and/or breast cancer. The position will include joint appointments in the Division of Gynecologic Oncology and the Department of Biological Chemistry. Individuals with either an M.D. degree or a Ph.D. degree are invited to apply. Laboratory and office space will be located in the UCLA-Jonsson Cancer Center, in close proximity to a number of recently recruited faculty working in the areas of signal transduction, cell biology, and molecular oncology. A generous start-up package for equipment, supplies, travel, salaries, and stipends is available. A curriculum vitae and a two-to-four-page description of proposed research should be sent by December 1, 1996 to: **Ms. Judith Mayfield, Search Coordinator, Jonsson Comprehensive Cancer Center, University of California, Los Angeles, Box 961781, 8-684 Factor Building, Los Angeles, CA 90095-1781.** Applicants should also have three or more letters of reference sent to the same address, under separate cover. *UCLA is an Equal Opportunity/Affirmative Action Employer.*

PROFESSOR AND CHAIR

Department of Basic and Behavioral Sciences Northwestern University Dental School Chicago Campus

The Department of Basic and Behavioral Sciences is seeking applications for the position of **PROFESSOR** and **CHAIR** for the Department of Basic and Behavioral Sciences to begin January 1, 1997 if possible, but no later than September 1997. The department comprises three Divisions (Biological Materials, Oral Biology, and Behavioral Sciences). The candidate should be an established scientist with an active, grant-supported research program that can complement and extend Department strengths in mineralized tissue biology, structural biology, and cell-materials interactions. The candidate should hold the Ph.D., D.D.S.-Ph.D., or M.D.-Ph.D. degree. The candidate is expected to be active in training of Ph.D. candidates and Postdoctoral Fellows, and to provide leadership to maintain Institutional NIDR Ph.D. Training Grants in Oral Biology and Biological Materials, as well as to support research for dental students and M.S. students in Advanced Dental Education programs. Send résumé and names and addresses of three references to: **Professor Arthur Veis, Department of Basic and Behavioral Sciences, Northwestern University Dental School, 303 East Chicago Avenue, Chicago, IL 60611. Telephone: 312-503-8296; FAX: 312-503-2544; Email: aveis@nwu.edu.** Deadline for application: November 1, 1996. *An Affirmative Action/Equal Opportunity Employer. Hiring is contingent upon being eligible to work in the United States.*

FACULTY POSITION

DEPARTMENT OF MOLECULAR BIOLOGY MASSACHUSETTS GENERAL HOSPITAL Department of Genetics Harvard Medical School

The Department of Molecular Biology at Massachusetts General Hospital and the Department of Genetics at Harvard Medical School invite applications at the level of **ASSISTANT PROFESSOR** for a position to begin September 1997. We are seeking applicants working in any field of genetics, molecular biology, and/or biochemistry. The laboratory will be located in the Massachusetts General Hospital Department of Molecular Biology and the faculty appointment will be in the Harvard Medical School Department of Genetics.

Applications should include a curriculum vitae, reprints of publications, a statement of research plans, and three letters of recommendation. This material should be sent by December 15, 1996 to: **Howard M. Goodman, Chief, Department of Molecular Biology, Wellman 11, Massachusetts General Hospital, Boston, MA 02114.**

Harvard University and the Massachusetts General Hospital are Equal Opportunity/Affirmative Action Employers. We encourage applications from women and minority groups.

POSITIONS OPEN

UNIVERSITY OF CALIFORNIA, DAVIS DEPARTMENT OF CHEMISTRY

Applications are invited for a tenure-track position beginning fall 1997, for a physical chemist with research interests in spectroscopic studies of condensed-phased systems including biological systems. This position is at the **ASSISTANT PROFESSOR** level and is subject to final budgetary approval. Candidates must demonstrate exceptional promise for active, independent research and teaching and have a Ph.D. degree at time of appointment. Applicants must provide a letter, to be sent to: **Faculty Recruitment Committee, #P, Room 108, Chemistry Department, University of California, Davis, CA 95616** indicating the position they are seeking. They should also include a curriculum vitae (including a list of publications); a summary of research objectives; and the names, addresses, fax and telephone numbers of three referees. The position is open until filled, but to ensure consideration, applications should be received by October 31, 1996. *The University of California, Davis, is an Affirmative Action/Equal Opportunity Employer with a strong institutional commitment to the development of a climate that supports equality of opportunity and respect for differences based on gender, cultural ethnicity, disability, and sexual orientation. In that spirit, we are particularly interested in receiving applications from individuals who would enhance the diversity of our workforce.*

PHYSICAL ANTHROPOLOGY Washington University—St. Louis

The Department of Anthropology at Washington University in St. Louis is seeking applications for a tenure-track or tenured **FACULTY** position in physical anthropology beginning July 1, 1997. Salary and rank are open and will be commensurate with experience and qualifications. Candidates should have experience in teaching and an outstanding research record in some aspect of later hominid evolution and/or in human variation. Please send curriculum vitae, statement of research interests, and names and addresses of three referees by January 15, 1997, to: **Tab Rasmussen, Chair, Search Committee, Department of Anthropology, Campus Box 1114, Washington University, St. Louis, MO 63130.** *Washington University is an Affirmative Action/Equal Opportunity Employer. We especially seek applications from women and minorities.*

FACULTY RESEARCH POSITION in tumor immunology. Mayo Clinic and Foundation invites applications for a full-time career scientist position at the level of Assistant, Associate, or Full Professor with joint appointments in the Cancer Center and in the Department of Immunology. Mayo Clinic offers a highly interactive research environment with basic scientists and clinical investigators. Candidates should have an outstanding, independent research program focused on tumor antigens, factors influencing tumor cell immunogenicity, effector mechanisms in cancer immunity, and/or factors limiting effective tumor immunity. An attractive package of salary, benefits, and research support will be provided. Please send a curriculum vitae, list of references, and a statement of research interests and goals to: **David J. McKean, Ph.D., 301 Guggenheim Building, Mayo Clinic, Rochester, MN 55905.** *Mayo Foundation is an Affirmative Action/Equal Opportunity Educator and Employer.*

ANIMAL PHYSIOLOGIST—Kenyon College seeks a tenure-track animal physiologist with broad training. Applicants must have a Ph.D., preferably with postdoctoral experience. Although the exact specialty of the appointment is flexible, preference will be given to candidates utilizing molecular and/or biochemical techniques. The successful candidate will teach upper-level courses in comparative animal physiology, as well as introductory-level courses, and will maintain a strong research program that involves undergraduates. A competitive start-up package is offered. Send curriculum vitae, statement of teaching and research interests, graduate and undergraduate transcripts, and three letters of reference to: **Physiology Search Committee, Department of Biology, Kenyon College, Gambier, OH 43022.** Review of applications will begin 15 November 1996 and continue until the position is filled. *An Equal Opportunity Employer, Kenyon encourages the applications of women and minority candidates.*

POSITIONS OPEN

FACULTY POSITION DEVELOPMENTAL BIOLOGY

The Department of Biological Sciences at the University of Pittsburgh anticipates making, subject to budgetary approval, one full-time **TENURE-TRACK** faculty appointment in the area of developmental biology, beginning September 1997, to continue expansion of the Department. Applicants studying molecular mechanisms of animal development using a model genetic system are especially encouraged to apply. This appointment is expected to be made at the Assistant Professor level, but under exceptional circumstances experienced candidates with outstanding records will be considered at higher rank. The successful candidate must have a Ph.D. and extensive postdoctoral experience and will be expected to establish an extramurally funded research program, train graduate students, and participate in undergraduate education. In order to ensure full consideration, applications must be received by December 2, 1996. Applicants should send a curriculum vitae along with a summary of research interests and goals, and should arrange to have at least three letters of reference sent to:

**Dr. Richard Carthew
Developmental Biology Search Committee
Department of Biological Sciences
University of Pittsburgh
Pittsburgh, PA 15260
Telephone: 412-648-7687**

The University of Pittsburgh is an Equal Opportunity/Affirmative Action Employer. Women and minorities are especially encouraged to apply.

PLANT ECOLOGIST

The Department of Biology at the College of New Jersey invites applications for a tenure-track **ASSISTANT PROFESSORSHIP** to begin September 1997. Applicants must have a Ph.D., research experience in plant ecology, and a demonstrated potential for teaching excellence. Strong background in vascular plants and field studies and strong commitment to undergraduate education preferred, plus potential to establish an active research program involving undergraduates. Teaching duties include a spring semester ecology course and courses in vascular plant biology. Candidate may develop upper level courses in an area of specialization and will represent plant sciences at the College. Send curriculum vitae, statement of research interests, description of teaching experience, transcripts, and three letters of recommendation to: **David Rose, Department of Biology, The College of New Jersey, Trenton, NJ 08650-4700** by December 16, 1996. *An Equal Opportunity Employer.*

ANIMAL BEHAVIORIST BEHAVIORAL ECOLOGIST

The Department of Zoology at Duke University invites applications for a tenure-track position at the **ASSISTANT PROFESSOR** level in the field of animal behavior or behavioral ecology beginning fall 1997. The successful applicant will be expected to establish a vigorous research program and develop an undergraduate course in animal behavior or behavioral ecology. Curriculum vitae, statements of research and teaching interests, and three letters of reference should be sent to: **Chairman, Animal Behavior Search, Department of Zoology, Duke University, Durham, NC 27708-0325.** Applications received before November 15, 1996, will be guaranteed consideration. *Duke University is an Equal Opportunity/Affirmative Action Employer.*

EXECUTIVE DIRECTOR American Institute of Biological Sciences

This is a full-time position with administrative responsibility for the Institute's office in Washington, D.C. American Institute of Biological Sciences (AIBS) is a member- and society-governed federation of 45 scientific societies, museums, and research laboratories and 5,000 individual members, with a full-time staff of 15.

Applicants should have a Ph.D. in the biological sciences or a closely related discipline; at least ten years of professional experience in the biological sciences; experience in education; experience with the executive and legislative branches of the federal government; an appreciation for the research enterprise; and excellent leadership, communication, interpersonal, and writing skills.

Submit a letter of intent, résumé, and the names of five referees by December 9, 1996, to: **AIBS Executive Director Search, AIBS, 1444 Eyc Street NW, Suite 200, Washington, DC 20005.**

AIBS is an Equal Opportunity/Affirmative Action Employer.

POST-DOCTORAL POSITION

NATURAL PEPTIDE LIGANDS FOR THYMIC SELECTION

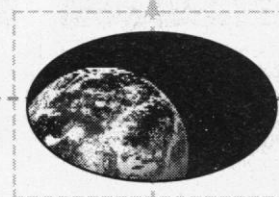
Available immediately, to investigate the self-peptide requirements for the thymic selection of autoreactive and virus-specific T cells. Studies will involve generating new mouse models, using transgenic and ES cell technology, to study thymic development. A background in molecular biology is essential and an interest in immunology advantageous.

Please send curriculum vitae and names of three referees to: Philip G. Ashton-Rickardt, Ph.D., The University of Chicago, Gwen Knapp Center for Lupus and Immunology Research, 924 East 57th Street, R414, Chicago, IL 60637-5420. PHONE: 312/702-7669. FAX: 312/702-1576. e-mail: p-ashton@bio-3.bsd.uchicago.edu



**THE UNIVERSITY
OF CHICAGO**

The University of Chicago is an Affirmative Action/Equal Opportunity Employer.



Ceregen

As a subsidiary of the Fortune 100 Monsanto Company, Ceregen is a world leader in the discovery and development of agricultural products based on advanced chemistry and biotechnology. And our professionals are playing a key role in their ongoing product development and support, and in our future.

Research Entomologists

As part of a multidisciplinary team, you will discover and develop insect control opportunities in cotton, corn and other crops.

We seek adaptive, innovative professionals with an MS in entomology—Ph.D. is preferred—and at least 3 years of experience in insect bioassay design and performance along with data and project management skills. Field experience with cotton or corn is a plus, and experience with international pests and markets is desirable.

There's only one thing more diverse than Monsanto's global business units—our talented group of professionals. To join them in a unique environment that's specifically designed for communication and innovation, send your resume to: **Monsanto Company, B. Robinson, GG4C, 700 Chesterfield Parkway North, St. Louis, MO 63198. FAX: 314/537-7015. EEO/AA Employer M/F/D/V.**



SENIOR NEUROLOGIST FACULTY POSITION IN ALZHEIMER'S DISEASE RESEARCH Institute for Brain Aging and Dementia College of Medicine, Department of Neurology School of Biological Sciences UNIVERSITY OF CALIFORNIA, IRVINE

Applications are invited for a tenured, Senior Neurologist faculty position dually appointed in the College of Medicine, Department of Neurology, and in the School of Biological Sciences, Department of Psychobiology. This individual is expected to take a leadership role in the Alzheimer's Disease Program that is designated both as an Alzheimer's Disease Research Center and as an Alzheimer's Disease Diagnostic and Treatment Center (State of California, DHHS), structured within the Institute for Brain Aging and Dementia. The successful candidate will be one who demonstrates appropriate leadership skills, including the ability to maintain effective interactions over a range of basic science and clinical disciplines related to the study of Alzheimer's disease. Candidates should have a record of outstanding research accomplishment as evidenced by national and international recognition, appropriate funding record, and proven ability to train graduate and postdoctoral researchers. Examples of areas of research foci might include neuro-imaging applications, dementia sub-type analyses, and/or biological markers of dementia. The level of appointment is commensurate with the credentials of the successful candidate.

Candidates holding an M.D. degree and board certification in Neurology are invited to apply by sending a letter of interest, a curriculum vitae that includes a record of teaching and research experience, and the names and addresses of three referees to: **University of California Irvine, Dr. Carl W. Cotman, Institute for Brain Aging and Dementia, Biological Sciences II, Room 1305, Irvine, CA 92697-4540. Refer to Position #96-C.**

The University of California Irvine: rooted in education, enriched by diversity.

MIT

FACULTY POSITIONS IN NEUROBIOLOGY

MIT is seeking neurobiologists for the Center for Learning and Memory, with faculty appointments in the Department of Brain and Cognitive Sciences. The area of interest is broad, but we are particularly interested in candidates with research programs in the fields of learning and memory, development and neural function. Opportunities are available for individuals using genetic, biochemical, molecular biological, cell biological, and physiological techniques.

Applicants should have significant research accomplishments, the ability to establish and maintain a rigorous research program and a commitment to excellence in education at the undergraduate and graduate levels.

Applicants should submit a curriculum vitae and a summary of current and proposed research work, and should arrange to have three letters of recommendation sent to: Prof. Mriganka Sur or Prof. Susumu Tonegawa, Department of Brain and Cognitive Sciences, E25-406, 77 Massachusetts Avenue, Cambridge, MA 02139. Applications will be considered as soon as they are complete and letters of recommendation have been received. Qualified women and minority candidates are especially encouraged to apply.



Massachusetts Institute of Technology
An Equal Opportunity/Affirmative Action Employer
Non-Smoking Environment

POSITIONS OPEN

UNIVERSITY OF CALIFORNIA SAN FRANCISCO

Assistant Professor, Integrative Neuroscience

The Department of Physiology invites applications for **ASSISTANT PROFESSOR**, tenure series, with research interests in the function of the intact central nervous system, including cognitive and computational approaches. The successful candidate will join the Keck Center for Integrative Neuroscience (<http://keck.ucsf.edu>), participate in the Neuroscience Graduate Program, and teach in the professional schools.

To apply, send curriculum vitae and a concise statement of research interests and ask for three letters of recommendation to be sent before December 15, 1996 to:

Neuroscience Search Committee
Department of Physiology
513 Parnassus Avenue, Room S-762
University of California
San Francisco, CA 94143-0444

University of California, San Francisco is an Equal Opportunity/Affirmative Action Employer. Women and under-represented minorities are encouraged to apply.

UNIVERSITY OF ILLINOIS AT CHICAGO DEPARTMENT OF BIOCHEMISTRY COLLEGE OF MEDICINE

Faculty Position in Structural Biology

Applications are invited for a tenure-track **ASSISTANT/ASSOCIATE/FULL PROFESSOR** faculty position in the Department of Biochemistry in the area of structural biology. Candidates' research interests should be in the application of structural methods, particularly NMR spectroscopy and x-ray crystallography, to answer medically relevant questions in the broad area of biochemistry. A successful junior applicant will be expected to develop a strong, externally funded research program, whereas a senior applicant is expected to have an established and currently vigorous research program with a good and continuing record of external support. Applicants should submit their curriculum vitae, a statement of research goals, and the names of three references to: **Chair, Structural Biology Search Committee, Department of Biochemistry, M/C 536, University of Illinois at Chicago, 1819 West Polk Street, Chicago, IL 60612.** *University of Illinois at Chicago is an Affirmative Action/Equal Opportunity Employer.*

SENIOR ASSOCIATE DEAN FOR BASIC SCIENCE AND RESEARCH

The University of Nevada School of Medicine is seeking a full-time **SENIOR ASSOCIATE DEAN** for Basic Science and Research for its Reno campus. Responsibilities include: establish and maintain regular communications with the Dean, Chairs, and faculty; foster educational and research goals and policies; coordinate personnel activities of basic science departments; diversify the school's research enterprise and broaden its financial resources; administer office of Medical Research; coordinate research and graduate programs; and oversee student research. Qualifications: doctoral degree; experience in medical school administration and medical education, including curriculum design and implementation; record of significant scholarly and research productivity and funding; excellent communication skills; and ability to facilitate group process. Submit curriculum vitae to: **Thomas J. Scully, M.D., Chair, Search Committee, University of Nevada School of Medicine/332, Reno, NV 89557.** Applications received by November 15, 1996 are assured of complete review. *Affirmative Action/Equal Opportunity Employer.*

FACULTY POSITION IN NEUROLOGY

The Department of Neurology at Vanderbilt University Medical Center invites applications for a position of **ASSISTANT PROFESSOR** in the field of neurosciences, relating to CNS inflammation and demyelination. Research areas include, but are not restricted to, areas of demyelination, cytokines, microglia/glia interactions, glial cell signaling. We are seeking outstanding Ph.D. candidates who will establish a vigorous research program and complement existing program in neuroscience. A curriculum vitae, outline of planned research, and three letters of reference should be sent to: **S. Sriram, Professor of Neurology, Multiple Sclerosis Research Laboratory, 2201 Capers Avenue, Nashville, TN 37212.** FAX: 615-321-5247; Telephone: 615-963-4042.

POSITIONS OPEN

EVOLUTIONARY BIOLOGY Whitewater, Wisconsin

The Department of Biological Sciences at the University of Wisconsin (UW)-Whitewater announces a tenure-track **ASSISTANT PROFESSOR** position in Evolutionary Biology beginning August 24, 1997. Ph.D. expected, ABDs considered. Academic staff if ABD. Prefer a zoologist who specializes in evolutionary theory with background in paleontology. Teaching responsibilities include introductory zoology for majors, organic evolution, introductory biology for non-majors, and a core course in science and technology. Candidate expected to engage undergraduate students in research, and conduct a research program compatible with UW-Whitewater resources. Closing date: November 22, 1996. Send letter of application, curriculum vitae, undergraduate and graduate transcripts, three current letters of reference, and a one-page statement of teaching philosophy and research agenda. Apply: **Lauren Wentz, Chair, Search and Screen Committee, Department of Biological Sciences, UW-Whitewater, Whitewater, WI 53190.** Telephone: 414-472-1092; FAX: 414-472-5633. *UW-Whitewater is an Affirmative Action/Equal Opportunity Employer.*

ASSISTANT PROFESSOR

Applications are invited for a **TENURE-TRACK** assistant professorship in the Department of Biochemistry and Biophysics, Iowa State University (ISU), to begin fall 1997. Duties include teaching undergraduate and graduate courses and conducting an independent research program. Research interests and teaching competence should emphasize molecular biophysics or physical biochemistry. Qualifications include a Ph.D. degree, postdoctoral experience, and a record of excellence and productivity in scholarly work. The Department has particular need for a person with expertise in NMR spectroscopy, although all candidates with strong qualifications in biophysical areas will be considered. Résumé and three letters of reference should be sent to: **Prof. Jon Applequist, Chair, Faculty Search Committee, 1210 Molecular Biology Building, Iowa State University, Ames, IA 50011.** Applications will be accepted through November 30, 1996. For further information see <http://molebio.iastate.edu/bbhtml/homepage.htm>. *ISU is an Affirmative Action/Equal Opportunity Employer.*

PROFESSOR OF FOREST STATISTICS

The Yale University School of Forestry and Environmental Studies seeks to make a **TENURED** appointment in Forest Statistics. A record of distinction in the development and application of statistical methods in forestry is essential. Experience and interest in imaging analysis, spatial statistics, sampling, and/or remote sensing would be especially welcome. Candidates are expected to maintain an active research program in statistics and to teach courses in statistical methods for professional students. Demonstrated interest and ability in interdisciplinary research and teaching as well as intellectual leadership for our forestry and forest science programs are sought.

The deadline for receipt of application materials is December 1, 1996. Please submit a statement of research and teaching interests, a curriculum vitae, and the names and addresses of three references to: **Office of the Dean, Yale University, School of Forestry and Environmental Studies, 205 Prospect Street, New Haven, CT 06511.**

Yale University is an Equal Opportunity/Affirmative Action Employer. Women and minority group members are encouraged to apply.

ASSISTANT OR ASSOCIATE SCIENTIST WILDLIFE ECOLOGY

**Joseph W. Jones Ecological Research Center
Newton, Georgia**

The Jones Ecological Research Center invites applications for **ASSISTANT** or **ASSOCIATE SCIENTIST** in Wildlife Ecology (available May 1, 1997). Responsibilities include research for non-game and game wildlife species (60 to 70%) and conservation, education, and service (30 to 40%). Qualifications include a Ph.D. in wildlife biology/ecology, population or community ecology, or related field.

Compensation package is competitive and commensurate with experience. An application letter, résumé, and names of three references should be mailed by January 15, 1997 to: **Dr. William Michener, Search Committee Chair, Jones Ecological Research Center, Route 2, Box 2324, Newton, GA 31770.** FAX: 912-734-4707; Telephone: 912-734-4706.

POSITIONS OPEN

CHAired ASSISTANT PROFESSORSHIP Department of Chemistry and Biochemistry University of Notre Dame

Applications are invited for a chaired position in the area of basic cancer research. This **TENURE-TRACK** position is at the assistant professor level and will be available in the fall of 1997. Applicants must have a strong commitment to teaching and to developing an active research program. Individuals with research interests in biochemistry and structural or molecular biology are being sought. Research areas are open, but those that complement existing departmental programs, including gene targeting, will be most strongly considered. An attractive salary/capitalization package is available for this highly competitive position. Applicants should send a complete résumé, a summary of research plans, and three letters of recommendation to: **Professor Roger K. Brethauer, Chair, Search Committee, Department of Chemistry and Biochemistry, University of Notre Dame, Notre Dame, IN 46556.** Complete applications must be received by December 2, 1996.

The University of Notre Dame is an Affirmative Action/Equal Opportunity Employer.

ASSISTANT PROFESSOR

The Medical Sciences Program of the Indiana University School of Medicine in Bloomington invites applications from candidates with at least two years of postdoctoral experience for a 12-month, tenure-track position as **ASSISTANT PROFESSOR** of Anatomy starting July 1997. The successful applicant is expected to participate in teaching the anatomical sciences to medical, graduate, and undergraduate students and to establish an excellent extramurally funded research program. Preference will be given to those candidates who can document both teaching and research expertise and whose research interests complement those of current faculty. More information is available at Web page <http://www.indiana.edu/~medsci/>. Applicants should send a curriculum vitae, a statement of teaching commitment and philosophy, and a summary of current and anticipated research activities, and should arrange to have three letters of reference sent by December 1, 1996, to: **Search Committee, Medical Sciences Program, Indiana University School of Medicine, Myers Hall, Bloomington, IN 47405-4201.**

Indiana University is an Equal Opportunity/Affirmative Action Employer. Women and minorities are encouraged to apply.

MICROBIOLOGIST/IMMUNOLOGIST CARLETON COLLEGE

Applications are invited for a full-time, tenure-track position beginning September 1, 1997 at the rank of **ASSISTANT PROFESSOR** in the Department of Biology. Teaching responsibilities include courses in microbiology, immunology, and introductory biology. Must be committed to teaching and research in the context of a liberal arts college. Candidate will be expected to maintain a research program that encourages participation by undergraduates and to actively seek external research support. Start-up funding is available. Applicants must have a Ph.D.; postdoctoral experience is highly advantageous. Send letter of application, curriculum vitae, undergraduate and graduate transcripts, a statement of teaching philosophy, a summary of research goals, and three letters of recommendation to: **Susan R. Singer, Department of Biology, Carleton College, Northfield, MN 55057-4025** by October 25, 1996. *Carleton College is an Equal Opportunity/Affirmative Action Employer. Women and minority candidates are strongly encouraged to apply.*

ASSISTANT PROFESSOR: The Department of Physiology invites applications from outstanding scientists with Ph.D., M.D., or equivalent degrees for two tenure-track assistant professor positions. Of particular interest are candidates who will develop independent research programs in cellular, molecular, or biophysical aspects of membrane biology or cell signaling. Integrative biology research using cell and molecular biological approaches to investigate higher order physiological systems is also of interest. However, the excellence of the successful candidate is more important than the particular area of research. These positions are part of the continuing growth of this dynamic Department. Applicants should submit a curriculum vitae and a brief statement of research plans, and should arrange to have three letters of reference sent to: **James T. Stull, Ph.D., Department of Physiology, The University of Texas Southwestern Medical Center, 5323 Harry Hines Boulevard, Dallas, TX 75235-9040.** *An Affirmative Action/Equal Opportunity Employer.*



The Van Andel Institute
Founded by Jay and Betty Van Andel

**The Van Andel Research Institute
Director of Nutrition Research Institute**

The Van Andel Nutrition Research Institute invites applications for the position of Director of an Institute based on "nutrient influence on gene expression." The Director should be an active researcher with the leadership skills to recruit and interact with a team of five to ten senior researchers.

State of the Art Facilities — Guaranteed
Multimillion Dollar Operational Budget

University Appointment — Excellent
Compensation and Benefits

VANRI will provide funds for personal and
laboratory relocation expenses

For confidential consideration, please submit your
C.V. and a letter stating the reasons for your interest
in leading this Institute.

Van Andel Research Institute (VANRI)
201 Monroe Ave., N.W., Suite 400
Grand Rapids, MI 49503
Tel: 616-235-8242
Fax: 616-235-8245

Cato Research Ltd. (CRL), a clinical research organization located in Research Triangle Park, NC that devises creative and effective strategies to guide innovative pharmaceutical products to the market place, is continuously recruiting for Clinical Research Fellows and Clinical Research Associates.

Clinical Research Fellows

CRL has an exciting opportunity for a self-starter with a scientific background who wants to learn and grow in a creative environment. The Clinical Research Fellow will receive training in the scientific, regulatory, medical and financial aspects of pharmaceutical development. The ideal candidate will possess a Ph.D. in biological sciences; excellent written and verbal skills; initiative and strong interpersonal skills; and the ability for critical and analytical thinking. Code #DS/SC

Clinical Research Associates

CRL is currently recruiting CRAs for our Denver, CO and Durham, NC offices. Individuals will possess at least two years of on-site experience in monitoring Phase I through Phase IV clinical trials for drugs, biologics and/or medical devices. In this integral role, responsibilities will include: initiating and monitoring clinical investigations according to GCPs, FDA codes of federal regulations and CRL policies and procedures. The flexibility to travel overnight up to 50% per year is essential. The ideal candidate will have a BS (in nursing, chemistry, biological science or pharmacy preferred), 2 years of field experience in clinical monitoring (with a CRO is a plus), excellent oral/written communication skills, initiative and strong interpersonal skills. Code #DP/CRA

Cato Research Ltd. provides an opportunity for the right individual to become a part of the pharmaceutical drug development industry. CRL offers personal and professional growth opportunities, a competitive salary and an excellent benefits package. For consideration, please send your resume including Code # to: Cato Research Ltd., Code #____, 4364 S. Alston Avenue, Suite 201, Durham, NC 27713-2280; or FAX (919) 361-2290. No phone calls or third party agencies, please. EOE.

CATO
RESEARCH

DEAN

**School of Biological Sciences
University of California, Irvine**

The University of California, Irvine, invites applications and nominations for the position of Dean of the School of Biological Sciences. We seek an individual with an outstanding reputation within the scientific community who will bring vision and innovative leadership to the School. Candidates must have a demonstrated commitment to academic excellence to further advance the School's standing in research, undergraduate and graduate education, and service. The scholarly achievements of this individual should be appropriate for an appointment as a Full Professor in one of the departments in the School. The School of Biological Sciences comprises four academic departments: Development and Cell Biology, Ecology and Evolutionary Biology, Molecular Biology and Biochemistry, and Psychobiology.

Applications and nominations will be received until the position has been filled. However, the screening process will begin immediately, and individuals are encouraged to apply prior to **November 15, 1996**.

Nominations and expressions of interest, along with a curriculum vitae and the names and addresses of three referees, should be submitted to:

Professor Thomas Poulos
Chair, Biological Sciences Dean Search
University of California, Irvine
509 Administration, Irvine, CA 92697-1000.

*The University of California, Irvine is an equal opportunity
employer committed to excellence through diversity.*

**DEPARTMENT OF EARTH AND ATMOSPHERIC SCIENCES
UNIVERSITY OF ALBERTA
Tenure Track Position in Geoprocessing**

The Department of Earth and Atmospheric Sciences plans to strengthen its research programs in geoprocessing through the appointment of a new faculty member who will have responsibility for teaching and research in the areas of geographic information systems (GIS), cartography, and quantitative methods (with emphasis on spatial applications). Experience in the use of GIS and terrain modelling with specific application to earth and environmental sciences would be an advantage. The Department is exceptionally well-equipped and has an international reputation for teaching and research excellence. The person selected for this position will develop an active research program that includes the supervision of M.Sc. and Ph.D. students and interaction with other faculty members who are engaged in research in this area. Detailed information about the department can be found on the World Wide Web at <http://www.ualberta.ca/~eas/home.html>.

This position will be at the Assistant Professor level (salary range: \$39,230—\$55,526). Applicants must hold a Ph.D. degree and have a proven research record. Previous teaching experience would be a significant asset. Applications, including a resume, a statement of research interests, and the names and addresses of three referees, should be addressed to **Dr. Brian Jones, Chair, Department of Earth and Atmospheric Sciences, University of Alberta, Edmonton, Alberta, T6G 2E3, Canada. Fax: 403-492-2030; email: bjones@gpu.srv.ualberta.ca**. Deadline for receipt of applications is December 1, 1996. The appointment will commence on July 1, 1997, providing a suitable candidate can be found.

The University of Alberta is committed to the principle of equity in employment. As an employer we welcome diversity in the workplace and encourage applications from all qualified women and men, including Aboriginal peoples, persons with disabilities, and members of visible minorities.

POSITIONS OPEN

ASSISTANT PROFESSOR

The Department of Biological Sciences, University of Iowa, invites highly qualified applicants for a **TENURE-TRACK** position in developmental biology. Required qualifications include: a Ph.D. degree; postdoctoral research experience; significant publication record in leading scientific journals; and evidence of the ability to develop a strong, independent research program with high visibility in the international scientific community. An important consideration will be the potential for research collaboration with one or more research groups already existing in the department, which has strength in neurobiology, developmental genetics, and cell biology. Teaching duties will include participation in both undergraduate and graduate developmental biology courses. Applicants should ask three referees to send letters of recommendation and should themselves send a curriculum vitae, statement of future research objectives, description of teaching interests, and selected reprints or preprints to: **Development Search Committee, Department of Biological Sciences, University of Iowa, 138 Biology Building, Iowa City, IA 52242-1324.** Applications will be reviewed starting December 1, 1996. *The University of Iowa is an Affirmative Action/Equal Opportunity Employer. Women and minority candidates are especially encouraged to apply.*

MIDDLEBURY COLLEGE

The Department of Chemistry and Biochemistry invites applications for a **TENURE-TRACK** position, beginning fall 1997, in the area of biochemistry. Ph.D. chemists, biochemists, or molecular biologists with background and interests in experimental biochemistry are encouraged to apply. Applicants must be committed to excellence in both teaching and scholarship. The successful candidate will teach lecture and laboratory courses in biochemistry, first-year chemistry, an upper-division elective of choice, and a course to be taught during the winter term. Supervision of undergraduate student research in biochemistry is expected. Completed application including curriculum vitae, statements of teaching and research interests, undergraduate and graduate transcripts, a sample of scholarly work, and at least three current letters of recommendation that speak to experience or potential as a teacher and independent researcher should be sent to: **R. G. Cluss, Department of Chemistry and Biochemistry, Middlebury College, Middlebury, VT 05753. Telephone: 802-443-5450; FAX: 802-443-2072; Email: rclus@panther.middlebury.edu; Web: www.middlebury.edu.** Materials must be received by 25 November 1996. *Middlebury College is an Equal Opportunity Employer, and it encourages applications from women and members of minority groups.*

IMMUNOLOGY PROGRAM ADMINISTRATOR NATIONAL INSTITUTE ON AGING

The Biology of Aging Program, National Institute on Aging, National Institutes of Health (NIH), Department of Health and Human Services, is seeking an accomplished immunobiologist (GS-601-13/14, annual salary \$52,867 to \$81,217) to develop and direct its extramural basic research program on the immunobiology of aging. Applications are invited from candidates with demonstrated strong research and administrative skills in cellular and molecular immunology. Successful candidates should have an established track record in obtaining grant funding and managing an academic research program. Familiarity with age-related immune dysfunction and its biological consequences is desirable. *U.S. citizenship is required.* To receive a faxed copy of the complete vacancy announcement, **Telephone: 1-800-728-5627, ID Number 1214.**

Send a curriculum vitae and the Optional Application for Federal Employment Form (OF-612), or the Application for Federal Employment (SF-171) by January 15, 1997 to: **Christine Hartz, NIA Personnel Office, Building 31, Room 2C02, 31 Center Drive MSC 2292, Bethesda, MD 20892. Telephone: 301-496-5347.** *NIH is an Equal Opportunity Employer.*

ASSOCIATE RESEARCH SCIENTIST

Position available immediately to study regulation of enzymes involved in leukotriene biosynthesis. Experience with enzymology and lipid metabolism desirable. Send curriculum vitae and references to: **Dr. Steven J. Feinmark, Department of Pharmacology, Columbia University, 630 West 168th Street, New York, NY 10032.** *Columbia University is an Equal Opportunity/Affirmative Action Employer.*

POSITIONS OPEN

ASSISTANT PROFESSOR Molecular Zoologist

Texas Tech University, Department of Biological Sciences, invites applications for a nine-month, **TENURE-TRACK** position in the area of molecular zoology. The successful candidate must demonstrate dedication to excellence in undergraduate and graduate teaching and the potential to develop a nationally recognized, extramurally funded research program. Research emphasis should include molecular approaches to problems in endocrinology, neurobiology, cell or developmental biology, or environmental physiology. An ability to interact with colleagues having diverse research interests (35 faculty, 100+ graduate students) is essential. Annual teaching responsibilities might include teaching (one semester) and coordinating (both semesters) non-majors Anatomy and Physiology, and teaching (one semester) an upper-division/graduate course in the candidate's research specialty. A Ph.D. is required. Postdoctoral research experience and teaching experience is preferred. Candidates should arrange for curriculum vitae, brief statement of teaching philosophy and research plans, and three letters of reference to be received by November 4, 1996: **Zoologist Search Committee, Department of Biological Sciences, Texas Tech University, Lubbock, TX 79409-3131.** *Texas Tech University is an Affirmative Action/Equal Employment Opportunity Institution.*

MOLECULAR/CELL BIOLOGIST

North Central College invites applications from broadly trained molecular/cell biologists for a tenure-track appointment as **ASSISTANT PROFESSOR**, to begin September 1997. Ph.D. required and postdoctoral experience expected. Applicants should have a strong commitment to excellence in undergraduate teaching and research. Teaching assignments include courses in cell biology and molecular biology. Additionally, the successful candidate will participate in our introductory biology sequence and direct undergraduate students in research. North Central College, located 30 miles west of Chicago in Illinois' research and development corridor, is a 135-year-old comprehensive liberal arts college of 2500 students with a strong tradition in biology. For more details call **Peggy Lang, Telephone: 630-637-5181; Email: mell@noctrl.edu.** Send letter of application, curriculum vitae, outline of undergraduate research plans, plus graduate and undergraduate transcripts, and have three letters of recommendation sent to: **Dr. Terrence Marsh, Search Committee Chair, c/o Academic Affairs Office, North Central College, P.O. Box 3063, Naperville, IL 60566-7063.** Review of applications begins December 2, 1996 and continues until the position is filled. *We encourage applications from women and minority candidates. Equal Opportunity Employer.*

GRANTS PROGRAM OFFICER INFORMATION SYSTEMS

Howard Hughes Medical Institute (HHMI), the nation's largest private philanthropic organization, conducts scientific research at leading academic medical centers throughout the United States. Currently, we have an opening for a **PROGRAM OFFICER** at our headquarters in Chevy Chase, Maryland.

Responsibilities involve managing the development of new and ongoing information systems on education and research grant competitions, awards, and outcomes; preparing summaries of information system-based data for program assessment activities; and coordinating all phases of the development and production of grants publications. Duties also include identifying and implementing electronic and technological resources and continuing the development of the grants home page.

Requirements include a Ph.D. in biology or equivalent experience in a scientific field and at least five years of management experience. Experience with the creation and analysis of large databases in areas of science education, training and research; thorough knowledge of hardware, software, and communication technologies; and experience with program budget and publications management preferred. Excellent communication, analytic, and writing skills are essential.

HHMI offers a competitive salary and excellent benefits package. Please send your résumé and salary requirements to: **Howard Hughes Medical Institute, Attention: RP, Human Resources Department, 4000 Jones Bridge Road, Chevy Chase, MD 20815-6789. Email: http://www.hhmi.org.** *Equal Opportunity Employer.*

Howard Hughes
Medical Institute

POSITIONS OPEN

BIOLOGY OF ANIMAL BEHAVIOR

The Reed College Biology Department invites applications for the tenure-track position of **ASSISTANT PROFESSOR** to commence in the fall of 1997. A Ph.D. is required and postdoctoral experience is highly desirable. The successful applicant should be prepared to teach invertebrate diversity at the introductory level as well as an upper-division lecture/laboratory course in the biology of behavior. He or she will be expected to establish an active and competitive research program for which start-up funding is available. Among the additional teaching duties will be the direction of year-long senior thesis research in areas related to animal behavior. We seek a biologist committed to teaching and research in the undergraduate environment. Reed College is a selective liberal arts institution with a distinguished record of educational accomplishment and a strong commitment to scholarship (<http://www.reed.edu/>). Applications including curriculum vitae and three recent letters of reference should be sent by January 6, 1997 to: **Search Committee Chair, Biology Department, Reed College, Portland, OR 97202-8199.** *Reed College is an Equal Opportunity Employer.*

DEVELOPMENTAL GENETICIST

Iowa State University invites applications for a **TENURE-TRACK FACULTY** position in developmental genetics within the Department of Zoology and Genetics. Applications are encouraged from individuals conducting interdisciplinary research in developmental genetics of any fungal, plant, or animal system. The department contains a variety of active and collaborative research groups in developmental biology, genetics, neurobiology, and physiology (see: <http://molebio.iastate.edu/html/zghomepg.html>). The successful candidate will be expected to establish a competitive research program and contribute to graduate and undergraduate education. The position includes start-up funds and space in a modern Molecular Biology Building, which houses state-of-the-art support facilities. Candidates should send curriculum vitae and statement of research and teaching interests, and should arrange for three letters of recommendation to be sent to: **Dr. Sheldon S. Shen, Chair, Developmental Genetics Search Committee, 339 Science II Building, Iowa State University, Ames, IA 50011,** by December 31, 1996. *Iowa State University is an Equal Opportunity/Affirmative Action Employer. Women and members of minority groups are encouraged to apply.*

Developmental Neurobiologist. The Zoology Department at The University of Texas at Austin invites applications for a **TENURE-TRACK** position from individuals with demonstrated excellence in research and teaching. In unusual circumstances we will consider applications on the Associate Professor level. Candidates for entry level should have (or be a candidate for) a Ph.D. Candidates for advanced positions must have commensurately outstanding academic records and research program. Preference will be given to candidates using cellular and/or molecular approaches. Candidates will teach at the graduate and undergraduate levels. Applications should include a curriculum vitae; a statement of research interests emphasizing past accomplishments and future goals; representative reprints or manuscripts; and the names, telephone numbers, and Email addresses of three to five references. Candidate selection will begin on October 31, 1996. Please address applications to: **Dr. Lawrence Gilbert, Search Committee, Department of Zoology, University of Texas, Austin, TX 78712.** *An Equal Opportunity/Affirmative Action Employer.*

PRECLINICAL PROJECT MANAGER

Ferring Research Institute, Inc., San Diego Division, is a research organization in the field of therapeutic peptide products.

Applications are being accepted for the position of **PRECLINICAL PROJECT MANAGER.** The successful candidate has a Ph.D. in biology, biochemistry, pharmacology, or related field and at least five years of experience in drug development. The qualified individual will coordinate and plan all preclinical studies required to assess the potential interest of drug use for clinical development according to FDA and/or EU regulatory requirements. To prepare downstream development steps, the individual will interact between clinical and pharmaceutical groups. Must have excellent organizational, communication, planning, and data reporting skills.

Please send or fax résumé, salary history, and references to: **Ferring Research Institute, Inc., Building 2, Room 434, 3550 General Atomics Court, San Diego, CA 92121. FAX: 619-455-3190.**

ASSISTANT PROFESSOR - TENURE TRACK - VERTEBRATE ECOLOGY

The Department of Biology, Skidmore College, invites applications for a tenure-track position at the Assistant Professor level to begin in July 1997. We seek a vertebrate ecologist with specialization in population/community ecology with a commitment to combining teaching and research at a small liberal arts college. Teaching responsibilities include an introductory-level *Population Biology* course for majors, an introductory-level course for non-science majors and advanced-level courses in the applicant's field of expertise. The successful candidate is expected to establish an active research program with opportunities for undergraduate participation in laboratory and field work. Applicants must have Ph.D.; post-doctoral and teaching experience are desirable.

Send CV, statements of teaching and research interests, and three letters of recommendation to **Dr. David Domozych, Chair, Department of Biology, Skidmore College, Saratoga Springs, NY 12866. Deadline for applications and supporting materials is November 15, 1996.**

People from diverse racial, ethnic and cultural backgrounds are especially encouraged to apply.

SKIDMORE
C O L L E G E

NEUREX CORPORATION, a rapidly growing biopharmaceutical company in the San Francisco Bay Area, is currently conducting projects aimed at discovering drugs to treat a variety of neurological disorders.

RESEARCH AND DEVELOPMENT OPPORTUNITIES

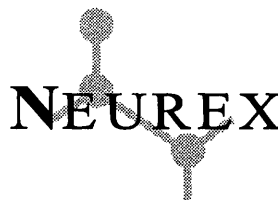
SCIENTIST CNS Disorders

This individual will perform research in chronic and acute neurodegenerative models of disease, analgesia and inflammation, and will be responsible for the setting up and management of a primary cell facility. Ideal candidate will possess a PhD in Neurobiology, Cell Biology or a related discipline with a minimum of three years' post-doctoral experience. A thorough knowledge of the cellular/molecular mechanisms underlying neurological diseases is essential with preference for those candidates who have working experience with *in vivo* models of neuropathological disorders. **JOB CODE: CB-1**

ASSOCIATE SCIENTIST Cell Biology

This individual will be responsible for the development of *in vitro* neuronal models of cell death, including the isolation and maintenance of primary neuronal and glial cell cultures. The successful candidate will have a BS or MS in Cell Biology, Neurobiology or a related discipline. Experience with protein biochemistry, cell transfection/transformation, including the use of plasmid and viral vectors, and a strong interest in drug discovery are required. **JOB CODE: CB-2**

Neurex Corporation offers excellent salaries and benefits, including stock options. Please send your resume, quoting the appropriate Job Code, to: Neurex Corporation, Human Resources, 3760 Haven Avenue, Menlo Park, CA 94025. Equal Opportunity Employer.



Chair of the Department of Pathology Albert Einstein College of Medicine

The Albert Einstein College of Medicine invites nominations and applications for the position of Professor and Chair of the Department of Pathology at the College, with responsibilities in academic and clinical pathology as head of the department at the Montefiore Medical Center and affiliates.

The Department of Pathology at Einstein has a tradition of research eminence with significant extramural funding, excellence in preclinical and clinical teaching, and successful Ph.D., postdoctoral and residency training programs. The Chair should be a dynamic leader for maintaining and enhancing these activities, with a vision of the future in a changing academic, research, and healthcare environment. Superior personal interactions and administrative skills are necessary. Board certification in Pathology is a requirement.

A letter of interest or nomination, together with a current curriculum vitae, should be sent to: **Dr. Peter Satir, Chair, Search Committee for the Department of Pathology Chair, Department of Anatomy and Structural Biology, Albert Einstein College of Medicine, Jack and Pearl Resnick Campus, 1300 Morris Park Avenue, Bronx, NY 10461. EOE.**

**ALBERT EINSTEIN
COLLEGE OF MEDICINE**

Toward the
advancement of medicine
...and your career



GLOBAL CAREER OPPORTUNITIES



The University of Sydney AUSTRALIA

LECTURER IN EUKARYOTIC MOLECULAR GENETICS

School of Biological Sciences

Reference No. A37/02

Applications are invited for a Lectureship in Eukaryotic Molecular Genetics. Applicants with research interests in developmental or evolutionary genetics, based on any higher or lower eukaryotic organism, are encouraged to apply, however, preference will be shown to applicants with specific interests in these topics as applied to insects. The appointee will teach molecular and general genetics at all undergraduate levels and have the opportunity to supervise research students. The appointee will be encouraged to develop their own research interests and will also be expected to contribute to the research activities of the Fruit Fly Centre housed within the school. Part funding for this position is being provided by the Centre.

A good general knowledge of molecular and general genetics is essential, as is a detailed knowledge of specific areas of eukaryotic developmental or evolutionary genetics. Applicants must possess a PhD or equivalent, have proven research ability, demonstrated administrative skills, lecturing experience at tertiary undergraduate level, and must present evidence of good teaching practices, communication skills, ability to work co-operatively with others, and research potential.

The position will be available from 1 January 1997 for a period of three years. There is the possibility of further offers of employment up to three years subject to funding and need. Membership of a University approved superannuation scheme is a condition of employment for new appointees.

For further information contact Professor R A Skurray, phone 61 2 9351 2376, fax 61 2 9351 4771, e-mail: Skurray@extro.ucc.su.oz.au or Associate Professor C B Gillies, Phone: 61 2 9351 2688, Fax: 61 2 9351 4771, e-mail: cgillies@extro.ucc.su.oz.au or Dr M Frommer, Research Director, Fruit Fly Research Centre, Phone: 61 2 9351 2298, Fax: 61 2 9351 4771, e-mail: marianne@bio.usyd.edu.au.

Salary: Lecturer A\$43,042 - A\$51,113 p.a.

Closing: 7 November 1996

Method of application for academic positions: Three copies of the application, quoting Reference No, including curriculum vitae, list of publications and the names, addresses and fax numbers of at least three and not more than five confidential referees to: The Personnel Officer, (Sciences Group), Carslaw Building, (F07), The University of Sydney, NSW, 2006 AUSTRALIA.

Equal employment opportunity and no smoking in the workplace are University policies. The University reserves the right not to proceed with any appointment for financial or other reasons.



St. Jude Children's Research Hospital

ALSAC • Danny Thomas, Founder

POSTDOCTORAL POSITION IN EXPERIMENTAL ONCOLOGY

Applications are invited for a funded position to dissect and analyze the transcriptional control of early events in myelopoiesis. Current investigations focus on the functional interactions of transcription factor proteins in the regulation of genes specifically expressed early after commitment to the myeloid lineage (JBC 270:8763, 1995), and the influence of the bone marrow stroma on the regulation of early myeloid gene expression (leukemia 9:1508, 1995). Specific projects include: characterizing functional interactions of the c-Myb and ETS-1 transcription factors with accessory proteins and the role of these interactions in regulating early myeloid gene transcription; determining the influence of the bone marrow stroma on the expression and functional interactions of myeloid-regulatory transcription factors; and isolating the gene encoding a developmentally expressed, myeloid-specific DNA-binding protein which may confer the myeloid-specific expression of the aminopeptidase N gene in hematopoietic cells. Individuals are needed to work on all aspects of these projects involving biochemical, molecular, cellular and molecular genetic analyses. Support facilities at this institution are exceptional, the research environment is highly interactive, both within the Research Hospital and at the nearby UT Medical School. Qualified candidates should possess either a Ph.D. and/or M.D. in a relevant field. Please forward your CV and the names, addresses, and phone numbers of three references to: **Linda H. Shapiro, Ph.D., Department of Experimental Oncology, St. Jude Children's Research Hospital, 332 North Lauderdale, Memphis, TN 38105. e-mail: linda.shapiro@stjude.org** Women and minorities are especially encouraged to apply. SJCRH is an affirmative action/equal opportunity employer.

ASSISTANT/ASSOCIATE PROFESSOR TENURE-TRACK FACULTY POSITION

The Pennington Biomedical Research Center at Louisiana State University invites applications for a faculty position at the assistant or associate professor level. Applicants should have a Ph.D. or equivalent degree with post-doctoral experience and a strong background and expertise in molecular and cell biology. The individual selected will be expected to establish or maintain an independent extramurally funded research program in Signal transduction pathways that complements the research programs of the current faculty in the field of molecular nutrition. Major research programs in the Center include an emerging new area of research aiming to understand molecular and cellular mechanisms that mediate development of obesity, and that modulate expression of genes involved in lipid metabolism. Start-up funds and outstanding research facilities are available. Rank and competitive salary will be commensurate with the applicant's qualifications. Applications will be accepted until a suitable candidate is selected. Applicants should submit a curriculum vitae; copies of three recent publications; a statement of their current research program, accomplishments, and future plans; and the names of three references to: **Dr. David York, Chief of Basic Science, Pennington Biomedical Research Center, Louisiana State University, 6400 Perkins Road, Baton Rouge, LA 70808.** Further information may be obtained by telephone: 504-763-2548 or email: yorkda@mhs.pbrc.edu.

*LSU/PBRC is an Equal Opportunity/
Affirmative Action Employer.*

The Department of Microbiology and Molecular Genetics and the Department of Medicine at the University of California, Irvine are jointly seeking applicants for a faculty position at the Assistant or Associate Professor level, depending upon qualifications. As part of our ongoing effort to expand our program in molecular pathogenesis, we are soliciting applications from individuals who have demonstrated superior talent and productivity in the area of molecular mechanisms of microbial pathogenesis. His/her previous work should have been judged by peer review to have been scientifically rigorous and medically relevant, and he/she should have been successful in obtaining sufficient funds from peer-reviewed grants to support these efforts. The latter can include postdoctoral fellowship support for Assistant Professor candidates.

Candidates must have an M.D./Ph.D. or M.D., and board certification in internal medicine and board eligibility in infectious diseases are required. The successful candidate will have some teaching and clinical responsibilities but will have considerable time available for accomplishing research goals and participating in research-related activities.

Please send curriculum vitae, summary of research interests, and names of three references to:

Dr. Alan G. Barbour
Search Committee Chair
Department of Microbiology and
Molecular Genetics
College of Medicine
University of California
Irvine, CA 92697-4025

*The University of California at Irvine is an equal
opportunity/affirmative action employer.*

Women and minorities are encouraged to apply.

Deputy Director of Basic Research

The University of California, Davis, Cancer Center is seeking a full-time academic Deputy Director for Basic Research of the Cancer Center. Candidates must have a doctoral degree with credentials suitable for appointment with tenure at the rank of Associate Professor or Professor in a basic science department of UC Davis. Candidates should have significant and recognized scientific accomplishments in the molecular biology of cancer and demonstrated administrative ability to develop and focus research programs in cancer biology. UCD Cancer Center is a priority program for UCD and intends to fulfill NCI requirements for a designated cancer center. Because of strong emphasis on academic productivity as a factor for promotions at the University of California, candidates should have established a record of publications and a substantial past and current level of extramural research funding. Please forward the following: 1) letter describing research, teaching, and administrative background; 2) curriculum vitae; and 3) names and addresses of five references to **Ralph deVere White, M.D., Chair, Search Committee for Deputy Director, UCD Cancer Center, 4501 X Street, Room #3003, Sacramento, CA 95817.** This position will be "Open Until Filled;" for full consideration, applications should be received by February 15, 1997. *The University of California is an Affirmative Action/Equal Opportunity Employer.*

FACULTY POSITION Community/Ecosystem Ecology

The Department of Biological Sciences at the University of Pittsburgh anticipates making, subject to budget approval, one full-time tenure-track faculty appointment in the area of community or ecosystem ecology, beginning September 1997, to continue expansion of the Department. Applications from candidates with research interest at the community/ecosystem interface are especially valued. This appointment is expected to be made at the Assistant Professor level, but under exceptional circumstances experienced candidates with outstanding records will be considered at higher rank. Our expanding ecology and evolution program has excellent research and teaching facilities on campus and at the University's Pymatuning Laboratory of Ecology (<http://www.pitt.edu/~blueeye/ec2.html>). The successful candidate must have a Ph.D. and post-doctoral experience and will be expected to establish an extramurally funded research program, train graduate students, and participate in undergraduate education. In order to ensure full consideration, applications must be received by December 2, 1996. Applicants should send a curriculum vitae along with a summary of research interests and goals, and arrange to have at least three letters of reference sent to:

Dr. Stephen Tonsor
Ecology Search Committee
Department of Biological Sciences
University of Pittsburgh
Pittsburgh, PA 15260
(412) 624-5491

The University of Pittsburgh is an Equal Opportunity/Affirmative Action employer. Women and minorities are especially encouraged to apply.

STRATAGENE, a leader in the development and manufacture of molecular biology research products in La Jolla (San Diego area), California, offers the following openings for our expanding Library group:

R&D STAFF SCIENTIST

Qualified candidates will possess a Ph.D. and at least 2 years of postdoctoral experience with expertise in library construction and screening, genomics, vector construction and eukaryotic molecular genetics. Experience with gene transfer and vector systems is important. We are looking for excellent technology development skills. Req. 21028-96R

LIBRARY PRODUCTION MANAGER

Qualified candidates will possess at least a BS/BA in Molecular Biology or Biological Science with 3-5 years' experience in manufacturing. A background in cDNA and genomic library construction with an understanding of RNA, lambda and plasmid technology is preferred. Business administration and customer service experience is also desired. Req. 32080-96R

Please forward resume to: Stratagene, 11011 N. Torrey Pines Rd., La Jolla, CA 92037, Attn: Professional Staffing/Req. _____. AA/EOE.



Manager

WINTER SITE MANAGER

The Antarctic Support Group seeks an enterprising individual to assist in managing a USAP Antarctic Station and associated science support facilities. Deploying to the region as senior ASA on-site manager for the winter season, we'll rely on you to ensure that facilities/equipment are maintained, provide administrative continuity/support services, assist in recruiting winter-over employees and issue progress reports. You'll also conduct tourist visits, serve as liaison with other areas, coordinate science personnel needs and maintain a proactive approach to problem solving.

We require a bachelor's degree in a relevant discipline or equivalent, 5 years' diversified experience in project management (facilities/utilities operation, research support, logistics preferred), ability to manage a multi-skilled workforce, and software experience (WP, spreadsheets). You must be able to pass a physical/dental examination and comply with all applicable safety, environment, health and waste management policies. U.S. citizenship is required.

We offer an excellent salary/benefits package and ongoing excitement of interacting with the U.S. Antarctic Program, a permanent presence of scientific and engineering researchers. For consideration, please send or fax your resume with a cover letter no later than 16 October 1996.



Antarctic Support Associates
61 Inverness Drive East
Suite 300
Englewood, CO 80112
Response Code: WQ/JP
Fax: 303-705-0811

EOE

THE HUMAN FRONTIER SCIENCE PROGRAM ORGANIZATION

DIRECTOR OF RESEARCH GRANTS (NEUROSCIENCES)

The aim of the Human Frontier Science Program Organization is to promote, through international collaboration, basic research in two areas: molecular biology and the neurosciences. Funding is provided for the support of Research Grants, Fellowships, and Workshops. (For more details, see <http://www.hfsp.org>)

We seek a Director of Research Grants (Neurosciences)

The Director, who will be located in our offices in Strasbourg, France, will be responsible for the overall management of the Research Grants program and will report directly to the Secretary General. The candidate must have an excellent knowledge of English, which is the working language of the Organization. The candidate must also have a strong background of research accomplishment in the neurosciences, experience with the peer-review process, and the ability to communicate easily with colleagues throughout the world.

The starting date is summer 1997.

Application together with CV and names of three references should be sent to:

Professor Michel Cuenod
Secretary General of the HFSP
Bureaux Europe
20, place des Halles
67080 STRASBOURG Cedex
FRANCE

POSITIONS OPEN

CAMILLE AND HENRY DREYFUS POSTDOCTORAL FELLOWSHIP Environmental Science MIT

The Massachusetts Institute of Technology (MIT) has been awarded a Postdoctoral Fellowship by the Dreyfus Foundation that will enable a Ph.D. **CHEMIST** or **CHEMICAL ENGINEER** to carry out interdisciplinary research in environmental science. A wide range of research topics is available to interested candidates, including atmospheric chemistry, environmental monitoring, and studies of the fate and transport of toxic chemicals. In addition to his or her primary research activities, the Postdoctoral Fellow will participate actively in interdisciplinary environmental seminars and teaching programs at MIT. The Fellow will possess a doctorate specifically in chemical science or engineering, but is not expected already to be an expert in environmental science.

The salary is \$35,000 for the first year, renewable for one additional year by mutual agreement among the Fellow, the faculty supervisor, and the Dreyfus Foundation. A supplementary research allowance of \$5,000 per year is available. A selection committee will review applications received by November 15, 1996. Applications, including a curriculum vitae, publication record, statement of specific research interests, and recommendation letters, should be sent to: **Professor J. I. Steinfeld, Department of Chemistry, 2-221, MIT, Cambridge, MA 02139.**

MIT is an Equal Opportunity, Affirmative Action Employer and encourages applications from minorities and women.

NEUROIMMUNOLOGY FELLOWSHIP

One-year, renewable position for a Ph.D. to study mechanisms of CNS inflammatory demyelination in multiple sclerosis or animal model to include studies on T cell co-stimulation, cytokines, growth factors, and/or identification of antigenic epitopes and T cell receptor usage. Techniques include cell culture (human and animal lymphocytes, astrocytes, oligodendroglia, macrophages), immunocytochemistry, autoradiography, RT-PCR, Northern and cloning. Multiple collaborations available. Interested persons should contact: **Dr. John Trotter, Barnes-Jewish Hospital MS Center at the Washington University Medical Center, Box 8111, 660 South Euclid Avenue, St. Louis, MO 63110. Telephone: 314-747-2111; FAX: 314-747-1345; Email: trotterj@neuro.wustl.edu.**

RESEARCH ASSOCIATE UNIVERSITY OF VIRGINIA Experimental High Energy Physics

The University of Virginia High Energy Physics group is seeking qualified applicants for a **RESEARCH ASSOCIATE** position to work on the physics of CP violation. In the short term, this work will focus on the KTEV experiment at Fermi National Accelerator Laboratory, and, on a longer time scale, on the LHC-B beauty physics experiment at CERN. This position is now open. The successful candidate is expected to play an important role in the KTEV experiment in the operation of an e^+e^- trigger based on a transition radiation detector and in the development of lepton detectors and triggers for the LHC-B experiment. Applications including curriculum vitae, a list of publications, and three letters of reference should be sent to: **Prof. B. Cox, Physics Department, McCormick Road, University of Virginia, Charlottesville, VA 22901.** Information concerning this position may be obtained through Email: **Cox@UVAHEP.phys.virginia.edu.**

GRADUATE ASSISTANTSHIPS in Molecular Biology, Biochemistry, and Biophysics. Several positions are available in the Department of Molecular Biology and Biochemistry, Wesleyan University, Middletown, Connecticut. Departmental research interests emphasize regulation of gene expression in embryogenesis and development; heat-shock response and cellular regulation of iron metabolism; biophysics of protein-nucleic acid interactions; tissue differentiation and regulation of collagen gene expression; molecular genetics and regulation of protein secretion; DNA replication; DNA repair and the cell cycle; biophysics of allosteric proteins; nuclear magnetic resonance spectroscopy; optical and vibrational spectroscopy and computer modeling. All students receive 12-month stipends, tuition remission, fringe benefits, and dependency allowance, if applicable. Opportunities to teach. Write to: **Director of Graduate Admissions, Department of Molecular Biology and Biochemistry, Wesleyan University, Middletown, CT 06459-0175.**

POSITIONS OPEN

BioGenex

MANAGER DNA Probe Diagnostics

BioGenex, a leader in the development, manufacture, and worldwide distribution of products for the cellular and molecular diagnostics field using immunological and DNA-based technology, seeks a **SENIOR SCIENTIST** to lead development work on new DNA diagnostics. Successful candidates will have: 1) a Ph.D. in biochemistry or a related field; 2) strong knowledge in molecular biology and DNA chemistry, especially in design, labeling, and use of oligonucleotide probes; 3) over five years of research and development experience beyond the Ph.D., preferably in an industrial setting. BioGenex offers a competitive salary and excellent benefits package with 401(k) plan. Send résumé to: **BioGenex, 4600 Norris Canyon Road, San Ramon, CA 94583. FAX: 510-275-0580, Attention: Dr. Jintao Chen.**

HARVARD UNIVERSITY BULLARD FELLOWSHIPS IN FOREST RESEARCH

Each year Harvard University awards a limited number of Bullard Fellowships to individuals in biological, social, physical, and political sciences to promote advanced study, research, or integration of subjects pertaining to forested ecosystems. The **FELLOWSHIPS**, which include stipends up to \$30,000, are intended to provide individuals in mid-career with an opportunity to utilize the resources and to interact with personnel in any department within Harvard University in order to develop their own scientific and professional growth. In recent years Bullard Fellows have been associated with the Harvard Forest, Department of Organismic and Evolutionary Biology and the John F. Kennedy School of Government and have worked in areas of ecology, forest management, policy, and conservation. Fellowships are available for periods ranging from four months to one year and can begin at any time in the year. Fellowships are not intended for graduate students or recent postdoctoral candidates. Further information may be obtained from: **Committee on the Charles Bullard Fund for Forest Research, Harvard University, Harvard Forest, P.O. Box 68, Petersham, MA 01366 U.S.A.** Annual deadline for applications is February 1. *Applications from international scientists, women, and minorities are encouraged.*

ASSISTANT OR ASSOCIATE SCIENTIST SILVICULTURE/FOREST ECOLOGY Joseph W. Jones Ecological Research Center Ichauway

The Joseph W. Jones Ecological Research Center at Ichauway invites applications for the position of **ASSISTANT** or **ASSOCIATE SCIENTIST** in Silviculture and Forest Ecology (available May 1, 1997). Responsibilities include research for understanding ecological controls with the management of coastal plain forests and related multidisciplinary research efforts (60 to 70%) and participation in education programs of the Center (30 to 40%). Qualifications include a Ph.D. in forest resources, ecology, or a related field.

Compensation package is competitive and commensurate with experience. Letters of application, résumé, and names of three references should be mailed by January 15, 1997 to: **Dr. Robert J. Mitchell, Search Committee Chair, Jones Ecological Research Center, Ichauway, Route 2, Box 2324, Newton, GA 31770. Telephone: 912-734-4706; FAX: 912-734-4707.**

RESEARCH/TECHNICAL, Ph.D. or M.S., HIV project. Experience in viral culture, PCR and basic molecular cloning essential. Knowledge of RT and neutralizing assays preferred. Salary and benefits competitive. Send/fax résumé to: **Holly Weisbuch, University of Southern California School of Medicine, 2011 Zonal Avenue, HMR 712, Los Angeles, CA 90033. FAX: 213-342-2874. Equal Opportunity Employer/Affirmative Action, Minorities/Females/Disabled/Veterans.**

POSITIONS OPEN

RESEARCH SCIENTISTS Plant Molecular Biology

DNA Plant Technology (DNAP), a rapidly growing agricultural biotechnology company, is seeking several highly motivated and talented scientists to join its expanding research team.

To qualify, you should have at least two years of postdoctoral experience in plant molecular biology, plant biochemistry, or molecular plant pathology.

DNAP offers a stimulating research environment together with an excellent compensation and benefits package. To apply, please submit curriculum vitae with cover letter describing interests and goals to: **HR Department/Code RS, DNA Plant Technology, 6701 San Pablo Avenue, Oakland, CA 94608. Equal Opportunity Employer.**

Yale University School of Medicine: A National Institute of Health supported **ASSOCIATE RESEARCH SCIENTIST** or **POSTDOCTORAL POSITION** is available for an individual to join a group of laboratory/clinical investigators studying the role of T cells and inflammation in the pathogenesis of human isocyanate asthma. Applicants must have a Ph.D. in the biological sciences, a strong background in human immunology, and experience in cellular and molecular biology techniques including human tissue culture. Excellent English communication skills and the ability to work independently are also required. Send curriculum vitae, statement of research experience and interests, representative publications, and the names (and addresses and telephone numbers) of three references to: **Dr. Carrie A. Redlich, Yale Occupational and Environmental Medicine Program, 135 College Street, 3rd Floor, New Haven, CT 06510.**

POSTDOCTORAL POSITION Washington University in St. Louis

Available in molecular cell biology; two areas of investigation: receptor biology (*EMBO J.* 14:2269-2280, 1995) and ubiquitin system (*J Biol Chem.* 271:15608-15614, 1996). Send curriculum vitae to: **Alan L. Schwartz, Box 8116, Washington University, 660 South Euclid, St. Louis, MO 63110. FAX: 314-454-0537; Email: schwartz@kids.wustl.edu. An Equal Opportunity/Affirmative Action Employer. Minorities/Females/Disabled/Veterans.**

POSTDOCTORAL POSITION available to study a MAP kinase pathway mediated signal transduction and transcriptional regulation in *Saccharomyces cerevisiae* and *Candida albicans* (see *Science*, 262:1741-1744, 1993; *Science*, 266:1723-1726, 1994). Experience with the molecular biology of yeast is desirable. Please send curriculum vitae and two letters of recommendation to: **Dr. Haoping Liu, Department of Biological Chemistry, College of Medicine, University of California at Irvine, Irvine, CA 92697-1700.**

POSTDOCTORAL POSITION University of California-San Francisco

One three-year position is available to study molecular and cellular aspects of tumor immunobiology. Multi-disciplinary approach utilizes molecular biology, including phage display, protein chemistry, cellular immunology, and biophysical techniques to develop novel recombinant antibody-based strategies for targeted tumor therapy. The successful candidate will have a Ph.D. and demonstrated experience in one of the following areas: cellular immunology, biophysics, protein chemistry, virology, or enzymology. Send curriculum vitae, brief statement of research interests, and names, addresses, and telephone numbers of three references to: **James D. Marks, M.D., Ph.D., University of California-San Francisco (UCSF), Room 3C-38, 1001 Potrero, San Francisco, CA 94110. Email: Postdocs@quickmail.ucsf.edu.**

The U.S. Environmental Protection Agency Cincinnati Research Center has an opening for a permanent, full-time lead **CHEMIST** or **CHEMICAL ENGINEER** to work in the area of environmentally preferable chemical synthesis and manufacturing. Combined education and/or experience in developing model, cleaner pathways for oxidation chemistries is mandatory. Starting salary range is \$44,387 to \$68,619. Applicants must be U.S. citizens. Call: **Juanita Jefferies, Telephone: 513-569-7515 before October 31, 1996 for more information.**

POSTDOCTORAL FELLOWSHIP in Immunology/Genetics available immediately for work on marrow cells and cytokines in genetic studies of mice dealing with regulation of marrow-bone cell interactions. Ph.D. required. Position involves interactions with large, multidisciplinary lab of Ph.D.'s and M.D.'s performing osteoporosis-related research. Salary and benefits are competitive. Send cover letter and curriculum vitae to: **Ms. C. Farrell, Min. Met. Lab., P.O. Box 7210, Loma Linda, CA 92354.**



RESEARCH GROUP LEADERS

Charged with carrying out research into immunity to pathogens and developing vaccine candidates, The Jenner Institute combines charitable status with a progressive outlook. Benefiting from both public and private sector funding, the Institute will have a full-time scientific and support staff of up to 60 and is located adjacent to the Institute for Animal Health at Compton near Newbury. Two exceptionally challenging opportunities currently exist for highly experienced, capable scientists at Group Leader level.

POSITION ONE: Carrying responsibility for developing a programme of research on the regulation and ontogeny of immune responses to carbohydrates and their importance for microbial immunity and vaccine development.

POSITION TWO: Involving detailed research into immune mechanisms in the respiratory tract in relation to viral infections, principally Respiratory Syncytial Virus. Experience with in situ analysis of immune responses in tissues would be highly advantageous for this position.

As Group Leader, you will be expected to establish and maintain a successful research group. Requiring a PhD or equivalent qualification and several years' postdoctoral experience, in addition, you must be able to demonstrate independent scientific thinking through first author publications, the ability to attract peer reviewed funding and experience of supervising technical, postdoctoral and graduate staff.

Both positions attract competitive remuneration, including funding for support staff salaries, equipment and running costs. In the first instance, these posts are offered on a five-year fixed-term contract. For further information contact the Scientific Head, Professor Peter Beverley on (01635) 577900. Applications, including a statement of research interests, CV and names and addresses of three referees should be sent to Professor Peter Beverley, The Edward Jenner Institute for Vaccine Research, Compton, Newbury, Berkshire RG20 7NN by Friday 15th November 1996.

THE EDWARD

JENNER INSTITUTE

FOR VACCINE RESEARCH

*An Equal
Opportunity Employer*

*Promoting Health
through Vaccine Research*

cancer research
campaign

CRC Senior Cancer Research Fellowship 1997

The Cancer Research Campaign invites applications for its newly established Senior Cancer Research Fellowship. The aim of this Fellowship scheme is to support outstanding young investigators who have shown special promise in their initial studies in a cancer relevant research field and to provide them with an opportunity to establish an independent research group.

Candidates should have a PhD, have completed at least 3 years' postdoctoral work and should not normally be over 35 years of age. However, equal consideration will be given to those over this age where their career has been affected either by a late start, or by interruption for personal or family reasons.

A CRC Senior Cancer Research Fellowship may be held in any CRC-funded Research Institute, Laboratory or Research Group, or alternatively in an appropriate UK university department, subject to the usual CRC funding restrictions.

The Fellowship will provide both personal and research support (salary for technical support plus consumables), plus a set-up equipment grant in the first year and will be tenable for five years in the first instance.

For further details and application forms please contact: Dr Fiona Hemsley, Cancer Research Campaign, 10 Cambridge Terrace, London NW1 4LJ. Tel: 0171 224 1333 or Fax: 0171 487 4302. Closing date for applications is Friday 10th January 1997.

Fighting cancer on all fronts

Scientist cardiovascular PHARMACOLOGY

**A major
French
pharmaceutical
company
wishes
to recruit a
pharmacologist
for its
research
centre located
west of Paris**

Qualifications include a PhD with postdoctoral experience in cardiovascular research. Applicants should have a practical experience of hemodynamic techniques and coronary catheterism.

Involved in research projects aiming at the discovery of novel drugs, you will be more particularly responsible for studies on vascular stenosis models and will perform vascular histomorphometric techniques.

Our material and technical facilities are excellent. You will join a high-level multi-disciplinary team and evolve in a stimulating scientific environment.

Please send your application file (CV, handwritten letter and photo) to **PUBLIVAL/9060**
27 Route des Gardes
92190 MEUDON (FRANCE)

POSITIONS OPEN

POSTDOCTORAL AND RESEARCH FACULTY Chemical Physics and Physics Experimentalists and Theorists

FIVE POSITIONS for exceptionally talented scientists in the following areas: quantum control of chemical reactions with tailored ultrafast light pulses, ultrafast x-ray diffraction and absorption, dynamics of biomolecular and biological processes imaged with light pulses, and high intensity light driven physics, including x-ray lasers, high harmonics, and laser driven particle acceleration. For more information about these positions and the group, see our Web site: <http://www.wilson.ucsd.edu>.

Salaries and positions commensurate with experience and qualifications. Applicants please send curriculum vitae, statement of research interests, and one letter of recommendation to: **Prof. Kent R. Wilson and C. P. J. Barty, Department of Chemistry, University of California, San Diego, La Jolla, CA 92093-0339. Equal Opportunity Employer.**

POSTDOCTORAL POSITION MOLECULAR BIOLOGY OF p53

Applications are invited from recent or pending graduates for a **POSTDOCTORAL** position in a laboratory involved in understanding the molecular biology of the tumor suppressor p53. Salary is negotiable. Individuals with expertise in recombinant DNA technology and mammalian cell culture systems are especially encouraged to apply. Send complete curriculum vitae and arrange for three letters of reference to be sent directly to: **Sumitra Deb, Ph.D., Associate Professor, Department of Microbiology, University of Texas Health Science Center, 7703 Floyd Curl Drive, San Antonio, TX 78284-7758. FAX: 210-567-6612; Email: Deb@UTHSCSA.edu. The University of Texas Health Science Center at San Antonio is an Equal Opportunity/Affirmative Action Employer.**

POSTDOCTORAL POSITION Molecular Regulation of Calcium Channels

A **POSTDOCTORAL POSITION** is available immediately to study the regulation of calcium release channels (IP3-receptors and ryanodine receptors) that control intracellular calcium signaling (see *Cell*, 77:513-523; *Science*, 272:1492-1494). Ph.D. or M.D. and extensive experience in molecular and cell biology are required. Please send curriculum vitae, a brief summary of research experience, and three references to: **Dr. Andrew R. Marks, Molecular Medicine Program, Box 1269-6574, Mount Sinai School of Medicine, One Gustave L. Levy Place, New York, NY 10029. Email: a_marks@smtpink.mssm.edu. Equal Opportunity Employer.**

POSTDOCTORAL TRAINING PROGRAM RHEUMATOLOGY/IMMUNOLOGY DIVISION TUFTS/NEW ENGLAND MEDICAL CENTER

POSTDOCTORAL RESEARCH positions available. Focus: studies of molecular mechanisms of *B. burgdorferi* attachment to host cells, T cell responses in Lyme disease, and immune regulation in inflammatory arthritis. Mentors: **A. C. Steere, J. Coburn, L. Glickstein, R. Roubenoff, R. R. Isberg, B. T. Huber.** Funding: NIH training grant (permanent U.S. resident). Applications (curriculum vitae, three reference letters) to: **Allen Steere, New England Medical Center, Box 406, 750 Washington Street, Boston, MA 02111. Equal Opportunity Employer.**

POSTDOCTORAL FELLOW/RESEARCH ASSOCIATE to work in laboratory at Boston University School of Medicine investigating transcriptional regulation of genes encoding regulatory peptides. Experience in molecular biology and cell culture necessary. Salary commensurate with qualifications and experience. Send or FAX curriculum vitae and the names of three references to: **Dr. Michael Wolfe, GI Section, Boston Medical Center, 88 East Newton Street, Boston, MA 02118. FAX: 617-638-7785. An Affirmative Action/Equal Opportunity Employer.**

A **POSTDOCTORAL POSITION** is available to study the function of G proteins and G protein-coupled receptors. The applicant should be a recent Ph.D. with strong background in molecular biology and/or protein biochemistry. Please send curriculum vitae and three reference letters to: **Dr. M. M. Kwatra, Duke University Medical Center, Box 3094, Durham, NC 27710. Duke University is an Equal Opportunity/Affirmative Action Employer.**

POSITIONS OPEN

POSTDOCTORAL POSITIONS Tumor Immunology and Molecular Biology National Cancer Institute National Institutes of Health

The laboratory is investigating the use of novel vectors for the development and analysis of recombinant anti-cancer vaccines. **TWO POSTDOCTORAL** positions are available: 1) a molecular biologist/virologist with interest and/or experience in the design and generation of novel viral and/or bacterial vectors for use in anti-cancer vaccine development; 2) a cellular immunologist to help design and develop strategies for the induction of host cellular immune responses to anti-cancer vaccines. Applicants should have a Ph.D. and/or M.D. and less than five years of postdoctoral experience. Please submit a curriculum vitae and bibliography to: **Dr. J. Schlom, Laboratory of Tumor Immunology and Biology, NCI, Building 10, Room 8B07, 10 Center Drive MSC 1750, Bethesda, MD 20892-1750. Telephone: 301-496-4343; FAX: 301-496-2756. NIH is an Equal Opportunity Employer.**

POSTDOCTORAL FELLOWSHIP PARASITE IMMUNOLOGY

Applications are invited from highly qualified scientists to participate in an NIH-funded research program on the cellular immunology of *Cryptosporidium parvum* infections in murine models. The two- to five-year position involves development of CD4⁺ and CD8⁺ T cell clones and characterization of mucosal cytokine responses. Starting salary will be in the range of \$21,000 to \$22,000. Minimum qualifications include a Ph.D., M.D./Ph.D., or M.D., with a strong background in immunology and tissue culture, some publications relevant to parasitology and/or immunology, and willingness to conduct bench research as part of an interactive team. To apply send a curriculum vitae, outlining previous research achievements and experience, along with contact details for three referees to: **F. Javier Enriquez, M.D., Ph.D., Department of Veterinary Science, Building 90, Room 202, University of Arizona, Tucson, AZ 85721, U.S.A. Closing date October 31, 1996.**

POSTDOCTORAL RESEARCH ASSISTANT position available immediately to study molecular physiology and signal transduction mechanisms in the cardiovascular system. Background in enzyme kinetics, protein chemistry and purification, protein analysis (including nitrosylations, phosphorylations, and glycosylations) desired. Candidates should have a Ph.D. or equivalent experience in biochemical and molecular biological techniques. Send curriculum vitae to: **Robert S. Danziger, M.D., Department of Medicine, College of Physicians and Surgeons of Columbia University, 630 West 168th Street, New York, NY 10032. We take Affirmative Action toward Equal Employment Opportunity.**

POSTDOCTORAL POSITION available immediately to join ongoing NIH-funded research on mechanisms of O₂ and CO₂ sensing by the carotid chemoreceptors. Studies focus on developmental aspects of cellular oxygen sensing, calcium regulation, stimulus-secretion coupling, and other aspects of chemotransduction. Electrophysiology expertise required. Fluorescence imaging microscopy experience desired. Send curriculum vitae and names/telephone numbers of three references to: **Dr. John L. Carroll, Department of Pediatrics, Johns Hopkins University School of Medicine, Park 316, 600 North Wolfe Street, Baltimore, MD 21287-2533 or (preferably) Email: jcarroll@welchlink.welch.jhu.edu.**

Molecular biology **POSTDOCTORAL POSITION** immediately available to study structure/function relationships in ion channels. Selection begins September 1, 1996 and continues until position is filled. Send, fax, or Email curriculum vitae and a list of three references to: **Dr. P. C. Ruben, Department of Biology, Utah State University, Logan, UT 84322-5305. FAX: 801-797-1575; Email: pruben@cc.usu.edu. Affirmative Action/Equal Opportunity Employer.**

Several **POSTDOCTORAL POSITIONS** available to carry out projects concerning disease-related TCRs and antibodies using molecular biological/biophysical (e.g., NMR, SPR) or cellular techniques. Prior experience in these techniques preferred but not essential. Please send curriculum vitae and names of three referees to: **Dr. E. S. Ward, Department of Microbiology, U.T. Southwestern Medical Center, 5323 Harry Hines Boulevard, Dallas, TX 75235-8576, U.S.A. Email: sally@skylab.swmed.edu. Equal Opportunity Employer.**

POSITIONS OPEN

THE NEUROSCIENCES INSTITUTE SAN DIEGO Cellular and Molecular Neurobiology

Applications are invited for the **POSTDOCTORAL** position of Junior Fellow in Experimental Neurobiology to study the formation and function of synapses using molecular, cell biological, and fluorescence imaging techniques. Applicants should have a background in molecular and cellular neurobiology, preferably with some experience in neuronal *in vitro* systems. Fellows will receive stipends appropriate to their qualifications and experience. Submit a curriculum vitae, statement of research interests, and names of three references to: **Dr. Olaf Sporns, The Neurosciences Institute, 10640 John J. Hopkins Drive, San Diego, CA 92121. FAX: 619-626-2099.**

POSTDOCTORAL FELLOW

The Drug Discovery Group has an opening for a highly motivated individual within its DNA-binding program. Research activities of the group are centered around the development of small molecules with high specificity and affinity for target DNA sequences in the promoter regions of disease-causing genes. These small molecules are being used to modulate the expression of specific genes by competing with transcription factors for binding to sites in DNA. Candidates should have a Ph.D. with a background in molecular biology. Specific responsibilities will include molecular analysis of the promoter regions of certain disease-causing genes and the design and execution of experiments to determine the effects of small molecules on specific gene expression. Apply to: **Human Resources, Genelabs Technologies, Inc., 505 Penobscot Drive, Redwood City, CA 94063. FAX: 415-368-0709.**

POSTDOCTORAL POSITION MITOCHONDRIAL DYSFUNCTION

Study the role of mitochondrial dysfunction in aging, neurodegenerative diseases, and alcoholism. Focus on calcium transport and signaling, oxidative stress, and apoptosis. Work with both isolated mitochondria and whole cells. Previous experience in membrane biochemistry and/or cell biology is desirable. Competitive salary. Please send curriculum vitae and list of references to: **Dr. Hagai Rottenberg, Pathology M.S. Number 435, Allegheny University, Hahnemann Medical School, Broad and Vine Streets, Philadelphia, PA 19102-1192. FAX: 215-246-5918; Telephone: 215-762-7988; Email: rottenbergh@hal.allegheny.edu. Allegheny University is an Equal Opportunity Employer.**

THREE POSTDOCTORAL positions are available to study the functional roles of cell death genes in both *Drosophila* and mouse. The mouse and one of the fly positions involve analysis of recently cloned novel cell death-associated genes, while the other fly position is for work on cell death during nervous system development. Experience in molecular biology required. Background in fly genetics or tissue culture highly desirable. Salary commensurate with experience. Send curriculum vitae and the names and telephone numbers of three references to: **L. M. Schwartz, Ph.D. (mouse) or J. R. Nambu, Ph.D. (fly), Department of Biology, Morrill Science Center, University of Massachusetts, Amherst, MA 01003. UMass is an Equal Opportunity Employer; women and minorities are encouraged to apply.**

POSTDOCTORAL RESEARCH POSITION: Available immediately in the laboratory of **Dr. Stuart Smith** for characterization of a novel human thioesterase that may play an important role in the deacylation of thioesterified proteins. Previous experience in protein expression, mutagenesis, and characterization desirable. Send curriculum vitae and three references to: **Human Resources, Children's Hospital Oakland, Attention: David Kirk, 747 52nd Street, Oakland, CA 94609. Email: cho.per.dki@cho.org; FAX: 510-428-3306. Equal Opportunity Employer.**

POSTDOCTORAL POSITION Johns Hopkins Oncology Center

A **POSTDOCTORAL POSITION** is available to study the control of hematopoietic stem cell expressed genes. A strong background in molecular biology and previous experience in transcriptional control are required. Send or fax curriculum vitae and three references to: **Donald Small, M.D., Ph.D., Oncology Center 3-109, Johns Hopkins University School of Medicine, 600 North Wolfe Street, Baltimore, MD 21287. FAX: 410-955-8897.**

POSITIONS OPEN

POSTDOCTORAL FELLOW Human Gene Therapy Research Institute

The Human Gene Therapy Research Institute (HGTRI) has available **POSTDOCTORAL** positions for research in gene transfer systems and their application to the treatment and prevention of human disease. Laboratory focus is on translational research with a long-term goal of improving gene transfer into humans. Backgrounds in molecular virology, cancer biology, immunology, and microbiology are preferred, but all candidates with evidence of skills in molecular biology, cell biology, and mammalian biology will be considered. Positions are available immediately.

HGTRI is a not-for-profit, academic research group funded by the Central Iowa Health System of Des Moines. Laboratories provide state-of-the-art equipment, animal facility, and administrative and technical support. Applicants should submit a curriculum vitae, an outline of current and future research interests, and three references to: **Charles J. Link Jr., M.D., Director Gene Therapy Program, Iowa Health System, 1313 High Street, Suite 111, Des Moines, IA 50309. Equal Opportunity/Affirmative Action Employer/Minorities/Females/Disabled/Veterans.**

POSTDOCTORAL FELLOWSHIPS Vascular Biology/Signal Transduction

Several **FELLOWSHIPS** are available beginning February 1, 1997 in the laboratory of **Dr. J. Anthony Ware**, to be relocated to newly renovated facilities for a new vascular biology initiative at the Albert Einstein College of Medicine. Major focus of research will be on the molecular basis of intracellular signaling and gene expression in endothelial growth, angiogenesis, and platelet activation. Ph.D. or M.D. and experience in cell or molecular biology are required; experience in vascular biology helpful. Send curriculum vitae, statement of research interests, and the names of three references to: **Dr. J. Anthony Ware, Chief, Cardiovascular Division, Albert Einstein College of Medicine, Jack and Pearl Resnick Campus, G-42 Forchheimer Building, 1300 Morris Park Avenue, Bronx, NY 10461. Before January 1, 1997: Harvard-Thorndike Laboratories, Beth Israel Hospital, 330 Brookline Avenue, Boston, MA 02215. FAX: 617-667-4833; Email: jaware@bih.harvard.edu. An Equal Opportunity Employer.**

POSTDOCTORAL POSITIONS Bacterial Pathogenesis

TWO POSITIONS are available to study *Mycobacterium tuberculosis* and *Streptococcus pyogenes*. Candidates for the *M. tuberculosis* position must have laboratory experience in study of antimicrobial agent resistance and have experience with working with this pathogen. Candidates for the *S. pyogenes* position must have broad experience in immunology, including vaccine-related research, or expertise in matrix metalloprotease work. Send curriculum vitae, including the names and telephone numbers of three references, to: **James M. Musser, M.D., Ph.D., Section of Molecular Pathobiology, Department of Pathology, Baylor College of Medicine, One Baylor Plaza, Houston, TX 77030. FAX: 713-798-4595. Baylor College of Medicine is an Equal Opportunity/Affirmative Action and Equal Access Employer.**

POSTDOCTORAL POSITION MOLECULAR VIROLOGY Department of Microbiology Mount Sinai School of Medicine

An opportunity for a **POSTDOCTORAL RESEARCHER** is available to study the gene regulation of herpes simplex virus. Applicants with experience in biochemistry and/or molecular genetics should send i) their curriculum vitae, ii) the names of three references, and iii) a one-page research summary to: **Dr. John A. Blaho, Department of Microbiology, Box 1124, Mount Sinai School of Medicine, One Gustave L. Levy Place, New York, NY 10029-6574. An Equal Opportunity Employer.**

POSTDOCTORAL POSITION Transcription and Leukemogenesis

A funded position is available to study transcriptional control of myeloid differentiation and leukemogenesis by C/EBP and CBF—see *Mol. Cell. Biol.* **14**:5558, 1994; *Mol. Cell. Biol.* **16**:4717, 1996; *Can. Res.* **56**:3250, 1996. Send curriculum vitae and names of references to: **Dr. Alan Friedman, Johns Hopkins Oncology Center, Room 3-109, 600 North Wolfe Street, Baltimore, MD 21287. FAX: 410-955-8897. Johns Hopkins University is an Equal Opportunity/Affirmative Action Employer.**

POSITIONS OPEN

POSTDOCTORAL POSITION HARVARD MEDICAL SCHOOL Harvard Institute of Human Genetics Brigham and Women's Hospital

Position available immediately to investigate the molecular genetic basis of human leukemias. Current research is focused on the positional cloning and characterization of genes that cause leukemia (e.g. *Cell*, **77**:307, 1994; *PNAS*, **92**:4917, 1995; *Blood*, **87**:5218, 1996; *Mol. Cell. Biol.*, **16**:4107, 1996). Our goal is to develop new therapeutic approaches to human leukemia based on an understanding of the mechanism of transformation of leukemogenic fusion proteins.

A Ph.D. and/or M.D. and a strong background in protein biochemistry are essential requirements for this position, including experience in bacterial, baculovirus, and mammalian expression systems; protein purification; and mutational analysis of protein structure and function.

Please send curriculum vitae including bibliography and three letters of reference to: **Gary Gilliland, Ph.D., M.D., Harvard Medical School, Brigham and Women's Hospital, 221 Longwood Avenue LMRC 611, Boston, MA 02115.**

An Equal Opportunity Employer.

POSTDOCTORAL POSITIONS G Protein Signaling University of Michigan

Two NIH-supported research positions are available immediately in the laboratories of **Ron Taussig** and **Rick Neubig** in the departments of Biological Chemistry and Pharmacology at the University of Michigan. Research areas include structure-function studies of adenylyl cyclase and G protein α or $\beta\gamma$ subunits by use of yeast genetic methods, expression in insect cells, mammalian cell transfection, photolabelling and proteolytic mapping, and synthetic peptides. Candidates should have a recent Ph.D. in an appropriate field and experience in molecular biology, protein biochemistry, and signal transduction methods. Candidates should provide a cover letter outlining career objectives, a curriculum vitae, and names of three references. FAX inquiries to: **Dr. Neubig, FAX: 313-763-4450** or see <http://www-personal.umich.edu/~rneubig/postdoc.html> for further information.

The University of Michigan is an Affirmative Action/Equal Opportunity Employer. Applications from qualified women, minorities, and/or disabled individuals are encouraged.

POSTDOCTORAL POSITIONS IN BIOMEDICAL LASER RESEARCH

One or two **POSTDOCTORAL RESEARCH** positions are available at the New England Eye Center, Tufts University School of Medicine, to conduct ophthalmic laser research and to develop novel techniques for optical tomography and laser surgery. Potential candidates should have a strong background in optics and lasers, good communication skills, and an ability to work closely with clinical investigators. A Ph.D. degree in biomedical engineering, biophysics, optics, or related field is preferred. Successful candidate will be encouraged to develop his or her own independent research program. Please send curriculum vitae and three letters of recommendation to: **Carmen A. Puliafito, M.D., Director, New England Eye Center, 750 Washington Street, Boston, MA 02111. FAX: 617-636-4215.**

POSTDOCTORAL POSITION Duke University

Available to study microtubule motor protein molecular genetics. Training in molecular biology or biochemistry preferred. Send curriculum vitae and names of three references to: **Dr. Sharyn Endow, Department of Microbiology, Duke University Medical Center, Durham, NC 27710. Duke University is an Equal Opportunity/Affirmative Action Employer.**

POSTDOCTORAL POSITION for studies of signal transduction in mouse T lymphocyte subsets, with emphasis on aging and T cell memory. A strong background in cellular and molecular biology is required. Send curriculum vitae, brief statement of research interests, and names and telephone numbers of three referees to: **Richard A. Miller, University of Michigan, Box 0642, MSRB-3, Ann Arbor, MI 48109. An Equal Opportunity Employer.**

POSITIONS OPEN

POSTDOCTORAL ASSOCIATE HUMAN MOLECULAR GENETICS Fox Chase Cancer Center Philadelphia, Pennsylvania

Position available immediately at the Fox Chase Cancer Center, an NCI-designated Comprehensive Cancer Center, to study tumor suppressor genes involved in human kidney cancer and kidney cysts. Strong experience in molecular biology and/or cell biology required. Please send curriculum vitae and names of references to: **Dr. Elizabeth Henske, c/o Human Resources Department, Fox Chase Cancer Center, 7701 Burholme Avenue, Philadelphia, PA 19111. Equal Opportunity Employer.**

POSTDOCTORAL POSITION in Immunology. Available immediately to study murine NK cells, with emphasis on their interactions with MHC molecules. Experience in molecular techniques highly desirable. Send curriculum vitae and names of three references to: **Dr. I. Nakamura, Department of Pathology, State University of New York at Buffalo, 232 Farber Hall, Buffalo, NY 14214. FAX: 716-829-2086; Email: inakamur@ubmed.buffalo.edu.**

ANNOUNCEMENT

REQUEST FOR PROPOSALS

U.S.-Israel Science and Technology Foundation


Summary: The U.S.-Israel Science and Technology Foundation invites proposals for financial assistance under the U.S.-Israel Science and Technology Program. The Program will assist U.S. and Israeli entities that have entered into a joint venture to carry out research and development on methyl bromide alternatives, emissions reduction, improved application techniques, and/or containment technologies.

Such projects should focus on research, development, and commercialization of technologies that are not appropriately funded by other U.S. or Israeli government-funded research and development efforts. This assistance will take place through the use of Funding Agreements pursuant to this Notice.

Dates: Applications must be received by December 31, 1996.

For a complete copy of the RFP, please contact: **Lee Bailey, Executive Director, U.S.-Israel Science and Technology Commission. Telephone: 202-482-6351; FAX: 202-501-6849.**

MARKETPLACE



DNA Sequencing \$50 - (single pass using ABI automated sequencing instrumentation)

Other services include:

- Site-directed mutagenesis
- DNA subcloning and hybridization
- Library screening

Florida Genetics Corp.
1-800-747-1378 Fax (904) 462-0875

Circle No. 49 on Readers' Service Card

QUALITY CUVETTES!!!

Inexpensive Electroporation Cuvettes
Each sterile package includes a free pipette for easy sample removal!



1-800-289-2465
FAX: 619-597-9594

Circle No. 37 on Readers' Service Card


Custom Peptides
\$17/Residue

Free HPLC & Mass Spec. ▼
Fast Turn-Around Time ▼
No Set-Up Charge ▼
Crude, 5-25mg ▼

Voice: (800) 445-1544, x35 ▼

Antibody Production, \$950

2 Rabbits w/ Conjugation & Delivery (10 weeks)



COAST SCIENTIFIC
Fax: (619) 450-1157

Circle No. 34 on Readers' Service Card

Marketplace ads continue on page 142

MARKETPLACE



**MORE PRODUCTS
ON PREVIOUS PAGE**

CUSTOM HYBRIDOMA DEVELOPMENT

- Ascites Production Available
- Purification • Conjugation



Phone (800) 481-9737 • Fax (619) 788-9694
e-mail: antibodies@htibio.com
http://www.htibio.com

Circle No. 31 on Readers' Service Card

Super™ AcrylAgarose
For Low Molecular Weight DNA

- **Hassle Free** An Alternate to PAGE
- **Rapid** Just Microwave and Pour Gel
- **Non Toxic** • **Efficient**
- **50-500** bps can be resolved in 30 min.
- Cat # DP-7121 Price \$250/100 gms

DNA Technologies, Inc.
TEL 1-800-998-3628 • FAX 301-990-4063 • eMail dnatech@erols.com

Circle No. 25 on Readers' Service Card

SFM-Human Keratinocyte Cell System
Start up a 75 for LESS than a 25
More Cells / Lowest Price / Highest Quality
CSC Certificate™ #30467

1-800-697-1211
cell systems

Circle No. 44 on Readers' Service Card

NEW NO ANALYZER
**Chemiluminescence
Model 280**

- Exhaled Breath • Cell Culture • Plasma

Phone (303) 444-2009 Fax (303) 444-9543 USA
SIEVERS

Circle No. 20 on Readers' Service Card

\$Want® P.O. Box 2660
CH-6501 Bellinzona
Switzerland

Fax: +41 91 825 76 08
www.swant.com
E-mail: info@swant.com

Antibodies to calcium-binding proteins:
parvalbumin, calbindin, calretinin, S-100
calcinurin, calmodulin, Ca-channels, Ca-
exchangers! Fax or e-mail for free catalogue!

Circle No. 32 on Readers' Service Card

Plasmid-prep kits
Super low price

miniprep midiprep maxiprep
\$0.74/prep \$3.44/prep \$5.75/prep

Viogenic TEL: 800-225-3402
Inet: http://www.viogenic.com

Circle No. 26 on Readers' Service Card

MARKETPLACE

PeptidoGenic

The Peptide Engineering Specialist
E-mail: pkim@ccnet.com
Fax: 510-371-1156
Voice: 800-597-7873
510-371-1070

Custom Peptide **\$20**/residue/crude/5days

No Setup Fee
Free HPLC &
IonSpray Mass.

Circle No. 29 on Readers' Service Card

Custom DNA from \$1.00/base

ransom hill bioscience, inc.
http://www.ransomhill.com
no setup, no minimum, no baloney!
email: visla@ix.netcom.com fax: (800) 597-8509

Circle No. 4 on Readers' Service Card

- Automated DNA sequencing
- Custom DNA/RNA synthesis
- Protein/peptide synthesis & sequencing
- Spectroscopy/calorimetry
- Mass spec services

Commonwealth Biotechnologies, Inc.
Your one stop biotech shop

LET US QUOTE YOUR SPECIAL PROJECTS
Comprehensive biotech services. For information please call:
1-800-735-9224
Visit our web page at:
www.cbi-biotech.com
Fax: 804-648-2641 E-mail: CBI@richnet.com

Circle No. 21 on Readers' Service Card

CUSTOM DNA SYNTHESIS

PURE & SIMPLE

- Superb Technical Support
- Impeccable Quality
- World's Fastest Service
- Cap Gel & TOF Mass Spec

* Some restrictions apply. Please call for details.

MIDLAND
STILL THE UNDISPUTED #1 CUSTOM DNA SYNTHESIS SERVICE

THE MIDLAND CERTIFIED REAGENT COMPANY
Phone 1-800-247-8766 FAX 915-694-2387
email mcrc@oligos.com

Circle No. 9 on Readers' Service Card

PARTICLE SIZE STANDARDS

NBS traceable calibration standards and controls. Large assortment of diameters from 0.02 to 2000 µm, microspheres of polystyrene, glass and fluorescent materials. Free catalog available. Toll Free 800-334-3883. In Calif. 415-424-1177. FAX 415-424-1158

Duke Scientific Corporation
P.O. BOX 50005
2463 FABER PLACE
PALO ALTO, CA 94303

Circle No. 1 on Readers' Service Card

MARKETPLACE

PRIMERS

\$1.19

- 200 NMOLS (15-20 ODU)
- NO Restrictions
- NO Setup
- Purified
- Full Q.C., Page on every oligo
- 24-48 Hours

OR

65¢

- 50 NMOLS (5 ODU)
- Full Q.C.
- Just order >400 bases aTsT
- Guaranteed Quality

"From the people that first introduced oligos in 1984."

BIO-SYNTHESIS, INC.
1-800-227-0627
Fax 214-420-0442
E-Mail: biosyn@onramp.net
INet: http://www.biosyn.com

Circle No. 13 on Readers' Service Card

Molecular Biology Services

- Personal Attention
- Lowest Price
- Quality Satisfaction Guaranteed

- **DNA Sequencing** \$50/run
- **Mutagenesis** \$1150/site
- **Gene Synthesis** \$7/bp
- **Gene RACE** \$3K/gene
- **Subcloning** \$450/clone
- **DNA&RNA Prep** \$10/prep

Biotech Core
Tel. 415-493-2888 Fax. 415-493-0907
E-mail: Blotcore@aol.com

Circle No. 46 on Readers' Service Card

ONLY DNA

No frills, just good DNA at very low prices

69¢ per base, NO setup charge

Ultra-small scale synthesis gives 1 A₂₆₀ unit
Some restrictions apply; Call for details
1-800-359-5794 e-mail onlydna@oligos.com

Circle No. 10 on Readers' Service Card

Custom DNA
Purified & Delivered in 48 Hours

\$1.20 per base • Purified
http://www.resgen.com

Research Genetics, Inc.
1-800-533-4363

Circle No. 6 on Readers' Service Card



**WHILE OTHER DNA SUPPLIERS PROMISE YOU THE WORLD,
OPERON ACTUALLY DELIVERS IT.**

Operon is the world's leading supplier of DNA. And we maintain that leadership by consistently delivering exactly the product you need. On time. With unsurpassed purity. Backed by an unconditional guarantee. And at an extremely competitive price.

For a brochure or to place an order, call us at **1-800-688-2248**.

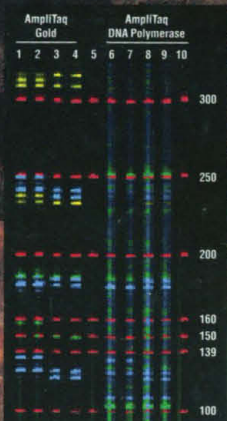
OPERON

WORLD'S LEADING SUPPLIER OF SYNTHETIC DNA

©1994 Operon Technologies, Inc., 1000 Atlantic Avenue, Alameda, CA 94501, USA.
Phone: (510) 865-8644 Fax: (510) 865-5255 NIHBP 263.00033233

Circle No. 50 on Readers' Service Card

Introducing
AmpliTaq Gold™



Co-amplification of 8 human STR loci. L1, 2: male control DNA; L3, 4: female control DNA; L5: AmpliTaq negative control; L6, 7: male control DNA; L8, 9: female control DNA; L10: negative control.



Amplification of HIV-1 Control DNA. L2: 0 copies, AmpliTaq DNA Polymerase, No Hot Start; L3: 10 copies, AmpliTaq DNA Polymerase, No Hot Start; L4: 10 copies, AmpliTaq DNA Polymerase, manual Hot Start; L5: 10 copies, AmpliTaq Gold.

Where There's Gold,
You'll Find
Performance.

For PCR performance with higher yield, better specificity and more reliable results, discover AmpliTaq Gold™.

This new version of AmpliTaq® DNA Polymerase provides the specificity of Hot Start PCR, without all the extra steps. In most cases, you can substitute AmpliTaq Gold directly in existing PCR amplification protocols—without re-optimization.

You'll find AmpliTaq Gold saves time and money with dramatically lower drop-out rates, improved specificity, and easier multiplexing.

It also gives you consistently better PCR results. Because AmpliTaq Gold remains inactive until heated, conditions that lead to primer-dimer formation and mispriming are eliminated.

And of course, you have the continued assurance of knowing that AmpliTaq Gold

is backed by PE Applied Biosystems' exclusive PCR Performance Guarantee.

So discover AmpliTaq Gold, and discover high performance PCR. To request information, call 1-800-327-3002. Outside the U.S. and Canada, contact your local PE Applied Biosystems representative. On the Internet, visit our home page at <http://www.amplitaqgold.com>, or e-mail pebio@perkin-elmer.com.

PE Applied Biosystems

Europe Langen, Germany Tel: 49 6103 708 301 Fax: 49 6103 708 310
Japan Tokyo, Japan Tel: (0473) 80-8381 Fax: (0473) 80-8505
Latin America Mexico City, Mexico Tel: 52-5-651-7077 Fax: 52-5-593-6223
Australia Melbourne, Australia Tel: (03) 9212-8585 Fax: (03) 9212-8502

Perkin-Elmer PCR reagents are developed and manufactured by Roche Molecular Systems, Inc., Branchburg, New Jersey, U.S.A.



AmpliTaq Gold is a trademark and AmpliTaq is a registered trademark of Roche Molecular Systems, Inc. The PCR process is covered by patents owned by Hoffmann-La Roche, Inc. and Hoffmann-La Roche Ltd. PE Applied Biosystems is a trademark and Perkin-Elmer is a registered trademark of The Perkin-Elmer Corporation. The Perkin-Elmer Corporation is ISO 9001 certified.

Circle No. 35 on Readers' Service Card