

CHALLENGING THE BIG PROBLEMS WITH GREAT SCIENCE

Agouron Pharmaceuticals, Inc. is a recognized pioneer and leader in the field of protein structure-based drug design. We are headquartered in La Jolla, a flourishing center for scientific research located on the southern coast of California. We are currently seeking the following professionals to join our team.

COMPUTATIONAL CHEMIST/ CRYSTALLOGRAPHER

We are currently seeking a PhD researcher with significant professional experience, expert knowledge of protein structure, and proven ability in software development. This position involves developing software to augment, maintain and extract information from 3D structural databases. General responsibilities include facilitating the use of structural information in a structure-based drug discovery process and developing novel strategies to prepare and analyze protein crystal structures for use with computational chemistry methods. The qualified candidate will have an excellent track record in the design and implementation of computational chemistry software. Experience in C/C++ and OpenGL programming in a Unix environment and in database management is preferred. Successful candidates must be able to interact in a multidisciplinary team. Code: EV

ANALYTICAL CHEMISTS

The selected candidates will be hands-on scientists with a BS or MS in chemistry. Several positions at a variety of levels are available for individuals with at least 2 to 8+ years of experience in the pharmaceutical industry. Experience with GMP compliance, USP test methods, GC and HPLC is required. Additionally, experience in analytical methods development, validation and extensive HPLC methods for small organic molecules is desired. Experience with chiral HPLC and GC would be beneficial. The successful candidate will be able to work in a team environment on fast track clinical trials projects. Code: DS

We offer competitive salaries and benefits in addition to an intellectually stimulating environment. Please send résumé to: Human Resources, Agouron Pharmaceuticals, Inc., 10350 N. Torrey Pines Road, La Jolla, CA 92037-1020; e-mail: jobs@agouron.com. EOE.



Agouron
Pharmaceuticals, Inc.

High Throughput Screening/ Combinatorial Chemistry

Join a group on the forefront of technology development. We are currently seeking scientists to develop new technologies which will accelerate the pace of drug discovery.

Ph. D. biochemist/enzymologist with 2+ years postdoctoral experience. Candidate will participate in the ultra high throughput screening of combinatorial chemistry libraries for the rapid discovery of novel therapeutic compounds. Experience in high throughput assays, enzyme kinetics and mechanism required. Preference will be given to candidates with experience in high throughput screening for drug discovery, assay automation, and low light imaging. Candidate should have broad knowledge of biochemistry, enzymology, and some knowledge of organic chemistry. Creativity and innovation a plus. Code: LD

BS/MS level scientists to participate in technology development for high throughput screening of combinatorial chemistry libraries. Background in either enzymology or signal transduction required. Previous experience in ultra high throughput screening, assay automation, or low light imaging a plus. 2+ years experience required. Code: LD

Ph.D organic chemist with 2+ years of postdoctoral experience. Individual will be responsible for the innovative development and implementation of new technologies and strategies for the synthesis of combinatorial libraries of small heterocyclic molecules. The focus of these studies will encompass both generation of random libraries for new lead discovery and focused libraries for lead compound optimization. A strong background in organic synthesis with experience in solid-phase synthesis is required. A working knowledge of molecular biology, computer design and programming is a plus. Code: C & PS.

BS/MS organic chemist with 3+ years of synthetic experience. Individuals will learn and participate in state-of-the-art combinatorial strategies for the discovery of novel pharmaceuticals. Development of synthetic strategies and operation of robotic synthesizers will be your primary responsibilities. Additional experience in computer programming and/or biology is a plus. Code: C & PS.

DuPont Merck offers excellent compensation and benefits. Our mid-Atlantic location affords an attractive lifestyle with easy access to a wide range of academic, cultural, and recreational activities.

Interested candidates can send their curriculum vitae, references and 1-2 page research summary including appropriate code to: The DuPont Merck Pharmaceutical Company, P.O. Box 80400, Room 2413, Wilmington, DE 19880-0400. An equal opportunity employer. M/F/H/V.

**DU PONT
MERCK**

The DuPont Merck Pharmaceutical Company
Merging Strengths...Emerging Opportunities.

Improving life by advancing science.

Since opening our doors back in 1980, Genetics Institute has discovered a prodigious number of novel regulatory proteins. To date, nine of these have advanced to human clinical evaluation or commercialization. Fueling the pipeline, are R&D programs addressing blood cell growth and differentiation, coagulation, tissue growth and repair and immune modulation among others.

Few biotech companies have been able to sustain growth, financial strength and a steady flow of scientific breakthroughs. Genetics Institute has combined top talent, a world-class manufacturing facility, a solid financial profile and the most sophisticated resources to make the prospects for continued innovation unprecedented.

As we continue improving existing products and developing new ones, we have opportunities in the following areas:

• Preclinical R&D — Research Staff

You will be responsible for the preparation of injectable formulations and matrices for rhBMP-2 devices for in vitro measurement of rhBMP-2 adsorption and release. You will also assist with animal model studies, especially in the areas of device preparation and subsequent data analysis work. To qualify, you must have a BS/MS in Chemistry, Chemical Engineering, or Biotechnology, with at least 2 years of relevant laboratory work. Strong computer experience, plus demonstrated data entry and analysis skills are essential.....Job Code: 96-216SCI

• Mammalian Microbial Cell Sciences — Molecular Biologist/Virologist

Develop, qualify, validate, and implement sensitive robust assays to monitor production bioreactors for the presence of such contaminants as virus, mycoplasma, non-host bacteria, and phage. Requires a PhD, significant hands-on experience in molecular biology, and an extensive working knowledge of PCR. Excellent communications, computer, and organizational skills are essential. Experience in virology or microbiology research is preferred.....Job Code: 96-166SCI

• Post-Doctoral Fellowship

We have an opportunity to conduct experiments in the cloning and characterization of novel proteins involved in the TNF/IL-1 receptor signaling. You will also collaborate with in-house scientists to perform structural studies of these proteins. The ideal candidate will be highly-motivated and possess the ability to complement or expand the existing program. A background in the field of signal transduction is preferred.....Job Code: PD-SCI

• Preclinical R&D - Compliance Specialist

The experienced individual we seek will monitor and audit study conduct in the GLP area; audit all manual data creation, entry, and retrieval; ensure training of GLP study participants; maintain calibration and maintenance records; prepare study documentation for internal and external audits for ongoing studies; maintain an inventory of and ensure the integrity of assay reference material as well as PC GLP study files. Essential requirements are a BS in Biology or related field or an MT with 5+ years' experience. Excellent written and verbal communication skills are vital. Familiarity with GLP or CLIA lab, various laboratory techniques (e.g. ELISAs) and attention to detail are important. Background in data audit and compliance desirable.....Job Code: 96-157SCI

To be considered for current or future job openings, please only forward original resumes, suitable for scanning, to: Human Resources Department, Genetics Institute, Inc., 87 CambridgePark Drive, Cambridge, MA 02140. Fax: (617) 498-8089 or (617) 876-8847. E-mail address: jobs@genetics.com. Please see our home page: <http://www.genetics.com>.

Genetics Institute offers competitive salaries and benefits, including comprehensive health care, dental and life insurance, three weeks' paid vacation, 401(k), stock purchase plan, relocation assistance, tuition assistance, and an on-site exercise facility. Genetics Institute is dedicated to building strength through diversity.

GENETICS INSTITUTE

Harnessing the Body's Power to Heal™

DIRECTOR, LINUS PAULING INSTITUTE OREGON STATE UNIVERSITY

The Linus Pauling Institute of Science and Medicine, located in Palo Alto, California, will soon be dissolved and the Linus Pauling Institute (LPI) will be established in Corvallis, Oregon, at Oregon State University. The mission of the Linus Pauling Institute at Oregon State University is to develop a research program dedicated to elucidation of the roles of micronutrients, phytochemicals, and microconstituents of food in human health.

Oregon State University invites nominations and applications for the position of Director, Linus Pauling Institute. The Director will hold an endowed chair at Oregon State University. This is a 12-month, 1.0 FTE appointment at the rank of Professor with a 9-month tenure commitment in a department appropriate to the individual's background. Salary range will be commensurate with experience and qualifications. The Director is expected to maintain an active research program in a human health related area that complements the mission of the Linus Pauling Institute. The Director will provide leadership for the Institute and will work closely with development personnel to acquire funding for the Institute. A doctorate degree in a human health related area is required.

We are seeking an individual who has a highly recognized, established research program and a record of successful experience in obtaining funding for research in a human health related area. A record of successful interaction with groups and with other scientists is essential.

Nominations should include name and address of the nominee and a letter addressing the qualifications of the individual. Applicants should submit a letter of interest and a resume along with names, addresses, and phone numbers of four references to:



Richard A. Scanlan, Dean of Research
Oregon State University
312 Kerr Administration Building
Corvallis, OR 97331-2140
email: harrisob@ccmail.orst.edu

References will not be contacted without prior approval of the applicant. Nominations are due September 10, 1996. For full consideration, apply by October 1, 1996; position shall remain open until filled. Position is available January 1, 1997. OSU is an AA/EEO employer and has a policy of being responsive to dual-career needs.

Division Director & Research Scientist Microbiology

The American Type Culture Collection (ATCC), a global bioscience organization and leading germ plasm resource for intellectual and economic development, is seeking a dynamic individual to direct scientific research and manage the microbiology Division (Bacteriology, Mycology, Virology and Protistology). This division maintains the world's most comprehensive collection of microorganisms and deals with all facets of microbial science and technology in the United States and abroad.

In 1997 the ATCC will relocate its operations to a modern, custom-designed facility in Prince William County, Virginia and will have a joint interest with George Mason University (GMU) in the Molecular Bioscience and Technology Institute (MBTI) on the Prince William Campus of GMU. The MBTI and ATCC will serve as a nucleus for a research and commercial biotechnology center and will enable the ATCC to continue its tradition of service and research to the scientific community.

The successful candidate must have a Ph.D. in Microbiology or a related science, a minimum of eight years research experience in microbiology, which includes management of a sizeable research team, and a proven track record in project management and external research funding. This individual will provide technical, scientific, fiscal and strategic leadership to the Microbiology Division.

Interested candidates should send or fax a resume and salary history to:



ATCC
Human Resources
12301 Parklawn Drive
Rockville, MD 20852
fax 301-998-8771

EOE — M/F/D/V

RESEARCH SCIENTIST- PEPTIDE CHEMISTRY

Amgen, the world's largest biotechnology company, currently has exciting opportunities in its Boulder facility for a Research Scientist - Peptide Chemistry.

Selected candidate will be responsible for designing, implementing, and directing specific scientific experiments which greatly contribute to attaining goals jointly established by the Research Staff. The requirements for this position include a Ph.D. in Chemistry or related field, and 7 or more years related research experience. The successful applicant will have a strong track record of technical expertise and accomplishment in the field of peptide synthesis. Knowledge of solid phase methodology, purification, and analytical and spectroscopic techniques required. Must also have experience with non-routine peptide synthesis and knowledge and experience with automation and computer operation.

We recognize that diverse perspectives are a key factor in the process of discovery.

At Amgen, you'll find our approach as rewarding as it is effective. We offer a highly competitive compensation and benefits package. Please e-mail your resume to: Amgen, Boulder, Human Resources, Dept. BPSC-5722, P.O. Box 19409, Boulder, CO 80308-2409. Please consult our on-line Job Bulletin Board at <http://www.bio.com> for information on other career opportunities available at Amgen. Principals only please.

EEO/AA Employer M/F/D/V

Manager of Laboratory Health and Safety Programs



Put your laboratory research skills and experience to work in a new and important application. Stanford University seeks an individual with significant laboratory bench top experience to plan, organize and provide senior specialty chemical safety and health technical support for a diverse and comprehensive research environment. Individual will be experienced in laboratory research activities and have the ability to apply research and laboratory operations knowledge in support of a broad range of research environments and activities. Focus of program support and development will be in areas of experimental procedures safety/hazard assessment and in the review, interpretation, application and management of regulatory compliance requirements in the laboratory research environment. Position reports to the Associate Vice Provost for EH&S.

Prefer individual with a doctorate in Chemistry or Chemical Engineering with bench top experience; Master's degree in cognizant field with significant research laboratory and demonstrated safety management experience will be considered. Five plus years of increasingly responsible research experience with demonstrated successful program results and experience in supervision of staff also necessary.

Please send a C.V./resume and a cover letter detailing your interest and qualifications for this position to: Harvey Chock, Department of Environmental Health and Safety, Stanford University, ESF-640 Oak Road, Stanford, CA 94305-8007. AA/EOE



COMBINATORIAL CHEMISTRY

STRUCTURE-BASED DRUG DESIGN

Agouron Pharmaceuticals, Inc. is a recognized pioneer and leader in the field of protein structure-based drug design and development. We are expanding our efforts in combinatorial chemistry to realize the full potential of rapid lead identification and optimization guided by three-dimensional protein structure. The following opportunities are currently available:

PHD BIOCHEMIST

ASSAY DEVELOPMENT AND SCREENING

HIGH-THROUGHPUT SCREENING

Selected candidate will support our combinatorial chemistry program in the area of new assay development, library screening, and high-throughput assay development. You will work with chemists and biochemists to facilitate efforts in lead identification from chemical libraries. The position requires demonstrated experience in state-of-the-art assay methods, the analysis of activity from mixtures of organic compounds, and deconvolution methods. Preference will be given to candidates with experience in high-throughput screening for drug discovery, including assay automation and data management. Qualified candidates will have a PhD and at least 2 years' post-doctoral experience developing and validating biochemical screening assays for a variety of targets. Code: SW4

PHD ORGANIC CHEMIST

Selected candidate will support our combinatorial chemistry program in the design and synthesis of chemical libraries directed at protein targets based on their three-dimensional structure. You will develop new solid phase and solution phase chemistry for the generation of novel small molecule libraries. The position requires a PhD in organic chemistry with at least 2 years' post-doctoral experience with a strong emphasis on organic synthesis. A familiarity with the principles of combinatorial chemistry and solid phase synthesis is required and hands-on experience in combinatorial chemistry is preferred. Code: SR4

We offer competitive salaries and benefits in addition to an intellectually stimulating environment. Please send résumé to: Human Resources, Agouron Pharmaceuticals, Inc., 10350 N. Torrey Pines Road, La Jolla, CA 92037-1020; e-mail: jobs@agouron.com. EOE.



Agouron
Pharmaceuticals, Inc.

UTRECHT UNIVERSITY

Faculty of Pharmacy

Postdoctoral Research Fellow

Position available in the division of Analysis & Toxicology of the Utrecht Institute for Pharmaceutical Sciences per 01-09-1996.

The project involves fundamental research in analytical biotechnology, focussed on the relation between structure and molecular properties of biotech products, especially with respect to a (possible) clinical application.

Applicants must have a Ph.D. in pharmaceutical sciences, biology or (medicinal) chemistry with some years experience in a 'bio-technical' environment.

The following expertise is needed:

- bio-analysis experience
- advanced separation methods a.o. CE-MS and LC-MS, with application to peptides and proteins
- structural research of peptides and biotech proteins
- some knowledge of (pre) chemical and toxicological drugs research.

Submissions to:

Mrs. Y. Temme-de Fremery
P.O. Box 80082
3508 TB Utrecht
The Netherlands.
Vacancy no. 67605.



The Division of Cardiovascular Diseases of the Mayo Clinic and Foundation invites applications for an established investigator position at the rank of Associate or full Professor. Applicants should have an M.D. or Ph.D. degree and an established record of accomplishment in basic cardiovascular research such as in molecular or cellular biology which focuses upon endothelial, vascular smooth muscle or cardiac myocyte biology. Excellent institutional resources and long-term support are available. Written applications including CV, three letters of recommendation and a description of research interests should be sent to: **John C. Burnett, Jr., M.D., Cardiovascular Chair for Research, Director, NIH Cardiovascular Research Training Program, Mayo Clinic, 200 First Street, SW, Rochester, MN 55905.** Applications will be considered until September 1, 1996. *Mayo Foundation is an affirmative action and equal opportunity educator and employer.*

ANNOUNCEMENT

REQUEST FOR PROPOSALS THE INTERNATIONAL SPINAL RESEARCH TRUST

The ISRT is a grant-giving charity (number 281325) with the purpose of funding research aimed at resolving the non- or partial-functioning of the injured spinal cord.

The field of spinal cord repair has developed to the stage at which we now have demonstrable regeneration of damaged nerve fibres in the adult mammalian cord. Accordingly, we feel that we have sufficient knowledge to plan a research strategy that will guarantee genuine progress. To proceed further it is recommended that ISRT funding is restricted to projects that are conducted in adult mammalian spinal cord and concentrated on 3 main research foci:

- **Early Trauma and Inflammation:** Prevention of the generation of obstacles to future regenerative repair, including aspects of scarring.
- **Trophic Stimulation of Neurite Outgrowth:** Identification of the pattern and possible temporal cascade of the different factors required to achieve long-distance regeneration.
- **CNS Inhibitory Molecules:** Masking of intrinsic mechanisms that are inhibitory to axonal regrowth in the CNS.

Besides these three main foci, ISRT will, in due course, support a complementary programme to address the hurdles that prevent a proper evaluation of the progress made on each project.

The Trust does not, at this time, have the resources to begin every aspect of this three-year programme. Accordingly, applications are invited for projects in the area of understanding the **integration of neurotrophic factors and inhibitory molecules**. We are particularly interested in applications in which consideration is given to monitoring the physiological and behavioural impact of their effects. Applicants should submit a letter of intent (c. two sides) summarizing the proposed research and background of the laboratory. An approximate budget and the curriculum vitae of the Principal Investigator(s) should be appended. Awards will average up to \$375,000 over three years and, following a preliminary review, detailed proposals will be requested from a limited number of applicants. Deadline for letters of intent is 16 September 1996. Successful applicants will be approached by ISRT for detailed plans.

Address letters of intent to: **The International Spinal Research Trust, Unit 7 Bramley Business Centre, Station Road, Bramley, Guildford, Surrey GU5 0AZ.** Email: isrt@dial.pipex.com

SCIENCE

DISPLAY CLASSIFIED ADVERTISEMENTS

Call for rate and deadline information on display classified advertisements.

Bethany Ritchey
Recruitment Display Advertising
Telephone: (202) 326-6541
FAX: (202) 289-6742

Janis Crowley
Recruitment Advertising Manager
Telephone: (212) 496-7704
FAX: (202) 289-6742

Debbie Cummings
European Recruitment Advertising
Telephone: +44 (0) 1223 302067
FAX: +44 (0) 1223 576208

For **ANNOUNCEMENT** display advertisements, turn to page 536.

LINE CLASSIFIED ADVERTISEMENTS

How to Submit a Line Classified Ad: Submit double-spaced typewritten copy. Do not include any abbreviations. SCIENCE will edit and typeset ads according to SCIENCE guidelines. Include billing information and desired publication date. Available categories: Positions Open, Meetings, Announcements, Courses and Training, Services. SCIENCE cannot provide proofs of typeset line ads. Line advertisements are not commissionable.

Estimates: SCIENCE will provide a cost estimate for line ads. This is an approximate cost only. Allow for variation between estimated lines and actual typeset lines and resulting final cost. Purchase orders must allow for some degree of flexibility and/or adjustment.

For line advertising deadlines, call Eric Banks.
Telephone: (202) 326-6555;
FAX: (202) 289-6742.

Credit Cards: SCIENCE accepts American Express, MasterCard and VISA. Discount does not apply to credit cards.

Cancellations: Deadline for cancellation is Tuesday, 10 days prior to issue date.

Discounts: A 3% cash discount is granted to all prepaid ads.

Ads from Outside the U.S.: A discount of \$30 will be offered to advertisers making payment in U.S. dollars by checks drawn on U.S. banks. Contact Debbie Cummings. Telephone: +44(0) 1223 302067; FAX: +44(0) 1223 576208.

SCIENCE Global Career Network: Unless otherwise instructed, every classified advertisement submitted for publication in SCIENCE is automatically posted on SCIENCE's on-line classified advertising service, SCIENCE Global Career Network, at no additional charge. SCIENCE Global Career Network address:
WWW: <http://www.aaas.org>
Gopher: gopher.aaas.org

Mail, FAX or Email materials to:
SCIENCE Classified Advertising
1200 New York Avenue, N.W., Room 911
Washington, DC 20005
FAX: 202-289-6742
Internet Email: science_classifieds@aaas.org
(please include your telephone number in Email)

SCIENCE reserves the right, at its discretion, to edit or decline to publish advertisements submitted to it.

CHEMISTRY POSITIONS

CHIEF, GENETIC DISEASE LABORATORY

California Department of Health Services, Genetic Disease Branch, announces an examination to fill a position for **CHIEF, Genetic Disease Laboratory**. This position is responsible for planning, organizing, and directing the program and operations of the Genetic Disease Laboratory, encompassing a program of analysis, quality control, research, and consultation in laboratory and in biochemistry and clinical chemistry related to detection of genetic disorders and birth defects. A doctoral degree in biochemistry, molecular biology, or clinical genetic chemistry or a closely related subject is required. Salary is \$5,242 to \$6,336 per month. The position will be located in Berkeley, California. Obtain an application form and announcement for this Civil Service Examination by contacting: **Maxie Spears, Telephone: 510-540-2613, TDD: 916-657-3042.** Applications for this examination must be postmarked no later than August 23, 1996. *California State Government is an Equal Employment Opportunity Employer.*

PALO ALTO INSTITUTE OF MOLECULAR MEDICINE

Bay Area Institute seeks entrepreneurial biomedical scientists with RO1 or other funding. All areas of biomedical research considered, including cellular and molecular biology, pharmacology, chemistry, and biochemistry. Contact: **James W. Larrick, M.D., Ph.D., PAIMM, 2462 Wyandotte Street, Mountain View, CA 94043.**

POSTDOCTORAL PROTEIN CHEMISTRY position available in the Adirondack Mountains in 1996. Requires doctoral degree with experience in electrospray mass spectrometry and liquid chromatography. The successful candidate will gain state-of-the-art experience in protein structural characterization, including purification, identification of posttranslational modifications, sequence and amino acid analysis. Send curriculum vitae and three letters of recommendation to: **Dr. John W. Crabb, Protein Chemistry Facility, c/o Personnel Manager, W. Alton Jones Cell Science Center, Lake Placid, NY 12946. FAX: 518-523-1849.**

POSTDOCTORAL POSITIONS are available to study the structure-function relationship of ryanodine receptor/calcium release channel and cystic fibrosis transmembrane conductance regulator chloride channel. Previous experience in molecular cloning, electrophysiology, or protein chemistry is required. Send curriculum vitae and three letters of reference to: **Dr. Jianjie Ma, Department of Physiology and Biophysics, Case Western Reserve University, 10900 Euclid Avenue, Cleveland, OH 44106. Email: jxm63@po.cwru.edu.**

POSTDOCTORAL POSITION Protein Purification/Chemistry

Position available to purify and study protein domains, DNA-protein interactions, and GTP binding of P element transposase protein (see *Cell*, 62:27, 1992). Experience in HPLC, peptide mapping, and protein purification essential. Send curriculum vitae and names of three references to: **Dr. Donald Rio, Department of Molecular and Cell Biology, 401 Barker Hall, University of California, Berkeley, CA 94720-3204.**

POSITIONS OPEN

ASSISTANT PROFESSOR of Wildlife Science. Tenure-track, nine-month position for a broadly trained vertebrate ecologist with experience in wildlife-habitat relationships and/or population ecology related to forest management. Ph.D. required. Must be able to teach courses in a vertebrate ecology specialty, and in wildlife-forest relationships, and be willing to assist in other undergraduate courses. Additional duties will include advising graduate and undergraduate students. The successful applicant's teaching and research are expected to contribute to an increasing emphasis in interdisciplinary approaches with the College and with other university programs. Although the College is seeking a person at the assistant professor rank, appointment may be made at the rank of associate professor or professor under unusual circumstances and commensurate with the qualifications of the individual. Send cover letter, course transcripts, résumé, and three letters of recommendation to: **Dr. David A. Manuwal, Chair of Wildlife Search Committee, College of Forest Resources, University of Washington, Box 352100, Seattle, WA 98195-2100. Email: aulet@u.washington.edu.** Deadline for applications: 1 October 1996. *The University of Washington is building a culturally diverse faculty and strongly encourages applications from female and minority candidates.*

POSITIONS OPEN

STANFORD UNIVERSITY DEPARTMENT OF CHEMISTRY ASSISTANT PROFESSOR Two Faculty Positions (Tenure-Track)

Completed applications must be received by October 15, 1996. Appointment commences on September 1, 1997.

Applicants must be strongly motivated toward creative research and have a commitment to teaching at the undergraduate and graduate levels.

Applications for the faculty position in the general area of **ORGANIC CHEMISTRY** should include a current curriculum vitae and list of publications and a brief statement of research interests (three pages or less). Arrange to have three letters of reference sent on your behalf to:

**Chairman, 1996 Organic Chemistry
Search Committee
Department of Chemistry
Stanford University
Stanford, CA 94305-5080**

Applications for the faculty position in the general area of **PHYSICAL CHEMISTRY** should include a current curriculum vitae and list of publications and a brief statement of research interests (three pages or less). Arrange to have three letters of reference sent on your behalf to:

**Chairman, 1996 Physical Chemistry
Search Committee
Department of Chemistry
Stanford University
Stanford, CA 94305-5080**

Stanford University is committed to Equal Employment Opportunity through Affirmative Action and is eager to identify minority persons and women with appropriate qualifications.

HEAD DEPARTMENT OF BOTANY AND PLANT PATHOLOGY Purdue University

Purdue University seeks applications for **HEAD** of the Department of Botany and Plant Pathology. Candidates should hold the Ph.D. degree, be eligible for tenure at the rank of professor, and be committed to the land grant philosophy. A nationally recognized record in teaching, research, or extension in a plant related field, and leadership abilities, are required; administrative skills are essential. Applicants should submit by September 1, 1996 a statement of administrative philosophy, a complete curriculum vitae, and the names and addresses of five references to: **Dr. Greg Shaner, Co-Chair, Dean of Agriculture's Office, 1140 Agricultural Administration Building, Purdue University, West Lafayette, IN 47907. Purdue University is an Affirmative Action/Equal Opportunity Employer. Women and minorities are strongly encouraged to apply.**

FACULTY POSITION

The Division of Endocrinology of the Department of Medicine and the Department of Pharmacology at the University of Washington are recruiting a full-time **ASSISTANT or ASSOCIATE PROFESSOR**. Must be a Ph.D. with an outstanding research record including demonstrated capability for external funding. Research must be oriented to reproductive biology using molecular techniques including gene knockouts and/or overexpression. Will be based at the Seattle VA Medical Center and must be willing to collaborate actively with clinical investigators and to participate in teaching. The closing date for applications is September 9, 1996. Send curriculum vitae to: **William J. Bremner, M.D., Ph.D., VA Puget Sound Health Care System, Medicine Service (111), 1660 South Columbian Way, Seattle, WA 98108. The University of Washington is an Affirmative Action/Equal Opportunity Employer.**

HARVARD UNIVERSITY Department of Chemistry and Chemical Biology Assistant Professorships in Inorganic, Organic, and Physical Chemistry

Applicants are invited to apply for **ASSISTANT PROFESSORSHIPS** in inorganic, organic, and physical chemistry. Applicants should arrange to have three letters of recommendation sent independently and should provide a curriculum vitae, a list of publications, and outlines of two future research projects. Applications and supporting materials should be sent no later than 1 November 1996 to: **Professor David A. Evans, Chairman, Department of Chemistry and Chemical Biology, Harvard University, 12 Oxford Street, Cambridge, MA 02138-2902. Harvard University is an Affirmative Action/Equal Opportunity Employer and welcomes applications from women and minority group members.**

COMPUTATIONAL CHEMIST

At Amgen, you'll discover a research environment that emphasizes collaboration, intellectual honesty, scientific integrity, and a supportive culture. This unique approach has helped us grow into a global biotechnology leader in just sixteen years.

The Molecular Structure and Design Department currently seeks a Computational Chemist to join our expanding structure-based drug design group. You will join a team of well-integrated state-of-the-art industry professionals that includes macromolecular crystallography and high field NMR spectroscopy, as well as computational chemistry. This group will work closely with molecular biologists and chemists.

Qualified candidates will have expertise in the use and development of molecular modeling methods for protein and protein/small molecule interactions in drug development, and be familiar with the use of semi-empirical and ab initio quantum mechanics methods. The selected individual must also work productively in a team environment comprised of various scientists, chemists, molecular biologists and structural scientists in macromolecular crystallography and high field NMR.

This position requires a Ph.D. or the equivalent, and typically 2-5 years' experience working in an industrial or academic environment.

We recognize that diverse perspectives are a key factor in the process of discovery.

At Amgen, you'll find our approach to scientific research as rewarding as it is effective. We offer a highly competitive compensation and benefits package that includes a retirement and savings plan, an on-site fitness center, and 3 weeks' vacation. For immediate consideration, mail your resume to: **Amgen, Staffing, Job Code: TPSC, P.O. Box 2569, Thousand Oaks, CA 91319-2569. E-mail: jobs@amgen.com** Please consult our on-line Job Bulletin Board at <http://amgen.bio.com> for information on other career opportunities available at Amgen. Principals only, please.

EEO/AA Employer M/F/D/V



CALYDON is a new company involved in *in vivo* gene therapies for cancer. We are seeking a Ph.D. with experience in virology and GMP production of Recombinant Adenoviruses.

**Ph.D., Adenovirus
GMP Development**

Our candidates are highly motivated individuals who want to make a significant contribution to developing new medicines for prostate cancer. The candidate will be responsible for product development: taking a research therapeutic to the clinic. Responsibilities include writing and implementing GMP SOP's.

CALYDON offers an exciting corporate career opportunity, competitive salary, benefits with stock options, and a collegial environment. Send your CV to:

**CALYDON,
1014 Hamilton Court, Menlo Park, CA
94025**

Genomics: Breakthrough Discoveries

Genome Therapeutics Corporation is a dynamic, rapidly expanding and financially successful biotechnology company. As a recognized leader in the field of genomics, GTC has initiated multi-million dollar alliances to develop genome-based drugs and vaccines, and offers exciting challenges in the discovery of novel drugs and the development of innovative approaches to accelerate drug discovery. We are seeking creative and motivated individuals for two Senior Scientist positions with the following qualifications:

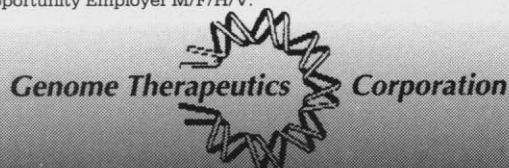
Senior Scientists

One applicant will be involved in development of strategies to identify new antibacterial therapeutic drugs in gram-positive pathogenic bacteria. The candidate should have a broad range of expertise in microbial genetics and pathogenesis as well as strong experience in molecular biology and genetic engineering techniques, with emphasis in the use of transposon mutagenesis and allele exchange systems in gram-positives. Additionally, experience in gene expression and assay development is highly desired. Computational skills area a plus.

Second applicant will be involved in development and evaluation of technology for high throughput screening of combinatorial as well as traditional synthetic and natural product compound libraries. The candidate should have a strong background in biochemistry and bacterial biochemistry and be proficient in the use of chemical compound libraries and "display libraries", in the development of cell based and "in vitro" biochemical and antimicrobial assays, and have a good knowledge of methods for high throughput screening of compound libraries. It is desirable but not required that the candidate have some experience with automation methods and computer related skills.

Both candidates should have a Ph.D., at least three years of postdoctoral experience in a relevant field and a strong record of publication.

GTC offers a highly stimulating working environment and excellent compensation and benefit packages. Please send or fax your resume to: **Human Resources, Genome Therapeutics Corporation, 100 Beaver Street, Waltham, MA 02154; Fax (617) 893-9535.** An Equal Opportunity Employer M/F/H/V.



DIRECTOR, CLINICAL RESEARCH

Somatogen Inc., a biopharmaceutical company located in Boulder, Colorado, is engaged in the development of specialty oxygen therapeutics utilizing its proprietary recombinant hemoglobin technology.

A Director of Clinical Research is being added to the team, to be the primary medical and scientific resource in the development of new clinical trial protocols and programs. Reporting to the Senior Vice President of Medical Affairs, the Director will work closely with Clinical Research Associates and the Research Data Organization in accomplishing day-to-day tasks and will provide the medical perspective related to clinical trial design and logistics, clinical trial monitoring, and report writing.

Requirements include an M.D. with at least 5 years of related hands-on experience in early-stage drug development in the pharmaceutical industry. Direct experience in clinical trial preparation and management as well as medical/scientific development of new protocols and programs is essential. A thorough knowledge of Good Clinical Practices and management experience are also required. A specialty in hematology, transfusion medicine, or critical care is desirable for this clinician/scientist.

Somatogen offers competitive salaries, benefits (including a 401K savings plan), and relocation assistance. *Somatogen is an Equal Opportunity Employer. Female and minority candidates are encouraged to apply.* Please fax your curriculum vitae to: 415-941-1729.

The R.W. Johnson Pharmaceutical Research Institute (RWJPRI) conducts research in a number of therapeutic areas including anti-infectives, CNS, dermatology, hematology/oncology, immunology/inflammation, and women's health for a number of the pharmaceutical business units of Johnson & Johnson worldwide. The following openings are available with RWJPRI at its campus-like facilities.

The following openings are located in Spring House, PA (suburban Philadelphia)

Sr./Principal Scientist: Cardiovascular Pharmacology

While working in a very interactive and collaborative environment, the successful candidate will establish independent research in areas such as arteriosclerosis, tissue remodeling and matrix formation, smooth muscle/endothelial cell biology and vascular functions. Qualified candidates will have a Ph.D. in Biological Science, at least one full term of postdoctoral fellowship and 3-5 years of experience in independent scientific research in an academic or pharmaceutical research organization. A strong track record of publication in high-quality, peer-reviewed professional journals is a plus (Dept. 549).

Sr. Associate Scientists/Scientists: Combinatorial Research

Requires BS or MS in organic chemistry with 6+ years of experience or a Ph.D. with 2+ years. 2+ years experience working with combinatorial chemistry or automated organic synthesis required. Familiarity with Microsoft Word, Excel and ChemDraw (Dept. 618).

Assoc. Scientist/Sr. Assoc. Scientist: Combinatorial Research

Requires a BS or MS in organic chemistry with 3-6 years of industrial synthetic experience. Some experience with solid phase chemistry or automated organic synthesis is preferred. Computer literacy required to track large amounts of both chemical and biological data (Dept. 619).

The following openings are located in Raritan, NJ (midway between NYC and Philadelphia)

Scientist/Sr. Scientist: Protein Biochemistry

Requires a Ph.D. in Chemistry or Biochemistry or related field and 3-5 years postdoctoral study. Knowledge of protein biochemistry, receptor biology, protein purification required. Knowledge of hematopoiesis and inflammation a plus. Experience in molecular biology, chromatography and assay development required (Dept. 573).

Scientist/Sr. Scientist: Inflammation Biochemistry

Requires a Ph.D. in Biochemistry, Pharmacology or a related field and 3-5 years of postdoctoral experience. Knowledge of inflammation, cytokine-mediated signal transduction and molecular biology techniques is also required along with experience in enzyme and receptor isolation, purification and assay development (Dept. 573).

Assoc. Scientist/Sr. Assoc. Scientist

Requires a BS or MS in chemistry with 2-8 years experience in synthetic organic chemistry laboratory using modern spectroscopic methods for structure determination. The successful candidate will be responsible for the synthesis of organic compounds for biological testing, and background must demonstrate a practical knowledge of modern organic reactions, spectroscopic methods and purification techniques such as chromatography (Dept. 620).

The following openings are located in La Jolla, CA (San Diego County)

Postdoctoral Fellows (Bioinformatics)

Requires a Ph.D. in molecular biology, neurobiology, physiology or a related field. Familiarity with Genbank, EMBL, SWISS-PROT, PIR, and Brookhaven Protein Databases as well as experience in sequence analysis softwares (GCG, BLAST, etc.) is essential; C programming experience in the UNIX system is preferred. Conduct bioinformatics and computational biology with drug discovery teams. Use state-of-the-art computers and software to search for proteins with therapeutic and/or drug target potentials. Develop and implement software tools for database mining and sequence analysis.

Project Manager (Bioinformatics)

Requires MS or equivalent with 6+ years experience (or BS with 10+ years) demonstrating comprehensive knowledge in information systems development projects, with at least 2 years managing large software development projects. Project management experience in support of drug discovery and bioinformatics, and application development management of multi-disciplinary teams, also required.

We offer a competitive salary and excellent benefits, including medical/dental insurance, 401(k) plan and our LIVE FOR LIFE Wellness Program. For positions in Raritan, NJ, and Spring House, PA, please forward a copy of your curriculum vitae suitable for scanning into our database (i.e., clean/clear, no graphics and preferably unfolded) to: Dept. 573, Johnson & Johnson Recruiting, P.O. Box 16597, New Brunswick, New Jersey 08906-6597. To apply for La Jolla openings, please send resume, including salary requirement to: Human Resources Consultant, RWJPRI, 3535 General Atomics Court, Suite 100, San Diego, CA 92121. We are an equal opportunity employer and support diversity in the workplace.



**THE R.W. JOHNSON
PHARMACEUTICAL RESEARCH INSTITUTE**

POSITIONS OPEN

FACULTY POSITION PHYSIOLOGY AND BIOPHYSICS

The Department of Physiology and Biophysics at the Finch University of Health Sciences/The Chicago Medical School invites applications for a tenure-track faculty position at the **ASSISTANT, ASSOCIATE or FULL PROFESSOR** level. Applicants should have a strong record of scholarship and experience using state-of-the-art approaches to studying physiological mechanisms at the systems, cellular, or molecular level. The individual selected will be expected to maintain an independent and externally funded research program that complements the research interests of the current faculty, and to contribute to the graduate and medical teaching programs in the department. Rank will be commensurate with the level of experience. Applicants for appointment at more senior levels should have an established research program, with a history of highly regarded publications. The quality of the applicant's publications will be a primary consideration in the selection process at all ranks; therefore, applicants are requested to submit no more than three of their most well-regarded original research publications to be used as a basis for this evaluation. They should also send a copy of their curriculum vitae, including a statement of future research interests and the names of three persons who may be contacted as references, to: **Robert F. Rakowski, Ph.D., Chairman, Department of Physiology and Biophysics, Finch University of Health Sciences/The Chicago Medical School, 3333 Green Bay Road, North Chicago, IL 60064. Affirmative Action/Equal Opportunity Employer. Women and minorities are encouraged to apply.**

UNIVERSITY OF FLORIDA

Seeks an **INSTRUCTOR** in the Department of Medicine, Division of Nephrology. M.D. degree. Board-certified/eligible in Nephrology with a minimum of three years of basic or clinical research training in the field of nephrology, hypertension, or a related discipline. This position will care for patients with hypertension and related nephrological problems including ESRD, acid-base disturbances, diabetic nephropathy, and other forms of renal disease. Salary and benefits commensurate with experience. Recruiting deadline August 8, 1996. Anticipated starting date August 23, 1996. Please reply with curriculum vitae to: **Dr. Edward A. Ross, M.D., Associate Professor, Department of Medicine, Box 100214 JHMC, Gainesville, FL 32610. An Equal Opportunity/Affirmative Action Employer.**

MEDICINAL CHEMISTRY

The Department of Medicinal Chemistry, and the Drug Design and Development Institute, Medical College of Virginia/Virginia Commonwealth University (VCU): three full-time faculty positions at the **ASSISTANT, ASSOCIATE, and/or FULL PROFESSOR** level. The successful candidates will each possess a doctorate degree and preference will be given to applicants with strong backgrounds in synthetic medicinal chemistry, molecular pharmacology, or structural biology; with records of demonstrated achievements; and with active research programs. Submit a curriculum vitae and names of three references to: **Search Committee Chairman, Department of Medicinal Chemistry, Box 980540, Medical College of Virginia/Virginia Commonwealth University, Richmond, VA 23298-0540** before October 1, 1996. *VCU is an Equal Opportunity/Affirmative Action Employer. Women, minorities, and persons with disabilities are encouraged to apply.*

PLANT POPULATION/ EVOLUTIONARY GENETICIST

The Department of Biology at Montana State University-Bozeman invites applications for a tenure-track **ASSISTANT PROFESSOR** position in plant population genetics. Candidates must have a Ph.D. and a record of productive research in plant population studies with an emphasis in molecular evolutionary, ecological, or conservation genetics. Postdoctoral research experience preferred. The successful applicant will develop a nationally funded research program, supervise graduate students at the M.S. and Ph.D. levels, and teach an undergraduate course in basic genetics and a graduate course in population/evolutionary genetics. Applicants should submit a curriculum vitae and descriptions of their research and teaching interests and experience and arrange to have three letters of recommendation sent to: **Dr. Robert Sharrock, Search Committee Chair, Department of Biology, Montana State University-Bozeman, Bozeman, MT 59717.** Screening of applications will begin on September 10, 1996, and continue until a suitable candidate is found. *Affirmative Action/Equal Opportunity/ADA/Veterans' Preference.*

POSITIONS OPEN

MICROBIOLOGY Department of Microbiology and Immunology University of Kentucky

The Department of Microbiology and Immunology, College of Medicine, University of Kentucky, seeks candidates for a full-time, tenure-track faculty position at the **ASSISTANT PROFESSOR** level, available July 1997. Applicants should have a Ph.D. or equivalent degree; postdoctoral experience; and expertise in molecular biology and host-pathogen interactions, microbial genetics, or microbial physiology, and should show exceptional promise in developing or maintaining a strong research program. The successful candidate is expected to develop/maintain an innovative, externally funded research program as well as participate in graduate and medical student teaching. This is an excellent opportunity to join an established group of faculty with research programs in prokaryotic and eukaryotic pathogenesis and molecular biology and a strong predoctoral and postdoctoral training program. The Department currently has twenty tenure-track faculty with research programs in microbial pathogenesis, eukaryotic molecular biology, molecular and cellular immunology, molecular virology, and tumor biology.

Excellent start-up funds, state-funded salary commensurate with experience, and modern research facilities will be provided. Applications should include curriculum vitae, representative reprints, a statement regarding research interests and future plans, as well as three letters of recommendation. Send all materials to: **Dr. Carol Pickett, Chair, Faculty Search Committee, Department of Microbiology and Immunology, MS415 Medical Center, University of Kentucky, Lexington, KY 40536-0084. Telephone: 606-323-5313; FAX: 606-257-8994. The University of Kentucky is an Equal Opportunity/Affirmative Action Employer and has an affirmative duty to reasonably accommodate otherwise qualified individuals with a disability.**

CONSERVATION BIOLOGIST

The Department of Fish and Wildlife Resources at the University of Idaho is seeking applications for an **ASSISTANT PROFESSOR** of conservation biology/wildlife ecology. Candidates should have dealt with questions of population genetics, biodiversity, and/or small-population biology. They should be quantitatively oriented. Candidates must be able to demonstrate their potential as effective teachers. The selection process will commence on September 15, 1996 and will conclude when a sufficient number of qualified applicants have been identified. Send materials including letter of application, curriculum vitae, and the names of three references to: **Conservation Biology Search, Department of Fish and Wildlife Resources, University of Idaho, Moscow, ID 83844-1136. Telephone: 208-885-4006; FAX: 208-885-9080; Email: glabar@uidaho.edu. Affirmative Action/Equal Opportunity Employer.**

ASSISTANT PROFESSOR of Pathology to be associated with Preuss Laboratory for Brain Tumor Research and NIH Brain Tumor Center at Duke University Medical Center. M.D. or Ph.D. and minimum of two years' postdoctoral experience in molecular biology required. Experience in DNA recombinant techniques, especially genomic cloning, PCR amplification, expression of genes in eukaryotic and prokaryotic cells, and site-directed mutagenesis desired, particularly experience with human/mouse monoclonal antibody humanization and preparation of sFv constructs. Salary negotiable, dependent upon experience. Position available immediately. Send curriculum vitae and three letters of recommendation to: **Darell D. Bigner, M.D., Ph.D., Department of Pathology, Duke University Medical Center, Box 3156, Durham, NC 27710. FAX: 919-684-5321. An Equal Opportunity/Affirmative Action Employer.**

The Surgical Services and the Center for Engineering in Medicine at the Massachusetts General Hospital in collaboration with the Shriners Burns Institute in Boston invite applications for a **FACULTY POSITION** at the instructor/assistant/associate professor level. Candidates must have earned an M.D. and/or a Ph.D., and possess an outstanding track record in the areas of carbohydrate, lipid, and/or amino acid metabolism in acute and chronic disease. The successful candidate will have skills in conventional methodology for studying metabolic disorders as well as experience and/or interest in defining the molecular bases for these disorders and in developing nutritional strategies and programs. Please send applications to: **Professor Martin L. Yarmush, The Center for Engineering in Medicine, Massachusetts General Hospital, Bigelow 1404, 55 Fruit Street, Boston, MA 02114. The Massachusetts General Hospital is an Equal Opportunity/Affirmative Action Employer.**

POSITIONS OPEN

FACULTY POSITION Department of Internal Medicine

The Pulmonary Division at The University of Texas Southwestern Medical School invites applications for a position as an **INSTRUCTOR/ASSISTANT PROFESSOR**. This position is for a Ph.D. with a background in signal transduction with special emphasis on JAK-STAT pathways. Applicants with demonstrated productivity using molecular and cellular techniques and an interest in lymphocyte function in the lung are encouraged to apply. The position offers a competitive salary, excellent research facilities, and an outstanding environment for the conduct of research. Applicants should submit a curriculum vitae and three letters of reference to: **Jonathan C. Weissler, M.D., Director, The James M. Collins Center for Biomedical Research, University of Texas Southwestern Medical Center, 5323 Harry Hines Boulevard, Dallas, TX 75235-9034. An Affirmative Action/Equal Opportunity Employer.**

FACULTY POSITION CLINICAL PHARMACOLOGY JEFFERSON MEDICAL COLLEGE

The Division of Clinical Pharmacology at Jefferson Medical College is seeking applicants for a faculty position at the **ASSISTANT PROFESSOR** level. Candidates with research interests in molecular biology and drug metabolism preferred. The successful candidate will have a Ph.D. (or equivalent) degree, and will be expected to develop an independently funded research program, to supervise a bio-analytical laboratory, and to participate in Divisional educational programs. Divisional facilities include well-equipped laboratories and a clinical research unit. Submit curriculum vitae, summary statement of research interests, and names of three references to: **Dr. Thorir D. Bjornsson, Division of Clinical Pharmacology, Department of Medicine, Thomas Jefferson University, 1100 Walnut Street, Philadelphia, PA 19107-5563. Smoke-free environment. An Affirmative Action/Equal Opportunity Employer.**

RESEARCH ASSOCIATE PROFESSOR. Conduct and supervise research on neuroimmunological aspects of multiple sclerosis. Job duties will include cell culture, animal experimentation including injection of cells and emulsions, immunological techniques including enzyme-linked immunosorbent assay and radioimmunoassay, use of radioisotopes for cell incorporation, preparation of monoclonal and antibodies with hybridoma studies and cellular proliferation with various mitogens. Equipment to be used will include that for cell culture, gamma and scintillation counting, electrophoresis with transfer and blotting, regular and inverted microscopes, enzyme linked immunosorbent assay reader, centrifuges, ultracentrifuges, and spectrophotometers. Must have M.D. or Ph.D. in immunology/neuroimmunology with two years of experience in multiple sclerosis research. Contact: **John N. Whitaker, M.D., Department of Neurology, UAB, Birmingham, AL 35294-0007. University of Alabama at Birmingham is an Equal Opportunity/Affirmative Action Employer.**

STAFF ASSOCIATE

The Division of Pediatric Neurology at Columbia University is recruiting a **STAFF ASSOCIATE** to coordinate a multi-institutional grant investigating the incidence of carnitine deficiency in newborns. The coordinator should have a bachelor's or higher degree and at least four years of experience in multi-institutional research design, data management, epidemiological principles, and biostatistics. Preference will be given to applicants with postgraduate training in public health or experience in environmental health. The Staff Associate will be responsible for grant preparation, literature review, data entry and analysis, and other activities essential to the conduct of the research project. Direct inquiries to: **Darryl C. De Vivo, M.D., Neurological Institute, 710 West 168th Street, New York, NY 10032.**

Columbia University is an Affirmative Action/Equal Opportunity Employer.

NEUROPHYSIOLOGY PRODUCT MANAGER for instruments and supplies is presently sought. This is an opportunity for a person who has proven experience using electrophysiology techniques. It involves customer support, product development, and supervision. The salary range is between \$30,000 and \$40,000 per year with health benefits. The applicant should send curriculum vitae, summary of research experience, and personal references to: **Ted J. McDonald, Ph.D., A-M Systems, Inc., 11627-A Airport Road, Everett, WA 98204 U.S.A. Email: tjmcdon@interserv.com.**

AACR SPECIAL CONFERENCES IN CANCER RESEARCH

2nd Annual Meeting of the
American Society for Blood and Marrow Transplantation (ASBMT)

Novel Approaches in Blood and Marrow Transplantation

Co-Sponsored by the College of Physicians & Surgeons of Columbia University

October 2-6, 1996
Hotel del Coronado, San Diego, California

Conference Chairpersons: Bruce R. Blazar, O. Michael Colvin

SCIENTIFIC PROGRAM

PLENARY SESSIONS - Pharmacologic Approaches to Reducing Malignancy: Joseph R. Bertino, Robert B. Diasio, William Hrynuk, O. Michael Colvin; **Biologic Approaches to Reducing Malignancy**: Martin Kast, Fatih M. Uckun, John R. Murphy, Glenn Dranoff; **Options for Hematopoietic Progenitor Cell Sources**: Christopher Juttner, Peter M. Lansdorp, Jan Nolte, Paul Martin; **Allogeneic Approaches to Reducing Malignancy Post-BMT**: Bruce R. Blazar, Ronald E. Gress, Robert Korngold, Lee M. Nadler; **Biology of Breast Cancer**: William P. Peters, Karen S. H. Antman, Jeffrey T. Holt, Daniel D. Von Hoff; **Policy Issues**: Joseph W. Fay, Scott D. Rowley, Elizabeth J. Shpall, Richard E. Champlin

SCIENTIFIC SUBCOMMITTEES - Solid Tumors, Lymphoid Malignancies, Experimental Therapeutics, Gene Therapy
WORKSHOPS - Tumor Biology and Residual Disease Detection, Growth Factors and Sources of Stem Cells, Graft Rejection/gvhd/gvl, Supportive Care, Leukemias, Non-Malignant Disorders-Congenital and Acquired

Carcinogenesis from Environmental Pollution: Assessment of Human Risk and Strategies for Prevention

Joint Conference with the International Agency for Research on Cancer

October 6-9, 1996
Hotel Gellért, Budapest, Hungary

Conference Chairpersons: Frederica Perera, Paul Kleihues

Keynote Address: Curtis C. Harris; **Cancer Incidence, Etiology, and Risk Assessment**: Witold A. Zatonski, Frederica Perera, J. Carl Barrett, Helmut Bartsch; **Air, Water, Food, and Soil Contamination: Exposure and Susceptibility**: Radim J. Sram, Joellen Lewtas, Wieslaw Jedrychowski, Olav Axelsson; **Ambient Environmental and Occupational Exposure and Cancer Risk**: Mieczyslaw R. Chorazy, Alan Pinter, Kimmo Peltonen, Monica C. Hollstein, Kari Hemminki; **Risks of Tobacco Smoke Exposure**: Ivan Plesko, Barbara S. Hulka, Paolo L. Vineis, Stephen S. Hecht, Krystyna Frenkel, Bernadette Schoket; **Strategies for Cancer Prevention**: Waun Ki Hong, I. Bernard Weinstein, Anna Tompa

Programmed Cell Death

October 19-23, 1996
The Sagamore, on Lake George at Bolton Landing, New York

Conference Chairpersons: Stanley J. Korsmeyer, Shigekazu Nagata, Andrew Wyllie

SCIENTIFIC PROGRAM

Keynote Address: Martin C. Raff; **Death Effectors**: Junying Yuan, Donald W. Nicholson, Vishva M. Dixit, Arnold H. Greenberg; **Death Signals**: Shigekazu Nagata, Peter H. Krammer, David V. Goeddel; **Oncogenesis**: Douglas Hanahan, Mina J. Bissell, Gerard I. Evan; **Development**: H. Robert Horvitz, Hermann Steller, Stanley J. Korsmeyer; **Survival Signals**: Andrew Wyllie, Nobuyuki Tanaka, Ken-Ichi Arai; **Death Antagonists**: Suzanne Cory, Craig B. Thompson, Lois K. Miller, Eileen White; **Resistance and Therapeutics**: Michael B. Kastan, Richard N. Kolesnick

Information and Application Forms:

American Association for Cancer Research
Public Ledger Building, Suite 816
150 S. Independence Mall West
Philadelphia, PA 19106-3483
Phone: 215-440-9300 **Fax**: 215-440-9313
Email: aacr@aol.com

POSITIONS OPEN



The Environmental Chemistry Laboratory, Natural Resources Institute, Beltsville Agricultural Research Center, Beltsville, Maryland is accepting applications for three permanent, full-time research positions. **RESEARCH CHEMIST** (GS 11/12 Vacancy Announcement DB6049). The Chemist will conduct independent and team research to measure and predict persistence, dispersal rates, and general environmental behavior of pesticide chemicals. The research will emphasize atmospheric transport and deposition of pesticides in the Chesapeake Bay region. Candidates should have a Ph.D. in environmental, analytical, or organic chemistry. The starting salary range is \$37,094 to \$44,458 per annum. **RESEARCH CHEMIST** (GS 12/13 Vacancy Announcement DB6048). The Chemist will conduct independent and team research to develop and implement methods of extraction and analysis for pesticides and other chemical contaminants in food. The research will emphasize development of multiresidue approaches of analysis and rapid screening techniques to determine pesticide residues in fruit, vegetables, meat, and other food matrices. Candidates should have a Ph.D. in analytical chemistry. The starting salary range is \$44,458 to \$52,867. **RESEARCH SOIL SCIENTIST** (GS 12/13 Vacancy Announcement DB6050). The Soil Scientist will conduct independent and team research to determine the impacts of conservation tillage and nitrogen fertilization on nitrogen use efficiency, groundwater quality, soil nitrogen transformations, microbial communities, and enzyme activities. The research will emphasize development of nitrogen management practices to reduce nitrate contamination of groundwater and the Chesapeake Bay. Candidates should have a Ph.D. in soil microbiology/biochemistry. The starting salary range is \$44,458 to \$52,867. *Candidates for these positions must be U.S. citizens and must address and meet specific qualification requirements and placement factors defined in the Vacancy Announcement.* For information about the research program and positions contact the Environmental Chemistry Laboratory, Telephone: 301-504-6511. Applicants must call: 301-344-4638 for a copy of the announcement and application procedures. Applications must be postmarked by the closing date. Incomplete applications will not receive consideration. *USDA/ARS is an Equal Opportunity Employer.*

PEDIATRIC PHYSICIAN SCIENTISTS

The University of Kentucky College of Medicine is interested in recruiting pediatricians (M.D. or M.D., Ph.D.) who are committed to laboratory investigations in areas of cancer, genetic and metabolic diseases, neuroscience, heart diseases, or other disorders related to neonatal and child health. Clinical area of interest should be related to one of the above subspecialty disciplines or in neonatology or critical care. Laboratory space, protected time, joint clinical/basic science appointments, collaboration or mentorship by senior investigators, and substantial intramural funding is available. Junior investigators with potential for extramural funding or senior investigators with active funding are encouraged to apply. Interactions with other faculty in clinical/basic science departments as well as the Sanders-Brown Center for Aging, Markey Cancer Center, School of Biological Sciences, and College of Agriculture provide a particularly stimulating research environment. *Permanent visa/citizenship required.* Interested individuals should send curriculum vitae and statement of past experience and future plans to: V. Mankad, Chairman, Department of Pediatrics, University of Kentucky Medical Center, 800 Rose Street, Lexington, KY 40536-0284.

CHIEF ZOOLOGIST

The Latin America and Caribbean Division of The Nature Conservancy seeks a **CHIEF ZOOLOGIST** to coordinate zoology activities related to conservation and to provide training and technical assistance to partners in Latin America. Requirements include advanced degree in zoology (Ph.D. preferred), minimum of three years of Latin American field experience, competency in database software and uses of GIS, and fluency in English and Spanish. For a copy of full job description contact: Claire Teixeira, Conservation Science and Stewardship, The Nature Conservancy, 1815 North Lynn Street, Arlington, VA 22209. *Equal Opportunity Employer.*

POSITIONS OPEN

POSTDOCTORAL POSITIONS RNA Crystallography

SEVERAL POSITIONS are available to investigate structural motifs in RNA molecules, using the crystal lattice of a large RNA-protein complex as a vehicle for the crystallization and structure determination of new RNAs. Targets include HIV and BIV TAR RNAs, conserved hairpin and loop motifs, and RNAs identified to bind specific ligands. Applicants with backgrounds in macromolecular crystallography, RNA biochemistry, or enzymology are encouraged to apply. Send curriculum vitae and names of two to three references to: Dr. John Perona, Department of Chemistry, University of California at Santa Barbara, Santa Barbara, CA 93106-9510. FAX: 805-893-4120; Email: jperona@sbmm1.ucsb.edu. *Affirmative Action/Equal Opportunity Employer.*

RESEARCH SPECIALIST IN MR University of Illinois at Urbana-Champaign

A SENIOR RESEARCH SPECIALIST in Health Sciences is needed to manage a laboratory and participate in NMR spectroscopy and imaging research on living cells, tissues, animals, and humans. Duties include responsibility for instrumentation, as well as teaching and assistance to undergraduate, graduate, and postdoctoral students. An M.S. degree in an appropriate scientific or engineering field and two years of research laboratory experience is required, Ph.D. preferred. This is a full-time, 12-month academic professional appointment. Salary \$30,000 to \$40,000, dependent upon qualifications and experience. Send résumé and names, addresses, telephone and fax numbers, and/or Email addresses of three references by August 20, 1996 to: Professor Joan Dawson, Department of Molecular and Integrative Physiology, 524 Burrill Hall, 407 South Goodwin, Urbana, IL 61801. *The University of Illinois is an Affirmative Action/Equal Opportunity Employer.*

APPLICATION SCIENTIST

To support our expanding line of confocal instruments, Meridian Instruments has a position open in our Applications Development department. Ph.D. or M.S. with expertise and experience in imaging and confocal microscopy required. Must also have excellent presentation and written communication skills. Please send salary history and résumé to: Dr. Peggy Wade, Meridian Instruments, Inc., 2310 Science Parkway, Okemos, MI 48864. FAX: 517-349-5967.

PHARMACOLOGIST

SENIOR SCIENTIST to coordinate all preclinical animal experimentation for growing drug delivery company. Postdoctoral or industrial experience required. Send curriculum vitae, salary history, and references to: Pharmavene, Inc., Attn: CMM, 1550 East Gude Drive, Rockville, MD 20850.

SENIOR RESEARCH SPECIALIST position available to study the expression, function, regulation, and signaling of G protein coupled receptors for peptide hormones. Cell and/or molecular biology experience desirable. Send curriculum vitae and names of three references to: Dr. Richard Benya, Section of Digestive and Liver Diseases, University of Illinois at Chicago, 840 South Wood Street (M/C 787), Chicago, IL 60612. *The University of Illinois is an Affirmative Action/Equal Opportunity Employer.*

POSTDOCTORAL POSITION is immediately available in Boston to study human virus/virus receptor interactions and virus induced genetic events that lead to tumor development. Experience in virology, biochemistry, and cellular and molecular biology preferred. M.D. or Ph.D. Harvard Medical School appointment. Send curriculum vitae and names of three references to: Robert Finberg, M.D. or Joyce Fingerth, M.D., Division of Infectious Diseases, Dana-Farber Cancer Institute, 44 Binney Street, Boston, MA 02115. FAX: 617-632-4257.

POSTDOCTORAL POSITION available immediately to study the role of interleukin-1 as an autocrine regulator of vascular smooth muscle cell proliferation. Background in vascular and molecular biology desirable. Send curriculum vitae and names of three references to: Debbie Beasley, Ph.D., Box 172, Department of Medicine, Tufts New England Medical Center, 750 Washington Street, Boston, MA 02111. FAX: 617-636-1355; Email: debbie.beasley@es.nemc.org.

POSITIONS OPEN

WAYNE STATE UNIVERSITY

An exciting opportunity exists for a Board-certified/Board-eligible **PSYCHIATRIST** to join an integrated neuroscience/psychiatry research program. The physician position in the Schizophrenia and Mood Disorders Clinical Research Division involves clinical and research responsibilities in inpatient and outpatient settings. Excellent research laboratories, brain imaging facilities, and support facilities are located in the Wayne State University School of Medicine, which is part of one of the largest medical centers in the United States. Candidates must have a strong background in psychopharmacology and clinical psychiatry. Salary will be commensurate with experience. Qualified candidates are requested to send a complete curriculum vitae and a brief description of current research interests to: Hussein K. Manji, M.D., c/o Chairperson's Office, Department of Psychiatry and Behavioral Neurosciences, University Health Center, 4201 St. Antoine, Detroit, MI 48201.

Wayne State University is an Equal Opportunity/Affirmative Action Employer. All buildings, structures, and vehicles at Wayne State University are smoke-free. Wayne State University—People working together to provide quality service.

MICROBIOLOGY SCIENTIST

IntraBiotics Pharmaceuticals, Inc. is a young biopharmaceutical company developing novel antimicrobial peptides to address the crisis in infectious disease caused by the growing resistance of pathogens to existing antimicrobial agents. Currently, the Microbiology group has an opening for a **SCIENTIST** (Ph.D. with two to four years of postgraduate experience) to develop biological assays using bacteria, fungi, and primary or continuous mammalian cell cultures to evaluate product candidates. Background in infectious diseases, antimicrobial agents, and microbial pathogenicity strongly desired. Experience with animal models is a plus. Please send résumés to: Human Resources (SCI/Micro) IntraBiotics Pharmaceuticals, Inc., 816 Kifer Road, Sunnyvale, CA 94086.

POSTDOCTORAL POSITION available to investigate the transcriptional and posttranscriptional mechanisms by which expression of the gene encoding vascular endothelial growth factor is induced in response to hypoxia during embryonic, myocardial, and tumor vascularization. Cover letter, curriculum vitae, and three reference letters should be sent directly to: Gregg L. Semenza, M.D., Ph.D., Center for Medical Genetics, CMSC-1004, Johns Hopkins University School of Medicine, 600 North Wolfe Street, Baltimore, MD 21287-3914. FAX: 410-955-0484.

POSTDOCTORAL FELLOW Function of Ras and Related GTPases

POSTDOCTORAL POSITION available to study 1) the role of Ras-GRF in calcium induced Ras activation in brain neurons (see *Nature*, 376: 524, 1995) and 2) the role of Ras GTPases as newly identified effectors of Ras (see *EMBO*, 16: 810, 96 and *Nature*, 378: 409, 95). Please send curriculum vitae to: Dr. Larry Feig, Ph.D., Department of Biochemistry, Tufts University School of Medicine, Boston, MA 02111. Email: lfeig@opal.tufts.edu.

CORONARY PHYSIOLOGY POSTDOCTORAL POSITION

If you wish to investigate the control of coronary blood flow by adrenergic and adenosine-mediated mechanisms in whole animal preparations, please write to us. Include a curriculum vitae and list of references who may be contacted. Eric Feigl or Keith Kroll, Department of Physiology and Biophysics, University of Washington, Box 357290, Seattle, WA 98195-7290.

POSTDOCTORAL POSITION available to study pattern formation in *Drosophila* eye. Areas of research also include cell movement, tissue polarity, and degeneration. For more information, contact: Dr. Kwang Choi, M820, Department of Cell Biology, Baylor College of Medicine, 1 Baylor Plaza, Houston, TX 77030. FAX: 713-798-8005; Email: kchoi@bcm.tmc.edu. Send application including curriculum vitae and names of three references. *Baylor is an Equal Opportunity, Affirmative Action, Equal Access Employer.*

EXPLORE SCIENCE WITH CAMBRIDGE

Climate Change 1995— Economic and Social Dimensions of Climate Change

Contribution of Working Group III to the Second Assessment Report of the Intergovernmental Panel on Climate Change

J. Bruce, Hoesung Lee, and E. Haites, Editors

This landmark assessment addresses the response options, applicability of cost-benefit analysis to climate change, and the costs faced by the many countries committed to limit greenhouse gas emissions by 2000.

1996 458 pp.
56854-4 Paperback \$29.95

Climate Change 1995— The Science of Climate Change

Contribution of Working Group I to the Second Assessment Report of the Intergovernmental Panel on Climate Change

John T. Houghton, L.G. Meiro Filho, B.A. Callander, N. Harris, A. Kattenburg, and K. Maskell, Editors

The first full sequel to the original 1990 IPCC scientific assessment brings us completely up-to-date on the full range of scientific aspects of climate change. This assessment forms the standard scientific reference for all concerned with climate change and its consequences.

1996 584 pp.
56436-0 Paperback \$34.95

Climate Change 1995— Impacts, Adaptations and Mitigation of Climate Change:

Scientific-Technical Analyses
Contribution of Working Group II to the Second Assessment Report of the Intergovernmental Panel on Climate Change

R.T. Watson, M.C. Zinyowera, and R.H. Moss, Editors

The influence of climate change on sensitive ecological and socioeconomic systems is expected to be profound. This assessment identifies the most vulnerable systems, and presents adaptation and mitigation strategies for managing them.

1996 888 pp.
56437-9 Paperback \$35.95

Available in bookstores or from

**CAMBRIDGE
UNIVERSITY PRESS**

The Cambridge Illustrated History of Medicine

Roy Porter, Editor

Against the backdrop of an unprecedented concern for health today, *The Cambridge Illustrated History of Medicine* not only surveys the rise of medicine in the West from earliest times to the present day, but also glimpses into the future. It is written by a team of experts coordinated by one of the most distinguished and prolific writers and researchers into the history of medicine, Roy Porter.

Cambridge Illustrated Histories

1996 400 pp.
44211-7 Hardback \$39.95

Evolving the Mind

On the Nature of Matter and the
Origin of Consciousness

A.G. Cairns-Smith

"...an absorbing book... We know a lot about how [the brain] works via molecular biology, but none of that explains our consciousness, our mind. There are, of course, theories—and Cairns-Smith provides one of his own as well as discussing others, in an admirably clear style. It is an enjoyable and rewarding read: throw out a couple of thrillers and take it on holiday."

—New Scientist

1996 237 pp.
40220-4 Hardback \$24.95

Crop Evolution, Adaptation and Yield

L.T. Evans

"...an amazing book.... The author truly breaks new ground and has created a whole new way to look at crop plant evolution and improvement.... both the Cambridge University Press and the author should be congratulated for a brave step forward and beyond the maddening crowd's 'same and safe' writing."

—Garrison Wilkes, Plant Science
Bulletin

1996 512 pp.
29558-0 Paperback \$32.95

Quantum Field Theory

Second Edition

Lewis H. Ryder

"It is very strongly recommended to anyone seeking an elementary introduction to modern approaches to quantum field theory."

—Physics Bulletin

1996 505 pp.
47814-6 Paperback \$39.95

Fair Division

From Cake-Cutting to Dispute
Resolution

**Steven J. Brams and
Alan D. Taylor**

"...explains everything a layperson might need to know about fair division.... Even lawyers should love the book."

—Discover

Fair Division, unlike most research on fairness in the social sciences and mathematics, is devoted solely to the analysis of constructive procedures for actually dividing things up and resolving disputes, including indivisible items or issues, such as the marital property in a divorce or sovereignty in an international dispute.

1996 286 pp.
55390-3 Hardback \$54.95
55644-9 Paperback \$18.95

Great Ape Societies

**William C. McGrew,
Linda F. Marchant, and
Toshisada Nishida, Editors**

In addition to sharing a common ancestor only five million years ago, we share high intelligence, omnivorous diets, prolonged child-rearing and rich social lives with the Great Apes. This study draws on decades of international field work, zoo and laboratory studies for up-to-date syntheses of research.

1996 328 pp.
55536-1 Paperback \$24.95

Evolution and Ecology of Macaque Societies

**John E. Fa and
Donald G. Lindburg, Editors**

In this definitive synthesis, researchers from many parts of the world are brought together to interpret recent findings on many aspects of Macaque ecology, evolution, behavior and conservation.

1996 614 pp.
41680-9 Hardback \$125.00

A Social History of Wet Nursing in America

From Breast to Bottle

Janet Golden

This book examines the intersection of medical science, social theory, and cultural practices as they shaped relations among wet nurses, physicians, and families from the colonial period through the twentieth century.

Cambridge History of Medicine

1996 228 pp.
49544-X Hardback \$54.95

40 West 20th Street, New York, NY 10011-4211 Call toll-free 800-872-7423.
The Edinburgh Building, Shaftesbury Road, Cambridge CB2 2RU, U.K.
Web site: <http://www.cup.org> MasterCard/VISA accepted. Prices subject to change.



Yeast Genetics &

November

14-17, 1996

Mt. Washington Conference Center
Baltimore, Maryland

The timing of this meeting coincides with new opportunities afforded by great progress in exploring the yeast and human genomes; the meeting will take place approximately 6 months after the anticipated public release of the complete sequence of the *S. cerevisiae* genome and completion of the 400,000 human EST target set by the Merck Gene Index Project. The goals of the meeting are to emphasize the great value and potential of combining studies in yeast and mammalian systems to further understanding of genetics and basic cellular processes and to enhance interactions between investigators working with these two systems.

To foster a highly interactive, scientific retreat atmosphere, registration for this conference will be available by accepted abstract and application only. All participants will speak or present a poster as part of the conference program.

Scientific Organizing Committee Co-Chairs:

Philip Hieter,
Johns Hopkins University
David Valle,
Johns Hopkins University

Keynote Speakers

Ira Herskowitz,
University of California at San Francisco
Francis Collins,
National Institutes of Health
David Botstein,
Stanford University

Cell Cycle, Checkpoints, and Cancer

Lee Hartwell,
University of Washington
Tamar Enoch,
Harvard University
Mike Kastan,
Johns Hopkins University
Steve Elledge,
Baylor College of Medicine

Partial list of confirmed speakers and sessions—each session will have eight speakers; approximately half of the talks will be chosen from applicants' abstracts. CME credit available.

Students!

At least thirty scholarships are available for pre- and post-doctoral students. Inquiries should be directed to the ASM Conferences Coordinator.

Chromosome Structure, Genome Stability, and Cancer

Bert Vogelstein,
Johns Hopkins University
Liz Blackburn,
University of California at Berkeley
Tom Petes,
University of North Carolina
Tom Kelly,
Johns Hopkins University

Control of Gene Expression/Signal Transduction

Gerry Fink,
Massachusetts Institute of Technology
Jasper Rine,
University of California at Berkeley
Hal Dietz,
Johns Hopkins University
Richard Klausner,
National Institutes of Health

Inherited and Acquired Disease

Rod Rothstein,
Columbia University
Jef Boeke,
Johns Hopkins University
Bob Nussbaum,
National Institutes of Health
David Cox,
Stanford University

Comparative Genomics and Technology

Stan Fields,
University of Washington
Aya Jakobovits,
Abgenix, Inc.
Mark Boguski,
National Center for Biotechnology Information
Pat Brown,
Stanford University

Cell Biology

Susan Michaelis,
Johns Hopkins University
Art Horwich,
Yale University
Mike Welsh,
University of Iowa
Steve Gould,
Johns Hopkins University

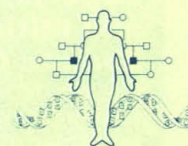
For an application package please contact:

Conferences Coordinator
American Society for Microbiology
1325 Massachusetts Ave., NW
Washington, DC 20005
202.942.9254/telephone
202.942.9340/fax
meetingsinfo@asmusa.org/e-mail
www.asmusa.org/internet

Application deadline: Friday, September 13, 1996

Attendance is limited to 200. Meals will be included to encourage informal interaction.

Human Disease



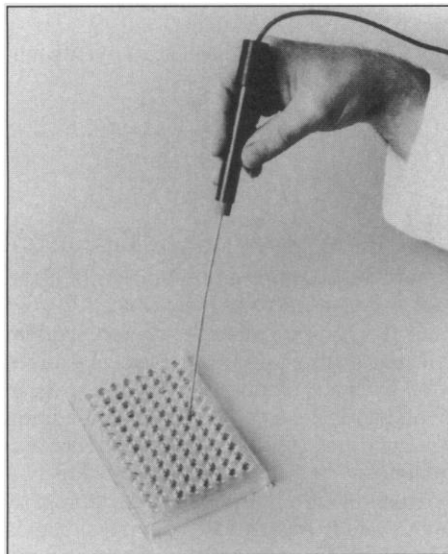
a conference
of the American
Society for
Microbiology
(ASM)

in collaboration with
the Johns Hopkins
University

PRODUCTS & MATERIALS

Micro pH Electrode

The PHR-146 Micro pH Electrode measures samples as small as 10 μ l. The probe is especially suited for biological assays in containers such as microtiter plates, culture tubes, cuvettes, micro test tubes, serum cups, and



nuclear magnetic resonance tubes. It offers high stability, rapid response time, and extended shelf life. The flat sensor tip makes it usable for surface measurements on filter paper and electrophoretic agar surface gels. **Lazar Research Laboratories.** Circle 138.

Oligonucleotide Labels

Biotin CX Phosphoramidite and Fluorescein CX Phosphoramidite allow for easy and efficient synthesis of biotin- and fluorescein-labeled oligonucleotides. These products contain a spacer arm that includes a cyclohexane ring to improve the rigidity of the molecule, thus preventing steric hindrance of the label with the oligonucleotide chain. The result is increased hybridization efficiency over previous biotin phosphoramidites, with typical values of increased signal strength of five to six times, according to the manufacturer. The new phosphoramidites also provide exceptionally high coupling efficiency (>98%) for multiple additions and for maximal yield of the labeled oligonucleotide. The new reagents are suitable for use in DNA probe synthesis, nonradioactive

analysis, and primer extension protocols such as polymerase chain reaction and DNA sequencing. **BioGenex.** Circle 139.

Mass Spectrometer

The Q-TOF is a hybrid mass spectrometer system combining the simplicity of a quadrupole with the product ion sampling efficiency of an orthogonal time-of-flight (TOF) mass analyzer, resulting in subfemtomole sensitivity for the automated acquisition of full scan product ion mass spectra. Unlike scanning instruments in which each mass in the spectrum is transmitted sequentially, the number of ions transmitted to the detector in a TOF instrument is typically 100 to 1000 times that for a scanning instrument when acquiring over the same mass range for the same time. Furthermore, detection levels are signifi-

cantly improved for applications such as electrospray mass spectroscopy, where chemical noise is usually low. **Micromass.** Circle 140.

Stereo-Fluorescence System

The Stereo-Fluorescence System consists of the Leica MZ12 Stereomicroscope with 12.5:1 zoom with fluorescence module. The stereoscope combined with the fluorescence module allows unprepared fluorescing specimens to be inspected, manipulated, sorted, and recorded. The intense light produced by the mercury vapor lamp, together with a filter set developed specifically for green-fluorescent protein, enables the user to differentiate even the finest structures, such as individual nerve cells. This protein makes it possible to study the migration of certain cells in living organisms in vivo and to carry out investigations in real time. **Leica.** Circle 141.

In Situ Hybridization Covers

HybriSlips covers for in situ hybridization do not trap or bind probes, and allow uniform distribution of probe reagent. HybriSlips remain flat and do not curl at high tempera-

PFANSTIEHL

The tools you need
for oligosaccharide synthesis.

Our selectively blocked sugars can give you a head start on oligosaccharide synthesis. We offer a wide range of these key intermediates including thioglycosides, per-benzylated and acylated mono- & disaccharides, glycals, lactones, acetonide and benzylidene derivatives. If you have a specific compound you need to get started contact us today. Request information.

PFANSTIEHL LABORATORIES, INC.
The source for carbohydrate chemistry

1219 Glen Rock Avenue / Waukegan, IL 60085-0439
847/623-0370 • Toll Free: 1-800/383-0126 • FAX: 847/623-9173

International: Pfanstiehl (Europe) Ltd.
+44 (0) 1606.331825 • FAX: +44 (0) 1606.331826

<http://www.pfanstiehl.com> e-mail: info@pfanstiehl.com



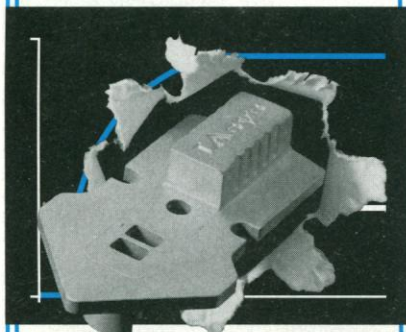
P9

MAKING THINGS WORK

IASys

real-time biomolecular
interaction analysis

Breakthrough in performance and flexibility



Cuvette technology has made IAsys optical biosensors the only fast and flexible option.

Choose hands-on productivity with the interactive IAsys cuvette system, or the dramatic performance of IAsys Auto+.

**UNIQUE: automation
with real-time kinetics
data analysis**

Intelligent IAsys Auto+ software with if/then programming allows automated data interrogation and analysis, ensuring every assay counts.

**IAsys optical biosensors.
Imagine the possibilities.**

**Affinity
SENSORS**

INTERNATIONAL:

Tel: +44 1954 789976

Fax: +44 1954 789417

USA:

Tel: (800) 631 1369

Fax: (201) 265 1977

A subsidiary of Thermo Instrument Systems Inc.,
a Thermo Electron company.

tures. Working surfaces are protected with a polyethylene film liner that prevents RNase contamination. The cover slips prevent evaporation and increase reliability and efficiency of the assays. **Research Products International.** Circle 142.

Conductivity Detector

The Alltech 550 Conductivity Detector provides sensitive detection of all ionic species in both suppressor-based and single-column ion chromatography mode. The active temperature-controlled cell reduces thermal noise and drift for exceptional baseline stability. **Alltech Associates.** Circle 143.

Chemiluminescent Detection Film

BioMax Light film for chemiluminescent detection is a double-emulsion film coated on a clear base to provide maximum clarity and sensitivity. It is suitable for manual and automated processing. **Scientific Imaging Systems, Eastman Kodak.** Circle 144.

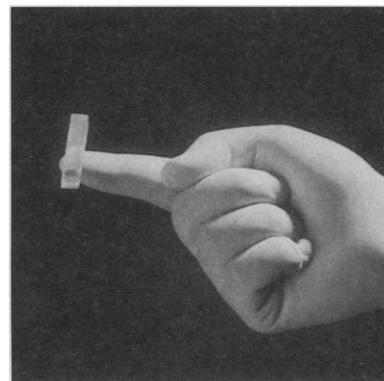
Affinity Media

STREAMLINE rProtein A and rProtein A Sepharose Fast Flow are two new affinity media for large-scale purification of monoclonal antibodies in expanded-bed adsorption and traditional packed-bed chromatography. The highly purified recombinant protein A has been engineered to include a COOH-terminal cysteine that favors oriented thioether coupling, resulting in improved dynamic binding capacity and low ligand leakage. STREAMLINE rProtein A offers the possibility to capture monoclonal antibodies directly from cell culture broth. **Pharmacia Biotech.** Circle 145.

Uni-Lane Gel System

Uni-Lane gels are precast agarose gels in a single lane-by-lane format. This allows one or more lanes to be used as needed for testing plasmid preps, restriction enzyme digestions, polymerase chain reaction products, RNA integrity, or any other samples needing to be fractionated by agarose gel electrophoresis. The user simply slides one gel lane per sample or marker into any horizontal electrophoresis tank, loads the wells, and starts the power supply. The gels are available in 45-mm, 90-

mm, and custom lengths. The gels are manufactured with GT agarose, the highest bio-



technology grade available, and are free of DNase, RNase, and protease. **Geno Technology.** Circle 146.

Literature

The Merck Index, 12th Edition, gives scientists access to information on tens of thousands of chemicals and biochemicals. It contains 10,330 monographs describing important chemicals, drugs, and biological substances. More than half of the monographs have been significantly revised since the last edition was published. The 2600-page reference also includes indices to more than 60,000 synonyms, organic name reactions, company names, addresses, and trademarks. **Sigma Chemical.** Circle 147.

Sealpette Pipettors describes a new line of adjustable and fixed volume pipettes. The line features a large digital display, an ergonomic grip, smooth plunger action, and a high degree of accuracy. **Jencons Scientific.** Circle 148.

Bellco Glass Mini Catalog contains 66 pages covering an extensive range of laboratory equipment and glassware for biotechnology and general lab applications. It features disposable pipettes, shakers, rockers, roller apparatus, large-scale cell culture systems, and total control systems. **Bellco Glass.** Circle 149.

Scientific, Engineering and Technical Software includes more than 2000 software products and books. Subject areas covered include quality control, lab management, graphics, data analysis, chemistry, biology, medicine, physics, mathematics, statistics, and mechanical and electrical engineering. **Scientific Instrument Services.** Circle 150.

Newly offered instrumentation, apparatus, and laboratory materials of interest to researchers in all disciplines in academic, industrial, and government organizations are featured in this space. Emphasis is given to purpose, chief characteristics, and availability of products and materials. Endorsement by *Science* or AAAS is not implied. Additional information may be obtained from the manufacturers or suppliers named by circling the appropriate number on the Readers' Service Card and placing it in a mailbox. Postage is free.

Mitotix is a biotechnology company developing cell-cycle based biotherapeutics for cancer, cardiovascular and infectious diseases.

SCIENTIST HIGH-THROUGHPUT SCREENING

Our screening group is seeking a highly motivated individual to design, develop and supervise the operation of high-throughput compound screens. Previous experience with the development and operation of screens using laboratory workstations and/or robotic systems is essential. Must have working knowledge of screening databases. Supervisory experience is desirable.

Either a Ph.D. or MS degree with a minimum of 2 years' work experience in a pharmaceutical or biotechnology company is required.

Mitotix offers competitive salaries, benefits and a chance to work in an exciting scientific environment. Please send resume, indicating **Job Code CS95** and names and addresses of three references to: **Human Resources, Mitotix, Inc., One Kendall Sq., Bldg. 600, Cambridge, MA 02139.** No telephone calls please.



National Institute on Alcohol Abuse and Alcoholism (NIAAA)

National Institutes of Health (NIH)
Bethesda, MD

Position available for a Board Certified or eligible psychiatrist or neurologist with training in brain imaging to develop an independent research program on alcoholism and antisocial behavior. The program will focus primarily on functional imaging (PET, SPECT, and MRI) and complement ongoing behavioral, molecular genetic, and neuroendocrine studies on alcoholism and on individuals at high risk of developing alcoholism. Individuals with research interests in ligand development, receptor regulation, and receptor polymorphisms should apply. The incumbent is expected to develop an independent research program on CNS receptor and metabolic regulation in humans and nonhuman primates. A two-page statement of research interests and goals should be submitted with three letters of recommendation. *U.S. citizenship or permanent residency required.* **Laboratory of Clinical Studies, NIAAA, c/o Ms. Kathleen Hanratty, Building 31, Room 1B58, 31 Center Drive, MSC 2088, Bethesda, MD 20892-2088.**

Deadline for receipt of applications:
August 31, 1996

NIH is an Equal Opportunity Employer

Roche

DIRECTOR, ANIMAL SCIENCE RESEARCH

At Roche Vitamins and Fine Chemicals, our scientific expertise and innovative approach to research has made us a leader in developing Animal Health products. Right now, our Animal Science Research team is looking for an experienced scientist and manager to provide leadership in identifying, evaluating, and selecting potential new chemical entities for the Medicated Feed Additive business.

As you direct research, you will work with team members from Marketing, Clinical, Regulatory, and Technical Operations to ensure that new chemical entities achieve timely global regulatory approvals. You will also support efforts to build the value of current products and act as a key member of the global and North American R&D teams in creating and implementing R&D strategies. Other duties include developing proper study protocols and conducting periodic evaluations of ongoing research activities.

To succeed as Director, you must have effective contacts with academic and industrial leaders in the relevant sciences, as well as in-depth knowledge of competitive products and the ability to assess their impact on Roche research. Qualifications also include a DVM or PhD in Animal Nutrition, Biochemistry, Veterinary Medicine, or a related animal science field. Ten years' documented experience in developing animal drugs is required, including 5 years in leadership positions. A background in obtaining global regulatory approvals for animal drugs is desired. Strong oral, written, and interpersonal communication skills are vital.

We offer a competitive salary and benefits. Send your resume and salary requirements to: **Human Resources Department 96031, Roche Vitamins and Fine Chemicals, 45 Eisenhower Drive, Paramus, New Jersey 07652.** We are an equal opportunity employer

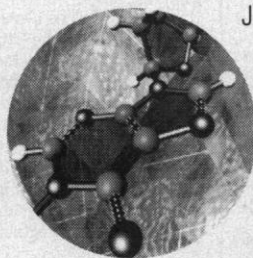
Roche

Roche Vitamins & Fine Chemicals

A Member of the Roche Group



Bristol-Myers Squibb Company



Join the Oncology Drug Discovery Division of Bristol-Myers Squibb Pharmaceutical Research Institute, the R&D division of Bristol-Myers Squibb, a worldwide leader in the discovery and development of innovative pharmaceuticals.

Oncology Drug Discovery *Head of Transgenic Unit*

This is your opportunity to manage a well-established Transgenic Unit that, over the last five years, has generated a large number of transgenic lines as well as over twenty five different strains of "knock out" and "knock in" mice in the areas of transcription factors (FosB, NF-kB), signaling molecules (Erp, Vav), tyrosine kinase receptors (Trk) and growth factors (GDNF).

You will work in close collaboration with other Departments in the Division and develop an aggressive research program to generate novel animal model systems (e.g., inducible/conditional "knock outs") that will be of direct value to ongoing and future exploratory and drug discovery programs in the field of oncogenes, tumor suppressor genes and signal transduction molecules.

In addition to a Ph.D. or M.D., the ideal candidate will have extensive experience in the generation of transgenic and "knock out" mice as well as experience in the field of mouse molecular genetics that includes innovative contributions to the development of transgenic mouse models of human disease, with particular emphasis on cancer.

We offer competitive salaries and benefits programs, a highly collaborative environment and a strong commitment to scientific integrity.

Please forward/fax your resume to: **Bristol-Myers Squibb Pharmaceutical Research Institute, Human Resources Dept. BM-S-321, P.O. Box 11279, Trenton, NJ 08620-0279.** FAX: 609-581-8841.

Equal Opportunity Employer

Product & Support Manager Image Analysis Microscopy

Kontron Elektronik Corporation, a subsidiary of BMW AG, is offering two positions for experienced Product Support Managers for Kontron's Image Analysis Systems. In cooperation with KONTRON in Germany, you will be responsible for sales activities, including the support of an established sales rep network, product presentations, customer applications support, and training.

Successful candidates will possess a bachelors degree, 2+ years experience in the described field, detailed knowledge of light microscopy and/or laser scan microscopy, computers and Windows applications (Excel, Access).

One position will be located in our North American office in Newport Beach, California, the other in the east coast area.

Please send your resume with salary requirements to:
(No phone calls please)

Personnel Manager
Kontron Elektronik Corporation
4440 Von Karman Avenue
Newport Beach, CA 92660
<http://www.kontron.com>
e-mail: glammers@kontron.com



KONTRON ELEKTRONIK

HARVARD SCHOOL OF PUBLIC HEALTH

The Environmental Science and Engineering (ES&E) Program in the Department of Environmental Health is seeking three Assistant/Associate Professors. The Program offers advanced degrees in environmental health sciences, environmental health management, and industrial hygiene. We especially welcome applications from women and minorities. Candidates must have post-doctoral experience related to the position.

Assistant/Associate Professor of Environmental Chemistry and Exposure Assessment

The successful candidate will teach and conduct multidisciplinary research in occupational and environmental exposure assessment. Candidates with research interests in multimedia exposures, development of exposure biomarkers, and study design are particularly encouraged to apply.

Assistant/Associate Professor of Aquatic Chemistry

The successful candidate will teach and establish research complementing the department's existing program in water and health. Applicants are expected to have an understanding of the physio-chemical interactions of toxic metals and other pollutants in water, and the ability to apply this understanding to ecosystem health. Teaching responsibilities include a course in aquatic chemistry as it relates to environmental health.

Assistant/Associate Professor of Environmental Health Management

The successful candidate must have research experience in multimedia exposure and risk modeling, as well as a strong background in physics, chemistry, and statistics with applications to environmental exposure, health and risk research. Teaching and research interests will include international environmental health issues.

Applicants should specify the position for which they are applying, and send a resume and the names of three references to:

Joseph J. Harrington, Ph.D., Chair, Search Committee
Environmental Science and Engineering Program
Harvard School of Public Health
665 Huntington Avenue
Boston, MA 02115
email: harringt@husc3.harvard.edu

BIOCHEMISTRY



B I O C I R C U I T S
corporation

ASSAY DEVELOPMENT OPPORTUNITIES

Biocircuits Corporation, a 7-year-old, publicly held company, is developing a new generation of immunodiagnostic testing systems targeting the physician office market. The Biocircuits system features a low-cost analyzer and disposable cartridge that combines all reagents in a dry chemistry format.

We have an immediate opening for an experienced Research Chemist to formulate and optimize reagents in formats suitable for automation. In this position, you will be responsible for all aspects of product development, including protein characterizations and purification, conjugate synthesis and evaluation, assay optimization, performance of stability studies, and the completion of clinical validation and process optimization.

Qualified candidates will have a B.S./M.S. in biochemistry or a related discipline, with 3 or more years of experience in immunoassay development. Working knowledge of conjugation methods, monoclonal antibodies, and protein purification techniques is required. GMP knowledge and experience in the development of microtiter assays plus experience in the operation of lab instrumentation is necessary.

To apply, mail or fax resume to:

Biocircuits Corporation
1324 Chesapeake Terrace
Sunnyvale, CA 94089
Fax: (408) 752-8795

CHEMISTRY



University of Illinois at Urbana-Champaign

Faculty Position (Open Rank)
Department of Biochemistry

The Department of Biochemistry, within the School of Chemical Sciences at the University of Illinois at Urbana-Champaign, is seeking applicants for a faculty position which will carry a full-time, tenure-track appointment. The position is open to rank and will commence on August 21, 1997.

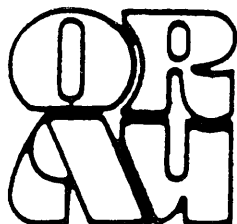
Outstanding candidates whose expertise is in the use of NMR spectroscopy to study the structures and properties of proteins, nucleic acids, and/or carbohydrates will receive full consideration. Examples of research areas of interest are structural and dynamic properties of membrane proteins, protein-protein interactions such as those involved in signal transduction, time-resolved dynamics of enzymes, and both protein-DNA and protein-carbohydrate interactions.

The School of Chemical Sciences, through partial support from the Keck Foundation, has created a Center for Complex Structures with multiple NMR instruments, including wide-bore magnets, operating at 750 MHz, 600 MHz, 500 MHz, and 400 MHz. The successful candidate must have demonstrated excellence in research as well as the ability to participate effectively in both the undergraduate and graduate teaching programs of the Department. The rank and starting salary is dependent upon the experience and qualifications of the candidate. A doctoral degree and postdoctoral experience in NMR spectroscopy is required.

To ensure full consideration, submit a letter of application, a curriculum vitae, with a list of publications and a brief description of future research plans, and arrange to have letters of recommendation from three qualified scientists sent to the Search Committee by October 15, 1996. Applications and requests for further information should be directed to:

The Biochemistry Search Committee
Department of Biochemistry
University of Illinois at Urbana-Champaign
600 South Mathews Avenue
Urbana, IL 61801
Phone (217) 333-4889

The University of Illinois is an Affirmative Action - Equal Opportunity Employer.



Oak Ridge Associated Universities
PRESIDENT AND CHIEF
EXECUTIVE OFFICER

The Board of Directors of Oak Ridge Associated Universities (ORAU) invites nominations and applications for the position of President and Chief Executive Officer. ORAU is a not-for-profit [501 (c) 3] corporation; a multi-university consortium; and a U.S. Department of Energy (DOE) management and operating contractor located in Oak Ridge, Tenn. ORAU serves government, academia, and the private sector in science and technology. ORAU conducts programs with and for its sponsoring institutions and manages the Oak Ridge Institute for Science and Education (ORISE) for DOE. ORISE undertakes national and international programs in education, training, environmental and health sciences, and technical analyses and assessments.

Responsibilities of the President and CEO include: Directing all programs, facilities and personnel of the corporation; exercising strong leadership and direction in pursuing new initiatives and expanding in new directions; exercising overall accountability for successful cooperative and collaborative activities and relationships with and among sponsoring institutions; representing ORAU to DOE, federal agencies, industry, foundations, universities, and other organizations (including non-U.S. entities, when appropriate); and directing the strategic planning enterprises of the corporation.

The successful candidate will have an appropriate combination of the following qualifications: Doctorate in science, engineering, medicine or related field; experience as a faculty member and/or familiarity with university administration; experience in research or research planning and administration; experience with government agencies, including funding procedures and proposal preparation; extensive successful management and business experience, including personnel, fiscal, and program responsibilities; working familiarity with private foundations and other 501 (c) 3 organizations; and a proven record of strong leadership. All candidates must be a U.S. citizen and have exceptional oral/written communications and interpersonal skills.

The position is currently available. The Search Committee will accept applications until the position is filled and will begin reviewing applications September 30, 1996. Salary will be commensurate with education and experience. Starting date is negotiable. Applications should include a letter stating an interest in the position, a complete resume, and names and addresses of at least three references. Nomination letters should include the complete name, title, and address of the nominee. Applications will be confidential.

Send applications and nominations to:
Anthony K. Hyder, Chair, ORAU Search Committee
Center for Continuing Education, University of Notre Dame
P.O. Box 1008, Notre Dame, IN 46556-1008.

ORAU is an Equal Employment Opportunity/Affirmative Action Employer.

New Approaches to **Crop Protection**

DuPont Central Research and Development is seeking highly motivated Scientists for these immediate openings:

Agricultural Biokinetics- Principle Investigator

You will be part of a program aimed at applying the principles of xenobiotic transport and accumulation to the design of novel crop protection chemicals.

The successful applicant will study the biological factors that control the uptake and translocation of xenobiotics in plants. The ideal person will be an analytical biochemist/plant physiologist possessing a strong molecular background, and be capable of working and communicating effectively with a multidisciplinary team of biochemists, chemists, biologists and modelers from Central Research and Development and DuPont Agricultural Products.

Requirements for this position include a Ph.D and at least two years of postdoctoral research experience, with demonstrated accomplishment in metabolite or xenobiotic movement on the cellular or organismal level. Experience with LC/MS, microsampling techniques, or computer modeling is highly desirable.
code:PSS-0127

Protein Crystallography- Visiting Research Scientist

We are looking for a scientist to join our protein crystallography group. You will be part of a team using structure-based inhibitor design for the discovery of new herbicides, fungicides, and insecticides. You should have a Ph.D. and experience at protein crystallization and data collection and analysis. Our facilities include the latest in computers and detectors, as well as access to synchrotron facilities.
code:PSS-0129

Photosynthesis- Visiting Research Scientist

A position is available for the study of electron transport processes in Photosystem II of oxygenic photosynthesis. This program is focused on the manganese cluster and the redox active tyrosine implicated in water oxidation, and on the reaction center chlorophylls implicated in primary and secondary electron transfer. The successful candidate will have a Ph.D. in a chemical or biological science. Experience in the area of photosynthesis and in optical and magnetic resonance spectroscopies and biochemical and microbiological techniques would be an advantage.
code:PSS-0130

We offer a highly stimulating environment and excellent company benefits. Please forward your resume indicating position of interest and code # to: DuPont Human Resources, Attn: PSS-code, Wilmington, DE 19898. OR Fax: 800-631-2206. Attn: PSS-code. We are an equal opportunity employer.



**DuPont Central Research
and Development**

Senior Medical Writer

The R.W. Johnson Pharmaceutical Research Institute (RWJPRI) is a first-class world-wide research and development organization within Johnson & Johnson, the world's largest and most comprehensive provider of health care products. RWJPRI performs R&D activities for the Johnson & Johnson companies...Cilag, Ortho-McNeil Pharmaceutical, Ortho Biotech and Ortho Dermatological.

Expanding programs in several therapeutic areas have created a significant career opportunity for a Senior Medical Writer with good written and oral communication skills, and demonstrated ability to handle diverse, multiple assignments simultaneously.

To qualify, you must have a Ph.D. or equivalent in the Biological Sciences with extensive publications, or an MS degree with at least five years of pharmaceutical research experience in clinical research or regulatory affairs, including extensive preparation and review of clinical documents for regulatory submission. You will be responsible for preparing investigational drug brochures, reports summarizing clinical trial results, and other summary documents for NDAs/product license applications/international registrations.

We offer a competitive salary and comprehensive benefits, including medical/dental insurance, 401(k) plan and our LIVE FOR LIFE Wellness Program with on-site fitness center at our campus-like facility in central New Jersey. Please forward a copy of your resume, including salary requirements, suitable for scanning into our database (i.e., clean/clear, no graphics, and preferably unfolded) to: Dept. 775, Johnson & Johnson Recruiting, P.O. Box 16597, New Brunswick, NJ 08906-6597.

We are an equal opportunity employer and support diversity in the workplace.



**THE R.W. JOHNSON
PHARMACEUTICAL RESEARCH INSTITUTE**
a Johnson & Johnson company

CHEMISTRY

SR. CHEMIST

Medical Analysis Systems has excellent opportunities available in our **Research, Development and Pre-Production Departments** at our Camarillo facility, located in beautiful Ventura County, CA.

Requires B.S., M.S. or Ph.D. in Chemistry, Biochemistry or a related field, familiarity with automated clinical analyzers and 2+ years of industry experience in clinical chemistry, preferably in-vitro diagnostics. Also requires a working knowledge of Windows-based spreadsheets and word processing programs, excellent math, reasoning, verbal/written communication skills, and ability to function in a team environment.

Outstanding salary and benefits. Please send your resume and salary history to:

MEDICAL ANALYSIS SYSTEMS, INC.

**542 Flynn Road
Camarillo, CA 93012
Attn: Human Resources**

Equal Opportunity Employer M/F/D/V

Chair, Department of Integrative Biology, Pharmacology and Physiology

The University of Texas-Houston Medical School in Houston, Texas is seeking a Chairperson for a newly merged Department of Integrative Biology, Pharmacology and Physiology. The candidate must have a Ph.D., M.D., or comparable doctoral degree. He/she should be an internationally recognized research scientist who has an established commitment to biomedical education. The individual should have the administrative, communication, and interpersonal skills with which to lead this academic department where education of medical and graduate students and the conduct of dynamic research programs are primary activities. The department currently has well-established research programs and an active graduate training program centering on gastrointestinal physiology, signal transduction, cell biology, hormone action, and membrane, muscle, and neural physiology.

Resources will be provided for continued departmental growth and development. Excellent opportunities exist for interactions with various components of The University of Texas-Houston Health Science Center as well as with the other institutions in the Texas Medical Center and southeast Texas. For information about the department, see <http://farrm4.med.uth.tmc.edu> and <http://dib.med.uth.tmc.edu>.

Interested applicants should send a copy of their curriculum vitae to **Barbara Sanborn, Ph.D., Chair, Integrative Biology, Pharmacology and Physiology Search Committee, 6431 Fannin, c/o Dean's Office, MSG G.010, Houston, Texas 77030**. Although nominations and applications will be accepted until the position is filled, those submitted by November 1, 1996, are best assured of receiving full consideration. *The University of Texas is an Equal Opportunity/Affirmative Action Employer. Women and minorities are encouraged to apply.*

DISCOVER SUGEN:

A LEADER IN SIGNAL TRANSDUCTION RESEARCH

SUGEN, Inc., a growing and dynamic biopharmaceutical company, is seeking Scientists/Group Leaders to join us in the San Francisco Bay Area.

Scientist/Group Leader Screening Operations

We seek a PhD in Biological/Chemical Science to manage our screening operations, including overseeing a staff of 5-7 individuals, presenting data at project meetings, interfacing with internal groups, managing corporate alliances, maintaining and expanding compound collections, and ensuring the optimization of screening assays. The successful candidate will need 2-4 years' experience in the pharmaceutical or biotechnology industry with a proven record in the management of a small screening group. Excellent computer and database management skills plus a strong familiarity with high-throughput screening operations are required. Dept. JM/SCI

Scientist/Group Leader Immunology

You will be an integral part of a highly motivated research program. As the successful candidate, you must possess at least 3 years of postdoctoral experience in Immunology with a strong background in Molecular Biology and/or Biochemistry. Preference will be given to those with experience in signal transduction pathways mediating immune responses. Dept. IM/SCI

We offer competitive salaries and benefits, including stock options. Please send resume, referencing appropriate Dept., to: SUGEN, Inc., Human Resources, 515 Galveston Drive, Redwood City, CA 94063. Equal Opportunity Employer.

SUGEN, Inc.

**NIH Postdoctoral Position—AIDS Research
HIV Env/CD4 Interactions, Fusion Cofactors, Tropism**

Projects: 1) Identification of cofactors on CD4+ cells required for HIV fusion and entry [*Virology* (1993) **193**:483; *Science* (1994) **264**:1156]; role of fusion cofactors in tropism of HIV and SIV for different CD4-positive cell types [*PNAS* (1995) **92**:9004; *J. Virol.* (1996) **70**:5487]. These studies make use of a novel reporter gene assay for fusion [*J. Virol.* (1994) **68**:5411]. We recently cloned a cDNA encoding a putative chemokine receptor that functions as a fusion cofactor for T-cell line-tropic HIV-1 strains [*Science* (1996) **272**:872]; we also identified a distinct chemokine receptor as a fusion cofactor for macrophage-tropic strains [*Science* (1996) **272**:1955]. 2) Structure/function analysis of env/CD4/cofactor interactions and CD4-induced conformational changes [*J. Virol.* (1993) **67**:913]. 3) Analysis of role of fusion cofactors in pathogenesis and transmission. 4) Design of novel AIDS therapeutics and screening methods based on env/CD4/cofactor interactions. 5) Paramyxovirus glycoprotein/receptor interactions and fusion mechanisms [*J. Virol.* (1995) **69**:3341].

Experimental approaches include expression of recombinant proteins (emphasis on vaccinia virus vectors); biochemical, genetic, and immunochemical analyses of fusion reactions; development of novel functional cDNA library screening methods.

Position available immediately (August 1996); later starting dates considered. Experience in molecular biology, protein chemistry, immunology, membrane biochemistry, or virology strongly preferred. Send CV and names of three references to:

Edward A. Berger, Ph.D.

**Chief, Molecular Structure Section
Laboratory of Viral Diseases, NIAID**

**Bldg. 4, Rm. 236
National Institutes of Health
Bethesda, MD 20892**

Phone: (301) 402-2481, FAX: (301) 480-1147

email: edward_berger@nih.gov

NIH is an Equal Opportunity Employer.

BIOCHEMISTRY

TENURE-TRACK STAFF POSITION

The Laboratory of Biochemistry, Division of Basic Sciences, National Cancer Institute, National Institutes of Health, Bethesda, MD, invites applications for a tenure-track staff position. Applicants should have a Ph.D. or M.D. degree, a strong record of scientific accomplishments, and the ability to establish an independent research program in protein chemistry. Research interests of the Laboratory of Biochemistry currently include many of the major fields of modern biology. Applicants with a strong background in biophysical chemistry and an interest in interdisciplinary approaches are of special interest. Salary will be commensurate with education and experience with a range between \$45,000 and \$65,000. Applicants should send a curriculum vitae, outline of a proposed research program, and three letters of recommendation to: **Dr. Howard Nash, Chairman, Search Committee, Attn: Ms. Beverly Miller, National Cancer Institute, Bldg. 37, Room 4E-28, National Institutes of Health, 37 Convent Drive, MSC 4255, Bethesda, MD 20892-4255, (301) 496-5957.** Applications must be received by October 31, 1996. *The National Cancer Institute is an Equal Opportunity Employer. Selection for this position will be based solely on merit, with no discrimination for non-merit reasons.*

BIOCHEMISTRY

**R&D
OPPORTUNITIES**

Prizm Pharmaceuticals, Inc. is a biotechnology company which applies its expertise in growth factor biology to develop therapeutic products that regulate cell growth. We are located in San Diego, an expanding center for biotech research. We seek the following professionals:

MANAGER, FORMULATION

This individual will evaluate/develop vehicles and delivery systems for recombinant proteins for use in pre-clinical and clinical studies. Requires PhD in pharmaceutical chemistry or related discipline and 5+ years' experience formulating and testing protein based dosage forms, including strong hands-on experience with relevant biochemical assays and broad knowledge of protein aggregation and degradation. Working knowledge of cGMPs, lyophilization and various sterilization techniques is desirable. Code: MF

**SCIENTIST, ANALYTICAL
METHODS DEVELOPMENT**

This individual will develop analytical methods for biochemical characterization of recombinant proteins of potential clinical relevance including methods for in-process and final product release and stability testing. Requires PhD in Biochemistry and 3+ years' relevant experience in protein chemistry including strong hands-on experience in analysis of recombinant proteins by gel electrophoresis, HPLC, peptide mapping, disulfide bond assignment and secondary structure analyses. Code: AMD

**SCIENTIST, CARDIOVASCULAR
PHARMACOLOGY**

This individual will develop/perform studies to assess efficacy of novel therapeutics in cardiovascular disease models (restenosis, inflammation, atherosclerosis); and provide expert knowledge of *in vivo* models used in the areas of growth factors, immunopathology, vascular and cell biology. Requires MD or PhD in Pharmacology or related discipline and 5+ years' experience including experience in animal physiology/*in vivo* model development. Code: CP

Prizm Pharmaceuticals, Inc. offers excellent compensation and benefits. Please submit your c.v. to: **Prizm Pharmaceuticals, Inc., Human Resources, Attn: SCI, Code (see above), 11035 Roselle Street, San Diego, CA 92121; fax 619/625-0050. EOE.**



**P R I Z M
PHARMACEUTICALS**

POSITIONS OPEN

PRINCIPAL SCIENTIST MOLECULAR BIOLOGY

The Department of Surgery, Cedars-Sinai Medical Center, affiliated with UCLA School of Medicine in Los Angeles, California, welcomes applications for a **SENIOR RESEARCH SCIENTIST**. The position is available immediately to a qualified molecular geneticist/biologist for research focused on molecular neurobiology, CNS degenerative diseases, injury, regeneration, and transplantation of genetically engineered cells. The candidate is required to have a Ph.D. and/or M.D. degree and should have evidence of excellent productivity in research with publications in peer-reviewed journals and active independent funding. A fully equipped laboratory with personnel, start-up funds, and some ongoing support will be provided. Salary and benefits package are competitive nationally. Curriculum vitae, list of publications, selected reprints, and three letters of reference should be addressed to: **Rebecca Chandler, Academic Personnel, Cedars-Sinai Medical Center, 8700 Beverly Boulevard, Los Angeles, CA 90048.**

CAL POLY FOUNDATION

PRINCIPAL RESEARCH ASSOCIATE, Biological Sciences: (\$2,858 to \$3,715 per month). Assist with the kit fox conservation program at Camp Roberts National Guard Training Site outside of Paso Robles, California. Requires: M.S. or Ph.D. in zoology, biology, or wildlife biology or related field with research experience or B.S. with five or more years of appropriate experience. Experience preferred in carnivore surveys, especially kit fox; small mammal trapping, especially foxes; experience operating four-wheel drive vehicles; carnivore and small mammal trapping; collecting, analyzing, and reporting data; supervision of technicians; creating and maintaining computer data base. Must have the ability to obtain federal permits necessary to handle endangered species; the ability to hold a California Driver's License and an insurance record acceptable to our insurance underwriters; and the ability to drive and walk through rough terrain and to work under strenuous conditions. The Foundation offers generous benefits. Applications must be received by 5 p.m. on August 9, 1996. For application contact: **Foundation Human Resources, California Polytechnic State University, San Luis Obispo, CA 93407. Telephone: 805-756-7107. Affirmative Action/Equal Employment Opportunity.**

POSTDOCTORAL POSITIONS to study biochemistry and endocrine regulation of sex pheromones in insects. Experience in biochemistry or molecular techniques essential. Experience with insects or lipids helpful. Two full-time positions and one quarter-time position available. Send curriculum vitae, statement of research experience/goals, and three reference letters to: **Gary Blomquist, Biochemistry/330, University of Nevada, Reno, NV 89557. Telephone: 702-784-4104; Email: blomquist@fs.scs.unr.edu. Review begins September 1, 1996. Affirmative Action/Equal Opportunity Employer.**

A POSTDOCTORAL POSITION is available immediately to study the mechanisms of peroxisomal assembly. The import of matrix proteins, assembly of membrane proteins, and peroxisomal proliferation are areas currently under study, mostly in yeast. A background in yeast cell or molecular biology will be helpful. Send curriculum vitae and list of references to: **Dr. Joel Goodman, The University of Texas Southwestern Medical Center at Dallas, TX 75235-9041. FAX: 214-648-2994; Email: goodman02@utsw.swmed.edu. Equal Opportunity Employer.**

POSTDOCTORAL POSITION To Study Telomere Structure and Function

Position available immediately in telomere biochemistry lab. Ongoing projects include studies of telomere-binding proteins, telomerase, telomere replication, and *de novo* telomere synthesis. Experience in molecular biology, protein biochemistry, or enzymology required. Send curriculum vitae and description of research experience, and arrange to have three reference letters sent to: **Dr. Carolyn Price, Department of Chemistry, 610 Hamilton Hall, University of Nebraska, Lincoln, NE 68588. FAX: 402-472-9402. http://wwitch.unl.edu/price/price.html.**

POSITIONS OPEN

POSTDOCTORAL POSITIONS Washington University, St. Louis

TWO POSTDOCTORAL positions available for studies of DNA motor proteins (helicases) involved in DNA repair and SSB protein-DNA interactions using biochemical and biophysical approaches. Particular emphasis is on mechanistic studies using transient kinetic methods (fluorescence, stopped-flow, quenched-flow). Send curriculum vitae and have three letters of reference sent to: **Prof. Timothy M. Lohman, Biochemistry and Molecular Biophysics, Box 8231, Washington University School of Medicine, 660 South Euclid Avenue, St. Louis, MO 63110.**

POSTDOCTORAL POSITIONS Signal Transduction in Lymphoid Cells

Several positions available immediately to study 1) the function of 14-3-3 in Raf activation, 2) the role of the cytoskeleton in T cell activation, and 3) the regulation of RNA metabolism by signal transduction. Experience in molecular biology, protein biochemistry, or enzymology required. Send curriculum vitae, description of research experience, and three reference letters to: **Dr. Andrey S. Shaw, Center for Immunology and Department of Pathology, Box 8118, 660 South Euclid, Washington University, St. Louis, MO 63110. Email: shaw@immunology.wustl.edu.**

POSTDOCTORAL POSITION available to participate in a mutagenesis screen for behavioral mutations in the mouse. The postdoctoral fellow will be involved in the characterization of primary defects and positional cloning of selected mutations. Applicants with experience in molecular biology, as well as behavioral pharmacology or chronobiology, are sought. Interested candidates should send/FAX a curriculum vitae and names with telephone numbers of three references to: **Maja Bucan, Center for Neurobiology and Behavior, Department of Psychiatry, University of Pennsylvania, 111 CRB, Philadelphia, PA 19104. FAX: 215-573-2041; Email: bucan@pobox.upenn.edu.**

POSTDOCTORAL POSITIONS: Available immediately to join ongoing studies of sodium channel structure and subtype expression in the heart. Ph.D. training in molecular biology/biochemistry required. Send curriculum vitae, description of research training, and names of three references to: **Sidney A. Cohen, M.D., Ph.D., Cardiology Section (111C), Philadelphia VA Medical Center, University and Woodland Avenue, Philadelphia, PA 19104. FAX: 215-823-4650; Email: cohensa@mail.med.upenn.edu. Equal Opportunity/Affirmative Action Employer.**

TWO POSTDOCTORAL positions available to study the nature of interprotein interactions between cytochrome P450 and its redox partners. A molecular biologist and an enzymologist/kineticist are required to generate and characterize the structure and function of the proteins. Send résumé and three letters of reference to: **L. Waskell, Ph.D., Department of Anesthesia, UC San Francisco, VA Medical Center, San Francisco, CA 94121. FAX: 415-750-6946. Equal Opportunity Employer.**

POSTDOCTORAL POSITION in molecular epidemiology available immediately to study the transmission risks of HIV-1 among injection drug users. Studies involve laboratory simulations of injection risk practices, HIV-1 microculture, and immunodiagnoses. Experience in cell and virus culture desired. Send curriculum vitae and names of three references to: **Robert Heimer, Department of Epidemiology and Public Health, Yale University School of Medicine, 60 College Street, New Haven, CT 06520-8034. Email: robert_heimer@qm.yale.edu. Yale University is an Equal Opportunity/Affirmative Action Employer; applications from under-represented groups are encouraged.**

POSTDOCTORAL ASSOCIATE Synaptic Plasticity

Join ongoing electrophysiological studies of synaptic co-transmission in sympathetic ganglia. This position requires experience in voltage-clamp and an interest in pre- and postsynaptic mechanisms that mediate interactions between nicotinic, muscarinic, and peptidergic receptors (see *J. Physiol.*, 491:413, 1996 and 494:287, 1996). Send curriculum vitae and names of three references to: **Dr. John P. Horn, Department of Neurobiology, E1440 BST, University of Pittsburgh, School of Medicine, Pittsburgh, PA 15261. Telephone: 412-648-9429; Email: JPH+@pitt.edu. Affirmative Action/Equal Opportunity Employer.**

POSITIONS OPEN

POSTDOCTORAL POSITION

Position available immediately to study the molecular mechanisms of GABA_A receptor modulation. Chimeric and point-mutation GABA_A receptors expressed in *Xenopus* oocytes and transfected cells are examined using the two-electrode voltage clamp and patch clamp techniques. Applicants should have a Ph.D. in a relevant area of research and be proficient with electrophysiology and/or molecular biology, and should have a strong desire to learn new techniques. Send curriculum vitae and names of three references to: **Jay Yang, Ph.D., M.D., Associate Professor, Department of Anesthesiology and Pharmacology/Physiology, University of Rochester Medical Center, Rochester, NY 14642. An Equal Opportunity/Affirmative Action Employer.**

POSTDOCTORAL POSITION—Position available immediately to develop gene therapy approaches for a multisystemic congenital disorder, the Chediak-Higashi syndrome. Studies involve retroviral mediated transfer of the recently cloned cDNA into hematopoietic cells of the mouse model (*beige*) and into patient-derived cell lines. A background in molecular biology, virology, or experimental hematology would be appropriate. Please send curriculum vitae and names of three references to: **Dr. Stephen J. Brandt, Division of Hematology, Room 547 MRB II, Vanderbilt University Medical Center, Nashville, TN 37232. An Affirmative Action/Equal Opportunity Employer.**

POSTDOCTORAL SCIENTIST—Rhône-Poulenc Rorer, one of the world's leading pharmaceutical companies, currently has a position available for a postdoctoral scientist in the Department of Drug Metabolism and Pharmacokinetics, to investigate biotransformation pathways of development compounds using advanced *in vitro*, bioanalytical, and kinetic approaches. Metabolism/bioanalytical (LC/MS/MS) experience desired.

We offer a competitive salary. For consideration, please send curriculum vitae and the names of three references to: **Rhône-Poulenc Rorer Research and Development, Human Resources, P.O. Box 6096, Mailstop 3A77, Collegeville, PA 19426-0800. Equal Opportunity Employer. Minorities/Females/Disabled/Veterans.**

POSTDOCTORAL POSITION

Immediate opening for an NIH-funded position to study signal transduction and biology of endothelium-specific receptor tyrosine kinases. Expertise in the molecular and cellular biology of angiogenic growth factors and/or zebrafish developmental biology is desirable. Direct inquiries to: **Dr. Kevin G. Peters, Duke University Medical Center, Box 3623, Durham, NC 27710. FAX: 919-684-8591; Email: kpg@hodgkin.mc.duke.edu. Duke University is an Equal Opportunity/Affirmative Action Employer.**

POSTDOCTORAL POSITION Children's Hospital/Harvard Medical School

Opening available immediately to study the molecular basis of cyst formation in epithelial organs. The role of a new gene, *Ke 6*, and steroid dehydrogenase genes in polycystic kidney disease is the current focus. Experience in molecular biology or biochemistry helpful. Please send curriculum vitae with names and telephone numbers of three references to: **Nazneen Aziz, Ph.D., Children's Hospital, Enders 1251, 300 Longwood Avenue, Boston, MA 02130. Email: aziz@al.tch.harvard.edu.**

POSTDOCTORAL TRAINING positions available in an NIH-supported advanced research program for dentists. Areas of research include cell and molecular biology, immunology, endocrinology, microbiology, and biochemistry. Term of appointment is two to three years. Candidates must have a degree in dentistry or a doctorate in a field of biological science. Preference will be given to candidates with a dental degree. *U.S. citizenship or permanent residency required.* Contact: **Program Coordinator, School of Dentistry, Room 301, 501 South Preston Street, University of Louisville, Louisville, KY 40292. Telephone: 502-852-7507.**

POSTDOCTORAL POSITION available immediately to study mechanisms of polyamine-dependent skin carcinogenesis in a recently developed transgenic mouse model (*L. Megosh et al., Cancer Res.*, 55:4205-4209, 1995). Experience in molecular biology required; previous work in animal models of carcinogenesis desirable. Send curriculum vitae and names of three references to: **Dr. Thomas G. O'Brien, Lankenau Medical Research Center, 100 Lancaster Avenue, Wynnewood, PA 19096. Equal Opportunity Employer.**

MERCK

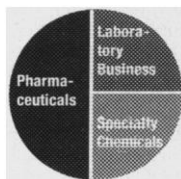
Bioinformatics

Merck KGaA is an international pharmaceutical company with a long-term commitment to innovative research. Identification and evaluation of new therapeutic targets is one of our objectives at the main research center located in Darmstadt (near Frankfurt), Germany. In order to assure our innovative power and research quality, the Department of Medical Chemistry and Drug Design is looking for several qualified professionals supporting our activities in bioinformatics.

You will carry out your preferred part of a wide range of activities including database development and application programming or sequence analysis and prediction of function.

You will be joining a team of high-level drug design and bioinformatics scientists. An important part of your job will consist of close collaboration with our in-house experimental cellular and molecular biologists. Extensive contacts to our academic collaborators and experimental scientists will be another aspect of this position.

Your professional background should include a Ph.D. in biology or related sciences with a good knowledge of molecular biology and strong emphasis on extensive computer experience and knowledge of current software applications. A specialization and some working experience in the field of sequence analysis would be of advantage. An important aspect of this position is the need for excellent communication skills, due to the high level of interaction and cooperation with various



areas of our research division. Working in a friendly and stimulating environment you are expected to develop and bring in your own ideas about new targets for small molecule drugs and for data-mining strategies and their implementation.

If you are motivated and interested in joining our team, please send your complete application to Merck KGaA, Human Resources, Pharma R+D, D-64271 Darmstadt, Germany



UNIVERSITY OF CAMBRIDGE

Department of Zoology

Assistant Director of Research

Applications are invited for the post of Assistant Director of Research in the Department of Zoology to take up appointment as soon as possible. We are looking for a person with potential, or established, research record in integrative or molecular biology.

Salary scale: £18,294 - £26,430

University Lecturer

Applications are invited for the post of University Lecturer in the Department of Zoology, to take up appointment as soon as possible. We are looking for a person with potential, or established excellence in research. Our priority is to appoint the best possible candidate, though we are particularly interested in strengthening research and teaching in either cell/molecular physiology, or in population and community ecology. The Department has a strong interest in many aspects of biological science, including cell biology, developmental biology, cell signalling, neurobiology, behaviour, behavioural ecology, population biology, systematics and evolutionary studies, and physiological ecology.

Salary scale: University Lecturer: £18,294 - £28,215

Further information and application form, for both of the above posts, from: The Secretary, Appointments Committee for Faculty of Biology, 19 Trumpington Street, Cambridge CB2 1QA. Tel: (01223) 334998. Fax: (01223) 332355. Informal enquiries should be addressed to Professor Malcolm Burrows, tel: (01223) 336601, email: mb135@cus.cam.ac.uk

Closing date: 6 September 1996.

The University follows an equal opportunities policy.

PROFESSORSHIP

Toyota Technological Institute (TTI), established in 1981 by a donation from the Toyota Motor Corporation, offers undergraduate and master's programs. TTI also has doctoral programs in Information Aided Technology and Future Industry-oriented Basic Science and Materials.

To strengthen education and research in the Department of Information Aided Technology, TTI is currently seeking a full professor in the field of **Information Science, Artificial Intelligence, or Control Systems**. Although the targeted start date to join this community is negotiable, the preferred start date would be April 1, 1997. The selected individual will organize a unit laboratory that will consist of 1 professor, 1 associate professor, 2-3 postdoctoral research associates and students. Japanese communication skills are preferred.

Support for research start-up expenses and an annual research budget will be provided, in addition to a salary and fringe benefits package.

Qualified applicants are invited to mail their curriculum vitae, a statement of research interests and a list of publications by October 15, 1996 to: **Dr. M. Nagasawa (Vice-President)**.



TOYOTA TECHNOLOGICAL INSTITUTE

2-12 Hisakata, Tempaku, Nagoya, Japan 468

Fax Inquiries: Japan 81-52-809-1721

TTI is an Equal Opportunity Employer.

POSITIONS OPEN

POSTDOCTORAL POSITION Primate Lipoprotein Cholesterol Transport Laboratory Larry Rudel, Ph.D.

A POSTDOCTORAL POSITION in the Arteriosclerosis Research Program of the Bowman Gray School of Medicine at Wake Forest University is available in the laboratory of Dr. Larry Rudel. The focus of this project is on the nutritional regulation of hepatic cholesterol metabolism with much of the work being carried out in primate models of atherosclerosis. Hepatic enzymes central in determining the liver's response to a dietary cholesterol challenge, specifically acylcoenzyme A:cholesterol acyltransferase and cholesterol 7 α -hydroxylase, are being characterized and the molecular mechanisms regulating their expression are under investigation. The position requires an M.D., Ph.D., or D.V.M. degree, with experience in molecular biology, biochemistry, and aspects of cell biology. Familiarity with cholesterol metabolic pathways would be helpful. Funding is partly provided from an NIH training grant, with the stipend supplemented to a level of \$24,000 per annum for first-year fellows. The program is part of a large multidisciplinary effort that includes graduate students, postdoctoral fellows, junior and senior faculty, all involved in various aspects of atherosclerosis research. Contact: Dr. Lawrence Rudel, Department of Comparative Medicine, Bowman Gray School of Medicine of Wake Forest University, Winston-Salem, NC 27157-1040. *Affirmative Action/Equal Opportunity Employer.*

POSTDOCTORAL FELLOWSHIP

Applications are invited for a POSTDOCTORAL FELLOWSHIP available September 1, 1996 to study radiation-induced electron transfer along DNA. The successful applicant will have a Ph.D. in chemistry, biochemistry, or related subject area; will be a highly motivated experimentalist with demonstrated experience in radiation and/or free radical biochemistry; and will have the ability to work in a multidisciplinary environment utilizing analytical (HPLC; GC-MS; ESI-MS) and biochemical methodologies. Fellows will receive a highly competitive stipend (and an allowance for medical benefits) appropriate to their qualifications and experience. Applications should include: 1) brief statement of research interests, capabilities, and goals; 2) curriculum vitae; 3) addresses, FAX and telephone number(s); and 4) the names and telephone numbers of three references. Applications may be sent to: Dr. Alfred F. Fuciarli, Toxicology Department (K4-16), Battelle, Pacific Northwest National Laboratories, P.O. Box 999, Richland, WA 99352.

POSTDOCTORAL TRAINING REPRODUCTIVE BIOLOGY

Opportunities in cell and developmental biology, molecular biology, reproductive endocrinology, neuroendocrinology, biophysics, and male contraceptive development are offered by the University of Washington Population Center for Research in Reproduction and sponsored by The National Institutes of Health and The Andrew W. Mellon Foundation. For additional information see our website at <http://weber.u.washington.edu/~popctr/> or contact: Dr. Robert A. Steiner, Department of Physiology and Biophysics, Box 357290, University of Washington, Seattle, WA 98195. Send one copy of curriculum vitae and three letters of reference before September 15, 1996. *The University of Washington provides Equal Opportunity in education without regard to race, color, creed, religion, national origin, sex, sexual orientation, age, marital status, disability, or status as a disabled veteran or Vietnam era veteran in accordance with University of Washington policy and applicable federal and state statutes and regulations.*

POSTDOCTORAL POSITIONS are available in two areas: i) study of aberrant transcriptional regulation of the SIS/PDGF-B proto-oncogene in human cancers and related disease states (*PNAS*, 90:7563, 1993; *JBC*, 271:11792, 1996), as well as possible therapeutic strategies to suppress the growth factor-related diseases; and ii) design and expression of recombinant glutathione S-transferases (GSTs) to confer drug-carcinogen resistance in animals and plants, and transcriptional regulation of endogenous GST genes by the Antioxidant Responsive Element (*PNAS*, 92:8140, 1995), and therapeutic strategies related to GST expression. Candidates must have a strong background in cellular and molecular biology. Also see <http://mcardle.oncology.wisc.edu/>. Please send curriculum vitae and names of three references to: Dr. William Fahl, McArdle Laboratory, University of Wisconsin, Madison, WI 53706-1599.

POSITIONS OPEN

POSTDOCTORAL POSITIONS University of Pennsylvania

CELL CYCLE—Dr. Greg H. Enders has established a new laboratory to address fundamental issues in G1/S phase progression in mammalian cells. *Oncogene*, 12:1239-1245, 1996. *Nature*, 375: 506-510, 1995.

DIFFERENTIATION AND DEVELOPMENT—Dr. Peter G. Traber studies intestinal differentiation and development. Projects focus on transcriptional regulation of intestinal genes and the role of transcription factors in development, growth control, and oncogenesis. *Ann. Rev. Physiol.*, 58:275-297, 1996. *Mol. Cell Biol.*, 16: 619-625, 1996.

Send curriculum vitae and two letters of reference to:

Suite 600 CRB, 415 Curie Boulevard
Philadelphia, PA 19104-6144
Attention: Dr. Enders or Dr. Traber
Telephone: 215-898-0154
FAX: 215-573-2024

Email: traberp@mail.med.upenn.edu

An Equal Opportunity/Affirmative Action Employer.

POSTDOCTORAL POSITION Center for Surgical Research

POSTDOCTORAL POSITION available immediately to study the role of apoptosis in the induction of immune dysfunction associated with sepsis. A Ph.D. or equivalent degree in cell biology/immunology/microbiology is required. Emphasis on cellular immunology and molecular biology is desired. Previous experience with general molecular biological techniques (RNA/DNA, RT-PCR, *in situ* hybridization), cellular immunological assays (bioassays, ELISA, ELISpot, etc.), and signal transduction biological techniques essential. Starting salary is \$25,000 to \$28,000 with benefits dependent on qualifications. Send/FAX curriculum vitae, brief summary of salient research experience, and names and addresses of three references to: Alfred Ayala, Ph.D., Center for Surgical Research, Middle House 211, Rhode Island Hospital, 593 Eddy Street, Providence, RI 02903. FAX: 401-444-3278.

POSTDOCTORAL POSITION available immediately to study the role of self peptides in T cell development using biochemical (characterization of self peptides), molecular (transgenic/knock-out mice), and cellular (lineage analyses) techniques. Other ongoing projects include the molecular basis of MHC class I antigen presentation and T cell antigen recognition. Interested candidates with a Ph.D. and a background in basic immunological, biochemical, and/or molecular techniques send curriculum vitae and names and telephone numbers of three references to: Sebastian Joyce, Ph.D., Department of Microbiology and Immunology, Pennsylvania State University College of Medicine, 500 University Drive, Hershey, PA 17033-0850. Telephone: 717-531-4163; FAX: 717-531-6522; Email: sjoyce@bcmic.hmc.psu.edu. For your health, Hershey Medical Center is a smoke-free campus. We are an Equal Opportunity/Affirmative Action Employer and encourage minority and female applicants to apply.

TWO POSTDOCTORAL positions available immediately for collaborative gene therapy project. 1) Virologist to further develop HSV-1 vectors for long-term targeted expression in CNS. 2) Neurobiologist to apply this methodology to transfer neurotrophin and other genes in rodent models of neurodegenerative disease (e.g., Alzheimer's, Parkinson's, diabetic neuropathy). Send letter, curriculum vitae, and names of three references to: 1) Lawrence T. Feldman, UCLA Microbiology and Immunology, 43-169 CHS, Los Angeles, CA 90024, or 2) N. T. Maidment, UCLA Psychiatry and Biobehavioral Sciences, 760 Westwood Plaza, Los Angeles, CA 90024. *Affirmative Action/Equal Opportunity Employer.*

CATALYTIC ANTIBODIES

POSTDOCTORAL POSITION currently available for the development of *in vitro* and genetic methods for the evolution of catalytic antibody activity. A doctoral degree with a background in enzymology and molecular biology is required. Send curriculum vitae and three references to: Dr. C. F. Barbas, Department of Molecular Biology, MB-11, The Scripps Research Institute, 10666 North Torrey Pines Road, La Jolla, CA 92037. FAX: 619-554-6778; Email: carlos@scripps.edu.

POSITIONS OPEN

POSTDOCTORAL POSITION Control of mRNA Turnover

A POSTDOCTORAL POSITION is available immediately to study molecular mechanisms controlling selective and differential mRNA degradation in mammalian cells (Chen and Shyu, *TIBS*, 20:465, 1995; Peng et al., *Mol. Cell Biol.*, 16:1490-1499, 1996). Our current studies focus on interactions between RNA destabilizing elements and their cognate binding proteins that dictate nucleolytic events in the mRNA decay pathways. Experience in protein chemistry and purification and some molecular biology is desirable. Salary commensurate with experience. Send curriculum vitae; brief statement of current research; and names, addresses, and telephone/fax numbers of three references to: Dr. Ann-Bin Shyu, Department of Biochemistry and Molecular Biology, The University of Texas-Houston Medical School, 6431 Fannin Street, Houston, TX 77030. Email: abshyu@utmmg.med.uth.tmc.edu.

COMPUTATIONAL BIOLOGY/BIOLOGICAL SEQUENCE COMPARISON

POSTDOCTORAL POSITION available immediately to develop more powerful methods for protein and DNA sequence comparison. Approaches include evaluation of sequence comparison methods, multiple alignment algorithms, parallel computation, evolutionary tree construction, and sequence/structure comparisons. Candidates with backgrounds in molecular evolution, biological sequence comparison, computational biology, and other areas of molecular biology are encouraged to apply. Send a curriculum vitae and have letters from two references sent to: William R. Pearson, Department of Biochemistry, Box 440 Jordan Hall, University of Virginia, Charlottesville, VA 22908. FAX: 804-924-5069; Email: wrp@virginia.edu. *The University of Virginia is an Equal Opportunity/Affirmative Action Employer.*

MOLECULAR NEUROPHARMACOLOGY

POSTDOCTORAL POSITION available immediately for studies using pharmacological and molecular techniques to investigate allosteric regulation of muscarinic acetylcholine receptors. Experience in the molecular biology of G-protein-coupled receptors is preferred. Please send curriculum vitae, one-page description of research interests, and names and addresses of three references to: John Ellis, Ph.D., Department of Psychiatry, Penn State University College of Medicine, 500 University Drive, Hershey, PA 17033-0850. Email: jxe11@psu.edu.

For your health, the Hershey Medical Center is a smoke-free campus. We are an Equal Opportunity/Affirmative Action Employer and encourage minorities and women to apply.

POSTDOCTORAL RESEARCH POSITION PLANT MOLECULAR BIOLOGY

Position to study mismatch repair and mutation in plants, newly funded at Oregon State University (OSU) by National Science Foundation. Focus on isolation and study of *Arabidopsis* mismatch-repair genes and development of reporter-gene assays for mutagenesis. Experience in plant molecular biology essential, and expertise in bacterial genetics highly desirable. November 1, 1996 start date preferable but flexible. Send complete curriculum vitae and names of three references by August 19, 1996 to: Dr. John Hays, OSU Agricultural Chemistry Department, ALS 1007, Corvallis, OR 97331. Position Number 001-1649. OSU is an Affirmative Action/Equal Employment Opportunity Employer and is responsive to dual career couples.

POSTDOCTORAL POSITION—A postdoctoral position in a research group studying the biochemistry, enzymology, and structural biology of coagulation proteins is immediately available to conduct research on receptor-mediated interactions of coagulation proteins with platelets, the enzymology of blood coagulation proteins, and the characterization of intrinsic platelet coagulation proteins and inhibitors. Applicants should have completed recent Ph.D. graduate studies in biochemistry/molecular biology and should be seeking a two- to three-year postdoctoral fellowship to round out research experience. Qualified applicants should send curriculum vitae, detailed statement of accomplishments and research interests, and names and addresses of three references to: Peter N. Walsh, M.D., Ph.D., Thrombosis Research Center, Temple University Health Sciences Center, 3400 North Broad Street, Philadelphia, PA 19140. Email: pnw@astro.ocis.temple.edu. *An Equal Opportunity/Affirmative Action Employer.*

POSITIONS OPEN

POSTDOCTORAL POSITION Molecular Biology of Membrane Proteins

POSTDOCTORAL POSITION(S) are available to develop and apply modern techniques of molecular biology and protein chemistry to study structural aspects (topology, folding, organization of ligand binding domains) and dynamics of cation-transporting P-type ATPases. Strong background in molecular biology and/or protein chemistry required. Send curriculum vitae and names of three references to:

Professor Jack H. Kaplan, Ph.D., F.R.S.
Department of Biochemistry and
Molecular Biology, L224
Oregon Health Sciences University
3181 S.W. Sam Jackson Park Road
Portland, OR 97201-3098

POSTDOCTORAL RESEARCHER with protein chemistry experience in large-scale production/purification of recombinant proteins using bacteria. You will study proteins involved in apoptosis regulation. Plans include obtaining x-ray crystal and NMR structures of these proteins and examining their physical and kinetic properties using chromatography, centrifugation, and BIA-CORE technology. Send or fax curriculum vitae and two reference letters to: Burnham Institute, 10901 North Torrey Pines Road, Attn: Dr. Reed, La Jolla, CA 92037. FAX: 619-646-3194. Equal Opportunity Employer.

ANNOUNCEMENT

CONSULTANTS—JOIN WEB DATABASE

If you are an environmental consultant (land, air, water, waste) or provide advice on a paid basis, the 3E Database is the best way to ensure that anyone who needs your expertise is able to locate it, anywhere and at any time, via the WWW. Join on the WWW <http://www.nhbs.co.uk/3e/index.html> or fax to: Dr. Phil Smith, Earth's Environmental Experts (3E), Creed Park, Crediton, Devon, EX17 4EB, U.K., FAX: +44 1363 774656; Email: earth@online.rednet.co.uk.

MEETING

American Aging Association, Annual Scientific Meeting, October 4 to 8, 1996, San Francisco, California. Conference Theme: **Nutrition and Functional Aging**. Students/postdoctorals can submit abstracts for award competition and prize. Scientists can submit research abstracts related to aging and nutrition. Abstract submission deadline is July 29, 1996. For registration and information contact: Arthur K. Balin, M.D., Ph.D., FACP, American Aging Association, 2129 Providence Avenue, Chester, PA 19013. Telephone: 610-874-7550; FAX: 610-876-7715; Email: AmerAging@aol.com.

SYMPOSIUM



UNIVERSITY OF CINCINNATI

Neuronal Plasticity in
Dopaminergic Systems:
From Molecular Biology to Patient Care
October 4-5, 1996

The SYMPOSIUM will highlight recent molecular, cellular, and integrative approaches to understanding the mechanisms of dopaminergic neurotransmission and explore how these findings may be applied to the treatment of disease. Invited speakers include P. Greengard, M. Caron, S. Amara, G. Koob, J. Sladek, R. Albin, M. DeLong, and A. Carlsson.

Registration fee is \$150 for faculty, \$50 for postdoctoral trainees, and \$25 for graduate students. For details and registration forms contact: University of Cincinnati College of Medicine, Department of CME, P.O. Box 670567, Cincinnati, OH 45267-0567. FAX: 513-558-1708; Telephone: 513-558-3197; Email: jill.holsapple@uc.edu.

SYMPOSIUM

Geriatric Medicine in the Twenty-First Century: The Basic Science Contribution to Clinical Care

Henry VIII Hotel and Conference Center
St. Louis, Missouri

September 24 to 26, 1996

The Fifteenth Annual SYMPOSIUM on Gerontology and Geriatrics will include sessions on molecular biology techniques, design of clinical research projects, cellular senescence, age-related changes in hormone action, age-related osteoporosis, Alzheimer's disease, memory decline, and the aging immune system. Sponsored by the Geriatric Center, St. Louis VA Medical Center and the Division of Geriatrics, St. Louis University Health Sciences Center. Information: Symposium Secretary, GRECC (11G/JB), St. Louis VA Medical Center, St. Louis, MO 63125. Telephone: 314-894-6510.

COMPUTER MARKET

Molecular Software

Fast macromolecular modeling for PCs. Creates photo-realistic images. \$295 Comm./\$195 Acad.

FREE DEMO on the web

<http://www.concentric.net/~molimage>
misofware@aol.com - (619) 483-2051

Circle No. 34 on Readers' Service Card

MARKETPLACE

ANTIBODY SOLUTION

HYBRIDOMA DEVELOPMENT
POLYCLONAL PRODUCTION
ASCITES SCALE-UP
IMMUNOCHEMISTRY



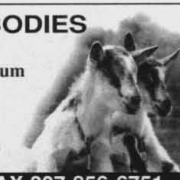
800/922-2226

Circle No. 41 on Readers' Service Card

ATLANTIC ANTIBODIES

Custom Immunization Service

- Custom Polyclonal Antiserum
- Normal Serum
- Quality Control Testing
- Research Support Services



TEL 207-856-6151 FAX 207-856-6751

Circle No. 25 on Readers' Service Card

QUALITY CUVETTES!!!

Inexpensive Electroporation Cuvettes
Each sterile package includes a free
pipette for easy sample removal!



1-800-289-2465
FAX: 619-597-9594

Circle No. 39 on Readers' Service Card



CHEMICON

Your Neuroscience Antibody Solution

- Dopamine Transporter • GABA Transporters
- Metabotropic Glutamate Receptors
- Vesicular Acetylcholine Transporter (VAT)

PH: 800-437-7500 • FAX: 909-676-9209

Circle No. 44 on Readers' Service Card

MARKETPLACE



HIGH QUALITY PEPTIDES ENZYME SUBSTRATES / INHIBITORS ANTIBODIES

ANASPEC

1-800-452-5530 FAX (408) 452-5059

Circle No. 27 on Readers' Service Card

DNA

PEPTIDES

89¢
per base

Deprotected
and Desalted
5-10 OD

\$15
per residue

Quantity 15
to 40 mg

No Set-up Charge. Quality Guaranteed.
Some Restrictions May Apply. Please Call.

GENEMED

BIOTECHNOLOGIES

1 (800) 344-5337 • Fax (415) 952-9540

Circle No. 28 on Readers' Service Card

TITERFLUOR™

FLUORESCENCE EIA ANSWERS

A complete reagent, instrument & data analysis system.

- Up to 100X increased sensitivity
- Superior expanded dynamic range
- Novel non-isotopic format

New TiterFluor Kits Measure:
Cytokines • Cyclic Nucleotides • Eicosanoids

Tel: 1.800.899.5858 x 7843
Fax: 1.508.383.7885



PerSeptive Biosystems

Circle No. 21 on Readers' Service Card

Ultrapur plasmidprep kits for fluorescent sequencing

Price 30% lower than other suppliers

	yield/prep	preps	price/prep	cat.#
miniprep	1-20 ug	120	\$ 0.74	\$6011
midiprep	0.1-0.3 mg	25	\$ 3.44	\$7011
maxiprep	0.5-1 mg	16	\$ 5.75	\$8011
megaprep	1-2 mg	8	\$ 11.50	\$9011

Viogenic (CA), TEL: 1.800.225.3402 FAX: 408.730.8891
email: order@viogenic.com Detail see: <http://www.viogenic.com>

Circle No. 57 on Readers' Service Card



- DNA Sequencing
Automatic or Manual
- DNA Subcloning
- Library Screening

800-557-2248 (557-ACGT)
(708)559-8631 • Fax (708)559-8632

New
Lower
Prices

Circle No. 15 on Readers' Service Card

Princeton BioMolecules

80% PURE CUSTOM PEPTIDES

Reliability + Quality + Service = Value

80+% purity, 15+mg, free HPLC trace, free MS, no setup fee

Call: 614-487-3663 Fax: 614-487-3664

Your partners in research

Circle No. 2 on Readers' Service Card

Marketplace ads continue on page 542



**MORE PRODUCTS
ON PREVIOUS PAGE**

DNA Technologies, Inc.

**Custom Baculovirus
Cloning • Expression**

**Custom in-vitro
Mutagenesis**

**Custom DNA
Sequencing**

**Custom Plasmid
DNA Isolation**

7860 Beechcraft Ave., Gaithersburg MD 20879 USA
TEL 1-800-998-3628 • FAX 301-990-4063 • eMail dnatech@erols.com

Circle No. 54 on Readers' Service Card

Fasten your seatbelts!

**Multipin™ SPOC is here to propel
you to 1000's of compounds a
year at an unbelievable price.**

PHONE OR FAX US TODAY FOR FULL INFORMATION

US: West Coast
Tel: 800 644 1866
Fax: 800 655 1866
US: East Coast
Tel: 800 633 8161
Fax: 800 424 3970



International
Tel: +61 3 9565 1111
Fax: +61 3 9565 1199
Europe
Tel: +33 141 38 9400
Fax: +33 141 38 9409

Circle No. 4 on Readers' Service Card

FETAL BOVINE SERUM

Triple 0.1um filtered • Certified FMD & BSE Free • USDA Inspected

**HIGH
QUALITY**



**LOW
PRICES**

Call or Fax for Information, Pricing and a **FREE** Cell Culture Catalog.
FREE Samples and Quantity Discounts are available.

PH: (800) 780-7788
(770) 446-3336

FAX: (800) 780-7374
(770) 446-1404

Circle No. 5 on Readers' Service Card

SFM-Human Keratinocyte Cell System

Start up a 75 for LESS than a 25
More Cells / Lowest Price / Highest Quality
CSC Certificate™ #30467



1-800-697-1211

Circle No. 20 on Readers' Service Card

CUSTOM PEPTIDES

Quality Peptides at Competitive Prices.
Experienced Company offering:

- ♦ Synthesis of difficult sequences
- ♦ Fluorescent labeling
- ♦ Phospho peptides
- ♦ Peptide conjugation
- ♦ Biotinylated peptides
- ♦ Large scale synthesis
- ♦ Special amino acid containing peptides

Welcome to American Peptide. We can satisfy your peptide needs from small to large quantities at **considerably reduced prices**. We offer different purity levels to match your exact needs, whether for screening, antibodies production or drug development.

NEW 1996-97 CATALOG

Many new peptides. Comprehensive Selection. Amyloids, Endothelins, Neuropeptides, Substrates, Toxins & many more. Call / Fax for a free copy!

88-1-10	Endothelin-1	98%	0.1 mg	60.00
			0.5 mg	175.00
			1.0 mg	285.00
60-1-11	NPY, human	98%	0.5 mg	85.00

AMERICAN PEPTIDE COMPANY
TEL: 408.733.7604 FAX: 408.733.7603

777 E Evelyn Ave., Sunnyvale, CA 94086 USA

Circle No. 23 on Readers' Service Card

MARKETPLACE

PeptidoGenic

MS, LC/MS Custom Analysis

IonSpray Mass Spec

\$30/Sample (MS), \$250/Sample (LC/MS)

Please inquire for terms and conditions

(E mail): pkim@ccnet.com (Fax): 510-371-1156
(Voice): 800-597-7873, 510-371-1070

Circle No. 55 on Readers' Service Card

Custom DNA from \$1.00/base



ransom hill bioscience, inc.

<http://www.ransomhill.com>

no setup, no minimum, no baloney!

email: visla@ix.netcom.com fax: (800) 597-8509

Circle No. 7 on Readers' Service Card

Antisense Oligos

(Phosphorothioates, S-Oligos)

\$2.00 per base
10-20 OD's

DNA Sequencing

as low as \$40/Run

Gene Synthesis

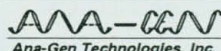
as low as \$5/bp

Site-Directed Mutagenesis

Call for Price Quote

1-800-OLIGOS-1

e-mail: anagen@svpal.org



Ana-Gen Technologies, Inc.

Circle No. 51 on Readers' Service Card

CUSTOM DNA SYNTHESIS

PURE & SIMPLE

• Superb Technical Support

• Impeccable Quality

• World's Fastest Service

• Cap Gel & TOF Mass Spec

* Some restrictions apply. Please call for details.

MIDLAND

STILL THE UNDISPUTED #1 CUSTOM DNA SYNTHESIS SERVICE

THE MIDLAND CERTIFIED REAGENT COMPANY

Phone 1-800-247-8766

FAX 915-694-2387

email mcrc@oligos.com

Circle No. 13 on Readers' Service Card



Thermostable TAQUENASE™

Reduce the sequencing cost to 25¢/Rxn
Also minimize the number of N

SCIENTECH CORP.

T: 1-800-645-0089 F: 314-645-0177

st@icon-stl.net

Circle No. 18 on Readers' Service Card

MARKETPLACE

CUSTOM DNA

\$1.19 base

200 nmol scale (10 - 20 ODU)

No setup charges • Deprotected & **Desalted**
A 20-mer is only \$241 • 24 - 48 hours shipping

CUSTOM PEPTIDES

\$20 residue

15 - 40 mg • Free mass spec & HPLC tracing
No setup charges • Desalted • 5 - 8 days shipping
Antipeptide antibodies available



1-800-227-0627

FAX 214-420-0442

BIO•SYNTHESIS
INCORPORATED

E-Mail: biosyn@onramp.net

Internet: <http://www.biosyn.com>

FDA#001235 • NIH BPA#263-00038171-04-BPA/C

Circle No. 16 on Readers' Service Card

Toolkits for Amplification, Labeling and Hybridization

• **OptiTag Kit & Refill Buffers** - optimization of *in vitro* amplification reactions

• **TAG-IT Kit** - thermal cycle radiolabeling of probes, specific activity of $\geq 10^6$ dpm/ μ g, only 1-10 ng of template required

• **Speed-Hyb Solution** - consistent hybridizations, includes dextran sulfate and sheared salmon sperm DNA

Kits for fundamental lab techniques.
Ideal for standard operating procedures.

<http://www.bioslabs.com>



TEL: (800) 678-9487
FAX: (203) 562-9377

Circle No. 43 on Readers' Service Card

ONLY DNA

No frills, just good DNA at very low prices

69¢ per base, **NO** setup charge

Ultra-small scale synthesis gives 1 A₂₆₀ unit
Some restrictions apply; Call for details
1-800-359-5794 e-mail onlydna@oligos.com

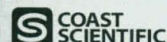
Circle No. 14 on Readers' Service Card

Custom Peptides \$17.00 / Residue

- >75% Purity, 5-25 mg
- 5 Day Delivery
- Free HPLC & Mass Spec.
- No Set-Up Charge

Antibody Production

2 Rabbits w/ Conjugation
& Delivery
6-12 Week Delivery **\$950**



US Voice: **800-445-1544**
Global Fax: (619) 450-1157

Circle No. 22 on Readers' Service Card

Custom DNA

Purified & Delivered in 48 Hours

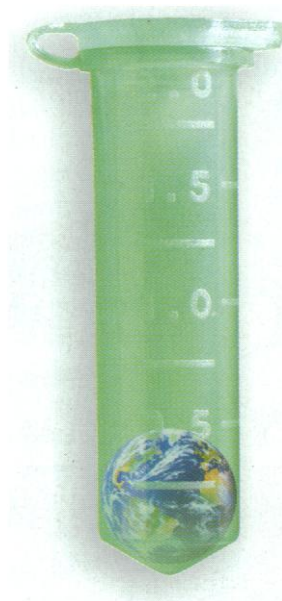
\$1.20 per base • Purified

<http://www.resgen.com>

Research Genetics, Inc.

1-800-533-4363

Circle No. 9 on Readers' Service Card



**WHILE OTHER DNA SUPPLIERS PROMISE YOU THE WORLD,
OPERON ACTUALLY DELIVERS IT.**

Operon is the world's leading supplier of DNA. And we maintain that leadership by consistently delivering exactly the product you need. On time. With unsurpassed purity. Backed by an unconditional guarantee. And at an extremely competitive price.

For a brochure or to place an order, call us at **1-800-688-2248**.

OPERON

WORLD'S LEADING SUPPLIER OF SYNTHETIC DNA

©1994 Operon Technologies, Inc., 1000 Atlantic Avenue, Alameda, CA 94501, USA.

Phone: (510) 865-8644 Fax: (510) 865-5255 NIHBP 263.00033233

Circle No. 58 on Readers' Service Card

Maximum Performance for Biological Imaging

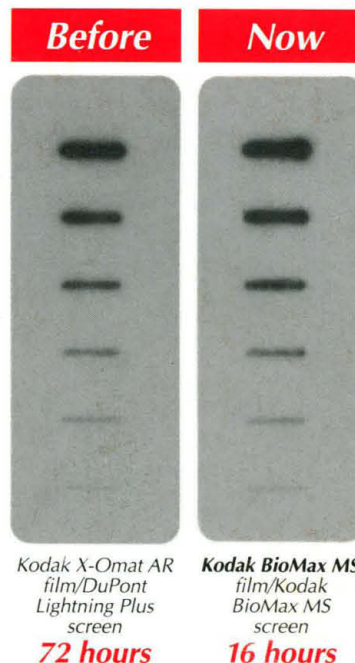
It's About Time!

Kodak BioMax MS system

Detect ^{32}P samples 4 to 8 times faster with Kodak BioMax MS film and BioMax MS intensifying screen.

The BioMax MS system is the fastest autoradiography film/screen combination available. Using state-of-the-art Kodak technology, the film and intensifying screen work together to advance the boundaries of maximum sensitivity. With the BioMax MS system you can:

- Reduce 4-day exposures to 1 day
- Reduce overnight exposures to 4 hours
- Detect 1-dpm bands in 1 day



Save 25%

Purchase a special combination pack of BioMax MS film and a BioMax MS intensifying screen (8 x 10 in., CAT No. 116 5893; 35 x 43 cm, CAT No. 118 8077). Contact your distributor or call Kodak Scientific Imaging Systems at (800) 225-5352 or (716) 722-5813.



Scientific Imaging Systems



Depend on Kodak films for life science research, from the maximum resolution BioMax MR film to the general purpose Kodak X-Omat AR film and the economical Kodak X-Omat LS film.

© Eastman Kodak Company, 1996 KODAK, BIOMAX, and X-OMAT are trademarks of Eastman Kodak Company.

In the U.S.: Amersham (800) 323-9750/Sigma Chemical Company (800) 521-8956/VWR Scientific (800) 932-5000/Fisher Scientific (800) 766-7000. Outside the U.S.: **Australia/New Zealand** Integrated Sciences Ltd. (02) 417 7866 **Belgium** Sigma-Aldrich N.V./S.A. 0800 14747/INTEGRA Biosciences AG (01) 830 22 77/Amersham 32 9 24152 70 **Canada** InterSciences Inc. (800) 661-6431 or (905) 940-1831/VWR Canlab (800) 932-5000/Amersham (416) 847-1166 **Denmark** Struers KEBO Lab A/S (43) 86 87 88 **Finland** KEBO Lab OY (90) 804 4900 **France** Sigma-Aldrich Chemie S.a.r.l. 05 21 14 08/INTEGRA Biosciences S.A. (1) 39 59 84 42/Amersham 331 69 18 28 00 **Germany** Sigma-Aldrich Chemie GmbH 0130 5155/INTEGRA Biosciences GmbH (06404) 8090/Amersham 49 (0)5307 930 0 **India** Biotech India (542) 311473 **Israel** TAMAR Ltd. (02) 52 02 79 **Italy** Sigma-Aldrich S.r.l. 1678-27018/M-Medical srl (055) 5001871/Amersham 392 50 88220 **Japan** Cosmo Bio (03) 5632-9610/Kodak Japan (03) 5488-2139/Amersham 81 3 3816 6161 **Korea** LRS Laboratories Inc. (02) 924 86 97 **Netherlands** Sigma-Aldrich N.V./S.A. 06 0224748/INTEGRA Biosciences AG (01) 830 22 77/Amersham (31)73 418525 **Norway** KEBO Lab AS (022) 90 00 00 **Singapore** Research Instruments, Pte. (65) 775-9228 **Spain** Quimigranel s.a. (91) 556 16 14 **Sweden** KEBO Lab AB (08) 621 34 00 **Switzerland** Sigma Chemie 155 00 20/INTEGRA Biosciences AG (01) 830 22 77/Amersham 41 (01) 315 7050 **Taiwan** Long Chain International Corp. (02) 552-2605 **United Kingdom** Scientific Imaging Systems, Ltd. 01223 24 28 13/Sigma-Aldrich Co. Ltd. 0800 373731/Amersham 01494 544000/Anachem 01582 456666

Circle No. 33 on Readers' Service Card