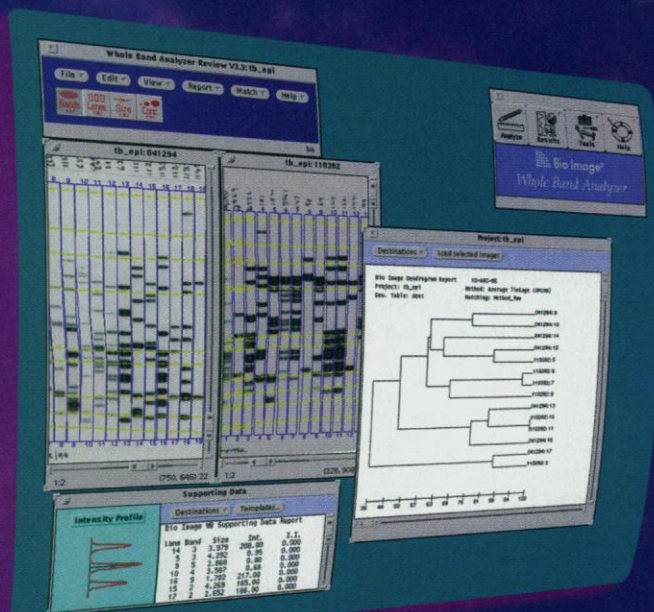


# Electrophorepeats



**Redefining how you think  
about electrophoresis image analysis**

**H**ow repeatable is repeatable? For some people doing image analysis, close seems good enough. Exact doesn't seem possible. Unless you're working with Bio Image®. Bio Image has been the leader in electrophoresis image analysis since 1983. Whether you analyze 1-D or 2-D samples, DNA sequences, high-density grids, or colonies, we give you the same accurate result time after time.

How? By precisely calculating the location, size and density of bands and lanes—and comparing the data to standards. By quantifying whole bands instead of just slices. And by correcting for gel distortion and smiling bands.

Image analysis can't get any more repeatable than Bio Image. But don't take our word for it. Find out for yourself.

*Call us to qualify for a free demo disk or sample analysis.*

Call 1-800-BIO-IMAGE (1-313-930-9900 outside the U.S.) or e-mail [info@bioimage.com](mailto:info@bioimage.com)

Bio Image is a registered trademark of B.I. Systems Corporation



**Bio Image®**

Circle No. 29 on Readers' Service Card

## Working with Congress: A Practical Guide for Scientists and Engineers

NEW SECOND EDITION

William G. Wells, Jr.

This new, updated edition of *Working with Congress* helps scientists and engineers communicate more effectively with Members of Congress and their staffs. These days, Congress exerts considerable influence over the future direction of science and technology, yet relatively few Members have any training or background in science and technology. Learn how Congress operates, the 17 cardinal rules for working with Congress, how to influence the legislative process, and how to initiate and maintain communications with Members and staff.

1996; 160 pages; \$15.95  
(AAAS member price \$12.76)  
Purchase /handling \$4.00 per order  
AAAS Distribution Center  
PO Box 521  
Annapolis Junction, MD 20701  
Order by phone  
(VISA/MasterCard only)  
call 1-800-222-7809 or  
fax orders to 301-206-9789.



# ISCAN®

## EYE MOVEMENT MONITORING SYSTEMS

ISCAN eye tracking products set the pace for performance and affordability in the research marketplace. Applications include fixation monitoring, vision research, advertising research, psycho-visual experiments, reading studies, toxicology, human factors evaluation and drug or alcohol response.

Non-invasive, real-time video image processors automatically measure pupil position and size and compute subject's point of

gaze. Benchtop, head mounted and high speed versions as well as computer data analysis software are available. Complete Eye Movement Monitoring Laboratories or component systems can be provided to suit any research application.

**ISCAN, Inc.**  
P.O. Box 382076  
Cambridge, MA 02238-2076 USA  
Tel: 617-273-4455 Fax: 617-273-0076

Circle No. 8 on Readers' Service Card

Discover New Effective Drugs For Human Cancer

# METAMOUSE™

- Evaluates all anti-tumor and anti-metastatic therapeutics
- Replicates human clinical responses including metastasis
- More clinically relevant than subcutaneous or transgenic models
- Same-organ tumor transplantation: fresh patient tumors or established lines
- All major cancer types available
- Contract research or models available for shipment

Wang, X. et al. Matrix metalloproteinase inhibitor BB-94 inhibits human colon tumor growth and spread in a patient like orthotopic model in nude mice. *Cancer Res.* 54, 4726-28, 1994.

Hoffman, R. Orthotopic is orthodox: why orthotopic transplant metastatic models are different from all other models? *J. Cellular Biochem.* 56, 1-4, 1994.

For more information call:

Tel-(800) 511-2555 • Tel-(619) 654-2555 • Fax-(619) 268-4175

7917 Ostrow Street **ANTICANCER** INCORPORATED San Diego, CA 92111, USA

Circle No. 10 on Readers' Service Card



## AUSTRALIAN BIRDS OF PREY

The Biology and Ecology of Raptors

**Penny Olsen**

The definitive book on the ecology, predation, and behavior of Australian raptors, with hundreds of stunning color photographs, 80 drawings.

\$49.95 hardcover

## VENUS

A New Geology

**Peter Cattermole**

"This volume, marked by its clarity and wide interests, full of up-to-date images, amounts to a bare-bones account of a whole new geology as it is unfolding."  
—*Scientific American*. 141 illustrations, 12 color plates.

\$19.95 paperback

## APTITUDE REVISITED

Rethinking Math and Science Education for America's Next Century

**David E. Drew**

"This inspirational book is about doing, succeeding, and excelling."—John Brooks Slaughter, President, Occidental College

\$35.95 hardcover

## DINOSAURS OF THE EAST COAST

**David B. Weishampel  
and Luther Young**

Hunting dinosaur fossils has a long history in the eastern United States—and new discoveries are still being made. 139 illustrations.

\$35.95 hardcover



## WOMEN SCIENTISTS IN AMERICA

Before Affirmative Action, 1940-1972

**Margaret W. Rossiter**

*Women Scientists in America: Struggles and Strategies to 1940* marked the beginning of a pioneering effort to interpret the history of American women scientists. Now Margaret Rossiter continues that effort in a long-awaited sequel.

\$35.95 hardcover

## CULTIVATING WOMEN, CULTIVATING SCIENCE

Flora's Daughters and Botany in England, 1760 to 1860

**Ann B. Shteir**

The surprising history of a scientific discipline in which women were welcomed as equal partners—for a time. 43 illustrations.

\$29.95 hardcover

**THE JOHNS HOPKINS UNIVERSITY PRESS**

Hampden Station, Baltimore, Maryland 21211

To order, call 1-800-537-5487.

Visit our web site at <http://jhupress.jhu.edu/home.html>

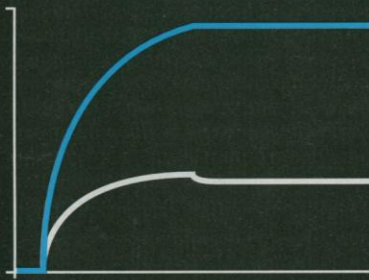


Circle No. 37 on Readers' Service Card

# IASys

real-time biomolecular  
interaction analysis

## New insights into binding properties



Study Protein-Protein, Drug-Receptor, Hormone-Receptor, Antibody-Antigen, DNA/RNA-Protein, Cell-Protein. Watch interactions as they happen. Understand the dynamics, as well as the strength of binding.

**IN DETAIL:  $k_{\text{ass}}$   $k_{\text{diss}}$   $K_D$**

Get far more information than ELISA, gel band shift or RIA can offer. Make a dramatic difference to the analysis of structure-function relationships, the design of molecules with specific activity, the development of new assays or biomolecular selection.

**IASys optical biosensors.  
Imagine the possibilities.**

 **Affinity  
SENSORS**

### INTERNATIONAL:

Tel: +44 1954 789976

Fax: +44 1954 789417

### USA:

Tel: (800) 631 1369

Fax: (201) 265 1977

A subsidiary of Thermo Instrument Systems Inc.,  
a Thermo Electron company.

Circle No. 21 on Readers' Service Card

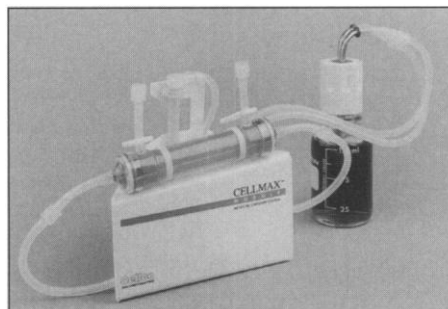
# PRODUCTS & MATERIALS

## Nucleic Acid Purification System

The AutoGen NA1000 is an automated system for isolating genomic DNA from animal cells. The microprocessor-controlled system features reagent delivery, robotic tube transfer mechanisms, a reciprocal shaker, a heater module for temperature control, and a centrifuge module. A filter system provides controlled air stream and ventilation of the centrifuge. Up to 40 samples can be processed simultaneously. Processing time varies from 5.5 to 7.6 hours, depending on the materials being purified. It is particularly suited for laboratories performing genomic isolations from whole blood, lymphocytes, cultured cells, and animal tissues. **Integrated Separation Systems. Circle 138.**

## Retroviral Vector Production

The Cellmax Retroviral Vector Production Cell Culture System is for the production of packaged viral vectors in a serum-free environment. The system incorporates ready-to-



use culture modules optimized for high titer production. It requires less space, manipulation, and materials than other culture technologies, according to the manufacturer. **Cellco. Circle 139.**

## Monoclonal Antibodies

A new monoclonal antibody (mAb) specific for histidine-Tag detects short stretches of histidine in the sequence X-X-Gly-Ser-His-His-

His that is contained in widely used expression vector systems for histidine-tagged proteins. The mAb can be used to detect recombinant proteins by protein immunoblot, dot blot, immunocytochemistry, enzyme-linked immunosorbent assay, and immunofluorescence. **Cortex Biochem. Circle 140.**

A range of mAbs is available against human and mouse epithelial cadherin. Epithelial cadherin is involved in the  $\text{Ca}^{2+}$ -dependent adhesion of epithelial cells during embryonic development and is important in the generation and maintenance of epithelial layers in adult tissues. These mAbs are suitable for use in adhesion blockade, immunohistochemistry (frozen and paraffin-embedded sections), protein immunoblotting, immunofluorescence, and immunoprecipitation. **R&D Systems Europe. Circle 141.**

## DNA Primers

A new line of Random Amplified Polymorphic DNA primers and kits is useful for genetic mapping and DNA fingerprinting. Each kit contains 20 individual 10 mer primers with a G+C content of 60 to 70%. Individual vials contain 15  $\mu\text{g}$  of lyophilized primer that has been reverse-phase purified and checked by polyacrylamide gel electrophoresis. **CyberSyn. Circle 142.**

## Protein Elution Monitor

A flow-through conductivity monitor can help optimize the separation and recovery of proteins in both classical column and high-performance liquid chromatography systems. The conductivity cell attaches to the eluent end of the column and digitally displays conductivity during a run. Protein tracking can be accomplished by monitoring eluent conductivity during column separations, since a protein will usually elute from the column at the same conductivity value run after run. The conductivity cell has a dead volume of less than 20  $\mu\text{l}$ , ensur-

Newly offered instrumentation, apparatus, and laboratory materials of interest to researchers in all disciplines in academic, industrial, and government organizations are featured in this space. Emphasis is given to purpose, chief characteristics, and availability of products and materials. Endorsement by *Science* or AAAS is not implied. Additional information may be obtained from the manufacturers or suppliers named by circling the appropriate number on the Readers' Service Card and placing it in a mailbox. Postage is free.



ing no remixing of the separated protein components. The cell is also totally biocompatible and resists protein binding to its internal sensor. **Lazar Research Laboratories. Circle 143.**

### Total RNA Kit

The S.N.A.P. Total RNA Isolation Kit makes use of spin columns with a unique resin to produce RNA that is free from contaminating DNA, protein, and cellular debris without the use of organic extractions or ethanol precipitations. The kit yields 100 to 150 µg of total RNA from  $5 \times 10^6$  cells or 20 mg of tissue, suitable for use in reverse transcriptase polymerase chain reaction. **Invitrogen. Circle 144.**

### DNA Analysis System

The P/ACE capillary electrophoresis system for automated DNA analysis provides advantages over traditional gel electrophoresis methods for size polymorphisms, DNA quantitation, synthetic oligonucleotide purity analysis, mutation analysis, and protein-DNA interaction. The system automates the separation, quantitation, analy-

sis, and documentation of oligonucleotides, polymerase chain reaction products, and restriction fragments. Automated sample handling capabilities eliminate time-con-



suming manual sample loading and gel preparation. Automatic quantitation, through on-capillary detection, results in further time and cost savings. **Beckman Instruments. Circle 145.**

### Literature

*Purification of Nucleic Acids* is a booklet that outlines the latest liquid chromatography methods used to separate, analyze, and purify oligonucleotides, DNA and RNA restriction fragments, polymerase chain reac-

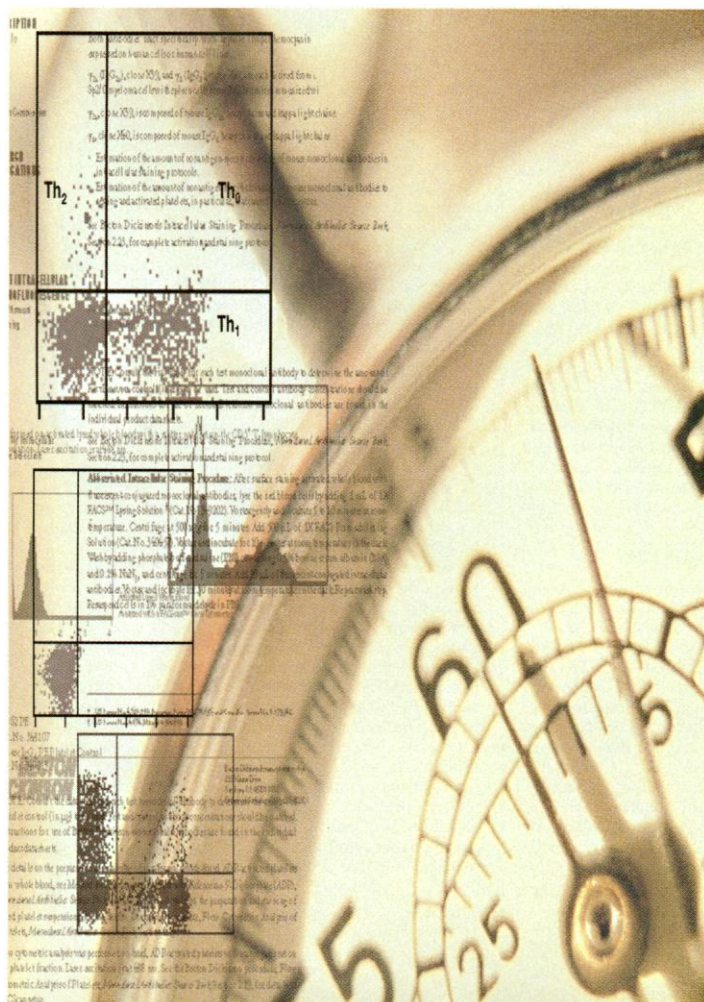
tion generated fragments, and plasmids. Illustrated examples of reversed phase, ion exchange, size exclusion, and hydroxyapatite chromatography modes are included along with an extensive bibliography of journal articles. **TosoHaas. Circle 146.**

1996 *Spring Books* lists 42 recently released publications covering a diverse range of topics, including cell biology, immunology, molecular biology, protein chemistry, and spectroscopy. **Sigma Chemical. Circle 147.**

*Isolation and Preparation of Proteins Using 2-D Electrophoresis and Affinity Chromatography* is an application note that describes a two-step strategy for high-resolution protein purification. **Oxford GlycoSystems. Circle 148.**

*Vacuum Products* is a 1000-page catalog offering a comprehensive selection of hardware, instrumentation, and accessories for rough, high, and ultra-high vacuum. **Kurt J. Lesker. Circle 149.**

*Gas Chrom Newsletter* keeps gas chromatographers current with new product developments and applications. Every issue includes instructional material for both the novice and the experienced user. **Alltech Associates. Circle 150.**



## Buy Hours. By Ours.

*Intracellular cytokine detection in hours, not days.*

**Introducing the FASTIMMUNE™ Cytokine System from Becton Dickinson.**

The FASTIMMUNE Cytokine\* System is a powerful new tool for studying the interrelationships of the human cytokine network. Unlike bulk ELISA assays, this easy-to-use reagent system provides comprehensive cell-by-cell flow cytometric results from whole blood in only a few hours. High sensitivity and low background are ensured by stringent antibody selection, proprietary permeabilization chemistry, and proven conjugation technology. For more information, please contact Becton Dickinson Immunocytometry Systems today at (800) 223-8226.

**Circle No. 16 on Readers' Service Card**

*\*For research use only. Not for use in diagnostic procedures.*

**BECTON  
DICKINSON**

FASTIMMUNE is a trademark of Becton Dickinson and Company.  
©1996 Becton Dickinson and Company.

# SCIENCE

## DISPLAY CLASSIFIED ADVERTISEMENTS

Call for rate and deadline information on display classified advertisements.

Bethany Ritchey  
Recruitment Display Advertising  
Telephone: (202) 326-6541  
FAX: (202) 289-6742

Janis Crowley  
Recruitment Advertising Manager  
Telephone: (212) 496-7704  
FAX: (202) 289-6742

Debbie Cummings  
European Recruitment Advertising  
Telephone: +44 (0) 1223 302067  
FAX: +44 (0) 1223 576208

For **GLOBAL CAREER OPPORTUNITY** display advertisements, turn to pages 131, 134, 135, and 143.

## LINE CLASSIFIED ADVERTISEMENTS

### How to Submit a Line Classified Ad:

Submit double-spaced typewritten copy. Do not include any abbreviations. SCIENCE will edit and typeset ads according to SCIENCE guidelines. Include billing information and desired publication date. Available categories: Positions Open, Meetings, Announcements, Courses and Training, Services. SCIENCE cannot provide proofs of typeset line ads. Line advertisements are not commissionable.

**Estimates:** SCIENCE will provide a cost estimate for line ads. This is an approximate cost only. Allow for variation between estimated lines and actual typeset lines and resulting final cost. Purchase orders must allow for some degree of flexibility and/or adjustment.

For line advertising deadlines, call Eric Banks.  
Telephone: (202) 326-6555;  
FAX: (202) 289-6742.

**Credit Cards:** SCIENCE accepts American Express, MasterCard and VISA. Discount does not apply to credit cards.

**Cancellations:** Deadline for cancellation is Tuesday, 10 days prior to issue date.

**Discounts:** A 3% cash discount is granted to all prepaid ads.

**Ads from Outside the U.S.:** A discount of \$30 will be offered to advertisers making payment in U.S. dollars by checks drawn on U.S. banks. Contact Debbie Cummings. Telephone: +44(0) 1223 302067; FAX: +44(0) 1223 576208.

**SCIENCE Global Career Network:** Unless otherwise instructed, every classified advertisement submitted for publication in SCIENCE is automatically posted on SCIENCE's on-line classified advertising service, SCIENCE Global Career Network, at no additional charge.

SCIENCE Global Career Network address:

WWW: <http://www.aaas.org>  
Gopher: [gopher.aaas.org](mailto:gopher.aaas.org)

### Mail, FAX or Email materials to:

SCIENCE Classified Advertising  
1200 New York Avenue, N.W., Room 911  
Washington, DC 20005  
FAX: 202-289-6742

Internet Email: [science\\_classifieds@aaas.org](mailto:science_classifieds@aaas.org)  
(please include your telephone number in Email)

SCIENCE reserves the right, at its discretion, to edit or decline to publish advertisements submitted to it.

## POSITIONS OPEN

Purdue University's School of Veterinary Medicine is seeking an outstanding leader to head the Veterinary Pathobiology Department. Candidates must represent a discipline in the unit, be familiar with modern molecular technology for investigation and diagnosis of natural and experimental disease of both infectious and non-infectious origins, possess a record of excellence in research and teaching, and have a thorough understanding of extramural funding. Strong interpersonal skills and experience in administering a multidisciplinary unit are desirable. Incumbent must be aware and supportive of animal health diagnostic activities and have strong commitment to excellence in our educational programs—veterinary professional, veterinary technology, human medical professional, and graduate/residency. Candidates must have vision and leadership skills needed to direct this multidisciplinary academic unit of 27 faculty and 39 graduate students/residents (disciplines include anatomic pathology, clinical pathology, microbiology, immunology, parasitology, epidemiology, toxicology, and ethology). Incumbent will serve on School's Executive Committee and must possess an outstanding record of scholarship to qualify for the position of **PROFESSOR**. D.V.M. or equivalent required; Ph.D. and Board certification in a departmental specialty area preferred. Closing date for applications is September 1, 1996, or until filled. Send application with letter of intent, curriculum vitae, and names of four references to: **Dr. John F. Van Vleet, Head, Search Committee, Veterinary Pathobiology Department, 1243 Veterinary Pathology Building, Purdue University, West Lafayette, IN 47907-1243.** *Purdue University is an Affirmative Action/Equal Opportunity Employer/Educator. Women and minority applicants are strongly encouraged to apply.*

**ASSISTANT PROFESSOR/SUPERINTENDENT** position with New Mexico State University at the Agricultural Science Center in Los Lunas, New Mexico, located 25 miles south of Albuquerque, New Mexico. Tenure-track position with graduate faculty appointment 60% research, 40% administrative. Supervise and conduct research on improved irrigated farming systems and urban horticultural and revegetation problems. Qualifications include Ph.D. in agricultural or related field. Must be knowledgeable in irrigated production systems. Submit written letter of application, current résumé, official transcripts, and addresses of at least three references by August 15, 1996 to: **Dr. LeRoy A. Daugherty, Chairman, Search Committee, New Mexico State University, Box 30003, Department 3Q, Las Cruces, NM 88003. Telephone: 505-646-3406; FAX: 505-646-6041.** *New Mexico State University is an Equal Opportunity/Affirmative Action Employer. Offer of employment contingent upon verification of individual's eligibility for employment in the United States.*

## SCIENTIST

The Division of Endocrinology, Department of Medicine, University of Toronto, is seeking to recruit scientists and/or clinician-scientists at the **ASSISTANT PROFESSOR** level, to establish independent research programs in the molecular and cellular biology or genetics of diabetes. Candidates should have a record of successful graduate and postdoctoral training, as evidenced by a competitive publication record.

Interested applicants should submit a covering letter and curriculum vitae to: **Dr. D. Drucker, The Toronto Hospital, 200 Elizabeth Street CCRW 3-838, Toronto M5G 2C4, Canada. Email: [d.drucker@utoronto.ca](mailto:d.drucker@utoronto.ca).** *The University of Toronto encourages applications from qualified men and women, members of visible minorities, aboriginal peoples, and persons with disabilities. In accordance with Canadian Immigration requirements, this advertisement is directed to Canadian citizens and permanent residents.*

## MEDICINAL CHEMISTRY

The Department of Medicinal Chemistry, and the Drug Design and Development Institute, Medical College of Virginia/Virginia Commonwealth University (VCU): three full-time faculty positions at the **ASSISTANT, ASSOCIATE, and/or FULL PROFESSOR** level. The successful candidates will each possess a doctorate degree and preference will be given to applicants with strong backgrounds in synthetic medicinal chemistry, molecular pharmacology, or structural biology; with records of demonstrated achievements; and with active research programs. Submit a curriculum vitae and names of three references to: **Search Committee Chairman, Department of Medicinal Chemistry, Box 980540, Medical College of Virginia/Virginia Commonwealth University, Richmond, VA 23298-0540** before October 1, 1996. *VCU is an Equal Opportunity/Affirmative Action Employer. Women, minorities, and persons with disabilities are encouraged to apply.*

## POSITIONS OPEN

### DIRECTOR OF MANUFACTURING

Jenner Technologies is an emerging biotechnology company developing products for the immunotherapy of cancer and related conditions. **SENIOR LEVEL** position with responsibility for outsourcing and supervising contract manufacturing of diverse products for clinical trials including lipophilic synthetic lipopeptides, recombinant proteins produced in baculovirus and *E. coli* expression systems, and liposomal formulations. Prior industry experience in manufacturing with working knowledge of quality control and regulatory affairs essential. The successful candidate will have excellent scientific and communications skills and be a self-starter. Contact:

**Anthony E. Maida III, M.A., M.B.A.**  
Chief Executive Officer  
Jenner Technologies  
828 Eastbrook Court  
Danville, CA 94506-1206  
FAX: 510-736-5910  
Email: [VAXP@AOL.COM](mailto:VAXP@AOL.COM)

### EAST TENNESSEE STATE UNIVERSITY

**ASSISTANT PROFESSOR (Research Track)**—Program is on the molecular basis of atherogenesis—particularly with regard to the roles of macrophage and the inflammatory response. A background in the molecular and cell biology of either sterol trafficking or macrophage function is desirable. Desired techniques include: protein biochemistry (e.g. FPLC, SDS-PAGE, immunoprecipitation); cell biology (transfection, immunofluorescence); and molecular biology (preparation of constructs, site directed mutagenesis). Qualifications: Ph.D. in cell biology/biochemistry/molecular biology with at least three years of related experience. Start date is flexible but will be available by December 1, 1996. Starting salary will be \$40,000 per year plus benefits. Send curriculum vitae to: **Dr. Michael Sinensky, East Tennessee State University, Box 70581, Johnson City, TN 37614-0581.** *East Tennessee State University is an Affirmative Action/Equal Opportunity Employer. Position contingent upon grant funding.*

### FACULTY POSITION

The Division of Endocrinology, Diabetes and Metabolism (Department of Medicine) at the University of Pennsylvania School of Medicine invites applications from physician-scientists for a **FACULTY POSITION**. Candidates who will develop or maintain an excellent basic research program related to diabetes are sought. Areas of potential interest include, but are not limited to, hormone action, signal transduction, obesity, genetics, metabolism, membrane protein targeting, and secretion. Academic rank and financial support will be commensurate with the needs and experience of the successful candidate. Please send curriculum vitae, a brief description of research interests, and three letters of recommendation to: **Morris J. Birnbaum, M.D., Ph.D., University of Pennsylvania, Room 322 Clinical Research Building, 415 Currie Boulevard, Philadelphia, PA 19104-6148.** *The University of Pennsylvania is an Affirmative Action/Equal Opportunity Employer, and applications from women and minorities are welcomed.*

### MRI FACULTY POSITIONS University of Kentucky Medical Center

The Department of Anatomy and Neurobiology and the Sanders-Brown Center on Aging invite applications for two tenure-track positions in Magnetic Resonance Imaging or Spectroscopy Research. The positions will be at either the **ASSISTANT or ASSOCIATE PROFESSOR** level, depending on experience and qualifications. Successful candidates will show exceptional promise for establishing strong extramurally funded research programs using MRI in the areas of stroke, aging of the nervous system, and/or neurodegenerative diseases. The Research MRI Center has a research dedicated 1.5 T Siemens VISION unit with high performance gradients, EPI and multinuclear spectroscopic capabilities, and a 4.7 T Varian Imaging/Spectroscopy system. Applicants should have an M.D., Ph.D. or equivalent degree. Applicants should send curriculum vitae, a short statement of research interests, and the names of three references to: **Dr. Don M. Gash, Chair of Search Committee, Department of Anatomy and Neurobiology, Chandler Medical Center MN224, Lexington, KY 40536-0084.** *The University of Kentucky is an Equal Opportunity Employer.*



## Public Invitation to Participate in a Research and Development Project on Broad Area Energy Utilization Network System (Eco-Energy City Project)

*Announced by the New Energy and Industrial Technology Development Organization on July 5, 1996*

In order to promote new energy technologies, the New Energy and Industrial Technology Development Organization (NEDO) would like to invite all interested companies and research organizations to apply to us with new R&D proposals regarding R&D criteria of the Eco-Energy City Project.

After receiving your applications, we will start the evaluation of the proposals regarding their possibilities and finally select suitable ones adopted to new R&D items of the Eco-Energy City Project.

Through the entrustment contract on budget etc., they may start from Fiscal 1997 (from April, 1997) as new research themes.

1. *Theme of the Research and Development Project:*  
"Broad Area Energy Utilization Network System (Eco-Energy City Project)"

2. *Process of Application:*

Through the application, we evaluate new R&D proposals according to the object and content of our project in order to add new R&D items and renovate our project. Received proposals shall be evaluated and selected through the due system of NEDO based on whether they are suitable for our project from the standpoint of its social value, fitness, and effectiveness for the project.

3. *Outline of the Research and Development Work to be Entrusted:*

Energy consumption of cities has been dramatically increasing and pollution of cities has become serious. These are main factors that affect long term energy supply of the nation and global environmental problems.

It is now necessary to build highly efficient energy supply systems in cities to minimize energy consumption and environmental pollution.

The purpose of the Eco-Energy City Project is to establish a newly combined energy supply system and unified city infrastructure in cities and to promote building cities with high efficiency of energy utilization and low levels of environmental load (pollution).

Technological fields of R&D of the Eco-Energy City Project are as follows:

- (1) Recovery and conversion technologies of the unused energy  
This is to develop technologies to recover energy from waste heat of industrial sites in and around cities and convert it to use for other purposes.
- (2) Energy transport and storage technologies  
This is to develop energy transport and storage technologies in order to construct efficient energy utilization network systems in and around cities.
- (3) Energy supply and utilization technologies  
This is to develop energy supply and utilization technologies in order to supply energy to cities and peripheral industrial sites according to their complicated energy demand.
- (4) Environmental improving technologies  
This is to develop technologies to decrease the emission of pollutants through activities to better use energy in and around cities and to create a better city environment.
- (5) Peripheral elementary technologies such as measuring technologies  
This is to develop technologies such as measuring technologies related to above-mentioned elementary technologies.
- (6) Optimum system design technologies  
This is to develop optimum system design technologies regarding system planning, controlling, and evaluation in order to construct various kinds of energy network systems using above-mentioned technologies.

4. *Procedures for Application:*

Please apply your proposal according to NEDO's instructions.

(1) *Qualification Criteria*

All companies or research organizations that meet the following qualification criteria can submit an application to participate in our project:

1. The applicant must have previous research and development experience in the field covered by or related to the project and possess the organizational structure, human resources, and research facilities required to carry out the project work.
2. The applicant must be in economically sound condition and have the ability to manage its finances and facilities as necessary to smoothly carry out the project work.
3. The applicant must be able to comply with NEDO's instructions, if such are necessary, to fulfill the project work.
4. The applicant must have attended the explanatory meeting held by NEDO as set forth in item (2) below or been represented at the meeting by a responsible agent or representative who is capable of accurately conveying the contents of the meeting in detail

(2) *Explanatory Meeting*

An explanatory meeting will be held on the date shown below in order for NEDO to fully explain the details of the project's research and development work to be entrusted and the application document to be submitted. All companies or research organizations that are interested in submitting an application to participate in the project are required to attend this meeting or to send an agent or representative to attend on their behalf. Only Japanese will be used during the meeting.

Date: July 17, 1996  
Time: 14:00 to 15:00  
Place: NEDO Head Office  
Sunshine 60 Building  
30th Floor, Special Conference Room  
1-1, Higashi-Ikebukuro 3 Chome, Toshimaku, Tokyo 170

(3) *Deadline*

Deadline for Proposals is 12:00, September 6, 1996.

(4) *Further Information*

For further information regarding the research and development work for entrustment, please contact NEDO by telefax as follows:

New Energy and Industrial Technology Development Organization  
Contract Division, Accounting Department  
28th Floor, Sunshine 60 Building  
1-1, Higashi-Ikebukuro 3 Chome, Toshimaku, Tokyo 170  
Telefax: 03-5992-1184



## MEDICAL OFFICER

### DIVISION OF VIRAL AND RICKETTSIAL DISEASES, NATIONAL CENTER FOR INFECTIOUS DISEASES, CENTERS FOR DISEASE CONTROL AND PREVENTION.

The Centers for Disease Control and Prevention is seeking qualified applicants for a staff position in the Viral Exanthems and Herpesvirus Branch, Division of Viral and Rickettsial Diseases, who will function as a key member of a multidisciplinary scientific team responsible for the development, implementation, and evaluation of novel laboratory-based epidemiologic research studies. This research includes identifying molecular markers of pathogenesis applicable to the etiology, diagnosis, therapy, and conduct of molecular epidemiologic studies of sexually transmitted viral disease, particularly human papillomavirus and human herpesvirus.

Qualifications include outstanding scientific credentials; experience and board certification in infectious diseases or oncology, OB/GYN, pathology; knowledge of sexually transmitted viral diseases; and proven ability to engage in original laboratory and epidemiologic research with other scientists. A medical degree is required. An additional advanced degree (Ph.D., Sc.D., or other) in biomedicine or a related field is desirable. Depending on qualifications, the annual salary range is \$68,735-\$86,411. Additional compensation is provided for board certification. Interested applicants should send their curriculum vitae by August 13, 1996, to: **Ms. Janie L. Oddy, Personnel Generalist, Human Resources Management Office, Centers for Disease Control and Prevention, 4770 Buford Hwy., Atlanta, GA 30341-3724. EOE.**

## RICE WEED ECOPHYSIOLOGIST

**Assistant/Associate Professor and Assistant/Associate Weed Ecophysio-  
logist.** An 11 month term (9 month tenure-track) career position in the Agricultural Experiment Station and the College of Agricultural and Environmental Sciences at the University of California, Davis. This academic position has 75% research and 25% teaching responsibilities. The appointee will be located in the Weed Science Program in the Department of Vegetable Crops. Appointee will develop a strong research program on the ecophysiology of weeds, with emphasis in rice and rice-based cropping systems. The incumbent should be competent in the use of modern ecological, physiological, biochemical, and/or molecular techniques to investigate the fundamental bases of weed management or weed/crop interactions. Possible program areas include crop/weed competition; canopy development and light interception for species mixtures; herbicide resistance management; and integrated weed control practices. The appointee will direct the applied rice weed management program at the California Rice Experiment Station at Biggs, CA, and collaborate with Cooperative Extension personnel in rice weed control research and educational activities. It is anticipated that the appointee will assume an endowed Professorship in Rice Weed Control and will utilize the endowment income in his/her rice weed management program. The incumbent will teach an undergraduate course in weed science and participate in graduate education. Applicant must hold the Ph.D. degree in a plant science discipline with a good understanding of statistics and field methodology and expertise in one or more of the following areas: weed science, agronomy, plant ecology, or plant physiology. Send curriculum vitae, publication lists (both published and submitted, including representative reprints), statement of teaching and research interests, undergraduate and graduate transcripts (if within 5 years of graduation), and names and addresses of five professional references to **Dr. Kent J. Bradford, Chair, Department of Vegetable Crops, University of California, Davis, CA 95616-8746. Telephone: (916) 754-7049; Fax: (916) 752-9659; Email: kjbradford@ucdavis.edu** for application information. Open until filled, but to assure consideration, apply by October 1, 1996. *The University of California is an affirmative action/equal opportunity employer.*

### Faculty Position in Biophysics University of California, Los Angeles

The Departments of Physics and Astronomy, Chemistry and Biochemistry and the Jules Stein Eye Institute invite applications for a senior faculty position in experimental biophysics. Exceptionally well-qualified junior applicants will also be considered for appointment at the assistant or associate professor level. Applicants should have a demonstrated ability to pursue an independent research program that involves collaboration with biochemists and molecular biologists. We are particularly interested in biophysicists with expertise in advanced probes such as optical methods, force microscopy, magnetic resonance, x-ray scattering, and the use of genetic manipulation. However, highly qualified individuals with interests in other areas of biophysics will be considered.

This search is being conducted jointly by the Physics and Astronomy, Chemistry and Biochemistry Departments of UCLA in collaboration with the Jules Stein Eye Institute of the UCLA Medical School, which has active biophysics-related research programs that include protein-folding, electron spin resonance, signal processing within cells, and molecular mechanisms of membrane transduction. The successful applicant would establish an affiliation with JSEI, ranging from an informal research collaboration to a joint faculty appointment, and would be expected to stimulate a biophysics teaching program.

Applicants should send a resume, a research statement, and names of at least three references to **F. V. Coroniti, Chair, Department of Physics and Astronomy, University of California, Los Angeles, CA 90095-1547.** For full consideration, applications should be received by September 15, 1996. *The University of California is an affirmative action/equal opportunity employer.*



### ENDOWED CHAIRS

The Department of Pathology of the Vanderbilt University School of Medicine is pleased to announce the appointment of Professor Robert D. Collins as the first John L. Shapiro Chair in Pathology. The Department is seeking nominations for two additional senior faculty to be conferred with Endowed Chairs in the Department. These Chairs honor Professor Ernest W. Goodpasture, and Dorothy B. and Theodore Austin. The Department of Pathology has a distinguished history, a devotion to teaching, and an outstanding record of clinical service, clinical research, and residency and fellowship training. The basic research program is highly focused and excellent, and there is a well-established Ph.D. program within Vanderbilt's Interdisciplinary Graduate Program. Current areas of research strength are cancer, neurotoxicology and neurodegenerative disease, vascular and extracellular matrix biology, AIDS, and renal disease. Environmental pathology, broadly defined, is the recruiting theme for these Chairs. The two Chairs will investigate the contributions of genetics, aging, and environmental toxicants to the pathogenesis of disease. The holder of one Chair will focus on basic cancer research. Candidates must be M.D. or M.D./Ph.D. pathologists with qualifications commensurate with the rank of Professor, and should have a distinguished record in teaching, scholarship, peer-reviewed funding, and the mentoring of academic pathologists. *Vanderbilt University is an Equal Opportunity employer, and women and minorities are encouraged to apply.*

Letters of interest should be sent with a curriculum vitae and three references to:

**Doyle G. Graham, M.D., Ph.D.  
Professor and Chair  
Department of Pathology  
C-3322 Medical Center North  
Vanderbilt University Medical Center  
Nashville, TN 37232**

# Advancing Science... Enhancing Life

Pharmacia & Upjohn, Inc., a worldwide manufacturer of pharmaceutical, agricultural and healthcare products, seeks a Pharmacologist (Ph.D.) and a Molecular Biologist/Biochemist (B.S./M.S.) with significant expertise in contemporary pharmacological and molecular biological approaches, respectively, to inflammatory diseases. As key members of our Cell Biology and Inflammation Research team, the selected individuals will participate in the identification of new molecular targets for the discovery of novel anti-inflammatory compounds and the identification and evaluation of lead compounds. We invite you to explore these opportunities today.

**Ph.D. Pharmacologist:** We seek a candidate with a Ph.D. in pharmacology or physiology and a strong record of research achievement utilizing in vivo models of pulmonary disease. Experience in measuring lung function in animal models is highly desirable. Initial responsibilities will include providing pharmacological support for the discovery of new drugs for asthma. An understanding of the molecular, cellular and immunological mechanisms underlying inflammatory diseases is also important, as conception and implementation of new in vitro and in vivo assays will be driven by future molecular targets. A desire to participate enthusiastically in the translation of contemporary scientific concepts into pharmacological therapies for clinical development is essential, as is the ability to work comfortably in a team setting to achieve research objectives. **Refer to position #317 in your correspondence.**

**Molecular Biologist/Biochemist:** Our ideal candidate will have a B.S. or M.S. in molecular biology, biochemistry, immunology, or a related field. We seek an individual who is self-motivated, has the ability to plan and critically evaluate experiments, and has excellent verbal and written communication skills. The individual must have at least two years' experience in RNA purification, RT-PCR, generation of prokaryotic and eukaryotic expression constructs, immunoblotting and immunoprecipitation, or purification of expressed proteins. Experience with in situ hybridization or techniques to study protein-protein interactions is highly desired. A background in signal-transduction or immunology would be helpful. **Refer to position #318 in your correspondence.**

Pharmacia & Upjohn offers a stimulating, multi-disciplinary research environment in modern facilities at our Pharma Product Center in Kalamazoo. Our region offers an outstanding mix of cultural and recreational pursuits and an attractive cost of living. Excellent salary and benefit packages are provided.

For confidential consideration, please send your curriculum vitae and a description of research experience to: Pharmacia & Upjohn, Inc., Corporate Recruiting, 7000 Portage Road, Kalamazoo, MI 49001. Pharmacia & Upjohn is an equal opportunity employer with a commitment to workplace diversity.



**Pharmacia & Upjohn**

## NATIONAL CANCER INSTITUTE NATIONAL INSTITUTES OF HEALTH, PUBLIC HEALTH SERVICE CANCER PREVENTION FELLOWSHIP PROGRAM

The Division of Cancer Prevention and Control (DCPC), NCI, is accepting applications for the Cancer Prevention Fellowship Program (CPFP). The purpose of this program is to train individuals from a multiplicity of health science disciplines in the field of cancer prevention and control. The program provides for: *Master of Public Health training* (at accredited university programs); participation in the *DCPC Cancer Prevention and Control Academic Summer Course* (open to physicians and scientists interested in specialized instruction on the principles and practice of cancer prevention and control); *working directly with individual preceptors at DCPC* on cancer prevention and control projects; *brief field assignments* in cancer prevention and control programs at other institutions. Funding permitting, Fellows will be accepted for up to three years of training, beginning July 1, 1997. Benefits include selected relocation and travel expenses, paid federal holidays, and participatory health insurance.

### ELIGIBILITY

M.D., D.D.S., or D.O. from a U.S., territorial, or Canadian Medical School. Foreign medical graduates must have current USMLE or ECFMG certification and appropriate experience, e.g., one year residency in a training program approved by the Accreditation Council for Graduate Medical Education.

**OR**

Ph.D. or other doctoral degree in a related discipline (epidemiology, biostatistics, and the biomedical, nutritional, public health or behavioral sciences). Foreign education must be comparable to that received in accredited U.S., territorial, or Canadian institutions.

**PLUS**

The applicant must be a U.S. citizen or resident alien eligible for citizenship within four years.

For details and an application catalog either call, fax, email, or send a postcard or letter with your name, home address, and where you heard about the program to:

Douglas L. Weed, M.D., M.P.H., Ph.D.  
Director  
Cancer Prevention Fellowship Program  
Division of Cancer Prevention and Control  
National Cancer Institute  
Executive Plaza South, Suite T-41  
6130 Executive Blvd MSC 7105  
Bethesda MD 20892-7105

Further inquiries: Mrs. Barbara Redding, Telephone: (301) 496-8640; Fax: (301) 402-4863; email: [reddingb@dcpceps.nci.nih.gov](mailto:reddingb@dcpceps.nci.nih.gov)

**DEADLINE FOR RECEIPT OF APPLICATIONS: SEPTEMBER 1, 1996**

*NIH is an Equal Opportunity Employer*



# Scientists/ Senior Scientists

**Onyx Pharmaceuticals, Inc.** is a growing research-driven biotechnology company headquartered in the San Francisco Area. We are dedicated to the discovery and development of novel therapeutics based on the genetics of human disease, with an initial focus on cancer. Our continued growth has created several outstanding opportunities for a handful of creative professionals with a strong background in virology.

These key positions will help expand our program in replicating viruses targeted at cancer cells, and help to develop new programs in therapeutic viruses targeting other diseases. Candidates must possess a Ph.D.; at least 5 years of postdoctoral, industrial or academic experience with publications in the field; a solid understanding of molecular virology; working knowledge of the biology of cancer and/or of chronic viral diseases; and the ability to work independently, and as part of a talented, interdisciplinary research team.

We offer an attractive salary/benefits/relocation package, including stock options & stock purchase plan. If living in the Bay Area and an exciting career with an innovative company pioneering a new therapeutic field sounds good to you, please send or fax your resume to: **ONYX Pharmaceuticals, Attn: Virology Research, 3031 Research Dr., Richmond, CA 94806.** Fax: (510) 222-9387 or e-mail to [denise@onyx-pharm.com](mailto:denise@onyx-pharm.com). EOE

**ONYX**  
P H A R M A C E U T I C A L S

## CHAIR OF EXCELLENCE BIOMEDICAL ENGINEERING THE UNIVERSITY OF MEMPHIS *Search Continued*

An endowed Chair is being offered to candidates who have shown consistent evidence of research excellence, leadership, and teaching ability. The qualifications of the candidate should be commensurate with an appointment as full professor. Areas of emphasis are the mechanics of cells or tissues, biomaterials, or electrocardiology/instrumentation, although other areas that are complementary to the interests of both the program and the existing faculty, such as cell biology, bio-fluid dynamics, thrombosis, and microcirculatory behavior, will also be considered. A significant record of research funding is essential. In addition to salary guarantees, the Chair offers significant resources to help establish an initial research program. This position will be filled as soon as feasible and will remain open until filled.

The Department of Biomedical Engineering at the University of Memphis is part of a joint graduate program with the University of Tennessee, Memphis, a development enhanced by the receipt of a Special Opportunity Award from the Whitaker Foundation by the two institutions. The program consists of over 75 students and 16 tenure-track faculty members, including 4 endowed Chairs. Substantial resources are available to the joint program: the facilities of two major universities; several teaching hospitals in a major medical center, the nationally known St. Jude Children's Research Hospital; and three major implant manufacturers.

Interested applicants should send a CV, a summary of their research plans, and the names of three references to: **Dr. Vincent Turitto, Chair, Department of Biomedical Engineering, The University of Memphis, Memphis, TN 38152** ([vturitto@cc.memphis.edu](mailto:vturitto@cc.memphis.edu)).

*The University of Memphis is an Equal Opportunity/  
Affirmative Action Employer*

### U.S. DEPARTMENT OF ENERGY DIRECTOR ENVIRONMENTAL SCIENCES DIVISION OFFICE OF HEALTH AND ENVIRONMENTAL RESEARCH \$100,526 to \$122,688 per annum

The U.S. Department of Energy is seeking applicants for the Senior Executive Service position of Division Director, Environmental Sciences Division (ESD), Office of Health and Environmental Research (OHER), in the Office of Energy Research. The incumbent is the principal Department of Energy official responsible for planning, implementing, and directing the Environmental Sciences Research Program, including research carried out by universities, national laboratories, and private institutions (involving over 300 grants, contracts, and interagency agreements). Notable programs in the Environmental Sciences Division include the Department's Global Change Program, Bioremediation, and basic science in support of improved methods for environmental restoration. The Director of ESD must also work as a member of the OHER management team on numerous crosscutting initiatives, and with the Office of Environmental Management, DOE, and other components of DOE. A Ph.D. (or equivalent training and experience) in one of the scientific disciplines within the scope of the Division such as global change, atmospheric science, chemistry, ecology, marine biology, or environmental biotechnology; and significant experience as an administrator in government or the private sector are necessary.

To be eligible for consideration, applicants must meet all executive core qualifications and the specific technical qualification requirements. A supplemental statement must be included addressing each of the qualification requirements. Details of all information required to apply and further information should be obtained from the address below.

Exceptional difficulty in recruiting highly qualified candidates may be the basis for paying a recruitment or relocation bonus (up to 25% of base pay) and/or requesting approval of a dual compensation waiver for civil and uniformed services retirees.

**Applications must be postmarked no later than August 1, 1996. Direct inquiries to: Office of Executive and Technical Resources, HR-34, 4E-060, FORS, DOE, Washington, DC 20585. The Department is an equal opportunity employer. U.S. citizenship is required.**

## GLOBAL CAREER OPPORTUNITIES

### NIRIM

#### POST-DOCTORAL RESEARCH FELLOWSHIP

Applications of several excellent post-doctoral researchers are invited for the NIRIM COE (Center of Excellence) Research Fellowship in FY1997. Applicants are requested to join the COE Project in NIRIM, where search for and synthesis of new denser materials are carried out by using ultra high pressure techniques of a diamond anvil cell with laser heating system, a single and a double stage gun-type shock compression apparatus, and a large belt-type apparatus. Applicants must provide a well defined research proposal to be carried out within these scopes. The fellowships will be awarded for a period between August 1997 and March 1998. Salary is about \$4000/m. A round trip flight ticket and a fixed moving allowance will be provided.

Application forms (returnable by 30th Sept. 1996) and further particulars can be obtained from: **COE Secretariat, National Institute for Research in Inorganic Materials, 1-1 Namiki, Tsukuba, Ibaraki 305, Japan**

**Tel: +81-298-55-2142**

**Fax: +81-298-52-7449**

**e-mail: [kobayam@nirim.go.jp](mailto:kobayam@nirim.go.jp)**

**University of Illinois at Chicago  
Director of Neuroscience**

Research in neuroscience at UIC is currently conducted by approximately 60 faculty in basic science and clinical departments. UIC is committed to expanding and enhancing its neuroscience programs. In enhancing existing programs, the Director will be instrumental in the recruitment of additional neuroscience faculty. We seek an individual who will create an environment conducive to excellence by coordinating and stimulating the development of research, education, and training in neuroscience.

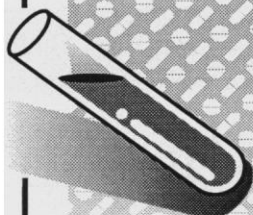
The Director will be provided with adequate resources and full time administrative support. Appointment requires qualifications as a tenured Professor.

Nominations and applications should be sent to:

**Assistant Dean Lillye Hart  
Neuroscience Search Committee  
Dean's Office  
University of Illinois at Chicago  
1853 W. Polk Street, Room 131  
(M/C 784)  
Chicago, Illinois 60612**

*The University of Illinois at Chicago is an Affirmative Action/Equal Opportunity Employer. Women and minorities are encouraged to apply.*

RESEARCH & DEVELOPMENT



## **Insight scientific discovery**

*Glaxo Wellcome, the world's largest pharmaceutical company, continues to reinforce its commitment to pioneering research and development efforts that respond to the existing and emerging needs of the global community. To explore new challenges in healthcare research, bring your expertise to our team in the following opening at our Corporate Headquarters located in Research Triangle Park, N.C.*

### **ASSISTANT SCIENTIST/ RESEARCH SCIENTIST**

As a key member of our Molecular Endocrinology Department, this individual will develop and study novel ligands directed against ion channels.

This position requires a BS or MS in a Biological Science discipline with a minimum of 1 year relevant experience. Previous experience with patch clamp and/or molecular biology techniques is strongly desired. Candidate must have excellent teamwork/communication skills and the ability to interact with other scientists.

The rewards of working at Glaxo Wellcome include an excellent salary and a flexible benefits package. For confidential consideration, send your resume, **which MUST include position title and salary history, to: Human Resources, Job #ASC1797-1, Glaxo Wellcome, P.O. Box 13398, Research Triangle Park, NC 27709.** (No Phone Calls or Agency Referrals, Please.) An Equal Opportunity Employer M/F/D/V.

# **GlaxoWellcome**

*Working Together for A Healthier World*

#### **GLOBAL CAREER OPPORTUNITIES**

### **University of Cambridge**

## **Arthur Balfour Professorship of Genetics**

Applications are invited for the above Chair which will become vacant from 1 July 1996. Pensionable stipend £38,993.

Further information may be obtained from the Secretary General of the Faculties, General Board Office, The Old Schools, Cambridge CB2 1TT. Applications (10 copies), marked 'confidential', with names of two referees by 30 September 1996.

*The University follows an equal opportunities policy.*

## **Vice President for Research**

Case Western Reserve University invites applications and nominations for the new position of Vice President for Research. The Vice President will provide leadership for the development, implementation, and communication of policies and programs affecting research and research commercialization throughout the university, and for linking research activities to economic development in the community at large. Reporting to the Provost, the Vice President will participate in the university's senior planning and policy-making bodies, and will work closely with the President, Provost, deans, and faculty leadership in determining research priorities.

CWRU ranks 31st among all universities in the nation, and 15th among private universities, in federal awards to support research and development. External awards for research from all sources in the fiscal year ending June 30, 1995 were \$159.3 million.

Qualifications include extensive knowledge of and experience with research as a principal element in a high-quality academic institution, understanding of the issues and opportunities facing major private research universities, and familiarity with the federal research establishment and the regulatory and legal environment for research and technology transfer. The successful candidate should demonstrate understanding of the research and development needs of industry and the processes through which campus-based technologies reach the market. A Ph.D. or other research-based advanced degree is highly desirable.

Applications and nominations should be addressed to:

Chair, Search Advisory Committee for Vice President for Research  
c/o Office of the Provost  
Case Western Reserve University  
10900 Euclid Avenue  
Cleveland, OH 44106-7004

Review of materials will begin immediately and continue until an appointment is made. To ensure full consideration, applications and nominations should be received by August 15, 1996.



**CASE WESTERN RESERVE UNIVERSITY**

*In employment, as in education, Case Western Reserve University is committed to affirmative action and equal opportunity.*



# Announcing the 4th Annual BS/MS Careers Issue

*August 30, 1996*

**Get BS/MS students excited about career opportunities at your company or university.** SCIENCE Magazine offers you a once-a-year opportunity to reach the best science students and tell them about your employment opportunities in the August 30, 1996 BS/MS special advertising supplement.

**Full page advertisements receive bonus distribution to the top biology and chemistry programs in the U.S.**

Make sure your message gets the impact you need. Run a full page ad and reach our regular subscriber base of over 160,000. In addition, your ad receives bonus distribution to students in 151 of the top biology and chemistry programs around the U.S. in a special reprint of the BS/MS advertising section.

**Reach eligible minority students.**

Do you need to reach a diverse pool of candidates? When you advertise in the BS/MS Careers issue your advertisement will get special distribution to U.S. colleges and universities with historically high minority enrollment.

**Start planning your advertisement now!**

It's never too soon to start planning your full page recruitment message. By advertising in SCIENCE, you'll increase your chance of reaching the best candidates first. Get scientists excited about your employment opportunities.

**Placing your ad is easy!**

In the U.S., call Janis Crowley at (212) 496-7704 or fax (202) 289-6742. In Europe, call Debbie Cummings at +44 (0) 1223 302067 or fax +44 (0) 1223 567208.

**Advertising deadline: August 13, 1996.**

# SCIENCE

<http://www.sciencemag.org>

List of colleges/universities scheduled to participate in the 1996 bonus distribution of the SCIENCE BS/MS reprint:

Alabama A&M University*	Howard University*	Stanford University	University of Massachusetts
Boston University	Indiana University	SUNY, Buffalo	University of Miami
Brandeis University	Johns Hopkins University	Syracuse University	University of Minnesota
Brigham Young University	Lehigh University	Texas Tech University	University of North Carolina
Brown University	MIT	Tufts University	University of Notre Dame
Caltech	Michigan State University*	Tuskegee University*	University of Oregon
Carnegie Mellon University	Morehouse College*	University of Arkansas*	University of Pennsylvania
Colorado State University	New Mexico State University	UC-Berkeley	University of Pittsburgh
Columbia University	New York University	UC-Davis	University of South Carolina
Cornell University	Northeastern University	UC-Los Angeles	University of Texas at Austin
Dartmouth College	Northwestern University	UC-Riverside	University of Utah
Delaware State University*	North Carolina A&T State University	UC-San Diego	University of Virginia
Duke University	North Carolina Central University	UC-Santa Barbara	University of Washington
Emory University	Ohio State University	UC-Santa Cruz	University of Wisconsin
Fisk University*	Penn State University	University of Chicago	Vanderbilt University
Florida A&M University*	Princeton University	University of Colorado	Washington University
Georgetown University	Purdue University	University of Delaware	Winston-Salem State University*
Grambling College*	Rice University	University of Houston	Yale University
Harvard University	Spelman College*	University of Illinois	Yeshiva University

The nation's top schools for biological sciences, various chemistry disciplines and clinical medicine ranked by the Institute for Scientific Information's Science Watch, as well as the top 20 schools from U.S. News & World Report's Annual America's Best Colleges issue. \*Denotes institution with historically high minority enrollment.

## DIRECTOR, DIVISION OF KIDNEY, UROLOGIC, AND HEMATOLOGIC DISEASES (DKUHD)

The National Institute of Diabetes and Digestive and Kidney Diseases (NIDDK), located in Bethesda, MD, is seeking an outstanding physician for the position of Director, Division of Kidney, Urologic, and Hematologic Diseases (DKUHD). This is a Senior Executive Service (SES) permanent full-time position with a salary range of \$100,526 to \$122,688 per annum commensurate with qualifications. Applicants must demonstrate research experience and knowledge of research programs in one or more areas related to kidney, urologic, and hematologic diseases. May be eligible for Physicians Comparability Allowance of up to \$20,000 per year. A recruitment bonus of up to 25% may be available to a non-Federal applicant. *The deadline for receipt of application is July 31, 1996.*

The Director, DKUHD, is the principal advisor to the Director, NIDDK, on matters and policies pertaining to research grants, contracts, training and specialized programs in kidney, urologic, and hematologic diseases including basic and applied research, training fellowships and institutional training awards, and clinical trials. Additionally, the incumbent may have the opportunity to conduct independent research projects in the area of kidney, urologic and hematologic diseases.

**FOR MORE INFORMATION CONTACT MS. JOANNA VOIGHT, NIDDK PERSONNEL OFFICE, BLDG. 31, ROOM 9A30, 9000 ROCKVILLE PIKE, BETHESDA, MARYLAND 20892; (301) 496-4231.**

U.S. Citizenship Required / NIH is an Equal Opportunity Employer

# BIOGEN

OUR EXPANDING UNIVERSE

In May 1995, we filed for U.S. regulatory approval of a new treatment for multiple sclerosis. We are now in the process of building the infrastructure and capabilities we will need to commercialize this drug, which is our first proprietary product. Our record of success to date is based on the hard work and dedication of our employees. We are now seeking a select number of committed professionals with strong values to join the Biogen team.

## Director – Biological Science

We are currently seeking a proven scientific leader to direct our efforts in the areas of molecular biology/molecular genetics. In this role, you will oversee the work of approximately forty talented individuals focused currently in areas of growth regulation, viruses, gene therapy and vascular biology. The successful candidate will hold a Ph.D. or M.D./Ph.D. in molecular sciences and have a minimum of ten years' experience. He/she will have a distinguished record of scientific achievement, a strong publication history and be well-versed in the use of molecular technique. Industry experience is desirable, but not required.

Biogen offers what few companies in our industry can – Professional Challenge, Stability, Growth, and one of the strongest financial profiles in the industry. In addition, our compensation and benefits package, including equity participation, is one of the best in the industry, and is designed to attract and retain the finest talent available. If you are one of the best, this is your opportunity to join our expanding universe. Please forward your resume to the address below.

Biogen, Dept. JT, Biogen, Inc., 14 Cambridge Center,  
Cambridge, MA 02142. FAX: (617) 679-2546

# BIOGEN

Biogen is an Equal Opportunity Employer.  
<http://www.careermosaic.com/cm/biogen>

## U.S. DEPARTMENT OF ENERGY DIRECTOR

**HEALTH EFFECTS AND LIFE SCIENCES RESEARCH DIVISION  
OFFICE OF HEALTH AND ENVIRONMENTAL RESEARCH  
\$100,526 to \$122,688 per annum**

The U.S. Department of Energy is seeking applicants for the Senior Executive Service position of Division Director, Health Effects and Life Sciences Research Division (HELRD), Office of Health and Environmental Research (OHER), in the Office of Energy Research. The incumbent is the principal Department of Energy official responsible for planning, implementing, and directing the Life Sciences Program, including research carried out by universities, national laboratories, and private institutions (involving over 300 grants, contracts, and interagency agreements). Notable programs in the HELRD include the Department's Human Genome Program, Structural Biology, and Microbial Genome. The Director of HELRD must also work as a member of the OHER team on numerous crosscutting initiatives, such as molecular nuclear medicine and other medical applications of energy; and basic science in support of improved methods for environmental restoration including bioremediation, and with other components of DOE and other agencies. An M.D., M.D./Ph.D., or Ph.D. (or equivalent training and experience) in molecular and cellular biology, structural biology, analytical instrumentation, chemistry, biotechnology or biomedical technology; and significant experience as an administrator in government or the private sector are necessary.

To be eligible for consideration, applicants must meet all executive core qualifications and the specific technical qualification requirements. A supplemental statement must be included addressing each of the qualification requirements. Details of all information required to apply and further information should be obtained from the address below.

Exceptional difficulty in recruiting highly qualified candidates may be the basis for paying a recruitment or relocation bonus (up to 25% of base pay) and/or requesting approval of a dual compensation waiver for civil and uniformed services retirees.

Applications must be postmarked no later than August 1, 1996. Direct inquiries to: Office of Executive and Technical Resources, HR-34, 4E-060, FORS, DOE, Washington, DC 20585. *The Department is an equal opportunity employer. U.S. citizenship is required.*

## NEUROPHARMACOLOGIST/BIOCHEMICAL PHARMACOLOGIST POSITION

**DEPARTMENT OF PHARMACOLOGY AND  
EXPERIMENTAL THERAPEUTICS**

**Loyola University Chicago, Stritch School of Medicine**

A unique opportunity to become involved in an exciting new research project is available immediately. The candidate will be instrumental in implementing pharmacological and neurochemical strategies relating to inflammatory processes and neurodegeneration. The position will allow considerable autonomy. All necessary technical and research support will be provided.

Requirements for this non-tenured position include: 1) formal training in pharmacology, with a Ph.D. degree in pharmacology or a closely allied science; and 2) at least 2 years of postdoctoral training. Expertise in the study of inflammatory processes, interleukin research, and/or neurodegeneration is preferable.

The salary is negotiable, based on prior experience and training. Travel and moving expenses to the work location will be covered by the employer.

Candidates should send their curriculum vitae, 3 letters of recommendation, representative reprints, and a personal statement to: **Dr. Israel Hanin, Chairman, Department of Pharmacology and Experimental Therapeutics, Loyola University Chicago, Stritch School of Medicine, 2160 South First Avenue, Maywood, Illinois 60153. Telephone: 708-216-3261; Fax: 708-216-6596. AA/EOE.**



## POSITIONS OPEN

### MENTORED SCIENTIST PROGRAM

University of Southern California. **ASSISTANT PROFESSOR** position (tenure-track) available July 1, 1997 under a Neurogerontology Institutional award from the National Institute on Aging for development of basic and clinical research skills for study of diseases related to aging nervous system. U.S. citizenship or permanent U.S. residency status and Board eligibility in neurology, psychiatry, neuropathology, or internal medicine required. Two to three years of concentration in basic research followed by focus on neurogerontology or geriatric psychiatry and the development of individual research program. Send curriculum vitae and three letters of recommendation to: **Leslie P. Weiner, M.D., Department of Neurology, USC School of Medicine, 1510 San Pablo Street, Suite 646, Los Angeles, CA 90033-4606** and arrange for two days of interviews. For further information Telephone: 213-342-5793.

**STAFF-SCIENTIST**—Will oversee the chronic animal evaluation of a bladder/bowel/erection assist device; independently pursue research and development efforts in the development of new electrode configurations and manufacturing techniques; evaluate devices in acute and chronic animal experimentation; serve as the primary liaison to the medical community during clinical trials of the bladder/bowel/erection device; and interact with other staff members and outside personnel in the development of larger scale and cost-productive manufacturing techniques for the bladder/bowel/erection assist device. Must have two years' experience in the research and development of new electrode configurations, manufacturing techniques, and the evaluation of devices for acute and chronic animal experimentation; one year of surgical experience; and experience in patient management during clinical trials. Must also have two years' research experience in functional neuromuscular stimulation ("FNS") techniques, and/or the evaluation of medical electrodes. Experience can be concurrent, occurring before, during, or after degree. 40 hours per week. 8:00 a.m. to 5:00 p.m. \$70,000.00 per year. Benefits. You must have legal authority to work indefinitely in the U.S. Send two résumés and cover letters (no calls) to: **ES Sp Prgrms., Ref Number 1888, the Ohio Bureau of Employment Services, P.O. Box 1618, Columbus, OH 43216.**

### LABORATORY MANAGER

The Tulane/Xavier Center for Bioenvironmental Research is an interdisciplinary research organization conducting cutting-edge research and teaching in a broad range of environmental studies. The Center, a partnership between Tulane and Xavier Universities, invites applications for the position of Laboratory Manager to manage and supervise the activities of the newly established Research/Teaching Laboratory of Environmental Biotechnology. Research will focus on environmental signaling or environmental hormones and be under the general direction of **Dr. John A. McLachlan**, Director of the Center. The laboratory is a focal point for Tulane and Xavier faculty innovation in research and teaching. Emphasis is on flexibility, interdisciplinary work, and ability to provide training for faculty and students in molecular biology techniques. The candidate should possess good interpersonal skills, a knowledge of lab management, and experience in several aspects of molecular biology. Salary commensurate with background and skills. Contact: **Katherine Davey, Center for Bioenvironmental Research, Tulane University, SL3, New Orleans, LA 70112.** Equal Opportunity/Affirmative Action Employer.

**POSTDOCTORAL POSITION** available immediately to study the function of Epstein-Barr virus glycoproteins in virus entry, replication, and pathogenesis. Background in molecular biology and virology preferred. Understanding of immunology desirable. Send curriculum vitae and names of three references to: **Lindsey Hutt-Fletcher, Ph.D., School of Biological Sciences, University of Missouri-Kansas City, 5100 Rockhill Road, Kansas City, MO 64110.** FAX: 816-235-2575; Email: [huttlfletcher@cctr.umkc.edu](mailto:huttlfletcher@cctr.umkc.edu). Equal Opportunity/Affirmative Action Institution.

**POSTDOCTORAL POSITIONS.** Available in Departments of Biochemistry, Cell Biology and Anatomy, Microbiology and Immunology, Molecular and Cellular Biology, Pathology, Pharmacology/Toxicology, and Physiology. Applicants must have a Ph.D. or M.D. degree. Positions available during 1996 and 1997. Review of applications begins July 31, 1996, and will remain open until positions are filled. Send applications to appropriate department heads: **The University of Arizona, Arizona Health Sciences Center, Tucson, AZ 85724.** Equal Employment Opportunity/Affirmative Action/ADA Employer. Women and minorities are urged to apply.

## POSITIONS OPEN

**POSTDOCTORAL POSITION** available immediately to study the molecular mechanisms that inhibit the terminally differentiated cardiac muscle cell from re-entering the cell cycle and dividing. Studies involve regulation of the cell cycle and tumor suppressor genes. Experience in cellular and molecular biology required. Send curriculum vitae and three letters of reference to: **William Claycomb, Ph.D., Department of Biochemistry and Molecular Biology, LSU Medical Center, 1901 Perdido Street, New Orleans, LA 70112.** Telephone: 504-568-4737; FAX: 504-568-7649.

LSU Medical Center is an Equal Opportunity/Affirmative Action Employer.

### POSTDOCTORAL POSITION

Francis I. Proctor Foundation  
University of California San Francisco

**POSTDOCTORAL POSITION** in bacterial pathogenesis to study the molecular pathogenesis of *Chlamydia trachomatis* for National Institutes of Health-funded projects. Molecular genetic focus to investigate host-microbial interactions including attachment and invasion of mammalian cells and role of host immune response in immunity and disease. Recent Ph.D. or M.D. graduates with productive research background in microbiology, cell biology, and/or immunology are encouraged to apply. Send curriculum vitae and names of references to: **Dr. Richard S. Stephens, F.I. Proctor Foundation, University of California, San Francisco, CA 94143-0412.** Equal Opportunity Employer.

The Laboratory of Biochemistry and Metabolism of the National Institute of Diabetes and Digestive and Kidney Diseases at NIH has an immediate opening for a biologist interested in ES technology. The work involves ES cell culture, blastocyst injection, and mouse colony management. Applicants with experience in blastocyst or oocyte injection are preferred. Salary is intended to be between \$25,000 and \$40,000 depending upon experience. Applicants should submit a curriculum vitae and the names of three references to: **Chuxia Deng, NIH, NIDDK, LBM, Building 10, Room 9N105, 10 Center Drive, MSC 1812, Bethesda, MD 20892-1812.** NIH is an Equal Opportunity Employer.

### POSTDOCTORAL POSITION

NMR Structure of DNA and RNA

A position is available in Seattle beginning autumn 1996 to study the solution structure of unusual base pairing in DNA (see *J. Mol. Biol.*, 254:623, 1995) and hybrid and chimeric DNA-RNA duplexes (see *Biochemistry*, 34:2372, 1995) using NMR. Candidates should have extensive experience in 2D NMR spectroscopy as well as structure determination and refinement using distance restraints. Applicants with, or about to receive, a Ph.D. in this area are invited to respond initially by Email and by sending their résumé and the names and addresses of three referees to: **Prof. Brian R. Reid, University of Washington, Chemistry Department, Box 351700, Seattle, WA 98195-1700.** Email: [reid@macmail.chem.washington.edu](mailto:reid@macmail.chem.washington.edu).

### TWO POSTDOCTORAL FELLOWSHIPS

First position available is to study DNA repair in SCID mice. The levels of double- and single-strand break repair of the total genome and single genes will be measured using assays with cells and protein extracts. Second position is to study the mechanism of DNA repair and transcription. Please send curriculum vitae and names of three references to: **Dr. Vilhelm Bohr, Laboratory of Molecular Genetics, Box 01, National Institute on Aging, National Institutes of Health, 4940 Eastern Avenue, Baltimore, MD 21224.** FAX: 410-558-8157; Email: [BOHRV@GRC.NIA.NIH.GOV](mailto:BOHRV@GRC.NIA.NIH.GOV). NIH is an Equal Opportunity Employer.

**POSTDOCTORAL POSITION** available immediately to study growth factor (PDGF) signal transduction in vascular cells. The role of intracellular  $Ca^{2+}$  and second messengers in the alteration of protein kinase cascades and gene expression will be examined using video and confocal microscopy in combination with biochemical and molecular biology techniques. Recent Ph.D. in cell biology, biochemistry, or pharmacology with a strong background in protein chemistry or fluorescence microscopy is preferred. Send curriculum vitae and names of three references to: **Dr. Pamela A. Diliberto, Department of Cell Biology and Anatomy, CB Number 7090, 202 Taylor Hall, University of North Carolina, Chapel Hill, NC 27599.** Email: [dilib@med.unc.edu](mailto:dilib@med.unc.edu).

## POSITIONS OPEN

### Ph.D. STUDENTSHIP

Objective is the development of models and software tools to analyze microbial metabolic networks for metabolic engineering.

Applications are invited from candidates who have or expect to obtain a first class honours degree in applied mathematics, engineering science, informatics, or related disciplines. Experiences are expected in description and analysis of dynamical systems as well as in software engineering (object oriented methods).

A contract of three years' duration will be offered to the successful candidate.

Applications including a curriculum vitae with the names and addresses of two referees should be sent to:

**Prof. Dr. C. Wandrey**  
Research Center Jülich GmbH  
Institute of Biotechnology  
D-52425 Jülich  
Germany

### POSTDOCTORAL POSITION

Clinical Pharmacology/Pharmacokinetics  
of Antitumor Agents

The Mayo Cancer Center conducts an extensive developmental therapeutics program for the treatment of cancer. Our laboratory characterizes the pharmacology and metabolism of new agents in conjunction with NCI-sponsored adult Phase I and Phase II clinical trials, and in conjunction with Children's Cancer Group pediatric clinical trials. The laboratory is also funded to conduct pre-clinical pharmacology, metabolism, and mechanisms of action studies with new agents. Candidates should have a strong background in pharmacokinetics, metabolism, and/or pharmacology. Candidates with postdoctoral experience will be considered for a more advanced appointment. Applications including curriculum vitae, summary of research interests and experience, and names of three references should be forwarded to: **Dr. Matthew M. Ames, Chair, Division of Developmental Oncology Research, Department of Oncology, Mayo Clinic and Foundation, Rochester, MN 55905.** Mayo Foundation is an Affirmative Action/Equal Opportunity Educator and Employer.

### POSTDOCTORAL POSITION

SYNTHETIC ORGANIC CHEMISTRY

One **POSTDOCTORAL POSITION** available in cancer research laboratory with emphasis on the design, synthesis, characterization, and evaluation of novel antitumor agents. Current studies include development of mechanism-based protease inhibitors and novel tryptophan analogs targeted at carcinoid disease. This position funded by NCI training grant and/or NIH R01 grant; successful applicant will meet eligibility requirements for support. Applications including curriculum vitae, a summary of research interests/experience, and names of three references should be forwarded to: **Dr. Matthew M. Ames, Chair, Division of Developmental Oncology Research, Department of Oncology, Mayo Clinic and Foundation, Rochester, MN 55905.** Mayo Foundation is an Affirmative Action/Equal Opportunity Educator and Employer.

**POSTDOCTORAL POSITION** available immediately to study the function of androgen-response genes in apoptosis and/or cell proliferation in the prostate and the role of these genes in pathogenesis of prostate cancer and benign prostate hyperplasia. Applicants should have a Ph.D. in molecular biology, biochemistry, or a related field. Send curriculum vitae and names of three references to: **Zhou Wang, Ph.D., Department of Urology, Northwestern University Medical School, Tarry 11-715, 303 East Chicago Avenue, Chicago, IL 60611.** FAX: 312-908-7275. Affirmative Action/Equal Opportunity Employer.

See

**SCIENCE Classified  
Advertising On-Line**

<http://www.sciencemag.org>

## Advancing Knowledge and Opportunity... SEARLE

Research and development... Searle's leadership and innovation in the pharmaceutical industry have helped us become a world leader.

G.D. Searle's Cardiovascular Diseases Research Department, located in St. Louis, Missouri, is seeking a scientist with a Ph.D. in Physiology/Biochemistry/Pharmacology or a related discipline to conduct biomedical research aimed at identifying novel therapeutic agents to treat diabetes mellitus, specifically non insulin-dependent diabetes and its associated vascular complications.

Responsibilities include planning and performing experiments using both cellular and in vivo models of diabetes to identify new approaches to the treatment of this disease. The successful candidate will be highly self-motivated, independent and possess an interest in physiology ranging from the molecular to the organismal level. The ability to work with other scientists within an interactive/multidisciplinary team environment is also essential. A record of prior accomplishments in the areas of diabetes, in vivo energy metabolism and/or insulin action is highly desirable. Postdoctoral experience is preferred.

G.D. Searle is a subsidiary of Monsanto Company. Interested candidates should send resumes to:

**SEARLE R & D**  
**700 Chesterfield Village Parkway**  
**Mail Zone BB5B (EGM)**  
**St. Louis, MO 63198**

Monsanto is an Equal Opportunity Employer.  
 M/F/D/V

**SEARLE**



## THE J. DAVID GLADSTONE INSTITUTES

University of California, San Francisco

San Francisco General Hospital



### POSTDOCTORAL FELLOWSHIP - DR. ROBERT PITAS

Study the molecular basis for the impact of apolipoprotein E4 on neurite outgrowth and Alzheimer's disease. A combination of *in vitro* studies and studies with transgenic models will be used to examine the mechanism for the contribution of apolipoprotein E4 to Alzheimer's disease. Candidates should possess an M.D. or Ph.D. in neurobiology. Job #C96-017.

### POSTDOCTORAL FELLOWSHIP - DR. ISRAEL CHARO

**STUDY CHEMOKINE RECEPTORS.** Current projects include signal transduction pathways and G-protein coupling of receptors, receptor knockout and transgenic mouse models, and potential roles of Chemokine Receptors as co-factors in the internalization of HIV. A strong background in molecular biology is required. Job #C95-063.

Please send CV and list of references, indicating the appropriate job number, to: The J. David Gladstone Institutes, P.O. Box 419100, San Francisco, CA 94141.

For a listing of other open positions, visit our website:

<http://gladstone.ucsf.edu/positions.html>

Equal Opportunity/Affirmative Action Employer

## BIOQUEST

INCORPORATED

Executive Search Consulting  
 is conducting a search for

### Senior Director, Molecular Biology

for a major pharmaceutical company, located in a culturally active, university city in the Midwest. The Sr. Director will be the corporation's world wide authority in molecular biology and together with his/her group will

- initiate and stimulate drug discovery research in the company's areas of therapeutic specialization (metabolic disorders, inflammation, cardiovascular diseases, cancer, infectious and neurodegenerative diseases);
- guide the company's programs in molecular biology through an accelerated growth period during the next 2-3 years;
- seek and inspire collaborations with technology-focused groups within the company (especially with cell biology, biochemistry, and biomolecular structure);
- participate in on-going, external drug discovery research and help identify new opportunities in academia and industry that will enhance the company's position in the technology of molecular biology and their application to drug discovery.

Interested candidates for this highly visible position will have a Ph.D. degree in molecular biology, biochemistry, or a related field. S/he will have collaborated with respected scientists and published extensively during the last 15 years, covering broad areas of molecular biology. Experience in leading a scientific group of substantial size is essential.

Please submit resume to J. Weber, BioQuest Inc., 100 Spear Street, Suite 1125, San Francisco, CA 94105, or call Bettina Griessmann during West Coast business hours at 415-777-2422.

### Scientific Review Administrator

Opening Date: 7/1/96

Closing Date: 7/29/96

Announcement Number: CA-96-1915

GS-601-13/14

The Grants Review Branch, Division of Extramural Activities of the National Cancer Institute (NCI), National Institutes of Health (NIH), is seeking to recruit an individual to join a multidisciplinary group of Scientific Review Administrators (formerly Executive Secretaries) engaged in managing the review of research grant applications submitted to the NCI. These activities are based in suburban Maryland, but some travel is involved. Candidates should have independent research expertise in current and emerging technologies in cell and molecular biology related to cancer, with an emphasis on molecular genetics. Candidates should be familiar with the NIH grant review and support process. Candidates must be United States citizens. The salary range for this position is \$52,867 to \$81,217. To obtain information on the application procedures and documents required for consideration for this position, candidates may contact the **National Cancer Institute, Office of Human Resources and Consulting Branch** at (301) 402-2789. To obtain a fax of this information, call 1-800-728-5627 or (301) 594-2953 and enter Fax ID# 1880. *Selection for this position will be based on merit, with no discrimination for non-merit reasons such as race, color, gender, national origin, age, religion, sexual orientation, or physical or mental disability. The NCI/NIH is an equal opportunity employer.*



## POSITIONS OPEN

### MOLECULAR NEUROBIOLOGIST

The Department of Anesthesiology, Cornell University Medical College (CUMC) is seeking an outstanding scientist (Ph.D., M.D., or M.D./Ph.D.) with experience in combining electrophysiological, molecular biological, and/or neuropharmacological approaches to investigate the molecular mechanisms of anesthesia as an **ASSISTANT PROFESSOR**. Expertise in the study of ion channel molecular structure by molecular biological techniques and structure-function correlations by patch clamp and/or oocyte electrophysiology is desired. Previous postdoctoral research experience with a strong background in molecular biology and/or neurobiology and the ability to maintain an extramurally funded independent research program are required. Applicants should send a curriculum vitae and three references to:

**Hugh C. Hemmings, Jr., M.D., Ph.D.**

Director of Research

The New York Hospital-Cornell Medical Center

Department of Anesthesiology

Lasdon, Box 50

525 East 68th Street

New York, NY 10021

*CUMC is an Equal Opportunity/Affirmative Action Employer.*

### POSTDOCTORAL POSITION MOLECULAR BIOLOGY OF p53

Applications are invited from persons with keen interest in understanding the molecular biology of the tumor suppressor p53 for an NIH-funded position. Current focus in the laboratory is understanding the involvement of "gain of function" mutations of the p53 gene in transcription and oncogenesis. Individuals with expertise in recombinant DNA technology and protein purification are especially encouraged to apply with complete curriculum vitae and names of three references to: **Sumitra Deb, Ph.D., Department of Microbiology, University of Texas Health Science Center, 7703 Floyd Curl Drive, San Antonio, TX 78284.** The University of Texas Health Science Center at San Antonio is an Equal Opportunity/Affirmative Action Employer.

### POSTDOCTORAL FELLOWSHIP

Position available for protein biochemist/molecular biologist in well-funded laboratory investigating molecular basis of intestinal tight junctions regulation, enterocyte cytoskeletal organization, and cell-cell interactions. Experience in molecular biology, signal transduction, protein purification, protein-protein interactions, or protein phosphorylation desirable. Send curriculum vitae and names of three references to: **Dr. Alessio Fasano, University of Maryland, School of Medicine, Division of Pediatric Gastroenterology and Nutrition, 22 South Greene Street, Box 140, Baltimore, MD 21201-1595. Email: AFASANO@UMABNET.AB.UMD.EDU.** An Affirmative Action/Equal Opportunity Employer.

**POSTDOCTORAL RESEARCH** position available immediately. NIH training grant in the Department of Surgery at Columbia University College of Physicians and Surgeons. Ongoing projects focus on mechanisms of thrombotic disorders, organ preservation and ischemia, hypoxia induced modulation of cellular function, tumor angiogenesis and anti-angiogenesis, and Alzheimer's disease. For application information please contact: **Dr. David M. Stern, Department of Physiology, Columbia University P&S 11-518, 630 West 168th Street, New York, NY 10032. Telephone: 212-305-1615; FAX: 212-305-5337; Email: dms9@columbia.edu.**

**POSTDOCTORAL POSITION** available to study mechanisms of protein folding with emphasis on formation of native tertiary topology, its dependence on information in the amino acid sequence, and pathways leading from a partially folded intermediate to a biologically active protein. We are seeking a self-motivated candidate with some background in protein folding who is familiar with molecular biology, protein chemistry, and/or biophysical techniques. Send curriculum vitae and names of two references to: **Dr. Zheng-yu Peng, Department of Biochemistry, University of Connecticut Health Center, Farmington, CT 06032. Email: peng@sun.uhc.edu.**

*An Affirmative Action/Equal Opportunity Employer. Minorities/Females/Persons with Disabilities/Veterans.*

### POSTDOCTORAL/RESEARCH ASSOCIATE

Applications are invited for **POSTDOCTORAL** and/or **RESEARCH ASSOCIATE** positions to conduct research on molecular genetics or biochemistry of oxidative stress in relation to the aging process. Please contact: **Dr. William C. Orr (molecular genetics) or Dr. R. S. Sohal (biochemistry), Department of Biological Sciences, Southern Methodist University, Dallas, TX 75275-0376. Telephone: 214-768-2730; FAX: 213-768-3955.**

## POSITIONS OPEN

### VETERINARY LABORATORY MICROBIOLOGY SERVICES MANAGER

A position is available as Veterinary Laboratory Microbiology Services Manager, which will serve as the Chief of Microbiology of the Bureau of Veterinary Diagnostic Laboratories, Summerdale, Pennsylvania. The laboratory is part of the Pennsylvania Animal Diagnostic Laboratory System (PADLS) with laboratories at the Pennsylvania State University and the University of Pennsylvania School of Veterinary Medicine. The position is responsible for the function and operation of the Microbiology and possibly the Immunology areas of the laboratory. The diagnostic laboratory performs procedures in pathology, histology, toxicology, microbiology and immunoserology on mammalian, avian, and aquatic species. A new laboratory is under construction; substantial equipment including development of a new computer system has been acquired in the past several years and provisional AAVLD accreditation is underway. Research and educational activities are encouraged and there is collaborative activity with the university laboratories. Training opportunities and professional self-development is encouraged and supported. A Ph.D. in microbiology and three years as a microbiologist in a full-service veterinary diagnostic laboratory is required. Postdoctoral/research experience desirable.

The Commonwealth of Pennsylvania offers a full benefit program including: paid life and medical insurance; dental, vision, hearing, and paid prescription plan; vacation; and an excellent retirement plan. A bonus program is also offered for this position. Salary range is \$46,044 to \$70,005.

This is a civil service position; a job announcement and required application materials must be obtained by contacting: **Ms. Beth Williamson, Pennsylvania Department of Agriculture, 2301 North Cameron Street, Harrisburg, PA 17110. Telephone: 717-787-1065.** Completed application and supplement must be filed at this address by September 27, 1996. Resumes alone will not be accepted.

### UNIVERSITY SCIENTIST

The Department of Otolaryngology at Wayne State University invites applications for an academic appointment of a qualified **ANATOMIST** to complement departmental strengths in the molecular biology, biochemistry, and physiology of the inner ear. Qualifications for the position include a Ph.D. and postdoctoral fellowship with expertise in anatomical techniques including autoradiography, immunohistochemistry, and immunocytochemistry. Candidates finishing postdoctoral fellowships in established laboratories will receive preference. The responsibilities will include establishing an independent laboratory, moderate teaching responsibilities, and departmental committee work. The department offers start-up funds for developing an inner ear anatomy laboratory. Academic appointment and compensation will be related to training and experience. Letter of inquiry, recent reprints, and curriculum vitae should be sent to: **Robert H. Mathog, M.D., Professor and Chairman, Department of Otolaryngology, Wayne State University, 4201 St. Antoine, 5 E UHC Detroit, MI 48201.** Wayne State University is an Equal Opportunity/Affirmative Action Employer. All Wayne State University buildings, structures, and vehicles are smoke-free. Wayne State University—People working together to provide quality service.

**POSTDOCTORAL POSITIONS** in cellular/molecular immunology for work on regulation of Fas-mediated apoptosis/autoimmunity and mechanisms of receptor-transcription factor coupling. Experience in immunohistology, molecular biology, or signal transduction preferred. Send curriculum vitae, statement of research interests, and three references to: **Ann Marshak-Rothstein, Ph.D. Email: amrothst@acs.bu.edu,** or **Thomas L. Rothstein, M.D., Ph.D. Email: trothstein@med1.bu.edu,** Department of Microbiology, Boston University School of Medicine, 80 East Concord Street, Boston, MA 02118.

**POSTDOCTORAL POSITION** available immediately for NIH-sponsored studies of DNA methylation in breast cancer. Requirements include a Ph.D. with demonstrated experience in molecular biology and excellent written skills. Send a curriculum vitae plus names and telephone numbers of three references to: **Dr. Tim Huang, Department of Pathology and Anatomical Sciences, University of Missouri, Columbia, MO 65212** before July 31, 1996 deadline. *Equal Opportunity/Affirmative Action Employer.*

# next wave

<http://sci.aaas.org/nextwave>

The career-related information offered by this new on-line publication will be a valuable resource for scientists beginning their careers, and will offer unparalleled visibility for your organization! Plan NOW to sponsor the following two-month forums:

**7 June**

**Corporations & Science Funding**

**12 July**

**Bioinformatics Careers**

**2 AUGUST**

**Postdoctoral Scientists**

**6 SEPTEMBER**

**Scientists as Biotech Entrepreneurs**

**4 October**

**Science in Asia**

**8 NOVEMBER**

**Career Decisions: M.S. or Ph.D.?**

**6 December**

**Scientists as Patent Attorneys**

Your organization's logo will appear on this site for a period of two months and will be linked to a listing of your job opportunities or to your home page.

For more information contact:  
Janis Crowley  
Phone: (202) 326-6532;  
Fax: (202) 682-0816

## INFLAMMATION PHARMACOLOGY

Investigator/Sr. Investigator

SmithKline Beecham Pharmaceuticals, a world leader in pharmaceutical research, has an opportunity for an Investigator to join the Department of Inflammation Pharmacology.

The selected candidate will participate in the drug discovery process for immunologically driven inflammatory diseases and identify new molecular targets for immunological diseases. Acting as a departmental resource in the field of Cellular and Molecular Immunology, the Investigator will also be required to establish new model systems/assays to facilitate research efforts, present findings at scientific meetings and publish in scientific journals.

Qualifications include a PhD (or equivalent) in Immunology, Molecular Biology or Cell Biology, and 2+ years of post-doctoral experience in immunology, immunopharmacology or related field. Candidates must also demonstrate expertise with state-of-the-art cellular and molecular immunology methodologies, as well as knowledge of T and B lymphocyte biology and cell-mediated immunity. The ability to take a creative approach to independent projects is equally essential.

Located in our technologically advanced research facility in suburban Philadelphia, SmithKline Beecham offers an excellent compensation/benefits/relocation package. Interested candidates should send CV and salary requirements to: SmithKline Beecham Pharmaceuticals, Job Code H5-0498-DG, P.O. Box 2645, Bala Cynwyd, PA 19004. We are an Equal Opportunity Employer, M/F/D/V.



**SmithKline Beecham**  
Pharmaceuticals

Challenging the natural limits.



**Dedicated to Science.  
Focused on Discovery.**

At the Parke-Davis Pharmaceutical Research Division of Warner-Lambert Company, inspired science and a strategy of innovation has made us an international leader in the pharmaceutical industry. Our team members are encouraged to pursue discovery together—and explore all the possibilities of scientific problem solving.

### POSTDOCTORAL FELLOWSHIP CANCER RESEARCH

Currently, we have an immediate opening for a Postdoctoral Fellow to investigate the role of cell cycle elements in tumorigenesis and to explore the therapeutic consequences of intervention or modulation at strategic sites along the cell cycle pathway.

The candidate will join a preclinical cancer research group involved in a multi-disciplinary effort to study oncogenic proteins involved in mitogenic signal transduction and cell cycle progression as potential targets in cancer therapy.

Candidates should be recent PhD graduates in biochemistry, cell biology or a related discipline with experience in tissue culture, protein biochemistry or enzymology. Some familiarity with the areas of cancer biology and the cell cycle would be beneficial.

Members of our world-class pharmaceutical team enjoy world-class salaries, benefits and career growth potential. For consideration, please send, fax or e-mail a resume to: **Parke-Davis, Human Resources Department, Job Code: CJM963146, 2800 Plymouth Road, Ann Arbor, MI 48105. Fax: 313-996-2531; e-mail: resume@aa.wf.com.** "Equal Opportunity in Action."



**PARKE-DAVIS**  
People Who Care

## The Untapped Power of DISCOVERY

Established in 1993, SCRIPTGEN has become a leading molecular therapeutics company by developing unique drug discovery technologies that represent breakthrough advances in the race to develop effective therapies. Our proprietary, affinity-based screening system, ATLAS (Any Target Ligand Affinity Screen) allows novel protein targets to be screened in a high throughput mode, and our SCAN (Screen for Compounds with an Affinity for Nucleic Acid) and RNA transcripts technologies are facilitating the discovery of important drugs that regulate RNA.

The success of these technologies, coupled with our advances in the therapeutic modulation of microbial gene transcription, has created expansion opportunities in our research organization. We are seeking the skills and expertise of highly motivated, team-oriented scientists who are ready to bring their innovative ideas to the brink of discovery.



### PhD Biochemist

~ Candidate must have strong practical and theoretical background in the characterization of protein function and protein-ligand interactions including at least 2 years' postdoctoral laboratory experience. Drug discovery/development and enzymology experience preferred. Experience with cell culture assays desirable. Job Code AFF5

### MS/BS Biochemists

~ Candidates must have a background and at least 2 years' laboratory experience in protein biochemical methods including protein purification, gel electrophoresis and functional assays. Experience with ligand binding interactions, high-throughput screens and immunoassays desired. Job Code AFF6

### MS/BS Biochemist/ Molecular Biologist

~ Individual will assume a major role on our antibacterial drug discovery team. Candidates must have a degree in Biochemistry, Molecular Biology, Genetics, Microbiology or related discipline. Two plus years' laboratory experience with either recombinant DNA techniques (including DNA sequencing, nucleic acid hybridization screening, library preparation and analysis) or protein expression, purification and characterization is required. Job Code BAC3

### BS Biochemists

~ Candidates should have an understanding of biochemical methods/principles and must have experience with basic biochemical techniques. Job Code AFF7

### MS/BS Biochemist High-Throughput Screening

~ Candidates must have a degree in Biochemistry, Molecular Biology or related discipline and the ability to work independently and as part of a team. Will play a major role in our high-throughput screening group. Two or more years' laboratory experience with enzymatic assays, enzyme kinetics, protein purification and characterization as well as the ability to direct others essential. Candidates with experience in nucleic acid enzymology and/or high-throughput drug screening techniques preferred. Job Code FGL4

### MS/BS Molecular Geneticists

~ Individuals will play an active role in our antifungal target discovery program. Candidates must have a degree in Biochemistry, Molecular Biology, Genetics, Microbiology or related discipline. Two plus years' working experience in recombinant DNA technology and DNA sequencing required. Experience with genetics of yeast or other fungi highly desired. Job Code FGL5

SCRIPTGEN offers very competitive salaries and benefits, along with equity participation. Please reference Job Code when responding. Forward letters, references and resume to: Human Resources, SCRIPTGEN Pharmaceuticals, Inc., 200 Boston Avenue, Medford, MA 02155. Fax: 617-396-1028. An equal opportunity employer.

**SCRIPTGEN**



Cephalon, Inc., a rapidly expanding biotechnology firm specializing in discovering, developing, and marketing products to treat neurological disorders, has positions available at its headquarters in West Chester, PA.

## PROCESS DEVELOPMENT SCIENTIST

Applicants should have B.S., M.S., or Ph.D. in Biochemical Engineering, Microbiology or related discipline, with demonstrated experience in fermentation/cell culture development, optimization, and scale-up for recombinant protein expression. Knowledge of Molecular Biology techniques is helpful. Experience in the areas of process validation and GMP regulations is desirable. Good documentation and computer skills are also very important. **Job Code RAB.**

## BUSINESS DEVELOPMENT MANAGER

This is a key position responsible for facilitating ongoing company business development initiatives. The major goal is to identify, establish and maintain relationships with academia, government and industry in order to license technology valuable to Cephalon's research activities. The candidate will have the ability to prioritize and implement projects; negotiate and maintain license agreements; establish and manage a network of contacts to assure a flow of technologies; and perform business assessments including market research and financial analysis. The position requires strong communication, negotiation, analytical and computer skills. This presents an excellent opportunity for a scientist or clinician who is ready to move to a business role in pharmaceutical development. An advanced degree (e.g., Ph.D., preferably in the neurosciences) and an MBA would make you an ideal candidate for the position. Relevant work experience in the pharmaceutical industry is a plus. **Job Code BD.**

Cephalon is committed to your professional development and offers a stimulating and exciting work environment. Please send resumes, indicating JOB CODE to:  
**Recruitment Manager, Cephalon, Inc.,  
145 Brandywine Parkway, West Chester,  
PA 19380-4245.** An equal opportunity employer.



**Cephalon, Inc.**

Bringing Innovative  
Therapies to Neurology

## Lab Director Immunology/Pre-Clinical Studies

Genetic Therapy, Inc. is a leader in the development of human gene therapy products for genetic and acquired diseases. Located in the Washington, D.C. area, GTI and its collaborators represents one of the largest groups of scientists dedicated to research and development in the field.

We are seeking a Lab Director to manage our Immunology/Preclinical Studies Lab. Our lab is currently involved in many cancer gene therapy trials and we will be expanding our program. Individual will manage 30 employees.

Must have a Ph.D. in a scientific discipline and 8 years of related experience or equivalent, plus 3 years of management experience. Research experience in immunology, molecular biology, animal modeling and pharm-tox knowledge required. Experience in the gene therapy field a must. Should have strong project management, budgeting and planning skills.

We offer a stimulating and challenging environment with an excellent salary and benefits package. Please specify position when applying. Fax or send resume to:



**Genetic Therapy, Inc.**  
938 Clopper Road  
Gaithersburg, MD 20878  
Attn: 119-050-8/S  
FAX: (301) 948-0503

Genetic Therapy is a subsidiary of **SANDOZ**  
Equal Opportunity Employer

### Program Scientists Science Division Office of Mission to Planet Earth Headquarters

#### NATIONAL AERONAUTICS AND SPACE ADMINISTRATION (NASA)

NASA Headquarters' Office of Mission to Planet Earth (MTPE) seeks qualified applicants for the positions of Program Scientists for Terrestrial Ecology, Hydrology, and Oceanography in the Science Division.

These positions are to be filled on a 1- or 2-year rotating basis under the provisions of the Intergovernmental Personnel Act (IPA). IPA applicants must be permanent, career employees of an IPA-eligible employer for at least 90 days prior to entering into a mobility assignment agreement with a federal agency. Reimbursement of salary, benefits, and other related expenses are negotiated between NASA Headquarters and the individual's institution.

Primary responsibilities include program planning, priority formulation, proposal evaluation, recommendation and monitoring of research grants and projects, and coordination with other federal and non-federal programs. The MTPE program requires extensive interdisciplinary interactions.

Applicants must have a Ph.D. or equivalent experience in the respective disciplinary science or related fields; five or more years of successful research, research administration, and/or managerial experience pertinent to the respective positions beyond the Ph.D.; a broad understanding of the current status of the respective disciplinary research at the national and international level as well as the role of remote sensing in the continuing advancement of research.

Interested applicants must submit a curriculum vitae and a list of three references to **NASA Headquarters, Office of Mission to Planet Earth, Attn: Jackie A. Gasch, Code YS, 300 E Street, NW, Washington, DC 20546-0001.** Review of applications begins on August 30, 1996.

For further administrative information, call Jackie A. Gasch: 202/358-0844. For technical information, call Dr. Robert C. Harriss, Director, Science Division: 202/358-2559.

*NASA is an equal opportunity employer committed to employing a highly qualified staff that reflects the diversity of our nation.*

Neurex Corporation, a rapidly growing biopharmaceutical company in the San Francisco Bay Area, is currently conducting projects aimed at discovering drugs to treat a variety of neurological disorders. Molecular targets include ion channels, proteins of the cellular secretory pathways, and factors regulating cell survival and apoptosis.

#### MOLECULAR NEUROBIOLOGIST

We need a highly motivated and talented Scientist with a broad background in molecular neuroscience to join our multidisciplinary team. The successful candidate will possess a PhD in Molecular Physiology or Pharmacology, or Neurobiology and a minimum of 2 years' relevant post-doctoral experience. Preference will be given to candidates with experience expressing and electrophysiologically characterizing cloned ion channels. Please quote JOB CODE: GM-1.

#### RESEARCH ASSOCIATE

We seek a highly motivated Research Associate to perform pharmacological assays. The successful candidate will possess a BS/MS in science and 2 years' relevant experience in an industrial or academic lab. Please quote JOB CODE: GM-2.

Neurex offers a competitive salary, comprehensive group insurance and benefits program, and stock options. For consideration, send your resume and references, indicating job code of interest, to: Human Resources, Neurex Corporation, 3760 Haven Avenue, Menlo Park, CA 94025-1012. We are an equal opportunity employer.





UNIVERSITY OF MANCHESTER  
**SCHOOL OF  
BIOLOGICAL  
SCIENCES**

## New Lectureships

### Lectureship in Molecular Pharmacology (Ref no. 336/96) and

### Lectureship in Molecular Biology (Ref no. 335/96)

These posts will continue to develop our strengths in molecular and cellular biology. Applicants should have a proven track record of excellence in their field. For the Lectureship in Molecular Pharmacology, applicants should have a background in pharmacology and should preferably possess previous experience in molecular and cellular biology. The Lectureship in Molecular Biology is particularly suited to candidates who wish to integrate aspects of their work with those interested in physiology, pharmacology and whole animal biology.

The School of Biological Sciences at The University of Manchester is large, offers excellent opportunities for collaboration, is well equipped and includes excellent core facilities for biomolecular synthesis, electron microscopy, NMR, flow cytometry and transgenesis.

Both positions are for a fixed term of five years with a minimal teaching load during the first two years. Salary on the scale: £15,154 - £26,430 p.a. (under review) according to qualifications and experience.

Informal enquiries may be made to Professor J Hickman, Tel: (0161) 275 5448; Fax: (0161) 275 5600; e-mail: jhickman@man.ac.uk. or Professor A Weston, Tel: (0161) 275 5490; Fax: (0161) 275 5600; e-mail: aweston@man.ac.uk.

### Lectureship in Integrative Animal Biology (Ref. no. 337/96)

Applications are invited for this fixed term (5 year) Lectureship from animal biologists especially those with interests in fields including environmental and comparative physiology, animal behaviour, neuroscience/genetics, reproductive biology/development and comparative immunology, or any other area of Integrative Animal Biology. A key criterion will be that the individual's research includes genetic and/or molecular technologies underpinning questions at the whole organism level. Teaching responsibilities will include undergraduate animal biology courses and participation in an expanding postgraduate teaching programme at M.Res and MSc level.

Initial salary according to qualifications and experience within the range £15,154 - £26,430 p.a. (under review).

Informal enquiries may be made to Professor A Loudon, Tel: (0161) 275 3888; Fax: (0161) 275 3938; e-mail: andrew.loudon@man.ac.uk.

Further particulars and an application form are available from The Office of the Director of Personnel, The University of Manchester, Oxford Road, Manchester M13 9PL. Tel: (0161) 275 2028; Fax: (0161) 275 2221; Minicom: (0161) 275 7889. Please quote appropriate ref.no. Closing date for receipt of applications is 19 July 1996.

As an equal opportunities employer, the University of Manchester welcomes applications from suitably qualified people from all sections of the community regardless of race, religion, gender or disability.

### EPIDEMIOLOGIST

(Virology)

**World Health Organization  
Geneva, Switzerland**

The National Center for Infectious Diseases (NCID), Centers for Disease Control and Prevention (CDC), is seeking qualified applicants for a Virologist position (GS-601-15) for assignment to the World Health Organization (WHO). The incumbent will serve as a principal scientific and technical advisor to the Director, NCID, and will work under the Director, Division of Emerging and other Communicable Diseases Surveillance and Control, WHO. Responsibilities will include the development and implementation of global surveillance, investigational, and prevention and control activities related to emerging and re-emerging viral diseases, including arbovirus diseases and viral hemorrhagic fevers.

Qualifications require significant experience in viral diseases and the ability to plan, implement, and manage infectious disease programs. Doctoral degree preferred.

Salary range, GS-15, is \$69,300 to \$90,090. Additional benefits include quarters/housing allowance, educational expenses, and cost-of-living allowance.

Interested candidates may send their curriculum vitae in confidence along with the names of three professional references postmarked no later than 7/30/96, to **Janie L. Oddy, Human Resources Management Office, Centers for Disease Control and Prevention (K15), 4770 Buford Highway, Atlanta, GA 30341-3724. EOE.**



### Immunologist

We have an immediate opening in our 3M Pharmaceuticals Division for an Immunologist. This position will be located at our Research facilities in St. Paul, Minnesota.

This position will provide technical leadership in a laboratory focused on discovering new drugs for treating pulmonary diseases such as asthma and allergies. Cytokine modulation will be emphasized. Duties will include establishing new primary screening models as well as working with existing ones. Responsibilities also include supervision and interaction with other researchers.

We require a PhD in Immunology or related field with a minimum of 3 years research experience. Pharmaceutical experience preferred.

3M has an excellent benefits package with salary commensurate with experience. For confidential consideration, send your resume (no phone calls or employment agency referrals, please) to:

#### NAS REPLY SERVICE

**Dept. 7MP39  
Riverview Office Tower  
8009 34th Avenue South  
Minneapolis, MN 55425-1619**

We Are An Equal Opportunity Employer M/F/D/V

**ACADEMIC COORDINATOR** to manage, oversee, and participate in the laboratory operations of upper division courses in the Department of Biology, including: 153L (laboratory for cellular physiology; functional histology); 158 (cell biology); 162 (plant physiology); 166 (animal physiology); and 167 (regulatory physiology). Depending upon qualifications, the successful candidate will have the opportunity to participate in appropriate lecture series in courses taught by regular members of the faculty. The primary responsibilities for laboratory operations in each course will include: participation in selection and development of laboratory exercises and computer-assisted learning; supervision and technical training of graduate student teaching assistants; coordinating and overseeing admission and registration of students in laboratory sections; participation in the development and administration of laboratory examinations; selection and maintenance of laboratory equipment; and oversight of the maintenance and use of living organisms in teaching exercises.

Qualifications include a Ph.D. degree or equivalent in an appropriate field of biology; appropriate training and experience in experimental laboratory biology; experience in teaching at a university level; and experience in working with computers in scientific laboratory settings. Level of appointment and salary commensurate with qualifications and experience. The appointment is for one academic year. Reappointment beyond that date may be possible.

Applications should include current c.v., including lists of publications; written statements of teaching and research interests and backgrounds; and names, addresses, and telephone numbers of three references. Position is currently available and will be filled as soon as possible. Address applications to **Academic Coordinator Search Committee, c/o Professor Robert Wayne, Department of Biology, University of California, Los Angeles, CA 90095-1606** by September 2, 1996.

*UCLA is an affirmative action/equal opportunity employer. Women, minorities, and persons with disabilities are encouraged to apply.*

## POSTDOCTORAL/PROFESSIONAL RESEARCH POSITIONS DEPARTMENT OF PHARMACOLOGY UNIVERSITY OF CALIFORNIA, IRVINE

Several postgraduate and professional researcher positions are or will be available in individual laboratories in the department for candidates who have demonstrated research promise at the post-doctoral level. The emphasis of research in the department is in the areas of neuropharmacology, cellular and molecular pharmacology, and cardiovascular pharmacology. The faculty of the department and their research interests are:

- |                     |  |
|---------------------|--|
| Dr. Olivier Civelli | G protein-coupled receptors and their ligands  |
| Dr. Sue Duckles     | Vascular function: Age and gender  |
| Dr. Fred Ehler      | Muscarinic receptors and their signaling mechanisms                                    |
| Dr. Kelvin Gee      | Characterization of novel modulatory sites on GABA <sub>A</sub> receptor complex       |
| Dr. Frances Leslie  | Drugs of abuse and cellular plasticity   |
| Dr. Ralph Purdy     | Vascular second messengers; vasoconstrictor synergism                                  |
| Dr. Larry Stein     | Cellular basis of reward, learning and memory; behavioral pharmacology; drug discovery |
| Dr. Eckard Weber    | Novel NMDA antagonists; stroke therapy drugs   |

Applications, including your letter of interest, CV, and the names and addresses of three references, should be sent to: **Dr. Larry Stein, Professor and Chair, Department of Pharmacology, University of California, Irvine, 360 Med Surge II, Zot Code 4625, Irvine, CA 92697-4625.** *UCI is an Affirmative Action/Equal Opportunity Employer.*



## POSTDOCTORAL POSITIONS

The Institute of Molecular Medicine and Genetics (IMMAG) has several postdoctoral positions available. The Institute offers a highly interactive and supportive scientific environment, with state-of-the-art equipment and a new building. There are excellent facilities for development of transgenic and knockout mice. To apply for one of these positions, please send your curriculum vitae and names of three references to the faculty member referenced below at IMMAG, CB-2803, Medical College of Georgia, 1120 15th St., Augusta, GA 30912.

**Postdoctoral positions (2)** are available August 1, 1996 to study the signal transduction pathways leading to modulation of activities of specific transcription factors that are involved in differentiation, growth, and apoptosis in mammalian cells. Background in molecular biology/biochemistry and interest in establishing mouse models (transgenic and knockouts) is preferred. Contact: Dr. Nahid Mivechi.

**Postdoctoral positions (2)** are available immediately to study the molecular biology of DNA-dependent protein kinase and its role in repair, recombination, stress, and autoimmunity. (McConnell and Dynan, *Current Opinion in Cell Biology*, 8:325-330, 1996). Candidate should have a background in protein chemistry, molecular biology, and/or establishment of mouse models. Contact: Dr. William S. Dynan.

**Postdoctoral position** available immediately to study p53-dependent apoptosis and cell cycle regulation. Candidate should have a background in biochemistry and molecular and cellular biology. Contact: Dr. Xinbin Chen.

**Postdoctoral position** available immediately to study the biochemistry and molecular biology of the RAG proteins in their essential role in the DNA recombination of the immune system (V(D)J recombination). The connection to DNA repair, general DNA recombination, and immune system development are continuing interests (see Sadofsky et al., *Genes and Development*, 9:2193-2199, 1995; van Gent et al., *Cell* 81:925-934, 1995). Contact: Dr. Moshe Sadofsky.

*MCG is an EEO/AAE.*

## ANNOUNCEMENT



1996-'97

## AAAS Award for Public Understanding of Science and Technology

### Nominations Invited

- An annual Award for working scientists and engineers from all disciplines who make outstanding contributions to public understanding of science and technology but are *not* members of the media.
- Contributions should have a significant impact on the public; be accurate, timely, and innovative; and convey the meaning, excitement, and significance of scientific activity.
- The Award will be presented during the AAAS Annual Meeting in Seattle, WA, February 13-18, 1997.
- The Award carries a \$5,000 prize.

1995 Award Winner: Carl Sagan

*For additional information, contact: Amie King, Project Director, American Association for the Advancement of Science, 1200 New York Avenue, NW, Washington, DC 20005, telephone (202) 326-6667, or fax (202) 371-9849.*

*Deadline for nominations is August 1, 1996.*



## POSITIONS OPEN

### NATIONAL INSTITUTES OF HEALTH (NIH) National Institute on Alcohol Abuse and Alcoholism (NIAAA)

and the  
Office of Alternative Medicine (OAM)  
Bethesda, Maryland

The NIAAA and OAM invite motivated and highly qualified physicians to apply for a unique three-year **RESEARCH FELLOWSHIP**. Research protocols will examine the efficacy of acupuncture and alternative medicine techniques on alcohol relapse utilizing state-of-the-art neurochemical and neuroimaging techniques. Training in acupuncture and neuroimaging techniques and core course curriculum provided by both the Clinical Center at the NIH and the OAM will complement the rich intellectual environment of the NIH. The Board-certified/Board-eligible applicant must have completed an accredited residency program and must be licensed to practice medicine. Applicants should send a letter of interest, curriculum vitae, and three letters of recommendation to: **Markku V. Linnoila, M.D., Ph.D., Scientific Director, National Institute on Alcohol Abuse and Alcoholism, Building 10, Room 3C103, 10 Center Drive MSC 1256, Bethesda, MD 20892-1256**. For more information call **Joseph R. Hibbeln, M.D., Chief, Outpatient Clinic, NIAAA. Telephone: 301-443-2716; Email: JHIBBELN@DIBBR.NIAAA.NIG.GOV**.

Deadline for receipt of applications: August 1, 1996.  
NIH is an Equal Opportunity Employer.

### RESEARCH POSITIONS Molecular Neurobiology of Drug Abuse

**FELLOW** and **SENIOR FELLOW** positions are available to pursue the molecular neurobiology and genetics of drug abuse. Candidates should have expertise in molecular biology and/or molecular genetics, with preference given to experience in neuropharmacology. Ongoing work examines the structure and function of the dopamine transporter/cocaine receptor,  $\mu$  opiate receptor/heroin receptor, genes regulated by abused drugs, and genes important for interindividual differences in substance abuse vulnerability in animal models and humans. If you hold a doctoral degree(s) and would like to be considered for a position, please send a cover letter, curriculum vitae with bibliography, statement of research interests and goals (not to exceed two pages), and three letters of recommendation to: **G. R. Uhl, M.D., Ph.D., Molecular Neurobiology, NIDA/NIH, P.O. Box 5180, Baltimore, MD 21224**. Competitive salary levels with full benefits. *An Equal Opportunity Employer. Candidates must be U.S. citizens or permanent residents.*

**POSTDOCTORAL POSITIONS:** Available for studies in various aspects of cancer research and toxicology in the Center in Molecular Toxicology through the Departments of Biochemistry, Cell Biology, Chemistry, Medicine, Pathology, and Pharmacology. Areas of investigation relating to toxicology and carcinogenesis are: 1) enzymatic oxidation and conjugation, 2) oxidative damage, 3) DNA damage and mutagenesis, 4) regulation of gene expression, 5) analytic method development, 6) neurotoxicology, and 7) clinical toxicology. Center faculty include **Drs. Richard N. Armstrong, Ian A. Blair, Raymond F. Burk, Raymond N. DuBois, Doyle G. Graham, F. Peter Guengerich, Thomas M. Harris, Lawrence J. Marnett, Timothy J. Meredith, Jennifer A. Pietsenpol, Michael P. Stone, William M. Valentine, and Michael R. Waterman**. Salaries are negotiable. Applicants should submit curriculum vitae and three letters of recommendation to: **Dr. F. Peter Guengerich, Director, Center in Molecular Toxicology, Vanderbilt University, School of Medicine, Nashville, TN 37232-0146**. *An Affirmative Action/Equal Opportunity Employer.*

### POSTDOCTORAL POSITION Cardiac Physiology University of Maryland School of Medicine

A **POSTDOCTORAL POSITION** is available immediately for research in electrophysiology and excitation-contraction coupling of cardiac muscle. The research will involve the use of patch clamp techniques, fluorescent ion-indicators, and confocal microscopy. Applicants should have a Ph.D. or M.D. and experience in electrophysiology.

Interested individuals should send curriculum vitae and names of three references to: **Dr. C. William Balke, Department of Physiology, University of Maryland at Baltimore, 660 West Redwood Street, Room 590, Howard Hall, Baltimore, MD 21201**. *University of Maryland at Baltimore is an Equal Opportunity/Affirmative Action Employer.*

## POSITIONS OPEN

### POSTDOCTORAL ASSOCIATE Primate Lung Development

Position available to study the role of peptide growth factors (bombesin-like peptides, BLP) in monkey lung development. Research will involve both *in vivo* and *in vitro* studies of the effect of gastrin-releasing peptide (GRP), antagonists and other BLP on fetal lung development. Research will involve both molecular and morphologic approaches. Studies will use our recently cloned probes for the monkey GRP and GRP receptor genes as well as study of potential new forms of the bombesin receptor that may be expressed in lung. The candidate should have a Ph.D. or M.D. degree and a background in lung development or lung biology. Flexible start date and salary commensurate with experience. Mail or fax curriculum vitae and names of three references to: **Eliot R. Spindel, M.D., Ph.D., Division of Neuroscience, Oregon Regional Primate Research Center, 505 NW 185th Avenue, Beaverton, OR 97006. Email: spindele@OHSU.edu; FAX: 503-690-5384**. *Affirmative Action/Equal Opportunity Employer.*

### POSTDOCTORAL/RESEARCH SCIENTIST POSITIONS G Proteins

Positions are available to study the  $\beta$  and  $\gamma$  subunits of the signal-transducing G proteins in the laboratory of **Dr. Janet Robishaw**. Projects include: 1) molecular regulation of gene expression and 2) development of mouse models By-mediated signaling, using gene targeting techniques. Experience in molecular biology and/or biochemistry is required; some experience with transgenic/knockout mice is desirable.

Geisinger offers a competitive salary and an excellent benefit package. Interested candidates should send a curriculum vitae, names of three references, and a brief summary of research experience to: **Geisinger, Human Resources (JDR), 100 North Academy Avenue, Danville, PA 17822-1529**. *Equal Opportunity Employer/Minority/Female/Disabled/Veteran.*

### RESEARCH ASSOCIATE The University of Texas at El Paso Minority Biomedical Research Support Department of Biological Sciences

Participate in an NIH-funded research project on cell cycle modulation of DNA repair. Supervise undergraduate and graduate students in the laboratory. Maintain accounts and ordering of supplies. Ph.D. in biochemistry and/or biology with a research background in molecular biology and/or DNA repair. Background in tissue culture, PCR, construction of genomic libraries and DNA sequencing a plus. Send cover letter, résumé, and three letters of recommendation to: **Pablo Arenaz, Ph.D., UTEP, Department of Biological Sciences, El Paso, TX 79968-0519. Telephone: 915-747-6005**. *The University does not discriminate on the basis of race, color, national origin, sex, religion, age, or disability in employment or the provision of services.*

### THE NEUROSCIENCES INSTITUTE SAN DIEGO Cellular Neurophysiology

Applications are invited for the **POSTDOCTORAL POSITION** of Junior Fellow in Experimental Neurobiology to study cellular and synaptic physiology in mammalian neocortex. Applicants should have a background in electrophysiology, preferably with brain slice and patch-clamp experience. Fellows will receive stipends appropriate to their qualifications and experience. Submit a curriculum vitae, statement of research interests, and names of three references to: **Dr. Ronald B. Langdon, The Neurosciences Institute, 10640 John J. Hopkins Drive, San Diego, CA 92121. FAX: 619-626-2099**.

A **POSTDOCTORAL POSITION** is available immediately in the Department of Biochemistry, East Carolina University School of Medicine, to work on the effects of Diabetes and insulin resistance on various enzymes involved in lipid and lipoprotein metabolism. The post is supported by the NIH and is available for two years. Ph.D. degree in biochemistry or a related field required. Previous experience with lipoproteins and molecular techniques is desirable. Please submit a curriculum vitae and the names of three references to: **Dr. Hisham Barakat, Department of Biochemistry, East Carolina University School of Medicine, Greenville, NC 27858**. *An Equal Employment Opportunity/Affirmative Action Employer. Accommodates individuals with disabilities. Immigration Reform and Control Act procedures followed.*

## POSITIONS OPEN

**POSTDOCTORAL POSITION** for NIH-funded project to study outer membrane proteins of pathogenic *Leptospira* species. A variety of novel molecular and biophysical approaches are being utilized to identify transmembrane and lipoprotein components of the leptospiral outer membrane. In addition to characterization of their structure, function, and expression, the study involves testing the ability of these molecules to serve as protective immunogens. Interested candidates should send curriculum vitae and names of three references to: **David A. Haake, M.D., Division of Infectious Diseases, 111F, West Los Angeles VA Medical Center, Los Angeles, CA 90073. FAX: 310-391-1966; Email: haake.david@west-la.va.gov**.

**POSTDOCTORAL POSITION** available to study genes that determine yeast longevity and their human counterparts, age-dependent regulatory elements, and mammalian cellular senescence (*J. Biol. Chem.*, 269:15451, 1994; *J. Biol. Chem.*, 269:18638, 1994; *BBRC*, 219:370, 1996; *Dev. Genet.*, 18:154, 1996; *Science*, 273, 5 July 1996). Experience in molecular techniques essential and in yeast genetics helpful. Send curriculum vitae with bibliography and names, telephone, FAX, and Email of three referees to: **Dr. S. Michal Jazwinski, Department of Biochemistry and Molecular Biology, LSU Medical Center, 1901 Perdido Street, New Orleans, LA 70112**. *Affirmative Action/Equal Opportunity Employer.*

## ANNOUNCEMENT



### RESEARCH GRANTS

The American Health Assistance Foundation invites applications from researchers at non-profit institutions for the following programs:

**Alzheimer's Disease Research:** grant awards of up to \$100,000 per year for up to two years (renewable) for research into the causes and treatment of Alzheimer's disease. Application deadline: October 15, 1996.

**Glaucoma Research:** grant awards of up to \$35,000 per year for up to two years (renewable) for research into the causes and treatment of glaucoma. Application deadline: November 30, 1996.

**National Heart Foundation Grants:** starter grants of up to \$15,000 for one year (renewable) for research into the cause and treatment of stroke or cardiovascular disease. To qualify for a starter grant, the investigator must be an assistant professor (or equivalent) beginning an independent research career. Application deadline: October 31, 1996.

For information and application forms contact: **Research Grants Department, American Health Assistance Foundation, 15825 Shady Grove Road, Suite 140, Rockville, MD 20850. Telephone: 301-948-3244**.

## MEETING

American Aging Association, Annual Scientific Meeting, October 4 to 8, 1996, San Francisco, California. Conference Theme: **Nutrition and Functional Aging**. Students/postdoctorals can submit abstracts for award competition and prize. Scientists can submit research abstracts related to aging and nutrition. Abstract submission deadline is July 29, 1996. For registration and information contact: **Arthur K. Balin, M.D., Ph.D., FACP, American Aging Association, 2129 Providence Avenue, Chester, PA 19013. Telephone: 610-874-7550; FAX: 610-876-7715; Email: AmerAging@aol.com**.

## COMPUTER MARKET

**SCIENTIST**  
FITS EQUATIONS TO DATA

FREE 30-day version available on the  
Web at <http://www.micromath.com>

**MICROMATH®**

Circle No. 14 on Readers' Service Card

Marketplace ads continue on page 146

## MARKETPLACE

## CUSTOM ANTIBODIES TO PEPTIDES AND PROTEINS

- Purification • Conjugation
- ELISA Titration



HTI BIO-PRODUCTS, INC.

Phone (800) 481-9737

Fax (619) 788-9694

e-mail antibodies@htibio.com

http://www.htibio.com

Circle No. 35 on Readers' Service Card



**Custom Polyclonal Antibodies**  
BEST PRICES • BEST ANIMALS  
**ANIMAL PHARM SERVICES**  
**(800) 808-0550**

Circle No. 18 on Readers' Service Card

## AUTOMATED DNA SEQUENCING

### SEQWRIGHT

DNA Sequencing

SEQWRIGHT, LLC

2472 Bolsover #425 • Houston, TX 77005

1-800-720-4363 • (FAX) 713-528-6232

Internet Mail: seq@blkbox.com

http://www.blkbox.com/~seq/

Circle No. 27 on Readers' Service Card

## SFM-Human Endothelial Cell System

More Cells / Lowest Price / Highest Quality  
Start up a 75 cm Flask / Recombinant Mitogen  
CSC Certificate™ #30566



1-800-697-1211

Circle No. 12 on Readers' Service Card

## CUSTOM PEPTIDES

Quality Peptides at Competitive Prices.  
Experienced Company offering:

- ♦ Synthesis of difficult sequences
- ♦ Fluorescent labeling
- ♦ Phospho peptides
- ♦ Peptide conjugation
- ♦ Biotinylated peptides
- ♦ Large scale synthesis
- ♦ Special amino acid containing peptides

Welcome to American Peptide. We can satisfy your peptide needs from small to large quantities at **considerably reduced prices**. We offer different purity levels to match your exact needs, whether for screening, antibodies production or drug development.

### NEW 1996-97 CATALOG

Many new peptides. Comprehensive Selection. Amyloids, Endothelins, Neuropeptides, Substrates, Toxins & many more. Call / Fax for a free copy!

88-1-10	Endothelin-1	98%	0.1 mg	60.00
			0.5 mg	175.00
			1.0 mg	285.00
60-1-11	NPY, human	98%	0.5 mg	85.00

AMERICAN PEPTIDE COMPANY

TEL: 408.733.7604 FAX: 408.733.7603

777 E Evelyn Ave., Sunnyvale, CA 94086 USA

Circle No. 17 on Readers' Service Card

## MARKETPLACE

## PeptidoGenic

The Peptide Engineering Specialist

E-mail: pkim@ccnet.com

Fax: 510-371-1156

Voice: 800-597-7873

510-371-1070

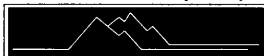
Custom  
Peptide

:\$20/residue/crude/5days

No Setup Fee  
Free HPLC &  
IonSpray Mass.

Circle No. 36 on Readers' Service Card

### Custom DNA from \$1.00/base



ransom hill bioscience, inc.

http://www.ransomhill.com

no setup, no minimum, no baloney!

email: visio@ix.netcom.com fax: (800) 597-8509

Circle No. 4 on Readers' Service Card

## XX IDT<sup>®</sup>

INTEGRATED DNA TECHNOLOGIES, INC.

### Custom DNA Synthesis

# \$1.35 / Base

200 nmole Scale

No Set-up Fee

Column Purified

24 Hour Shipping

Q.C. by PAGE on Every Oligo

Call today, join over 300  
institutions already on our  
discount programs!

E-mail: orders@idtdna.com

Web Site: http://www.idtdna.com

Fax: 1-319-645-2921

Phone: 1-800-328-2661

Circle No. 26 on Readers' Service Card

## CUSTOM DNA SYNTHESIS

PURE &amp; SIMPLE

- Superb Technical Support

- Impeccable Quality

- World's Fastest Service

- Cap Gel & TOF Mass Spec

\* Some restrictions apply. Please call for details.

## MIDLAND

STILL THE UNDISPUTED #1 CUSTOM DNA SYNTHESIS SERVICE

THE MIDLAND CERTIFIED REAGENT COMPANY

Phone 1-800-247-8766 FAX 915-694-2387

email mrcr@oligos.com

Circle No. 7 on Readers' Service Card

## PARTICLE SIZE STANDARDS

NBS traceable calibration standards and controls. Large assortment of diameters from 0.02 to 2000  $\mu$ m. microspheres of polystyrene, glass and fluorescent materials. Free catalog available. Toll Free 800-334-3883. In Calif. 415-424-1177. FAX 415-424-1158

Duke Scientific  
CorporationP.O. BOX 50005  
2463 FABER PLACE  
PALO ALTO, CA 94303

Circle No. 2 on Readers' Service Card

## MARKETPLACE

## CUSTOM DNA

# \$1.19 base

200 nmol scale (10 - 20 ODU)

No set-up charges • Deprotected & Desalted  
A 20-mer is only \$24! • 24 - 48 hours shipping

## CUSTOM PEPTIDES

# \$20 residue

15 - 40 mg • Free mass spec & HPLC tracing  
No set-up charges • Desalted • 5 - 8 days shipping  
Antipeptide antibodies available



1-800-227-0627

FAX 214-420-0442

BIO•SYNTHESIS  
INCORPORATED

E-Mail: biosyn@onramp.net

Internet: http://www.biosyn.com

FDA#001235 • NIH BPA#263-00038171-04-BPA/C

Circle No. 9 on Readers' Service Card

- Automated DNA sequencing
- Custom DNA/RNA synthesis
- Protein/peptides synthesis & sequencing
- Spectroscopy/calorimetry
- Mass spec services

Commonwealth Biotechnologies, Inc.

Your one stop biotech shop

LET US QUOTE YOUR SPECIAL PROJECTS

Comprehensive biotech services. For information please call:

1-800-735-9224

Visit our web page at:

www.cbi-biotech.com

Fax: 804-648-2641

E-mail: CBI@richnet.com

Circle No. 15 on Readers' Service Card

Widely Recognized Original & Guaranteed

# KlenTaq1

8¢/u Truncated Taq DNA Polymerase Withstand 99°C

US Pat # 5,436,149

Call: **Ab Peptides** 1-800-383-3362

Fax: 314-968-8988 abpeps@icon-stl.net

Circle No. 6 on Readers' Service Card

## Custom DNA

Purified &amp; Delivered in 48 Hours

# \$1.20 per base • Purified

http://www.resgen.com

Research Genetics, Inc.

1-800-533-4363

Circle No. 5 on Readers' Service Card



# Join the Partnership



MAXWELL MACKENZIE

"As a AAAS member and Fellow, I believe that the Center for Science and Engineering will contribute to the overall health of the scientific enterprise today and in the decades to come. The Center's auditorium, equipped with satellite and video-conferencing capabilities, will bring the best of the world's science, engineering and technology to scientists, engineers, policymakers, teachers and students worldwide. I urge you to join me in contributing to its completion."

*Joseph G. Gavin, Jr.*



For the latest on the Center for Science and Engineering, contact the AAAS Development Office at [NEWBUILDING@AAAS.ORG](mailto:NEWBUILDING@AAAS.ORG) or (202) 326-6636. Visit us on the web at [WWW.AAAS.ORG](http://WWW.AAAS.ORG).

## CONSIDER A NAMED GIFT

You can be permanently associated with the mission of AAAS and the Center for Science and Engineering through a named gift. A contribution of \$5000 or more will inscribe a chair in the auditorium with your name or the name of a mentor, colleague, or family member.

Yes, I/We would like to support the **Center for Science and Engineering** with

☐ a gift of \$ \_\_\_\_\_ or

☐ a pledge of \$ \_\_\_\_\_

Enclosed is the first installment of \$ \_\_\_\_\_, with balance to be contributed:

☐ annually ☐ semi-annually ☐ quarterly beginning \_\_\_\_\_

I make this gift

☐ in my name

☐ in honor/memory of: \_\_\_\_\_

☐ and I will determine if my employer or my spouse's employer will match this contribution to AAAS.

\_\_\_\_\_  
*Signature*

\_\_\_\_\_  
*Printed Name*

\_\_\_\_\_  
*Address*

\_\_\_\_\_  
*City, State, ZIP*

\_\_\_\_\_  
*Phone*



AMERICAN ASSOCIATION FOR THE  
ADVANCEMENT OF SCIENCE

Please return to:  
AAAS Development Office  
1200 New York Avenue NW  
Washington, DC 20005

SC796

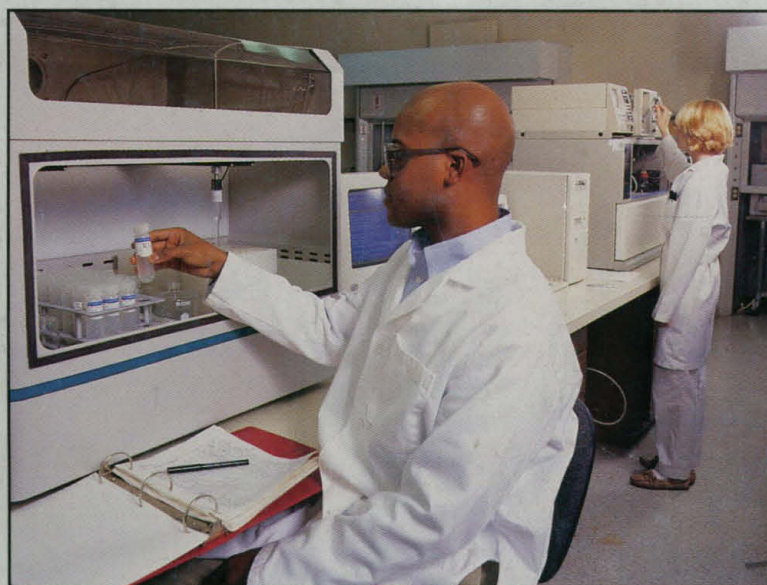


# New Lower Peptide Prices!

## \$18.00 per residue\*

**\*10 residue minimum**

Researchers can now get the same high quality and fast delivery they have come to expect from Research Genetics at an even lower price. This service includes 15-40 mg of 10-20mer peptides shipped in just 5 days. Just one more example of how Research Genetics is continually improving upon its products and services.



## Monoclonal and Polyclonal Antibodies

Research Genetics is proud to provide an economical 'start-to-finish' peptide antibody service.

- Polyclonal Antibodies - delivered within 16 weeks - starting at \$1,195
- Monoclonal Antibodies - delivered within 24 weeks - \$8,500

## Research Genetics, Inc.

2130 Memorial Pkwy, SW • Huntsville, AL • 35801

U.S. or Canada 800-533-4363      Worldwide 205-533-4363

U.K. 0-800-89-1393      FAX 205-536-9016

Homepage <http://www.resgen.com>

Circle No. 30 on Readers' Service Card

Ask about our affinity  
purification and Western  
blotting services