

ther, no clinical trials of these costly dimensions should be designed without peer review by experts in the biochemistry and toxicity of the agents under test.

Paul A. Lachance

Department of Food Science,
Cook College, Rutgers University,
New Brunswick, NJ 08903-0231, USA

References

1. G. S. Omenn *et al.*, *N. Engl. J. Med.* **334**, 1150 (1996).
2. Alpha-Tocopherol, Beta Carotene Cancer Prevention Study Group, *ibid.* **330**, 1029 (1994).
3. J. N. Hathcock *et al.*, *Am. J. Clin. Nutr.* **52**, 183 (1990).
4. S. de Pee *et al.*, *Lancet* **346**, 75 (1995).

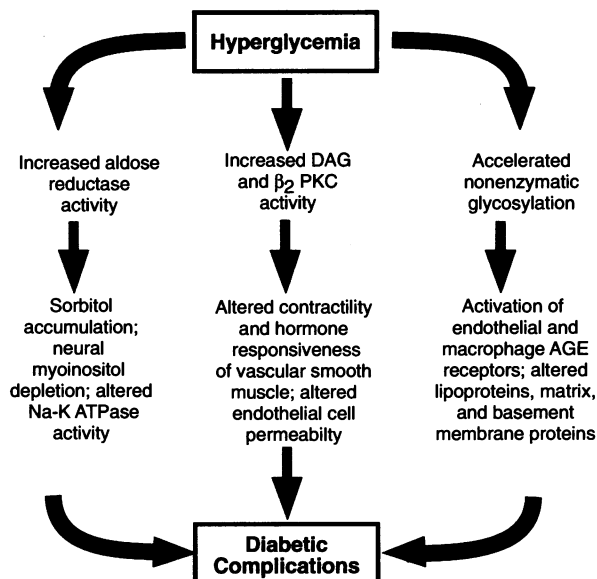
Letters to the Editor

Letters may be submitted by e-mail (at science_letters@aaas.org), fax (202-789-4669), or regular mail (*Science*, 1200 New York Avenue, NW, Washington, DC 20005, USA). Letters are not routinely acknowledged. Full addresses, signatures, and daytime phone numbers should be included. Letters should be brief (300 words or less) and may be edited for reasons of clarity or space. They may appear in print and/or on the World Wide Web. Letter writers are not consulted before publication.

Corrections and Clarifications

In column 4 of Table 1 (p. 524) in the report "Probing electrical transport in nanomaterials: Conductivity of individual carbon nanotubes" by Hongjie Dai *et al.* (26 Apr., p. 523), "ohm·m" should have been "microhm·m."

The diagram (p. 700) accompanying the Perspective "Diabetes complications: Why is glucose potentially toxic?" by Daniel Porte Jr. and Michael W. Schwartz (3 May, p. 699) was incorrectly drawn. The correct diagram appears below.



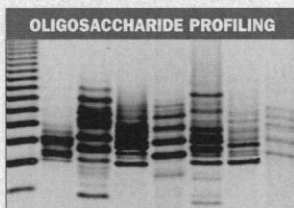
Glyko's FACE® technology makes carbohydrate analysis fast, reliable, and affordable

Glyko's FACE (Fluorophore Assisted Carbohydrate Electrophoresis) technology

makes it possible for you to work with and analyze complex carbohydrates using the same technique you already use in your lab: polyacrylamide gel

electrophoresis. Now, in less than one day, you can perform profiling, composition, or sequencing experiments using FACE chemistry kits. Everything you need is included:

enzymes or release chemicals, fluorescent labeling



Example of a FACE gel profile of N-linked oligosaccharides released from a number of different glycoproteins

reagents, electrophoresis standards, controls, running buffers, precast polyacrylamide gels, and complete protocols.

The FACE Imager and Analytical Software

give you the ability to analyze, quantify, and document the results of n-linked and o-linked oligosaccharide profiling, monosaccharide composition and sequencing gels—without radio-labeling, staining, or exhaustive sample preparation.

FACE Recombinant Glycosidases Glyko continues to discover and clone more recombinant glycosidases than anyone else. Stringent quality

control and high specific activity assure predictable reaction times and consistent results. Glyko recombinant glycosidases can be used for your cell biology, biochemistry, or sequencing experiments

To order or to learn more about Glyko products, custom services, and international distributors, call toll free: **1 800 33 GLYKO** (334 5956) U.S. only, phone: 1 415 382 6653, or fax: 1 415 382 7889.

VISIT OUR WEB SITE:
<http://www.glyko.com>

GLYKO