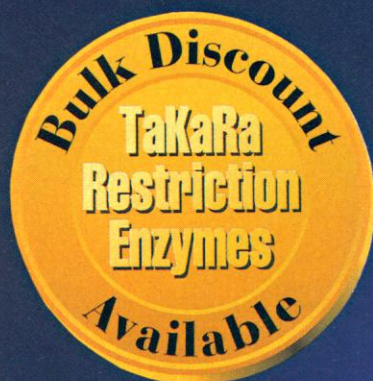


TIME TO CHANGE FOR THE BETTER

With Newly Upgraded TaKaRa Restriction Enzymes,
Improve Cloning Efficiency in Less Time without Screening
in conjunction with the Enforcement Cloning System pKF3.



36 Prime Restriction Enzymes

The highest purity enzyme with the lowest exonuclease activity guaranteed using an innovative QC/QA methodology; the Enforcement Cloning System, highly selective and sensitive with detection of low frequency transfectant caused by trace amount of exonuclease.

Enforcement Cloning System pKF3

Comprised of pKF3 DNA and *E. coli* TH2 Competent Cells.

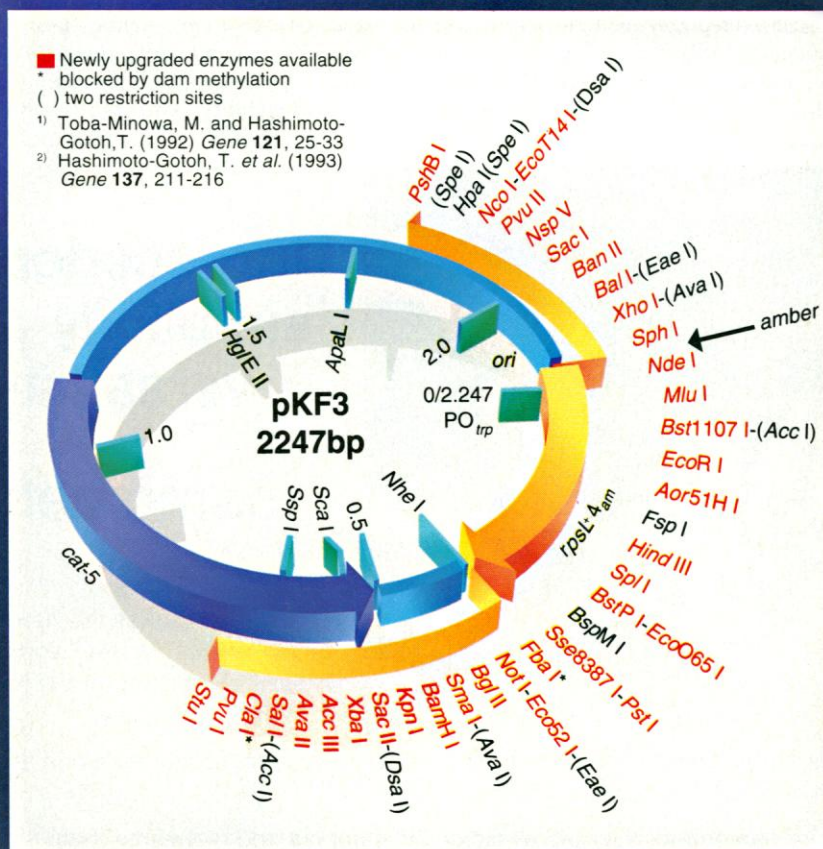
This system has no cumbersome screening steps and is potent in a variety of applications such as library construction from shotgun cloning, subcloning of PCR products and colony hybridization.

pKF3 DNA:

A Cm^RSm^S -enforcement plasmid vector contains 44 multi restriction sites within the PO_{trp} -driven $\text{rpsL}^{+4}_{\text{am}}$ gene.

E. coli TH2 Competent Cells:

Highly competent cells are prepared from the TH2 trpR624 strain with rpsL^- , supE^- and trpR^- , a variant of HB101, for the exclusive use with the pKF3 vector.



TaKaRa
TAKARA SHUZO CO., LTD.
BIOMEDICAL GROUP
Otsu, Shiga, Japan
Phone: +81 775-43-7247 Fax: +81 775-43-9254

Europe
**TaKaRa Biomedical
Europe S.A.**
92230 Gennevilliers, France
Phone: +33 1 41 47 01 14
Fax: +33 1 47 92 18 80

Korea
**BOHAN (TaKaRa-Korea)
Biomedical Inc.**
Seoul, Korea
Phone: +82 2-577-2002
Fax: +82 2-577-3691

North & South Americas:
PanVera Corporation
Madison, WI 53711
Toll Free: 800-791-1400
Fax: 608-233-3007
E-mail: info@panvera.com

Circle No. 2 on Readers' Service Card

PRODUCTS & MATERIALS

DNA Purification System

The NucleoSpin C & T system is for the extraction of 20 to 40 µg of genomic DNA from body fluids and tissue samples. Each micro-spinning cup can be closed and fits standard microcentrifuge tubes. The procedure can be completed in 20 min or less. The plasmid DNA is ready for a variety of manipulations including restriction analysis, sequencing, amplification, and bacterial transformation. **The Nest Group. Circle 136.**

Green Fluorescent Vector

Green Lantern-1 Vector, an improved green fluorescent protein (GFP), is a powerful transfection reporter vector for expression in mammalian cells. Green Lantern GFP has several mutations that increase fluorescence 40-fold over wild-type GFP and result in

faster visualization. The new vector generates transfection results in as little as 5 hours, compared with 24 to 48 hours for wild-type GFP. **Life Technologies. Circle 137.**

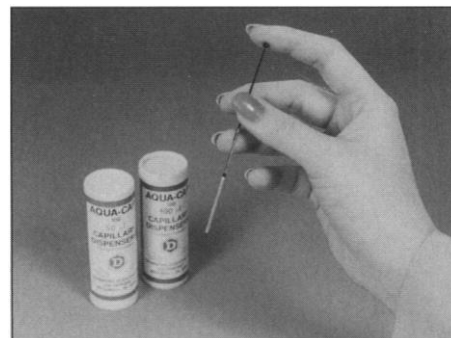
In Situ Hybridization Reagent

Nanogold-Streptavidin is a novel in situ hybridization reagent with superior sensitivity. It penetrates well, produces a brown-black color compatible with other cell stains, and requires only a simple light microscope instead of expensive fluorescent optics. It is so sensitive that in situ polymerase chain reaction (PCR) is not necessary, an advantage since PCR requires more steps and can produce false positives. Nanogold-Streptavidin features a small gold cluster covalently coupled to streptavidin for maximum activity and stability. The gold is subsequently

visualized by silver enhancement using a rapid, selective, and permanent developer. **Nanoprobes. Circle 138.**

Capillary Pipettes

Aqua-Cap Microdispensers are single-use, disposable, glass capillary pipettes with hydrophobic plugs preset for precise volume delivery. The plug controls the volume and serves as a piston that dispenses the sample



when pressed down by a reusable plunger. The design prevents a second use, eliminating the possibility of cross-contamination. They are available in sizes from 10 to 100 µl. **Drummond Scientific. Circle 139.**

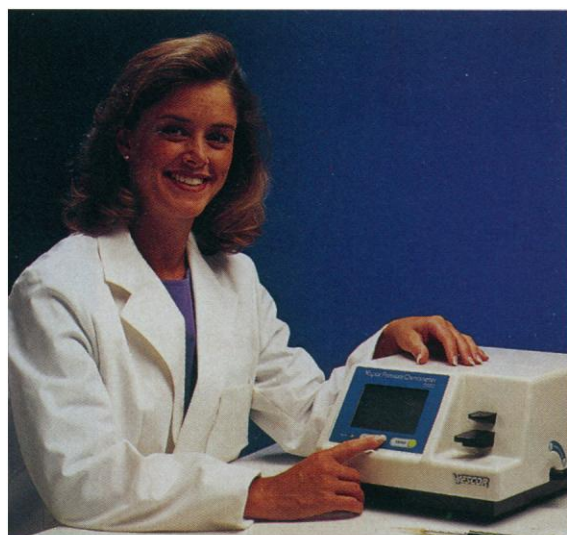
Nitric Oxide Synthase Assay

The NOSdetect kit provides a rapid and sensitive means for testing the activity of nitric oxide (NO) synthases. The kit is based on monitoring the conversion of [³H]arginine to [³H]citrulline during the enzymatic formation of NO. The kit's direct conversion of arginine to citrulline is specific for the NO synthase pathway, and since citrulline is easily separated from unreacted arginine, hundreds of assays can be performed in less than an hour. Applications include study of neurotransmitters, vascular regulators, and modulators of the inflammatory process. **Stratagene. Circle 140.**

Antibodies

A group of antibodies is available for the study of proteins involved in apoptosis. An antibody sampler kit contains antibodies to Bad, Bcl-x, CPP32, Fas, ICH-1_L, p53, and TIAR. Monoclonal antibodies (mAbs) are available to FADD, Fas ligand, and Mcl-1. **Transduction Laboratories. Circle 141.**

Tyrosine-phosphorylated proteins are involved in signal transduction and in the regulation of cell proliferation. Two new mAbs to phosphotyrosine, PY 54 and PY 69, have been added to an extensive line of phosphotyrosine antibodies. All these anti-



**Unprecedented
simplicity and
versatility
in
osmometry**

That's what makes the new menu-driven Wescor Vapro® Vapor Pressure Osmometer the ideal

instrument for researchers who have to measure osmolality precisely.

It's quick and simple to use and all key functions, including calibration and statistical analysis, can be selected from its menu.

The Vapro osmometer accepts all biological samples and measures them at room temperature in natural equilibrium. As a result the Vapro avoids all the artifacts that may compromise freezing point determinations.

The versatile Vapro osmometer is widely used in marine biology, tissue culture, soil and plant water potential measurements, and lab animal studies. You'll also find it performing Q.C. work in the food, pharmaceutical, beverage, and ophthalmology industries.

Contact us for more details or to arrange a demonstration.
Wescor, Inc., 459 South Main Street, Logan UT. 84321.
Phone 1-800-453-2725. FAX 801-752-4127.

Circle No. 39 on Readers' Service Card

WESCOR

bodies recognize phosphotyrosine in a wide variety of species and are useful for several immunological techniques, including protein immunoblotting, immunoprecipitation, and immunocytochemistry. **Transduction Laboratories. Circle 142.**

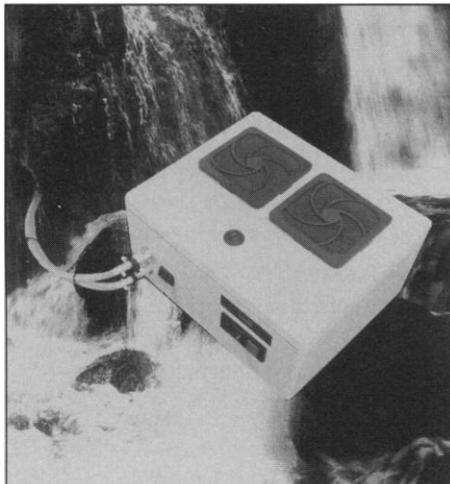
Two antibodies are available as markers of activated endothelial cells. The E-selectin antibody can be used in immunohistochemistry, enzyme-linked immunosorbent assay, and flow cytometry. The VCAM-1 antibody works on formalin-fixed, paraffin-embedded sections. It can also be used on frozen sections, cell smears, and in enzyme-linked immunosorbent assays and flow cytometry. **Dako. Circle 143.**

Mutagenesis Kit

The Quant-Essential T7 polymerase in vitro mutagenesis kit allows site-directed mutagenesis to be performed directly on double-stranded DNA purified on a cesium chloride gradient or by an alkaline lysis mini-prep procedure. **Quantum Biotechnologies. Circle 144.**

Lamp Cooling System

A compact dual-fan, closed-cycle cooling system can maintain a safe operating temperature for high-wattage lamps to 1000 W. Many instruments make use of high-powered xenon arc lamps that require water cooling for reliable operation, but providing water is



often difficult. This device obviates the need to schedule experiments around the availability of a lab sink and to monopolize the sink for the duration of the experiment. The device is fitted with a pump, a heat exchange coil, and two fans to dissipate the heat

Newly offered instrumentation, apparatus, and laboratory materials of interest to researchers in all disciplines in academic, industrial, and government organizations are featured in this space. Emphasis is given to purpose, chief characteristics, and availability of products and materials. Endorsement by *Science* or AAAS is not implied. Additional information may be obtained from the manufacturers or suppliers named by circling the appropriate number on the Readers' Service Card and placing it in a mailbox. Postage is free.

of the lamp. **On-Line Instrument Systems. Circle 145.**

Next Generation Ames Assay

The AMAX (Ames II Mutagenic Assay by Xenometrix) system is a next generation assay for use in testing chemical compounds for potential carcinogenic effects. Six new bacterial strains engineered for the assay have considerably lower spontaneous reversion frequencies, increasing their sensitivity in detecting mutagens. Each of the six new strains reverts by only one specific base-pair substitution out of the six possible changes, giving precise information on the mutagen's effects. The new assay indicates the mutagenic potential of a substance and identifies the types of base substitution induced. **Xenometrix. Circle 146.**

Literature

Pall Biosupport Comes Through for You: Separations for Critical Analyses is an eight-page brochure that describes the broad range of separations capabilities Pall Biosupport media provide to users in the diagnostic, molecular biology, sample preparation, packaging, and medical devices arenas. Applications include lateral and flow-through diagnostic assays, hydrophobic and oleophobic venting, blood separation, DNA detection, and protein immobilization. **Pall Corp. Circle 147.**

Turbo LC Plus Method Development System is a brochure on an automated tool for developing high-performance liquid chromatography methods. The system offers many advantages, including single-point workstation control and integrated software designed for rapid method development. **Perkin-Elmer. Circle 148.**

Chemicon Tools for Neuroscience Research features a wide variety of antibodies and proteins. It includes antibodies to beta amyloid, choline acetyltransferase, metabotropic glutamate receptor 2/3, synaptophysin, and tyrosine hydroxylase. **Chemicon International. Circle 149.**

Research Product Catalog focuses on nucleic acid hybridization and detection technology. Products include a wide choice of labeled nucleotides, systems that allow researchers to produce probes, and more. **Enzo Diagnostics. Circle 150.**

Direct Pathways to Cancer Research

Taconic Transgenic Models

Transgenic technology offers gene-specific pathways to researchers for *in vivo* studies relating to tumor biology, carcinogenesis and drug discovery research.

TSG-p53[®] Knockout Mice

(p53 tumor suppressor gene deficient) heterozygote and homozygote models are available

mdr1a Knockout Mice

(P-glycoprotein deficient) useful in multi-drug resistance studies

rag-2 Knockout Mice

(T&B cell deficient) improved model for xenotransplants

pim-1 Transgenic Mice

(expresses *pim-1* oncogene) predisposed to chemically induced lymphomas

TO ORDER

or for technical information:
e-mail: TaconicSer@aol.com
Tel: (518) 537-6208
Fax: (518) 537-7287



Taconic

Transgenic Models and Services Division

273 Hover Avenue
Germantown, NY 12526

TSG-p53 is a registered trademark of Taconic

Pathogen & Mycotoxin Assays

From A  Z

Pathogen Test Kits:

- LISTERIA MONOCYTOGENES
- LISTERIA SPP.
- SALMONELLA
- SALMONELLA ENTERITIDIS

Mycotoxin Test Kits:

- AFLATOXIN • OCHRATOXIN
- DON • ZEARALENONE
- FUMONISIN



313 PLEASANT STREET
WATERTOWN, MA 02172

TEL: 800-338-4381, 617-926-7045

FAX: 617-923-8055

Circle No. 19 on Readers' Service Card

Fundamentalism, alien abductions, faith healing, astrology,
channeling: Carl Sagan takes on America's most dangerous beliefs.

CARL SAGAN

THE DEMON-HAUNTED WORLD SCIENCE AS A CANDLE IN THE DARK



Carl Sagan explores our obsession with the supernatural—
and explodes the superstitions that many take for science.

**"Eloquent and fascinating.... I wish I had written
The Demon-Haunted World. Please read this book."**

—Richard Dawkins, Simonyi Professor of the Public Understanding of Science,
Oxford University, in *The Times* (London)

**"A stirring defense of informed rationality...
rich in surprising information and beautiful writing."**

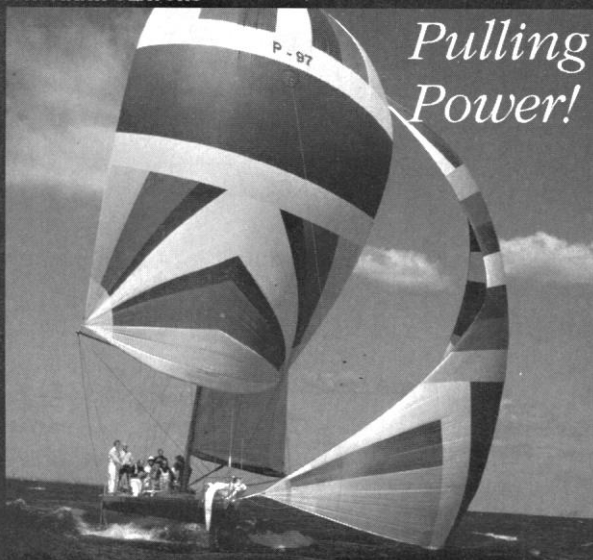
—Martin Gardner, *The Washington Post Book World*

A Selection of the Book-of-the-Month Club

RANDOM HOUSE
<http://www.randomhouse.com/>

Circle No. 50 on Readers' Service Card

MICROMANIPULATORS



*Pulling
Power!*

MICROELECTRODE BEVELERS

MICROPIPETTE/NEEDLE PULLERS

-Microelectrodes -Patch pipettes
-Injection needles

The P-97 gives you the power to
pull a variety of micropipettes,
accurately, reliably, and at
an affordable price!



SUTTER INSTRUMENT COMPANY

40 LEVERONI COURT, NOVATO, CA 94949

PHONE: 415.883.0128 FAX: 415.883.0572

INFO@SUTTER.COM

HTTP://WWW.SUTTER.COM

OPTICAL FILTERWHEELS

Circle No. 13 on Readers' Service Card

Discover New Effective Drugs For Human Cancer

METAMOUSE™

- Evaluates all anti-tumor and anti-metastatic therapeutics
- Replicates human clinical responses including metastasis
- More clinically relevant than subcutaneous or transgenic models
- Same-organ tumor transplantation: fresh patient tumors or established lines
- All major cancer types available
- Contract research or models available for shipment

Wang, X. et al. Matrix metalloproteinase inhibitor BB-94 inhibits human colon tumor growth and spread in a patient like orthotopic model in nude mice. *Cancer Res.* 54, 4726-28 1994

Hoffman, R. Orthotopic is orthodox: why orthotopic transplant metastatic models are different from all other models? *J. Cellular Biochem.* 56, 1-4, 1994



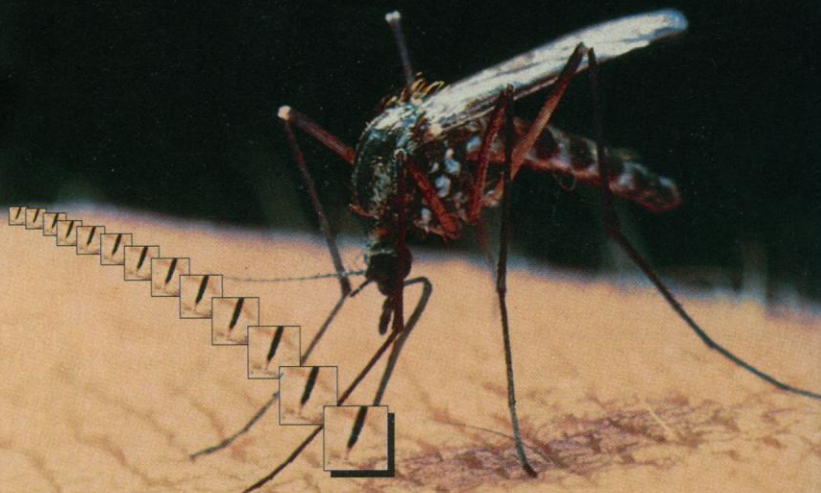
For more information call:

Tel-(800) 511-2555 • Tel-(619) 654-2555 • Fax-(619) 268-4175
USA/Canada

7917 Ostrow Street **ANTICANCER** INCORPORATED San Diego, CA 92111, USA

Circle No. 26 on Readers' Service Card

Whatever your target...



Be sure to get the native DNA!

Proteinase K— DNA grade

... ready-to-use solution of the highest purity available ... free of contaminating nucleic acids ... packed under laminar flow in an aerosol free environment ... the next generation of quality!

For further information, please contact us:

Merck KGaA, Darmstadt/Germany
Phone (+49) 6151-72 75 93
Fax: (+49) 6151-72 68 59

Circle No. 54 on Readers' Service Card

Introducing the first system for convenient Epitope Mapping of Proteins

SPOTs™

from Genosys Biotechnologies, Inc.

SPOTs is an easy-to-use system for determining the amino acid sequence of a peptide epitope. The SPOTs kit enables researchers of any discipline to easily synthesize a custom library of overlapping or variant peptides on a derivatized cellulose sheet. Peptide sequences corresponding to the specificity of an antibody are identified by conventional enzyme-linked or autoradiographic detection methods.

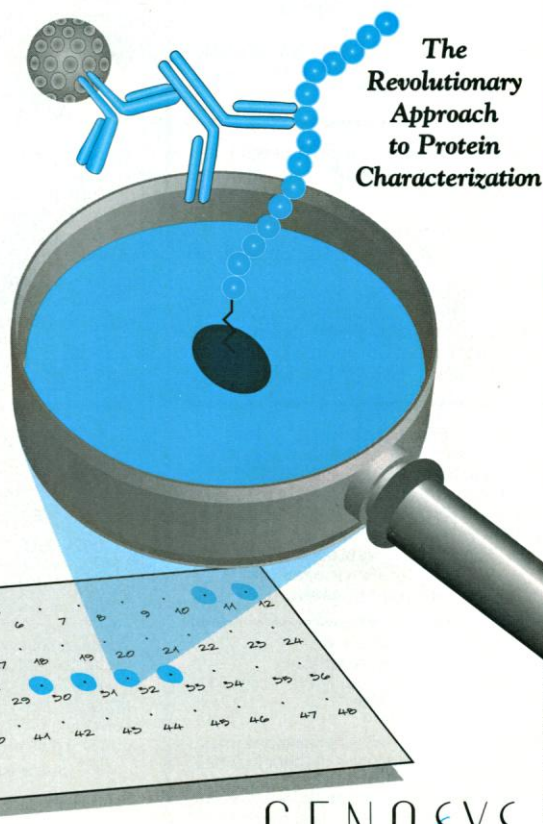
Genosys also offers a custom SPOTs service where researchers can request any number of custom peptides to be synthesized on a cellulose sheet. Prices start as low as \$16 per peptide (6-15 amino acids).

Additional applications include: peptide library studies; protein-protein interactions; receptor-ligand interactions; phosphorylation studies; metal and nucleic acid binding; and enzyme-substrate interactions.

U.S.
800-853-3385
FAX 713-363-2212
info@genosys.com

Europe
44 (0)1223 425622
FAX 44 (0)1223 425966
genosys@genosys.co.uk

<http://www.genosys.com>



The
Revolutionary
Approach
to Protein
Characterization

GENOSYS

© 1994 Genosys Biotechnologies, Inc. MK 294557 SPOTs 2/94

Circle No. 51 on Readers' Service Card

SCIENCE

DISPLAY CLASSIFIED ADVERTISEMENTS

Call for rate and deadline information on display classified advertisements.

Bethany Ritchey
Recruitment Display Advertising
Telephone: (202) 326-6541
FAX: (202) 289-6742

Janis Crowley
Recruitment Advertising Manager
Telephone: (212) 496-7704
FAX: (202) 289-6742

Debbie Cummings
European Recruitment Advertising
Telephone: +44 (0) 1223 302067
FAX: +44 (0) 1223 576208

LINE CLASSIFIED ADVERTISEMENTS

How to Submit a Line Classified Ad: Submit double-spaced typewritten copy. Do not include any abbreviations. SCIENCE will edit and typeset ads according to SCIENCE guidelines. Include billing information and desired publication date. Available categories: Positions Open, Meetings, Announcements, Courses and Training, Services. SCIENCE cannot provide proofs of typeset line ads. Line advertisements are not commissionable.

Estimates: SCIENCE will provide a cost estimate for line ads. This is an approximate cost only. Allow for variation between estimated lines and actual typeset lines and resulting final cost. Purchase orders must allow for some degree of flexibility and/or adjustment.

For line advertising deadlines, call Nancy Hicks.
Telephone: (202) 326-6555;
FAX: (202) 289-6742.

Credit Cards: SCIENCE accepts American Express, MasterCard and VISA. Discount does not apply to credit cards.

Cancellations: Deadline for cancellation is Tuesday, 10 days prior to issue date.

Discounts: A 3% cash discount is granted to all prepaid ads.

Ads from Outside the U.S.: A discount of \$30 will be offered to advertisers making payment in U.S. dollars by checks drawn on U.S. banks. Contact Debbie Cummings. Telephone: +44(0) 1223 302067; FAX: +44(0) 1223 576208.

SCIENCE Global Career Network: Unless otherwise instructed, every classified advertisement submitted for publication in SCIENCE is automatically posted on SCIENCE's on-line classified advertising service, SCIENCE Global Career Network, at no additional charge. SCIENCE Global Career Network address:
WWW: <http://www.aaas.org>
Gopher: gopher.aaas.org

Mail, FAX or Email materials to:
SCIENCE Classified Advertising
1200 New York Avenue, N.W., Room 911
Washington, DC 20005
FAX: 202-289-6742
Internet Email: science_classifieds@aaas.org
(please include your telephone number in Email)

SCIENCE reserves the right, at its discretion, to edit or decline to publish advertisements submitted to it.

POSITIONS OPEN

STANFORD UNIVERSITY SCHOOL OF MEDICINE

Associate Professor (Research) Professor (Research)

The Division of Otolaryngology/Head and Neck Surgery invites applications for a Ph.D. or M.D. director of the Liem Sioe Liong Molecular Biology Laboratory at the ASSOCIATE PROFESSOR (research) or PROFESSOR (research) level. The individual will direct and conduct independent research in pathogenesis of head and neck diseases. Opportunity exists for collaborative inter-departmental research with other investigators at Stanford University Medical Center.

Qualifications include the Ph.D., M.D., or equivalent degree; completed postdoctoral fellowships in either molecular biology, genetics, tumor immunology, or cancer biology; advanced training with evidence of productivity in research; and a commitment to teaching. The candidate should have eight years of demonstrated research experience, with publications in peer-reviewed journals, and current independent research funding.

Letters of inquiry with curriculum vitae and the names and addresses of four people familiar with the applicant's work should be sent to:

Willard E. Fee, Jr., M.D.
Edward C. and Amy H. Sewall Professor
Division of Otolaryngology/Head and Neck Surgery
Stanford University Medical Center
300 Pasteur, R-135 Edwards
Stanford, CA 94305-5328

Stanford University is committed to increasing representation of women and members of minority groups on its faculty and particularly encourages applications from such candidates.

UNIVERSITY OF VERMONT Molecular/Cellular Physiologist

The Department of Molecular Physiology and Biophysics seeks a tenure-track ASSISTANT/ASSOCIATE/FULL PROFESSOR. We are seeking an individual who is investigating molecular structure as it relates to the function of molecular motors or ion channels. The successful candidate will have a strong background in biophysical techniques and/or molecular biology. For a description of the department and the research interests of its faculty see <http://salus.med.uvm.edu/physiol.html>. Candidates for Assistant Professor must have an earned doctorate plus two or more years of postdoctoral experience at the time of application. They must demonstrate the potential to develop a productive and independent research program, and to contribute effectively to departmental teaching at both graduate and undergraduate levels. Applicants at the Associate/Full Professor level must have an actively funded and productive research program and demonstrated excellence in teaching, scholarship, and service. Review of applications will begin immediately. The deadline for receipt of applications is July 1, 1996. Applicants should send a curriculum vitae along with a description of career goals, research objectives, and names of three references to:

Chair, Faculty Search Committee
Department of Molecular Physiology and Biophysics
University of Vermont College of Medicine
Burlington, VT 05405-0068

The University of Vermont is an Equal Opportunity/Affirmative Action Employer. Women and individuals from diverse racial, ethnic, and cultural backgrounds are encouraged to apply.

ACADEMIC POSITION ASSISTANT PROFESSOR Environmental Science/Chemistry

TENURE-TRACK position beginning fall 1996. Ph.D. and teaching experience required. Teaching responsibilities include environmental science; general and analytical chemistry (limnology helpful); and assistance with general laboratories. Opportunity for directing undergraduate research for environmental science majors. Saint Joseph's College is a liberal arts college located on Sebago Lake northwest of Portland and two hours from Boston. Send résumé, curriculum vitae, statement of teaching philosophy, research interest, transcripts, and three letters of recommendation by May 3, 1996 to:

Sister Mary Ellen Murphy, Ph.D., Dean
Saint Joseph's College
278 Whites Bridge Road
Standish, ME 04084-5263

POSITIONS OPEN

FACULTY POSITION X-ray Crystallography

The Department of Pediatrics at Massachusetts General Hospital (MGH) and Harvard Medical School is seeking applications for a position at the ASSISTANT PROFESSOR level to be located at MGH.

Applicants should have an interest in the application of x-ray crystallography to address significant problems in structural biology, biochemistry, and pharmacology, particularly pertaining to molecules involved in host defense. The successful candidate will join an outstanding interactive group of biologists in the MGH community.

Interested applicants should send an outline of future research plans, a curriculum vitae, bibliography, and the names of three to four references to:

Professor Alan Ezckowitz
Chief, Pediatric Service
Massachusetts General Hospital
15 Parkman Street, WAC 731
Boston, MA 02114-3139

*Women and minorities are encouraged to apply.
Harvard University and Massachusetts General Hospital are Equal Opportunity Employers.*

FACULTY POSITIONS in vascular engineering. The Department of Biomedical Engineering, University of Virginia, invites applications for three tenure-track positions in Biomedical Engineering at the Assistant/Associate Professor rank, with research interests in technology development and basic studies in one of three areas: 1) molecular genetics including gene targeting, vascular gene expression, or transfection of vascular tissues; 2) genetic changes on integrative cardiovascular function; and 3) cellular mechanisms of wound healing and prevention. Successful candidates will participate in a vascular engineering program that has special strengths in vascular biology, angiogenesis, cell adhesion, microvascular remodeling, and ultrasound and MR imaging. Applicants must hold a Ph.D. in relevant areas. Postdoctoral and industrial experience are viewed favorably. Please submit a curriculum vitae, a two-page research plan, and names and addresses of three references to: J. S. Lee, Chair, Department of Biomedical Engineering, Box 377, Health Sciences Center, University of Virginia, Charlottesville, VA 22908. *We are an Equal Opportunity Employer.*

FACULTY POSITION ENDOWED CHAIR IN IMMUNOLOGY Department of Internal Medicine University of Michigan Medical Center

The Division of Rheumatology is seeking an outstanding investigator for the newly established William D. Robinson and Frederick Huetwell Professorship. This position is intended to support a research program in basic immunology in: lymphocyte signal transduction, antigen receptor biology, immunogenetics, or other areas of molecular immunology. Applicants must have an outstanding record of research accomplishment, and will interact with basic scientists, clinical investigators, and students. An M.D. and/or Ph.D. degree (or equivalent) is required. Please respond to: Gary J. Nabel, M.D., Ph.D., Chair, Robinson/Huetwell Search Committee, c/o Gigi Rowe, Rheumatology Division, 3918 Taubman, 1500 East Medical Center Drive, Ann Arbor, MI 48109-0358. *The University of Michigan is a nondiscriminatory, Affirmative Action Employer.*

FACULTY POSITION Pharmacology and Toxicology

A tenure-track faculty position at the ASSISTANT or ASSOCIATE PROFESSOR level is available in the Department of Medical Pharmacology and Toxicology, College of Medicine, Texas A&M University. The successful candidate is expected to develop a strong independent research program and participate in medical and graduate teaching. All research areas of pharmacology are relevant. The position will be available in the fall of 1996. Applications should include curriculum vitae, selected reprints, statement of research interests, and three letters of reference. Review of applications will begin August 1, 1996 and will continue until the position is filled. Please send your application to: Dr. James L. Way, Chair, Search Committee, Department of Medical Pharmacology and Toxicology, Texas A&M University Health Science Center, College Station, TX 77843-1114. *Equal Opportunity Employer.*

PRIZM Pharmaceuticals, Inc., is a privately held biotechnology company focused on the regulation of cell growth utilizing our growth factor biology expertise.

DIRECTOR, PROCESS DEVELOPMENT

The selected candidate will be responsible for all aspects of scale-up and manufacturing of clinical supplies. This will encompass directing a multi-functional group in the design, implementation and scale-up of recombinant protein-based drugs. Requires an M.S. or Ph.D. in Biochemical Engineering, Biochemistry, or Microbiology, 10+ years' industrial experience including 5+ years' management experience, and a strong background in one of the following areas: protein purification; *E. coli* fermentation scale-up in cGMP/cGMP environment; formulation; statistical process control and process validation; knowledge of GLP/GMP, IND requirements.

FORMULATION SCIENTIST

This scientist will develop liquid and lyophilized formulations of bulk recombinant protein and screening protein formulations for unique device and delivery applications. Responsibilities include: formulation development; preformulation and stability studies; preparation of technical reports and SOPs; and transfer of formulation technology to contract facilities. Requires a Ph.D. in Chemistry, Pharmaceutical Chemistry, or Biochemistry with 3 years' industry experience.

Please send your c.v. to: PRIZM Pharmaceuticals, Inc., Human Resources/Ref. SCI, 11035 Roselle Street, San Diego, CA 92121, FAX 619/625-0050. EOE.



PRIZM
PHARMACEUTICALS

CELLULAR AND MOLECULAR NEUROBIOLOGY Postdoctoral Positions

Postdoctoral positions are available at the Worcester Foundation for Biomedical Research to study cellular and molecular aspects of neurobiology. These positions are supported by an NIH Training Grant. The faculty and their research interests are:

HAGAN BAYLEY: Protein kinases in neuronal modulation; genetic engineering of membrane channels and pores.

F.ROB JACKSON: Molecular genetic analysis of circadian rhythms and other neural functions in *Drosophila*.

MICHELE JACOB: Molecular mechanisms of neuronal synapse formation; viral-vector mediated gene transfer in vivo.

DANIEL KILPATRICK: Transcriptional regulation of neuronal differentiation.

STEPHEN LAMBERT: Role of membrane-cytoskeleton interactions during axonal outgrowth and myelination.

JOSÉ LEMOS: Stimulus-secretion coupling at nerve terminals; mechanisms modulating neurotransmitter release.

ROBERT O'CONNELL: Neurobiology of quality perception in olfaction including stimulus detection, transduction, coding and behavior.

ALONZO ROSS: Neurotrophin receptors, signal transduction and differentiation.

RICHARD VALLEE: Microtubule motor proteins; synaptic GTPase dynamin.

ZUOSHANG XU: Neurofilaments, SOD1 and motor neuron disease.

Send curriculum vitae and names of references to the faculty member(s) of interest, c/o: **Human Resources, Worcester Foundation for Biomedical Research, 222 Maple Avenue, Shrewsbury, MA 01545, USA.** EOE/AA/M/F/H.



WORCESTER FOUNDATION
FOR BIOMEDICAL RESEARCH

Senior Scientists Oncology/ Immunology Research

Wyeth-Ayerst Research, a major division of Fortune 150 American Home Products Corporation, has opportunities for highly talented and motivated individuals within the Oncology and Immunology Research Section, a major division of Research and Development, located in Pearl River, New York. Join our growing efforts to develop novel pharmaceuticals for the treatment of cancer.

Endocrine Oncology

We are currently building a major focus directed at understanding and controlling breast, ovarian, and prostatic cancers. This effort will include the design and implementation of high-throughput screens for agents that selectively inhibit the growth of breast cancer as well as an exploratory program for novel targets in endocrine cancers. Expertise in signal transduction, hormonal control, cell cycle control, or transcriptional regulation is sought. A proven publication record and/or patent record is desired. **Position #OPSCI-1835.**

Cell Biologist

This Senior Research position works with a well integrated group of biologists, molecular biologists and chemists studying the molecular pathways regulating apoptosis. Expertise in the regulation of intracellular calcium and protein kinase pathways as they relate to programmed cell death or transcriptional activation of "death genes" is required. **Position #OPSCI-1714.**

Signal Transduction

This Senior Research position in Signal Transduction Antagonist Drug Discovery requires experience in the biochemistry and molecular biology of eukaryotic signal transduction pathways. **Position #OPSCI-1891.**

Candidates for the above positions must have a Ph.D. in Life Sciences with a minimum of 3 years relevant post-doctoral experience, or the equivalent.

Wyeth-Ayerst Research has a long-standing commitment and proven track record in Oncology and Women's Health. In addition, we offer an excellent compensation and benefits package in a highly professional environment. Please send your resume with salary requirements and Position #, to: **Wyeth-Ayerst Research, Human Resources Dept., P.O. Box 7886, Philadelphia, PA 19101-7886, or fax your resume (in fine mode if possible) directly into our centralized Research resume database at (610) 989-4854. e-mail: jobs@RAMAIL1.wyeth.com (ASCII format, no attachments, subject: resume).** Principals Only. Equal Opportunity Employer, M/F/D/V.



Leading The Way for a Healthier World

Tenure-Track Positions Assistant Professor Equivalent

Cell-Wall Biochemistry and Molecular Biology of

M. tuberculosis

A position is available to develop an independent research program in cell-wall biochemistry and molecular biology of *M. tuberculosis*. The program will be targeted at understanding molecular structures and mechanisms relevant to human disease with the aim of identifying and developing potential drug targets for the treatment of tuberculosis. A minimum of three years postdoctoral experience in such subjects as chemistry, molecular biology, biochemistry and mechanistic enzymology is required. Closing date is July 1, 1996. Chief, Administrative and Facilities Management Section (OE-116), NIAID, Rocky Mountain Laboratories, 903 South 4th Street, Hamilton, MT 59840.

Molecular Genetics of *Neisseria gonorrhoeae*

A position is available in the Laboratory of Microbial Structure and Function for an MD or PhD scientist to develop an independent research program related to molecular genetics of *Neisseria gonorrhoeae*, with special focus on variable expression of genes whose products are related to pathogenicity. Space, technical and postdoctoral fellow support, supply budget, and salary are committed. Training in recombinant techniques, microbiology, nucleotide chemistry and sequencing are required. Considerable previous work on pathogenic neisseriae is highly desirable. Dr. Claude Garon, Chairperson, Tenure Track Search Committee (OE-116), NIAID, Laboratory of Microbial Structure and Function, Rocky Mountain Laboratories, 903 South 4th Street, Hamilton, MT 59840.

Medical Statistician

The National Cancer Institute is seeking a medical statistician in the Biostatistics Branch of the Division of Cancer Epidemiology and Genetics. This scientist will design, conduct, and analyze observational and experimental studies of cancer in human populations to enhance our understanding of environmental and genetic determinants of cancer. Ongoing studies include an observational study on progression of precancerous gastric lesions and an intervention trial to prevent their progression. Candidates must have clinical experience; strong background in medical and biological sciences; mastery of statistical methods to design and analyze epidemiological studies and clinical trials, and to develop new analytic approaches. They should have an MD, as well as a PhD in statistics. Closing date is May 10, 1996. Ms. Judy Schwadron, Program Analyst (OE-116), NCI, Executive Plaza North, Room 634G, Bethesda, MD 20852.

To Apply

Please send a cover letter, *curriculum vitae*, bibliography, a one- to two-page statement of research interests and goals, and selected publications to the address listed with each position. In addition, please arrange to have letters of recommendation sent from three references who can provide an evaluation of your professional qualifications.

New Web Site

Visit the new NIH Office of Education web site listing tenure-track positions, postdoctoral positions, and much more. Converse by email with NIH investigators and apply electronically if you so choose. Find us on the Internet World Wide Web at <http://helix.nih.gov:8001/oe/>



National Institutes Of Health

Office Of Education

The NIH is an Equal Opportunity Employer

Two Postdoctoral Positions at NCI, NIH

The control of retrovirus gene expression and mRNA processing are under investigation (**David Derse, Ph.D.**, Retrovirus Pathogenesis Group). Research will focus on characterizing interactions among mRNA sequences, cell splicing factors, and retrovirus regulatory proteins (Rev). Applicants should have a strong background in molecular biology and virology.

The cellular interactions and signal transduction events elicited by a member of the Eph family of receptor tyrosine kinases as well as candidate ligands are being studied. Emphasis is placed on signal function during *Xenopus laevis* embryonic development (**Ira Daar, Ph.D.**, Developmental Signal Transduction Group). Candidates should have a strong background in molecular, cellular, or developmental biology.

Applicants must have less than 5 years of postdoctoral experience. Curriculum vitae and three letters of references should be sent to the appropriate mentor at: The Laboratory of Leukocyte Biology, Division of Basic Sciences, NCI-FCRDC, Building 567, Frederick, MD 21702. E-mail: derse@ncicrf.gov or daar@ncicrf.gov.

POSTDOCTORAL RESEARCH FELLOWSHIP

The Alfred I. duPont Institute Children's Hospital in Wilmington, DE has a Postdoctoral Research Fellowship position available in the Laboratory of Epithelial Cell Biology of the Nemours Research Programs. The Laboratory is also a part of the Pediatrics Dept. of Thomas Jefferson University. Individual will study the regulation of chloride channel activity in cystic fibrosis. The position, available immediately, requires a PhD in Biochemistry or related field and experience with tissue culture, in vivo protein labeling and peptide mapping. Experience with mammalian expression systems or electrophysiology would be helpful. The Institute offers competitive salaries and benefits packages. Send curriculum vitae and names of three references to: **Dr. William Reenstra, Dept. Of Clinical Science, Alfred I. duPont Institute, P.O. Box 269, Wilmington, DE 19899.** Alfred I. duPont Institute is an Equal Opportunity/Affirmative Action Employer.



Alfred I. duPont
Institute

OF THE NEMOURS FOUNDATION
A CHILDREN'S HOSPITAL

SCIENTIST

Solvay Animal Health, Inc., a world leader in the development, manufacture and marketing of vaccines and pharmaceuticals for animal health, has an immediate need for a Scientist in our R&D Biological Development Department located in our Corporate Headquarters near St. Paul, MN.

Responsibilities include planning and designing specific projects plus providing scientific and technical leadership for these projects.

Requirements include a Ph.D. with emphasis in Genetic Engineering; 3+ years of experience in cloning and expression of foreign genes; PCR; mutagens and sequencing in addition to Virology or Bacteriology background. Excellent interpersonal, communication and organization skills necessary, as is the ability to work independently.

Solvay offers an excellent compensation package plus flex benefits including a 401(k) and relocation. Please fax your resume to (612) 681-3709 or mail to:

Human Resources Administrator
SOLVAY ANIMAL HEALTH, INC.
1201 Northland Drive
Mendota Heights, MN 55120

Equal Opportunity Employer

POSTDOCTORAL FELLOWSHIPS

DNAX Research Institute, located near Stanford University, carries out basic research in Immunology and Molecular Biology in an open, academic environment. We are looking for motivated individuals who can contribute to our enthusiastic and productive research program for a period of 2-3 years.

A postdoctoral position currently is available in the laboratory of Dr. Thomas Schall to study the immunoregulatory actions of chemokines. Strong background in one or more of the following areas is essential: molecular biology, analysis of transgenic and targeted gene deletion mice, infectious disease, and receptor/ligand/signaling interactions.

We also are seeking an individual to participate in studies into the structure of the IL-10 receptor and its variable functions on different cell types. Specific topics may include: interaction of recombinant receptor components with modified ligands, regulation of receptor expression in response to external stimuli, and identification and characterization of IL-10 inducible genes.

An additional position is available involving gene targeting studies of novel molecules in the immune/hematopoietic systems, including the use of inducible and lineage specific approaches to gene targeting.

Qualified applicants should send a *curriculum vitae*, statement of research interests, and the names of 3 references to the Human Resources Department, DNAX Research Institute, 901 California Ave., Palo Alto, CA 94304. DNAX is an equal opportunity employer m/f/h/v.

DNAX Research Institute

DEAN DIVISION OF SCIENCE COLLEGE OF LIBERAL ARTS AND SCIENCES (CLAS)

CITY COLLEGE OF NEW YORK/CITY UNIVERSITY OF NEW YORK

The City College of New York invites applications and nominations for the position of Dean of the Division of Science. The Division of Science, a unit of the College of Liberal Arts and Sciences at City College, comprises five academic departments (Biology, Chemistry, Earth and Atmospheric Sciences, Mathematics and Physics).

City College is the oldest senior college in the City University of New York system, and has been committed to the dual goals of accessibility and academic quality since its founding in 1847. The College campus occupies thirty-five tree-lined acres along Convent Avenue from 131st to 141st Street in the Borough of Manhattan. It has an international reputation for its ability to promote scholarly excellence in students of diverse ethnic and cultural backgrounds and economic circumstances. The College ranks fourth nationally in the number of students who have gone on to earn doctorates. The Science Division is a major center for research and scholarship, generating over \$11,000,000 in research funding per year. The Division boasts eight Nobel prize winners among its alumni.

The Division of Science awards undergraduate and master's degrees in all of its departments. The faculty contribute to a number of doctoral programs housed on campus and at the Graduate School and University Center.

The Dean assumes leadership in the management and administration of the Division, curriculum development, program planning, budgeting, and the acquisition of external funding. The Dean reports to the Provost and maintains liaisons with other administrators of the College, Federal, State and City agencies, related organizations and associations, and community leaders.

Candidates should possess distinguished records of scholarship and teaching, significant academic administrative experience, and strong leadership qualities and communication skills. Candidates should currently hold a tenured faculty position or equivalent, and have administrative experience at least at the level of Department Chair or equivalent. Individual should qualify for appointment at the rank of full professor in one of the departments of the Division, through demonstrated excellence in teaching, scholarship, and service. Individual should be responsive to the needs of faculty and the diverse student body, and committed to cultural and intellectual diversity. Candidates should be able to serve as effective and forceful advocates of the role of the Sciences and have a demonstrated commitment to public education. A knowledge of the institutional dynamics of a public and urban University system such as CUNY would be desirable.

Salary: \$89,762 - \$103,867. Applicants should send a letter of interest, their curriculum vitae, and the names, addresses and telephone numbers of at least four professional references. Nominations should be accompanied by the nominee's curriculum vitae. Applications must be postmarked no later than May 3, 1996. An appointment effective August 1 is anticipated.

Applications and nominations should be addressed to:



Search Committee for the Dean of the Division of Science, CLAS
Administration Building, Rm 206
The City College of CUNY
Convent Avenue at 138th Street, New York, NY 10031
An AA/EEO Employer M/F/D/V



**St. Jude Children's
Research Hospital**

ALSAC • Danny Thomas, Founder

CANCER PHARMACOLOGY ASSOCIATE MEMBER IN MOLECULAR PHARMACOLOGY

A Senior Faculty position is available for an outstanding scientist holding a Ph.D. or M.D. degree, with an established research program focused on molecular aspects of the biology or treatment of malignant diseases. Opportunities exist for the application of basic and translational research. Excellent support for continuing this program will be provided. Currently, the Molecular Pharmacology Department at St. Jude Children's Research Hospital is comprised of ten faculty with independent research programs investigating molecular targets of drug action, growth factor receptors, signal transduction pathways, oncogenes, tumor suppressor genes, apoptosis, nuclear trafficking, xenograft models, and their relationship to therapy of neoplastic diseases.

The campus, a renowned center for biomedical research, provides a state-of-the-art research environment encompassing the fields of molecular and cell biology, biochemistry, molecular pharmacology, neurobiology, genetics, virology, gene regulation, immunology, infectious diseases, pharmaceutical sciences, gene therapy, and clinical therapy of cancer. The two research towers presently house over 300 doctoral level laboratory and clinical scientists to provide an interactive and productive scientific environment. Extensive institutional core facilities are available to provide support for all laboratory and clinical programs, and include DNA and protein chemistry, transgenic/knockout technology, flow cytometry, hybridoma production, confocal and electron microscopy.

Candidates should send a CV, summary of research interests and the names of three references to: **Dr. Janet A. Houghton; Chair, Search Committee, Department of Molecular Pharmacology, St. Jude Children's Research Hospital, 332 North Lauderdale, Memphis, TN 38105-2794.**

St. Jude Children's Research Hospital is an equal opportunity employment/affirmative action employer.

POSITIONS OPEN

MICROBIAL ECOLOGIST

The Louisiana Universities Marine Consortium (LUMCON) invites applications for a **TENURE-TRACK** faculty position in microbial ecology. Applicants with expertise in microbial studies related to the biogeochemical cycles of C, N, P, S, or metals are strongly encouraged. Participation in interdisciplinary studies within coastal wetland, bay, or shelf environments is expected. The successful candidate should develop an active research program and contribute to graduate and undergraduate education programs at the LUMCON Marine Center and consortium member institutions. A Ph.D. with concentration in biological oceanography or microbial ecology is preferred.

The LUMCON Marine Center is located at Cocodrie on the central Louisiana coast, approximately 80 miles southwest of New Orleans. The Marine Center features state-of-the-art research, teaching, and library facilities, and is base for the UNOLS vessel R/V Pelican.

Review of applications will begin on June 1, 1996. Applicants should send a curriculum vitae, a cover letter that includes a statement of research interests, and the names, addresses, and telephone numbers of four references to: **Brent McKee, Chairman, Microbial Ecologist Search Committee, Louisiana Universities Marine Consortium, 8124 Highway 56, Chauvin, LA 70344.** Telephone: 504-851-2800; Email: bmckee@coco.lumcon.edu.

HEAD Department of Toxicology

The College of Agriculture and Life Sciences, North Carolina State University (NCSU), is searching for an outstanding leader to administer the research, teaching, and extension programs of the Department of Toxicology. Applicants should possess an international reputation in toxicology, a Ph.D. degree, and research and teaching experience commensurate with the rank of **PROFESSOR**. Administrative experience and demonstrated leadership potential expected. The successful candidate is expected to conduct a vigorous program of research and contribute to departmental teaching and extension activities. Applicants should send a curriculum vitae; names, addresses, and telephone numbers of at least three references; and a letter describing interests and qualifications to: **Dr. James D. Harper, Toxicology Head Search Committee, Department of Entomology, Box 7613, NCSU, Raleigh, NC 27695-7613.** Application deadline June 15, 1996 or until suitable applicant is found. *An Equal Opportunity/Affirmative Action Employer.*

VISITING ASSISTANT PROFESSOR IN BIOLOGY

Nine-month full-time **SABBATICAL REPLACEMENT** appointment beginning September 1996. Teach two upper-division courses from the following: genetics, vertebrate natural history, animal behavior. Also teach a non-majors general biology course. Ph.D. relevant to the above set of courses. Part-time positions will also be available. Screening will begin on April 22, 1996 and continue until the positions are filled. Send letter of application and professional curriculum vitae including names, addresses, and telephone numbers of three references to: **Dr. Angela G. Alexander, Department of Biology, Pacific Lutheran University, Tacoma, WA 98447.** Email: alexanag@plu.edu. *Pacific Lutheran University is a church-related university and an Affirmative Action/Equal Opportunity Employer.*

MOLECULAR BIOLOGIST Harvard Medical School and Massachusetts Eye and Ear Infirmary

An academic appointment will be made in the Department of Otolaryngology and Laryngology at either the **ASSISTANT** or **ASSOCIATE PROFESSOR** level. Applicants should have an established record of nationally recognized research, a history of obtaining external research funding, and a strong interest in establishing collaborations with other scientists within the Massachusetts Eye and Ear Infirmary. Interested applicants should send a curriculum vitae, reprints of selected published research articles, and the names of at least three references. Inquiries should be made to: **William F. Sewell, Chair, Search Committee, Department of Otolaryngology, Massachusetts Eye and Ear Infirmary, 243 Charles Street, Boston, MA 02114.** Email: wfs@epi.meei.harvard.edu. *Applications from minorities and women are encouraged. An Equal Opportunity/Affirmative Action Employer.*

POSITIONS OPEN

CHAIRMAN Department of Chemistry Boston University

Applications and nominations are invited for the position of **CHAIRMAN** of the Department of Chemistry in the College of Arts and Sciences at Boston University. The Department is strongly committed to excellence in teaching and research. It enrolls 140 undergraduate chemistry majors and 90 graduate students and teaches approximately 2,000 students per year. There are active research programs in organic, biological, inorganic, physical, and theoretical chemistry. We particularly seek a Chairman who will continue our development in organic chemistry and in biologically related areas of chemistry.

The position is available September 1, 1996. Screening of candidates will begin immediately and will continue until the position is filled. Candidates should send a résumé and a description of their current research interests to: **Professor Edward Loehler, Chairman, Chemistry Search Committee, The Graduate School of Arts and Sciences, Room 115, Boston University, 705 Commonwealth Avenue, Boston, MA 02215.** *Boston University is an Affirmative Action/Equal Opportunity Employer.*

EAST TENNESSEE STATE UNIVERSITY

RESEARCH FELLOWS/INSTRUCTORS. Experienced Ph.D.'s to work on the molecular mechanisms of regulation of cholesterol biosynthetic genes in cultured cells. Salary negotiable depending on experience. Approximate start date July 1, 1996. Apply to: **Dr. Michael Sinensky, Chair of Biochemistry, J. H. Quillen College of Medicine, East Tennessee State University, Box 70581, Johnson City, TN 37614-0581.** Positions contingent upon outside funding. *Affirmative Action/Equal Opportunity Employer.*

PROFESSOR AND ASSOCIATE DIRECTOR School of Marine Programs

Applications or nominations are invited for **ASSOCIATE DIRECTOR** of the University of Georgia's School of Marine Programs. The Associate Director will spend approximately one-half of her or his time working with the School Director on administration of the Department of Marine Sciences and on interdisciplinary projects involving the other units of the School (The Marine Institute, The Marine Extension Service, and the Georgia Sea Grant College Program). We seek an established marine scientist qualified for appointment as a tenure-track Associate Professor or Full Professor of Marine Sciences who will maintain an active, funded research program and participate in our instructional programs. Area of research specialty is open but potential for interactions with our ongoing research programs in nearshore marine processes and land-sea interactions is preferred. Send curriculum vitae; statement of administrative, research, and instructional interests; and the names of four references to: **Office of the Director, School of Marine Programs, Ecology Building, University of Georgia, Athens, GA 30602.** Review of applications will begin June 1, 1996 with an expected start date in the fall/winter of 1996. *The University of Georgia is an Equal Opportunity Employer. Women and minority applicants are encouraged to apply.*

ASSISTANT PROFESSOR—Tree Physiology. This is a full-time, 12-month, continuing, tenure-track position in the Department of Forestry at Mississippi State University to start as early as July 1996. Function: participate in the Department's teaching, research, and service programs. Responsibilities: teach undergraduate, graduate, and continuing education courses related to tree physiology; develop a strong research and graduate program in this field; collaborate with a U.S. Forest Service unit related to this field and located on campus; and be able to teach sections of undergraduate core courses in forest biology as needed. Requirements: Ph.D. in forestry, botany, or closely related field, with emphasis in physiology; priority will be given to applicants with at least one degree in forestry. Demonstrated proficiency in one or more of the following: regeneration biology (including seed physiology, seedling production, or seedling establishment); whole plant modeling; forest biotechnology; or host-pest interactions. Deadline: 26 May 1996, or until position is filled. Letter of interest, curriculum vitae, three letters of reference, and transcripts covering all academic work should be mailed to: **Dr. Alexander L. Friend, Search Committee Chair, Department of Forestry, Box 9681, Mississippi State University, Mississippi State, MS 39762-9681.** *Mississippi State University is an Affirmative Action/Equal Opportunity Employer.*

POSITIONS OPEN

ASSISTANT OR ASSOCIATE PROFESSOR MR Physics

A tenure-track or tenured position of medical physicist in the Department of Radiology at the University of Minnesota will be offered at the **ASSISTANT** or **ASSOCIATE PROFESSOR** level. The individual will conduct MR research in neuroradiology and MR at 1.5 Tesla on echoplanar-capable Philips and Siemens MR scanners. Minimum requirements at the Assistant Professor level are a Ph.D. in physics or chemistry, a strong background in mathematics, and at least two years of experience in techniques of MR imaging, MR spectroscopy, and MR angiography with a suitable publication record in peer-reviewed journals. Appointment at the rank of Associate Professor requires a minimum of five years of research experience in the same research areas and an extensive publication record. In addition, the successful candidate must be able to demonstrate expertise and publications in endovascular and cardiovascular interventional MR techniques, experience with interventional MR equipment, with special experience in RF coil design. The candidate should also have familiarity with Philips MR scanners and programming language, MR-compatible materials, and contrast agents. Salary is negotiable and competitive. Applications will be accepted through May 31, 1996. Send letters to: **Dr. E. Russell Ritenour, Director, Physics Section, Department of Radiology (Box 292 UMC), 420 Delaware Street S.E., Minneapolis, MN 55455.** *The University of Minnesota is an Equal Opportunity Employer/Educator, and specifically invites and encourages applications from women and minorities.*

TENURE-TRACK ASSISTANT PROFESSOR Freshwater Biologist/Aquaculturist

The Department of Biological Sciences at California State Polytechnic University, Pomona, is seeking a freshwater biologist/aquaculturist. **ASSISTANT** or **ASSOCIATE PROFESSOR**, dependent upon qualifications and experience. A Ph.D. in biology or a related discipline is required, and a demonstrated commitment to undergraduate/graduate teaching is essential. The position includes teaching responsibilities in freshwater biology and general biology, and half time teaching at the Center for Regenerative Studies with responsibilities in aquaculture. The successful candidate is expected to develop and maintain an active research program. The anticipated starting date for the position is September 1996. Further information at <http://www.sci.csupomona.edu/biology/freshbio.htm>. Applicants should send a letter of interest; Application for Academic Employment; résumé; official transcripts; and names, addresses, and telephone numbers of three references to: **Search Committee, Department of Biological Sciences, California State Polytechnic University, 3801 West Temple Avenue, Pomona, CA 91768.** FAX: 909-869-4078; Email: RDQUINN@csupomona.edu. Closing Date: May 20, 1996. *California State Polytechnic University, Pomona, is an Affirmative Action/Equal Opportunity Employer committed to diversity.*

RESEARCH ASSOCIATE

The University of Kansas Medical Center Institutional Transgenic Facility has an opening for a **RESEARCH ASSOCIATE**. This position will report to the Director of the facility. Requires M.S., Ph.D., or equivalent degree, preferably in biology, cell biology, physiology, or animal science, with a solid background in reproductive biology; expertise in animal husbandry, and embryo manipulation and micro injection; excellent communication, organizational, and interpersonal skills and ability to work independently. Prefer experience in molecular biology. Please send or fax résumés to: **Dr. Glen Andrews, Department of Biochemistry and Molecular Biology, University of Kansas Medical Center, 3901 Rainbow Boulevard, Kansas City, KS 66160-7421.** FAX: 913-588-7440. Only candidates under consideration will be contacted. *An Equal Opportunity Affirmative Action Employer.*

Applications are invited for **NIH-FUNDED POSITIONS** to study signal transduction processes mediated by the Raf-1 protein kinase. Experience in molecular biology and protein biochemistry is required. Send curriculum vitae, short statement of research accomplishments and interests, and the names of three references to: **John M. Sedivy, Ph.D., Department of Molecular Biology, Cell Biology and Biochemistry, Brown University, Box G-J2, Providence, RI 02912.**



**National Institute for Occupational Safety and Health
Health Effects Laboratory Division**

NIOSH has established a new state-of-the-art research facility and research division in Morgantown, WV, to conduct applied and multifaceted laboratory-based research into the diagnosis, mechanisms, and prevention of adverse health effects due to workplace exposure to hazardous substances or agents.

The Toxicology and Molecular Biology Branch currently has openings of 4 Team Leader positions with responsibility to recruit and supervise a staff, and to develop research programs in one of the following areas:

Molecular Toxicology/Molecular Biology. To identify molecular biomarkers of exposure, effect, and disease associated with adverse occupational agents and to study potential susceptibility genes that affect work-related diseases associated with specific organ/systems such as the liver, hematopoietic, or immune systems.

Neuroscience/Neurotoxicology. To identify and study neurological biomarkers (e.g., changes in gene expression or neuropeptides) associated with neurotoxic agents with potential occupational exposure.

Dermatotoxicology. To study molecular and cellular events responsible for irritant contact dermatitis (e.g., adhesion molecules, skin-nervous system interactions) associated with agents with potential occupational exposure.

Molecular Carcinogenesis. To study molecular events associated with carcinogenesis which allow development of biomarkers that identify exposure to or predate clinical diagnosis of potential workplace-related carcinogens.

For a complete application package, contact: **NIOSH, HELD, 1095 Willowdale Road, Morgantown, WV 26505, (304) 285-6060**; or the CDC Home Page at <http://www.cdc.gov>. Applications will be accepted until **May 3, 1996** for nonfederal applicants and until **May 7, 1996** for federal applicants. *U.S. citizenship required. CDC/NIOSH is an Equal Opportunity Employer.*



**St. Jude Children's
Research Hospital**

ALSAC • Danny Thomas, Founder

**POSTDOCTORAL
RESEARCH ASSOCIATE
IN MOLECULAR
PHARMACOLOGY**

The laboratory is interested in defining signal transduction pathways involved in growth, differentiation and, most importantly, chemotherapeutic drug resistance in neuroblastoma. We are currently focused on the role TRK family receptors have in neuroblastoma, especially whether neurotrophins are involved in a novel mechanism of drug resistance. Candidates should be a recent Ph.D. graduate and have a strong background in applying molecular biology to signal transduction problems coupled with an interest in pharmacological approaches to elucidating signal transduction pathways. The institution offers a rich collaborative research environment with exceptional facilities. The position should provide an outstanding opportunity for career development in molecular pharmacology.

The position is available July 1, 1996. Interested candidates should send a curriculum vitae and the names of three references to **Dr. David Middlemas, Department of Molecular Pharmacology, St. Jude Children's Research Hospital, P.O. Box 318, Memphis, TN 38101-0318**. An Equal Opportunity/Affirmative Action Employer.

National Cancer Institute

Division of Basic Sciences

**Frederick Cancer Research and
Development Center (FCRDC)**

Frederick, Maryland

Opening Date: April 22, 1996

Closing Date: June 3, 1996

Announcement Number: CA-96-0093

Senior Scientist, HIV/AIDS Research Program

The Division of Basic Sciences (DBS), National Cancer Institute (NCI), National Institutes of Health (NIH), is seeking senior scientist candidates to lead a world-class HIV/AIDS research program which will be newly established on the Frederick, Maryland campus of NCI amidst contract and intramural laboratories focused on HIV and AIDS research. The program, which may specialize in a number of areas of AIDS research from basic virology to AIDS-associated malignancies, will serve as a central component of NCI's fight against AIDS. An approximate annual budget of \$3.5 million will be provided and, in addition, 4,800 square feet of research space will be allocated for the program. The selected scientist will supervise several Principal Investigators.

The selected scientist will be responsible for ensuring the effective functioning of the program by creating and maintaining an interactive scientific environment that supports and enhances the independent research projects of the Principal Investigators within the program. The selected scientist is someone who possesses excellent scientific judgment, is able to recruit and mentor the best scientists, and possesses strong managerial skills while providing the "chemistry" of a successful scientific environment.

Candidates must hold a medical and/or doctoral-level degree in a biomedical or related field and must be recognized as a world-class leader in HIV/AIDS research. Candidates must also possess relevant experience in the administration and management of a research program in HIV/AIDS including planning and directing a program and evaluating its effectiveness. Experience in establishing priorities and allocating resources is also essential.

Candidates must be either a U.S. citizen, a citizen of a treaty allied country, or a nonresident alien with a valid work visa.

Total annual compensation will be commensurate with education and experience, and may be up to \$148,400.

Applicants should send the following: a cover letter of interest in the position, statement of research interests, curriculum vitae, bibliography, and the names and addresses of five individuals who can be contacted as references. Letters of reference should not be submitted by the applicant. The materials should be sent to:

**National Cancer Institute
Human Resources Management Consulting
Branch
6120 Executive Boulevard
Room 537, EPS
Rockville, MD 20852**

Applications may also be faxed to (301) 402-9333.

If you need additional information, please call Ms. Toni McKeown, NCI, Human Resources Management Consulting Branch, on (301) 402-2812.

Selection for this position will be based solely on merit, with no discrimination for non-merit reasons such as race, color, gender, national origin, age, religion, sexual orientation, or physical or mental disability.

NCI IS AN EQUAL OPPORTUNITY EMPLOYER

THE ROCKEFELLER UNIVERSITY HOSPITAL CLINICAL SCHOLARS

The Clinical Research Center at the Rockefeller University is seeking M.D.'s or M.D./Ph.D.'s who wish to develop a commitment to patient-oriented research in the biomedical sciences. The opportunity will be provided to work in one of 14 major laboratories now actively using the Hospital. Clinical Scholars will participate in current clinical research, develop independent clinical programs and acquire laboratory skills to enable their development as independent investigators. The Hospital provides an unequalled opportunity for intensive clinical investigation, devoid of any clinical responsibilities other than those required for research subjects. Applications are now being considered from licensed physicians for appointments as early as July of this year.

Please send curriculum vitae and a letter describing clinical investigative interests directly to appropriate participating laboratories at:

The Rockefeller University
1230 York Avenue
New York, NY 10021-6399

The Rockefeller University is an equal opportunity employer and has an affirmative action program to increase the employment of women and members of protected groups at all job levels.

PARTICIPATING LABORATORIES

J.L. Breslow — Atherosclerosis
R. Darnell — Paraneoplastic Syndromes
J. Friedman — Obesity
D. Ho — HIV/AIDS
M. Karayiorgou — Schizophrenia
M.J. Kreek — Addiction
J. Krueger — Dermatology
R.L. Leibel — Obesity
M. Nussenzweig — Human Immunodeficiencies
J.V. Ravetch — Immunology
T.P. Sakmar — Signal Transduction Defects
R. Steinman — Immunology/AIDS
M. Stoffel — Diabetes Mellitus
J.B. Zabriskie — Multiple Sclerosis



**Institute for
Genetic
Medicine**
University of Southern California
Assistant or Associate Professor

The Institute for Genetic Medicine and the Department of Surgery are seeking candidates with special research interests in molecular biology and genetics as they relate to human disease. The successful candidate will have a joint appointment in the Department of Surgery and in an appropriate basic science department of the School of Medicine. Candidates with a wide range of interests will be considered, including research activities involving development of models for human genetic disease, homologous recombination in embryonic stem cells, development of gene transfer vehicles including retroviruses and genetically engineered cells, the molecular genetics and biology of stem cells and cytokines, and the molecular genetics of human disease. Clinically based research could be an important component of the program. The faculty appointee must have a Ph.D. or M.D. degree and will be expected to interact with surgical faculty and fellows in addition to developing an independent research program and participating in both medical and graduate student teaching programs. Faculty members will be housed within newly remodeled space in the Institute for Genetic Medicine/Norris Comprehensive Cancer Center Gene Therapy Program. Candidates eligible for an associate professorial appointment should demonstrate evidence of extramurally funded and sustained research programs.

The University of Southern California and its Medical School have made a major commitment to building a program in gene therapy and genetic medicine. The faculty members will play a major role in defining the future expansion of the Institute for Genetic Medicine.

Candidates should send their curriculum vitae, bibliography, a statement of research and teaching interests and the names, addresses, fax numbers and e-mail addresses of three references to **Laurence H. Kedes, M.D., Director, Institute for Genetic Medicine, University of Southern California, 2011 Zonal Avenue, HMR #413, Los Angeles, CA 90033**

The University of Southern California is an equal opportunity affirmative action employer.

**THE UNIVERSITY OF TEXAS
MD ANDERSON
CANCER CENTER**

Department of Urology

Multidisciplinary Prostate Cancer Research Program

The University of Texas M. D. Anderson Cancer Center is launching a major new integrated multidisciplinary program in Prostate Cancer Research in conjunction with the Departments of Urology, Cell Biology, and Genitourinary Medical Oncology. Ample resources of dedicated laboratory space and research personnel and a substantial financial base is being secured for this program. We are seeking scientists for faculty positions to add to our critical contingent of researchers interested in the biology and therapy of human prostate cancer.

- A position at the **Professor** level for a senior scientist with a record of outstanding achievement in research, extramural funding, administration, and graduate training;
- **Two** positions at the **Assistant or Associate Professor** level for scientists with exceptional accomplishments in cancer biology (systemic, cellular, molecular, and biochemical).

Candidates should have a Ph.D. or an M.D. degree with a track record of research in molecular biology and interest in the study of prostate cancer. Applicants should send *curriculum vitae*, a 1-2 page summary of research activities, and the names of three references to:

Andrew C. von Eschenbach, M.D.
Director of the Prostate Research Cancer Program
Chairman, Department of Urology, Box 110
The University of Texas M.D. Anderson Cancer Center
1515 Holcombe Blvd.
Houston, TX 77030

The University of Texas is an Affirmative Action/Equal Opportunity Employer and encourages minorities and women to apply. Smoke-free environment.

National Institute of Allergy and Infectious Diseases
National Institutes of Health
**NIH Seeks Scientist/Physician
for Extramural Basic Immunology Branch**

The Division of Allergy, Immunology and Transplantation (DAIT) is seeking an outstanding physician (M.D.) or scientist (Ph.D.) to serve as Chief of the Immunoregulation Section within the Basic Immunology Branch. Candidates should have a strong research background in the fields of molecular or cellular immunology, microbiology or biochemistry.

Responsibilities include providing professional and scientific leadership on a broad array of activities necessary for the planning, evaluation, direction and coordination of the Immunoregulation Section. We offer competitive salaries and outstanding benefits.

The Immunoregulation Section Chief is a GS-14 position with a salary range up to \$86,411 per annum for physicians and \$81,217 per annum for non-physicians. Physicians' comparability allowance up to \$20,000 may be applicable.

Please send resume or your Application for Federal Employment (SF-171) to:

**Personnel Office
PHS/NIH/NIAD
Bldg. 31, Room 7A-20
31 Center Drive MSC 2520
Bethesda, MD 20892-2520
Announcement #AI-96-024
Telephone: 301-402-1421
Fax: 301-496-1940
ATTN: Kristie Daniel
U.S. citizenship required.**

NIH is an Equal Opportunity/Affirmative Action Employer

**DEAN
College of Veterinary Medicine
Auburn University, AL**

The College of Veterinary Medicine at Auburn University invites applications of persons for the position of Dean. The Dean serves as chief administrative officer of the College, with responsibility for programs in teaching, research, clinical service, and outreach.

Auburn University is a comprehensive public doctoral institution with its main campus in Auburn, Alabama. Chartered in 1856 as a liberal arts college, the University was issued Land Grant status in 1862 and has more than 22,000 students enrolled in 12 colleges and schools. Veterinary science has been taught as a distinct academic discipline at Auburn since 1892, and the Doctor of Veterinary Medicine degree was first offered in 1907. The College of Veterinary Medicine is organized into six academic departments and a privately endowed research center.

Candidates for the position of Dean must hold the DVM or equivalent degree, as well as the Ph.D. degree or certification by a specialty board approved by the AVMA. Candidates are expected to demonstrate a commitment to effective teaching at the professional, graduate, and postgraduate levels; a sustained record of competitive research; and a history of contributions to the profession through clinical or diagnostic service, and outreach. Distinguished achievement with recognition at the national level is expected. Candidates must offer evidence of effective leadership, administrative experience, plus acquisition and management of financial resources. Candidates should be eligible for appointment at the rank of professor in an academic department of the College.

Salary is commensurate with experience and background. The position is available October 1, 1996. Consideration of applications will begin on June 1, 1996. Send letters of application, including vision statement and curriculum vitae with names, addresses and telephone numbers of five references, or letters of nomination including names and complete addresses of nominees to **Dr. James E. Marion, Chair, AUCVM Dean Search Committee, College of Agriculture, 107 Corner Hall, Auburn University, AL 36849-5401; phone 334/844-2474; fax 334/844-4814.**

*Auburn University - An AA/EO Employer
Women and Minorities are Encouraged to Apply*

**Program of Excellence in Molecular
Biology of the Heart and Lung
Special Postdoctoral Positions**

The University of Cincinnati Program of Excellence in Molecular Biology of the Heart and Lung, funded by the National Heart, Lung and Blood Institute of NIH, has as its goal the application of molecular genetic approaches to study heart and lung function. The Program is open to Ph.D.s or M.D.s with training in molecular biology who wish to apply their skills to significant problems of heart or lung, or to individuals with strong backgrounds in heart and lung who wish to develop molecular tools for continued study of these problems. We are particularly interested in recruiting women and minorities to the Program. Stipends begin at \$31,000 per year with benefits. The faculty and their interests are described below.

Jerry B. Lingrel

Na,K-ATPase gene regulation, enzyme phosphorylation and structure-function studies

Jeffrey Whitsett

Molecular biology of lung development of lung specific gene expression

Paul Rosevear

Cardiac troponin: Elucidation of calcium dependent protein-protein interactions using heteronuclear multidimensional NMR

Gary Shull

Role of ion-transport proteins in cardiac function and control of arterial blood pressure using gene targeting technology

Jeffrey Robbins

Targeted modification of the cardiac contractile proteins and growth and developmental control of cardiac muscle

Steven Potter

Manipulating genes important in heart and lung development by insertional mutagenesis and targeted modification in ES cells

Thomas Doetschman

Role of growth and differentiation factors in the development and function of heart and lung using targeted gene modification in the mouse

Anil Menon

The genetics of human cardiovascular disease

Stephen Liggett

Molecular biology, pharmacology and structure/function of cardiopulmonary adrenergic receptors

Applicants should submit a C.V. and the names of three references to **Jerry B. Lingrel, Ph.D., Director, Program of Excellence in Molecular Biology, Department of Molecular Genetics, Biochemistry, and Microbiology, University of Cincinnati College of Medicine, Cincinnati, Ohio 45267-0524.**

Affirmative Action/Equal Opportunity Employer

POSITIONS OPEN

GEORGE MASON UNIVERSITY Molecular Biologist

The Department of Biology seeks applications for a **TENURE-TRACK** position for 1997-98 or sooner. Candidates are expected to participate in undergraduate and graduate teaching and to have a robust independent research program with evidence of the ability to acquire external funding. Candidates will also be expected to develop new courses in molecular biology that incorporate innovative uses of teaching technologies. The department provides a stimulating environment in the fields of organismal biology, microbiology, environmental science, biotechnology, and molecular genetics. Opportunities are available for interdisciplinary teaching and interactions with the American Type Culture Collection (ATCC) and the Molecular Bioscience and Technology Institute (MBTI) at GMU's campus in Manassas, Virginia.

Applicants should send a curriculum vitae, a statement of teaching and research interests, and three letters of recommendation to:

MSN 3E1

Chair: Molecular Biology Search Committee
Department of Biology
George Mason University
4400 University Drive
Fairfax, VA 22030-4444

Review of applications will begin on May 27, 1996 and will continue until the position is filled. Position availability pending budgetary approval. *George Mason University is an Affirmative Action/Equal Employment Opportunity Employer.*



CALL FOR PROPOSALS

The Lymphangiomyomatosis (L.A.M.) Foundation is offering two **POSTDOCTORAL FELLOWSHIPS** for the study of the cellular and molecular basis of L.A.M. Maximum annual award for each fellowship will be \$35,000, renewable for up to two additional years. Examples of competitive proposals include those that focus on the genetic factors, cellular signaling pathways, and hormonal stimuli that result in smooth muscle cell proliferation and disruption of pulmonary, renal, and lymphatic function. Mechanistic, hypothesis driven approaches of all types are welcomed but monies will not be awarded for clinical training. Deadline for applications is September 1, 1996, funding period starts November 1, 1996. Please write to: **The L.A.M. Foundation, 10105 Beacon Hills Drive, Cincinnati, OH 45241.**

POSTDOCTORAL POSITION. A recent Ph.D. is needed to study the proliferation of airway smooth muscle. The project is focused on the activation of MAP kinase signaling pathways by seven transmembrane receptors. Molecular biology experience is required. Please forward curriculum vitae to: **James Posada, Ph.D., Department of Molecular Physiology, University of Vermont, Burlington, VT 05405. Telephone: 802-656-5776; Email: posada@salus.med.uvm.edu.**

TWO POSTDOCTORAL POSITIONS available to study signal transduction and gene regulation in inflammation (asthma). Experience in molecular biology and whole animal studies is desirable. Send curriculum vitae with names of references to: **Drs. Prabir Ray and Anuradha Ray, Department of Internal Medicine/Pulmonary Section, Yale University School of Medicine, LCI 105, 333 Cedar Street, New Haven, CT 06520. Equal Opportunity Employer.**

POSTDOCTORAL POSITIONS available to study the adaptive regulation of transporters and receptors in human brain. NIDA-funded multidisciplinary studies include pharmacokinetic, biochemical, and molecular biology approaches. The successful candidates will have a Ph.D. and expertise in HPLC, GC/MS, ligand binding, receptor autoradiography, *in situ* hybridization, solution hybridization, or PCR methodologies. Send curriculum vitae and names and telephone numbers of three references to: **Deborah C. Mash, Ph.D., Department of Neurology, University of Miami, 1501 NW 9th Avenue, Miami, FL 33136. Email: dmash@mednet.med.miami.edu.**

POSITIONS OPEN

SEARCH EXTENDED ASSOCIATE DEAN FOR RESEARCH Krieger School of Arts and Sciences

We seek an innovative, proactive **ADMINISTRATOR** to nurture and enrich a well-established, strong, and diversified research base. The continued integration of this research with high quality graduate and undergraduate education is also critical. Candidates should have a proven record in the areas of academic science research, management of government funding, research coordination and administration, and possibly industrial research. The Ph.D. degree in science is necessary and, although the position does not carry tenure, appointment to a suitable research faculty position is possible.

Applicants should submit a résumé with the names, addresses, and telephone numbers of three referees to: **Associate Dean for Research Search Committee, Johns Hopkins University, Krieger School of Arts and Sciences, Mergenthaler 224, Baltimore, MD 21218. Johns Hopkins University is an Equal Opportunity, Affirmative Action Employer.**

PEPTIDE CHEMIST-R&D

BioNebraska is an emerging biotechnology company focused on recombinant peptide production. We seek an individual with a Ph.D. in biochemistry, pharmacology, or a related field with a minimum of five years of experience in a peptide and protein research and development environment. A wide knowledge of peptide chemistry and good communications skills are required. The successful candidate will manage and partake in protein and peptide purification and scaleup, assay and method development, validation, and release testing. Growth position. Salary commensurate with experience. Send résumé and references to: **Human Resources Department, BioNebraska, Inc., 3820 NW 46th Street, Lincoln, NE 68524-1637. An Equal Opportunity Employer.**



POSTDOCTORAL SCIENTIST

POSTDOCTORAL SCIENTIST position available immediately in the laboratory of **Dr. Robert E. Lanford**. This position will conduct research in molecular analysis of hepatitis B virus replication. The studies will focus on the HBV reverse transcriptase using a recently developed active form of the enzyme purified from insect cells. A Ph.D. degree in a biological science with experience in molecular biology techniques is required. The successful candidate will be expected to apply for an NIH-sponsored postdoctoral fellowship. Please send curriculum vitae and names, addresses, and telephone numbers of three references to: **Director of Human Resources (607), Southwest Foundation for Biomedical Research, P.O. Box 760549, San Antonio, TX 78245-0549. Equal Opportunity Employer.**

POSTDOCTORAL/ASSOCIATE RESEARCH SCIENTIST (Two Positions)

Positions immediately available for research on the cellular biology or varicella-zoster virus and its interaction with neurons. Candidates should have a background in molecular and cellular biology. Experience in some of the following techniques would be an advantage: molecular cloning, tissue culture, transfection of DNA into eukaryotic cells, yeast-two hybrid system, immunocytochemistry, protein purification, and Western blotting. Ph.D. or equivalent necessary. Apply to **Dr. Anne A. Gershon, Columbia University, P&S, Departments of Anatomy and Cell Biology and Pediatrics, 630 West 168th Street, Number 12-513, New York, NY 10032. Columbia University is an Equal Opportunity Employer.**

POSTDOCTORAL POSITION available to clone and study the function of a novel macrophage lipoprotein receptor. Functional studies will be carried out in transgenic and knockout mice. Experience in molecular biology and cloning essential; expression cloning experience desirable. Send curriculum vitae and three references to: **Dr. Ira Tabas, Department of Medicine, Columbia University, 630 West 168th Street, New York, NY 10032. Equal Opportunity/Affirmative Action Employer.**

POSITIONS OPEN

POSTDOCTORAL POSITION YALE MEDICAL SCHOOL

We are studying the mechanism by which Adenovirus 12 transforming functions (especially E1B 55 kDa) specifically induce chromosome fragility at the human *RNU1* and *RNU2* loci in a p53-dependent fashion (*Mol. Cell. Biol.*, 15:6246, 1995). Please send a curriculum vitae and names of three references to: **Dr. Alan M. Weiner, Department of Molecular Biophysics and Biochemistry, Yale University, 266 Whitney Avenue, P.O. Box 208114, New Haven, CT 06520-8114.**

POSTDOCTORAL RESEARCH FELLOW

A **POSTDOCTORAL POSITION** is available immediately in the Movement Disorders Neurogenetics Laboratory at Columbia University to study the molecular basis of movement disorders. The Fellow will be involved with DNA sequencing and sequence analysis, RNA, and protein analytic techniques. The candidate must have a Ph.D. degree and a strong background in biochemistry and molecular genetics. Send curriculum vitae and the names of three references to: **Dr. Michael Neystat, Department of Neurology, Columbia University, 630 West 168th Street, New York, NY 10032. Columbia University is an Equal Opportunity/Affirmative Action Employer.**

DEPARTMENT OF NEURO-ONCOLOGY The University of Texas M. D. Anderson Cancer Center

A **POSTDOCTORAL POSITION** is available to study cell cycle regulation, signal transduction, and clinical oncology. Applicants should have a Ph.D. with experience in molecular biology, cell biology, and animal models. Please send curriculum vitae and names of three references to: **Dr. Wei Zhang, Department of Neuro-Oncology, Box 100, The University of Texas M. D. Anderson Cancer Center, 1515 Holcombe Boulevard, Houston, TX 77030. FAX: 713-794-4999; Email: 12507vl@utmdacc.mda.utmc.edu. Equal Opportunity Employer/a smoke-free environment.**

POSTDOCTORAL POSITION in Immunology. Available immediately to study murine NK cell biology, with emphasis on their interactions with MHC molecules. Experience in molecular techniques highly desirable. Send curriculum vitae and names of references to: **Dr. I. Nakamura, Department of Pathology, State University of New York at Buffalo, 232 Farber Hall, Buffalo, NY 14214. FAX: 716-829-2086; Email: inakamur@ubmed.buffalo.edu.**

POSTDOCTORAL FELLOWSHIP: A postdoctoral fellowship in aphasia research is available at the University of Maryland School of Medicine, Department of Neurology. The fellow will be involved in an NIH-funded project focusing on linguistic limits and rehabilitative effects of an alternative communication system. A strong background in experimental design and knowledge of sentence processing or semantics is essential. Send curriculum vitae to: **Michael Weinrich, M.D., Department of Neurology, University of Maryland Hospital, 22 South Greene Street, Baltimore, MD 21201. Email: mweinric@umabnet.ab.umd.edu. The University encourages women and minorities to apply. An Equal Opportunity Employer.**

POSTDOCTORAL POSITION available to study the role of biogenic amines in regulating reproduction in snail vectors of Schistosomiasis. Background in peptide biochemistry and/or neurophysiology strongly desired, as well as familiarity with HPLC and tissue culture. Send curriculum vitae and three reference letters to: **Dr. T. P. Yoshino, Department of Pathobiological Sciences, University of Wisconsin, 1515 Linden Drive West, Madison, WI 53706. Equal Opportunity/Affirmative Action Employer.**

POSTDOCTORAL position available in Neuropharmacology to study molecular biology and regulation of Na⁺-dependent glutamate transporters or metabotropic glutamate receptors; experience with molecular biology required. Position also available to study regulation of glutamate release/synthesis. Send curriculum vitae, a letter of interest stating research goals, and three letters of reference to: **Dr. Michael B. Robinson, Abramson Research Building-Room 502, University of Pennsylvania, 34th Street and Civic Center Boulevard, Philadelphia, PA 19104. An Equal Opportunity Employer.**



**MOLECULAR/GENETIC EPIDEMIOLOGIST
MAYO FOUNDATION**

The Section of Clinical Epidemiology at Mayo Clinic, in collaboration with the Mayo Cancer Center, is seeking a molecular/genetic epidemiologist to fill a new position in our large and active group. This position presents an exciting opportunity for the successful candidate to conduct population-based molecular epidemiologic studies of the occurrence, etiology, and outcomes of cancers, as well as evaluations of the impact of diagnostic and therapeutic interventions in these conditions.

Applicants should have a strong methodologic training in epidemiology with evidence of research productivity in molecular epidemiology as reflected by peer-reviewed publications and a demonstrated ability to attract extramural research funding. This individual will be expected to develop an independent program of research in collaboration with clinical and laboratory investigators.

The Mayo Clinic, with a research budget in excess of \$130 million per year, provides an outstanding environment for the conduct of molecular epidemiologic research. Resources include: The Rochester Epidemiology Project, with its linkage of medical records for residents of Olmsted County back to the early 1900s, a large referral practice as reflected by over 150,000 cases recorded in the Mayo Tumor Registry, tissue archives from the local and referral practice, and an exceptional collaborative atmosphere among clinicians, basic scientists, epidemiologists and biostatisticians.

Academic rank for the successful applicant will depend on qualifications and experience. There are no clinical practice responsibilities associated with this position. Salary and benefits are most competitive.

Rochester, Minnesota provides a remarkable quality of life, as evidenced by its #1 (1993) and #2 (1994,1995) ranking in Money Magazine.

Qualified applicants should submit a current curriculum vitae to:

**Steven J. Jacobsen, MD, PhD
Head, Section of Clinical Epidemiology
Mayo Clinic, 200 First Street, SW
Rochester, MN 55905
(507)284-5544**

Mayo Foundation is an affirmative action and equal opportunity educator and employer.

POSITIONS OPEN

POSTDOCTORAL FELLOWSHIP Hepatitis C Virus Polymerase and Molecular Therapeutics

Two-year position open to study recombinant hepatitis C virus RNA polymerase and develop model cellular systems. Interdisciplinary interactions with molecular modeling and antiviral researchers in the Chemistry Department and investigators at the Centers for Disease Control. Salary and benefits competitive. Send curriculum vitae and references to: Dr. Curt H. Hagedorn, Genetics and Molecular Therapeutics—Winship Cancer Center, 2101 Woodruff Memorial Research Building, Emory University School of Medicine, Atlanta, GA 30322. Email: chagedo@bimcore.emory.edu; FAX: 404-727-5767.

POSTDOCTORAL POSITIONS HARVARD MEDICAL SCHOOL Center for Experimental Therapeutics and Reperfusion Injury

Two NIH-funded POSTDOCTORAL POSITIONS are available to study the role of complement in ischemia/reperfusion injury. Studies involve complement activation and its effect on nitric oxide *in vitro* and *in vivo*. Applicants should hold a Ph.D. or M.D. degree and have basic research experience. Expertise in the microvasculature, immunology, cellular or molecular biology desired. Send or Email a curriculum vitae, a summary of relevant experience, and names of three references to: Gregory L. Stahl, Ph.D., Center for Experimental Therapeutics and Reperfusion Injury, Department of Anesthesia, Brigham and Women's Hospital, 75 Francis Street, Boston, MA 02115. Email: gstahl@zeus.bwh.harvard.edu.

POSTDOCTORAL POSITION available to study the transport of organic molecules by renal tubules. Ph.D. or equivalent required. Preference will be given to candidates with experience working with isolated single renal tubules, microtechniques, and fluorescence microscopy. Review of applications begins May 1, 1996 and continues until filled. Send curriculum vitae and three letters of reference to: Dr. William H. Dantzer, Department of Physiology, College of Medicine, University of Arizona, Tucson, AZ 85724-5051. The University of Arizona is an Affirmative Action/Equal Employment Opportunity/ADA Employer and applications from females and minority members are strongly encouraged.

POSTDOCTORAL POSITION: RNA Biochemistry. Position available to study RNA folding and structure. Applicants should possess experience in the synthesis, purification, and characterization of RNA. Expertise in kinetic measurements is also desirable. Interested individuals should submit a curriculum vitae and names of three references to: Professor Gary D. Glick, Department of Chemistry, University of Michigan, 930 North University Avenue, Ann Arbor, MI 48109-1055. An Affirmative Action/Equal Opportunity Employer.

POSTDOCTORAL POSITION University of California, San Francisco

Position available immediately to study mechanisms of vasoregulation in the coronary circulation. Investigators of the Anesthesiology-Coronary Physiology Laboratories conduct basic science and clinical research encompassing molecular, cellular, and integrative physiology. Applicant should have a doctoral degree and relevant experience in cardiovascular physiology, pharmacology, or clinical cardiovascular research. Send curriculum vitae and three references to: Brian A. Cason, M.D., Anesthesiology (129), VA Medical Center, 4150 Clement, San Francisco, CA 94121. FAX: 415-750-6946.

A POSTDOCTORAL POSITION is available July 1, 1996, to study the biochemistry and cell biology of vertebrate nuclear transport. See *Cell*, 69:939, 1992; *Nature*, 365:661, 1993; *PNAS*, 92:1769, 1995; *Cell*, 81:215, 1995. Send curriculum vitae and the names of three references to: Dr. Mary Shannon Moore, Department of Cell Biology, Baylor College of Medicine, One Baylor Plaza, Houston, TX 77030. FAX: 713-798-7799; Email: mmoore@bcm.tmc.edu. An Equal Opportunity/Affirmative Action/Equal Access Employer.

POSTDOCTORAL POSITION in molecular virology available immediately to study aspects of HIV pathogenesis in children and adolescents. Molecular biology and cell culture experience as well as a Ph.D. or M.D. degree required. Please send curriculum vitae, a summary of research experience, and names of three references to: Dr. Christie Holland, Center for Virology, Immunology, and Infectious Disease Research, Children's National Medical Center, 111 Michigan Avenue, Washington, DC 20010.

POSITIONS OPEN

LABORATORY RESEARCH ANALYST I

The Molecular Therapeutics Program at Duke University is seeking highly experienced RESEARCH SCIENTISTS with expertise in cell culture and immunologic methods. Individuals will be responsible for development and implementation of human tissue culture conditions in human gene and cellular therapy clinical trials sponsored by the National Cancer Institute. Please send résumé with inquiries to: Dr. Eli Gilboa, Molecular Therapeutics Program, Duke University Medical Center, Box 2601, Durham, NC 27710. FAX: 919-681-7970; Email: lyer1001@mc.duke.edu. Duke University Medical Center is an Equal Opportunity/Affirmative Action Employer.

The National Institutes of Health, National Institute of Neurological Disorders and Stroke, Laboratory of Neurochemistry, is seeking a POSTDOCTORAL FELLOW (U.S. citizen, permanent resident, or non-U.S. citizen) who has a Ph.D./M.D. or equivalent degree in molecular biology or a related field and one to five years of postdoctoral experience. The position includes using cloning techniques and collaborating with an electrophysiology fellow in the isolation and characterization of a calcium channel from a neuronal cell line. The appointment will be for two years with a salary range between \$25,000 and \$38,000 per year. Please submit a curriculum vitae and names of three references by June 30, 1996 to:

Dr. Hemin Chin
Laboratory of Neurochemistry, NINDS
Building 36, Room 4D20
Bethesda, MD 20892-4130

National Institutes of Health is an Equal Opportunity Employer.

POSTDOCTORAL POSITION available starting July 1996 to study the biochemical/molecular mechanism(s) by which hyperglycemia impairs muscle and hepatic glucose metabolism (*J. Clin. Invest.*, 96:132). In particular the potential role of glycosylation in the regulation of intracellular trafficking of GLUT4 containing vesicles will be examined in transgenic mice. Applicants must have a background in biochemistry/molecular biology. The position offers opportunity for research in a well-equipped multidisciplinary lab, within a Diabetes Research and Training Center. Applications with curriculum vitae and three letters of recommendation should be sent to: Dr. L. Rossetti, Co-director of the Diabetes Research and Training Center, Albert Einstein College of Medicine, Jack and Pearl Resnick Campus, Belfer Building Number 701, 1300 Morris Park Avenue, Bronx, NY 10461. Telephone: 718-430-4118. Equal Opportunity Employer.

POSTDOCTORAL POSITION to Study Molecular Biology of p53

Applications for an NIH-funded position are invited from persons with keen interest in understanding the molecular biology of the tumor suppressor p53. Current focus in the laboratory is understanding the involvement of "gain of function" mutations of the p53 gene in transcription and oncogenesis. Individuals with expertise in recombinant DNA technology and protein purification are especially encouraged to apply with complete curriculum vitae and names of three references to: Sumitra Deb, Ph.D., Department of Microbiology, University of Texas Health Science Center, 7703 Floyd Curl Drive, San Antonio, TX 78284. The University of Texas Health Science Center at San Antonio is an Equal Opportunity/Affirmative Action Employer.

POSTDOCTORAL FELLOW IN SIGNAL TRANSDUCTION

An NCI-funded POSTDOCTORAL FELLOWSHIP is available in the Signaling Program of the Comprehensive Cancer Center of Wake Forest University. The research is being conducted in the following areas: lipid mediators, molecular biology and enzymology of signaling cascade, mechanisms of cyclooxygenase in cancer and inflammation, and phospholipases. Research opportunities are available in the Departments of Biochemistry, Microbiology/Immunology, and Physiology/Pharmacology. Please outline your interests in signal transduction. For information contact:

Dr. Moseley Waite, Chairman
Department of Biochemistry
Bowman Gray School of Medicine
Medical Center Boulevard
Winston-Salem, NC 27157-1016
Email: mwaite@medcenter.wfmail.wfu.edu
http://isnet.is.wfu.edu/bgsbm/biochem/home.html
Affirmative Action/Equal Opportunity Employer.

POSITIONS OPEN

STAFF SCIENTIST RESEARCH ASSOCIATE SENIOR RESEARCH ASSOCIATE

Three positions are available at the Tobacco and Health Research Institute, University of Kentucky, which is developing novel tobacco germplasm for new applications: 1) SCIENTIST (plant molecular biology) Job 313351 (non-tenured staff appointment), to lead plant transformation group. Requires Ph.D. in molecular biology or equivalent, with one year of experience in routine gene cloning, vector construction, and plant transformation procedures. 2) RESEARCH ASSOCIATE (plant molecular biology) Job 313352, to support plant transformation effort. Requires either Ph.D. or equivalent experience in a biological field, with laboratory experience in plant molecular genetics. 3) SENIOR RESEARCH ASSOCIATE (economics and market research) Job 313344, to conduct extensive literature surveys, information networking, and market analysis to identify molecular farming opportunities for new crops. Minimum requirements: Degree in a biological subject, with proficiency in information research, and either Ph.D. plus three years of experience, or equivalent. Experience in biotechnology market analysis would be advantageous. Applicants must be able to perform all essential job functions as identified in position description; copy available to candidates selected for interview. Send résumé, names of three references, and brief summary of relevant experience by May 24, 1996 to the appropriate job number listed above. HR/Employment, 112 Scovell Hall, Lexington, KY 40506-0064. For more information Email: HHH@ukcc.uky.edu. The University of Kentucky is an Equal Opportunity Employer and encourages applications from minorities and women.

POSTDOCTORAL POSITION Section of Molecular Cardiology Albert Einstein College of Medicine

A position is available utilizing conditional gene expression systems (*J. Clin. Invest.*, 94:2421) to study cardiac electrophysiology and arrhythmias in genetically modified mice. Applicants with expertise in molecular biology and/or electrophysiology are encouraged to apply. Send curriculum vitae and names of three references to: Glenn I. Fishman, M.D., Albert Einstein College of Medicine, Jack and Pearl Resnick Campus, 1300 Morris Park Avenue, Room U-1225, Bronx, NY 10461. Telephone: 718-430-4127; Email: fishman@acom.yu.edu. An Equal Opportunity Employer.

RESEARCH ASSOCIATE POSITION NEUROIMMUNOLOGY

Candidate with strong background in clinical immunology and experimental dermatology for bench research and drug trials. California Medical License. Contact: Professor E. M. Farber, Psoriasis Research Institute, 600 Town and Country Village, Palo Alto, CA 94301. Psoriasis Research Institute is an Equal Opportunity Employer.

POSTDOCTORAL RESEARCHER Department of Chemistry

Available August 1, 1996 for one year with possibility of renewal for additional year. Position will involve the use of EPR, ENDOR, MCD, and/or EXAFS spectroscopic techniques as well as traditional enzymology to investigate the intermediate states of nitrogen fixation. Applicants must have a Ph.D. in chemistry, biochemistry, or a related field with a strong background in protein purification and biophysical techniques. Application deadline is May 10, 1996, or until candidate is selected. Send curriculum vitae and three letters of recommendation to:

Dr. Brian J. Hales
Department of Chemistry
Louisiana State University
Baton Rouge, LA 70803-1804
Louisiana State University is an Equal Opportunity/Affirmative Action Employer.

POSTDOCTORAL POSITION available to study dopamine D₂ and D₃ receptor mutant mice. This position requires a strong background in molecular neurobiology. Send curriculum vitae; a statement of research experience; and names, addresses, and telephone numbers of two references to: Dr. Claudia Schmauss, Box 1229, Mount Sinai School of Medicine, One Gustave L. Levy Place, New York, NY 10029. FAX: 212-831-1947; Email: Schmauss@smtpink.mssm.edu.

Join the Quest!

Hemosol Inc., a leader in the global quest for a human blood substitute, currently requires a Research Scientist in its new X-Cell Biotech division. A strong general background in cell biology, molecular biology and immunology is expected. Above average oral and written communication skills are required, as is a high level of self-motivation. We're seeking an individual with a Ph.D. and relevant post-doctoral and/or industrial experience in cellular immunology, in-vivo and in-vitro lymphocyte culture, and flow cytometry. An expert, current knowledge of cellular immunology, lymphocyte function and culture and signal transduction are essential.

We offer a competitive salary and benefits package in a stimulating work environment. If you are interested in joining our talented team, please send your resume, quoting file # XC/01/96, in confidence, to: Human Resources Department, 115 Skyway Avenue, Etobicoke, Ontario M9W 4Z4 or Fax: (416) 798-0151.



HEMOSOL INC.

An equal opportunity employer.

Manager, Quality Control

Manufacturer of animal health products has an immediate opening for Manager, Quality Control. Responsibilities include inspection, sampling, and testing of raw materials, containers/closures, packaging materials, toll/contract manufactured products and BIAHI manufactured products; determines technical adequacy of the scientific documents and testing methods used within Quality Control, reviews calculations and all testing performed within Quality Control and ensures procedures used within QC are current and comply with regulatory requirements; prepares and allocates the department budget for Quality Control; ensures the proper administration of the BIAHI stability program including evaluation of trends/testing at appropriate intervals as per NADA/Regulatory commitments and is responsible for storage/inspection of retention samples; implementation of the BIAHI environmental monitoring program including establishing trends and implementing proper sanitation procedures; responsible for the implementation of the hazardous waste program at BIAHI; responsible for the improvement of current QC tests and developing new QC tests and liaise with R&D to instigate new QC tests needed for new products.

Qualifications include an advanced degree (preferably Ph.D.) in Biological Sciences/Chemistry with at least 6-10 years of experience in Quality Control; high proficiency in Microbiology required; proficiency in Chemistry desirable; extensive knowledge of Quality Control techniques for Animal Health products; extensive knowledge of relevant APHIS, European Union, and FDA regulations for Animal Health Products; proven record in improving QC processes and systems.

Excellent compensation package offered. To apply, send resume and salary requirements to:

Vice President, Human Resources
Boehringer Ingelheim Animal Health, Inc.
2621 N. Belt Highway
St. Joseph, MO 64506
USA

Equal Opportunity Employer



**Boehringer
Ingelheim**

Wanted: Committed, ambitious scientist. Must be a team player with a vision for the future. M.D./Ph.D., Ph.D., M.S. or B.S. degree necessary.

Does this describe you?

If it does, then plan to attend the bioSCIENCE Career Fairs sponsored by SCIENCE. The bioSCIENCE Career Fairs offer the perfect opportunity for scientific professionals to meet in person with representatives from top biotechnology and pharmaceutical companies, universities, governmental agencies and institutions. You can also attend the seminar, *How to get a paper published in SCIENCE*. This exclusive seminar is offered free of charge and will be conducted by one of SCIENCE's editors.

1996 bioSCIENCE Career Fairs

San Francisco, CA on the Stanford Campus in Palo Alto, May 3-4.
May 3: 11am - 4pm; May 3 Seminar: 11 - 11:30am. May 4: 12 noon - 4pm.

Just added! Careers in Biomedical Research: Join leaders from both industry and academia for a panel discussion sponsored by the Biomedical Association of Stanford Students on May 3, 12 - 1:30 p.m. at the Fairchild Auditorium. The panel discussion focuses on careers in biomedical research.

La Jolla, CA at the Scripps Research Institute, October 4-5.

**bioSCIENCE
CAREER FAIRS**

For information please call (202) 326-7018.

bioSCIENCE Career Fair Information On-Line:
<http://www.aaas.org> (Choose SCIENCE Classified Advertising from the menu)

To pre-register, please submit your resume or CV via fax:
(202) 289-6742, or via e-mail: bioscience@aaas.org.

We've got Information Systems for Pharmaceutical Research down to a science...

That's Schering-Plough

At Schering-Plough, we recognize the key role Information Systems plays in efficiently bringing pharmaceuticals to market. In fact, there is not a single aspect of our global operations that is not touched by advancements in the way we process, store or share information. It's a competitive edge we maintain by investing in state-of-the-art technology and the insightful professionals who optimize their application.

SENIOR SYSTEMS ANALYSTS

Chemistry

We seek an Information Systems professional to provide application solutions that will enable chemists to meet their scientific and business objectives more effectively. Areas of involvement will include critical initiatives in Combinatorial Chemistry, Computer Aided Drug Design and High Throughput Screening. To qualify, you will need a BS degree in Computer Science or Chemistry, a demonstrated interest in scientific programming, and knowledge of C++, Perl and UNIX. Background in scientific database development (ORACLE), GUI development tools (OMNI 7/Powerbuilder), Macintosh/AppleScript programming and HTML development is highly desirable. Excellent organizational and communication skills are essential. To be considered for this position, please respond to Dept. RI96-03.

Bioinformatics

We seek an Information Systems professional to provide software support for our Bioinformatics initiatives. Major programming emphasis will be on the design of database applications for genomic and functional biology information, and programming interfaces that will enable biologists to use and manipulate these databases. To qualify, you will need a BS degree in Math, Computer Science, Biological Science or equivalent experience in the development of scientific applications. Background must include strong UNIX-based skills, Perl programming, knowledge of relational databases. SQL and basic molecular biology concepts. Knowledge of C++ and HTML is desirable. Excellent organizational and communication skills are essential. To be considered for this position, please respond to Dept. PB/KW.

We offer an excellent compensation package including a competitive salary and comprehensive benefits. For prompt, confidential consideration, we invite you to forward a resume indicating salary requirements and the Dept. Code for your position of interest to: Human Resources-BG, Schering-Plough Research Institute, 2015 Galloping Hill Road, Kenilworth, NJ 07033-0539. We are an equal opportunity employer. *We regret we are unable to respond to each resume. Only those selected for an interview will be contacted.*



**Schering-Plough
Research Institute**



DARTMOUTH MEDICAL SCHOOL
Department of Pathology

The Department of Pathology at Dartmouth Medical School is seeking an individual for a tenure-track position with an appointment as an associate or full professor. The search will concentrate on candidates holding M.D. or M.D./Ph.D. degrees who have completed pathology residency training. Postdoctoral research training in a recognized center is strongly desired. An investigative focus in immunology, immunopathology, immunogenetics, autoimmunity, adhesion or costimulatory molecular biology is desired. The candidate should have a record of independent productivity and funding. It is envisioned that approximately 75% of the individual's time will be devoted to basic research. Medical student teaching, administrative and clinical assignments can be arranged to accommodate the candidate's requirements. The new faculty member will be expected to maintain research funding, join the appropriate graduate training program, and direct an active research laboratory with the capacity to train Ph.D. and postdoctoral fellows. Please send curriculum vitae and the names of three referees to:

William F. Hickey, M.D.

Professor and Chairman

Department of Pathology

Dartmouth Medical School - D.H.M.C.

Lebanon, NH 03756

Dartmouth College is an affirmative action, equal opportunity employer. Women and minorities are encouraged to apply.



Space Medicine and Life Sciences Research Center at Morehouse School of Medicine

The following positions are available: **Assistant Professor:** The applicant should have experience in gravitational biology or space medicine/life sciences research. The successful candidate will be expected to obtain independent research support, develop collaborative research efforts with SMLSRC investigators, and participate in the predoctoral training program. **Postdoctoral Research Associates:** Applicants should have experience in gravitational biology and/or one of the following: cardiovascular studies relating to cardiac and hemodynamic function and vascular cell behavior; musculoskeletal studies relating to autocrine and paracrine factors mediating muscle fiber type expression; production of matrix components by musculoskeletal cells; neuronal studies relating to cellular, morphological, and functional aspects of reproductive and ocular circadian rhythms. Expertise should be demonstrated in at least two of the following areas: cell culture, gene regulation, receptor assay, immunocytochemistry, neuroendocrinology, vascular reactivity, or muscle physiology. **Predocutorial Graduate Students:** The training program in biomedical sciences is designed to develop independent investigators capable of assuming leadership roles. Candidates are accepted for both Ph.D. and M.D./Ph.D. programs. Students in the center will be involved in ground-base microgravity studies in cardiovascular, neuronal, or musculoskeletal areas. Postdoctoral and predocutorial students must be U.S. citizens. Applicants should send a CV, three letters of reference, and a statement of research interests to: **John Smith, Assoc. Director, 720 Westview Drive, S.W., Atlanta, GA 30310-1495, Phone (404) 752-1973, FAX (404) 752-1978, Email: biochem@link.msm.edu** Morehouse School of Medicine is an Equal Opportunity/Affirmative Action Employer.



**MAYO CLINIC
DIVISION OF
MEDICAL ONCOLOGY
AND MAYO CANCER CENTER**

Clinical Research Positions

The Division of Medical Oncology and the NCI-designated Mayo Cancer Center in Rochester, Minnesota, invites applications for two clinical research positions. Clinical investigators with established cancer research programs are encouraged to apply. The Mayo Clinic provides an outstanding environment for investigators interested in conducting translational research with the goal of improving prevention, diagnosis, and treatment of cancer. Interested applicants should submit a statement of research interests, curriculum vitae, bibliography, and list of references to:

James N. Ingle, M.D.
Associate Director for Clinical Research
Mayo Cancer Center
Mayo Clinic
200 First Street, SW
Rochester, MN 55905

Mayo Foundation is an affirmative action and equal opportunity educator and employer.

**National Institute for
Discovery Science**

**Research Management
(Multiple Positions)**

The National Institute for Discovery Science, a private research organization, is looking for senior managers for long-term employment. NIDS will explore cutting-edge issues related to the nature and evolution of consciousness and life in the universe. Managers must be capable of employing accepted scientific methods to novel or unconventional observations or theories while maintaining the highest ethical and quality standards. Successful candidates will have a doctoral degree and substantial experience managing complex research projects. Work will be reviewed and approved by a world-class science advisory board. A history of successful publication is a plus. Please send resume/CV to: **National Institute for Discovery Science, Dept. S, 4640 So. Eastern, Las Vegas, NV 89119**

Hybridon, Inc., is a leader in the discovery and development of genetic medicines based on antisense technology. A newly public company with over 150 employees, Hybridon has 69 employees with advanced degrees working on basic and applied research in our laboratories in the Massachusetts Biotechnology Research Park. Come grow with us.

Research Scientist (Chemistry)

Candidate should have a Ph.D. in organic/nucleic acids chemistry, and 2-3 years' experience in the field of nucleic acids chemistry/oligonucleotide chemistry/nucleoside chemistry. The candidate should have expertise in synthetic and analytical methodologies, as applied to the nucleic acids field.

**Research Scientist
(Biochemistry/Molecular Biology)**

This position requires a Ph.D. with 2-3 years' experience in nucleic acids biochemistry/molecular biology. Candidates must have experience in cloning techniques, cell culture work, and DNA sequencing.

Research Scientist (Biophysical Chemistry)

This position requires a Ph.D. level scientist with experience in the biophysical studies of DNA/RNA. Candidates should be familiar with CD and Tm studies, calorimetry, as well as various other biochemical/analytical techniques. Experience in molecular modeling will be an asset.

Postdoctoral Scientists

These positions require a Ph.D. with strong background in nucleic acids chemistry/oligonucleotide synthesis/organophosphorous chemistry/nucleoside chemistry. Candidates should be familiar with modern synthetic methodologies as well as analytical and spectroscopic techniques.

Research Associates

M.S./B.S. level candidates with experience in synthetic organic chemistry/biochemistry preferably in the oligonucleotide field. Experience in the use of DNA synthesizers will be an asset. Adequate knowledge and experience in chromatographic and analytical methodologies and biochemical techniques are required.

Publication/Documentation Specialist

A Ph.D. level candidate with a good background in chemistry/biochemistry. This candidate will assist in various activities related to publication/documentation of scientific research. The candidate should have expertise in using various technical and word processing software packages and graphics for technical publications. Excellent oral and written communication skills as well as prior experience in performing technical editorial functions are a must.

Candidates for all positions, except Documentation Specialist, are bench-level scientists and should be team players who are highly motivated to perform assigned duties in a timely and organized manner in a competitive environment.

With a commitment to steady growth, we offer ongoing professional development opportunities. We also provide a highly competitive salary and benefits package. Please send your resume, to: **Human Resources Manager, Hybridon, One Innovation Drive, Worcester, MA 01605. Principals only.** An equal opportunity employer.



Leadership in Genetic Antisense Therapeutics



ALBAC • Danny Thomas, Founder

Postdoctoral Position in Experimental Oncology

A postdoctoral position is available immediately to participate in an established research program investigating the role of fusion proteins generated by chromosomal translocations in the etiology of human leukemia and lymphoma, and the functions of their normal homologues in cellular growth and development. Current studies focus on the characterization of the pathophysiologic role of the t(2;5) fusion product, NPM-ALK, in lymphomagenesis (*Science* 263:1281, 1994) and on the molecular, biochemical, and biological analysis of the NPM-MLF1 fusion protein produced by the t(3;5) rearrangement specific to acute myeloid leukemia, which our group has also recently cloned (*Oncogene* 12:265, 1996). Investigations designed to determine the normal function of the novel, neural-specific ALK receptor tyrosine kinase including inactivation of the gene in mice by homologous recombination, studies to identify the ALK ligand(s), and yeast two-hybrid screening to identify interacting substrates, are also planned or in progress. In addition, studies to characterize the normal function of the MLF1 protein altered by the t(3;5) are planned. A number of opportunities also exist for translational studies linking these basic research findings to medical applications for cancer diagnosis and therapeutics, as well as for the molecular characterization of other diagnosis and therapeutics, as well as for the molecular characterization of other cancer-associated chromosomal translocations. Candidates possessing a Ph.D. and/or M.D. degree who are interested in joining a multidisciplinary group utilizing molecular cytogenetic, molecular biologic, and biochemical techniques to understand the mechanisms of malignant transformation should submit their curriculum vitae, reprints, and names of three references to: Dr. Stephan W. Morris, Department of Experimental Oncology, St. Jude Children's Research Hospital, 332 N. Lauderdale, Memphis, TN 38105. An Equal Opportunity/Affirmative Action Employer. We provide a smoke-free environment.

GLOBAL CAREER OPPORTUNITIES

Max Planck Institute of Psychiatry Clinical Institute VW-Project

Group of Dr. Reul, Munich

Applicants are invited for a **POST-DOCTORAL POSITION** to investigate the interactions between steroid hormones, neurotransmitters and cytokines in the CNS. Research experience in molecular (neuro) biology and neuroimaging techniques (e.g., in situ hybridisation, immunohistochemistry) is required. Experience in experimental animal techniques would be favorable. The successful candidate will be a member of a multidisciplinary team conducting basic research on the pathogenesis of stress-related psychiatric disorders such as major depression. The position will last for up to 2 years with possible extension thereafter. Applications should be addressed to **Personnel Office, Max Planck Institute of Psychiatry, Clinical Institute, Kraepelinstr. 2-10, D-80804 Munich, Germany.**

IDEXX Laboratories, Inc. a leader in the development of advanced biotechnology-based products for animal health, environmental testing and quality assurance, has the following opportunities for Research Scientists.

Molecular Biology

Scientists with a Ph.D. and 2-5 years of broad-based post-doctoral experience in Molecular Biology are desired. Hands-on experience in cloning and expressing recombinant proteins and/or antibodies are required. Mammalian cell expression and protein purification experience would be preferred. (Code MB-AA)

Immunology/Cell Biology

Cellular immunologist or cell biologists with innovative courage and strong communication skills to create and implement research efforts directed at the cellular and molecular basis of allergy and inflammation are desired. Experience with hybridoma technology, protein purification and basic cellular immunological techniques are essential. An understanding of the molecular and cellular aspects of immune reactions and immunoregulation are desirable. A Ph.D. or Ph.D./DVM and 3-5 years' post-doctoral experience is required. (Code ICB-AA)

Biochemistry

Scientists with a Ph.D. and 2-5 years of broad-based post-doctoral training in biochemistry or related discipline with strong emphasis on state-of-the-art analytical techniques in small and large molecular characterization are desired. Experience in techniques related to protein purification, HPLC fractionation, chromatography, immunochemistry and/or ligand-binding assays are essential. (Code BC-AA)

Scientists in these positions will design and execute research projects to support corporate programs relevant to the immune response in animals during allergy, infection, and other diseases. We are looking for team players with leadership potential who are innovative, creative, aggressive and independent. These positions are for hands-on scientists and will involve some supervisory responsibilities.

IDEXX Laboratories, Inc. is located near Portland, Maine. Maine offers a variety of environments, from its 3500 miles of coastline to its many mountains and clear lakes. It's a place where you can find unique craft and antique shops along quaint New England streets, factory outlet stores, or fine dining. Maine is a state where nature's unspoiled bounties await hunters, fishermen, boaters and outdoor enthusiasts.

Applicants should send resume indicating job code along with cover letter describing how their experience and qualifications would be appropriate for these positions to: Human Resources, Code __, IDEXX Laboratories, Inc., One IDEXX Drive, Westbrook, ME 04092. We are an Equal Opportunity Employer M/F/D/V. Resumes without a cover letter will not be considered.

IDEXX

Innovators in Diagnostics

SCIENTIST

Molecular Biology/ Molecular Immunology

Pharmacia Biotech Inc., Molecular Biology Reagents Division is a leader in the research, production and marketing of molecular and cell biology products. We have an immediate opening for a Scientist to join our R&D staff.

This individual will possess a Ph.D. degree in Molecular Biology/Immunology or related field and be skilled in any or all of the following techniques: Molecular cloning, bacterial, yeast, insect and/or mammalian gene expression systems, protein engineering and purification; Hybridoma production; isolation of mono/polyclonal antibodies. In addition, experience in an industrial setting is highly desirable, combined with excellent interpersonal and communication skills.

We offer a competitive salary and comprehensive benefit package. For consideration, send CV/resume and salary history/requirements to: **Director, Human Resources, PHARMACIA BIOTECH, INC., Molecular Biology Reagents Division, 2202 N. Bartlett Avenue, Milwaukee, WI 53202.** We are advocates of a diverse workforce, M/F/D/V.



**Pharmacia
Biotech**



**FOUNDATION FOR
RESEARCH, SCIENCE AND TECHNOLOGY**

Tūāpapa Toha Pūtea, Whakatakoto Kaupapa Rangahau, Pūtaiao

POST-DOCTORAL FELLOWSHIPS

The NZ Science & Technology Post-Doctoral Fellowships Scheme provides early career support for New Zealand scientists, engineers and social scientists of outstanding talent, for post-doctoral research either locally or overseas. Applicants must be New Zealand citizens or permanent New Zealand residents.

Fellowships will normally have a maximum value of NZ\$70,000 (incl. GST) per year; the stipend will on average be NZ\$50,000 (incl. GST). A contribution is made to the costs incurred by an organisation hosting a Fellow. Fellowships tenable in overseas countries will have an overall value that reflects costs of working in the particular country; applications to work in countries with which New Zealand has not had strong science links are encouraged.

Applications must be received by 10 June 1996, on the application form available from the Foundation. Please contact:

The Foundation for Research, Science and Technology
PO Box 12-240, Wellington, New Zealand.
Tel: 64-4-499 2559, Fax: 64-4-499 2568
Email: pdfs@frst.govt.nz

Infolge Rücktritts des derzeitigen Stelleninhabers ist auf den 1. Juli 1997 der posten des



**Direktors
des
Schweizerischen Tropeninstituts (STI)
in Basel**

neu zu besetzen. Gesucht wird eine Persönlichkeit mit

- ausgewiesener wissenschaftlicher Tätigkeit auf dem Gebiet der tropen-orientierten biomedizinischen Forschung, Epidemiologie und des Gesundheitswesens
- mehrjähriger Felderfahrung in den Tropen
- reicher universitärer Lehrerfahrung
- guten Kenntnissen der Verwaltung eines wissenschaftlichen Instituts und Erfahrung in der Führung von Auslandsprojekten
- Fähigkeit rund 150 MitarbeiterInnen aller Stufen zu führen
- Erfahrung im Umgang mit Behörden und der Öffentlichkeit des In- und Auslands
- Beherrschung der Sprachen Deutsch, Französisch, Englisch in Wort und Schrift

Geboten wird eine vielseitige und verantwortungsvolle Aufgabe in der Schweiz und in Übersee, die, neben einer grossen Selbständigkeit, auch die Zusammenarbeit mit einem bestehenden, eingespielten MitarbeiterInnen-Team erfordert. Umhabilitierung an die Universität Basel wird erwartet. Zeitgemässe Salarierung und Sozialleistungen werden geboten.

Informationen zur gegenwärtigen Organisation und Tätigkeit des STI können bei dessen Sekretariat angefordert werden. InteressentInnen reichen ihre Bewerbung (mit dem Vermerk: persönlich und vertraulich)-in deutscher Sprache und handschriftlich abgefasst-mit den üblichen Unterlagen bis zum 31. Mai 1996 ein bei Herrn Prof. Dr. H.R. Striebel, Präsident des Kuratoriums des Schweizerischen Tropeninstituts, Socinstrasse 57, Postfach, CH-4002 Basel.

Roche

A unique and challenging career opportunity in Switzerland for a

Research Leader – Experimental Nephrology

An expanding range of activities in basic cardiovascular research, including work on the endothelin and renin-angiotensin systems, has created an opening for an experimental nephrologist on our cardiovascular team. The post will entail heading all nephrology projects in this area. Tasks include studying the renal effects of novel cardiovascular drugs and contributing to the discovery of new drugs for acute and chronic renal failure by developing models for the detailed characterization of renal function.

The successful applicant will be a skilled scientist with an appropriate academic background, postdoctoral experience in experimental nephrology and a strong research record in this field. Applicants should be able to perform micropuncture experiments, and they should have a solid understanding of drug R&D in the pharmaceutical industry.

Please send a C.V., copies of your main publications and a letter explaining your interest in joining a pharmaceutical company to Mr. W. Aschwanden in our Personnel Department, quoting reference Science 2016/96/As.

F. Hoffmann-La Roche Ltd., CH-4070 Basel, Switzerland

REQUEST FOR PROPOSALS

The James S. McDonnell Foundation

Planning Grants and Pilot Studies for Collaborative Projects in Cognitive Rehabilitation Research

To encourage the development of cognitive rehabilitation strategies based on research findings linking cognitive science, cognitive psychology, and cognitive neuroscience, The James S. McDonnell Foundation is initiating a new program in support of cognitive rehabilitation research carried out by teams comprised of cognitive neuroscientists, cognitive psychologists and rehabilitation professionals. The initial request is for 18 month planning grants or 24 month pilot study proposals. Proposed projects should address how the research findings from brain plasticity studies, brain structure/function relationships, cognitive science and information processing theory can be applied to the design of clinical interventions intended to improve the performance of individuals with brain injury on functional, real-world tasks (e.g., self-care, meal preparation, tasks related to employment, etc.).

Projects emphasizing ameliorating the cognitive deficits resulting from acquired brain damage rather than deficits resulting from developmental disorders or neurodegenerative diseases are preferred. All proposals must clearly articulate the cognitive science and cognitive neuroscience foundation underlying the proposed cognitive intervention. The proposals should also address the expected functional benefit the clinical intervention is designed to accomplish and describe how subjects' functional improvement will be quantitated.

Interested applicants must obtain the detailed RFP and application guidelines. Complete information is available on the Foundation's home page via <http://www.jsmf.org>. The RFP and application guidelines may also be requested by Email, c06819cn@wvum.edu, or by calling 314/721-1532. We encourage you to use the Internet or Email when possible.

Proposals are due June 24, 1996. It is anticipated the awards will be announced in October, 1996.

Contact: Susan M. Fitzpatrick, PhD, Program Officer, James S. McDonnell Foundation, 1034 South Brentwood Blvd., Suite 1610, St. Louis, MO 63117. Internet: <http://www.jsmf.org>. Email: c06819cn@wvum.edu. Telephone: 314/721-1532.



The University of North Carolina at Chapel Hill

Distinguished Undergraduate Teaching Professorships

Applications, nominations and inquiries are sought for four new **Kenan Distinguished Undergraduate Teaching Professorships** at the University of North Carolina at Chapel Hill. These distinguished professors must demonstrate excellence and commitment as undergraduate teachers and also have a record of outstanding scholarship or artistic creativity. Distinguished professors may affiliate with any program at the University that offers an undergraduate major, including departments and interdisciplinary programs in Arts and Sciences as well as Business, Education, Journalism, Nursing, Medicine, Pharmacy and Public Health.

Selection will take place over the next 12 months with appointments anticipated to begin July 1, 1997. Applications and nominations received by July 1, 1996 will be assured full consideration.

Applications should include evidence of teaching effectiveness along with a curriculum vitae and a letter summarizing the applicant's research and teaching interests. These should be sent to:

Office of the Provost

Search Committee:

Kenan Undergraduate Teaching Professorships

CB #3000, 104 South Building

University of North Carolina at Chapel Hill

Chapel Hill, NC 27599-3000

The University of North Carolina is an Affirmative Action, Equal Opportunity Employer committed to fostering diversity in its faculty, staff and student body, and welcomes applications from underrepresented groups.

BIOLOGICAL PROCESS SCIENCES

Cell Biologist

SmithKline Beecham Pharmaceuticals, a world leader in pharmaceutical research, seeks an accomplished Cell Biologist to join the Biological Process Sciences department within Biopharmaceutical R&D. As a member of the cell culture process research team, you'll be involved with early development of mammalian cell culture systems which produce biopharmaceuticals for preclinical and clinical evaluation. You'll be responsible for investigating ways of enhancing recombinant protein expression at benchscale, trouble shooting cell culture processes, optimizing cell line nutrient requirements, and developing new cell culture process systems and technology.

A BS/MS in Biology, Biochemistry or Biotechnology and 5+ years of cell culture and biochemical research experience are required. Recent PhDs would also be considered. Qualified candidates must have the ability to independently design and conduct experiments, preferably using statistical approaches and provide cell culture training and guidance to others in the lab. Excellent written and verbal communication skills are essential. Experience in mammalian cell culture, cell metabolism, protein synthesis and secretion and recombinant protein expression are preferred. Proficiency in one or more of the following is highly desired: immunofluorescence, cell sorting, use of radioactive compounds, DNA/RNA methods, cell transfection, metabolic assays.

Located in our state-of-the-art research facility in suburban Philadelphia, SmithKline Beecham offers a competitive compensation/benefits/relocation package. For confidential consideration, please forward resume and salary requirements to: SmithKline Beecham Pharmaceuticals, Job Code H6-0113, P.O. Box 2645, Bala Cynwyd, PA 19004. We are an Equal Opportunity Employer, M/F/D/V.



SmithKline Beecham
Pharmaceuticals

Challenging the natural limits.

Post-Doctoral Fellow

Immunology/Virology

The Lindsley F. Kimball Research Institute, a division of the New York Blood Center, has an excellent opportunity for a post-doctoral fellow in its Laboratory of Virology and Parasitology. The laboratory has 12 post-doctoral scientists working primarily on HCV, HIV and the filarial parasite, *Onchocerca volvulus*.

You will carry out studies on determinants of immunogenicity of hepatitis C cDNA, or Pox virus, based immunization. Experience in CTL and CTLp assays is required.

Located in close proximity to the Cornell University Medical Center, Rockefeller University and the Memorial Sloan Kettering Cancer Center. The Institute comprises 16 laboratories working in diverse areas of biomedical research supported by central facilities for microchemistry, electron microscopy and animal care. Post-doctoral salaries vary between \$27,500 and \$40,000 depending on years of experience. In addition, a housing supplement of \$3,600 is provided. Superior housing at the nearby Rockefeller University Scholars Residence is usually available.

For further information, contact: Alfred M. Prince, M.D. at New York Blood Center, 310 East 67th Street, New York, NY 10021. Tel: 212-570-3279, Fax 212-370-3190, E-mail: aprince@server.ntbc.org. EOE M/F/D/V

Lindsley F. Kimball

Research Institute

A Division of the New York Blood Center

POSITIONS OPEN

POSTDOCTORAL RESEARCHER Department of Chemistry

Available June 1, 1996, for one year with possibility of renewal for additional year. Position will involve the use of site-directed mutagenesis for the investigation of the structure/function relationship of V-nitrogenase in the mechanism of nitrogen fixation. Applicants must have a Ph.D. in chemistry, biochemistry, or a related field with a strong background in prokaryotic molecular biology and protein purification techniques. Application deadline is May 10, 1996, or until candidate is selected. Send curriculum vitae and three letters of recommendation to:

Dr. Brian J. Hales
Department of Chemistry
Louisiana State University
Baton Rouge, LA 70803-1804

Louisiana State University is an Equal Opportunity/Affirmative Action Employer.

SYMPOSIUMS



American Institute for Cancer Research

ANNUAL RESEARCH CONFERENCE

"Dietary Fat and
Cancer: Genetic
and Molecular
Interactions"

August 29 and 30, 1996
Washington, DC

For more information please call the
AICR Research Department at
202-328-7744 or 1-800-843-8114
or Email: jcohn@capcon.net



6th International Congress on Cell Biology
36th American Society for Cell Biology
Annual Meeting
San Francisco, December 7 to 11, 1996

Abstract submission deadline: June 14, 1996.
Contact: American Society for Cell Biology
9650 Rockville Pike, Bethesda, MD 20814
Telephone: 301-530-7153
FAX: 301-530-7139
Email: congress@ascb.faseb.org
http://www.faseb.org/ascb

Second International von Hippel-Lindau Symposium
and Cancer in Families Conference. Honolulu, June 17 to
21, 1996. Scientific and Medical Program plus Issues for
Health Professionals and Affected Families. Y. E. Hsia,
Department of Genetics, University of Hawaii. Tele-
phone: 808-956-8331; FAX: 808-956-5518; Email:
JAHunt@Hawaii.Edu.

MARKETPLACE

Custom Molecular Biology Services

DNA Sequencing
as low as 45¢/base

800-654-4671 **ANA-GEN**
e-mail: anagen@svpal.org Ana-Gen Technologies, Inc.

Circle No. 63 on Readers' Service Card

MARKETPLACE

Custom Peptides \$17.00 / Residue

- >75% Purity, 5-25 mg
- 5 Day Delivery
- Free HPLC & Mass Spec.
- No Set-Up Charge

Antibody Production

2 Rabbits w/Conjugation
& Delivery
6-12 Week Delivery \$950

**COAST
SCIENTIFIC**
US Voice: 800-445-1544
Global Fax: (619) 450-1157

Circle No. 22 on Readers' Service Card

FETAL BOVINE SERUM
Triple 0.1um filtered • Certified FMD & BSE Free • USDA Inspected

HIGH QUALITY **ATLANTA biologicals** LOW PRICES

Call or Fax for Information, Pricing and a FREE Cell Culture Catalog.
FREE Samples and Quantity Discounts are available.

PH: (800) 780-7788 FAX: (800) 780-7374
(404) 446-3336 (404) 446-1404

Circle No. 8 on Readers' Service Card

CELL CULTURE

Microvascular & Arterial Endothelial Cells;
HUVEC; Smooth Muscle Cells;
Fibroblasts; Hepatocytes; Custom Isolations.
High purity, normal human cells, animal cells, and cell
lines. Ready to use total kits and detailed instructions.

Cell Applications, Inc. 800-645-0848

Circle No. 36 on Readers' Service Card

Gappel

Primary and Secondary Antibodies

- histidine tag
- mucin-2
- autoantigens
- CD markers
- cytokeratins
- β -galactosidase
- E-cadherin
- MDR proteins
- neuropeptides
- microorganisms

Organon Teknika Corporation
800-523-7620 fax: 919-620-2152

Circle No. 38 on Readers' Service Card

**Fluorescence in situ Hybridization
(FISH) Custom Services**

- Cytogenetic mapping of genes
- Physical ordering of adjacent clones
- Characterization of YAC clones
- Analysis of nuclear integration sites

OVER 10 YEARS OF EXPERIENCE.
BIOS provides report, photographs, and negatives.

http://www.bioslabs.com

BIOS TEL: (800) 678-9487
FAX: (203) 562-9377

Circle No. 61 on Readers' Service Card

MARKETPLACE

The ideal statistical software for the
day-to-day data analysis needs of
researchers. SigmaStat's unique
Advisor recommends the correct test to
run, checks the underlying assump-
tions, runs the test and interprets the
results. It's like having a professional
consultant at your fingertips!

Jandel Scientific
1-800-4-JANDEL (1-800-452-6335)
Internet: http://www.jandel.com ASCSS046

Circle No. 34 on Readers' Service Card

ACGT

- DNA Sequencing
Automatic or Manual
- DNA Subcloning
- Library Screening

800-557-2248 (557-ACGT)
(708) 559-8631 • Fax (708) 559-8632

New
Lower
Prices

Circle No. 16 on Readers' Service Card

NEW NO ANALYZER

**Chemiluminescence
Model 280**

• Exhaled Breath • Cell Culture • Plasma

Phone (303) 444-2009 • Fax (303) 444-9543 USA

SIEVERS

Circle No. 43 on Readers' Service Card

**Steroid/Thyroid/
Retinoic Acid
Receptor Antibodies**
And Other
Transcription Factor Antibodies

ABR Affinity BioReagents, Inc.
800-527-4535; Fax: 303-278-2424
E-mail: affinity@bioreagents.com
http://www.bioreagents.com/affinity

Circle No. 48 on Readers' Service Card

ELISA TEST KITS

- Hormones
- Leukotrienes
- One Step Substrates
- Prostaglandins
- Thromboxanes
- Cyclic Nucleotides

Neogen™ Corporation, ELISA Technologies® Division
800 477 8201 (USA/Canada) • 606 254 1221
Fax 606 255 5532

Circle No. 44 on Readers' Service Card

**Thermostable
TAQUENASE**

Reduce the sequencing cost to 25¢/Run
Also minimize the number of N

SCIENTECH CORP.
T: 1-800-645-0089 F: 314-645-0177

Circle No. 24 on Readers' Service Card

Marketplace ads continue on page 450

MARKETPLACE

Fasten your seatbelts!

Multipin™ SPOC is here to propel you to 1000's of compounds a year at an unbelievable price.

PHONE OR FAX US TODAY FOR FULL INFORMATION

US: West Coast
Tel: 800 644 1866
Fax: 800 655 1866
US: East Coast
Tel: 800 633 8161
Fax: 800 424 3970



International
Tel: +61 3 9565 1111
Fax: +61 3 9565 1199
Europe
Tel: +33 141 38 9400
Fax: +33 141 38 9409

Circle No. 11 on Readers' Service Card

DNA	PEPTIDES
89¢ Deprotected and Desalted per base 5-10 OD	\$15 Quantity 15 to 40 mg per residue
No Set-up Charge. Quality Guaranteed. Some Restrictions May Apply. Please Call.	
GENEMED BIOTECHNOLOGIES 1 (800) 344-5337 • Fax (415) 952-9540	

Circle No. 20 on Readers' Service Card

SFM-Human Keratinocyte Cell System

Start up a 75 for LESS than a 25
More Cells / Lowest Price / Highest Quality
CSC Certificate™ #30467

1-800-697-1211
cell systems

Circle No. 28 on Readers' Service Card

CustomPeptides

Need!

Quality peptides at competitive prices.
Want to deal with an experienced company offering:

- Special amino acid containing peptides
- Synthesis of difficult sequences
- Phosphopeptides
- Biotinylated peptides
- Fluorescent labeling
- Peptide conjugation
- Large scale synthesis

Welcome to American Peptide. We can satisfy your peptide needs from small to large quantities at a **considerably reduced prices**. We offer different purity levels to match your exact needs, either for screening, antibodies production or drug development.

New 1996-97 Catalog

Comprehensive selection of bioactive peptides - Many new peptides - Highest quality - Amyloids & other peptides for neuroscience. Fax / call for a free copy!

62-0-72	β-Amyloid (25-35)	98%	0.5 mg	50.00
62-0-74	β-Amyloid (1-28)	98%	0.5 mg	85.00
62-0-78	β-Amyloid (1-40)	98%	0.5 mg	150.00
62-0-80	β-Amyloid (1-42)	98%	0.5 mg	225.00

AMERICAN PEPTIDE COMPANY

777 E Evelyn Ave. Sunnyvale, CA 94086 USA
Toll Free: 800-926-8272 Tel: 408-733-7604 Fax: 408-733-7603

Circle No. 1 on Readers' Service Card

♦ See www.aaas.org
beginning 29 March.

MARKETPLACE

PeptidoGenic

The Peptide Engineering Specialist
E-mail: pkim@cnet.com
Fax: 510-371-1156
Voice: 800-597-7873
510-371-1070

Custom Peptide

\$20/residue/crude/5days

No Setup Fee,
Free HPLC &
IonSpray Mass.

Circle No. 58 on Readers' Service Card

Custom DNA from \$1.00/base



ransom hill bioscience, inc.

no setup, no minimum, no baloney!
internet: visla@ix.netcom.com fax: (800) 597-8509

Circle No. 9 on Readers' Service Card

XX IDT®
INTEGRATED DNA TECHNOLOGIES, INC.

Custom DNA Synthesis
\$1.50 / Base
200 nmole Scale
No Set-up Fee
Column Purified
24 Hour Shipping
Q.C. by PAGE on Every Oligo

Call today, join over **250**
institutions already on our
discount programs!

E-mail: orders@idtdna.com
Web Site: <http://www.idtdna.com>

Fax: 1-319-645-2921
Phone: 1-800-328-2661

♦ Circle No. 10 on Readers' Service Card

CUSTOM DNA SYNTHESIS

PURE & SIMPLE

- Superb Technical Support
- Impeccable Quality
- World's Fastest Service
- Cap Gel & TOF Mass Spec

* Some restrictions apply. Please call for details.

MIDLAND
STILL THE UNDISPUTED #1 CUSTOM DNA SYNTHESIS SERVICE

THE MIDLAND CERTIFIED REAGENT COMPANY
Phone 1-800-247-8766 FAX 915-694-2387
email mcrc@oligos.com

Circle No. 14 on Readers' Service Card

FLUORESCENT MICROSPHERES

Distinctive colors for biology, diagnostics, physiology, aerosol, and filter testing applications.

- Diameters from 0.025 μm to 10 μm in red, green, blue fluorescence
- Assorted surface properties for protein coupling
- Free catalog available

Call 800-334-3883 Toll Free or in Calif. 415-424-1177. FAX 415-424-1158

Duke Scientific Corporation
P.O. BOX 50005
2463 FABER PLACE
PALO ALTO, CA 94303

Circle No. 4 on Readers' Service Card

MARKETPLACE

CUSTOM DNA

\$1.19 base

200 nmol scale (10 - 20 ODU)
No set-up charges • Deprotected & Desalted
A 20-mer is only \$24! • 24 - 48 hours shipping

CUSTOM PEPTIDES

\$20 residue

15 - 40 mg • Free mass spec & HPLC tracing
No set-up charges • Desalted • 5 - 8 days shipping
Antipeptide antibodies available



1-800-227-0627
FAX 214-420-0442

BIO-SYNTHESIS
INCORPORATED

E-Mail: biosyn@onramp.net
Internet: <http://www.biosyn.com>

FDA#001235 • NIH BPA#263-00038171-04-BPA/G

Circle No. 17 on Readers' Service Card

ONLY DNA

No frills, just good DNA at very low prices

69¢ per base, **NO** setup charge

Ultra-small scale synthesis gives 1 A₂₆₀ unit
Some restrictions apply; Call for details
1-800-359-5794 e-mail onlydna@oligos.com

Circle No. 15 on Readers' Service Card

TITERFLUOR™

FLUORESCENCE EIA ANSWERS
A complete reagent, instrument & data analysis system.

- Up to 100X increased sensitivity
- Superior expanded dynamic range
- Novel non-isotopic format

New TiterFluor Kits Measure:
Cytokines • Cyclic Nucleotides • Eicosanoids

Tel: 1.800.899.5858 x 7845
Fax: 1.508.383.7885 PerSeptive Biosystems

♦ Circle No. 52 on Readers' Service Card

SURGICAL INSTRUMENTS!

SEND FOR OUR **FREE CATALOG**

1-800-645-3569 Ext. 246

assi ACCURATE SURGICAL & SCIENTIFIC INSTRUMENTS
300 SHAMES DRIVE, WESTBURY, NY 11590 • FAX: 516-997-4948

Circle No. 25 on Readers' Service Card

Custom DNA
Purified & Delivered in 48 Hours

\$1.20 per base • Purified
<http://www.resgen.com>

Research Genetics, Inc.
1-800-533-4363

Circle No. 12 on Readers' Service Card



**WHILE OTHER DNA SUPPLIERS PROMISE YOU THE WORLD,
OPERON ACTUALLY DELIVERS IT.**

Operon is the world's leading supplier of DNA. And we maintain that leadership by consistently delivering exactly the product you need. On time. With unsurpassed purity. Backed by an unconditional guarantee. And at an extremely competitive price.

For a brochure or to place an order, call us at 1-800-688-2248.

OPERON

WORLD'S LEADING SUPPLIER OF SYNTHETIC DNA

©1994 Operon Technologies, Inc., 1000 Atlantic Avenue, Alameda, CA 94501, USA.
Phone: (510) 865-8644 Fax: (510) 865-5255 NIHBP 263.00033233

Circle No. 45 on Readers' Service Card

Come to us for Peptides...

Express Peptides

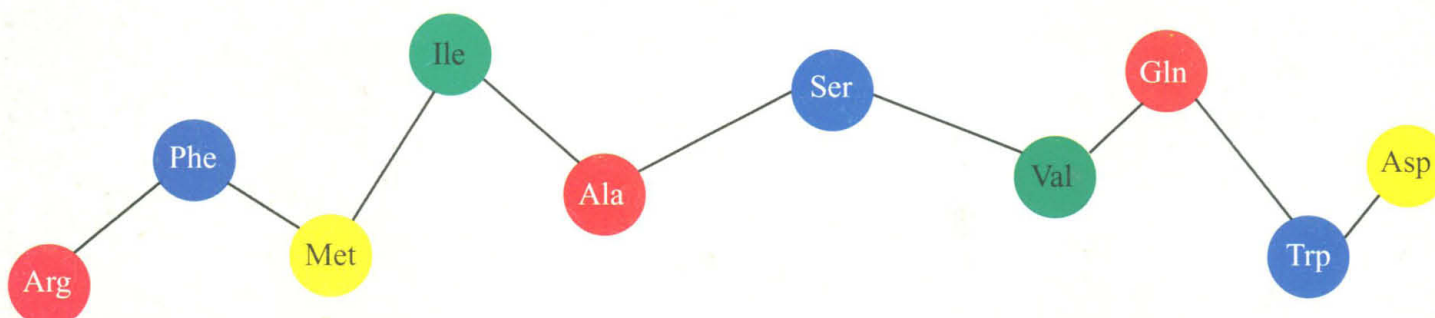
15 mg in 5 days

\$18 per residue*

No set-up charge

*10 residue minimum

Now there's no need to choose between quality, low-price, and fast delivery. With our express service you get the peptides you need in just 5 days for only \$18 per residue. You will receive at least 15 mg of each peptide you order, fully deprotected, lyophilized and packed under argon. All of this, faster than ever before.



and Antibodies!

Peptide Antibodies

Monoclonal...\$8,500

Delivered in 24 weeks

Polyclonal...\$1,195

Delivered in 16 weeks

Research Genetics is proud to provide an economical 'start-to-finish' custom peptide antibody service. Just supply us with your peptide sequence and we'll do the rest. Your peptide will be synthesized utilizing the latest FMOC solid phase methods with MAP resin technology which increases the antigenic response. When requested, first bleed serum from polyclonal antibodies is available upon collection.

Research Genetics, Inc.

2130 Memorial Parkway SW • Huntsville, AL 35801

U.S. or Canada 800-533-4363 • U.K. 0-800-89-1393 • FAX 205-536-9016

Homepage <http://www.resgen.com>

Circle No. 27 on Readers' Service Card