

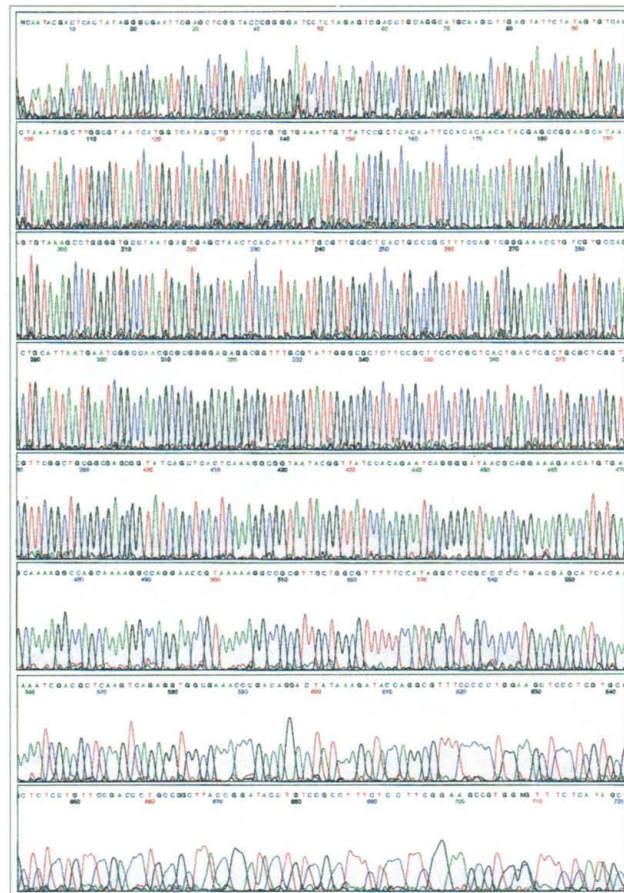
# Thermo Sequenase for the most impressive sequencing performance

The bench mark sequencing performance of even peak heights and long read lengths, synonymous with T7 Sequenase™, is now possible from cycle sequencing methods using Thermo Sequenase™.

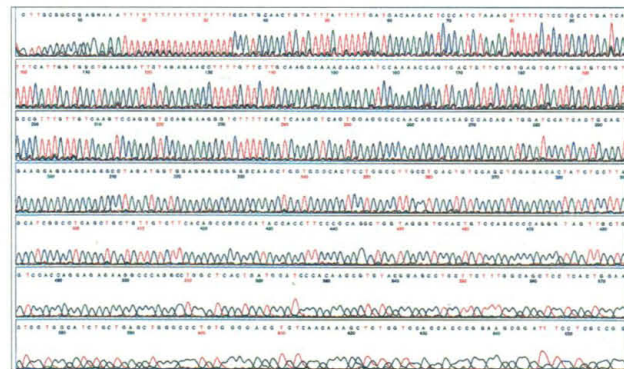
A novel thermostable polymerase which uses dideoxynucleotides as readily as deoxynucleotides, Thermo Sequenase\* has been developed by Amersham™ based on pioneering work by Tabor and Richardson<sup>(1)</sup> and licensed exclusively from Harvard Medical School.

Thermo Sequenase kits optimised for fluorescent sequencing using dye primer and dye terminator chemistries are now available, including kits for the™Vistra DNA automated sequencing instrumentation range.

But don't just take our word for it - one look at the results from leading researchers and you will be impressed!



Cycle sequencing of pGEM plasmid using Thermo Sequenase fluorescent labelled primer cycle sequencing kit.  
(Data supplied by an independent research laboratory)



Sequence of a plasmid containing a human brain cDNA using Thermo Sequenase in dye primer cycle sequencing.  
(Data supplied by Génethon, 1 rue de l'International, 91002, Evry, France)

## THERMO Sequenase

1. *Proc. Natl. Acad. Sci., USA*, 92(14), pp.6339-6343, (1995).

Amersham International plc  
Amersham Place, Little Chalfont,  
Buckinghamshire, HP7 9NA England.  
Tel: 01494 544000  
Fax: 01494 542929

For further information  
contact your local office.

Australia  
Sydney (02) 894-5188  
Belgium  
Gent (092) 41-52-70  
Canada  
Oakville (905) 847-1166  
Denmark  
Birkerød (45) 82-02-22  
Far East  
Hong Kong (852) 802-1288

France  
Les Ulis (1) 69-1828-00  
Germany  
Braunschweig (05307) 930-0  
Iberica  
Madrid (91) 304-42-00  
Italy  
Milan (02) 508 8220  
Japan  
Tokyo (03) 38-16-6161  
Nederland  
's-Hertogenbosch (073) 41-83-35

Norway  
Gjertum (67) 54-63-18  
Sweden  
Solna (08) 734-08 00  
Switzerland  
Zürich (01) 3157050  
UK Sales  
Little Chalfont 0800 515313  
USA Arlington Heights  
IL 800 323-9750  
Export Office  
Little Chalfont (0) 1494 544100

\* Patent pending

All goods and services are sold subject to the terms and conditions of sale of the company within the Amersham Group which supplies them. A copy of these terms and conditions is available on request. Amersham, Sequenase, Thermo Sequenase and Vistra DNA are trademarks of Amersham International plc. © Amersham International plc 1995. All rights reserved.

**Amersham LIFE SCIENCE**

Circle No. 82 on Readers' Service Card

MTSA



# PRODUCTS & MATERIALS

## Centrifugal Evaporator

The DyNA Vap Centrifugal Evaporator is designed for rapid drying and concentration of small samples in the molecular biology laboratory. It is a fully integrated system that combines a temperature-controlled centrifugal evaporation unit and a vacuum pump in a single, self-contained unit. It requires less than 12.5 inches of bench space. A seamless,



stainless steel, corrosion-resistant evaporation chamber protects the internal workings from moisture and volatile organics. The large capacity, dual format rotor has a capacity for 48 ml by 0.5 ml tubes and 24 ml by 1.5 ml tubes simultaneously. **National Labnet. Circle 140.**

## Digital Microscopy Scanning

The Micro Lumina is a scanning digital color camera that captures images 36 bits deep at up to 2700 by 3400 pixels in a single pass. Priced like a video camera, the Micro Lumina produces images at approximately 30 times the resolution of video, allowing enlargement of macro and microscopic images without pixelization. The device gives fast, photographic images for imaging cells for enumeration and quantification, tracing neurons, electronically archiving histological sections, produc-

ing detailed images for failure analysis, and capturing other complex information for accurate analysis and archiving. It works directly with a personal computer without the need for a framegrabber. **Electron Microscopy Sciences. Circle 141.**

## RNA Isolation Kit

The Total RNA Isolation Kit isolates pure, intact RNA from tissue and cells in less than 90 min. The kit makes use of thiocyanate and  $\beta$ -mercaptoethanol to disrupt cellular structure while inactivating ribonuclease released from membrane-bound organelles. Total RNA is isolated, free from protein and DNA, with phenol:chloroform:isoamyl alcohol. The purified RNA is ready for use in downstream applications such as mRNA isolation, Northern blotting, and reverse-transcriptase polymerase chain reaction. **CPG. Circle 142.**

## Plasmid DNA Kit for Automated Sequencing

The S.N.A.P. Miniprep Kit is designed for use in automated sequencing. The kit features a unique plasmid-binding resin that allows the user to purify high-quality plasmid DNA in less than 30 min. Plasmid DNA is eluted from the resin at the optimal concentration recommended in automated sequencing protocols. The plasmid DNA is also suitable for other molecular biology applications, including mammalian transfection. **Invitrogen. Circle 143.**

## Nitric Oxide Assay Kit

In aqueous solution, nitric oxide rapidly degrades to nitrate and nitrite. Hence, for accurate assessment of nitric oxide, one must monitor both nitrate and nitrite. This assay makes use of immunoaffinity-purified nitrate reductase to convert nitrate to nitrite, which can then be followed by spectrophotometric quantitation of nitrite using Greiss reagent.

Newly offered instrumentation, apparatus, and laboratory materials of interest to researchers in all disciplines in academic, industrial, and government organizations are featured in this space. Emphasis is given to purpose, chief characteristics, and availability of products and materials. Endorsement by *Science* or AAAS is not implied. Additional information may be obtained from the manufacturers or suppliers named by circling the appropriate number on the Readers' Service Card and placing it in a mailbox. Postage is free.

## Direct Pathways to Immunological Research

### Taconic Transgenic Models

Transgenic technology offers gene-specific pathways to researchers for *in vivo* immunological research.

**ptp Knockout Mice**  
(Perforin Deficient)  
severe depletion of  
NK cell function

**$\beta$ 2m Knockout Mice**  
(MHC Class I Deficient)  
deficient in CD4<sup>+</sup> T cells

**A $\beta$  Knockout Mice**  
(MHC Class II Deficient)  
severe depletion of  
CD4<sup>+</sup> T cells

**Rag-2 Knockout Mice**  
(Mature T and B  
Cell Deficient)  
unable to initiate  
V(D)J rearrangement

### TO ORDER

or for technical information:  
e-mail: [TaconicSer@aol.com](mailto:TaconicSer@aol.com)  
Tel: (518) 537-6208  
Fax: (518) 537-7287



**Taconic**

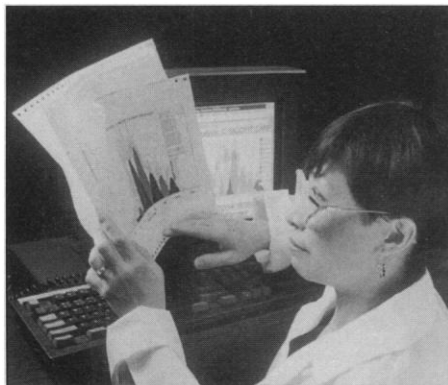
Transgenic Models and Services Division

273 Hover Avenue  
Germantown, NY 12526

The method allows measurement of the total nitric oxide produced in in vitro experimental systems. **Oxford Biomedical Research. Circle 144.**

### Cell Proliferation Assay

A new assay allows researchers to simultaneously measure cell proliferation and study phenotypically distinct subsets of a mixed-



cell population using flow cytometry. The Cell Census Plus System can be used on all cell types without affecting the cell's biological or proliferative function and requires

no radioactive materials. The system makes use of an aliphatic reporter molecule (PKH26) that acts as a fluorescent membrane dye, and a patented diluent that allows the dye to incorporate strongly and evenly into the cell's membranes. The system can also be used with immunogating techniques to measure proliferation of a select subset of cells within the whole proliferating cell culture. **Sigma Chemical Co. Circle 145.**

### Literature

*ABI 172 Microbore HPLC System* is a brochure on a high-performance liquid chromatography (HPLC) system optimized for micropurification and precise automated analysis. The brochure describes how the system is suited for micropurification of proteins and peptides, peptide mapping, analysis of pharmaceutical and pharmacokinetic samples, and liquid chromatography/mass spectrometry applications. **Perkin-Elmer. Circle 146.**

*LC Series Stirred Reaction Vessels* describes a series of reactors for such applications as catalytic reduction, polymerization, hydrogenation, amination, oxidation, isomerization, dehydrogenation, and organic synthesis. The

vessels are available in volumes from 300 ml to 8000 ml and rated for use at up to 2000 psi (138 Bar) at 350°C. **Pressure Products Industries. Circle 147.**

*Oligo Primer Design and Analysis Software for Mac Demonstration Guide* describes version 5.0 of this program. The new version provides 25 new features to improve its performance in the selection and management of optimal oligonucleotides for polymerase chain reaction, sequencing, hybridization, and other applications. An interactive demonstration disk is also available. **National Biosciences Inc. Circle 148.**

*ATCC Animal Virus Reference Guide* contains 256 pages with detailed descriptions of more than 1300 animal viruses, animal virus antisera, chlamydiae, rickettsiae, and cloned viral genomes. Product descriptions include strain designation, isolation source, host of choice, host range, and depositor information. **American Type Culture Collection. Circle 149.**

*Filtration* is a product guide to brand-name syringe filters, vacuum filtration systems, filter membranes, glass fiber filters, extraction thimbles, and Buchner funnels. **Sigma-Aldrich Techware. Circle 150.**

# Vibratome® Beats The Others Cold.

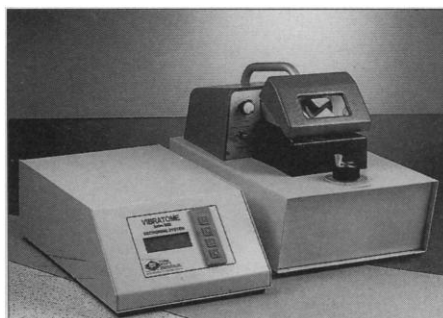
Want to avoid cryoprotection, freezing and thawing artifacts, and unnecessary expense?

Consider using the  
**VIBRATOME**

Fresh/Fresh Fixed Tissue

Sectioning System. Maintain the biological viability of tissue. No freezing or embedding to change the characteristics of specimens. The Vibratome is available with either manual operation or with built-in automation and/or refrigeration.

For *fresh* sections,  
put your cryostat in cold storage.



TECHNICAL  
PRODUCTS  
INTERNATIONAL, INC.

5918 EVERGREEN / ST. LOUIS, MISSOURI 63134 U.S.A.  
(314) 522-8671 (800) 729-4421 FAX (314) 522-6360

Experimental Biology '96  
Booth 639

## DNA Sequencing

Double-Stranded  
Single-Stranded  
Highest Quality

## Custom Oligo Synthesis

\$1.50 Base / No Setup

Fast Turn-around

Cost Effective

**Call for Prices**

## Molecular Biology Into the 21st. Century

South West Scientific Resources  
5300 Sequoia NW, Suite 150  
Albuquerque, NM 87120

Phone: **(800)343-8998**

Fax: (505)831-2635

**<http://www.ssr4dna.com>**

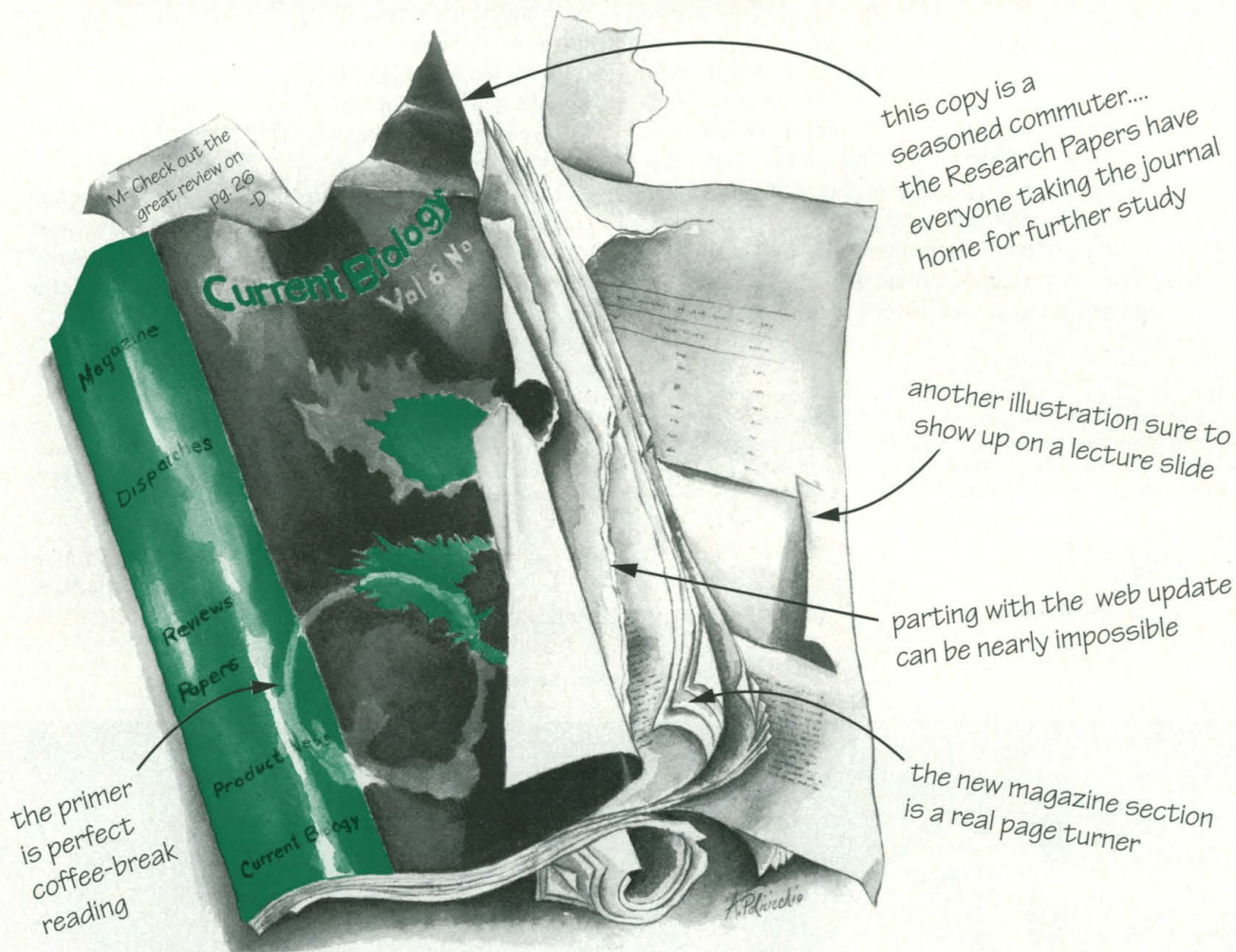
Circle No. 13 on Readers' Service Card

See: [www.aas.org](http://www.aas.org) on 26 April

Circle No. 7 on Readers' Service Card



# Current Biology Never Looked Better



**(If you don't know why, you don't have your own copy.)**

**E**veryone needs to read Current Biology. So it's no wonder that this tattered issue is a typical sight. The cutting-edge research, absorbing dispatches, thorough reviews and the new magazine section make it an indispensable journal. Don't wait for the next issue of Current Biology to make the rounds before showing up at your in-box. It's time to get your own copy ... while it's current ... and intact.

Send us your name and address and we'll send you the latest issue free. (Plus a special offer you won't want to miss.)

**Send my sample copy and special offer to:**

name \_\_\_\_\_  
institution \_\_\_\_\_  
address \_\_\_\_\_  
city \_\_\_\_\_  
state \_\_\_\_\_ zip/post code \_\_\_\_\_  
country \_\_\_\_\_ telephone \_\_\_\_\_

CBSC1

**Fax, telephone, or e-mail us at:**

**North, South America:**

Telephone (215) 574-2206

Toll-Free (800) 427-1796 (US/Canada)

Fax (215) 574-2225 E-Mail: [info\\_cb@phl.cursci.com](mailto:info_cb@phl.cursci.com)

**UK & Rest of World:**

Telephone +44 (0) 171 636 6737

Freephone 0800 212530

Fax +44 (0) 171 636 6911 E-Mail: [info@cursci.co.uk](mailto:info@cursci.co.uk)

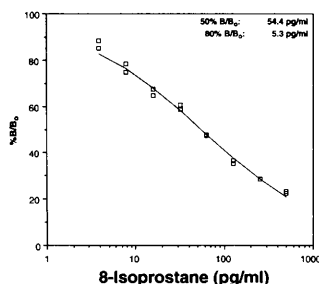
**N & S America Mailing Address:**  
Current Biology LTD., 400 Market St., Suite 700  
Philadelphia, PA 19106-9201

❖ Visit us at Analytica  
Hall 07, Stand B40

**UK & Rest of World Mailing Address:**  
Current Biology LTD., Middlesex House  
34-42 Cleveland Street, London W1P 6LB UK



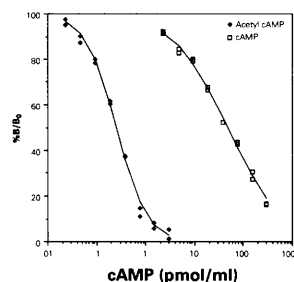
## 8-isoprostane Measurement



8-isoprostane is a non-enzymatically derived eicosanoid produced by the random oxidation of tissue phospholipids by oxygen radicals. It is a potent pulmonary and renal vasoconstrictor and has

been implicated as a causative mediator of hepatorenal syndrome and pulmonary oxygen toxicity. In addition, it was proposed that 8-isoprostane acts as a marker of antioxidant deficiency and oxidative stress. Levels of this isoprostane were shown to be elevated in heavy smokers.

## cAMP EIA



Cyclic Adenosine Monophosphate (cAMP) is a key intracellular second messenger molecule. It functions in signal transduction as a bridge to link the activation of cell surface membrane receptors to the protein kinases

and other more distal components of the transduction chain that lead ultimately to changes in gene expression. At the functional level, the relative abundance of cAMP within a given cell type can act as a surrogate marker for the activation of that cell by agonists acting through G-protein coupled 7-transmembrane domain receptors.

*Convenient measurement of these compounds is possible with the use of Cayman Chemical EIA kits. Our competitive immunoassays utilize an acetylcholinesterase tracer for maximum sensitivity and versatility. All necessary reagents for performing the enzyme immunoassay, along with detailed sample preparation instructions, are included with each kit. Cayman Chemical also offers an EIA for cGMP as well as a wide range of other analytes including prostaglandins, interleukins, steroids, leukotrienes, and endothelin.*



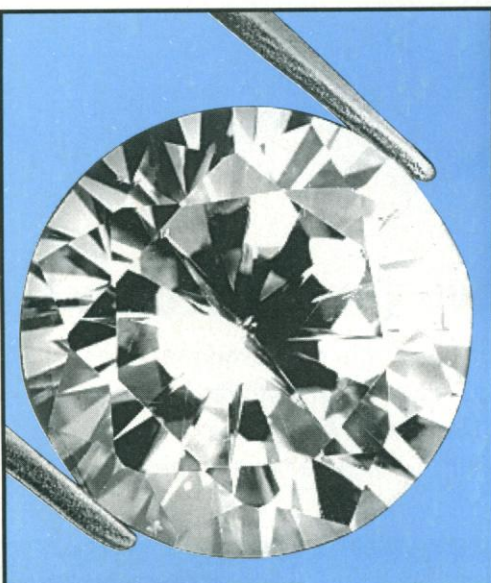
See us at EB '96, Booths 1340, 1342

Cayman@CaymanChem.com

690 KMS Place  
Ann Arbor, MI 48108

(800) 364-9897 • Fax: (313) 662-6896

Circle No. 64 on Readers' Service Card



# Pure substance.

It's clear to see why researchers around the world value **CURRENT CONTENTS®** so highly.

Each week, it provides more information than you could otherwise uncover about current developments in your field. Detailed bibliographic data...complete author abstracts... and more. Useful data carefully extracted from the most scholarly journals in the world.

And because ISI® indexes that information so thoroughly, you can retrieve it easily, and access the full text through The Genuine Article®. After all, ISI has been making things easy for researchers for nearly forty years. By knowing what you value...and giving you what you need.

For a free trial  
Call:  
215.386.0100

Email:  
isiorde@isinet.com

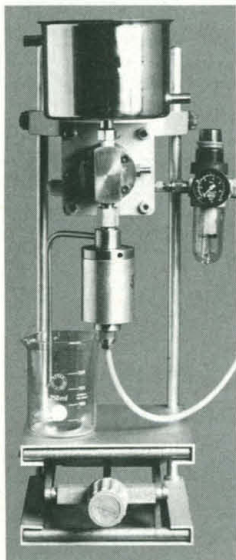
Web:  
<http://www.isinet.com>

**CURRENT  
CONTENTS®**  
Now available  
for Windows®

A wealth of  
valuable  
information.



## DISRUPT VIRTUALLY ANY TYPE OF CELL



### With the Unique Stansted Cell Disrupter

Yeast, bacteria, fungi, algae, mammalian cells, etc. are disrupted in a continuous operation for the intact extraction of all types of cellular components.

The Stansted cell disrupter provides disruption from 0 to 100% breakage which is reproducible within 15% from batch to batch of equivalent material. Batch sizes can vary from 1/2 ml. to whatever is needed.

All parts in contact with cellular material can be sterilized, and no external energy is introduced during this usually single pass disruption process. Disruption pressures are obtainable up to 40,000 psi in either motor driven or air operated units. Large scale equipment is also available.

Distributed exclusively in North America by:

### ENERGY SERVICE COMPANY

B200 Walker Building, 734 15th St., NW, Washington D.C. 20005  
Telephone: (202) 737-6018

Circle No. 42 on Readers' Service Card

## Measuring Proteins, Peptides or Nucleic Acids?

## Simplify Your Science.

### Our Sub-Attomole Labeling Kit Lets You Directly Label & Quantitate <10<sup>-18</sup> Moles in Less Than 3 Hours!

Pre-Measured Chemiluminescent Acridinium Ester Ready to Covalently Attach to Lysine or other Primary Amines

#### PLUS

All the Reagents, Buffers and a Column For Isolation

Enough Material to Label up to 5 mg of IgG

Call for Details on Catalog #90701

### Assay

designs, inc.

Tel: (800) 833-8651 or (313) 668-6113 Fax: (313) 668-2793  
e-mail: assaydes@pipeline.com

WORLDWIDE DISTRIBUTORS: Austria, Germany & Switzerland: Biotrend, Tel: 0221-497034, Fax: 0221-496341. Rest of Europe: Cascade Biochem. Tel: 44-1734-312019, Fax: 44-1734-753294. Japan: Funakoshi Co. Ltd., Tel: 03-5684-1616, Fax: 03-5684-1634. Israel, Egypt & Jordan: Ornat, Tel: 972-8-406530, Fax: 972-8-406498. W. Canada: Precision Biochemicals, Tel: (604) 983-9953, Fax: (604) 983-9023.

Circle No. 79 on Readers' Service Card



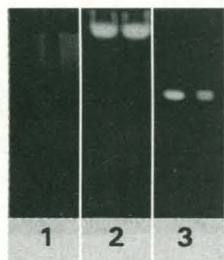
MOLECULAR RESEARCH CENTER, INC. presents

# SMART SOLUTIONS

The most reliable and cost-effective reagents for DNA and RNA isolations. Using separation technology based on the recognition of target molecules by a liquid phase, these innovative reagents outperform traditional DNA and RNA isolation methods. No enzymatic treatments! No columns! No prolonged protocols!

### DNAzol™

a new standard of simplicity and effectiveness in the isolation of high quality genomic DNA, developed by P. Chomczynski.



- Requires only 10 - 30 minutes
- Effective with cells, tissue and liquid samples, including blood.
- No phenol or other toxic agents
- Isolated DNA ② is ready for Southern blotting, restriction analysis ①, PCR ③, molecular cloning and other applications.

### TRI REAGENT®

the most advanced version of the single-step method of RNA isolation.



- Isolates high quality total RNA in less than one hour
- Can be used to simultaneously isolate RNA, DNA and proteins
- Effective with cells, tissue and liquid samples, including blood.
- Isolated RNA ⑤ is ready for Northern blotting ④, RT-PCR ⑥, and other applications

For information or to place an order from USA, Canada and countries not listed below call 1-800 462-9868, 513-841-0900 or Fax 513-841-0080.

# MRC

MOLECULAR RESEARCH CENTER, INC  
5645 Montgomery Rd. Cincinnati, OH 45212

AUSTRIA: Biomedica Gesellschaft 43-222-292-3527; AUSTRALIA: A.G.P. Technologies Pty Ltd 1-800-631-093; FRANCE: Euromedex 33-88-180722; GERMANY: BioTech Trade & Service GmbH 49-6227-51308 WAK-Chemie Medical 496-172-22073; HONG KONG: Onwon Trading Ltd. 852-275-77569; INDIA: Lab Care Products 91-11-6425156; ISRAEL: Tal Ron 972-8-472563; ITALY: Bio-Optica Milano SpA 39-2-2640274; JAPAN: Cosmo Bio 81-3-5632-9630; KOREA: Choong Il Chemical, Inc. 822-294-6411; MALAYSIA: Far East Scientific 603-718-7457; SWITZERLAND: Lucerna Chem Ag 41-41-369636; TAIWAN: Pan Asia Biomedical Technology, Inc. 886-2-7418169; UNITED KINGDOM: Molecular Research Centre Oxford 44-993-706736.

Circle No. 23 on Readers' Service Card  
See Electronic Marketplace: [www.aaas.org](http://www.aaas.org)





## HUMAN FRONTIER SCIENCE PROGRAM (HFSP)

Bureaux Europe, 20 place des Halles, 67080 STRASBOURG Cedex, FRANCE

Tel: (33) 88 21 51 21 Fax: (33) 88 32 88 97

E-mail: [info@hfsp.c-strasbourg.fr](mailto:info@hfsp.c-strasbourg.fr)

### CALL FOR APPLICATIONS FOR 1997 AWARD YEAR (Deadline for receipt of applications is 1 September 1996)

The aim of the Human Frontier Science Program (HFSP) is to promote, through international collaboration, basic research to elucidate the complex mechanisms of living organisms, including man. Applications are solicited for the support of research grants, fellowships and workshops in the areas set out below

#### RESEARCH AREAS OF THE HFSP

##### Basic Research for the Elucidation of

##### (B) Brain Functions

1. Elementary Processes
2. Perception & Cognition
3. Movement & Behavior
4. Memory & Learning
5. Language & Thinking

##### (M) Biological Functions through Molecular Level Approaches

1. Expression of Genetic Information
2. Morphogenesis
3. Molecular Recognition & Responses
4. Energy Conversion

#### TYPES OF SUPPORT

The program will only support research that **transcends national boundaries**. Thus, **research grants** will be awarded for programs that involve collaboration between teams in different countries; **fellowships** are available to young post-doctoral scientists who wish to work in a different country; and support will be provided for international **workshops**.

##### RESEARCH GRANTS

Grants for basic research (*up to 3 years*) carried out jointly by research teams in different countries. The principal applicant must be from one of the eligible countries\*.

##### FELLOWSHIPS

**Long Term** (*1- 2 years*) and **Short-Term** (*up to 3 months*) Fellowships for researchers early in their careers and from the eligible countries\* who wish to do post-doctoral research in foreign countries, or for young researchers from outside the eligible countries who wish to do research in one of the eligible countries\*.

##### WORKSHOPS

Grants for international workshops organized by researchers from the eligible countries.

\* **Current eligible countries are** Austria, Belgium, Canada, Denmark, Finland, France, Germany, Greece, Italy, Japan, Luxembourg, the Netherlands, Portugal, the Republic of Ireland, Spain, Sweden, Switzerland, the UK and the USA .

#### RESEARCH GRANTS AND LONG-TERM FELLOWSHIPS : APPLICATION DEADLINE IS 1 SEPTEMBER 1996

(awards to be announced in April 1997)

Applications for **Short-Term Fellowships** and **Workshops** can be submitted **throughout the year**

**Guidebooks and application forms** will be available in mid-April 1996 and may be obtained upon written request by addressing the form below to the HFSP or by E-mail. Applications using previous year's forms are not accepted. They can also be retrieved through Internet: on our anonymous FTP server at [ftp.hfsp.c-strasbourg.fr](ftp://ftp.hfsp.c-strasbourg.fr) [directory:/pub/HFSP] or at Netscape or other WWW browser at <ftp://ftp.hfsp.c-strasbourg.fr/pub/HFSP>.

Surname

First name

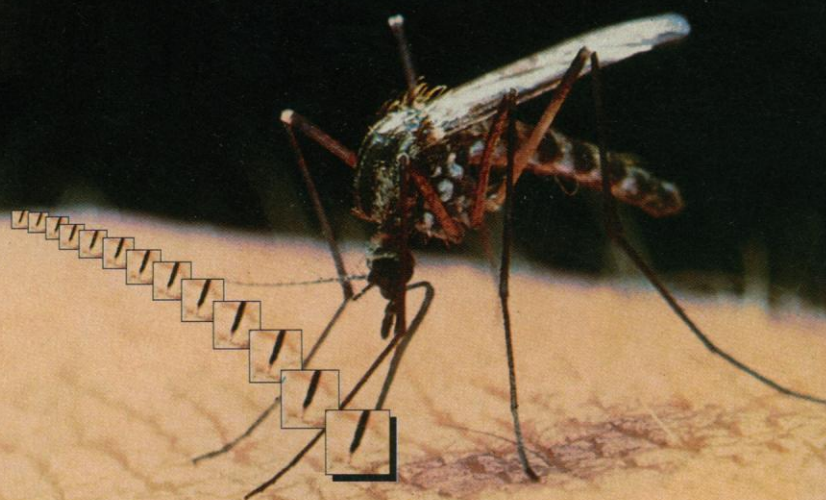
Institution

Postal Address

Circle No. 63 on Readers' Service Card

- ☐ **Research Grant**
- ☐ **Long-Term Fellowship**
- ☐ **Short-Term Fellowship**
- ☐ **Workshop**  
(please check the relevant box(es))

# Whatever your target...



## Be sure to get the native DNA!

### Proteinase K— DNA grade

... ready-to-use solution of the highest purity available ... free of contaminating nucleic acids ... packed under laminar flow in an aerosol free environment ... the next generation of quality!

For further information, please contact us:

Merck KGaA, Darmstadt/Germany  
Phone (+49) 6151-72 75 93  
Fax: (+49) 6151-72 68 59

Circle No. 68 on Readers' Service Card

# T's for Two!

**Science Roll-up Sleeve T-shirt, Style #1501**

*NEW SIZES Available: Adult Small & Baby*

**Features:**

- Super heavyweight 100% cotton jersey knit
- Available in medium, large and extra large sizes
- Ash shirt with blue trim roll-up sleeves
- Crew neck & hemmed bottom
- Oversized, relaxed fit
- Made in the USA
- Full front imprint of SCIENCE logo in blue

**\$18.00**

AAAS Member Price. Includes shipping in U.S.  
Non-member price: \$20

**Science Pictogram T-shirt, Style #1201**

**Features:**

- White Menas Beefy-T, super heavy-weight 100% cotton jersey knit
- Available in medium, large, extra large sizes; child's size available
- Crew neck & hemmed bottom
- Slightly oversized fit
- Made in the USA
- Full front and left sleeve imprint in blue

**\$15.00**

AAAS Member Price. Includes shipping in U.S.  
Non-member price: \$16.50

**Special Offer: Order two or more T-shirts and receive a 10% discount!**

### Its easy to order!

Call (202) 326-6526, or fax (202) 682-0816  
or mail your order to: SCIENCE Tee-Shirt  
1333 H Street, NW / Room 839  
Washington, DC 20005 USA

## SCIENCE

**Yes!** I want to show my support for SCIENCE. Please send me the SCIENCE T-shirts I've checked off below. I have enclosed a check for the amount of the shirts (plus shipping charges for non-US orders). I understand my order is refundable if I am not completely satisfied.

### Shipping Address *(please print)*

Name \_\_\_\_\_

Address \_\_\_\_\_

City, State/Province, Country, Postal Code \_\_\_\_\_

### Telephone and Fax

Please allow 4 weeks for delivery inside the US. Outside the US please allow 6 weeks for delivery. Prices and shipping charges subject to change without notice. Shirts returned must be in salable condition. Wash - D.C. residents please add sales tax.

### Payment Information

☐ US dollar check ☐ Visa ☐ MasterCard ☐ AmEx  
Important: All payments must be made in US dollars. \$25 minimum order for all credit card orders. Make check payable to AAAS Science Publications, Inc.

Credit card number \_\_\_\_\_ Expiration date \_\_\_\_\_

Signature \_\_\_\_\_

AAAS Membership No. \_\_\_\_\_

QTY	SIZE	STYLE NO.	DESCRIPTION	PRICE

Discount: Less 10% for two or more T-shirts. \_\_\_\_\_

Subtotal \_\_\_\_\_

Outside the US: Add \$3.50 per shirt/air delivery. \_\_\_\_\_

**Total Enclosed** \_\_\_\_\_



# PALL BIOSUPPORT COMES THROUGH FOR YOU

SEPARATIONS FOR CRITICAL ANALYSES

THERE IS NO MARGIN FOR ERROR IN SEPARATIONS FOR CRITICAL ANALYSES. AS THE GLOBAL FILTRATION LEADER, PALL'S CAPABILITIES ARE WELL DOCUMENTED FOR OPTIMIZING ACCURACY, SENSITIVITY, CONSISTENCY, EASE OF USE AND REPRODUCIBILITY OF RESULTS — IN APPLICATIONS FROM R&D TO CLINICAL TO COMMERCIAL, IN FIELDS FROM MOLECULAR BIOLOGY TO IMMUNO-DIAGNOSTICS TO ENVIRONMENTAL TESTING.

WHERE THERE IS NO MARGIN FOR ERROR IN CRITICAL BIOLOGICAL ANALYSES, THERE IS AN APPLICATION FOR PALL MEMBRANES AND ASSISTANCE. RELY ON PALL RESOURCES FOR UNPARALLELED CUSTOMER SUPPORT, INCLUDING WORLDWIDE APPLICATION ASSISTANCE, TECHNICAL EXPERTISE AND PRODUCT DEVELOPMENT CAPABILITIES. WE'LL COME THROUGH FOR YOU.



PALL BIOSUPPORT PRODUCTS  
INCLUDE MEDIA FOR:

- BLOOD SEPARATION
- HYDROPHOBIC AND OLEOPHOBIC VENTS
- LATERAL AND FLOW-THROUGH DIAGNOSTIC ASSAYS
- DNA DETECTION
- PROTEIN IMMOBILIZATION
- SAMPLE PREPARATION



BIO SUPPORT DIVISION

**FOR IMMEDIATE APPLICATION ASSISTANCE: 1-800-289-PALL**

*PALL CORPORATION BIOSUPPORT DIVISION*

25 HARBOR PARK DRIVE, PORT WASHINGTON, NEW YORK 11050 TEL: 516-484-3600 FAX: 516-484-6129  
custsvc@pall.com

*BIO SUPPORT GROUP NIHON PALL LTD.*

1-5-1 NISHI GOTANDA, SHINAGAWA-KU, TOKYO 141 JAPAN TEL: 011-81-33495-8843 FAX: 011-81-33495-8367

*PALL BIOSUPPORT*

EUROPA HOUSE, HAVANT STREET, PORTSMOUTH, PO1 3PD UNITED KINGDOM TEL: 011-441-705-302304 FAX: 011-441-705-302499





# PCR-Quality DNA from Whole Blood

## IsoCode™ Stix PCR Template Preparation Dipsticks

Introducing IsoCode Stix, a revolutionary new device for fast isolation of DNA template from blood samples — with exceptionally reproducible results.

The IsoCode Stix dipstick format

### Collect

facilitates the easy collection of blood samples, even at remote locations. A write-on identification feature guarantees sample traceability.

Using IsoCode Stix, researchers can

### Elute

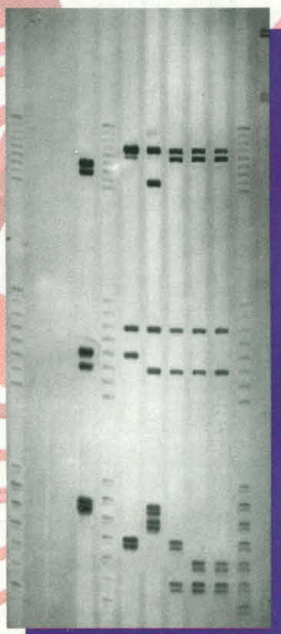
isolate DNA for PCR with a simple water extraction. As the DNA is eluted, PCR inhibitors such as hemoglobin remain on the matrix, ensuring consistent results.

IsoCode Stix are stored at ambient

### Store

temperatures, eliminating the need for refrigeration. This stability simplifies archiving and the mailing of blood samples.

For your FREE SAMPLE of IsoCode Stix, call the S&S Technical Service Department today.



Multiplex STR analysis of human genomic DNAs isolated from dried blood spots on an IsoCode™ device.

Call: 1-800-245-4024 ■ 8 am – 8 pm EST  
Outside U.S. & Canada fax: 49-5561-791536

**Schleicher & Schuell**

United States: Keene, NH, USA 03431 • Tel 800/245-4024 • 603/352-3810  
Germany: P.O. Box 4, D-37582 Dassel, Germany • Tel (05561-7910)

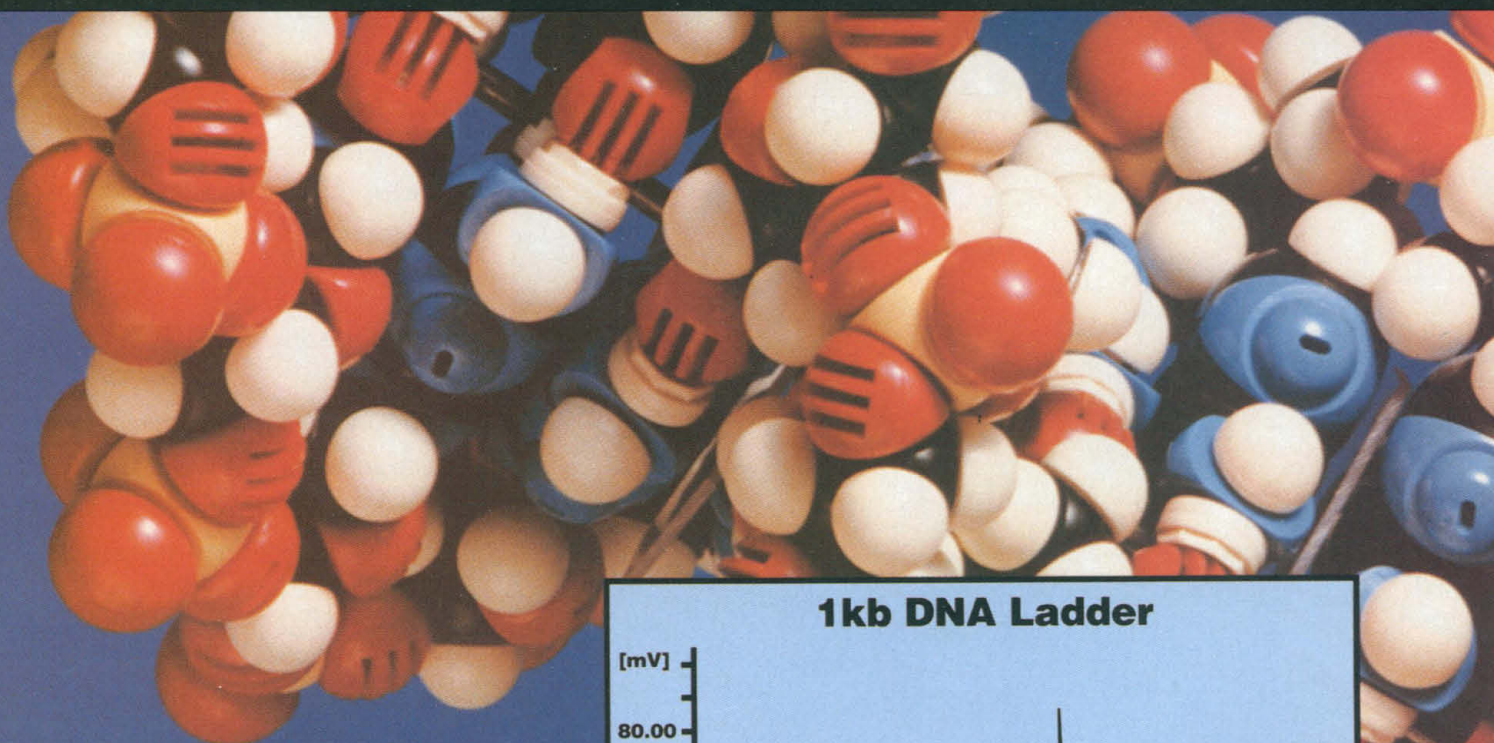
E-mail: [techserv@s-and-s.com](mailto:techserv@s-and-s.com)

Circle No. 32 on Readers' Service Card

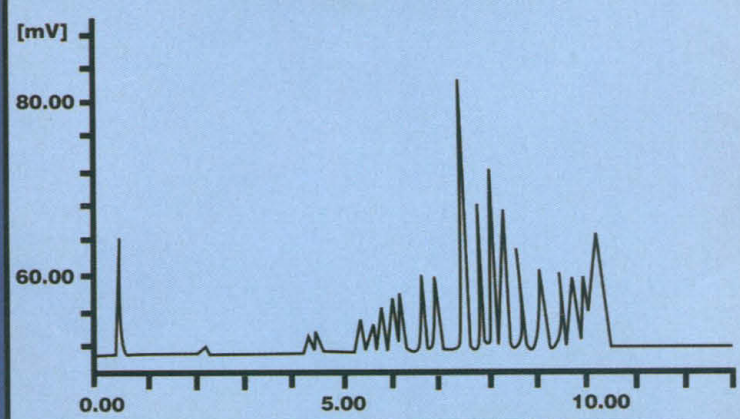


# TSKgel DNA-NPR Column

- High Resolving Power
- Small and Large DNA Fragments
- Resolution up to 8000 bp
- Easy to Use



**1kb DNA Ladder**



**NEW...**

for the most precise, quantitative measurement of plasmids, oligonucleotides, restriction fragments, PCR products and other DNA molecules. This column provides a rapid and inexpensive HPLC technique for analytical separations. For more information on this column and its applications, write: TOSHAAS, 156 Keystone Drive, Montgomeryville, PA 18936 or call 800-366-4875, Fax: 215-283-5035 E-mail: [toshaas\\_direct@rohmmaas.com](mailto:toshaas_direct@rohmmaas.com)

**TOSHAAS**



## Chemiluminescent Protein Detection with Western-Star™

Western-Star™ is highly sensitive and ideally suited for the detection of picogram quantities of proteins in membrane-based immunoassays. Western-Star incorporates a new "bright" chemiluminescent substrate, Tropix CDP-Star™, resulting in rapid film exposures of only 1 sec to 5 min.

Unlike enhanced luminol methods which have a rapidly decaying light signal, Western-Star generates a high intensity light signal that persists from hours to days, easily enabling multiple film re-exposures. The high intensity, long-lived signal also makes Western-Star ideal for direct imaging with phosphor screen and CCD cameras.

Western-Star is used with nitrocellulose, PVDF and nylon membranes. Unlike colorimetric detection, blots generated with Western-Star are easily re-probed and conveniently imaged, providing immediate hard copy records.

Tropix

Circle No. 83 on Readers' Service Card

## Quantitative PCR with Luminescence

PCR-Light™ is a rapid and sensitive system for the quantitation of PCR products. Due to the high sensitivity of chemiluminescence, detection can be performed during the exponential phase of amplification resulting in accurate quantitation of initial target over a wide concentration range. PCR-Light is particularly useful in virus and RNA quantitation assays. PCR-Light eliminates problems due to detection of primer-dimer artifacts. Results are obtained in approximately 3 hours. The assay is performed in microplate or coated bead formats.

Tropix

Circle No. 84 on Readers' Service Card

## "Brighter" Luminescent Alkaline Phosphatase Substrate - CDP-Star™

CDP-Star™ alkaline phosphatase substrate is ideal for chemiluminescent Southern and western blotting and immunoassays. CDP-Star offers up to 10-fold greater signal intensity than other alkaline phosphatase substrates, enabling shorter film exposures ranging from 1 second to 15 minutes. CDP-Star generates a long-lived signal which persists from hours to days, enabling multiple re-exposures and easy control over signal-to-noise. The high intensity, prolonged signal makes CDP-Star ideal for phosphor screen and CCD camera imaging. CDP-Star offers high sensitivity in both blotting and immunoassay applications.

Tropix

Circle No. 85 on Readers' Service Card

# Sensitive Reporter Gene Assays

with  
**LUMINESCENCE**

*Tropix rapid, ultra-sensitive chemiluminescent reporter gene assays are superior to fluorescence, colorimetric, and isotopic detection methods in sensitivity, speed, dynamic range, simplicity, and safety.*

New!

### DUAL-Light™ COMBINED Assay for Luciferase & $\beta$ -Galactosidase\*

- **Convenient** - Only a single extract aliquot assayed - more precise normalization
- **Sensitive** - Two highly sensitive luminescent assays
- **Rapid** - Completed in less than 1 hour

\*Luciferase Assay Kit available separately

### Galacto-Light Plus™ $\beta$ -Galactosidase Assay

- **Sensitive** - Up to 1000X more sensitive than CAT and color  $\beta$ -gal assays
- **Rapid** - Results in less than 25 minutes
- **Convenient** - Ideal for luciferase co-transfections

### Phospha-Light™ Secreted Placental Alkaline Phosphatase Assay

- **Sensitive** - Measures less than 10 fg of SEAP
- **Convenient** - Cell media assayed only: cells remain intact
- **Rapid** - Completed in less than 1 hour

### GUS-Light™ GUS Assay

- **Sensitive** - Up to 100X more sensitive than fluorescent assays
- **Rapid** - Results in less than 1 hour
- **Convenient** - Ideal for luciferase co-transfections

**TROPIX**

47 Wiggins Avenue, Bedford, Massachusetts 01730

TEL: 800-542-2369 or 617-271-0045

FAX: 617-275-8581 Internet Mail: Tropix@BioTechNet.com World Wide Web: <http://www.tropix.com>

**AUSTRIA:** Dipl. Ing. F. GATT 0512.58.30.17 • **BELGIUM/LUXEMBURG:** Westburg BV 0800.1.9815 • **CANADA:** BIO/CAN Scientific 800.387.8125 • **DENMARK:** AH Diagnostics 86.101055 • **FINLAND, NORWAY, SWEDEN:** Boule Diagnostics AB 46.8.608.8650 • **FRANCE:** OZYME 1.34.60.24.24 • **GERMANY, EAST GERMANY:** Boehringer Ingelheim Bioproducts Partnership 06221.502.0 • **HONG KONG:** Gene Company, Ltd. 2.896.6283 • **ISRAEL:** Gamidor, Ltd. 3.5351505 • **ITALY:** Prodotti Gianni S.p.A. 02.5097238 • **JAPAN:** Boehringer Mannheim K.K. 03.3432.3155 • **KOREA:** Seoulin Scientific Corp. 2.3461.5911 • **MALAYSIA:** Filtarite Co. 603.7351559 • **SPAIN:** Ingelheim Diagnostica y Tecnologia, S.A. 3.404.52.20 • **SWITZERLAND:** Catalys AG 01.830.70.37 • **TAIWAN:** Unimed Healthcare Inc. 02.7202215 • **THE NETHERLANDS:** Westburg BV 033.4950094 • **UK:** Cambridge BioScience 0223.316855 ©Copyright 1996 Tropix, Inc. All rights reserved.

Circle No. 86 on Readers' Service Card



# We Go To Great Lengths...

## To Give You Accurate Sequence!

### Long Reads and High Accuracy

Minimize your time and maximize your data with the longest read lengths possible. LI-COR users enjoy both long reads and high accuracy from the 4000L Long ReadIR™ DNA Sequencer. They expect 800-1100 base read lengths with at least 98.5% accuracy, and they get it! In fact, in our ongoing Long Read contest, the latest winner\* sequenced **1260 bases**, *automatically*.

Long reads are meaningless, however, without high accuracy. That's why we use high sensitivity infrared detection combined with powerful Base ImagIR™ analysis software to routinely deliver the accuracy you need.

### New Internal Labeling Strategy

Now, these long read length and high accuracy standards can be achieved with your unlabeled primers using CLS™ – our new Cycle Labeling and Sequencing protocol. CLS™ increases prime walking efficiency, giving you over 800 bases per sample. CLS™ offers the speed and ease-of-use of cycle sequencing with one protocol for plasmids, PCR and M13 templates.

\*CEPRAP, Univ. of California-Davis. 1260bp with 98.8% accuracy. Base calls were made automatically with no editing or operator intervention.



Model 4000L  
Long ReadIR™  
DNA Sequencer



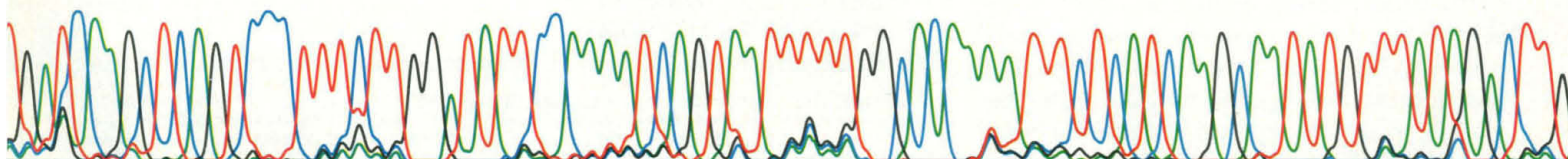
### Test the Difference!

We'll sequence your sample  
on a LI-COR infrared DNA  
sequencer, just so you can  
compare the results!

**1-800-645-4267**

<http://www.licor.com>

**LI-COR®**  
BIOTECHNOLOGY DIVISION



LI-COR, Inc. • 4308 Progressive Ave. • Lincoln, Nebraska 68504 USA • Phone: 402-467-0700 • FAX: 402-467-0819 • E-mail: [biohelp@bio.licor.com](mailto:biohelp@bio.licor.com)  
Japan: (0422) 45-5111; Germany, Austria: 08092/8289-0; Switzerland: 061/411 11 22; United Kingdom: 0181-614 1000; Spain: (3) 201 44 11; France: 1 64 46 2400;  
Netherlands: (0) 294 283119; Denmark: +45 86 10 10 55; Sweden: 08-680 0845; Norway: +47 22 50 90; Australia: (02) 417 8877; New Zealand: 9 366 3999;  
Taiwan: (02) 393-4231; Korea: (02) 547-1758

Circle No. 22 on Readers' Service Card



# SCIENCE

## DISPLAY CLASSIFIED ADVERTISEMENTS

Call for rate and deadline information on display classified advertisements.

Bethany Ritchey  
Recruitment Display Advertising  
Telephone: (202) 326-6541  
FAX: (202) 289-6742

Janis Crowley  
Recruitment Advertising Manager  
Telephone: (212) 496-7704  
FAX: (202) 289-6742

Debbie Cummings  
European Recruitment Advertising  
Telephone: +44 (0) 1223 302067  
FAX: +44 (0) 1223 576208

**MEETINGS, CONFERENCES & SYMPOSIA**  
For meeting, conference and symposium display advertisements, turn to page 303.

## LINE CLASSIFIED ADVERTISEMENTS

**How to Submit a Line Classified Ad:**  
Submit double-spaced typewritten copy. Do not include any abbreviations. SCIENCE will edit and typeset ads according to SCIENCE guidelines. Include billing information and desired publication date. Available categories: Positions Open, Meetings, Announcements, Courses and Training, Services. SCIENCE cannot provide proofs of typeset line ads. Line advertisements are not commissionable.

**Estimates:** SCIENCE will provide a cost estimate for line ads. This is an approximate cost only. Allow for variation between estimated lines and actual typeset lines and resulting final cost. Purchase orders must allow for some degree of flexibility and/or adjustment.

For line advertising deadlines, call Nancy Hicks.  
Telephone: (202) 326-6555;  
FAX: (202) 289-6742.

**Credit Cards:** SCIENCE accepts American Express, MasterCard and VISA. Discount does not apply to credit cards.

**Cancellations:** Deadline for cancellation is Tuesday, 10 days prior to issue date.

**Discounts:** A 3% cash discount is granted to all prepaid ads.

**Ads from Outside the U.S.:** A discount of \$30 will be offered to advertisers making payment in U.S. dollars by checks drawn on U.S. banks. Contact Debbie Cummings. Telephone: +44(0) 1223 302067; FAX: +44(0) 1223 576208.

**SCIENCE Global Career Network:** Unless otherwise instructed, every classified advertisement submitted for publication in SCIENCE is automatically posted on SCIENCE's on-line classified advertising service, SCIENCE Global Career Network, at no additional charge. SCIENCE Global Career Network address:

WWW: <http://www.aaas.org>  
Gopher: [gopher.aaas.org](mailto:gopher.aaas.org)

**Mail, FAX or Email materials to:**

SCIENCE Classified Advertising  
1200 New York Avenue, N.W., Room 911  
Washington, DC 20005  
FAX: 202-289-6742

Internet Email: [science\\_classifieds@aaas.org](mailto:science_classifieds@aaas.org)  
(please include your telephone number in Email)

SCIENCE reserves the right, at its discretion, to edit or decline to publish advertisements submitted to it.

## POSITIONS OPEN

### ENVIRONMENTAL BIOCHEMIST Rutgers, The State University of New Jersey New Jersey Agricultural Experiment Station

The Department of Environmental Sciences and the Center for Agricultural Molecular Biology are seeking to fill a faculty position in the area of environmental biochemistry. The position is a tenure-track faculty appointment at the rank of **ASSISTANT PROFESSOR**. Desired expertise and interest are in the general area of 1) biochemical processes relevant to fate and transport of chemicals in the environment and/or 2) microbial catabolic pathways that are applicable to biodegradation or to biocatalytic processes. The candidate should have a Ph.D. in biochemistry, microbiology, or a related field and post-doctoral experience. The successful candidate is expected to teach undergraduate and graduate courses in environmental sciences and establish a robust extramurally supported research program that would complement existing strengths in environmental sciences and environmental biotechnology at the University. The environmental area has been identified as a major thrust area at Rutgers and this position is one of five to be filled in the next two years in the Department of Environmental Sciences.

Please send a curriculum vitae, a teaching and research statement, and the names, addresses, telephone, fax and Email addresses of at least three references to: **Dr. Lily Y. Young, Search Committee Chair, Department of Environmental Sciences, Rutgers, The State University of New Jersey, Cook College, New Brunswick, NJ 08903-0231**. Review of applications will commence on June 3, 1996.

*The University is an Affirmative Action/Equal Opportunity Employer.*

### DIRECTOR PEDIATRIC DEVELOPMENTAL BIOLOGY PROGRAM

The Department of Pediatrics, Case Western Reserve University (CWRU), is seeking a nationally recognized scientific leader in the area of cellular and molecular development; faculty rank in the tenure track at the **ASSOCIATE PROFESSOR/PROFESSOR** level; M.D. and/or Ph.D. required. The successful applicant must have a proven track record of scientific accomplishments, extramural research support, and academic/administrative leadership. The position provides a significant opportunity for research development with strong interdisciplinary ties to a number of departmental programs as well as CWRU basic science departments. Submit curriculum vitae to: **Ellis D. Avner, M.D., Chairman, Department of Pediatrics, Rainbow Babies and Childrens Hospital, 11100 Euclid Avenue, Cleveland, OH 44106-6003**. CWRU is an Affirmative Action/Equal Opportunity Employer; applications from qualified women and minority candidates are encouraged.

### FACULTY POSITION Computational Structural Biologist

The newly formed Center for Structural Biology at the University of Kentucky invites applications for a tenure-track **ASSISTANT PROFESSOR** faculty position through the Department of Biochemistry and the Center for Computational Sciences. The successful applicant is expected to develop an extramurally funded research program in the area of computational structural biology that complements programs within the department and will participate in departmental teaching. This individual will be a part of a structural group consisting of x-ray crystallographers, an NMR spectroscopist, and a computational structural biologist. Please send curriculum vitae, including a summary of proposed research, and have three letters of recommendation sent to: **Search Committee, Department of Biochemistry, University of Kentucky, 800 Rose Street, MS 607, Lexington, KY 40536-0084**. An Affirmative Action/Equal Opportunity Employer.

Tenure-track **ASSISTANT PROFESSORSHIP** in Animal Physiology. Teaching responsibilities include physiology and pathophysiology. Candidates must have a Ph.D. and be innovative and effective teachers at the Bachelor's and Master's levels. Developing research program expected; facilities available for cell and small-animal work. By April 26, 1996, submit curriculum vitae, official college transcripts, descriptions of teaching philosophy and research plans, and three reference letters to: **Professor R. Gerard Albright, Chair, Department of Biology, University of Detroit Mercy, P.O. Box 19900, Detroit, MI 48219-0900**. Equal Opportunity/Affirmative Action Employer.

## POSITIONS OPEN

### DEPARTMENT OF MICROBIOLOGY AND IMMUNOLOGY East Carolina University School of Medicine

Faculty position available at the **ASSISTANT** or **ASSOCIATE PROFESSOR** levels in the areas of molecular and cellular immunology. Salary and rank will be commensurate with qualifications. Successful candidates will develop an extramurally funded research program and will participate in team-taught courses in the Medical and Graduate Schools. Appointment at the Associate Professor level requires a strong record of continuous research funding including current extramural support and evidence of leadership in teaching and service. The department has 15 full-time faculty and is fully equipped with advanced core facilities for research in immunology, molecular biology, and genetics. Please provide curriculum vitae, a letter describing research and teaching goals, and names and addresses of three references to: **Dr. Paul Phibbs, Professor and Chairman, Department of Microbiology and Immunology, School of Medicine, East Carolina University, Greenville, NC 27858-4354**.

*East Carolina University is an Equal Opportunity/Affirmative Action University. Accommodates individuals with disabilities. Applicants must comply with the Immigration Reform and Control Act.*

### PROFESSOR AND DEPARTMENT HEAD

The Department of Plant Pathology, College of Agricultural and Environmental Sciences, The University of Georgia, invites nominations and applications for the position of **PROFESSOR AND HEAD**. The department consists of 32 faculty, 46 staff, 25 graduate students, and units located at three campuses. The teaching, research, and extension programs are comprehensive with strong applied programs for the major crops. The department head has the overall responsibility for the leadership and administration of all teaching, research, and extension activities, including program planning and evaluation, faculty and staff recruitment and development, and budget allocation and accountability. The head maintains liaisons with the agricultural community. A Ph.D. in plant pathology or related discipline and demonstrated excellence in research, teaching, and/or extension are required. Administrative experience is desirable and evidence of leadership potential is required. Applications will be accepted until August 15, 1996 or until a qualified candidate is secured. The expected starting date is January 1, 1997, with possible appointment earlier or later. Formal applications, including a current curriculum vitae, a statement of leadership philosophy and qualifications, and four letters of reference, should be sent to: **Dr. Robert Shulstad, Search Committee Chairman, c/o Department of Plant Pathology, The University of Georgia, Athens, GA 30602-7274**. Telephone: 706-542-1248; FAX: 706-542-1262. The University of Georgia is an Affirmative Action/Equal Opportunity Employer.

### CELL BIOLOGIST/MICROBIOLOGIST

One-year **ASSISTANT PROFESSOR** appointment beginning August 1996. Ph.D. required. The successful candidate will teach courses in cell biology and microbiology (with labs) plus one non-major course of her or his choice that is compatible with our curriculum, and will supervise senior research. Whitman College has a strong commitment to excellence in undergraduate teaching, research, and student advising. Send curriculum vitae, three letters of recommendation, transcripts, and statements of teaching and research interests to: **Professor Earl Fleck, Department of Biology, Whitman College, Walla Walla, WA 99362**. Telephone: 509-527-5135 or 509-527-5225; FAX: 509-527-5904; Email: [fleck@whitman.edu](mailto:fleck@whitman.edu). Closing date: 7 May 1996. Equal Opportunity Employer.

### CHAIR IN BASIC CANCER RESEARCH

Tulane University Medical Center and the Tulane Cancer Center seek an outstanding basic scientist with an active research focus in cancer biology to fill the Marguerite Main Zimmerman Chair in Basic Cancer Research. The successful candidate will also be the **ASSOCIATE DIRECTOR** for Basic Research of the Tulane Cancer Center and will play a major role in shaping the Cancer Center's programs, identifying and recruiting junior faculty with the chairpersons of the basic science departments, and allocating resources and space in support of cancer research program development. Interested candidates should forward their curriculum vitae and letter of application to: **Roy S. Weiner, M.D., Director, Tulane Cancer Center, 1430 Tulane Avenue, SL-68, New Orleans, LA 70112**. Affirmative Action/Equal Opportunity Employer.



## POSITIONS OPEN

### TENURE-TRACK FACULTY POSITION George Washington University School of Medicine

Tenure-track opening for a molecular biologist in the Department of Biochemistry and Molecular Biology at the George Washington University (GWU) School of Medicine. We are seeking to fill the position at the level of either **ASSISTANT** or **ASSOCIATE PROFESSOR**. The successful candidate will have an outstanding record in applying molecular techniques to any one or more of the areas of research emphasis at GWU, including molecular and cellular oncology, neuroscience, and virology and immunology. The candidate must also exhibit the aptitude to teach both basic and advanced molecular biology to graduate students and medical students. Send curriculum vitae, a concise statement of research activities and goals, and addresses of three references to: **Dr. Gary Fiskum, Faculty Search, The George Washington University School of Medicine and Health Sciences, Department of Biochemistry and Molecular Biology, 2300 Eye Street, N.W., Washington, DC 20037**. Review of applications will begin April 19, 1996 and continue until the position is filled. *The George Washington University is an Equal Opportunity/Affirmative Action Employer.*

The Department of Anesthesia at the Massachusetts General Hospital (MGH) and Harvard Medical School (HMS) is seeking a tenured **FULL PROFESSOR** in Pain Neurobiology. Scientists interested in neural plasticity and pain are especially encouraged to apply. Candidates must hold a Ph.D. and/or M.D. (or equivalent) degree and should be expert in modern neurobiology with experience in electrophysiology, neuroanatomy, cell biology, and molecular biology. Applicants must have international recognition in research and scholarship; proven skills in academic leadership and management; and a commitment to graduate and medical education and to the development of students, faculty, and staff. The successful candidate will be responsible for the operations of a large laboratory (2,500 square feet), including setting up the laboratory and recruiting various personnel to work in the laboratory. Established investigators with an outstanding publication record and a demonstrated ability to sustain extramural research support are encouraged to apply. Joint academic opportunities are available at Harvard Medical School. Interested applicants should submit a full curriculum vitae, a letter of research interests, and the names of three references to: **Warren M. Zapol, M.D., Anesthetist-in-Chief, Massachusetts General Hospital, Boston, MA 02114**. *MGH and HMS are Equal Opportunity Employers.*

Indiana—Oral Biology. A full-time, **TENURE-TRACK** position for an anatomist in the Department of Oral Biology at Indiana University School of Dentistry is available July 1, 1996. Applicants should have a Ph.D. degree in anatomy and experience teaching anatomy in a medical or dental school. The D.D.S./D.M.D. degree is also highly desirable. Main responsibilities include development and administration of a Biomedical Sciences Resource Laboratory and teaching in the undergraduate (D.D.S.) program. This position will require collaboration with multidisciplinary teaching teams in the development of a systems-based biomedical sciences curriculum. Demonstrated ability in independent and collaborative research is also highly desirable. Academic rank and salary are commensurate with experience and qualifications.

Please send curriculum vitae and names and addresses of three references to: **Dr. Marilyn Lantz, Chair, Department of Oral Biology, Indiana University School of Dentistry, 1121 West Michigan Street, Indianapolis, IN 46202**. *Indiana University is an Equal Opportunity Employer.*

Kent State University seeks a biological anthropologist or biologist for a tenure-track position at the **ASSISTANT PROFESSOR** level, beginning fall 1996. The position includes instruction in an M.A. program in anthropology as well as a Ph.D. program in biomedical sciences. Commitment to fundable research imperative. Subdiscipline open, but preference given to those most likely to contribute to a large multidisciplinary program in palaeo-anthropology. Send curriculum vitae and letter of application to: **Chair, Biological Anthropology Search Committee, Department of Anthropology, Kent State University, P.O. Box 5190, Kent, OH 44242-0001**. *Equal Opportunity Employment/Affirmative Action Employer. Women and minorities are encouraged to apply.*

## POSITIONS OPEN

### VISITING ASSISTANT/ASSOCIATE PROFESSOR IN BIOLOGY

Applications are invited for a one-year visiting **ASSISTANT/ASSOCIATE PROFESSOR** position in biology, in the Division of Science at the College of Liberal Arts, beginning August 1996. The successful candidate will have a Ph.D. in biology, demonstrate excellence in college and/or university teaching, and be responsible for undergraduate student advising and supervision. She or he will be involved in teaching genetics/molecular genetics, virology, and toxicology. Teaching will be mostly at the undergraduate level. Salary will be commensurate with experience and qualifications.

Send curriculum vitae and three letters of reference to: **Dr. James Kumi-Diaka, Search Committee Chair, College of Liberal Arts, Broward Campus, 2912 College Avenue, Davie, FL 33314**. FAX: 305-236-1150. Closing Date: May 31, 1996. *Florida Atlantic University is an Equal Employment Opportunity/Affirmative Action Employer.*

### VISITING ASSISTANT PROFESSOR UNION COLLEGE Department of Biology

The Biology Department of Union College invites applications for a two-year sabbatical replacement position as a **VISITING ASSISTANT PROFESSOR** to begin in fall 1996. We are seeking a broadly trained cell/molecular biologist to teach laboratory sections of introductory courses in cell/molecular biology and genetics, and to develop an upper-level course in the candidate's area of expertise (microbiology especially desirable). A Ph.D. and a strong commitment to undergraduate education is required, postdoctoral experience preferred. Send a letter of application, curriculum vitae, statements of research interests and teaching philosophy, and the names of three referees by May 10, 1996 to: **Dr. Steve Horton, Department of Biology, Union College, Schenectady, NY 12308**. *Union College is an Equal Opportunity/Affirmative Action Employer. Women and minorities are especially encouraged to apply.*

### FACULTY POSITION, ENDOWED CHAIR IN IMMUNOLOGY

#### Department of Internal Medicine University of Michigan Medical Center

The Division of Rheumatology is seeking an outstanding investigator for the newly established William D. Robinson and Frederick Huetwell **PROFESSORSHIP**. This position is intended to support a research program in basic immunology in: lymphocyte signal transduction, antigen receptor biology, immunogenetics, or other areas of molecular immunology. Applicants must have an outstanding record of research accomplishment and will interact with basic scientists, clinical investigators, and students. An M.D. and/or Ph.D. degree (or equivalent) is required. Please respond to: **Gary J. Nabel, M.D., Ph.D., Chair, Robinson/Huetwell Search Committee, c/o Gigi Rowe, Rheumatology Division, 3918 Taubman, 1500 East Medical Center Drive, Ann Arbor, MI 48109-0358**. *The University of Michigan is a non-discriminatory, Affirmative Action Employer.*

### ASSISTANT PROFESSOR OF BIOLOGY

**TENURE-TRACK** starting August 15, 1996. Undergraduate survey, general, and cell biology, with molecular genetics and immunology desirable. Academic advising and scholarly activity expected, providing undergraduate research opportunities. Doctorate required by start date. Additional information available upon request. Send letter of application, a statement of teaching philosophy, curriculum vitae, transcripts, and three letters of reference by May 10, 1996 to: **Walt Cook, Chair, Box 9005, Black Hills State University, Spearfish, SD 57799-9005**. *An Equal Opportunity/Affirmative Action Employer.*

**POSTDOCTORAL POSITION** available to study the regulation of p53-dependent transcription in cell cycle control. A Ph.D. or M.D. and a background in molecular or cell biology are required. Self-motivated individuals with training in transcription regulation, protein purification, phosphorylation, and signal transduction are especially encouraged to apply. Applicants should send a curriculum vitae and three references to: **Dr. Xuan Liu, Department of Biochemistry, University of California, Riverside, CA 92521**. Email: xuan@ucr1.ucr.edu.

## POSITIONS OPEN

### POSTDOCTORAL RESEARCH POSITIONS

Beginning in the spring/early summer of 1996, two newly funded **POSTDOCTORAL RESEARCH** positions will be available in the Laboratory of Cellular and Molecular Cerebral Ischemia. Research focuses on the mechanisms that result in neurodegeneration. Current *in vitro* and *in vivo* investigations examine the role of peptide growth factors, signal transduction pathways, metabotropic glutamate receptors, cellular metabolism, and gene regulation on neuronal survival. Applicants must have a Ph.D. or M.D. with expertise in cellular and/or molecular biology. Salary will be consistent with NIH guidelines. Please send a curriculum vitae, a summary of research interests, and three references to: **Keneth Maiese, M.D., Department of Neurology, 6E-19 UHC, Wayne State University School of Medicine, 4201 St. Antoine, Detroit, MI 48201**. Email: kmaiese@cms.cc.wayne.edu; WWW: <http://www.phymac.med.wayne.edu/departments/neurology/maiese/homepage.html>. *Wayne State University is an Equal Opportunity/Affirmative Action Employer.*

### TWO POSTDOCTORAL FELLOWSHIP/ RESEARCH ASSOCIATE POSITIONS

To investigate regulation of the nitric oxide guanylyl cyclase signaling pathway. One position is for a **NEUROSCIENTIST** to investigate NO interactions with anesthesia and analgesia in the central nervous system. Neuropharmacology, neurohistochemistry/autoradiography, and molecular biology experience required. The second position will investigate **MOLECULAR REGULATION** of lung/vascular nitric oxide synthase and soluble guanylyl cyclase expression. A significant molecular biology background and experience investigating gene regulation is required. Please submit your curriculum vitae and three references to: **Roger A. Johns, M.D., University of Virginia Health Sciences Center, Box 238, Charlottesville, VA 22908 U.S.A.** *The University of Virginia is an Equal Opportunity Employer.*

**RESEARCH POSITION**, faculty appointment—The Department of Cardiothoracic Surgery is pleased to announce the availability of an academic research position in our Surgical Research Laboratory. Responsibilities include managing ongoing investigations into the sequelae of long-term cardiopulmonary bypass as well as being responsible for the day-to-day operation of the lab and supervising a staff of four. In addition, you will supervise the design and analysis of experiments and collaborate on the preparation of reports and publications. Qualifications: a degree in neurophysiology or an allied field with three to ten years of laboratory experience in mammalian neurological research, plus excellent communication and organizational skills. Interested candidates should submit their curriculum vitae and references to: **Dr. Randall Griep, The Mount Sinai Hospital, Box 1028, One Gustave L. Levy Place, New York, NY 10029-6574**. *Equal Opportunity Employer.*

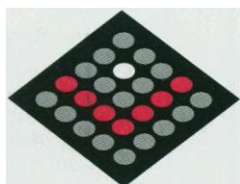
### POSTDOCTORAL POSITION

**POSTDOCTORAL** position is available for gene therapy and nucleic acid based therapeutics for skin diseases and connective tissue diseases. Genes involved in human genetic diseases and inflammation will be among the targets. Candidates must have a strong background in molecular biology and biochemistry. Competence and experience in transcription, eukaryotic expression vector, mammalian cell culture, and transfection is preferred (**Yoon et al., Proc. Natl. Acad. Sci., 93, 2071-2076, 1996**). Send or FAX curriculum vitae and a letter describing experience to: **Dr. Kyonggeun Yoon, Associate Professor, Department of Dermatology and Cutaneous Biology, Thomas Jefferson University, 233 South 10th Street, Philadelphia, PA 19107**. Telephone: 215-955-5434; FAX: 215-955-5788.

A **POSTDOCTORAL** training position at Boston University School of Medicine is available to a qualified individual to conduct neurobiological research. *U.S. citizens or permanent residents only*. Only candidates with strong background in biochemistry, cell biology, and molecular biology, including eukaryotic expression systems, will be considered. Please send curriculum vitae and three reference letters to: **Dr. Carmela R. Abraham, K-5, 80 East Concord Street, Boston, MA 02118**. FAX: 617-638-5226. Email: cabraham@acs.bu.edu.



# VERSICOR INC. ANNOUNCES OPENING OF WEST COAST LABORATORY



# VERSICOR

Excellence in 21st Century Science  
The Combinatorial and Medicinal Chemistry Partner to the  
Pharmaceutical and Biotech Industry

Versicor Inc. is devoted to the integration of combinatorial technologies, contemporary medicinal chemistry, biochemistry and screening, for the purposes of drug discovery. As a well-financed, technology rich enterprise, Versicor is expanding its operations by founding a new laboratory in the San Francisco Bay area.

In addition to developing combinatorial technology tools and novel small molecule chemical libraries, Versicor will develop new screening methodologies and maintain proprietary high throughput screening systems for collaborations with pharmaceutical and biotechnology companies. The company will also apply the above proprietary technologies internally in specific therapeutic areas for drug discovery.

We are presently seeking talented scientists at all experience levels in the following areas:

- ◆ *Combinatorial and Synthetic Chemistry*
- ◆ *Medicinal Chemistry*
- ◆ *Biochemistry / Enzymology*
- ◆ *Microbiology / Molecular Biology*
- ◆ *Analytical Chemistry and Instrumentation*
- ◆ *Assay Development and High Throughput Screening*
- ◆ *Computation and Information Scientists*

We offer an exceptionally creative scientific environment with excellent compensation and benefits, along with the opportunity to enhance your career in a growing company. Please forward your CV with cover letter to: Dr. Eric M. Gordon, Versicor Inc., 555 Bryant Street #249, Palo Alto, CA 94301. An equal opportunity employer.

# VERSICOR



## Smart Science

PURSuing THE QUESTIONS

## Focused Groups

FINDING THE ANSWERS



Bioscience

*The scientists at Roche Bioscience work in focused research groups to discover and develop innovative pharmaceuticals that significantly improve the quality of life. As a research-based business-driven organization, patents, publishing and profit all matter. However each group is staffed so employees can concentrate on scientific development. Currently our Respiratory Disease Group has the following outstanding opportunities for Scientists to join us.*

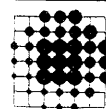
### Principal Research Scientist

You will lead a group investigating the effects in pharmacological agents, expressed transgenes, and gene therapies in in-vivo models of lung function and disease states. A PhD in Biology, Molecular Biology, or Pharmacology and 3-5 years of experience with in-vivo models of human lung disease are required.

### Research Associates

You will be part of a team analyzing the effect of pharmaceutical agents and transgenic expression on lung function using in-vivo models of human disease. Specifically, you will measure indices of airway inflammation and airway hyperactivity in at least two different in-vivo models. You will also test/validate novel in-vivo models of lung functions, and regularly analyze the effect various pharmaceuticals have on lung function in these models. A BS/MS in Biology, Molecular Biology or Pharmacology with 1-5 years' relevant experience is required.

*Roche Bioscience, located in the beautiful San Francisco Bay Area near Stanford University, offers competitive salaries, relocation assistance where appropriate and generous benefits. Please send your resume to Roche Bioscience, Dept. SCB412KH, 3401 Hillview Avenue, MS A2-HR, Palo Alto, CA 94304. Fax: 415-424-8159. See us on the WWW at: <http://www.roche.com/bioscience>. We are an equal opportunity employer committed to a diversified workforce.*



### Faculty Position Program in Molecular Signal Transduction

Division of Basic Sciences  
National Jewish Center for  
Immunology  
and Respiratory Medicine

A faculty position is available at the level of Assistant Professor. We are seeking individuals with a research focus in mouse transgenic and gene inactivation technologies applied to the general areas of signal transduction, immunology or developmental biology. Successful applicants should be capable of establishing a vigorous independent research program.

Applicants should submit a curriculum vitae containing a brief summary of past research accomplishments, a statement of future research objectives, and three letters of reference to:

**Gary L. Johnson, Director, Program in Molecular Signal Transduction, Division of Basic Sciences, Department of Pediatrics, National Jewish Center for Immunology and Respiratory Medicine, 1400 Jackson Street, Denver, Colorado 80206**

*An Equal Opportunity Employer*

## BIOMOLECULAR NMR SPECTROSCOPIST

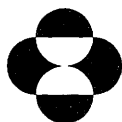
Merck Research Laboratories in Rahway, New Jersey, a world leader in biological and pharmaceutical research, is seeking outstanding candidates for a position as a Biomolecular NMR Spectroscopist in the Department of Biochemistry.

The successful candidate will participate in the macromolecular-structure determination programs of the Biochemistry Department. The scientist will be involved in the collection and analysis of 600 MHz NMR data in order to determine protein structures and characterize protein-ligand interactions with the goal of obtaining information relevant to drug design. Duties will include the assignment of protein NMR spectra, the determination of protein structure from NMR data and computational methods, and the evaluation of bound ligand conformation and interactions.

A Ph.D. in chemistry, biochemistry or a related field and 2-3 years of post-doctoral experience are required. Experience in modern 2D, 3D and 4D heteronuclear NMR as applied to macromolecular-structure determination is essential. Familiarity with the expression, isotopic labeling and purification of proteins is desirable.

The Biomolecular NMR Group has a state-of-the-art facility, with two Varian 600 MHz NMR spectrometers. Computational facilities that are available include a Cray Y-MP, a Cray J90, an IBM SP2 and a compute-farm of IBM RS/6000's.

Merck Research Laboratories are located in Rahway, New Jersey, approximately 25 miles from New York City. Our salaries, benefits and growth potential are excellent. For consideration, send your resume, with the names of three references, to **Merck Research Laboratories, Human Resources, AD #184, P.O. Box 2000, RY80A-3, Rahway, NJ 07065.** EOE/AA/VH/Employer.



**MERCK**

Research Laboratories

## EPILEPSY RESEARCH

The Hospital for Sick Children, a health care, teaching and research centre dedicated exclusively to children; affiliated with the University of Toronto, currently has opportunities in their Epilepsy Research Program and Division of Neurology for experienced Staff Scientists. These positions call for a relevant Ph.D. and the ability to effectively participate in both clinical and basic neuroscience research.

### STAFF SCIENTIST - NEUROPHYSIOLOGY

You have extensive training in neurophysiology enhanced by postdoctoral training in cellular/synaptic neurobiology with a focus on signal transmission at synapses and/or the control of neuronal excitability as they relate to the process of epileptogenesis.

### STAFF SCIENTIST - MOLECULAR NEUROBIOLOGY

Your in-depth training in molecular and cellular neurobiology is complemented by postdoctoral training in cell-fate and cell-cell interactions as they relate to the process of epileptogenesis.

Successful candidates will be expected to apply for cross-appointment at the University of Toronto at a similar level. We invite qualified individuals to submit their curriculum vitae by June 1, 1996, to: **O. Carter Snead III, M.D., Head, Division of Neurology, The Hospital for Sick Children, 555 University Avenue, Toronto, Ontario M5G 1X8, Canada**. In accordance with its Employment Equity Policy, the University of Toronto encourages applications from qualified women and men, members of visible minorities, aboriginal peoples and persons with disabilities. In accordance with Canadian immigration requirements, this advertisement is directed to Canadian citizens and permanent residents of Canada.



THE HOSPITAL  
FOR SICK CHILDREN



University of Toronto

# Discovery Research Opportunities At...



Through challenging research programs and discovery of new pharmaceutical agents, scientists at Pfizer's Central Research Division contribute to the development of medicines that bear the mark of innovation. We are committed to finding and developing breakthrough pharmaceutical inventions for major unmet medical needs. Our Fortune 100 company's current array of new products is one of the most exciting in the industry.

## Ph.D. SCIENTISTS

**Allergy/Respiratory** - As part of our multidisciplinary team of investigators, you will work in the field of cytokine signal transduction in the discovery of novel agents for the treatment of allergic and respiratory diseases including asthma and allergic rhinitis. Successful candidates will have a demonstrated record of independent and creative research in biochemical pharmacology of cytokine signal transduction. **Job Code 1088**

**Human Genetics** - The ideal candidate will establish a laboratory capable of developing genotyping assays to support early and late stage clinical development programs; establish in-house genetics database, and participate in design of clinical studies involving genotyping protocols. Ideally, postdoc will be in human genetics. **Job Code 1092**

**Bioinformatics** - This opportunity involves computational sequence analysis methods for database searching, gene protein structure prediction, and pattern discrimination. Programming in a UNIX/Mac environment is requisite. **Job Code 1093**

**Computational Chemistry** - The independent, creative candidates we seek will work directly with our synthetic chemists discovery efforts in combinational chemistry, pharmacophore development, lead optimization and structure assisted drug design. We prefer strong background in statistical mechanics and experience with the Sybyl programming language in a UNIX environment. **Job Code 1094**

*Ph.D. Scientists must have degree in area identified, plus 2-3 years relevant postdoctoral experience. Must have proven oral and written communication and interpersonal skills.*

## BS/MS SCIENTISTS

**Cardiovascular Diseases** - We seek a highly motivated individual to evaluate the efficacy and pharmacological profile of novel cardiovascular therapies. The candidate must be knowledgeable in cardiovascular physiology and biophysics to conduct complex experiments in large and small animal models of cardiovascular disease and to interpret their results. Laboratory research experience is required in acute and chronic surgical preparation of *in vivo* models, in measurement of cardiovascular function and blood flow, and in data analyses using computer systems. Familiarity with myocardial ischemia and reperfusion injury is important; skills in histopathology techniques and in the measurements of blood chemistry and neurohormones are desirable. Candidates must be able to work well independently as well as in a team environment and have good communication skills, both written and oral. BS or MS (preferred) in Physiology, Pharmacology or related Biological fields with two years of laboratory research experience is required. **Job Code 1086**

**Medicinal Chemistry** - We have a number of opportunities available for knowledgeable scientists with experience in synthetic organic chemistry and strong theoretical and laboratory background. These positions require a BS or MS in a relevant field, and effective oral and written communication skills. **Job Code 1087**

## POSTDOCTORAL FELLOWSHIPS

### *Molecular Biology*

We are seeking two postdoctoral research scientists to each guide a 3-year independent research study. Selected candidates will spend 18 months at Pfizer's Central Research Division's state-of-the-art research facility in Groton and then 18 months at a co-sponsoring university. These unique positions will emphasize publication, individual scientific development, and an opportunity to learn about the drug discovery process.

**Molecular Control of Cardiomyocyte Proliferation** - As a postdoctoral fellow in the laboratories of Scott P. Kennedy, Ph.D. at Pfizer Central Research and Kenneth Walsh, Ph.D. at St. Elizabeth's Medical Center and Tufts University School of Medicine, you will be working toward understanding cardiomyocyte proliferation and terminal differentiation with the eventual aim of suggesting novel therapeutic strategies for regenerating damaged myocardium. Experience in cell-cycle control, cardiomyocyte culture or *in vivo* gene delivery approaches, as well as an interest in the drug discovery process are preferred. **Job Code 1089**

**Functional Characterization of Novel TNF Receptor Family Members** - As a postdoctoral fellow in the laboratories of John Hamor, Ph.D. at Pfizer Central Research and Randy Noelle, Ph.D. at Dartmouth Medical School, you will be working on signal transduction/gene regulation pathways that are relevant to human disease. The successful candidate will have experience in protein purification, cloning techniques, and yeast two-hybrid technology. A Ph.D. in Biochemistry and a strong interest in unraveling signaling pathways as well as a desire to learn about the drug discovery process are required. **Job Code 1090**

Pfizer Scientists have the opportunity to interact with members of the world's finest corporate scientific and academic communities, enjoy a competitive salary, medical/dental coverage and the many lifestyle advantages of our southeastern Connecticut location. Relocation assistance is available. For confidential consideration, please send your curriculum vitae for electronic scanning (i.e., eliminate italics, bullets, bolds, underlines and staples), indicating **Job Code to: Employee Resources, Pfizer Inc, Central Research Division, Eastern Point Road, Groton, CT 06340**. An Equal Opportunity Employer M/F/D/V

*We're part of the cure.*



# SCIENTISTS

SmithKline Beecham, a world leader in pharmaceutical research, currently has several opportunities for accomplished scientists to join our Molecular Microbiology and Molecular Pathogenicity Departments.

## Postdoctoral Scientist

Working with bacterial cell division and cell envelope biosynthesis in the Department of Molecular Microbiology, the selected scientist will exploit genomic sequence data to identify and characterize pioneer antibacterial targets associated with bacterial cell division and bacterial membrane biosynthesis. Candidates should have a proven practical and intellectual knowledge of bacterial cell division and/or bacterial membrane biosynthesis with expertise in the relevant biochemical techniques. Refer to Job Code B6-PDPAYNE.

## Protein Biochemist – Surface Plasmon Resonance Expertise

Our Department of Molecular Microbiology is seeking a Protein Biochemist with a proven in-depth knowledge and practical expertise in Surface Plasmon Resonance technology. The candidate will be required to identify applications of this technique to facilitate the characterization of a variety of novel antibacterial targets. Refer to Job Code B6-PAYNE.

## Molecular Pathogenicity

Multiple opportunities also exist in our Molecular Pathogenicity Department for experienced and dedicated scientists (PhD, MS and BS) with expertise in the development and use of animal models of infection for the examination of pathogenic mechanisms and/or chemotherapeutic evaluation. Skills in microbiology, immunology, molecular biology or tissue culture would be a distinct advantage. Refer to Job Code B6-PATH.

All positions will be responsible for initiating practical approaches to problems and encouraged to collaborate with leading academic groups and strategic alliance partners. Applicants should possess good communication skills and a desire to work in a multidisciplinary team.

Located in our state-of-the-art research facility in Collegeville, PA, a suburb of Philadelphia, SmithKline Beecham offers a competitive compensation/benefits/relocation package and a stimulating working environment. For confidential consideration, please send resume and salary requirements, indicating desired Job Code, to: SmithKline Beecham Pharmaceuticals, Job Code \_\_\_\_\_, P.O. Box 2645, Bala Cynwyd, PA 19004. We are an Equal Opportunity Employer, M/F/D/V.



**SmithKline Beecham**  
Pharmaceuticals

Challenging the natural limits.

## Endowed Research Chair for Cancer Molecular Biology

SOUTHERN RESEARCH INSTITUTE, a diversified contract research organization, is seeking to fill an endowed research chair, funded with \$1 million, to expand the Institute's efforts in the field of cancer molecular biology. Southern is particularly interested in the development of antitumor drugs and invites applications from molecular biologists who specialize in oncology and/or pharmacology.

THE SUCCESSFUL CANDIDATE will have the opportunity to interact with other Southern scientists in experimental therapeutics, toxicology, pharmacology, cell biology and immunology. Current areas of interest include gene therapy, cancer therapeutics, carcinogenesis, and chemoprevention. Pertinent fields of work include gene therapy, oncogenes, tumor suppressor genes and transgenic animals in carcinogenesis and/or chemoprevention. Applicants should have competence in securing outside funding.

SOUTHERN RESEARCH INSTITUTE offers a multidisciplinary working environment, generous benefits, modern equipment and facilities, and an extensive technical library. In addition, the endowed position provides opportunities for extensive interaction with clinical and academic personnel at the University of Alabama at Birmingham (UAB).

INTERESTED CANDIDATES should send curriculum vitae to Dr. Donald L. Hill, Search Committee Chairman, at the address below.



## Southern Research Institute

2000 Ninth Avenue South  
P.O. Box 55305  
Birmingham, Alabama 35255-5305  
(205) 581-2463

*An Affirmative Action/Equal Opportunity Employer*

# SIGNAL AHEAD

*The ability to inhibit* Signal Pharmaceuticals, Inc. is at the forefront of scientific advances in intracellular signaling and transcription factor biology. Our focus is on the discovery of small molecule drugs that regulate transcription factors and production of disease-associated proteins. We have a strong research program focused on the cloning and characterization of novel factors involved in signal transduction, in particular MAP kinase cascades. We are seeking highly motivated candidates with excellent interpersonal skills for the following positions:

## BONE DISEASES/OSTEOPOROSIS

*specific* This highly motivated research team identifies novel genes and determines through innovative research approaches their biological role in bone mitogenesis and resorption. This knowledge is applied to the development of novel drug screening assays and validation of new therapeutics.

## Transcription CELL BIOLOGISTS

*Factors* Responsible for the development of *in vitro* models of bone formation and resorption assays and cloning of critical genes. Expertise in cell biology and PhD or MD required. Experience with *in vitro* models of bone formation and resorption desired.

*provides a* Responsible for the evaluation of compounds in bone formation and resorption assays and development of prototype screening assays. BS/MS and 3+ years' experience in bone tissue culture required.

## DRUG DISCOVERY & PHARMACOLOGY

*powerful* This department is responsible for identifying and characterizing novel drugs that affect specific signal transduction pathways. Proprietary cell and biochemical assays are used in combination with high throughput screening and structure-based approaches. Lead compounds are optimized in collaboration with Medicinal Chemistry and evaluated at the molecular, cellular, and whole animal levels.

## opportunity ENZYMOLOGIST

*to treat a* Responsible for characterizing proprietary enzyme targets and identifying novel molecular sites for potential therapeutic intervention. Requires PhD or equivalent with 2-5 years' post-doctoral experience in enzyme kinetics, characterization of inhibitors and novel assay development. Protein purification, biochemistry experience and specific knowledge of kinases desired.

## wide variety CELLULAR AND MOLECULAR NEUROBIOLOGISTS

*of diseases.* PhD with up to 5 years' experience in primary neuronal cell culture, immortalization techniques, sub-cloning cell lines, patch-clamping and/or molecular neurobiology required. Knowledge of neuronal and glial cell lineage, apoptosis, novel gene identification, channels and/or receptors preferred.

We reward the dedicated efforts of our team with competitive salaries and generous benefits, including equity participation. Join forces with a company that thrives on the dynamic challenges of excellence. Please send resume, indicating position of interest, to: Signal Pharmaceuticals, Inc., Attn: L. Cain, 5555 Oberlin Dr., San Diego, CA 92121; Fax: (619) 558-7513; or E-mail: [lcain@signalpharm.com](mailto:lcain@signalpharm.com) EOE.



## TENURE-TRACK POSITION NATIONAL INSTITUTE OF ENVIRONMENTAL HEALTH SCIENCES

### CELL CYCLE REGULATION AND MOLECULAR CARCINOGENESIS

A position is available in the Laboratory of Environmental Carcinogenesis and Mutagenesis for an outstanding scientist to develop an independent program of basic research in the area of cell cycle control alterations during the process of carcinogenesis. Applications are invited from candidates with a strong research record in molecular cell cycle control and carcinogenesis as demonstrated by having significant impact in the field. Priority will be to applicants whose expertise includes genetic and molecular approaches to investigate the impact on cell cycle regulation in mammalian cells of exposure to environmental carcinogens. Minimum qualifications are a doctoral degree in the biomedical sciences, a minimum of three years postdoctoral experience and research publications in prestigious peer-reviewed journals. Desirable additional qualifications include demonstrated expertise in the following areas: The cell biology of neoplastic transformation; molecular consequence of proto-oncogene activation on cell cycle regulation; inactivation of tumor suppressor genes; cell cycle checkpoint mechanisms and genetic alterations of cell cycle control that predispose to cancer.

The position is available to citizens or permanent residents of the United States. Salary will be commensurate with experience and qualifications of the candidate. Applications from women and minority groups are particularly welcome. Interested individuals should provide a curriculum vitae with bibliography, a brief statement of research interests, and arrange for three letters of recommendation to be sent by June 15, 1996.

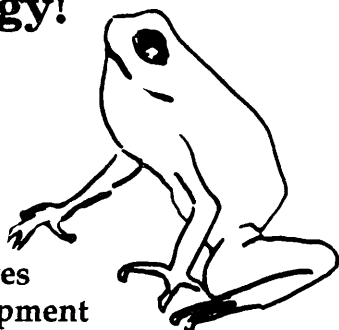
LISA ROGERS (HNV96-7), HUMAN RESOURCE MANAGEMENT  
BRANCH, NATIONAL INSTITUTE OF ENVIRONMENTAL HEALTH SCIENCES, PO Box 12233, RESEARCH TRIANGLE PARK, NC 27709  
(919) 541-3316

NIEHS/NIH is an Equal Opportunity Employer

## SYMPOSIUM

### Advances in the Biology of the Skin: Pharmacology & Toxicology!

Toxicology  
Pharmacology  
Disease Models  
Natural Products  
Clinical Perspectives  
New Drug Development  
Percutaneous Absorption  
Inflammation & Wound Healing



A three and one-half day symposium on the campus of Rutgers University, June 24-27, 1996. Sponsored by The Environmental and Occupational Health Sciences Institute (EOHSI) at the University of Medicine and Dentistry of New Jersey-Robert Wood Johnson Medical School and Rutgers University. For information: Diane E. Heck, Ph.D. or Jeffrey D. Laskin, Ph.D., EOHSI, 681 Frelinghuysen Rd, Piscataway, NJ 08855 (908) 445-0219, FAX (908) 445-0119 or Howard Maibach M.D., UCSF (415) 673-3533, FAX (415) 673-9693. Registration and abstract forms: (908) 235-5062.



### University of Southern California Assistant or Associate Professor

The Institute for Genetic Medicine and the Department of Surgery are seeking candidates with special research interests in molecular biology and genetics as they relate to human disease. The successful candidate will have a joint appointment in the Department of Surgery and in an appropriate basic science department of the School of Medicine. Candidates with a wide range of interests will be considered, including research activities involving development of models for human genetic disease, homologous recombination in embryonic stem cells, development of gene transfer vehicles including retroviruses and genetically engineered cells, the molecular genetics and biology of stem cells and cytokines, and the molecular genetics of human disease. Clinically based research could be an important component of the program. The faculty appointee must have a Ph.D. or M.D. degree and will be expected to interact with surgical faculty and fellows in addition to developing an independent research program and participating in both medical and graduate student teaching programs. Faculty members will be housed within newly remodeled space in the Institute for Genetic Medicine/Norris Comprehensive Cancer Center Gene Therapy Program. Candidates eligible for an associate professorial appointment should demonstrate evidence of extramurally funded and sustained research programs.

The University of Southern California and its Medical School have made a major commitment to building a program in gene therapy and genetic medicine. The faculty members will play a major role in defining the future expansion of the Institute for Genetic Medicine.

Candidates should send their curriculum vitae, bibliography, a statement of research and teaching interests and the names, addresses, fax numbers and e-mail addresses of three references to Laurence H. Kedes, M.D., Director, Institute for Genetic Medicine, University of Southern California, 2011 Zonal Avenue, HMR #413, Los Angeles, CA 90033

The University of Southern California is an equal opportunity affirmative action employer.



**Wanted: Committed, ambitious scientist. Must be a team player with a vision for the future. M.D./Ph.D., Ph.D., M.S. or B.S. degree necessary.**

***Does this describe you?***

If it does, then plan to attend the bioSCIENCE Career Fairs sponsored by SCIENCE. The bioSCIENCE Career Fairs offer the perfect opportunity for scientific professionals to meet in person with representatives from top biotechnology and pharmaceutical companies, universities, governmental agencies and institutions.

EDITORIAL SEMINAR: On the first day of the event from 11:00 - 11:30, a SCIENCE editor will conduct a seminar on "How to get a research paper published in SCIENCE."

***1996 bioSCIENCE Career Fairs***

San Francisco, CA on the Stanford Campus in Palo Alto, May 3-4.  
May 3: 11am - 4pm; May 3 Seminar: 11 - 11:30am.  
May 4: 12 noon - 4pm.

**Just added! Careers in Biomedical Research:** Join leaders from both industry and academia for a panel discussion sponsored by the Biomedical Association of Stanford Students on May 3, 12 - 1:30 p.m. at the Fairchild Auditorium. The panel discussion focuses on careers in biomedical research.

La Jolla, CA at The Scripps Research Institute, October 4-5.

**bioSCIENCE  
CAREER FAIRS**

To pre-register, please submit your resume or CV via fax: (202) 289-6742, or via e-mail: [bioscience@aaas.org](mailto:bioscience@aaas.org). Please indicate to which bioSCIENCE Career Fairs you would like to have it distributed. Please remember to bring multiple copies of your CV or resume with you to the Career Fairs.

***For more information please call (202) 326-7018.***

bioSCIENCE Career Fair Information On-line: <http://www.aaas.org>  
(Choose SCIENCE Classified Advertising from the menu)

## INHIBITORS OF METALLOPROTEINASES in Development and Disease: TIMPs '96

Banff, Alberta, Canada • September 25-29

Organizers: Dylan Edwards, Susan Hawkes,  
Rama Khokha

**Topics:** Gene Regulation • TIMP Structure: Function  
• TIMPs as Multifunctional Molecules • Development,  
Reproduction, Disease • Cancer • Synthetic MMP  
Inhibitors

**Speakers:** H. Nagase, D. Edwards, Y. Sun, I. Clark,  
H. Birkedal-Hansen, G. Murphy, R. Williamson, S.  
Hawkes, C. Overall, D. Denhardt, F. Woessner, W.  
Stetler-Stevenson, T. Hayakawa, G. Goldberg, M.  
Seiki, Z. Werb, C. Alexander, K. Osteen, S. Apte, T.  
Curry, T. Cawston, Y. DeClerck, P. Soloway, S.  
Zucker, R. Khokha, K. Appelt, P. Brown, A. Docherty,  
H. Van Wart

**Abstract Submission Deadline is May 31, 1996**

For registration & information please contact:

Laurie Kinach

**The Banff Center for Conferences**

St. Julien Rd., Box 1020, Stn. 11, Banff

Alberta, Canada T0L 0C0

(403) 762-6204/ fax (403) 762-7501

www site: [http://johns.largnet.uwo.ca:80./lrcc/annual\\_report/timps96.htm](http://johns.largnet.uwo.ca:80./lrcc/annual_report/timps96.htm)

## RADIATION EFFECTS RESEARCH FOUNDATION HIROSHIMA, JAPAN

Vice Chairman

The U.S. National Academy of Sciences (NAS) is seeking a Resident Director/Vice Chairman for the Radiation Effects Research Foundation (RERF) in Hiroshima, Japan. RERF is a private foundation in Japan with over 335 employees working in laboratories in Hiroshima and Nagasaki. NAS provides management and scientific oversight services to RERF for the U.S. Government. The Foundation is equally funded by the Government of Japan, through the Ministry of Health and Welfare, and by the U.S. Government, through the Department of Energy (DoE). RERF is also equally managed on-site by citizens of the two countries. The Vice Chairman assists the Chairman in the general management of RERF's administrative and scientific activities related to the long-term follow-up of late health effects among the survivors of the atomic bombs. Assistance in the day-to-day management of the Foundation is also provided by two other Resident Directors. Qualified candidates must be U.S. citizens, have an M.D. or Ph.D. with extensive experience in scientific research, preferably radiation biology or a related research area, and management of complex, multi-disciplinary research programs. U.S. Resident Directors are employees of the United States National Academy of Sciences and RERF. Salaries are commensurate with qualifications and are supplemented by relocation, housing, and cost-of-living benefits. Terms of office of Directors are for four years with a maximum of two terms (eight years). Typical NAS appointments are for two years with extensions of additional two year appointments, up to the eight years, if warranted. To apply, please send a letter of interest, your resume and the names and addresses of at least three references to: **Dr. Zimbrick, Board on Radiation Effects Research, (NAS 342-JZ), National Academy of Sciences, 2101 Constitution Avenue, NW, Washington, D.C. 20418. (FAX: 202-334-1639, e-mail: [jjimbrick@nas.edu](mailto:jjimbrick@nas.edu)). Review of applications will begin on April 15, 1996 and will continue until the position is filled. EOE**



## UNIVERSITY OF CONNECTICUT

### Professor and Department Head Department of Nutritional Sciences

Candidates are sought for the position of Professor and Head of the Department of Nutritional Sciences. This 10-month, tenure track appointment requires a doctoral degree in Nutrition or a closely related discipline. Administrative experience with evidence of leadership are highly desirable, as is a record of academic excellence. Individuals having prior involvement with a Land Grant College system are especially encouraged to apply.

Responsibilities include providing leadership for the department's teaching, research and outreach programs; representing the department to the university's administration, and to external bodies at the local, state, national and international levels; supporting faculty and departmental development. The department head is responsible for personnel recruitment, evaluation and promotion and tenure procedures. Applicants must be committed to a philosophy of academic excellence, research and scholarship.

Evaluation of applicants will begin June 1, 1996, and will continue until a suitable candidate is selected. The anticipated start date is September 1, 1996. To apply, send a letter of application, a curriculum vitae and names and addresses of four references to: Dr. Ian Hart, Chair, Department Head Search Committee, Department of Nutritional Sciences, U-17, University of Connecticut, Storrs, CT 06269. We encourage applications from underrepresented groups including minorities, women and people with disabilities. (Search# 96A241)



### MAYO CLINIC DIVISION OF MEDICAL ONCOLOGY AND MAYO CANCER CENTER

#### Clinical Research Positions

The Division of Medical Oncology and the NCI-designated Mayo Cancer Center in Rochester, Minnesota, invites applications for two clinical research positions. Clinical investigators with established cancer research programs are encouraged to apply. The Mayo Clinic provides an outstanding environment for investigators interested in conducting translational research with the goal of improving prevention, diagnosis, and treatment of cancer. Interested applicants should submit a statement of research interests, curriculum vitae, bibliography, and list of references to:

James N. Ingle, M.D.

Associate Director for Clinical Research  
Mayo Cancer Center  
Mayo Clinic  
200 First Street, SW  
Rochester, MN 55905

*Mayo Foundation is an affirmative action  
and equal opportunity educator and employer.*

### The University of North Texas Health Science Center at Fort Worth

Chair, Departments of Biochemistry and  
Molecular Biology and Microbiology and  
Immunology

We are seeking applications for the position of **Chair** of the combined Departments of Biochemistry and Microbiology. The chairperson is expected to provide leadership and direction to both Departments in research and curriculum development. The chairperson will also have a considerable latitude in the overall organization of the two Departments. A generous start-up package will enable the successful candidate to fill several positions. Candidates should have demonstrated administrative skills, a distinguished record of scholarly activity, and a well-funded, internationally recognized research program, preferably in the area of molecular genetics, but other subspecialties will be considered. A Ph.D. or equivalent degree and qualifications for appointment at the rank of professor are required. The Health Science Center is fully accredited by the Southern Association of Colleges and Schools. In addition to the College of Osteopathic Medicine, the Center has a Graduate School of Biomedical Sciences, Masters Program in Public Health, and approval to begin a Physician Assistant program. The Departments of Biochemistry and Microbiology currently occupy approximately 20,000 ft<sup>2</sup> of space and are well equipped to support faculty research programs. Most faculty are funded by extramural grants. The review of applications will begin immediately with initial interviews planned for the fall of 1996. The search will continue until the position is filled. Send a letter of application, curriculum vitae, and names and addresses of four references to:

James E. Turner, Ph.D.  
Chair, Search Committee  
UNT Health Science Center  
Department of Anatomy and Cell Biology  
3500 Camp Bowie Blvd.  
Fort Worth, Texas 76107-2699  
*An EEO/Affirmative Action Institution*



## POSITIONS OPEN

### POSTDOCTORAL THROUGH ASSISTANT PROFESSOR

Position available at the POSTDOCTORAL through ASSISTANT PROFESSOR level for an individual with interest and experience in investigations of tumorigenesis and of early alterations in the colonic mucosa of animals and patients with genetically or environmentally (diet) initiated colon cancer. We are especially interested in individuals skilled in analysis of pathology and immunohistochemical, biochemical, and/or molecular alterations in early lesions such as aberrant crypt foci. Apply by submission of a curriculum vitae and names, addresses, and telephone numbers of two references to: Leonard H. Augenlicht, Ph.D., Professor of Medicine and Cell Biology, Director of Molecular Oncology Program, Albert Einstein Cancer Center, Montefiore Hospital, 111 East 210th Street, Bronx, NY 10467.

### POSTDOCTORAL POSITIONS

Washington University School of Medicine  
NIH Training Program in Diabetes Research

Applications are being accepted for POSTDOCTORAL POSITIONS in a multi-investigator program to study diabetes and related endocrine diseases. Trainees will be offered opportunities in the following areas: cellular mechanisms in insulin secretion, insulin action, islet transplantation, autoimmunity, the role of nitric oxide and cytokines, vascular and neurological complications, glucose transporters, biology of aldose reductase, and regulation of gene expression. U.S. citizenship or permanent resident status is required. Salary on NIH scale. Curriculum vitae and three letters of recommendations are required. For information, please contact: Dr. Michael L. McDaniell, Box 8118, Washington University School of Medicine, Department of Pathology, St. Louis, MO 63110. Telephone: 314-362-7435; FAX: 314-362-4096; Email: mcdaniell@pathology.wustl.edu. An Affirmative Action/Equal Opportunity Employer.

POSTDOCTORAL POSITION available immediately in an NIH-supported program investigating the regulation of gene expression during the transcript elongation and truncation phases of mRNA synthesis (JBC, 268:12874; JBC, 270:2290). Ph.D. graduates with a strong background in molecular biology or protein biochemistry are encouraged to apply. Some experience in protein purification and a basic understanding of transcriptional regulation is preferred. Send curriculum vitae and three letters of reference to: Dr. Michael G. Izban, Sealy Center for Molecular Science and Department of Reproductive Sciences, University of Texas Medical Branch, Galveston, TX 77555-1062. Email: Mizban@BEACH.UTMB.EDU; FAX: 409-747-0475.

POSTDOCTORAL POSITION immediately available to study molecular genetics of thyroid hormone receptor (TR $\alpha$  and  $\beta$ ) genes using knock-out mice and molecular biology approaches (e.g., Forrest, EMBO J., 1996, in press). Emphasis is on phenotypes and target genes in the endocrine system and in the developing nervous and auditory systems. Experience with molecular biology, tissue culture, or transgenic mice desirable. Send curriculum vitae and three letters of reference to: Dr. Douglas Forrest, Department of Human Genetics, Mount Sinai School of Medicine, Fifth Avenue at 100th Street, New York, NY 10029. Email: dforrest@msvax.mssm.edu.

### POSTDOCTORAL RESEARCH ASSOCIATES NEUROSCIENCE

Four NIH-supported positions available to study intact and injured somatosensory systems in developing and mature rodents. Interests include pattern formation, neurotrophins, apoptosis, plasticity, and circuit analysis using systems, cellular, molecular and transgenic tools. Interactive, creative, flexible research environment. Send curriculum vitae and references to: Dr. Mark F. Jacquin, Professor, Neurology, Box 8111, Washington University School of Medicine, St. Louis, MO 63110. Email: jacquim@neuro.wustl.edu. An Equal Opportunity/Affirmative Action Employer.

POSTDOCTORAL POSITION to study acute and chronic pain using functional magnetic resonance imaging. Ph.D. in a neuroscience-related discipline required. Funding is available for three years. Send curriculum vitae, references to: A. Vania Apkarian, SUNY Health Science Center at Syracuse, Neurosurgery Lab/3118 WSK, 750 East Adams Street, Syracuse, NY 13210. Email: apkarian@vax.cs.hscsy.edu. Affirmative Action/Equal Opportunity Employer.

## POSITIONS OPEN

POSTDOCTORAL POSITION available in an immunology laboratory in the Department of Molecular Biology at Princeton University to study the cell biology and biochemistry of a novel pathway of antigen presentation by MHC class I-like molecules CDI. Antigen presentation by CDI in mouse selectively turns on a subset of T cells that produce interleukin-4 and regulate the type of T helper cell differentiation (Science, 269:185, 1995). We have developed a set of genetic and biochemical tools to study CDI in the mouse system and are seeking a postdoctoral fellow with solid experience in cell biology and biochemistry. Send (or FAX) curriculum vitae, two letters of reference, and a statement of interest to: Albert Bendelac, M.D., Ph.D., Department of Molecular Biology, Princeton University, Washington Road, Princeton, NJ 08544. Telephone: 609-258-5454; FAX: 609-258-2205; Email: abendelac@molbiol.princeton.edu. Princeton University is an Equal Opportunity/Affirmative Action Employer.

A POSTDOCTORAL POSITION is available to study communication between different excitable or non-excitable cell types, (epithelial/endothelial—smooth muscle of airways, vasculature or myometrium or glial cells: Mol. Cell. Endocrinol., 98:173, 1994). Techniques include video microscopy of Ca<sup>2+</sup> dyes, photochemistry, electrophysiology, and molecular biology. Electrophysiology experience an advantage but not essential. Send curriculum vitae and statement of interests to: Dr. M. J. Sanderson, Physiology, University of Massachusetts Medical Center, 55 Lake Avenue North, Worcester, MA 01655. FAX: 508-856-5997. University of Massachusetts Medical Center is an Equal Opportunity/Affirmative Action Employer.

POSTDOCTORAL ASSOCIATE. Position available for research on structure-function relationships and catalytic mechanism of human manganese superoxide dismutase in a collaborative project with Drs. Harry S. Nick and David N. Silverman. Our approach uses fast kinetic methods, magnetic resonance, and physicochemical studies on site-directed mutants. Send curriculum vitae and names of three references to: Dr. David N. Silverman, Box 100267 Health Center, University of Florida College of Medicine, Gainesville, FL 32610-0267. Equal Employment Opportunity/Affirmative Action Employer.

### POSTDOCTORAL POSITION

An immediate opening is available to study a multifunctional receptor LRP and its ER chaperone, RAP (see EMBO J., 14:2269, 1995). The areas of research will include both the biology of the receptor and the mechanism for the chaperone function of RAP. Experience in molecular and cellular biology is desirable. FAX curriculum vitae and names of three references to: Dr. Guojun Bu, Washington University School of Medicine, Box 8116, St. Louis, MO 63110. Telephone: 314-454-2685. Washington University is an Equal Opportunity/Affirmative Action Employer. Minority/Female/Disabled/Veteran.

POSTDOCTORAL POSITIONS available immediately to study adhesion molecules and signaling receptors in neural development, spinal cord regeneration, and brain tumors. Strong background in molecular and cellular biology required. Experience in neurobiology is desirable. Qualified candidates should send a cover letter, curriculum vitae, and three letters of reference to: Dr. Martin Grumet, Department of Pharmacology, NYU Medical Center, 550 First Avenue, New York, NY 10016. Email: grumem01@mcrcr6.med.nyu.edu. Equal Opportunity Employer, Minorities/Females.

POSTDOCTORAL POSITION available to study NMDA-receptor-dependent LTP as a nociceptive memory mechanism in defined neural networks controlling defensive behavior of *Aplysia*. Interest in behavioral/evolutionary neurobiology and neurophysiology is essential. Send curriculum vitae and names of three references to: Edgar T. Walters, Ph.D., Department of Integrative Biology, University of Texas-Houston Medical School, 6431 Fannin, Houston, TX 77030. Email: ewalters@girch1.med.uth.tmc.edu. Equal Opportunity/Affirmative Action Employer.

### POSTDOCTORAL POSITION

POSTDOCTORAL POSITION available immediately to study the molecular biology of Herpes Simplex latency. Procedures involve cloning, sequencing, construction of recombinant viruses, and animal work. Send curriculum vitae and the names of three references to: Dr. Lawrence T. Feldman, Department of Microbiology and Immunology, UCLA School of Medicine, Los Angeles, CA 90095-1747.

## POSITIONS OPEN

### POSTDOCTORAL POSITIONS Cell-Mediated Immunity and Monoclonal Antibodies

The Indiana University School of Medicine invites applications for TWO POSTDOCTORAL positions. One position will be for the study of cellular immune mechanisms in a mouse model of pulmonary histoplasmosis. Applicants must have experience in cellular immunology. The second position is for the production and characterization of monoclonal antibodies against *Histoplasma* antigens. Applicants must have strong background in monoclonal antibody production. Both positions, which are available June 1996, require an individual with a Ph.D. in a related field and who is organized and self-motivated. Applicants should send a curriculum vitae and arrange for three letters of recommendation to be sent to: L. Joseph Wheat, M.D., Department of Medicine/Infectious Diseases, Indiana University School of Medicine, 1001 West 10th Street, OPW 430, Indianapolis, IN 46202-2897. Email: Joe@idwish.dmed.iupui.edu. Affirmative Action/Equal Opportunity Employer.

### TWO NEUROSCIENCE LABS

POSTDOCTORAL POSITIONS to study molecular/cell basis of sensory transduction. Experience in molecular biology for one position (1); *in situ* hybridization and/or immunocytochemistry in nerve tissue for the other (2). Curriculum vitae, experience, three references to (1) Dr. Nirupa Chaudhari or (2) Dr. Stephen Roper, Department of Physiology and Biophysics (R430), P.O. Box 016430, University of Miami School of Medicine, Miami, FL 33101. Inquiries: nchaudha@newsun.med.miami.edu or sroper@newsun.med.miami.edu.

POSTDOCTORAL POSITION for Ph.D. or M.D. in behavioral neurobiological research on HPA-axis/catecholamine interactions in primates and rodents. Neurochemistry background and lab animal research required. Microdialysis or brain imaging experience desirable. Send curriculum vitae, one key publication, a one-page summary of experience, and names of three referees to: David Lyons, Department of Psychiatry and Behavioral Sciences, Stanford University School of Medicine, MSLS P111, Stanford, CA 94305-5485. Closing date: May 12, 1996. Stanford University is an Equal Opportunity/Affirmative Action Employer.

Two POSTDOCTORAL POSITIONS are available immediately to develop adenovirus and lentivirus vectors for gene therapy applications. Experience in the development and use of adenoviral and/or retroviral vectors is required. Applicants should send a current curriculum vitae and list of references to: Dr. Paul Robbins, Associate Professor, Department of Molecular Genetics and Biochemistry, University of Pittsburgh School of Medicine, W1246 Biomedical Science Tower, Pittsburgh, PA 15261. The University of Pittsburgh is an Affirmative Action/Equal Opportunity Employer.

### TUFTS MEDICAL SCHOOL Neuroscience

POSTDOCTORAL POSITION available immediately to work on information processing in real and artificial olfactory systems. Focus is on development of artificial systems. Computer experience required; physiological experience desired. Please send curriculum vitae to: John S. Kauer, Ph.D., Neuroscience, Tufts Medical School, 136 Harrison Avenue, Boston, MA 02111. FAX: 617-636-0476. Tufts University is an Equal Opportunity/Affirmative Action Employer.

POSTDOCTORAL POSITION is available immediately, with NIH funding, to study structure/activity relationships of salivary proteins when adsorbed to biological mineral. A Ph.D. in biochemistry or biophysics is required with experience in protein separation and characterization methods. Send, FAX, or Email curriculum vitae and three references to: Dr. John Featherstone, University of California San Francisco, Box 0758, 707 Parnassus Avenue, San Francisco, CA 94143-0758. Email: jdbf@itsa.ucsf.edu. FAX: 415-476-0858.

### POSTDOCTORAL POSITION Duke University

Available to study microtubule motor protein structure and function. Training in molecular biology or biochemistry preferred. Send curriculum vitae and names of three references to: Dr. Sharyn Endow, Department of Microbiology, Duke University Medical Center, Durham, NC 27710. Duke University is an Equal Opportunity/Affirmative Action Employer.



## ASSISTANT PROFESSOR

### SOIL MORPHOLOGY AND LAND USE

Tenure-track, academic-year position in the Department of Natural Resources Science beginning Fall, 1996. Position is approximately 60% teaching and 40% research. Teaching responsibilities include two undergraduate courses—soil morphology and mapping, and soil interpretation for land use—and a graduate course related to the applicant's area of expertise. Research will focus on the relationship between soil morphology and suitability for various land uses, with special emphasis on water quality and wetland issues.

Ph.D. in soil science or closely related field required. Expertise in soil morphology, interpretation, and mapping required. Experience with glacial geology, hydric soils, and soil suitability for waste disposal preferred. Successful applicant is required to demonstrate the ability to develop a high-quality, fundable, research program that focuses on the relationship between soil morphology and land use management. Teaching experience required.

Submit a letter of application, including a statement of research and teaching interests, plus curriculum vitae, official transcripts, and three letters of reference by 5/10/96 to: Arthur J. Gold, Search Committee Chair, Log # 191151 University of Rhode Island, P.O. Box G, Kingston, RI 02881. The University of Rhode Island is an AA/EEO employer and is committed to increasing the diversity of its faculty, staff and students. People from under-represented groups are encouraged to apply.

## Director, Great Lakes Environmental Research Laboratory Office of Oceanic and Atmospheric Research (A Senior Executive Service Position in the Federal Government)

Department of Commerce  
National Oceanic and Atmospheric Administration (NOAA)  
Director, Great Lakes Environmental Research Laboratory  
Ann Arbor, Michigan  
\$101,682 - 123,100 annually

The candidate selected for this position will be responsible for the direction and administration of the Great Lakes Environmental Research Laboratory (GLERL), Environmental Research Laboratories (ERL), Office of Oceanic and Atmospheric Research (OAR).

#### Mandatory Professional/Technical Qualification Requirements:

\*Broad understanding of the theory and current state-of-the-art in at least three (3) of the following disciplines including limnology, oceanography, hydrology, ecology, geochemistry, geology, and/or mathematics to be able to design, direct, and evaluate theoretical and experimental aquatic environmental research studies of complex scientific issues.

\*High-level competence in the environmental sciences sufficient to perceive complex research problems in broad perspective, to coach and infuse new ideas/approaches, and to participate meaningfully in discussion and evaluation of program areas in aquatic environmental research.

\*Ability to provide scientific, technical and organizational leadership disciplines that make up the Laboratory.

\*Ability to perform senior-level research with particular emphasis on environmental sciences, and to publish significant research findings in refereed literature.

Please contact (301) 713-0534/(301) 713-0973 (TDD) for an announcement package, including mailing instructions. Refer to announcement number NOAA#96-06. This vacancy closes on June 17.



NOAA Values  
a Diverse Workforce  
and is an  
Equal Opportunity Employer



### Faculty Positions Biochemistry and Molecular Biology

Applications are invited for research-track faculty positions in the Department of Dermatology. Selected applicants would join a 50-member multidisciplinary research environment to study molecular mechanisms of skin repair. Candidates should have documented expertise in state-of-the-art approaches to the study of gene regulation and/or signal transduction. Applicants should possess a Ph.D. (or M.D.) degree, at least 3 years of postdoctoral experience, demonstrated research excellence, and strong written and oral communication skills. Selected applicants will be expected to conduct primary and collaborative research projects in a variety of areas, including:

- \* Molecular mechanisms of cell activation by ultraviolet irradiation (see *Nature*, 379:336-339, 1996)
- \* Transcriptional mechanisms of ultraviolet damage and skin cancer
- \* Functions of nuclear receptor superfamily members
- \* Retinoid and vitamin D-mediated gene regulation

Please send curriculum vitae, a one-page summary of research interests, three representative reprints, and the names and addresses of three references to: John J. Voorhees, M.D., Professor and Chair, Department of Dermatology, University of Michigan, 1301 E. Catherine, Kresge I, R6558, Ann Arbor, Michigan 48109-0528. FAX: 313-747-0076; Email: cmhill@umich.edu.

The University of Michigan is a non-discriminatory, Affirmative Action employer and encourages minorities and women to apply.

## RADIATION EFFECTS RESEARCH FOUNDATION HIROSHIMA, JAPAN

### Chief of Research

The U.S. National Academy of Sciences (NAS) is seeking a Resident Director/Chief of Research for the Radiation Effects Research Foundation (RERF) in Hiroshima, Japan. RERF is a private foundation in Japan with over 335 employees working in laboratories in Hiroshima and Nagasaki. NAS provides management and scientific oversight services to RERF for the U.S. Government. The Foundation is equally funded by the Government of Japan, through the Ministry of Health and Welfare, and by the U.S. Government, through the Department of Energy (DoE). RERF is also equally managed on-site by citizens of the two countries. The Chief of Research is responsible for the scientific programs and research activities conducted at RERF on the long-term follow-up of late health effects among the survivors of the atomic bombs, and assists in the day-to-day management of the Foundation with three other Directors, all of whom live in Japan. Qualified candidates must be U.S. citizens, have an M.D. or Ph.D. with extensive experience in basic research (genetics, molecular biology, cellular biology, immunobiology, etc.) and management of complex, multi-disciplinary research programs. U.S. Resident Directors are employees of the United States National Academy of Sciences and RERF. Salaries are commensurate with qualifications and are supplemented by relocation, housing, and cost-of-living benefits. Terms of office of Directors are for four years with a maximum of two terms (eight years). Typical NAS appointments are for two years with extensions of additional two year appointments, up to the eight years, if warranted. Please send your resume and the names and addresses of at least three references to: Dr. Zimbrick, Board on Radiation Effects Research, (NAS 342-JZ), National Academy of Sciences, 2101 Constitution Avenue, NW, Washington, D.C. 20418. (FAX: 202-334-1639; e-mail: jzimbrick@nas.edu) The review of applications will begin on April 15, 1996 and continue until the position is filled. EOE



**M**uch of the success of Bayer Corporation, Pharmaceutical Division, is based on innovation and research. At the same time, all of our success is based on the talent and drive of our people. As an integral part of Bayer, a \$26.8 billion global leader, we have the resources to provide our employees with a supportive, state-of-the-art, multidisciplinary environment that encourages their professional growth and makes our success possible. Join our dedicated team of professionals in the following positions:

### Associate Research Scientist

You will assist in the design and execution of in vitro drug metabolism studies in the support of drug development, under the supervision of a Sr. Research Scientist. You will be required to study the metabolism of drugs in various mammalian species, with emphasis on in vitro experiments designed to predict the metabolism of drugs in man. Responsibilities include: preparation and characterization of liver subcellular fractions from various mammalian species, preparation of liver slices, and development and utilization of bioanalytical methods for monitoring and identifying metabolites. Additional responsibilities include data analysis and preparation of tables and graphs for reports.

You must possess a BS degree with 2 or more years of experience or an MS degree with minimal experience in biology, biochemistry or related area and experience in in vitro drug metabolism. Demonstrated skills in the preparation of subcellular fractions (microsomal and cytosolic) and in vitro enzyme assays required. Expertise in liver slice methodology is essential. A working knowledge of analytical techniques (HPLC, spectroscopy, gel electrophoresis) and tissue culture experience are desired. Excellent oral and written skills are required.

### Associate Research Scientist

You will assist in the analysis of drug/metabolites in biological fluids, and conduct both in vitro and in vivo pharmacokinetic studies in support of drug discovery and development under the supervision of a Sr. Scientist. You will also be responsible for animal handling/dosing and sampling of biological fluids in animal pharmacokinetic studies. Surgical skills related to pharmacokinetic studies (tissue dissection, cannulations, etc.) must be excellent. Computer skills in data analysis will also be required. Additional responsibilities include trouble-shooting of instrumental problems and preparation of tables and graphs for reports.

You must possess a BS degree with two or more years of experience or an MS with minimal experience in chemistry, biology, biochemistry or related area and industrial experience in pharmacokinetics. Experience in the conduct of pharmacokinetic studies preferred. Working knowledge of analytical techniques (HPLC/GC) relevant to pharmacokinetic studies is essential. Demonstrated skills in handling/dosing/sampling of lab animals and animal surgical techniques are essential. Data analysis ability using a computer is required. Problem solving skills and the ability to work with minimal supervision are desired.

### Associate Research Scientist

You will assist in the analysis of drugs/metabolites in biological fluids and tissues and conduct in vivo pharmacokinetics, tissue distribution and mass balance studies in support of drug discovery and development under the supervision of a Sr. Scientist. You will also be responsible for animal handling, dosing, surgery (e.g. catheterization) dissection and sampling of biological fluids and tissues. Extensive experience in handling radioisotopes and radiolabelled compounds is essential. Computer skills in data analysis and report writing will also be required. Additional responsibilities will include utilization and maintenance of analytical equipment and preparation of tables and graphs for reports.

You must possess a BS degree with 2 or more years of proven experience or an MS degree with minimal experience in pharmacokinetics. Experience in the conduct of pharmacokinetics, mass balance and tissue distribution studies preferred. Proficiency in small animal handling, dosing, surgery and dissections is essential. Demonstrated ability in use of isotopes and radiolabelled compounds ( $^{14}\text{C}$ ,  $^3\text{H}$ ) is essential. Experience in various analytical techniques (HPLC/GC) is desirable. Data analysis skills and computer knowledge are required. Problem solving skills and the ability to work with minimal supervision are desired.

We offer attractive compensation and generous benefits. For immediate consideration, please forward a resume, including salary history, to:

**Bayer Corp., Pharmaceutical Division, Dept. ELWD, 400**



**Pharmaceutical  
Division**

**Morgan Lane, West  
Haven, CT 06516.**

No phone calls please. An Equal Opportunity Employer M/F/D/V. Bayer Corp. is committed to creating and maintaining cultural diversity within our work environment.



## University College Dublin

An Coláiste Ollscoile Baile Átha Cliath

### DEPARTMENT OF ZOOLOGY

#### One Permanent Post (Ref: 67/96)

Applications are invited for a full-time permanent academic post to commence in September 1996. Preference will be given to candidates who have a relevant PhD degree, post-doctoral and/or teaching experience and who are committed to productive research and excellence in teaching. Research experience in coastal zone ecology would be a distinct advantage. Applications from young researchers will be welcomed.

The appointment will be made at the level of either Assistant Lecturer or College Lecturer.

**Closing Date: Not later than 5.00 p.m. on Thursday, 16 May 1996.**

Prior to application, further information (including current salary scales) should be obtained from the **Personnel Office, University College Dublin, Belfield, Dublin 4, Ireland** (quoting above reference number). Telephone enquiries: **(+353 1) 706 1645**. Fax: **(+353 1) 269 2472**. Email: **acadrec@irlearn.ucd.ie**

*UCD is an equal opportunities employer*

### The Fourth Research Grant Offer by Mizutani Foundation for Glycoscience

**Mizutani Foundation for Glycoscience** invites grant applications for basic studies in the field of glycoconjugates. The lists of previous grantees and their research projects may be found in: *Science* **263**, 1051 (1994) & **268**, 1532 (1995) and *Nature* **367**, 10 Feb. classified 21 (1994) & **375**, 25 May classified 29 (1995).

**Qualification:** An applicant must (a) have a doctor's degree, (b) have a documented capability of performing independent studies, and (c) be a member of a research institute where he or she can carry out the proposed project.

**Grant:** As much as ¥10,000,000 may be requested per annum for a maximum of two years. The total budget for grants is approximately ¥100,000,000 per annum, but the budget allocated to new research proposals may vary each year. No more than 10% of the grant may be used for indirect costs (overheads), and no part of the grant may be used for stipends of the principal and/or collaborative investigators.

**Selection:** New applications will be reviewed by members of a committee consisting of specialists appointed by the Board of Trustees of the Foundation for originality, scientific merit and feasibility.

**Application Form and Deadline:** An application must be typed or printed on an official, current form, an English version of which may be available (after May 1) by sending a letter or fax (no telephone calls) to Dr. Yumiko Kawai, Department of Biochemistry, Meharry Medical College, 1005 David Todd Jr. Blvd., Nashville, TN 37208, USA (Fax: [1] 615-327-6442). A completed application form for a grant to be awarded on April 1, 1997 will be accepted after July 1 and must be received on or before August 31, 1996 at the Tokyo Office of the Foundation shown below:

**Mizutani Foundation for Glycoscience: Sen-i Kaikan  
Suite 5F, 3-1-11 Nihonbashi-honcho, Chuo-ku, Tokyo 103,  
Japan (Phone: [81] 3-3246-0224, Fax: [81] 3-3246-1265).**



## NEUROSCIENCE

### THE EJLB FOUNDATION

#### SCHOLAR RESEARCH PROGRAMME

The EJLB Foundation awards each year up to six (6) grants for research projects in all areas of neuroscience that pertain directly or indirectly to schizophrenia and mental disease.

Eligibility for such grants is restricted to young scientists who are pursuing an independent research career and have given evidence of having significant potential. It is also a requirement that these scientists (i) have earned an MD and/or a Ph.D. degree; (ii) have completed their post-graduate training; and (iii) have been admitted after **June 15, 1991** as faculty members of a leading university, or an affiliated non-profit research centre, in Canada or elsewhere in the world.

Each grant is of CAN\$300,000, is disbursed over three (3) years and is non-renewable.

The next closing date for receipt of letters of intent is **May 31, 1996**.

Full details regarding this programme and required letter of intent forms may be obtained from:

**The EJLB Foundation**  
1350 Sherbrooke Street West  
Suite 1050  
Montréal, Québec  
CANADA H3G 1J1.

Fax (For inquiries only 514-843-4080).

## DEPARTMENT OF BIOCHEMISTRY

### Research Chair in Cell Death & Survival

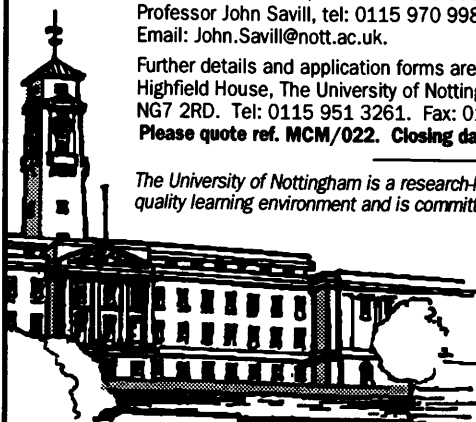
Applications are invited for the Research Chair in Cell Death and Survival based in the Department of Biochemistry, which is very well equipped for molecular cell biology. The successful candidate will be expected to have an outstanding record of research relevant to cell death and survival and will promote an internationally competitive research programme in this field. This will complement and extend existing expertise in the molecular cell biology of neurodegeneration, inflammatory/immune disease and cancer in the Departments of Biochemistry and Medicine.

Salary will be within the professorial scale, minimum £34,047pa.

Informal enquiries may be addressed to either Professor R John Mayer, tel: 0115 970 9369, fax: 0115 970 9969, Email: John.Mayer@nott.ac.uk or Professor John Savill, tel: 0115 970 9985, fax: 0115 970 9978, Email: John.Savill@nott.ac.uk.

Further details and application forms are available from the Personnel Office, Highfield House, The University of Nottingham, University Park, Nottingham NG7 2RD. Tel: 0115 951 3261. Fax: 0115 951 5205.

Please quote ref. **MCM/022**. Closing date: **7 May 1996**.



*The University of Nottingham is a research-led institution which provides the highest quality learning environment and is committed to equal opportunities in employment.*



**The University of Nottingham**



### Postdoctoral Position

#### Microbiology/Microbial Ecology/Biochemistry

A position is available to study the microbial degradation of mineral oil in contaminated soils and aquifers. The project will include field work, simulations in laboratory aquifer columns, and studies in microbial cultures. Selected catabolic pathways will be characterized biochemically, whereas specific microorganisms in aquifer material are to be determined by means of gene probes. The applicant should have special interest in anaerobic processes and be familiar with chemical analysis.

The position is available from spring 1996 to spring 1998 and may include an extension for two additional years. The salary will be about CHF 75,000 per annum.

To apply, please send a full CV and the names of three referees to **K. Zurbuchen, Personnel Officer, Swiss Federal Institute of Technology (ETH), 8092 Zurich, Switzerland**. Further details may be obtained from J. Zeyer or P. Hoehener by phone (+41 1 633 60 44 or 60 42) or by e-mail (zeyer@ito.umnw.ethz.ch).

## Scientist cardiovascular PHARMACOLOGY

*A major  
French  
pharmaceutical  
company  
wishes  
to recruit a  
pharmacologist  
for its  
research  
centre located  
west of Paris*

Qualifications include a PhD with postdoctoral experience in cardiovascular research. Applicants should have a practical experience of hemodynamic techniques and coronary catheterism.

Involved in research projects aiming at the discovery of novel drugs, you will be more particularly responsible for studies on vascular restenosis models and will perform vascular histomorphometric techniques.

Our material and technical facilities are excellent. You will join a high-level multidisciplinary team and evolve in a stimulating scientific environment.

Please send your application file (CV, handwritten letter and photo) to **PUBLIVAL/4003**  
27 Route des Gardes  
92190 MEUDON (FRANCE)

## POSITIONS OPEN

### POSTDOCTORAL/RESEARCH ASSISTANT PROFESSOR Molecular Physiology of Secretory Cells

We are seeking candidates for an NIH-funded, interdisciplinary study of the molecular physiology of secretion in exocrine cells. The focus of this work is on the anion channels in parotid acinar cells and includes an electrophysiological study of the channels in native cells and the cloning, *in vitro* expression, and structure/function studies of the channel proteins (see *J. Physiol.*, 484:677, 1995; *J. Mem. Biol.*, 147:95, 1995; *J. Physiol.*, 490:351, 1996). We seek a Ph.D. with experience patch clamping native cells, especially epithelial cells. The main responsibility will be to design and implement studies designed to address the modulation and regulation of the anion channels in acinar cells and to collaborate with molecular biologists in the cloning, expression, and structure/function studies of these channels. Interested individuals should contact: Dr. Ted Begenisich, Department of Pharmacology and Physiology, Box 711, 601 Elmwood Avenue, University of Rochester, Rochester, NY 14642.

**POSTDOCTORAL POSITIONS** available for scientists interested in the study of the signaling and regulatory mechanisms of G protein-coupled receptors and/or the function and biology of neurotransmitter transporters using molecular biological/biochemical and transgenic animal approaches (*Science*, 271:363, 1996; *Nature*, 379:606, 1996). Preference will be given to individuals with strong molecular biology/biochemistry and/or neurobiology background. Candidates should send curriculum vitae and three letters of reference to:

Dr. Marc G. Caron  
Departments of Cell Biology and Medicine  
Box 3287  
Duke University Medical Center  
Durham, NC 27710

Equal Opportunity Employer.

### RETINAL ANATOMY/PHYSIOLOGY

**POSTDOCTORAL POSITION** available now to work on NIH-funded study of interactions between rod and cone signals in macaque monkey retina. Training is offered in physiology and anatomy of primate retina in the lab of Dr. Dennis Dacey (Department of Biological Structure). Background in electrophysiology, visual psychophysics, and/or color science would be helpful. Annual salary: \$25,000 for one to three years. Please send curriculum vitae and names of three references to: Dr. Steven Buck, Department of Psychology, University of Washington, Box 351525, Seattle, WA 98195. Email: sbuck@u.washington.edu. FAX: 206-685-3157.

**POSTDOCTORAL POSITION**—Position available immediately to develop gene therapy approaches for the congenital disorder Chediak-Higashi syndrome. Studies involve the mouse model beige and patient-derived cell lines. A background in either the biochemistry of vesicular transport or experimental hematology would be appropriate. Please send curriculum vitae and names of three references to: Dr. Stephen J. Brandt, Division of Hematology, Room 547 MRB II, Vanderbilt University Medical Center, Nashville, TN 37232. An Affirmative Action/Equal Opportunity Employer.

### RESEARCH FELLOWSHIPS

**POSTDOCTORAL FELLOWSHIPS** available to study: 1) signal transduction abnormalities in murine lupus; 2) antigen presentation and autoimmunity; 3) cytoskeletal structure and function in oxidative injury. Cell and/or molecular biology experience desirable. Send letter, curriculum vitae, and three references to: Dr. Jerrold S. Levine and Dr. Wilfred Lieberthal, Renal Section, Boston University School of Medicine, 88 East Newton Street, Boston, MA 02118. FAX: 617-638-7326. Boston University is an Affirmative Action/Equal Opportunity Employer.

**RESEARCH SCIENTIST** to study structure and function of ion channels in heterologous expression systems. Requires Ph.D. and three or more years of postdoctoral training using voltage/patch clamp techniques. An excellent salary and benefits package is available. Send curriculum vitae, description of current research, and names of three references to: Dr. William P. Schilling, Rammelkamp Center Research, Case Western Reserve University, 2500 MetroHealth Drive, Cleveland, OH 44109-1988. Email: wschilling@mhnct.nhmc.org.

## POSITIONS OPEN

### GENETICIST/CURATOR

The USDA, Agricultural Research Service (ARS) is seeking a **GENETICIST** (plants)/plant physiologist to work on small grains computer databases. Project is assembling and curating data on maps, clones, genes, traits, pathology, and germplasm. Databases are available via several formats, mainly by Internet access. Position involves data assembly, formatting, and analysis from sources including research laboratories and literature. Major role in interacting with users and data sources. Ideal candidate is cereal geneticist with professional knowledge of plant genetics, breeding, pathology, mapping, and molecular biology. Experience with computer databases, network access, and UNIX systems is preferable. This is a permanent full-time position. Salary range is \$38,119 to \$59,397, plus benefits, commensurate with qualifications. *U.S. citizenship required.* For position information contact: Dr. Olin D. Anderson, USDA, ARS, WRRRC, 800 Buchanan Street, Albany, CA 94710. Telephone: 510-559-5773; Email: oanderson@pw.usda.gov. Candidates must successfully address and meet specific placement factors defined in official vacancy announcement. Contact: Ms. Janis Wright, Telephone: 510-559-6014 for copy of vacancy announcement ARS-D6W-079. The USDA is an Equal Opportunity Employer.

### SCIENTIST

The Henry M. Jackson Foundation for the Advancement of Military Medicine has a position available for a Ph.D. in molecular biology to study the emergence of drug-resistant HIV strains. Individual must have a minimum of five years of experience in the field of drug resistance. The position will require the setting up of a project to study drug resistance using cloning and sequencing techniques. Individual will be expected to generate and characterize drug-resistant HIV mutants and to express and perform enzymologic characterization of the mutant proteins. Interested individuals should submit a cover letter and résumé to: Human Resources Department, Attention: PL4960123, The Henry M. Jackson Foundation for the Advancement of Military Medicine, 1401 Rockville Pike, Suite 600, Rockville, MD 20852. Email: hr@mail.hjff.org. Affirmative Action/Equal Opportunity Employer.

### POSTDOCTORAL AND ASSOCIATE SCIENTIST

**POSTDOCTORAL AND ASSOCIATE SCIENTIST** positions available at the Weis Center for Research in Danville, Pennsylvania in the laboratory of Dr. Lawrence Rothblum. The successful applicants will have a Ph.D. in biochemistry, cell biology, or microbiology with experience in molecular biology. Experience with Baculovirus and/or mammalian viral vectors is desirable. The project involves studies on the mechanism of transcription by RNA polymerase I and its regulation [see Cavanaugh *et al.*, *Nature*, 374:117-180, 1995, and Henpel *et al.*, *Mol. and Cell. Biology*, 16:557-563, 1996.] The Weis Center for Research is a well-equipped, modern research facility in a semirural environment with easy access to major cities of the Northeast. Competitive salary and fringe benefits are available. Please send curriculum vitae with the names and telephone numbers of three references to: Geisinger Human Resources (LR), 100 North Academy Avenue, Danville, PA 17822-1529.

### POSTDOCTORAL POSITION

#### Control of mRNA Stability

A **POSTDOCTORAL POSITION** is available immediately to study molecular mechanisms controlling selective and differential mRNA degradation in mammalian cells (Chen and Shyu, *TIBS*, 20:465, 1995). Our current studies focus on interactions between RNA destabilizing elements and their cognate binding proteins that dictate nucleolytic events in the mRNA decay pathways. Experience in protein chemistry and purification and molecular biology is desirable. Salary commensurate with experience. Send curriculum vitae; brief statement of research interests; and names, addresses, and telephone/FAX numbers of three references to: Dr. Ann-Bin Shyu, Department of Biochemistry and Molecular Biology, The University of Texas-Houston Medical School, 6431 Fannin Street, Houston, TX 77030. Email: abshyu@utmmg.med.uth.tmc.edu. Women and minorities are encouraged to apply. Equal Opportunity Employer.

## POSITIONS OPEN

### EXPERIMENTAL PHYSICIST

To work in Newport News, Virginia; forty hours per week (8:00 a.m. to 5:00 p.m.). Salary: \$60,000 per year.

Incumbent will contribute to the design, construction, installation, and commissioning of the experimental equipment for the High Resolution Magnetic Spectrometers. Duties will include design and development of the focal plane detectors, data acquisition and control system, coordination of the construction and test detectors built by different universities. Also develop computer programs to simulate experiments. Participate in collaborative and independent research activities in areas of current and future interest to the laboratory.

Requires a Ph.D. in physics plus at least three years of postgraduate experience in experimental nuclear physics at an electron accelerator laboratory, including design and construction of particle detectors (e.g. Drift chamber, Cherenkov counter, shower calorimeter), data acquisition and control systems for detectors and targets. Demonstrated expertise in coordination of the efforts in collaboration experiments. Expertise in simulating physics experiments.

To apply, mail two résumés, with copy of this ad attached, to: VEC, VA5035773, 5145 East Virginia Beach Boulevard, Norfolk, VA 23502.

**POSTDOCTORAL POSITIONS** are available in the Sealy Center for Oncology and Hematology at the University of Texas Medical Branch (UTMB) in Galveston. Projects will focus on the identification and cloning of novel molecular components of antiproliferative signaling pathways in normal and malignant hematopoietic cells. Applicants should send their curriculum vitae and a description of research interests to: Dr. Michael P. Carroll, Sealy Center for Oncology and Hematology, University of Texas Medical Branch, MRB Room 9.104, 301 University Boulevard, Galveston, TX 77555-1048. Equal Opportunity/Affirmative Action Employer. Minorities/Females/Disabled/Veterans. UTMB hires only employees authorized to work in the U.S.

Three **POSTDOCTORAL POSITIONS** (visiting, one-to-three years). Two molecular biologists to develop transgenic wetland plants with improved accumulation/volatilization of trace elements. One plant physiologist to study trace element uptake by wetland plants. Salary: \$27,000 to \$30,000. Send résumé and three letters of recommendation to: Prof. Norman Terry, Department of Plant Biology, 111 Koshland Hall, University of California, Berkeley, CA 94720-3102. Email: nterry@nature.berkeley.edu. Equal Opportunity Employer.

**POSTDOCTORAL POSITION** to study the development of tumor-specific lymphocytes and immunogenic vaccines. Funding for this position is anticipated for May 1, 1996. Please send curriculum vitae and three letters of reference to: Dr. Stephen E. Wright or Dr. Kenneth E. Dombrowski, Department of Internal Medicine, Texas Tech University School of Medicine, 1400 Wallace Boulevard, Amarillo, TX 79109-1797. (Non-U.S. citizens, please provide evidence of visa status.)

### POSTDOCTORAL RESEARCH ASSOCIATE AUDITORY PHYSIOLOGY

This position is available for a Ph.D. graduate to study neural mechanisms for the processing of complex communication and/or biosonar sounds in the bat's auditory system. A person with background in neurophysiology and/or neuroanatomy is welcome to apply. Please send 1) curriculum vitae, 2) a brief statement of research interest and experience, and 3) names and telephone/FAX numbers of three references to: Professor N. Suga, Department of Biology, Washington University, One Brookings Drive, St. Louis, MO 63130. FAX and Telephone: 314-935-8530; Email: Suga@wustlb.wustl.edu. An Equal Opportunity/Affirmative Action Employer.

**POSTDOCTORAL POSITION** available to study genes that determine yeast longevity and their human counterparts, and mammalian cellular senescence (*Genetics*, 91:35, 1993; *J. Biol. Chem.*, 269:15451, 1994; *J. Biol. Chem.*, 269:18638, 1994; *BBRC*, 219:370, 1996; *Dev. Genet.*, 18:154, 1996). Experience in molecular techniques essential and in yeast genetics helpful. Send curriculum vitae with bibliography and names with telephone, FAX, and Email numbers of three referees to: Dr. S. Michal Jazwinski, Department of Biochemistry and Molecular Biology, LSU Medical Center, 1901 Perdido Street, New Orleans, LA 70112. Affirmative Action/Equal Opportunity Employer.



Wyeth-Lederle Vaccines  
and Pediatrics (WLVP),

*a member of the  
Wyeth-Ayerst family,  
is recognized  
internationally as a  
leader in the research,  
development and  
manufacture of  
vaccines for prevention  
of viral and  
bacterial diseases.  
Our continued  
success depends  
upon the talent of  
multi-disciplinary  
research teams made  
up of scientists like  
you...bringing to  
market biological  
products that prevent  
disease, improve  
health and enhance  
the quality of life.*

# VIRAL VACCINE RESEARCH

Join **Wyeth-Lederle Vaccines and Pediatrics** for the opportunity for professional growth. We seek experienced candidates to staff key positions in Viral Vaccine Research at our Pearl River, New York R & D facility. These positions require a specialization in molecular biology, virology or biochemistry.

## • Sr. Project Leaders/Project Leaders

MD and/or Ph. D. in biological sciences plus 8 years post doctorate experience and a proven record of accomplishments through publications, patents, grants, etc.

## • Sr. Research Scientists/Research Scientists

Ph. D. with a minimum of 2 to 6 years post doctorate experience.  
The preceding positions require experience in one of the following areas:

- Gastrointestinal Viruses
- Genitourinary Viruses
- Respiratory Viruses

## • Sr. Research Associates/Research Associates

BS or MS Molecular Biology or Biology or Biochemistry with 1-3 years experience in one of the following areas:

- Gene Expression and DNA/RNA cloning, analysis and manipulation
- Biochemical techniques
- Virus propagation, characterization and purification

Additional positions are also available within WLVP for:

## • Clinical Research Associates

BSN with 2 years experience in clinical fields or BS or MS in Life Sciences with 2 years Phase I through Phase IV clinical studies experience.

## • Development Chemist

BS or MS in Chemistry with a minimum of 4 years analytical chemistry experience such as GC, HPLC, AA, IR, NMR and wet chemistry methods.

WLVP offers the ideal environment to spark your enthusiasm and challenge your ingenuity. In support of your research efforts you will have and use state-of-the-art resources and equipment. The free flow of scientific and technical knowledge is encouraged by frequent in-house seminars and company sponsored participation in conferences and worldwide symposia. Our research scientists are encouraged to establish their reputations by developing a strong record of publications. We offer competitive compensation and benefits package, including savings plan. If you are ready to contribute to a challenging program, send your resume including salary history to:

**Wyeth-Lederle Vaccines and Pediatrics, Human Resources, #140/435**  
**401 Middletown Road, Pearl River, New York 10965**

Principals Only Please. An Equal Opportunity Employer.



**Wyeth-Lederle**

**Vaccines and Pediatrics**

Protecting Families Through Immunization®

## Postdoctoral Research Positions

### Veterinary Infectious Disease Organization

The Veterinary Infectious Disease Organization (VIDO) has immediate openings for 4 postdoctoral fellows to strengthen its research programs in the areas of vaccine development and delivery. Positions are available to work in the following areas:

**Nucleic acid immunization (V-01--Dr. S. van den Hurk):** This position involves the development of polynucleotide immunization technology for use in animals, including sheep, cattle, and swine, as well as to understand the immune mechanisms involved.

**Bovine adenovirus (V-02--Dr. S. Tikoo):** Two positions are available to work on the molecular biology of bovine adenovirus with emphasis on its development as a viral vector for vaccine delivery and gene therapy.

These positions require a strong background in molecular virology and/or immunology plus the ability to work in a team-based research environment.

**Immunology (V-03--Dr. P. Griebel):** The objective of this project is to investigate the ability of liposome-cytokine formulations to modulate immune responses to vaccine antigens. These formulations will be tested for their ability to confer protection against respiratory pathogens in a sheep model. Candidates will be expected to have a strong background in immunology with a working knowledge of mucosal immunity. Experience with techniques necessary to evaluate cellular and humoral immune responses is essential, and a working knowledge of ruminant immunology would be an asset.

VIDO has well-equipped laboratory and animal facilities and offers a stimulating research environment encouraging collaborative efforts between scientists within various disciplines. All positions are available immediately. Please identify the position you are applying for by using the reference number. Candidates should send a copy of their vitae and names of three references to:

**Dr. Andrew A. Potter**  
Associate Director--Science  
Veterinary Infectious Disease Organization  
120 Veterinary Road  
Saskatoon, Saskatchewan S7N 5E3 Canada  
Email: potter@sask.usask.ca

## Come to NIH and Help Shape the Future of Neuroscience Health Scientist Administrator

The National Institute of Neurological Disorders and Stroke (NINDS), located in Bethesda, Maryland, is seeking a health scientist administrator in the Division of Fundamental Neurosciences. The person holding this position will advise and assist NINDS grantees doing fundamental research related to neurological diseases, and will be responsible for evaluating and planning the extramural research program of the Institute in this scientific area. Applicants are expected to have broad knowledge of, and interest in, contemporary neurobiological research. Areas of special interest include molecular, developmental, or integrative biology. Successful applicants must possess a Ph.D. or M.D. (or equivalent degree) with postdoctoral training in research and a record of research accomplishment relevant to the responsibilities described above.

This is a GS-12/13/14 Civil Service Position with a salary range of \$44,458 to \$62,473 per year for Ph.D.s and \$53,110 to \$72,663 for M.D.s. Physicians may be additionally eligible for a Physician's Comparability Allowance.

Applicants should submit a letter of application with a brief description of career interests, along with a curriculum vitae and bibliography, to:

**Ms. Christine Steyer, National Institutes of Health, NINDS Personnel Office, Building 31, Room 8A23, 31 Center Drive, MSC 2540, Bethesda, MD 20892-2540, or you may fax your application to (301) 402-2818.**

Applicants are encouraged to obtain information concerning the position description and qualification requirements by contacting Ms. Steyer at (301) 496-6334.

U.S. citizenship is required.

Applications must be submitted by June 1, 1996.

**National Institutes of Health  
Department of Health and Human Services  
NIH IS AN EQUAL OPPORTUNITY EMPLOYER**

# Cardiovascular Diseases Research

DuPont Merck is a worldwide research-based pharmaceutical and radiopharmaceutical manufacturer. Established in 1991 as a partnership of the DuPont Company and Merck & Co., Inc., DuPont Merck has over \$1.2 billion in sales. The company employs approximately 4,000 people worldwide, and is headquartered in Wilmington, Delaware, USA.

The Cardiovascular Diseases Research group has openings in the thrombosis research and vascular biology areas and uses a team-oriented approach to discover and advance novel therapies for the treatment of unmet clinical needs in these areas.

## THROMBOSIS RESEARCH

We are seeking an individual who will have responsibility for providing scientific leadership to a multidisciplinary group whose purpose is to identify and implement novel approaches for the treatment of thrombotic disorders. Specifically, the successful candidate will provide expert knowledge of the interaction between platelets, lipids and vessels as related to the mechanisms of thrombosis. Must have a Ph.D. or M.D. and 5+ years experience of innovative research in thrombosis or coagulation. Excellent leadership skills are desirable.

## VASCULAR BIOLOGY

This individual will provide scientific leadership to a multidisciplinary team developing new molecular strategies for the treatment of cardiovascular disease. Expertise in vascular biology is required. Experience in signal transduction in vascular cells and biochemical/molecular methods for cell-cell and cell-extracellular matrix interactions is highly desirable. M.D. or Ph.D. required with 5+ years of experience and a proven track record of innovative research in vascular biology.

DuPont Merck offers excellent compensation and benefits. Our mid-Atlantic location affords an attractive lifestyle with easy access to a wide range of academic, cultural, and recreational activities.

Interested candidates should send their curriculum vitae, references and 1-2 page research summary to: The DuPont Merck Pharmaceutical Company, CVS-S4/96, P.O. Box 80400, Room 2413C, Wilmington, DE 19880-0400. An equal opportunity employer M/F/H/V.

**DU PONT  
MERCK**

**The DuPont Merck Pharmaceutical Company**  
Merging Strengths...Emerging Opportunities.

## MEETINGS

### FIRST INTERNATIONAL CONFERENCE ON IMMUNOLOGY AND AGING

Natcher Center,  
National Institutes of Health Campus  
Bethesda, Maryland • June 16-19, 1996

Sponsored By



**INSTITUTE  
FOR ADVANCED STUDIES IN  
IMMUNOLOGY  
& AGING**

In Collaboration With



National Institutes  
of Health



World Health  
Organization

*International Union of Immunological Societies  
International Association of Gerontology  
American Association of Immunologists  
American Geriatrics Society  
Gerontological Society of America  
and Other Organizations*

#### CONFIRMED SPEAKERS

*William B. Ershler, University of Wisconsin  
Amiela Globerson, Weizmann Institute of Science, Israel  
Calvin Harley, Geron Corporation  
Richard J. Hodes, National Institute on Aging, NIH  
Thomas J. Kind, National Institute of Allergy  
and Infectious Disease  
Tadamitsu Kishimoto, Osaka University Medical School  
Philippa Marrack, Howard Hughes Medical Institute  
Susan Swain, Trudeau Institute  
Georg Wick, Austrian Academy of Sciences*

#### CONFERENCE TOPICS

*Molecular Biology of Aging  
Autoimmunity and Aging  
Cytokines and Aging  
Aging Genes and Molecular Mechanisms  
Consequences of Immunosenescence on Infection  
Effects of Environment and Behavior,  
Including Exercise, Psychological Stress  
and Nutrition, on Aging and Immune Function  
Vaccines for Older Adults  
Geriatric AIDS  
Immunorestitution,  
DHEA  
Immune Function and Aging in Relation  
to Specific Diseases: Diabetes, Osteoporosis, Arthritis,  
Alzheimer's, Atherosclerosis*

#### PROGRAM & REGISTRATION INFORMATION

*Please contact: The Institute for  
Advanced Studies in Immunology and Aging  
1819 Pennsylvania Avenue, NW, Ste. 400  
Washington, DC 20006  
(202) 333-8845 or FAX (202) 333-8898  
e-mail: L-ASL-A1@aol.com*

*See the Brochure and registration forms, etc. on the  
INTERNET: <http://www.erols.com/jpeters/iasia.html>*



**WHEN SCIENCE AND  
TECHNOLOGY COME  
TOGETHER, ANYTHING IS  
POSSIBLE.**

**AND EVERYTHING IS  
ACHIEVED.**

**B**y merging pharmaceutical science with technology, Eli Lilly and Company is creating unprecedented opportunities to better meet the global population's health care needs. While we continue our search for innovative pharmaceuticals, we're also pioneering ways to use technology to improve health care. We're collecting, analyzing and sharing data with the entire health care community in order to help people manage illness and lead healthier, more active lives. The Technology Core Research division of Lilly Research Laboratories has postdoctoral fellowships available in the area of biotechnology research. We have two positions available immediately that are a part of our ongoing commitment to Lilly's Postdoctoral Fellowship Program. Postdoctoral appointments at Eli Lilly and Company are for two years, renewable for the second year upon mutual agreement.

**Heterologous gene expression/  
recombinant protein structure:**

The investigator will undertake a multidisciplinary approach to study structure/function of recombinant proteins in heterologous hosts with an emphasis on insect cell systems although experience in that area is not essential. Beginning with expression, the candidate will develop a complete program leading to characterization and structure analysis of the targeted protein. A successful candidate should have the interpersonal skills to work closely with a team of excellent scientists in Protein Chemistry, Cell Biology, and Molecular Structure.

The candidate should have (or nearly) completed a Ph.D. degree in a related field of biochemistry, molecular biology, or cell biology with a strong background in molecular biology (gene expression - eukaryotic and/or prokaryotic systems) and protein biochemistry. Tissue culture experience would be an advantage.

**Protein Biochemistry:**

A postdoctoral fellowship is available to study changes in cellular proteins by applying the techniques of two-dimensional gel electrophoresis and protein mass spectrometry (both ESI and MALDI). The project will be part of an effort to identify novel drug targets through the use of genomics.

The candidate should have (or nearly) completed a Ph.D. degree in a related field. Experience in identifying proteins separated on gels through the use of protein sequencing or mass spectrometry is highly desirable.

*So bring your scientific and technical knowledge together with ours at Lilly, and achieve everything you ever thought possible - and some things you never even imagined. To apply, please send a resume suitable for scanning to: Eli Lilly and Company, Scientific Recruitment, Dept. ADSCMPD04, Lilly Corporate Center, Indianapolis, IN 46285.*

*We are an equal opportunity employer dedicated to diversity and the strength it brings to the workplace.*

*For other job opportunities, please access our Job Bank at <http://www.lilly.com> or phone our Jobline 1-800-892-9121.*

**Lilly**  
Eli Lilly and Company

KNOWLEDGE IS POWERFUL MEDICINE

**Executive Director**

Hubbs-Sea World Research Institute, a private, not-for-profit foundation, seeks an Executive Director who shall be in charge of all facets of operations and administration. The Executive Director reports to the Board of Directors and is responsible for administration, strategic planning, and development of resources in support of scientific research. Candidates must demonstrate exceptional management and communication skills, fund-raising ability, and visionary scientific leadership. Research programs include ecology, behavior, physiology and aquaculture, primarily of marine and coastal organisms. Postmark deadline: 15 May 1996. Submit cover letter, curriculum vitae, and the names, addresses and phone numbers of at least three professional references to: **Search Committee, Hubbs-Sea World Research Institute, 2595 Ingraham Street, San Diego, California 92109.**

**MYRIAD GENETICS, INC.**

**Positions Available**

Myriad Genetics, located adjacent to the University of Utah and in the foothills of the Wasatch Mountains, is a publicly-held genomics company focused on the isolation of significant disease-causing genes. Our scientific achievements include elucidating the role of the p16 tumor suppressor gene in human cancer (Science 264: 436-440), and the identification of the breast and ovarian cancer susceptibility gene BRCA1 (Science 266: 66-71). We currently have active programs in the areas of cancer, coronary heart disease, asthma, obesity, and osteoporosis. We have major collaborations with Ciba Geigy, (now called NOVARTIS) and Bayer pharmaceutical companies. We have the opportunity to expand our staff in the following areas:

**Scientific Director for Myriad Genetic Laboratories, Inc.** - Seeking Ph.D. for technology development and scientific leadership in DNA based genetic testing laboratory. Additionally, will develop and optimize automated processes for a high throughput testing laboratory. Skills and experience in molecular genetics and DNA sequencing. Commercial experience preferred.

**Senior Scientist** - Seeking Ph.D. for technology development position in DNA sequencing and molecular genetic analysis. You will work to develop and optimize processes for a high throughput research environment, as well as anticipate the practical implementation of new technologies and evaluate for suitability. Skills in molecular genetics, mechanical or electrical engineering and computer science preferred.

**Research Associates** - Requires an M.S. or B.S. degree and a minimum of two years' experience in molecular biology. Experience with cell culture-based assays, construction and screening of cDNA or genomic libraries and PCR is preferred.

**Sequence Analysts** - Requires an M.S. or B.S. degree; experience in DNA and protein sequence analysis, sequence alignment and contig assembly preferred.

We offer a competitive compensation package and a highly stimulating interactive environment. Please send or fax your letter of interest specifying position, a complete resume, and the names of three professional references to: Barbara Berry, Human Resources Dept., Myriad Genetics, Inc., 390 Wakara Way, Salt Lake City, UT 84108. Fax: 801-584-3640. Equal Opportunity Employer.

  
**MYRIAD**

## Smart Science

PURSUE THE QUESTIONS

## Focused Groups

FINDING THE ANSWERS

Roche

Bioscience

*The scientists at Roche Bioscience work in focused research groups to discover and develop innovative pharmaceuticals that significantly improve the quality of life. As a research-based business-driven organization, patents, publishing and profit all matter. However each group is staffed so employees can concentrate on scientific development. Currently our Respiratory Disease Group has the following outstanding opportunities for Scientists to join us.*

### Senior Research Associate

You will be involved in the construction and characterization of transgenic and knockout mice for disease modeling. A BS/MS in Biology, Molecular Biology, or Pharmacology and 2+ years of relevant experience are required.

### Postdoctoral Fellows

You will conduct a research program utilizing a genomic approach in identifying genes regulating cytokine production by T cells. A PhD in Molecular/Cellular Biology or Biochemistry is required.

*Roche Bioscience, located in the beautiful San Francisco Bay Area near Stanford University, offers competitive salaries, relocation assistance where appropriate and generous benefits. Please send your resume to Roche Bioscience, Dept.SCA412KH, 3401 Hillview Avenue, MS A2-HR, Palo Alto, CA 94304. Fax: 415-424-8159. See us on the WWW at: <http://www.roche.com/bioscience>. We are an equal opportunity employer committed to a diversified workforce.*

## MEETINGS

### The Extracellular Matrix: Its Synthesis, Function and Degradation

September 12-15, 1996

Sponsored By:

W. Alton Jones Cell Science Center, Inc.

#### ORGANIZING COMMITTEE:

Dr. JoEllen Welsh and Dr. Martin Tenniswood

W. Alton Jones Cell Science Center

#### SCIENTIFIC ADVISORY COMMITTEE:

Dr. Mina Bissel, Dr. John Mort, Dr. Gunter Vollmer

**Topics include:** Structure, synthesis and degradation of ECM; interaction of ECM and cell surface associated receptors in control of differentiation, growth and apoptosis; involvement of ECM proteases and their inhibitors in tumor progression and metastasis.

#### SPEAKERS

Suneel Apte  
Tim Cawston  
Ann Chambers  
Matthias Chiquet  
Mirek Cygler  
Shoukat Dedhar  
Steven Farmer

Fillipo Giancotti  
Paul Hughes  
Donald Ingber  
Rudolph L. Juliano  
Hynda K. Kleinman  
Bruce Lessey  
Joseph A. Madri  
John Mort

Arthur M. Mercurio  
Cal Roskelley  
Leena B. Tuderman  
Gunter Vollmer  
Valerie Weaver  
J. Frederick Woessner  
Anita Yu

Registration forms may be obtained from: **The Organizing Committee, W. Alton Jones Cell Science Center, Inc., 10 Old Barn Road, Lake Placid, NY 12946; Tel: (518) 523-1252; Fax: (518) 523-1849**

## VIRAL IMMUNOLOGIST

Immunex is a Seattle-based biopharmaceutical company dedicated to developing immune systems science to protect human health. Our success has established an international reputation for quality research. We currently are seeking a highly motivated individual to contribute to our scientific efforts at the interface of virology and immunology.

This individual will participate in the establishment of a new infectious disease program designed to integrate virology, immunology and pathology. The programs primary focus will be to identify virus-encoded immune modulatory proteins and to evaluate the role of candidate cytokines and cytokine receptors in modulating viral pathogenesis and other immune/inflammatory responses. The successful candidate will join a large, multidisciplinary team which currently includes bioinformatics, immunology and molecular biology.

Qualified candidates will have an established record of research productivity with at least two years of relevant post-doctoral experience, preferably with animal models of viral infection. Molecular virology skills are also desirable. The individual must be an effective communicator and thrive in a highly collaborative environment.

Immunex offers a competitive salary + benefits package, relocation assistance and an attractive location in the Pacific Northwest. Please send a cover letter and resume to:

Immunex Corporation,  
Attn: Dept. #7215.0212.

51 University St.,  
Seattle, WA 98101.

FAX (206) 623-4572.

Equal Opportunity Employer.

Jobline: (206) 389-4060.

## IMMUNEX®

#### References

- Yao, et al. Herpesvirus Saimiri Encodes a New Cytokine, IL-17, Which Binds to a Novel Cytokine Receptor. *Immunity* 3:811, 1995.
- Yao, et al. Human IL-17: A Novel Cytokine Derived from T Cells. *J. Immunology* 155:5483, 1995.
- Spriggs, M.K., et al. Vaccinia and cowpox viruses encode a novel secreted interleukin-1 binding protein. *Cell* 71:145, 1992.
- Spriggs, M.K., et al.  $\beta$ 2-microglobulin, CD8+ T cell deficient mice survive inoculation with high doses of vaccinia virus and exhibit altered IgG responses. *PNAS USA* 89:6070, 1992.
- Smith, C.A., et al. A receptor for tumor necrosis factor defines an unusual family of cellular and viral proteins, *Science* 248:1019, 1990.





## Senior Lectureship/ Lectureship in Pharmacology

Applications are invited for a Senior Lectureship/Lectureship in the Department of Pharmacology (RF-95/96-89), tenable from 15 June 1996 or as soon as possible thereafter. Appointment will initially be made on a fixed-term basis of two to three years, with a possibility of renewal.

Applicants should possess a PhD in pharmacology or related disciplines, postdoctoral experience and a substantial record of publication. The appointee will be expected to contribute to the teaching of pharmacology to medical, dental and undergraduate nursing students, and supervision of postgraduate students. The appointee should also establish an independent research programme. Some internal support for research will be available but the appointee is encouraged to seek external fundings. The position may be filled at the Senior Lectureship level if the appointee has substantial research experience, demonstrated teaching ability and an excellent record of achievement.

Current departmental interests include cardiovascular pharmacology, gastric pharmacology, pharmacology of medicinal plants, toxicology and drug metabolism. Applicants are requested to submit a brief description of their proposed research together with their curriculum vitae, and to indicate clearly which level they wish to be considered for.

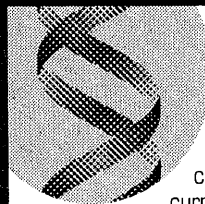
**Annual salaries** [non-superannuable but attracting 15% (taxable) terminal gratuity] are on the following scales, with starting salary depending on qualifications and experience: Senior Lecturer: HK\$705,600 - HK\$947,880 (9 points) (approx. US\$91,636 - US\$123,101); Lecturer: HK\$454,200 - HK\$758,700 (11 points) (approx. US\$58,987 - US\$98,532; US\$ equivalent as at 25 March 1996).

At current rates, salaries tax will not exceed 15% of gross income. Children's education allowances, leave, and medical benefits are provided; housing or tenancy allowances are also provided in most cases at a charge of a percentage of salary, currently 7.5%.

**Further particulars and application forms** may be obtained from the Appointments Unit, Registry, The University of Hong Kong, Hong Kong (Fax (852) 2540 6735/2559 2058; E-mail: APPTUNIT@REG.HKU.HK), or from Appointments (44874), Association of Commonwealth Universities, 36 Gordon Square, London WC1H 0PF, UK (tel. 0171 387 8572 Ext.206; fax 0171 813 3055; email: appts@acu.ac.uk), or on WWW at <http://www.hku.hk>.

Closes 10 June 1996.

## CUTTING EDGE SCIENCE



Genentech is a pace-setting company, internationally known for discovering, developing, manufacturing and marketing pharmaceuticals for significant unmet medical needs. We are the only biotech company with five marketed products and currently have the following excellent opportunities available in our South San Francisco headquarters.

### Scientist - Hybridoma Group

This bench scientist will be responsible for generating mAbs for therapeutic, assay and protein purification. We are seeking a highly motivated individual with the ability to develop his/her own research program, to interact with multidisciplinary groups and to supervise 1-2 Research Assistants.

The successful candidate should have a PhD and postdoctoral training in the field of biological science with molecular biology experience. Some experience in the conventional hybridoma technology or phage antibody would be a plus. Job code: MCHG

### Research Associate/ Senior Research Associate, Pathology Department

Our Department of Pathology currently has an opportunity available for an individual to manage the laboratory and to provide the technical support for *in situ* hybridization. Your duties will include preparing tissue specimens including cryostat sectioning, designing and preparing riboprobes and performing multiple, large volume *in situ* hybridization experiments. We'll rely on you to maintain a bank of normal and lesioned tissues used for tissue distribution studies and manage the daily operation of the laboratory including supervising 2 technicians.

We seek an effective team player with a BS/MS in Molecular Biology and 4-6 years' direct experience performing *in situ* hybridizations. The successful candidate will have extensive experience and in-depth theoretical and applied knowledge of molecular biology and *in situ* hybridization techniques, including isotopic and non-isotopic procedures, PCR, *in situ* rtPCR and immunohistochemistry. Computer skills are important including use of commercial software for design of probes. Excellent communication, organization and problem solving skills are essential. Job code: MCKH

Join us and enjoy our exciting success and progressive benefit package that includes free health club membership, 3 weeks paid vacation, 6 weeks sabbatical after 6 years, fully paid medical/dental/vision coverage, and Company stock purchase opportunities for full time employees. For immediate consideration, send your resume indicating appropriate job code to Genentech, Inc., Human Resources Dept., 460 Pt. San Bruno Blvd., South San Francisco, CA 94080. We value creativity at Genentech, but our scanning equipment does not. Please avoid bold, underline or italic type faces. You may also e-mail your resume with the job code to [jobs@gene.com](mailto:jobs@gene.com) (ASCII files only with a maximum line width of 76 characters). Find out more about Genentech at <http://www.gene.com/>. Genentech is an Equal Opportunity Employer. We value the contributions of our diverse workforce.

# Genentech, Inc.

**WHEN SCIENCE AND  
TECHNOLOGY COME  
TOGETHER, ANYTHING IS  
POSSIBLE.**

**AND EVERYTHING IS  
ACHIEVED.**

**B**y merging pharmaceutical science with technology, Eli Lilly and Company is creating unprecedented opportunities to better meet the global population's health care needs. While we continue our search for innovative pharmaceuticals, we're also pioneering ways to use technology to improve health care. We're collecting, analyzing and sharing data with the entire health care community in order to help people manage illness and lead healthier, more active lives. And achieving all this is a dedicated team of professionals. Their talents and skills in a variety of arenas, keep our \$6+ billion company on the cutting edge. So bring your scientific and technical knowledge together with ours at Lilly, and achieve everything you ever thought possible - and some things never even imagined.

**Lilly**  
Eli Lilly and Company

KNOWLEDGE IS POWERFUL MEDICINE

## **Senior Behavioral Pharmacologist CNS Research**

The Lilly Research Laboratories of Eli Lilly and Company, one of the world's leading pharmaceutical companies, is committed to the discovery and development of innovative pharmaceutical products.

We are looking to recruit an outstanding behavioral pharmacologist in our CNS Discovery Research program. Experience in rodent behavioral pharmacology of relevance to one or more of the following is required: animal models of neuropsychiatric disorders; regulation of food intake/models of obesity, behavioral effects of neuropsychopharmacological drugs.

Applicants should have a Ph.D. degree or equivalent and at least five years postdoctoral experience in behavioral pharmacology. A proven track record of scientific excellence, good communication skills and the ability to organize and motivate are essential.

*The Lilly Research Laboratories offers a highly competitive salary and benefits and an extremely attractive working environment. To apply, please send a comprehensive CV (suitable for scanning) and bibliography to: Eli Lilly and Company, Scientific Recruitment, Dept. ADSCMPH14, Lilly Corporate Center, Indianapolis, IN 46285.*

*We are an equal opportunity employer dedicated to diversity and the strength it brings to the workplace.*

*For other job opportunities, please access our Job Bank at <http://www.lilly.com> or phone our Jobline 1-800-892-9121.*

## **Caltech Postdoctoral Scholars Program at JPL**

**The California Institute of Technology** has established a new Postdoctoral Scholars Program at the Jet Propulsion Laboratory (JPL). Positions are now available in the Air-Sea Interaction Team of the Earth and Space Science Division for studies in large scale ocean-atmospheric interaction and ocean circulation by applying satellite data. The NASA Scatterometer (NSCAT) will be launched in August 1996 and will provide surface wind vectors over 90% of the global ice-free ocean every two days under both clear and cloudy conditions. NSCAT data will be complemented by other spacebased data that provide thermal/hydrologic forcing and oceanic responses (surface temperature and sea level). Synergistic uses of spacebased observations, groundbased measurements, and numerical models are encouraged. Information on relevant research activities at JPL can be found in homepage <http://airsea-www.jpl.nasa.gov>

The appointments are contingent upon evidence of completion of Ph.D. A degree in Atmospheric or Oceanic Sciences with a strong background or training in physics and applied mathematics is desirable. The annual salary for a new Ph.D. is approximately \$36,000 and can vary somewhat according to the applicant's qualifications. The position will be awarded initially for one year, with the possibility of renewal in one year increments for a maximum of two additional years. A statement of a brief proposal (1-2 pages) describing future research interest and the intended studies should accompany the application.

Please send a curriculum vitae with a list of individuals who could serve as professional references to: **Dr. Timothy W. Liu, M.S. 300-323, Jet Propulsion Laboratory, 4800 Oak Grove Drive, Pasadena, California 91109, Phone: (818) 354-2394, Fax: (818) 393-6720. Email: [liu@pacific.jpl.nasa.gov](mailto:liu@pacific.jpl.nasa.gov)**

The California Institute of Technology and the Jet Propulsion Laboratory are Equal Opportunity /Affirmative Action Employers. Women, minorities, veterans, and disabled persons are encouraged to apply.

**JPL**  
Jet Propulsion Laboratory  
California Institute of Technology

## **Senior Investigator**

The Albert Einstein College of Medicine is seeking a senior investigator with an established research program for appointment as a Professor in a Basic Science Department. Resources include: Research space in the new Golding Research Building, a generous start-up package, and a relocation package. Research areas of interest include: Regulation of Transcription, RNA Processing, or Translation; Mammalian Development; Human Genetics; and Integrin-Mediated Signal Transduction.

Interested candidates should send a CV and the names of three references to: **Dr. Michael B. Prystowsky, Chair, Interdepartmental Search Committee, Albert Einstein College of Medicine, Jack and Pearl Resnick Campus, 1300 Morris Park Avenue, Bronx, NY 10461.** An Equal Opportunity Employer.

**ALBERT EINSTEIN  
COLLEGE OF MEDICINE**  
Toward the  
advancement of medicine  
...and your career





## POSITIONS OPEN

### SUPERVISORY RESEARCH BIOLOGIST OR MICROBIOLOGIST

The Scientific Resources Program, National Center for Infectious Diseases, Centers for Disease Control and Prevention (CDC), invites applications for a position of **CHIEF, Biological Products Branch**. This branch is responsible for 1) preparing and distributing cell cultures, cell culture media, microbiological culture media, stains, and various other reagents to CDC scientists for research and reference/diagnostic activities; 2) maintaining a bank of cell line cultures; 3) maintaining a water quality laboratory to ensure that water treatment systems function properly and deliver water of appropriate quality; 4) conducting applied and basic research (independently and collaboratively)—problems related to mammalian cell cultures, cell biology, microbiological fermentation, water quality, and specimen storage conditions; 5) establishing and practicing quality control procedures to ensure production of high quality products; 6) providing consultation and training to CDC programs and extramural organizations; and 7) collaborating with CDC laboratory personnel in developing and improving products and services. Basic requirements include a degree in biology and/or microbiology, with emphasis in cell biology. An advanced degree in biology and experience as a principal investigator in cell biology and/or molecular biology is desirable. *Candidates must be U.S. citizens* since this is a career position. Civil Service salary range for the position is \$72,862 to \$94,721 per annum. Salary and benefits are commensurate with education and experience. Interested individuals are invited to send a curriculum vitae with publications to: **Ms. Janie Oddy, CDC-HRMO, 4770 Buford Highway, Mailstop K15, Atlanta, GA 30341-3724**. CDC is an Equal Opportunity Employer and has a smoke-free environment.

### EVOLUTIONARY GENETICS (Rank Open)

We are searching to fill **TWO POSITIONS**, one senior and one junior, in evolutionary genetics; theoretical, empirical or both. We are particularly looking for candidates whose research complements the interests of our current faculty, including the areas of human, plant or microbial population genetics, or evolutionary quantitative genetics. Interested persons should submit their curriculum vitae, relevant publications, and the names of three referees to: **Genetics Search Committee, Department of Ecology and Evolution, University of Chicago, 1101 East 57th Street, Chicago, IL 60637**. The deadline for receipt of applications is July 30, 1996. We anticipate interviewing candidates in the fall of 1996 and the positions beginning as early as September 1, 1997.

### HEALTH RESEARCH ANALYSTS

ECRI, a nonprofit health research agency, seeks doctoral-level **SCIENTISTS** with life science or clinical epidemiology training and a voracious reading ability to evaluate clinical literature and critique new health technologies. Excellent analytical, statistical, and science-writing skills essential. Experience in assessing women's health technologies helpful.

Send curriculum vitae to: **Vivian Coates, Vice President, ECRI, 5200 Butler Pike, Plymouth Meeting, PA 19462**.

## ANNOUNCEMENTS

A NATO Advanced Study **INSTITUTE** on "The Role of the Human Corpus Callosum in Sensory Motor Integration: Anatomy, Physiology and Behavior; Individual Differences and Clinical Applications" will be held at Il Ciocco in Tuscany, Italy from September 1 to 10, 1996. For information contact: **Dr. Eran Zaidel, Department of Psychology, Los Angeles, CA 90095-1563**. Telephone: 310-206-8280; FAX: 310-206-5895; Email: [LCAPETIL@UCLA.EDU](mailto:LCAPETIL@UCLA.EDU); <http://www.lifesci.ucla.edu/repository/psychology/Resources/zaidel/natoasi.html>.

**PRE-PROPOSALS**—Deadline: 1 July 1996. International Foundation for Ethical Research (IFER) has grants available for research into alternatives to the use of live animals in research, testing, and education. Projects must take into account the three R's: Refinement, Reduction, and Replacement, plus a fourth R: Responsibility. For information and format write to: **IFER, 53 West Jackson Boulevard, Department J, Chicago, IL 60604**. Telephone: 312-427-6025.

## ANNOUNCEMENTS

### MEDICAL SCHOOL IN AUSTRALIA Flinders University of South Australia

As one of Australia's leading medical schools, Flinders University of South Australia offers an excellent four-year medical degree and is the only school in Australia with experience in graduate entry medicine. This innovative course features problem-based learning, small classes, early patient contact, and excellent research opportunities.

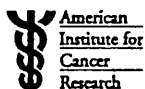
Twenty percent of places are reserved for international students and in the past most of these have been filled by students from the U.S.A. Prerequisites include a university degree and MCAT.

Advantages of studying at Flinders include low competition for international student places and comparative tuition fees with U.S. schools. In addition, Adelaide has the lowest cost of living of any mainland capital city in Australia. Flinders programs are approved for U.S. educational loans; Flinders is internationally renowned for excellence in medical research and is committed to helping international students qualify for medical registration in their home countries.

Enquiries: **Dr. J. Teubner**; FAX: +61-8-277-0085; Email: [Jillian.Teubner@flinders.edu.au](mailto:Jillian.Teubner@flinders.edu.au); Web site: <http://www.som.finc.flinders.edu.au>; Telephone: 1-800-686-3562 (accessible from U.S.A. only).

Applications close 30 June 1996; interviews in the U.S.A. and Asia in early August.

## SYMPOSIUM



### American Institute for Cancer Research

#### ANNUAL RESEARCH CONFERENCE

"Dietary Fat and  
Cancer: Genetic  
and Molecular  
Interactions"

August 29 and 30, 1996  
Washington, DC

For more information please call the  
**AICR Research Department** at  
202-328-7744 or 1-800-843-8114  
or Email: [jcohn@capcon.net](mailto:jcohn@capcon.net)

## COMPUTER MARKETPLACE

### UNISTAT®

The ultimate data analysis add-in for MS Excel™, that is also a full-power statistical package. Visit our Web page for full details.

<http://www.unistat.com>

USA: P-STAT. Tel: 609 466 9200, Fax: 609 466 1688  
World: Tel: +44 181 964 1130, Fax: +44 181 964 0531

◆ Circle No. 40 on Readers' Service Card

## MARKETPLACE

### QUALITY CUVETTES!!!

**Inexpensive Electroporation Cuvettes**  
*Each sterile package includes a free  
pipette for easy sample removal!*



1-800-289-2465  
FAX: 619-597-9594

Circle No. 31 on Readers' Service Card

## MARKETPLACE

# DNA

**\$0.89/base**

# PEPTIDES

**\$15/residue**

**No Set-up Charge. Quality Guaranteed.**

Some Restrictions May Apply. Please Call.

## GENEMED

BIOTECHNOLOGIES

1 (800) 344-5337 • Fax (415) 952-9540

Circle No. 24 on Readers' Service Card

### ELISA TEST KITS

•Hormones •Prostaglandins  
•Leukotrienes •Thromboxanes  
•One Step Substrates •Cyclic Nucleotides  
Neogen™ Corporation, ELISA Technologies® Division  
800 477 8201 (USA/Canada) • 606 254 1221  
Fax 606 255 5532

Circle No. 54 on Readers' Service Card



**CHEMICON**  
Your Cytokine Research Solution

• Chemokines • Cytokines  
• Growth Factors • Neurotrophic Factors  
Purified Proteins, Monoclonal and Polyclonal  
Antibodies and ChemiKine™ ELISA Kits

PH: 800-437-7500 • FAX: 909-676-9209

Circle No. 77 on Readers' Service Card

### Select & Clone Hybridomas in One Step with ClonaCell™HY

Complete kit for generating hybridomas  
**StemCell Technologies Inc**

E-Mail: [info@stemcell.com](mailto:info@stemcell.com)

Tel: 800-667-0322 Fax: 800-567-2899

Circle No. 2 on Readers' Service Card

### YES WE HAVE NO !!!

Complete systems for In Vivo & In Vitro  
measurements of nitric oxide, oxygen,  
pH, PCO<sub>2</sub>, calcium, potassium, & more!

**DIAMOND  
GENERAL  
Corp.**  
<http://www.diamondgeneral.com> [mail@diamondgeneral.com](mailto:mail@diamondgeneral.com)  
Telephone (800) 678-9856 or (313) 973 7160 FAX (313)973-0179

Circle No. 72 on Readers' Service Card

### NEW NO ANALYZER

**Chemiluminescence  
Model 280**

• Exhaled Breath • Cell Culture • Plasma  
Phone (303) 444-2009 Fax (303) 444-9543 USA

## SIEVERS

Circle No. 50 on Readers' Service Card

Marketplace ads continue on page 318

## MARKETPLACE

## Custom Antibodies to Peptides & Proteins

Conjugation, Purification and ELISA Titration Available.



**BIO-PRODUCTS, INC.**

TEL 1 (800) 481-9737 FAX 1 (619) 788-9694

Circle No. 39 on Readers' Service Card

**NOS**  
NITRIC OXIDE SYNTHASE ANTIBODIES

**ABR**  
Affinity BioReagents, Inc.  
800-527-4535; Fax: 303-278-2424  
E-mail: affinity@bioreagents.com  
http://www.bioreagents.com/affinity

Brain NOS, Endothelial NOS, Inducible NOS

Circle No. 60 on Readers' Service Card

## ANTIBODY SOLUTION

HYBRIDOMA DEVELOPMENT  
POLYCLONAL PRODUCTION



BERKELEY ANTIBODY COMPANY

ASCITES SCALE-UP  
IMMUNOCHEMISTRY

800/922-2226

Circle No. 87 on Readers' Service Card

## SFM-Human Endothelial Cell System

More Cells / Lowest Price / Highest Quality  
Start up a 75 cm Flask / Recombinant Mitogen  
CSC Certificate™ #30566



1-800-697-1211

Circle No. 34 on Readers' Service Card

## CustomPeptides

**Need!**

Quality peptides at competitive prices.

Want to deal with an experienced company offering:

- ❖ Special amino acid containing peptides
- ❖ Synthesis of difficult sequences
- ❖ Phosphopeptides
- ❖ Biotinylated peptides
- ❖ Fluorescent labeling
- ❖ Peptide conjugation
- ❖ Large scale synthesis

Welcome to American Peptide. We can satisfy your peptide needs from small to large quantities at a **considerable reduced prices**. We offer different purity levels to match your exact needs, either for screening, antibodies production or drug development.

### New 1996-97 Catalog

Comprehensive selection of bioactive peptides - Many new peptides - Highest quality - Amyloids & other peptides for neuroscience. Fax/call for a free copy!

62-0-72	β-Amyloid (25-35)	98%	0.5 mg	50.00
62-0-74	β-Amyloid (1-28)	98%	0.5 mg	85.00
62-0-78	β-Amyloid (1-40)	98%	0.5 mg	150.00
62-0-80	β-Amyloid (1-42)	98%	0.5 mg	225.00

AMERICAN PEPTIDE COMPANY

777 E Evelyn Ave. Sunnyvale, CA 94086 USA  
Toll Free: 800-926-8272 Tel: 408-733-7604 Fax: 408-733-7603

Circle No. 1 on Readers' Service Card

♦ See [www.aaas.org](http://www.aaas.org)  
beginning 29 March.

## MARKETPLACE

## PeptideGenic

The Peptide Engineering Specialist

E-mail: [pkim@ccnet.com](mailto:pkim@ccnet.com)  
Fax: 510-371-1156  
Voice: 800-597-7873  
510-371-1070

**Custom Peptide**

**\$20**/residue/crude/5days

No setup fee,  
Free HPLC &  
In-spray Mass

Circle No. 66 on Readers' Service Card

### Custom DNA from \$1.00/base



**ransom hill bioscience, inc.**

**no setup, no minimum, no baloney!**  
internet: [visla@ix.netcom.com](mailto:visla@ix.netcom.com) fax: (800) 597-8509

Circle No. 11 on Readers' Service Card

**CUSTOM SYNTHESIZED PNA OLIGOMERS**

- Hybridization at low salt to DNA & RNA
- Higher affinity and specificity
- Stable towards nucleases and proteases

### CUSTOM PNA SYNTHESIS SERVICE

PerSeptive Biosystems can synthesize the PNA sequence you need:

- Simple strings of A, C, G and T
- Labeled oligomers:  
Biotin  
Rhodamine  
Cyanine  
DIG™  
Alkaline Phosphatase  
Fluorescein

U.S. and Canada: 1-800-899-5858 • Japan: +81 3 3471 81 91  
France: +33 134 523 030 • U.K.: +44 1 992 507100  
Germany and other locations: +49 6122 98300

DIG is a trademark of  
Boehringer Mannheim.



PerSeptive Biosystems

♦ Circle No. 48 on Readers' Service Card

**CUSTOM DNA SYNTHESIS**

PURE & SIMPLE

- Superb Technical Support
- Impeccable Quality
- World's Fastest Service
- Cap Gel & TOF Mass Spec

\* Some restrictions apply. Please call for details.

**MIDLAND**  
STILL THE UNDISPUTED #1 CUSTOM DNA SYNTHESIS SERVICE

THE MIDLAND CERTIFIED REAGENT COMPANY  
Phone 1-800-247-8766 FAX 915-694-2387  
email [mrcr@oligos.com](mailto:mrcr@oligos.com)

Circle No. 19 on Readers' Service Card

**Widely Recognized**

**KlenTaq1**

Original & Guaranteed

**8¢/u**  
Truncated  
Taq DNA  
Polymerase  
Withstand 99°C

US Pat # 5,436,149

Call: **Ab Peptides** 1-800-383-3362  
Fax: 314-968-8988 [abpeps@icon-stl.net](mailto:abpeps@icon-stl.net)

Circle No. 10 on Readers' Service Card

## MARKETPLACE

## CUSTOM DNA

# \$1.19 base

200 nmol scale (10 - 20 ODU)  
No set-up charges • Deprotected & Desalted  
A 20-mer is only \$24! • 24 - 48 hours shipping

## CUSTOM PEPTIDES

# \$20 residue

15 - 40 mg • Free mass spec & HPLC tracing  
No set-up charges • Desalted • 5 - 8 days shipping  
Antipeptide antibodies available

**1-800-227-0627**  
FAX 214-420-042  
**BIO-SYNTHESIS**  
INCORPORATED  
E-Mail: [biosyn@onramp.net](mailto:biosyn@onramp.net)  
Internet: <http://www.biosyn.com>  
FDA#001235 • NIH BPA#263-00038171-04-BPA/C

Circle No. 20 on Readers' Service Card

## Custom Peptides

# \$17.00 / Residue

- >75% Purity, 5-25 mg
- 5 Day Delivery
- Free HPLC & Mass Spec.
- No Set-Up Charge

## Antibody Production

2 Rabbits w/Conjugation & Delivery  
6-12 Week Delivery **\$950**

**COAST SCIENTIFIC**  
US Voice: 800-445-1544  
Global Fax: (619) 450-1157

Circle No. 26 on Readers' Service Card

**Custom PEPTIDES**

Purity >70% **\$20** (offer thro. May)  
1st order disc., no setup fee, free HPLC A.A. analy.

**PEPTIDE ANTIBODY: \$250** Rabbit  
UNBEATABLE: NO CHARGE IF NO ANTIBODY PRODUCTION

**PEPTIDE LIBRARY: from \$150** library  
1-800-400-0070 (Tel)  
TANA LAB., LC. • 713-663-7163 (Fax)

Circle No. 16 on Readers' Service Card

**CUSTOM PEPTIDES**

High quality at unbeatable prices  
starting from \$195\*

Order with confidence knowing that you'll  
get the quantity and purity you require with  
no hidden extras.

US: West Coast  
Tel: 800 644 1866  
Fax: 800 655 1866  
US: East Coast  
Tel: 800 633 8161  
Fax: 800 424 3970

International:  
Tel: +61 3 9565 1111  
Fax: +61 3 9565 1199  
Europe:  
Tel: +33 141 38 9400  
Fax: +33 141 38 9409

\* 10-30 mg, 6-15 residues, unpurified with mass spec. CM 1173.

Circle No. 9 on Readers' Service Card

## Express Peptides

**15-40 mg in 5 days**  
**\$18 per residue**

**Research Genetics, Inc.**  
1-800-533-4363

Circle No. 12 on Readers' Service Card



TO OFFER  
*Quality* DNA for  
**\$0.80**  
PER BASE,  
OPERON *must*  
BE ZUCCHANAS.



THE ZUCCHANA

You'd be bananas to pass this up. Or is that zucchanas? Operon now offers a price of just \$0.80 per base with a \$10 set-up fee for synthesis of custom DNA on a 50 nmole scale. So you can afford to do more experiments and get more results.

As the world's leading supplier of synthetic DNA, Operon gives you more than just a great price. We also offer unsurpassed purity, fast delivery, and an unconditional guarantee. Not to mention a customer service line that lets you speak to a person, not just a machine. We also

offer the best value in the industry on the larger 1.0  $\mu$ mole scale, at just \$2.40 per base with a \$20 set-up fee, and a 0.2  $\mu$ mole scale for just \$1.60 per base with a \$15 set-up fee.

Quality DNA for just \$0.80 per base. Now you don't have to settle for second best to save a bunch.

For more information, or to place an order, call Operon at 1-800-688-2248.

**OPERON**

WORLD'S LEADING SUPPLIER OF SYNTHETIC DNA

© 1996 Operon Technologies, Inc. 1000 Atlantic Avenue, Alameda, CA 94501, Phone: (510) 865-8644, Fax: (510) 865-5255, NIHBP 263-00033233.

E-mail: DNA@OPERON.COM Web: HTTP://OPERON.COM

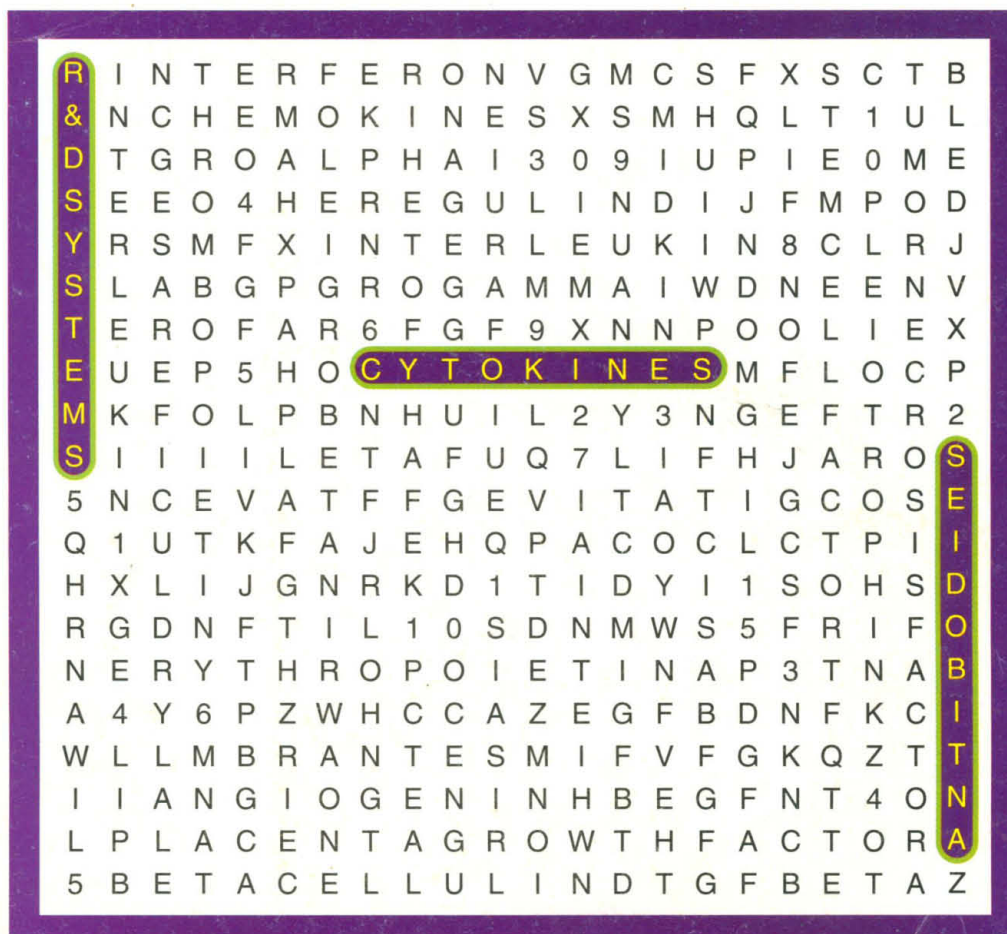
**Circle No. 58 on Readers' Service Card**



ANG	IL-10 sR ♦
AR	IL-11
BTC	IL-12
C10	IL-12 p40 ♦
CNTF	IL-13
β-ECGF	IL-15 ♦
EGF	IP-10
ENA-78	JE
Epo	KC ♦
FGF acidic	LAP
FGF basic	LIF
FGF-4	LIFR ♦
FGF-5	M-CSF
FGF-6	MCP-1
FGF-7	MCP-2 ♦
FGF-9 ♦	MCP-3 ♦
G-CSF	MIF ♦
GDNF ♦	MIP-1α
GM-CSF	MIP-1β
gp130 ♦	MIP-2 ♦
GROα	MK
GROβ	β-NGF
GROγ	NT-3 ♦
HB-EGF	NT-4 ♦
HRG-α ♦	OSM
I-309	PD-ECGF
IFN-γ	PDGF-AA
IGF-I	PDGF-AB
IGF-II	PDGF-BB
IL-1α	PIGF
IL-1β	PTN
IL-1ra	RANTES
IL-1sRI ♦	SCF
IL-1sRII ♦	SLPI
IL-2	TGF-α
IL-2 sRα	TGF-β sRII ♦
IL-2 sRβ	TGF-β sRIII ♦
IL-2 sRγ ♦	TGF-β1
IL-3	TGF-β1.2
IL-3 Rα ♦	TGF-β2
IL-4	TGF-β3
IL-4 sRα ♦	TGF-β5
IL-5	TNF-α
IL-5 sRα ♦	TNF-β
IL-6	sTNF RI
IL-6 sR	sTNF RII
IL-7	Tpo ♦
IL-8	VEGF <sub>121</sub> ♦
IL-9	VEGF <sub>165</sub> ♦
IL-9R ♦	VEGF/PIGF ♦
IL-10	♦ denotes NEW

**R&D**  
**SYSTEMS**  
**1-800-343-7475**

# Searching for Cytokines and Antibodies?



There are 60 cytokines hidden in this puzzle

## The first place to look ...

**R&D Systems** offers the most extensive line of cytokines and soluble receptors as well as antibodies to cytokines and cytokine receptors.

### Cytokines & Soluble Receptors

- Over 130 available – *human and mouse*
- Full biological activity
- >97% pure

### Antibodies

- Over 150 available – *anti-human and anti-mouse*
- Polyclonal and monoclonal
- Highly active and specific

**FOR RESEARCH USE ONLY. NOT FOR USE IN DIAGNOSTIC OR THERAPEUTIC PROCEDURES.**

**U.S.A. and Canada**  
**R&D Systems, Inc.**  
614 McKinley Place NE  
Minneapolis, MN 55413, USA.  
Tel: 612 379-2956  
Fax: 612 379-6580

**Europe**  
**R&D Systems Europe Ltd.**  
4-10 The Quadrant, Barton Lane  
Abingdon, OX14 3YS, UK.  
Tel: +44 (0)1235 531074  
Fax: +44 (0)1235 533420

**Germany**  
**R&D Systems GmbH**  
Borsigstrasse 7  
65205 Wiesbaden, Germany  
Tel: +49 06122 90980  
Fax: +49 06122 909819

**Japan**  
**Funakoshi Co., Ltd.**  
9-7, Hongo 2-Chome  
Bunkyo-ku, Tokyo 113, Japan  
Tel: +81 (03) 56841622  
Fax: +81 (03) 56841633

**International Distributors – Australia:** (62) 008-25-1437. **Austria:** (43) 02 292 35 27. **Chile:** (56) 2-671-9369. **Israel:** (972) 02 9230048. **Italy:** (39) 02 25 75 377. **Korea:** (850) 82-2-569-0781. **Mexico:** (52) 5-612-0085. **Spain & Portugal:** (34) 01 448 84 86 or 03 456 97 06. **Taiwan:** (866) 2-368-3600.

**International Freefone Numbers – Belgique/België:** 078 11 04 68. **Danmark:** 80 01 85 92. **Deutschland:** 013011 0169. **France:** 05 90 72 49. **Nederland:** 060-225607. **Norge:** 800 1103. **Sverige:** 02079 31 49. **Switzerland:** 155 2482.

 [www.rndsystems.com](http://www.rndsystems.com)