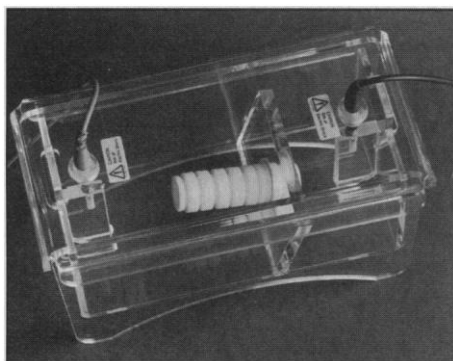


PRODUCTS & MATERIALS

Electroeluter-Dialyser-Concentrator

This unit for the rapid purification of proteins, nucleic acids, carbohydrates, and other biomolecules can be used for electroelution from gels and solutions, electroconcentration, and electrodialysis. The elution and sample chambers are made of inert Teflon.



Membranes can be selected for elution, filtration, dialysis, and concentration. The elution is performed in 5 to 10 min at a low current (2 to 10 mA). **Sialomed. Circle 137.**

Eukaryotic Expression System

The Sindbis Expression System offers high-level expression and allows quick and easy study of recombinant protein production and function in a variety of eukaryotic cell lines. The system takes advantage of the unique features of the Sindbis virus to allow production of harmless viral particles that can be used to infect almost any cell line. Researchers no longer have to subclone into more than one expression vector or spend time and money performing multiple transfection reactions. **Invitrogen. Circle 138.**

Manual Sequencing System

The Fidelity DNA Sequencing System provides manual sequencing of single- and double-stranded DNA templates using a proprietary T4 polymerase system. The system provides long, resolvable reads on double-

stranded DNA with even band intensities and few pause sites. The system is conveniently configured into a streamlined 12-component kit that requires no predilution of the polymerase or reaction buffers. It is packaged in a reusable benchtop cooler. A quick-denature double-stranded DNA protocol is provided to shorten sample preparation time. The system makes use of a 3'-5' exonuclease-deficient form of T4 polymerase in conjunction with T4 single-stranded DNA binding protein and T4 polymerase accessory factors. Novel chain-terminating nucleotides are incorporated at high efficiency by the polymerase for greater sequence resolution. **Oncor. Circle 139.**

Reagent Dropper Formulations

Six new additions to a line of diagnostic reagent droppers include Nitrate "A," Nitrate "B," Ninhydrin, PYR, Calcofluor White, and Evans Blue. Nitrate "A" and Nitrate "B" are used to determine the ability of bacteria to reduce nitrate to nitrite. Ninhydrin is used in the identification of bacteria that hydrolyze hippurate. PYR is used in the identification of bacteria that produce pyrrolidone enzyme. Calcofluor White is used in fluorescence microscopy detection of fungi in direct smears. Evans Blue is used with Calcofluor White as a counterstain in fluorescence microscopy detection of fungi. **Becton Dickinson. Circle 140.**

Antibodies for Apoptosis Research

Four new antibodies for the study of apoptosis include reagents that recognize BAX, BCL-X, BCL-2, and FAS. The BAX protein is 21 kD with homology to BCL-2. The *bcl-x* gene is related to the *bcl-2* gene that functions as a BCL-2-independent regulator of apoptosis. BCL-2 is an inhibitor of apoptosis. FAS is a member of the nerve growth factor/tumor necrosis factor-R family. It is a transmembrane protein that contains a "death domain" responsible for transducing the ligand-

Newly offered instrumentation, apparatus, and laboratory materials of interest to researchers in all disciplines in academic, industrial, and government organizations are featured in this space. Emphasis is given to purpose, chief characteristics, and availability of products and materials. Endorsement by *Science* or AAAS is not implied. Additional information may be obtained from the manufacturers or suppliers named by circling the appropriate number on the Readers' Service Card and placing it in a mailbox. Postage is free.

The nucleic acid labeling source

Ambion is your source for innovative kits for all your nucleic acid labeling needs

NEW! Kinase Max™

5' End Labeling Kit produces 1.5-3 times the yield than kits utilizing standard kinase buffers.

DECAprime™ II

For high specific activity DNA labeling with the random priming method. Fast five minute reaction maximizes probe yield and specific activity.

NEW! Prime-A-Probe™

For strand specific DNA probe synthesis. The kit utilizes specific primers and your linearized plasmid DNA to produce high specific activity probes for S1, Southern or Northern assays.

Contact us today for information on our full range of nucleic acid labeling kits for your specific applications.

(512) 445-6979 (512) 445-7139 FAX

(800) 888-8804

Ambion

Innovative Products for RNA Analysis

Circle No. 36 on Readers' Service Card

TiterMax[®]

Worldwide Adjuvant of Choice

- High, long-lasting titers
- Reliable alternative to Freund's
- Animal safe
- Antibody specific



In response to our customers' requests, TiterMax is now packaged in 1.0 and 5.0 ml vials, in addition to our 0.5 and 10 ml vials currently sold.

CytRx[®]
CORPORATION

154 Technology Parkway
Norcross, GA 30092
1-800-345-2987 • 1-770-368-9500
Fax: 1-770-447-8875
<http://www.cytrx.com/titermax/>

For more information or to purchase TiterMax contact one of the following TiterMax Distributors:

- **Canada:** CedarLane Laboratories Ltd.,
Tel: 800-268-5058, Fax: 905-878-7800
- **Germany:** Serva Feinbiochemica GmbH & Co. KG,
Tel: 6221-502-134, Fax: 6221-502-143
- **Italy:** Charles River Italia S.p.A., Tel: 039-509-915,
Fax: 039-508-219
- **Japan:** Funakoshi Co., Ltd., Tel: 3-5684-1627,
Fax: 3-5684-1775
- **United Kingdom:** Stratech Scientific Ltd.,
Tel: 0582-481884, Fax: 0582-481895
- **United States:** CytRx Corporation,
Tel: 1-800-345-2987, 770-368-9500,
Fax: 770-447-8875
Sigma Immunochemicals, Tel: 800-262-9141,
Fax: 314-664-3143
Circle No. 46 on Readers' Service Card

induced death signal. These antibodies can be used for protein immunoblotting and staining of frozen tissues. **Calbiochem. Circle 141.**

Statistics and Graphics Software

StatMost 3.0 for Windows is an upgrade of a statistical and graphics software package. Additions to the program's statistical abilities include procedures such as experimental design, cluster analysis, factor analysis, post hoc tests, stepwise regression, general linear models, exponential smoothing, discriminant analysis, survival analysis, and life tables. Data can be exchanged with most popular spreadsheet and database file formats. It provides a powerful object-oriented on-screen graphics editor that makes it easy to design and modify graphs. It also has a report editor with word processing features and graph and table support. **DataMost. Circle 142.**

Amplification System

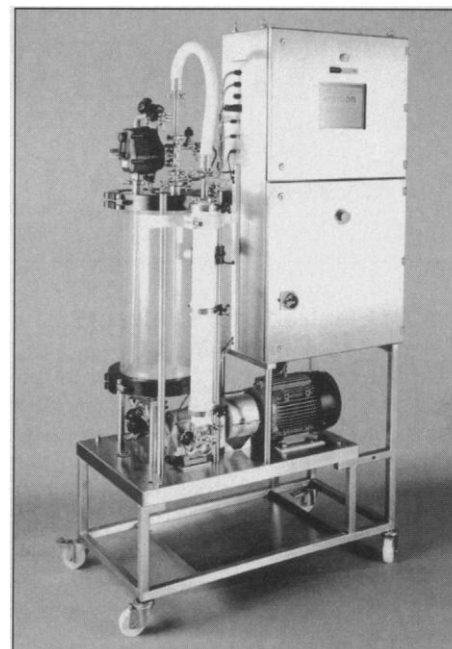
The Catalyzed Signal Amplification System, HRP, is a sensitive immunohistochemistry staining procedure for monoclonal antibodies (mAbs) that makes use of signal amplification. Based on a patented technology, the procedure makes use of an enzyme-catalyzed deposition of biotin, which results in a greatly amplified signal, allowing detection of small quantities of reactive antigen. The system enables certain mAbs that normally are not compatible with formalin-fixed, paraffin-embedded sections to be used on such specimens. **Dako. Circle 143.**

Antibodies

This affinity-purified sheep polyclonal antibody reacts with Ki⁶⁷, a large nuclear antigen present in proliferating but not quiescent cells. It is intended for use as a primary antibody in immunohistology. **The Binding Site. Circle 144.**

Automated Membrane Filtration Systems

The ProFlux A30 and A60 tangential filtration systems are designed to automate the concentration and separation of biological solutions and suspensions. Featuring hollow fiber and spiral-wound membrane cartridges, the systems are suitable for pharmaceutical and biotechnology process development and production. The models differ only in pumping capacity. The output of the A60 is 61 liters per minute at 4.2 bar (60 psi). Model A30 pumps 40 liters per minute at the same



pressure. The systems include a controller with built-in monochrome touch-screen display of the process diagram and key operating parameters. **Amicon. Circle 145.**

Literature

1995-1996 *Microscopy and Histology Catalog* features more than 1000 new items for the microscopy laboratory. **Polysciences. Circle 146.**

An In-Depth Look at Three Automated Sample Preparation Instruments and How They Improve Accuracy, Increase Throughput, and Reduce Tedious Manual Tasks is a technical report. **Gilson. Circle 147.**

Tandem Dual Sample Introduction Systems describes a system designed to enhance productivity and versatility in inductively coupled plasma spectrometers by overlapping two sample introduction cycles. **Leeman Labs. Circle 148.**

Affinity Chromatography lists more than 500 affinity resins that can be applied to almost any purification need, organized by functional groups such as hydrophobic resins, dye resins, and nucleic acid resins. **Sigma Chemical. Circle 149.**

Life Science Research Products contains more than 600 products for cell biology, immunology, and molecular biology research. It includes a large range of polyclonal and monoclonal antibodies to oncoproteins, adhesion molecules, cytoskeletal proteins, and peptides. It also offers a collection of biologically active peptides, peptide substrates, and neurochemicals. **Genosys. Circle 150.**

Current Contents® for Windows.®

Coming soon to a screen near you.

Yes, it's true: *Current Contents* (CC®), the world's leading scientific current awareness database, will soon feature new search and retrieval software from ISI® for Windows. The first release of our new graphical user interface, CC for Windows will make *Current Contents on Diskette*® (with and without abstracts) more powerful than ever before with:

- expanded multiple-issue search capabilities
- a new form-driven quick search option
- a full-search option with greater flexibility
- on-screen pricing for ISI's document delivery service

Of course, you'll still get distinctive, authoritative coverage of the world's scholarly journals. Plus information about recently published scientific books. And you'll uncover all the critical, high quality bibliographic data about every significant item...including complete author abstracts in the abstracts version.

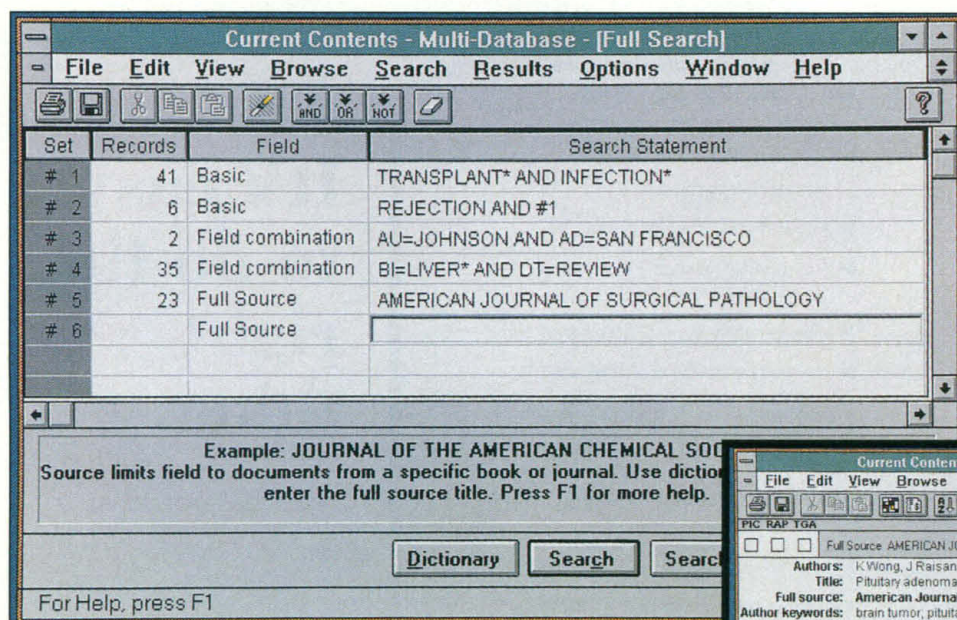
What's more, you'll find all the features you'd expect from *Current Contents*—search profiles you can customize and reuse...convenient access to full-text documents...author and publisher names and addresses. All now even easier to use with a standard Windows user interface.

So be sure to see these and many other time-saving *Current Contents on Diskette* features. Catch the premiere of CC for Windows. Call ISI today for more information.

1-800-336-4474
(U.S., Canada, and Mexico)

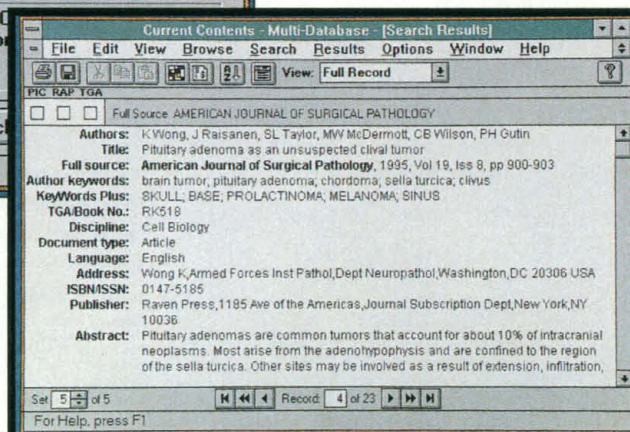
+44-1895-270016
(Europe, Africa, and the Middle East)

215-386-0100
(Other parts of the world)



The Full Search window offers great flexibility, as it enables you to develop search profiles with query structures that seem most natural to you. You can also combine different fields into one search statement, as shown here.

Search results contain all the key information you need for complete research. Note that full-length author abstracts are part of the bibliographic record.



Windows is a registered trademark of Microsoft Corporation. This product incorporates technology used under license from Fulcrum Technologies, Inc.



Institute for Scientific Information, Inc.

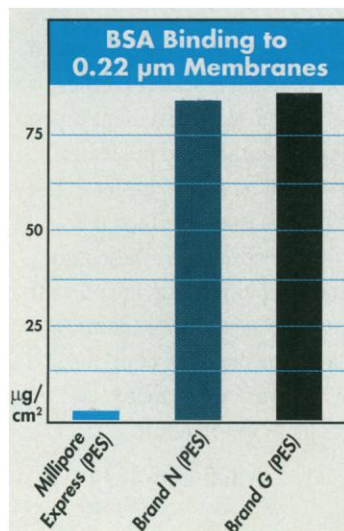
3501 Market Street, Philadelphia, PA 19104 U.S.A. • Brunel Science Park, Brunel University, Uxbridge UB8 3PQ U.K.

Circle No. 34 on Readers' Service Card

Fast Flow AND Low Protein Binding

Not all PES membranes are created equal

When it comes to fast flow and low protein binding, only Millipore gives you both in one membrane. The Millipore Express™ Membrane is made from a patented surface-modified polyethersulfone (PES) design. Just look at how we compare, even to other PES membranes.



Available in a wide range of filtration devices, including Millex® Syringe Filter Units, the Millipore Express Membrane is now also offered in the Stericup™ Vacuum Filtration and Storage System. Filter from 10–1000 mL of tissue culture media, dilute protein solutions or microbiological media in half the time without sacrificing recovery!

Call or fax for more information. U.S. and Canada, call Technical Services: 1-800-MILLIPORE (645-5476); in Japan, call: (03) 3474-9111; in Europe, fax: +33.88.38.91.95.

MILLIPORE

MILLIPORE LAB CATALOG ON INTERNET:
ACCESS URL MENU AND TYPE:
<http://www.millipore.com/express>
U.S. PATENT NO. 5,444,097

Circle No. 26 on Readers' Service Card

NEW MOLECULAR
BIOLOGY PRODUCTS



Message Maker kit

New - developed and manufactured by R&D Systems to our exacting high standards; a kit for the rapid and direct isolation of mRNA

Message Maker means:-

- ▶ No need to isolate total RNA
- ▶ Rapid mRNA isolation - < 30 minutes for 10⁷ cells
- ▶ Easy-to-handle oligo dT-latex beads
- ▶ No phenol extraction or guanidinium buffers
- ▶ Two kit sizes available to match sample size
- ▶ Anti-foaming reagents for easy homogenization
- ▶ Manufactured to GLP and GMP standards

For further information on R&D Systems' Message Maker kits for isolation of mRNA call us today.

Technical Service

Belgique/België: 078 11 04 68. Danmark: 80 01 85 92.
Deutschland: 0130 11 01 69. France: 05 90 72 49.
Japan: (03) 5632-9600. Nederland: 060 225607..
Norge: 800 11033. Sverige: 020 79 31 49.
Switzerland: 155 2482.

Europe
R&D Systems Europe Ltd., UK
Tel: +44 (0)1235 551100
Fax: +44 (0)1235 533420

USA and Canada
R&D Systems, Inc., MN, USA
Tel: 1-800-343-7475
Fax: 612 379-6580

**R&D
SYSTEMS**
1-800-343-7475

Circle No. 8 on Readers' Service Card

SCIENCE ENTERS CYBERSPACE!

The world of SCIENCE On-line:

Now you can access these exclusive features on the SCIENCE World Wide Web home page:

- SCIENCE Electronic Marketplace
- SCIENCE GLOBAL CAREER NETWORK
- Beyond the Printed Page
- SCIENCE On-line

SCIENCE WWW Address:
<http://www.aaas.org>


SCIENCE

COVERS THE WORLD

It's easy to do the right thing.

CCC makes it simple, efficient, and cost-effective to comply with U.S. copyright law. Through our collective licensing systems, you have lawful access to more than 1.7 million titles from over 9,000 publishers. Whether it's photocopying, electronic use, or the emerging information technologies of tomorrow—CCC makes it easy.

Call 1-800-982-3887 ext. 700 to find out how CCC can help you to Copy Right!™

 **Copyright Clearance Center®**
Creating Copyright Solutions

222 Rosewood Drive
Danvers, MA 01923

Copyright Clearance Center and the CCC logo are registered trademarks of Copyright Clearance Center, Inc. within the United States

SCIENCE

PERSONNEL PLACEMENT

LINE CLASSIFIED ADVERTISEMENTS

Deadlines: Ads are due by Thursday, 10 a.m., 2 weeks prior to the issue date. *Science* is published each Friday, except the last Friday of the year. Call for holiday deadlines. Ads must be submitted in writing.

How to Submit a Classified Ad:

Prepare double-spaced typewritten copy. Do not include any abbreviations. *Science* will edit and typeset ads according to *Science* guidelines. Include billing information, and desired publication date. Available categories: Positions Open, Meetings, Announcements, Courses and Training, Search Firms. *Science* cannot provide proofs of typeset line ads.

Mail, FAX or Email materials to:

Science Classified Advertising
1333 H Street, N.W., Room 814
Washington, DC 20005
Telephone: 202-326-6555 or 202-326-6534
FAX: 202-682-0816

Internet Email: science_classifieds@aaas.org
(please include telephone number in email correspondences)

Rates: Ads are \$43 per line; \$430 minimum. One line equals 52 characters and spaces; centered headings equal 32 characters and spaces. A 3% cash discount is granted to all prepaid ads. Line advertisements are not commissionable.

Estimates: *Science* will provide a cost estimate for line ads. This is an approximate cost only. Allow for variation between estimated lines and actual typeset lines and resulting final cost. Purchase orders must allow for some degree of flexibility and/or adjustment.

Ads from Outside the U.S.: A discount of \$30 will be offered to advertisers making payment in U.S. dollars by checks drawn on U.S. banks. Contact Debbie Cummings at telephone: +44(0) 1223 302067 or fax: +44(0) 1223 576208.

Credit Cards: *Science* accepts American Express, MasterCard and VISA. Discount does not apply to credit cards.

Cancellations: Deadline for cancellation is 10 a.m., Tuesday, 10 days prior to issue date.

DISPLAY PERSONNEL ADVERTISEMENTS

For rates and info. for fractional display ads call:

Bethany Ritchey
Recruitment Display Advertising
Telephone: 202-326-6541
FAX: 202-682-0816

Janis Crowley
Recruitment Advertising Manager
Telephone: 212-496-7704
FAX: 202-682-0816

Debbie Cummings
European Recruitment Advertising
Telephone: +44 (0) 1223 302067
FAX: +44 (0) 1223 576208

Science Global Career Network: Unless otherwise instructed, every classified advertisement submitted for publication in *Science* is automatically posted on *Science's* on-line classified advertising service, Science Global Career Network, at no additional charge. Science Global Career Network address:

WWW: <http://www.aaas.org>

Gopher: gopher.aaas.org

Science reserves the right, at its discretion, to edit or decline to publish advertisements submitted to it.

POSITIONS OPEN

Southwestern University

AT GEORGETOWN, TEXAS

ASSISTANT PROFESSOR OF BIOLOGY

Southwestern University seeks candidates who are broadly trained in the field of genetics and botany for a **TENURE-TRACK** position in the Department of Biology. This position involves the teaching of introductory genetics (molecular, Mendelian, and populations), botany, and other biology courses in a liberal arts setting. Excellence in teaching and a Ph.D. degree are required. The successful candidate will be asked to participate in the department's undergraduate research program.

Southwestern University is a selective, undergraduate institution committed to broad-based liberal arts and sciences education. Affiliated with the United Methodist Church, it has over 1,200 students and a history of stable enrollment. Southwestern's endowment of more than \$175 million ranks among the highest per student of undergraduate institutions in the country. The university is located in Georgetown, Texas, 28 miles north of Austin, the state capital and site of the University of Texas.

Send a letter of application, curriculum vitae, description of teaching and other professional goals, and the names of three references to: **Biology Search Committee, Job Number 9552, P. O. Box 770, Georgetown, TX 78627-0770.** Deadline for applications is December 10, 1995. *Southwestern University is an Affirmative Action, Equal Opportunity Employer. Southwestern University is committed to increasing the diversity of its faculty. Persons from underrepresented minority groups are encouraged to apply.*

TENURE-TRACK ASSISTANT PROFESSOR

The University of Illinois at Chicago (UIC) College of Medicine is accepting applications for a tenure-track position in the Department of Pharmacology, preferably at the **ASSISTANT PROFESSOR** level. Applicants should have a Ph.D. or M.D. degree and postdoctoral experience. Applicants should also have a solid publication record and a demonstrated ability to apply molecular biological approaches to studies in the areas of vascular biology, receptors, or signal transduction. The successful candidate will be expected to have a funded independent research program and to participate in the medical teaching curriculum. This position is accompanied by significant start-up funds and laboratory space. The Department of Pharmacology at UIC has maintained a strong record of graduate education/scholarly activity and is seeking applicant qualifications commensurate with this tradition. Please forward a letter, complete curriculum vitae, a brief statement of research interests, and the names of three references to:

Faculty Search Committee
Department of Pharmacology (m/c 868)
University of Illinois at Chicago
835 South Wolcott
Chicago, IL 60612

The University of Illinois at Chicago is an Affirmative Action/Equal Opportunity Employer.

MICROBIOLOGIST Department of Biology

The Department of Biology at Central Michigan University invites applications for a second ten-month tenure-track faculty position in microbiology at the **ASSISTANT PROFESSOR** level to begin August 1996. A Ph.D. in microbiology is required. Postdoctoral research experience is preferred. Preference will also be given to individuals with an expertise in either environmental or medical microbiology. The successful candidate will be expected to participate in undergraduate (general microbiology) and graduate (M.S.) courses, to establish an active research program, and to secure extramural funding. Preference will be given to applications received prior to January 12, 1996. Send curriculum vitae, statement of teaching interests, research objectives, graduate and undergraduate transcripts, and three letters of reference to: **Microbiology Search Committee, Department of Biology, Central Michigan University, Mt. Pleasant, MI 48859.** FAX: 517-774-3462.

Central Michigan University (Affirmative Action/Equal Opportunity Institution) encourages diversity and resolves to provide equal opportunity regardless of race, sex, disability, sexual orientation or other irrelevant criteria.

POSITIONS OPEN

CHILDREN'S NUTRITION RESEARCH CENTER Baylor College of Medicine

The Children's Nutrition Research Center (CNRC), Department of Pediatrics, Baylor College of Medicine is interested in expanding its lactation biology research program by recruiting a new faculty member at the tenure-track **ASSISTANT PROFESSOR** level. Qualifications include a Ph.D. in one of the biological sciences and a minimum of two years of postdoctoral training, although additional postdoctoral experience is desirable. The candidate should have a research program with a specific focus on the regulation of lactation and mammary gland development at the molecular level. A program using the latest techniques in molecular and cell biology along with the ability to collaborate with other scientists within the CNRC and Baylor College of Medicine is essential. Experience with the use of transgenic animal models is desirable, and an individual with the demonstrated ability to obtain outside funding is preferred.

Interested candidates should submit their curriculum vitae, a statement of research interests, and three letters of recommendation to: **Dennis M. Bier, M.D., Director, Children's Nutrition Research Center, Baylor College of Medicine, 1100 Bates Street, Houston, TX 77030-2600.** Telephone: 713-798-7022; FAX: 713-798-7046; Email: dbier@bcm.tmc.edu.

Baylor College of Medicine is an Equal Access/Equal Opportunity/Affirmative Action Employer. Women and members of minority groups are strongly encouraged to apply.

ASSISTANT PROFESSOR KANSAS STATE UNIVERSITY

The Division of Biology, Kansas State University, invites applications for a tenure-track position at the **ASSISTANT PROFESSOR** level. We seek an exceptional educator, whose primary instructional responsibilities will be introductory biology. The successful candidate will be expected to generate a record of scholarly achievement, focused on any area of biology or biology education, and to have knowledge and experience with computation and interactive multimedia as applied to undergraduate biology teaching. A Ph.D. or equivalent and postdoctoral experience are required. The position includes a competitive salary and start-up package, and information about research and teaching strengths of the Division can be found at: <http://www.ksu.edu:80/biology/>. Applicants should submit a curriculum vitae, reprints, a statement of teaching philosophy, and a summary of scholarly interests, and arrange to have three letters of recommendation sent to: **James A. Guikema, Biology Multimedia Instruction Faculty Search Committee, Division of Biology, Kansas State University, 231 Ackert Hall, Manhattan, KS 66506-4901.** Applications should be received by February 5, 1996. *KSU is an Equal Opportunity/Affirmative Action Employer, and encourages diversity among its employees.*

ASSISTANT PROFESSOR Structural Molecular Biologist/Biochemist University of Illinois at Chicago (UIC)

The Laboratory for Molecular Biology of the Department of Biological Sciences at the University of Illinois at Chicago invites applicants for a faculty position at the level of **ASSISTANT PROFESSOR** beginning September 1996. Candidates with an active research program addressing biological problems from a structural perspective are sought, although applicants with other areas of expertise will also be considered. Successful candidates will be expected to pursue a vigorous independent research program as well as to foster collaborative research projects with departmental colleagues, and to contribute to the department's undergraduate and graduate teaching effort. Modern X-ray crystallography, NMR, and high resolution electron microscopy facilities are already on site. Laboratory facilities are located in the recently completed Molecular Biology Research Building, which also houses molecular biologists from other departments. Applications should include a curriculum vitae and a summary of research plans. In addition, candidates should arrange to have at least three letters of recommendation forwarded to the search committee. For fullest consideration, applications should be received by January 1, 1996. Send application and letters of reference to: **Chairman, Search Committee for Structural Biologist, UIC, M/C 567, Laboratory for Molecular Biology, 900 South Ashland Avenue, Chicago, IL 60607.** *UIC is an Affirmative Action/Equal Opportunity Employer.*

POSITIONS OPEN

SCIENCE EDUCATION Ball State University Muncie, Indiana

Applications are invited for a tenure-track science education position at the **ASSISTANT PROFESSOR** level in the Department of Biology available August 23, 1996. Candidates are expected to have a commitment to excellence in teaching, to be competent in current approaches used in science education, and to establish an active research program. Responsibilities: teach both undergraduate and graduate courses in early childhood and elementary grades science methods; conduct research in specialty area and promote student involvement; and be an active member of the academic community. Minimum qualifications: earned doctorate in science education or the equivalent of science education with a strong background in the life, earth and physical sciences (ABD's will be considered but doctorate must be completed by August 15, 1997); elementary or secondary school science teaching experience and certification; and effective written and oral communication skills. Preferred qualifications: demonstrated teaching ability and publications and/or evidence of other scholarly activity. Submit curriculum vitae, documentation of scholarly activity, transcripts, and three letters of reference to: **Chair, Science Education Search Committee, Department of Biology, Ball State University, Muncie, IN 47306**. Review of applicants will begin January 19, 1996 and continue until the position is filled.

Ball State University is an Equal Opportunity/Affirmative Action Employer and is strongly and actively committed to diversity within its community.

INSECT POPULATION GENETICIST

Tenure-track, **ASSISTANT PROFESSOR** research (60%) and teaching (40%) position, to begin July 1, 1996. Research area is open, but should contribute ultimately to strategies for insect pest management, diversity conservation, or both; examples include genetic aspects of host plant resistance, pesticide resistance, plant/herbivore or herbivore/natural enemy interactions, or conservation biology. The successful candidate will participate in both graduate and undergraduate teaching, and interact with existing programs in integrated pest management, insect/plant and insect/vertebrate interactions, and evolutionary biology. Applications should include curriculum vitae, statements of research plans and of teaching experience and interests, transcript copies or list of relevant courses taken, and names and addresses of five referees. Apply by December 11, 1995 to guarantee fullest consideration. Direct applications or questions to: **Charles Mitter, Population Genetics Search, Department of Entomology, University of Maryland, College Park, MD 20742** [Internet: cm42@umail.umd.edu]. University of Maryland, College Park is an Equal Opportunity Employer; applications from minorities and women are encouraged.

NATURAL HISTORY/BOTANY

The Evergreen State College (TESC) seeks recently trained biologists with one to 10 years of experience for full-time continuing and full-time **VISITING FACULTY** positions beginning September 15, 1996. Seek applicants who can incorporate plant-based field studies into team-taught interdisciplinary programs. Disciplinary/methodological strengths should include historical/comparative approaches (systematics, biogeography) and/or experimental approaches (ecology, forestry). Knowledge of flora and ecology of Pacific Northwest, initiation of student-oriented research program, and experience with herbarium techniques desired. Application procedures: **Faculty Hiring Coordinator, TESC, Olympia, WA 98505** or Email: pinsonr@elwha.evergreen.edu.

LONGWOOD COLLEGE

Cellular/Molecular Geneticist. The Department of Natural Sciences invites applications for a **TENURE-TRACK POSITION** to begin August 1996. Ph.D., teaching assistant experience, and background in biochemistry preferred. Teaching at the undergraduate level is the primary focus. Duties include courses in cell biology, biochemistry, genetics, and ethics for majors and a general education course for non-majors. Molecular biology and/or other specialty course possible. Some research opportunities available. Send letter of application, curriculum vitae, telephone numbers of three references, and other supportive materials to: **Dr. Carolyn Wells, c/o Human Resources Office, Longwood College, 201 High Street, Farmville, VA 23909**. Review begins January 16, 1996. An Affirmative Action/Equal Opportunity Employer. Women and minorities are encouraged to apply.

POSITIONS OPEN

AQUATIC ECOLOGIST

Tenure-track **ASSISTANT PROFESSOR** position beginning in fall 1996 for an aquatic ecologist, working on biological aspects of freshwater systems. This is a joint position of Zoology and the Oklahoma University Biological Station, and a research program is expected to be centered about half on the main campus and half at the Station on Lake Texoma. The successful candidate will strengthen our graduate program in ecology, evolution, systematics, and animal behavior and should complement faculty interests in these areas. The primary teaching responsibility will be one course on the main campus each year and will rotate among limnology, general ecology, and a graduate course in the candidate's specialty.

Candidates must have Ph.D. with proven record of excellent teaching and research abilities (demonstrated by publications). Postdoctoral experience preferred. Screening begins 15 January 1996 and will continue until position is filled. Send curriculum vitae, four letters of recommendation, representative reprints, summary of teaching experience and description of research interests to: **Dr. James N. Thompson, Jr., Chair, Department of Zoology, University of Oklahoma, Norman, OK 73019**. An Equal Opportunity/Affirmative Action Employer. Oklahoma University has a policy of being responsive to needs of dual-career couples.

ASSISTANT PROFESSOR ANALYTICAL CHEMISTRY

American Chemical Society-certified department, located in the Philadelphia, Pennsylvania suburbs, seeks to fill a **TENURE-TRACK FACULTY POSITION** in analytical chemistry commencing fall 1996. The successful candidate must have a Ph.D. degree in chemistry, a record of accomplishments in separation science, and the background necessary for teaching courses in biochemistry as well as analytical chemistry. A strong commitment to undergraduate and M.S.-level teaching and research is essential. Send curriculum vitae, including a list of publications, three letters of recommendation, graduate and undergraduate transcripts, evidence of teaching excellence, and separate detailed statements of research interests and teaching philosophy to: **Dr. John A. Mangravite, Department of Chemistry, West Chester University of Pennsylvania, West Chester, PA 19383**. All application materials must be received by January 15, 1996. Affirmative Action/Equal Opportunity Employer. Women and minorities are encouraged to apply.

FACULTY POSITION BIOLOGICAL CHEMISTRY

The Department of Chemistry at the University of North Carolina at Chapel Hill invites applications for a tenure-track position in biological chemistry. The successful applicant must have a Ph.D., postdoctoral experience, a strong record of research, and the ability to teach biological chemistry effectively at the undergraduate and graduate levels. Preference will be given to individuals who can establish a strong research program in biological chemistry and interact enthusiastically with other chemists, and whose appointment would be at the rank of **ASSISTANT PROFESSOR**. Review of the applications will begin December 15, 1995. Send a curriculum vitae, a brief research plan, a statement of teaching interests, and four letters of recommendation to: **Dr. Nancy L. Thompson, Department of Chemistry, CB 3290 University of North Carolina, Chapel Hill, NC 27599-3290**. The University of North Carolina is an Equal Opportunity/Affirmative Action Employer.

INSTRUCTOR, Department of Zoology, Oregon State University (OSU) to teach and coordinate courses in human anatomy and physiology. The initial appointment will be for two years, with the possibility of annual renewals for two-year periods at the discretion of the department chair. A Ph.D. is required. Applicants should have teaching and research experience in appropriate disciplines, and an interest in computer-aided instruction. Salary: \$30,000 annually. Send cover letter, résumé, three letters of reference to: **Dr. John A. Ruben, Physiology Search Committee, Department of Zoology, Oregon State University, Corvallis, OR 97331-2914**. File review will start on 1 February 1996 and continue until the position is filled.

OSU is an Affirmative Action/Equal Employment Opportunity Employer and has a policy of being responsive to needs of dual career couples.

POSITIONS OPEN

ASSISTANT/ASSOCIATE PROFESSOR Immunology/Virology (Two Positions)

Creighton University, School of Medicine, Department of Medical Microbiology and Immunology invites applications for two **TENURE-TRACK POSITIONS** available in spring or summer 1996. Preference will be given to applicants with research interests in immunology and virology. The appointees are expected to conduct vigorous independent research and to have an interest and aptitude for teaching graduate students as well as medical, dental and other allied health profession students. Laboratory space and start-up funding will be available. Applicants should send a curriculum vitae, a brief summary of research plans and teaching interests, and the names and addresses of at least three references to: **Roderick Nairn, Ph.D., Professor and Chair, Department of Medical Microbiology and Immunology, Creighton University, 2500 California Plaza, Omaha, NE 68178**. Deadline for receipt of applications is January 31, 1996. Creighton University is an Affirmative Action/Equal Opportunity Employer.

ASSISTANT PROFESSOR

The Biotherapy Program at the University of Minnesota is seeking two faculty members to fill an annual, renewable, non-tenured **ASSISTANT PROFESSOR** position. Applicants should hold a Ph.D. or an equivalent degree and have expertise in the area of synthetic chemistry. Laboratory space and adequate funds are available to allow the establishment of an outstanding research program. Applicants should submit: a curriculum vitae, reprints of selected publications, and the names, addresses, and telephone numbers of three individuals whom the applicant has asked to submit letters of recommendation by December 15, 1995 to: **Search Committee c/o Dr. F. M. Uckun, University of Minnesota, Box 356 UMHC, 420 Delaware Street SE, Minneapolis, MN 55455**.

The University of Minnesota is an Equal Opportunity Educator and Employer.

ASSISTANT PROFESSOR BIOLOGICAL SCIENCES

A **TENURE-TRACK POSITION** with responsibilities for teaching freshmen and sophomore courses in biology and physiological chemistry will be available August 1996. A demonstrable interest in teaching undergraduate students and evidence of teaching effectiveness is required, as is a Ph.D. in biology, biochemistry, or molecular biology. A tenure-track position carries the expectation of scholarly activity. Salary is commensurate with qualifications. Application deadline: January 17, 1996. Send letter of application, curriculum vitae, transcripts, and three letters of recommendation by that date to: **Dr. William G. Bittle, Dean, Kent State University-Stark Campus, 6000 Frank Avenue, NW, Canton, OH 44720**.

University of California at Berkeley: **ASSISTANT PROFESSOR** of Forest Resource Management, nine-months, starting July 1, 1996. Ph.D. with expertise in application of optimization and simulation modeling to the study of forest ecosystems is required for appointment. Candidates are expected to have advanced training and expertise in systems analysis/operations research, ecosystem modeling, and economics. For further information, including a full position description, contact: **Chair, Forest Resource Management Search Committee, Department of Environmental Science, Policy, and Management, 145 Mulford Hall, University of California, Berkeley, CA 94720-3114**. Telephone: 510-642-0376. Applications close January 31, 1996. The University of California is an Equal Opportunity/Affirmative Action Employer.

PHYSIOLOGIST

Emporia State University invites applications for a nine-month, tenure-track, **ASSISTANT/ASSOCIATE PROFESSOR** position available August 1996. Ph.D. and commitment to teaching required. Appointee expected to direct student research and develop research program appropriate to available facilities and resources, and teach 12 contact hours per semester in human anatomy and physiology with lab, advanced physiology, and possibly comparative anatomy or embryology. Screening begins January 3, 1996, and continues until position filled. Send application letter, curriculum vitae, transcript, and name, address, telephone/Email of four references to: **Search Committee, Division of Biological Sciences, Campus Box 4050, Emporia State University, Emporia, KS 66801-5087**. <http://www.emporia.edu/>. Affirmative Action/Equal Opportunity Employer.

Postdoctoral Opportunities In The Biomedical Sciences.

The following research training opportunities are currently available at the National Institutes of Health.

Computational Molecular Biology **Jacob V. Maizel, Jr., PhD**

Computational methods for nucleic acid and protein sequence analysis are being developed and then applied to important problems in cancer, AIDS and other areas of biomedical research. Background in computational molecular biology, FORTRAN, C, VMS, UNIX, and 2- and 3-D RNA structures as well as US citizenship and/or permanent residency are required. Laboratory of Mathematical Biology (OE-106), NCI-FCRDC, P.O. Box B, Building 469, Room 151, Frederick MD 21702-1201.

Hepatitis C Virus (HCV) Genomic Variations **Robin Biswas, MD**

HCV viral genomic variation is being investigated by nucleic acid sequencing, PCR, serologic tests and single-strand conformation polymorphism. Problems under investigation include the study of HCV viral genomic variations in different individuals, HCV viral genomic change over time in humans and chimpanzees, and possible relationships between HCV and other viruses. Applicants should have less than five years of postdoctoral experience. Laboratory of Hepatitis (OE-106), CBER/FDA, Building 29, Room 225, HFM-325, 1401 Rockville Pike, Rockville, MD 20852.

Molecular and Cellular Biology **Anton Jetten, PhD**

The regulation of gene expression during differentiation and the mechanism of action of retinoids is being studied. The role of nuclear/orphan receptors in the control of gene transcription is investigated using deletion mutations, mobility shift assays and two-hybrid system. Studies involve characterization of promoters of several genes. Applicants must have experience in molecular biology techniques. Laboratory of Pulmonary Pathobiology (OE-106), NIEHS, P.O. Box 12233, MD D2-01, Research Triangle Park, NC 27709.

Molecular Endocrinology **Matthew M. Rechler, MD**

The laboratory is studying the mechanisms by which insulin-like growth factor binding proteins (IGFBPs) modulate the mitogenic actions of IGFs. Specific projects include the formation and function of plasma IGF-IGFBP complexes, interactions of IGFBPs with target cells, role of IGFBP proteases, and regulation of IGFBP promoter activity by glucocorticoids, insulin and growth hormone. Experience in molecular biology, biochemistry and cell biology is required. Molecular and Cellular Endocrinology Branch (OE-106), NIDDK, Building 10, Room 8D14, 10 CENTER DR MSC 1758, BETHESDA MD 20892-1758. E-mail: mrechler@helix.nih.gov.

Neurotoxicology/Neuroimmunopathology **Melvyn P. Heyes, PhD**

The functional and clinical significance of accumulations of the neurotoxin, quinolinic acid, in CNS immune activation, including AIDS, infectious diseases, brain injury and autoimmune conditions will be studied. Experience in the quantitative evaluation of neuropathologic and/or functional responses to immune- or excitotoxin-mediated CNS damage, and experience with *in vivo* animal models of inflammatory neurologic diseases

is preferred. Laboratory of Clinical Science (OE-106), NIMH, Building 10, Room 3D40, 10 CENTER DR MSC 1262, BETHESDA MD 20892-1262.

Protein Modeling/Docking **Jacob V. Maizel, Jr., PhD**

Research involves protein modeling, protein-protein recognition and protein and drug docking. Applicants should have a recent PhD in computational chemistry or biophysics. Work will involve close collaboration with Drs. Jacob Maizel and Ruth Nussinov. Supercomputing facilities are available. Salary commensurate with experience. Laboratory of Mathematical Biology (OE-106), NCI-FCRDC, P.O. Box B, Building 469, Room 151, Frederick, MD 21702-1201, or e-mail: BEARD@FCRFV1.NCICRF.gov.

Structural Analysis of Endocytic Proteins **Jenny E. Hinshaw, PhD**

The laboratory is interested in the mechanisms of vesicular transport within the cell. Specifically, the role of dynamin in vesicle budding during endocytosis is being explored by high resolution electron microscopy and biochemistry. Candidates should be well trained in biochemistry, have a strong interest in structural biology and image processing, and less than five years of postdoctoral experience. Laboratory of Cell Biochemistry and Biology (OE-106), NIDDK, Building 8, Room 301, 8 CENTER DR MSC 0850, BETHESDA MD 20892-0850 or E-mail: jennyh@helix.nih.gov.

Additional Opportunities

The NIHEDNET Bulletin Board **POSTDOC** (fellowship positions) and **TENURE** (tenure track positions) conferences are accessed via a modem (301-402-2221 or 800-358-2221 with parameters FDA using Telnet (wylbur.cu.nih.gov) or the World Wide Web (URL: [telnet://wylbur.cu.nih.gov](http://wylbur.cu.nih.gov)). When connected to NIH, key in **.vt100** for terminal emulation, **F5E** for initials, and **AJLI** for account number. To view tenure track positions, quit the **POSTDOC** conference and join the **TENURE** conference.

An electronic version of the *Postdoctoral Research Fellowship Opportunities* catalog is accessed via the Internet using either the Gopher Information System (gopher.nih.gov) or the World Wide Web (URL: <http://www.nih.gov>). When connected with Gopher, select **Grants and Research Information** and then **NIH Office of Education**. When connected with WWW, select **Grants and Contracts** and then **NIH Office of Education**. If you have further questions, please contact the NIH Office of Education, Building 10, Room 1C129, 10 CENTER DR MSC 1158, BETHESDA MD 20892-1158, Phone 301-496-2427, Fax 301-402-0483.

To Apply

If you hold a graduate doctoral degree (e.g., PhD, MD/PhD) or a professional degree (MD, DO, DDS, DMD or DVM) accompanied by previous laboratory research experience, and would like to be considered for one of these positions, please send a cover letter, *curriculum vitae*, bibliography, and statement of research interests to the address listed with each position. In addition, please arrange to have letters of recommendation sent from three scientists who can provide an evaluation of your qualifications.



National Institutes Of Health

Office Of Education

The NIH is an Equal Opportunity Employer

POSITIONS OPEN

MUHLBERG COLLEGE Endowed Chair in Environmental Science

Muhlenberg College seeks applicants for the David and Donna Long Professorship in Environmental Science. An appointment will be made at the **ASSOCIATE** or **FULL PROFESSOR** rank. The College welcomes applicants from a variety of scientific disciplines. The Long Professor will administer a recently established environmental science major, develop and instruct courses in the major, guide and coordinate student research and internships, and initiate grant proposals. A College-owned field station, a College arboretum and a number of nearby wildlife and watershed areas provide opportunities for long term environmental research. Muhlenberg is located in the Lehigh Valley, within easy driving distance of Philadelphia and New York City. Submit résumé, three reference letters, and a statement of your personal teaching and research philosophies to: **Dr. Richard C. Hatch, Dean of the College for Faculty, Muhlenberg College, Allentown, PA 18104**. Application review will begin February 1, 1996. *Muhlenberg College is an Equal Opportunity Employer.*

CELL BIOLOGY ASSISTANT PROFESSOR

The Department of Biology, Hamilton College, invites applications for a **TENURE-TRACK POSITION** at the assistant professor level, effective 1 July 1996. Applicants must have a Ph.D.; postdoctoral research and teaching experience are preferred. Teaching for the successful applicant will include cellular and developmental biology at the introductory level, an upper-level course in cell biology, an additional course, and supervision of senior thesis research. An ongoing research program emphasizing cellular processes and involving undergraduates is expected. Send curriculum vitae, statements of teaching and research interests, and three letters of reference to: **Ernest H. Williams, Chair, Biology Department, Hamilton College, 198 College Hill Road, Clinton, NY 13323-1292**. Application materials must be received by 8 January 1996. *Women and minorities are encouraged to apply. Hamilton College is an Equal Opportunity/Affirmative Action Employer.*

BIOLOGY: GENETICS

Carthage College seeks an **ASSISTANT PROFESSOR** for a tenure-track position in genetics. Ph.D.; strong background in experimental biology; commitment to teaching at the undergraduate level; willingness to involve students in research projects; and ability to pursue external funding required. Located on the shore of Lake Michigan midway between Chicago and Milwaukee, the College offers quick urban access from the relaxed environment of a small city. Recent renovations to science facilities make Carthage well equipped for state-of-the-art teaching and research activities. Nominations and applications, including a current curriculum vitae and three letters of reference, should be sent by January 1, 1996, to: **Charlotte Chell, Chair, Division of Natural Sciences, Carthage College, 2001 Alford Park Drive, Kenosha, WI 53140**.

University of California at Berkeley: **ASSISTANT PROFESSOR** of Silviculture, nine-months, starting, July 1, 1996. Ph.D. with expertise in silviculture and forest ecology is required for appointment. Experience should include research in silviculture, forest dynamics, and restoration of forested landscapes and familiarity with current forest management issues. For further information, including a full position description, contact: **Chair, Silviculturist Search Committee, Department of Environmental Science, Policy, and Management, 145 Mulford Hall, University of California, Berkeley, CA 94720-3114**. Telephone: 510-642-0376. Applications close January 31, 1996. *The University of California is an Equal Opportunity/Affirmative Action Employer.*

Biology: two positions, August 1996. (1) **ASSISTANT PROFESSOR**—Animal Physiology. Tenure-track, Ph.D. to teach Animal Biology, General Physiology, and Human Anatomy/Physiology. Research with undergraduates expected. (2) **LECTURER**, two-year academic staff, minimum of M.S. to teach General Biology and Plant Biology. Application deadline February 1, 1996. Send inquiry to: **Physiologist or Lecturer Search, Department of Biology, University of Wisconsin-Eau Claire, Eau Claire, WI 54702-4004**. Internet: biolsrch@uwec.edu; Telephone: 715-836-4166; FAX: 715-836-5089. *An Equal Opportunity/Affirmative Action Employer.*

POSITIONS OPEN

The Department of Psychiatry and Behavioral Sciences, Stanford University School of Medicine, is seeking a faculty member to develop and administer a basic research program in an area of basic neuroscience associated with psychiatric disease. The applicant must have a strong scientific and administrative background and be qualified for university appointment at the **ASSISTANT PROFESSOR** level. Applicants must hold a medical degree or a Ph.D. We seek a talented neuroscientist with outstanding skills in cellular or molecular neurobiology. We particularly encourage physicians with psychiatric training to apply, provided they have requisite basic science research training. Please submit your curriculum vitae to: **Alan F. Schatzberg, M.D., Chairman of Search Committee, Department of Psychiatry, Stanford University School of Medicine, Stanford, CA 94305-5548**. *Stanford University is committed to increasing representation of women and members of minority groups on its faculty and particularly encourages applications from such candidates.*

ASSISTANT PROFESSOR: Oglethorpe University. Tenure-track position beginning fall 1996. Teaching responsibilities in Comparative Vertebrate Anatomy, advanced Human Physiology, General Biology, Core Program Biological Science, and advanced course(s) in specialty. Ph.D. or terminal doctorate and experience teaching anatomy required; experience in small college preferred. Founded in 1835, Oglethorpe University is a highly selective, private, liberal arts university located on a beautiful, 100-acre campus in suburban Atlanta. It is an independent, privately supported institution in the British tradition of personalized education. Its distinguished faculty, ninety-two percent of whom hold doctoral degrees, are teachers/scholars committed to providing the highest quality of instruction in the liberal arts and sciences. Its student body of 1300 is cosmopolitan and is drawn from the ablest one-tenth of secondary school graduates; average combined SAT scores of enrolled students is above 1100. Send letter of application and a résumé/curriculum vitae by January 1, 1996 to: **Dr. Daniel Schadler, Oglethorpe University, 4484 Peachtree Road, Atlanta, GA 30319-2797**. Telephone: 404-261-1441; FAX: 404-364-8500. *Equal Opportunity Employer.*

PLANT CELL BIOLOGIST

Bloomsburg University stresses teaching excellence. Full-time, **TENURE-TRACK, ASSISTANT PROFESSOR** to begin fall 1996. Ph.D. in plant biology required; cell-level plant biologist, physiology training, experience with molecular techniques. University teaching/research experience preferred. Responsibilities: teach undergraduate courses in cell biology, plant physiology, general botany, and non-majors' biology; develop a molecular-level course; develop research involving undergraduate and Master's students. Send letter of application, curriculum vitae, all transcripts, and three letters of reference by January 26, 1996 to: **Dr. J. Kipe-Nolt, Biol/AH Sci., Bloomsburg University, Bloomsburg, PA 17815**. Must receive favorable recommendation by majority of department faculty. *Affirmative Action/Equal Employment Opportunity. Bloomsburg University, State System of Higher Education, Commonwealth of Pennsylvania.*

ASSISTANT/ASSOCIATE PROFESSOR CARDIOLOGY

**Bowman Gray School of Medicine
Wake Forest University**

Need individual with skills in applying molecular biology techniques to issues related to cardiovascular disease. Curriculum vitae to: **Dr. William C. Little, Cardiology, Bowman Gray School of Medicine, Medical Center Boulevard, Winston-Salem, NC 27157-1045**. *Equal Opportunity/Affirmative Action Employer.*

ASSISTANT PROFESSOR: Lawrence University Chemistry Department invites applications from biochemists or bio-organic chemists committed to excellent teaching and to active research involving undergraduates. Ph.D. required; postdoctoral experience preferred. Will teach biochemistry, some organic and general chemistry, special topics; expected to participate in college-wide freshman program. One-year sabbatical replacement appointment will convert to tenure-track in fall 1997. Send curriculum vitae, statement of teaching philosophy, description of research interests, undergraduate and graduate transcripts; arrange for three letters of reference. Review begins January 2, 1996. **Professor Jerrold Lokensgard, Chair, Chemistry Department, Lawrence University, Appleton, WI 54912-0599**. *Affirmative Action/Equal Opportunity Employer. Applications from women and members of minorities encouraged.*

POSITIONS OPEN

KWANGJU INSTITUTE OF SCIENCE AND TECHNOLOGY (K-JIST) DEPARTMENT OF LIFE SCIENCE, KOREA

FACULTY POSITIONS (Assistant and Associate Professors) are available immediately in the areas of gene targeting; structure and function of membrane proteins; genetic regulation of normal and abnormal growth and aging; and gene therapy. The responsibilities of this position include development of an active research program and participation in graduate student teaching programs in the department. Teaching by foreign professors will be conducted in English. The applicants should have a Ph.D. degree in the relevant fields and at least two years of postdoctoral training. K-JIST is a new government-funded graduate school (for Master's and Doctorate degrees), located at Kwangju, 200 miles south of Seoul. The school offers an excellent environment for both research and outdoor activities. Constant governmental research funds are available for faculty research. The starting salary is \$35,000 to \$50,000 per annum depending on experience. Fringe benefits include free faculty apartment for three to five years.

Please send curriculum vitae and two letters of reference before February 28, 1996 by mail or FAX to: **Do Han Kim, Ph.D., Professor, Department of Life Science, Kwangju Institute of Science and Technology (K-JIST), Kwangsan-ku, Kwangju, 506-303, Korea**. Telephone: +82-62-970-2482; FAX: +82-62-970-2484.

ECOLOGIST/FIELD BIOLOGIST

The Hendrix College Department of Biology invites applications for a tenure-track **ASSISTANT PROFESSOR** position beginning August 1996. Applicants should have a Ph.D. and be broadly trained field biologists able to teach general ecology and either general zoology or general botany. A promise of excellence in teaching and a commitment to continued scholarship are essential. Responsibilities include teaching five courses over three terms (fall, winter, spring), directing undergraduate research, and contributing to the departmental and liberal arts academic communities. The Department of Biology has six full-time faculty and a laboratory technician; has architectural plans for a new life sciences building; is developing a vigorous undergraduate research program; and averages 34 graduating majors per year with 70% continuing to professional or graduate schools.

Send a letter of application, curriculum vitae, statement of teaching interests and professional goals in a liberal arts environment, graduate and undergraduate transcripts, and letters from three references (two should be qualified to address teaching effectiveness) in hard copy to: **Bruce Haggard, Chair, Department of Biology, Hendrix College, 1601 Harkrider Street, Conway, AR 72032** (Haggard@Hendrix.edu). Evaluation of applications will begin January 1, 1996 and continue until the position is filled. *Hendrix College is an Equal Opportunity/Affirmative Action Employer.*

INDIANA UNIVERSITY Ecosystems Ecologist-Faculty

The School of Public and Environmental Affairs (SPEA) is a multidisciplinary, university-wide division of Indiana University, organized as a professional school committed to excellence in teaching, research, and service addressing critical issues of environmental science, public and environmental policy and management. With well over 100 faculty (tenured or tenure-track), SPEA is the largest school in the nation offering programs in environmental science and public affairs. The graduate program consistently ranks among the best in the country.

Ecosystem ecology (Bloomington campus): **FACULTY POSITION** with teaching and research emphasis in the application of ecological knowledge to natural resources management. Preference given to applicants with interests/experience in one or more of the following: conservation biology, landscape ecology, microbial ecology, global environmental change, ecological risk assessment, ecological process modeling, or applications of GIS and remote sensing in ecological research. Rank and salary will be commensurate with experience. Ph.D. in related field is required. Review of applications will begin on December 15, 1995 and will continue until suitable candidates have been identified. Send a letter of interest, curriculum vitae, and names, addresses, and telephone numbers of four references to: **Stephen D. Gottfredson, Associate Dean for Academic Affairs, Job Code: EE-31, School of Public and Environmental Affairs, Indiana University, Bloomington, IN 47405**. See: <http://www.indiana.edu/~speaweb/index.html>. Click on "SPEA News." *Indiana University is an Affirmative Action/Equal Opportunity Employer, and strongly encourages applications from members of historically underrepresented groups.*

**NATIONAL CANCER INSTITUTE (NCI)
NATIONAL INSTITUTES OF HEALTH (NIH)
DEPARTMENT OF HEALTH & HUMAN SERVICES
(DHHS)**

DIRECTOR

**DIVISION OF CLINICAL SCIENCES
MEDICAL OFFICER (General), GS-602-15**

The NCI is accepting applications for the position of Director, Division of Clinical Sciences (DCS), located on the NIH campus in Bethesda, MD. The Director, DCS, provides scientific leadership for the NCI intramural clinical research program. He/She is responsible for the development and administration of innovative investigator-initiated clinical research in cancer, AIDS, and AIDS-related malignancies which translates fundamental research to the bedside in a bi-directional manner. Through the allocation of budgetary and FTE resources within the Division, the Director determines immediate and long-range research objectives and plans and directs the implementation of these objectives. The Director is responsible for managing and maintaining a clinical and laboratory environment conducive to development and conduct of clinical research and ensuring that research conducted throughout the NCI intramural program reflects both the highest standards of scientific excellence and the highest ethical standards for protection of the human subjects participating in intramural clinical research. We are seeking physicians who have expertise in the development of innovative programs for the treatment of cancer and AIDS and who have demonstrated the ability to manage large, multi-disciplinary clinical research programs. Experience and working knowledge with the issues related to human subjects experimentation are highly desirable.

SALARY: Basic salary may range from \$77,001 to \$97,386 per annum. In addition, Physician Special Pay ranging from \$34,000 to \$64,500 may be available. Therefore, the total annual compensation may be up to \$161,886, commensurate with education and experience.

A one-time, lump sum recruitment bonus of up to 25% of basic salary may also be paid. The maximum allowable recruitment bonus is \$24,346. Future annual retention allowances of up to \$24,346 may also be payable.

BENEFITS: Generous package includes health and life insurance options, retirement, paid holidays, vacation and sick leave.

Exceptional recruiting difficulty may result in payment of recruitment bonus. Payment of travel and transportation expenses will be considered on an individual basis.

FOR QUALIFICATION REQUIREMENTS, APPLICATION PROCEDURES, AND OTHER ADDITIONAL INFORMATION (INCLUDING SALARY), PLEASE CONTACT:

**Ms. LAURA FAILE
PERSONNEL MANAGEMENT
SPECIALIST, NCI
NCI PERSONNEL OFFICE
BLDG. 31, ROOM 3A21
9000 ROCKVILLE PIKE
BETHESDA, MD 20892
TEL: (301) 496-6503; FAX: (301) 496-6168**

Applications must be postmarked no later than the announcement closing date of 12/18/95. To be considered, applicants must be U.S. citizens.

NIH is an Equal Opportunity Employer

**Chair, Department of Chemistry
Ohio University**

Applications are invited for the position of Chair of the Department of Chemistry in the College of Arts and Sciences at Ohio University. Ohio University, located in the city of Athens (population 30,000), is a state university with Carnegie Research II status and has undergraduate and graduate student enrollments of 16,000 and 2,500 respectively. The Department of Chemistry has 22 full-time tenure-track faculty with approximately 300 undergraduate majors in traditional chemistry, forensic chemistry, biochemistry, and pre-professional programs, and 50 Ph.D. and M.S. students. The research strengths of the Department are in analytical chemistry and the chemistry of biological systems, and candidates for the Chair should have their research interests in one of these areas. The successful applicant will be expected to lead a reorganization of the Department which will include focusing the Ph.D. program in the areas of current strength. Candidates should have an international reputation in their research area, an established record of external funding and publication in quality journals, current substantial external funding and qualifications which merit tenure and rank of Professor. Candidates should also have administrative skills and/or experience which will enable them to maintain an active research program in addition to assuming the administrative responsibilities as Chair of the Department. Salary and research support for the position are competitive. This position is contingent on final budgetary approval by Ohio University. Letters of application containing a curriculum vitae, a description of research interests and current areas of activity, names of three references, and a statement describing administrative experience and philosophies should be addressed to: **Dr. P. Johnson, Search Committee Chair, Department of Chemistry, Clippinger Laboratories, Ohio University, Athens, Ohio 45701.** Completed applications will be reviewed beginning January 15, 1996, with July 1, 1996 as the negotiable starting date for the position. *Ohio University is an Equal Opportunity/Affirmative Action Employer.*

**Albert B. Alkek
Institute of Biosciences and Technology
Texas A&M University**

**Tenure-Track Faculty Positions
Center for Cancer Biology and Nutrition**

The Center for Cancer Biology and Nutrition

is housed in a new 11-story research tower located in the Texas Medical Center, Houston, Texas. Together with groups in DNA structure and genomic research, extracellular matrix biology, skeletal and infectious disease, structural biology and bioinformatics which foster research in cell and molecular sciences, bridging between medicine and agriculture is through interactions with programs in the Texas Medical Center and the Texas A&M University System. The Center focuses on mechanisms of signal transduction whose dysfunction may be involved in cancer and the impact of nutrients on these processes at the molecular level.

Applications

will be considered for tenure-track positions at the Assistant or Associate Professor levels. Appointments will be in an academic department within Texas A&M University. Applicants must have a Ph.D., DVM or M.D. degree, exhibit research contributions in cell, molecular and/or developmental biology, and have potential to develop an independent research program related to cancer biology and nutrition. Applicants with background and interests in developmental biology, transgenic technologies, plant sciences or food sciences related to mammalian cell biology and disease are especially encouraged to apply.

Response

Interested individuals should send a letter of application and curriculum vitae, and have three letters of reference sent to: **Dr. Wallace L. McKeehan, c/o Ms. Diana Taylor, Dept. CCBN, Institute of Biosciences and Technology, Texas A&M University, 2121 W. Holcombe Boulevard, Houston, TX 77030-3303.**

Texas A&M University is an Equal Employment Opportunity/Affirmative Action Employer.

The Carlsbad Environmental Monitoring & Research Center, New Mexico State University, has an opening for a Deputy Director. Qualifications: Earned doctorate in science, environmental health, statistics, engineering or related field with at least seven years of technical management related experience. Duties include responsibility for managerial, administrative, and financial affairs; coordinating, formulating and implementing policies and programs; administrative supervision; preparing grant applications. Salary is competitive and based on qualifications. Please request position announcements or send resumes to **Donald J. Fingleton, Ph.D., Director; Carlsbad Environmental Monitoring & Research Center, 800 W. Pierce, Carlsbad, NM 88220; (505) 234-5500.** Review of resumes will begin January 3, 1996 and continue until position is filled. Position is contingent upon funding. *NMSU is an EEO/AA employer.*

**POSTDOCTORAL
POSITION**

A position is available immediately to study regulation of the mammalian nervous system. The research will focus on isolation of factors which regulate alternative splicing of neuronal-specific genes. Candidates should have a Ph.D. with experience in molecular and cellular biology; some knowledge of protein purification techniques is desirable.

The Shriver Center is an affiliate of Massachusetts General Hospital and Harvard Medical School. The Department of Biomedical Sciences provides extensive core facilities and many opportunities for scientific interactions.

Please send C.V. and the names/phone numbers of three references to:

**Athena Andreadis, Ph.D., E. K. Shriver
Center, Biomedical Sciences, Room 205,
200 Trapelo Road, Waltham, MA 02254,
Fax: (617) 893-4824,
email: aandreadis@shriver.org**



**EUNICE KENNEDY
SHRIVER CENTER**

An Equal Opportunity Employer

POSITIONS OPEN

INSTRUCTOR/ASSISTANT PROFESSOR

The University of Alabama at Birmingham (UAB), Department of Obstetrics and Gynecology is seeking to fill two **FACULTY POSITIONS**. Candidates must be Board Eligible/Certified in Obstetrics and Gynecology. One position will provide patient care services in the Division of Medical/Surgical Gynecology (benign gynecology). Potential candidates should have a strong interest in both clinical and basic sciences research activities, particularly molecular biology. The second position will spend sixty percent effort with the Division of Maternal-Fetal Medicine and forty percent with our private obstetrical group known as Ob/Gyn Associates. The activities in Maternal-Fetal Medicine will be fifty percent clinical and fifty percent research. The activities with Ob/Gyn Associates will be one hundred percent clinical. Research interest should be in the area of infectious diseases and the effects of such on premature rupture of the membranes, premature labor, and recurrent pregnancy losses. Interested persons should apply to: **Harvey L. Iker, Executive Administrator, Department of Obstetrics and Gynecology, Liberty National Building, Suite 613, 301 South 20th Street, Birmingham, AL 35233. UAB is an Equal Opportunity Employer.**

THE UNIVERSITY OF THE SOUTH Assistant Professor of Biology

An **ASSISTANT PROFESSORSHIP** is available beginning in August 1996, for an initial appointment period of three years. There is a strong possibility that after the initial three-year term the position will become a tenure-track position. Applicants should have a strong field orientation and a solid background in organismal biology, and be able to establish a research program on the local environment that will involve undergraduates. They should be able to teach courses in introductory biology and upper-division courses in their specialties. Preference will be given to vertebrate biologists, but other broadly trained candidates will also be considered. Appreciation for the liberal arts tradition in education is very desirable. The University, with an undergraduate enrollment of 1200, has a highly selective program and is located on a forested 10,000-acre campus on Tennessee's Cumberland Plateau. Screening of applicants will begin on 1 January 1996. Send statement of teaching and research interests, curriculum vitae, unofficial transcripts, and names and addresses of three references to: **Dr. D. Bruce Conn, Search Committee, Department of Biology, The University of the South, Seawance, TN 37383. Internet: bconn@seawance.edu. The University of the South is a Title IX/Section 504/ADA/Equal Opportunity Employer.**

ANIMAL PHYSIOLOGIST

Texas A&M University-Kingsville is reopening its search for a tenure-track animal physiologist at the **ASSISTANT PROFESSOR** level. Successful applicants will have a Ph.D. in the appropriate field, preferably with postdoctoral experience, and will be expected to teach advanced courses in their discipline and participate in the introductory biology program. Additional responsibilities will include developing a funded research program that trains Master's and undergraduate students. We desire a broadly trained individual able to teach courses in human anatomy and physiology, physiology, histology and/or embryology. Candidates must submit: 1) a letter of application that describes teaching and research interests; 2) transcripts; 3) a curriculum vitae; and 4) three letters of reference. Texas A&M University-Kingsville is an Hispanic-serving institution located in South Texas. The deadline to submit an application is January 13, 1996. Inquiries should be addressed to: **Dr. Steven A. Smith, Search Committee Chair, Department of Biology, Texas A&M University-Kingsville, Kingsville, TX 78363. Telephone: 512-595-3504. Texas A&M University-Kingsville is an Affirmative Action/Equal Opportunity Employer.**

TENURE-TRACK BIOLOGIST

Primary teaching responsibilities include: Introductory Biology, Cell Biology or Vertebrate Morphology and/or Physiology plus a course in your specialty. A strong commitment to teaching and an active research program involving undergraduates required. Ph.D. required, postdoctoral experience preferred. Mississippi College is a comprehensive Baptist college with a biology faculty of six. Send curriculum vitae, a statement of teaching philosophy, and three letters of reference to: **Prentiss G. Cox, Ph.D., Mississippi College, Box 4045, Clinton, MS 39058. Mississippi College is an Equal Opportunity Employer.**

POSITIONS OPEN

SENIOR POSITION MICROBIOLOGY AND IMMUNOLOGY

The Yerkes Regional Primate Research Center and the Department of Microbiology and Immunology of Emory University are seeking a virologist or immunologist with interest and expertise in AIDS animal model research. We are looking for an experienced, highly qualified individual to serve as **CHIEF** of the Division of Microbiology and Immunology within Yerkes and direct the Center's AIDS-related research program. The successful candidate will also serve in a **SENIOR FACULTY POSITION** in the Department of Microbiology and Immunology at the Emory University School of Medicine. Applicants must demonstrate a strong publication record and the ability to direct independent programs of research, to secure outside funding support, to mentor students and junior faculty, and to forge productive collaborative efforts. Emory University has a growing and dynamic research environment and offers an especially rich opportunity for development of a major program in retrovirology. Candidates should send a letter stating research interests and goals, a curriculum vitae, and the names and addresses of three references to: **Thomas R. Insel, M.D., Director, Yerkes Regional Primate Center, Emory University, Atlanta, Ga 30322. Telephone: 404-727-7707; Email: insel@rmy.emory.edu. Confidential screening of applications will begin on January 15, 1996 and continue until the position is filled. An Equal Employment Opportunity/Affirmative Action Employer.**

WILDLIFE CONSERVATION SOCIETY FOUNDED IN 1895 AS THE NEW YORK ZOOLOGICAL SOCIETY

New position: Fisheries Scientist. To be **PROGRAM DIRECTOR** for the Wildlife Conservation Society's fisheries research programs. Unique opportunity with significant latitude to direct and build a strong research program on marine fishes and fisheries at the leading international conservation research organization. Will also advise parallel programs on marine policy development and public awareness. Requirements: Ph.D. or equivalent in fisheries ecology, oceanography, marine ecology, or related field; modeling background; demonstrated interpersonal, presentation, and team management skills. Title/salary commensurate with experience. Send curriculum vitae, a summary of research, conservation and policy interests, and references to: **Director of Human Resources, Wildlife Conservation Society, Bronx Zoo, 185 Street and Southern Boulevard, Bronx, NY 10460. The Wildlife Conservation Society is an Equal Opportunity Employer.**

MOLECULAR ENDOCRINOLOGIST

ASSISTANT PROFESSOR. Ph.D. required, postdoctoral experience preferred. The Department of Biology and Microbiology, California State University, Los Angeles, will fill a tenure-track faculty position beginning fall 1996 for a person with research interests in molecular endocrinology. The successful candidate is expected to teach undergraduate and graduate courses, including Human Anatomy and Physiology for the allied health students, Cell Biology and Endocrinology. The candidates must also develop a productive, independently funded research program involving M.S. and undergraduate students. Start-up funds are available. Submit curriculum vitae, statement of research plans, and three letters of reference by February 1, 1996 to: **Dr. Betsy Peitz, Search Committee, Department of Biology and Microbiology, California State University, Los Angeles, CA 90032.**

Equal Opportunity/Affirmative Action Employer. Reasonable accommodation may be requested.

ASSISTANT PROFESSOR (anticipated): The Department of Biochemistry at Louisiana State University is currently seeking applicants for a 12-month tenure-track position to be shared between the College of Basic Sciences and the Louisiana Agricultural Center. The major field of interest is in eucaryotic signal transduction with preferred emphasis in plant systems. Applicants must have a Ph.D. or equivalent degree in biochemistry or closely related field. Teaching assignments will be in the graduate and undergraduate programs and a competitive start-up package is being offered. Please send curriculum vitae, a statement of research interests and goals, and names of three referees to: **Signal Transduction Search, Department of Biochemistry, 322 Choppin Hall, Louisiana State University, Baton Rouge, LA 70803. Telephone: 504-388-1556; FAX: 504-388-5321. Application deadline January 26, 1996 or until suitable candidate is found. An Affirmative Action/Equal Opportunity Employer.**

POSITIONS OPEN

ASSISTANT PROFESSOR Developmental/Molecular Neuroscience

The Department of Psychology, University of Louisville, invites applications for a tenure-track position to begin July 1, 1996. Together with a new interdepartmental Program in Developmental and Molecular Neurobiology, we seek an individual who uses molecular approaches to study the developing visual system. The successful candidate will join a group of vision scientists in the Department (with interests ranging from visual photoreceptors to visual cognition), and interact with the other Program researchers (affiliated with the Departments of Anatomical Sciences and Neurobiology, Biochemistry, Ophthalmology and Visual Sciences, and Pathology). The University of Louisville is also home to a strong vision research community housed in the Kentucky Lion's Eye Research Institute. Generous start-up funds are available, as are supply allowances and graduate student fellowships for the first few years. Graduate/undergraduate teaching and participation in Ph.D. training is expected. Successful applicants will be expected to demonstrate: strong research activities; evidence (or obvious promise) of extramural research funding; and teaching experience. A Ph.D. in psychology or related neuroscience discipline is required and postdoctoral experience is preferred. Send curriculum vitae, statement of research interests, copies of three to five reprints/preprints, and have three letters of recommendation sent to: **Neuroscience Search Committee, Department of Psychology, University of Louisville, Louisville, KY 40292. Review of applications will begin January 1, 1996. The University of Louisville is an Equal Opportunity Employer and applications from African-Americans, women and other minorities are strongly encouraged.**

Plant Molecular Biologist. The Institute of Biological Chemistry at Washington State University invites applications for a tenure-track position at the **ASSOCIATE** or **FULL PROFESSOR** level beginning July 1, 1996. This is an 89% research and 11% teaching position on a 12-month salary. Applicants should have a nationally/internationally recognized, extramurally-funded research program that uses molecular and biochemical or cellular approaches to an important problem in plant biology and agriculture. The Institute provides an excellent research environment with more than 100 scientists, expansive plant growth facilities, and access to the latest analytical instrumentation and techniques. Candidates should send a curriculum vitae, extramural funding record, a statement of research interests, a description of future research directions, and three letters of recommendation to: **Dr. Thomas W. Okita, Chair, Search Committee, Institute of Biological Chemistry, Washington State University, Pullman, WA 99164-6340. Telephone: 509-335-3391; FAX: 509-335-7643. Applications will be accepted until December 31, 1995, or until a suitable candidate is identified. Equal Opportunity/Affirmative Action Employer/ADA.**

MOLECULAR/DEVELOPMENTAL GENETICS

The Department of Microbiology at the Marshall University School of Medicine is seeking Ph.D. applicants for a tenure-track **ASSISTANT PROFESSOR** position in the area of eukaryotic molecular or developmental genetics. We are interested in those with research interest in the molecular basis of inherited human diseases, mapping of disease loci, or molecular diagnosis. The candidate will be expected to develop an independent research program and participate in medical and graduate student training. Applicants should send curriculum vitae, reprints, a description of research interests, and three letters of recommendation by February 15, 1996 to: **Search Committee Chair, Department of Microbiology, Marshall University School of Medicine, 1542 Spring Valley Drive, Huntington, WV 25704-9388. Marshall University is an Equal Opportunity, Affirmative Action Employer. Women and minorities are encouraged to apply.**

POSTDOCTORAL OPPORTUNITY available now in the Markey Center for Cell Signaling for biochemist with background and interest in protein kinases, phosphatases or G-proteins in cellular signaling. Candidates must have published first-author peer-reviewed papers in good journals. Preference may be given to individuals who are available by February 1, 1996, but all interested persons are urged to provide a letter of inquiry, curriculum vitae, and three references to: **Dr. Thomas W. Sturgill, University of Virginia Health Sciences Center, Markey Center for Cell Signaling, Box 577, Charlottesville, VA 22908. FAX: 804-924-9659. An Equal Opportunity/Affirmative Action Employer.**

The Woodward Clyde Chair in Environmental Science

School of Environmental & Marine Sciences
Division of Science & Technology
Tamaki Campus

Vacancy UAC.601

Applications are invited for The Woodward Clyde Chair in Environmental Science within the recently established School of Environmental and Marine Science based at the Tamaki Campus. Within the School, the Chair in Environmental Science will complement the existing Chair in Environmental Management and the Chair in Marine Science (which is soon to be filled). The School has contributions from both interdisciplinary core staff and multidisciplinary staff jointly appointed with discipline-based Departments represented on both the City and Tamaki campuses.

The appointee will establish a Diploma in Environmental Science which is parallel to and complements the existing Diploma of Environmental Management. The Diploma will provide an advanced, science-based training programme for industry and regulatory authorities, both off-shore and New Zealand based. The appointee must have demonstrated excellence in teaching and research and, preferably, will have experience in academic administration of environmental science programmes. The appointee must have demonstrated ability to interact effectively with the private sector and should have extensive international contracts and experience in environmental science. The appointee will be expected to spend up to 25% of time consulting for Woodward Clyde.

Commencing salary will be established within the range NZ\$83,000 - NZ\$101,500 per annum.

Further information, Conditions of Appointment and Method of Application should be obtained from the Academic Appointments Office, The University of Auckland, Private Bag 92019, Auckland, New Zealand, phone 64-9-373 7999 ext 5097, fax 64-9-373 7023. **Three copies** of applications should be forwarded to reach the Registrar by **31 January 1996**.

Please quote Vacancy Number UAC.601 in all correspondence.

W B NICOLL, REGISTRAR



New Zealand

The University has an equal opportunities policy and welcomes applications from all qualified persons

WRIGHT STATE UNIVERSITY

Dean College of Science and Mathematics

Wright State University invites applications and nominations for the position of dean of the College of Science and Mathematics.

RESPONSIBILITIES: The dean is expected to provide dynamic leadership in the quest for excellence in teaching, research, and professional service within the mission parameters of a leading metropolitan university and must be sensitive to the aspirations of diverse constituencies.

The dean serves as the principal officer and spokesperson for the college, reporting to the provost and working with the council of deans to formulate university policy. The dean supervises departmental chairs and faculty in formulating college goals and policy. Among the dean's specific responsibilities are strategic planning, program development, faculty development, resource allocation and budget management, research promotion, fund raising, enrollment management, and relations with external constituencies.

CAMPUS: Wright State is located in suburban Dayton, Ohio, a region of government and industrial innovation in services and technology. The university enrolls about 17,000 students, including nearly 4,000 in graduate and professional programs. There are approximately 100 undergraduate, over 30 masters, and five doctoral programs. Research and sponsored programs exceeded \$25 million in 1994-95.

The College of Science and Mathematics has more than 149 (tenured and tenure-track) faculty in the Departments of Biological Sciences; Chemistry; Geological Sciences; Mathematics and Statistics; Physics; Psychology; Anatomy; Biochemistry and Molecular Biology; Microbiology and Immunology; and Physiology and Biophysics. The latter four departments also report to the dean of Medicine. The Ph.D. program in Biomedical Sciences is jointly administered with the School of Medicine. The college programs enroll 1,700 undergraduate students and 325 graduate students, including 75 in Psychology and BMS Ph.D. programs. The college faculty have a tradition of productive scholarship, recognized during the past year by external funding exceeding \$5 million.

REQUIREMENTS: The ideal candidate for the position will possess a terminal degree and a record of excellence in teaching and scholarly research that would meet the qualifications for the rank of professor in a department of the college. Significant administrative experience, including evidence of strong personnel and budget management skills is required. In addition, the candidate must demonstrate commitment to the involvement of the college with the regional community. Salary for the position is competitive; starting date is expected to be no later than July 1, 1996.

APPLICATIONS: Applicants should provide a letter of interest addressing the above qualifications, a curriculum vitae, and the names, addresses, and telephone numbers of five references. Review of applicants will begin on January 2, 1995, but applications will be accepted until the position is filled. Send nominations and applications to:

Perry Moore, Ph.D.
Chair, Science and Mathematics Dean's
Search Committee
Wright State University
3640 Colonel Glenn Highway
Dayton, OH 45435

Wright State University is an affirmative action/equal opportunity employer.



Wright State University
Dayton, Ohio 45435

POSITIONS OPEN

POSTDOCTORAL FELLOW MOLECULAR AND CELLULAR BIOLOGY

Applications are invited for a postdoctoral fellowship to study the function of a novel zinc finger protein in epidermis and testis. Candidates with experience in molecular biology, cell culture, and immunocytochemistry are encouraged to apply. Opportunities for interactions with a variety of basic science disciplines in the university are available and encouraged. Please send curriculum vitae, including description of research interest and experience, to: **Hung Tseng, Ph.D., Department of Dermatology, University of Pennsylvania, Room M8c, Stellar-Chance Laboratories, 422 Curie Boulevard, Philadelphia, PA 19104.** U.S. citizenship or permanent residency required. University of Pennsylvania is an Affirmative Action/Equal Opportunity Employer.

The Center for Photoinduced Charge Transfer (CPCT), an NSF Science and Technology Center, has several immediate and future **POSTDOCTORAL POSITIONS** open to U.S. citizens. All research projects involve collaboration between University of Rochester faculty and Kodak and/or Xerox scientists, and span a wide range of problems in chemistry, physics, and materials science related to the fundamental process of photoinduced charge transfer. To apply, send curriculum vitae and arrange for three letters of reference to: **Debbie Shannon, CPCT, Department of Chemistry, University of Rochester, Rochester, NY 14627-0219.** Email: stc@chem.chem.rochester.edu. Applications from women and minorities are particularly encouraged.

POSTDOCTORAL RESEARCH FELLOW. Deborah Research Institute has a grant-based position for a Postdoctoral Research Fellow to examine the regulation of gene expression and signal transduction in mechanically challenged cardiac myocytes. The position will involve overseeing the direction and performance of experiments in one of several ongoing research initiatives in the laboratory, including 1) molecular studies concerning regulation of cytoskeletal protein and heat shock protein gene expression, and 2) analysis of regulation of type VII adenylyl cyclase through signal crosstalk. The successful applicant will have obtained a Ph.D. or equivalent in physiology, biochemistry, or cell biology and will have experience in cell culture and/or molecular biological research. Interested individuals should send a current curriculum vitae and three letters of recommendation to: **Ms. Rebecca S. Steward, Administrative Assistant, Deborah Research Institute, 20 Pine Mill Road, Browns Mills, NJ 08015-1799.** FAX: 609-893-2441.

STAFF SCIENTIST/POSTDOCTORAL

Immediate opening in the Barnett Institute for either a **STAFF SCIENTIST** or a **POSTDOCTORAL FELLOW** for development of high throughput DNA sequencing instrumentation. This position would involve design and implementation of a new generation of instrumentation for DNA sequencing. Experience with laser-based spectroscopy and CCD imaging necessary. Staff Scientist position requires, at a minimum, one to two years of postdoctoral experience. Please send résumé to: **Dr. Barry L. Karger, Barnett Institute, Northeastern University, 360 Huntington Avenue, Boston, MA 02115.** Northeastern University is an Equal Opportunity Employer.

YEAST GENETICIST

A new drug discovery project is being initiated in the Clinical Division of the Fred Hutchinson Cancer Research Center. Our goal is to develop new paradigms for discovering anti-cancer chemotherapeutic drugs using yeast genetics. The project will grow to a size of 20 to 30 people. Some programs will be funded by the National Cancer Institute and others by a major pharmaceutical company. We are seeking three yeast geneticists with postdoctoral experience for immediate employment as **SENIOR STAFF SCIENTISTS** and we also have openings in several **POSTDOCTORAL POSITIONS**. Experience in cell cycle and/or DNA repair is desirable but not essential. Please send curriculum vitae, three letters of recommendation, and a description of current research endeavors and long term interests by January 12, 1996 to: **Steve Friend, M.D., Ph.D., Director of Molecular Pharmacology, Fred Hutchinson Cancer Research Center, 1124 Columbia Street, M616, Seattle, WA 98104** or **Lee Hartwell, Ph.D., Department of Genetics, Box 357360, University of Washington, Seattle, WA 98195-7360.**

On Site Child Care. The Center is an Equal Opportunity Employer Committed to Work Force Diversity.

POSITIONS OPEN

POSTDOCTORAL POSITION available immediately to investigate the molecular basis of circadian clock function in *Drosophila melanogaster*. Current projects focus on (1) understanding the autoregulatory feedback loop that mediates circadian expression of the period gene and (2) identifying new circadian clock mutants/genes via enhancer-detector screening. Experience in molecular biology and/or biochemistry are required. Interested candidates should send a curriculum vitae and the names of three references to: **Dr. Paul Hardin, Department of Biology, University of Houston, Houston, TX 77204-5513.**

The University of Houston is an Equal Opportunity/Affirmative Action Employer. Minorities, women, veterans and persons with disabilities are encouraged to apply.

POSTDOCTORAL RESEARCH POSITION in nephrology available at Yale University School of Medicine. Opportunities to study renal physiology, cell biology, gene expression, transplantation immunology, or genetics of hypertension. M.D. or Ph.D. required. Supported by NIH training grant. Send curriculum vitae, personal statement, and three letters of reference to:

**Dr. Peter Aronson
Yale University School of Medicine
333 Cedar Street, New Haven, CT 06520
Telephone: 203-785-4186; FAX: 203-785-7068**

Must be US citizen or permanent resident. Women and members of minority groups are encouraged to apply.

MOLECULAR MICROBIAL ECOLOGY

A **POSTDOCTORAL POSITION** is available to study the use of rRNA probes for diagnosing impacts of pollutants on microbial populations in ground water. Applicants are desired to have experience in the design and application of oligonucleotide probes to investigate microbial communities. The initial appointment will be for two years and is available as of December 1, 1995. Send a description of research interests, curriculum vitae, and list of three referees to: **Dr. William Hickey, Department of Soil Science, University of Wisconsin, Madison, WI 53706.** Email: wjhikey@mac.wisc.edu; FAX: 608-265-2595. Equal Opportunity/Affirmative Action Institution.

POSTDOCTORAL POSITION in Cardiac Muscle Physiology. The section of Cardiology at the Bowman Gray School of Medicine is seeking candidates to study cellular mechanisms of heart failure. Candidates require an M.D. or Ph.D. degree, and experience in developing experimental models of heart failure and measurement of force and calcium myocytes. Send current curriculum vitae and three letters of reference to: **Dr. Pieter P. de Tombe, Cardiology, Bowman Gray School of Medicine, Medical Center Boulevard, Winston-Salem, NC 27157-1045.** Equal Opportunity Employer.

POSTDOCTORAL POSITION available immediately to study the molecular and genetic control of germ line formation in the mouse. Experience in molecular biology techniques is required. Please send, FAX, or Email curriculum vitae, statement of research accomplishments and interests, and names of three references to: **Dr. Karen Downs, Department of Anatomy, University of Wisconsin-Madison Medical School, 1300 University Avenue, Madison, WI 53706.** FAX: 608-262-7306. Email: kdowns@facstaff.wisc.edu.

PLANT BIOTECHNOLOGY

A **POSTDOCTORAL POSITION** in plant molecular biology is available immediately to work with a multidisciplinary team looking at the production of industrial enzymes in transgenic alfalfa. Candidates should have a strong background in plant molecular biology and proven experience with recombinant DNA techniques. Send résumé and three references to: **Dr. S. Austin, Plant Biotechnology Laboratory, UWBC, 425 Henry Mall, Madison, WI 53706.** Telephone: 608-262-7293; FAX: 608-262-6748.

RESEARCH TECHNICIAN

Research technician position available to study the mechanism and regulation of mitosis in yeast. Knowledge of molecular cloning required. The work will involve plasmid construction, yeast genetics, and protein biochemistry. Send curriculum vitae and list of references to: **Dr. David Pellman, Dana-Farber Cancer Institute, Room D1612, 44 Binney Street, Boston, MA 02115.** Alternatively, send these via Email to Davd.Pellman@dfci.harvard.edu.

POSITIONS OPEN

POSTDOCTORAL POSITION available immediately to join an expanding group of research and clinical scientists involved in gene therapy and immunotherapy for cancer. This ongoing research effort focuses on genetic modification of tumor cells and immune effector cells in animal and human tumor model systems. This position requires a strong background in tumor immunology, gene transfer techniques, animal tumor modeling, and *in vitro* culture and assay techniques. Please send curriculum vitae, names of three references, and a brief description of your research interests to: **Dr. James J. Mulé, Professor of Surgery, University of Michigan, 1150 West Medical Center Drive, 1520C MSRB-I, Box 0666, Ann Arbor, MI 48109.** FAX: 313-936-2990.

POSTDOCTORAL POSITION MOLECULAR/CELL BIOLOGY

POSTDOCTORAL POSITION available immediately to study cellular and molecular biology of biliary epithelial growth and response to injury using cellular and animal model systems. Opportunity to learn cell biology methods, but experience in molecular biology required. Please send curriculum vitae and names of three references to: **A. J. Demetris, M.D., Director, Division of Transplant Pathology, University of Pittsburgh Medical Center, E1548 Biomedical Science Tower, Pittsburgh, PA 15261.** World Wide Web Page: <http://path.upmc.edu>. Equal Opportunity Institution.

POSTDOCTORAL POSITION to study neuronal mechanisms analyzing sonar signals by bats. We examine neural responses, anatomical connections, and neuropharmacology of combination-sensitive neurons in the mustached bat. Experience in neurophysiological, anatomical, or neuropharmacological (microiontophoresis) techniques helpful. To apply, send curriculum vitae with names of three references to: **Human Resources (attention: Jeff Wenstrup), Department of Neurobiology, Northeastern Ohio Universities College of Medicine, 4209 State Route 44, Rootstown, OH 44272-0095.** Internet: jjw@neoucom.edu. An Affirmative Action/Equal Opportunity Employer.

POSTDOCTORAL POSITION. Fish/animal biochemist position is available immediately for NOAA-funded study on reproduction and amino acid requirement of freshwater fish. Applicants must possess expertise in animal biochemistry, high pressure liquid chromatography of amino acids, nutritional methods, and enzyme purification. Candidates should send curriculum vitae, reprints, and names of three references to: **Konrad Dabrowski, School of Natural Resources, Ohio State University, Columbus, OH 43210.** FAX: 614-292-7432.

POSTDOCTORAL POSITION to study mammalian sperm nuclear chromatin structure as related to fertility and toxicology. Experience in mammalian fertility, cell/molecular biology/biochemistry, flow cytometry and/or image analysis desirable. Send or FAX curriculum vitae, research experience/interests, and three current reference letters by December 22, 1995 to: **Professor Donald P. Evenson, Olson Biochemistry Labs, ASC 136, South Dakota State University, Brookings, SD 57007.** FAX: 605-688-6295; Email: Evensond@mg.sdstate.edu. Affirmative Action/Equal Employment Opportunity Employer.

POSTDOCTORAL POSITION open immediately to conduct research on gene therapy of brain tumors with special focus on immune amplification. Experience in cellular/tumor immunology and molecular biology skills are required. Please send curriculum vitae and names of three references by December 31, 1995, by FAX or mail to: **Rolf F. Barth, M.D., The Ohio State University, Department of Pathology, 1645 Neil Avenue, Columbus, OH 43210.** FAX: 614-292-7072. Affirmative Action/Equal Opportunity Employer.

POSTDOCTORAL FELLOW: Three years of lab experience in yeast genetics, molecular biology, tissue culture, immunochemistry and radiobiochemistry techniques. Must have Ph.D. in related field. Send résumé to:

**Mahmoud A. Ghannoum, Ph.D.
Harbor-UCLA Medical Center
1000 West Carson Street
Building RB-2
Torrance, CA 90509**

The George Washington University Medical Center

Invites applications for an Assistant/Associate Professor position in the Department of Anatomy as part of a new expansion of the basic science endeavors in interdisciplinary research programs. The basic science departments of the GWU Medical Center have begun to organize interdepartmental research and graduate training programs with the Columbian School of Arts and Sciences, Children's Research Institute of the Children's National Medical Center, and the Holland Laboratories of the American Red Cross. The successful candidate will find wide collaborative opportunities at these sites, as well as numerous other research institutions in the DC area, and will be expected to contribute to this new collaborative endeavor.

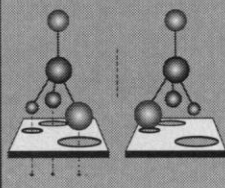
The successful candidate will be an outstanding investigator with substantial potential to develop a vigorous, externally-funded research program in the field of Developmental Neurobiology. Areas of research that are of particular interest are in developmental gene expression, differentiation of specific neuronal and glial types, and neurotransmitters and signal transduction during development. This research program is expected to utilize modern molecular genetic techniques and complement the existing research programs in the department and the interdepartmental Neuroscience Program. The successful candidate is expected to make major contributions to at least one of the interdepartmental graduate programs in Genetics, Molecular/Cellular Oncology and Neuroscience, and will have teaching responsibilities in the medical teaching commitment of the Anatomy Department. Faculty rank and salary commensurate with prior experience.

Applicants should send a letter of intent, a detailed statement of research goals and teaching expertise, curriculum vitae, and the names, addresses and telephone numbers of four references to:

Dr. Sally A. Moody
Chair, Search Committee
Department of Anatomy, Ross 4N4431
2300 I Street, NW
Washington, DC 20037

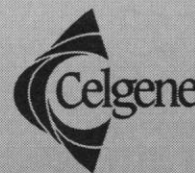
Review of applicants will commence on **December 22, 1995** and continue until position is filled. *The GWUMC is an equal Opportunity/Affirmative Action Employer. Women and minority applicants are encouraged.*

CELGENE



CELGENE CORPORATION

is an international
leader in the develop-
ment and application of
biocatalysis for produc-
tion of chemicals.
Steady business growth
has created openings
for experienced R&D
personnel in the
following areas:



BIOCATALYSIS

Using supplied enzymes for laboratory studies ranging from kinetic analysis to process R&D for chemical production. Candidates should have a background in enzymology or biochemical engineering, Ph.D. or equivalent, and experience in biocatalysis.

PROTEIN ENGINEERING

Involving the genetic modification of enzymes to enhance kinetic properties, as well as the high-level expression of recombinant proteins for enzyme production. Requires a Ph.D. and strong background in molecular biology of prokaryotes.

Appointments will be at the appropriate level on the scientific and managerial ladders, depending on experience.

Celgene seeks highly motivated individuals to work in multidisciplinary teams in an entrepreneurial environment. We offer competitive salaries and generous benefits, including a 401(k) program. Our modern facility in Central NJ, between NYC and Philadelphia, provides an attractive environment conducive to personal growth and achievement.

Interested applicants should send a detailed resume, including salary requirements, to: HR Manager, Dept. SCI, Celgene Corporation, 7 Powder Horn Drive, Warren, NJ 07059. Equal Opportunity Employer, M/F.

Biology Faculty

The Department of Biology, University of Southwestern Louisiana invites applications for three tenure-track positions in support of the doctoral program in Environmental and Evolutionary Biology. These positions are for research faculty and offer a competitive salary. Faculty members are expected to develop active research programs, seek extramural funding and participate in undergraduate and graduate education. The Biology Department consists of 30 professorial faculty, with research interests ranging from molecular to ecosystem studies, and more than 60 graduate students. USL has an exceptionally well equipped Electron Microscopy Center and Center for Advanced Computer Studies. Other resources include the Primate Research Center, Center for Crustacean Research, Center of Molecular Evolution, Louisiana Universities Marine Consortium (LUMCON) Marine Laboratory and research vessels, a major research center for the National Biological Service and the National Marine Fisheries Service's Estuarine Habitats and Coastal Fisheries Research Center.

EUKARYOTIC MICROBIOLOGY - preferred research areas include the physiology, biochemistry or molecular biology of microfungi or yeasts.

PLANT EVOLUTIONARY BIOLOGY - preferred research areas include evolution, systematic methods or molecular studies of higher plants.

FISH BIOLOGY - preferred research areas include physiology, developmental or cellular biology.

Applicants should submit curriculum vitae, selected reprints, a concise statement of research goals, and names, addresses and telephone numbers of three referees. Review of applications will begin 15 January 1996 and continue until positions are filled. Direct application to: **Faculty Development Search Coordinator, Department of Biology, University of Southwestern Louisiana, Lafayette LA 70504-2451. AA/EOE.**

GLOBAL CAREER OPPORTUNITIES

LOGAN RESEARCH FELLOWSHIPS

Monash University is one of the top research institutions in Australia with more published research in each of the last two years than any other university in the country.

To build on its research reputation and to mark the retirement in 1996 of vice-chancellor, Professor Mal Logan, Monash University has established the Logan Fellowship scheme to attract the most outstanding postdoctoral researchers in the world in any field.

The terms and conditions of appointment compare very favourably with other schemes at this level.

Depending on experience, the initial appointment salary ranges between \$A45,362 and \$A50,111 pa with the opportunity to advance to the next level which has a commencing salary of \$A51,692.

Applicants will need at least two years and not more than six years postdoctoral experience.

Initial appointment is for three years, extendable to six years.

Research support grants are equally attractive and range between \$A5000 and \$A20,000, depending on the needs of the research.

Five Logan Fellowships will be available in 1996. Applications for the 1996 fellowships, which start on 1 July, must be lodged by 28 February 1996.

For more information about research at Monash, conditions of appointment and guidelines, and for an application form, contact the Logan Research Fellowships page on the World Wide Web: <http://www.monash.edu.au/resgrant/loganfs/> or email: christina.perrett@adm.monash.edu.au Fax: +61 3 9905 3831 or telephone Christina Perrett on +61 3 9905 9016.



MONASH

AUSTRALIA'S INTERNATIONAL UNIVERSITY

AK62422/R

POSITIONS OPEN

CANCER RESEARCH POSTDOCTORAL TRAINING Case Western Reserve University Cancer Center

NIH-funded cancer research postdoctoral positions for individuals holding the M.D., M.D./Ph.D. or Ph.D. degrees. Research focuses include:

Apoptosis, breast cancer, molecular virology, radiation biology, cellular adhesion, retroviral oncogenesis, gene regulation, gene therapy, DNA repair, mutagenesis, immunology, cutaneous oncology, regulation of cell growth, neurooncology, steroid hormone action, and molecular biology of colon cancer.

Send curriculum vitae and statement of research interests to: **Dr. Clark Distelhorst, School of Medicine (BRB), Case Western Reserve University, 10900 Euclid Avenue, Cleveland, OH 44106-4937. Must be U.S. citizen or permanent resident. Minorities and women are encouraged to apply.**

OREGON HEALTH SCIENCES UNIVERSITY BIOCHEMISTRY AND MOLECULAR BIOLOGY

POSTDOCTORAL RESEARCHER appointments available in group studying structure-function relations in the Na,K-ATPase. Applicants should have received a Ph.D. during the last five years in Biochemistry or related discipline and have expertise in molecular biological techniques applied to understanding protein function. The laboratory is involved in studying the mechanism of P-type ATPases or ion pumps using the techniques of protein chemistry and molecular biology. Send curriculum vitae and names of three references to:

Professor Jack H. Kaplan, Ph.D., F.R.S.
Department of Biochemistry and
Molecular Biology, L224
Oregon Health Sciences University
3181 S.W. Sam Jackson Park Road
Portland, OR 97201-3098

POSTDOCTORAL POSITION—Cell Biology. An experienced microscopist is sought to participate in two NIH-funded projects. The first concerns the regulation of mitochondrial respiration during cellular responses to activating signals. The second concerns the intracellular mechanisms responsible for directed cell motility. The projects will be facilitated by the availability of excellent resources for quantitative optical microscopy and image processing in the Center for Biomedical Imaging Technology. Candidates should send their curriculum vitae and have three reference letters sent to: **Leslie M. Loew, Professor of Physiology, UConn Health Center, Department of Physiology, 263 Farmington Avenue, Farmington, CT 06030-3505. An Affirmative Action/Equal Opportunity Employer. Minorities/Females/Persons with Disabilities/Veterans.**

POSTDOCTORAL POSITION Genome Sequencing Technology

Designing and developing automated capillary fluorescent DNA sequencing systems based on novel fluidic technology. Candidates with backgrounds in analytical chemistry, engineering, molecular biology, micromachining, or instrumentation will be considered. Submit curriculum vitae, a short statement of research accomplishments, and at least two letters of recommendation to: **Dr. Harold Swerdlow, Department of Human Genetics, 2100 EIHG, University of Utah, Salt Lake City, UT 84112. FAX: 801-585-7177. More information: <http://www.genetics.utah.edu/~swerdlow>.**

University of Utah is an Equal Employment Opportunity/Affirmative Action Employer and encourages applications from males, women, and minorities.

BEHAVIORAL NEUROSCIENTIST. The University of California, San Francisco. The Gallo Center is seeking an experienced behavioral neuroscientist to collaborate with Gallo scientists to study behavioral responses to alcohol in animal models and transgenic mice. Experience in neuropharmacology is desirable. Salary and appointment commensurate with experience. Send curriculum vitae and three letters of reference to: **Ivan Diamond, M.D., Ph.D., Director, Gallo Center, Building 1, Room 101, San Francisco General Hospital, San Francisco, CA 94110. The Gallo Center is an Equal Opportunity/Affirmative Action Employer. Women, minority groups and disabled individuals are encouraged to apply.**

POSITIONS OPEN



Wayne State University

POSTDOCTORAL RESEARCH ASSOCIATE position in lung toxicology/cell biology available immediately to study cellular and subcellular events involved in the inflammatory and permeability changes in the airways following exposure to air pollutants. The studies utilize innovative *in vivo* and *in vitro* approaches to examine biological effects. Participation in studies aimed at analyzing cytokines, cell adhesion molecules, cytoskeleton, inflammation, and epithelial injury is expected. Experience can be drawn from immunocytochemical, morphological, and biochemical procedures. Send curriculum vitae to: **Deepak K. Bhalla, Ph.D., Department of Occupational and Environmental Health Sciences, College of Pharmacy and Allied Health Professions, 628 Shapero Hall, Wayne State University, Detroit, MI 48202.**

Wayne State University (WSU) is an Affirmative Action/Equal Opportunity Employer. WSU—People Working Together to Provide Quality Service. All buildings, structures and vehicles at WSU are smoke-free.

POSTDOCTORAL POSITION MASSACHUSETTS GENERAL HOSPITAL (MGH) HARVARD MEDICAL SCHOOL Cutaneous Biology Research Center (CBRC)

POSTDOCTORAL RESEARCH POSITION to study the genetic regulation of programmed cell death in *Drosophila* (*Science*, 264:677-683). Work will focus on the use of genetic and molecular techniques to identify and characterize genes involved in apoptosis. Knowledge of basic molecular techniques and some experience in a genetic system desirable. Salary is negotiable according to experience and institutional guidelines. Send curriculum vitae and names and addresses of three references to:

Kristin White, Ph.D.
Massachusetts General Hospital
Cutaneous Biology Research Center
Building 149, 13th Street
Charlestown, MA 02129

The MGH/Harvard CBRC is a committed Equal Opportunity/Affirmative Action Employer. Minorities, women, handicapped persons and veterans are encouraged to apply.

MOLECULAR CARDIOLOGY

POSTDOCTORAL POSITION available immediately for a recent Ph.D. or M.D. interested in integrating cardiovascular physiology with cellular and molecular biology. Outstanding research opportunity in a newly-established Molecular Cardiology Unit focusing on molecular mechanisms of ischemic preconditioning (*J. Clin. Inv.*, 95:388, 1995), coronary stenosis (*Circulation*, 90:2402, 1994), and gene therapy (*Circulation*, 90:2414, 1994). A strong background in molecular and cellular biology is necessary. Additional experience in cardiovascular physiology, gene expression regulation, signal transduction, direct gene transfer, molecular virology, immunology, and/or cardiovascular pathology is desirable. Cardiology Fellows with molecular training and an interest in pursuing an academic career are encouraged to apply. Send curriculum vitae, statement of research interests, and names of three references to: **Dr. Roberto Bolli, Chief of Cardiology Division, Department of Medicine, University of Louisville, Louisville, KY 40292.**

POSTDOCTORAL POSITION FISHERIES OCEANOGRAPHY

Immediate opening for individual with strong background in fisheries oceanography, ecology, early life history, and statistics. Successful candidate will participate in a large interdisciplinary oceanographic study of juvenile herring habitat, distribution, and abundance. Funding anticipated for two to three years. Send curriculum vitae, statement of research and computer experience along with names, addresses, and telephone numbers of three references to: **Dr. Brenda L. Norcross, P. O. Box 757220, Institute of Marine Science, University of Alaska, Fairbanks, AK 99775-7220.**

The University of Alaska Fairbanks is an Equal Opportunity/Affirmative Action Employer and Educational Institution. Your application for employment with the University of Alaska is subject to public disclosure under the Alaska Public Records Act.

POSITIONS OPEN

GRADUATE RESEARCH OPPORTUNITY The Jacob Blaustein Graduate Program for Desert Research Ben-Gurion University of the Negev, Israel

Grants are available, for two year periods, for thesis research toward M.Sc. and Ph.D. degrees at one of the departments of the Jacob Blaustein Institute for Desert Research, situated at the Sede Boker Campus in the Negev Desert.

Disciplines represented at the institute include: ecology (animal and plant); energy and environmental physics (including solar energy); hydrology and geology; agrobiology; animal adaptation and husbandry; plant ecophysiology and introduction; microbiology; controlled environment agriculture; aquaculture, including algal biotechnology; social studies; architecture; meteorology and remote sensing.

Students who are registered for graduate studies will carry out their thesis project research only, at the institute. Accreditation of theses and awards of degrees will be by the home universities, by prior arrangement.

The grants will be sufficient to cover fees, board and lodging at the BIDR. Deadline for applications—February 29, 1996. Announcements of awards will be sent by March 15, 1996. Students should plan to arrive no later than August 1, 1996.

For further information and application forms please contact: **Prof. Joseph Gale, Director, The Jacob Blaustein International Center for Desert Research, Ben-Gurion University of the Negev, Sede Boker Campus, 84990 Israel. FAX: 972-7-555058; Email: inter@bgumail.bgu.ac.il.**

RESEARCH ASSOCIATE I Electron Microprobe/X-ray Diffractometer Laboratory Manager Yale University

The Department of Geology and Geophysics seeks a full-time manager of our electron microprobe and x-ray diffractometer laboratories. Located in the Department of Geology and Geophysics, facilities include a fully automated JEOL JXA-8600 microprobe, a fully automated Scintag x-ray diffractometer, and associated specimen-preparation equipment.

The position requires active participation in research with members of the Department and the broader scientific community at Yale. Responsibilities will include: (1) development of new analytical techniques, (2) collaboration on scientific papers and grant proposals, (3) training new users of the microprobe and diffractometer, and (4) operation and general maintenance of the microprobe, diffractometer, and associated equipment.

Applicants must have an M.S., Ph.D., or the equivalent, and experience with x-ray spectrometry, computer programming, interfacing computers to analytical equipment, and basic electronics.

Send formal applications including curriculum vitae and three letters of recommendation to: **Ms. E. Dubois, Yale University, Department of Human Resources, 155 Whitney Avenue, POB 208256, New Haven, CT 06520-8256. Address general inquiries to search chair Jay J. Ague via Email at: ague@milne.geology.yale.edu.**

Closing date: January 15, 1996.

Yale University is an Equal Opportunity/Affirmative Action Employer.

HARVARD MEDICAL SCHOOL

POSTDOCTORAL POSITION available immediately for NIH-funded position studying signal transduction and DNA repair. Studies include (1) regulation of p53 transcriptional activity by phosphorylation; (2) function of ATM gene in DNA repair; (3) cell cycle regulation following DNA damage. Techniques include PCR, mutagenesis, transfection, and cDNA cloning. Recent Ph.D. and experience in molecular biology required. Send curriculum vitae and names of three referees to: **Dr. B. D. Price, JF209, Dana-Farber Cancer Institute, Harvard Medical School, 44 Binney Street, Boston, MA 02115. Email: brendan_price@dfci.harvard.edu. Equal Opportunity Employer.**

UCLA Position Opening

ACADEMIC COORDINATOR to manage, oversee and participate in the laboratory operations of upper division neuroscience laboratory courses in the Undergraduate Interdepartmental Program in Neuroscience and the Department of Psychology. Depending upon qualifications, the successful candidate will have the opportunity to participate in appropriate lecture series in courses taught by regular members of the faculty. The primary responsibilities for laboratory operations in each course will include: participation in selection and development of laboratory exercises and computer-assisted learning; supervision and technical training of graduate student teaching assistants; coordinating and overseeing admission and registration of students in laboratory sections; participation in the development and administration of laboratory examinations; selection and maintenance of laboratory equipment; and oversight of the maintenance and use of living organisms in teaching exercises.

Qualifications include a Ph.D. degree or equivalent in neuroscience or a related field; training and experience in experimental laboratory biology, experience in teaching at a university level, and experience in working with computers in scientific laboratory settings would be desirable. Level of appointment and salary commensurate with qualifications and experience. The appointment is for two academic years and is renewable.

Applications should include a c.v., including lists of publications, written statements of teaching and research interests and background, and names, addresses and telephone numbers of three references. Position is currently available and will be filled as soon as possible. Address applications to Academic Coordinator Search Committee, Department of Physiological Science, 621 Circle Drive South, Box 951527, University of California, Los Angeles, CA 90095-1527.

UCLA is an affirmative action/equal opportunity employer. Women, minorities, and persons with disabilities are encouraged to apply.

ASSISTANT RESEARCH SCIENTIST IN RETROVIROLOGY

The University of Iowa Gene Transfer Vector Core is accepting applications for an Assistant Research Scientist in the field of retrovirology. Applicants should have a Ph.D. or equivalent combination of education and experience. Applicants with considerable research experience (3-5 years) in recombinant DNA techniques, tissue culture, and training in the manipulation and generation of recombinant retroviruses for gene transfer is desirable. Please submit cover letter indicating #35611, curriculum vitae, and names of three references to:

Dr. Beverly Davidson, Ph.D.
Assistant Professor
Director, Vector Core
Department of Internal Medicine
The University of Iowa
College of Medicine
200 EMRB
200 Hawkins Drive
Iowa City, IA 52242.

The University of Iowa is an Equal Opportunity and Affirmative Action employer. Women and minorities are strongly encouraged to apply.

ANALYTICAL SCIENCES

SmithKline Beecham is a worldwide leader in pharmaceutical research. Due to continued growth and expansion, we have several challenging opportunities for scientists at our Upper Merion, PA facility.

Assistant Director

For this exciting opportunity, we are seeking a scientist with proven ability and an established record of directing an analytical methods development group to oversee a group of scientists in the development and validation of immunochemical-based assay methods for the evaluation of protein biopharmaceutical products. Duties also include directing methods development for determination of DNA levels in biopharmaceuticals, designing experiments and validation protocols and preparing regulatory submissions. The selected candidate will have a Ph.D. in Biochemistry or Molecular Biology and 7 years of proven expertise with novel approaches and techniques in separation sciences. A minimum of 5 years' experience in the pharmaceutical industry with a record of achievement in technical leadership and strong skills in methods development and validation are highly desirable. Refer to Job Code H0452.

Investigator

The successful candidate will evaluate biopharmaceutical drug substances/products and proteins utilizing state-of-the-art methods in bioanalytical and carbohydrate chemistry. This will include developing methods for the analysis of protein biopharmaceuticals by exploring new methodologies in structural analysis, protein chromatography or immunochemistry. Requirements include a Ph.D. in Bioanalytical Sciences, postdoctoral experience and demonstrated experience in contributing to regulatory documents and in making oral scientific presentations. Refer to Job Code H0443.

Analytical Chemist

While performing methods development for the analysis of biopharmaceuticals, the successful candidate will evaluate protein drug substances/products of HPLC, N-terminal sequencing, electrophoresis and ELISA methodologies, and will perform peptide mapping and/or carbohydrate mapping of proteins. Duties also include developing new assays and improving existing techniques, performing validations and preparing final reports. Required qualifications include a BS (MS preferred) in Analytical Chemistry/Biochemistry, experience in biochemical separations and electrophoretic methods, and the ability to conduct successful laboratory work with minimal supervision. Strong communication and customer interaction are key. Familiarity with LIMS, and data acquisition and reduction systems is preferred. Refer to Job Code H0446.

Located in our technologically advanced research facility in suburban Philadelphia, SmithKline Beecham offers an excellent compensation/benefits/relocation package. For confidential consideration, please send resume, indicating desired Job Code, to: SmithKline Beecham Pharmaceuticals, Job Code _____, P.O. Box 2645, Bala Cynwyd, PA 19004. We are an Equal Opportunity Employer, M/F/D/V.



SmithKline Beecham
Pharmaceuticals

Challenging the natural limits.

BOEHRINGER INGELHEIM ANIMAL HEALTH, INC.

*a manufacturer of animal health products
is seeking the following individuals*

International Biological Manager

Strong background in microbiology and immunology; ability to interpret and evaluate scientific data and present data in an understandable manner; good organizational and negotiating skills; minimum of BA or BS Degree; PhD in biological field desirable; five years minimum international (European) regulatory work experience; ability to manage the licensing/registration of biological products on an international basis; ability to travel.

International Biological Specialist

Strong background in microbiology and immunology; ability to interpret and evaluate scientific data and present data in an understandable manner; good organizational and negotiating skills; minimum of BA or BS Degree; PhD in biological field desirable; five years minimum international (European) regulatory work experience; ability to assist with licensing/registration of biological products on an international basis.

Manager, Quality Control

Advanced degree (preferably PhD) in Biological Science/Chemistry with at least 6-10 years experience in Quality Control; high proficiency in Microbiology required; proficiency in Chemistry desirable; extensive knowledge of Quality Control techniques for Animal Health products; extensive knowledge of relevant APHIS, European Union, and FDA regulations for Animal Health Products; proven record in improving QC processes and systems.

Manager, Pharmaceutical Research & Development

PhD in pharmacy or related pharmaceutical science, chemistry, or biochemistry; 3 to 5 years experience in pharmaceutical formulation or analytical chemistry development in either the human or veterinary industry; 4 to 5 years management experience as a department manager or equivalent preferred; hands-on experience in project management; experience in working in a multinational company preferred; proven capabilities in pharmaceutical product development (Chemistry/Pharmacy); ability to manage multidisciplinary research staff; good abilities to evaluate and interpret scientific data; good/excellent written and oral communication skills.

Excellent compensation package offered. To apply, send resume and salary requirements to:

Vice President, Human Resources
Boehringer Ingelheim Animal Health, Inc.
2621 N. Belt Highway
St. Joseph, MO 64506
USA

Equal Opportunity Employer



Boehringer Ingelheim

A World Class Organization

ASSISTANT PROFESSOR OF BIOCHEMISTRY MOLECULAR STRUCTURE UNIVERSITY OF CALIFORNIA RIVERSIDE

The Department of Biochemistry invites applications for a tenure-track position of **ASSISTANT PROFESSOR OF BIOCHEMISTRY**. Qualifications for the position include a strong potential for imaginative research in the physical biochemistry of molecular structure. Individuals whose scholarship is broadly in areas of macromolecular structure-function that complement existing Departmental strengths in protein X-ray crystallography are encouraged to apply. Areas of particular interest include protein structure determination by NMR, *de novo* designed artificial proteins, analysis of structural motifs, macromolecular dynamics, folding mechanisms, and computer-aided ligand design. The Department of Biochemistry presents Ph.D. and M.S. programs, and an undergraduate major in Biochemistry. Areas of research strength in the Department include physical and structural biochemistry, plant biochemistry, molecular endocrinology, and biochemical regulation. The successful candidate must possess a strong commitment to teaching excellence and a high research potential. The candidate will be expected to actively participate in both graduate and undergraduate instruction, and will also receive an appointment in the Agricultural Experiment Station. Applicants must hold a Ph.D. or equivalent degree and have postdoctoral experience. Interested individuals should submit as soon as possible, but prior to January 15, 1996, a curriculum vitae, bibliography (including three recent reprints), a brief (limit of 500 words) description of proposed research interests, and request letters of recommendation be sent to us separately by three to five individuals. These materials should be directed to: **Chair of Search Committee, Department of Biochemistry-015, University of California, Riverside, CA 92521-0129.** The University of California is an Equal Opportunity/Affirmative Action Employer.

University of Houston

FACULTY POSITION IN NEUROSCIENCE

The Department of Biology at the University of Houston invites applications for a tenure-track faculty position at the **Assistant or Associate Professor** level. The position requires a Ph.D. degree and post-doctoral experience. We especially wish to recruit faculty with interests in cellular, developmental or molecular neuroscience, but we will consider applicants in other areas of neuroscience. The faculty member will be expected to develop a nationally competitive research program and participate in graduate and undergraduate teaching. The Department has spacious labs, strong research programs in many areas of cellular and molecular biology and encourages active research collaborations among its faculty.

MOLECULAR EVOLUTIONARY BIOLOGY

The Department of Biology at the University of Houston invites applications for a tenure-track faculty position at the **Assistant or Associate Professor** level in the area of evolutionary mechanisms at the molecular

level. The position requires a Ph.D. degree and post-doctoral experience. The faculty member will be expected to develop a nationally competitive research program and participate in graduate and undergraduate teaching. The successful applicant will join a diverse group whose interests range from behavioral ecology to molecular phylogenetics and a Department with spacious labs, strong research programs and that encourages active research collaborations among its faculty.

Consult <http://www.bchs.uh.edu> for further information about the Department. Review of applications will begin by January 15, 1996. Please submit curriculum vitae, statement of research plans and have three letters of reference sent to: **Dr. Joseph Eichberg, Chair, Search Committee, Department of Biology, University of Houston, Houston, TX 77204-5513. UH is an Equal Opportunity/Affirmative Action Employer. Minorities, women, veterans, and persons with disabilities are encouraged to apply.**

GLOBAL CAREER OPPORTUNITIES

OY PHARMING LTD

Pharming Oy is a young biotechnology company focussed on the development of transgenic cattle for the production of biomedical proteins in milk. For its rapidly expanding operations in Kuopio, Finland, the company has upgraded its R & D laboratories in the field of molecular biology, and murine and bovine embryology. Farms and veterinary research facilities are available and will also be constructed. Pharming Oy is a subsidiary of Pharming B. V. in Leiden, The Netherlands.

Due to the expansion of our activities, we are interested in meeting candidates for the challenging position of

MANAGING SCIENTIST BOVINE EMBRYOLOGY

You will be responsible for:

—Our research program in the area of bovine embryology and molecular biology.

—The large scale generation of bovine embryos required to generate transgenic pregnancies.

You will both participate in and supervise the activities carried out in the bovine embryology laboratory.

The ideal candidate has several years of post-doctoral experience, is skilled in all technical aspects of in vitro bovine embryo generation (IVM/IVC/IVF, micromanipulation, cryopreservation, tissue culture, etc.) as well as in molecular biology and has proven managerial capabilities.

Applicants are expected to collaborate with a highly motivated, multidisciplinary team in the fields of molecular biology, embryology and bovine reproduction both in Finland and in The Netherlands.

The position is available immediately and requires good command of the English language.

The company provides a competitive compensation package. To apply, please send your resume, list of publications and short description of current activities to **Oy Pharming Ltd., Dr. M. B. M. van Dongen, Managing Director, P.O. Box 1850, 70211 Kuopio, Finland.** For detailed information, please contact Dr. F. R. Pieper, Director Research, Pharming B. V., tel.: 31 71 247 400, The Netherlands.

ANIMAL HEALTH

At Pfizer we draw from real life.

Pfizer, a leader in animal health products, has established a reputation for success in finding/developing breakthrough products for the global market. Currently, we have outstanding opportunities in our Animal Health biological regulatory group in Lincoln, Nebraska for team-oriented:

MANAGERS, BIOLOGICAL REGULATORY AFFAIRS

(2 POSITIONS- VIROLOGY & BACTERIOLOGY)

These positions prepare the regulatory documents, through close collaboration with scientists, veterinarians and others for submission to government agencies. You will review data to confirm the purity, safety, potency and efficacy of veterinary biologics; and review package labeling and promotional materials. We require a DVM or Ph.D. in microbiology or related field; at least 3 years' relevant experience; familiarity with the biologics industry, testing methods and APHIS licensing regulations; and knowledge of bacteriology or virology, biotechnology, immunology, epidemiology and the Virus-Serum-Toxin Act.

In addition to an attractive salary/benefits package, you will enjoy the many recreational and educational amenities of our friendly, family-oriented Midwestern location. Relocation assistance is available. For consideration, send detailed resume to: **Employee Resources, Biological R&D, 601 West Cornhusker Highway, Lincoln, NE 68521.**

We are an equal opportunity employer M/F/D/V.



Animal Health Group

We're part of the cure.

NATIONAL INSTITUTES OF HEALTH
NATIONAL CENTER FOR RESEARCH RESOURCES
VETERINARY RESEARCH PROGRAM

CHIEF, DIAGNOSTICS AND SURGERY SERVICES

The National Institutes of Health, National Center for Research Resources, Veterinary Resources Program is seeking an individual to serve as Chief of Diagnostic and Surgical Services (Interdisciplinary) GS-403/440/701-14/15 with an annual salary range of \$60,925 to \$93,166 which includes a 5.48% locality pay for the Washington, D.C. metropolitan area.

The Veterinary Research Program is responsible for providing professional and technical support services and consultation related to animal research to intramural research programs of the NIH. The successful candidate must oversee the administration of two distinct functions within the Program. The Diagnostics Service participates in comparative pathology research that assist in the characterization of animal models. This is done utilizing gross pathology, histopathology, bacteriology, parasitology virology, immunology, and electron microscopy. The Animal Surgery Service assists principal investigators in the design and performance of surgical procedures by providing veterinary expertise and centralized aseptic experimental surgery and radiology facilities.

Successful candidates must possess: a Doctorate of Veterinary Medicine from an AVMA accredited school, or a Ph.D. in an applicable discipline related to veterinary pathology or surgery. In addition, the applicant should have broad supervisory and administrative experience in managing professional and technical services to a variety of research programs. A documented research record or demonstrated potential to develop a collaborative research program is desirable. Applicants may apply with a resume, Optional Application for Federal Employment (OF-612), Application for Federal Employment (SF-171) or any other written format of choice. This position is included in the Federal Equal Opportunity Recruitment Program (FEORP) and is, therefore, targeted for EEO recruitment efforts. Consideration is limited to citizens of the United States. Applications must be postmarked by December 4, 1995.

Further information and qualification requirements can be obtained by contacting: **MR. RON CANADA, NATIONAL CENTER FOR RESEARCH RESOURCES, BUILDING 31, ROOM 3B-38, 9000 ROCKVILLE PIKE, BETHESDA, MARYLAND 20892; TELEPHONE (301) 496-5621; FAX (301) 403-2110.**

NIH is an Equal Opportunity Employer

GLOBAL CAREER OPPORTUNITIES

THE INSTITUTE FOR IMMUNOLOGY AND ALLERGY RESEARCH

Senior Research Scientist

Ad No: MB96908-530

Close Date: 8.12.95

Position open to isolate and study the molecular, protein chemistry and functional aspects of a novel lymphokine. The laboratories are part of the newly formed Research Institute for Immunology and Allergy Research, which is a member of the Westmead Institutes of Health Research. The Westmead campus houses Westmead Hospital and the Royal Alexandra Hospital for Children which are University of Sydney teaching hospitals. Applicants should have a strong background in molecular biology and lymphokine research, hold a PhD Degree or equivalent, and have at least five years post-doctoral experience. The appointments will be funded for 3.5 years starting December 1995 with a salary range of \$50,000 to \$60,000pa and conditions equivalent to the NSW Hospital Scientists Award. Successful applicant will receive assistance with moving expenses. Facilities exist for applicant to continue other areas of interest. Please send CV with list of publications, a letter of interest outlining relevant areas of expertise and names of four referees to: Dr Elizabeth Benson, The Institute for Immunology and Allergy Research, Westmead Hospital, Westmead NSW 2145. For informal contacts please telephone (61 2) 845 6933 or fax (61 2) 891 3889.

BACTERIAL PATHOGENESIS

Molecular Biology



Applicants with experience in the molecular biology of pathogenic bacteria are invited to apply for a post-doctoral position working on the development of new and improved bacterial vaccines. Experience in state-of-the-art molecular biological techniques and genetic manipulation of microorganisms is essential. Familiarity with human pathogens is desirable, although qualified candidates with other relevant experience will be considered. The candidate will join a team focusing on the identification, genetic characterization and heterologous expression of protective antigens.

Our biomedical research centre located close to Vienna offers excellent research facilities and technical support and provides the opportunity to work within a small international team of motivated scientists. Immuno offers a competitive salary, benefits programme and compensation for re-location expenses.

Please submit a detailed Curriculum Vitae together with salary requirements and date of availability to :

Immuno AG
Dr. Elisabeth Pullez
Industriestraße 67
A-1221 Vienna

OUR SUCCESS IS
YOUR
OPPORTUNITY!



RESEARCH DEVOTED TO PEOPLE

**College of Agricultural and Environmental Sciences
University of California, Davis**

Inquires are invited from qualified applicants for faculty positions available July 1, 1996.

Positions are 9-month tenure track appointments. Eleven month term employment will be offered and continued based upon academic personnel review.

Assistant Professor specializing in Biochemical Genetics. Conduct research on plant biochemistry and/or biochemical genetics with relevance to agricultural plant production, utilization of quality. Teach undergraduate and/or graduate courses in related topics. Apply to: Richard Micheltore, Dept. of Vegetable Crops. Open until filled: to ensure consideration applications should be received by 2/1/96.

Assistant Professor specializing in Botany/Weed Ecophysiology. Teach an undergraduate course in herbicide physiology. The emphasis would be on relationships between plant ecophysiology and herbicide action, selectivity, how these processes are modified by environmental conditions, and environmental fate of herbicides. There will be opportunity to develop a course along the candidate's area of specialization. Training of graduate students in the general area of weed science will also be expected. Conduct research on ecophysiology of weeds and crops, including interactions with herbicides. Apply to: Dave Bayer, Dept. of Vegetable Crops. Open until filled: to ensure consideration applications should be received by 3/1/96.

Assistant Professor specializing in Food Chemistry. Teach in areas of food chemistry and toxicology. Develop research in analytical/separation methods for food component and toxic substance isolation. Prefer candidate with expertise in analytical chemistry combined with training or experience in oxidant/anti-oxidant chemistry. Apply to: Bruce German, Dept. of Food Science and Technology. Open until filled: to ensure consideration applications should be received by 12/15/95.

Assistant Professor specializing in Natural Resource/Environmental Economics. Initiate and maintain a distinguished research and teaching program focusing on resource use and environmental issues pertinent to California, the nation, and the rest of the world. Interests should focus on working on issues related to agricultural/natural systems linkages, sustainable production systems, dynamic production analysis in agro/resource systems and optimal renewable and nonrenewable resource use. Strong analytical skills in microeconomics, statics and econometrics, and dynamic analysis are desirable. Student advising and service activities are expected. Apply to: James Wilen, Dept. of Agricultural Economics. Open until filled: to ensure consideration applications should be received by 1/15/96.

Assistant Professor specializing in Economic Development and/or International Trade. Develop a strong research program in an area of economic development and/or international trade. Teaching responsibilities include an average of three quarter-length courses in the Departmental teaching program, emphasizing economic development and/or international trade at the graduate and undergraduate levels. Student advising and service activities are expected. Apply to: Lovell Jarvis, Dept. of Agricultural Economics. Open until filled: to ensure consideration applications should be received by 1/15/96.

Professorial positions have responsibilities for teaching, advising and research (in the Agricultural Experiment Station) and require teaching and research experience. Candidates must have a Ph.D. in an appropriate field. Applicants should submit resume, transcripts (if within five years of graduation), statements of research and teaching experience, list and reprints of publications, and the names and addresses of at least three persons familiar with the applicant's qualifications, to individual and department as noted for position (department name), University of California, Davis, CA 95616. Please indicate the position(s) in which you are interested. *The University of California is an Affirmative Action/Equal Opportunity Employer.*

**TENURE-TRACK
ASSISTANT PROFESSOR
UNIVERSITY OF TEXAS
DIVISION OF
NUTRITIONAL SCIENCES**

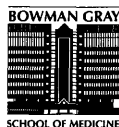
The Division of Nutritional Sciences at The University of Texas-Austin invites applications for a tenure-track faculty position at the level of **ASSISTANT PROFESSOR**. The successful candidate will be expected to develop an independent research program in the molecular or cellular biological aspects of nutrition, to teach nutrition science at the undergraduate and graduate level, to supervise graduate and undergraduate research, and to participate in professional service at the department, university and national level. The position requires a doctorate degree and postdoctoral experience in molecular or cellular sciences. The successful candidate must possess a desire to define the function that nutrients play in developmental processes, or define the role that diet plays in the etiology of nutritionally related diseases such as obesity, diabetes, or cancer. Expertise in cell signaling processes or gene expression is desirable. Preference will be given to applicants with demonstrated research productivity, grantsmanship, and teaching competence.

The Division of Nutritional Sciences consists of 10 faculty members and offers undergraduate degrees in nutrition science and dietetics. The graduate program offers a doctoral degree in Nutritional Sciences as well as a Masters of Arts option. Applications should be received by January 15, 1996. Applicants should send a curriculum vitae, transcripts, selected research publications, a statement of research interests and names of three references to:

**Dr. Steven D. Clarke, Chairman
M. M. Love Chair in
Nutrition, Molecular and Cellular Sciences
GEA 115/A2700
The University of Texas
Austin, Texas 78712**

Review of applications will begin on January 15, 1996, and continue until the position is filled.

*The University Of Texas At Austin is an Equal
Opportunity/Affirmative Action Employer*



Endowed Professorship in Neuroscience

Departments of Neurology and Neurobiology and Anatomy
and the Center for Investigative Neuroscience of
Bowman Gray School of Medicine, Wake Forest University

We are seeking an *external candidate* with a strong, well established research program who is using cellular and molecular approaches to study basic neurobiological mechanisms related to neuromuscular disorders. Areas of special interest include trophic/nutritional aspects, axonal growth and regeneration, synapse formation, and animals models of disease and gene therapy, including transgenics. The endowment provides annual research funds to be used at the discretion of the successful candidate. The Bowman Gray School of Medicine of Wake Forest University offers a unique opportunity to interact with neurobiologists with diverse interests that comprise part of a strong and active interdisciplinary Ph.D. Program in Neuroscience with 25 graduate students and over 70 faculty. Send curriculum vitae and a brief one page description of research interests to: **Dr. Ronald Oppenheim, Department of Neurobiology and Anatomy, Bowman Gray School of Medicine, Wake Forest University, Winston-Salem, NC 27157-1010. AA/EOE**

**WAKE FOREST
UNIVERSITY**

**THE COLLEGE OF
WOOSTER**

BIOLOGY – Tenure track position for Assistant Professor with ability to teach upper-level courses in vertebrate biology from an ecological and evolutionary perspective, an introductory-level course for non-majors, participate in Introductory Biology sequence, and direct undergraduate research in the College's required Independent Study program. Ability to teach basic statistics for biologists required. Participation in the College's interdisciplinary first-year program expected. Ph.D. Required, post-doctoral research and/or teaching experience preferred.

and

BIOLOGY – One-year Visiting Assistant Professor to teach Population and Community Ecology, Natural History of the Invertebrates, parts of the Introductory Biology Sequence, and to direct undergraduate research in the College's required Independent Study program. Ph.D. Required, post-doctoral research and/or teaching experience preferred.

Send applications to:

**Dr. Floyd Downs
Biology Department
The College of Wooster
931 College St.
Wooster, OH 44691**

by **January 15, 1996**
to receive full consideration.

The College wishes to ensure that the search identifies qualified women and minority candidates. Applicants belonging to these groups are encouraged to identify themselves if they wish. The College of Wooster is an independent liberal arts institution with a commitment to excellence in undergraduate education. Affirmative Action/Equal Opportunity Employer.

Research Associate Professor

The Department of Physiology at the Wayne State University School of Medicine has an opening for a Research Associate Professor (non-tenure track). The Department is seeking to build on its strengths in the areas of cell signaling, modulation of phospholipase activity, or transmembrane ionic currents, particularly as applied to diabetes, cardiovascular disease, or stroke. The Department is looking for an individual who is applying modern molecular techniques to any of these areas. The successful candidate will be expected to conduct an outstanding research program and be active in the teaching programs of the Department.

Additional opportunities for collaboration and interaction are available with the members of the Karmanos Cancer Institute, the Institute for Molecular Medicine, the Neuroscience Program and the Neurotrauma Center. Wayne State University is a Research University I, as designated by the Carnegie Foundation, and is located in the heart of the Detroit metropolitan area.

Candidates should have a PhD or equivalent degree and appropriate postdoctoral training. Applicants having significant grant funding will be given strong preference. Excellent start-up funds are available. Please send a CV, description of research interests, and reprints of up to three of your best publications to:

John W. Phillis, Professor and Chair
Department of Physiology
Wayne State University School of Medicine
540 E. Canfield
Detroit, MI 48201

Three letters of reference should be sent directly to the above address.

Wayne State University is an equal opportunity/affirmative action employer. Wayne State University - People working together to provide quality service. All buildings, structures and vehicles at WSU are smoke-free.

POSTDOCTORAL RESEARCH SCIENTIST

Behind a profound commitment to pioneering and backed by the success of our new product introductions, Searle continues to be recognized as one of the world's foremost pharmaceutical companies. As a wholly owned subsidiary of the Fortune 100 Monsanto Company, we can now offer you the opportunity to join our team and discover a world of success.

We currently have an immediate training opportunity in St. Louis for a post-doctoral candidate to study Human Leukocyte Antigen Class II-peptide complexes. A recent Ph.D. or M.D./Ph.D. and experience using molecular and cellular biology techniques are required.

For consideration, please send curriculum vitae and the names and telephone numbers of three references to: **Searle, Research & Development, Attn.: Susan Woulf, 700 Chesterfield Village, Box AA4C, St. Louis, MO 63198.** An Equal Opportunity Employer M/F/D/V.

SEARLE

PATHOLOGY: The University of California, Davis, School of Medicine seeks a full-time academic Chairperson of Pathology. Candidates must possess an M.D. degree and be Board Certified in Anatomic/Clinical Pathology, be eligible for licensure in California and be academically qualified for appointment at the professorial level. Demonstrated evidence of excellence in academic and clinical service administration, teaching, and research is required. Please forward the following: (1) letter describing administrative, teaching, and research background; (2) curriculum vitae; (3) names and addresses of five references to Frederick J. Meyers, M.D., Chair, Search Committee for Chair of Pathology, c/o Karen Eilers, Office of the Dean, School of Medicine, East Health Sciences Drive, University of California, Davis, California 95616. This position will be "Open Until Filled"; for full consideration, applications should be received by March 31, 1996. *The University of California is an Affirmative Action/Equal Opportunity Employer.*

UNIVERSITY OF UTAH

CENTER FOR HUMAN GENOME RESEARCH GENOME SCIENCE POSTDOCTORAL FELLOWSHIPS

Seeking applications for postdoctoral students in genome science. Select interdisciplinary tracks:

- Robotics and Instrumentation
- Mathematical Biology
- Genome Biology
- Genome Informatics
- Open Track

Ph.D. is required in relevant area--human genetics, bioengineering, mathematics, computer science, physics, biology or chemistry. Applications welcome from researchers in social, humanistic, or legal specialties concerned with impacts of genome science.

Appointment for 2-year terms. NIH grant funds provide first-year stipend of \$191,608. Stipend augmentation may be available from sponsoring research projects. Eligibility limited to US citizens and permanent residents.

DOCTORAL TRAINING IN GENOME SCIENCE

Seeking applications for doctoral training in genome science. Select interdisciplinary tracks:

- Robotics and Instrumentation
- Mathematical Biology
- Genome Biology
- Genome Informatics
- Open Track

Students complete doctoral degrees in home departments, and earn certificate in genome science. Potential home depts. include anthropology, bioengineering, biology, computer science, human genetics, mathematics, oncological sciences. Open track students can select college such as humanities, social and behavioral sciences, medicine, or law.

Financial aid available through NIH training grant and research or teaching assistantships. Apply to desired home dept. with letter expressing interest in genome science.

More information:

University of Utah
Utah Center for Human Genome Research
Fax (801) 585-7177
E-mail: genome-science@genetics.utah.edu
WWW:<http://www.genetics.utah.edu/~genome-science>

RECRUITMENT ADVERTISERS

East Coast Careers Forecast

Issue date: 15 December

Space Reservation Deadline: 28 November

In this special advertorial, we will look at current trends and news surrounding the biotech and pharmaceutical industry on the east coast, making this issue an excellent opportunity to draw more attention to the scientific career opportunities available within your company.

TAKE ADVANTAGE OF OUR 25% DISCOUNT!

Repeat your ad within 8 weeks and receive 25% off the second placement!

FREE PLACEMENT ON SCIENCE Global Career Network!

Every advertisement receives placement on the SCIENCE world wide web service.

SCIENCE Global Career Network address: <http://www.aaas.org>

For more information or to reserve your space,
call Janis Crowley at (202) 326-6532.

SCIENCE
COVERS THE WORLD

MOLECULE of the YEAR

22 December issue

Advertising Space Reservation Deadline: 7 December 1995

Each year, in the Molecule of the Year issue, SCIENCE highlights a discovery which played a key role in the advancement of science during that year. In 1993, the editors selected p53, a tumor suppressor in humans. In 1994 it was DNA repair enzymes. Which molecule will be selected Molecule of the Year this year? Find out when SCIENCE announces the 1995 winner in the 22 December issue. Advertise in the issue everyone will be waiting for this December!

This is your last chance to take advantage of the 1995 rates!

All recruitment advertisements in this issue will receive free placement on SCIENCE Global Career Network. <http://www.aaas.org> (select SCIENCE Global Career Network from the main menu.)

For advertising information, please call :

In Europe, Debbie Cummings at (44) 01223 302-067,
or fax: (44) 01223 576-208.

In the U.S., Janis Crowley at (202) 326-6532
or fax to (202) 682-0816.

SCIENCE
COVERS THE WORLD

Research Associate

Ph.D. Research Associate is needed to join a large biomembrane research group to work in a field of membrane-protein interactions in malaria-infected red blood cells. Background in protein biochemistry and familiarity with molecular biology techniques essential. Please send CV to: Jiri Palck, M.D., Chairman, Department of Biomedical Research, St. Elizabeth's Medical Center, 736 Cambridge Street, Boston, MA 02135; Fax: (617) 254-7488. An Equal Opportunity Employer.

St. Elizabeth's Medical Center of Boston

Caritas Christi • A Catholic Health Care System • Member A University Medical Center of Tufts University School of Medicine

PROGRAM ADMINISTRATOR

Educational Testing Service(ETS), the nation's leading educational testing & measurement organization, has an immediate opening in their Center for the Assessment of Educational Progress.

The successful applicant will assist in the development of National Assessment of Educational Progress (NAEP) science and other assessments, and be required to apply basic skills in the test development process, administration, educational measurement, statistical analysis, operations and research.

Responsibilities include assistance in preparation of materials and/or operation specifications, in training readers for professional scoring of constructed-response items, coordination/implementation of special studies & preparation of draft revisions/outlines & manuscripts for NAEP publications.

To qualify you must have a Master's degree in science or an equivalent combination of education & experience and a minimum of 4 years teaching experience in science in either elementary, middle or high school.

ETS offers a salary in the mid \$40's, an attractive benefits program & a professional environment which recognizes individual achievement. For prompt, confidential consideration, please send resume and salary requirements to: **Ms. Sandy DeAngelo**



EDUCATIONAL TESTING SERVICE

Rosedale Road, Princeton, NJ 08541

We are dedicated to Equal Opportunity/Affirmative Action in the workplace. We regret we are unable to respond to each resume. Only those selected for an interview will be contacted.

Neurochemist - The Department of Pediatrics of The Medical College of Pennsylvania and Hahnemann University School of Medicine is seeking a senior neurochemist for its Division of Neonatology. Applicant must possess Ph.D. in Biochemistry and have 15 years of postdoctoral research experience with at least 8-10 years in the field of hypoxic/ischemic brain injury using fetal and newborn animal models. The candidate must have demonstrated ability to supervise and provide guidance for young investigators/neonatal-perinatal fellows to develop their independent research. The candidate should have extensive publications and have developed a strong research program focusing on brain cell membrane lipid peroxidation, oxygen free radicals, anti-oxidant enzymes and modification of enzymes and receptor sites during brain development and hypoxia. Demonstrated expertise with measurements of in-vivo and in-vitro indices of brain cell membrane lipid peroxidation is required. In addition to experience with the use of hypoxic/ischemic models in the fetus and newborn animals, especially guinea pig and newborn piglets, work with human neuronal cells is essential. Academic rank will be commensurate with experience. Applications with CV to:

Endla Anday, M.D., Director
Clinical Neonatal Services
Office of Medical and Academic Affairs
St. Christopher's Hospital for Children
Erie Avenue at Front Street
Room 131-A-1
Philadelphia, PA 19134-1095

Affirmative Action/
Equal Opportunity Employer

Postdoctoral Positions Cell Biology of Development

The Worcester Foundation for Biomedical Research has several openings for Postdoctoral scientists on a recently funded National Institutes of Health training grant entitled The Cell Biology of Development. These positions may be filled only by US Citizens or Permanent Residents. A list of faculty and their research interests are shown below:

Justin Fallon, Ph.D. - Mechanisms of synapse formation in the central and peripheral nervous system.

F. Rob Jackson, Ph.D. - Molecular and cellular analysis of the *Drosophila* circadian timing system.

Michele Jacob, Ph.D. - Regulation of neuronal synapse formation - changes in gene expression that underlie synaptogenesis; and the targeting components to synaptic microdomains.

Daniel Kilpatrick, Ph.D. - Transcriptional control of spermatogenesis and neuronal differentiation.

Elizabeth Luna, Ph.D. - Structure, function, and regulation of membrane skeletons in motile cells.

Thor Pederson, Ph.D. - RNA processing and trafficking: ribonucleoproteins.

Joel D. Richter, Ph.D. - Post-transcriptional regulation of *Xenopus* and mouse development.

Alonzo Ross, Ph.D. - Neurotrophin receptors and differentiation of neural tumors.

Greenfield Sluder, Ph.D. - Checkpoint controls for entry into mitosis and anaphase onset; control of centrosome reproduction.

Richard Vallee, Ph.D. - Microtubule motor proteins; role of dynamin in endocytosis and synaptic function.

Yu-li Wang, Ph.D. - Mechanism of cytokinesis; regulation and dynamics of actin structures in cultured cells.

George Witman, Ph.D. - Molecular genetic analysis of dynein and flagellar motility; photosensory transduction in *Chlamydomonas*; mammalian sperm maturation.

David Wolf, Ph.D. - Structure, function and dynamics of the nerve growth factor receptor.

Paul Zamecnik, Ph.D. - Antisense inhibition of viral and parasitic diseases.

Please send curriculum vitae and names of three references to the faculty member(s) of interest, c/o Human Resources, Worcester Foundation for Biomedical Research, 222 Maple Avenue, Shrewsbury, MA 01545, USA. An Equal Opportunity/Affirmative Action Employer M/F/H.



**WORCESTER FOUNDATION
FOR BIOMEDICAL RESEARCH**

POSITIONS OPEN

SCIENCE WRITER/EDITOR

The American Society of Plant Physiologists (ASPP) has an immediate opening for news and reviews **EDITOR** of its journal, *The Plant Cell*. Individual bears full responsibility for content and editing of front section, including writing articles and selecting and editing articles written by others; handles all aspects of the publication of review articles; coordinates editing and production of special review issues; attends scientific meetings and has frequent contact with plant cellular, molecular, and developmental biologists. Qualifications: demonstrated excellent writing skills, including ability to synthesize complex scientific concepts and explain them in a clear, intelligible fashion; minimum of an M.S. in genetics or biology, with Ph.D. highly desirable; ability to communicate effectively and tactfully with authors; ability to gain rapid understanding of unfamiliar research areas and to recognize what topics in current plant biological research merit commentary. Salary commensurate with experience; excellent benefits. Send cover letter, résumé, salary history, and writing samples to: Job Search, 15501 Monona Drive, Rockville, MD 20855-2768. Please do not call. *Equal Opportunity Employer.*

SPECIAL OFFER: BUY TWO SCIENCE LOGO T-SHIRTS & GET 10% OFF!

A GREAT HOLIDAY GIFT IDEA
Give the scientist who has everything a top quality, 100% cotton *SCIENCE* logo shirt. Blue logo on grey. For details or an order form, call Corrine Harris at (202) 326-6527, or **SCIENCE** fax (202) 682-0816.

COMPUTER MARKETPLACE

STATISTICAL SOFTWARE

Announcing NCSS 6.0 for Windows: an accurate, easy to learn, statistical system. Includes t-tests, Anova, chi-square, survival analysis, regression analysis, multivariate analysis, graphics. Data may be imported from over 30 database and spreadsheet formats. Output may be read by your Windows word processor. Thousands of users. \$395. Ask for Dr. Hintze (PhD Statistician) at (800) 898-6109, fax (801) 546-3907. E-mail address: ncss@ix.netcom.com. Web page: WWW.ICW.COM/NCSS.

Circle No. 11 on Readers' Service Card

For Mac Lovers
The best bibliography software
-only for the Mac-

bookends pro ver. 3.2


e-mail: westing3@aol.com

http://www.westinginc.com/westing

Phone: 1-800-325-1862

Circle No. 23 on Readers' Service Card

MARKETPLACE

Quality Antibodies for Signal Transduction Research	Nitric Oxide Synthase	Brain NOS (bNOS) mAb
	NOS	bNOS polyclonal
	antibodies	Endothelial Cell NOS mAb
	from	ECNOS polyclonal
	TRANSDUCTION LABORATORIES	Induc. NOS (iNOS) mAb
	1-800-227-4063	(iNOS) polyclonal (iNOS) mAb FITC conj.

Circle No. 12 on Readers' Service Card

MARKETPLACE

CustomPeptides

Need!

Quality peptides at competitive prices.

Want to deal with an experienced company offering:

- ❖ Special amino acid containing peptides
- ❖ Synthesis of difficult sequences
- ❖ Phosphopeptides
- ❖ Biotinylated peptides
- ❖ Fluorescent labeling
- ❖ Peptide conjugation
- ❖ Large scale synthesis

Welcome to American Peptide. We can satisfy your peptide needs from small to large quantities at a **considerably reduced prices**. We offer different purity levels to match your exact needs, either for screening, antibodies production or drug development.

New 1996-97 Catalog

Comprehensive selection of bioactive peptides - Many new peptides - Highest quality - Amyloids & other peptides for neuroscience. Fax / call for a free copy!

62-0-72	β-Amyloid (25-35)	98%	0.5 mg	50.00
62-0-74	β-Amyloid (1-28)	98%	0.5 mg	85.00
62-0-78	β-Amyloid (1-40)	98%	0.5 mg	150.00
62-0-80	β-Amyloid (1-42)	98%	0.5 mg	225.00

AMERICAN PEPTIDE COMPANY

777 E Evelyn Ave. Sunnyvale, CA 94086 USA
Toll Free: 800-928-8272 Tel: 408-733-7604 Fax: 408-733-7603

Circle No. 44 on Readers' Service Card

CUSTOM DNA SYNTHESIS

PURE & SIMPLE

- Superb Technical Support

- Impeccable Quality

- World's Fastest Service

- Cap Gel & TOF Mass Spec

* Some restrictions apply. Please call for details.

\$1.19*
per base
\$10 setup
50 nmole
scale

MIDLAND

STILL THE UNDISPUTED #1 CUSTOM DNA SYNTHESIS SERVICE

THE MIDLAND CERTIFIED REAGENT COMPANY

Phone 1-800-247-8766 FAX 915-694-2387

email mrcr@oligos.com

Circle No. 1 on Readers' Service Card

Custom DNA from \$1.00/base



ransom hill bioscience, inc.

no setup, no minimum, no baloney!
internet: visia@delphi.com fax: (800) 597-8509

Circle No. 16 on Readers' Service Card

SURGICAL INSTRUMENTS FOR RESEARCH

A 100-page catalog of specially selected surgical instruments and accessories for the research professional. Please contact us for your FREE copy today.

FST 415-349-1636 • Fax 415-349-3729
FINE SCIENCE TOOLS INC. REPRESENTATIVES WORLDWIDE
e-mail: 73633.260@compuserve.com

VANCOUVER SAN FRANCISCO HEIDELBERG

Circle No. 45 on Readers' Service Card

The Peptide Engineering Specialist
PeptidoGenic
e-mail: pkim@ccnet.com
Fax: 510-371-1156
Voice: 1-800-597-7873

Custom Peptide: **\$20**/residue/crude/5days
lonSpray MS Service :MS (\$30), LC/MS (\$250)

No Setup Fee, Free HPLC, lonSpray Mass.

Circle No. 10 on Readers' Service Card

MARKETPLACE

CUSTOM DNA as low as
\$1.19 base
UP TO 30 BASES

150 nmol scale (>10 ODU)
Deprotected • No set-up charges
Synthesis report • 24-48 hours shipping

CUSTOM PEPTIDES as low as
\$20 residue
8-30 RESIDUES

15-40 mg • No set-up charges
Free mass spec & HPLC tracing
Desalted • 5-8 days shipping



1-800-227-0627

FAX 214-420-0442

BIO•SYNTHESIS
INCORPORATED

E-Mail: biosyn@onramp.net

Internet: http://www.biosyn.com

FDA#001235 • NIH BPA#263-00038171-04-BPA/C

Circle No. 13 on Readers' Service Card

SFM-Human Keratinocyte Cell System

Start up a 75 for LESS than a 25
More Cells / Lowest Price / Highest Quality
CSC Certificate™ #30467



1-800-697-1211

Circle No. 22 on Readers' Service Card

BioGeek Clip Art™

Images for Biotechnology

Over 150 color & 3D images: Mac and PC!

- Antibodies • Cells • Proteins
- Lab Animals • Lab Toys • DNA

No more narcotic presentations!

Introductory Price \$59.95 Phone/Fax 203-798-6200
E-mail: biogefix@aol.com

Circle No. 71 on Readers' Service Card

FETAL BOVINE SERUM

Triple 0.1um filtered • Certified FMD & BSE Free • USDA Inspected

HIGH QUALITY **ATLANTA biologicals** LOW PRICES

Call or Fax for Information, Pricing and a FREE Cell Culture Catalog.
FREE Samples and Quantity Discounts are available.

PH: (800) 780-7788 FAX: (800) 780-7374
(404) 446-3336 (404) 446-1404

Circle No. 14 on Readers' Service Card

Express Peptides

15 mg in 5 days
\$18 per residue

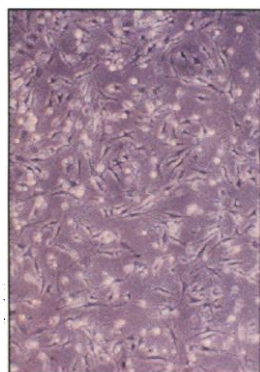
Research Genetics, Inc.
1-800-533-4363

Circle No. 4 on Readers' Service Card

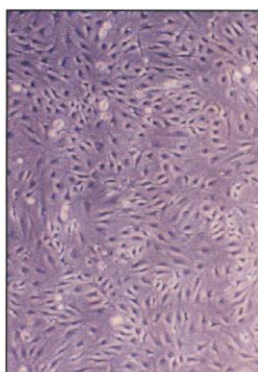


TAKE TRANSFECTION BY THE HORNS

With TransIT™ Low Toxicity Transfection Reagents!



High Level of Damaged and Non-viable NIH3T3 Cells Result from Transfection with the Leading Industry Transfection Reagent.



TransIT™ - LT2 Transfection Reagent Yields Dramatically Higher Numbers of Viable, Proliferating NIH3T3 Cells.

TransIT™ Polyamine Transfection Reagents are ideal for gene expression studies requiring high transfection efficiency and healthy, post-transfection cells. Developed by Mirus Corporation, the gene transfer specialists, these products provide the following advantages:

- Significantly Lower Cellular Toxicity than Leading Transfection Reagents
- Only **\$99/pack***: The Lowest Price in the Industry for Comparable Products
- Transfection Efficiency Similar to Any Available Reagent on the Market

Take Transfection by the Horns! Call PanVera today and charge ahead with the new standard of transfection performance.

* U.S. Introductory Price



800-791-1400

608-233-5050

Fax: 608-233-3007

E-mail: info@panvera.com

Homepage: <http://www.panvera.com/>

PanVera Corporation

545 Science Drive

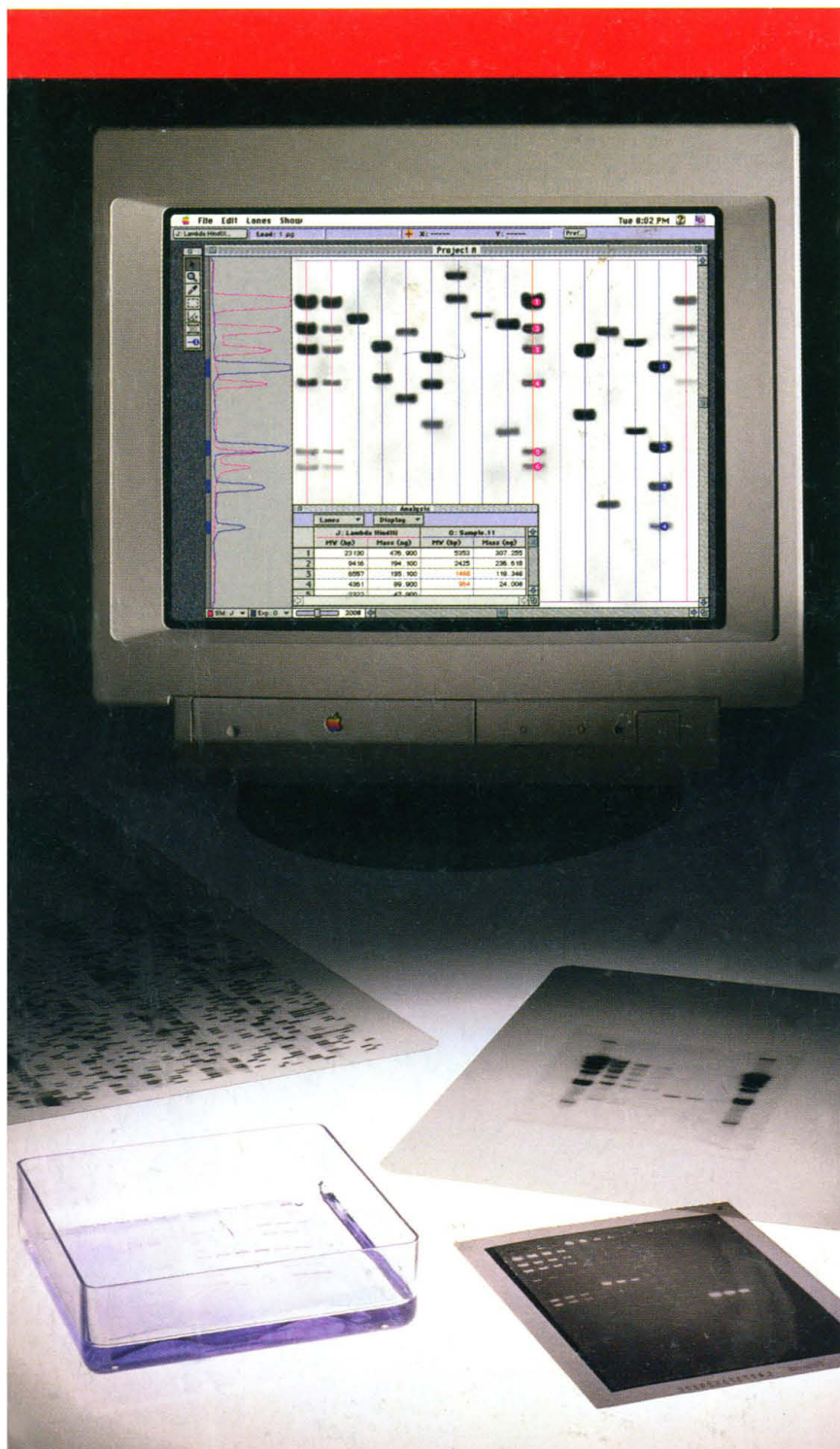
Madison, WI 53711 USA

In Japan contact: **TaKaRa** Shuzo Co., Ltd. Otsu, Shiga, Japan Phone: +81 775-43-7247 Fax: +81 775-43-9254

Circle No. 38 on Readers' Service Card

Maximum Performance for Biological Imaging

BioMax Image Analysis Software. Powerful, affordable solutions from Kodak.



For fast, easy analysis of any electrophoresis gel image, look to Kodak BioMax Image Analysis systems. We offer a complete line of software and hardware systems for rapid, powerful analysis of any nucleic acid or protein electrophoresis image.

Determine mass and molecular weight in minutes.

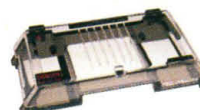
Interpreting nucleic acid agarose or protein polyacrylamide gels? Scan your blot, photo or protein gel with the Kodak BioMax BandScanner 1D or your own TWAIN-compliant scanner, and BioMax 1D Image Analysis software accurately determines mass and molecular weight.

"Smart" systems for sequence gel analysis.

Analyze sequencing gels faster with the Kodak BioMax BandScanner SQ Image Analysis system. Scan autorads, and let SQ software find bands and accurately determine sequences using neural net intelligence. Data can then be exported to Kodak's AssemblyLIGN program for fragment assembly, and to MacVector for powerful sequence analysis.

Point-and-click simplicity for both platforms. BioMax 1D and SQ Image Analysis systems feature easy-to-use interfaces for Mac, Windows™ 3.1, Windows 95 and NT.

To learn more, contact Scientific Imaging Systems at (800) 225-5352 or (716) 722-5813; Fax: (800) 879-4979 or (716) 588-8368. e-mail: support@ksis.com.



Separate your sample.



Capture your image.



Analyze your image.

MacVector™

Analyze your data.



Mac OS



Cross-platform compatibility.

© 1995 EASTMAN KODAK COMPANY



Scientific Imaging Systems

EASTMAN KODAK COMPANY
Rochester, NY 14650

Australia/New Zealand Integrated Sciences Ltd (02) 417 7866 Belgium Sigma-Aldrich N.V./S.A. 0800 14747 / INTEGRA Biosciences AG (01) 830 22 77 Canada InterSciences Inc. (800) 661-6431 or (905) 940-1831
Denmark Struers KEBO Lab A/S (43) 86 87 88 Finland KEBO Lab OY (90) 804 4900 France Sigma-Aldrich Chimie S.a.r.l. 05 21 14 08 / INTEGRA Biosciences S.A. (1) 39 59 84 42 / Kodak-Pathe (film only) 64 61 21 77
Germany Sigma-Aldrich Chemie GmbH 0130 5155 / INTEGRA Biosciences GmbH (06404) 8090 India Biotech India (542) 311473 Israel TAMAR Ltd (02) 52 02 79 Italy Sigma-Aldrich S.r.l. 1678-27018 / M-Medical srl (055) 5001871
Japan Cosmo Bio (03) 5632-9610 / IEDA Trading Corp. (03) 3816 2861 Korea LRS Laboratories Inc (02) 924 86 97 Netherlands Sigma-Aldrich N.V./S.A. 06 0224748 / INTEGRA Biosciences AG (01) 830 22 77
Norway KEBO Lab AS (022) 90 00 00 Spain Quimigrañel s.a. (91) 556 16 14 Sweden KEBO Lab AB (08) 621 34 00 Switzerland Sigma Chemie 155 00 20 / INTEGRA Biosciences AG (01) 830 22 77
Taiwan Janson Technology Co., Ltd (02) 704 4029 United Kingdom IBI Limited 01223 24 28 13 / Sigma-Aldrich Co. Ltd. 0800 373731

Circle No. 31 on Readers' Service Card