

TRAVEL FELLOWSHIP PROGRAM

for

Scientists of East Central Europe
and
the former Soviet Union

The United States Department of Energy (DOE) and the American Association for the Advancement of Science (AAAS) seek to recognize the research accomplishments of mid-career scientists from East Central Europe (ECE) and the countries of the former Soviet Union (FSU) in the area of environment and health, especially as it relates to problems of radiation contamination and health. A program has been established to award young ECE and FSU scientists travel grants to attend the AAAS Annual Meeting in the United States and be able to present their research findings to conference attendees during poster sessions.

The 1996 AAAS Annual Meeting will be held February 8 – 13 in Baltimore, Maryland.

Fellows will be given economy class travel support to the conference along with lodging and per diem reimbursement for food and incidental expenses. The fellows will also participate in site visits to local agencies and institutes directly related to their research.

ELIGIBILITY

Applications by ECE and FSU graduate students and post-doctoral scientists (within five years of completing their degree) *who currently are actively conducting research* in the areas of environmental contamination and health in geographic regions identified as being contaminated by radiation will be accepted. This would include researchers in these regions specializing not only in the effects of radiation contamination on health but also other possible contributory causes of negative health effects in these regions. These individuals must be working at recognized scientific research institutions; must be able to speak, read, and write English with a moderate degree of fluency; and must be able to gain the permission of their governments to travel.

APPLICATION AND NOTIFICATION PROCEDURES

Application materials should include all of the following: 1) a letter of intent by the applicant including name, affiliation, address, telephone, and e-mail address, if any, where he/she can be reached; 2) an abstract of the proposed poster session including a brief description of the research question, design, methods, results, discussion, and conclusions reached; 3) a curriculum vitae; and 4) two letters of support from professors or colleagues familiar with the applicant's research.

These materials must be submitted to AAAS by mail or fax no later than October 31, 1995. No late or incomplete applications will be considered. Send materials or inquiries to: Ms. Beth Boswell, Project Coordinator, AAAS, 1333 H Street, NW, Washington, DC 20005; Tel: (202) 326-6427; Fax: (202) 289-4958; bboswell@aaas.org.

TXB₂ PGE₂ PGF_{2α} LTB₄ cAMP 6-Keto PGF_{1α} cGMP

The Best Just Got Better...

Correlate Immunoassay Kits

STABILITY

Standards are stable in solution at 4°C!

Call today for the data proving our PGE₂
standards' superior stability.

QUALITY

All standards and conjugates manufactured
from ISO 9002 antigens!

SPEED & SENSITIVITY

No one offers more sensitive or faster kits!

CONVENIENCE

All kits use color-coded ready-to-use
liquid reagents stored at 4°C!

*SPECIAL OFFER

Prove it for yourself!

Try any of our 96 well EIA kits
for \$100.00 off list price!

*Just supply us with an invoice for any competitor's kit.
Limit 1 kit per institution. Offer good until December 31, 1995.

Assay

designs, inc.

In Japan, call:
Funakoshi Co. Ltd.



Tel: 81-3-5684-1616
Fax: 81-3-5684-1634

Tel: (800) 833-8651
(313) 668-6113

Fax: (313) 668-2793

e-mail: assaydes@pipeline.com

In Austria, Germany
and Switzerland, call:

BIO TREND

Tel: (0211) 4972034
Fax: (0211) 496341

PRODUCTS & MATERIALS

Protease Inhibitor

Complete Protease Inhibitor Cocktail Tablets can be dissolved in water or phosphate buffer to inhibit serine, cysteine, and metalloproteases during protein extractions on animal tissues, plants, yeast, or bacteria. The tablet form eliminates contact with potentially hazardous compounds during weighing and ensures that the same dosage is delivered every time. **Boehringer Mannheim.** Circle 139.

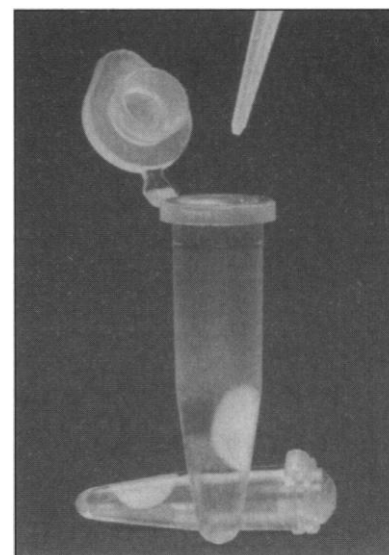
DNA Sequencer

The genomxLR is an affordable, programmable DNA sequencer with advanced features such as symmetric air impingement temperature control, proprietary radio-

nucleotide capture, and internal gel drying. The unit maintains a preset temperature over both sides of a 60-cm gel, independent of the voltage applied. The independent temperature control allows the gel to be run at increased temperatures, eliminating problems caused by GC-rich compressions and other artifacts. **Genomix.** Circle 140.

RT and PCR in One Tube

HotStart Storage and Reaction Tubes allow the researcher to separate reverse transcriptase (RT) and polymerase chain reactions (PCR) within the same tube until after the DNA has been made and is ready for amplification. Simply add RT reagents to the tube and during the denaturing step the wax



bead melts to cover the RT reaction. While the RT reaction is occurring, the wax overlay will harden. Now add PCR reagents, and when the reaction begins, the wax barrier will melt and rise to the top, allowing the RT and PCR reactions to combine. By eliminating the need to transfer samples from one tube to another, HotStart tubes significantly reduce the risk of contamination and sample

NEW! EndNote® Plus For Windows®



More than 85,000 users prefer EndNote, the only Windows bibliographic software that...

- Includes 240 journal styles
- Appends bibliographies automatically to *all* leading word processors: WordPerfect for Windows, Microsoft Word for Windows, and AmiPro
- Allows users to index all fields for high-speed searching
- Allows Macintosh and Windows users to access the same database over a network

New in Version 2.0:

- Term lists to keep track of important terms
- Global editing commands
- Enhanced searching options
- EndLink 2 (sold separately) includes 140 filters to import references from online and CD-ROM services
- Customizable EndLink import filters
- Compatible with Windows 3.1, Windows 95, and Windows NT

1 Import references

2 Store references in library

3 Select a journal style

4 Format a bibliography

\$99.95 limited-time offer*

Niles & Associates, Inc.
800 Jones Street
Berkeley, CA 94710
Voice: 800-554-3049
E-mail: info@niles.com
Fax: 510-559-8683
http://www.niles.com
Demo available at ftp.niles.com

References

1. Argus, M.V. and S.J. Jones. "The evolution of the butterfly species." *Journal of Entomology* 222-36, 1994.
2. Billoski, T.V. "South and American Butterflies." (Ed.) *Butterflies* (New York: & Howells, 1993), pp. 97-124-36, 1993.
3. Whiting, J.R. "Structure of butterfly wings." *Journal of Entomology* 97-124-36, 1993.

*This price includes EndLink 2.0 and expires 10/31/95. Offer good in U.S. & Canada only. Contact for eligibility information. Special price not available on Macintosh. Microsoft, Windows and the Windows logo are registered trademarks of Microsoft Corp. All other trademarks are the property of their respective companies.

Circle No. 11 on Readers' Service Card

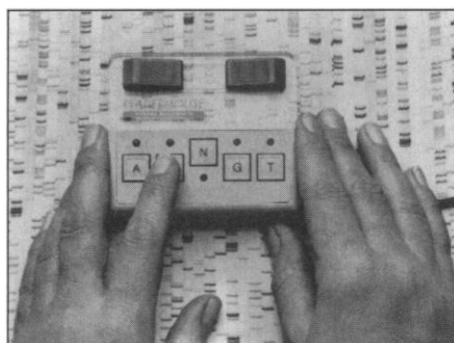
loss. Reaction time is reduced because of the fast transition from RT to PCR. **Molecular Bio-Products. Circle 141.**

Crossflow Filtration Units

Sartocon-Micro crossflow filtration units are for concentration or purification applications ranging from 50 ml to 1 liter. The units close the gap between centrifugal units and crossflow module systems, providing individual crossflow systems that are complete, closed, presterilized, pyrogen-free, and ready to connect. They feature high flow rates, are easy to clean, require virtually no set up, and eliminate the need for gas pressurization. They eliminate the drawbacks of protein and peptide concentration with stirred cells. **Sartorius. Circle 142.**

Direct Computer Entry of Sequences

Readermouse allows DNA sequences to be read directly from x-ray film into a computer without the need for a keyboard. The



Readermouse can communicate directly with both Windows and Macintosh systems and enables DNA sequences to be edited, checked, processed, stored, and exported. **Integra Biosciences. Circle 143.**

Plotting and Data Processing Software

PSI-Plot for Windows is a new version of technical plotting and data processing software. PSI-Plot provides standard editing functions, such as cut, copy, and paste, and many data analyzing tools, such as sorting, ranking, and automatically creating data. It performs complete statistical analysis, data transformation, digital signal processing, nonlinear parameter fitting and model development, and ordinary differential equa-

tion solving. Data can be exchanged with most popular file formats, including Lotus 1-2-3, Quattro Pro, DIF, MicroSoft Excel, and ASCII. A powerful plot editor with drawing tools, object alignment, and legend generator makes it easy to design and modify graphs. The program requires a 386-, 486-, or Pentium-based computer running MS Windows 3.1 or later, and a hard drive with at least 4 Mb free disk space. **Poly Software International. Circle 144.**

Detection of Single Copy Sequences

Hybrisol XR Hybridization Solution enables the detection of single-copy gene sequences in as little as 1.0 µg of genomic DNA, using a 15-min prehybridization and 2-hour hybridization. This solution also offers the flexibility of performing overnight hybridizations, without the background observed with other rapid hybridization solutions. Hybrisol XR joins five other custom Hybrisol formulations for specific applications such as nonradioactive blotting and in situ chromosome hybridization. **Oncor. Circle 145.**

Literature

1995-1996 *Scientific Supplies Catalog* is a 600-page tome with a comprehensive line of supplies and services for mass spectrometers, gas chromatographs, liquid chromatographs, vacuum systems, and accessories for related instruments. **Scientific Instrument Services. Circle 146.**

Norton Performance Plastics Corporation: The Innovative Source for Peristaltic Tubing is a comprehensive brochure designed to help users of peristaltic pumps select the proper tubing for their applications. **Norton Performance Plastics. Circle 147.**

Membrane Filtration and Chromatography Catalog is an 80-page offering of more than 600 products and includes an applications guide. **Amicon. Circle 148.**

Laboratory Equipment for the Life Sciences includes a diverse array of standard and hard-to-find supplies for biomedical research. **World Precision Instruments. Circle 149.**

If You Need a Lab Out Here describes the features and applications of the SpectroChem 100, a notebook-size near-infrared spectrophotometer. **AnalytiChem. Circle 150.**

Newly offered instrumentation, apparatus, and laboratory materials of interest to researchers in all disciplines in academic, industrial, and government organizations are featured in this space. Emphasis is given to purpose, chief characteristics, and availability of products and materials. Endorsement by *Science* or AAAS is not implied. Additional information may be obtained from the manufacturers or suppliers named by circling the appropriate number on the Readers' Service Card and placing it in a mailbox. Postage is free.

The RNA analysis source

Ambion offers a complete range of kits and reagents for RNA analysis including:

Ribonuclease Protection Assay—Ten Times More Sensitive Than A Northern

For single tube, high sensitivity RPAs use the RPA II™ Kit. And for precious samples the Direct Protect™ Lysate RPA Kit allows probing directly in cell lysates without prior RNA isolation.

S1 Nuclease Protection

The S1 nuclease protection assay is now in convenient kit form. The S1™-Kit provides function tested solutions and controls necessary for analysis and mapping of RNA with DNA probes.

Ambion is the first company to offer RPA and S1 nuclease protection assay kits.

Novel technology has been incorporated into each kit to bring you state of the art speed, efficiency, and ease of use.

Contact us today for information on our full range of products for RNA analysis.

(512) 445-6979 (512) 445-7139 FAX

(800) 888-8804

Ambion

Innovative Products for RNA Analysis

Circle No. 32 on Readers' Service Card

Science

PERSONNEL PLACEMENT

LINE CLASSIFIED ADVERTISEMENTS

Deadlines: Ads are due by Thursday, 10 a.m., 2 weeks prior to the issue date. *Science* is published each Friday, except the last Friday of the year. Call for holiday deadlines. Ads must be submitted in writing.

How to Submit a Classified Ad:

Prepare double-spaced typewritten copy. Do not include any abbreviations. *Science* will edit and typeset ads according to *Science* guidelines. Include billing information, and desired publication date. Available categories: Positions Open, Meetings, Announcements, Courses and Training, Search Firms. *Science* cannot provide proofs of typeset line ads.

Mail, FAX or Email materials to:

Science Classified Advertising
1333 H Street, N.W., Room 814
Washington, DC 20005
Telephone: 202-326-6555
FAX: 202-682-0816

Internet Email: science_classifieds@aaas.org
(please include telephone number in email correspondences)

Rates: Ads are \$43 per line; \$430 minimum. One line equals 52 characters and spaces; centered headings equal 32 characters and spaces. A 3% cash discount is granted to all prepaid ads. Line advertisements are not commissionable.

Estimates: *Science* will provide a cost estimate for line ads. This is an approximate cost only. Allow for variation between estimated lines and actual typeset lines and resulting final cost. Purchase orders must allow for some degree of flexibility and/or adjustment.

Ads from Outside the U.S.: A discount of \$30 will be offered to advertisers making payment in U.S. dollars by checks drawn on U.S. banks. Contact Gordon Clark at +44 1223 302 067 (telephone) or +44 1223 576 208 (FAX).

Credit Cards: *Science* accepts American Express, MasterCard and VISA. Discount does not apply to credit cards.

Cancellations: Deadline for cancellation is 10 a.m., Tuesday, 10 days prior to issue date.

DISPLAY PERSONNEL ADVERTISEMENTS

For rates and info. for fractional display ads call:

Bethany Ritchey
Recruitment Display Advertising
Telephone: 202-326-6541
FAX: 202-682-0816

Janis Crowley
Recruitment Advertising Manager
Telephone: 212-496-7704
FAX: 202-682-0816

Gordon Clark
European Recruitment Advertising
Telephone: +44 1223 302 067
FAX: +44 1223 576 208

Science Global Career Network: Unless otherwise instructed, every classified advertisement submitted for publication in *Science* is automatically posted on *Science's* on-line classified advertising service, Science Global Career Network, at no additional charge. Science Global Career Network address:

Gopher: gopher.aaas.org
WWW: <http://www.aaas.org>

Science reserves the right, at its discretion, to edit or decline to publish advertisements submitted to it.

POSITIONS OPEN

ASSISTANT PROFESSOR MOLECULAR BIOLOGY/PHYSIOLOGY OF AGING

The Department of Physiology and the Sanders Brown Center on Aging at the University of Kentucky College of Medicine invite applications for a tenure-track position at the **ASSISTANT PROFESSOR** level. We seek an individual who will establish a strong research program which emphasizes the use of molecular biological approaches to the study of age-related changes in physiological functions and who will participate in our teaching program. Special consideration will be given to candidates who complement existing strengths of the department which include molecular, cellular and integrative aspects of neuro, endocrine, renal, respiratory and cardiovascular physiology. Interactions with other faculty within the Department and the Center on Aging, College of Medicine, School of Biological Sciences, College of Agriculture and the Markey Cancer Center provide a particularly stimulating research environment.

Applicants must have a Ph.D. or M.D. and at least three years of postdoctoral experience. Interested individuals should send curriculum vitae, a detailed statement of past experience, future research plans and three letters of reference to: **Dr. Phyllis M. Wise, Chair, Department of Physiology, College of Medicine, University of Kentucky, Lexington, KY 40536-0084.** Review of applications will begin on December 1, 1995.

Women and minority candidates are encouraged to apply. The University of Kentucky is an Affirmative Action/Equal Opportunity Employer.

ASSISTANT, ASSOCIATE OR FULL PROFESSOR

University of Wisconsin-Madison

Applications are invited for a junior or senior **TENURE-TRACK FACULTY** position in the Department of Neurological Surgery at the University of Wisconsin Medical Center. Applicants should have a Ph.D. with appropriate training in neurobiology, molecular biology and/or physiology. Applicants will be expected to develop an independent research program with extramural research support to study the cell and molecular biological aspects of ischemic neuronal injury and brain trauma. Applicants will be expected to collaborate and interact with clinician-scientists in the neurological surgery group. Joint appointments in basic science departments are encouraged. Salary and start-up package will be commensurate with experience of the candidate. Please send a curriculum vitae, a summary of research plan and the names of at least three references to: **Dr. Robert J. Dempsey, M.D., Department of Neurological Surgery, University of Wisconsin Medical School, H4/342 Clinical Science Center, 600 Highland Avenue, Madison, WI 53792-3232.** Unless confidentiality is requested in writing, information regarding the applicants must be released upon request. Finalists cannot be guaranteed confidentiality. *The University of Wisconsin is an Affirmative Action/Equal Opportunity Employer.*

FACULTY POSITION CELL CYCLE REGULATION

The Department of Molecular Genetics, Biochemistry, and Microbiology invites applications or nominations for an **ASSOCIATE/FULL PROFESSOR** in cell cycle regulation. The Department includes 28 full-time faculty having strong research programs in gene and chromosome structure; regulation of gene expression, development and differentiation; human and mouse genetics; membrane structure, function and transport; intracellular trafficking; molecular and cellular immunology; pathogenic mechanisms; and structural biology. We are also the lead department in the NHLBI-sponsored Program of Excellence in Molecular Biology of the Heart and Lung. The department supports an active graduate program and maintains core facilities including those for the production of transgenic and knockout mice and DNA synthesis and sequencing. All these factors contribute to a collegial atmosphere which amplifies the excellence of all our research programs. Interested applicants should submit curriculum vitae, brief description of research program, and the names of three qualified references to: **Jerry B. Lingrel, Ph.D., Professor and Chair, Department of Molecular Genetics, Biochemistry, and Microbiology, University of Cincinnati College of Medicine, 231 Bethesda Avenue, Cincinnati, OH 45267-0524.**

The University of Cincinnati is an Equal Opportunity Employer.

POSITIONS OPEN

STATISTICAL/POPULATION GENETICIST

The Medical University of South Carolina (MUSC) offers a tenure-track position as **ASSISTANT** or **ASSOCIATE PROFESSOR** with co-appointment in the Department of Medicine (Division of Endocrinology, Diabetes, and Medical Genetics) and the Department of Biometry and Epidemiology. The ideal candidate will have a Ph.D. or M.D. degree and an established research program in statistical or population genetics related to human disease with or without an involvement in molecular genetics. He/she would maintain an independent research program and participate in ongoing activities at MUSC, notably the genetic epidemiology of diseases affecting African-Americans. The candidate will be invited to participate in the development of a world-class family registry for positional cloning of diabetes and obesity genes, in linkage analyses and study design, and in genetic epidemiology components complementing other large population-based studies. Send curriculum vitae, statement of research interests, and references to either co-chair of the search committee: **Dr. Tim Garvey, Director, Division of Endocrinology, Diabetes, and Medical Genetics, Telephone: 803-792-2529; FAX: 803-792-4114; Email: tim.garvey@musc.edu,** or **Dr. David Hoel, Chair, Department of Biometry and Epidemiology, Telephone: 803-792-2262; FAX: 803-792-1123; Email: david.hoel@musc.edu,** MUSC, 171 Ashley Avenue, Charleston, SC 29425. *Equal Opportunity/Affirmative Action Employer.*

ASSISTANT/ASSOCIATE/FULL PROFESSOR Microbiology (Two Positions)

Bacteriology/Immunology/Immunoparasitology

These **TENURE-TRACK POSITIONS** are available January 1, 1996. Candidates should have a Ph.D., M.D., D.V.M., D.D.S., or equivalent degree and at least two years of postdoctoral training. Preference will be given to applicants with research interests in bacteriology, involving basic cell biology, or in immunology/immunoparasitology. The appointees are expected to conduct vigorous independent research and to teach microbiology to students of medicine, dentistry, and other health-related professions. Laboratory space and start-up support will be provided. Salary is negotiable. Interested persons should submit curriculum vitae, brief descriptions of research interests, and the names and addresses of three references. All materials should be sent to: **Dr. John Hay, Professor and Chairman, Department of Microbiology, School of Medicine and Biomedical Sciences, State University of New York at Buffalo, 138 Farber Hall, Buffalo, NY 14214.** Deadline for receipt of applications is December 31, 1995. *State University of New York is an Affirmative Action/Equal Opportunity Employer.*

ASSISTANT PROFESSOR. Department of Pathology, University of Virginia Health Sciences Center, Charlottesville, Virginia. A position is available for a Ph.D. with at least three years of postdoctoral experience in molecular biology related to cancer. The individual would be expected to develop a vigorous, externally funded research program for the study of the molecular genetics of prostate cancer.

Applicants should send a curriculum vitae, a detailed research proposal for the molecular genetic study of prostate cancer, names, addresses, and telephone numbers of three references, and copies of the last three most significant publications to: **Henry F. Frierson, Jr., M.D., Department of Pathology, Box 214, University of Virginia Health Sciences Center, Charlottesville, VA 22908.** *The University of Virginia is an Equal Opportunity/Affirmative Action Employer.*

HARVARD UNIVERSITY DEPARTMENT OF CHEMISTRY Assistant Professorship in Inorganic Chemistry

Applicants are invited to apply for an **ASSISTANT PROFESSORSHIP** in inorganic chemistry. Applicants should arrange to have three letters of recommendation sent independently and should provide a curriculum vitae, a list of publications and outlines of two future research projects. Applications and supporting materials should be sent no later than 1 November 1995 to: **Professor Charles M. Lieber, Chairman of the Faculty Search Committee, Department of Chemistry, Harvard University, 12 Oxford Street, Cambridge, MA 02138-2902.** *Harvard University is an Affirmative Action/Equal Opportunity Employer and welcomes applications from women and minority group members.*

Geron is the first biotechnology company to focus exclusively on the development of therapeutic agents for age-related diseases emerging from new advances in molecular and cellular gerontology. These diseases include atherosclerosis, senile dementia, age-related immune suppression and cancer. Please join us in one of the following:

Research Associate — Protein Purification

The Protein Chemistry group works to understand the mechanisms involved in regulating cellular senescence. The qualified candidate must have a BS or equivalent along with 2+ years' laboratory experience in protein chemistry. Experience in protein purification and characterization, enzymatic assays, standard molecular biology techniques and handling of radioisotopes is required.

Postdoctoral Position — Molecular Biology, Human Telomerase

Geron has recently cloned the RNA component of the human enzyme. This postdoctoral position will investigate the biochemistry and molecular biology of human telomerase (a ribonuclear protein whose activity is associated with immortalization and tumorigenesis). You will participate in on-going efforts to define the interaction of the RNA and protein components, as well as identify and clone the remaining protein components of the enzyme. A thorough background in molecular techniques, including library screening and DNA sequencing is required. Experience with RNPs and RNA-protein interactions would be an asset.

Our innovative research company offers a competitive salary, benefits and stock incentive program. Please send your resume to: Geron Corporation, Attn: Human Resources Dept., 200 Constitution Drive, Menlo Park, CA 94025. EOE.



THE ROBERT A. WELCH FOUNDATION 39TH CONFERENCE ON CHEMICAL RESEARCH NANOPHASE CHEMISTRY

October 23-24, 1995

Adam's Mark Hotel, Houston, Texas

MONDAY, OCTOBER 23

RICHARD J. V. JOHNSON, Chairman of the Board of Directors
W. O. BAKER, Introductory Remarks
ROBERT A. LAUDISE, Preface

SESSION I

JEAN-MARIE P. LEHN, "Towards Supramolecular Nanochemistry through Self-Assembly"
LOUIS E. BRUS, "Perspectives on Nanochemistry"
RICHARD E. SMALLEY, "Chemistry of Clusters"
LAWRENCE DAHL, "New Frontiers in High Nuclearity Transition Metal Cluster Chemistry"

SESSION II

TAKAYOSHI KOBAYASHI, Discussion Leader
HOWARD REISS, "From Colloids to Clusters"
R. STEPHEN BERRY, "Cluster Dynamics; Potential Surfaces"
A. PAUL ALIVISATOS, "Nanocrystals and Phase Transitions"
J. FRASER STODDART, "Molecular Nanostructures"

TUESDAY, OCTOBER 24

SESSION III

MARYE ANNE FOX, Discussion Leader
GEORGE M. WHITESIDES, "Self-Assembled Monolayers and Lithography"
THOMAS E. MALLOUK, "Self-Assembly of Nanostructures from Inorganic Building Blocks"
CHARLES T. KRESGE, "Molecular Sieves as Hosts for Nanophases - Design, Preparation and Properties"
STEPHEN S. MANN, "Molecular Tectonics in Biomineralization and Biomimetic Materials Chemistry"

1995 WELCH AWARD IN CHEMISTRY LUNCHEON

ROBERT H. ABELES, "Novel Inhibitors of Thiol & Serine Proteases"
JEREMY R. KNOWLES, "The Anatomy of an Enzyme"

SESSION IV

ALLEN J. BARD, Discussion Leader
JAY K. TRAUTMAN, "Near Field Optics in Nanostructures"
DONALD M. EIGLER, "Molecular Movement in Nanophase Dimensions"
ROBERT M. WESTERVELT, "Quantum Behavior in Nanoparticles"
HEINRICH ROHRER, "The Nanometer Age: Chance and Challenge"

ADVANCE REGISTRATION FORM

<input type="checkbox"/> I will attend the conference.		<input type="checkbox"/> I will attend the luncheon.	
Dr. Mr.			
Mrs. Ms.			
	(Last)	(First)	(Middle)
Position			
Organization			
Department			
Address			

The conference is open to all and there is no registration fee. Advance registration will be acknowledged and accepted in order of receipt, to within the capacity of the available space. Please make your hotel reservations directly with the Adam's Mark Hotel at 800-436-2326 or 713-735-2701.

Return the above form by October 9 to:

The Robert A. Welch Foundation
4605 Post Oak Place, Ste. 200
Houston, Texas 77027
713-961-9884 Fax: 713-961-5168

POSITIONS OPEN

MOLECULAR/CELLULAR PHYSIOLOGIST IN MUSCLE CONTRACTION/ CELL MOTILITY

Department of Physiology and Biophysics
University of Illinois at Chicago

The Department of Physiology and Biophysics seeks a tenure-track faculty member at the level of **ASSISTANT PROFESSOR** or **ASSOCIATE PROFESSOR**. We are seeking candidates with interests in molecular and cellular aspects of muscle contraction and cell motility. Applicants must have a doctoral degree, and several years of postdoctoral experience, and should be prepared to carry out independent research and to participate in the teaching activities of the department. Applicants must be able to teach mammalian physiology to graduate and health professional students, and to develop an advanced graduate-level course in their area of interest. Strengths of the department include molecular physiology of muscle contraction/cell motility, signal transduction and neurophysiology, molecular endocrinology, and epithelial transport biology. Applicants should send curriculum vitae and bibliography, a statement of current research interests, and the names of three references to: **Dr. R. John Solaro, Department of Physiology and Biophysics, M/C 901, University of Illinois College of Medicine at Chicago, 835 South Wolcott Avenue, Chicago, IL 60612-7342.**

The University of Illinois is an Equal Opportunity/Affirmative Action Employer.

Biochemistry **FACULTY POSITION**: San Francisco State University, Department of Chemistry and Biochemistry invites applications for a tenure-track **ASSISTANT PROFESSORSHIP**, to begin fall 1996. Applicants must have a Ph.D. degree in Biochemistry (postdoctoral experience preferred). Candidates must be committed to excellence in teaching and research, and are expected to initiate a fundable research program involving undergraduates and M.S. students. Areas of research interest include: protein engineering, physical characterization of biochemical macromolecules, and regulation of cellular events at the molecular level. Send curriculum vitae, detailed description of research plans, and three letters of recommendation to: **Biochemistry Search Committee, Department of Chemistry and Biochemistry, San Francisco State University, 1600 Holloway Avenue, San Francisco, CA 94132.** Closing date for application is November 10, 1995. *San Francisco State University is an Equal Opportunity/Affirmative Action Employer.*

NMR SPECTROSCOPIST

The University of Maryland at Baltimore NMR Facility is seeking applications from highly qualified NMR spectroscopists to fill a **RESEARCH ASSISTANT PROFESSOR** position. A Ph.D. and considerable experience in the application of high resolution heteronuclear multidimensional NMR methods is required. The successful candidate will conduct active research and manage the daily operations of a state-of-the-art 600 MHz Bruker DMX spectrometer. Applicants should send a current curriculum vitae and the names of three references to: **Dr. David J. Weber, The Department of Biological Chemistry, The University of Maryland at Baltimore, School of Medicine, 108 North Greene Street, Baltimore, MD 21201.** *Equal Opportunity Employer.*

DEVELOPMENTAL BIOLOGIST

The Department of Biological Sciences at the University of Notre Dame invites applications for a **TENURE-TRACK FACULTY POSITION**. The successful candidate is expected to develop and maintain an active research program in an area of modern developmental biology. Outstanding applicants in all areas of developmental biology will be considered. Teaching responsibilities will be one course per semester and will include an undergraduate course in developmental biology. The University of Notre Dame offers competitive salary and start-up package, and state-of-the-art research facilities (i.e. animal care including a new zebrafish facility, common facilities for peptide and oligonucleotide synthesis and sequencing, NMR, electron and confocal microscopy). Applicants should submit curriculum vitae, a statement of research and teaching interests, and letters from three references by October 15, 1995, to: **Dr. Sunny K. Boyd, Department of Biological Sciences, University of Notre Dame, Notre Dame, IN 46556.** *The University of Notre Dame is an Affirmative Action/Equal Opportunity Employer encouraging women and minorities to apply.*

POSITIONS OPEN

HARVARD UNIVERSITY DEPARTMENT OF CHEMISTRY Assistant Professorship in Organic Chemistry

Applicants are invited to apply for an **ASSISTANT PROFESSORSHIP** in organic chemistry. Applicants should arrange to have three letters of recommendation sent independently and should provide a curriculum vitae, a list of publications and outlines of two future research projects. Applications and supporting materials should be sent no later than 21 October 1995 to: **Professor Elias J. Corey, Chairman of the Faculty Search Committee, Department of Chemistry, Harvard University, 12 Oxford Street, Cambridge, MA 02138-2902.** *Harvard University is an Affirmative Action/Equal Opportunity Employer and welcomes applications from women and minority group members.*

DIRECTOR OF MOLECULAR CARDIOLOGY

The Department of Medicine of Case Western Reserve University is recruiting an outstanding individual for a leadership position at the institution in the area of molecular aspects of hypertension and cardiovascular disease. The department wishes to expand in the area of genetics and/or vascular biology with emphasis on channels, receptors or signal transduction. Applicants should have a M.D. or Ph.D., an established research career and the potential of building a strong research group comprising several junior faculty. In addition to the title of Director of Molecular Cardiology and academic appointment commensurate with his/her qualifications, very competitive space, start up funds and salaries are available.

Submit curriculum vitae, brief statement of research interests, and names of five references to:

**Molecular Cardiovascular Medicine
Search Committee
c/o Dr. Janice G. Douglas, Chief
Division of Hypertension, Room W165
Case Western Reserve University School of Medicine
10900 Euclid Avenue
Cleveland, OH 44106-4982**

Case Western Reserve University is an Equal Opportunity/Affirmative Action Employer. Women and underrepresented minorities are especially encouraged to apply.

ENDOWED PROFESSORSHIP IN PLANT MOLECULAR GENETICS

The Department of Botany at The University of Texas at Austin seeks an internationally recognized scientist currently of associate or professorial rank to hold the **D. J. Sibley Endowed Professorship in Plant Molecular Genetics**. Applicants should have an established, active research program in the broadly defined field of plant molecular biology. This recruitment is part of a university-wide initiative to expand research programs in molecular biology. Applicants should send curriculum vitae, statement of research and teaching interests, the names and addresses of three references, and three to five reprints to: **Dr. Stan Roux, Search Committee, Department of Botany, University of Texas, Austin, TX 78713.** Consideration of applicants will begin October 15, 1995, and continue until a suitable candidate is selected. *The University of Texas, Austin is an Affirmative Action/Equal Opportunity Employer.*

FACULTY POSITIONS Department of Biochemistry

The Department of Biochemistry at Baylor College of Medicine (BCM) invites applications for two **TENURE-TRACK FACULTY** positions—one in X-ray crystallography and one in computational biophysics. This heavily research-oriented department is seeking outstanding scientists who are committed to establishing excellent research programs in an expanding structural biophysics group. BCM provide a unique and interactive community of researchers with strengths in structural, molecular, and cellular biology, in molecular genetics and in molecular medicine. Applicants should send a curriculum vitae, a research plan and three letters of recommendation to:

**Professor Florante A. Quiocho
Faculty Search Committee
Department of Biochemistry
Baylor College of Medicine
One Baylor Plaza
Houston, TX 77030 USA**

Baylor College of Medicine is an Equal Opportunity/Affirmative Action/Equal Access Employer.

POSITIONS OPEN

Veterinary Pathologist. The Department of Microbiology, Pathology, and Parasitology, North Carolina State University seeks a veterinary anatomical pathologist to participate in teaching and research missions of the college. The individual selected to fill this **TENURE-TRACK** position will devote approximately 45% effort to classroom and diagnostic pathology instruction of veterinary medical students in the second and fourth years of the professional curriculum. Approximately 5% effort will be devoted to the betterment of the department, college, and university through participation in departmental meetings and service on committees. The remaining 50% time will be devoted to research activities in toxicologic pathology or host-infectious agent interactions. The individual will develop an extramurally funded research program emphasizing the use of current technology. The scope and impact of research will be sufficient to provide quality research training opportunities for students seeking the Ph.D. degree. Applicants for this position will have D.V.M. (or equivalent) and Ph.D. degrees. Preference will be given to those applicants who are certified by the American College of Veterinary Pathologists. Rank and salary are negotiable. Starting date is July 1, 1996. Applicants should send letter of application, curriculum vitae, and names of three references to: **Dr. John Cullen, Department of Microbiology, Pathology, and Parasitology, College of Veterinary Medicine, North Carolina State University, 4700 Hillsborough Street, Raleigh, NC 27606. Telephone: 919-829-4350 or FAX: 919-829-4455.** Application closing date is January 2, 1996 or until a suitable candidate is chosen.

North Carolina State University is an Equal Opportunity/Affirmative Action Employer.

University of California, San Diego, Department of Chemistry and Biochemistry invites applications for tenure-track and tenured faculty positions in Biochemistry at the **ASSISTANT, ASSOCIATE, and FULL PROFESSOR** levels. Applicants are sought at all levels and will be considered in all areas, but the committee is particularly interested in applicants with an expertise and interest in NMR or X-ray structure determinations. Applicants must have a Ph.D. and a demonstrated ability for creative research and teaching at the undergraduate and graduate levels. Salary commensurate with qualifications and based on University of California pay scale. Positions subject to availability of funds. Applicants should send a curriculum vitae, a list of publications, reprints of up to five representative papers, a summary of research plans and names and addresses of three references to: **Chair, Biochemistry Staffing Committee-S3-162, University of California, San Diego, Department of Chemistry and Biochemistry-0332, La Jolla, CA 92093-0332.** Prompt response is recommended but all applications received by 1 December 1995, or until open positions are filled, will be assured full consideration. All applications are retained for 12 months from date of receipt and are valid for positions that open during that period. *The University of California is an Equal Opportunity/Affirmative Action Employer.*

FACULTY POSITIONS Molecular Biology and Molecular Pharmacology

The Department of Pharmacology and Molecular Biology at The Chicago Medical School is initiating the third phase of faculty recruitment for **TENURE-TRACK POSITIONS** (at all levels) from candidates with expertise in endocrinology, toxicology, oncology or cardiology at the molecular/genetic level. Preference will be given to those candidates with ongoing, funded research program(s). Attractive benefits and start-up funds are available. The school is located in a modern facility adjacent to the very pleasant North Shore community of Lake Bluff, 38 miles from downtown Chicago with proximity to forest preserves and Lake Michigan. The department under new leadership has already recruited several faculty of high caliber. Excellent core facilities and strong graduate program (Ph.D. and M.D./Ph.D.) are available. Please send curriculum vitae, research plans and three names for reference to:

**Dr. Samson T. Jacob, Chairman
Department of Pharmacology and Molecular Biology
The Chicago Medical School
3333 Green Bay Road, North Chicago, IL 60064**

The Chicago Medical School is an Equal Opportunity/Affirmative Action Employer.

**NAVAL RESEARCH LABORATORY
STENNIS SPACE CENTER, MS**

**HEAD, OCEAN DYNAMICS AND PREDICTION BRANCH
OCEANOGRAPHY DIVISION**

The Naval Research Laboratory at the Stennis Space Center (NRL-SSC), one hour east of New Orleans, LA, seeks a Senior level scientist to head its Ocean Dynamics and Prediction Branch. The scientist will head a branch of nationally and internationally recognized scientists in performing basic and applied research in the areas of ocean and ice dynamics, computational numerical techniques, data assimilation, and the analysis of satellite oceanographic data as related to the development of ocean modeling and data assimilation capabilities.

As branch head, the applicant will be responsible for the planning, direction, formulation, and execution of the scientific goals of the branch, the administration of its programs and the supervision of its scientists and personnel. He/she will have the opportunity to pursue and direct research with access to substantial computational facilities: a Cray C90 at SSC; a Thinking Machines CM-200 and CM-5 at NRL-DC; an IBM SP-2 and an Intel PARAGON via the DoD High Performance Computing Network. Excellent facilities for analysis, video animation and graphical display, a satellite receiving and processing system and extensive data bases are also available.

Salary: \$70,482-\$91,629 (GS-15 Supervisory Oceanographer). Because of the interdisciplinary nature of the branch, the applicant should have a diverse background in one of the physical, computational or engineering sciences and substantial numerical computational experience. A Ph.D. is desired. In addition, the applicant should have a documented record of research publications, accomplishments and research team leadership.

U.S. citizenship and the ability to obtain a security clearance is required.

Submit a curriculum vitae, "Optional Application for Federal Employment" (OF-612), references, list of publications and statement of research interest by **29 September 1995** to: Naval Research Laboratory (Code 1870), (Attn: Lou Ann Lott, Annmt. 95-070), Stennis Space Center, MS 39529-5004. To receive a copy of the application form and announcement, please call Lou Ann Lott at (601) 688-5204.

NRL is an equal opportunity employer.

**ASSISTANT PROFESSOR
FRESHWATER/LANDSCAPE ECOLOGY**

Beginning Academic Year 1996-1997

The Harvard University Graduate School of Design has an Assistant Professor position available beginning in the academic year 1996-1997 for a dynamic individual qualified to offer graduate-level instruction in freshwater/landscape ecology. This full-time position may be filled for a fixed initial term, normally of three years, with responsibilities for teaching and scholarship. Candidates should have a record of scholarly research productivity on land/water interactions, an ability to relate research to the design professions, and some teaching experience. A Ph.D and published research in ecology with a focus on streams, rivers, wetlands, or lakes are required. Experience in landscape ecology, aquatic restoration, hydrology, or working with landscape architects and planners is desirable.

Applications are invited before **15 December, 1995** on the application forms available from: Office of Faculty Planning, Harvard University Graduate School of Design, 48 Quincy Street, S203, Cambridge MA 02138, Attn: Richard T. Forman. Fax: (617) 496-5310. Applicants should also include copies of their most relevant publications with their applications.

Harvard is an Equal Opportunity/Affirmative Action Employer.



HARVARD UNIVERSITY

**Graduate School
of Design**

**MICHIGAN STATE UNIVERSITY
DEAN, COLLEGE OF NATURAL SCIENCE**

Michigan State University invites applications and nominations for the position of Dean of the College of Natural Science. Michigan State University, a premier land grant institution and a member of the Association of American Universities, has a student enrollment of approximately 40,000 and is located in an urban-rural setting adjacent to Lansing, the State capital. The University has 14 colleges plus two academic administrative programs in international studies and urban affairs led by deans.

The College of Natural Science consists of 19 academic units and programs in the physical, biological and mathematical sciences, as well as the MSU/DOE Plant Research Laboratory, Kellogg Biological Laboratory, Center for Fundamental Materials Research, Center for Microbial Ecology, Pesticide Research Center, Center for Electron Optics, and the Center for Integrative Studies. The College provides instruction in the natural sciences for all University undergraduates and offers programs of study leading to the B.A., B.S., M.A., M.S., M.A.T., and Ph.D. degrees. Currently, the college consists of about 350 tenure stream faculty and 5,300 majors, about 80 percent at the undergraduate level and about 20 percent at the graduate level. The Dean is the chief academic officer of the college and reports directly to the Provost.

QUALIFICATIONS

MSU is seeking individuals who have demonstrated strong accomplishment in scientific research, strong leadership in administration and education, effective interpersonal skills and a commitment to excellence in natural science teaching, research and service programs. An earned doctorate in a field related to programs of the college is required. Candidates must meet standards for appointment at the rank of professor (with tenure) in an academic department in the college.

SALARY

Salary is competitive and commensurate with experience and qualifications.

APPLICATIONS/NOMINATIONS

Applications/nominations should be submitted as soon as possible and preferably by October 1, 1995. Applications/nominations submitted later will be given all possible consideration, depending on the status of the search process. Women and minority applications/nominations are encouraged. Handicappers have the right to request and receive reasonable accommodation. Nominations or letter of application with curriculum vitae should be sent to:

Dr. William Deal, Chairperson, Search and Rating Committee
Dean, College of Natural Science
Office of the Provost
Michigan State University
312 Administration Bldg.
East Lansing, MI 48824-1046
Telephone Inquiry : (517) 353-8949
FAX: (517) 353-9334; Email: dealw@pilot.msu.edu

Michigan State University is an Affirmative Action/Equal Opportunity Institution

POSITIONS OPEN

CHAIRMAN

Department of Microbiology and Immunology

Indiana University School of Medicine seeks candidates for the tenure-track position of Chairman of the Department of Microbiology and Immunology. Candidates must hold a Ph.D. and/or M.D. degree, have an active research program, and be experienced in medical and graduate education and administration. Send curriculum vitae and references to: **David A. Williams, M.D., Frieda and Albrecht Kipp Professor of Pediatrics, Professor of Medical and Molecular Genetics, and Associate Investigator, Howard Hughes Medical Institute, Chairman, Search and Screen Committee, Indiana University School of Medicine, Fesler Hall 302, 1120 South Drive, Indianapolis, IN 46202-5114.** *Indiana University is an Affirmative Action/Equal Opportunity Employer, Minority/Female.*

SENSORY BIOLOGY

Tenure-track **ASSISTANT PROFESSORSHIP**. We are interested especially in candidates who use physiological, biochemical, or molecular approaches to study chemoreception or mechanoreception in multicellular organisms. The successful candidate will be expected to contribute to undergraduate and graduate instruction and to establish an independent research program. Participation in ongoing interdisciplinary programs is encouraged. A competitive salary, laboratory facilities, and start-up funds are available. Submit a curriculum vitae, statements of research and teaching interests, copies of three representative publications, and at least three letters of reference to: **Sensory Biology Search Committee, T. H. Morgan School of Biological Sciences, 101 Morgan Building, University of Kentucky, Lexington, KY 40506-0225.** Application screening will begin October 13, 1995, and continue until the position is filled.

An Affirmative Action/Equal Opportunity Employer.

TEL AVIV UNIVERSITY Sackler Faculty of Medicine

Seeking candidates for a **TENURE-TRACK** research and teaching position in the Department of Behavioral Sciences, available beginning October 1996.

Applicants should have a Ph.D. or M.D. degree, in Medical Anthropology and/or Medical Psychology, with considerable capacity of research in Behavioral Sciences in the field of Medicine, and with capacity to organize and teach courses in both Hebrew and English. Preference will be given to candidates who have worked in the field, within Medical School(s).

Applicants should submit their applications (including curriculum vitae, list of publications, and at least three letters of recommendation), by October 1995, to: **Dean, Sackler Faculty of Medicine, Tel Aviv University, Ramat Aviv, Tel Aviv 69978, Israel.**

ASSISTANT PROFESSOR

A tenure-track appointment at the level of **ASSISTANT PROFESSOR** is available in the Department of Biochemistry, College of Medicine, University of Saskatchewan. Applicants must have a Ph.D. in plant biochemistry or a related field. The successful candidate will have a strong research potential. Experience in plant biotechnology and related areas is highly desirable. Duties will include research and teaching of biochemistry to undergraduate and graduate students. Effective date of the appointment is to be not later than 1 July 1996. Salary will be commensurate with experience and training.

Please send curriculum vitae and the names of three references by December 15, 1995, to: **Dr. J. F. Angel, Department of Biochemistry, University of Saskatchewan, 107 Wiggins Road, Saskatoon, Saskatchewan, Canada, S7N 5E5.** (Reference Position Number 95T 11-3-6X). *The University of Saskatchewan is committed to the principles of employment equity and welcomes applications from all qualified candidates. Women, people of aboriginal descent, members of visible minorities, and people with disabilities are invited to identify themselves as members of these designated groups in their applications. In accordance with Canadian immigration requirements, priority will be given to Canadian citizens and permanent residents.*

POSITIONS OPEN

ASSISTANT/ASSOCIATE PROFESSORS BIOLOGY

Transylvania University invites applications for **TWO TENURE-TRACK POSITIONS** to teach undergraduate courses; direct student research; develop curriculum. Transylvania is a small, residential liberal arts college. Ph.D. plus teaching experience required. Position one: **Animal Physiologist.** Teaching responsibilities include Animal Physiology, Cell Biology, and General Biology. Position two: **Evolutionary Biologist.** Teaching responsibilities include Evolutionary Biology, Invertebrate or Vertebrate Zoology, and General Biology. Bingham Awards for Excellence in Teaching may provide salary supplements for exceptional candidates or smaller start-up grants for recent Ph.D.s. Send application letter, curriculum vitae, statement of teaching philosophy, and three letters of recommendation by October 15, 1995 to: **Dr. James Miller, Chair, Division of Natural Sciences and Mathematics, Transylvania University, Lexington, KY 40508-1797.** *Transylvania is an Equal Opportunity Employer.*

PROFESSOR AND CHAIRPERSON DEPARTMENT OF ZOOLOGY

Oregon State University invites applications/nominations of accomplished scientists to provide leadership to the Department of Zoology, in both teaching and research. This tenured 12-month position is funded at 1.0 FTE. Salary is negotiable, commensurate with qualifications and experience. Appointee must have a doctoral degree in zoology, biology or a related discipline and several years' relevant experience at a senior level. Dedication to excellence in undergraduate and graduate education and demonstrated leadership in support of the principles of affirmative action are essential, as is experience in securing and administering research funds. Other administrative experience is desirable. Send a letter of intent, and a curriculum vitae, including a list of publications, to: **Dr. John L. Fryer, Chair, Department of Microbiology, 220 Nash Hall, Oregon State University, Corvallis, OR 97331-3804.** Telephone: 503-737-1834; FAX: 503-737-0496; Email: fryerj@ccmail.orst.edu. Review of files will begin December 1, 1995. *OSU is an Affirmative Action/Equal Employment Opportunity Employer and has a policy of being responsive to dual-career needs.*

DEVELOPMENTAL BIOLOGIST Department of Biological Sciences Stanford University

We invite applications for a tenure-track position at the **ASSISTANT PROFESSOR** level from candidates investigating the mechanisms of development in higher eukaryotes. Please submit a curriculum vitae, FAX number, Email address, description of current and future research interests, and statement of teaching experience and interests to: **Professor Virginia Walbot, Department of Biological Sciences, Stanford University, Stanford, CA 94305-5020.** The application deadline is 1 November 1995. Please provide the names, addresses, Email, FAX and telephone numbers of three referees. *Applications from women and members of minority groups are strongly encouraged.*

One or more tenure-track faculty positions at the **ASSISTANT PROFESSOR** level will be available this year. Outstanding applicants at the Associate Professor and Professor level may also be considered. Individuals should have a Ph.D. or M.D. Areas of research within the department include cardiovascular disease, neuroanatomy and neurophysiology, reproductive and developmental biology and wound healing. Teaching responsibilities are negotiable but will be in either Gross Anatomy, Neuroanatomy or Histology. Salaries and start-up funds are competitive. Low crime rate and excellent local schools provide an attractive environment. Review of applicants begins October 15, 1995 but applicants will be considered until the positions are filled. Submit curriculum vitae, career goals and names of three references to: **Dr. A. Martin Gerdes, Chair, Department of Anatomy and Structural Biology, University of South Dakota School of Medicine, 414 East Clark Street, Vermillion, SD 57069-2390.** *USD is an Equal Employment Opportunity/Affirmative Action Employer. Women and minorities are encouraged to apply.*

POSITIONS OPEN

POSTDOCTORAL SCIENTIST Viral Immunology

Position available October 1, 1995 for two years (renewable) to study coronavirus-myeelin cross-reactive T cells in multiple sclerosis patients. Ph.D. or M.D./Ph.D. graduate with strong background and interest in cellular and/or molecular immunology required. Minimum starting salary \$25,000 per year, plus benefits. Send curriculum vitae with bibliography and names and telephone numbers of three references to: **Dr. Pierre Talbot, Armand-Frappier Institute, University of Quebec, 531 boulevard des Prairies, Laval, Quebec, Canada H7N 4Z3.** Telephone: 514-687-5010 ext. 4406; FAX: 514-686-5531; Email: Pierre.Talbot@iaf.quebec.ca.

POSTDOCTORAL TRAINING Immunobiology of Normal and Neoplastic Lymphocytes

This NIH-sponsored program offers training in a wide variety of cancer related areas of immunology including immune recognition, regulation, and tolerance; lymphocyte development; cell signaling and adhesion; and cancer immunotherapy. A brochure describing the research interests of the 24 primary trainers in the program is available on request.

Positions are open immediately for Ph.D. graduates and for those who expected to graduate in the next year. Applicants must be U.S. citizens or permanent residents. Interested candidates should send curriculum vitae and names of three references to: **Dr. Yvonne Paterson, Program Director, Department of Microbiology, 1033 Blockley Hall, University of Pennsylvania Medical Center, Philadelphia, PA 19104-6076.** FAX: 215-898-9557; Email: paterson@A1.mscf.upenn.edu. *Women and minorities are urged to apply. The University of Pennsylvania is an Equal Opportunity/Affirmative Action Employer.*

POSTDOCTORAL RESEARCH ASSOCIATE positions, funded by NIH, are available September 1, 1995, to study the acute and chronic aspects of the negative effect of alcohol on antihypertensive therapy. Studies will involve hemodynamic and electrophysiologic measurements in chronically instrumented conscious rats as well as central administration of drugs to investigate the role of central sympathetic pathways in the interaction. Candidates must have a Ph.D., M.D., D.V.M. or equivalent degree. Familiarity with neurobiology and autoradiography are desirable. Send curriculum vitae, description of research experience, and names of three references to: **Dr. Abdel A. Abdel-Rahman, Department of Pharmacology, East Carolina University School of Medicine, Greenville, NC 27858.** Federal law requires proper documentation of identity and employability at the time of employment. *Affirmative Action/Equal Employment Opportunity.*

POSTDOCTORAL POSITION

A **POSTDOCTORAL POSITION**, prokaryotic molecular biology, is available immediately to study the influence of global regulatory proteins on *E. coli* gene expression *in vitro*. Experience with techniques in molecular biology/molecular genetics is required. Send curriculum vitae and the names of three references to: **Dr. Irvin N. Hirschfield, Chair, Department of Biological Sciences, St. John's University, 8000 Utopia Parkway, Jamaica, NY 11439.** FAX: 718-380-8543.

POSTDOCTORAL POSITION is available to study mobile genetic elements and associated xenobiotic degradation genes in *Pseudomonas aeruginosa*. Experience in using molecular techniques to study bacterial genetics or physiology is essential. Send a description of research interests, curriculum vitae, and the names and telephone numbers of three potential references to: **Dr. William Hickey, Department of Soil Science, University of Wisconsin, Madison, WI 53706.** Email: wjickey@mac.wisc.edu; FAX: 608-265-2595.

POSTDOCTORAL/ASSOCIATE RESEARCH SCIENTISTS

Positions are available to study molecular consequences of mtDNA mutations which result in human diseases. Strong background in molecular genetics, cell biology, or protein chemistry required. Great opportunity for creative scientist. Send curriculum vitae and names of references to: **Michael P. King, Ph.D., Department of Neurology, Columbia University, 630 West 168th Street, New York, NY 10032.** *An Equal Opportunity/Affirmative Action Employer.*

**EXECUTIVE OFFICER
THE PROTEIN SOCIETY
(Part-Time Position)**

The Protein Society invites applications for the position of Executive Officer. The Society's headquarters are located at the Federation of American Societies for Experimental Biology campus in Bethesda, Maryland. The Society is separately incorporated and manages its own administrative and financial affairs.

The Executive Officer works with the President and with the Council, which is the governing body of the Society, to coordinate, manage, and administer the activities of the Society. The Executive Officer also helps to set policy and program priorities; works with the editor of *Protein Science*, the official journal of the Society, in the publication of society-related announcements; provides strong and effective advocacy for related priorities of the Society with the Congress, Federal Agencies, and with elected officials and the public; develops liaisons with other professional societies; provides support to the membership; prepares and edits announcements of society-related activities and coordinates the management of the annual meeting and other meetings with other activities of the Society.

The Protein Society was formed in 1986 and has heretofore functioned without an Executive Officer. We envisage that this will be a half-time appointment.

Preferential consideration will be given to individuals with the following qualifications: experience in management (of a department, research office, or nonprofit organization), and formal training in an area related to protein science. Additional information is available from the address below.

Please forward your resume by October 1, 1995, with a covering letter detailing specific examples of relevant past success and the names of three individuals willing to provide letters of reference to:

**FASEB Human Resources
Chair, Search Committee for Executive Officer
of the Protein Society
9650 Rockville Pike
Bethesda, MD 20814-3998**

An Equal Opportunity Employer

STAFF SCIENTIST Sequencing Group, Human Genome Center

The Human Genome Center (HGC), Life Sciences Division, at Lawrence Berkeley National Laboratory (LBNL) is seeking an investigator to manage a group dedicated to the development of production sequencing methodologies. This group, consisting of 1-2 senior research associates, will interact extensively with both research and production groups in HGC to increase the effectiveness of the Center's high throughput sequencing efforts. Additional interactions will include collaborative projects with the Center's Automation and Instrumentation and Informatics Groups.

Qualified candidates will possess a Ph.D. in molecular biology or related field; be familiar with genome research and DNA sequencing; and possess a computational background with Macintosh, IBM PCs, and Sun workstations running the UNIX operating system. Management experience desired.

Please send a curriculum vitae; a list of publications; and the names, addresses and telephone numbers of three references to: **Group Leaders, Human Genome Center, Life Sciences Division, c/o Lawrence Berkeley National Laboratory, Staffing Office, Job #JSCI3725, One Cyclotron Road, Bldg. 938A, Berkeley, CA 94720.**

*LBNL is an affirmative action/equal-opportunity employer.
Minorities and women are encouraged to apply.*



ERNEST ORLANDO LAWRENCE
BERKELEY NATIONAL LABORATORY

NEUROSCIENTIST POSITIONS

The Department of Anatomy and Neurobiology at Colorado State University has tenure track openings for three neuroscientists at the level of Assistant Professor or higher. The Department is an integral part of the campus-wide Program in Neuronal Growth and Development. Successful applicants will contribute to Department and Program teaching, which includes courses in the undergraduate, graduate and professional veterinary medicine curricula. Areas of teaching need include developmental neurobiology, human gross anatomy, neuroanatomy and related areas.

Successful applicants will be expected to maintain an extramurally-funded research program. The applicants' research should complement interests of the Department and Program which include structure and function of membrane receptors and ion channels; neural integration, particularly at the cellular level; and disorders of the nervous system. Preference will be given to applicants whose research employs techniques of molecular biology or digital imaging.

Closing date for applications is October 15, 1995; the search may be extended. Preferred start date July 1996. Send CV and names of three references to: **Chair, Search Committee, Department of Anatomy and Neurobiology, Colorado State University, Fort Collins, CO 80523.** CSU is EEO/AA employer. E.O. Office: 25 Spruce Hall, Fort Collins, CO 80523.

THE UNIVERSITY OF TEXAS - HOUSTON HEALTH SCIENCE CENTER



TENURE TRACK FACULTY POSITIONS available June 1996, for an expanding departmental focus in **SIGNAL TRANSDUCTION**. Individuals working in the general area of **KINASES AND PHOSPHATASES**, are especially encouraged to apply, but outstanding applicants in all areas of research are welcome. Candidates must be using state-of-the-art approaches to define molecular mechanisms affecting cell regulation. Responsibilities include the development of a funded, internationally recognized research program and participation in medical and/or graduate education. Positions are in the Texas Medical Center, a superb research environment that includes the UT-Houston Health Science Center, Baylor College of Medicine, and M.D. Anderson Cancer Center. Further information can be obtained at our www site "<http://farm4.med.uth.tmc.edu>". Send a cover letter of introduction, CV, 2-3 page summary of research plans, and names, addresses, and phone numbers of 4 potential references to **Dr. Fernando Cabral, Department of Pharmacology, University of Texas Medical School at Houston, P.O. Box 20708, Houston, Texas 77225.** Review of applications will begin on October 10, and continue until the positions are filled. *The University of Texas is an Equal Opportunity Employer. Women and minorities are encouraged to apply.*

Washington WASHINGTON UNIVERSITY • IN-ST. LOUIS

Department of Genetics

The Department of Genetics plans to hire several new faculty members. Applications for junior level, tenure track faculty positions are invited. Current interests of department include:

- 1) model systems
- 2) mammalian genetics
- 3) computational biology
- 4) quantitative genetics

Responsibilities include establishment of a strong and interactive research program and a commitment to graduate and/or medical student education.

Applicants should send a curriculum vitae and a statement of current and future research plans and arrange for the submission of three letters of reference by November 15 to:

Robert Waterston, M.D., Ph.D.
Search Committee
Department of Genetics
Box 8232

Washington University School of Medicine
4566 Scott Avenue
St. Louis, MO 63110

POSITIONS OPEN

POSTDOCTORAL FELLOWSHIP

Molecular Therapeutics, Hepatitis C Virus and RNA Binding Proteins

To study the Hepatitis C virus (HCV) RNA polymerase, develop model systems to study HCV replication and use molecular modeling to design novel HCV therapeutics. In addition, studies of protein/mRNA cap interactions and the use of that knowledge to design agents that selectively regulate the expression of specific mRNA. Interdisciplinary interactions with colleagues in the Chemistry Department and Centers for Disease Control are available. **Dr. Curt H. Hagedorn**, 2101 Woodruff Memorial Research Building, Molecular Therapeutics Program—Winship Cancer Center, Emory University School of Medicine, Atlanta, GA 30322. Email: chagedo@bimcore.emory.edu; FAX: 404-727-5767.

POSTDOCTORAL POSITION

COR Therapeutics, Inc. is a publicly-held biopharmaceutical company focused on the discovery and development of novel therapeutics for the treatment of severe cardiovascular disease.

Postdoctoral fellowships at COR are basic research positions: original research and rapid presentation and publication of results is expected.

Positions are available immediately to study basic mechanisms of integrin signal transduction with a focus on signaling to and from GPIIb-IIIa in platelets. Applicants should have a strong background in biochemistry or molecular biology. Please send curriculum vitae, a statement of research experience and career goals, and the names, addresses and telephone numbers of three references to: **Dr. David R. Phillips**, COR Therapeutics, Inc., 256 East Grand Avenue, South San Francisco, CA 94080.

POSTDOCTORAL POSITION available immediately to work on an American Heart Association funded project to study cellular and molecular aspects of L-type calcium channel plasticity in sympathetic neurons. Techniques used in the lab include whole cell and single channel patch clamping, Northern blot analysis and RNase protection assay. Some experience in molecular biology is desirable. Please send curriculum vitae, names of three references and a brief description of your research interests to: **Ann Rittenhouse**, Department of Physiology, University of Massachusetts Medical Center, 55 Lake Avenue, North, Worcester, MA 01655. FAX: 508-856-5997. *The University of Massachusetts is an Affirmative Action/Equal Opportunity Employer.*

Three **POSTDOCTORAL POSITIONS** available immediately to join an expanding group of laboratory scientists studying cellular and molecular biology of RNA virus infection. Experience in virology not essential. These positions require a strong background in immunology, cell biology (receptor and signal transduction), or molecular biology. Mail or FAX curriculum vitae with your telephone/FAX numbers to: **Hideo Sumiyoshi**, Ph.D., Yale Arbovirus Research Unit, Department of Epidemiology and Public Health, Yale University School of Medicine, 60 College Street, P.O. Box 208034, New Haven, CT 06520-8034. FAX: 203-785-4782.

POSTDOCTORAL POSITION is available to investigate hormone and fuel regulation of insulin and glucagon genes with emphasis on transcription and post-transcriptional processing using clonal cell lines and isolated pancreatic islets. Candidates should have broad, in-depth experience in techniques of molecular biology. Send curriculum vitae and three reference letters to: **Dr. R. Paul Robertson**, Director, Division of Diabetes, Endocrinology, and Metabolism, University of Minnesota, Box 101 UMHC, 420 Delaware Street S.E., Minneapolis, MN 55455. Email: roberso@lenti.med.umn.edu.

POSTDOCTORAL POSITION is immediately available to study biochemistry of oxidative stress and the aging process. Requires experience in HPLC techniques or protein chemistry. Send curriculum vitae to: **Professor R. S. Sohal**, Department of Biological Sciences, Southern Methodist University, Dallas, TX 75275-0376. Telephone: 214-768-2732; FAX: 214-768-3955. Email: r.sohal@sun.cis.smu.edu.

POSITIONS OPEN

POSTDOCTORAL TRAINEESHIPS

Biomathematics, Biostatistics, Biomedical Engineering

The Curriculum in Toxicology, University of North Carolina, has three immediate openings for **POSTDOCTORAL TRAINEES** to develop mathematical mechanistic models of developmental and neurotoxicological processes, and to investigate statistical inference issues in complex dynamic models. Each position requires a recent Ph.D. in biomathematics, biostatistics, biomedical engineering or a related field, with experience in quantitative modeling of biological systems and, for one position, familiarity with statistical methodology. EPA policy limits awards to U.S. citizens or permanent residents. Send curriculum vitae and names, telephone and FAX numbers of three references to: **Dr. David Holbrook**, Curriculum in Toxicology, University of North Carolina, CB No. 7270, Chapel Hill, NC 27599. For research information, contact: **Dr. Woodrow Setzer**, NHEERL MD-55, EPA, Research Triangle Park, NC 27711. Internet: setzer.woodrow@epamail.epa.gov. *Affirmative Action/Equal Opportunity Employer.*

POSTDOCTORAL POSITIONS, Gene Mapping/Expression, USDA, Agricultural Research Service (ARS), U.S. Meat Animal Research Center, Clay Center, NE has Postdoctoral Research Associate positions available immediately in a group developing high resolution linkage maps for livestock and conducting marker assisted selection. Recent Ph.D. candidates with a strong background in molecular biology techniques are preferred. Excellent facilities and established reference families provide a unique opportunity in this high priority ARS program. Minimum starting salary \$35,578. Send curriculum vitae and names of three references to: **Dr. Craig W. Beattie**, U.S. Meat Animal Research Center, P.O. Box 166, Clay Center, NE 68933. *USDA-ARS is an Affirmative Action/Equal Opportunity Employer.*

UNIVERSITY OF PENNSYLVANIA

A **POSTDOCTORAL POSITION** is available September 15, 1995, to study immune responses of two MHC-congenic lines of chickens to *Salmonella enteritidis*. A recent Ph.D. with cellular immunology background (cell culture, FACS), and an enthusiastic nature are required. Send curriculum vitae and names of three references along with telephone and FAX numbers to: **Dr. Linda H. Keller**, Laboratory of Avian Medicine & Pathology, New Bolton Center, 382 West Street Road, Kennett Square, PA 19348-1692. *Equal Opportunity/Affirmative Action Employer. We encourage minority and women candidates.*

A **POSTDOCTORAL POSITION** is available for an individual with expertise in molecular biology and/or protein chemistry. This ongoing research focuses on signal transduction pathways of macrophage activation and tolerance to bacterial endotoxins.

Send curriculum vitae and two reference letters to: **Dr. James A. Cook**, Professor of Physiology, Medical University of South Carolina, 171 Ashley Avenue, Charleston, SC 29425. Telephone: 803-792-2978; FAX: 803-792-4423; Email: james_cook@smtpgw.musc.edu. Grant requires U.S. citizenship or permanent resident status.

BACTERIAL VACCINES

A **POSTDOCTORAL POSITION** for a two-year, USDA-funded study is available immediately to develop an experimental *Campylobacter* vaccine using an avirulent *Salmonella* vaccine expression system. Experience in molecular biology required. Send curriculum vitae and names of three references to: **Dr. Irving Nachamkin**, Pathology and Laboratory Medicine, University of Pennsylvania, 3400 Spruce Street, Philadelphia, PA 19104-4283. Telephone: 215-662-6651; FAX: 215-662-6655.

RESEARCH ASSOCIATE. Ph.D. training and expertise in ion channel analysis using patch clamp or planar bilayers. **POSTDOCTORAL FELLOW**. Recent Ph.D. in a similar field or in biochemistry/molecular biology of membrane proteins with emphasis on either structure-function or biosynthetic processing and intracellular transport. **Dr. John Riordan**, Mayo Clinic Scottsdale, 13400 East Shea Boulevard, Scottsdale, AZ 85259. *Mayo Clinic Scottsdale is an Affirmative Action Employer and Educator. It promotes cultural diversity in its workforce.*

POSITIONS OPEN

POSTDOCTORAL POSITIONS, Penn State: Two postdoctoral positions are available in cytokine signal transduction. Research includes study of type 1 receptor structure/function; associated tyrosine kinases as effectors of mitogenesis and apoptosis; and nuclear effectors of erythroid development. Fellows will participate in Penn State's Center for Gene Regulation, and Program in Cell and Developmental Biology. Provide curriculum vitae, references, and research interests to: **D. M. Wojchowski**, Penn State, 126 ASI Building, Department of Science, University Park, PA 16802. Telephone: 814-865-0657; FAX: 814-863-6140; Email: DMW1@psu.edu. *An Affirmative Action/Equal Opportunity Employer. Women and minorities encouraged to apply.*

POSTDOCTORAL POSITION MOLECULAR BIOLOGY/IMMUNOLOGY Karolinska Institute, Stockholm, Sweden

A candidate with a strong background in molecular biology, in particular vector constructions and transgenic/knock-out technology, is needed for a rapidly expanding group active in research related to MHC class I mediated antigen presentation and T cell selection.

Send curriculum vitae, brief description of research experience, and two letters of recommendation to: **Dr. Hans-Gustaf Ljunggren**, Microbiology and Tumor Biology Center, Karolinska Institute, S-171 77 Stockholm, Sweden. FAX: +46 8 32 67 02.

NEURAL DEVELOPMENT AND PATTERNING

POSTDOCTORAL POSITIONS open to study molecular aspects of pattern formation in the embryonic CNS. The laboratory is part of the Developmental Genetics Program located at the Skirball Institute of Molecular Medicine. The newly built Institute is part of the New York University Medical Center located in Manhattan, New York.

Applicants should have a strong background in molecular biology, embryology or molecular genetics and hold a Ph.D. degree or equivalent. Applications must be sent to: **Dr. Ariel Ruiz i Altaba**, Developmental Genetics Program, Skirball Institute, New York University Medical Center, 540 First Avenue, New York, NY 10016, USA.

POSTDOCTORAL POSITION BLOOD COAGULATION ENZYMOLOGY

A **POSTDOCTORAL RESEARCH POSITION** is available to investigate the mechanisms and regulation of blood coagulation reactions with protein chemistry, enzyme kinetics, and fluorescence spectroscopy approaches. Interested individuals who are recent Ph.D. degree graduates in biochemistry, biophysics, chemistry, or biology should send a copy of their curriculum vitae and arrange for two letters of recommendation to be sent to: **Dr. Paul Bock**, Vanderbilt University School of Medicine, Department of Pathology, C-3321 Medical Center North, Nashville, TN 37232-2561. *Vanderbilt University is an Equal Opportunity/Affirmative Action Employer.*

POSTDOCTORAL POSITION available immediately for a NIH-funded study of the signals initiating reactive astrogliosis in the central nervous system. Molecular biological background is required; cell culture experience is helpful, but not essential. This position is ideal for an individual with a molecular biological background who wishes to examine biological questions relating to neurobiology. Send curriculum vitae and names of three references to: **Tae H. Oh, Ph.D.**, Department of Anatomy, University of Maryland School of Medicine, 655 West Baltimore Street, Baltimore, MD 21201. *The University of Maryland is an Equal Opportunity/Affirmative Action Employer.*

POSTDOCTORAL POSITION—available now to study antibiotic-resistant enteric bacteria in beef cattle populations in a three-year funded project. Applicants must have background in microbiology and bacterial population genetics. Applicants must demonstrate expertise in PCR, plasmid profiling, or other techniques of bacterial genetic fingerprinting. Review of applications will begin September 15, 1995, and continue until the position is filled. Send or FAX a curriculum vitae, summary of research interests, and three reference letters to: **Dr. John C. Galland**, Food Animal Health and Management Center, VCS-106, College of Veterinary Medicine, Kansas State University, Manhattan, KS 66506. FAX: 913-532-4288.

Roche Bioscience

A Novel Approach to Drug Discovery

One of the newest pharmaceutical research enterprises in the San Francisco Bay Area, Roche Bioscience was formed following the acquisition of Syntex by Roche Holding Ltd. We are located in Palo Alto, California, on an extremely well-equipped campus devoted to drug discovery. Our goal is to identify drug targets and develop drugs that modify the activity of the target. We aim to discover and optimize the drugs and demonstrate their therapeutic potential through clinical proof of concept trials. We actively encourage creativity and innovation in the identification of novel drug targets by way of exploratory research programs.

Research Section Leader/Analgesia

The primary responsibility of this position within the Department of Analgesia will be to supervise Ph.D. and non-Ph.D. staff involved in in vivo testing of novel analgesics. Will facilitate research into the role of specific ion channels and cell surface receptors in pain transmission pathways. Ideal candidate will be a Ph.D. (pharmacology/related discipline) with a strong research record (8-10 years) in pain and analgesia. (Job#SM0901KF1)

Laboratory Head Inflammation Pharmacology

Acts as the primary scientific leader in developing a variety of animal models of inflammation, using broad knowledge of the physiology and pharmacology of animals and their relevance to human disease. Must have demonstrated proficiency in animal model development and the physiological basis of disease. Experience in mediators of inflammation and associated pain responses will be considered highly advantageous. A Ph.D. and 3+ years' experience in pharmacology, physiology or a relevant discipline and strong supervisory skills as well as excellent communication skills are required. (Job#SM0901KF2)

Staff Scientist/Molecular Pharmacology

You will be the primary scientific, technical and practical leader developing high throughput reporter assays for the function of GPC-receptors and other receptors. Assays measuring PLC coupled, AC stimulatory and AC inhibitory GPCRs are needed. Identification, design and execution of complex cloning and cell engineering strategies are required. Ability to establish biochemical assays, troubleshoot technical problems, and creatively overcome throughput limiting issues are required. You must possess a Ph.D. with several years' postdoctoral experience. (Job#SM0901KF3)

Staff Scientist/Neuropharmacology

Opportunity to apply expertise in histological methods and imaging techniques, including receptor autoradiograph, in situ hybridization and immunocytochemistry. A strong background in neuroanatomy or neuropharmacology is required, as well as a Ph.D. and at least 2 years' postdoctoral training. Prefer experience in an industrial setting. (Job#SM0901KF4)

Staff Scientist/Enzymology

Will work on multidisciplinary drug discovery teams providing biochemistry/enzymology expertise to establish and validate in vitro assays, determining mechanisms of enzyme inhibition and appropriate kinetic parameters. A Ph.D. is required with several years' post-doctoral biochemistry experience (emphasis on enzymology) and strong chemistry background. An understanding of molecular biology is desired. (Job#SM0901KF5)

Roche Bioscience offers competitive salaries and generous benefits. For immediate consideration, send your resume to: Roche Bioscience, Professional Staffing, appropriate Job#, 3401 Hillview Avenue, Suite A1-130, Palo Alto, CA 94304. FAX: 415-424-8159. Roche Bioscience is an equal opportunity employer committed to the values of a diversified workforce.



Bioscience


Roche

Our Preclinical Pharmaceutical Research department in Basel is expanding its core group in

Bioinformatics

and has two exciting opportunities at the interface between genomics and computer science.

Candidates for both positions should have a strong interest in the application of computers to the exploration of biological sequences and genomes as well as several years' postdoctoral experience in this field.

For the first position you should be proficient in database management on VMS and UNIX platforms, client/server applications development and integration of bioinformatics software tools. You should be able to write custom programs for sequence and genome analysis in close collaboration with biologists in various fields.

For the second position you will need experience in the use of bioinformatics tools to solve problems in biology from the sequence to the genome level. You will be expected to work with scientists in various research areas and instruct them in the use of these tools.

Located in Basel, Switzerland, we offer a dynamic international research environment and encourages collaboration with academic groups.

If you are interested in either of these positions, please send your handwritten letter of application and resume to Mrs. M. Waespe of our Personnel Department, quoting reference Science 4/95/Wa.

**F. Hoffmann-La Roche Ltd., P.O. Box,
Ch-4002 Basel**

**THE HONG KONG UNIVERSITY OF
SCIENCE AND TECHNOLOGY
DEPARTMENT OF BIOLOGY**



FACULTY POSITIONS

The Hong Kong University of Science and Technology is a publicly-funded research university with strong graduate programmes. The Department of Biology is well-equipped with modern facilities and currently has 23 faculty members. Applications are invited for faculty positions at all ranks in the following areas:

1. Ecology/Marine Biology;
2. Environmental Science/Ecotoxicology;
3. Neurobiology; and
4. Tumor Molecular Biology/Virology.

Applicants must have a Ph.D. degree, postdoctoral experience, and the ability to establish an independent research programme.

Starting salary and rank will depend on qualifications and experience. The annual salary ranges for each rank are: Professor (Minimum US\$129,100), Reader (US\$94,400 - US\$125,400), Senior Lecturer/Associate Professor (US\$90,500 - US\$121,500) and Lecturer/Assistant Professor (US\$58,200 - US\$97,300).

Generous fringe benefits including medical and dental benefits, annual leave, and children's education allowances are provided. Housing benefit and air passages are also provided where applicable. Initial appointments will generally be on 3-year contract terms; a gratuity of 25% of the total basic salary drawn will be payable upon successful completion of contract. Re-appointment will be subject to mutual agreement.

Applications indicating areas applied for, together with a curriculum vitae, a short statement on research interests, and the names and addresses of 3 referees should be sent to: The Chair of Recruitment Committee, Department of Biology, Hong Kong University of Science and Technology, Clear Water Bay, Hong Kong. Fax: (852) 2358-1559 before 31 December 1995.



GLAXO WELLCOME

Centre for Natural Product Research Institute of Molecular and Cell Biology

The Centre for Natural Product Research, located within the Institute of Molecular and Cell Biology of the National University of Singapore, represents a major new initiative in drug discovery. Jointly funded by Glaxo Wellcome, the Singapore Economic Development Board and the Institute of Molecular and Cell Biology, the Centre develops and operates high throughput screens in the search for lead compounds from natural sources. To strengthen our team, we wish to recruit two motivated individuals with a proven track record of scientific achievements, good communication skills and ability to function in a multi-disciplinary setting.

Senior Research Leader/Deputy Head

This position is for a senior scientist with effective managerial skills. Several years of industrial experience in a high throughput screening operation is essential. The successful candidate will have a strong natural products chemistry background but would need to be familiar with and have a good understanding of bioassay and sample supply related issues. He/she will provide scientific and organisational leadership for the Chemistry team as well as coordinate with the Sample Supply and Bioassay groups. A candidate with the appropriate level of seniority and experience may be considered for the position of Deputy Head of the Centre.

Natural Products Chemist

The natural products chemist will be responsible for isolation and characterization of bioactive compounds from plant, microbial and marine sources. The work involves interacting closely with the Sample Supply and Screening groups to ensure the successful progression of bioactive leads. Postdoctoral experience in natural products chemistry, a strong background in modern separation techniques and spectroscopy are essential. Familiarity with high-throughput screening would be advantageous.

These positions offer excellent opportunities for career and personal development. We offer competitive terms of employment. For consideration, please send your curriculum vitae to:

Dr. Miranda G.S. YaP
Head, Centre for Natural Product Research
Institute of Molecular and Cell Biology
National University of Singapore
10 Kent Ridge Crescent
Singapore 0511

Tel: 65-7726824 Fax: 65-7791117

THE EDWARD
JENNER INSTITUTE
FOR VACCINE RESEARCH

The Institute is an entirely new development funded by Glaxo-Wellcome, MRC, BBSRC and the Department of Health. It will be located alongside the Institute for Animal Health, at Compton, Berkshire, have a core staff of 30 scientists and technologists and a total annual operating budget of about £4 million. The aims of the Institute are to improve understanding of the role of protective immune responses in different diseases, to develop better predictive models to study vaccine candidates for human diseases and to provide new insights into vaccine formulation and adjuvants.

The Head of the Institute is Professor Peter Beverley.

GROUP LEADERS

The Institute is seeking to recruit outstanding and innovative scientists as Research Group Leaders. Scientists with experience in immunology, bacteriology, virology, molecular biology and protein structure and expression are invited to apply. Group leaders will be appointed for 5 years in the first instance and will be expected to develop a research programme in accordance with the aims of the Institute and will have first class research facilities and support.

ADMINISTRATOR

The Institute also wishes to recruit an administrator. The successful candidate will play a key role in the development of the Institute including management of the laboratories, installation of equipment, hiring of staff and development of effective liaison with the Institute for Animal Health. Previous experience in laboratory or scientific management would be an advantage. The salary for this post will be dependant on experience and qualifications and will be up to £35,000 for an exceptional candidate.

Those interested in these posts may make informal enquiries and obtain further particulars from Professor Peter Beverley on 0171 380 9326 or fax: 0171 436 2956.

Applicants should include a CV, names of three referees and, in the case of Research Group Leaders, a brief statement of research interests and their relevance to the work of the Institute. Send applications to Professor P C L Beverley, ICRF Tumour Immunology Unit, 91 Riding House Street, London W1P 8BT. The Institute is an equal opportunity employer.

ASSISTANT/ASSOCIATE PROFESSORSHIP IN GEOGRAPHY WITHIN THE FIELD OF REMOTE SENSING AND PHYSICAL GEOGRAPHY.

A position as assistant/associate professor in geography within the field of physical geography and remote sensing, is available as of 1 September 1995 or as soon as possible.

It focuses particularly on the development of methodologies for the assessment of atmospheric/climatic, hydrological, vegetation and/or soil parameters on the basis of satellite images.

Further information about the position may be obtained from the Head of the Institute (tel +45 35 32 25 49. Fax +45 35 32 25 01).

The application marked: 5208/L13-95 and written in English, must formally be addressed to the Rector of the University of Copenhagen and mailed to the Faculty of Science, Blegdamsvej 3, DK-2200 Copenhagen N, Denmark.

Applications, in order to be considered, must have been received by the Faculty of Science no later than October 1, 1995.

Three copies of the application, including a CV, a complete list of publications and copies of those publications (max 10) considered most relevant in the context, should be mailed to the Head of the Institute of Geography, Øster Voldgade 10, DK-1350 Copenhagen K.



Lectureship in Ecology and Biodiversity

Applications are invited for a Lectureship in the Department of Ecology and Biodiversity (RF-95/96-24). Appointment will be made on a two to three-year fixed-term basis.

Applicants should have a PhD degree, teaching experience and a strong research background. Preference will be given to those with expertise in the fields of conservation evaluation, environmental impact assessment, or biological statistics. Applicants with demonstrated research abilities in related fields will also be considered. Ability to apply ecological approaches to real-world problems of conservation and environmental management will be regarded as a particular advantage, as will familiarity with the flora and fauna of the Asian region.

Annual salary [non-superannuable but attracting 15% (taxable) terminal gratuity] is on an 11-point scale, with starting salary depending on qualifications and experience: HK\$454,200 - HK\$758,700 (approx. US\$58,987 - US\$98,533; US\$ equivalents as at 9 August 1995).

At current rates, salaries tax will not exceed 15% of gross income. Children's education allowances, leave, and medical benefits are provided; housing or tenancy allowances are also provided in most cases at a charge of a percentage of salary, currently 7%.

Further particulars and application forms may be obtained from the Appointments Unit, Registry, The University of Hong Kong, Hong Kong (fax: [852] 2559 2058; E-mail: APPTUNIT@REG.HKU.HK). Particulars are also available on the University's listserv accessed by E-mail as "LISTSERV@HKUVM1.HKU.HK" (specify "get apptment filelist" for list of vacant posts).

Closes **25 October 1995**.

The Global Environment: Invitation for Research Proposals By RITE

(1996 entrusted research)

Research Institute of Innovative Technology for the Earth (RITE) is inviting basic research proposals dealing with global environmental problems. Also, research proposals deemed to contribute significantly to the resolution of global environmental problems will be supported by RITE in the form of entrusted research.

1. Category of Research Invited

Basic research aimed at the development of innovative technologies which will contribute to the solution of global environmental problems.

2. Themes of Research Invited

- [A] Research concerning carbon dioxide, methane and other greenhouse gases considered to be the primary causes of global warmings:
- 1) Efficient separation, recovery, disposal, re-use etc. of greenhouse gases.
 - 2) Innovative process technologies which limit greenhouse gas generation.
 - 3) Research concerning enhancement of CO₂ sinks (e.g. ocean sink, underground storage and reforestation through biotechnology).
- [B] Research on other technologies concerning global environmental problems as follows:
- 1) Control of the generation and widespread release of chemical substances, apart from the greenhouse gases mentioned [A], which are seriously detrimental to the environment, or prevention of the generation of those substances.
 - 2) Substitutes for the chemical substances mentioned above.
 - 3) Recycling and effective utilization of materials.

3. Number of Proposals to be Accepted

The number of proposals to be accepted will be determined after the governmental budget for FY 1996 has been confirmed. Twelve new proposals have been accepted for FY 1995.

4. Research Expenses for Entrusted Research

Up to 10 million Japanese yen will be allocated for each proposal, although

the entire cost of a proposal may not be covered by RITE. Research expenses distributed for the proposals accepted in FY 1995 ranged from 2.2 million to 7.5 million Japanese yen per proposals, with an average of 6.25 million yen.

RITE makes advances for research expenses from RITE budget. The new proposals and continuing proposals account for 25% and 50% of research expenses, respectively.

5. Deadline for the Submission of Proposals

Proposals must be received by RITE no later than December 1, 1995.

***Attention: Proposals received post deadline will be returned unprocessed.**

6. Period of the Entrusted Research

Period of the entrusted research will be from April; 1996 to March, 1997. If continuation is deemed necessary, however, RITE may entrust further research.

7. Qualified Research Participants

Individuals or groups engaged in research activities at research institutions etc. are eligible. The applicants' citizenship or proposed site for the research will not be considered as criteria for selection.

8. Application Procedure

Applicants are asked to contact the RITE Secretariat (as below) for further information on documents to be submitted and the format thereof. Facsimile transmission is preferred for speed of communication. Please include relevant Tel. and Fax. numbers with requests.

**Secretariat,
Mr. Deguchi or Mr. Iki
Research Proposal Reception Section
Research Planning Department
RITE
9-2 Kizugawadai Kizu-cho Soraku-gun,
KYOTO 619-02 JAPAN
Tel: +81-774-75-2302 Fax: +81-774-75-2314**



RICHARD DICKINSON CHAIR OF ORAL MICROBIOLOGY

This is a newly established Chair and UMDS Dental School is looking for a scientist with a proven research reputation, together with teaching ability, to be head of the Unit of Oral Microbiology within the Department of Oral Medicine and Pathology. Expertise in molecular microbiology is desirable, together with the ability to establish an internationally competitive research group.

The salary is negotiable within the Professorial range.

Informal enquiries should be directed to Professor FP Ashley, Dean of the Dental School on 0171 955 4204.

UMDS reserves the right to consider for appointment persons other than those who make a formal application.

Further details of the post and application procedure are available from Simon Ford, UMDS, Medical School Office, St Thomas' Hospital, Lambeth Palace Road, London SE1 7EH. Tel: 0171 928 9292 extension 3341 (office hours) or 0171 922 8049 (24-hour answerphone) or fax 0171 928 7964.

Please quote reference: G/DEN/506C.

Closing date for application: 31st October 1995.

*Promoting excellence in
teaching, learning &
research*

*Equality of Opportunity
is School Policy*

UMDS
GUY'S AND ST THOMAS'S
MEDICAL AND DENTAL SCHOOL
(University of London)

icipe Tropical Insect Science for Development

The International Centre of Insect Physiology and Ecology (ICIPE)
Invites applications and nominations for

Deputy Director General

ICIPE is a unique international research and capacity building centre dealing with arthropods in the tropical zones of the world. Its mission is to develop in partnership with end-users and relevant international institutions, environmentally sound and sustainable tools for the management of arthropods as plant pests and vectors of human and animal diseases. Following a major restructuring, the Centre has added an arthropod biodiversity assessment, conservation and utilization programme, among other new initiatives. ICIPE has 50 internationally recruited scientists and 370 support staff. The present annual budget of US\$ 9 million is expected to grow substantially over the next few years.

The successful candidate will provide, in close collaboration with the Director General, intellectual and management leadership for the research and capacity building programmes of the Centre. Candidates must have a PhD in arthropod sciences, with at least 10 years of internationally recognized research experience in the tropics; proven experience in the management of interdisciplinary research teams in a project environment; commitment to partnership with research and education organizations in developing and developed countries; experience in research and institutional management. Of particular value will be a strong background in ecology and/or biochemistry with a good appreciation for the integration of natural and social sciences. Proficiency in written and spoken English is expected, while fluency in French will be an advantage.

Salary and perquisites are internationally competitive.

Applications, with full CV and publication list, including the names and addresses with telephone/fax numbers of three referees should be sent before 29 September 1995 to:

**Dr. Hans R. Herren, Director General
The International Centre of
Insect Physiology and Ecology
Thika Road, Kasarani
PO Box 30772, Nairobi, Kenya
Fax: 254 02 803360**



ICIPE is an equal opportunity employer and encourages applications from qualified women candidates.



**FACULTY POSITION,
U.C.L.A.
PLANT
MOLECULAR BIOLOGY**

The newly formed Department of Molecular, Cell and Developmental Biology, would like to add to existing strength in Plant Molecular Biology by hiring two individuals with proven research and teaching accomplishment in the area of Plant Cell, Molecular or Developmental Biology. One appointment will be at a relatively junior level (starting Assistant through mid-Associate Professor level). The second appointment would be made in connection with our search for a Chair of the Department of Molecular, Cell and Developmental Biology. Successful candidates' research programs will be expected to use molecular and genetic techniques to address questions of fundamental importance for plant cell and developmental biology. The candidates will participate in teaching undergraduates in an integrated life sciences curriculum at both the lower and upper division levels. Applicants should send their c.v., a concise research statement indicating future plans as well as the current program, and a brief statement of teaching interests and experience to: Plant Molecular Biology Search Committee the Department of Molecular, Cell and Developmental Biology, Box 951606, U.C.L.A., Los Angeles, CA 90095-1606. Candidates for a junior position should have three letters of recommendation sent to the same address. Candidates for the senior position should include names of three potential references. The committee will start considering candidates by October 20, 1995. U.C.L.A. is an affirmative action/equal opportunity employer. *Women, minorities, and persons with disabilities are encouraged to apply.*

Neuroendocrinology

At Amgen, you'll discover a research environment that emphasizes collaboration, intellectual honesty, scientific integrity, and a supportive culture. This unique approach has helped us grow into a global biotechnology leader in just fifteen years.

ASSOCIATE DIRECTOR

This individual will help lead a neuropeptides program in generating new therapeutic molecular targets in the areas of obesity and diabetes. Requirements include expertise in the above mentioned areas, a history of published research, and the achievement of academic tenure or a record of progressively responsible management experience in the pharmaceutical industry. The preferred candidate will have experience directing research in receptor pharmacology and molecular biology.

We recognize that diverse perspectives are a key factor in the process of discovery.

At Amgen, you'll find our approach to scientific research as rewarding as it is effective. We offer a highly competitive compensation and benefits package that includes a retirement and savings plan, an on-site fitness center, and three weeks' vacation. Please mail or fax your resume/c.v. to: Amgen, Staffing, Job Code: OXP-SC-NEUR, Amgen Center, Thousand Oaks, CA 91320-1789. Fax: (805) 499-9981. Please consult our on-line Job Bulletin Board at <http://www.bio.com> for information on other career opportunities available at Amgen. Principals only, please.

EEO/AA Employer M/F/D/V

AMGEN®

GLOBAL CAREER OPPORTUNITIES

國立陽明大學 徵校長

國立陽明大學現有醫學院、醫事技術及工程學院、生命科學院暨通識教育中心，為一以醫學為主之綜合大學。因現任校長將於民國八十五年七月任期屆滿，故擬廣徵賢達，凡曾任大學教授五年以上、德學崇隆、行政能力卓越、教育理念清晰，皆歡迎自薦或由他人推薦為候選人。請將候選人簡歷及推薦人之聯絡地址電話在八十四年九月十日前寄至：

「中華民國臺灣省台北市
北投區石牌國立陽明大學
實驗大樓二樓A110室
校長遴選委員會」收。

TEL: 886-2-821-2582

FAX: 886-2-826-4719

E-mail:

dong@dtk1.ym.edu.tw

UNSW

THE UNIVERSITY OF NEW SOUTH WALES AUSTRALIA

BIOMEDICAL MASS SPECTROMETRY UNIT

Professional Officer

Total Remuneration Level 7: A\$44,944 - A\$50,058 per annum (Salary A\$37,978 - A\$42,300 pa plus up to 17% employer superannuation plus leave loading).

The Biomedical Mass Spectrometry Unit, UNSW, is a central facility servicing the faculties of Medicine and Biological and Behavioural Sciences. The Unit is well equipped and has a hybrid instrument, a triple quadrupole mass spectrometer dedicated to ESI and APCI work, two benchtop GCMS systems, and a linear MALDI mass spectrometer. Good HPLC and general laboratory facilities also exist.

A position is available as a professional officer within the Unit, which, after satisfactory completion of a probationary period, becomes a permanent appointment. Applicants must have a PhD in an appropriate discipline, and at least several years experience in applying mass spectrometry to problems in the biological/ biomedical sciences. Applicants must also have demonstrated practical experience with the operation and maintenance of magnetic sector and/or triple quadrupole instruments, and must be able to work cooperatively as part of a team. Experience in LC-MS (particularly ESI and APCI) would be a decided advantage. Specific areas of our research include quantitative mass spectrometry, studies of DNA damage and protein characterisation. Experience in any of these areas would be an advantage. The position involves some service work, and the applicant is required to assist other investigators on campus with their research; however, this appointment does offer the opportunity for some independent research consistent with the objectives of the Unit. A knowledge and understanding of EEO/AA principles is required.

Membership of an approved University superannuation scheme is a condition of employment for this position for new appointees and members of staff appointed after 30 June 1991.

Enquiries may be directed to Associate Professor Mark Duncan, BMSU on telephone 61 2 385 2952, facsimile 61 2 662 4469 or e-mail M.Duncan@unsw.edu.au

Applications close 15 September 1995.

PLEASE QUOTE Ref 462SCI

Application Procedure Unless otherwise stated in the body of this advertisement - applicants should submit a written application QUOTING REFERENCE NUMBER include business and private telephone numbers; a complete resume, (copies of academic transcript and qualifications where appropriate); and the names and addresses and preferably facsimile numbers of at least two referees to: The Recruitment Officer, Human Resources, UNSW, Sydney 2052 Australia by the applications close date.

UNSW is an Equal Opportunity Employer with a smoke free workplace



OREGON HEALTH SCIENCES UNIVERSITY
BIOCHEMISTRY & MOLECULAR BIOLOGY

SENIOR FACULTY

The Department of Biochemistry and Molecular Biology at OHSU, School of Medicine, is undergoing a period of expansion. We are interested in recruiting several senior (Associate Professor, Professor) faculty members who will supply leadership to our developing programs. The areas of particular interest to our faculty include, structure, function and regulation of membrane proteins, physical biochemistry and molecular biophysics. We are interested in scientists who are using modern techniques of biochemistry and biophysics to investigate phenomena at the molecular level.

We will offer attractive salary and start-up packages and the opportunity to play a key role in the development of an interactive department in a stimulating scientific environment set in one of the most desirable areas in the country. Applications and inquiries should be received by October 15, 1995.

Interested candidates should have a sustained record of externally funded research. Send a copy of your curriculum vitae, a description of research interests, and the names of three references to:

Professor Jack H. Kaplan, F.R.S.
Faculty Search (S)
Department of Biochemistry and Molecular Biology
Oregon Health Sciences University
3181 S.W. Sam Jackson Park Road, L224
Portland, OR 97201-3098

OHSU is an Affirmative Action/Equal Opportunity Employer

INORGANIC CHEMIST. The Department of Chemistry at the University of Nebraska-Lincoln invites applications for a tenure-track position in **INORGANIC CHEMISTRY** at the assistant or associate professor level beginning Fall 1996. The position requires a Ph.D. in Chemistry and post-doctoral experience is preferred. The successful candidate is expected to establish an outstanding, internationally-recognized, funded program in any area of **INORGANIC CHEMISTRY** including bioinorganic chemistry and materials science. Quality teaching will be expected in graduate and undergraduate courses. The deadline is November 30, 1995, or until position is filled. Applicants should send a C.V., reprints and research proposal and arrange for three letters of recommendation to be sent to **Professor T. Adrian George, Chair of Search Committee, Department of Chemistry, University of Nebraska-Lincoln, NE 68588-0304. Phone: 402-472-3513; fax: 402-472-2044; Email: george@unlinfo.unl.edu.**

ANALYTICAL CHEMIST. The Department of Chemistry at the University of Nebraska-Lincoln invites applications for a tenure-track position in analytical chemistry at the assistant or associate professor level beginning Fall 1996. A Ph.D. in Chemistry is required and post-doctoral experience is preferred. The candidate will be expected to establish and maintain a vigorous research program and to take part in teaching at the undergraduate and graduate levels. Outstanding candidates from all areas of analytical chemistry are encouraged to apply, with preference being given to those applicants whose research complements that of the current faculty and departmental initiatives in the fields of biotechnology and materials research. This includes candidates with expertise in electrochemistry, optical spectroscopy or chemical sensors. Deadline is November 30, 1995, or until position is filled. Applicants should send a C.V., research plans, reprints, and three letters of recommendation to **Prof. David S. Hage, Chair of Search Committee, Department of Chemistry, University of Nebraska-Lincoln, NE 68588-0304. (Tel: 402-472-2744; FAX: 402-472-9402; Email: dhage@unlinfo.unl.edu).**

The University of Nebraska-Lincoln is committed to a pluralistic campus community through Affirmative Action and Equal Opportunity and is responsive to the needs of dual career couples. We assure reasonable accommodation under the Americans with Disabilities Act—please contact Diane Stevens (Tel: 402-472-2745; FAX: 402-472-9402) for assistance.

POSTDOCTORAL POSITIONS

The Cell Growth, Damage, & Repair Group in the Life Sciences Division at the Los Alamos National Laboratory is seeking Postdoctoral Candidates in the following two areas:

Biochemistry of DNA Repair Enzymes - Investigate biochemical mechanisms of how mammalian cells repair DNA double-strand breaks (DSB). Research areas include identification and characterization of DSB repair enzymes and functional structural analysis of DSB repair enzymes. Applicants must have a strong background in protein expression, purification and biochemical analysis. Experience in molecular biology techniques, in vitro repair assays or protein expression in insect cells, NMR protein structural analysis, or Atomic Force Microscope are desirable. **Regulation of Radiation-Induced G2 Check-Point** - Perform research in DNA damage-induced cell cycle regulation, especially mechanisms of radiation-induced G2 delay/block. Applicants must have strong background in cell cycle regulation and protein biochemistry. Experience in mammalian cell cycle gene expression, cell cycle analysis, DNA damage and repair, or biochemistry analysis are desirable.

Successful applicants will join a highly interactive and multidisciplinary research team with a diverse array of expertise in radiation biology, molecular genetics, cell cycle regulation, structural biology, chromatin structure, and protein biochemistry. For additional technical information contact Dr. David J. Chen by FAX at (505)665-0123 or email: dchen@telomere.lanl.gov.

A Ph.D. completed within the last 3 years or soon to be completed required. Annual starting salaries range from \$41,250 to \$44,570 plus an excellent and comprehensive benefits package. For consideration: submit **TWO COPIES** of a curriculum vitae and publication listing to Ms. Mary Anne With, MS P290, Advertisement PD95041, Los Alamos National Laboratory, Los Alamos, NM 87545. Advertisement # must be referenced in address. Affirmative Action/Equal Opportunity Employer. Individuals with disabilities needing reasonable accommodation should call (505)667-8622. A teletype Device for the Deaf (TDD) is available by calling (505)665-5357. Los Alamos National Laboratory is operated by the University of California for the US Department of Energy.

Los Alamos
NATIONAL LABORATORY

Division Director, NIOSH National Institute for Occupational Safety and Health (NIOSH), within the Centers for Disease Control and Prevention (CDC), has an immediate opening for the Director of the Education and Information Division (EID). The Director EID is responsible for development of recommended criteria for health and safety standards, the development of methods to evaluate and monitor the effectiveness of training programs and outcome measures, the establishment and maintenance of the Institute's libraries and information clearinghouse utilizing various communication modes including the Information Superhighway, and the evaluation of the burden (economic and societal) of occupationally-induced diseases and injuries and the impact of focused interventions. The division also provides or coordinates technical expertise and support to other federal agencies such as OSHA and MSHA. We are searching for a leader in the field of occupational safety and health who has the ability to provide overall guidance and direction for this program to a staff of highly qualified personnel. A strong publication and presentation record is desired, as well as the ability to interact with representatives of other federal, state and local agencies, labor groups, private industry, foreign governments, and academia. This position is for a person with experience in managing a diverse organization. An MD and/or PhD is desired. CDC/NIOSH is an equal opportunity employer and offers a smoke-free environment. Please send resumes or requests for additional information regarding this position to Cincinnati Human Resources Management Office, National Institute for Occupational Safety and Health, 4676 Columbia Parkway, Cincinnati, Ohio 45226.

POSITIONS OPEN



Agricultural Research Service
United States Department of Agriculture

RESEARCH MOLECULAR BIOLOGIST (RESEARCH ASSOCIATE)

USDA-ARS is seeking applicants for a **POSTDOCTORAL RESEARCH ASSOCIATE** in the Plant Resistance/Germplasm Enhancement Research Unit, Insect Biology and Population Management Research Laboratory, Tifton, Georgia. The incumbent will serve as a member of a team and will conduct research to: 1) determine location of the gene(s) for corn resistance to the corn earworm/afatoxin contamination; 2) ascertain the relationship between the gene(s) for resistance to corn earworm from different germplasm lines; and 3) use genetic markers to follow transfer of resistance to elite sweetcorn inbreds. The incumbent must have an indepth knowledge of molecular genetics and techniques to identify genes associated with resistance of plants to insects/plant pathogens. The position is full time, not to exceed two years. Salary is GS-11 (\$35,578). For additional information, contact: **Dr. Robert E. Lynch** at Telephone: 912-387-2375. For information on application procedures and forms contact: **Ms. Margaret Denby** at Telephone: 912-386-3498. Applications must be received by December 1, 1995. ARS is an Equal Opportunity Employer.

MAGNETIC RESONANCE IMAGING/ SPECTROSCOPY RESEARCH SCIENTIST

The Pittsburgh NMR Center for Biomedical Research is searching for an outstanding individual with experience in MRI/MRS to participate in on-going projects in the NMR Center. In addition, there is some opportunity to pursue independent research interests within the context of on-going projects. We are particularly interested in someone with expertise in one or more of the following areas: spectroscopic imaging/spectral editing, novel rf coil design, computational approaches to aid MRI/MRS, post-data processing, or micro-imaging. A Ph.D. in a MRI/MRS related area is required and some postdoctoral experience is preferred. The Center presently has active projects in imaging cell migration to help diagnosis of rejection of transplanted organs, development of functional imaging techniques for use on transgenic mice, and development of ultra-fast imaging techniques. There are a number of active collaborations with groups from the University of Pittsburgh Medical Center. Interested candidates should send a curriculum vitae, representative publications, and three references to: **Chien Ho, Pittsburgh NMR Center for Biomedical Research, Carnegie Mellon University, 4400 Fifth Avenue, Pittsburgh, PA 15213.**

Carnegie Mellon University is an Equal Opportunity Employer.

POSTDOCTORAL RESEARCH ASSOCIATE SENSORY NEUROBIOLOGY

A two-to-three year **POSTDOCTORAL POSITION** is available to study sensory transduction mechanisms in free nerve endings. Current research projects involve electrophysiological, molecular biological, pharmacological, and bioengineering approaches to look at the cellular and molecular mechanisms of cold, mechanical, chemical and pain transduction. A Ph.D. in neurophysiology, neurobiology, biophysics, bioengineering, or a related field is required. Salary range is \$26,000 to \$32,000 depending on experience. Applicants should send a curriculum vitae and the names of three individuals who may be contacted for references to: **Darrell L. Tanelian, Ph.D., M.D., Director, Pain Research Program, Department of Anesthesiology and Pain Management, University of Texas, Southwestern Medical Center, 5323 Harry Hines Boulevard, Dallas, TX 75235-9068.** University of Texas Southwestern Medical Center is an Equal Opportunity/Affirmative Action Employer.

ASSOCIATE RESEARCH SCIENTIST—NYU Medical Center is currently seeking an experienced molecular biologist with expertise in cloning PCR, RNA, and DNA techniques. Familiarity with tissue culture and transfection of cells required. Knowledge of Immunology desirable. The project involves studies in gene expression in human cell lines and primary cultures of T cells and thymocytes. Send curriculum vitae to: **Ms. Maha L. Singh, Professional Recruiter, New York University Medical Center, 550 First Avenue, New York, NY 10016.**

POSITIONS OPEN

POSTDOCTORAL POSITION MOLECULAR BIOLOGY

A position is available immediately to participate in the ongoing projects concentrating on identification and characterization of cis-acting DNA elements and their cognate transcription factors involved in the regulation of hepatocyte growth factor (HGF) and HGFR gene expression (*JBC* 269:4152, 1994; *MCB* 14:7046, 1994; *Oncogene* 9:2045, 1994). A strong background and hands-on experience in molecular biology are essential. Send curriculum vitae and the names of three references to: **Dr. Reza Zarnegar, Department of Pathology, Scaife Hall, University of Pittsburgh, School of Medicine, Pittsburgh, PA 15261.** Call with questions at Telephone: 412-648-8657, or FAX: 412-648-1916; Email: Rezazar@pitt.edu.

BASIC RESEARCH SCIENTIST-IMMUNOLOGIST

The Bay Pines Foundation is recruiting for a basic scientist-immunologist with specific experience in experimental surgery, clinical immunology and allergy and with particular training in molecular aspects of primary immunodeficiency diseases and gene identification. Send curriculum vitae to: **Bay Pines Foundation, P.O. Box 263, Bay Pines, FL 33504.** Equal Opportunity Employer.

MEDICAL WRITING. International medical communications/publishing company seeks individual with strong scientific/medical background, exceptional writing ability, and proven managerial skills. Experience in managing development of high-caliber, medical journal publications preferred. Freelance opportunities also available. Send résumé to: **Personnel-MW, Excerpta Medica, Inc., 105 Raider Boulevard, Belle Mead, NJ 08502.**

SYMPOSIA

SUSCEPTIBILITY AND RISK ASSESSMENT The Third Annual Symposium of the Health Effects Research Laboratory

The Health Effects Research Laboratory (HERL) of the U.S. Environmental Protection Agency is pleased to announce that its Third Annual Symposium will be held November 6-9, 1995, at the North Raleigh Hilton in Raleigh, North Carolina. This third in the Annual HERL Symposium Series on Research Advances in Health Risk Assessment will focus on known factors affecting the susceptibility of humans, experimental animal models, or cell tests systems to environmental toxicants with the goal of refining risk assessment strategies which must consider variable population response. Protection of the "susceptible individual" is a fundamental goal of environmental regulation. Indeed, it is generally accepted that if the susceptible individual is protected, then the entire population will be protected. The format of the HERL Symposium will include invited platform presentations and contributed poster presentations. For more information, please contact:

1995 HERL Symposium
Susceptibility and Risk Assessment
c/o RSD Conference Coordinator
U.S. EPA
HERL, MD-70
Research Triangle Park, NC 27711
Telephone: 919-541-5193
FAX: 919-541-4002

Internet:

MEETING\$MAIL@HERL45.HERL.EPA.GOV

SYMPOSIUM: Therapeutic Antibody Technology 95 October 30 to November 1, 1995; Cathedral Hill Hotel, San Francisco, California. Speakers: C. Barbas, G. Barsomian, C. Borrebaeck, D. Burton, P. Carter, D. Charish, K. Chester, A. Griffiths, A. Grillo-Lopez, K. Hellstrom, A. Hiatt, H. Hoogenboom, P. Hudson, A. Jakobovits, K. Johnson, W. Marasco, G. Mark, J. Marks, S. Morrison, I. Pastan, A. Plückthun, L. Ostberg, J. Reno, M. Rosenberg, T. Scanlon, W. Stemmer, L. Weiner, I. Wilson. Abstracts due October 16, 1995. Organizers: J. Larrick, J. Marks. Sponsor: Palo Alto Institute of Molecular Medicine, 2462 Wyandotte Street, Mountain View, CA 94043. Telephone: 415-694-4996; FAX: 415-694-7717; Email: PAIMM@AOL.COM.

SCIENCE LOGO T-SHIRTS BUY 2 & GET 10% OFF!

Blue type on grey 100% cotton shirt.
For details or an order form, call Corrine Harris at (202) 326-6527, or fax (202) 682-0816. **SCIENCE**

COMPUTER MARKETPLACE

SigmaStat for Windows

The ideal statistical software for the day-to-day data analysis needs of researchers. SigmaStat's unique Advisor recommends the correct test to run, checks the underlying assumptions, runs the test and interprets the results. The perfect statistical software for the nonstatistician!

1-800-4-JANDEL (1-800-452-6335)

415-453-7769 (fax)
sales@jandel.com
2591 Kerner Blvd
San Rafael, CA 94901

Jandel
SCIENTIFIC SOFTWARE

Circle No. 43 on Readers' Service Card

MARKETPLACE



PEPTIDE TECHNOLOGIES

Custom Peptide Synthesis
includes purification & analysis
FOR QUOTES

CALL: 1-800-966-3384

FAX: 301 869-7308

EMAIL: peptech@access.digex.net

Circle No. 34 on Readers' Service Card

Custom Oligos

99¢ per base 50 nmole

No Setup Charge!
No Restrictions!

For Details:
1-800-OLIGOS-1
e-mail: anagen@svpal.org

ANA-GEN
Ana-Gen Technologies, Inc.

Circle No. 41 on Readers' Service Card

Princeton BioMolecules

80% PURE PEPTIDES

Reliability + Quality + Service = Value

80+% purity, 15+mg, free HPLC trace, free MS, no setup fee

Call: 614-487-3663 Fax: 614-487-3664

Your partners in research

Circle No. 37 on Readers' Service Card

Marketplace ads continue on page 1310

MARKETPLACE

Custom Antibodies to Peptides & Proteins

Conjugation, Purification and ELISA Titration Available.



BIO-PRODUCTS, INC.

TEL 1 (800) 481-9737 FAX 1 (619) 788-9694

Circle No. 23 on Readers' Service Card

Quality Antibodies for Signal Transduction Research	Nitric Oxide Synthase	Brain NOS (bNOS) mAb bNOS polyclonal Endothelial Cell NOS mAb ECNOS polyclonal Induc. NOS (iNOS) mAb (iNOS) polyclonal (iNOS) mAb FITC conj.
NOS antibodies from TRANSDUCTION LABORATORIES 1-800-227-4063		

Circle No. 22 on Readers' Service Card

Human Microvascular Cells Complete Cell System

NOW ONLY \$350

NEW DEFINED ANIMAL ENDOTHELIAL CELL SYSTEMS:
Porcine Aortic Endothelial Cell System
Bovine Aortic Endothelial Cell System



800-697-1211

Circle No. 50 on Readers' Service Card



AMITOF'S CUSTOM DNA
\$1.50 per base/50nmole

* No set-up Charge / No Rush Charge

* Shipped within 48 hours

1-800-5-AMITOF Fax 617-782-9352

Circle No. 14 on Readers' Service Card

SCIENTIST Fits Equations To Data

- nonlinear algebraic equations
- implicit algebraic equations
- Laplace transforms
- ordinary differential equations
- various splines/polynomials

1-800-942-6284

MICROMATH

Circle No. 13 on Readers' Service Card

DAKO CORPORATION

NEW! Amplification tools from DAKO

Increase your performance...

For immunohistochemistry:

DAKO CATALYZED SIGNAL AMPLIFICATION (CSA) SYSTEM

For ELISAs:

DAKO AMPAK

Call for more information and a FREE catalog

800/424-0021

Fax: 805/566-6688



DAKO

Circle No. 29 on Readers' Service Card

MARKETPLACE

"THE COMPLETE OLIGONUCLEOTIDE COMPANY"

KEYSTONE FALL SPECIALS!

Large Scale DNA

25 μ mole \$10/base

S-Oligos for Antisense

Free HPLC Purification

dna@keydna.com

800-788-4DNA

Circle No. 45 on Readers' Service Card

YES WE HAVE NO !!!

Complete systems for In Vivo & In Vitro measurements of nitric oxide, oxygen, pH, PCO₂, calcium, potassium, & more!

DIAMOND GENERAL CORP.
3810 Varsity Drive Ann Arbor, Michigan 48108 USA
Telephone (800) 678-9856 or (313) 973 7160 FAX (313)973-0179

Circle No. 49 on Readers' Service Card

ABS Bioreagents™

Custom Receptor Binding, Enzyme, and RNA Preparations Including Human Tissue Preps Cell Culture Services

Analytical Biological Services Inc.
(800) 391-2391 fax (302) 654-8046

Circle No. 30 on Readers' Service Card

CUSTOM	DNA	SYNTHESIS
PURE & SIMPLE		
• Superb Technical Support	\$1^{19*} per base \$10 setup 50 nmole scale	
• Impeccable Quality		
• World's Fastest Service		
• Cap Gel & TOF Mass Spec		
* Some restrictions apply. Please call for details.		
MIDLAND STILL THE UNDISPUTED #1 CUSTOM DNA SYNTHESIS SERVICE		
THE MIDLAND CERTIFIED REAGENT COMPANY Phone 1-800-247-8766 FAX 915-694-2387 email MCRC@WLN.COM		

Circle No. 2 on Readers' Service Card

The Peptide Engineering Specialist

PeptidoGenic

e mail: pkim@ceenet.com
Fax: 510-371-1156
Voice: 1-800-597-7873

Custom Peptide: **\$20**/residue/crude/5days
IonSpray MS Service: MS (\$30), LC/MS (\$250)

No Setup Fee, Free HPLC, IonSpray Mass

Circle No. 18 on Readers' Service Card

MARKETPLACE

World leader in Synthetic DNA and Peptides

Custom	DNA E-Mail: Biosyn@aol.com	
	NO SETUP CHARGE \$1^{19*} • 150 nmole (10 ODU) base • Synthesis Report • 24 hour SHIPPING Visit our Home Page on the Internet (WWW) * upto 30 bases http://www.biosyn.com	
Custom	PEPTIDES ! FREE MASS SPEC ! • NO SETUP charge • Free HPLC Tracing \$20^{00*} • 15 - 40 mgs residue • 8 - 30 residues * desalted • Shipped in 5 days ! Antipeptide Antibodies production services, & more ! Since 1984, serving you with quality products BIO-SYNTHESIS Tel: 800-227-0627 Fax: 214-420-0442	

Circle No. 25 on Readers' Service Card

AUTOMATED DNA SEQUENCING



SEQWRIGHT, LLC
2472 Bolsover #425
Houston, TX 77005
1-800-720-4363
Fax: 713-528-6232

Circle No. 39 on Readers' Service Card

XX IDT INTEGRATED DNA TECHNOLOGIES, INC.
Custom DNA Synthesis \$1.65 / Base 200 nmole Scale No Set-up Fee Column Purified 24 Hour Shipping Q.C. by PAGE on Every Oligo S-Oligo Synthesis Available Volume & Group Discounts Available! E-mail: orders@bbs.idtdna.com telnet bbs.idtdna.com Fax: 1-319-645-2921 Phone: 1-800-328-2661 Major Credit Cards Accepted

Circle No. 1 on Readers' Service Card

Express Peptides

15 mg in 5 days
\$18 per residue

Research Genetics, Inc.
1-800-533-4363

Circle No. 4 on Readers' Service Card

Sigma has been earning
the confidence of
scientific researchers



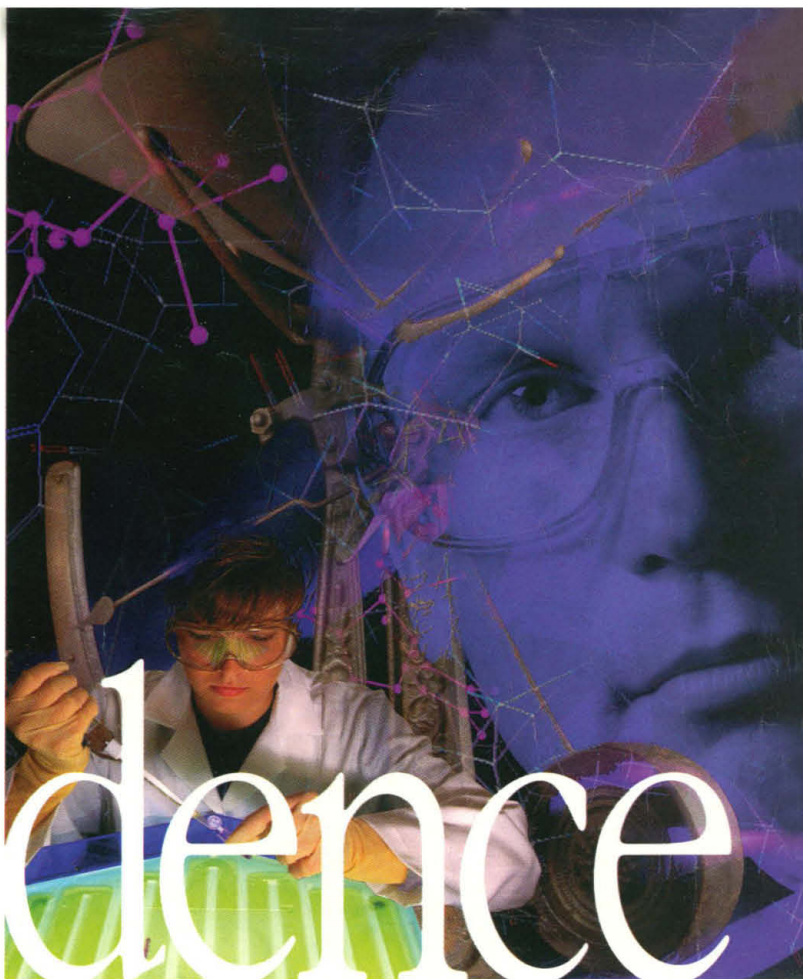
for over fifty years. The reason? Our total
commitment to customer satisfaction.

Nowhere is this dedication more evident
than in our electrophoresis product line.

Use-tested and strictly assayed to ensure

lot-to-lot consistency,

Confidence



Sigma electrophoresis

products provide

reliable and consistent

results in even the most demanding research

environments. And as with all Sigma

products, a technical

support representative

is available to offer

reliable assistance when questions arise

concerning uses and applications.



Electrophoresis Reagents and Markers

Sigma's complete line of electrophoresis reagents includes gel reagents and precast gels, stains, buffers and molecular weight markers. To receive a free copy of our brochure highlighting these products, use the Reader Service Number.



Capillary Electrophoresis Sigma's capillary electrophoresis products include standards and buffers which optimize the separation of many biological molecules including proteins, water soluble vitamins, peptides, dsDNA and oligonucleotides. Our protocols reduce the time required to calibrate your system prior to analyzing unknown samples.

Imaging Products and Equipment

Sigma provides researchers with a single, comprehensive source for Electrophoresis and Imaging equipment and supplies. Highlighted products in this brochure include film, autoradiography supplies, and products for photodocumentation.



SIGMA 
CHEMICAL COMPANY

Address
Phone
Fax
Internet

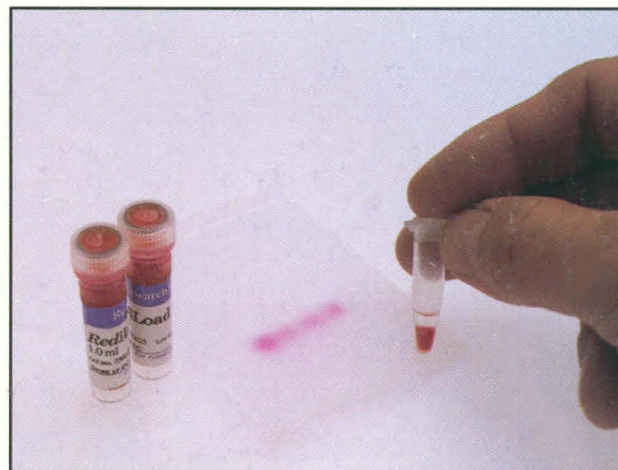
P.O. Box 14508, St. Louis, Missouri 63178
800-325-3010 Collect Outside USA/Canada: 314-771-5750
800-325-5052 Collect Outside USA/Canada: 314-771-5750
<http://www.sigma.sial.com>

AUSTRALIA AUSTRIA BELGIUM BRAZIL CZECH REPUBLIC FRANCE GERMANY HUNGARY INDIA ITALY JAPAN
KOREA MEXICO NETHERLANDS POLAND SPAIN SWEDEN SWITZERLAND UNITED KINGDOM UNITED STATES

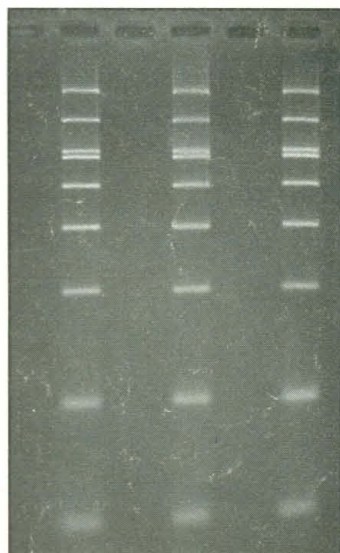
Circle No. 10 on Readers' Service Card

RediLoad • SequaMark • GelMarker

RediLoad is a reagent that can be added to DNA amplification reactions to allow for direct loading of PCR reaction mixtures onto agarose gels after amplification. Simply add **RediLoad** to the PCR reactions mixture, perform the amplification, and load an aliquot of the reaction directly on a gel for electrophoresis. **RediLoad** supplies a PCR compatible density increasing agent and a red tracking dye that migrates at approximately 25 base pairs to monitor the progress of electrophoresis. **RediLoad** can also be used as a replacement for conventional agarose loading buffer.



SequaMark™ is a DNA size marker designed for the specific needs of sequencing and microsatellite marker sizing. The marker is used in standard sequencing reactions using ddT as the exclusive terminator. The products of the resulting reaction will produce a ladder with bands appearing every 10 bases, beginning ten bases from the special sequencing primer provided, and extending to 500 bases. The marker aids in orientation of bands appearing in neighboring lanes on gels and serves as a reference point for proper scoring of sequences, as well as a general control for the quality of the sequencing reactions and the resolving power of each gel run. Kits are available for isotopic, biotin, digoxigenin, and fluorescence based detection systems and include primers, template, and protocols.



GelMarker™ is a molecular weight standard specifically designed to accurately quantitate yields and determine the size of PCR products separated by gel electrophoresis. GelMarker has been designed to give discrete bands of equal intensity and can be used for a more accurate determination of product size. GelMarker also includes a 50bp band which allows ready identification of primer dimer. As an additional convenience, GelMarker is supplied at 50ng/band for quantitative estimation. The product is ready to load with no pre-heating required.

SequaMark and GelMarker are trademarks of Research Genetics.

The Polymerase Chain Reaction (PCR) process is covered by patents owned by Hoffman-LaRoche. Use of the PCR process requires a license. A license for research may be obtained by purchase and use of authorized DNA thermocyclers from the Perkin-Elmer Corp., or by otherwise negotiating a license with Perkin-Elmer.

Research Genetics, Inc.

2130 Memorial Pkwy, SW • Huntsville, AL • 35801

U.S. or Canada 800-533-4363 • U.K. 0-800-89-1393 • FAX 205-536-9016

World Wide Web Homepage <http://www.resgen.com>

Circle No. 9 on Readers' Service Card