



Explore Antarctica

Louise Crossley

Using non-technical language, the author tours the Earth's remotest continent revealing its natural environment—geography, geology, ecosystems—and history, including the gripping race to the pole.

1995 112 pp. 49591-1 Hardback \$39.95/£24.95
45566-9 Paperback \$17.95/£12.95

Resistance to New Technology

Nuclear Power, Information Technology, Biotechnology

Martin Bauer, Editor

Compares resistance to technology across time, nations and technologies showing resistance as a constructive force in technological development and in overcoming the technocratic bias to downplay resistance.

1995 435 pp. 45518-9 Hardback \$74.95/£50.00

Population Genetics of Bacteria

S. Baumberg, J.P.W. Young, E.M.H. Wellington, and J.R. Saunders, Editors

Brings together authoritative articles summarizing the current state of knowledge of the genetic organization of bacterial populations with consideration of the consequences of population structure in clinical practice, environmental situations, and commercial exploitation.

Society for General Microbiology Symposium 52
1995 360 pp. 48052-3 Hardback \$110.00/£55.00

New edition...

Control of Crop Diseases

Second Edition
W.R. Carlile

This new edition has been expanded by the addition of a chapter on the detection and identification of disease, more extensive coverage of fungicides, and consideration of problems of disease control in crops and produce entering international trade.

1995 161 pp. 48345-X
Paperback about \$19.95/£12.95

Dealing in Diversity

America's Market for Nature Conservation

Victoria Edwards

Examines the 'market' for conservation of natural areas in the USA, considering the efforts of both profit and non-profit making ventures. The costs and benefits of protecting natural areas are discussed using specific examples of private sector conservation.

1995 200 pp. 46567-2
Hardback about \$44.95/£29.95

Galileo and the Church

Political Inquisition or Critical Dialogue?

Rivka Feldhay

Questions the traditional 'grand narratives' of science and religion in the seventeenth-century. The known contradictions between the documents of Galileo's 'trials' are reread as expressions of the contradictory nature of the Counter Reformation Church.

1995 311 pp. 34468-9 Hardback \$54.95/£35.00

Fritz London

A Scientific Biography

Kostas Gavroglu

Provides a detailed account of London's life and work in Munich, Berlin, Oxford, Paris, and finally in the United States and examines the process by which scientific theories become legitimized.

1995 323 pp. 43273-1 Hardback \$69.95/£50.00

Bioextraction and Biodeterioration of Metals

Christine C. Gaylarde

and **Hector A. Videla, Editors**

An up-to-date research review of the most important topics in metal corrosion caused by micro-organisms and the use of micro-organisms in the extraction of metals from their ores.

Biology of World Resources Series

1995 388 pp. 41757-0 Hardback \$99.95/£70.00

Cambridge Medical Reviews: Neurobiology and Psychiatry

Volume 3: Neuroimaging

Robert Kerwin, David Dawbarn, James McCulloch,

and **Carol Tamminga, Editors**

Devoted to the important role of and advances in neuroimaging within psychiatry. This series of up-to-date topic-oriented reviews of current research acts as an important information resource for all clinical and laboratory workers in the field.

Cambridge Medical Reviews: Neurobiology and Psychiatry 3

1995 192 pp. 45365-8 Hardback \$89.95/£50.00

Now in paperback...

The Botany of Mangroves

P.B. Tomlinson

Emphasizes the biology of individual species, discussing how mangroves protect shorelines from wave damage as well as providing a nursery for many commercial fishes.

Cambridge Tropical Biology Series

1995 441 pp. 46675-X Paperback \$29.95/£19.95

Eddington's Search for a Fundamental Theory

A Key to the Universe

C.W. Kilmister

Examines how Eddington came to write his last two books, uncharacteristic as they were—in terms of the physics and history of the day—and what value they have to modern physics. The result is an illuminating description of the development of theoretical physics in the first half of the twentieth century.

1995 268 pp. 37165-1 Hardback \$59.95/£35.00

Molecular and Cellular Aspects of Plant Reproduction

Rod J. Scott

and **Anthony D. Stead, Editors**

Discusses the molecular and genetic control of flower morphogenesis in particular species as well as the role and regulation of gene expression in the development of the male and female gametes in plant reproduction.

Society for Experimental Biology Seminar Series 55

1995 328 pp. 45525-1 Hardback \$69.95/£45.00

Human Energetics in Biological Anthropology

Stanley J. Ulijaszek

Considers various ways in which measurements of energy intake, expenditure and balance have been used to study human populations by biological anthropologists and human biologists.

Cambridge Studies in Biological Anthropology 16

1995 244 pp. 43295-2 Hardback \$54.95/£35.00

Available in bookstores or from

CAMBRIDGE
UNIVERSITY PRESS

40 West 20th Street,
New York, NY 10011-4211

The Edinburgh Building
Shaftesbury Road
Cambridge CB2 2RU, U.K.

Call toll-free 800-872-7423

MasterCard/VISA accepted. Prices subject to change.
Web site: <http://www.cup.org>

The Science Linkages in the Community Institute (SLIC)
at the American Association for the
Advancement of Science presents its 1995 workshops:

FUNDING COMMUNITY SCIENCE AND MATHEMATICS PROGRAMS TO TARGET YOUTH NEEDS

A seminar for community-based organizations,
churches, after-school groups and any other
youth serving organization.

Washington, DC	June 16 & 17, 1995
Washington, DC	July 18 & 19, 1995
St. Louis, MO	September 7 & 8, 1995
Dallas, TX	October 13 & 14, 1995
New Orleans, LA	November 16 & 17, 1995
San Francisco, CA	December 7 & 8, 1995

REGISTER NOW!

Call Stephanie Jensen at AAAS, at 1-800-351-7542

Supported in part by the DeWitt Wallace-Reader's Digest Fund

Boehringer Mannheim Worldwide Representatives

Australia

Tel.: (02) 899 7999

Austria

Tel.: (0222) 277 87
DW 420 to 423

Belgium

Tel.: (02) 247 4930

Brazil

Tel.: 55 11 66 3565

Canada

Tel.: (514) 686 7050

Central/Eastern Europe

Tel.: (0222) 277 87

China

Tel.: (852) 2485 7596

Czech Republic

Tel.: (0324) 45 54, 58 71-2

Denmark

Tel.: 49 13 83 42

Finland

Tel.: (90) 429 2342

France

Tel.: 76 76 30 86

Germany

Tel.: 0621 759 8568

Greece

Tel.: (01) 64 96 683-6

Hong Kong, see China

India

Tel.: (22) 837 0794

Indonesia, see Singapore

Ireland

Tel.: 1 800 409 041

Israel

Tel.: (03) 493111

Italy

Tel.: (02) 270 96209

Japan

Tel.: (03) 3432 3155

Malaysia, see Singapore

Mexico

Tel.: (5) 227 8967

Netherlands

Tel.: (036) 539 4911

New Zealand

Tel.: (09) 276 4157

Norway

Tel.: 22 07 65 00

Philippines, see Singapore

Poland

Tel./Fax: (022) 37 42 35

Tel./Fax: (026) 62 63 03

Portugal

Tel.: (01) 417 1717

Singapore

Tel.: 65 479 4111

South Africa

Tel.: (011) 886 2400

South Korea

Tel.: 02 569 6902

(5 lines)

02 562 9947

Spain

Tel.: (93) 201 4411

Sweden

Tel.: 08 98 8150

Switzerland

Tel.: 042 65 4242

Taiwan

Tel.: (02) 736 7125

Thailand, see Singapore

Turkey

Tel.: 1 349 8176, -77, -78, -79

United Kingdom

Tel.: 0800 521578

USA

Tel.: 800 428 5433

NEW FROM THE SCIENCE REPRINT LIBRARY!

The Breast Cancer Susceptibility Gene

**Includes 4 pages of SCIENCE news analysis:
*Breast Cancer Gene Offers Surprises, The Hottest Race
in Cancer Genetics and more!***

**Miki, Y. et al.: A Strong Candidate for the
Breast and Ovarian Cancer
Susceptibility Gene BRCA1**

ALSO INCLUDED:

**Futreal, P.A. et al.: BRCA1 Mutations in Primary Breast and
Ovarian Carcinomas**

**Wooster, R. et al.: Localization of a Breast Cancer Susceptibility Gene,
BRCA2, to Chromosome 13q12-13**

Order reprints of one of most important cancer research papers to be
published in 1994! This SCIENCE reprint features the breakthrough findings from
the research team led by Dr. Mark Skolnick, which links the gene BRCA1 with
breast and ovarian cancer. The reprint includes two other important breast cancer
research papers and SCIENCE news analysis. 20 pages/ Full-color/ **\$5.50***.

**Fax SCIENCE at (202) 682-0816 for an order
form; or call Corrine Harris at (202) 326-6527.
Bulk purchase discounts available.**

* Shipping not included

SCIENCE



Increased productivity

Spiraling beneath a school of fish, several humpback whales use their blowholes to create a circular "net" of bubbles. The open-mouthed whales then swim up through the school and engulf the disoriented prey. This communal "bubble-netting" enables the whales to take in more food than normal surface feeding by individuals.

Boehringer Mannheim's complete line of nonradioactive alternative products can help you generate similar productivity increases in your lab.

Accomplish more in less time

Our nonradioactive kits and reagents let you obtain experimental results faster. Many of them save you hours, even days, per experiment. Even when experimental time remains the same, you save the set-up, clean-up, and record-keeping time required for the use of radioactive compounds.

Alternatives for common techniques

Boehringer Mannheim now offers products that allow you to greatly reduce or completely eliminate the use of radioactive compounds in your lab, creating a safer, less stressful working environment.

Isotope Eliminated	Nonradioactive Alternative
$^3\text{H}/^{51}\text{Cr}$	Cell Proliferation Assays, Cell Death Assays, Reverse Transcriptase Assay
^{14}C	CAT ELISA, Glycoconjugate Analysis System
^{35}S	Biotin <i>In Vitro</i> Translation System
^{125}I	Chemiluminescent Western Blotting Kits
$^{32}\text{P}/^{33}\text{P}$	Genius™ System, Tyrosine Kinase/Phosphorylase Assays

A full-service focus

In addition to quality products, customer-focused services combine to increase the productivity of your lab:

- **Accurate, next business day delivery**, so you have the products when you need them
- **Highly trained technical and sales representatives** to help you attain your laboratory objectives.

Your nonradioactive future is a phone call away

Take the first step towards a safer, more productive nonradioactive laboratory by contacting Boehringer Mannheim for more information. Or call us to place your order at 1-800-428-5433 (514-686-7141 in Canada).

Federal Express trademark used by permission.

© 1994 Boehringer Mannheim. All Rights Reserved.

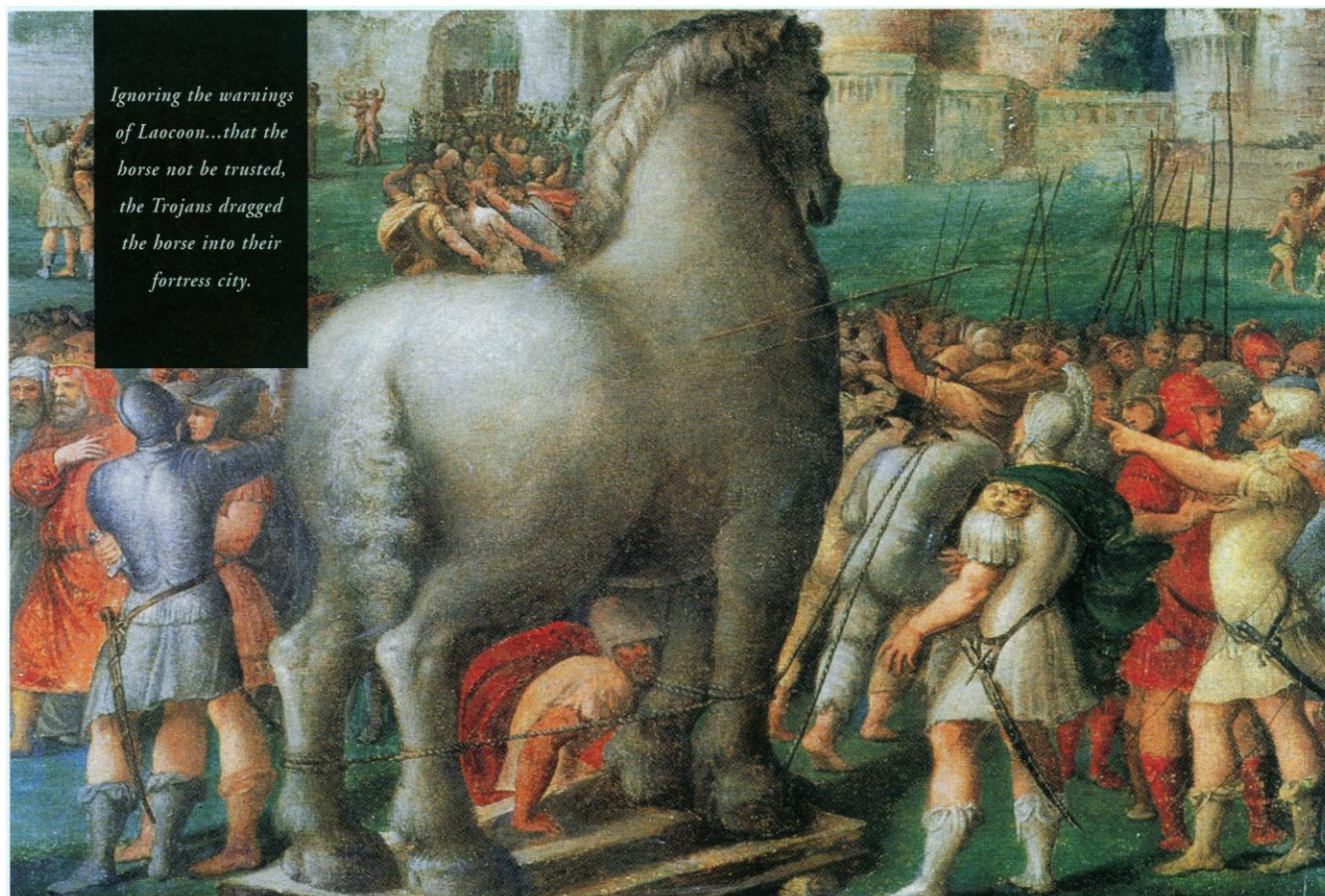


Biochemicals

BOEHRINGER MANNHEIM Corporation

9115 Hague Road
P.O. Box 50414
Indianapolis, IN 46250-0414
USA

Your research already has “unknowns.” *Can you risk another?*



If you open your lab to just any sera, you may be in for a big surprise. Some sera suppliers are going to considerable lengths to convince you that you can have equal quality from foreign sources at less cost. As a responsible researcher, you're not fooled. You want predictable results.

Non-domestic sera from "USDA approved" sources can carry adventitious agents, antibiotics and pesticides that can jeopardize your research. The sera may look fine on the outside, but the fact is, unless you're using Research Sera, you're gambling by bringing an unknown entity into your lab.

When you use Research Sera, you eliminate all concern for the source and the consistency of your sera. At the same time, you minimize your testing efforts in search of optimum performance. How? Because Research Sera is incomparable.

Research Sera is produced from stock in the same five regions here in the United States bottle after bottle, month after month, even year after year. Research Sera is 100% U.S. Origin fetal bovine serum proven by our documents that trace Research Sera back to the owner of the stock. U.S. Origin. Peace of Mind.

Research Sera is accompanied by data that is genuinely useful to the responsible researcher. Research Sera is assayed for what presently appears to be the most important cytokine in cell culture, TGF- β 1. This growth factor stimulates or inhibits nearly all cell types. Furthermore, the IgG levels in Research Sera are reported for you – useful data for those purifying monoclonals and conducting other antibody research. Finally, Research Sera is pre-tested on ten popular cell lines for your convenience and confidence. Valuable information. Peace of Mind.

Lastly, Research Sera is plentiful. How would a multi-year supply of the same lot of Research Sera enhance the consistency of your work? Availability. Peace of Mind.

Doesn't your research have enough variability?
With Research Sera, you'll know exactly what you're bringing into your lab.
Call 1-800-933-0909 for more information.

**Research
Sera**

Another Peak of Excellence Product from Summit Biotechnology 701 Centre Ave. Fort Collins, CO 80526-1843 1-800-933-0909

Circle No. 17 on Readers' Service Card

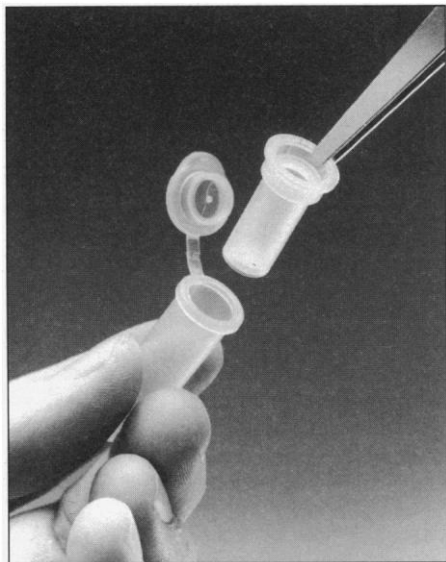
PRODUCTS & MATERIALS

Automatic Slide Stainers

The Histo-Stainer and Cyto-Stainer are compact, stand-alone stainers that provide consistent staining for paraffin sections and exfoliative cell preparations. The internal activated charcoal filter and integrated fume collection system eliminate the need for fume hoods or external ventilation. A micro-processor continually monitors and controls the staining process, producing consistent staining results in as quickly as 8.5 min. It also monitors errors in the pumping system, the air filtration system, and the slide transport mechanism. The capillary staining technology provides high quality and uniform stains. Each stainer is available with or without an automatic coverslipper processing center. **Curtin Matheson Scientific. Circle 138.**

Nucleic Acid Recovery

Ultrafree-MC Probind centrifugal filters are for fast removal of enzymes from up to 500 µl of reaction mixture containing double-



stranded DNA. Upon centrifugation, the enzyme is immobilized on the polyvinylidene membrane and the protein-free DNA can be recovered from the tube in less

than 30 s. There is no denaturation of nucleic acids, no special waste disposal problems, and no need for phenol or chloroform extractions. **Millipore. Circle 139.**

Flow Cytometry System

The automated FACSCalibur flow cytometry system is the only four-color benchtop system that combines both cell analysis and cell sorting applications, according to the manufacturer. The system features touch-pad operation, an automated sample loader, advanced object-oriented software, a broad range of reagents, and an easy-to-use data management system. Routine applications of the system include immunophenotyping, absolute counting, reticulocyte enumeration, and DNA analysis. Advanced applications include rare event analysis, dynamic immunophenotyping, immune function, platelet analysis, stem cell research, molecular flow techniques, and kinetics assays. **Becton Dickinson Immunocytometry Systems. Circle 140.**

DNA Fragment Analysis Kit

The DNA Fragment Analysis Kit, for use in polyacrylamide electrophoresis gels, produces high resolution results with sharp bands. Resolution is 8 base pairs (bp) within 100 to 200 bp, making the method more reliable than agarose electrophoresis. **Pharmacia Biotech. Circle 141.**

Cell Culture Production

The CellCube offers the fastest, most compact system available for high-volume cell culture production, according to the manufacturer. The CellCube not only saves up to four times the space of roller bottles, it cultures faster and more easily. The controlled environment can easily be scaled up to meet full production requirements. Each individual plate in the cube is fed by a flow control orifice, which distributes media evenly

Newly offered instrumentation, apparatus, and laboratory materials of interest to researchers in all disciplines in academic, industrial, and government organizations are featured in this space. Emphasis is given to purpose, chief characteristics, and availability of products and materials. Endorsement by *Science* or AAAS is not implied. Additional information may be obtained from the manufacturers or suppliers named by circling the appropriate number on the Readers' Service Card and placing it in a mailbox. Postage is free.

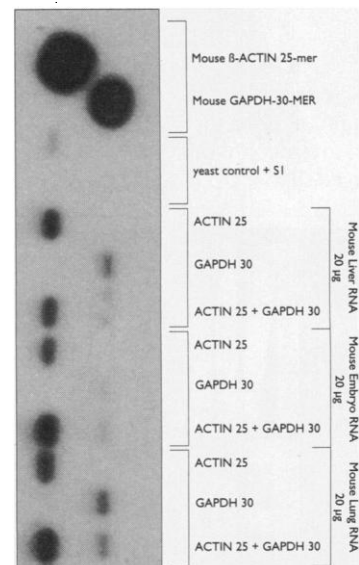
NEW PRODUCTS

The Leading Edge of RNA Technology

S1-Assay

The S1 nuclease protection assay is a frequently applied technique for characterizing mRNA, especially for precisely mapping 5' and 3' ends of transcripts and mapping intron-exon boundaries.

It's now even easier to apply this technique in your laboratory. The Ambion S1-Assay™ Kit has a streamlined, single-tube procedure, and a new, direct-load protocol eliminates the usual ethanol precipitation step prior to loading the sample for gel analysis.



20 µg of total RNA isolated from three tissues of the mouse were probed with two oligonucleotide probes that were 5'-end labeled with ³²P-ATP and used with the S1-Assay Kit. The samples were hybridized overnight and taken through the S1 Nuclease Protection Assay.

*Contact us today for information
on our full range of products
for RNA Analysis.*

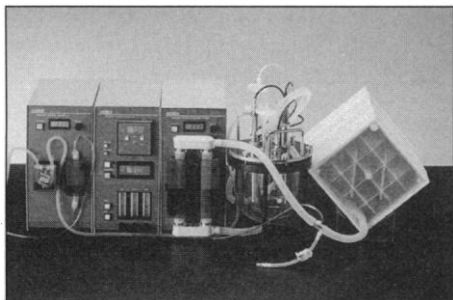
(512) 445-6979 (512) 445-7139 FAX

(800) 888-8804



Innovative Products for RNA Analysis

throughout the assembly. The tissue culture-treated polystyrene growth surfaces, continuously bathed in freshly oxygenated media, create the ideal microenvironment for the rapid proliferation of a monolayer of



cells on both sides of each plate. The constant perfusion of media across the cell layer optimizes the metabolic rate and promotes improved cell growth, protein expression, or virus replication. **Corning Costar. Circle 142.**

Coated Capillaries

New capillary electrophoresis capillaries contain a permanently adsorbed layer of polyvinyl alcohol that shields out negatively charged silanol groups. As a result, the capil-

lary shows virtually no electroosmotic flow over a wide pH range—from pH 2.5 to 9.5. Because the silica surface is covered, many proteins and amines can be analyzed without the peak tailing found in uncoated capillaries. The capillaries can be used in a variety of applications, including protein analysis at physiological pH, isoelectric focusing, pharmaceutical analysis, and ion analysis. **Hewlett Packard. Circle 143.**



Literature

XL Series Scanning Electron Microscopes is a brochure on the features and benefits of a line that incorporates computer technology and Windows software for user-friendly operation. **Philips Electron Optics. Circle 144.**

Fractogel EMD Tentacle Phases for Hydrophobic Interaction Chromatography gives technical details of this method for the isolation of proteins. **Merck. Circle 145.**

VIA (Varian Instrument Applications) is a magazine with articles about a variety of applications for chromatography, spectroscopy, and sample preparation products. A recent issue contains articles on a new sample introduction system for atomic ab-

sorption spectroscopy, improved chromatography software, and more. **Varian Associates. Circle 146.**

GeneWorks Sequence-Centered Analysis Software is an eight-page brochure on a comprehensive program for DNA and protein sequence analysis for the Macintosh. Capabilities include database searching, multiple sequence alignment, circular mapping, and polymerase chain reaction primer design. **IntelliGenetics. Circle 147.**

Columns for Gel Permeation and Size Exclusion Chromatography describes a line of columns for polymer characterization. **Waters. Circle 148.**

High-Resolution Analysis and Purification of Oligonucleotides with the NucleoPac PA-100 Column presents methods for efficient separation of synthetic DNA. **Dionex. Circle 149.**

Sigma.Com is a new newsletter with application information, new product announcements, and other news on the company's services and programs. The premier issue includes articles on a new heparin agarose, the use of BCA Reagent for protein determination, and new products of life science research. **Sigma Chemical. Circle 150.**

NEW! EndNote® Plus For Windows®



More than 85,000 users prefer EndNote, the only Windows bibliographic software that...

- Includes 240 journal styles
- Appends bibliographies automatically to *all* leading word processors: WordPerfect for Windows, Microsoft Word for Windows, and AmiPro
- Allows users to index all fields for high-speed searching
- Allows Macintosh and Windows users to access the same database over a network

New in Version 2.0:

- Term lists to keep track of important terms
- Global editing commands
- Enhanced searching options
- EndLink 2 (sold separately) includes 140 filters to import references from online and CD-ROM services
- Customizable EndLink import filters
- Compatible with Windows 3.1, Windows 95, and Windows NT

\$99.95
limited-time offer*

1 Import references
2 Store references in library
3 Select a journal style
4 Format a bibliography

References

1. Argus, M.V. and S.I. Jones. "Li reflection and wing orientate butterfly species." *J. of Entomol* 222-36, 1994.
2. Billoski, T.V. "South and American Butterflies" in (Ed.) Butterflies (New York & Howells, 1993), pp. 97-124-36, 1993.
3. Whiting, J.R. "Struct of butterfly wings."

Niles & Associates, Inc.
800 Jones Street
Berkeley, CA 94710
Voice: 800-554-3049
E-mail: info@niles.com
Fax: 510-559-8683
http://www.niles.com
Demo available at ftp.niles.com

*This price includes EndLink 2.0 and expires 10/31/95. Offer good in U.S. & Canada only. Contact for eligibility information. Special price not available on Macintosh. Microsoft, Windows and the Windows logo are registered trademarks of Microsoft Corp. All other trademarks are the property of their respective companies.

Science

PERSONNEL PLACEMENT

LINE CLASSIFIED ADVERTISEMENTS

Deadlines: Ads are due by Thursday, 10 a.m., 2 weeks prior to the issue date. *Science* is published each Friday, except the last Friday of the year. Call for holiday deadlines. Ads must be submitted in writing.

How to Submit a Classified Ad:

Prepare double-spaced typewritten copy. Do not include any abbreviations. *Science* will edit and typeset ads according to *Science* guidelines. Include billing information, and desired publication date. Available categories: Positions Open, Meetings, Announcements, Courses and Training, Search Firms. *Science* cannot provide proofs of typeset line ads.

Mail, FAX or Email materials to:

Science Classified Advertising
1333 H Street, N.W., Room 814
Washington, DC 20005
Telephone: 202-326-6555
FAX: 202-682-0816

Internet Email: science_classifieds@aaas.org
(please include telephone number in email correspondences)

Rates: Ads are \$43 per line; \$430 minimum. One line equals 52 characters and spaces; centered headings equal 32 characters and spaces. A 3% cash discount is granted to all prepaid ads. Line advertisements are not commissionable.

Estimates: *Science* will provide a cost estimate for line ads. This is an approximate cost only. Allow for variation between estimated lines and actual typeset lines and resulting final cost. Purchase orders must allow for some degree of flexibility and/or adjustment.

Ads from Outside the U.S.: A discount of \$30 will be offered to advertisers making payment in U.S. dollars by checks drawn on U.S. banks. Contact Gordon Clark at +44 1223 302 067 (telephone) or +44 1223 576 208 (FAX).

Credit Cards: *Science* accepts American Express, MasterCard and VISA. Discount does not apply to credit cards.

Cancellations: Deadline for cancellation is 10 a.m., Tuesday, 10 days prior to issue date.

DISPLAY PERSONNEL ADVERTISEMENTS

For rates and info. for fractional display ads call:

Deborah Cummings
Recruitment Display Advertising
Telephone: 202-326-6541
FAX: 202-682-0816

Janis Crowley
Recruitment Advertising Manager
Telephone: 212-496-7704
FAX: 202-682-0816

Gordon Clark
European Recruitment Advertising
Telephone: +44 1223 302 067
FAX: +44 1223 576 208

Science JOBNET: Unless otherwise instructed, every classified advertisement submitted for publication in *Science* is automatically posted on *Science's* on-line classified advertising service, *Science JOBNET*, at no additional charge. *Science JOBNET* address:

Gopher: gopher.aaas.org
WWW: <http://www.aaas.org>

Science reserves the right, at its discretion, to edit or decline to publish advertisements submitted to it.

POSITIONS OPEN

ASSISTANT PROFESSORS OF ZOOLOGY

The University of Idaho's Department of Biological Sciences invites applications for two **TENURE-TRACK POSITIONS** from candidates with a Ph.D. and postdoctoral experience. The specific areas for which August 1996 openings are anticipated are: 1) Mammalogist/Ornithologist. Teaching responsibilities will include general zoology and mammalogy/ornithology; 2) Fisheries Biologist. Teaching responsibilities will include ichthyology and invertebrate zoology.

Appointments will be at the assistant professor level. Successful candidates will be expected to have a keen interest in undergraduate instruction, to establish extramurally funded research programs and to supervise research at the undergraduate, Master's, and doctoral levels. Applications will be reviewed if received by October 20, 1995.

Applicants should send a statement of research goals, teaching philosophy, curriculum vitae and the names and telephone numbers of three references to: **Julie Monroe, Secretary to the Search Committee, Department of Biological Sciences, University of Idaho, Moscow, ID 83844-3051. Email: jmonroe@aspen.csv.uidaho.edu; http://www.uidaho.edu/Letters_and_Science/BioSci/.** To enrich education through diversity, the University of Idaho is an Equal Opportunity/Affirmative Action Employer.

UNIVERSITY OF WYOMING

Vertebrate Ecological Geneticist or Modeler

The Department of Zoology and Physiology at the University of Wyoming seeks applications for a tenure-track position at the level of **ASSISTANT PROFESSOR**. Teaching responsibilities include an undergraduate course in one of the following areas: fish/wildlife management, population ecology, modeling, or conservation biology; and a graduate course in the incumbent's area of interest. We seek an individual with research expertise in either ecological modeling or population genetics. Modeling can address population dynamics, spatial relationships, or multi-tiered ecological systems that include vertebrates. Research in genetics of animal populations should incorporate the latest molecular approaches, and may address questions about variability and relatedness of animals in ecological, conservation, or evolutionary contexts. The incumbent will be expected to seek extramural support for research, and to carry out an active program of graduate training. A Ph.D. is required and postdoctoral experience desirable. An application, including a letter outlining research interests, curriculum vitae, and three letters of recommendation sent directly from references should be submitted to: **Chair, Wildlife Biologist Search Committee, Department of Zoology and Physiology, P.O. Box 3166, University of Wyoming, Laramie, WY 82071-3166. Telephone: 307-766-4207; FAX: 307-766-5625.** To be considered, application materials must be postmarked by 1 October 1995.

An Equal Opportunity/Affirmative Action Employer.

OKLAHOMA STATE UNIVERSITY Assistant Professor of Pharmacology

The Department of Pharmacology and Physiology, College of Osteopathic Medicine, invites applications from individuals to establish a research program in molecular aspects of pharmacology and teach pharmacology to second-year medical students. Research interests of the department center on neuroscience and cardiovascular and renal physiology and pharmacology. Desirable interests of the applicant include receptor-effector coupling, binding and localization of receptors, and molecular/genetic techniques. Applicants should have a Ph.D. degree in pharmacology and at least two years of postdoctoral experience. Candidates should have a record of scholarly publications, ability to attract extramural funding, and excellent written and oral communication skills. Teaching experience is preferred, and women and minority applicants are especially encouraged to apply. Applicants should send curriculum vitae, a description of research interests, and the names, addresses and telephone numbers of three references by December 1, 1995, to: **Dr. George Brenner, Chair, Department of Pharmacology and Physiology, OSU-COM, 1111 West 17th Street, Tulsa, OK 74107-1898.**

POSITIONS OPEN

ASSISTANT/ASSOCIATE PROFESSORS(S) PLANT PATHOLOGY

Applications are invited for two tenure-track positions focusing on fundamental research concerning plant-pathogen interactions. Successful candidates will be allowed broad latitude in determining particular research directions. However, strong preference will be given in one position for an individual using molecular approaches to the study of prokaryotes and plant diseases in which they are causally involved. In both cases, postdoctoral experience is desirable. One position may be filled at the **ASSOCIATE PROFESSOR** level with an individual who has demonstrated appropriate professional accomplishments. The appointees will be expected to contribute to the instructional program in the department as well as to provide expertise to other departmental efforts. Applicants should send curriculum vitae, transcripts, sample publications, any other evidence of professional accomplishments considered relevant and the names/addresses/telephone numbers of at least three professional references to: **Dr. David A. Smith, Department of Plant Pathology, S-305 Agricultural Science Building, North, University of Kentucky, Lexington, KY 40546-0091. Telephone: 606-257-3901; FAX: 606-323-1961; Email: dsmith@ukcc.uky.edu.** Applications will be accepted until August 31, 1995, or until suitably qualified candidates are found. *The University of Kentucky is an Equal Opportunity Employer. Women and minorities are encouraged to apply.*

INFECTIOUS DISEASES

The Division of Infectious Diseases of the Department of Medicine of Emory University School of Medicine is seeking applications for a new faculty member as part of expansion of the Division's tuberculosis related research activities. The position is at the level of **ASSISTANT/ASSOCIATE PROFESSOR**. Applications are invited from individuals with a basic research focus. The Division currently has strong tuberculosis research programs in epidemiology, molecular epidemiology, hospital and community control of tuberculosis, education and treatment which are supported by grants from the Robert Wood Johnson Foundation and NIH.

The Division also has strong ties with the Centers for Disease Control and Prevention, the Department of Microbiology and Immunology and other basic science departments of the Emory University School of Medicine, and the Yerkes Primate Center. These collaborative resources provide an excellent opportunity for career development.

Applicants should provide a curriculum vitae and names and addresses of three potential references, to: **Dr. David S. Stephens, Director, Division of Infectious Diseases, Department of Medicine, 69 Butler Street, SE, Atlanta, GA 30303.** *Emory University is an Equal Opportunity Employer and applications from women and members of minorities are encouraged.*

The University of Virginia is seeking qualified applicants for a tenure-track **ASSISTANT PROFESSOR** position in the area of organic chemistry, broadly defined. Candidates are expected to establish a high quality productive research program that will attract outside funding and top caliber graduate students and postdoctoral collaborators. Teaching ability at both graduate and undergraduate levels is a prime consideration. Applicants should send a curriculum vitae, copies of reprints/preprints, and a detailed description of research plans no later than November 1, 1995, to: **Professor James A. Marshall, Chairman of Organic Faculty Search Committee, Department of Chemistry, McCormick Road, University of Virginia, Charlottesville, VA 22903.** Applicants should also arrange that three letters of recommendation be sent to the above address by the same date. *The University of Virginia is an Equal Opportunity/Affirmative Action Employer.*

MOLECULAR BIOLOGIST

Stonehill College, a small liberal arts undergraduate institution located south of Boston invites applications for a tenure-track **ASSISTANT PROFESSOR** position in Molecular Biology. Applicants should have a Ph.D. and a strong commitment to teaching and undergraduate research. Would be expected to teach and participate in a team-taught genetics, and molecular and cell biology courses. Send curriculum vitae, statements of teaching and research interest, and three letters of reference by September 30, 1995, to: **Department of Biology, Stonehill College, North Easton, MA 02357.**

POSITIONS OPEN

PLANT MOLECULAR GENETICIST/ MOLECULAR BIOLOGIST University of Nebraska-Lincoln Department of Biochemistry

Seeking candidates for tenure-track, 12-month appointment, **ASSISTANT PROFESSOR** position. Particularly interested in applicants conducting fundamental plant research in areas pertinent but not limited to understanding the molecular/biochemical basis of genome organization and/or gene expression. Will be expected to develop a vigorous, externally funded research program and to teach one course per year at the undergraduate or graduate level. Department housed in the new G. W. Beadle Center, a \$32-million laboratory/greenhouse complex. Requires Ph.D. degree and postdoctoral experience. Send curriculum vitae, one-page statement of research interests, representative reprints, and three letters of reference by 15 September 1995 (or until suitable candidate is found) to: **Dr. Raymond Chollet, Department of Biochemistry, University of Nebraska-Lincoln, Lincoln, NE 68588-0664 USA. Telephone: 402-472-2936; FAX: 402-472-7842.** *University of Nebraska-Lincoln is committed to a pluralistic campus community through Affirmative Action and Equal Opportunity, is responsive to the needs of dual-career couples, and assures reasonable accommodation under the Americans With Disabilities Act.*

Indiana University. The Chemistry Department, Indiana University is soliciting applications for a **JUNIOR PROFESSOR** position in Inorganic Chemistry beginning in the fall of 1996. The appointment could be made at either the tenured or tenure-track level. We are seeking an imaginative and ambitious individual who is capable of establishing an outstanding, vigorous internationally recognized research program in any branch of Inorganic Chemistry, including bioinorganic chemistry, materials science and physical inorganic chemistry. The successful appointee will also be expected to demonstrate an excellent ability to teach inorganic chemistry at both the graduate and undergraduate levels, including general chemistry. Applicants should send a curriculum vitae, a publication list, a copy of each publication and a research proposal to the address below; they should also arrange to have three letters of recommendation sent on their behalf. The deadline is September 15, 1995. Send applications to: **Professor George Christou, Chair of Search Committee, Department of Chemistry, Indiana University, Bloomington, IN 47405-4001.** *Indiana University is an Affirmative Action/Equal Opportunity Employer and especially encourages applications from women and members of minority groups.*

ASSISTANT, ASSOCIATE or FULL PROFESSOR, tenure-track position available. Experience in basic cellular and molecular approaches relevant to anesthesia and pharmacology required, as well as experience in molecular mechanisms of neurotransmitter and drug action in the mammalian nervous and cardiovascular systems, receptor and ion channel structure dissection of ligand-receptor interactions, and the analysis of sensory transduction and pain pathways. Responsible for developing role of basic science expertise in research-oriented anesthesia graduate training consortia involving residents and fellows; with laboratory space. Send curriculum vitae and three reference letters by August 31, 1995, to: **Jeanine P. Wiener-Kronish, M.D., UCSE, Anesthesia and Cellular and Molecular Pharmacology, Box 0624, M-917, San Francisco, CA 94143-0648.** *University of California, San Francisco is an Equal Opportunity/Affirmative Action Employer.*

HARVARD UNIVERSITY DEPARTMENT OF CHEMISTRY Assistant Professorship in Organic Chemistry

Applicants are invited to apply for an **ASSISTANT PROFESSORSHIP** in organic chemistry. Applicants should arrange to have three letters of recommendation sent independently and should provide a curriculum vitae, a list of publications and outlines of two future research projects. Applications and supporting materials should be sent no later than 21 October 1995 to: **Professor Elias J. Corey, Chairman of the Faculty Search Committee, Department of Chemistry, Harvard University, 12 Oxford Street, Cambridge, MA 02138-2902.** *Harvard University is an Affirmative Action/Equal Opportunity Employer and welcomes applications from women and minority group members.*

POSITIONS OPEN

RESEARCH ASSISTANT PROFESSOR, Division of Radiobiology, University of Utah School of Medicine. Position available is 100% research. A Ph.D. and/or M.D., five years of postdoctoral experience and an extensive publication record are required. The successful candidate will be expected to continue and foster a vigorous, externally funded research in the area of *in vivo* models of hard tissue diseases and supervise postdoctoral fellows.

Applicants should send curriculum vitae, a statement of research interest and training, names, addresses and telephone and FAX numbers of three references and copies of most significant recent publications by October 1, 1995, to:

**Dr. Webster S. S. Jee
Division of Radiobiology
Building 586
University of Utah
Salt Lake City, UT 84112
FAX: 801-581-7008**

University of Utah is an Equal Opportunity/Affirmative Action Employer. Women and minorities are encouraged to apply.

UNIVERSITY OF PUERTO RICO Mayagüez Campus Mayagüez, P.R. 00681 Professor in Marine Sciences

A **TENURE-TRACK POSITION** at the Assistant Level, starting August 1995. Candidates will be expected to teach graduate level courses and develop an active research program in one of the following areas: Coral/Coral Reef Biology, Marine Geology, Bio-Optical Oceanography, or Mariculture. Salary: \$29,400 annually, can be augmented with external funding. Ph.D. required; knowledge of English and Spanish desirable. Send statements of research and teaching interests, curriculum vitae, and three letters of recommendation by September 15, 1995, to: **Director, Department of Marine Sciences, University of Puerto Rico, Mayagüez, PR 00681-5000.**

Affirmative Action/Equal Opportunity Employer.

HARVARD UNIVERSITY DEPARTMENT OF CHEMISTRY Assistant Professorship in Inorganic Chemistry

Applicants are invited to apply for an **ASSISTANT PROFESSORSHIP** in inorganic chemistry. Applicants should arrange to have three letters of recommendation sent independently and should provide a curriculum vitae, a list of publications and outlines of two future research projects. Applications and supporting materials should be sent no later than 1 November 1995 to: **Professor Charles M. Lieber, Chairman of the Faculty Search Committee, Department of Chemistry, Harvard University, 12 Oxford Street, Cambridge, MA 02138-2902.** *Harvard University is an Affirmative Action/Equal Opportunity Employer and welcomes applications from women and minority group members.*

ASSISTANT PROFESSOR/University of Minnesota: One individual is being sought as a full-time Assistant Professor (tenure-track) in the Department of Surgery in the area of Wound Healing and Reparative Medicine. Position requires demonstrated involvement in clinical or basic research (accepted or published) in peer-reviewed journals and competence in teaching of students. Candidate must be M.D., licensed to practice medicine in Minnesota, and be Board-eligible or -certified in general surgery. Individual must have completed a general surgery residency and critical care surgery fellowship. Duties will include patient care, teaching, and developing programs in clinical and/or basic research programs in the field of wound healing and reparative medicine at the University of Minnesota Hospital, the V.A. Medical Center, and affiliated hospitals. Please send curriculum vitae by September 5, 1995, to:

**Ms. Mary Jane Towle
c/o Search Committee for
Assistant Professor in Wound Healing
University of Minnesota Hospital, Box No. 195
420 Delaware Street S.E.
Minneapolis, MN 55455**

The University of Minnesota is an Equal Opportunity Educator and Employer.

POSITIONS OPEN

DIRECTOR OF RESEARCH AND COLLECTIONS

The North Carolina State Museum of Natural Sciences invites applications for **DIRECTOR** of Research and Collections, a senior research/administration position. Primary requirements are 1) administration experience, 2) an active research background with systematics collections and museum experience, and 3) demonstrated abilities in good people skills. Applicants should also have demonstrated management abilities, experience in seeking grants and funding for research programs and collections management, a commitment to collection growth and curation, and will be expected to assist in exhibit interpretation planning, and other museum administrative responsibilities as required. This position will be integral to the growth and development of expanding the Research and Collections section as well as play a significant role in developing the overall programs of a new 200,000 square foot Museum. Master's degree (Ph.D. preferred) in biology, zoology, paleontology, or other natural science is required; ability to review and interpret scientific data; and five years of progressive museum-related research and administration experience in a university natural sciences department or natural history museum is preferred. Please submit letter of application and curriculum vitae with bibliography, and references to: **Dr. Betsy Bennett, Director, North Carolina State Museum of Natural Sciences, 102 North Salisbury Street, Raleigh, NC 27603/Department of Environment, Health and Natural Resources; Museum Division.** *An Equal Opportunity/Affirmative Action Employer.*

The Center for Aquatic Ecology invites applications for an **ASSOCIATE RESEARCH SCIENTIST** (postdoctoral), as leader for studies of potential effects of increased commercial navigation traffic on fishes in the Mississippi River (grant funded, three year project). Candidates must hold a Ph.D. in fisheries ecology or closely related discipline, a record of independent research, and expertise in statistics or modeling. Preference to individuals having diverse experience with fishes in a variety of habitats and with supervisory ability. Potential to develop independent research. Field sampling will be conducted at the Alton Field Station near St. Louis, Missouri, but facilities of the Natural History Survey, an affiliated agency of the University of Illinois will be available. Salary range will be \$30,000 to \$38,000 plus benefits. Technical questions to: **Dr. David Wahl, telephone: 217-728-4400.** To apply: send curriculum vitae, a statement of research interests, up to three reprints, and names of four references to: **Jacqueline Sanders, CAE Search, Illinois Natural History Survey, 607 East Peabody, Champaign, IL 61820. Telephone: 217-244-7790; FAX: 217-333-4949.** Applications due September 1, 1995, to insure full consideration. *The Illinois Natural History Survey is an Equal Employment Opportunity/ADA Employer.*

POSTDOCTORAL POSITION NEUROBIOLOGY

Position available to study glutamate receptor-related neuropathologic changes in the hippocampus and related cortical areas. The candidate is expected to work on both human pathologic studies as well as ischemia-related neuronal degeneration in an animal model of global brain ischemia. Previous experience with immunohistochemistry is essential and experience with confocal and/or electron microscopy is desirable. Sophisticated quantitative computer-assisted microscopy will be used for these analyses. Please send curriculum vitae with the names of three references to: **John H. Morrison, Ph.D., Department of Neurobiology, Box 1065, Mount Sinai School of Medicine, One Gustave L. Levy Place, New York, NY 10029-6574.** *An Equal Opportunity Employer.*

Two- or three-year **POSTDOCTORAL FELLOWSHIP** in neuroimmunology available. Applicant should have an M.D. or Ph.D. degree. The successful candidate will have the opportunity to pursue one of the following research areas: neurovirology, neuroimmunology, glial cell electrophysiology and molecular biology, CNS gene therapy or multiple sclerosis. Please submit curriculum vitae and a brief letter of research interest to: **Barry G. W. Arnason, M.D., Chairman, Department of Neurology, The University of Chicago Medical Center, 5841 South Maryland Avenue, MC 2030, Chicago, IL 60637.** *The University of Chicago is an Equal Opportunity/Affirmative Action Employer.*

Tenure-Track And Postdoctoral Opportunities.

The following research training opportunities are currently available at the National Institutes of Health.

Tenure-Track Positions

Assistant Professor Equivalent

Pharmacokinetics and Drug Metabolism

Markku Linnoila, MD, PhD

A position is available for a scientist with expertise in pharmacokinetics to establish an independent research program to develop radiolabeled imaging agents for Positron Emission Tomography. Experience in the use of HPLC and GCMS and training in PBPK models, neuropharmacology and drug metabolism is desirable. Experience should include the supervision of junior fellows and technicians. A brief statement of research interests and a *curriculum vitae* should be submitted in addition to three letters of recommendation. Office of the Scientific Director (OE-94), NIAAA, Building 10, Room 3C103, 10 CENTER DR MSC 1256, BETHESDA MD 20892-1256.

Taste and Smell Research

Reuben P. Siraganian, MD, PhD

A position is immediately available to investigate molecular mechanisms involved in taste and smell. The applicant will utilize molecular biology and biochemical and/or cell biological approaches to investigate the molecular mechanisms involved in chemosensory perception and/or receptor cell differentiation. Support for two postdoctoral fellows or technicians will be provided. A two-page statement of research interests and a *curriculum vitae* should be submitted in addition to three letters of recommendation. Laboratory of Immunology (OE-94), NIDR, Building 10, Room 1N106, 10 CENTER DR MSC 1188, BETHESDA MD 20892-1188.

Postdoctoral Positions

Differentiation and Signal Transduction

Francis W. Ruscetti, PhD

Studies using *Xenopus laevis* are aimed at understanding the cellular interactions and signal transduction events elicited by a receptor tyrosine kinase of the Eph family to affect changes in differentiation and cell fate. Additionally, a novel homeodomain protein involved in myeloid leukemogenesis is being studied. Candidates should have less than five years of postdoctoral experience and a strong background in molecular, and/or developmental or cell biology. Laboratory of Leukocyte Biology (OE-94), NCI-BRMP FCRDC, Building 567, Room 254, Frederick MD 21702.

Neurosciences

John M. Hallenbeck, MD

Interactions between circulating inflammatory/immune cells and endothelial cells in relation to stroke are being investigated, with emphasis on the role of cytokines. Applicants must be knowledgeable in immunology, biochemistry, and be skilled in cell culture, histochemistry, and immunoassays. Stroke Branch (OE-94), NINDS, Building 36, Room 4A03, 36 CONVENT DR MSC 4128, BETHESDA MD 20892-4128.

Gene Regulation in Central Nervous System

Michael Brenner, PhD

The factors involved in the regulation of gene expression in the central nervous system are being examined using *in vitro* transcription, cell transfection, and transgenic mice. Current studies focus on the GFAP gene, which encodes an intermediate filament protein found primarily in astrocytes. Experience in molecular biology, biochemistry, or cell culture is desirable. Stroke Branch (OE-94), NINDS, Building 36, Room 4A03, 36 CONVENT DR MSC 4128, BETHESDA MD 20892-4128.

Regulation of Sympathetic Nervous System Function

Irwin J. Kopin, MD

The development and plasticity of the peripheral sympathetic nervous system and its control by central nervous system mechanisms are the subjects of study. Projects include evaluation of molecular mechanisms governing these processes in health, with drug administration, and in disease states. Applicants should have a strong background in molecular and cell biology. Clinical Neuroscience Branch (OE-94), NINDS, Building 10, Room 5N214, 10 CENTER DR MSC 1424, BETHESDA MD 20892-1424.

Additional Opportunities

The NIHEDNET Bulletin Board POSTDOC (fellowship positions) and TENURE (tenure track positions) conferences are accessed via a modem (301-402-2221 or 800-358-2221 with parameters set at 7,Even,1) or the Internet using Telnet (wylbur.cu.nih.gov) or the World Wide Web (URL: telnet://wylbur.cu.nih.gov). When connected to NIH, key in ,vt100 for terminal emulation, F5E for initials, and AJL1 for account number. To view tenure track positions, quit the POSTDOC conference and join the TENURE conference.

An electronic version of the Postdoctoral Research Fellowship Opportunities catalog is accessed via the Internet using either the Gopher Information System (gopher.nih.gov) or the World Wide Web (URL: http://www.nih.gov). When connected with Gopher, select Grants and Research Information and then NIH Office of Education. When connected with WWW, select Grants and Contracts and then NIH Office of Education. If you have further questions, please contact the NIH Office of Education, Building 10, Room 1C129, 10 CENTER DR MSC 1158, BETHESDA MD 20892-1158, Phone 301-496-2427, Fax 301-402-0483.

To Apply

If you hold a graduate doctoral degree (e.g., PhD, MD/PhD) or a professional degree (MD, DO, DDS, DMD or DVM) accompanied by previous laboratory research experience, and would like to be considered for one of these positions, please send a cover letter, *curriculum vitae*, bibliography, and statement of research interests to the address listed with each position. In addition, please arrange to have letters of recommendation sent from three scientists who can provide an evaluation of your qualifications.



National Institutes Of Health

Office Of Education

The NIH is an Equal Opportunity Employer

POSITIONS OPEN

Dermatology/Skin Cancer **POSTDOCTORAL FELLOW** needed to study gene expression and degradative processes involved in tumor invasion/metastasis (e.g., *Nature*, 375:244, 1995; *J Biol Chem*, 269:25849, 1994; *Proc Natl Acad Sci*, 92:3849, 1995). Strong background in cell/molecular biology required. Submit curriculum vitae and two letters of reference to: **Dr. Stephen J. Weiss, UpJohn Professor, University of Michigan Comprehensive Cancer Center, 5301 MSRB III, 1150 West Medical Center Drive, Ann Arbor, MI 48109-0640.** We encourage applications from candidates who will enrich and contribute to the cultural diversity of our University.

POSTDOCTORAL FELLOW/RESEARCH ASSISTANT/ASSOCIATE to work on the molecular regulation of nitric oxide-guanylyl cyclase signaling pathway in the context of vascular physiology and pathophysiology with dynamic vascular biology research group at the University of Virginia. Molecular biology expertise essential, promoter analysis experience preferable. Applications detailing molecular biology experience to: **Roger A. Johns M.D., University of Virginia Health Sciences Center Box 238, Charlottesville, VA 22908 USA.** An Equal Opportunity/Affirmative Action Employer.

POSTDOCTORAL FELLOW position is available in the Department of Pharmacology, University of Missouri-Columbia to study cellular and molecular aspects of modern pharmacology. Current research interests of the faculty in the department include: neuropharmacology; immunopharmacology; peptide and hormone receptor interactions; transmembrane signaling mechanisms; mechanism and regulation of ion transport; biochemical and physiological action of hormone and growth factors; and, the regulation of gene expression in cell growth, differentiation and cellular homeostasis.

Interested applicants should send a letter describing their research interest, a curriculum vitae and names and addresses of three references to: **Jeannie Ruth, Department of Pharmacology, University of Missouri-Columbia, Columbia, MO 65212.** The qualified applicant will have a doctorate degree in Pharmacology or related disciplines and will be expected to carry out independent research under the general supervision of one of the faculty members and compete for extramural support following the initial support period. *The University of Missouri-Columbia is an Affirmative Action Employer. Women and minority candidates are especially encouraged to apply.*

UNIVERSITY OF WASHINGTON/ SEATTLE VAMC

Immediate opening for recent Ph.D. to study signal transduction by hematopoietic growth factors in normal and malignant myeloid cells. Experience in current molecular techniques, including mutagenesis and gene expression, is required. Candidate must qualify for employment by the University of Washington. Send statement of research interests and curriculum vitae to: **Dr. Michael Lilly, Medical Oncology (1110NC), Seattle VA Medical Center, 1660 Columbian Way S, Seattle, WA 98108.** FAX: 206-764-2851.

POSTDOCTORAL POSITION

POSTDOCTORAL POSITION available immediately to investigate nematode gut function and biogenesis in the parasitic nematode *Haemonchus contortis*. Interest in parasitology with experience in cell or molecular methodologies is highly desirable. Send curriculum vitae and names of three references to: **Douglas P. Jasmer, Department of Veterinary Microbiology and Pathology, Washington State University, Pullman, WA 99164-7040.** FAX: 509-335-8529; Email: DJasmer@vetmed.wsu.edu. *Washington State University is an Equal Opportunity/Affirmative Action Employer and Educator. Protected groups are encouraged to apply.*

POSTDOCTORAL RESEARCH position in the Department of Biochemistry and Molecular Biology at University of South Dakota School of Medicine to study the molecular mechanisms underlying tissue-specific expression of mammalian aldehyde dehydrogenase genes. A Ph.D. degree in biochemistry, molecular biology is required. Experience in molecular biology and cell culture preferred. Send curriculum vitae and names of three references to: **Dr. Ronald Lindahl, Professor and Chairman, Department of Biochemistry and Molecular Biology, University of South Dakota School of Medicine, Vermillion, SD 57069.** FAX: 605-677-5781. *The University of South Dakota is an Affirmative Action/Equal Opportunity Employer.*

POSITIONS OPEN

POSTDOCTORAL POSITIONS to study the signal transduction of inflammatory macrophages. Projects include molecular biology of phagocytosis (see *Trends Cell Biol.* 5:93, 1995) and cytokine signal transduction. Experience in recombinant DNA technology strongly preferred. One position, funded for three years, requires an M.D. or an M.D./Ph.D. from a U.S. university; another position requires a Ph.D. Send curriculum vitae and three letters of reference to: **Dr. Steven Greenberg, Columbia University, P&S 9-503, 630 West 168th Street, New York, NY 10032.** FAX: 212-305-5775; Email: greenberg@cucf.ccc.columbia.edu. An Affirmative Action/Equal Opportunity Employer.

POSTDOCTORAL POSITION in obesity research available immediately in a multidisciplinary group at the VA Medical Center and University of Washington to study hypothalamic neuropeptide gene expression using immunocytochemistry and *in situ* hybridization. Recent Ph.D. with training in basic molecular biology techniques and U.S. citizenship required. Send curriculum vitae with references to: **Dr. Denis G. Baskin, Mail Stop 151, VA Medical Center, 160 South Columbian, Seattle, WA 98108.** Affirmative Action/Equal Opportunity Employer.

DUKE UNIVERSITY

A **POSTDOCTORAL POSITION** for a recent Ph.D. to study mRNA regulation is available immediately. Additional experience in tissue culture and/or viral vectors would be beneficial. Send curriculum vitae and three letters of reference to: **Dr. Debra Schwinn, Box 3094, Duke University Medical Center, Durham, NC 27710.** FAX: 919-681-4776.

Two **POSTDOCTORAL POSITIONS** available immediately. 1) To study the electrophysiology and pharmacology of recombinant and native GABA_A receptors. Experience in patch clamp or molecular biology desirable. 2) To study animal behavioral pharmacology in areas of aging and substance abuse. \$1,968 per month. Submit curriculum vitae and names of references to: **Department of Human Resource Services, University of North Texas Health Science Center at Fort Worth, Suite I-735, 3500 Camp Bowie Boulevard, Ft. Worth, TX 76107-2699.** An Equal Employment Opportunity/Affirmative Action Institution.

POSTDOCTORAL POSITION available immediately to subtype and characterize *Helicobacter* strains. *Helicobacter pylori* is a bacterium highly associated with gastrooduodenal disease, including peptic ulcer disease and gastric cancer. The position requires at least two years of experience in molecular biology. Knowledge/training in microbial genetics and physiology highly desirable. Send curriculum vitae, names and telephone numbers of three references, and date available to: **Mae F. Go, M.D., Baylor College of Medicine & VA Medical Center (111D), 2002 Holcombe Boulevard, Houston, TX 77030.**

POSTDOCTORAL POSITION available immediately to study the molecular biology of retroviral transactivation of cellular genes. Strong background in retroviral molecular biology is required. Must be a U.S. citizen/permanent resident. Please submit curriculum vitae, including names and addresses of three references, to: **Dr. Douglas V. Faller, Cancer Center, Boston University Medical School, 80 East Concord Street E-124, Boston, MA 02118.** FAX: 617-638-4176. An Affirmative Action/Equal Opportunity Employer.

Two funded **POSTDOCTORAL POSITIONS** at Harvard Medical School are available immediately to study the molecular mechanisms by which proteins and organelles are targeted to the yeast lysosome for degradation. 33 complementation groups required for this process have been identified. Future research will focus on the cloning and sequencing of the genes involved in this pathway. Send curriculum vitae and three names of references to: **Dr. H. Chiang, Department of Cell Biology, 25 Shattuck Street, Boston, MA 02115.**

PRINCETON UNIVERSITY CHEMISTRY DEPARTMENT

Chemistry Department of Princeton University invites applications for **POSTDOCTORAL POSITIONS** in physical, organic, inorganic, and biochemistry. Send curriculum vitae directly to faculty of interest or write: **Department Manager, Chemistry Department, Princeton University, Princeton, NJ 08544.** Princeton is an Equal Opportunity/Affirmative Action Employer.

POSITIONS OPEN

POSTDOCTORAL POSITIONS Mayo Clinic and Graduate School

Applications are invited for study of structure and function of molecules related to mechanisms of neurodegeneration. Three positions available immediately: 1) NMR/molecular modeling of trinucleotide repeat DNA (Gacy et al., *Cell*, 81:533, 1995); 2) Nitric Oxide biochemist/molecular biologist; and 3) Molecular biologist interested in either DNA replication, expansion or neurodegeneration.

The focus of the research is understanding the mechanism of neurodegeneration in disease related to trinucleotide expansion and/or oxidative damage. We are using a variety of biochemical, biophysical, cellular and molecular approaches to identify mechanism. General interest in neurobiology is essential. Mayo Foundation is a world-class research institute with medical school and graduate school. Excellent basic research and facilities. Excellent salaries and benefits for qualified individuals. Interested parties should send curriculum vitae and three letters of recommendation to: **Dr. Cynthia T. McMurray, Department of Pharmacology, Mayo Foundation, Rochester, MN 55905.** Email: mcmurray@mayo.edu.

Mayo Foundation is an Affirmative Action and Equal Opportunity Educator and Employer.

POSTDOCTORAL POSITION available immediately to study the functions of the Osmoregulatory Na⁺/Myo-inositol cotransporter in regulation of membrane signal transducing inositolphospholipids and cellular levels of organic osmolytes. Molecular and cellular approaches include cloning, DNA and protein expression analysis and transgenic modeling. Background in molecular biology is required. Per NIH guidelines, candidates must be a citizen or permanent resident (possessing a Green Card) of the United States. Holders of temporary or student visas are not eligible for consideration. Send curriculum vitae and names of three references to: **Gerard T. Berry, M.D., Division of Biochemical Development and Molecular Diseases, The Children's Hospital of Philadelphia, 34th and Civic Center Boulevard, Philadelphia, PA 19104.** Equal Opportunity Employment/Affirmative Action, Minority/Female/Disabled/Veteran. Women and minorities are encouraged to apply.

POSTDOCTORAL POSITION PROGRAM FOR MECHANISMS OF INFECTIOUS DISEASES OF MUCOSAL SURFACES

An immediate opportunity for an individual to participate in a research program focused on the interaction of bacterial and viral ligands with cellular receptors. Candidates should have a Ph.D. in microbiology, cell biology, biochemistry or a related field. The candidate should have experience in either membrane biology, signal transduction, virology and/or bacteriology. Send curriculum vitae, transcripts, three references, and a one-page summary of research interests by September 1, 1995, to: **Dr. Christopher Chase, Department of Veterinary Science, P.O. Box 2175, South Dakota State University, Brookings, SD 57007-1396.** Affirmative Action/Equal Opportunity Employer/ADA Reasonable Accommodations 605-688-4128 (TT/Voice 605-688-4394).

POSTDOCTORAL POSITION Catalytic RNA/RNA Splicing

POSTDOCTORAL POSITION available immediately to study RNA splicing by group I introns and RNP complexes (*EMBO J.* 12:3599, 1993). Ph.D. in biochemistry or molecular biology required. Strong nucleic acids background desirable. Send curriculum vitae, names of three references, and a letter describing research skills and interests to: **John M. Burke, University of Vermont, Microbiology & Molecular Genetics, 306 Stafford Hall, Burlington, VT 05405.** Email: jburke@moose.uvm.edu.

POSTDOCTORAL POSITIONS available to study genes that determine the yeast replicative life span, their human homologs and age-responsive promoter elements (*Genetics*, 91:35, 1993; *J. Biol. Chem.*, 269:15451, 1994; *J. Biol. Chem.*, 269:18638, 1994). Experience in molecular techniques essential and in yeast genetics helpful. Send curriculum vitae with bibliography and names, telephone and fax numbers of three references to: **Dr. S. Michal Jazwinski, Department of Biochemistry and Molecular Biology, Louisiana State University Medical Center, 1901 Perdido Street, New Orleans, LA 70112.** Affirmative Action/Equal Opportunity Employer.

Procter & Gamble

POSTDOCTORAL POSITION IN BIOCHEMICAL TOXICOLOGY

The Procter & Gamble Company has an immediate postdoctoral position available for a scientist to work in our R&D laboratories in Cincinnati. This position is ideal for an individual who desires a postdoctoral experience in biochemical toxicology.

- The successful candidate will participate in research programs directed toward understanding the role of cytochrome P-450 induction and xenobiotic metabolism in toxicity and carcinogenicity. The laboratory takes a diverse approach (biochemical, cellular and molecular) to the study of mechanisms of toxicity, and current work includes the development of transgenic animals for research models. Candidates with experience in toxicology, pharmacology or biochemistry are preferred. Our laboratory is part of large group carrying out basic research in toxicology in a collegial atmosphere where publishing results is stressed.

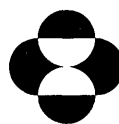
Procter & Gamble is a world leader in the research, development, manufacture, and marketing of a wide variety of consumer products. Annual sales exceed \$30 billion, and our R&D budget is \$1 billion/year. P&G offers a competitive salary and benefits package, placing us among the top 5% of U.S. firms. For confidential consideration, please send a letter of introduction, resume, and list of publications to:

Procter & Gamble
R&PD Technical Recruiting, Dept. LLM
P.O. Box 538707 • Cincinnati, OH 45253-8707

No agency referrals, please. Must be presently authorized to work in the U.S. on a full-time basis.
An Equal Opportunity Employer

Senior Research Scientist/ Protein Crystallographer

Merck Research Laboratories has an immediate opening in protein crystallography. The successful candidate will join a team of structural biologists and enzymologists to participate in on-going multidisciplinary drug development programs. The candidate must be a recent Ph.D. graduate with postdoctoral experience and extensive research expertise in X-ray crystallography and protein crystallization. He/she is expected to be well versed in solving crystal structures of macromolecules de novo utilizing classical approaches and modern technology. Our crystallographic facilities include a modern biochemistry wet lab and an X-ray diffraction lab equipped with an ICN robotic crystallization system, 2 walk-in cold rooms, 2 Rigaku rotating anode generators, 2 RAXIS-II imaging plate systems, 3 Silicon graphics workstations, a subzero temperature data collection system, and a darkroom. Our computer supporting system includes VAX clusters and a CRAY YMP supercomputer. Excellent salary and benefit programs accompany this position at our modern research facilities located 25 miles northwest of Philadelphia. Please send curriculum vitae with cover letter to: **Personnel Manager, MRL Human Resources WP 42-2, Merck Research Laboratories, P.O. Box 4, Ad # B-30, West Point, PA 19486.** Equal Employment Opportunity/Affirmative Action/Veterans Employer.



MERCK
Research Laboratories

FACULTY POSITION

**University of Arkansas
for Medical Sciences**

**Department of
Pharmacology and Toxicology**

The Department of Pharmacology and Toxicology has a tenure-track position available. Candidates at levels of Assistant Professor, Associate Professor and Professor are invited to apply. We are seeking individuals with a record of research excellence and strong interests in medical education. The credentials of a candidate for the position at a senior academic rank would be expected to include extramural funding. Research and teaching experience in some aspect of cardiovascular pharmacology is preferred. Laboratory and office space is available in the new basic research building on the UAMS campus. A substantial start up package will be provided to the successful candidate. Candidates should submit a curriculum vitae and the names and addresses of three individuals that we may contact for letters of reference. Applications should be submitted to: **Dr. Galen R. Wenger, Director, Division of Pharmacology, College of Medicine, University of Arkansas for Medical Sciences, 4301 West Markham Street, Mail Slot 611, Little Rock, AR 72205.** The University of Arkansas for Medical Sciences is an equal opportunity employer. Women and minorities are encouraged to apply.

WE'RE LOOKING AT SCIENCE

In A New Way.

United States Surgical Corporation, a leading innovator in the design and manufacture of surgical devices, is expanding its research and development effort in Biotechnology. You can be part of a dynamic team of scientists working on a new generation of wound healing products for soft and hard tissue. Our state-of-the-art research facility is located in North Haven, CT, just 10 minutes from Yale University.

Biochemistry Staff Scientist

A position is available for a creative and motivated scientist. Requires a Ph.D. with a strong background in cell and molecular biology. Experience in recombinant protein expression, immunoassays, tissue culture, and a construction and screening of DNA libraries is desirable. Familiarity with growth factors and extracellular matrix proteins a plus.

We offer a competitive salary and benefits package. Interested individuals should send their curriculum vitae, including salary history and requirements, to: **Andrea DelVecchio, Coordinator, Human Resources, United States Surgical Corporation, 195 McDermott Road, North Haven, CT 06473.** An Equal Opportunity Employer M/F/D/V.



**United States
Surgical Corporation**

POSITIONS OPEN

POSTDOCTORAL POSITION available immediately to study ovarian steroids-induced changes in biotransformation of opiates in a rat model. Desired: Ph.D., strong background in HPLC method development and analysis of biological samples, research experience in drug metabolism, knowledge of pharmacokinetic data analysis. Experience with *in vivo* microdialysis would be advantageous. Funding is available for one year. Send curriculum vitae, description of research training/experience and two letters of reference to: **Anna Ratka, Ph.D., Department of Pharmaceutical Sciences, College of Pharmacy, Idaho State University, Box 8334, Pocatello, ID 83209-8334.**

A POSTDOCTORAL FELLOW/RESEARCH ASSOCIATE position is available for a scientist interested in studying signal transduction mechanisms for integrin gene regulation and the role of specific integrins in tumor metastasis in the Laboratory of Molecular Biology at the Guthrie Research Institute. The Institute offers outstanding facilities and opportunities for both collaborative and independent work in a supportive environment. Experience in molecular biology, biochemistry, or cell biology is required. Candidates should send their curriculum vitae and the names of two references to: **Dr. John D. Noti, Guthrie Research Institute, 1 Guthrie Square, Sayre, PA 18840. Telephone: 717-882-4653; FAX: 717-882-5151. An Equal Opportunity Employer.**

POSTDOCTORAL FELLOWSHIP Endogenous Opiate Systems in Drug Abuse

The Neuroimaging and Drug Action Section at the National Institute on Drug Abuse has an immediate opening for a **POSTDOCTORAL FELLOW** (Intramural Research Training Award) to study the modulation of endogenous opiate systems by chronic drug abuse. The candidate must be a U.S. citizen or permanent resident and have a Ph.D. or M.D. and less than five years of postdoctoral experience. The research will involve *in vivo* mapping of biochemical processes in brain in non-human animal models. Knowledge of pharmacology, physiology and neuroanatomy is highly desirable. Salary is contingent upon number of years of postdoctoral experience. Applicant should send a current curriculum vitae and a letter discussing research interests and experience to: **Edythe D. London, Ph.D., Chief, Neuroimaging and Drug Action Section, National Institute on Drug Abuse, P.O. Box 1580, Baltimore, MD 21224. The National Institute on Drug Abuse is an Equal Opportunity Employer. Women and other minorities are encouraged to apply.**

VISITING SCIENTIST HARVARD SCHOOL OF PUBLIC HEALTH

The Department of Tropical Public Health invites applications for a **VISITING SCIENTIST** to participate in research studies conducted in Boston and Brazil on schistosomiasis, leishmaniasis, or malaria funded through a National Institutes of Health/International Centers for Infectious Disease Research Award. Successful applicant(s) will spend from two months to one year at one of the following study sites: Salvador, BAHIA, Fortaleza, CEARA or Rio de Janeiro, RIO DE JANEIRO. Applicants must have a Ph.D. or M.D. degree and interest/relevant experience in epidemiology, immunology and pharmacology. Please send research proposal, curriculum vitae and three letters of reference to: **Dr. Donald Harn, Professor, Harvard School of Public Health, Department of Tropical Public Health, 665 Huntington Avenue, Boston, MA 02115. FAX: 617-432-1257.**

POSTDOCTORAL RESEARCH ASSOCIATE

We seek a scientifically mature molecular biologist/biochemist with at least two years of postdoctoral experience, with initiative and communication skills. Ideal candidate will have drive and talent to share in the creation of a group aimed at solving major research problems in protein kinetics and developmental biology. The position is challenging and career building with very good salary and benefits. Open as early as September 1995. Send résumé, names and telephone numbers of three references to: **Dr. Arnold Kaplan, Department of Biological Sciences, M/C 066, University of Illinois at Chicago, 845 West Taylor Street, Chicago, IL 60607. University of Illinois at Chicago is an Affirmative Action/Equal Opportunity Employer.**

POSITIONS OPEN

RESEARCH ASSOCIATE position available immediately to develop and apply molecular diagnostic testing in a clinical laboratory setting. Candidates should possess a Ph.D. and have experience in developing molecular diagnostic assays for infectious agents, coagulation markers, and/or tumor markers. Send résumé and a list of references with contact addresses and telephone numbers to: **Dr. Hawazin Faruki, Molecular Diagnostics, Institute for Transfusion Medicine, 3636 Boulevard of the Allies, Pittsburgh, PA 15213. FAX: 412-621-5730.**

RESEARCH ASSOCIATE

Agronomy Department has a 12-month, non-tenure position available in soybean molecular genetics, genome analysis, molecular marker-based mapping of qualitative and quantitative trait loci, and marker-facilitated selection. Requires Ph.D. in Agronomy, Biological Science, or related field, and experience in molecular genetics. Specific expertise in gene mapping and cloning highly desirable. Send résumé, transcripts and three letters of reference postmarked by September 15, 1995, to:

**Dr. P. Stephen Baenziger, Head
Department of Agronomy
University of Nebraska-Lincoln
P.O. Box 830915
Lincoln, NE 68583-0915**

The University of Nebraska-Lincoln is an Affirmative Action/Equal Opportunity Employer, responsive to the needs of dual-career couples, and assures reasonable accommodation under the Americans With Disabilities Act.

ASSISTANT PROFESSIONAL SCIENTIST Soil Invertebrate Ecologist

The Illinois Natural History Survey, Center for Economic Entomology, seeks candidates for an **ASSISTANT PROFESSIONAL SCIENTIST/Soil Invertebrate Ecologist** position located on the campus of the University of Illinois. The successful candidate will be responsible for developing research programs that: (1) incorporate a focus on soil invertebrate (arthropods and related phyla) ecology in natural and agricultural ecosystems; (2) have management implications for these ecosystems in Illinois; and (3) involve field and laboratory work combining descriptive and experimental approaches. This scientist is expected to work cooperatively with entomologists at the Illinois Natural History Survey and the University of Illinois. The successful candidate must have (1) a Ph.D. in a biological science; (2) training and expertise in soil invertebrate ecology; (3) field experience; (4) the ability to conduct independent research and secure funding; (5) the aptitude to express thoughts clearly, both verbally and in writing, to scientific, academic, and lay audiences; and (6) the ability to publish research findings in nationally recognized scientific journals.

To ensure full consideration, all application materials should be received by September 29, 1995. Send a letter of application, a copy of undergraduate and graduate transcripts, curriculum vitae, and a statement of research interests. Request that three referees send letters of recommendation. Address application materials to: **Ms. Jacqueline Sanders, Illinois Natural History Survey, 607 East Peabody Drive, Champaign, IL 61820. Telephone: 217-244-7790. Technical questions should be addressed to: Dr. Rick Weinzierl, telephone: 217-333-6651; Email: richardw@denr1.igis.uiuc.edu. The Illinois Natural History Survey is an Equal Opportunity/ADA Employer.**

MEETING

MITOCHONDRIAL AND FREE RADICAL INVOLVEMENT IN AGING October 6 to 10, 1995 San Antonio, Texas

This conference explores the rapidly accumulating evidence that mitochondria and free radicals are significantly involved in aging. Six symposia featuring 26 speakers including leading investigators (e.g., J. Müller-Höcker, E. Shoubridge, R. Sohal, D. Wallace). For information, contact: **American Aging Association, 2129 Providence Avenue, Chester, PA 19013. Telephone: 610-874-7550; FAX: 610-876-7715; Email: ameraging@aol.com.**

POSITIONS OPEN



MOLECULAR BIOLOGISTS

Ambion, Inc. develops innovative products and kits for molecular biology research. We are seeking **SENIOR SCIENTISTS** for Research and Development. Candidates should have a Ph.D. in molecular biology or related field, a strong publication record and an entrepreneurial spirit. Candidates with strength in eukaryotic molecular biology, protein engineering/expression or nucleotide chemistry are especially encouraged to apply. Ambion is in Austin, location of the University of Texas and the state capital, on the edge of the Texas hill country with nearby lakes and rivers that provide abundant recreational opportunities.

Ambion offers competitive salaries, benefits and employee stock option plan. Reply to: **Ambion, Inc., 2130 Woodward Street, No. 200, Austin, TX 78744. Equal Opportunity Employer.**

SYMPOSIA

SUSCEPTIBILITY AND RISK ASSESSMENT The Third Annual Symposium of the Health Effects Research Laboratory

The Health Effects Research Laboratory (HERL) of the U.S. Environmental Protection Agency is pleased to announce that its Third Annual Symposium will be held November 6-9, 1995, at the North Raleigh Hilton in Raleigh, North Carolina. This third in the Annual HERL Symposium Series on Research Advances in Health Risk Assessment will focus on known factors affecting the susceptibility of humans, experimental animal models, or cell tests systems to environmental toxicants with the goal of refining risk assessment strategies which must consider variable population response. Protection of the "susceptible individual" is a fundamental goal of environmental regulation. Indeed, it is generally accepted that if the susceptible individual is protected, then the entire population will be protected. The format of the HERL Symposium will include invited platform presentations and contributed poster presentations. For more information, please contact:

**1995 HERL Symposium
Susceptibility and Risk Assessment
c/o RSD Conference Coordinator
U.S. EPA
HERL, MD-70
Research Triangle Park, NC 27711
Telephone: 919-541-5193
FAX: 919-541-4002
Internet:
MEETINGSMAIL@HERL45.HERL.EPA.GOV**

SYMPOSIUM: Therapeutic Antibody Technology 95
October 30 to November 1, 1995; Cathedral Hill Hotel, San Francisco, California. Speakers: C. Barbas, G. Barsomian, C. Borrebaeck, D. Burton, P. Carter, D. Charish, K. Chester, A. Griffiths, A. Grillo-Lopez, K. Hellstrom, A. Hiatt, H. Hoogenboom, P. Hudson, A. Jakobovits, K. Johnson, W. Marasco, G. Mark, J. Marks, S. Morrison, I. Pastan, A. Plückthun, L. Ostberg, J. Reno, M. Rosenberg, T. Scanlon, W. Stemmer, L. Weiner, I. Wilson. Abstracts due October 16, 1995. Organizers: J. Larrick, J. Marks. Sponsor: Palo Alto Institute of Molecular Medicine, 2462 Wyandotte Street, Mountain View, CA 94043. Telephone: 415-694-4996; FAX: 415-694-7717; Email: PAIMM@AOL.COM.

ETHICAL ISSUES IN RESEARCH RELATIONSHIPS BETWEEN UNIVERSITIES AND INDUSTRY

Sponsored by
University of Maryland at Baltimore
Center for Biomedical Ethics
Friday and Saturday, November 3 and 4, 1995
Baltimore Marriott Inner Harbor Hotel
For information, contact: **Dr. James Rule, University of Maryland, Room 3-E-10, 666 West Baltimore Street, Baltimore, MD 21201. Telephone: 410-706-7960; FAX: 410-706-3028.**

**University of California
Lawrence Berkeley National Laboratory**

**Director of the
Nuclear Science Division**

The Lawrence Berkeley National Laboratory is a multi-purpose research laboratory funded by the U.S. Department of Energy. Its Nuclear Science Division conducts a vigorous research program in both experimental and theoretical nuclear physics. In addition to its 88-inch Cyclotron research program, the Nuclear Science Division has major experimental programs in the areas of high-energy nuclear physics, nuclear structure and nuclear astrophysics, and is participating in the construction of several major new detector systems: STAR, GAMMASPHERE and SNO. The Division Director has primary responsibility for the leadership and management of this program under the general direction of the Laboratory Director.

The Laboratory is seeking a highly respected and energetic nuclear scientist, capable of providing strong scientific and intellectual leadership in these challenging times. Applicants are requested to submit a curriculum vitae, a list of publications, a statement of research accomplishments and interests, and the names of at least five references, to: **Dr. Lee S. Schroeder, Chair, Nuclear Science Division Director Search Committee, c/o Human Resources Department, Bldg. 938A, Box JSC13548, Lawrence Berkeley National Laboratory, 1 Cyclotron Road, Berkeley, CA 94720, U.S.A.** Lawrence Berkeley National Laboratory is an Equal Opportunity/Affirmative Action Employer. Women and minorities are encouraged to apply. Applicants are encouraged to respond as quickly as possible.



ERNEST ORLANDO LAWRENCE

BERKELEY NATIONAL LABORATORY



OREGON HEALTH SCIENCES UNIVERSITY
BIOCHEMISTRY & MOLECULAR BIOLOGY

PHYSICAL BIOCHEMISTRY

The Department of Biochemistry and Molecular Biology at OHSU, School of Medicine, is committed to a period of significant expansion during the next several years, focusing on mechanisms of biochemical processes at the molecular level. We are recruiting tenure track faculty at all levels, although our emphasis is on junior colleagues. We are interested in biochemists whose focus is in applying biophysical techniques to the analysis of protein or nucleic acid function.

We will offer attractive start-up packages, competitive salaries, and the opportunity to participate in the growth and development of a dynamic and interactive department in a highly desirable location. Faculty will be expected to establish competitive research programs and assist in graduate and medical school teaching. Applicants at the Assistant Professor level should have a Ph.D. with several years of postdoctoral experience. Applications for our first series of appointments should be received by September 30, 1995.

Interested applicants should send a copy of their curriculum vitae, a description of their research plans and interests, and the names of three references to:

Professor Jack H. Kaplan, F.R.S.
Faculty Search (PB)
Department of Biochemistry and Molecular Biology
Oregon Health Sciences University
3181 S.W. Sam Jackson Park Road, L224
Portland, OR 97201-3098

OHSU is an Affirmative Action/Equal Opportunity Employer

Biohalogenation

A one-day symposium of the Whistler Center for Carbohydrate Research, Purdue University speakers.....

H. Brian Dunford
University of Alberta
Mechanism of Halogenation
by Heme-containing Peroxidases

Lowell P. Hager
University of Illinois
Heme-containing Chloroperoxidases

Thomas Poulos
University of California, Irvine
Tertiary Structure of
Heme-containing Chloroperoxidase

Ron Wever
University of Amsterdam
Structure and Activity of
Vanadium Chloroperoxidase

Alison Butler
University of California, Santa Barbara
Vanadium Bromoperoxidases

K.H. van Pée
Technical University, Dresden
Bacterial Haloperoxidases
September 25, 1995, 9 a.m. - 4 p.m.
Room 320 Stewart Center
Purdue University

Registration not required

For assistance with hotel reservations contact:

Nedra Michael
Tel.: (317) 494-6171
Fax: (317) 494-7953
e-mail: michaeln@foodsci.purdue.edu

S C I E N T I S T S

**The excitement of pharmaceutical development
backed by \$620 million annually in R & D...**

That's Schering-Plough

The fulfillment of seeing your ideas happen. At Schering-Plough, we invest over \$620 million annually to advance the process of discovery and development. To the dedicated scientist, this means a greater opportunity to see your work extend and enhance lives the world over.

**PRINCIPAL SCIENTIST
Central Nervous System
Pharmacology**

To qualify for this excellent career opportunity, you will need a PhD and 5-8 years years of postdoctoral experience which includes extensive background in the use of *in vitro* and *in vivo* binding techniques to study neurotransmitter receptors. Experience with other biochemical pharmacology techniques used to study neuronal function, such as enzyme

assays, microdialysis or HPLC, is highly desirable. Solid interpersonal and communication skills a must.

We offer an excellent compensation package including a competitive salary and comprehensive benefits. For prompt, confidential consideration, we invite you to forward a resume with salary requirements to: Human Resources Department-KB, Dept. DD-95-21, K-15-1, MS#1255, Schering-Plough Research Institute, 2015 Galloping Hill Road, Kenilworth, NJ 07033-0539. We are an equal opportunity employer. *We regret we are unable to respond to each resume. Only those selected for an interview will be contacted.*



**Schering-Plough
Research Institute**

U s i n g S c i e n c e F o r H u m a n A d v a n t a g e

Carolina Workshops
University of North Carolina at Chapel Hill

COMPUTATIONAL MOLECULAR BIOLOGY
October 22-October 27, 1995

This course is designed for scientists with limited prior experience in computational molecular biology. The topics to be covered include: biomolecular informatics and databases, protein and nucleic acid sequence analysis and alignment, 3D protein structure analysis and prediction, molecular modeling and dynamic simulations of proteins and nucleic acids, and structure-based drug design. The workshop will consist of the in-depth theoretical lectures and intensive hands-on laboratory sessions. The course will be taught at the training facility of the North Carolina Supercomputing Center, Research Triangle Park, North Carolina.

Application Deadline-September 7, 1995. Tuition- \$1,200.00. Participation is limited to 15 people.

INSTRUCTORS: Alexander Tropsha, Ph.D., Course Director, UNC-CH; Frank K. Brown, Ph.D., Glaxo-Wellcome; Iosif I. Vaisman, Ph.D., UNC-CH; David C. Richardson, Ph.D., Duke University; Wayne Litaker, Ph.D., UNC-CH

MOLECULAR BIOLOGY TECHNIQUES
February 18-March 1, 1996

This course is designed for individuals with little or no practical experience in the techniques of gene cloning. Topics to be covered include: Basic microbiological techniques, Western blotting, screening of libraries with antibodies and nucleic acid probes, subcloning into plasmid vectors, Southern and Northern blotting, PCR techniques, and DNA sequencing. As time allows, students will also be introduced to computer analysis of nucleic acid and protein sequences.

Application Deadline-December 31, 1995. Tuition-\$2,150
INSTRUCTOR: Philip Carl, Ph.D., UNC-CH

INTRODUCTION TO PCR
GIVEN BY PERKIN ELMER, INC.

September 13-September 15, 1995 &
November 1-November 3, 1995

The Introduction to PCR workshops will feature three days of lectures and laboratory sessions designed for scientists with little previous PCR experience. Through active participation and extensive hands-on lab work, students will gain a solid understanding of PCR methodology and the recommended procedures for successful amplification of DNA and RNA. Lecture topics will cover the basic molecular biology of the PCR reaction, sample preparation, the optimization of the PCR process, RNA PCR, quantitation of PCR products, major applications and troubleshooting. The laboratory sessions will include basic PCR reactions; PCR product visualization via gel electrophoresis; reaction optimization; and RNA PCR. The registration fee includes a 100 Reaction GeneAmp PCR Core Reagents kit valued at \$225.

Application Deadline-September 1, 1995 for September Course and October 20, 1995 for November Course. Tuition-\$850. Participation is limited to 24 people.

INSTRUCTORS: James V. Snider, Ph.D. & John Pfeifer, Ph.D., Perkin Elmer

For further information or to apply to the Computational Biology or Nucleic Acids Workshops, Contact: Dr. Wayne Litaker, Facility Director, University of North Carolina at Chapel Hill, Program in Molecular Biology & Biotechnology, 402 Taylor Hall CB 7100, Chapel Hill, North Carolina 27599-7100. PHONE (919) 966-1730, FAX (919) 966-6821, E-mail Address: litaker@med.unc.edu

For further information or to apply to the Introduction to PCR Workshops, Contact: Paula Molina, Perkin Elmer Training Administrator, 850 Lincoln Center Dr., Foster City, CA 94404, PHONE 1-800-874-9868, ext. 5015, FAX (415) 638-5994, E-MAIL: molinapa@perkin-elmer.com.

Imagine The Possibilities

At Berlex, we've built our reputation on FDA-approved product successes and a proven track record in the pharmaceutical industry. Currently, we are seeking the following Scientists to join our world-renowned team in the beautiful San Francisco Bay Area.

Associate Scientist/Scientist

Quality Control

Collaborating with a variety of departments, you will perform and develop biochemical assays and analyses, applying your skills in enzymology, gel electrophoresis, and the physical and analytical characterization of biomolecules with particular emphasis on HPLC. You will need a PhD with 0-2 years of experience or a BS/MS degree with 6-10 years' experience, ideally working in a GMP/GLP environment. Job Code: B95-024.

Associate Scientist

Protein Biochemistry & Biophysics

You will be responsible for protein purification and characterization, assay development, and immunological and cell culture techniques. We require a BS or MS in biochemistry or related field with 3-5 years' experience in protein chemistry, ideally working with cytokine cell surface receptors. Job Code: B95-020.

As a US subsidiary of an international Fortune 500 company, Berlex is proud to offer competitive salaries and a generous benefits package. To apply, send your CV/resume, indicating the Job Code corresponding with the position of your interest, to: BERLEX, HUMAN RESOURCES EMPLOYMENT, 15049 SAN PABLO AVE., RICHMOND, CA 94804-0099. Principals only, please. EOE.

BERLEX

THE BEST IS YET TO COME

SANDOZ AGRO, INC., a division of Swiss-based Sandoz Ltd., is committed to agricultural research in North America and the crop protection business worldwide. Our innovative bio-rational approach to research offers a stimulating and challenging work environment. Working toward the development of novel microbial insecticides, the Biologicals R&D Group has the following openings:

SENIOR SCIENTIST. We are seeking a candidate with a strong background in microbial physiology, preferably experienced with sporulating bacteria, to establish a research program aimed at developing novel means of expressing insecticidal proteins in *Bacillus* hosts. Requires a Ph.D. in Microbiology, Biochemistry or related field with at least three years' postgraduate experience. Excellent communication skills and ability to work in a team environment essential.

POSTDOCTORAL SCIENTIST. Available for studies related to the discovery of novel insecticidal protein encoding genes, including studies to determine the mode of action of these toxins at the molecular level. Requires recent Ph.D. in Molecular Biology, Biochemistry or related field with substantial experience in molecular biology and/or gene expression.

ASSOCIATE SCIENTIST. Responsibilities include isolation, cloning and characterization of genes encoding novel insecticidal proteins. Requires a B.S. in Biochemistry, Molecular Biology or Microbiology with significant experience in standard microbiological and recombinant techniques.

For consideration, please note position of interest and send CV and the names of three references to Sandoz Agro, Inc., Human Resources Dept., 975 California Avenue, Palo Alto, CA 94304-1104. AA/EOE.

 **SANDOZ**

Molecular Biology Technicians

Myriad Genetics, located adjacent to the University of Utah, is a biotechnology company focused on the isolation of significant disease-causing genes.

Positions require an M.S. or B.S. degree and a minimum of two years molecular biology experience. ABI sequencing and/or linkage analysis experience strongly preferred.

We offer a competitive compensation package and a highly stimulating, interactive environment. Please send or fax your C.V., including references to: Barbara Berry, Myriad Genetics, Inc., Human Resources Dept. SCI, 390 Wakara Way, Salt Lake City, UT 84108. Fax: 801/584-3640. EOE.



MYRIAD

Stem Cell Biology

At Amgen, you'll discover a research environment that emphasizes collaboration, intellectual honesty, scientific integrity, and a supportive culture. This unique approach has helped us grow into a global biotechnology leader in just fifteen years.

RESEARCH ASSOCIATES

We currently seek three Research Associates to participate in the characterization of the properties and mechanisms of known hematopoietic growth factors, as well as the identification and characterization of new growth factors. Qualified candidates will have a BS/MS in Cell Biology, Biochemistry, Immunology, Hematology, or related discipline. These positions also require at least 2 years' relevant experience in mammalian cell culture and in vitro and in vivo bioassays (ideally related to hematopoiesis). Additional experience in protein characterization or molecular biology is preferred.

We recognize that diverse perspectives are a key factor in the process of discovery.

At Amgen, you'll find our approach to scientific research as rewarding as it is effective. We offer a highly competitive compensation and benefits package that includes a retirement and savings plan, an on-site fitness center, and three weeks' vacation. Please mail or fax your resume/c.v. to: Amgen, Staffing, Job Code: OXP-SC-2435-S, Amgen Center, Thousand Oaks, CA 91320-1789. Fax: (805) 499-9981. Please consult our on-line Job Bulletin Board at <http://www.bio.com> for information on other career opportunities available at Amgen. Principals only, please.

EEO/AA Employer M/F/D/V

AMGEN®

Senior Research Assistant/Peptide Chemist

The Lindsley F. Kimball Research Institute, a division of the New York Blood Center, is currently seeking a Senior Research Assistant/Peptide Chemist for our Laboratory of MicroChemistry. As an integral member of our research team, the incumbent will participate in original research in peptide chemistry as well as all aspects of the laboratory which synthesizes, purifies and characterizes biomolecules for researchers at the institute.

Requirements include a Ph.D. in Chemistry or Biochemistry and at least 2 years of directly related experience (or) an MS with 5 or more years of experience. A solid background in peptide chemistry or solid phase synthesis and a willingness to learn automated DNA sequencing and synthesis are also essential.

This position commands a competitive salary and a comprehensive benefits package including full health coverage and liberal vacations. For immediate consideration, please send your curriculum vitae and three references to: Department JF, Human Resources, New York Blood Center, 310 E. 67th St., New York, NY 10021; Fax: (212) 570-3195. Equal Opportunity Employer M/F/D/V

Job Opportunity Hotline 1-800-835-0058

Lindsley F. Kimball
Research Institute
A Division of the New York Blood Center

VANDERBILT UNIVERSITY MEDICAL CENTER and the Division of Continuing Medical Education And NATIONAL HEART, LUNG, AND BLOOD INSTITUTE

Present

"GENE THERAPY FOR ACQUIRED DISEASES"

October 19-21, 1995
Nashville, Tennessee

Presentations will include

"Gene Therapy: Promises and Problems"

Inder Verma, M.D.

"Basic Science and Technology of Gene Transfer: Molecular Conjugates"

Matthew Cotten, Ph.D.

"Gene Therapy for Breast Cancer"

Cynthia Dunbar, M.D.

"Gene Transfer for Restenosis"

Victor Dzau, M.D.

"Gene Therapy for Diseases of the Lung: ARDS"

Kenneth Brigham, M.D.

"Controls of Apoptosis as Potential Targets of Gene Therapy"

Dale Bredesen, M.D.

"Gene Therapy for Neuronal Injury"

Richard Miller, Ph.D.

"Regulatory Issues"

Philip Noguchi, M.D.

WINE AND CHEESE POSTER SESSION

Travel scholarships will be offered for students, fellows, and junior faculty who are a minority, a woman, or disabled.

FOR INFORMATION AND REGISTRATION:

Arlene A. Stecenko, M.D.

Vanderbilt University School of Medicine
Center for Lung Research, T-1217 MCN
Nashville, Tennessee 37232-2650

Phone: 615/322-3412

Fax: 615/343-7448

Email: Arlene.Stecenko@mcmail.Vanderbilt.edu

COMPUTER MARKETPLACE

STATISTICAL SOFTWARE

Announcing NCSS 6.0 for Windows: an accurate, easy to learn, statistical system. Includes t-tests, Anova, chi-square, survival analysis, regression analysis, multivariate analysis, graphics. Data may be imported from over 30 database and spreadsheet formats. Output may be read by your Windows word processor. Thousands of users. \$395. Ask for Dr. Hintze (PhD Statistician) at (800) 899-6109, fax (801) 546-3907. E-mail address: ncss@ix.netcom.com. Web page: WWW.ICW.COM/NCSS.

Circle No. 26 on Readers' Service Card

SCIENTIST[®] Fits Equations To Data

- nonlinear algebraic equations
- implicit algebraic equations
- Laplace transforms
- ordinary differential equations
- various splines/polynomials


1-800-942-6284
MICROMATH[®]

Circle No. 15 on Readers' Service Card

MARKETPLACE

SCIENCE LOGO T-SHIRTS BUY 2 & GET 10% OFF!

Blue type on grey 100% cotton shirt.
For details or an order form, call Corrine Harris at (202) 326-6527, or fax (202) 682-0816. **SCIENCE**

Quality Antibodies for Signal Transduction Research	Nitric Oxide Synthase	Brain NOS (bNOS) mAb
	NOS	bNOS polyclonal
	antibodies	Endothelial Cell NOS mAb
	from	ECNOS polyclonal
	TRANSDUCTION LABORATORIES	Induc. NOS (iNOS) mAb
	1-800-227-4063	(iNOS) polyclonal (iNOS) mAb FITC conj.

Circle No. 29 on Readers' Service Card

DAKO CORPORATION

NEW! Amplification system for immunohistochemical detection.

DAKO[®] CATALYZED SIGNAL AMPLIFICATION (CSA) SYSTEM*

For Research Use Only.
* Includes one ready-to-use antibody

Call for FREE catalog
800/424-0021
Fax: 805/566-6688



DAKO

Circle No. 45 on Readers' Service Card

MARKETPLACE

CUSTOM	DNA	SYNTHESIS
PURE & SIMPLE		
• Superb Technical Support	\$1	19* per base
• Impeccable Quality		\$10 setup
• World's Fastest Service		50 nmole scale
• Cap Gel & TOF Mass Spec		
* Some restrictions apply. Please call for details.		
MIDLAND		
STILL THE UNDISPUTED #1 CUSTOM DNA SYNTHESIS SERVICE		
THE MIDLAND CERTIFIED REAGENT COMPANY		
Phone 1-800-247-8766 FAX 915-694-2387		
email MCRCL@WLN.COM		

Circle No. 3 on Readers' Service Card

*THE COMPLETE
OLIGONUCLEOTIDE
COMPANY*

KEYSTONE
"Are you happy with your
DNA synthesis?"

961 HAMILTON
AVENUE
MENLO PARK
CA
94025

CALL KEYSTONE.

dna@keydna.com

800-788-4DNA

Circle No. 7 on Readers' Service Card

XX=IDT[®]
INTEGRATED DNA TECHNOLOGIES, INC.
Custom DNA Synthesis
\$1.95 / Base
200 nmole Scale
No Set-up Fee
Column Purified
24 Hour Shipping
Q.C. by PAGE on Every Oligo
S-Oligo Synthesis Available
Volume & Group Discounts Now Available!
E-mail: orders@bbs.idtdna.com
telnet bbs.idtdna.com
Fax: 1-319-645-2921
Phone: 1-800-328-2661
Major Credit Cards Accepted

Circle No. 2 on Readers' Service Card

The Peptide Engineering Specialist
PeptidoGenic
e mail: pkim@ccnet.com
Fax: 510-371-1156
Voice: 1-800-597-7873
Custom Peptide : \$20 /residue/crude/5days
IonSpray MS Service :MS (\$30), LC/MS (\$250)

Circle No. 25 on Readers' Service Card

MARKETPLACE

World leader in Synthetic DNA and Peptides

Custom	DNA	E-Mail: Biosyn@aol.com
	NO SETUP CHARGE	
Custom	\$1	19* • 150 nmole (10 ODU)
	base	• Synthesis Report
		• 24 hour SHIPPING
	Visit our Home Page on the Internet (WWW)	
	http://www.biosyn.com	
	* upto 30 bases	
	PEPTIDES	
	! FREE MASS SPEC !	
	• NO SETUP charge • Free HPLC Tracing	
	\$20	00* • 15 - 40 mgs
	residue	• 8 - 30 residues
		• Shipped in 5 days
	! Antipeptide Antibodies production services, & more !	
	Since 1984, serving you with quality products	
	BIO-SYNTHESIS	
	Tel: 800-227-0627 Fax: 214-420-0442	

Circle No. 51 on Readers' Service Card

AUTOMATED DNA SEQUENCING	SEQWRIGHT DNA Sequencing SEQWRIGHT, LLC 2472 Bolsover #425 Houston, TX 77005 1-800-720-4363 FAX: 713-528-6232
---	---

Circle No. 22 on Readers' Service Card

Human Microvascular Cells Complete Cell System
NOW ONLY \$350
NEW DEFINED ANIMAL ENDOTHELIAL CELL SYSTEMS: Porcine Aortic Endothelial Cell System Bovine Aortic Endothelial Cell System
800-697-1211
cell systems

Circle No. 39 on Readers' Service Card



AMITOF'S CUSTOM DNA
\$1.50 per base/50nmole

* No set-up Charge / No Rush Charge

* Shipped within 48 hours

1-800-5-AMITOF Fax 617-782-9352

Circle No. 19 on Readers' Service Card

Express Peptides
15 mg in 5 days
\$18 per residue
Research Genetics, Inc.
1-800-533-4363

Circle No. 6 on Readers' Service Card

NOW THAT
OPERON'S DNA *is*
just **\$1.20** PER BASE,
YOUR *savings* ARE
SURE TO multiply.



Here's something you can bank on. A 50 nmole scale synthesis of Operon's custom DNA for just \$1.20 per base, with a \$10.00 set-up fee.

This new, affordable price not only means you'll be able to conduct more experiments, it means your savings will grow with each project. And with our reputation for high-quality DNA, you'll get the results you need every time.

Of course, we still offer our 0.2 μ mole scale for \$2.00 per base with a \$15.00 set-up fee and our 1.0 μ mole scale for \$2.80 per base with a \$20.00 set-up fee.

Thanks to Operon's knowledgeable and experienced staff, you can always count on us for unmatched customer service, too. Because when it comes to meeting your needs, we really know how to hop to it.

For more information, or to place an order, call us toll-free at **1-800-688-2248**.

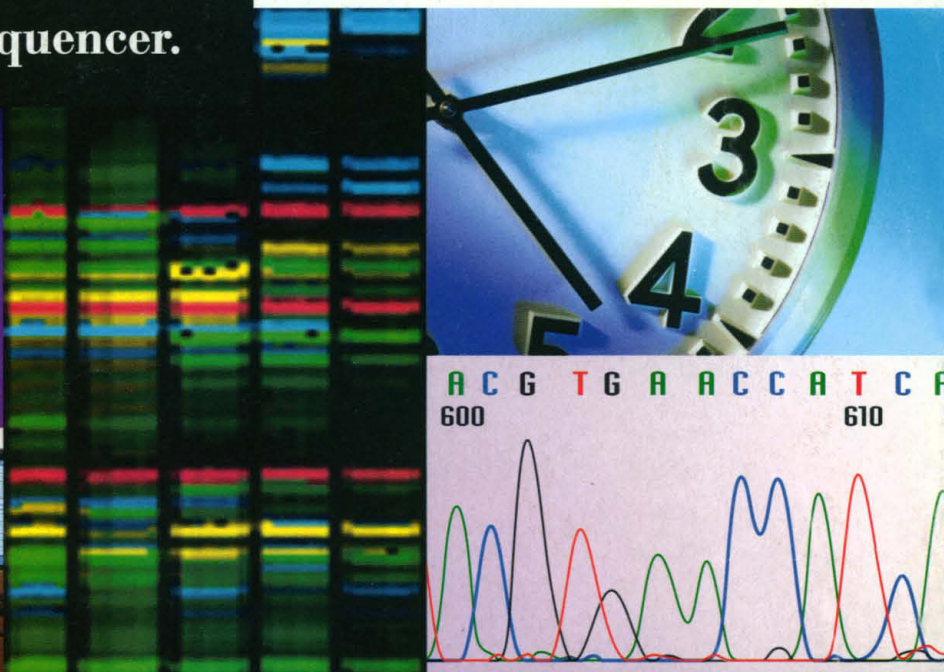
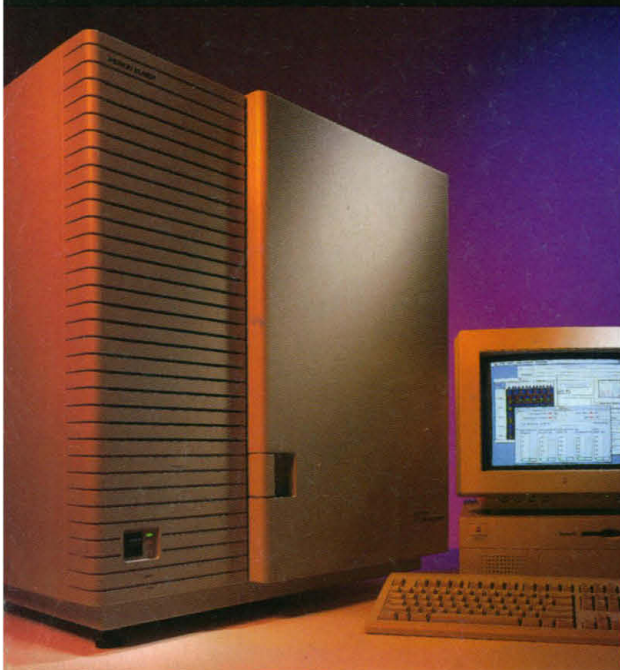
OPERON

WORLD'S LEADING SUPPLIER OF SYNTHETIC DNA

© 1995 Operon Technologies, Inc. 1000 Atlantic Ave., Alameda, CA 94501, USA. Phone: (800) 688-2248 or (510) 865-8644. Fax: (510) 865-5255. E-mail: dna@operon.com. NIHBP 263.00033233.

Circle No. 30 on Readers' Service Card

Introducing the new ABI PRISM™ 377 DNA Sequencer.



**Greater productivity,
no matter how you measure it.**

The ABI PRISM™ 377 DNA Sequencer goes beyond previous technology to bring you unprecedented productivity for all your DNA sequencing and fragment analysis applications.

The ABI 373 set the standard for accuracy and throughput with automated four-dye, one-lane detection. Now the ABI PRISM 377 raises that standard with powerful new hardware and software capabilities that take performance and reliability to new levels.

You've never seen a system this fast. Using simultaneous multicolor detection and advanced electrophoresis technology, the ABI PRISM 377 generates data four times faster than the ABI 373.

You'll also find that the 377's versatile vertical gel format offers even greater precision and more control for fine-tuning electrophoresis parameters.

And the ABI PRISM 377 is so easy to use, you'll be running samples with complete confidence in no time. A Macintosh Power PC



interface streamlines data collection and analysis with your choice of DNA Sequencing or GeneScan™ software.

Of course, the ABI PRISM 377 is backed by Perkin-Elmer's worldwide technical support organization. With over eight years of experience in genetic analysis, our Applied Biosystems Division offers you the most comprehensive range of systems, technologies, and applications expertise in the industry.

So if you're looking for greater DNA sequencing and fragment analysis productivity, find out how the ABI PRISM 377 measures up. For more information, call 1-800-345-5224. Outside the U.S. and Canada, contact your Perkin-Elmer representative.

PERKIN ELMER

Europe Langen, Germany Tel: 49 (0) 6103 708 301 Fax: 49 (0) 6103 708 310
Japan Tokyo, Japan Tel: (0473) 80-8500 Fax: (0473) 80-8505
Latin America Mexico City, Mexico Tel: 52-5-651-7077 Fax: 52-5-593-6223
Australia Melbourne, Australia Tel: (03) 9212-8585 Fax: (03) 9212-8502

Perkin-Elmer is a registered trademark and ABI PRISM and GeneScan are trademarks of The Perkin-Elmer Corporation. All other trademarks and product names are the property of their respective owners.