

Introducing StatView 4.1 for your Power Macintosh

Analyzing data the StatView way is faster than ever!

Are you still trying to wring statistics from a spreadsheet? Or shuttling data back and forth among statistics, graphing, and presentation programs? We have a better way.

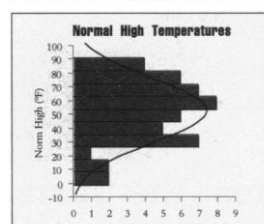
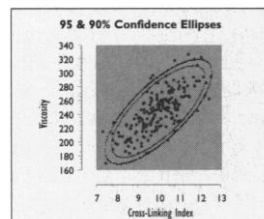
The StatView way

StatView is the best-selling, most award-winning data analysis package for the Macintosh. No other program combines data management, data analysis, graphing, drawing, and color presentation into a single easy-to-use package. If you need to go from raw data to a finished presentation, the easiest way is the StatView way.

Now 4 to 10 times faster!

StatView is now accelerated for your Power Macintosh. (Of course it runs great on regular Macs, too.) Take advantage of this stellar performance increase — try StatView “native” on your Power Macintosh today. For more information on StatView 4.1, call us at 1-800-666-STAT

StatView —
now 4 to 10
times faster
on your Power
Macintosh!

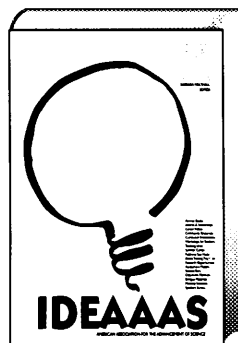


ABACUS
CONCEPTS
THE SIGNIFICANT DIFFERENCE™

© 1994 Abacus Concepts, Inc., 1918 Bonita Avenue, Berkeley, CA 94704-1014; tel: 510-540-1949; fax: 510-540-0260. StatView is a registered trademark and SuperANOVA is a trademark of Abacus Concepts, Inc. All other brands are property of their respective holders.

Circle No. 50 on Readers' Service Card

ACCESS 10,000 IDEAS.



IDEAAAS™ Sourcebook for Science, Mathematics and Technology Education
Published by the American Association for the Advancement of Science (AAAS) and The Learning Team. IDEAAAS lists over 10,000 resources in classroom materials, workshops, summer programs and outreach activities, offered by 1600 organizations for K-12 teachers, students and parents.
Only \$24.95

The Learning Team

To order or receive more information call:
1-800-793-TEAM (Dept. S)
Ask about our multi-purchase discounts
10 Long Pond Rd., Armonk NY 10504

914-273-2226 FAX 914-273-2227

AAAS Science and Technology Policy Yearbook 1994

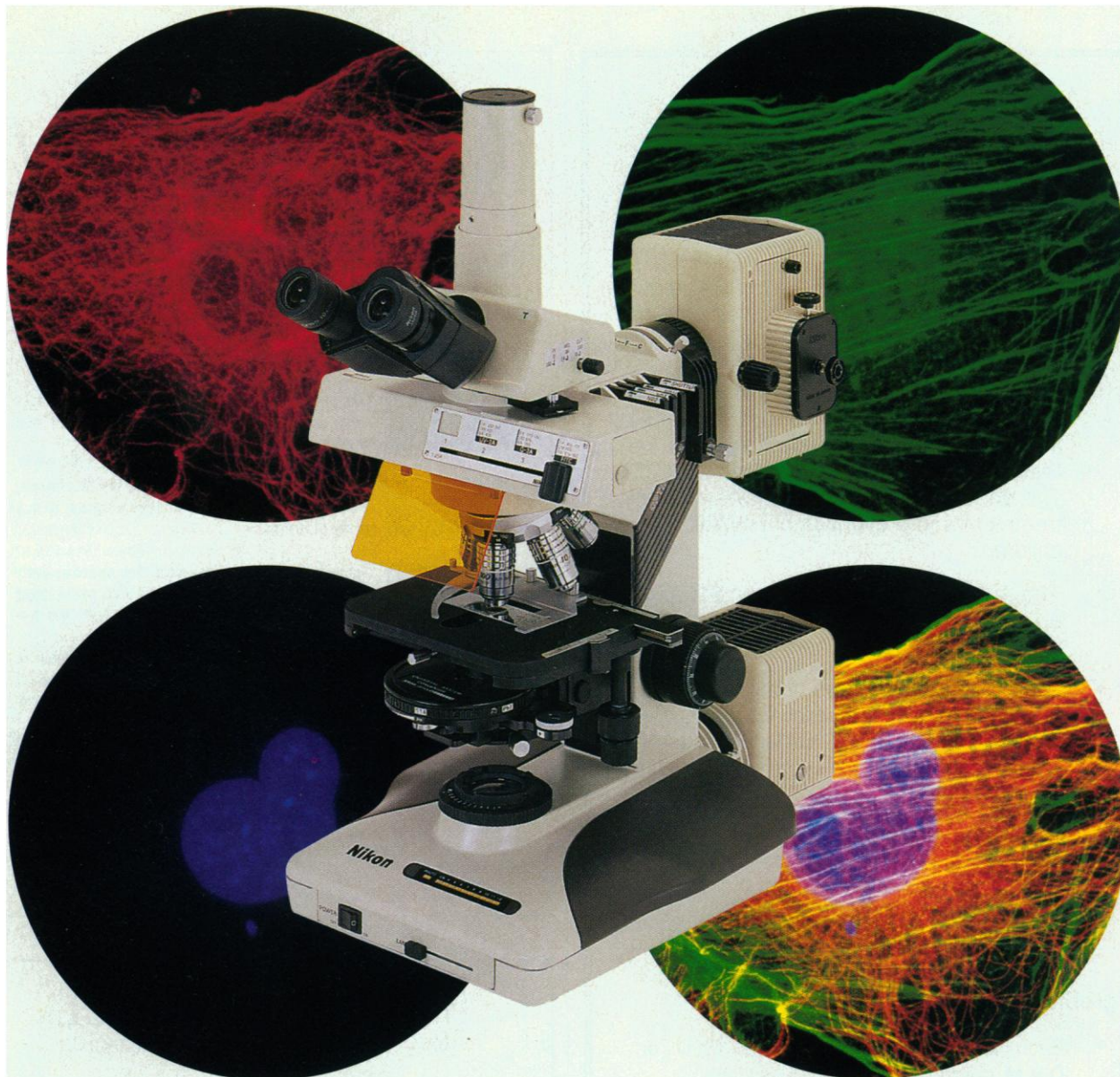
Albert H. Teich, Stephen D. Nelson
and Celia McEnaney, editors

Published by the American Association
for the Advancement of Science

The fourth volume in the AAAS Yearbook series presents selected papers from the 19th AAAS Science and Technology Policy Colloquium, held in April 1994, together with other original articles, addresses from the 1994 AAAS Annual Meeting, and excerpts from influential reports. Authors include many notable figures in S&T policy, also included is a reprint of the 1945 landmark report *Science—The Endless Frontier* by Vannevar Bush.

1994; 447 pages; index; softcover;
ISBN 0-87168-533-7
\$24.95 (AAAS member price \$19.96)
Purchase the AAAS 1991, 1992, and
1993 Yearbooks for only \$8.00 each.
Postage/handling per order \$4.00.
Mail your order to:
AAAS Distribution Center
PO Box 521
Annapolis Junction MD 20701
If you prefer to order by phone
(VISA/MasterCard only, call
1-800-222-7809 (8:30am - 5:00pm ET).
Fax orders to 301-206-9789.

Photomicrographs of mouse fibroblasts (100x) courtesy of Jennifer Kramer and Sam Wells, Molecular Probes, Inc.



The best performance and value any way you look at it!

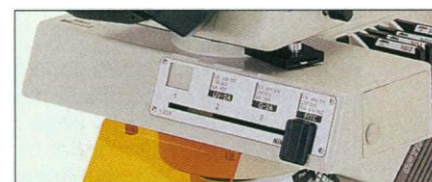
The Optiphot-2® multi-functional research microscope offers the performance and image quality of instruments costing almost twice as much. Advanced Nikon optical system, new Plan Fluor objectives and new Quadfluor™ epi-fluorescence illumination system maximize brightness and contrast in all viewing techniques.

The Quadfluor illuminator is chromatically corrected and provides lower background noise and increased light transmission. It features a smooth, precise linear slider and specially designed epi-fluorescence filter cubes which further enhance image quality.

A new high-resolution UC (User-Configured) DIC system condenser allows simultaneous fluorescence and DIC imaging with the Quadfluor illuminator. Very cost-effective, it lets you buy only the components you need for your application.

Outstanding performance, outstanding value... the Nikon Optiphot-2.

For more information and a demonstration, call 1-800-52-NIKON, ext. 275.



*New Quadfluor epi-fluorescence
illumination system.*

Circle No. 51 on Readers' Service Card

Nikon

hope for Children
with AIDS

The Elizabeth Glaser Scientist Award Pediatric AIDS Foundation

The Elizabeth Glaser Scientist Award will be given to five outstanding scientists each year whose research will greatly impact children with HIV/AIDS.

- Over a five year period, a maximum of 25 awards will be made to support outstanding investigators whose research will help resolve critical issues in pediatric HIV/AIDS. The end result will be new answers for the treatment and prevention of HIV/AIDS in children.
- The Award will provide between \$100,000 and \$150,000 in support each year for five years.
- International candidates from diverse disciplines whose research will impact children with HIV/AIDS are encouraged to apply.
- A maximum of five Scientists will be selected in December of 1995. Awards will begin in January of 1996.
- The Advisory Board will select the Scientists and ensure that the program meets its goals.

Eligibility:

- Each candidate must have an M.D., Ph.D., or D.V.M. degree and be at the associate professor level or above or be eligible for an associate professor appointment at the time of application. This Award, however, is not intended for highly established investigators.
- Research activities must take place at an accredited non-federal educational institution or education-affiliated institution. Persons being recruited but not yet hired will be considered with suitable explanation.
- Interested applicants must submit a pre-application package* in the following order:
 - A two page curriculum vitae with complete mailing information;**
 - A one page research plan;**
 - One letter of recommendation from the applicant's department chair.**
- Applicants who will be invited to submit full application packages will be notified by October 5th.

* Those interested in applying must send 12 copies of the pre-application package by August 15, 1995 to:

Patricia Devine
Pediatric AIDS Foundation
1311 Colorado Avenue
Santa Monica, CA 90404

Get to the Point

F A S T !

Data Desk is fast, visual data analysis software that takes you straight to the heart of your data. Its dynamically linked graphics show you key patterns and relationships—even the first time you use the program. The fastest calculations of *any* Macintosh statistics package let you spend less time computing—even for the largest datasets.

Start Fast

"The program teams ease of use with advanced features, making it a good choice for novices as well as experienced statisticians." —MACUSER, 9/93

★★★★½

Compute Fast

"The fastest statistics package for the Macintosh, and it is also the easiest statistics program to use on any platform." —WALTER T. LINDE-ZWIRBLE,

CLINICAL OUTCOMES, SUMMER 93

Analyze Fast

"Its user interface and recalculation speed actively encourage users to examine data sets using many different tools." —MACWEEK, 7/5/93

★★★★

Get to the Point Fast

"For getting to the heart of the matter, which is finding patterns in data, Data Desk 4.0 has no peer." —MACWORLD, 5/93

★★★★★

Data Desk

The Fast, Visual Tool for Data Analysis

DATA DESCRIPTION, INC., P.O. Box 4553, ITHACA, NY 14852

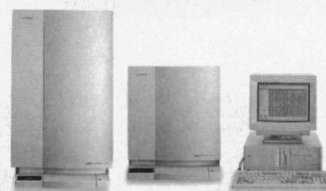


CALL FOR A FREE MAC DEMO! 800-573-5121

Circle No. 14 on Readers' Service Card

MULTIPLE CHOICE[®]

for DNA Sequencing & Genetic Analysis



4000LS LONG READIR[™]

- 800-1000 bases per sample (typical for ss templates).
- Multitasking software — operate three sequencers on one computer.



4000S

- 550 bases per sample with 99% accuracy (typical for ss templates).
- High sequencing throughput on shorter fragments.



4000LX

- Combines a Model 4000L, a Model 4000 and one computer.
- Each sequencer is operated independently.

Choose a LI-COR *infrared* sequencer for high productivity sequencing, genetic analysis, or extra long reads to close gaps between contigs. Or, combine a system for all three applications!

1-800-645-4267

(Toll-Free U.S. & Canada)

LI-COR[®]

BIOTECHNOLOGY DIVISION

402-467-0700 • FAX: 402-467-0819

4421 Superior Street • P.O. Box 4000 • Lincoln, Nebraska 68504 USA

Circle No. 13 on Readers' Service Card

1 9 9 6

AAAS ANNUAL MEETING

SCIENCE INNOVATION EXPOSITION

February 8-13 • Baltimore Convention Center

MARK YOU CALENDAR for the preeminent multidisciplinary scientific conference and exposition ... *AMSIE'96*. Share recent findings, explore fertile synergies with colleagues in other disciplines, and debate today's critical issues in science policy and education — join us in Baltimore for a diverse selection of plenary lectures, symposia, seminars, workshops, exhibitions, and more. The only multidisciplinary conference of its kind ... *AMSIE'96* offers you the rare opportunity to meet and learn from top scientists in your own field and in other disciplines.

Find out the latest research advances

over 150 symposia and lectures covering the biological, physical, and social sciences.

Discover the newest techniques and instruments

One hundred exhibiting companies featuring cutting edge instruments and techniques in biomedical science in addition to the latest lab products, computer equipment, books and journals.

Meet the leaders in your field

more than 1,200 speakers, including some of the top names in research, will share their latest work.

Network with your colleagues

some 5,000 of your colleagues are expected ... networking, lunching, and exchanging solutions and ideas.

Explore career opportunities

the *AMSIE'96* Employment Exchange offers on-site interviews, hundreds of job postings, and career development seminars.

Present your own work

contribute a poster paper or submit your session ideas now to be considered by our distinguished Program Committee.

Student poster competition

special awards competition for the best student poster presentations.

Technical seminars

advanced topics will be presented in intensive (2-3 days) courses.

AMSIE'96 Program Committee:

Rita Colwell, University of Maryland
'96 Annual Meeting Program Chair

Jane Lubchenco, University of Oregon
'97 Annual Meeting Program Chair

Ronald L. Graham
AT&T Bell Laboratories

Lawrence Grossman
Johns Hopkins University

Alvin L. Kwiram
University of Washington

Donald A.B. Lindberg
National Library of Medicine

Orie L. Loucks
Miami University-Ohio

Cora B. Marrett
National Science Foundation

Robert P. Morgan
Washington University

Robert M. Nerem
Georgia Institute of Technology

Savio L.C. Woo
*Baylor College of Medicine and
Howard Hughes Medical Institute*

Harry Woolf
Institute of Advanced Study

Science Innovation Organizing Committee

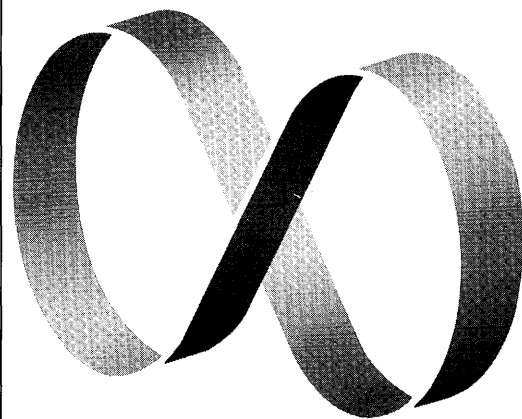
Savio L.C. Woo
*Chair
Baylor College of Medicine and
Howard Hughes Medical Institute*

Robert Nerem
Georgia Institute of Technology

Barbara Jasny
SCIENCE

William Hazeltine
Human Genome Sciences

Edward Korn
*National Heart Lung and Blood
Institute.*



Where Science Comes To Life

THE PRELIMINARY PROGRAM WILL BE AVAILABLE IN SEPTEMBER. COMPLETE THE COUPON BELOW TO RESERVE YOUR COPY.

The American Association for the Advancement of Science
The 1996 AAAS Annual Meeting & Science Innovation Exposition

- ☐ Send me program/registration information
- ☐ Send me Employment Exchange information
- ☐ Send me Exhibitor information
- ☐ Send me "Call for Poster Papers" information

Please type or print clearly

Name _____

Company _____

Address _____

City _____

State _____

Zip _____

Telephone () _____

FAX () _____

Mail AAAS, Meetings Department
1333 H St., NW
Washington, DC 20005

Phone: (202) 326-6450

FAX: (202) 842-1065

American Association for the Advancement of Science



It looks like an ordinary filter. But comes with its own laboratory filtration expert.

What seems like an ordinary filter is actually your direct link to Millipore Technical Service Specialists. Plus hundreds of references, years of research and Internet access via URL: <http://www.millipore.com>. Tell us about your application. Log on or call 1-800-MILLIPORE in the U.S. In Europe, fax to +33-88.38.91.95. In Japan, call (03)3474-9111. And use the filter with more behind it.

MILLIPORE

PRODUCTS & MATERIALS

Autoradiography Pen

The Bio-Imager Pen contains a nonradioactive, nontoxic, phosphorescent writing fluid that exposes x-ray film. The user can write run number, time, date, positioning information, and other data on electrophoretic gels or other surfaces prior to exposure of the x-ray film. Once the gel is processed and exposed to the x-ray film all the information will appear clearly on the film to provide a written record. **The Binding Site. Circle 139.**

DNA Mini System

The DNA Mini System is a compact complete vacuum concentration system for the drying and concentrating of RNA and DNA



precipitates. The environmentally friendly system consists of a centrifuge, a Teflon membrane pump, rotor, and built-in analog vacuum readout and autovent. **Appropriate Technical Resources. Circle 140.**

DNA Hybridization System

The Checkerboard Hybridization System allows the user to perform up to 1350 probe hybridizations simultaneously on a single membrane. Target DNA sequences, either purified or in cell lysates, are first applied to the membrane in horizontal lines using a vacuum aspiration device. Membranes are then transferred to a Miniblotter, where probes are introduced into parallel vertical incubation channels. Hybridizations can be

carried out according to standard protocols using chemiluminescent or radiolabeled probes. The resulting checkerboard hybridization can be quantitated by scanning densitometry. Potential applications include analysis of clinical samples with multiple probes, analysis of probe sequence overlap, analysis of sequence relatedness between different species, or any procedure involving DNA hybridizations with multiple probes and target sequences. Two systems are available. One permits up to 280 hybridizations on a 7 cm by 10 cm membrane, the other 1350 hybridizations on a 15 cm by 15 cm membrane. **Immunetics. Circle 141.**

Personal Hybridization Oven

The PersonalHyb oven is a space-saving, stackable hybridization oven that hybridizes radioactive probes to nucleic acids immobilized on membrane filters. The oven features a microprocessor proportional-integral-derivative temperature controller and forced air circulation to rapidly bring the temperature to the desired setting. A unique rotating-roller system holds the tubes and bottles, eliminating the need for special adapters, springs, or clips. Bottles from 35 to 80 mm in diameter can be used, as well as standard 50-ml conical tubes. **Stratagene. Circle 142.**

Portable Luminometer

The Celsis Portable Luminometer I (CPLI) can rapidly indicate both microbial and non-microbial contamination. Testing based on agar plate technology requires 2 days to obtain a result and can only detect bacterial contamination. The CPLI, used with the Celsis Hygiene Monitoring Kit, can detect adenosine triphosphate derived from both microbial and nonmicrobial sources in seconds. Traditionally, luminometers are benchtop instruments that lack mobility, requiring sample processing to be laboratory-based. The CPLI comes with a carrying case to allow the completion of sample analysis at the site of collection. **Celsis. Circle 143.**

Newly offered instrumentation, apparatus, and laboratory materials of interest to researchers in all disciplines in academic, industrial, and government organizations are featured in this space. Emphasis is given to purpose, chief characteristics, and availability of products and materials. Endorsement by *Science* or AAAS is not implied. Additional information may be obtained from the manufacturers or suppliers named by circling the appropriate number on the Readers' Service Card and placing it in a mailbox. Postage is free.

Why Wait for that Pre-Cast Gel?

NOVEX will ship it within

48 hours.

Guaranteed.

- Choose from 140 gel types
- Reliable, reproducible results
- Set-Up to run in 30 seconds with the NOVEX™ XCell II™ Mini-Cell

* Guarantee applies to top 10 NOVEX gels.



San Diego, California
Tel: (619)452-6634 • Fax: (619)452-6635

The Electrophoresis Experts
1-800-456-6839

Circle No. 27 on Readers' Service Card



Microconcentrators

Nanosep 10K microconcentrators can concentrate or desalt a 500- μ l sample to 50 μ l in 5 to 10 min, with recoveries typically greater than 90%. High recoveries can be achieved because of the encapsulated low protein adsorption membrane and polypropylene construction. They can be used for concentrating and desalting small peptides, oligonucleotides, nucleic acids, enzymes, antibodies, microbes, and other biomolecules. They fit any standard centrifuge rotor that accepts 1.5-ml tubes. **Filtron Technology. Circle 144.**

Transcription Kits

With typical yields of 100 to 160 μ g of RNA from just 1 μ g of DNA template, the AmpliScrib High-Yield Transcription Kit permits the synthesis of the maximum possible amounts of RNA from in vitro transcription reactions. The novel preparation of T7, T3, and SP6 phage RNA polymerase in the kit transcribes up to 30 times more RNA than standard in vitro transcription kits and can be used to produce transcripts ranging in size from <100 bases to multi-kilobase sizes. The kit economically synthesizes large amounts of RNA for in vitro translation, microinjection, and complementary DNA synthesis. **Epicentre Technologies. Circle 145.**

Literature

QIAamp Application Guide provides protocols for fast, reliable isolation of genomic DNA from a wide range of samples, including mouse tails, insects, blood, and tissue. Purification of viral nucleic acids from body fluids is also described. The QIAamp system is a simple microspin procedure in which DNA is adsorbed to a membrane, then eluted in buffer or water with no phenol extraction or ethanol precipitation. The DNA is ready

for use in applications from restriction digestion to amplification to blotting. **Qiagen. Circle 146.**

Capillary Electrophoresis: An Introduction to Principles and Practice is a video that explains how and why capillary electrophoresis works. **Phenomenex. Circle 147.**

Cell Culture Incubators brochure describes a complete line, including water-jacketed incubators with CO₂ and O₂ control, incubators with high efficiency filters, large capacity reach-in incubators, and an anaerobic system. **Forma Scientific. Circle 148.**

Accelerated Restriction Mapping and Cloning with Ultrafiltration is an application note that describes a method that allows the ordering of several restriction fragments on a map while generating, as a by-product, insert DNA suitable for cloning. **Amicon. Circle 149.**

Electrophoresis and Imaging is a 36-page product guide that lists hundreds of brand name products for horizontal, vertical, and capillary electrophoresis; nucleic acid sequencing; blotting; photography; autoradiography; chemiluminescence; and sequence analysis. **Sigma-Aldrich Techware. Circle 150.**

HIGH RESOLUTION,

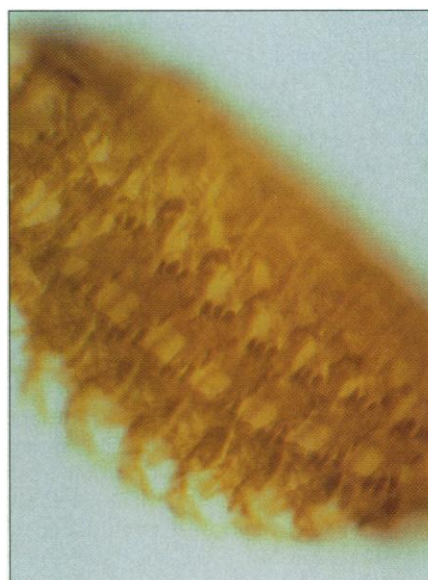
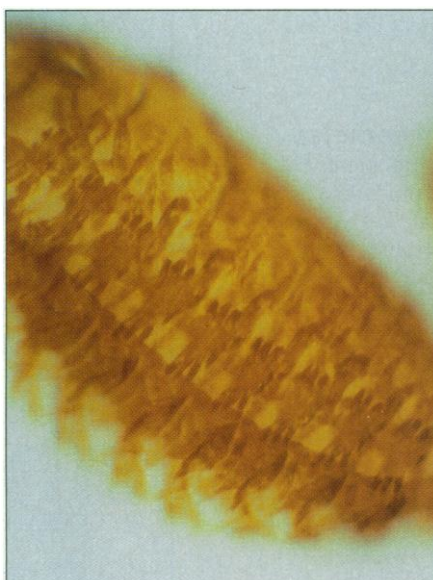
HIGH MAGNIFICATION,

DIRECTLY OBSERVABLE,

REAL-TIME 3D.

Buy or lease the Edge® R400 microscope. Call* 1-800-597-EDGE.

edge®



*Outside the U.S. call 310-396-9333. ©1995 Edge Scientific Instrument Corporation, 1630 17th Street, Santa Monica, CA 90404. Made in the U.S.A.
3D pair of wild-type *Drosophila* embryo (stage 16/17) stained with MAb6D5 to visualize developing muscles.
Preparation provided by Dr. E. Giniger, Fred Hutchinson Cancer Research Center.

Circle No. 68 on Readers' Service Card

Science

PERSONNEL PLACEMENT

LINE CLASSIFIED ADVERTISEMENTS

Deadlines: Ads are due by Thursday, 10 a.m., 2 weeks prior to the issue date. *Science* is published each Friday, except the last Friday of the year. Call for holiday deadlines. Ads must be submitted in writing.

How to Submit a Classified Ad:

Prepare double-spaced typewritten copy. Do not include any abbreviations. *Science* will edit and typeset ads according to *Science* guidelines. Include billing information, and desired publication date. Available categories: Positions Open, Meetings, Announcements, Courses and Training, Search Firms. *Science* cannot provide proofs of typeset line ads.

Mail, FAX or Email materials to:

Science Classified Advertising
1333 H Street, N.W., Room 814
Washington, DC 20005
Telephone: 202-326-6555
FAX: 202-682-0816

Internet Email: science_classifieds@aaas.org

Rates: Ads are \$43 per line; \$430 minimum. One line equals 52 characters and spaces; centered headings equal 32 characters and spaces. A 3% cash discount is granted to all prepaid ads.

Estimates: *Science* will provide a cost estimate for line ads. This is an approximate cost only. Allow for variation between estimated lines and actual typeset lines and resulting final cost. Purchase orders must allow for some degree of flexibility and/or adjustment.

Ads from Outside the U.S.: A discount of \$30 will be offered to advertisers making payment in U.S. dollars by checks drawn on U.S. banks. Contact Gordon Clark at +44 1223 302 067 (telephone) or +44 1223 576 208 (FAX).

Credit Cards: *Science* accepts American Express, MasterCard and VISA. Discount does not apply to credit cards.

Cancellations: Deadline for cancellation is 10 a.m., Tuesday, 10 days prior to issue date.

DISPLAY PERSONNEL ADVERTISEMENTS

For rates and info. for fractional display ads call:

Deborah Cummings
Recruitment Display Advertising
Telephone: 202-326-6541
FAX: 202-682-0816

Janis Crowley
Recruitment Advertising Manager
Telephone: 212-496-7704
FAX: 202-682-0816

Gordon Clark
European Recruitment Advertising
Telephone: +44 1223 302 067
FAX: +44 1223 576 208

SCIENCE JOBNET: Unless otherwise instructed, every classified advertisement submitted for publication in *Science* is automatically posted on *Science's* on-line classified advertising service, *SCIENCE JOBNET*, at no additional charge. **SCIENCE JOBNET address:** gopher.aaas.org

CONDITIONS: The AAAS encourages employers to actively recruit and employ underrepresented minority groups. *Science* reserves the right, at its discretion, to edit or decline to publish advertisements submitted to it.

POSITIONS OPEN

UNIVERSITY OF VIRGINIA Department of Biomedical Engineering

Applications are invited for a tenure-track position in Biomedical Engineering, at the **ASSISTANT** or **ASSOCIATE PROFESSOR** rank. Applicants should have research interests in basic cellular and molecular mechanisms of wound formation and wound repair, technology development for metabolic and mechanical wound monitoring, and clinical applications of wound healing science. The successful candidate will be expected to participate in a multidisciplinary program in wound prevention and repair with participants from Biomedical Engineering, Cell Biology, Physiology, Plastic Surgery, Mechanical Engineering, and Infectious Diseases. A core laboratory for these activities is under development. The desired start date is September 1, 1995. Applicants must hold a Ph.D. and have demonstrated research experience in a relevant area. Please submit a curriculum vitae, a two page description of future research plans, and names, addresses, and telephone numbers of three professional references to: **Dr. Thomas C. Skalak, Program Director, Center for Engineering of Wound Prevention and Repair, Department of Biomedical Engineering, Box 377 Health Sciences Center, University of Virginia, Charlottesville, VA 22908.** *The University of Virginia is an Equal Opportunity Employer. Women and minorities are encouraged to apply.*

EAST CAROLINA UNIVERSITY SCHOOL OF MEDICINE

Department of Microbiology and Immunology

Faculty positions are available at the **ASSISTANT** or **ASSOCIATE PROFESSOR** levels in the areas of molecular and cellular immunology and/or microbial pathogenesis. Salary and rank will be commensurate with qualifications. Successful candidates will develop an extramurally funded research program and will participate in team-taught courses in the Medical and Graduate Schools. Appointment at the Associate Professor level requires a strong record of continuous research funding including current extramural support and evidence of leadership in teaching and service. The department has 15 full-time faculty and is fully equipped with advanced core facilities for research in immunology, molecular biology and genetics. Please provide curriculum vitae, a letter describing research and teaching goals, and names and addresses of three references to: **Dr. Paul Phibbs, Professor and Chairman, Department of Microbiology and Immunology, School of Medicine, East Carolina University, Greenville, NC 27858-4354.**

East Carolina University is an Equal Opportunity/Affirmative Action University. Accommodates individuals with disabilities. Applicants must comply with the Immigration Reform and Control Act.

JUNIOR FACULTY POSITION BIOMEDICAL ENGINEERING Massachusetts Institute of Technology

The Department of Mechanical Engineering at MIT invites applications for a junior **FACULTY POSITION** in the general areas of Biomedical Engineering. The candidate's area of interest should complement and enhance current research and teaching activities in mechanical engineering. Focus on mechanical and either biochemical or biophysical phenomena at the biological microscale (cells and matrices), as well as their relation to physiological or pathological function of tissues and organs, is desired. Emphasis on a specific tissue/organ is desirable, together with interests in applications to a variety of *in vitro* and *in vivo* systems. Applicants must hold an earned doctorate in mechanical engineering, biomedical engineering, or a related field and have a demonstrated ability to carry out innovative research and a strong promise of outstanding teaching. Applicants should send a curriculum vitae including citizenship and/or visa status, a one-to-two page statement of research interests, copies of no more than three publications, and the names, addresses and telephone numbers of at least three references to:

**Chair—Biomedical Engineering Faculty Search
Department of Mechanical Engineering Room 3-173
Massachusetts Institute of Technology
Cambridge, MA 02139-4307**

Applications received by July 31, 1995, will be given full consideration.

MIT is an Equal Opportunity/Affirmative Action Employer. Women and minorities are encouraged to apply.

POSITIONS OPEN

PHYTOPLANKTON OCEANOGRAPHER MARINE STUDIES

The Graduate College of Marine Studies, University of Delaware, invites applications for a faculty position in Biological Oceanography. The position is available after September 1995 and is a 12 month tenure-track position at the **ASSISTANT PROFESSOR** level located at the Lewes Campus. Responsibilities will include development of a vigorous research program, teaching, and advisement of graduate students. We are looking for candidates with expertise in plankton studies who will establish an integrated laboratory and field program. Preference will be made for candidates with interest in ecosystem dynamics and experience in using modern techniques (such as those from molecular biology). The successful candidate will be expected to interact with oceanographers and marine biologists from diverse disciplines. A candidate should submit a letter of application describing research interests and background, a current curriculum vitae, and the names and addresses of three references (please do not request letters from references, but do give telephone numbers and Email addresses) to: **Jonathan H. Sharp, Search Committee Chairman, Graduate College of Marine Studies, University of Delaware, Lewes, DE 19958.** **Telephone: 302-645-4259; FAX: 302-645-4007; Email: jsharp@brahms.udel.edu.** Applications should be completed by July 1, 1995.

The University of Delaware is an Equal Opportunity Employer which encourages applications from minority group members and women.

Wetlands Ecologist. **ASSISTANT PROFESSOR** of Environmental and Resource Sciences, 12-month, tenure-track appointment (50% research, 50% instruction). The successful candidate will augment programs in Natural Resource Management and Conservation Biology by developing undergraduate and graduate courses in wetlands ecology and management, by building a nationally competitive and funded research program, and by developing a strong graduate program. The University's location affords easy access to a variety of natural and artificial wetlands from alpine to Great Basin desert settings. Candidates with interest in vascular plant ecology are especially encouraged to apply. Ph.D. required, postdoctoral training preferred. Consideration of applicants will begin 1 August 1995 and continue until the position is filled. Send letter of interest, a curriculum vitae, statements of teaching and research interests, copies of publications, and three letters of reference to: **Dr. Lewis Oring or Dr. Sherm Swanson, Search Committee, Department of Environmental Resource Sciences, MS 186, 1000 Valley Road, University of Nevada, Reno, NV 89512-0013.**

Affirmative Action/Equal Opportunity Employer. Diversity will be strongly considered. The University of Nevada, Reno employs only U.S. citizens and aliens lawfully authorized to work in the United States.

FACULTY POSITION IN CARDIOLOGY UNIVERSITY OF CALIFORNIA, IRVINE

Applications are invited for a **TENURE-TRACK** or **TENURED POSITION** in the Division of Cardiology with joint appointment in the Department of Pharmacology. Qualifications include: (1) M.D. or M.D./Ph.D. degrees with clinical training and Board-certification or eligibility in Cardiovascular Diseases; (2) a proven record or outstanding promise of research accomplishment and funding; and (3) investigative experience in molecular biological approaches to important cardiovascular problems, e.g., coronary restenosis, or myocardial dysfunction. Level of appointment and salary will be commensurate with achievement and experience. Curriculum vitae, references, and a summary of research interests should be sent to: **Julius M. Gardin, M.D., Professor of Medicine and Chief, Division of Cardiology, University of California, Irvine Medical Center, 101 City Drive South, Orange, CA 92668.** *University of California, Irvine is Rooted in Education; Enriched by Diversity.*

AUDITORY NEUROSCIENCE

RESEARCH ASSISTANT PROFESSOR, non-tenure-track, with interests in tissue culture, neural regeneration/degeneration. Develop research program and collaborate in ongoing projects. Send curriculum vitae and names of three references to: **J. H. Mills, Department of Otolaryngology, Medical University of South Carolina, 171 Ashley Avenue, Charleston, SC 29425.** *The Medical University is an Equal Opportunity/Affirmative Action Employer and invites applications from women and minorities.*

POSITIONS OPEN

CHAIR OF PATHOLOGY

The University of Texas Health Science Center at San Antonio invites applications for the position of **CHAIR** and Professor of Pathology. We are seeking a candidate with leadership ability, administrative experience and a strong record of academic accomplishments to direct the teaching, research and clinical programs of the department. The successful candidate will possess the credentials and vision to build upon existing strengths to further the academic mission of the department. The Chair of Pathology will direct clinical and anatomical pathology services at the affiliated University Hospital and Audie L. Murphy VA Hospital. The position will provide opportunities for additional growth of the department. Nominations or letters of interest including a curriculum vitae should be sent to: **Vernon S. Bishop, Ph.D., Chair, Pathology Chair Search Committee, Department of Physiology, University of Texas Health Science Center at San Antonio, 7703 Floyd Curl Drive, San Antonio, TX 78284-7756.** *The University of Texas Health Science Center at San Antonio is an Affirmative Action/Equal Opportunity Employer with a strong commitment to the achievement of diversity among its faculty.*

LINDHOLM ENDOWED CHAIR IN GENETICS

Requirements include M.D. and/or Ph.D. degree and an international reputation in research, scholarship and education in the field of mammalian molecular genetics. The duties for this **TENURE-TRACK** position include establishing an outstanding research program and acting as a catalyst for the further development of academic programs in Genetics. Laboratory space will be provided in the newly constructed Children's Research Center at The University of Arizona College of Medicine. Review of applications will begin June 1, 1995, and continue until the position is filled. Send a letter describing current/future research and teaching interests, a curriculum vitae, and names/telephone numbers of five professional references from whom letters may be solicited to: **Search Committee for the Lindholm Endowed Chair, Section of Medical and Molecular Genetics, Department of Pediatrics, The University of Arizona Health Sciences Center, Tucson, AZ 85724.** *The University of Arizona is an Equal Employment Opportunity/Affirmative Action/ADA Employer. Women and minorities are encouraged to apply.*

FACULTY POSITIONS IN MOLECULAR MICROBIOLOGY AND MOLECULAR GENETICS TECHNION—ISRAELI INSTITUTE OF TECHNOLOGY

The B. Rappaport Faculty of Medicine at the Technion invites applications for tenure-track positions at the **SENIOR LECTURER to PROFESSOR** level in all areas of Molecular Microbiology. Applications are also invited for tenure-track positions at the senior lecturer to professor level in Molecular Genetics, preferably human or mammalian genetics. Applicants are expected to conduct independent research of high quality and to teach undergraduate and graduate courses in their areas of expertise. Please submit curriculum vitae, a brief statement of research directions and names of three references to: **Professor Peretz Lavie, Dean, B. Rappaport Faculty of Medicine, Technion, P.O.B. 9649, Bat Galim, Haifa 31096 Israel.**

FACULTY POSITIONS

The Department of Physiology and Biophysics of Case Western Reserve University is recruiting for individuals in the areas of muscle contractility or cell motility. The department currently has several faculty with research interests in this area, and wishes to expand. Applicants using biochemical and molecular approaches to address questions in the areas of muscle-related gene expression or regulation of contractility are especially encouraged to apply. Applications will be considered at all **FACULTY** appointment levels, and very competitive conditions are available.

Submit curriculum vitae, brief statement of interests, and names of references to: **Muscle Search Committee, Department of Physiology and Biophysics, Case Western Reserve School of Medicine, Cleveland, OH 44106-4970.** *Case Western Reserve University is an Equal Opportunity/Affirmative Action Employer.*

POSITIONS OPEN

ASSOCIATE DEAN FOR RESEARCH AND FACULTY AFFAIRS

The University of Kansas School of Medicine announces the search for an **ASSOCIATE DEAN** for Research and Faculty Affairs. The Associate Dean will have primary responsibility for enhancing the faculty's research activities and professional development as successful investigators and research scholars. The incumbent will serve as an advocate for the research activities within the School of Medicine and the University of Kansas Medical Center. The Associate Dean will be responsible for ensuring that there is effective, ongoing evaluation of research efforts within various departments. The successful candidate must have an M.D. or Ph.D. degree, substantive research and administrative experience in an academic institution, familiarity with government and non-government granting agencies, demonstrated research productivity, experience in faculty development, and strong interpersonal and communication skills. The successful candidate must qualify for a tenure-track position at a senior rank in an academic department of the School of Medicine. Salary will be commensurate with experience. Nominations and/or applications should be submitted to: **S. J. Enna, M.D., Chair, Associate Dean for Research and Faculty Affairs Search Committee, School of Medicine, University of Kansas Medical Center, 3901 Rainbow Boulevard, Kansas City, KS 66160-7300.** *An Equal Opportunity/Affirmative Action Employer.*

FACULTY POSITIONS Assistant, Associate or Full Professor Department of Physiology and Biophysics University of Mississippi Medical Center

The Department of Physiology and Biophysics at the University of Mississippi Medical Center invites applications for two tenure-track faculty appointments. Applicants will be considered for the ranks of **ASSISTANT, ASSOCIATE, or FULL PROFESSOR.** Applicants must have a Ph.D. and/or M.D. and postdoctoral training and must be a permanent resident or citizen of the United States. We are seeking individuals with expertise in molecular and/or cellular physiology with research interests that complement existing areas of excellence in cardiovascular and/or renal physiology. Special consideration will be given to candidates with research interests in the areas of regulation of extracellular matrix, angiogenesis, or hypertrophy of vascular or cardiac muscle. Successful applicants are expected to establish a strong independent research program, supported by extramural funding, and contribute to the teaching of graduate and medical students. Interested applicants should send curriculum vitae and the names of at least three references to: **Dr. John Hall, Department of Physiology & Biophysics, University of Mississippi Medical Center, Jackson, MS 39216.** *Equal Opportunity Employer/Minority/Female/Disabled/Veteran.*

ASSISTANT/ASSOCIATE PROFESSOR(S) PLANT PATHOLOGY

Applications are invited for two tenure-track positions focusing on fundamental research concerning plant-pathogen interactions. Successful candidates will be allowed broad latitude in determining particular research directions. However, strong preference will be given in one position for an individual using molecular approaches to the study of prokaryotes and plant diseases in which they are causally involved. In both cases, postdoctoral experience is desirable. One position may be filled at the **ASSOCIATE PROFESSOR** level with an individual who has demonstrated appropriate professional accomplishments. The appointees will be expected to contribute to the instructional program in the department as well as to provide expertise to other departmental efforts. Applicants should send curriculum vitae, transcripts, sample publications, any other evidence of professional accomplishments considered relevant and the names/addresses/telephone numbers of at least three professional references to: **Dr. David A. Smith, Department of Plant Pathology, S-305 Agricultural Science Building, North, University of Kentucky, Lexington, KY 40546-0091.** Telephone: 606-257-3901; FAX: 606-323-1961; Email: dsmith@ukcc.uky.edu. Applications will be accepted until August 31, 1995, or until suitably qualified candidates are found. *The University of Kentucky is an Equal Opportunity Employer. Women and minorities are encouraged to apply.*

POSITIONS OPEN

ASSISTANT MEMBER MONELL CHEMICAL SENSES CENTER

The Monell Chemical Senses Center is inviting applications at the **ASSISTANT MEMBER** level for an individual with expertise in cellular and molecular mechanisms of olfaction to work on the effect of nutritional factors on development and regeneration in the olfactory system. The successful candidate should have a Ph.D. and at least two years of relevant postdoctoral experience, and will be expected to establish an independent extramurally funded research program utilizing cellular, molecular and behavioral approaches. Please send curriculum vitae, a letter describing research plans, and three letters of recommendation to: **Dr. Gary Beauchamp, Director, Monell Chemical Senses Center, 3500 Market Street, Philadelphia, PA 19104.** *Monell is an Affirmative Action/Equal Opportunity Employer.*

FACULTY POSITION IN PHARMACOLOGY

The Division of Basic Medical Sciences at Mercer University School of Medicine invites applications for a tenure-track position at the **ASSISTANT/ASSOCIATE PROFESSOR** level. The successful applicant should have a doctoral degree in Pharmacology with at least two years of postdoctoral training and will be expected to participate in interdisciplinary problem-based medical education, facilitate learning in small group tutorials and develop an independent research program. Preference will be given to individuals with interests in autocrine-, eicosanoid-, endocrine- or immunopharmacology. Candidates with strong backgrounds in other areas are also encouraged to apply. Applicants should send curriculum vitae (including teaching experience), the names of three references and a brief description of research interests and educational philosophy to: **Robert J. Moon, Ph.D., Division of Basic Medical Sciences, School of Medicine, Mercer University, 1550 College Street, Macon, GA 31207.** *Equal Opportunity/Affirmative Action Employer.*

SCIENCE JOBNET

Classified Advertising On-line!

SCIENCE JOBNET: A new on-line service only from SCIENCE. Now, when you advertise in the SCIENCE classified recruitment section, your advertisement is automatically posted on our new on-line classified advertising service, SCIENCE JOBNET, at no additional charge.

SCIENCE JOBNET address:

Gopher: [gopher.aaas.org](gopher:aaas.org)

WWW: [gopher://gopher.aaas.org](http://gopher.aaas.org)

DIRECTOR, OFFICE OF DIETARY SUPPLEMENTS RESEARCH

National Institutes of Health, Public Health Service, Department of Health and Human Services

The National Institutes of Health (NIH) invites applications for the position of Director, Office of Dietary Supplements Research, Office of Disease Prevention within the Office of the Director. This position may be filled through (1) Civil Service appointment, (2) leave from an institution of higher education, state, local or Indian tribal government or other eligible organization to serve on an Intergovernmental Personnel Act (IPA) assignment or (3) appointment as a Special Expert. The position is classified as a Nutritionist/Medical Officer, GS-630/602-15, with a salary range of \$71,664 to \$93,166 per year which includes locality pay. Physicians may be eligible for a Physicians Comparability Allowance.

Serves as a principal advisor on the issues of dietary supplements to the NIH, Centers for Disease Control and Prevention and Food and Drug Administration of the Public Health Service and to other Departments of the Federal Government. Represents NIH on interdepartmental committees. As a recognized expert in nutrition and prevention research, establishes and promotes liaisons with scientific societies, academic institutions and commercial interests to communicate the commitment of NIH to conduct research on scientific issues related to the use of dietary supplements to improve health care in the United States. Develops a database on NIH intramural research and extramural-funded grants for research on dietary supplements and for reviews of published literature that addresses the impact of dietary supplements on human diseases including heart disease, cancer, birth defects, osteoporosis and cataracts. The Director will work with NIH Institutes and Centers to develop new research initiatives through Requests for Applications, Requests for Proposals and Program Announcements related to dietary supplements research and to appropriate training activities.

Applicants must possess a Ph.D. or M.D. or equivalent graduate degree in the field of nutrition or a related science with broad biomedical expertise, or an equivalent combination of education and experience which has equipped the individual with the specific knowledge, skills and abilities to successfully perform the duties of the positions. Desirable factors which should also be addressed: (1) knowledge of nutrition research and issues in nutrition supplements research; (2) knowledge of national nutrition policies and regulations; (3) demonstrated experience in compiling and summarizing databases; (4) demonstrated experience and skill in writing and editing technical reports for review by scientists and for publication; (5) demonstrated skill and experience in initiating research activities; and (6) skill in organizing and directing formal conferences and meetings. Applicants are encouraged to address the desirable factors in their applications.

A copy of the vacancy announcement, OD-95-1042, may be obtained by phoning (301) 402-4111. Applications must be postmarked by June 12, 1995. Send the application materials to:

National Institutes of Health, Office of the Director Personnel Office

Attn: Deborah Kraut, Building 31, Room 1C27

31 CENTER DR MSC 2264 BETHESDA MD 20892-2264

Selection for this position will be based solely on merit, with no discrimination for nonmerit reasons such as race, color, religion, gender, national origin, political affiliation, marital status, disability, age, sexual orientation or membership or nonmembership in an employee organization.

NIH is an Equal Opportunity Employer

Postdoctoral Research Associate, Cellular/ Molecular Biology

We have an excellent opportunity for a Ph.D. to study cellular and molecular biology of the human erythrocyte anion exchange protein, the principal erythrocyte transmembrane protein involved in anion transport and the attachment of the submembrane skeleton to the plasma membrane. You will focus on recently detected mutant forms of this protein and the study of relationships among altered protein structure, function, and biogenesis, including genotype-phenotype correlations.

Applicants should have a strong background in cell and molecular biology, specifically experience with protein expression, cell culture techniques and/or membrane protein biochemistry/cell biology techniques including immunochemistry, protein purification and HPLC. Position is available June 1, 1995.

St. Elizabeth's, a 454-bed, Tufts-affiliated tertiary care hospital, is just minutes from downtown Boston. Here you'll enjoy a competitive salary, commensurate with experience, and benefits package, including health and dental insurance, tuition reimbursement, a smoke-free environment, an on-site child care center, and convenient, on-site parking. Benefits pro-rated for eligible part-time employees. Please send a resume along with the names and phone numbers of three references to:

Jiri Palek, M.D., Chairman, Department of Biomedical Research, St. Elizabeth's Medical Center, 736 Cambridge Street, Boston, MA 02135; fax (617) 254-7488. An Equal Opportunity Employer.

St. Elizabeth's Medical Center
of Boston

Caritas Christi • A Catholic Health Care System • Member
A University Medical Center of Tufts University School of Medicine

Stem Cell Biology

At Amgen, you'll discover a research environment that emphasizes collaboration, intellectual honesty, scientific integrity, and a supportive culture. This unique approach has helped us grow into a global biotechnology leader in just fifteen years.

RESEARCH ASSOCIATES

We currently seek two Research Associates to participate in the characterization of the properties and mechanisms of known hematopoietic growth factors, as well as the identification and characterization of new growth factors. Qualified candidates will have a BS/MS in Cell Biology, Biochemistry, or related discipline. These positions also require at least 3 years' relevant experience in mammalian cell culture, protein purification and characterization, and in vitro and in vivo bioassays. Experience in hematopoiesis is highly desirable.

At Amgen, you'll find our approach to scientific research as rewarding as it is effective. We offer a highly competitive compensation and benefits package that includes a retirement and savings plan, an on-site fitness center, and three weeks' vacation. Please mail or fax your resume/c.v. to: Amgen Inc., Staffing, Job Code: OXP-SC-2435-S, Amgen Center, Thousand Oaks, CA 91320-1789. Fax: (805) 499-9981. Principals only, please. EEO-Affirmative Action Employer M/F/D/V. We recognize that diverse perspectives are a key factor in the process of discovery.

AMGEN®

POSITIONS OPEN

Tectonics/Structural Geology, Yale University: The Department of Geology and Geophysics anticipates having an open **SENIOR POSITION** in the area of tectonics to begin in the academic year 1996-1997. Send curriculum vitae, publications, and at least three names and addresses of references by July 15, 1995, to: **Prof. Ronald B. Smith, Chair, Department of Geology and Geophysics, Yale University, P.O. Box 208109, New Haven, CT 06520-8109.** *Yale University is an Affirmative Action/Equal Opportunity Employer. We especially encourage applications from qualified women and minority scientists.*

POSTDOCTORAL POSITION is available after May 1, 1995, to investigate mechanisms relevant to the effects of nitric oxide, atrial natriuretic factor, and cGMP on vascular smooth muscle cell proliferation. The successful candidate should have Ph.D. and experience in molecular biological techniques. Interested candidates should send a curriculum vitae and three reference names to: **Dr. Aviv Hassid, Department of Physiology and Biophysics, University of Tennessee, Memphis, TN 38163.** *The University of Tennessee is an Equal Opportunity/Affirmative Action/Titles VII and IX/Section 504/ADA Employer. Minorities and women are encouraged to apply.*

POSTDOCTORAL RESEARCH ASSOCIATE positions at Baylor College of Medicine available July 1, 1995, for a biochemist/biophysicist with experience in lipid/liposome physical methods and a cell biologist with experience in receptor mediated endocytosis for a multidisciplinary approach for targeting plasmid DNA/synthetic peptide/lipid complexes to tumor cells *in vivo*. Send a curriculum vitae, names and addresses of three references, and a short letter describing research experience to: **Dr. Louis C. Smith, Department of Medicine, Mail Station A-601, The Methodist Hospital, 6565 Fannin Street, Houston, TX 77030.** Email: lou@bcm.tmc.edu. *Equal Opportunity Employer.*

POSTDOCTORAL ASSISTANT

Ph.D. with experience in molecular biologic techniques such as polymerase chain reaction, Northern analysis, immunohistochemistry, ELISA, and other techniques to determine mRNA and protein content in wounds. Candidate should also have the ability to work with rodents and have experience with cell culture techniques. Please send curriculum vitae to: **Surgery Business Office, University of Cincinnati, 231 Bethesda Avenue, M.L. No. 558, P.O. Box 670558, Cincinnati, OH 45267-0558.**

POSTDOCTORAL POSITION in gene expression to study transcription factor regulation of *Drosophila* muscle genes in transgenic flies (see *Dev. Biol.*, 159:513, 1993). Experience in recombinant DNA technology is required and experience in *Drosophila* genetics is desirable. Position is available immediately. Applicants must have a Ph.D. Send curriculum vitae and names of three references to: **Dr. Robert V. Storti, Department of Biochemistry (MC/536), University of Illinois College of Medicine, 1853 West Polk Street, Chicago, IL 60612.** *University of Illinois at Chicago is an Affirmative Action/Equal Opportunity Employer.*

POSTDOCTORAL FELLOW: Recent Ph.D. in molecular biology (RT-PCR and *in situ* hybridization) wanted for July 1, 1995, for study of colonocyte differentiation (*CGED*, 1:617-626, 1990; 3:753-762, 1992; 4:785-792, 1993; 5:267-275, 1994; 5:909-917, 1994). U.S. citizen/permanent resident preferred. Send curriculum vitae and telephone numbers of three references to: **Dr. Eileen Friedman, Memorial Sloan-Kettering Cancer Center, Box 244, 1275 York Avenue, New York, NY 10021.**

POSTDOCTORAL POSITION

Available immediately to study the molecular basis of *Porphyromonas gingivalis* invasion of gingival epithelial cells. Experience in molecular biology important. For information Email: lamon@u.washington.edu. To apply, send curriculum vitae with names of three references to: **Dr. Richard Lamont, University of Washington, Department of Oral Biology, Box 357132, Seattle, WA 98195-7132.**

POSITIONS OPEN

POSTDOCTORAL FELLOW IN POPULATION BIOLOGY University of California, Davis

The Center for Population Biology at UC Davis invites applications for its 1995-1997 CPB **POSTDOCTORAL FELLOWSHIP** in population biology, broadly defined to include systematics, ecology, population genetics, and evolution. The position is for two years, and will begin between October 1, 1995 and December 31, 1995. The annual salary range is \$22,000 to \$25,000, depending on qualifications, plus up to \$3,000 per year for research support. The CPB Fellow will be a fully participating member in the Center for Population Biology, and is expected to have an independent research program that bridges the interests of two or more CPB laboratory groups.

Interested candidates should submit a curriculum vitae, three letters of reference, a short (one-to-two page) description of research accomplishments, and a short (one-to-two page) description of proposed research to: **CPB Fellow Search Committee, Center for Population Biology, University of California, Davis, CA 95616.** Evaluation of applications will begin on July 15, 1995.

The University of California is an Affirmative Action/Equal Opportunity Employer.

GENE THERAPY FOR ARTHRITIS

POSTDOCTORAL POSITION available at the University of Pittsburgh School of Medicine to join an interactive and energetic team developing novel, gene-based therapies for arthritis (*PNAS*, 90:10764, 1993; *J. Rheumatol.*, 21:779, 1994). Experience with one or more of the following an advantage: animal models of arthritis, gene delivery, gene expression, molecular immunology. Project is co-supervised by **Drs. C. H. Evans** (Orthopaedic Surgery Department) and **P. D. Robbins, Ph.D.** (Molecular Genetics and Biochemistry Department) who may be contacted for further information. Send curriculum vitae and three letters of reference to: **C. H. Evans, Ph.D., 986 Scaife Hall, University of Pittsburgh School of Medicine, Pittsburgh, PA 15261.** *The University of Pittsburgh School of Medicine is an Equal Opportunity/Affirmative Action Employer. Women and minorities are encouraged to apply.*

POSTDOCTORAL POSITION HEMATOLOGY/ONCOLOGY

POSTDOCTORAL POSITION is available to study the molecular and immunologic mechanisms of circumventing chemotherapeutic resistance and programmed cell death pathways. The candidate should have significant experience in molecular and cell biology. Experience in immunology is desirable but not essential. Please send curriculum vitae, research interests, and references to: **Dr. Robert Arceci, Hematology/Oncology, Children's Hospital Medical Center, 3333 Burnet Avenue, Cincinnati, OH 45229.** FAX: 513-559-5845; Email: arceci@ucunix.san.uc.edu. *Equal Opportunity Employer.*

POSTDOCTORAL/RESEARCH ASSOCIATE Position is available at the Guthrie Research Institute to participate in the molecular characterization of extracellular matrix signal in conferring cancer cell resistance to tumor necrosis factor and apoptosis (*JBC*, 270:7765, 1995). Experience in molecular cloning, sequencing, expression and/or background in immunology is required. Send curriculum vitae and three reference letters to: **Dr. N.-S. Chang, Guthrie Research Institute, 1 Guthrie Square, Sayre, PA 18840.** FAX: 717-882-5151. *An Equal Opportunity Employer.*

RESEARCH FELLOW: Lab research on the role of fibroblast-derived cytokines and growth factors in psoriatic arthritis by establishing fibroblast cultures from skin biopsies of psoriatic patients. Reverse transcription-polymerase chain reaction (RT-PCR) is performed after total ribonucleic acid (RNA) extraction with specific primers for cytokines to find the production of cytokines of fibroblasts *in vitro*. Ph.D. in Immunology or M.D. (or equivalent) required with one year of experience in job offered or one year of medical lab research using tissue culture techniques. \$26,192 per year, 40 hours per week, 9:00 a.m. to 5:00 p.m. Contact: **LA Office of Employment Security, Job Order 686708, 617 St. Charles Avenue, New Orleans, LA 70130-3482.**

POSITIONS OPEN

POSTDOCTORAL POSITIONS Molecular Embryology-Neural Development

Positions open to study molecular aspects of pattern formation in the embryonic CNS with emphasis on anteroposterior and forebrain patterning. The laboratories are part of the Developmental Genetics Program located at the Skirball Institute of Biomolecular Medicine. The newly built Institute is part of the New York University Medical Center located in Manhattan, New York.

Applicants should have a strong background in molecular biology, embryology or molecular genetics and hold a Ph.D. degree or equivalent. Applications must be sent to: **Dr. Ariel Ruiz i Altaba/Dr. Gordon Fishell, Developmental Genetics Program, Skirball Institute, New York University Medical Center, 540 First Avenue, New York, NY 10016 USA.**

POSTDOCTORAL POSITION COMPUTATIONAL NEUROSCIENCE

A full-time grant-funded position is available August 1, 1995, to model computation and synaptic modification in hippocampal dentate granule cells. Modeling will proceed at several levels from highly detailed models of individual cells to models of synapses, spines and biochemical reactions. A Ph.D. plus experience in computational modeling is required. Salary is \$20,000 to \$22,000. Send curriculum vitae, statement of interests, and names, addresses and Email addresses of three references by June 19, 1995, to: **Dr. William R. Holmes, Department of Biological Sciences, Ohio University, Athens, OH 45701.** *Ohio University is an Equal Opportunity/Affirmative Action Employer.*

POSTDOCTORAL POSITION Allergy/Immunology

NIH-supported fellowship in Division of Pediatric Immunology, Johns Hopkins School of Medicine. The Division has active research programs in the molecular biology of host defense and allergy. Positions available as of January 1996. Applicants should contact: **Jerry A. Winkelstein, M.D., Director, Division of Immunology, CMSC 1102, Johns Hopkins Hospital, Baltimore, MD 21287.** FAX: 410-955-0229.

POSTDOCTORAL POSITIONS Protein/DNA Interactions and Cancer Genetics

Positions available to study (i) thermophilic DNA recognition proteins and their use in genetic disease detection, especially the Ligase Chain Reaction, and (ii) mutations associated with tumor development. Applicants should have a Ph.D., preferably with experience in protein-DNA interactions, structural biology, automated DNA sequencing, DNA synthesis, PCR, and cancer or human genetics. Salary based on experience. Send curriculum vitae and names of three references to: **Dr. Francis Barany, Department of Microbiology, Box 62, Cornell University Medical Center, 1300 York Avenue, New York, NY 10021.** FAX: 212-746-8587. *Equal Opportunity Employer.*

POSTDOCTORAL POSITION

On the role of receptor binding in determining the host range of the influenza viruses. The research aims at identifying virion changes which alter host range at the cellular level. It includes the use of conventional and reverse genetics to generate new strains with altered receptor binding properties. Candidates with experience in molecular and cellular biology will be strongly favored. Send curriculum vitae and names of referees to: **Irene T. Schulze, Department of Molecular Microbiology and Immunology, St. Louis University School of Medicine, 1402 South Grand Boulevard, St. Louis, MO 63104.** *Equal Opportunity Employer.*

SCIENCE TEACHER for Middle/High School (6-12)

Biological Sciences (Environmental Science, Field Work and Chemistry desired). Advanced degrees and experience preferred. Send résumé to: **Attn: Mr. Alan Guma, Assistant Headmaster, The Dalton School, 108 East 89th Street, New York, NY 10128**

PATHOLOGIST POSITIONS

The Pathology Branch, Environmental Toxicology Program, National Institute of Environmental Health Sciences has opportunities for four permanent positions as Veterinary Medical Officers in several areas of research and testing related to the identification and characterization of chemical and physical environmental agents that have the potential to cause adverse health effects. U.S. citizenship is required. Salary will be commensurate with experience and qualifications. Salary ranges are as follows: (GS-13 \$50,706 - \$65,915; GS-14 \$59,920 - \$77,893; GS-15 \$70,482 - \$91,629).

SENIOR PATHOLOGIST:
GS-14 (Code: HNV106A)
GS-15 (Code: HNV106B)

Research and management of studies to determine toxic and carcinogenic effects of xenobiotics. Experience in rodent carcinogenesis pathology, morphology, immunohistochemistry and molecular biology is preferred. For further information contact: **Dr. Gary A. Boorman, (919) 541-3440, Fax (919) 541-4714, email BOORMAN@NIEHS.NIH.GOV.**

TOXICOLOGICAL PATHOLOGIST:
GS-13 (Code: HNV107A)
GS-14 (Code: HNV107B)

Management of rodent studies, review of morphological diagnoses, determining terminology and criteria for toxic and carcinogenic lesions in B6C3F1 mice and F344 rats. Serves as study director for chemicals under evaluation. For further information contact: **Dr. Rick Hailey, (919) 541-0294, Fax (919) 541-4714, email HAILEY@NIEHS.NIH.GOV.**

TOXICOLOGIST/PATHOLOGIST:
GS-13 (Code: HNV108A)
GS-14 (Code: HNV108B)

Serves as study director for new chemicals, plans studies, develops protocols that will provide meaningful information that can be used in risk assessment. Experience in molecular biology and modeling of chemical effects is preferred. For further information contact: **Dr. Gary A. Boorman, (919) 541-3440, Fax (919) 541-4714, email BOORMAN@NIEHS.NIH.GOV.**

PATHOLOGIST FOR ALTERNATE SPECIES:
GS-13 (Code: HNV109A)
GS-14 (Code: HNV109B)

Management of studies to evaluate chemicals using small fish models. Plans studies that will help reduce the number of rodents needed in chemical evaluations, determines which alternate models may prove most effective. Experience in small fish models and carcinogenicity studies is preferred. For further information, contact: **Dr. Gary A. Boorman, (919) 541-3440, Fax (919) 541-4714, email BOORMAN@NIEHS.NIH.GOV.**

The closing date of this announcement is June 1, 1995. To ensure consideration, send cover letter indicating the position(s), by code number, to:

Ms. Norma Daye, NIEHS Personnel Office
P. O. Box 12233, Research Triangle Park, NC 27709
(919) 541-3377

Molecular Carcinogenesis

Position available for an experienced molecular/cell biologist with several years successful postdoctoral experience. Our research interests are centered around the functions of tumor suppressor proteins and regulators of the cell cycle, with emphasis on the interactions with viral oncoproteins. Position will be filled at a level commensurate with candidates experience.

The ABL-Basic Research Program is located 45 miles north of Washington DC and west of Baltimore in Frederick, MD, at the Frederick Cancer Research and Development Center. The Basic Research Program is operated by Advanced BioScience Laboratories, Inc., under contract with the National Cancer Institute.

We offer a full complement of benefits, competitive salary, and an excellent work environment. To apply please send C.V. with current salary and contact information for three references to:

Personnel Department/KV
ABL-Basic Research Program,
NCI-FCRDC
P.O. Box B, Building 428
Frederick, MD 21702

*The Basic Research Program is
an Equal Opportunity Employer*

Sequencing in Diagnostic Research

Pharmacia Biotech Inc. is pleased to invite you to a one day symposium on the theme "Sequencing in Diagnostic Research". This one day free symposium will take place at the following locations:

**MONDAY
JUNE 12**
NEW YORK CITY
The Rockefeller
University

**TUESDAY
JUNE 13**
WASHINGTON, DC
Rockville, MD
Doubletree Hotel,
(formerly Crowne
Plaza)

**THURSDAY
JUNE 15**
SAN DIEGO
La Jolla Marriott



**PLEASE CALL 1-800-526-3593 EXT.2222 TO
REGISTER VIA VOICE MAIL, OR REACH US VIA E-MAIL
AT erin.weisberg@uspis.pharmacia.se**

If you call to register please include name, address and phone number. Registration is limited. A complimentary breakfast and lunch is included with your registration.

A registration confirmation with detailed directions will be sent to you within one week from your registration.

SYMPOSIUM PROGRAM

8:15 am - 9:15 am	Registration & Continental breakfast	12:00 pm - 1:30 pm	Lunch
9:15 am - 10:00 am	<i>Solid Phase Sequencing as a Clinical Tool</i> M.Uhlén, Ph.D., Professor, Royal Institute of Technology, Stockholm, Sweden	1:30 pm - 2:15 pm	<i>The Use of Sequencing for Characterizing HLA Class I Molecules</i> W. Hildebrand, Ph.D., University of Oklahoma, Oklahoma City, OK
10:00 am - 10:45 am	<i>Potential Applications of Sequence Based Diagnosis for Hemoglobinopathies in the Clinical Laboratories</i> & <i>Alpha-Thalassemia and Its Impact on Other Clinical Conditions</i> L. Bowie, Ph.D., Director, Clinical Laboratories, Evanston Hospital, Evanston, IL	2:15 pm - 2:45 pm	<i>Innovations and New Product Development for Clinical Research</i> Pierre Chretien, Pharmacia Biotech Inc., Montreal, Canada
10:45 am - 11:15 am	Coffee	2:45 pm - 3:30 pm	<i>Sequence Based Diagnostics - A Tool in the Diagnostic Laboratory of the Future: Clinical Studies on p53 Mutations in Breast Cancer</i> Margaret Bywater, Med. Fil. Lic. (Path), Pharmacia Biotech AB, Uppsala, Sweden
11:15 am - 12:00 pm	<i>Manifold-Assisted Genetic Analysis</i> Ulf Landegren, M.D., Ph.D., BMC, Uppsala, Sweden	3:30 pm	Close

 **Pharmacia
Biotech**

POSITIONS OPEN

POSTDOCTORAL POSITION

The Section on Connective Tissue Disorders, Human Genetics Branch, National Institute of Child Health and Human Development has an opening for a candidate with an M.D. The successful candidate should have at least three years of postdoctoral experience. The candidate must have experience with molecular biology techniques especially RNA methodology and antisense suppression. The candidate will do antisense suppression, detection of mutations using DNA and RNA methodologies and protein electrophoretic screening. Salary range is from \$30,000 to \$42,000. U.S. citizenship required. Curriculum vitae and reference letters must be received by: **Dr. J. Marini, Building 10, Room 9S242, 10 Center Drive, MSC 1830, Bethesda, MD 20892-1830. FAX: 301-496-6683, no later than June 30, 1995.**

A POSTDOCTORAL POSITION is available to study the structure, function, and regulation of G-protein-coupled receptors. Our current focus includes alpha-adrenergic and substance P receptors. Applicant should be a recent Ph.D. with background in molecular biology and protein biochemistry. Send curriculum vitae and three reference letters to: **Dr. M. M. Kwatra, Duke University Medical Center, Box 3094, Durham, NC 27710. An Equal Opportunity/Affirmative Action Employer.**

POSTDOCTORAL POSITION available to work on an NIH-funded research of the role of retinoic acid-targeted mouse developmental genes, using transgenic and gene-targeting approaches. Experience in molecular biology, biochemistry, tissue culture techniques or mouse embryology is desirable. Send curriculum vitae, names and addresses of three references and a letter describing research experience to: **Dr. Li-Na Wei, Department of Pharmacology, University of Minnesota, 435 Delaware Street, SE, Minneapolis, MN 55455. Telephone: 612-625-9402; FAX: 612-625-8408; Email: weix009@staff.tc.umn.edu.**

POSTDOCTORAL RESEARCH POSITION is available immediately in the area of gene therapy of brain tumors. Applicants should possess a Ph.D. in molecular biology or related fields and have previous training in adenoviral and/or retroviral vector development for gene transfer and expression in mammalian systems. Send/Fax curriculum vitae, bibliography and three references to: **Dr. B. D. Ross, University of Michigan, Department of Radiology, MSRB III, Room 9303, Ann Arbor, MI 48109-0648. FAX: 313-747-2563. Email: brian.ross@med.umich.edu. A Nondiscriminatory, Affirmative Action Employer.**

POSTDOCTORAL POSITION starting in July 1995 in the Department of Medicine, Division of Endocrinology at Cornell University School of Medicine, to conduct studies of molecular genetics of sexual differentiation, particularly 5 α -reductase deficiency. The project requires experience in basic molecular biology, including cloning techniques and DNA sequencing. M.D./Ph.D. in molecular biology or genetics or an M.D. with training in molecular medicine is preferred. Ability to work independently is strongly advantageous.

Please send curriculum vitae, name and telephone numbers to: **Dr. Julianne Imperato-McGinley, Cornell University Medical College, Division of Endocrinology, 525 East 68th Street, New York, NY 10021.**

POSTDOCTORAL POSITION in the Laboratory of Molecular Genetics, National Institute of Environmental Health Sciences (NIEHS) in the Research Triangle Park, North Carolina. Available in June 1996 to study the mechanisms for maintaining high DNA replication fidelity in human cells. Candidates should have a Ph.D. in Biochemistry and a record of productivity appropriate to their years of experience. Postdoctoral experience in investigating the biochemistry of replication error processes, including combined expertise in methods to determine DNA replication fidelity and post-replication mismatch repair activities in human cells is required. Salary range: \$33,000 to \$40,000. For prompt consideration, send curriculum vitae and three letters of reference by June 26, 1995, to: **Ms. Julie Manyik (HNV113), Personnel Staffing Specialist, NIEHS, MD I-01, P.O. Box 12233, Research Triangle Park, NC 27709. NIH is an Equal Employment Opportunity Employer.**

POSITIONS OPEN



POSTDOCTORAL RESEARCH positions available to study aspects of signal transduction in polarized epithelial cells including 1) molecular characterization of A kinase anchoring proteins; and 2) characterization of Rab proteins involved in exocytosis. Molecular, immunocytochemical and protein chemical techniques involved. NIH-funded program. Positions available immediately with salary negotiable. Contact: **James R. Goldenring, M.D., Ph.D., Institute for Molecular Medicine, Medical College of Georgia, Augusta, GA 30912. Telephone: 706-721-0684; FAX: 706-721-7915; Email: deptmed.jgolden@mail.mcg.edu.**

POSTDOCTORAL POSITION Molecular Characterization of Histamine Transporters

Available immediately to undertake a molecular and biophysical investigation of invertebrate and mammalian histamine transporters. This position is ideally suited for an individual trained in membrane biophysics who wishes to gain molecular biological experience. The research program is solidly funded and supported by state of the art equipment. The candidate should submit a curriculum vitae, the names of three references, and a brief statement of research experience and interest to: **Drs. Bob Fremereau and Ann E. Stuart, Department of Pharmacology and Neurobiology, Duke University Medical Center, Box 3813, Durham, NC 27710.**

TUFTS MEDICAL SCHOOL Neuroscience

POSTDOCTORAL POSITION: Available immediately to work on information processing in the olfactory system using a combination of molecular biological and physiological methods. Molecular biological experience required; physiological/computational experience desired. Please send curriculum vitae to: **John S. Kauer, Ph.D., Neuroscience, Tufts Medical School, 136 Harrison Avenue, Boston, MA 02111. FAX: 617-636-0476; Email: jkauer@pearl.tufts.edu.**

POSTDOCTORAL POSITION available to study recombinant TCRs in the context of T cell mediated autoimmunity. Prior experience in immunology preferred. Please send curriculum vitae and names of three referees to: **Dr. E. Sally Ward, Cancer Immunobiology Center and Department of Microbiology, University of Texas Southwestern Medical Center, 5323 Harry Hines Boulevard, Dallas, TX 75235-8576. University of Texas Southwestern is an Equal Opportunity Institution.**

INSTITUTE OF MOLECULAR BIOLOGY ACADEMIA SINICA, TAIWAN, ROC

Tenure-track positions for RESEARCH FELLOWS are open for outstanding individuals to establish research programs in an expanding, stimulating research institute. Scientists with a Ph.D. degree and at least two years of postdoctoral experience in molecular cell biology and biochemistry are encouraged to apply. Although people who work on genetics and development, and on cellular signal transduction, are of particular interest to the selection committee, individuals with demonstrated records of research accomplishments and scientific creativity in all areas of molecular genetics will be considered.

The Institute currently has 25 laboratories, and is well-funded by the Academia Sinica and the National Science Council. Successful candidates will be appointed at the Assistant, Associate, or Full Research Fellow level, and are expected to develop their own independent research programs as well as program projects with other research fellows in the Institute.

Deadline for application is July 15, 1995. First-round candidates will be selected by July 31, 1995. The interview process and final decision are expected to be completed by September 15, 1995.

Interested individuals should send curriculum vitae, a description of past research accomplishments and future research interests, and three letters of reference by July 15, 1995, to: **Dr. Che-Kun Shen, Director, Institute of Molecular Biology, Nankang, Taipei, Taiwan 11529 ROC. FAX: 886-2-788-4177.**

POSITIONS OPEN

BROOKHAVEN NATIONAL LABORATORY Postdoctoral Research Associate

The Biosystems Division of the Department of Applied Science of Brookhaven National Laboratory has an immediate opening for a recent Ph.D. trained in plant physiology/molecular biology, to conduct research investigating mechanisms by which photosynthesis adjusts to an increasing atmospheric concentration of CO₂. Applicants must have strong laboratory skills in molecular biology using DNA probes and the analysis of nucleic acids, proteins and other organelle components. The research will focus on mechanisms at the level of gene expression regulating changes in the concentration of proteins associated with photosynthesis and cellular respiration. Plant tissue will be available from currently operating free air carbon dioxide enrichment (FACE) field experiments.

Applicants should send by June 1, 1995, a curriculum vitae and names and addresses of three references to: **Dr. George R. Hendrey, Building 318, Department of Applied Science, Brookhaven National Laboratory, Associated Universities, Inc., Upton, Long Island, NY 11973-5000. Equal Opportunity Employer/Minority/Female/Disabled/Veteran.**

POSTDOCTORAL POSITION in neurogenetics available to study control of programmed cell death during eye and brain development in *Drosophila melanogaster*. Projects focus on molecular biological and genetic analysis of *eya* (Cell, 72:379-395) and interacting genes that link cell death with differentiation, and characterization of vertebrate homologs. Please send curriculum vitae and names of three references to: **Dr. Nancy Bonini, Department of Biology, University of Pennsylvania, 306 Leidy, Philadelphia, PA 19104-6018.**

POSTDOCTORAL FELLOWSHIP PROGRAM in Mammalian Organ System Physiology. The American Physiological Society, in collaboration with Genentech, Inc., announces a fellowship program designed to promote careers in mammalian organ system physiology. The program recognizes the fact that many advances in cell and molecular biology will ultimately require an understanding in the context of the organism. The postdoctoral project must use the tools of cellular and molecular biology in the setting of the whole animal. Candidates should identify a laboratory and sponsor under whose supervision a project in mammalian organ system physiology and molecular biology can be combined. The award is for a two year period and includes an annual stipend (\$32,000) and a trainee allowance of \$3,500. Deadline: October 2, 1995. Contact: **APS/Genentech Postdoctoral Program, American Physiological Society, 9650 Rockville Pike, Bethesda, MD 20814-3991. Telephone: 301-530-7118; FAX: 301-571-8305.**

POSTDOCTORAL FELLOW/RESEARCH ASSOCIATE POSITION in microbiology dealing with biofilms. The successful candidate should have a degree in microbiology with expertise in microbial physiology/biochemistry. Send curriculum vitae and the names of three references to: **Dr. L. A. Bulla, Department of Molecular Biology, University of Wyoming, Box 3944, Laramie, WY 82070. The University of Wyoming is an Equal Opportunity/Affirmative Action Institution.**

SENIOR RESEARCH ASSOCIATE to study cardiovascular disease in murine models of obesity. Candidates should have three to five years of postdoctoral experience with specific background in the fibrinolytic system in obesity and NIDDM. Experience in *in situ* hybridization, immunohistochemistry, Northern blotting, quantitative PCR, cell culture, and small animal surgery is essential. Salary range, \$28,000 to \$35,000. Send curriculum vitae and three references to: **D. J. Loskutoff, Ph.D., VB3, The Scripps Research Institute, 10666 North Torrey Pines Road, La Jolla, CA 92037.**

RESEARCH ASSOCIATE or PROJECT SCIENTIST position is available to apply molecular approaches to ongoing studies of receptor-mediated signal transduction pathways regulating endothelial cell motility. Successful applicant will have three or more years of postdoctoral training and experience in molecular biology as evidenced by a strong publication record. Send curriculum vitae, a brief statement of research interests, and the names of three references to: **Paul L. Fox, Ph.D., Department of Cell Biology, Cleveland Clinic Research Institute, Room NC10, 9500 Euclid Avenue, Cleveland, OH 44195.**

Tenure-Track And Postdoctoral Opportunities.

Listed below are some of the outstanding research training opportunities that are currently available at the National Institutes of Health.

Tenure-Track Position Assistant Professor Equivalent

Pediatric Endocrinology **Carolyn Bondy, MD**

A position is available to develop an independent research program in fundamental mechanisms underlying human growth and development and their disorders. Expertise in both laboratory and clinical investigation is required. Candidates must be BE/BC in Pediatric Endocrinology and prepared to teach fellows and serve as attending physician for a busy pediatric endocrinology service. A two-page statement of research interests and goals should be submitted in addition to three letters of recommendation. Developmental Endocrinology Branch (OE-81), NICHD, Building 10, Room 10N262, 10 CENTER DR MSC 1862, BETHESDA MD 20892-1862.

Postdoctoral Positions

Enzymology, Molecular Biology, and Cell Biology **Seymour Kaufman, PhD**

Current research includes studies on the structure and regulation of the tetrahydrobiopterin-dependent aromatic amino acid hydroxylases and nitric oxide synthase, as well as the role of tetrahydrobiopterin in regulating neurotransmitter release and gene transcription. Applicants should have less than five years of postdoctoral experience and a strong background in enzymology or protein chemistry; experience in molecular and cell biology is also desirable. Laboratory of Neurochemistry (OE-81), NIMH, Building 36, Room 3D30, 36 CONVENT DR MSC 4096, BETHESDA MD 20892-4096.

HSV Latency and Reactivation **Philip R. Krause, MD**

Hypotheses regarding HSV latency are being tested by construction of mutant viruses, evaluation of the behavior of these viruses in appropriate animal models, and further molecular characterization of latent and reactivated virus. Latent viral transcription is also being studied *in vivo* and *in vitro*. Applicants must have less than five years postdoctoral experience. Laboratory of DNA Viruses (OE-81), FDA/CBER, Division of Viral Products, (HFM-457), 1401 Rockville Pike, Rockville, MD 20842-1448.

Molecular Neurobiology **P. J. Brooks, PhD**

A position is available to study the regulation of DNA repair processes in the brain, and to develop novel methodologies for gene transfer into adult brain neurons. Candidates should have a strong background in recombinant DNA methodology, experience with the construction and use of viral vectors for gene transfer, and must have less than five years of postdoctoral experience. Laboratory of

Neurogenetics (OE-81), NIAAA, Flow Building, 12501 Washington Avenue, Rockville, MD 20852.

Neurobiology of NO • and • OH **Chung C. Chiueh, PhD**

A position is available to evaluate potential neuroprotective strategies through the study of pathophysiological roles of free radicals in the central nervous system. Candidates should have a strong background in pharmacology, cell or molecular biology with less than five years of postdoctoral experience. Neuronal culture experience is also desirable. Laboratory of Clinical Science (OE-81), NIMH, Building 10, Room 3D-41, 10 CENTER DR MSC 1264, BETHESDA MD 20892-1264.

Regulation of Multidrug Resistance Genes **Jeffrey Silverman, PhD**

A position is available to investigate the structure, function and regulation of the multidrug resistance genes. This work focuses on the molecular mechanisms through which carcinogens and drugs activate transcription. Candidates should have experience in molecular biology and must be US citizens with less than five years of postdoctoral experience. Laboratory of Experimental Carcinogenesis (OE-81), Building 37, Room 3C25, 37 CONVENT DR MSC 4255, BETHESDA MD 20892-4255.

Additional Postdoctoral Fellowship Opportunities

For an on-line listing of additional postdoctoral openings, you may access the NIH EDNET Bulletin Board POSTDOC conference via Internet (wylbur.cu.nih.gov) or modem (1,301-402-2221 or 1,800-358-2221) with parameters set at "7,Even,1". When connected to NIH, type in "vt100" for terminal emulation, "F5E" for initials, and "AJLI" for account number.

The Postdoctoral Research Fellowship Opportunities catalog, which describes intramural laboratories at the NIH, is also available by request. An electronic version of the catalog may be accessed via the Internet using either the Gopher Information System (gopher.nih.gov) or the World Wide Web (<http://www.nih.gov>). When connected, select *Research Opportunities at the NIH*. If you would like to request a catalog or have further questions, please contact the NIH Office of Education, Building 10, Room 1C129, 10 CENTER DR MSC 1158, BETHESDA MD 20892-1158, 301-402-1603, Fax 301-402-0483.

To Apply

If you hold a doctoral degree (e.g., PhD, MD/PhD, MD, DO, DDS, DMD or DVM) accompanied by previous laboratory research experience, and would like to be considered for one of these positions, please send a cover letter, *curriculum vitae*, bibliography, and statement of research interests to the address listed with each position. In addition, please arrange to have letters of recommendation sent from three scientists who can provide an evaluation of your qualifications.



National Institutes Of Health

Office of Education

The NIH is an Equal Opportunity Employer

INVESTIGATOR

Cardiovascular Pharmacology

SmithKline Beecham, a worldwide leader in pharmaceutical research, has an excellent research opportunity in our Cardiovascular Pharmacology department for an Investigator with good understanding of molecular biology techniques and strategies.

While working in a very interactive and collaborative environment, the successful candidate will establish independent basic research in areas such as atherosclerosis, thrombosis and tissue remodeling and in particular regulation of matrix formation, smooth muscle/endothelial cell biology and vascular functions. Responsibilities will also include supervising an associate scientist and taking care of administrative aspects of lab work.

Qualified individuals will have a PhD in Biological Sciences, at least one full term of post-doctorate fellowship, and 3-5 years' experience in independent scientific research in an academic or pharmaceutical research organization. Requirements also include proficiency in operating physiology/hemodynamic laboratory and animal procedures and a strong track record of high quality publication in peer-reviewed professional journals.

Our state-of-the-art research facility is located in suburban Philadelphia. We offer a competitive compensation/benefits/relocation package and a stimulating team environment. For confidential consideration, send your resume to: SmithKline Beecham Pharmaceuticals, Job Code H5-0107, P.O. Box 799, Conshohocken, PA 19428. We are an Equal Opportunity Employer, M/F/D/V.



SmithKline Beecham
Pharmaceuticals

Challenging the natural limits.

SCHEPENS EYE RESEARCH INSTITUTE HARVARD MEDICAL SCHOOL

The Schepens Eye Research Institute, an affiliate of Harvard Medical School, seeks well-qualified (Ph.D., M.D./Ph.D., or M.D.) applicants for a position at the Associate Professor level to develop a basic research program in molecular biology and genetics of the eye, with emphasis on immunity and inflammation. Resources and new laboratory space for initiation of this program have been provided by a generous grant from Lucille P. Markey Charitable Trust. Candidates should have experience at the faculty level in creating, sustaining and supporting an independent research program. The successful candidate should have experience in one or more of the following areas: transcription factors and molecular control of gene function, and signaling pathways among plasma membrane, cytosol, and nucleus as they relate to cytokines and their receptors and inhibitors. Candidates are expected to be able to recruit and support the growth of junior scientists to be included in this program, and to engender collaborative interactions with Institute scientists, to be active in the training of pre- and post-doctoral fellows, and to participate as a member of the Harvard Medical School faculty.

Applicants should send their curriculum vitae, a statement of research interests, and the names of three references by August 31, 1995 to:

J. Wayne Streilein, M.D.
DeWalt and Marie Ankeny Director of Research
Professor of Ophthalmology and Dermatology
Harvard Medical School
20 Staniford St.
Boston, MA 02114

SERI and Harvard Medical School are Equal Opportunity/Affirmative Action Employers. Women and minorities are encouraged to apply.

Faculty Member Department of Oral Pathology/Dental School University of Maryland at Baltimore

The University of Maryland at Baltimore Department of Oral Pathology, Dental School is seeking a faculty member at the assistant/associate professor level, tenure track, with particular interest and experience in experimental oral pathology. Applicants are expected to compete successfully for extramural funding and may have existing grant support.

Responsibilities include didactic teaching of general pathology and oral pathology as well as active participation in the PhD graduate program in Oral and Experimental Pathology. Rank and salary will be commensurate with the applicant's credentials and accomplishments.

For best consideration, submit curriculum vitae with names of three references prior to **1 September 1995**:

J.J. Sauk
Chair, Department of
Oral Pathology/Dental School
University of Maryland
at Baltimore
666 W. Baltimore Street
Baltimore, MD 21201

University of Maryland at Baltimore is an AA/EEO/ADA employer

DEPARTMENT OF PHARMACOLOGY, WAYNE STATE UNIVERSITY SCHOOL OF MEDICINE, invites applications for TENURE TRACK POSITIONS at the ASSISTANT/ASSOCIATE PROFESSOR level.

Candidates using contemporary approaches to study signal transduction, vesicular trafficking, cell cycle regulation, transcriptional regulation, and protease/protease inhibitors are preferred. Responsibilities include establishing an outstanding independent and extramurally-funded research program and teaching of pharmacology to medical and graduate students. Faculty may participate in the training of graduate students in Pharmacology as well as in interdisciplinary degree programs in Cancer Biology and/or Molecular Toxicology.

Opportunities are available for interactions with faculty in the Michigan Cancer Foundation, the Institute for Chemical Toxicology, the Center for Molecular Medicine, the Neuroscience Program, and the Neurotrauma Center.

Candidates should have a Ph.D. or equivalent degree with appropriate postdoctoral training. Highly competitive salary and start-up packages are available for these positions. Applications will be accepted until the positions are filled. A CV with a statement of research interests, reprints of two relevant publications and names, addresses, and telephone/fax numbers of at least three references should be forwarded to: **Dr. David Kessel, Chair, Faculty Search Committee, Wayne State University, School of Medicine, Department of Pharmacology, 540 E. Canfield, Rm. 6374, Detroit, MI 48201.**

Wayne State University is an Equal Employment Opportunity/Affirmative Action employer. Dr. Bonnie F. Sloane, Professor and Chair.

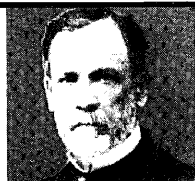
PHYSIOLOGY AND BIOPHYSICS ASSISTANT OR ASSOCIATE PROFESSOR

Applications are invited for a tenure-leading faculty position in the Department of Physiology and Biophysics at the University of Nebraska College of Medicine. We are particularly interested in recruiting a cardiovascular physiologist whose interests lie in understanding integrative cardiovascular function by using cellular and/or molecular techniques. The successful candidate will be expected to establish an independent, funded research program which will complement a group of cardiovascular investigators whose research is at the integrative, organ, and cellular level. Additional responsibilities will be engaging in the teaching programs of the department at the medical school and graduate levels. A competitive salary and setup funds are available. Applicants should forward by July 1, 1995, a Curriculum Vitae, a brief description of research accomplishments, plans for future research, and the names of three individuals who can serve as references to:

Harold D. Schultz, Ph.D.
Chairman, Search Committee
Department of Physiology & Biophysics
University of Nebraska
College of Medicine
600 South 42nd Street
Omaha, NE 68198-4575

*An Equal Opportunity/
Affirmative Action Employer*

*Minorities and Women are
Encouraged to Apply*



The Year of Louis Pasteur
International Symposium

1995 L'année Pasteur
Stereospecificity and Molecular Recognition

The Rockefeller University
New York City, USA

September 12-15, 1995

Topics:
Molecular Recognition and Response,
Molecular Assemblies, A Chiral World

Speakers:
J. Barton, T. Cech, A. Eschenmoser,
J.-P. Changeux, S. Harrison, R. Henderson,
L. Johnson, G. Joyce, P. Kim, A. Kornberg,
J.-M. Lehn, G. Petsko, S. Schreiber,
K. Wüthrich, M. Rossmann,
J. Rebek, Jr., P. Schultz, J. Steitz, D. Wiley

Registration materials may be
obtained from:

The Rockefeller University
Office of Public Affairs
1230 York Avenue
New York, NY 10021
Tel: (212) 327-8967
Fax: (212) 327-7876



e-mail: callh@rockvax.rockefeller.edu

**Director, Regional Primate
Research Center
University of Washington**

The University of Washington invites applications
and nominations for the position of Director of the
Regional Primate Research Center.

The Washington Regional Primate Research Center
is located on the University of Washington
Health Sciences campus and is fully integrated
into the academic and research functions of the
University. Its staff includes 29 doctoral level
scientists, and 148 support personnel and it sustains
an extensive affiliated research program. The
Center programs involve approximately \$20 million
in grant and contract funding. The Center
maintains several non-human primate colonies as
resources for its diverse basic and applied medical
research programs.

The Center Director is responsible for the administrative
management and research direction of the
Primate Center. The successful candidate will be
an established scientist with a professional doctorate
or Ph.D. in one of the health sciences disciplines
and a recipient of peer reviewed biomedical research
support, preferably involving non-human primates.
Like other Core Staff members, the Director must
meet the requirements for appointment to an academic
department in the University. The Director will provide
leadership and administrative oversight to further the
development of the Primate Center's program. Besides
being responsible for the preparation of the Center's
five-year base grant and recruitment of staff scientists,
the Director also serves as the Center representative to
the University and non-University communities.

Applications and nominations for this position
should be sent with resumes before July 31, 1995
to:

Dr. Milo Gibaldi
Chair, Search Committee
School of Pharmacy Box 357631
University of Washington
Seattle, WA 98195

RESEARCH OPPORTUNITIES EXPERIMENTAL TOXICOLOGY

Innovative research at Sandoz has been enhancing medicine around the world for over a century. Pioneering drugs have extended and improved the quality of life for countless individuals and revolutionized basic scientific concepts within the transplantation and mental health fields. Opportunities now exist for Experimental Toxicologists within our Drug Safety Department.

ASSISTANT/ASSOCIATE FELLOW

The successful candidate will be responsible for supervising a laboratory focused on investigating mechanisms of target organ toxicity of drug candidates using appropriate *in vivo* and *in vitro* approaches to support drug discovery and development. This individual will be a key member of a multi-disciplinary team and will be expected to collaborate with associates in Drug Discovery and Drug Safety in identifying lead drug candidates for further development. The successful candidate will be expected to develop and implement state of the art methodologies to provide scientific perspective to safety assessment issues and to identify surrogate markers of toxicity to be used in selection of lead drug candidates. Candidates should have a Ph.D. in Pharmacology, Toxicology or a related field with at least 2 years of postdoctoral experience. Additional relevant experience in the pharmaceutical industry is preferable. The individual should have a strong background in mechanistic-based toxicology. Expertise in non-genotoxic carcinogenesis is desirable. **(Position #3300)**

POSTDOCTORAL FELLOW

The successful candidate will focus on investigating mechanisms of drug-induced hepatotoxicity using appropriate *in vivo* and *in vitro* techniques. In addition, the postdoctoral fellow will be part of a multi-disciplinary team in the Department of Drug Safety and will be expected to contribute to identifying mechanistic-based surrogate markers of toxicity to be used in selection of lead drug candidates for further development. The Drug Safety Department, consisting of Toxicology/Pathology, Drug Metabolism and Pharmacokinetics and Clinical Pharmacology, offers a highly interactive and dynamic environment for postdoctoral research. Candidates should have a recent Ph.D. in Toxicology, Pharmacology, Biochemistry, Medicinal Chemistry or a related field. Experience and understanding of mechanisms of toxicity is desirable. **(Position #PD 033)**

Postdoctoral appointments are for one year but are renewable for a second year by mutual agreement. Sandoz Research Institute provides our scientists with an environment that encourages creative thinking and ample opportunities for publication and research presentations.

Sandoz offers comprehensive health, dental, and savings plans as well as an attractive location in northern New Jersey. For consideration, please specify the number of the position you are responding to and forward your curriculum vitae and the names and address of three references to:

SANDOZ PHARMACEUTICALS CORP

Staffing Department

Building 122/3

East Hanover, NJ 07936-1080

An Equal Opportunity Employer M/F/D/V



SANDOZ
bringing research to life

CARDIOVASCULAR PHARMACOLOGISTS

G.D. Searle's Cardiovascular Diseases Research Department, located in St. Louis, Missouri, is seeking two scientists with in vivo pharmacology experience to conduct studies aimed at discovering novel therapies for the treatment of myocardial disease. Responsibilities include planning and performing experiments using animal models of myocardial ischemia/reperfusion injury to identify new approaches for the treatment of this disease. This position will also serve as an in vivo pharmacology resource for our department of scientists working on novel research projects in thrombosis and atherosclerosis.

The successful candidates for these positions will be highly self-motivated and will have demonstrated the ability to be productive in a multidisciplinary, high-energy, creative environment. The first position requires a Ph.D. or M.D. in Pharmacology or related discipline and 2 to 3 years of post-doctoral experience. The second position requires a Ph.D. or equivalent in Pharmacology or related discipline.

Interested candidates should send their resume to: MONSANTO; Attn: Debbie Vollmer; KO-1; 800 North Lindbergh Blvd; St. Louis, MO 63147. Monsanto is an Equal Opportunity Employer M/F/D/V.

SEARLE

Landscape Ecologist

The U.S. Environmental Protection Agency, Office of Research and Development, is currently accepting applications for a Landscape Ecologist, GS-408-11/12. This position is located in the National Health and Environmental Effects Research Laboratory (NHEERL) at the Mid-Continent Ecology Division in Duluth, Minnesota. The mission of the laboratory is to conduct research to provide the scientific information on ecotoxicological and freshwater ecological effects necessary to reduce the uncertainty in ecological risk assessments and support risk management option selections. This position is part of a team of scientists conducting research to study and quantify the effects of watershed structure and function on aquatic resources. The starting salaries for this position are: GS-11: \$35,578; GS-12: \$42,641.

To qualify, you must have a degree in biology, or a related field of science underlying ecological research. You must also have knowledge of landscape ecology, aquatic ecology, and the ability to apply Geographic Information Systems (GIS) to ecological studies. The following experience is desirable:

- Familiarity with ARC-INFO and ARC-VIEW GIS packages,
- The use and interpretation of aerial photographs and satellite imagery for ecological studies, and
- The use of modeling approaches to describe relationships between land-use/land-cover patterns in watersheds and water quality, aquatic/riparian community structure and aquatic ecosystem functions.

If you have never worked for the U.S. Government and would like to apply for this position you must request an application package from the Office of Personnel Management-Los Angeles Service Center by calling (818) 575-6510. If you are a current federal employee or former employee with status, you may request an application package by calling (702) 798-2418.

You must be a U.S. citizen to apply. *The U.S. Environmental Protection Agency is an Equal Opportunity Employer.*

CONFERENCE

1st Announcement 9th International Conference on Carcinogenesis and Risk Assessment

"Etiology of Breast and Gynecological Cancers"

Objective

Clinical, epidemiological and experimental animal studies have provided overwhelming evidence associating hormone exposure with the etiology of some of the most common female cancers. Although advances in research and prevention have been substantial in recent years, various of these hormone-related cancers are still on the rise. Much still remains to be learned on physiologic mechanisms of action of hormones and their relation to neoplastic transformation. The combination of a specific genetic makeup with exposure to specific exogenous factors such as environmental, chemical, and physical carcinogens, co-carcinogens and/or promoters may play a decisive role in defining the risk for tumor development. The identification and role of environmental hormone disrupters is an area of intense research and debate. The objective of this conference is to review the most recent advances in the fields of breast and gynecological carcinogenesis and to discuss data of environmental influences that may play a role in these hormone-mediated neoplasias. Emphasis will be placed on discussion of validation and extrapolation issues from animal models to man and their impact in risk assessment. This conference is the ninth international meeting in a series covering research and contemporary on issues carcinogenesis and risk assessment.

November 29 -December 2, 1995

Barton Creek Conference Resort
Austin, Texas

For additional information as it becomes available, send name and address to:

Breast and Gynecological Cancers Conference
P.O. Box 389
Smithville, Texas 78957
Telephone: 512-237-2403
Fax: 512-237-2522

GLOBAL CAREER OPPORTUNITIES

University of Glasgow Institute of Biomedical and Life Sciences

Lecturer in Virology

The position is located in the Institute of Virology which comprises the University Laboratory of Virology and the MRC Virology Unit. Applicants should be molecular virologists working in the area of virus-host interactions, preferably with research interests in post-transcriptional regulation or identification of virus and cellular receptors. The successful candidate will be capable of attracting substantial research funding, and supervision of graduate students. The Virology Institute is internationally recognised as a centre for virus research and its facilities are excellent, as are opportunities for collaboration both within the IBLS (formed recently through reorganisation of the University's pre-clinical and life science departments) and clinical departments. The University has one of the major academic libraries and excellent computing facilities. Informal enquiries may be made to Professor JB Clements, FRSE, Institute of Virology, Glasgow, G11 5JR, tel: 0141-330-4027; fax: 0141-337-2236; Email: b.clements@vir.gla.ac.uk

Salary will be within the Lecturer scale (£14,756-£25,735). Appointment will be made as soon as mutually agreeable and by 1 March 1996 at the latest.

Further particulars may be obtained from the Academic Personnel Office, University of Glasgow, Glasgow G12 8QQ, where applications (8 copies), giving the names and addresses of three referees should be lodged on or before 16th June, 1995.

In reply, please quote ref. no. 8730.

The University of Glasgow is an exempt charity dedicated to excellence in teaching and research.

Calyx Plantech Ltd Business Development Manager in Plant Biotechnology

The major UK universities of Birmingham, Glasgow, Leeds, Manchester, Warwick and York seek an experienced business manager for a new company, Calyx Plantech Ltd. It has been founded to develop national and international collaborations with industry and other sponsors based upon our expertise and intellectual property. Our ideal candidate for this challenging and rewarding post will have considerable proven, relevant business experience and acumen. Considerable scope will be provided for business development and initiatives to ensure that the joint venture company prospers. Support staff and office facilities will be provided at one site but the successful candidate will be charged with ensuring that the business portfolio of each member university receives equal attention. Salary will initially be in the region of £40-45,000 per annum with an additional performance-related element. There will be a generous travel allowance including provision of a car.

Potential applicants wishing to obtain further details or discuss the position informally and in confidence should contact Professor J. Callow, School of Biological Sciences, The University of Birmingham, Edgbaston, Birmingham B15 2TT, UK Tel. (0) 121 414 5559, Fax 121 414 5925, E-mail J.A.Callow@BHAM.AC.UK.

Closing Date for Applications: 16 June 1995

DIRECTOR

International Institute for Applied Systems Analysis (IIASA) Laxenburg (Austria)

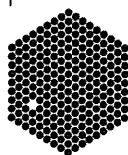
The Executive Council of the International Institute for Applied Systems Analysis (IIASA) invites nominations and applications for the position of Director. IIASA is an international non-governmental research organization, located in Laxenburg near Vienna (Austria) and supported by seventeen countries. The Director supervises 85 professionals and approximately 100 support staff with an annual budget of \$15 million. He or she plans and oversees a broad range of programs concerned with global environmental change, develops and recommends policies for the execution of research programs, determines the effectiveness of current programs, and develops new and revised programs.

The applicant should be capable of providing an imaginative leadership in developing the potential role of an institution such as IIASA, should have a track record of general management experience in a scientific- preferably international -research institution and should have recognized experience with interdisciplinary research. He or she should have an excellent command of English, the working language of the Institute. Knowledge of at least one other major European language is desirable (preferably Russian or German).

Nominations and applications should be sent to:

**Professor K.L. KOMAREK
The Director's Search Committee
IIASA-Schloss Laxenburg
A-2361 Laxenburg
Austria**

Applications should be accompanied by a current curriculum vitae, a bibliography, and a cover letter that addresses the qualifications of the position. Salary commensurate with experience. Review of applications will begin on July 1st, 1995.



EMBL

The European Molecular Biology Laboratory, an international research organization consisting of three outstations and a headquarters laboratory situated in Heidelberg, Germany, has the following vacancies:

GROUP LEADER POSITIONS IN MOUSE GENETICS

The EMBL invites applications for four research group leader positions in mouse biology, in areas that use modern tools of genetic analysis, such as developmental genetics, cell biology, gene expression, immunogenetics or neurogenetics. These positions will be established at the Monterotondo campus, near Rome, at a site which is also a strong candidate for hosting an Independent European repository of mouse strains, similar to the Jackson Laboratory. The facilities will include a well equipped animal house and laboratory. The selected candidates will be given standard EMBL group leader appointments including some research and personnel costs, initially for 5 years. They will also hold associate appointments in the EMBL headquarters laboratory in Heidelberg, which includes groups working on vertebrate gene expression, cell biology, differentiation and development.

Please note deadline for applications has been extended to 30 June 1995. Appointments would be available from autumn 1995.

EMBL is an inclusive international organization and encourages applications from women and nationals of currently underrepresented Member States. The Laboratory provides financial help in relocating families.

Informal inquiries are welcomed, and can be made to the chair of the search committee:

Dr. Thomas Graf, tel: +49 6221 387410, fax: +49 6221 387516.

Applications, comprising a curriculum vitae, a short description of research accomplishments and future plans, and three letters of reference should be sent to:

**EMBL, Personnel Section, Postfach 10.2209, D-69012
Heidelberg, Germany (Fax: +49 6221 387555)**

The EMBL search committee will be assisted in its task by an international advisory panel, including:

Mary Osborn, Göttingen, Germany (Chair)

Rosa Beddington, London, UK	Leroy Hood, Seattle, U.S.A.
Anton Berns, Amsterdam, Holland	Carlos Martinez-Alonso, Madrid, Spain
Margaret Buckingham, Paris, France	Klaus Rajewsky, Köln, Germany
Mario Cappechi, Salt Lake City, U.S.A.	Peter Rigby, London, UK
Pierre Chambon, Strasbourg, France	Davor Solter, Freiburg, Germany
Denis Duboule, Geneva, Switzerland	Glauco Tocchini-Valentini, Rome, Italy
Frank Grosveld, Rotterdam, Netherlands	Erwin Wagner, Vienna, Austria
Peter Gruss, Göttingen, Germany	



Lectureship in Pharmacology

Applications are invited for a Lectureship in the Department of Pharmacology, (RF-94/95-81) tenable from 15 June 1995 or as soon as possible thereafter. Appointment will initially be made on a fixed-term basis of two to three years, with a possibility of renewal.

Applicants should possess a PhD in pharmacology or related disciplines, postdoctoral experience and a substantial record of publication. Special consideration may be given to applicants with experience in molecular pharmacology, cell biology or receptor signal transduction. The appointee will be expected to contribute to the teaching of pharmacology to medical, dental and undergraduate nursing students and the supervision of postgraduate students, and to establish an independent research program. Some internal support for research will be available, but the appointee is encouraged to seek external funding.

Current departmental interests include cardiovascular, gastric and CNS diseases, toxicology and pharmacokinetics. Applicants are requested to submit a brief description of their proposed research together with their curriculum vitae.

Annual salary [non-superannuable but attracting 15% (taxable) terminal gratuity] is on an 11-point scale, with starting salary depending on qualifications and experience: HK\$412,980 - HK\$689,880 (approx. US\$53,634 - US\$89,595; US Dollar equivalents as at 27 April 1995). At current rates salaries tax will not exceed 15% of gross income. Children's education allowance, leave, and medical benefits are provided; housing or tenancy allowances are also provided in most cases at a charge of a percentage of salary, currently 7½%.

Further particulars and application forms may be obtained from the Appointments Unit, Registry, The University of Hong Kong, Hong Kong (fax: [852] 2559 2058; E-mail: APPTUNIT@HKUVM1.HKU.HK). Particulars are also available on the University's listserv accessed by E-mail as "listserv@hkumv1.hku.hk" (specify "get apptment filelist" for list of vacant posts).

Closes **15 August 1995**.

The Institute of Cancer Research (University of London)



Section of Structural Biology

Protein Crystallography Initiative

The Institute of Cancer Research, in association with the Royal Marsden NHS Trust, is one of the world's leading cancer research institutions, with programmes covering an exceptionally wide range of basic and clinical sciences. It has a strong postgraduate school and is not generally involved in undergraduate teaching.

A major initiative in protein crystallography is being established in the recently formed Section of Structural Biology (presently based in Sutton, Surrey), which houses the CRC Biomolecular Structure Unit with its strong reputation in nucleic acid structural studies and molecular modelling. The initiative will be supported by excellent equipment and resources, together with significant start-up funds. There will be extensive opportunities to develop collaborations with active research groups in the Institute working in areas such as oncogenes, signal transduction, transcription factors and anticancer drug discovery.

Applications are invited from protein crystallographers for two key posts in this initiative:

(i) **A Team Leader** (Senior Lecturer level appointment) to energetically lead this new team and develop a programme of protein crystallography research in the Institute. The successful candidate will already have demonstrated outstanding achievement in the field. Salary range £29,152 - £32,667 pa. Reference number 70.

(ii) **A Post-doctoral Scientist** (Lecturer level appointment) Applicants are especially welcomed from protein crystallographers with particular skills either in computational crystallography or molecular biology. Salary range £17,700 - £27,869 pa. Reference number 71.

Both posts will be offered for five years in the first instance, and are available from 1 October 1995 or from a suitable date to be arranged.

Interested candidates are invited to discuss the posts with Professor Neidle (Tel: 0181 643 8901 ext 4251. Fax: 0181 643 1675. Email: steve@iris5.icr.ac.uk).

To obtain an information pack, please contact Anne Keefe, Tel: 0171 352 8133 ext 5109.

To apply, please send two copies of your curriculum vitae, including the names and addresses of three referees, to the Personnel Officer, The Institute of Cancer Research, 17a Onslow Gardens, London SW7 3AL quoting the appropriate reference number.

The Institute operates a no smoking policy.

POSITION ANNOUNCEMENT

Applications are invited from suitably qualified candidates for the following position tenable at the International Centre of Insect Physiology and Ecology (ICIPE) in Nairobi, Kenya.

SENIOR INSECT ECOLOGIST APPLIED ECOLOGY DEPARTMENT REF: 16/95

The candidate must have a PhD with at least 5 years postdoctoral experience in insect ecology with a strong background in quantitative population ecology and demonstrated abilities to conduct innovative field research. Experience in tsetse research and control would be an advantage.

The successful candidate will be expected to conduct ecological research on tsetse flies at Nguruman, a Rift Valley field station in Maasailand in south-western Kenya. These studies will focus on the development of methods for maintaining tsetse populations at ultra-low levels in areas undergoing tsetse suppression with traps. He/she will join a multidisciplinary team of scientists studying various aspects of tsetse biology and control in an ongoing project.

This is an international professional staff position at level IPS3 with a total package that is negotiable around US\$ 60,000 per annum.

Applications, giving full and up to date curriculum vitae, reprints of three most recent publications, current salary, names and addresses of three referees and photocopies of relevant certificates (which will not be returned) should be addressed to:

Director, Management
The International Centre of Insect
Physiology and Ecology (ICIPE)
P.O. Box 30772
NAIROBI, Kenya
Fax No.: 254-2-803360
Email 157: CGI 063

Closing date: one month from date of publishing



**University of
Canterbury**
New Zealand

Lecturer In Ecology

Applications are invited for the above tenured position in the Department of Zoology.

The minimum qualification on appointment is the Ph.D. degree or equivalent. The appointee will preferably have post-doctoral experience and will be required to contribute to undergraduate and postgraduate courses in ecology, environmental science and general zoology; supervise postgraduate students; and engage actively in research. Applicants should have a strong research background in experimental ecology and the ability to apply ecological principles within the broader fields of environmental science, conservation biology or resource management. Those with research experience in aquatic or terrestrial ecology are encouraged to apply. Preference may be given to a candidate with a background in invertebrate ecology.

Academic enquiries may be directed to the Head of Department, Professor M.J. Winterbourn, Telephone 64-3-364 2026, Fax 64-3-364 2024, or Email: job@zool.canterbury.ac.nz

The salary for Lecturers is on a scale from NZ\$40,000 to NZ\$50,000 per annum.

Applications close on 31 July 1995.

Further particulars and Conditions of Appointment may be obtained from the undersigned.

Applications, quoting Position No. ZO49, must be addressed to:

Mr A W Hayward, Registrar,
University of Canterbury,
Private Bag 4800,
Christchurch, New Zealand.

The University has a policy of equality of opportunity in employment.

University of Tübingen

Eberhard-Karls-University Medical School Tübingen, Germany

The Department of Hematology/Oncology, Stem Cell Transplantation and Immunology (Chairman: Prof. Lothar Kanz) invites applications for

Postdoctoral Research Fellows Wiss. Assistentinnen/Assistenten (BAT IIa/Ib) Visiting Scientists

Applicants must have a M. D. or Ph. D. degree. Candidates are sought with background in hematopoietic stem cell biology and therapy, gene transfer, or immunotherapy (adoptive cancer therapy, antigen presenting cells).

Appointments will be made for an initial period of 3 to 5 years. The available positions provide the opportunity for young, creative and motivated scientists to join the recently created research program dedicated to the basic and clinical research topics above. The Institute provides opportunities to pursue M. D. as well as Ph. D. careers.

The University Tübingen is striving for a larger quote of women on its academic staff and is therefore strongly encouraging women to apply for the above position. Handicapped persons with the same qualifications will have preferences.

Candidates should submit a curriculum vitae, a brief statement of their interests and expertise, reprints, and indicate three referees – Code Number Z 141/5 – to:

Prof. Dr. med. Lothar Kanz, Chairman, Dept. of Medicine II, Eberhard-Karls-University Medical School, Otfried-Müller-Straße 10, D- 72076 Tübingen, Germany, Telephone 0049-7071-29 27 26, Fax ...-29 36 71.

The University Hospital Administration is in charge of the hiring process.

1996 PRIZE FOR MEDICAL APPLICATIONS OF ELECTRICITY

CALL FOR APPLICATIONS

Under the aegis of the Institut Electricité Santé, the Medical Studies Department is offering a research grant of 300,000 FF.

TOPIC: The study should be on the application of electricity to medicine, including diagnosis, therapy or the life sciences.

APPLICANTS: Applications will be accepted from medical or scientific research groups working in France or abroad.

TO APPLY: Application forms are available from the Medical Studies Department. Completed applications, in French or in English with a French summary, postmarked not later than December 15, 1995, should be sent to:

SERVICE DES ETUDES MEDICALES, EDF-GDF

22-30, ave de Wagram
75382 Paris cedex 08 (France)

Further information from:

Dr. Pierre-André CABANES

Tel.: 33.1.47 64 73 02

Fax. 33.1.47 64 73 15

THE ARABIAN GULF UNIVERSITY COLLEGE OF MEDICINE & MEDICAL SCIENCES-BAHRAIN

Invite applications for chairpersons in the following medical science departments:

1. Anatomy; 2. Medical Biochemistry; 3. Microbiology;
4. Pharmacology & Therapeutics; 5. Medical Physiology.

The College of Medicine and Medical Sciences of the Arabian Gulf University which is located in the State of Bahrain and is sponsored by 6 Arab Gulf States as the integrated medical education curriculum of problem based self directed learning in small groups. English is the language of instruction. The college is in the process of reorganizing its academic structure with the establishment of strong academic departments for education, research, service and graduate training.

Applications are invited from senior academic individuals with Ph.D., and/or M.D. and board certification when applicable. Applicants are expected to have an established record of leadership in teaching, administration, research at the level of professor and have special interest in working in a pioneering environment as members of an academic team dedicated to high quality medical education and research. Salaries and benefits in Bahraini Dinars (1BD = U.S. dollars 2.65) are : basic monthly salary of professor and chair is BD. 1,400 to 2,050, together with professional allowance of 30% of the basic salary if medically qualified. The benefits will include a monthly housing rental allowance or suitable furnished university accommodation, transportation and chairperson allowance. Also included are furnishing allowance, moving allowance of personal effects, contribution towards expenses for the education of children under 18 years of age at the local American School, end of service gratuity of one month basic salary per year of service, free medical care in the State of Bahrain, insurance against accidents during working hours and 60 days annual leave with paid, return air ticket to country of recruitment for faculty, spouse, and three children. There is no income tax in Bahrain and the country has a pleasant and warm climate throughout the year.

Applications with detailed curriculum vitae, together with names, addresses and telephone numbers of four referees should be mailed or faxed to **Office of the Dean, Arabian Gulf University, PO Box 26671, Manama Bahrain, Telephone (973) 279410 or 277822; Fax 230730.**

BIOPROCESS SCIENTISTS Cell Culture Process Development

The mission of Human Genome Sciences is to identify and develop drugs and diagnostic products based on its leadership in the discovery and expression of novel genes from human and animal origin.

HGS is currently expanding to a new state-of-the-art Bioprocess Development facility and is looking for experienced process scale scientists for scaling-up recombinant protein production in mammalian and insect cell culture systems.

Responsibilities will include: Serum-free media development for scale-up of CHO cell cultures for recombinant protein production; process optimization of CHO cell cultures to maximize recombinant protein yields; determination of cellular metabolic parameters, especially with regard to nutrient requirements and recombinant protein secretion. Prior experience in CHO Cell Culture in Bioreactor systems is essential!

Candidates must possess a PhD in Biological Sciences or related discipline and have 1-3 years of industry experience. A minimum of 5 years experience with cell culture is required. Must be able to work effectively in an interdisciplinary environment and must demonstrate excellent written and oral communication skills. Computer skills are essential and knowledge of cGMPs are highly desirable.

HGS encourages the pursuit of academic excellence and offers a comprehensive benefits package including medical/dental insurance, 401(k) and tuition reimbursement. For immediate consideration, please send your curriculum vitae to **Human Resource Department (RG 5/19), Human Genome Sciences, Inc., 9410 Key West Avenue, Rockville, MD 20850. FAX: (301) 309-8512.** An Equal Opportunity Employer.



HGS

Human Genome Sciences, Inc.

Dedicated To Discovery For Health

Position Announcement

Applications and nominations are invited for the position of **Associate Dean for Research and Graduate Studies** in the Graduate School at the University of Maryland at College Park. This individual will assist the Associate Provost for Research and Dean of the Graduate School in the comprehensive management of the research enterprise at UMCP and participate in oversight of graduate programs. An individual is sought who can provide leadership in creative approaches to research, including development and nurture of multidisciplinary and multi-college projects, and who can interact on our behalf with various federal agencies sponsoring scientific research. Candidates must hold a Ph.D., be qualified for an appointment as tenured professor at UMCP, and have experience in graduate education. This position will be 75% -100% in the Graduate School with the remaining time in an appropriate department if the appointment is split. The appointment will be effective ASAP. Minorities and women are encouraged to apply. The committee will begin review on June 2. Applications will be accepted until the position is filled. Send a letter of nomination or application with curriculum vitae and 3 letters of reference to: **Dr. Chuan Liu, Professor of Physics; Chair, Search Committee, Associate Dean for Research and Graduate Studies; The Graduate School; 2126 Lee Building; University of Maryland at College Park; College Park, MD 20742. Fax# 301-314-9305**

Special Advertising Supplement

MEETING THE CHALLENGES: Careers in Biotechnology and Pharmaceuticals for Scientists with Disabilities

On 23 June, *SCIENCE* will publish a special advertising section devoted to career opportunities for scientists with disabilities. This section will examine the steps being taken by companies and institutions in the biopharmaceutical industry to make their work environments accessible to all scientists.

- What are companies and institutions doing to create barrier-free buildings and work stations?
- How do companies and institutions utilize the thousands of devices designed to accommodate people with special needs?

By advertising in this special section, your company or institution can send a recruitment message and show support for hiring scientists with disabilities.

Meeting the Challenges publishes: 23 June 1995.

Advertising space reservation deadline: 6 June 1995.

Bonus Distribution

This issue will be distributed, along with a letter highlighting the special career section and recruitment advertisements, to the AAAS Resource Group of Scientists and Engineers with Disabilities.

Benefits of Full Page Advertisements

This issue is an excellent opportunity for full page advertisers to get extra attention:

- Full page recruitment advertisements will receive placement throughout the career-related special advertising section.
- A directory of full page recruitment advertisements will be published in this issue referring readers to your ad in the special section by listing your company name and the corresponding page number on which your ad appears.
- Names of the full page recruitment advertisers will be listed on an index affixed to the covers of the magazines being mailed to the AAAS Resource Group of Scientists and Engineers with Disabilities.

SCIENCE

To advertise call Janis Crowley
at (212) 496-7704 or fax to (202) 682-0816.

At Abbott, Pioneering Research Is Making The World A Better Place.

For over a century, breakthrough research has helped Abbott Laboratories deliver generation after generation of highly advanced pharmaceuticals. Today, as a globally renowned health care leader, our world class research team continues to consistently deliver ground breaking products to market. Now, you could join the Anti-infective Research Division of our Pharmaceutical Products Division—and help bring a new age of drug discovery to life.

Postdoctoral Research Scientist

Using genetic and protein analysis, you will investigate epidemiology and antimicrobial resistance in *Helicobacter pylori*.

This position requires a Ph.D. in Microbiology along with 0-2 years of postdoctoral experience. We prefer experience in molecular techniques.

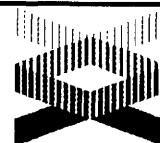
Abbott provides an excellent salary and benefits package including profit sharing and a stock retirement plan. We are located in an attractive suburban area, approximately 30 miles north of Chicago. For confidential consideration, please send your curriculum vitae to: **Alison Burke, Job #BF72280, D-583, AP6B, Abbott Laboratories, One Abbott Park Rd., Abbott Park, IL 60064.** Abbott is a Affirmative Action/Smoke-Free Employer.

ABBOTT LABORATORIES



Quality
Health Care
Worldwide
Since 1888

Experience The Abbott Edge.



Postdoctoral Positions

Diagnostic Development Branch

National Center for Human Genome Research National Institutes of Health

Postdoctoral research positions are available for individuals interested in mammalian genetics and genome analysis.

Dr. Eric Green:

*Human Chromosome Mapping and Sequencing;
Isolation of Genes Associated with Inherited Diseases*

Dr. Mark Hughes:

*Single Cell Molecular Genetics; Prenatal and
Preimplantation Diagnosis; Reproductive Medicine*

Dr. David Ledbetter:

*Molecular Cytogenetics and Human Development;
Genomic Imprinting*

Dr. Thomas Ried:

*Human and Mouse Molecular Cytogenetics;
Biology of Tumor Progression*

Candidates should possess an M.D. and/or Ph.D. and have <5 years of postdoctoral experience. Please send a C.V. and the name of 3 references to:

Dr. Eric Green, NCHGR, NIH, 9 Memorial Dr., MSC 0945, Bethesda, MD 20892. FAX: 301-402-4735. The NIH is an Equal Opportunity Employer.

New from SCIENCE:

JOBNET

Classified Advertising On-line!

JOBNET: A new on-line service listing the best scientific career opportunities and more...Only from SCIENCE! JOBNET offers you an on-line connection to the same comprehensive listing of positions open, meetings and courses that appears in SCIENCE every week. The JOBNET service delivers the most up-to-date science job directory because new listings appear each week.

To Access JOBNET

Gopher: <gopher.aaas.org>

WWW: [gopher://gopher.aaas.org](http://gopher.aaas.org)

Once you enter the AAAS databank, select SCIENCE magazine and then choose JOBNET from the menu.

If you need help getting to our Gopher, your computer systems department at your company or institution is the best source for help. Send Internet inquiries regarding JOBNET or accessing the AAAS gopher to: JOBNET@aaas.org.

JOBNET address: gopher.aaas.org

EXECUTIVE DIRECTOR

To Lead The Graduate Record Examinations Program

Educational Testing Service(ETS), the nation's leading educational and measurement organization whose standards of excellence extend worldwide, seeks a well-qualified individual for a challenging and rewarding position.

The Executive Director directs, manages, and plans for the Graduate Record Examinations Program (GRE) under the auspices of the GRE Board (a policy council composed primarily of graduate deans). The Director explores and proposes new programs and activities to the GRE Board, which sets policy for the GRE Program, and serves the graduate community which the Board represents. The Director serves as lead administrator for the GRE Board, acts as primary liaison between the GRE Board and ETS, and manages the day-to-day activities of the GRE Board, its program, services and research. The Director also represents the GRE program to other organizations and agencies such as the American Council on Education and the Council of Graduate Schools and may participate in their workshops and annual meetings. The Director will manage the transition from paper-and-pencil testing to a completely computerized testing program to meet the needs of graduate education. In addition, the Director develops budgets for review by the Board Fiscal Committee and provides overall leadership and management of a high-level professional and support staff for the GRE Program.

Requirements are a doctoral degree or an equivalent combination of education and experience and 4 years of successful leadership in progressively responsible administrative positions. Excellent interpersonal, verbal communication and writing skills are essential. Highly desirable are familiarity with graduate education, knowledge of educational measurement and of cognitive science.

The position offers a highly competitive salary/benefits package and a stimulating environment, ideal for professional growth and career enhancement. For confidential consideration, please submit a detailed resume, complete with salary history and cover letter to: **Ms. P. Marks**



EDUCATIONAL TESTING SERVICE

Rosedale Road, Princeton, NJ 08541

As an Equal Opportunity/Affirmative Action Employer with a commitment to diversity, ETS actively encourages nominations and applications from women, candidates of diverse racial and ethnic backgrounds and differing physical abilities.

FACULTY POSITION IN OCULAR STRUCTURAL BIOLOGY: The Department of Ophthalmology, University of Florida invites applications for a tenure-track position in the area of modern structural biology. The Department is particularly interested in candidates who utilize modern morphological methods to investigate structure and function of the vertebrate retina, cornea, and/or optic nerve. Candidates must have at least a Ph.D. degree, postdoctoral experience, and demonstrate exceptional promise in research. Candidates are expected to develop a vigorous extramurally funded research program and to supervise a well-equipped electron microscopy core facility that serves an active group of vision researchers. Salary is negotiable. Opportunities exist for joint appointments with appropriate basic science departments. The deadline for applications is July 1, 1995 to start by August 1, 1995. Candidates should send a curriculum vitae, a list of publications, a statement of research activities and goals, and the names of three referees to **W.W. Hauswirth, Ph.D., Professor, Department of Ophthalmology, Box 100284 JHMHC, University of Florida, Gainesville, FL 32610-0284. The University of Florida is an Equal Opportunity/Affirmative Action Employer.**

Special Advertising Supplement

Choosing A Future: Career Opportunities and Academic Options for BS & MS Scientists *August 25, 1995*

Announcing the 3rd Annual BS & MS Scientists Special Advertising Supplement.

For the third consecutive year **Science** will publish a special advertising supplement devoted to BS and MS level scientists. In this year's issue, *Choosing a Future: Opportunities and Options for BS and MS Scientists*, we will examine this topic in two parts. First, we'll look at career opportunities available to BS and MS level scientists. The second part will cover the wide range of academic programs available to chemists and biologists holding bachelor's or master's degrees.

For advertising information, please contact Janis Crowley at phone: (212) 496-7704; fax: (202) 682-0816.

Space Reservation Deadline: August 8, 1995

♦ The Nation's top schools for Biological Sciences, various Chemistry disciplines and Clinical Medicine ranked by the Institute for Scientific Information's *Science Watch*, as well as the top 20 schools from *U.S. News & World Report's* Annual America's Best Colleges issue.

Bonus Distribution. Copies of the 25 August BS/MS issue will be distributed at 2 Biotech/Pharmaceutical Job Fairs:

- 22-23 September, La Jolla, CA and
- 29-30 September, Cambridge, MA.

Full Page Advertisements Receive:

Special Reprint Distributions. Full page ads in the BS/MS section will be included in a special reprint of the advertising section and receive bonus distribution to students at over 70 of the top biology and chemistry programs at U.S. colleges and universities. ♦

Minority Distribution. Your full page ad in the special section reprint will also be distributed to colleges and universities with historically high minority enrollment.

Prime Positioning. Full page advertisements will be placed throughout the career-related special supplement and medical and graduate school advertisements will run under special "Graduate School" and "Medical School" banners increasing the visibility of your message.

SCIENCE
COVERS THE WORLD

CHEMISTS

Analytical Sciences

SmithKline Beecham, a worldwide leader in pharmaceutical research, currently has two openings in our Analytical Sciences Department.

Responsibilities include performing method development for the analysis of biopharmaceuticals and evaluating protein drug substances/products using HPLC, N-terminal sequencing, and ELISA methodologies. Other duties will include peptide mapping and/or carbohydrate mapping of proteins, developing new assays and preparing assay validation protocols. Performing validation studies and writing final reports will also be required.

Successful candidates must have a B.S. with 5-10 years of experience, or an M.S. with 3-5 years of experience, or a PhD with some postdoctoral experience. The ability to adapt new techniques to relevant research and to apply your own research efforts to Program/Feasibility Study goals is required. A self-motivated approach to working in/running a lab as well as demonstrated computer skills are preferred.

Located in our state-of-the-art research facility in suburban Philadelphia, SmithKline Beecham offers an excellent compensation/benefits/relocation package, as well as a stimulating work environment in which to grow and excel. For confidential consideration, send resume and salary requirements to: SmithKline Beecham Pharmaceuticals, Job Code H5-0095, P.O. Box 799, Conshohocken, PA 19428. We are an Equal Opportunity Employer, M/F/D/V.



SmithKline Beecham
Pharmaceuticals

Challenging the natural limits.

INNOVATION SERVING HEALTH CARE

ASSOCIATE DIRECTOR CORPORATE LIBRARY AND INFORMATION CENTER

At Baxter Healthcare Corporation, our commitment to innovation serving health care is evident. Today, this Fortune 500 Corporation has an immediate opening for the Associate Director, Library and Information Center, Corporate Research and Technical Services, in **Round Lake, Illinois**.

The Library and Information Center services the business, clinical, and technical information needs of the corporation's sixty thousand people worldwide. Responsibilities include the operation and personnel management of this function, working directly with all levels of management and actively promoting the center's services. The Associate Director will also provide leadership and strategic planning for future services reflecting a vision for libraries and information centers in the 21st century.

Requirements include a Masters level degree in library or information science, five years management experience including budgetary and staff development, excellent interpersonal skills, excellent written and oral communication skills, and advanced knowledge in computers including the Internet, LAN's and other distributed information technologies.

Baxter Healthcare Corporation is a leader in the Healthcare industry offering excellent salaries and benefits. For immediate consideration, submit resume and salary history to: **CRTS Human Resources WG2-3S, Dept. IRC/S Baxter Healthcare Corporation, Round Lake Technology Park, Round Lake, Illinois, 60073**. An Equal Opportunity Employer.

Baxter

Research

The Next Generation of Animal Health Care Products Is Ours. And Yours.

For over one hundred years, Mallinckrodt has brought a solid commitment to breakthrough research to the animal health and nutrition industry. That's why today, we are considered one of the veterinary industry's foremost names. Now, you could join us in one of the following outstanding opportunities and take animal health care into the next century.

PROCESS DEVELOPMENT SCIENTIST

In this highly visible role, you will perform quantitative and qualitative lab studies in support of process development projects for our Bioprocess Development Department. You will also plan and initiate manufacturing methodologies in an effort to improve the productivity of biologicals. Areas of emphasis will include growth enhancement and purification of vaccines at laboratory and production levels.

This position requires a BS in Life Sciences, Microbiology, or Veterinary Science. We also require 1-3 years of experience in Microbiology or Virology research, or 1-3 years of experience in a Microbiology Production, Diagnostic, or Quality Assurance laboratory. Minimal experience is required with an MS. We prefer Animal Health vaccine production experience.

IMMUNOLOGY SCIENTISTS

We currently have positions at all levels for scientists with background in cellular immunology, ELISA technology, flow cytometry and molecular immunology. Knowledge of animal trial design is an asset.

VACCINE DEVELOPMENT SCIENTISTS

We are seeking scientists of all levels for bacterial and viral vaccine development. Qualified candidates must have experience in growth, downstream processing and optimization of antigen expression. Experience in design and performance of microbiological and viral assays to support vaccine trials in animals is also required. Industry experience is desirable.

We offer a salary commensurate with experience and an excellent benefits package which includes medical coverage, 401(k), and stock options. For consideration, please send your resume and salary history to:

Mallinckrodt Veterinary, Attn: Human Resources Dept. ARS, 421 E. Hawley St., Mundelein, IL 60060. FAX: 708-949-3476.

Equal Opportunity Employer M/F/D/V.

**MALLINCKRODT
VETERINARY**

RESEARCH ASSOCIATES

The Upjohn Company is seeking laboratory research associates for the following:

Position #282: Incumbents will participate in studies focusing on the identification and function of novel genes that contribute to development of human diseases. Qualified applicants will have a BS/MS degree in molecular biology, biochemistry, or closely related discipline and a minimum of 2 years experience. A broad background in state-of-the-art techniques of cell and molecular biology including: recombinant DNA manipulation, nucleic acid hybridization protocols, cell culture and ectopic expression of genes in mammalian cells required.

Position #283: Incumbents will participate in the development, automation and implementation of high throughput screens to discover novel pharmacologic agents in chemical libraries. Candidates will have a BS/MS degree in biology, biochemistry or a related discipline. A knowledge of the basic principles of biochemistry, cell biology, and molecular biology is required. Experience in tissue culture, biochemical assays, data management, and robotic equipment preferred.

The Upjohn Company offers a stimulating, multi-disciplinary research environment, and a competitive salary and benefits package. For consideration, please forward your C.V. with appropriate position number to: **The Upjohn Company, Corporate Recruiting, 7000 Portage Road, Kalamazoo, MI 49001.** We are an equal opportunity employer with a commitment to workplace diversity.



TRUDEAU INSTITUTE, INC.

A **POSTDOCTORAL POSITION** in **IMMUNOLOGY** is available for a person with training in cellular and/or molecular immunology to study the immune response to bacterial infections. The laboratory is currently emphasizing immunity to experimental tuberculosis.

THE TRUDEAU INSTITUTE is a well-endowed, not-for-profit, basic research institute with modern facilities, up-to-date equipment, in-house animal production, efficient management and an international reputation for excellence. The Trudeau Institute is located on the shore of Saranac Lake, 8 miles from Lake Placid. Competitive salary and fringe benefits are offered and institute housing will be made available.

Applications consisting of a curriculum vitae and the names and addresses of three references should be addressed to:

Robert J. North, Ph.D., D.Sc.
Director
Trudeau Institute, Inc.
P.O. Box 59
Saranac Lake, NY 12983

First Annual Conference on Recruitment and Retention of Minority Scientists

*"Unlocking Opportunities:
Fostering Diversity in the Scientific Workforce
in the Pharmaceutical and Biomedical Industries"*
26 - 27 October 1995

This is a unique opportunity to be part of an exciting forum where professionals from industry, government, universities and associations will discuss and share strategies related to the recruitment, retention and professional development of minority scientists.

Sponsored By: The American Association for the Advancement of Science
Location: Washington D.C. (Crystal City Marriott, Arlington, Virginia)
Cost*:

- \$340 registration before July 1, 1995
- \$395 registration after July 1, 1995.
- \$285 per person for 2 or more before July 1, 1995.
- \$340 per person for 2 or more after July 1, 1995.

Price includes full conference, opening cocktail reception, continental breakfast and lunch.

(*Does not include hotel accommodations).

For information call: Janis Crowley (212) 496-7704

The conference is supported by a grant from the DeWitt Wallace-Reader's Digest Fund.

POSITIONS OPEN

MOLECULAR SYSTEMATICS STAFF BIOLOGIST

The National Museum of Natural History's Laboratory of Molecular Systematics seeks an individual with considerable laboratory experience in molecular genetics coupled with a strong interest in evolutionary biology, for the position of **STAFF BIOLOGIST**. As general lab manager, he/she will: 1) train incoming researchers in the use of molecular genetic techniques; 2) oversee and maintain facilities, laboratory bench space, and equipment and supplies; and 3) plan and carry out biochemical and molecular genetic laboratory experiments for PI-directed research projects, analyze data and write up results for publication. Starting salary range: \$36,174 to \$43,356. For more information about the position, contact: **Dr. Matthew Kane** or **Dr. Michael Braun** at telephone: 301-238-3444; Email: kane(or braun)@onyx.si.edu; for application information, call our 24-hour automated request center: telephone: 202-287-3102, press 9, and request **Vacancy Announcement No. 95-1080R** and a full application package. Applications must be received no later than June 30, 1995. *An Equal Opportunity Employer.*

RESEARCH SCIENTIST

Position is immediately available to study HIV-1 and B cell lymphokine expression at the cellular and molecular levels. Specific requirements include strong background in molecular biology and cellular immunology of HIV-1. Excellent salary and fringe benefits. Send résumé, names and addresses of three references and salary requirements to:

David Benjamin, M.D.
1232 James Cancer Hospital and Research Institute
The Ohio State University Hospitals
300 West 10th Avenue
Columbus, OH 43210-1228
Telephone: 614-293-3716; FAX: 614-293-4372

The Johnson Space Center **VISITING SCIENTIST PROGRAM** in Space Biomedicine supports up to six months of on-site research and additional follow-on research at the Visiting Scientist's home institution. Sponsoring laboratories offer research projects in the following discipline areas: 1) Balance function modeling; 2) Radiation biophysics; 3) Biotechnology; 4) Cellular immunology; 5) Cellular physiology of muscle; 6) Water quality; 7) Biomechanics of bone; and 8) Psychology and behavior. For additional information or application materials, contact: **Barbara Railsback (S)**, USRA, Division of Space Life Sciences, 3600 Bay Area Boulevard, Houston, TX 77058. Telephone: 713-244-2009; FAX: 713-244-2006.

WASTE REDUCTION SPECIALIST; 40 hours per week; 8:00 am to 4:30 pm; \$33,000 annually; Organize and conduct waste reduction programs for small businesses throughout Iowa. Conduct on-site reviews of businesses covering environmental regulation review and recommendation for both waste reduction and compliance in the areas of air, water, solid and hazardous waste management. Duties include helping small businesses meet requirements under the Clean Air Act e.g., air permits, emission inventory, air dispersion modeling, etc. Research new and emerging waste reduction techniques and equipment. Provide technical assistance to business and state agencies. Conduct short training courses and make presentations to trade associations and other small business groups on environmental regulations and requirements, waste reduction, pollution prevention, recycling, etc. Must have a Bachelor's degree in engineering or a related field. Must have two years of experience in job offered or as an engineer doing project management work (such as inspection, evaluation and project appraisal) and concurrently, one year working with hazardous materials. Must have completed coursework in solid and hazardous waste management covering Resource Conservation Act (RCRA), Superfund Amendment and Reauthorization Act (SARA), and Comprehensive Environmental Response Liability Act (CERCLA). Must have proof of legal authority to work permanently in the United States. Send résumés to: **D.E.S. Workforce Center**, P.O. Box 2160, 925 East 4th Street, Waterloo, IA 50704-2160. Please refer to Job Order IA1100370. Employer paid advertisement.

COMPUTER MARKETPLACE

USED COMPUTERS



The Computer Exchange

Apple/Mac • IBM • Compaq
Toshiba • Clones • & more
We match buyers and sellers of used equipment nationwide.

Call for Pricing ■ 800-304-INDX (4639)

Circle No. 72 on Readers' Service Card

ProCite®

The Software Solution To Managing Bibliographic References

Automatically generate formatted bibliographies of any type, or create your own electronic catalog of publications, collections, and research information. PBS, Inc. software is available for Windows, Macintosh, and DOS operating systems, in single and multi-user versions.

Call for a **FREE** mini-version
(313) 996-1580 ext. 90

Circle No. 15 on Readers' Service Card

MARKETPLACE

Polyclonal Antisera

THE HIGHEST QUALITY AT THE LOWEST PRICE
—Plus—

SPECIAL INTRODUCTORY DISCOUNTS

CALL FOR A FREE CATALOG

800-454-6790

FAX (619) 454-7851

La Jolla Diagnostics

A division of
PATHFINDER HOLDING CORPORATION
800 Silverado
La Jolla CA., 92037

Circle No. 21 on Readers' Service Card

XX-IDT®
INTEGRATED DNA TECHNOLOGIES, INC.

Custom DNA Synthesis

\$1.95 / Base

200 nmole Scale

No Set-up Fee

Column Purified

24 Hour Shipping

Q.C. by PAGE on Every Oligo

E-mail: orders@bbs.idtdna.com

Fax: 1-319-645-2921

Phone: 1-800-328-2661

Major Credit Cards Accepted

Circle No. 4 on Readers' Service Card

MARKETPLACE

ULTRASONIC

CELL DISRUPTORS
LIQUID PROCESSORS • ATOMIZERS
FREE CATALOG - 1-800-745-1105
SONICS & MATERIALS
W. KENOSIA AVE., DANBURY, CT 06810 USA
FAX 203-798-8350

Circle No. 6 on Readers' Service Card

QUALITY CUVETTES!!!

Inexpensive Electroporation Cuvettes
Each sterile package includes a free
pipette for easy sample removal!

BTX

1-800-289-2465

FAX: 619-597-9594

Circle No. 35 on Readers' Service Card

Custom Polyclonal Antibodies
BEST PRICES • BEST ANIMALS
ANIMAL PHARM SERVICES
(800) 808-0550

Circle No. 24 on Readers' Service Card

\$25 PEPTIDES \$39*

>100mg, HPLC 8 res. min. **\$60*** >20 mg >90% pure >50mg >70% pure

Delivery: 2-3 weeks *Mass Spec, HPLC, UV Scan

SynPep Corp. Phone: 1-800-899-3436

Custom and 1-510-803-9250

Radiolabeled Peptides Fax: 1-800-899-6534

Circle No. 34 on Readers' Service Card

GIBCO BRL
CUSTOM PRIMERS™
\$1.19
PER BASE PLUS SETUP*

- High quality
- High capacity
- Fast turnaround

Internet Ordering on the World Wide Web:
<http://www.lifetech.com>

Call for easy fax ordering form: (800) 828-6686

* Setup Charge: \$5.00 for Deprotected or \$10.00 for Deprotected/Desalted primers.

LIFE TECHNOLOGIES

Producer of GIBCO BRL Products

Circle No. 25 on Readers' Service Card

Marketplace ads continue on page 1098

MARKETPLACE

ONLY DNA

No frills, Just good DNA at very low prices

\$1.60 per base

- No set-up fee • 48 hour turnaround
- 50 nanomole synthesis

1-800-359-5794 email onlydna@wln.com

Circle No. 18 on Readers' Service Card

IMMUNOLOGICAL PRODUCTSRIA Kits (each) - Special Price - **\$200.00**

ENDOTHELIN-1, ANGIOTENSIN II, LH-RH, CALCITONIN & MANY MORE

¹²⁵I-Labeled Peptides (Per 10 µCi) - **\$200.00**

High Sensitivity Peptide Antibodies

FOR RIA AND IMMUNOHISTOCHEMISTRY • ASK FOR YOUR FREE SAMPLE

LIMITED TIME OFFER

Advanced ChemTech

Fax(502) 968-1000 1-800-456-1403

Circle No. 29 on Readers' Service Card

FLUORESCENT MICROSPHERES

Distinctive colors for biology, diagnostics, physiology, aerosol, and filter testing applications.

- Diameters from 0.025 µm to 10 µm in red, green, blue fluorescence
- Assorted surface properties for protein coupling
- Free catalog available

Call 800-334-3883 Toll Free or in Calif. 415-424-1177 FAX 415-424-1158

Duke Scientific
CorporationP.O. BOX 50005
2463 FABER PLACE
PALO ALTO, CA 94303

Circle No. 17 on Readers' Service Card

DNA | PEPTIDES**• \$1.75 /base****• \$20 /residue**

- Column Purified
- No setup fee

- 15-40 mg in 5 days
- No setup fee

GENEMED BIOTECHNOLOGIES

1 (800) 344-5337 • Fax (415) 952-9540

Circle No. 22 on Readers' Service Card

\$195 CUSTOM PEPTIDES

- 15 - 30 mg • 8 - 20 residues
- Mass Spec. Provided
- Quantity discounts available

CHIRON
MIMOTOPES
PEPTIDE SYSTEMSNorth America:
Tel:
1-800-338-4965
Fax:
1-800-654-5392

Circle No. 20 on Readers' Service Card

MARKETPLACE

custom custom custom custom custom custom custom custom

PEPTIDE and DNAPeptide and DNA engineering specialist:
Phosphoryl, Thiophosphoryl, Biotinyl, Chloromethyl,
Cyclic, Dimeric, Partial protected, FITC, DNP, pNA,
AMC, Phosphothionate and more**IonSpray MS and LC/MS**Synthetic or natural compounds analysis:
Organic, Inorganic, or coordination compounds
Drug metabolites, Enzyme digests, ect.
\$30/sample (MS), \$250/sample (LC/MS)Call for more information (800-597-7873) or
Fax us sequence for quotation (510-371-1156).
PeptideGenic Research & Co. Livermore, CA.

Circle No. 3 on Readers' Service Card

* Video Gel Documentation * Gel Analysis * Slide Makers *
Wouldn't you rather destain your coomassie gels for minutes not hours?
B/T Blv
 * Destain = rinse - few minutes (results immediately visible)
 * Less solvent waste and less cost
 * 2 fold greater sensitivity than coomassie
 Call B/T SciTech - 1-800-352-4474
 * Bio 101 * UV Transilluminators * Low Noise Microfuges *

Circle No. 30 on Readers' Service Card

The premium antibody for phosphotyrosine detection is available from the laboratory where it originated, for the low price of
PY20
 from
TRANSDUCTION LABORATORIES
 1-800-227-4063
 only
\$100/mg!

Circle No. 19 on Readers' Service Card

Human Microvascular Cells Complete Cell System

NOW ONLY \$350

NEW DEFINED ANIMAL ENDOTHELIAL CELL SYSTEMS:
Porcine Aortic Endothelial Cell System
Bovine Aortic Endothelial Cell System

cell systems

800-697-1211

Circle No. 48 on Readers' Service Card

CUSTOM DNA SYNTHESIS

PURE & SIMPLE

- Superb Technical Support
 - Impeccable Quality
 - World's Fastest Service
 - Cap Gel & TOF Mass Spec
- * Some restrictions apply. Please call for details.

MIDLAND

STILL THE UNDISPUTED #1 CUSTOM DNA SYNTHESIS SERVICE

THE MIDLAND CERTIFIED REAGENT COMPANY

Phone 1-800-247-8766 FAX 915-694-2387
email MCRC@WLN.COM

Circle No. 5 on Readers' Service Card

MARKETPLACE

World leader in Synthetic DNA and Peptides

DNA E-Mail: Biosyn@aol.com

- NO SETUP charge • NO minimum order

\$1.49
base

- Column Purified
- 10.0 OD's (~330 µg)
- Synthesis Report
- 24 hour SHIPPING

Call for \$1.19 /base oligos. Larger scales & more available.

PEPTIDE**! FREE MASS SPEC !**

- NO SETUP charge • Free HPLC Tracing

\$20.00* residue
 • 15-40 mgs
 • 8 - 30 residues
 * desalted • Shipped in 5 days

! Antipeptide Antibodies production services, & more !

Since 1984, serving you with quality products

BIO-SYNTHESIS

Tel: 800-227-0627 Fax: 214-420-0442

Circle No. 36 on Readers' Service Card

2-D Electrophoresis ServicesFast - Reliable - Custom
1D & 2D Protein PAGE
Kendrick Labs, Inc

1 800 462-3417

Circle No. 37 on Readers' Service Card

PEPTIDES

Custom Purity >70%, \$20 Res. (offer thro. May)

1st order disc., no setup fee, free HPLC/A.A. analy.

PEPTIDE ANTIBODY: \$250 Rabbit

UNBEATABLE: NO CHARGE IF NO ANTIBODY PRODUCTION

PEPTIDE LIBRARY: from \$150 library

1-800-400-0070 (Tel)

TANA LAB., LC. • 1-713-663-7163 (Fax)

Circle No. 71 on Readers' Service Card

ANTIBODIES
 Conjugates
 Secondary
 Custom
Antibodies Inc.
 Call
 1-800-824-8540
 Fax: (916) 758-6307
 Price below competitors.

Circle No. 1 on Readers' Service Card

Custom DNA Purified & Delivered in 48 hours

\$5.00 per base • Purified
Guaranteed minimum 100µg

Research Genetics, Inc.
1-800-533-4363

Circle No. 8 on Readers' Service Card

NOW THAT
OPERON'S DNA *is*
just **\$1.20** PER BASE,
YOUR *savings* ARE
SURE TO multiply.



Here's something you can bank on. A 50 nmole scale synthesis of Operon's custom DNA for just \$1.20 per base, with a \$10.00 set-up fee.

This new, affordable price not only means you'll be able to conduct more experiments, it means your savings will grow with each project. And with our reputation for high-quality DNA, you'll get the results you need every time.

Of course, we still offer our 0.2 μ mole scale for \$2.00 per base with a \$15.00 set-up fee and our 1.0 μ mole scale for \$2.80 per base with a \$20.00 set-up fee.

Thanks to Operon's knowledgeable and experienced staff, you can always count on us for unmatched customer service, too. Because when it comes to meeting your needs, we really know how to hop to it.

For more information, or to place an order, call us toll-free at **1-800-688-2248**.

OPERON

WORLD'S LEADING SUPPLIER OF SYNTHETIC DNA

© 1995 Operon Technologies, Inc. 1000 Atlantic Ave., Alameda, CA 94501, USA. Phone: (800) 688-2248 or (510) 865-8644. Fax: (510) 865-5255. E-mail: dna@operon.com. NIHBP 263.00033233.

Circle No. 40 on Readers' Service Card

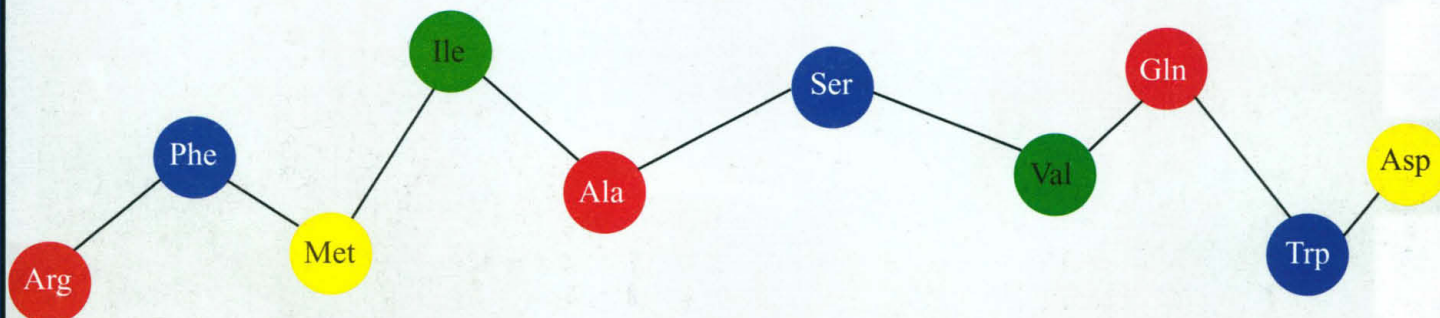
Come to us for Peptides...

Express Peptides

15 mg in 5 days
\$18 per residue*
No set-up charge

*8 residue minimum

Now there's no need to choose between quality, low-price, and fast delivery. With our express service you get the peptides you need in just 5 days for only \$18 per residue. You will receive at least 15 mg of each peptide you order, fully deprotected, lyophilized and packed under argon. All of this, faster than ever before.



and Antibodies!

Peptide Antibodies

Monoclonal...\$8,500

Delivered in 24 weeks

Polyclonal...\$1,195

Delivered in 16 weeks

Research Genetics is proud to provide an economical 'start-to-finish' custom peptide antibody service. Just supply us with your peptide sequence and we'll do the rest. Your peptide will be synthesized utilizing the latest FMOC solid phase methods with MAP resin technology which increases the antigenic response. When requested, first bleed serum from polyclonal antibodies is available upon collection.

Research Genetics, Inc.

2130 Memorial Parkway SW • Huntsville, AL 35801

U.S. or Canada 800-533-4363 • U.K. 0-800-89-1393 • FAX 205-536-9016

Circle No. 10 on Readers' Service Card