



DO YOU REALLY, REALLY, REALLY WANT TO MAKE A **DINOSAUR?**

DNA STAT-120

High Molecular > 150 Kb

- Less than a 2 hour procedure from start to finish
- Very high yield of pure high MW Genomic DNA
- Adapts easily to very small or large specimens
- No organic solvents, no centrifugation
- DNA good for southern blotting and cDNA libraries
- Gold-pak for PCR applications (cat. no. 4530)

50 ml - TL-4500 • 100 ml - TL-4510
200 ml - TL-4520

RNAzol™ B - Total RNA in 90 minutes

RNA STAT-60™ - Total RNA in less than 1 hour

RNA STAT-50™ LS - Single extraction
reagent for total RNA from liquid samples

RNA STAT-30™ KIT - Total RNA/mRNA
isolation kit

mRNA STAT-30™ KIT - poly a+mRNA
isolation kit - oligo d T columns

Aquanase-Free™ Water - RNase, DNase,
pyrogen free water for all molecular
biology needs

DNA STAT-60

Low Molecular < 20 Kb

- Monophasic
- Non-poisonous, non-irritant, organic solvent
- Does not require ultracentrifugation
- No organic solvents, no centrifugation
- DNA good for PCR, southern blotting, and cDNA libraries

50 ml - TL-4200 • 100 ml - TL-4210
200 ml - TL-4220

TEL-TEST "B," INC.

P.O. Box 1421 • 1511 County Road 129 • Friendswood, Texas 77546

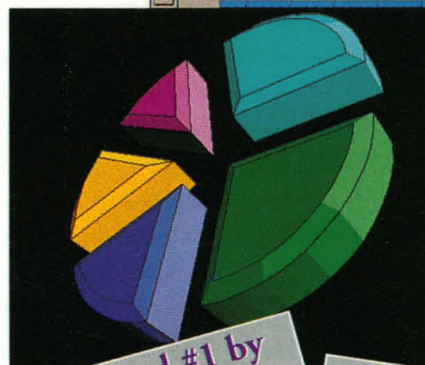
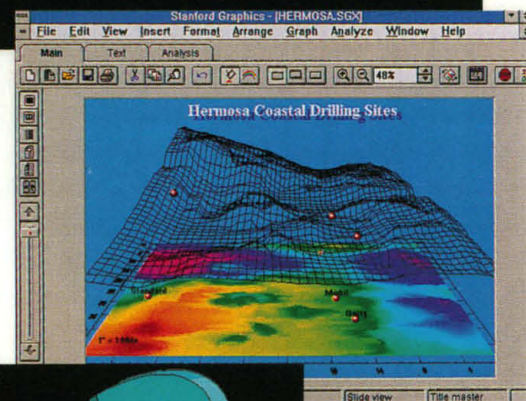
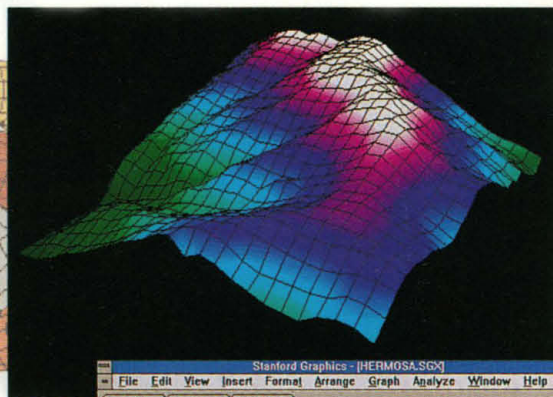
(713) 482-2672 • Customer Service: (800) 631-0600 / Outside Texas • FAX: (713) 482-1070

Circle No. 57 on Readers' Service Card

Stanford Graphics 3.0

The Ultimate Technical Graphics and Analysis Software

- Comprehensive statistical library of functions ever offered in a presentation package.
- Graph Gallery of 171 chart types for business, statistical and technical users.
- Interactive presentation-quality 2D and 3D graphics.
- Links large external data files to a 4-dimensional spreadsheet.
- Formula Visualizer graphically displays user-defined equations.
- Curve fitting, contouring, FFT's and data smoothing.
- Complete Windows compatibility, including DDE, OLE and True Type font support.



Rated #1 by
PC Windows
Magazine

Windows 3.1, &
Windows NT
Versions Available

Call for a FREE InfoPak today!

1-800-729-4723

Visual Numerics™

phone (713) 954-6424 fax (713) 781-9260
e-mail: marketing@houston.vni.com
Mosaic URL: <http://www.vni.com>

STANFORD
GRAPHICS Presentation &
Data Analysis Software

Visual Numerics and Stanford Graphics are trademarks of Visual Numerics, Inc.
All other brand or product names are trademarks of their respective owners.

Circle No. 51 on Readers' Service Card

AD9582



Now... Read DNA, RNA, and Proteins Directly



SPECTRAmax 250:
IT'S MORE THAN A MICROPLATE READER



SPECTRAmax™ 250 combines the tunability of a spectrophotometer with the efficiency of a microplate reader. Simplify your analysis using the speed and convenience of a microplate format.

Direct UV measurements in a microplate

Directly determine the concentration of up to 96 different DNA, RNA, or protein samples in a few seconds using a SPECTRAplate UV transparent disposable or quartz microplate. Protocols are included to measure the purity of DNA samples by calculating A 260/A 280 ratios. Use up to six different wavelengths to quantitate your samples.

UV/VIS Spectra Scans

Perform a spectral scan from 250-750 nm, in 1 nm increments, on all 96 wells of your microplate to determine the absorption maxima of your sample. Analyze column fractions or characterize the composition of inorganic samples.

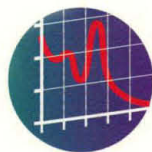
New SOFTmax® PRO

The built-in spreadsheet capabilities of SOFTmax® PRO give you complete control of calculations and data presentation.

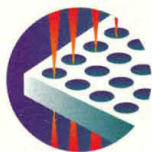
Discover the advantages of SPECTRAmax 250 – contact your local representative today at 1-800-400-9060



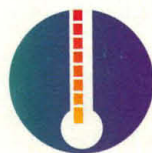
TUNABLE WAVELENGTH



SPECTRA ANALYSIS



UV TRANSPARENT MICROPLATE

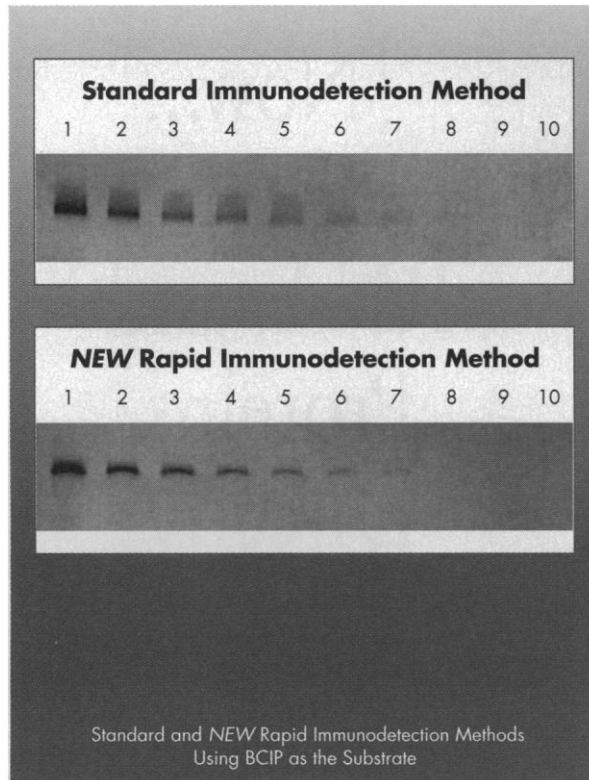


PRECISE TEMP. CONTROL



1311 Orleans Dr., Sunnyvale, CA 94089
(800) 400-9060

Call for a free sample.



Eliminate the blocking step in Western blots.

The standard immunodetection method for blotted proteins can be very time-consuming. That's because conventional membranes must be blocked to prevent non-specific antibody binding. Extensive washes are also required to reduce the background for a better signal-to-noise ratio.

Cut your detection time up to 2 hours with Immobilon-P™ Transfer Membranes from Millipore. Unique membrane properties eliminate the blocking step and dramatically reduce the number and length of washes required — without compromising specificity or sensitivity.

Call or fax to request a free sample of Immobilon-P Transfer Membranes and a copy of the new rapid protocol. U.S. and Canada call Technical Services: 1-800-MILLIPORE; Japan: (03) 3474-9111; European Headquarters in Paris, fax: 33.1.30.12.71.83.

MILLIPORE

Millipore Lab Catalogue on **Internet:** access **URL** menu and type: <http://www.millipore.com>

Circle No. 66 on Readers' Service Card

Introducing StatView 4.1 for your Power Macintosh

Analyzing data the StatView way is faster than ever!

Are you still trying to wring statistics from a spreadsheet? Or shuttling data back and forth among statistics, graphing, and presentation programs? We have a better way.

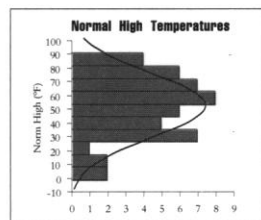
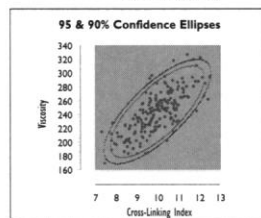
The StatView way

StatView is the best-selling, most award-winning data analysis package for the Macintosh. No other program combines data management, data analysis, graphing, drawing, and color presentation into a single easy-to-use package. If you need to go from raw data to a finished presentation, the easiest way is the StatView way.

Now 4 to 10 times faster!

StatView is now accelerated for your Power Macintosh. (Of course it runs great on regular Macs, too.) Take advantage of this stellar performance increase — try StatView “native” on your Power Macintosh today. For more information on StatView 4.1, call us at 1-800-666-STAT

StatView —
now 4 to 10
times faster
on your Power
Macintosh!



ABACUS
CONCEPTS
THE SIGNIFICANT DIFFERENCE™

© 1994 Abacus Concepts, Inc., 1918 Bonita Avenue, Berkeley, CA 94704-1014; tel: 510-540-1949; fax: 510-540-0260. StatView is a registered trademark and SuperANOVA is a trademark of Abacus Concepts, Inc. All other brands are property of their respective holders.

Circle No. 61 on Readers' Service Card

**The Gerontological Society of America
and
The Glenn Foundation for
Medical Research
Announce
the Winners of the
1994 Glenn Foundation Award**

**James R. Smith, PhD and
Olivia Pereira-Smith, PhD
Huffington Center on Aging at
Baylor College of Medicine**

Drs. James R. Smith and Olivia Pereira-Smith were the recipients of the 1994 Glenn Foundation Award for a Significant Research contribution in the Biology of Aging. Drs. James R. Smith and Olivia Pereira-Smith were honored for their research into the molecular mechanisms of cell cycle control.

The \$20,000 award was presented to Drs. Olivia Pereira-Smith and James R. Smith at The Gerontological Society of America's 47th Annual Scientific Meeting in November of 1994.

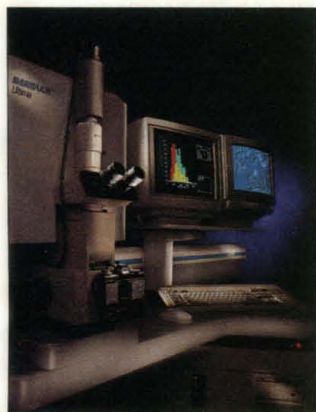
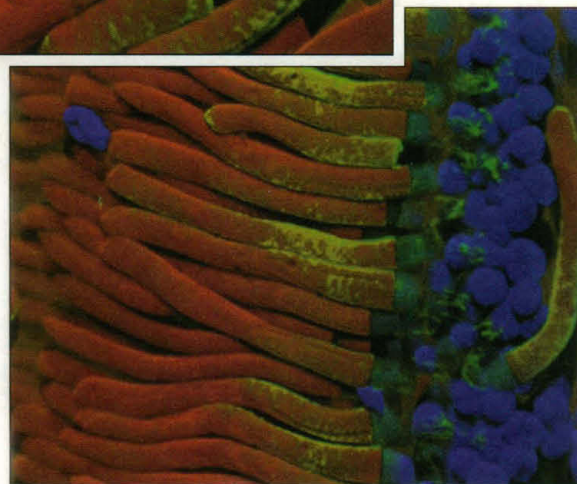
The Award is funded by the Glenn Foundation for Medical Research in Santa Barbara, California and administered by The Gerontological Society of America. The Society is the national multidisciplinary organization for researchers, educators and practitioners in aging.

The deadline for the 1995 Glenn Award selection process is May 8. For further information, contact:

**Awards Coordinator
The Gerontological Society of America
1275 K Street, NW, Suite 350
Washington, DC 20005-4006
Tel: (202) 842-1275**

The Ultima 312™

The Ultimate in Confocal Imaging



Introducing the Ultima 312™ Premium Laser Confocal Microscope System from Meridian Instruments, an instrument that treats your confocal data as it should be treated.

A high-performance point scanner, the Ultima 312 offers a **dynamic range of 12 bits per channel**. That means that even with particularly dim signals, the Ultima 312 provides 16 times the dynamic range of the best 8-bit systems, giving you images with more distinct contrasts. The result? More data content per image.

The Ultima 312 dramatically increases both the quality and the quantity of your data, as well as your confocal imaging options. It is well-suited for studies requiring **simultaneous detection of up to 3 channels**, as well as studies involving simultaneous (or sequential) **UV and visible laser excitation**.

Specimens ranging in size from bacteria to mice can be scanned using the instrument's

two scanning modes — the aberration-free, on-axis StageScan™ mode (for scans of areas as large as 5.3 cm x 8.8 cm), or the high-speed DualScan™ combination galvanometric mirror and stage scanning mode (for faster scans of smaller areas). **Images can be as large as 1,536 x 1,536 pixels**, the largest available from any confocal instrument.

The Ultima 312 is controlled by a powerful Pentium microprocessor which automates such vital functions as pinhole alignment and calibration, an important benefit for researchers working in multi-user facilities.

The Ultima 312 Premium Laser Confocal Microscope System. 3 PMTs. 12-bit analog to digital conversion. Unlimited possibilities.

Contact the Meridian Instruments office nearest you for more information, or to schedule your personal demonstration of the Ultima 312, the ultimate laser confocal system.

MERIDIAN
Instruments, Inc.

Meridian Instruments, Inc.
2310 Science Parkway
Okemos, Michigan 48864 USA
Phone: 800-247-8084
FAX: 517-349-5967

Meridian Instruments
Europe
Industriepark—West 75
B-9100 St. Niklaas BELGIUM
Phone: 32-3-7801760
FAX: 32-3-7781727

Meridian Instruments
Far East K.K.
The Sonehara Building (2nd Floor)
2-23-3 Higashi Nihonbashi
Chuo-ku, Tokyo 103 JAPAN
Phone: 81-3-5820-3315
FAX: 81-3-5820-3316

Meridian Instruments
Hong Kong, Ltd.
19th Floor, Room B
Sai Wan Ho Plaza
66-68 Shau Kei Wan Road
HONG KONG
Phone: 852-513-7333
FAX: 852-513-1299

Meridian Instruments Italia
Via Fabio Filzi, 12
20026 Novate Milanese ITALY
Phone: 39-2-3541444
FAX: 39-2-3541572

3-D rendering of rod photoreceptors from the frog *Xenopus laevis*, showing the distribution of nuclei (blue), the visual pigment opsin (green), and glyco-conjugates containing N-acetyl glucosamine (red). Nuclei were stained with Hoechst; visual pigment was labeled with a monoclonal antibody to opsin, followed by a FITC-conjugated secondary antibody; and N-acetyl glucosamine was defined by lectin wheat germ agglutinin, conjugated to the fluorochrome Cy3. Top image reconstructed from 29 optical slices (51 x 48 μ m), scanned at 0.5 μ m Z-steps; bottom image reconstructed from 27 optical slices (102 x 96 μ m), scanned at 1.0 μ m Z-steps. (Sample courtesy of Dr. Brian Matsumoto, University of California at Santa Barbara.)

Distributors located in: Australia, Austria, Benelux, Finland, France, Israel, Korea, New Zealand, the People's Republic of China, Portugal, Spain, Sweden, Switzerland, Taiwan, and the United Kingdom.

Circle No. 55 on Readers' Service Card

©1994 Meridian Instruments Inc.

IMMUNODEFICIENT MICE



NU/NU CD-1® • NU/NU • BALB/c Nude
• NIH-III • Fox Chase SCID™ • SCID Beige



Charles River
LABORATORIES

Contributing to the Search for Healthier Lives™

251 Ballardvale Street, Wilmington, MA 01887 1-800-LAB-RATS



© Charles River Laboratories, 1995

Fox Chase SCID is a trademark of the Fox Chase Cancer Center

Circle No. 26 on Readers' Service Card

Celebrate 150 years of Scientific Advancement

In 1998, the American Association for the Advancement of Science (AAAS) will celebrate the 150th anniversary of its founding. A commemorative postage stamp would be a fitting tribute to the Association's historic efforts to promote the progress of science and engineering in the service of humankind.

BUT YOUR HELP IS ESSENTIAL.

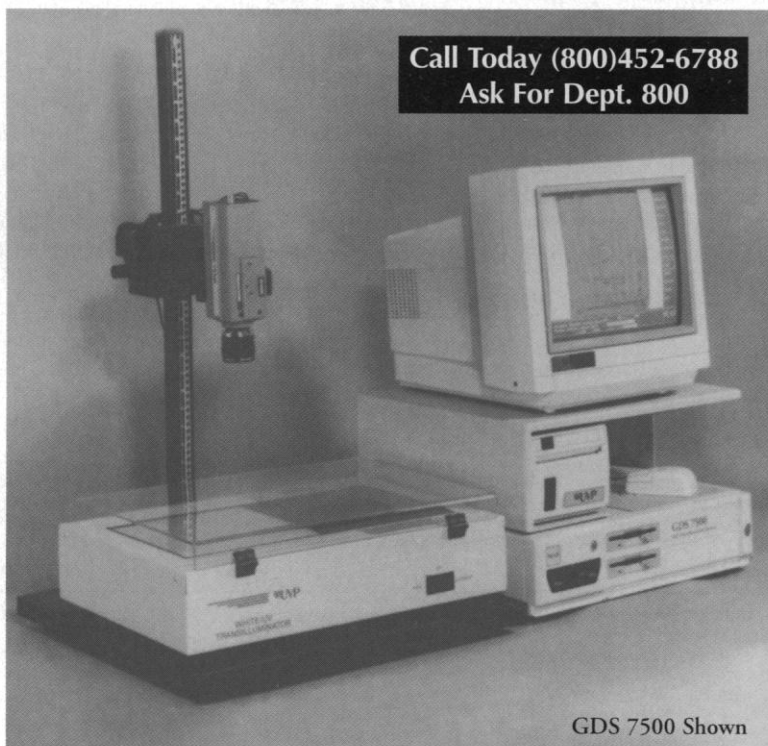
We need letters expressing support for a AAAS commemorative stamp as well as ideas for the stamp's theme and design.

Please write promptly to:

The AAAS Commemorative Postage Stamp Committee
Office of Communications, Room 801
1333 H Street, NW, Washington, DC 20005

or call: 202-326-6440

Affordable Scientific Imaging Systems From UVP



**Call Today (800)452-6788
Ask For Dept. 800**

GDS 7500 Shown

UVP, a world leader in ultraviolet and white light CCD scientific imaging technology, offers the scientific community an extensive range of PC and MAC based imaging systems to visualize, document and analyze gels, films or membranes.

Doc-It™ entry-level gel documentation system.

Grab-It™ image acquisition system utilizes your MAC or PC computer to create a dedicated gel documentation and densitometry system.

GDS5000 and GDS7500 complete gel documentation, image archiving, densitometry system ideal as a core location system with security log-on features, color applications, MAC and PC diskette image storage, ethernet network options, and image enhancements.

GelBase™/GelBlot™ Pro, GelSeq™, GelMatch™ analysis software for both Windows and MAC applications to perform molecular weight sizing, quantitation, 2D, 3D imaging, sequencing, analysis and RFLP analysis.

At UVP, we have over 62 years of experience serving the scientific community. With thousands of placements world wide, we offer the technical, sales and product support you deserve.

Call Today for A Demonstration Tomorrow.



UVP, Inc. Upland, CA
(800)452-6788 (909)946-3197
Ultra-Violet Products Limited
Cambridge, England *44 (0) 1223 420022

Visit UVP at AACR, booth 421
Circle No. 62 on Readers' Service Card

REPEL ALIEN INVADERS

Revco's Unique Deep Drawn CO₂ Incubators Fight Contamination

Deep in the dark recesses of most incubators, in crevassed corners and along welded seams, viruses, bacteria, molds and fungi are fighting for a foothold. If they are successful, it could mean shut-down for cleaning and decontamination. At best.

Worse, they might contaminate costly cultures. Worse still, they can cause irreparable damage and render the incubator useless.

But not in the seamless, deep-drawn interiors of Revco Ultima incubators. Manufactured without welds or sharp corners, these chambers offer no place to hide. A simple wipe of a cloth with cleaning agent eliminates the most tenacious invader.

Choose from stainless steel and copper seamless.

In Europe, the copper interiors are particularly popular because of their microbe-inhibiting effects. Beyond the corrosion-resistant barrier of stainless, copper provides an active shield to growth. With Revco, you have two tough choices.

Tough contamination-resistance is another sound reason laboratory cultures are safe in Revco incubators. For more information on the deep drawn tanks, sophisticated microprocessor controls, and other clear Revco advantages, call, write or circle the number below:

Revco Incubators. Safe and Sound.



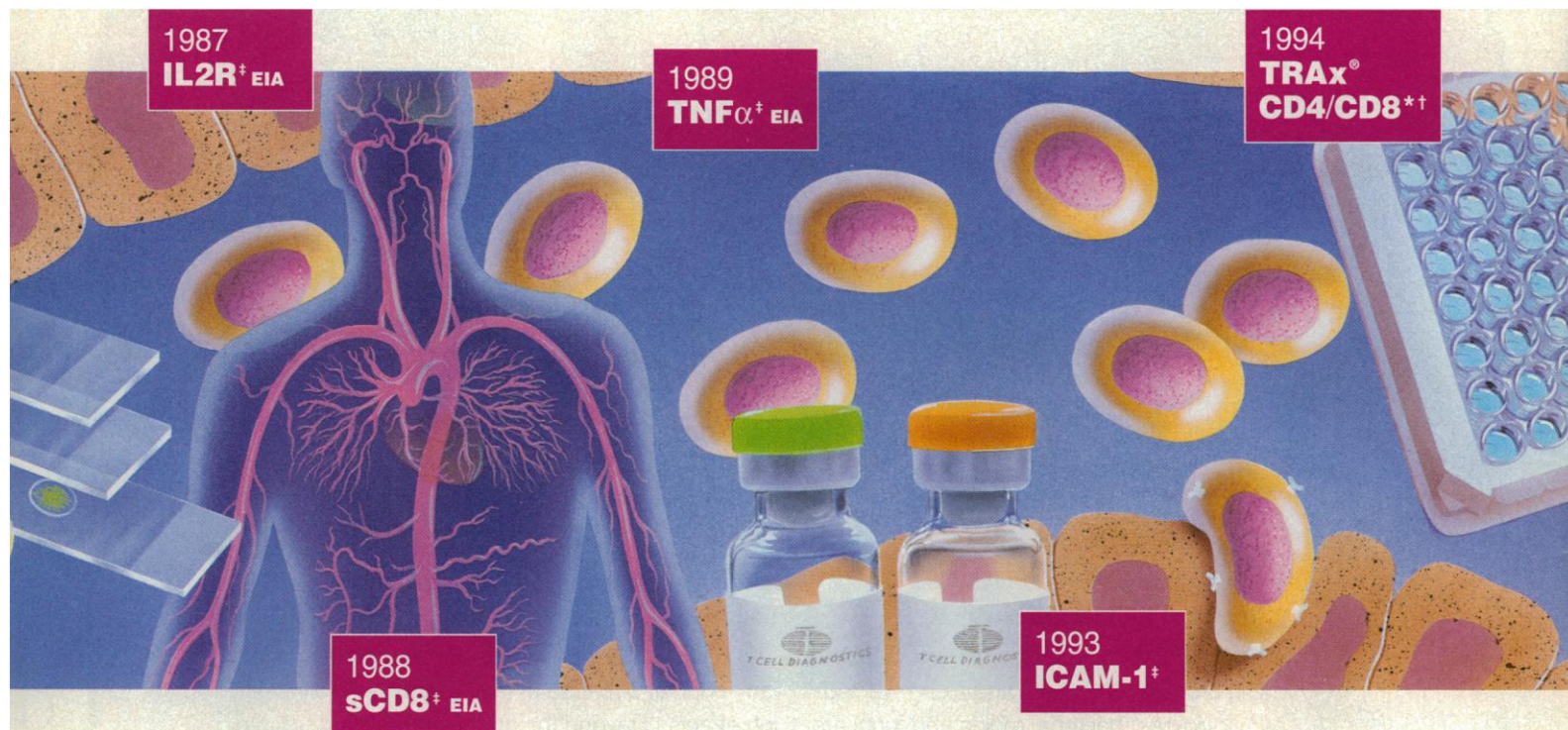
REVCO

Revco Scientific • 1 Revco Drive Asheville, NC 28804

Phone: 800-252-7100 Fax: 704-645-3368

Circle No. 52 on Readers' Service Card

CYTOKINES ■ ADHESION MARKERS ■ T CELL RECEPTORS ■ SOLUBLE RECEPTORS



T Cell Diagnostics Puts a Decade of Immunology Research in Your Hands.

The path your research takes is often dictated by the resources at hand. For 10 years, T Cell Diagnostics and our parent company, T Cell Sciences, have developed tools for novel explorations into human immunology.

High-Performance EIA Kits Lead the Way

Accurately quantitate cytokines and soluble receptors with our complete line of high-sensitivity, high-specificity immunoassay kits. Calibrated standards and easy-to-follow protocols ensure reproducible results in a few quick steps.

Obtain absolute CD4 and CD8 lymphocyte counts in your lab without flow cytometry by using the familiar TRAx® ELISA format.

High-Quality Mabs for High Specificity

Precisely identify T cell antigen receptors and adhesion markers by using our broad range of monoclonal antibodies and extensive applications expertise.

Measure Immune Profiles for Clinical Research

With our unique combination of products, you have the capability to study immune status in HIV, infectious disease, and organ transplantation.

Complete Support at Your Fingertips

Our experienced Technical Support Staff and Researchers will work closely with you to realize every advantage that our products bring to your lab.

Let us put a decade of immunology research in your hands. Call 1-800-624-4021 for our catalog.



T CELL DIAGNOSTICS

HELPING YOU EXPLORE THE IMMUNE RESPONSE

T Cell Diagnostics, Inc., 6 Gill Street, Woburn, MA 01801 Tel: 617-937-0890, 1-800-624-4021 *For Investigational Use Only. Pending FDA clearance. †Patents Pending, T Cell Diagnostics Inc. ‡For Research Use Only.

Circle No. 36 on Readers' Service Card

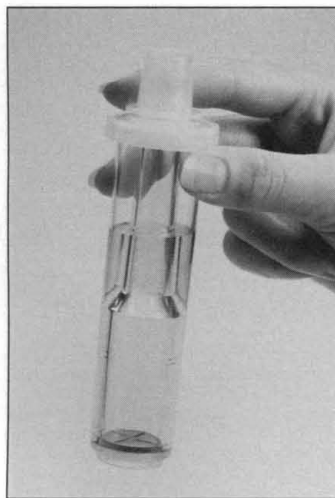
D.C. #564

Solvents Database

The Solvents Database (SOLV-DB) contains data on the physical and chemical properties, environmental fate, health and safety effects, and regulations concerning chemicals. Solvents can be selected by common name, synonym, CAS number, molecular formula, or SAX number. The database also includes information on chemical identity and vendors of solvents. Users can select criteria such as boiling point range and flammability to identify new alternative solvents and compare properties with the solvent being used. SOLV-DB runs on IBM-compatible computers with DOS 3.0 or higher; 2 megabytes of random access memory; 5.6 megabytes of hard disk space; and CGA, EGA, VGA, or compatible monitors. **Syracuse Research. Circle 138.**

Anti-Fouling Filtration

The centrifugal Centriprep Particle Separator is designed for removing debris such as cells, beads, and other particles from



biological samples. During centrifugation, the device minimizes accumulation of particles on the membrane surface that would block the filter and diminish its effectiveness. Centrifugal force drives the suspended particles away from the filter surface while the pressure resulting from the

centrifugation forces membrane-permeable material through the membrane. The device is capable of purifying up to 15 ml. Membrane porosity is 0.2 μm . **Amicon. Circle 139.**

Separation Media

Three new separation media for high-performance hydrophobic interaction chromatography are designed for fast, high resolution purification of proteins and peptides. Source 15ETH (ether), Source 15ISO (isopropyl), and Source 15PHE (phenyl) cover a wide range of selectivities. They maintain performance at large scale and thus can be used for the final stages of an industrial purification process in which trace contaminants and close variants need to be removed. The media can be packed in standard and high-performance laboratory scale columns. **Pharmacia Biotech. Circle 140.**

Monoclonal Antibodies

Six new monoclonal antibodies (mAbs) to matrix metalloproteinases (MMP) and two to tissue inhibitors of metalloproteinases (TIMP) are available. Members of the MMP family of enzymes are expressed at elevated levels in aggressive human tumor cells and have been implicated in the catalytic functions of extracellular proteolyses. The mouse mAbs are for MMP-1, MMP-2, MMP-3, MMP-9, TIMP-1, and TIMP-2. **Oncogene Science. Circle 141.**

A group of antibodies to chemokines includes human mAbs to interleukin-8 (IL-8), macrophage inflammatory protein (MIP)-1 α , MIP-1 β , and RANTES, and mouse mAbs to

MIP-1 α and MIP-1 β . The line also includes recombinant human chemokines including IL-8, GRO α , MIP-1 α , MIP-1 β , monocyte chemoattractant protein-1 and RANTES. Recombinant mouse chemokines include MIP-1 α and MIP-1 β . **Sigma ImmunoChemicals. Circle 142.**

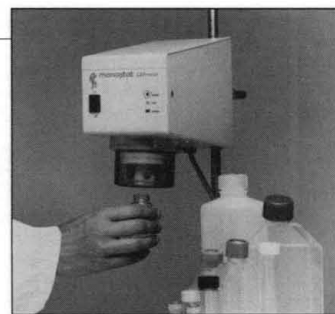
For studies of the immune system's regulatory control pathways, a mAb against the 55-kD Tac subunit of the human IL-2 receptor is suitable for various immunodetection assays, including immunoprecipitation and immunohistochemistry. **Berkeley Antibody. Circle 143.**

Agarose Additive

Gels made with GelTwin Agarose Additive and agarose feature improved resolution in the 50- to 2000-bp range, increased loading capacity, and improved gel clarity. A gel containing 1% GelTwin and 0.5% agarose performs comparably to a 2% agarose gel, which results in significant cost savings and improved resolution. GelTwin outperforms expensive specialty agaroses for polymerase chain reaction analysis, according to the manufacturer. **J.T. Baker. Circle 144.**

Device Caps and Uncaps Vials

The Capitator, a device designed to take caps on and off threaded neck vials, bottles, test tubes, and T flasks, now accommodates two different ranges of cap sizes. In addition to the original range of caps from 0.5 to 1.5 inches in diameter, it can now be used for caps ranging in size from 1 to 2 inches. The device allows vials to be uncapped using one hand and can be used in a hood. It can be



used for short-run production, multiple sample handling, working with robots, quality control applications, and in cell culture and microbiology labs. **Manostat. Circle 145.**

Literature

General Utility of the Mass Spectrometric Detector for the Analysis of Materials by Gas Chromatography is an application note that focuses on the advantages of this technology for analysis of complex molecular mixtures. It includes descriptions of 10 varied applications, ranging from analysis of perfume to testing of drugs of abuse. **Perkin-Elmer. Circle 146.**

SynChropak Bibliography contains more than 450 references on high-performance liquid chromatography applications involving biomolecules. Compounds are indexed alphabetically to facilitate methods development. **SynChrom. Circle 147.**

Culture with Confidence describes a line of water-jacketed CO₂ incubators designed to maintain ideal growth conditions for cell and tissue culturing applications. **Precision Scientific. Circle 148.**

GC Cryo-Trap Adds Cryo-Cooling Capabilities to your GC describes two programmable traps that can be interfaced to thermal desorption and head space gas chromatography systems. **Scientific Instrument Services. Circle 149.**

Higher Productivity, Better Results, and Lower Cost with Fully Compatible Automation describes a line of sample preparation and sample introduction products for chromatography. **Hewlett-Packard. Circle 150.**

Newly offered instrumentation, apparatus, and laboratory materials of interest to researchers in all disciplines in academic, industrial, and government organizations are featured in this space. Emphasis is given to purpose, chief characteristics, and availability of products and materials. Endorsement by *Science* or AAAS is not implied. Additional information may be obtained from the manufacturers or suppliers named by circling the appropriate number on the Readers' Service Card and placing it in a mailbox. Postage is free.

Science

PERSONNEL PLACEMENT

LINE CLASSIFIED ADVERTISEMENTS

Deadlines: Ads are due by Thursday, 10 a.m., 2 weeks prior to the issue date. *Science* is published each Friday, except the last Friday of the year. Call for holiday deadlines. Ads must be submitted in writing.

How to Submit a Classified Ad:

Prepare double-spaced typewritten copy. Do not include any abbreviations. *Science* will edit and typeset ads according to *Science* guidelines. Include billing information, and desired publication date. Available categories: Positions Open, Meetings, Announcements, Courses and Training, Search Firms. *Science* cannot provide proofs of typeset line ads.

Mail, FAX or Email materials to:

Science Classified Advertising
1333 H Street, N.W., Room 814
Washington, DC 20005
Telephone: 202-326-6555
FAX: 202-682-0816
Internet Email: science_classifieds@aaas.org

Rates: Ads are \$43 per line; \$430 minimum. One line equals 52 characters and spaces; centered headings equal 32 characters and spaces. A 3% cash discount is granted to all prepaid ads.

Estimates: *Science* will provide a cost estimate for line ads. This is an approximate cost only. Allow for variation between estimated lines and actual typeset lines and resulting final cost. Purchase orders must allow for some degree of flexibility and/or adjustment.

Ads from Outside the U.S.: A discount of \$30 will be offered to advertisers making payment in U.S. dollars by checks drawn on U.S. banks. Contact Gordon Clark at +44 223 302 067 (telephone) or +44 223 302 068 (FAX).

Credit Cards: *Science* accepts American Express, MasterCard and VISA. Discount does not apply to credit cards.

Cancellations: Deadline for cancellation is 10 a.m., Tuesday, 10 days prior to issue date.

DISPLAY PERSONNEL ADVERTISEMENTS

For rates and info. for fractional display ads call:

Deborah Cummings
Recruitment Advertising
Telephone: 202-326-6541
FAX: 202-682-0816

Janis Crowley
Recruitment Advertising Manager
Telephone: 212-496-7704
FAX: 202-682-0816

Gordon Clark
European Recruitment Advertising
Telephone: +44 223 302 067
FAX: +44 223 302 068

CONDITIONS: The AAAS encourages employers to actively recruit and employ underrepresented minority groups. *Science* reserves the right, at its discretion, to edit or decline to publish advertisements submitted to it.

POSITIONS OPEN

SENIOR FACULTY POSITIONS

Structure and Function of Macromolecules
University of Oklahoma Health Sciences Center
Department of Biochemistry and Molecular Biology

Under the leadership of the new Chairman, Dr. Paul H. Weigel, the Department of Biochemistry and Molecular Biology at the University of Oklahoma Health Sciences Center plans a significant expansion in the size and research activities of the Department. The search committee invites applications from established investigators with expertise in structure and function of macromolecules for several positions at the **ASSOCIATE** or **FULL PROFESSOR** level. Interested candidates must have a Ph.D. or equivalent degree and a strong publication record in physical biochemistry with sustained extramural support. Examples of appropriate areas of research are protein folding, assembly, protein-protein, protein-nucleic acid, protein carbohydrate and protein-membrane interactions. Knowledge of physical biochemical techniques, such as fluorescence spectroscopy, microcalorimetry, circular dichroism and NMR spectroscopy would be an asset. Successful candidates are expected to lead independent research programs, to participate in graduate and professional teaching programs and to serve as a resource for other faculty and students. There are six colleges in the University of Oklahoma Health Sciences Center, located on a 200 acre modern campus in Oklahoma City, with over 3,300 students and 2,200 faculty. A Biotechnology Park is under construction and work will begin shortly on a \$45 million Biomedical Research Center. A letter of application, curriculum vitae, outline of current and future research activities, selected reprints and names of three references should be received by May 1, 1995, after which screening will begin with a possible starting date of September 1, 1995. Applications should be sent to: **John R. Sokatch, Chair, Search Committee, Department of Biochemistry and Molecular Biology, University of Oklahoma Health Sciences Center, P.O. Box 26901, Oklahoma City, OK 73190. The University of Oklahoma is an Equal Opportunity/Affirmative Action Employer.**

HIGHER PLANT ECOLOGIST Memorial University of Newfoundland Department of Biology

Applications are invited for a tenure-track position at the **ASSISTANT PROFESSOR** level in the Department of Biology commencing in September 1995. We are seeking a higher plant ecologist. The successful candidate will be expected to develop a strong research program, seek and secure external funding, supervise graduate students and teach courses at the undergraduate and graduate levels. Candidates must have a Ph.D. and preferably postdoctoral experience. Application, including curriculum vitae, statement of research directions, the names and addresses of three references, and copies of representative publications should be sent to: **Dr. T. R. Patel, Chair, Search Committee, Biology Department, Memorial University of Newfoundland, St. John's NF, A1B 3X9 Canada.** Screening of applications will begin on April 15, 1995. *In accordance with Canadian immigration requirements, this advertisement is directed towards Canadian citizens and permanent residents of Canada. Memorial University is committed to Employment Equity.*

ASSISTANT/ASSOCIATE PROFESSOR TENURE-TRACK—MOLECULAR BIOLOGY

The Faculty of Dentistry, University of Western Ontario, is seeking an outstanding candidate with a strong background in molecular biology to join an interdisciplinary group in mineralized tissue research. The appointee is expected to develop or have already established a vigorous, externally funded research program complementing existing strengths in the biochemistry and physiology of mineralized tissues. Candidates should have a Ph.D. (or equivalent) and at least two years of postdoctoral experience. A commitment to teaching and contributions to administration are expected. Send curriculum vitae, selected reprints, outline of research plans and list of three references to: **Dr. R. I. Brooke, Dean, Faculty of Dentistry, The University of Western Ontario, London, Ontario, N6A 5C1 Canada. FAX: 519-661-3875.** Position is subject to budget approval. *In accordance with Canadian immigration requirements, this advertisement is directed to Canadian citizens and permanent residents of Canada. The University of Western Ontario is committed to employment equity, welcomes diversity in the workplace, and encourages applications from all qualified individuals including women, members of visible minorities, aboriginal persons and persons with disabilities.*

POSITIONS OPEN

VETERINARY PHYSIOLOGIST

The Department of Veterinary Physiology and Pharmacology, College of Veterinary Medicine, Texas A&M University, invites applications for a tenure-track teaching position as an **ASSISTANT** or **ASSOCIATE PROFESSOR** of veterinary physiology and pharmacology. The requirements for this position are the D.V.M. and Ph.D. or equivalent degrees. Clinical experience is desirable. Preference will be given to candidates with exceptional teaching skills and expertise relating to the physiology of animals.

The successful candidate will devote the majority of his/her time to instruction of veterinary and undergraduate students and will be expected to teach in a variety of settings including large classroom lectures, small group discussions and teaching laboratory sessions. The opportunity to teach graduate students is also available. Expectations for the person filling this position include: effective interpersonal skills, a demonstrated and/or excellent potential for performance of scholarly activity (research and publications) relating to teaching and the ability to provide departmental leadership in the area of physiology education.

Interested candidates should submit a letter of intent outlining their academic interests and goals, a curriculum vitae, pertinent publications and a list of references to: **Dr. Jon F. Hunter, Department of Veterinary Physiology and Pharmacology, Texas A&M University, College Station, TX 77843-4466.** Inquiries may be directed to **Dr. Hunter at: 409-845-7261** (telephone) or **409-845-6544** (FAX).

Review of applications will begin immediately and continue until the position is filled. *Texas A&M University is an Affirmative Action/Equal Opportunity Employer committed to excellence through diversity and encourages applications from minorities, women, veterans and persons with disabilities.*

FACULTY POSITION

Department of Biochemistry and Molecular Biology
Saint Louis University School of Medicine
Molecular Genetics/Human Genomics/
Gene Therapy/Transgenic Research

Applications are invited for a tenure-track position involving research and teaching at the **ASSISTANT** or **ASSOCIATE PROFESSOR** level. Applicants whose research might complement interdepartmental efforts bridging the areas of human genomic analysis, experimental aspects of gene therapy, and transgenic approaches to genetic analysis are encouraged to apply. We seek applicants who will complement ongoing research in molecular genetic, metabolic regulation, cellular biology, and/or physical biochemistry and can participate in the multidisciplinary Cell and Molecular Biology Program at Saint Louis University School of Medicine. Excellent start-up funds and salary are available. Curriculum vitae, description of research plans, and at least three letters of recommendation should be sent to: **Search Committee, c/o Dr. William S. Sly, Chairman, Edward A. Doisy Department of Biochemistry and Molecular Biology, Saint Louis University School of Medicine, 1402 South Grand Boulevard, St. Louis, MO 63104. Saint Louis University is an Equal Opportunity/Affirmative Action Employer/Minority/Female/Veterans/Disabled.**

VIROLOGIST ASSISTANT PROFESSOR University of California, San Francisco

The F.I. Proctor Foundation in collaboration with the University of California, San Francisco (UCSF) Program in Biological Sciences is seeking exceptional candidates for a position of **ASSISTANT PROFESSOR**. Candidates should have a Ph.D. or M.D. degree and postdoctoral research experience in viral pathogenesis. Applicants should have outstanding potential for research and teaching, and will be expected to develop an independent research program. We are particularly interested in candidates with research programs related to mechanisms of herpesvirus pathogenesis.

Interested applicants should submit a curriculum vitae, summary of research interests, copies of major publications and three letters of recommendation by May 15, 1995, to:

Chair of Search Committee
F.I. Proctor Foundation, S-315
UCSF Medical Center
San Francisco, CA 94143-0412

UCSF is an Equal Opportunity and Affirmative Action Employer.

Tenure-Track And Postdoctoral Opportunities.

Listed below are some of the outstanding research training opportunities that are currently available at the National Institutes of Health.

Tenure-Track Position Assistant Professor Equivalent

Developmental Neurobiology
Phillip G. Nelson, MD, PhD

Position is available to develop an independent program on the developmental regulation of neurotransmitter phenotypes at the molecular level. The program complements studies on neuronal differentiation. The candidate should have broad experience in neurosciences including neuroanatomy, molecular and cell biology, and protein-DNA interactions. Please submit a *curriculum vitae*, statement of research interests, and three letters of recommendation by April 15, 1995. Laboratory of Developmental Neurobiology (OE-72), NICHD, Building 49, Room 5A38, 49 CONVENT DR MSC 4480, BETHESDA MD 20892-4480.

Postdoctoral Positions

Functional Neuroanatomy
Miles Herkenham, PhD

Positions are available to apply molecular and histochemical techniques to study the neuroanatomical bases for the brain's response to peripheral cytokines, drugs of abuse (cannabinoids), or psychotherapeutic drugs. A strong background in neurobiology, molecular biology, immunology, or pharmacology is desired. Applicants must have less than five years of postdoctoral experience. Section on Functional Neuroanatomy (OE-72), NIMH, Building 36, Room 2D15, 36 CONVENT DR MSC 4070, BETHESDA MD 20892-4070.

Insulin Signal Transduction and Hypertension
Michael J. Quon, MD, PhD

Molecular mechanisms of insulin-stimulated glucose transport are being studied using a novel transfection system for adipose cells in primary culture*. Insights from these studies are being used to investigate the relationship between insulin resistance and hypertension at a molecular level. In particular, the role of insulin signaling in nitric oxide production by vascular endothelium is being studied. A strong background in molecular biology and/or cell biology is preferred. Applicants must have less than five years of postdoctoral experience. Hypertension Endocrine Branch (OE-72), NHLBI, Building 10, Room 8C-103, 10 CENTER DR MSC 1754, BETHESDA MD 20892-1754. **(PNAS 91:5587-5591, 1994; JBC 269:27920-27924, 1994)*

Molecular Biology of Herpesviruses
Jeffrey I. Cohen, MD

The functions of herpesvirus genes are being studied and mutated viruses are being constructed and characterized *in vitro* and in animal models. These studies include viral genes that may interact with the immune system. Applicants should have experience in virology and molecular biology, and less than four years of postdoctoral experience.

Laboratory of Clinical Investigation (OE-72), NIAID, Building 10, Room 11N228, 10 CENTER DR MSC 1888, BETHESDA MD 20892-1888.

Selective Transposon Insertion
Judith A. Kassis, PhD

Position available to study the selective insertion of transposable elements in *Drosophila*. The mechanism of selective insertion will be studied using genetic, molecular and biochemical techniques. Applicants must have experience in molecular biology, genetics or biochemistry, and have less than five years of postdoctoral experience. Laboratory of Developmental Biology (OE-72), FDA/CBER, Division of Cellular and Gene Therapies, (HFM-527), 1401 Rockville Pike, Rockville, MD 20852-1448.

Toxin and Ribonuclease Biology
Richard J. Youle, PhD

Ongoing research projects include engineering of toxic proteins into therapeutics for cancer and HIV; understanding the cell biology of ribonuclease cytotoxicity; study of the mechanisms of neuronal cell loss during development and disease; and exploring the biochemistry of apoptosis. Applicants should have a strong background in molecular or cell biology, and have less than five years of postdoctoral experience. Surgical Neurology Branch (OE-72), NINDS, Building 10, Room 5D37, 10 CENTER DR MSC 1414, BETHESDA MD 20892-1414.

Additional Postdoctoral Fellowship Opportunities

For an on-line listing of additional postdoctoral openings, you may access the NIH EDNET Bulletin Board POSTDOC conference via Internet (wylbur.cu.nih.gov) or modem (1,301-402-2221 or 1,800-358-2221) with parameters set at "7,Even,1". When connected to NIH, type in "vt100" for terminal emulation, "F5E" for initials, and "AJL1" for account number.

The Postdoctoral Research Fellowship Opportunities catalog, which describes intramural laboratories at the NIH, is also available by request. An electronic version of the catalog may be accessed via the Internet using either the Gopher Information System (gopher.nih.gov) or the World Wide Web (<http://www.nih.gov>). When connected, select *Research Opportunities at the NIH Office of Education*. If you would like to request a catalog or have further questions, please contact the NIH Office of Education, Building 10, Room 1C129, 10 CENTER DR MSC 1158, BETHESDA MD 20892-1158, 301-402-1603, Fax 301-402-0483.

To Apply

If you hold a doctoral degree (e.g., PhD, MD/PhD, MD, DO, DDS, DMD or DVM) accompanied by previous laboratory research experience, and would like to be considered for one of these positions, please send a cover letter, *curriculum vitae*, bibliography, and statement of research interests to the address listed with each position. In addition, please arrange to have letters of recommendation sent from three scientists who can provide an evaluation of your qualifications.



National Institutes Of Health

Office Of Education

The NIH is an Equal Opportunity Employer

POSITIONS OPEN

ASSISTANT/ASSOCIATE/FULL PROFESSOR Agricultural Science and Technology Education

The Department of Education at Cornell University invites applications for two **TENURE-TRACK POSITIONS** to provide leadership for a teacher education program in agricultural science and technology. Successful applicants will cooperate with an existing program in science and mathematics teacher education, extend the mission of agricultural science and technology education beyond preservice teacher education to include public literacy about agriculture and food systems, and conduct high quality programs of research.

Qualifications include a Ph.D. in an appropriate field, teacher education experience, a demonstrated capacity for quality research, and a commitment to quality and leadership in the development of agricultural science and technology education. In addition, the successful candidates will possess a suitable mix of the following qualifications: knowledge of a relevant technical field such as plant science, environmental science, or agricultural engineering; competence in a relevant social or behavior science; knowledge of adult or extension education; or an interest in international applications. Cornell wishes to hire individuals who can bring innovative approaches to this field, and will consider applicants with a variety of backgrounds and training.

Applicants should submit a letter of application, curriculum vitae, a writing sample, and names and addresses of four references by April 1, 1995, to: **Dr. Kenneth Strike, Search Committee Chair, Department of Education, NYS College of Agriculture and Life Sciences, Kennedy Hall, Ithaca, NY 14853.**

CANCER MOLECULAR BIOLOGIST The USC/Norris Comprehensive Cancer Center

The University of Southern California/Norris Comprehensive Cancer Center is recruiting a tenure-track faculty member for a joint appointment in the Departments of Surgery and Molecular Microbiology and Immunology or Biochemistry and Molecular Biology. We are looking for individuals at the **ASSISTANT PROFESSOR** or higher level with an interest in molecular biology and genetics of cancer. It is expected that in this position the recruit will develop an independent research program. The Cancer Center will provide the individual with a highly interactive environment and ample opportunities to collaborate with strong research groups interested in gene therapy, molecular epidemiology, gene regulation and tumor invasion and metastases. Salaries and start-up funds are highly competitive.

Send curriculum vitae, names of three references and summary of research interests to: **Dr. Peter A. Jones, Director, USC/Norris Comprehensive Cancer Center, 1441 Eastlake Avenue, NOR 815, Los Angeles, CA 90033.** USC is an Affirmative Action/Equal Opportunity Employer.

Biology. The Department of Biology at Merrimack College invites applications for two or three tenure-track positions at **ASSISTANT** or **ASSOCIATE PROFESSOR** level beginning September 1995. Candidates must possess a Ph.D. and undergraduate teaching experience in biochemistry, cell and molecular biology, developmental biology, genetics, immunology, environmental biology, or plant science. Expertise in more than one area is preferred. Demonstrated excellence in teaching and continued involvement in research, particularly that which could involve undergraduates, are expected. Teaching load is 12 contact hours per semester. The college is particularly interested in candidates who desire to teach in a small, interactive classroom environment emphasizing dialogue and inquiry on civilizational issues. Send curriculum vitae and three letters of reference by March 27, 1995, to: **Dr. Kathleen A. FitzPatrick, Chair, Department of Biology, Merrimack College, 315 Turnpike Street, North Andover, MA 01845.** Email: Kfitzpatrick@merrimack.edu. Merrimack College is an Equal Opportunity Employer. Women and minorities are encouraged to apply.

Histologist. Full-time **ASSISTANT** or **ASSOCIATE PROFESSOR** position available starting July 1, 1995, to teach Histology. Research and service are expected. Send curriculum vitae, research interests, and three letters of reference by April 1, 1995, to: **Dr. J. Alcalá, Chairperson, Department of Anatomy, Ponce School of Medicine, P.O. Box 7004, Ponce, PR 00732.** Telephone: 809-840-2575. The Ponce School of Medicine is an Affirmative Action/Equal Opportunity Employer.

POSITIONS OPEN

PARASITOLOGIST

The University of Illinois at Urbana-Champaign (UIUC) announces a full-time, tenure-track **ASSISTANT PROFESSOR** position in Parasitology within the Department of Veterinary Pathobiology in the College of Veterinary Medicine with a starting date of August 21, 1995. The successful applicant will have a Ph.D. and/or a D.V.M. with advanced academic training in parasitology. Duties will include teaching parasitology to veterinary and graduate students and the development of a strong research program. Appointments in the University of Illinois Laboratories for Veterinary Diagnostic Medicine and the Agricultural Experiment Station are available for an appointee who qualifies. Salary is negotiable and commensurate with qualifications.

Special consideration may be given to applicants with postdoctoral experience, demonstrable interest in veterinary parasitology or whose research interests will complement existing programs. Research strengths in the Department include studies on infectious diseases, molecular hemotropic disease, epidemiology, and pathology. There are opportunities for collaboration with other departments within the College, as well as departments in other colleges at UIUC.

Letters of application, curriculum vitae, and three letters of recommendation should be sent to: **Dr. C. J. Jones, Search Committee Chair, Department of Veterinary Pathobiology, College of Veterinary Medicine, 2001 South Lincoln Avenue, Urbana, IL 61801.** Telephone: 217-333-0330. To ensure full consideration, all materials should be received by May 1, 1995.

The University of Illinois is an Affirmative Action/Equal Opportunity Employer.

Environmental Virologist. The Department of Biology at New Mexico State University is seeking applicants for a tenure-track **ASSISTANT PROFESSOR** as early as January 1996. Applicants must have a Ph.D. and postdoctoral research experience in virology or related field, such as microbiology or molecular biology. The successful candidate will be expected to develop a vigorous research program in the area of environmental virology. Teaching responsibilities will include courses in immunology and virology at the senior/graduate level and participation in an introductory biology or microbiology course. The department offers Bachelor's degrees in biology and microbiology and the M.S. and Ph.D. in biology. The individual selected may participate in the M.S./Ph.D. Graduate Program in Molecular Biology and the NIH-sponsored Minority Access to Research Careers and Minority Biomedical Research Support programs. Applicants should submit a curriculum vitae, statements of research and teaching interests, and the names, addresses, and telephone numbers of at least three references to: **Dr. Charlotte McCarthy, Search Committee, Department of Biology, Box 30001, Department 3AF, New Mexico State University, Las Cruces, NM 88003-8001.** Review of applications will begin April 21, 1995. *New Mexico State University is an Equal Employment Opportunity/Affirmative Action Employer. Offer of employment contingent upon verification of individual's eligibility for employment in the United States.*

SEARCH REOPENED PLANT ECOLOGIST

The faculty of the University of Mississippi Department of Biology invites applications for a tenure-track, nine-month appointment as **ASSISTANT PROFESSOR**. Duties: Conduct research in specialty area; develop an extramurally funded research program; excel in undergraduate and graduate teaching, including introductory and specialty courses; direct graduate students; professional service; advise undergraduates. Research and teaching opportunities exist at the University of Mississippi Biological Field Station. Qualifications: Doctoral degree; research experience and publications in plant ecology; evidence of ability to obtain extramural funding. Applications reviewed immediately until position is filled. Position available: August 1995. Send a letter of application including a description of current research and future plans, teaching experience and interests, and a description of how your teaching and research might take advantage of opportunities at the Biological Field Station; a curriculum vitae; and three letters of reference to: **Dr. James Kushlan, Chair, Department of Biology, University of Mississippi, University, MS 38677.** Telephone: 601-232-7204.

The University of Mississippi is an Affirmative Action/Americans with Disabilities Act/Equal Opportunity Employer. Women and minorities are particularly encouraged to apply.

POSITIONS OPEN

ASSISTANT PROFESSOR, Food Safety Microbiology. Tenure-track, academic year faculty position (60% research/40% teaching) available in the Department of Food Science and Technology, University of Nebraska. Candidate will conduct research on food safety microbiology, emphasizing molecular approaches to detection, pathogenesis, or control of pathogenic microorganisms in foods. Will be expected to seek external funding, advise graduate students, and participate in teaching food microbiology and related courses. Requires Ph.D. in Food Science, Microbiology, or related discipline. Postdoctoral or industry experience is highly desirable. Candidate will join a Department of 13 faculty, including three food microbiologists. Department is located in the new Food Industry Complex containing molecular biology, fermentation and bioprocessing, and tissue culture laboratories. The Food Industry Complex is among the best in the United States for food science research. Applicants should submit a letter of application, a statement of research interests, a curriculum vitae, transcripts, and have three letters of reference sent postmarked by June 1, 1995 (or until suitable candidate is identified), to: **Dr. Robert Hutkins, Chair, Search Committee, Department of Food Science and Technology, University of Nebraska, Lincoln, NE 68583-0919.** University of Nebraska-Lincoln is committed to a pluralistic campus community through Affirmative Action and Equal Opportunity and is responsive to the needs of dual career couples. We assure reasonable accommodation under the Americans With Disabilities Act; contact Dr. Hutkins for more information.

FACULTY POSITION IN CELL BIOLOGY

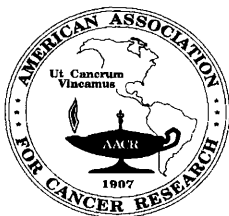
The Department of Cell Biology and Neuroscience of The University of Texas Southwestern Medical Center at Dallas seeks applications for a tenure-track position at the level of **ASSISTANT PROFESSOR**. Applicants must have a relevant Ph.D. or M.D. degree, appropriate postdoctoral training, and show evidence of firm commitment to a career in independent research. We are particularly interested in considering creative and highly motivated individuals who wish to apply contemporary cell and molecular techniques to elucidate at the cellular level the fundamental mechanisms of human disease. Responsibilities will also include teaching of medical and graduate students after the first year of employment.

Send curriculum vitae, a brief description of proposed research, and three letters of reference to: **Richard G. W. Anderson, Ph.D., Department of Cell Biology and Neuroscience, UT Southwestern, 5323 Harry Hines Boulevard, Dallas, TX 75235-9039.** An Equal Opportunity/Affirmative Action Employer.

PHYSICIAN/SCIENTIST ASSISTANT PROFESSOR (TENURE-TRACK)

The Geographic Medicine Division and the Vaccine Development Center at the University of Maryland School of Medicine seek a physician scientist with molecular biology skills and experience as **ASSISTANT PROFESSOR** (tenure-track) of Medicine. The position requires that approximately one month each year be spent in clinical research (testing of vaccines) with the remainder of time devoted to basic laboratory research on the development of methods to study the molecular epidemiology of human malaria (major research thrusts within the Center). Prerequisites include M.D. with Board-certification in internal medicine and certification or eligibility in infectious diseases and demonstrable laboratory expertise in molecular biology of *Plasmodium falciparum*. An individual with malaria field experience is strongly preferred. Starting date circa August 1, 1995. Please send curriculum vitae to: **Dr. Robert Edelman, Associate Director, Clinical Studies, Center for Vaccine Development, University of Maryland School of Medicine, 10 South Pine Street, Baltimore, MD 21201.** The University of Maryland at Baltimore encourages women and minorities to apply and is an Affirmative Action/Equal Employment Opportunity/ADA Employer.

Pharmacology/Toxicology: ASSISTANT PROFESSOR, tenure-track position beginning July 1, 1995. Ph.D. in Pharmacology/Toxicology required. A degree in pharmacy is desirable. Team teaching of biomedical science and graduate courses, student advising, and extramural-supported scholarly research is expected. Submit letter of intent, curriculum vitae, statement of research interests, names, addresses and telephone numbers of three references to: **F. W. Fochtman, Ph.D., Chair, Search Committee, Department of Pharmacology/Toxicology, School of Pharmacy, Duquesne University, Pittsburgh, PA 15282.**



AMERICAN ASSOCIATION FOR CANCER RESEARCH SCIENTIFIC CONFERENCES

APRIL 1-6, 1995

Signal Transduction of Normal and Tumor Cells

Co-sponsored by the National Cancer Institute of Canada

Chairpersons: Anthony J. Pawson, Toronto, Ontario, Canada; André Veillette, Montreal, Quebec, Canada; Grant McFadden, Edmonton, Alberta, Canada
Banff Centre, Banff, Alberta, Canada

OCTOBER 14-18, 1995

Cytokines and Cytokine Receptors

Chairperson: Steven Gillis, Seattle, WA
The Sagamore, Bolton Landing (Lake George), NY

NOVEMBER 5-9, 1995

Cancer: The Interface Between Basic and Applied Research

Chairpersons: Bert Vogelstein, Baltimore, MD; Stephen H. Friend, Seattle, WA; John D. Minna, Dallas, TX
Stouffer Harborplace Hotel, Baltimore, MD

NOVEMBER 17-21, 1995

Novel Strategies Against Resistant Cancers

Chairpersons: Victor Ling, Toronto, Ontario, Canada; Daniel D. Von Hoff, San Antonio, TX
Sanibel Harbour Resort & Spa, Ft. Myers, FL

DECEMBER 2-6, 1995
***The Molecular Basis of
Gene Transcription***

Chairperson: Tom Curran, Nutley, NJ
Hotel Del Coronado, Coronado (San Diego), CA

JANUARY 17-20, 1996

Cancer and the Cell Cycle

Joint Meeting with the Swiss Institute for Experimental Cancer Research
Chairpersons: Edward E. Harlow, Charlestown, MA; Viesturs Simanis, Lausanne, Switzerland
Location to be Announced in Lausanne, Switzerland

FEBRUARY 19-25, 1996

Cancer Susceptibility Genes and Molecular Carcinogenesis

Chairpersons: Curtis C. Harris, Bethesda, MD; Allan Balmain, Glasgow, Scotland; Kenneth Olden, Research Triangle Park, NC
Keystone Resort, Keystone, CO

MARCH 1-5, 1996

Proteases and Their Inhibitors in Cancer

Chairpersons: Lynn M. Matrisian, Nashville, TN; Bonnie F. Sloane, Detroit, MI
Marriott's Bay Point Resort, Panama City Beach, FL

APRIL 20-24, 1996

87th Annual Meeting

Chairperson: Lorraine J. Gudas, New York, NY
Washington D.C. Convention Center, Washington, D.C.
Abstract Deadline: December 1, 1995

JUNE 1996

Inducible Genomic Responses

Chairpersons: William T. Beck, Memphis, TN; John A. Hickman, Birmingham, England; Richard I. Morimoto, Evanston, IL
Location to be Announced

OCTOBER 1996

Novel Approaches in Blood and Marrow Transplantation

Second Annual Meeting of the American Society for Blood and Marrow Transplantation
Chairpersons: Joseph R. Bertino, New York, NY; Bruce R. Blazar, Minneapolis, MN
Location to be Announced

OCTOBER 1996

Carcinogenesis from Environmental Pollution: Assessment of Human Risks and Strategies for Prevention

Joint Meeting with International Agency for Research on Cancer
Chairpersons: Frederica Perera, New York, NY; Paul Kleihues, Lyon, France
Location to be Announced in Budapest, Hungary

OCTOBER 19-23, 1996

Programmed Cell Death

Chairperson: Stanley J. Korsmeyer, St. Louis, MO
The Sagamore, Bolton Landing (Lake George), NY

AACR members will receive brochures on the above special conferences as soon as they are available. Nonmembers should call or write:

American Association for Cancer Research
Public Ledger Building, Suite 816
150 South Independence Mall West
Philadelphia, PA 19106-3483
215-440-9300 • 215-440-9313 (FAX)

POSITIONS OPEN

ANATOMY AND PHYSIOLOGY POSITIONS OHIO UNIVERSITY

The Department of Biological Sciences announces the availability of two non-tenure-track teaching positions at the **ASSISTANT PROFESSOR** level beginning September 1995; maximum employment is three years. Position No. 1 is for Human Physiology and Physiology of Exercise, and Position No. 2 is for Human Anatomy. Successful completion of the Ph.D. degree is required for both positions. These positions represent a significant teaching commitment in our large undergraduate curriculum. Responsibilities will include participation in lectures and laboratories. Collaborative research efforts with faculty are possible. Minimum salary for these positions is \$30,000 for nine months plus a comprehensive benefits package. Applicants should send a curriculum vitae, transcripts, statement of teaching and research interests, the position(s) applied for, and three letters of recommendation by April 1, 1995, to: **Physiology/Anatomy Search, Jean Witkowski, Biological Sciences, 107A Irvine Hall, Ohio University, Athens, OH 45701.**

Ohio University is an Equal Opportunity/Affirmative Action Employer and women and minorities are encouraged to apply.

The Center for Neuroscience and the Department of Psychology at the University of California, Davis, invite applications for a tenure-track position at the **ASSISTANT PROFESSOR** level in the area of computational neuroscience. Candidates specializing in analytical approaches and predictive modeling of perceptual and/or motor circuitry in vertebrates are encouraged to apply. Postdoctoral experience is desirable. Ideal candidates would also incorporate neurophysiological, neuroanatomical, psychophysical, and/or cognitive-experimental techniques to test models. The appointee will be expected to teach undergraduate and graduate level courses in his/her areas of expertise. The University of California is interested in candidates who are committed to the highest standards of scholarship and professional activities. This position is open until filled, but applications must be received by May 1, 1995, to be assured full consideration.

Applicants should submit curriculum vitae, bibliography, a brief description of research interests and the names of at least three references to: **Michael S. Gazzaniga, Ph.D., Director, Center for Neuroscience, University of California, Davis, CA 95616.**

The University of California is an Equal Opportunity/Affirmative Action Employer with a strong institutional commitment to the achievement of diversity among its faculty and staff.

ENVIRONMENTAL SCIENTIST—DIRECTOR

Claremont McKenna College, a member of The Claremont Colleges, seeks to hire at the advanced level a **DIRECTOR** of the Roberts Environmental Center, an institute for research and undergraduate education in environmental problems. Responsibilities will include research (preferably applied biological research pertinent to Southern California), administration, and undergraduate teaching in environmental science. Prior experience in each of these areas is essential. Salary commensurate with experience. Claremont McKenna College is a small, selective liberal arts college that emphasizes economics and policy studies. Send a résumé and arrange to have three to five letters of recommendation forwarded to: **Anthony Fucaloro, Dean of the Faculty, Claremont McKenna College, 500 East 9th Street, Claremont, CA 91711-6400** by March 31, 1995. Review of applications will begin immediately and continue until the position is filled.

Claremont McKenna College is an Affirmative Action/Equal Opportunity Employer. Women and minority candidates are encouraged to apply.

CHAIR IN ORGANIC CHEMISTRY

The Swiss Federal Institute of Technology in Zurich (ETHZ) invites applications for a **CHAIR** in organic chemistry. Candidates should have an outstanding record in organic synthesis, preferably related to bio-organic problems. The candidate is expected to teach at all levels of organic chemistry.

Vigorous research, facility with teaching, and the willingness to collaborate with colleagues both within and outside ETHZ are prerequisites.

Please submit your application together with a curriculum vitae and a list of publications to: **President of ETH Zurich, Professor J. Nüesch, ETH Zentrum, CH-8092 Zurich**, no later than April 15, 1995. Applications from young and women scientists are especially invited.

POSITIONS OPEN

PLANT MOLECULAR BIOLOGIST BOYCE THOMPSON INSTITUTE

The Boyce Thompson Institute (BTI) at Cornell University invites applications for a **TENURE-TRACK ASSISTANT SCIENTIST** position in the Plant Molecular Biology Program. Candidates using molecular or genetic approaches to solve fundamental problems in plant biology are encouraged to apply. The successful candidate will be expected to establish a vigorous, independent research program which complements the activities of the Plant Molecular Biology Program, and to collaborate with other BTI and/or Cornell faculty. Submit curriculum vitae, statement of research goals, and three letters of reference by April 14, 1995, to: **Dr. H. Alan Wood, Chair, Search Committee, Boyce Thompson Institute, Tower Road, Ithaca, NY 14853 USA. Email: haw5@cornell.edu.**

BTI is an Affirmative Action/Equal Opportunity Employer. Women and minorities are encouraged to apply.

DEPARTMENT OF ANATOMY Medical Sciences Campus University of Puerto Rico

Applications are invited for a tenure-track faculty position, rank according to experience up to **ASSOCIATE PROFESSOR**. We seek an individual with teaching experience in gross anatomy, engaged in research in one or more of the following fields: functional morphology, developmental biology, ultrastructure, and cell biology. Teaching responsibilities include gross anatomy and graduate courses in the individual's specialty. The successful candidate will have an ongoing research program and willingness to seek external funding. Applicants should send curriculum vitae and summary of current research to: **John G. H. Cant, Director, Department of Anatomy, Medical Sciences Campus, University of Puerto Rico, G.P.O. Box 365067, San Juan, PR 00936-5067. Telephone: 809-758-2525, ext. 1501; FAX: 809-767-0788.** Review of applications will begin immediately and continue until the position is filled. *The University of Puerto Rico is an Equal Opportunity/Affirmative Action Employer.*

CHAIR of Biology: Search extended. Alfred University seeks a division chair in either molecular biology or "whole organism" plant science. Requires strong commitment to undergraduate teaching and advising. Research expectations consonant with active undergraduate research program in small liberal arts environment. Successful candidate will have teaching and scholarly record compatible with appointment as full professor and a desire to provide leadership for curricular change. Knowledge of pre-medical programming and success in obtaining extramural funding are desirable. Ph.D. required. Salary and benefits competitive. Women and minorities encouraged to apply. Review of applications will begin March 25, 1995, and continue until position is filled. Send curriculum vitae and three letters of recommendation to: **Dr. C. R. Grontkowski, Acting Chair of Biology, Alfred University, Alfred, NY 14802.** *An Equal Opportunity/Affirmative Action Employer.*

FACULTY POSITION ISCHEMIA REPERFUSION RESEARCH

The Department of Anesthesia at Brigham and Women's Hospital, Harvard Medical School has one position for a **FULL-TIME RESEARCHER** to study mechanisms of ischemia-reperfusion injury, preferably with a focus on the role of neutrophils. The position is within a newly established Ischemia-Reperfusion Center, to join two other investigators in established research space. The Anesthesia Research Laboratories are comprised of 15 independent investigators working in molecular neuropharmacology, pain research, muscle mechanics and cardiac electrophysiology. Academic rank will be commensurate with experience and status. Applicants should send a letter describing their interests, a curriculum vitae and have three letters of recommendation forwarded to:

**Professor Gary R. Strichartz
Vice Chairman for Research
Department of Anesthesia Research Laboratories
Brigham and Women's Hospital
Harvard Medical School
75 Francis Street
Boston, MA 02115**

Harvard Medical School/Brigham and Women's Hospital are Equal Opportunity/Affirmative Action Employers. Women and minority candidates are especially encouraged to apply.

POSITIONS OPEN

TEXAS A&M UNIVERSITY SEA GRANT COLLEGE PROGRAM College of Geosciences and Maritime Studies

Applications are invited for the position of **DIRECTOR** of the Texas A&M University (TAMU) Sea Grant College Program to begin September 1, 1995, or later. Headquartered in College Station, and including 10 coastal Marine Advisory Service offices, the TAMU Sea Grant College Program employs a staff of 30 with a total budget of approximately \$2.1 million.

Applicants must have a Ph.D. or equivalent experience, and at least eight (8) years of experience in administration or management of marine programs. Consideration of applications will begin April 15, 1995, and will continue until position is filled.

Send applications, including curriculum vitae and three references, to: **Dr. Robert D. Brown, Sea Grant Search Committee Chairman, Department of Wildlife and Fisheries Sciences, 210 Nagle Hall, Texas A&M University, College Station, TX 77843-2258. Telephone: 409-845-1261.**

Texas A&M University is an Affirmative Action/Equal Opportunity Employer and welcomes applications from qualified women and minority candidates.

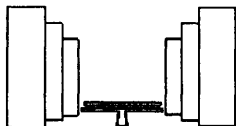
WAYNE STATE UNIVERSITY FACULTY POSITION

Drug Delivery/Drug Transport Technology and Pulmonary Inflammation Research College of Pharmacy and Allied Health Professions

The Department of Pharmaceutical Sciences is seeking candidates for a **TENURE-TRACK POSITION** available immediately in Drug Delivery/Drug Transport Technology with focus on molecular and biochemical aspects of drug delivery and transport systems. A **NON-TENURE-TRACK FACULTY** position is also available for research on extracellular matrix in lungs. Candidates for both positions will be expected to establish a funded research program. Applicants should possess a Ph.D. and/or M.D. degree in pharmacology, pharmaceutical sciences, immunology or related disciplines and have postdoctoral experience. Rank and salary commensurate with experience. Qualified candidates should send a curriculum vitae and the names and addresses of three references to: **Fusao Hirata, M.D., Ph.D., Interim Chair, Department of Pharmaceutical Sciences, College of Pharmacy and Allied Health Professions, 528 Shaper Hall, Detroit, MI 48202.** *Wayne State University is an Equal Opportunity/Affirmative Action Employer. Minorities and women are encouraged to apply. Wayne State University. People working together to provide quality service. All buildings, structures and vehicles at Wayne State University are smoke-free.*

The Kellogg Eye Center and the Center for Ultrafast Optical Science at the University of Michigan is seeking an accomplished individual, with Ph.D. or equivalent, for a **RESEARCH** or **TENURE-TRACK POSITION** to participate in establishing an Ultrafast Biomedical Laboratory. The candidate shall have documented credentials with demonstrated accomplishments in the field of ultrafast optical science. Responsibilities of this position will include assembly, operation, and use of femtosecond lasers for medical and biologically based experiments. Ideally the candidate shall have a background in physics and biology with very strong and recognized abilities in ultrafast optics, laser matter interactions, and medical applications of ultrafast lasers. In addition the candidate shall be expected to represent this technology to the financial and investment community and be capable of transferring the results of research into the biomedical business arena. Send résumé and background information to: **Paul R. Lichter, M.D., Professor and Chairman, Department of Ophthalmology, W. K. Kellogg Eye Center, University of Michigan, 1000 Wall Street, Ann Arbor, MI 48105.** *The University of Michigan is an Equal Opportunity Employer.*

Department of Psychiatry, University of Pennsylvania, has two **FACULTY POSITIONS** available for program in neurobiology and behavior. Positions are at either the junior or senior level depending on candidates' qualifications. Candidates must be M.D., Ph.D. with training in genetics and experience in endocrinology, molecular pharmacology and neuroanatomy. Please send letter of intent and curriculum vitae to: **Peter C. Whybrow, M.D., Chairman, Department of Psychiatry, University of Pennsylvania, 305 Blockley Hall, 418 Guardian Drive, Philadelphia, PA 19104-6021.** *Equal Opportunity/Affirmative Action Employer.*



**THE SALK INSTITUTE FOR
BIOLOGICAL STUDIES
Postdoctoral Research
Associate**

Position available in an ongoing project studying cell cycle control in the fission yeast *Schizosaccharomyces pombe*, with particular focus on START and the initiation of DNA replication. The project uses classical and molecular genetics, cell biology and biochemical techniques to identify and characterize the regulatory genes involved in the G1/S phase transition.

A Ph.D. in Molecular Biology or related field and relevant experience in molecular biology required. Experience with cell biology or yeast genetic techniques would be helpful.

Send curriculum vitae, brief research summary, and the names of three references to: **Dr. Susan L. Forsburg, Molecular Biology and Virology Laboratory, The Salk Institute for Biological Studies, 10010 N. Torrey Pines Road, La Jolla, CA 92037. EOE/AA.**

**POSTDOCTORAL
FELLOWSHIP**

Human Genome Center

The Human Genome Center at the Lawrence Berkeley Laboratory is a multi-disciplinary program focused on large-scale sequencing and analysis of the human genome. Postdoctoral positions are available in the areas of the development of new instrumentation, informational tools, and biological approaches related to accelerating the process of mapping, map assembly, sequencing, sequence assembly, and sequence analysis. Individuals are needed to work in all aspects of the program, particularly in projects involving cross-disciplinary interactions. Recent Ph.D. in molecular biology, engineering, physics, statistics, computer sciences, or related field is required.

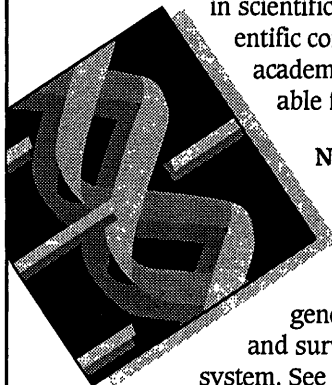
Send curriculum vitae (6 copies) and names and addresses of three references, to: **The Human Genome Center, c/o Lawrence Berkeley Laboratory, Staffing Office, Box #JSCI3245, One Cyclotron Road, Bldg. 938A, Berkeley, CA 94720.** We are an equal opportunity employer.



**LAWRENCE BERKELEY LABORATORY
UNIVERSITY OF CALIFORNIA
Department of Energy**

POSTDOCTORAL OPPORTUNITIES

The Genentech Postdoctoral Program consists of more than 50 Fellows and is a vibrant and intensive environment for advanced scientific training. Postdoctoral Fellows conduct basic research in the areas of our scientific interests, publish in scientific journals, attend and present work at scientific conferences and maintain close ties with the academic community. Several positions are available for outstanding candidates in the fields of:



Neurobiology: A position is available in the area of developmental neurobiology. The successful candidate will utilize advanced molecular, cellular, and genetic approaches to identify and study genes that control commitment differentiation and survival of neurons in the central nervous system. See *Nature* 363, 266 (1993); *Science* 266, 1062 (1994); *Neuron* 113, 1245 (1994); *PNAS* 91, 3304 (1994); *Cell* 80, 95 (1995); *Nature* 373, 339 (1995). Send your resume to Dr. Arnon Rosenthal, Department of Neuroscience.

Molecular Biology: A position is available to study cytokine receptor signal transduction and participate in the identification of novel receptors and ligands with potential therapeutic interest. Experience in hematopoiesis and/or signal transduction is an advantage. See *Nature* 369, 533 (1994) and *Science* 265, 1445 (1994). Send your resume to Dr. Frederic de Sauvage, Department of Molecular Biology.

Molecular Biology: A position is available to study receptors and GTP-binding proteins and to identify novel genes that regulate essential cell functions. The successful candidate will have a background in molecular and cell biology, biochemistry and genetics. See *Cell* 56, 487 (1989); *Nature* 340, 146 (1989); *PNAS* 88, 10535 (1991); *Nature* 360, 161 (1992); *JBC* 268, 26059 (1993); *Jl* 152, 1347 (1994). Send your resume to Dr. Avi Ashkenazi, Department of Molecular Biology.

Genentech offers an excellent salary and benefits package which includes child care resources, free health club membership and fully paid medical, dental and vision coverage. Please send your resume to the appropriate investigator at Genentech, Inc., Human Resources, 460 Point San Bruno Blvd., South San Francisco, CA 94080. We actively support and promote affirmative action and equal employment opportunity. Women and minorities are encouraged to apply.

Genentech, Inc.

POSITIONS OPEN

TENURE-TRACK FACULTY RESEARCH POSITIONS MOLECULAR AND CELLULAR PATHOLOGY

The Department of Pathology, University of Alabama at Birmingham, is seeking individuals for positions at the faculty level who are interested in joining an active and growing group of investigators in basic research and graduate training. Applicants should have a Ph.D. or M.D. degree and are expected to develop independently funded research programs. Special consideration will be given to individuals with experience in cellular and molecular biology, signal transduction, a desire to interact with other investigators and a willingness to participate in graduate and postdoctoral training. Level of appointment will be determined by qualifications. Please send a detailed curriculum vitae including description of research, recent reprints and names of three references to: **Thomas M. Lincoln, Ph.D., Acting Director, Division of Molecular and Cellular Pathology, Department of Pathology, University of Alabama at Birmingham, 1670 University Boulevard, Birmingham, AL 35294-0019.** *University of Alabama at Birmingham is an Affirmative Action/Equal Opportunity Employer and welcomes applications from women and minorities.*

DEPARTMENT OF NUTRITION CASE WESTERN RESERVE UNIVERSITY

We seek a **FACULTY** member to conduct basic and clinical investigations in nutritional biochemistry and metabolism. We are particularly interested in (i) the intra- and inter-organ metabolism of nutrients, (ii) the use of stable isotope techniques for investigating these processes, and (iii) the design and testing of synthetic nutrients. The appointee will develop independent research programs and participate in the teaching and training of graduate and postgraduate students. Send curriculum vitae, representative reprints, outline of research program and names of three persons we could contact as references by May 1, 1995, to: **Dr. Henri Brunengraber, Chair, Department of Nutrition, Case Western Reserve University, Cleveland, OH 44106.** *Case Western Reserve University is an Equal Opportunity Employer and encourages applications from minorities and women.*

BIOLOGY LABORATORY INSTRUCTORS

Ohio University Department of Biological Sciences invites applications for seven full-time, permanent laboratory **INSTRUCTOR** positions for the following laboratory courses: principles of physiology series, introductory zoology series, human anatomy, human physiology, exercise physiology, anatomy and histology, and comparative vertebrate anatomy. The normal teaching load is 20 contact hours per week. Preference will be given to individuals who can teach in several of these areas. A minimum of a Master's degree in a biological science, a strong commitment to an undergraduate teaching career, excellent teaching skills, a broad knowledge of the field, and a demonstrated commitment and ability to integrate the latest educational technologies are required. The Department has 50 tenure-track faculty members, teaches 1,600 undergraduate, 80 graduate, and 250 professional students. The positions begin September 1, 1995, at a minimum nine-month salary of \$26,000 plus benefits. Send curriculum vitae, college transcripts, a statement of teaching experience and philosophy, and three letters of recommendation by April 1, 1995, to: **Biology Instructor Search, J. Witkowski, Department of Biological Sciences, Ohio University, Athens, OH 45701.**

Ohio University is an Equal Opportunity/Affirmative Action Employer and women and minorities are encouraged to apply.

POSTDOCTORAL POSITION in molecular parasitology available immediately to study kinetoplast DNA replication genes and proteins in the trypanosomatid *Cnithidia fasciculata*. Areas of research in our laboratory include 1) cloning and analysis of genes required for kinetoplast DNA replication, 2) cell cycle control of the expression of DNA replication genes, and 3) identification and characterization of proteins involved in the organization and condensation of kinetoplast DNA. (See *Pasion et al., J. Cell Sci.*, 107:3515-3520, 1994; *Xu and Ray, PNAS*, 90:1786-1789, 1993; *Melendy et al., CELL*, 55:1083-1088, 1988.) Requires a strong background in Molecular Biology or Biochemistry with experience in recombinant DNA and protein methods. Interested applicants should send their résumé including reprints and names and telephone numbers of three references to: **Dr. Dan S. Ray, Molecular Biology Institute, UCLA, Los Angeles, CA 90095-1570.**

POSITIONS OPEN

POSTDOCTORAL/RESEARCH FACULTY Theoretical, Computational, and Experimental Chemistry and Physics

We are looking for exceptionally able (1) theoretical/computational chemists or physicists with a strong background in quantum or classical dynamics, intense light-matter interactions, quantum control of chemical dynamics, or related areas, (2) experimentalists, particularly with a background in one or more of the following: ultrafast lasers, atomic and molecular beams, laser generated X-rays, charged particle beams, or X-ray physics. Current research interests in our group include (1) theoretical and experimental quantum control of chemical dynamics with femtosecond lasers, (2) development of multi-terawatt femtosecond lasers and their application to high field chemistry and physics, (3) ultrafast, short wavelength electron and X-ray diffraction as applied to imaging molecular quantum dynamics. For a description of current group activities and personnel see our World Wide Web site, <http://www-wilson.ucsd.edu/> or send Email with no text to wilsjob@ucsd.edu. To apply, please send a curriculum vitae to: **Prof. Kent R. Wilson, Department of Chemistry 0339, University of California, San Diego, La Jolla, CA 92093-0339.** *Affirmative Action/Equal Opportunity Employer.*

POSTDOCTORAL POSITION MOLECULAR RADIOBIOLOGIST

POSTDOCTORAL POSITION available July 1, 1995, in the Radiobiology Laboratory of the Johns Hopkins Oncology Center. The applicant should have a background in cellular and molecular biology with an interest in the cellular response to ionizing radiation. This is a starting faculty position at the Instructor or Assistant Professor level with three years of initial support. Send curriculum vitae and names of three references to:

Moody D. Wharam, Jr., M.D.

Professor

Oncology, Radiological Sciences,
Neurosurgery, and Pediatrics
Director

Division of Radiation Oncology
The Johns Hopkins Oncology Center
600 North Wolfe Street
Baltimore, MD 21287-8922

The Johns Hopkins University School of Medicine is an Equal Opportunity Employer.

POSTDOCTORAL POSITION available immediately to participate in NIH-funded Program Project Grant on the role of lipid mediators in lung injury. The research bridges molecular biology/biochemistry to pathogenesis of inflammation in diseases including asthma and ARDS. This position is focused on regulation of phospholipases A₂ and is an interdepartmental project combining senior faculty of the Departments of Medicine and Biochemistry. Experience in molecular biology and lipid chemistry would be important. Send curriculum vitae and names and telephone numbers of three references to: **Dr. David A. Bass, Pulmonary and Critical Care Medicine, Bowman Gray School of Medicine of Wake Forest University, Medical Center Boulevard, Winston-Salem, NC 27157-1054.** FAX: 910-716-7277. *An Affirmative Action/Equal Opportunity Employer.*

POSTDOCTORAL POSITION available for three years to study electrophysiology of cancer cells, cardiac myocytes and cloned human cardiac potassium channels. Experience of voltage clamp methods essential, with interest in molecular biology. Opportunities to interact with a number of different investigators and groups. Please send curriculum vitae and names of two references to: **Dr. David Fedida, Department of Physiology, Queen's University, Kingston, Ontario K7L 3N6 Canada.** Telephone: 613-545-2799; FAX: 613-545-6880. *In accordance with Canadian immigration requirements, priority will be given to Canadian citizens and permanent residents.*

POSTDOCTORAL POSITIONS available immediately to study the molecular/biochemical mechanisms of retinoic acid-regulated cell growth/differentiation in myeloid cells and drug resistance in breast tumor cells. Candidates with background in molecular biology/biochemistry, interested in pursuing career in the area of cancer biology should send résumé and the names and addresses of three references to: **Kapil Mehta, Ph.D., Department of Clinical Investigation, Box 60, University of Texas M.D. Anderson Cancer Center, Houston, TX 77030.** Telephone: 713-792-2649; FAX: 713-796-1731.

POSITIONS OPEN

POSTDOCTORAL POSITION HIV RESEARCH

POSTDOCTORAL POSITION available immediately to study cytokine and cytokine antagonist control of HIV replication and immune response. The *in vitro* research is oriented toward designing therapeutic approaches for *in vivo* use. A Ph.D. or M.D. degree is required and a strong background in HIV research or molecular biology is highly desirable. Send curriculum vitae and names of three references to: **Paul Skolnik, M.D., Division of Infectious Diseases, Tufts University-New England Medical Center, 750 Washington Street, NEMCH 67, Boston, MA 02111.** FAX: 617-636-3216; Email: paul.skolnik@es.nemc.org. *New England Medical Center is an Equal Opportunity/Affirmative Action Employer. Women and minorities are encouraged to apply.*

Full-time **POSTDOCTORAL POSITION** available immediately to study molecular mechanism of tumorigenesis, involving tumor suppressor genes and oncogenes. Competitive salary depends on experience. Please send curriculum vitae with names and telephone numbers of three references to:

**Anne T'Ang, Ph.D.,
Assistant Professor of Pathology/Ophthalmology
University of Southern California
Division of Ophthalmology
Childrens Hospital Los Angeles
4650 Sunset Boulevard, Mailstop No. 94
Los Angeles, CA 90027**

USC/Childrens Hospital Los Angeles is an Affirmative Action/Equal Opportunity Employer.

POSTDOCTORAL ASSOCIATE

Available for Ph.D., M.D. or M.D./Ph.D. with interest in the application of molecular approaches to address questions in appetite, regulation of food intake and peripheral metabolism. Initial experiments in animals but opportunities exist for progression to human experimentation. Proficiency in protein chemistry, RNA/DNA techniques, PCR and electrophoresis required. Please send curriculum vitae and names and complete addresses of three references to: **Richard Galbraith, M.D., Ph.D., The University of Vermont, 795 Baird, The College of Medicine, Burlington, VT 05401.** *The University of Vermont is an Affirmative Action/Equal Opportunity Employer.*

POSTDOCTORAL POSITION, USDA, Agricultural Research Service (ARS), National Animal Disease Center, Ames, Iowa. The candidate will investigate expression of heat shock proteins by the host cell and bacterium after infection with *Mycobacterium paratuberculosis*. Evaluation of these proteins as potential antigens for activation of lymphocyte populations will also be expected. Candidate will be part of a team consisting of an immunologist and a pathologist. Applicants must have a Ph.D. degree. Minimal of 24 month appointment; salary is commensurate with experience (\$35,578 to \$42,641 per annum). Send curriculum vitae or an application and names of three references to: **Dr. Judith R. Stabel, USDA, ARS, National Animal Disease Center, P.O. Box 70, Ames, IA 50010.** Telephone: 515-239-8304. Applications in response to this advertisement should be marked 5N029. Applications will be accepted until the position is filled. *USDA/ARS is an Equal Opportunity Employer.*

POSTDOCTORAL POSITIONS—One available immediately to study the role of the helix-loop-helix proto-oncogene *TAL1/SCL* in avian vascular development. Other position available July 1, 1995, supported by NIH training grant to study the role of *TAL1/SCL* in leukemogenesis. Candidates should have experience in cellular and/or molecular biology. Previous experience in developmental biology desirable. Send curriculum vitae and names of three references to: **Dr. Stephen J. Brandt, Division of Hematology, Room C-3101 Medical Center North, Vanderbilt University Medical Center, Nashville, TN 37232.** FAX: 615-343-4589. *An Affirmative Action/Equal Opportunity Employer.*

POSTDOCTORAL POSITION available to characterize mutants isolated from a genetic screen on metal-regulated gene expression. The NIH-funded research requires background in yeast genetics and molecular biology. Send curriculum vitae and three letters of reference to: **Dr. Dennis R. Winge, University of Utah Health Sciences Center, Salt Lake City, UT 84132.**

The University of Utah is an Equal Opportunity Employer.

BRANCH CHIEF

Clinical Development Branch, Vaccine and Prevention Research Program

Location: Bethesda, MD

The Division of AIDS, NIAID/NIH is seeking a Branch Chief for its newly established Clinical Development Branch. This individual is responsible for the overall scientific leadership and management of Phase I and II clinical trials of candidate AIDS vaccines. Currently, the Branch supports the AIDS Vaccine Evaluation Group (AVEG) at six clinical sites, a Statistical and Coordinating Center Contract, and two Immunology Laboratory Contracts. The Division plans and directs a national and international extramural research program into the causes, diagnosis, prevention and treatment of HIV and its associated opportunistic infections.

Desirable qualifications include an M.D. and/or Ph.D. degree, extensive postgraduate research experience, demonstrated ability to direct a biomedical research effort, broad knowledge of the basic and clinical research aspects of vaccine testing and vaccine clinical trials and an understanding of the policies, procedures, and mechanisms used within the Institute and DHHS for accomplishing research through extramural activities. U.S. citizenship is required.

This is a GS-15 Civil Service position. A recruitment or relocation bonus of up to 25% of base pay may be available. Physicians may be eligible for a Physician's Comparability Allowance of up to \$20,000 per year.

Selection for this position will be based solely on merit with no discrimination for non-merit reasons such as race, color, religion, gender, national origin, disability, age, or sexual orientation.

For additional information on the position listed, please contact Ms. Janice Cordell, Assistant to the Associate Director, Vaccine and Prevention Research Program, DAIDS at: 301-402-5535. **Applicants should submit a curriculum vitae by April 3, 1995 to:**

**Kristie Daniel, NIAID Personnel Office, Room 7A-20
9000 Rockville Pike, Bethesda, MD 20892
Merit Promotion Vacancy Announcement #95-020**

Nutritional Biochemist (Project Leader)

Ross Products Division, a division of Abbott Laboratories and the leading manufacturer of pediatric and medical nutritional products, has two excellent opportunities for experienced professionals with Ph.D.s in Nutritional Biochemistry or a related field.

Position #1 - Research expertise in the fields of metabolism and biochemistry of cells and tissues is desired. A general comprehension of physiology is helpful.

Position #2 - Research expertise in the fields of diabetes and cell signaling is desired. A general comprehension of integrative metabolism is helpful.

These persons will provide technical leadership on current projects as well as participation in new product concept development for disease specific areas. The selected candidates will be assigned projects with a high degree of technical responsibility, be expected to establish research internally and externally in support of projects and work with outside experts and sister divisions. These individuals will be independent contributors to team oriented endeavors. Strong communication skills are necessary.

Ross Products Division, headquartered in Columbus, Ohio, offers an excellent compensation and benefits program in a smoke-free environment. For confidential consideration, please direct your CV to: **ROSS PRODUCTS DIVISION, 625 Cleveland Avenue, Columbus, OH 43215. Attn: Staff Recruiter.** Ross is an Equal Opportunity Employer.

 **ABBOTT LABORATORIES
ROSS PRODUCTS DIVISION**

ROSS PRODUCTS DIVISION

D. PRO BIOCH

...anco, leading com
...e products for cro
...for a Ph.D. Protei
...nt Genetics Depa
...anco recovery P
...ate-of-the-art res

...part in inter
...nsible for the
...diverse sourc
...opment of tra
...successful co
...ein chem
...he optimizat
...tein for me
...eptocytes
...l regulation
...d a high l

To learn
...e Agric
...993 to: K
...on will
...opportu

 **Dow Chemical**

POSITIONS OPEN

PITTSBURGH TRANSPLANTATION INSTITUTE

A **POSTDOCTORAL FELLOWSHIP** is available for studies concerning the regulation of antigen-presenting cell (APC) function (see e.g., *J. Exp. Med.*, 178:1823, 1994) and the role of donor-derived APCs in transplantation tolerance. Candidates should have a Ph.D. in immunology and/or molecular biology relevant to transplantation science and up to two years of postdoctoral experience. Please submit curriculum vitae and provide three references to: **Angus W. Thomson, D.Sc., Research Professor, Pittsburgh Transplantation Institute, W1544 Biomedical Science Tower, University of Pittsburgh Medical Center, 200 Lothrop Street, Pittsburgh, PA 15213 USA. FAX: 412-624-1172.**

POSTDOCTORAL FELLOW. Position available spring 1995 to conduct research on the role of macrophages in atherosclerosis using molecular biological and transgenic mouse techniques. Experience in molecular biology necessary. Send curriculum vitae and references to: **Dr. I. Tabas, Department of Medicine, Columbia University, New York, NY 10032. Columbia University is an Equal Opportunity/Affirmative Action Employer.**

POSTDOCTORAL POSITION in Neuroscience. NIH-funded position available immediately to study the electrophysiological properties of vestibular sensory neurons in chick brain slices and/or immunocytochemical studies on vestibular central synapses. Candidate should have experience in voltage clamp, pharmacology, and/or immunocytochemistry. Please send curriculum vitae, statement of research interests and three references to: **Dr. Kenna D. Peusner, Department of Anatomy and Neuroscience Program, George Washington University School of Medicine, 2300 I Street, N.W., Washington, DC 20037. The George Washington University is an Equal Opportunity Employer.**

A **POSTDOCTORAL POSITION** is available to clone and characterize the developmentally regulated genes in sweetpotato. A Ph.D. in molecular biology, plant science or related discipline with research experience in differential display PCR, DNA sequencing, vector construction and *in situ* hybridization required. Send résumé and three letters of reference to: **Dr. C. S. Prakash, Tuskegee University, School of Agriculture, Tuskegee, AL 36088. FAX: 334-727-8067. U.S. citizens only. Minorities and women are strongly encouraged to apply.**

POSTDOCTORAL FELLOWSHIPS

The College of Medicine and the H. Lee Moffitt Cancer Center and Research Institute at the University of South Florida has **POSTDOCTORAL/RESEARCH ASSOCIATE** positions available in a stimulating academic environment that includes excellent laboratory and clinical facilities. Investigators providing mentorship include **Julie Djeu, Ph.D., Jie Wu, Ph.D., W. J. Pledger, Ph.D., and Timothy Yeatman, M.D.**

The individuals sought should hold a M.D. or Ph.D. and have a demonstrated interest in cancer related research with training in molecular biology and/or cellular biology. Research areas include: signal transduction, regulation of growth and differentiation, processes of metastasis, and mechanisms of action of cytokines and growth factors.

Send current curriculum vitae and a brief statement of major academic interests to: **W. J. Pledger, Ph.D., Associate Center Director for Basic Research, Office of Faculty Recruitment, Moffitt Cancer Center, 12902 Magnolia Drive, Tampa, FL 33612.** Applicants who need a reasonable accommodation in order to participate in the selection process must notify **Jody Swanson** in the Office of Faculty Recruitment, 813-975-7894, five days in advance. Applications must be postmarked by deadline of April 20, 1995.

Moffitt Cancer Center is an Equal Opportunity Employer. The University of South Florida is an Equal Opportunity/Equal Access/Affirmative Action Employer.

Immediate opening for **POSTDOCTORAL FELLOW/RESEARCH ASSOCIATE**. Candidate should have a Ph.D. in a biologically relevant discipline, training and experience in immunoassays, and technical writing ability. Candidate would interface with clinical studies. Competitive salary and fringe benefits. Send letter of interest, curriculum vitae, and official transcript to: **Dr. David J. Baylink, Distinguished Professor of Medicine, Loma Linda University, J. L. Pettis VAH (151), 11201 Benton Street, Loma Linda, CA 92357.**

POSITIONS OPEN

POSTDOCTORAL RESEARCH ASSOCIATE NEUROSCIENCE

A **POSTDOCTORATE** or **RESEARCH ASSOCIATE** position is available in the Neuroscience Program at the Loeb Resource Institute of the Ottawa Civic Hospital, a University of Ottawa affiliate, to participate in peer-reviewed and funded studies of neurotransmitter and peptide receptors, ligand- and voltage-activated conductances and second messenger mechanisms in mammalian CNS neurons controlling autonomic and pituitary function. The Program comprises nine PIs with expertise in molecular and cellular neurobiology applied to exocytosis, membrane trafficking, signal transduction, gene regulation, ion channel function, post-ischemic neuronal function and survival. Requires: M.D. and/or Ph.D. degree; minimum of four years of postdoctorate experience with electrophysiology and neuropharmacology in slice and/or explant preparations; demonstrated ability and productivity (authorship on peer-reviewed publications) with current, voltage- and patch clamp techniques, data analysis and anatomical marking methods. Position is tenable for a minimum of three years, and involves teaching and lab supervision. Salary and benefits commensurate with experience. In accordance with Canadian immigration regulations, this advertisement is directed first, but not solely, to Canadian citizens and permanent residents.

Forward or FAX (613-761-5360) curriculum vitae with addresses of three references and a statement of goals/interests/experience by March 31, 1995, to: **Dr. Leo Renaud, Director, Neurology/Neurosciences, Ottawa Civic Hospital and Loeb Research Institute, 1053 Carling Avenue, Ottawa, Ontario, K1Y 4E9 Canada.**

POSTDOCTORAL FELLOW CELL REGULATION University of Texas Southwestern Medical Center at Dallas

An exciting new area in cell regulation research is emerging. Evidence is accumulating that two plasma membrane domains that are specialized for endocytosis (clathrin coated pits and caveolae) are sites where hormonal and mechanical signals are modulated. Our laboratory has mounted a major research effort to study the role of these membrane domains in compartmentalized signal transduction.

POSTDOCTORAL POSITIONS are now available for individuals who want to receive training in this exciting new research area. If you have either a Ph.D. or M.D. and have experience in molecular and cell biology, please apply. Send curriculum vitae and three letters of recommendation to:

**Dr. Richard G. W. Anderson
Department of Cell Biology and Neuroscience
University of Texas Southwestern Medical Center
at Dallas
Dallas, TX 75235-9039
An Equal Opportunity Employer**

POSTDOCTORAL FELLOWSHIP

Position available in cellular and molecular neurobiology for a Ph.D. or M.D./Ph.D. Research projects involve transgenic and gene targeting strategies to generate animal models of human neurodegenerative diseases, including Alzheimer's disease, ALS, and spinal muscular atrophy. Studies of the mechanisms of neuronal injury and cell death are integral to our program. A strong background in cellular and molecular biology and familiarity with neurobiology are desirable. Send curriculum vitae and references to: **Donald L. Price, M.D., Neuropathology Laboratory, The Johns Hopkins University School of Medicine, 558 Ross Research Building, 720 Rutland Avenue, Baltimore, MD 21205-2196. Please, U.S. citizens or permanent residents only (because of funding limitations). An Equal Opportunity Employer; women and minorities are encouraged to apply.**

POSTDOCTORAL POSITIONS in Adhesion Receptor Research: Positions available immediately to study (1) integrin mediated signal transduction (with **R. L. Juliano**)—background in mammalian molecular biological techniques essential; or (2) sickle cell adhesion to ECM (with **L. Parise**)—background in protein biochemistry essential. Applicants should send curriculum vitae and names of two references to: **Brenda Rosen, Department of Pharmacology, University of North Carolina-Chapel Hill, Chapel Hill, NC 27599-7365. FAX: 919-966-5640. An Equal Opportunity/Affirmative Action Employer.**

POSITIONS OPEN

POSTDOCTORAL/RESEARCH ASSOCIATE to study CNS remyelination. *In vivo* and *in vitro* cellular and molecular techniques will be integrated to identify signals mediating proliferation and migration of remyelinating cells in experimentally demyelinated mice. Send curriculum vitae, a summary of research interests/experience, and names and telephone numbers of at least three references to: **Dr. R. C. Armstrong, Department of Anatomy and Cell Biology, Uniformed Services University of the Health Sciences, 4301 Jones Bridge Road, Bethesda, MD 20814-4799. This is a civilian research position within the medical school.**

Affirmative Action/Equal Opportunity Employer.

POSTDOCTORAL TRAINEES, Neuroscience. Research with Drs. **Eric Simon** (opioid receptors), **Eric Stone** (catecholamines and stress) or **Ken Carr** (opioids and motivated behavior). Start April 1 to September 1, 1995. Contact: **Dr. Carr, Millhauser Lab, NYU Medical Center, 550 First Avenue, New York, NY 10016. U.S. citizenship or permanent residency required. An Affirmative Action/Equal Opportunity Employer.**

IMMUNOLOGY AND HEMATOLOGY/BMT

City of Hope, a world-renowned cancer treatment and research center has the following opportunities.

Immunology: Position for a **POSTDOCTORAL RESEARCH FELLOW** with experience in tissue culture, molecular biology and immunology techniques. Experience with neutrophils and cellular biochemistry is desired. Ph.D. or M.D. required. Please reference position KF.

Hematology/BMT. Position for a Doctoral-level **SCIENTIST** to participate in the development of a subunit/peptide vaccine against CMV in the transplantation setting. The program is supported by a five-year NIH grant. Requires extensive background in cellular immunology with expertise in protein chemistry or molecular biology. Please reference position DD.

Send résumé to: **Human Resources, City of Hope and Beckman Research Institute, 1500 East Duarte Road, Duarte, CA 91010-3000. FAX: 818-301-8448. For consideration, position reference must be identified. Equal Opportunity Employer.**

NMR SPECTROSCOPY

The Cardiovascular Institute at Columbia University seeks applicants with an M.D. or Ph.D. and one to two years of postdoctoral experience in NMR spectroscopy. Additional expertise in MR imaging is desirable. Our current interests are in pursuing multi-nuclear imaging and spectroscopy of the cardiovascular system including proton, sodium and phosphorus on 3T and 5T whole-body NMR systems. This is primarily a **RESEARCH POSITION** with no clinical responsibilities. Please send curriculum vitae, a reprint of a key publication and the names of two references to: **Dr. Jose Katz, Division of Cardiology, College of Physicians and Surgeons, Columbia University, 630 West 168th Street, New York, NY 10032. Columbia University is an Affirmative Action/Equal Opportunity Employer.**

LABORATORY SUPERVISOR

A position is available to participate in the NHLBI-sponsored Mammalian Genotyping Service in the laboratory of Dr. James Weber. The goal of this project is to provide high quality, cost-effective and automated genotyping of DNA polymorphisms to support genetic studies aimed at identifying genes responsible for cardiovascular, lung and blood diseases. The successful candidate will lead a team of about five technicians and computer specialists. A doctorate degree and research experience in human molecular genetics are required. Completion of a postdoctoral fellowship is desired. Competitive salary and benefits are offered. Interested applicants should send curriculum vitae and three reference letters to: **Human Resources, Employment Generalist, Marshfield Clinic, 1000 North Oak Avenue, Marshfield, WI 54449. The Marshfield Clinic is an Equal Opportunity Employer, Minority/Female/Disabled/Veterans.**

ELECTROPHORESIS RESEARCHERS

Established manufacturer seeks help with development efforts for an electrophoresis product. Individuals must own or have direct access to an IEF device (Phast®, Multiphor®, ICE® System, etc.) and prior experience in electrophoresis. Incentives provided for rapid data generation. Please send a brief description of your electrophoresis capabilities to: **RHD, P.O. Box 2555, Acton, MA 01720.**

Tenure Track Position
**HUMAN AND ANIMAL GENETICS
& MOLECULAR GENETICS
OF DRUG ABUSE**

George R. Uhl, M.D., Ph.D.

Tenure track position available to lead a research program that will extend and complement ongoing research in the Genetics and Molecular Genetics of Drug Abuse. Candidates should have experience in genetics and molecular genetics, with preference given to expertise in human genetics of nonMendelizing disorders. Support by senior fellows, technical staff, extensive laboratory and animal space for up to six years. The candidate will be evaluated for tenure within a period not to exceed six years. If you hold a doctoral degree(s) and would like to be considered for the position, please send a cover letter, a curriculum vitae with bibliography, statement of research interests and goals (not to exceed two pages), and three letters of recommendation to: **G.R. Uhl, M.D., Ph.D., Molecular Neurobiology Branch, Division of Intramural Research, National Institute on Drug Abuse, National Institutes of Health, Box 5180, Baltimore, Maryland 21224.** Competitive salary levels with full federal benefits - an equal opportunity employer. Candidates must be U.S. citizens or permanent residents.

EARLE A CHILES RESEARCH INSTITUTE
PORTLAND, OREGON



The Earle A. Chiles Research Institute, located at Providence Portland Medical Center and a member of the Oregon Cancer Center, is a not-for-profit, academic organization committed to translational research in biological cancer therapy. Research programs, under the direction of **Bernard A. Fox** and **Deric D. Schoof**, include basic human and animal tumor immunobiology, tumor vaccine development, clinical immunotherapy and gene therapy. Applications are being accepted for the following positions:

• **POSTDOCTORAL FELLOWSHIP IN CANCER IMMUNOLOGY** (2 positions available)

Applicants must have a Ph.D. or M.D. degree with experience in cell culture, animal tumor models or molecular and cell biology.

• **GRADUATE TRAINING PROGRAM IN TUMOR IMMUNOLOGY**

Applications are invited for a program of study leading to a Ph.D. from the Department of Molecular Microbiology and Immunology at Oregon Health Sciences University.

Salary is commensurate with experience. Please send curriculum vitae and the names of three references to: Research Staff Committee, Earle A. Chiles Research Institute, Providence Medical Center, 4805 NE Glisan Street, Portland, OR 97213, email: kalezmn@ohsu.edu. *An equal opportunity/affirmative action employer.*

Imagine The Possibilities

At Berlex, we've built our reputation on FDA-approved product successes and a proven track record in the pharmaceutical industry. Currently, we are seeking Senior Scientists/Scientists to contribute to our Oncology research projects in the beautiful San Francisco Bay Area.

ONCOLOGY SENIOR SCIENTISTS/SCIENTISTS

In Vitro/In Vivo Tumor Models

You will develop in vitro and in vivo tumor models, conduct therapy studies and support antitumor drug discovery programs as part of our new Oncology Research team. You will need a Ph.D. in cell/tumor biology or pharmacology and some post-doctoral training, preferably working with the prostrate, along with 2-5 years' industry experience in tumor biology and drug discovery. Dept. B95-009.

Tumor Biology

Calling on your skills and extensive experience in cell and molecular biology (culture of normal and neoplastic cells as well as the elucidation of autocrine and paracrine signalling pathways), you will design assay systems to help identify novel targets and characterize promising compounds for antitumor drug discovery. You will need a Ph.D. in cell biology, molecular biology or biochemistry supported by post-doctoral experience to include 2-5 years' experience in tumor biology and drug discovery in industry. Dept. B95-008.

As a US subsidiary of an international Fortune 500 company, Berlex is proud to offer competitive salaries and a generous benefits package. To apply, send your CV/resume, indicating the Dept. number corresponding with the position of your interest to: **BERLEX, HUMAN RESOURCES EMPLOYMENT, 15049 SAN PABLO AVE., RICHMOND, CA 94804-0099.** Principals only, please. EOE.

BERLEX

THE BEST IS YET TO COME

**Postdoctoral Training In Cancer Biology
Massey Cancer Center
Medical College of Virginia-Richmond, VA**

Postdoctoral training opportunities are available at the Massey Cancer Center encompassing faculty in the Departments of Microbiology/Immunology, Pharmacology, and Medicine.

Signal Transduction and Genetic Control of Apoptosis

This program focuses on the molecular and signal transduction events that regulate drug-induced apoptosis in human leukemia cells. The goal is to elucidate the role of protein kinase C and other signaling pathways in apoptotic events, as well as the contribution of oncogenes such as bc1-2, c-jun, and p21 to this process. Training is within the context of a collaborating group of faculty in the Developmental Therapeutics and Growth Regulation Programs of the Massey Cancer Center.

Molecular Pharmacology of Anti-neoplastic Agents

This program provides trainees with perspectives and laboratory skills to explore the development of anti-cancer drugs, and their biochemical modulations and chemical modifications. There is special focus on new generation antimetabolites and DNA damaging agents. Training is supported by a collaborating group of faculty with expertise in pharmacology, biochemistry, molecular biology and biophysics. Trainees are introduced to concepts in structural biology and computer modelling to prepare them for modern drug development strategies.

The Biology of Follicular Dendritic Cells

Follicular dendritic cells are the long-lived lymphoid cells that retain antigen elements and are a critical factor in immune cell memory. This project will focus on the role of follicular dendritic cells in cell growth and differentiation in a variety of lymphoma models. The Department of Microbiology/Immunology is an internationally recognized center for studies on the biology of follicular dendritic cells.

Molecular Aspects of Oncogenesis

This project will focus on the development of a novel approach to investigate the mechanisms controlling oncogene translocations. This work will be undertaken as a collaboration between laboratories working on regulation of oncogene expression and isotype switch recombination.

Massey is an NCI designated center with an established NCI funded postdoctoral training program. There is extensive faculty and trainee collaboration and utilization of center core laboratory facilities for antibody, oligonucleotide and protein production, DNA sequencing and FACS services. There is a track record of successful trainee placement in positions in academics, government and research units of the pharmaceutical industry. Trainees participate in the development of grants as part of the training experience and have had an excellent record of peer-reviewed funding.

Molecular and Genetic Mechanisms of Prostate Cancer Progression

Studies will focus on differential gene expression, as well as cytogenetic and molecular marker analysis, in both surgical specimens and novel laboratory models of prostate tumor invasion and metastasis. Opportunity for training in interdisciplinary prostate cancer research program. Experience in genetics, molecular biology, or cell biology preferred.

Starting stipend is \$25,000/yr. Applicants should submit a curriculum vitae along with the names and addresses of three references and a statement of their research background and interests to **Dr. I. David Goldman, Director, Massey Cancer Center, Medical College of Virginia, MCV P.O. Box 980230, Richmond, VA 23298-0230.** US citizenship or permanent residence status is required. MCV/VCU is an equal opportunity employer. Women and minorities are encouraged to apply.

**The Women, Gender, and
Science Question:**

What do research on the history of women and science and research on science and gender have to do with each other?

May 12-14, 1995

University of Minnesota
St. Paul, Minnesota

For further information:

phone Susan Potratz
(612) 625-5886,
fax (612) 626-1632

or email

sburke@mail.cee.umn.edu

*The University of Minnesota
is an equal opportunity edu-
cator and employer.*

UNIVERSITY
OF MINNESOTA

**DEAN OF THE MEDICAL SCHOOL
UNIVERSITY OF WISCONSIN-MADISON**

The University of Wisconsin-Madison is the original University of Wisconsin, and is one of the largest land-grant Universities in the United States. There are approximately 2,500 faculty, 4,000 professional and administrative staff, 8,000 classified employees and 40,000 undergraduate, graduate and professional students at the institution.

The Dean of the Medical School serves as the chief academic and executive officer of the school with responsibility for staffing, budget, curriculum, student academic affairs, and space. The school is a component of the Health Sciences, which includes the Schools of Nursing and Pharmacy as well as University Hospital and is housed almost entirely on the Madison campus. The Medical School is composed of approximately 600 medical students, 500 graduate students, and 200 postdoctoral trainees. The Dean leads a faculty of approximately 750 and a professional staff of over 1,000 located in Madison and a network of educational programs throughout the state. In addition to the MD degree, the school offers master's and doctoral degrees in the fields of anatomy, biomolecular chemistry, history of medicine, medical genetics, medical microbiology, medical physics, neurophysiology, oncology, pathology, pharmacology, physiology, preventive medicine and radiobiology. The school sponsors over 500 house staff in residency and fellowship training in all medical fields, using the University Hospital in Madison and community teaching hospitals throughout the state. The Medical School is responsible for the programs in training Physician Assistants and Medical Technologists and provides instruction for numerous undergraduates in the Schools of Pharmacy, Nursing, Education, and in the Colleges of Letters and Science, Agricultural and Life Sciences, and Engineering.

The major qualifications for this position include a successful record of academic achievement and administrative leadership in medical education including internal management skills and the creative advocacy of private support; accomplishments that meet standards for a tenured appointment at the rank of full professor in the University of Wisconsin-Madison faculty; a commitment to enhance excellence in medical, graduate student, and residency education in research, public service and outreach activities; and the ability to articulate the vision and needs of the school to diverse constituencies includes potential private donors, legislators and various government officials. The Dean must also have a commitment to encouraging interdisciplinary collaboration among members of the faculty within the school as well as within the larger community of scholars at other schools and colleges within the university. The Dean should have a commitment as well to exploring collaborative opportunities that exist in partnerships with health care providers, state agencies, and other educational programs within the state. **Under Wisconsin Statutes, the names of nominees and applicants who explicitly request confidentiality will not be made public, although the university is required to release the names of the finalists, who will be interviewed by the UW-Madison Chancellor.**

The position is available July 1, 1995.

All applications and nominations must be received by Monday, April 17, 1995.

Submit applications and nominations to:

**John J. Frey (Chair)
Search and Screen Committee
University of Wisconsin-Madison
129 Bascom Hall
500 Lincoln Drive
Madison, Wisconsin 53706
Telephone: (608) 262-9337
Fax: (608) 265-5728**

The University of Wisconsin is an Equal Opportunity Affirmative Action Employer

IMMUNOLOGIST

The Department of Biology at the University of Northern Iowa invites applications for a tenure-track assistant professor position effective August 1995. The individual will have primary responsibility for an upper division course in immunology and also teach in other areas. The department expects effectiveness in both teaching and research. The applicant's research program should invite participation by master's and undergraduate students. Ph.D. in a biological science is required. Teaching and postdoctoral research experience are preferred.

Screening of applications will begin April 1, 1995 and continue until the position is filled. The department encourages applications from minority persons, women, Vietnam era veterans, and disabled persons. Please send a curriculum vitae, transcripts, statement of interests and goals in both teaching and research, and three letters of recommendation to:

**Dr. Darrell Wiens
Chair, Search Committee
Department of Biology
University of Northern Iowa
Cedar Falls, IA 50614-0421
Fax: (319) 273-7125**

**THE UNIVERSITY OF NORTHERN
IOWA IS AN EQUAL OPPORTUNITY
EDUCATOR AND EMPLOYER.**

ASSOCIATE DIRECTOR FOR SCIENCE AND TECHNOLOGY TRANSFER POLICY

The National Institutes of Health (NIH) invites applications for the position of Associate Director for Science and Technology Transfer Policy, Office of the Director. This is a Civil Service position in the Senior Executive Service (SES), with a base salary ranging from the ES-1 to ES-6 pay level per annum (currently \$97,991 to \$122,040 including locality pay). Recruitment and relocation bonuses may be applicable for candidates. A one year probationary period must be served by the individual selected if not currently or previously in the career Senior Executive Service.

The Associate Director for Science and Technology Transfer Policy is the principal NIH official responsible for advising the Director, NIH, on agency wide biomedical and behavioral science policy and technology transfer policy. This position also serves as principal advisor to the Assistant Secretary for Health on technology transfer policy. The advice provided pertains primarily to issues generated by the interface between science and the public at large, which includes responsibilities for assessing the biomedical and behavioral research and technology transfer programs to target areas suitable for new policy initiatives and to determine which mechanisms are best suited for effective and efficient policy development. This position also advises the Director, NIH, and senior NIH staff on all aspects of technology transfer policy, including policy related to technology management, licensing and marketing activities, and patent administration and prosecution activities. In addition, this position serves as the focal point for the NIH for coordinating the development, management, and oversight of strategic program plans associated with the NIH mission, which includes planning and conducting a comprehensive program of policy development, program evaluation, and economic and resource analyses. The incumbent of this position also manages the Recombinant DNA Advisory Committee and develops and implements NIH policies and procedures for the safe conduct of recombinant DNA studies.

Applicants should submit either a curriculum vitae, an Optional Application for Federal Employment (OF-612), or any other written format (including an SF-171 or resume); a bibliography; and a written statement addressing the mandatory and desirable qualification factors for this position. The vacancy announcement with mandatory/desirable qualifications requirements can be obtained by calling (301) 496-3365. Application materials must be sent to the following address:

National Institutes of Health
Building 31, Room 2A25
31 CENTER DR MSC 2425
BETHESDA MD 20892-2425
Attn: Sharon Porter

Applications must be postmarked no later than April 12, 1995.

Selection for this position will be based solely on merit, with no discrimination for nonmerit reasons such as race, color, religion, gender, national origin, political affiliation, marital status, disability, age, sexual orientation or membership or nonmembership in an employee organization.

NIH is an Equal Opportunity Employer

NEW.....NEUROSCIENCE

THE EJLB FOUNDATION SCHOLAR RESEARCH PROGRAMME

The EJLB Foundation announces that it will award each year up to six (6) grants for research projects in all areas of neuroscience that pertain directly or indirectly to schizophrenia and mental disease.

Eligibility for such grants is restricted to young scientists who are pursuing an independent research career and have given evidence of having significant potential. It is also a requirement that these scientists have earned an MD and/or a Ph.D. degree, have completed their post-graduate training and been admitted, after June 15, 1990, as faculty members of a leading university or an affiliated non-profit research centre, in Canada or elsewhere in the world.

Each grant totals CAN\$300,000, is disbursed over three (3) years and is non-renewable.

The next closing date for receipt of letters of intent is June 15, 1995.

Full details and letter of intent forms may be obtained from The EJLB Foundation, 1350 Sherbrooke Street West, Suite 1050, Montréal, Québec, H3B 1J1. Fax (for inquiries only) 514-843-4080).

The Life Sciences Division at Lawrence Berkeley Laboratory is currently seeking the following:

SENIOR or STAFF SCIENTIST DNA Repair

Seeking a Senior or Junior investigator to work on the molecular and cell biology of DNA repair mechanisms in higher eukaryotic cells. A senior scientist must have a nationally and internationally established track record in the field and an active and well funded research program. A staff scientist may have a less established track record with a funded research program. We seek candidates who can effectively interact with the LBL Human Genome Center, as well as molecular and cell biologists whose interests include radiation biology, structural, genetic and enzymatic aspects of DNA damage and repair, genomic stability, molecular cytogenetics, and control of cell proliferation, differentiation, carcinogenesis and tumor suppression. The Laboratory will provide well equipped Laboratory space, the possibility of up to two years of start up funds, after which the program is expected to be self-supporting. Job #JSCI3248

STAFF SCIENTIST Chromatin/Nuclear Structure

Seeking a Junior or mid career investigator working in the area of chromatin and nuclear structure, particularly as it relates to the control of gene expression. Must have an established track record and a funded research program. We seek candidates who can effectively interact with molecular and cell biologists in the Division whose interests include the control of cell proliferation, differentiation and replicative senescence, carcinogenesis and tumor suppression, genomic stability and DNA repair, and molecular cytogenetics. LBL will provide well-equipped laboratory space and a comprehensive fringe benefits package. Job #JSCI3247

LBL is adjacent to the University of California, (UC) Berkeley campus. Investigators will have the opportunity to interact closely with faculty at both UC Berkeley and UC San Francisco. Please send a curriculum vitae; a list of publications (complete for last three years); a list of current and pending funding; a brief (one page or less) summary of the research program and future directions; and the names, addresses, and telephone numbers of three references by April 14, 1995 to: Chair, LSD Search Committee, c/o Lawrence Berkeley Laboratory, Staffing Office, One Cyclotron Road, Bldg. 938A, Berkeley, CA 94720. Please indicate Job #. We are an equal opportunity employer.



LAWRENCE BERKELEY LABORATORY
UNIVERSITY OF CALIFORNIA
Department of Energy



PRE- DOCTORAL AND POST-DOCTORAL TRAINING PROGRAMS

RESEARCH PROGRAMS

Genome Organization
Developmental Biology
Metabolic Diseases
Neurobiology
Genetics of Complex Traits
Cancer Genetics
Immunology/Hematology
Bioinformatics

The Jackson Laboratory: a unique research environment with unparalleled mouse resources.

Letters of inquiry should include: curriculum vitae, statement of research interests, list of publications, and names of three references. (Predoctoral programs are in conjunction with the University of Maine and Yale University.)

To apply or request further information, contact:
Phyllis Mobraaten, Box 65, The Jackson Laboratory,
600 Main Street, Bar Harbor, ME 04609 Phone: 207-
288-3371, ext 1376; FAX 207-288-5079; e-mail:
pam@aretha.jax.org **EE/AA Employer**

ADVANCES IN MOLECULAR GENETICS

Fundamental Strategies and Methods in Gene Hunting and Molecular Characterization

A new, international recombinant DNA course with a focus on the fundamental strategies and methods in gene hunting and molecular characterization will be held June 19 – June 30, 1995. The intensive three-credit course featuring lectures, lab work and student presentations will be conducted at the BioPharmaceutical Technology Center Institute (BTCI) in Madison, Wisconsin.

The program is designed as a model partnership between the educational and business communities, enabling students to design strategies and practice techniques for the isolation, characterization and manipulation of genes, including library construction and screening, vector design and gene cloning, mutagenesis, sequencing, gene amplification and gene expression.

Course instructors include: Prof. Richard Burgess (UW-Madison), Dr. Don Court (National Cancer Institute), Prof. Alik Honigman (Hebrew University), Prof. Haim Rosen (Hebrew University) and Dr. Keith Wood (Promega Corporation).



Co-sponsored by

BioPharmaceutical Technology Center Institute (BTCI)
University of Wisconsin Biotechnology Center (UWBC)
University of Wisconsin-Madison Department of Oncology
with support from Promega Corporation

For more information contact:

Dr. Karin Borgh, Executive Director, BTCI
5445 East Cheryl Parkway, Madison, WI, 53711
Telephone 608/273-9737 or FAX 608/273-6992
E-MAIL: KBORGH@PROMEGA.COM

SangStat Medical Corporation is a biopharmaceutical company developing novel therapeutic and monitoring products to improve the outcome of organ transplantation. To expand our research capabilities, we are looking for highly motivated individuals to fill the following position:

Post-doctoral Scientist

An exceptional opportunity to work on the development of novel immunomodulatory compounds based on peptides derived from the heavy chain of MHC class I molecules. Some of these peptides prolong allograft survival in mice and rats in a non-allele restricted manner. In vitro these peptides inhibit several cell-mediated immune responses. Despite their effectiveness in in vitro and in vivo models, the mechanism of action of these peptides is still unclear. The successful candidate with experience in cellular and molecular immunology will work in a small team to elucidate the mechanism of action.

We offer an energetic environment in the San Francisco Bay Area and an opportunity for research in a rapidly changing field. Competitive salary benefits. EEO employer. Write or Fax your resume to V.P. of Research at:



SangStat Medical Corporation
The Transplant Company™

1505-B Adams Drive
Menlo Park, CA 94025
Telephone: 415.328.0300
Facsimile: 415.328.8892

Graduate Program in Molecular & Cellular Biology The University of Illinois at Chicago College of Medicine

The Molecular & Cellular Biology Training Program provides interdisciplinary training. Over 40 faculty members from different departments participate in the program. Students can choose from many possible areas of research, including:

- Cell Growth & Differentiation
- Cell Structure
- Developmental Biology
- DNA Structure & Function
- Gene Regulation
- Immunology
- Molecular Biology of Cancer
- Molecular Endocrinology
- Protein Structure & Function
- Signal Transduction

Principal Participating Departments:

- Anatomy & Cell Biology
- Biochemistry
- Genetics
- Microbiology & Immunology
- Pharmacology
- Physiology & Biophysics

Stipends of \$14,000 are available to all doctoral students in the form of tuition-free fellowships. Interested candidates are encouraged to seek application and information from:

MCBTP
c/o Heidi Hamm
Dept. of Physiology and Biophysics
835 S. Wolcott M/C 901
Chicago, IL 60612-7342

Research Positions

Molecular Neurobiology of Drug Abuse

George R. Uhl, M.D., Ph.D.

Fellow and senior fellow positions are available to pursue the molecular neurobiology and genetics of drug abuse. Candidates should have expertise in molecular biology and/or molecular genetics, with preference given to experience in neuropharmacology. Ongoing work examines the structure and function of the dopamine transporter/cocaine receptor, μ opiate receptor/heroin receptor, genes regulated by abused drugs, and genes important for interindividual differences in substance abuse vulnerability in animal models and humans. If you hold a doctoral degree(s) and would like to be considered for a position, please send a cover letter, curriculum vitae with bibliography, statement of research interests and goals (not to exceed two pages), and three letters of recommendation to:

G.R. Uhl, M.D., Ph.D.
Molecular Neurobiology Branch
Division of Intramural Research
National Institute on Drug Abuse
National Institutes of Health, Box 5180
Baltimore, Maryland 21224

Competitive salary levels will full federal benefits - an equal opportunity employer. Candidates must be U.S. citizens or permanent residents.

BIOANALYTICAL OR BIOPHYSICAL CHEMISTRY Ph.D. SCIENTIST

Analytical Research & Specifications Development

The Upjohn Company, is seeking a scientist for a challenging position in drug development, with an emphasis on analytical methods development and chemical characterization of new drug candidates, including peptides and proteins.

The successful candidate will conduct independent research to define and measure important quality characteristics of drug entities and formulations. Responsibilities will include the development of analytical methods for major and minor components, elucidation of chemical degradation pathways and kinetics, characterization of critical chemical and physical properties, and development of specifications for regulatory submissions. You will communicate and collaborate with scientists in other areas through multidisciplinary project teams, and contribute to the development and/or application of new technology through independent research. Growth of scientific expertise and reputation through external presentations and publications encouraged.

A Ph.D. degree in Analytical Biochemistry, Biophysical Chemistry, or a related discipline is required. Training in protein and peptide characterization is desirable. Experience in molecular biology, immunology, glycosylation chemistry and/or related areas is a plus.

In addition to an excellent salary and benefits package, Upjohn Laboratories offers a stimulating, multi-disciplinary research environment at our modern facilities located in Kalamazoo, a southwestern Michigan community located midway between Detroit and Chicago. This region provides an outstanding mix of cultural and recreational pursuits and a reasonable housing cost market. For confidential consideration please send your C.V. with list of publications to: The Upjohn Company, Corporate Recruiting, Ad #254, 7000 Portage Road, Kalamazoo, Michigan 49001. We are an equal opportunity employer with a commitment to work-place diversity.

Upjohn

DISCOVER SUGEN:

A LEADER IN SIGNAL TRANSDUCTION RESEARCH

SUGEN, Inc. is a dynamic biopharmaceutical company focused on the discovery and development of drugs for the treatment of cancer and diabetes. We currently have the following vacancies at our San Francisco Bay Area facility.

Neurobiology

Director: This key scientist will take overall responsibility for the Neurobiology Program at SUGEN, which currently consists of three research teams. The position demands several years' postdoctoral experience in neurobiology, as well as proven leadership skills. Experience in electrophysiology an advantage.

Protein Tyrosine Phosphatases

Group Leader: You will be prepared with a Ph.D. as well as several years of postdoctoral experience in the area of protein tyrosine phosphatases. You will lead a group studying the regulation and function of this diverse group of enzymes, particularly in regard to their involvement in clinical disease.

Immunology

Group Leader: This group will focus on immunosuppression and inflammation. The position requires a Ph.D. and several years of experience in immunological research. Experience in signal transduction pathways essential.

Gene Expression

Group Leader: For this Ph.D.-level position, we seek someone experienced in vector construction and eukaryotic and prokaryotic expression systems.

Signal Transduction

We also have openings for Ph.D. scientists with experience in signal transduction research to join a number of the new and existing groups in our Research Division.

To reply to one of the positions above, please note position of interest and send *c.v.*, along with the names, addresses and telephone/fax numbers of three references, to: SUGEN, Inc., Attn: Dorian Rinella, 515 Galveston Drive, Redwood City, CA 94063. Informal inquiries for Group Leader and Director positions only should be addressed via FAX to Sara A. Courtneidge, Ph.D., at (415) 306-7613. Competitive salary and benefits, including stock options, support these positions. Equal Opportunity Employer.

SUGEN, Inc.

INDEPENDENT, TENURE TRACK STAFF POSITION AT NIH

The Laboratory of Biochemistry, National Cancer Institute, National Institutes of Health seeks to appoint a junior scientist to initiate an independent, tenure track program of basic research. Applications are invited from candidates with demonstrated potential for creative research in the biological sciences. The Laboratory of Biochemistry is composed of 14 research groups that study diverse problems in bacteria, yeast, fly, and animal cells, employing techniques of classical and molecular genetics, protein chemistry, biochemistry, and cell biology.

To apply, please send a curriculum vitae, bibliography, brief statement of research interests, and three letters of recommendation to:

Dr. Carl Wu, Chair, Search Committee
Laboratory of Biochemistry
NIH/National Cancer Institute
Bldg. 37, Room 4E28
9000 Rockville Pike
Bethesda, MD 20892-4255

NIH/NCI is an Equal Opportunity Employer

ARE YOU AN INNOVATIVE SCIENTIST?

If so, the Gene Therapy Business Unit of Baxter Healthcare Corporation is the place for you. Having conducted some of today's most innovative and important research, Baxter continues to pioneer the future of health care products. Currently, we have two outstanding opportunities for experienced Scientists to join us in our northwest suburban Chicago location.

GENE THERAPY

You will design viral vectors for *in vivo* gene therapy and molecular devices for transgene regulation. This will involve collaboration with other scientists, and leading a research team. Other duties include maintaining familiarity with new technologies through literature searches, as well as organizing research data and writing patents, manuscripts and reports.

We require a Ph.D in Molecular Biology, Virology, or Biochemistry, along with 3-5 years of post-doctoral experience in gene expression and viral vector development. We also require a solid background in virology, immunology, molecular biology, and biochemistry. Preferred candidates will be currently participating in a leading research lab.

We provide a highly professional environment conducive to career development, as well as a competitive compensation and benefits program. Please send resume with salary history to: **Baxter Healthcare Corporation, Human Resources, Dept. GT95104, Route 120 & Wilson Rd., WG2-3S, Round Lake, IL 60073.** An Equal Opportunity Employer.

Baxter

Technical Service Chemist

Sigma Chemical Company currently has a position in the Technical Service Department of the Research Division. This is an opportunity for someone with a Ph. D. degree in Biochemistry or an M.S. degree with extensive experience in biochemical techniques to be presented a diversity of challenges.

The ideal candidate will have Postdoctoral or industrial experience in isolating and characterizing proteins. A broad background in teaching, purification, synthesis, analytical and detection techniques would be advantageous. Responsibilities include gathering and interpreting technical information, telephone and FAX interactions with our research customers worldwide, and the documentation and resolution of technical problems. Candidate MUST possess excellent verbal and written communication and customer relations skills.

Take advantage of this excellent opportunity with a rapidly-growing company offering competitive compensation and benefits, including a 401(k) plan. To apply, send resume and cover letter, including salary history to: **SIGMA CHEMICAL COMPANY; Attn: Human Resources; Position T.S./N.V. 3050 Spruce Street; St. Louis, MO 63103.**

SIGMA 
CHEMICAL COMPANY
P.O. BOX 14000, ST. LOUIS, MO 63178 USA

An Equal Opportunity Employer

The Molecular Therapeutics Program at Duke University has expanded the program for developmental and clinical trials in novel gene and cellular based therapeutics for human cancers and viral infections. We are seeking qualified individuals as research scientists and postdoctoral fellows in the following areas:

Cellular Immunology

Experienced cellular immunologists form an integral component of a cellular and gene based therapeutics program. Extensive experience in T cell activation, cloning, in vitro expansion, and phenotypic and functional assessment of human and murine T cells required.

Molecular Biology

We seek experienced molecular biologists to join a gene therapy program involved in anti-tumor and anti-viral strategies for clinical use. Extensive experience in cloning, vector construction, in vitro expression, RT-PCR required.

Cellular Biology

We seek experienced cell biologists to develop and implement human gene therapy trials involving tumor cell culture, in vitro gene transfer into tumor cells, and in vitro and in vivo assessment of gene transfer and gene expression.

Contact Dr. Eli Gilboa at Box 2601, Medical Sciences Research Building, Room 401, Duke University Medical Center, Durham, NC, USA 27710 or FAX (919) 681-7970.

*Duke University is An Equal Opportunity/
Affirmative Action Employer*

Program Directors Division of Elementary, Secondary, and Informal Education National Science Foundation

The National Science Foundation's (NSF's) Division of Elementary, Secondary, and Informal Education (ESIE) is seeking qualified applicants for Program Director positions in its Teacher Enhancement, Instructional Materials Development, and Young Scholars Programs. Openings are available commencing in Summer/Fall 1995 for a period of one-to-two-years. Positions may be filled as a Temporary employee or through the Visiting Scientist (VS) or Intergovernmental Personnel Act (IPA). Applicants must hold a Ph.D. plus have six plus more years of equivalent experience in research and/or education related to science, mathematics, or technology, or have related experience in referenced areas. Positions are open in the following areas:

- Elementary Science
- Elementary Mathematics
- Technological Education.

The salary range is from \$51,557 to 94,953 per annum; locality pay adjustments are included for VS/IPA appointments. Applicants must submit a resume, current salary, and up to three letters of recommendation by March 15, 1995 to the NSF, **ATTN: NINA BEARD, DIVISION OF HUMAN RESOURCE MANAGEMENT, SUITE 315, 4201 WILSON BLVD., ARLINGTON, VA 22230.** For general information, or information about the appointing authorities, call Ms. Beard at (703) 306-1185 (X3026). For information about the Division and its Programs, contact Ms. Jean Vanski, Deputy Division Director, ESIE, at (703) 306-1620. Hearing-impaired individuals should call TDD 703-306-0189. Qualified individuals who are women, ethnic/racial minorities, and/or persons with disabilities are strongly encouraged to apply. NSF is an equal opportunity employer committed to employing a highly qualified staff that reflects the diversity of our nation.

The National Institutes of Health National Center for Human Genome Research

The intramural program of the National Center for Human Genome Research (NCHGR), the National Institutes of Health (NIH) in Bethesda, Maryland, is now in operation. Scientists with a unique range of expertise and interests have been recruited to focus on the identification, localization, diagnosis, and treatment of human genetic disease.

We are now actively recruiting a tenure-track scientist in the field of

HUMAN AND MURINE GENOMICS

for a position within the Laboratory of Genetic Disease Research. The successful applicant will be provided with the space and resources needed to pursue an independent research program in mapping, isolating, and characterizing genes involved in human and/or murine genetic disease.

Candidates must have a Ph.D. and/or M.D. as well as advanced training in genome science: demonstrable expertise in genetic and physical mapping and positional cloning in humans or mice.

Competitive salary and benefit packages are available. Please forward curriculum vitae and three references to:

Robert L. Nussbaum, M.D.
Chief, Laboratory of Genetic Disease Research
NIH/NCHGR
Building 49, Room 4A72
49 Convent Drive MSC 4470
Bethesda, MD 20892-4470

Closing Date: April 1, 1995

NIH is an Equal Opportunity Employer

The Extracellular Matrix in Invasion, Metastasis, and Angiogenesis

Friday,
March 10, 1995

MAYER AUDITORIUM
University of Southern California Health Sciences Campus

Program

Welcome
PETER A. JONES, PhD
University of Southern California

Introduction
YVES A. DE CLERCK, MD
University of Southern California

ERKKI RUOSLAHTI, MD
La Jolla Cancer Research Foundation
Integrins as Signaling Molecules
in Cell Proliferation, Migration
and Apoptosis

DAVID A. CHERESH, PhD
The Scripps Research Institute
Role of Integrin $\alpha_v\beta_3$ in
Angiogenesis of Human Tumors

LYNN M. MATRISIAN, PhD
Vanderbilt University
Metalloproteinases in
Tumor Progression

BONNIE F. SLOANE, PhD
Wayne State University
Cathepsins in Cellular Invasion

JAMES P. QUIGLEY, PhD
State University of New York at Stony Brook
The Plasminogen Activator System
in Tumor Invasion and Metastasis

YVES A. DE CLERCK, MD
University of Southern California
Tissue Inhibitors of
Metalloproteinases in Tumor
Invasion and Metastasis

ZENA WERB, PhD
University of California, San Francisco
Proteolytic Degradation of the
Extracellular Matrix During
Physiological Invasion

DANIEL B. RIFKIN, PhD
New York University Medical Center
Interplay Between Growth
Factors, Matrix and Proteases
in Angiogenesis

HELENE SAGE, PhD
University of Washington
Positive and Negative Regulators of
Angiogenesis: Sparc and Angiostatin

Symposium organized by USC/Amgen Inc.
No registration fee • Information: (213) 764-0816

CELLULAR & MOLECULAR CANCER RESEARCH

The College of Medicine and the H. Lee Moffitt Cancer & Research Institute at the University of South Florida are seeking applications from Assistant, Associate and Full Professor level individuals to participate in the Cancer Center Research Programs under a stimulating academic environment that includes excellent laboratory and clinical facilities. Research programs include Immunology, Cancer Cell Biology, Molecular Oncology and Cancer Genetics. Academic rank and salary will be commensurate with experience and qualifications. These positions will be assigned to a specific, mutually agreed upon department within the College of Medicine with the possibility of tenure. Successful individuals must hold an M.D. or Ph.D. with a minimum of 2 years post doctoral training. Individuals at the rank of Associate Professor must have a demonstrated potential for extramural funding. Individuals for Full Professor must have a proven track record of independent research, leadership ability and training backed by publications and extramural funding.

Send current curriculum vitae and a brief statement of major academic interests to W.J. Pledger, Ph.D., Associate Center Director for Basic Research, Office of Faculty Recruitment, Moffitt Cancer Center, 12902 Magnolia Drive, Tampa, Florida 33612. Applicants who need a reasonable accommodation in order to participate in the selection process must notify Jody Swanson in the Office of Faculty Recruitment, (813) 975-7894, five days in advance. Applications must be postmarked by deadline of April 20, 1995.

The H. Lee Moffitt Cancer Center & Research Institute is a free standing Cancer Center located adjacent to the Health Sciences Center on the Tampa campus of the University of South Florida. In addition to a 162-bed full service cancer treatment facility, the Center has research laboratory space in four buildings including over 50,000 square feet of dedicated laboratory and support space in a new Cancer Research Center slated to open in June 1995.



**H. LEE MOFFITT CANCER CENTER
& RESEARCH INSTITUTE**
University of South Florida College of Medicine

Moffitt Cancer Center is an Equal Opportunity Employer.
The University of South Florida is an
EO/Equal Access/Affirmative Action Employer.

Help Deliver A New Era In Pharmaceuticals

Since 1888, Abbott has been at the forefront of discovery in the health care industry. In 1993, we committed \$881 million to R&D to answer some of today's most important scientific questions. As we continue our work, our Pharmaceutical Products Division has the following outstanding opportunity available.

SENIOR RESEARCH SCIENTIST/RESEARCH INVESTIGATOR

You will be responsible for high capacity screening with emphasis in the identification of agents for treatment in the Neuroscience disease area.

We require a PhD in Biochemistry, Pharmacology, or Molecular Biology as well as 3+ years of postdoctoral experience. We also require experience in high capacity screening, automation of bioassay, neuroscience drug discovery, and biochemical/ pharmacological characterization of new agents.

Abbott provides an excellent salary and benefits package, including profit sharing and a stock retirement plan. We are located in an attractive suburban area, approximately 30 miles north of Chicago. For confidential consideration, please send your resume with salary history to: **Alison Burke, D-583, AP6B, Job #NB73857, Abbott Laboratories, 100 Abbott Park Rd., Abbott Park, IL 60064.** Abbott is an Affirmative Action/Smoke-Free Employer.

ABBOTT LABORATORIES



Quality
Health Care
Worldwide
Since 1888

Experience The Abbott Edge.

LeukoSite is a growing Biopharmaceutical Company focused on the process of tissue-specific leukocyte trafficking and the discovery of novel therapies for inflammatory and autoimmune diseases. Founded by Tim Springer of Harvard Medical School, an outstanding team of scientists has been assembled to lead the Company's research and discovery program.



DIRECTOR, MOLECULAR BIOLOGY

Applications are sought for a senior management position as Director of Molecular Biology. Through extensive publications in peer reviewed journals, applicants will have established a national reputation in their chosen field. Candidates should have broad experience in a range of techniques including cloning and gene expression. Respondents should have a strong interest or experience in the field of inflammation, a hands-on approach, and a commitment to an integrated and team oriented approach to drug discovery. Prior industry experience would be advantageous.

Respondents should submit their complete CV and the names of three references to: Personnel Director, LeukoSite, Inc., 215 First St., Cambridge, MA 02142. An Equal Opportunity Employer.



Greenville Hospital System
Clemson University

DISTINGUISHED PROFESSORSHIP IN BIOLOGICAL SCIENCES

The Greenville Hospital System/Clemson University Biomedical Cooperative invites applications for a tenured Distinguished Professorship in the area of Cell and Developmental Biology with special competence in molecular techniques. The successful candidate must have a Ph.D., an outstanding research and teaching record, a strong history of grant support, and be able to work in both a medical and academic setting. S/he will be expected to collaborate with hospital-based clinicians, develop a graduate program in medically related research, and teach undergraduates. Applications must be received by April 21, 1995. Send letter of application, curriculum vita, a brief description of research plans and the names of five references to: Dr. J. David Gangemi, Director, GHS/CU Biomedical Cooperative, 445 Brackett Hall, Clemson University, Clemson, SC 29634-1912.

GHS/CU is an Equal Opportunity/ADA/Affirmative Action Employer and encourages applications from minorities and women.

Attention Non-U.S. Advertisers!

SCIENCE announces the 1995 pounds sterling rate card! Advertisers not based in the United States may choose to pay in U.S. dollars or pounds sterling.

SCIENCE continues its surge in the global marketplace, meeting the needs of advertisers! We are proud of our 71% growth in the non-U.S. market since 1991!

Contact your advertising representative for more information:

**In the U.S., call Janis Crowley at (212) 496-7704,
or fax to (202) 682-0816.**

**In Europe, call Gordon Clark at (44) 0223 302067,
or fax to (44) 0223 302068.**

**In Japan, call Mashy Yoshikowa at (81) 3 3235-5961,
or fax to (81) 3 3235-5852.**

**In Australia, call Keith Sandell at (61) 02 922 2977,
or fax to (61) 02 922 1100.**

SCIENCE



GLOBAL CAREER OPPORTUNITIES



Sultan Qaboos-University- Sultanate of Oman Department of Environmental Science, College of Sciences

Sultan Qaboos University, the National University of the Sultanate of Oman, urgently invites applications and nominations for the post of Professor and Head of the Department of Environmental Science in the College of Science.

The basic requirements for eligibility are: (1) Ph.D. in Environmental Science, (2) a minimum of ten years teaching and research experience in a recognized university, of least two years of which must have been spent as a full professor.

It is planned to start a separate Environmental Science Department from September 1995 and the Head of Department is expected to lead the establishment of the department. The first offering will be an Msc in Environmental Science, further details of which are available on request.

Apart from a very attractive tax free base salary depending upon qualifications and experience, the University offers free furnished accommodation, two years renewable employment contract with end of service gratuity, annual leave with return first class air tickets, a contribution towards the school fees of two dependent children below 18 studying in the Sultanate of Oman, free medical treatment in Government Hospitals.

Interested candidates are requested to submit their full C.V., along with copies of academic and experience certificates, quoting our Ref: ADV/SCI/02/95. to:

**The Director, Personnel Affairs,
Sultan Qaboos University,
P.O. Box 50, Al-Khod - 123,
Sultanate of Oman**



KAROLINSKA INSTITUTET Department of Bioscience at Novum Center for Structural Biochemistry

Research assistant/ Postdoctoral fellow NMR spectroscopy in biology

The position is available within the Unit for NMR Spectroscopy with placement at the Center for Structural Biochemistry (CSB) within the Department of Bioscience. CSB is situated at the South Campus of the Karolinska Institutet encompassing the NOVUM Research Park in Huddinge, about 20 km south of the center of Stockholm. The CSB has a staff of about 40 researchers and includes units for X-ray crystallography, molecular modelling, electron microscopy and NMR spectroscopy. The NOVUM Research Park provides an excellent environment with over 400 researchers within various biomedical disciplines.

The research within the Unit for NMR Spectroscopy includes structural and biophysical studies of biomolecules. The research presently concerns nuclear receptors, other steroid-binding proteins, ribosomal proteins and DNA-binding proteins from archaeobacteria. The NMR unit is equipped with a Varian Unity 500 MHz NMR spectrometer with all necessary hardware and extensive computing resources.

The applicant should have a solid background in NMR spectroscopy and biomolecular NMR. A second condition is that applicants should have experience in either physical and biophysical chemistry or protein expression and protein biochemistry. The position is available for four years with an initial limitation of one or two years.

For further information contact Dr. Torleif Härd (email th@csb.ki.se) (questions regarding qualifications etc.) or Ingvar Lennerfors (administrative questions) +46-8 608 92 33.

Applications should be sent to Karolinska Institutet, Department of Bioscience at Novum, S-141 57 HUDDINGE, SWEDEN together with CV, relevant publications, a short description of research interests and two recommendation letters. Please quote reference no 53021/4 and note that we want your application in 1 original and 1 copy.

Closing date: March 31, 1995

LECTURER IN AQUATIC ECOPHYSIOLOGY

Required by Department of Biological Sciences from September 1995. Candidates should have active research interests in the field of Aquatic Ecophysiology. The appointee will complement the research of existing Departmental strengths in this area. Salary on Lecturer scales either Grade A £14,756 - £19,326 p.a. or Grade B £20,133 - £25,735 p.a.

Information from Personnel, University of Exeter, Exeter EX4 4QJ; (01392) 263100 or e.mail Personnel@exeter.ac.uk, quoting reference no.3962. Closing date: 3 April 1995.

*Promoting Excellence In
Education & Research*

Equal Opportunities Employer

**UNIVERSITY
of EXETER**



UNIVERSITY OF MANCHESTER SCHOOL OF BIOLOGICAL SCIENCES

Two New Lectureships

Following our recent success in recruiting to a number of new lectureships, the School of Biological Sciences now seeks to appoint outstanding individuals to two further posts, recently created to support our continuing programme of development.

LECTURESHP IN ANIMAL BIOLOGY Ref: 62/95

This post aims to strengthen our existing research into animal biology at the whole-animal level by using genetic, molecular, endocrinological or cellular-based techniques. We therefore seek applicants from any biological discipline (physiology, pharmacology, anatomy, developmental biology, zoology etc) with an interest in environmental physiology, reproductive biology, or animal behaviour using either invertebrate or vertebrate model systems. The successful candidate will establish a vigorous research programme and contribute to undergraduate and postgraduate teaching.

Contact: Professor M J Emes tel: 0161 275 3899, fax: 0161 275 3954,
E-Mail MEmes@fs2.scg.man.ac.uk

LECTURESHP IN MICROBIOLOGY Ref: 63/95

Applications are invited from any area of bacteriology but individuals with an interest in researching molecular aspects of bacterial pathogenesis are particularly welcome. The successful candidate will be expected to develop an independent research group, encouraged to establish collaborative research projects and contribute to undergraduate and postgraduate teaching.

Contact: Professor Tony Trinci tel: 0161 275 3893, fax: 0161 275 5656,
E-Mail Tony.Trinci@man.ac.uk

Salary in the range £14,756 - £25,735 per annum. For application forms, further particulars and an information pack covering all of the posts in this new development, prospective applicants should contact The Director of Personnel, Academic Staffing Office, The University of Manchester, Manchester M13 9PL, tel: 0161 275 2028, fax: 0161 273 5306. Quote the reference given above. Enquiries by E-Mail to the Dean's Secretary: SLong@fs2.scg.man.ac.uk Informal enquiries concerning individual posts should be made to the contact persons listed above who will be happy to discuss the opportunities in more detail and to arrange for informal visits, etc. Closing date for applications 31st March 1995. As an Equal Opportunities Employer, the University welcomes applications from suitably qualified people from all sections of the community regardless of race, religion, gender or disability.

Promoting quality teaching and research.





Leicester University

Department of Biochemistry

POSTDOCTORAL RESEARCH

Control of Gene Expression by RNA Splicing

Applications are invited to join research into the selection of alternative splice sites in mammalian pre-mRNA. This will involve cross-linking, affinity purification and a number of techniques in molecular biology. The position is funded by the European Commission and is part of a collaboration with colleagues elsewhere in Europe.

The position is available for up to two years. The salary would be on the R&A IA, II or III scales (£13,941 - £30,533 pa). A PhD and a good first degree are required, with expertise in protein biochemistry or molecular biology. Applicants should be nationals of the EU or states participating in the Human Capital and Mobility Programme but not of the UK.

Applications (including a CV and the names of two referees) should be sent as soon as possible to **Dr Ian Eperon, Department of Biochemistry, University of Leicester, University Road, Leicester LE1 7RH, UK.** Informal enquiries are welcome and should be made to **Dr Eperon (Tel: (44) 116 252 3482; Fax: (44) 116 252 3369; e-mail, eci@leicester.ac.uk).**

Towards equal opportunities

Promoting excellence in University teaching and research



PROFESSOR OF ZOOLOGY

Townsville

Applications are invited for the Chair in Zoology which has become vacant following the appointment of Professor R E Jones as Deputy Vice-Chancellor (Science and Engineering). The appointee will also be Head of the Department of Zoology.

Applicants must have an international reputation for excellence in a field of Zoology and be able to provide academic leadership that maintains and enhances the existing strengths of the Department. The appointee will be required to contribute to both undergraduate and postgraduate teaching. In this regard applications should include a teaching portfolio.

The Department has 23 full-time academic staff and over 60 postgraduate research students. Research and teaching are focussed on whole animal biology with an emphasis on population and community ecology, wildlife and conservation biology, ecophysiology and animal behaviour, and systematics and evolution. In addition applied programs in aquaculture and entomology/pest management are offered.

As a joint member of the School of Biological Sciences the Department has close research and teaching links with the Departments of Marine Biology and Botany and Tropical Agriculture and is a member of the Cooperative Research Centres for Tropical Rainforest Ecology, Aquaculture and Tropical Savannas. The Department received over 3.6 million dollars in external research funding in the period 1992-1994. The location of the University and its field stations present outstanding opportunities for research in tropical terrestrial, freshwater and marine environments.

Tenure: The position is available on a permanent basis.

Salary: Academic Level E - A\$80176 a year.

Further information may be obtained from the Recruitment Officer, Human Resources Division, James Cook University of North Queensland, Townsville Q 4811 Australia. Phone 61 77 81 4880; Fax 61 77 81 5644. Applications close on 28 April 1995. Quote J195028.

Equal Opportunity in Employment is University Policy
The University has a "Smoke-Free Working Environment" Policy

JAMES COOK UNIVERSITY
OF NORTH QUEENSLAND

THE HONG KONG UNIVERSITY OF SCIENCE AND TECHNOLOGY

SCHOOL OF SCIENCE

seeks candidates for

HEAD OF DEPARTMENT OF BIOCHEMISTRY

The Hong Kong University of Science and Technology (HKUST) was incorporated in April 1988, and opened in October 1991, as a technological university dedicated to the advancement of learning and scholarship, with special emphasis on research, postgraduate education, and close collaboration with industry and business. Enrolment is expected to grow to 7,000 (FTE) by 1996-97, and possibly to higher levels further on. The School of Science which comprises five departments: Biochemistry, Biology, Chemistry, Mathematics, and Physics enrolls about one quarter of the University's undergraduate and postgraduate students.

HEAD, DEPARTMENT OF BIOCHEMISTRY

The Department of Biochemistry has comprehensive teaching and research programmes in both basic and applied aspects of biochemistry. It offers the following academic degrees: Bachelor of Science, Master of Science, Master of Philosophy and Doctor of Philosophy. It also maintains a close relationship with the Biotechnology Research Institute. There are 16 faculty members specializing in (1) Genetic Engineering and Protein Design, (2) Immunochemistry, (3) Neurochemistry, and (4) Plant and Medicinal Biochemistry. By 1997 the faculty strength will grow to 21.

Qualifications and Experience

Applications/nominations are invited from well-qualified and accomplished scientists for the post of Head of the Department of Biochemistry. In addition to extensive teaching and research experience, the successful candidate must have demonstrated leadership qualities necessary to lead and manage the Department.

Salary and Conditions of Service

Salary will be very competitive. Generous fringe benefits including medical and dental benefits, annual leave and children's education allowances are provided; housing benefit is provided at a charge of 7.5% of salary. Air passages are also provided where applicable; and a gratuity of 25% of the total basic salary drawn will be payable where applicable.

Application/Nomination Procedures

Applications/nominations together with a detailed curriculum vitae and the names and addresses/fax numbers of at least three and up to five referees should be sent to the **Director of Personnel, The Hong Kong University of Science and Technology, Clearwater Bay, Kowloon, Hong Kong (Fax No.: (852) 2358-0700) before 15 April 1995. Please quote Ref. BICH.HD on your application/nomination. The search will continue until a suitable appointment is made.**



Université de Montréal
Faculté de médecine

MEMBRANE TRANSPORT

The **Département de physiologie**, Faculté de médecine, Université de Montréal seeks applicants for a position at the level of assistant professor. **Functions:** The successful applicant will become member of the Membrane Transport Research Group of the Université de Montréal and is expected to join ongoing projects involving measurements of transport systems on membrane vesicles, and/or vesicle fusion onto planar lipid bilayer. The selected candidate must develop a strong independent research program and compete successfully for funding from agencies such as the Medical Research Council of Canada or the Fonds de la recherche en santé du Québec. Duties also include a minimum of teaching in physiology (less than 20% of time) and graduate student supervision. **Requirements:** Suitable candidates must have a minimum of three years of postdoctoral training and have a proven record of excellence in the field of molecular biology of membrane transport systems with a special focus on the structure-function relationship of P-glycoproteins. Knowledge of the French language is an asset. **Starting date:** Fall 1995. Applicants must send their curriculum vitae, a synopsis of research interest and three letters of reference, **before April 15th 1995 to:** Dr. Rémy Sauvé, Département de physiologie, Faculté de médecine, Université de Montréal, C.P. 6128, succursale Centre-ville, Montréal (Québec), H3C 3J7, CANADA. In accordance with Canadian immigration requirements, priority will be given to Canadian citizens and permanent residents of Canada. The University is committed to equal employment opportunity for women.

(0529)

POSITIONS OPEN

A non-profit educational institution located in north-eastern Ohio is seeking an **ENGINEER II**. The candidate will be responsible for technical aspects of research and technical aspects of clinical management e.g., computer programming, systems analysis, statistical analysis, control mechanisms and electrical systems interfacing in the Pediatric Intensive Care Unit. He/She will assist investigators and clinicians with computer interfacing and on-line data acquisition from various types of mechanical ventilators and bedside cardiorespiratory monitors as well as design new equipment for cardiovascular and respiratory monitoring to meet specific research needs. The candidate will have direct contact with critically ill infants and children and must maintain a professional demeanor around patients and their families as well as strict confidentiality concerning patient's medical records. He/She will also be required to work on several clinical research projects including pulmonary mechanics and weaning mechanical ventilation using various types of clinically used mechanical ventilators (e.g., Siemens Servo 900C, Newport Wave E200, and VIP Bird ventilators), pulmonary function equipment and indirect calorimetry in the Pediatric Intensive Care Unit. The minimum requirements for the job are a B.S. in biomedical engineering with two years of experience in the job described above. Alternatively the candidate will have an M.S. in biomedical engineering; no experience required, but will qualify with specific education in pulmonary physiology, pulmonary mechanics and mechanical ventilation. The salary will be \$36,600 per year. Monday through Friday 8:30 a.m. to 5:00 p.m. (37½ hours per week). Send two cover letters and résumés with names, telephone numbers, and addresses of three (3) recent professional or academic references who can confirm experience or education requirements (No Calls) to: **T. Do, J.O. No. 00434, Ohio Bureau of Employment Services, P.O. Box 1618, Columbus, OH 43216.** An Affirmative Action/Equal Employment Opportunity Employer.

SYMPOSIUM

You are invited to attend a **SYMPOSIUM** on "The Relation of Periodontal Infections to Systemic Diseases," May 20, 1995, in Buffalo, New York. Experts will discuss risk factors for periodontal disease, such as smoking, diabetes, altered phagocyte function, stress, distress, coping behaviors, and osteopenia. The effects of periodontal disease as increasing the risk for poor diabetic control, adverse pregnancy outcomes, and respiratory and cardiovascular diseases will also be discussed. Contact: **Dr. Robert Genco, State University of New York at Buffalo.** Telephone: 716-829-2854 or FAX: 716-829-2387.

COURSES AND TRAINING

METHODS IN COMPUTATIONAL NEUROSCIENCE

July 30–August 26, 1995. This is an intensive, lecture/laboratory course that addresses issues relevant to computational neuroscience: the study of how the biophysical and biochemical properties of neurons and synapses, together with the architecture of neural circuits, produce animal behavior. The program of the course consists of two daily lectures, presented by a faculty of 30 established investigators, computer simulation tutorial projects, and an individualized modeling project. The course is designed for advanced graduate students, postdoctoral fellows, and faculty members who have trained in a variety of disciplines, including neurobiology, physics, electrical engineering, computer science, and psychology. Enrollment is limited to 23 participants. Directors: **David Kleinfeld** and **David W. Tank**, Biological Computation Research Department, AT&T Bell Laboratories, Murray Hill, NJ.

Tuition: \$1,500 (room and board available at no additional charge). Limited financial aid is available.

Application Deadline: April 12, 1995.

For information and application forms contact: **Admissions Coordinator, Marine Biological Laboratory, Woods Hole, MA 02543.** Telephone: 508-289-7401; Internet: admissions@mbi.edu; World Wide Web: <http://www.mbl.edu>.

COURSES AND TRAINING

MECHANISMS OF NEURAL DISEASE: GRADUATE AND FELLOWSHIP TRAINING

Opportunities for research training at the graduate and postgraduate level in an NIH-sponsored training program "Molecular Mechanisms of Neurological Diseases," are available at the Cornell University Graduate School of Medical Science. Applicants may contact **John A. Wagner**, the director of the graduate program and the training grant, or any of the participating faculty for additional information about specific opportunities. Participating faculty include **Drs. Michael Caudy, Moses Chao, Robert Duvoisin, Henry Furneaux, Sam Gandy, Gary Gibson, Steve Goldman, Bernice Grafstein, Charles Inturrisi, Tong Joh, Peter MacLeish, Teresa Milner, Gavril Pasternak, Virginia Pickel, Fred Plum, Jerome Posner, and Donald Reis.** Cornell University Graduate School of Medical Science, 1300 York Avenue, New York, NY 10021. *Cornell University Medical College is an Affirmative Action/Equal Opportunity Employer.*

ANNOUNCEMENTS



American Institute for Cancer Research

ANNUAL RESEARCH CONFERENCE

"Dietary Phytochemicals in Cancer Prevention and Treatment"

August 31 and September 1, 1995
Washington, DC

For more information please call the
AICR Research Department at
202-328-7744 or 1-800-843-8114
or Email: jjohn@capcon.net

THE SIXTH INTERNATIONAL MEETING ON CHEMICAL SENSORS

July 22–25, 1996

National Institute of Standards and Technology
Gaithersburg, Maryland 20899

The meeting will be held at the National Institute of Standards and Technology in Gaithersburg, Maryland located just outside of Washington, DC, USA. The scientific program will include plenary presentations, and oral and poster presentations of contributed papers. Oral and poster sessions will be devoted to various areas including: sensing principles and mechanisms; new materials development; novel approaches to sensing, acoustic sensors, electrochemical sensors, ion selective electrodes, optical devices, biosensors, gas sensors, humidity sensors, environmental monitoring, process control sensing, sensor fabrication technology, and signal processing. The official language of the meeting will be English. Contributed papers will be published.

For further information call or write: **Howard H. Weetall, National Institute of Standards and Technology, 222/A353, Gaithersburg, MD 20899 USA.** Telephone: 301-975-2628; FAX: 301-330-3447; Email: weetall@nist.gov.

MARKETPLACE

Polyclonal Antisera

THE HIGHEST QUALITY AT THE LOWEST PRICE
—Plus—

SPECIAL INTRODUCTORY DISCOUNTS

CALL FOR A FREE CATALOG

800-454-6790

FAX (619) 454-7851

La Jolla Diagnostics

A division of
PATHFINDER HOLDING CORPORATION
800 Silverado
La Jolla CA, 92037

Circle No. 59 on Readers' Service Card

MARKETPLACE

Custom Polyclonal Antibodies
BEST PRICES • BEST ANIMALS
ANIMAL PHARM SERVICES
(800)808-0550

Circle No. 88 on Readers' Service Card

enzymes CATALOG AVAILABLE!

- CELL ISOLATION / CULTURE
- MOLECULAR BIOLOGY
- PROTEIN RESEARCH

QUALITY • VALUE • SERVICE

worthington Ph: 800-445-9603 • Fax: 800-368-3108
Halls Mill Road • Freehold, NJ • 07728

Circle No. 30 on Readers' Service Card

JETstar Mini, Midi, Maxi

Plasmid Purification

GENOMED Inc. — simply the BEST!
800-436-6548 fax: 919-870-9352

Circle No. 75 on Readers' Service Card



EVERYTHING YOU NEED FOR PROTEIN CRYSTAL GROWTH

Crystallization research products for proteins, peptides & nucleic acids

FREE CATALOG

(800) 452-3899

Fax (909) 784-2215

Internet XTALROX@AOL.COM



Circle No. 4 on Readers' Service Card

The premium antibody for phosphotyrosine detection is available from the laboratory where it originated, for the low price of

PY20 from **TRANSDUCTION LABORATORIES**
1-800-227-4063 only

\$100/mg!

Quality Antibodies for Signal Transduction Research

Circle No. 43 on Readers' Service Card

custom custom custom custom custom custom custom custom

PEPTIDE and DNA

Peptide and DNA engineering specialist:
Phosphoryl, Thiophosphoryl, Biotinyl, Chloromethyl, Cyclic, Dimeric, Partial protected, FITC, DNP, pNA, AMC, Phosphothionate and more

IonSpray MS and LC/MS

Synthetic or natural compounds analysis:
Organic, Inorganic, or coordination compounds
Drug metabolites, Enzyme digests, ect.
\$30/sample (MS), \$250/sample (LC/MS)

Call for more information (800-597-7873) or
Fax us sequence for quotation (510-371-1156).
PeptidoGenic Research & Co. Livermore, CA.

Circle No. 5 on Readers' Service Card

Marketplace ads continued on page 1562

MARKETPLACE

**CUSTOM ANTIBODIES
TO PEPTIDES & PROTEINS**

Purification, Conjugation and ELISA Titration Available

**HTI BIO-PRODUCTS, INC.**

1 (800) 481-9737 OR (619) 788-9691 Fax (619) 788-9694

Circle No. 38 on Readers' Service Card

ROCKLAND
Immunochemicals for ResearchAntibodies to **ENZYMES**
Anti-**APOLIPOPROTEINS**
Antibodies to **COLLAGENS**

800-656-ROCK Fax 610-367-7825

Circle No. 27 on Readers' Service Card

The Complete
Oligonucleotide
Company**KEYSTONE**Introducing
**MiniScale
Oligos****\$1.75 per base
No set-up fee.**Minimum order 30
oligonucleotides.Keystone Laboratories, Inc.
961 Hamilton Avenue Menlo Park, CA 94025
tel 800-788-4DNA fax 800-786-4DNA
e-mail keydna@keydna.com
VISA, Mastercard, American Express.

Circle No. 16 on Readers' Service Card

CUSTOM DNA SYNTHESIS

PURE & SIMPLE

● Price
as low as **\$2¹⁹**
per base
plus set up

- + ● Superb Technical Support
- + ● Impeccable Quality
- + ● World's Fastest Service

MIDLANDTHE UNDISPUTED #1
CUSTOM DNA SYNTHESIS SERVICETHE MIDLAND CERTIFIED REAGENT COMPANY
3112-A West Cuthbert Avenue
Midland, Texas 79701
Phone 1-800-247-8766 FAX 915-694-2387

Circle No. 8 on Readers' Service Card

MARKETPLACE

DNA | PEPTIDES**\$.1.75 /base**

● Column Purified

● No setup fee

\$.20 /residue

● 15-40 mg in 5 days

● No setup fee

GENEMED BIOTECHNOLOGIES
1 (800) 344-5337 • Fax (415) 952-9540

Circle No. 77 on Readers' Service Card

\$195 CUSTOM PEPTIDES

● 15 - 30 mg ● 8 - 20 residues

● Mass Spec. Provided

● Quantity discounts available

**CHIRON**
MIMOTOPES
PEPTIDE SYSTEMSNorth America:
Tel:
1-800-338-4965
Fax:
1-800-654-5592

Circle No. 9 on Readers' Service Card

PEPTIDES
Custom (worldwide service)
\$20/RES. (Discount for 1st order)
No setup charge, free HPLC, A.A. analysis
PEPTIDE ANTIBODY: \$250/RABBIT
UNBEATABLE: NO CHARGE IF NO ANTIBODY PRODUCTION
PEPTIDE LIBRARY: FROM \$150/LIBRARY
TANA LAB., LC. 1-800-400-0070 (Tel)
1-713-663-7163 (Fax)

Circle No. 31 on Readers' Service Card

QED Monoclonal Antibodies
are just the Beginning...
Monoclonal Antibody Products
Hybridoma Development
CDR Sequencing/Modeling
(800) 929-2114 FAX (619) 451-0105
A business unit of ImmunoPharmaceuticals, Inc.

Circle No. 54 on Readers' Service Card

Activated For Protein Modification

PEGs**Shearwater Polymers, Inc.**

(800) 457-1806

(205) 533-4805 (fax)

Circle No. 2 on Readers' Service Card

**Human Microvascular Cells
Complete Cell System**

NOW ONLY \$350

NEW DEFINED ANIMAL ENDOTHELIAL CELL SYSTEMS:
Porcine Aortic Endothelial Cell System
Bovine Aortic Endothelial Cell System**cell systems**

800-697-1211

Circle No. 58 on Readers' Service Card

MARKETPLACE

World leader in Synthetic DNA and Peptides

DNA
● NO SETUP charge ● NO minimum order
\$1⁹⁹ base
● Column Purified
● 10.0 OD's (~330 µg)
● Gel Picture Q. C.
● Synthesis Report
● 24 hour SHIPPING

PEPTIDES

! FREE MASS SPEC !
● NO SETUP charge ● Free HPLC Tracing
\$20⁰⁰ /res. ● 15-40 mgs
● 8 - 30 residues
● Shipped in 5 days
! Antipeptide Antibodies production services, & more !

Since 1984, serving you with quality products

BIO-SYNTHESIS

1-800-227-0627 Fax: 214-420-0442

Circle No. 7 on Readers' Service Card

FREE DEMO DISK

Software for
Combinatorial Mutagenesis
and
Directed Evolution
of Proteins
KAIVOS[®] SCIENTIFIC, INC.**CyberDope™**10⁶ times better than randomFAX:
(408) 362-1200
E-Mail:
cyberdope@aol.com

Circle No. 10 on Readers' Service Card

ONLY DNA

No frills, Just good DNA at very low prices

\$1.60 per base

- No set-up fee
- 48 hour turnaround
- 50 nanomole synthesis

1-800-359-5794 email onlydna@wln.com

Circle No. 39 on Readers' Service Card

ANTIBODIES
Conjugates
Secondary
Custom
Antibodies Inc.
Price
below
competitors.
Call
1-800-824-8540
Fax: (916) 758-6307

Circle No. 1 on Readers' Service Card

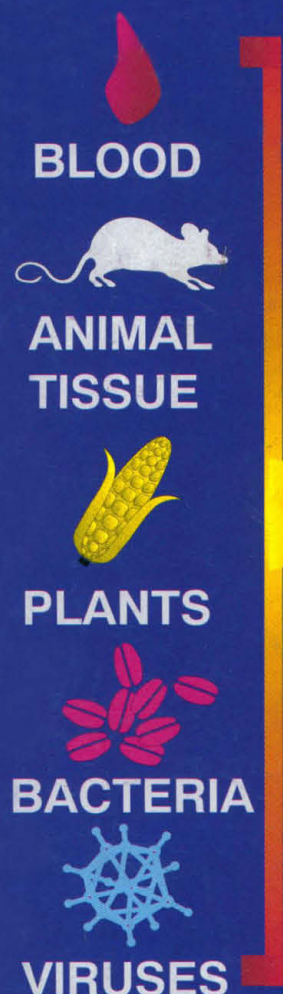
**Custom DNA
Purified & Delivered in 48 hours****\$5.00 per base • Purified****Guaranteed minimum 100µg****Research Genetics, Inc.**
1-800-533-4363

Circle No. 12 on Readers' Service Card

GENERELEASER

PCR* READY DNA IN 5 MINUTES

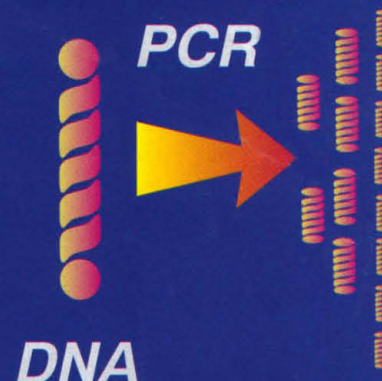
1993
R&D
100
WINNER



**SAMPLE
TYPES**



- * FIVE MINUTE PROTOCOL
- * MULTIPLE ASSAYS
- * KITS NOW AVAILABLE



DNA

PCR

RT-PCR

RNA

IN ADDITION TO THE STOCK GENERELEASER REAGENT, KITS FOR DNA AND RNA PREPARATION FROM MOUSE TAILS, WHOLE TISSUES, YEASTS, PLANTS, AND PARAFFIN EMBEDDED TISSUES ARE AVAILABLE COMPLETE WITH PROTOCOLS, MICROWAVE RACK, DISPOSABLE PESTLES AND TUBES FOR 50 ASSAYS.

**CALL NOW FOR ONE OF THE MOST COST EFFECTIVE,
INNOVATIVE SAMPLE PREPS AVAILABLE**

BioVentures, Inc.

Phone 800-235-8938 FAX 615-896-4837

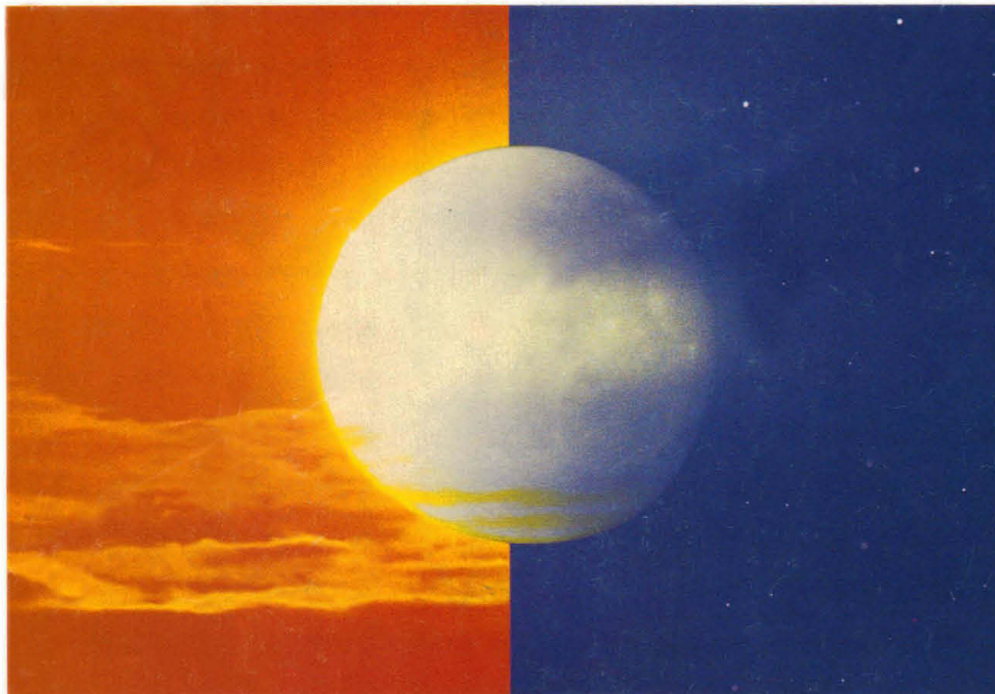
AUSTRALIA: Integrated Sciences Pty. Ltd. (02) 436-2611 AUSTRIA: Vienna Lab (1) 740-40-190 BELGIUM: Eurogentec (41) 66 01 50 CANADA: General Synthesis & Diagnostics (416) 978-8805 & Kara-Tech (604) 264-8844
CHINA: Jingmei Biotech 364-273 & T.W.C. BioSearch International (852) 699-6208 CZECH REPUBLIC: BioVendor sro (49) 69-6772127 FRANCE: ATGC Biotechnologie (1) 43 04 21 00 & Eurogentec (41) 66 01 50
GERMANY: Angewandte Gentechnologie Systeme mbH (6221) 831023 & Eurogentec (41) 66 01 50 & Syntex-Vertriebsgesellschaft mbH (69) 359686 or (6221) 161720 ISRAEL: Talron (8) 472563 ITALY: Polymed srl (55) 8071285
JAPAN: Funakoshi (3) 5684-1622 KUWAIT: Boushahri Medtech 5729000 THE NETHERLANDS: Eurogentec (41) 66 01 50 NEW ZEALAND: Integrated Sciences Pty. Ltd. (02) 436-2611
SOUTH AFRICA: Whitehead Scientific (21) 981-1560 SPAIN: Bio-Synthesis (1) 352-63-99 & C.E. Durviz sl (6) 347-6409 TAIWAN: Pro-Tech (2) 3810844 UNITED KINGDOM: Cambio 223-66500

*PCR IS COVERED BY PATENTS OWNED BY HOFFMANN-LA ROCHE

Circle No. 14 on Readers' Service Card

QuantikineTM Immunoassays

Precise, Accurate and
Highly Reproducible...



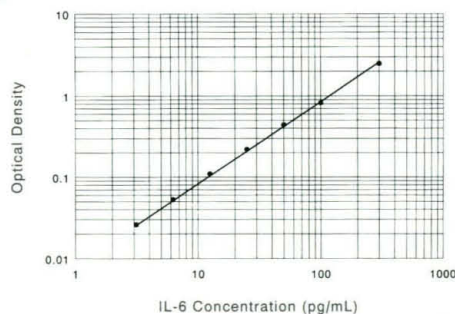
...as sure as night follows day.

The components of R&D Systems' Quantikine Immunoassays are engineered to provide outstanding performance:

- ▶ Precision ▶ Sensitivity
- ▶ Accuracy ▶ Specificity

More than 45 different immunoassays available for the measurement of cytokines and cytokine receptors.

Typical IL-6 Standard Curve



FOR RESEARCH USE ONLY. NOT FOR USE IN DIAGNOSTIC OR THERAPEUTIC PROCEDURES.

U.S.A. and Canada

R&D Systems, Inc.
614 McKinley Place NE
Minneapolis MN 55413, USA.
Tel: 612 379-2956
Fax: 612 379-6580

Europe

R&D Systems Europe Ltd.
4-10 The Quadrant, Barton Lane
Abingdon, OX14 3YS, UK.
Tel: +44 (0)1235 531074
Fax: +44 (0)1235 533420

Japan

Funakoshi Co., Ltd.
9-7, Hongo 2-Chrome
Bunkyo-ku, Tokyo 113, Japan
Tel: +81 (03) 56841622
Fax: +81 (03) 56841633

Circle No. 49 on Readers' Service Card

Quantikine

- human IL-1 α
- human IL-1 β
- human IL-1ra
- human IL-2
- NEW human IL-2 sR α
- human IL-3
- human IL-4
- human IL-5
- human IL-6
- human IL-6 sR
- human IL-7
- human IL-8
- NEW human IL-10
- human IL-11
- human IL-12
- human ANG
- human EGF
- human FGF basic
- human G-CSF
- human GM-CSF
- human GRO α
- NEW human IFN- γ
- human LIF
- human M-CSF
- NEW human MCP-1
- human MIP-1 α
- NEW human MIP-1 β
- human OSM
- human PDGF-AB
- human RANTES
- human SCF
- human SLPI
- human sTNF RI
- human sTNF RII
- human TfR
- human TGF- β 1
- human TGF- β 2
- human TNF- α
- human TNF- β
- NEW human VEGF

Quantikine HS

- human IL-1 β
- human IL-3
- human IL-6
- human IL-7
- human FGF basic
- human TNF- α

Quantikine IVDTM

- human Epo

RESEARCH AND DIAGNOSTICS

R&D
SYSTEMS

1-800-343-7475