

## Physiological Data Logger for Humans

The Mini-Logger Series 2000 is a wearable, physiological data logger for simultaneously monitoring temperature, activity, and heart rate in ambulatory humans. Whether the subject is awake or asleep, at work or at play, the multichannel Mini-Logger provides accurate data 24 hours a day, making the world a laboratory for circadian rhythm studies,



research on pain management, sleep assessment, and any other study requiring data collection from humans. The unit weighs 125 grams and measures 120 by 65 by 22 mm. Four channels can be designated with any combination of activity or temperature while the fifth channel is dedicated to heart rate or inter-beat interval data. The unit stores data for later downloading to a personal computer for analysis. **Mini-Mitter. Circle 139.**

## Manual DNA Cycle Sequencing Kit

The AmpliCycle Sequencing Kit is a complete, flexible kit for manual cycle sequencing of DNA. The kit yields high-quality, reproducible sequencing ladders from a wide variety of DNA templates, including polymerase chain reaction products, rapidly and reliably. The kit contains a

novel new enzyme, AmpliTaq DNA Polymerase, CS (cycle sequencing), which is a recombinant form of a full-length, 94 kD thermostable DNA polymerase obtained by expression of a modified form of the Taq DNA polymerase gene in *Escherichia coli*. The special properties of this enzyme include the absence of both the 3' to 5' and 5' to 3' exonuclease activities. The kit supports two types of labeling methods—direct incorporation of label or end-labeling of sequencing primers with  $^{32}\text{P}$ ,  $^{33}\text{P}$ , and  $^{35}\text{S}$  nucleotide labels. **Perkin-Elmer. Circle 140.**

## DNA Polymerases

Two highly purified Klenow (large fragment) DNA polymerases are both qualified for Sanger dideoxy sequencing. Klenow Sequencing Grade is for laboratories that perform site-directed mutagenesis regularly and need a DNA polymerase for sequencing with proofreading capability. Klenow Exo Minus is for laboratories that need an inexpensive alternative to T7 DNA polymerase for sequencing and for use in strand displacement amplification protocols. **Promega. Circle 141.**

## Somatic Cell Hybrid Panels

A new monochromosomal somatic cell hybrid panel (MSC Hybrid Panel) for chromosome localization has been added to a line that includes a polychromosomal panel. The MSC Hybrid Panel consists of 24 cell lines, 22 of which contain a single human chromosome (the other two cell lines contain two human chromosomes). The panel will not only provide an independent

confirmation of chromosome location, but will also provide DNA for the generation of chromosome-specific libraries and probes. If sublocalization or confirmation is needed, the manufacturer also offers a fluorescence in situ hybridization service. **BIOS Laboratories. Circle 142.**

## Monoclonal Antibodies

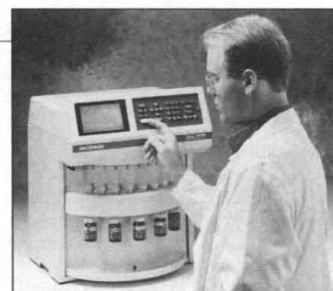
Three new monoclonal antibodies (mAbs) for use in signal transduction research include Anti-Phosphoserine (clone PSR-45), Phosphothreonine (clone PTR-8), and Phosphotyrosine (clone PT-66). These mAbs react only against a specific phosphorylated amino acid. All three are available conjugated to biotin, fluorescein isothiocyanate, tetramethyl rhodamine isothiocyanate, and agarose. **Sigma ImmunoChemicals. Circle 143.**

Also for signal transduction research, anti-Ash/Grb-2 mAb recognizes an epitope in the  $\text{NH}_2$ -terminal SH3 domain of human, rat, or mouse Ash/Grb-2. **Kamiya Biomedical. Circle 144.**

A new mAb against p27<sup>Kip1</sup> for use in cell cycle regulation studies can be used in protein immunoblotting against a broad range of species as well as in other immunological applications. **Transduction Laboratories. Circle 145.**

## DNA Synthesizer

The multi-column Oligo 1000M DNA Synthesizer is designed for multi-users and groups with high-volume oligonucleotide needs. With its 2-min cycle times and 10-min cleavage and deprotection, the unit produces high-quality oligonucleotides in less than



an hour. Featuring eight columns, it is practical for a multi-user environment. Its efficient reagent consumption lowers the cost of making oligonucleotides to one-half the price of most commercial suppliers, according to the manufacturer. **Beckman Instruments. Circle 146.**

## Literature

**3M Empore Extraction Disk:** *The Revolutionary Disk that will Dramatically Improve your Environmental Water Sample Preparation* is a 6-page brochure on a product designed for the extraction of a wide variety of environmental analytes from drinking water, ground water, and waste water samples. **Phenomenex. Circle 147.**

**DNA Labstation 625** is a brochure on a device that offers unattended sequencing reaction preparation, including DNA template purification, for both single- and four-dye automated sequencing systems. A special section explains the built-in magnetic purification system. **Molecular Dynamics. Circle 148.**

**Sigma ImmunoChemicals 1995 Catalog** features 130 new products among the 1700 products listed, including antibodies, conjugates, substrates, reagents for analytical cytology, growth factors, interleukins, and more. **Sigma ImmunoChemicals. Circle 149.**

**Column Blanks, End Fittings, Modular Column Systems, and Frits for HPLC** is a brochure on how column performance is affected by the dimensional stability of these components in high-performance liquid chromatography (HPLC). **Isolation Technologies. Circle 150.**

Newly offered instrumentation, apparatus, and laboratory materials of interest to researchers in all disciplines in academic, industrial, and government organizations are featured in this space. Emphasis is given to purpose, chief characteristics, and availability of products and materials. Endorsement by *Science* or AAAS is not implied. Additional information may be obtained from the manufacturers or suppliers named by circling the appropriate number on the Readers' Service Card and placing it in a mailbox. Postage is free.

# Science

## PERSONNEL PLACEMENT

### LINE CLASSIFIED ADVERTISEMENTS

**Deadlines:** Ads are due by Thursday, 10 a.m., 2 weeks prior to the issue date. *Science* is published each Friday, except the last Friday of the year. Call for holiday deadlines. Ads must be submitted in writing.

#### How to Submit a Classified Ad:

Prepare double-spaced typewritten copy. Do not include any abbreviations. *Science* will edit and typeset ads according to *Science* guidelines. Include billing information, and desired publication date. Available categories: Positions Open, Meetings, Announcements, Courses and Training, Search Firms. *Science* cannot provide proofs of typeset line ads.

#### Mail, FAX or Email materials to:

Science Classified Advertising  
1333 H Street, N.W., Room 814  
Washington, DC 20005  
Telephone: 202-326-6555  
FAX: 202-682-0816

Internet Email: science\_classifieds@aaas.org

**Rates:** Ads are \$43 per line; \$430 minimum. One line equals 52 characters and spaces; centered headings equal 32 characters and spaces. A 3% cash discount is granted to all prepaid ads.

**Estimates:** *Science* will provide a cost estimate for line ads. This is an approximate cost only. Allow for variation between estimated lines and actual typeset lines and resulting final cost. Purchase orders must allow for some degree of flexibility and/or adjustment.

**Ads from Outside the U.S.:** A discount of \$30 will be offered to advertisers making payment in U.S. dollars by checks drawn on U.S. banks. Contact Gordon Clark at +44 223 302 067 (telephone) or +44 223 302 068 (FAX).

**Credit Cards:** *Science* accepts American Express, MasterCard and VISA. Discount does not apply to credit cards.

**Cancellations:** Deadline for cancellation is 10 a.m., Tuesday, 10 days prior to issue date.

### DISPLAY PERSONNEL ADVERTISEMENTS

For rates and info. for fractional display ads call:

Deborah Cummings  
Recruitment Advertising  
Telephone: 202-326-6541  
FAX: 202-682-0816

Janis Crowley  
Recruitment Advertising Manager  
Telephone: 212-496-7704  
FAX: 202-682-0816

Gordon Clark  
European Recruitment Advertising  
Telephone: +44 223 302 067  
FAX: +44 223 302 068

**CONDITIONS:** The AAAS encourages employers to actively recruit and employ underrepresented minority groups. *Science* reserves the right, at its discretion, to edit or decline to publish advertisements submitted to it.

## POSITIONS OPEN

### SIGNAL TRANSDUCTION CORNELL UNIVERSITY

Applications are invited for the position of **ASSISTANT PROFESSOR** in the Department of Pharmacology at the College of Veterinary Medicine, Cornell University. Candidates using molecular approaches in any area of cell signal transduction will be considered. Responsibilities include the teaching of pharmacology to veterinary and graduate students, participating in the development of a strong graduate student training program in association with our NIH training grant in Biophysical and Biochemical Pharmacology and establishing an outstanding research program. Current research interests in the department include cell regulation, structure and function of receptors and ion channels, membrane-bound and intracellular signalling systems, exocytosis, and trans-epithelial ion transport. Candidates should have the D.V.M., M.D., Ph.D. or equivalent degree, should be firmly committed to an academic career in teaching and research, and have strong or potentially strong research programs. Salary will be commensurate with qualifications and experience. Letters of application, together with a curriculum vitae and three letters of recommendation, should be sent to: **Dr. Geoffrey W. G. Sharp, Chairman, Department of Pharmacology, College of Veterinary Medicine, Cornell University, Ithaca, NY 14853-6401. Fax: 607-253-3659.** Additional information can be obtained via Email by contacting **Marge McKinney**, at [mfm1@cornell.edu](mailto:mfm1@cornell.edu) or through **Gopher: zoo.vet.cornell.edu**. *Cornell University is an Equal Opportunity/Affirmative Action Educator and Employer. Women and minorities are strongly urged to apply.*

### MOLECULAR BIOLOGIST

Baylor College of Medicine, Department of Otorhinolaryngology and Communicative Sciences announces a tenure-track **ASSISTANT/ASSOCIATE PROFESSOR** position. The applicant must have a Ph.D., or its equivalent, with relevant postdoctoral experience. Applicants with an active research interest in the biology of sensory transduction are encouraged to apply. The chosen candidate must develop an independent research program, contribute to department and institutional teaching efforts, and interact with existing research faculty in the auditory and vestibular sciences. Exceptional candidates with a proven track record may be considered at the Associate Professor level. Send a curriculum vitae, detailed statement of research interests, and names and telephone numbers of three references by March 15, 1995, to: **Herman A. Jenkins, M.D., Department of Otorhinolaryngology and Communicative Sciences, One Baylor Plaza, Houston, TX 77030.** *Baylor College of Medicine is an Equal Opportunity/Affirmative Action Employer and encourages women, minorities and persons with disabilities to apply.*

### BUCKNELL UNIVERSITY ASSISTANT PROFESSOR OF BIOLOGY

Two temporary one-year sabbatical replacement positions, entry level, beginning August 1995. One position will involve teaching comparative anatomy and general biology and the other molecular and cellular biology. Ph.D. preferred. Applicants should forward curriculum vitae, evidence of teaching effectiveness, and three letters of recommendation to:

**Dr. Wayne McDuffett, Chair  
Department of Biology  
Bucknell University  
Lewisburg, PA 17837**

Closing date for applications: March 15, 1995. *Bucknell University encourages applications from women and members of minority groups. An Equal Opportunity/Affirmative Action Employer.*

### BIOMEDICAL ENGINEERING FACULTY POSITION

Rice University invites applications for a tenure-track appointment as **ASSISTANT PROFESSOR** in the field of biomaterials—with research interests in cellular and tissue engineering. Areas of particular interest include cell specific biomaterials and materials fabrication at the micron to nanometer scale. Send curriculum vitae, statement of teaching and research interests, and three letters of recommendation to: **Dr. Larry V. McIntire, Chair, Institute of Biosciences and Bioengineering, Rice University, Houston, TX 77251-1892.** *Rice University is an Equal Opportunity/Affirmative Action Employer; women and minority candidates are encouraged to apply.*

## POSITIONS OPEN

### ASSISTANT OR ASSOCIATE PROFESSOR Biochemistry/Molecular Biology

The Department of Biological Sciences at the University of North Texas, located in the Dallas/Fort Worth metropolitan area, invites applications for a tenure-track faculty appointment at the rank of **ASSISTANT** or **ASSOCIATE PROFESSOR**. Candidates must have a Ph.D. and relevant postdoctoral experience, and will be expected to establish an independent, extramurally funded research program in biochemistry and/or molecular biology. Preference will be given to applicants whose research interests involve higher eukaryotic organisms. Teaching responsibilities will include a graduate course in protein structure-function and enzymology and participation in the undergraduate biochemistry/molecular biology program. Applicants should submit curriculum vitae, a description of research plans, and at least three letters of recommendation to: **Biochemistry/Molecular Biology Search Committee, Department of Biological Sciences, University of North Texas, P.O. Box 5218, Denton, TX 76203-0218.** To ensure full consideration, applications should be received by April 17, 1995. *The University of North Texas is an Equal Opportunity/Affirmative Action Employer. Women, disabled persons, and individuals from all racial, ethnic, and cultural backgrounds are encouraged to apply.*

### RANGELAND SCIENTIST

**ASSOCIATE/FULL PROFESSOR**, tenure-track, 12-month split appointment (50-50) between the Department of Environmental and Resource Sciences and the School of Veterinary Medicine. Ph.D. in Rangeland Ecology/Management/Science or closely related discipline (must have at least one degree in range); significant experience in conflict resolution; a familiarity with public and private land issues; teaching experience; demonstrated ability to effectively work in interdisciplinary teams; and a record of publication and extramural funding. Position will be an integral part of the development and implementation of the University of Nevada, Reno Center for Sustainable Agreements, a multidisciplinary approach to merging the biological and social sciences to achieve good decisions for the land. Consideration of applicants will begin on April 15, 1995, and continue until the position is filled. Send letter of application, curriculum vitae, copies of pertinent publications, and three letters of reference to: **Dr. G. Fred Gifford (Telephone: 702-784-4020) or Dr. Don Hanks (Telephone: 702-784-6135), University of Nevada, Reno, Environmental and Resource Sciences (MS 186), 1000 Valley Road, Reno, NV 89512.**

*An Affirmative Action/Equal Opportunity Employer. University of Nevada, Reno employs only U.S. Citizens and aliens lawfully authorized to work in the United States. Diversity will be strongly considered.*

### ASSISTANT PROFESSOR PHARMACOLOGY

The Department of Physiology/Pharmacology at the University of Osteopathic Medicine and Health Sciences is seeking candidates for a tenure-track **ASSISTANT PROFESSOR** position. A Ph.D. degree is required with primary responsibility for teaching medical pharmacology in several university programs. The candidate will have the opportunity to conduct independent research or participate in departmental research programs. Letter of interest, curriculum vitae and names of three references should be sent to: **Mearl Kilmore, Ph.D., Professor and Chairman of Search Committee, Department of Physiology/Pharmacology, 3200 Grand Avenue, Des Moines, IA 50312.** *The University is an Equal Opportunity Employer.*

**Academic: Infectious Diseases.** The Division of Infectious Diseases, the University of Pittsburgh School of Medicine, is seeking a full-time M.D. or Ph.D. at the **ASSISTANT PROFESSOR** level to pursue a research career in the pathogenesis and/or immunology of intracellular pathogens using molecular techniques. At least 80% of time will be devoted to research and the investigator will be expected to become self-sufficient in external funding. Tenure status and salary dependent on qualifications. A letter of interest and complete curriculum vitae should be sent to: **Edward J. Wing, M.D., Chief, Division of Infectious Diseases, University of Pittsburgh Medical Center, Montefiore University Hospital-Room W931, 200 Lothrop Street, Pittsburgh, PA 15213.** *The University of Pittsburgh is an Affirmative Action/Equal Opportunity Employer.*





Bristol-Myers Squibb

# Uncompromising Science

*In 1995, Bristol-Myers Squibb will invest more than \$1 billion on research and development.*

*Our 4,000 scientists and support*

*personnel are dedicated to achieving and sustaining a pre-eminent position in the design and development of breakthrough, cost-effective therapies.*

**Wallingford, Connecticut**

## **CENTRAL NERVOUS SYSTEM**

### **Research Investigators**

We are actively pursuing research in the areas of neurodegenerative diseases (stroke and Alzheimer's Disease), sleep disorders, and eating disorders. Our research environment is characterized by multidisciplinary collaborations among scientists trained in different aspects of neuroscience and molecular neurobiology. Successful candidates will share an interest in better understanding neurologic and psychiatric disorders as they relate to the identification and preclinical development of potential new therapeutics which will meet unmet medical needs or offer significant advantages over currently available agents. Applicants should have at least 3 years of relevant postdoctoral experience. The productivity and expertise of the candidate are more important than are the specific areas of training. Opportunities at various levels exist in molecular neurobiology, neuropharmacology and neurophysiology, and in behavioral neuroscience. Reply to DEPT. HD-CNS

### **Postdoctoral Fellows**

Fully funded Postdoctoral Fellow positions are available to participate in exploratory brain research. Opportunities exist for Postdoctoral Fellows to work with scientific mentors engaged in research related to neurodegenerative diseases, feeding disorders, and the regulation of receptors in the CNS. Applications are invited from (but not limited to) candidates with interests in cell biology, molecular biology, and neuropharmacology. Reply to DEPT. HD-CNS.2

## **VIROLOGY**

### **Research Scientists**

The Virology Discovery Group has several research positions available for highly motivated individuals interested in the discovery and development of novel antiviral compounds. Candidates should have a B.S. or M.S. with 2-3 years industry or research laboratory experience. Successful candidates will possess skills in the areas of cell culture, molecular biology and/or biochemistry. Prior experience with viral research is highly desirable. Reply to DEPT. HD-195.

*The above opportunities are in our Wallingford, CT research facility. Please forward resume with salary history and Dept. # of interest, to: Bristol-Myers Squibb Pharmaceutical Research Institute, Human Resources, 5 Research Parkway, P.O. Box 5101, Wallingford, CT 06492-7661. FAX: (203) 284-7762.*

Equal Opportunity Employer, M/F/D/V.

**Princeton, New Jersey**

## **CARDIOVASCULAR**

### **Postdoctoral Fellow**

**MOLECULAR & CELLULAR BIOLOGY—CARDIAC GENE EXPRESSION.** A fully funded two-year postdoctoral position is available immediately in the laboratory of Dr. Michael Blarar, Department of Cardiovascular Molecular & Cellular Biology, to participate in a new research program directed toward the isolation and characterization of novel molecules associated with normal cardiac function and cardiac disease states. Interested candidates should possess evidence of excellence in molecular biology (gene regulation, protein-protein interactions). Experience in gene targeting by homologous recombination in embryonic stem cells would be desirable. Reply to DEPT. BM-389

## **DRUG METABOLISM**

### **Research Investigator**

Responsibilities include designing programs on drug candidates in development and providing, interpreting and reporting pharmacokinetic, drug disposition and drug metabolism data and conducting clinical and non-clinical studies. Requirements include a Ph.D. in Biopharmaceutics/ Pharmacokinetics with up to four years postdoctoral experience in the kinetics of studies which must include experience evaluating the metabolism and pharmacokinetics of biologics, preferably in a pharmaceutical industry. Candidates must be capable of interpreting assay methods development and validation results for biologics. Familiarity with IND/NDA/PLA requirements and submissions, and GLP regulations required. Reply to DEPT. DF-402

## **EXPERIMENTAL THERAPEUTICS**

### **Research Investigator**

Participate in studies to evaluate biological aspects of monoclonal antibody/drug immunoconjugates. This includes studies on various anticancer agents with various mechanisms of action, and includes both in-vitro and in-vivo applications. Requirements include a Ph.D. with a minimum of 2 years postdoctoral experience and experience in tumor biology/immunology. Candidates must have a working knowledge of in-vitro/in-vivo methods used for the evaluation of anticancer agents, monoclonal antibodies and immunoconjugates. Reply to DEPT. BM-385.

*The above opportunities are in our Princeton, NJ research facility. Please send curriculum vitae/resume and the names of three references, including Dept. #, to: Human Resources Department, Bristol-Myers Squibb Pharmaceutical Research Institute, P.O. Box 4000, Princeton, NJ 08543-4000. FAX: (609) 581-8841.*



## POSITIONS OPEN

### ASSISTANT/ASSOCIATE PROFESSOR TENURE-TRACK BIOCHEMIST POSITION FLORIDA A&M UNIVERSITY

Outstanding biochemist/molecular biologist is being sought for **TENURE-TRACK POSITION** to join a rapidly growing basic science division in the College of Pharmacy and Pharmaceutical Sciences at the Florida A&M University. Candidates should have an established research program within the broadly defined areas of biochemistry and molecular biology, which will serve to complement and broaden drug-related research at the college. Responsibility includes teaching biochemistry in professional and graduate programs. Applications should be received by April 1, 1995, to receive full consideration. Applicants should send a curriculum vitae and three letters of reference to: **Dr. Karam F. A. Soliman, Chairman, Division of Basic Pharmaceutical Sciences, College of Pharmacy and Pharmaceutical Sciences, Florida A&M University, Tallahassee, FL 32307.** *The Florida A&M University is a Historically Black University and It is an Equal Opportunity/Affirmative Action Employer.*

### TUFTS UNIVERSITY SCHOOL OF MEDICINE DEPARTMENT OF PATHOLOGY

The Department of Pathology at Tufts University School of Medicine seeks to recruit an established investigator for a tenure-track faculty position, initially at the **ASSOCIATE PROFESSOR** level or above with a background in molecular or cellular aspects of disease pathogenesis, specifically in virology, neoplasia, or genetics. Candidates should have a strong record of independently funded research. The investigator will have the opportunity to interact with established programs in the Department including basic research in Immunology, Genetics and Pathology.

Interested individuals should send a letter and a current curriculum vitae with the names of three references to:

**Search Committee**  
c/o Professor David A. Thorley-Lawson  
Department of Pathology  
Tufts University School of Medicine  
136 Harrison Avenue  
Boston, MA 02111

### THE HEBREW UNIVERSITY- HADASSAH MEDICAL SCHOOL JERUSALEM, ISRAEL FACULTY POSITIONS

Applications are welcomed for positions that will be available from the academic year 1996-97:

**TENURE-TRACK FACULTY** positions in basic medical sciences with preference to candidates that utilize modern molecular/cellular approaches.

Ph.D. and/or M.D. degrees and postdoctoral training are required. Excellence in research and teaching will be of prime importance for decisions of the search committee. Candidates are expected to develop independent research. Curriculum vitae, list of publications, three to five selected reprints, research plans and three (3) letters of recommendation addressed to the dean, **Prof. O. Abramsky**, should arrive at the dean's office (P.O. Box 12272, Jerusalem 91120 Israel) no later than May 15, 1995.

### ASSISTANT-IN-INSTRUCTION ENVIRONMENTAL SCIENCE

Middlebury College, Middlebury, Vermont: the Program in Environmental Studies is accepting applications for a three-year position as **ASSISTANT-IN-INSTRUCTION** in Environmental Science to begin 15 June 1995. The position involves developing lab/field exercises for an introductory environmental science course offered in both fall and spring semesters, teaching labs, grading, and coordinating undergraduate teaching assistants. We seek candidates with a strong background in the natural sciences, experience in teaching environmental science with an interdisciplinary perspective, and at least a Master's degree in a natural science or science education. Submit a letter of application, curriculum vitae, statement of teaching interest, transcripts, and names and telephone numbers of three references by March 10, 1995, to: **Chair, Environmental Science Search Committee, Program in Environmental Studies, Farrell House, Middlebury College, Middlebury, VT 05753.** *Middlebury College is an Equal Opportunity Employer and encourages applications from women and members of minority groups.*

## POSITIONS OPEN

Microbial physiological ecologist, tenure-track **ASSISTANT PROFESSORSHIP**, available 1 July 1995. Ph.D. in Microbiology or related field, postdoctoral and research experience in microbial physiological ecology or related area required. We seek an individual with basic research interests in applied and environmental microbiology. Knowledge of metabolic diversity and/or molecular tools preferred. The initial one-and-a-half to two years is a research position in the NSF-sponsored Center for Biofilm Engineering and the individual must contribute expertise to interdisciplinary research on environmental, industrial or medical aspects of biofilm processes. Subsequently, the individual will participate in undergraduate and graduate instruction in general, applied and environmental microbiology, coordinate the department's environmental microbiology program, and maintain a vigorous independent research program. Send application specifically addressing qualifications for these duties, curriculum vitae, and names, addresses and telephone/FAX/Email numbers for three referees to: **Dr. David M. Ward, Department of Microbiology, Montana State University, Bozeman, MT 59717. Telephone: 406-994-3401.** Screening begins on 1 April 1995, and continues until a suitable candidate is hired. *ADA/Equal Opportunity/Affirmative Action/Veterans Preference.*

### CELL/MOLECULAR BIOLOGY BIOCHEMISTRY Hamline University St. Paul, MN 55104

The biology faculty announce a tenure-track, **ASSISTANT PROFESSOR** position, beginning September 1, 1995. The successful applicant will demonstrate successful experience teaching undergraduates, an active research program, and desire to work in a liberal arts setting. Teaching responsibilities include biochemistry, cell/molecular biology, genetics, and shared commitments to introductory biology and courses in general education, such as freshman seminar, and a range of cultural problems. The successful candidate will establish within the science division an extramurally funded program of interdisciplinary research. Include curriculum vitae, statements of teaching experience and philosophy, research interests and grants and special (methodological, computational) skills, and names and telephone numbers of four referees to: **Dr. John Brennan, Chair, Biology Department, Hamline University, 1536 Hewitt Avenue, St. Paul, MN 55104.** Interviews will begin after March 14, 1995, and continue until the position is filled. *Hamline University is an Affirmative Action/Equal Opportunity Employer. Minorities and women are encouraged to apply.*

The Biology Department at Hartwick College invites applications for two positions at the level of **ASSISTANT PROFESSOR**. One (tenure-track) position is for a Plant Physiologist with training in microbiology to teach plant physiology, plant development, limnology, plant ecology, as well as microbiology to nursing and biology majors. Expertise in aquatic biology is desirable. The other position (a three-year appointment) is for a Human Anatomist and Physiologist to teach: anatomy and physiology to nursing, pre-allied health, and biology majors; specialized pre-allied health courses such as kinesiology and exercise physiology; and a core biology major course. The successful candidate will also chair the Pre-Allied Health Advisory Committee. Expertise in transmission and scanning EM is highly desirable for either position. Requirements for both positions include a Ph.D. and a strong commitment to quality undergraduate teaching and research involving undergraduates. Send a letter of application including a brief statement of research and teaching interests, curriculum vitae, official transcripts, and three letters of recommendation to: **Dr. Linda A. Scott, Chair, Biology Department, Hartwick College, Oneonta, NY 13820** by March 20, 1995. *Women and minorities are especially encouraged to apply. An Equal Opportunity Employer.*

Department of Psychiatry, University of Pennsylvania, has two **FACULTY POSITIONS** available for program in neurobiology and behavior. Positions are at either the junior/senior level depending on candidates' qualifications. Candidates must be M.D., Ph.D. with training in genetics and experience in endocrinology, molecular pharmacology and neuroanatomy. Please send letter of intent and curriculum vitae to: **Peter C. Whybrow, M.D., Chairman, Department of Psychiatry, University of Pennsylvania, 305 Blockley Hall, 418 Guardian Drive, Philadelphia, PA 19104-6021.** *Equal Opportunity/Affirmative Action Employer.*

## POSITIONS OPEN

The School of Medicine of the State University of New York at Stony Brook announces a search for a **CHAIRPERSON** of its Department of Orthopaedics.

The Medical Center at Stony Brook is the only comprehensive university medical center on Long Island. It is an integral part of the Health Sciences Center on the campus of The State University of New York at Stony Brook located approximately 50 miles from New York City. SUNY-Stony Brook is a comprehensive research university with over 17,000 students and more than 100 degree-granting programs.

The Department has educational responsibilities in each of the four years of the undergraduate curriculum. There is a fully accredited residency program, two fellowship training programs, and a variety of continuing education offerings. The department enjoys a strong and growing network of academic and clinical affiliates, including Nassau County Medical Center, Winthrop University Hospital, St. Charles Hospital and the Veterans Administration Medical Center in Northport.

The successful candidate will be selected on the basis of his or her academic and research accomplishments, educational goals, clinical skills, and administrative and managerial abilities. The individual must hold the M.D. degree, be qualified for a senior faculty appointment, have specialty board certification in Orthopaedics, and be eligible to practice in New York State.

Applications will be accepted until April 1, 1995. Nominations or curricula vitae with two to three page personal statements may be sent to me at the address below.

**Valerie M. Parisi, M.D., M.P.H.**  
Professor and Chair  
Department of Obstetrics and Gynecology  
and Reproductive Medicine  
c/o Office of the Dean, School of Medicine  
State University of New York at Stony Brook  
Stony Brook, NY 11794-8430

*The State University of New York is an Equal Opportunity Employer and urges minority candidates to apply.*

Washington State University invites applications and nominations for an **ASSISTANT or ASSOCIATE PROFESSOR** (Animal Well-Being). This is a tenure-track, 12-month appointment. The individual must have a Ph.D. or D.V.M. and advanced training in animal welfare or behavior. The ability to communicate and collaborate effectively with others in teaching, research and the public are essential. Specific responsibilities include instruction at the undergraduate and graduate/professional school level, establishment of a productive, extramurally funded research program, and interaction with the University and livestock industry and public sectors on animal welfare issues. Experience in and familiarity with livestock or aquaculture production practices is highly desirable. To ensure consideration, send a cover letter describing qualifications and goals for the position, curriculum vitae, complete college transcripts and names, addresses and FAX numbers of three references to: **Raymond W. Wright Jr., Search Committee Chair, Department of Animal Sciences, Washington State University, Pullman, WA 99164-6332. Telephone: 509-335-4125; FAX: 509-335-1074.** Screening of applicants will begin April 3, 1995, and continue until the position is filled. *An Equal Opportunity/Affirmative Action/ADA Employer.*

### FACULTY POSITION Bowman Gray School of Medicine

The Departments of Obstetrics and Gynecology and Physiology and Pharmacology invite applications for a tenure-track position at the **ASSISTANT/ASSOCIATE PROFESSOR** level in the general area of molecular endocrinology with interests in developmental physiology. Expertise in molecular biology and an active research program or the ability to develop a research program competitive for extramural funding desirable.

Applicant should have a Ph.D. or M.D. degree and postdoctoral experience. Send a curriculum vitae, statement of research interests and plans and names of three references to:

**Dr. James C. Rose**  
Department of Obstetrics and Gynecology  
Bowman Gray School of Medicine  
Medical Center Boulevard  
Winston-Salem, NC 27157

*The Bowman Gray School of Medicine is an Affirmative Action/Equal Opportunity Employer. Women and minorities are encouraged to apply.*

## FORMULATION/ DELIVERY SCIENTIST

Miles Inc. maintains a leading worldwide position in the field of Human Biologicals. Join us in our continued commitment to the production of quality biologicals and the development of a new generation of healthcare products through biotechnology.

Position available for a Senior Research Scientist with experience in formulation and delivery of mammalian glycoproteins. Responsibilities include:

- Protein stability estimation via biophysical techniques, viz. FTIR, DSC, CD, etc.
- Evaluation of novel delivery modalities for drug targeting.
- Implementation of drug delivery options under CGMP environment.

A Ph. D. in an appropriate discipline with a minimum of 4 years of formulation/delivery of proteins is required. Miles Inc. offers attractive compensation and generous benefits. Send resume and salary history to:

JoAnne McHugh,  
Miles Inc.,  
4th and Parker Streets,  
P.O. Box 1986, Berkeley, CA 94701

EOE/AA/D



PHARMACEUTICAL DIVISION

## POSTDOCTORAL POSITION Neurobiology

Mount Sinai School of Medicine offers an immediate opening for an individual at the Associate Professor level to study the binding site structure of serotonin 5-HT<sub>2</sub> receptors using chemical and molecular approaches. Unique environment in a research group encompassing molecular biology, pharmacology, biophysics and computational molecular modeling. An independent, academically oriented candidate is desired with experience

Mount  
Sinai

in physical chemistry of macromolecules, and/or molecular engineering. Interest and experience in cell biology and/or molecular pharmacology are preferred. Send curriculum vitae and telephone numbers of 3 references to: **S.C. Sealfon, Neurobiology, Box 1065, (212) 241-7075; fax (212) 996-9785, sealfon@msvax.mssm.edu; or H. Weinstein, Department of Physiology and Biophysics, Box 1218, (212) 241-6530, fax (212) 860-3369; both at Mount Sinai Medical School, One Gustave L. Levy Place, NYC 10029-6574.** An Equal Opportunity Employer.

The Mount Sinai Medical Center of New York

**MILES** 

**Pharmaceutical  
Division**

*Miles Inc., Pharmaceutical Division, located near Raleigh, NC, is seeking scientists with experience in areas of Virus Inactivation, Process Sciences, and Analytical Sciences to meet the needs of our Biological Products line. These immediate openings exist in our growing Technology Department—a multidisciplinary, team-oriented, process sciences group responsible for developing and applying new technology to the purification of therapeutic proteins.*

## SCIENTISTS

**Biochemist, Virus Structure and Inactivation (Position #107).** This senior scientific staff position is responsible for development and integration of new methods for inactivation of viruses into biological product processes. Incumbent will interact with scientists involved with process development, characterization, and validation, and with regulatory and quality assurance departments. Requires a Ph.D. in a relevant biological science, plus a minimum of seven years of experience in protein biochemistry, preferably within both academic and industrial environments. A thorough understanding of animal virus structure and inactivation, and experience in GLP compliance are required. Supervisory experience preferred.

**Process Development Chromatographer (Position #124).** Individual will be responsible for bench to pilot scale development of chromatography processes. The incumbent will be a member of a team of developmental and analytical scientists and will interface with regulatory and quality assurance departments. Requires a Ph.D. or M.S. in Biochemistry, Chemistry or Chemical Engineering, plus a minimum of four years of relevant experience with automated chromatography systems, protein chemistry, and scale-up issues in a GMP environment.

**Process Development Chromatographer (Position #110).** Individual will be responsible for chromatographic process development from bench to pilot scale. Requires a Ph.D. or M.S. in Biochemistry, Chemistry or Chemical Engineering, plus a minimum of two years of relevant experience in large scale chromatography, including use of automated chromatography workstations and ultrafiltration systems in a GMP environment.

**Process Development Scientist (Position #123).** Individual will be responsible for scale-up of processes and equipment from bench to production scale. Requires an M.S. or equivalent in Chemical Engineering, Chemistry or Biochemistry with over four years of relevant experience in pilot plant operations including the use of chromatography, filtration and ultrafiltration in a GMP environment.

**Biochemist, Analytical (Position #122).** This individual will interact with a team of process scientists to develop and implement modern analytical techniques in support of process development. Requires a Ph.D. or M.S. degree in Biochemistry or Analytical Chemistry, plus three to five years of experience in analytical protein biochemistry and immunochemistry in a GLP environment. Prefer incumbent with experience in automated quantification of viral inactivating agents.

*These positions offer an attractive compensation package commensurate with qualifications. Send resume and identify Position # of interest to: **Human Resources Manager, Miles Inc., PO Box 507, Clayton, NC 27520.***

An Equal Opportunity Employer M/F/D/V.

## POSITIONS OPEN

### MOLECULAR PHYSIOLOGIST BIOPHYSICIST

A **TENURE-TRACK** position (rank open) is available in the Department of Molecular Physiology and Biological Physics at the University of Virginia School of Medicine. The Department intends to further strengthen its current program in structural biology (atomic force microscopy, electron energy loss spectroscopy, cryoelectron microscopy, electron probe analysis and confocal microscopy), by recruiting an individual with an established reputation and an outstanding peer-reviewed record studying structure-function relations in membrane (or other) proteins involved in cellular signal transduction. M.D. scientists and Ph.D.'s interested in both fundamental and disease-related aspects of cellular and molecular function are particularly encouraged to apply.

A salary and benefits package commensurate with experience and qualification will be offered.

Please send applications with curriculum vitae and three references to: **Lukas K. Tamm, Ph.D., Search Committee Chairperson, Department of Molecular Physiology & Biological Physics at the University of Virginia School of Medicine, 1300 Jefferson Park Avenue, Box 449 Jordan Building, Charlottesville, VA 22908.**

*The University of Virginia is an Equal Opportunity/Affirmative Action Employer. Qualified female and minority applicants are encouraged to apply.*

The Ohio State University Department of Pediatrics located at an academically oriented children's hospital is seeking a distinguished Ph.D. senior scientist to direct the development of a major research effort in developmental biology of the mammalian respiratory system. This is a regular tenure-track position at the **ASSOCIATE** to full **PROFESSOR** level. Candidates must have experience characterizing gene expression and regulation in the lung. Must have extensive experience generating transgenic mice and capability of coordinating a transgenic resource facility and generate "knock out" mice with organ specific "knock outs." Must have been successful in obtaining NIH funding. Responsibilities include teaching pre-M.D., post-M.D., and Ph.D. students in the techniques and philosophy of research being conducted in the field of molecular biology. Applicants should send curriculum vitae to: **Grant Morrow III, M.D., Chair, Molecular Biologist Search Committee, The Ohio State University Department of Pediatrics, c/o Children's Hospital Research Foundation, 700 Children's Drive, Columbus, OH 43205.** *The Ohio State University is an Equal Opportunity/Affirmative Action Employer. Qualified women, minorities, Vietnam-era veterans, disabled veterans and the disabled are encouraged to apply.*

### ASSISTANT PROFESSORSHIPS BIOLOGY

Kent State University Regional Campuses invites applications for two (2) **TENURE-TRACK APPOINTMENTS** available fall 1995. Both positions require a Ph.D. and teaching experience and evidence of scholarship is preferred. The Trumbull Campus position involves teaching microbiology and general biology. The specialty for this position is microbiology with some background in basic zoology and ecology. The Tuscarawas Campus position involves teaching introductory biology courses and possible anatomy and physiology. The specialty for this position is physiology with some background in zoology. Submit letter of application (specifying campus), résumé, transcripts and names and addresses of three references by March 31, 1995, to: **Dr. Alan C. Coe, Dean for Academic Affairs Regional Campuses, Kent State University, P.O. Box 5190, Kent, OH 44242-0001.** *An Equal Opportunity/Affirmative Action Employer.*

### GROSS ANATOMIST

**FACULTY POSITION** for full-time instruction in gross anatomy plus histology and/or embryology in a professional program. Successful college teaching, effective communication in English, and Master's degree required; doctorate strongly preferred. Application processing begins immediately and continues until position filled. Available May 1, 1995. Applications to include letter stating reasons for interest in the position, statement of teaching philosophy, evidence of successful teaching, current complete résumé, and names, addresses, and telephone numbers of three professional references. Send applications to: **Director of Basic Sciences, Cleveland Chiropractic College, 6401 Rockhill Road, Kansas City, MO 64131.** *An Affirmative Action/Equal Opportunity Employer. Qualified women and minorities encouraged to apply.*

## POSITIONS OPEN

### SCIENTIST/EDUCATOR

Assistant/Professor (**RESEARCH**) position is available for a qualified biomedical research scientist to assist NIEHS-funded Center in the administration and development of educational programs and presentations in the areas of environmental health sciences, toxicology and the molecular basis for toxic effects; time will also be available for research activities. Audiences will vary from undergraduate to middle/high school students and include interested lay personnel as well as other scientists working in the areas of interest.

The successful candidate must have the Ph.D., M.D., or D.V.M. degree, a minimum of five publications, excellent communication skills, some administrative experience, and a willingness to participate as a member of an exciting team of science educators, administrators and research scientists.

Applicants should submit their curriculum vitae, copies of three publications, a statement summarizing their research interests and three letters of recommendation to: **Dr. Raymond F. Novak, Director, Institute of Chemical Toxicology, 2727 Second Avenue, Room 4000, Detroit, MI 48201.**

The Ohio State University Department of Pediatrics located at an academically oriented children's hospital is seeking a distinguished Ph.D. senior scientist to direct the development of a major research effort in molecular toxicology. This is a regular tenure-track position at the full **PROFESSOR** level. Candidates must have a strong background in chemistry and an established track record of attracting national funding. Extensive experience required in developing junior faculty research activities, especially physician-scientists. Must have a national and international stature. Responsibilities include teaching pre-M.D., post-M.D., and Ph.D. students in the techniques and philosophy of research being conducted in the field of molecular toxicology. Applicants should send curriculum vitae to: **Grant Morrow III, M.D., Chair, Molecular Toxicologist Search Committee, The Ohio State University Department of Pediatrics, c/o Children's Hospital Research Foundation, 700 Children's Drive, Columbus, OH 43205.** *The Ohio State University is an Equal Opportunity/Affirmative Action Employer. Qualified women, minorities, Vietnam-era veterans, disabled veterans and the disabled are encouraged to apply.*

**Anatomist/Neurobiologist:** The Department of Biological Sciences at Idaho State University anticipates a tenure-track position, at the **ASSISTANT PROFESSOR** level, to begin fall 1995. Applicants must have completed a doctorate, and postdoctoral experience is preferred. Teaching assignments include: regional gross anatomy and histology for undergraduate students in our Physician Assistant Program and neurosciences for graduate students in Physical Therapy. The successful applicant will be expected to work with graduate students and develop a research program that will complement and strengthen existing departmental goals in biomedically related fields. This position will remain open until filled, but applicants should send a letter of application, including a statement of research goals, a statement of teaching philosophy, curriculum vitae, and arrange for three letters of recommendation by April 1, 1995, to: **Chairman, Anatomist/Neurobiologist Search Committee, Department of Biological Sciences, Box 8007, Idaho State University, Pocatello, ID 83209.** *Idaho State University is an Equal Opportunity/Affirmative Action Employer.*

**ASSISTANT PROFESSOR** of Entomology, Toxicology: Tenure-track (12 month appointment). Research (80%) dealing with toxicology of insecticidal agents using biochemical, neurophysiological, and/or molecular biological approaches. Teach (20%) an undergraduate/graduate-level course dealing with insecticidal agents and a graduate course in insect toxicology. Detailed position announcements available upon request. Required: Ph.D. with postdoctoral experience in a biological science, specialization in toxicology and experience with insects or other arthropods. Strong publication record, demonstrated ability to obtain extramural funding and good interpersonal skills to work with students, postdoctorals and colleagues. Deadline: May 1, 1995. Send letter of application; résumé; transcripts; and names, addresses and telephone numbers of three references to: **C. Michael Smith, Head, Department of Entomology, 123 Waters Hall, Kansas State University, Manhattan, KS 66506-4004. Telephone: 913-532-6154; FAX: 913-532-6232.** *An Affirmative Action/Equal Opportunity Employer. Kansas State University encourages diversity among its employees.*

## POSITIONS OPEN

The Department of Medical Microbiology and Immunology and the H. Lee Moffitt Cancer Center at the University of South Florida are seeking a non-tenure-track **RESEARCH ASSISTANT PROFESSOR** with three or more years of experience in molecular biology, including cDNA cloning, sequencing, use of viral vectors and retroviruses. Must have experience in mammalian cell cycle including experience measuring cyclin A, E, and D and their associated activities.

Please send curriculum vitae to: **W. J. Pledger, Ph.D., Associate Center Director for Basic Research, Office of Faculty Recruitment, 12902 Magnolia Drive, Tampa, FL 33612.** Applicants who need a reasonable accommodation in order to participate in the selection process must notify **Jody Swanson** at **813-975-7894**, forty-eight hours in advance. Application deadline is March 30, 1995. *Moffitt Cancer Center is an Equal Opportunity Employer. The University of South Florida is an Equal Opportunity/Affirmative Action Employer.*

**FACULTY/RESEARCH POSITIONS.** The University of Puerto Rico Medical School, a fully accredited research and teaching institution invites applications for two tenure-track assistant professor positions for molecular biologists with research interests related to pharmacology/physiology. Areas of special interest are: gap junctions, secretory processes, oxygen biology, membrane transport and mesangial cell function. Send applications including curriculum vitae and names of three references to: **Dr. Emma Fernández-Repollet, RCMI Program Acting Director, University of Puerto Rico, Medical Sciences Campus, P.O. Box 365067, San Juan, PR 00936-5067.**

### COASTAL MARINE/ESTUARINE BIOLOGY UNIVERSITY OF FLORIDA

Applications are invited for a 12-month, tenure-track faculty position at the **ASSISTANT PROFESSOR** level. A Ph.D. in a biological discipline and expertise pertinent to fish or shellfish is required. The successful applicant will be expected to develop a vigorous research program and teach at the undergraduate and graduate levels. Send letter of application, curriculum vitae, and the names, addresses and telephone numbers of five references by March 31, 1995, to: **Chair, Search Committee, Department of Fisheries and Aquatic Sciences, University of Florida, 7922 NW 71st Street, Gainesville, FL 32653.** *An Equal Opportunity/Affirmative Action Institution.*

### DEPARTMENT OF GENETICS HARVARD MEDICAL SCHOOL ASSISTANT/ASSOCIATE PROFESSOR IN HUMAN OR MAMMALIAN GENETICS

The Department of Genetics, Harvard Medical School, invites applicants for the position of **ASSISTANT/ASSOCIATE PROFESSOR** in the area of human or mammalian genetics. We are particularly interested in individuals with strong programs and research accomplishments relevant to human disease. Candidates with Ph.D., M.D., or M.D./Ph.D. degrees will be considered. The successful candidate will be nominated for an appointment with the Howard Hughes Medical Institute located within the Department.

The position offers generous scholarly and scientific resources and the opportunity to teach medical school students and fellows with strong interests in genetics research.

Applicants should submit as soon as possible, but prior to May 1, 1995, a curriculum vitae, bibliography, a brief (limit of 500 words) description of research interests and ask three references to send letters of recommendation. These materials should be directed to:

**Dr. Philip Leder, Chairman  
Department of Genetics  
Harvard Medical School  
200 Longwood Avenue  
Boston, MA 02115**

**POSTDOCTORAL POSITION** available to study recombinant TCRs and antibodies using molecular biological, cellular and biophysical techniques. Prior experience in immunology preferred. Please send curriculum vitae and names of three referees to: **Dr. E. Sally Ward, Cancer Immunobiology Center and Department of Microbiology, U.T. Southwestern Medical Center, 5323 Harry Hines Boulevard, Dallas, TX 75235-8576.** *The University of Texas Southwestern is an Equal Opportunity Institution.*

*The Foundation for Advanced Cancer Studies and  
Cold Spring Harbor Laboratory will cosponsor  
an exciting new meeting...*

## **Cancer Genetics and Tumor Suppressor Genes**

**June 14-17, 1995  
Hood College  
Frederick, Maryland**

Organized by **Stephen H. Friend**  
Harvard Medical School

Associate Organizers E Fearon, E Harlow, B Ponder  
G Vande Woude, B Vogelstein

Emphasis will be placed on cancer genetics and tumor suppressor genes. Graduate students and postdoctoral fellows are encouraged to attend. The format will consist of oral and poster presentations with overviews given by distinguished leaders in the field. This meeting presents an exciting new forum for young investigators to present and discuss their research - please plan to attend.

Registration (including housing and meals) is **\$550.00 US**.  
Abstract submittal deadline is April 7, 1995.

For details, please contact: Margaret L. Fanning  
Conference Office, FACS  
P.O. Box 249 • 12120 Main Street  
Libertytown, Maryland 21762  
301-898-9266 • FAX 301-898-9173

*Cadus Pharmaceutical Corp., a rapidly growing biopharmaceutical company pioneering the discovery of drugs which regulate G-protein-mediated signalling pathways in the areas of inflammation, cardiovascular, and neurological disorders.*

### **GROUP LEADER-BIOCHEMISTRY**

Cadus Pharmaceutical Corporation is recruiting a Scientist with experience in receptor biochemistry and/or peptide biochemistry to serve as group leader for the **TARGET DRIVEN TO SUCCESS** biochemistry program at Cadus. Candidate should have extensive experience in structural and functional analysis of membrane proteins. Candidates with

additional familiarity with peptide biochemistry are preferred.

Candidates must have a Ph.D. in Biochemistry or a related field and several years relevant research experience. Supervisory experience essential with strong preference given to those candidates with experience running an independent research program.

*Cadus offers competitive salaries and benefits as well as excellent opportunity for career growth in a stimulating collaborative environment. Send CV and List of References to Science Search S-BIO, Cadus Pharmaceutical Corporation, 777 Old Saw Mill River Road, Tarrytown, NY 10591-6705. Cadus is an Equal Opportunity Employer.*

**CADUS**  
PHARMACEUTICAL CORPORATION

## **POSTDOCTORAL SCIENTISTS**

The R. W. Johnson Pharmaceutical Research Institute (RWJPRI) is a worldwide research and development organization within Johnson & Johnson ... the world's largest and most comprehensive provider of health care products. RWJPRI performs R&D activities for the Johnson & Johnson companies ... Cilag, Ortho-McNeil Pharmaceutical, and Ortho Biotech. To move our current research forward, we are now seeking Postdoctoral Scientists to join us in the following areas:

### **Synthetic Organic Chemistry Spring House, PA**

You will conduct research in the area of serine protease inhibitors, which will involve the synthesis of novel organic molecules, especially peptides and peptide-mimetics, as well as basic organic chemistry research. Position requires a PhD in the area of organic or medicinal chemistry with a background in synthesis, spectroscopic identification and purification of complex organic molecules. **Dept. 186.**

### **Drug Discovery/Microbiology Raritan, NJ**

Your research will involve antibacterials as immune response suppressors, both immunostimulatory and immunosuppressive activities, using microbiological, immunobiological, biochemical and molecular biology techniques. Position requires a PhD in cellular immunology, molecular immunology or molecular microbiology and a background in cytokine research, molecular biology, biochemistry and/or cell biology. **Dept. 187.**

### **Synthetic Organic Chemistry Raritan, NJ**

Your research will involve the development of heterogeneous chiral catalysts and the study of their applications as well as studies of a new chiral auxiliary. Position requires a PhD in Synthetic Organic Chemistry and experience with state-of-the-art methods for determination of stereochemical products; familiarity with amino acid chemistry is helpful. **Dept. 188.**

To apply for these openings and/or to be considered for future opportunities with Johnson & Johnson, please forward a copy of your resume, suitable for scanning and input into our state-of-the-art database (clean/clear, no graphics, and preferably unfolded). Send to Dept. # for the position of your interest, Johnson & Johnson Recruiting, P.O. Box 16597, New Brunswick, NJ 08906-6597.

We are an equal opportunity employer and support diversity in the workplace.



THE R.W. JOHNSON  
PHARMACEUTICAL RESEARCH INSTITUTE  
a Johnson & Johnson company

## POSITIONS OPEN

### TWO POSTDOCTORAL POSITIONS BIOCHEMISTRY/MOLECULAR BIOLOGY

The University of Michigan is seeking highly motivated, creative scientists to fill two **POSTDOCTORAL POSITIONS**. Preference will be given to candidates who can join us prior to June 30, 1995. Applicants should possess a Ph.D. with expertise in Biochemistry or Molecular Biology with demonstrated research excellence and strong written and oral communication skills.

Positions are available immediately to investigate 1) molecular mechanisms involved in growth factor and cytokine signal transduction in human skin cells, and 2) responses of human skin to ultraviolet light.

Specific projects include: (Position 1) investigating functional specificities and regulation of protein kinase C isoenzymes, regulation of intracellular protein kinase cascades by specific agonists, and cross-talk among steroid hormone nuclear receptor superfamily members and protein kinase signaling pathways; (Position 2) investigating molecular mechanisms through which ultraviolet light activates protein kinases, and transcription factors in human skin. Additionally, mechanisms through which steroids, retinoids, and vitamin D nuclear receptors alter responses of human skin to ultraviolet light will be investigated. Send curriculum vitae to: **Dr. Gary J. Fisher, Department of Dermatology, University of Michigan, 1301 East Catherine, Kresge I, R6558, Ann Arbor, MI 48109-0528. FAX: 313-747-0076.**

The University of Michigan is a nondiscriminatory, Affirmative Action Employer.

**Behavioral Ecology and Comparative Neurobiology.** The University of Kentucky has in place a NIMH Research Training Grant program for **POSTDOCTORAL** and **GRADUATE FELLOWSHIPS** to support a unique training program that emphasizes integrative research on the interface between behavioral ecology and neurobiology. Fellowships include stipends and funds to support research expenses. To apply, send a curriculum vitae and a statement summarizing your background and research interests to: **Bert Peretz, Department of Physiology 40536-0084, Andrew Sih, School of Biological Sciences 40506-0225, or Ken Haynes, Department of Entomology 40546-0091, University of Kentucky, Lexington, KY.** Applications will be considered as they arrive. Women and minorities are particularly encouraged to apply. An Equal Opportunity/Affirmative Action Employer.

**POSTDOCTORAL FELLOWSHIP** in Gene Therapy/Molecular Neurobiology. Candidate will develop and utilize non-human primate retrovirus vectors for potential gene therapy of human neurological disorders, with testing in brain culture and in monkeys. Ph.D. in Biochemistry, Molecular Biology, Virology, or Neuroscience is required. Technical skills in virus vector construction and development of packaging cell lines, brain or hematopoietic cell culture methods, neuroanatomy, and stereotactic brain injection are highly desirable. Salary commensurate with experience. Send curriculum vitae, publication list, and names and addresses of three references to: **Dr. Curt Machida, Neuroscience, Oregon Regional Primate Research Center, Oregon Health Sciences University, 505 NW 185th Avenue, Beaverton, OR 97006. FAX: 503-690-5384. An Equal Opportunity Employer.**

Senior **RESEARCH ASSOCIATE** position is available immediately to study animal asthma. The work will involve the use of conscious animals to study immunological basis of asthmatic responses. This individual should be interested in basic mechanics of respiratory physiology and immunobiology in general as it applies to pulmonary pathology. The position requires a Ph.D. or equivalent in bioscience and experience in cellular and molecular techniques.

Salary is negotiable based on experience and institutional guidelines.

Please send curriculum vitae and names of three references to: **Dr. B. C. Kang, Allergy/Immunology Division, University of Kentucky Medical Center, K528, Kentucky Clinic, 800 Rose Street, Lexington, KY 40536-0284.**

**POSTDOCTORAL POSITION** available immediately to study gene regulation in mouse retina using cell transfection and transgenic mice. Prior background in molecular biology required. Send curriculum vitae and references to: **Dr. V. Sarthy, Ophthalmology, Northwestern University, 300 East Superior, Tarry 5-715, Chicago, IL 60611. FAX: 312-503-1210. Northwestern University is an Affirmative Action/Equal Opportunity Employer.**

## POSITIONS OPEN

**POSTDOCTORAL POSITION** available immediately: We are seeking a talented individual who can apply a multidisciplinary approach to important questions in receptor tyrosine kinase-mediated signal transduction. The project combines molecular biology, protein biochemistry with computational sequence analysis and molecular modeling to study protein-protein interactions, determinants of protein folding and structural basis of transforming mutations. Qualified candidates should have a Ph.D. or M.D. and strong background in molecular biology or protein biochemistry. Familiarity with computer programming is a plus. Please send a statement of research interests, curriculum vitae, and three letters of reference to: **Dr. David States/Dr. Angel Lee, Institute for Biomedical Computing and the Department of Biochemistry and Molecular Biophysics, Washington University School of Medicine, Campus Box 8036, 700 South Euclid Avenue, St. Louis, MO 63110. FAX: 314-362-0234. Washington University is an Equal Opportunity Employer.**

**NMR/MRI POSTDOCTORAL POSITION** available immediately to study metabolic triggers of retinal angiogenesis *in vivo*. Experience with gradient-based pulse sequence development/application and image analysis methods desirable. Please send curriculum vitae, and the names/telephone numbers of three references to: **Bruce Berkowitz, Ph.D., Department of Ophthalmology, 5323 Harry Hines Boulevard, UT Southwestern Medical Center, Dallas, TX 75235-8592. Telephone: 214-905-0872; Email: bruce@baby.swmed.edu; FAX: 214-630-8841. An Equal Opportunity/Affirmative Action Employer.**

**POSTDOCTORAL ASSOCIATE.** Research position available for recent Ph.D. or M.D. with training in physiology, neuroscience, or biophysics. Interests must complement existing research programs in ion transport, neurophysiology, GI, cardiovascular, pulmonary, thermoregulation, renal or environmental physiology. Some teaching required. Position is for one year, renewable for a second year, starting July 1, 1995, with an annual salary of \$27,500. Send curriculum vitae and three letters of reference by April 1, 1995, to: **Stephen C. Wood, Ph.D., Chairman, Department of Physiology, East Carolina University School of Medicine, Greenville, NC 27858-4354.** For information, contact by Email: **Wood@Brody.med.ecu.edu. An Equal Opportunity/Affirmative Action University. Accommodates individuals with disabilities. Applicants must comply with the Immigration Reform and Control Act.**

**POSTDOCTORAL POSITIONS:** To study regulation of gene expression during fat synthesis and adipocyte differentiation. Research includes 1) characterizing and cloning nuclear factors which interact with hormone response elements for lipogenic enzyme genes and 2) studying mode of action of an inhibitor of adipogenesis and its down-regulation during adipocyte differentiation. Send curriculum vitae and names of references to: **Dr. Hei Sook Sul, Department of Nutritional Sciences, University of California-Berkeley, Berkeley, CA 94720-3104. The University of California is an Equal Opportunity/Affirmative Action Employer.**

**POSTDOCTORAL POSITION** at the University of Virginia in Kinases and Cell Signaling in laboratory of **T. W. Sturgill**, for biochemist with background and interest in protein phosphorylation research, protein chemistry, protein purification (EPLC), or MAP kinases. Send curriculum vitae, description of research training and career goals, and three references to: **Dr. Thomas W. Sturgill, University of Virginia Medical Center, Markey Center for Cell Signaling, Box 577, Charlottesville, VA 22908. FAX: 804-924-9659.**

**Plant Biologist.** St. Mary's College of Maryland, a small, public, liberal-arts honors college, invites applications for a one-year **SABBATICAL REPLACEMENT** for 1995-1996. Applicants should have a Ph.D. in some area of plant biology or be near the completion of such a program. Responsibilities: Teach upper division courses in biology of plants and plant physiology, assist with general biology for majors and non-majors. Application review will begin immediately and continue until the position is filled. Submit curriculum vitae, transcripts, and three letters of reference (at least one addressing teaching capabilities) to: **Christopher Tanner, Biology Search Committee, Department of Biology, St. Mary's College of Maryland, St. Mary's City, MD 20686. St. Mary's College of Maryland is an Equal Opportunity/Affirmative Action Employer.**

## POSITIONS OPEN

**POSTDOCTORAL POSITION:** Available immediately to participate in ongoing cellular, biochemical and molecular biology studies on soluble T cell receptor molecules and their role and function in immune regulation. Training in cellular immunology and molecular biology is required and experience in biochemistry/protein purification is desired. Send curriculum vitae, statement of research interests and names of three references with telephone numbers to: **Dr. John W. Moorhead, Department of Immunology, Campus Box B-164, University of Colorado Health Sciences Center, 4200 East Ninth Avenue, Denver, CO 80262. FAX: 303-270-7642.**

The University of Colorado is committed to Equal Opportunity and Affirmative Action. Applications from women and minority groups are encouraged.

**POSTDOCTORAL POSITION** available immediately at the Harris Chasanoff Heart Institute of Long Island Jewish Medical Center, to study propagation of electrical excitation in cardiac muscle and mechanisms of antiarrhythmic drugs using quantitative modeling. Ph.D. required. Training and experience in cardiac electrophysiology, computer modeling of cardiac membranes, Fortran programming and the UNIX operating system, as well as experience with supercomputing highly desirable. Please send curriculum vitae with names and telephone numbers of three references to: **Dr. Steven J. Evans, Director, Cardiac Electrophysiology, Room 2135, The Harris Chasanoff Heart Institute, Long Island Jewish Medical Center, 270-05 76th Avenue, New Hyde Park, NY 11040. Long Island Jewish Medical Center is the Long Island Campus for the Albert Einstein College of Medicine. An Equal Opportunity Employer.**

### POSTDOCTORAL POSITION

Available immediately to study the genetics of Inherited Nephropathies and fine mapping of Polycystic Kidney Disease 2 gene. Candidate should have background in molecular biology and expertise in techniques such as library screening, large DNA fragment cloning, PCR, DNA sequencing, Southern and Northern blot hybridization and possibly tissue culture. The post is for two years, renewable to three. Send curriculum vitae and recommendation letters to: **Dr. Constantinos Deltas, The Cyprus Institute of Neurology and Genetics, P.O. Box 3462, Nicosia, Cyprus. FAX: 357-2-427308.**

A **POSTDOCTORAL POSITION** is available, starting July 1, 1995, in the Department of Microbiology and Molecular Genetics, Harvard Medical School. Candidates need to be experienced in bacterial genetics and physiology. The project involves experimental evolution of physiological function of enzymes (*in vivo* protein engineering) in *E. coli*. The salary will be commensurate with experience and the appointment can be up to three years. Send curriculum vitae with names of three references to: **Professor E. C. C. Lin, Department of Microbiology and Molecular Genetics, Harvard Medical School, 200 Longwood Avenue, Boston, MA 02113.**

**POSTDOCTORAL POSITIONS.** Available immediately for outstanding individuals to study lymphocyte activation and the role of protein kinases in the regulation of lymphocyte growth. Candidates should have a strong background in Molecular Biology/Biochemistry. U.S. citizenship or permanent residency is required. Send curriculum vitae and the names of three references to: **Dr. Malek Kamoun, University of Pennsylvania Medical Center, 7 Founders-4283, 3400 Spruce Street, Philadelphia, PA 19104. FAX: 215-349-5090.**

**POSTDOCTORAL POSITION** (Maize Molecular Genetics) is available immediately for a two to three year project to clone and characterize a lesion mimic gene (mimicking hypersensitive cell death) from maize that has been tagged with Mutator. Experience with molecular techniques is required, and a background in genetics or plant pathology is preferred. Send curriculum vitae and three letters of reference to: **Guri Johal, 202 Curtis Hall, Department of Agronomy, University of Missouri, Columbia, MO 65211. FAX: 314-874-4063.**

### POSTDOCTORAL POSITION

A position is available to participate in studies on the transport and function of carotenoids in human plasma lipoproteins. Prior experience in analytical chemistry or biochemistry is desired. Send curriculum vitae and the names of three references to: **Dr. Earl Harrison or Dr. Diane Morel, Department of Biochemistry, Medical College of Pennsylvania, 2900 Queen Lane, Philadelphia, PA 19129.**



## ASSISTANT PROFESSOR OF BIOCHEMISTRY

The Department of Biochemistry at the University of Minnesota Medical School is seeking outstanding candidates for appointment to its faculty. The Graduate Program in Biochemistry, Molecular Biology and Biophysics has established strengths in molecular biology, cell signaling and biomolecular structure. We are seeking candidates who will complement one or more of those areas. We are particularly interested in attracting candidates whose research has physiological or medical significance. The appointment is at the assistant professor level (tenure-track position). Applicants should hold a Ph.D. or equivalent degree in biochemistry or a closely related discipline, have completed at least one year of postdoctoral training at the time of application and should have an outstanding record of research productivity.

Send your curriculum vitae, a statement of research plans, recent reprints, and arrange to have three letters of recommendation sent to the address given below. The application must be postmarked by March 31, 1995.

**Faculty Search Committee  
Department of Biochemistry  
4-225 Millard Hall  
435 Delaware St. SE  
University of Minnesota  
Minneapolis, MN 55455**

*The University of Minnesota is an equal opportunity educator and employer.*

## DIRECTOR UNIVERSITY OF KENTUCKY TOBACCO AND HEALTH RESEARCH INSTITUTE

The University of Kentucky seeks to recruit an investigator with outstanding scientific credentials and a long term extramurally supported research program in the area of plant biochemistry/molecular genetics to become Director of the Tobacco and Health Research Institute (THRI). The individual must have academic credentials to qualify for the rank of tenured Full Professor in an academic department at the University of Kentucky. The Director will be expected to establish and guide a broadly based research effort in biochemistry/molecular genetics of both plants and animals. The goal is to build a research program directed at genetically engineering tobacco and other higher plants to produce substances such as protein, chemicals, enzymes, fibers, etc., which would have commercial value. Portions of the broad based research program could also encompass areas such as plant or animal-derived pharmaceuticals and genetically linked aspects of plant and animal biology and disease. The THRI is a free standing facility with excellent research space on the University of Kentucky campus. Women and minorities are encouraged to apply. Applications should be sent to: THRI Director's Search, University of Kentucky, Office of The Vice President for Research and Graduate Studies, 207 Administration Building, Lexington, Kentucky 40506-0032. Review of applications will begin March 15, 1995.

*The University of Kentucky is an Equal Opportunity Employer.*

For a world technology leader with a patent portfolio that ranks second to none (we were awarded 1,008 new U.S. patents in 1993 alone), Eastman Kodak Company offers innovative thinkers a professional environment to grow. Our new initiatives in the Scientific Imaging Systems Unit offer opportunities in the following areas:

**Marketing Manager, Sequencing & Imaging** – This position is responsible for management of our nucleic acid sequencing and imaging product portfolio, including exploration of market opportunities, business case and customer requirement development, product development support, and product launch leadership. We require a bachelor's degree in molecular biology or biological sciences (MBA preferred), 3-plus years of experience including product/project management, and experience with DNA sequencing products and autoradiography. Process orientation with the ability to lead development/launch teams, good technical and business communications skills, and a team oriented work style are important.

**Software Engineer** – This position is responsible for all phases of in-house software development focusing on quality assurance in a highly team-oriented environment. We require a bachelor's degree or equivalent in computer science, 1+ years of Macintosh and/or PC/Windows experience. Strong math skills and either an imaging or molecular biology background desirable.

**Senior Software Engineer** – This position is responsible for in-house development of Macintosh-based imaging application software. We require a BS or equivalent, with 3-plus years of Mac software development experience focused on commercial applications. Strong knowledge of either Think C or MPW programming environment and the ability to create innovative user interfaces are a must. Imaging background, experience in C++ and object oriented programming, strong math skills including algorithm development will be helpful. Team orientation is very important.

**Manager, Research & Development** – This position provides leadership for R&D scientific imaging systems group and works closely with marketing on translation of concept to commercial product. Responsibilities include research staff/program management, participation in strategic planning, and development of research collaborations. We require a Ph.D. in imaging sciences with focus on scientific applications, and 3-plus years of R&D program management experience demonstrating research skills, technical and business communications ability, and team leadership.

These positions are located in New Haven, CT, and offer New England's many amenities as well as Eastman Kodak salary/benefits package and stimulating professional environment. Relocation assistance is available. For confidential consideration, please send your resume to: **Eastman Kodak Company, Professional Staffing, Dept. SNC, 343 State Street, Rochester, NY 14650-1139.** Eastman Kodak is an equal opportunity employer. We invite people with disabilities to notify us of their need for accommodations.



© Eastman Kodak Company 1995

## CHIEF, LABORATORY OF PEDIATRIC DISEASES OFFICE OF VACCINES RESEARCH AND REVIEW DHHS, PHS, FDA, CENTER FOR BIOLOGICS EVALUATION AND RESEARCH

The Division of Viral Products in the Food and Drug Administration seeks an outstanding scientist or physician to lead the Laboratory of Pediatric Diseases within the Center for Biologics Evaluation and Research, Office of Vaccines Research and Review, located on the NIH campus in Bethesda, Maryland. The Chief of the Laboratory of Pediatric Diseases is responsible for conducting basic and applied research on viral vaccines and immunologic products for the prevention and treatment of pediatric and respiratory viral diseases. The Laboratory is responsible for evaluating and reviewing new and licensed vaccines and making recommendations related to their use. The Chief will have the opportunity to continue his/her research program as well as develop programs in the laboratory through recruitment and supervision of scientists in a well funded research environment which includes modern laboratories, ALAAC approved small animal and primate facilities and the opportunity to interact with the NIH research community.

**QUALIFICATIONS:** Physicians must have completed all requirements for a Doctor of Medicine or Osteopathy Degree from an accredited institution. Candidates who are board certified or board eligible in infectious diseases are preferred. Graduates of foreign medical schools must submit a copy of their permanent Educational Commission for Foreign Medical Graduates (ECFMG) certification. For scientists, doctoral level degree in biology, microbiology, or chemistry along with advanced training and/or experience in virology or related area is preferred.

Candidates with a strong background in pediatric and/or respiratory viral diseases including laboratory research and a national/international reputation in virology or related area are desirable. In addition, candidates should have leadership and administrative experience with a demonstrated ability to direct complex scientific programs along with a keen interest in public health issues related to infectious diseases. **U.S. citizenship is required.**

**SALARY:** For physicians, Civil Service salary range for GS-14 through GS-15 is \$67,385 to \$93,166 per annum. Also, physicians may be eligible for a physicians' comparability allowance up to \$20,000 per annum. For scientists, (other than M.D.), Civil Service salary range for GS-14 through GS-15 is \$60,925 to \$93,166 per annum. Salary, benefits, and level of responsibility are commensurate with education and experience. The grade level of this position depends upon the research qualifications of the candidate as determined by a peer review board. This position may be filled by appointment in the U.S. Public Health Service, Commissioned Corps with commensurate salary and benefits.

**HOW TO APPLY:** For additional information about the position and instructions on how to apply, call Ms. Boyer at (301) 443-6142. Applications must be received or post marked by March 31, 1995. FDA is an equal opportunity employer and has a smoke free environment.

# Where can you have a research career in a highly collaborative environment?



The National Renewable Energy Laboratory (NREL) in Golden, Colorado, just west of Denver, is the nation's primary federal laboratory for research, development and testing in renewable energy and energy efficiency. We collaborate with universities, private industry and government agencies to move technological innovations from the laboratory to the marketplace. Consider joining us in one of the following positions:

## Senior Avian Project Coordinator

Offering unique opportunities to develop and manage trail-blazing programs related to wind energy technology, you'll apply expertise in avian research and knowledge of wind energy development. Responsibilities include technical management, writing RFPs and reviewing proposals, and working with industry and government organizations in dissemination of information, and the publication of scientific papers and reports. To qualify, you must have 5-8 years experience in avian research and wildlife management, project management skills, familiarity with engineering concepts and terminology, and excellent public speaking and communication skills. Advanced degree required with Ph.D. preferred. Ref: E4410-491.

## Avian Ecologist, Post Doctorate Research

Designing and implementing avian field studies, analyzing demographic data and developing population models, you'll evaluate study plans and publish research results. A one-year assignment with possible extension, to qualify you must hold a Ph.D. in Wildlife Science or Conservation Biology and have field experience in the study of avian demographics with emphasis on raptors. Skills in forecasting population trends including PVA is required, with formal training in biostatistics highly desired. Ref: #RP4410-521.

We offer an excellent benefits package. Qualified candidates should send a resume referencing position code to: Human Resources Office, NREL, Ref. #\_\_\_\_, 1617 Cole Blvd., Golden, Colorado 80401. For information on other NREL job opportunities, contact JOB LINE (303)275-4300 or 1-800-398-3513.

Internet through Gopher [info.nrel.gov](http://info.nrel.gov) or World Wide Web (WWW) at URL <http://info.nrel.gov>

NREL is an equal opportunity employer and proud of its commitment to diversity. Women and minorities encouraged to apply.



**NREL**

NATIONAL RENEWABLE ENERGY LABORATORY



## CHAIRPERSON DEPARTMENT OF MOLECULAR CANCER BIOLOGY

Duke University is seeking candidates for the position of Professor and Chairperson of the Department of Molecular Cancer Biology, a basic science department in Duke University Medical Center. Responsibilities include providing leadership for research and teaching activities of the Department. Minimal qualifications include an earned doctorate in a related discipline, a distinguished record of scholarship, administrative experience in an academic environment, and a demonstrated ability to work collaboratively in a university and academic medical center and with external constituencies. The position will be available in the Summer of 1995. Applicants should send a copy of their curriculum vitae with references and other credentials to: Molecular Cancer Biology Search Committee, Box 3701, Duke University Medical Center, Durham, NC 27710. Consideration of applications will begin immediately, and applications will be considered until the position is filled.

## Duke University Medical Center

Duke University is an Equal Opportunity/  
Affirmative Action Employer.

### Post-Doctoral Research Associate Aquatic Microbial Ecologist (Two-Year App't.) Biological Sciences Center Desert Research Institute Reno, Nevada

#### FILING DEADLINE EXTENDED

Conducts aquatic microbial ecology field and laboratory research as part of the Antarctic McMurdo Dry Valleys Long-Term Ecological Research (LTER) project; assists senior LTER personnel in project science and management both at DRI and the LTER field site in Antarctica. Requires Ph.D. in the biological sciences within last 3 years. Research in field studies, laboratory analysis, data processing and analysis related to aquatic microbial ecology and demonstrated experience in the use of modern ecological techniques required. Record of previous publications and successful proposal preparation highly desired. Prior to Antarctic deployment, individual must pass comprehensive medical and dental exams. Review of applications is ongoing and continues until position is filled. Submit resume, letter of interest and the names, addresses and telephone number of 3 references.

### Post-Doctoral Research Associate Energy and Environmental Engineering Center Desert Research Institute Las Vegas, Nevada

Duties will, to some extent, depend upon individual's skills, but will in general include analysis of air quality and meteorological data and preparation of journal articles, reports and proposals; may include participation in the design and operation of field measurement programs. Specific research areas may include, but are not limited to: assessment of methods for sampling and analysis of atmospheric aerosols; modeling the transport, dispersion and transformation of atmospheric constituents and statistical data analysis (e.g. receptor modeling, chemometrics). Minimum qualifications: recent doctorate in Atmospheric, Science, Chemistry, Engineering, Environmental Science, Physics or a related program from a recognized, accredited academic program; research experience in environmental data analysis; experience with computer software and demonstrable written/oral communication and human relations skills. Ability to write computer programs in the Fortran or C languages desired. Review of applications begins 4/17/95 and continues until position is filled. Submit resume and one-page narrative describing how your qualifications meet position requirements and names, addresses and telephone numbers of 3 references. Salaries competitive and commensurate with qualifications.

Send applications to: **Recruitment Office, Desert Research Institute, UCCSN, P.O. Box 19040, Las Vegas, NV 89132-0040.** An Affirmative Action/Equal opportunity Employer, employing only U.S. citizens and persons authorized to work in the U.S.

## BIODIVERSITY

### Program Associate Western Hemisphere Project Directorate For International Programs

The American Association for the Advancement of Science (AAAS) seeks a **biodiversity** specialist to organize an assessment of science capacity for biodiversity in Latin American and the Caribbean. The successful candidate will also plan and organize other biodiversity workshops and projects; serve as a source of biodiversity expertise for the AAAS; write and edit publications, and participate in raising program funds. Individual may also organize projects with other AAAS International programs (which include Population and Sustainable Development, Sub-Saharan Africa, Europe and the Former Soviet Union, and Science and International Security).

**Qualifications:** Master's degree (preferably Ph.D) in field related to biodiversity; three to five years experience related to biodiversity science, conservation, and sustainable development (experience working abroad or in an international setting, preferably in developing world but not necessarily in Latin America or the Caribbean); excellent verbal and written communication skills, and teamwork skills; strong English skills required, reading and speaking knowledge of Portuguese or Spanish desirable. Other desirable skills and experiences: work in policy analysis in a non-government or government setting desirable, experience in organizing workshops and conferences, knowledge of electronic databases and information systems desirable. Travel required.

Interested applicants may send cover letter and resume along with salary requirements to: AAAS, Human Resources Department, 1333 H Street, N.W., Suite 125, PA-013, Washington, DC 20005. EOE. Non-smoking working environment.

# Tenure-Track And Postdoctoral Opportunities.

Listed below are some of the outstanding research training opportunities that are currently available at the National Institutes of Health.

## Tenure-Track Positions Assistant Professor Equivalent

### Brain Imaging

**Markku Linnoila, MD, PhD**

A position is available for a board-certified or eligible psychiatrist or neurologist to develop an independent research program on alcoholism, antisocial behavior, and CNS receptor and metabolic regulation in humans and nonhuman primates. The program complements ongoing behavioral, molecular genetic, and neuroendocrine studies on alcoholism and individuals at high risk of developing alcoholism. Candidates must be US citizens or permanent residents with research interests in brain imaging, ligand development, receptor regulation and polymorphisms. Please submit a *curriculum vitae*, a detailed statement of research interests, selected publications, and names of three references by March 31, 1995. Laboratory of Clinical Studies (OE-68), NIAAA, Building 10, Room 3C103, 10 CENTER DR MSC 1256, BETHESDA MD 20892-1256.

### Mammalian Molecular Genetics

**Heiner Westphal, MD**

An opportunity is available to establish an independent research program in an area of molecular genetics of mouse development that would complement ongoing research on gene regulation during CNS and thymus development. A state-of-the-art facility provides gene-altered mice. Applicants with a strong record of scientific achievement should submit a *curriculum vitae*, a detailed statement of research interests, selected publications, and names of three references by March 31, 1995. Laboratory of Mammalian Genes and Development (OE-68), NICHD, Building 6B, Room 413, 6 CENTER DR MSC 2790, BETHESDA MD 20892-2790.

### Salivary Gland Gene Therapy

**Bruce J. Baum, DMD, PHD**

A position is available for developing an independent laboratory and clinical program applying gene transfer technology to salivary glands. Resources include space, a technician and the opportunity to recruit postdoctoral fellows. Requirements include a clinical degree (DDS, MD or equivalent), specialty training, US license, basic science doctoral degree (PhD), substantive experience in salivary gland biology, and expertise in virus-mediated gene transfer. Candidates should submit a *curriculum vitae*, a detailed statement of research interests, selected publications, and names of three references by March 31, 1995. Clinical Investigations and Patient Care Branch (OE-68), NIDR, Building 10, Room 1N113, 10 CENTER DR MSC 1190, BETHESDA MD 20892-1190.

## Postdoctoral Positions

### Hemoglobin-Based Blood Substitutes

**Abdu I. Alayash, PhD**

Stroma-free hemoglobin, chemically or genetically altered, is being investigated as a potential blood substitute. Problems under investigation include the effects of oxygen and nitric oxide uptake and delivery by selected hemoglobin constructs, as well as, oxygen free

radicals on the normal cell structure and function. Applicants should have less than five years of postdoctoral experience. Laboratory of Cellular Hematology (OE-68), FDA/CBER (HFM-335), Building 29, Room B-10, 8800 Rockville Pike, Bethesda, MD 20892.

### Molecular and Developmental Neurobiology

**D. v. Agoston, MD, PhD**

The molecular mechanism of phenotypic differentiation, the role of DNA repeats and novel DNA-binding proteins during neurodevelopment is under investigation. First project includes the development of primary tissue culture and transgenic mouse models; second project includes the study of protein-DNA interactions. Applicants should have strong background in molecular and cell biology and must have less than five years postdoctoral experience. Laboratory of Developmental Neurobiology, (OE-68), NICHD, Building 49, Room 5A24, 49 CONVENT DR MSC 4480, BETHESDA MD 20892-4480.

### Physical Chemistry of Proteins

**A. Shrake, PhD**

A position is available to conduct basic research in the area of physical chemistry of proteins, particularly mechanisms and thermodynamics of intraprotein communication and of protein-protein and protein-ligand interactions relating to protein stability and protein folding and unfolding. Training and/or experience in calorimetry, spectroscopic techniques, and protein purification is desirable. Applicants should have less than three years of postdoctoral experience. Laboratory of Plasma Derivatives (OE-68), FDA/CBER (HFM-345) 1401 Rockville Pike, Room 300, Rockville Pike, MD 20852-11448.

### Additional Postdoctoral Fellowship Opportunities

For an on-line listing of additional postdoctoral openings, you may access the NIH EDNET Bulletin Board POSTDOC conference via Internet ([wylbur.cu.nih.gov](http://wylbur.cu.nih.gov)) or modem (1,301-402-2221 or 1,800-358-2221) with parameters set at "7,Even,1". When connected to NIH, type in "vt100" for terminal emulation, "F5E" for initials, and "AJL1" for account number.

The Postdoctoral Research Fellowship Opportunities catalog, which describes intramural laboratories at the NIH, is also available by request. An electronic version of the catalog may be accessed via the Internet using either the Gopher Information System ([gopher.nih.gov](http://gopher.nih.gov)) or the World Wide Web (<http://www.nih.gov>). When connected, select *Research Opportunities at the NIH Office of Education*. If you would like to request a catalog or have further questions, please contact the NIH Office of Education, Building 10, Room 1C129, 10 CENTER DR MSC 1158, BETHESDA MD 20892-1158, 301-402-1603, Fax 301-402-0483.

### To Apply

If you hold a doctoral degree (e.g., PhD, MD/PhD, MD, DO, DDS, DMD or DVM) accompanied by previous laboratory research experience, and would like to be considered for one of these positions, please send a cover letter, *curriculum vitae*, bibliography, and statement of research interests to the address listed with each position. In addition, please arrange to have letters of recommendation sent from three scientists who can provide an evaluation of your qualifications.



# National Institutes Of Health

Office of Education

The NIH is an Equal Opportunity Employer



S C I E N T I S T S

# Providing the vital link between research and manufacturing...

## *That's Schering-Plough*

*The transition from theory to practical application. Throughout Schering-Plough's Biotechnology Development facility in Union, NJ and our Pharmaceutical Development facility in Kenilworth, NJ, scientists skillfully devise innovative methods to bring quality pharmaceutical products to market.*

### **PRINCIPAL SCIENTIST** *Molecular Biology*

As a member of a professional research team, you will play a critical role in the development of new cell culture/viral-based therapeutics. Research will include development and optimization of novel eukaryotic expression systems, investigation of viral as well as alternative methods for delivery of gene therapy-related products, and the development of new analytical methods through state-of-the-art molecular biology.

To qualify, you will need a PhD in Molecular Biology/Microbiology and 1-8 years of experience with eukaryotic systems and general molecular biological techniques. Excellent oral and written communication skills essential. Supervisory experience preferred. For consideration, please respond to: Human Resources Manager, Dept. PL-BD95-01/SC, Schering-Plough Research Institute, 1011 Morris Avenue, Union, NJ 07083.

### **PRINCIPAL SCIENTIST** *Protein Analysis*

Working in our Protein Analysis Laboratories, you will be an integral part of a professional management team exploring newly evolving analytical technologies and evaluating new analytical methods for protein pharmaceuticals.

To qualify, you will need to be an independent self-starter with a PhD in Biochemistry or Analytical Chemistry, extensive experience in protein chemistry, management experience and knowledge of GMPs. Excellent communication and interpersonal skills along with a commitment to teamwork are essential. For consideration, please respond to: Human Resources-SS, Dept. PH94-48/SC, Schering-Plough Research Institute, 2015 Gallop Hill Road, Kenilworth, NJ 07003.

We offer an excellent compensation package which includes a competitive salary and comprehensive benefits. For prompt, confidential consideration, we invite you to forward a resume with salary requirements to the appropriate address for your position of interest. We are an equal opportunity employer. *We regret we are unable to respond to each resume. Only those selected for an interview will be contacted.*



**Schering-Plough**  
Research Institute

U s i n g   S c i e n c e   F o r   H u m a n   A d v a n t a g e

## **VIROLOGIST** **HIV Vaccine Development**

We are a dynamic biopharmaceutical company devoted to the development and manufacture of diagnostic products, vaccines, and therapeutics to combat infectious diseases and immune system disorders. In conjunction with other scientists, you will plan, supervise, and implement product support activities for HIV vaccine development; contribute to our growing efforts to discover novel approaches to prevention of, and therapy for, HIV/AIDS; plus identify key experimental needs and conduct appropriate studies. You'll also coordinate the work of outside investigators; plus apply knowledge of *in vitro* and *in vivo* models of HIV infection, biochemistry, and molecular tools to expand the profile of candidate HIV vaccines and therapeutics.

This highly-visible position requires a Ph.D. in Virology; a minimum of 3-5 years' post-doctoral experience in studies of HIV, preferably related to humoral immune responses; scientific achievement as evident from publications, patents, abstracts, and presentations; excellent communication skills; and the ability to work effectively with individuals of varied backgrounds and disciplines. Industry and supervisory experience would be preferred.

We offer a competitive compensation package and a rewarding opportunity to play a key role in solving the planet's urgent healthcare problems. For confidential consideration, please mail/FAX your resume to: **Human Resources, United Biomedical, Inc., 25 Davids Drive, Hauppauge, New York 11788; FAX (516) 273-1717.** We are an equal opportunity employer m/f/d/v.



**UNITED BIOMEDICAL, INC.**  
*Innovation through focused research*

### **AASTROM Biosciences, Inc.** **Cell and Molecular Biologists**

AASTROM Biosciences, Inc., a growing cell therapy and medical products company located in Ann Arbor, Michigan, has positions open for Cell Biologists and Molecular Biologists.

**Scientist/Director - Cell Biology.** Ph.D. in Cell Biology and a minimum of five years' experience (Director) or three years' experience (Scientist) in hematology or immunology required. Responsibilities include directing or participating in a hematopoietic cell biology research program focused on *ex vivo* stem cell production and hematopoiesis. Candidates should have experience with human hematopoietic cell culture applications, stem cell selection and characterization, and flow cytometric, cytologic and immunologic assays.

**Director - Molecular Biology.** Ph.D. in Molecular Biology and a minimum of five years' experience in gene transfer and hematology or immunology required. Responsibilities include management of research projects on transduction of hematopoietic stem cells, participation in the development of a novel gene transfer device, interaction with clinical sites in the preparation of clinical protocols, and implementation of gene transfer technologies. Additional candidate qualifications include: gene transfer into hematopoietic stem and progenitor cells, vector development and testing, gene therapy protocols, packaging cell line development, and gene transfer into non-hematopoietic cells.

Competitive compensation and benefit package. Please send resume to:

**Cell and Molecular Biologists**  
**AASTROM Biosciences, Inc.**  
P.O. Box 376  
Ann Arbor, MI 48106-0376  
E.O.E.

# Postdoctoral Research Scientists

*Upjohn Laboratories, a division of The Upjohn Company, has exciting opportunities for postdoctoral research scientists in the following areas:*

## Immunology, Cell and Molecular Biology (Specialty Code 100-PRS)

**Mechanism of apoptosis and apoptosis-related pathways in cultured cells.** Experience in molecular biology and protein biochemistry is desirable.

**Molecular recognition by cell adhesion molecules for structure-based drug design, using combinatorial libraries in phage display systems.** Prior experience in molecular biology or biochemistry is required; previous experience with phage display libraries, expression cloning, or microbial expression is desired.

**Mechanisms of leukocyte trafficking in lung inflammation.** Background in immunology, pharmacology, cell or molecular biology is required. Interest in inflammation, adhesion biology, or cell trafficking is desirable.

- **Chimeric recombinant viruses that manipulate the immune system.** Virologist or immunologist with an excellent background in the manipulation of recombinant DNA is being sought.

## Neurobiology (Specialty Code 101-PRS)

- **Role of Dopamine Receptors in Antipsychotic Drug Effects.** Ph.D. in Neurobiology/Neuropharmacology with strong background in neuroanatomy, molecular biology and receptor pharmacology. Preference will be given to applicants with tract-tracing, immuno-histochemical and in situ hybridization methods experience.

## Investigative Toxicology (Specialty Code 102-PRS)

- **Mutagenesis and carcinogenesis mechanisms using transgenic models and applying these models to human risk assessment.** Molecular biologist/geneticist with in vivo mammalian system experience desired.

## Drug Delivery Systems (Specialty Code 103-PRS)

- **Structure-absorption relationships for peptide transport across epithelial cells.** The candidate will synthesize model peptides, conduct transport studies, employing cultured epithelial cell monolayers. Background in bio-organic or medicinal chemistry with some cell culture experience desirable.

## Physical & Analytical Chemistry (Specialty Code 201-PRS)

- **Protein dynamics of ligand recognition.** A background in protein NMR spectroscopy with experience in structure determination and dynamics experiments is required.

## Medicinal Chemistry (Specialty Code 202-PRS)

- **Four positions are available dealing with one or more of the following areas: natural products synthesis, synthetic methodology, combinatorial chemistry or structure-based design.** Self-motivated individuals with a strong background and training in synthetic organic chemistry are being sought. In general, these positions involve research in both basic (non-proprietary) and program (proprietary) directed areas. The ability to function independently is of importance, as are good written and oral communication skills.

In addition to an excellent salary and benefits package, Upjohn Laboratories offers a stimulating, multi-disciplinary research environment at our modern facilities located in Kalamazoo, a southwestern Michigan community located midway between Chicago and Detroit. Our region provides an outstanding mix of cultural and recreational pursuits and a reasonable housing cost market. For consideration, please forward your C.V. and a statement of research interests (refer to the appropriate Specialty Code) to: **The Upjohn Company, Corporate Recruiting, 7000 Portage Road, Kalamazoo, MI 49001.** We are an Equal Opportunity Employer with a commitment to workplace diversity.

**Upjohn**

**Advancing Science...  
Enhancing Life**

*Ontogen Corporation is a dynamic pharmaceutical company with a vigorous research program for the development of small molecule therapeutics. Our research facility is located 30 miles north of San Diego in Carlsbad, CA. We currently have an opening for the following:*

### **Principal Scientist**

This position requires a Ph.D. in a biological science, postdoctoral studies, and a minimum of 5 years' industrial experience in *in vitro* and *in vivo* evaluation of small molecules as potential human therapeutics to treat oncological diseases. The qualified candidate will be responsible for leading a research team focused on the discovery and development of compounds that reverse the effects of multi-drug resistance associated with cancer treatment. The successful candidate will have experience in the pharmacology/cell biology of current cancer chemotherapy and preferably research experience in the area of multi-drug resistance. Other factors to be considered are expertise in cell culture techniques, knowledge of *in vivo* tumor models and knowledge of the preclinical studies necessary for the advancement of compounds to the IND stage.

Ontogen offers competitive compensation and benefits packages including a stock option plan. Qualified candidates are invited to send resumes to: **HR-100, Ontogen Corporation, 2325 Camino Vida Roble, Carlsbad, CA 92009.** Ontogen is an Affirmative Action/Equal Opportunity Employer.

**Ontogen Corporation**

## **ASSOCIATE EDITOR**

An editorial position at Science is available for a Ph.D. scientist with a broad range of interests and research experience in planetary science, condensed matter physics, mineral physics, or materials science. We are seeking someone with at least two or three years of postdoctoral experience and publications in the refereed literature. Editors have varied responsibilities including solicitation, selection, and editing of manuscripts. Previous editorial experience is not required. This is a full-time position in our Washington, D.C. office.

*Please send resume, list of publications, names of three references, and a cover letter with salary requirements to:*

**Greg Stokes**  
**Human Resources Dept.**  
**Suite 125**  
**1333 H Street, N.W.**  
**Washington, DC 20005**

*EOE/Non-Smoking Environment*

## **Research Associate**

At Amgen, you'll discover a research environment that emphasizes collaboration, intellectual honesty, scientific integrity, and a supportive culture. This unique approach has helped us grow into a global biotechnology leader in just thirteen years.

### **IMMUNOLOGY**

This position requires a BS in Biology and 2 years' research experience in life sciences or equivalent. Candidates must be skilled in gene and cDNA cloning, gene transfer and expression, tissue culture, and immunochemistry. The ideal candidate will have a MS in Molecular or Cellular Biology with 1 year of research experience, including signal transduction experience.

At Amgen, you'll find our approach to scientific research as rewarding as it is effective. We offer a highly competitive compensation and benefits package that includes a retirement and savings plan, an on-site fitness center, and three weeks' vacation. Please mail your resume/c.v. to: Amgen Inc., Staffing, Job Code: OXP-SC-2225, Amgen Center, Thousand Oaks, CA 91320-1789. Principals only, please. For information on other research opportunities available at Amgen, please call 1-800-446-4007. EEO-Affirmative Action Employer M/F/D/V. We recognize that diverse perspectives are a key factor in the process of discovery.

**AMGEN**

### **BIOMATHEMATICIAN**

Agouron Pharmaceuticals, Inc., is a development-stage biopharmaceutical company with a focus on protein structure-based drug design. A vacancy exists for a biomathematician with an interest in computational approaches to pharmacology to join a multidisciplinary team working on rational design and development of anticancer and antiviral drugs. The successful applicant will be expected to collaborate with experimental pharmacologists on development of pharmacokinetic and pharmacodynamic models, and on expert systems for prediction of clinical pharmacology from preclinical data.

Applicant should hold a Ph.D. or equivalent degree and preferably have postdoctoral experience in modeling complex biological systems. Prior experience of collaboration with experimental biologists would be an asset. Knowledge of C programming is required.

We offer state-of-the-art facilities and competitive salaries and benefits. Applications, including curriculum vitae and names of three references should be sent to:

Director, Human Resources



**Agouron**  
Pharmaceuticals, Inc.

10350 N. Torrey Pines Road  
La Jolla, California 92037





Pioneer Hi-Bred International, Inc., is a world-wide leader in agricultural genetics. Founded in 1926, we are a publicly-held corporation with research, production, and sales organizations world-wide. Our dynamic RESEARCH and PRODUCT DEVELOPMENT DIVISION is currently seeking motivated and experienced professionals to join us in our on-going program of crop improvement.

### RESEARCH MANAGER Gene Targeting Job #1040

The Research Manager, Gene Targeting, will manage a maize transformation program as part of a team working on gene targeting and other molecular genetic approaches for manipulation of this important crop species. Position requires a demonstrated ability to develop and implement innovative new procedures, and previous experience in interacting closely with other cell and molecular biologists. EDUCATION/EXPERIENCE: A Ph.D. (or equivalent) in plant science or related field, plus at least 3 years directly related experience in plant cell/molecular biology, experience with supervising technical staff and setting research goals/timelines. Candidates with direct experience in transformation of cereals and production of transgenic cereal crop plants, including greenhouse and field evaluation, will be preferred. (APPLICATION DEADLINE is March 17, 1995.) Please send cover letter indicating job number and C.V. to: Chris Fitch, Administrative Project Assistant, Pioneer Hi-Bred International, Inc., 7300 N.W. 62nd Avenue, P.O. Box 1004, Johnston, IA 50131-1004.

### SENIOR RESEARCH ASSOCIATE Protein Biochemistry Job #1041

Responsibilities include developing experimental strategies for optimizing the expression and targeting of proteins/peptides in plant cells, designing genes for engineered proteins, subsequent recombinant expression and structure-function characterization for novel properties. EDUCATION/EXPERIENCE: a MS degree plus at least 2 years of experience; or a BS degree in Biochemistry/Molecular Biology or equivalent, plus at least 4 years directly related lab experience in the application of molecular biology skills to understanding protein structure-function. Excellent interpersonal skills, high motivation level, familiarity with computers/computational skills and ability to work in a team environment are essential. (APPLICATION DEADLINE is March 17, 1995.) Please send cover letter indicating job number and C.V. to: Chris Fitch, Administrative Project Assistant, Pioneer Hi-Bred International, Inc., 7300 N.W. 62nd Avenue, P.O. Box 1004, Johnston, IA 50131-1004.

### POST DOCTORAL ASSOCIATE Protein Biochemistry Job #1042

A post-doctoral position is available starting June 1, 1995 to apply the technology of phage display to the identification of novel proteins for crop improvement. The successful candidate will have a Ph. D. in biochemistry/molecular biology with experience in molecular cloning techniques and the construction/screening of DNA libraries. The candidate should also have a background in protein biochemistry, be familiar with techniques in immunochemistry and be computer literate. Innovation and creativity essential. (APPLICATION DEADLINE is March 17, 1995.) Please send cover letter indicating job number and C.V. to: Chris Fitch, Administrative Project Assistant, Pioneer Hi-Bred International, Inc., 7300 N.W. 62nd Avenue, P.O. Box 1004, Johnston, IA 50131-1004.

### POST DOCTORAL ASSOCIATE Discovery Research Job #1043

The successful applicant will study folding, assembly, targeting, and processing of specific proteins in plant cells. The focus of this Discovery project will be on the action of molecular chaperones in the Endoplasmic Reticulum and on processing proteases in the ER and the Vacuole. Requirements include a Ph. D. in cell biology, protein biochemistry, or a related area. The candidate must have experience in protein purification and molecular biology techniques. Research experience with subcellular fractionation techniques, molecular chaperones and proteolytic enzymes is desirable. (APPLICATION DEADLINE is March 17, 1995.) Please send cover letter indicating job number and C.V. to: Cindy Letizia, Administrative Project Assistant, Pioneer Hi-Bred International, Inc., 7300 N.W. 62nd Ave., P.O. Box 1004, Johnston, IA 50131-1004.

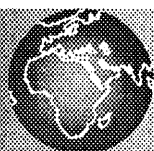
We offer excellent compensation, benefits and career growth potential, as well as good facilities and a cooperative research environment. Communication and teamwork skills essential. Please send cover letter indicating job name and job number to the respective individuals. We are an Equal Opportunity Employer.



**PIONEER®**

**PIONEER HI-BRED INTERNATIONAL, INC.**

## Share Our Distinct View of Science



At Alcon Laboratories, Inc., we view scientific discovery as the cornerstone to our success. In order to maintain our position as the global leader with over \$1.5 billion in annual sales, we continue to concentrate on what we do best - innovation in the research and development of ophthalmic and vision care products.

### Senior Scientist Pharmacokinetics-Drug Metabolism

This professional will act as Study Director for preclinical systemic and ocular ADME studies. Responsibilities will include protocol design, study implementation, interpretation of data and preparation of technical reports. Qualified candidates will possess a PhD in Biochemistry, Chemistry, Pharmacokinetics, Pharmaceutical Sciences or related field, and at least 2 years relevant industry experience.

If you share our distinct view of science, consider a career with Alcon Laboratories, a proud member of the Nestlé family. We are headquartered in Ft. Worth, Texas, where a warm climate, low cost-of-living and a variety of recreational and cultural facilities are part of the Sunbelt lifestyle. Our professionals also enjoy a state-of-the-art environment, and an excellent salary and benefits package, as well as the opportunity for career advancement. For consideration, please forward your resume with salary history to: Alcon Laboratories, Placement and Development, T1-3 (SSPDM), P.O. Box 6600, Ft. Worth, TX 76115; Equal Opportunity Employer, M/F/D/V. Principals only, please.

**Alcon®**  
**LABORATORIES**

*More Than Meets The Eye*

### National Institutes of Health

## LAB CHIEF

The National Institute of Allergy and Infectious Diseases (NIAID) invites nominations and applications for the newly created position of Chief, Laboratory of Allergic Diseases (LAD), Division of Intramural Research (DIR). The Chief, Laboratory of Allergic Diseases will provide basic science and clinical leadership to the Laboratory's research program in allergic diseases; as such, he/she will serve as the focal point within the Federal Sector and the scientific community for the conduct of research in allergy.

This position may be filled through the Civil Service employment mechanism or through the United States Public Health Service Commissioned Corps personnel system. Annual civil service salary may range from \$72,471 to \$92,856. The person selected may also be eligible for Physician's Comparability Allowance of up to \$20,000 per year. A recruitment bonus of up to 25 percent of base pay may be available to a non-federal candidate selected for this position, subject to individual approval.

For more information contact Ms. Kristie Daniel at (301) 402-1421. The following forms may be submitted as your application: SF-171 or OF-612, Application for Federal Employment, resume or curriculum vitae and your social security number. Please submit to:

**Joann Martin, NIAID, Personnel Mgmt Specialist,  
Bldg. 31, Rm 7A24, Bethesda, MD 20892.**

**Deadline for receipt of applications is: April 28, 1995.**

Selection for this position will be made solely on merit, with no discrimination for non-merit reasons such as race, color, religion, sex, national origin, politics, marital status, physical or mental handicap, or membership or non-membership in an employee organization.

**U.S. Citizenship Required  
NIH is an Equal Opportunity Employer**

## Join the world's leader in allograft tissue science.

Our research focus is to develop novel allograft bone and demineralized matrix materials for a variety of clinical applications. We're seeking two professionals to assume significant responsibilities in our Research and Development Department:



### ANIMAL SCIENTIST (Ph.D./D.V.M./M.S.) Allograft Development

To qualify, you will have extensive background using animal models to study bone healing with allograft materials. Experience in developing osteoinductive and osteoconductive models is required. Familiarity with demineralized bone matrix, bone growth factors, and cartilage would be a plus. This position requires the ability to analyze tissue responses using histological, pathological, and immunological methods. Position level will be commensurate with experience.

### SCIENTIST (B.S./M.S.) Molecular Biology and Tissue Culture

Responsibilities of this position will include analyzing cell cultures and tissues obtained from small animal experiments utilizing ELISA, PCR, *in situ* hybridization, immunohistochemistry, plus Southern, Northern, and Western blotting techniques. Three years' experience is required.

*Excellent oral/written communication skills and the ability to work on a broad range of projects in a team environment are essential for both positions.*

We offer competitive salaries and benefits and a Jersey shore location half way between New York City and Philadelphia. For confidential consideration, send your *curriculum vitae*, indicating position of interest, to: **Human Resources Department, Osteotech, Inc., 1151 Shrewsbury Avenue, Shrewsbury, New Jersey 07702.** We are an equal opportunity employer m/f/d/v.



## Research Fellow/Assistant

The Lindsley F. Kimball Research Institute, a division of the New York Blood Center, currently has an opening for a post-doctoral Research Fellow/Assistant.

As an active member of our research laboratory studying a novel form of blood clotting, the successful candidate will be a biochemist with a strong background in molecular biology to participate in a multi-faceted structure/function investigation. Requires proficiency in modern techniques including site-specific mutagenesis, epitope mapping, immunohistochemistry, use of transgenic animals, and protein chemistry.

In close proximity to other major research institutes on Manhattan's Upper East Side, we are comprised of 17 laboratories carrying out autonomous research programs in diverse fields, and offer a competitive salary and comprehensive benefits package. For immediate consideration, please fax (212)721-2752, or send CV to: **Department of Human Resources, Attn: GG-PP-II, New York Blood Center, 150 Amsterdam Avenue, 3rd Fl, New York, NY 10023.** An Equal Opportunity Employer M/F/D/V

**Job Opportunity Hotline**  
1-800-835-0058

**Lindsley F. Kimball**  
**Research Institute**  
A Division of the New York Blood Center

## DEPARTMENT of PHARMACOLOGY CENTRE for NEUROSCIENCE LECTURESHIP

Applications are invited for a Lectureship in Neuroscience tenable from April 1st, 1995. The preferred area of expertise is **Systems Neuroscience**, i.e. the analysis of information processing by the brain with respect to sensory or motor systems, motivation, emotion, memory or other aspects of higher brain function. The Lecturer will be expected to take part in teaching undergraduate courses in neuroscience, presently Brain and Behaviour 3, and Neuroscience 4. The successful candidate will also be expected to set up his/her own independent research laboratory. Individuals with expertise in neurophysiology, neuropsychology, behavioural neuroscience or psychophysics would complement existing strengths.

Candidates must have a good honours degree in a relevant subject, a doctoral qualification, and provide evidence of their ability to publish and attract external funding. The appointment will be at an appropriate point on the scale: £14,756-£25,735 per annum with USS superannuation.

Please quote REF: SCI 590048.

Informal enquiries should be addressed to Professor R G M Morris,  
Tel: 44-131-650 4562, Fax: 44-131-650 4579.

Further particulars may be obtained from:

**THE PERSONNEL OFFICE, THE UNIVERSITY OF EDINBURGH,  
1 ROXBURGH STREET, EDINBURGH EH8 9TB,  
FAX: 0131-650 6509**

where applications (12 copies) including a curriculum vitae and the names and addresses of two referees should be lodged.

Closing date: 10th March, 1995.



## Physical Oceanographer Oceanography Division Naval Research Laboratory

The Oceanography Division invites applications for the position of Head, Meso- and Finescale Ocean Physics Section, in the Ocean Sciences Branch. The Branch conducts a broad program of basic and applied oceanographic research that includes: coupled hydrodynamical, atmospheric, biodynamical and optical models, ocean optics, small scale turbulence and mixing, surface waves, ocean dynamics, and micro-biologically influenced corrosion. The Meso- and Finescale Ocean Physics Section conducts experimental and theoretical analyses of mesoscale, finescale and microscale processes. Research work is supported by a suite of modern *in situ* measurement systems, workstation networks and access to high-performance computing facilities. The current Section emphasis includes: upper ocean turbulent mixing, methods for optimizing sampling of hydrodynamic and thermohaline variability on continental shelves; littoral zone bubble distributions; deep western boundary current structure in the Northern Pacific. The Head of this Section leads in the formulation and conduct of research projects with a preferred emphasis on littoral and continental shelf dynamical processes. SALARY: \$59,920 to \$77,983 (GM-1360-14, Supervisory Oceanographer), dependent on qualifications. QUALIFICATIONS: Ph.D., or equivalent, in physical oceanography with a documented record of research accomplishments and research team leadership. Ability to obtain a security clearance and pass a *fitness for sea duty* medical examination are required. Applicants should submit a detailed resume or an optional Application for Federal Employment (OF-612) to: **Naval Research Laboratory, Human Resources Office (Code 1870), ATTN: Mrs. P. Buehler, Stennis Space Center, MS 39529.** Resumes/Application forms must be postmarked no later than **7 April 1995.** For additional information, contact Mrs. Pam Buehler at (601) 688-5731.

AN EQUAL OPPORTUNITY EMPLOYER  
U.S. CITIZENSHIP REQUIRED.

## POSITIONS OPEN

**POSTDOCTORAL POSITIONS.** Two postdoctoral positions are immediately available in the following areas: (1) the structure, function, and mechanism of action of primase during pRNA synthesis in initiation of DNA replication; (2) the role of a specific mRNA degradation in regulating gene expression. Candidates should have Ph.D. degree. A strong background in general molecular biology, together with a familiarity with molecular biological techniques is required. Experience of protein biochemistry is desirable. Send curriculum vitae with bibliography, description of research experience, reprints of recent publications, and names of three referees to: **Dr. G. Nigel Godson, Department of Biochemistry, New York University Medical Center, 550 First Avenue, New York, NY 10016.**

### PROTEIN CRYSTALLOGRAPHERS

**POSTDOCTORAL RESEARCH** projects on control of reactive oxygen species, DNA-repair, and cell cycle. Superb facilities and environment. Send curriculum vitae with names of three references to: **Dr. John Tainer, Molecular Biology MB4, The Scripps Research Institute, La Jolla, CA 92037. Email: jat@scripps.edu. Minority applicants encouraged.**

**POSTDOCTORAL POSITION** is available immediately to study structure/function of human factor VIII (anti-hemophilic factor) and interactions of factor VIII with other blood clotting proteins. Candidates should have a recent Ph.D. in Biochemistry or related field with a strong background in protein characterization and enzymology. Send curriculum vitae and names of three references to: **Dr. Philip J. Fay, Hematology Unit, P.O. Box 610, University of Rochester School of Medicine, Rochester, NY 14642. An Equal Opportunity/Affirmative Action Employer.**

**POSTDOCTORAL RESEARCH FELLOW** position. University of California, San Francisco (UCSF). The Department of Neurology at UCSF and the Gallo Center seek a postdoctoral research fellow to help identify genetic loci that contribute to susceptibility to alcoholism and neurodegenerative diseases. The projects involve both gene mapping and positional cloning. Candidates must have a working knowledge of molecular biology. Send curriculum vitae and bibliography, a statement of research experience and interests, and the names of three references to: **Kirk C. Wilhelmsen, M.D., Ph.D., Department of Neurology, Building 1, Room 101, 1001 Potrero Avenue, San Francisco, CA 94110. The University of California, San Francisco and the Ernest Gallo Clinic and Research Center are Equal Opportunity/Affirmative Action Employers. Women, minority groups and disabled individuals are encouraged to apply.**

### MOLECULAR PHARMACOGENETICS POSTDOCTORAL FELLOWSHIP MAYO MEDICAL SCHOOL

**POSTDOCTORAL FELLOWSHIP** positions are available beginning immediately to participate in ongoing NIH-funded studies of the molecular basis of genetic polymorphisms for drug metabolizing enzymes that alter drug toxicity and/or therapeutic efficacy. Candidates should have a Ph.D. and/or an M.D. degree with experience in pharmacology, molecular biology and/or molecular genetics. Experience in cDNA cloning, gene cloning and DNA polymorphism detection would be helpful. Send curriculum vitae and list of three references to: **Dr. Richard Weinshilboum, Department of Pharmacology, Mayo Medical School/Mayo Clinic, Rochester, MN 55905. Mayo Foundation is an Affirmative Action and Equal Opportunity Educator and Employer.**

### NIH POSTDOCTORAL FELLOWSHIP

**POSTDOCTORAL POSITION** available in the Laboratory of Physical Biology, National Institute of Arthritis and Musculoskeletal and Skin Diseases, National Institutes of Health, Public Health Service in Bethesda, Maryland, to study the molecular mechanism of muscle contraction. Position involves using advanced techniques of physiology and biochemistry to explore how modification of the myosin molecule affects its interaction with actin. Salary is \$25,000 to \$42,000 per year. The successful candidate will have a Ph.D. or M.D. degree with five years or less of postdoctoral research training. Send curriculum vitae, including bibliography and names of three references to: **Mark Schoenberg, M.D., National Institutes of Health, NIAMS/TRP, 6 Center Drive MSC 2751, Bethesda, MD 20892-2751. NIH is an Equal Opportunity Employer.**

## POSITIONS OPEN

**POSTDOCTORAL RESEARCH POSITION.** The University of Puerto Rico Medical School, a fully accredited research and teaching institution invites applications for a research associate position for candidates with research interests related to pharmacology/physiology. Areas of special interest are: intracellular signaling, secretory processes, oxygen biology, cell growth regulation and mesangial cell function. Send applications including curriculum vitae and names of three references to: **Dr. Emma Fernández-Repollet, RCM Program Acting Director, University of Puerto Rico, Medical Sciences Campus, P.O. Box 365067, San Juan, PR 00936-5067.**

### POSTDOCTORAL RESEARCH ASSOCIATE

Available spring 1995, to study pathogenesis of virulent *Borrelia burgdorferi*, the causative agent of Lyme disease. Candidates should have a Ph.D. and be experienced in recombinant DNA techniques. Send curriculum vitae, names of three references, and copies of recent publications to: **Dr. Robin Isaacs, Division of Infectious Diseases, University of Mississippi Medical Center, 2500 North State Street, Jackson, MS 39216-4505. Applications will be accepted until April 15, 1995. An Equal Opportunity Employer, Minority/Female/Disabled/Veterans.**

### POSTDOCTORAL FELLOW

Position(s) available immediately in the laboratory of **Dr. Harold A. Singer**, at the Sigfried and Janet Weiss Center for Research to identify calcium/calmodulin dependent protein kinase II isozymes and evaluate structure/function in smooth muscle. Applicants should have training in molecular biology or biochemistry. Experience in one or more of the following areas is desirable: control of gene expression and/or cell growth, protein kinase enzymology, smooth muscle contractile protein regulation. Send curriculum vitae, a statement of research interests, and names with telephone numbers of three references to: **Geisinger Human Resources (HS), 100 North Academy Avenue, Danville, PA 17822-1529. Equal Opportunity Employer/Minority/Female/Disabled/Veterans.**

### POSTDOCTORAL FELLOWSHIP

Washington University School of Medicine

Applications are invited for a **POSTDOCTORAL POSITION** to study the cell and molecular biology of receptor-mediated endocytosis and its regulation of blood coagulant protein physiology. Interested candidates should send curriculum vitae, names of three references and a brief summary of research experience to: **Alan L. Schwartz, Ph.D., M.D., Box 8116, School of Medicine, Washington University, St. Louis, MO 63110 USA. FAX: 314-454-2685.**

**POSTDOCTORAL FELLOW POSITION** is available to study the molecular etiology of periodontal disease and oral cancer. Requires recent Ph.D. or M.D./Ph.D., experience in molecular biology, tissue culture and immunohistochemistry. Send résumé and three recommendation letters to: **Zlatko P. Pavelic, M.D., Ph.D., Professor and Director, Division of Molecular Oncology, Department of Otolaryngology-Head and Neck Surgery, Medical School, University of Cincinnati, P.O. Box 670528, Cincinnati, OH 45267-0528. An Equal Opportunity Employer.**

**GEOLOGIST** for environmental consultant in northeast Ohio. Conduct groundwater flow and transport modeling for remedial investigations; work with risk assessment group for data evaluation, calculation and report preparation; conduct research into methodologies and data sources, and use computer software to organize and graphically present environmental data. Tools: MODFLOW, MULTIMED, VLEACH, StratiFact, GRITS, CoreDraw, Paradox, and Excel. M.S. in geology is required. Must have one year of experience in job described above or one year of experience with environmental data analysis. Graduate education must include one course each on Hydrogeology, Fluid Mechanics, Solid and Hazardous Waste, and Geographic Information System. Must have either a Master's thesis or one project in groundwater modeling using MODFLOW, VLEACH, StratiFact and CoreDraw. Experience may be gained before, during or after degree. 40 hours per week, 8:00 a.m. to 5:00 p.m., Monday to Friday, \$33,862 per year. Send two résumés and cover letters (no calls) to: **T. Do, Job No. 00890, Ohio Bureau of Employment Services, P.O. Box 1618, Columbus, OH 43216.**

## POSITIONS OPEN

### POSTDOCTORAL POSITION NMR ON COMPLEX FLUIDS

Applications are invited for a two-year **POSTDOCTORAL FELLOWSHIP** to study bilayer fluctuations, nematic order, and microstructure in amphiphilic liquid crystals using NMR spectroscopy, relaxation, and diffusion. A strong background in NMR and an interest in complex fluid physics are desirable. Excellent NMR facilities are available in a new laboratory. Send curriculum vitae, research summary, and the names and addresses of two references to: **Dr. Bertil Halle, Department of Physical Chemistry 2, Lund University, P.O. Box 124, S-22100 Lund, Sweden. FAX: +46-46-104543, Email: bertil.halle@FKEM1.LU.SE.**

**RESEARCH ECOLOGIST**—U.S. Department of the Interior, National Biological Service, Forest & Rangeland Ecosystem Science Center at Corvallis, Oregon, seeks an ecosystem-level, watershed research ecologist (GS-401/460/486-13, \$50,706 to \$65,915 per annum) to lead a field-oriented research program relating management of forest or rangeland natural resources to the proper function of ecosystems in the Pacific Northwest and Intermountain West. Ph.D. equivalent experience in ecology, watershed science or in a closely related field is required. Opening date: 13 February 1995. Closing date: 13 March 1995. Contact: **Carla Clark, 503-750-7307** for complete announcement and informational details.

**POSTDOCTORAL POSITION** available immediately to study regulation of gene expression in mycobacteria. Focus is on expression of genes relevant to disease pathogenesis. Experience in molecular biology and microbial and cell culture essential. Interested individuals should send curriculum vitae and names of three references to: **Dr. Robert Hussion, Division of Infectious Diseases, Enders 625, Children's Hospital, 300 Longwood Avenue, Boston, MA 02115. FAX: 617-735-8387.**

## COURSES AND TRAINING

### PATHOGENESIS OF NEUROIMMUNOLOGIC DISEASES

August 13-25, 1995

This two-week lecture course, for residents and staff in neurology, neurosurgery, or psychiatry, and for advanced graduate students, postdoctorates, and investigators in neuroscience or immunology, will describe the application of genetics, molecular, and cell physiologic concepts and techniques in current use in immunology and neurophysiology to the analysis of pathogenesis in the better known neurologic and psychiatric diseases thought to have an immunologic basis.

Co-directors: **Celia F. Brosnan, Albert Einstein College of Medicine; and Jack Rosenbluth, New York University School of Medicine.**

Tuition: \$1,000 (room and board available at no additional charge). Application Deadline: April 12, 1995.

For further information and application forms, contact: **Admissions Coordinator, Marine Biological Laboratory, Woods Hole, MA 02543. Telephone: 508-548-3705, extension 401. Internet: admissions@mbi.edu. World Wide Web: <http://www.mbl.edu>.**

## MARKETPLACE

**\$195 CUSTOM PEPTIDES**

- 15 - 30 mg • 8 - 20 residues
- Mass Spec. Provided
- Quantity discounts available



**CHIRON**  
MIMOTOPES  
PEPTIDE SYSTEMS

North America:  
Tel: 1-800-338-4965  
Fax: 1-800-654-5592

CM 0945

Circle No. 8 on Readers' Service Card

Marketplace ads continue on next page



## MARKETPLACE

The Complete  
Oligonucleotide  
Company

# KEYSTONE

Custom DNA  
Conjugates

Biotin  
Fluorescent dyes  
Alkaline Phosphatase  
Horseradish Peroxidase

Call for our new expanded catalog.

Keystone Laboratories, Inc.  
961 Hamilton Avenue Menlo Park, CA 94025  
tel 800-788-4DNA fax 800-786-4DNA  
e-mail keydna@keydna.com  
VISA, Mastercard, American Express.

Circle No. 14 on Readers' Service Card

custom custom custom custom custom custom custom custom

## PEPTIDE and DNA

Peptide and DNA engineering specialist:  
Phosphoryl, Thiophosphoryl, Biotinyl, Chloromethyl,  
Cyclic, Dimeric, Partial protected, FITC, DNP, pNA,  
AMC, Phosphothionate and more .....

## IonSpray MS and LC/MS

Synthetic or natural compounds analysis:  
Organic, Inorganic, or coordination compounds  
Drug metabolites, Enzyme digests, ect  
\$30/sample (MS), \$250/sample (LC/MS)

Call for more information (800-597-7873) or  
Fax us sequence for quotation (510-371-1156).  
PeptidoGenic Research & Co. Livermore, CA.

Circle No. 2 on Readers' Service Card

## CUSTOM DNA SYNTHESIS

PURE & SIMPLE

Price **\$2.19**  
as low as per base plus set up

- Superb Technical Support
- Impeccable Quality
- World's Fastest Service

### MIDLAND

THE UNDISPUTED #1  
CUSTOM DNA SYNTHESIS SERVICE  
THE MIDLAND CERTIFIED REAGENT COMPANY  
3112-A West Cuthbert Avenue  
Midland, Texas 79701  
Phone 1-800-247-8766 FAX 915-694-2387

Circle No. 7 on Readers' Service Card

## MARKETPLACE

## ABS Bioreagents™

Custom Receptor Binding,  
Enzyme, and RNA Preparations  
Fast, Cost-Effective Service  
Analytical Biological Services Inc.  
(800) 391-2391

Circle No. 29 on Readers' Service Card

## IMMUNOLOGICAL PRODUCTS

- RIA Kits (each) - Special Price - **\$200.00**
- ENDOTHELIN-1, ANGIOTENSIN II, LH-RH, CALCITONIN & MANY MORE
- <sup>125</sup>I-Labeled Peptides (Per 10 µCi) - **\$200.00**
- High Sensitivity Peptide Antibodies
- For RIA AND IMMUNOHISTOCHEMISTRY • ASK FOR YOUR FREE SAMPLE

LIMITED TIME OFFER

## Advanced ChemTech

Fax(502) 968-1000 1-800-456-1403

Circle No. 1 on Readers' Service Card

## PARTICLE SIZE STANDARDS

NBS traceable calibration standards and controls. Large  
assortment of diameters from 0.02 to 2000 µm, micro-  
spheres of polystyrene, glass and fluorescent materials.  
Free catalog available. Toll Free 800-334-3883.  
In Calif. 415-424-1177, FAX 415-424-1158

 Duke Scientific  
Corporation

P.O. BOX 50005  
2463 FABER PLACE  
PALO ALTO, CA 94303

Circle No. 40 on Readers' Service Card

## XX IDT

Integrated DNA Technologies, Inc.

Custom DNA Synthesis  
Oligonucleotides  
**\$2.25/Base**

No Set-up Fee  
48 hour Delivery  
Column Purified

Phone: 800-328-2661  
Fax: 319-645-2921

Circle No. 4 on Readers' Service Card

Custom  
MAb  
Production

- Hybridoma Development
- Ascites Production
- In-Vitro Production
- Purification Services
- Labeling • Fragmentation

(518) 537-8000

 TSDBIOSERVICES

Circle No. 37 on Readers' Service Card

## MARKETPLACE

World leader in Synthetic DNA and Peptides

## DNA

- NO SETUP charge • NO minimum order
- Column Purified
- >5.0 OD's (~200 µg)
- Gel Picture Q. C.
- Synthesis Report

## PEPTIDES

- NO SETUP charge • Free HPLC Tracing
- 15-40 mgs
- 8 - 20 residues
- Shipped in 5 days
- Antipeptide Antibodies production services, & more!

Since 1984, serving you with quality products

**BIO-SYNTHESIS**  
1-800-227-0627 Fax: 214-420-0442

Circle No. 6 on Readers' Service Card

## CUVETTES PLUS™

Low Cost, Disposable  
Electroporation Cuvettes  
Each individual sterile package includes  
a pipette for easy sample handling  
 1-800-289-2465  
FAX 619-597-9594

Circle No. 18 on Readers' Service Card

## Human Microvascular Cells Complete Cell System

NOW ONLY \$350

NEW DEFINED ANIMAL ENDOTHELIAL CELL SYSTEMS:  
Porcine Aortic Endothelial Cell System  
Bovine Aortic Endothelial Cell System

 cell systems

800-697-1211

Circle No. 21 on Readers' Service Card

## ULTRASONIC

CELL DISRUPTORS  
LIQUID PROCESSORS • ATOMIZERS  
FREE CATALOG - 1-800-745-1105  
**SONICS & MATERIALS**  
W. KENOSIA AVE., DANBURY, CT 06810 USA  
FAX 203-798-8350

Circle No. 10 on Readers' Service Card

## Express Peptides

15 mg in 5 days  
\$25 per residue

**Research Genetics, Inc.**  
1-800-533-4363

Circle No. 12 on Readers' Service Card

NOW THAT  
OPERON'S DNA *is*  
*just* **\$1.20** PER BASE,  
YOUR *savings* ARE  
SURE TO multiply.



Here's something you can bank on. A 50 nmole scale synthesis of Operon's custom DNA for just \$1.20 per base, with a \$10.00 set-up fee.

This new, affordable price not only means you'll be able to conduct more experiments, it means your savings will grow with each project. And with our reputation for high-quality DNA, you'll get the results you need every time.

Of course, we still offer our 0.2  $\mu$ mole scale for \$2.00 per base with a \$15.00 set-up fee and our 1.0  $\mu$ mole scale for \$2.80 per base with a \$20.00 set-up fee.

Thanks to Operon's knowledgeable and experienced staff, you can always count on us for unmatched customer service, too. Because when it comes to meeting your needs, we really know how to hop to it.

For more information, or to place an order, call us toll-free at 1-800-688-2248.

**OPERON**

WORLD'S LEADING SUPPLIER OF SYNTHETIC DNA

© 1995 Operon Technologies, Inc. 1000 Atlantic Ave., Alameda, CA 94501, USA. Phone: (800) 688-2248 or (510) 865-8644. Fax: (510) 865-5255. E-mail: dna@operon.com. NIHBP 263.00033233.

Circle No. 42 on Readers' Service Card



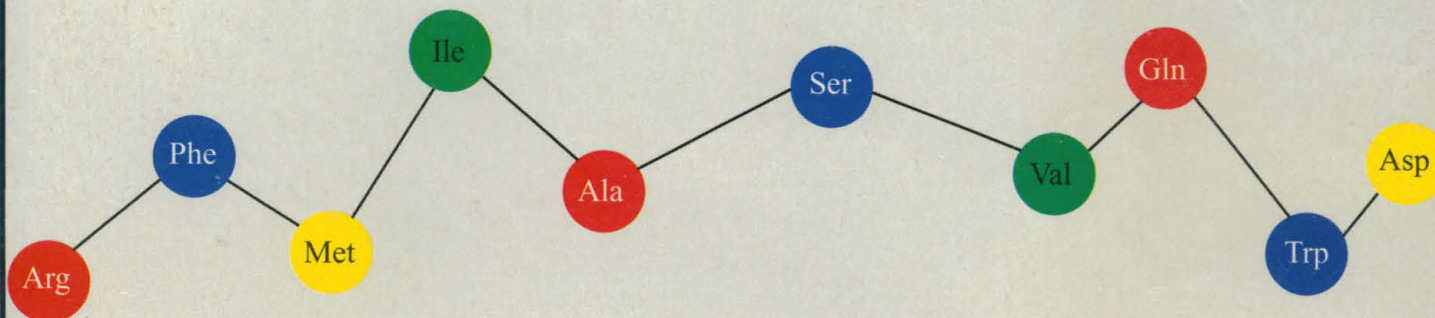
# Come to us for Peptides...

## Express Peptides

**15 mg in 5 days**  
**\$25 per residue\***  
**No set-up charge**

\*8 residue minimum

Now there's no need to choose between quality, low-price, and fast delivery. With our express service you get the peptides you need in just 5 days for only \$25 per residue. You will receive at least 15 mg of each peptide you order, fully deprotected, lyophilized and packed under argon. All of this, faster than ever before.



## and Antibodies!

## Peptide Antibodies

**Monoclonal...\$8,500**

Delivered in 24 weeks

**Polyclonal...\$1,195**

Delivered in 16 weeks

Research Genetics is proud to provide an economical 'start-to-finish' custom peptide antibody service. Just supply us with your peptide sequence and we'll do the rest. Your peptide will be synthesized utilizing the latest FMOC solid phase methods with MAP resin technology which increases the antigenic response. When requested, first bleed serum from polyclonal antibodies is available upon collection.

# Research Genetics, Inc.

2130 Memorial Parkway SW • Huntsville, AL 35801

U.S. or Canada 800-533-4363 • U.K. 0-800-89-1393 • FAX 205-536-9016

Circle No. 15 on Readers' Service Card