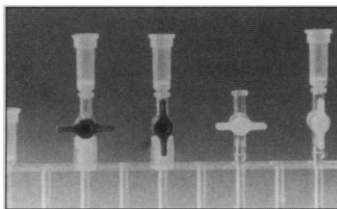


Rapid Minipreps with Spin Columns

QIAprep Plasmid Kit spin columns can now be used on all commercially available vacuum manifolds with luer connectors. This handling option provides laboratories with considerable flexibility for plasmid DNA mini-preparations. The outlet nozzle of QIAprep spin columns fits inside male luer connectors, which are a standard fitting on many vacuum manifolds. Samples can



now be purified in a vacuum manifold or in a microfuge, depending on the preference of the user. The procedure provides up to 20 µg of high quality plasmid DNA suitable for manual sequencing, restriction, library screening, ligation, and transformation. Recoveries are between 85 and 95%. **QIAGEN. Circle 140.**

Endotoxin Removal from Nucleic Acids

DNA Etox removes endotoxin from plasmid or synthetic DNA produced for gene therapy. The solid-phase reagent has a binding capacity of up to 1000 EU/m as measured in a standard plasmid preparation. DNA Etox can be regenerated with 1 M NaOH and reused, and can be sterilized by autoclaving. It can be used either in a batch or in a chromatography column. **Sterogene. Circle 141.**

mRNA Differential Display Kit

The RNAimage kit is an improved system for differential display of mRNAs. The system is based on a third generation of differential display technology featuring one-base anchored oligo-

(dT) primers. The kit overcomes the redundancy and underrepresentation in gene detection experienced with two-base anchored primers. The one-base anchored primers are highly selective in subdividing the mRNA species into three groups each with guanine, thymine, and cytosine located immediately upstream of their polyadenylate tails. This improvement further decreases the number of reverse transcription reactions needed for each RNA sample without primer degeneration. **GenHunter. Circle 142.**

Heart Performance Analyzer

The Digi-Med Heart Performance Analyzer (HPA) is a compact digital instrument that measures 10 key parameters of the mechanical function of the heart in lab animals, including maximum change in ventricular pressure and largest normalized rate of change in pressure. It instantaneously displays the analyzed values and can output them to a printer, microcomputer, or chart recorder. The HPA requires no post-experiment calculations, such as those demanded by polygraph systems. The HPA's nanoliter-volume transducer permits accurate measurement even in smaller animals like rats and mice. **Micro-Med. Circle 143.**

Ratio Fluorescence Imaging System

The ImageMaster Ratio Fluorescence Imaging System measures the concentration of calcium, magnesium, sodium, chloride, and hydrogen ions inside living cells through the use of dual wavelength probes. The system offers a choice of illuminators, microscopes, and video cameras,

and features intuitive Windows-based software. **Photon Technology International. Circle 144.**

DNA/RNA Hybridization Kit

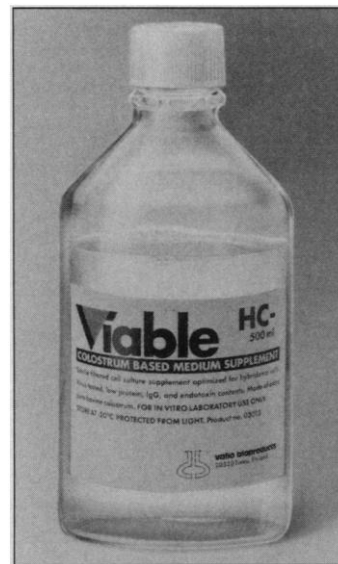
The DNA/RNA Hybridization Kit is a complete set of reagents and nylon membranes for the hybridization of nucleic acid probes to Northern (RNA), Southern (DNA), colony, and plaque blots. The kit is designed for use with the LabLogix Luminescent DNA/RNA Detection Kit or ³²P-labeled probes to give reproducible results with low background and sensitive detection of complementary DNA at picogram levels. Either large probes or oligonucleotide probes can be used. **LabLogix. Circle 145.**

Primer Analysis Software

Primer Premier analysis software features a primer sequence database that permits simple yet powerful porting of complete GenBank and EMBL sequences into the program. A new facility allows for direct ordering of selected oligonucleotides by automatic generation and mailing of a convenient synthesis order form via local e-mail or Internet. The program can export the synthesis form into the word processor of the user's choice. Additional features include restriction enzyme analysis, amino acid translation, false priming checks, and nested primer analysis. **Premier Biosoft International. Circle 146.**

Fetal Bovine Serum Alternative

Viable is a colostrum-based medium supplement that offers ad-



vantages over fetal bovine serum, including low bovine protein content, minimal batch-to-batch variations, extremely low endotoxin content, low viscosity, low fat content, and no viruses such as FMD, BSE, IBR, and BVD. **Accurate Chemical and Scientific. Circle 147.**

Literature

Rapid Identification of Unknown Proteins Using MASSMAP is an application data sheet on using this software for analysis of matrix-assisted laser desorption ionization data. **Finnigan MAT. Circle 148.**

Immunological Reagents for Industry and Research 1994-95 lists more than 4000 reagents, including monoclonal and polyclonal antibodies, affinity-purified antibodies, purified antigens, conjugated antibodies, and contract antibody development and production services. **Biodesign International. Circle 149.**

Protease Inhibitors Technical Guide provides catalog numbers, package sizes, solubility and stability information, suggested starting concentration, molecular weight, and additional inhibitor-specific information. **Boehringer Mannheim. Circle 150.**

Newly offered instrumentation, apparatus, and laboratory materials of interest to researchers in all disciplines in academic, industrial, and government organizations are featured in this space. Emphasis is given to purpose, chief characteristics, and availability of products and materials. Endorsement by *Science* or AAAS is not implied. Additional information may be obtained from the manufacturers or suppliers named by circling the appropriate number on the Readers' Service Card and placing it in a mailbox. Postage is free.

SCIENCE

PERSONNEL PLACEMENT

LINE CLASSIFIED ADVERTISEMENTS

Deadlines: Ads are due by Thursday, 10 a.m., 2 weeks prior to the issue date. *Science* is published each Friday, except the last Friday of the year. Call for holiday deadlines. Ads must be submitted in writing.

How to Submit a Classified Ad:

Prepare double-spaced typewritten copy. Do not include any abbreviations. *Science* will edit and typeset ads according to *Science* guidelines. Include billing information, and desired publication date. Available categories: Positions Open, Meetings, Announcements, Courses and Training, Search Firms. *Science* cannot provide proofs of typeset line ads.

Mail, FAX or Email materials to:

Science Classified Advertising
1333 H Street, N.W., Room 814
Washington, DC 20005
Telephone: 202-326-6555
FAX: 202-682-0816

Internet Email: science_classifieds@aaas.org

Rates: Ads are \$43 per line; \$430 minimum. One line equals 52 characters and spaces; centered headings equal 32 characters and spaces. A 3% cash discount is granted to all prepaid ads.

Estimates: *Science* will provide a cost estimate for line ads. This is an approximate cost only. Allow for variation between estimated lines and actual typeset lines and resulting final cost. Purchase orders must allow for some degree of flexibility and/or adjustment.

Ads from Outside the U.S.: A discount of \$30 will be offered to advertisers making payment in U.S. dollars by checks drawn on U.S. banks. Contact Gordon Clark at +44 223 302 067 (telephone) or +44 223 302 068 (FAX).

Credit Cards: *Science* accepts American Express, MasterCard and VISA. Discount does not apply to credit cards.

Cancellations: Deadline for cancellation is 10 a.m., Tuesday, 10 days prior to issue date.

DISPLAY PERSONNEL ADVERTISEMENTS

For rates and info. for fractional display ads call:

Deborah Cummings
Recruitment Advertising
Telephone: 202-326-6541
FAX: 202-682-0816

Janis Crowley
Recruitment Advertising Manager
Telephone: 212-496-7704
FAX: 202-682-0816

Gordon Clark
European Recruitment Advertising
Telephone: +44 223 302 067
FAX: +44 223 302 068

CONDITIONS: The AAAS encourages employers to actively recruit and employ underrepresented minority groups. *Science* reserves the right, at its discretion, to edit or decline to publish advertisements submitted to it.

POSITIONS OPEN

ASSISTANT PROFESSOR PHARMACEUTICS AND PHARMACEUTICAL CHEMISTRY THE OHIO STATE UNIVERSITY

The Division of Pharmaceutics and Pharmaceutical Chemistry invites applications for a tenure-track position at the **ASSISTANT PROFESSOR** level. Applicants should have a Ph.D. degree in pharmaceutics, pharmaceutical chemistry, or a closely related field of biomedical or molecular life sciences research. Postdoctoral experience is desirable. Preference will be given to applicants who have a professional degree in pharmacy and teaching experience, especially in a college of pharmacy. To complement existing strengths in the division, a research program is preferred at the molecular or cellular level in the areas of targeted drug delivery, gene therapy, controlled release, and drug delivery systems.

Review of applications will begin March 1, 1995; the position becomes available October 1, 1995. Applicants should provide a letter of application, a curriculum vitae, the names and addresses of three references, and a statement of research interests and professional goals. Please contact:

Dr. Sylvan G. Frank
Chair, Search Committee
Division of Pharmaceutics and
Pharmaceutical Chemistry
College of Pharmacy
The Ohio State University
500 West 12th Avenue
Columbus, OH 43210-1291

The Ohio State University is an Equal Opportunity/Affirmative Action Employer.

ASSISTANT/ASSOCIATE PROFESSOR OF VERTEBRATE ZOOLOGY

The Division of Natural Sciences of the University of Guam (UOG) solicits applications from those eligible to work in the United States for a **TENURE** or **NON-TENURE-TRACK**, full-time position (one-, two-, or three-year appointment). The primary responsibilities are to teach freshman anatomy and physiology to non-majors (half-time), comparative vertebrate anatomy, and graduate/undergraduate courses in the candidate's research area. Demonstrated success in teaching and research is important. Guam offers excellent opportunities for work with endangered and introduced vertebrate species. UOG has a multi-ethnic, multilingual student body of about 4,000 and is an excellent place to explore pedagogical methods for diversity in learning. Informal letters of inquiry may be addressed to: E. A. Matson, UOG Division of Natural Science or eamatson@uog9.uog.edu. Also, for further information call Dr. Daniel McCauley, our representative on the U.S. mainland at 1-800-821-9233, 8 to 5 CST. Serious applicants should send names, addresses and telephone/Email of three academic references, curriculum vitae, official graduate transcripts sent directly from the awarding institution, copies of undergraduate transcripts, and reprints by 31 January 1995 to: Chair, Biology Search Committee, Personnel Services Division, University of Guam, UOG Station, Mangilao, Guam 96923. Federal law requires presentation of proof of eligibility to work in the United States prior to an offer of employment. *The University of Guam is an Affirmative Action/Equal Opportunity Employer. Women and minorities are particularly encouraged to apply.*

ASSISTANT/ASSOCIATE PROFESSOR. The Department of Physiology of University of North Texas Health Science Center at Fort Worth (UNTHSC) invites applications for tenure-track position. Applicants must have established a research emphasis in neural control of circulation and respiration. Current grant funding is preferred. In addition to research, responsibilities will include medical and graduate student instruction.

UNTHSC is a state-supported health science center with state-of-the-art facilities for medical student and graduate student education and is located in the cultural district of Fort Worth. Submit letter of application stating career goals, curriculum vitae and three letters of recommendation to: Patricia A. Gwartz, Ph.D., Search Committee Chairman, Department of Physiology, UNTHSC, 3500 Camp Bowie Boulevard, Fort Worth, TX 76107-2699. Deadline for application: March 5, 1995, with a start date of September 1, 1995.

University of North Texas Health Science Center is an Equal Opportunity/Affirmative Action Employer and Educator

POSITIONS OPEN

FACULTY POSITIONS DEPARTMENT OF MICROBIOLOGY NEW YORK UNIVERSITY SCHOOL OF MEDICINE

The Department of Microbiology of NYU School of Medicine is seeking to fill one to two tenure-track positions at the **ASSISTANT/ASSOCIATE PROFESSOR** level within the next one to two years. We are particularly interested in attracting outstanding researchers with a Ph.D. or M.D. degree working in the fields of viral and bacterial pathogenesis but will also welcome applications from individuals interested in the molecular analysis of viral and bacterial function in general. Participation in the Department's graduate teaching is expected. Start-up funds are available.

The Department of Microbiology is housed in the Medical Science Building at NYU Medical Center, with additional faculty located in the adjacent Skirball Institute of Biomedical Research and nearby Aaron Diamond AIDS Research Center and Public Health Research Institute. The research interests of the faculty are diverse with an emphasis on mechanisms of microbial pathogenesis including the study of AIDS and retrovirology, host defense mechanisms, microbial and molecular genetics, oncogenesis, growth factors, cytokines and the regulation of gene expression. The Department has an active NIH-supported graduate training program and also participates in interdisciplinary NIH-funded programs in the Kaplan Cancer Center and the Center for AIDS Research.

Applicants should send their curriculum vitae, names of three references and a brief statement of research interests to: Microbiology Search Committee, Department of Microbiology, NYU Medical Center, 550 First Avenue, New York, NY 10016.

NYU is an Equal Opportunity Employer

FACULTY POSITIONS IN MOUSE GENETICS AND HUMAN DISEASE MODELS

Department of Genetics and Molecular Medicine Emory University School of Medicine

The Department of Genetics and Molecular Medicine is seeking faculty members specializing in mouse genetics, with special interest in individuals studying developmental genetics and/or developing animal model for disease. The successful candidates will join a department encompassing faculty studying mouse developmental genetics, the molecular basis of human diseases, quantitative genetics, and gene therapy. The department has all new facilities for research and development in human and mammalian genetics including a fully equipped mouse oocyte and embryo injection facility. Most appointments will be at the **ASSISTANT PROFESSOR** level, although more senior individuals will also be considered at their appropriate rank. In addition to developing an active and competitive research program, the successful candidates will be expected to participate in teaching of medical and graduate student candidates.

Candidates should send their curriculum vitae, their research goals, and arrange to have three references forwarded to:

Douglas C. Wallace, Ph.D.
Department of Genetics and Molecular Medicine
1462 Clifton Road, N.E. Room 420A
Emory University School of Medicine
Atlanta, GA 30322

Emory University is an Equal Opportunity Employer.

ASSISTANT PROFESSOR OF BIOLOGY Search Re-Opened

TENURE-TRACK POSITION at Berry College beginning August 1995. We seek a botanist to teach botany, plant ecology, plant taxonomy, plant anatomy and morphology, and a non-majors course. The individual should be committed to undergraduate teaching and research in a department with a research emphasis in ecology and evolutionary biology. Teaching or postdoctoral experience required. Submit curriculum vitae, reprints, description of teaching and research interests, and the names and addresses of three references by January 30, 1995, to: Dr. Barbara Mixon, School of Mathematical and Natural Sciences, 5036 Berry College, Mount Berry, GA 30149-5036. Berry is listed in Peterson's Competitive Colleges and Barron's Profiles of American Colleges.

Berry College is an Equal Opportunity Employer. Minorities and women are encouraged to apply.

POSITIONS OPEN

PLANT BIOLOGIST

Harvey Mudd College announces a tenure-track position at the rank of **ASSISTANT/ASSOCIATE PROFESSOR** to begin in September 1995 or January 1996. Ph.D. required, postdoctoral experience preferred. We seek a plant biologist with expertise in physiology, cell biology, genetics, or development to join a new, active biology program with excellent laboratory and research facilities. Breadth of knowledge for excellent undergraduate teaching in a small department is required, as is a research program appropriate for participation by undergraduates. Teaching responsibilities include plant biology portions of introductory biology and general physiology for majors, and advanced specialty courses. Harvey Mudd College, a member of the Claremont Colleges, is a small private college of science and engineering with a select undergraduate student body.

Send letter including description of teaching and research interests and curriculum vitae, and have three letters of reference sent to: **Dr. William K. Purves, Chair, Department of Biology, Harvey Mudd College, 301 East 12th Street, Claremont, CA 91711**. Review of applications will begin on January 30, 1995, and continue until the position is filled. Email inquiries to: **Bill.Purves@HMC.Edu**. Harvey Mudd College is an Equal Opportunity Employer, and women and members of minority groups are encouraged to apply.

BIOLOGY—SCIENCE EDUCATION

ASSISTANT PROFESSOR, tenure-track position beginning 1 September 1995. Doctorate in one of the Biological Sciences with appropriate experience in natural science education for elementary teachers required. Candidates must be able to teach one or more of the following: nutrition, biological aspects of child development, human anatomy or human physiology and must show a commitment to quality undergraduate education in biology and science education. Responsibilities include coordination and teaching of natural sciences course designed for elementary school teachers which accounts for 50% or more of the teaching load and teaching other courses in specialty area, conducting scholarly activity in either the biological sciences or science education, and working cooperatively with the faculty in the Schools of Arts and Sciences and Education to promote the development of science-literate teachers. Applications must include a letter of application, a curriculum vitae, copies of transcripts, and three letters of reference. Deadline: February 15, 1995. Send to: **Dr. F. Duane Blume, Chair, Department of Biology, California State University, 9001 Stockdale Highway, Bakersfield, CA 93311-1099**. California State University, Bakersfield is an Affirmative Action/Equal Opportunity Employer.

NEUROPHYSIOLOGIST

Tenure-track **ASSISTANT/ASSOCIATE PROFESSOR**. Must have Ph.D. requirements completed by 22 August 1995. Must have training and research experience in neurophysiology and strong background in systemic physiology and human anatomy. Preference given to those with broad training in biology. Applicants should have strong commitment to teaching and experience working with ethnically diverse populations. Duties: teaching neurophysiology, human physiology/anatomy, graduate, and, possibly, general biology courses; developing courses; advising undergraduate student research; serving on committees. Submit curriculum vitae, all transcripts, names of three references to: **M. Reihman, Chair, Biological Sciences, California State University, Sacramento, CA 95819-6077**. Application deadline: 1 March 1995. Affirmative Action/Equal Employment Opportunity.

ASSISTANT PROFESSOR—Cell Biology (Animal). Tenure-track, August 1995. Ph.D. to teach Principles of Biology, Cell Biology, and Recombinant DNA Techniques. Research with undergraduates expected. Deadline February 20, 1995. Send application letter stating teaching/research interests, résumé, all transcripts, up to three publications, and three reference letters to: **Cell Biology Search, Department of Biology, University of Wisconsin-Eau Claire, Eau Claire, WI 54702-4004**. Internet: **BIOLSRCH@UWEC.EDU**. Telephone: 715-836-4166; FAX: 715-836-5089. An Equal Opportunity/Affirmative Action Employer. Applications from women and persons of color are particularly welcomed.

POSITIONS OPEN

FACULTY POSITION in Cellular and Molecular Mechanisms of Viral Pathogenesis. The Department of Veterinary Pathobiology wishes to fill a full-time, tenure-track **ASSISTANT PROFESSOR** position in the area of animal health and disease with emphasis on cellular and molecular mechanisms of viral pathogenesis. Ph.D. or equivalent foreign degree at the time of application is required. Candidates must have at least two years of relevant postdoctoral experience by July 1, 1995, and the ability to establish a strong, fundable research program. Candidates must have demonstrated expertise in cellular/molecular approaches in the area of virology. A successful candidate will be expected to establish a competitively funded research program, participate in our D.V.M. teaching curriculum, and train pre- and postdoctoral scientists. Salary: commensurate with experience and qualifications. Start date: July 1, 1995. Send a letter describing your research and teaching interests and career objectives, a curriculum vitae, and names and addresses of three referees postmarked by March 1, 1995, to: **Dr. Sam Maheswaran, Chair, Search Committee, Department of Veterinary Pathobiology, College of Veterinary Medicine, University of Minnesota, 1971 Commonwealth Avenue, St. Paul, MN 55108**. FAX: 612-624-7284 (for inquiries only). The University of Minnesota is committed to the policy that all persons shall have equal access to its programs, facilities, and employment without regard to race, religion, color, sex, marital status, national origin, disability, age, public assistance status, veteran status, or sexual orientation.

ASSISTANT/ASSOCIATE/FULL PROFESSOR

The Center of Marine Biotechnology of the University of Maryland Biotechnology Institute seeks to fill a tenure-track **FACULTY POSITION** with a highly qualified researcher in marine natural products and processes or marine bioremediation. Preference will be given to exceptional candidates who have established research programs in the molecular biology of marine symbiosis, microbial phylogeny, microbial degradation of marine pollutants, molecular genetics of marine algae, or molecular genetics/biochemistry of marine natural products. Applications will be accepted at the Assistant, Associate, or Full Professor levels, and the starting rank of the position will be commensurate with the qualifications of the successful candidate. Individuals who have demonstrated outstanding research ability should forward a curriculum vitae, a short description of research plans, and names of three referees by February 1, 1995, to: **Chairman, Search Committee for Microbiology/Biotechnology, Center of Marine Biotechnology, University of Maryland Biotechnology Institute, 600 East Lombard Street, Baltimore, MD 21202**. The University of Maryland is an Equal Opportunity/Affirmative Action Employer. Women and minorities are encouraged to apply.

ASSISTANT/ASSOCIATE RESEARCH PROFESSOR

Non-tenure-track, research **FACULTY POSITIONS** are available in the areas of marine biotechnology, aquaculture and fisheries molecular biology, marine natural products, and marine bioremediation. Applicants should have a Ph.D., postdoctoral experience, and a demonstrated commitment to excellence in research. Appointment will be at a level appropriate to experience. These are non-tenure-track positions, and appointees are generally expected to generate 100% of their salaries. Individuals who have demonstrated outstanding research ability should submit a curriculum vitae and names and addresses of three referees by February 1, 1995, to: **Chairman, Search Committee for Assistant/Associate Research Professors, Center of Marine Biotechnology, University of Maryland Biotechnology Institute, 600 East Lombard Street, Baltimore, MD 21202**. The University of Maryland is an Equal Opportunity/Affirmative Action Employer. Women and minorities are encouraged to apply.

ANIMAL PHYSIOLOGIST

Tenure-track **ASSISTANT PROFESSOR** position anticipated to begin in August 1995. Will teach animal physiology, an upper-level course in applicant's area, and general biology courses; and direct student research. A Ph.D. and commitment to liberal arts education are required. Applicants should submit curriculum vitae, names of three references, and teaching and research goals to: **Dr. Matthew J. Temple, Department of Biology, Nazareth College, 4245 East Avenue, Rochester, NY 14618-3790** by January 25, 1995. Nazareth College is an Equal Opportunity/Affirmative Action Employer.

POSITIONS OPEN

ASSISTANT PROFESSOR, Zoology: tenure-track position in the Department of Zoology and Physiology at the University of Wyoming beginning fall semester 1995 to teach in areas of zoology broadly defined and maintain a research program commensurate with available time, facilities and resources. A Ph.D. in zoological sciences is required and commitments to and demonstrated proficiency in undergraduate instruction are essential. The appointee will be in residence at the University of Wyoming/Casper College Center, Casper, Wyoming, and will be expected to teach two courses, including laboratories, and to direct an undergraduate seminar and independent study and to perform student advising each semester. The appointee will have opportunity for access to departmental research facilities and graduate programs at the University of Wyoming, Laramie campus. Send letter of application, curriculum vitae, available teaching evaluations and three letters of recommendation to: **Dr. Robert A. Jenkins, Search Committee Chairman, Department of Zoology and Physiology-UW/Casper College Center, 125 College Drive, Casper, WY 82601** by 17 February 1995. The University of Wyoming is firmly committed to building a multicultural faculty and strongly encourages applications from female and minority candidates. The University of Wyoming is an Affirmative Action/Equal Opportunity Employer.

FACULTY POSITION IN PSYCHIATRY AND PHARMACOLOGY

Applications are invited for a tenure-track **ASSOCIATE or FULL PROFESSOR** joint position in the Departments of Psychiatry and Pharmacology. The position requires a Ph.D. degree and candidates should document experience with modern approaches in molecular biology. Of special interest are receptor structure and function as applied to neurotransmitters and pharmacologic agents as well as other neurohormonal correlates of behavior.

A clear record of capability for generating extramural research support and for working as an independent investigator is required. Outstanding laboratory facilities and ample start-up funds are available. Salary is competitive. Rank and salary will be commensurate with experience and productivity.

Please send curriculum vitae, a brief summary of present and future research interests, three representative reprints, and the names and addresses of three references to: **Edward Bixler, Ph.D., Department of Psychiatry, Pennsylvania State University College of Medicine, Hershey, PA 17033**. Deadline for receipt of applications is 28 February 1995.

An Affirmative Action/Equal Opportunity Employer. Women and minorities are encouraged to apply.

CELL BIOLOGY ASSISTANT PROFESSOR

The Department of Biological Sciences, SUNY at Buffalo invites applications for a **TENURE-TRACK POSITION** in cell biology starting September 1995. Qualifications include a Ph.D., at least two to three years of postdoctoral experience and the potential to establish an outstanding research program. Of particular interest are individuals addressing developmental and/or immunological aspects of cell biology. The Department has excellent research facilities and will offer a very competitive salary and start-up package. The selected candidate will join a young and vibrant, research-oriented faculty with strength in cell and molecular biology and will participate in our Departmental Graduate Program, as well as in undergraduate instruction. Membership in a University-wide Molecular Cell Biology Graduate Program is also possible. Applicants should forward a curriculum vitae, statement of future research plans and arrange for three letters of reference to be sent by January 30, 1995, to: **Dr. Ronald Berezney, Chair of the Cell Biology Search, Department of Biological Sciences, State University of New York at Buffalo, Buffalo, NY 14260**. SUNY is an Equal Opportunity/Affirmative Action Employer.

The Department of Biochemistry, Duke University Medical Center invites applications for a faculty position at the level of **ASSISTANT PROFESSOR**. We welcome candidates in all areas, especially structural biology, mechanistic enzymology and nucleic acid biochemistry. Send résumé, summary of research interest and three letters of reference to: **Christian R. H. Raetz, Department of Biochemistry, Duke University Medical Center, Durham, NC 27710**. Consideration of applications will commence in February 1995. Duke University is an Equal Opportunity/Affirmative Action Employer.

Tenure-Track And Postdoctoral Opportunities.

Listed below are a few of the outstanding opportunities for conducting research that are now available at the National Institutes of Health.

Tenure-Track Position Assistant Professor Equivalent

Cell Biology Edward D. Korn, PhD

A tenure-track position is available for a cell biologist to develop an independent research program to complement ongoing projects in cell motility and intracellular membrane trafficking. Applicants who combine the use of structural techniques with biochemical and molecular approaches are especially encouraged to apply. A willingness to interact with current members of the laboratory on problems of mutual interest is desirable. Support for up to three postdoctoral fellows and technicians will be provided. A two-page statement of research interests and goals should be submitted in addition to three letters of recommendation. The successful candidate will be evaluated for tenure within six years. Laboratory of Cell Biology (OE-63), NHLBI, Building 3, Room B1-22, 3 CENTER DR MSC 0301, BETHESDA MD 20892-0301.

Clinical Pharmacology Markku Linnoila, MD, PhD

Position available for a board certified or eligible internist with training in clinical pharmacology to develop an independent research program on alcoholism. The program complements ongoing molecular genetic and brain imaging studies on alcoholism and on individuals at high risk of developing alcoholism. Individuals with research interests in neuroendocrinology, receptor regulation and receptor polymorphisms should apply. The incumbent is expected to use pharmacological challenge strategies to define homogenous subgroups of alcoholics for molecular genetic investigations. A two-page statement of research interests and goals should be submitted with three letters of recommendation. US citizenship or permanent residency required. Laboratory of Clinical Studies (OE-63), NIAAA, Building 10, Room 3C103, 10 CENTER DR MSC 1256, BETHESDA MD 20892-1256.

Postdoctoral Positions

DNA Damage and Repair Vilhelm A. Bohr, MD, PhD Michele K. Evans, MD

The roles of DNA damage and DNA repair mechanisms are currently being investigated in several human model systems associated with cancer susceptibility and features of premature senescence. Applicants should have a strong background in molecular biology and biochemistry, and have less than five years of postdoctoral experience. Laboratory of Molecular Genetics, (OE-63), NIA, Gerontology Research Center, Room 2D09, 4940 Eastern Avenue, Baltimore, MD 21224.

Hemostasis Mark Weinstein, PhD

Opportunity for investigator-initiated research in hemostasis, especially hemophilias. Experience in molecular biology, protein chem-

istry or biomedical engineering is desirable. In addition, fellow will review blood product license applications and give advice about coagulation products. Laboratory of Hemostasis (OE-63), CBER/FDA (HFM 340), 1401 Rockville Pike, Rockville, MD 20852-1448.

Immunobiology Kelly P. Kears, PhD

A position is available to study T cell differentiation, extrathymic migration, and developmental regulation of immune receptors. Carbohydrate receptors important to immune cell development and function are also being identified. Experience in molecular biology or biochemistry desirable but not required. Experimental Immunology Branch (OE-63), NCI, Building 10, Room 4B17, 10 CENTER DR MSC 1360, BETHESDA MD 20892-1360.

Molecular Neurobiology Beth J. Hoffman, PhD

The role of transporters in neurotransmitter signaling is under investigation. The receptor-mediated regulation of monoamine transporters is being studied at both transcriptional and post-translational levels. Projects include development of tissue culture and transgenic mouse models. Applicants should have a strong background in molecular biology, pharmacology or cell biology and must have less than five years postdoctoral experience. Laboratory of Cell Biology (OE-63), NIMH, Building 36, Room 3A17, 36 CONVENT DR MSC 4090, BETHESDA MD 20892-4090.

Additional Postdoctoral Fellowship Opportunities

For an on-line listing of additional postdoctoral openings, you may access the NIH EDNET Bulletin Board POSTDOC conference via Internet (wylbur.cu.nih.gov) or modem (1,301-402-2221 or 1,800-358-2221) with parameters set at "7,Even,1". When connected to NIH, type in "vt100" for terminal emulation, "F5E" for initials, and "AJL1" for account number.

The Postdoctoral Research Fellowship Opportunities catalog, which describes intramural laboratories at the NIH, is also available by request. An electronic version of the catalog may be accessed via the Internet using either the Gopher Information System (gopher.nih.gov) or the World Wide Web (<http://www.nih.gov/>). When connected, select *Research Opportunities at the NIH Office of Education*. If you would like to request a catalog or have further questions, please contact the Office of Education, Building 10, Room 1C129, 10 CENTER DR MSC 1158, BETHESDA MD 20892-1158, 301-496-1603, Fax 301-402-0483.

To Apply

If you hold a doctoral degree (e.g., PhD, MD/PhD, MD, DO, DDS, DMD or DVM) accompanied by previous laboratory research experience, and would like to be considered for one of these positions, please send a cover letter, *curriculum vitae*, bibliography, and statement of research interests to the address listed with each position. In addition, please arrange to have letters of recommendation sent from three scientists who can provide an evaluation of your qualifications.



National Institutes Of Health

Office Of Education

The NIH is an Equal Opportunity Employer

POSITIONS OPEN

ASSISTANT PROFESSOR in Avian Ecology and Conservation. The Department of Wildlife and Range Sciences, University of Florida, invites applications for a 12-month, tenure-track, research (30%) and teaching (70%) position. Teaching includes undergraduate courses in wildlife conservation, wildlife ecology, graduate course in area of specialization, and student advisement. Applicants must have a Ph.D. in wildlife ecology, biology, zoology, or related field; expertise at population, community, or landscape levels; active research interest in ecology or biogeography of avifauna associated with terrestrial, coastal, or aquatic systems; experience in procuring extramural funding; and ability to work effectively and efficiently with colleagues and students. Salary commensurate with qualifications and experience. Applicants should submit a letter of application, résumé, official transcripts, and three letters of recommendation by 20 January 1995 to: **Dr. Mel Sunquist, Chair, Search and Screen Committee, P.O. Box 110430, Department of Wildlife and Range Sciences, University of Florida, Gainesville, FL 32611-0430.** Reference Position No. 916210. *Women and minority candidates are encouraged to apply. Affirmative Action/Equal Opportunity Employer.*

PURDUE UNIVERSITY DEPARTMENT OF FOODS AND NUTRITION ASSISTANT/ASSOCIATE PROFESSOR FOOD/FLAVOR CHEMISTRY

Tenure-track, 10-month, 50% research and 50% teaching position is anticipated for July 1, 1995. Research interest preferred: Flavor/Sensory/Lipid and related areas. Opportunities for research include newly designed Sensory Analysis and Lipid Laboratories and collaboration with an Aquaculture Research Group. Graduate and undergraduate teaching opportunities include a sensory analysis course and other undergraduate and graduate food science courses. Qualifications include a Ph.D. degree in Food Science or related field with industry or postdoctoral experience desirable. Candidates should submit a résumé, list of publications, a short description of future research plans and should arrange for three letters of reference to be sent to: **Karen Jamesen, Food/Flavor Chemistry Search Committee, Department of Foods and Nutrition, Purdue University, 1264 Stone Hall, West Lafayette, IN 47907-1264.** Review of applications will begin March 1, 1995. *An Equal Opportunity/Affirmative Action Employer.*

ASSISTANT PROFESSOR DEPARTMENT OF CHEMISTRY THE UNIVERSITY OF TEXAS AT EL PASO

Tenure-track **ASSISTANT PROFESSOR** position available to begin in the academic year 1995-96. Teaching duties in inorganic, physical or analytical chemistry (plus elementary courses and specialized research areas). A Ph.D. is required and postdoctoral experience is preferred. Research interests should be in the areas of inorganic, polymer, materials and/or environmental chemistry. Development of an externally supported research program to include undergraduate, M.S. students (Chemistry) and Ph.D. students (Materials Sciences and Environmental Sciences interdisciplinary programs) required. Send letter of application, curriculum vitae, summaries of research plans and teaching proficiencies, and arrange to have three letters of recommendation sent to: **Search Committee, UTEP, Department of Chemistry, El Paso, TX 79968.** *The University does not discriminate on the basis of race, color, national origin, sex, religion, age or disability in employment or the provision of services.*

ASSISTANT PROFESSOR, Immunology. The Department of Cellular and Molecular Biology at The University of West Florida is seeking applications for a tenure-track faculty position, available August 1995. The successful candidate is expected to teach immunology, offer additional courses in areas of expertise (e.g., cell biology, molecular biology, or biochemistry), and develop an active research program involving undergraduate and Master's students. Qualifications include Ph.D. with specialization in immunology and relevant research or teaching experience. Salary range \$34,000 to \$38,000. Applicants should submit a statement of teaching and research interests, curriculum vitae, transcripts, and three letters of reference by February 15, 1995, to: **Dr. John P. Riehm, Chair, Department of Cellular & Molecular Biology, The University of West Florida, Pensacola, FL 32514.** *An Affirmative Action/Equal Employment Opportunity Employer.*

POSITIONS OPEN

ASSISTANT/ASSOCIATE PROFESSOR. The Division of Pulmonary and Critical Care Medicine, University of California, Davis, School of Medicine is recruiting for two full-time faculty positions. Individuals with demonstrated records of research in lung cell biology, competence in teaching, and clinical investigations are desired. The Division has a strong clinical program, chiefly located at the University of California, Davis, Medical Center and affiliated with an outpatient program located at the Sacramento VA Outpatient Clinic. Therefore, training and experience necessary for acting as an attending physician in Pulmonary and Critical Care Medicine is required. Interested applicants should send a résumé to: **Timothy Albertson, M.D., Ph.D., Division of Pulmonary and Critical Care Medicine, University of California, Davis, Medical Center, 4301 X Street, Room 2120, Sacramento, CA 95817.** Positions are open until filled but not later than 31 May 1995. *The University of California, Davis is an Equal Opportunity/Affirmative Action Employer.*

ASSISTANT PROFESSOR PLANT PHYSIOLOGY

The Department of Botany-Microbiology, Ohio Wesleyan University, seeks a plant physiologist for a tenure-track position to begin August 1995. Teaching includes plant physiology and introductory botany and microbiology. Individuals with expertise in molecular plant physiology, plant-fungus interactions, or genetic regulation of development are encouraged to apply. Candidates must have Ph.D. and a demonstrated commitment to undergraduate teaching. Applications should include curriculum vitae, statement of research interests, reprints of selected publications, and three letters of recommendation sent by 31 January 1995, to: **Dr. J. E. Sanger, Department of Botany-Microbiology, Ohio Wesleyan University, Delaware, OH 43015.** *Ohio Wesleyan is an Affirmative Action/Equal Opportunity Institution, encouraging application from women and minorities.*

BIOCHEMISTRY ASSISTANT PROFESSOR. The Texas Tech University Department of Chemistry and Biochemistry invites applications for a full-time, tenure-track **ASSISTANT PROFESSOR** position. A Ph.D. degree is required; postdoctoral experience is preferred. The successful candidate should have outstanding potential in teaching and establish a vigorous research program in experimental or computational aspects of protein biochemistry. Teaching duties will include a graduate course in Proteins. Candidates should submit a curriculum vitae, a description of proposed research and names and addresses of three references to be sent by January 31, 1995, to: **Dr. Robert W. Shaw, Department of Chemistry and Biochemistry, Box 41061, Texas Tech University, Lubbock, TX 79409-1061.** *Texas Tech University is an Equal Employment Opportunity/Affirmative Action/ADA Employer.*

DEAN—Medical College of Pennsylvania and Hahnemann University School of Medicine—The Medical College of Pennsylvania and Hahnemann University have recently consolidated and the new institution is seeking nominations and applications for the position of Dean of the School of Medicine. Nominees and applicants must hold a doctoral degree in biomedical sciences (M.D., Ph.D. or equivalent) and have a distinguished record of scholarly and professional accomplishments appropriate for tenure within the University. We seek an individual whose vision and management skills will stimulate and shape the growth and stature of the School of Medicine at a time of immense change within the University and in the health care environment at large. Candidates must have a demonstrated record of effective recruitment and retention of outstanding faculty and staff and the ability to recognize and support excellence and diversity within the faculty. In addition, candidates must also embrace an educational philosophy that emphasizes the essential integration of research, teaching and patient care, and must have the ability to articulate that philosophy effectively. Nominations and applications will be accepted until January 31, 1995, and will be reviewed beginning immediately. Nominations and applications should be sent to the attention of **Leslie Anne Miller, Esq. at the Medical College of Pennsylvania and Hahnemann University School of Medicine, 3300 Henry Avenue, Philadelphia, PA 19129, c/o Ms. Jane Underwood.** *The Medical College of Pennsylvania and Hahnemann University is an Affirmative Action/Equal Opportunity Employer.*

POSITIONS OPEN



FRED
HUTCHINSON
CANCER
RESEARCH
CENTER

DIRECTOR OF THE PUBLIC HEALTH SCIENCE CORE LABORATORY

The position of **DIRECTOR** of the Core Laboratory in the Cancer Biology Program of the Public Health Science (PHS) Division of the Fred Hutchinson Cancer Research Center (FHCRC) is available. Appointment to be at the Assistant Member rank is anticipated. This facility has been organized to provide a service for the quality-controlled testing of large sample numbers for the PHS Division programs and to translate new methods and biomarkers into the epidemiology and cancer prevention arena. The laboratory is supported by involvement in investigator-initiated grants, by charge-back for sample testing and by Center support for development of new procedures required for pilot studies, etc. The laboratory currently has responsibility for biochemical tests in the Cancer Prevention Research Program's studies and in the CARET studies as well as in numerous projects in the Program in Epidemiology. The Core Laboratory is located in the FHCRC Columbia Building but will be moving to new facilities in the South-East Lake Union campus in 1997.

Candidates should send a curriculum vitae and list of four references to: **James K. McDougall, Ph.D., Member and Program Head, Program in Cancer Biology, Fred Hutchinson Cancer Research Center, 1124 Columbia Street, C1-015, Seattle, WA 98104.** Deadline for applications is March 1, 1995.

PROFESSOR/CHAIR DEPARTMENT OF ANATOMY AND CELL BIOLOGY

The State University of New York at Buffalo School of Medicine and Biomedical Sciences invites applications and nominations for a tenured professorial position as **CHAIR** of the Department of Anatomy and Cell Biology. The Department, with 17 faculty members, has active teaching programs in several fields such as gross anatomy, histology, and neuroscience and offers graduate training in the anatomical sciences and cell biology. This position represents a unique opportunity to build upon a strong department by promoting continued growth and further development of its teaching and research programs. The successful candidate should have a distinguished record of academic accomplishment and the ability to establish a strong independent, extramurally supported research program and to foster faculty development. The candidate must have a Ph.D., M.D. or equivalent doctoral degree, experience in teaching and research in anatomy or cell biology, and skills as a leader and manager. Individuals with an active research program, extramural grant support, a background in cell biology, and some previous administrative experience are preferred. Women and minority applicants are particularly encouraged to apply. Interested candidates should submit a letter of application, curriculum vitae, and a one page research statement. All correspondence should be sent to: **Reid R. Heffner, Jr., M.D., Chair, Anatomy Search Committee, Department of Pathology, 204 Farber Hall, SUNY at Buffalo School of Medicine, Biomedical Sciences, 3435 Main Street, Buffalo, NY 14214-3000.** The deadline for receipt of applications is February 1, 1995. *The State University of New York is an Affirmative Action/Equal Opportunity Employer.*

PHYSIOLOGISTS/PHARMACOLOGISTS

Applications are invited for a tenure-track **FACULTY POSITION** at the Associate to Professor level. Applicants must have a Ph.D. or equivalent in physiology, pharmacology, or neuroscience or related discipline and a minimum of five years of experience. Individuals must have funded extramural basic science research that is related to oral biology. Preference will be given to projects employing modern molecular techniques. Instructional duties include team teaching of physiology or pharmacology. Applicants should submit curriculum vitae, a statement of research interests, and names of at least three references to: **Dr. Lee Robertson, Chair, Department of Biological Structure and Function, School of Dentistry, Oregon Health Sciences University, 611 S.W. Campus Drive, Portland, OR 97201.** *Oregon Health Sciences University is an Equal Opportunity/Affirmative Action Employer.*



CONFERENCE ANNOUNCEMENT

CALL FOR ABSTRACTS

Advanced Technology Applications to Combat Casualty Care (ATACCC)

May 17-18, 1995, Silver Springs, Maryland

The Combat Casualty Care Research Program of the United States Army Medical Research and Materiel Command will sponsor a second advanced technology conference. The conference is designed to promote the transfer of advanced technological applications between DoD research agencies and the civilian sector. An increasing number of new technologies being developed for various purposes may not necessarily relate to emergency trauma and combat casualty care, per se. This conference and workshop is designed to bring together the technological and medical fields to allow for open discussion of problems and new solutions employing the emerging technologies. The technological areas are not restricted. Examples of some of the applications presented in the first ATACCC meeting include, but are not limited to, the fields of telemedicine, advanced bio/physiological sensors, remote personal status monitors, new and unique polymers, virtual reality simulation, ultrahigh speed information processing systems and robotics.

The meeting is limited to 200 attendees with 120 selected oral and poster presentations. Abstracts are invited from both the civilian and government sector. There will be two categories of abstracts 1) Specific Applications and 2) Organizational Technology Overviews, designed to allow governmental and non-governmental organizations that have specific as well as a broad range of cutting edge technologies to interact with medical researchers and developers. Abstracts are due February 15, 1995.

For more information contact:

Dr. Rudy Kuppers
Science Applications International Corporation
5340 Spectrum Drive, Suite N
Frederick, Maryland 21701
(301) 698-5991, FAX (301) 698-6188

RARE CELL ISOLATION/ANALYSIS POSTDOCTORAL SCIENTIST

HELPING PEOPLE LIVE BETTER LIVES

We are seeking a Postdoctoral Scientist to work in an aggressive program involving rare cell isolation. The goal of this program is the development of methods that allow the isolation/enrichment of rare cells for diagnostic purposes. The candidate should have a PhD in a field which provided 1-3 years experience with various aspects of molecular biology. This background should include purification and labelling of mRNA, cDNA cloning, synthesis and analysis of cDNA libraries, subtraction hybridization strategies, PCR, in-situ hybridization and M13 based sequencing. Knowledge of cell biology would be helpful. Using the above specified skills this individual will be responsible for a critical portion of an exciting multidisciplinary project with on-going world-class collaborations.

The appointment is for 1 year, renewable for a second year and available now. Competitive salary, benefits and relocation allowance provided.

For consideration please forward your CV to the Human Resources Department at Boehringer Mannheim Corporation, 9115 Hague Rd., Indianapolis, IN 46250. Please reference POSTDOC-2. Principals only please. An Equal Opportunity Employer.

BOEHRINGER
MANNHEIM
CORPORATION



PRIZM Pharmaceuticals, Inc., is a privately held biotechnology company with a focus on eliminating unwanted cellular proliferation in serious clinical diseases, utilizing our expertise in growth factor biology. We are seeking for our Preclinical Research Department individuals who value creativity, a team approach to solving difficult research problems, and innovative experimental approaches to protein therapeutics having novel mechanisms of action.

Director, Ophthalmology Research

This director will be responsible for the development of novel anti-proliferating agents in eye diseases. A Ph.D. or M.D., 10 years' experience in broad areas of ophthalmology research, drug development experience with small molecules and proteins, and a strong publication record are required. Ref. ORD

Scientist, Ophthalmology

This scientist will develop model systems to analyze inhibition of cell proliferation. A Ph.D. or M.D. in a relevant discipline, at least 5 years of industry or academic experience, and knowledge of corneal, anterior and posterior chamber disease models are required. Experience in evaluating protein or small molecule therapeutics and a strong publication record are preferred. Ref. OPS

Scientist, Tumor Biology

This scientist will modify and develop *in vivo* approaches toward understanding the mechanisms of action of novel therapeutics. A Ph.D., D.V.M. or M.D. in experimental pathology or other relevant discipline, at least 5 years of industry or academic experience, and knowledge of a variety of surgical and non-surgical animal models are required. Evidence of independent research, the ability to build an innovative research program, and a strong publication record also are required. The successful candidate will be in charge of developing models to investigate mechanisms of action of growth factor inhibitors/antagonists at the tissue, cellular or molecular level. Specific experience with analytical techniques such as immunohistochemistry, *in situ* hybridization, tissue Western blot analysis and *in vitro* analyses is preferred. Ref. TBS

Research Associates, Oncology

These research associates will develop and utilize *in vivo* models to assess the efficacy of novel therapeutics for oncology and other growth inhibitory applications. A B.S./B.A. in biology or a related field, at least 3 years of laboratory experience, including animal handling and surgical experience, and strong analytical skills are required. An M.S. degree, specific experience with tumor models and AALAS certification are preferred. Ref. RAO

All positions demand individuals with strong written and verbal communication skills and the desire to work in a team situation.

PRIZM offers a highly stimulating research environment in which team synergy and scientific curiosity are encouraged. Please mail or fax your C.V. today, referencing position of interest, to: PRIZM Pharmaceuticals, Human Resources/Ref. _____, 11035 Roselle Street, San Diego, CA 92121. Fax 619/625-0050. An Equal Opportunity Employer.



P R I Z M
PHARMACEUTICALS

POSITIONS OPEN

DIRECTOR JONSSON COMPREHENSIVE CANCER CENTER SCHOOL OF MEDICINE University of California, Los Angeles

The UCLA School of Medicine is seeking a distinguished scientist to serve as **DIRECTOR** of the Jonsson Comprehensive Cancer Center. The Director is responsible for coordinating and expanding interdisciplinary cancer research among cancer control and basic science units in the School of Medicine and Public Health, and stimulating new research programs and investigators through seed grant funds. Oversight of existing grants and private funding and space resources, and development of new funding sources, are also responsibilities of the Director.

Interested applicants should have experience in leadership, development and clinical or basic science research. Applications, including curriculum vitae, should be sent within four weeks to:

Jean B. deKernion, M.D.
Chair, Jonsson Comprehensive Cancer Center
Director Search Committee
c/o Barbara Kriel, Dean's Office
12-138 CHS
UCLA School of Medicine
Los Angeles, CA 90024-1722

UCLA is an Affirmative Action/Equal Opportunity Employer.

COKER TRUSTEES CHAIR PLANT BIOTECHNOLOGY CLEMSON UNIVERSITY

Clemson University is seeking applications and nominations for a distinguished tenure-track position as the Coker Trustees **CHAIR** in Plant Biotechnology. Research emphasis is in fiber crops, primarily cotton, with undergraduate and graduate teaching responsibilities. The position is available July 1, 1995; applications or nominations accepted until February 28, 1995, or until a suitable candidate is identified. Individuals with an outstanding record in research and accomplishments in plant biotechnology are encouraged to apply. Applications (curriculum vitae, statement of research goals and interests, and references) should be sent to: **Coker Chair Search Committee, Agricultural Experiment Station, 104 Barre Hall, Clemson University, Clemson, SC 29634-0351, Attn: Dwight Camper.**

DIRECTOR, Environmental Science Program. Columbus College invites applications for Director of the new Environmental Sciences Program. The College, a member of the University System of Georgia, enrolls over 5,500 students. The Environmental Sciences Program is in its first year of operation and will grant the M.S. degree with multidisciplinary participation. The new Director will play a key role in determining the program's focus and future direction. Applicants should hold the Ph.D. in a related natural or physical science, with a record of research or applied experience in environmental science. Area of specific expertise is open. The candidate will be expected to attract external funding, teach courses within the program, and interact with the community in related issues. Send résumé, statement of research interests, and names, addresses, and telephone numbers of three references. Deadline is 15 February 1995. Send materials to: **ESD Search Committee, Department of Chemistry and Geology, Columbus College, Columbus, GA 31907-5645.** Ethnic minorities and women are encouraged to apply.

SCIENTIFIC DIRECTOR

BIO-IMMR R&D, a company with interest in biotechnology, specialized in Reproductive Medicine, Immunology and Genetics is looking for a **SCIENTIFIC DIRECTOR**. Minimum requirements: Ph.D. or M.D. with 10 years in research. Job Description: Supervision of the technical aspects of research and development; budget; implementation of protocols and procedures; development of strategic alliances with industry and universities; liaison between the scientific team and the administration; supportive of the general direction. Qualifications: experience in molecular biology; knowledge of university, government and industry procedures; knowledge of French and English is a must.

Please send your résumé before January 31, 1995, to: **Dr. Pierre Bois, Institut de médecine de la reproduction de Montréal, 1100, Beaumont, Bureau 305, Montréal (Québec), H3P 3H5 Canada.** Or send a FAX to 514-345-8978.

POSITIONS OPEN

ASSOCIATE DIRECTOR: The Ohio State University (OSU) announces an opening for Associate Director, Ohio Agricultural Research and Development Center (OARDC). The position is located in Wooster, Ohio. This is a full-time administrative position reporting to the Director. The Associate Director, as a partner with the Director, will be responsible for all activities including the planning, budgeting, coordination, resource development and implementation of research activities funded by federal, state and non-government sources. The candidate must provide effective leadership in development of research programs consistent with the mission of the OARDC and OSU. The OARDC, the agricultural experiment station for Ohio, has a budget in excess of \$37 million per year with over 250 scientists and over 400 staff in the Colleges of Food, Agricultural, and Environmental Sciences, Human Ecology, Biological Sciences and Veterinary Medicine. Qualifications include an earned doctorate degree in an agricultural or related discipline and the ability to effectively communicate with academic and nonacademic clientele. Research accomplishments as evidenced by publications and success in securing grant and/or other outside sources of funding are essential. Demonstrated experience and ability in research administration in the land-grant university system are desirable. Salary is negotiable and an excellent benefit package is provided. The Search Committee will begin reading dossiers on February 27, 1995, and will continue to receive applications until a candidate is selected. Applicants should send a letter of application and résumé to: **Dr. Y. M. Saif, Search Committee Chair, Food Animal Health Research Program, OARDC/OSU, 1680 Madison Avenue, Wooster, OH 44691.** The OSU is an Equal Opportunity/Affirmative Action Employer and complies with all federal and Ohio state laws regarding affirmative action.

DIRECTOR ROMBERG TIBURON CENTERS

The Romberg Tiburon Centers, operated by San Francisco State University, are located on 36 acres on San Francisco Bay in Marin County. The Centers operate a 40-foot research vessel and several small boats involved in research on the Bay. The Centers are staffed by 12 scientists and 20 support personnel in addition to participation by faculty and students from the University. The Centers seek an estuarine or marine scientist with experience in leading a multidisciplinary research team for the position of **DIRECTOR**. The position responsibilities include: (1) overall administration of the estuarine research and instructional facility; (2) recruiting research faculty and coordination and development of extramural funding for research on San Francisco Bay and the central California coastal zone; (3) coordination of efforts with other organizations working on the Bay; (4) establishing and enhancing the relations with the community and with the public through the media and public programs; (5) planning and implementation of University instructional programs at the Centers; (6) development and management of facilities, including ship operations.

Applicants should have a strong record of research in estuarine and/or coastal oceanographic systems, experience in the administration and management of field stations, and a proven ability to develop multidisciplinary proposals. Salary will be commensurate with qualifications. A complete benefits package is available. Submit curriculum vitae and names of at least three references to: **Dr. James Kelley, Dean, College of Science and Engineering, San Francisco State University, San Francisco, CA 94132** by 28 February 1995. *San Francisco State University is an Equal Opportunity Employer.*

PROFESSOR AND CHAIRMAN THE LAUTENBERG CENTER FOR GENERAL AND TUMOR IMMUNOLOGY

The Hebrew University
Hadassah Medical School Jerusalem

Nominations and applications for **CHAIRMAN** of the Lautenberg Center as successor to **Dr. David W. Weiss** are invited by February 15, 1995. The successful candidate will have a record of major accomplishment in science and evidence of ability to nurture, coordinate, and lead a research center dedicated to immunology, molecular biology and tumor biology. Candidates should send a curriculum vitae, bibliography, and a brief exposition of general directions in research that offer promise. Address applications to: **Lautenberg Center Scientific Advisory Committee, Box 1129, Mount Sinai Medical Center, New York, NY 10029.**

POSITIONS OPEN

DIRECTOR ENVIRONMENTAL SCIENCES PROGRAM University of Massachusetts-Amherst

The College of Food and Natural Resources invites applications and nominations for **DIRECTOR** of Environmental Sciences at professor or associate professor level. This interdisciplinary program has over 400 undergraduate majors, and involves more than 20 faculty from nine departments and three colleges. Administrative responsibilities include coordinating teaching and advising programs of the major and the development of a proposed interdisciplinary graduate program. The director will teach and advise and have opportunities for research. Qualifications include Ph.D., excellence in teaching and research in a discipline suitable for tenure in the college. Administrative experience is preferred. Salary commensurate with qualifications and experience. Applications should be received by February 1, 1995, for priority consideration. Starting date is September 1995. Candidates should send a curriculum vitae, representative reprints, a synopsis of academic interests and philosophies, and names, addresses and telephone numbers of at least three references to: **Dr. Cleve Willis, Search Committee Chair, 235 Draper Hall, University of Massachusetts, Amherst, MA 01003-7230. Telephone: 413-545-5708; FAX: 413-545-5853; Internet: willis@resecon.umass.edu.** The University of Massachusetts is an Affirmative Action/Equal Opportunity/American with Disabilities Act Employer.

DEPARTMENT CHAIR/PROFESSOR DEPARTMENT OF CHEMISTRY THE UNIVERSITY OF TEXAS AT EL PASO

Qualifications include Ph.D. in Chemistry, administrative experience, excellent interpersonal skills, and professional/scientific credentials to lead a department with a strong record of teaching and research with undergraduate and graduate students. The area of research specialization should lie within the materials and/or environmental sciences fields. Present departmental goals include continued emphasis on undergraduate research and active participation in two interdisciplinary Ph.D. programs (Materials Sciences; Environmental Sciences and Engineering). The educational, outreach and developmental goals of the University of Texas at El Paso include significant commitments within the binational areas of the United States and Mexico in which the Chair will participate. Please submit curriculum vitae, statement regarding teaching and administrative leadership, statement of research plans, and listing of three references (name, address, telephone) to: **Chemistry Chair Search Committee, UTEP, Department of Chemistry, El Paso, TX 79968.** The University does not discriminate on the basis of race, color, national origin, sex, religion, age or disability in employment or the provision of services.

Indiana—Oral Biology—Full-time, tenure-track position available as **DIRECTOR** of the Graduate Program in Oral Biology. Responsibilities include development of a Ph.D. Program in Oral Biology, teaching graduate-level didactic courses and directing a strong basic research program. Candidate must possess a Ph.D. degree in a basic science and/or D.D.S./D.M.D. and have demonstrated ability to obtain extramural research funding. Academic rank and salary commensurate with qualifications and experience. Send curriculum vitae and letters of recommendation to: **Dr. Marilyn S. Lantz, Chair, Department of Oral Biology, Indiana University School of Dentistry, 1121 West Michigan Street, Indianapolis, IN 46202-5186.** Indiana University is an Equal Opportunity/Affirmative Action Employer.

Comparative Vertebrate Physiologist: one-year appointment **SABBATICAL REPLACEMENT** in the Biology Department of Whitman College, August 1995-June 1996. Ph.D. desired. Will teach Physiology, Comparative Vertebrate Anatomy, animal survey portion (one-half) of introductory course (all with labs), and direct student research. Whitman College is a liberal arts college of 1,200 students committed to excellence in undergraduate teaching, advising, and research. Please send curriculum vitae, three letters of recommendation, transcripts, and statement of teaching and research interests to: **Dr. Paul Yancey, Biology Department, Whitman College, Walla Walla, WA 99362. Telephone: 509-527-5498 or 509-527-5225; FAX: 509-527-5904.** Closing date: January 15, 1995. *An Equal Opportunity Employer.*

TENURE TRACK ASSISTANT PROFESSOR

Department of Microbiology

The Department of Microbiology is seeking applicants for a tenure track Assistant Professor position. The exceptional candidate will have demonstrated a high level of scientific productivity with at least three years' of post-doctoral experience. The successful applicant is expected to develop an independent research program, preferably in the area of molecular immunology. Other areas of research in an appropriate area of microbiology will be considered as well. Current departmental research interests generally involve areas of nucleic acid metabolism in procaryotic, fungal and viral systems. The department is responsible for teaching medical microbiology/immunology to second year medical students; all faculty participate in this course. All faculty in the department are also members of the interdivisional program in molecular biology, which is a joint program between Memorial Sloan-Kettering and Cornell Medical College.

Cornell is located on the upper east side of Manhattan adjacent to The Rockefeller University and Memorial Sloan-Kettering Research Institute. A large number of tri-institutional programs contribute to an exceptionally strong scientific community in the immediate area. Interested applicants should send curriculum vitae, a description of proposed area of research and letters of recommendation from three qualified scientists to: **Dr. Kenneth I. Berns, Chairman, Department of Microbiology Box 62, Cornell University Medical College, 1300 York Avenue, New York, NY 10021.** EEO/AA/M/F/D/V.

**CORNELL UNIVERSITY
MEDICAL COLLEGE**



The Division of Hematology/Oncology and the Cancer Center at the University of California, San Francisco (UCSF) is seeking applicants for a faculty position at the **Assistant Associate Professor level**, depending upon qualifications, in the In-Residence series. Applicants for this position should have demonstrated superior talent and productivity in areas of basic sciences relevant to gene transfer into cells *in vitro* and *in vivo*. His/her previous work should have been judged by peer review to have been scientifically rigorous and clinically relevant and he/she should have been successful in obtaining sufficient funds from peer reviewed grants to support these efforts. Candidates will be expected to have a M.D. or M.D./Ph.D). Board eligibility in medical oncology or hematology is desirable. He/she will be expected to participate in both teaching and research conferences within the Division of Hematology/Oncology and the UCSF Cancer Center. The ability to work as a member of a team with commitment to the mission of the Cancer Center and the entire Division is crucial. Submit curriculum vitae and the names and addresses of three references to: **J. Gray, Ph.D., Department of Laboratory Medicine, UCSF, San Francisco, CA 94143-0808.**

The University of California San Francisco is an equal opportunity employer. Women and minorities are encouraged to apply.

Program of Excellence in Molecular Biology of the Heart and Lung

Special Postdoctoral Positions

The University of Cincinnati Program of Excellence in Molecular Biology of the Heart and Lung, funded by the National Heart, Lung and Blood Institute of NIH, has as its goal the application of molecular genetic approaches to study heart and lung function. The Program is open to Ph.D.s or M.D.s with training in molecular genetics who wish to apply their skills to significant problems of heart or lung or to individuals with strong backgrounds in heart and lung who wish to develop molecular genetic tools for continued study of these problems. We are particularly interested in recruiting women and minorities to the Program. Stipends begin at \$30,000 per year with benefits. The faculty and their interests are described below.

Jerry B Lingrel- *Na, K-ATPase gene regulation and structure-function studies including identification of the cardiac glycoside binding site using site specific mutagenesis*

Jeffrey Whitsett- *Molecular biology of lung development of lung specific gene expression*

Paul Rosevear- *Calcium and troponin I binding to cardiac troponin C*

Gary Shull- *Structure-function relationships and genetic regulation of ion-transport proteins of heart and lung*

Jeffrey Robbins- *Targeted modification of the cardiac contractile proteins and growth and developmental control of cardiac muscle*

Steven Potter- *Manipulating genes important in heart and lung development by insertional mutagenesis and targeted modification in ES cells*

Arnold Schwartz- *Molecular structure, function and regulation and gene regulation of ion channel proteins, identification of receptors for calcium antagonists; molecular aspects of excitation-contraction coupling*

Judith Harmony- *Role of apolipoproteins in heart and lung development and in resistance to disease*

Thomas Doetschman- *Role of growth and differentiation factors in the development and function of heart and lung using targeted gene modification in the mouse*

Amil Menon- *The genetics of human cardiovascular disease*

Stephen Liggett- *Molecular biology, pharmacology and structure/function of cardiopulmonary adrenergic receptors*

Applicants should submit a C.V. and the names of three references to Jerry B. Lingrel, Ph.D., Director, Program of Excellence in Molecular Biology, Department of Molecular Genetics, Biochemistry and Microbiology, University of Cincinnati College of Medicine, Cincinnati, Ohio 45267-0524.

Affirmative Action/Equal Opportunity Employer

POSITIONS OPEN

DIRECTOR OF CARDIOTHORACIC SURGICAL RESEARCH LABORATORY Emory University

The Division of Cardiothoracic Surgery is seeking a scientific **DIRECTOR** for its cardiothoracic research laboratory. The laboratory contains 10,000 square feet of modern research space with approximately \$400,000 per year of renewable local funding. Research efforts have focused in the past upon problems of cardiac physiology and pathophysiology related to cardiac surgery. The future direction of the laboratory will be determined in large part by the interests and talents of the new clinical director. Primary faculty appointment will be in the Department of Surgery with cross appointments possible. Preference given to applicants with a record of external funding. Interested individuals should contact: **Dr. Robert A. Guyton, Division of Cardiothoracic Surgery, 1365 Clifton Road, NE, Atlanta, GA 30322.** *An Equal Opportunity Employer.*

UNIVERSITY OF MASSACHUSETTS

The Department of Polymer Science and Engineering at the University of Massachusetts at Amherst invites applications for a tenure-track **FACULTY POSITION** in polymer physics or physical chemistry. Appointments will be considered at any level, depending on the qualifications of the candidate. It is anticipated that the successful candidate will supervise an active experimental research program in the application of physical methods to the exploration of the behavior of macromolecules. Vigorous participation in the teaching activities of the department is also expected. Please send a résumé, a brief statement of teaching and research interests, and three letters of recommendation to: **Professor M. Muthukumar, Department of Polymer Science and Engineering, University of Massachusetts, Amherst, MA 01003.** The deadline for receipt of applications is February 1, 1995; however the search will continue until an appointment is made. All appointments are subject to final budgetary approval. *The University of Massachusetts is an Affirmative Action/Equal Opportunity Employer, and applications from women and members of minority groups are encouraged.*

Western Psychiatric Institute and Clinic, University of Pittsburgh, School of Medicine, wishes to fill immediately the following vacancy for a full-time, non-tenure-stream **FACULTY POSITION:** Pharmacologist: A receptor pharmacologist who will relate to the department's current clinical and basic neuroscience research activity, particularly in the area of serotonin neurotransmission. Expertise in the area of receptor pharmacology but particularly directed to the CNS is preferred. Salary commensurate with qualifications. Letters of application or nomination with accompanying résumé should be sent by January 31, 1995, to: **Samuel Gershon, M.D., Vice President for Research, University of Pittsburgh Medical Center, 3811 O'Hara Street, Pittsburgh, PA 15213.** Telephone: 412-624-7942. *The University of Pittsburgh, as an educational institution and as an employer, does not discriminate on the basis of race, color, religion, ethnicity, national origin, age, sex, sexual orientation, or marital, veteran or handicapped status. This is a commitment made by the University and is in accordance with federal, state, and local laws and regulations. An Affirmative Action/Equal Opportunity Employer.*

TENURE-TRACK POSITION TERRESTRIAL ECOLOGY

The College of Saint Benedict, a women's college, and Saint John's University, a men's college, are accepting applications for a **TENURE-TRACK POSITION** to begin fall 1995 in the Joint Biology Department. Our campus includes 3,000 acres of forest, field, wetland and lakes. We seek candidates with expertise in terrestrial ecology, a broad biological background, and some knowledge of environmental ethics. Qualifications for the position include a Ph.D., demonstrated interest and ability in teaching and a desire to participate in research with undergraduates. Annual duties include teaching an upper division ecology course, introductory biology, and a course for non-majors. Applicants should submit a letter of application, curriculum vitae, and three letters of recommendation to: **Director of Human Resources, Saint John's University, Collegeville, MN 56321.** Applications received after January 30, 1995, cannot be guaranteed consideration. *Women and people of diverse racial, ethnic, and cultural backgrounds are especially encouraged to apply. The College of Saint Benedict and Saint John's University are Equal Opportunity/Affirmative Action Employers.*

POSITIONS OPEN

WILLIAM G. ALLYN CHAIR IN MEDICAL OPTICS THE INSTITUTE OF OPTICS UNIVERSITY OF ROCHESTER Endowed Professorship in Medical Optics

The Institute of Optics invites nominations and applications for a new endowed **PROFESSORSHIP** in Medical Optics. The successful candidate will be expected to have achieved international prominence in some aspect of medical optics, and to merit appointment at the level of full professor. He or she will be expected to conduct a vigorous program of research and to participate actively in The Institute's undergraduate and graduate teaching programs in optical science and engineering. The Institute of Optics, an academic department offering B.S., M.S., and Ph.D. degrees in Optics, has approximately 120 undergraduate students and 85 graduate students in residence. The University's Medical Center and Center for Visual Science offer significant opportunities for collaborative research projects that involve the application of optical science, engineering, and technology to important areas of modern medicine.

Each application should include a letter describing teaching and research interests, a curriculum vitae, and the names of three references. Nominations and applications should be sent to:

**Professor Dennis G. Hall, Director
The Institute of Optics
University of Rochester
Rochester, NY 14627**

*The University of Rochester is an
Affirmative Action/Equal Opportunity Employer*

ASSOCIATE POSTDOCTORAL POSITION Harvard Medical School Massachusetts General Hospital

Applications are invited for a **POSTDOCTORAL POSITION** as an Associate to work in the laboratory of **Dr. Maria Alexander-Bridges**, whose current research involves studies aimed at defining the molecular mechanisms that underlie glucose/insulin responsive gene transcription. Emphasis will be on identifying glucose/insulin sensitive transcription factors, using conventional cloning techniques and, in some cases, the two-hybrid or "interactive trap" techniques. Experience in molecular biology, protein purification/phosphorylation, or immunocytochemistry will be of advantage. Qualified candidates should possess either a M.D. or a Ph.D. Please forward your curriculum vitae and three letters of recommendation to: **Dr. Maria Alexander-Bridges, Massachusetts General Hospital, 50 Blossom Street, Wellman 306, Boston, MA 02114.** *An Equal Opportunity Employer.*

POSTDOCTORAL POSITION available immediately to participate in studies on the structure, function and regulation of components of the insulin signal transduction chain. Prefer applicants with experience in molecular cloning and recombinant DNA techniques. Send curriculum vitae to: **Dr. Zahi Damuni, Associate Professor, Department of Cellular and Molecular Physiology, The Pennsylvania State University College of Medicine, 500 University Drive, Hershey, PA 17033.** Telephone: 717-531-4195; FAX 717-531-7667. *We are an Equal Opportunity/Affirmative Action Employer and encourage minority and female applicants to apply.*

POSTDOCTORAL POSITION available to study oxygen metabolite-soluble guanylate cyclase interactions in pulmonary vascular and airway signal transduction. Experience in pulmonary physiology/pathophysiology, biochemical and/or molecular techniques desirable. Send curriculum vitae and names, addresses and telephone numbers of three references to: **Theresa Burke-Wolin, Ph.D., Department of Experimental Pathology, New York Medical College, Valhalla, NY 10595.** FAX: 914-993-4679.

POSTDOCTORAL POSITION UNIVERSITY OF PENNSYLVANIA

Nuclear hormone receptors in gene regulation and cell differentiation (see *MCB*, 4: 7105, 1994; *PNAS*, 91:1786, 1994; *MCB*, 3:3113, 1993). Available immediately. Requires experience in molecular and cellular biology. Send curriculum vitae and names of three references to: **Dr. Mitch Lazar, University of Pennsylvania, 611 CRB, 415 Curie Boulevard, Philadelphia, PA 19104.**

POSITIONS OPEN

POSTDOCTORAL POSITIONS MOLECULAR BIOLOGY AND CANCER GENETICS

Position available to study (i) mutations associated with tumor development, and (ii) thermophilic DNA interacting proteins and their use in genetic disease detection, especially the Ligase Chain Reaction. Applicants should have a Ph.D., preferably with experience in automated DNA sequencing, DNA synthesis, PCR, protein-DNA interactions, and cancer or human genetics. Salary based on experience. Send curriculum vitae and names of three references to: **Dr. Francis Barany, Department of Microbiology, Box 62, Cornell University Medical Center, 1300 York Avenue, New York, NY 10021.** FAX: 212-746-8587. *An Equal Opportunity Employer.*

IMMUNOLOGIST/MOLECULAR BIOLOGIST

Two **POSTDOCTORAL POSITIONS** are available at the Dana-Farber Cancer Institute. The project involves the generation and evaluation of DNA vaccines to prevent retroviral infection and disease. We are seeking an Immunologist with special expertise in evaluating cytotoxic T-cell responses. For the second position, we are seeking a Molecular Biologist with expertise in studying gene expression systems. Send curriculum vitae and names of three references to: **Dr. Ruth M. Ruprecht, Chief, Laboratory of Viral Pathogenesis, Dana-Farber Cancer Institute, 44 Binney Street, Boston, MA 02115 USA.** *Dana-Farber Cancer Institute is an affiliate of Harvard Medical School; Affirmative Action/Equal Opportunity Employer. Women and minorities are encouraged to apply.*

POSTDOCTORAL POSITIONS available to candidates with experience in biochemistry of signal transduction for two different projects: (1) to study pathways that mediate neurite growth stimulated by neuronal activity and (2) to investigate regulation of voltage-sensitive calcium channels by ethanol. Experience with molecular biology, especially in regulation of gene expression, preferred. Fellowship salary is \$27,000 to \$30,000 and includes health insurance. Send curriculum vitae, summary of research experience and names of three references to: **Dr. Robert Messing, Department of Neurology, Ernest Gallo Clinic and Research Center, University of California, San Francisco, Building 1, Room 101, 1001 Potrero Avenue, San Francisco, CA 94110.** *Affirmative Action/Equal Opportunity Employer.*

POSTDOCTORAL POSITION to study gene regulation and gene therapy in the liver. Studies include the molecular and cellular regulation of expression of viral receptor genes and their use to target gene transfer in intact animals. Transgenic animals will be used to assess gene regulation issues. Candidate should have strong training in molecular biology and adequate knowledge of metabolism. Preferred if experienced with histology and tissue culture techniques. NIH funding available. Send curriculum vitae or call **Dr. Maria Hatzoglou, Department of Molecular Nutrition, Case Western Reserve University, 10900 Euclid Avenue, Cleveland, OH 44106-4935.** Telephone: 216-368-3012; FAX: 216-368-4544.

POSTDOCTORAL RESEARCH ASSOCIATE: The Biology Department at Brookhaven National Laboratory has a position available for a recent Ph.D. in physics, biophysics or related discipline. Experience with gel electrophoresis, electronics, lasers, and/or component fabrication is desirable. The successful applicant will develop and characterize new equipment and methods for performing DNA sequencing by gel electrophoresis.

Applicants should submit a curriculum vitae and the names of three references to: **Dr. John C. Sutherland, Biology Department, Building 463, Brookhaven National Laboratory, Associated Universities, Inc., Upton, Long Island, NY 11973-5000.** *An Equal Opportunity Employer, Minorities/Female/Disabled/Veterans.*

POSTDOCTORAL POSITION available immediately to study molecular regulation of apo B mRNA editing. Projects include characterization of the apo B mRNA editing enzyme (*Science*, 260:1816), targeted expression in liver cells (*JBC*, 269:5932) and gain/loss of function through transgenic/ES cell technology. Solid background in molecular biology/genetics required. Send curriculum vitae and three references to: **Dr. Nicholas O. Davidson, University of Chicago, FAX: 312-702-2182.** Email: akomins@medicine.bsd.uchicago.edu. *An Affirmative Action/Equal Opportunity Employer.*

**National Institutes of Health
Public Health Service
National Institute of Environmental Health Sciences**



**Applications wanted for Research on the Biological
Effects of EMFs**

In Section 2118 of the 1992 Energy Policy Act, the National Institute of Environmental Health Sciences (NIEHS), an Institute of the National Institutes of Health (NIH), has been designated as the lead agency for coordinating and conducting the health effects studies on the possible adverse health effects, if any, of exposure to 60 Hz Electric and Magnetic Fields (EMFs) from the generation, transport and use of electricity. As part of the National Program, the NIEHS is required to competitively solicit and select applications to conduct research and communication activities under the program. With the funds provided by this Act, the NIEHS established a Research and Public Information Dissemination (RAPID) Program to meet the obligations of this law. In Fiscal Year 1995 (FY95), the NIEHS is again soliciting grant applications for the NIH Program Announcement 91-53, Research on the Effects of Power Frequency Electric and Magnetic Fields.

**PRIORITY AREAS FOR THE FY95
RAPID PROGRAM**

In FY95, the NIEHS RAPID Program is encouraging investigators to pursue research areas which may be important for understanding the biological actions and possible health effects of exposure to 60Hz EMFs. The following have been identified as priority research areas:

1. Identification and characterization of any biological mechanisms that might lead to adverse health effects in animal models (*in vivo* studies).
2. Identification of any significant changes in normal biological function caused by brain cancer, EMFs that may be plausibly involved in the processes leading to leukemia, breast and brain cancer, and reproductive and neurologic dysfunctions.

3. Validation (and to the extent possible, replication) of bioeffects reported in the peer-reviewed literature related to the mechanisms underlying the diseases listed in item 2.

4. Use of laboratory-based approaches to identify and characterize the specific physical characteristics of EMF that might be biologically active.

5. Development of scientifically sound risk assessment models and criteria for determining the human health hazards of EMF.

EMF EXPOSURE SYSTEMS

Many of the problems with exposure systems that have hindered the participation of investigators wishing to pursue research on this problem have been minimized with the recent development of commercial exposure units for *in vitro* and *in vivo* studies. NIEHS can provide investigators a list of commercial vendors and engineers who have expertise and information about EMF exposure units. In addition, NIEHS through the Department of Energy (DOE) is willing to assist successful investigators by providing advice, helping to identify potential problem areas, and visit laboratories to monitor the functioning of exposure units. NIEHS and DOE have also established regional exposure facilities staffed with knowledgeable investigators who may also be able to provide advice on exposure systems to investigators interested in working in this field.

*Application receipt dates for FY95:
February 1 and June 1, 1995*

A copy of the program announcement can be obtained by either writing or faxing your mailing address to:

**Dr. Michael J. Galvin, Program Administrator
Division of Extramural Research and Training
National Institute of Environmental Health Sciences
Research Triangle Park, NC 27709
Fax: (919) 541-2843 Phone: (919) 541-3319**

POSITIONS OPEN

POSTDOCTORAL POSITION

Applications are invited for a **POSTDOCTORAL POSITION** in Dr. Zuoshang Xu's lab available immediately. The research projects investigate the role of neurofilaments in neuronal physiology and pathology. Training and experience in morphological analysis of the nervous system, protein chemistry or cell and molecular biology are desirable. The position includes a competitive salary and benefit package. Applicants should send their curriculum vitae and three references to: **Dr. Zuoshang Xu, c/o Human Resources, Worcester Foundation for Experimental Biology, 222 Maple Avenue, Shrewsbury, MA 01545.**

*An Equal Opportunity/Affirmative Action Employer
Minorities/Female/Disabled*

POSTDOCTORAL POSITION available immediately to study gene expression in human and animal models of hepatocellular carcinoma. Projects will focus on characterizing marker genes for hepatoma as well as investigating the role of G-proteins and other areas of signal transduction in cancer biology. Candidates with working experience in cell culture, various blotting techniques, *in situ* hybridisation, RT-PCR and differential display using PCR are encouraged to apply. Send curriculum vitae with bibliography, description of research experience, and names of three referees to: **Dr. James V. Sitzmann, Department of Surgery, Division of Surgical Oncology, Johns Hopkins Medical Institutions, Blalock 665, 600 North Wolfe Street, Baltimore, MD 21287. Email: jvsitzmann@welchlink.welch.jhu.edu.**

POSTDOCTORAL POSITION available immediately to identify molecular mechanisms of extracellular matrix-cell interactions in bone. Prefer experience in one or more of the following areas: bone/matrix cell biology, matrix receptors, signal transduction, and construction and use of expression genes for *in cellulo* and murine experiments. Send curriculum vitae, a description of current research and future interests and three references to: **Richard Wenstrup, Division of Human Genetics, Children's Hospital Research Foundation, 3333 Burnet Avenue, Room 1033, Cincinnati, OH 45229. Telephone: 513-559-4471. An Equal Opportunity/Affirmative Action Employer.**

POSTDOCTORAL POSITION Massachusetts General Hospital Harvard Medical School

Position available to study tissue-specific gene regulation. Recent Ph.D. with experience in site-directed mutagenesis, mammalian cell transfection and transient expression assays desired. Send curriculum vitae with names of references to: **Dr. Steve F. Abcouwer, Massachusetts General Hospital, Cox 626, 100 Blossom Street, Boston, MA 02114.**

POSTDOCTORAL POSITION available for a biochemist/molecular biologist/synthetic chemist to work in an interdisciplinary team studying structure-function relation in vitamin D endocrine system. Approaches include chemical synthesis, protein chemistry/biochemistry and recombinant DNA techniques. Send curriculum vitae and names of references to: **Dr. R. Ray, Boston University School of Medicine, 80 East Concord Street, Boston, MA 02118. FAX: 617-638-8882. Minority candidates are strongly encouraged to apply.**

POSTDOCTORAL POSITION for recent Ph.D. available March 1, 1995, to study TGF β 1-initiated signaling in colon cancer (see *J. Biol. Chem.*, **269**:13231, 1994; *CG&D*, **5**:909, 1994). Excellent biochemistry skills, some molecular biology background and capacity for independence required. Send résumé and three references to: **Dr. Eileen Friedman, Memorial Sloan-Kettering Cancer Center, Box 244, 1275 York Avenue, New York, NY 10021.**

MOLECULAR BIOLOGY POSTDOCTORAL POSITION

Two-year NIH **POSTDOCTORAL FELLOWSHIP** available for a molecular biologist to investigate novel mechanisms of gene delivery. Experience in cell culture techniques and receptor binding studies is desirable. Applicant must be U.S. citizen. Send curriculum vitae and three letters of reference to: **Dr. Thomas J. Brady, Massachusetts General Hospital-NMR Center, Building 149, 13th Street, Charlestown, MA 02129.**

POSITIONS OPEN

POSTDOCTORAL POSITION, University of Rochester, Rochester, New York. A postdoctoral position is available to study the cytoplasmic chaperonin, TRiC that assists in the folding of proteins in yeast. The position is available starting July 1, 1995. Interested candidates should send their curriculum vitae, the names of three references and a statement of their research experience to: **Dr. Fred Sherman, Department of Biochemistry, Box 607, 601 Elmwood Avenue, Rochester, NY 14642.** *The University of Rochester is an Affirmative Action/Equal Opportunity Employer.*

POSTDOCTORAL FELLOWSHIP

Position available to study the regulation of gene expression by steroid hormones in the uterus during pregnancy in mammals. Experience in molecular biology, such as isolation of messenger RNA from tissue, Southern blots, Northern blots, PCR, and gene transfection is required. Experience in animal handling is essential. Send curriculum vitae and names and addresses of three references to: **Dr. Indrani Bagchi, The Population Council, Center for Biomedical Research, 1230 York Avenue, Box 273, New York, NY 10021.**

POSTDOCTORAL FELLOWSHIP IN NEUROBIOLOGY

A **POSTDOCTORAL POSITION** is available to study the basis of human handedness and the development of this behavior. The work will involve functional magnetic resonance imaging, computer reconstruction and analysis of relevant brain regions, as well as studies of postmortem material from subjects of known handedness. Interested candidates should contact: **Dale Purves, Department of Neurobiology, Box 3209, Duke University Medical Center, Durham, NC 27710. FAX: 919-684-4431; Email: purves@neuro.duke.edu.**

POSTDOCTORAL FELLOWSHIPS IN IMMUNOLOGY

The International Center for Interdisciplinary Studies of Immunology at Georgetown University Medical Center has been awarded a **POSTDOCTORAL** training program in developmental immunology from NICHD. The program provides a core curriculum in basic and clinical immunology with an emphasis on developmental processes. Research opportunities are available in molecular immunology, immunopathology, immunobiology and in the clinical disciplines of allergy, infectious disease and autoimmunity. Four positions, each renewable for one year, will be available on July 1, 1995. U.S. citizenship or permanent residency is required. Applicants should have a M.D. and/or Ph.D. degree and have a career interest in academic medicine. Stipend level dependent on experience. Send curriculum vitae, transcripts and three letters of recommendation by March 15, 1995, to: **Dr. Joseph A. Bellanti, Director, International Center for Interdisciplinary Studies of Immunology, Gorman 1034, Georgetown University Medical Center, 3800 Reservoir Road, NW, Washington, DC 20007-2197.**

POSTDOCTORAL FELLOWSHIP POSITIONS—Yale University School of Medicine in Cell and Molecular Physiology and Biology. M.D.s with prior training in Pediatrics/Internal Medicine or Ph.D.s seeking postdoctoral training in a spectrum of basic science disciplines including Epithelial Cell Biology, Immunobiology and Molecular and Cellular Neurobiology with 21 active faculty and labs. Special interests include O₂-sensing mechanisms, anoxia survival and mechanisms of cell death. Must be U.S. citizens/permanent residents. Please send curriculum vitae and names of three references to: **Gabriel G. Haddad, M.D., Pediatrics-Respiratory Medicine, Yale University School of Medicine, 333 Cedar Street, Fitkin 506, New Haven, CT 06520. Yale University is an Equal Opportunity/Affirmative Action Employer.**

The Biomolecular Structure Analysis Center is seeking a **POSTDOCTORAL FELLOW** with a strong background in computational chemistry. Experience with molecular modeling techniques mandatory, AMBER force field preferred. Research involves molecular dynamics simulations of membranes, drugs, G-protein coupled receptors and ion channels. Major emphasis is being placed on "membrane" drug design. Send responses to: **Dr. Leo Herbet, University of Connecticut Health Center, Farmington, CT 06030. An Affirmative Action/Equal Opportunity Employer.**

POSITIONS OPEN

POSTDOCTORAL FELLOWS DEPARTMENT OF NEUROSURGERY

Two **POSTDOCTORAL POSITIONS** available for a Ph.D. or M.D./Ph.D. with experience in molecular, cellular biology and extracellular matrix. Experience with brain tumors is encouraged, but not required. Stipend and benefits are highly competitive depending upon experience. Send curriculum vitae and three references to: **Jasti S. Rao, Ph.D., Director of Experimental Neurosurgery, Department of Neurosurgery-Box 64, The University of Texas M. D. Anderson Cancer Center, 1515 Holcombe Boulevard, Houston, TX 77030.** *Equal Opportunity/Affirmative Action Employer. Smoke-free environment.*

POSTDOCTORAL RESEARCH FELLOW

POSTDOCTORAL RESEARCH and training positions are available in Cardiovascular Pharmacology at the University of Michigan Medical School, Department of Pharmacology. Laboratory-based research is focused on three general areas: 1) Mechanisms of arrhythmogenesis and antifibrillatory drug action. 2) Pharmacologic prevention of myocardial ischemia/reperfusion injury. 3) Thrombosis and drug interventions for thrombolysis and prevention of rethrombosis.

Candidates must have a doctoral degree in Pharmacology. Experience with biochemical methods, molecular biology, immunology, cardiac electrophysiology and/or relevant research experience at the postgraduate level would be advantageous. Salary and benefits are based on previous experience and education, but will be commensurate with the current NIH postdoctoral stipends. Applicants must be authorized to work in the United States and have demonstrated proficiency in English and oral and written communication. If interested, contact **Dr. B. R. Lucchesi**, at 313-747-3134, via Email: **ben.lucchesi@med.umich.edu**, or send curriculum vitae and names of three references to: **Dr. B. R. Lucchesi, University of Michigan Medical School, Department of Pharmacology, 1301C MSRB III, Ann Arbor, MI 48109-0632.** *The University of Michigan is an Equal Opportunity/Affirmative Action Employer.*

DEVELOPMENTAL BIOLOGIST

The Oregon Regional Primate Research Center (ORPRC) has an opening for a **SENIOR STAFF SCIENTIST** with research interests in early growth and development processes. Interaction with the assisted reproductive technology program at the ORPRC is anticipated as this program provides a unique opportunity to conduct research with non-human primate embryos. Candidates must hold a Ph.D. or equivalent degree and have advanced training in a field related to reproductive/developmental/molecular biology with an interest in non-human primates as models for human disease. Molecular and gene transfer expertise is essential. An extramurally funded research program is required. Joint academic opportunities are available at our host institution, Oregon Health Sciences University. Applicants should submit a résumé, a letter of research interests, and the names of three references to: **Chair, Developmental Biologist Search Committee, Division of Reproductive Sciences, ORPRC, 505 N.W. 185th Avenue, Beaverton, OR 97006 USA.** Applications will be accepted until the position is filled. *The ORPRC is an Equal Opportunity/Affirmative Action Employer.*

The University of Wyoming is interested in recruiting a **RESEARCH SCIENTIST** for the Department of Biology to work in the area of insect receptors for the insecticidal toxins of *Bacillus thuringiensis*. The successful candidate should have a Ph.D. in chemistry with considerable experience in protein purification and characterization. Expertise in mechanisms, inhibition and immunology of toxic proteins is essential. Additional qualifications should include experience and expertise in protein chromatography, electrophoresis, mass spectrometry, NMR, sequencing, cross-linking, photoaffinity labeling, phosphorylation and renaturation. Applications along with the names of at least three references should be sent to: **Dr. Lee Bulla, Department of Molecular Biology, University of Wyoming, Box 3944, Laramie, WY 82071.** Applications will be accepted up to 9 January 1995.

Synaptic Pharmaceutical Corporation has two immediate opportunities in our Molecular Pharmacology Group for Ph.D. scientists whose studies will involve drug discovery using recombinant human receptor subtypes in heterologous expression systems.

A minimum of 2-5 years postdoctoral experience with G protein-coupled or neuropeptide receptors in native and/or transfected systems and demonstrated expertise in receptor binding and signal transduction mechanisms is required.

Synaptic Pharmaceutical Corporation is a leader in the search of novel therapeutic agents for the treatment of central and peripheral nervous system disorders using target-based drug design. Successful candidates will join our multi-disciplinary drug discovery team to assist on the identification of new therapies for the treatment of human diseases.

Synaptic Pharmaceutical Corporation offers excellent compensation and benefits which include a 401(k) plan and equity participation programs.



For further consideration,
send curriculum vitae in confidence to:

Human Resources Manager, Dept. 161
Synaptic Pharmaceutical Corporation
215 College Rd., Paramus, New Jersey 07652

Molecular Pharmacology of G Protein-Coupled Receptors

SCIENTIST ENZYMOMOLOGY

Affymax Research Institute is an innovative venture dedicated to the development of new technologies which will accelerate the process of pharmaceutical discovery.

We are seeking an Enzymologist for a program aimed at discovering novel inhibitors of proteases using Affymax's proprietary technologies for generating molecular diversity. The successful candidate will utilize and develop methods for the assay of soluble and immobilized substrates and inhibitors as well as oversee the production, modification and characterization of proteases, their substrates and inhibitors. We require a Ph.D. in Biochemistry, or related areas, with 4 or more years of additional experience, preferably in an industrial or pharmaceutical environment. Familiarity with matrix metalloproteases, physical biochemistry (solid phase interactions), chemical modification of proteins or combinatorial chemistry is a plus.

Affymax provides an excellent compensation package including a stock option program. We are located in the San Francisco Bay Area in new laboratory facilities in Santa Clara. Please send your resume to: **Affymax Research Institute, Human Resources Dept., Job Code MN267, 3410 Central Expressway, Santa Clara, CA 95051. EOE**

affymax



JOIN THE FIRST NAME IN BIOSAFETY TESTING

MICROBIOLOGICAL ASSOCIATES (MA) is an expanding international provider of biological and toxicological safety testing services to biopharmaceutical, personal care and biotechnology industries. Our entry into new cGMP businesses has created the following opportunities:

STUDY DIRECTORS

Qualified candidates for Study Director positions will have a Ph.D. with 2 years of industry experience (since post-doc), including management of a lab under GLP/cGMP guidelines. Excellent oral and written communication skills are key for effective client interactions.

VIRAL END POINT ASSAY: Direct group to perform and validate plaque, focus and other assays supporting quantitation of virus and retrovirus-containing process intermediates.

PROCESS VALIDATION: Two positions available for the classical virology lab and the HIV lab. Classical virology lab requires exp in the design & performance of viral inactivation/clearance studies for biopharmaceutical processes. The HIV lab requires expertise in classical virology, retrovirology & biochemical separation techniques.

MOLECULAR BIOLOGY/VIROLOGY: Manage a commercial molecular biology laboratory which performs GLP/cGMP assays: Southern blot, PCR, slot blot hybridization, reverse transcriptase.

PROTEIN CHARACTERIZATION: Develop and validate chromatographic methods for biopharmaceuticals. Protein characterization experience: sequencing, AAA, peptide mapping, highly desirable.



Join us at our state-of-the-art facility in the Washington, DC suburbs as we build on our 40-years of scientific excellence. Please forward a resume with salary history to Human Resources:

MICROBIOLOGICAL ASSOCIATES
9900 Blackwell Road, Rockville, MD 20850
Fax (301)738-1036 EOE m/f/v/d

Research Associate

At Amgen, you'll discover a research environment that emphasizes collaboration, intellectual honesty, scientific integrity, and a supportive culture. This unique approach has helped us grow into a global biotechnology leader in just thirteen years.

NEUROSCIENCE

The Neuroscience Department seeks an MS level Research Associate to carry out neurotrophic bioassays and data analyses. Ideal candidate will have 5-10 years' experience in Biology or related field. A strong background in tissue culture, including the nervous system, histology, and immunohistochemistry, is also required.

At Amgen, you'll find our approach to scientific research as rewarding as it is effective. We offer a highly competitive compensation and benefits package that includes a retirement and savings plan, an on-site fitness center, and three weeks' vacation. Please mail your resume/c.v. to: Amgen Inc., Staffing, Job Code OXP-SC-2154, Amgen Center, Thousand Oaks, CA 91320-1789. Principals only, please. EEO-Affirmative Action Employer M/F/D/V. We recognize that diverse perspectives are a key factor in the process of discovery.

AMGEN®

Discover a unique approach.

THE JOHN D. AND CATHERINE T.
MACARTHUR FOUNDATION

ASSOCIATE DIRECTOR MACARTHUR FELLOWS PROGRAM

The John D. and Catherine T. MacArthur Foundation seeks an Associate Director for its MacArthur Fellows Program. The Fellows Program provides unique, unrestricted fellowships to exceptionally talented and promising individuals on the principle that freedom from financial constraints will lead to significant contributions that might otherwise not be made. The ideal candidate for the position must display commitment to the principles of the MacArthur Foundation and of the Program, collegiality, curiosity, discretion, managerial acumen, and an appreciation of the world's diversity.

Requirements are a Master's Degree, although a Ph.D is most desirable, and evidence of the ability to see, understand, and articulate important advances in established, new and changing fields. A background in the sciences is highly preferred.

Responsibilities will be to coordinate the Program's day to day activities and manage the Program in the Director's absence; assist in the confidential search for and identification of MacArthur Fellows; prepare the Program budget; conduct Program evaluation and analysis; incorporate new information technologies into the Program's operation; conduct personnel matters; and serve as editor of some Program publications and documents.

Send applications or nominations by January 15, 1995 to: **Search Director, John D. and Catherine T. MacArthur Foundation, 140 S. Dearborn, Suite 1000, Chicago, IL 60603.** Competitive salary/generous benefits. The MacArthur Foundation is an Equal Opportunity Employer and benefits from the various perspectives and talents of a racially and culturally diverse staff.

SIENA COLLEGE

BIOLOGY - TWO POSITIONS.

Tenure track starting Fall 1995. Candidates must have Ph.D. in biological sciences and be committed to teaching undergraduates and to developing a research program involving undergraduates. Teaching duties for both positions will include lecture/lab courses in introductory biology for majors and non-majors and one of the following lecture/lab courses. 1) **Biochemistry** - Area of expertise may be genetics, cell biology, microbiology, biochemistry. 2) **Comparative Vertebrate Anatomy** - Areas of expertise not currently covered by our faculty are paleontology, biomechanics, mammalogy, and ornithology. Located two miles north of Albany, New York, Siena College is a four-year Liberal Arts college with approximately 2,700 students. The Biology Department consists of 15 full-time faculty and 380 majors. Send letter of application, separate statements of teaching and research interests, resume and three letters of recommendation by January 16, 1995 to: Dr. Andrea Worthington, Department of Biology, Siena College, Loudonville, NY 12211.

Siena College is an Equal Opportunity Employer and encourages applications from all qualified candidates including women and minorities.



U.S. Department of Veterans Affairs
Research & Development Program
Associate Chief of Staff for Research



THE EDWARD HINES, JR DEPT OF VETERANS AFFAIRS HOSPITAL is recruiting for an Associate Chief of Staff (ACOS) for Research. Hines VA is highly affiliated with the Stritch School of Medicine of Loyola University of Chicago.

As one of the most diverse in the VA system, the Hines research program includes nearly 500 active research programs which are being conducted in more than 100,000 square feet of modern research facilities. Included are studies in endocrinology, neurosciences, aging, biopsychiatry and the full range of biomedical research in addition to a Rehabilitation R&D Center, Cooperative Studies Program Coordinating Center, Center for Cooperative Studies in Health Services, a Health Services R&D Field Program, & a Nonprofit Research Corporation. 1994-95 funding will exceed \$10 million from VA, NIH and other private and public sources.

The ACOS for Research is challenged to provide the vision, leadership and management for further growth and development of these programs within the context of the emerging, competitive, health care environment. Candidates possessing an MD or MD/PhD are strongly preferred and must also hold the scientific, research and academic credentials to qualify for an appointment at Loyola University's Stritch School of Medicine. Especially important is a candidate whose communication, administrative and leadership skills are sufficient to implement a strategic plan for a research program which integrates the strengths of our university affiliate with those of this hospital. The ACOS is expected to establish and maintain an externally funded research program at the VA. Edward Hines, Jr. VA Hospital shares a campus with Loyola University Medical Center, 10 miles west of Chicago's Magnificent Mile. Chicago is truly a "World Class City" offering wonderful neighborhoods and affordable housing in the city or suburbs; outstanding schools; the Bulls, Bears, Blackhawks, White Sox & Cubs; outstanding performing arts including the symphony, opera and theaters; Lake Michigan, fabulous museums, restaurants and extraordinary architecture. It's a great place to live and work.

Qualified candidates should submit a letter of interest and curriculum vitae (including the name, address and phone number of three references) not later than January 15, 1995 to Gregorio Chefec, MD, Chairman, ACOS for R&D Search Committee, Hines VA Hospital, P.O. Box 7003, Hines, IL 60141. It is intended that a candidate will be chosen not later than February 28, 1995. EOE

SCIENCE Bonus Distribution

Bonus Distribution to Biotechnology/Pharmaceutical Job Fair and to the '95 Miami Bio/Technology Winter Symposia

27 January 1995 issue

The 27 January issue of SCIENCE offers a double bonus distribution opportunity. This issue receives bonus distribution to scientists at the Biotechnology/Pharmaceutical job fair in San Francisco, California, 3-4 February 1995. In addition, you can reach nearly 1,000 attendees at the '95 Miami Bio/Technology Winter Symposia 5-6 February 1995 in Ft. Lauderdale, Florida.

Recruitment Advertising Space
Reservation Deadline:
10 January 1995

To Advertise Call:
In the U.S., Janis Crowley
(212) 496-7704, or fax (202) 682-0816.
In Europe, Gordon Clark (44) 01223
302067, or fax to (44) 01223 302068.

SCIENCE

VACANCY ANNOUNCEMENT

Department of Health and Human Services • Public Health Service • National Institutes of Health
National Institute of Arthritis and Musculoskeletal and Skin Diseases

Position: Director, National Institute of Arthritis and Musculoskeletal and Skin Diseases

Location: Bethesda, Maryland

The National Institute of Arthritis and Musculoskeletal and Skin Diseases (NIAMS) invites nominations and applications for the position of Director, NIAMS. This is a Civil Service position in the Senior Executive Service with a salary range of \$96,830 to \$120,594 per annum, which includes a 4.23% locality allowance. Physicians may be eligible for a Physician's Comparability Allowance up to \$20,000 per year. A recruitment bonus of up to 25% of base pay may be available to a non-Federal applicant selected for this position, subject to individual approval. A relocation bonus of up to 25% of base pay may be available to a permanent Federal employee who must relocate to accept this position, subject to individual approval. A one-year probationary period must be served by the individual selected if he/she is not currently in the Senior Executive Service.

The NIAMS conducts, fosters and supports research and research training on the causes, prevention, diagnosis and treatment of arthritis, musculoskeletal, and skin diseases and disorders. In its intramural laboratories and in the extramural scientific community, the Institute supports basic and clinical investigations and training of biomedical scientists with particular interest in arthritis and musculoskeletal and skin diseases and disorders.

Applicants must meet the minimum educational requirements (or possess equivalent combination of experience and training) for the Medical Officer series, GS-602; the General Health Sciences series, GS-601; or an allied scientific discipline, as defined by the U.S. Office of Personnel Management Qualification Standards for General Schedule Positions, which is available in Federal Personnel Offices and Federal Job Information Centers.

For further information about the position or an application package, contact Ms. Lucia C. Biederman, Personnel Officer, NIAMS, at (301) 496-0436. An application or curriculum vitae, bibliography, and a statement addressing the mandatory qualification requirements, should be submitted to: **Ms. Biederman, National Institutes of Health, Building 31, Room 4C-21, 31 Center Drive MSC 2350, Bethesda, MD 20892-2350.**

APPLICATIONS MUST BE POSTMARKED BY: February 10, 1995

SELECTION FOR THIS POSITION WILL BE BASED SOLELY ON MERIT, WITH NO DISCRIMINATION FOR NON-MERIT REASONS SUCH AS RACE, COLOR, RELIGION, GENDER, NATIONAL ORIGIN, POLITICAL AFFILIATION, MARITAL STATUS, SEXUAL ORIENTATION, DISABILITY, AGE, OR UNION MEMBERSHIP.

NIH IS AN EQUAL OPPORTUNITY EMPLOYER

STAFF SCIENTIST NEUROBIOLOGY

Stratagene, with over 200 employees, is located in a very attractive part of La Jolla, California. Known for our innovative, high quality products for cutting edge research, we are expanding our program in the area of neuroscience and cell biology.

The successful candidate will have a Ph.D. and a significant publication record in the field of Neurobiology with an emphasis on molecular approaches to neuron function.

We offer an excellent salary, bonus and benefits package. Candidates interested in joining a highly successful, progressive company with room to grow are encouraged to submit resume to: **Stratagene, Attn: Professional Staffing 21033-94A, 11011 N. Torrey Pines Rd., La Jolla, CA 92037. AA/EOE.**



STRATAGENE®

POSTDOCTORAL POSITION

Postdoctoral position available to study signal transduction by G-protein coupled neuropeptides receptors. The role of proliferative neuropeptides receptors in potentiating the growth of brain tumor cells will be investigated using biochemical and molecular techniques. The candidate should have a Ph.D. in Molecular Biology or related fields and interest in cancer research. Send a letter of interest, curriculum vitae and name of three references to: **Dr. Mohammed Sharif, Dept. of Molecular Pharmacology, St. Jude Children's Research Hospital, 332 N. Lauderdale, Memphis, TN 38105. Fax: 901-521-1668.**



**St. Jude Children's
Research Hospital**

An Equal Opportunity/Affirmative Action Employer
We provide a smoke-free environment

THE NATIONAL RESEARCH COUNCIL Postdoctoral & Senior Research Associateship Awards

Opportunities for research in:

**Chemistry • Earth and Atmospheric Sciences
Engineering, Mathematics and Applied Sciences
Life and Medical Sciences**

Space and Planetary Sciences • Physical Sciences

- 400 awards for independent research at 110 laboratories within 31 participating U.S. Government agencies
- 12-month awards renewable for up to 3 years maximum
- Annual stipend for recent Ph.D. or M.D. graduates \$30,000 to \$45,500 depending upon sponsoring laboratory; stipend appropriately higher for senior researchers
- Support for relocation and professional travel; health insurance program offered
- 3 annual award competitions for most participating laboratories

Applications accepted on a continuous basis throughout the year. Those postmarked by January 15 will be reviewed in the February competition, by April 15 in June and by August 15 in October.

**For application materials and information on
participating laboratories contact:**

The National Research Council



**The Associateship Programs
(TJ-2094/SB)**

2101 Constitution Avenue, NW
Washington, DC 20418
FAX: (202) 334-2759

*Qualified applicants will be reviewed without regard to
race, creed, color, age, sex or national origin.*

DIRECTOR, SCIENCE OPERATIONS Ocean Drilling Program Texas A&M University

Texas A&M University (TAMU) invites nominations and applications for the position of Director, Science Operations for the Ocean Drilling Program (ODP) at TAMU. The Director works with the national and international partners and ODP advisory structure in the identification and implementation of the scientific goals and directions of ODP, and he/she is responsible for the overall management and execution of the science and engineering programs identified by these groups.

The science operations program at TAMU includes the management of ODP activities aboard the deep sea drilling vessel JOIDES RESOLUTION, development and maintenance of specialized drilling equipment used in the program, publication of scientific and engineering investigations, development and maintenance of an extensive computerized data system, curation and distribution of samples from ODP's core repositories, and design and maintenance of extensive sedimentological, petrological and geochemical laboratories and other support facilities onboard and ashore. The annual budget is in excess of \$40 million. Approximately 150 skilled scientists and professionals assist the director. The Director is responsible for the science operations program to the National Science Foundation through the prime contractor for ODP, the Joint Oceanographic Institutions, Inc., and must liaise with the U.S. and international funding partners, the international scientific community and the drilling contractor.

For these challenging tasks we seek an internationally acclaimed earth scientist with strong, proven leadership qualities, experience with multidisciplinary and international research programs, the vision to guide the development and implementation of the science operations program, and the ability to communicate the challenges and accomplishments of ODP. The successful applicant must be able to develop improved services for the program within an environment where the needs and resources of the international scientific drilling community are changing. Familiarity with ODP is desirable but not required. The position is located at TAMU in College Station, Texas. A tenured faculty position at TAMU is possible.

Candidates should send a curriculum vitae and names and addresses of four references to Dr. Joel S. Watkins, Chair of the ODP-TAMU Director Search Committee, Department of Geology and Geophysics, Texas A&M University, College Station, Texas 77843-3114. Evaluation of the applications will begin on January 1, 1995 and will continue until the position is filled. Salary will be competitive.

An Equal Opportunity/Affirmative Action Employer Committed to Diversity

THE NEUROSCIENCES INSTITUTE

La Jolla, California

THE NEUROSCIENCES INSTITUTE (NSI) IS AN INDEPENDENT, not-for-profit organization at the forefront of research on the brain. The NSI, located on the campus of The Scripps Research Institute in La Jolla, is also the home of the Neurosciences Research Program and serves as an international meeting place for neuroscientists; Fellows have opportunities to interact with visitors from many institutions worldwide.

FELLOW IN

THEORETICAL NEUROBIOLOGY

APPLICATIONS ARE INVITED FOR POSITIONS AS FELLOW IN Theoretical Neurobiology. Since 1987, the NSI has had a research program dedicated to developing biologically based, experimentally testable theoretical models of neural systems. Current projects include large-scale simulations of neuronal networks, the design of behaving automata, and detailed formulations of biologically based models of perceptual systems. Fellows will have daily opportunities to interact with NSI's Fellows in Experimental Neurobiology.

Applicants should be at the postdoctoral or assistant professor level with strong backgrounds in theoretical or experimental neuroscience or related fields. Positions are now available.

Fellows will receive stipends appropriate to their qualifications and experience. Candidates should send a short statement of research interests, a curriculum vitae, and the names of three references to: *Dr. W. Einar Gall, Research Director, The Neurosciences Institute, 3377 North Torrey Pines Court, Suite 310, La Jolla, California 92037.*

RUTGERS UNIVERSITY

and

UMDNJ - Robert Wood Johnson Medical School

Core Curriculum in Molecular Biosciences

A comprehensive graduate curriculum in Molecular Biosciences has been created by consolidating Graduate Programs in Biochemistry, Microbiology, Molecular Genetics, Cell and Developmental Biology at Rutgers University and the UMDNJ - Robert Wood Johnson Medical School. Students will be able to carry out Ph.D. dissertations with an extensive group of faculty working on a wide range of fields including:

- | | |
|---------------------------|----------------------|
| •Biochemistry | •Microbiology |
| •Biotechnology | •Molecular Biology |
| •Cell Biology | •Molecular Genetics |
| •Developmental Biology | •Molecular Virology |
| •Macromolecular Structure | •Protein Engineering |

State of the art equipment and resources are available for graduate research. Competitive stipends and tuition remission are provided to all students. Applications received by March 1, 1995 will receive first consideration. For further information, application materials, and descriptions of faculty research interests contact:

Joint Graduate Admissions Committee, Room 309
Center for Advanced Biotechnology and Medicine
679 Hoes Lane
Piscataway, New Jersey 08854

Phone 908-235-5375

E-mail: ambrose@mbcl.rutgers.edu



POSITIONS AVAILABLE

Nucleic Acid Diagnostics

Scientists/Senior Scientists V.P. Product Development Diagnostics Development

THIRD WAVE TECHNOLOGIES, a leading new biotechnology company is pioneering the development of novel reagents and instruments for research and clinical DNA and RNA diagnostic applications. Third Wave is actively seeking scientists, senior scientists, and a vice president of product development to join its dynamic team in the development of new tools for DNA diagnostics.

We offer an outstanding opportunity for exceptional individuals to become key members of the scientific/development team. Our comprehensive salary, and benefits package includes a stock option plan.

A Ph.D. or equivalent and a proven track-record of accomplishment and innovation is required. Ideal candidates will have strong initiative and communication skills and the ability to adapt quickly to change. Industry experience is preferred for senior positions but not essential.

For confidential consideration, please send your cover letter and *Curriculum Vitae* to:

 THIRD WAVE TECHNOLOGIES, INC.

Third Wave Technologies, Inc.
ATTN: Human Resources Department
2800 South Fish Hatchery Road
Madison, Wisconsin
53711

ENVIRONMENTAL TOXICOLOGIST



Shell Development Company has an immediate opening in the environmental research, development and technology area at its Westhollow Technology Center in Houston. The position is in support of new product and process development and in support to existing product lines in surfactants, fuels and resins.

Ideal individual must possess expertise in the area of environmental toxicology, with a strong background in biology, environmental chemistry, statistics and some understanding of engineering principles. You will have an opportunity to develop technical solutions to issues relating to effluent toxicity identification and evaluation, sediment sorption phenomena of products and effluent chemicals, and bioconcentration and bioaccumulation potential of present and past operations. The ability to integrate multidisciplinary information for the demonstration of the environmental compatibility of activities using risk-based decisions is critical. Areas of interest include operations at exploration and production sites onshore and offshore, refining and manufacturing sites, chemical plants, and waste remediation sites.

Requirements include a minimum of a PhD in Biology, Environmental Toxicology or related sciences and at least 2 years practical experience in aquatic and/or terrestrial toxicology research with applied research experience. A demonstrated skill in oral and written communications to both a peer group in technical disciplines and associated technical professionals with analytical chemistry, chemical engineering and process engineering skills is required.

A competitive salary and an excellent benefits package will be offered. Send resume and letter of application to:

Shell Development Company
Recruitment
P.O. Box 1380
Westhollow Technology Center
Houston, Texas, USA 77251-1380

We are an equal opportunity employer, M/F/D/V.
Candidates must be legally authorized to work in the U.S. on a full-time basis.

The College of Mount Saint Vincent BIOLOGY Tenure Track Position

The College of Mount Saint Vincent invites applications for a tenure-track position for Fall 1995 in either of the following areas: Animal Physiology or Microbiology/Microbial Ecology. Required to teach introductory courses for majors and non-majors. Experience in Anatomy and Physiology and non-major Microbiology a plus. Expected to develop upper-division course(s) for majors. Ph.D. is required, computer experience desirable.

The Biology Department is a joined department of The College of Mount Saint Vincent and Manhattan College. The appointment will be to the CMSV faculty. Appointment will be at the rank of instructor or assistant professor.

Send application, curriculum vitae, statement of teaching philosophy, summary of research goals and three letters of recommendation by February 3, 1995 to:

Dr. William A. Tramontano
Chair, Biology Department
College of
Mount Saint Vincent/
Manhattan College
6301 Riverdale Avenue
Riverdale, NY 10471-
1093

Minorities are encouraged to apply. Equal opportunity employer. M/F Affirmative Action.



POSTDOCTORAL FELLOWSHIP

Value Through Innovation

Together with all the Boehringer Ingelheim companies worldwide, Boehringer Ingelheim Pharmaceuticals is committed to *Value Through Innovation* as our driving ambition. As a major international pharmaceutical company, we have made a commitment to innovation through world class R&D facilities, programs and scientific staff.

We have an immediate opening for a postdoctoral fellow to join our Inflammatory Diseases Department. This position will be in the Biophysics/Structural Biology group and have close interaction with the Cellular Inflammation group. The incumbent will study early events in T-cell signaling using a variety of cell biological and biophysical techniques.

Candidates should have a recent Ph.D. in Cell Biology or Immunology and experience with laser confocal microscopy.

Boehringer Ingelheim's R&D facility is located in a campus-like setting in a beautiful area of Western Connecticut. We offer excellent facilities and a supportive and challenging environment.

For an opportunity to contribute to our innovative programs, please send your resume and a brief cover letter to: Dept. DN-AKPD, Boehringer Ingelheim Pharmaceuticals, Inc., 900 Ridgebury Road, P.O. Box 368, Ridgefield, CT 06877.



Boehringer Ingelheim

We are an equal opportunity employer.
As a progressive healthcare company, we have a non-smoking environment.

Announcing an
INTERNATIONAL SYMPOSIUM AND
CALL FOR PAPERS

NUCLEAR ANTIGENS AS TARGETS FOR CANCER THERAPY

June 2-3, 1995 · Omaha, Nebraska USA

Sponsored by: University of Nebraska Medical Center
Eppley Cancer Institute
Department of Obstetrics and Gynecology
Symposium Chair: Ewa M. Rakowicz-Szulczynska, Ph.D.

Topics to be discussed:

- Role of nuclear receptors in cancer cell response to growth factors
- Nuclear accumulation of growth factors and control of gene expression
- Nuclear translocation of anti-cancer antibodies
- Nuclear antigens with epitopic homology to cell surface antigens
- Cancer therapy with non-internalized and internalized antibodies

APPLICATION DEADLINE: March 1, 1995

Information & Application Forms:
University of Nebraska Medical Center
Center for Continuing Education
600 South 42nd Street
Omaha, NE 68198-5651 USA
Phone: 011-402-559-9252 FAX: 011-402-559-5915

RESEARCH POSITION AVAILABLE

The Institute of Gerontology at the University of Michigan is recruiting a researcher in biostatistics or a related field whose work is broadly relevant to the study of ageing.

The Institute of Gerontology at the University of Michigan (UM) is a multidisciplinary research institute the faculty of which represent the behavioral biological, medical and social sciences, and which reports to the UM Vice President for Research. The available faculty position is within the research track and at any rank. Senior applicants will be expected to show a substantial record of publications, continuing ability to raise extramural funding for research, and acknowledged stature as an independent scientist, methodologist, or scholar. Junior applicants will be expected to show accomplishments in some of these matters and strong promise in all.

The phrase "biostatistics or a related field" should be construed very broadly. A candidate's field(s) of training and expertise may be disciplinary, multidisciplinary, or interdisciplinary. We will entertain applications from scholars who typically work alone and also from those who typically work in collaboration with others. The successful applicant may emphasize research within a traditional theme of academic biostatistics, such as the design of intervention studies or the statistical analysis of event histories, or might range farther afield to include, for example, evolutionary aspects of ageing, studies of specific disease processes associated with ageing, information systems for health-related behavior of the elderly, or the measurement or modeling of uncertainty, change or fluctuations in any of the above.

Appointment as Assistant Research Scientist, Associate Research Scientist, or Research Scientist will include research space at the Institute, some initial funding for new research efforts, and a guarantee of twelve-month salary support beginning in September, 1995 for a period of years depending on rank and qualifications. Research faculty appointments at the UM are not tenurable, but offer most other privileges of a professional title. The successful candidate might be jointly appointed in a tenure-track position, but such a joint appointment is not a criterion of selection.

Applications should include a curriculum vitae, including a complete history of external funding support, and, for applicants whose work has not yet become obviously relevant to the study of ageing, a short explanation of its potential relevance to such studies. Three letters of recommendation should be sent separately. All materials should be mailed to:

Fred L. Bookstein
Biostatistics Search Committee
Institute of Gerontology
University of Michigan
300 North Ingalls Building
Ann Arbor, Michigan 48109-2007

The deadline for receipt of completed applications is February 1, 1995.

The University of Michigan is an equal opportunity/affirmative action employer. Women and members of underrepresented ethnicities are particularly encouraged to apply for this position.

Director Trudeau Institute

The Trudeau Institute invites applications for the position of Director. The Institute, located in Saranac Lake, N.Y. is a privately endowed laboratory engaged in basic research in the field of Immunobiology at molecular, cellular, and physiological levels, with special emphasis on the responses of experimental animals to a variety of antigenic stimuli including those provided by tumors, allografts, and pathogenic microorganisms. Total research space in the Institute amounts to 10,000 square feet. In addition there are several rooms equipped with micro isolator housing for small animals, a BioSafety Level 3 facility, and a 10,000 sq. ft. animal facility that breeds mice under specific pathogen free conditions. Candidates should have attained national and international stature in the field of experimental immunology, and should be actively involved in a full-time program of basic research. Inquiries and applications, which should include a current curriculum vitae, should be sent to:

The Search Committee
Trudeau Institute
P. O. Box 59
Saranac Lake, N.Y. 12983

Research Scientist

VICAL INCORPORATED, a leader in the development of gene-based pharmaceutical products for human gene therapy, is currently seeking a Research Scientist. The incumbent will be responsible for carrying out original and applied research in the areas of molecular biology, molecular genetics, and molecular immunology. Will also provide experimental and intellectual contributions to Vical's primary direct DNA injection technology in the area of immune protection from infectious disease, immuno-therapy and therapeutic delivery of proteins. The ideal candidate will possess a Ph.D. with significant Post Doctoral research experience. Strong emphasis in techniques common to molecular biology and molecular genetics, research in the area of immunology, mechanisms of immune response, and/or infectious disease vaccination is desirable. Excellent communication skills and a strong publication record in journals reporting original molecular biology/molecular genetic research are required. Please send your resume to Vical Incorporated, Human Resources, 9373 Towne Centre Dr. Suite 100, San Diego, CA 92121 or fax to (619) 453-3452. EOE

VICE CHAIR FOR RESEARCH

DEPARTMENT OF PEDIATRICS MEDICAL COLLEGE OF WISCONSIN

The Department of Pediatrics is seeking an experienced M.D. or Ph.D. scientist at the associate professor or professor rank, who is an established and currently funded investigator with an outstanding national reputation, to continue their own research program as well as to encourage collaborative research on campus, to develop a mentor program for young investigators and to be an advocate for research in the Department of Pediatrics and the Children's Hospital of Wisconsin.

Current active areas of basic research in the Department of Pediatrics include molecular-genetic aspects of oncogenes, immunology of transplant rejection and graft vs. host disease, molecular biology of coagulopathies, neonatal pulmonary vascular cell biology, molecular enzymology and gene regulation, molecular epidemiology and vaccine development of respiratory viruses, gene expression in the developing intestine, vascular endothelial cell sickle cell interaction, biochemical regulation and pathophysiology of NO and NO synthase, and transmembrane signaling of the insulin pathway in addition to many clinical protocols. Campus-wide research collaboration is available with the highly successful Blood Research Institute, the Cardiovascular Research Center, the Biophysics (NMR-Spin Resonance Center), the Cancer Center and the campus-wide nationally funded CRC. Superior laboratory space is available in a new research facility at the suburban Milwaukee campus of the Medical College of Wisconsin and the Children's Hospital of Wisconsin.

Send CV to:
Robert M. Kliegman, M.D.
Professor and Chair
Department of Pediatrics
Medical College of Wisconsin
MACC Fund Research Center
8701 Watertown Plank Road
Milwaukee, Wisconsin 53226



Equal Opportunity Employer & Affirmative Action Employer.
M/F/D/V.

TOXICOLOGY RESEARCH

LILLY RESEARCH LABORATORIES

With \$1.6 million daily spent in R&D activities, Eli Lilly and Company is making a significant investment in the development of pharmaceuticals, biotechnology products and products for animal health. And nowhere is that investment more evident than in the Lilly Toxicology division, a part of Lilly Research Laboratories.

Occupying almost six acres within the Lilly Research Laboratories complex in Greenfield, Indiana (a suburb of Indianapolis) our Toxicology facility is one of the largest and most modern of its kind in the world. Here, our toxicology scientists study the effects of chemicals on life processes with the goal of providing efficacious products that are safe to humans and the environment.

To help insure our continued success in this area, the following positions are available for scientists with a BS or MS degree in toxicology, pharmacology, cell biology, biochemistry or a related field.

SCIENTIST SUPERVISOR to conduct and supervise toxicology studies. A thorough understanding of GLPs is expected. Openings exist for candidates with experience in dog and monkey tox; teratology, reproduction and/or behavioral studies; acute, subchronic, chronic and oncogenicity toxicology studies. Responsibilities will include preparing written reports for submission to regulatory agencies worldwide.

AUTORADIOGRAPHY ASSOCIATE SCIENTIST to participate in *in vivo* disposition studies utilizing whole body autoradiographic and dissection techniques.

BEHAVIORAL CNS ASSOCIATE SCIENTIST to participate in studies recording rodent EEG's for GLP regulatory pharmacology studies and to perform behavioral tests in primates.

CARDIOVASCULAR ASSOCIATE SCIENTIST to participate in pharmacology studies utilizing chronically instrumented conscious animal models. Computer experience highly desirable.

We are also seeking the following:

TOXICOLOGIC PATHOLOGISTS with DVM and Ph.D degrees, one position in morphologic pathology and one position in clinical pathology. ACVP certification is strongly desired with a background in experimental pathology.

TOX SYSTEM ANALYST (BS/MS) to develop and implement client server applications for laboratory automation and data analysis. Experience with ORACLE, VAX, and client server expected.

LABORATORY ANIMAL TECHNICIANS to participate in research and development studies in the toxicology division. A 2-year associate degree in veterinary technology is required.

Eli Lilly and Company offers a competitive compensation package and a highly professional environment. For prompt consideration, please forward your resume to: Eli Lilly and Company, Scientific Recruitment, Dept.

TOX1294, Lilly Corporate Center, Indianapolis, IN 46285.

Eli Lilly and Company is an equal opportunity employer committed to diversity in the workplace.



POSTDOCTORAL RESEARCH FELLOW IN TISSUE BIOENGINEERING

A research fellowship is currently available with the Cannon Research Facility of the Carolinas Medical Center and the Charlotte-Mecklenburg Hospital Authority, a diverse and comprehensive premier teaching and research medical center. The fellowship is part of a fully funded tissue bioengineering grant that is a joint effort of the Department of General Surgery Research of Carolinas Medical Center and the Department of Pediatric Surgery at Harvard and the Department of Chemical Engineering at the Massachusetts Institute of Technology. The fellowship is under the directorship of Dr. Walter D. Holder, Jr. in collaboration with Drs. Joseph Vacanti and Robert Langer.

The selected candidate will be responsible for assisting in a tissue bioengineering project for the development of a soft tissue bioprosthesis and for related independent research. The fellow will work primarily at the Cannon Research Facility in Charlotte, NC with frequent travel to Harvard and MIT.

At least one year of research experience in bioengineering or biology and a PhD, MD or DVM credentials are required.

For consideration, qualified candidates should forward curriculum vitae to:

**Human Resources
Charlotte-Mecklenburg Hospital Authority
P.O. Box 32861
Charlotte, NC 28232-2861**



**THE CHARLOTTE-MECKLENBURG
HOSPITAL AUTHORITY**

EEO/AAP

PRODUCT DEVELOPMENT STAFF SCIENTIST (Ph.D.)

JRH Biosciences is a leading manufacturer of cell culture media products serving the growing Biotherapeutic and Biotech industries worldwide.

We have an immediate opening for an innovative scientist to direct and coordinate R&D activities for development of cell culture media products.

Qualified individuals will have five years industrial experience in culture media applications. Familiarity with media development and optimization of large-scale cell culture preferred. A Ph.D. is required with expertise in molecular biology, analytical chemistry and protein chemistry.

Position will interact on a regular basis with technical staff, sales, marketing and customers. Superior communication, organization and interpersonal skills required. Some domestic and international travel required.

JRH offers a competitive salary and benefits package. For confidential consideration, send resume to:

JRH
BIOSCIENCES

**ATTN: HUMAN RESOURCES
13804 W. 107TH STREET
LENEXA, KS 66215**

**A CSL COMPANY
EQUAL OPPORTUNITY EMPLOYER**

The Physics Department of Princeton University

announces the inaugural competition for the

ROBERT H. DICKE POSTDOCTORAL FELLOWSHIPS



A fellowship program named for Robert H. Dicke has been newly established to provide opportunities for outstanding young physicists to work in the field of their choice. Research may be carried out independently or in collaboration with members of the Physics Department. The Fellowships provide an annual stipend of \$38,000 along with a \$ 5,000 annual allowance for research support. The Fellowships are awarded for two years, with the possibility of an additional year at Princeton by mutual agreement. Applicants will also be considered for available postdoctoral positions. Current areas of research include:

- Atomic Physics and Optical Pumping
- Condensed Matter Experiment
- Cosmology
- Mathematical Physics
- Nuclear Astrophysics
- High Energy Experiment
- Theory of Elementary Particles & Strings
- Biophysics
- Condensed Matter Theory
- Gravitational Physics
- Nuclear Physics
- Pulsar Physics

Candidates should send a letter of application and the supporting materials listed below to the DICKE FELLOWSHIPS COMMITTEE, c/o Prof. A. J. S. Smith, Princeton University Physics Department, P.O. Box 708, Princeton, NJ 08544. Applications must be received no later than January 16, 1995.

1. Curriculum Vitae
2. List of publications and preprints
3. Brief statement of research interests and goals
4. Names and addresses of three referees familiar with the candidate's work (the candidate should arrange to have the letters of recommendation sent directly to the address above).

Princeton University is an Affirmative Action/Equal Opportunity employer and particularly welcomes applications from women and members of minority groups.

Auburn University Director, Environmental Institute

Auburn University invites applications for the position of Director of its newly established Environmental Institute. The Institute is currently funded by State appropriations and an endowment. The mission of the Institute is to promote, coordinate, and implement multidisciplinary programs and activities to address local, state, and national environmental issues through instructional, research, and outreach efforts. The Director will report to an Administrative Board. The responsibilities of the Director will include: • Working with deans and department heads to implement curriculum changes that will have the results of instilling in students an appreciation of the scientific, technical, social, economic, and political implications of environmental problems; • Promoting interdisciplinary environmental projects; • Providing a coherent focus and framework whereby faculty researchers can coordinate projects and improve their funding opportunities to develop high quality environmental research projects; and; • Coordinating and sponsoring workshops and seminars designed to enhance environmental awareness.

Auburn University is a comprehensive university in Auburn, Alabama, which is an excellent location between Atlanta, Georgia and Montgomery, Alabama. The University was established in 1856 and is Alabama's 1872 land-grant university. Currently there are approximately 24,000 students pursuing undergraduate and graduate degrees. The University has already developed a record of accomplishment in the areas of (1) environmental considerations for sustainable agriculture, rural, and international development, (2) water resources policy and management, (3) conservation biology and ecology, (4) waste management and technology, (5) environmental engineering, (6) global environmental change, (7) natural and technological hazards research, and (8) forested wetlands.

Candidates will be expected to have a Ph.D. degree with professional experience that should include development and implementation of new programs or initiatives, a familiarity with the extramural environmentally-oriented funding agencies and experience in interacting with these agencies, demonstration of good interpersonal skill, and experience with natural and/or human resource issues. Review of applications will begin **January 16, 1995** and continue until the position is filled. A letter of application which is accompanied by a statement of the applicant's vision of how the Institute will achieve the criteria stated above, a current resume, and three names, addresses, and telephone numbers of references should be sent to:

Dean William F. Walker
Chair of the Search Committee
College of Engineering
108 Ramsay Hall
Auburn University
Auburn University, AL 36849-5330
Telephone: (205) 844-2308
Fax: (205) 844-2672

Auburn University is an Affirmative-Action/Equal Opportunity Employer. Minorities and women are encouraged to apply.

Department of Neurology University of Pittsburgh

Molecular Neurobiologists

The Department of Neurology, University of Pittsburgh School of Medicine (Roger P. Simon, M.D., Chair), seeks M.D., Ph.D., or M.D./Ph.D. candidates with a strong background in molecular biology for the following positions:

Faculty

Tenure-track positions are available at the Professor, Associate Professor, or Assistant Professor level for individuals with a record of scientific excellence and an active ongoing laboratory effort in basic neuroscience research at the molecular or cellular level. The research program should have potential relevance to stroke, neurodegenerative disease, neural transplantation, or epilepsy.

Postdoctoral Fellows

Postdoctoral positions are available for candidates with expertise in molecular biology to study mechanisms of neuronal injury and repair in cell culture and in animal models of neurologic disease. Areas of investigation include the identification of gene products involved in ischemic neuronal injury and neuroprotection, and the role of neural stem and progenitor cells in repair of the injured nervous system.

Interested persons should submit a curriculum vitae and names of references to: David A. Greenberg, M.D., Ph.D., Professor and Vice-Chairman for Research, Department of Neurology, 325 Scaife Hall, University of Pittsburgh, Pittsburgh, PA 15261.

Women and minorities are encouraged to apply. The University of Pittsburgh is an equal opportunity/affirmative action employer.

Postdoctoral Positions: Department of Molecular Microbiology and Immunology University of Missouri, School of Medicine, Columbia, Missouri

Applications are invited for postdoctoral positions. General areas of research include:

- Molecular approaches to immunobiology and immunochemistry; mechanisms of B-cell activation, induction of autoimmunity, class I antigen presentation, microbial superantigens, and T lymphocytes
- Regulation of gene expression in prokaryotic and eukaryotic systems; iron regulated operons in *E. coli*, mycoplasma and yeast systems, and molecular virology (DNA viruses and retroviruses)
- Membrane structure and function; mechanisms of phenotypic switching; surface antigen variation
- Intracellular signalling mechanisms in neutrophils, lymphocytes, yeast
- Mechanisms of oncogene action in eukaryotes
- Early nematode development
- Pathogenic mechanisms of *Staphylococci*, *Vibrio cholerae*, *H. influenzae*, *B. cepacia* and *Rickettsia*

Complete descriptions of research programs are available. Applicants should direct their inquiries to:

Postdoctoral Opportunities,
Department of Molecular Microbiology
and Immunology,
University of Missouri,
School of Medicine,
Columbia, Missouri 65212
Phone: (314) 882-2470 OR 882-3920;
Fax: (314) 882-4287

QUALIFIED APPLICANTS MAY BE APPOINTED TO AN NIH TRAINING GRANT, MOLECULAR BIOLOGY PROGRAM FELLOWSHIPS, OR INDIVIDUAL RESEARCH GRANTS.

The University of Missouri is an Equal Opportunity Employer and encourages applications from females and minorities.

THE KRIEGER MIND/BRAIN INSTITUTE

THE JOHNS HOPKINS UNIVERSITY

The Krieger Mind/Brain Institute of the Johns Hopkins University invites applications for three positions as members of the Institute, with joint appointment in the Department of Neuroscience of the University. Funding is available for substantial salary and research support for the first three years of appointment, after which it is expected that partial research support will be acquired from external sources.

Applications are sought from those who have finished postdoctoral training, or at a more advanced level, who are interested in the general subject of the physiology of the cerebral cortex, with particular reference to its role in perception. We include in this venue the broad range from cellular/molecular studies of cortical function and small network analysis the cortical mechanisms in perception studied in non-human primates, the behavior and psychophysical studies of perception in normal and brain-damaged human subjects, to analyses at the levels of theory and modeling.

The Krieger Mind/Brain Institute is located on the Homewood campus of the School of Arts and Sciences of the University, in North Baltimore. Applications should include a description of research interests, a curriculum vitae, the names of 3 references and be addressed to:

The Director,
The Krieger Mind/Brain Institute,
The John Hopkin University
3600 North Charles Street
Baltimore, Maryland 21218

The Johns Hopkins University is an equal opportunity employer.

**ASSISTANT PROFESSOR
OF BIOLOGY**



The Department of Biology at Niagara University invites applications for a Microbiologist beginning August 1995. This tenure track teaching and research position requires a Ph.D. in Microbiology with ability to teach courses in pre-medical/nursing microbiology, environmental microbiology and immunology. Postdoctoral experience is highly desirable.

The Department of Biology is committed to excellence in undergraduate education. Teaching at the introductory and advanced levels is expected. In addition, the candidate is expected to develop an individual research program involving undergraduate students. Start-up funds, suitable laboratory space and departmental resources are available for the successful candidate. Collaborations with local research and industry groups are encouraged. Salary is competitive, and will be commensurate with the candidate's experience. Application should demonstrate exceptional teaching and research skills and should include curriculum vitae, three (3) letters of reference, and a summary of current and future research plans. Review of applicants will begin on February 1, 1995.

Send to: **Dr. Carol R. Sweeney, Chairperson, Department of Biology, Niagara University, Box 2032 Niagara University, NY 14109**



**Nominations are
Solicited for the J. Allyn Taylor
International Prize in Medicine**

The Prize for \$10,000 is awarded annually to one or more individuals who have made significant contributions in basic or clinical research in diseases of the brain, circulation or immune system.

The eleventh annual J. Allyn Taylor International Prize in Medicine in 1995 will be awarded to a scientist(s) who have made outstanding contributions in: ***Immunological Tolerance: Impact on Autoimmune Disease and Transplantation.***

Nominations, accompanied by a Curriculum Vitae and a letter of support of the nominee, should be sent prior to March 31, 1995 to: Dr. M.J. Poznansky, The J. Allyn Taylor International Prize in Medicine, The John P. Roberts Research Institute, P.O. Box 5015, 100 Perth Drive, London, Ontario, Canada, N6A 5K8.

**Teaching and Research in Biomedical Sciences
CONTRACTUALLY DEFINED
FACULTY POSITION IN ANATOMY**

Applications are invited for a Contractually Defined Assistant Professorship in the Department of Biomedical Sciences at the Ontario Veterinary College. The appointee will take part in team teaching anatomy to the first year Diploma of Veterinary Medicine (DVM) students and other course material in consultation with the Chair of the Department. The Department is responsible for teaching in the DVM Program as well as courses to science students, including a new honours B.Sc. program in Biomedical Sciences and in an interdisciplinary Honours Program in Toxicology. Candidates with expertise in veterinary anatomy and with research interests in related fields will be considered. Applicants should have a Ph.D., or a DVM or its equivalent with at least a Master's degree, and have experience in teaching anatomy. Post-doctoral experience would also be an asset.

The Department is very active in research, with established programs in carcinogenesis, gastrointestinal physiology, hemostasis, immunology, medical genetics, neuroendocrinology, pharmacokinetics, toxicology, and in reproductive, developmental and cell biology. In view of the limited term of this appointment, it is expected that the person appointed will participate in one of the current research programs in the Department.

The University has a wide range of internationally and nationally recognized research activities, and enjoys collaborative links with scientists at universities such as McMaster, Waterloo, Toronto, and Western Ontario.

The appointment is for one year with a possibility of reappointment for a further two years. The salary is negotiable, but is subject to final budgetary approval. In accordance with Canadian Immigration requirements, priority will be given to Canadian citizens and permanent residents of Canada.

Applications, together with a curriculum vitae and names and addresses of three referees, should be sent to **Dr. John Leatherland, Chair, Department of Biomedical Sciences, University of Guelph, Guelph, Ontario N1G 2W1, Canada**, from whom further particulars may be obtained. Applications will be accepted up to **February 17, 1995.**

The University of Guelph is committed to an employment equity program that includes special measures to achieve diversity among its faculty and staff. We therefore particularly encourage applications from qualified aboriginal Canadians, persons with disabilities, members of visible minorities and women.

**UNIVERSITY
of GUELPH**

Kelco
DIVISION OF MERCK & CO. INC.

Kelco is a worldwide leading developer and manufacturer of specialty biopolymers for food and industrial applications. We have immediate openings for a Microbial Geneticist and a Microbial Physiologist at our San Diego location.

MICROBIAL GENETICIST

Qualifications include a PhD in Genetics, Molecular Biology, Microbial Physiology or equivalent and a minimum of 5 years' experience in industrial strain development. Experience in working with multiple biological systems a plus. The successful candidate will take a lead role in developing and implementing strain improvement strategies for the production of a variety of specialty chemicals. Will also have demonstrated proficiency in using both classical strain improvement strategies and molecular biology to influence carbon flow down desired metabolic pathways.

MICROBIAL PHYSICIST

A PhD in Microbial Physiology, Biochemical Engineering or equivalent and a minimum of 5 years' experience in process development is required. The ideal candidate will have demonstrated experience in developing fermentation processes from flask to production scale and should have a conceptual understanding of all aspects of fermentation development. Will take a lead role in developing processes for the production of specialty chemicals and nutritional biochemical.

Both positions require excellent communication & interpersonal skills and the ability to supervise technical staff with a wide range of professional knowledge and experience. Project manager experience highly desirable.

We offer an excellent salary and a complete benefits package. Please send detailed resume and salary requirements to: Robert Ashton, Human Resources Department, KELCO, Division of Merck & Co., Inc., 8355 Aero Drive, San Diego, CA 92123.

An Equal Opportunity Employer M/F/D/V

DIRECTOR OF THE INSTITUTE Inter-American Institute for Global Change Research (IAI)

The Inter-American Institute for Global Change Research (IAI) is a new international organization established to promote cooperative scientific research on global change issues in the Americas. The IAI will promote cooperation among regional and extra-regional research institutions; sponsor scientific projects of regional relevance; pursue research that cannot be conducted by a single country or institution; improve the technical capabilities and research infrastructure of the region; foster the standardization, collection, analysis, and exchange of scientific data; and improve public awareness and information for public policy. The IAI Conference of the Parties (CoP) is seeking highly qualified candidates for the Brazil-based position of IAI Director.

RESPONSIBILITIES:

- Prepare and implement IAI long-range plans and financial policies for the IAI
- Propose the annual work program and budget to the Conference of the Parties of the IAI
- Promote and represent the IAI
- Design and implement fund-raising strategies
- Manage the Directorate, located on the campus of the Instituto Nacional de Pesquisas Espaciais (INPE) in São José dos Campos, Brazil, its staff, and related facilities.

QUALIFICATIONS

- A proven record in management and scientific research administration
- An ability to work and communicate effectively with relevant scientific, policy-making, and donor communities
- Excellent conceptualizing skills that provide leadership for staff of the Directorate, research partners, and donors
- Strong language and writing skills in English and Portuguese, French, or Spanish
- Highest academic qualifications and achievements in a scientific area
- A successful record of fund-raising for scientific research

Parties to the IAI Agreement which may submit candidates' names for consideration to the CoP are the following: Argentina, Brazil, Canada, Chile, Costa Rica, Mexico, Panama, Peru, United States, and Uruguay. By agreement of the Parties of the IAI, the Director cannot be a citizen of Brazil, the host country for the Directorate, but is not required to be a citizen of a nation party to the IAI Agreement. The Director and family will be accorded special status as a representative of an international organization by the Government of Brazil.

APPLICATION INSTRUCTIONS:

Applications/nominations of interested candidates should include 1) a cover letter that addresses the qualifications of the position, 2) a current curriculum vitae, 3) the Party that the applicant wishes to have submit their candidacy, and 4) the names/addresses/phones/faxes of three references. These materials, which will be accepted until February 28, 1995, or until a suitable candidate has been identified, should be submitted to the following address: IAI Director Search, c/o Ms. V. Richardson, National Science Foundation, 4201 Wilson Boulevard, Suite 705, Arlington, VA, 22230, United States of America.

University of Texas Health Science Center at San Antonio/Pfizer, Inc., Post-Doctoral Fellowship in Clinical Mycology

Dr. Michael Rinaldi (Fungus Testing Laboratory, Department of Pathology) and Dr. J. Richard Graybill (Division of Infectious Diseases, Department of Medicine), UTHSCSA announce and solicit applications for the newly-established "UTHSCSA/Pfizer, Inc. Fellowship in Clinical Mycology." This new Fellowship, supported by an unrestricted educational grant from Pfizer, Inc., New York, NY, involves a two year program in the study of fungi of medical significance, the mycoses they incite, their mycology, diagnosis and therapy. The selected Fellow will conduct/learn clinical laboratory mycology in the first year; including classic taxonomic/morphologic means to assess proper fungal identification, as well as study employing the techniques of contemporary biology for accomplishing clinical mycology. Year one will encompass antifungal susceptibility testing, measurement of antifungal concentrations in biologic fluids/tissues, and the study of potential and new antifungal agents in vitro and in vivo employing animal models of mycotic infections. The Fellow will have frequent contact/interaction with scientists/clinicians/other health care professionals at UTHSCSA involved with the long-standing mycological effort at the institution. Dependent on the type of doctorate degree held by the Fellow, year two will encompass research in clinical mycology which may range from involvement in human drug studies, pathogenesis of fungal infections, molecular biological endeavors, epidemiology of mycoses, laboratory mycology, to virtually any of a variety of research efforts concerning medical fungi. The goal of the Fellowship is to generate a future cadre of mycologically well-trained health care professionals who possess the knowledge and skills to become leaders/trainers in the future of medical mycology. The selected Fellow must possess an earned doctorate degree (Ph.D., D.Sc., Sc.D., M.D., D.D.S., D.M.D., D.V.M., or equivalent), have training in a biological science relevant to this Fellowship (biology, microbiology, medicine [any relevant specialty], dental medicine, veterinary medicine, biochemistry, genetics, molecular biology, etc.), have a desire to pursue a career in medical mycology in its broadest interpretation, and fulfill the expectation of successful scholarly activity throughout the program. The Fellowship stipend is \$50,000.00/year which includes salary, benefits, and the necessary resources to accomplish the program goals and requirements. Interested applicants should send a letter indicating their scientific interests past and present, their reasons for seeking this Fellowship, goals and aspirations for the future, and a detailed curriculum vitae to: **Dr. Michael Rinaldi, Department of Pathology, UTHSCSA, San Antonio, Texas 78284-7750 (210-567-4132/FAX 210-567-4076).** Applications will be accepted until the Fellow is selected for this two year cycle. The UTHSCSA is an equal employment opportunity/affirmative action employer.

Department of Biology Assistant Professor Tenure Track Positions

The following positions are available in August 1995.

Evolutionary Ecologist - The applicant should have research interests broadly defined as the evolutionary ecology of terrestrial plants and/or animals (i.e., coevolutionary processes, species, interactions, biogeography, etc.). A Ph.D. in Biology or related fields is required with postdoctoral experience preferred. Teaching responsibilities will include courses in Evolution, Population Biology and General Biology for majors and non-majors.

Parasitologist/Cell Biologist - The applicant should have demonstrated breadth in biology with research interests in host-parasite interactions. A Ph.D. in Biology or related field is required with postdoctoral experience preferred. Teaching responsibilities include Parasitology, Cell Biology and one or more of the following: Cytology, Histology, Hematology, Electron Microscopy, Introductory Biology and a course in area of specialization.

Geneticist/Director of Genetic Counseling Program - Applicant should have breadth in genetics with an interest in human genetics. Duties will include directorship of a new Master's program in genetic counseling, along with teaching responsibilities in the areas of general genetics, human genetics, and, on occasion, introductory biology. A Ph.D. in biology or a related field is required, with postdoctoral experience preferred. Preference will be given to individuals whose research experience includes application of molecular genetics techniques to questions of genome organization and/or gene structure, function and transmission.

Microbiologist - Applicants should have a strong background in prokaryotic ecology and use molecular, chemical, and biochemical approaches to study microbial diversity. The successful applicant will be expected to teach graduate and undergraduate courses in Microbial Ecology, General Microbiology, and General Biology. Evidence of a strong commitment to teaching is essential and evidence of teaching effectiveness must be provided. Applicants must possess a Ph.D. in Microbiology or related area, have postdoctoral research experience, and demonstrate research ability.

The candidates will be expected to develop a strong research program involving undergraduate and graduate students. Supervision of graduate research is expected (M.S. level). The successful candidate will be expected to solicit outside funding to support his/her research. Committee work and other functions usually associated with University faculty are expected. Applications must be received by February 1, 1995, to ensure full consideration. Applicants should send a letter of application outlining his/her research interests, a list of relevant courses taken, curriculum vitae, no more than 4 representative reprints, summary of teaching experience, and three letters of reference to: **Dr. Mary Corcoran, Chair, Department of Biology, California State University Northridge, 18111 Nordhoff Street, Northridge, CA 91330-8303.**

California State University Northridge is an Equal Opportunity, Affirmative Action, Title IX, Section 504 Employer. Applications from women, minorities, and persons with disabilities are particularly encouraged.

POSTDOCTORAL RESEARCH OPPORTUNITIES IN TOXICOLOGY

DEPARTMENT OF ENVIRONMENTAL MEDICINE, UNIVERSITY OF ROCHESTER MEDICAL CENTER

Presently there exist postdoctoral research positions with an outstanding group of scientists in the Toxicology Training Program at the University of Rochester Medical Center. The program is funded by the National Institute of Environmental Health Sciences, and is the only such program associated with both an Environmental Health Sciences Center and a Center for Space Environmental Health, funded by NASA.

The participating faculty and their current major areas of interest include:

M. W. Anders, D.V.M., Ph.D. - glutathione-dependent bioactivation of xenobiotics

R. B. Baggs, D.V.M., Ph.D. - toxicologic pathology /teratology; alterations in vasculature function

N. Ballatori, Ph.D. - the role of glutathione in the transport of xenobiotics and heavy metals

R. F. Borch, M.D., Ph.D. - design and mechanisms of action of anticancer drugs

T. W. Clarkson, Ph.D. - transport of methylmercury across the blood-brain barrier

D. A. Cory-Slechta, Ph.D. - neurotoxicology and developmental toxicology of lead

J. Ferin, Ph.D. - pulmonary toxicology of inhaled particles

J. N. Finkelstein, Ph.D. - mechanisms controlling responses of pulmonary alveolar epithelium

T.A. Gasiewicz, Ph.D. - receptor-mediated toxicity /immunotoxicology; dioxins and the Ah receptor

M. D. Maines, Ph.D. - regulation, function, and molecular properties of heme pathway and enzymes

W. H. Merigan, Ph.D. -selective toxic effects on visual pathways

R. K. Miller, Ph.D. - reproductive and perinatal toxicology; metals, anti-HIV therapy, drugs of abuse

A. C. Notides, Ph.D. -estrogen receptor-mediated toxicity; DDT and breast cancer

R. H. Notter, M.D., Ph.D. -lung disease and injury; pulmonary surfactant biophysics

G. Oberdoerster, Ph.D. -cellular mechanisms of acute/chronic lung injury; environ./occup. aerosols

P. M. Rodier, Ph.D. - developmental toxicology; fetal alcohol syndrome, methylmercury, autism

D. W. Siemann, Ph.D. - interactions of radiation and chemotherapy with tumor cells

B. R. Stripp, Ph.D. - molecular genetics, airway epithelial cell injury /repair; Clara cell secretory protein

M. J. Utell, M.D. - effects of oxidants and acid aerosols on airways of human populations

B. Weiss, Ph.D. - behavioral and developmental toxicology; methylmercury and dioxins

D. A. Young, M.D. - gene products that mediate actions of hormones, growth factors, tumor promoters

To apply, send a cover letter, curriculum vitae, and names of three references to Dr. T.A. Gasiewicz (Program Director) or the particular faculty member of interest using the following address: Toxicology Training Program, Department of Environmental Medicine, University of Rochester Medical Center, 575 Elmwood Avenue, Rochester, New York 14642, or call 716-275-7723 or FAX 716-256-2591 for further information. (Minorities, women and handicapped individuals are encouraged to apply. All applicants receive consideration without regard to race, religion, color, sex, or political affiliation. The NIEHS-sponsored Training Grant will, however, fund only U.S. citizens or permanent U.S. residents. The University of Rochester is an equal opportunity affirmative action employer.)

Program Manager

HP Inkjet Business Unit Product Safety

Dramatic technological transformations are happening every day at Hewlett-Packard's Inkjet Business Unit (IJB) in Corvallis, Oregon. Currently, we are seeking a highly skilled, technically competent Inkjet Pen Product Stewardship Program Manager.

In this key role, you will lead a team of two product safety/regulations engineers to ensure that high level support and guidance is provided to ink research and development teams in developing and registering safe printer pen consumer products. This includes toxicological and physical properties assessments, providing/defining process linkages between R&D, Manufacturing, Marketing, EHS, and Legal across division sites in Corvallis and San Diego, facilitating and leading a cross-functional chemical review council to product decision making, and providing oversight of third party resources and partners in the ink development and manufacturing process.

Requires a BS degree in Toxicology, Chemistry, or Chemical Engineering and 3 years of significant program/staff management experience. Working knowledge of product regulations such as the Toxic Substances Control Act, consumer product safety, and international regulations is essential. You must also have demonstrated leadership, management, communication, and computer skills. MS degree is desired.

Join HP in Corvallis, the home of Oregon State University, and enjoy the natural scenery of the area, the friendliness of its residents, and the wide variety of recreational choices. For immediate consideration, please send your resume to: **Hewlett-Packard Employment Response Center, Attn: Ad #1073, 3000 Hanover Street, MS 20AZ, Palo Alto, CA 94304-1181.** Hewlett-Packard Company is an equal opportunity employer dedicated to affirmative action and work force diversity.



**HEWLETT®
PACKARD**

ZYMOGENETICS

Bio-Tech in the Pacific Northwest

ZymoGenetics, a biotechnology company located in Seattle, Washington, is dedicated to the treatment and prevention of human illness through the discovery, development, production and clinical evaluation of novel therapeutic agents. As a subsidiary of **NOVO NORDISK A/S**, the world's largest manufacturer of insulin, ZymoGenetics offers an exciting environment characteristic of a small research and development company, along with the scope and stability of a large pharmaceutical corporation. Currently, we are seeking a candidate for the following position:

Molecular Pharmacologist

The successful candidate will design and conduct studies aimed at the discovery and evaluation of new agents for the treatment of non-insulin dependent diabetes (NIDDM) and its complications. Qualified candidates will have a Ph.D. in the Life Sciences and 2+ years' postdoctoral experience, preferably in receptor-mediated signaling research and or drug discovery.

ZymoGenetics offers intellectual challenge, a new state-of-the-art facility on Lake Union in Seattle, a generous benefits package and the opportunity to live and work in the Pacific Northwest. Please apply by sending your CV, noting reference number **15R894** to:

**ZymoGenetics, Inc., Human Resources
1201 Eastlake Avenue East, Seattle, WA 98102**

ZymoGenetics is committed to equal opportunity and diversity.



Molecular Biology of Neural Development and Plasticity

A major grant from the Lucille P. Markey Charitable Trust is providing funding for a continuing search for several faculty positions in molecular neurobiology, with an emphasis upon molecular mechanisms of neural development and plasticity.

We plan to fill one or more full time tenure track faculty positions (rank open) for Fall, 1995 and additional positions in the next several years. Candidates will be appointed primarily in the Departments of Biochemistry, Cell and Structural Biology and Physiology although appointments may be made in other departments. Substantial funds are available for laboratory start-up and research. The University has a strong interdisciplinary Neuroscience Program with strengths in neural development and plasticity and growing strength in cellular and molecular neuroscience. In addition to the interdisciplinary resources of the Beckman Institute, the University of Illinois is home to the NSF-funded National Center for Supercomputing Applications, and a Biotechnology Center that provides a number of subsidized services including production of oligonucleotides, peptides and monoclonal antibodies, molecular graphics, fluorescence activated sorting, protein and DNA sequencing and transgenic animal facilities.

Salary is commensurate with experience and qualifications. Minorities and women are particularly encouraged to apply. Applications (vita, 1-2 representative reprints, and a statement of research interests) and three letters of recommendation should be sent to:

Dr. James A. Weyhenmeyer
Chair, Molecular Neuroscience Search Committee
c/o: University of Illinois
506 Morrill Hall
505 South Goodwin
Urbana, IL 61801 Tel (217) 244-9294

This is an ongoing search and applications received after the deadline may receive consideration. However, to ensure full consideration for FALL, 1995 hiring, applications should be received by January 31, 1995.

The University of Illinois is an Affirmative Action/Equal Opportunity Employer.

TEACHERS COLLEGE, COLUMBIA UNIVERSITY

DEPARTMENT OF MOVEMENT SCIENCES AND EDUCATION

Assistant/Associate Professor in Bio-mechanics/Motor Learning and Control Tenure track; initial two-year appointment. Competencies in computer-based kinematics/kinetic analysis of human movement, ability to use biomechanics as a tool for elucidating processes underlying skill learning, development, or neuromotor control processes. Doctorate required; postdoctoral research training preferred. Research publications should provide evidence of potential for external funding. **Responsibilities:** teaching graduate courses; directing doctoral dissertation research; maintaining active research program; designing/supervising research in rehabilitation and clinical settings. Review of applications begins January 16, 1995. Letter of interest, CV, statement of research plans, copies of publications, three references to: Professor Gentile, Chair, Movement Sciences Search, Box 199, 525 W. 120th Street, New York, NY 10027.

Teachers College is an EOE.

Postdoctoral Fellowships

The UNC Lineberger Comprehensive Cancer Center of the University of North Carolina at Chapel Hill will have openings in 1995 for persons completing graduate studies to train with excellent investigators in basic research in tumor virology, molecular carcinogenesis, molecular therapeutics, cancer cell biology, genetics, and tumor immunology. Training is available in recombinant DNA technology, gene expression, DNA replication, mutagenesis, regulation of cellular proliferation, growth factors, molecular immunology, molecular genetics of cancer, and combined programs. Unique training resources and core facilities are supported by the NCI-designated UNC Lineberger Comprehensive Cancer Center.

Preceptors are: Steven Bachenheimer, Albert Baldwin, Keith Burridge, Stephen Chaney, David Clemmons, Marila Cordeiro-Stone, Channing Der, H. Shelton Earp, Jeffrey Frelinger, Frank French, Jack Griffith, Stephen Haskill, Geoffrey Haughton, Brian Herman, Clyde Hutchinson III, Eng-Shang Huang, Kenneth Jacobson, Rudolph Juliano, David Kaufman, Shannon Kenney, Ryszard Kole, Steven Leadon, David Lee, Edison Liu, Patricia Maness-Tidwell, William Marzluff, Beverly Mitchell, Joseph Pagano, Nancy Raab-Traub, James Raleigh, R. Jude Samulski, Aziz Sancar, Ronald Swanson, Ronald Thurman, Jenny Ting, Michael Topal, Terry Van Dyke, Jean-Michel Vos, Elizabeth Wilson, Bernard Weissman, and Yue Xiong.

Candidates must be U.S. citizens or permanent residents. To send for an informational brochure or to apply, (with curriculum vitae, three letters of recommendation, a statement of research interests and graduate school records,) write to:

Joseph S. Pagano, M.D.
CB# 7295

UNC Lineberger Comprehensive Cancer Center
School of Medicine
University of North Carolina at Chapel Hill
Chapel Hill, NC 27599-7295

UNC's Comprehensive Cancer Center is an Affirmative Action/Equal Opportunity Employer. Minority applicants are encouraged voluntarily to identify themselves.

FACULTY POSITIONS DEPARTMENT OF BIOLOGY TEXAS A&M UNIVERSITY

We invite applications for two tenure-track faculty positions in the areas of plant molecular biology and animal developmental biology. The successful candidates are expected to develop nationally recognized research programs, to teach at both the undergraduate and graduate levels, and to complement current strengths in microbial, plant and animal biology. Applicants must have a Ph.D. (or equivalent degree) and postdoctoral experience.

Plant Molecular Biology

We are seeking an outstanding molecular biologist studying fundamental problems of plant biology. The successful candidate will be housed in a new, multi-disciplinary plant biotechnology center. Special consideration will be given to candidates applying molecular genetic approaches to study plant development or signal transduction in an advanced model, such as *Arabidopsis*. Applicants should submit a curriculum vitae, a description of research and teaching interests, and the names, addresses and telephone numbers of three referees to: Jim Carrington, Chair, Plant Molecular Biology Search Committee, Department of Biology, Texas A&M University, College Station, Texas 77843-3258. FAX: (409) 845-2891. E-mail: carrington@bio.tamu.edu.

Developmental Biology

We are seeking an outstanding scientist studying fundamental problems of animal development at the cellular, molecular and/or genetic levels. We are particularly interested in candidates studying a model system such as zebra fish or *Xenopus* to take advantage of our extensive aquatic facilities. However, consideration will also be given to other applicable systems. Applicants should submit a curriculum vitae, a description of research and teaching interests, and the names, addresses and telephone numbers of three referees to: Vincent M. Cas-sone, Chair, Developmental Biology Search Committee, Department of Biology, Texas A&M University, College Station, Texas 77843-3258. FAX: (409) 845-2891. E-mail: vmc@bio.tamu.edu.

Closing date: February 15, 1995, or until position is filled.

Texas A&M University is an Equal Opportunity/Affirmative Action employer.

MOLECULAR PHARMACOLOGIST

Cardiovascular Biology

SmithKline Beecham Pharmaceuticals, a world leader in pharmaceutical research, has an opening for a Molecular Pharmacologist in its Cardiovascular Biology Department.

The selected individual will establish and conduct innovative research in cardiovascular biology. Responsibilities also include characterizing cellular and molecular mechanisms in vascular and myocardial remodeling.

The successful candidate will have a Ph.D. in Molecular Pharmacology, Cell Biology or Biochemistry with two to five years of relevant postdoctoral experience. This individual must also have expertise in vascular smooth muscle and endothelial cell biology. Experience in RNA/DNA hybridization techniques, differential display, gene cloning and expression, and *in situ* localization is highly desirable. Demonstrated ability to present at scientific meetings and publications of results are strongly preferred. Good oral/written communication skills, a high level of motivation and team collaboration are also required.

SmithKline Beecham offers an excellent compensation/benefits package and a stimulating work environment. Interested candidates should send resume with salary requirements to: SmithKline Beecham, Job Code H0443, P.O. Box 799, Conshohocken, PA 19428. We are an Equal Opportunity Employer, M/F/D/V.



SmithKline Beecham
Pharmaceuticals

Challenging the natural limits.

MICROBIOLOGIST (IMMUNOLOGY)

PATHOGENESIS AND
BASIC RESEARCH BRANCH
DIVISION OF AIDS, NIAID, NIH

The National Institute of Allergy and Infectious Diseases, Rockville, Maryland, seek an experienced immunologist (GS-403-13). The base salary range is \$47,920-\$62,293; recruitment bonus may be available. Incumbent will plan, implement and evaluate immunological research in HIV pathogenesis; organize workshops, meetings and collaborative studies; communicate scientific, technical and management information, both within and outside the Division of AIDS, and plan allocation of resources. Applicant must demonstrate knowledge and experience in state-of-the-art immunology, virology and pathogenesis research, and have professional training equivalent to a Ph.D. or M.D., and immunology postdoctoral (or equivalent) experience.

Please send resume and/or SF-171, Application for Federal Employment (reference announcement no. 9492) to:

Ms. Kristie Daniel
NIAID Personnel Office
Building 31, Room 7A27
Bethesda, Maryland 20892
(301-402-1421)
U.S. citizenship is required.



Applications will be accepted until January 17, 1995.
NIH is an Equal Opportunity Employer

1995 Swine in Biomedical Research THE INTERNATIONAL SYMPOSIUM

October 22-25, 1995
The Inn and Conference Center
University of Maryland
University College
College Park, MD

SPONSORED BY
THE UNIVERSITY OF MINNESOTA
& THE UNIVERSITY OF ILLINOIS
AT URBANA-CHAMPAIGN

CONFERENCE AGENDA

Abstracts accepted relating to:

Transplantation	Pharmacology
Nutrition	Transgenics
Genetic Models	Toxicology
Behavior	Infectious Diseases
Immunology	Physiology
Obesity	Dermatology
Other Subjects	

**ABSTRACT DEADLINE IS
JULY 15, 1995**

**For Registration and Abstract
Information contact:**

SWINE IN BIOMEDICAL RESEARCH
Secretariat International Symposium
College of Veterinary Medicine
295 AS/VM Bldg., 1988 Fitch Avenue
St. Paul, MN 55108-6010
Internet: pigmodel@gold.tc.umn.edu

Analytical and Quantitative Light Microscopy

May 11 - 19, 1995

This is a comprehensive course in light microscopy for researchers in biology, medicine, and materials science. It provides an in-depth examination of the theory of the microscope and application of video for exploring subtle interactions between light and the specimen. Limited to 26 students.

Directors: Greenfield Sluder and David Wolf, Worcester Foundation for Experimental Biology.
Tuition: \$1750 (room and board available at no additional charge). **Application Deadline:** March 14, 1995.

Microinjection Techniques in Cell Biology

May 23 - 30, 1995

In this research-oriented course for 18 graduate students, postdoctoral researchers, and investigators, leading practitioners teach microinjection techniques in combination with analytical light microscopic methodologies, electroporation, biolistic methods, electrophysiological and photometric approaches. Participants will learn techniques of microinjection into a variety of intact, living cells through lectures, demonstrations, and extensive hands-on laboratory exercises.

Director: Robert B. Silver, Cornell University/MBL. **Tuition:** \$1550 (room & board available at no additional charge). **Application Deadline:** March 14, 1995.

Marine Animal Models: Their Care, Culture, and Uses in Basic Biological, Biomedical, and Toxicological Research

May 14 - 26, 1995

This lab and lecture course is intended for 20 scientists, advanced technicians and students interested in maintaining, rearing, and spawning marine organisms for scientific research. The course emphasizes four themes: (1) ecological approach to water quality, system design and disease prevention, (2) nutrition and metabolism, (3) settlement, growth and behavior, and (4) reproduction and genetic manipulation. Recent developments in molecular biology, biotechnology and computer automation will be addressed.

Director: Roger T. Hanlon, Marine Biomedical Institute, Galveston.
Tuition: \$1500 (room & board available at no additional charge).
Application Deadline: March 14, 1995.

For further information and admissions applications contact: Admissions Coordinator,
Marine Biological Laboratory, Woods Hole, MA 02543; (508) 548-3705, ext. 401;
Internet: admissions@mbi.edu.

MARINE BIOLOGICAL LABORATORY

Spring Training Opportunities

The MBL is an EEO Affirmative Action Institution





UNIVERSITY OF
FLORIDA

Center for Structural Biology

FACULTY POSITIONS: NUCLEAR MAGNETIC RESONANCE

The Center for Structural Biology of the College of Medicine, University of Florida currently has openings for faculty conducting innovative research emphasizing nuclear magnetic resonance. The Center is associated with the University of Florida Brain Institute (UFBI) and with the National High Magnetic Field Laboratory (NHMFL), jointly run by Florida State University, the University of Florida, and the Los Alamos National Lab. The Center is an interdisciplinary program with emphasis on understanding of biological function by determining high-resolution structures of large biological molecules and assemblies, studying cell structure and function, and the morphology and physiology of the whole organism. Within the Center, advanced spectroscopic, diffraction, and imaging techniques (nuclear magnetic resonance, optical microscopy, and electron microscopy; X-ray crystallography is being planned) are used to derive molecular-based information related to cellular, tissue, and organism-level structure and function. The Center houses NMR spectrometers (Varian Unity 300 and Unity 600) used for macromolecular structure determination and microscopy, as well as an imaging spectrometer (a 12 T, 40 cm system to be installed in 1997) for animal research. Also the Center uses a 4.7 T, 33 cm animal system and a 3 T whole-body system (to be installed in 1995) for research. In addition, Center faculty use prototype magnets and spectrometers located at the NHMFL Tallahassee site, including a wide-bore 600 MHz and 720 MHz high-resolution spectrometer, with other magnet systems operating at higher fields.

Faculty are being recruited in two areas: 1) high-resolution macromolecular NMR spectroscopy and 2) MR imaging and spectroscopy in living systems. Interested persons are invited to apply for tenure-track faculty positions, at any level, with direct association to the National High Magnetic Field Laboratory. Applicants at the assistant professor level need extensive experience with NMR at the postdoctoral or more advanced level with interest in developing and expanding experimental techniques. In addition, applicants at the associate and full professor level need to have an established program with extramural funding. Successful candidates will conduct innovative research emphasizing NMR and will use the facilities of the Center for Structural Biology, with additional support provided through the facilities of the NHMFL and the UFBI. Opportunities exist for collaborative research in areas such as biochemistry, cell biology, cognitive neuroscience, pharmacology, or physiology.

Applicants must have Ph.D. Degree and a min. 1 yr. post-doc experience. Submit C.V. with statement of research interests and three letters of reference by Feb. 15, 1995. Anticipated starting date on or before Sept., 1995; salary commensurate with experience. All correspondence should be sent to Thomas H. Mareci, Ph.D., Director, Center for Structural Biology, College of Medicine, University of Florida, Box 100245, Gainesville, Florida, Box 100245, Gainesville, Florida 32610-0245. The University of Florida is an Affirmative Action-Equal Opportunity employer, and applications from minorities and women are strongly encouraged. Gainesville is an attractive University community in North-central Florida with good low-cost housing, quality public schools, and many outdoor activities.

FACULTY POSITION IN MOLECULAR RETROVIROLOGY THE OHIO STATE UNIVERSITY

The Ohio State University is undertaking a major initiative in Molecular Life Sciences Research that will include at least thirty new faculty hires in the next six years. As part of this initiative, the Department of Veterinary Biosciences invites applications for a tenure-track faculty position and member of the University Center for Retrovirus Research. The Center consists of 25 faculty plus graduate and postdoctoral students interested in the role of retroviruses in the pathogenesis of human and animal diseases. A joint faculty appointment will be encouraged for the successful candidate in an appropriate academic department in the College of Medicine. The Ohio State University is a designated NIAID AIDS Clinical Trials Unit. The applicant should have a Ph.D. degree or equivalent, relevant postdoctoral experience, and an established record of research excellence in retrovirology, molecular biology, or gene therapy. Senior candidates should have a proven record of obtaining extramural research funds; junior candidates should have excellent potential. Preference will be given to candidates with experience in molecular approaches to the prevention of retroviral diseases, the use of viral vectors or other approaches to gene therapy. Maintenance of an independent research program, development of collaborative research efforts, and a strong commitment to graduate education are essential. Support facilities include a recently completed BSL-3 containment laboratory, state-of-the-art cytometry facility, and a new primate complex. Applications should include a curriculum vitae, statement of career goals, summary of current research activities, and names of at least four individuals from whom letters of reference may be solicited. Academic rank and salary are negotiable. Consideration of applications will begin on 1 February 1995, but applications will be accepted until the position is filled. Address all correspondence to: Dr. Charles C. Capen, Chairman, Department of Veterinary Biosciences, The Ohio State University, 1925 Coffey Rd., Columbus, OH 43210-1093. *The Ohio State University is an EO/AA employer. Women, minorities, Vietnam era veterans, disabled veterans and individuals with disabilities are encouraged to apply.*



The University of Memphis

DEAN OF THE COLLEGE OF ARTS AND SCIENCES

The University of Memphis invites nominations and applications for the position of Dean of the College of Arts and Sciences. The largest and most diverse college in the University, Arts and Sciences includes over twenty departments and programs. The College is central to the University's mission. We seek a person who will provide leadership and integrate the instructional and research mission with outreach to the community and the nation.

Desired qualifications for the person filling the position include a terminal degree; a demonstrated record in scholarship and education, and administrative leadership (including experience in budgeting); and a commitment to improving gender and cultural diversity.

The University of Memphis is one of two public comprehensive doctoral granting institutions in Tennessee, with colleges of Arts and Sciences, Business and Economics, Communication and Fine Arts, Education, and Engineering; schools of Law, Nursing, and Audiology and Speech-Language Pathology; and University College. The University enrolls 20,000 students, of which 4,400 are in graduate programs. The University of Memphis is strongly committed to its urban mission and outreach programs. The University recognizes the diverse and interrelated roles played by faculty in fulfilling a comprehensive mission of research, education, and outreach.

The University of Memphis is strongly committed to diversity; women and minority candidates are encouraged to apply. Review of nominations and applications will begin February 15, 1995 and continue until the position is filled. Application materials should include a statement of interest, full curriculum vitae, and names of five references, including addresses and telephone numbers. All materials should be sent to:

Dr. Michael M. Osborn, Chair Dean of the College of Arts and Sciences Search Committee c/o Office of the President 313 Administration Building The University of Memphis Memphis, Tennessee 38152

An Equal Opportunity/Affirmative Action University

RECRUITMENT ADVERTISERS

SAVE 25%

Running your recruitment ad once may not be enough. Place the same ad again within the next eight issues and get 25% off your second insertion.

- Get more attention
- Get more value
- Get more applicants

Reach the global scientific community you need to maximize your recruitment efforts. **SCIENCE** does it bigger, better and at greater savings for you.

call Janis Crowley
U.S. 212-496-7704
or fax 202-682-0816

Europe:
call Gordon Clark
+44 (0)223 302 067
or fax +44 (0)223 302 068

THE EDWARD
JENNER INSTITUTE
FOR VACCINE RESEARCH

Applications are invited from suitably qualified scientists for the post of

SCIENTIFIC HEAD

of the Edward Jenner Institute for Vaccine Research

The Edward Jenner Institute has been recently established by the Office of Science & Technology, MRC, BBSRC, Department of Health and Glaxo, as an independent research institute. The Institute is dedicated to research aimed at the understanding of the immune responses against infectious organisms or tumour cells, and in particular how beneficial protective responses may be induced by vaccination. The Institute will also carry out research to develop new models of infectious or malignant disease in which efficacy of potential vaccines may be predicted, and to devise improved formulations and adjuvants for the presentation of antigens to the immune system.

The Scientific Head will report to the Board of Management of the Institute, and will play a key role with the Board and its Scientific Advisory Committee in the determination of the Institute's research strategies and scientific programmes. The Head will be responsible for the implementation and

management of the research programmes of the Institute and for its day to day operation. He/she will play an important role in establishing the Institute's facilities, to be built at the Institute for Animal Health, Compton, Berkshire, UK, and for recruitment of the core staff of up to 30 scientists and technologists.

It is anticipated that the Scientific Head will be a scientist of international standing in one or more of the fields of science of this Institute and will have significant experience of research management.

Further particulars about the Institute and this post and terms and conditions of this senior appointment may be obtained from: The Edward Jenner Institute for Vaccine Research Steering Committee, c/o Lansdowne House, Berkeley Square, London W1X 6BQ. Applications should reach the Committee by 31st January 1995.



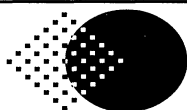
FIRC-Italian Foundation for Cancer Research
FIEO-Foundation European Institute of Oncology

POST-DOCTORAL FELLOWSHIPS

are available for research at the Department of
Experimental Oncology of the

European Institute of Oncology
Milan

The European Institute of Oncology is a newly founded comprehensive cancer centre. The Department of Experimental Oncology comprises four sections headed by Dr. Pier Giuseppe Pelicci, Dr. Pier Paolo Di Fiore, Dr. Matthias H. Kraus, and Dr. Kristian Helin, investigating mechanisms of normal and neoplastic growth regulation. Major research areas include signal transduction by receptor tyrosine kinases, functional characterization of cytoplasmic signalling cascades, transcriptional regulation in cell cycle control, and gene expression and structure abnormalities in human cancer. Fellowships are initially offered for one year and are annually renewable for two additional years. Stipend levels will be competitive starting at 30 million Italian lire. M.D. or Ph.D. degree as well as basic research experience in Molecular Biology or Protein Biochemistry are required. Qualifying candidates are invited to forward applications including curriculum vitae, three letters of reference, and a statement of research interest with specific reference to one of the four sections. Applications should be sent to: **Dr. Pier Giuseppe Pelicci-European Institute of Oncology-Via Ripamonti, 435-20141 Milano-Italy.**



MDC

Max Delbrück Center
For Molecular Medicine
Berlin-Buch

The Max Delbrück Center for Molecular Medicine (MDC) Berlin-Buch invites applications for two independent group leader positions in the field of molecular and cellular neurosciences. The MDC is a national research center supported by the Federal Government of Germany and the Land Berlin. Scientists are specifically encouraged to integrate into clinical research programs. Applicants should have an outstanding record of scientific accomplishment.

The positions are guaranteed for 5 years. Appropriate laboratory space, funds for laboratory set-up and operation will be provided; fellowships for postdoctoral fellows and graduate students are subject to negotiation. Candidates should submit their curriculum vitae, a list of publications, a short description of their future research objectives, and the names of three references to:

Dr. Helmut Kettenmann
Max-Delbrück Center for Molecular Medicine
Robert-Rossle-Strasse 10
13122 Berlin
Germany

Deadline for application is February 28, 1995.



NATIONAL UNIVERSITY OF SINGAPORE COMPUTATIONAL SCIENCE PROGRAMME

Applications are invited for **Faculty positions/appointments** under the **Computational Science Programme** from candidates who possess a PhD degree or its equivalent in any of the following areas:

Geometric Modelling
Parallel Computation
Symbolic Computing
Nonlinear Dynamics

Computational Fluid Dynamics
Quantum Chemistry
Complex Systems

Duties include teaching, research and some administrative work.

Besides appointments on normal 3-year contracts, **visiting appointments** for one or two years will also be considered.

The Computational Science Programme, consisting of Computational Chemistry, Computational Mathematics and Computational Physics, is an interdisciplinary undergraduate programme in the Faculty of Science. There are eight faculties in the National University of Singapore with a current student enrolment of some 17,500. All departments are well-equipped with a wide range of facilities for teaching and research.

Gross annual emoluments range as follows:

Lecturer	S\$55,910 - 71,400
Senior Lecturer	S\$65,200 - 122,820
Associate Professor	S\$108,820 - 151,480

(US\$1.00 = S\$1.46 approximately)

The commencing salary will depend on the candidate's qualifications, experience and the level of appointment offered. In addition, a 13th month Annual Allowance (of one month's salary) and an Annual Variable Component (of normally 2 months' salary) may be payable at year end, under the flexible wage system, to staff on normal contracts.

Leave and medical benefits will be provided. Depending on the type of contract offered, other benefits may include: provident fund benefits or an end-of-contract gratuity, a settling-in allowance, subsidised housing or a housing allowance, education allowance for up to three children subject to a maximum of S\$16,425 per annum per child, passage assistance and baggage allowance for the transportation of personal effects to Singapore. Staff members may undertake consultation work, subject to the approval of the University, and retain consultation fees up to a maximum of 60% of their gross annual emoluments in a calendar year.

All academic staff will be given a networked microcomputer with access to an IBM mainframe computer, UNIX hosts, a supercomputer, departmental laser printers, a wide spectrum of software, on-line library catalogue, CD-ROM databases, Televue, INtv, Bitnet and Internet.

Application forms and further information on terms and conditions of service may be obtained from:

The Director
Personnel Department
National University of Singapore
10 Kent Ridge Crescent
Singapore 0511

The Director
North America Office
National University of Singapore
55 East 59th Street
New York, N.Y. 10022, U.S.A.
Tel: (212) 751-0331

Enquiries may also be sent through **INTERNET** to:
PERCNC@LEONIS.NUS.SG, or through **Telefax: (65) 7783948**

Max Planck Institute for Psychological Research

Munich, Germany

The Max Planck Institute for Psychological Research in Munich announces the establishment of a new Center for Rational Judgment and Decision-Making. The Center focuses on the cognitive and computational modeling of human reasoning, inference, and risk-taking in its social and motivational context. The Center will be interdisciplinary, bringing together psychological research with ideas from neighboring disciplines, such as Computer Science, Evolutionary Biology, and Economics.

The Center will be staffed by a new research group of younger scholars with strong theoretical backgrounds and interdisciplinary interests, at both junior and senior levels of appointment. We invite applicants from psychology as well as applicants from neighboring fields who work on modeling psychological processes. The following positions are available as of June 1, 1995 (labeled by rough US equivalent levels, the German salary group and level is specified in parentheses):

1 Associate Professor (tenure; professor C3)
1 Associate Professor (salary group Ia BAT)
3 Assistant Professors (salary group IIa/Ib BAT)
and 3 Post Doc Positions (stipend range DM 33,120 - 45,600).

The Max Planck Society is a private research institution. All positions are exclusively research positions, with no teaching obligations. The operating language for the Center will be English; knowledge of German would be helpful, but is not necessary. Send applications (curriculum vitae, copies of three recent papers) by **January 31, 1995** to Professor Gerd Gigerenzer, Max Planck Institute for Psychological Research, Leopoldstr. 24, 80802 Munich, Germany (or to: Gerd Gigerenzer, Department of Psychology, University of Chicago, 5848 S. University Av., Chicago, IL 60637, USA).

Attention Non-US Advertisers!

SCIENCE
is pleased to announce
the introduction of the
1994 pounds Sterling
rate card!

**Advertisers not based in the
United States can now choose to
pay either in US dollars or pounds
sterling - whichever is more
convenient!**

SCIENCE continues its surge in
the global marketplace, meeting
the needs of advertisers! We're
proud of our 63% growth in the
non-US market since 1990!

Contact your advertising
representative for more information:
European Recruitment Advertising:
Gordon Clark: +44 223 302067

SCIENCE

POSITIONS OPEN

NIH-supported **POSTDOCTORAL FELLOW-SHIP** position available early-mid-1995. Project involves development/application of analytical chemical techniques for drug metabolism studies and stable isotope kinetics in humans, animals and subcellular systems. Applicant must be proficient in GC-MS or MS; knowledge of NMR and HPLC desirable. Salary based on experience. Send curriculum vitae and references to: **Peter W. Stacpoole, Ph.D., M.D., Departments of Medicine and Biochemistry/Molecular Biology, Box 100226, University of Florida College of Medicine, Gainesville, FL 32610.**

POSTDOCTORAL FELLOWS

Postdoctoral positions are available for highly motivated individuals interested in the Molecular Basis for Natural Killer (NK) Cell Recognition. Ongoing research topics include NK cell receptors specific for MHC class I (*Nature*, 358:66) and the NK gene complex (*Curr Op Immunol*, 5:67). Projects involving other aspects of NK cell biology are being developed. Qualified candidates must have a strong background in immunology, biochemistry, or molecular biology.

Please send a curriculum vitae, three letters of recommendation, and a statement of long-term career goals and general research interests to: **Dr. Wayne Yokoyama, Box 1269, Mt. Sinai Medical Center, One Gustave L. Levy Place, New York, NY 10029-6574.** No telephone calls, please. *An Equal Opportunity Employer.*

SENIOR LICENSING ASSOCIATE Technology Transfer Office

The University of California, San Diego (UCSD), a prestigious educational and research institution located in La Jolla, California, is starting a new technology transfer office. UCSD is seeking a **SENIOR LICENSING ASSOCIATE** (life sciences) to interact with investigators, elicit invention disclosures, evaluate these disclosures for commercial viability and patentability, market them to the private sector, and negotiate and write appropriate licensing agreements to accomplish the transfer. The Associate will interact with private counsel during patent prosecution and with university counsel during the licensing process.

Requires industrial/academic experience in the technology transfer area; advanced degree in life science is preferred. A solid understanding of intellectual property laws is essential. Skills in writing various agreements and excellent interpersonal and oral/writing communication skills must be demonstrable. Marketing experience related to technology transfer is highly desirable.

Salary range is in the \$60,000s, commensurate with experience. Send résumé by January 20, 1995, or until filled, referencing Job No. 105580-D, to: **UCSD Human Resources, 9500 Gilman Drive, La Jolla, CA 92093-0867.** *Affirmative Action/Equal Opportunity Employer.*

RESEARCH ASSOCIATE ATMOSPHERIC SCIENCES

Conduct research on global climate change using computer model of the atmosphere-ocean system; design and conduct simulations of global climate with the model; diagnose and improve the performance of the computer model of global atmosphere; study the physical processes that determine the seasonal cycle of the model atmosphere; assess the model potential for use in long-range climate prediction; prepare reports and articles on research findings to be submitted for publication in scientific journals; participate in related projects; provide technical assistance to graduate students and coworkers. Requirements: Ph.D. in Atmospheric Sciences with research emphasis on climate variability and general circulation of the atmosphere; demonstrated ability in developing numerical models of the global atmosphere and running models in supercomputers; research experience in diagnosing the influences of physical processes on the general circulation of the atmosphere; demonstrated ability in analyzing large data sets with statistical methods and assessing model performance.

Job location/interview: Los Angeles, California. \$34,296.00 per year. Send this ad and résumé to: **Job No. VL66227, P.O. Box 269065, Sacramento, CA 95826-9065.**

POSITIONS OPEN

Cell/Molecular Biologist. Pending final budget approval, the Department of Biology at Drake University invites applications from individuals with the Ph.D. degree for a **TENURE-TRACK POSITION** in Cell/Molecular Biology effective August 1995. Teaching responsibilities will include cell/molecular biology plus a course in a specialty area. Applicants with teaching experience and research interests in cell/molecular biology are preferred. Experience with genetic engineering is desirable. The research program should invite participation by graduate (M.A.) and undergraduate (B.S.) students. Postdoctoral experience is preferred. The department expects excellence in both teaching and research. Applicants should submit a letter of application, curriculum vitae including teaching experience, statement of teaching philosophy, research interests and goals, relevant reprints, and the names, addresses, and telephone numbers of three references. Send application and supporting material to: **Dr. Michael E. Myszwski, Department of Biology, Drake University, 2507 University Avenue, Des Moines, IA 50311-4505.** *Drake University is an Equal Opportunity Employer.*

VETERINARY PATHOLOGIST

The Oregon Regional Primate Research Center (ORPRC) has a core **STAFF POSITION** available May 1995 for a Veterinary Pathologist. Candidates must hold a D.V.M. or equivalent degree, be certified or eligible for certification by the American College of Veterinary Pathologists, and have experience with the pathology of nonhuman primates and other laboratory animals. Primary duties include responsibility for diagnostic pathology service, supervision of pathology and histology laboratories, and interaction with the Center's research staff on matters pertaining to pathology. An individual with experience and interest in participating in collaborative research focusing on lentivirus immunopathogenesis is highly desirable. Joint academic opportunities are available at the nearby Oregon Health Sciences University. Appointment level and salary are commensurate with qualifications. Applicants should submit a résumé, letter of interest, and the names of three references to: **Dr. Richard L. Stouffer, Chairman, Veterinary Pathologist Search Committee, Oregon Regional Primate Research Center, 505 NW 185th Avenue, Beaverton, OR 97006.** Applications will be accepted until a suitable candidate is identified. *The ORPRC is an Equal Opportunity/Affirmative Action Employer.*

STAFF SCIENTIST

DynCorp, a leader in biomedical services, has an opening in our Rockville, Maryland laboratory for a molecular virologist to work as part of a professional staff providing contract laboratory research services to the NIH, universities and commercial organizations in the areas of vaccinia and baculovirus recombinant technology and purification.

Applicants should possess Ph.D., or M.D., or equivalent and have a minimum of two years of postdoctoral research experience. A demonstrated record of publication in the field of recombinant DNA or protein purification is also required.

We are an employee-owned company which offers competitive salaries and a comprehensive benefits package. Please mail or fax your résumé to: **DynCorp, 1 Taft Court, Suite 200, Rockville, MD 20850, Attn: Dr. Potash. FAX: 301-738-1109.** *We are an Equal Opportunity Employer, Minorities/Female/Disabled/Veterans.*

SYMPOSIUM

SYMPOSIUM: Stem Cells: Prospects for the Clinic; February 6 and 7, 1995; Hyatt Ricketts, Palo Alto, CA. **SPEAKERS:** I. Weissman, Stanford; G. Spangrude, Utah; D. Emery, MGH; R. Hoffman, SyStemix; S. Heimfeld, CellPro; R. Tushinski, SyStemix; M. Moore, Sloan Kettering; R. Mertelsmann, Germany; J. E. Wagner, Minn; R. O'Reilly, Sloan Kettering; R. Mulligan, MIT; E. Gilboa, Duke; J. Lebkowski, AIS; S. Chatterjee, City of Hope; D. Bodine, NIH; D. Kohn, UCLA; A. Deisseroth, M. D. Anderson; D. Valerio, IntroGene; C. Bordignon, Italy; D. DiGiusto, Progenex; A. Galy, SyStemix; F. Gage, UCSD; S. Weiss, Calgary; J. Rhim, Penn; D. Sasaki, SyStemix; R. Knazek, Celco; G. Reves, Ingenex; D. Harris, Arizona. Abstracts due January 28, 1995. Organizers: J. Larrick¹ and J. Mulé.

Sponsor: 1. Palo Alto Institute of Molecular Medicine, 2462 Wyandotte Street, Mt. View, CA 94043. FAX: 415-694-7717; Telephone: 415-694-1420; Email: PAIMM@AOL.com.

SERVICES

DOUBLE BLIND CONSULTANTS (DBC)

We are an entrepreneurial network of consultants in all fields of pharmaceutical, medical and biological sciences. Hear the truth, not what you would like to hear. At least three independent consultants will review your reports, protocols, manuscripts, grant applications, data analysis, IND/NDA, research plans or ideas. Your identity and that of the consultants will never be broken. Strict confidentiality is guaranteed. Contact us for details. We also invite **CONSULTANTS** from all levels (send curriculum vitae). DBC, P.O. Box 1022, Ridgefield, CT 06877.

COURSES AND TRAINING

GRADUATE TRAINING IN VIRAL ONCOLOGY AND IMMUNOLOGY

Stipends are available for students pursuing a Ph.D. in an integrated program in molecular oncology and immunology beginning September 1995. The principal interests of participating faculty are molecular mechanisms of tumorigenesis including oncogenes and tumor suppressors, repair of DNA damage, signal transduction and growth control, as well as molecular, cellular and tumor immunology.

Students will be supported chiefly by an NIH programmatic training grant, requiring U.S. citizenship, or resident status. We strongly encourage applications from minority students. Limited funding is also available outside of this source. Information and application forms are available from: **Dr. R. B. Carroll, Graduate Student Advisor, Department of Pathology, New York University Medical School, 550 First Avenue, New York, NY 10016.**

MARKETPLACE

Columns, buffers, ninhydrin, and standards for the

**Beckman 6300
Amino Acid Analyzer**

**PICKERING
LABORATORIES**

800 654 3330 • FAX: 415 968 0749

Circle No. 19 on Readers' Service Card

CUSTOM ANTIBODIES TO PEPTIDES & PROTEINS

Purification, Conjugation and ELISA Titration Available

HTI

HTI BIO-PRODUCTS, INC.

1 (800) 481-9737 OR (619) 788-9691 Fax (619) 788-9694

Circle No. 10 on Readers' Service Card

Superior Quality

L-NMMA

100 mg - \$76 1 g - \$149 10 g - \$740

Other NOS Inhibitors Available

CHEM-BIOCHEM RESEARCH, INC.

Products for Research Since 1979
800-340-9479

Circle No. 40 on Readers' Service Card

Marketplace ads continue on next page

MARKETPLACE

FREE DEMO DISK **CyberDope™**
 Software for
 Combinatorial Mutagenesis
 and
 Directed Evolution
 of Proteins
 KAIROS SCIENTIFIC, INC.
 10⁶ times better than random
FAX:
 (408) 362-1200
E-Mail:
 cyberdope@aol.com

Circle No. 6 on Readers' Service Card

ROCKLAND
 Immunochemicals for Research
 Antibodies to ENZYMES
 Anti-TRANSCRIPTION FACTORS
 IgG and IgM Proteins (all species)
 800-656-ROCK Fax 610-367-7825

Circle No. 13 on Readers' Service Card

ransom hill bioscience, inc.
CUSTOM DNA
FROM \$1.49/BASE
 NO SETUP! NO MINIMUM! NO BALONEY!
 Fax (800) 597-8509 or
EMAIL visla@delphi.com
for a complete price list!

Circle No. 41 on Readers' Service Card

custom custom custom custom custom custom custom custom
PEPTIDE and DNA
 Peptide and DNA engineering specialist:
 Phosphoryl, Thiophosphoryl, Biotinyl, Chloromethyl,
 Cyclic, Dimeric, Partial protected, FITC, DNP, pNA,
 AMC, Phosphothionate and more
IonSpray MS and LC/MS
 Synthetic or natural compounds analysis:
 Organic, inorganic, or coordination compounds
 Drug metabolites, Enzyme digests, ect.
 \$30/sample (MS), \$250/sample (LC/MS)
 Call for more information (800-597-7873) or
 Fax us sequence for quotation (510-371-1156):
 Peptidogenic Research & Co. Livermore, CA.

Circle No. 30 on Readers' Service Card


XX IDT
 Integrated DNA Technologies, Inc.
Custom DNA Synthesis
Oligonucleotides
\$2.25/Base
 No Set-up Fee
 48 hour Delivery
 Column Purified
Phone: 800-328-2661
Fax: 319-645-2921

Circle No. 11 on Readers' Service Card

MARKETPLACE

CUSTOM DNA SYNTHESIS
PURE & SIMPLE
\$2¹⁹
 • Price as low as **2** per base plus set up
 +
 • Superb Technical Support
 +
 • Impeccable Quality
 +
 • World's Fastest Service
MIDLAND
 THE UNDISPUTED #1
 CUSTOM DNA SYNTHESIS SERVICE
 THE MIDLAND CERTIFIED REAGENT COMPANY
 3112-A West Cuthbert Avenue
 Midland, Texas 79701
 Phone 1-800-247-8766 FAX 915-694-2387

Circle No. 1 on Readers' Service Card

High Quality Synthetic DNA
\$1.41 per base
 50 nmole scale no-setup charge
 Including Gel Picture-QC, MW, Qty
 48 hours turnaround

 specializing in Safe-Handling of
Large-Volume Orders
HPLC, Cartridge or PAGE purification
Large-Scale synthesis
1 800 249 7841 . fax# 610 459-7826

Circle No. 34 on Readers' Service Card

* Video Gel Documentation * Gel Analysis * Slide Makers *
Wouldn't you rather destain your coomassie gels for minutes not hours?

 * Destain = rinse - few minutes - results immediately visible
 * Less solvent waste and less cost
 * 2 fold greater sensitivity than coomassie
 Call B/T SciTech - 619-591-7881
 * Bio 101 * UV Transilluminators * Low Noise Microfuges *

Circle No. 28 on Readers' Service Card

KEYSTONE The Complete
 Laboratories, Inc. Oligonucleotide Company
Oligonucleotides: \$2.30/base
 Volume orders of 200 bases or more.
No set-up fee. Shipped in 24hrs.
 Tel. 1-800-788-4DNA • Fax 1-800-786-4DNA
Circle No. 3 on Readers' Service Card

MARKETPLACE

World leader in Synthetic DNA and Peptides


CUSTOM DNA
 • NO SETUP charge • NO minimum order
\$1⁹⁹ base • Column Purified
 • >5.0 OD's (~200 µg)
 • Gel Picture Q. C.
 • Synthesis Report
CUSTOM PEPTIDES
! FREE MASS SPEC !
 • NO SETUP charge • Free HPLC Tracing
\$20⁰⁰ /res. • 15-40 mgs
 • 8 - 20 residues
 • desalted • Shipped in 5 days
! Antipeptide Antibodies production services, & more !
 Since 1984, serving you with quality products
BIO-SYNTHESIS
 1-800-227-0627 Fax: 214-420-0442

Circle No. 8 on Readers' Service Card

Bone Metabolism, Calcium
 Regulatory Peptides, Proteins
 and Antisera

Peptide Innovations
 919-847-0161
 FAX 919-870-9352
UCB BioProducts
 Brussels
 322 3862111 **800-522-3310**

Circle No. 44 on Readers' Service Card

HUMAN ENDOTHELIAL CELLS
VENOUS, ARTERIAL, and
MICROVASCULAR SYSTEMS
 True pools of >50 donors, frozen @ <6 CPD in vitro,
 >500,000 cells, complete CS growth medium system
 characterized and tested for cytokine-stimulated leuko-
 cyte adherence, negative for HIV-1 DNA by PCR

800-697-1211

Circle No. 20 on Readers' Service Card

ANTIBODIES
 Conjugates
 Secondary
 Custom
Antibodies Inc.
 Price below competitors.
 Call
 1-800-824-8540
 Fax: (916) 758-6307

Circle No. 22 on Readers' Service Card

Custom DNA
Purified & Delivered in 48 hours
\$5.00 per base • Purified
Guaranteed minimum 100µg
Research Genetics, Inc.
1-800-533-4363

Circle No. 2 on Readers' Service Card

Need to Optimize the Full Potential of Your R&D Department?

With Modeling
& Simulation
you can do
more than
you can
imagine

Apply Computer Aided Molecular Design to your real industry problems in drug design, agricultural chemicals, biotechnology, polymers, catalysts, separation processes, food and food substitutes, and advanced materials.

With modeling software you can visualize dynamic changes in structure, predict interactions over time, and quickly focus on the most promising research avenues.

• Adsorption •
• Blend
• Elasticity •
• Ligand
• NMR
• Spectroscopy
• Sequence
• Yield
• Activity
• Tacticity •
• Precipitation •
• Semiconductors •
• Static Interactions •
• Surfaces • Toughness •
• Crystal Structures •
• Welding • Composites •
• Conformational Search •
• Micropore Identification •
• Thermodynamics • Structure
• Prediction • Residual Stress •

HRTEM image for $\text{Nb}_2\text{O}_5\text{F}$

Generated by BIOSYM software and rendered on the Silicon Graphics® Indigo²™. SGI provides the most powerful desktop graphic systems, perfect for visualization and simulation.



SiliconGraphics
Computer Systems

Ask us how you can accelerate your research



BIOSYM
Technologies

Major Offices:

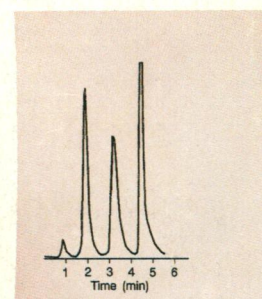
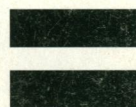
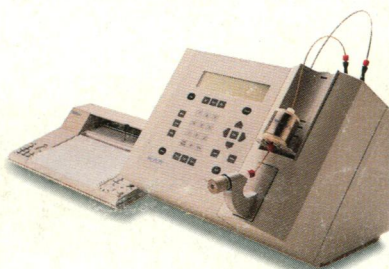
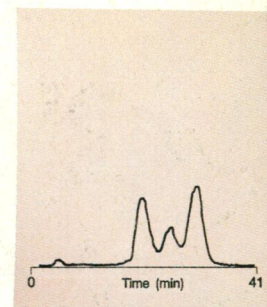
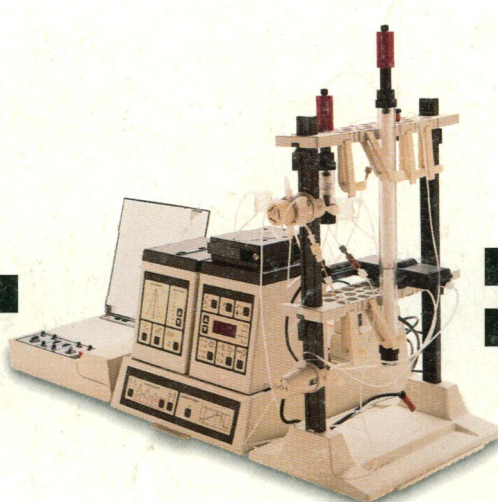
U.S. West - San Diego CA 619-458-9990 • U.S. East - Parsippany NJ 201-267-4476

Europe - Paris France +1-69419908 • Asia/Pacific - Sydney Australia +2-959-1055

Japan - Tokyo +473-53-6997 • South America - Rio de Janeiro Brazil +217173079

Superior Service and Support Worldwide

Circle No. 17 on Readers' Service Card



BOTH CHROMATOGRAPHY SYSTEMS ARE ABOUT THE SAME LOW PRICE. BUT THAT'S WHERE THE SIMILARITY ENDS.

Why bog down your work with a traditional chromatography system? You can achieve even better resolution, in a fraction of the time, outside the cold room, with a ConSep LC 100™ system from PerSeptive Biosystems.

Whether you are purifying proteins or nucleic acids, the ConSep system delivers high biological activity and purity in just 15 in. of bench space.

And it's so simple to use. The patented Auto•Blend™ four-buffer

blending feature lets you alter both the pH and the ionic strength of your buffers with just a few key-strokes, so you can run pH and salt gradients simultaneously.

The ConSep system is compatible with all conventional low-pressure bead-based columns. And for ion exchange chromatography, the "flow through pores" of MemSep® cartridges speed the transport of biomolecules, for sharper peaks and faster results.

THE CONSEP LC 100 SYSTEM.

Using anything else just doesn't add up. For information and a free video or demonstration in your lab, call PerSeptive Biosystems in the US and Canada at **1-800-899-5858**, in Germany at 761-45240, in Japan at 5389-7371, in France at 1-42-05-4081, and in the UK at 730-895-596.



PerSeptive Biosystems
Bioseparations Products

U.S. Headquarters, 38 Sidney Street, Cambridge, MA 02139

©1994 PerSeptive Biosystems
ConSep LC 100 is a trademark and MemSep is a registered trademark of PerSeptive Biosystems.
Auto•Blend is a trademark of Waters Corp.

Circle No. 29 on Readers' Service Card