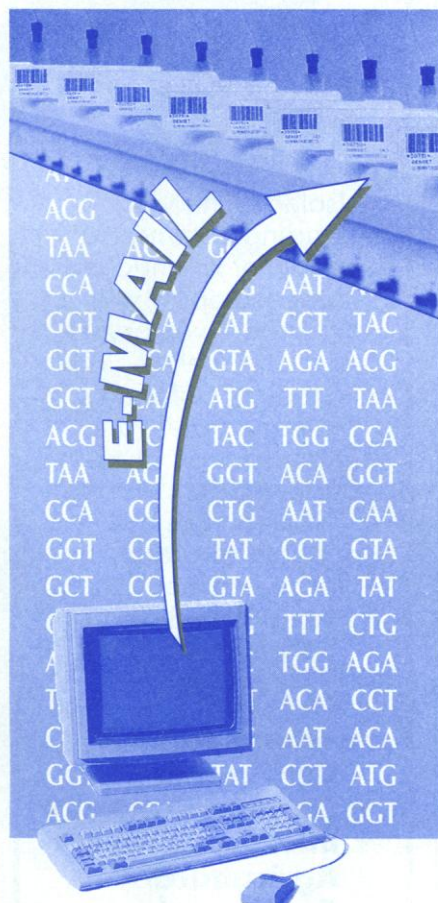




GUARANTEED OLIGOS™

**CONNECT
YOURSELF TO OUR
DNA
SYNTHESIZERS**



**SEND YOUR SEQUENCES
BY E-MAIL
FOR DIRECT
EXECUTION**

USA

ORDER AT : oligos@gensetlj.com
For quotation : marketing@gensetlj.com

EUROPE & ASIA

ORDER AT : oligos@genset.fr
For quotation : marketing@genset.fr

Circle No. 27 on Readers' Service Card

PFANSTIEHL

Moving oligosaccharide synthesis right along

No need to start from scratch in the synthesis of oligosaccharides when Pfanstiehl can simplify this complex process. In addition to our selectively blocked sugars we offer acetylated thioglycosides. These stable, crystalline compounds have been widely used in oligosaccharide synthesis. They are just one of a family of building blocks involving carbohydrates. Contact us today for a data sheet and catalog.

PFANSTIEHL LABORATORIES, INC.

The source for carbohydrate chemistry

1219 Glen Rock Avenue/Waukegan, IL 60085-0439
Tel.: 1-708/623-0370/Toll Free: 1-800/383-0126
FAX: 708/623-9173
91-W



MAKING THINGS WORK

Circle No. 18 on Readers' Service Card

FLUORESCENCE POLARIZATION AT LOW COST

FPM-1™ FPM-1™ SYSTEM FLUOROLITE FPM-2™

- SENSITIVE ■ FAST
- PRECISE ■ EASY

INSTRUMENTATION FOR PERFORMING

- DNA PROBES
- DNA/PROTEIN BINDING
- CELL RECEPTOR/LIGAND BINDING
- THERAPEUTIC DRUG ANALYSIS
- ENZYME/SUBSTRATE INTERACTIONS
- PROTEASE ASSAYS
- ANTIBODY/ANTIGEN INTERACTIONS
- DRUG/RECEPTOR INTERACTIONS
- HIGH VOLUME THROUGH-PUT SCREENING (FLUOROLITE FPM-2 ONLY)
 - 96 WELL FORMAT
 - >15,000 SAMPLES PER DAY



FOR FURTHER DETAILS CALL, FAX OR WRITE TO
JOLLEY CONSULTING AND RESEARCH, INC.

34469 N. CIRCLE DR., ROUND LAKE, IL 60073 USA
708-548-2330 ■ USA & CANADA 1-800-685-0401
■ FAX 708-548-2984



Circle No. 40 on Readers' Service Card

1995-96

AAAS Fellowships for Scientists & Engineers

Congressional

AAAS Congressional Science & Engineering Fellows Program

Fellows spend one year on Capitol Hill working with Members of Congress or congressional committees as special assistants in legislative and policy areas requiring scientific and technical input. Two fellowships will be offered, with annual stipends of \$40,000.

Technology Policy

AAAS-Critical Technologies Institute Science & Engineering Fellows Program

Fellows spend one or two years, working at the Critical Technologies Institute, providing expertise in industrial research and development, technology transfer, international competitiveness, and related issues. At least one Fellow will be selected. Applicants must have a minimum of five years industrial experience, as midlevel or senior executives. Stipends are negotiable, depending on qualifications and experience. Applicants must be U.S. citizens. An additional fellowship opportunity may be available at the White House Office of Science and Technology Policy.

Diplomacy

AAAS Science, Engineering, & Diplomacy Fellows Program

Fellows work in international affairs on scientific and technical subjects for one year, either in foreign policy at the U.S. Department of State or in international development for the U.S. Agency for International Development. One Fellow will be selected at State and approximately 12 Fellows will be selected at USAID. The annual stipend varies with experience, starting at approximately \$43,000. Applicants must be U.S. citizens.

Environmental

AAAS-EPA Environmental Science & Engineering Fellows Program

Fellows work as special research consultants with the U.S. Environmental Protection Agency for 10 weeks in the summer. The detailed, future-oriented research assists EPA in assessing the significance of long-range environmental problems. The stipend is \$950 a week. Applicants must be U.S. residents. Twelve Fellows will be selected.

Applicants should be postdoctoral to midcareer scientists and engineers, from any physical, biological, or social science or any field of engineering. The programs are designed to provide each Fellow with a unique public policy learning experience; to make practical contributions to the more effective use of scientific and technical knowledge in the U.S. government; and to demonstrate the value of science and technology in solving important societal problems. All Fellows participate in a rigorous orientation on the relevant congressional and executive branch operations and foreign affairs plus a year-long seminar series on issues involving science, technology, and public policy. The Congressional, Diplomacy, and Technology Policy programs begin in September 1995, and the Environmental program begins in June 1995.

All application deadlines are January 15, 1995.

For additional program information and application instructions, write:

**Fellowship Programs/Directorate for Science and Policy Programs
American Association for the Advancement of Science
1333 H Street, NW, Washington, DC 20005
202/326-6600 Fax: 202/289-4950
Internet: science_policy@aaas.org**

TO OFFER
Quality DNA for
\$2.00
PER BASE,
OPERON *must*
BE ZUCCHANAS.



THE ZUCCHANA

You'd be bananas to pass this up. Or is that zucchanas? Operon now offers a 0.2 μ mol scale synthesis of custom DNA for just \$2.00 per base with a \$20 set-up fee. So you can afford to do more experiments, and get more results.

As the world's leading supplier of synthetic DNA, Operon gives you more than just a great price. We also offer unsurpassed purity, fast delivery, and an unconditional guarantee. Not to mention a customer service line that lets you speak to a person, not just a machine.

And, of course, we still offer the lowest price on the larger 1.0 μ mol scale in the industry, at just \$2.80 per base with a \$20 set-up fee.

Quality DNA for \$2.00 per base. Now you don't have to settle for second best to save a bunch. For more information, or to place an order, call Operon at **1-800-688-2248**.

OPERON

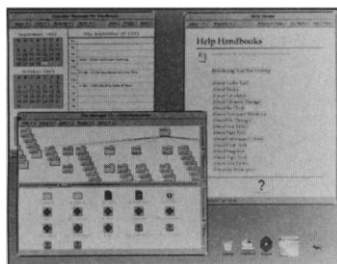
WORLD'S LEADING SUPPLIER OF SYNTHETIC DNA

©1994 Operon Technologies, Inc., 1000 Atlantic Avenue, Alameda, CA 94501, USA. Phone: (510) 865-8644. Fax: (510) 865-5255. NIHBP263-00033233

Circle No. 42 on Readers' Service Card

Image Analysis Software

Intelligent Quantifier (IQ) image analysis software is a self-installing, self-tutoring program that supports whole band one-dimensional analysis, two-dimensional electrophoresis, blot analysis, and colony and plaque counting. A



user can annotate and compare images, and even prepare reports, without leaving the keyboard using Microsoft Excel and Word, Lotus 1-2-3, and WordPerfect. **Bio Image. Circle 137.**

Recombinant Screening Kit

The ScreenTest recombinant screening kit allows 3-hour, polymerase chain reaction (PCR)-based recombinant insert analysis directly from transformed colonies. No time-consuming overnight inoculations, DNA mini-preparations, or restriction enzyme digestions are required. The kit's unique primers contain highly conserved complementary sequences and were designed to be asymmetrical to the multiple cloning sites in plasmids, making it possible to determine insert presence and orientation by agarose gel analysis of the PCR products. When the ScreenTest primer set is combined with a user-defined, insert-specific primer, characteristic banding patterns will verify insert orientation. **Stratagene. Circle 138.**

Dot Blot Analysis

The InstantImager speeds up the analysis of dot blots by direct nuclear quantitation of the ra-

diolabeled material. Whether the experiment is to detect the number of copies of a gene in a genome or the specificity of a polymerase chain reaction, the InstantImager provides linear quantitation with minimal sample handling. The unit provides accurate results with fewer steps than any other method of quantitation. **Packard Instrument. Circle 139.**

Antibodies

A monoclonal antibody (mAb) that is highly specific for HSP27, a heat shock protein associated with breast and gastric cancer, is available. **Amersham International. Circle 140.**

Sheep polyclonals are available to ATF-1, cMYC, EGFr, endothelin B-MC2, human GTPase activating protein, glucose transporter, HIV-rev, HIV-TAT, LYN, MAP kinase, RAL-A, and SOS1-B6. Four new mAbs are available specific for mycoplasma species. **Maine Biotechnology Services. Circle 141.**

Polyclonal antibodies are available against four HOX proteins: A10, B6, B7, and B4. These antibodies were developed using synthetic peptides and can be used in protein immunoblotting, immunoprecipitation, and supershift experiments. **Berkeley Antibody. Circle 142.**

Fragment Analysis Software

Version 2.0 of RFLPscan software is a Windows program for performing genetic analyses derived from DNA restriction fragment patterns, DNA fingerprints, protein typing patterns, and other identity-profiling gel images. It

automatically calculates molecular weight and isoelectric points. It can analyze image data from a number of different sources including output from film densitometers, flatbed scanners, charge-coupled device cameras, storage phosphor devices, and radiometric detectors. RFLPscan provides the tools to complete the analysis of samples from several disciplines, and to archive the data for future retrieval. It can be used in phylogenetic studies and genetic linkage analysis, forensic and paternity testing, agricultural breeding programs, identification and relatedness of organisms by genetic typing, quality control monitoring of cell lines' purity and genetic stability in bioprocessing facilities, and diagnostics in genetic diseases. **Scanalytics. Circle 143.**

Solid Phase Extraction System

PROSPEKT is a solid phase extraction system for high-performance liquid chromatography (HPLC) that automates the tedious sample preparation and handling steps required before analysis. It consists of three modules: a unit that automatically changes



cartridges and injects directly into the HPLC column; a solvent delivery unit, which selects and delivers up to 16 solvents to the cartridges at constant flow rates and high pressures; and an autosampler that delivers precise amounts of sample to the disposable cartridges. **Varian Associates. Circle 144.**

Literature

1994/1995 Image Sensor and Solid State Camera Products Data Book features 465 pages of technical data on charge-coupled devices, photodiode arrays, line scan cameras, high resolution cameras, fast framing cameras, and more. More than 200 pages of application notes and technical papers assist in the proper use of solid-state cameras. **EG&G Reticon. Circle 145.**

The elements of quality features a line of quality reagents used in all facets of laboratory and industrial analysis. **EM Science. Circle 146.**

Biological and body fluid tubing connections just got easier covers many new biotech and medical applications for the MPC line of quick disconnect couplings. New materials increase productivity while reducing risk of fluid contact or contamination. **Colder Products. Circle 147.**

Ion Channel & Receptor Ligands wall chart illustrates activators, agonists, antagonists, blockers, and inhibitors for channels, enzymes, receptors, and signal transduction. **Accurate Chemical & Scientific. Circle 148.**

The 1994-1995 edition of the National Institute of General Medical Sciences' *Human Genetic Mutant Cell Repository Catalog* includes human cell cultures and DNA samples in the following categories: inherited metabolic disorders with characterized mutations, well-characterized chromosomally aberrant cell cultures, a CEPH Reference Families collection, a human diversity collection, and human/rodent somatic cell hybrid mapping panels. The catalog includes 5883 cell cultures and 458 DNA samples. **Coriell Cell Repositories. Circle 149.**

Size Exclusion Chromatography of Polymers is a technical bulletin that includes applications for size exclusion of cationic, neutral, and anionic polymers. **SynChrom. Circle 150.**

Newly offered instrumentation, apparatus, and laboratory materials of interest to researchers in all disciplines in academic, industrial, and government organizations are featured in this space. Emphasis is given to purpose, chief characteristics, and availability of products and materials. Endorsement by *Science* or AAAS is not implied. Additional information may be obtained from the manufacturers or suppliers named by circling the appropriate number on the Readers' Service Card and placing it in a mailbox. Postage is free.

Science

PERSONNEL PLACEMENT

LINE CLASSIFIED ADVERTISEMENTS

Deadlines: Ads are due by Thursday, 10 a.m., 2 weeks prior to the issue date. *Science* is published each Friday, except the last Friday of the year. Call for holiday deadlines. Ads must be submitted in writing.

How to Submit a Classified Ad: Prepare double-spaced typewritten copy. Do not include any abbreviations. *Science* will edit and typeset ads according to *Science* guidelines. Include billing information, and desired publication date. Available categories: Positions Open, Meetings, Announcements, Courses and Training, Search Firms. *Science* cannot provide proofs of typeset line ads.

Mall, FAX or Email materials to:

Science Classified Advertising
1333 H Street, N.W., Room 814
Washington, DC 20005
Telephone: 202-326-6555
FAX: 202-682-0816

Internet Email: science_classifieds@aaas.org

Rates: Ads are \$43 per line; \$430 minimum. One line equals 52 characters and spaces; centered headings equal 32 characters and spaces. A 3% cash discount is granted to all prepaid ads.

Estimates: *Science* will provide a cost estimate for line ads. This is an approximate cost only. Allow for variation between estimated lines and actual typeset lines and resulting final cost. Purchase orders must allow for some degree of flexibility and/or adjustment.

Ads from Outside the U.S.: A discount of \$30 will be offered to advertisers making payment in U.S. dollars by checks drawn on U.S. banks. Contact Gordon Clark at +44 223 302 067 (telephone) or +44 223 302 068 (FAX).

Credit Cards: *Science* accepts American Express, MasterCard and VISA. Discount does not apply to credit cards.

Cancellations: Deadline for cancellation is 10 a.m., Tuesday, 10 days prior to issue date.

DISPLAY PERSONNEL ADVERTISEMENTS

For rates and info. for fractional display ads call:

Deborah Cummings
Recruitment Advertising
Telephone: 202-326-6541
FAX: 202-682-0816

Janis Crowley
Recruitment Advertising Manager
Telephone: 212-496-7704
FAX: 202-682-0816

Gordon Clark
European Recruitment Advertising
Telephone: +44 223 302 067
FAX: +44 223 302 068

CONDITIONS: The AAAS encourages employers to actively recruit and employ underrepresented minority groups. *Science* reserves the right, at its discretion, to edit or decline to publish advertisements submitted to it.

POSITIONS OPEN



RESEARCH FACULTY TRANSPLANT IMMUNOLOGY

The Division of Cardiology, Department of Medicine and the Cardiovascular Research Center invite applications for a full-time, service, **ASSISTANT** or **ASSOCIATE PROFESSOR** holding a Ph.D. with an interest in transplantation biology/immunology. A major interest is the development of a program in xenotransplantation, although individuals with related research interests will be considered. The successful candidate will also participate in the education of graduate and medical students as well as other trainees at the Medical College.

Direct inquiries and curriculum vitae to:

Jeffrey Hosenpud, M.D.
Division of Cardiology
Medical College of Wisconsin
8700 West Wisconsin Avenue
Milwaukee, WI 53226

*Equal Opportunity/Affirmative Action Employer
Minorities, Female, Disabled, Veterans*

THE UNIVERSITY OF MINNESOTA DEPARTMENT OF OPHTHALMOLOGY

A full-time, probationary **ASSISTANT**, tenured **ASSOCIATE** or tenured **PROFESSORSHIP** in molecular biology is immediately available in the Department of Ophthalmology at the University of Minnesota, with membership in the University's Institute of Human Genetics. The department conducts an active Genetics Clinic so that physician-scientists with an interest in conducting both research and a clinical practice, as well as non-clinicians, will be considered. Competitive compensation, generous new laboratory and office space, start-up funds, and access to graduate programs and students are available.

Probationary assistant professor: M.D. and/or Ph.D. required. Demonstrated involvement in quality research accepted or published in peer-reviewed journals. Competence in communication and in the teaching of students. Tenured associate professor: M.D. and/or Ph.D., required. Professional distinction in research and writing and demonstrated effectiveness in teaching and advising. Tenured professor: Additional academic, scientific, scholarly and professional achievements such as establishment of a training program, election to scientific and/or professional organizations which recognize excellence and academic contributions, and evidence of a national and international reputation and leadership. Minimum academic preparation and experience: M.D. or Ph.D., with preference given to candidates with demonstrated interest in gene therapy or molecular approaches to treating existing diseases of the eye and ability to obtain funding. Send a curriculum vitae, statement of research interests and at least three letters of reference to: Dale S. Gregerson, Ph.D., Chairperson, Search Committee, Department of Ophthalmology, Lions Research Building, Room 314, 2001 6th Street SE, Minneapolis, MN 55455. Last day for receipt of applications is January 15, 1995. *The University of Minnesota is an Equal Opportunity Educator and Employer.*

BIOCHEMISTRY—tenure-track, **ASSISTANT PROFESSOR** at Bradley University in Peoria, Illinois. The Department of Chemistry invites applications for a faculty position in biochemistry beginning fall 1995. Candidates must have a recent Ph.D. in biochemistry and be committed to excellence in teaching at the undergraduate level. Teaching responsibilities will include biochemistry (lecture and lab), introductory chemistry, and possibly an advanced course. Research involving undergraduates is expected. Bradley has strong ties to the USDA National Center for Agricultural Utilization Research in Peoria. Each applicant should send a complete curriculum vitae, three letters of recommendation, transcripts, a statement of teaching philosophy, and a description of research interests with start-up costs to: Chair, Search Committee, Department of Chemistry, Bradley University, Peoria, IL 61625. To ensure full consideration, applications and supporting materials should be received by January 10, 1995. *Bradley University is an Equal Opportunity/Affirmative Action Employer.*

POSITIONS OPEN

INTEGRATIVE BIOLOGISTS Arizona State University

The Department of Zoology invites applications for two tenure-track positions at the level of **ASSISTANT PROFESSOR** beginning in fall 1995 from biologists who are studying questions that integrate multiple levels of organization.

Position 1—An integrative biologist who uses an evolutionary or organismal perspective to study questions at the molecular to organismal level. Individuals using theoretical, comparative, or experimental approaches in fields such as cellular/developmental biology, neuroscience, morphology, physiology, and genetics are encouraged to apply.

Position 2—An integrative biologist who uses evolutionary or ecological perspectives to study questions integrating multiple levels of organization at the organismal level or above. Researchers using theoretical or empirical approaches are encouraged to apply.

Candidates for both positions must have demonstrated a strong commitment to teaching and basic research, and must have a Ph.D. in an appropriate area by August 1995. Applicants should forward a curriculum vitae, selected reprints, statements of teaching and research, with the latter addressing the integrative nature of their work, and arrange for three letters of reference to be sent directly to: Dr. Neil F. Hadley (Position No. 1) or Dr. Stanley H. Faeth (Position No. 2), Department of Zoology, Box 871501, Arizona State University, Tempe, AZ 85287-1501. Review of applications will begin December 15, 1994, and continue until each position is filled. Applications from two individuals for a single shared appointment will be considered.

Arizona State University is an Affirmative Action/Equal Opportunity Employer.

THREE FACULTY POSITIONS BIOLOGY AND EXERCISE AND HEALTH SCIENCE ALMA COLLEGE

The Alma College Biology Department invites applications for a tenure-track **ASSISTANT PROFESSOR** to teach introductory biology and contribute to either environmental sciences or health sciences areas. Ph.D. and commitment to excellence in teaching and research essential. We also seek a part-time, non-tenure-track **INSTRUCTOR** to coordinate, prepare, and teach introductory biology laboratories. Master's degree required, teaching experience preferred.

The Department of Exercise and Health Science seeks a tenure-track **ASSISTANT PROFESSOR** in exercise biochemistry to teach physiology, exercise physiology, exercise biochemistry and pharmacology. Ph.D. and a commitment to liberal arts and interest/ability in establishing student-faculty research essential.

Send letter of application, curriculum vitae, and list of references to: Chair, Biology or EHS Search Committee, Alma College, Alma, MI 48801. Review of materials begins December 15, 1994. Positions begin fall 1995. *Alma College, a private, undergraduate, liberal arts college with 1,300 students, is an Affirmative Action/Equal Opportunity Employer. Women and minorities are encouraged to apply. Alma College's non-discrimination policy includes age, color, creed, gender, national origin, physical ability, race, religion, and sexual orientation.*

FISH AND WILDLIFE ECOLOGY: ASSISTANT or **ASSOCIATE PROFESSOR** in Fish and Wildlife Ecology, tenure-track, nine-month faculty position available June 1995 in the Department of Range and Wildlife Management, Texas Tech University. Summer salary is dependent on availability of teaching and research funding. The position is approximately 50% teaching and 50% research. The applicant should have a Ph.D. in either fisheries, wildlife, or closely related area, preferably with experience with fish and wildlife populations. Preference will be given to individuals with expertise in Vertebrate Population Biometry/Modeling of processes related to population growth or estimation. Applicants should send curriculum vitae, transcripts, description of research interests, and have three letters of recommendation forwarded by 15 January 1995, to: Dr. Loren M. Smith, Chairman of the Search Committee, Department of Range and Wildlife Management, Texas Tech University, Lubbock, TX 79409-2125. Telephone: 806-742-2842; FAX: 806-742-2280; Email: C7LMS@TTACS1.TTI.EDU. *Texas Tech is an Affirmative Action/Equal Opportunity Employer.*

POSITIONS OPEN



FACULTY POSITIONS MOLECULAR AND CELLULAR PHARMACOLOGY

The Department of Molecular and Cellular Pharmacology at the University of Miami School of Medicine is seeking applications for up to two tenure-track faculty positions, preferably at the **ASSISTANT** or **ASSOCIATE PROFESSOR** level. The positions will be available in 1995; rank and salary will be commensurate with experience. Excellent lab space and start-up funds are available. Candidates must have a Ph.D. and/or M.D. degree (or equivalent), and have an established record of research excellence. Applicants from all areas of molecular/cellular biology and biomedical research are welcome. Researchers utilizing modern approaches to the study of cardiovascular pharmacology/biology are particularly encouraged to apply. The new faculty members will complement existing research efforts in the Department which include regulation of cardiac and skeletal muscle function, ion channels, receptors and signal transduction, function and development of the nervous system, and regulation of gene expression.

Applicants should send a curriculum vitae, description of current and future research interests, and the names and addresses of three references to: **Dr. James D. Potter, Chairman, Department of Molecular and Cellular Pharmacology, University of Miami School of Medicine, P.O. Box 016189, Miami, FL 33101. An Equal Opportunity/Affirmative Action Employer.**

PLANT CYTOGENETICS FACULTY POSITION UNIVERSITY OF WISCONSIN-MADISON

The Department of Horticulture at the University of Wisconsin-Madison invites applications for an **ASSISTANT PROFESSOR** position in plant genetics and breeding with 70% research and 30% teaching. The person in this position will be responsible for fundamental research in plant cytogenetics with application to polyploid clonally propagated crops. The successful candidate will provide leadership in graduate training in plant cytogenetics and development of germplasm useful for Wisconsin. Horticulture is a major contributor to a core teaching effort in the Plant Breeding and Plant Genetics Interdepartmental Program. Teaching responsibilities include a course in cytogenetics and one other course. Applicants should have a Ph.D. with major emphasis in plant genetics or plant breeding and knowledge of cytogenetics and/or molecular cytogenetics. Experience with polyploid vegetable crops including potatoes is desirable. Application will be accepted until January 1, 1995, or until the position is filled. Salary is competitive and commensurate with training and experience. Applicants should send their curriculum vitae, a statement of professional goals, transcripts, and three letters of recommendation to: **Dr. P. W. Simon, Chair of Search Committee, Department of Horticulture, University of Wisconsin-Madison, 1575 Linden Drive, Madison, WI 53706.** Names, titles and addresses of applicants and nominees cannot be kept confidential. *The University of Wisconsin is an Affirmative Action/Equal Opportunity Employer and encourages applications from women and minorities.*

CELL BIOLOGIST UNIVERSITY OF VIRGINIA

The Department of Biology at the University of Virginia invites applications for a tenure-track appointment at the **ASSISTANT PROFESSOR** level. We are seeking a researcher of exceptional promise using molecular, genetic and/or biophysical approaches to investigate fundamental questions in Cell Biology. Applicants should submit curriculum vitae, a summary of past accomplishments, a description of future research plans and teaching interests, and should arrange for three letters of reference to be sent to: **Cell Biologist Search Committee, Department of Biology, Gilmer Hall, University of Virginia, Charlottesville, VA 22903-2477.** Women and members of minority groups are encouraged to apply and to identify themselves. Screening of applications will begin immediately. *The University of Virginia is an Equal Opportunity/Affirmative Action Employer.*

POSITIONS OPEN

ENVIRONMENTAL HEALTH EFFECTS ASSISTANT PROFESSOR

The Department of Biological Sciences at Wright State University (WSU) is seeking a **TENURE-TRACK FACULTY** member with expertise in the area of environmental health effects from toxicants or toxins. Emphasis will be given to applicants with a Ph.D. and postdoctoral experience, demonstrating excellence in one or more of the following areas: immunotoxicology, cellular toxicology, toxicokinetic modeling, exposure assessment, or hazard assessment. An ability to integrate basic and applied research in any of these areas is advantageous. The successful candidate will assist with teaching and advising in the Environmental Health Sciences Program (160 B.S. degree majors) and participate in the Institute for Environmental Quality (M.S. degrees with Biology, Chemistry, Geology, Physics, and Statistics Departments). Teaching responsibilities typically include three upper-level courses (one per quarter) in the environmental sciences curriculum. The applicant will be expected to develop an extramurally funded research program. WSU has approximately 17,000 students. The department has 21 faculty and approximately 500 undergraduate and 45 graduate students. The successful candidate will be encouraged to participate in the Biomedical Sciences Ph.D. program which has participating faculty from the Departments of Pharmacology and Toxicology, Biochemistry and Molecular Biology, Physiology and Biophysics, Microbiology and Immunology, and Anatomy, which are matrixed with the WSU School of Medicine.

The application deadline is January 31, 1995. Send a letter of application, curriculum vitae, statement of research and teaching goals, and names of three references to: **Chair, Search Committee, Biological Sciences Department, Wright State University, Dayton, OH 45435.** *WSU is an Affirmative Action/Equal Opportunity Employer.*

ASSISTANT PROFESSORS Evolutionary Biology, Mammalian Molecular Genetics, Neurobiology of Learning/Memory, and Virology

Applications are invited for five **TENURE-TRACK FACULTY** positions (one Evolutionary Biologist, one Mammalian Molecular Geneticist, two Neurobiologists interested in Learning and Memory, and one Virologist). The Division of Life Sciences offers the Ph.D. with an emphasis on neurobiology and seeks candidates whose research interests are in neurobiology. For the Neurobiology of Learning and Memory positions, candidates with demonstrated interests in either the behavioral and/or computational significance of long term potentiation in the hippocampus are preferred. Requirements include a doctoral degree in the appropriate discipline and postdoctoral experience. Candidates must have demonstrated research accomplishments and a strong commitment to undergraduate and graduate teaching. Set-up funds and laboratory space are available. Send curriculum vitae, a letter describing research interests, selected publications, and three reference letters to: **Dr. Joe L. Martinez, Jr., Director, Division of Life Sciences, The University of Texas at San Antonio, San Antonio, TX 78249.** Applicants must identify the position for which he/she is applying and applications must be received by December 31, 1994. Positions are pending budget approval. *The University of Texas at San Antonio is an Affirmative Action/Equal Opportunity Employer. Minorities and women are especially encouraged to apply. Applicants who are not U.S. citizens must state current visa and residency status.*

X-RAY CRYSTALLOGRAPHER, ASSISTANT or ASSOCIATE PROFESSOR, tenure-track (search reopened). The new Center for Pharmaceutical Biotechnology invites applications in macromolecular X-ray crystallography. Ph.D. and postdoctoral experience required. Responsibilities include developing a strong, externally funded research program, and teaching in graduate and professional programs. Successful candidate will have appointments within the Center and a College basic science department, and extensive collaborative opportunities in a major health sciences center. Forward curriculum vitae, description of research interests, and three reference letters to: **Dr. M. E. Johnson, Interim Director, Center for Pharmaceutical Biotechnology, College of Pharmacy, University of Illinois at Chicago, 833 South Wood Street, m/c 874, Chicago, IL 60612-7230.** Screening of applications will begin on 1 January 1995 and continue until position is filled. *Affirmative Action/Equal Opportunity Employer.*

POSITIONS OPEN

The Department of Biology at Georgia Southern University (G.S.U.) anticipates an opening for a tenure-track position at the rank of **ASSISTANT PROFESSOR**. Principal responsibilities include coordination and teaching of the introductory biology course and laboratory for non-majors. Active involvement in additional scholarly activity is expected. The particular area of research interest is open, but preference will be given to applicants with specialties in science education, plant/animal coevolution, or biostatistics. The position begins September 1, 1995, and a doctorate is required at the time of appointment. Send a letter of application, curriculum vitae, statement of teaching and research goals, and names of three references to: **General Biology Search Committee Chair, Department of Biology, Georgia Southern University, Statesboro, GA 30460-8042.** **Postmark deadline is 20 January 1995.**

Georgia Southern University, a 14,000-student unit of the University System of Georgia, is located in Statesboro, a community of approximately 25,000 residents. The Biology Department is rapidly growing and has a strong commitment to teaching and research excellence. There are currently 25 faculty, a Callaway Chair of Research, 35 M.S. degree students, and 650 undergraduate majors. The G.S.U. Botanical Garden, the Institute of Arthropodology and Parasitology, the Smithsonian Institution's National Tick Collection and the G.S.U. Herbarium are located on campus and are affiliated with the department.

The names of applicants and nominees, résumés and other general non-evaluative information are subject to public inspection under the Georgia Open Records Act. *Georgia Southern is an Equal Opportunity/Affirmative Action Institution.* Persons who need accommodation(s) in the application process under the Americans with Disabilities Act should notify the search chair.

ASSISTANT PROFESSOR (TENURE-TRACK) UNIVERSITY OF VIRGINIA

The Department of Environmental Sciences invites applications for two **ASSISTANT PROFESSORSHIPS** (tenure-track). These positions are in an interdisciplinary department with faculty in hydrology, ecology, geosciences and atmospheric sciences offering B.A., M.S. and Ph.D. degrees. Successful candidates will be expected to develop strong teaching and research programs that capitalize on the unique interdisciplinary nature of the department. The positions are:

Ecologist in the areas of estuarine or aquatic ecology. We are seeking a person with an ecosystem (or combined community/ecosystem) emphasis and research interests in such areas as biogeochemistry and physiological ecology. Candidates should be prepared to teach a course in fundamentals of ecology and upper-level courses appropriate to their research interests.

Atmospheric Scientist with research interests in such interdisciplinary areas as land surface-atmospheric interactions (both terrestrial and coastal), water vapor-atmospheric circulation, and the dynamics and effects of tropospheric aerosols and trace gases. Candidates will be expected to contribute to the teaching of atmospheric science at both the undergraduate and graduate levels.

A Ph.D. in an appropriate discipline and demonstrated research scholarship are required for these positions. Applications should consist of a curriculum vitae, a statement of research goals, and the names of three references. The deadline for applications is December 31, 1994, and should be sent to: **Dr. William Ruddiman, Chair, Department of Environmental Sciences, University of Virginia, Charlottesville, VA 22903.** *The University of Virginia is an Equal Opportunity/Affirmative Action Employer.*

FRESHWATER ECOLOGIST ASSISTANT PROFESSOR

Tenure-track, Ph.D. required, postdoctoral experience desired. Broadly trained with research interests at the ecosystem or community level desired. Teaching will include non-majors biology, general zoology, and an upper division/graduate course. Will be expected to develop an extramurally funded research program and participate in undergraduate and Master's level research. Send curriculum vitae, photocopies of undergraduate/graduate transcripts, statements of research and teaching interests, copies of key publications, and names and addresses of three references by February 1, 1995, to: **Dr. Marc Bechard, Department of Biology, Boise State University, Boise, ID 83725.** *An Equal Opportunity Employer/Affirmative Action Institution.*

POSITIONS OPEN

CARTHAGE COLLEGE Assistant Professor of Chemistry Assistant Professor of Biology

Growing enrollments in the sciences provide opportunities for new **FACULTY APPOINTMENTS** at Carthage. Both positions are tenure-track and require the Ph.D.

Chemistry: The department, accredited by the ACS, seeks an energetic individual who has a keen interest in undergraduate teaching, including research. The College offers technologically advanced instrumentation and a progressive curriculum that includes interdisciplinary general education. Reply by January 15, 1995.

Genetics/Botany: Seek candidate with a strong background in experimental biology. The individual must have a commitment to guiding undergraduate research projects and pursuing external funding. The department is equipped for state-of-the-art teaching and research. Reply by January 1, 1995.

Located on the shore of Lake Michigan midway between Milwaukee and Chicago, Carthage offers quick urban access from the relaxed environment of a small city. Predominantly Midwesterners, students come from 22 states and seven foreign countries. Founded in 1847, the College is affiliated with the Evangelical Lutheran Church in America.

Nominations and applications, including a current curriculum vitae, three letters of reference, and teaching philosophy should be sent by the deadlines indicated to: **Charlotte J. Chell, Chair, Division of Natural Sciences, Carthage College, 2001 Alford Park Drive, Kenosha, WI 53140-1994.**

CELL BIOLOGIST ASSISTANT PROFESSOR

The Department of Biological Sciences at Wright State University invites applications for a tenure-track **ASSISTANT PROFESSOR** position in cell biology. Applicants must have postdoctoral experience in molecular aspects of cell biology such as cell-cycle regulation, intercellular communications, the cytoskeleton, nuclear organization or chromatin. Teaching duties will include an undergraduate molecular-oriented cell biology course. The successful candidate will be expected to develop a fundable research program in cell biology and to participate in the departmental M.S. degree program and the interdisciplinary Biomedical Sciences Ph.D. program which draws faculty from several other departments including the School of Medicine Departments of Anatomy, Biochemistry and Molecular Biology, Microbiology and Immunology, Pharmacology and Toxicology, and Physiology and Biophysics. Wright State University has approximately 17,000 students. The Department, located in the College of Science and Mathematics, has 21 faculty and approximately 500 undergraduate and 50 graduate students. Applicants should send curriculum vitae, statements of teaching and research interests, and names of at least three referees to: **Cell Biologist Search Committee, Department of Biological Sciences, Wright State University, Dayton, OH 45435.** We will begin reviewing applications on December 20, 1994. *Wright State University is an Equal Opportunity/Affirmative Action Employer.*

DEPARTMENT OF MICROBIOLOGY and the CANCER CENTER MEDICAL COLLEGE OF WISCONSIN

The Department of Microbiology and the Cancer Center seek applicants for a tenure-track **ASSISTANT or ASSOCIATE PROFESSORSHIP**. Investigators employing molecular, genetic, and biochemical approaches to the study of gene expression, growth factors and cytokines, apoptotic mechanisms, receptors and signaling, oncogenes, bacterial pathogenesis, or tumor immunobiology are urged to apply. Applicants must have an earned doctorate, at least two years of postdoctoral experience, a strong record of research accomplishment, a commitment to developing an independent, extramurally funded research program, and willingness to participate in graduate and medical team-teaching. Modern laboratories, core facilities, competitive salary and start-up funds are available. Send curriculum vitae, statement of research interest and plans, three relevant reprints, and the names of three references to: **Molecular Search Committee, Department of Microbiology, Medical College of Wisconsin, 8701 Watertown Plank Road, Milwaukee, WI 53226.** *Medical College of Wisconsin is an Affirmative Action/Equal Opportunity Employer/Minorities, Female, Disabled, Veterans.*

POSITIONS OPEN

GENETICIST Miami University, Oxford, Ohio

The Department of Zoology: **ASSISTANT PROFESSOR** position (tenure-track) to begin in August 1995. Ph.D. in genetics, zoology, or biology, required. We seek an individual to develop an independent research program in genetics with an emphasis on evolutionary biology to complement existing strengths within the department. Teaching responsibilities include: (1) general genetics; (2) a general evolution course, or an advanced course in evolution/biosystematics, and; (3) participation in a team-taught general biology course every other year. The successful applicant will be expected to seek external funding to support his/her research and to supervise graduate and undergraduate research projects. Advancement will be based on teaching, research, and professional service, with primary emphasis on teaching and research. We have excellent research facilities, strong Ph.D. and M.S. programs, 32 faculty members, several postdoctoral positions, and 54 graduate students. Interested persons should submit a curriculum vitae, statement of teaching philosophy, a description of current research and long-term research interests, and should arrange for three letters of recommendation and transcripts of all academic work to be sent to: **Dr. Douglas H. Taylor, Chair of Zoology, Miami University, Oxford, OH 45056.** Review of applications will begin on 16 January 1995. *Miami University offers Equal Opportunity in Employment and Education.*

TERRESTRIAL ANIMAL ECOLOGIST

The Department of Biological Sciences, University of Wisconsin-Milwaukee (UWM), invites applications for a tenure-track position in terrestrial animal ecology at the **ASSISTANT PROFESSOR** level. We seek applicants with broad training and experience involving population, community, and/or conservation ecology. Candidates are expected to develop a vigorous research program and to supervise Ph.D. and M.S. research. The Department has an active research faculty in ecology, and the UWM Field Station affords unique facilities for research and instruction. Teaching responsibilities include sharing a general ecology course, some participation in the general biology curriculum, and an advanced course in ecology or area of organismal specialty.

Applicants should submit a curriculum vitae, statements of research and teaching interests, pertinent reprints, and arrange to have three letters of reference sent to: **Dr. Millicent S. Ficken, Chairperson, Ecologist Search Committee, Department of Biological Sciences, University of Wisconsin-Milwaukee, P.O. Box 413, Milwaukee, WI 53201.** Deadline for application is January 20, 1995. *The University of Wisconsin-Milwaukee is an Equal Opportunity/Affirmative Action Employer. Women and minority scientists are encouraged to apply for this position. The names of those nominees and applicants who have not requested that their identities be withheld and the names of finalists will be released upon request.*

ASSISTANT/ASSOCIATE PROFESSOR ANATOMY

Applications are invited for a tenure-track position in the Department of Anatomy at the University of Osteopathic Medicine and Health Sciences. Teaching responsibilities will be in Human Gross Anatomy/Neuroanatomy with some Histology. Applicants should have a Ph.D. in Human Anatomy with an interest in innovative teaching methods. Postdoctoral experience will be helpful. Interested persons should submit a curriculum vitae and names and addresses of three references to: **Craig Canby, Ph.D., Chair, Anatomy Search Committee, Department of Anatomy, UOMHS, 3200 Grand, Des Moines, IA 50312.**

The University is an Equal Opportunity Employer.

MICROBIAL GENETICIST—ASSISTANT PROFESSOR, tenure-track, fall 1995, to teach Microbiology, Genetics and Molecular Biology, and supervise Master's research. Strong commitment to teaching, Ph.D. required. Experience in small college teaching desirable. Screening begins December 6, 1994. Submit statement of teaching interests and research plans, résumé, transcripts and addresses/telephone numbers of three references to: **Biology Search Committee, HSB 223, Sangamon State University, Springfield, IL 62794-9243.**

Sangamon State University is an Affirmative Action/Equal Opportunity Employer. People with disabilities, women, minorities and veterans are encouraged to apply.

POSITIONS OPEN

SMITH COLLEGE DEPARTMENT OF BIOLOGICAL SCIENCES Developmental Biologist

The Smith College Department of Biological Sciences invites applications for a full-time, tenure-track **ASSISTANT PROFESSOR** in Developmental Biology for an appointment starting September 1, 1995. We seek a biologist with expertise in plant or animal development/embryology to participate in Introductory or Cell Biology, and to offer an intermediate-level course with a laboratory in Developmental Biology. An advanced level course in the applicant's specialty will be encouraged. Candidates should have a Ph.D. and commitments to both undergraduate teaching and research that can involve undergraduates. Significant teaching and/or postdoctoral experience are preferred. Smith College is a leading women's college in western Massachusetts, in a consortium with Amherst, Mount Holyoke and Hampshire Colleges and the University of Massachusetts. A curriculum vitae, statement of teaching philosophy and research interests and experience, and three letters of recommendation should be sent to: **Professor E. Tyrrell, Chair, Department of Biological Sciences, Clark Science Center, Smith College, Northampton, MA 01063.** Applications should be received by December 31, 1994. *An Affirmative Action/Equal Opportunity Institution. Minorities and women are encouraged to apply.*

UNIVERSITY OF VIRGINIA Faculty Positions in Pharmacology

Applications are invited for two tenure-track positions in the Department of Pharmacology to be filled at the rank of **ASSISTANT PROFESSOR** or higher. The Department is seeking applicants with significant postdoctoral research experience and research interests relevant to cell signalling using contemporary approaches, including molecular structure, genetic analysis of function in model organisms or differentiated cells, control of transcription, and the organization and function of the cardiovascular, nervous, or immune systems. Successful candidates will be expected to develop or maintain externally funded research programs and to participate in graduate and medical student teaching. The University of Virginia provides a highly interactive scientific community well supported by core facilities, research centers and training programs. Highly competitive salary and start-up packages are available for these positions.

Curriculum vitae, statement of research accomplishments and plans, and three letters of recommendation should be directed to: **Dr. Carl E. Creutz, Chair, Faculty Search Committee, Department of Pharmacology, University of Virginia, Charlottesville, VA 22908.** *The University of Virginia is an Equal Opportunity/Affirmative Action Employer. Applications from women and underrepresented minorities are encouraged.*

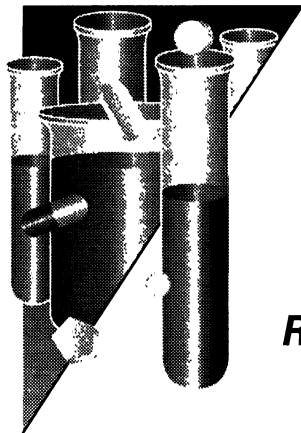
ELECTROPHYSIOLOGIST

The Section of Neurosurgery, Yale University School of Medicine, has an **ASSISTANT PROFESSOR** position available for individual interested in cellular mechanisms of human epilepsy. Candidates must have Ph.D. or M.D. degree and at least two years of postdoctoral experience using *in vitro* slice preparation. Successful candidate expected to establish independent funding program and to interact with group of neuroscientists studying epileptogenesis in human hippocampal and neocortical tissue. Interested persons should send curriculum vitae and three references by December 15, 1994, to: **Dr. Dennis Spencer, Section of Neurosurgery, Yale University School of Medicine, P.O. Box 208039, New Haven, CT 06520-8039.** Position available after January 1, 1995.

Women and minorities urged to apply. Yale University is an Equal Opportunity/Affirmative Action Employer.

ASSISTANT PROFESSOR MOLECULAR BIOLOGY

A **TENURE-TRACK POSITION** beginning August 1995. The successful applicant will be broadly trained in molecular biology, have a commitment to undergraduate teaching, a Ph.D., and a willingness to involve undergraduate students in a productive research program. Primary responsibilities include teaching courses in molecular biology and other biology courses. Send résumé, a list of all molecular techniques applicant is prepared to teach, three letters of recommendation and undergraduate and graduate transcripts to: **Department of Biology, Lycoming College, Williamsport, PA 17701** by December 30, 1994. *Lycoming College is an Equal Opportunity Employer.*



A DYNAMIC MISSION

*At The Glaxo Inc.
Research Institute,
Our Priority Is
Progress.*

Glaxo Inc., one of the largest pharmaceutical companies in the world, has an established record of developing the highest quality prescription medicines for unmet patient needs. Located in **Research Triangle Park, N.C., the Glaxo Inc. Research Institute** is a premier facility which provides a stimulating environment for scientists working in all aspects of discovery and development. We invite you to join us today in the following opening.

RESEARCH SCIENTIST Molecular Science

As a key member of our Structural Area within the Department of Molecular Science, the selected individual will work closely with the macromolecular X-ray crystallography group on protein engineering, protein isolation, crystallization, and structure determination of therapeutically important proteins. This individual will take an independent approach to research and have a keen desire to learn new techniques in molecular biology, protein chemistry, and structural work.

This position requires a B.S. degree with a minimum of 5 years relevant experience. Skills in one or more of the following areas are encouraged: sub-cloning, site-directed mutagenesis, protein purification, and protein characterization. Excellent written and verbal communication skills are required, as is the ability to interact well with groups in obtaining goals.

Glaxo offers an attractive compensation and benefits package that features a matching savings plan, an on-site fitness center and much more. Research Triangle Park, N.C. offers an academically enriched quality of life complete with a host of cultural and recreational advantages. For confidential consideration, send your resume which must include position title and salary history, to: **Human Resources Department, Job #ASC912005, Glaxo Inc., P.O. Box 13398, Research Triangle Park, NC 27709.** (No Phone Calls or Agency Referrals, Please.) An Equal Opportunity Employer M/F/D/V.

Glaxo Inc.

The Time For Achievement Is Now

National Institute of Environmental Health Sciences
National Institutes of Health • Public Health Service
Department of Health and Human Services

DIRECTOR DIVISION INTRAMURAL RESEARCH (DIR)

The National Institute of Environmental Health Sciences (NIEHS) invites nominations and applications for the position of Director, Division Intramural Research (DIR). The incumbent of this position will direct laboratory and clinical research through eighteen laboratories and branches with 500 employees and approximately 100 non-ceiling personnel, and an annual budget of approximately 100 million dollars. The Director, DIR, will serve as principal advisor to the Institute Director on scientific affairs involving all Institute direct research programs; develops and recommends policies for the execution of research programs; determines effectiveness of current programs and recommends; and develops new and revised programs to meet national environmental health needs.

This is a Civil Service position in the Senior Executive Service. The salary range is ES-1 to ES-5, currently \$95,771 to \$115,255 (includes a locality pay of 3.09%) per annum. The person selected may be eligible for Physician's Comparability pay up to \$20,000 per year. A recruitment bonus of up to 25% of base pay may be available to a non-federal selectee for this position, subject to individual approval. A relocation bonus of up to 25% of base pay may be available to a permanent Federal employee who must relocate to accept this position, subject to individual approval. (Alternatively, applicants may be eligible for appointment in the Commissioned Corps of the U.S. Public Health Service.) The SES individual selected, if not presently in the Senior Executive Service, must serve a one year probationary period.

Applicants must meet the minimum educational requirements (or possess equivalent combination of experience and training) for Medical Officer, GS-602; other biomedical sciences (GS-400 group, GS-1300 group), as defined by the U.S. Office of Personnel Management Handbook X-118, Qualification Standards for Positions Under the General Schedule, which is available in Federal Personnel Offices and Federal Job Information Centers. Further information about the position may be obtained by calling 919-541-3317. An Application for Federal Employment (SF-171), accompanied by a current curriculum vitae and bibliography and Executive Qualification narrative should be submitted to:

**Mr. Bruce Wiggins (HNV91)
NIEHS Personnel Office
P.O. Box 12233
Research Triangle Park, NC 27709**

Application must be received by January 18, 1995.

Selection for this position will be based solely on merit, with no discrimination for non-merit reasons such as race, color, religion, sex, sexual orientation, national origin, politics, marital status, physical or mental handicap, age, or membership or non-membership in an employee organization.

NIH is an Equal Opportunity Employer

POSITIONS OPEN

ASSISTANT PROFESSOR DEPARTMENT OF MOLECULAR BIOPHYSICS AND BIOCHEMISTRY YALE UNIVERSITY

The Department of Molecular Biophysics and Biochemistry seeks applicants for a position at the level of **ASSISTANT PROFESSOR** in the general area of physical biochemical studies of macromolecular mechanisms. This would be a particularly good opportunity for those who wish to interact with molecular biologists and biochemists as well as a large program in structural biology. The person appointed would be expected to develop an independent research program and to participate in departmental teaching.

Candidates should submit two copies of a curriculum vitae with a summary of present and future research interests, and request that three letters of recommendation be sent no later than December 15, 1994, to:

Thomas A. Steitz, Search Chair
Department of Molecular Biophysics and
Biochemistry 0734
Yale University
P.O. Box 208114
266 Whitney Avenue
New Haven, CT 06520-8114 USA

Yale University is an Equal Opportunity/Affirmative Action Employer and invites applications from all qualified individuals.

ASSISTANT PROFESSOR—MICROBIOLOGY

The University of Kansas is seeking outstanding candidates for an **ASSISTANT PROFESSOR** tenure-track position in the Department of Microbiology beginning fall 1995. This position is supported in part by the newly established Franklin D. Murphy Scholars in Molecular Biology Endowment. Candidates with postdoctoral experience, whose research interests encompass molecular biology and who have demonstrated creativity and productivity in virology, will be considered. The selected candidate will be expected to develop and sustain a vigorous research program and to participate effectively in the teaching of undergraduate and graduate students. Murphy Scholars are provided start-up funds, an annual salary supplement, and discretionary funds. Applicants please submit a curriculum vitae, a brief statement of research interests, and the names and addresses of three references to: **Dr. Clarence S. Buller, Department of Microbiology, University of Kansas, Lawrence, KS 66045**. First consideration will be given to completed applications received by January 31, 1995, and review will continue until the position is filled. *Equal Opportunity/Affirmative Action Employer. Applications from women and minorities are encouraged.*

FACULTY POSITION IN GENETICS—Duke University Medical Center. Applications are invited for a tenure-track position in the Department of Genetics at Duke University Medical Center. Although we anticipate filling this position at the **ASSISTANT PROFESSOR** level, we will consider individuals for any level appointment. We are particularly interested in those individuals that are engaged to work utilizing mammalian systems or focusing on the genetics of human disease. The facilities and environment of the Department of Genetics are excellent. Applications should include a curriculum vitae, a brief description of research accomplishments, a brief description of plans for future research, and the names of three individuals that can serve as referees. Address applications to: **Genetics Search Committee, Department of Genetics, Duke University Medical Center, Box 3054, Durham, NC 27710**. *Duke University is an Equal Opportunity/Affirmative Action Employer.*

ASSISTANT PROFESSOR OF BIOLOGICAL SCIENCES. The Department of Biological Sciences is seeking a Biologist to teach undergraduate courses in Introductory Biology and to design a course in Developmental Biology. The full-time, tenure-track position starts in the fall of 1995. A Ph.D. and postdoctoral experience is required. We are particularly interested in an individual who is enthusiastic about teaching undergraduates and directing undergraduate research. Please forward your curriculum vitae, a statement of your teaching philosophy, and a description of your research plan. Also arrange to have three letters of reference sent independently. Completed materials should be received no later than January 6, 1995, by: **Chairman, Search Committee, Department of Biological Sciences, York College of Pennsylvania, York, PA 17405-7199**. *An Affirmative Action/Equal Opportunity Employer.*

POSITIONS OPEN

CONSERVATION BIOLOGY

The Department of Zoology at North Carolina State University seeks applicants for **ASSISTANT PROFESSOR** in Conservation Biology. The position is 12-month tenure-track, combining teaching and research. Teaching duties include undergraduate and graduate advising and undergraduate (including ecology) and graduate (including specialty and probably ornithology) courses. Candidates should show research achievement in conservation biology at the community or landscape level, preferably emphasizing terrestrial vertebrates. Candidates are expected to show potential for excellence in teaching and to have received a Ph.D. in conservation biology or a related field by July 1995; postdoctoral research experience is preferred. A letter of application, three letters of recommendation, and curriculum vitae should be sent to: **Sam Mozley, Conservation Biology Search, Department of Zoology, North Carolina State University, Raleigh, NC 27695-7617**. Applications will be accepted until December 9, 1994, or a suitable candidate is identified. We are looking to diversify our faculty; minorities and women are encouraged to apply. *North Carolina State University is an Equal Opportunity/Affirmative Action Employer.*

ENVIRONMENTAL BIOLOGIST—Riparian zone ecologist preferably with experience in bioremediation or restoration ecology. **ASSISTANT PROFESSOR** level (tenure-track) available fall 1995 pending funding. Teaching duties include an ecology course for non-biology majors and courses in the applicant's area of specialization. Participation in the undergraduate environmental program and development of a quantitative research program that includes undergraduates and Master's students is also expected. Ph.D. in Biology and a commitment to quality undergraduate and graduate education required. Experience in bioremediation or restoration ecology and use of quantitative and computer methods in research preferred. Credentials and experience comparable to the above will also be considered. Please send letter of application and curriculum vitae with a statement of teaching and research interests, and the names, addresses and telephone numbers of three references to: **Dr. Kim A. Wilson, Search Committee Chairperson, Department of Biological Sciences, Central Connecticut State University, New Britain, CT 06050-4010**. Review of candidates will begin on December 9, 1994. *Central Connecticut State University aggressively pursues a program of Equal Employment and Educational Opportunity and Affirmative Action. People of color, women, veterans and persons with disabilities are invited and encouraged to apply.*

FOREST WILDLIFE ECOLOGIST

The Center for Wildlife Ecology of the Illinois Natural History Survey (INHS) invites applications for a forest wildlife ecologist at the **ASSISTANT PROFESSIONAL SCIENTIST** level. Although field-oriented research on white-tailed deer and turkeys in forest/agricultural landscapes is stressed, candidates must have aptitude for addressing a variety of forest wildlife species. The successful applicant will: (1) maintain an extramurally funded research program, (2) work cooperatively with the Illinois Department of Conservation and other agencies, and (3) publish frequently and present research results at scientific meetings. The position is full-time and the successful applicant will be stationed on the campus of the University of Illinois (Champaign/Urbana) or at the Forbes Biological Station (Havana). Applicants must hold a Ph.D. in an appropriate discipline and have experience in forest wildlife ecology. Applications should be received by 31 January 1995. Submit letter of application, résumé, statement of research interests, and the names, addresses, and telephone numbers of four references to: **Ms. Jacqueline Sanders, Personnel Officer, Illinois Natural History Survey, 607 East Peabody Drive, Champaign, IL 61820**. Telephone: 217-244-7790; FAX: 217-333-4949. *The INHS is an Equal Employment Opportunity/ADA Employer.*

ASSISTANT PROFESSOR of Biology to teach molecular biology, cell physiology, general biology and interdisciplinary science general education; conduct research involving undergraduates. For details contact: **Dr. Ann Henninger, Wartburg College, Waverly, IA 50677**. FAX: 319-352-8582. Wartburg is an accredited four-year, coeducational liberal arts college of the Lutheran Church (ELCA). *An Equal Opportunity/Affirmative Action Employer.*

POSITIONS OPEN

ENVIRONMENTAL SCIENCE/STUDIES

The University of Central Arkansas, College of Natural Sciences and Mathematics, is accepting applications for a tenure-track position at the **ASSISTANT** or **ASSOCIATE PROFESSOR** level to begin fall 1995. The successful candidate will hold a Ph.D. or its equivalent in biology, chemistry, environmental science, geology, mathematics, or physics with a field of specialization appropriate to environmental studies; develop a modern environmental science/studies program incorporating the disciplines above; conduct research with graduate and undergraduate students; and teach courses in the department of her or his degree.

Send letter of application, curriculum vitae, graduate transcripts, copies of recent research publications, statements of research goals and teaching philosophy, and names, addresses, and telephone numbers of three references to: **Steve Butcher, Chair, Environmental Science Search Committee, College of Natural Sciences and Mathematics, Irby Hall 120, University of Central Arkansas, Conway, AR 72035**. Review of applications will begin on December 20, 1994, and continue until the position is filled. The position is contingent on funding. *The University of Central Arkansas is an Affirmative Action/Equal Opportunity Employer.*

PHARMACOLOGY

RESEARCH ASSISTANT PROFESSOR: Experience in polycyclic aromatic hydrocarbon (PAH) metabolism, DNA-adduct formation, [³²P]-post-labeling, assessment of oxidative damage to DNA, and free radical chemistry required. Expertise in cell culture and spectroscopic methods including NMR, EPR and MS desirable. Ph.D. in pharmacology, toxicology or medicinal chemistry preferred; Ph.D. in molecular biology or related field with experience in molecular biology to study the regulation of genes involved in PAH activation will be considered. Inquiries should include curriculum vitae, list of publications, and a statement of research interests. Send résumé and three letters of recommendation to: **Dr. Trevor M. Penning, Department of Pharmacology, University of Pennsylvania School of Medicine, Philadelphia, PA 19104-6084**. *Equal Opportunity/Affirmative Action Employer.*

CONSERVATION BIOLOGIST

The Department of Biology at the University of Richmond, a highly selective, private liberal arts institution, invites applications for a tenure-track position at the **ASSISTANT PROFESSOR** level to begin August 1995. The successful candidate must have a Ph.D. and be committed to excellence in teaching and research. Primary teaching responsibilities include introductory biology for non-majors, a course in conservation biology for majors, and advanced courses in the specialty area. A commitment to a research program that involves both undergraduates and Master's level students is required. Please send letter of application, curriculum vitae, statements of teaching philosophy and research interests, official graduate and undergraduate transcripts, recent publications and have three letters of recommendation sent by December 21, 1994, to: **Dr. Roni J. Kingsley, Department of Biology, University of Richmond, VA 23173**. *As an Equal Opportunity/Affirmative Action Employer, we especially encourage applications from underrepresented groups, including women and minorities.*

ASSISTANT, ASSOCIATE or FULL PROFESSOR (two positions) (search reopened). The new Center for Pharmaceutical Biotechnology invites applications in biotechnology/pharmaceutics. Ph.D. and postdoctoral experience required. Responsibilities include developing a strong, externally funded research program, and teaching in the graduate and professional pharmaceutics programs. The Center for Pharmaceutical Biotechnology fosters collaboration and cooperation, bringing together campus researchers from the full range of biotechnology-related disciplines. Successful candidates will have tenure-track appointments within the Center and Department of Pharmaceutics and Pharmacodynamics in the College of Pharmacy. Curriculum vitae, description of research interests, and three letters of reference should be forwarded to: **Dr. M. E. Johnson, Interim Director, Center for Pharmaceutical Biotechnology, University of Illinois at Chicago, 833 South Wood Street (m/c 874), Chicago, IL 60612-7230**. Screening of applications will begin on 30 January 1995 and continue until positions are filled. *Affirmative Action/Equal Opportunity Employer.*



PATHOGENESIS

PathoGenesis Corporation is dedicated to the discovery, diagnosis, and treatment of infectious agents associated with chronic disease. We are currently seeking the following professional:

Ph.D. VIROLOGIST

Characterization of newly discovered viruses. Candidate must have a Ph.D. and a minimum of 5 years experience in virology, including mammalian cell culture, in vitro virus propagation, quantitative evaluation of antiviral compounds, and molecular biology. Experience with DNA viruses required.

PathoGenesis is located in Seattle and offers a competitive salary plus a benefits program that includes insurance and stock options. Send, fax or e-mail your resume to:

PathoGenesis Corporation
201 Elliott Ave. West, Suite 150
Seattle, WA 98119
Fax: (206) 270-3330
E-mail: jduggan@bart.path.com

Equal Opportunity Employer

Fellowship Programs United States-Israel

BARD. The United States-Israel Agricultural R & D Fund, announces two Fellowship Programs promoting cooperative agricultural research.

The **POSTDOCTORAL FELLOWSHIP PROGRAMS** provides support for candidates who are citizens of either the United States of Israel and who have fulfilled the requirements for the Ph.D. degree within the last three years. American candidates must carry out their fellowship research in Israel and Israeli candidates must carry out their fellowship research in the United States. The initial award is for one year and under certain conditions, a one year extension will be considered. The award for the first year is \$27,000 for living and travel expenses and it is paid directly to the fellow. An allowance not exceeding \$3,000 may also be paid to the host institution for operating expenses incurred in the research.

The **RESEARCH FELLOWSHIP PROGRAM** is intended to support citizens of the United States who are established research scientists in American non-profit research institutions, universities or federal and state agencies during a period of 4 to 12 months in Israel. The grant is \$3,000 per month and will be paid in coordination with the base institution of the fellow. One round trip air ticket will be provided.

Applications for either program must reach BARD's offices by January 15.

For information on application procedures please contact BARD's offices at:

BARD
USDA-ARS-OIRP
Room 102, Bldg. 005, BARC-West
Beltsville, MD 20705
U.S.A.

Tel: 301-504-5605
Fax: 301-504-5298

BARD
The Volcani Center
F.O.B. 6
Bet Dagan
Israel 50250

Tel: 972-3-9655133
Fax: 972-3-9662506



Wellcome

WE ARE SUCCESSFUL TODAY BECAUSE WE ATTRACTED GREAT PEOPLE YESTERDAY.

And we will be successful tomorrow because of the people we attract today. Burroughs Wellcome Co. is a pharmaceutical leader for thousands of reasons—innovative and dedicated people who strive for excellence, individually and as a team. Now is your chance to become a part of a great company, and help to make a greater tomorrow.

Research Scientist III/Research Scientist IV

The **Research Scientist III** will assist in the development, characterization and utilization of therapeutic targets for the screening of agents that will retard the Alzheimer's disease pathology. The major responsibilities will include the development of immunological and oligonucleotide probes to investigate the synthesis and processing of the amyloid precursor protein (APP) to the beta/A4-peptide. This position will additionally aid in the development of a program to screen for inhibitors of the beta/A4-peptide aggregation process and for inhibitors of the neurotoxic effects of this peptide. Candidates must have a B.S. degree or four-year college curriculum with a major concentration in Biochemistry, Immunology or Molecular Biology PLUS 6 years of experience in Biochemistry, Immunology and Molecular Biology **OR** a Master's degree in Biochemistry, Immunology or Molecular Biology PLUS 4 years of experience in Biochemistry, Immunology and Molecular Biology **OR** a Ph.D. in Biochemistry, Immunology and Molecular Biology. Other factors to be considered include a working knowledge and expertise in cell biology, protein/peptide chemistry and biophysical methods and experience with diverse methodologies from various disciplines to examine neurobiological problems at the molecular level as well as in vivo. Experience in enzymology and enzyme kinetics helpful.

The **Research Scientist IV** will develop, characterize and utilize therapeutic targets for the screening of agents that will retard the Alzheimer's disease pathology. The major responsibilities will include the participating in the development of a research program to search for novel therapies to inhibit the synthesis and processing of the amyloid precursor protein (beta-APP) to the beta/A4-peptide as well as to inhibit the beta/A4-peptide aggregation and neurotoxicity. Candidates must have a B.S. degree or four-year college curriculum with a major concentration in Biochemistry, Immunology or Molecular Biology PLUS 7 years of experience in Biochemistry, Immunology and Molecular Biology **OR** a Master's degree in Biochemistry, Immunology or Molecular Biology PLUS 5 years of experience in Biochemistry, Immunology and Molecular Biology **OR** a Ph.D. in Biochemistry, Immunology and Molecular Biology PLUS 1 year of Postdoctoral experience in Biochemistry, Immunology and Molecular Biology. Other factors to be considered include a working knowledge and expertise in cell biology, protein/peptide chemistry and biophysical methods and experience with diverse methodologies from various disciplines to examine neurobiological problems at the molecular level as well as in vivo. Experience in enzymology and enzyme kinetics helpful.

We offer a competitive salary and comprehensive benefits. And our outstanding Research Triangle Park location is one of the most desirable areas of the country in which to work and live. To apply, please send your resume, indicating **REQ #65909-29** in your cover letter, by **Tuesday, December 13, 1994**, to: **Burroughs Wellcome Co., Human Resources Department, 3030 Cornwallis Road, Research Triangle Park, NC 27709.**

For information on other job opportunities with Burroughs Wellcome Co., call our Job Information Line at **(919) 315-8347** in Research Triangle Park; or **(919) 707-2997** in Greenville.



BURROUGHS WELLCOME CO.

An Equal Opportunity Employer

POSITIONS OPEN

FACULTY POSITION DEPARTMENT OF MOLECULAR AND CELLULAR BIOLOGY UNIVERSITY OF ARIZONA

As part of a continuing expansion, the Department of Molecular and Cellular Biology is seeking a new tenure-track faculty member at the **ASSISTANT PROFESSOR** level for appointment in 1995. Applicants with research interests in the molecular, cellular, or developmental biology of any organism including plants, animals, fungi, or bacteria will be considered. Successful candidates will be expected to establish a competitive research program and to teach at both the undergraduate and graduate levels. Send curriculum vitae, a one to two page statement of research interests, and have at least three supporting letters sent to: **Professor Samuel Ward, Head, Department of Molecular and Cellular Biology, Life Sciences South Building, Room 444, University of Arizona, Tucson, AZ 85721 USA.** To ensure consideration, applications should be received by December 16, 1994, although applications will be accepted until the position is filled. *The University of Arizona is an Equal Employment Opportunity/Affirmative Action/ADA Compliance Employer. Women and minorities are encouraged to apply.*

BEHAVIORAL NEUROSCIENTIST

ADJUNCT ASSISTANT PROFESSOR or POST-DOCTORAL RESEARCH ASSOCIATE (non-tenure-track), one to four year appointment is available immediately for a Ph.D. with at least two years of postdoctoral experience and expertise in neuroanatomy, neuroendocrinology, and/or behavioral neuroscience. Candidate must be a highly independent researcher, and qualified to teach undergraduate courses in either Behavioral Neuroscience Laboratory, Behavioral Endocrinology, or Neuroanatomy. Candidate should be prepared to make a significant contribution to research related to (but not limited to) metabolic control of neuroendocrine mechanisms controlling behavior (reproductive, ingestive, thermoregulatory, social, or other). Salary and rank are dependent upon experience and qualifications. Send curriculum vitae, statement of teaching and research interests, three letters of reference to: **J. Schneider, Department of Biological Sciences, Center for Molecular Bioscience and Biotechnology, 111 Research Drive, Lehigh University, Bethlehem, PA 18015.** *Lehigh is an Equal Opportunity/Affirmative Action Employer.*

VERTEBRATE ZOOLOGIST/EVOLUTIONARY BIOLOGIST—Tenure-track, **ASSISTANT PROFESSOR** position available fall 1995 pending funding. To teach vertebrate zoology, evolution, and to develop other upper-level courses in areas of specialization. Successful applicant will be expected to teach introductory courses for majors or non-majors, and to develop a research program involving undergraduate and Master's level students. Ph.D. or award of Ph.D. no later than August 1995 in biological field required. Credentials and experience comparable to the above will also be considered. Please send letter of application, curriculum vitae with statements of teaching goals and of research interests; names, addresses and telephone numbers of three references to: **Dr. Ruth E. Rollin, Search Committee Chairperson, Department of Biological Sciences, Central Connecticut State University, New Britain, CT 06050-4010.** Review of candidates will begin on December 9, 1994. *Central Connecticut State University aggressively pursues a program of Equal Employment and Educational Opportunity and Affirmative Action. People of color, women, veterans and persons with disabilities are invited and encouraged to apply.*

WHEATON COLLEGE Wheaton, Illinois

Department of Biology seeking application for **CHAIR** of Department who is **BOTANIST; ASSOCIATE or PROFESSOR** level. Experience in management of academic program or similar experience necessary. Teaching expectations are plant physiology, plant morphology, plant taxonomy, ultrastructure, and introductory biology courses. Possible teaching at Science Station in South Dakota. Contact: **Dr. Rodney Scott, Department of Biology, Wheaton College, Wheaton, IL 60187.** Closing date January 20, 1995.

Wheaton College is an evangelical Christian liberal arts college whose faculty and staff affirm a Statement of Faith and adhere to lifestyle expectations. The College complies with federal and state guidelines for nondiscrimination in employment. Women and minority applicants are encouraged to apply.

POSITIONS OPEN

ASSISTANT PROFESSOR BIOLOGICAL ANTHROPOLOGY UNIVERSITY OF CALIFORNIA, DAVIS

The Department of Anthropology seeks applicants for a tenure-track position as **ASSISTANT PROFESSOR**, starting July 1, 1995. Applicants should have primary research accomplishment in the special area of behavioral ecology of nonhuman primates, supported with interests and background in one or more other areas of biological anthropology. Teaching duties will include advanced and graduate courses in behavioral ecology and at least one other area of biological anthropology as well as an introductory course in the evolution of human behavior. Strong preference will be given to applicants whose research is carried out in the field and who have completed the Ph.D. or clearly will complete it by July 1, 1995. To apply, please submit a letter of application describing special research interests and supporting areas of interest in depth, a curriculum vitae, and the names and addresses of three referees to: **Peter S. Rodman, Chair, Department of Anthropology, University of California, Davis, CA 95616.** Deadline for receipt of applications is January 15, 1994. *UC Davis is an Equal Opportunity/Affirmative Action Employer. Women, members of minority groups, veterans and those with disabilities are urged to apply and are invited to identify themselves as such.*

NEUROSCIENTIST

The Department of Anatomical Sciences and Neurobiology is seeking to fill tenure-track positions at the level of **ASSISTANT or ASSOCIATE PROFESSOR**. The preferred candidates will have a Ph.D. or M.D./Ph.D., an independent research program in neurosciences and teaching experience in gross anatomy or histology. Participation in the graduate student training program is expected. The department has 25 faculty, the majority of whom have a research interest in the neurosciences. This is an interactive group of investigators with research programs that encompass developmental neurobiology, molecular neuroscience, neurophysiology and systems neuroscience. Opportunity for joint appointments with clinical departments. Send curriculum vitae, statement of research and career goals, list of current or proposed funding, and at least four letters of reference to:

**Chair of the Search Committee
Department of Anatomical Sciences
and Neurobiology
University of Louisville School of Medicine
Louisville, KY 40292**

The University of Louisville is an Equal Opportunity Employer. Women and minorities are encouraged to apply.

PURDUE UNIVERSITY Wildlife Extension Specialist and Summer Practicum Director

Two-year, 12-month visiting **ASSISTANT PROFESSOR** position in wildlife ecology. Extension responsibility (70%): Serve as Wildlife Extension Specialist, develop and conduct proactive wildlife extension programs and participate in ongoing publication and continuing education projects. Teaching responsibility (30%): Organize and conduct required (6 credit) five-week summer practicum held in northern Michigan. Ph.D. in ecology, wildlife science, or related field required. At least one degree in a management-oriented natural resource curriculum is desirable. A complete position description is available upon request. Send résumé, transcripts, and a statement of interest in extension. Also arrange to have at least three letters of reference sent. Address correspondence and inquiries to: **B. K. Miller, Chair, Search Committee, Department of Forestry and Natural Resources, Purdue University, 1159 Forestry Building, West Lafayette, IN 47907-1159.** Review of applications will begin January 31, 1995. *Purdue University is an Equal Opportunity/Affirmative Action Employer. Women and minorities are encouraged to apply.*

FACULTY POSITION: A tenure-track faculty position is available to conduct research on multinuclear NMR spectroscopy of isolated tumor cells and spheroids. Ability to develop an independent yet interactive research program and compete for external funding is essential. Salary and level of appointment commensurate with qualifications. Contact: **Dr. Jerry D. Glickson, Department of Radiology, The Johns Hopkins School of Medicine, 720 Rutland Avenue, Baltimore, MD 21205.** *Johns Hopkins is an Equal Opportunity/Affirmative Action Employer.*

POSITIONS OPEN

COMPUTER SYSTEMS ENGINEER

The Lawrence Berkeley Laboratory Human Genome Center (HGC) is currently seeking a Group Leader for its Genome Computation Group (GCG).

Reporting to the Director of HGC, selected candidate will provide leadership to a group of computer professionals whose main goal is to complete the planning/implementation of a custom software system to support the expansion of the Directed Sequencing Project within the HGC. This system will require the development of significant custom software along with the adaptation of various existing software modules. A defining feature of the Center is its emphasis on team-oriented interdisciplinary research among the biology, instrumentation, and genome computation groups.

Applicant must have experience in software engineering with an emphasis on the design and implementation of large or moderate scale systems for data acquisition, processing, and database management; experience with development of high quality graphical user interfaces; supervisory experience at the project management level; and ability to develop new software related proposals. M.S./Ph.D. in related field preferred.

Send your résumé and salary history to: **Lawrence Berkeley Laboratory, Staffing Office, Box No. JSCIE2904, One Cyclotron Road, Building 938A, Berkeley, CA 94720.** Or Email to: **JAMagee@lbl.gov.** *An Equal Opportunity Employer.*



BIOLOGY CHAIR

The University of Central Arkansas invites applications and nominations for the position of **CHAIR** of the Department of Biology. The 20 member department has a record of excellence in education in biology at the undergraduate and graduate (M.S.) levels and a strong commitment to research. The successful candidate will have demonstrated skills in teaching, research, and administration consistent with appointment at the associate professor or professor level. Letter of application, current résumé, concise statement of educational and administrative philosophy, and names, addresses, and telephone numbers of three references should be sent to:

**Biology Chair Search Committee
College of Natural Sciences and Mathematics
Irby 120
University of Central Arkansas
Conway, AR 72035**

Review of materials will begin on 20 December 1994 and continue until the position is filled. *University of Central Arkansas is an Equal Opportunity/Affirmative Action Employer.*

DEAN: COLLEGE OF NATURAL SCIENCES AND MATHEMATICS

Applications and nominations are invited for the position of **DEAN** of the College of Natural Sciences and Mathematics, Indiana University of Pennsylvania (IUP). Candidates should have an earned doctorate in a discipline offered by the College (Biology, Chemistry, Computer Science, Geoscience, Mathematics, Physics, and Psychology); proven leadership ability; administrative experience working with faculty, administrators, staff, and students; an excellent record of teaching, research, and professional activity; and proven ability to work effectively with the community. Contact person is **Dr. Dennis Whitson, Chair, Search Committee, 204 Sutton Hall, IUP, Indiana, PA 15705-1098.** Internet: **Whitson@grove.iup.edu.** *IUP is an Affirmative Action/Equal Opportunity Employer.*

CHIEF OF GERONTOLOGY. The Portland, Oregon, Department of Veterans Affairs Medical Center, a Dean's hospital and closely affiliated with Oregon Health Sciences University, is seeking an experienced academic leader to serve as Chief of the section of gerontology. Candidates should be experienced academic physicians with an excellent record of laboratory research, clinical and teaching skills and administrative accomplishments.

The appointment will be at the level of associate professor or professor based on the candidate's qualifications. Applicants should write **Kenneth Brummel-Smith, M.D., P.O. Box 1034, ATTN: 05D2, Portland, OR 97207.** Applicants may be subject to drug testing. *The Veterans Affairs Medical Center is an Equal Opportunity Employer.*

National Institutes of Health National Institute on Aging Postdoctoral Fellowship Positions

The Laboratory of Biological Chemistry located at the Gerontology Research Center in Baltimore, Maryland is seeking a postdoctoral fellow (Ph.D. or M.D.) interested in studying the regulation of chondrocyte gene expression using model systems related to chondrogenesis and cartilage repair. The project will focus on the characterization of chondrocyte nuclear factors that interact with previously identified regulatory sequences in the collagen II gene. The candidate should have training in cellular and molecular biology and have an interest in degenerative diseases of aging. Starting salary will be commensurate with qualifications and experience. For more information contact Dr. Walter E. Horton, Jr. at (410) 558-8154. Interested candidates should submit curriculum vitae, bibliography, reprints, summary of research interests and names of three references to: National Institute on Aging, Attn: Walter E. Horton, Jr., Gerontology Research Center, 4940 Eastern Avenue, Baltimore, MD 21224.

NIH is an Equal Opportunity Employer.

RESEARCH MICROBIOLOGIST

Position requires a research scientist skilled in recombinant DNA techniques with experience and education in DNA/cDNA cloning, viral and bacterial expression vectors and polymerase reaction methodologies. Masters degree or PhD required.

RESEARCH IMMUNOLOGIST

Requirements include experience in veterinary biology. Will plan/execute scientific experiments and analysis. Masters or PhD in Microbiology required; industrial research experience would be a major plus.

If your talents include solving complex problems, Fort Dodge Laboratories, the leader in veterinary biology, offers a state-of-the-art technical atmosphere, professional associates and excellent compensation.

Send resume in confidence to:

**Personnel Director
FORT DODGE LABORATORIES
P.O. Box 518
Fort Dodge, IA 50501**



*Talented People & State-Of-The-Art
Technology Together...*

EOE M/F/D/V

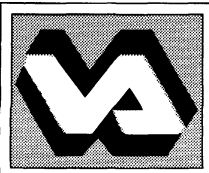
BOSTON VA MEDICAL CENTER

**KEEPING THE
PROMISE
TO THOSE
WHO SERVED**

CLINICAL CHEMIST

Boston Veterans Medical Center is seeking a Clinical Chemist to supervise the busy chemistry section which is responsible for routine, automated and toxicological chemistry. The appointee will supervise laboratory safety activities and aid in continuing education for technologists. Research is encouraged. The Medical Center is a large, active tertiary care center & teaching hospital with two out-patient clinic laboratories. It is affiliated with Boston University School of Medicine and a faculty appointment with teaching duties will be available to an appropriately qualified applicant. Applicants should send their curriculum vitae to: **Human Resource**

V A M C



**Management Service, Boston
VA Medical Center, 150 South
Huntington Avenue, Boston,
MA 02130. Call Cora M.
Felder for applications at
(617) 232-9500, ext. 5559. We
are smoke-free and committed to
equal employment opportunities.**

Minority Fellowships in Neuroscience

Doctoral Fellowships Postdoctoral Fellowships

Benefits

- Financial support for up to a period of either three years (doctoral) or two years (postdoctoral)
- Summer Training in Neuroscience and Survival Skills at the Marine Biological Laboratory in Woods Hole, MA
- Travel to prospective training sites
- Partial travel support to the Society for Neuroscience meeting

Eligibility

- American citizenship or permanent visa residency; and
- Enrollment in a full-time doctoral program in neuroscience

An additional important factor for selection is that applicants be members of an underrepresented minority group, including but not limited to African Americans, Alaskan Natives, American Indians, Mexican Americans, Pacific Islanders, and Puerto Ricans.

Application

For the doctoral program applications are now being accepted and must be received by January 15, 1995. For the postdoctoral program applications are due March 1, 1995. Funding is provided by the National Institute of Mental Health. This program is administered by the American Psychological Association and the Association of Neuroscience Departments and Programs.

For Information Write:

**The American Psychological Association
Minority Fellowship Program/Neuroscience
750 First Street, N.E.
Washington, D.C. 20002-4242
(202) 336-6027
Internet: mfp@apa.org**

POSITIONS OPEN

CANCER CENTER DIRECTOR UNIVERSITY OF ILLINOIS AT CHICAGO

The University of Illinois at Chicago (UIC) College of Medicine invites applications for the position of Cancer Center **DIRECTOR**. The position includes appointment as a tenured Professor. We are looking for an outstanding cancer researcher (M.D., Ph.D., or the equivalent) with international recognition, a strong record of publications and grant support, broad knowledge of the current state of cancer research and the ability to communicate effectively with both researchers and clinicians. This individual should have the organizational skills and ambition to initiate and coordinate multidisciplinary basic and clinical studies on cancer. The Cancer Center Director will foster interactions and collaborations among cancer researchers and clinicians at UIC, promote and coordinate recruitment of cancer researchers, establish and supervise shared facilities for the Cancer Center, and spearhead the development of new research and training programs in oncology. The Cancer Center will take advantage of the outstanding research environment at UIC, strong clinical base, diverse patient population, and the commitment of the University to developing UIC as a leading national center of preclinical and clinical oncology. For fullest consideration, interested applicants should send a copy of their curriculum vitae by January 17, 1995, to:

Dr. Igor B. Roninson
Chair, Cancer Center Search Committee
Department of Genetics M/C 669
University of Illinois at Chicago
808 South Wood Street
Chicago, IL 60612-7309

UIC is an Equal Opportunity/Affirmative Action Employer.

DIRECTOR UNIVERSITY OF WISCONSIN COMPREHENSIVE CANCER CENTER

The University of Wisconsin Medical School, Madison, invites applications and nominations for the position of **DIRECTOR** of the Wisconsin Comprehensive Cancer Center (UWCCC). The UWCCC comprises 145 members who engage in research, training, cancer care and outreach. The Center Director reports directly to the Dean of the Medical School, and with the advice and assistance of senior and program leaders, allocates the resources of the Center to accomplish its mission of excellence in research, education, clinical care and outreach. The Director guides a complex interdepartmental, interdisciplinary organization. Resource development is an important element of successful leadership. The position develops and sustains a broad program meeting NCI criteria for comprehensiveness with outstanding achievements in research in the basic and clinical sciences, high priority clinical trials, and cancer prevention and control; education and training; public information services, and community service and outreach. Candidates will have an M.D. and/or Ph.D. degree, nationally recognized experience and interest in oncology, and demonstrated administrative excellence. Academic credentials gained in clinical and/or laboratory research and education must meet standards for a senior faculty rank appointment. Tenure home will be in a department appropriate to the candidate's background. Applications from minorities and women are encouraged. Curriculum vitae and letter of interest should be sent by January 31, 1995, to: **William Ershler, M.D., Chair, Cancer Center Director Search Committee, c/o Margie Martin, 1205 MSC, 1300 University Avenue, Madison, WI 53706. FAX: 608-265-3286.** Confidentiality may be requested in writing. Finalists cannot be guaranteed confidentiality. *University of Wisconsin is an Equal Opportunity/Affirmative Action Employer.*

ORGANIC CHEMIST. Yeshiva University invites applications for a tenure-track **FACULTY POSITION** in Organic Chemistry, starting September 1995. Teaching duties include organic chemistry, advanced courses possibly including biochemistry and spectroscopy, and chemistry for non-science majors. Applicants must have a completed Ph.D. Preference will be given to candidates with experience in undergraduate teaching and demonstrated ability and interest in conducting research with undergraduates who are interested mainly in the health sciences. Rank and salary are dependent on qualifications. Send résumés and have three letters of reference sent to: **Dean H. Nierenberg, Yeshiva College, 101 Furst Hall, Yeshiva University, 500 West 185th Street, New York, NY 10033.** *An Equal Opportunity Employer.*

POSITIONS OPEN

EMORY UNIVERSITY

Dean of the Graduate School of Arts and Sciences

Emory University invites applications and nominations for the position of **DEAN** of the Graduate School of Arts and Sciences. Emory University currently enrolls approximately 10,000 students in nine schools, taught by 1,700 full-time instructional faculty, of whom 700 are graduate faculty. The Graduate School of Arts and Sciences enrolls 1,300 students and awards Master's and doctoral degrees in 23 departments and divisions. The Dean is responsible for providing academic leadership in all aspects of the graduate program and representing graduate studies within the administration of the University.

Candidates must have a record of teaching and scholarship commensurate with appointment to the rank of professor. Evidence of administrative interest and aptitude is required, as is commitment to rigorous graduate education.

Applicants should submit a letter detailing their interest and pertinent experience, together with a current curriculum vitae. Applications and letters of nominations should be sent to: **Professor Thomas S. Burns, Chair, Graduate Dean Search Committee, Department of History, Bowden Hall, Emory University, Atlanta, GA 30322.** The search committee will begin reviewing dossiers December 15, 1994.

Emory is an Affirmative Action/Equal Opportunity Employer.

Applications are invited for a **TENURED** or **TENURE-TRACK POSITION** in an area of biochemistry or molecular biology linked to pharmaceutical-bioanalytical research, with a dual affiliation as a Faculty Fellow at the Barnett Institute and a Faculty appointment in the Department of Pharmaceutical Sciences. Current areas of strength between the Department and the Institute include bioanalytical methodology, e.g., mass spectrometry, HPLC and capillary electrophoresis, neuropharmacology, drug targeting using receptor and antibody-based methods, molecular modeling and novel drug delivery systems development. The two units already enjoy strong collaborative ties. We are seeking an individual whose expertise bridges the strengths of the two units and whose talents will generate synergistic research activities. Participation in undergraduate and graduate teaching in the Department is an important component of this position.

Candidates should submit a letter of application with a curriculum vitae, a description of their current research activities and a projection as to how their research would interface with strong bioanalytical and pharmaceutical research groups. Please submit response to:

Chair, Search Committee
Biochemistry/Pharmaceutical Sciences Position
110 Mugar Building
Northeastern University
360 Huntington Avenue
Boston, MA 02115-5096

CELL BIOLOGIST—A TENURE-TRACK POSITION will be available August 1, 1995. Teaching duties include an introductory course in cell/molecular biology, an upper-level course and a seminar in cell biology, participation in our Liberal Studies program, and directing student research projects. Development of an active research program involving undergraduates is expected. Excellent research and teaching facilities are available, as are start-up funds. We seek an individual with demonstrated excellence in teaching and research, and a commitment to liberal arts education. Send curriculum vitae, statements of teaching and research interests, and three references to: **Dr. Glen Wurst, Chair, Biology Department, Allegheny College, Meadville, PA 16335.** Review of credentials will begin January 4, 1995. *Women and minorities are strongly encouraged to apply. Allegheny is an Equal Opportunity Employer.*

TWO POSTDOCTORAL POSITIONS

Molecular genetics of (1) Colorectal Cancer or (2) Salmonella, available immediately. (1) DNA and RNA fingerprinting in cancers that display the mutator phenotype. (2) Physical and genetic analysis of Salmonella-specific chromosome loops. Both projects funded by NIH through 1998.

Please submit curriculum vitae to:

(1) **Manuel Perucho** or (2) **Michael McClelland**
California Institute of Biological Research
11099 North Torrey Pines Road
La Jolla, CA 92037
FAX: 619-535-5472

POSITIONS OPEN

MARINE SCIENTISTS

The Department of Marine Sciences, a unit of the University of Georgia's School of Marine Programs, invites applications for three **TENURE-TRACK FACULTY** positions beginning September 1995 in the areas of 1) organic geochemistry or biogeochemistry; 2) near-shore/coastal ecosystem processes; and 3) micro- or macro-zooplankton. Successful applicants will be expected to develop innovative, fundable research programs and participate in the department's graduate and undergraduate instructional programs. Potential for interdisciplinary collaboration on process-oriented research is desirable. Send curriculum vitae, statements of research and teaching interests, and three letters of reference by January 16, 1995, to: **Chair, Search Committee, Department of Marine Sciences, Ecology Building, University of Georgia, Athens, GA 30602-2206.** *The University of Georgia is an Equal Opportunity/Affirmative Action Employer. Women and minority candidates are especially encouraged to apply.*

POSTDOCTORAL POSITIONS BIOLOGICAL MASS SPECTROMETRY NSF High-Field FT-ICR MS Facility

POSTDOCTORAL POSITIONS at \$31,000 per year are available in high-performance Fourier transform mass spectrometry. State-of-the-art equipment includes electrospray and MALDI ion sources for 7 T and 9.4 T widebore superconductor magnets. Each postdoctorate is expected to participate in one or more projects, including ion optics; instrumental and experimental technique development; MALDI and other laser-based experiments; and electrospray for structure/shape analysis of biomolecules. Prior experience in structural biology and/or biological mass spectrometry is desirable. Submit graduate transcript, updated curriculum vitae including publications and presentations, one page on prior research accomplishments, and a short description of proposed research area(s), and have three reference letters sent to: **Professor Alan G. Marshall, Director, ICR Program, National High Magnetic Field Laboratory, Florida State University, 1800 East Paul Dirac Drive, Tallahassee, FL 32306-4005.** *Florida State University is an Affirmative Action/Equal Opportunity Employer.*

POSTDOCTORAL OR STAFF RESEARCHER EXPERIMENTAL CHEMICAL PHYSICS

Experimental quantum control of chemical dynamics with femtosecond lasers. Close interaction between experiments and analytical and numerical theory. Ultrafast X-ray and electron diffraction for imaging molecular quantum dynamics. Looking for exceptionally able experimentalists, particularly with strong background from among ultrafast laser, molecular or charged particle beams, or X-ray physics. Salary \$26,220+ (Postdoctoral), \$41,600+ (Researcher, with exceptional experience). For description of current group activities and personnel see World Wide Web site, <http://www-wilson.ucsd.edu>. Prof. Kent R. Wilson, Department of Chemistry 0339, University of California, San Diego, La Jolla, CA 92093-0339. *Affirmative Action/Equal Opportunity Employer.*

POSTDOCTORAL POSITION available immediately to study the application of new technologies to develop immunoassays for measuring diabetes-associated autoantibodies. The project requires the use of a variety of immunology, molecular biology and biochemical methods with semi-automated work station technologies. Candidates should possess an interest in human immunology and a creative aptitude for developing new immunoassay strategies. A Ph.D. degree is required; experience in monoclonal antibodies and molecular biology is strongly preferred. Send curriculum vitae, statement of research interests and names and telephone numbers of three references to: **Dr. Santica Marcovina, University of Washington, 2121 North 35th Street, Seattle, WA 98103.** *The University of Washington is an Affirmative Action/Equal Opportunity Employer.*

POSTDOCTORAL POSITION available for Molecular Cell Biologist, Biochemist, or related discipline to better understand cellular responses to physical stimuli in models of wound and fracture healing. Cell culture experience preferred. Send curriculum vitae and three letters of reference to: **Dr. Robert Goldman, McKay Laboratory of Orthopaedic Surgical Research, 424 Stemmler Hall, 36th and Hamilton Walk, University of Pennsylvania, Philadelphia, PA 19104.**

ASSISTANT RESEARCH SCIENTIST

A post-doctoral research position in cellular and molecular immunology is immediately available, in the laboratory of Dr. Julia M. Phillips-Quagliata. Position requires a recent Ph.D. to study a novel IgA/IgM receptor on mouse B cells. Strong background in Immunology with some experience in Molecular Biology preferred.

Mail or fax your curriculum vitae, the names, address, FAX and telephone numbers of 2 references and a statement of your research goals and interests to: Maha L. Singh, Professional Recruiter, Human Resources, NYU Medical Center, 550 First Avenue, New York, N.Y. 10016, fax: 212-263-8211. EOE, MF.

Leading Research Into The 21st Century.

Bristol-Myers Squibb in Syracuse, New York, has the following opportunities available in the Genetic Engineering and Biological Process Development Department:

Assistant/Associate Scientists

Participate in the development of GMP recovery/purification, processes and validation of the processes for proteins. Responsible for the design and implementation of experiments as well as the interpretation of results for the development of protein purification procedures. Also responsible for insuring process integrity by designing and implementing validation protocols and obtaining required analyses.

The qualified candidates will possess a B.S. or M.S. in Chemistry or Biochemistry. Experience in protein purification with demonstrated ability to work independently as well as in a group. Written and oral communication skills are necessary. Reply to **Dept. SY-940196/197**.

Assistant/Associate Scientist

Conduct laboratory procedures in compliance with established protocols and with regulatory/laboratory requirements, maintain a research notebook and perform literature searches and evaluations.

The qualified candidates will possess a B.S. or M.S. in Biology or Molecular Biology with up to 4 years experience which should include molecular biology, cDNA construction, gene isolation familiarity PCR techniques. Must be able to maintain a level of technical knowledge and understanding that keeps current with scientific literature. Reply to **Dept. SY-940193**.

We offer an excellent salary and comprehensive benefits. For consideration, forward your resume with salary requirements and **Dept. # to: Manager Human Resources, BRISTOL-MYERS SQUIBB, P.O. Box 4755, Syracuse, NY 13221-4755**. Equal Opportunity Employer, M/F/D/V.



Bristol-Myers Squibb Company



**Temple University
School of Medicine**

Cancer Research Positions

The Department of Pathology and Laboratory Medicine at Temple University School of Medicine is currently seeking applicants for research positions at the Assistant/Associate Professor level. These positions will be in the division of Experimental Pathology. In particular, qualified candidates are sought in the areas of (1) Hormonal carcinogenesis, (2) Environmental carcinogenesis, (3) Gene targeting/immunotherapy of cancer, and (4) Resistance to cancer chemotherapy. These investigators will hold appointments in the Fels Institute for Cancer Research, will be associated with the Ph.D. program in the department and should have a track record of independent research and research funding. These positions will augment the section of molecular pharmacology in the Temple University Comprehensive Cancer Center. Interested candidates are requested to submit a C.V. and the names of three references to: **Henry Simpkins, M.D., Ph.D., Chairman, Department of Pathology and Laboratory Medicine, Temple University School of Medicine, 3401 N. Broad St., Phila., PA 19140**.

Temple University is an EOE/AA employer and strongly encourages applications from women and minorities.

National Institutes of Health • National Institute of Allergy and Infectious Diseases •
Division of Acquired Immunodeficiency Syndrome

CHIEF DRUG DEVELOPMENT AND CLINICAL SCIENCES BRANCH THERAPEUTICS RESEARCH PROGRAM

Location: Bethesda, Maryland

Announcement No.: AI-94-0089

The Division of AIDS, Therapeutics Research Program, NIAID/NIH, is seeking a Chief for its newly established Drug Development and Clinical Sciences Branch. This individual is responsible for providing overall leadership for, and the general guidance, in the areas of preclinical development of experimental therapies: identification, validation, and standardization of immunologic and virologic markers; quality assurance programs and accreditation policies for immunology, virology, and pharmacology laboratories, and; initiative development to support immunology, virology, pharmacology, and drug development laboratory research as they relate to the DAIDS/NIAID HIV research agenda. The Division plans and directs a national and international extramural research program into the causes, diagnosis, prevention, and treatment of HIV and its associated sequelae.

Desirable qualifications include a Ph.D. and/or M.D. degree, extensive postgraduate research experience in the areas of virology, immunology, and/or pharmacology, demonstrated ability to direct biomedical research efforts, strong management skills, broad knowledge of both basic and clinical research aspects of infectious diseases and an understanding of the policies, procedures, and mechanisms used within the Institute, DHHS, and PHS for accomplishing research through extramural activities. U.S. citizenship is required. NIH is an Equal Opportunity Employer. Position targeted for EEO recruitment efforts.

This is a GM-15 Civil Service position. A recruitment or relocation bonus of up to 25% of base pay may be available. Physicians may be eligible for a Physician's Comparability Allowance of up to \$20,000 per year.

Selection for this position will be based solely on merit with no discrimination for non-merit reasons such as race, color, religion, gender, national origin, disability, age, or sexual orientation.

Persons interested in this position may contact Mr. Thomas Voskuhl, Associate Director for Program Operations, DAIDS, at 301-496-0545 or submit an SF-171 (Application for Federal Employment) and a curriculum vitae by December 31, 1994 to: **Ms. Sheila Conner, NIAID Personnel Office, Solar Building, Room 4B15, 6003 Executive Boulevard, Rockville, MD 20892-7260 (301-402-0957)**.

POSITIONS OPEN

VASCULAR BIOLOGY UNIVERSITY OF VIRGINIA Outstanding Opportunities for Graduate Students and Postdoctoral Fellows

The University of Virginia offers a multidisciplinary program in Vascular Biology emphasizing Physiology, Pharmacology, Biophysics and Cell Biology of the Vessel Wall. Twenty-four investigators are participants in a training program with a long history of successful mentoring of both graduate students and postdoctoral fellows. Our particular strengths are in the areas of Biophysics, Cell Signaling and Microcirculation. Laboratory investigations are underway in cell-cell communication in microvessels, cardiac, smooth muscle and endothelial cell electrophysiology, smooth muscle cell signal transduction and leukocyte-endothelial cell interactions. Interested and competitive applicants should apply to: **Dr. Brian R. Duling, Department of Molecular Physiology and Biological Physics, Box 449, Health Sciences Center, University of Virginia, Charlottesville, VA 22908.** These positions are restricted to permanent residents or citizens of the United States.

The U.S. Geological Survey (USGS), Water Resources Division, has a **POSTDOCTORAL POSITION** for a United States citizen available immediately for studies on the biodegradation of trifluoroacetate in soils, sediment, and bacterial cultures. Candidates should have a Ph.D. in microbial ecology, biogeochemistry, microbiology, or related field. Experience with microbial dehalogenation reactions, cultivation of anaerobes or methanotrophs is desirable. Term appointment of one to two years that may be extended, \$35,701-\$42,788 per annum with benefits; location: Menlo Park, California. Applicants should send SF-171 (application for Federal Employment), transcripts to: **Cecilia E. Reyes, Office of Personnel, U.S. Geological Survey, MS 213, 345 Middlefield Road, Menlo Park, CA 94025.** The USGS is an Equal Opportunity Employer. U.S. citizenship is required.

POSTDOCTORAL POSITION PRECLINICAL NEUROPSYCHOPHARMACOLOGY

Mayo Clinic Jacksonville, Laboratory of Neuropsychopharmacology, has a postdoctoral position available to study the molecular biology and pharmacology of neurotransmitter receptors, especially those for the peptide neurotransmitters. Candidates must have a strong background in pharmacology or molecular biology. Applications including curriculum vitae, summary of research interests and experience and names of three references should be forwarded to: **Elliott Richelson, M.D., Director for Research, Mayo Clinic Jacksonville, 4500 San Pablo Road, Jacksonville, FL 32224.** An Equal Employment Opportunity/Affirmative Action Employer.

POSTDOCTORAL FELLOW, MOLECULAR ENDOCRINOLOGY—Position available in early 1995 on an NIH-funded training grant to join a group studying signal transduction pathways and transcription factors that mediate developmental and hormonal regulation of the growth hormone and prolactin genes. Strong background in biochemistry required, and experience in molecular biology preferred. Send curriculum vitae, and names and telephone numbers of three references to: **Dr. Carter Bancroft, Department of Physiology and Biophysics, Box 1218, Mount Sinai School of Medicine, One Gustave L. Levy Place, New York, NY 10029-6574.** An Equal Opportunity Employer.

POSTDOCTORAL ASSOCIATE needed to conduct molecular ecology project concerning use of bacteria as indicators of degradation of stream ecosystems. Experience in aquatic ecology, molecular biology, or microbiology is desirable. Must be a U.S. citizen for access to study sites. Please send a curriculum vitae and names, addresses, and telephone numbers of three references to: **Laura Leff, Department of Biological Sciences, Box 5-CHH, Kent State University, Kent, OH 44242.** Kent State University is an Equal Opportunity/Affirmative Action Employer.

SENIOR POSTDOCTORAL FELLOW/INSTRUCTOR—Advanced postdoctoral position available in mitochondrial biochemistry and molecular biology. Opportunity to develop independent projects and career track. Send curriculum vitae to: **Eric P. Brass, M.D., Ph.D., Chairman, Department of Medicine, Harbor-UCLA Medical Center, 1000 West Carson Street, Torrance, CA 90509.**

POSITIONS OPEN

G PROTEIN-MEDIATED SIGNAL TRANSDUCTION—Two **POSTDOCTORAL POSITIONS** are available to study: 1) The role of lipid modifications and other structural features in the function, location, and movement of G proteins within cells. This is a collaborative project between **Drs. Susanne Mumby, Richard G. W. Anderson, and Alfred G. Gilman.** 2) The role of heterotrimeric G proteins in hematopoiesis and early development using embryonic stem cell and transgenic mouse technology. This second position is in the laboratory of **Dr. Tom Wilkie.** Applicants with a recent M.D. or Ph.D. degree, and research experience in cell biology, biochemistry, or immunology will be considered. Please submit a curriculum vitae, letter describing research experience, and the names, addresses, and telephone and FAX numbers of three references to: **Dr. Susanne Mumby or Dr. Tom Wilkie, Department of Pharmacology, University of Texas Southwestern Medical Center, 5323 Harry Hines Boulevard, Dallas, TX 75235-9041.** An Equal Opportunity Employer.

Two **POSTDOCTORAL POSITIONS.** Cell and molecular biology of signal transduction in *Brassica* self-incompatibility. 1) Cell Biologist with Ca^{2+} imaging, electron microscopy or electrophysiology expertise. 2) Molecular Biologist with expertise in DNA/RNA and protein techniques. Send curriculum vitae and names of three references by February 1, 1995, to: **Drs. D. Goring, R. Lew, or B. Heath, Biology Department, York University, 4700 Keele Street, Toronto, Ontario, M3J 1P3 Canada.** FAX: 416-736-5698; Email: FS300541@sol.yorku.ca.

POSTDOCTORAL POSITION available immediately in area of protein tyrosine kinase and integrin signaling. Recent Ph.D. graduate wanted to study focal adhesion kinase, its associated proteins and substrates. Experience in molecular biology, biochemistry and tissue culture an asset. Send curriculum vitae and three letters of recommendation to: **Dr. Michael Schaller, Department of Cell Biology and Anatomy, University of North Carolina at Chapel Hill, CB No. 7090, 108 Taylor Hall, Chapel Hill, NC 27599.** An Equal Opportunity/Affirmative Action Employer.

POSTDOCTORAL POSITION. Available immediately to study the mechanism of site-specific recombination in mycobacteriophage L5 including structure-function analysis of the L5 integrase and the role of mycobacterial host factors. Basic techniques in biochemistry and previous experience in protein-DNA interactions desirable. Send curriculum vitae and names of three references to: **Graham F. Hatfull, Ph.D., Department of Biological Sciences, University of Pittsburgh, Pittsburgh, PA 15260.** FAX: 412-624-4759. The University of Pittsburgh is an Equal Opportunity/Affirmative Action Employer. Women and minorities are especially encouraged to apply.

POSTDOCTORAL POSITION YALE MEDICAL SCHOOL

We are studying regulation of gene expression, recombination and somatic hypermutation in primary and EBV-transformed mammalian B cells. Please send curriculum vitae and three letters of reference to: **Dr. Nancy Maizels, Department of Molecular Biophysics and Biochemistry, Yale University School of Medicine, 333 Cedar Street, New Haven, CT 06510.**

POSTDOCTORAL FELLOWS/RESEARCH SCIENTISTS needed to characterize a large set of novel gene products expressed in tissue-destructive/invasive cell populations during inflammation/metastasis (isolated by subtractive cloning/PCR display). Strong background in cell/molecular biology preferred. Submit curriculum vitae and two letters of reference to: **Dr. Stephen J. Weiss, Upjohn Professor, University of Michigan Comprehensive Cancer Center, 1150 West Medical Center Drive, Ann Arbor, MI 48109-0640.**

POSTDOCTORAL POSITIONS available early 1995, to study the molecular mechanisms of transcriptional regulation in erythroid cells. Recent Ph.D.'s with research experience in recombinant DNA, protein-protein interaction, and/or yeast genetics are encouraged to apply, but other candidates will also be considered. Please send curriculum vitae and two reference letters as soon as possible to: **Ms. Tina Jones, Section of Molecular and Cell Biology, University of California, Davis, CA 95616.** FAX: 916-752-3085.

POSITIONS OPEN

POSTDOCTORAL POSITION PROTEIN BIOCHEMIST

A **POSTDOCTORAL POSITION** is open immediately for an experienced Protein Biochemist at Vanderbilt University Medical Center. Areas of investigation will include the molecular biology of NF- κ B/Rel transcription factors and their role in human T-cell growth, development, and HIV gene expression. Minimum requirements include M.D. and/or Ph.D., proven expertise in FPLC, and prior training in protein purification, DNA cloning, and signal transduction assays.

Please send your résumé with three references to: **Dean W. Ballard, Ph.D., c/o Julie Morris, Vanderbilt University Medical Center, 802 Light Hall, Nashville, TN 37232-0295.** Equal Opportunity Employer.

POSTDOCTORAL POSITION—IMMUNOLOGY

Available immediately to study T cell recognition of Major Histocompatibility Complex (MHC) class I-peptide complexes, antigen presentation function of MHC class I, and analysis of peptide immunodominance. Studies involve molecular and biochemical approaches as well as functional analyses. Funding source restricts qualified applicants to citizens or permanent residents. Send curriculum vitae and the names of three references to: **Dr. Janet M. Connolly, Department of Genetics, Washington University School of Medicine, Box 8232, 4566 Scott Avenue, St. Louis, MO 63110-1093.** Washington University is an Equal Opportunity/Affirmative Action Employer.

POSTDOCTORAL POSITIONS available for: (1) genetic analysis of circadian clock mechanism in zebrafish; and (2) cellular studies of circadian mechanisms in vertebrate photoreceptors. Candidates with related interests and experience in genetics, molecular biology, cell biology and/or biochemistry are encouraged to apply. Send curriculum vitae, description of research experience and interests, and names and addresses of three references to: **Dr. Gregory M. Cahill, Department of Biology, University of Houston, Houston, TX 77204-5513.** The University of Houston is an Equal Opportunity/Affirmative Action Employer. Minorities, women, veterans and persons with disabilities are encouraged to apply.

POSTDOCTORAL POSITION available immediately through University of Alabama at Birmingham Cystic Fibrosis Research Center and Immunobiology Vaccine Center to investigate mucosal immune responses to viral vectors following CFTR gene therapy. Cellular immunology and molecular biology experience preferable. Submit curriculum vitae and names of three references to: **Dr. David W. Pascual, Department of Microbiology, University of Alabama at Birmingham, University Station-BBBB 772, Birmingham, AL 35294** or FAX: 205-975-4436.

POSTDOCTORAL POSITION: to study the regulatory role of tight junctions, cytoskeletal elements, second messenger systems, intracellular Ca^{2+} , and molecular processes in intestinal epithelial paracellular permeability. Permeability disorder of Crohn's disease is being studied. Some experience in molecular biology is desirable. Please send curriculum vitae and three letters of reference to: **Thomas Ma M.D., UCI College of Medicine-DVA Medical Center, 5901 East Seventh Street (111G), Long Beach, CA 90822.** FAX: 310-494-5675.

POSTDOCTORAL POSITION available to participate in: 1) Cloning and characterization of MDV latency associated genes; 2) Identification and cloning of cellular proteins that interact with the HIV. Experience in molecular biology techniques required. Send curriculum vitae and names of three references to: **Dr. Yasaman Shirazi, Molecular Biology, Biotechnology Program, Salem-Teikyo University-Tampa Bay Research Institute, 10900 Roosevelt Boulevard, St. Petersburg, FL 33716.**

POSTDOCTORAL POSITION available immediately for a period of two years (\$25,000 per annum) to study the physiology of somatic embryogenesis in horticultural plants. Experience with analytical techniques (HPLC) or Agrobacterium mediated gene transfer is desirable. Interested candidates should send their curriculum vitae to: **Dr. P. K. Saxena or Dr. T. Senaratna, Horticultural Science, University of Guelph, Guelph, Ontario, N1G 2W1 Canada.** FAX: 519-767-0755; Email: psaxena@evbhort.uoguelph.ca.

Cell/Molecular Biologists

Headquartered in the San Francisco Bay Area, Tularik is a growing biotechnology company dedicated to the discovery and development of ethical drugs that regulate gene expression. We are actively seeking the following professionals to join our research team.

One scientist will assume a critical position in our Cell Biology Group with the objective of innovating intact cell and recombinant virus assays to search for therapeutics that alter the transcription of clinically important genes. The other scientist will join our Molecular Biology Group with the goal of discovering novel regulatory circuits responsible for controlling gene expression. We are presently focusing on gene regulation in the context of inflammatory response, hypercholesterolemia, viral replication, immune regulation and the growth of fungal pathogens. The ideal candidate for either position will have a Ph.D. degree in Cell or Molecular Biology and several years of productive postdoctoral experience.

In addition to attractive salaries and benefits, We offer an exciting, multidisciplinary research environment, where the latest developments in the understanding of gene regulation find practical application. For consideration, please submit your curriculum vitae to: **Tularik, Inc., Department LM-S, 270 East Grand Avenue, South San Francisco, CA 94080.** Tularik is an Equal Opportunity Employer.

Tularik



SCIENTIST Pharmacology

*Value
Through
Innovation*

Together with all Boehringer Ingelheim companies worldwide, we are committed to *Value Through Innovation* as our driving ambition. As a major international pharmaceutical company, we have made a commitment to innovation through world class R&D facilities, programs and scientific staff.

We currently have an opportunity for a laboratory scientist with academic or industrial experience in studying ion channel regulations of leukocytes. The successful candidate will work in a team-oriented setting within the Pharmacology Group and interact with members of the Immunological and Inflammatory Diseases Departments. Emphasis will be placed on defining the mechanism of action of agents known to modulate neutrophil functions as well as identifying novel compounds which affect neutrophils and/or other leukocytes.

Requirements for the position include a B.S./M.S. degree in the biological sciences or equivalent. Candidates should have experience in ion channel biology as relates to leukocyte function and technical expertise amenable to a Drug Discovery environment. Specific skills in the utilization of patch clamp techniques would be particularly desirable as well as exposure to fluorescence-based measurements and/or receptor biochemistry. Cell culture experience and computer skills would also be beneficial.

Located on a campus-like setting in a beautiful area of western Connecticut, we offer a competitive compensation and benefits package, the opportunity to be involved in interesting and challenging work, and a chance to contribute to our innovative discovery program. To join our growing team, please write to: **Dept. DN-1S-835, Boehringer Ingelheim Pharmaceuticals, Inc., 900 Ridgebury Road, P.O. Box 368, Ridgefield, CT 06877.** We are an equal opportunity employer. As a progressive healthcare company, we have a non-smoking environment.



**Boehringer
Ingelheim**

SCIENTIST

STAFF

Experience in hematology and related peripheral blood progenitor cells products. Knowledge of culture system, flow cytometry, and selection techniques. Position will involve bench research as well as coordination of R&D efforts in corporate lab. Please send cover letter, three letters of reference and resume to:

Response
TECHNOLOGIES

**Attn: National Director
of Laboratory**
**1775 Moriah Woods
Blvd.**
Memphis, TN 38117
EOE

Pharmacokinetics/ Drug Metabolism Scientists

PARKE-DAVIS, the Pharmaceutical Research Division of Warner-Lambert, has two immediate openings in the Pharmacokinetics/Drug Metabolism Department.

The successful candidates will be responsible for the design and conduct of clinical and preclinical pharmacokinetic and drug metabolism (PK/DM) studies, pharmacokinetic and statistical data analysis, and summarization of results. They will also be responsible for development, validation, and implementation of analytical methods for drugs and metabolites in biological fluids.

These positions require a BS/MS in pharmacy, pharmacology, chemistry, biochemistry or related discipline with a minimum of 3-7 years (BS) or 2-4 years (MS) experience in pharmaceutical R&D. Good experience in HPLC method development and assay of biological samples. Understanding of pharmacokinetic principle. Good computer and written/oral communications skills.

The PARKE-DAVIS Research Division is located in Ann Arbor, Michigan adjacent to the University of Michigan campus. Our scientific staff enjoy excellent compensation and benefits, and an exceptional living environment with excellent schools, diverse social activities and cultural activities associated with a major university.

Interested, qualified applicants should send their resume, list of references, and salary requirements in confidence to: **PARKE-DAVIS, Human Resources, Attn: LJB-94167-9, 2800 Plymouth Road, Ann Arbor, MI 48105.** "Smoke-Free Work Environment"



PARKE-DAVIS

People Who Care

"Equal Opportunity in Action"

POSITIONS OPEN

POSTDOCTORAL POSITION to study the possible segregation of heat shock proteins and abscisic acid with the plant drought and heat resistance phenotype. Expertise in protein and abscisic acid analysis required. Experience in light microscopy desired. Send letter stating research experience, résumé, and three letters of recommendation to: **Zoran Ristic, Department of Biology, University of South Dakota, Vermillion, SD 57069 USA.** Deadline: January 16, 1995, or until the position is filled. *The University of South Dakota is an Equal Opportunity/Affirmative Action Employer.*

POSTDOCTORAL POSITION available to study the cellular interactions of interferon and cancer chemotherapeutic drugs in colon cancer. Research projects include molecular analysis of the transcriptional regulation of interferon-induced genes, the biochemical pharmacology of fluoropyrimidines, and studies utilizing a new transgenic mouse model of colon cancer. Send curriculum vitae and names of three references to: **Dr. Edward L. Schwartz, Department of Oncology, Albert Einstein Cancer Center, 111 East 210th Street, Bronx, NY 10467.**

POSTDOCTORAL POSITION AVAILABLE

A position is immediately available for a **POSTDOCTORAL FELLOW** to investigate the effects of atherosclerosis on arterial smooth muscle cells using molecular biology techniques. Experience in cell culture and molecular biology is preferred. Please send curriculum vitae and three letters of reference to: **Thomas N. Tulenko, Ph.D., Department of Physiology, Medical College of Pennsylvania, 2900 Queen Lane, Philadelphia, PA 19129.**

UNIVERSITY OF CALIFORNIA SAN FRANCISCO Studies in Cancer Genetics-Biology Fellowships for Predoctoral and Postdoctoral Students

Predocutorial and postdoctoral **FELLOWSHIPS** are available to individuals interested in biophysical, molecular, genomic, and molecular cytogenetic approaches to the study of the mechanisms (especially genetic) of carcinogenesis, tumor progression and response to therapy. Faculty preceptors represent a broad spectrum of research from various departments at the University of California, San Francisco (UCSF). The size and nature of this fellowship program encourages communication and exchange of ideas between its members, creating a stimulating atmosphere in which to conduct scientific investigations. Predocutorial Student Fellowships are available through a multidisciplinary graduate program leading to the Ph.D. degree in Biophysics. M.D.'s, D.V.M.'s, bachelor's and Master's level students are considered. Send GRE scores, statement of research interests, and three letters of recommendation by January 15, 1995, to: **The Program Administrator, Graduate Group in Biophysics, Box 0448, UCSF, CA 94143.** Postdoctoral applicants who are U.S. citizens or permanent residents send a curriculum vitae, graduate transcript, statement of research interests, and three letters of recommendation to: **Dr. William C. Dewey, Program Director, Radiation Oncology Research Laboratory, 1855 Folsom Street, MCB-200, UCSF, CA 94103-0806.** Telephone: 415-476-9062; FAX: 415-476-9069; Email: Dewey@dmc.ucsf.edu.

UCSF is an Equal Opportunity/Affirmative Action Employer

PUBLIC HEALTH SCIENTIST: The Natural Resources Defense Council, a national non-profit public interest organization, seeks a **SENIOR SCIENTIST** to bring scientific analysis and knowledge to advocacy in various forums for the prevention of adverse health and ecological effects of toxic chemical pollution. A Ph.D. or M.D./M.P.H. is required, with several years of experience in environmental or public health, or a related field. Candidates should be knowledgeable about cutting-edge toxics issues such as disproportionately impacted subpopulations, endocrine disruption, and other noncancer endpoints, and emerging issues regarding carcinogenesis. The position requires the established ability to keep abreast of scientific advances and work with the public health and academic communities. The ability to conduct outreach activities to build bridges with persons affected by toxics problems is also very important. The salary is \$60,000 to \$70,000, commensurate with experience. Send résumé to: **Public Health Program, NRDC, 1350 New York Avenue, NW, Suite 300, Washington, DC 20005.** *Equal Opportunity Employer.*

POSITIONS OPEN



SOIL SCIENTIST (PHOSPHORUS)

The Agricultural Research Service, USDA, University Park, Pennsylvania, has an opening for a permanent full-time **SOIL SCIENTIST** to lead research to define and manage the critical factors controlling P losses from fields, landscapes, and watersheds, and to develop and conduct research on the chemical factors controlling these P losses. Demonstrated experience required in: 1) formally leading research projects; and 2) publication record, with emphasis on the chemical aspects of P cycling or controlling losses. Candidates must be U.S. citizen; have a degree in Soil Science or related discipline that included 30 semester hours in biological, physical or earth science and 15 semester hours in soil chemistry, soil physics, and soil fertility; have knowledge of the phosphorus-water-soil-sediment-plant system; and the ability to design, plan, and conduct research and publish results. Salary commensurate with experience (\$49,401 to \$68,667 per year). For copy of the position description call **Teri Jordan at 814-863-0939** or FAX: 814-863-0935. For application package call **Angela Canterini at 301-344-1920.** Incomplete applications will not be considered. Applications in response to this advertisement must be marked **5N005** and mailed by December 23, 1994.

USDA/ARS is an Equal Opportunity Employer.

THE NEUROSCIENCES INSTITUTE LA JOLLA Cortical Neurophysiology

Applications are invited for the postdoctoral position of **JUNIOR FELLOW** in Experimental Neurobiology to study mechanisms underlying visual perception and sensorimotor integration in the cat. Applicants should have a background in neurophysiological techniques and data analysis. Fellows will receive stipends appropriate to their qualifications and experience. Submit a curriculum vitae, statement of research interests, and names of three references to: **Dr. Peter König, The Neurosciences Institute, 3377 North Torrey Pines Court, La Jolla, CA 92037.** FAX: 619-554-9159.

LEAD SCIENTIST for collaborative molecular modeling project in a leading-edge Environment Project will apply innovative modeling techniques to build structural models of a protein class, in collaboration with ongoing molecular biology and drug-design studies.

Molecular Applications Group is a Stanford-based start-up company, founded by **Dr. Michael Levitt**, developing and selling leading-edge software for 3-D macromolecular structure presentation and analysis. Our combination of unique visualization tools and scientific applications for predicting and manipulating protein structures allows scientists to use structural insight to test and analyze hypotheses when planning and interpreting experiments. We are seeking a research scientist with expertise in computer modeling of macromolecular structure. Candidates should have a Ph.D. and preferably two to four years of postdoctoral experience, and must possess broad familiarity with the techniques and current research in macromolecular modeling. Qualified candidates will have experience in sequence analysis and molecular modeling of proteins, and development of new methods via computer programming.

Call, send résumés by FAX or Email to: **Dov Hershsberg, Molecular Applications Group; Telephone: 415-473-3033; FAX: 415-473-1795; Email: dov@mag.com.**

Infectious Diseases M.D./RESEARCH FELLOWSHIP position available immediately supported by an NIH institutional training grant. Areas of investigation include HIV/AIDS, sexually transmitted diseases, and the pathogenesis of intracellular pathogens. Training faculty are members of the Department of Medicine, Molecular Genetics and Biochemistry, Surgery, Obstetrics and Gynecology, and Graduate School of Public Health. Research fellows will design and carry out a project in the laboratory of one of the training faculty. A clinical trials unit and primary care clinic complement the basic science program. NIH stipend is supplemented according to University of Pittsburgh policy. Candidates must be U.S. citizens or have resident alien status. Interested individuals should contact: **Dr. Edward J. Wing, University of Pittsburgh Medical Center, Montefiore-W931, 200 Lothrop Street, Pittsburgh, PA 15213.** *The University of Pittsburgh is an Affirmative Action/Equal Opportunity Employer.*

POSITIONS OPEN



GENETICIST, GS440-12/13. U.S. Department of Agriculture, Agricultural Research Service, Plant Genetics Research, Columbia, Missouri, is seeking a permanent, full-time **GENETICIST** to provide leadership for an ongoing cooperative maize genetics program. The scientist will manage the Maize Genome Database, and will ensure compilation and systematization of genetic information through communication and coordination with research workers on maize and other plant species. The position combines service duties (75%) and research (ca. 25%) in the incumbent's relevant area of interest. Candidates must have professional knowledge of maize genetics, molecular genetics, and biochemistry; and familiarity with the application of biotechnological methods in genetics and plant breeding research directed to solving crop problems. Knowledge of the operation of diverse computer systems such as UNIX, DOS, Macintosh; word processing, spreadsheet, and database programs; networking software; and relational database formats and manipulation (specifically with Sybase) is required. Salary commensurate with experience (\$41,543 to 49,401). U.S. citizenship required. For information about the position contact: **Dr. E. H. Coe, telephone: 314-882-2768; FAX: 314-874-4063; Email: ed@teosinte.agron.missouri.edu.** For information on application procedures contact: **Robin Marlowe, USDA-ARS, 6305 Ivy Lane, Room 325, Greenbelt, MD 20770.** Applications in response to this advertisement should be marked **5N008.** *ARS is an Equal Opportunity Employer.*

UNIVERSITY OF CALIFORNIA SANTA BARBARA School of Environmental Science and Management

We invite applications for two **SENIOR POSITIONS** in the new graduate school: (a) Earth System Science, including the physical climate system, hydrologic cycle, biogeochemical cycles, and their interactions; (b) Environmental Policy and Resource Management, including environmental regulation and policy analysis, economic valuation, and resource management. We seek distinguished applicants with strong publication records, vigorous, original research programs, evidence of excellence in teaching, and a commitment to helping start a new, interdisciplinary program that will admit its first students in fall 1996. Appointment level is open. Rank and salary will depend on teaching and research experience.

Application deadline is January 27, 1995. Start date is July 1, 1995. Send curriculum vitae, names of four references, statement of proposed research and teaching interests, and reprints of no more than five publications to: **Jeff Dozier, Dean, School of Environmental Science and Management, University of California, Santa Barbara, CA 93106.** Email: dozier@cresco.ucsb.edu.

The University of California is an Equal Opportunity/Affirmative Action Employer.

INFECTIOUS DISEASES. The Infectious Disease Research Institute (IDRI) is seeking highly qualified doctoral level individuals with externally funded programs to join a dynamic team of immunologists, biochemists, and molecular biologists working on immunological control of *Mycobacterium tuberculosis*, as well as select parasitic and viral infections. IDRI is located on the premises of CORIXA Corporation, a newly founded T cell vaccine company, possessing a fully equipped, interactive, and supportive laboratory and clinical research environment. Qualified applicants will be eligible for partial salary support and other benefits from CORIXA. Please send curriculum vitae and names of three references to: **Steven G. Reed, IDRI, 1124 Columbia, Suite 464, Seattle, WA 98104.** *Equal Opportunity Employer.*

NSF GRADUATE TRAINEESHIPS in Environmental Biology. The University of Notre Dame has several five-year graduate traineeships (toward Ph.D.) available in fall 1995 as part of a new NSF-sponsored program designed to link ecology and engineering in addressing environmental problems. The traineeship provides an annual stipend of \$14,100, full tuition waiver, and research/travel support. Application deadline is 1 February 1995. For information and application materials, write: **Environmental Biology Training Program, Department of Biological Sciences, University of Notre Dame, Notre Dame, IN 46556.**

OPTIMEDx, Inc.

RESEARCH SCIENTISTS

OPTIMEDx, Inc., a new Seattle biomedical company, has challenging opportunities for scientists to support our expanding research and development program.

Tumor biologist

The ideal candidate will have a Ph.D. in cell or tumor biology, with relevant experience utilizing a wide variety of laboratory techniques including optical imaging and measurement of blood flow. Research will involve development of animal tumor models, with the ultimate goal of understanding mechanisms underlying changes in optical signals, in normal and tumor cells.

Optical imaging scientist

We are seeking a scientist with a Ph.D. in biophysics or a related field with postdoctoral research experience in photomicroscopy, optics, digital image analysis and a strong background in cell or tumor biology. The position involves design and operation of optical imaging systems for use in the research program, as well as strong interactions with engineers designing systems for clinical imaging applications.

Responsibilities of these scientists include establishing in-house facilities, and managing outside collaborations aimed at understanding the mechanisms underlying a new tumor-imaging modality. The candidates will have to communicate with, and provide advice to, an interdisciplinary team consisting of physicians, engineers and scientists.

Interested candidates should submit a C.V. to: Director, Discovery Science, OPTIMEDx, Inc., 2151 North Northlake Way, Suite 200, Seattle, WA 98103.

An Equal Opportunity Employer M/F

JPL/NASA Visiting Senior Scientist

MISSION FROM PLANET EARTH STUDY OFFICE PUBLIC OUTREACH AND EDUCATION SPECIALIST

The Jet Propulsion Laboratory invites applications to the Visiting Senior Scientist (VSS) Program for a position in the Mission from Planet Earth (MFPE) Study Office at NASA Headquarters. The function of this position is to support the Branch Chief in all programmatic and funding aspects of their activities. Current activities for which the MFPE Office is responsible for are aimed at developing, communicating and broadening a public dialogue and understanding of the rationale, goals, value to society and required technology development associated with NASA's long range program of human and robotic exploration of space. The activities also include the long-range development of commercial activities associated with space.

In addition to having a PhD in a technical field or equivalent credentials in education or communications, the successful candidate must have demonstrated expertise in public outreach and education; the successful candidate will help plan and execute regional national meetings; help develop and implement educational programs with K-12 teachers in their development of new curricula. Excellent communication skills, both verbal and written, are essential.

The individual will be based at NASA Headquarters in Washington, D. C. and will report to the Chief of Mission from Planet Earth Study Office.

Tenured faculty members are preferred although qualified individuals from non-profit institutions may also be considered. This position is open for immediate filling. Normal assignments in the VSS Program do not exceed two years. Appointees must be U. S. Citizens or Permanent Residents and are expected to return to their home institution following the NASA assignment. Appointees are also expected to pursue their professional career at some level, and monthly two-day visits to their home institution are supported as are conference and other professional related travel and publication costs. For more detailed information please call Dr. Carl Pilcher at NASA Headquarters (202) 358-0291.

Please provide Curriculum Vitae, bibliography and the names of four references to:

Dr. Fred Shair 183-900
Jet Propulsion Laboratory
4800 Oak Grove Drive Pasadena,
California 91109
(818) 354-8252

An Equal Opportunity Employer

JPL

Jet Propulsion Laboratory
California Institute of Technology

INTEGRATIVE BIOLOGISTS Arizona State University

The Department of Zoology invites applications for two tenure-track positions at the level of Assistant Professor beginning in Fall 1995 from biologists who are studying questions that integrate multiple levels of organization.

Position 1 - An integrative biologist who uses an evolutionary or organismal perspective to study questions at the molecular to organismal level. Individuals using theoretical, comparative, or experimental approaches in fields such as cellular/developmental biology, neuroscience, morphology, physiology, and genetics are encouraged to apply.

Position 2 - An integrative biologist who uses evolutionary or ecological perspectives to study questions integrating multiple levels of organization at the organismal level or above. Researchers using theoretical or empirical approaches are encouraged to apply.

Candidates for both positions must have demonstrated a strong commitment to teaching and basic research, and must have a Ph.D. in an appropriate area by August 1995. Applicants should forward a curriculum vitae, selected reprints, statements of teaching and research, with the latter addressing the integrative nature of their work, and arrange for three letters of reference to be sent directly to Dr. Neil F. Hadley (Position #1) or Dr. Stanley H. Faeth (Position #2), Department of Zoology, Box 871501, Arizona State University, Tempe, AZ 85287-1501. Review of applications will begin December 15 and continue until each position is filled.

Applications from two individuals for a single shared appointment will be considered.

Arizona State University is an Affirmative Action/Equal Opportunity Employer.

ASSISTANT PROFESSOR BIOCHEMISTRY

The Mount Sinai School of Medicine, Department of Biochemistry invites applications for a tenure-track position at the assistant professor level. Although

this is a broad search, there is special interest in the control of cell cycling, signal transduction, and macromolecular interactions. The successful applicant will be expected to develop a strong independent research program with extramural funding and to participate fully in the teaching of medical and graduate students.

Current research interests in the department include: structure and function of insulin, insulin-like growth factors,

insulin-receptor action, protein phosphorylation and signaling, Fc receptors and signaling, regulation of mRNA metabolism, biochemical toxicology of alcohol, cytochrome P450 function and regulation, molecular mechanisms of energy transduction, signal transduction and carcinogenesis, conformational properties of proteins, and thermodynamics of macromolecular interactions. Start-up funds and research space are available for the 1995 academic year. Women and minorities are strongly encouraged to apply.

Applicants should send curriculum vitae, a statement of research interests, and the names of three references to: Search Committee, Department of Biochemistry, Box 1020, Mount Sinai School of Medicine, One Gustave L. Levy Place, New York, NY 10029-6574. An Equal Opportunity Employer.

The Mount Sinai Medical Center of New York
Take Good Care of Your Career.

Professor of Biochemistry and Molecular Biology

Queensland University of Technology (QUT) is one of Australia's largest universities operating on four Brisbane campuses with 25 000 students.

The School of Life Science at the Gardens Point campus is seeking a Professor to head the Biochemistry and Molecular Biology Division. The appointee will develop new initiatives in the teaching of biochemistry and molecular biology to undergraduate and postgraduate students. The appointee should have demonstrated research excellence in the area of biomedical science, and would be expected to contribute to the research programs within the Centre for Molecular Biotechnology.

Women are under-represented at QUT at this level; therefore suitably qualified women are encouraged to apply.

QUALIFICATIONS/SKILLS: Applicants must have a PhD in a relevant area, or equivalent accreditation or standing. Applicants should have a distinguished record of achievement in biomedical research and have contributed to the profession and/or discipline at an international level. Applicants should have a proven ability to initiate innovative teaching programs, supervise postgraduate students, contribute to the development of multidisciplinary programs, and provide leadership and management of an academic unit including staff motivation and strategic planning.

CONDITIONS: Tenurable appointment is available at the level of Professor (\$AUD78 991 per annum). Conditions include

subsidised superannuation, relocation assistance and professional experience leave. New professors at QUT are eligible for a \$AUD25 000 grant to use on work-related projects. Smoking is not permitted in QUT buildings or vehicles.

FURTHER INFORMATION: Before submitting an application, the duty statement, selection criteria and information on the position and University should be obtained from QUT's Human Resources Department, telephone 617 864 5988 or facsimile 617 864 5684. For further information on the position contact Professor Vicki Sara on telephone 617 864 2182 or facsimile 617 864 1534.

Applications and envelopes should quote 437/94. Applications must systematically address the selection criteria and include evidence of academic qualifications and experience, plus the names, addresses, telephone and facsimile numbers of five academic and professional referees. Applicants should include teaching evaluations as well as copies of their best three papers, highlighted on their application with an asterisk. Applications should reach the Human Resources Director, QUT, Locked Bag No 2, Red Hill Queensland 4059, Australia, by 13 January 1995.

An Equal Opportunity Employer

26th ANNUAL MEETING AMERICAN SOCIETY FOR NEUROCHEMISTRY SATELLITE SYMPOSIUM

Loew's Santa Monica Beach Hotel
Santa Monica, California -- March 4-5, 1995

Neuronal and Glial Injury: SIGNAL TRANSDUCTION AND NEUROPROTECTION

Chairmen: Nicolas G. Bazan and Claude G. Wasterlain

Keynote Speaker - Stephen F. Heinemann, The Salk Institute

Brain Ligand-Gated Receptors: Insight into the Mechanisms of Memory and Neurological Disease

Bruce R. Ransom, Yale
Mechanisms of Optic Nerve Injury

Jean de Vellis, UCLA

Cytokines and Neurotrophins: Role in Glial Injury

Claude G. Wasterlain, UCLA

Neuroprotection in vitro and in vivo

Dale E. Bredesen, UCLA

Gene Induction in Apoptotic Neuronal Death

Keynote Speaker - Stuart Lipton, Harvard

HIV-Related Neuronal Injury: Potential Therapy with NMDA Open-Channel Blockers and Redox Congeners of Nitric Oxide

Nicolas G. Bazan, LSU, New Orleans

Excitable Membrane-Derived Messengers in the Regulation of Gene Expression

Ted Dawson, Johns Hopkins

Nitric Oxide: Action and Pathologic Roles in Central Nervous System

Rooms: Reserve through the ASN meeting. For Saturday night, preference will be given to satellite symposium registrants.

Posters: Selected posters will be displayed, and some may be selected for platform presentation. Please indicate on registration form whether or not you intend to submit a poster.

Questions: Call 818/895-9473 (Claude Wasterlain) or 504/568-6700, ext. 321 (Nicolas Bazan); 818/895-5801 (fax).

How to Register: Send your name, address, telephone and fax number, along with a check for \$100.00 made to *ASN Satellite Symposium* to: Claude Wasterlain, VA Medical Center, 16111 Plummer Street, Sepulveda, CA 91343.

****Students:** Receive a \$25.00 discount off the registration fee--please send a letter from your advisor.

American Society for Cell Biology Meeting Bonus Distribution! 10-14 December San Francisco, CA

Over 5,000 scientists will attend this important meeting. Make sure these potential candidates know about your open positions by advertising in:

**Science's
9 December 1994 Issue**

**Call Janis Crowley at
212-496-7704
Or Fax 202-682-0816**

Space reservations are on a first come, first served basis!

FACULTY POSITION—MOLECULAR GENETICS THE OHIO STATE UNIVERSITY

The Department of Molecular Genetics at The Ohio State University is initiating a search for a tenure-track faculty member at the **Assistant Professor** level. We are particularly interested in applicants who are using molecular genetic approaches to study important topics in molecular, cell and developmental biology using experimental systems such as yeast, *Caenorhabditis*, zebra fish, mice, and humans. However, highly qualified applicants with other research specialties within the broader area of molecular genetics will also be considered seriously. A highly competitive recruiting package is available, which includes an attractive (hard money) salary, laboratory space in a new building, and substantial funds for equipment purchase and initial operating expenses. The Ohio State University is undergoing a major expansion in the Molecular Life Sciences which will involve the hiring of at least 30 new faculty over the next four years. The Department of Molecular Genetics will play a central role in this expansion. Women and members of minority groups are enthusiastically encouraged to apply.

The Ohio State University is the flagship institution of the state's higher education system. It is located in the state capital, Columbus, which is a growing, yet highly affordable, metropolitan area of about 1.3 million people. Columbus has been ranked by *Newsweek* as one of the country's best places to live and work.

Applications should include a detailed curriculum vitae, a description of research experience, a statement of the nature of the planned independent research program, and the name, address and telephone number of four scientists who have agreed to serve as references. Applications will be accepted until suitable candidates are hired. Review of applications will begin during January 1995. Information about our Department can be obtained by calling our offices at 614-292-8084.

Application materials should be sent to: **Dr. Alan M. Lambowitz, Molecular Genetics Search, Department of Molecular Genetics, The Ohio State University, 484 West 12th Avenue, Columbus, Ohio 43210.**

The Ohio State University is an Equal Opportunity/Affirmative Action Employer. Qualified women, minorities, Vietnam-era Veterans, disabled veterans and the disabled are encouraged to apply.

THE CHINESE UNIVERSITY OF HONG KONG

The University (founded 1963) offers comprehensive programmes up to PhD level in the Humanities, Business Administration, Education, Engineering, Medicine, Science, Social Science and Architecture. Student enrollment is 11,000 full-time equivalent in 1994-95. The University is very active in promoting research and consultancies and in liaising with industry and the business sector worldwide. English and/or Chinese are used in teaching and administration.

Applications are invited for:

Lecturer, Department of Biochemistry (Ref. 98(665)/2/94)

The Department of Biochemistry is re-opening its search for faculty at the lectureship level. Candidates should have a higher degree in Biochemistry or related subjects; those possessing Ph.D. degrees in Environmental Science are particularly welcome. The appointee will be responsible for developing the Environmental Science Programme, jointly offered by the Departments of Biochemistry, Biology and Chemistry. He/She will be required primarily to help teach courses in environmental and biochemical toxicology, but will also be asked to participate in the teaching of biochemistry courses to science and medical students. The appointee is expected to initiate a strong independent research programme. The specific area of research is open but experience in environmental mutagens and toxicology will be decided advantages. The post will be tenable in August 1995.

Lecturer Department of Biology (Ref. 94(665)/2/94)

Applicants should have a Ph.D. degree in Food Science/Technology or a related field with appropriate postdoctoral experience. The appointee will contribute to teaching undergraduate courses in food industry economics and management studies, food processing, food engineering, food service systems and catering studies. The Department of Biology has a scientifically diverse faculty that is active in research in various fields of biological sciences including food chemistry and food microbiology. The appointee is expected to establish an active research programme in food science/technology. The post will be tenable in August 1995.

Annual Salary and Fringe Benefits

HK\$412,980 - 689,880 by 10 increments

(approx. exchange rate in October 1994: US\$1=HK\$7.8)

Starting salary will be commensurate with qualifications and experience.

Benefits include leave with full-pay, medical and dental care, education allowances for children and housing benefit for the eligible appointee (with appointee contributing 7.5% of salary towards the provision of housing). Appointment may be made either on superannuable terms with the University and the appointee contributing 15% and 5% respectively to a superannuation scheme, or on fixed term contract which carries a contract-end gratuity (15% of basic salary) in lieu of the superannuable benefits. The University may also consider more flexible appointment terms for suitable candidates.

Application Procedure

Send full resume in duplicate and names and addresses of 3 referees, with copies of academic credentials (in duplicate) and recent publications to the Personnel Office, The Chinese University of Hong Kong, Shatin, N.T., Hong Kong (Fax: (852)603 6852) before **December 31, 1994**. Please quote the appropriate reference no. and mark "Recruitment" on cover.

ANNOUNCING The International Congress of Toxicology-VII

Seattle, Washington USA
July 2 to 6, 1995

Horizons in Toxicology: Preparing for the 21st Century featuring

- 5 Plenary Lectures •21 Symposia
- 13 Workshops •2 Debates

Pre-Registration Deadline: January 16, 1995
Abstract Receipt Deadline: January 16, 1995

For more information please contact:

ICT-VII Management Staff
The Wellington Group
4707 College Boulevard, Suite 213
Leawood, KS 66211
Telephone: (913) 345-1990
Fax: (913) 345-0893

POSTDOCTORAL POSITIONS

CELL AND GENE THERAPY PROGRAM



**St. Jude Children's
Research Hospital**

Danny Thomas, Founder

St. Jude Children's Research Hospital, a private research institute, is engaged in a further expansion of its scientific and clinical program in cell and gene therapies. In addition to current projects in the area of Hematology/Oncology, the institution is opening programs in Metabolic Disorders, Pharmacology, Inherited Immunodeficiencies, AIDS, and Hemoglobinopathies. An expansion in fundamental studies of gene transfer and regulation is also underway. A new 4500 sq. ft. GMP facility for clinical cell and gene therapy protocols will open early in 1995.

As part of this initiative we are looking for postdoctoral fellows who would enjoy working in an exceptionally well equipped environment which strongly encourages collaboration between basic and clinical researchers of all disciplines. Salaries and benefits are nationally competitive.

Postdoctoral vacancies exist with the following faculty:

Faculty Member	Area of Interest	Department
Mary Ellen Conley, MD	Inherited Immunodeficiencies	Immunology
Alessandra D'Azzo, PhD	Metabolic Storage Disorders	Genetics
Victor Garcia, PhD	AIDS and	Virology & Molecular
	Novel Gene Transfer Systems	Biology
Raymond Blakley, PhD	Selectable markers for Gene Transfer	Molecular Pharmacology
Malcolm Brenner, MB, PhD	Pediatric Malignancies	Hematology/Oncology
Arthur Nienhuis, MD	Thalassemia and Sickle Cell Anemia	Hematology/Oncology
Brian Sorrentino, MD	Drug Resistance Genes	Biochemistry
John Cunningham, MD	Thalassemia and Sickle Cell Anemia	Hematology/Oncology

Applicants should send a brief statement of research interests, a resume and the names, addresses and telephone numbers of three references to: **Dr. Malcolm D. Brenner, Cell and Gene Therapy Program, St. Jude Children's Research Hospital, 332 N. Lauderdale, P.O. Box 318, Memphis, TN 38105.**

Equal Opportunity/Affirmative Action Employer

LATEX AGGLUTINATION PRINCIPAL SCIENTIST

Instrumentation Laboratory (IL), a worldwide leader in the research and development of reagent biomedical instrumentation test systems, is currently seeking an individual for its Lexington, Massachusetts, facility. Responsibilities include designing and performing experiments to develop latex agglutination immunoassays to be placed in automated chemistry and coagulation instrumentation systems. Individual must possess and maintain comprehensive knowledge of scientific literature and competitive products. Qualified candidate will have a Ph.D. in biochemistry or related science, plus two to five years industrial/academic experience in the latex agglutination immunoassay field. Thorough knowledge of protein chemistry, protein coating onto synthetic surfaces by physical or chemical means, colloidal chemistry, optics, and scattering laws is required.

IL offers an excellent salary and benefits package including 401(k) plan. Interested candidates should submit resume and salary history to: **Christopher Hatt, Human Resources, Instrumentation Laboratory, 113 Hartwell Avenue, Lexington, MA 02173-3190.**

Equal Opportunity Employer



ASSISTANT/ASSOCIATE PROFESSOR:

IMMUNOLOGY, VIROLOGY, VIRAL IMMUNOLOGY

The Department of Molecular Microbiology and Immunology in the St. Louis University, School of Medicine, seeks outstanding candidates with the Ph.D. or M.D. degree for 12 month tenure-track positions at the Assistant or Associate Professor level. Immunologists interested in virus disease are especially encouraged to apply, but applications are welcomed in any area of immunology or virology, including HIV, viral pathogenesis, animal and transgenic models, oncogenes, and gene therapy. The Medical School has active research groups in molecular virology and immunology, HIV, several DNA and RNA viruses, viral vectors vaccine development, and many areas of molecular and cell biology. Candidates are expected to develop a vigorous externally-funded research program, and to teach medical and graduate students. Newly renovated laboratories, excellent start-up funds, and competitive salaries are offered. St. Louis is a strong center of academic and industrial biomedical research, and it has a very high standard of living.

Applicants should send their curriculum vitae, name of three references and a brief description of research interests to:

**Dr. William Wold, Professor and Chairman
Department of Molecular
Microbiology and Immunology
St. Louis University Health Sciences Center
1402 S. Grand Blvd.
St. Louis, MO 63104**

(Equal Opportunity Employer)

THE EVERGREEN STATE COLLEGE seeks broadly trained faculty interested in teaching in a public, liberal arts institution emphasizing interdisciplinary study and team-teaching. Faculty have neither tenure nor rank. "Continuing" (as opposed to "Visiting") positions are presumed eligible for renewal under 3- and 8-year contracts. For following positions, we invite recently trained candidates with 1 to 8 years' experience. **GEOGRAPHY** (Continuing). To teach in graduate and undergraduate environmental studies programs. Required: expertise in resource, cultural, physical or economic geography and in ecological/environmental issues; interest and ability to teach G.I.S. Preferred: ability to teach research/quantitative methods and remote sensing methodologies; interest and expertise in 3rd World environmental issues; knowledge of land use planning principles and community development strategies; experience in environmental policy practice. **HUMAN BIOLOGY** (Continuing). To teach cell-to-organism biology at all curricular levels. Required: ability to teach anatomy, physiology, cell and developmental biology, genetics and organic chemistry lab. **MARINE ECOLOGY/BIOLOGICAL OCEANOGRAPHY** (1 continuing & 1 Visiting). Required: ability to supervise, teach lab and field marine methods and relate statistics to quantitative work in environmental studies; knowledge of marine ecology, phytoplankton ecology or invertebrate zoology, and Pacific Northwest marine environment. Preferred: knowledge of role of oceans in global environmental issues; experience integrating physical, chemical and biological parameters, policy questions surrounding uses of marine resources, and interaction between science and policy. **PHYSICS** (Continuing). Required: ability to teach both upper division (mechanics, E&M, etc.) and first-year students in intensive (40 quarter-hour), year-long programs; experience in one or more of following: broadly-based experimental physics, physics of the environment (e.g., atmospheric, geological, hydrological), energy studies. **RAINFOREST ECOLOGY** (Visiting). Required: ability to teach ecology, environmental biology or geology. Preferred: field experience in Pacific N.W. **INFORMATION**: For application procedures, write **Faculty Hiring Coordinator, TESC, Olympia, WA 98505.**

RESEARCH OPPORTUNITY IN ANALYTICAL BIOCHEMISTRY

The Analytical Biochemistry Department of Pioneer Hi-Bred International, Inc. is seeking applicants for our ongoing program of crop improvement. Pioneer offers competitive salaries, excellent facilities and a highly cooperative research environment.

SENIOR RESEARCH ASSOCIATE, PROTEIN BIOCHEMISTRY (KIT DEVELOPMENT) JOB # GROT-1

The primary responsibilities of this position will be: to develop and scale-up kits for the analysis of proteins; complete assigned technology development and problem-solving projects for immunoassays and sample preparation methods; organize projects and prepare reports.

The successful candidate will be interacting with the assay development and applications groups and is expected to design, implement and interpret experiments.

EDUCATION/EXPERIENCE: MS degree plus 4 years experience OR a BS degree plus 6 years experience in microbiology, biochemistry or molecular biology is required. Applicants should have specialized skills in areas of immunochemistry and protein kit development. Experience in conducting product research, validation and scale-up under commercial conditions is highly desirable. Good communication skills are essential, especially in the exchange of technical information. Familiarity with computers and statistical analysis is preferred.

Applications received by December 16, 1994 will be assured of consideration. However, applications will be considered until the position is filled.

Pioneer Hi-Bred International, Inc. is an Equal Opportunity employer. Please send TWO complete sets of resume/application information. Be sure to indicate in your correspondence the JOB #, along with the names, addresses and telephone numbers of three references to:

PIONEER HI-BRED INTERNATIONAL, INC.
Analytical Biochemistry Department
ATTN: Dawn M. Meyer, JOB # GROT-1
P.O. Box 1004, 7300 NW 62nd Avenue
Johnston, IA 50131-1004



Join the leader in expanding the dimensions of tissue engineering

■ Manager, Cell Culture ■

Requires Ph.D. in Cell Biology with 7+ years' experience with the cultivation of various types of mammalian cells in serum containing and serum free systems. Experience with keratinocyte and feeder layer cultivation systems required.

Manages cell culture department within manufacturing with accountability for results in terms of costs, methods, and employees. Responsible for the design and implementation of manufacturing processes, instrumentation and equipment from the laboratory through pilot plant and manufacturing scale. Provides expertise in cell culture, process design and scale-up. Assists the manufacturing operations in problem solving with regards to cell cultivation. Develops and recommends new process formulas and technologies to achieve cost effectiveness and improved product quality. Responsible for new product scale-up, process optimization, technology transfer, and process validation activities.

Experience for yourself the possibilities that lie

ahead in tissue engineering, and in return you'll enjoy support for your ideas. Please send or fax your resume to:

BIOSURFACE TECHNOLOGY

BioSurface Technology, Inc., Dept. SM1118,

64 Sidney Street, Cambridge, MA 02139; FAX: (617) 494-6561. An Equal Opportunity Employer.

Since 1888, R&D Has Been The Foundation For Our Success.

For over a century, Abbott's solid commitment to R&D has delivered breakthrough health care products and services to customers worldwide. Now, as we continue to find new answers and improve lives, you could join us in one of the following key positions in our Pharmaceutical Products Division.

PULMONARY IMMUNOPHARMACOLOGIST

You will develop animal, *in vitro*, and tissue culture systems to profile the effects of novel compounds on the immunological genesis of various inflammatory lung diseases.

We require a BS or an MS along with 2+ years of post-graduate training. Your experience should include animal handling, measurement of pulmonary function, *in vitro* immunologic assays, and tissue cultures. In addition, experience with FACS analysis and lung lavage/histology is highly desirable. **Job# CW60030.**

IN VIVO RESEARCH PHARMACOLOGIST

You will develop *in vivo* models of inflammation in collaboration with a multi-disciplinary research team. The position will also entail supervision of technical staff and analyses and presentation of results.

We require a PhD in Pharmacology or Physiology and preferably at least 2-4 years of experience in animal models of allergy and arthritis. We also require a solid background in lipid mediators and cytokines, and an understanding of allergy and arthritis immunology. In addition to scientific creativity, strong writing and presentation skills are essential. Supervisory experience is a plus. **Job# RB74087.**

Abbott provides an excellent salary and benefits package including profit sharing and a stock retirement plan. We are located in a suburban area, approximately 30 miles north of Chicago. For confidential consideration, please send a resume and salary history (indicating appropriate Job#) to: **Alison Burke, D-583, AP6B, Abbott Laboratories, One Abbott Park Rd., Abbott Park, IL 60064.** Abbott is an Affirmative Action Employer/Smoke-Free Environment.

ABBOTT LABORATORIES



Quality
Health Care
Worldwide
Since 1888

Experience The Abbott Edge.

POSITIONS OPEN

BIOTECHNOLOGY RESEARCH ASSOCIATE

The Molecular Toxicology Group of the Health Sciences Research Division at the Oak Ridge National Laboratory (ORNL) has immediate Ph.D. level openings for recent graduates. One position will conduct studies on a novel non-invasive diagnostic and therapeutic technology. Relevant experience in tissue culture and molecular biology techniques is required which may include: insertion of small oligonucleotides into eukaryotic cells, immunochemistry procedures and cloning in prokaryotic and eukaryotic systems, and common techniques to manipulate and analyze nucleic acids. Experience in antisense technologies and use of chemically modified oligonucleotides may be useful.

Ongoing projects also include studies in tumor suppressor gene phosphorylation, enhancement of cellulase production in bacteria, and identification of genes related to immunodeficiency in mutant mice using differential display. Experience in differential display, signal transduction/protein phosphorylation, or cloning in non-*E. coli* systems may be considered for these projects.

ORNL is managed by Martin Marietta Energy Systems, Inc. for the U.S. Department of Energy. For immediate consideration, send your résumé by December 2, 1994, to: **Dr. Craig Dees, Department SCI-1118, Oak Ridge National Laboratory, P.O. Box 2008, Oak Ridge, TN 37831-6480.** For more information, telephone: 615-576-2128. ORNL is an Equal Opportunity Employer committed to building and maintaining a diverse workforce.

OPEN EXAMINATION FOR SUPERVISING TOXICOLOGIST

The California Environmental Protection Agency, Department of Pesticide Regulation seeks a **SUPERVISING TOXICOLOGIST** to manage the pesticide regulatory program. Requirements: Five years of postdoctoral experience in toxicology or closely related field. This experience must have included the interpretation of toxicological findings relative to probable human health, one year of experience in the development and design of toxicological research and investigative studies, and two years of experience in supervisory or management positions. The position is located in Sacramento. Salary Range: \$5,332-\$6,450 per month. Comprehensive benefits package. Submit application and résumé to the address below by the Final File Date: **December 20, 1994.**

Department of Pesticide Regulation
Personnel/Examination Unit
1020 N Street, Room 126
Sacramento, CA 95814
Attn: SDJ

For State application and announcement call 916-322-4553.

ECOLOGIST or AQUATIC BIOLOGIST. The Department of Biology, Kenyon College, invites applications for a one-year, leave-replacement position. The successful candidate will participate in the introductory biology sequence for undergraduates; teach advanced ecology or aquatic biology as appropriate; teach in the interdisciplinary, environmental studies course; and advise undergraduate, independent research projects. Applicants should hold a Ph.D. degree and be able to demonstrate teaching excellence. Statements of teaching and research interest, curriculum vitae, undergraduate and graduate transcripts and three letters of reference should be sent directly to: **Search Committee, Biology Department, Kenyon College, Gambier, OH 43022.** Review of applications will begin 10 December 1994.

An Equal Opportunity Employer, Kenyon affirms the values and goals of diversity; therefore, the applications of minorities and women are especially encouraged.

MICROBIOLOGIST

The Foreign Animal Disease Diagnostic Laboratory, USDA, APHIS, on Plum Island, New York, is recruiting for a **MICROBIOLOGIST** with experience in all standard molecular biological techniques of nucleic acid and protein analysis and specific experience in DNA amplification and sequencing. Experience in protein expression and familiarity with animal viruses is desirable. Minimal educational requirement is a Bachelor's degree in the biological or chemical sciences, Master's degree preferred. Must be a U.S. citizen. Starting salary is \$24,534 to \$30,012 per year. For additional information contact: **Dr. Richard F. Meyer at 516-323-2500, ext. 388 or 256.**

The Federal Government is an Equal Employment Opportunity Employer.

POSITIONS OPEN

MOLECULAR DEVELOPMENTAL BIOLOGIST: One-year appointment, with the possibility for a renewal, in the Department of Biology at Whitman College beginning in August 1995. Ph.D. required. Teach Molecular Biology and Developmental Biology (both with labs), one other course and lab compatible with the biology curriculum, and direct student research. Whitman has a strong commitment to excellence in undergraduate teaching, research, and student advising. Send curriculum vitae, three letters of recommendation, transcripts, and statement of teaching and research interests to: **Professor Earl Fleck, Biology Department, Whitman College, Walla Walla, WA 99362. Telephone: 509-527-5135 or 509-527-5225; FAX: 509-527-5904. Email at fleck@whitman.edu.** Closing date: January 15, 1995. *Equal Opportunity Employer.*

BIOLOGIST

The Biology Department at the University of Richmond, a highly selective, private liberal arts institution, is seeking to fill a three-year, non-tenure-track position, effective August 1995. Ph.D. is preferred. Responsibilities include lecture and laboratory instruction in biology for non-majors and first year botany and zoology for majors, with a teaching load of 12 contact hours per week each semester. Please send curriculum vitae, official graduate and undergraduate transcripts, a statement of teaching philosophy, and have three letters of recommendation sent by January 2, 1995, to: **Dr. W. John Hayden, Department of Biology, University of Richmond, VA 23173.** As an Equal Opportunity/Affirmative Action Employer, we especially encourage applications from underrepresented groups, including women and minorities.

TECHNOLOGY LIAISON

The Edison BioTechnology Center (EBTC) is seeking a liaison to work with The Ohio State University, its technology transfer office and central Ohio biomed/biotech businesses to identify and transfer biomedical technologies with commercial potential to industry, and to coordinate EBTC's business assistance efforts in the region. Requirements include an advanced degree in a relevant field, technology assessment experience, and experience working in both academia and industry. Experience developing business plans, funding strategies and ventures is preferred. This position is located in Columbus, Ohio. Submit résumés by December 30, 1994, to: **EBTC, Department CK, 11000 Cedar Avenue, Cleveland, OH 44106.**

SCIENTIST RESEARCH/COMPUTATIONAL

Develop advanced computer programs for *ab initio* quantum chemistry applications. Test, maintenance and troubleshoot. Customer technical support. Ph.D. Applied Physics or Chemistry. Experience: one year in job offered or two years as a Research Assistant in a scientific field. Advanced experience in scientific programming Fortran, C and UNIX. Advanced research experience: *ab initio* quantum chemistry, pseudospectral methodology, GVB theory, transition metal chemistry, local density functional theory and application of symmetry to computational chemistry. Experience writing scientific technical articles/reports. Able to submit writing samples upon request. 40 hours per week; \$44,175 per year. Job interview: Pasadena, California. Send address/résumé to **Job No. HR46263, P.O. Box 269065, Sacramento, CA 95826-9065.**

Columbia University—A position for **STAFF ASSOCIATE** in the Department of Physiology is available to study nonenzymatically glycosylated proteins and their receptors in Alzheimer's disease. The applicant must have a Master's degree and experience in the preparation and characterization of advanced glycation end-products. The applicant must have a strong background in chemistry, and the ability to utilize baculovirus expression systems for protein expression. Send curriculum vitae to: **S. Lyn, Columbia University, Department of Physiology, 630 West 168th Street, New York, NY 10032.** Columbia University is an Affirmative Action/Equal Opportunity Employer.

COURSES AND TRAINING

CAREER CHANGE OPPORTUNITY

This unique program offers the candidate with an earned doctorate in the sciences the opportunity to obtain the Doctor of Optometry (O.D.) degree in two calendar years. Employment opportunities exist in private practice, industry, education, and research. Contact: **Dr. D. Chauncey, Program Director, Accelerated Program, The New England College of Optometry, Room S, 424 Beacon Street, Boston, MA 02115.**

ANNOUNCEMENT

NATIONAL INSTITUTE ON DRUG ABUSE NATIONAL INSTITUTES OF HEALTH

AIDS AND DRUG ABUSE CONFERENCE, June 9-10, 1995, Scottsdale, Arizona. In conjunction with the 1995 meeting of the College on Problems of Drug Dependence, NIDA will host a satellite conference, to review the state of research on AIDS and drug abuse, discuss future research priorities, and foster scientific collaborations. Deadlines for abstracts is February 28, 1995. For more information please contact: **Harry Haverkos or Robert Battjes, NIDA. Telephone: 301-443-6697; FAX: 301-443-2317.**

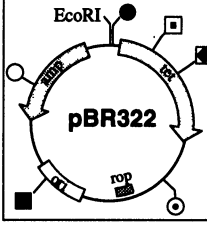
SYMPOSIUM

SYMPOSIUM: Stem Cells: Prospects for the Clinic; February 6 and 7, 1995; Hyatt Rickes, Palo Alto, CA. **SPEAKERS:** I. Weissman, Stanford; G. Spangrude, Utah; D. Emery, MGH; R. Hoffman, SyStemix; S. Heimfeld, Cell-Pro; R. Tushinski, SyStemix; M. Moore, Sloan Kettering; R. Mertelsmann, Germany; J. E. Wagner, Minn; R. O'Reilly, Sloan Kettering; R. Mulligan, MIT; E. Gilboa, Duke; J. Lebkowski, AIS; S. Chatterjee, City of Hope; D. Bodine, NIH; D. Kohn, UCLA; A. Deisseroth, M. D. Anderson; D. Valerio, IntroGene; C. Bordignon, Italy; D. DiGiusto, Progenys; A. Galy, SyStemix; F. Gage, UCSF; S. Weiss, Calgary; J. Rhim, Penn; D. Sasaki, SyStemix; R. Knazek, Celco; G. Reeves, Ingenex; D. Harris, Arizona. Abstracts due January 28, 1995. Organizers: J. Larrick and J. Mulé.

Sponsor: 1. Palo Alto Institute of Molecular Medicine, 2462 Wyandotte Street, Mt. View, CA 94043. FAX: 415-694-7717; Telephone: 415-694-1420; Email: PAIMM@AOL.com.

COMPUTER MARKETPLACE

MacPlasmap version 2
Plasmid map drawing program for Macintosh



Circular/linear plasmid maps • copy/paste/insert/insert map segments
 • color • read PICT files
 • read GenBank feature tables • easy to use...
 Free demo version available upon request
CGC Scientific, Inc.
 Tel. (314) 652-6533
 Fax (314) 652-6631

Circle No. 48 on Readers' Service Card

MARKETPLACE

Columns, buffers, ninhydrin, and standards for the

Beckman 6300
Amino Acid Analyzer

PICKERING
LABORATORIES

800 654 3330 • FAX: 415 968 0749

Circle No. 47 on Readers' Service Card

Marketplace ads continue on page 1290

SCIENTISTS

Darwin Molecular Corporation, a growing, information intensive biotechnology company is seeking outstanding Scientists experienced in the application of molecular biology, genetics and engineering to genomic research. The company's technical focus is on the acquisition and use of DNA sequence information to identify and select targets for drug discovery via molecular evolution. Darwin's initial therapeutic focus is on autoimmune disease, AIDS and cancer.

We are seeking Scientists with broad scientific interests and an outstanding record of accomplishment who are interested in using their talents as a member of an interdisciplinary team. The individuals will play a key role in contig and library construction for a large-scale genomic sequencing effort, in the development of novel, global approaches to physical and genetic mapping, and in technology development for large-scale sequencing. Experience in physical mapping, sequencing, BAC or PAC libraries, human genetics or automation is desirable. PhD or the equivalent in experience is required and 2 years of postdoctoral experience preferred.

Darwin Molecular Corporation offers competitive salaries, benefits and an equity participation program. Our company's start-up environment is ideal for self-motivated, innovative employees who are eager to grow with us.

To apply, please send curriculum vitae to: **Human Resources SCH11894SQ, Darwin Molecular Corporation, 1631 220th Ave., S.E., Bothell, WA 98021.**



Darwin Molecular is an Equal Opportunity Employer.



SCIENCE AND ENGINEERING FELLOWSHIPS IN JAPAN

The National Science Foundation (NSF) offers opportunities for research in Japanese universities, national research institutes, and corporate research facilities. Applicants must be U.S. citizens of permanent residents.

These fellowship programs are conducted in cooperation with the Center for Global Partnership (CGP) and other Japanese organizations. Awards are available for graduate students, postdoctoral fellows, and senior investigators for 3-24 month research visits in Japan for (deadlines are indicated in parentheses):

- Long and Medium Term Research (November 1, April 1)
- Short Term for Cooperative Research (May 15)
- Dissertation Enhancement (November 1, April 1)
- Summer Institute for Graduate Students in Science and Engineering (December 1)

Awards are also available for Bilateral Seminars in Japan or the United States (May 15).

To apply for these programs, you may request the program announcement "International Opportunities for Scientists and Engineers" NSF 93-51 (Revised 11/93). This publication is available through STIS (Science and Technology Information System), NSF's online publishing system, described in NSF 94-4, "STIS flyer." To receive a paper copy of the flyer, call the NSF Publications Section at 703-306-1130. For an electronic copy, send an E mail message to stisfly@nsf.gov (Internet) or stisfly@nsf (BITNET). The TDD number is (703) 306-0090.

Research Associates

At Amgen, you'll discover a research environment that emphasizes collaboration, intellectual honesty, scientific integrity, and a supportive culture. This unique approach has helped us grow into a global biotechnology leader in just thirteen years.

NEUROSCIENCE

For Position A, the ideal candidate will have a BS in Biology or a related field and at least 3 years' experience in expression cloning of cell surface receptors using radiolabelled ligands. Experience in iodination of growth factors and tissue culture is preferred. (Job Code: OXP-SC-2016)

For Position B, we seek a BS level Research Associate to study the effect of neurotrophic factors on neurodegenerative diseases. Position requires experience with in vivo animal models and at least 2 years' laboratory experience. Experience in immunohistochemistry, in situ hybridization, or electrophysiology preferred. A Master's degree is a plus. (Job Code: OXP-SC-1476)

STEM CELL BIOLOGY

This Research Associate will participate in ongoing programs to characterize the properties and mechanisms of action of known hematopoietic growth factors, as well as the identification and characterization of new growth factors. Qualified candidates will have a BS or MS in Cell Biology, Biochemistry or a related discipline. This position also requires at least 3 years' relevant experience in mammalian cell culture, protein purification and characterization, and in vitro and in vivo bioassays. (Job Code: OXP-SC-2091)

At Amgen, you'll find our approach to scientific research as rewarding as it is effective. We offer a highly competitive compensation and benefits package that includes a retirement and savings plan, an on-site fitness center, and three weeks' vacation. Please mail your resume/c.v. to: Amgen Inc., Staffing, Job Code (see above), Amgen Center, Thousand Oaks, CA 91320-1789. Principals only, please. EEO-Affirmative Action Employer M/F/D/V. We recognize that diverse perspectives are a key factor in the process of discovery.

AMGEN
Discover a unique approach.

MARKETPLACE

CyberDope™

"Ten million times better than random combinatorial mutagenesis" *BioTech*. 11:1548
!!! (K,N,R,S,T) = A(ACG)(CG) ≠ NNN !!!

KAİROS® Scientific Inc.

FAX: 408-362-1200 E-Mail: cyberdope@aol.com

Circle No. 49 on Readers' Service Card



UCB BioProducts
Brussels
322 3862111

Glycoproteins
and
Somatrophins

Peptide Innovations
800 522 3310
919 847 0161

Circle No. 43 on Readers' Service Card

ONLY DNA

No frills, Just good DNA at very low prices
\$1.60 per base

- No set-up fee
- 48 hour turnaround
- 50 nanomole synthesis

1-800-359-5794 email onlydna@wln.com

Circle No. 30 on Readers' Service Card

KEYSTONE Laboratories, Inc.

The Complete
Oligonucleotide
Company

Oligonucleotides: \$2.30/base

Volume orders of 200 bases or more.

No set-up fee. Shipped in 24hrs.

Tel. 1-800-788-4DNA • Fax 1-800-786-4DNA

Circle No. 9 on Readers' Service Card

Rhein Biotech
- Affordable Products -

Hansenula derived

r-HIRUDIN

Bulk Quantities • Highest Quality

HIGH YIELD = FAIR PRICE

RHEIN BIOTECH GMBH

Phone: +49 211 709010 • Fax: +49 211 7090130
Eichsfelder Str. 11 • D-40595 Düsseldorf • Germany

Circle No. 44 on Readers' Service Card

\$195 CUSTOM PEPTIDES

- Mass Spec. • 15-30 mg.
- 8-20 residues.

Special Offer thru December 1994



CHIRON
MIMOTOPES
PEPTIDE SYSTEMS

North America:
Tel:
1-800-338-4965
Fax:
1-800-654-5592

Circle No. 36 on Readers' Service Card

MARKETPLACE

GUARANTEED PEPTIDES

\$18.

per residue
resin peptide
\$200/peptide min.

- ✓ No setup chg.
- ✓ 25± mmole
- ✓ 8-20 residues
- ✓ 5 working days

Trifunctional amino acids
slightly higher; cleavage, pu-
rification and analysis extra.

Advanced ChemTech

1-800-456-1403

Circle No. 55 on Readers' Service Card

XX IDT

Integrated DNA Technologies, Inc.

Custom DNA Synthesis

Oligonucleotides

\$2.25/Base

No Set-up Fee

48 hour Delivery

Column Purified

Phone: 800-328-2661

Fax: 319-645-2921

Circle No. 31 on Readers' Service Card

CUSTOM DNA SYNTHESIS

PURE & SIMPLE

• Price
as low as **\$2.19**
per base
plus set up

- Superb Technical Support
- Impeccable Quality
- World's Fastest Service

MIDLAND

THE UNDISPUTED #1

CUSTOM DNA SYNTHESIS SERVICE

THE MIDLAND CERTIFIED REAGENT COMPANY

3112-A West Cuthbert Avenue
Midland, Texas 79701

Phone 1-800-247-8766 FAX 915-694-2387

Circle No. 5 on Readers' Service Card

* Video Gel Documentation * Gel Analysis * Slide Makers *
Wouldn't you rather destain your coomassie gels for minutes not hours?
B/T Bio
* Destain = rinse - few minutes (results immediately visible)
* Less solvent waste and less cost
* 2 fold greater sensitivity than coomassie
Call B/T SciTech - 619-591-7881
* Bio 101 * UV Transilluminators * Low Noise Microfuges

Circle No. 41 on Readers' Service Card

MARKETPLACE

World leaders in Synthetic DNA and Peptides

Custom DNA DESIGNER LABELS:
BIOTIN, FITC, ACRIDINE,
DNP, Alk. Phos. & more

• NO SETUP CHARGE • Column Purified

No minimum order

\$2.50 /base • >5.0 OD's (~200 µg)

Also • Gel Picture Q. C.

\$1.99 /base • Synthesis Report

* Standby orders • 24 hour SHIPPING

! Luminescent substrate kits available !

Custom PEPTIDES

• NO SETUP CHARGE • Free HPLC Tracing

\$20.00 /res. • 15-40 mgs

* desalted • 8 - 20 residues

• Shipped in 5 days

! Antipeptide Antibodies production services, & more !

Accurate Mass Analysis Service - Syn. Peptides (\$40)

by Mass Spectrometry (MALDI-TOF) Proteins (\$70)

BIO-SYNTHESIS

1-800-227-0627 Fax: 214-420-0442

Circle No. 19 on Readers' Service Card

ULTRASONIC

CELL DISRUPTORS

LIQUID PROCESSORS • ATOMIZERS

FREE CATALOG - 1-800-745-1105

SONICS & MATERIALS

W. KENOSIA AVE., DANBURY, CT 06810 USA

FAX 203-798-8350

Circle No. 25 on Readers' Service Card

HUMAN ENDOTHELIAL CELLS

VENOUS, ARTERIAL, and

MICROVASCULAR SYSTEMS

True pools of >50 donors, frozen @ <6 CPD in vitro,
>500,000 cells, complete CS growth medium system
characterized and tested for cytokine-stimulated leuko-
cyte adherence, negative for HIV-1 DNA by PCR

800-697-1211

cell systems

Circle No. 53 on Readers' Service Card

Custom PEPTIDES

(worldwide service)

\$20/RES. (Discount for 1st order)

No setup charge, free HPLC/A.A. analysis

PEPTIDE ANTIBODY: \$250/RABBIT

UNBEATABLE: NO CHARGE IF NO ANTIBODY PRODUCTION

PEPTIDE LIBRARY: FROM \$150/LIBRARY

TANA LAB., LC. 1-800-400-0070(Tel)

1-713-663-7163(Fax)

Circle No. 28 on Readers' Service Card

Express Peptides

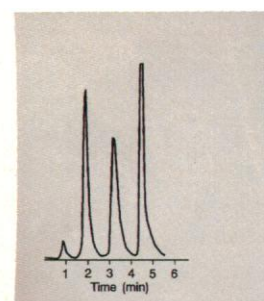
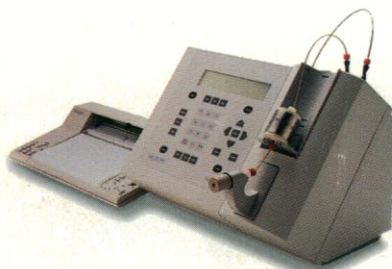
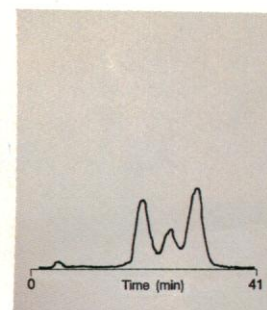
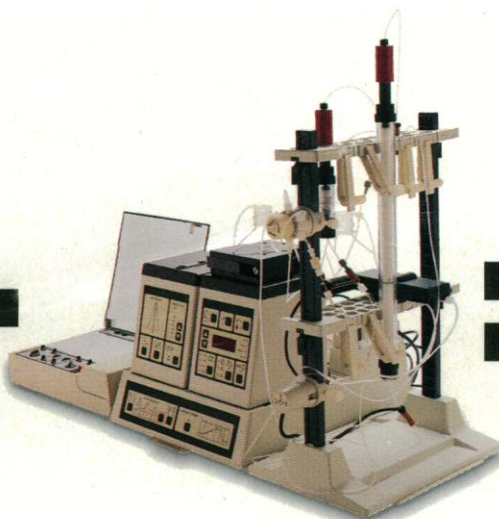
15 mg in 5 days

\$25 per residue

Research Genetics, Inc.

1-800-533-4363

Circle No. 8 on Readers' Service Card



BOTH CHROMATOGRAPHY SYSTEMS ARE ABOUT THE SAME LOW PRICE. BUT THAT'S WHERE THE SIMILARITY ENDS.

Why bog down your work with a traditional chromatography system? You can achieve even better resolution, in a fraction of the time, outside the cold room, with a ConSep LC 100™ system from PerSeptive Biosystems.

Whether you are purifying proteins or nucleic acids, the ConSep system delivers high biological activity and purity in just 15 in. of bench space.

And it's so simple to use. The patented Auto•Blend™ four-buffer

blending feature lets you alter both the pH and the ionic strength of your buffers with just a few key-strokes, so you can run pH and salt gradients simultaneously.

The ConSep system is compatible with all conventional low-pressure bead-based columns. And for ion exchange chromatography, the "flow through pores" of MemSep® cartridges speed the transport of biomolecules, for sharper peaks and faster results.

THE CONSEP LC 100 SYSTEM.

Using anything else just doesn't add up. For information and a free video or demonstration in your lab, call PerSeptive Biosystems in the US and Canada at **1-800-899-5858**, in Germany at 761-45240, in Japan at 5389-7371, in France at 1-42-05-4081, and in the UK at 730-895-596.



PerSeptive Biosystems
Bioseparations Products

U.S. Headquarters, 38 Sidney Street, Cambridge, MA 02139

©1994 PerSeptive Biosystems
ConSep LC 100 is a trademark and MemSep is a registered trademark of PerSeptive Biosystems.
Auto•Blend is a trademark of Waters Corp.

Circle No. 45 on Readers' Service Card

Resources for Research

Now Available from the NIH Self Service Store...

1L Depc treated H₂O
100ml Depc treated H₂O
20x SSC
Sheared DNA
EDTA
and much more...



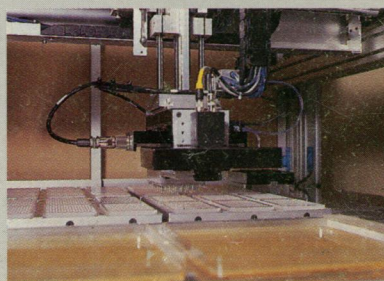
Custom Genotyping

Fast • Economical • Confidential

With the opening of the Research Genetics Genotyping Center, all investigators now have access to high throughput genotyping without having to give up control of their work. Typical genotyping projects involving hundreds of markers can be completed in under 90 days. Complete results including both the raw data and computer files suitable for use by linkage software are provided. Please contact Research Genetics for more information.

Custom Picking and Spotting

Research Genetics now offers custom picking and spotting services. The library will be plated and picked into 96 or 384-well microtiter plates. A typical library of 50,000 clones will need only two weeks for turnaround. After the library has been picked, high density membranes suitable for



screening by hybridization may be produced. A variety of high density spotting patterns are available to suit your needs.

Peptides and Antibodies

Express Peptides

15mg in 5 days
\$25 per residue
8 residue minimum

Custom Peptide Antibodies

Polyclonal.....\$1195
Monoclonal....\$8500

We ship direct to Europe and Japan.

YAC Resources

now available...

Human CEPH A

•

Human CEPH B

•

Mouse DNA Pools

•

Human Y Chromosome Library

•

YAC Library Custom Screening

Research Genetics, Inc.

2130 Memorial Pkwy, SW • Huntsville, AL • 35801
U.S. or Canada 800-533-4363 • U.K. 0-800-89-1393 • FAX 205-536-9016