

## Human P1 Library

In this hybridization-based screening service, the genomic DNA is carried in a P1 vector that makes the DNA easily retrievable and exempt from rearrangement and recombination artifacts. (P1 elements are bacteriophages that contain human DNA inserts of approximately 80 to 100 kb.) To ensure accurate cloning, each P1 clone is spotted in duplicate on a high-density filter and each positive clone is confirmed by a second hybridization. Send BIOS your complementary DNA (cDNA), and BIOS supplies you with the corresponding human genomic clone or clones. The genomic clones can be used for chromosome mapping, polymorphism screening, regulatory DNA sequence studies, genomic instability studies, intron and exon structure studies, and genetic marker development. Multigene families are more readily obtained by hybridization than by polymerase chain reaction (PCR) screening. Hybridization screening also allows for selection of human homologs corresponding to cDNAs of other species and does not require any sequencing or development of corresponding PCR assays to amplify selected domains. **BIOS Laboratories. Circle 140.**

## Sample Treatment Filter

Ultrafree-20 centrifugal filters are for the concentration, purification, and desalting of biological samples. Easier to use and faster than stirred cell devices, they can process samples from 0.5 to 20 ml. Depending on the starting concentration, 20 ml of sample can be concentrated down to 0.5 ml in 10 to 60 min. The process is faster at desalting and buffer exchange than traditional dialysis tubing and other methods. The filters can be used for a variety of techniques including the recovery of enzymes, virus, bacteria, yeast, and peptides. They can be



used for concentrating serum or urine proteins for urine electrophoresis, and for the recovery of low molecular weight components from cell lysates, culture media, or fermentation broths. **Millipore. Circle 141.**

## Scientific WorkPlace Software

Scientific WorkPlace 2.0 combines scientific word processing technology with Maple V3's algebraic computation system. The user can change variables and instantly update work, compute derivatives and integrals, solve differential equations, apply vector and matrix operations, and graph in two and three dimensions. Scientific WorkPlace calls up the power of Maple to calculate answers quickly and accurately, then prints the results in professional-quality documents. The user can create everything from memos, letters, and exams to professional articles and full-length books. **TCI Software Research. Circle 142.**

## 384 Well Plate

Designed for screening DNA libraries in high volume labs, the 384 Well Plate has four wells in

the same space as one well in a standard 96-well plate, with the same footprint. It comes complete with lid and is sterile. Each well, center to center, is 4.5 mm, a distance compatible with robotics and manual multi-channel pipettors. The maximum volume of each well is 124  $\mu$ l. **Nunc. Circle 143.**

## Antibodies

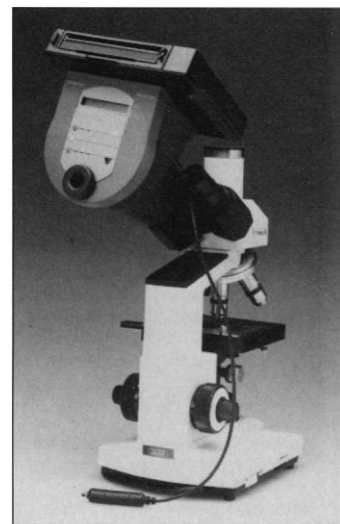
New monoclonal and polyclonal antibodies to the Raf (c-raf-1) kinase can be used in protein immunoblotting, immunoprecipitation, and indirect immunofluorescence. Monoclonal antibodies to several important proteins involved in cell cycle regulation include cdk4, cyclin D1, Rb, and cdk2. The reagents are for use in protein immunoblotting, immunoprecipitation, and immunocytochemistry. **Transduction Laboratories. Circle 144.**

For researchers studying oncoproteins and oncosuppressors, five clones of anti-human p53 antibody are available in unconjugated, biotinylated, and fluorescein-labeled form for use in immunohistochemistry, flow cytometry, and protein immunoblotting. In addition, monoclonal and polyclonal antibodies to the MDM2 protein, the latest p53 binding protein to be discovered, are available. **Vector Laboratories. Circle 145.**

Both monoclonal and polyclonal antibodies are available to human vascular endothelial growth factor (VEGF), also known as vascular permeability factor or vasculotropin. VEGF is a potent angiogenesis inducer in vivo and may play an important role in tumor formation. **R&D Systems. Circle 146.**

## Microscope Slide Photography

The MicroCam SLR instantly converts any microscope slide to a photo document. The device adapts to any microscope, mak-



ing it an easy way to document results and view them again without returning to the microscope. **Markson Science. Circle 147.**

## Literature

*Interaction Polymeric Columns for HPLC* is a 64-page catalog of high-performance liquid chromatography (HPLC). **InterAction Chromatography. Circle 148.**

*Responsible Chromatography With The Alltech Solvent Recycler 2000* describes an instrument that decreases isocratic liquid chromatography mobile phase consumption by up to 95%. An electrically actuated valve placed downstream from the system's detector responds to the detector signal by diverting contaminated solvent to waste or recycling clean solvent for reuse. **Alltech Associates. Circle 149.**

*Mass Spectrometry...now as simple as making a cup of coffee* describes the VG OpenLynx instrument, which allows synthetic chemists to obtain their own mass spectra in less than 5 min per sample. **Fisons Instruments. Circle 150.**

Newly offered instrumentation, apparatus, and laboratory materials of interest to researchers in all disciplines in academic, industrial, and government organizations are featured in this space. Emphasis is given to purpose, chief characteristics, and availability of products and materials. Endorsement by *Science* or AAAS is not implied. Additional information may be obtained from the manufacturers or suppliers named by circling the appropriate number on the Readers' Service Card and placing it in a mailbox. Postage is free.

# Science

## PERSONNEL PLACEMENT

### LINE CLASSIFIED ADVERTISEMENTS

**Deadlines:** Ads are due by Thursday, 10 a.m., 2 weeks prior to the issue date. *Science* is published each Friday, except the last Friday of the year. Call for holiday deadlines. Ads must be submitted in writing.

#### How to Submit a Classified Ad:

Prepare double-spaced typewritten copy. Do not include any abbreviations. *Science* will edit and typeset ads according to *Science* guidelines. Include billing information, and desired publication date. Available categories: Positions Open, Meetings, Announcements, Courses and Training, Search Firms. *Science* cannot provide proofs of typeset line ads.

#### Mail, FAX or Email materials to:

Science Classified Advertising  
1333 H Street, N.W., Room 814  
Washington, DC 20005  
Telephone: 202-326-6555  
FAX: 202-682-0816

Internet Email: science\_classifieds@aaas.org

**Rates:** Ads are \$43 per line; \$430 minimum. One line equals 52 characters and spaces; centered headings equal 32 characters and spaces. A 3% cash discount is granted to all prepaid ads.

**Estimates:** *Science* will provide a cost estimate for line ads. This is an approximate cost only. Allow for variation between estimated lines and actual typeset lines and resulting final cost. Purchase orders must allow for some degree of flexibility and/or adjustment.

**Ads from Outside the U.S.:** A discount of \$30 will be offered to advertisers making payment in U.S. dollars by checks drawn on U.S. banks. Contact Gordon Clark at +44 223 302 067 (telephone) or +44 223 302 068 (FAX).

**Credit Cards:** *Science* accepts MasterCard and VISA. Discount does not apply to credit cards.

**Cancellations:** Deadline for cancellation is 10 a.m., Tuesday, 10 days prior to issue date.

### DISPLAY PERSONNEL ADVERTISEMENTS

For rates and info. for fractional display ads call:

Deborah Cummings  
Recruitment Advertising  
Telephone: 202-326-6541  
FAX: 202-682-0816

Janis Crowley  
Recruitment Advertising Manager  
Telephone: 212-496-7704  
FAX: 202-682-0816

Gordon Clark  
European Recruitment Advertising  
Telephone: +44 223 302 067  
FAX: +44 223 302 068

**CONDITIONS:** Personnel advertising is accepted only with the understanding that the advertisers do not discriminate among applicants on the basis of race, sex, religion, age, color, handicap or sexual preference. The AAAS encourages employers to actively recruit and employ underrepresented minority groups. *Science* reserves the right, at its discretion, to edit or decline to publish advertisements submitted to it.

## POSITIONS OPEN

### ASSISTANT PROFESSOR IN VIRAL PATHOGENESIS

The Department of Microbiology and Immunology is inviting applications for a position at the **ASSISTANT PROFESSOR** level. Successful applicants must have a Ph.D., M.D., or DVM degree, a minimum of two years of postdoctoral experience, and an excellent publication record with demonstrable expertise in molecular aspects of pathogenesis of viral diseases including human immunodeficiency virus (HIV). The appointee will be expected to develop a research program in an area involving the molecular aspects of host-pathogen relationships, structure-function analysis, or viral vectors in gene therapy or vaccination. The successful applicant will carry a minimal teaching load in the first two years and will have excellent opportunities to interact with the clinical and biomedical community. The successful applicant will be eligible for salary support and start-up funds during the initial two years. During this period the successful applicant will be required to apply for an external scholarship and operating grant support through agencies such as Medical Research Council of Canada or National Science & Engineering Research Council and sources such as industry.

The University of Western Ontario is committed to excellence and offers one of the finest research, teaching and living environments in Canada. Interested applicants should send a detailed curriculum vitae, outline of current research interests and names/addresses of three referees by January 31, 1995, to: Chair, Viral Pathogenesis Search Committee, Department of Microbiology and Immunology, Dental Sciences Building, University of Western Ontario, London, Ontario, N6A 5C1 Canada.

Positions are subject to budget approval. *In accordance with Canadian Immigration requirements, this advertisement is directed to Canadian Citizens and Permanent Residents of Canada. The University of Western Ontario is committed to employment equity, welcomes diversity in the workplace, and encourages applications from all qualified individuals including women, members of visible minorities, aboriginal persons, and persons with disabilities.*

**BIOLOGY: DEVELOPMENTAL BIOLOGIST/ ASSISTANT PROFESSOR.** Starting date: fall 1995. Qualifications: Ph.D. and postdoctoral experience required. Responsibilities: Teaching an upper-level course in his/her field and undergraduate courses in human anatomy and physiology and cell biology; development of an externally funded research program in the area of developmental biology. Application Deadline: December 15, 1994. To Apply: Submit curriculum vitae, statements of research/teaching interests, undergraduate and graduate transcripts, and three letters of recommendation to: Dr. Timothy Johnston, Search Committee Chair, Department of Biological Sciences, Murray State University, Murray, KY 42071. *Murray State University is an Equal Education and Employment Opportunity/Minorities/Female/Disabled/Affirmative Action Employer.*

### WORCESTER POLYTECHNIC INSTITUTE BIOCHEMISTRY—FALL 1995

The Department of Chemistry anticipates making a tenure-track appointment in biochemistry at the **ASSISTANT PROFESSOR** level. Applications are invited from candidates in all areas of biochemistry. Applicants should have a Ph.D. degree and will be expected to develop strong research and teaching programs at the undergraduate and graduate levels. To apply, submit complete résumé, including research plans and teaching interests, and three letters of recommendation to: Dr. James W. Pavlik, Department of Chemistry, Worcester Polytechnic Institute, Worcester, MA 01609. *Worcester Polytechnic Institute is an Affirmative Action/Equal Opportunity Employer and encourages all qualified persons to apply.*

### FACULTY POSITION

The School of Biology at Georgia Institute of Technology invites applications for a position at **ASSISTANT** or **ASSOCIATE PROFESSOR**. Successful applicants are expected to establish an active program of funded research, and be committed to teaching in the B.S. and Ph.D. programs. The major area of research interest is molecular genetics relating to gene regulation, molecular evolution, or cell signal transduction in the eukaryotic organism. Curriculum vitae, research plans, and names and addresses of three references should be submitted by December 31, 1994, to: Faculty Search Committee, c/o Dr. Roger M. Wartell, School of Biology, Georgia Institute of Technology, Atlanta, GA 30332. *Georgia Tech is an Equal Opportunity/Affirmative Action Employer.*

## POSITIONS OPEN

### ASSISTANT/ASSOCIATE PROFESSOR OF MEDICINAL CHEMISTRY/BIOCHEMISTRY

The Medicinal Chemistry/Biochemistry Division of the School of Pharmacy, University of Wisconsin-Madison, invites applications for a tenure-track position to begin between July 1 and August 1, 1995. The position is likely to be filled at the **ASSISTANT PROFESSOR** level but outstanding candidates at the **ASSOCIATE PROFESSOR** level will be considered. A Ph.D. degree in biochemistry, chemistry or medicinal chemistry, postdoctoral research experience, and outstanding research potential are required. Applicants who would establish an independent research program in one of the following areas—modulation of receptor or gene function by small molecules with a potential for development into new types of drug therapy; structure/function studies of drug receptors or other macromolecular targets aided by site-directed mutagenesis, molecular modeling and crystallographic or spectroscopic methods; synthesis and evaluation of novel macromolecular ligands with a potential for use in approaches to gene therapy; novel approaches to combating drug resistance—are preferred but all outstanding candidates will be considered. Teaching duties will be in the current undergraduate courses offered by the divisional faculty and in a graduate course to be devised by the new faculty member.

Applications will be accepted until December 1, 1994. Please send a cover letter including a statement of research and teaching interests, curriculum vitae, selected reprints and the names, addresses, and telephone or Email numbers of three references to: Prof. C. R. Hutchinson, Search Committee, School of Pharmacy, University of Wisconsin, 425 North Charter Street, Madison, WI 53706. Telephone: 608-262-7582; crhutchi@facstaff.wisc.edu. Unless confidentiality is requested in writing, information regarding the applicants must be released upon request. Finalists cannot be guaranteed confidentiality. *The University of Wisconsin-Madison is an Equal Opportunity Employer.*

### EVOLUTIONARY BIOLOGIST Grinnell College

GRINNELL COLLEGE invites applications for a tenure-track appointment beginning August 1995 in **EVOLUTIONARY BIOLOGY. ASSISTANT PROFESSOR** preferred, **ASSOCIATE PROFESSOR** possible. We seek candidates with proficiency in quantitative methods and a commitment to field research with the ability to teach an advanced specialty course using our field station and laboratory, an introductory biology course in evolution, and a general education course for non-majors. Grinnell College is seeking candidates with postdoctoral research experience who plan an active research program involving undergraduates. Start-up funds, excellent facilities, and continuing support for research are available. In their letters of application, candidates should address their interest in undergraduate teaching in a liberal arts environment. Send curriculum vitae, three letters of recommendation, a statement of teaching and research interests and copies of all transcripts to: Professor Karl DeLong, Department of Biology, Grinnell College, Grinnell, IA 50112-0806. To be assured of full consideration, applications must be complete by December 15, 1994. *Grinnell College is an Affirmative Action/Equal Opportunity Employer and especially seeks women and minority candidates.*

### COMPUTATIONAL BIOLOGIST ASSISTANT PROFESSOR, RESEARCH TRACK

The Vermont Cancer Center and the Department of Microbiology and Molecular Genetics at the University of Vermont invites applications for a research track position at the **ASSISTANT PROFESSOR** level to direct a computer core facility. The successful candidate is expected to spend half-time interacting with Vermont Cancer Center colleagues facilitating core use and half-time developing an independent research program. Applicants must have a Ph.D. in an area related to computational/structural biochemistry and postdoctoral experience. A strong background in nucleic acid structure is desirable. Send curriculum vitae, a statement of research interests and three references to: Dr. Susan Wallace, Director, VCC DNA Damage and Repair Program, Chair, Department of Microbiology and Molecular Genetics, The University of Vermont, Stafford Hall, Burlington, VT 05405. Applications will be accepted until the position is filled. *The University of Vermont is an Affirmative Action/Equal Opportunity Employer.*

# THE STRENGTHS OF SERONO

## Financial Stability

covering and defining new compounds for development into clinical products. The exciting, ongoing success of our product portfolio and research projects has triggered the need to add gifted individuals to our staff.

The Ares/Serono Group is a pioneering organization widely recognized for turning specific challenges into achievements. At

Ares Advanced

Technology, our

efforts are directed at dis-

## Innovative Products

## DIRECTOR OF PATHOLOGY

Applications are invited for the challenging opportunity within our Senior Management Team for an individual who is expert in working at the interface between the clinic and basic research. As a key member of our research team, we will count on you to provide an objective medical/clinical perspective to guide and define research targets and directions, develop and maintain communication

## Fully Integrated

ties with outside clinical experts, as well as serve as liaison with internal clinical/pre-clinical experts. Successful candidate will be expected to develop expertise in clinical pathologies of specific interest and relevance to overall company directions/objectives, with emphasis on B cell malig-

nancies, auto-immune diseases, shock and endocrine disorders. Candidate for this position should possess a MD/PhD or MD degree, a distinguished record of scholarly activity and the ability to foster an interdisciplinary research program. A minimum of 4 years' postdoctoral-graduate experience is required. The ability to quickly gain objective expertise regarding different pathologies, coupled with a strong background in Immunology, and a willingness to travel is essential. A minimum of 2 years' industry experience is desirable.

Qualified candidates should send or fax CV's to: Ares Advanced Technology, Inc., c/o Nancy Magid, 280 Pond St., Randolph, MA 02368. FAX: (617) 963-6831. An equal opportunity employer.

## Entrepreneurial Environment

**Serono**

Ares Advanced Technology

## CELLULAR/MOLECULAR IMMUNOLOGY

The University of Calgary Faculty of Medicine invites applications for a full-time academic position at the Assistant Professor level or higher for research in cellular or molecular immunology. Qualifications include a PhD, MD or equivalent, and interest and experience in immunology at the cellular or molecular level, particularly related to autoimmune pathogenesis of Type 1 Diabetes. Opportunities will be available for graduate and medical school teaching. Rank and salary commensurate with qualifications and experience.

The successful candidate must compete successfully for salary and establishment grant support from the Alberta Heritage Foundation for Medical Research or the Medical Research Council, and will have 75% of time protected for research.

In accordance with Canadian immigration requirements, priority will be given to Canadian citizens and permanent residents of Canada. The University of Calgary is committed to Employment Equity.

Please submit a curriculum vitae and statement of research and goals, and arrange for three letters of reference to be sent directly, by December 31, 1994, to:

Dr. Ji-Won Yoon  
Professor and Director  
Julia McFarlane Diabetes Research Centre  
The University of Calgary  
3330 Hospital Drive N.W.  
Calgary, AB, Canada T2N 4N1

 THE UNIVERSITY OF  
CALGARY

## POSTDOCTORAL FELLOWSHIPS IN MOLECULAR AND CELL BIOLOGY AT THE NIH

Postdoctoral Fellowships are available in the Genetics and Biochemistry Branch, NIDDK, NIH. The Branch is similar to a small academic department and has excellent laboratory facilities. The intramural program of the NIH offers an outstanding research environment. The Branch is located on the main intramural campus of the NIH in Bethesda, Maryland, a 20 minute ride from Washington, D.C. Applications are invited from individuals of the highest caliber with Ph.D., M.D., or M.D., Ph.D. degrees. Physicians may participate in either the NIH Interinstitute Endocrine or the NIH Interinstitute Medical Genetics Training Programs. Current research interest of the staff with positions available include:

- The targeting of proteins to the secretory pathway in both eukaryotes and prokaryotes is being studied using a combination of in vivo and in vitro approaches. Current projects focus on the mechanisms of signal sequence recognition, the regulation of protein targeting by a new family of GTPases, and the function of recently discovered prokaryotic homologs of components of the eukaryotic sorting machinery (Harris Bernstein).

- Biochemistry and molecular biology of homologous recombination in eukaryotes and prokaryotes, the structure and function of novel triplex DNAs, new methods for gene mapping and cloning (e.g. RARE) and gene targeting in mammalian cells, gene rearrangements in eukaryotes and novel approaches to gene therapy (Dan Camerini-Otero).

- The role of DNA structure in homologous recombination is being investigated. We are studying the kinetics of DNA branch migration and the role of recombination proteins in promoting branch migration. We are also interested in characterizing other enzymes involved in recombination and repair in eukaryotes (Peggy Hsieh).

- Molecular basis of mechanisms involved in hormonal and developmental control of gene expression. The immediate focus is on the transacting factors of the steroid/thyroid hormone receptor gene superfamily. Future work will use homologous recombination to target genes of regulatory nuclear proteins (Vera Nikodem).

- Current projects involve gene targeting by homologous recombination to generate mouse models of lysosomal storage diseases, development of gene therapy for treatment of neurodegenerative disorders, and investigation of lysosomal enzyme structure and function (Rick Proia).

- The functional role of a family of neural-specific transcription factors, class III POU domain genes, is being investigated using a combination of molecular and embryological approaches in vertebrate embryos. The regulation of anterior-posterior patterning in the early vertebrate embryo is also under investigation (Sheryl Sato).

Interested candidates should send a letter stating their interests, their curriculum vitae and list of publications, and the names and addresses of three references to:

Dr. R. Daniel Camerini-Otero  
Chief, Genetics and Biochemistry Branch  
Building 10, Room 9D-15  
National Institutes of Health  
Bethesda, Maryland 20892  
Telephone: 301-496-2710

## POSITIONS OPEN

### ASSISTANT PROFESSOR OF ZOOLOGY HIGHER VERTEBRATES

The Department of Biological Sciences at the University of Idaho invites applications for a nine-month, tenure-track ASSISTANT PROFESSOR position with specialization in the biology of higher vertebrates (birds and/or mammals). The successful candidate will be expected to develop an independently funded program in an area of higher vertebrate biology and to demonstrate potential for excellence in teaching. Teaching responsibilities will include rotation in general zoology plus instruction in the biology of higher vertebrates. Send curriculum vitae; statement of teaching philosophy and goals; statement of research goals and expectations; and the names, addresses and telephone numbers of at least three references to: **A. W. Rourke, Department of Biological Sciences, University of Idaho, Moscow, ID 83844-3051.** Search and selection procedures will be closed when a sufficient number of qualified candidates has been identified, but not earlier than December 21, 1994.

To enrich education through diversity, the University of Idaho is an Equal Opportunity/Affirmative Action Employer.

**ASSISTANT PROFESSOR—MOLECULAR PHARMACOLOGY/TOXICOLOGY.** A tenure-track faculty position in the Department of Pharmacology and Toxicology at the University of Kansas for an individual with training and postdoctoral experience in the areas of Molecular Pharmacology/Toxicology, and a specialty in Molecular Neurobiology, Genetics, or Virology is available starting in August 1995. We are looking for an individual who will establish a strong research program, interact well with related research groups present at the University, and teach appropriate courses at the graduate and undergraduate level. To apply send a letter describing research interests, a curriculum vitae, and the names of three references to:

**Dr. Elias K. Michaelis, Chairman**  
Department of Pharmacology and Toxicology  
5064 Malott Hall  
University of Kansas  
Lawrence, KS 66045-2505  
Telephone: 913-864-4001  
FAX: 913-864-5219  
EKM@SMISSMAN.HBC.UKANS.EDU

Applications must be transmitted on or before November 14, 1994. The University of Kansas is an Equal Opportunity/Affirmative Action Employer. Women and minorities are especially encouraged to apply.

**POPULATION BIOLOGIST.** Tenure-track ASSISTANT PROFESSOR position to begin 16 August 1995. Both plant and animal population biologists are encouraged to apply. Establishment of a strong, independent research program and direction of graduate students is expected. Will instruct a population biology course and participate in team-taught introductory biology. Ph.D. required and postdoctoral experience desirable. Send curriculum vitae, three representative reprints and statements of teaching and research interests, and have three letters of reference sent to: **Chair, Population Biology Search Committee, Department of Biology, University of North Dakota, Grand Forks, ND 58202-9019.** Review of applications will begin on December 9, 1994, and continue until the position is filled. The University of North Dakota is an Affirmative Action/Equal Opportunity Employer.

**IMMUNOLOGIST.** The Department of Microbiology and the Basic Medical Sciences Program at Washington State University invites applications for a nine-month, tenure-track faculty position at the ASSISTANT PROFESSOR level. Applicants must have postdoctoral training and will be expected to have expertise in immunology preferably at the molecular level as it pertains to infectious disease. Qualifications should be documented by published papers in refereed journals and by other evidence of accomplishments. The successful candidate will also be expected to establish an active, externally funded, research program and participate in medical, graduate and undergraduate student teaching in the area of immunology. Send curriculum vitae, statement of research interests and professional objectives, and at least three letters of reference to: **Dr. Nancy S. Magnuson, Search Committee Chairman, Department of Microbiology, Washington State University, Pullman, WA 99164-4233.** Review of applications begins December 15, 1994, and continues until the position is filled. Washington State University is an Equal Opportunity/Affirmative Action Employer and Employer. Protected group members are encouraged to apply.

## POSITIONS OPEN

### Drake DRAKE UNIVERSITY

#### ASSISTANT PROFESSOR MEDICINAL CHEMISTRY

Applications are invited for an academic year, tenure-track, faculty position at the rank of ASSISTANT PROFESSOR. This position is pending final budgetary approval. Applicants should have a Ph.D. in medicinal chemistry or related area and a strong commitment to teaching at the undergraduate level. Postdoctoral experience is desirable but not required. Preference will be given to applicants possessing an undergraduate degree in pharmacy. Primary responsibilities include instruction in medicinal chemistry to undergraduate pharmacy majors, development of an independent, fundable research program, and service responsibilities as assigned. Applicants should send their curriculum vitae, a brief statement of research interests, and a statement of teaching experience and/or interests to: **Chair, Medicinal Chemistry Search Committee, College of Pharmacy and Health Sciences, Drake University, Des Moines, IA 50311-4505.** Applicants should also arrange to have three letters of recommendation sent on their behalf directly to the address listed above. Completed applications, including letters of reference, must be received by December 31, 1994, to be assured full consideration. Drake University is committed to Equal Opportunity through Affirmative Action in employment and is especially eager to identify minority persons and women with appropriate qualifications.

#### FACULTY POSITIONS FOR STUDIES ON THE BIOCHEMISTRY OF THE CELL NUCLEUS DEPARTMENT OF BIOCHEMISTRY MICHIGAN STATE UNIVERSITY

The Department of Biochemistry seeks applications for two tenure-track positions, preferably at the ASSISTANT PROFESSOR level. Applicants should have demonstrated productivity and evidence of potential for independent research on aspects of the biochemistry of the cell nucleus as it applies broadly to nuclear structure, signaling, or transport. One of the applicants is also expected to have considerable experience in prostaglandin biochemistry. The successful applicants will be expected to participate in the Program for Studies on the Biochemistry of the Cell Nucleus, an area of emphasis developed with support of the Michigan State University Cancer Center. The Biochemistry faculty has explicitly endorsed efforts to increase the diversity of its ranks, and accordingly, candidates from groups currently underrepresented in academic science are encouraged to apply.

The Department of Biochemistry has a large faculty conducting research in most areas of contemporary biochemistry and molecular biology, providing both a stimulating scientific atmosphere and opportunities for research collaboration. The Department occupies a modern research building with well-equipped research and teaching laboratories, and has vigorous undergraduate, graduate and postdoctoral training programs.

Applicants should submit a curriculum vitae, a description of research accomplishments and future interests, and have three letters of recommendation sent on their behalf to: **Dr. John E. Wilson, Chair, Department of Biochemistry, Box S, Michigan State University, East Lansing, MI 48824.** To ensure consideration, applications should be received by December 1, 1994. Michigan State University is an Equal Opportunity/Affirmative Action Employer.

#### ASSISTANT PROFESSOR OF BIOLOGY

Randolph-Macon Woman's College, a selective liberal arts college with historic strengths in the sciences, seeks an ASSISTANT PROFESSOR (tenure-track) for the fall of 1995, to teach molecular cell biology, upper-level courses in genetics and microbiology, a non-majors course, and to participate in senior seminar. Ph.D. and teaching experience required. A strong commitment to engaging students in research is desirable. Send letter of application, including statement of teaching and research interests, a curriculum vitae, and names, addresses, and telephone numbers of three references by 15 November 1994 to: **Dr. Douglas H. Shedd, Department of Biology, Randolph-Macon Woman's College, Lynchburg, VA 24503.** Equal Opportunity Employer.

## POSITIONS OPEN

**EVOLUTIONARY BIOLOGIST,** a tenure-track ASSISTANT PROFESSOR in the Department of Biological Sciences is expected pending funding. Applicant should establish a vigorous, externally funded research program using techniques of Molecular Biology. A generous start-up package is available. Teaching in the areas of evolution and ecology. A Ph.D. and postdoctoral experience are required. Send curriculum vitae, research statement and three recommendation letters by November 15, 1994, to: **Dr. Ronald P. Hart, Department of Biological Sciences, Rutgers University, 101 Warren Street, Newark, NJ 07102.** Rutgers is an Equal Opportunity/Affirmative Action Employer.

#### ASSISTANT PROFESSORSHIP/MEMBRANE PHYSIOLOGY

The Critical Care Research Laboratories at Children's Hospital and Harvard Medical School is recruiting an individual at the ASSISTANT PROFESSOR level working in the area of pulmonary ion and water transport, blood-brain barrier function or brain ion and fluid homeostasis. This individual should have a Ph.D. or M.D.-Ph.D., at least two years of postdoctoral research experience, and be committed to full-time laboratory research. We are seeking an individual working on cellular and molecular aspects of membrane channel/transporter function using state-of-the-art approaches. The successful candidate will be expected to develop an independent, externally funded research program and participate in the laboratory training of critical care fellows. The Critical Care Research Laboratories are part of a larger Membrane Physiology Group that includes investigators studying basic aspects of cellular signaling, regulation of gene expression, membrane ion and water channels, organic solute transporters, cellular volume homeostasis, intracellular membrane protein trafficking and epithelial development. Candidates should send their curriculum vitae, a brief statement of research interests, selected reprints and three letters of reference to: **Dr. Kevin Strange, Children's Hospital, Hunnewell 3, 300 Longwood Avenue, Boston, MA 02116.** Children's Hospital is committed to diversity in the workplace.

**BIOLOGY.** Clarkson University is seeking applications for a tenure-track position at the ASSISTANT PROFESSOR level. Postdoctoral experience is required and research should be in the area of Microbial Ecology using molecular techniques. Research collaborations with faculty in Environmental and Chemical Engineering are possible and would be encouraged. Anticipated teaching load is two courses a semester, and may include: General Ecology, Molecular Biology, Microbiology, and Microbiology for Environmental Engineers. Clarkson University is located in a college-town environment in the foothills of the Adirondack Mountains. The Department offers degrees at the Bachelor's, Master's and Doctoral levels (M.S. and Ph.D. in conjunction with the Department of Chemistry). Send curriculum vitae, statement of research and teaching interests, and the names of three references by November 14, 1994, to: **Dr. Michael H. Roberts, Department of Biology, Box 5805, Clarkson University, Potsdam, NY 13699-5805.** Minority candidates are strongly urged to apply. Clarkson University is an Affirmative Action/Equal Employment Opportunity Educator and Employer. (Position posting No. 603).

#### ASSISTANT PROFESSOR Aquatic Ecologist

Anticipated tenure-track ASSISTANT PROFESSOR position, starting August 1995, "Pending Final Approval." Outstanding candidates in all areas of aquatic (marine and/or freshwater) ecology will be considered, but we are especially interested in the area of ecotoxicology. The candidate's expertise in the fate and effects of environmental contaminants may range from molecular or biochemical approaches to the response of ecological systems. Ph.D. or equivalent degree in a biological science is required. Postdoctoral research and teaching experience preferred. The successful candidate is expected to develop a strong, independent research program with extramural support, and have a commitment to teaching excellence. Candidates should submit a statement of research interests, teaching philosophy, curriculum vitae and names of three references by December 7, 1994, or until position is filled, to: **Faculty Search Committee, Department of Zoology and Physiology, Louisiana State University, Baton Rouge, LA 70803-1725.** Louisiana State University is an Equal Opportunity/Affirmative Action Employer.



Research

## Program Officer Biology

The Board on Biology (BB) of the National Research Council (NRC) is seeking candidates for the position of Program Officer. Candidates should have a Ph.D. or equivalent in the biodiversity and/or biomedical sciences, at least one additional year of relevant experience, and good current understanding of biology. Will manage a study on the value of biodiversity and its implications for natural resource management, as well as other projects in biodiversity, molecular biology, and the health of the biological sciences. The position requires demonstrated understanding of the utilization of scientific information in decision-making and effective communication and organizational skills. Please send resume in confidence to: **NRC/BB (EF), Position #452.103, 2101 Constitution Avenue, NW, Washington, DC 20418. EOE.**



# RESEARCH SCIENTISTS

We are a well-funded, independent, not-for-profit biomedical research institute. Our 30,000 square feet of modern, state-of-the-art facilities are located on the North Shore University Hospital campus on Long Island, close to New York City and Cold Spring Harbor labs. We are seeking highly motivated, creative professionals to join our teams researching the following areas:

### IMMUNOLOGY and/or AIDS-Post-Doctoral Position

Study the biochemistry of T-cell activation in normal and HIV-1 infected cells. Requires expertise in immunology, molecular biology, and/or protein biochemistry.

### ACTINOMYCETES BIOLOGY

#### Post-Doctoral (1) & Research Assistant Positions (2)

Study the biosynthesis of novel polyketides in actinomycetes. Requires expertise in molecular biology and actinomycetes biology.

### CYTOKINE BIOLOGY-Post-Doctoral Positions (3)

Study the biochemistry and biology of macrophage-derived cytokines which are involved in inflammation and neoplastic disease. Requires expertise in biochemistry and cell biology.

We can offer you an excellent salary and benefits program, commensurate with experience and education. For confidential consideration, we invite you to forward a "c.v.", indicating area of interest and three references, to: **Human Resources Dept. S1014, The Picower Institute, 350 Community Drive, Manhasset, New York 11030. We are an equal opportunity employer m/f/h/v.**



## The Picower Institute for Medical Research

# Senior Executive Service Opportunity

**Salary Range: \$96,830 to \$120,594**

The Chief, Sanctuaries and Reserve Division, is responsible for directing nationwide activities to identify, designate and manage National Marine Sanctuary and Estuarine Reserve Research Systems Programs. The incumbent develops long-range plans which provide a basis for strategic policy and program decisions. Innovative management strategies are developed to address demands placed on coastal, marine and estuarine waters and adjacent lands by an ever-increasing population and natural physical changes. Fosters concerns to support and implement programs for research, management and conservation of resources. Serves as representative for the National Oceanic and Atmospheric Administration, National Ocean Service, on high-level committees, advisory groups, task forces and conferences.

For additional information, please contact  
**Renee Loudermill or Heidi Smith at**

**(301) 713-0530**

Announcement closes 11/18/94  
Equal Opportunity Employer  
Department of Commerce, NOAA



## Scientific Opportunities at Bio-Rad Laboratories

As a pioneer in the clinical testing of thyroid, B-12 and folates more than a decade ago, Bio-Rad Laboratories is helping to solve today's clinical laboratory problems with innovative tests for AIDS, diabetes, hemoglobin variants and drugs of abuse.

**Research Scientist:** Our continued growth has created the need for creative scientists with experience in the commercial development of non-isotopic immunoassays. Successful candidates will have a BS, MS or PhD in the Life Sciences or equivalent discipline and demonstrated success in the development of immunochemical assays. *Dept. 476a.*

**Assay Development Scientist:** You will help develop new assays for manufacturing on our new automated blood chemistry analyzer. This position requires a BS/MS in Life Science with 3+ years experience in assay development. FDA, GMP and ISO9000 experience in a medical device environment is considered a real plus. *Dept. 476b.*

**Process Improvement Scientist:** You will help continuously improve our Western Blot manufacturing process. This position requires a BS/MS in Life Science with 3+ years experience in Western Blot manufacturing and process control. FDA, GMP and ISO9000 experience in a medical device environment is considered a real plus. *Dept. 476c.*

To apply, please send your resume to: Bio-Rad Laboratories, 4000 Alfred Nobel Dr., please indicate appropriate dept. #, Hercules, CA 94547. An Equal Opportunity Employer, MFDV.

**BIO-RAD Bio-Rad Laboratories**

## POSITIONS OPEN

**ASSISTANT PROFESSOR**, tenure-track position starting September 1995 in a multidisciplinary department. We seek a broadly trained **ANIMAL PHYSIOLOGIST** with postdoctoral experience and a specialty in **ENDOCRINOLOGY**. The candidate should utilize molecular biological techniques to study endocrine/developmental events at the cellular level. Possible areas of research include signal transduction, membrane phenomena, or cell cycle regulation. The successful applicant is expected to develop an externally funded research program, teach undergraduate courses in physiology and endocrinology, and participate in the graduate program. Submit curriculum vitae, statement of research and teaching interests/experience, representative reprints, and three letters of recommendation to: **Dr. R. G. Van Buskirk, Department of Biological Sciences, Binghamton University, Binghamton, NY 13902-6000** by December 15, 1994. Binghamton University is one of the four doctoral-granting campuses of the State University of New York system and is dedicated to growth in research and graduate education. *Strongly committed to Affirmative Action. Recruitment conducted without regard to race, color, sex, religion, age, disability, marital status, sexual orientation or national origin.*

### MICROBIOLOGIST

The Biology Department at Holy Cross College seeks to fill a tenure-track position for a broadly trained microbiologist at the rank of **ASSISTANT PROFESSOR** beginning in September 1995. The successful candidate must hold a Ph.D. at the time of appointment and will be expected to develop an active research program involving undergraduate students. The research must be compatible with the environment of a liberal arts college and should be in one or more of the following areas: bacterial physiology, microbial ecology, or bacterial systematics and evolution. Teaching responsibilities include a laboratory course in microbiology, participation in introductory biology, and development of a course for non-science majors. Holy Cross is a nationally ranked, highly selective liberal arts college with an enrollment of 2700 students. It values excellence in both undergraduate teaching and research. Applications, consisting of a curriculum vitae, statements of teaching and research interests, copies of publications, copies of graduate and undergraduate transcripts, and letters from four referees, should be submitted by December 1, 1994, to: **Dr. Mary E. Morton, Search Committee Chair, Biology Department, College of the Holy Cross, Worcester, MA 01610**. We encourage applications from underrepresented groups, including minorities, women, and people with disabilities. Holy Cross is an Affirmative Action/Equal Opportunity Employer.

**ASSISTANT or ASSOCIATE PROFESSORIAL LEVEL FACULTY APPOINTMENTS** available in Biochemistry, Histology/Neuroanatomy (dual expertise). Primary responsibilities: maximum 25% of time teaching the above disciplines to medical students. Minimum 75% of time for research. Academic rank and salary commensurate with training, teaching and research experience. Please specify your academic specialty in your reply. Send curriculum vitae and publications list, detailing teaching and research experience and interests, grant support and names of three references to: **Dr. Arnold L. Nagler, Dean, PCME, New York College of Osteopathic Medicine, Old Westbury, NY 11568**. An Affirmative Action/Equal Opportunity Employer, Male/Female.

### GROSS ANATOMY ASSISTANT PROFESSORS

The Department of Anatomical Sciences, University at Stony Brook, seeks to fill two faculty positions at the level of **ASSISTANT PROFESSOR**. The major teaching responsibility will be as an instructor of human gross anatomy to students in health sciences professional programs. Each faculty person will pursue independent research in functional morphology, musculoskeletal biology, evolutionary morphology, and/or vertebrate paleontology. All candidates must have a Ph.D., have satisfactorily completed a graduate-level dissection course in human gross anatomy, and, preferably, have experience teaching such a course. Submit curriculum vitae and names of three references to: **Dr. Brigitte Demes, Department of Anatomical Sciences, Health Sciences Center, University at Stony Brook, Stony Brook, NY 11794-8081**. Applications must be received by December 1, 1994.

An Affirmative Action/Equal Employment Opportunity Employer.

## POSITIONS OPEN

### TENURE-TRACK BIOLOGIST UNIVERSITY OF SOUTHERN CALIFORNIA

Applications are invited for a position at the **ASSISTANT, ASSOCIATE, or FULL PROFESSOR** level in the Department of Biological Sciences. We seek an active researcher whose work includes significant aspects of evolution or population genetics. The department has graduate programs in marine biology, molecular biology, and neurobiology, and the successful candidate will be expected to participate actively in one or more of these programs. He or she will be expected to be the primary instructor in an undergraduate course in evolution and population genetics, and also to participate in other teaching. Primary evaluation criteria are excellence in both research and teaching. Applicants should send a curriculum vitae, description of research and teaching interests, a description of start-up needs, and three letters of recommendation (senior applicants need not solicit letters and may send names and addresses of three references) to: **Chair, Faculty Search Committee, Department of Biological Sciences, University of Southern California, Los Angeles, CA 90089-0371**. The department will start evaluating applications on 1 November 1994, and will continue to accept them until a suitable candidate is found. *Women and members of minority groups are particularly encouraged to apply. USC is an Affirmative Action Employer.*

### UNIVERSITY OF WISCONSIN-PARKSIDE Assistant Professor of Biological Sciences Developmental Biology or Molecular-Cellular Immunology

**TENURE-TRACK POSITION** for person seeking a balance of research and teaching in a department designated a University of Wisconsin System Center of Excellence, beginning fall 1995. Require Ph.D. and postdoctoral research with expertise in developmental biology or molecular-cellular immunology and proven competence in applying molecular biology techniques in research. Teaching experience and a broad background in biology helpful. Duties include: 1) research involving M.S. and undergraduate students; 2) initially teaching an introductory course for non-majors, laboratory modules on working with cultured cells and proteins, and upper division courses in area of specialty; and 3) service to the university.

University of Wisconsin-Parkside's campus is an attractive, park-like setting in the Chicago-Milwaukee urban corridor with a diverse student body. The 14-person department offers strong undergraduate concentrations in General Biology, Pre-health Professions, and Molecular Biology, as well as a thesis-based M.S. in Applied Molecular Biology. All faculty have active research programs; collaborations are encouraged.

Send letter of interest, curriculum vitae, brief summary of research and teaching goals, representative reprints, and names of at least three references to: **Dr. Scott Thomson, Chair, Biological Sciences Search Committee, UW-Parkside, Box 2000, Kenosha, WI 53141**. Telephone: 414-595-2547/2327; FAX: 414-595-2056; [thomson@cs.uwp.edu](mailto:thomson@cs.uwp.edu) by November 28, 1994. The University of Wisconsin-Parkside is an Equal Opportunity/Affirmative Action Employer.

**ASSISTANT/ASSOCIATE PROFESSOR**—The **DIVISION OF CARDIOLOGY** invites applications for a position at the Assistant or Associate Professor level. The general focus of this position will be to work on the molecular biology of myocardial ischemia within the context of a multidisciplinary team that will include physiologists and biochemists and will use a variety of models (isolated cells, isolated hearts, anesthetized and conscious animals). The successful candidate will have demonstrated expertise in molecular biology and will join existing groups of investigators in molecular cardiology and physiology to conduct research focusing on the changes in gene expression associated with myocardial "stunning" and preconditioning. Applicant must hold an M.D. or Ph.D., have a minimum of three years of postdoctoral training in molecular biology, and be capable of establishing a strong independent research program. A background including cardiology, cardiovascular physiology, or molecular physiology would also be of great value. To apply, refer to position No. 09999C and include curriculum vitae, statement of research interests and names of three references to: **Richard N. Redinger, M.D., Professor and Chairman, Department of Medicine, University of Louisville, Louisville, KY 40292**. Equal Employment Opportunity/Affirmative Action Employer.

## POSITIONS OPEN

### DEVELOPMENTAL GENETICIST

**ASSISTANT PROFESSOR OF MOLECULAR AND CELLULAR BIOLOGY**—The Division of Biological Sciences, University of California, Davis, invites applications and nominations for an Assistant Professor of Molecular and Cellular Biology. This is a tenure-track position in the Section of Molecular and Cellular Biology within the newly reorganized Division. Candidates must have a Ph.D. (or equivalent) and have an outstanding record of achievement in research. The candidate will be expected to develop a strong research program in developmental genetics using genetically amenable higher eukaryotic model systems. This position reflects the Section's ongoing commitment to building strength in genetics at the undergraduate and graduate level. Candidates should submit a curriculum vitae, a statement of their current and proposed research, and a statement of teaching experience and/or interests, and arrange to have three letters of recommendation sent to: **Dr. Carol Erickson, Chair, Search Committee, Section of Molecular and Cellular Biology, Division of Biological Sciences, University of California, Davis, CA 95616-8519**. Closing date: open until filled but all application materials including letters of recommendation must be received before December 1, 1994, to be assured full consideration. *The University of California does not discriminate on the basis of race, color, national origin, religion, sex, disability, age or sexual orientation. An Equal Opportunity/Affirmative Action Employer.*

### ASSISTANT PROFESSORSHIP IN MEXICO

The **CENTER OF BIOTECHNOLOGY (CB)** at the Instituto Tecnológico y de Estudios Superiores de Monterrey (ITESM), Campus Monterrey in México, invites highly motivated individuals for the tenure-track position of **ASSISTANT PROFESSOR**. The CB aims to develop the areas of agrobiotechnology, food technology, and environmental biotechnology. Priority areas are plant genetic engineering, industrial microbiology, and biochemical engineering. Applications to reinforce the ongoing research areas of biological waste treatment, cell growth and biocatalysis, enzyme biotechnology, immunodiagnosis, molecular biology, and protein engineering are welcome. Candidates should have a Ph.D. and a minimum of two years of postdoctoral experience with established research credentials. The successful candidates are expected to conduct both independent and collaborative research, as well as lecturing at the undergraduate and graduate levels. Spanish speaking is not required. The ITESM offers very competitive salaries and benefits. Send résumé, research plans, teaching interests, and three references to: **Dr. Alfredo Jacobo-Molina, ITESM, Director del Centro de Biotecnología, Sucursal de Correos "J" CP 64849, Monterrey, N.L., México**. FAX: 528-328-4136; Email: [ajacobo@campus.mty.itesm.mx](mailto:ajacobo@campus.mty.itesm.mx).

### UNIVERSITY OF CALIFORNIA, SANTA CRUZ Department of Biology

Applications are invited for a tenure-track faculty position beginning fall 1995, contingent upon available funding. Minimum qualifications: Ph.D. or equivalent in Biology or a related field, postdoctoral research experience, university teaching experience, or demonstrated potential. The successful applicant will be expected to mount a vigorous externally funded research program and contribute to teaching at the graduate and undergraduate levels.

**ASSISTANT PROFESSOR** in invertebrate biology, No. 0494: We are especially interested in applicants, from any relevant discipline, who are likely to emphasize the faunas and resources of the Monterey Bay region in their research and teaching.

Applicants should submit a curriculum vitae, brief description of research and teaching interests, reprints, and arrange for three letters to be sent to:

**Invertebrate Biology Search Committee  
Department of Biology  
225 Sinsheimer Labs  
University of California  
Santa Cruz, CA 95064**

All applications must be received by no later than December 15, 1994.

The University of California is an Equal Opportunity/Affirmative Action/IRCA Employer. Women and minorities are encouraged to apply.





"Support actions in the area of research and information in favour of Animal Health, with a view to improving Man's Health and Environment."

# RESEARCH GRANTS

Offered by

THE FONDATION

PIERRE RICHARD DICK - VIRBAC

*under the aegis of the Fondation de France*

IF YOUR RESEARCH  
CONCERNS  
INFECTIOUS  
DISEASES OF VIRAL,  
BACTERIAL OR  
PARASITIC ORIGINS



All qualified groups or individuals are invited to submit applications for research grants to undertake basic or applied medical and veterinary research in the field of:

- New vaccines or new methods of vaccination within the framework of infectious and transmissible diseases aiming to benefit both human beings and animals.

Particular attention will be given to projects displaying positive impact on the environment and developing countries, clear and economically acceptable objectives, and collaboration between **Veterinary and Human Research**.

A minimum of two Grants of \$ U.S. 25,000 each will be awarded for one year, beginning in June 1995.

The deadline for submission of your proposal is **January 31, 1995**.

**Orientation Committee**

**Fondation Pierre Richard Dick - Virbac**

**B.P. 305, 06514 CARROS Cedex, FRANCE**

**Tel: (33) 92 08 72 49 Fax: (33) 92 08 72 82**

**PLEASE CONTACT US QUICKLY FOR AN APPLICATION FORM**

## Assistant Professor Department of Biological Sciences Dartmouth College

The Department of Biological Sciences at Dartmouth College seeks applicants for a tenure track position at the level of Assistant Professor. Candidates should have strong training in **biochemistry** and expect to teach undergraduate biochemistry as well as a graduate level course in their area of research specialization. The successful candidate will join a group of faculty whose research currently involves cellular, molecular, and biochemical approaches to studying a number of model systems including *Arabidopsis*, *C. elegans*, *Drosophila*, sea urchins, squid and yeast. We expect the successful candidate to establish and supervise an independent research program that will attract extramural funding and provide research training for graduate and undergraduate students. Candidates should have a Ph.D. (or equivalent) and at least two years of relevant postdoctoral experience.

Please send a current curriculum vitae, a statement of research and teaching interests, and arrange to have three letters of reference sent under separate cover to:

Biochemistry Search Committee  
Department of Biological Sciences  
Dartmouth College  
6044 Gilman Hall  
Hanover, NH 03755-3576

Although materials can be submitted by FAX (603-646-1347) if circumstances warrant, please note that the original documents are ultimately required. Application review will begin on 15 November 1994. Women and members of minority groups are strongly encouraged to apply. Dartmouth College is an Equal Opportunity/Affirmative Action Employer.

## Northwestern University Department of Neurobiology and Physiology and Institute for Neuroscience

Three tenure-track faculty positions for outstanding neuroscientists in the areas of *Molecular Biology, Genetics, Cellular and/or Systems Neurobiology* are now open in the Department of Neurobiology and Physiology (NBP), with joint appointments in the intercampus Northwestern University Institute for Neuroscience (NUIN). These new positions represent an increased commitment by the University to the neurosciences within both the NBP Department and NUIN. We are particularly interested in hiring young neuroscientists at the Assistant Professor level who have had postdoctoral experience, although senior candidates will also be considered. The salary level is open. New faculty are expected to complement the strengths of the Department in the areas of circadian biology, endocrinology, molecular and cell biology, neurogenetics, and sensory neurobiology. In addition to maintaining a strong independent research program, faculty are expected to participate in the teaching of undergraduate and graduate students. The Department is located in an attractive setting on the main campus along the shore of Lake Michigan. Applicants should send a curriculum vitae, a statement of research interests, and have at least three letters of reference sent to the address below. Applications should be received by December 1, 1994, to receive full consideration, although the searches will proceed until the positions are filled. Evaluation will begin immediately and hiring may start as soon as spring 1995. Women and members of minority groups are especially encouraged to apply. Northwestern University is an AA/EEO Employer. Please address the applications to Chair, Neurobiology and Physiology Search Committee, Northwestern University, 2153 N. Campus Drive, Evanston, IL 60208-3520.

## POSTDOCTORAL SCIENTIST

(Full-time Temporary)

SmithKline Beecham Animal Health has an immediate opening for a Postdoctoral Scientist in the Anti-Infective Assessment Department at our West Chester facility. This position will last for 12 to 24 months, offering paid vacation and personal holidays, plus full health benefits. The selected candidate will carry out cell-based assays and animal studies to develop new immunomodulating drugs for veterinary application.

The qualified candidate will have a Ph.D. in biochemistry, immunology or related field, with experience in cell culture techniques and knowledge in molecular biology. Ability to work both independently and as part of a team is a must, in addition to having good computer, communication and interpersonal skills.

Please send your resume and salary requirements to: Human Resources (Box MM), SmithKline Beecham Animal Health, 1600 Paoli Pike, West Chester, PA 19380. **No phone calls or faxes please.** We are an Equal Opportunity Employer, M/F/D/V.



**SmithKline Beecham**  
Animal Health

## POSITIONS OPEN

**PHYSIOLOGY/ANATOMY.** Visiting ASSISTANT PROFESSOR to teach Human and/or Vertebrate Physiology course (s), and Human Anatomy laboratories using cadavers and instructional technology, including Macintosh®-based A.D.A.M.® software. One year appointment, starting August 1995, may be renewed twice. Opportunities exist for collaborative research. Video interview and/or video lecture required of finalists. M.S. minimum; Ph.D. preferred. Submit curriculum vitae, teaching statement, and names, addresses and telephone numbers of three references to: **Associate Head, Department of Biology, James Madison University, Harrisonburg, VA 22807.** Review of candidates will begin December 15, 1994. Applications and nominations must be received by that date for consideration. *James Madison University is an Equal Opportunity/Affirmative Action/Equal Access Employer and especially encourages applications from minorities, women and persons with disabilities.*

The Department of Psychology at Brown University invites applications for a three-year non-tenure track position at the level of **ASSISTANT PROFESSOR** starting September 1995. The Department seeks applicants with specialization in the neurochemical basis of behavior who can teach courses in Psychopharmacology and Behavioral Neuroscience. Brown offers excellent laboratory facilities, and opportunities for interaction with established laboratories in a variety of areas of neuroscience.

Applicants should send a letter describing their interest, curriculum vitae, reprints of representative publications, and three letters of reference to: **Search Committee, Department of Psychology, Brown University, P.O. Box 1853, Providence, RI 02912.** The deadline for application is January 10, 1995. *Brown University is an Equal Opportunity/Affirmative Action Employer. Applications from minority persons and women are strongly encouraged.*

### ASSISTANT PROFESSOR DEPARTMENT OF PHARMACOLOGY UNIVERSITY OF WASHINGTON

Applications are invited for a tenure-track faculty position at the **ASSISTANT PROFESSOR** level in the Department of Pharmacology. For candidates with appropriate qualifications, appointment may be considered at the rank of **ASSOCIATE PROFESSOR**. A Ph.D. or M.D. degree and postdoctoral research experience are required. Selection will be based on scientific excellence and the potential to establish an outstanding independent research program using molecular and cellular approaches to research problems in signal transduction or other aspects of molecular pharmacology. The successful candidate will teach and participate in graduate student training in the Department of Pharmacology, the Interdisciplinary Graduate Program in Neurobiology, and the Interdisciplinary Molecular and Cellular Biology Program. Applicants should send their curriculum vitae, a statement of research plans, and three letters of recommendation by January 1, 1995, to the **Pharmacology Search Committee, Department of Pharmacology, SJ-30, University of Washington, Seattle, WA 98195.** *The University of Washington is building a culturally diverse faculty and strongly encourages applications from female and minority candidates. Affirmative Action/Equal Opportunity Employer.*

### TENURE-TRACK FACULTY POSITIONS AT VANDERBILT UNIVERSITY MEDICAL CENTER

Tenure-track faculty positions available in the area of **SIGNAL TRANSDUCTION** as it relates to development or functioning in differentiated cells. Particular attention will be given to candidates focused on fundamental issues of importance to Molecular and Cellular Neuroscience. University-wide strengths in signal transduction, cellular and molecular neuroscience, regulation of gene expression for growth or differentiation, molecular development as well as a strong interdisciplinary graduate student training program and a scientific culture that fosters collaboration make Vanderbilt University an excellent research environment. Positions are available for **ASSISTANT PROFESSOR** or **ASSOCIATE** or **FULL PROFESSOR**, for senior candidates with ongoing programs of excellence. Applicants should send curriculum vitae, three letters of reference and a description of proposed research activities to: **Dr. Lee E. Limbird, Ph.D., Professor and Chair, Department of Pharmacology, Vanderbilt University, Nashville, TN 37232.** FAX: 615-343-1084. *Vanderbilt is an Affirmative Action/Equal Opportunity Employer.*

## POSITIONS OPEN

### UNIVERSITY OF CALIFORNIA, SANTA CRUZ Department of Biology

Applications are invited for two tenure-track faculty positions beginning fall 1995, contingent upon available funding. Minimum qualifications: Ph.D. or equivalent in Biology or a related field, postdoctoral research experience, university teaching experience, or demonstrated potential. The successful applicant will be expected to mount a vigorous externally funded research program and contribute to teaching at the graduate and undergraduate levels.

**ASSISTANT PROFESSOR** in Cell Biology, No. 0501: Applicants who use molecular, genetic or biochemical approaches to investigate fundamental problems in cell biology are encouraged to apply.

**ASSISTANT PROFESSOR** in Molecular Genetics of Development, No. 0487: We are seeking an individual whose research centers on problems involving the molecular biology of development. We especially encourage applicants using molecular genetic approaches.

Applicants should submit a curriculum vitae, brief description of research and teaching interests, reprints, and arrange for three letters of recommendation to be sent to:

**Molecular Genetics of Development  
Search Committee or  
Cell Biology Search Committee  
Department of Biology  
225 Sinsheimer Labs  
University of California  
Santa Cruz, CA 95064**

All applications must be received by no later than December 15, 1994.

Candidates applying for both positions may submit one application, but **MUST** indicate that they want to be considered for both positions.

*The University of California is an Equal Opportunity/Affirmative Action/IRCA Employer. Women and minorities are encouraged to apply.*

### NEUROPHYSIOLOGIST AND ENDOCRINOLOGIST

Two (2) tenure-track positions are available at the level of **INSTRUCTOR/ASSISTANT PROFESSOR** to teach basic neurophysiology and endocrinology/digestion in a professional college. Candidates must possess a Ph.D. in physiology (professional degree may be considered). Postdoctoral and/or teaching experience is desirable. The positions involve participation in the development of a problem-based curriculum, working as a facilitator in a small group learning environment. Strong commitment to teaching is expected and computer experience in a teaching environment is helpful. The successful candidates will be encouraged to establish and maintain ongoing research and obtain outside funding. Salary for a 12-month contract will be commensurate with education and experience. Send curriculum vitae and the names, addresses and telephone numbers of three references to: **James Christiansen, Ph.D., Chairman, Physiology Search Committee, National College of Chiropractic, 200 East Roosevelt Road, Lombard, IL 60148.**

### BIOCHEMISTRY/MOLECULAR BIOLOGY MEHARRY MEDICAL COLLEGE

Faculty positions are available in 1995 in the Department of Biochemistry, at the level of **ASSISTANT** or **ASSOCIATE PROFESSOR**. Applicants must have a Ph.D. or M.D. degree, or both, and appropriate formal postdoctoral research experience. Joint appointments in clinical science are possible. We are seeking individuals who have potential or demonstrated competence in the use of molecular biological or biophysical approaches to conduct research in molecular medicine, or on fundamental biochemical/cell biological problem(s). Selected individuals must also be capable of, and committed to making significant contributions to teaching and administrative functions of the Department of Biochemistry. Successful applicants will be expected to develop/maintain a funded research program of high quality and to substantially participate in the graduate and professional (medical, dental and allied health) school teaching programs of the Department. Applicants should send curriculum vitae, a statement on teaching interests, names of four individuals who may be contacted for reference, and a summary (not exceeding four pages) of potential research project(s) to: **Ifeanyi J. Arinze, Ph.D., Chairman, Department of Biochemistry, Meharry Medical College, Nashville, TN 37208.** *An Equal Opportunity/Affirmative Action Employer.*

## POSITIONS OPEN

**ASSISTANT PROFESSOR: NEUROPHARMACOLOGY/NEUROTOXICOLOGY.** The Department of Pharmacology, Toxicology and Therapeutics at the University of Kansas Medical Center invites applications for a tenure-track position at the **ASSISTANT PROFESSOR** level. The applicant must have a Ph.D. or M.D. degree, with two or more years of postdoctoral experience. The successful candidate will be expected to establish an independent research program in molecular neuropharmacology/neurotoxicology and contribute to the teaching of graduate and medical students. The ideal candidate will have had training in pharmacology, neurosciences and molecular biology. Affiliations with the Center for Environmental and Occupational Health and the Mental Retardation Research Center are possible. Curriculum vitae and the names of three references should be sent to: **Dr. S. J. Enna, Department of Pharmacology, Toxicology and Therapeutics, University of Kansas Medical Center, Kansas City, KS 66160-7417.** *The University of Kansas is an Affirmative Action/Equal Opportunity Employer.*

### PLANT SYSTEMATIST Duke University

The Department of Botany invites applications and nominations for a tenure-track position at the **ASSISTANT PROFESSOR** level to begin September 1995. Appointment at the **ASSOCIATE PROFESSOR** level may be possible. Candidates should possess taxonomic expertise with a particular plant group, together with experience in modern approaches to plant systematics. Send curriculum vitae, a statement of research and teaching interests, and names of three references to: **Professor Janis Antonovics, Chair of the Search Committee, Department of Botany, Duke University, Box 90338, Durham, NC 27708-0338.** Applications received by November 15, 1994, will be guaranteed consideration.

*Duke University is an Equal Opportunity/Affirmative Action Employer.*

### FACULTY POSITION IN PLANT BIOLOGY

The Department of Biological Sciences, University of Maryland Baltimore County (UMBC) is seeking an outstanding new colleague who is using molecular, biochemical and genetic approaches to address fundamental problems in plant biology. Applicants must have a Ph.D. and postdoctoral experience. The position is currently open at the **ASSISTANT PROFESSOR** level, but candidates with appropriate qualifications may be considered for appointment at a higher rank. The successful candidate will develop an independent research program and will contribute to the department's undergraduate and graduate teaching programs. Doctoral degrees are offered in Biological Sciences, Molecular and Cellular Biology, and Marine, Estuarine and Environmental Sciences. Salaries are competitive and start-up funds are very generous. Facilities are excellent and include a newly renovated greenhouse for transgenic plant research. Applicant should submit a curriculum vitae, summary of current and future research interests, and names, addresses and telephone numbers of three references. For full consideration, applications should be submitted by December 15, 1994, to: **Dr. J. Lynn Zimmerman, Chair, Plant Biology Search Committee, Department of Biological Sciences, UMBC, Baltimore, MD 21228.** *UMBC is an Affirmative Action/Equal Opportunity Employer. Women and minorities are encouraged to apply.*

### FACULTY POSITIONS IN VISION SCIENCE

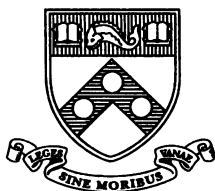
The Department of Physiological Optics seeks outstanding scientists interested in the eye and vision. These scientists should be committed to their own independent research programs. Successful applicants will be expected to participate in the graduate program and the optometry program. However, teaching loads are compatible with a strong departmental commitment to investigator-initiated research. Faculty in the department interact closely with other researchers on the University of Alabama at Birmingham campus through the Vision Science Research Center. The positions are at the **ASSISTANT PROFESSOR** or the **ASSOCIATE PROFESSOR** level and are tenure-track. Applicants should send a curriculum vitae with a statement of research interests to: **Dr. Graeme Wilson, Chairman, Department of Physiological Optics, School of Optometry, The University of Alabama at Birmingham, Birmingham, AL 35294.** *University of Alabama at Birmingham is an Affirmative Action/Equal Opportunity Employer.*





## Faculty Positions in Neuroscience

The Department of Neuroscience at the University of Pennsylvania School of Medicine invites applications for two tenure-track positions at the assistant professor level. One appointment will be in the area of developmental neurobiology and the other in the broad area of molecular neuroscience. Outstanding candidates whose research interests fall into these areas are encouraged to apply. Candidates should, by January 1, 1995, send CV, statement of research interests, and three letters of recommendation to:



**Faculty Search Committee  
Department of Neuroscience  
215 Stemmler Hall  
University of Pennsylvania  
School of Medicine  
Philadelphia, PA 19104-6074**

AN EQUAL OPPORTUNITY/AFFIRMATIVE ACTION EMPLOYER.  
WOMEN AND MINORITIES ARE ESPECIALLY ENCOURAGED TO APPLY.

## GASTROINTESTINAL RESEARCH

The University of Calgary Gastrointestinal Research Group invites applications for a full-time academic position at the Assistant Professor level or higher for a basic scientist with expertise in regulation of intestinal smooth muscle or mucosal function. Duties include teaching and graduate student supervision. Qualifications include a PhD, at least two years' postdoctoral training, and a proven record of excellence in research. Interest in the influence of various cytokines, growth factors and inflammatory mediators on smooth muscle or mucosa is preferred. Applications are encouraged from pharmacologists and physiologists studying smooth muscle or mucosal function at the cellular and molecular levels.

Academic appointment will be with an appropriate department of the Faculty of Medicine. The selected candidate will be associated with the multidisciplinary Research Group, must compete successfully for salary support from agencies such as the Alberta Heritage Foundation for Medical Research, and will have 75% of time protected for research.

In accordance with Canadian immigration requirements, priority will be given to Canadian citizens and permanent residents of Canada. The University of Calgary is committed to Employment Equity.

Please submit a curriculum vitae and the names of three referees by December 15, 1994, to:

Dr. R.B. Scott, Chair  
Gastrointestinal Research Group  
The University of Calgary  
3330 Hospital Drive N.W.  
Calgary, AB, Canada T2N 4N1



## POSTDOCTORAL RESEARCHERS

Cedars-Sinai Medical Center, affiliated with UCLA School of Medicine, currently seeks:

### MOLECULAR VIROLOGY

Immediate opportunity for a Postdoc Researcher to join our Research Institute. Will work on NIH funded grants studying the molecular virology of herpes simplex virus latency. Studies emphasize viral and cellular genes & proteins involved in HSV-1 pathogenesis as well as the establishment & reactivation of HSV-1 latency. Experience in molec bio, molec gen or molec/classical virology (esp. herpes virology) is highly desirable, but not essential. Position is well funded at a competitive salary. Send CV & names/addresses/phone #'s of 3 references to: Job#1940596, Dr. Steven L. Wechsler, Director, Virology Research Laboratories, 8700 Beverly Blvd., Davis Bldg., Room 5069, Los Angeles, CA 90048. FAX: (310) 652-8411.

### HUMAN GENETICS

Our Collagen Molecular Genetics Laboratory seeks a postdoctoral fellow to investigate the molecular genetics of the skeletal dysplasias using positional cloning, linkage mapping and mutational analysis of extracellular matrix genes. The successful candidate will join an integrated multidisciplinary group focused on this group of disorders. Requires a PhD Degree. Strong background in molec and cell biology highly desirable. Please send full CV, names/addresses of 3 references & reprints of published work to: Job#1940588, Daniel H. Cohn, PhD, Medical Genetics, SSB-3, 8723 Alden Dr., Los Angeles, CA 90048. FAX: (310) 659-0491.



AA/EOE Minorities/female candidates are encouraged to apply



**Yale UNIVERSITY**  
Department of Biology

## Assistant Professors

The Biology Department at Yale University is seeking candidates for two positions at the level of Assistant Professor. Candidates for one of these positions should have a demonstrated interest, and experience, in the molecular biology of nucleic acids (preferably RNA) and how their structure and/or function is implicated in important intracellular processes. Suitable topics for research might include an understanding of higher order structure of nucleic acids and its relation to interactions with other nucleic acids or proteins, nucleic acids as catalysts or as participants in nucleoprotein complexes with catalytic functions and nucleic acids as regulators of the expression of genetic information. Candidates for the other position should have a demonstrated interest, and experience, in molecular biochemistry of the cellular signaling pathway from membrane to nucleus.

Please send curriculum vitae, description of research interests and the names and addresses of at least three referees by December 15, 1994 to: Molecular Biology and Biochemistry Search Committee, c/o Chairperson, Department of Biology, Yale University, P.O. Box 208103, New Haven, CT 06520-8103.

Yale University is an Affirmative Action/Equal Opportunity Employer. Women and members of minority groups are especially urged to apply.



At Pfizer,  
we're  
focused on  
discovery.

## Research Scientist Protein X-ray Crystallography

Pfizer is seeking a Ph.D. level crystallographer to join our structure-based design team, which includes molecular biology, fermentation protein purification, characterization and crystallization, crystallography, NMR and computational chemistry. The crystallography laboratory is equipped with a Rigaku rotating anode generator and an R Axis II detector, Silicon Graphics workstations, and related equipment. The successful candidate will have experience in solving the three dimensional structures of protein ligand complexes using state-of-the-art computer software and experimental methods. Relevant experience in molecular biology, biophysics, biochemistry, or chemistry is desirable. For confidential consideration, please send your curriculum vitae and the names of three references to: Code: JM001, Employee Resources Dept., Pfizer Inc, Central Research Division, Eastern Point Road, Groton, CT 06340. We are an equal opportunity employer. M/F/D/V.



Central Research

## POSITIONS OPEN

### YALE UNIVERSITY SCHOOL OF MEDICINE ASSISTANT PROFESSOR OF GENETICS

The Department of Genetics and the Yale Comprehensive Cancer Center invite applications for a tenure-track **ASSISTANT PROFESSOR** position in the broad area of cell growth regulation. We seek an individual with expertise in the analysis of oncogenes, tumor suppressor genes, signal transduction, cell cycle regulation, or the molecular genetics of neoplastic disease, either in mammalian cells or model systems. Applicants with a strong record of accomplishment in these areas should submit a curriculum vitae, selected reprints, a short statement of research interests, and should arrange to have three letters of recommendation sent to:

Chair, Faculty Search Committee  
ATTN: Mrs. I. Sherman  
Yale University School of Medicine  
P.O. Box 208005  
New Haven, CT 06520-8005

The deadline for receipt of applications is November 15, 1994. *Yale is an Equal Opportunity/Affirmative Action Employer; women and minorities are encouraged to apply.*

**MICROBIOLOGY or IMMUNOLOGY.** The Department of Biology at the University of Colorado at Denver seeks applicants for an **ASSISTANT PROFESSOR** tenure-track position, if funded, to begin August 1995. Applicants must have a Ph.D. in one of these or a related field. Postdoctoral and teaching experience is desirable. A commitment to quality teaching and externally funded research is essential. Teaching responsibilities consist of two courses a semester, including microbiology and immunology. Send résumé, representative reprints, outlines of teaching and research plans, and three letters of recommendation to: **Search Committee, Department of Biology, University of Colorado at Denver, CB 171, P.O. Box 173364, Denver, CO 80217** by November 15, 1994. Alternative formats of this ad are available upon request. *The University of Colorado at Denver is an Equal Opportunity/Affirmative Action Employer.*

### CELL BIOLOGY

The Biology Department at Millsaps College announces a **TENURE-TRACK POSITION** as **ASSISTANT PROFESSOR** to begin August 1995. Ph.D. required; teaching experience preferred. We are looking for someone broadly trained in biology who will use modern molecular techniques to address questions about the structure and function of cells. Expertise in electron microscopy is a plus. The successful candidate will teach introductory biology, advanced courses in the specialty, and supervise externally funded undergraduate research. A strong commitment to multidisciplinary thinking and the liberal arts tradition is expected. In order to be considered for interview at the American Society of Zoologists, apply by December 1, 1994. Send letter of application, including transcripts and three letters of recommendation to: **Dr. Sarah Armstrong, Chair, Department of Biology, Millsaps College, Jackson, MS 39210**. Applications accepted through December 15, 1994.

### UNIVERSITY OF KENTUCKY SCHOOL OF BIOLOGICAL SCIENCES FACULTY TEACHING POSITIONS

The T. H. Morgan School of Biological Sciences invites applications for two tenure-track positions that we anticipate filling at the **ASSISTANT PROFESSOR** level in the fall of 1995. Primary teaching responsibilities will be in introductory biology coursework. Possible involvement in mid-level and advanced undergraduate courses. Classroom experience and commitment to excellent undergraduate education are essential. Please send a curriculum vitae, a statement of teaching interests and the names of three references by November 30, 1994, to: **Dr. William S. Cohen, Chair, Search Committee, 101 Morgan Building, University of Kentucky, Lexington, KY 40506-0225**.

*An Equal Opportunity/Affirmative Action Employer.*

**POSTDOCTORAL POSITION** currently available to study the mechanism and regulation of mRNA polyadenylation in yeast. A strong background in biochemistry, genetics, and/or molecular biology is greatly preferred. Please send a résumé, a brief summary of research experience, and the names of three references to: **Dr. Claire Moore, Department of Microbiology, Tufts University School of Medicine, 136 Harrison Avenue, Boston, MA 02111**.

## POSITIONS OPEN

**COGNITIVE NEUROSCIENCE/PSYCHOBIOLOGY. ASSISTANT PROFESSOR** of Psychology (tenure-track). Ph.D. required and postdoctoral experience preferred. Candidates should demonstrate (a) an active research program using animal models to understand the relationship between brain-behavior/cognition (area of specialization open), (b) ability to attract grant support, (c) overlapping interest with other areas of department (e.g., clinical, cognitive), and (d) commitment to undergraduate and graduate teaching in a Ph.D. program. Send curriculum vitae, selected reprints, transcripts, and three letters to: **Neuroscience Search, Psychology, BGSU, Bowling Green, OH 43403**. Application should be received by December 1, 1994, for fullest consideration. *Minorities and females are encouraged to apply. Affirmative Action/Equal Opportunity Employer.*

### EVOLUTIONARY BIOLOGIST COMPARATIVE PHYSIOLOGY/ DEVELOPMENT

The Department of Biology, University of Miami, invites applications and nominations for a tenure-track position at the level of **ASSISTANT PROFESSOR**. We seek an evolutionary biologist to join a faculty with strengths in ecology, behavior, and evolutionary biology. Preference will be given to individuals applying an evolutionary approach to studies in comparative physiology or developmental biology of plants or animals. Ph.D. degree required. The successful candidate will be expected to develop an innovative, externally funded research program, and to participate in teaching at the undergraduate and graduate levels. Applicants should send curriculum vitae, representative reprints, summary of research interests, and names and addresses of three references to: **Julian C. Lee, Chair, Search Committee, Department of Biology, P.O. Box 249118, University of Miami, Coral Gables, FL 33124-0421**, by 15 November 1994.

*The University of Miami is an Equal Opportunity/Affirmative Action Employer, and a smoke/drug-free workplace.*

The Department of Biology at Illinois Wesleyan University has a tenure-track opening at the **ASSISTANT PROFESSOR** level in Molecular Genetics. Candidate must have a Ph.D., a broad background in biology, a strong commitment to undergraduate teaching excellence and the promise of research. Responsibilities include teaching genetics (introductory and advanced), an upper-level molecular or cellular biology course, and supervision of undergraduate student research. Appointment begins August 1995. Applicants should submit a letter of application, curriculum vitae, transcripts, three letters of recommendation (including comments on teaching effectiveness), a one-page statement of teaching philosophy and an outline of future research plans to: **Dr. Bruce B. Criley, Chairman, Department of Biology, Illinois Wesleyan University, Bloomington, IL 61702-2900**, by December 1, 1994. *Illinois Wesleyan is an Equal Opportunity Employer; women and minorities are encouraged to apply.*

The Department of Biology has an opening for a tenure-track **ASSISTANT PROFESSOR** for fall 1995. **WETLANDS BOTANIST:** preference given to applicants with a background in the ecology of vascular plants. Teaching will include introductory Ecology for majors and graduate courses in area of specialty. Successful applicants will be expected to supervise M.S. and Ph.D. students in Environmental Biology and to develop externally funded research programs. To apply, send curriculum vitae, statement of research goals, photocopies of transcripts, and names, addresses and telephone numbers of three references to: **Dr. Paul A. Bukaveckas, Department of Biology, University of Louisville, Louisville, KY 40292**. Screening of completed applications will begin November 21, 1994. *The University of Louisville is an Equal Opportunity/Affirmative Action Employer. Women, African-Americans and other underrepresented groups are encouraged to apply.*

**POSTDOCTORAL POSITION** in neuropharmacology to examine regulation of second messenger systems in brain. Experience in studying receptor-mediated cAMP production and in characterizing components of the cAMP generating system in brain slices and cell lines is desired. Send curriculum vitae and list of references to: **S. J. Enna, Ph.D., Department of Pharmacology, University of Kansas Medical School, 3901 Rainbow Boulevard, Kansas City, KS 66160-7417**. *An Equal Opportunity Employer.*

## POSITIONS OPEN

### PLANT ECOLOGIST

The Department of Botany invites outstanding applications for a tenure-track position as an **ASSISTANT PROFESSOR** to develop innovative, experimental research in ecophysiology or ecosystem analysis involving (but not restricted to) southwestern arid ecosystems and complementary to departmental strengths. The individual is expected to develop a vigorous, externally funded research program and to contribute to both undergraduate and graduate teaching in ecology. Applicants must have a Ph.D. degree, postdoctoral experience, evidence of research productivity, and good communication skills. Salary and start-up funds as well as existing equipment and laboratories are excellent. Application evaluation will begin December 1, 1994, and the first day of every month until the position is filled. Please submit curriculum vitae, names and addresses of three referees and a statement of research interests to: **Ecologist Search Committee, Department of Botany, Box 871601, Arizona State University, Tempe, AZ 85287-1601**. (Call 602-965-3414 for departmental information.) *Arizona State University is an Equal Opportunity/Affirmative Action/Title IX Employer.*

### PRINCETON UNIVERSITY DEPARTMENT OF MOLECULAR BIOLOGY

The Department of Molecular Biology at Princeton University is seeking to recruit an individual with research experience in the area of yeast molecular and cellular biology, with a broad emphasis on aspects of cell cycle regulation. The position is at the **ASSISTANT PROFESSOR** level. A Ph.D. or equivalent and several years of postdoctoral experience are required. Applicants should send a curriculum vitae, short summary of research interests, and three letters of reference to:

Yeast/Cell Cycle Search  
Department of Molecular Biology  
Princeton University  
Princeton, NJ 08544

*Princeton University is an Equal Opportunity/Affirmative Action Employer.*

The Department of Biology has an opening for a tenure-track **ASSISTANT PROFESSOR** for fall 1995. **VERTEBRATE ECOLOGIST:** preference given to applicants with background in terrestrial ecology and/or biology of captive animals. Teaching will include participation in introductory Ecology or Comparative Vertebrate Anatomy and graduate courses in area of specialty. Successful applicants will be expected to supervise M.S. and Ph.D. students in Environmental Biology and to develop externally funded research programs. To apply, please send curriculum vitae, statement of research goals, photocopies of transcripts, and names, addresses and telephone numbers of three references to: **Dr. Paul A. Bukaveckas, Department of Biology, University of Louisville, Louisville, KY 40292**. Screening of completed applications will begin November 21, 1994. *The University of Louisville is an Equal Opportunity/Affirmative Action Employer. Women, African-Americans and other underrepresented groups encouraged to apply.*

### NEUROSCIENCE CENTER DIRECTOR THE UNIVERSITY OF TEXAS SOUTHWESTERN MEDICAL CENTER AT DALLAS

The University of Texas Southwestern Medical Center invites applications and nominations for the position of **DIRECTOR** of the Neuroscience Center. Applicants should have an outstanding record of research accomplishment in neuroscience and academic leadership. The Director will have the opportunity to expand the Center from its current size of seven core faculty members to about twice this number, and 18,500 square feet of new space will be available for such expansion. The Director will be responsible for providing intellectual leadership and guidance both to the Center and within the larger neuroscience community on the campus, including the Neuroscience Graduate Program. Institutional support for the Center is composed of both state-funded faculty salaries and substantial endowment funds. Applications should be submitted before November 18, 1994, although the search will continue until the position is filled. Send curriculum vitae to: **Dr. Elliott M. Ross, Department of Pharmacology, University of Texas Southwestern Medical Center, 5323 Harry Hines Boulevard, Dallas, TX 75235-9041**. *The University of Texas Southwestern Medical Center is an Equal Opportunity/Affirmative Action Employer.*



BROWN UNIVERSITY

**ASSISTANT/ASSOCIATE PROFESSOR  
IN PROTEIN BIOCHEMISTRY**

The Department of Molecular Biology, Cell Biology, and Biochemistry in the Division of Biology and Medicine at Brown University invites applications for a tenure track position in protein biochemistry at the rank of Assistant or Associate Professor (rank dependent upon successful candidate's qualifications). Requirements are a Ph.D. or M.D. degree, at least two years of postdoctoral training, a strong record of research achievement, and the potential for excellence in teaching. The successful candidate will be expected to establish an independent, vigorous, externally-funded research program focusing on basic studies of protein molecular structure, intermolecular interactions, and/or enzymology, as well as to be an active member of our NIH funded predoctoral training program. Applicants should be willing to contribute to a team-taught course in biochemistry and a graduate-level seminar course in their area of specialty. Interested individuals should send curriculum vitae and a description of research interests and have three letters of reference (five letters for Associate Professor level applicants) sent as soon as possible but to be received no later than January 9, 1995 to Biochemistry Search Committee Chair, c/o Ms. Laurie Chronley, Department of Molecular Biology, Cell Biology, and Biochemistry, Brown University, Providence, RI 02912.

*Brown University is an Affirmative Action/Equal Opportunity Employer. Applications from qualified women and minority candidates are encouraged.*



BROWN UNIVERSITY

**ASSISTANT/ASSOCIATE PROFESSOR  
IN MOLECULAR GENETICS**

The Department of Molecular Biology, Cell Biology, and Biochemistry in the Division of Biology and Medicine at Brown University invites applications for a tenure track position in molecular genetics at the rank of Assistant or Associate Professor (rank dependent upon successful candidate's qualifications). Requirements are a Ph.D. or M.D. degree, at least two years of postdoctoral training, a strong record of research achievement, and the potential for excellence in teaching. The successful candidate will be expected to establish an independent, vigorous, externally-funded research program in molecular genetics and to be an active member of our NIH funded predoctoral training program. While we are especially interested in research programs utilizing yeast as a model system, investigators working in any aspect of molecular genetics are encouraged to apply. Applicants should be willing to contribute to a team-taught course in molecular biology or genetics and a graduate-level seminar course in their area of specialty. Interested individuals should send curriculum vitae and a description of research interests, and have three letters of reference (five letters for Associate Professor level applicants) sent as soon as possible but received to be no later than January 9, 1995 to Molecular Geneticist Search Committee Chair, c/o Ms. Laurie A. Chronley, Department of Molecular Biology, Cell Biology, and Biochemistry, Brown University, Providence, RI 02912.

*Brown University is an Affirmative Action/Equal Opportunity Employer. Applications from qualified women and minority candidates are encouraged.*

## Postdoctoral Fellowship

The PARKE-DAVIS Pharmaceutical Research Division of Warner-Lambert Company has a postdoctoral position available October 1994 for an independent and highly motivated laboratory scientist interested in applying modern principles of pharmaceuticals to the development of innovative methods of rapidly assessing the physical chemical characteristics of early drug candidates. Experience with crystallography would be extremely desirable. The fellow will participate in extensive, interdisciplinary collaboration with Pharmacology, Medicinal Chemistry, Chemical Development and Pharmacokinetics.

The successful candidate will be a recent Ph.D. graduate in Pharmaceutics, Pharmaceutical Chemistry, Physical-Organic Chemistry, or closely related discipline. Good verbal and written communication skills, and good interpersonal skills are essential.

The position is located in new state-of-the-art laboratories at our main research campus in Ann Arbor, Michigan. This position includes a competitive salary and an attractive employee benefits package, including relocation assistance. All appointments are for one year, renewable for a second and third year on mutual agreement.

PARKE-DAVIS offers a competitive salary, an attractive benefit package, and relocation assistance. Interested candidates should send their curriculum vitae to **Box CLP-1116, PARKE-DAVIS Pharmaceutical Research, Human Resources Department, 2800 Plymouth Road, Ann Arbor, MI 48105. "Smoke-Free Environment"**



**PARKE-DAVIS**

People Who Care

"Equal Opportunity in Action"

## ORGANIC CHEMISTS

*Value  
Through  
Innovation*

Together with all the Boehringer Ingelheim companies world wide, we are committed to *Value Through Innovation* as our driving ambition.

As a major international pharmaceutical company, we have made a commitment to innovation through world class R&D facilities, programs and scientific staff. We are currently seeking a number of Organic Chemists to join our growing MEDICINAL CHEMISTRY Department.

We have openings for individuals with a Ph.D. in Organic or Medicinal Chemistry with one or more years post-doctoral experience. The successful candidates will design, plan and execute activities in support of our drug discovery programs. You will also be responsible for supervising a laboratory and participating on project teams.

Opportunities also exist for individuals with a B.S. or M.S. degree in Organic or Medicinal Chemistry who have research experience in organic synthesis. Enthusiasm for laboratory work and expertise in modern techniques of synthesis, purification and characterization are essential.

Located on a campus-like setting in a beautiful area of western Connecticut, we offer a competitive compensation and benefits package, the opportunity to be involved in interesting and challenging work, and a chance to contribute to our innovative discovery program. To join our growing team, please write to: **Dept. DN-1S-815, Boehringer Ingelheim Pharmaceuticals, Inc., 900 Ridgebury Road, P.O. Box 368, Ridgefield, CT 06877.** We are an equal opportunity employer. As a progressive healthcare company, we have a non-smoking environment.



**Boehringer  
Ingelheim**



## POSITIONS OPEN

### CHAIR, AND PROFESSOR OF BOTANY UNIVERSITY OF MARYLAND AT COLLEGE PARK

The College of Life Sciences at the University of Maryland—College Park invites applications for the position of **PROFESSOR** and **CHAIR** of the **DEPARTMENT OF BOTANY**, with an anticipated starting date of July 1, 1995. The Department of Botany consists of 23 tenure-track faculty with research and teaching interests in physiology, genetics, cell and molecular biology, ecology, evolution, systematics, and pathology. We seek an individual to provide academic and administrative leadership for the teaching, research and extension programs that are ongoing in the department. The successful candidate will also be expected to direct a research program and to participate in our instructional program. Candidates must have an earned doctorate in an area of botany or a closely related field, and have internationally recognized professional accomplishments. For best consideration, completed applications should be received by January 16, 1995. Applications should include a letter of application accompanied by a curriculum vitae and a statement of administrative, research and teaching philosophies. In addition, four letters of reference should be sent directly to: **Search Committee Chair, Department of Botany, University of Maryland, College Park, MD 20742-5815.** The University of Maryland is an Affirmative Action/Equal Opportunity Employer. Women and minority candidates are encouraged to apply.

### CHAIRPERSON MICROBIOLOGY AND IMMUNOLOGY SCHOOL OF MEDICINE TEXAS TECH UNIVERSITY HEALTH SCIENCES CENTER

The School of Medicine at Texas Tech University Health Sciences Center invites nominations and applications for the position of **CHAIRPERSON** of the Department of Microbiology and Immunology. Candidates should have an earned doctorate degree, an established research program in microbiology/immunology and a demonstrated ability as an educator. Prior administrative experience is viewed as desirable. Applicants should include a letter of interest, a curriculum vitae, and names, addresses and telephone numbers of at least three references. Review of applications will begin on 5 December 1994 and continue until the position is filled.

Applications and nominations should be submitted to: **Dr. Louis A. Chiodo, Chairman, Department of Pharmacology, Texas Tech University Health Sciences Center, 3601 4th Street, Lubbock, TX 79430.**

Texas Tech University is an Equal Opportunity/Affirmative Action Employer. Minorities and women are encouraged to apply.

**DEPARTMENT OF CHEMISTRY AND BIOCHEMISTRY**, University of Maryland at College Park invites applications for a tenure-track or tenured position in **BIOCHEMISTRY**. Candidates at all levels will be considered, and applications at the **ASSOCIATE** or **FULL PROFESSOR** level are especially encouraged. Research areas of particular interest include, but are not limited to: protein folding and design, structure-function relations pertaining to signal transduction, gene expression, immunochemistry, cell-cell interactions, etc., and protein secretion. Candidates will also have the opportunity to participate in the campus-wide Program in Molecular and Cell Biology. Submit a résumé, a short description of research plans, and arrange for three letters of reference to be sent to: **Prof. Douglas A. Julin, Biochemistry Search Committee, Department of Chemistry and Biochemistry, University of Maryland, College Park, MD 20742-2021.** Evaluations begin on November 1, 1994, but new applications will be considered until the position is filled. University of Maryland at College Park encourages applications from women and members of minority groups and is an Equal Opportunity/Affirmative Action Employer.

Two **POSTDOCTORAL POSITIONS** at Stanford University's Center for Conservation Biology. 1) Population-resource-environment policy research. Ph.D. in the natural or social sciences; broad knowledge and quantitative skills required. 2) Ecological economics. Ph.D. in economics required. Appointments for one year, possibly renewable. Send curriculum vitae, statement of interests, and four letters of recommendation to: **Dr. Paul R. Ehrlich, Department of Biological Sciences, Stanford University, Stanford, CA 94305-5020.** An Equal Opportunity/Affirmative Action Employer.

## POSITIONS OPEN

Applications are invited for a tenured or **TENURE-TRACK POSITION** in an area of biochemistry or molecular biology linked to pharmaceutical-bioanalytical research, with a dual affiliation as a Faculty Fellow at the Barnett Institute and a Faculty appointment in the Department of Pharmaceutical Sciences. Current areas of strength between the Department and the Institute include bioanalytical methodology, e.g., mass spectrometry, HPLC and capillary electrophoresis, neuropharmacology, drug targeting using receptor and antibody-based methods, molecular modeling and novel drug delivery systems development. The two units already enjoy strong collaborative ties. We are seeking an individual whose expertise bridges the strengths of the two units and whose talents will generate synergistic research activities. Participation in undergraduate and graduate teaching in the Department is an important component of this position.

Candidates should submit a letter of application with a curriculum vitae, a description of their current research activities and a projection as to how their research would interface with strong bioanalytical and pharmaceutical research groups. Please submit response to:

**Chair, Search Committee  
Biochemistry/Pharmaceutical Sciences Position  
110 Mugar Building  
Northeastern University  
360 Huntington Avenue  
Boston, MA 02115-5096**

### PRINCETON UNIVERSITY DEPARTMENT OF MOLECULAR BIOLOGY

The Department of Molecular Biology at Princeton University is seeking to recruit an individual using physical approaches to study biological systems at the cellular or multicellular level. Applicants should send a curriculum vitae, a short summary of research interests, and three letters of references to:

**Physical Biology Search  
Department of Molecular Biology  
Princeton University  
Princeton, NJ 08544**

This position is **TENURE-TRACK**, but exceptional senior candidates may also be considered.

Princeton University is an Affirmative Action/Equal Opportunity Employer.

### EXPERIMENTAL PHYSICS

The Emory University Physics Department seeks applicants for two **FACULTY POSITIONS**, one in experimental biophysics and the other in experimental condensed matter physics. Although the rank of each appointment is open, we anticipate making senior appointments for candidates with active research programs, an outstanding record of funding and achievement in their areas of research, and strong interests in an academic career combining research and teaching.

Applicants should send a curriculum vitae, a statement of professional goals and the names of at least three references to: **Dr. B. H. Vincent Huynh, Chair, Faculty Search Committee, Physics Department, Rollins Research Center, Emory University, Atlanta, GA 30322.** Consideration of applicants will begin on January 1, 1995.

Emory University is an Equal Opportunity/Affirmative Action Employer.

### ECOLOGIST/ENTOMOLOGIST/ MICROBIOLOGIST (INTERDISCIPLINARY) USDA—FOREST SERVICE

The Southern Forest Experiment Station is seeking a **POSTDOCTORAL SCIENTIST** for its Forest Insect Research Unit at the Alexandria Forestry Center, Pineville, Louisiana. We are interested in candidates with research experience in quantitative ecology and herbivore/pathogen/host plant interactions. The immediate research objective is to elucidate multitrophic level interactions of the southern pine beetle (SPB), associated arthropods and fungi, and their pine hosts. The ultimate goal is to incorporate the results of this research into predictive mathematical models of SPB dynamics, to be used in management decisions and in evaluating different suppression strategies for SPB.

Qualifications: Ph.D. or equivalent in ecology, entomology, microbiology, or related fields. Contact: **Dr. J. L. Hayes, 318-473-7232.** Application materials sent on request. Application postmark deadline: November 15, 1994.

## POSITIONS OPEN

**POSTDOCTORAL RESEARCH ASSOCIATE** to join an ongoing study on the structure and function relationships of lipase involving important physiological processes. The area of research will be in the isolation and cloning of receptor and the mechanism studies in the function of receptor. The applicant should have a Ph.D. in Biochemistry or related fields. Please submit a curriculum vitae, research experience and interests, and names and telephone numbers of three references to: **Dr. Jordan Tang, Protein Studies Program, Oklahoma Medical Research Foundation, 825 N.E. 13th Street, Oklahoma City, OK 73104. Telephone: 405-271-7291; FAX: 405-271-7249; and Internet address: Jordan-Tang@omrf.uokhsc.edu.** Applications completed by November 15, 1994, will receive full consideration. The Oklahoma Medical Research Foundation, an Equal Opportunity Employer, is a private research institution located in the University of Oklahoma Health Science Center, Oklahoma City, Oklahoma. The Foundation has a stimulating research environment with emphasis in basic research programs in Protein Structural Biology, Cardiovascular Biology, Cell and Molecular Biology, Immunobiology, and Free Radical Biology.

### POSTDOCTORAL POSITIONS IN BIOCHEMISTRY AND MOLECULAR BIOLOGY

Positions are available immediately to study the mechanism of action of specific deoxynucleotide-metabolizing enzymes involved in cancer research and their expression in eukaryotes and prokaryotes. Gene isolation and amplification of their protein products will be required. Once obtained, substrate and regulatory sites on the protein products will be determined by functional group-specific reagents and affinity labels. In addition, site-specific mutagenesis will be employed to establish the relation of structure to function in these enzymes. Cloning and sequencing experience desirable. The research will be conducted in a well-equipped core facility. Compensation from Health Research Inc. dependent upon experience. Send résumé and three references to: **Dr. Frank Maley, Wadsworth Center for Laboratories and Research, Empire State Plaza, Box 509, Albany, NY 12201.** An Equal Opportunity/Affirmative Action Employer.

### POSTDOCTORAL/RESEARCH INVESTIGATOR

Position available to join research group working on adherence and entry of pathogens that cause STDs. Although most research by this laboratory has focused on the mechanism of sexual transmission of HIV, there is interest in other viruses, as well as bacteria, that cause STDs. The laboratory is part of the Center for Biomedical Research of the Population Council, which is located on the campus of Rockefeller University.

Qualifications: Ph.D., M.D., or equivalent degree; graduate school training and degree should be in microbiology. Please send curriculum vitae and names and addresses of three references to: **Dr. David Phillips, The Population Council, Center for Biomedical Research, 1230 York Avenue, New York, NY 10021.**

**POSTDOCTORAL POSITION.** Research Associate position for recent Ph.D. with experience in respiratory or cardiovascular physiology of lab animals. Surgery and computer skills plus ability to work independently are necessary. Some teaching required. Submit curriculum vitae and names of three references to: **Stephen C. Wood, Ph.D., Chairman, Department of Physiology, East Carolina University School of Medicine, Greenville, NC 27858-4354.** An Equal Opportunity/Affirmative Action Employer. Federal law requires proper documentation of identity and employability at the time of employment. It is required that this document be included with your application.

**POSTDOCTORAL RESEARCH ASSOCIATE**, Insect Behavior and Chemical Ecology. Three-year position on how foraging decisions and host selection by a hymenopterous parasitoid are mediated by chemical cues and how chemical variation is related to variation in host quality. Ph.D. in entomology or related discipline with experience in insect behavior and chemical analysis required. Biological control experience desirable. Apply by December 10, 1994, to: **Dr. J. Daniel Hare, Department of Entomology, University of California, Riverside, CA 92521. Telephone: 909-787-3858; FAX: 909-787-3086; Email: HAREJD@UCRACI.UCR.EDU.** The University of California is an Equal Opportunity/Affirmative Action Employer.

# THE STRENGTHS OF SERONO

The Ares Serono Group is a pioneering organization widely recognized for turning specific challenges into achievements. At Ares Advanced Technology, we

## Financial Stability

employ state-of-the-art methods in Cell Biology, Molecular Biology and Protein Chemistry to discover and evaluate new biopharmaceutical agents of clinical importance. The exciting, ongoing success of our product portfolio and research projects has triggered the need to add gifted individuals to our staff. Financial stability, innovative products, an entrepreneurial environment and our emergence as a fully integrated company means Ares Advanced Technology can offer you what no one else can. **The Best of Biotech.**

## POSTDOCTORAL SCIENTIST Protein Engineering

This individual will be responsible for implementing an aggressive program to generate novel proteins for use in testing of product concepts and structure activity studies of ligand-receptor interactions. Candidates must have a PhD and 2-3 years' experience in protein

## Innovative Products

biochemistry. An extensive molecular biology background, including construction of cDNA libraries, PCR and mutagenesis technology as well as expression of recombinant genes in both eukaryotic and prokaryotic systems is required. Knowledge of methods for protein analysis, purification and activity testing also essential.

## POSTDOCTORAL SCIENTIST Multiple Myeloma/Immunology

You will be involved in a research project which studies multiple myeloma and related lymphoproliferative disorders. This will entail identifying novel factors and genes involved in the progression of multiple myeloma and associated dysregulation of the immune system. To qualify, applicants should possess a PhD and 2-3 years' experience with a proven record of independent research achievements. Expertise in cell biology, monoclonal antibody preparation, flow cytometry, 2-dimensional gel electrophoresis and related protein chemistry techniques also essential. Knowledge of cloning and expression preferred.

## Fully Integrated

Both positions are for 1 year and are available immediately.

For consideration, please forward your CV to Ares Advanced Technology, Inc., attn: Nancy Magid, Human Resources, 280 Pond Street, Randolph,

## Entrepreneurial Environment

MA 02368, or fax your CV to (617) 963-6831. Please reference POSTDOC. No phone calls please. An Equal Opportunity Employer.

# Serono

THE BEST OF BIOTECH

## MOLECULAR OR DEVELOPMENTAL NEUROBIOLOGIST

The University of Calgary Department of Anatomy and the Neuroscience Research Group are seeking a full-time academic Molecular or Developmental Neurobiologist at the Assistant Professor level or higher. This position offers an excellent opportunity to develop vigorous independent research programs and collaborative interactions within a multidisciplinary research environment. Duties will include teaching and graduate student supervision. Qualifications include a PhD, at least two years' postdoctoral experience, and research interests in molecular and/or cellular approaches to development or plasticity of the nervous system.

The selected candidate must compete successfully for salary and establishment funding from the Alberta Heritage Foundation for Medical Research, and will have 75% of time protected for research.

In accordance with Canadian immigration requirements, priority will be given to Canadian citizens and permanent residents of Canada. The University of Calgary is committed to Employment Equity.

Please send a curriculum vitae, a statement of research interests, and the names of three referees by November 30, 1994, to:

Dr. S. Weiss  
Chair, Selection Committee  
Department of Anatomy  
The University of Calgary  
3330 Hospital Drive N.W.  
Calgary, AB, Canada T2N 4N1



THE UNIVERSITY OF  
CALGARY

The Oxford International Biomedical Centre invites you to a biomedical symposium on

## Biomedicine Today and Tomorrow: Molecular Understanding of Disease

on  
Monday, November 7, 1994  
at

SmithKline Beecham, King of Prussia, PA

Organized in conjunction with **SmithKline Beecham**, this event is a unique conference, on the cutting-edge of biomedical research. Speakers who will lead discussion on progress in fundamental research, clinical applications and biotech/pharma development will be:

Ira BLACK (UMDNJ)  
Jurgen DREWS (Hoffman-La Roche)  
William HASELTINE (Human Genome Sciences)  
Alan KINGSMAN (Oxford University)  
Paul MARKS (Memorial Sloan Kettering)  
Charles PASTERNAK (Director of OIBC)  
Rodney PHILLIPS (Oxford University)  
Brian RICHARDS (British Biotech Ltd, Oxford)  
Robert RUFFOLO (SmithKline Beecham)  
Craig VENTER (Institute for Genomic Research)

To reserve a place at this exciting symposium, send **\$80** (checks payable to OIBC), to include lunch and all breaks, **NOW** to Kathy McCabe, SmithKline Beecham, 709 Swedeland Road, PO Box 1539, King of Prussia, PA 19406: special rate of **\$40** for academics and **\$25** for students.

## POSITIONS OPEN

### UNIVERSITY OF TEXAS MEDICAL BRANCH GALVESTON

A **POSTDOCTORAL POSITION** available immediately in Experimental Pathology Division will investigate the biochemical and molecular mechanisms of vascular injury by toxic substances; established NIH-funded laboratory within strong, collaborative University Toxicology Program. Send curriculum vitae with names and telephone numbers of three references to: **Paul J. Boor, University of Texas Medical Branch, 301 University Boulevard, Department of Pathology, Galveston, TX 77555-0605.**

*The University of Texas Medical Branch (UTMB) is an Equal Opportunity/Affirmative Action Employer. Male/Female/Disabled/Veterans. UTMB is a smoke-free/drug-free workplace. UTMB hires only individuals authorized to work in the United States.*

**POSTDOCTORAL POSITIONS** are available immediately at Thomas Jefferson University to study the structural and functional aspects of *ets* oncogenes and their related genes (*Oncogene*, October, 1994; *Oncogene*, 9:1855, 1994; *Oncogene*, 9:669, 1994; *Cancer Res.*, 53:5859, 1993; *Oncogene*, 8:3459, 1993; *Oncogene*, 8:1751, 1993; *Cancer Res.*, 53:3449, 1993; *Oncogene*, 8:2167, 1993; *Cancer Res.*, 53:215, 1993; *Cancer Res.*, 52:5833, 1992; *Oncogene*, 11:2335, 1992; *Oncogene*, 7:65, 1992). Ongoing studies are focused on DNA binding, transcriptional regulation, Role of *ets* genes in leukemias, lymphomas, sarcomas, breast cancer, in signal transduction, cell death, cell growth and differentiation. Experience in recombinant DNA techniques, or biology (phosphorylation, apoptosis, transformation, etc.) is desirable. Please send curriculum vitae and names, addresses and telephone numbers of three references to: **Veena N. Rao, Ph.D., Room 631, or E. Shyam Reddy, Ph.D., Room 650, Thomas Jefferson University, Bluemle Life Sciences Building, 233 South 10th Street, Philadelphia, PA 19107-5541.** We are an Equal Opportunity Employer committed to a smoke-free environment.

**POSTDOCTORAL CANDIDATES.** The Life Sciences Division of Los Alamos National Laboratory is seeking postdoctoral candidates in the field of Cell/Molecular Biology to study the structure-function relationships of cell cycle and DNA repair proteins. Prior experience in monoclonal antibody and/or phage display technology required; experience in recombinant protein production, especially with baculovirus systems, cell culture, and protein chemistry desired. A Ph.D. completed within the last three years or soon to be completed required. Annual starting salaries range from \$39,660 to \$42,860 plus an excellent and comprehensive benefits package. For consideration, submit TWO COPIES of a curriculum vitae, publication listing, description of research experience, and names, addresses, and telephone numbers of three references to: **Ms. Mary Anne With, MS P290, 94030PD, Los Alamos National Laboratory, Los Alamos, NM 87545.** For additional technical information, contact Dr. Min S. Park at 505-667-5701. Individuals with disabilities needing reasonable accommodation should call 505-667-8622. A Teletype Device for the Deaf (TDD) is available by calling 505-665-5357. Los Alamos National Laboratory is operated by the University of California for the U.S. Department of Energy. Affirmative Action/Equal Opportunity Employer.

### POSTDOCTORAL POSITIONS

Postdoctoral positions available in January 1995 to study T cell antigen recognition. The work will focus on the role of affinity of interaction between antigen/MHC and T cell receptor in determining signaling and differentiation events of T cells.

Send curriculum vitae and three letters of reference to: **Dr. Howard M. Grey, La Jolla Institute for Allergy and Immunology, 11149 North Torrey Pines Road, La Jolla, CA 92037.**

**POSTDOCTORAL POSITIONS** to study mechanisms of toxicity of *Ah* receptor ligands. Expertise sought (1) in signal transduction; in particular, one or more of the following: protein kinase C, phospholipases, cell lipid analysis, and/or intracellular calcium and (2) in eukaryotic gene expression. U.S. citizens and permanent residents only. Send curriculum vitae, names of three references and a statement of research interests to: **Dr. Arleen Rifkind, Department of Pharmacology, Cornell University Medical College, 1300 York Avenue, New York, NY 10021.** An Equal Opportunity/Affirmative Action Employer/Minorities/Female/Veterans.

## POSITIONS OPEN

### POSTDOCTORAL RESEARCH Pinelands Nutrient Dynamics

Institute of Marine and Coastal Sciences of Rutgers, The State University of New Jersey. A 12-month position is available for postdoctoral study on nutrient dynamics in the New Jersey Pinelands. The successful candidate will be expected to start on or before December 1, 1994, and will receive an annual stipend of \$28,000.

Preference will be given to candidates with expertise in fungal/root interactions and nutrient cycling. All requirements for Ph.D. must be completed at the time of appointment.

Applicants should send a résumé, detailed statement of research interests, copies of any publications, and three letters of recommendation by October 31, 1994, to: **Dr. John Dighton, Rutgers, The State University of New Jersey, Institute of Marine and Coastal Sciences, Department of Biology, Camden, NJ 08102.** Rutgers is an Equal Opportunity/Affirmative Action Employer.

**POSTDOCTORAL POSITIONS:** Available immediately for genome analysis and gene mapping. Projects include: 1. Quantitative trait loci identification and mapping in poultry. 2. Evaluation of the molecular basis for heterosis/hybrid vigor. Applicants should have strong training and experience in molecular biology and/or genetics. Familiarity with microsatellite analysis is a must. Preference will be given to candidates with additional experience in animal cell culture and somatic cell genetics. Training in statistical genetics is possible. Please send curriculum vitae and two references to: **Dr. Ed Smith, 106 Milbank Hall, Tuskegee University, Tuskegee, AL 36088.** Telephone: 205-727-8028; Email: EDSMITH@ACD.TUSK.EDU.

**POSTDOCTORAL RESEARCH POSITION** available immediately to study the molecular virology and pathogenesis of hepatitis C virus infection in man. Applicants should have a strong background in molecular biology and prior research experience in virology. Experience with *in situ* hybridization and PCR technologies is highly desirable, and prior experience in the analysis of RNA structure would be beneficial. Send curriculum vitae and names of three references to: **Dr. David Gretch, Hepatitis Laboratory, 9th Floor Pacific Medical Center, 1200 12th Avenue, S Room 9301, Seattle, WA 98144.**

### BACTERIAL MOLECULAR PATHOGENESIS

A **POSTDOCTORAL POSITION** is immediately available to investigate the genetics and regulation of capsular polysaccharide biosynthesis by group B streptococci during the pathogenesis of infections caused by this organism. Appointment is for three years. Applicants must have a Ph.D. and be a citizen of the United States, or have permanent visa status. Applicants with backgrounds in microbiology and molecular/cell biology are preferred. Send curriculum vitae and names of three references to: **Craig E. Rubens, M.D., Ph.D., Associate Professor of Pediatrics and Microbiology/Immunology, Children's Hospital and Medical Center, 4800 Sand Point Way NE, CH-32, Seattle, WA 98105.** Telephone: 206-526-2073; FAX: 206-527-3890. Affirmative Action/Equal Employment Opportunity Employer.

**POSTDOCTORAL POSITIONS** at Yale University are available immediately for the study of biogenic amine transporters using molecular and cell biologic approaches. We plan to identify domains of the protein involved in substrate and inhibitor binding, translocation, and targeting to nerve terminals. For a review see: *Biochim. Biophys. Acta*, 1144:249-263. Experience in molecular biology, cell biology or transport is preferred, but not essential. If interested, send a complete curriculum vitae and three letters of reference to: **Dr. Gary Rudnick, Department of Pharmacology, Yale University School of Medicine, 333 Cedar Street, P.O. Box 3333, New Haven, CT 06510.**

Two **POSTDOCTORAL POSITIONS** available to study the functions and RNA interactions of viral replication proteins. See *PNAS*, 90:6095. Ph.D. in biochemistry or related field, and experience with protein purification, enzymology and recombinant DNA required. Send curriculum vitae and names of three references by October 31, 1994, to: **Dr. Theo Dreher, Agricultural Chemistry, Oregon State University, ALS 1007, Corvallis, OR 97331-7301.** Oregon State University is an Affirmative Action/Equal Opportunity Employer and is responsive to dual-career needs. Position No. 001-1533.

## POSITIONS OPEN

### POSTDOCTORAL POSITIONS IN IMMUNOLOGY

Immediately available for recent Ph.D. or M.D. interested in cellular and molecular aspects of lymphocyte development and maturation. The candidate will receive training in state-of-the-art molecular and immunobiologic techniques. Current research areas include: helper T cell development and differentiation into memory (Hayakawa); and B cell development, selection and repertoire formation (Hardy). Experience in immunology is preferred but candidates with a strong background in molecular biology and biochemistry also welcome. Please forward curriculum vitae and names of three references to: **Dr. Kyoko Hayakawa or Dr. Richard R. Hardy, c/o Human Resources Department, Fox Chase Cancer Center, 7701 Burholme Avenue, Philadelphia, PA 19111.** We are an Equal Opportunity Employer.

### POSTDOCTORAL POSITION Electrophysiology

The Health Sciences Research Division at the Oak Ridge National Laboratory (ORNL) has an immediate postdoctoral opening in biophysics (Ph.D. completed) with recent, extensive experience in microelectrophysiology techniques, including intercellular electrodes, microinjection, ionophoresis, and patch clamp procedures in mammalian cells to study gap junctional communication and effects of electromagnetic fields in cancer and normal cells. The successful candidate will be self-motivated and able to initiate research as well as work in a team environment to meet project goals.

ORNL provides a stimulating work environment in a multidisciplinary setting with a highly competitive salary. ORNL is managed by Martin Marietta Energy Systems, Inc., for the U.S. Department of Energy. For immediate consideration, send your résumé to: **G. D. Griffin, Oak Ridge National Laboratory, Department SCI-1, P.O. Box 2008, Oak Ridge, TN 37831-6101.** ORNL is an Equal Opportunity Employer committed to building and maintaining a diverse workforce.

### POSTDOCTORAL FELLOWSHIPS

Hawaii Natural Energy Institute, School of Ocean and Earth Science and Technology, University of Hawaii, extramural funds. To begin approximately November 15, 1994 through September 30, 1995; continuation dependent upon availability of funds. Training to be performed: Participate in research on marine macroalgal physiology, or microbial or cyanobacterial physiology. Biomass and/or hydrogen production enhancement. Qualifications: Ph.D. in Botany, Microbiology, or related discipline. Desirable Qualifications: Applied energy alternatives research. Inquiries: **Dr. Kelton McKinley at 808-956-2346.** Annual Stipend: \$33,000 to \$40,000. To apply, submit statement of research interest, curriculum vitae, three letters of recommendations from work-related references, and sample of one or more relevant authored publications to: **Personnel Officer, Hawaii Natural Energy Institute, 2540 Dole Street, Holmes 246, Honolulu, Hawaii 96822.** Closing date: Until a suitable candidate is found.

*Equal Employment Opportunity/Affirmative Action Employer.*

### POSTDOCTORAL POSITION AVAILABLE FOR TRAINING IN MOLECULAR CARDIOLOGY

Studies will involve utilizing techniques of molecular biology to examine function, structure and regulation of the endothelial cell nitric oxide synthase. Opportunities available for active collaboration among several laboratories utilizing a multidisciplinary approach to the study of this important enzyme as it relates to the broad areas of endothelial cell and vascular biology. Previous experience with biochemistry or molecular biology is desirable. Please address inquiries to: **David G. Harrison, M.D., P.O. Drawer LL, Division of Cardiology, Emory University School of Medicine, Atlanta, GA 30322.** Telephone: 404-727-3710; FAX: 404-727-3330.

**POSTDOCTORAL FELLOWSHIP** available immediately to study basic mechanisms of epileptogenesis and synaptic plasticity using *in vitro* electrophysiological methods. Experience in electrophysiological recording techniques is desirable. Send curriculum vitae and three references to: **Wilkie A. Wilson, Ph.D., Department of Pharmacology, Box 3813, Duke University Medical Center, Durham, NC 27710.** Duke University Medical Center is an Equal Opportunity Employer.



## **Associate Director Statistical Analysis**

As a prominent leader in the health care industry and in response to shifting needs and trends, we are searching for an individual to assist in the development of goals and plans relating to our Department of Research and Evaluation.

Primary responsibility for this position is to coordinate statistical analysis and data management activities with research, development and clinical evaluation efforts as well as supervise staff in the sections on data management and biostatistics. Also, you will assist in the development and administration of departmental budgets and establish standards for effective job performance, including evaluations. In addition, assist in coordination of educational programs, oversee daily operations of research projects, and monitor projects to ensure that research conducted is completed in a highly professional manner and is statistically appropriate.

Seven to ten years experience in teaching, research and/or health care delivery/administration and an earned doctorate in biostatistics or statistics is required. Experience with sampling techniques, risk adjustment, and advanced experimental design/statistical analysis along with strong managerial, analytical, communication skills essential.

We are committed to high standards of individual and team performance. We can offer the experienced professional an opportunity for a challenging, rewarding career. Please forward resume/salary requirements to **Department ADSA/RHC** in care of:

**Science/Classified Department**  
P.O. Box 55  
1333 H Street N.W.  
Washington, D.C. 20005  
*Equal Opportunity Employer m/f/d/v*

## **International Business Unit Manager**

Bio-Rad Laboratories, a world leading supplier of clinical diagnostic, life science and analytical reagent, apparatus and instrumentation products has an exciting international opportunity for an experience Business Unit Manager to champion the company's emerging flow cytometry product line.

With worldwide P&L responsibility, you will lead the business' growth and development through the management of strategic marketing and on-going development of instrumentation and reagent products. You will report directly to our VP, Clinical Diagnostics, with your base of operations located in the UK, outside London.

To be a successful candidate, you must have a solid product marketing and technical/scientific background in Flow Cytometry and related products, successfully launched products through a worldwide distribution network, had significant P&L responsibility and a proven record of building and leading effective work teams with 10 to 12 years international bio-tech business management background. A BS in Biology/Chemistry or a related technical discipline is essential. An advanced degree is desirable.

Please send your resume and salary history in confidence to: Bio-Rad Laboratories, 1000 Alfred Nobel Dr., Dept. 483, Hercules, CA 94547. EOE MFDV.

**BIO-RAD** Bio-Rad Laboratories

# Canada

## **Research Scientist – Ecological Modeller**

**\$37,036 – \$48,727**

**Environment Canada  
Delta, British Columbia**

You will be responsible for advising on, developing, planning and carrying out both independent and co-operative research to model terrestrial, aquatic and marine systems in support of Canadian Wildlife Service objectives. You will provide expertise on systems ecology and population modelling, with special reference to food-chains, biodiversity and habitat use. You will participate in toxicological and physiological research by modelling factors such as energetic processes and pathways. As part of a multidisciplinary team, you will develop predictive ecological models to improve the scientific basis for the management of wildlife and habitat. As a scientific authority, you will advise on work performed by contractors who are involved in monitoring and research studies. You will also advise and consult with other government agencies, universities, industry, the public, national and international bodies.

You have a doctoral degree from a recognized university in a related field, as well as experience in successfully planning, organizing and performing independent research that involves quantitative ecology and modelling. You have demonstrated experience as an effective contributor to a multidisciplinary, experimental approach to science. You will provide evidence of authorship of published papers resulting from research into predictive models of biological systems. Proficiency in the English language is required.

To apply, please submit your resume before November 18, 1994, quoting reference number S-94-31-5576-52DP-(G35), to:

**Daniel Potvin  
Public Service Commission of Canada  
66 Slater Street  
Ottawa, Ontario, Canada K1A 0M7  
Fax: (613) 943-0627**

*In accordance with the Public Service Employment Act, preference for appointment will be given to Canadian citizens.*

*This advertisement is of particular interest to women.*

*We thank all those who apply and advise that only those selected for further consideration will be contacted.*

*We are committed to Employment Equity.*



Public Service Commission  
of Canada

Commission de la fonction publique  
du Canada

## POSITIONS OPEN

### GRADUATE FELLOWSHIPS in Protein Engineering

An interdisciplinary graduate program leading to a Ph.D. in Biological Sciences, Chemistry, or Engineering with a Concentration in Protein Engineering is offered at the University of California, Irvine. The program provides a unique opportunity for students to work with faculty within the School of Biological Sciences, the Department of Chemistry, and the Department of Biochemical Engineering and to focus their coursework and research in the areas of protein structure and function and molecular biology. The program brings together approximately 20 faculty with research interests in structure/function of enzymes, metalloproteins, receptors, and growth factors; protein folding and design; bioremediation; protein modification with non-natural amino acids; NMR spectroscopy; and X-ray crystallography.

The application deadline for fall 1995 admission is February 15, 1995. Address inquiries to: **Graduate Program in Protein Engineering, University of California, Irvine, CA 92717-1450. Telephone: 714-856-6686; Internet: Prot.Engr@UCI.edu.** Applications from underrepresented groups, including minorities, women, and people with disabilities, are encouraged.

**GLOBAL CHANGE POSTDOCTORAL FELLOWSHIPS** are available from the Department of Energy for research related to the U.S. Global Change Research Program carried out by DOE and other federal agencies. Areas include observations and data management; process research (including studies of physical, geological, chemical, biological, economic, and social processes); integrated modeling and prediction; and integrated assessments. Stipend is \$35,000. A doctoral degree received after March 31, 1992, is required as is U.S. citizenship or PRA status. Deadline is December 15, 1994. Contact: **Global Change Postdoctoral Fellowships, Science/Engineering Education Division, Oak Ridge Institute for Science and Education, P.O. Box 117, Oak Ridge, TN 37831-0117. Telephone: 615-576-9934.**

**POSTDOCTORAL FELLOWSHIP.** The Academy of Natural Sciences of Philadelphia is pleased to offer the **JOHN J. and ANNA H. GALLAGHER FELLOWSHIP** for research on any of the rarer groups of microscopic, freshwater invertebrate organisms. The research must focus on systematics but may include ecological, behavioral, physiological, biochemical, genetic, or developmental components as part of a basic systematic investigation. Position is open until filled; the successful candidate may begin the fellowship at any time during the next year. Send curriculum vitae, statement of research interests, description of the project to be undertaken during the one year fellowship period, and the names of three references to: **Chairman, Gallagher Fellowship Committee, Academy of Natural Sciences, 1900 Benjamin Franklin Parkway, Philadelphia, PA 19103-1195.**

### POSTDOCTORAL FELLOW

The Parkinson's Institute is pleased to announce the establishment of the **NPF RESEARCH FELLOWSHIP** at the Institute. Postdoctoral candidates are sought (Ph.D. or M.D.) with a background and/or interest in human neurodegenerative disease and at least one of the following: neurochemistry, neuropharmacology, neurophysiology, or neurotoxicology. Applications to: **Dr. J. William Langston, 1170 Morse Avenue, Sunnyvale, CA 94089.**

**MOLECULAR BIOLOGIST RESEARCH STAFF MEMBER.** Princeton, New Jersey. Duties include: Protein purification and analysis; antibody production in rabbits and mice; utilize immunocytochemistry techniques; construction of transgenic mice, including producing DNA constructs, purifying DNA, pronuclear injections and embryo transfer with birth of transgenic animals; utilize general cloning and DNA analysis, including DNA sequencing and PCR analysis; construct recombinant clones that express fusion proteins; work with binding of sperm to eggs (fertilization in mice). Required—Ph.D. in Molecular Biology. Must have demonstrated proficiency in all job duties through one year of research experience or one research publication. 40 hours per week (9–5), \$25,600 per year. Must have proof of legal authority to work in United States. Send résumé in duplicate to: **Business and Worker Development, EF080293111, CN 053, Trenton, NJ 08625** (no fee charged).

## POSITIONS OPEN

### HIBERNIA/EDWARD G. SCHLIEDER ENDOWED CHAIR Nutrition and Molecular Biology/Genetics

The Pennington Biomedical Research Center, a research facility of Louisiana State University, invites applications for an **ACADEMIC/RESEARCH POSITION**. The successful candidate will have a M.D., Ph.D., D.V.M. or Sc.D., a research background utilizing biochemical and molecular biological techniques focused in one of the center's major research areas: Diabetes, Obesity and Metabolism, Atherosclerosis, Hypertension or Neuroscience. There should be a substantial record of scientific productivity; individual should have independent grant support; and leadership ability. Teaching and administrative opportunities are available but not required. Applications, including cover letter, curriculum vitae, bibliography, names, addresses and telephone number of three references will be accepted until December 15, 1994; send to: **George A. Bray, M.D., Pennington Biomedical Research Center, 6400 Perkins Road, Baton Rouge, LA 70808. Telephone: 504-765-2513; FAX: 504-765-0935.** Louisiana State University/Pennington Biomedical Research Center is an Equal Opportunity/Affirmative Action Employer.

### RESEARCH FELLOWSHIPS IN EPIDEMIOLOGY OF LUNG DISEASES

National Institutes of Health-supported stipends and tuition fees for a two-year program working in airways hyperreactivity and/or natural history studies on chronic lung disease along with didactic training in epidemiology leading to a Master's degree from Harvard University. Must be eligible in Internal Medicine or equivalent. Candidates with clinical training in Pulmonary Diseases preferred but not required. Available for U.S. citizens or permanent residents. Inquire: **Frank E. Speizer, M.D., Professor of Medicine, Harvard Medical School, Co-Director, Channing Laboratory, Department of Medicine, Brigham and Women's Hospital, 180 Longwood Avenue, Boston, MA 02115.** This program specifically encourages applications by minority group members. The Brigham and Women's Hospital is an Equal Opportunity Employer.

**STRUCTURAL BIOLOGY RESEARCH ASSOCIATE** to study recombinant peptides using an integrated application of molecular and structural biology, including studies of structural properties of protein domains with CD, FTIR, EPR, etc. Ph.D. and prior experience in molecular biology required; experience in protein chemistry desired; experience or interest in biophysical methods helpful. Submit curriculum vitae, a description of research experience and the names and telephone numbers of three references to: **L. W.-M. Fung, Department of Chemistry, Loyola University Chicago, Chicago, IL 60626. Fax: 312-508-3086.** Position open until filled. Equal Opportunity/Affirmative Action Employer.

**POSTGRADUATE RESEARCHER (PGR)** with experience in molecular biology or immunology and retrovirology to conduct research in HIV pathogenesis and the antiviral resistance. Position available immediately for at least two years. Salary range based on University of California policy. Send curriculum vitae with a list of three references to: **Stephen A. Spector, M.D., Professor, Department of Pediatrics and Center for Molecular Genetics, UCSD, 9500 Gilman Drive, No. 0672, La Jolla, CA 92093.**

Equal Opportunity/Affirmative Action Employer.

### ASSOCIATE RESEARCH SCIENTIST

The Department of Pharmacology invites applications for the position of **ASSOCIATE RESEARCH SCIENTIST** in Pharmacology. This is a non-tenure-track annual research appointment. We seek a candidate to work on cardiac arrhythmias in animal models of myocardial infarction. Qualifications for this position include training in electrical or biomedical engineering as well as in cardiac electrophysiology with a Ph.D. in one of these disciplines. The position requires at least two years of postdoctoral experience in conducting both electrical and optical mapping experiments and in computer modelling of impulse propagation. Please send curriculum vitae, and names of three references to: **Dr. Andrew L. Wit, Department of Pharmacology, College of Physicians & Surgeons of Columbia University, 630 West 168th Street, New York, NY 10032.**

Columbia University is an Equal Opportunity/Affirmative Action Employer.

## POSITIONS OPEN

### RESEARCH ASSOCIATE

Positions are available immediately at the level of Research Associate. The projects involve molecular biology and cell biology of proliferating hepatocytes *in vivo* and *in vitro*. Studies will include detailed analysis of gene expression and transcription factor in different conditions and settings of hepatocyte proliferation. Correlations will be established with neoplasia as well as liver regeneration. Interested persons should have a strong background in molecular biology. Applications should be sent to: **Dr. George Michalopoulos, Professor and Chairman, Department of Pathology, University of Pittsburgh School of Medicine, S-729 Scaife Hall, Pittsburgh, PA 15261.**

### POSTDOCTORAL POSITION IN DEVELOPMENTAL NEUROBIOLOGY

Position available to study neuronal differentiation and formation of synaptic pathways in the rat spinal cord. Candidates with experience using intracellular recordings and/or calcium imaging are preferred. Send curriculum vitae and three letters of reference to: **Dr. Lea Ziskind-Conhaim, Department of Physiology and Center for Neuroscience, 129 SMI, 1300 University Avenue, University of Wisconsin Medical School, Madison, WI 53706. Telephone: 608-263-3382; FAX: 608-265-5512.**

Position available at Delaware State University for **ASSISTANT** to **MARC** Director. Qualifications B.S./M.S. in Biochemistry or equivalent. Two years of computer skills required. Experience with the AIX, IBM Risk 6000 system and molecular modeling is desirable. Salary commensurate with experience. Position open until filled. Please send résumé with two letters of recommendation to: **Dr. F. Helmy, MARC Program Director, Delaware State University, 1200 North DuPont Highway, Dover, DE 19901.** Affirmative Action/Equal Opportunity Employer.

### POSTDOCTORAL POSITION

Available to study local signaling between neurons and astrocytes using *in vivo* and *in vitro* preparations. (See: *Science*, 263:1768-1771, 1994). Experience in neuronal cell biology, imaging techniques and/or electrophysiology is desirable. Submit curriculum vitae and reference list to: **Maiken Nedergaard, M.D., Ph.D., Department of Neurosurgery, Cornell University Medical College, 1300 York Avenue, New York, NY 10021. FAX: 212-746-8038.**

### POSTDOCTORAL POSITION

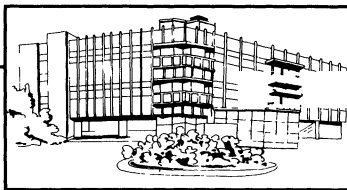
Available immediately to study the structure-function relationships in proteins involved in species-specific gamete recognition and adhesion. A strong background in biochemistry, molecular biology or cell biology is preferred. Please send curriculum vitae, and the names of three references to: **Dr. Charles Glabe, Department of Molecular Biology and Biochemistry, University of California, Irvine, Irvine, CA 92717.**

The deadline for applications is December 31, 1994. The University of California is an Equal Opportunity/Affirmative Action Employer, committed to excellence through diversity.

**POSTDOCTORAL POSITION** available from 1 March 1995 to study the molecular mechanism of urokinase-type plasminogen activator mRNA degradation analyzing the physical state of the mRNA *in vivo*. Experience in molecular biology and cell biology is required. Send a description of your research interests, curriculum vitae and names of two references to: **Dr. Yoshikuni Nagamine, Friedrich Miescher Institute, P.O. Box 2543, CH-4002 Basel, Switzerland. FAX: +41 61 6973976.**

### UNIVERSITY OF CALIFORNIA, SAN FRANCISCO ELECTRON MICROSCOPIST

Electron microscopist for prion disease studies. Extensive experience with embedding, ultrathin sectioning and immunolabeling of cultured cells and brain is required. Experience in negative staining and microscope maintenance advantageous. M.S. degree preferred. Apply to: **S. Prusiner, UCSF, San Francisco, CA 94143-0518** with three letters of reference. University of California, San Francisco is an Affirmative Action/Equal Opportunity Employer, women and minorities are encouraged to apply.



MARION MERRELL DOW

Strasbourg R&D Center

## Postdoctoral position in Vibrational Spectroscopic Methods

An immediate appointment is to be made to strengthen our capabilities in the structural study of proteins and their interactions by vibrational spectroscopic techniques.

The desired candidate should have a sound knowledge of both theory and current technology in vibrational spectra acquisition, and bring an enthusiasm for experimental applications of FT-IR and/or laser Raman spectroscopy to biological systems. Advantageous would be experience and interest in biological surfaces or membranes.

The Strasbourg Research Centre of Marion Merrell Dow is devoted to basic investigations leading to the development of novel drugs for diseases of the central nervous system. The

multidisciplinary Biophysics Group, providing a Global Core Facility for researchers in all MMD centres, undertakes mainly structural investigations of proteins and peptides in solid and solution states using state-of-the-art instrumentation (X-ray crystallography, NMR and optical spectroscopies).

Candidates, who have completed or who expect to complete their Ph.D. by October 1994, should send a CV with the names of 3 referees to M.-J. Bildstein, Human Resources Department, Marion Merrell Dow Research Institute, 16 rue d'Ankara, 67080 Strasbourg Cedex, France.

MEDIA SYSTEM

U.S. DEPARTMENT OF ENERGY  
OFFICE OF HEALTH AND ENVIRONMENTAL RESEARCH



### Alexander Hollaender DISTINGUISHED Postdoctoral Fellowship Program

Research Opportunities in  
Energy-Related Life, Biomedical, and  
Environmental Sciences

- Research in OHER-sponsored programs
- Tenable at various laboratories
- Stipends \$37,500
- Doctoral degree received after April 30, 1993
- U.S. citizens or PRA eligible

Information and applications:

**Hollaender Postdoctoral Fellowships**  
Science/Engineering Education Division  
Oak Ridge Institute for  
Science and Education  
P.O. Box 117  
Oak Ridge, TN 37831-0117  
(615) 576-9975

**Deadline January 15, 1995**

JOIN OUR FAMILY

### RESEARCH SCIENTIST

#### Saint Francis Campus

Saint Francis Hospital and Medical Center Located in Hartford, Connecticut, is seeking candidates to join our Department of Research to establish new programs in vascular biology. Candidates should have completed a doctoral degree and a postdoctoral fellowship and have prior experience in vascular biology. Candidates will be eligible for an appointment at the University of Connecticut School of Medicine. Interested candidates should send resume and references to:

**Dr. Ernesto Canalis, Saint Francis Hospital and Medical Center, 114 Woodland St., Hartford, Connecticut 06105-1299, Fax: (203) 548-5415.**



EEO/AA - M/F/D/V  
Pre-Employment Drug Testing

### UNIVERSITY OF CALIFORNIA VICE PRESIDENT— AGRICULTURE AND NATURAL RESOURCES



The President and The Regents of the University of California invite nominations and applications for the position of Vice President—Agriculture and Natural Resources. The appointment will be effective as of July 1, 1995.

The Vice President—Agriculture and Natural Resources is the chief administrative officer for the Division of Agriculture and Natural Resources. The Division is a statewide research and public service organization responsible for activities in agriculture, natural resources, environmental sciences, family and consumer sciences, forestry, human and community development, and related areas.

Candidates should have a demonstrated commitment to excellence in teaching, research, and public service and a record of academic and administrative achievement and leadership in agriculturally related teaching, research, and public service programs. Previous administrative experience should evidence abilities in planning and program evaluation, budgeting for complex organizations, public and governmental relations, affirmative action, resource development and direction of agriculturally related research, teaching, and public service.

Applications, accompanied by current resumes, and nominations may be addressed to:

The President  
Attn: VP—DANR Search  
University of California  
300 Lakeside Drive  
Oakland, California 94612-3550

Applications and nominations should be received no later than December 15, 1994, to be given full consideration.

AN EQUAL OPPORTUNITY AFFIRMATIVE  
ACTION EMPLOYER



## POSITIONS OPEN

### ECOLOGIST/ENVIRONMENTAL BIOLOGIST

The Department of Biological Sciences, University of Maryland Baltimore County (UMBC), invites applications for a **TENURE-TRACK POSITION** in ecology or environmental biology. UMBC is located near Baltimore and provides ready access to diverse research environments. The UM System maintains three environmental research laboratories including two on the Chesapeake Bay. Ample opportunities exist for collaborations with state and federal agencies and private laboratories in the Washington-Baltimore region. The Department has 24 research faculty at all levels of biological organization, with particular emphasis on molecular and cellular biology. The applicant should have postdoctoral experience and will be expected to establish a strong and independently funded research program. Teaching will include an undergraduate course in ecology/evolution and a graduate-level course in the appointee's area. For full consideration, applications should be submitted by December 15, 1994. Send a curriculum vitae, statement of research interests and at least three references to: **Dr. Brian Bradley, Search Chairman, Department of Biological Sciences, UMBC, Baltimore, MD 21228-5398.** *UMBC is an Equal Opportunity Employer. Women and minorities are encouraged to apply.*

The Veterinary Pathobiology Department, Purdue University School of Veterinary Medicine, invites applications for an **EPIDEMIOLOGIST** in a tenure-track faculty position. Qualifications include D.V.M./V.M.D. and Ph.D. in analytic epidemiology. Ph.D. in epidemiology or biostatistics and experience in medical sciences will be considered. Responsibilities include teaching D.V.M. veterinary epidemiology course and graduate courses in epidemiologic methods, assisting in design and analysis of interdisciplinary projects, and establishing independently funded research. Candidates should submit a letter, curriculum vitae, and names of three references by November 30, 1994, to: **Epidemiology Search Committee, c/o Dr. A. H. Rebar, VPB Department, 1243 VPTH Building, Purdue University, West Lafayette, IN 47907-1243.** *An Affirmative Action/Equal Opportunity Employer. Women and minorities encouraged to apply.*

### ANATOMY

**OPEN RANK** Anatomy and Cell Biology Positions. The Department of Anatomy and Cellular Biology of Tufts University Schools of Medicine, Dental Medicine and Veterinary Medicine, invites applications for tenure-track positions. Applicants should possess a Ph.D., M.D. or D.M.D. degree (or equivalent), must have an active, funded research program. Teaching will be required and will involve one team-taught professional course for medical or dental students, as well as participation in graduate-level courses (Cell Biology and Developmental Biology). Major research areas in the department include: Cell and molecular biology, developmental biology, reproductive biology and neuroendocrinology. Salary and rank will be dependent upon qualifications and experience. Applicants are invited to submit a curriculum vitae, names of at least three (3) references and a letter describing interests and teaching experiences to: **Dr. Joan King, Department of Anatomy and Cellular Biology, Tufts University Schools of Medicine and Veterinary Medicine, 136 Harrison Avenue, Boston, MA 02111.** Minority applicants are urged to apply. *Tufts University is an Equal Opportunity/Affirmative Action Employer.*

**RESEARCH MICROBIOLOGIST**—The Department of Ophthalmology, Baylor College of Medicine, invites applications for a **MICROBIOLOGIST** to develop an independent research program. Research on host-bacteria pathogenic interactions is preferred. Potential areas of study include molecular mechanisms of attachment and invasion by prokaryotic and eukaryotic microorganisms, host inflammatory responses to microbial disease, and how eye infections relate to aging and other risk factors. Joint faculty appointment is available in the Department of Microbiology and Immunology with participation in the graduate program. Applicants for this tenure-track position should have a Ph.D., at least two years of postdoctoral experience, and demonstrated research productivity. Send curriculum vitae, names and addresses of at least three references, and a statement of research interests to: **Search Committee for Microbiologist, Cullen Eye Institute, Baylor College of Medicine, 6501 Fannin (NC200), Houston, TX 77030.** *Baylor College of Medicine is an Affirmative Action/Equal Opportunity/Equal Access Employer.*

## POSITIONS OPEN

### RESEARCH MANAGER

Midwestern specialty agricultural chemical firm seeks a **RESEARCH MANAGER** to be key technical scientist and manage their seven person R&D department. Principal duties will be to direct all research and quality assurance efforts. Successful candidate will thrive in a sales-driven environment. Excellent communication skills, Ph.D. in Biochemistry, technical expertise in biochemistry and physiology, chromatography, enzymology, five years of postdoctorate work experience and management experience required. Please send résumé in confidence to:

**Francis & Associates  
6923 Vista Drive  
West Des Moines, IA 50266**

### STAFF SCIENTIST/SENIOR SCIENTIST

The **BOSTON BIOMEDICAL RESEARCH INSTITUTE** invites applications from investigators in the broad field of molecular and structural cell biology. Preference will be given to applicants with interests in the areas of cell motility and non-muscle contractility, cell growth, and cell signalling. Generous start-up funds are available. Successful applicants are expected to develop a strong, extramurally funded research program. The Boston Biomedical Research Institute is an independent biomedical research center that offers an exceptionally collegial and intellectually stimulating environment. Applicants should submit a curriculum vitae, a description of research interests, and names of three referees to: **Miss Mary Caulfield, Secretary to the Search Committee, Boston Biomedical Research Institute, 20 Staniford Street, Boston, MA 02114.** *Boston Biomedical Research Institute is an Equal Opportunity Employer.*

**RESEARCH SCIENTIST.** Position available for molecular or structural biologist to study salivary proteins. Two to three years of postdoctoral experience in molecular and structural biology required. Salary range \$30,000–\$40,000 depending upon experience. Also desirable is experience in NMR or crystallography of proteins. Send curriculum vitae and three letters of reference to: **Project Director, Department of Oral Biology, 109 Foster Hall, State University of New York, Buffalo, NY 14214-3092.**

*The Research Foundation of SUNY/Buffalo is an Affirmative Action/Equal Opportunity Employer.*

**EVOLUTIONARY/BEHAVIORAL ECOLOGIST**—An 18-month leave replacement position will be available beginning in January 1995. Duties include teaching introductory and advanced courses in evolution and animal behavior, as well as supervising undergraduate student research. Candidates must have a demonstrated interest and ability in teaching and in directing student research. Send curriculum vitae, statements of teaching and research interests, three reference letters, and graduate transcripts to: **Dr. Glen Wurst, Biology Department, Allegheny College, Meadville, PA 16335,** by October 31, 1994. *Equal Opportunity Employer.*

### BIOLOGICAL ANTHROPOLOGIST

The Department of Biological Anthropology and Anatomy at Duke University invites applications and nominations for a tenure-track position at the **ASSISTANT PROFESSOR** level to begin September 1995. Candidates must have demonstrated research interests in paleoanthropology, studied from the perspective of evolutionary theory with a focus on the genus *Homo*. Experience in teaching paleoanthropology is desirable. Send curriculum vitae and names of references to: **Chair, Search Committee, Department of Biological Anthropology and Anatomy, Box 3170, Duke University Medical Center, Durham, NC 27710.** Applications received by January 1, 1995, will be guaranteed consideration. *Duke University is an Equal Opportunity/Affirmative Action Employer.*

**AQUATIC EDITORIAL STAFF**—Cambridge Scientific Abstracts, a leading aquatic/biomedical publisher, is seeking a **SUPERVISING EDITOR** and an **EDITOR** to join editorial team in indexing and classifying articles for abstracts journals and data bases. Solid academic background in aquatic science required; graduate degree in marine biology or oceanography preferred. Ability to thrive under deadline pressure a must; exposure to the Internet a plus. Congenial office in suburban Washington, D.C. area; Write or FAX: **CSA, HR Department, 7200 Wisconsin Avenue, Suite 601, Bethesda, MD 20814.** FAX: 301-961-6720.

## POSITIONS OPEN

### CHIEF ENVIRONMENTAL SCIENTIST

**LOUIS BERGER & ASSOCIATES, INC.**, a prominent, rapidly expanding environmental, planning and engineering consulting firm with more than 1,400 employees and offices throughout the United States has a rewarding career opportunity available immediately in our New Jersey headquarters. Requirements include: Ph.D. in Environmental Science, Ecology or related discipline; fifteen years of experience including project management; proven ability to develop staff; and proposal preparation and marketing skills. Please send résumé and salary requirements to: **Louis Berger & Associates, Inc., Personnel Department, 100 Halsted Street, East Orange, NJ 07019.**

### PLANT MOLECULAR BIOLOGIST

Applications are invited for a tenure-eligible **PLANT MOLECULAR BIOLOGIST** beginning fall 1995. Ph.D. required, teaching experience desired. Course expectation: Cell and Molecular Biology, Introductory Biology; develop upper-level courses in specialty; conduct research with undergraduates. Expertise in plant/insect interactions and/or plant tissue culture is also desirable. Collaborative research possible with Pharmacy Program (Pharm.D.); therefore, interest in botanical pharmacology and/or pharmacophagy is beneficial. Demonstrated ability and desire to teach undergraduates of diverse interest and abilities is highly sought, and ability to interact with colleagues in biology, chemistry, pharmacy and other disciplines. Application, including a statement of teaching philosophy, a curriculum vitae, and three letters of recommendation should be submitted to: **Associate Dean (Biology), School of Science and Engineering, Wilkes University, Wilkes-Barre, PA 18766.** Review of applications will begin November 15, 1994.

*Women and minorities are encouraged to apply. Affirmative Action/Equal Opportunity Employer.*

### FOOD AND INDUSTRIAL MICROBIOLOGIST

M.S. Biology with experience or knowledge in water and solid waste treatment, human metabolic system, isotope handling and disposal, cancer epidemiology. Using microbiological principle to develop procedures for nutritional status testing of clinical patients. Using sterile technique to process human specimen such as blood cell separation, cell harvesting, counting, identification. Handling low-level radioisotope and operate beta counter. In charge water purification and solid waste (isotope, medical and hazardous waste) disposal for the lab. \$30,600 per year, 40 hours per week. Must be able to work on weekends. Apply at the Texas Employment Commission, Houston, Texas, or send résumé to: **Texas Employment Commission, TEC Building, Austin, TX 78701.** JO No. TX7214578. *Ad paid by an Equal Opportunity Employer.*

### LEADER OF LABORATORY OF MOLECULAR BIOLOGY TECHNIQUES

The Department of Biological Sciences at the University of Idaho seeks a Ph.D. to direct a laboratory to train students and faculty in a broad range of techniques used in molecular biology involving at least DNA and RNA; opportunities for collaborative research. Excellent interpersonal skills required. Search and selection procedures will be closed when a sufficient number of qualified candidates has been identified, but not earlier than November 5, 1994. Send letter of application; including résumé; job expectation; evidence of interpersonal skills; and names, addresses and telephone numbers of three references to:

**A. W. Rourke  
Department of Biological Sciences  
University of Idaho  
Moscow, ID 83844-3051**

*To enrich education through diversity, the University of Idaho is an Equal Opportunity/Affirmative Action Employer.*

**EXPERIENCED INVESTIGATORS** are sought to assist in the development of a chemotherapeutic approach based upon the molecular biology of proliferative signaling. Experts in areas related to proliferative signal transduction, pharmacology, tumor studies in animals, stem cell biology, and *in vivo* gene delivery are encouraged to apply. Salary will be commensurate with background. Contact: **Dennis W. Stacey, NC2-151, The Cleveland Clinic Foundation, 9500 Euclid Avenue, Cleveland, OH 44195.**



**RedCell, Inc.**, a biopharmaceutical company developing novel therapeutic products based on red cell mediated therapy, is looking to expand its research capabilities and has the following opportunities available for highly motivated individuals:

• **Director of Medicinal Chemistry**

Highly motivated, innovative, hands-on chemist to be a part of a team that will pioneer our enabling RedCell technology. Our ideal candidate will possess an outstanding record of accomplishment and productivity with strong management and interpersonal skills.

• **Protein Chemist/Biochemist**

Ph.D. and B.S./M.S. level scientists with backgrounds in protein chemistry to characterize chemically modified proteins and develop structure/function relationships. A Ph.D. in chemistry or biochemistry, coupled w/2-5 yrs. of postdoctoral experience in protein chemistry including the chemical modification of proteins, assay development, and the purification and characterization of proteins using a variety of chromatographic, spectroscopic, and electrophoretic techniques, is essential. Expertise in immunochemistry is also desirable.

• **Cell Biologist**

Ph.D. and a strong background in cell biology with experience in hematology and immunology, molecular and cellular analysis of chemically modified red cells, and analysis of their function.

• **Organic Chemists**

Ph.D. and B.S./M.S. level scientists with experience in automated solid phase peptide synthesis, peptide purification, and the construction of combinatorial libraries, as well as scientists with strong backgrounds in multistep organic synthesis, modern spectroscopic and chromatographic techniques, computer literacy and familiarity with chemistry software packages.

• **Research Investigator/Mass Spectrometry**

Ph.D. in chemistry/biochemistry or analytical chemistry with demonstrated accomplishments in structural elucidation of complex organic molecules and proteins.

We offer an energetic environment in the San Francisco Bay Area and an opportunity for research in a rapidly changing field. Competitive salary and benefits. EOE employer. Write or Fax your resume to Executive V.P. of Research at: One Sansome St., Ste. 2000, S.F., CA 94104; fax (415) 984-3181.



# affymax

Affymax is a dynamic young company devoted to the rapid discovery of new pharmaceutical products. We have brought together an outstanding interdisciplinary team of biologists, molecular biologists, chemists, engineers and computer scientists and have become recognized as a leader in the development and application of novel approaches to the drug discovery process. Our systems employ combinatorial chemistry libraries and innovative strategies for rapid, automated micro-scale screening against important biological targets.

## DRUG METABOLISM • PHARMACOKINETICS PHARMACOLOGY

The positions are for experienced B.S., M.S. and Ph.D. scientists and involve the study of in vivo activities of our development compounds. Experience in pharmaceutical industry research and development is preferred.

Affymax provides an excellent compensation package including a stock option program. We are located in the San Francisco Bay Area, and the available positions will be located in new laboratory facilities in Santa Clara. Please send your curriculum vitae to: **Rose Sturgess, Affymax Pharmaceuticals, 3410 Central Expressway, Santa Clara, CA 95051. EOE**

# affymax

### WORLD HEALTH ORGANIZATION

#### INTERNATIONAL AGENCY FOR RESEARCH ON CANCER LYON, FRANCE

Unit of Field and Intervention Studies is looking for an:

#### STATISTICIAN/EPIDEMIOLOGIST

The IARC conducts a broad range of studies in the fields of cancer cause and prevention. There are a large number of epidemiological projects in collaboration with investigators throughout the world, and an extensive experimental programme. The Unit of Field and Intervention Studies conducts research in two main fields:

- (1) Investigation of the role of infectious agents and other risk factors in the causation of human cancer and
- (2) Implementation of intervention studies using the information derived from the above and other aetiological studies.

The major role of the successful applicant will be to be responsible for the computing and statistical methodology of several ongoing or planned projects such as a multicentre case-control study on cervical cancer, cohort studies of HBsAg carriers and liver cancer and of H1PV and CIN lesions, intervention trials on precancerous lesions of the stomach and of the uterine cervix. The applicant should have an advanced degree in biostatistics or epidemiology 3-4 years experience in biostatistics applied to cancer epidemiology, with good knowledge of statistical methods - ability to use the most common statistical software: SAS, GLIM — ability to program in FORTRAN or other language - a good knowledge of English with working knowledge of French.

Annual Salary (net of tax): US\$ 36,781 at single rate and US\$ 39,383 with primary dependents, plus a cost of living element which is at present 51.2% of the above figures. This percentage is to be considered as indicative since variations may occur each month either upwards or downwards.

The initial appointment will be for a period of two years, with possibility of renewal. Those interested should write, enclosing a brief curriculum vitae, to:

Personnel Office  
I.A.R.C.  
150, Court Albert Thomas  
F-69372 Lyon cedex 08  
France  
Fax No 72 73 85 75

Appointments from women are encouraged.

**Harvard Medical School  
Molecular Medicine Unit  
Beth Israel Hospital**

The Molecular Medicine Unit of Beth Israel Hospital is seeking applicants for the position of Assistant Professor. The successful candidate will hold the PhD and/or MD degrees, and have completed a minimum of two years of postdoctoral training in molecular cell biology, physiology, or genetics. Applicants will be expected to establish a funded independent research program in membrane transporters or channels in the broad area of cardiovascular biology. Generous start-up funds and some ongoing support will be provided. The Molecular Medicine Unit faculty currently investigate membrane transport and ion homeostasis, tumor suppression and signal transduction, and induction pathways in early development. All have joint or primary appointments with basic science departments at Harvard Medical School. Candidates should send CVs and names of three references to:

Robert D. Rosenberg, MD-PhD  
Faculty Search Committee  
Molecular Medicine Unit  
Beth Israel Hospital RW663  
330 Brookline Ave.  
Boston, MA 02215

*The Beth Israel Hospital is an equal opportunity employer.*

**Assistant/Associate Professor  
in Microbiology and Immunology**

The Department of Microbiology and Immunology, University of Illinois at Chicago, is seeking to fill a position at the level of Assistant or Associate Professor in the area of eucaryotic molecular biology. Preference will be given to individuals whose research interests are focused on virology or immunology. The successful candidate will be expected to develop a strong independent research program and participate in the multifaceted research and graduate training program of the Department. Generous laboratory space and start-up funds are available. Applicants should have a PhD or equivalent and at least two years of postdoctoral experience.

Applications should include a curriculum vitae, the names of three references and a brief statement of future research plans. Please send applications to:

Search Committee  
University of Illinois at Chicago  
Department of Microbiology/Immunology  
(M/C 790)  
835 South Wolcott  
Chicago, IL 60612

The University of Illinois at Chicago is an Affirmative Action/Equal Opportunity employer. Women and minorities are strongly encouraged to apply.

**SECTION HEAD  
MOLECULAR NEURO-ONCOLOGY,  
DEPARTMENTS OF CANCER BIOLOGY AND  
NEUROSCIENCES**

**RESEARCH INSTITUTE OF THE  
CLEVELAND CLINIC FOUNDATION**

We are seeking an established scientist (MD and/or Ph.D.) to lead the Molecular Neuro-oncology Section in the Departments of Cancer Biology and Neurosciences of the Research Institute of the Cleveland Clinic. The Research Institute has a long standing commitment to excellence in basic and applied biomedical research with an annual budget in excess of \$50 million. This new position is part of a bridge program among the Departments of Cancer Biology and Neurosciences of the Research Institute and the Clinical Departments of Neurosurgery and Neurology, to promote and foster translational research between the Research Institute and Clinical departments of the Cleveland Clinic. The establishment and funding of this position recognizes the Clinic's traditional excellence in neurosurgery and neurology and its commitment to the study of the molecular genetic basis of cancer. We are seeking candidates with already established programs in the molecular genetics of brain tumors who are able to utilize the substantial clinical and research resources available to build an outstanding effort in molecular neuro-oncology. The position will be provided with generous space and start-up support including substantial endowment funds. Salary and fringe benefits are highly competitive.

Curriculum vitae and names and addresses of three references should be sent to:

Bryan R. G. Williams, Ph.D.  
Search Committee for Molecular  
Neuro-oncology  
Department of Cancer Biology NN 10  
Cleveland Clinic Foundation, 9500 Euclid Avenue  
Cleveland, Ohio 44195

**COMPUTATIONAL  
MOLECULAR  
BIOLOGIST**

Health Research, Inc., a not-for-profit organization, seeks a Research Scientist III to work in The Wadsworth Center, a multidisciplinary basic research & public health laboratory. The incumbent will play a major role in bridging the gap between computational & experimental molecular biology. Accordingly, the position involves both the delivery of computational tools to staff scientists (50% support) & a program of computational molecular biology research (50%).

Support activities will include: 1) consulting w/ scientists on a wide variety of computational molecular biology problems; 2) user support & training for molecular biology computer software & databases. Substantial interaction w/ the molecular biology user community is expected.

The ideal research program would focus on building computational approaches to questions identified by staff scientists at the Wadsworth Center, & would build on the base of computational molecular biology research currently ongoing at Wadsworth including multisequence alignment, identification & characterization of subtle regulatory signals & threading.

A doctoral degree & 2 years experience w/ software tools for molecular biologist such as GCG, Blast, & Entrez are preferred. Formal training in computational molecular biology, 3D molecular modeling & computer science highly desirable. Send resume to: Health Research, Inc. W163S, 66 Hackett Blvd, Albany, NY 12209.

**Université de Montréal  
Faculté des arts et des sciences  
Département de sciences biologiques  
TENURE-TRACK POSITION  
AS ASSISTANT PROFESSOR IN  
PLANT MOLECULAR BIOLOGY**

The Département de sciences biologiques, Faculté des arts et des sciences, Université de Montréal, invites application for a tenure-track position as assistant professor in plant molecular biology. **Functions:** Teaching in French, particularly in molecular biology at the undergraduate level, and at the graduate level in the candidate's area of specialization. Supervision of M.Sc. and Ph.D. students. Research: the successful candidate must develop an autonomous and innovative research program as a part of a multidisciplinary team located at the Institut de recherche en biologie végétale (I.R.B.V.) at the Montréal Botanical Gardens. **Requirements:** Candidates should have a Ph.D. in a relevant field, a strong research background in any area of plant molecular biology, preferably of vascular plants, and at least one year of postdoctoral experience or equivalent. **Salary:** According to the collective agreement. **Starting date:** June 1, 1995. Applicants must send their curriculum vitae, a statement of teaching and research interests, two copies of five reprints (or pre-publication of papers in press) representing their most significant contributions, and three letters of recommendation **before December 1, 1994 to:**

Dr. Raymond McNeil, directeur  
Département de sciences biologiques  
Université de Montréal  
C.P. 6128, succursale Centre-ville  
Montréal (Québec), H3C 3J7

In accordance with Canadian immigration requirements, priority will be given to Canadian citizens and permanent residents of Canada. The University is committed to equal employment opportunity for women.



Announcing applications for:

## THE CHILDREN'S BRITTLE BONE FOUNDATION FELLOWSHIP

\$50,000/year award for two years.

The Children's Brittle Bone Foundation announces an international competition for two fellowships to study the pathogenesis and treatment of osteogenesis imperfecta. Appropriate research areas include: therapeutic approaches to osteogenesis imperfecta including gene therapy; regulation of collagen-synthesis; bone growth and differentiation factors.

Each grant includes approximately \$35,000 in salary plus benefit allowance, and a research allowance. Applicants may hold either a Ph.D. or M.D. and be in postdoctoral training or hold a junior faculty position. A second year of support will be available based on evidence of continued progress.

If the applicant is a postdoctoral fellow, a letter of support from the preceptor along with evidence of the preceptor's external funding for related scientific research is required with the full application.

### Applications available:

October, 1, 1994

### Filing Deadline:

January, 17, 1995

### Fellows Notified:

April 17, 1995

### Write to:

CHILDREN'S BRITTLE BONE  
FOUNDATION  
Attention: Grants and  
Awards  
P.O. Box 27  
Highland Park, IL 60035  
USA



CHILDREN'S BRITTLE BONE FOUNDATION

## Postdoctoral Research Fellowship

Department of Geology

### Vacancy UAC.506

A vacancy is available for a postdoctoral fellow to work with a multidisciplinary group on a Late Cenozoic volcanic arc complex (Coromandel Volcanic Zone) in the North Island of New Zealand. The position is available for two years. Some relocation costs will be available. Applicants should have a degree in applied geophysics or geology and previous experience working in volcanic areas, ground and aerial gravity and magnetic surveys, and modelling of data.

A stipend of NZ\$35,000 per annum will be paid.

Interested persons should contact Professor M P Hochstein, Geothermal Institute, The University of Auckland, phone 64-9-373 7599 ext 8403, fax 64-9-373 7436, email thermal@auckland.ac.nz, or Professor P M Black, Department of Geology, The University of Auckland, phone 64-9-373 7599 ext 7560, fax 64-9-373 7435, email pm.black@auckland.ac.nz

Applications in the form of a detailed CV and including the contact details for two or more referees close with the Registrar, The University of Auckland, Private Bag 92019, Auckland, New Zealand on **12 December 1994**

**Please quote Vacancy Number UAC.506 in all correspondence.**

W B NICOLL, REGISTRAR



### New Zealand

*The University has an equal opportunities policy and welcomes applications from all qualified persons*

**Lawrence Berkeley Laboratory**, a major R&D facility under contract with the U.S. Department of Energy and located in the San Francisco Bay Area, has several senior positions to fill within their Energy & Environment Division.

The Division has approximately 300 scientific, technical, and administrative/clerical staff members, and carries out a broad interdisciplinary R&D program in energy end-use efficiency, indoor air quality, energy supply, environmental technologies, and related policy analyses. Technology transfer and technical assistance are integral parts of the Division's activities and of these positions.

## Head of the Center for Building Science

The Center coordinates program development, R&D, and technology transfer/technical assistance activities among three buildings-related Research Programs: Building Technologies, Energy Analysis, and Indoor Environment. Also, the Center serves as a contact point for federal agencies and others interested in building technologies. The Center has a small scientific/technical/administrative staff. (Job #B/2833).

## Leader of the Division's Washington D.C. Project Office

The Office serves as a contact to offices within the Department of Energy (DOE) and other Washington-based agencies on behalf of the Division. The Leader is also expected to develop and direct research projects, such as policy analyses, for which a presence in Washington is beneficial. The Office has a small scientific/technical/administrative staff in an office suite within a few blocks of DOE Headquarters. The Leader should expect to divide time roughly 80%/20% between Washington and Berkeley. (Job #B/2465).

## Leader of the Lighting Systems Group

The Group is in the Building Technologies Program and works toward increased lighting efficiency, with preserved or enhanced human productivity. R&D activities include advanced lamp technologies, energy efficient fixtures, lighting design tools, and the relationship between lighting and human productivity. Some of the work is carried out through R&D subcontracts. The Group has about five staff scientists and technical/administrative support. (Job #B/2832).

## Transportation Research Coordinator

The Division views the transportation field as one of potential growth and seeks a person to develop a coordinated transportation R&D program. At present, the Laboratory has strengths in electrochemistry for advanced batteries and fuel cells, combustion and emissions, materials, sensors, advanced manufacturing techniques, and thermal management of vehicle interiors. (Job #B/2831).

Applicants should have substantial experience in one or more of the technical areas under the purview of the position, excellent communication skills, and significant management experience. For more information about the Laboratory and the Division, more detailed descriptions of the positions, and information on applying for them, please write to (include Job #): **Greg Blinn, Lawrence Berkeley Laboratory, M/S 90-3026, One Cyclotron Road, Berkeley, CA 94720. Equal Opportunity/Affirmative Action Employer.**



**LAWRENCE BERKELEY LABORATORY**  
UNIVERSITY OF CALIFORNIA  
U.S. Department of Energy

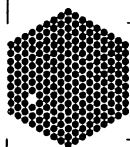


## Neuroimaging

The Mental Health Research Institute and Department of Psychiatry of the University of Michigan are seeking candidates for a tenure track position in research on non-invasive imaging of the brain related to the understanding of human behavior relevant to mental illness. Candidates should have interest and experience in application of non-invasive modalities to measure neuroanatomically defined functional change, e.g., blood flow, metabolism, receptor regulation, etc., and are expected to develop independent and collaborative research projects. Preference will be given to psychiatrists with neuroimaging experience. Applicants should provide a brief statement of research interests and future plan, a curriculum vitae with bibliography, and names and addresses of three references. Deadline Nov. 15, 1994. Send inquiries and applications to: Chair, Neuroimaging Search Committee, Mental Health Research Institute, University of Michigan, 205 Zina Pitcher Place, Ann Arbor MI 48109-0720. The University of Michigan is an equal opportunity/affirmative action employer and specifically encourages applications from qualified women and minorities.

## Developmental Neurobiologist

The Mental Health Research Institute/Department of Psychiatry and The Department of Biological Chemistry of the University of Michigan are seeking candidates for a tenure-track position in Developmental Neurobiology to be jointly appointed at the Assistant Professor/Assistant Research Scientist level. The appointee will develop an independent research program in the area of nervous system development. Developmental neurobiologists utilizing molecular, genetic and cellular approaches and/or with particular interest in biological psychiatry are especially encouraged to apply. Applicants should provide a brief statement of research interests and future plans, a curriculum vitae with bibliography, and three letters of reference. Deadline: December 1, 1994. Send applications to: Dr. Daniel Goldman, Chair, Developmental Neurobiology Search Committee, Mental Health Research Institute, University of Michigan, 205 Zina Pitcher Place, Ann Arbor, MI 48109-0720. The University of Michigan is an equal opportunity/affirmative action employer and specifically encourages applications from qualified women and minorities.



# EMBL

## GROUP LEADER

The Differentiation Programme invites applications for a group leader position. The Programme is broadly interested in signal transduction pathways and how a given pathway, depending on the cellular context, can induce cell cycle changes, differentiation, or cell death. The successful applicant will conduct independent research in an area that complements the ongoing research in the Programme, which includes: signal-dependent control of gene expression in eukaryotes (Dirk Bohmann); intercellular signalling and pattern formation in *Drosophila* limbs (Stephen Cohen); germ plasm assembly and germ line determination in *Drosophila* (Anne Ephrussi); nuclear oncogenes and avian haematopoietic cell differentiation (Thomas Graf); tyrosine protein kinase receptors and neuronal development in mice (Rüdiger Klein); cell-cell interactions during nervous system development in *Drosophila* (Marek Mlodzik); and growth factor and mediators in vertebrate embryogenesis (Rolf Zeller).

Applications, comprising a curriculum vitae, a short description of research interests, and three letters of reference should be sent to the chair of the search committee, Dr. Thomas Graf, EMBL, Personnel Section, Postfach 10.2209, D-69012 Heidelberg, Germany. Closing date for applications: 30.11.1994.

EMBL is an inclusive international organization and encourages applications from women and nationals of currently underrepresented member states. The laboratory provides financial help in relocating families. Excellent child care facilities are available.

## Mark 4 November 1994 on Your Calendar!

# Get Bonus Distribution to Minority Scientists

## with the Science Education Issue.

The unique challenges facing minority scientists begin with education. Place your full page recruitment advertisement in the 4 November 1994 issue of *SCIENCE* and reach minority candidates. The Science Education issue gets bonus distribution at these distinguished minority universities and organizations:

- Minority Research Development Program
  - Bennett College
  - Central State University
  - Florida A&M University
  - Howard University
  - Lehman College/CUNY
  - Meharry Medical College
  - Morehouse College
  - Morris Brown College
  - University of Hawaii
  - University of Puerto Rico-  
Recinto de Ciencias
  - Wayne State University
  - SUNY/College at Old Westbury
- Minority Access to Research Careers
- National Hispanic Leadership Conference
- National Network of Minority Women in Science
- National Organization for the Advancement of Black Chemists and Chemical Engineers
- National Puerto Rican Coalition
- National Technical Association

**Advertising Deadline: 18 October 1994**

To advertise call Janis Crowley in the U.S.  
at (212) 496-7704 or fax to (202) 682-0816.  
In Europe, call Gordon Clark  
(44) 0223 302067 or fax to (44) 0223 302068.

## Plant Molecular Biology Postdoctoral Position

Ribozyme Pharmaceuticals, a leader in the development of ribozyme-based pharmaceuticals and agricultural products, is currently seeking a Postdoctoral Scientist to join our agricultural group in our Boulder, Colorado facility.

Working on the optimization of ribozyme activity in plant cells, you must be highly self-motivated with the ability to design/conduct independent research and collaborate with other personnel. A Ph.D. in plant molecular biology or biochemistry is required, with a strong background in molecular biology. Experience with plant tissue culture and gene expression in transient systems will be beneficial.

For consideration, please send a *Curriculum Vitae*, including the names of three references, to: Ribozyme Pharmaceuticals, Inc. Attn: Dr. Brent Edington, Ribozyme Pharmaceuticals, Inc., 2950 Wilderness Place, Boulder, CO 80301. FAX: 303-449-6995. We are an equal opportunity employer.



RIBOZYME  
PHARMACEUTICALS,  
INCORPORATED

## MSDS/RISK ASSESSMENT TOXICOLOGIST

For more than 115 years, the people of Eli Lilly and Company have dedicated their efforts to the discovery and development of products that improve the quality of life.

Lilly Research Laboratories currently has a position available for an individual trained in, and experienced in, toxicology, pharmacy, pharmacology or related fields. An MS degree is required.

The successful candidate will review, interpret, and summarize toxicological data for the development and revision of Material Safety Data Sheets and label information. This scientist will also write risk assessments for chemicals that are used in industrial settings or that may enter the environment. Considerable interaction will be required with others involved in assuring safety information for the workplace.

Eli Lilly and Company offers a competitive compensation and benefits package and a highly professional environment. For prompt consideration, please forward your resume to: Eli Lilly and Company, Scientific Recruitment, Dept. PW-1094, Lilly Corporate Center, Indianapolis, IN 46285.

We are an equal opportunity employer committed to diversity in the workplace.

### UNIVERSITY COLLEGE DUBLIN

#### NEWMAN SCHOLARSHIP

#### LIVER UNIT TRUST NEWMAN SCHOLARSHIP In LIVER TRANSPLANT IMMUNOLOGY

University College Dublin is pleased to announce the endowment of a further Newman Scholarship as part of its programme to provide research opportunities for scholars of proven academic excellence.

The holder of the Scholarship will join a dynamic research group already engaged in several demanding projects which would welcome the input of an additional experienced, energetic researcher.

Applicants for this Scholarship should hold a doctoral degree in Immunology, Molecular Biology or a related discipline and show evidence of a track record in Biomedical research.

The Scholarship is tenable for three years - subject to satisfactory performance.

Further details and application forms may be obtained from the Personnel Office, University College Dublin, Belfield, Dublin 4, Ireland. Telephone: (353 1) 706 1409. Fax: (353 1) 269 2472.

The closing date for the receipt of completed applications is Thursday, 24 November 1994.

### Vanderbilt Cancer Center Faculty Positions

Several tenure track faculty positions are available in the Vanderbilt Cancer Center. Positions are available at all academic ranks and carry competitive start up packages. Outstanding candidates will be considered in all fields of cancer research but priority will be given to individuals interested in the identification or functional characterization of cancer genes and in molecular epidemiology. Women and minorities are especially encouraged to apply. Investigators will have primary appointments in Medical School departments and will be housed in newly constructed Cancer Center space. Candidates should send a curriculum vitae, an outline of research plans, and three letters of recommendation to: Chair, Faculty Search Committee The Vanderbilt Cancer Center 876 Medical Research Building Vanderbilt University Medical Center Nashville, TN 37232-6838

*Vanderbilt University is an equal  
opportunity/affirmative action  
employer.*



### Tenure-Track Faculty Positions Department of Genetics

The Department of Genetics of the University of Pennsylvania School of Medicine is undergoing expansion, and plans to make several appointments in each of two areas: 1. Molecular genetics of lower eukaryotes, and 2. Mammalian or developmental genetics, including human molecular genetics. Attractive new laboratory space and other resources are available.

The deadline for applications is January 1, 1995. Send curriculum vitae, including bibliography, statement of research interests, and names and addresses of three references to:



**Chair, Search Committee  
Department of Genetics  
School of Medicine  
University of Pennsylvania  
422 Curie Boulevard  
Philadelphia, PA 19104**

AN EQUAL OPPORTUNITY/AFFIRMATIVE ACTION EMPLOYER

## COURSES AND TRAINING

### CARNEGIE MELLON

Graduate Study in Engineering and Public Policy (EPP) leads to a research-based Ph.D. specializing in policy issues in areas such as: telecommunication, computer and other information technologies; energy and environmental systems (including climate change); technical issues in international security; manufacturing and industrial policy; and risk analysis. Applicants must hold B.A. or B.S. in engineering, physical science, or mathematics. Education or experience beyond the B.S. very desirable. Contact: Denise Murrin-Macey, Engineering and Public Policy (07), Carnegie Mellon, Pittsburgh, PA 15213. Equal Opportunity/Affirmative Action Employer.

## SEARCH FIRMS

### SEARCH FIRMS

**SCIENCE announces a new classified advertising category especially for search firms. Now, search firms can reach the more than 163,000 scientists who read SCIENCE each week. Your ad will be seen by professionals in life sciences and biotechnology in both academia and industry.**

Call Rachael Wilson  
at (202) 326-6555 or fax to (202) 682-0816.  
Internet Email:  
science\_classifieds@aaas.org

## U.S. POSTAL SERVICE

Statement required by the Act of 12 August 1970, Section 3685, Title 39, United States Code, showing the ownership, management, and circulation of:

1-9. Science, Publication No. 0036-8075, is published weekly on Friday, except the last week in December, at 1333 H Street, NW, Washington, DC 20005-4792. Date of filing: 30 September 1994. This is also the address of the publisher, the editor, and the managing editor, who are, respectively, Richard S. Nicholson, Daniel E. Koshland Jr., and Monica M. Bradford.

10. The owner is the American Association for the Advancement of Science, 1333 H Street, NW, Washington, DC 20005-4792. Stockholders: None.

11. Known bondholders, mortgages, and other security holders owning or holding 1 percent or more of total amount of bonds, mortgages, or other securities: None.

12. The purpose, function, and nonprofit status of this organization and the exempt status for federal income tax purposes have not changed during the preceding 12 months.

13-15. The average number of copies of each issue during the preceding 12 months is (A) Total number of copies printed: 171,263; (B) Paid circulation: (1) Sales through dealers and carriers, street vendors, counter sales: None; (2) Mail subscriptions: 161,913; (C) Total paid circulation: 161,913; (D) Free distribution by mail: Samples, complimentary, and other free copies: 3,649; (E) Free distribution outside of mail: Carrier or other means: 1,992; (F) Total free distribution: 5,641; (G) Total distribution: 167,554; (H) Copies not distributed: (1) Office use, leftover, unaccounted, spoiled after printing: 3,709; (2) Returns from news agents: None; (I) Total: 171,263. Percent paid and/or requested circulation: 96.6%

Actual number of copies of single issue published nearest to filing date are (A) Total number of copies printed: 172,000; (B) Paid circulation: (1) Sales through dealers and carriers, street vendors, counter sales: None; (2) Mail subscriptions: 160,113; (C) Total paid circulation: 160,113; (D) Free distribution by mail: Samples, complimentary, and other free copies: 3,929; (E) Free distribution outside of mail: Carrier or other means: 4,630; (F) Total free distribution: 8,559; (G) Total distribution: 168,672; (H) Copies not distributed: (1) Office use, leftover, unaccounted, spoiled after printing: 3,328; (2) Returns from news agents: None; (I) Total: 172,000. Percent paid and/or requested circulation: 94.9%

I certify that the statements made by me above are correct and complete. (signed) Michael Spinella, Director, Membership/Circulation.

## MARKETPLACE

Activated For Protein Modification

# PEGs

Shearwater Polymers, Inc.

(800) 457-1806  
(205) 533-4805 (fax)

Circle No. 6 on Readers' Service Card

SPRAY-ON Substrates for use in WESTERN BLOTS.

OPTI-MIST HRP OPTI-MIST AP  
Ready to use. No Mixing!

The Center for Diagnostic Products

800-282-7879 (Fax) 508-473-9701

Circle No. 23 on Readers' Service Card

## CUSTOM ANTIBODIES TO PEPTIDES & PROTEINS

Purification, Conjugation and ELISA Titration Available



HTI BIO-PRODUCTS, INC.

1 (800) 481-9737 OR (619) 788-9691 Fax (619) 788-9694

Circle No. 21 on Readers' Service Card

HybriLogic Corp

## Monoclonal Antibody Specialists

Custom Development • Gram-Scale Production  
Highly Experienced • Personalized Service

800 / 643-6780 • Fax: 503 / 255-4891

Circle No. 7 on Readers' Service Card

## CUSTOM DNA SYNTHESIS

PURE & SIMPLE

Price **\$2.19**  
as low as per base plus set up

- Superb Technical Support
- Impeccable Quality
- World's Fastest Service

# MIDLAND

THE UNDISPUTED #1  
CUSTOM DNA SYNTHESIS SERVICE

THE MIDLAND CERTIFIED REAGENT COMPANY  
3112-A West Cuthbert Avenue  
Midland, Texas 79701

Phone 1-800-247-8766 FAX 915-694-2387

Circle No. 2 on Readers' Service Card

## MARKETPLACE

World leaders in Synthetic DNA and Peptides

Custom **DNA**

DESIGNER LABELS:  
BIOTIN, FITC, ACRIDINE,  
DNP, Alk. Phos. & more ....

• NO SETUP CHARGE • Column Purified  
No minimum order

**\$2** 50  
/base • >5.0 OD's (~200 µg)  
Also • Gel Picture Q. C.  
**\$1** 99\*  
base • Synthesis Report  
• 24 hour SHIPPING  
\* Standby orders ! Luminescent substrate kits available !

Custom **PEPTIDES**

• NO SETUP CHARGE • Free HPLC Tracing

**\$20** 00\*  
/res. • 15-40 mgs  
• 8 - 20 residues  
• desalted • Shipped in 5 days  
! Antipeptide Antibodies production services, & more !

Accurate Mass Analysis Service - Syn. Peptides (\$40)  
by Mass Spectrometry (MALDI-TOF) Proteins (\$70)

**BIO-SYNTHESIS**  
1-800-227-0627 Fax: 214-420-0442

Circle No. 13 on Readers' Service Card

## ABS Bioreagents

Custom Receptor Binding,  
Enzyme, and RNA Preparations  
Fast, Cost-Effective Service  
Analytical Biological Services Inc.  
(800) 391-2391

Circle No. 22 on Readers' Service Card

## Human Microvascular Cells Complete Cell System

NOW ONLY \$350

NEW DEFINED ANIMAL ENDOTHELIAL CELL SYSTEMS:  
Porcine Aortic Endothelial Cell System  
Bovine Aortic Endothelial Cell System

cell systems 800-697-1211

Circle No. 17 on Readers' Service Card

## KEYSTONE Laboratories, Inc.

The Complete  
Oligonucleotide  
Company

Oligonucleotides: \$2.30/base

Volume orders of 200 bases or more.

No set-up fee. Shipped in 24hrs.

Tel. 1-800-788-4DNA • Fax 1-800-786-4DNA

Circle No. 4 on Readers' Service Card

## Custom DNA Purified & Delivered in 48 hours

\$5.00 per base • Purified  
Guaranteed minimum 100µg

## Research Genetics, Inc.

1-800-533-4363

Circle No. 3 on Readers' Service Card



TO OFFER  
*Quality* DNA for  
**\$2.00**  
PER BASE,  
OPERON *must*  
BE ZUCCHANAS.



THE ZUCCHANA

You'd be bananas to pass this up. Or is that zucchanas? Operon now offers a 0.2  $\mu$ mol scale synthesis of custom DNA for just \$2.00 per base with a \$20 set-up fee. So you can afford to do more experiments, and get more results.

As the world's leading supplier of synthetic DNA, Operon gives you more than just a great price. We also offer unsurpassed purity, fast delivery, and an unconditional guarantee. Not to mention a customer service line that lets you speak to a person, not just a machine.

And, of course, we still offer the lowest price on the larger 1.0  $\mu$ mol scale in the industry, at just \$2.80 per base with a \$20 set-up fee.

Quality DNA for \$2.00 per base. Now you don't have to settle for second best to save a bunch. For more information, or to place an order, call Operon at 1-800-688-2248.

**OPERON**

WORLD'S LEADING SUPPLIER OF SYNTHETIC DNA

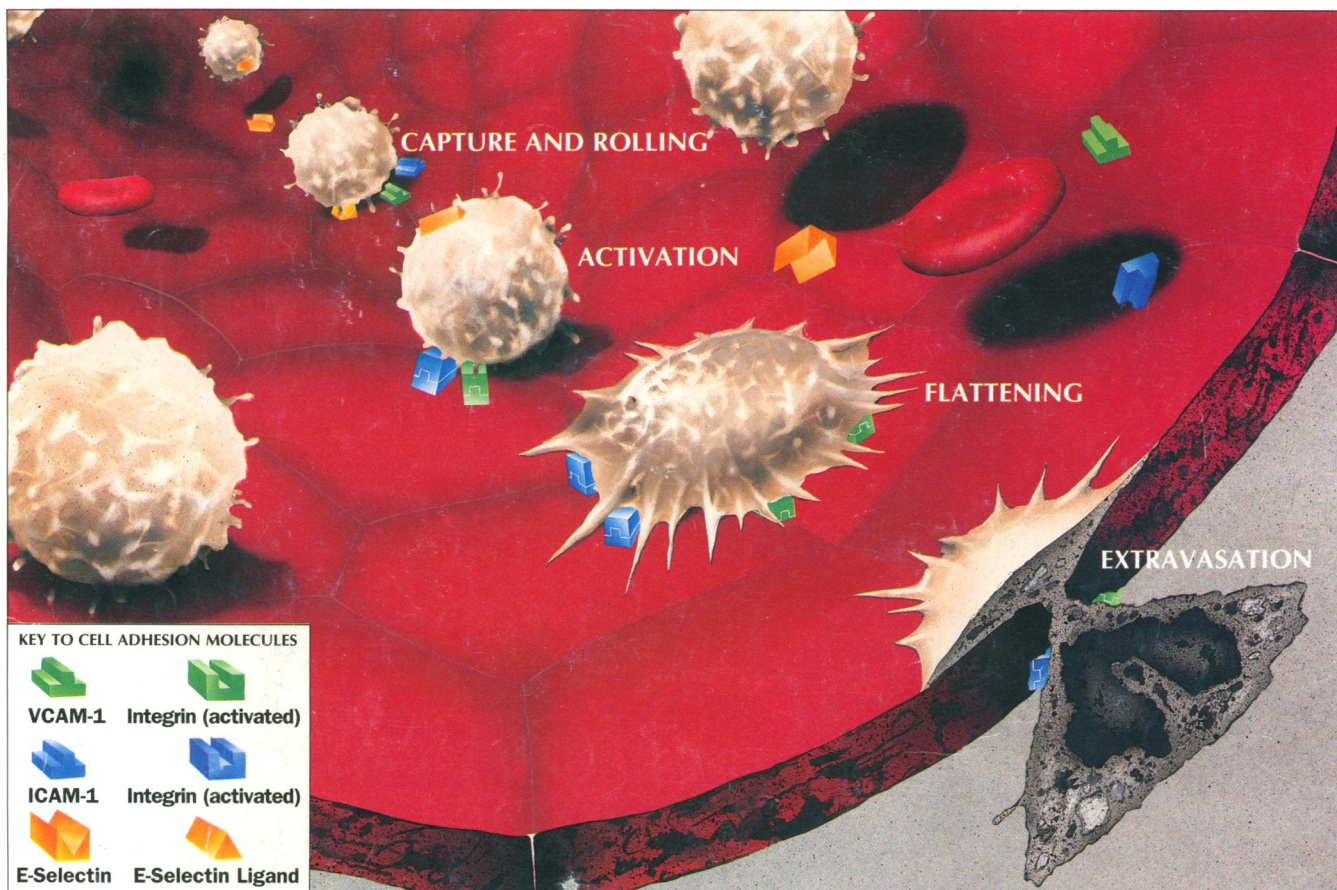
©1994 Operon Technologies, Inc., 1000 Atlantic Avenue, Alameda, CA 94501, USA. Phone: (510) 865-8644. Fax: (510) 865-5255. NIHBP263-00033233

Circle No. 29 on Readers' Service Card



# ADHESION MOLECULE IMMUNOASSAYS

## *Parameter*<sup>TM</sup>



**sVCAM-1 ♦ sICAM-1 ♦ sE-Selectin**

### *Parameter*<sup>TM</sup> Adhesion Molecule Immunoassays

give precise, reproducible results in 2 hours.

### Scientific Research

Recent publications suggest that levels of soluble adhesion molecules in serum and plasma may assist in understanding the basic biology and etiology of diseases such as:

- ♦ HIV Infection
- ♦ Rheumatoid Arthritis
- ♦ Transplant Rejection
- ♦ Cancer
- ♦ Sepsis
- ♦ Diabetes

FOR RESEARCH USE ONLY.  
NOT FOR USE IN DIAGNOSTIC OR THERAPEUTIC PROCEDURES.

### Kit Features

- ♦ color coded reagents
- ♦ pre-dispensed standards
- ♦ positive control serum



#### North America

R&D Systems Inc.  
614 McKinley Place N.E.  
Minneapolis MN 55413, USA.  
Tel: (612) 379-2956  
Fax: (612) 379-6580

USA & Canada: 1-800-343-7475. UK: 01235 531074.  
Belgium: 078 11 04 68. Denmark: 80 01 85 92. France: 05 90 72 49.  
The Netherlands: 060 225 607. Norway: 800 11033. Sweden: 020 79 31 49.

#### Europe

R&D Systems Europe Ltd.  
4-10 The Quadrant, Barton Lane  
Abingdon, OX14 3YS, UK.  
Tel: +44 (0)1235 529449  
Fax: +44 (0)1235 533420

# R&D

## SYSTEMS