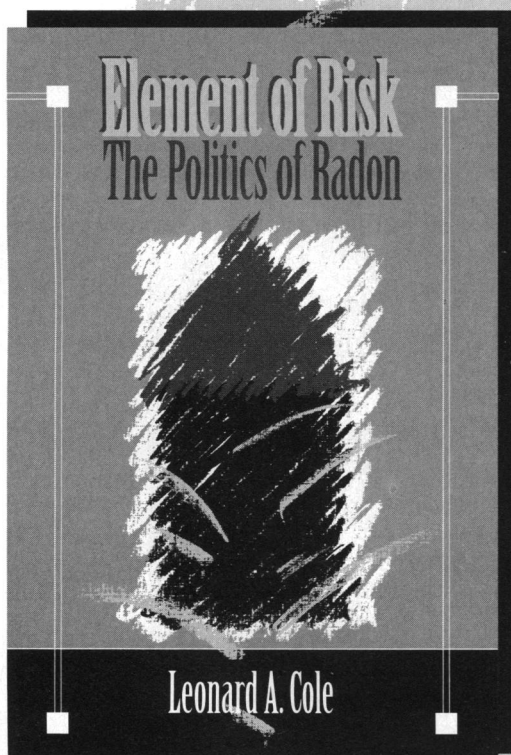


Radon: Health Hazard or Hype?



Element of Risk: The Politics of Radon

by Leonard Cole

246 pages

\$29.95 (AAAS member price: \$23.95)

ISBN 0-87168-513-2

Call toll free 1-800-222-7809 to order

Element of Risk: The Politics of Radon

traces the development of the nation's indoor radon policy, the scientific uncertainties and questionable assumptions that lie behind it. A cogent case study in risk assessment, the book explores major influences on the policy: the roles of elected officials, federal and state regulators, the scientific community, public and private interest groups, the press, and American political culture.

"Strongly recommended."

Choice, December '93

"...Splendid..."

Nature, 20 January '94

"It is also the kind of book that should be passed around to friends and neighbors...deserves wide distribution."

Health Physics

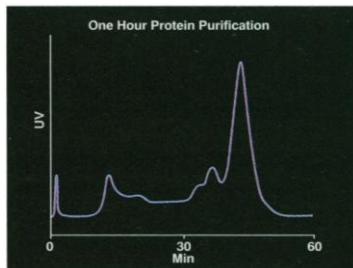
"Cole offers a balanced perspective and perhaps one that is the 'last word' on radon."

Library Journal

AAAS
PRESS

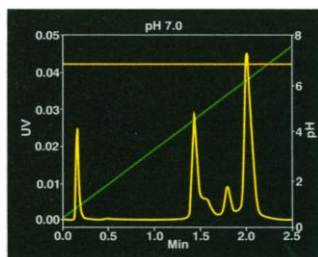
1333 H St. NW
Washington, DC 20005

WHILE YOU SPENT ONE HOUR DOING THIS,

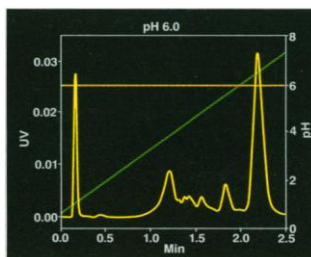


Anion exchange separation of recombinant protein with conventional LC column and instrumentation.

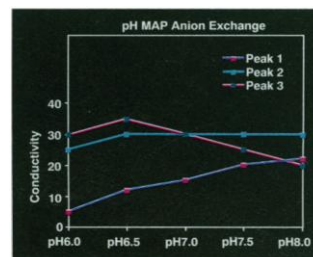
LOOK AT ALL WE'VE BEEN UP TO.



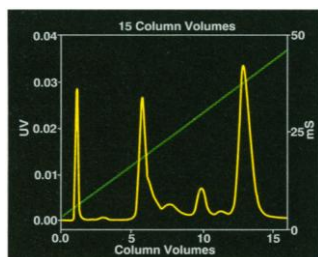
We began by running the separation at several pHs.



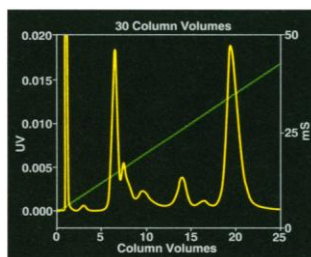
Confirmed the optimum pH at 6.0.



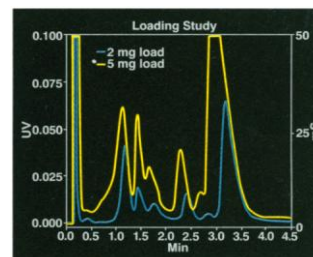
Plotted results from built-in spreadsheet.



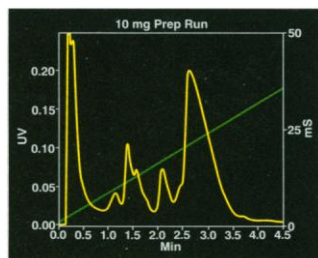
Tested gradient slopes for improved resolution.



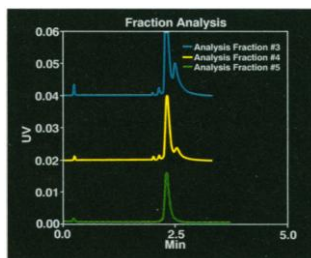
Selected 30 column volume gradient as optimum.



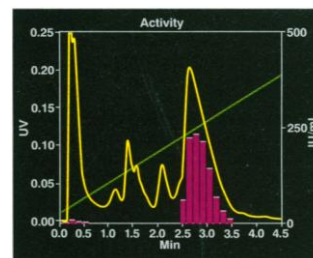
Studied the effect of loading at 2 mg and 5 mg.



Ran a 10 mg prep. Collected fractions.



Analyzed fractions by reversed phase.



Checked biological activity and purity.

Here's the challenge. Take your protein sample, map a range of pHs, optimize gradient and loading, purify 10 mg, analyze fractions, and check purity—all in about an hour. How? Using the BioCAD Workstation, you can run 3-minute separations, examine more variables than ever before, and get the highest purity products in hours...not weeks, not months. BioCAD employs Perfusion Chromatography®, a patented new technology enabling high resolution separations on any of 25 surface chemistries. It's the one tool you need to accelerate the pace of discovery and development in your lab. Find out more. Call Toll Free (800) 899-5858.



PerSeptive Biosystems
38 Sidney Street, Cambridge, MA 02139



BioCAD™
WORKSTATION
for Perfusion Chromatography

Monoclonal Antibodies

New monoclonal antibodies (mAbs) to protein kinase C include those to isoforms alpha, beta, delta, epsilon, and theta. **Transduction Laboratories. Circle 138.**

MRK-16 mAb recognizes a surface epitope of human p-glycoprotein, a 170-kD human multidrug-resistant product that acts as an efflux pump to remove toxic products from the cell. MRK-16 antibody can be used to investigate hematological malignancies by flow cytometry and immunohistochemical staining of solid tumors. **AMAC. Circle 139.**

An anti-p53 mAb (CBL 422; clone BP53-12) is suitable for the detection of p53 overexpression in clinical specimens and investigations of p53 tumor suppressor gene function and abnormalities in cancer. The p53 tumor suppressor gene regulates normal cell growth and alteration of p53 expression is the most frequently known genetic change in human cancers. **Cybus Bioscience. Circle 140.**

Genomic DNA Isolation

Nuclitips can give up to 20 µg of directly usable DNA from intact cells in less than 1 hour. All operations are performed using a modified pipette tip containing a small membrane that binds nuclei. Following a gentle lysis treatment, the purified DNA of very high molecular weight (> 800 kb) is released. This DNA is ready for use in restriction fragment length polymorphism analysis, yeast artificial chromosome cloning, pulsed-field gel electrophoresis, and polymerase chain reaction. **Amer-sham International. Circle 141.**

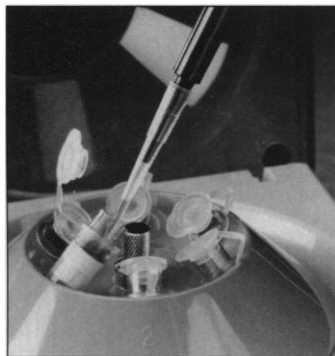
Statistical Advice Software

Statistical Navigator Professional is a program that works alongside your statistics package to help you

select the correct statistic for your problem. Statistics Navigator is a menu-driven program that asks you questions about your research objectives and assumptions in order to identify the best analysis for your problem. It ranks the analyses, and when there is a clear choice, recommends the best one. It provides a detailed report including a definition of each appropriate analysis, references, common packages that will compute that statistic, and a discussion of how that statistic does or does not fit your problem. It runs on MS DOS-compatible computers with 512K random access memory and requires 1 megabyte of hard disk space. A mouse and color monitor are recommended. **The Idea Works. Circle 142.**

High Recovery Ultrafiltration

The Spin-X UF concentrators are for concentrating or desalting samples from 50 to 500 µl. The Spin-X UF features a low protein binding membrane in 3K, 10K, 30K, and 100K MW cutoffs. The



disposable devices can be used with any centrifuge that accepts 1.5-ml tubes. Applications include protein concentration, DNA recovery during polymerase chain reaction, and desalting or buffer exchange. **Corning Costar. Circle 143.**

PCR Core Kit Plus

The PCR Core Kit Plus can eliminate DNA template carryover in polymerase chain reaction (PCR). The kit combines the specificity and high yields of the manufacturer's PCR Core Kit with the ability of uracil-DNA glycosylase to prevent carryover contamination. Like the PCR Core Kit, the new kit is guaranteed to yield 10⁵ copies in a standard function test using a lambda DNA fragment as template. **Boehringer Mannheim. Circle 144.**

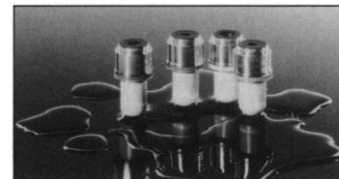
DNA Purification Kit

One Prep-A-Gene master kit purifies all the the most common types of DNA including plasmid or cosmid DNA, M13 or phagemid DNA, polymerase chain reaction (PCR) amplified DNA fragments, lambda phage DNA, and genomic DNA for PCR. The Prep-A-Gene kits are the only silica-based DNA purification kits to feature diatomaceous earth as the silica-based matrix. The matrix has a higher DNA binding capacity than glass-beaded matrices (> 0.2 µg per microliter of suspended matrix), and does not require high salt elution of the DNA-like ion exchange resins. **Bio-Rad Laboratories. Circle 145.**

Water Immersion Objectives

A complete line of water immersion Achromplan objectives are suited for electrophysiology, microcirculation, and other in vitro and in vivo applications. The physiological demands placed upon some biological models require the use of an upright microscope. Traditionally the microscopist has been restricted to objectives designed for unrelated applications with less than ideal

imaging, but the new objectives have been designed for these specialized applications. The slender objective barrel with its ceramic



housing provides ideal access for micromanipulation and microinjection while maintaining electrical and thermal isolation. The objectives cover the range from 10x to 63x. **Carl Zeiss. Circle 146.**

Electrophoresis BubbleBuster

The BubbleBuster ends the aggravation of removing stubborn bubbles after gel pouring. One quick step eliminates trapped air bubbles from the gel, minimizing unusable gels and distorted lanes. It is designed for sequencing plates with 0.4-mm spacers. **AT Biochem. Circle 147.**

Literature

Whatman LabSales 1994 Catalog contains more than 300 pages and features a variety of new products including bioreactors, mixers, blotters, and gel dryers. It includes complete sections on research equipment, lab instrumentation, safety products, general lab supplies, and filtration and chromatography products. **Whatman LabSales. Circle 148.**

Vector/Two—A Global Approach to Mass Spectrometry Automation details the benefits of this gas chromatography and liquid chromatography data system. **Teknivent. Circle 149.**

Turbo LC Plus System describes a high-performance liquid chromatography system designed to control and integrate up to eight liquid chromatography or gas chromatography systems. **Perkin-Elmer. Circle 150.**

Newly offered instrumentation, apparatus, and laboratory materials of interest to researchers in all disciplines in academic, industrial, and government organizations are featured in this space. Emphasis is given to purpose, chief characteristics, and availability of products and materials. Endorsement by *Science* or AAAS is not implied. Additional information may be obtained from the manufacturers or suppliers named by circling the appropriate number on the Readers' Service Card and placing it in a mailbox. Postage is free.

SCIENCE

PERSONNEL PLACEMENT

LINE CLASSIFIED ADVERTISEMENTS

- **Deadlines:** Ads are due by Thursday, 10 a.m., 2 weeks prior to the issue date. *Science* is published each Friday, except the last Friday of the year. Call for holiday deadlines. Advertisements must be submitted in writing.
- **How to Submit a Classified Ad:** Prepare double-spaced typewritten copy. Do not include any abbreviations. *Science* will edit and typeset ads according to *Science* guidelines. Include billing information, and desired publication date. Available categories: Positions Open, Meetings, Announcements, Courses and Training.
- **Mail, FAX, or E-Mail materials to:**
Science Classified Advertising
 1333 H Street, N.W., Room 814
 Washington, DC 20005
 Telephone: 202-326-6555
 FAX: 202-682-0816
 Internet E-Mail:
 science_classifieds@aaas.org
- **Rates:** Ads are \$43 per line; \$430 minimum. One line equals 52 characters and spaces; centered headings equal 32 characters and spaces. A 3% cash discount is granted to all prepaid ads.
- **Ads from Outside the U.S.:** A discount of \$30 will be offered to advertisers making payment in U.S. dollars by checks drawn on U.S. banks. Contact Annemarie Vis at +44 223 302 067 (telephone) or +44 223 302 068 (FAX).
- **Credit Cards:** *Science* accepts MasterCard and VISA. Discount does not apply to credit cards.
- **Cancellations:** Deadline for cancellation is 10 a.m., Tuesday, 10 days prior to issue date.

DISPLAY PERSONNEL ADVERTISEMENTS

For rates and info. about fractional display ads (all ads 1/2 page and larger), contact:

Recruitment Advertising
 Deborah Cummings
 Telephone: 202-326-6541

Janis Crowley, Recruitment
 Advertising Manager
 Telephone: 212-496-7704
 FAX: 202-682-0816

Annemarie Vis
 European Recruitment Advertising
 Telephone: +44 223 302 067
 FAX: +44 223 302 068

CONDITIONS: Personnel advertising is accepted only with the understanding that the advertisers do not discriminate among applicants on the basis of race, sex, religion, age, color, handicap or sexual preference. The AAAS encourages employers to actively recruit and employ underrepresented minority groups. *Science* reserves the right, at its discretion, to decline to publish advertisements submitted to it.

POSITIONS OPEN

The Department of Physiology of the Ponce School of Medicine announces an immediate opening for applicants with an interest in **cardiovascular physiology**. It is preferred to fill the position at the **INSTRUCTOR/ASSISTANT PROFESSOR** level. A Ph.D. is required. Applicants must also have a strong commitment to assist in the teaching of medical physiology and advanced graduate courses. Curriculum vitae, statement of teaching and research interests, and the names of three references should be sent to: **Dr. Howard Mass, Chairman, Department of Physiology, Ponce School of Medicine, P.O. Box 7004, Ponce, Puerto Rico 00732.** *Ponce School of Medicine is an Equal Opportunity Employer.*

FACULTY POSITION: The Department of Rehabilitation Medicine of the University of Pennsylvania Medical Center is seeking applicants for a faculty position at the **ASSISTANT PROFESSOR** level for its research program. This individual will be actively involved in research in skeletal muscle metabolism using nuclear magnetic resonance imaging and spectroscopy. Applicants should be able to collaborate in research projects with faculty in our musculoskeletal and neurorehabilitation divisions. Interested applicants should send curriculum vitae to: **Alfred P. Fishman, M.D., Chairman, Department of Rehabilitation Medicine, University of Pennsylvania Medical Center, 3400 Spruce Street, Philadelphia, PA 19104.** *The University of Pennsylvania is an Equal Opportunity/Affirmative Action Employer.*

Mycologist/Plant Pathologist. The Department of Plant Pathology, University of California, Davis, invites applications for an 11-month tenure-track position at the **ASSISTANT PROFESSOR** level that will be available starting September 1, 1994. Closing date for applications is August 31, 1994. For more information concerning the requirements for and responsibilities of this position, and a complete position description, interested parties should contact: **Dr. James D. MacDonald, Chair, Mycologist Search Committee, Department of Plant Pathology, University of California, Davis, CA 95616.** Telephone: (916) 752-6897, FAX: (916) 752-0121, E-mail (Internet): jdmacdonald@ucdavis.edu.

The University of California is an Affirmative Action/Equal Opportunity Employer.

ENVIRONMENTAL SCIENTIST: The Environmental Sciences Department of Purchase College, State University of New York, invites applications for a half-time, renewable position (commencing September 1994) at the rank of **ASSISTANT or ASSOCIATE PROFESSOR**, for an environmental scientist with strong training and interest in environmental regulation and policy. Applicants should have a Ph.D. in an environment-related science and a strong commitment to undergraduate teaching. Maintenance of a strong research program in an area related to environmental degradation is expected. Teaching responsibilities include courses in environmental regulation and impact assessment. Send application letter, current curriculum vitae and 3 reference letters to: **Dr. Gerard M. Capriolo, Chair Search Committee, c/o Peter Brown, Affirmative Action Officer, Purchase College, State University of New York, Purchase, NY 10577.** Review of applications will begin on May 1, 1994, and continue until a suitable candidate is found. *Equal Opportunity Employer.*

ENVIRONMENTAL TOXICOLOGIST

The Department of Environmental Health Sciences, University of Alabama at Birmingham (UAB) invites applications at the **ASSISTANT/ASSOCIATE PROFESSOR** level. This is a tenure-track, 12-month position. Basic or applied scientists with research interest in human biological monitoring/biological markers and research expertise in immunotoxicology, pulmonary toxicology, neurotoxicology, or risk assessment are encouraged to apply. Candidates must have demonstrated excellence in conducting independent research, significant postdoctoral training, and an interest in interdisciplinary studies. Send applications (including curriculum vitae, statement of research and teaching interests, and three references) to: **Dr. Deodutta Roy, Department of Environmental Health Sciences, University of Alabama at Birmingham, Birmingham, AL 35294.** Review of applications will begin July 1, 1994, and continue until position is filled. Salary commensurate with training and experience. *UAB is an Equal Opportunity/Affirmative Action Employer and encourages applications from qualified women and minorities.*

POSITIONS OPEN

DEPARTMENT OF ENTOMOLOGY PENN STATE UNIVERSITY

Applications are invited from individuals conducting original research on genetic mechanisms governing biology and behavior of honey bees and other social insects. This is a tenure-track position at the **ASSISTANT OR ASSOCIATE PROFESSOR** level, available as early as August 1, 1994. Applicants should possess the Ph.D. in genetics, entomology, or related discipline, with research experience in genetics and willingness to seek external funding. Candidate will participate in undergraduate and graduate instruction and will collaborate with extension associate responsible for honey bees. A competitive salary and attractive benefits package are offered. Applications, including curriculum vitae, academic transcripts, statement of research interests, and the names of five references, should be sent to: **J. L. Frazier, Head, Department of Entomology Bx S, Penn State University, 501 Agricultural Sciences & Industries Building, University Park, PA 16802-3508.** Consideration of applications will begin June 15, 1994, and will continue until a qualified candidate is identified. *An Affirmative Action/Equal Opportunity Employer. Women and minorities encouraged to apply.*

ASSISTANT/ASSOCIATE PROFESSOR OF MOLECULAR BIOSCIENCES. The Department of Molecular Biosciences, School of Veterinary Medicine, University of California-Davis, is seeking a physiological chemist with advanced training in molecular biology. **Ph.D. is required** and D.V.M. or equivalent is desirable. This tenure-track position is available after July 1, 1994. Candidates must provide evidence of interest and aptitude in molecular biology and demonstrated potential as a creative research scientist in some area of eukaryotic biological regulatory processes related to animal systems at the molecular and cellular level. It is desirable that the research program would further basic knowledge in biochemistry, cellular physiology and/or nutrition as applied to solving disease-related problems. Candidates should also provide evidence of interest and demonstrated aptitude in teaching basic physiological chemistry and molecular biology. Qualified applicants should apply by letter of intent, detailing special interest in the position, qualifications/experience and research goals/plans as related to the position description. Send curriculum vitae, history of extramural research funding, reprints of three most significant publications and names, addresses and telephone numbers of three (3) references. Applications will be accepted through June 30, 1994, or until a suitable candidate is identified. Mail applications to: **Ms. Erin Lindley, Management Services Officer, Department of Molecular Biosciences, School of Veterinary Medicine, University of California, Davis, CA 95616-8741; Telephone: (916) 752-1059, FAX: 916-752-4698.** *The University of California is an Affirmative Action/Equal Opportunity Employer.*

Applications are invited for a tenure-track **ASSISTANT/ASSOCIATE PROFESSOR** position in **veterinary toxicology**. Candidates must hold the Ph.D. degree; both Ph.D. and D.V.M. degrees are preferred. Applications should include a statement of career goals, curriculum vitae that documents toxicology teaching experience, and the name, address, telephone and FAX numbers of 4 references. Send to: **Dr. Delmar R. Finco, Department of Physiology and Pharmacology, College of Veterinary Medicine, The University of Georgia, Athens, GA 30602** before July 1, 1994, to assure consideration. *The University of Georgia is an Equal Opportunity/Affirmative Action Institution.*

TENURE-TRACK ASSISTANT PROFESSOR University of Pennsylvania, Laboratory of Parasitology

Applications are invited for a tenure-track assistant professorship in the School of Veterinary Medicine. The successful applicant will be expected to develop an independently funded research program and to participate in teaching Veterinary Parasitology as well as graduate-level courses in Parasitology. Candidates should have a D.V.M./V.M.D. and/or Ph.D. degree and a demonstrated ability to conduct high quality independent research. Applicants with a research interest in the molecular biology of helminths or an immunity to helminth infections will be given primary consideration. Send a letter of application, curriculum vitae, and the names of three references to: **Chair, Search Committee, Laboratory of Parasitology, School of Veterinary Medicine, University of Pennsylvania, 3800 Spruce Street, Philadelphia, PA 19104.**

Penn is an Affirmative Action/Equal Opportunity Employer.

P

ioneer Hi-Bred International, Inc. is a world leader in agricultural genetics. Founded in 1926, we are a publicly-held corporation with research, production and sales organizations on every crop-producing continent. Our dynamic RESEARCH AND PRODUCT DEVELOPMENT DIVISION is currently seeking motivated and experienced professionals to join us in our ongoing program of crop improvement.

PROJECT LEADERS

Plant Cell Biologist (Job #1000)

Responsibilities include initiating, planning and conducting research projects to include performing transformation and monitoring the fate of gene products in the cell. Experience in Agrobacterium, characterization of transgenic plants, and seed development is necessary. Solid project/personnel management skills are essential, along with a PhD or equivalent experience in cell biology with 3+ years' directly related laboratory experience.

Protein Biochemist (Job #1001)

Responsibilities involve initiating, planning and conducting research projects to include: developing *in vitro* test to identify genes of interest; characterizing protein products for the genes; isolating/characterizing genes of interest. Experience in seed proteins, metabolism and molecular biology techniques is necessary, along with solid project/personnel management skills, PhD or equivalent experience in biochemistry or molecular biology, and 3+ years' directly related laboratory experience.

Carbohydrates (Job #1002)

Responsibilities are similar to PROTEIN BIOCHEMIST; experience should include carbohydrate metabolism and structure/function relationships with carbohydrates. Solid project/personnel management skills are essential, along with a PhD or equivalent experience in biochemistry or molecular biology, and 3+ years' directly related laboratory experience.

Disease Resistance Gene Expression (Job #1357-A-Jorgensen)

Responsibilities are to identify, isolate, employ, and assay gene expression systems in transgenic plants. Expertise in the analysis and manipulation of nucleic acids, including recombinant DNA technology, is essential, along with a PhD or equivalent experience in molecular biology, and 3+ years' directly related laboratory experience. Experience studying transgene expression is desired. (APPLICATION DEADLINE FOR THIS POSITION IS 6/12/94.)

SENIOR RESEARCH ASSOCIATES

Soybean Transformation (Job #1003)

Responsibilities involve planning, developing and executing all aspects of lab experiments in high frequency Agrobacterium-mediated transformation of soybean to include alternative tissue targets for Agrobacterium-mediated transformation capable of high frequency plant regeneration and alternative methods for soybean transformation. 5 years' directly related laboratory experience with an MS, or 8 years with a BS are required, along with solid project/personnel management experience and good familiarity with genetic transformation in dicots and dicot cell/tissue culture.

Specialty Grain Traits (Job #1004)

Responsibilities include planning, designing and executing experiments with minimal supervision. Expertise in all aspects of recombinant DNA methodology including DNA/RNA isolation, sequencing, PCR, gene cloning/characterization, nucleic acid/protein gel electrophoresis, nucleic acid hybridization and radioisotope manipulations is necessary. Solid data organization, interpersonal and project/personnel management skills are essential. An MS in molecular biology or related science area with 4 years' directly related laboratory experience, or BS with 6 years, is required.

Seed-Specific Proteins (Job #1005)

This position will be part of a group working on seed-specific protein expression and on proteins critical for nutritional enhancement. The individual will use modern molecular biological and protein biochemistry methods to express and to analyze proteins in seeds of transgenic plants. An MS in biochemistry or related field with 1 year of directly related laboratory experience, or BS with 3 years is required; solid knowledge of recombinant DNA techniques and basic protein analytical methods, with additional background in protein purification, HPLC or enzymology are highly desirable.

Disease Resistance (Job #1006)

Responsibilities involve: maintaining inventory/database incorporating genetic data with pedigrees; participating in all facets of maize molecular genetics research program including field/lab studies; collaborating with internal/external peers to conduct and interpret genetic investigations; isolating genes by transposon tagging; mapping mutant loci using classical methods and molecular markers; writing reports/manuscripts; and supervising personnel. Requirements include an MS in molecular genetics, molecular biology, biochemistry or related science area; 4 years' directly related laboratory/field experience in eukaryotic molecular genetics, or 6 years' experience and BS; and excellent interpersonal and cross-functional skills. (APPLICATION DEADLINE FOR THIS POSITION IS 6/12/94.)

RESEARCH ASSOCIATES

Sunflower Transformation (Job #1007)

Responsibilities involve coordinating routine sunflower transformation efforts. Requirements include a BS and 2 years' directly related lab experience, or an MS; skills in the use of Agrobacterium for plant transformation, particle gun procedures, plant cell culture techniques, marker gene characterization in transgenic plants, and database usage.

Maize Transformation (Job #1008)

Responsibilities involve developing/evaluating new technology for the genetic transformation of maize. Requirements include a BS or equivalent with 2 years' directly related lab experience, or an MS; specialized skills in such areas as plant/maize tissue culture, transformation, cell biology or related discipline are desired, along with knowledge of one or more of the following: experimental design, technology development, molecular biology, computers and statistical analysis.

Soybean Genetic Markers (Job #1009)

Responsibilities involve planning, conducting and reporting of genetic-marker experiments with application to soybean breeding and the development of DNA-marker technology. Requirements include an MS in a biological science and experience collecting genetic-marker data, or a BS in a biological science with 3+ years' directly related experience. Knowledge of DNA chemistry, plant breeding and quantitative, qualitative and molecular genetics is desirable. Effective organization and communication skills are necessary.



We offer excellent compensation, benefits and career growth potential, as well as excellent facilities and a highly cooperative research environment. Please send a cover letter indicating job number and TWO copies of your resume, by June 5, 1994, to: Gary Walljasper, Workforce Manager, Pioneer Hi-Bred International, Inc., 6800 Pioneer Parkway, Johnston, Iowa 50131. We are an Equal Opportunity Employer.

Imagine The Possibilities

At Berlex, we've built our reputation on FDA-approved product successes and a proven track record in the pharmaceutical industry. To meet the challenges before us, we are seeking a Scientist to contribute to our Mammalian Expression Program. If you've been looking to join forces with an internationally recognized pharmaceutical team, imagine building your career with Berlex in the beautiful San Francisco Bay Area.

SCIENTIST

Mammalian Expression/Bioassay Development

Focusing on proprietary mammalian expression systems, you will support our research activities through establishing new cell lines and enhancing existing in-house expression vectors that will significantly improve current and future products. The PhD Scientist we seek will possess 1-2 years of postdoctoral experience and demonstrated expertise in the areas of mammalian gene expression, cloning and DNA manipulation, and reporter gene assays. Strong cell culture and cell transfection techniques to include experience with southern/northern blot analyses and DNA/RNA analyses are also essential.

As a US subsidiary of an international Fortune 500 company, Berlex is proud to offer competitive salaries and a generous benefits package. To apply, send your CV/resume to: BERLEX, HUMAN RESOURCES EMPLOYMENT, DEPT. B94-013, 15049 SAN PABLO AVE., RICHMOND, CA 94804-0099. EOE. Principals only please.

BERLEX

The Best Is Yet To Come

The Lindsley F. Kimball Research Institute of the New York Blood Center invites applications for a Postdoctoral Position to study the molecular control of erythroid differentiation.

A Postdoctoral Fellowship sponsored by a Johnson & Johnson Focused Giving Grant is available to study the molecular control of erythroid differentiation in the Lab of Hematopoietic Growth Factors of the New York Blood Center. Applicants should have a strong background in molecular biology and genetics.

Please send a curriculum vitae, a summary of research experience, and the names and addresses of 3 references to: Dr. Anna Rita Migliaccio, Laboratory of Hematopoietic Growth Factors, The New York Blood Center, 150 Amsterdam Avenue, New York, NY 10023. Fax: 212-570-3195. An Equal Opportunity Employer M/F/D/V.

△ Lindsley F. Kimball
Research Institute

A Division of the New York Blood Center

Where concern for the community comes first.

DEAN COLLEGE OF MEDICINE UNIVERSITY OF CALIFORNIA, IRVINE

The University of California, Irvine invites applications and nominations for the position of Dean of the College of Medicine. As the chief academic and administrative officer of the College, the Dean is responsible for leadership of the College in all education, research, patient care, and public service programs. The Dean reports to the Office of the Chancellor and works closely with the Executive Director of the UCI Medical Center to provide leadership in the development of the 493-bed comprehensive academic medical center which supports the College's academic and clinical missions.

UCI College of Medicine was founded to educate physicians, conduct biomedical research, and provide health care-related public service. As the only medical school in Orange County, California, UCI plays a substantial role in shaping the quality of health care delivery in the region. The College currently enrolls 392 students in the M.D. program, 146 Ph.D. students in the basic sciences, and 600 residents in clinical training programs. It has 23 clinical and basic science departments with a full-time faculty of 524 and a voluntary faculty of approximately 2,000.

Qualifications include the following: an M.D. degree; a distinguished record of teaching and research; demonstrated leadership and administrative capabilities; a proven commitment to academic and clinical excellence and to affirmative action; a keen understanding of the challenges posed by changes in the national medical environment; the ability to further the development of the College; the capacity to provide integrated leadership with the Executive Director of the UCI Medical Center on health service decisions facing an academic medical service provider in Orange County.

Nominations, applications and requests for information should be directed to UCI's consultant.

Paula Carabelli
Witt/Kieffer, Ford, Hadelman & Lloyd
2030 Main Street, Suite 620
Irvine, CA 92714
714/851-5070/FAX: 714/851-2412

Screening will begin May 31, 1994 and continue until an appointment is made. It is anticipated that the Dean will assume office no later than January, 1995.

UCI is an Equal Opportunity/Affirmative Action employer and educator.

Microbiology Research Associate Research Scientist

The Cancer & Infectious Diseases Unit, Upjohn Laboratories Discovery Research, has an opportunity available for a microbial physiologist. The successful candidate will participate in infectious diseases research programs studying the role of bacterial metabolic pathways in disease pathogenesis and evaluating new targets for chemotherapeutic intervention. The position will involve the use of molecular biology, biochemistry and microbiology skills for the study of bacterial metabolic pathways and the development of mechanism-based screens for the discovery of novel antibiotics.

We seek an individual with a B.S. or M.S. degree and a minimum of two years laboratory experience. Preference will be given to individuals with laboratory experience in studying the molecular biology of pathogenic bacteria.

Upjohn offers a stimulating, multi-disciplinary research environment at our headquarters in Kalamazoo (a southwestern Michigan community located midway between Detroit and Chicago). An excellent salary and benefits package is provided. For confidential consideration please send your resume to: **The Upjohn Company, Corporate Recruiting, Ad #210, 7000 Portage Road, Kalamazoo, Michigan 49001.** We are an Equal Opportunity Employer with a commitment to workplace diversity.

Upjohn

Advancing Science...
Enhancing Life

JOIN OUR FAMILY

POST-DOCTORAL FELLOW

Bone/Cell/Molecular Biology

Saint Francis Hospital & Medical Center is seeking candidates who have completed a doctoral degree to join our NIH-supported Bone Biology Laboratory.

Interested candidates should send a resume and references to:

Dr. Ernesto Canalis,
Director,
Department of Research,
Saint Francis Hospital
& Medical Center,
114 Woodland Street,
Hartford, CT 06105-1299.



EEO/AA - M/F/D/V
Pre-Employment Drug Testing

Mammalian Cell Research

At Amgen, you'll discover a research environment that emphasizes collaboration, intellectual honesty, scientific integrity, and a supportive culture. This unique approach has helped us grow into a global biotechnology leader in just thirteen years. We currently seek the following professional to work in our Mammalian Cell Research Department:

RESEARCH SCIENTIST

This position requires a Ph.D. in Molecular Biology, 2-3 years of postdoctoral training, and experience in developing mammalian expression vector systems. Candidates must be familiar with cDNA expression library construction and screening, PCR, transfection and assaying of mammalian cells. Experience with adenovirus mediated gene transfer is highly desirable.

At Amgen, you'll find our approach to scientific research as rewarding as it is effective. We offer a highly competitive compensation and benefits package that includes a retirement and savings plan, an on-site fitness center, and three weeks' vacation. Please FAX/mail your resume/c.v. to: FAX: (805) 447-1985. Amgen Inc., Staffing, Job Code: OA-SC-SH-004, Amgen Center, Thousand Oaks, CA 91320-1789. For additional information regarding Amgen's recruitment process, please call (805) 447-4150. Principals only, please. EEO-Affirmative Action Employer M/F/D/V. We recognize that diverse perspectives are a key factor in the process of discovery.



Myco Pharmaceuticals, Inc., innovative leaders in fungal genetic engineering and in the use of fungi as the source of new pharmaceuticals, announces a further expansion in its research staff at its Cambridge, MA research laboratories.

NATURAL PRODUCTS CHEMISTRY

We have an opening for an outstanding Natural Products Chemist to work on the isolation and structure elucidation of novel lead compounds produced by organisms from our unrivaled fungal collection. The successful candidate will have a doctorate in Chemistry, (preferably with post-doctoral experience in Natural Products) and be adept in the use of modern techniques of separation, identification and structure determination.

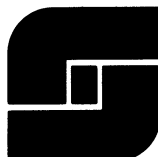
LEAD DISCOVERY

A fascinating position is now available in our Lead Discovery laboratory for a Ph.D. biologist with experience in high-throughput cell-based screening. In particular we are interested in a scientist with material handling, data base and laboratory automation experience.

The successful candidates will play critical roles in fulfilling our plans for a further expansion of our highly successful Natural Products-based Lead Discovery programs.

Detailed resumes should be mailed to: **Recruiting Coordinator, Dept. Y, Myco Pharmaceuticals Inc., One Kendall Square, Building 300, Cambridge, MA 02139.** Phone solicitations concerning these positions will not be accepted.

**MYCO
PHARMACEUTICALS INC.**



RESEARCH SCIENTIST Postdoctoral

Position to study pathogenicity of *Mycobacterium avium*. Ability to employ molecular approaches to study pathogenic mechanisms of disease or biosynthesis of cell wall components wanted. Experience with mycobacteria, lipids, cytokines, cell culture techniques, or molecular biology preferred.

Southern Research Institute is an independent, not-for-profit research institute offering multidisciplinary research capabilities in the physical sciences, life sciences, environmental sciences and engineering. Competitive salary and excellent benefits plan.

To apply, send c.v. and a list of references to Human Resources Department 845, Southern Research Institute, P.O. Box 55305, Birmingham, AL 35255-5305.

We are an equal opportunity/
affirmative action employer.

POSITIONS OPEN

ENVIRONMENTAL HEALTH

The Division of Occupational and Environmental Health of the Graduate School of Public Health at San Diego State University invites applications for tenure-track **ASSISTANT PROFESSOR** position effective August 25, 1994.

Applicant is expected to teach graduate lecture and laboratory courses in environmental health, supervise students in Master's thesis research, and conduct independent research. Candidates must possess a Ph.D. degree in a related area. Postdoctoral and/or research experience in the application of molecular biology techniques, such as PCR and gene probes to detect pathogens in the environment or other molecular approaches to study target organs of environmental contaminants (e.g., gene expression analysis) is particularly desirable. Applicants must send curriculum vitae, statement of research plans, and three letters of reference to: **Dr. Richard M. Gersberg, Chair of OEH Search Committee, Graduate School of Public Health, San Diego State University, San Diego, CA 92182.** Review of applicants will begin on June 1, 1994, and will continue until the position is filled. *San Diego State University is an Equal Opportunity/Affirmative Action Employer.*

THE UNIVERSITY OF WESTERN ONTARIO

The Department of Zoology, the University of Western Ontario, seeks a **MOLECULAR CELL BIOLOGIST** to fill a tenure-track position at the **ASSISTANT PROFESSOR** level, beginning 1 July 1995. At least two years of postdoctoral research experience using molecular approaches in cellular or developmental biology are required. The successful candidate will be expected to teach introductory and advanced cell biology, develop an independent research program, and interact with faculty in Molecular Genetics, Molecular Biology or Neuroscience. Applications and 3 letters of reference should be sent to: **Dr. J. S. Millar, Chair, Department of Zoology, The University of Western Ontario, London, Ontario, Canada N6A 5B7** by 1 August 1994.

Positions are subject to budget approval. *In accordance with Canadian Immigration requirements, this advertisement is directed to Canadian citizens and permanent residents of Canada. The University of Western Ontario is committed to employment equity, welcomes diversity in the workplace, and encourages applications from all qualified individuals including women, members of visible minorities, aboriginal persons, and persons with disabilities.*

FOREST TREE GENETICIST

ASSOCIATE/FULL PROFESSOR, Forest Tree Geneticist, tenure-track. Candidate to establish vigorous research program to complement a multidisciplinary team focused on utilizing classical genetics and molecular techniques for improvement of southern pines; teach one lecture and one laboratory course in forest tree genetics and tree breeding at the graduate level; and provide intellectual input to the Tree Breeding and Genetics Program of the TAMU system. Ph.D. in genetics, forestry or a related field, significant research accomplishments, innovation in approaches and techniques of research, and demonstrated excellence in teaching are required. Salary commensurate with experience. Submit statement of interest, a brief statement of current and future research directions, résumé, and names and addresses of three professional references to: **William J. Lowe, Chair, Search Committee, Department of Forest Science, Texas A&M University, College Station, TX 77843-2135, Telephone: (409) 845-2523, FAX: (409) 845-3272.** Closing date: July 1, 1994, or until a qualified candidate is identified.

*An Affirmative Action/Equal Opportunity Employer.
Women and minorities are encouraged to apply.*

PORTLAND COMMUNITY COLLEGE INSTRUCTOR BIOTECHNOLOGY Job #906F

Master's degree in Molecular Biology, Molecular Genetics, Microbiology, Biochemistry, Biotechnology or a closely related field is required. 2 years of recent lab experience working in industrial, research or academic lab required. Job closes May 31, 1994. Contact Staff Employment for an application packet, P.O. Box 19000, Portland, OR 97280-0990, Telephone: (503) 273-2823. *An Affirmative Action/Equal Employment Opportunity Institution.*

POSITIONS OPEN

PROGRAM DIRECTOR

The National Research Initiative Competitive Grants Program, U.S. Department of Agriculture, seeks a qualified scientist to serve as a Program Director for grant review and administration in the area of human nutrition/food safety research. Candidates must have a Ph.D. or other degree with major study in nutrition, food or related sciences. In addition, candidates must have specialized experience. Closing date is May 30, 1994. For further information on this full-time, permanent position, contact: **Dr. Rosemary R. Grady, NRICGP, Ag Box 2242, Washington, DC 20250-2242/Telephone: (202) 401-6234.** For information on application procedures/forms, contact **Ms. Delicia Taylor, (202) 690-0089.** *USDA is an Equal Opportunity Employer.*

RESEARCH MANAGER—BIOLOGICALS

Kemin Industries, Inc., a leading manufacturer of animal feed ingredients, has an immediate opening in its Research and Development Department for a Research Manager who would oversee research on its digestive enzyme additives and edible antimicrobials. The Research Manager will report directly to the Director of R & D and will have principal responsibility for the invention of enzyme products to increase the digestibility of animal feeds as well as products to protect feeds from molds and bacterial contamination (e.g., *Salmonella*). Major job functions include direction of laboratory personnel, data analysis and interpretation, writing technical reports and peer-reviewed scientific publications, and laboratory research on developing particular enzymatic assays. Ph.D. in biochemistry or microbiology is required. Preference will be shown to those with previous industrial/supervisory experience and will be especially shown to those with an agricultural background. Job offer is conditional on passing a medical examination including a drug screen. *No smoking is allowed on premises. Kemin Industries is an Equal Opportunity Employer.* Please forward your résumé along with the names of three references to: **Dr. Rodney L. Ausich, Director of Research and Development, P.O. Box 70, Des Moines, IA 50301.**

DEPARTMENT CHAIR. Department of Forestry, Northern Arizona University, Flagstaff, Arizona. The Chair, as the chief administrator, leads the teaching and research activities of the Department's faculty. Responsibilities include faculty and staff development and evaluation, leadership of curriculum, coordination and integration of research and instruction, preparation and management of budgets, and allocation of resources. The Chair will also teach in her or his area of expertise. Performance of responsibilities will generally take place with the consultation of faculty and staff. **QUALIFICATIONS:** The successful candidate will have an earned Ph.D.; at least one degree in forestry (preferred) or a closely related natural resources field; commitment to high quality teaching and academic research; demonstrated leadership abilities; strong budget skills; effective resource and personnel administrative abilities; and a commitment to participatory decision making. Overall qualifications of the successful candidate should be sufficient to hold the rank of an associate or full professor. **SALARY:** \$55,000 to \$65,000 per year, 12-month basis. **STARTING DATE:** No later than July 1, 1995. **FOR FURTHER INFORMATION CONTACT:** **Dr. Bruce Fox, 602-523-6636.** **CANDIDATE SCREENING BEGINS:** August 31, 1994. *Northern Arizona University is an Affirmative Action/Equal Opportunity Institution. Minorities, women, persons with disabilities and veterans are encouraged to apply.*

FACULTY POSITION

Applications are invited for a faculty position. Teaching responsibilities include pathophysiology and physiology for Allied Health and Nursing students. Minimum qualifications include M.D. or Ph.D. in either Pathology or Physiology or Pharmacology, with appropriate related clinical, teaching and research experience. Rank and salary commensurate with qualifications. Application Deadline: May 31, 1994. Send curriculum vitae and the names and addresses of three references to: **Search Committee, Office of the Dean, College of Applied Health Professions, University of South Alabama, Mobile, AL 36688.**

The University of South Alabama is an Equal Opportunity Employment/Affirmative Action Employer, M/F/D.

POSITIONS OPEN

INSTRUCTOR OREGON STATE UNIVERSITY

INSTRUCTOR in the Department of Zoology at Oregon State University to teach and coordinate courses in ecology and marine biology as a sabbatical replacement for the 1994-95 academic year. A Ph.D. is required. Send curriculum vitae, addresses and telephone and FAX numbers of two referees: **Bruce Menge, Department of Zoology, Oregon State University, 3029 Cordley Hall, Corvallis, OR 97331-2914, FAX: 503-737-3360.** Deadline June 8, 1994. *Oregon State University is an Affirmative Action/Equal Opportunity Employer and is responsive to dual-career couples.*

HONG KONG POLYTECHNIC

DEPARTMENT OF APPLIED BIOLOGY AND CHEMICAL TECHNOLOGY. LECTURER IN MICROBIOLOGY/FOOD SCIENCES. (HK \$262,380 per annum to HK \$449,100 per annum.) The appointee will be required to teach in one or more of the following subjects: General Microbiology, Applied Microbiology, Food Safety and Regulations, Food Biotechnology. The appointee is also expected to be engaged in research and carry out administrative duties. Candidates should have a higher degree in Microbiology/Food Sciences or similar disciplines and three years of relevant post-degree experience. Experience in the subject areas specified above would be an advantage. (Note: US\$1 = 7.73 as of 25 April 1994.) Initial appointment will be on a fixed-term gratuity-bearing contract of two years with generous fringe benefits. Send curriculum vitae and names of three references to the **General Secretariat, Hong Kong Polytechnic, Hung Hom, Kowloon, Hong Kong** before June 3, 1994. [FAX: (852) 364 2166], or by **E-mail: [BITNET HKPOLY@HKPCC.HKP.HK].** Further information will be provided upon request from the same office.

TENURE-TRACK POSITIONS IN ZOOLOGY for Scientists in the Following Fields of Organismic Biology: Ecology; Molecular systematics; Behavior.

Candidates with at least 1 year of postdoctoral experience should submit curriculum vitae, list of publications, and request three letters of reference to be sent to: **Chairman, Department of Zoology, Tel Aviv University, Ramat Aviv 69978, Israel, not later than June 15, 1994.**

Applications are invited for a **TENURE-TRACK POSITION in plant systematics-taxonomy** beginning fall 1994. The candidate will teach introductory plant biology, botany electives for majors and help with introductory biology. An opportunity to participate in a new Master's program in Environmental Science is possible. The successful candidate should have a doctorate, demonstrate enthusiasm for undergraduate teaching, ability to develop research activities appropriate for undergraduate participation, and to apply classical and modern methods to plant taxonomy. Submit statement of interest and philosophy, résumé and the names and addresses of three references to: **George E. Stanton, Chair, Department of Biology, Columbus College, Columbus, GA 31907-5645** by May 23, 1994, to insure consideration. *We are eager to increase the number of underrepresented groups in our faculty and urge minorities and women to apply.*

PROFESSOR STRUCTURAL BIOLOGY

The University of Buffalo invites applications for Professor and head of NMR structural analysis in the new Center for Structural Biology. This person will bring an established research program and lead a group in multidimensional NMR analysis of biological macromolecules. This person will expect to participate in the development of facilities with new state-of-the-art equipment and to be involved in interactions and collaborations with other members of the Center across traditional school and departmental lines. The candidate will expect to interface with a world-class X-ray crystallography group in biological structure. Research interests and background will determine departmental affiliations and faculty responsibilities. Candidates should submit curriculum vitae, statement of research interests, reprints of significant publications, and names of three references to: **Committee on Structural Biology, Department of Biological Sciences, State University of New York at Buffalo, 109 Cooke Hall, Buffalo, NY 14260-1300.**

The University of Buffalo (SUNY) is an Affirmative Action/Equal Opportunity Employer.

NYU
Medical
Center

Electron Microscopy Technician

We currently have a position for an **ELECTRON MICROSCOPY RESEARCH TECH** to work in the Department of Medical and Molecular Parasitology. The candidate should have at least 3 years experience in electron microscopy including preparation, fixation and embedding of biological materials for transmission microscopy, thin sectioning and photographic work. Experience in immunogold labeling of plastic and ultracyosections and negative staining is welcome.

The position necessitates flexibility, skills and a good knowledge of electron microscopical protocols.

Send your curriculum vitae to: Ms. Maha Singh, Human Resources Dept., NYU Medical Center, 550 First Ave., New York, NY 10016. Fax: (212)263-8116. C.V.s must be received by 6/6. EOE, M/F.

WHERE EXCELLENCE IS A WAY OF LIFE.

PROFESSOR OF MEDICAL ZOOLOGY

The F. Edward Hebert School of Medicine of the Uniformed Services University of the Health Sciences (USUHS), Department of Preventive Medicine & Biometrics, Division of Tropical Public Health is accepting applications for the position Professor (with tenure) of Medical Zoology. USUHS, located in Bethesda, MD, is a fully accredited academic institution that grants the degrees, M.D., M.S., M.P.H., MTM&H and Ph.D.

The position involves teaching medical and graduate students, methodological and collaborative field and laboratory-based research overseas and in locations within the US. Research emphasis will be on the applications of geographic information system and remote sensing technologies to disease vector ecology and landscape epidemiology.

Salary is commensurate with training and experience. The successful candidate must be a US citizen with a Ph.D. in medical zoology and extensive overseas field research experience. Level of appointment is dependent on demonstrated research productivity, international experience and teaching credentials. Applications will be accepted until May 31, 1994.

Interested applicants should submit a CV and three references to:

**DOD/USUHS
CHR (ATTN: JK/PB)
Room A1022
4301 Jones Bridge Road
Bethesda, Maryland 20814-4799**

Final appointment to this position is subject to completion of a background investigation and appropriate clearance.

The USUHS is an **EQUAL OPPORTUNITY/AFFIRMATIVE ACTION EMPLOYERS** with strong commitment to racial, cultural, and ethnic diversity.

Roche

PCR TECHNOLOGY

SCIENTISTS

Rapid progress in the use of DNA Probes for the detection of infectious disease agents has created a pressing need for their automation. Roche Molecular Systems is committed to the rapid commercialization of the next generation of PCR-based diagnostic systems. Experienced professionals are invited to explore growth opportunities in an interdisciplinary environment dedicated to the advancement of diagnostic medicine. The following positions are available:

GROUP LEADER

PCR Reagent Development

We seek a proven leader to supervise a team of scientists developing intermediate and large scale processes for manufacturing DNA-Probe Reagents for automated laboratory analyzers. Position requires 10-15 years applicable industrial experience, a Ph.D. in Biochemistry, Chemistry or Chemical Engineering, familiarity with FDA diagnostic product requirements and detailed knowledge of GLP/GMP. *Refer to position WES1-S*

SENIOR SCIENTIST

PCR Assay Applications

This position is responsible for the application of proprietary methods of PCR amplification and subsequent target detection to prototype automated systems, as well as the development of assay parameters for reliable diagnostic performance in the clinical laboratory. Position requires 10-12 years applicable industrial experience and a Ph.D. in Molecular Biology or Biochemistry. The successful candidate will have significant experience in the technical supervision of multiple projects, in-depth understanding of FDA requirements for diagnostic assay development (infectious disease) and familiarity with the principles of assay automation. *Refer to position WES2-S*

SENIOR SCIENTIST

Analytical Methods Development

Development and application of methods for the chemical and physical characterization of PCR Reagents. Position requires 5-10 years of Ph.D.-level, hands-on experience with spectroscopic, radiochemical and immunochemical methods of analysis applied to molecular probe products combined with a background in surface chemistry and molecular separation. *Refer to position WES3-S*

SCIENTIST

PCR Reagent Development

Process development, oligonucleotide conjugates, scale-up and transfer to manufacturing. Position requires Ph.D.-level experience with DNA-Probe Diagnostic Reagent Development and Scale-Up. *Refer to position WES4-S*

ASSOCIATE SCIENTIST

PCR Assay Applications

Validation of systems performance in the detection of infectious disease agents. Position requires a B.S./M.S. and familiarity with the conduct of PCR-based assays. *Refer to position WES5-S*

Roche Molecular Systems offers competitive salaries, extensive benefits and a working environment characterized by open communications and a supportive team spirit. For immediate consideration, please send your resume, including salary requirements and indicating appropriate position reference, to: **Mr. John Mucci, Roche Molecular Systems, 1080 U.S. Highway 202 South, Branchburg, New Jersey 08876.** We are an equal opportunity employer.

Roche

Roche Molecular Systems

A Member of the Roche Group

PENNSTATE



University Park
Campus

DEAN COLLEGE OF HEALTH AND HUMAN DEVELOPMENT

Penn State University invites applications and nominations for the position of Dean of the College of Health and Human Development. The enrollment of the College is 3,621 undergraduate majors and 522 graduate students served by 170 full-time faculty members. The operating budget for the College is approximately \$29 million, including \$12 million in externally-supported research funds.

The College includes the following academic units: Communication Disorders; Exercise and Sport Science; Health Education; Health Policy and Administration; School of Hotel, Restaurant, and Recreation Management; Human Development and Family Studies; School of Nursing; Nutrition; and a graduate program in Biobehavioral Health. Over \$12 million in external research funds are generated through the academic units and the College's nationally recognized research centers.

The successful candidate will be expected to possess:

1. Demonstrated ability to set goals, motivate people, manage budgets, cultivate innovation and faculty productivity, and secure funds for research and development.
2. Prior leadership experience at a significant level of responsibility appropriate for the administration of an academic organization.
3. Academic credentials appropriate for appointment as a tenured professor within one of the programs in the College.
4. A commitment to the land-grant philosophy and to the education, research, and public service responsibilities of a major, public research university.

The Search Committee will continue to receive applications and nominations until a candidate is selected. Nominations and letters of application accompanied by resumes and other supporting material should be submitted to:

Dr. John J. Cahir, Chairman
Health and Human Development Dean Search
201-SCI Old Main
The Pennsylvania State University
University Park, PA 16802

An Affirmative Action/Equal Opportunity Employer.
Women and Minorities Encouraged to Apply.

National Institute of Mental Health

SERVICE FELLOWSHIP

The NIMH is seeking a Service Fellow with a Ph.D. and at least 3-5 years research experience beyond the Ph.D. to conduct studies on neuronal mechanisms and neurotransmitter interactions relevant to schizophrenia research in primates. Demonstrated expertise on the mechanisms of prefrontalcortical regulation of subcortical dopamine systems in primates, in vivo neuropharmacology studies in primates, experience with primate stereotactic neurosurgery using MRI, surgical implantation of microdialysis probe guide implants, skills in performing routine in vivo microdialysis in sedate and awake behaving monkeys, dialysis probe construction skills are required. Expertise in microbore chromatographic analysis of trace quantities of neurotransmitters and drugs in biological samples is necessary. Training in neurochemistry/neuropharmacology with expertise in receptor assays using grind and bind techniques and neurotransmitter uptake histological evaluation of brain tissue are desirable. Salary approximately \$38,000 - \$50,000 per annum. US citizenship required. Send curriculum vitae, brief statement of research achievement and names of 3 references to Dr. Daniel Weinberger, Chief, Clinical Brain Disorders Branch, NIMH Neuroscience Center at St. Elizabeths, Washington, DC 20032.

Enter a New Dimension of Gene-Based Therapies

Position yourself at the forefront of biotechnology science at VIAGENE, INC.—an industry leader dedicated to the research, development and manufacture of gene transfer drugs for the treatment of life-threatening diseases and genetic disorders. To enhance our technological expertise, we are currently seeking experienced scientists for bench and project manager-level positions:

RESEARCH SCIENTISTS

- | | |
|---------------------|---------------------|
| * Molecular Biology | * Virology |
| * Immunology | * Biochemistry |
| * Cell Biology | * Stem Cell Biology |
| * Cancer Biology | |

ASSOCIATE DIRECTOR, CELL BIOLOGY

Discover a company whose technology is consistent with its mission: to improve and save lives. Send your resume to: VIAGENE, INC., Human Resources, 11055 Roselle St., San Diego, CA 92121. EOE.



VIAGENE, INC.

THE SIXTH INTERNATIONAL GENOME SEQUENCING AND ANALYSIS CONFERENCE

SEPTEMBER 17-21, 1994
HYATT REGENCY, HILTON HEAD, SC

Cochairs: Chris Fields, Raymond F. Gesteland, Robert H. Waterston

Executive Committee: J. Craig Venter, C. Thomas Caskey, Leroy Hood

Leading scientists from around the world will gather on September 17-21, 1994, to discuss the latest breakthroughs emerging from the genome sequencing community and the implications and uses of these discoveries. The emphasis will be on the integration of biological and computational approaches that make use of rapidly advancing sequencing technology to analyze biological systems.

- | | | |
|---------------------------|--|-----------------------------|
| ■ Plenary sessions on: | ■ Concurrent sessions and posters | ■ Exhibits of the latest in |
| Genome Organization | on sequencing, informatics, technology | automated sequencers, |
| Sequencing Technology | ■ Sequence Data Fair | laboratory robots, and |
| Gene Expression | ■ New Automation and Robotics Fair | products for molecular |
| Evolution and Systematics | ■ Human EST Sequencing and Assembly | biology |

ABSTRACT DEADLINE: JUNE 29, 1994

For further information contact:

Genome Sequencing Conference Office, 932 Clopper Road, Gaithersburg, MD 20878-1301
(301)216-9567 ■ (301)977-7233 FAX ■ Internet: seqconf@tigr.org

Massachusetts Institute of Technology
Summer Professional Seminar

NEW COMPUTING ARCHITECTURES: THEORY AND APPLICATIONS OF NEURAL NETWORKS

Center for Biological and
Computational Learning (CBCL)

July 15, 16, 17, 1994

MIT FACULTY SPEAKERS:

Tomaso Poggio Michael Jordan
Federico Girosi Satinder Singh
Jean-Jacques Slotine

For further information, contact:

MIT Summer Session Office,
E19-356, Cambridge, MA 02139;

Phone: (617) 253-2101;

Fax: (617) 253-8042;

E-Mail: summer-professional-programs@mit.edu

Hybritech Incorporated is a recognized leader in the development, manufacture and marketing of diagnostic products utilizing monoclonal antibody technology. We have the following immediate openings:

RESEARCH SCIENTIST

This Scientist will lead a group of Associates to develop new processes used in the production and purification of monoclonal antibodies and other biomolecules for the manufacturing of diagnostic products. The group will maintain and improve current processes and be actively involved in working with development teams to bring new products to market. The ideal candidate will have a Ph.D. in Protein Biochemistry and be proficient in the purification and characterization of various types of biomolecules (proteins, polysaccharides, lipids). Leadership, experience in team and project management, knowledge of GMP and experience in process validation are highly desirable.

RESEARCH ASSOCIATE

This Associate will develop and validate methods for the testing and characterization of biomolecules, including monoclonal antibodies, as well as organic and inorganic compounds. The ideal candidate will have an M.S., preferably in Chemistry or Protein Biochemistry, or comparable experience. Proficiency in protein purification and the associated techniques (protein HPLC, electrophoresis, spectroscopy) is desired. An understanding of Design of Experiments, excellent team spirit and the capability of assuming project responsibilities are preferred.

Hybritech offers a stimulating work environment and competitive salaries and benefits. Please indicate the following code on your resume and forward to: **H.R. Dept., HYBRITECH INCORPORATED, P.O. Box 269006, MD/TECH/SM/5-94, San Diego, CA 92196-9006.** We are committed to diversity in our workforce/EOE.

 **Hybritech**
INCORPORATED
TEAM EXCELLENCE

POSITIONS OPEN

TENURE-TRACK FACULTY POSITION MICROBIAL PATHOGENESIS

The University of Michigan
Department of Microbiology and Immunology

We are seeking an individual with outstanding credentials in the field of microbial pathogenesis to complement and strengthen a rapidly growing departmental activity in molecular and genetic aspects of infectious diseases. Although the rank is open, significant attention will be given to applicants at the level of assistant or associate professor.

Applications should include curriculum vitae, bibliography, a brief statement of research interests, and the names of three individuals familiar with the candidate's research and teaching abilities. Applications should be submitted by July 31, 1994, to: Microbial Pathogenesis Search Committee, Department of Microbiology and Immunology, The University of Michigan, 6643 Medical Science Building II, Ann Arbor, MI 48109-0620.

The University of Michigan is an Equal Opportunity/Affirmative Action Employer and encourages the application of qualified women and underrepresented minorities.

MAMMALIAN PHYSIOLOGY AND BIOCHEMISTRY INSTRUCTORS

The Department of Biology at the University of California, San Diego, has openings for non-tenure-track lecturers, full and part-time, beginning September 1994. Appointments will be made for one year and are renewable. Responsibilities may include teaching lower-division organismic biology, upper-division mammalian physiology, mammalian physiology lab, biochemistry lab, recombinant DNA lab or upper-division molecular biology. Ph.D. is required. Salary is commensurate with experience and based on the University of California pay scale. Send letter of application with curriculum vitae, and the names of three references by June 17, 1994, to: Lecturer Search Committee (S), Department of Biology 0346, 9500 Gilman Drive, La Jolla, CA 93093-0346.

The University of California at San Diego is an Equal Opportunity/Affirmative Action Employer.

FACULTY POSITIONS

Applications are invited for 3 teaching positions available August 29, 1994: HUMAN GROSS ANATOMY, IMMUNOLOGY, CLINICAL PATHOLOGY. Applicants must have a Ph.D. degree and/or M.D. degree and be devoted to teaching medical students. Interested applicants should send curriculum vitae and names of references to: American University of the Caribbean School of Medicine, P.O. Box #400, Plymouth, Montserrat, West Indies. FAX: 809-491-2913.

POSTDOCTORAL TRAINING PROGRAM RHEUMATOLOGY/IMMUNOLOGY DIVISION TUFTS UNIVERSITY NEW ENGLAND MEDICAL CENTER

Postdoctoral research positions available. Focus: molecular and cellular studies, including T cell studies, of Lyme disease and rheumatoid arthritis. Mentors: rheumatology and basic science faculty, A.C. Steere, J.M. Leong, R. Roubenoff, J.G. Schaller, C.A. Dinarello, R.R. Isberg, and B.T. Huber. Funding: primarily NIH training grant requiring candidate to be permanent U.S. resident. Applications (curriculum vitae, 3 reference letters) to: Allen Steere, New England Medical Center, NEMC406, 750 Washington Street, Boston, MA 02111. Equal Opportunity/Affirmative Action Employer.

POSTDOCTORAL POSITION MOLECULAR BIOLOGY OF PROGRAMMED CELL DEATH

Two positions available in the laboratory of Dr. V. M. Dixit to investigate the mechanism by which cells become resistant to cytokine killing and to identify components of the death pathway. Recent relevant publications from the laboratory include: JBC (1992) 267:12424, JBC (1992) 267:17971, JBC (1992) 267:24157, JBC (1993) 268:5032, JBC (1994) 269:3633. Submit curriculum vitae and three references to: Dr. V. M. Dixit, University of Michigan, Department of Pathology, Box 0602, Ann Arbor, MI 48109. A non-discriminatory Affirmative Action Employer.

POSITIONS OPEN

POSTDOCTORAL POSITION. Evolution of Complex Traits: The Mammalian Dentition. The role of homeobox genes and other transcription factors in the evolution of a segmented neural structure. Analysis of cDNA, gene arrangement, sequence, *in situ* and *in vitro* regulation and expression studies of differentiation in tooth morphology, from comparative and evolutionary perspectives. Can start July 1, 1994. Applications received by April 30, 1994, will be assured of consideration, but applications will be considered until position is filled. Write to: Dr. Kenneth M. Weiss, Department of Anthropology and Graduate Program in Genetics, Penn State University, 409 Carpenter, University Park, PA 16802. [Telephone: (814) 865-2509; E-mail: KMW4 @ PSUV.M.PSU.EDU]. An Affirmative Action/Equal Opportunity Employer. Women and minorities are encouraged to apply.

POSTDOCTORAL POSITION BIOCHEMISTRY/MOLECULAR BIOLOGY

A postdoctoral position is available to identify and characterize protein structural components and intermolecular interactions critical to mammalian glucose transporter function and regulation. The position requires training and recent laboratory experience in molecular biology. Interested applicants should send curriculum vitae and the names of three references to: Dr. Brent C. Reed, Department of Biochemistry and Molecular Biology, Louisiana State University Medical Center, 1501 Kings Highway, Shreveport, LA 71130-3932. LSUMC is an Equal Opportunity/Affirmative Action Employer.

POSTDOCTORAL POSITION to engage in development of novel methods for manipulating DNA segments. Experience with plasmid construction, sequencing, microbial genetics, transposons, PCR and large fragment analysis desired. Please send curriculum vitae and names of three references to: George Bennett, Department of Biochemistry, Rice University, P.O. Box 1892, Houston, TX 77251 or FAX: (713) 285-5154.

POSTDOCTORAL POSITION available for training in cell and molecular biology of extracellular matrix, including basement membranes, elastin and collagen genes, biology of inflammation, regulation of cartilage collagen genes and role of laminin in neoplasia. Send résumé to: Nicholas A. Kefalides, M.D., Ph.D., Director, Connective Tissue Research Institute, University of Pennsylvania, University City Science Center, 3624 Market Street, Philadelphia, PA 19104-2614. An Equal Opportunity/Affirmative Action Employer.

RNA EDITING

POSTDOCTORAL POSITION to study the mechanism of RNA editing in trypanosomes and/or characterize the macromolecular complex that performs editing. Experience in molecular biology and/or biochemistry is essential. Send curriculum vitae, statement of research interests, and three letters of recommendation to: Dr. Kenneth Stuart, Seattle Biomedical Research Institute, University of Washington, SC-38, 4 Nickerson Street, Seattle, WA 98109-1651. An Equal Opportunity/Affirmative Action Employer.

POSTDOCTORAL POSITIONS in molecular pulmonary pharmacology available for recent Ph.D. in pharmacology, physiology or biochemistry. Project related to molecular pharmacology of purine receptors and the involvement of second messenger systems in airway smooth muscle and epithelial cells. Salary NIH level. Experience in related field preferred. Send curriculum vitae and 3 letters of recommendation to: Dr. S. Jamal Mustafa, Department of Pharmacology, East Carolina University, Greenville, NC 27858. Federal law requires proper documentation of identity and employability at the time of employment. Affirmative Action/Equal Employment Opportunity.

HUMAN CANCER GENETICS

POSTDOCTORAL POSITION is available to study the molecular genetic basis of inherited human cancers. Pursuant to NIH rules, NIH funding will only be provided for U.S. citizens/resident aliens. Foreign applicants require their own funding support.

Send curriculum vitae, research goals and objectives and names of three references to: Dr. Robert Burk, M.D., Genetics Division, Pediatric Department, Albert Einstein College of Medicine, Jack and Pearl Resnick Campus, Ullman 625, 1300 Morris Park Avenue, Bronx, NY 10461. FAX: (718) 918-0857; E-mail: burk@aecom.yu.edu.

POSITIONS OPEN

MOLECULAR BIOLOGIST/IMMUNOLOGIST

The Georgetown University Division of Molecular Virology and Immunology invites applications for a **POSTDOCTORAL POSITION** in molecular biology to participate in studies of the immunology and pathogenesis of woodchuck hepatitis B virus infection and disease. Research skills should include a strong background in molecular biology as applied to the immune system and/or virus-host cell interactions. Areas of interest may include: gene cloning and expression of immunologically relevant molecules, effect of cytokines on virus-host cell interactions, role of T helper cells in the outcome of acute infection, and the role of cytolytic T cell responses in viral clearance and disease processes. Send résumé, references, and a cover letter describing the application of your skills and experience to any of the above areas care of: John L. Gerin, Ph.D., Division of Molecular Virology and Immunology, Georgetown University Medical Center, 5640 Fishers Lane, Rockville, MD 20852. An Affirmative Action/Equal Opportunity Employer.

POSTDOCTORAL POSITION available immediately to study the genetics of inherited nephropathies and fine mapping of Polycystic Kidney Disease 2 gene. Candidate should have background in molecular biology and expertise in techniques such as cDNA library screening, large DNA fragment cloning, PCR, DNA sequencing, Southern hybridization, and possibly FISH. The post is for two years renewable to three. Send curriculum vitae and names of references to: Dr. Constantinos Deltas, The Cyprus Institute of Neurology and Genetics, P.O. Box 3462, Nicosia, Cyprus. FAX: 357-2-427308.

POSTDOCTORAL POSITION IN BIOPHYSICAL CHEMISTRY

The Department of Physical Chemistry 2, Lund University, Sweden, has a postdoctoral position available immediately in a group working in the field of biophysical chemistry. The main interest of the group is "Structure and Dynamics of Calcium-binding Proteins". The main technique used in these studies is NMR but CD and other spectroscopic techniques as well as microcalorimetry are used extensively. The available NMR equipment is GE 500 MHz and Nicolet 360 MHz spectrometers. A Varian 600 MHz NMR spectrometer will be installed in September 1994. Send curriculum vitae, summary of research and the names and addresses of two references to: Dr. Sture Forsén, Department of Physical Chemistry 2, University of Lund, P.O. Box 124, S-221 00 LUND, Sweden; or FAX: Int+46-46-104543.

Boyce Thompson Institute at Cornell University seeks a **POSTDOCTORAL ASSOCIATE** for a study of hydraulic limitations to transpiration rates in plants. Emphases include the stomatal response to humidity, temperature interactions, ecotypic adaptation to climate, cavitation thresholds, and drought resistance. The successful candidate will have experience in gas-exchange and/or hydraulic architecture. Available immediately. Contact: Dr. Jonathan Comstock, Boyce Thompson Institute, Tower Road, Ithaca, NY 14853; (Telephone: 607-254-1214). The Institute is an Equal Opportunity and Affirmative Action Employer; women and minorities are encouraged to apply.

POSTDOCTORAL OR RESEARCH FACULTY POSITION

Available to M.D. or Ph.D. to examine signal transduction mechanism involved in electrogenic sodium transport. Applicants should have background in molecular or cell biology, and, preferably, an interest in epithelial cells. Salary negotiable depending on experience. Women and members of minority groups are particularly encouraged to apply. Send résumé and names of three references to: John P. Hayslett, M.D., Department of Medicine, Yale School of Medicine, 333 Cedar Street, Box 208029, New Haven, CT 06520-8029; FAX: (203) 785-7068.

An Equal Opportunity/Affirmative Action Employer.

SCIENCE welcomes placement of line classified ads by Internet Mail. Please include name and telephone number for our confirmation call when transmitting ad to:

Internet E-Mail: Science_classifieds@aaas.org

EXPLORATION OF THE UNIVERSE

a challenge for Europe and its best engineers

The European Southern Observatory (ESO) is an intergovernmental organisation responsible for the most advanced astronomical research in the southern hemisphere. The eight Member States of the ESO are Belgium, Denmark, France, Germany, Italy, the Netherlands, Sweden and Switzerland.

As the prime European astronomical centre, ESO occupies a leading position in the world's scientific community. Its research work is of great value to many areas of science and industry. The Very Large Telescope (VLT) is a 400 MD/M programme expected to be completed by the year 2000. It consists of four 8-metre telescopes to be built by European industry and installed in Chile. ESO is responsible for the conceptual design, engineering design and construction of some essential parts, as well as for the overall programme management.

This is an exceptional opportunity for those seeking creative involvements in an international scientific environment. After a short period of training (one or two months) at the ESO headquarters in Garching near Munich, Germany, the candidate will be assigned to the observatory at La Silla, which is located approximately 600 km north of Santiago, Chile.

For the Technical Research Support Department at the La Silla Observatory, Chile, ESO is seeking a (m/f)

OPTICAL ENGINEER or PHYSICIST/ASTROPHYSICIST (Ref.: CTR 129)

Profile: the candidate for this position should have a university degree in optics, physics, astrophysics or equivalent, as well as several years of experience with the design, operation, calibration and commissioning of sophisticated opto-mechanical instrumentation. Organized and familiar with high precision control and data analysis systems, the candidate should ideally have a good knowledge of high angular resolution techniques in astronomy.

Responsibilities: the selected candidate will be responsible for the improvement, preparation and operation of the ESO adaptive optics system and its associated IR instrumentation at the La Silla Observatory. In charge of defining the necessary procedures and providing technical support to develop the system as a common user instrument, he will also be responsible for the overall organisation of the technical and observing runs with the instrument and for co-ordinating the La Silla technical support staff allocated to this project. In addition to the technical work, the candidate will also be required to support the optics group (30 % of the time) for the improvement of the optical instruments of the observatory. The selected candidate will have a high degree of autonomy and the possibility to perform scientific observations with the system for personal research or participate in some development programmes. Shift work is required for this post. For technical matters, the candidate will report to, and closely co-operate with, the Focal Plane and Adaptive Optics Systems Group in Garching.

Remuneration for this post will be commensurate with background, experience and family status. It will be compatible with the salaries paid by intergovernmental organisations.

Although preference will be given to nationals of ESO Member States, this should not discourage suitably qualified applicants from other countries from applying. Positions are open to suitably qualified women and men. It is essential that all candidates have an excellent command of English; some knowledge of Spanish would be advantageous.

Applications with a brief c.v. (no supporting documentation unless requested) should specify the job reference and be submitted before June 30, 1994 to: Personnel Administration and General Services, European Southern Observatory, Karl-Schwarzschild-Strasse 2, D-85748 Garching near Munich, Germany. Tel: (89)320.06.219 or (89)320.06.438.



EUROPEAN SOUTHERN OBSERVATORY



JACQUELINE DU PRE FELLOWSHIP

The International Federation of Multiple Sclerosis Societies encourages the training of research workers, interested in the field of Multiple Sclerosis, from countries where funds for MS research and training are not available.

Therefore annually one award has been made available totalling US\$37,000.

Applications are invited from young scientists. The area of research should be appropriate to Multiple Sclerosis and be appropriate to the country from which she or he originates.

Information on the application can be obtained from the IFMSS Secretariat, 10 Heddon Street, London W1R 7LJ, UK. Tel: (44) 71 734 9120, Fax: (44) 71 287 2587.

Deadline for application is the 15th June 1994.



Deutsches
Krebsforschungszentrum
Stiftung des öffentlichen Rechts

Universität
Heidelberg

The German Cancer Research Center (DKFZ) and the University of Heidelberg are establishing a clinical co-operation unit of **Dermato-Oncology** at the **Department of Dermatology of the Klinikum Mannheim**, in order to promote cooperation between basic research, clinical research and patient care. The clinical cooperation unit will be a **division of the DKFZ** and located initially for a five year period within the premises of the Department of Dermatology at the Klinikum Mannheim.

The head of the clinical cooperation unit will be offered a

Professorship (C3) for Dermato-Oncology

at the Faculty of Medicine at Mannheim, University of Heidelberg.

Preference will be given to applicants with a research focus on basic research in molecular and cell biology. Innovative and substantial contributions to the development of basic research into clinical applications, including methods of gene technology, are expected.

Medicinal licence ("Approbation"), board certification in Dermatology and "Habilitation" or equivalent scientific work are required.

The position as head of a division at the DKFZ is tenured. Applications with a curriculum vitae and a complete list of publications should be sent to

Deutsches Krebsforschungszentrum, Wissenschaftlicher Stiftungsvorstand
Im Neuenheimer Feld 280, D-69120 Heidelberg by 15 June 1994

The International Center for Tropical Agriculture



Cassava Research Program Senior Scientists

The aim of the Cassava Research Program at CIAT is to contribute to the well being of cassava farmers, processors and consumers by generating knowledge, research methods and technology components that lead to a sustained improvement in the level and quality of cassava production and diversified, value added end uses of the crop.

The following scientists are being sought to join an interdisciplinary team working on germplasm conservation and utilization, integrated crop management and product, process and market development.

PLANT PHYSIOLOGIST to study the mechanisms of carbon metabolism in cassava, the effect of environmental factors on production and genotypic response to abiotic stresses and root quality. The scientist will also assist in the development of principles and components for integrated soil/crop management programs. The position is located at CIAT headquarters in Cali, Colombia.

PLANT PATHOLOGIST to characterize and evaluate cassava genotypes with resistance to fungal and bacterial diseases and to investigate the nature of resistance mechanisms. The scientist will also develop principles and components for integrated pest management programs. The position is located at CIAT headquarters in Cali, Colombia.

BREEDER/AGRONOMIST who will be responsible for germplasm introduction to Africa, joint evaluation and selection of cassava genotypes with potential adaptation to major African cassava ecosystems and for research on genotype interaction with major cropping systems components. The position is located at the international Institute of Tropical Agriculture (IITA) at Ibadan, Nigeria.

FOOD SCIENTIST/TECHNOLOGIST to define and execute joint projects with other post harvest research institutes for the development of cassava (and possibly other root and tuber) products and processes and to support the conceptualization and implementation of integrated production, processing and marketing programs in selected countries. The position will be located at CIAT headquarters in Cali, Colombia.

Candidates should possess a Ph.D., a demonstrated ability to develop an innovative research program, proven managerial and communication skills and the ability to work effectively in a multidisciplinary team. Excellent command of English is required and proficiency in Spanish, Portuguese or French is desirable. Practical experience in developing country agriculture would also be an asset.

Letter of application, including Curriculum Vitae and the names and addresses of three referees, should be sent to Dr. William Scowcroft, Deputy Director General Research, CIAT, Apartado Aero 6713, Cali, Colombia (Fax: 57 23 647243; E-MAIL: W.SCOWCROFT@CGNET.COM) before 15 July 1994.

CIAT is a non-profit organization with 80 internationally recruited scientists. Salaries and benefits are competitive, with privileges similar to other international organizations. It is located in Cali, Colombia, an attractive, hospitable, medium sized city at the foot of the Andes. The climate is pleasant; housing, schooling and health services are excellent. Communications, including daily national and international flights are effective.

The Medical Research Council of Canada and Ciba-Geigy Canada Ltd. are pleased to announce the establishment of the

MICHAEL SMITH/CIBA-GEIGY/MRC PROFESSORSHIP

to be held at

THE NEUROSCIENCE RESEARCH INSTITUTE, UNIVERSITY OF OTTAWA

Applications for this position are now invited from candidates with a proven record of research productivity in the field of molecular neuroscience. Relevance to mechanisms of cell death, neurodegeneration and neuronal survival is desirable. The position is open to candidates from assistant to full professor. Applicants should submit a C.V. and a summary of their research interest as well as future plans. Applications will be peer-reviewed by the MRC, and in accordance with Canadian immigration requirements, this advertisement is directed primarily to Canadian citizens and permanent residents. Please send application before June 30, 1994 to:

Dr. A. Hakim
University of Ottawa
Neuroscience Research Institute
451 Smyth Road
Ottawa, Ontario, K1H 8M5
CANADA

UNIVERSITY OF NEWCASTLE UPON TYNE



CHAIR OF GENETICS

Applications are invited for the Established Chair of Genetics in the Department of Biochemistry & Genetics. This is a key appointment in a rapidly expanding and developing department which occupies modern, well-equipped laboratories within the Medical School. In order to further raise the research profile of the department, we are seeking an internationally renowned geneticist or molecular biologist who will be expected to establish a major research group and to provide research leadership within the department. A lectureship is also available to support this important post.

Salary will be at an appropriate point in the non-clinical professorial range.

Prospective applicants who have an international reputation in any field of genetics or molecular biology are invited to discuss the post informally, in the first instance, with Professor S J Yeaman, Head of Department of Biochemistry & Genetics, (tel: 44 91 222 7433, or with the Dean of Medicine, Professor A L Crombie, The Medical School, Newcastle upon Tyne, (tel: 44 91 222 6000 ext. 7003). Formal applications, giving the names of not more than three referees, should be lodged with the Senior Assistant Registrar, The Medical School, University of Newcastle upon Tyne, Framlington Place, Newcastle upon Tyne, NE2 4HH, by not later than 31st May 1994.

THE CHINESE UNIVERSITY OF HONG KONG

The University (founded 1963) offers comprehensive programmes up to PhD level in the Humanities, Business Administration, Science, Medicine, Social Science, Education, Engineering and Architecture. Student enrolment is planned to expand to 11,000 full-time equivalent by 1994-95. The Faculty of Medicine offers undergraduate and postgraduate programmes in Medicine, Nursing and Pharmacy. The MBChB programme admits 160 students annually and is fully recognized by the General Medical Council of the United Kingdom. Clinical courses are taught at the Medical Faculty's 1,450-bed teaching hospital, the Prince of Wales Hospital, which is one of the regional hospitals in Hong Kong, and the Lek Yuen Health Centre. The University is very active in promoting research and consultancies and in liaising with industry and the business sector worldwide. English is used in teaching and administration in the Faculty of Medicine.

Applications are invited for:-

Senior Lectureship/Lectureship in Physiology

Applicants should have a PhD degree or a medical qualification and some teaching and research experience in the field of Physiology. The Department offers courses to medical, nursing and pharmacy students of the Faculty and students majoring in Human Biology. The Department's current research interests are in the areas of ion channels and epithelial transport, sensory and central nervous system physiology, vascular physiology, muscle physiology, molecular endocrinology and reproductive physiology. Those who apply for appointment at the Senior Lecturer level are expected to have ample teaching and research experience. The appointee is expected to assume duty in January 1995 or as soon as possible thereafter.

Annual Salary and Fringe Benefits

Senior Lecturer (non-clinical): HK\$586,080—787,320 by 8 increments
Lecturer (non-clinical): HK\$377,220—630,180 by 10 increments
(approx. exchange rate in April 1994: US\$1=HK\$7.8; £1=HK\$11.3)

Starting salary and grade will be commensurate with qualifications and experience. Benefits for superannuable appointment include leave with full-pay, medical and dental care, education allowances for children, housing benefit for eligible appointee with an annual salary at HK\$402,480 (with appointee contributing 7.5% of salary towards such provision) and superannuation scheme (University 15%, appointee 5%). Appointment made on fixed term contract will carry equivalent benefits including a contract-end gratuity (15% of basic salary) in lieu of the superannuation scheme, where applicable. The University may also consider more flexible terms for suitable candidates subject to mutual agreement.

Application Procedure

Send full resume in duplicate and names and addresses of 3 referees, with copies of academic credentials (in duplicate) and recent publications, to the Personnel Office, The Chinese University of Hong Kong, Shatin, N.T., Hong Kong (Fax: (852) 603 5026) before June 18, 1994. Please quote the reference no. 16B/509/2/94 and mark "Recruitment" on cover. Enquiries may be directed to Professor Patrick Y. D. Wong, Department of Physiology (Fax No.: (852) 603 5022).

[Note: The University reserves the right not to fill the Lectureship and or to fill the post by invitation].



ROYAL
INSTITUTE OF
TECHNOLOGY

PROFESSOR IN BIOCHEMISTRY

At the Royal Institute of Technology, KTH, School of Chemistry and Chemical Engineering, Stockholm, Sweden, a position as tenured professor in Biochemistry is open for application.

Expiration date for the application is: 6th of June 1994

The description of the position is: Structural Biochemistry: Studies of relationships between sequence, structure and function of biological macromolecules, especially theoretical analysis of such relationships.

The position is at the Department of Biochemistry and Biochemical Technology but located at the Center for Structural Biochemistry (CSB) within the Novum Research Center at a campus some 20 km south of Stockholm Center. CSB has excellent research facilities and equipment.

For information as how to apply and further information please call, fax or write to:

Professor S.O. Enfors
Head of Department of
Biochemistry and Biotechnology
KTH, Fack
100 44 STOCKHOLM Sweden
telephone +46 8 790 9164
fax +46 8 723 1890

Professor Ivars Neretnieks
Dean of the School of Chemistry
and Chemical Engineering
KTH, Fack
100 44 STOCKHOLM, Sweden
telephone +46 8 790 8229
fax +46 8 10 52 28

For additional information on the facilities at the Novum Research Center at Huddinge, please contact.

Professor Jan-Åke Gustafsson
Center for Structural Biochemistry
NOVUM
141 57 HUDDINGE Sweden
telephone +46 8 7749207
fax +46 8 7798795

NORTHERN IRELAND REGIONAL MEDICAL PHYSICS AGENCY

Chief Executive/Honorary Professor of Medical Physics (University of Ulster)

Salary range: £37,000 - £47,000

The Department of Health and Social Services has established a Regional Medical Physics Agency which is responsible for the provision of an efficient and integrated regional medical physics service. Currently this is provided through a management structure consisting of six divisions covering such areas as radiation protection, radiotherapy/radiodiagnostics physics, radioisotopes, ultrasound and clinical instrumentation. The Agency is looking for a committed professional to fill the post of Chief Executive who may be offered the title of Honorary Professor of Medical Physics at the University of Ulster. The successful candidate will have a University honours degree and preferably a doctorate in physics or other physical sciences. He/she should also have at least five years senior management experience in the public or private sector coupled with a substantial record of research in medical physics.

Closing date for receipt of completed application forms is ?? April 1994.

A job description and application form can be obtained by writing, enclosing a stamped addressed envelope (10" x 7") and 25p stamp to:

NORTHERN IRELAND HEALTH & SOCIAL SERVICES
CSA
CENTRAL SERVICES AGENCY

The Personnel
Department,
Central Services Agency,
25/27 Adelaide Street,
Belfast BT2 8FH.
An Equal Opportunity Employer



UNIVERSITY OF TASMANIA

Applications are invited for the following position

Hobart, Tasmania, Australia

Tasmania is one the most popular tourist destinations in Australia and is best known for its beautiful scenery and its clean and green environment. The City of Hobart is the State capital of Tasmania and is situated on both sides of the attractive Derwent River. Outdoor sports, including sailing, skiing, mountaineering and bush walking are readily available.

LECTURER / SENIOR LECTURER (LEVEL B/C)

Department of Anatomy
(Ref. No. 50/94)

Applications are invited for appointment as Lecturer/Senior Lecturer in the Department of Anatomy within the School of Health Science which is offered on a fixed term basis of up to five years.

The appointee will be required to undertake teaching, research and administrative duties and will be responsible for preparing and supervising units in Gross Anatomy and/or Neuroanatomy or Neurobiology that are the administrative responsibility of the Department for majors in Science, Psychology and Medicine as well as graduate students in Anatomy, Biochemistry and Physiology.

The appointee will engage in creative scholarship by developing and/or continuing an active program in research in some area of developmental cellular neurobiology that would relate to ongoing collaborative interdepartmental research programs in the Departments of Anatomy and Physiology. Current research interests involve differentiation of central and peripheral nervous systems, plasticity, response to injury and regeneration. The appointee will have access to research facilities of the shared Molecular Biology Unit and the Centre for Cellular and Ultrastructural Research that is administered by the Department of Anatomy.

Candidates must have a PhD in an area relevant to Anatomy including medicine and dentistry with postdoctoral research experience and supporting publications. Previous experience lecturing Gross Anatomy is desirable. For appointment as Senior Lecturer applicants must have an established record in creative scholarship.

Commencing salary will be within the Lecturer (Level B) range, A\$41,474 - A\$49,370 per annum or Senior Lecturer (Level C) A\$50,928 - A\$58,724 per annum.

For further information about academic aspects of the position please contact Professor Bryce L. Munger, telephone 61 02 202666, fax 61 02 202679, eMail: B.Munger@anat.utas.edu.au.

Closing Date: 15 June 1994

Position information and application forms are available from the Personnel Services Secretary, telephone 61 02 20 2013. Applications addressing the selection criteria and quoting ref. no should reach the Acting Director of Personnel Services, University of Tasmania, G.P.O. Box 252C, Hobart, Tasmania, Australia 7001 by the specified date.

EQUAL EMPLOYMENT OPPORTUNITY AND A SMOKE-FREE
WORKING ENVIRONMENT IN SHARED WORKPLACES
ARE UNIVERSITY POLICY.

DTA 50/94

Chair of Biochemistry (Molecular Biology)

IN THE SCHOOL OF BIOLOGICAL
SCIENCES

The College seeks to appoint a Professor of Biochemistry (Molecular Biology) and applications are welcome from those with research interests in any area of biochemistry/molecular biology. The professor will give leadership to the molecular side of the School's activities which span the whole range of biological sciences from molecular to organismal biology.

Informal enquires may be made to Professor R S Clymo (Head of School) on 071-775 3011 (e-mail R.Clymo@qmw.ac.uk).

For an application form and further details, please telephone 071-975 5171, quoting reference 94044. Applications should be returned by 10 June 1994 to

the Recruitment Co-ordinator,
Queen Mary and Westfield
College, Mile End Road, London
E1 4NS.



WORKING TOWARDS EQUAL
OPPORTUNITIES

MOLECULAR ONCOLOGIST BIOCHEMIST/CELL BIOLOGIST

Center for Molecular Oncology
The University of Chicago

The Center for Molecular Oncology of the University of Chicago is seeking applicants at the Assistant and/or Associate Professor level to join the newly formed Center. The Center is committed to developing a strong program in molecular oncology, broadly defined. We are seeking outstanding individuals who are using the approaches of molecular biology, molecular genetics, biophysics, and cell physiology to examine basic mechanisms and/or disorders such as signal transduction, gene and cell cycle regulation, and DNA replication and repair. The Center for Molecular Oncology is closely interfaced with an NCI-designated Cancer Center that includes programs on cytogenetics and molecular genetics, cell growth and differentiation, immunology and developmental therapeutics. Candidates should have sufficient research experience to demonstrate both significant accomplishment and outstanding promise. Faculty appointments will be tenure-track in the most appropriate academic department where the candidate will be expected to exercise full membership. New state-of-the-art laboratory space is available in the Institute for Molecular Medicine. This Institute also houses programs in molecular immunology, vascular biology, human genetics, and neurobiology. Letters of application including curriculum vitae, bibliography, a brief statement indicating research interest, and the names of 3 references should be sent to: **Dr. Michael Weiss, Director, Center for Molecular Oncology, 924 E. 57th Street, Chicago, IL 60637-5419.**



THE UNIVERSITY
OF CHICAGO

An Affirmative Action Equal Opportunity Employer

Leading Edge Research

Arris Pharmaceutical Corporation is a growing biopharmaceutical company dedicated to the rapid development of novel human therapeutics. We are committed to an innovative multidisciplinary & team oriented approach that encourages both creativity and collaboration.

FORMULATION SCIENTIST

The successful candidate will possess a Ph.D. in Chemistry, Biochemistry, or related field, and 4-5 years of pharmaceutical experience in the areas of drug formulation, analytical methods development, and drug stability testing. You will develop different formulations (aerosol, oral, and topical) of a novel class of anti-inflammatory compounds; design analytical methods for quantitating the active ingredient; oversee stability testing of the drug product; and interact with contract laboratories and government agencies. Job code: FS/RT-S

CELL BIOLOGIST

The successful candidate will possess a Ph.D. in Biology, Biochemistry, or related field, and 4-5 years of postdoctoral research experience in mast cell biology with prominent scientific publications in this area. You will study the role of mast cells in inflammation and examine the mechanism of action of novel anti-inflammatory compounds that inhibit mast cell function. Pharmaceutical research experience is desirable but not required. Job code: CB/RT-S

We offer attractive salaries, a generous benefits package, the potential for career advancement, and the rare opportunity to make significant scientific contributions. Please send resume & cover letter to:

Arris Pharmaceutical Corp.
Human Resources Dept. Job Code
385 Oyster Point Blvd., Suite 3
South San Francisco, CA 94080.

Equal Opportunity Employer



ACADEMIC ANATOMIC PATHOLOGIST

SUNY HEALTH SCIENCE
CENTER AT SYRACUSE
SYRACUSE, NEW YORK

ACADEMIC ANATOMIC PATHOLOGIST in the Department of Pathology at SUNY Health Science Center at Syracuse. Rank open depending on qualifications and experience. Active program with opportunities for academic growth. Share in the educational activities and Anatomic Pathology service responsibilities of the department, and engage in research and other academic pursuits. Significant consideration will be given to individuals with active and productive research programs. Review of applications will begin immediately for appointment August 1994, and will continue until the position is filled. Send CV, with supporting information and names of three references to Gerald B. Gordon, M.D., Chair, Academic Anatomic Pathologist Search Committee, Department of Pathology, SUNY Health Science Center at Syracuse, 750 East Adams Street, Syracuse, New York 13210. Phone (315) 464-4750. SUNY HSC is an EEO/AA/ADA employer strongly committed to achieving excellence through cultural diversity. Nominations of women, persons of color and members of other underrepresented groups are encouraged.

S C I E N T I S T S

Pharmaceutical development to challenge infectious and cardiovascular diseases, allergies, cancer and central nervous system disorders ...

That's Schering-Plough

From molecules to medicines. At Schering-Plough, scientists are developing the novel therapeutics that challenge mankind's most debilitating diseases. To continue this important work, we seek talented scientists with knowledge and dedication.

ASSOCIATE SCIENTIST

Fermentation Development

Based at our Fermentation Laboratory in Union, NJ, you will be part of a diverse group of scientists involved in development and validation projects using state-of-the-art fermentation processes for proteins and antibiotics. Your responsibilities will include preparing samples and performing assays using HPLC or spectrophotometer, evaluating new equipment, developing calibration protocols, and designing experiments to support current development projects.

To qualify, you will need a BS degree in Microbiology or Biochemical Engineering and 4-7 years of related experience or an MS and 2-5 years' experience. Knowledge of microbiological assay procedures, design of experiments for fermentation operation, reporting results and GMPs preferred. Excellent analytical, organizational and interpersonal skills a must. Please respond to: Dept. PL-BD94-05/SC.

ASSISTANT SCIENTIST

Process Development

As a member of our Process Development Group in Union, NJ, you will support R&D activities and offshore manufacturing operations. This will involve evaluating strains to achieve cost reductions and yield improvements for various antibiotics as well as assisting in the timely advancement of clinical candidates towards approval.

To qualify, you will need to be an independent self-starter with a BS degree in Microbiology and 2-4 years of related experience or an MS and 0-2 years' experience. Excellent communication and organizational skills a must. For consideration, please respond to: Dept. PL-BD94-04/SC.

We offer an excellent compensation package including competitive salaries and comprehensive benefits. For prompt, confidential consideration, we invite you to forward a resume, indicating the Dept. Code for your position of interest and salary requirements, to: Human Resources Manager, Schering-Plough Research Institute, 1011 Morris Avenue, Union, NJ 07083. We are an equal opportunity employer.



Schering-Plough
Research Institute

U s i n g S c i e n c e F o r H u m a n A d v a n t a g e

NYU
Medical
Center

Technology Transfer - Industrial Liaison

New York University Medical Center seeks a highly motivated professional for this senior level management position in the Office of the Vice President for Industrial Liaison. This office is responsible for the Medical Center's technology transfer activities: patenting, marketing and licensing the Medical Center's portfolio of inventions and technologies and obtaining industrial support for research projects. The successful candidate will be expected to develop strong relationships with NYU faculty in order to promote disclosure of new inventions and identify research of potential interest to industry.

Applicants should have an advanced degree in the biomedical or life sciences, knowledge of business practices related to protection and commercialization of intellectual property, and the ability to work successfully in a complex academic and business environment. Outstanding oral, written and interpersonal skills are required. Technology assessment/development experience preferred, particularly in the biopharmaceutical industry.

Salary commensurate with experience. Please send your resume to Joan Harmon, Human Resources Dept., NYU Medical Center, 550 First Ave., New York, NY 10016. Resumes must be received by June 6th. EOE, M/F.

LEADING RESEARCH INTO THE 21ST CENTURY

POSITIONS OPEN

POSTDOCTORAL POSITION: Available July 1, 1994, to study the molecular biology of lipoteichoic acid in bacterial cell surface assembly [*J. Bact.* 176: 681-690 (1994)]. Recent Ph.D. in either microbiology or biochemistry. Experience in molecular biology desired. Send résumé and names of three references to: **F. C. Neuhaus, Ph.D., Department of Biochemistry, Molecular and Cell Biology, Northwestern University, 2153 Sheridan Road, Evanston, IL 60208-3500. An Equal Opportunity/Affirmative Action Employer.**

NMR SPECTROSCOPIST/POSTDOCTORAL POSITION. Position is for the 600 MHz spectrometer in the Keck NMR facility for biomolecular research. Require strong interests in multidimensional NMR and knowledge in pulse programs and the UNIX environment. Strong record of publication in NMR research areas is desirable. Must send résumé and three letters of reference to: **Dr. Xiaolian Gao, Department of Chemistry, University of Houston, Houston, TX 77204-5641.**

TWO POSTDOCTORAL POSITIONS available immediately—one to study structure-function relationships in blood coagulation factors IX and VII and the second to study tissue factor pathway inhibitor gene regulation. Applicants should have strong background in protein chemistry and/or molecular biology. Since one of these positions may be supported by an NIH training grant, U.S. citizenship or permanent resident visa is required for that position. Submit curriculum vitae, a brief summary of prior research and three references to: **Dr. Paul Bajaj, Ph.D., Saint Louis University Health Sciences Center, 3635 Vista Avenue, St. Louis, MO 63110. FAX: (314) 773-1167. St. Louis University is an Equal Opportunity Employer.**

POSTDOCTORAL POSITION available immediately to join an NSF-funded project to study lysosomal proteinase and endocytic packaging mechanisms. Skills required include cell culture, protein chemistry, peptide chemistry and enzymology. Experience in one or more of these areas would be an advantage. This position will have technical support and is in a multidisciplinary research group exploring the function of lysosomal proteins. Send applications to: **Dr. Robert W. Mason, Associate Research Scientist, Department of Medical Cell Biology, Nemours Research Programs, P.O. Box 269 Wilmington, DE 19899, or FAX to (302) 651-6888. An Equal Opportunity Employer.**

POSTDOCTORAL FELLOWSHIPS UCLA BRAIN RESEARCH INSTITUTE

National Research Service Award Institutional Training Program supports 2- or 3-year Postdoctoral Research Fellowships to study molecular biology of brain glucose transporters and/or brain drug delivery and transport biology. Background in biochemistry, molecular biology, or pharmacology is required. Competitive salary plus medical insurance. Applicants must be U.S. citizens or have U.S. permanent residency. Positions available now and in 1995. Send curriculum vitae and three letters of reference to:

**Dr. William M. Pardridge
Department of Medicine
University of California, Los Angeles
School of Medicine
Los Angeles, CA 90024-1682
or FAX to (310) 206-5163
An Equal Opportunity Employer.**

RESEARCH ASSOCIATE CLINICAL INSTRUCTOR

The Division of Transplantation is seeking a molecular biologist with an interest and background in cellular immunology and genetics of MHC to join a research group investigating mechanisms of allograft tolerance. Project will involve cloning, sequencing and expression of MHC alleles. Applicants must have a Ph.D. or M.S. degree with equivalent independent laboratory experience. There are 5 Ph.D.-level immunologists in the division with whom the individual will interact. Please send curriculum vitae and references to: **Dr. Judy Thomas, Immunology Section, Division of Transplantation, Department of Surgery, East Carolina University School of Medicine, Greenville, NC 27858. Federal law requires proper documentation of identity and employability prior to final consideration for this position. East Carolina is an Equal Opportunity/Affirmative Action Employer.**

POSITIONS OPEN

CHEMIST/BIOCHEMIST. POSTDOCTORAL RESEARCH ASSOCIATE. 2-year Appointment. GS-11, Approximately \$35,000. USDA-ARS, Athens, Georgia. Recent Ph.D. in Chemistry/Biochemistry with experience in enzymatic techniques. Experience in gravimetric analyses, statistics, IR and/or NIR spectroscopy and microscopy. NIR methods which will aid Federal Agencies with new labeling legislation requirements. Applications in response to this ad should be marked RA-94-32(2)-4-005. USDA is an Equal Opportunity Employer. Call/FAX for complete details. 706-546-3497; FAX: 706-546-3607.

The Irvington Institute for Medical Research POSTDOCTORAL FELLOWSHIPS IN IMMUNOLOGY 1995-1998

The Irvington Institute for Medical Research will award up to twelve (12) Postdoctoral Fellowships in Immunology for three (3) consecutive years of work in a lab or hospital in the United States. A laboratory may qualify for only one (1) fellow per year. The fellowships will be awarded for basic immunologic research.

M.D.'s, Ph.D.'s, and M.D./Ph.D.'s are encouraged to apply. Candidates with not more than three (3) years of laboratory experience will receive priority. The Irvington Institute does not have a citizenship requirement, however, applicants from abroad must first obtain sponsorship by a senior scientist in the United States before applying for an Irvington Award.

The Institute will pay a stipend of \$23,000, \$25,000, and \$27,000 for years one, two, and three, with an additional eight percent (8%) each year offered to help cover the costs of health insurance, travel and supplies.

August 15, 1994, is the deadline for filing applications. The Institute will notify applicants in November 1994 whether they have been selected to receive a fellowship to begin July 1, 1995.

Applications may be obtained by writing to: **Fellowship Coordinator, The Irvington Institute for Medical Research, 120 East 56 Street, #340, New York, NY 10022 USA. FAX: (212) 758-8968.**

Private University in northeast Ohio is seeking a **SENIOR RESEARCH ASSOCIATE** for the Department of Physiology and Biophysics to aid with the development of independent research programs to study and characterize ionic currents in vascular smooth muscle utilizing electrophysiological patch clamp techniques; study mechanisms of modulation by proteolytic enzymes; interpretation and design of experiments by using computer models; work with new fluorescent imaging techniques for measuring cytosolic calcium (Ca^{2+}) in single cell. M.D. or Ph.D. in physiology or biophysics or foreign-earned equivalent as determined by accredited evaluating agency. Applicants will qualify with three years of postdoctoral experience in job described or with three years of postdoctoral experience in electrophysiology: patch clamp techniques and software development and programming, modelling of biological systems, isolation and culturing of cardiac and smooth muscle cells. \$34,000 per annum; Monday to Friday, 8:30 A.M. to 5:00 P.M. ($37\frac{1}{2}$ hours per week.) Must have proof of legal authority to work indefinitely in the United States. Send curriculum vitae with list of publications, names and addresses of 3 recent academic or professional references in duplicate (no calls) to: **J. Davies, JO# 00316, Ohio Bureau of Employment Services, P.O. Box 1618, Columbus, OH 43126. Equal Employment Opportunity/Affirmative Action.**

RESEARCH ASSOCIATE

A search committee chaired by Judy Thomas, Ph.D., has been formed to fill a position in the Division of Surgical Immunology and Transplantation. We are seeking a person with an interest in endothelial cell biology, immunology and a molecular biology background. The primary laboratory interest is in the interactions of the endothelial cell in transplant rejection, both allograft and xenograft. Applicants must have a Master's degree or equivalent. A Ph.D. is preferable. There are 5 Ph.D.-level persons in the division, with whom the individual will interact. Please send curriculum vitae to: **Dr. Carl Haisch, Division of Surgical Immunology and Transplantation, Department of Surgery, East Carolina University, 4S-10 Brody Building, Greenville, NC 27858. Federal law requires proper documentation of identity and employability prior to final consideration for this position. East Carolina is an Equal Opportunity/Affirmative Action Employer.**

POSITIONS OPEN

POSTDOCTORAL ASSOCIATE/ RESEARCH ASSOCIATE

Postdoctoral Associate and Research Associate positions are available immediately at Children's Hospital at Harvard Medical School to participate in research on basic HIV virology. Applicants must have (1) a Ph.D. or M.D. degree for the postdoctoral position, (2) a B.S. or M.S. for the research associate position. Experience in recombinant DNA technology and/or cell cultures is preferable. Applicants should forward curriculum vitae, description of their previous research experience and names of three references to: **Dr. Anna Aldovini, Children's Hospital, Enders 7, Boston, MA 02115.**

RESEARCH ASSOCIATE PLANT SCIENCES DEPARTMENT COLLEGE OF AGRICULTURE THE UNIVERSITY OF ARIZONA TUCSON, AZ 85721

Postdoctoral research associate position available to study regulation of storage protein synthesis in developing maize seeds. The research involves studies on mechanisms regulating protein synthesis and development in maize endosperm. The research requires a background in protein biochemistry, and cell and molecular biology. The position is available July 1, 1994; the closing date for applications is June 1, 1994, or until the position is filled. The starting salary is \$21,000 plus benefits. Applications should include a résumé plus three letters of recommendation. Requests for additional information should be sent to: **Dr. Brian Larkins, Department of Plant Sciences, University of Arizona, Tucson, AZ 85721.**

The University of Arizona is an Affirmative Action/Equal Employment Opportunity/ADA Employer. Women and minorities are encouraged to apply.

MOLECULAR BIOLOGIST

This position will be responsible for the development of new assays to be utilized in the field of Gene Therapy. Experience in DNA hybridization, PCR and Western blots utilizing non-isotopic detection methods is desired. Requires a Ph.D. in Molecular Biology. Please forward curriculum vitae (with current salary) to: **Human Resources Department; MICROBIOLOGICAL ASSOCIATES, 9900 Blackwell Road, Rockville, MD 20850. FAX: (301) 738-1036. Equal Opportunity Employer, m/f/d/v.**

ORGANIC GEOCHEMISTRY: The Geophysical Laboratory of the Carnegie Institution of Washington seeks outstanding applicants at the entry level for a research staff position in Organic Geochemistry. We are looking for an exceptional individual who will initiate a bold new line of research in organic or biogeochemistry. The new staff member will be encouraged to interact and participate with our earth science faculty in interdisciplinary projects. Applicants should send curriculum vitae and list of publications, statement of research interests, and the names and addresses of at least three references to: **Charles T. Prewitt, Director, Geophysical Laboratory, 5251 Broad Branch Road, N.W., Washington, DC 20015.**

The Geophysical Laboratory is an Affirmative Action/Equal Opportunity Employer.

MOLECULAR BIOLOGIST AND MICROBIOLOGIST

Microbiologist: to direct product development in the area of infectious disease. A Ph.D. and 3 to 5 years of experience in the pharmaceutical industry are desirable. The position will involve interaction with a diverse team of scientists at AMBI's laboratory in Manhattan and at collaborating laboratories.

Molecular biologist: for studies in the area of recombinant expression and mutagenesis of antimicrobial peptides. A recent Ph.D. with a strong background in the molecular biology of gram-positive organisms, in particular *Lactococcus lactis*, is preferred.

Applied Microbiology, Inc. (AMBI) is a biotechnology company developing antimicrobial peptides as an alternative to antibiotics for human and veterinary pharmaceuticals. We offer excellent benefits and competitive compensation. AMBI is an Affirmative Action/Equal Opportunity Employer.

Applicants should mail or FAX curriculum vitae and the names of three references to: **Malvina Araman, Applied Microbiology, Inc., 170 53rd Street, Brooklyn, NY 11232, FAX: 718-492-3878.**



**BRIGHAM
AND
WOMEN'S
HOSPITAL**



PROFESSOR OBSTETRICS, GYNECOLOGY & REPRODUCTIVE BIOLOGY

Harvard Medical School and the Brigham and Women's Hospital are seeking a Senior Investigator in the area of Reproductive Medicine and/or Reproductive Biology. Candidates must be internationally recognized in their field and maintain a successful and dynamic research program.

This investigator will hold an academic appointment as the **William Lambert Richardson Professor of Obstetrics, Gynecology and Reproductive Biology** and will be expected to teach Reproductive Medicine and serve as a research mentor to trainees. Applicants must also have at least 8 years of experience in directing an independent research program.

Send inquiry and curriculum vitae to: Robert Barbieri, M.D., Chairman, Department of Obstetrics and Gynecology, Brigham and Women's Hospital, 75 Francis Street, Boston, MA 02115. The Brigham and Women's Hospital and Harvard Medical School are affirmative action, equal opportunity employers. Inquiries from female and minority candidates are encouraged.

Crystal Formation Scientist

Cygnus Therapeutic Systems has an opening for a Staff Scientist to initiate and develop a collaborative research effort to identify and control drug crystal formation in controlled release delivery systems. Candidates should possess a Ph.D. in Physical Organic, Pharmaceutical or Biophysical Chemistry and a minimum of five years industry or postdoctoral experience. Qualified candidates should have expertise in one or more of the following disciplines: crystal kinetics and properties, thermodynamics, differential scanning calorimetry, molecular modeling, metals/ceramics, drug polymorphism, x-ray diffraction, spectroscopy. Drug delivery experience is desirable but not essential.

Cygnus Therapeutic Systems develops and manufactures advanced drug delivery systems which control the release of drugs over extended periods of time. This rapidly growing business sector improves the efficacy and cost-effectiveness of therapies. We offer competitive salaries and benefits including stock options. Qualified candidates should mail or FAX their resume to:

Michael Patrick
Manager, Human Resources
Department 94-43
CYGNUS THERAPEUTIC SYSTEMS
400 Penobscot Drive
Redwood City, CA 94063
FAX: (415) 599-2503



An EEO Employer

SANOFI DIAGNOSTICS PASTEUR, INC.

Quality, Leadership and Innovation

Sanofi Diagnostics Pasteur, Inc., an internationally recognized developer of innovative medical diagnostic systems, has employment opportunities for highly motivated, talented professionals with research and development experience in the following areas:

ALLERGY (BS, MS, PhD)

This team is searching for highly skilled individuals with a dedication to diagnostic development in the field of human allergic responses. Candidates with 1 - 4 years industrial experience are preferred. Experience in the characterization of proteins and protein chemistry as well as previous experience in allergy research is an advantage.

INFECTIOUS DISEASES (BS, MS, PhD)

This group focuses on developing immunodiagnostic, instrument-based test kits for human infectious agents. The ideal candidate will be trained in microbiology, immunology or a related field and possess 3 - 7 years industrial experience in virologic or bacteriologic immunoassay design and development.

CRITICAL COMPONENTS (BS, MS, PhD)

Our Critical Components department has the responsibility to develop critical reagents for assay development. We are seeking candidates with a strong background in protein purification, characterization and modification. Industrial experience with large scale operations is desirable.

ASSAY DEVELOPMENT (BS, MS, PhD)

This group is seeking candidates with 3 - 7 years of industrial immunoassay development experience. Experience with automated systems, previous clinical laboratory experience and prior supervisory experience highly desired.

SYSTEMS INTEGRATION (BS, MS, PhD)

The development of our diagnostic equipment requires individuals skilled in the integration of immunoassays with hardware and software. We are seeking candidates with experience in assay development and instrumentation.

Sanofi Diagnostics Pasteur, Inc., located in a western suburb of Minneapolis, offers an excellent salary and benefits package including family paid medical insurance, a 401K plan and the opportunity for continued personal and professional growth. For confidential consideration, please forward resume to: **Sanofi Diagnostics Pasteur, Inc., Attention: Human Resources-5110, 1000 Lake Hazeltine Drive, Chaska, MN 55318, U.S.A.**



Equal Opportunity/Affirmative Action Employer

PENNSTATE



University Park
Campus

JEAN PHILLIPS SHIBLEY PROFESSOR OF BEHAVIORAL HEALTH

The interdisciplinary Program in Biobehavioral Health in the College of Health and Human Development invites nominations and applications for the Jean Phillips Shibley Professorship in Biobehavioral Health. Candidates should have distinguished records of scholarly achievements in an area related to behavior, biology and health and should be strongly oriented toward collaborative activities. Advanced degrees should be from an appropriate discipline within the behavioral, biological, medical or social sciences. Review of applications will begin July 15, 1994 and continue until the position is filled. Send letter of application, curriculum vitae, and three letters of reference to:

**Search Committee, Shibley Professorship
in Biobehavioral Health
210-SM East Health and
Human Development Building
Penn State University
University Park, PA 16802**

An Affirmative Action/Equal Opportunity Employer.
Women and Minorities Encouraged to Apply.



THE SIGMA-TAU FOUNDATION ALZHEIMER JOURNALISM FELLOWSHIP 1994 WINNERS

Science & Trade Press

- 1st Place: "Encircling a Mechanism in Alzheimer's Disease"
The Journal of NIH Research
Celia Hooper, Staff Writer
- 2nd Place: "A Molecular Whodunit: New Twists in the Alzheimer's Mystery"
Science News
Elizabeth Pennisi, Editor, Life Sciences & Biomedicine
- 3rd Place: "The Alzheimer Gene War"
MD Magazine
Daniel Pollen, Professor of Neurology & Physiology, University of Massachusetts Medical School

Consumer Press

- 1st Place: "A New Picture of Alzheimer's", "Moments of Truth",
"Caregivers Need Time to Find Themselves"
The Boston Globe
Judy Foreman, Medical Writer
- 2nd Place: "Research Team Links Gene To Alzheimer's", "Tribute to Wife is Best Donation"
News & Record (Greensboro, NC)
Justin Catanoso, Staff Writer
- 3rd Place: "Love's Loneliest Test"
The Boston Globe
Jack Thomas, Feature Writer

Broadcast (TV/Radio)

- 1st Place: "Giving Care, Taking Care"
KCET (Los Angeles, CA)
Gilbert DeGloria, Production Associate
- 2nd Place: "The Family History of Alzheimer's Disease"
New England Cable News (Newton, MA)
Cara Birritieri, Health and Science Reporter
- 3rd Place: "Father's Daze"
MTV (Baltimore, MD)
Mark Pellington, Film Director
- Honorable Mention: "Losing A Lifetime"
WTVT (Tampa, FL)
Steve Geiger

DEAN, COLLEGE OF TROPICAL AGRICULTURE & HUMAN RESOURCES UNIVERSITY OF HAWAII AT MANOA

The University of Hawaii at Manoa (UHM) invites applications and nominations for the position of Dean of the College of Tropical Agriculture and Human Resources (CTAHR). Dynamic leadership that recognizes innovative training in undergraduate and graduate programs, promotes research necessary to diversify and sustain Hawaii's agricultural industry, enhances consumer education, and contributes to an expanded economy are expected. Founded in 1907, UHM is Hawaii's land-grant institution that has a student population of over 20,000 and 3,000 faculty and staff.

The College: Established at the founding of the University CTAHR offers the full range of undergraduate and graduate degrees (10 baccalaureate, 10 master's and 6 Ph.D. programs) in 11 departments: Agricultural and Resource Economics, Agronomy and Soil Science, Animal Sciences, Biosystems Engineering, Entomology, Environmental Biochemistry, Food Science and Human Nutrition, Horticulture, Human Resources, Plant Molecular Physiology, and Plant Pathology. The research and extension missions of the College are centered in the Hawaii Institute of Tropical Agriculture and Human Resources (HITAHR), which oversees the Cooperative Extension Service as well as a network of Hawaii Agricultural Experiment Stations. The College has a challenging leadership role in transforming Hawaii's agriculture and communities as the dominance of sugar and pineapple fades.

Duties: The CTAHR dean reports directly to Manoa's Senior Vice President and Executive Vice Chancellor and to the Senior Vice President for Research and Graduate Education and serves as the chief academic administrative officer of the College; oversees a budget in excess of \$20 million, extramural funds averaging close to \$12 million per annum, approximately 250 FTE instructional and research faculty, specialists, and extension agents in four counties covering six islands, and over 550 undergraduate and graduate students; serves on the Governor's Agricultural Coordinating Committee; encourages synergism among units in the College and with other Campus colleges, institutes, and departments; and collaborates with the UH-Hilo College of Agriculture.

Salary: Commensurate with qualifications.

Starting Date: January 1, 1995 or as soon thereafter as possible.

Qualifications Requirements and Applications Information: A complete job description is available by calling Dr. Madeleine Goodman, Assistant Vice President for Academic Affairs, at (808) 956-8447. Although applications will continue to be considered until the position is filled, screening will commence on **June 15, 1994**. Applications should include a curriculum vitae, a statement addressing specific minimum and desirable qualifications, and the names, addresses, telephone and facsimile numbers of three references and addressed to: Dean Chuck Gee, Chair, CTAHR Dean Search Committee, Office of the Senior Vice President and Executive Vice Chancellor, University of Hawaii at Manoa, 2444 Dole Street, Bachman Hall 105, Honolulu, HI 96822.

The University of Hawaii is an Affirmative Action, Equal Employment Opportunity Employer. Women and minority candidates are encouraged to apply.

*It's always more
than just a meeting!*

1st International Conference on Antibiotic Resistance: Impact on Discovery

September 10 - 13, 1994

Englewood, Colorado

Among the featured speakers are: D. Shlaes,
G. Miller, J. Davies and S. Levy

Topics include: β -lactams, Glycopeptides,
Aminoglycosides, Chloramphenicol/
Tetracyclines/Macrolides and Quinolones.

SIM Annual Meeting

July 31 - August 5, 1994

Boston, Massachusetts

For more information on these meetings contact:
Society for Industrial Microbiology, P.O. Box 329,
Annandale, VA 22003. Tel: (703) 941-5373,
Fax: (703) 941-8790

Radiation Oncology/ Cancer Biology Program

The Cleveland Clinic Cancer Center, in collaboration with the Research Institute, is recruiting an individual for a junior faculty position in basic molecular radiobiology research. Applicants should demonstrate a strong background in molecular biology techniques and some familiarity with the cellular effects of ionizing radiation. In particular, radiation-inducible DNA repair mechanisms, cell cycle effects, p53 and oncogene activation, and apoptosis would be appropriate areas for potential investigation. Start-up resources and a joint appointment in the Department of Cancer Biology will be available.

The Department of Radiation Oncology, one of the busiest clinical radiotherapy services in the country, currently includes 9 staff members, several of whom have active research programs. The clinical research efforts in biomedical technology and correlative tumor biology are expanding rapidly.

The Department of Cancer Biology consists of 12 scientists with active programs in molecular, genetic and cellular approaches to cancer. It is one of 8 departments in the Research Institute of the Cleveland Clinic Foundation committed to basic and applied biomedical research.

Please forward a CV and 2 letters of reference to: Roger M. Macklis, MD, Chairman, Department of Radiation Oncology/ T18, Cleveland Clinic Foundation, 9500 Euclid Avenue, Cleveland, Ohio 44195, Fax: 216-445-7595. An equal opportunity employer m/f/d/v. Smoke-free environment.

THE CLEVELAND CLINIC
FOUNDATION

THE U.S. DEPARTMENT OF THE INTERIOR NATIONAL BIOLOGICAL SURVEY SEVEN SENIOR EXECUTIVE SERVICE POSITIONS

The National Biological Survey (NBS) is a newly established bureau at the Department of the Interior where challenging opportunities exist as the bureau begins to fill seven executive positions. The NBS, being new, offers qualified candidates an opportunity to create a leadership climate for innovative scientific ecosystem exploration. Candidates should possess research and managerial experience in the physical or biological sciences.

The National Biological Survey brings together research and development activities from several Interior bureaus into one organization. The mission of the NBS is to provide leadership in gathering, analyzing and disseminating biological information in support of sound management of the Nation's natural resources. This will be approached primarily through basic and applied biological research, inventory and monitoring activities, assessment of species viability, and sharing of information and technology services.

Candidates who are selected for the positions listed below will become vital components in this new and exciting operation within the Department of the Interior.

Positions

Assistant Director for Research
Assistant Director for Inventory and Monitoring
Assistant Director for Information and
Technology Services
Regional Director (4 positions)

(NOTE: All initial assignments in Washington, D.C. Regional Directors will relocate to regional offices in 3 to 6 months).

Requirements: Candidates will have advanced academic and professional experience in the physical or biological sciences as well as exceptional managerial achievements in the field. U.S. citizenship is required.

Application Information: Application materials and copies of specific announcements may be obtained by calling (202) 208-4562, via FAX (202) 219-2071, or by writing or visiting the National Biological Survey, 1849 C Street, N.W., Room 3625-MIB, Washington, D.C. 20240.

The National Biological Survey is an Equal Opportunity Employer.



American Institute for Medical and Biological Engineering Executive Director

The American Institute for Medical and Biological Engineering (AIMBE) is a national organization devoted to enhancing the field of biological and medical engineering by providing a unifying link between its constituency and members of government and professional groups. AIMBE's membership includes a College of Fellows, 12 professional societies, and nearly 50 academic institutions.

AIMBE is establishing a Washington, D.C. office and is searching for an Executive Director. The Executive Director reports to the Board of Directors of AIMBE.

Principal Responsibilities of the Executive Director:

1. To articulate the role of biological and medical engineering in issues of national significance.
2. To assist in the development of public policy concerning biological and medical technologies and their impact on health care.
3. To provide a stable interface between AIMBE and government agencies, professional groups, industry, Congress and the media.
4. To promote public awareness of biological and medical engineering.
5. To assist the Board in the development of AIMBE as an organization through:
 - a. Strategic and business plan development, implementation and evaluation
 - b. Support of the Board, Commissions, Councils and Committees in fulfilling their roles
 - c. Regular communication with the membership
 - d. Establishing and managing the AIMBE office
 - e. Fundraising

Desirable Qualifications and Experience:

1. Doctorate degree in a pertinent field such as engineering, medicine, technology assessment, etc.
2. At least five years experience in the biomedical engineering, biotechnology, medical devices or health care technology assessment field.
3. Experience with public policy development and dissemination.
4. Outstanding verbal and interpersonal skills.

If qualified and interested, please send resumes to:

Professor R.M. Nerem
Chair, AIMBE Search Committee
School of Mechanical Engineering
Georgia Institute of Technology
Atlanta, GA 30332-0405

Review of applicants will begin June 10, 1994 and continue until position is filled.

AIMBE is an Equal Opportunity Employer



POSITION ANNOUNCEMENT DEAN OF COLLEGE OF ARTS AND SCIENCES SOUTHERN ILLINOIS UNIVERSITY AT EDWARDSVILLE

Southern Illinois University at Edwardsville invites nominations and applications for the newly created position of Dean of the College of Arts and Sciences. The first task will be to unify four previously independent Schools (Sciences, Social Sciences, Humanities and Fine Arts and Communications) and several other units into an academically integrated and effectively managed unit. The Dean will participate in the formulation of the budget, development of the staff, and initiation of policies and procedures governing the operation of the new College.

Southern Illinois University at Edwardsville, a comprehensive institution whose primary mission is undergraduate education, offers master's degree programs that serve regional needs and reflect institutional strengths. The campus is located on 2,600 acres of gently rolling hills, approximately twenty minutes from the cultural centers of downtown St. Louis. The University enrolls approximately 11,000 students, including 2,400 graduate students.

RESPONSIBILITIES: As chief academic and administrative officer of the College, the Dean will report to the Provost and Vice President for Academic Affairs. The Dean will be responsible for the administration of twenty-one departments as well as the general education program, academic advising, and academic development, and must provide leadership for approximately 230 full-time faculty and 150 staff.

QUALIFICATIONS:

- earned doctorate or terminal degree, and a recent record of teaching and scholarly accomplishment commensurate with a tenured appointment in a department of the college
- commitment to quality in general education and undergraduate and graduate education in the liberal arts and sciences
- administrative experience at the level of department chair or above
- demonstrated leadership in organization and fiscal management, including developing, directing, and evaluating
- ability to delegate authority and responsibility
- commitment to equal employment opportunity and to the value of intellectual and cultural diversity
- leadership style that emphasizes openness, consultation, and shared governance
- dedication to seeking a balance between scholarship of teaching and research and creative activities as criteria for distribution of rewards and benefits
- experience in securing external funds

APPLICATIONS: Review of applications will begin on May 30 and will continue until the position is filled. The position will be available on or after January 1, 1995. Candidates should submit a letter of application; description of accomplishments as well as a statement of educational and administrative philosophy; a current vitae; three letters of recommendation addressing the qualifications above; and the names, addresses, and phone numbers of three additional references. These materials should be sent to:

Professor Donald Elliott, Chair
College of Arts and Sciences Dean Search Advisory Committee
Southern Illinois University at Edwardsville
Edwardsville, IL 62026-1010

SALARY: Commensurate with qualifications and experience.
Southern Illinois University at Edwardsville is an equal opportunity, affirmative action employer.

POSITIONS OPEN

CLINICIAN INVESTIGATOR IN CARDIOVASCULAR DISEASES. Excellent facilities, financial support, and a highly interactive research environment are available to an M.D. or M.D./Ph.D. clinician investigator in cardiovascular disease. Areas of special interest include (but are not limited to) myocardial and vascular energetics and receptors, endothelial function, gene transfer in vascular disease of humans, congestive heart failure, and genetics of human cardiomyopathy. Appointment as a Clinician Investigator in Cardiovascular Diseases will involve at least 50% commitment to research. Academic rank will be appropriate to experience; preference will be given to individuals with demonstrated potential for extramural funding. *Foreign citizens should have permanent residency status in the United States and be eligible for medical licensure.* Send curriculum vitae, bibliography, and three letters of reference by June 15, 1994, to: **Dr. Stephen Brimjoin, Department of Pharmacology, Mayo Clinic/Mayo Medical School, Rochester, MN 55905.** Mayo Foundation is an Affirmative Action and Equal Opportunity Educator and Employer.

RESEARCH TECHNOLOGIST I MOLECULAR ONCOLOGY/ GYNECOLOGIC ONCOLOGY

Immediate opening for a Research Technologist I in the Molecular Oncology Laboratory at the University of Nebraska Medical Center. Potential candidates must have B.S. or M.S. degree in biology/biochemistry or chemistry, and have practical knowledge of protein electrophoresis and Western blotting. Experience with monoclonal antibody labeling with radioactive ligands, cancer cell fractionation, cell culture, and tumor growth in nude mice is highly desirable. Salary negotiable, depending on qualifications. Interested candidates should send curriculum vitae with letters of reference to: **Dr. Ewa Rakowicz-Szulczynska, Department of Obstetrics and Gynecology, UNIVERSITY of NEBRASKA MEDICAL CENTER, 600 South 42nd Street, Omaha, NE 68198-3255; or FAX: (402) 559-8112.** Affirmative Action/Equal Opportunity Employer.

REPRODUCTIVE ENDOCRINOLOGIST

The Department of Ob/Gyn, University of Kansas School of Medicine-Wichita, invites applicants for a research position in the Women's Research Institute to begin immediately. The primary appointment will be in the Department of Obstetrics/Gynecology. Qualified candidates must hold a Ph.D. or M.D., have at least two to three years of postdoctoral training, and be capable of establishing an independent research program in some area of male or female reproductive endocrinology. The successful candidate will have the unique opportunity to join a group of clinical and basic scientists whose research interests include *in vitro* fertilization, implantation, ovarian physiology, maternal/fetal well-being, biochemical and molecular endocrinology. Academic rank and salary are negotiable. Applicants should submit curriculum vitae, statement of current and future research interests, and names of three references by June 15, 1994, to: **Dr. Brooks A. Keel, Ph.D., President and CEO, The Women's Research Institute, University of Kansas School of Medicine-Wichita, 2903 East Central, Wichita, KS 67214.** An Equal Opportunity/Affirmative Action Employer. Applications are sought from all qualified people regardless of race, religion, color, sex, disability, veteran status, national origin, age, or ancestry.

CAREER SCIENTIST IN CARDIOVASCULAR DISEASES. Excellent facilities, financial support, and a highly interactive research environment are available to a basic investigator in molecular cardiology or vascular biology. Areas of special interest include (but are not limited to) molecular biology or myocardial growth, ion channel regulation in heart and blood vessels, and genetics, gene transfer and transgenic models of cardiovascular disease. Appointment as a Career Scientist in Cardiovascular Diseases will carry academic rank appropriate to experience; established investigators and promising young scientists with demonstrated potential for extramural funding will be considered. *Foreign citizens should have permanent residency status in the United States.* Send curriculum vitae, bibliography, and three letters of reference by June 15, 1994, to: **Dr. Stephen Brimjoin, Department of Pharmacology, Mayo Clinic/Mayo Medical School, Rochester, MN 55905.** Mayo Foundation is an Affirmative Action and Equal Opportunity Educator and Employer.

POSITIONS OPEN

SENIOR RESEARCH SCIENTIST

The Department of Emergency Medicine, Carolinas Medical Center, is seeking to fill a position with a senior-level research scientist with a primary interest in cardiovascular physiology, pharmacology, or toxicology. Candidates must have a Ph.D., M.D., or both and have a distinguished record of publications and extramural funding. The candidate will be responsible for conducting an active research program and training postdoctoral fellows, residents, and medical students. Applicants should submit curriculum vitae and names, addresses and telephone numbers of three references to: **Marsha Ford, M.D., Division of Medical Toxicology or Richard Raymond, Ph.D., Division of Research, Department of Emergency Medicine, Carolinas Medical Center, P.O. Box 32861, Charlotte, NC 28232-2861; Telephone: 704/355-3181.**

VETERINARY PATHOLOGIST: The Oregon Regional Primate Research Center (ORPRC) has a core staff position for a Veterinary Pathologist at the ASSISTANT or ASSOCIATE SCIENTIST level. Candidates must hold a D.V.M. or equivalent degree, be certified or eligible for certification by the American College of Veterinary Pathologists, and have experience with the pathology of nonhuman primates and other laboratory animals. Duties include responsibility for diagnostic pathology service, supervision of pathology and histology laboratories, interaction with the Center's research staff on matters pertaining to pathology, and participation in the Center's research mission. The development of an independent research program or participation in collaborative research is highly desirable. The research activities of the Center include: infectious diseases, neuroscience, and reproductive biology. Joint academic opportunities are available at the nearby Oregon Health Sciences University. Appointment level and salary are commensurate with qualifications. For consideration for this position, please submit a résumé, letter of interest, and the names of three references to: **Dr. Don P. Wolf, Chairman, Veterinary Pathologist Search Committee, Oregon Regional Primate Research Center, 505 NW 185th Avenue, Beaverton, OR 97006.** Applications will be accepted through July 15, 1994, or until a suitable candidate is identified. *The ORPRC is an Equal Opportunity/Affirmative Action Employer.*

MARKETPLACE



**Custom DNA \$4.00/Base
No Set Up Charge
Cartridge Purified
300ug Guaranteed
Two Day Turnaround**

Ask your Fisher Rep or call (800) 766-7000



FisherBiotech

Fisher Scientific

Circle No. 34 on Readers' Service Card

Custom PEPTIDES

• NO SETUP CHARGE • Free HPLC Tracing

\$20.00 • 15-40 mgs
/res • 8-20 residues

• desalted • Shipped in 5 days

Conjugation/Antiserum production services, & more

BIO-SYNTHESIS

1-800-227-0627 Fax: 214-420-0442

Circle No. 15 on Readers' Service Card

MARKETPLACE

CUVETTES PLUS™

Low Cost, Disposable
Electroporation Cuvettes
Each individual sterile package includes
a pipette for easy sample handling



1-800-289-2465
FAX 619-597-9594

Circle No. 16 on Readers' Service Card

HUMAN ENDOTHELIAL CELLS VENOUS, ARTERIAL, and MICROVASCULAR SYSTEMS

True pools of >50 donors, frozen @ <6 CPD *in vitro*,
>500,000 cells, complete CS growth medium system
characterized and tested for cytokine-stimulated leuko-
cyte adherence, negative for HIV-1 DNA by PCR



800-697-1211

Circle No. 21 on Readers' Service Card

KEYSTONE Laboratories, Inc.

The Complete
Oligonucleotide
Company

MAY SPECIAL!

Oligos: \$1.75 per base

No set-up fee; shipped in 24 hrs.

Tel. 1-800-788-4DNA • Fax 1-800-786-4DNA

Circle No. 5 on Readers' Service Card

KEYSTONE Laboratories, Inc.

The Complete
Oligonucleotide
Company

**PURIFIED DNA OLIGOS FOR
ANTISENSE: 100mg \$1,600**

Phosphothioates, methylphosphonates, and most other
common analogues also available. Call for pricing.

Tel. 1-800-788-4DNA • Fax 1-800-786-4DNA

Circle No. 22 on Readers' Service Card

ABS Bioreagents™

Custom Receptor Binding,
Enzyme, and RNA Preparations
Fast, Cost-Effective Service
Analytical Biological Services Inc.
(800) 391-2391

Circle No. 30 on Readers' Service Card

Activated For Protein Modification

PEGs

Shearwater Polymers, Inc.

(800) 457-1806
(205) 533-4805 (fax)

Circle No. 8 on Readers' Service Card

Custom DNA
Purified and Delivered in 48 hours

**\$5.00 per base • Purified
Guaranteed minimum 100 µg DNA**

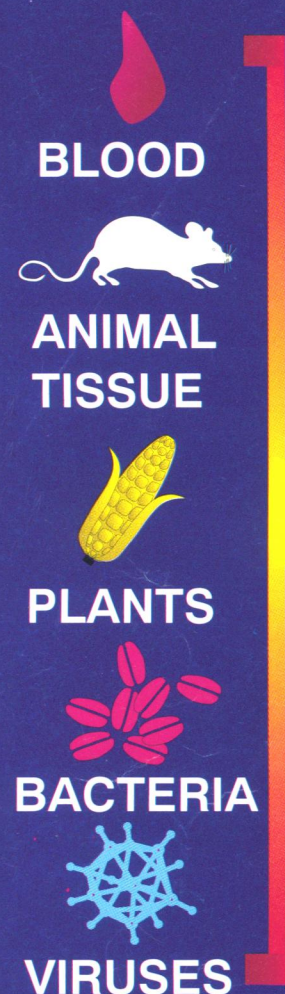
Research Genetics
1-800-533-4363

Circle No. 4 on Readers' Service Card

GENERELEASER

PCR* READY DNA IN 5 MINUTES

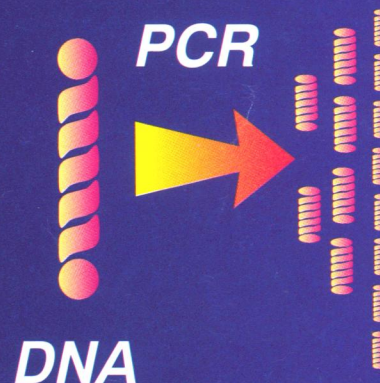
1993
R&D
100
WINNER



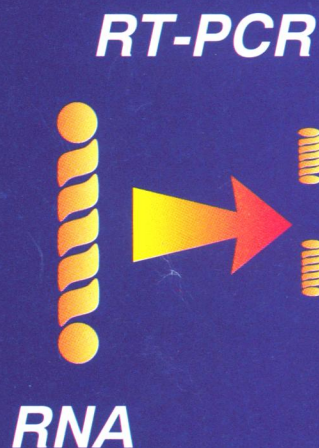
**SAMPLE
TYPES**



- * FIVE MINUTE PROTOCOL
- * MULTIPLE ASSAYS
- * KITS NOW AVAILABLE



DNA



RNA

IN ADDITION TO THE STOCK GENERELEASER REAGENT, KITS FOR DNA AND RNA PREPARATION FROM MOUSE TAILS, WHOLE TISSUES, YEASTS, PLANTS, AND PARAFFIN EMBEDDED TISSUES ARE AVAILABLE COMPLETE WITH PROTOCOLS, MICROWAVE RACK, DISPOSABLE PESTLES AND TUBES FOR 50 ASSAYS.

**CALL NOW FOR ONE OF THE MOST COST EFFECTIVE,
INNOVATIVE SAMPLE PREPS AVAILABLE**

BioVentures, Inc.

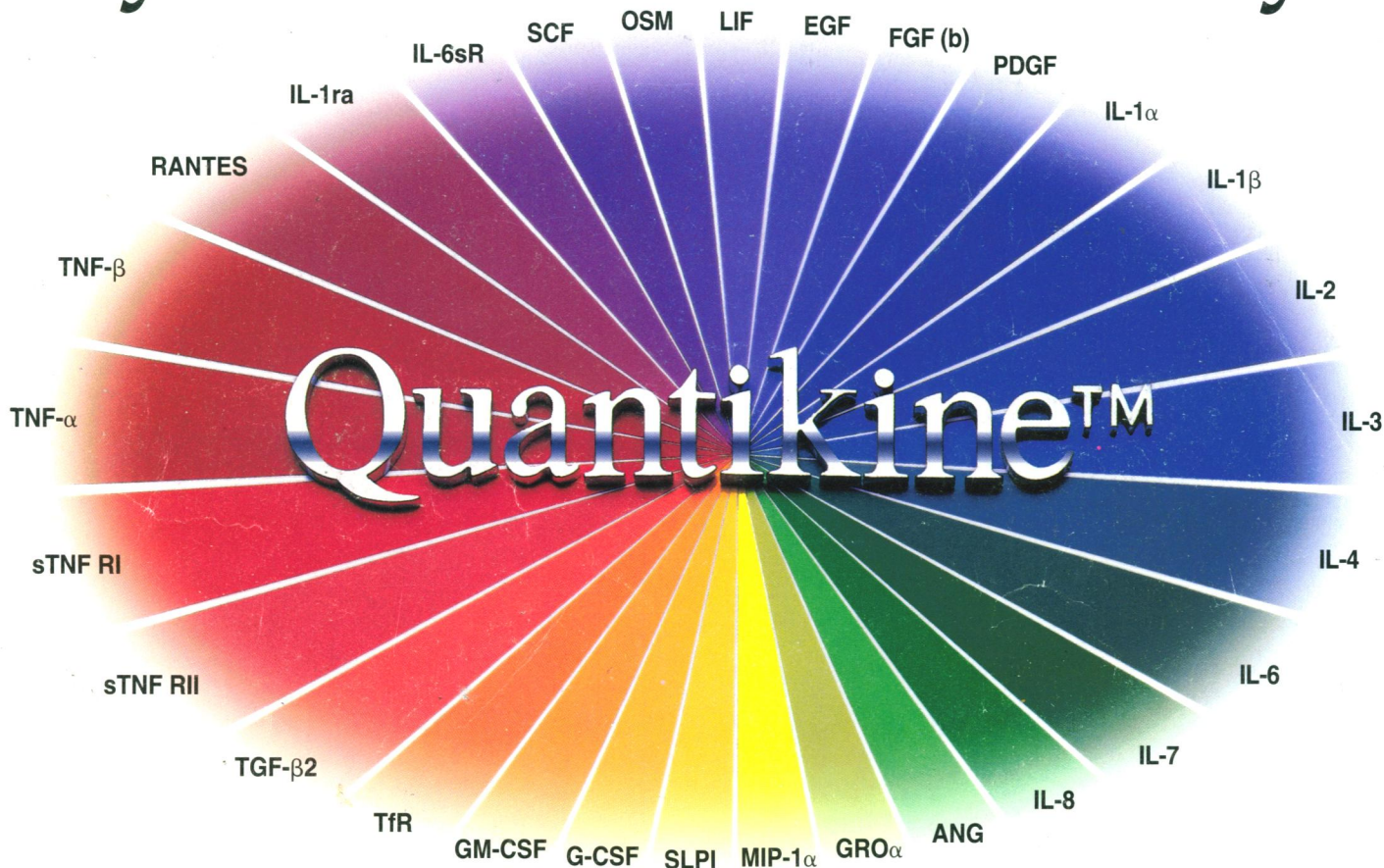
Phone 800-235-8938 FAX 615-896-4837

AUSTRALIA: Integrated Sciences Pty. Ltd. (02) 436-2611 AUSTRIA: Vienna Lab (1) 740-40-190 BELGIUM: Eurogentec (41) 66 01 50 CANADA: General Synthesis & Diagnostics (416) 978-8805 & Kara-Tech (604) 264-8844
CHINA: Jingmei Biotech 364-273 & T.W.C. BioSearch International (852) 699-6208 CZECH REPUBLIC: BioVendor sro (49) 69-6772127 FRANCE: ATGC Biotechnologie (1) 43 04 21 00 & Eurogentec (41) 66 01 50
GERMANY: Angewandte Gentechnologie Systeme mbH (6221) 831023 & Eurogentec (41) 66 01 50 & Syrinx-Vertriebsgesellschaft mbH (69) 359686 or (6221) 161720 ISRAEL: Talron (8) 472563 ITALY: Polymed srl (55) 8071285
JAPAN: Funakoshi (3) 5684-1622 KUWAIT: Boushahri Meditech 5729000 THE NETHERLANDS: Eurogentec (41) 66 01 50 NEW ZEALAND: Integrated Sciences Pty. Ltd. (02) 436-2611
SOUTH AFRICA: Whitehead Scientific (21) 981-1560 SPAIN: Bio-Synthesis (1) 352-63-99 & C.E. Durviz sl (6) 347-6409 TAIWAN: Pro-Tech (2) 3810844 UNITED KINGDOM: Cambio 223-66500

PCR IS COVERED BY PATENTS OWNED BY HOFFMANN-LA ROCHE

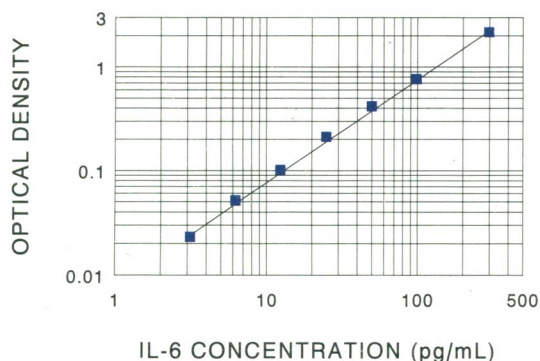
Circle No. 7 on Readers' Service Card

Cytokine Immunoassays



Sensitive...Precise...Accurate.

Standard curve for IL-6 in serum diluent using the 2 hour shaker option.



Cytokines exert their effects at extremely low concentrations in the presence of many other bioactive proteins. Quantikine immunoassays provide precise determination of cytokines in very complex biological samples.

- Sensitivity in the picogram range
- Tested for cross reactivity with all available cytokines
- Assay time - 2.0 - 4.5 hours
- Precoated 96 well strip plates
- Prediluted HRPO-conjugated second antibody
- Diluents for Serum/Plasma and Cell Culture Media
- Low inter-and intra-assay CV's

To obtain a catalog, detailed product information or to place an order:

In North America Contact:

R&D Systems
614 McKinley Place N.E.
Minneapolis, MN 55413
Telephone: 800-343-7475
Fax: (612) 379-6580

Freephone:

Belgium: 078 11 04 68
Denmark: 80 01 85 92

In Europe Contact:

R&D Systems Europe
4-10 The Quadrant, Barton Lane
Abingdon, Oxon OX14 3YS
Telephone: +44 (0235) 531074
Fax: +44 (0235) 533420

France: 05 90 72 49
Netherlands: 060 225 607

In Japan Contact:

Funakoshi Co., Ltd.
9-7, Hongo 2-Chome
Bunkyo-ku, Tokyo 113
Telephone: +81 (03) 56841622
Fax: +81 (03) 56841633

Norway: 800 11 033
Sweden: 020 79 31 49

R&D
SYSTEMS

1-800-343-7475

Circle No. 20 on Readers' Service Card