

Elephant Man's Disease

In a recent Research News item by Rachel Nowak ("Talkin' trash: A glossary of junk DNA," 4 Feb., p. 609), reference is made to short interspersed elements of DNA sequences causing disease by disruption of functional genes. Neurofibromatosis (NF) type 1 (1) is cited as an example and is given the misnomer "elephant man's disease." Since M. M. Cohen's 1988 paper (2) appeared, it has been widely accepted that Joseph Merrick (the "elephant man") actually suffered from Proteus syndrome, not from neurofibromatosis.

Margaret R. Wallace
Department of Pediatrics,
Division of Genetics,
University of Florida College of Medicine,
Gainesville, FL 32610-0296, USA

References

1. M. R. Wallace *et al.*, *Nature* **353**, 864 (1991).
2. M. M. Cohen, *Am. J. Med. Genet.* **29**, 777 (1988).

Response: Wallace is correct that, since 1988, it has been accepted that Merrick most likely suffered from Proteus syndrome and not from neurofibromatosis, as was first diagnosed in 1909. However, according to Richard Lewis, an expert on neurofibromatosis at Baylor College of Medicine, "many NF clinics and NF support groups still use the term 'elephant's man disease' in recognition of its historic usage."

—**Rachel Nowak**

Phonetics Lesson

While I was amused by the description of me [as having an Irish brogue] in the article by Robert Crease (*News & Comment*, 4 Mar., p. 1214), I'm afraid that the author is no Henry Higgins. I do not hail from the Emerald Isle. Immigrants to the United States from my place of origin in England are not so uncommon; Joseph Priestley and David Hockney are two other examples.

Ian Hinchliffe
Lawrence Berkeley Laboratory,
1 Cyclotron Road,
Berkeley, CA 94720, USA

Corrections and Clarifications

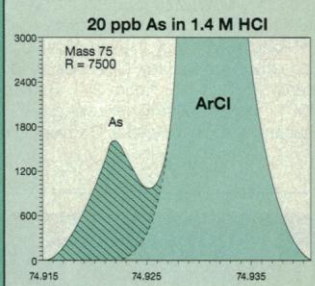
On the page of illustrations accompanying the review of Ann Shelby Blum's *Picturing Nature* (10 Dec., p. 1753), the caption for the illustration from Thomas Say's *American Conchology* (lower left) erroneously included the names of species not represented in the plate reproduced; all four specimens shown represent *Paludina decisa*.



ICP-MS is the most powerful technique known in multi-element trace analysis. Almost complete atomization and ionisation in the plasma ion source is achieved by excitation temperatures in excess of 5000 K. The atmospheric pressure source allows simple introduction of samples and easy on-line coupling to sample preparation devices.

However, spectral interferences limit this method. Collisions and reactions in the interface region create cluster ions. Low resolution quadrupole analyzers cannot separate these interferences from the analyte. As a result, detection limits for a group of elements are abnormally high.

With low resolution analyzer elements such as As and Fe suffer from interferences. For example, a mass resolving power of 7,500 is needed to distinguish the mono isotopic As from an intense AsCl interference. Data from the **ELEMENT** high performance ICP-MS.



Combining an ICP source with a high resolution magnetic sector mass analyzer is the solution. However, the hybrid approach has disadvantages of high price and complexity. In addition, such analyzer require an ion source at high potential.

The **ELEMENT** was designed from first principles to avoid the drawbacks of such a hybrid system.

A novel plasma sampling interface on ground potential is combined with an innovative approach to mass analyzer design. The result is a cost-effective compact high performance ICP-MS.

The **ELEMENT** is equally suited to solving analytical problems in routine and research applications.

These mass analyzers are well established for the structural analysis of organic compounds.



Germany: (+49)421/5493-0, Fax 5493-396
U.K.: (+44)1442/233555, Fax 233556
USA: (+1)408/433-4800, Fax 433 4823
Japan: (+81)3/372 3001, Fax 3372 7051

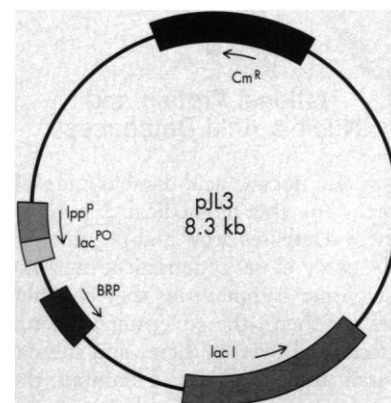
The **OPINION** column features technical tips & preliminary information relating to instruments designed & built at Finnigan MAT GmbH, Bremen, Germany.



Mo Bi Tec
MOLECULAR BIOLOGISCHE TECHNOLOGIE

BRP-vectors

for controlled protein release
into cell culture medium



The BRP vectors harbor the gene coding for the Bacterial Release Protein (BRP) which makes the inner and outer membrane of *E. coli* permeable. BRP induction with either IPTG (pJL3) or mitomycin C (pSW1) results in the release of cellular proteins into the cell culture medium.

Advantages:

- inducible expression of BRP
- adjustable permeabilization of the *E. coli* membranes
- controlled protein secretion
- protein release into the cell culture medium from intact cells
- complete system with description and protocols.

Mo Bi Tec

Wagenstieg 5, D-37077 Göttingen, FRG

Tel: +49 551 371 062; Fax: +49 551 34 987

USA: USB Tel: 800-321-9322; 216-765-5000

Japan: Funakoshi Tel: 03-5684-1620, Fax: 03-5684-1620

Circle No. 11 on Readers' Service Card