

be allowed to pass without comment. Rather, the facts indicate the reverse. Recent results have demonstrated that the Earth is an asteroid-pelted planet (1), that evolution is a chaotic process (2), that impacts drive at least the major branch points of the evolutionary tree (3), and that their decrease through geologic time has allowed life to develop (4) and now presents a significant, potentially avoidable, hazard to civilization (5) with a statistically insurable risk estimated at several hundred million dollars per year. Applied astronomy (6) has a promising future—provided the comet or asteroid does not get us first. Whatever the merits of high-energy astronomy (and there are many), modern astronomy also addresses a wide range of issues that are clearly fundamental and of great value to society; the debate is not advanced by the propagation of myths or the collective burial of heads in the sand.

Mark E. Bailey
School of Computing and
Mathematical Sciences,
Liverpool John Moores University,
Liverpool L3 3AF, United Kingdom

References

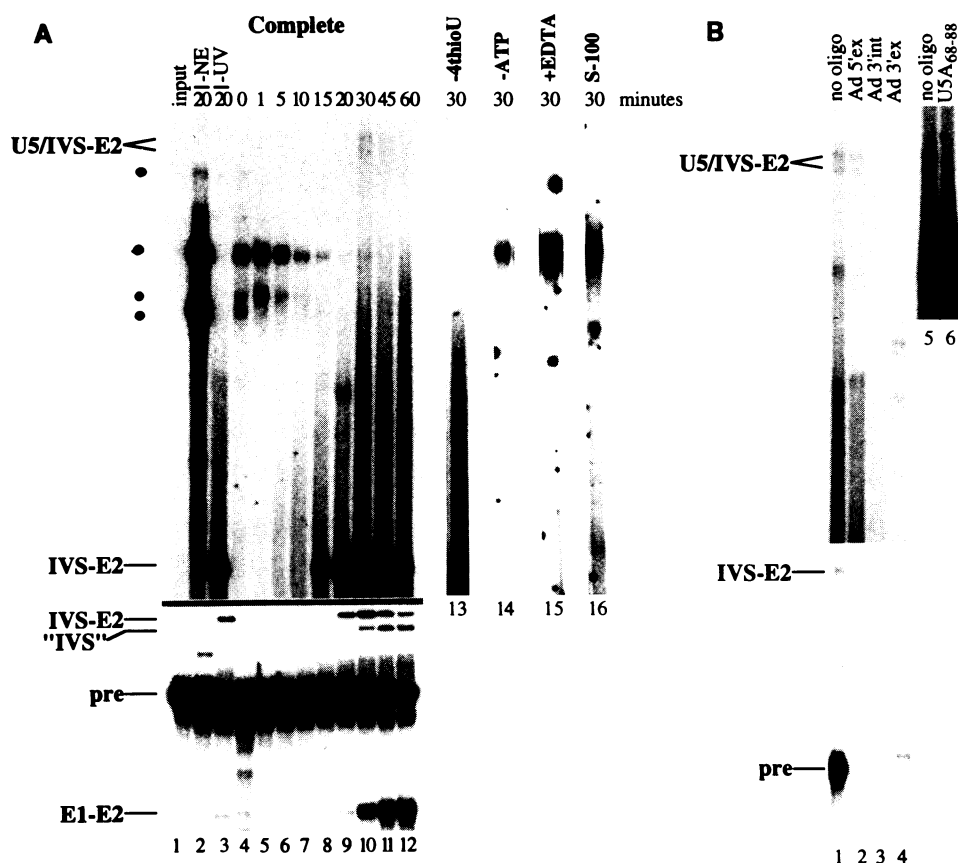
1. D. I. Steel, *Nature* **354**, 265 (1991); B. G. Marsden, *Sky Telesc.* **83**, 4 (January 1992).
2. S. J. Gould, *Wonderful Life* (Penguin, London, 1991), chap. 5.
3. A. R. Hildebrand and W. V. Boynton, *Nat. Hist.* (June 1991), p. 47; R. A. F. Grieve, *Vistas Astron.* **36**, 203 (1993).
4. N. H. Sleep, K. J. Zahnle, J. M. Kasting, H. J. Morowitz, *Nature* **342**, 139 (1989).
5. D. Morrison, "The Spaceguard Survey: Report of the NASA Near-Earth-Object Detection Workshop" (National Aeronautics and Space Administration, Washington, DC, 1992); G. H. Canavan, J. C. Solem, J. D. G. Rather, "Proceedings of the Near-Earth-Object Interception Workshop (LA-12476-C, Los Alamos National Laboratory, Los Alamos, NM, 1992).
6. M. E. Bailey, *Phys. World* **6**, 22 (February 1993).

Corrections and Clarifications

The title of the Report by S. Kandels-Lewis and B. Séraphin on page 2035 of the 24 December issue should have been "Involvement of U6 snRNA in 5' splice site selection."

The map accompanying the Perspective "The deadly Latur earthquake" by H. K. Gupta (10 Dec., p. 1666) incorrectly designated a portion of eastern India as "Myanmar."

In the Research Article "The U5 and U6 small nuclear RNAs as active site components of the spliceosome" by E. J. Sontheimer and J. A. Steitz (24 Dec., p. 1989), figures 4A and 4B (p. 1992) were printed incorrectly. The correct figure is shown below.



MILLIPORE
ELECTROPHORESIS

A gel that resists cracking...

Tired of your protein slab gels breaking or cracking? Try Duracryl™ acrylamide from Millipore. Its high tensile strength is double that of conventional gels, so it won't crack, break or tear – even in large format thin gels.¹

Silver-stained Duracryl gels produce monochromatic grey-black spots for superior laser scanner images – instead of the difficult to scan red-brown spots obtained with standard acrylamide gels.

For DNA sequencing, we also offer ultra high quality acrylamide stock solution (40%, 19:1 bis) with extremely low conductivity for excellent results with manual or automated sequencers.

Millipore acrylamides are made with high purity powders and Milli-Q® water, then further purified using chromatographic and membrane-based systems – techniques that Millipore knows a thing or two about.

...and a free offer that's hard to resist!

Don't just take our word for it. Try a free 100 mL bottle of Duracryl (30%, 0.8% bis) or acrylamide (40%, 19:1 bis). But call soon.

This offer expires March 31, 1994. Call 1-800-MILLIPORE or our fax on demand information retrieval system at 1-800-MILLIFX and request #1701.

MILLIPORE

Duracryl is a trademark of Millipore Corporation. Milli-Q is a registered trademark of Millipore Corporation

¹ *BioTechniques*, **12**(4), 580 (1992)

Circle No. 25 on Readers' Service Card