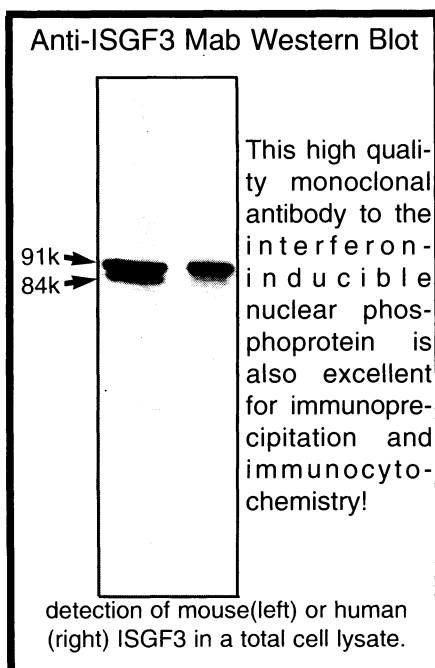


QUALITY ANTIBODIES  
FOR  
SIGNAL TRANSDUCTION  
RESEARCH

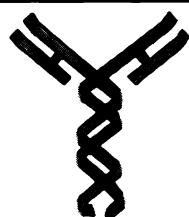
Monoclonal antibodies to:

- Map kinases (ERKs), Map ERK kinases (MEKs), and ERK kinase kinase (MEK kinase)
- SH2 containing proteins: GRB2, SHC, PI3 kinase, GAP, VAV, NCK, PLC $\gamma$ , ISGF3, PTP1C, PTP1D
- Receptor tyr. kinases: EGF, insulin, PDGF, FGF receptors
- Phosphotyrosine: monoclonal PY20, polyclonal, recombinant antibody RC20
- Many other signalling proteins

Don't compromise your research  
with inferior antibodies!



Affordably priced under \$200



**Transduction  
Laboratories**  
1-800-227-4063  
Lexington, Kentucky  
Tel: 606-277-1399  
Fax: 606-276-2251

In Europe, contact:  
Affiniti Research Products  
Tel: (44) 602-436100  
Fax: (44) 602-436300

In Japan, contact:  
Funakoshi Co., LTD.  
Tel: 81-3-5684-1622  
Fax: 81-3-5684-1633

Circle No. 43 on Readers' Service Card

ties as part of the Environment Research Project. The European Science Foundation initially launched the idea of this project and is still supporting a useful and stimulating coordination activity among European volcanologists.

**Franco Barberi**  
Chairman,  
European Volcanological Project,  
European Science Foundation, and  
Department of Earth Science,  
University of Pisa,  
Via S. Maria 53, 56100 Pisa, Italy

**Mesostructure Silicate Names**

In our 3 September report "Cooperative formation of inorganic-organic interfaces in the synthesis of silicate mesostructures" (A. Monnier *et al.*, p. 1299), we described (fourth from last paragraph and cover) a cubic ( $Ia\bar{3}d$ ) mesophase, originally synthesized by C. T. Kresge *et al.* and J. S. Beck *et al.* (references 1 and 2 in our report). The Mobil-designated name of this phase, MCM-48, and a detailed description of its synthesis and properties should be noted

[Kresge *et al.*, U.S. Patent 5,198,203 (1993)].

**Galen Stucky**  
Department of Chemistry,  
University of California,  
Santa Barbara, CA 93106

**Corrections and Clarifications**

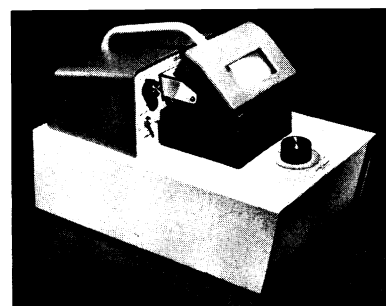
The cover caption in the issue of 17 September (p. 1499) did not make it sufficiently clear that the cover art was not multiple segments of a *Drosophila* embryo, but rather a single segment reiterated by computer for artistic purposes.

In Richard Stone's Research News article "Guam: Deadly disease dying out" (23 July, p. 424), it was incorrectly stated in column 3 on page 425 that "[t]he decline [in new cases of Guam ALS-PDC] has been occurring steadily over the last 40 years, from about 40 new cases . . . each year in the 1950s to fewer than five a year in the early 1990s." In the period from 1956 to 1964, the average number of new cases per year was 12.6; the incidence was about 40 per year.

In the 3 September Random Samples item "Processing the New Coke fiasco" (p. 1271), Daniel Levine's collaborator should have been listed as Samuel Leven of the Center for Brain Research at Radford University in Radford, Virginia.

# Beautiful? No. Reliable? You Bet.

VIBRATOME® gives you  
fresh tissue sectioning  
without freezing or embedding.  
Simple, precise adjustments cut fresh or  
fixed tissue evenly from 20 microns up.  
Now that's beautiful.



So, if you're more interested in how it works than how it looks, choose Vibratome.  
Function is beauty.



**TECHNICAL  
PRODUCTS  
INTERNATIONAL, INC.**

Neuroscience Booth 336

5918 EVERGREEN / ST. LOUIS, MISSOURI 63134 U.S.A.  
(314) 522-8671 (800) 729-4421 FAX (314) 522-6360

Circle No. 5 on Readers' Service Card