

LETTERS

not, their evaluations are used, almost verbatim, by government health regulators worldwide. A regulator ignoring an agent classified by the IARC as a "2A carcinogen" ("an agent probably causing cancer in the human") does so at his or her peril. Vainio *et al.* insist they are scientists merely making objective reviews and that "[r]eaders may . . . accept or reject them"; many a manufacturer only wishes this were the case. This advice may well apply to the casual reader who has the good fortune not to be a responsible government regulator.

It is my view that either these evaluations should be done according to the logical procedures of the toxicologist that take into account dose, route of exposure, and mechanisms of action or they should be objective evaluations of the scientific literature without arbitrary indices of potential hazard to humans. I would favor the latter approach and a return to the original format of the IARC monograph series.

Philippe Shubik

Green College at the Radcliffe Observatory,
Oxford OX2-6HG, United Kingdom

Excluded Gender?

Was it with a taste for irony that 1 week after reporting the resolution of a gender-bias lawsuit at the University of California, Berkeley, mathematics department (ScienceScope, 19 Mar., p. 1683), *Science* published a book review titled "Mathematical malaises" (26 Mar., p. 1928) restating the principle of the excluded middle?

A man of Seville is shaved by the Barber of Seville if and only if the man does not shave himself. Does the Barber shave himself?

The review says, "The statement can be neither true nor false. The conclusion: the barber cannot exist." Excluded middle or excluded gender? Clearly, the Barber is a woman!

David Arnosti

Department of Biology,
University of California, San Diego,
La Jolla, CA 92093-0322

Volcanology in Europe

Paolo Gasparini's Perspective "Research on volcanic hazards in Europe" (18 June, p. 1759) provides an excellent updated summary of recent achievements of European research in the field of volcanic hazard mitigation. One should note, however, that the "laboratory volcanoes" project, initiated in 1992, is entirely financed by the Commission For the European Communi-

IL-2R

T Cell Diagnostics takes soluble IL-2R testing to its Maximum!

T Cell Diagnostics, Inc. brings to you the most sophisticated IL-2R Test Kit available today. With unparalleled performance, the Cellfree® IL-2R EIA Test Kit is the one most used by researchers. And now it's better than ever.

For more information or to order, call:
(800) 624-4021 or
(617) 621-1410.
In Europe
(44) 0865-873489

performance

flexibility

responsiveness

convenience

sensitivity

Optional high sensitivity protocol

100 400 1600 3200 6400 U/mL

HELPING YOU EXPLORE THE IMMUNE RESPONSE

T Cell Diagnostics, 38 Sidney St., Cambridge, MA 02139

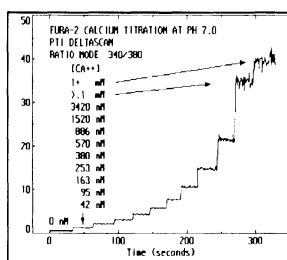
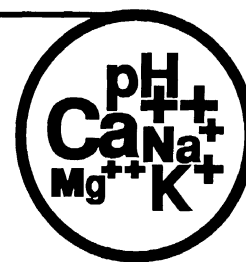
T Cell Diagnostics Europe 28 Crown Road, Wheatley, Oxford OX3 1UL, U.K.

T CELL DIAGNOSTICS

Research Use Only. Not for use in Diagnostic procedures. ^aU.S. Patent No. 4,707,443; ^bU.S. Patent No. 5,006,459; ^cPatents Pending. D.C. #453.0.

Circle No. 13 on Readers' Service Card

Three new systems for measuring intracellular ions!



UNDER \$20,000. A cuvette-based ratio fluorescence system for measuring ion concentrations in living cells using excitation- or emission-shifted probes.

UNDER \$25,000. A high-speed excitation system for measuring excitation-shifted dyes such as Fura-2 with data acquisition rates up to 650 ratios per second.

UNDER \$25,000. A high-speed emission system for measuring emission-shifted dyes such as Indo-1 with data acquisition rates up to 1000 ratios per second.

FREE. Applications support developed over many years of providing leading edge fluorescence systems to the biomedical community.

Prices valid only in the U.S. and Canada.



Photon Technology International

1 Deerpark Dr., Suite F, So. Brunswick, NJ 08852 (908) 329-0910 Fax: 329-9069

Circle No. 34 on Readers' Service Card

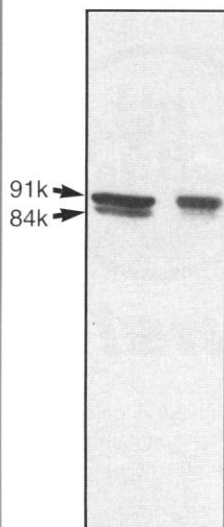
QUALITY ANTIBODIES
FOR
SIGNAL TRANSDUCTION
RESEARCH

Monoclonal antibodies to:

- Map kinases (ERKs), Map ERK kinases (MEKs), and ERK kinase kinase (MEK kinase)
- SH2 containing proteins: GRB2, SHC, PI3 kinase, GAP, VAV, NCK, PLC γ , ISGF3, PTP1C, PTP1D
- Receptor tyr. kinases: EGF, insulin, PDGF, FGF receptors
- Phosphotyrosine: monoclonal PY20, polyclonal, recombinant antibody RC20
- Many other signalling proteins

Don't compromise your research
with inferior antibodies!

Anti-ISGF3 Mab Western Blot



detection of mouse(left) or human
(right) ISGF3 in a total cell lysate.

Affordably priced under \$200



**Transduction
Laboratories**
1-800-227-4063
Lexington, Kentucky
Tel: 606-277-1399
Fax: 606-276-2251

In Europe, contact:
Affiniti Research Products
Tel: (44) 602-436100
Fax: (44) 602-436300

In Japan, contact:
Funakoshi Co., LTD.
Tel: 81-3-5684-1622
Fax: 81-3-5684-1633

Circle No. 43 on Readers' Service Card

ties as part of the Environment Research Project. The European Science Foundation initially launched the idea of this project and is still supporting a useful and stimulating coordination activity among European volcanologists.

Franco Barberi
Chairman,
European Volcanological Project,
European Science Foundation, and
Department of Earth Science,
University of Pisa,
Via S. Maria 53, 56100 Pisa, Italy

[Kresge *et al.*, U.S. Patent 5,198,203 (1993)].

Galen Stucky
Department of Chemistry,
University of California,
Santa Barbara, CA 93106

Corrections and Clarifications

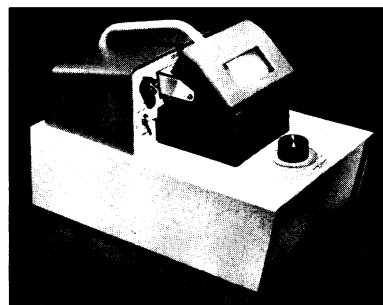
The cover caption in the issue of 17 September (p. 1499) did not make it sufficiently clear that the cover art was not multiple segments of a *Drosophila* embryo, but rather a single segment reiterated by computer for artistic purposes.

In Richard Stone's Research News article "Guam: Deadly disease dying out" (23 July, p. 424), it was incorrectly stated in column 3 on page 425 that "[t]he decline [in new cases of Guam ALS-PDC] has been occurring steadily over the last 40 years, from about 40 new cases . . . each year in the 1950s to fewer than five a year in the early 1990s." In the period from 1956 to 1964, the average number of new cases per year was 12.6; the incidence was about 40 per year.

In the 3 September Random Samples item "Processing the New Coke fiasco" (p. 1271), Daniel Levine's collaborator should have been listed as Samuel Leven of the Center for Brain Research at Radford University in Radford, Virginia.

Beautiful? No. Reliable? You Bet.

VIBRATOME® gives you
fresh tissue sectioning
without freezing or embedding.
Simple, precise adjustments cut fresh or
fixed tissue evenly from 20 microns up.
Now that's beautiful.



So, if you're more interested in how it works than how it looks, choose Vibratome.
Function is beauty.



TECHNICAL
PRODUCTS
INTERNATIONAL, INC.

Neuroscience Booth 336

5918 EVERGREEN / ST. LOUIS, MISSOURI 63134 U.S.A.
(314) 522-8671 (800) 729-4421 FAX (314) 522-6360

Circle No. 5 on Readers' Service Card