

much to protect our health and environment.

Is a new paradigm needed for environmental governance in the United States, one reflecting a basic shift in emphasis from restriction to incentives and from reacting after the fact to anticipating future needs and opportunities? As co-chair of the President's Council on Sustainable Development, I believe the timing is right to bring diverse resources together as we stake out new directions. Many in the environmental and industrial communities agree that the next generation of environmental policy must achieve greater results and do so more efficiently. From now on, our goal must be to prevent pollution by motivating potential polluters to adopt new techniques and technologies. This new approach would harness technology as an environmental ally, stress least-cost solutions, and encourage companies to go beyond the minimum required to meet standards. As it proves itself, this new model should replace the old command-and-control regulation.

Jonathan Lash
President,

World Resources Institute,
1709 New York Avenue, NW,
Washington, DC 20006

Corrections and Clarifications

A table in the article "Science elites envy American cohesion" in the special section on Science in Europe (18 June, p. 1738) incorrectly ranked the National Institute of Standards and Technology (NIST) second among U.S. institutions in terms of citations per chemistry paper. The table was compiled by the Institute for Scientific Information (ISI), which inadvertently used only older papers by authors identified as being from the National Bureau of Standards, NIST's former name, to calculate NIST's citation rate from 1988 to 1992. When more recent NIST papers, which have had less time to be cited, are included, NIST's citation rate drops from 8.94 to 5.27 cites per paper.

An asterisk indicating that he was a corresponding author should have appeared next to Mark D. Bednarski's name in the list of authors of the report "Direct colorimetric detection of a receptor-ligand interaction by a polymerized bilayer assembly" by D. H. Charych *et al.* (30 July, p. 585).

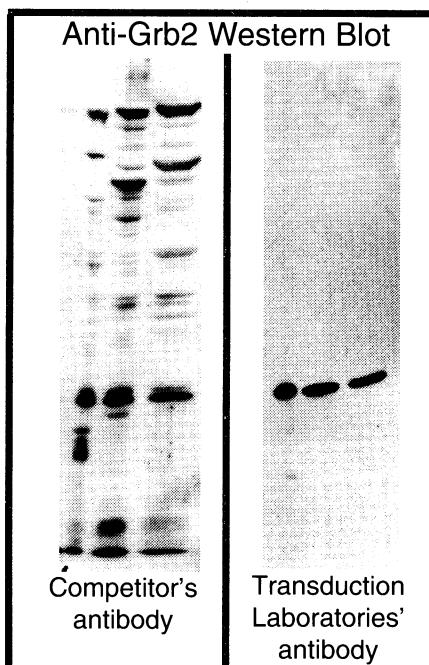
In the table in the article "Can sustainable farming win the battle of the bottom line?" by Bob Holmes (Environment & the Economy, 25 June, p. 1893), the second and third lines in the legend should have read, "Alt. #1: conventional corn-soybean rotation with reduced tillage. Alt. #2: organic corn-beans-(wheat+clover)-clover-corn rotation with reduced tillage."

QUALITY ANTIBODIES FOR SIGNAL TRANSDUCTION RESEARCH

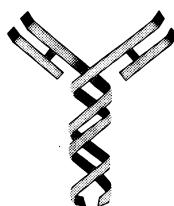
Monoclonal antibodies to:

- Map kinases (ERKs), Map ERK kinases (MEKs), and ERK kinase kinase (MEK kinase)
- SH2 containing proteins: GRB2, SHC, PI3 kinase, GAP, VAV, NCK, PLC γ , ISGF3, PTP1C, PTP1D
- Receptor tyr. kinases: EGF, insulin, PDGF, FGF receptors
- Phosphotyrosine: monoclonal PY20, polyclonal, recombinant antibody RC20
- Many other signalling proteins

Don't compromise your research
with inferior antibodies!



Affordably priced under \$200



**Transduction
Laboratories**

1-800-227-1399
Lexington, Kentucky
Tel: 606-277-1399
Fax: 606-276-2251

In Europe, contact:
Affinity Research Products
Tel: (44) 602-436100
Fax: (44) 602-436300

In Japan, contact:
Funakoshi Co., LTD.
Tel: 81-3-5684-1622
Fax: 81-3-5684-1633

Circle No. 31 on Readers' Service Card



Pre-cast gels with better performance...

Using pre-cast SDS-PAGE gels to save time isn't really a bargain if you trade performance for convenience. But you can have both with Millipore pre-cast mini gels. Our Tris-tricine chemistry produces better protein fractionation of all molecular weights, especially low MW proteins.¹

And, to make sure you get the best results, we include the Tris-tricine running buffer and sample buffer concentrate with every pack of pre-cast gels.

...and longer shelf life.

Because of our expertise in casting, we have a proprietary manufacturing process that overcomes the inherent instability in pre-cast gels. Our tricine chemistry's shelf life far exceeds the usual 90 days associated with conventional Laemmli chemistry.

Let us prove it to you for free!

Try a free two-pack of the pre-cast gel of your choice:

Gradient: 4-20% or 10-20%

Homogeneous: 7.5%, 10%, 12%, 16%, or 20%

Includes running and sample buffers. Other configurations are available upon request. But call soon.

This offer expires December 31, 1993. Call 1-800-MILLIPORE or our fax on demand information retrieval system at 1-800-MILLIFX and request #1700.

MILLIPORE

¹ *Anal. Biochem.* 179: 37-49

Circle No. 26 on Readers' Service Card