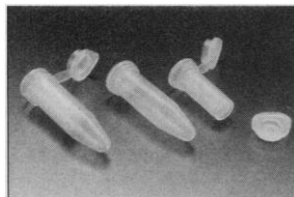


Centrifuge Filters

UltraFuge Ultrafiltration centrifuge filters allow the user to purify, desalt, or concentrate small volumes of proteins, enzymes,



nucleic acids, and antibodies. Filters are available in 1.5- and 3-ml sizes. The 1.5-ml size, designed for use in microcentrifuges, has a maximum sample capacity of 400 μ l with a hold-up volume of <5 μ l. The 3-ml size, designed for use in benchtop or floor model centrifuges, has a maximum sample capacity of 3 ml with a hold-up volume of <10 μ l. **Micron Separations, Inc. Circle 140.**

Flow Cytometry Quality Control

Results Assurance is a family of quality control products and services for flow cytometry. Components include a DNA Quality Control Particles kit for documenting performance in the most critical areas of DNA analysis; a stable liquid concentrate of human peripheral blood leukocytes for monitoring immunophenotyping; a tri-level reference control manufactured from human red blood cells and used to evaluate cytometer sensitivity for the detection of reticulocytes; and a full line of negative (isotype) reagent controls to assess nonantigen-specific antibody binding to human cells. **Becton Dickinson Immunocytometry Systems. Circle 141.**

Avidin Resin

SoftLink Soft Release Avidin Resin provides a quick, resilient, convenient, and nondenaturing means to purify biotinylated molecules. The SoftLink Resin is a rigid acrylic polymer functional-

ized with monomeric avidin. Unlike tetrameric avidin, which does not allow release of biotinylated molecules except under strongly denaturing conditions, the monomeric avidin on the SoftLink Resin allows reversible binding under mild elution conditions. This allows the design of isolation and purification systems that are highly specific yet mild for sensitive biological materials. It reversibly binds 25 to 40 nmol of biotinylated protein per milliliter of SoftLink Resin. It can be regenerated 10 times without loss of binding capacity. **Promega. Circle 142.**

Quick CBB Stain

Though Coomassie brilliant blue (CBB) has long been used in the visualization of SDS-separated proteins, the Quick CBB Stain offers a more efficient method for protein detection, according to the manufacturer. Because the dye already comes in solution, staining occurs within 1 hour after separation of proteins with virtually no mess. In addition, the stain is clear with little background discoloration, thus eliminating the need for destaining. **Wako BioProducts. Circle 143.**

DNA and Protein Band Pattern Software

The new version of Bio Image Whole Band Analysis Software automatically sizes and quantifies DNA fragments and protein band patterns and allows investigators to easily perform detailed quantitative analyses. The software accepts images from virtually any imaging device including storage phosphor devices, flatbed scanners, laser densitometers, and cameras. The software automatically determines the size

(molecular weight) of the bands and the amount of sample present. Bands in one lane can then be compared with others lanes or with lanes stored in an image database. Individual lanes can be exported to other systems, and clustering techniques can be used to create dendrograms. The software is available as part of a Bio Image Gel Scanner system and can be added to such a system or to a Sun Microsystems computer. **Millipore. Circle 144.**

Microcentrifuge Filters

The Centrex MF-.4 microcentrifuge filter is available with a low protein-binding cellulose acetate membrane to replace harsh extraction methods and minimize sample handling for the rapid and



gentle elution of DNA from agarose gels. The Centrex MF-.4 consists of a polypropylene filter insert and a 1.9-ml receiver tube and cap that fit into a standard microcentrifuge. The filters are available with chemically resistant nylon membranes for small volume (20 to 400 μ l) high-performance liquid chromatography sample preparations. **Schleicher & Schuell. Circle 145.**

Genetics Software

Cyrillic is a Windows pedigree drawing program for geneticists. Users can import pedigrees and marker data from standard sources such as MLINK pedigree files.

Pedigree data are displayed graphically, and there is complete control over line widths, fonts, colors, symbol sizes, scaling of the drawing, and information displayed about each symbol. Pedigree drawings can be exported to word processor documents using the Windows clipboard and can be printed on any Windows-compatible printer. The program requires an IBM-compatible computer running Microsoft Windows 3.1. **Cherwell Scientific. Circle 146.**

Literature

Ultra Pure Chemicals for Biotechnology 1993-1994 is a catalog with a complete list of electrophoresis reagents, saturated phenols, premixed buffers, and other molecular biology products. **AMRESCO. Circle 147.**

A Great New Fraction Collector with the Greatest Family Name: It's Foxy Jr. provides information on a unit that features built-in peak detection, intuitive programming, space-saving design, and a wide variety of collection vessels. The unit sizes fractions by time, drop, or pumped volume; locates liquid chromatography and high-performance liquid chromatography peaks; and can collect fractions in the most useful way for other types of chromatography. **Iso. Circle 148.**

Gilson Chromatography Applications: Low Pressure Liquid Chromatography is devoted to protein analysis, the isolation of proteins with a cation exchanger, purification using an anion exchanger resin, and hydrophobic interaction chromatography of a protein mixture. **Gilson Medical Electronics. Circle 149.**

BuckySep Columns for Separation of Fullerenes is a four-page brochure highlighting the applications and benefits of these high-performance liquid chromatography columns. **Phenomenex. Circle 150.**

Newly offered instrumentation, apparatus, and laboratory materials of interest to researchers in all disciplines in academic, industrial, and government organizations are featured in this space. Emphasis is given to purpose, chief characteristics, and availability of products and materials. Endorsement by *Science* or AAAS is not implied. Additional information may be obtained from the manufacturers or suppliers named by circling the appropriate number on the Readers' Service Card and placing it in a mailbox. Postage is free.

Science

PERSONNEL PLACEMENT

LINE CLASSIFIED ADVERTISEMENTS

- **Deadlines:** Ads are due by Thursday, 10 a.m., 2 weeks prior to the issue date. *Science* is published each Friday, except the last Friday of the year. Call for holiday deadlines. Advertisements must be submitted in writing.
- **How to Submit a Classified Ad:** Prepare double-spaced typewritten copy. Do not include any abbreviations. *Science* will edit and typeset ads according to *Science* guidelines. Include billing information, and desired publication date. Available categories: Positions Open, Meetings, Announcements, Courses and Training.
- **Mail or FAX materials to:**
Science Classified Advertising
 1333 H Street, N.W., Room 814
 Washington, DC 20005
 Telephone: 202-326-6555
 FAX: 202-682-0816
- **Rates:** Ads are \$42 per line; \$420 minimum. One line equals 52 characters and spaces; centered headings equal 32 characters and spaces. A 3% cash discount is granted to all prepaid ads.
- **Ads from Outside the U.S.:** A discount of \$30 will be offered to advertisers making payment in U.S. dollars by checks drawn on U.S. banks. Contact Annemarie Vis at +44 223 302067 (telephone) or +44 223 302068 (FAX).
- **Credit Cards:** *Science* accepts MasterCard and VISA. Discount does not apply to credit cards.
- **Cancellations:** Deadline for cancellation is 10 a.m., Tuesday, 10 days prior to issue date.

DISPLAY PERSONNEL ADVERTISEMENTS

For rates and info. about fractional display ads (all ads 1/2 page and larger), contact:

Recruitment Advertising
 Deborah Cummings
 Telephone: 202-326-6541

Janis Crowley, Recruitment
 Advertising Manager
 Telephone: 212-496-7704
 FAX: 202-682-0816

Annemarie Vis
 European Recruitment Advertising
 Telephone: +44 223 302067
 FAX: +44 223 302 068

CONDITIONS: Personnel advertising is accepted only with the understanding that the advertisers do not discriminate among applicants on the basis of race, sex, religion, age, color, handicap or sexual preference. The AAAS encourages employers to actively recruit and employ underrepresented minority groups. *Science* reserves the right, at its discretion, to decline to publish advertisements submitted to it.

POSITIONS OPEN

Tenure-track faculty position in wildlife ecology at Purdue University, Department of Forestry and Natural Resources to be filled at either the **ASSISTANT** or **ASSOCIATE PROFESSOR** level. Teaching responsibility (70%) includes teaching undergraduate courses in environmental conservation, wildlife ecology, and global environmental issues, and a graduate course in conservation biology or similar subject. Research responsibility (30%) is to develop and conduct a program in wildlife ecology. Ph.D. in ecology, wildlife science, or related area required. Also required is a demonstrated record of excellence in teaching and research or evidence of the capability and commitment to establish such a record. Send résumé, transcripts, copies of publications, and a statement of teaching philosophy and research interest. Also arrange to have at least three letters of reference sent. Address correspondence and inquiries to: **Dr. Dennis Le Master, Chair, Search & Screening Committee, Department of Forestry & Natural Resources, Purdue University, West Lafayette, IN 47907-1159.** Review of applications begins October 31, 1993. *Purdue University is an Equal Opportunity/Affirmative Action Employer. Women and minorities are encouraged to apply.*

The Department of Life Sciences of New Mexico Highlands University has re-opened the search for two tenure-track positions in biology, **ASSISTANT PROFESSOR** level, in animal physiology-health science and in microbiology, effective January 17, 1994. Responsibilities: Participation in the undergraduate and graduate life science curricula, including related courses in biology and environmental science. Research and supervision of M.S. students expected. Application deadline: September 1, 1993, or until filled. Submit letter of application indicating which position you are applying for, résumé, official transcripts, and three references with telephone numbers to: **Biology Search Committee, School of Science and Engineering, New Mexico Highlands University, Las Vegas, NM 87701.** *New Mexico Highlands University is an Affirmative Action/Equal Employment Opportunity Employer.*

VASCULAR BIOLOGIST

The Department of Medicine, Section of Cardiology, invites applications for a tenure-track position at the rank of **ASSISTANT** or **ASSOCIATE PROFESSOR** beginning as soon as possible. Applicants should have an M.D. or Ph.D. degree and a record of accomplishment in basic research in the area of vascular biology. Individuals with molecular and cellular research programs focusing on endothelial and smooth muscle cell biology will be given preference. Excellent departmental resources including newly designed laboratory space in the cardiovascular research center are available. Written applications including curriculum vitae, three letters of recommendation, and a description of research interests should be sent by September 17, 1993, to: **Jeffrey M. Leiden, M.D., Ph.D., Professor of Medicine and Pathology, and Chief, Section of Cardiology, University of Chicago, 5841 South Maryland Avenue, BRH B608 MC6080, Chicago, IL 60637.** *The University of Chicago is an Affirmative Action/Equal Opportunity Employer and strongly encourages females and minorities to apply.*

FLORIDA INTERNATIONAL UNIVERSITY GLASER VISITING PROFESSORSHIP IN BIOLOGICAL SCIENCES

Applications are solicited from distinguished scientists interested in visiting the Department of Biological Sciences at Florida International University (FIU), the state university of Florida at Miami. We are specifically interested in scientists in two research areas, Space Biology and Molecular Evolution. The Glaser Professor will offer a short course in his/her specialty (ten lectures over a 2- to 3-week period during the spring 1994 semester), give a departmental lecture, and interact with faculty and students. Remuneration is \$8000. FIU is a dynamic, growing public university with 24,000 students. The Department of Biology has 28 faculty and 85 graduate students (M.S. and Ph.D.). Apply with letter of intent, résumé, and reprints of up to three relevant publications before September 1, 1993, to: **Dr. Laurie L. Richardson, Glaser Committee Chair, Department of Biological Sciences, Florida International University, Miami, FL 33199.** *Women and minorities are especially encouraged to apply. FIU is an Affirmative Action/Equal Opportunity Employer.*

POSITIONS OPEN

ASSISTANT/ASSOCIATE PROFESSOR. Researcher with interest in the physiology and pharmacology of glaucoma, including aqueous humor dynamics, fluorophotometry, prostaglandins and other eicosanoids, laser procedures, and cell/organ culture techniques. Ph.D. required in area of physiology or pharmacology. Salary and rank dependent upon qualifications; health professions (tenure-leading) appointment contract with potential for renewal. Good opportunity for interaction and affiliation with basic science departments. Application deadline: 31 October 1993. Send curriculum vitae to: **Carl B. Camras, M.D., Professor & Vice Chairman, Department of Ophthalmology, University of Nebraska Medical Center, 600 South 42nd Street, Omaha, NE 68198-5540.** *An Equal Opportunity/Affirmative Action Employer. Women and minorities are encouraged to apply.*

BIOCHEMISTRY/MOLECULAR BIOLOGY AND PHYSICAL BIOCHEMISTRY MEHARRY MEDICAL COLLEGE

Faculty positions will be available in 1994 in the Department of Biochemistry, at the level of **ASSISTANT** or **ASSOCIATE PROFESSOR**. Applicants must have a Ph.D. or M.D. degree, or both, and appropriate formal postdoctoral research experience. Joint appointments in clinical science departments are possible. We are seeking individuals who have potential or demonstrated competence in physical biochemistry or in the use of molecular biological approaches to conduct research in molecular medicine, or on fundamental biochemical/cell biological problem(s). Selected individuals must also be capable of, and committed to, making significant contributions to the teaching and administrative functions of the department of biochemistry. Successful applicants will be expected to develop/maintain a funded research program of high quality and to participate in the graduate and professional (medical, dental and allied health) school teaching programs of the Department. Applicants should send curriculum vitae, names of four individuals who may be contacted for reference, and a summary (not exceeding 3 pages) of potential research project(s) to: **Ifeanyi J. Arinze, Ph.D., Chairman, Department of Biochemistry, Meharry Medical College, Nashville, TN 37208.** *An Equal Opportunity/Affirmative Action Employer.*

HARVARD MEDICAL SCHOOL CENTER FOR BLOOD RESEARCH ASSISTANT PROFESSOR

The Department of Pathology at Harvard Medical School and the Center for Blood Research are jointly seeking to fill an Assistant Professorship. The candidate is expected to direct a vigorous, independent research program. Laboratory space is in the newly constructed Warren Alpert Building on the main quadrangle at Harvard Medical School. The field of search is broad, and includes whole animal immunology and leukocyte trafficking in the vasculature, cell migration/motility/cytoskeleton, cell surface receptors, protein biochemistry, signaling and biophysics of cell interactions. The position offers significant scientific and scholarly resources and the candidate will participate in teaching graduate and medical students. Interactions are encouraged with neighboring investigators working on cell adhesion and chemotaxis, hematopoiesis, lymphocyte development, genetics, and signal transduction.

Candidates should send curriculum vitae and statement of research interests, and three references to: **Professor Timothy A. Springer, Search Committee Chair, Center for Blood Research, Box 2, Room 251, 200 Longwood Avenue, Boston, MA 02115.**

Harvard Medical School is an Affirmative Action/Equal Opportunity Employer. Qualified female and minority applicants are encouraged to apply.

ASSISTANT PROFESSOR (Physics and Physical Science). One-year temporary position beginning fall 1993. This position will be reopened and made tenure-track the following academic year. Minimum qualifications: Ph.D. in physics preferred; ABD's will be considered. Application deadline is August 15, 1993. Send résumé and three letters of recommendation to: **Dr. Nico Orsini, Chair, Department of Physics and Physical Science, Marshall University, 400 Hal Greer Boulevard, Huntington, WV 25755.** *Marshall University is an Affirmative Action/Equal Opportunity Employer. Women and minorities are encouraged to apply.*

POSITIONS OPEN

FACULTY POSITION IN MICROBIOLOGY

An ASSISTANT PROFESSORSHIP in microbiology is available. Qualifications include a doctoral degree and teaching experience. Major responsibilities are teaching microbiology to students in Osteopathic Medicine, Optometry, Pharmacy and Allied Health. Send curriculum vitae and a list of three references to: **Harold E. Laubach, Ph.D., Chairman, Department of Microbiology, Southeastern University of the Health Sciences, 1750 N.E. 167th Street, North Miami Beach, FL 33162.**

The University of South Carolina, Columbia, invites applications and nominations for the position of **DEAN of the College of Science and Mathematics.** The Dean of the College of Science and Mathematics is responsible for administering the College's budget of approximately \$17.5 million in state funding and \$21 million in outside support. The College consists of seven departments and several institutes. Applicants should send a letter of application and a complete résumé to: **Dr. Ralph E. White, Chairman of the Science and Mathematics Dean Search Committee, Department of Chemical Engineering, Swearingen Engineering Center 2C13, University of South Carolina, Columbia, SC 29208. Telephone: (803) 777-6060; FAX: (803) 777-8265. The University of South Carolina is an Equal Opportunity Employer and specifically invites and encourages applications from women and minorities.**

MOLECULAR ELECTROPHYSIOLOGIST

The Department of Medicine, Section of Cardiology, invites applications for a tenure-track position at the rank of **ASSISTANT or ASSOCIATE PROFESSOR** beginning as soon as possible. Applicants should have an M.D. or Ph.D. degree and a record of accomplishment in basic research in the area of molecular electrophysiology. Individuals with research experience in the areas of the molecular and cellular biology of excitable tissues will be given preference. Excellent departmental resources including newly designed laboratory space in the cardiovascular research center are available. Written applications including curriculum vitae, three letters of recommendation, and a description of research interests should be sent by September 17, 1993, to: **Jeffrey M. Leiden, M.D., Ph.D., Professor of Medicine and Pathology, and Chief, Section of Cardiology, University of Chicago, 5841 South Maryland Avenue, BRH B608 MC6080, Chicago, IL 60637. The University of Chicago is an Affirmative Action/Equal Opportunity Employer and strongly encourages females and minorities to apply.**

COLUMBIA UNIVERSITY DEPARTMENT OF OPHTHALMOLOGY

The department is seeking an outstanding individual with a Ph.D. or M.D. for a full-time, non-tenure position as **PROFESSOR of Ocular Physiology** (in Ophthalmology). The individual is to conduct basic research in ocular physiology with particular reference to the cornea. Studies on endothelial functions and permeability as well as mechanisms of corneal transparency are important. Candidates must provide evidence of significant research accomplishment. Applicants should submit recent curriculum vitae with publications to: **Anthony Donn, M.D., Department of Ophthalmology, Edward S. Harkness Eye Institute, 635 West 165th Street, Box 20, New York, NY 10032. Columbia University takes Affirmative Action to ensure Equal Opportunity.**

MOLECULAR MARINE BIOLOGIST

To teach biochemistry and molecular biology to undergraduates. Appointment is tenure-track at **ASSISTANT PROFESSOR** level. February or September 1994. Forward curriculum vitae, statement of research interests and names of three references to: **Search Committee, Natural Science Division, Southampton Campus of Long Island University, Southampton, NY 11968. Affirmative Action/Equal Opportunity Employer.**

SCIENCE welcomes placement of line classified ads by FAX. Please include name and telephone number for our confirmation call when transmitting ad to:

FAX NUMBER: 202-682-0816

POSITIONS OPEN

FACULTY POSITION THE WEIZMANN INSTITUTE OF SCIENCE

The Department of Biochemistry at the Weizmann Institute of Science, Rehovot, Israel, is seeking applicants for a tenure-track position at the **SENIOR SCIENTIST (ASSISTANT PROFESSOR)** level starting in the fall of 1994 (Earlier start possible under special conditions). Preferred areas of research include molecular genetics, developmental genetics, protein-DNA interactions, protein chemistry and enzymology. The successful candidate is expected to establish an independent and creative research group. The Department of Biochemistry provides an excellent and stimulating research environment with groups studying subjects such as gene expression, DNA replication and mutagenesis, membrane transport systems and photosynthesis.

Applicants should send research plans, curriculum vitae, list of publications and the names of three referees to: **Dr. Zvi Livneh, Search Committee, Department of Biochemistry, The Weizmann Institute of Science, Rehovot 76100, Israel.**

DIRECTOR OF CYTOGENETICS

Duke University Medical Center is recruiting an experienced Ph.D. or M.D. to direct its cytogenetics laboratory. Depending upon the background of the candidate selected, the director will hold a primary appointment in pediatrics, obstetrics and gynecology, or pathology, with secondary appointments in the other two departments. The director will be able to develop a full research program and join in the ongoing research of various genetic/biochemical disorders. The lab currently processes 600 to 700 samples per year; the case load is expected to increase. Training in molecular techniques is preferred. Candidates should be board certified by the ABMG.

Please send a letter of application and curriculum vitae to: **William N.P. Herbert, M.D., Professor and Chief, Division of Maternal-Fetal Medicine, Chair, Search Committee for Director of Cytogenetics Laboratory, Duke University Medical Center, Box 3967, Durham, NC 27710. Duke University is an Equal Opportunity/Affirmative Action Employer.**

(HEALTH RISK ASSESSMENT SUPERVISOR) PUBLIC HEALTH \$33,072 to \$39,468

Division of Public Health Service, Bureau of Health Risk Assessment, Concord, New Hampshire. The successful candidate will supervise, plan and assign work to staff performing environmental health risk assessments and related health studies, develop risk assessment procedures as necessary. **Minimum Qualifications:** B.A. from a recognized college or university with major in environmental health or related science. Each additional year of approved formal education may be substituted for one year of work experience. Also required is six years of experience in an environmental health related area, two years of which shall have involved supervisory duties as well as the preparation of various health risk assessments, or related research. For further information contact **Brook Dupee** at 603-271-4664. An official State Application for Employment may be obtained from, and returned to: **The Department of Health and Human Services, 6 Hazen Drive, Concord, NH 03301, Attention: Human Resources; Telephone: 603-271-4286. A transcript must be attached to the application. Recruitment will remain in effect until position is satisfactorily filled. Equal Opportunity Employer.**

DEAN THAYER SCHOOL OF ENGINEERING DARTMOUTH COLLEGE

Applications and nominations are sought for the position of **Dean of the Thayer School of Engineering** at Dartmouth College, to begin July 1, 1994. Applicants should have a doctoral degree and be eligible for a tenured full professorship in engineering. Review of applications begins October 1, 1993. Please send applications and supporting materials to: **Graham B. Wallis, Chair, Thayer School Dean Search Committee, 6004 Parkhurst Hall, Room 204, Dartmouth College, Hanover, NH 03755-3529.**

Dartmouth College is an Equal Opportunity/Affirmative Action Employer.

POSITIONS OPEN

DIRECTOR, Center for Drug Evaluation and Research

The Food and Drug Administration seeks an outstanding individual to direct its Center for Drug Evaluation and Research (CDER). With facilities in Rockville and Beltsville, Maryland, CDER's research and regulatory activities support the mandate of ensuring that human drugs are safe and effective and that product labeling is truthful and informative.

Qualifications include clinical experience, including experience in the development, pharmacology, clinical investigation or pharmacoepidemiology of drugs, and managerial experience at the executive level in planning and directing broad scientific research or regulatory programs. The position is in the Senior Executive Service with a salary range of \$92,900 to \$111,800. Candidates may also be eligible for a recruitment or relocation bonus of up to 25% of base pay. Please contact **Jeylene Wood** at (301) 443-1755 for more information regarding qualification requirements and application procedures for this position. Applications will be accepted until September 10, 1993.

*An Equal Opportunity Employer.
FDA is Smoke-free.*

CHAIR, DEPARTMENT OF OPHTHALMOLOGY

THE COLLEGE OF MEDICINE AT THE UNIVERSITY OF FLORIDA is searching for an individual to serve as Professor and Chair for the Department of Ophthalmology and to provide academic and administrative leadership in programs of patient care, teaching and research. Minimum qualifications include an M.D. degree and a distinguished record of performance in teaching, clinical care and/or research with abilities to lead a highly productive academic department. The deadline for receipt of applications is October 1, 1993. The anticipated starting date is July 1, 1994. Reply by sending current curriculum vitae to: **Dwight L. Evans, M.D., Chair, Ophthalmology Search Committee, Department of Psychiatry, University of Florida, Box 100256, Gainesville, FL 32610-0256. Affirmative Action/Equal Opportunity Employer. Women and minority applicants are encouraged to apply and voluntarily identify themselves.**

"HARD MONEY" POSITION: REPRODUCTIVE ENDOCRINE LABORATORY DIRECTOR

The reproductive research laboratory of the Division of Reproductive Endocrinology, Department of Obstetrics and Gynecology at the University of Maryland School of Medicine is seeking a full-time Manager/Director. Funding/independence is encouraged but not required. A Ph.D. degree in the biomedical sciences and extensive experience in molecular biologic techniques are required. Successful applicant is expected to join an established team of faculty, postdocs and technicians. Earliest start date: July 1, 1994. Applications with curriculum vitae should be forwarded to: **Dr. Eli Y. Adashi, 405 West Redwood Street, Third Floor, Baltimore, MD 21201. University of Maryland is an Affirmative Action/Equal Opportunity Employer, M/F/H/V.**

FACULTY POSITIONS

The Department of Pharmacology and Molecular Biology at the Chicago Medical School is initiating the third phase of faculty recruitment for tenure-track positions at all levels. Preference will be given to those candidates with an ongoing funded research program and experience in any aspect of gene expression or molecular/biochemical pharmacology. Attractive benefits and start-up funds are available. The school is located in a modern facility adjacent to the very pleasant North Shore community of Lake Bluff, 38 miles from downtown Chicago with proximity to forest preserves and Lake Michigan. The department under new leadership has already recruited several faculty of high caliber. Excellent core facilities and strong graduate program (Ph.D. and M.D./Ph.D.) are available. Please send curriculum vitae, research plans and three names for reference to: **Dr. Samson T. Jacob, Chairman, Department of Pharmacology and Molecular Biology, The Chicago Medical School, 3333 Green Bay Road, North Chicago, IL 60064. The Chicago Medical School is an Equal Opportunity/Affirmative Action Employer.**

Molecular and Structural Biology

Battelle, Pacific Northwest Laboratories, (PNL), is an international leader in the practical application of technology. Battelle PNL is dedicated to both basic and applied research to find ways to preserve our environment and keep America technologically competitive. Our Life Sciences Center has immediate openings for the following positions:

Department Manager, Biology and Chemistry

This position requires experience in leading a multi-disciplinary research organization and will provide technical leadership to over 100 staff with programs in cellular and molecular biology, structural biology, health effects studies, and radiological physics. Will be responsible for development of new programs and will facilitate integration of research programs with other laboratory organizations. The successful candidate must have a Ph.D. in biological sciences or a closely related field and an outstanding record in health effects research and molecular biology with applications in biotechnology, genomics, gene expression, or structural biology.

Manager, Basic Life Sciences Research Initiative

This position is responsible for the management of the PNL Life Sciences Center initiative to develop a broad program in basic life sciences research, with a focus on characterizing alterations in DNA structure and gene expression caused by radiation or chemical exposure. The initiative leader will also manage the Molecular/Structural Biology Section of the Biology and Chemistry Department. The successful candidate must have a Ph.D. in biological sciences with emphasis in molecular or structural biology. Experience in research on DNA damage, repair, enzymology, and structural analysis of DNA lesions is highly desirable.

Battelle PNL, one of the nine U.S. Department of Energy multiprogram research laboratories, is located in Southeastern Washington state and offers the advantages of a pleasant life style and the extraordinary environment of the Pacific Northwest. Interested candidates should send a resume to: Battelle Recruiting Center, P.O. Box 999, Richland, WA 99352, ATTN: 5122 BAH. Principals Only. We are an Equal Opportunity Employer. Women and Minorities are encouraged to apply. Legal right to work in U.S. required.

 **Battelle**
...Putting Technology To Work

CHAIR OF METEOROLOGY and DIRECTOR, COOPERATIVE RESEARCH CENTRE FOR SOUTHERN HEMISPHERE METEOROLOGY

Applications are invited for appointment jointly to a Chair of Meteorology in the Department of Mathematics at Monash University and Directorship of a new Cooperative Research Centre for Southern Hemisphere Meteorology (CRC SHM).

The Chair of Meteorology is funded jointly by Monash University and the Bureau of Meteorology. The Cooperative Research Centre is part of the Australian Government CRC program and brings together in a cooperative venture components of the research, operational and industry resources of Monash University, the Bureau of Meteorology, CSIRO Division of Atmospheric Research and of Applied Physics, and Cray Research (Australia). The expertise and research facilities contributed by the participating institutions represent a substantial contribution to the CRC SHM in addition to \$1.5M per annum provided by the Commonwealth Government. The Centre was formally established on 1 July 1993; it is planned within the initial years of establishment that a substantial number of new research appointments to the CRC SHM will be available at Monash University and within the participating research institutions.

The Department of Mathematics at Monash University has a long standing involvement in and commitment to research and education in Dynamical Meteorology and Geophysical Fluid Dynamics within its Applied Mathematics section. The Cooperative Research Centre is focused on the Monash campus but will also have centres of activity within the participating research institutions. The research staff of these institutions are located predominantly within Melbourne in the Bureau of Meteorology Research Centre and the CSIRO Division of Atmospheric Research. The appointee to this dual position will provide the leadership necessary to establish a world class university-based cooperative centre for meteorological research and postgraduate education.

Applicants for this joint Chair/Director appointment will be expected to have an outstanding record of achievement relevant to the CRC SHM research and education programs. The research of the CRC SHM is aimed at meeting Australia's needs in three key areas, namely stratospheric ozone, global transport modelling and southern hemisphere climate dynamics. The education program is aimed at creating a first class and comprehensive graduate program in Meteorology. A priority focus of the research program will be on stratospheric ozone and the dynamics controlling its distributions particularly in the Southern Hemisphere and Australian region; applications from appropriate candidates with requisite levels of achievement in this priority area will be of particular interest.

Salary: A professorial salary (\$A77,900 per annum) is payable, with additional remuneration through the CRC negotiable. Superannuation, travel and removal allowance, and temporary housing assistance are available.

Further information of an academic nature and copies of the CRC SHM prospectus may be obtained from Professor WJ Ewens, Head, Department of Mathematics, Monash University, Clayton, Victoria, 3168, Australia, facsimile +61 3 565 4403, Dr D Gauntlett, Deputy Director, Bureau of Meteorology, G.P.O. Box 1289K, Melbourne, Victoria, 3001, Australia, facsimile +61 3 669 4548, and Dr G Pearman, Chief, Division of Atmospheric Research, CSIRO, PMB 1, Mordialloc, Victoria, 3195, Australia, facsimile +61 3 586 7600.

Information on application procedure and further particulars may be obtained from the Personnel Officer (Chair Appointments), Monash University, Clayton, Victoria, 3168, Australia, facsimile +61 3 565 6016.

Applications should reach the Director of Personnel Services, not later than Tuesday 31 August 1993. Council reserves the right to make no appointment or to appoint by invitation at any stage.

 **MONASH**
AUSTRALIA'S INTERNATIONAL UNIVERSITY

AK12950

UNIVERSITY OF KUWAIT
Faculty of Medicine
Health Science Centre

Pre-Clinical and Clinical Appointments:

Applications are invited for the following appointments in the Faculty of Medicine:

Anatomy: Professor/Associate/Assistant - Gross & Anatomy; Medical Embryology and/or Microscopic and Neuroanatomy.

Biochemistry:

Professor/Associate/Assistant Professor	-	Molecular Biology
Associate Professor	-	Protein biochemist
Associate Professor	-	Membranes
Professor	-	Endocrinology

Community Medicine & Behavioral Sciences:

Professor/Associate/Assistant Professor - Biostatistician (1); Sociopsychologist (1); Environmental & Occupational Health (1); Community Medicine & Epidemiology (1); Occupational Epidemiology (1); Medical Psychology (1)

Microbiology:

Professor/Associate/Assistant Professor - Clinical Microbiology (2) (Experience in STD, Antimicrobial Chemotherapy, Respiratory Micro.); clinical Immunology (1)

Associate/Assistant Professor - Parasitology (1); Immunology (2); Clinical Virology (1)

Pathology:

Professor/Associate/Assistant Professor - Haematology; Clinical Chemistry

Assistant Professor - Histopathology

Physiology: Associate/Assistant Professor - Endocrine Physiology (1); Renal Physiology (1); Respiratory Physiology (1); Neurophysiology (1); General Physiology (1)

Pharmacology: Associate Professor - Clinical Toxicologist (1)

Medicine: Professor/Associate/Assistant Professor - Rheumatology; Clinical Haematology; Infectious Diseases; Respiratory Medicine

Obstetrics & Gynaecology:

Professor & Chairman	-	Reproductive Medicine (1)
Professor	-	Gynaecology (1)
Associate Professor	-	Perinatology (2)
Assistant Professor	-	Obstetrics & Gynaecology (4)

Paediatrics: Professor/Associate /Assistant Professor: biochemist (Ph.D. in Enzymology); Paediatric Nephrology; Paediatric Allergy & clinical Immunology; Pulmonary Medicine; Paed. Critical Care Medicine; Neonatologist; Emergency Medicine; Paed. Cardiology; Clinical Genetics

Radiology:

Associate Professor - Diagnostic Radiology; Physicist (Image Processing & Information Storage)

Assistant Professor - Magnetic Resonance Imaging & digital radiographic techniques

Surgery:

Professor	-	Orthopaedics (2); Anaesthesia (1); Vascular Surgery (1)
Associate Professor	-	Urology (1); Neurosurgery (1); Transplant (1)
Assistant Professor	-	General Surgery (1); Anaesthesia (1); Urology (1)

Psychiatry: Professor/Associate/Assistant Professor (3)

(Preference will be given to Arabic speaking candidates)

Requirements for Appointment: Applicants should possess a **Ph.D.** or an equivalent high professional qualification i.e. **FRCS/MRCP/MRCOG/MRCPath/MD/American Board** in their respective specialty and have conducted and published research in their field.

Conditions of Appointment: Total monthly salaries will be within the following scales according to qualifications and experience (1KD=1.9 St. Pound, US\$3.5 approximately). Increment per year 20 KD.

Professors:

- | | |
|---|--------------------------------|
| - With clinical appointments | - KD. 1210-1370 (8 increments) |
| - Medically qualified with a Ph.D. in Medical Science | - KD. 1140-1300 (8 increments) |
| - Non-Medically qualified | - KD. 1070-1230 (8 increments) |

Associate Professors:

- | | |
|---|-------------------------------|
| - With clinical appointments | - KD. 989-1149 (8 increments) |
| - Medically qualified with a Ph.D. in Medical Science | - KD. 932-1092 (8 increments) |
| - Non-Medically qualified | - KD. 875-1035 (8 increments) |

Assistant Professors:

- | | |
|---|------------------------------|
| - With clinical appointments | - KD. 768-928 (8 increments) |
| - Medically qualified with a Ph.D. in Medical Science | - KD. 724-884 (8 increments) |
| - Non-Medically qualified | - KD. 680-840 (8 increments) |

Other Allowances:

- Social allowance will be paid in addition to the monthly salary as per the University regulations.
- Clinical allowances from the Ministry of Public Health for 10 months a year (i.e. the University academic year from September to end of June) for clinical service commitments as follows:

Professor and Chairman	KD. 450/-
Professor	KD. 400/-
Associate Professor	KD. 300/-
Assistant Professor	KD. 200/-

Other Benefits:

Conference attendance. Gratuity. Furnished accommodation (electricity and water free of charge). Free medical treatment in Kuwait. Free annual roundtrip air tickets from country of citizenship or permanent residence for self and family up to three dependent children. Baggage and freight allowance. Education fees for maximum three children in Kuwait from elementary through high school. No taxation. Currency is transferable without restriction. 60 days paid annual leave.

Method of Application: Curriculum vitae in duplicate which should include the names of 3 referees; personal particulars; copy of the relevant pages of passport; qualifications with dates, career history with dates; teaching experience, research accomplishments and where appropriate clinical experience, should be sent no later than October 31, 1993 to:

**The Vice Dean Administration
(Recruitment Office)
Faculty of Medicine
Kuwait University
P.O. Box 249 23
13110 Safat, Kuwait
FAX#965/531-8454**

Director, Radiological Health

The University of Utah seeks a Director of the Radiological Health Department. The Director is also the University's Radiation Safety Officer (RSO). The RSO is responsible to regulatory agencies for all aspects of protecting employees, patients, students and the general public from exposure to ionizing radiation utilized by the University and its employees. Qualifications of the Director and RSO are as follows: The RSO must be certified by (a) The American Board of Health Physics and Comprehensive Health Physics, (b) The American Board of Radiology, (c) The American Board of Nuclear Medicine, (d) The American Board of Science and Nuclear Medicine, or (e) The Board of Pharmaceutical Specialties in Nuclear Pharmacy; or candidates must have had classroom and laboratory training and experience as follows: (a) 200 hours of classroom and laboratory training in radiation physics and instrumentation, radiation protection, mathematics pertaining to the use of measurement of radioactivity, radiation biology, and radio pharmaceutical chemistry and (b) one year of full time experience as a radiation safety technologist at a medical institution under the supervision of the individual identified on the license as the RSO.

As the Director of the Radiological Health Department, the incumbent is responsible to the University for administration of the personnel, facilities, equipment and budget that are necessary to conduct the Radiation Protection Program. These responsibilities include determining the number and types of employees needed, the hiring, promotion, discipline or firing of employees and salary adjustments. The Director prepares the budget and controls department expenditures. He/She proposes radiation policies to the Radiation Safety Committee for approval and formulates department policies for implementing the radiation protection program. The Director is responsible for handling a budget of approximately \$500,000 and supervises thirteen (13) employees.

The University is an AA/EQ employer and encourages applications from women and minorities, and provides reasonable accommodation to the known disabilities of applicants and employees.

A letter of application, a current Curriculum Vitae, and three to five letters of recommendation should be submitted to:

Personnel Administration, c/o Shirley Watkins (SW 2624)
101 Annex
University of Utah
Salt Lake City, UT 84112
Closing Date for applications is August 31, 1993.

TULANE UNIVERSITY/XAVIER UNIVERSITY DIRECTOR OF THE TULANE-XAVIER CENTER FOR BIOENVIRONMENTAL RESEARCH

Tulane and Xavier Universities of New Orleans invite nominations for the position of Director of the Tulane-Xavier Center for Bioenvironmental Research. The Tulane-Xavier Center for Bioenvironmental Research (CBR), established in 1989, is the centerpiece of Tulane and Xavier Universities' environmental health, science, and engineering programs. The Center, which receives over \$80 million in external funding, encompasses several major programs, including the South Central Regional Center of the National Institute for Global Environmental Change, the Superfund Basic Research Program, the Freeport-McMoran Environmental Policy Institute, and the Institute for Environmental Restoration and Waste Management.

The Director reports to the Chairman of the CBR Governing Board and works closely with the Presidents and principal investigators of environmental programs at Tulane and Xavier. The successful candidate is expected to be a nationally recognized leader in the area of environmental health, environmental sciences, or environmental engineering research, with a demonstrated record of competitive funding and administration of multidisciplinary research. A distinguished record of teaching and scholarship commensurate with a faculty appointment at the rank of tenured professor at Tulane or Xavier is preferred. The individual must be supportive of interdisciplinary research and education and have demonstrated capabilities in the development and implementation of one or more of the current CBR programmatic areas of study, which include health effects, risk assessment, exposure evaluation, risk management, environmental modeling, and environmental restoration and waste management, among others. A health, science, or engineering professional with a terminal degree at the doctoral level, a medical degree, or the equivalent is required. Administrative experience, including financial and budgeting experience, in a research setting is recommended.

Please submit nominations and expressions of interest to the search committee no later than November 1, 1993. The Search Committee will begin the screening of candidates in September 1993, and consideration cannot be guaranteed after November 1, 1993. Please direct letter of application, resume and a list of references to: Director of Tulane-Xavier CBR Search Committee, Tulane University, 218 Gibson Hall, 6823 St. Charles Avenue, New Orleans, Louisiana 70118.

Tulane and Xavier Universities are equal opportunity/affirmative action employers and actively seek and encourage nominations of, and expressions of interest from, minority and female candidates.

CHAIR OF GENETICS

The Chair of Genetics will be vacated by Professor David Sherratt FRS from 1st April, 1994. As part of the recruitment process, a successor is sought with a proven track record within the broad area of genetics and who will give a personal lead in the University's programme of expansion in this area of biological and biomedical research.

The Departmental interests in research and teaching focus on Genetics, Biotechnology and Molecular Parasitology. There is an established academic staff of 12, of which one lectureship is vacant at present. Research income is in excess of two million pounds annually; grant funded staff at present include 39 postdoctoral fellows, 6 graduate research assistants and 41 PhD students.

The accommodation falling vacant within the Department is sufficient for two large research groups. The University is also building a new biomedical research block linked to the Department where space can be made available for substantial new initiatives secured by the Chairholder.

Informal enquiries should be directed to Dr. R. G. Sutcliffe (Telephone: 041-339 8855, Ext. 5101/5104 or Fax: 041-330 5994).

Further particulars may be obtained from the Academic Personnel Office, University of Glasgow, Glasgow G12 8QQ, where applications (3 copies; 1 copy in the case of overseas applicants), giving the names and addresses of three referees, should be lodged on or before 31st October, 1993. In reply, please quote Ref. No: 7978.

The University is an equal opportunities employer.



APPLICATIONS AND NOMINATIONS ARE INVITED FOR THE POSITION OF DEAN COLLEGE OF VETERINARY MEDICINE Michigan State University

Michigan State University invites applications and nominations for the position of dean, College of Veterinary Medicine. An individual is sought who can provide leadership for the continuing excellent development of instructional, research, clinical, and outreach programs and who will serve as a representative of the college in its interaction with other MSU colleges, the public, and the veterinary community. The dean of the College of Veterinary Medicine is the chief executive officer of the college and is responsible to the provost and the president for the general administration of the College.

Michigan State University enrolls approximately 40,000 students and is a research-intensive, land-grant institution with 14 colleges, including the College of Human Medicine and the College of Osteopathic Medicine. Its 5,000 acre park-like campus is widely recognized as one of the most beautiful in the nation. The College of Veterinary Medicine consists of the departments of Large Animal Clinical Sciences, Small Animal Sciences, and the shared departments of Anatomy, Microbiology, Pathology, Pharmacology and Toxicology, and Physiology. In addition, the college contains the Animal Health Diagnostic Laboratory and the Veterinary Teaching Hospital, which is situated in a modern, state-of-the-art facility. The college's \$12 million annual general fund budget supports approximately 140 ranked faculty and 230 support staff. The 400 veterinary students and 65 graduate students are enrolled in the DVM professional program, masters or doctorate programs, or intern and residency programs in various clinical specialties. There is also a veterinary technician program. Both the DVM and veterinary technician programs are fully accredited by the AVMA.

Applicants must have the DVM degree (or its equivalent), and an earned doctorate is preferred. Evidence of scholarship in research, teaching, and service and evidence of dynamic leadership are also necessary. Candidates must meet standards for appointment at the rank of professor (with tenure) in an academic department in the college. Expected starting date is May 1, 1994, or as soon as possible thereafter.

Handicappers have the right to request and receive reasonable accommodation.

Applications and nominations are requested by October 1, 1993, and should be sent to: Dr. John Kaneene, Chairperson, Search and Rating Committee, Dean of College of Veterinary Medicine, c/o Office of the Provost, 212 Administration Building, Michigan State University, East Lansing, MI 48824-1046.

The Right Chemistry With Beckman

Product Planning Manager Method Based Systems

Requirements include an advanced degree in Chemistry or related science, with an MBA preferred; protein chemistry background essential, carbohydrate chemistry experience desirable; 5+ years' current experience in the pharmaceutical or biotechnology industry required with specific knowledge of CE, HPLC and related software; 2+ years' marketing and sales experience necessary.

You will be responsible for the definition and evaluation of new product development for CE and LC based systems. This is a leadership position requiring strategic planning and positioning skills. The final metric is the effective delivery of new products.

Marketing Applications (CE/HPLC) Sr. Applications Chemist

Ph.D. in Chemistry or Biochemistry required, with experience in CE and HPLC of proteins, peptides and amino acids; 3+ years' practical experience in the pharmaceutical or biotechnology industries. An accomplished scientist with a marketing orientation preferred; excellent communication skills a must; travel required.

You will provide scientific strength to our CE/HPLC marketing programs by developing new analytical methods for proteins and peptides. In this capacity, you will interact with both our customers and sales force, transferring results from the laboratory to the business of science. You will be required to conduct seminars, provide consulting advice and training to Beckman specialists and customers.

Marketing Applications (Automated Systems) Sr. Applications Chemist

Requirements include a Ph.D. in Biochemistry, Immunochemistry or related areas, with 2+ years' post-doc experience. An accomplished scientist with a marketing orientation and understanding of current customer demand with regard to immunoassays is preferred; excellent communication skills a must; travel required.

You will be responsible for adapting current methodologies for immunoassays and receptor binding analysis to automated systems. In this capacity, you will provide scientific strength to our robotics marketing program by developing solutions to meet customer needs. You will interact with both our customers and sales force, transferring results from the laboratory to the business of science. You will be required to conduct seminars, provide consulting advice and training to Beckman specialists and customers.

Consider Beckman, where you'll experience the right chemistry. We offer an excellent salary and benefits package. Qualified candidates are encouraged to send a resume with salary requirements to:

Beckman Instruments
So Cal Headquarters
Gail Scott, Human Resources Dept.
2500 Harbor Blvd., D-27-A
Fullerton, CA 92635

BECKMAN

An Affirmative Action/Equal Opportunity Employer



THE AUSTRALIAN NATIONAL UNIVERSITY

Humanities Research Centre

VISITING FELLOWSHIPS 1995

Applications are invited for visiting Fellowships in the Humanities Research Centre in 1995. Each year the Centre concentrates upon a special theme. In 1995 the theme will be 'Africa'. The Centre intends to organise three conferences around this theme as well as a conference on 'National Biography and National Identity'.

Applications from scholars working in any area of the humanities are welcomed, as a proportion of each year's Fellowships is reserved for those without special interest in the year's theme; the majority of Fellowships, however, will be awarded to those whose work is relevant to the annual theme or the subsidiary conference. Fellows are expected to work at the Centre, but are encouraged also to visit other Australian universities. Grants usually include a travel component and a weekly living allowance. Prospective applicants must obtain further particulars and application forms from:

The Centre Administrator
Humanities Research Centre
The Australian National University
Canberra ACT 0200
AUSTRALIA

Phone 61 6 249 2700, fax 61 6 248 0054.

Applications should reach the Secretary, The Australian National University by 31 October 1993.

Ref: HRC 7.7.1.

SYMPOSIUM



Inflammation in Cardiovascular, Lung, and Blood Diseases

November 29-30, 1993

Masur Auditorium
National Institutes of Health
Bethesda, Maryland

Cochairs:

Peter Libby, M.D.
Charles G. Cochrane, M.D.

The symposium is the twentieth in a series titled "Frontiers in Basic Sciences That Relate to Heart, Lung, and Blood Diseases," and is focused on progress in basic science disciplines and transfer of such knowledge to clinical research programs. Experts will present recent research results, views on the state of the science, current problems, and possible future developments in the area of inflammation in cardiovascular, lung, and blood diseases.

Presentations will be structured around the following topics:

- Leukocyte-tissue interactions in inflammation
- Signal transduction in inflammation
- Cytokine involvement in inflammation
- Effector mechanisms in pulmonary inflammation
- Inflammatory cardiovascular disease
- Genetic manipulation of inflammatory cardiovascular and pulmonary diseases

For further information and registration materials, please contact: Ms. Carol Sadler, Prospect Associates, 1801 Rockville Pike, Suite 500, Rockville, Maryland 20852, (301) 468-MEET.

Sponsored by the National Heart, Lung, and Blood Institute

Speakers and Session Chairs

Paul M. Allen, Ph.D.
Michael Bevilacqua, M.D., Ph.D.
Lewis C. Cantley, Ph.D.
Charles G. Cochrane, M.D.
Ramzi S. Cotran, M.D.
Ronald G. Crystal, M.D.
John Curnutte, M.D., Ph.D.
James Darnell, M.D.
David Dichek, M.D.
Jaime Escobedo, Ph.D.
Ronald Falk, M.D.
Bruce A. Freeman, Ph.D.
Craig Gerard, M.D., Ph.D.
Michael A. Gimbrone, Jr., M.D.
Goran K. Hansson, M.D.
John M. Harlan, M.D.
Arieh Katz, Ph.D.
Peter Libby, M.D.
Elizabeth Nabel, M.D.
Carl Nathan, M.D.
Joost J. Oppenheim, M.D.
Polly Parsons, M.D.
Jordan S. Pober, M.D., Ph.D.
Thomas Schall, Ph.D.
Peter A. Ward, M.D.
Joseph Witztum, M.D., Ph.D.
Sally H. Zigmond, Ph.D.

POSITIONS OPEN

ASSISTANT DIRECTOR FOR OUTREACH University of Wisconsin-Madison Biotechnology Center (UWBC)

Degree and Experience: Master's (Ph.D. preferred) degree in biological sciences and laboratory research sciences related to biotechnology. At least 10 years of a combination of management, marketing, technology transfer, education and research experience related to biotechnology is required. **Duties:** Function as a member of the UWBC management team and actively work to combine and guide the resources of the outreach functions of education, information, consortium programs, and technology transfer. Responsible for program and budget planning and attracting support for outreach activities from university, state, federal, and private sources. Specific responsibility for directing Technology Transfer staff and activities, and developing and implementing a marketing plan. Send résumé and 3 references to: **Mary Greenheck, Administrative Officer, University of Wisconsin, Biotechnology Center, 1710 University Avenue, Madison, WI 53705.** *Unless confidentiality is requested in writing, information regarding the applicants must be released upon request. Finalists cannot be guaranteed confidentiality. The UW-Madison is an Equal Opportunity Employer.*

The Swiss Federal Institute of Technology in Zurich (ETHZ) wishes to appoint a professor to the CHAIR FOR PLANT NUTRITION

The professor is responsible for the teaching of the principles of plant nutrition including nutrient uptake and transport and the effects of nutrients on the yield and quality of plant products. Nutrient cycling in agroecosystems and methods of fertilizer use to minimize environmental damage are also important.

Research should be concerned with agro-ecologically relevant questions related to nutrient cycles. The candidate is expected to foster close cooperation with other research groups in the Institute of Plant Sciences and with other groups in ETHZ.

The professor is expected to be strongly involved in the newly proposed courses in agro-ecology.

The candidate should have a Ph.D. in plant science, agronomy or closely related fields. Knowledge of German and/or French, or a willingness to learn them, is important.

Applications including curriculum vitae, publication list (and the names of three referees) should be sent to: **President of ETHZ, Prof. Dr. J. Nüesch, ETH Zentrum, CH-8092 Zurich, by October 31, 1993.** *The ETHZ specifically encourages female candidates to apply with view towards increasing the proportion of female professors.*

PHYSIOLOGY, FACULTY. A tenure-track position for an investigator in cellular physiology, biophysics, or neuroscience. Researchers in cellular/molecular physiology, membrane transport, or neurobiology are especially invited to apply. Applications including curriculum vitae, a brief statement of research interests and three letters of reference should be mailed to: **Dr. Robert B. Gunn, Chairman, Department of Physiology, Emory University School of Medicine, Atlanta, GA 30322.** New applications will be considered until September 15, 1993, or until the position is filled. *Emory University is an Equal Opportunity/Affirmative Action Employer.*

THE CHEMISTRY DEPARTMENT AT THE UNIVERSITY OF CALIFORNIA, BERKELEY, solicits applications for positions as **ASSISTANT PROFESSOR** of Chemistry, beginning in the fall of 1994, pending budgetary approval. Creative and energetic candidates in organic and inorganic chemistry who show exceptional promise for research and teaching are specifically sought, though truly outstanding persons in any area of chemistry will be considered. Individuals selected for these positions will be expected to establish an outstanding research program. Candidates should send curriculum vitae, a proposed research program, and arrange to have three letters of recommendation sent to: **Chairman, Faculty Recruiting Committee; Department of Chemistry; University of California, Berkeley, CA 94720.** Applications received by October 15, 1993, will be reviewed first. The final deadline for receipt of applications is December 1, 1993. *The University of California is an Equal Opportunity/Affirmative Action Employer.*

POSITIONS OPEN

ASSISTANT PROFESSOR—PLANT VIROLOGY

The Department of Plant Pathology and Microbiology at Texas A&M University invites applications for a tenure-track position (65% Research, 35% Teaching) at the assistant professor level. We seek an individual who will establish a strong research program in plant virology that is self-supporting from extramural grant funds. The research program will address processes involved in virus infection of plants and identification and control of viruses in different cropping systems. Research by the individual should address both immediate needs of Texas agriculture as well as contribute to our scientific knowledge of plant viruses. It is expected that the individual will work closely with other researchers and extension specialists as needed to achieve these objectives. Teaching will include, but not necessarily be limited to, a graduate course in plant virology and direction of graduate students. Candidates with postdoctoral experience and a record of scholarly research will be given preference. Screening of applicants will begin 15 October 1993 and continue until a suitable candidate is identified. Applicants should submit curriculum vitae, statement of professional goals and research interests, and three letters of reference to: **Dr. Neal K. Van Alfen, Head, Department of Plant Pathology and Microbiology, Texas A&M University, College Station, TX 77843.** *Texas A&M University is an Equal Opportunity Employer and strongly encourages applications from women and minorities.*

POSTDOCTORAL POSITIONS—PLANT MOLECULAR VIROLOGY: Two available immediately: (1) To study targeted recombination between viral and cellular RNA's in transgenic plants. (2) To investigate the mechanism of viral RNA recombination using mutants of plant virus replicase proteins. Experience in transgenic plants/protein biochemistry desirable. Send preference, curriculum vitae and three references to: **Dr. Jozef J. Bujarski, Plant Molecular Biology Center, Northern Illinois University, Montgomery Hall, DeKalb, IL 60115.** *Affirmative Action/Equal Opportunity Employer.*

POSTDOCTORAL POSITIONS IN VIROLOGY—Two postdoctoral positions are available immediately in our program focusing on the molecular biology and pathogenesis of hepatitis B and C viruses. A solid background in recombinant DNA technology and tissue culture work is required. Candidates are expected to have a strong interest in mechanistic aspects pertinent to animal virus replication and virus-host interactions. Please send curriculum vitae, a brief summary of current and future research objectives and the names of three references to: **Dr. William Mason, or Dr. Cristoph Seeger, c/o Human Resources Department, Fox Chase Cancer Center, 7701 Burholme Avenue, Philadelphia, PA 19111.** FAX: 215-728-3616. *Equal Opportunity Employer.*

POSTDOCTORAL POSITIONS in Molecular Cardipulmonary Pharmacology available for recent Ph.D. in pharmacology, physiology or biochemistry. Project related to molecular pharmacology of purine receptors and the involvement of second messenger systems in smooth muscle, epithelial and endothelial cells. Salary NIH level. Experience in related field preferred. Send curriculum vitae and 3 letters of recommendation by September 30, 1993, to: **Dr. S. Jamal Mustafa, Department of Pharmacology, East Carolina University, Greenville, NC 27858.** *Federal law requires proper documentation of identity and employability at the time of employment. Affirmative Action/Equal Employment Opportunity.*

POSTDOCTORAL POSITIONS IN NEUROSCIENCE

Postdoctoral positions to study mechanisms involved in the regulation and plasticity of synaptic transmission are available immediately. The research involves studies of transmitter release and postsynaptic receptor properties at identified connections *in vivo* and *in vitro*, using electrophysiological, morphological and molecular techniques. Applicants should have experience in one or more of the above areas. Send curriculum vitae and names of three references to: **Donald S. Faber, Ph.D., Professor & Chair, Department of Anatomy & Neurobiology, The Medical College of Pennsylvania, 3200 Henry Avenue, Philadelphia, PA 19129.**

POSITIONS OPEN

POSTDOCTORAL POSITIONS for work on aging, lymphocyte development and signal transduction. One project involves studies of lymphokine production by T cell subsets. The other explores calcium and protein kinase signals in early T cell activation. A strong background in cell biology and/or molecular immunology is required. Send curriculum vitae, a brief statement of research interests, and names and telephone numbers of three referees to: **Richard Miller, University of Michigan, Box 2007, 300 North Ingalls Street, Ann Arbor, MI 48109.** *An Equal Opportunity Employer.*

POSTDOCTORAL POSITION available immediately to join an NIH-funded project on amino acid and iron supply to the early mammalian embryo. Background in receptor-mediated endocytosis, lysosomes and/or transferrin biochemistry a plus. Send applications to: **Dr. J. B. Lloyd, Professor and Director, Department of Medical Cell Biology, Nemours Research Programs, P.O. Box 269, Wilmington, DE 19899.** *Equal Opportunity Employer.*

RESEARCH ASSOCIATE

Molecular Genetics of Mouse Circadian Clocks

POSTDOCTORAL POSITION available to study circadian rhythms in the mouse using genetic and physical mapping and positional cloning of a novel circadian clock mutant. Ph.D. in molecular genetics and experience with physical mapping, YAC expression or transgenic mice desirable. Send curriculum vitae, research interests and 3 letters of recommendation to: **Dr. Joseph S. Takahashi, Department of Neurobiology & Physiology, Northwestern University, 2153 North Campus Drive, Evanston, IL 60208.** Telephone: 708-491-4598. *Equal Opportunity/Affirmative Action Employer.*

POSTDOCTORAL POSITION available immediately to study the molecular mechanisms mediating epithelial-stromal cell interactions and control of hormone-responsiveness in the normal and cancerous breast. The relationships between ovarian hormones, growth factors, growth inhibitors and extracellular matrix molecules in growth regulation will be investigated *in vivo* using tissue recombinants of normal or tumorous breast epithelium with normal or cancer-derived stroma, and *in vitro* under co-culture conditions in cell and organ culture. Experience in cell culture, immunocytochemistry, endocrine control of mammalian cell proliferation and tumor biology are desirable. Competitive salary and fringe benefits. Please send curriculum vitae and three letters of reference to: **Dr. Sandra Z. Haslam, Physiology Department, Michigan State University, East Lansing, MI 48824.** Telephone: (517) 355-6475, extension 1232, FAX: (517) 355-5125.

POSTDOCTORAL POSITION available to carry out isolation of enzymes involved in nucleoside antibiotic biosynthesis in *Streptomyces*. Previous experience with enzyme assays and enzyme purification required; previous experience with *Streptomyces* desirable. Send curriculum vitae and the names and telephone numbers of three references to: **Professor Ronald Parry, Department of Chemistry, Rice University, P.O. Box 1892, Houston, TX 77251.**

POSTDOCTORAL POSITION available immediately to study regulation of DNA damage inducible genes in *Saccharomyces cerevisiae* and higher eukaryotes. Previous experience in modern recombinant DNA technology required. Submit curriculum vitae and 3 letters of recommendation to: **Dr. Gwendolyn B. Sancar, Department of Biochemistry CB# 7260, School of Medicine, University of North Carolina at Chapel Hill, Chapel Hill, NC 27599-7260.** FAX: (919) 966-2852. *The University of North Carolina is an Equal Opportunity/Affirmative Action Employer.*

POSTDOCTORAL POSITION— INSECT VIROLOGY

Position available immediately to work within our insect vector biology group on the characterization and development of mosquito densoviruses as gene expression vectors. Preference will be given to applicants with experience in molecular biology, virology and entomology. Send detailed curriculum vitae with names of three references to: **Dr. R. B. Tesh, Department of Epidemiology and Public Health, Yale University School of Medicine, 60 College Street, P.O. Box 3333, New Haven, CT 06510.** *Yale University is an Equal Opportunity Employer.*

SKIRBALL INSTITUTE OF BIOMOLECULAR MEDICINE

The Skirball Institute of Biomolecular Medicine at New York University Medical Center School of Medicine will open in September 1993. This institute will focus on molecular neurobiology, developmental genetics and molecular pathogenesis. Each program will comprise 1-2 groups at the professorial level and 8-9 junior groups at the assistant professor level. In addition, several groups will be recruited in structural biology encompassing x-ray crystallography, NMR, electron microscopy as well as protein and DNA chemistry. The structural biology groups will be integrated within the 3 major research programs. A total of 40 research groups will be recruited during the next year. All group leaders will receive tenured or tenure track appointments in the existing basic science or clinical departments of New York University School of Medicine to achieve optimal interaction between existing departments and the Skirball Institute.

If you would like to join us in this unique opportunity to build an exceptional research environment, send your curriculum vitae, bibliography, a short research proposal and a list of reference to: Dr. Lennart Philipson, NYU Medical Center, 550 First Ave., New York, NY 10016 or to FAX # (212) 263-8951. If you need additional information, please call (212) 263-8950. EOE, M/F.



PROFESSORSHIPS

The Toyota Technological Institute (TTI), established in 1981 by a donation from the Toyota Motor Corporation, offers undergraduate and master's programs. To further strengthen education and research at the graduate level, TTI is adding a doctoral program which will focus on the following disciplines:

Information Aided Technology including Advanced Information Theory; Information Processing; Information/Motion Transformation Theory; Thermofluid Dynamics; Intelligent Design; and Information Integrated Realization Technology.

Future Industry-oriented Basic Science and Materials including Ultimate Structure & Properties; Molecular Design, Characterization & Properties; Noble Crystals & Semiconductors; Structure Controlled Materials; Singular Layers in Materials; and Beam Processing.

To commence this project, TTI is currently seeking 5-8 senior faculty members at the full professor level to join this community by April 1, 1995. Selected individuals will organize a unit laboratory, which will consist of 1 professor, 1 associate professor, 2-3 post doctoral research associates and students.

Support for research start-up expenses and an annual research budget will be provided, in addition to a salary and fringe benefit package. Details will be provided upon inquiry.

Qualified applicants are invited to mail their curriculum vitae, a statement of research interest and a list of publications, by October 30, 1993 to: Dr. M. Nagasawa (Vice-President).



TOYOTA TECHNOLOGICAL INSTITUTE
2-12 Hisakata, Tenpaku-ku, Nagoya, Japan 468
Fax inquiries
(Japan 81-52-802-6069)
TTI is An Equal Opportunity Employer

VETERINARY PATHOLOGIST

Toxicology

SmithKline Beecham Pharmaceuticals, a world leader in pharmaceutical research, is seeking an experienced Veterinary Pathologist in our Department of Toxicology to participate in the discovery and development of new therapeutic agents.

Successful applicants must have demonstrated ability in experimental pathology with an M.S. or Ph.D. or through publication of scientific work. Participation in the design, conduct and reporting of toxicity studies is expected as are collaborative interactions with Research Departments: investigation of pathogenic mechanisms is emphasized. A background in laboratory animal pathology is desired and board certification by the American College of Veterinary Pathologists is preferred.

SmithKline Beecham offers excellent compensation and benefits, an attractive relocation policy and a collegial work environment that offers considerable opportunity for personal and professional growth. For confidential consideration, please forward your C.V. to: SmithKline Beecham Pharmaceuticals, Sr. Employment Administrator #MO92, P.O. Box 1539, King of Prussia, PA. We are an Equal Opportunity Employer, M/F/D/V.



SmithKline Beecham
Pharmaceuticals

Challenging the natural limits.

Cooperative Research Centre For Aquaculture

DIRECTOR

Salary Package to be negotiated

A Cooperative Research Centre for Aquaculture is being established to develop a national research strategy to address the problems of industry, and to provide a comprehensive educational resource with direct relevance to the development of aquaculture in Australia.

The Australian aquaculture industry is in a period of rapid growth requiring a collaborative, systematic approach to obtaining solutions. The CRC will bring together a core of researchers and facilities to carry out research throughout Australia.

The Education programs will concentrate on higher degrees by research.

We are seeking an outstanding person with a proven record in management and research, preferably in the biological sciences.

As Director, you will attend meetings of the CRC Board of Management, manage the research of the Centre and oversee the development and management of the Education program.

You will provide high level tactical and strategic advice to the Board and make a significant contribution to the Centre's research, education and management policies. You should have a proven capacity for analysis and an ability to plan and implement actions within an environment of growth, risk and uncertainty.

It is anticipated that the position will be an 80-90% appointment to the CRC with 10-20% of time available to address activities outside of the CRC.

The CRC is funded for 7 years. The initial appointment is for a term of 5 years with a capacity for renewal of the appointment at the end of the initial term.

Mr Tim Mangan (61 02 325 267) can be contacted for further details and Mrs Paulette Midgley (61 02 325 222) can provide a Job Description and Selection Criteria.

Applications should address the selection criteria and be sent to: Mr Bill Widerberg, Chairman, CRC for Aquaculture, GPO Box 1538, Hobart, Tasmania 7001, Australia.

Closing date for applications is 1 September 1993.

adcorp42186

CELL BIOLOGISTS

The Department of Medical Cell Biology of the Nemours Research Programs is expanding with the hiring of two experienced cell biologists at Assistant or Associate Professor level. Candidates must have at least two years postdoctoral experience and must be able to demonstrate a capacity and an enthusiasm for independent research. One of the posts will be to develop a program of work in some aspect of intestinal cell biology, preferably using cultured cells. Also to collaborate in and support the existing research programs directed by three gastroenterology physician investigators. The second appointee will have interests in endocytosis and/or lysosomes function and will pursue independent and collaborative research in this field.

The Department of Medical Cell Biology is one of three research departments located at the Alfred I. duPont Institute, a rapidly growing multidisciplinary children's hospital that has close academic and clinical links with Jefferson Medical College, Philadelphia. The Department currently has a staff of 45 and is engaged in a range of research projects in which the techniques of molecular and cell biology are used to investigate problems related to child health and disease. Existing work relevant to these new posts is concerned with pinocytosis and lysosome function in embryonic nutrition, genetic defects and targeted drug delivery; and with gastrointestinal energy metabolism, transport, motility and inflammation.

Send a letter of interest, curriculum vitae, and salary history (required) to: Dr. J.B. Lloyd, Professor and Director, Department of Medical Cell Biology, Nemours Research Programs, P.O. Box 269, Wilmington, DE 19899. Applications will be accepted until the positions are filled.

SCIENTISTS

Pharmacia P-L Biochemicals Inc., a leader in the research, production and marketing of molecular and cell biology products, is currently looking for Scientists to increase the R&D staff.

NUCLEIC ACID CHEMIST — Needed for laboratory synthesis and analysis of nucleoside phosphoramidites through application of basic organic chemistry principles to the improvement of synthetic methods. This position will require interaction with colleagues from a variety of internal company areas. Applicant should have a Ph.D. in Organic Chemistry, or the equivalent, and 2-5+ years experience in the synthesis and use of nucleoside phosphoramidites. Supervisory skills and the ability to interact with scientists from industry and academia are highly preferred. (Position CB1)

RESEARCH ASSOCIATE/ORGANIC SYNTHESIS — Is needed for research in nucleic acids synthesis and development of the production method. Applicants should have a BS/MS degree in Organic Chemistry or related field, or the equivalent, and 2-5+ years experience in organic synthesis, nucleic acids chemistry and nucleoside phosphoramidites synthesis. (Position CB2)

RESEARCH ASSOCIATES/MOLECULAR BIOLOGY — Are needed to do sequencing, purification and cloning of DNA. Applicants should have a BS/MS degree in Molecular Biology, Biochemistry, Microbiology or related field, or the equivalent, and 2-5+ years experience, including the production of recombinant proteins and/or the use of automated DNA sequencers. (Position PB3)

We offer competitive salaries and comprehensive benefit packages. For consideration, send CV/resume and salary history and requirements, indicating position code, to: **Manager, Human Resources, PHARMACIA P-L BIOCHEMICALS INC., 2202 N. Bartlett Ave., Milwaukee, WI 53202.** An equal opportunity employer m/f/d/v.



Pharmacia

Pharmacia P-L Biochemicals

ATTENTION SCIENCE RECRUITMENT ADVERTISERS...

\$50 SPECIAL

Place your classified ad in any July or August 1993 issue of *Science* and get double exposure. We'll display the same position announcement at the Employment Exchange during Science Innovation '93: The Conference on New Research Techniques—for only \$50 more.

When you place your classified ad in *Science*, simply let us know that you want to take advantage of the \$50 SPECIAL and we'll do the rest.

The Employment Exchange will take place at Science Innovation '93 at the Hynes Convention Center in Boston, August 6-10. Thousands of scientists have been invited to participate. Act fast and you can reach this unique pool of candidates.

You can also take advantage of the special if you have recently advertised in *Science*.

To obtain more information or to find out how you may interview candidates during the Employment Exchange at Science Innovation '93, contact: Jacquelyn Roberts at 202-326-6737.

RESEARCH SCIENTIST

Imagenetics is a growing division of Amoco Technology Company focusing on "in vitro" medical diagnostics, specifically in the areas of genetic disease, cancer, and infectious agents. We have an immediate opening for a Research Scientist to join a team developing DNA probe diagnostics.

Primary responsibilities include acquiring human DNA regions of interest and converting these into prototype probes as well as developing new DNA technologies. Other duties include presenting team findings and providing specialized expertise in the areas of molecular oncology and human molecular genetics.

Candidate must have a Ph.D. and/or an M.D. with 3-5 years post-doctoral experience (industrial preferred), with an extensive background in human molecular genetics/oncology and mastery of current recombinant DNA techniques. Knowledge of flow cytometry, immuno-histochemistry, and other cell analysis tests is desirable. Must be able to collaborate with team members effectively.

For immediate confidential consideration, please mail resume by AUGUST 20, to:



**Amoco Research Center
Recruiting Coordinator
P.O. Box 3011
F-3/HR Code: SS-718
Naperville, IL 60515
Equal Opportunity Employer M/F/H/V**



Memorial

University of Newfoundland

DEAN OF THE FACULTY OF SCIENCE

Memorial University of Newfoundland invites applications and nominations for the position of Dean of the Faculty of Science. The Faculty has an undergraduate enrollment of some 1300 students, over 300 graduate students, and 270 faculty members. Among the qualities we are looking for are commitment to teaching, research and scholarship, skill in human relations, administrative experience. The candidate is expected to provide collegial leadership within the framework of a collective bargaining agreement in which teaching and research are equally valued.

Memorial University, the largest Atlantic region university in Canada, is the only university in Newfoundland. It is geographically and philosophically oriented to take advantage of opportunities and linkages in Europe and of its marine environment. Memorial University enrolls over 18,000 undergraduate and graduate students in six faculties and seven schools. Its main campus is located in St. John's, a unique city of great charm.

The Faculty of Science is organized into nine academic units: biochemistry, biology, chemistry, computer science, earth sciences, mathematics and statistics, physics, and psychology, and the Ocean Sciences Centre. It offers a wide variety of undergraduate and graduate degrees. Ph.D. programs exist in all departments.

It is anticipated the appointment will take effect not later than September 1, 1994, and preferably sooner. Written nominations or applications, the latter accompanied by a resumé and the names of five referees, should be submitted by October 15, 1993, to:

**Dr. Jaap Tuinman
Vice-President (Academic) and Pro Vice-Chancellor
Arts and Administration Building
Memorial University of Newfoundland
St. John's, Newfoundland, Canada, A1C 5S7
Telephone: (709) 737-8246; Fax: (709) 737-2074;
E-mail: JTuinman@kean.ucs.mun.ca**

In accordance with Canadian immigration requirements, first preference will be given to Canadian citizens and permanent residents. Memorial University is committed to the principles of employment equity and welcomes applications from all qualified candidates.



The Illawarra District is a large urban centre with rural surrounds (population 300,000) 60 km south of Sydney. It has major steel, mining and port industries. The University of Wollongong has established a reputation as an energetic innovative institution. It has grown rapidly in recent years and currently has approximately 10,000 students in eight Faculties: Arts, Commerce, Education, Engineering, Health and Behavioural Sciences, Informatics, Law and Science.

BIOMEDICAL SCIENCE

Three vacancies exist and may be filled at one or more of the following levels:

ASSOCIATE PROFESSOR (Reference AC93 -103S)

SENIOR LECTURER (Reference AC93 -102S)

LECTURER (Reference AC93 -101S)

Appointments may be made to a Continuing or to a Limited Term - 5 years (Convertible) Appointment

This newly reorganized department within the Faculty of Health and Behavioural Sciences has a mandate to create a strongly research-oriented department dedicated to producing quality graduates in the health and biomedical sciences. A new building is being built to house the Faculty and will include excellent research and postgraduate facilities for the Department of Biomedical Science.

The department has a major program focussing on the roles of diet, exercise and genetic factors in health and disease. Particular research strengths are in factors leading to the development of the cluster of diseases related to insulin resistance: obesity, diabetes, dyslipidaemias, hypertension and heart disease. Complementary strengths are in biomechanics, exercise and environmental physiology, nervous control systems, and applied human anatomy.

Applicants with strong research and teaching credentials may come from a broad range of health and behavioural science backgrounds. Expertise in one or more of the research areas detailed above may be an advantage but demonstrated excellence in research is a major consideration. Appointment at Associate Professor level will require an applicant with a strong international research reputation. Further information from Professor Len Storlien 6142-213881; FAX 6142-214096), Closing date 9 September 1993.

Salary ranges (annual) Associate Professor (Level D): \$A60,475 - \$A66,625; Senior Lecturer (Level C): \$A50,225 - \$A57,913; Lecturer (Level B): \$A41,000 - \$A48,688. A limited term appointment may be converted to a continuing appointment, which is one until retirement. Further information on conditions of appointment from Mr Ross Walker (6142) 213934, FAX (6142) 213700 or e-mail r.walker@uow.edu.au Applications should quote the Reference, contain details of qualifications, employment history, research interests, publications and the names and addresses (including fax number or E-mail address) of three referees and be forwarded to the Recruitment Officer (Academic Staff). Please mark envelope 'Confidential - Appointment'. Mail address: University of Wollongong, Northfields Avenue, Wollongong NSW 2522 Australia. Electronic address J.Hutchinson@uow.edu.au Secure Fax (6142) 213700.

Equality of employment opportunity and a smoke free work environment are University Policies.

The University of Texas Southwestern Medical School
announces

The PEPR Program Independent Research Fellowships for Physician-Scientists

The University Texas Southwestern Medical School has established a program that is designed to replace or supplement the usual postdoctoral fellowship. This program will provide three years of support for independent research carried out by Physician/Scientists in any aspect of biomedical science including the fields of Biochemistry, Genetics, Pharmacology, Molecular and Structural Biology, Immunology, Pathology and Physiology.

• Fellowship Terms

Three years of support will be provided for a fundamental research project that will be carried out in laboratories at Southwestern Medical School.

- \$50,000-\$60,000 annual stipend, depending on qualifications.
- \$780,000 research support, which includes salary for a Research Assistant.

Junior Faculty Appointment.
Independent laboratory space.

• Eligibility

People holding both M.D. and Ph.D. degrees required with the first of these degrees awarded no earlier than 1988.

• Application

By September 30, 1993, please submit a one-page abstract of the research proposal, together with a *curriculum vitae* and the names, addresses and telephone numbers of three referees.

By November 1, 1993, please submit a research proposal, not more than eight pages in length, in double-spaced type. The proposal should be divided into Specific Aims, Background and Methods. It must include a full discussion of potential difficulties, both theoretical and practical, and should suggest methods by which these difficulties might be minimized or avoided. Please also send reprints of papers published by the candidate.

• Schedule

Candidate interviewed • December, 1993.
Announcement of awards • January 10, 1994.
Fellowships start • July 1, 1994

Applications and enquiries should be addressed to:

Dr. R. Sanders Williams, McDermott Center for Human Growth & Development,
The University of Texas Southwestern Medical Center, 5323 Harry Hines Blvd., Dallas, Texas 75235-8591
Telephone: (214) 648-1603 FAX (214) 648-1666

The University of Texas Southwestern Medical Center is an Affirmative Action/Equal Opportunity Employer

CORNELL UNIVERSITY COLLEGE OF VETERINARY MEDICINE DEPARTMENT OF PATHOLOGY

The Department of Pathology at Cornell University College of Veterinary Medicine invites applications for a tenure-track position at the Assistant Professor or beginning Associate Professor level. The desired candidate holds a DVM and Ph.D. in cellular and/or molecular biology and is expected to establish a rigorous, extramurally funded research program that complements ongoing departmental projects in cell proliferation and differentiation, cell-cell and cell-substrate interactions, transmembrane signaling, protein-protein interactions, and molecular genetics. She/he will also participate in teaching of DVM and graduate students, and residents, as well as contribute to general departmental academic activities. Applicants should submit their curriculum vitae, a summary of their present and future interests, and three letters of reference from persons familiar with their research and teaching abilities to: Dr. Andrew Yen, Chairman, Faculty Search Committee, Department of Pathology, Cornell University College of Veterinary Medicine, Ithaca, NY 14853. Applications will be reviewed starting September 15, 1993.

Cornell University is an Affirmative Action/Equal Opportunity Employer. Women and minority candidates are urged to apply.

Opportunities for Senior Scientists in Multi-disciplinary Research Program

The U.S. Environmental Protection Agency (EPA) is seeking two senior (S/T) research scientists with expertise in monitoring and assessment to lead exploratory research activities for the national Environmental Monitoring and Assessment Program (EMAP). EMAP is an innovative, multi-agency program designed to estimate status and trends in the condition of our nation's ecological resources. Applicants should possess technical proficiency in terrestrial, freshwater, marine, and/or landscape ecology. Experience with ecological indicators, monitoring at regional and national scales, and/or multiple-resource integration is highly desirable.

Positions for exemplary scientists may be located at any one of the following Office of Research and Development (ORD) laboratories depending on the compatibility of the incumbent's background with the mission of the particular laboratory: Atmospheric Research and Exposure Assessment Laboratory-Research Triangle Park, Environmental Monitoring Systems Laboratory-Las Vegas, Environmental Research Laboratory-Narragansett, Environmental Research Laboratory-Gulf Breeze, Environmental Research Laboratory-Duluth, Environmental Research Laboratory-Corvallis, or Environmental Research Laboratory-Athens.

Applicants must submit an original and three (3) copies of: (1) an SF-171, Application for Federal Employment; (2) a narrative statement specifically addressing their accomplishments and/or potential to provide leadership in the technical factors; and (3) the "EPA Applicant Race and National Origin Identification" form (optional). Applications WITHOUT documents 1 and 2 will be considered INCOMPLETE and will not receive consideration for this position. Application material must be received or postmarked by September 15, 1993, and should be sent to:

Chaunta A. Gladney
U.S. Environmental Protection Agency
OARM/OHRM/Executive Resources & Special Programs Division
401 M Street, S.W., Room 3910E, PM-224
Washington, DC 20460
ATTN: S/T-EMAP

Human Resources Contact: Chaunta A. Gladney, (202) 260-3336

Technical Contact: Thomas L. Baugh, (202) 260-5776

NOTE: APPLICANTS WILL BE DISQUALIFIED IF ALL SPECIFIED APPLICATION MATERIALS ARE NOT SUBMITTED. PLEASE SUBMIT ORIGINAL AND THREE (3) COPIES OF ALL APPLICATION MATERIALS.

RESUMES ARE NOT ACCEPTABLE AS APPLICATIONS.

THE U.S. EPA IS AN EQUAL OPPORTUNITY EMPLOYER.



School of Biological Sciences LECTURESHIP IN EVOLUTION

Applications are invited for a lectureship in Evolution from people with active research interest in any aspects of the subject. The appointment will be made in the School of Biological Sciences (a top ranked School in the recent research assessment exercise conducted amongst British Universities by their Funding Council), on the Lecturer A salary scale £13,601 to £18,855 per annum.

Application form and further particulars are available from Mrs. Laura Fitch, Personnel Office, Sussex House, Falmer, Brighton, BN1 9RH. UK. Tel (0273) 606755 ext 3768. Closing date for receipt of applications: 10 September 1993.

AN EQUAL OPPORTUNITY EMPLOYER

POSTDOCTORAL SCIENTIST

SmithKline Beecham Pharmaceuticals has an immediate opening in its Department of Renal Pharmacology for a postdoctoral fellow who will join a multi-disciplinary team of scientists in the area of receptor research and signal transduction. We are particularly interested in cloning and analysis of G-protein coupled receptors that interact with specific water diuretic agents.

The postdoctoral candidate will use a combination of molecular genetic and pharmacological techniques to clone and characterize cell surface receptors. Requirements for this position include a Ph.D. in Molecular Pharmacology or Cell Biology with a strong background in recombinant DNA techniques. The candidate should also possess a proven record of scientific achievement as evidenced by publications in major scientific journals.

SmithKline Beecham's postdoctoral scientists are afforded a stimulating and challenging work environment and are strongly encouraged to publish their research results in top academic journals. SmithKline Beecham's state-of-the-art research facility is located in suburban Philadelphia, near Valley Forge, PA. We offer a competitive compensation/benefits/relocation package. For confidential consideration, please submit your CV to: Employment Administrator, H0003, SmithKline Beecham Pharmaceuticals, P.O. Box 1539, King of Prussia, PA 19406-0939. We are an equal opportunity employer, M/F/D/V.



SmithKline Beecham
Pharmaceuticals

Challenging the natural limits.

Immunohistochemistry/ Molecular Pathology

M.D. or Ph.D.

Department of Pathology
University of Chicago/Section of Hematopathology

The Department of Pathology at the University of Chicago seeks a pathologist or Ph.D. with experience in immunohistochemistry and/or molecular biology to join the hematopathology section. The primary responsibility of this position is to help direct and develop the immunohistochemistry area of the laboratory. Interested individuals should be committed to implementing and developing new procedures utilizing immunologic and/or molecular biologic techniques applied to tissue sections or cell preparations. Knowledge of in-situ hybridization techniques and flow cytometry would be helpful, and experience in working with tissue sections is essential. This position will require considerable commitment to clinical service, but applicants should also be interested in initiating or participating in a research program and in teaching and involving residents and fellows in projects. The academic rank and salary are flexible, depending on the qualifications of the applicant. Please submit all inquiries to:

Godfrey S. Getz, M.D., Ph.D.
Chairman, Department of Pathology, MC3083
The University of Chicago
5841 S. Maryland Avenue
Chicago, IL 60637



THE UNIVERSITY
OF CHICAGO

The University of Chicago is An Affirmative Action Equal Opportunity Employer

GROUP LEADER

Mouse Molecular Genetics Program

The Biology Division of the Oak Ridge National Laboratory (ORNL), a recognized leader in multidisciplinary research and development, is seeking an experienced investigator to head a group in molecular mouse genetics. The candidate must be familiar with the utilization of mutant resources for addressing problems in developmental genetics and genome analysis. A knowledge of both classical genetics and modern molecular techniques is essential. A PhD is required in molecular biology, genetics, cell biology, or biochemistry, along with significant post-doctoral experience. The successful candidate should have a demonstrated potential to attract extramural support. Core funding will be provided at a level commensurate with the candidate's qualifications.

The ORNL Biology Division supports a large mouse genetics facility with numerous mutant stocks. An interactive group of scientists is conducting research in mutagenesis (agent-induced, insertional, and targeted), developmental genetics, and genome mapping. Additional Division programs include protein engineering, structural biology, and investigations into health effects of energy production and utilization for the Office of Health and Environmental Research within the Department of Energy. Among divisional support functions are cytogenetics, cryopreservation, and flow cytometry.

ORNL is a multi-purpose research facility managed by Martin Marietta Energy Systems, Inc., for the US Department of Energy. ORNL offers a competitive compensation and benefits package, including relocation. For immediate consideration, send your resume by September 30, 1993, to: L.B. Russell, Biology Division, Oak Ridge National Laboratory, Dept. SCI-806, P.O. Box 2009 Oak Ridge, TN 37831-8077.

ORNL is an equal opportunity employer committed to building and maintaining a diverse workforce.

POSITIONS OPEN

POSTDOCTORAL POSITION available immediately to study endothelial cell injury caused by *Rickettsia rickettsii*. Experience in cell culture and biochemistry required. Expertise in transmission electron microscopy desirable. Study involves the role of oxygen radicals and peroxides in injury caused by an intracellular bacterium. Send curriculum vitae, names of three references, and research background to: **Dr. David J. Silverman, Department of Microbiology and Immunology, University of Maryland, 655 West Baltimore Street, Baltimore, MD 21201. An Equal Opportunity/Affirmative Action Employer.**

THE ROCKEFELLER UNIVERSITY NEW YORK. Structural Studies of Transcription Complexes. Applications are invited for **POSTDOCTORAL POSITIONS** in the laboratory of Dr. Seth Darst to investigate structure-function relationships underlying macromolecular assemblies involved in the process of transcription. Work in the laboratory involves biochemical, biophysical, and structural investigations of assemblies and sub-assemblies of proteins and nucleic acids isolated at defined stages of the transcription process. Structural studies include X-ray crystallographic analysis of macromolecules, and electron microscopy and image processing of larger assemblies. A strong background in protein biochemistry, X-ray crystallography, or electron microscopy and image processing is desired. The isolation and characterization of macromolecular assemblies is emphasized and candidates with no crystallographic training are encouraged to apply.

Send curriculum vitae and the names of 3 references to: **Dr. Seth A. Darst, The Rockefeller University, Box 224, 1230 York Avenue, New York, NY 10021; FAX: 212-327-7477.**

POSTDOCTORAL SCIENTIFIC RESEARCH OPPORTUNITIES IN INDIA.

Three- to twelve-month fellowships in India awarded to U.S. citizens in 1993-4. For information, contact: **Jeanine Marie Greene, Academy for Educational Development, 1255 23rd Street, NW, Washington, DC 20037.**

POSTDOCTORAL POSITION YALE MEDICAL SCHOOL

Positions available to study the function and transcription of human spliceosomal small nuclear RNA's, and the genomic organization and evolution of the human U2 snRNA genes. Please send curriculum vitae and names of three references to: **Dr. Alan M. Weiner, Department of Molecular Biophysics and Biochemistry, Yale University School of Medicine, 333 Cedar Street, New Haven, CT 06510 USA.**

POSTDOCTORAL POSITIONS (2 to 5 years) are available at the National Institute of Arthritis and Musculoskeletal and Skin Diseases, National Institutes of Health, Public Health Service, to study the molecular mechanism of muscle contraction. Positions involve training in advanced techniques of physiology and biochemistry to explore how modification of the myosin molecule affects its interaction with actin. Salary is \$25,000 to \$42,000 per year. Send curriculum vitae and names of three references to: **Dr. Mark Schoenberg, NIAMS, NIH, Building 6, Room 108, Bethesda, MD 20892. An Equal Opportunity Employer.**

POSTDOCTORAL POSITION IN DISSOLVED ORGANIC MATTER BIOGEOCHEMISTRY

Available at the Stroud Water Research Center, a research station of the Academy of Natural Sciences of Philadelphia. Investigation of the sources and biological lability of terrestrial DOC entering streams. Expertise in one or more of the following research areas required: watershed biogeochemistry, benthic microbial ecology, analytical organic chemistry of natural compounds (GC/MS), groundwater hydrology, or mathematical modeling. This is a two-year position, beginning approximately November 1, 1993. Send curriculum vitae and names of three references to: **Dr. Louis A. Kaplan, Stroud Water Research Center, 512 Spencer Road, Avondale, PA 19311; Telephone: 215-268-2153; FAX: 215-268-0490. An Equal Opportunity/Affirmative Action Employer.**

POSITIONS OPEN

POSTDOCTORAL POSITION available immediately for a candidate interested in studying tumors, hematopoiesis and the immune response in *Drosophila*. Experience in molecular biology or genetics required. Please send curriculum vitae and names of three references to: **Dr. Deborah A. Kimbrell, Department of Biology, University of Houston, Houston, TX 77204-5513. University of Houston is an Equal Opportunity/Affirmative Action Employer.**

A **POSTDOCTORAL POSITION** is available immediately to study mechanisms of ethanol-induced alterations in intracellular trafficking in the liver. Specifically, acidification of endosomes and other organelles of liver cells will be examined along with the trafficking of ligands internalized into the liver by receptor-mediated endocytosis. Experience in cell biology, protein biochemistry and protein trafficking desired. Please send curriculum vitae and names, addresses and telephone numbers of three references to: **Carol A. Casey, Ph.D., Liver Study Unit, V.A. Medical Center, 4101 Woolworth Avenue, Omaha, NE 68198-8090.**

The University of Nebraska Medical Center is an Equal Opportunity/Affirmative Action Employer. Women and minorities are encouraged to apply.

POSTDOCTORAL FELLOWS

We solicit applications from bright, adaptable, adventuresome scientists with backgrounds in quantitative biology for postdoctoral fellowships. Salaries in the range of \$19,000 to \$25,000 plus fringe benefits. Current research areas are: (1) anti-tumor research involving the construction of targeted cytotoxins with a binding site-deleted catalytic toxin, and (2) signal systems in a predatory protozoan, both basic research and disease amelioration studies. Recombinant DNA and hybridoma technology, cell culture, protein chemistry, other molecular biology and biochemical techniques, *in vitro* and *in vivo* experimentation. Contact: **C. L. Villemez, Department of Molecular Biology, University of Wyoming, Laramie, WY 82071-3944, or call (307) 766-6443. An Equal Opportunity/Affirmative Action Employer.**

A position at the rank of **POSTDOCTORAL FELLOW or RESEARCH ASSISTANT PROFESSOR** is available to investigate the action of alcohols and anesthetics on cell membranes. Investigations are well-supported by a NIH-funded Alcohol Research Center Program and involve preparation of biological and model membranes, HPLC, GC, binding assays and animal behavioral studies. Applicant is expected to apply ESR, NMR, or fluorescence techniques to investigate membrane-anesthetic interactions. Rank and salary are competitive and commensurate with experience. Send curriculum vitae, a statement of research interests and the names and addresses of three references to: **Nathan Janes, Ph.D., Thomas Jefferson University, Department of Pathology & Cell Biology, 1020 Locust Street, Philadelphia, PA 19107. FAX: 215-923-2218. Equal Opportunity Employer committed to a smoke-free work environment.**

The *Sulfolobus* Genome Sequencing Project POSTDOCTORAL FELLOWS, GRADUATE STUDENTS AND TECHNICIANS

We have received funding to map and sequence the genome of the archaebacterium *Sulfolobus solfataricus*, developing and implementing analyses of the structural, functional and evolutionary information that will emerge. The work will be done at laboratories at the University of Ottawa (R. L. Charlebois) and at the National Research Council Institute for Marine Biosciences (M. A. Ragan) and Dalhousie University (W. F. Doolittle) in Halifax. We are assembling an interactive team of at least twelve people (principle investigators, research associates, postdoctoral fellows, graduate students and technicians). A strong interest in genomics and evolution is assumed. FAX curriculum vitae, together with names and telephone numbers of three referees, as soon as possible to: **W. F. Doolittle, Department of Biochemistry, Dalhousie University, Halifax, Nova Scotia B3H 4H7, Canada. FAX: (902) 494-1355. Employment Equity/Affirmative Action Employer. We encourage applications from qualified women, aboriginal peoples, visible minorities and persons with disabilities.**

POSITIONS OPEN

POSTDOCTORAL FELLOWSHIP available immediately for a Ph.D., M.D., or D.V.M., to participate in a study to assess the efficacy of therapeutic measures to ameliorate age-related cognitive impairments in nonhuman primates. Experience in neuropsychology or neuropharmacology is preferred. Computer proficiency and knowledge of sterile techniques are highly desirable. Send curriculum vitae and two letters of recommendation to: **Donald L. Price, M.D., The Johns Hopkins University School of Medicine, 558 Ross Research Building, 720 Rutland Avenue, Baltimore, MD 21205-2196.**

MOLECULAR IMMUNOLOGIST

VAMC, affiliate of the University of South Florida. Position available to a qualified **POSTDOCTORAL FELLOW** with experience in cell separation and culture, cytokine production, and quantitation. Interaction between the neuroendocrine and immune system in human subjects during exercise and the role of antioxidants is being explored. Send curriculum vitae to: **George Emmanuel, M.D., VAMC (111A), Bay Pines, FL 33504. Telephone: (813) 398-9539 or FAX: (813) 398-9549.**

POSTDOCTORAL ASSOCIATE position is available September 1, 1993, or until filled, to study genes suppressing MHC class II antigen expression in human trophoblasts. Candidate should have experience in mammalian cell and molecular biology, including DNA cloning and sequencing. Submit letters of application including brief description of research interests, curriculum vitae and names, addresses and telephone numbers of three references to: **Dr. Graeme L. Hammond, Department of Surgery, Yale University School of Medicine, P.O. Box 3333, New Haven, CT 06510. Yale University is an Equal Opportunity/Affirmative Action Employer and encourages women and minority group members to apply.**

POSTDOCTORAL RESEARCH POSITION

To study molecular and cellular mechanisms of signal transduction in relation to the pathophysiology of major psychiatric disorders and the mechanism of action of psychotropic medication. Particular emphasis is directed towards investigations of G protein function, second messenger signaling, and the effects of antidepressants and mood stabilizing agents on gene expression.

Position requires a Ph.D. or equivalent degree in neurochemistry, neurobiology, neuropharmacology or cellular biology; expertise in molecular methodologies recommended.

Inquiries may be sent to: **Drs. J. J. Warsh/P. P. Li, Section of Biochemical Psychiatry, Clarke Institute of Psychiatry, 250 College Street, Toronto, Ontario, Canada, M5T 1R8.**

POSTDOCTORAL RESEARCH ASSOCIATE, Brookhaven National Laboratory. The Department of Applied Science has a position available for a Ph.D. trained in biological oceanography or biology with experience in photobiology/photophysics of phytoplankton photosynthesis. Knowledge of remote sensing, optics, and management of large computer databases is desirable. The successful candidate will participate in a research program to integrate *in situ* data with satellite ocean color data in the development of biophysically robust algorithms for calculating primary productivity from remotely sensed variables.

Candidates are asked to forward curriculum vitae, list of publications, and the names and addresses of three references to: **Dr. Paul G. Falkowski, Department of Applied Science, Building 318, Brookhaven National Laboratory, Associated Universities, Inc., P.O. Box 5000, Upton, Long Island, NY 11973-5000. Equal Opportunity Employer, M/F/D/V.**

POSTDOCTORAL RESEARCH SCIENTIST/ASSOCIATE RESEARCH SCIENTIST to study molecular basis of cancer development and evolution. Experience in molecular biology (cDNA library construction and screening, subtraction hybridization, vector construction), retrovirus construction and sequencing, creating transgenic mice. Positions available immediately. Salary negotiable. Contact: **Dr. Nurul Sarkar, Medical College of Georgia, Augusta, GA 30912. Telephone: (706) 721-7657; FAX: (706) 721-7507.**

MCG is an Equal Opportunity/Affirmative Action Employer.

CARDIOVASCULAR RESEARCH SCIENTIST

Merck Research Laboratories, a leader in pharmaceutical research, has an opening for a cardiovascular scientist experienced with in vivo models of vascular injury, thrombosis and thrombolysis and/or restenosis to join an active team of investigators involved in the development of novel cardiovascular therapies.

This position requires a Ph.D. or equivalent in pharmacology or physiology and at least two years postdoctoral experience. Independent academic or industrial research experience in the fields of thrombosis and/or vascular injury would be advantageous.

Excellent salary and benefit programs accompany this position at our modern research facilities located 25 miles northwest of Philadelphia.

Please send curriculum vitae with cover letter to: **Personnel Manager, Ad #D-11, MRL Human Resources, WP42-2, Merck Research Laboratories, P.O. Box 4, West Point, PA 19486.** EEO/AA/V/Employer.



Drug Safety & Metabolism Principal Scientist

Wyeth-Ayerst Laboratories, a major division of Fortune 100 American Home Products Corporation, has an immediate opening for a Principal Scientist to design and conduct experimental pathology studies within the Drug Safety & Metabolism Division located in Chazy, New York.

Responsibilities include evaluating the mechanism of toxicologic and pathologic effects of potential new drugs; developing *in vitro* and *in vivo* methods for determining relevance of observed effects to man; and assisting in study director responsibilities for preclinical Drug Safety studies. The successful candidate will have a PhD and at least 2-5 years experience in applicable *in vitro* pathobiology techniques.

Our Chazy, New York, Drug Safety and Metabolism facility offers an excellent quality of life for our employees with easy access to cultural, educational and recreational resources of Montreal, Burlington, Vermont, the Adirondack Mountains and Lake Champlain.

We offer competitive salaries and professional opportunities as well as the full range of benefits that you would expect from a corporation of our caliber. Please send your resume with salary history to:

**Mr. Gary D. Wagoner, Human Resources Department,
Wyeth-Ayerst Research, 64 Maple St., Rouses Point,
NY 12979.** Equal Opportunity Employer, M/F/D/V



Leading The Way for a Healthier World



MICROBIOLOGICAL ASSOCIATES, INC. is a leading international provider of biological testing services to the pharmaceutical, personal care and biotechnology industries. We have an immediate opening for a **Project Manager**.

BIOCHEMICAL EPIDEMIOLOGY

This position requires a Ph.D. (or equiv. degree) with 3-5 years' project management experience, especially in the areas of epidemiology, clinical chemistry or molecular biochemistry. Must have effective writing/oral communication, organizational and interpersonal skills. Exper. in budgeting, financial analysis, negotiations, systems management and subcontract management is very desirable. 2-3 years' laboratory exper. and exposure to advanced laboratory QC procedures would be an asset.

Join us as we build on our 40-year tradition of scientific excellence. Our state-of-the-art facilities are located in the Washington, D.C. suburbs. Please send your C.V. and salary requirements to Human Resources Dept.

MICROBIOLOGICAL ASSOCIATES, INC.
9900 Blackwell Road
Rockville, MD 20850
Fax: 301/738-1036

EOE/M/F/H/V

FORSCHUNGSZENTRUM JÜLICH GmbH

KFA

The KFA is a national research centre jointly financed by the Federal Republic of Germany and the Federal State of North Rhine-Westphalia with a staff of approximately 4500. The main research activities of materials research, information technology, environmental research and energy technology are part of a broad spectrum of basic research ranging from medicine and biotechnology to solid-state research and basic nuclear research.

At our INSTITUTE OF MEDICINE there is a vacancy for a scientist (male or female) as the

ASSISTANT/ASSOCIATE PROFESSOR IN THE FIELDS OF MAGNETOENCEPHALOGRAPHY/MAGNETIC RESONANCE IMAGING/-SPECTROSCOPY

- Code 082/93 -

Candidates should have the Ph.D./M.D. degree or an equivalent training and postdoctoral education in magnetoencephalography or magnetic resonance imaging/-spectroscopy. Faculty are expected to develop sophisticated, externally funded research programs. The Department of Medicine has established a basic research program covering direct medical application for quantifying brain and cardiac functions in vivo using positron emission tomography. Please submit curriculum vitae, a description of research interests and the names of three references to

FORSCHUNGSZENTRUM JÜLICH GmbH
Personal- und Verwaltungsabteilung
- Personalbetreuung -
D- 52425 Jülich

University Of Dundee



PRINCIPAL AND VICE CHANCELLOR

The University is proceeding to the appointment of a successor to Principal Michael Hamlin who has intimated his intention of retiring from the office of Principal and Vice Chancellor in August 1994.

The University seeks for this appointment an outstanding individual who can offer both academic leadership and effective management of a multi-faculty institution with well-established strengths and ambitions in both teaching and research.

The Appointment Committee set up by the University Court to nominate Professor Hamlin's successor invites applications from persons with the appropriate personality, qualifications and experience and would also be pleased to receive nominations from third parties. All communications, including personal applications, will be treated as strictly confidential and should be addressed to the Chairman of the University Court, Mr D G Robertson, CBE, c/o The Secretary of the University, University of Dundee, Dundee DD1 4HN. Further information about the post and the University may be obtained from the Secretary of the University (Mr R Seaton, Tel: (0382) 23181 Ext. 4006, Confidential Fax: (0382) 201604.

The University is an Equal Opportunities Employer.

GENETHON

POSTDOCTORAL OR RESEARCH ASSOCIATES

Openings available immediately in positional cloning at Généthon, a human genome research centre supported by the Association Française contre les Myopathies. Preference will be given to individuals with prior experience in one or more of the following : positional and/or cDNA cloning, library construction, YAC manipulations, PFGE. Curriculum vitae and the names of three references may be sent to **Jean Weissenbach, Généthon, 1 rue de l'Internationale, BP 60, 91002 Evry cedex FRANCE.**

Chair

Department of Neurobiology University of Pittsburgh School of Medicine

Applications are invited for Chairperson of the Department of Neurobiology in the School of Medicine. The founding faculty of this newly organized department include: Eric Frank, Dan Simons, Susan Smith, Gloria Hoffman, John Horn, Alan Humphrey, Carl Lagenaur, Cynthia Lance-Jones, Peter Land, Joseph Yip, Elias Aizenman, Willi Halfter, and Richard Koerber. Under direction of the new chair, the Department will be located on the 14th floor (45,000 gross sq ft) of the recently constructed Biomedical Science Tower. The chairperson will receive a competitive package of start-up funds and new positions. He/She will be expected to build upon existing strengths of the Department and to lead in further growth of research and faculty development. It is also expected that the Chair will provide leadership for graduate and medical education and for bridging the basic and clinical sciences.

Interested persons should submit a letter of intent and curriculum vitae to:

Dr. Joseph Glorioso
Chairman of the Search Committee
Department of Molecular Genetics and Biochemistry
E1246 Biomedical Science Tower
University of Pittsburgh School of Medicine
Pittsburgh, PA 15261
(412-648-8106)

Women and minorities are encouraged to apply. The University of Pittsburgh is an Equal Opportunity/Affirmative Action Employer.

NEW ENGLAND BIOLABS

New England Biolabs, a world leader in the production of restriction endonucleases and other related products, located 20 miles north of Boston on the ocean, has several positions available.

Post Doc—The molecular biology group is seeking a recent Ph.D. for a postdoctoral position to study enzymes involved in protein modification. Experience with cloning, enzymology or protein purification is strongly preferred.

Product Manager—To fill a position in our production group. Requires a B.S. or M.S. with experience in protein purification.

The scientists at New England Biolabs have the freedom to do basic research, manage their own time and experiments, and publish immediately. Compensation and benefits have few peers.

Candidates please submit curriculum vitae with three references to:

New England Biolabs, Inc.
Human Resources
32 Tozer Road
Beverly, MA 01915-5510
An Equal Opportunity Employer



NEW ENGLAND

Biolabs

UNIVERSITY OF KUWAIT
Faculty of Medicine
Health Science Centre

Applications are invited for the position of Chief Technician in the following departments:

Medicine: Anatomy

1. **Microscopic & Gross Anatomy** (B.S. Biology, experience in histological techniques, modern microtomy and microscopy equipments. Applicant is expected to train and supervise departmental technicians in support of teaching and research programs)
2. **Electron Microscopy** (B.S. in Physics, Electronics or Biophysics, experience in modern instrumentations and preparations for both transmission and scanning Electron Microscopy).

Community Medicine & Behavioral Sciences:

He/She will be responsible for daily working of the department, ordering and checking equipment and supplies and ensuring adequate maintenance and service. He/She will be able to work in acting as liaison between the department and sales representatives and the MDL and organizing class material, also assisting with the preparation of demonstrations for teaching purposes, preparation of practical laboratories and for practical examinations.

Microbiology:

- Virology
- Immunology

He/She will supervise the Diagnostic service, assist in preparation of class for teaching and participate in research.

Pathology:

- Histopathology
- Clinical Chemistry

Pharmacology: Toxicology

Applicant should have extensive experience in gas chromatography, mass spectrometry and high pressure liquid chromatography.

He/She also have experience of budgeting and ordering and should have had a supervising role in managing technicians in an analytical/screening laboratory.

Candidate should have experience as a Clinical Laboratory technician and hold the F.I.M.L.S., or equivalent qualifications, with fifteen years experience including training. The applicant's duties will be of multidisciplinary nature and will be both in the laboratory and in the field.

Salary will be in the range of KD. 312-528 per month (KD=1.9 stg.pd., US \$3.5 approximately) No income tax in Kuwait and currency is transferable without restriction. Furnished air-conditioned accommodaton. Electricity and water free of charge. Sixty days paid annual leave for each completed year of employment. Annual round trip economy class air tickets to the country of citizenship or permanent residence for self and family up to three dependent children. Free medical care in Kuwait.

Method of Application: Curriculum vitae in duplicate which should include the names of 3 referees; personal particulars; copy of the relevant pages of passport; qualifications should be submitted no later than October 31, 1993 to:

THE VICE DEAN ADMINISTRATION
(Recruitment Office)
Faculty of Medicine, University of Kuwait
P.O. Box 24923
13110 Safat, Kuwait
FAX# 965/531-8454

POSITIONS OPEN

POSTDOCTORAL RESEARCH ASSOCIATE position is available for NIH-funded research for a recent Ph.D. graduate to study molecular mechanisms of cell cycle control, G1 check points including pRb and p53, and how these may be manipulated to influence cell growth and differentiation processes in neoplastic skeletal muscle cells. Applicants should have a strong background in molecular/cell biology techniques including cloning, PCR sequencing, directed mutagenesis, engineering constructs under inducible promoters, use of retroviral vectors, transfection techniques. Send curriculum vitae with names of 3 references to: **Dr. J. Houghton, Department of Molecular Pharmacology, St. Jude Children's Research Hospital, 332 North Lauderdale, Memphis, TN 38101.** *Equal Opportunity/Affirmative Action Employer.*

Cell and Molecular Biology of Aging

POSTDOCTORAL RESEARCH TRAINING

Positions are available for postdoctoral trainees in cell and molecular biology of aging at Baylor College of Medicine. This interdisciplinary program offers traineeships in the laboratories of Drs. **Julius Allen, Stanley Appel, Eugene Barnes, Gretchen Darlington, Stephen Elledge, Peter Hornsby, Russell Lebovitz, Dorothy Lewis, Gregory May, Bert O'Malley, Olivia Pereira-Smith, Robert Schwartz, and James Smith.** Research emphasis is on the regulation of gene transcription and expression in normal and aged cells; the role of calcium in cell proliferation; receptor and ion channel alterations in aging; and the study of genes involved in the genetic program of mortality and alterations in DNA synthesis which occur in aging cells. *Applicants must be citizens of the United States.* Send curriculum vitae and three reference letters to: **Dr. Gretchen Darlington, Huffington Center on Aging, Room M-320, Baylor College of Medicine, Houston, TX 77030.** *Baylor College of Medicine is an Equal Opportunity/Affirmative Action/Equal Access Employer.*

The Program in Genetic Therapy for Human Diseases, Duke University Medical Center, Durham, North Carolina

We are interested in hiring a **RESEARCH ASSOCIATE** or **RESEARCH SCIENTIST** for translational development of gene therapy for human carcinomas and viral infections. Applicants should have expertise in recombinant DNA technology, Southern, Northern and Western analysis, and PCR techniques for the evaluation of DNA and messenger RNA. Tissue culture experience is also required. This individual must be well-suited for interactions with basic scientists and clinicians in developing preclinical studies for the treatment of malignancies and viral infections by gene transfer. Contact: **Dr. H. Kim Lyster at (919) 681-8350.** *Duke University is an Equal Opportunity Employer.*

PLANETARY AND PREBIOLOGICAL ORGANIC CHEMISTRY—RESEARCH

The Laboratory for Planetary Studies at Cornell University announces a **RESEARCH ASSOCIATE** position starting September 1, 1993. An individual with extensive experience in chemical separation and identification techniques for organic biomolecules, comfortable with quantitative work, and interested in planetary atmospheres and surfaces is sought. This interdisciplinary work is focused on organic chemistry in the outer solar system and on the early Earth. The applicant should have good interpersonal skills and be willing to use and oversee maintenance of HPLC, FT-spectroscopic, and GC/IR/MS equipment. Send summary of research experience and interests, curriculum vitae/résumé, and three letters of recommendation to: **Prof. Carl Sagan, Space Sciences Building, Cornell University, Ithaca, NY 14853-6801.** *Cornell University is an Affirmative Action/Equal Opportunity Employer.*

RESEARCH ASSOCIATE: Molecular Biology Group. Position involves analysis of transgenic animals that model aspects of neurodegenerative diseases. You will also direct an in-house oligonucleotide synthesizer. Candidates with B.S. or M.S. degree and strong experience with DNA cloning, sequencing, PCR, RNA isolation, and library screening desired. Send curriculum vitae to: **Cephalon, Inc., Attention: Patricia Vandenberg, Human Resources, 145 Brandywine Parkway, West Chester, PA 19380-4245.** *An Equal Opportunity Employer.*

POSITIONS OPEN

RESEARCH ASSOCIATE II/RESEARCH SCIENTIST I: Two positions are available immediately for a Ph.D. and/or M.D. with strong background in Molecular Biology and/or Cellular Biology, to work on the molecular basis and on therapeutic aspects of pediatric leukemia. Send curriculum vitae with names/telephone numbers of 3 references to: **Priscilla Blanck, Cedars-Sinai Medical Center, Steven Spielberg Building, 8723 Alden Drive, Los Angeles, CA 90048.** *Affirmative Action/Equal Opportunity Employer.*

MOLECULAR BIOLOGIST

Midwest Research Institute (MRI), a leading contract research organization is seeking an outstanding Molecular Biologist to develop methods and conduct analyses to support new programs in biotechnology, biopharmaceutical development, and preclinical toxicology studies. In addition, will support programs in bioremediation, and biomonitoring of air quality. Successful candidate will possess a Ph.D. with 5 years of experience; skills in microbiology and molecular genetics, especially DNA probe analysis, PCR, and gene cloning with experience in bioanalysis, characterization, and isolation of complex biomolecules; ability to communicate effectively and interact with clients and internal staff. MRI offers competitive compensation, a comprehensive benefits package, paid relocation and a unique environment enhancing professional growth and challenge. Interested candidates, please FAX or send résumé to: **Rochelle Anderson, Department SCI-80693 at: Midwest Research Institute, 425 Volker Boulevard, Kansas City, MO 64110-2299, Telephone: 816/753-7600, FAX: 816/753-8420.** *Equal Opportunity/Affirmative Action Employer, M/F/D/V; A Drug-Screening Employer.*

NATIONAL INSTITUTES OF HEALTH MICROBIOLOGIST WITH ANIMAL MODELS EXPERIENCE

The National Institute of Allergy and Infectious Diseases, Division of AIDS, Vaccine Research and Development Branch has a challenging position for a Ph.D.-level candidate (GS13/14) to administer and further develop the National Cooperative Vaccine Development Groups for AIDS (NCVDG's) which are the cornerstone of NIAID extramural research and development of novel AIDS vaccines. The successful applicant will work in the Preclinical Development Section of the Vaccine R&D Branch, participating in all aspects of AIDS vaccine research and development including immunology (humoral and cell mediated immune responses, mucosal immunity), vaccine design, and animal evaluation of vaccines especially including non-human primates. The applicant will interact with both domestic and international scientists, and will have a major role in facilitating the research of NCVDG scientists. *Applicants must be U.S. citizens and should send curriculum vitae or SF-171 to: Dr. Alan Schultz, Division of AIDS/NIAID, Solar Building, Room 2B-01, 6003 Executive Boulevard, Bethesda, MD 20892; Telephone: 301-496-8200, FAX: 301-402-1506.* Closing Date: August 30, 1993. *NIH is an Equal Opportunity Employer.*

BIOTECHNOLOGIST: Laboratory position with rapidly growing biotechnology company in Madison, Wisconsin. Applicant must have good working knowledge of hybridoma technology and have at least 5 years of laboratory experience in production, cloning and growth of hybridoma cell lines. Salary based on experience. Excellent benefits. Send résumé to: **HARLAN BIOPRODUCTS FOR SCIENCE, Personnel Department, P.O. Box 44220, Madison, WI 53744-4220. Telephone: 608/277-2060, FAX: 608/277-2120.**

FORENSIC DNA RESEARCH and CRIMINALIST POSITIONS. The California Department of Justice is seeking molecular biologists for research positions in its DNA laboratory in Berkeley. The researcher will develop and validate methods for individualizing human DNA, testify in court regarding validated procedures, and train staff. Qualifications include a Ph.D. in molecular biology or related field and three years of independent research experience related to Forensic Science. Salary \$4117 to \$4977 per month. Final date to apply is August 13, 1993. Testing for positions as criminalists (casework analysts) will also be conducted within the next few months for those with B.S. and M.S. degrees in related fields. Contact: **Jan Bashinski, 626 Bancroft Way, Berkeley, CA 94710. FAX: 510-540-2701.**

POSITIONS OPEN

MICRO-BACTERIOLOGIST TAIWAN

PKL Verpackungssysteme GmbH, Taiwan Branch, has fast-growing operations in its Taiwan Branch in the packaging business. The right candidate must be willing to relocate to Taiwan, and must be fluent in Mandarin, Taiwanese and English. We offer a competitive salary and benefits package. Please send your résumé with your date of availability to: **PK1 Verpackungssysteme GmbH Taiwan Branch, Suite 603, 6F, 236, Tun-Hwa North Road, Taipei, Taiwan, R.O.C. Attention: Ms. Claudia Chau.**

Requirements:

- Major in chemistry, engineering or bacteriology with Ph.D. degree.
- Working experience in the foodstuff and beverage industry.
- Knowledgeability in microbiology and sterile testing.
- Ability to advise customers.

SENIOR SCIENTIST I. Requires Ph.D. in Pharmacy or Pharmaceutical Science and 6 months of experience in job offered or 6 months in pharmaceutical research and development in a commercial setting. At least half of required experience must include formulation of solid and sterile dosage forms. Ph.D. research or dissertation must involve analysis of thermodynamic properties of gels or hydrogels including changes due to absorption of select molecules and effects of ionic strength, pH and pK. Plan, conduct and direct R&D for specialized lens care pharmaceutical applications. Evaluate thermodynamic properties of gels and hydrogels, and analyze changes due to absorption of select disinfection molecules. Establish effects of physical parameters, particularly ionic strength, pH and pK, on absorption and desorption of disinfecting molecules from hydrogel surfaces and matrices. Design and conduct studies related to formulation and properties of solid and sterile dosage forms. Research interaction of dosage forms with hydrogel lenses. Forty hours per week, 8:00 to 5:00. Salary range \$44,000 to \$50,000 per year, depending on experience. Apply at: **Texas Employment Commission, Fort Worth, TX;** or send résumé to: **Texas Employment Commission, TEC Building, Austin, TX 78778, J.O. #TX6888331.** *Ad Paid by an Equal Opportunity Employer.*

BIOTECH PATENT ATTORNEY. Biotechnology/Chemical Practice Group, a Washington, D.C. law firm, is seeking an experienced associate. A qualified candidate would have a degree in the Biological, Chemical or Biochemical Sciences, a J.D. degree, and at least 3 years of patent experience. Experience in Organic Chemistry, Genetics, Molecular Biology, Cell Biology, Immunology, or Protein Chemistry would be a plus. Competitive salary commensurate with experience, and excellent benefits package are offered. Position entails all phases of patent practice, including preparation, prosecution, interference, licensing, client counseling, and litigation, serving primarily U.S.-based clientele. Please respond in confidence to: **Kerry E. Kedian, Recruitment Coordinator, Sterne, Kessler, Goldstein & Fox, 1100 New York Avenue, Suite 600, Washington, D.C. 20005.**

TOXICOLOGIST

Commonwealth of Pennsylvania Department of Environmental Resources

The Pennsylvania Department of Environmental Resources (DER) is seeking to fill a position in the Advanced Science and Research Team with a person with expertise in toxicology, risk assessment and risk management, and public health and safety. This person will provide expert advice and testimony in the above areas, will review risk assessments and develop guidance on risk assessment and risk management, will participate in regulatory review as well as development and implementation of departmental technical guidance, and will serve as a liaison with professionals in other agencies or academia. A doctorate degree in one of the above areas is required. The salary range is \$41,898 to \$64,176 annually. Applicants should send curriculum vitae and a statement of professional goals to: **Pennsylvania Department of Environmental Resources, Bureau of Human Resources (TM), 2nd Floor, Market Street State Office Building, P.O. Box 2357, Harrisburg, PA 17120 by September 6, 1993.** For further information, call **Isabel Buzby** at 717-783-0211.

An Equal Opportunity/Affirmative Action Employer.

Center for Synchrotron Radiation Research
and Instrumentation
is seeking a

STRUCTURAL BIOPHYSICIST

A position in structural biophysics in the Department of Physics at Illinois Institute of Technology is currently open. It is anticipated that the initial appointment will be at the Research Assistant/Associate Professor level with conversion to tenure-track after two years. We are seeking an experienced Ph.D. macromolecular crystallographer with interest in the development and use of synchrotron facilities for diffraction studies.

IIT, through its Center for Synchrotron Radiation Research and Instrumentation, will be responsible for the development of several synchrotron beam lines at the Advanced Photon Source currently being constructed at Argonne National Laboratory near Chicago. The successful candidate will work closely with the Center staff on the development of two beam lines for the Industrial Macromolecular Crystallography Association (IMCA), a consortium of twelve major chemical and pharmaceutical companies. Upon commissioning of the beam lines, it is anticipated that this faculty member will become Director of the IMCA operation at the Advanced Photon Source.

Illinois Institute of Technology, founded in 1890, is a private technological university located in south-central Chicago. The Department of Physics has strong research program in biophysics, condensed matter physics, elementary particle physics and materials physics, and offers bachelor's, master's, and doctoral degrees.

To apply, please send a curriculum vitae and publication list to:

Professor P.W. Johnson, Chair
Department of Physics
Illinois Institute of Technology
Chicago, IL 60616 USA

*Illinois Institute of Technology is an
equal employment/affirmative action employer M/F/H/V.*

B E C T O N D I C K I N S O N

SCIENTIST Diagnostic Chemistry

Becton Dickinson is seeking a scientist for our Diagnostic Chemistry Department. The position requires expert ability to measure the affinity/kinetics of binding reactions, especially those between antibody-antigen and protein-nucleic acids. A general awareness of ELISA, RIA, IRMA, filter binding assay screens and fluorescence detection methods, as well as general knowledge of immunochemistry including affinity chromatography and conjugation procedures are required.

The successful candidate must have B.S. (minimum) or a Ph.D. in chemistry, biochemistry, biophysics or a related field. Two years of experience and a published record of accomplishment required. Experience with solid phase biosensors such as BIAcore preferred. Ability to develop diagnostic tests for infectious disease is a plus. Must be able to clearly present abstract concepts and network with internal and external collaborators.

For immediate consideration, please send your resume to: **Human Resources, Becton Dickinson & Company**
Research Center, 21 Davis Drive, Research Triangle Park,
NC 27709. AA/EEO Employer.

**BECTON
DICKINSON**

THE REWARDS OF DISCOVERY

It's Up To You To Bring Science and Technology Together

For over 100 years, Abbott research has been bringing science and technology together to make a difference in the way people live — here at home and in 130 countries worldwide. Today, your unique experience could help us expand our leadership as a Fortune 100 health care pioneer. Our Pharmaceutical Research Computing and Information Science Division provides leading edge, state-of-the-art information management, computational sciences and systems methodology to support the discovery and development of pharmaceuticals.

RESEARCH COMPUTER SCIENTISTS

Various Positions Available

This individual will be responsible for Fortran and C programming in support of data acquisition, lab automation and data management for analytical services laboratories. Involves programming in a mixed UNIX/VMS workstation environment using client/server integration, system analysis, integration and troubleshooting, as well as Oracle and X-Windows programming. Experience in software development methodologies is desirable. Entry-level Ph.D. in Chemistry, Physics, Signal Processing, Image Analysis or related disciplines, or equivalent experience required. **Reply to Job# 59446.**

You will be involved with a highly visible computer system project which will focus on the development of a global reporting system. We seek a team-oriented individual who has made a significant contribution in the development of a sizable system. This position requires a scientific education (BS/MS) or equivalent work experience. Ability to interact with diverse client organizations, and possess project team management capabilities and analytical skills. Clinical research and/or validation experience is desirable. **Reply to Job# 59896.**

The qualified candidate will provide leadership on Drug Delivery Software Systems analysis and programming to support the laboratory automation needs of pharmaceutical research. We require a MS in a scientific discipline and 3-5+ years of software analysis design and development or a BS with equivalent work experience. This must include VAX knowledge and proficiency in C, Fortran, or other structured programming languages. Familiarity with software development methodology and database management systems is expected, as is demonstrated experience in laboratory automation, validation issues or related fields. Project management skills are required. Macintosh software development a plus. **Reply to Job# 59924.**

Abbott provides an excellent salary and benefits package including profit sharing and a stock retirement plan. We are located in an attractive suburban setting approximately 30 miles north of Chicago. For confidential consideration, please send a resume and salary history (INDICATING APPROPRIATE JOB#) to: **Linda DeLavallade, D-583, AP6D, Abbott Laboratories, One Abbott Park Road, Abbott Park, IL 60064.** Abbott is an Affirmative Action Employer/Smoke-Free Environment.

ABBOTT LABORATORIES



**Quality
Health Care
Worldwide**
1888-1993

Experience The Abbott Edge.



Osiris Therapeutics is a developer of cellular transplants and cell-matrix products to regenerate injured or defective mesenchymal tissues such as bone, cartilage, ligament, muscle and marrow stroma. The Company is seeking highly motivated, creative scientists to direct and conduct research and product development using the Company's patented stem cell technology. Opportunities exist for Research Managers and Scientists (M.D./Ph.D.) and Research Associates (M.S./M.S.).

Cell Culture Research and Operations

Develop and implement protocols for Mesenchymal Stem Cell isolation and expansion for use in preclinical and clinical studies, develop defined media and develop methods for histological and immunohistochemical characterization of these cells and their progeny.

Molecular Biology

Experienced Research Manager required to direct programs designed to isolate, clone and express the growth factors and control elements involved in human Mesenchymal Stem Cell differentiation leading to potential products in gene therapy and biopharmaceuticals.

Biomatrix Development

Research Scientists to develop materials and methods for stem cell delivery and implantation. Experience required with the manipulation and characterization of collagens, biological and organic polymers and/or ceramic biomaterials, and tissue/matrix interactions.

Product Development

Product Managers to direct development of Tissue Regeneration products. Industrial experience leading to commercial products for treatment of cartilage, bone and related tissues is required, particularly cell-based technologies.

Preclinical Studies

Manager and several Research Associates, with experience in developing and conducting orthopaedic implant studies in rabbits, dogs and other appropriate species, to test the Company's Tissue Regeneration products prior to FDA approval of human clinical studies.

Osiris Therapeutics, Inc. is co-located within the University Hospitals of Cleveland and adjacent to Case Western Reserve University, which together form Ohio's largest biomedical research organization. The Company offers competitive wages and benefits and an attractive stock option plan. Prospective candidates are encouraged to send resumes and supporting credentials to: Osiris Therapeutics, Inc., P.O. Box 1980, Cleveland, Ohio 44106-0180.

Osiris Therapeutics is an
Affirmative Action, Equal Opportunity Employer

OSIRIS THERAPEUTICS, INC.

DIRECTOR Biotechnology Area Programs

Colorado Advanced Technology Institute (CATI)

Position requires operational management skills in leading public/private partnerships serving academic and business development programs in biotechnology for economic development in the State of Colorado. The Director heads the Colorado Institute for Research in Biotechnology (CIRB), which includes a newly established RNA Center, and oversees the fiscal and organizational planning of its Bioprocessing Center and the State's support of the Colorado Biomedical Venture Center (CBVC). The position affords an opportunity for professional growth in an attractive urban Denver environment, with superb opportunities for recreational and intellectual pursuits, and family development.

The successful candidate will have an advanced degree in biotechnical sciences, and experience in program management of public/private/academic joint research and development efforts. A demonstrable ability to coordinate proposals with public and private funding sources is a requirement. Knowledge of Colorado's biotechnology industry and academic strengths will be highly valued.

This position reports to that of the Executive Director, which is responsible to a board of CATI Commissioners appointed exclusively from the private sector by the Governor of Colorado. CATI is an agency of the State of Colorado.

The compensation for this position consists of a base salary in a range, depending on qualifications and experience, with a midpoint of \$55,000 plus benefits. Send resume and three references by Sept. 30, 1993, to: Phillips V. Bradford, Sc.D., Executive Director, CATI, 1625 Broadway, Suite 700, Denver, CO 80202. CATI is an Equal Opportunity/Affirmative Action Employer.

PHARMACEUTICAL

At CytRx, Innovation Is Our Prescription For Success

CytRx is a rapidly expanding, well capitalized pharmaceutical company focusing on high-value therapeutics for critical care applications. Our diversified pipeline includes potential treatments for vascular and infectious diseases, dermatological conditions, and certain cancers. R&D spending increased 190 percent in 1992 alone, reflecting our strong commitment to expansion of our product line. To help us further our goals, we are currently seeking professionals for the following opportunities:

DIRECTOR OF DRUG REGULATORY AFFAIRS: M.S./Ph.D. with 5-7 years industry experience

DIRECTOR OF FORMULATIONS DEVELOPMENT: Ph.D. (Pharm Sciences) and 3-5 years experience with the development of parenteral dosage forms

QUALITY CONTROL MANAGER: B.S./M.S. (prefer Chemistry) with 5-7 years GMP/industry experience

PHARMACOKINETICIST: Ph.D./Pharm.D. required, some industry experience a plus

POST-DOC (GENE THERAPY): Ph.D. required

RESEARCH ASSOCIATE (VACCINES): B.S./M.S. with 3-5 years industry experience

CLINICAL RESEARCH ASSOCIATE: B.S./R.N. with 1-2 years industry experience

(4) PROJECT DIRECTORS (for the following areas: **Topicals; Anti-infectives; Oncology; Drug Delivery Systems**): Ph.D. preferred with 5-7 years industry experience

In return for your skills, we offer highly competitive salaries, excellent benefits, stock options, and a dynamic professional environment that fosters career challenge and career growth. Our beautiful suburban location in Norcross, Georgia, a fast growing high-tech area with an affordable cost of living and an excellent school system, is also in close proximity to all the amenities of the 1996 Olympic Games and the city of Atlanta. For immediate and confidential consideration, please send resume/CV to:

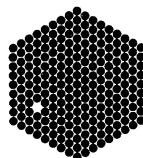
William Fleck, VPHR

CytRx
CORPORATION

150 Technology Parkway
Norcross, GA 30092

Due to the volume of responses,
we will not be able to accept phone calls
NO AGENCIES PLEASE

EQUAL OPPORTUNITY EMPLOYER M/F/D/V



EMBL

The European Molecular Biology Laboratory, an international research organization situated in Heidelberg, Germany, has a vacancy for a

POSTDOCTORAL FELLOW

(the mutagenesis of trypanosomal triosephosphate isomerase (TIM) and the biochemical characterization of the mutated TIM)

This study of TIM is part of an ongoing effort aimed at the design of new properties on the TIM-barrel scaffold. Detailed biochemical characterization of the new variants will be an important aspect of the work. The mutagenesis will be complemented by model-building studies based on known crystal structures of wild type trypanosomal TIM and of existing variants of TIM, and by further structure determinations of the new variants.

For this work we are looking for a postdoctoral fellow with experience in molecular biological and biochemical techniques and with an interest in the relationship between structure and function of proteins. This research is supported by a grant from the EC-BRIDGE-programme, the appointment will be for two years. The salary will be according to the EMBO guidelines. Starting date: as soon as possible, not later than 1 January 1994.

Please contact Dr. Rik Wierenga (EMBL, Postfach 10 22 09, D-69012 Heidelberg, Germany, tel +49 6221 387 256; internet wierenga@embl-heidelberg.de). Please provide a cv and the names of two referees. The EMBL has a strong interest in research focussing on the structure function relationship of proteins. This research is carried out in an international and stimulating environment. The EMBL is well equipped for molecular biological studies, protein-crystallographic structure determinations and has excellent model-building facilities.

EMBL

Personnel Section,
Postfach 10 22 09
D-69012 Heidelberg
Germany

RESEARCH OPPORTUNITIES IN BIOTECHNOLOGY

The Department of Biotechnology is seeking applicants for our ongoing program of crop improvement. Pioneer offers competitive salaries, excellent facilities and a highly cooperative research environment. Successful candidates will be expected to interact extensively with ongoing programs in transformation, gene expression, gene isolation or RFLP programs.

RESEARCH ASSOCIATE, CORN TRANSFORMATION (JOB #IDR-MSY)

Immediate openings are available to conduct experiments regarding the evaluation of agronomic genes in transgenic corn plants and progeny. **EDUCATION/EXPERIENCE:** BS degree or equivalent plus 2 years directly related lab experience; or MS degree. A good understanding of corn transformation and tissue culture is desirable. Knowledge of one or more of the following areas: genetics, plant physiology, cell biology and biochemistry.

Applications received by **SEPTEMBER 3, 1993** will be assured of consideration. However, applications will be considered until the positions are filled.

Pioneer Hi-Bred International, Inc. is an Equal Opportunity employer. Please send **TWO (2)** resumes and indicate in your correspondence the JOB #, the names, addresses and telephone numbers of three references to:



PIONEER HI-BRED INTERNATIONAL, INC.
Plant Breeding Division
Department of Biotechnology Research
Attn: Amy LaMotte JOB #_____
P.O. Box 1004
Johnston, IA 50131-1004

DIRECTOR UTAH SUPERCOMPUTING INSTITUTE AND SPECIAL ASSISTANT TO THE PRESIDENT FOR INFORMATION SCIENCES

Applications and nominations are invited for the dual position of Director of the Utah Supercomputing Institute and Special Assistant to the President for Information Sciences at the University of Utah. A candidate is sought with the highest credentials in high performance computing, who will direct the Institute, collaborate with faculty in obtaining extramural support, and develop industrial partnerships and applications in high performance computing. The successful candidate will supervise a staff dedicated to forging collaborative interaction with and providing support to faculty and students with high performance computing and communications needs. The Director will report to the Vice President for Research. In the capacity of Special Assistant to the President, the successful candidate will advise the President on coordination of campus computing activities. This charge is interpreted broadly to include the operation of networks, the increasingly close relationship between computing and telecommunications, instructional computing, administrative data processing, etc., in order to ensure maximum attention to the computing and communications needs of the faculty, staff, and students, at reasonable costs. It is anticipated that the successful candidate will qualify for a concurrent faculty appointment in one or more academic departments. A Ph.D. degree or equivalency in a science or engineering discipline is required, with expertise in computational science. Applicants should have at least 5 years experience in organized research, in addition to a demonstrated record of leadership and administrative experience. Familiarity with national supercomputer centers and funding agencies is highly desirable.

Past and present employers will be contacted unless otherwise requested in writing.

The University is an AA/EQ employer and encourages applications from women and minorities, and provides reasonable accommodation to the known disabilities of applicants and employees.

A letter of application, a current curriculum vitae, and three to five letters of recommendation should be submitted to:

USI Director and Special Assistant to the President
for Information Sciences Search Committee
c/o Office of the Vice President for Research (PB-2693)
210 Park Building
University of Utah
Salt Lake City, UT 84112

Applications will be accepted until the position is filled

First Ever!!!

B.S./M.S. Recruitment Advertising Section

A Primer for Scientists with B.S./M.S. Degrees in Biology and Chemistry Entering the Pharmaceutical and Biotechnology Industries.

Special Bonus Distribution to over 50 Universities During Fall 1993!

This special section will also be published in the 27 August issue of *SCIENCE*, guaranteeing your recruitment ad exposure to over 450,000 scientists worldwide!

For more information on this *SCIENCE* exclusive, call:

Janis Crowley

**Recruitment Advertising Manager at
212-496-7704**

**In Europe call Annemarie Vis at
+44 223 302067**



Government of Canada Gouvernement du Canada

Visiting Fellowships in Canadian Government Laboratories 1993-1994

The Government of Canada offers visiting fellowships to provide young scientists with the opportunity to work with well-established research groups in Canadian government laboratories. These fellowships are tenable in the laboratories of the following departments and agencies:

Agriculture Canada
AECL Research
Canadian Museum of Nature
Canadian Space Agency
Communications Canada
Energy, Mines and Resources Canada
Environment Canada

Fisheries and Oceans Canada
Forestry Canada
Health and Welfare Canada
National Defence
National Research Council Canada
Public Service Commission

Eligibility: Applicants must have received a doctorate from a recognized university within the last five years. There are no citizenship restrictions. Successful candidates who are not Canadians or permanent residents must satisfy Canadian immigration requirements.

Stipend: Fellowships have an annual value of \$35,184 plus a travel allowance.

Duration of tenure: Appointments are made for one year; renewals for a second year are possible.

Date of submission: The deadline for receipt of applications is November 15, 1993.

For further information, contact the:

Visiting Fellowships Officer
Natural Sciences and Engineering Research
Council of Canada
Ottawa, Ontario, Canada K1A 1H5
Telephone: (613) 996-4363

Canada

POSITIONS OPEN

B.S. OF SCIENCE. Immuno- and double labelling, growth curve, tissue culture, DNA/RNA extraction; Southern, Northern, Western blotting; serum independence. Feeding, counting, scraping, plating, subculture of cells. Coating dishes. Retinal and brain cell line. 3H-Thymidine incorporation, retinal pigmented and human epithelium, CDC method, olympus. Transforming, platelet-derived and fibroblast growth factor.

Documented knowledge of: cell thawing; maintenance and culture; IEC-Centra 7 centrifuge machine; FITC Fluorescein microscope; Filling liquid nitrogen tank; Medium preparations; making solutions; animal surgery; identification, culture and isolation of bacteria. Slide technique.

Send résumé to: **Georgia Department of Labor, Job Order: #GA 5640864, 2636-14 Martin Luther King, Jr. Drive, Atlanta, GA 30311;** or to the nearest Georgia Job Service Center.

EPIDEMIOLOGY—The University of New Mexico School of Medicine Cancer Center is recruiting a **CANCER CONTROL RESEARCHER** to join the Center's Cancer Control and Epidemiology Program. Resources include an established SEER Registry and a broad cancer epidemiology program. New Mexico's ethnically and racially diverse population offers unique research opportunities. The cancer control scientist would be expected to develop new population-oriented research initiatives. Full support available for two years. Academic appointment available in an appropriate department. Send inquiries and curricula vitae to: **Robert G. Strickland, M.D., Chairman, Department of Medicine, University of New Mexico School of Medicine, 2211 Lomas NE, Albuquerque, NM 87131. Affirmative Action/Equal Opportunity Employer.**

RESEARCH SCIENTIST, VASCULAR BIOLOGY. This position is in an interdisciplinary group with research activities in vascular biology, atherosclerosis, tissue engineering, and related areas. Experience in mammalian cell culture required. Qualifications include a Ph.D. and the ability to work independently. The person selected will have the opportunity to initiate new research areas, to work with graduate students, and to teach on a limited basis. Level of appointment and salary dependent on qualifications. Starting date negotiable. Send curriculum vitae and names and addresses of three references to: **Dr. Robert M. Nerem, Bioengineering Center, Georgia Institute of Technology, Atlanta, GA 30332-0405; Telephone: (404) 894-2768. Georgia Tech is an Equal Opportunity Employer.**

ANNOUNCEMENTS

REQUEST FOR PROPOSALS TO PROVIDE EXPERT ASSISTANCE

The South Florida Water Management District (SFWMD) is soliciting candidates for the Department of Research's (DOR) Expert Assistance Pool. The DOR is looking for candidates with expertise in the following areas: aquatic ecology and limnology, estuarine ecology, hydrology, BMP's and nutrient management, modeling, monitoring and network design, statistics, ecological economics, atmospheric deposition and meteorology, environmental chemistry, and a variety of other related areas. Selected experts from the Pool will be contracted to provide short-term assistance to District Research Staff in activities such as specific technical research problems, peer review of plans and manuscripts, data analysis and open literature publication. The SFWMD is actively engaged in water resources research in South Florida including activities such as the Kissimmee River Restoration project, Lake Okeechobee Restoration Project, the Everglades Restoration and projects in several estuarine systems including Florida Bay.

Interested persons should contact: **The Procurement and Contract Administration Division, South Florida Water Management District, P.O. Box 24680, 3301 Gun Club Road, West Palm Beach, FL 33416-4680; (Telephone: 407-687-6391)** to receive the Request for Proposal package. For specific information about the Expert Assistance Program, contact **Dr. Laur Tilly, Research Appraisal Division, Department of Research** at the above address or call **407-687-6605**. The deadline for receipt of completed materials is September 10, 1993.

ANNOUNCEMENTS



**AMERICAN
HEALTH
ASSISTANCE
FOUNDATION**

RESEARCH GRANTS

The American Health Assistance Foundation invites applications from researchers at non-profit institutions for the following programs:

Alzheimer's Disease Research: grant awards of up to \$100,000 per year for up to 2 years (renewable) for research into the causes and treatment of Alzheimer's disease. Application deadline: November 1.

Glaucoma Research: grant awards of up to \$25,000 per year for up to 2 years (renewable) for research into the causes and treatment of glaucoma. Application deadline: November 30.

National Heart Foundation Grants (formerly Coronary Heart Disease Research): starter grants of up to \$15,000 per year for 1 year (renewable) for research into the cause and treatment of stroke or cardiovascular disease. To qualify for a starter grant, the investigator must be an assistant professor (or equivalent) beginning an independent research career. Application deadline: November 1.

For information and application forms contact: **Research Grants Manager, American Health Assistance Foundation, 15825 Shady Grove Road, Suite 140, Rockville, MD 20850; Telephone: (301) 948-3244.**

COURSES AND TRAINING

HOW TO MAKE MICROCAPSULES— A HANDS-ON COURSE

A laboratory course designed to teach the art and science of microcapsule making. Suitable for biologists, pharmacists, chemists, life scientists and engineers. Enrollment limited to 12. Lectures and laboratory sessions by **Dr. Curt Thies, Professor of Chemical Engineering at Washington University in St. Louis.** Fall Sessions: November 7-10, and December 5-8, 1993, and Spring Session: March 6-9, 1994. For information call (314) 935-6066.

COMPUTER MARKETPLACE

Free Video

See how this software builds bibliographies and organizes your references. PC or Mac.

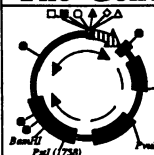
1-800-554-3049

(510) 649-8176. Free offer good in U.S. only



Circle No. 13 on Readers' Service Card

The Gene Construction Kit™



This DNA manipulation, design, and drawing tool automatically tracks construct history and produces publication quality output from your Macintosh. Allows graphical manipulation of DNAs while tracking ligations. DNA can be displayed as sequence or graphics. Call about a free demo offer. **Textco, Inc., 27 Gilson Road, W. Lebanon, N.H. 03784, U.S.A. voice or FAX: (603) 643-1871**

Circle No. 7 on Readers' Service Card

MARKETPLACE

**KEYSTONE
Laboratories, Inc.**

Menlo Park,
CA

\$3.50 / Base

Custom DNA Synthesis

No set-up fee • Shipped in 24 hrs

Also, non-standard bases, RNA and other backbones, conjugates, and large scale synthesis.

Tel. 1-800-788-4DNA • Fax 1-800-786-4DNA

Circle No. 39 on Readers' Service Card

MARKETPLACE

MAGNETIC mRNA ISOLATION

Purification Kit for \$195.00

BIOMAG® 1µm PARTICLES
for CELL SEPARATIONS

call (800)343-1346, (617)497-2070

ADVANCED MAGNETICS, INC.

Circle No. 16 on Readers' Service Card

ENHANCED MEDIA IN CAPSULES!
FOR BACTERIA & YEAST
Tired of mixing powdered media?
We have more than 100 Molecular
Biology formulations in stock.
Request comprehensive price list.
Custom formulations in 48 hours!
Call toll free or fax 619-598-0116.
800-424-6101 ✓ B/D 101

Circle No. 4 on Readers' Service Card

NEW TRIPLE CHECK™
A tip you can count on...
easy to read precision markings
...to save money on enzymes
800-424-6101 ✓ B/D 101
FAX 619-598-0116
Circle No. 27 on Readers' Service Card

Human Hepatic Microsomes • S9 • Slices

- For the advancement of research
- In compliance with all applicable regulations
- In vitro contract testing & consulting services

Not-for-profit

Int'l Institute for the Advancement of Medicine
Phone: (215) 363-3600 Fax: (215) 363-3605

Circle No. 10 on Readers' Service Card

CUSTOM DNA SYNTHESIS

We use Applied Biosystems Synthesizers • Prices from \$2.50 per base plus setup

PAGE and HPLC Purification Available

The Midland Certified Reagent Company
800-247-8766 or FAX 915-694-2387

Circle No. 3 on Readers' Service Card

HUMAN ENDOTHELIAL CELLS

FULLY CHARACTERIZED, TESTED, AND GUARANTEED

SPECIAL RESEARCH SYSTEM OFFER

500,000 CELLS PER AMP @ PASSAGE 1
TRUE POOLS OF >100 INDIVIDUAL DONORS
INCLUDES COMPLETE CS-C MEDIUM SYSTEM
ENDOTHELIAL CELL SYSTEM \$95.00

cell systems

1-800-697-1211

Circle No. 24 on Readers' Service Card

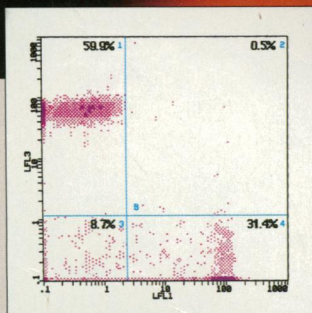
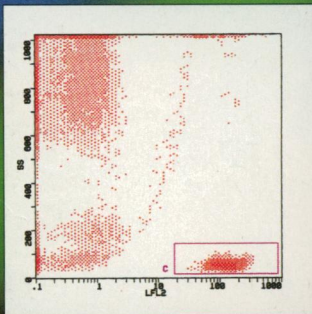
Custom DNA Purified and Delivered in 48 hours.

\$7.50 per base • Purified
Guaranteed minimum 100 µg DNA

Research Genetics
1-800-533-4363

Circle No. 1 on Readers' Service Card

Three Color Analytical Cytology with Quantum Red™



Simultaneous CD4, CD8 measurements using CD3 cells as the gate criteria. Whole blood was labeled with CD3-PE, CD4-Quantum Red and CD8-FITC in a single tube.

Quantum Red™ tandem dye provides three color capabilities for virtually all flow cytometers. Simultaneous analysis of multiple cell populations or fluorescence gating is now possible.

Quantum Red Offers:

- Lower emissions in PE channel compared to other tandem dyes
- Less compensation required than in previous generation third color dyes

- Equivalent brightness when compared to PE
- Minimal compensation required for two color analysis with FITC labels
- Economical cost

Quantum Red is available conjugated to:

- Streptavidin (Sigma Product No. S 3402)
- Selected CD markers
- Isotype controls

*Sigma
Immuno
Chemicals*

SIGMA®

Sigma Chemical Company, PO Box 14508, St. Louis, MO 63178, USA. Tel. 1-800-325-3010, Fax 1-800-325-5052.

In Australia: Tel. 008-800-097, Fax 008-800-096

In Belgium: Tel. 078 11 47 47, Fax 078 11 47 45

In France: Tel. 05 21 14 08, Fax 05 03 10 52

In Germany: Tel. (0130) 5155, Fax (0130) 6490

In Great Britain: Tel. 0800 373731, Fax 0800 378785

In Italy: Tel. 1678-27018, Fax (02) 38010737

In The Netherlands: Tel. 06 022 47 48, Fax 06 022 47 45

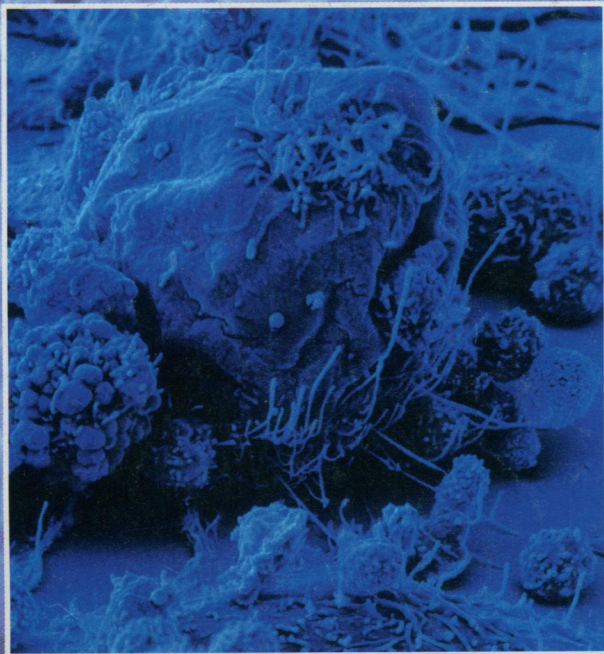
In Spain: Tel. 900-101376, Fax 91-6619642

In Switzerland: Tel. 081 756 9721, Fax: 081 756 7420

Outside these countries: Tel. 314-771-5750, Fax 314-771-5757

Circle No. 25 on Readers' Service Card

New Products For Cell Adhesion and Tumor Biology Research



Two New Elisa Kits

sELAM-1 ELISA Kit*

Uses: Monitoring of sELAM-1 (soluble Endothelial Leukocyte Adhesion Molecule-1) levels in normal as well as number of pathological conditions such as cancer, rheumatology, infectious diseases, allergies, transplant rejection and inflammatory diseases appears to have significant research interest.

Range: 1.6–50ng/ml. **Sensitivity:** < 1.6ng/ml.

Rapid: Total incubation only 2 hours, 15 minutes

sLECAM-1 ELISA Kit*

Uses: Altered levels of sLECAM-1 (soluble Leukocyte Endothelial Cell Adhesion Molecule-1) have been found in disease states including sepsis, HIV-infection, neoplastic diseases, neonatal infection, transplantation and insulin dependent mellitus.

Range: 0.3–25ng/ml. **Sensitivity:** 0.3ng/ml.

Rapid: Total incubation only 2 hours, 15 minutes

BioSource International offers an extensive line of MAb's, ELISA Kits, and cytokines for the study of cellular adhesion, tumor biology and immune regulation.

Monoclonal Antibodies Against:

- CD11a
- CD11b
- CD11c
- CD44
- CD44v exon v3-v4
- CD44v exon v5
- CD44v exon v6
- CD44v exon v7
- CD44v exon v8
- CD44v exon v9-v10
- ICAM-1
- ICAM-2
- ICAM-3
- HER-2 (c-erbB-2)[†]

Other ELISA Kits available from BioSource:

- mIL-1 α [†]
- hGM-CSF
- hIFN- γ
- hIFN- α
- hIL-2
- hIL-2 Receptor
- hIL-6
- hIL-6 Receptor
- hIL-8/NAP-1*
- hIL-10
- h & m SAA
- hTNF- α
- hTNF- β *
- sICAM-1*
- hSCF/C-kit Ligand[†]
- sTNF Receptor (60 kDa)*
- sTNF Receptor (75 kDa)*[†]



TAGOIMMUNOLOGICALS™



If you don't see the kit you're interested in, call us --it's probably under development.

Please contact BioSource International for your free copy of our 1993/94 Research Catalog containing over 600 reagents and assays for studies in cell biology and immunology.

CAUTION: FOR RESEARCH USE ONLY.
NOT FOR USE IN DIAGNOSTIC PROCEDURES.

[†]Available soon.

*Manufactured by Bender MedSystems
Photo from Bender MedSystems, Austria

Tel: (800) 242-0607 • Fax: (805) 987-3385
950 Flynn Road, Suite A, Camarillo, CA 93012