

AMERICAN
ASSOCIATION FOR THE
ADVANCEMENT OF
SCIENCE

Science

30 JULY 1993
VOL. 261 • PAGES 521-652

\$6.00

SCIENCE INNOVATION '93:
BIOMEDICAL IMAGING



THE NEXT STEP IN FILMLESS AUTORADIOGRAPHY.

A SMALLER PHOSPHORIMAGER.™



FOR SMALLER BUDGETS.

Now get all the advantages of Molecular Dynamics' proven storage phosphor technology for less than ever before.

The PhosphorImager SF™ is a smaller-format version of the PhosphorImager 425. It's perfect for autoradiography and analysis of samples up to 20 cm x 25 cm, such as Southern and northern blots, immunoblots, protein or nucleic acid gels, and TLC plates.

But there's nothing small about its performance. Like the large-format PhosphorImager 425, the PhosphorImager SF reduces exposure times by a factor of 10-100. Its large

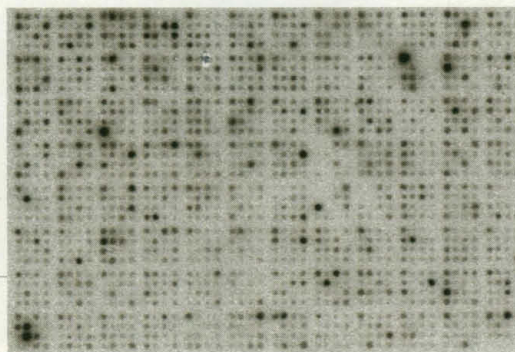
dynamic range allows you to image both weak and strong signals with a single exposure.

The PhosphorImager SF is also economical and easy to use. You don't need -70° freezers, darkrooms, or film process-

ing chemicals. Plus, storage phosphor screens can be erased and re-used indefinitely.

For analysis, the compact PhosphorImager SF includes Molecular Dynamics' powerful ImageQuant™ software.

High-density gene mapping hybridizations such as this 4 x 4 x 8 x 12 array can be imaged on the PhosphorImager SF. Courtesy of Dr. G. Lennon, Human Genome Center.



ImageQuant allows you to quantify images directly – and without scintillation counting. Files are formatted for easy transfer to your favorite PC and Macintosh programs. Built-in Ethernet capability lets you send data and images to other computers.

So, if you've been waiting for a PhosphorImager that fits your budget, size up the PhosphorImager SF. Call today for a free copy of our new PhosphorImager brochure.

...

In the U.S., call 1-800-788-0634.
In Europe, call 44 732 62565.
In Australia, call (03)810-9572.



Molecular Dynamics, 880 East Arques Ave., Sunnyvale, CA 94086 Ph: 408-773-1222 Fax: 408-773-8343

©1993, Molecular Dynamics. All company and/or product names are trademarks of their respective companies.

Circle No. 57 on Readers' Service Card

ENVIROAMP LEGIONELLA KITS



"L" REPRESENTS THE
LEGIONELLA GENUS;
"P" REPRESENTS
L. PNEUMOPHILA.
INTERNAL POSITIVE
AND NEGATIVE
CONTROLS GIVE YOU
CONFIDENCE IN
YOUR RESULTS.

Rapid, Definitive *Legionella* Testing, The PCR Way.

Now, Perkin-Elmer combines the inherent sensitivity and specificity of PCR with the simplicity and convenience of the reverse dot blot format. The new EnviroAmp™ Legionella Kits, used with the GeneAmp™ PCR System 9600 or DNA Thermal Cycler 480, give you semi-quantitative, easy-to-interpret results on 25 *Legionella* species. The detection level achieved is as low as 10 organisms per mL in the water sample.

Throughput is enhanced with the ability to process 48 samples simultaneously. Results are available in less than six hours. Hands-on time is reduced compared to traditional methods.

The new EnviroAmp Legionella Sample Preparation, PCR Amplification and PCR Detection Kits with the GeneAmp PCR System 9600 or DNA Thermal Cycler 480. The complete, tested system

for monitoring water sources. Backed by our PCR Performance Guarantee. In the U.S., call PE XPRESS at 1-800-762-4002 to order. Or call 1-800-762-4001 for technical information. Outside the U.S., contact your local Perkin-Elmer sales representative.

PERKIN ELMER

Europe Vaterstetten, Germany Tel: 49-8106-381-115 Fax: 49-8106-6697
Canada Montreal, Canada Tel: 514-737-7575 Fax: 514-737-9726
Far East Melbourne, Australia Tel: 61-3-560-4566 Fax: 61-3-560-3231
Latin America Mexico City, Mexico Tel: 52-5-651-7077 Fax: 52-5-593-6223

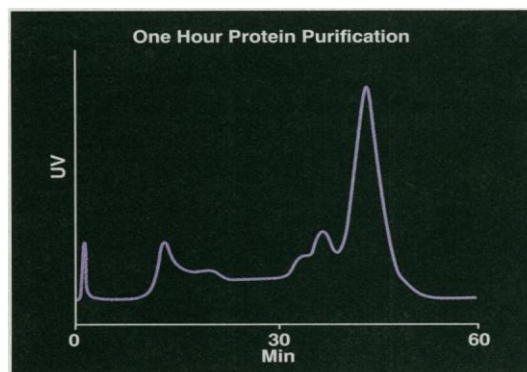
Perkin-Elmer PCR reagents are developed and manufactured by Roche Molecular Systems, Inc., Branchburg, New Jersey, U.S.A.



Perkin-Elmer is a registered trademark of The Perkin-Elmer Corporation. EnviroAmp and GeneAmp are trademarks of Roche Molecular Systems, Inc. The GeneAmp PCR process is covered by U.S. patents owned by Hoffmann-La Roche Inc. and Hoffmann-La Roche Ltd.

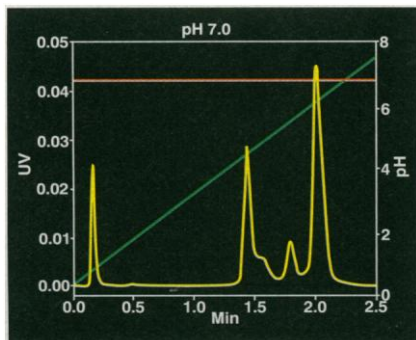
Circle No. 19 on Readers' Service Card

WHILE YOU SPENT
ONE HOUR DOING THIS,

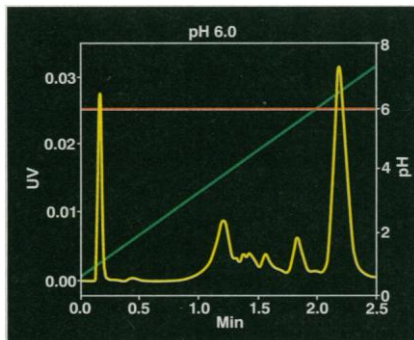


*Anion exchange separation of recombinant protein with
conventional LC column and instrumentation.*

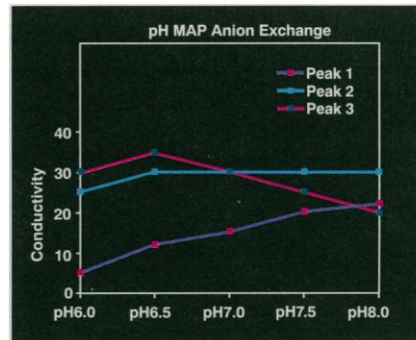
LOOK AT ALL
WE'VE BEEN UP TO.



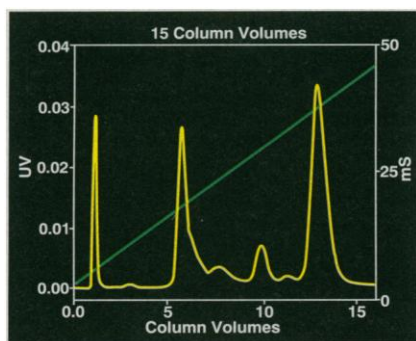
We began by running the separation at several pHs.



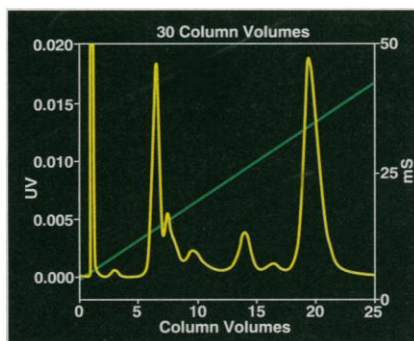
Confirmed the optimum pH at 6.0.



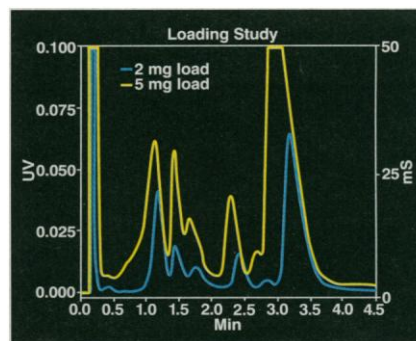
Plotted experimental results from built-in spreadsheet.



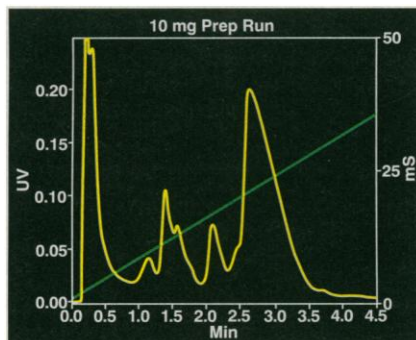
Tested gradient slopes for improved resolution.



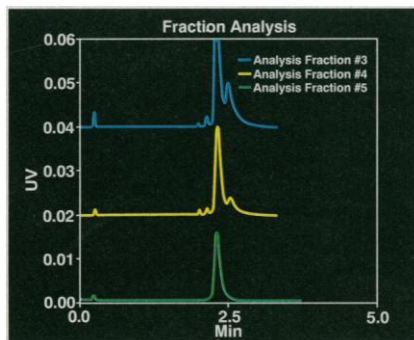
Selected 30 column volume gradient as optimum.



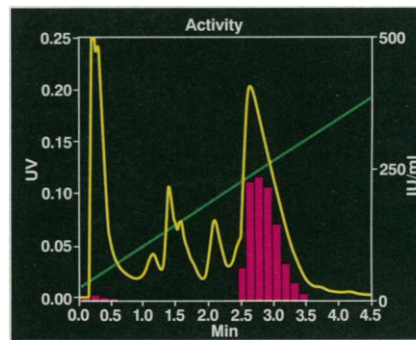
Studied the effect of loading at 2 mg and 5 mg.



Ran a 10 mg prep. Collected fractions.



Analyzed fractions by reversed phase.



Checked biological activity and purity.

ACCELERATE THE PACE OF DISCOVERY AND DEVELOPMENT



BioCAD™
WORKSTATION
for Perfusion Chromatography®

Here's the challenge. Take your protein sample, map a range of pHs, optimize gradient and loading, purify 10 mg, analyze fractions, and check purity—all in about an hour. How? Using the BioCAD Workstation, you can run 3-minute separations, examine more variables than ever before, and get the highest purity products in hours...not weeks, not months. BioCAD employs Perfusion Chromatography®, a patented new technology enabling high resolution separations on any of 25 surface chemistries. It's the one tool you need to accelerate the pace of discovery and development in your lab. Find out more. Call Toll Free (800) 899-5858.



PerSeptive Biosystems
University Park at MIT, 38 Sidney Street, Cambridge, MA 02139

©1993 PerSeptive Biosystems, Inc. BioCAD is a trademark of PerSeptive Biosystems, Inc. Poros and Perfusion Chromatography are registered trademarks of PerSeptive Biosystems, Inc.

Circle No. 53 on Readers' Service Card



540

ESA ascendant

NEWS & COMMENT

U.S. Space Scientists Look to Europe 540
The Making of a Space Program

Marine Biotechnology: Regulations Go 542
Swimmingly

Human Growth Hormone: French 543
Scientists May Face Charges Over CJD
Outbreak

Archeology: Computers Bring Back 544
a Long-Lost French Abbey

AZT Patent: Court Favors Drug 'Concept' 545
Over Proof

RESEARCH NEWS

Malaria: Focus on Mosquito Genes 546
Insect-Borne Viruses: Help From Plants
Bacteria May Provide Access to the Tsetse Fly

A Sub Surveillance Network Becomes a 549
Window on Whales
Listening to the Earth Move

New Chemicals Seek to Outwit Insect Pests 550

Jupiter Bombardment Now Certain, 552
but How Big a Show?

SCIENCE INNOVATION



Biomedicine in the Age of Imaging 554
OCT: Images of Coherence
Echo-Planar MRI: Learning to Read Minds
EEG + MRI: A Sum Greater Than the Parts
Transillumination: Looking Right Through You

PERSPECTIVE

Molecular Electronics: Observation of 576
Molecular Rectification
D. H. Waldeck and D. N. Beratan

ARTICLE

Hydrodynamic Stability Without 578
Eigenvalues
L. N. Trefethen, A. E. Trefethen, S. C. Reddy,
T. A. Driscoll

DEPARTMENTS

THIS WEEK IN SCIENCE 529

EDITORIAL 531
Making Wolves Lovable

LETTERS 533
A Reader's Response: K. H. Lowe; D. E. Koshland, Jr.
• Dental Institute Report: W. D. McHugh;
M. Katz • Dendrimer Development: M. S. Urdea
and T. Horn • Supersymmetry Predictions:
G. L. Kane

SCIENCESCOPE 539

RANDOM SAMPLES 553

Tales of the Coming Mega-Greenhouse • Fishing
for Links With a Chain • Gallo Case Spawns New
Drama • Krebs Nominated for Top Energy Research

BOOK REVIEWS 627
China's Environmental Crisis, reviewed by
R. P. Suttmeier • *Concepts of Symbiogenesis*,
M. G. Haygood • Other Books of Interest •
Vignette • Books Received

INSIDE AAAS 631

PRODUCTS & MATERIALS 633

Board of Reviewing Editors

John Abelson
Frederick W. Alt
Don L. Anderson
Michael Ashburner
Stephen J. Benkovic
David E. Bloom
Floyd E. Bloom
Piet Borst
Michael S. Brown
Henry R. Bourne
James J. Bull

Kathryn Calame
C. Thomas Caskey
Dennis W. Choi
John M. Coffin
Paul J. Crutzen
Robert Desimone
Nicole Le Douarin
Bruce F. Eldridge
Paul T. Englund
Richard G. Fairbanks
Douglas T. Fearon

Harry A. Fozzard
K. Friedrich
Theodore H. Geballe
Margaret J. Geller
John C. Gerhart
Roger I. M. Glass
Stephen P. Goff
Peter N. Goodfellow
Corey S. Goodman
Stephen J. Gould
Ira Herskowitz

Eric F. Johnson
Stephen M. Kosslyn
Michael LaBarbera
Charles S. Levings III
Alexander Levitzki
Harvey F. Lodish
Richard Losick
Diane Mathis
Anthony R. Means
Shigetada Nakanishi
Roger A. Nicoll

William H. Orme-
Johnson III
Stuart L. Pimm
Yeshayau Pocker
Dennis A. Powers
Ralph S. Quatrano
V. Ramanathan
Douglas C. Rees
T. M. Rice
Erkki Ruoslahti
David C. Rubie

Gottfried Schatz
Jozef Schell
Ronald H. Schwartz
Terrence J. Sejnowski
Ellen Solomon
Thomas A. Steitz
Michael P. Stryker
Richard F. Thompson
Robert T. N. Tjian
Emil R. Unanue
Geerat J. Vermeij

Bert Vogelstein
Harold Weintraub
Zena Werb
George M. Whitesides
Owen N. Witte
William A. Wulf
Keith Yamamoto

COVER

Adult female *Anopheles gambiae* mosquitoes, the principal malaria vector in Africa. A sex-linked recessive mutation that changes the wild-type (right) eye color to white (left) has been mapped genetically on the X

chromosome. See page 605 and the News story on page 546. [Photo: Jim Gathany, Centers for Disease Control Photoservices]



REPORTS

Direct Colorimetric Detection of a Receptor-Ligand Interaction by a Polymerized Bilayer Assembly

585

D. H. Charych, J. O. Nagy, W. Spevak, M. D. Bednarski

Structure of Membrane Surfactant and Liquid Crystalline Smectic Lamellar Phases Under Flow

588

C. R. Safinya, E. B. Sirota, R. F. Bruinsma, C. Jeppesen, R. J. Plano, L. J. Wenzel

Relation of Major Volcanic Center Concentration on Venus to Global Tectonic Patterns

591

L. S. Crumpler, J. W. Head, J. C. Aubele

Detection of a Meteoritic Component in Ivory Coast Tekites with Rhenium-Osmium Isotopes

595

C. Koeberl and S. B. Shirey

Greater Susceptibility to Mutations in Lagging Strand of DNA Replication in *Escherichia coli* Than in Leading Strand

598

X. Veaute and R. P. P. Fuchs

Signal Sequence Trap: A Cloning Strategy for Secreted Proteins and Type I Membrane Proteins

600

K. Tashiro, H. Tada, R. Heilker, M. Shirozu, T. Nakano, T. Honjo

Ixr1, a Yeast Protein That Binds to Platinated DNA and Confers Sensitivity to Cisplatin

603

S. J. Brown, P. J. Kellett, S. J. Lippard

A Detailed Genetic Map for the X Chromosome of the Malaria Vector, *Anopheles gambiae*

605

L. Zheng, F. H. Collins, V. Kumar, F. C. Kafatos

Differential T Cell Costimulatory Requirements in CD28-Deficient Mice

609

A. Shahinian, K. Pfeffer, K. P. Lee, T. M. Kündig, K. Kishihara, A. Wakeham, K. Kawai, P. S. Ohashi, C. B. Thompson, T. W. Mak

Interaction of Activated EGF Receptors with Coated Pit Adaptins

612

A. Sorkin and G. Carpenter

Functional Magnetic Resonance Imaging of Motor Cortex: Hemispheric Asymmetry and Handedness

615

S.-G. Kim, J. Ashe, K. Hendrich, J. M. Ellermann, H. Merkle, K. Ugurbil, A. P. Georgopoulos

The *Caenorhabditis elegans unc-17* Gene: A Putative Vesicular Acetylcholine Transporter

617

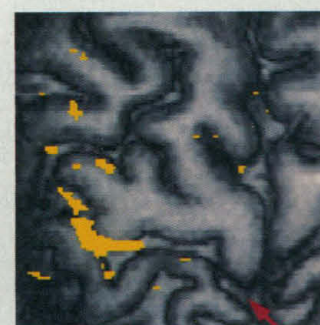
A. Alfonso, K. Grundahl, J. S. Duerr, H.-P. Han, J. B. Rand

TECHNICAL COMMENTS

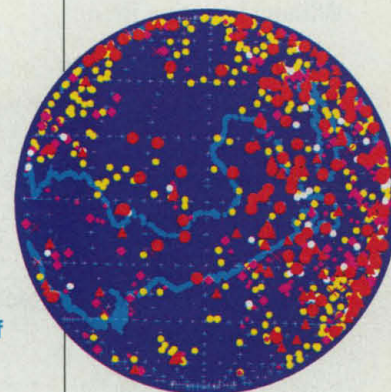
Locating the Catalytic Water Molecule in Serine Proteases

620

J. J. Perona, C. S. Craik, R. J. Fletterick, P. T. Singer, A. Smalås, R. P. Carty, W. F. Mangel, R. M. Sweet



Sinister activity in the brain 615



591

A global view of volcanism on Venus

AAAS Board of Directors

F. Sherwood Rowland
Retiring President,
Chairman
Eloise E. Clark
President
Francisco J. Ayala
President-elect

Robert A. Froesch
Florence P. Haseltine
William A. Lester, Jr.

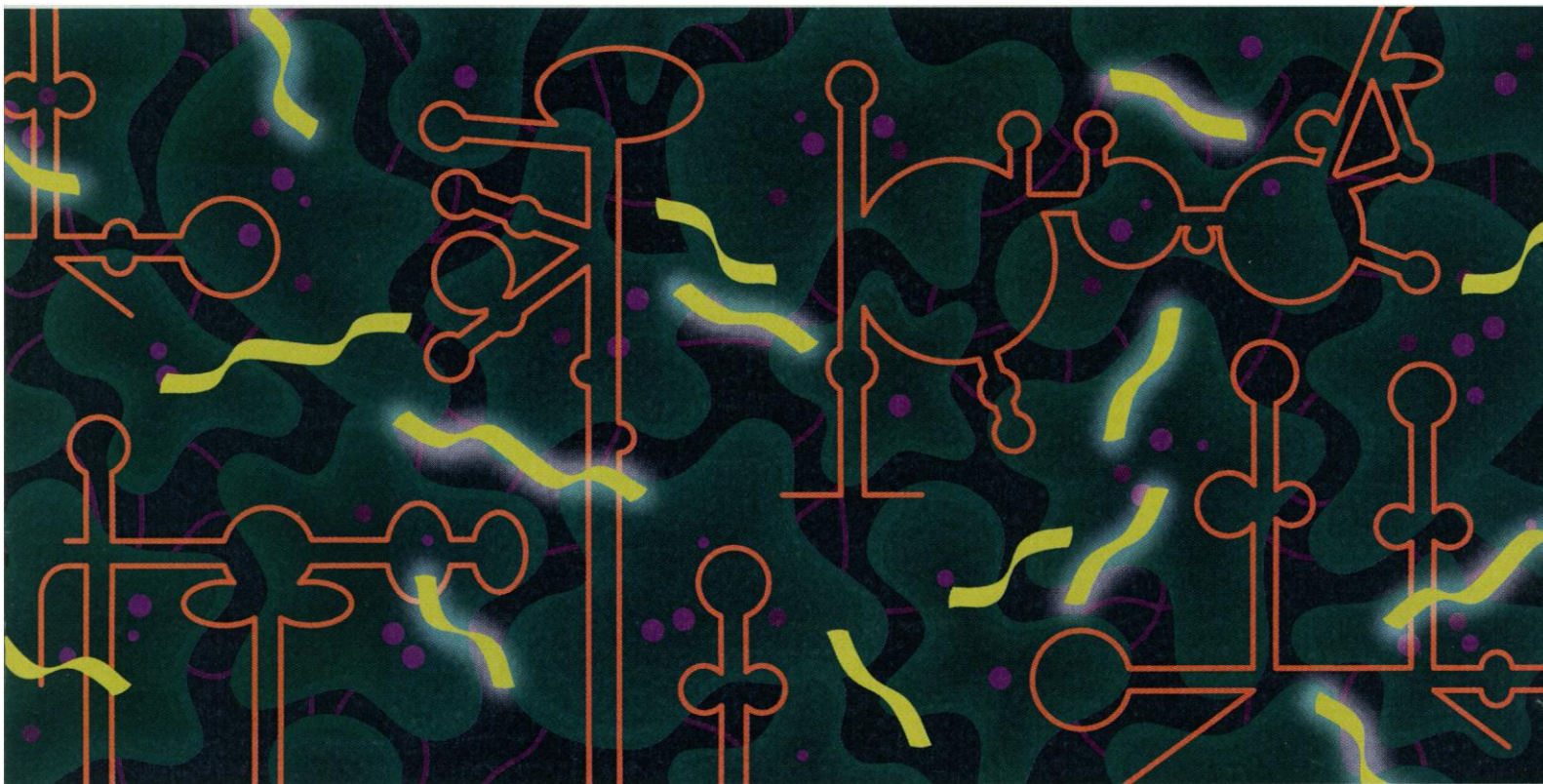
Alan Schriesheim
Jean'ne M. Shreeve
Chang-Lin Tien
Warren M. Washington
Nancy S. Wexler

William T. Golden
Treasurer
Richard S. Nicholson
Executive Officer

■ **SCIENCE** (ISSN 0036-8075) is published weekly on Friday, except the last week in December, by the American Association for the Advancement of Science, 1333 H Street, NW, Washington, DC 20005. Second-class postage (publication No. 484460) paid at Washington, DC, and additional mailing offices. Copyright © 1993 by the American Association for the Advancement of Science. The title **SCIENCE** is a registered trademark of the AAAS. Domestic individual membership and subscription (51 issues): \$87 (\$47 allocated to subscription). Domestic institutional subscription (51 issues): \$205. Foreign postage extra: Mexico, Caribbean (surface mail) \$50; other countries (air assist delivery) \$95. First class, airmail, student and emeritus rates on request. Canadian rates with GST available upon request, GST #1254 88122. **Change of address:** allow 6 weeks, giving old and new addresses and 11-digit

account number. **Postmaster:** Send change of address to *Science*, P.O. Box 20333, Marion, OH 43305-2033. **Single copy sales:** \$6.00 per issue prepaid includes surface postage; Guide to Biotechnology Products and Instruments, \$20. Bulk rates on request. **Authorization to photocopy** material for internal or personal use under circumstances not falling within the fair use provisions of the Copyright Act is granted by AAAS to libraries and other users registered with the Copyright Clearance Center (CCC) Transactional Reporting Service, provided that the base fee of \$1 per copy plus \$0.10 per page is paid directly to CCC, 27 Congress Street, Salem, MA 01970. The identification code for *Science* is 0036-8075/93 \$1 + .10. *Science* is indexed in the *Reader's Guide to Periodical Literature* and in several specialized indexes.

▼ LYSATE RIBONUCLEASE PROTECTION KIT



The Best Choice for Ribonuclease Protection Assays

Now You Can Do Ribonuclease Protection Assays Without Isolating RNA

- Purification of RNA is Not Required
- Detect RNA in Crude Cell Lysates

High Sensitivity Even in Crude Cell Lysates

- Detect As Little As 100 fg of Target RNA

A Direct Ribonuclease Protection Assay That is Fast and Convenient

- Entire Procedure Carried Out in One Tube
- Easy to Handle Multiple Samples
- Can Be Used With Cultured Cells OR Tissue Samples

Sensitive Detection of RNA for Quantification and Structural Analysis

- More Sensitive and Faster Than Northern Blot Analysis
- Map Transcription/Termination Sites, Intron/Exon Boundaries

For more information on our Lysate Ribonuclease Protection kit, contact United States Biochemical Corporation, P.O. Box 22400, Cleveland, Ohio 44122. Phone: 800-321-9322. Fax: 800-535-0898. International: 216-765-5000. Telex: 980718. Fax: 216-464-5075.



USB INTERNATIONAL OFFICES: Cambridge, England • Bad Homburg, Germany INTERNATIONAL DISTRIBUTORS: Alpha Scientific – Thessaloniki, Greece • BioTrade – Austria • Cambridge BioScience – Cambridge, England • Getter (2000) Ltd. – Tel-Aviv, Israel • Integro B.V. – Holland • Kebo – Spanga, Sweden • Ballerup, Denmark • Espoo, Finland • Oslo, Norway • Labex Corp. – Calcutta/New Delhi, India • Lucerna-Chem AG – Lucerne, Switzerland • Quimigranel-SA – Spain/Portugal • Societa Italiana Chimici – Roma, Italy • Sopachem – Belux • Touzart et Matignon – Paris, France • Toyobo Company, Ltd. – Osaka, Japan • Trace Scientific – Melbourne, Australia

Circle No. 21 on Readers' Service Card

Colorimetric test for viral ligand

Langmuir-Blodgett films that incorporate polydiacetylene have a blue color, but at increased temperatures the conjugated backbone undergoes conformational changes and these films turn red. Charych *et al.* (p. 585) show that if a ligand receptor is incorporated into the film, binding of the ligand can also induce a conformational change, an effect they call affinitychromism. A sialic acid derivative incorporated into the film was used to detect influenza virus hemagglutinin. The blue-to-red color change was visible to the naked eye, and viral concentration could be quantitated by using visible spectroscopy. This approach could be generalized to a wide variety of other ligand-receptor systems.

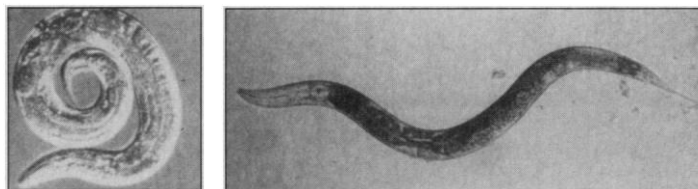


Shear numbers

Under shear flow conditions, simple liquids such as water respond in a relatively simple "Newtonian" fashion, but complex fluids have internal structures that respond to the stress and that require additional terms to be introduced into the hydrodynamic equations. Safinya *et al.* (p. 588) studied the effect of shear on ordered fluids that have layered structures (smectic liquid crystals and lamellar surfactant membranes) using synchrotron x-ray scattering. At high shear, the layers of the lamellar phase were oriented parallel to the shearing plates, but a smectic-A liquid crystal oriented its layers perpendicular to the shearing plates. A numerical calculation suggests that this change of orientation minimizes the elastic deformation caused by flow distortion of thermal fluctuations.

Transporters and locomotion

Nerve cells package their transmitters into small packets that are stored until a signal needs to be sent. The storage compartments are small vesicles that contain transport proteins that allow the accumulation of transmitters, most of which are synthesized in the



cytoplasm of the cell. Alfonso *et al.* (p. 617) cloned the gene responsible for transporting acetylcholine in the nematode *Caenorhabditis elegans*. As in other organisms, the nerve cells which innervate muscles use acetylcholine as their transmitter, and mutations in this gene produced deficits in locomotion. The characterization of these mutants also will make it possible to look at other proteins that might interact with these transporters.

Meteorites under glass

Crater debris and far-flung ejecta in large asteroid impacts are formed predominantly from the target rock and not the asteroid, which usually vaporizes. Detection of the asteroid component has been particularly difficult for tektites, small glassy droplets formed when target rocks melt upon impact. Koeberl and Shirey (p. 595) show that rhenium-osmium isotopes can be used to fingerprint the involvement of the asteroid in tektite formation and clarify the impact process. This isotopic system is sensitive because meteorites have high abundances of osmium compared to Earth's crust, and the osmium isotopic values are also distinct. Analysis of the Ivory Coast tektites showed that 0.6 percent of the composition of the tektites was derived from a meteoritic parent.



T cell costimulation pathways

T cells have to be costimulated in order to activate all of their various immune responses.

Binding of the B7 molecule to the CD28 receptor is the major known costimulatory pathway. Shahanian *et al.* (p. 609) established a CD28-deficient mouse strain and show that several T cell responses, including lectin stimulation of interleukin-2 production, T helper cell activity, and class switching of immunoglobulins, are impaired or reduced in these mice. However, some costimulatory responses, such as induction of cytotoxic T lymphocytes and delayed-type hypersensitivity, were still present, which suggests that alternative costimulatory pathways are present.



Mosquito map

In Africa, the primary malaria vector is the mosquito *Anopheles gambiae*. A detailed genetic map of the X chromosome of this organism had been obtained by Zheng *et al.* (p. 605), who used markers targeted to GA and GT microsatellite repeats (see news story by Aldhous, p. 546). Such a map is difficult to obtain because these mosquito

breed in swarms. Backcrosses were obtained only by forcibly mating individual mosquitoes.



Early endocytosis

When epidermal growth factor (EGF) binds to its receptor on the surface of a cell, a signaling pathway is initiated that results in the internalization of the receptor and consequent desensitization of the cell to the growth factor. Sorkin and Carpenter (p. 612) describe experiments that begin to define the molecular mechanism by which receptors are localized into coated pits, which are then taken into the cell by endocytosis. Binding of EGF to its receptor enhanced binding of the receptor to AP-2, a protein complex associated with coated pits of the plasma membrane. Association of the receptor with AP-2 appears to occur before the coated pits are fully assembled.



Hand signals

Activation of the left motor cortex during hand movements is not a mirror image of the activation of the right motor cortex. Kim *et al.* (p. 615) used functional magnetic resonance imaging to quantify motor cortex activation in healthy right- and left-handed human subjects who performed hand movement tasks. Activation of the right motor cortex occurs mainly during contralateral movements, that is, when either right- or left-handed subjects moved their left hand. Unlike the right motor cortex, the left motor cortex shows substantial activation during ipsilateral movements, and, for right-handed subjects, is activated almost equally for movement of the right or left hand.

Finally an Affordable Densitometer



Introducing the Model GS-670 for low cost, high quality imaging

The new Model GS-670 densitometer costs less—significantly less—than any other personal densitometer, and it offers more: more scanning wavelengths, more sample flexibility, and more software options.

The densitometer's variable wavelength light source lets you tailor your scanning to maximize sensitivity and accuracy. The transmittance and reflectance modes accommodate any type of sample, whether it be a wet or dry gel, film, blot, or TLC plate.

And the revolutionary new software—on both Windows® and Macintosh® platforms—provides multi-resolution scanning, automatic spot finding and peak detection, area and volume quantitation, and publishable output.

The Model GS-670 densitometer: More features, less money: easy to use, easier to afford. Call 1-800-BIORAD today for a free demo in your lab, using your samples.



BIO-RAD

Bio-Rad
Laboratories

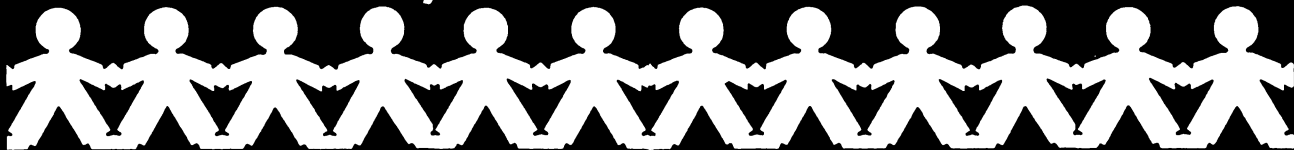
Life Science
Group

U.S. (800) 4BIORAD • California Ph. (510) 741-1000 • New York Ph. (516) 756-2575 • Australia Ph. 02-805-5000 • Austria Ph. 0222-877 89 01 • Belgium Ph. 091-85 55 11 • Canada Ph. (416) 624-0713 • China Ph. 2563146 • France Ph. 01-49 60 68 34 • Germany Ph. 089-318 84 0 • Italy Ph. 02-21609 1 • Japan Ph. 03-3534-7515 • Hong Kong Ph. 7893300 • The Netherlands Ph. 08385-40666 • New Zealand Ph. 09-443 3099 • Scandinavia Ph. 46 (0) 8 590-73489 • Spain Ph. (91) 661 70 85 • Switzerland Ph. 01-810 16 77 • United Kingdom Ph. 0800 181134

REV 031193

Circle No. 12 on Readers' Service Card

For the Ordinary



and the Extraordinary



in Peptides

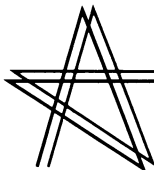
For all your Peptide needs
contact STAR Biochemicals,

a recognized leader in Peptide Chemistry & Development.

*We specialize in Custom Syntheses, Catalog Peptides
and Peptide Building Blocks.*

Call STAR Biochemicals at **(800) STAR 661** or **(800) 782-7661** for a copy of our catalog.

SEVERAL NEW PRODUCTS IN STOCK - *Please Inquire*



STAR Biochemicals

An Operating Unit of Mallinckrodt Specialty Chemicals Company

The Star of the 90's

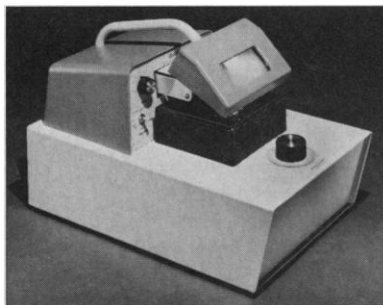
20916 Higgins Court • Torrance, CA 90501

Circle No. 41 on Readers' Service Card

Beautiful? No.
Reliable? You Bet.

VIBRATOME® gives you
fresh tissue sectioning
without freezing or embedding.
Simple, precise adjustments cut fresh or
fixed tissue evenly from 20 microns up.
Now that's beautiful.

So, if you're more interested in how it works than how it looks, choose Vibratome.
Function is beauty.



TECHNICAL
PRODUCTS
INTERNATIONAL, INC.

5918 EVERGREEN / ST. LOUIS, MISSOURI 63134 U.S.A.
(314) 522-8671 (800) 729-4421 FAX (314) 522-6360

Circle No. 8 on Readers' Service Card

WOMEN IN SCIENCE

"Gender and the Culture of Science"
SCIENCE 16 April 1993 Reprint

This 2nd annual cover story
explores the many issues vital to
female scientists and the compa-
nies and universities where they
work.

Are females unique in their
approach to science? Are the
issues facing American women
global or are the barriers and
frustrations different in Europe
and Japan? Is there a female
model for success in science?
These questions and more will be
raised in this important cover
story.

To order your copy send
\$2.95 per copy (includes
postage) to:

SCIENCE

Attn: Corrine Harris
1333 H Street, NW
Washington, DC 20005

\$1.95 per copy on bulk orders of 10 or more copies
\$25.00 minimum on Visa and MasterCard orders

Monoclonal Antibodies to Human Leukocyte Cell Surface Molecules



For Antigen Presentation Research

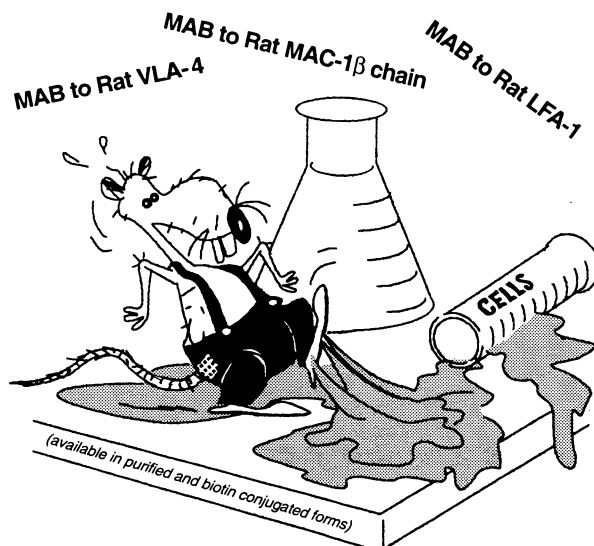
800-374-9523

FAX: 612-439-1940 Phone: 612-439-0835

Ancell Corporation P.O.Box 87 Bayport Minnesota 55003-0087

Circle No. 55 on Readers' Service Card

We're STICKING to Quality in a RATICAL Way !



For research use only. Not for drug or other uses.

The purest biochemicals for research in
* Carbohydrate Chemistry * Molecular Biology * Immunology * Cell Biology



SEIKAGAKU AMERICA, INC.
30 West Gude Drive, Suite 260
Rockville, Maryland 20850-1161, U.S.A.
Telephone: 1-301-424-0546, 1-800-237-4512
Facsimile: 1-301-424-6961
A subsidiary of SEIKAGAKU CORPORATION Tokyo, Japan

SEIKAGAKU CORPORATION
1-5, Nihonbashi-honcho 2-chome, Chuo-ku
Tokyo 103, Japan
Telephone: 81-3-3245-1951
Facsimile: 81-3-3242-5335

"SEIKAGAKU" means "biochemistry"

Circle No. 16 on Readers' Service Card

GENSET

the unique source
for guaranteed oligos

Automated DNA plant

range of synthesizers

capacity > 300 oligos/day

+

Total quality

E-mail direct ordering

bar-code sequences follow-up

robots for post-synthesis steps

highest quality controls

=

Guaranteed oligos

unpurified oligos

fully deprotected

fully desalted

PAGE controlled

delivered dosed

ready to use

sequence guaranteed

**in 2 days
from \$2.5 to \$4.0/base**

GENSET CORP.

505 Coast Blvd South, La Jolla CA 92037

For enquiries

West: 800 995 0308 East: 800 892 1956

(Europe & Asia: 33 (1) 43 56 59 00)

To order

Fax: 800 551 5291

E-mail: oligos@gensetlj.com



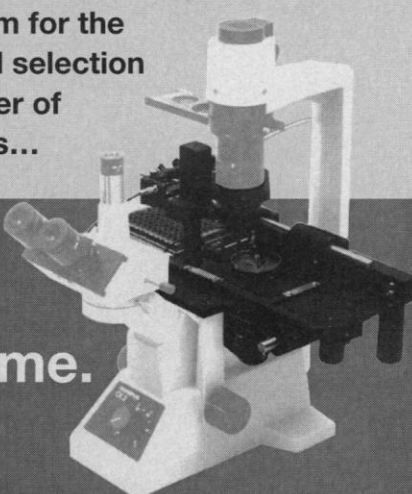
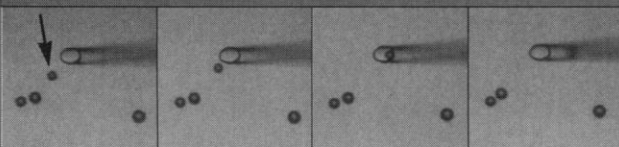
See us at Science Innovation '93,
Booth No. 418

Circle No. 51 on Readers' Service Card

NEW TECHNOLOGY

Quixell –a revolutionary new system for the automated selection and transfer of single cells...

one cell at a time.

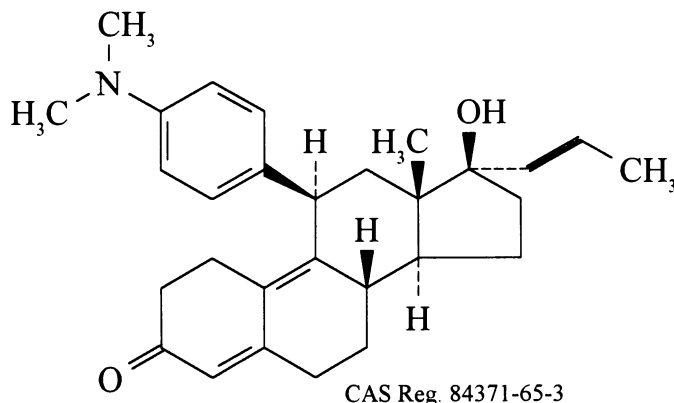
Selected cell being drawn into Quixell's glass micropipette. All other cells remain undisturbed.

STOELTING

Stoelting Co. 620 Wheat Lane
Wood Dale, IL 60191 USA
(708) 860-9700

Circle No. 9 on Readers' Service Card

NEW: MIFEPRISTONE



Cat. M 145 Mifepristone, 99%

25mg \$ 390.00

100mg \$ 950.00

Call: (302) 428-0701

Fax: (302) 428-6002

Note: This product will be supplied to established institutions only! Not for human use!

Cold Spring Biochemicals, Ltd.
Three Christina Center, Suite 1000
201 North Walnut Street
Wilmington, DE 19801

Circle No. 56 on Readers' Service Card



ADVISORY

The Rockefeller Foundation is concerned about the spreading world pandemic of sexually transmitted diseases (STDs) and its impact on health. As part of its efforts in this area, the Foundation is exploring the feasibility of offering a substantial monetary prize for the development of simple, low-cost, rapid diagnostic tests for sexually transmitted diseases that would be appropriate for use in resource-poor field settings.

STDs, with more than 250 million infections estimated each year, are important worldwide causes of morbidity and mortality, particularly in developing countries where STD control programs are difficult to implement. Most of these infections occur in young adults, and their serious complications disproportionately affect women. In addition, STDs increase the efficiency of transmission of HIV, the AIDS virus. Early diagnosis and treatment of STDs are crucial to preventing the serious long-term complications of these infections and would reduce the spread of HIV. However, the detection and diagnosis of STD infections, especially gonorrhea and chlamydia, remain technically complicated, time-consuming and, particularly for those in the developing world, prohibitively expensive.

Two principal challenges in this exploration are to create (1) objective, measurable criteria to define tests that would be rapid, highly accurate and suitable for use in the developing world (including low cost) and (2) appropriate means for ensuring global access to this technology. Foundation staff are gathering information from experts around the world in this effort. If the Foundation offers such a challenge/prize, complete details will be widely disseminated. In the meantime, to make as much information as widely available as possible at this stage in the exploration, the Foundation has issued this advisory. Comments and suggestions about this project are welcomed.

The Rockefeller Foundation
attn: STD Prize Working Group
1133 Avenue of the Americas
New York, New York 10036 U.S.A.

Circle No. 54 on Readers' Service Card

COUNTING CHAMBERS

- ❖ DISPOSABLE
- ❖ Fixed coverslip over grids
- ❖ Grid equivalent to hemocytometer for easy calculation
- ❖ 2 Windows with grids for counting
- ❖ 2 Plain Windows with drop-on coverslip for examining undiluted specimens without changing focus

Packaged 50/box

**HUMAGEN
DIAGNOSTICS, INC.**

1-800-937-3210 FAX (804) 295-5912

Circle No. 43 on Readers' Service Card

THE VALUE IS CRYSTAL CLEAR

RECOMBINANT ENZYMES FROM NEW ENGLAND BIOLABS

At New England Biolabs, we're cloning for the future. Our enzyme production is linked to the cloning and overexpression of restriction endonucleases. This means you can be assured of unmatched affordability, pure product and unsurpassed scientific expertise.

And, because our high quality recombinant enzymes are produced in larger lots, you get greater product consistency.



SDS-PAGE of recombinant BamH I restriction endonuclease demonstrating purity of enzyme preparation from the cloned BamH I gene. Lanes represent a 2-fold dilution from 54 to 0.14 µg BamH I per lane. Lane 9 contains molecular weight standards. Molecular weight of BamH I protein = 24,570 daltons. This preparation was used to grow BamH I crystals which led to solving its three-dimensional structure. (A. Aggarwal, personal communication)

62 Recombinant Restriction Endonucleases

Aat II	BspE I	Hind III	Not I
Acc I	BspH I	Hinf I	Pst I
Afl II	Dde I	HinP1 I	Pvu II
Afl III	Dpn I	Hpa I	Sac II
Alu I	Dpn II	Hpa II	Sal I
Ase I	Eag I	Kas I	Sau96 I
Ava I	EcoO109 I	Mbo II	Sfi I
Ava II	EcoR I	Msc I	Sma I
Avr II	EcoR V	Msp I	Sph I
BamH I	Fok I	Mwo I	Sty I
Ban I	Fsp I	Nae I	Taq ^q I
Bbv I	Hae II	Nco I	Xba I
Bcg I	Hae III	Nde I	Xho I
Bgl I	Hga I	NgoM I	Xma I
Bgl II	Hha I	Nla III	
BsaA I	Hinc II	Nla IV	

Recombinant Modifying Enzymes

Vent[®] DNA Polymerase
Vent[®] (exo⁻) DNA Polymerase
Deep Vent[®] DNA Polymerase
Deep Vent[®] (exo⁻) DNA Polymerase
M-MuLV Reverse Transcriptase
T7 DNA Polymerase
T4 DNA Polymerase
T7 RNA Polymerase
T4 DNA Ligase
Taq DNA Ligase
T4 RNA Ligase
T4 Polynucleotide Kinase
Exonuclease III

NEW Recombinant Enzymes for Protein Modification

PNGase F
Endo H
Endo H_f
Neuraminidase
N-Acetyl-β-D-Hexosaminidase_f
LAR_R Phosphatase
YOP_R Phosphatase
T-Cell_R Phosphatase
Lambda Phosphatase

For crystal clear value and purity, call
New England Biolabs, 1-800-NEB-LABS.



- New England Biolabs Inc.
32 Tozer Road, Beverly, MA 01915 USA
1-800-NEB-LABS
Tel. (508) 927-5054 Fax (508) 921-1350
- New England Biolabs Ltd., Canada
Tel. (800) 387-1095 (416) 672-3370
Fax (416) 672-3414
- New England Biolabs GmbH,
Federal Republic of Germany
Tel. (06196) 3031 Fax (06196) 83639

DISTRIBUTORS: Australia (075) 94-0290;
Brazil (011) 06-3565; Denmark (31) 56 20 00;
Finland (90) 420-8077; France (1) 34 60 24 24;
Greece (01) 5226547; India (542) 311473; Israel
(03) 535-1205; Italy (02) 38103171; Japan (03)
3272-0671; Korea (02) 5560311; Mexico (5)
519-3463; The Netherlands (033) 95 00 94;
New Zealand (09) 418-3039; Norway 22 22 04 11;
People's Republic Of China (1) 2544399; Portugal
(01) 858 15 64; Singapore 775-7284; Spain (01)
594 0806; Sweden (08) 734 8300; Switzerland
(061) 481 47 13; Taiwan (02) 8964437;
UK (0279) 758200



Have we got an offer for you! Custom made peptides from \$150*

With the quality
assurance of Mass Spec.

You can have dozens of custom designed peptides
for the price you have probably been paying
for 1 or 2. It has to be the most cost-effective
way to buy peptides yet devised.

You pay only for what you need!

But what about the quality, I hear you ask.

That's where dealing with
Chiron Mimotopes really gets
interesting. Because the identity
of your peptide is verified by
Mass Spectral analysis.

**Contact Chiron
Mimotopes U.S. today
and see for yourself
how well we
measure up.**

ORDER TOLL FREE

800-733-7025
West Coast

800-633-8161
East Coast

West Coast:
4560 Horton Street,
Emeryville, CA 94608.
Tel: (800) 733-7025
or (510) 601-3316.
Fax: (510) 601-3300.

East Coast:
172 Mine Lake Ct, Suite 100,
Raleigh, NC 27615.
Tel: (800) 633-8161
or (919) 848-4323.
Fax: (919) 870-9352.



CHIRON
MIMOTOPES U.S.

**The custom-made
peptide people**

*1mg 8 mer \geq 70% purity

Project CM0615.6.93 (USA)

Circle No. 11 on Readers' Service Card

This superpower stereo zoom microscope has a remarkable 10:1 magnification range.



The optics make it possible.

**OLYMPUS
SZH-10
STEREO ZOOM
MICROSCOPE**

The SZH-10 Zoom Stereo Microscope System. A new era in research microscopy. For magnification ranging from 3.5x all the way to 420x. With optics that maintain perfect images even under the highest power.

The distortion-free IX D.F. Plan Apochromatic objective eliminates image barreling and chromatic aberration. Ultra-low dispersion glass heightens image contrast and eliminates color shift. The superb optics yield photo and video images that satisfy the most stringent demands of research and documentation.

You command the SZH-10 with ease. Achieve precise repeatability with disengageable click-stops. Fine-tune images with the smooth coaxial coarse/fine counterweighted focusing mount. Optimize working convenience with a double-objective revolving nosepiece. End fatigue with a low eyepoint binocular observation tube and dual left/right-side magnification controls.

A new generation. A new superpower. A total, expandable system with a variety of models, accessories and attachments. Plus the optics that make it possible.

For a demonstration call **1-800-446-5967**. Or write Olympus Corporation, Precision Instrument Division, 4 Nevada Drive, Lake Success, NY 11042-1179, Fax: 516-222-7920. In Canada: Carsen Group Inc., Markham, Ontario L3R 1E7, Tel: 416-479-4100.

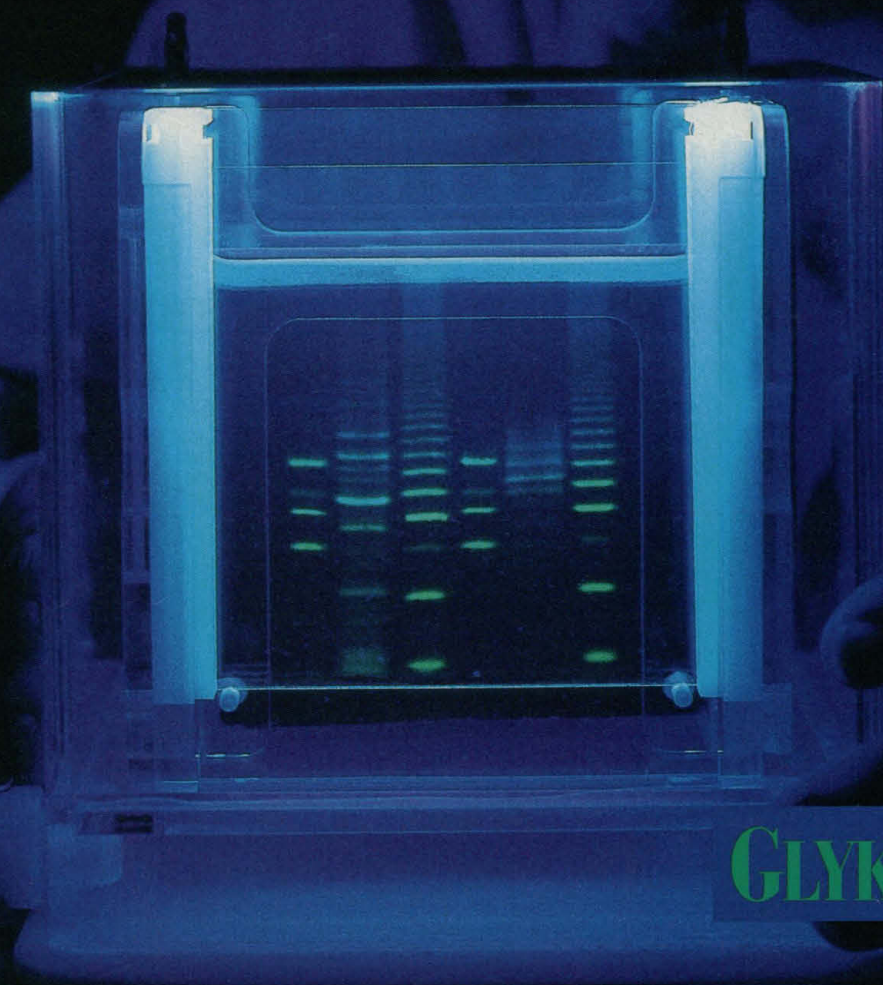


OLYMPUS®
The Image of Quality

Circle No. 20 on Readers' Service Card

With Glyko
FACE technology
you can separate,
quantify, or
sequence your
carbohydrate

In one day.



GLYKO

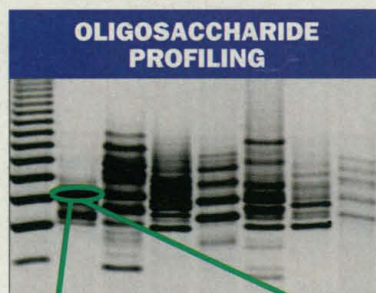
If you're working with DNA or protein, you're ready to work with carbohydrates

Glyko's FACE® (*Fluorophore Assisted Carbohydrate Electrophoresis*) technology, makes it possible for you to work with and analyze complex carbohydrates using the same technique you already use every day in your laboratory: polyacrylamide gel electrophoresis.

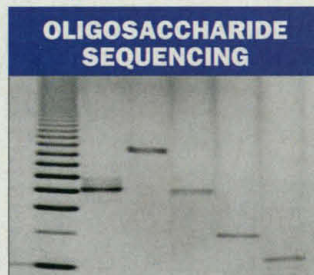
Now, in less than one day—without complicated or expensive instruments—you can perform profiling, composition, or sequencing experiments such as the ones shown here, using FACE chemistry kits.

Color-coded FACE kits make carbohydrate analysis easy and reliable

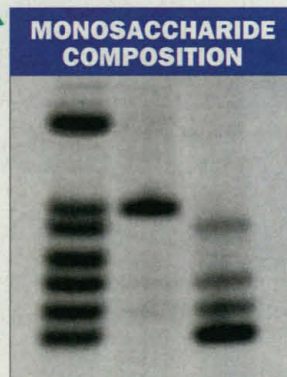
FACE kits are color-coded and are designed to provide a complete approach to carbohydrate analysis...starting with the enzymatic or chemical release from the glycoconjugate to the separation, isolation, or sequencing of oligosaccharides.



FACE gel profile of N-linked oligosaccharides released from a number of different glycoproteins



FACE gel showing the monosaccharide compositional analysis of a tri-sialylated, triantennary oligosaccharide



FACE gel illustrating the enzyme-based sequencing of a tri-sialylated, triantennary oligosaccharide

Everything you need is included: enzymes or release chemicals, fluorescent-labeling reagents, electrophoresis standards, controls, running buffers, and complete protocols.

Precast polyacrylamide gels specifically formulated for the separation of monosaccharides or oligosaccharides assure consistent results from experiment to experiment.

Glyko FACE kits available for glycoconjugate analysis include:

- **N-LINKED OLIGOSACCHARIDE PROFILING KIT**
- **O-LINKED OLIGOSACCHARIDE PROFILING KIT**
- **MONOSACCHARIDE COMPOSITION KIT**
- **N-LINKED OLIGOSACCHARIDE SEQUENCING KIT**
- **O-LINKED OLIGOSACCHARIDE SEQUENCING KIT**

We want to be your carbohydrate research partner

When your research requires a unique application of FACE technology, Glyko scientists will work with you to develop a custom FACE kit to your exact specifications.

Color-coded and accompanied with complete protocols, your custom FACE kit will contain the necessary reagents and materials you need to achieve your research objectives.

Sequence your oligosaccharides with Glyko recombinant glycosidases

Glyko also offers the most complete line of recombinant glycosidases available, each cloned to be free of other glycosidases and protease activity:

- **PNGase F**, releases Asn-linked oligosaccharides
- **NANase I**, releases α 2-3 N-acetylneuraminic acid
- **NANase II**, releases α 2-3,6 N-acetylneuraminic acid
- **NANase III**, releases α 2-3,6,8 N-acetylneuraminic acid
- **Neuraminic Acid Linkage Analysis Kit** contains NANase I, II, and III
- **HEXase I**, releases β 1-2,4,6 N-acetylglucosamine
- **MANase I**, releases α 1-2,3,6 mannose
- **FUCase I**, releases α 1-6 fucose



Your place or ours?

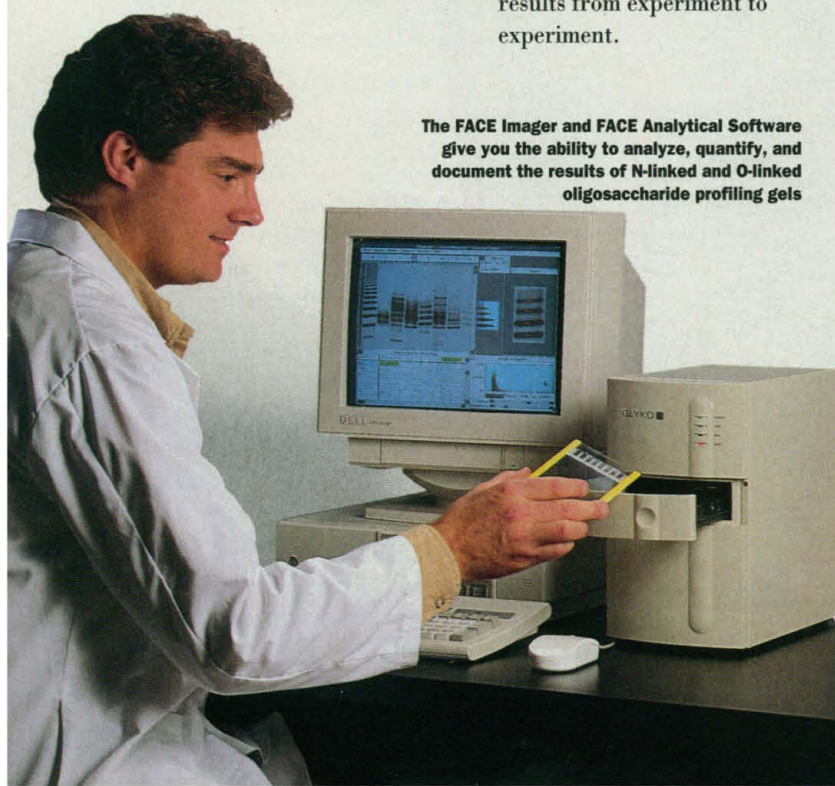
If you have only an occasional need for carbohydrate analysis, or lack the personnel to perform the analyses you require, our staff of scientists can do it for you.

Carbohydrate or glycoconjugate analysis, custom kit production, and staff training are just a few of the ways we can help.

For more information, a color brochure, and complete product specifications, please call Glyko, Inc. toll free at 1 800 33 GLYKO (334 5956) or fax us at 1 415 382 7889.



Circle No. 34 on Readers' Service Card



The FACE Imager and FACE Analytical Software give you the ability to analyze, quantify, and document the results of N-linked and O-linked oligosaccharide profiling gels

SEQUENASE[®]

VERSION 2.0 T7

DNA POLYMERASE

The enzyme to which
all others are compared.

USB offers the Complete Range of Sequencing Products Featuring Sequenase Version 2.0 T7 DNA Polymerase, the Premier Enzyme for Sequencing:

- Highly Processive
- Incorporates Nucleotide Analogs
- No Exonuclease Activity

Sequenase Kits Featuring the Two-Step Protocol Yield:

- Low Gel Background
- Uniform Band Intensities
- Easy to Read Gels

Sequenase Sequencing Kits are Versatile for Sequencing:

- PCR Products
- GC Rich Templates
- M13 and Plasmid Clones

Sequenase Version 2.0 DNA Sequencing Kits Are Flexible and Easy to Use:

- Contain dGTP, dTTP or 7-deaza dGTP Nucleotide Mixes for Resolving Compressions
- Sequence Information Close to the Primer with Mn
- Generate Long Reads
- Adapted for Glycerol Tolerant Gels

A. PCR Products

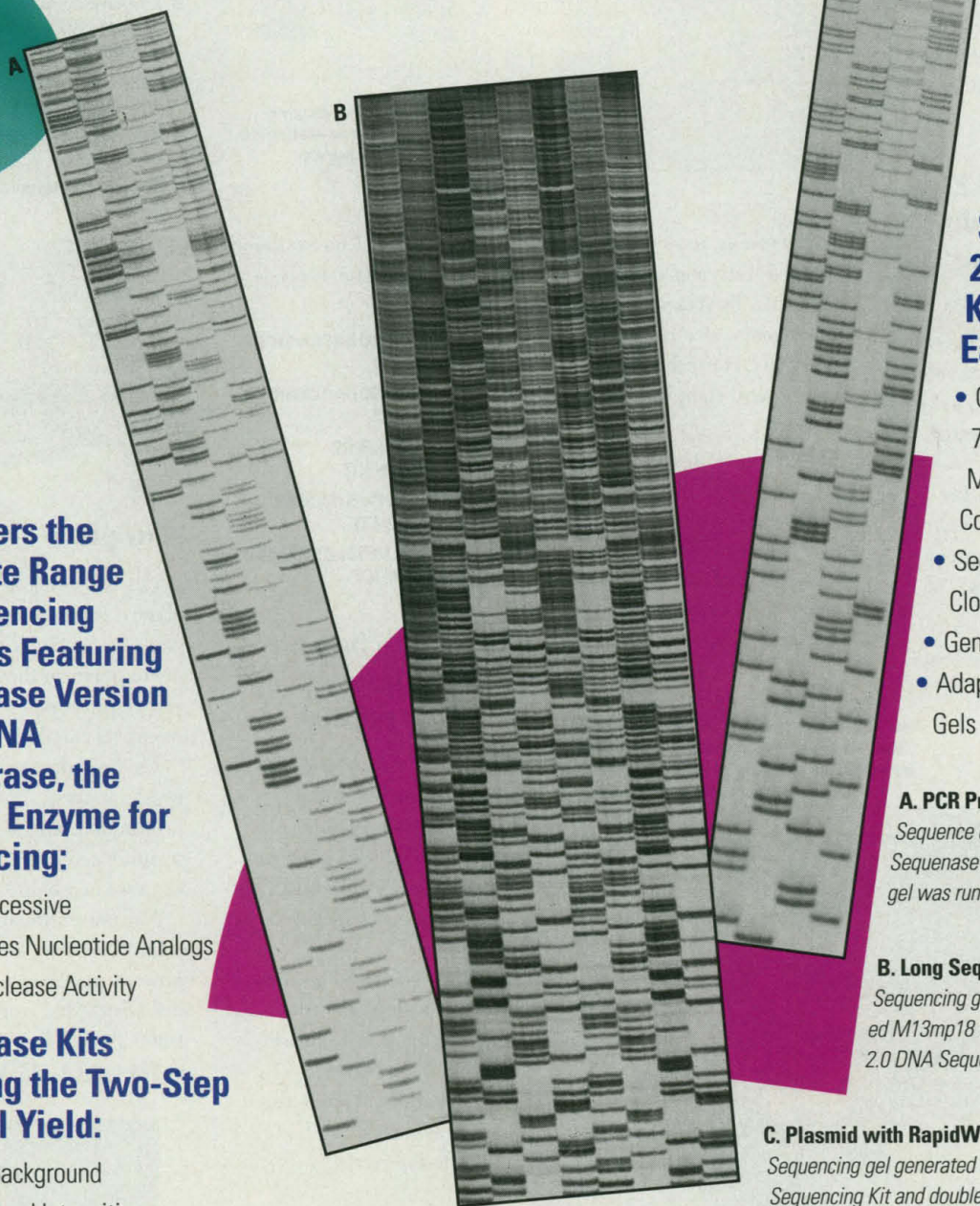
Sequence of a PCR product obtained with the Sequenase RapidWell DNA Sequencing Kit. This gel was run using Glycerol Tolerant Gel Buffer.

B. Long Sequences

Sequencing gel [³⁵S] generated using single-stranded M13mp18 template and the Sequenase Version 2.0 DNA Sequencing Kit.

C. Plasmid with RapidWell Kit

Sequencing gel generated using the Sequenase RapidWell DNA Sequencing Kit and double-stranded pUC19 with Mn²⁺.



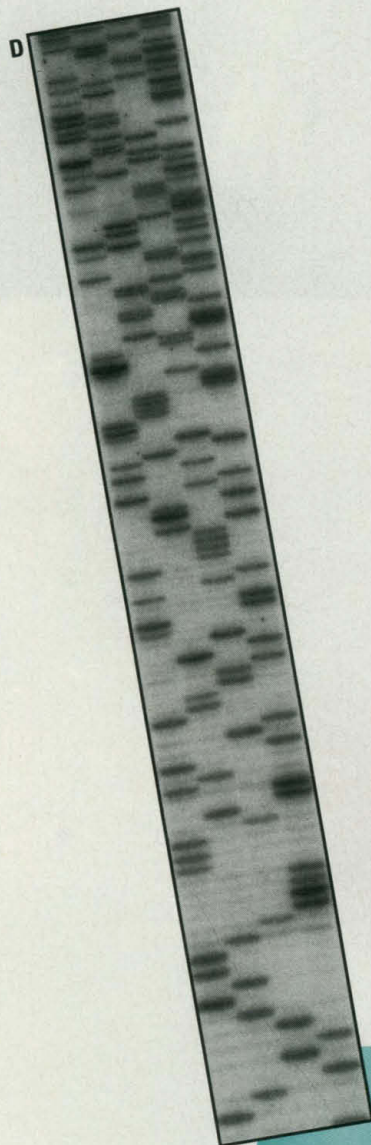
Sequenase Products are Supported By the Sequencing Experts:

- Innovative New Products and Detailed Protocols
- Sequencing Manual and Video Available
- Experienced Technical Support by Phone or Fax

USB Offers Additional Kits for a Complete Range of Sequencing Needs:

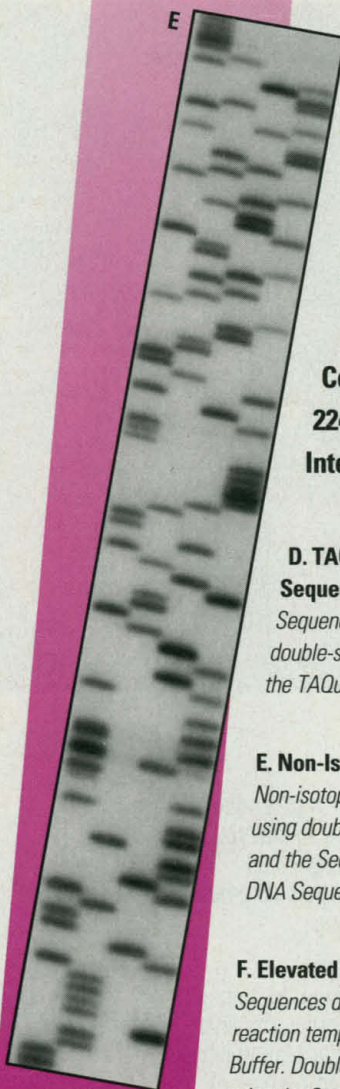
- TAQuence® Cycle Sequencing Kit for Sequencing Small Amounts of Template
- Sequenase® RapidWell™ DNA Sequencing Kit for Ease and Convenience
- Sequenase Images™ Non-Isotopic DNA Sequencing System for Non-Isotopic DNA Sequencing

Contact United States Biochemical Corporation, P.O. Box 22400, Cleveland, OH 44122. 800-321-9322. Fax: 800-535-0898. International: 216-765-5000. Telex: 980718. Fax: 216-464-5075.



D. TAQuence Cycle Sequencing Kit

Sequencing gel [³²P] generated using double-stranded pUC19 template and the TAQuence Cycle Sequencing Kit.

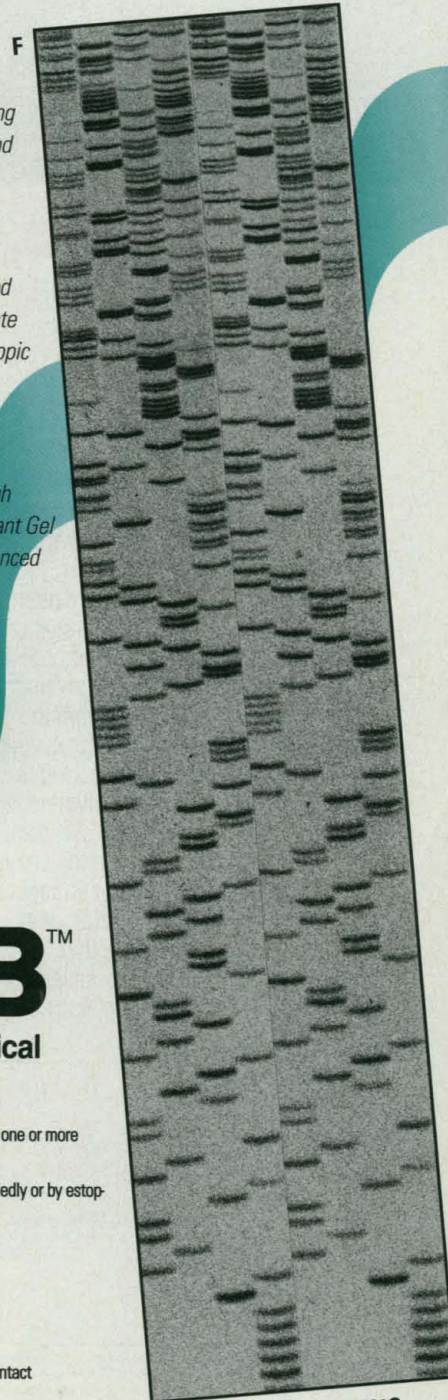


E. Non-Isotopic

Non-isotopic sequencing gel generated using double-stranded plasmid template and the Sequenase® Images Non-Isotopic DNA Sequencing System.

F. Elevated Temperature

Sequences demonstrating the use of high reaction temperature and Glycerol Tolerant Gel Buffer. Double-stranded DNA was sequenced using the Sequenase RapidWell DNA Sequencing Kit.



USB™
United States Biochemical

Sequenase is a registered trademark of United States Biochemical Corporation. This reagent (kit) contains materials covered by or suitable for use under one or more U.S. Patent Nos.: 4,795,699; 4,946,786; 4,942,130; 4,962,020; 4,994,372; 5,145,776 and 5,173,411. Patents pending in the U.S. and other countries.

Mn Buffer - Purchase includes a nonexclusive sublicense solely for use with Sequenase T7 DNA Polymerase. No other license is granted expressly, impliedly or by estoppel.

Glycerol Tolerant Gel Buffer - Pat. pending.

Sequenase® RapidWell™ DNA Sequencing Kit-Pat. Pending.

TAQuence is a registered trademark of United States Biochemical Corporation.

USB, the logo, RapidWell and Sequenase Images are trademarks of United States Biochemical Corporation.

PCR is covered by patents issued to Cetus Corporation and owned by Hoffman La-Roche, Inc. If you are interested in performing PCR, you may wish to contact Hoffman La-Roche for information on obtaining an appropriate license.

Circle No. 40 on Readers' Service Card

37°C

50°C

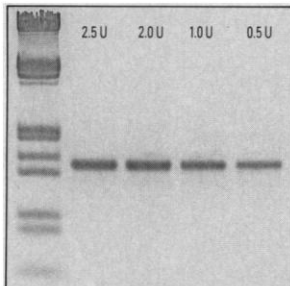


Specific purpose

The sharply curved bill of the white-tipped sickle-billed hummingbird is specifically adapted to probe the delicate tubular flowers of heliconia plants for the nectar on which the creature survives.

High-performance Boehringer Mannheim *Taq* DNA polymerase is designed and tested with an equally specific goal in mind: to produce absolutely specific amplification products in your polymerase chain reactions.

Each lot of *Taq* polymerase undergoes a unique self-priming assay to assure that the enzyme is essentially free of endogenous DNA fragments. Additional testing makes sure that contaminating exonucleases and endonucleases are also not present.



Specific amplification of a single-copy β -globin gene (1.5 kb) from 100 ng of human genomic DNA using various unit (U) quantities of Boehringer Mannheim *Taq* polymerase.

The highest levels of product purity are provided so that you achieve specific, high-yield amplification with no background and no false priming.

Licensed to perform

Choose Boehringer Mannheim *Taq* polymerase with confidence because Boehringer Mannheim is now a fully licensed supplier of PCR products, and your purchase conveys to you a license to perform PCR for research purposes.

Now you have the convenience of being able to purchase licensed *Taq* polymerase from the same company that you rely on for a wide range of other molecular biology research products.

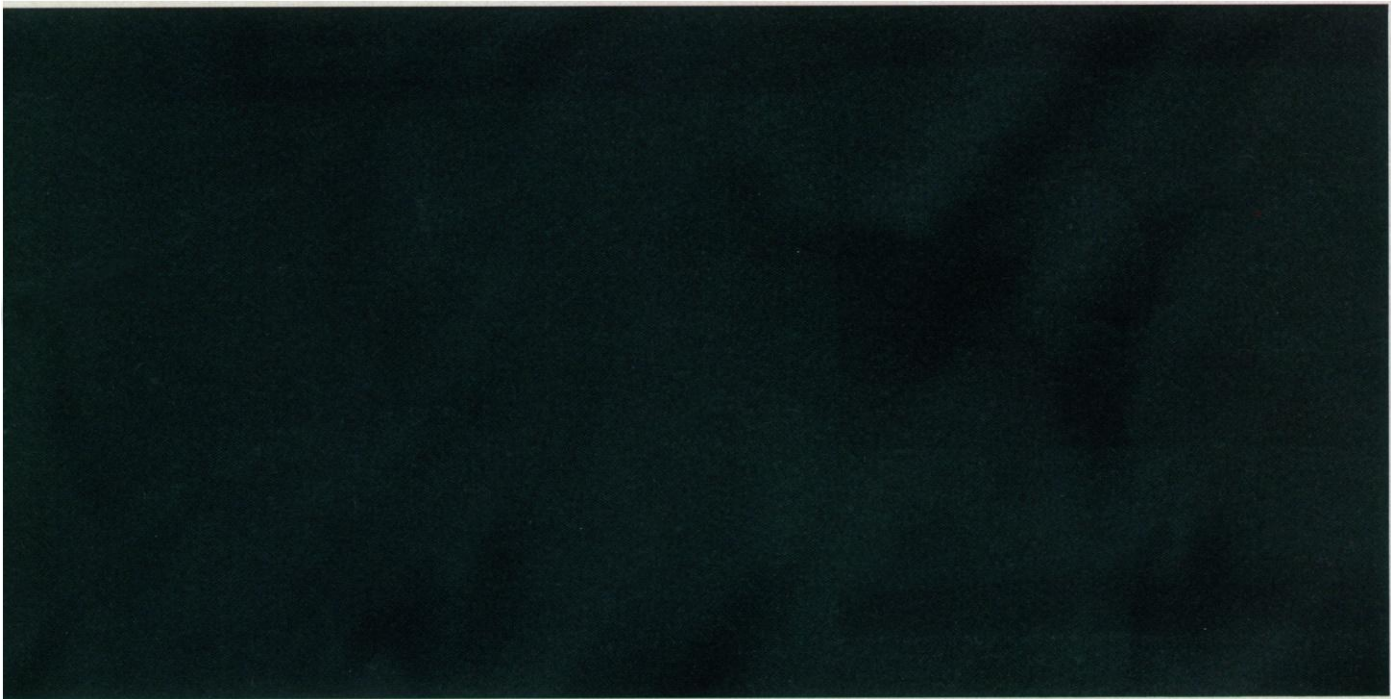
Give us your specifics today

Count on Boehringer Mannheim *Taq* polymerase for high-yield, high-quality PCR results. Contact your Boehringer Mannheim representative or call us to place your order at 1-800-262-1640.

This product is sold under licensing arrangements with Roche Molecular Systems and The Perkin-Elmer Corporation.

©1993 Boehringer Mannheim. All Rights Reserved.

Circle No. 47 on Readers' Service Card



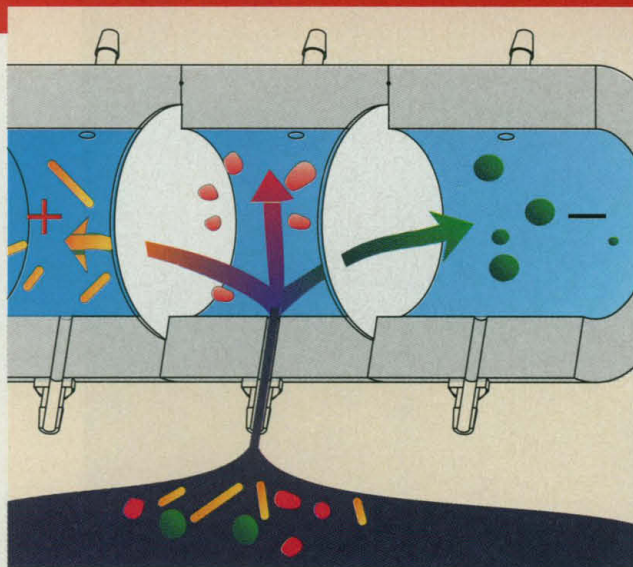
T A Q
BOEHRINGER
MANNHEIM
PCR
H I G H
PERFORMANCE

*Leaving the
Limits Behind*

BOEHRINGER
MANNHEIM

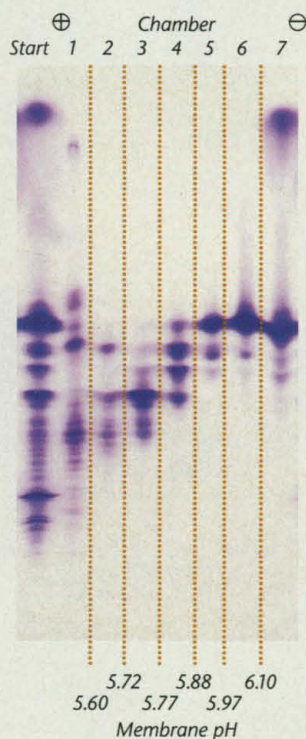


Hoefer Introduces



The IsoPrime separation unit has up to 8 chambers separated by polyacrylamide membranes of user-specified pH values. Each protein in a mixture migrates to the chamber delimited by membranes of pH above and below its pI value.

First pass purification of isoforms of bovine erythrocyte carbonic anhydrase.
Six isoelectric membranes delimited seven separation chambers. Membranes of pH=5.60, 5.72, 5.77, 5.88, 5.97 and 6.10 are indicated at the bottom of the figure. Analyzed on pH 3 to 7 IPG gel. (Starting material 250 mg total protein in 50 ml of distilled water).



A New Technology For Protein Purification

PrIME

Preparative Isoelectric Membrane Electrophoresis
and a New Instrument

IsoPrime™

Multi-chambered Electrofocusing Unit for unparalleled protein separations

- Outstanding resolving power—separate by differences in pI as little as 0.01.
- Easy sample recovery—the sample is in the solution, free of ampholytes, acrylamide byproducts and granular gel beds.
- Large sample capacity—purify hundreds of micrograms to hundreds of milligrams of protein.
- Software for easy calculation of isoelectric membrane composition and pH gradients.



For literature call us at 1-800-723-4707

Hoefer Scientific Instruments • 654 Minnesota Street, San Francisco, Ca 94107-0387
Toll Free: 1-800-227-4750, Phone: 415-282-2307, Fax: 415-821-1081, Telex: 470778

Circle No. 38 on Readers' Service Card

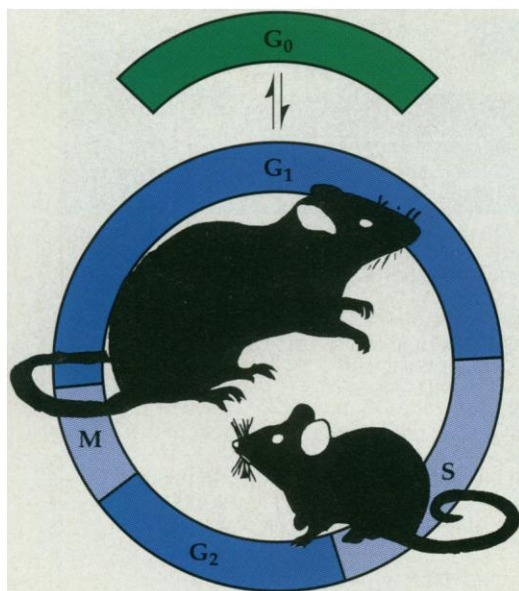
Hoefer™
Quality lasts a long time.

New Methodology for Measuring *In Vivo* Cell Proliferation

Are you *still* using
 ^3H -thymidine,
BrdU or PCNA
histochemistry
to detect cellular
proliferation?



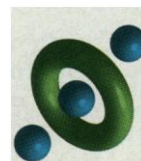
A new methodology is now available to determine cell cycle activation based upon the increased expression of cyclin-dependent kinases (CDK). Recent research has determined that the progression of the cell from G_0 to G_1 and through M phase is controlled by CDK. These enzymes function at various positions in the cell cycle to prepare the cell for replication. Paracelsian has converted these findings into a simple to use ELISA (patent pending) format that permits the quantification of CDK as a measure of cellular activation.



Advantages

- Uses no radioisotopes or toxic chemicals
- Eliminates labor intensive immunohistochemistry
- Can be used with any laboratory animal study design
- No pretesting surgery necessary
- Daily administration of marker compound not required
- Endpoint readily quantified for dose-response studies
- Kit contains confirmatory PCNA (Proliferating Cell Nuclear Antigen) ELISA

FOR ADDITIONAL INFORMATION
CALL 1-800-475-3141 or FAX 607-257-2734



PARACELSIAN

222 Langmuir Laboratories
Cornell Technology Park
Ithaca, NY 14850



NEW ANALYTICAL TOOLS IN FREE RADICAL BIOCHEMISTRY

SOD-525

a spectrophotometric assay of
SUPEROXIDE DISMUTASE

SPECIFIC REPRODUCIBLE FAST

ASSAYS

GSH-400

a colorimetric assay of
GLUTATHIONE GSH

MPO-EIA

an immunoassay of
HUMAN MYELOPEROXIDASE

LPO-586

a colorimetric assay of
LIPID PEROXIDATION

Lactof-EIA

an immunoassay of
HUMAN LACTOFERRIN

Available soon :
plasma Se-GPx (EIA)

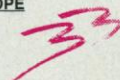
FRANCE



BIOXYTECH S.A. France

2, av. des Coquelicots
F 94385 BONNEUIL SUR MARNE - FRANCE
Tél. : 33-1 49 80 45 66 - Fax : 33-1 43 39 17 88

EUROPE



British Bio-technology Products Ltd

4-10 The Quadrant - Barton Lane - Abingdon -
OXON OX14 3YS
Telephone (0235) 529449 - Fax (0235) 533420

NORTH AMERICA



Cayman Chemical Company

690 KMS Place
ANN ARBOR, MI 48108 - USA
Phone : (313) 662-6756 - Fax : (313) 662-6896

JAPAN



FUNAKOSHI CO., LTD.

2-9-7 Hongo - Bunkyo-Ku
TOKYO
Tél. : 81-3-5684-1622 - Fax : 81-3-5684-1633

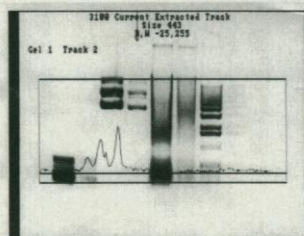
Circle No. 14 on Readers' Service Card

Simplify DNA/RNA Gel Analysis and Documentation...and SAVE MONEY!

Gel Documentation and Analysis Systems

Features:

- Reduced film cost-
8¢ per print
- Easy to use
- Fast hard copy-
10 sec.
- Publication quality
prints
- Dedicated
computer
not required.



Analysis Software For:

- Coomassie Blue Stain
- Silver Stain
- Ethidium Bromide Stain
- Sequence Gels
- 2D Gels
- Slot Blot / Dot Blot
- Westerns

UVP
LIFE SCIENCES

Celebrating over 60 years serving the Scientific Community!

Call NOW for a **FREE**
Demonstration!
800-452-6788

Circle No. 29 on Readers' Service Card

FLUORESCENCE POLARIZATION AT LOW COST



FPM-1™/FPM-1™ SYSTEM

- HIGHLY PRECISE—LESS THAN 1MP STANDARD DEVIATION
- HIGHLY SENSITIVE—ACCURATE AT 10^{-11} M FLUORESCIN IN THE POLARIZATION MODE DOWN TO 10^{-13} M FLUORESCIN IN THE INTENSITY MODE
- VARIABLE READ TIME FOR ULTRA HIGH PRECISION
- USES DISPOSABLE 12X75 MM GLASS TEST TUBES
- 4 STATIC MODES OF MEASUREMENT
- 4 KINETIC MODES OF MEASUREMENT
- AUTO BLANK SUBTRACT
- 99 USER PROGRAMMABLE PROTOCOLS
- RS232 AND/OR HARD COPY OUTPUT
- FPM-1 SYSTEM INCLUDES: COMPUTER, SUPER VGA MONITOR, KEYBOARD, PRINTER AND CABLES. MSDOS AND JOLLEY DATA REDUCTION SOFTWARE INSTALLED. (A COMPLETE TURN-KEY SYSTEM)



FOR FURTHER DETAILS CALL, FAX OR WRITE TO
JOLLEY CONSULTING AND RESEARCH, INC.

34469 N. CIRCLE DR., ROUND LAKE, IL 60073
(708) 548-2026 • U.S. & CANADA 1-800-685-0401 • FAX (708) 548-2025

Circle No. 1 on Readers' Service Card

Super Protein Capacity

Toyopearl® Super Q, the high capacity ion exchange resin for biopurification.

When it comes to handling a lot of protein, some products outperform the rest.

Toyopearl Super Q from TosoHaas has a truly superior capacity for proteins. A high density of trimethyl-amino groups in a wide-pore matrix gives Super Q the high protein capacity necessary to harvest, concentrate or purify proteins and peptides during production. Comparisons to other ion exchange resins, made under conditions simulating production chromatography* show Super Q to be clearly outstanding.

Super Q has excellent chemical and mechanical stability. You can use high linear velocities and maintain stable bed volumes with changes in pH and ionic strength. Choose your preferred CIP method using strong acid/base or a range of organic solvents. And to fit your specific application, Super Q is available in 30, 65 and 100µm particle sizes.

If super protein capacity is what you need in an anion exchange resin, try Toyopearl Super Q. Use the product with the superior performance, and amaze yourself with the results. Call us for more information.

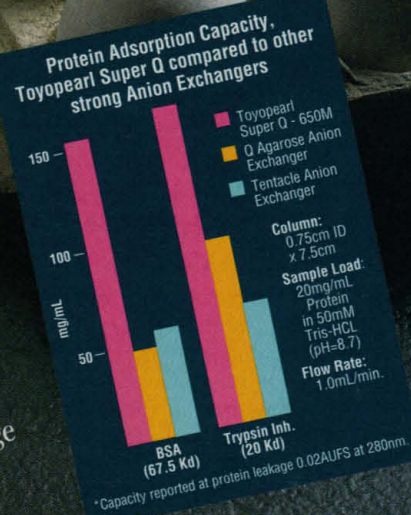
Toyopearl is a registered trademark of Tosoh Corporation.

BIOSEPARATION SPECIALISTS

TOSOHAAS

Montgomeryville, PA 18936. Tel. 800-366-4875
In Germany & other European countries: (0)711/13257-0.

Circle No. 17 on Readers' Service Card



CUSTOM DNA SYNTHESIS

PURE & SIMPLE
(and now more economical than ever)

☐ PRICE \$ **2.50**
+ per base plus setup

☐ SUPERB TECHNICAL SUPPORT
+

☐ IMPECCABLE QUALITY
+

☐ WORLD'S FASTEST SERVICE

MIDLAND

THE UNDISPUTED #1
CUSTOM DNA SYNTHESIS SERVICE

THE MIDLAND CERTIFIED REAGENT COMPANY
3112-A WEST CUTHBERT AVENUE
MIDLAND, TEXAS, 79701

PHONE 1-800-247-8766 FAX 1-915-694-2387

Circle No. 5 on Readers' Service Card

Zivic-Miller Laboratories, Inc.

We specialize in:
breeding rats, surgically preparing rats
rat tissue and organ preparations, and
precisely-timed pregnant, and aged rats
technosurgical procedure development
guaranteed technosurgical procedures

TECHNOSURGICAL ANIMAL MODELS

Neurological, Vascular, and Endocrine

models, such as: Chronic Brain Stereotaxic and
Cardiac and other Vascular Cannulations

Carotid Artery Endothelial Lesions

And Myocardial Infarction

models, etc., by



Zivic-Miller Labs

the technical breeder

dedicated to the Mirror-Like

reproducibility of our Technical Services

and our ZML:Sprague-Dawley MBM-VAF RATS

Call: 1-800-422-LABS (5227), Fax: 1-800-MBM-RATS

Zivic-Miller Laboratories, Inc.

TECHNOSURGICAL ANIMAL MODELS

We breed:

Maximum-Barrier-Maintained, Viral-Antibody-Free Rats

Sprague-Dawley, Long-Evans, Fisher 344, and Wistar

Other rodent strains are available upon request

Phone: 1-800-422-LABS, Fax 1-800-MBM-RATS

P.O. Box 280, Zelienople, PA 16063

Zivic-Miller Laboratories, Inc.

Circle No. 48 on Readers' Service Card

assessments e-ses-ments

Authoritative, Innovative, Practical Books for Educators and Policymakers

Assessment of Authentic Performance in School Mathematics

Richard A. Lesh and Susan J. Lamon, *editors*

Provides a clear focus on the purposes of assessment, guidelines for producing and scoring real-life assessment activities, and other critical and concrete issues. International trends are highlighted, as are current problems, challenges, and opportunities within the United States. Authors emphasize content above mode of delivery.

Catalog #92-16S, 1992; ISBN 0-87168-500-0
445 pages, index, softcover; \$29.95 (AAAS members, \$23.95)

Science Assessment in the Service of Reform

Gerald Kulm and Shirley M. Malcom, *editors*

An authoritative examination and presentation of useful material to make assessment a tool for meaningful reform of school science. Now in its second printing. "Outstanding academic book of 1992" — *Choice* magazine.

Catalog #91-33S, 1991; ISBN 0-87168-426-8
400 pages, index, softcover; \$24.95 (AAAS members, \$19.95)

Assessing Higher Order Thinking in Mathematics

Gerald Kulm, *editor*

A classic, now in its third printing. Explores new approaches to mathematics assessment, provides direction for reforming mathematics testing, and gives examples of innovative test items. Its recommendations set the standard for judging mathematics assessment.

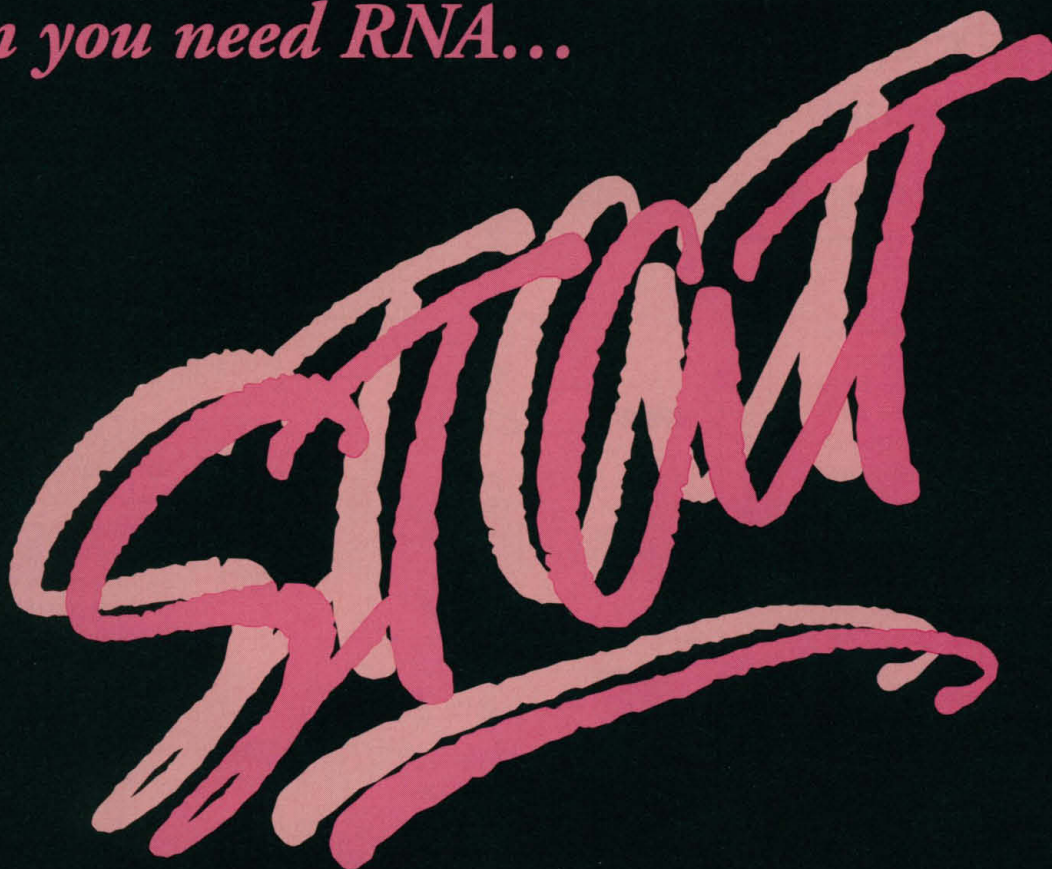
Catalog #89-27S, 1990; ISBN 0-87168-356-3
209 pages, index, softcover; \$24.95 (AAAS members, \$19.95)

Order from: AAAS Books, P. O. Box 753
Department A56, Waldorf, MD 20604

Add \$4.00 postage/handling per order, and CA state tax or Canadian GST if applicable. If you prefer to order by phone (VISA or MasterCard only), call (301) 645-5643 (9am-4pm ET) and ask for AAAS. Or send a fax to (301) 843-0159.

AAAS Press

When you need RNA...



RNA STAT-60TM

A Sixty Minute

Total RNA/mRNA ISOLATION REAGENT

FASTER

Protocol can be completed
in < 60 minutes.

MORE EFFICIENT

Extracts 30 - 150% more
total RNA/mRNA than
any other method.

MORE RELIABLE

Gives more consistent
results (260/280 > 1.9).

COST EFFECTIVE

One bottle of reagent isolates twenty
grams of tissue or 2×10^9 cells.

EASIER

Northern blot/PCR-ready
mRNA in under 60 minutes.

RNA STAT-60, a new and improved third generation state of the art version of the popular guanidinium-phenol based single-step method of total RNA isolation extracts 30-150% more total RNA and mRNA than any other method of RNA isolation. RNA STAT-60 isolates total RNA free of DNA and proteins in < 1 hour. No additional purification is required for Northern or dot-blot hybridization, molecular cloning, RNase protection or PCR.

TEL-TEST "B" INC.

P.O. Box 1421 • County Road 129 • Friendswood, TX 77546
(713) 482-2672 • FAX (713) 482-1070

Customer Service: (800) 631-0600 (Outside Texas)

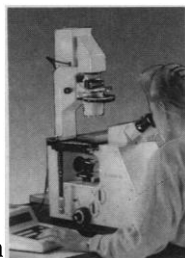
Circle No. 44 on Readers' Service Card

Think of us as your research foundation.

When you're probing or recording at the single-cell level, there's no room for error, or vibration.

Our patented Gimbal Piston® Air Isolator System effectively eliminates both vertical and horizontal floor vibration. When it's combined with our unique, highly damped, stainless steel laminate tops or steel honeycomb, spillproof CleanTop®, you are assured of unequalled performance.

That's why leading researchers worldwide specify TMC vibration isolation systems: laboratory tables, optical tables, table-top



and floor platforms. Each component of these precision systems is designed to assure the most effective vibration protection possible for your most critical applications.

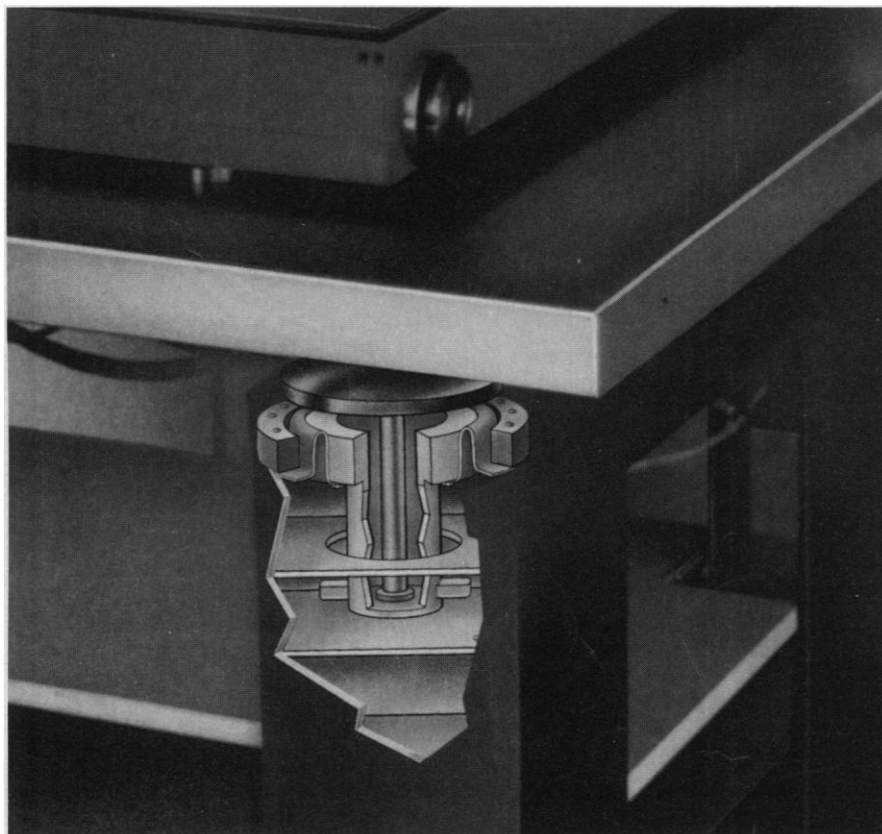
For support you can count on, move up to TMC vibration isolation systems. Contact our Technical Sales Group today.

TMC

Technical Manufacturing Corporation

15 Centennial Drive • Peabody, MA 01960, USA
Tel: 508-532-6330 • 800-542-9725 Fax: 508-531-8682

Vibration Solutions



Circle No. 37 on Readers' Service Card

CRUACHEM. ISO9001 CERTIFIED.

PRETTY MUCH SETTLES THE QUALITY ISSUE, DOESN'T IT?

- ✧ Our manufacturing processes are ISO9001 Certified for:
—phosphoramidites
—synthesis columns
—DNA/RNA synthesizers
- ✧ Great value—compare prices; you'll get ISO9001 quality for less than you're paying now.
- ✧ Our versatile PS250 DNA/RNA synthesizers feature preprogrammed protocols ranging from 40nM to 15μM DNA and even 1.0μM RNA.
- ✧ 100% compatible reagents for all common models of synthesizers, i.e., same bottle, same formula.
- ✧ Stringently tested for purity, solubility and coupling efficiency.



Cruachem

EASY DNA since 1979

... and now RNA

(800) 327-9362 • FAX (703) 689-3392

45150 Business Ct., # 550 • Dulles, VA 20166

VA Contract #V797P-5173n NIH BPA #263-00027974

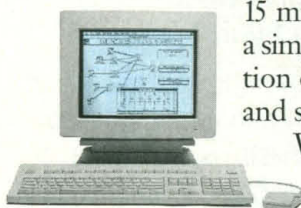
Circle No. 52 on Readers' Service Card



It's the one thing you can't make more of.

Time can't be manufactured. It can't be re-created. It can't even be bought.

However, time can be saved. With Strawberry Tree Data Acquisition Systems. Strawberry Tree systems slash your project time. Set up your application in about 15 minutes with a simple installation of the board and software.



We've also developed a streamlined user interface that cuts learning time and helps you work faster. Graphical icons

guide you through initial setup, and make it easy to modify or update your application.

Finally, Strawberry Tree systems operate at blinding speeds. Our FLASH-12™ and WorkMate™ boards are the quickest in the industry, delivering sample rates up to 1MHz.

In short, Strawberry Tree is the fastest, friendliest, data acquisition system you can buy. So call us today at 1-800-736-8810 today for a free demonstration disk, full color catalog, or application consultation.

"We'll get you going in no time."



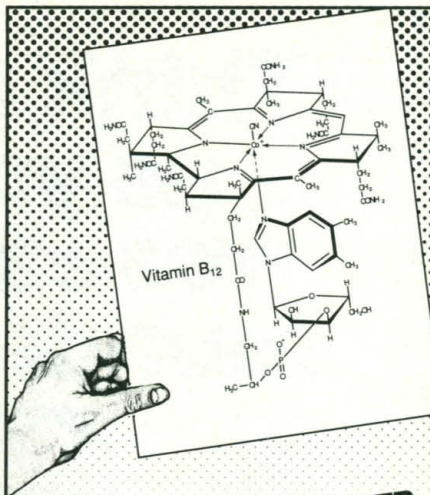
Strawberry Tree

Data Acquisition So Smart, It's Simple.

160 South Wolfe Road
Sunnyvale, California 94086

© 1993 Strawberry Tree, Inc.

Circle No. 26 on Readers' Service Card



HIGHLY RECOMMENDED Chemistry Drawing Software

"**ChemWindow** is highly recommended for anyone who needs to draw molecular structures. Even the occasional user, who may have a tendency to forget the 'inner workings' of a software package will have no trouble using ChemWindow."
-Dr. Jack Cazes, J. of Liq. Chrom., 15, 2625 (1992)

"I highly recommend **ChemIntosh v2**. The overall impression is of a well thought out package which in scope and flexibility is superior to, for instance, ChemDraw 2.1."
-R.G. Bell, Chemistry in Britain, May 1992.



CALL 303-242-7502
TO RECEIVE A FREE DEMONSTRATION DISKETTE

SoftShell
INTERNATIONAL

Circle No. 6 on Readers' Service Card

American Men & Women of Science

Since 1906, American Men & Women of Science has recorded the careers of over 300,000 distinguished scientists and engineers. R.R. Bowker is currently preparing for publication of the 19th edition in November, 1994. This definitive directory includes scientists in over 160 disciplines covering the fields of Natural Science, Agriculture, Medicine, Mathematics, Engineering, and Computer Science.

Former entrants will receive their biographies in early November 1993; all are encouraged to update and return their listings.

Entrants who do not receive an update form by January 1994 should call 1-800-824-2470 to request one.

All listings in American Men & Women of Science are free of charge, and are based exclusively on achievement.

Call for Entries

American Men & Women of Science is seeking nominations from the scientific community for men and women who have not previously been included, but who have distinguished themselves as corporate, government, or academic researchers, policy makers or managers in all fields of science and engineering. Using this form, please submit names and full addresses of nominees by September 15, 1993.

Name _____
Address _____

Telephone _____
Field of Research _____

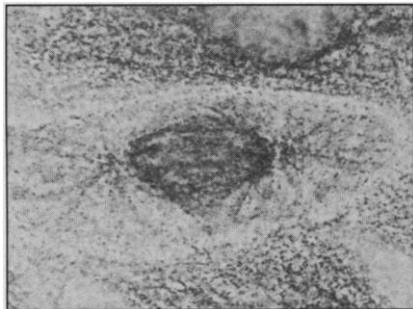
Please mail or fax nomination forms to:

Tanya Hurst, American Men & Women of Science, R.R. Bowker, 121 Chanlon Rd., New Providence, NJ 07974
Fax: 908-771-7704

Circle No. 28 on Readers' Service Card

NANOGOLD™, See What You've Been Missing!

*B*ecause of its revolutionary molecular design, Nanogold™ performance is far superior to traditional colloidal gold probes. Colloidal gold probes are coated with large, bulky proteins for stabilization and use IgG. Nanogold™ probes use Fab' fragments and do not require protein coating. They are the smallest immunoprobes commercially available, and have been shown to penetrate up to 50 times further than colloidal gold probes. This sophisticated design translates into immunolocalization with unprecedented visibility and resolution.

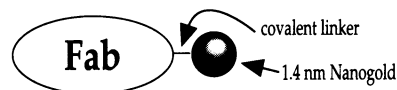


Spindle microtubules labeled with GAM colloidal gold (LEFT) and Fab'-Nanogold™ (RIGHT). EM courtesy of Drs. D. Vandré and R. Burry, Ohio State University. (Magnification = 1300x).

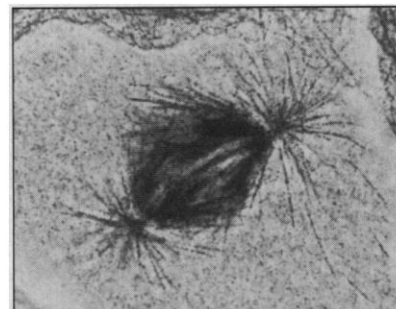
∞ Nanoprobes, Inc.

**How Can You
Study
Something
Your Gold
Probe Can't
Even Find?**

*A*lso, whereas colloidal gold probes may shed some of their antibodies which then compete for labeling sites, Nanogold™ is **covalently** linked to Fab' fragments.



Nanogold™ provides advantages critical for optimal immunoelectron microscopy.



25 E. Loop Rd. • Suite 124 • Stony Brook • NY 11790-3350 • Tel: 516 444 8815 • Fax: 515 444 8816

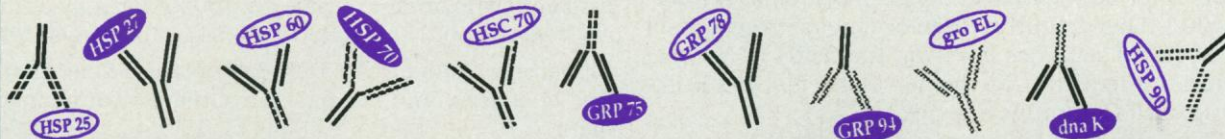
Circle No. 27 on Readers' Service Card

HEAT SHOCK / STRESS RESPONSE

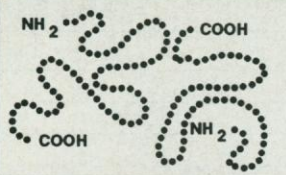
Stress Response Reagents for the Discriminating Investigator.

Monoclonal and Polyclonal Antibodies

Specific for Individual Stress Proteins, including groEL, dnaK; also PDI, Estrogen and Progesterone Receptors.

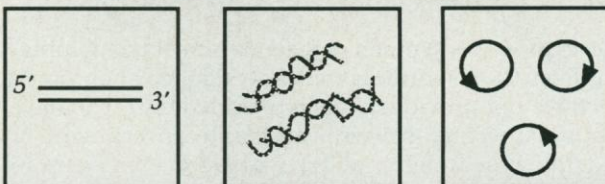


Purified Stress Proteins



Purified Native and Recombinant Stress Proteins.

Stress Protein PCR Primer Sets, DNA Probes, and Expression Vectors



StressGen BIOTECHNOLOGIES CORP.
120-4243 Glanford Avenue, Victoria, B.C., CANADA V8Z 4B9

For a Free Catalog or Information Call

Toll Free (US): (800) 661-4978

Tel: (604) 744-2811, Fax: (604) 744-2877

BIOMOL GmbH, GERMANY - Tel: 49-40-85-32-600 • BIOQUOTE LTD., UNITED KINGDOM - Tel: 44-904-431-402 • Funakoshi Co. LTD., JAPAN - Tel: 81-3-5684-1622 • SANBIO BV., BELGIUM, THE NETHERLANDS, AND LUXEMBOURG - Tel: 31-4132-51115 • SPACE, ITALY - Tel: 39-2-25-75-377 • SZABO, AUSTRIA - Tel: 43-222-409-39-610 • TEBU, FRANCE - Tel: 33-1-34-84-62-52

Circle No. 23 on Readers' Service Card

"GARRETT HARDIN has done it again!" —Paul R. Ehrlich

"Wonderfully rich in original ideas and insights...a compelling examination of the central question facing our civilization... Bound to be enduringly influential."

—Paul Demeny, Editor,
Population and Development Review

The acclaimed author of
"The Tragedy of the Commons"
points out the hard choices
we must make—and the
solutions we have been afraid
to consider.

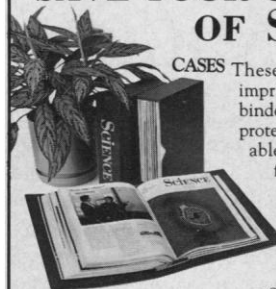
LIVING WITHIN LIMITS

Ecology, Economics, and
Population Taboos

At better bookstores.

OXFORD UNIVERSITY PRESS

SAVE YOUR COPIES OF SCIENCE



CASES These custom-made, imprinted cases and binders are ideal for protecting your valuable Science copies from damage.

Each binder or case holds one volume of Science, or 13 weekly issues

— order four binders or cases to hold a complete year of issues.

BINDER Constructed from reinforced board and covered with durable, leather-like red material and stamped in gold, the cases are V-notched for easy access; binders have a special spring mechanism to hold individual rods which easily snap in.

Cases	1 - \$7.95	2 - \$14.95	4 - \$27.95
Binders	1 - \$9.95	2 - \$18.95	4 - \$35.95

SCIENCE
Jesse Jones Industries, Dept. SCE
499 East Erie Ave., Philadelphia, PA 19134

Enclosed is \$_____ for _____ Cases;
Binders. Add \$1 per case/binder for postage & handling. Outside USA \$2.50 per case/binder (US funds only). PA residents add 7% sales tax.

Print Name _____

Address _____

No P.O. Box Numbers Please

City _____

State/Zip _____

CHARGE ORDERS (Minimum \$15): Am Ex, Visa, MC, DC accepted. Send card name, #, Exp. date.

CALL TOLL FREE 7 days, 24 hours 1-800-825-6690

— SATISFACTION GUARANTEED —

Circle No. 30 on Readers' Service Card