

PY20

Monoclonal Anti-Phosphotyrosine

Superior Antibody for:

- Western Blots
- Immunoprecipitation
- Cell Staining
- ELISA

PY20 Conjugates and Kit:

- Horseradish Peroxidase
- Alkaline Phosphatase
- FITC
- Biotin
- Agarose
- PY20 Immunoblot Kit

Next day delivery!



Circle No. 22 on Readers' Service Card

any confidence." This construction of my remarks is unfortunate because it conveys the unintended impression that I lack confidence in the experimental results of these researchers, whereas I indicated only that the publication is too difficult to understand fully in the time that I had to study it. It is true that this publication will not convince the case-hardened skeptics, but, as I told Amato, high-grade calorimetry is not necessary to evince the reality of anomalous ("excess") power generation during the boil-off period well documented by Fleischmann and Pons. This phenomenon, as well as the various manifestations contrary to classical nuclear physics observed by a considerable number of researchers, deserves continuing study supported by adequate funding despite the difficult-to-reproduce nature of the experiments.

Richard A. Oriani
Corrosion Research Center,
Department of Chemical Engineering and
Materials Sciences,
Institute of Technology,
University of Minnesota,
Minneapolis, MN 55455

References

1. M. Fleischmann and S. Pons, *Phys. Lett. A* 176, 2 (1993).

Corrections and Clarifications

In the photos accompanying the Research News article about the 1993 annual meeting of the American Association of Physical Anthropologists by Elizabeth Culotta ("At each others' throats," 14 May, p. 893), the three hyoid bones were not depicted in identical orientations. The hyoid of a pig, shown at the bottom, should have been rotated so that the arms of the bone point upward in order to match the orientation of the modern human and Neanderthal hyoid bones shown in the upper and middle photos.

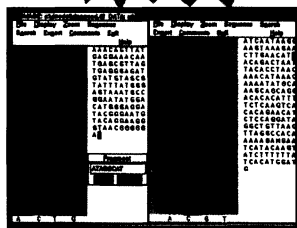
In Traci Watson's article "Task force: Level the playing field" (14 May, p. 888), a table reprinted from a report by the National Institutes of Health contained incorrect figures. The numbers in the column labeled "Difference" should have read from top to bottom as follows: -\$3,945, -\$9,121, +\$10,511, -\$343, -\$3,631, -\$3,249, -\$1,664, -\$5,967, and -\$2,754.

In Elizabeth Culotta's article "Entrepreneurs say: 'It's better to be the boss'" (Special Section, Women in Science '93, 16 Apr., p. 406), Henry Etzkowitz was incorrectly described as a sociologist "at Rutgers University." Dr. Etzkowitz is at the State University of New York at Purchase.

DNA/RNA, RFLP, AND SEQUENCING FILM SOFTWARE

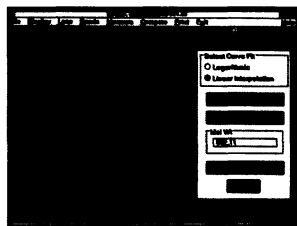
GELSEQ™

- Excellent quality control tool... enter proper sequence the first time.
- Enter, edit and compare multiple sequences quickly.
- Export data to other analysis packages.
- UVP hand scanner with scan align track guide lets you scan film quickly into your computer.



GELMATCH™

- RFLP band matching.
- Measure molecular weights and create compare with database of molecular weight patterns.
- Either UVP's hand scanner or Gel Documentation 5000 System with Imagestore 5000 can be used to scan the gel, and get a photographic quality printout for \$.08 per print.



GelBase and **GelBlot** programs for quantitational 1D, 2D, and 3D imaging also available. **Treasury** electronic library program of gel images with key text inputs available. Use all of these software packages with UVP's GDS5000 Gel Documentation System and Imagestore 5000 for a complete gel documentation and analysis system.



LIFE SCIENCES

**Call NOW for a FREE
Demonstration!
Tomorrow!**

800-452-6788 • FAX 818-285-2940

Circle No. 34 on Readers' Service Card

Alltech's New Chromatography Catalog

Chromatography

- GC
- Sample Prep
- TLC
- HPLC
- IC
- Instrumentation

Alltech

Catalog 300

**Request Your Free
Copy Today!**

- Over 800 Pages of Separations Products
- Expanded Instrumentation Section
- Broadest Selection of Chromatography Columns and Accessories Available



Alltech Associates, Inc.
2051 Waukegan Road • Deerfield, IL 60015
Phone: 1-800-255-8324 • Fax: 708-948-1078

Circle No. 21 on Readers' Service Card