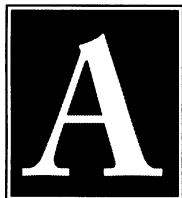


INTERNATIONAL SOCIETY OF MOLECULAR EVOLUTION



announcing the establishment of the **International Society of Molecular Evolution** (ISME), devoted to the consolidation and expansion of research in the field of molecular evolution construed in its broadest sense.

The major objectives of ISME are to facilitate and encourage communication and collaboration among research groups in various countries; to enhance the awareness of various national and international scientific organizations of the increasing importance of the field of molecular evolution; and to collaborate with other societies and organizations in the field and promote joint activities.

ISME will organize international scientific meetings in various parts of the world; publish a newsletter; and make available to its members as a benefit of membership its official journal, the *Journal of Molecular Evolution*.

For an initial period, the Society will be led by an Acting Chairman, Giorgio Bernardi.* The election of a governing body by the Members will be held as soon as possible, to be followed by the incorporation of ISME.

Membership is open to all scientists interested in molecular evolution. The annual dues are \$99. The present membership is:

Honorary Members: ☐ W. Arber ☐ T. Cech ☐ C. de Duve ☐ M. Eigen ☐ W. Gilbert ☐ F. Jacob ☐ J. Lederberg ☐ L. Pauling ☐ J. Watson

Charter Members: ☐ J. Aguilar ☐ R. Ambler ☐ D. Anxolabehere ☐ P. Arrigo ☐ J.C. Avise ☐ F.J. Ayala ☐ W. Begak ☐ G. Bernardi ☐ B.E. Blaisdell ☐ A. Brack ☐ R.J. Britten ☐ W.M. Brown ☐ A. Campbell ☐ C.R. Cantor ☐ L.L. Cavalli-Sforza ☐ S. Chigusa ☐ J.B. Clegg ☐ J.F. Crow ☐ W.W. De Jong ☐ R. De Wachter ☐ G.H. Dixon ☐ R.F. Doolittle ☐ W.F. Doolittle ☐ G.A. Dover ☐ S. Easta ☐ A. Efstratiadis ☐ J. Felsenstein ☐ W.M. Fitch ☐ G.E. Fox ☐ G. Geraci ☐ T. Gojobori ☐ M. Goodman ☐ D. Graur ☐ M.W. Gray ☐ B.G. Hall ☐ M. Hasebe ☐ M. Hasegawa ☐ D. Hewett-Emmett ☐ D.G. Higgins ☐ R. Holmquist ☐ L. Hood ☐ L.T. Hunt ☐ T. Ikemura ☐ M. Ito ☐ A.J. Jeffreys ☐ J. Jurka ☐ T.H. Jukes ☐ F. Kafatos ☐ H. Kasinsky ☐ L.H. Kedes ☐ M. Kimura ☐ A. La Volpe ☐ C. Lanave ☐ A. Lazcano ☐ R.C. Lewontin ☐ E.C.C. Lin ☐ W.-H. Li ☐ J.-F. Manen ☐ W. Martin ☐ B.W. Matthews ☐ M. Melkonian ☐ M. Meselson ☐ A. Meyer ☐ R. Milkman ☐ A. Morescalchi ☐ D. Mouchiroud ☐ J.C. Mounolou ☐ M. Müller ☐ A. Muto ☐ M. Nei ☐ D.L. Nickrent ☐ S. Nishimura ☐ Y. Ogihara ☐ T. Ohta ☐ N. Okada ☐ L. Orgel ☐ J. Oro ☐ S. Osawa ☐ S. Pääbo ☐ A. Rich ☐ G. Roizes ☐ C. Saccone ☐ C. Sadron ☐ H. Saedler ☐ V. Scaramella ☐ C.W. Schmid ☐ J.H. Subak-Sharpe ☐ C.G. Sibley ☐ M. Siniscalco ☐ J.M. Smith ☐ M.P. Solignac ☐ G. Spicer ☐ N. Takahata ☐ T. Terachi ☐ R. Terauchi ☐ G. Theissen ☐ K. Thomas ☐ E. Trifonov ☐ H. White ☐ G.S. Whitt ☐ M. Wink ☐ C.R. Woese ☐ S. Yokoyama ☐ K. Yoshinaga ☐ H. Zuber ☐ E. Zuckerkandl

*Laboratoire de Génétique Moléculaire/Institut Jacques Monod/2, Place Jussieu/Tour #43/2nd Etage/75005 Paris (France)
Tel: 33143295824/Fax: 3314427977/E-Mail: BERNARDI@FRCITI51BITNET

YES, I wish to join the **International Society of Molecular Evolution**. My annual dues payment of \$99.00 for 1993 (which entitles me to a **FREE** personal subscription to the *Journal of Molecular Evolution*) is enclosed.

Personal Check, Money Order, or Bank Draft (Must be in US dollars, drawn on a US bank).

☐ **Charge my** ☐ AmEx ☐ Visa ☐ MC ☐ Discover

Card No

Signature _____ Exp. Date _____

Name _____

Address _____

City/State/Zip _____ Country _____

Mail Payment and form to: **International Society of Molecular Evolution**

c/o Springer-Verlag New York, Attn: Gabriela Radulescu, 175 Fifth Avenue, New York, NY 10010

Monoclonal Antibodies

Monoclonal antibody (mAb) YL 1/2 recognizes the Glu-Glu-Phe (OH) COOH-terminal epitope of α tubulin. The mAb has been used in a novel immunoaffinity purification technique that allows rapid purification of human immunodeficiency virus reverse transcriptase, GTPase, RNase H, and other proteins by adding the Glu-Glu-Phe sequence to the COOH-terminal of proteins whose function is not compromised by COOH-terminal modification so rapid purification is facilitated. **Serotec. Circle 139.**

The following mAbs are available: CD3 FITC/CD4 PE, CD3 FITC/CD8 PE, CD3 FITC/CD19 PE, CD4 FITC/CD8 PE, CD8 FITC/CD4 PE, CD45 FITC/CD14 PE, CD3 FITC/CD16 PE, immunoglobulin G₁ (IgG₁) FITC/IgG₁ PE, and IgG₁ FITC/IgG_{2a} PE. **AMAC, a subsidiary of Immunotech SA. Circle 140.**

This mAb (clone BM204) reacts with a 68-kD nonstructural antigen found in the nucleus of cytomegalovirus-infected cells. It also immunoprecipitates cytomegalovirus antigens of 38, 43, 46, and 49 kD. **BioGenex. Circle 141.**

Nucleic Acid Synthesis System

Expedite Nucleic Acid Synthesis System allows researchers to synthesize oligonucleotides in a few hours. Two columns can run independently with fast cycle times.



A patented microfluidic plate technology allows for reduced reagent consumption (less than 4.5 ml at the 0.05-, 0.2-, and 1.0- μ mol scales). Additional features include precalibrated injectors to eliminate manual flow-rate calibration; software that offers a full sequence editor with mixed sites, storage for up to 64 sequences and eight user profiles; and chemistry that decreases deprotection time to 15 min at 55°C or 2 hours at room temperature. **Millipore. Circle 142.**

DNA Extraction Kit

The Nucleon DNA extraction system can isolate DNA from complex samples such as whole blood and animal cell cultures in less than 2 hours. There is no need for phenol extractions or proteinase K digestions. The extracted DNA is suitable for polymerase chain reaction or restricted fragment-length polymorphism applications with molecular weights in excess of 20 kb. The kit can be used to extract DNA from volumes of less than 1.5 to 30 ml. **Scotlab. Circle 143.**

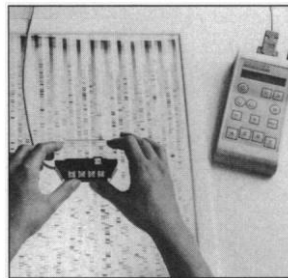
No-Mess Vertical Gel Caster

The Joey Gel Casting System for vertical electrophoresis eliminates the mess and nuisance of pouring acrylamide gels. In the system, gels are poured in a research-quality polymer "pouch." It makes vertical gel casting an easy three-step process: The glass and spacers are placed in the pouch; the pouch is clamped in the casting unit; and the acrylamide is poured. There is no need for the usual tape, grease, or agarose. Up to four gels can be cast at once, and precast gels can be saved "in pouch" for later use.

Heat sealing the pouch prevents contamination and dehydration. The system, which is compatible with most electrophoresis systems, comes in four convenient gel sizes from small minigels for applications requiring fast separations to larger sizes for complex samples where high resolution is required. **Owl Scientific. Circle 144.**

Nucleic Acid Sequencing Device

Sequenceboy with Readermouse provides an efficient editing device for nucleic acid sequencing that fills the gap between expensive computer systems and the tedious and error-prone "read and write" method. Readermouse, in an acrylic glass housing, has its own entering keys (A, C, G, T, and N) and connects directly to Sequenceboy. Readermouse is placed directly on the x-ray film



for editing; input keys and sequences are thus always in view for optimal control. Ergonomic finger grooves allow the user to move Readermouse smoothly; cursors with tracking lines help ensure the correct reading of sequences. **Integra Biosciences/Tecnomara. Circle 145.**

Motion Simulation Software

Working Model is a motion simulation program for the Macin-

tosh. Users can create physical objects on the Macintosh by drawing. Objects are given physical properties such as mass, friction, and elasticity. When a simulation is run, the program calculates the motion of every object and displays their movements in smooth animation. The program has a large tool kit of devices that allows users to build their physical systems and a complete set of measurement tools for data analysis. **Knowledge Revolution. Circle 146.**

Literature

NALGENE Cryopreservation Manual is a 12-page reference guide to preparing and storing cells at cryogenic temperatures. It covers such topics as developing a seed lot system, preparing cells, choosing cryoprotective agents, and storing, thawing, and maintaining culture collections. **Nalge Co. Circle 147.**

The *Chemical Resistance Wall Chart* lists chemical resistance and physical properties for 24 plastic resins used in NALGENE labware. It includes information on environmental stress cracking, interpretation of chemical resistance, the effects of 206 chemicals on the 24 resins, and maximum use temperatures. **Nalge Co. Circle 148.**

Nucleic Acid Purification with CHROMA SPIN Columns: Methods & Applications: Book 2 is a booklet on a series of columns available in five matrix pore sizes with three sterile column buffers that includes examples, references, and tables. **Clontech Labs. Circle 149.**

Product and Service Guide for the Cell Culture Scientist: 1993 is a 104-page catalog on a complete line of products that includes FetalClone, a family of FBS alternatives; Cosmic Calf Serum; Australian Sourced FBS; and a line of serum-free media. **HyClone Labs. Circle 150.**

Newly offered instrumentation, apparatus, and laboratory materials of interest to researchers in all disciplines in academic, industrial, and government organizations are featured in this space. Emphasis is given to purpose, chief characteristics, and availability of products and materials. Endorsement by *Science* or AAAS is not implied. Additional information may be obtained from the manufacturers or suppliers named by circling the appropriate number on the Readers' Service Card and placing it in a mailbox. Postage is free.

Science

PERSONNEL PLACEMENT

LINE CLASSIFIED ADVERTISEMENTS

- **Deadlines:** Ads are due by Thursday, 10 a.m., 2 weeks prior to the issue date. *Science* is published each Friday, except the last Friday of the year. Call for holiday deadlines. Advertisements must be submitted in writing.
- **How to Submit a Classified Ad:** Prepare double-spaced typewritten copy. Do not include any abbreviations. *Science* will edit and typeset ads according to *Science* guidelines. Include billing information, and desired publication date. Available categories: Positions Open, Meetings, Announcements, Courses and Training.
- **Mail or FAX materials to:**
Science Classified Advertising
1333 H Street, N.W., Room 814
Washington, DC 20005
Telephone: 202-326-6555
FAX: 202-682-0816
- **Rates:** Ads are \$42 per line; \$420 minimum. One line equals 52 characters and spaces; centered headings equal 32 characters and spaces. A 3% cash discount is granted to all prepaid ads.
- **Ads from Outside the U.S.:** A discount of \$30 will be offered to advertisers making payment in U.S. dollars by checks drawn on U.S. banks. Contact Annemarie Vis at +44 223 302067 (telephone) or +44 223 302068 (FAX).
- **Credit Cards:** *Science* accepts MasterCard and VISA. Discount does not apply to credit cards.
- **Cancellations:** Deadline for cancellation is 10 a.m., Tuesday, 10 days prior to issue date.

DISPLAY PERSONNEL ADVERTISEMENTS

For rates and info. about fractional display ads (all ads 1/2 page and larger), contact:

Recruitment Advertising
Deborah Cummings
Telephone: 202-326-6541

Janis Crowley, Recruitment
Advertising Manager
Telephone: 212-496-7704
FAX: 202-682-0816

Annemarie Vis
European Recruitment Advertising
Telephone: +44 223 302067
FAX: +44 223 302 068

CONDITIONS: Personnel advertising is accepted only with the understanding that the advertisers do not discriminate among applicants on the basis of race, sex, religion, age, color, handicap or sexual preference. The AAAS encourages employers to actively recruit and employ underrepresented minority groups. *Science* reserves the right, at its discretion, to decline to publish advertisements submitted to it.

POSITIONS OPEN

FACULTY POSITIONS BIOCHEMISTRY DEPARTMENT Tulane University Medical Center

We are seeking outstanding molecular bioscientists to fill tenure-track positions at the **ASSISTANT** or **ASSOCIATE PROFESSOR** level. Areas being emphasized are protein-nucleic acids interactions and structure-function relationships of macromolecules. Teaching medical and graduate students is to be expected. For assistant professor, clear evidence of independent productivity and innovative thinking are essential criteria. For associate professor, experience in graduate education, leadership potential, and an established (funded) research program are also essential. Please send curriculum vitae, statement of research interests, and names of 4 references to:

Faculty Search
Department of Biochemistry
Tulane University Medical Center
1430 Tulane Avenue
New Orleans, LA 70112

Applications will be reviewed until positions are filled. *Tulane is an Equal Employment Opportunity/Affirmative Action Employer. All M/F/V are encouraged to apply.*

FACULTY POSITION UNIVERSITY OF CALIFORNIA, IRVINE

The Department of Physiology and Biophysics invites applications for a faculty position at the **ASSISTANT PROFESSOR** (tenure-track) level. We are seeking candidates with the ability to define a significant research area in cell physiology, using modern techniques of cell biology, molecular biology, biochemistry, structural biology, or biophysics. Examples of research interests would include cell signaling, differentiation and growth control, regulation of gene expression, intracellular processing and sorting of biomolecules, membrane formation and turnover, and the relationship of molecular structure to biological function. The position also involves teaching of medical and graduate students. We will begin considering applications starting August 1, 1993, until the position is filled. Send curriculum vitae, a brief research description, and the names of three referees to: **Michael D. Cahalan, Chairman, Department of Physiology and Biophysics, University of California, Irvine, CA 92717.**

The University of California, Irvine, is an Affirmative Action/Equal Opportunity Employer.

ASSISTANT PROFESSORS IN BIOTECHNOLOGY—IIT BOMBAY. Applications are invited from Indian nationals for 2 Assistant Professor positions in Computational Biophysics and Biophysical Chemistry. **Qualifications:** Ph.D. with minimum of 3 years of experience in computer-aided modelling/simulation and experimental spectroscopic or crystallographic analysis of biomolecules, respectively. Biodata with three letters of recommendation may be sent to: **Registrar, Indian Institute of Technology, Powai, Bombay 400 076, India.**

BEHAVIORAL ECOLOGIST

The Department of Biology at UCLA invites applications for a tenure-track position in **Behavioral Ecology** at the **ASSISTANT PROFESSOR** level. A Ph.D. is required and postdoctoral experience is desirable. The successful candidate will be expected to develop a vigorous research program and to contribute to graduate and undergraduate teaching. Of particular interest are candidates whose research complements that of the current faculty in behavior, evolution, ecology and physiology, all of which are strengths within the Department. Applicants should send curriculum vitae, statement of research and teaching interests, and the address and telephone number of three references by September 1, 1993: **Robert Gibson, Behavioral Ecology Search, Department of Biology, University of California, Los Angeles, CA 90024-1606. UCLA is an Equal Opportunity/Affirmative Action Employer.**

POSITIONS OPEN

FACULTY POSITION

ASSISTANT PROFESSOR. The Division of Neurosurgery, Louisiana State University School of Medicine in Shreveport, seeks applicants for a tenure-track position in Neurosurgery. Applicants must possess a Ph.D. and will be expected to develop an independent research program. Expertise in molecular biology and immunology is preferred. *Affirmative Action/Equal Opportunity Employer.* Send curriculum vitae to: **Anil Nanda, M.D., Division of Neurosurgery, P.O. Box 33932, Shreveport, LA 71130.**

TENURE-TRACK ASSISTANT PROFESSOR, DEPARTMENT OF MICROBIOLOGY AND IMMUNOLOGY, VIRGINIA COMMONWEALTH UNIVERSITY. DEADLINE FOR APPLICATIONS HAS BEEN EXTENDED. Tenure-track Assistant Professorship in the Department of Microbiology and Immunology at Virginia Commonwealth University. An individual with formal training and expertise in one or more areas of contemporary microbiology, including cellular or molecular pathogenesis, molecular biology or molecular genetics. Applicants must hold Ph.D. or equivalent degree and have at least 2 years of productive postdoctoral experience as evidenced by scholarly publications. Incumbent expected to develop and maintain a strong, extramurally supported independent research program, competing successfully in the national arena for grants. Incumbent expected to participate in the formal training of graduate students and postdoctorals, including classroom teaching as well as lab-based research training. Independent scholarly growth of the incumbent is required and must be demonstrated by scholarly publication, especially in peer-reviewed journals. Participation in graduate- and professional-level teaching and service is also required. Candidates should submit statement of research interests, curriculum vitae, and names and addresses of three references by **August 16, 1993.** Submit materials to: **Dr. F. L. Macrina, Box 678 MCV Station, Richmond, VA 23298-0678.** *Virginia Commonwealth University is a culturally diverse, Equal Opportunity/Affirmative Action Institution and does not discriminate on the basis of race, gender, age, religion, ethnic origin, or disability. Women, minorities, and persons with disabilities are encouraged to apply.*

NEUROBIOLOGIST—The Department of Pathology and the Department of Neuroscience at the Albert Einstein College of Medicine seek developmental and molecular neurobiologists at the **ASSISTANT PROFESSOR** level. Applicants should demonstrate an interest and background in the study of developmental processes. It is expected that a successful applicant will establish a vigorous, independent research program. Applicants will have appointments in the Departments of Pathology and Neuroscience with research space available in the Kennedy Center for Research in Mental Retardation and Human Development. Both the Departments of Neuroscience and Pathology have strong programs in the study of cellular neurobiological processes in normal and pathological states. It is expected that a successful applicant will help to sustain this important bridge between basic and clinical sciences. To apply, please submit curriculum vitae, bibliography, a brief description of research plans and names of three references to: **Bruce H. Wainer, M.D., Ph.D., Professor and Chairman, Department of Pathology, or Michael V.L. Bennett, D.Phil., Professor and Chairman, Department of Neuroscience, Albert Einstein College of Medicine, Jack and Pearl Resnick Campus, 1300 Morris Park Avenue, Bronx, NY 10461. An Equal Opportunity Employer.**

TWO BIOLOGY TEACHING POSITIONS

We seek two visiting **ASSISTANT PROFESSORS** for 1933-1994. These temporary positions (which may be permanent) pay \$32,500 per 9 months. One visitor will teach microbiology lecture and lab, and general biology to a large lecture class. General biology includes cell biology and genetics. The other visitor will teach ecology lecture and lab, organismal biology lecture and an elective, preferably in botany. Organismal biology is an introductory course including plant and animal structure and function. Send curriculum vitae, transcript of graduate work, and three letters of reference by July 15, 1993, to: **Dr. Joan Bray, Visitor Search, Department of Natural Sciences, University of North Florida, 4567 St. Johns Bluff Road, Jacksonville, FL 32224-2645. UNF is an Affirmative Action/Equal Access/Equal Opportunity Employer.**

POSITIONS OPEN

PROFESSOR OF DEVELOPMENTAL BIOLOGY. Department of Biology, Nagoya University, invites applications for the full professorship in "developmental biology and related fields," available April 1994. Teaching and training of students either in Japanese or English are only prerequisite.

Applicants should send curriculum vitae, selected reprints or preprints (less than 5; if available include a review article), statements of research and teaching interests, and a list specifying academic activity status (records as an invitee to congress and/or conference, recent situation of research grants, etc.) and arrange to send at least two letters of recommendation to: **Professor Yasuo Mukohata, Search Committee, Department of Biology, School of Science, Nagoya University, Nagoya 464-01, Japan, prior to September 30, 1993.** Inquiry may be faxed to Professor Mukohata, 81-52-782-9564 (privacy kept).

PATIENT-ORIENTED RESEARCHERS

The Yale Child Study Center is seeking well-trained patient-oriented researchers for three entry-level positions. Positions involve either research with children and adolescents in a variety of clinical settings or laboratory-based studies of CNS development. Successful applicants must qualify for an academic appointment as **INSTRUCTOR** or **ASSISTANT PROFESSOR**. They must also have excellent clinical skills, a strong record of academic achievement, formal research training, and specialized skills or experience in one of the following research areas: genetics, molecular and developmental neurobiology, neuroimaging, psychopharmacology, neuroendocrinology, and/or services research. Salaries are commensurate with qualifications. Applications from women and minority group members are encouraged and welcomed. Applicants should send curriculum vitae, statement of career interests, and three letters of reference to:

James F. Leckman, M.D.
Chair, Search Committee, Child Study Center
Yale University School of Medicine
P.O. Box 3333
New Haven, CT 06510

The Yale University School of Medicine is an Affirmative Action/Equal Opportunity Employer.

RESEARCH ASSISTANT/ASSOCIATE PROFESSOR. Cognitive Neuropsychologist for Maryland Psychiatric Research Center Outpatient Program, University of Maryland School of Medicine. Ph.D. Required. Previous research experience in clinical neuroscience and schizophrenia required. This position will be responsible for clinical care, administration and neuroscience research in an outpatient research unit. Send curriculum vitae to: **Robert W. Buchanan, M.D., Maryland Psychiatric Research Center, P.O. Box 21247, Baltimore, MD 21228.** *Affirmative Action/Equal Opportunity Employer.*

GENETIC/MOLECULAR MECHANISMS OF DISEASE

The University of Kentucky, Tobacco and Health Research Institute (THRI), invites applications for a tenure-track position from individuals with an established research track record in genetic/molecular mechanisms in disease pathogenesis. The applicant should have an M.D., Ph.D. or M.D./Ph.D. degree and qualifications for appointment at the **FULL PROFESSOR** level in a department in the College of Medicine. Salary will be commensurate with experience. A record of successful extramural grant support is essential and the applicant will be expected to establish and support a research program directed at identifying genetic/molecular mechanisms which are associated with tobacco smoking-related diseases. Areas of special interest are pulmonary cancer, chronic obstructive lung disease and cardiovascular disease. An initial allocation of \$250,000 has been made to support the development of this program. Send curriculum vitae and four references to: **Ms. Elaine Fisher, Secretary; University of Kentucky, Tobacco and Health Research Institute, Cooper and University Drives, Lexington, KY 40546-0236.** Deadline for applications is September 1, 1993.

The University of Kentucky is an Equal Opportunity Employer.

POSITIONS OPEN

FACULTY POSITIONS IN PHYSIOLOGY

The Department of Physiology at Loyola University Chicago, Stritch School of Medicine, is seeking applicants for tenure-track positions at the **ASSISTANT, ASSOCIATE or FULL PROFESSOR** level. Applicants must have a Ph.D., M.D. or equivalent and are expected to have the ability to establish a strong research program. Senior applicants should have a strong record of research productivity. The Department is undergoing rapid expansion with strength in molecular, biophysical and cellular studies of ion channels/membrane transport and also E-C coupling in smooth and cardiac muscle. Applications are especially encouraged from individuals with research interests in related areas (e.g. signal transduction, but not necessarily overlapping). Send letter, curriculum vitae including research plans and names of 3 references to: **Donald M. Bers, Ph.D., Chairman, Department of Physiology, Loyola University Chicago, 2160 South First Avenue, Maywood, IL 60153.** *Loyola is an Equal Opportunity/Affirmative Action Employer.*

MR FACULTY

CHEMIST. Non-tenure-track **RESEARCH ASSISTANT PROFESSOR** position available in the Department of Radiology, University of Pennsylvania. The successful applicant will be expected to join a strong research team in developing new imaging agents; specific emphasis will be conducting research in the development of new agents for *in vivo* magnetic resonance imaging, attracting extramural funding, and teaching at the graduate level. Candidates should have a Ph.D. degree in medicinal and/or organic chemistry, with working knowledge of MR imaging.

PET/SPECT FACULTY

CHEMIST. Non-tenure-track **RESEARCH ASSISTANT PROFESSOR** position available in the Department of Radiology, University of Pennsylvania. Candidates must have a Ph.D. degree, with strong background in synthetic organic or medicinal chemistry. Expertise in organic synthesis and modern analytical techniques is highly desirable. Applicants are expected to join a multidisciplinary research team working closely with pharmacologists, medical physicists, and radiochemists in developing new imaging agents for PET and SPECT radiopharmaceuticals.

Please send résumé to: **Hank F. Kung, Ph.D., Department of Radiology, University of Pennsylvania, Room 305, 3700 Market Street, Philadelphia, PA 19104.** *The University of Pennsylvania is an Equal Opportunity Employer.*

The Department of Chemistry of Yale University solicits applications for a tenured position in organic chemistry at the level of **PROFESSOR** in the disciplines of organic synthesis and/or bio-organic chemistry. An outstanding teacher-scholar's research interests should complement those of the current faculty. The position is expected to be filled for the academic year 1994.

Applicants should submit curriculum vitae and a list of publications to: **Kenneth B. Wiberg, Chair, Senior Organic Search Committee, Department of Chemistry, Yale University, 225 Prospect Street, Box 6666, New Haven, CT 06511-8118** by September 1, 1993. *Yale University is an Equal Opportunity/Affirmative Action Employer.*

Department of Environmental and Occupational Health at University of South Florida invites candidates for 12-month, tenure-track faculty position: **ASSISTANT/ASSOCIATE PROFESSOR.** Required: Ph.D. and postdoctoral experience in Environmental Chemistry or closely related disciplines. Duties include teaching at graduate level, and developing strong research program in Environmental Health. Preferred research interests: transport or transformation of pollutants; air, soil or water pollution; waste management and risk assessment. Salary commensurate with rank and experience. Send letter of application stating research interests/goals, curriculum vitae, name, address and telephone number of three references by August 31, 1993, to: **Dr. Arun P. Kulkarni, USF College of Public Health, 13201 Bruce B. Downs Boulevard, Tampa, FL 33612-3805.**

According to Florida Law, applications and meetings regarding the search are open to the public. *USF is an Equal Opportunity, Equal Access Employer.*

POSITIONS OPEN

NEUROBIOLOGY FACULTY POSITION

The Neurobiology Research Center at the University of Alabama at Birmingham (UAB) School of Medicine invites applications for a faculty position at the **ASSISTANT PROFESSOR** level. Applicants should have at least two years of postdoctoral experience. The Center is seeking an outstanding individual with a strong record of achievement using modern approaches to neurobiology whose interests complement those of current members. Interests of the faculty include membrane biophysics, synaptic plasticity and modulation, cellular and molecular basis of neurodevelopment, signal transduction and intracellular signalling. The Center has excellent research facilities and has recently been provided with new space in the Civitan International Research Complex on the UAB campus. The development of the Center is supported by funds from the state and the Lucille P. Markey Charitable Trust.

Send curriculum vitae and statement of research plans and have three letters of recommendation sent to: **Michael J. Friedlander, Ph.D., Neurobiology Research Center, 1719 6th Avenue South, CIRC 516, University of Alabama at Birmingham, Birmingham, AL 35294-0021** by September 15, 1993. *UAB is an Affirmative Action/Equal Opportunity Employer.*

SCIENTIFIC COORDINATOR. Part-time (25% to 50%) to assist in National Indicator Study (NIS) scientific activities. NIS is a research program (Federal and State agencies and shellfish industries) to address problems associated with current microbiological indicators used in determining suitability of shellfish waters and shellfish meats for harvesting. LUMCON is under a DOC/NOAA contract to manage NIS scientific activities. Duties include: developing a task order work plan; preparing RFP's; monitoring and evaluating scientific progress; and preparing reports and presentations. Qualifications: Ph.D. in microbiology or environmental health-related sciences; 5 years of postdoctoral experience; strong background in relevant research. Prefer candidate with training in molluscan shellfish microbiology and epidemiology; strong interpersonal and managerial skills, and publication history. Salary is negotiable up to \$66,000 per year (FTE). Employment is on a contractual basis, renewable annually up to six (6) years. Submit letter, curriculum vitae and three (3) references by July 2, 1993, to: **Dr. Paul Sammarco, Executive Director, LUMCON Office of Special Programs, 150 Third Street, Room 107, Baton Rouge, LA 70801.** *Equal Opportunity Employer.*

RESEARCH INSTRUCTOR (grant-supported) for research in operant and Pavlovian conditioning using drugs of abuse, and teaching graduate students. Requirements: Ph.D. in physiological psychology or biological psychiatry; 5 years of postdoctoral experience in drug abuse research; and authorship on at least six peer-reviewed articles. Demonstrated ability to supervise research laboratory personnel; prepare progress reports and grant applications; and work independently. Experience is required in drug discrimination training, taste aversion conditioning, telemetric measurement of core body temperature, locomotor activity recording, and chronic intravenous administration of drugs in both rats and mice. Skills in small animal surgery including jugular cannulation and Minimeter implantation are required. Experience in use of Apple II computers to control and record experimental events is highly desirable. Salary commensurate with experience. Position will remain open for 30 days following publication of advertisement. *Affirmative Action/Equal Opportunity Employer.* Send curriculum vitae and names of three references to: **Dr. C. L. Cunningham, Department of Medical Psychology, L470, Oregon Health Sciences University, 3181 S.W. Sam Jackson Park Road, Portland, OR 97201-3098.**

PLANT ECOLOGIST

Central College: One-year **FACULTY POSITION** in plant ecology beginning September 1, 1993. Responsibilities include teaching Ecology, Biostatistics, Evolution, Field Botany, and introductory courses; assisting with senior research and department seminars. Ph.D. preferred; A.B.D. acceptable. Send for position description. Application should include résumé, transcripts and three letters of recommendation to: **W. H. Bearce, Dean of the College, Central College, Pella, IA 50219.** *Women and minority applications encouraged. Affirmative Action/Equal Opportunity Employer.* Review of applications will begin July 23, 1993.

**POSTDOCTORAL POSITION (NIH)
AIDS RESEARCH**
*HIV Env/CD4 Interactions and Mechanisms
of Membrane Fusion*

Projects: 1) Structure/function analyses of CD4/HIV env glycoprotein interactions and role in fusion with target cell; [PNAS (1991) 88, 8082]; J. Virol. (1993) 67, 913]; 2) Accessory components of CD4+cell involved in fusion (species-specific and cell type-specific tropisms) [Virology (1993) 193, 483]; CD4-based AIDS therapeutics; genetically engineered chimeric CD4-toxin which selectively kills HIV-infected cells [PNAS (1990) 87, 8889; virology (1993) 192, 375].

Approaches include design and expression of recombinant proteins (extensive use of vaccinia virus vectors); functional analyses using molecular genetic, biochemical, cell biological and biophysical methods. Successful applicant will take advantage of the diversified expertise and resources in the Laboratory of Viral Diseases and elsewhere on the NIH campus. Salary will be commensurate with experience.

Position available immediately; later starting dates considered. NRC fellowship available. Experience in molecular biology and/or protein and membrane biochemistry helpful but not required. Send CV and name of 3 references to:

Edward A. Berger, Ph.D.
Laboratory of Viral Diseases, NIAID
National Institutes of Health
9000 Rockville Pike, Bldg. 4, Rm. 229
Bethesda, MD 20892
Phone: 301-402-2481 Fax: 301-480-1147

NIH is an Equal Opportunity Employer

PENNSTATE



College of Medicine
University Hospital • Children's Hospital
The Milton S. Hershey Medical Center

**SIGNAL TRANSDUCTION IN THE
CARDIOVASCULAR SYSTEM**

The Department of Anesthesia at Penn State University College of Medicine is recruiting an experienced investigator to lead research efforts in the basic mechanisms of cell-cell interactions and/or signal transduction in the cardiovascular system. Research should be focused at the cellular or molecular level. Demonstrated scientific independence and extramural funding are required. Significant scientific interactions with both physicians and basic scientists are expected. Well-equipped new research laboratories totaling more than 8,000 square feet are devoted to neurobiology, cardiovascular physiology and artificial lung development. Generous laboratory and office space will be provided along with outstanding Departmental support to optimize scientific productivity. Applicants should send a curriculum vitae, a statement of research interests and professional goals, and the names of three references to: **Julien F. Biebuyck, M.D., Eric A. Walker Professor and Chairman, Department of Anesthesia, Penn State University College of Medicine, P.O. Box 850 -Drawer-S, Hershey, PA 17033.**

*An Affirmative Action/Equal Opportunity Employer
Women and Minorities Encouraged to Apply*

▪ **Research Scientist**
▪ **Sr. Associate Scientist**

The R.W. Johnson Pharmaceutical Research Institute (RWJPRI) is a first-class worldwide research and development organization within Johnson & Johnson, the world's largest and most comprehensive provider of health care products. The mission of RWJPRI is to discover and develop biotechnology-derived and traditional drugs that will drive the growth of the Johnson & Johnson companies...Cilag, Ortho-McNeil Pharmaceutical, and Ortho Biotech. We have 2 immediate openings at our campus-like setting located in central New Jersey midway between New York City and Philadelphia.

Research Scientist

The Dermatopharmacology Unit of our Drug Discovery Division has an immediate opening for a PhD scientist trained in molecular biology. A solid foundation in the principles of skin biology, signal transduction and/or gene expression is required.

The successful candidate will be involved in laboratory research and drug discovery in the biology of skin and pharmacology of skin diseases. Demonstrated laboratory independence, productivity, and a record of publications are required. Continued publication of experimental results is encouraged.

(HR Dept. 8)

Sr. Associate Scientist

Our Analytical R&D Department has an immediate opening for a candidate with a BS in Chemistry and a minimum of 5 years' experience or MS with minimum 2 years' experience in pharmaceutical analysis involving instrumental methods, especially HPLC.

The successful candidate will develop and validate methodology for the analysis of new drug entities and Phase I formulated products to support regulatory filings. There is opportunity to evaluate new analytical technologies and provide non-routine analytical support to our Discovery Research Department.

(HR Dept. 7)

We offer competitive salaries and the comprehensive benefits of a Johnson & Johnson company, including on-site fitness center. Ours is a smoke-free workplace.

No phone calls please. Submit your curriculum vitae with the names of 3 references to: Ms. P. Merski, indicate the HR Dept. # for the position of your choice, R.W. Johnson Pharmaceutical Research Institute, P.O. Box 300, Raritan, NJ 08869-0602. An Equal Opportunity Employer, M/F



THE R.W. JOHNSON
PHARMACEUTICAL RESEARCH INSTITUTE
a Johnson & Johnson company

The Spectroscopy and Biochemistry Group of the Isotope and Nuclear Chemistry Division is seeking a leader to direct research and development of stable isotope labeling methodologies for biophysical, biochemical and biomedical applications. Part of the successful applicant's responsibility will be to lead the NIH supported Stable Isotope Resource at Los Alamos. The leader will also carry out his/her own research in an area within biochemistry or biophysics consistent with the group and Laboratory environment. A major scientific focus in the group is the study of biomolecular structure and mechanisms using isotope labeling and spectroscopic techniques.

The successful applicant should have a Ph.D. in Chemistry, Biochemistry, Biophysics or a related field, and an established record of technical expertise in stable isotope or relevant chemistry and the application of labeled compounds to biophysics, biochemistry and/or medicine. Minimum of 3 years postdoctoral experience and demonstrated ability to maintain a successful research program with federal funding is necessary.

To formally apply for this position, interested candidates should forward a resume to James Trout (MS P282), Personnel Services Division **100804-B**, Los Alamos National Laboratory, Los Alamos, NM 87545. Affirmative Action/Equal Opportunity Employer. Los Alamos National Laboratory is operated by the University of California for the U. S. Department of Energy.

Los Alamos
NATIONAL LABORATORY

Computational Biologist

Laboratory and Research Products, Eastman Chemical Company, is a leader in the development of DNA and Protein sequence hardware and software for the biotechnology marketplace. LRP is currently seeking a Computational Biologist for its New Haven, CT, facility to develop innovative Macintosh-based sequence analysis products. Candidates must have experience in developing analysis algorithms, knowledge of current Molecular Biology research techniques, experience with the Macintosh and writing "C" code.

Send résumés to:

Gary Kerr
Department IBI
Eastman Chemical Company
Kingsport, TN 37662-5215



Laboratory and Research Products
Eastman Chemical Company

An Equal Opportunity Employer



THE AUSTRALIAN NATIONAL UNIVERSITY

Faculty of Science

DIVISION OF BOTANY AND ZOOLOGY AT THE AUSTRALIAN NATIONAL UNIVERSITY

LECTURER/SENIOR LECTURER

IN ENTOMOLOGY

(LEVEL B/LEVEL C)

The Division of Botany and Zoology at The Australian National University is seeking to fill a tenuous Lectureship/Senior Lectureship in Entomology.

The successful applicant will be involved in developing, organizing and contributing to undergraduate units in entomology, supervision of honours and graduate students, and will be expected to develop a strong independent research program. Applications are encouraged from entomologists whose research interests complement existing strengths in entomology in the Division (insect systematics), and who are likely to be able to further develop the strong links between the Division and the CSIRO Division of Entomology.

Salary: Lecturer: AUS\$41,000 – AUS\$48,688 p.a.

Senior Lecturer: AUS\$50,225 – AUS\$57,913 p.a.

Closing date: 23 July 1993.

Ref: FS 2.6.1

Enquiries: Professor Andrew Cockburn; e-mail Andrew.Cockburn@anu.edu.au; Phone 61 6 249 2866; Address Division of Botany and Zoology, The Australian National University, Canberra ACT 0200 Australia.

Applications addressing the selection criteria should be submitted in duplicate to:

The Secretary

The Australian National University
CANBERRA, ACT 0200

quoting reference number and including curriculum vitae, list of publications and names and addresses of at least three referees.

**THE UNIVERSITY IS AN
EQUAL OPPORTUNITY EMPLOYER**

The University has a "no-smoking" policy in all University buildings and vehicles.

CENTERS FOR DISEASE CONTROL AND PREVENTION (CDC)

CDC in Atlanta, Georgia, invites applications for the following positions:

Director, National Institute for Occupational Safety and Health (NIOSH)

The Director, NIOSH, manages a comprehensive program to prevent and reduce workplace-related injuries, illnesses, and premature death caused by trauma; exposure to toxic chemicals, dusts, and radiation; musculoskeletal and psychological stressors; noise; and other occupational hazards. NIOSH has a budget of more than \$100 million and approximately 1,000 employees in six states and the District of Columbia. The Director, NIOSH, consults with the U.S. Department of Labor, U.S. Department of Interior, other federal agencies, state and local government agencies, industry, and employee organizations relative to promotion of occupational safety and health. Closing date is July 30, 1993.

Director, National Center for Environmental Health (NCEH)

The Director, NCEH, is responsible for a national program to prevent or control environmentally related health problems occurring outside the workplace. The multi-faceted programs of NCEH involve environmental health laboratory related research/development; birth defects and developmental disabilities research and control; and environmental hazards and health effects research and control, including radiation effects. The Center has a budget of more than \$50 million and is staffed with approximately 400 employees in such disciplines as medicine, chemistry, microbiology, sanitation, and toxicology. Closing date is July 19, 1993.

Qualifications preferred include a doctoral degree (M.D., Ph.D., or equivalent), broad knowledge of public health programs related to the respective fields, and proven ability to provide administrative and scientific leadership for multidisciplinary programs. These Senior Executive Service positions are in the civil service with annual salary ranges of \$92,900 to \$115,700. Physicians may also be eligible for a comparability allowance of up to \$20,000 per year. Interested applicants may send their curriculum vitae and names of three professional references for each position applied for postmarked by the closing date to Nancy Peterson, Personnel Management Office, Mailstop D01, Centers for Disease Control and Prevention (CDC), 1600 Clifton Road, N.E., Atlanta GA 30333. Tel. (404) 639-3678. CDC is an Equal Opportunity Employer and provides a smoke-free work environment.

Pew

Latin American Fellows Program

A Program of the Pew Charitable Trusts

The Pew Charitable Trusts, one of the United States' largest private foundations, is sponsoring a program providing support for young scientists from Latin America for post-doctoral training in the biomedical sciences in the United States.

The Trusts will select 10 Fellows for awards in 1994 with each Fellow being supported for up to three years. An award of \$40,000, administered by the sponsoring U.S. institution, will be provided for use by the Fellow for living expenses during a two-year training period. Following the two-year training period, upon notification of the Fellow's return to his or her country, an additional \$35,000 award will be provided for the sole purpose of purchasing equipment and supplies to establish a laboratory at their home institution.

Applicants must have held their Ph.D. and/or M.D. degrees for no more than 5 years as of July 1, 1994. Preference is given to Latin American individuals who have not had significant previous training in the U.S. and who require support to receive post-doctoral training. The Program accepts candidates from the following countries: Argentina, Brasil, Chile, Mexico, Colombia, Uruguay, Ecuador, and Venezuela.

To obtain further information and application materials, contact the Nominating Committee Chairman listed for your country. The application deadline is October 1, 1993.

ARGENTINA

Dr. Israel Algranati
Instituto de Investigaciones Bioquímicas
Fundacion Campomar, Antonio Machado 151
Av. Patricia Argentinas 435
1405 Buenos Aires, Argentina
TEL: 1-88-4018 FAX: 1-865-2246

BRASIL

Dr. Carlos Eduardo Rocha- Miranda
Vice President
Academia Brasileira de Ciencias
Rua Anfilofio de Carvalho, 29, 3° Andar
20001-970 Rio de Janeiro, RJ - Brasil
TEL: 220-4794 FAX: 240-4695

CHILE

Dr. Mario Luxoro
Facultad de Ciencias, Universidad de Chile
Casilla 653 (correo central)
Santiago, Chile
TEL: 2-271-2865 FAX: 2-271-2983

MEXICO

Dr. Hugo Arechiga
Centro de Investigacion y de Estudios
Avanzados del IPN
Av. Instituto Politecnico Nacional 2508
AP 14-740, Col. San Pedro Zacatenco
Mexico City, 14DF, Mexico
TEL: 754-02-00 FAX: 752-05-90

COLOMBIA/URUGUAY

ECUADOR/VENEZUELA

Ms. Silvia Montano
Coordinator
The Pew Latin American Fellows Program
1388 Sutter Street, Suite 805
San Francisco, California 94109 U.S.A.
TEL: 415-476-5116 FAX: 415-476-4113

NOBLE FOUNDATION/ SALK INSTITUTE PLANT BIOLOGY FELLOWSHIPS

Two three-year postdoctoral fellowships will be available from November 1, 1993, as part of the joint program between the Plant Biology Division, Samuel Roberts Noble Foundation Ardmore, OK and the Plant Biology Laboratory, Salk Institute for Biological Studies, La Jolla, CA. We are seeking candidates with strong backgrounds in biochemistry and/or molecular genetics to work on the molecular genetic dissection of signal transduction pathways for plant defense gene activation and the use of antisense and sense suppression to elucidate the roles of phenylpropanoid compounds in plant defense. Successful candidates will spend approximately 18 months in the lab of Dr. Chris Lamb (La Jolla) and 18 months in the lab of Dr. Rick Dixon (Ardmore). Please send a resume and three letters of reference to Dr. C.J. Lamb, Plant Biology Laboratory, Salk Institute for Biological Studies, 10010 N. Torrey Pines Road, La Jolla, CA 92037. Informal inquiries and requests for further details can be made to Dr. Lamb (phone 619-453-4100, ext. 106) or Dr. Dixon (phone 405-223-5810).

The Samuel Roberts Noble Foundation and Salk Institute are equal opportunity employers.

genzyme

The strength of an organization can be measured by the scope of its products. At Genzyme, we are developing a range of innovative health care products and services that are enabling us to achieve success on a global scale.

Research Scientist-Signal Transduction

We are seeking a Ph.D. level scientist to join our growing drug discovery team. The individual will develop a research program in signal transduction, with emphasis on identifying and characterizing biochemical targets for new anti-inflammatory therapeutics. Qualifications include a Ph.D. in biochemistry, cell biology, molecular biology, or a related field. Research experience in cell membrane biochemistry and signal transduction is required, while additional expertise in tissue culture, molecular biology, or protein purification is desirable. Since our program is designed around a collaborative approach to problem solving, excellent leadership and communication skills are also essential.

Research Scientist-Wound Healing

The individual selected for this position will be well-versed in the standard techniques of molecular biology including gene cloning, PCR, site-directed mutagenesis, and expression of heterologous proteins in bacterial and mammalian cells. A practical grasp of basic protein biochemical techniques for purifying recombinant proteins and assessing their functionality (enzyme activity, immunological reactivity, and affinity for other macromolecules) is essential. Candidates must have a Ph.D. while relevant post-doctoral experience would be an advantage.

Candidates for both of these positions will have a proven record of scientific excellence and creativity as evidenced through publication. Flexibility and a strong team-oriented approach are essential.

Genzyme rewards success with an excellent compensation and benefits package, including 3 weeks' paid vacation, a 401(k) plan with a company match, extensive insurance benefits and an Employee Stock Purchase Plan. Please forward your resume to: Human Resources Department, S625, Genzyme Corporation, One Kendall Square, Cambridge, MA 02139. An equal opportunity employer.

ADVANCING HEALTH CARE PRODUCTS AND SERVICES WORLDWIDE

POSITIONS OPEN

PROGRAM MANAGER

The University of Alaska Anchorage (UAA) invites applications for a Program Manager responsible for overall supervision and development of the Alaska Natural Heritage Program. The Program Manager reports to the Director of the Environment and Natural Resources Institute (ENRI) of UAA's School of Public Affairs. Responsibilities include coordinating administration, science, and data management of the Biological and Conservation Database (BCD) on rare and significant elements of biological and ecological diversity of Alaska; developing cooperative agreements and liaison with public agencies, the Nature Conservancy, and others in maintaining and developing the BCD; promoting use of BCD network management, resource protection, and planning efforts; pursuing and developing financial support sources; and participating in the overall mission and activities of ENRI and UAA including teaching, presenting faculty seminar papers, and advising graduate students.

Requirements include Ph.D. in ecology, botany, zoology, or related field or equivalent in education and experience; experience in applied scientific research emphasizing conservation biology; and successful experience in scientific program development (securing funding, drafting proposals, developing budgets, and managing accounts).

Application review begins July 9, 1993. Send curriculum vitae, letter explaining qualifications, and three references to: **Personnel Office, University of Alaska Anchorage, 3890 University Lake Drive, Anchorage, AK 99508, Telephone: (907) 786-4608. UAA is an Equal Opportunity Employer.**

BIOLOGY: Monmouth College (Illinois) invites applications for **TENURE-TRACK POSITION** for fall 1993. Prefer candidates with strong interest in molecular biology. Should be prepared to teach cell and molecular biology, cell physiology and general education course in biology. Share responsibility with colleagues for supervision of senior research. Courses of specific interest to the candidate are encouraged. Position established 1990 and continuing. Basic equipment in place. Qualifications: Ph.D. required, experience at liberal arts college as student or faculty preferred. *Women/minority applicants welcomed.* Application: Send curriculum vitae and four references, with undergraduate/graduate transcripts to: **Dr. William B. Julian, Dean of the College, Monmouth College, Monmouth, IL 61462.** Search open until filled. *Equal Opportunity Employer.*

NMR MANAGER POSITION

Chemistry Department, Emory University

We seek an NMR spectroscopist to oversee the use of our NMR spectrometers (including GE 600 and 500 MHz) and to maintain the facilities and associated workstations. Additional responsibilities include training users on both instrumentation and software and supervising others to carry out such training. A Ph.D. is required. Please submit statements of relevant experience, curriculum vitae, and publication lists, and arrange for three letters of reference to be submitted to: **Professor Luigi G. Marzilli, NMR Search Committee, Department of Chemistry, Emory University, Atlanta, GA 30322.** Although all applicants will be considered until the position is filled, applicants are urged to submit by July 6, 1993. *Emory University is an Equal Opportunity/Affirmative Action Employer.*

ANATOMY AND PHYSIOLOGY

FACULTY POSITIONS for full-time instruction are available in anatomy and/or physiology in a professional program. Successful college teaching, effective communication in English, and Master's degree required; doctorate strongly preferred. *Qualified women and minorities encouraged to apply.* Available September 1, 1993. Application processing begins immediately and continues until position filled. Applications to include (1) a letter stating reasons for interest in the position, (2) a statement of teaching philosophy, (3) evidence of successful teaching, (4) a current complete résumé, and (5) the names, addresses, and telephone numbers of three professional references. Send applications to: **Director of Basic Sciences, Cleveland Chiropractic College, 6401 Rockhill Road, Kansas City, MO 64131.** *Affirmative Action/Equal Opportunity Employer.*

POSITIONS OPEN

DIRECTOR OF DEVELOPMENT AND PUBLIC RELATIONS

The Paleontological Research Institution (PRI) is a private research, educational and publishing institution interacting but not officially affiliated with Cornell University. Founded in 1932, the Institution houses one of the nation's largest collections of fossils and publishes its oldest paleontological journal. The Institution has an immediate opening for a Director of Development and Public Relations. Responsibilities will include developing and implementing short- and long-term public relations and fund-raising programs including a major capital campaign. Preference will be given to applicants with a B.A./B.S. equivalent or higher, significant natural history/natural science background, 5 years or more of development or equivalent experience including solicitation of major gifts and grant writing, and excellent oral and written communications skills. This is an opportunity to make a difference in a start-up program at a small but growing institution, and to work in an environment that promotes creativity and independence. Salary range \$40,000 to \$60,000, commensurate with experience. Submit letter of application to: **Dr. Warren D. Allmon, Director, Paleontological Research Institution, 1259 Trumansburg Road, Ithaca, NY 14850. PRI is an Equal Opportunity Employer.**

ANATOMIST

Cleveland Chiropractic College, serving greater Los Angeles, is accepting applications and nominations for a full-time **FACULTY POSITION.** The successful candidate will have an earned Ph.D. in anatomy, evidence of at least five years of successful college teaching experience, and scholarly activities. Position will involve both teaching and program development.

Annual salary is competitive for a full-time, 12-month position commencing September 1993. Submit a letter of interest, complete curriculum vitae and the names and addresses of at least three references to: **Kay Hill, Cleveland Chiropractic College, 590 North Vermont Avenue, Los Angeles, CA 90004.**

POSTDOCTORAL POSITION available immediately to study the molecular genetics of ovarian tumors. Research will involve loss of heterozygosity studies and development of new techniques to study genetic alterations during tumor development. Experience in molecular biology is desired. Submit curriculum vitae and three references to: **Dr. Maura Pieretti, Department of Pathology, University of Kentucky Medical Center, 800 Rose Street, Lexington, KY 40503. The University of Kentucky is an Equal Opportunity/Affirmative Action Employer.**

POSTDOCTORAL POSITION

A postdoctoral position is available immediately to study neural cortical mechanisms of visual perception, especially color, contour, and depth, and their interactions. The studies will involve extracellular recording from awake, behaving monkeys as well as psychophysical experiments and modeling of visual function. Send curriculum vitae, short statement of interests, and names of references to: **Rudiger von der Heydt, Ph.D., Department of Neuroscience, Johns Hopkins University School of Medicine, 725 North Wolfe Street, Baltimore, MD 21205-2185. FAX: (410) 955-8883.**

POSTDOCTORAL POSITION available to study molecular virology. Ph.D. graduates with productive research background in molecular biology are encouraged to apply. Send curriculum vitae, 3 letters and personal statement to: **Anna Lok, M.D., Tulane University Medical Center, 1430 Tulane Avenue, SL35, New Orleans, LA 70112. Affirmative Action/Equal Opportunity Employer.**

POSTDOCTORAL POSITION, MOLECULAR BIOLOGIST

Fred Hutchinson Cancer Research Center

Postdoctoral position immediately available (Ph.D. or M.D.) to study molecular basis of cell injury and repair in differentiated tissues. Candidate should have experience with molecular biology techniques and tissue culture. Support is guaranteed for two years with continuing support dependent on productivity. Candidates should send curriculum vitae and three references to: **Dr. Richard A. Zager, 1124 Columbia Street, M178, Seattle, WA 98104. Affirmative Action/Equal Employment Opportunity.**

POSITIONS OPEN

POSTDOCTORAL POSITION

University of California and Veterans Administration Medical Center, San Francisco, has a position available immediately for a qualified individual to join a group studying the regulation by calcium and vitamin D of gene expression during keratinocyte differentiation and proliferation. Applicants should have a Ph.D. in cellular and/or molecular biology with an interest in the hormonal control of mammalian cell growth and differentiation.

Please send curriculum vitae and names of 3 references to: **Daniel Bikle, M.D., Ph.D., Department of Medicine, VAMC (111N), 4150 Clement Street, San Francisco, CA 94121.**

MOLECULAR ENDOCRINOLOGY

TWO POSTDOCTORAL POSITIONS are available to investigate the gene regulation and structure-function relationship of the LH/CG receptor. Qualified candidates should send curriculum vitae and arrange to mail three reference letters to: **Professor Tac H. Ji, Department of Molecular Biology, University of Wyoming, Laramie, WY 82071-3944. Telephone: 307-766-6272. FAX: 307-766-5098.**

POSTDOCTORAL POSITION available beginning September 1, 1993, to study biological and biomedical problems related to subcellular localization of elements (isotopes) by employing a mass spectrometry-based technique of ion microscopy. Other techniques such as scanning and transmission electron microscopy and laser scanning confocal microscopy will be applied to complement ion microscopic observations. A Ph.D. degree in chemistry/biology or related fields is required. Expertise in TEM, SEM and laser confocal optical techniques is preferred. Experience with cryogenic sample preparation is desirable. Send curriculum vitae with names, addresses and telephone numbers of two references to: **Dr. George H. Morrison, Department of Chemistry, Baker Laboratory, Cornell University, Ithaca, NY 14853-1301. Telephone: (607) 255-3614; FAX: (607) 255-9930. Cornell University is an Equal Opportunity/Affirmative Action Employer.**

POSTDOCTORAL POSITION available to study the regulation of cardiac calcium channels by kinases, phosphatases, G-proteins, and intracellular ions. Experiments will use patch-clamp recordings from isolated myocytes and planar lipid bilayer reconstitution of single channels. Qualified applicants will have experience in ion channel electrophysiology. Send curriculum vitae and the names of three references to: **Dr. Robert L. Rosenberg, Department of Pharmacology, CB #7365, UNC-CH, Chapel Hill, NC 27599. An Equal Opportunity/Affirmative Action Employer.**

HIV DIAGNOSTICS USING IN SITU HYBRIDIZATION

A **POSTDOCTORAL POSITION** is available immediately for a project using *in situ* hybridization to detect HIV in patient blood and lymph nodes. Samples will be analyzed by automated cytometry or flow sorting. This is a prime opportunity for an individual with experience in HIV to learn clinical applications and commercial development in conjunction with a large biotech company. Responsibilities will include helping to coordinate a team of five individuals.

Send résumé and the names of three references to:

**Robert H. Singer, HIV Diagnostic Project
Department of Cell Biology
University of Massachusetts Medical Center
55 Lake Avenue North
Worcester, MA 01655**

POSTDOCTORAL POSITION available immediately to elucidate functions of novel tyrosine phosphatase receptor isoforms during neural development and in neuroectodermal tumors. Fellow will also explore a novel trinucleotide repeat. Demonstrated experience in molecular biology (especially sequence analysis and cell transformation/expression) required. Multidisciplinary training and collaborations available. Fellow will supervise and be assisted by a technician. Salary commensurate with experience. Send curriculum vitae, statement of research interests and names/telephone numbers of three references to: **Frank M. Longo, M.D., Ph.D., Department of Neurology VAMC/UCSF, V-127, 4150 Clement Street, San Francisco, CA 94121. The University of California, San Francisco is an Equal Opportunity/Affirmative Action Employer.**

POSTDOC OPPORTUNITIES

The Department of Neurobiology and Behavior has been awarded a training grant from NINDS which will support postdoctoral training in Molecular, Cellular and Systems Neurobiology. Applicants must be US citizens or permanent residents. Women and minorities are especially encouraged to apply. Salary in accordance with established NIH guidelines.

For further information concerning opportunities, contact the following coordinators: Molecular: Dr. Gail Mandel. Cellular: Dr. Paul Adams. Systems: Dr. Lorne Mendell. Write, telephone or fax:

Department of Neurobiology & Behavior
State University of New York
Stony Brook, NY 11794-5230
Tel: (516)632-8616
Fax: (516)632-6661

The University at Stony Brook is an Equal Opportunity/Affirmative Action Educator and Employer.



HERPES VIROLOGIST/ASSISTANT DIRECTOR

SmithKline Beecham Pharmaceuticals, a worldwide leader in pharmaceutical research, is seeking an Assistant Director for our Molecular Virology and Host Defense Department. This department's 40 members work on projects which encompass basic and applied research on many aspects of molecular virology and immunology of infectious diseases including immunomodulators, hemoregulatory cytokines, stromal cell biology, viral pathogenesis and the discovery of novel antivirals.

You will plan, supervise and implement research aimed at the discovery, evaluation and development of novel therapeutic anti-viral agents for herpes viruses. Using your knowledge of molecular tools and viral culture techniques, you will identify viral molecular targets, explore mechanisms of anti-viral drug action and select lead compounds. You will also have a leadership role in multi-discipline anti-viral programs.

The qualified candidate will have a Ph.D. in Virology (or equivalent), a minimum of five years' postdoctoral experience in herpes virology and an excellent record of scientific achievement as evident from publications, patents, symposia and presentations. Supervisory experience, excellent communication skills, and the ability to work effectively with individuals of varied backgrounds and disciplines are required. Outstanding applicants with broader backgrounds in non-herpes virology will also be considered. Industry experience is preferred.

Based in our modern, state-of-the-art research facility in suburban Philadelphia, near Valley Forge, PA, SmithKline Beecham provides you with the opportunity to work in an environment where advancement is based on performance. In addition, we offer a competitive compensation that is industry-adjusted annually, an excellent relocation package and a flexible benefits package. For confidential consideration, please submit your resume and the names of three references to: SmithKline Beecham Pharmaceuticals, Employment Administrator, #L050, PO Box 1539, King of Prussia, PA 19406-0939. We are an Equal Opportunity Employer, M/F/D/V.


SmithKline Beecham
Pharmaceuticals
Challenging the natural limits.

FLOW CYTOMETRY EXPERT

Genentech, Inc., a world leader in the biotechnology industry, is seeking a Flow Cytometry Expert to join our premier Cell Analysis Laboratory. You will take a leading role in applying our state-of-the-art equipment to challenging applications in biotechnology R&D. From the bioengineering of cells for drug discovery to basic research in cell biology, the Cell Analysis Laboratory is a multifaceted research group dedicated to the best in analytical cytology.

We're seeking an individual with a BS/MS degree in the Biological Sciences, expertise in the operation of flow cytometers, and cell culture experience with a strong knowledge of cell analysis protocols. The ability to collaborate effectively with scientists and researchers in a multiuser facility is essential.

Genentech offers an excellent salary and benefits package which includes child care facilities, free health club membership and fully paid medical/dental/vision coverage. For immediate consideration, please send your resume to Genentech, Inc., Human Resources, Dept. SW/KB, 460 Point San Bruno Blvd., South San Francisco, CA 94080. We actively support and promote affirmative action and equal opportunity employment. Women and minorities are encouraged to apply.

Genentech, Inc.

POSTDOCTORAL ASSOCIATE POSITIONS THE UNIVERSITY OF IOWA

Please contact the appropriate department to express your specific interest:

ANATOMY: Dr. J. P. Long, Interim Head, Bowen Science Building.

BIOCHEMISTRY: Alan G. Goodridge, Professor and Head, Bowen Science Building.

DERMATOLOGY: John S. Strauss, M.D., Professor and Head; or Kenzo Sato, M.D., Professor, 2 Boyd Tower, General Hospital. A postdoctoral research associate for the study of electrophysiology of cultured cells.

INTERNAL MEDICINE: Openings available in all disciplines in the Internal Medicine Department, College of Medicine, University of Iowa. Contact Francois M. Abboud, M.D., Professor and Head; or Personnel Department of Internal Medicine, SE 321 GH. Phone 319/356-2850.

MICROBIOLOGY: Dr. Michael Apicella, Professor and Head, Bowen Science Building.

NEUROLOGY: Postdoctoral associate positions are available in Cognitive Neuroscience, Neurophysiology, Neurobiology, Cerebrovascular Disease, Epilepsy, Sleep, and Neuromuscular Disease. Antonio R. Damasio, M.D., Professor and Head, 2151 Roy Carver Pavilion.

OBSTETRICS AND GYNECOLOGY: Postdoctoral associate position is available in the Perinatal Research Laboratory. Research area includes the study of hormonal influences on the regulation of vascular tone of the maternal and fetal circulation. Contact Carl P. Weiner, M.D., Professor, Division of Maternal Fetal Medicine, Department of Obstetrics/Gynecology. Phone 319/356-2305.

PATHOLOGY: Dr. Richard G. Lynch, Professor and Chairman, 144 Medical Laboratories. Research activity in all areas of pathology.

PEDIATRICS: Dr. Frank H. Morriss, M.D., Professor and Head.

PHARMACOLOGY: Dr. P. Michael Conn, Chairman and Head, Bowen Science Building. Openings in all areas of pharmacology and toxicology.

PHYSIOLOGY AND BIOPHYSICS: Robert E. Fellows, M.D., Ph.D., Professor and Head, Bowen Science Building.

OCCUPATIONAL & ENVIRONMENTAL HEALTH: Positions available for all aspects of occupational and environmental health. James A. Merchant, M.D., Dr. P.H., Director, Division of Occupational and Environmental Health and Institute of Agricultural Medicine and Occupational Health, Department of Preventive Medicine and Environmental Health, 100 Oakdale Campus, 126 AMRF, Phone 319/335-4189.

PSYCHIATRY: Postdoctoral associate positions are available in neuroscience, genetics, epidemiology, general hospital psychiatry, and child psychiatry. Robert G. Robinson, M.D., Professor and Head, 2887 John Pappajohn Pavilion.

A Ph.D. or equivalent is required. Desirable qualifications are based on Project Investigator's interest for research. Women and minorities are encouraged to apply. The University of Iowa, College of Medicine, Iowa City, Iowa, 52242, is an Equal Opportunity/Affirmative Action Employer.

BIOTECH UPDATE

Genetically engineered crop protection brings a new dimension to agriculture.

At the Agricultural Research Division of American Cyanamid, we've developed a significant in-house biotechnology capability. Our work has fostered major advances in the development of genetically engineered crop plants. At our state-of-the-art research laboratories, you'll find an interdisciplinary work environment where innovative thinking is nurtured. Right now we have an immediate opportunity for:

Senior Research Biologist/PhD

In this position, you will design, implement and direct a program to evaluate genetically engineered crop plants. Characterization will include greenhouse and field studies of plant responses to pesticide applications and determination of mode of inheritance of genetic modifications. Additionally, you will supervise and participate in field trials conducted at other locations. This position also involves strong statistical data analysis skills and the ability to present results to non-technical audiences.

We seek a PhD with knowledge of plant breeding, genetics, statistical analysis, weed science, pesticides and pesticide application. Experience in plant cell and molecular biology is preferred.

In addition to our unique interdisciplinary environment and history of new product innovations, American Cyanamid Company offers a competitive salary and excellent benefits, including a 401K Savings Plan, and a convenient location just one hour from New York City or Philadelphia. We invite you to forward your resume and salary history to: Employment Office, Dept. RC, American Cyanamid Company, Agricultural Research Division, P.O. Box 400, Princeton, NJ 08543-0400. An Equal Opportunity Employer.



POSTDOCTORAL FELLOWSHIP

Departments of Psychobiology, Neurology,
Radiological Science and IRU
in Brain Aging
University of California, Irvine

The University of California, Irvine NIA training program in Aging has a position for a Post-doctoral Fellow interested in anatomical and functional imaging of the brain. Applicants should have a background in human neuroanatomy and computer based imaging techniques. A general knowledge of behavioral and clinical aspects of aging and dementia would be helpful. MRI facilities will include a 1.5T clinical scanner, 4.7T whole body unit and a small bore 7.1T for *in vivo* and *in vitro* studies. Research examining basic and applied issues in aging and dementia involves interaction with an active multidisciplinary group with applications in Neuroscience, Radiological Sciences, Computer Assisted Image Analysis, Artificial Intelligence, Neurology and Molecular Biology. Faculty participating in the program include: Drs. Carl W. Cotman, Dennis Cunningham, Rui De Figueredo, J. Patrick Kesslak, Gary Lynch, Orhan Nalcioğlu and W. Rodman Shankle. Funding is available for only US citizens and permanent residents. Please submit current curriculum vitae, statement of research interests and the names and addresses of 3 potential references to: Dr. Patrick Kesslak, I.R.U. in Brain Aging, Department of Psychobiology, University of California, Irvine, CA 92717-4550. UCI is an Equal Opportunity/Affirmative Action Employer committed to excellence through diversity.

IOWA STATE UNIVERSITY

OF SCIENCE AND TECHNOLOGY

Director, Office of Intellectual Property and Technology Transfer

Iowa State University is seeking candidates to fill the position of Director of the Office of Intellectual Property and Technology Transfer (OIPTT). The Director, who reports to the Vice Provost for Research and Advanced Studies, is responsible for managing the university's process for commercializing new technology. Working closely with the Director of the Iowa State University Research Foundation, the Director of OIPTT: receives and evaluates invention disclosures; reviews and negotiates license agreements, confidentiality agreements, and memoranda of understanding; markets university technology and positions it for further development through business and industry; works with the Vice Provost to coordinate among university technology transfer programs and to coordinate university programs with local and state economic development and technology transfer organizations, including other state universities and community colleges.

The successful candidate must have at least three years experience in the commercialization of technology within industry and experience in technology commercialization and research within a research university. A Ph.D. in a technical field and strong written and spoken communication skills and interpersonal skills are required. Persons wishing to be considered for the position or wanting to nominate a candidate should write to:
Chair, OIPTT Director Search Committee, Vice Provost for Research, Iowa State University, 211 Beardshear Hall, Ames, Iowa 50011.

Applications should include a letter, a complete curriculum vitae, and the names and telephone numbers of five references. Review of applications will begin August 1, 1993 and the position will be available September 1, 1993, or as soon thereafter as the successful candidate is available. Women and minorities are especially encouraged to apply.

Iowa State University of Science and Technology is an equal opportunity, affirmative action employer.

BIOSCIENCE JOB FAIRS!!

*MEET DIRECTLY WITH HIRING
MANAGERS FROM THE NATION'S
BEST BIOTECH FIRMS!*

**July 14-15 - Boston/Cambridge
September 16 - San Francisco
November 11 - Philadelphia**



LIFE SCIENCE ASSOCIATES

OUR 1993 CLIENTS INCLUDE...

**Affymax
Bio Rad Labs
Biogen
Cephalon
Depotech
Genencor
Gen-Probe
Gensia Labs
Gensia Pharmaceuticals
SysTemix**

**Ixsys
Liposome Technology
Microgenics
Origin Medsystems
Protein Design Labs
Scios Nova
Somatix Therapy
Sugen
Insite Vision
Vivus**

*To interview directly at events or have your resume distributed at selected fairs, send one copy of your CV/resume to:
LSA/Career Expo, Dept. S, 2100 Embarcadero, Suite 101,
Oakland California 94606. You'll receive detailed
information on how to participate. Companies interested in
recruiting call 510-436-3992 for registration information.*

Sphinx Pharmaceuticals Corporation is a rapidly expanding, publicly-owned company focused on mechanism-based drug discovery and development. During 1992, we grew more than 100% and have begun Phase II trials of our first compound. We have immediate openings for the following positions:

IMMUNOLOGIST

The Immunologist will focus on the modulation of signal transduction pathways involving protein kinase C and cellular phospholipases in immune and inflammatory disorders. The successful candidate will be responsible for identifying new disease targets in this area in addition to our current targets: psoriasis, atopic dermatitis, and chronic inflammation. Requirements include a Ph.D. with 5-7 years experience to participate in multi-disciplinary Immunology/Inflammation program. Pharmaceutical industry experience with both cellular and animal models of inflammation and autoimmune disease is essential. Preference will be given to a candidate with hands-on ability to analyze immune cell subsets, activation markers, calcium flux, and DNA cell cycle using our Epics Elite cell sorter. **Position #236.**

VASCULAR BIOLOGIST

This scientist will lead a cardiovascular biology group as an integral part of a multi-disciplinary drug discovery team focused on signal transduction mechanisms involving phospholipases and protein kinase C. The successful candidate should be well-versed in mechanisms of smooth muscle cell proliferation and have hands-on experience in animal models of peripheral vascular disease and restenosis. Requirements include a Ph.D. with at least 5 years pharmaceutical industry experience with cellular and in vivo models of cardiovascular disease. **Position #187.**

Sphinx offers competitive salaries and excellent benefits in a high-energy environment, where personal initiative and contributions are recognized and rewarded. In addition, our location in the Research Triangle Park area of North Carolina offers a superb quality of life with all the cultural, recreational, and educational amenities that one could ask for. Please forward your resume, including salary history and names of three references, to: **Human Resources, SPHINX PHARMACEUTICALS CORPORATION, P.O. Box 52330, Durham, NC 27717.** (No Phone Calls or Agency Referrals, Please.) An Equal Opportunity Employer.



S P H I N X
Pharmaceuticals Corporation

PRODUCTION MANAGER DNA ANALYSIS

Molecular Tool is a biotechnology company located in Baltimore, Maryland committed to the development and commercialization of highly integrated DNA-based systems for the analysis of complex genomes and genetic loci. Together with a key industry partner, Molecular Tool has nearly completed a significant research and product development program for the near-term implementation of a large-scale DNA analysis system.

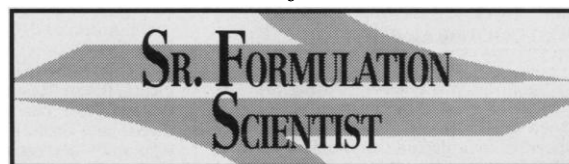
The Company is seeking a dynamic, motivated individual to manage its DNA analysis operations and services. This will entail the management of: 1) technology transfer, 2) product manufacturing, and 3) reference laboratory services. The successful candidate should have several years experience in: 1) managing the development & production of diagnostic kits, 2) organizing a high-volume clinical or biochemical testing laboratory, and 3) working with state-of-the-art quality control procedures, laboratory automation, data management, and data reporting. A research background and experience in DNA biochemistry, molecular biology or immunology is preferred but not essential.

Situated on a campus of the Johns Hopkins University School of Medicine, Molecular Tool, Inc. offers a stimulating scientific environment, competitive salaries, an incentive program and medical insurance benefits. Interested candidates should send a resume together with the names of three professional references to: **Molecular Tool, Inc., Alpha Center, Hopkins Bayview Research Campus, 5210 Eastern Avenue, Baltimore, MD 21224.** EOE.

MOLECULAR TOOL, INC.

RESEARCH

A m y l i n



Amylin Pharmaceuticals, Inc. is a dynamic development stage company working on new medicines for diabetes and related metabolic disorders. We are currently expanding our Pharmaceutical Development team and have an exciting opportunity available.

As a senior research scientist you will design and develop alternate drug delivery routes and controlled release formulations, as well as dissolution methods to evaluate new dosage forms, of peptide/protein pharmaceuticals. You will work closely with the manufacturing and regulatory teams to advance the development of our products.

The ideal candidate will have a Ph.D. in Pharmaceuticals, Pharmaceutical Chemistry, Polymer Chemistry or a related area with 2-4 years' experience in controlled release research and at least one year industrial experience. Experience must include formulation of peptides/proteins; Pharmacokinetics background is a plus.

Amylin is located in San Diego, offering a stimulating work environment and a top-notch scientific community. In addition, we offer an excellent salary and benefits package including stock option participation. We have brought together an impressive team of people to make new medicines based on a major scientific breakthrough. If you would like your science to make a difference please send your resume and salary history to:
A. McGovern/S.T., Amylin Pharmaceuticals, Inc., 9373 Towne Centre Drive, San Diego, CA 92121.

Amylin is an Equal Opportunity Employer.



POSITIONS OPEN

POSTDOCTORAL OR JUNIOR FACULTY POSITION IN BIOCHEMISTRY AND MOLECULAR GENETICS

HARVARD MEDICAL SCHOOL

A position is available in the Department of Surgery to investigate the regulation and function of p53 in germ cell function and malignancy. Applicants should have a strong background in molecular biology or biochemistry. Excellent opportunities are available for collaborative interactions. The appointee will participate in departmental activities including teaching and directing one or two residents.

Forward curriculum vitae and names, addresses, and telephone numbers of three references to:

William C. DeWolf, M.D.
Urologist-in-Chief
Beth Israel Hospital
Harvard Medical School
330 Brookline Avenue
Boston, MA 02215

POSTDOCTORAL POSITION MOLECULAR NEUROBIOLOGY HARVARD MEDICAL SCHOOL

Immediate opening on an NIH Institutional Training Grant to study the molecular biology and genetics of circadian oscillators in the vertebrate central nervous system. Applicants should have an M.D. and/or Ph.D. degree, be experienced in molecular biology or genetics, and be a U.S. citizen or permanent resident. Send curriculum vitae and the names of three references to: **Charles J. Weitz, M.D., Ph.D.**, Department of Neurobiology, Harvard Medical School, 220 Longwood Avenue, Boston, MA 02115. FAX: (617) 734-7557.

POSTDOCTORAL POSITION

Available immediately to study the molecular biology of a negative-sense RNA virus. Studies will emphasize molecular mechanisms of virus assembly. Experience in molecular biology/virology is essential. Send curriculum vitae and references to: **Siba K. Samal**, College of Veterinary Medicine, University of Maryland, College Park, MD 20742.

POSTDOCTORAL POSITION MOUSE DEVELOPMENTAL GENETICS

A postdoctoral position is available starting September 1, 1993, to study gametic imprinting in the mouse. Specifically, we are isolating potentially imprinted genes by differential hybridization, and differential display, using cDNA probes derived from parthenogenetic, androgenetic and fertilized embryos. Further work entails genetic mapping and targeted mutagenesis. Please send curriculum vitae, a statement of research interests, and the names of three referees to: **Dr. Sue Varmuza**, Department of Zoology, University of Toronto, 25 Harbord Street, Toronto, Ontario, Canada, M5S 1A1. Telephone: 416-978-2759, FAX: 416-978-8532, Email: svarmuza@zoo.utoronto.ca or svarmuza@zoo.utoronto.edu.

POSTDOCTORAL POSITION available to study targeting of genetically engineered chimeric toxins to tumor cells. For background see *JBC* 267, 24966 (1992). Experience in molecular biology essential. Send curriculum vitae and 2 letters of recommendation to: **Dr. Philip S. Low**, Department of Chemistry, Purdue University, West Lafayette, IN 47907. *Purdue University is an Equal Opportunity/Affirmative Action Employer; minorities and women are especially encouraged to apply.*

POSTDOCTORAL POSITION available immediately to study the potential of sand fly salivary gland proteins as *Leishmania* transmission blocking vaccine targets. Work will involve cloning of sand fly salivary gland cDNA's and expression of recombinant proteins. The candidate should have experience with molecular biology techniques. Send curriculum vitae and the names of three references to: **Dr. Richard G. Titus**, Department of Tropical Public Health, Harvard University School of Public Health, 665 Huntington Avenue, Boston, MA 02115.

POSITIONS OPEN

POSTDOCTORAL POSITION available immediately to conduct electrophysiological studies of inositol phosphate and cyclic nucleotide-gated ion channels in olfactory receptor cells. Join group also studying ligand biochemistry and molecular biology of the channels. Please submit curriculum vitae and three references to: **Barry W. Ache, Ph.D.**, Whitney Laboratory, University of Florida, 9505 Ocean Shore Boulevard, St. Augustine, FL 32086. *An Equal Opportunity Employer.*

POSTDOCTORAL POSITION IN POPULATION BIOLOGY available August 15, 1993, for 1 to 2 years, to assist in population studies of red-cockaded woodpeckers. Duties include development of data management systems, overseeing data management activities, data analysis and pursuing questions of mutual interest using a 14-year database from a completely marked population of over 500 adults. Some field activity possible depending on interest. Send curriculum vitae with names of 3 references to: **Drs. Phil Doerr or Jeffrey Walters**, Department of Zoology, North Carolina State University, Box 7617, Raleigh, NC 27695-7617.

POSTDOCTORAL POSITION

Position available in the laboratory of Dr. John Krupinski at the Weis Center for Research in Danville, Pennsylvania. The successful applicant will have a Ph.D. in biochemistry, cell biology, or pharmacology, with experience in molecular biology. The project will involve the expression and characterization of novel forms of adenylyl cyclase (see *J. Biol. Chem.* 267:24858-24862). Emphasis will be placed on determining those structural features of the adenylyl cyclases responsible for mediating unique physiological effects.

The Weis Center is a well-equipped, modern research facility in a semi-rural environment. Competitive salary and fringe benefits are available. Please send curriculum vitae with the names and telephone numbers of three references to: **Geisinger Human Resources (JK)**, 100 North Academy Avenue, Danville, PA 17822-1529. *Equal Opportunity Employer, M/F/H/V.*

PRE- AND POSTDOCTORAL POSITIONS IN DEVELOPMENTAL BIOLOGY

UT Austin's NIH-funded program in Developmental Biology announces the addition of three new faculty members: **Janice Fischer-Vize** [*Drosophila* eye development], **Bryan Haarer** [the cytoskeleton and cell polarity], and **Peter Vize** [*Xenopus* development]. They join a diverse and exciting training program with 16 faculty who study organisms as diverse as yeast, plants, flies, frogs, and mammals, and have interests in early development, gene regulation, genetics, cell biology, immunology, and neurobiology. Austin is a friendly, sophisticated, and livable environment. *Minorities are encouraged to apply. Eligible applicants must be U.S. citizens or permanent residents.* Inquiries indicating the applicant's areas of interest should be sent to: **Dr. Wesley Thompson**, Department of Zoology, The University of Texas at Austin, Austin, TX 78712-1064 U.S.A. *An Equal Opportunity/Affirmative Action Employer.*

POSTDOCTORAL POSITION available in molecular neurobiology in neurodegenerative diseases, including Alzheimer's disease in established multidisciplinary laboratory. Qualifications include a Ph.D. or M.D. and a strong background in biochemistry and molecular biology to explore the molecular basis of these diseases. Submit curriculum vitae and three references to: **Dr. Carol A. Miller**, Department of Pathology, USC School of Medicine, 2011 Zonal Avenue, Los Angeles, CA 90033. FAX: (213) 342-1808.

POSTDOCTORAL POSITION is available (U.S. citizens/permanent residents) to study the hormonal control of gene expression in the epididymis. The position is funded through an N.I.H. training program. Applicants should have Ph.D. and/or M.D. with experience in cellular and/or molecular biology. Send curriculum vitae and names of three references to: **Barry T. Hinton, Ph.D.**, Department of Anatomy & Cell Biology, University of Virginia Health Sciences Center, Charlottesville, VA 22908.

POSITIONS OPEN

POSTDOCTORAL: MOLECULAR GENETIC CONTROL OF BIOMINERALIZATION/STRUCTURE

Postdoctoral position available immediately. Genes, cDNA's, protein templates and cellular processing controlling self-assembly/biomineralization/structure of molluscan shell microlaminate composite. Developmental switching of protein-template gene expression controlling switches in structure. Strong experience in expression cloning, *in situ* hybridization and/or immunohistochemical analysis of gene expression required. Join our molecular genetic/developmental lab as part of strong interdisciplinary team of faculty, postdoctorals and students including Molecular Biology, Chemistry, Physics, Materials Science Engineering and new NSF-supported Materials Research Laboratory, combining molecular genetic/cellular approach with state-of-the-art confocal, integral fluorescence-atomic force microscopy, X-ray, EM and *in vitro* analyses of macromolecular template-directed mineralization and control of structure formation. Strong grant funding.

Send curriculum vitae, summary of previous research experience, copies of relevant publications, and have three letters of reference sent to: **Prof. Daniel E. Morse**, Division of Molecular, Cellular and Developmental Biology, Department of Biological Science, University of California, Santa Barbara, CA 93106, USA. FAX: 805-893-8062. *Equal Employment Opportunity/Affirmative Action Employer.*

POSTDOCTORAL POSITION available October 1, 1993, for research focusing on the role of cell adhesion and migration in the pathogenesis and metastasis of cancer. Salary depends on qualifications which include a Ph.D. and the ability to work independently as well as to interact with graduate students. Send curriculum vitae and list of three references to: **Dr. Cheng Zhu**, Bioengineering Center, Georgia Institute of Technology, Atlanta, GA 30332-0405.

POSTDOCTORAL POSITION: Yale University

Available to study the use of triplex DNA to produce targeted mutagenesis in mammalian cells as a new approach to gene therapy (see Havre et al. *PNAS*, in press). Please send curriculum vitae to: **Peter M. Glazer, M.D.**, Ph.D., Yale University, Boyer Center for Molecular Medicine, 295 Congress Avenue, New Haven, CT 06510, or FAX to (203) 737-2630.

POSTDOCTORAL: GENE REGULATION/DEVELOPMENT

NIH postdoctoral position available this September. Homeobox and proto-oncogene encoded transcription factors controlling gene expression and apoptosis induced at metamorphosis in molluscan larvae. Strong experience in homeobox/proto-oncogene molecular genetics, *in situ* hybridization, *in vitro* transcription and/or anti-sense required.

Send curriculum vitae, summary of previous research experience, copies of relevant publications, and names/telephone/FAX of 3 references to: **Prof. Daniel E. Morse**, Division of Molecular, Cellular and Developmental Biology, Department of Biological Science, University of California, Santa Barbara, CA 93106, USA. FAX: 805-893-8062. *Equal Employment Opportunity/Affirmative Action Employer.*

TWO POSTDOCTORAL POSITIONS

One: To study molecular mechanisms of virulence DNA transmission among fish-pathogenic marine bacteria. Must have Ph.D. in Microbiology or related discipline and experience in molecular mechanisms of DNA transmission among marine bacteria. **Two:** To study molecular genetics of antigenic variation of aquatic birnaviruses, dsRNA viruses of fish and shellfish. Ph.D. required; molecular virology and cell culture experience desired. Positions are available September 1993 for two years. Annual salaries: \$25,000. Send cover letter, curriculum vitae, and three letters of reference to: **John T. Singer** (position one) or **Bruce L. Nicholson** (position two), Department of Biochemistry, Microbiology and Molecular Biology, University of Maine, 5735 Hitchner Hall, Orono, ME 04469-5735. Review of applications begins July 1, 1993, and continues until positions are filled. *Equal Opportunity/Affirmative Action Employer. Women and minorities are encouraged to apply.*

**MICHIGAN STATE UNIVERSITY
THREE TENURE-TRACK 12-MONTH POSITIONS
IN FISHERIES**

Partnership for Ecosystem Research and Management (PERM) between Michigan State University (MSU) and Michigan Department of Natural Resources (MDNR) has established three tenure-track quantitative fisheries science positions.

POSITION AG 1366 ASSISTANT PROFESSOR - FISH POPULATION GENETICIST. Preference will be given to applicants with a Ph.D. specialization in fish genetics and an emphasis in applications of genetics theory and techniques to problems of stock assessment and performance, population dynamics, endangered species, and hatchery production. Strong quantitative background expected. Major responsibilities include: conduct research in the area of fish genetics with implications towards management of exploited, unexploited and protected species; develop and teach a graduate level courses on fish genetics, conservation biology or a related topic.

POSITION AG 1367 ASSISTANT PROFESSOR - QUANTITATIVE FISHERIES ECOLOGIST. Preference will be given to applicants with a Ph.D. with strong quantitative skills and a background in fisheries ecology, fish population modeling, and fisheries management, experience in quantitative methods for fish stock assessment. Major responsibilities include: conduct applied research on community and population dynamics of Great Lakes fish stocks; use existing mathematical models or develop new models to help predict the effects of alternative management strategies on fish populations or ecosystems; design model-driven sampling schemes to help evaluate status of fish stocks and to help make fisheries management decisions; develop and teach a graduate level course on quantitative stock assessment models and assessment methods or a related topic.

POSITION AG 1368 ASSISTANT PROFESSOR - FISH HABITAT ECOLOGIST. Preference will be given to applicants with a Ph.D. with strong quantitative skills and a background in fisheries ecology, fish population modeling, and aquatic habitat assessment; experience in quantitative methods for assessing effects of altered stream flows on mortality, growth, reproduction, habitat selection, and movement of fishes. Major responsibilities include: conduct applied research on fish population, community, and habitat responses to altered stream flows, such as those relating to water removal or hydropower dam operation; use existing mathematical models, such as IFIM-PHABSIM, or develop new models to help predict impacts of altered stream flows on fisheries; quantitatively assess stream flow requirements for fisheries with particular emphasis on the population and community levels responses; develop and teach a graduate level courses on quantitative habitat assessment models and assessment methods or a related topic.

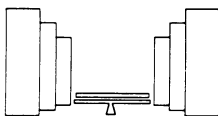
The successful candidates will be expected to cooperate with MDNR in conducting research on management-related topics and in developing management policies and practices; participate in faculty committees, public service programs, and advising of graduate students; and demonstrate evidence of ability to work effectively with state, federal, and private organizations, obtain research grants, conduct research, and publish findings. Positions are available beginning OCTOBER 1, 1993. Salary is competitive, commensurate with training, experience, and demonstrated ability.

Applicants should submit by AUGUST 31, 1993, or until a suitable candidate is found, a letter of application indicating position desired and professional goals and objectives, curriculum vitae with supporting materials including transcripts, and three letters of reference to:

Dr. Harold H. Prince, Search Committee Chairperson, Department of Fisheries and Wildlife, Michigan State University, East Lansing, MI 48824-1222; Telephone: (517) 353-0647.

E-Mail: 23183HHP@MSU.edu; FAX: (517) 336-1699.

MICHIGAN STATE UNIVERSITY is an equal opportunity/affirmative action employer. Minority and women candidates are encouraged to apply. Handicappers have the right to request and receive reasonable accommodation.



The Salk Institute for Biological Studies

**Postdoctoral and Staff
Scientist positions in
Structural
Biology Laboratory**

The Structural Biology Laboratory at The Salk Institute is seeking postdoctoral fellows and staff scientists. Our aim is to combine the X-ray crystallographic and molecular biological approaches towards the structural understanding of biological macromolecules. Additionally, we are interested in protein:nucleic acid interactions. Those with molecular biology/nucleic acid chemistry training interested in expanding their expertise to structural biology are encouraged to apply. Please send letter stating research interests, c.v., and three names of reference to: Structural Biology Laboratory, The Salk Institute, 10010 N. Torrey Pines Road, La Jolla, CA 92037-1099.

*The Salk Institute is an Equal
Opportunity Employer.*

Join Sterling Winthrop and be part of a team dedicated to the enhancement of scientific discovery. Sterling Winthrop Pharmaceuticals Research Division is the worldwide pharmaceutical research and development organization of Sterling Winthrop Inc. We currently have the following opportunities at our state-of-the-art pharmaceutical research facility in Upper Providence Township, PA (Collegeville).

DRUG METABOLISM & PHARMACOKINETICS

RESEARCH INVESTIGATOR/Ph.D.

Responsible for the design and conduct of in vivo and in vitro metabolism studies with new chemical entities in a variety of preclinical species and man. The scientist, as part of several multi-disciplinary teams, will be responsible for providing a drug metabolism perspective and generation of data leading to the discovery and development of new therapeutic agents including preparation of reports for submission to regulatory agencies and leading scientific journals. Requirements include a Ph.D. in biochemistry or pharmacology and 0-3 years of post-doctoral training. Relevant practical experience in the development of quantitative analytical methods for drugs in biological matrices using various detection methods (esp. radiochemical), pharmacokinetics, isolation and identification of drug metabolites and electronic data handling is highly desirable. **(Position #GV-54-93)**

SENIOR RESEARCH SCIENTIST/BS/MS

Responsible for conducting metabolism studies using both in vitro and in vivo techniques. Requirements include a BS/MS in chemistry, biochemistry or the pharmaceutical sciences and 4-7 years of relevant experience. Practical experience in the quantitation (with radiochemical and other techniques), isolation and characterization of drugs and their metabolites in biological matrices is also required. **(Position #GV-21-93)**

Sterling Winthrop emphasizes an interdisciplinary team approach to research and a highly interactive environment where excellent interpersonal skills are an asset.

At Sterling Winthrop, you'll enjoy a highly competitive salary and a comprehensive flexible benefits package, including outstanding career opportunities.



**STERLING
WINTHROP**

Pharmaceuticals
Research Division

A Division of Sterling Winthrop Inc.
A Subsidiary of Eastman Kodak Co.

For confidential consideration, forward your resume, salary requirements and Position # of interest, to:

**Human Resources
Sterling Winthrop PRD
81 Columbia Turnpike
Rensselaer, NY 12144**

Equal Opportunity Employer, M/F/D/V



cientist

E. Coli Genetics/Molecular Biology

Bring your innovative ideas to life.

Impact on exciting new areas of research as part of a high-profile scientific team. Regeneron Pharmaceuticals, a major biotechnology company known for its leading-edge research in the development of therapeutic agents for degenerative and traumatic nerve diseases, has an immediate opportunity for a committed scientist with the ideas and expertise to explore new areas in *E. coli* gene expression.

To qualify, individuals must possess a Ph.D. in microbiology or molecular biology coupled with at least 2 years' post-doctoral experience. Broad knowledge of *E. coli* physiology and genetics should include mutant selection, gene mapping and molecular genetics. Experience in protein secretion and/or fermentation would be a definite asset.

Regeneron is situated on an expansive wooded campus near Tarrytown, in Westchester County, 25 miles north of New York City. Our rapid growth affords you a competitive salary and benefits package including stock options and the opportunity to work with a premier scientific team. To apply, please send detailed resume with salary history to: Human Resources Dept., Bin-JF, Regeneron Pharmaceuticals, Inc., 777 Old Saw Mill River Road, Tarrytown, N.Y. 10591-6707. Equal Opportunity Employer.

REGENERON

Pharmaceuticals, Inc.

Applied Biosystems, the leading producer of automated instrument/reagent systems for biotechnology research, has an immediate opening. Consider this opportunity located in the San Francisco Bay Area.

SCIENTIST

Define and develop DNA probe-based products that use state-of-the-art PCR and fluorescence technologies. Your responsibilities will include defining and performing feasibility experiments; defining sources and procedures for manufacturing kit components, and working with process development scientists to help characterize them. You will also identify and collaborate with key researchers, publish experimental methods, and attend conferences to establish scientific credibility for DNA probe technology and its key application areas.

Requires a Ph.D. in Chemistry, Biochemistry, or Molecular Biology with 1-2 years' product development experience, or an MS/BS with 3-5 years' product development experience. The candidate we select will demonstrate competence in analytical techniques required for developing DNA probe based kits and will possess a knowledge of at least one of the following application areas: agriculture, human genetics, environmental monitoring, forensics.

We offer a competitive salary and generous benefits package. Please send your resume to: Applied Biosystems, Human Resources, Ref #2116, 850 Lincoln Centre Drive, Foster City, CA 94404. We are an equal opportunity employer.



A Division of Perkin-Elmer Corporation

41st Rachford Lectures

September 27 and 28, 1993

Transcriptional Control of Embryogenesis

An International Symposium
Children's Hospital Medical Center
Cincinnati, Ohio

Sponsored by

Perinatal Research Institute and Program of Excellence in Molecular Biology of the Heart and Lung Children's Hospital Medical Center Cincinnati, Ohio, and University of Cincinnati College of Medicine

Participating Speakers:

Mario Capecchi
University of Utah
Peter Gruss
Max Planck Institute
Rudolf Jaenisch
Massachusetts Institute of Technology
Robb Krumlauf
National Institute for Medical Research
Harold Moses
Vanderbilt University
Eric Olson
University of Texas
Stuart Orkin
Harvard University
Robert Roeder
Rockefeller University
Janet Rossant
University of Toronto
Erkki Ruoslahti
La Jolla Cancer Research Foundation

Abstracts for poster presentation

may be submitted by registered participants. Details will be included with registration materials. Abstract submission deadline is August 1.

To register, and for hotel information, call or write:

Shirley Courtney
Division of Endocrinology
Children's Hospital
Medical Center
Elland and Bethesda Avenues,
Cincinnati, Ohio 45229
(513) 559-4209
Fax (513) 559-7486

No registration fee, but attendance is limited to first 400 registrants. Registration deadline is July 15.



Children's Hospital Medical Center

POSTDOCTORAL SCIENTIST

Neurobiology Division

Somatix Therapy Corporation is a leader in the field of gene therapy. Our company is focused on the genetic modification of selected human cells to enable the production and delivery of therapeutic substances within a patient's body. Currently, our Neurobiology Division is developing a technique to transplant genetically modified autologous cells directly into human neostriatum to produce substances that will benefit patients suffering from Parkinson's disease. This exciting, two year investigation is ideal for a highly motivated, post-doctoral scientist looking to expand his/her realm of expertise in molecular neurobiology with our highly interactive and talented team.

As part of our Neurobiology group (M. Sofroniew, Director; R.J. Mandel, Rodents; K. Bankiewicz, Primates), you will be involved in a project which produces constructs that can be inserted into the genome of various cell types which will then produce and secrete proteins of therapeutic interest. You will be involved in all project phases, especially the development of rodent models of the neurochemical and functional deficits associated with Parkinson's disease. With a focus on comparing two potential treatment strategies—enhanced dopamine transmission versus growth factor delivery—you will also characterize various candidate cell types based on their efficacy as grafts for somatic gene delivery. The successful candidate should possess a Ph.D. from a related field of Neuroscience. Preference will be given to candidates with experience in one or more of the project phases mentioned above.

Located in the San Francisco Bay Area, Somatix offers a competitive salary and benefits package, which includes stock options. To learn more, send your CV/resume to: Somatix Therapy Corporation, Human Resources, 850 Marina Village Parkway, Alameda, CA 94501. We are an equal opportunity employer.





MICROBIOLOGICAL ASSOCIATES, INC. (MA) is a leading international provider of toxicological and biotechnology safety testing services. With our growing commercial and contract services businesses, we have immediate opening for Ph.D.'s who will be responsible for direct interaction with clients and for the supervision of testing programs.

MOLECULAR BIOLOGY

This position requires 2+ yrs. post-doctoral training (or equivalent) in a research environment. Will possess exceptional technical proficiency in recombinant DNA, DNA extraction, DNA probe, Southern blot assays, cloning, sequencing and PCR techniques, along with the ability to complete independent research and troubleshoot assays. Will also be involved in developing new molecular toxicology assays.

IN VITRO TOXICOLOGY

MA has an expanding program to provide the latest *in vitro* techniques for skin and eye irritation and also more complex biological toxicities. We require a Study Director with post-doctoral training and 3-5 yrs. experience in cell biology, toxicology or tissue metabolism. Some experience in the cosmetic or personal care products industries would be beneficial.

MAMMALIAN TOXICOLOGY

Our Mammalian Toxicology Division performs specialty toxicology tests such as analysis of cell proliferation, infectivity of microbial pesticides and chemically induced alterations in gene expression. Individuals with 2-5 yrs. experience in a GLP-compliant industry or contract lab would be preferred.

Join us as we build on our 40-year tradition of scientific excellence. Our state-of-the-art facilities are located in the Washington, D.C. suburbs. Please send your C.V. or resume to Human Resources Dept.:

MICROBIOLOGICAL ASSOCIATES, INC.
9900 Blackwell Road
Rockville, MD 20850
Fax: 301/738-1036
EOE M/F/H/V

The Spectroscopy and Biochemistry Group of the Isotope and Nuclear Chemistry Division is seeking a scientist to work in the area of biomolecular structure determination using NMR spectroscopy. Candidates interested in either solid state or high resolution NMR spectroscopy will be considered. The candidate will be expected to develop a research program consistent with the Laboratory and group environment, funded from a combination of internal and external sources. A major scientific focus in the group is the study of biomolecular structure and mechanisms using isotope labeling and spectroscopic techniques, including advanced optical and magnetic resonance spectroscopies. There is strong interest in increasing and consolidating interactions with the National High Magnetic Field Laboratory NMR program.

The successful applicant should have a Ph.D. in Chemistry, Biochemistry, Biophysics or a related field, and an established record of accomplishment as evidenced by refereed publications and funding in biomolecular structure determination using NMR spectroscopy.

To formally apply for this position, candidates should forward a resume to James Trout (MS P282), Personnel Services Division **100798-A**, Los Alamos National Laboratory, Los Alamos, NM 87545. Affirmative Action/Equal Opportunity Employer. Los Alamos National Laboratory is operated by the University of California for the U. S. Department of Energy.

Los Alamos
NATIONAL LABORATORY



Senior Professional Applied Environmental Research

The South Florida Water Management District is a 16-county regional agency responsible for the management of water resources in the most urbanized area of Florida. The agency has direct responsibility for environmental research and management for the Kissimmee River, Lake Okeechobee and over 1 million acres of Everglades. With a staff of more than 1,500 and a budget exceeding \$200 million, our agency addresses issues involving environmental protection/enhancement, water supply, flood control and water quality protection. At the District, applied environmental research is the foundation for sound resource management decision making.

We seek a Senior Environmental Scientist to work on applied research problems concerning the aquatic resources of South Florida, including the Everglades, Lake Okeechobee, Kissimmee River and estuarine ecosystems. The successful candidate will supervise and conduct research on a variety of environmental problems in the South Florida region. Ideal candidate should have a strong research background in ecology and environmental science, particularly applied aquatic ecology and water resources management. Demonstrated record of research accomplishment through publication is required, and experience in advanced statistics or ecological modeling would be a plus. Ability to work in multi-disciplinary teams, to plan and budget research projects, and to communicate scientific issues to both technical and lay audiences are desired qualities.

A Ph.D. degree in an environmental science or related field with aquatic emphasis is required. At least 8 years post-doctoral experience in wetlands ecology, limnology, water quality analysis, hydrological/ecological modeling or environmental management is sought.

We offer the opportunity to be involved in important research in applied science and to influence the future of South Florida's environment. You will also find a highly progressive professional environment with a team approach to solving complex environmental problems. In addition to competitive compensation, excellent benefits and the opportunity for continuing professional development, our employees enjoy the many benefits of South Florida living with a sub-tropical climate, exceptional year round recreational opportunities and favorable tax advantages. For information contact Dr. Garth Redfield at (407) 687-6611 or send resume including social security number to: Linda Starr, Human Resources Division, Re: SCLS7120, South Florida Water Management District, 3301 Gun Club Road, West Palm Beach, FL 33416. We are an equal opportunity employer M/F/D/V and a drug-free, smoke-free workplace.

South Florida Water Management District

When we talk about the environment, we mean business.

Research Investigator NMR Spectroscopy Analytical Research and Development

The Bristol-Myers Squibb Pharmaceutical Research Institute is the R&D Division of Bristol-Myers Squibb, a worldwide leader in the discovery and development of pharmaceuticals. We currently have an opportunity for a Research Investigator at our Wallingford, Connecticut research laboratories.

Collaborate in a multi-disciplinary problem solving environment with a team of analytical scientists involved in the structure elucidation of natural products and synthetic compounds. Interact with chemists and biologists in drug discovery research and investigate new techniques and instrumentation.

Departmental resources include Bruker AM 500 MHz, Varian Unity 500 MHz NMR spectrometers, and state of the art facilities for computational studies, tandem and high resolution mass spectrometry, X-ray crystallography, vibrational spectroscopy, separation sciences and physical chemistry. Candidate should have a Ph.D. in chemistry/biochemistry with demonstrated accomplishments in structure elucidation of complex organic molecules. Pulse sequence implementation and development desirable.

Bristol-Myers Squibb offers an excellent salary and comprehensive benefits program. For confidential consideration, please forward resume to: **Bristol-Myers Squibb Pharmaceutical Research Institute, Dept. MH0293, P.O. Box 5101, Wallingford, CT 06492-7661.** Equal Opportunity Employer, M/F/D/V.



Bristol-Myers Squibb Company

Forging New Frontiers...

That's what we're doing today at Searle, forging new frontiers in research and development. At Searle, our leadership and innovation have made us a premier, worldwide pharmaceutical company.

Biochemists

G.D. Searle & Co. is seeking two PhD biochemists with at least two years of post-doctoral experience with a background in developing novel therapeutic interventions for treating atherosclerosis and related cardiovascular diseases. Both positions will have an emphasis on lipid and lipoprotein biochemistry and metabolism. Candidates for the first position will need a demonstrated record of accomplishment at the cutting edge of their field. The candidates for the second position should have a strong background in enzymology and protein biochemistry relevant to lipid and lipoprotein metabolism. In addition, we desire experience with enzyme kinetics in multiphasic systems.

The successful candidates for both positions will desire to work in a fast-paced team environment. These positions are located at a multi-disciplinary research campus in suburban St. Louis, which conducts both fundamental and applied research in developing novel human health care products. G.D. Searle & Co. offers a competitive salary and benefits package and excellent career opportunities. Please submit a current curriculum vitae, including three professional references to: **Denise Cooper, Manager, Human Resources, SEARLE, Mail Zone 02H-RG1, 800 North Lindbergh Blvd., St. Louis, MO 63167.** An Equal Opportunity Employer M/F/D/V.

SEARLE

On track to being on top.

First Ever!!!

B.S./M.S. Recruitment Advertising Section

A Primer for Scientists with B.S./
M.S. Degrees in Biology and
Chemistry entering the
Pharmaceutical and
Biotechnology Industries

* * * * *

Special Bonus Distribution to
over 50 Universities
during fall 1993!

* * * * *

This special section will also be
published in the 27 August issue
of **SCIENCE**, guaranteeing
your recruitment ad exposure
to over 450,000 scientists
worldwide!

For more information on this
SCIENCE exclusive, call:

Janis Crowley
Recruitment Advertising Manager
at 212-496-7704

In Europe call Annemarie Vis at
+44 223 302067

Four billion-plus in annual sales can support R&D in a major way.

It takes a lot of money to fund significant work in Pharmaceutical R&D. At Schering-Plough, the commercial success we have achieved around the world, with a diverse line of both pharmaceuticals and health care products, has enabled us to spend over \$500 million annually on R&D. In addition, our success has allowed us to build a one million square foot drug discovery facility—the largest pharmaceutical research facility in the nation.

Success like this could mean an important opportunity for talented professionals.

PRINCIPAL SCIENTIST CNS Pharmacology

As an integral part of our CNS Pharmacology Group, you will participate in the research into the roles of the muscarinic cholinergic system in cognitive enhancement. Within this dynamic environment, you will determine the in vitro and in vivo biochemical responses of agents interacting with muscarinic receptors. To qualify for this highly visible opportunity, you must have a PhD in the Biological Sciences along with 5-8 years of relevant post-doctoral experience. Also important is a

thorough knowledge of muscarinic cholinergic pharmacology, to include experience in HPLC, receptor binding, molecular biology and microdialysis techniques. Supervisory experience is essential, preferably with management of PhD-level scientists. Strong oral and written communication skills are important. Please respond to: Mr. George Czuba, Human Resources, Department DD93-13, at the address below.

SENIOR SCIENTIST-Allergy

We are seeking a Senior Scientist to participate in cytokine signal transduction research utilizing molecular biology approaches to study regulation of gene transcription, in order to discover novel biochemical targets for therapeutic intervention. To qualify, you must have a PhD in Biochemistry, Molecular Biology or Immunology with a minimum of 2 years of postdoctoral experience. Also essential is a thorough familiarity with molecular cloning and gene expression. Please respond to Ms. Kathy Bassinger, Human Resources, Department DD93-15, at the address below.

We offer salaries commensurate with the importance of these positions, a generous benefits package, and the opportunity to join an internationally acclaimed pharmaceutical company with a demonstrated commitment to R&D. For confidential consideration, please send your resume, indicating salary history and requirements, indicating the appropriate person/department code: Schering-Plough Research Institute, 2015 Galloping Hill Road, Kenilworth, New Jersey 07033. We are an equal opportunity employer.

The science of success



**Schering-Plough
Research Institute**

Assistant to the Director of Humanitarian and Environmental Programs

FUNCTION

Responsible for environmental concerns, preparation and follow-up of programs linked to the environment, both in France and abroad. Will be working under the authority of the Director of Humanitarian and Environmental Programs.

EDUCATION

University diploma, medical doctor or biologist specializing in toxicology, cancerology, epidemiology also desired. Post graduate diploma in ecotoxicology, environmental chemistry, or fields related to health and the environment.

EXPERIENCE

Field or research experience in the areas of health, health education and applications linked to the environment. Experience dealing with the impact of certain industrial or natural substances on health would be appreciated.

PROFILE

Good negotiator, available for travel, functional English skills. Should be prepared to join a small, highly motivated team.

SALARY

Negotiable according to experience (around 400,000 French francs)

TYPE OF CONTRACT

Long-term contract following a 3-month trial period.

FONDATION ELF
Attn: Dr. R. Sebbag
23 Rue Galilée 75116 Paris
FRANCE
Tel: (+33) 1 53.67.82.64



TWO FACULTY POSITIONS IN THE DEPARTMENT OF ANATOMY AND CELL BIOLOGY EMORY UNIVERSITY SCHOOL OF MEDICINE

Applications are invited for two tenure track positions at the Assistant Professor level, each of which requires a Ph.D. or M.D. degree, significant postdoctoral experience and evidence of both productivity and a competitive research program. At least 80% of total faculty time will be available for research.

POSITION 1: We are seeking applicants using contemporary approaches to problems in developmental biology, cellular biology or integrative neurobiology. Successful candidates for this position must be able to participate in a team-taught course in human anatomy and a graduate course in cell or neurobiology. Candidates should submit a letter of application, curriculum vitae, reprints, a description of research interests and names and addresses of four individuals to be contacted for references to: Dr. John Scott, Search Committee Chairman, Position 1.

POSITION 2: We are seeking applicants using molecular approaches in the fields of contemporary cell or neurobiology research. Successful candidates must be able to participate in a team-taught course in cell biology and histology and a graduate course in cell or neurobiology. Candidates should submit a letter of application, curriculum vitae, reprints, a description of research interests and names and addresses of four individuals to be contacted for references to: Dr. Bryan Noc, Search Committee Chairman, Position 2.

Interviews will begin in late summer or early fall of 1993 and will continue until positions are filled. Please send all required materials to designated search committee chair at Department of Anatomy & Cell Biology, Emory University School of Medicine, Atlanta, GA 30322-3030.

****Emory University is an Equal Opportunity/Affirmative Action Employer****

Post-Doctoral Molecular Biologist

The Laboratory of Molecular Microbiology, National Institute of Allergy and Infectious Diseases, National Institutes of Health, is seeking a post-doctoral molecular biologist to investigate mechanisms of resistance to retroviruses. Experience with human and murine retrovirology, including retroviral mediated gene transfer and expression systems for HIV envelope, is required. The laboratory is also developing RT-PCR assays for novel retroviruses. Experience with viral purification, cDNA cloning, avidin-biotin techniques and PCR for RNA viruses is highly desirable. An M.D. or Ph.D. degree, as well as training in immunology, retrovirology and molecular genetics, are essential.

Send curriculum vitae and the names of three references no later than July 1, 1993 to:

Dr. Jonathan Silver
Laboratory of Molecular Biology
NIAID, NIH
Bldg. 4, Rm. 338
9000 Rockville Pike
Bethesda, MD 20892

Salary: \$35,000 - \$44,000

NIH is an Equal Opportunity Employer

POSITIONS OPEN

POSTDOCTORAL POSITIONS (3) in Molecular Pathology to study transcription factors for neuroendocrine differentiation and lung development. Joint appointment at Harvard Medical School. Applicants eligible to work in the United States, with an M.D. or Ph.D. and background in molecular or developmental biology, should send curriculum vitae and 3 references to: **Dr. M. E. Sunday, Department of Pathology, Brigham & Women's Hospital, 75 Francis Street, Boston, MA 02115.** FAX: 617-732-6796. *Equal Opportunity Employer.*

CORNELL UNIVERSITY TRAINING IN MOLECULAR AND CELL BIOLOGY OF CANCER

Cornell University is seeking applications for predoctoral and postdoctoral positions in Molecular and Cell Biology of Cancer. Our internationally recognized faculty will provide the opportunity to do research in oncogenesis, cell proliferation and differentiation, tumor virology, growth factor action and signal transduction, cell-cell and cell-substrate adhesion, metastasis, angiogenesis, etc. Students who seek the Ph.D. in Cancer Biology must have a B.S. in biological science or a D.V.M./M.D. degree. Postdoctoral fellows must have the Ph.D. degree. Successful applicants will be supported by an NCI training grant, which requires status of U.S. citizen, non-citizen national or permanent resident. Candidates should send curriculum vitae, transcripts, GRE scores and names, address and telephone numbers of 3 referees to: **Dr. Bendicht U. Pauli, Cancer Biology Laboratories, 215 VRT, Cornell University College of Veterinary Medicine, Ithaca, NY 14853-6401.**

Cornell University is an Equal Opportunity/Affirmative Action Employer/Educator.

Support for **POSTDOCTORAL FELLOWS** engaged in basic urologic research is available through an NIH training grant. Funding for two years will be available July 1, 1993. Areas of current investigation include the molecular and cell biology of prostate disease, genitourinary infection, renal physiology, urogenital tract development, and reproductive biology. Interested candidates should submit curriculum vitae and names of three references to: **Dr. Chung Lee, Northwestern University Medical School, Department of Urology, Room 11-715, Tarry Building, 303 East Chicago Avenue, Chicago, IL 60611-3008.**

POSTDOCTORAL FELLOW position is immediately available in the area of protein biochemistry and growth factor biology within the Harvard-MIT Division of Health Sciences and Technology. Previous postdoctoral experience is desirable. The ideal candidate will integrate basic biology and biochemistry with biophysics to study the interaction of membrane interdigitating compounds with mammalian cell growth control especially as it applies to cardiovascular disease. Send curriculum vitae and references to: **Dr. Elazer Edelman, Room 20A-127, Massachusetts Institute of Technology (MIT), Cambridge, MA 02139.** *Massachusetts Institute of Technology is an Equal Opportunity Employer.*

POSTDOCTORAL ASSOCIATE

A postdoctoral position is available immediately to study gene expression in early *xenopus* development. Ongoing projects include translational control, protein nuclear localization, and localization of transcription factors. Please send curriculum vitae and three letters of reference to: **Dr. Joel Richter, c/o Personnel Office, Worcester Foundation for Experimental Biology, 222 Maple Avenue, Shrewsbury, MA 01545, U.S.A.** *An Affirmative Action/Equal Opportunity Employer, M/F/H.*

NEW ENGLAND EYE CENTER/TUFTS UNIVERSITY MEDICAL SCHOOL. POSTDOCTORAL FELLOW/RESEARCH ASSISTANT PROFESSOR to study biochemistry of corneal Wound Healing and Infection. Background in molecular biology or experience with techniques to study glyco- and phospholipids preferred. Send curriculum vitae and names of three references to: **Dr. N. Panjwani, Department of Ophthalmology, Tufts University School of Medicine, 136 Harrison Avenue, Boston, MA 02111.**

SCIENCE welcomes placement of line classified ads by FAX. Please include name and telephone number for our confirmation call when transmitting ad to:

FAX NUMBER: 202-682-0816

POSITIONS OPEN

POSTDOCTORAL RESEARCH ASSOCIATE position is available in the Division of Neurology at the University of Nebraska Medical Center to study trained monkeys using neuropharmacological and electrophysiological techniques. Background in primate and rat behavior, vision, and cognitive ERP's are needed with particular emphasis on catecholaminergic process. Please send curriculum vitae, a summary of your research accomplishments and three references to: **Dr. Ivan Bodis-Wollner, Neurology-UNMC, 600 South 42nd Street, Omaha, NE 68198-2045.** *Equal Opportunity/Affirmative Action Employer.*

POSTDOCTORAL RESEARCH ASSOCIATE POSITION IN GENE THERAPY. Laboratory position in human hematopoietic stem cell expansion and gene insertion. Experience in molecular biology including transfection methods and PCR required. Experience with tissue culture techniques desirable. Investigator will develop this technology with translation to clinical trials in patients receiving autologous bone marrow transplants. Available June 1993. \$40,000 to \$50,000 salary. Contact: **Dr. E.J. Shpall, Bone Marrow Transplant Program, University of Colorado Health Sciences Center, 4200 East Ninth Avenue, Campus Box B-190, Denver, CO 80262.** Telephone: (303) 372-9000, FAX: (303) 372-9003.

UCHSC is committed to Equal Employment Opportunity and Affirmative Action.

POSTDOCTORAL FELLOW/RESEARCH ASSOCIATE position is available to characterize certain novel protein kinases and phosphatases involved in the signal transduction mechanisms of phagocytic leukocytes. Applicants should have a strong background in enzymology and protein purification (e.g., high performance liquid chromatography). Salary is negotiable. Send curriculum vitae and the names of two references to: **Dr. J.A. Badwey, Boston Biomedical Research Institute, 20 Staniford Street, Boston, MA 02114.**

Affirmative Action/Equal Opportunity Employer.

JOHN J. AND ANNA H. GALLAGHER FELLOWSHIP. The Academy of Natural Sciences of Philadelphia is pleased to offer a postdoctoral fellowship for research on the systematics of rotifers or other microscopic invertebrates. Position is open until filled; successful candidate may begin as early as fall 1993. Send curriculum vitae, statement of research interests, description of project to be completed during fellowship period, and names of three references to: **Chairman, Gallagher Fellowship Committee, Academy of Natural Sciences, 1900 Benjamin Franklin Parkway, Philadelphia, PA 19103-1195.**

POSTDOCTORAL FELLOW—Postdoctoral fellowship in Leukemia research supported by the Florence A. Carter fund. The research will be performed in the laboratory of Dr. George Atweh at the Mount Sinai School of Medicine with opportunities for close interaction with other laboratories at the institution that study the molecular basis of leukemia. M.D. or Ph.D. required. Experience in molecular biology is preferred. Send curriculum vitae with names and telephone numbers of 3 references to: **Dr. George F. Atweh, Division of Hematology, Box 1079, Mount Sinai School of Medicine, One Gustave L. Levy Place, New York, NY 10029-6574.** *An Equal Opportunity Employer.*

POSTDOCTORAL FELLOWSHIP—Division of Endocrinology/Metabolism, Department of Medicine. The Mount Sinai School of Medicine seeks Fellow to join studies on the molecular biology of the TSH receptor. Salary negotiable. This is an NIH-funded position: *Under the criteria for this NIH-supported grant, only U.S. citizens, nationals or permanent residents are eligible to be hired for this position.* Send curriculum vitae to: **Dr. Terry F. Davies, Mount Sinai School of Medicine, Box 1055, New York, NY 10029-6574.** *Equal Opportunity Employer.*

POSTDOCTORAL RESEARCH ASSOCIATE position is available in the Division of Neurology at the University of Nebraska Medical Center to study vision in neurodegenerative disorders. Quantitative psychophysics and applied statistics background is needed. Please send curriculum vitae, a summary of your research accomplishments and three references to: **Dr. Ivan Bodis-Wollner, Neurology-UNMC, 600 South 42 Street, Omaha, NE 68198-2045.** *Equal Opportunity/Affirmative Action Employer.*

POSITIONS OPEN

RESEARCH ASSOCIATE—NEUROPHYSIOLOGY/NEUROPHARMACOLOGY. The Neuroscience Research Program in the Loeb Research Institute at the Ottawa Civic Hospital and University of Ottawa is seeking a Research Associate holding a Ph.D. and/or M.D. degree to identify and study neurotransmitter and peptide receptors, ligand- and voltage-activated channels, ion channels and second messenger mechanisms in mammalian CNS neurons involved in hydromineral balance, cardiovascular and autonomic nervous function. Requirements are: minimum of 5 postdoctorate years of experience in an internationally recognized lab; experience with brain slice and explant preparations, tissue culture, dissociated cells and oocyte expression system; demonstrated ability and productivity (lead authorship on peer-reviewed publications) in *in vitro* intracellular current, voltage and patch clamp recordings and data analysis. Position requires teaching and lab supervision. Salary and benefits commensurate with experience. *In accordance with Canadian immigration regulations, this advertisement is directed first, but not solely, to Canadian citizens and permanent residents.*

Please forward curriculum vitae with names of 3 references and a statement of goals/interests/experience by September 30, 1993, to: **Dr. Leo Renaud, Director, Neurology/Neurosciences, Ottawa Civic Hospital and Loeb Research Institute, 1053 Carling Avenue, Ottawa, Ontario, CANADA K1Y 4E9.**

RESEARCH ASSOCIATE position available. Candidates should have a Ph.D. degree, at least 5 years of postdoctoral experience, research experience in the area of calcium and ATP-sensitive potassium channels in smooth muscle cells from urinary bladder and arteries, using the whole cell and single channel patch clamp technique. Applications should include curriculum vitae, descriptions of research interests, names of three references to whom the committee may write, and three relevant publications, and be sent to: **Dr. M.T. Nelson, Department of Pharmacology, University of Vermont, 55A South Park Drive, Colchester, VT 05446** by July 12, 1993. *The University of Vermont is an Equal Opportunity/Affirmative Action Employer. Women and people from diverse racial, ethnic and cultural backgrounds are encouraged to apply.*

RESEARCH ASSOCIATE—Design and perform experiments; analyze and interpret data; present data in written peer-reviewed publications and at national meetings; serve as a resource person for graduate students and technical personnel; assist principal investigator in overseeing functioning of laboratory operations; apply for and obtain extramural funding. Requires Ph.D. in Biochemical Sciences with one year of postdoctoral training in biochemistry, including research experience with proteoglycan and growth factor interactions. Candidate should also have experience in cell cycle control, especially with respect to divalent cations. 9:00 a.m. to 5:00 p.m., 40 hours per week. Salary \$30,462 per year. Contact: **Sandra T. Starnes, Alabama State Employment Service, 3440 Third Avenue South, Birmingham, AL 35222.** RE: Job Order #4074166.

MOLECULAR ENDOCRINOLOGY

Positions are now available for **JUNIOR SCIENTISTS (2), POSTDOCTORAL FELLOWS (2), and RESEARCH ASSISTANTS (2)**, at a state-of-the-art Molecular Endocrinology Laboratory. The laboratory, which already has a large international staff, is part of the King Faisal Specialist Hospital and Research Centre, the premier medical and research facility in the Middle East. The laboratory is currently engaged in the following areas: (1) Structure/function relationship of the TSH receptor; (2) Regulation of the TSH receptor gene; (3) Molecular basis of human thyroid cancer; (4) Polymorphism and regulation of Major Histocompatibility Complex Class II genes. Applicants for the Junior Scientist positions should have a Ph.D. in Molecular Biology or Biochemistry with at least 4 years of experience, while 2 years of experience would be sufficient for applicants for the postdoctoral positions. A B.Sc. or graduation from a technical school and at least 4 years of experience are requisites for the Research Assistant positions. Compensation and fringe benefits are exceptional. Send curriculum vitae and the names, telephone, and FAX numbers of three references to: **Nadir R. Farid, MBBS, FRCP, FRCP(C), FACP, Professor & Chairman, Department of Medicine, King Faisal Specialist Hospital & Research Centre, Riyadh 11211, Saudi Arabia.** FAX: 966-1-442-7499.

MILES 

Pharmaceutical
Division

Miles Inc., Pharmaceutical Division, has an immediate career opportunity for a motivated professional in our Research Support department.

ASSOC. RESEARCH SCIENTIST

In this position, you will study the molecular mechanisms leading to the neuropathology observed in age related dementia. The research will involve mainly molecular cloning techniques such as site-directed mutagenesis, DNA sequencing, DNA (cDNA and genomic) and RNA analysis, PCR/RT-PCR, and extensive tissue culture work (transfections), and protein analysis (Western analysis, immunoprecipitations). Additional technical Cell Biology experience not previously mentioned would be helpful.

A BS or MS degree in Cell Biology or Molecular Biology and at least 4 years of successful research experience are required. In addition to the necessary technical skills, you should bring a strong commitment and team spirit into the work environment.

We offer attractive compensation and generous benefits. Resumes, including salary history, should be forwarded in confidence to: **Miles Inc., Pharmaceutical Division, Dept. ELGK, 400 Morgan Lane, West Haven, CT 06516.**

An Equal Opportunity Employer M/F/D/V

IMMUNOLOGIST/VIROLOGIST

Ph.D. or M.D. needed with experience in murine retrovirology, immunology, lymphomagenesis and genetics and with knowledge of T and B cell development and effector cell function. Experience in preparation and quantitation of MuLV stocks, infectious center tests, Fv-1 typing, lymphoid cell separation, flow cytometry and transgenic mice required.

Salary range \$28,000 - \$36,000 will be commensurate with experience.

Qualified and interested candidates should send curriculum vitae and names and addresses of three references to:

**Herbert C. Morse, III, M.D., Chief
Laboratory of Immunopathology
National Institutes of Health, NIAID
Building 7, Room 302
9000 Rockville Pike
Bethesda, MD 20892
301-496-6379
301-402-0077 fax**



NIH is an Equal Opportunity Employer

RECRUITMENT ADVERTISERS

SAVE 25%

Running your recruitment ad once may not be enough. Place the same ad again within the next eight issues and get 25% off your second insertion.

- Get more attention
- Get more value
- Get more résumés

Reach the global scientific community you need to maximize your recruitment efforts. **SCIENCE** does it bigger, better and at greater savings for you.

Call, write, or fax:
SCIENCE Classified Advertising
1333 H Street, N.W.
Washington, D.C. 20005
Phone: 202-326-6541/6555
Fax: 202-682-0816

ENVIRONMENTAL CHEMIST

RENO, NV

Perform diagnostic work & methods development, air quality data analysis & receptor modeling, & data processing & validation; revise standard operating procedures; execute QA/QC procedures; assist in report & proposal preparation; set-up & maintain lab equipment for sample analyses; data base management; consult with sponsors. Reqs: M.S. in Chemistry or Environmental Engineering/Science, minimum 5 years' experience in laboratory chemistry activities, & familiarity with LANtansic, Excel, Harvard Graphics, & FoxPro or XBase data base management software. Experience in operating, maintaining, & calibrating laboratory instruments such as microelectronic balance, digital balance, densitometer, atomic absorption spectrophotometer, thermal/optical combustion carbon analyzer, ion chromatograph, gas chromatograph, automated colorimeter, & X-ray fluorescence analyzer, is desirable. Position is in Reno, NV. Filing opens 6/7/93 and continues until position is filled.

Submit résumé & letter of interest to:
Recruitment Office, Desert Research Institute, University & Community College System of Nevada, P.O. Box 19040, Las Vegas, NV 89132-0040.

The Desert Research Institute is an Affirmative Action/Equal Opportunity Employer and employs only U.S. citizens and persons authorized to work in the U.S.

PUBLIC AUTHORITY FOR APPLIED EDUCATION & TRAINING STATE OF KUWAIT

The Public Authority for Applied Education and Training (PAAET) invites applications for faculty positions at 2-year post-secondary colleges in Kuwait for the 1993-94 academic year. The degree ranks and specializations are indicated for each position.

College of Technological Studies Applied Sciences Technology

1. Ph.D. degree with at least 3 years of experience.
Specializations: Organic Chemistry; Biochemistry; Analytical Chemistry; Inorganic Chemistry
2. Ph.D. with at least 5 years of experience.
Specialization: Lights & optics
3. M.S. degree with at least 5 years of experience.
Specializations: Optics; X-Ray
4. B.S. degree with at least 5 years of experience.
Specialization: Chemistry

* * *

Qualified applicants should write directly for applications and conditions of service to:

PAAET Cultural Division
Embassy of the State of Kuwait
3500 International Dr. NW
Washington, DC 20008

POSITIONS OPEN

Ph.D. MICROBIOLOGIST

Dedicated researcher with industrial experience is sought to work for a small company on development, production and applications of biotechnologies for bioremediation. Candidate should have experience in fermentation, biodegradation and use of Macintosh. Speaking knowledge of Spanish and/or French is beneficial. Salary \$35,000 to \$50,000 CDN. Send curriculum vitae, a letter describing career goals and their relation to offered position and names and telephone numbers of three references to: **Aquaresearch Ltd, P.O. Box 208, North Harley, Quebec, Canada J0B 2C0.**

BIOCHEMIST needed to develop and implement antigen and antibody detection assays for HTLV (human T Cell lymphotropic virus) and other human pathogens. Candidate should have extensive experience in standard biochemical techniques including immunoblotting and radioimmuno-precipitation. Knowledge of monoclonal antibody purification, immunoconjugation, affinity chromatography and familiarity with HPLC systems will be very desirable. This individual will be expected to grow and maintain HTLV and other virus infected cell lines. Applicants need to have a Ph.D. in Biochemistry. Please forward curriculum vitae and three references to: **Dr. Steven Foug, Stanford University Blood Center, 800 Welch Road, Palo Alto, CA 94304. Stanford University is an Equal Opportunity/Affirmative Action Employer and Educator.**

ENGINEER, CIVIL (Geotechnical): Provide geotechnical services related to stabilization of groundwater contamination, hazardous waste management, ground water modeling, and wastewater collection and treatment. Perform soil investigation, design and analysis of landfills for waste material, tunneling in soft clay and rock, underground storage tanks, and earth dams. Monitor system design on all geotechnical-related work. Design slurry walls, grouting, and ground improvement of soft clay. Perform evaluation of strain softening behavior of clay using automated plane strain compression data acquisition testing system. Ph.D. in Geotechnical Engineering required. Academic background in soil mechanics, soil dynamics, engineering properties of soil, rock mechanics, finite element analysis, matrix analysis, experimental stress analysis, soil science for land disposal of waste, and air photo interpretation required. Academic background in strain softening behavior of clay and utilization of automated plane strain compression testing of clay required. Academic background in behavior of dissolved organic contaminants in ground water required. Academic background in automated testing and data acquisition devices and related programming skills utilizing BASIC and FORTRAN required. 40 hours per week. \$49,650 per year. *Must have proof of legal authority to work permanently in the United States.* Send two (2) copies of résumé to: **Illinois Department of Employment Security, 401 South State Street-3 South, Chicago, IL 60605; Attn: Pete Kula, Reference number V-IL 6384-K. No calls. An employer paid ad.**

NEUROGERONTOLOGY INSTITUTIONAL PHYSICIAN/SCIENTIST PROGRAM

The University of Southern California has recently received an award from the National Institute on Aging for a Physician/Scientist Program for the development of basic and clinical research skills for the study of diseases related to the aging nervous system. This is a five-year salary award with appointments in the Department of Neurology of the School of Medicine and in the School of Gerontology. *Candidate must be a U.S. Citizen or have permanent U.S. Resident status and be board eligible in neurology, psychiatry, neuropathology, or internal medicine.* The first two to three years are spent in basic research at the Andrus Gerontology Center or the Hedco Neuroscience Neural Information and Behavioral Science Program. During the third year, the candidate joins the Department of Neurology as Assistant Professor (tenure-track). He or she continues clinical training in neurogerontology and develops individual research program. Clinical responsibilities are limited to 25% of time and include teaching students, residents, and fellows in neurogerontology.

This position is open immediately. To apply send curriculum vitae and three letters of recommendation to: **Leslie P. Weiner, M.D., Department of Neurology, USC School of Medicine, 1510 San Pablo Street, Los Angeles, CA 90033-4606, and arrange for two days of interviews. For further information, call: 213/342-5793.**

POSITIONS OPEN

MOLECULAR BIOLOGIST. The Department of Hematology/Oncology at Brookdale Hospital, SUNY Science Center at Brooklyn, invites application for a Research Scientist position to join the ongoing research in myelofibrosis. The candidate must have a Ph.D. with experience in molecular biology. Excellent salary. Academic faculty appointment available. Please send curriculum vitae and names of three references to: **Jen C. Wang, M.D., Department of Hematology/Oncology, Brookdale Hospital Medical Center, Linden Boulevard at Brookdale Plaza, Brooklyn, NY 11212. Telephone: (718) 240-5807. Equal Opportunity Employer.**

RESEARCH SCIENTIST

The Center for Remote Sensing and Mapping Science (CRMS) is seeking qualified candidates for an **ASSISTANT/ASSOCIATE RESEARCH SCIENTIST** position. A Ph.D. in ecology is required, with a minimum of two years of experience in remote sensing and GIS for wetlands vegetation studies. Demonstrated skill with ARC/INFO, DMS and ERDAS software will be required. Successful applicant will be expected to generate external funds. Send curriculum vitae and names of four references to: **Dr. Roy Welch, Director, CRMS, Department of Geography, The University of Georgia, Athens, GA 30602-2503, by July 16, 1993. The University of Georgia is an Equal Opportunity Employer.**

NEUROLOGIST/DEVELOPMENTAL NEUROBIOLOGIST sought by Columbia University, Department of Neurology, to develop basic research program in cortical development and developmental abnormalities related to epilepsy. Applicants must have M.D. degree (some clinical work required) and track record of accomplishment in developmental neurobiology. Preference given to candidates with current grant support. Position is tenure-track with academic rank depending upon qualifications and experience. Send applications to: **Dr. Timothy A. Pedley, Director, Columbia Comprehensive Epilepsy Center, The Neurological Institute, 710 West 168th Street, New York, NY 10032. Columbia University is an Equal Opportunity/Affirmative Action Employer.**

ENTOMOLOGY, Texas A&M University Agricultural Research and Extension Center at Weslaco, Texas, a part of the Texas A&M University System invites applications for full-time **RESEARCH SCIENTIST** (Insect Pathologist). Primary duties and responsibilities in studies of basic host and pathogen biology, ecology, epizootiology and integrated pest management. Will act as a liaison for the development of cooperative interactions with biological control scientists in Europe, particularly in Russia. This effort will be linked to cooperative efforts with the USDA-APHIS and USDA-ARS Subtropical Agricultural Research Laboratory. Ph.D. in Entomology with a strong background in fungal pathogens of insects. Ability to write, speak and/or translate scientific and other documents in Russian, French, German and Spanish effectively, providing oral translations in bilateral meetings. Starting date will be July 1, 1993, or when a suitable candidate is identified. Applicants should submit letter of application with curriculum vitae (including transcripts and selected reprints) and request three letters of reference be sent to: **Dr. Jose M. Amador, Center Director, Texas Agricultural Experiment Station, 2415 East Highway 83, Weslaco, TX 78596. The Texas A&M University is an Affirmative Action/Equal Opportunity Employer.**

RESEARCH SCIENTIST: The Division of Orthopaedics at Ohio State University has an academic position available for a Research Scientist. Job responsibilities include developing and maintaining a Bone Biology and Biomechanics Laboratory; designing, developing and maintaining research projects in the Division of Orthopaedics; and instructing and lecturing residents and graduate students. Candidates must have at least a doctoral degree in the appropriate fields of Biology, Physiology or Biomedical Engineering with application to Orthopaedic research. Candidates should have a strong background in histology, histomorphometry, electron microscopy, X-ray diffraction, material testing and experience with computer systems. Salary is commensurate with experience. Send curriculum vitae to: **Sheldon R. Simon, M.D., Chief, Division of Orthopaedics, Ohio State University, 410 West Tenth Avenue, Columbus, OH 43210. The Ohio State University is an Equal Opportunity/Affirmative Action Employer. Qualified women, minorities, Vietnam-era veterans, disabled veterans and the disabled are encouraged to apply.**

POSITIONS OPEN

LEGISLATIVE REPRESENTATIVE

National Wildlife Federation (NWF) seeks an individual to serve as the principal liaison between NWF and outside organizations concerning legislative activities relating to fish and wildlife resource protection and conservation with particular emphasis on issues involving salmonid and marine species. Position requires advanced degrees in fisheries science/management; previous legislative experience on fisheries management and conservation issues at national level, demonstrated experience working with activists at the grassroots level, and media experience preferred; must be able to communicate effectively. Salary range upper \$30,000's to low \$40,000's. Submit résumé to: **NATIONAL WILDLIFE FEDERATION; Department #2325; 1400 16th Street, NW, Washington, DC 20036-2266. AN EQUAL OPPORTUNITY EMPLOYER.**

WETLANDS ECOLOGIST

Position available immediately for a Wetlands Ecologist. Applicant must have a Ph.D. in ecology or related field. Expertise in wetland soils, plant-soil interactions, or ecology of wetlands required. Experience with coastal wetlands and impoundments is desirable. Candidate will be involved in developing a program in wetlands mitigation, monitoring, and applied research. Some participation in environmental assessments and jurisdictional determinations will be required. Writing ability, data analysis skills, and ability to work with an interdisciplinary team are essential. Send résumé by July 19, 1993, to: **Personnel (WE), The Bionetics Corporation, Mail Code BIO-1, Kennedy Space Center, FL 32899. Equal Opportunity Employer, M/F/V/H.**

RESEARCH SCIENTIST, to utilize transgenic technology to create new strains of mice for obesity research. Minimum requirements are a Master's degree or equivalent in molecular biology with 2 years of experience, or Ph.D. Demonstrated competence in genomic cloning and vector construction, culture and manipulation of murine embryonic stem cells, and oocyte and blastocyst microinjection. Salary \$32,000 annually. Send résumé to: **Ms. Marie Vrabel, Division Administrator, Division of Endocrinology, Beth Israel Hospital, 330 Brookline Avenue, Boston, MA 02215. Affirmative Action/Equal Opportunity Employer.**

WETLAND ECOLOGIST

ENTRIX, Inc., a nationwide environmental consulting firm, is looking for a wetland ecologist for its professional technical staff in its Wilmington, Delaware, office. Candidates should have a Ph.D. in ecology, biology, or botany with research experience in wetland systems. Candidates should have some knowledge of state and federal regulations as they apply to wetland systems (Clean Water Act, Rivers and Harbors Act) and the Endangered Species Act as well as procedures currently being used to determine Corps of Engineers jurisdiction under Section 404 of the Clean Water Act. The candidate also should be familiar with wetland restoration planning. Duties will include project management, marketing, and planning and implementing studies of wetland systems for a variety of activities, including spills of oil and other hazardous or toxic materials, development, and superfund site remediation and restoration. Candidates should have good speaking and writing skills. Résumés and a list of at least three references should be submitted to: **Office Manager, ENTRIX, Inc., 200 Bellevue Parkway, Suite 200, Wilmington, DE 19809.**

ENTRIX, Inc. is an Equal Opportunity Employer.

STAFF SCIENTIST, TRANSGENIC MOUSE FACILITY Fred Hutchinson Cancer Research Center

Applications are invited for a service-oriented staff scientist position to run a transgenic mouse facility. This individual will use gene targeting in ES cells to derive mutations of genes implicated in development. Additional work will involve *in situ* hybridization examining expression patterns of targeted genes, as well as generating mouse strains by pronuclear injection of DNA. Prior experience with mouse embryos and tissue culture is desirable. Send curriculum vitae, statement of research interests, and salary expectations to: **Barbara Johnston, D.V.M., FHCRC, 1124 Columbia Street, Seattle, WA 98104. Affirmative Action/Equal Opportunity Employer.**



**Pierre
Fabre**

CHIEF OF MEDICINAL CHEMISTRY LABORATORY

The Centre de Recherche Pierre Fabre, located in the south of France (Castres), currently has a position available as chief of a Medicinal Chemistry Laboratory. The Research Center is aimed at the discovery of clinically efficacious drugs for the treatment of cardiovascular disease, cancer and central nervous disorders.

A senior scientist is sought who will report directly to the Director of Research and will head a laboratory of Medicinal Chemistry constituted of staff researchers and technicians. The position requires collaborating with an internationally diverse group of researchers in the definition and coordination of research projects. Applicants should have a training in organic chemistry at the Ph.D. level and at least five years of post-doctoral experience, including drug discovery research in the pharmaceutical industry.

**Pharmaceutical
Company**
(5 300 staff
annual turnover
5 Billion FF)

Please send your CV, list of publications and coordinates of three referees under ref. G 396/S to **PIERRE FABRE S.A.** Recrutement Cadres - 11, rue Thérion Périé - 81106 CASTRES CEDEX - FRANCE

MEDIA PA

Upjohn

Research Associate

Upjohn Laboratories seeks a highly motivated individual to conduct experiments utilizing immunohistostaining and other specialized histostaining techniques.

The successful candidate will be responsible for conducting in vitro and in vivo preclinical studies which involves immunohistostaining for products and collaborative research, utilizing immunohistology and other staining procedures to identify biological products, receptors, cell subtypes, or specific molecules in tissues from experimental animal models. You should be accustomed to working independently, have excellent record keeping and communication skills, and be able to assist in preparing internal reports and extramural manuscripts. Applicants should possess a BS/MS degree and have 3-4 years experience in immunohistochemistry or in situ hybridization. Particular consideration will be given to candidates with previous experience in preclinical drug development or toxicology. Academic or industrial experience illustrating additional skills in immunology or molecular biology are desirable.

Upjohn Laboratories' state-of-the-art Drug Safety Research facility is located in scenic Kalamazoo, Michigan, halfway between Chicago and Detroit. Upjohn offers a promotion system that recognizes performance, experience and training, and a compensation program that rewards high-caliber employees through merit and cost-of-living increases. Benefits include medical, dental and life insurance coverage, paid vacation and holidays, and matching stock contributions. Interested applicants should send their resume to: **The Upjohn Company, Attn: Corporate Recruiting, Position Code #167, 7000 Portage Road, Kalamazoo, MI 49001.** An Equal Opportunity Employer.

Environmental Sciences

Located in Las Vegas, Nevada, the Environmental Sciences Department of EG&G Energy Measurements assesses, monitors, and mitigates impacts of U.S. Department of Energy sponsored activities on biological resources at the Nevada Test Site.

We are seeking MS or PhD degreed candidates with expertise in animal ecology, population dynamics, plant or range ecology, and plant-soil-water relationships. Advanced knowledge of arid-land reclamation methods/research or animal/plant ecology, and strong management and quantitative skills are also necessary.

Senior Reclamation Scientist

This position supervises field crews while conducting established reclamation studies, developing new studies, and preparing and reviewing budgets, progress and technical reports. Will also maintain and develop contacts to help expand the reclamation research program.

Animal Ecologist

This position coordinates, assists and analyzes studies of small mammal and reptile populations using mark-recapture methods as well as radionuclide levels in plant and animal species.

Plant Ecologist

This position coordinates, directs and analyzes studies of vegetation communities as well as reclamation of disturbed sites.

EG&G Energy Measurements, Inc. offers a competitive salary and benefits package. Please send resumes to: EG&G Energy Measurements, Inc., Attn: Alma Vela-Belmonte 11/93, P.O. Box 1912, M/S C1-21, Las Vegas, NV 89125.

Equal Opportunity Employer. U.S. Citizenship Required. Pre-employment physical examination, which includes a drug screen, is required.

 **EG&G
ENERGY MEASUREMENTS**

THE UNIVERSITY OF WESTERN AUSTRALIA, PERTH CHAIR IN ANATOMY AND HUMAN BIOLOGY

Applications are invited for appointment to a tenurable Chair in Anatomy and Human Biology within the Department of Anatomy and Human Biology, The University of Western Australia. This is the second Chair in the Department. The first is held by Professor Charles Oxnard whose research area is at the macroscopic, whole-organism level, with research programmes in functional anatomy, medical anatomy, biomechanics, image analysis and evolutionary biology. It is envisaged that the appointee to the second Chair will complement Professor Oxnard's research. His/her scientific and scholarly interests will be at the microscopic and cellular levels with investigative programmes in any one or more of the other areas of the Department.

The Department of Anatomy and Human Biology has a very broad base and encompasses in its teaching and research the areas of cellular and tissue biology, developmental biology, neurobiology, reproductive biology, functional anatomy, biomechanics and image analysis, evolutionary biology and biological anthropology. In addition to the facilities for the whole organism studies, the Department's facilities for investigations at the cellular, tissue and microscopic levels include those for tissue culture, radioimmunoassay, stereological and image analysis, paraffin and resin histology, immunohistochemistry and ultramicrotomy. The Department has two transmission electron microscopes and there is an excellent University facility that contains scanning electron microscopes. Confocal microscopy will become available in the University in the near future.

The appointee will be expected to provide strong academic leadership, to be involved in a range of courses for undergraduate students in the Faculties of Medicine and Science, to supervise postgraduate research students and to develop a strong research laboratory team. It is essential that the appointee has interests in the development of the entire Department and a willingness to assume the Headship of the Department on a rotating basis with other senior academics in the Department.

An appropriate clinical loading will be available to a medically or dentally qualified appointee. Remuneration will be based on the professorial salary of A\$77,900 per annum. Benefits include generous superannuation, study leave with travel assistance after three years, long service leave, fares to Perth for the appointee and dependents and an allowance towards removal expenses. Further information concerning selection criteria and conditions of appointment should be obtained from Personnel Services, telephone +61 9 3803009 or confidential facsimile +61 9 3801036. Further information concerning the position and the Department of Anatomy and Human Biology may be obtained from Professor C. Oxnard, telephone +61 9 3803298, facsimile +61 9 3801051.

Applications, addressing the selection criteria, and stating full personal particulars (including work and home addresses, telephone and facsimile numbers), qualifications and experience should reach the Director, Human Resources, The University of Western Australia, Nedlands, (Perth) Western Australia 6009 by 13 August 1993. Applications may be sent by Facsimile +61 9 3801036 or by email to hspittle@acs.uwa.edu.au, but must be followed by a hard copy. The names, addresses and facsimile numbers of three referees should also be included with the application.

The University reserves the right to make no appointment or to fill the position by invitation.

The University is an equal opportunity employer and promotes a



RESEARCH SCIENTIST

A position in computational chemistry/molecular modeling is available in the structural chemistry group at the Miles Research Center. With close ties to medicinal chemistry, the structural chemistry group is an integrated, multidisciplinary effort that includes NMR, X-ray crystallography, computational chemistry and mass spectrometry.

Candidates should have:

- a Ph.D. and 0-3 years of postgraduate experience with applications of computational chemistry/molecular modeling to drug design.
- a strong background in chemical and mathematical principles required in computation.
- knowledge in the use of molecular mechanics and quantum mechanics software programs.
- skills in graphics and programming.
- knowledge in organic synthesis.

We seek an individual who is highly motivated, independent and able to interact effectively with other scientific disciplines including structural, medicinal chemistry and molecular biology.

We offer attractive compensation and generous health, medical, and relocation benefits. Resumes, including salary history and objectives, should be forwarded in confidence to: **Miles Inc., Pharmaceutical Division, Dept. AART, 400 Morgan Lane, West Haven, CT 06516.**

An Equal Opportunity Employer M/F/D/V

The Numbers Speak for Themselves.

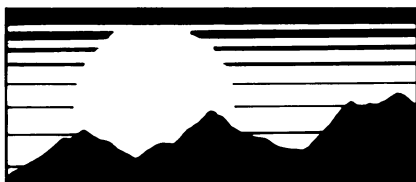
Look at the audited paid circulation
of these two publications:

| | |
|-------------------------------------|--|
| 154,842 51,306 | Science* Nature** |
|-------------------------------------|--|

SCIENCE, the global weekly of research.

For more information, contact:
Janis Crowley, 212-496-7704 (U.S.)
In Europe, contact
Annemarie Vis, +44 223 302 067

* December 1992 ABC Publisher's Statement
 ** December 1992 BPA Publisher's Statement



Preserving Orange County's Coastal Ocean Waters

The Orange County Sanitation Districts is the third largest wastewater treatment agency on the West Coast and a leader in its field. We currently have an excellent opportunity for a:

Compliance Supervisor

As the selected candidate, you will plan, assign and administer activities related to the Sanitation Districts' marine NPDES monitoring program. You will review program results, check for compliance with all regulations, coordinate contract production of annual reports as well as in-house reports and publications resulting from marine studies. Responsibilities include specifying and hiring outside contractors as necessary, and meeting with government regulators, contractors, and the scientific community to discuss, review and evaluate the Districts' marine programs.

A bachelor's degree in natural science is required, with an advanced degree in a marine field preferred. A background in math/statistics will be especially useful. Successful candidate will have strong skills in writing and editing scientific documents, computerized data analysis, the ability to communicate with staff and contractors, and at least four years of progressively responsible experience in administering marine monitoring/research programs, including supervision of staff and/or contract studies (advanced degree may substitute for one or two years of experience).

Our outstanding benefits include:

- \$4480 - \$6190/month
- full range of health benefits
- 12 paid holidays
- sick leave
- retirement plan
- optional matching deferred compensation plan
- 3-day weekend every other week

Please submit a completed employment application (do not send resume only) to: **ORANGE COUNTY SANITATION DISTRICTS, Personnel Office, 10844 Ellis Avenue, Fountain Valley, CA 92708-7018. FAX: (714) 962-0427.** To receive an application or further information, call (714) 962-2411, ext. 4000. Equal Opportunity Employer.

Postdoctoral Position Molecular Neurobiology Neural Plasticity

Amgen Inc., a leader in the biotechnology industry and located in Thousand Oaks, CA, has an immediate opportunity for a Postdoctoral Fellow. Candidate will study the function of novel gene products transcriptionally induced in hippocampal neurons in response to activation of NMDA and/or non-NMDA receptors. Expertise in Molecular Biology is essential. Neurobiology, Developmental Biology or transgenic animals experience is desirable.

At Amgen, our employees are provided the freedom to manage their projects, regulate the quality of work and make decisions to further company goals. We back this freedom with a highly competitive compensation and outstanding benefits package that reflects the level of our commitment. Qualified candidates should submit curriculum vitae for confidential consideration, to: **Amgen Inc., Staffing, Job Code OA-SC-LT-006, Amgen Center, Thousand Oaks, CA 91320-1789.** We are an Equal Opportunity Employer M/F/D/V.

AMGEN®

RESEARCH SCIENTIST

Cell/Tumor Biologist or Biochemist

Optimedx, Inc., a new Seattle medical instrumentation company, has a challenging opportunity for a scientist to support our expanding research and development.

The ideal candidate will have a Ph.D. in cell or tumor biology or biochemistry and from 2 to 4 years' postdoctoral related research. Experience in industry, computer literacy, regulatory experience, excellent communication skills and knowledge of a wide variety of laboratory techniques, including animal models, are desirable.

Responsibilities include establishing in-house facilities and managing outside collaborations aimed at understanding the mechanisms underlying a new tumor-imaging modality. The candidate will have to communicate with and provide advice to an interdisciplinary team consisting of physicians, engineers and scientists.

Interested candidates should submit a c.v. to: President, Optimedx, Inc., 2151 North Northlake Way, Suite 200, Seattle, WA 98103.

OPTIMEDx, INC.

An Equal Opportunity Employer M/F

Postdoctoral Fellowship

In Vivo Magnetic Resonance Spectroscopy (MRS)

A two year fellowship is available at the McLean Brain Imaging Center to perform multinuclear MRS studies (1H/31P) of patients with major depression. Candidates must have completed a Ph.D. with an emphasis on the use of nuclear magnetic resonance spectroscopy. Previous experience with in vivo MRS and good interpersonal skills are helpful. The Brain Imaging Center houses a 1.5 T GE Signa scanner with a multinuclear MRS capability and an Advanced NMR Systems echo planar coil. Ample machine time will be provided for human MRS studies and opportunities exist for the use of high resolution and animal MR systems located at nearby institutions.

McLean Hospital is a Harvard-affiliated private psychiatric hospital located eight miles from Boston in Belmont, MA and is an equal opportunity employer. Please send letter of interest, CV, and the names of three references to Perry F. Renshaw, M.D., Ph.D., Research Director, McLean Brain Imaging Center, 115 Mill Street, Belmont, MA 02178.



For the Good of Mind, Body and *Spirit*
THE MGH HEALTH AFFILIATES

Post-Doctoral Fellow

Hematopoiesis Section, Stem Cell Biology Program

The Immunocytometry Systems Division of Becton Dickinson, a medical products technology company, develops and markets sophisticated flow cytometry instruments and reagent systems used for cell analysis.

Join an energetic group of investigators at the forefront of research in hematopoiesis. We have recently identified a single common progenitor cell in human fetal bone marrow that gives rise to cells of both the hematopoietic and stromal cell lineages¹. We are developing animal model systems in which to study the biology of this "common stem cell" and invite your application for a position as a Post-Doctoral Fellow in our laboratory. We offer the opportunity to investigate the biology of stem cells in an exciting atmosphere for basic research in Hematology and Immunology. We are supported by the latest Becton Dickinson technology for studying and isolating hematopoietic cells.

We are looking for a recent PhD or MD/PhD graduate who is highly motivated, and preferably experienced in animal model systems of hematopoiesis. Send curriculum vitae, selected papers, and three recommendations to: Ned Waller, MD, PhD, Senior Research Fellow, Hematopoiesis Section, Stem Cell Biology Program, Becton Dickinson Immunocytometry Systems, 2350 Qume Drive, San Jose, CA 95131-1807.

¹ Huang, S. and Terstappen, L. WMM (1992) Formation of haematopoietic microenvironment and haematopoietic stem cells from single human bone marrow stem cells; *Nature* 360: 745-749.

Becton Dickinson is an Equal Opportunity Employer Committed to Workforce Diversity.

**BECTON
DICKINSON**

Career Opportunities at BioSource International

TAGIMMUNOLOGICALS™



**BIO SOURCE
INTERNATIONAL**

BioSource International is a leader in the development, distribution and marketing of immunological reagents to the research community. Take advantage of these exciting opportunities to join us in building a manufacturing and distribution network in immunology and cell biology research products. We supply pharmaceutical and academic scientists with cytokines, CD antibodies, secondary antibodies, flow cytometry kits, and ELISA kits. We are seeking exceptional individuals for the following positions.

Protein Purification:

An individual with a BS or MS in biochemistry or a related field with a minimum of two years of direct experience in protein purification. Experience in all aspects of antibody purification including HPLC, affinity and ion-exchange chromatography and SDS-PAGE is required for this position. The duties involve the routine preparation and purification of all polyclonal and monoclonal antibodies as well as developing new purification protocols.

Product Manager:

A Ph.D. Immunologist/Cell Biologist with at least one year of post-doctoral experience to assume planning, forecasting, advertising, and sales support for our cytokine and flow cytometry product lines. The individual we are looking for must be extremely organized and have proven ELISA and flow cytometry experience. No previous sales or marketing experience required, but an outgoing sales oriented personality is a must. This position will entail 20% domestic and international travel.

Manager of Manufacturing:

A manufacturing professional with a BS plus 8-12 years manufacturing experience or an MS in immunology or related field plus 5-10 years manufacturing experience (preferably working with immunodiagnostics or therapeutics). A background in scheduling, troubleshooting, inventory control, costing, and technology transfer of a large number of related products in a GMP environment is required.

Manager of Quality Assurance:

An experienced QA professional with a minimum of 5 years experience in managing QA operations for a diagnostic biotech company. Must ensure compliance with GMPs, review and approve DHRs, develop systems that ensure efficient quality production, audit manufacturing operations, manage documentation system, optimize customer satisfaction tracking system, manage real time and retrospective stability programs, interface with the FDA and other outside agencies when filing licensing applications and during inspections of our facilities.

BioSource International Inc. offers a competitive salary, stock option plan, 401k plan, comprehensive Medical/Dental benefits, and a team oriented working environment. For immediate consideration, forward your resume to: BioSource International, P.O. Box 4463, 887 Mitten Rd., Burlingame, CA 94011 or FAX to (415) 692-9004.

DIRECTOR OF RESEARCH/CHAIR OF GRADUATE PROGRAM IN BOTANY

Rancho Santa Ana Botanic Garden (RSABG) requests nominations and applications for the position of Director of Research and Chair of the Graduate Program in Botany. This is a newly defined opportunity to lead RSABG's outstanding efforts in plant systematic research and graduate education in Botany.

RSABG is seeking candidates with established records of accomplishment to maintain our ongoing tradition of excellence in active research and graduate-level teaching.

RSABG's Executive Director and Board of Trustees have a strong commitment to evolutionary systematics, molecular systematics, structural botany, reproductive biology, as well as monographic and floristic studies, particularly of arid-region plants. RSABG has excellent research facilities, library and herbarium collections, living collections of California native plants, and strong community outreach.

Letters of application should include a curriculum vitae and preliminary references. Send these to Dr. Thomas S. Elias, Executive Director, Rancho Santa Ana Botanic Garden, 1500 N. College Ave., Claremont, CA 91711. Telephone 909-625-8767, FAX 909-626-7670. Evaluation will begin immediately and continue until the position is filled. RSABG is an affirmative action, equal opportunity employer and welcomes applications from qualified scientists of any race or gender.

SYMPOSIUM

A symposium will be held this year to honor the scientific career of George M. Hahn, Ph.D. The symposium is entitled:

HYPERTHERMIA: PAST EXPERIENCE AND FUTURE PROSPECTS

Thursday, September 30-Friday, October 1, 1993
The Garden Court Hotel
520 Cowper Street
PALO ALTO, California

Partial list of speakers:

Olivier Bensaud, Ph.D. (Ecole Normale Supérieure, Paris)
Stuart K. Calderwood, Ph.D. (Harvard University, Joint Center, Boston)
Robert W. Carlson, M.D. (Stanford University, Stanford)
Thomas C. Cetas, Ph.D. (University of Arizona Health Sciences Center, Tucson)
Mark W. Dewhirst, Ph.D., DVM (Duke University Medical Center, Durham)
Luis F. Fajardo, M.D. (Stanford University and VA Hospital, Palo Alto)
Stanley B. Field, Ph.D. (MRC Cyclotron Unit, Hammersmith Hospital, London)
Gloria C. Li, Ph.D. (Memorial Sloan-Kettering, New York)
Thaddeus V. Samulski, Ph.D. (Duke University Medical Center, Durham)
J. Robert Stewart, M.D. (University of Utah Medical Center, Salt Lake City)
John W. Strohbehn, Ph.D. (Thayer School of Engineering, Dartmouth College, Hanover)

For registration information or more details, call:

(415) 723-7363,
FAX (415) 723-7382, or write to:
Mr. David Betten
Department of Radiation Oncology
Cancer Biology Research Building
Stanford, California 94305-5468

MEETINGS

THE FOURTH KECK SYMPOSIUM ON COMPUTATIONAL BIOLOGY in Pittsburgh, October 24 and 25, 1993. Sponsored by the W.M. Keck Center for Advanced Training in Computational Biology, at the University of Pittsburgh, Carnegie Mellon University and Pittsburgh Supercomputing Center. **Invited speakers:** N. Allewell, C. Brooks, D. Brutlag, L. Cavalli-Sforza, A. Chakravarti, P. Green, L. Hood, W. Olson, J. Rosenberg, G. Stormo, D. L. Taylor, **plus open call for posters.** Contact: Lucille Jarzynka, W.M. Keck Center, University of Pittsburgh, 205 MIB, Pittsburgh, PA 15260. Telephone: 412-624-6978, or Email: jarzynka@cs.pitt.edu.

ANNOUNCEMENTS

TIRED OF LECTURING IN THE CLASSROOM?

The School for Field Studies offers professionals in the fields of Conservation Biology, Resource Management, Tropical/Wildlife Ecology, Applied Anthropology, International Development and Resource Economics the opportunity to make an impact on the lives of students. Field positions are 2-year contracts, residential and year-round. Faculty oversee 32 students, in semester and summer programs focusing on local environmental conservation and management issues. Case studies are utilized along with lecturing, field work and applied research. Positions available in the following locations: **COSTA RICA**—Center for Sustainable Development; **KENYA**—Center for Wildlife Management; **CARIBBEAN**—Center for Marine Resources; **BAJA, MEXICO**—Center for Marine Mammals; **AUSTRALIA**—Center for Rainforest Studies. All positions require: Ph.D. or equivalent, at least one year of experience in the region, demonstrated commitment to conservation, 2 years of teaching at the undergraduate level, applied research experience, and an ability to live in a remote field setting for extended periods of time. **TO APPLY:** Send curriculum vitae to: SFS/SS93, 16 Broadway, Beverly, MA 01915, or FAX: 508-927-5127.

FULBRIGHT POSTDOCTORAL PROGRAM IN ISRAEL

1994 GRANTS FOR U.S. POSTDOCTORAL SCHOLARS

The United States-Israel Educational Foundation (USIEF) offers Fulbright awards to postdoctoral scholars at Israeli institutions of higher learning. Awards are for ten months, renewable up to twenty-one months.

Applications in all disciplines accepted. Preference to scholars who have not previously studied or done research in Israel and to those who have completed their doctorate within two years prior to application.

Stipends in 1993 ranged from \$17,800 to \$63,300, depending on length of stay and number of dependents. Twenty-one month awards include additional round-trip ticket to the United States.

Application deadline: October 31. Apply to: **Institute of International Education (IIE) Study Abroad Programs**, 809 United Nations Plaza, New York, NY 10017-3580, Telephone: (212) 984-5327 or campus Fulbright advisors.

THE ERNA AND JAKOB MICHAEL VISITING PROFESSORSHIPS 1994/95

THE JOSEPH MEYERHOFF VISITING PROFESSORSHIPS 1994/95

THE ROSIE AND MAX VARON VISITING PROFESSORSHIPS 1994/95

The Weizmann Institute of Science, Rehovot, Israel, offers a limited number of Visiting Professorships in the Natural and Exact Sciences.

The Visiting Professorships are intended for candidates already holding the rank of Full Professor or equivalent and will be for a duration of two months to one year.

Deadline for submission of completed applications is November 30, 1993.

For further information or application forms, please contact: **The Academic Secretary, The Weizmann Institute of Science, Rehovot 76100, ISRAEL.** (Telex: 972-8-381300, Facsimile: 972-8-471667, Bitnet: RSMARJOR@WEIZMANN).

ANNOUNCEMENTS

POSTDOCTORAL TRAINING IN HUMAN BEHAVIORAL NEUROIMAGING

Postdoctoral training is offered in applications of advanced imaging techniques to human behavioral neuroscience. Synergistic application of multiple imaging methods is emphasized. Onsite techniques include positron-emission tomography, magnetic resonance imaging (functional and anatomical), *in vivo* localized magnetic resonance spectroscopy, and event-related potentials. Mapping structure-functional relationships in cerebral cortex is strongly emphasized.

Doctoral degree in neuroscience, psychology (experimental, neuro-, or cognitive), or medicine is required. Applicants with medical degrees must have residency training in neurology, neurosurgery, or psychiatry. Several 2-year training positions are available, to begin on or after January 1, 1994. Funding provided by the EJLB Foundation, the Mind Science Foundation, and the Human Frontier Science Program.

Apply to: **Peter T. Fox, M.D., Research Imaging Center, University of Texas Health Science Center at San Antonio, 7703 Floyd Curl Drive, San Antonio, TX 78284-6240.** An Equal Opportunity Employer.

COMPUTER MARKETPLACE

Free Video

See how this software builds bibliographies and organizes your references. PC or Mac.

1-800-554-3049

(510) 649-8176. Free offer good in U.S. only



Circle No. 20 on Readers' Service Card

MARKETPLACE

CUSTOM PEPTIDES milligrams to multigrams

\$25 per residue - 25 µmol scale

shipped in 10 days • Why pay more for less?



Quality Controlled Biochemicals, Inc.
(800) 435-2080 FAX: (508) 435-2199

Circle No. 23 on Readers' Service Card



ACRYLICS FOR SCIENCE AND MEDICINE

- TISSUE CULTURE PIPETTE RACKS
- MICROFUGE TUBE RACK
- RADIATION LABELING CHAMBER
- COMPUTER & PRINTER STANDS
- FREE CATALOG/GUARANTEED
- RADIATION SAFETY
- PIPETTE AID RACK
- DESSICATION STORAGE
- GLOVE BOX HOLDERS
- PIPETMAN RACKS

NSI LABORATORIES 1-800-255-4926
Quality acrylics at grant-stretching prices!

Circle No. 19 on Readers' Service Card

CUSTOM DNA SYNTHESIS

We use Applied Biosystems Synthesizers • Prices from \$2.50 per base plus setup

PAGE and HPLC Purification Available

The Midland Certified Reagent Company
800-247-8766 or FAX 915-694-2387

Circle No. 5 on Readers' Service Card

MARKETPLACE

Custom made
PEPTIDES
Around the **\$30.00** /residue
Shipped in 10 days
Your Source of Peptides
BIO-SYNTHESIS
1-800-227-0627 Fax: 214-420-0442

Circle No. 8 on Readers' Service Card

Signal Transduction EIAs

High Sensitivity, Non-Acetylated

cAMP \$345/192 TESTS

800-343-1346-617-497-2070

ADVANCED MAGNETICS, INC.

Circle No. 12 on Readers' Service Card

GROWTH MEDIA IN CAPSULES
FOR BACTERIA & YEAST
More than 100 Molecular Biology Formulations in Stock.
Request comprehensive price list. Custom formulations in 48 hours!
800-424-6101
FAX 619-598-0116 **8/10 101**

Circle No. 7 on Readers' Service Card

Desperately Seeking Mono/Poly?

NIM™ (Neutrophil Isolation Medium) provides single step separation of mono and poly neutrophils from human blood.

We Deliver Worldwide.



1-800-359-3249
FAX 505-473-5637

Circle No. 22 on Readers' Service Card

Human Hepatic Microsomes • S9 • Slices

- For the advancement of research
- In compliance with all applicable regulations
- *In vitro* contract testing & consulting services

Not-for-profit

Int'l Institute for the Advancement of Medicine
Phone: (215) 363-3600 Fax: (215) 363-3605

Circle No. 17 on Readers' Service Card

Custom DNA Purified and Delivered in 48 hours.

\$7.50 per base • Purified
Guaranteed minimum 100 µg DNA

Research Genetics
1-800-533-4363

Circle No. 4 on Readers' Service Card

July 1992 – May 1993 Contents

ARTICLES

- Local anesthesia by peribulbar block for cataract extraction in an eye relief camp: a double-masked, randomized controlled trial, **Agrawal K, Saxena RC, Nath R, Saxena S**, 1993 Mar 19 Doc. No. 40
- Strategy to identify randomized controlled trials for systematic reviews, **Jadad AR, McQuay HJ**, 1993 Feb 27 Doc. No. 33
- The effectiveness of breast cancer screening by mammography in younger women, **Elwood JM, Cox B, Richardson AK**, 1993 Feb 25 Doc. No. 32
- Early or selective surfactant (colfosceril palmitate, Exosurf) for intubated babies at 26 to 29 weeks gestation, **European Exosurf Study Group**, 1992 Nov 10 Doc. No. 28
- The Monitored Atherosclerosis Regression Study (MARS): design, methods, and baseline results, **Cashin-Hemphill L, Kramsch DM, Azen SP, et al.**, 1992 Oct 23 Doc. No. 26
- Analgesia for the reduction of colles fracture: a comparison of hematoma block and intravenous sedation, **Singh GK, Manglik RK, Lakhtakia PK, Singh A**, 1992 Oct 1 Doc. No. 23
- Low-dose (7.5 mg) oral Methotrexate for chronic progressive multiple sclerosis, **Goodkin DE, Rudick RA, Medendorp SV, et al.**, 1992 Sep 25 Doc. No. 19
- Trimethoprim-sulfamethoxazole compared with Ciprofloxacin for the prevention of urinary tract infection in renal transplant recipients, **Hibberd PL, Tolkoff-Rubin NE, Doran M, et al.**, 1992 Aug 11 Doc. No. 15
- A clinical trials database as a research tool in health care, **Morris RD, Lau J, Arena NJ, et al.**, 1992 Jul 17 Doc. No. 14
- Does episiotomy prevent perineal trauma and pelvic floor relaxation?, **Klein MC, Gauthier RJ, Jorgensen SH, et al.**, 1992 Jul 1 Doc. No. 10
- Intensive therapy with Cisplatin, Interleukin-2 and Interferon-Alpha-2A in patients with metastatic melanoma: A phase II study, **Sznol M, Steis RG, Smith JW, et al.**, 1992 Jul 1 Doc. No. 9
- Metaanalysis of the effects of intensive glycemic control on late complications of type I diabetes mellitus, **Wang PH, Lau J, Chalmers TC**, 1993 May 21 Doc. No. 60
- A program to enhance clinical use of MEDLINE, **Haynes RB, Johnston ME, McKibbin KA, Walker CJ, Willan AR**, 1993 May 11 Doc. No. 56
- NIH clinical trials and publication bias, **Dickersin K, Min YI**, 1993 Apr 28 Doc. No. 50
- Problems in interpreting cost effectiveness in clinical trials, **De Nino LA, Mulrow CD, Gerety MB, Averyt EC**, 1993 Apr 10 Doc. No. 44

EDITORIALS

- A new option for CCT authors: Parallel publication with the Lancet, **Huth EJ**, 1992 Aug 28 Doc. No. 18
- Episiotomy: To cut or not to cut?, **Kaufman SC**, 1992 Aug 20 Doc. No. 16
- Searching the Online Journal of Current Clinical Trials for "old" documents, **Huth EJ**, 1992 Jul 14 Doc. No. 13
- Will publication bias vanish in the age of online journals?, **Berlin JA**, 1992 Jul 8 Doc. No. 12
- The publisher's perspective, **Nicholson RN**, 1992 Jul 1 Doc. No. 8
- Is the medical world ready for electronic journals?, **Huth EJ**, 1992 Jul 1 Doc. No. 7
- Mammography after 30 Years, **Chalmers TC**, 1993 May 28 Doc. No. 66

LETTERS

- Rejoinder to Elwood's reply, **Kopans DB**, 1993 Apr 17 Doc. No. 47

CLINICAL ALERT

- Important therapeutic information on treatment of HIV infection in HIV-infected patients who are intolerant of or have failed zidovudine therapy: NIH clinical alert, February 1, 1993, **National Institutes of Health**, 1993 Mar 5 Doc. No. 35

For information on manuscript submission contact the Managing Editor— tel. (202) 326-6735, fax (202) 842-2868

A joint venture of the American Association for the Advancement of Science (AAAS) and OCLC Online Computer Library Center, Inc.
1333 H Street, NW, Washington, DC 20005 USA



THE ONLINE JOURNAL OF CURRENT CLINICAL TRIALS
Editorial excellence, technological know-how

1993 subscription price is \$120 plus telecommunication charges
For subscription information call (202) 326-6446

What do we really know about editorial peer review in scientific publication?

Something, but not enough.

- We know that peer review is widely used, but how widely?
- We know that peer review suffers from bias and conflicts of interest, but what biases and conflicts really matter? And how do we get rid of them?
- We fear that peer review suppresses innovation, but to what extent?
- We know that peer review has existed for years without scientific proof of its worth, but will it hold up under the same rigor and scrutiny we demand of science itself?

To answer many of these questions, editors, scientists, and scholars will gather to present and discuss research findings at the Second International Congress on Peer Review in Biomedical Publication, September 9-11, 1993, at the Fairmont Hotel in Chicago, Illinois.

The Second International Congress on Peer Review in Biomedical Publication

September 9-11, 1993 Chicago, Illinois

Topics will include

- The mechanisms of peer review and editorial decision making in different journals, including blind review
- The relationships between authors, editors, and reviewers, and how each is educated, selected, and evaluated
- Allocation of responsibility for published material and the meaning of authorship
- Quality assurance and standards for reviewers and editors
- Breakdowns, weaknesses, and biases in the system
- Conflicts of interests
- Fraud and scientific misconduct
- Peer review of grant proposals

The subject of the Congress is biomedical publication, but scholars in other disciplines are urged to participate, so that we may examine editorial peer review in the context of the overall scientific enterprise.

For more information, contact

Annette Flanagan, North American Coordinator, Peer Review Congress,
JAMA, 515 N State St, Chicago, IL 60610; 312-464-2414, 312-464-5824 fax.

American Medical Association

Physicians dedicated to the health of America





With FLAG™ Biosystem, The Only Surprise Is How Well It Works.

IBI Presents a Proven Technology for High-Yield Expression, Detection and Purification of Recombinant Proteins in *E. coli*.

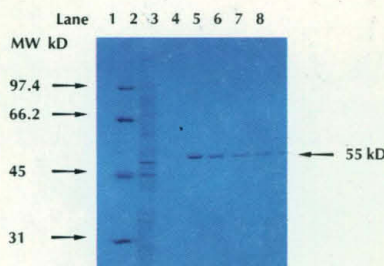
We've drawn on thousands of hours of research to assemble a highly reliable kit for high-yield purification of biologically active proteins.

The novel 8-amino-acid FLAG marker peptide is fused with virtually any protein for expression and secretion by the pFLAG-1 vector. The FLAG fusion protein is rapidly purified with the Anti-FLAG™ M1 affinity column. After that, the FLAG marker is easily removed with Enterokinase, and detected at any time with the Anti-FLAG™ M1 monoclonal antibody. With FLAG, you also get:

A Universal Marker for fast and efficient purification of any protein fused to the FLAG peptide.

High Yield due to the efficient expression and secretion of FLAG fusion proteins by the pFLAG-1 expression vector, and the fact that the small FLAG peptide does not affect biological activity.

Rapid Purification of a biologically active protein



Single-Step Purification: Lanes 2 and 3 show contaminating proteins eluted using CaCl_2 buffer, lanes 4-8 show the recovery of the 55 kD FLAG-BAP* fusion protein by washing with a mild buffer containing EDTA.

from a crude cell lysate in minutes with the anti-FLAG M1 affinity gel.

Recovery of Biologically Active Proteins as a result of mild conditions during affinity purification.

Efficient Detection because the FLAG peptide occurs on the protein surface for easy detection with the Anti-FLAG M1 monoclonal antibody.

Get Everything You Need to Flag a Protein Down. Order your complete FLAG Biosystem today (Cat. No. IB 13000) from

your VWR rep, or call IBI toll-free for a detailed six-page technical brochure: **1-800-243-2555**.

Outside the US: (203) 786-5600

Kit includes: pFLAG-1 expression vector, Anti-FLAG M1 monoclonal antibody, Anti-FLAG M1 affinity gel, enterokinase, enterokinase buffer, pFLAG-1-BAP* control vector, chromatography column, and technical manual.

*Bacterial Alkaline Phosphatase



Laboratory and Research Products
Eastman Chemical Company
25 Science Park, New Haven, CT 06511