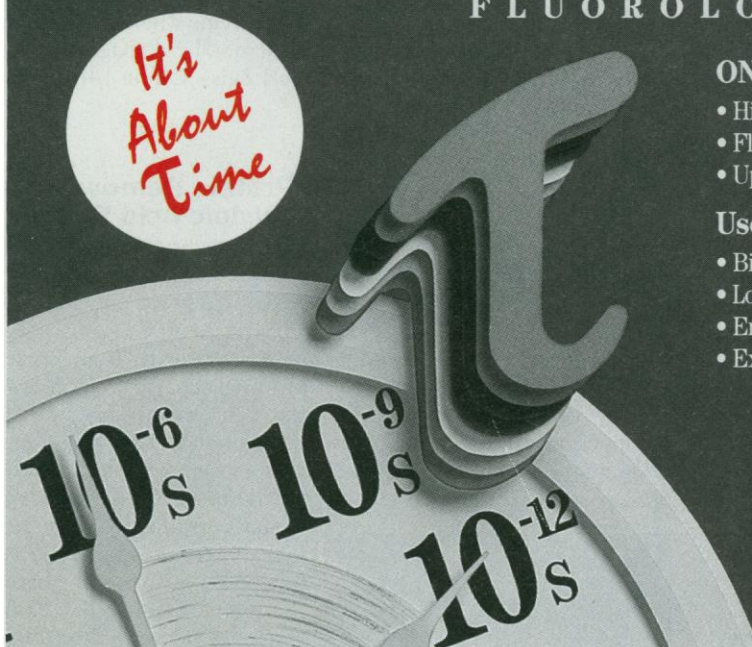


FLUORESCENCE LIFETIME

AND STEADY-STATE SPECTROFLUOROMETER FLUOROLOG- τ 2

*It's
About
Time*



ONLY Fluorolog- τ 2 delivers:

- Highest Sensitivity
- flattest frequency response over the full frequency range
- Update ANY Fluorolog-2 to lifetime capability

Use the Fluorolog- τ 2 to study

- Binding sites in proteins, DNAs and RNAs
- Local and Global molecular motion, molecular size and shape
- Energy transfer and charge transfer
- Excited state reactions

Call 1-800-GET-SPEX Today.
See how Fluorolog- τ 2 can benefit *your* research.

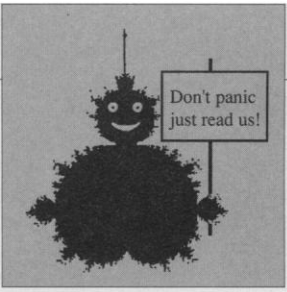
SPEX[®] INDUSTRIES, INC. 3880 PARK AVE.
EDISON, N.J. U.S.A. 08820


908-549-7144 FAX: 908-549-5125

AN INSTRUMENTS S.A. COMPANY
In France call: 1-64541300 • Benelux: 1720-24270
Germany: 89-460-2051 • Italy: 2-5760 3050 • U.K.: 081-204-8142

Circle No. 45 on Readers' Service Card

Exploring Order and Chaos





Kaye, B.
Chaos & Complexity
Discovering the Surprising
Patterns of Science and
Technology
1993. Ca XIV, 612 pages
with ca 250 figures ca 5 in
color and ca 45 tables.
Hardcover. Ca \$ 90.00.
ISBN 1-56081-799-2
Softcover. Ca \$ 50.00.
ISBN 1-56081-798-4

The surprising patterns of
chaos and complexity are
explored using many
beautiful figures, making
these sometimes compli-
cated wonders accessible to

students and professionals
alike. Amusing tales and
cartoons are used to explain
the concepts and demon-
strate the fascinating appli-
cations of this powerful
technique of analyzing the
patterns of nature and
science.

Kaye, B.H.
**A Random Walk Through
Fractal Dimensions**
1989. XXVI, 421 pages with
316 figures 14 in color.
Hardcover. \$105.00.
ISBN 0-89573-496-6
Softcover. \$ 45.00.
ISBN 0-89573-888-0

Heilbronner, E. /Dunitz, J.
Reflections on Symmetry
In Chemistry ... and
Elsewhere
Copublished with Helvetica
Chimica Acta Publishers,
Basel
1992. VI, 154 pages with 125
figures and 4 tables.
Hardcover. \$ 39.00.
ISBN 1-56081-254-0

Cramer, F.
Chaos and Order
1993. Ca 315 pages with ca
92 figures. Hardcover.
Ca \$ 30.00.
ISBN 1-56081-812-3

To order please contact your
bookseller or:


VCH, 220 East 23rd Street,
New York, NY 10010-4606, USA
(toll free: 1-800-367-8249)

VCH, P.O. Box 10 11 61,
D-6940 Weinheim,
Telefax (0) 62 01 - 60 61 84

VCH, Hardstrasse 10, P.O. Box,
CH-4020 Basel

VCH, 8 Wellington Court,
Cambridge CB1 1HZ, UK

VCH, Eikow Building,
10-9 Hongo 1-chome, Bunkyo-ku,
Tokyo 113



Circle No. 29 on Readers' Service Card



High-Speed Thermal Cycling

The TC1600 Thermocycler can cycle large numbers of chemical or biological samples through a range of temperatures in a pre-defined pattern using standard microtitration plates. Heating rates can be as fast as 1.3°C per second and cooling rates as fast as 3.7°C per second. The thermocycler can process up to 16 96- or 92-well microtitration plates in four quadrants, each of which can operate with a unique temperature profile. A profile can consist of a sequence of up to 10 set point temperatures from 32° to 98°C that can include looping and pausing. **IAS Products Inc. Circle 141.**

DNA/RNA Synthesizer

The ECOSYN D-300 DNA/RNA Synthesizer reduces reagent consumption through use of a precise metering syringe, zero dead-volume valves, and unique optosensors. Service costs are reduced through an easy-to-maintain valve block system. The unit features a menu-driven approach to operation with a flexible programming scheme that allows accurate mixed-based syntheses, separate cycles for analog amidites, and accurate monitoring of all parameters. **Eppendorf North America. Circle 142.**

Technical Calculation Software

Mathcad 4.0 is a major upgrade of a technical calculation software that now includes a feature called SmartMath, a rules-based processor that makes numeric and symbolic calculations faster, eas-

ier, and more accurately. Written in CLIPS, a knowledge-based processor developed by NASA, SmartMath provides an intelligent interface between the user's problem and Mathcad's numeric and symbolic capabilities. SmartMath reviews the user's input and executes a strategy for solving the problem by writing a new set of Mathcad equations in a pop-up window and delivering the results to the Mathcad document. Mathcad runs under Windows 3.1 and requires a 386- or 486-based personal computer running DOS 3.1 or later, with a minimum of 4 megabytes of memory (8 megabytes of virtual memory is recommended to improve performance). A math coprocessor is recommended but not required. **MathSoft. Circle 143.**

Statistical Software

AESOP is a technical software package for analysis of engineering and scientific data that includes two modules: ANALYZE performs a principal component analysis to quantify cause-and-effect relationships from a set of experimental data; PREDICT then provides interactive modeling capability, permitting a user to predict results of hypothetical experiments. **Witt Technical Associates. Circle 144.**

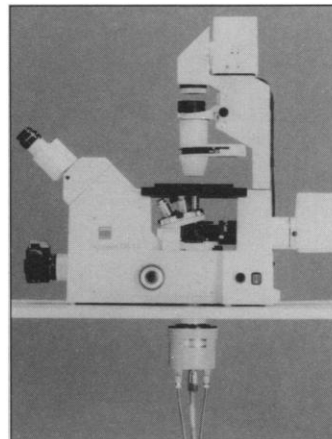
Mini-Collodion Membranes

These mini-collodion membranes are designed for purifying and concentrating small volumes of proteins and nucleic acids—2 ml down to 10 µl. They will retain molecules above 25,000 daltons. The membranes do not require extensive cleaning prior to use, are free of contaminants that may damage the sample, and offer

high recovery rates. Made of a special nitrocellulose, they will not bind nucleic acids or proteins. Uses include removal of phenol and SDS from nucleic acid preparations, desalting of protein solutions, and concentration and purification of other molecular biology solutions. **Schleicher & Schuell. Circle 145.**

Inverted Microscope with TV Port

The AXIOVERT TV (television) inverted microscopes from Carl Zeiss offer maximal light capture with a port that permits the mounting of a TV camera or photomultiplier directly into the optical axis. This aids in TV and



fluorescence applications where only small amounts of light are available. The advantages are twofold: non-TV path-deflecting optics are located on a slider and can be easily removed from the beam path, minimizing the loss of light during its path from specimen to detector; second, the baseport mounting configuration ensures that no camera or receiver housing obstructs the view of the specimen or access to micro-manipulation equipment. The microscopes are applicable to low light-level immunofluorescence,

fluorescence in situ hybridization, intracellular measurements of ion concentrations using the ratioing technique, and microscopy of living systems where the specimen must not be damaged by light. **Carl Zeiss. Circle 146.**

Protein Removal from Nucleic Acid Samples

A new technique for the rapid removal of proteins from nucleic acid samples without phenol and without sample loss involves a membrane with high protein-binding capacity incorporated into a microcentrifuge tube. The device removes up to 400 µg of protein from a nucleic acid sample in a single 5-s elution step on a microcentrifuge. Most proteins including ribonuclease and alkaline phosphatase are removed to the limits of detection. Binding efficiency is greater than 99.95% for protein concentrations of up to 80 µg in low salt restriction buffer. Double-stranded DNA does not bind to the membrane. **Advanced Genetic Technologies Corp. Circle 147.**

Literature

Mapping Strategies and Product Solutions is a catalog with chapters that cover chromosome localization, evolutionary relatedness, gene expression analysis (RNA products), DNA variation analysis by Southern blotting, DNA variation analysis by polymerase chain reaction, subchromosome localization, and more. **BIOS Labs. Circle 148.**

CED Phosphoramidites for DNA Synthesis and RNA Synthesis Reagents are two brochures that describe products that ease performance of these procedures. **BioGenex Labs. Circle 149.**

2-D Gel Electrophoresis is a brochure that describes a complete line of products, including molecular weight markers and reagents. **Sigma Chemical Co. Circle 150.**

Newly offered instrumentation, apparatus, and laboratory materials of interest to researchers in all disciplines in academic, industrial, and government organizations are featured in this space. Emphasis is given to purpose, chief characteristics, and availability of products and materials. Endorsement by *Science* or AAAS is not implied. Additional information may be obtained from the manufacturers or suppliers named by circling the appropriate number on the Readers' Service Card and placing it in a mailbox. Postage is free.

Science

PERSONNEL PLACEMENT

LINE CLASSIFIED ADVERTISEMENTS

- **Deadlines:** Ads are due by Thursday, 10 a.m., 2 weeks prior to the issue date. *Science* is published each Friday, except the last Friday of the year. Call for holiday deadlines. Advertisements must be submitted in writing.
- **How to Submit a Classified Ad:** Prepare double-spaced typewritten copy. Do not include any abbreviations. *Science* will edit and typeset ads according to *Science* guidelines. Include billing information, and desired publication date. Available categories: Positions Open, Meetings, Announcements, Courses and Training.
- **Mail or FAX materials to:**
Science Classified Advertising
 1333 H Street, N.W., Room 814
 Washington, DC 20005
 Telephone: 202-326-6555
 FAX: 202-682-0816
- **Rates:** Ads are \$42 per line; \$420 minimum. One line equals 52 characters and spaces; centered headings equal 32 characters and spaces. A 3% cash discount is granted to all prepaid ads.
- **Ads from Outside the U.S.:** A discount of \$30 will be offered to advertisers making payment in U.S. dollars by checks drawn on U.S. banks. Contact Annemarie Vis at +44 223 302067 (telephone) or +44 223 302068 (FAX).
- **Credit Cards:** *Science* accepts MasterCard and VISA. Discount does not apply to credit cards.
- **Cancellations:** Deadline for cancellation is 10 a.m., Tuesday, 10 days prior to issue date.

DISPLAY PERSONNEL ADVERTISEMENTS

For rates and info. about fractional display ads (all ads 1/2 page and larger), contact:

Recruitment Advertising
 Deborah Cummings
 Telephone: 202-326-6541

Janis Crowley, Recruitment
 Advertising Manager
 Telephone: 212-496-7704
 FAX: 202-682-0816

Annemarie Vis
 European Recruitment Advertising
 Telephone: +44 223 302067
 FAX: +44 223 302 068

CONDITIONS: Personnel advertising is accepted only with the understanding that the advertisers do not discriminate among applicants on the basis of race, sex, religion, age, color, handicap or sexual preference. The AAAS encourages employers to actively recruit and employ underrepresented minority groups. *Science* reserves the right, at its discretion, to decline to publish advertisements submitted to it.

POSITIONS OPEN

MOLECULAR-CELLULAR NEUROSCIENTISTS. The Neuroscience Program at the Loeb Research Institute and the Division of Neurology at the Ottawa Civic Hospital, a University of Ottawa teaching hospital, is seeking 2 qualified candidates, one at the **ASSISTANT PROFESSOR** level (Ph.D. and/or M.D. with at least 3 years of postdoctoral training), and one at the level of **ESTABLISHED INVESTIGATOR** (with an internationally competitive track record). Candidates must demonstrate excellence, originality and productivity in molecular and/or cellular neurobiology. You will join a program whose clinical foci in stroke/ischemia and degenerative/movement disorders are supported by a neuroscience research group (8 PIs) who use cell and molecular biology and electrophysiology to study cell-cell communication and neurotransmission, membrane trafficking, mechanisms of neuron/glia response to ischemia, CNS regulation of hydromineral and cardiovascular homeostasis. Preference will be given to applicants using **molecular approaches directed to postreceptor signal transduction.** *In accordance with Canadian immigration regulations, this advertisement is directed first, but not solely, to Canadian citizens and permanent residents.*

Please forward curriculum vitae with names of three references and a statement of goals/interests by September 30, 1993, to: **Dr. Leo Renaud, Director, Neurology/Neurosciences, Ottawa Civic Hospital and Loeb Research Institute, 1053 Carling Avenue, Ottawa, Ontario, CANADA K1Y 4E9.** *We support Equal Opportunity and a smoke-free environment.*

ASSISTANT PROFESSOR OR VISITING PROFESSOR OF MEDICINAL CHEMISTRY/CHEMOTHERAPY. Ohio Northern University is advertising a nine-month, tenure-track position. The position may also be filled by a Visiting Assistant Professor for the 1993-4 academic year. The individual will be responsible for the teaching of appropriate areas of Medicinal Chemistry, Chemotherapy, and/or Biochemistry to undergraduate pharmacy students. Individual or collaborative research appropriate to the research mission of the College is also expected. A Ph.D. in Bio- or Medicinal Chemistry is required. An undergraduate degree in pharmacy is desirable, but not required. The application and selection process begins immediately. Application deadline is July 17, 1993, or until a suitable candidate is identified. Application and inquires should be sent to: **Thomas P. Faulkner, Ph.D., Professor and Chair, Department of Pharmaceutical and Biomedical Sciences, College of Pharmacy, Ohio Northern University, Ada, OH 45810.** *Equal Opportunity/Affirmative Action Employer. Women and minorities are encouraged to apply.*

EVOLUTIONARY BIOLOGIST

Princeton University invites applications for a tenure-track position in the Department of Ecology and Evolutionary Biology. We anticipate filling the position at the level of **ASSISTANT PROFESSOR**, but a more senior appointment is possible for truly exceptional candidates. We are particularly interested in receiving applications from individuals using modern approaches to study evolutionary mechanisms, either phylogenetic processes of diversification or the genetic basis of microevolution. Applicants should have a strong commitment to teaching and a well-developed conceptual basis to their research. A statement of research interests, reprints of three publications and three letters of recommendation should be sent to: **Dr. Peter R. Grant, Department of Ecology & Evolutionary Biology, Guyot Hall, Princeton University, Princeton, NJ 08544-1003.** The closing date for applications is September 4, 1993. *Princeton University is an Affirmative Action/Equal Opportunity Employer.*

BIOLOGICAL OCEANOGRAPHER

We seek a Ph.D. marine microbial ecologist for a 9-month, tenure-track position at the **ASSISTANT PROFESSOR** level to begin in August 1994. The position involves research, teaching at the graduate and undergraduate levels, and service. Applicants may have research interests in the microbes of either the water column or the benthos. Send a letter describing research interests, curriculum vitae, and the names, addresses and telephone numbers of three references to: **Search Committee, Department of Oceanography, Florida State University, Tallahassee, FL 32306.** Application review will begin in July 1993 and continue until a suitable candidate is found. *The university is an Equal Opportunity/Affirmative Action Employer.*

POSITIONS OPEN

ASSOCIATE OR FULL PROFESSOR, GENETIC/MOLECULAR MECHANISMS OF DISEASE. The Department of Comparative Medicine, Schools of Medicine and Dentistry, University of Alabama at Birmingham (UAB), invites applications for a tenure-track position at the rank of Associate or Full Professor. We seek an independent investigator of genetic and molecular mechanisms in disease pathogenesis, with a strong commitment to development and use of animal models of human diseases. Investigators using novel approaches to gene transfer and expression, development of new embryonic stem cell systems (e.g., rat or rabbit), improved gene knockout or other innovations in animal modeling are encouraged to apply. Teaching responsibilities are modest and primarily at the graduate level. The Department of Comparative Medicine cosponsors with the Department of Pathology the Graduate Program in Molecular and Cellular Pathology, and has an NIH-funded training program. UAB is a research intensive university ranked 17th in NIH funding. Send curriculum vitae to: **J. Russell Lindsey, Chair, Department of Comparative Medicine, Schools of Medicine and Dentistry, UAB, Birmingham, AL 35294-0019.** *UAB is an Equal Opportunity/Affirmative Action Employer.*

PLANT MOLECULAR BIOLOGIST/GENETICIST

The University of ALBERTA
 Departments of BOTANY and GENETICS
 NSERC Women's Faculty Award

The University of Alberta invites applications from qualified female researchers for potential nomination to the Natural Sciences and Engineering Research Council (NSERC) for Women's Faculty Award. In particular, applications are sought in the areas of **Plant Molecular Biology and Plant Genetics.** Applicants must have a Ph.D. and postdoctoral experience. The Departments of Botany and Genetics have a strong supporting group of plant and molecular biologists and have excellent equipment, ample laboratory and growth chamber space and a 50-acre field station with laboratory facilities. A tenure-track position would become available to the successful candidate. Initial appointment would be at the **ASSISTANT PROFESSOR** level (current salary range \$40,035 to \$57,003, subject to negotiated adjustments). The applicant must have demonstrated research productivity, and will be expected to develop a program that will attract external funding and provide an environment for the training of skilled personnel. She would be expected to participate in teaching undergraduate and graduate courses appropriate to her area of expertise.

In accordance with Canadian Immigration requirements, priority will be given to Canadian citizens and permanent residents of Canada. Interested applicants should apply by sending curriculum vitae, a statement of research interests and the names of three referees by June 30, 1993, to: **Chairman, Department of Genetics, University of Alberta, Edmonton, Alberta, T6G 2E9, CANADA.**

The University of Alberta is committed to the principle of equity in employment. The University encourages applications from aboriginal persons, disabled persons, members of visible minorities and women.

ASSISTANT PROFESSOR RENAL MATRIX GENE EXPRESSION

We seek a physician-scientist with at least 3 years of research experience in molecular genetics of renal extracellular matrix components and their diseases to lead an independent research program in this area. **Application deadline: July 15, 1993.** Applications/3 academic references should be sent to: **Dr. B. M. Brenner, Director, Renal Division, Brigham and Women's Hospital/Harvard Medical School, 75 Francis Street, Boston, MA 02115.** *Women and minorities are encouraged to apply. Affirmative Action/Equal Opportunity Employers.*

RESEARCH ASSISTANT/ASSOCIATE PROFESSOR. Cognitive Neuropsychologist for Maryland Psychiatric Research Center Outpatient Program, University of Maryland School of Medicine. Ph.D. Required. Previous research experience in clinical neuroscience and schizophrenia required. This position will be responsible for clinical care, administration and neuroscience research in an outpatient research unit. Send curriculum vitae to: **Robert W. Buchanan, M.D., Maryland Psychiatric Research Center, P.O. Box 21247, Baltimore, MD 21228.** *Affirmative Action/Equal Opportunity Employer.*

POSITIONS OPEN

PHYSIOLOGIST ASSISTANT PROFESSOR

The Department of Physiology invites applications from individuals with at least 2 years of postdoctoral experience for a tenure-track position. Cardiovascular research is emphasized but all qualified applicants will be considered. Successful candidate will establish an independent research program, seek extramural funding and participate in teaching medical physiology. Send curriculum vitae, brief description of teaching experience, current research activities, career goals, and names of three references to: **D. Fred Peterson, Ph.D., Chairman, Department of Physiology, Kirksville College of Osteopathic Medicine (KCOM), Kirksville, MO 63501.**

KCOM is an Equal Opportunity/Affirmative Action Employer.

PSYCHOIMMUNOLOGY PH.D. RESEARCHER—ASSISTANT or ASSOCIATE PROFESSOR level, with 2 to 5 years of previous academic experience. This individual will play a leadership role in the development of a psychoneuroimmunology laboratory to conduct human studies of the relationship between stress and depression with course of medical illness. The individual should be experienced in laboratory techniques applicable to human studies in psychoneuroimmunology, research design, and data analysis. Previous extramural funding is highly desirable. A competitive package of laboratory start-up resources is available. Please contact: **Allan Tasman, M.D., Professor and Chairman, Department of Psychiatry and Behavioral Sciences, University of Louisville School of Medicine, Louisville, KY 40292; Telephone: (502) 588-1126.** Affirmative Action/Equal Employment Opportunity.

Department of Psychiatry, University of Pennsylvania, has position as **RESEARCH ASSISTANT PROFESSOR**. Applicant should have background in cellular and molecular biological approaches to the study of actions of drugs. Salary support will be from research projects on molecular biology of receptors in the human central nervous system. A demonstrated ability to attract extramural support is essential. Applicants must have a Ph.D. with at least two years of postdoctoral training. Send curriculum vitae and names of referees to: **Dr. Jeffrey N. Joyce, Laboratory of Chemical Neuroanatomy, University of Pennsylvania School of Medicine, 422 Curie Boulevard, Philadelphia, PA 19104-6141.** Equal Opportunity/Affirmative Action Employer.

VERTEBRATE ECOLOGY/BIOSTATISTICS. Tenure-track. **ASSISTANT PROFESSOR.** Possible starting date August 15, 1993. Teaching may include Anatomy/Physiology, Ecology and Biostatistics. Research program will involve undergraduate and M.S.-level students. Submit letter of application, curriculum vitae, 3 letters of recommendation and transcripts by June 30, 1993, to: **Dr. V. L. Dunham, Head, Department of Biology, Western Kentucky University, Bowling Green, KY 42101-3576.** Affirmative Action/Equal Opportunity Employer. Women and minorities encouraged to apply.

UTAH. The Department of Pediatrics, University of Utah Health Sciences Center seeks an **ASSISTANT PROFESSOR**, board eligible/certified in both Pediatrics and Child Psychiatry, to be a full-time member of the Division of General Pediatrics on the tenured or clinical track with an adjunct appointment in the Department of Psychiatry. The position is hospital-based through the University of Utah Health Sciences Center and will include responsibilities in medical student and housestaff teaching, with an emphasis on behavior/development, consult-liaison at Primary Children's Medical Center and University Medical Center. Inpatient and outpatient management and clinical research are expected. Closing date is June 30, 1993. Please address inquiries to: **Chuck Norlin, M.D., Chief, Division of General Pediatrics, University of Utah Health Sciences Center, Salt Lake City, UT 84132.**

An Equal Opportunity/Affirmative Action Employer and encourages applications from women and minorities.

POSITIONS OPEN

DIRECTOR OF ANESTHESIA RESEARCH

The Department of Anesthesiology at The Ohio State University is receiving applications for the position of Director of Anesthesia Research. This position demands extensive experience in small animal surgery, research design, initiation and supervision of ongoing research projects, and leadership in working with junior and senior faculty. Applicants must have a Ph.D. Preference will be given to candidates with current nationally funded research. Salary commensurate with experience and professional position. Please send curriculum vitae to: **John S. McDonald, M.D., Professor and Chairman, Department of Anesthesiology, The Ohio State University, Room N437 Doan Hall, 410 West 10th Avenue, Columbus, OH 43210-1228. Telephone: (614) 293-8487.**

UNIVERSITY OF THE VIRGIN ISLANDS ST. THOMAS

ADMINISTRATIVE DIRECTOR MARINE SCIENCE CENTER

Candidate should have a doctoral degree and academic credentials and experience appropriate for appointment at the Full Professor level. A strong successful record of internationally recognized, externally funded research is required. Demonstrated experience with program development, management and familiarity with funding agencies and foundations are important. Knowledge of the Caribbean and tropical marine experience are desirable. The successful appointee will direct and expand the marine science program, seek extramural funding to facilitate program expansion, increase Caribbean and international stature of the program and develop resources to support faculty research involving active undergraduate participation. The appointee will conduct own research program and teach occasionally in area of expertise. The salary for this administrative position ranges from \$43,742 to \$60,549 for the administrative year. Applications accepted until July 1, 1993. A letter of application, up-to-date résumé, official transcripts and three letters of recommendation should be addressed to: **Dr. Denis Paul, Vice President for Academic Affairs, University of the Virgin Islands, Number 2 John Brewers Bay, Charlotte Amalie, VI 00802-9990.**

Equal Opportunity/Affirmative Action
Employer and Educator.

FACULTY CELL BIOLOGIST

Tenure-track, 12-month **ASSISTANT PROFESSOR** position available January 1, 1994, for an outstanding animal cell biologist with expertise in cell regulation, cell signaling, or cell differentiation. Responsibilities include establishing an externally funded research program, teaching each year an undergraduate and an upper-level specialty course in cell or developmental biology, and advising undergraduate and graduate students. Ph.D. required and postdoctoral experience preferred. Submit (a) curriculum vitae, (b) 3 letters of recommendation, (c) up to 3 publications, (d) 1-page statement of how your research addresses important issues in cell biology, and (e) 1-page summary of teaching philosophy, experience, and proposed courses. Send these items by August 15, 1993, to: **R. Grossfeld, Cell Biology Search Committee, Zoology Department, North Carolina State University, Raleigh, NC 27695-7617.** NCSU is an Affirmative Action/Equal Opportunity Employer in the Research Triangle, a desirable environment for scholarly work and year-round cultural and recreational activities.

FACULTY POSITION

ASSISTANT PROFESSOR. The Division of Neurosurgery, Louisiana State University School of Medicine in Shreveport, seeks applicants for a tenure-track position in Neurosurgery. Applicants must possess a Ph.D. and will be expected to develop an independent research program. Expertise in molecular biology and immunology is preferred. Affirmative Action/Equal Opportunity Employer. Send curriculum vitae to: **ANIL NANDA, M.D., DIVISION OF NEUROSURGERY, P.O. BOX 33932, SHREVEPORT, LA 71130.**

POSITIONS OPEN

POSITIONS IN BIOLOGICAL SCIENCES

The Department of Biological Sciences, State University of New York College of Optometry, seeks to fill two tenure-track positions at the **ASSISTANT/ASSOCIATE PROFESSOR** level. Candidates should either have a Ph.D. in pharmacology or a closely related field, or a Ph.D. and an active research program in some of the following areas: immunology, infectious diseases, molecular biology, ocular surface, pathology.

Responsibilities for the positions will include courses in general and ocular pharmacology, and participation in courses in general and ocular biology and microbiology.

Both new faculty members will be expected to develop independent research programs and participate in the training of O.D. and O.D./Ph.D. students, as well as residents. Candidates should submit curriculum vitae and statement of research interests and plans to: **Harry J. Wyatt, Ph.D., Chair, Search Committee, Department of Biological Sciences, State University of New York, State College of Optometry, 100 East 24th Street, New York, NY 10010. Telephone: 212/780-5163.** Salaries and benefits competitive. An Equal Opportunity/Affirmative Action Employer.

FRESHWATER ECOLOGY

The Département de sciences biologiques, Faculté des arts et des sciences de la Université de Montréal, invites applications for a **TENURE-TRACK POSITION** in fundamental and applied freshwater ecology. Functions: the successful candidate will be expected to be able to teach courses in French at the undergraduate and graduate levels; to supervise graduate students; to carry out an active research program. Applications will be considered based on merit and on their complementarity with the research programs of the Équipe de recherche en écologie des eaux douces, which is a member of the Groupe de recherche interuniversitaire en limnologie (Gril). Among the important complementary fields are geochemistry, biochemical ecology, molecular biology or genetical ecology. Preference will be given to candidates having interest and experience in global and regional environmental changes in freshwater algae and plant communities, and those who would be able to use the facilities of the Station de biologie des Laurentides. Requirements: candidates should have a Ph.D. in a relevant field, and postdoctoral or equivalent experience. Salary: based on current contract agreements. Appointment Date: the position begins 1 June 1994. Interested applicants should submit curriculum vitae, two copies of five representative reprints or preprints, and three letters of reference before 31 August 1993 to: **M. Raymond McNeil, directeur, Département de sciences biologiques, Université de Montréal, C.P. 6128, succursale A, Montréal (Québec), Canada, H3C 3J7.** In accordance with Canadian Immigration requirements, priority will be given to Canadian citizens and landed immigrants.

The Department of Microbiology and Immunology, University of Maryland at Baltimore, is seeking applicants for a non-tenure-track position to **DIRECT** a Molecular Biology Core Facility. Applicants must have a Ph.D. in Molecular Microbiology with a minimum of 4 years of postdoctoral research experience and experience directing personnel and Core Facility operations. Applicants must be experienced in DNA and peptide synthesis, automated fluorescence-based DNA sequencing, HPLC techniques for purification of oligonucleotides, peptides and proteins, and should have a broad knowledge of current techniques in Molecular Biology. The Director of this facility will also be expected to develop proposals for extramural funding for both laboratory equipment and personnel. Send curriculum vitae and three references to: **Dr. Jan Cerny, Chairman, Department of Microbiology and Immunology, University of Maryland at Baltimore, Baltimore, MD 21201.**

The University of Maryland at Baltimore is an Equal Opportunity Employer, M/F/H/V.

PHARMACEUTICAL RESEARCH

ZENECA Pharmaceuticals Group (formerly ICI Pharmaceuticals Group), dedicated to the challenge of discovering and developing important new therapeutic agents, has openings in the CNS and Pulmonary Pharmacology drug discovery research groups at our suburban Wilmington, Delaware location.

CNS Pharmacology

The successful candidates will participate in molecular biological studies as part of an integrated team of biologists who interact closely with medicinal and molecular modeling chemists. Both positions require expertise in construction/expression of vectors for transient and stable mammalian cell expression and experience with mutagenesis techniques. Expression cloning of low abundance mRNA and genomic cloning is required.

SENIOR RESEARCH PHARMACOLOGIST — We seek a Pharmacologist to participate in and supervise molecular biological approaches, including cloning of drug therapy targets and their genetic manipulation. The successful candidate should have a PhD in molecular biology, molecular genetics, pharmacology, or biochemistry, with at least 2 years' postgraduate experience. Broad knowledge and experience in PCR are required.

SENIOR PHARMACOLOGIST — BS/MS in molecular biology, molecular genetics, pharmacology, or biochemistry, with at least 2 years' relevant experience in one or more areas of PCR is required.

Pulmonary Pharmacology

RESEARCH PHARMACOLOGIST — The successful candidate will interact in a team environment to establish and biologically characterize chronic *in vivo* models of pulmonary hypertension secondary to chronic obstructive pulmonary disease(s). A PhD in pulmonary physiology or pharmacology with 1-3 years' postdoctoral experience in the area of pulmonary vascular smooth regulation is required. Background in the principles of pharmacology also required. Good communication skills and experience with *in vitro* and *in vivo* techniques are essential. Understanding of the fundamentals of computers is an asset.

We offer competitive compensation, comprehensive flexible benefits, a unique investment plan, and the opportunity to join a team of scientists from a broad range of disciplines in an industrial pharmaceutical research environment.

Interested candidates should submit c.v. to: **Melanie Lewis, ZENECA Pharmaceuticals Group, 1800 Concord Pike, Wilmington, DE 19897.**

ZENECA

Pharmaceuticals Group

ZENECA Pharmaceuticals/Stuart Pharmaceuticals
Business Units of ZENECA Inc.

An Equal Opportunity Employer M/F.

1994 U.S. Public Health Service Epidemiology Training Program

If you are interested in training and research in the field of Epidemiology, now is the time to apply to the 1994 U.S. Public Health Service (PHS) Epidemiology Training Program (ETP). Applications are currently being accepted and are due on September 21, 1993. Training will begin approximately July 1, 1994.

Program Features:

For most trainees this is a three-year program. The first year, trainees may pursue an M.P.H. or equivalent by attending a university to study epidemiology, biostatistics, and related subjects. During the subsequent two years, they will perform research with senior epidemiologist for one of the following agencies: National Institutes of Health (NIH), Food and Drug Administration (FDA), and the National Center for Health Statistics (NCHS).

Trainees are matched with a preceptor whose area of expertise is of interest and consistent with trainees' career plans. (In some cases, individuals accepted into the Program who have already had a year of study in epidemiology and biostatistics will be accepted for the final two years of the Program.)

Pay and allowances will depend on the personnel system agreed upon by the preceptor and the trainee. Several options are available depending on the agency selected. Agencies can use one of a number of mechanisms, the two most common are:

1. A limited appointment in the Commissioned Corps of the United States Public Health Service in which the usual starting rank for program entrants will be Lieutenant (0-3). The starting salary for an 0-3 medical officer with dependents is approximately \$43,460 depending on training and experience. For non-medical officers of the same rank with dependents, the starting salary is approximately \$38,460. Employment in the Commissioned Corps may allow for certain tax exemptions. Candidates are asked to consult with their employing personnel office.

2. Appointment as a staff fellow in the sponsoring agency with starting salaries of approximately \$38,500 for physicians and \$28,000 for nonphysicians. An increase of up to \$2,000 per year will take effect in the second and third years of the program.

Educational costs and allowable relocation expenses for the first year are provided. Trainees may also be eligible for health and life insurance benefits.

Opportunities may be possible for physicians who join the ETP to enroll simultaneously in a Preventive Medicine Residency Program leading toward board eligibility.

Basic Requirements to Apply:

M.D., D.O., Doctorate in an allied health profession, or Ph.D., in a biomedical or behavioral science or equivalent, and one year of postdoctoral training or experience by July 1, 1994;

U.S. citizenship as of September 21, 1993; and

Acceptability to an accredited university offering an M.P.H. or equivalent, or more advanced public health degree (for the first year of the Program).

To obtain further Program details and an application package, send a postcard with your printed name and home mailing address to: NIH Training Center, Epidemiology Training Program, EPS/100, 9000 Rockville Pike, Bethesda, MD 20892, or call 301/402-3402.

Under the Affirmative Employment Program, minorities, women and persons with disabilities have been found to be under-represented in the GS 601 and 602 Epidemiologist series. Individuals who are members of these groups and meet the eligibility criteria are encouraged to apply.

The PHS Epidemiology Training Program
is an Equal Opportunity Employer.

BIO-MÉGA

Boehringer Ingelheim Research Inc.

Bio-Méga/Boehringer Ingelheim Research Inc. is one of the leading pharmaceutical research laboratories in Canada. We seek an experienced computational chemist to join our research center located in the Montréal suburb of Laval.

COMPUTATIONAL CHEMIST

The successful candidate will work closely with medicinal chemists, biochemists and pharmacologists in the design and optimization of biologically active molecules. The candidate will also have the opportunity to interact with scientists working in the areas of NMR and X-ray crystallography.

The ideal candidate will possess a Ph.D. in organic chemistry or physical chemistry or a related science. Experience in molecular modeling using molecular mechanics and/or quantum mechanical methods is essential. Preference will be given to candidates with experience in modeling enzyme inhibitor interactions.

Bio-Méga/Boehringer Ingelheim Research Inc. offers a competitive compensation and benefits package in addition to the opportunity to work in a pleasant and intellectually stimulating environment.

Interested candidates should send their resume to:

Department of Human Resources
BIO-MÉGA/BOEHRINGER INGELHEIM RESEARCH INC.
2100 Cunard St., Laval, Qc, Canada H7S 2G5
FAX: (514) 682-8434

DHHS/PHS—The Food and Drug Administration (FDA), Center for Biologics Evaluation and Research (CBER), Division of Bacterial Products (DBP), invites applications for the position of CHIEF, LABORATORY OF ENTERIC AND SEXUALLY TRANSMITTED DISEASES, located in Bethesda, Maryland. The Laboratory is responsible for conducting research and regulatory review related to enteric and sexually transmitted infections. This is a supervisory interdisciplinary position appropriate for a physician, chemist, microbiologist, or biologist with post-graduate training. The Laboratory Chief is responsible for originating, developing, conducting and leading a research program related to the biology of enteric and sexually transmitted bacteria. Demonstrated expertise in conducting research is required. Clinical and academic opportunities are available. Salary range for chemist, microbiologist and biologist is \$56,627 to \$73,619 at the GM-14 level and \$66,609 to \$86,589 at the GM-15 level. Salary range for physician is \$66,067 to \$83,059 at the GM-14 level and \$71,049 to \$91,029 at the GM-15 level. Physicians may also be eligible for a Physician's Comparability Allowance up to \$20,000 per year. Salary is commensurate with education and experience. The grade of the position depends upon the research qualifications of the candidate determined by the CBER Peer Review Board. Positions may be filled by appointment in the U.S. Public Health Service, Commissioned Corps, with commensurate salary and benefits. U.S. citizenship is required. FDA is an Equal Opportunity Employer and has a smoke free environment. Send CV, three letters of recommendation and Standard Form 171 no later than July 30, 1993 to: Maureen Walter, Division of Bacterial Products, OVRP, CBER, FDA, HFM-425, Building 29, Room 224, 8800 Rockville Pike, Bethesda, Maryland 20892. For further information on application call Maureen Walter at 301-496-0395.

DEPARTMENT OF BIOLOGICAL SCIENCES AVIAN PHYSIOLOGICAL ECOLOGY

The Department of Biological Sciences invites applications for a tenure track position. This is a re-advertisement, with the search now enlarged to consider applicants at the Associate as well as at the Assistant level. We seek an ecologist with proven ability to undertake physiological research on free-living birds in an evolutionary and ecological context. Possible areas of research include energetics, digestion or metabolism, but any relevant area may be considered. The successful applicant will hold an endowed position funded jointly by Simon Fraser University, the Canadian Wildlife Service (CWS), and the Natural Sciences and Engineering Research Council (NSERC) of Canada, and will be part of a team devoted to basic research on the problems faced by birds in changing environments. The candidate will be expected to teach in the biology program and to interact with colleagues in the Department of Biological Sciences and the CWS.

Interested applicants should send a letter outlining their research interests and how they fit the position's profile, a complete curriculum vitae, three letters of reference and three reprints to:

Dr. B.A. McKeown, Chair
ATT: Avian Physiological Ecologist
Department of Biological Sciences
Simon Fraser University
Burnaby, B.C. Canada
V5A 1S6

CLOSING DATE FOR APPLICATIONS IS AUGUST 31, 1993

Simon Fraser University is committed to the principle of equity in employment and offers equal employment opportunities to qualified applicants. The Department is particularly interested in increasing the number of qualified female applicants. In accordance with Canadian immigration requirements, priority will be given to Canadian citizens and permanent residents of Canada.

NATIONAL INSTITUTE ON AGING

STAFF FELLOWSHIP ON HUMAN MAGNETIC RESONANCE SPECTROSCOPY AND IMAGING

Staff fellowships are available beginning July, 1993 for studying human brain function in relation to aging and such disorders as Alzheimer's disease and multiple infarct and other vascular dementias using in vivo nuclear magnetic resonance spectroscopy and imaging techniques. Data generated can be combined with that obtained from positron emission tomography, neuropsychological testing, and neuropharmacological intervention. Responsibilities include writing and conducting research protocols, and limited clinical care on an 8-bed clinical research unit. MD degree and medical license (ECFMG if foreign trained) required. Fellows work in the Laboratory of Neurosciences (S.I. Rapoport, M.D., Chief), Brain Aging and Dementia Section (M.B. Schapiro, M.D., Chief), National Institute on Aging, National Institutes of Health, Public Health Service, Bethesda, MD. Starting salary commensurate with training and experience. For further information, contact:

Dr. B. Horwitz, Bldg. 10, Rm 6C-414
Laboratory of Neurosciences
National Institute on Aging
9000 Rockville Pike, Bethesda, MD 20892.
Tel. 301-496-4754; FAX: 301-402-0595;
Email: horwitz@alw.nih.gov.

NIH is an Equal Opportunity Employer

Director, Division of Clinical Research

Location: Rockville, Maryland

The National Institute on Drug Abuse (NIDA) invites nominations and applications for this Senior Executive Service position, located in Rockville, Maryland.

The Director, Division of Clinical Research (DCR), is responsible for the management and direction of the major Federal extramural program of medical, applied, services and outcome research focusing on drug abuse treatment. The Director is responsible for the planning, development and continuous enhancement of the Institute's grant and contract programs of clinical research and research training. DCR has an FY 1993 budget of approximately \$140 million and a staff of 45.

Desirable qualifications include an M.D. or Ph.D. degree with extensive postgraduate research experience, and experience in the scientific and administrative management of research programs which has established the candidate as an authority in the field of clinical research relevant to substance abuse.

The annual salary range for this position is \$92,900 to \$115,700. Physicians may be eligible for a Physician's Comparability Allowance of up to \$20,000 per annum. A recruitment bonus of up to 25 percent of base pay may be available to a nonfederal candidate selected for this position, subject to individual approval. A relocation bonus of up to 25 percent may be available to a permanent Federal employee who must relocate to accept this position, subject to individual approval. Submit applications (Application for Federal Employment, SF-171), accompanied by a current curriculum vitae and bibliography to:

Ms. Nancy Egan
Personnel Management Branch, NIDA
5600 Fishers Lane, Room 10-21
Rockville, Maryland 20857
Phone 301/443-9593



Complete application material (which must include SF-171) must be received by July 13, 1993.

NIDA IS AN EQUAL OPPORTUNITY EMPLOYER

Molecular Biosystems, Inc. (MBI), a world leader in the development of contrast agents for medical imaging, including ultrasound, MRI and CT, has an opportunity in our Analytical R&D Department for:

Research Associate

This position requires a BS in Chemistry with 3 years lab experience or an MS with 1 year lab experience in analytical chemistry or pharmaceutical analysis.

Responsibilities include development & validation of analytical methods using chromatography (HPLC, GC), spectroscopy (UV-VIS, FTIR, fluorescence, ICP), titrimetry & wet chemistry. Will also be involved in the testing of bulk chemicals & formulated dosage forms. A working knowledge of GLP compliance & computers is desirable.

MBI offers an excellent salary and benefits package, an opportunity to make a significant impact, and an exceptional working environment. For immediate consideration, please send résumé with salary history to:

Molecular Biosystems, Inc.
HR Department, A19-94
10030 Barnes Canyon Road
San Diego, CA 92121



An Equal Opportunity Employer



**MASSEY
UNIVERSITY**

Postdoctoral Research Fellowship

"EVOLUTIONARY ANALYSIS METHODS FOR DNA SEQUENCES"

A joint position is available in the Molecular Genetics Unit and the Department of Mathematics. The project aims to develop and apply improved and biologically realistic methods for analysing evolutionary trees and population history. In addition to this primary interest applicants should have subsidiary skills in molecular biology methods, mathematics, or computing.

The annual emolument payable for Postdoctoral Research Fellowships is currently NZ\$37,440 and the Fellowship is tenable for a maximum period of two years. Further information can be obtained from either Associate Professor D Penny (D.Penny@massey.ac.nz) or Associate Professor M Hendy (M.Hendy@massey.ac.nz).

Reference number Sc 37/93 must be quoted.

Closing date: 30 June 1993.

An information package including Conditions of Appointment is obtainable by telephoning extension 7318.

Applications, including a full curriculum vitae and the names, addresses and fax numbers of three referees should be sent to Mrs V B Bretherton, Personnel Section before the closing date specified.

We are an Equal Opportunity Employer.

Palmerston North, New Zealand

Telephone (64) 6 356-9099 • Fax (64) 6 350-5615

POSITIONS OPEN

FACULTY POSITION DEPARTMENT OF PHYSIOLOGY NEW YORK MEDICAL COLLEGE

Applications are invited for a tenure-track position in the Department of Physiology. Candidates must have an independent research program. Special consideration will be given to candidates with a background in molecular biology and/or cellular physiology and knowledge of endothelial cell and vascular smooth muscle mechanisms. Faculty rank and salary will be commensurate with credentials. Applicants should send curriculum vitae, history of past and current research funding, a statement of research interests and the names of 3 references to:

Gabor Kaley, Ph.D.
Professor and Chairman
Department of Physiology
New York Medical College
Valhalla, NY 10595

Equal Opportunity Employer, M/F/H/V.

HUXLEY COLLEGE OF ENVIRONMENTAL STUDIES WESTERN WASHINGTON UNIVERSITY

TERRESTRIAL (FOREST) ECOLOGIST, Ph.D. Huxley College of Environmental Studies is seeking outstanding candidates for a tenure-track **FACULTY POSITION** beginning September 15, 1993. Experience in teaching and current research in forest ecology at landscape or regional scale is preferred. Teaching duties include environmental systems, landscape ecology, conservation biology, and graduate-level ecological methods with a Northwest regional focus. Huxley College offers multidisciplinary upper-division undergraduate and graduate programs in environmental studies within a comprehensive university of about 10,000 students. Send cover letter, résumé and names/addresses of three references to: **Chair, Ecology Search Committee, Huxley College of Environmental Studies, Western Washington University, MS 9180, Bellingham, WA 98225. FAX: 206-650-2842. Email: ecologist@henson.ccWWU.edu.** Review of applications will begin July 1, 1993, and continue until the position is filled.

Western Washington University is committed to Equal Opportunity and Affirmative Action. We are working toward building a culturally diverse, broadly trained faculty and staff. Women, minorities and persons with disabilities are encouraged to apply. Persons with disabilities needing assistance in the application process may call (206) 650-3306. For the hearing impaired, call the Washington State TDD Relay Service (WSTRS) 1-800-833-6388.

PLANT SYSTEMATIST— MONOGRAPHER

The Rancho Santa Ana Botanic Garden Program in Botany invites applications for a **FACULTY POSITION** to begin January 1994. We seek a Ph.D.-level researcher who conducts modern monographic research. Preference will be given to applicants working on vascular plants. Applications at all academic levels will be accepted. The successful candidate will be expected to establish and maintain a vigorous research program and to play an active role in the graduate program. For full consideration, applicants should send curriculum vitae and statement of research interests, and have three letters of reference sent to: **Dr. Thomas S. Elias, Director, Rancho Santa Ana Botanic Garden, 1500 North College Avenue, Claremont, CA 91711 by 15 August 1993. The Rancho Santa Ana Botanic Garden is an Equal Opportunity/Affirmative Action Employer and encourages applications from members of minority groups and women.**

SENIOR POSTDOCTORAL POSITION

Available in NIH- and OCAST-funded laboratory to study the molecular mechanisms of drug resistance in the HIV virus. The applicant should have a strong background in computational and theoretical chemistry. Previous experience in the study of electrostatic interactions in proteins is advantageous. The initial appointment is for a 2-year period starting July 1993. Salary commensurate with experience. Send cover letter, curriculum vitae, background description and the names of two references to: **Dr. Fredy Sussman, University of Oklahoma Health Sciences Center, 801 N.E. 13th Street, Oklahoma City, OK 73190.**

POSITIONS OPEN

POSTDOCTORAL POSITION available immediately to conduct electrophysiological and pharmacological studies of the inositol phosphate cascade in photoreceptors. Please submit curriculum vitae and three letters of recommendation to:

Alan Fein, Ph.D.
Department of Physiology MC3505
University of Connecticut Health Center
Farmington, CT 06030

An Affirmative Action/Equal Opportunity Employer, M/F/D/V.

POSTDOCTORAL POSITION available immediately to study the molecular basis of hematological toxicity induced by anti-HIV drugs. Experience in laboratory techniques of cell culture and molecular biology is required. Send curriculum vitae and names of three references to: **Dr. Krishna C. Agrawal, Department of Pharmacology, Tulane University School of Medicine, New Orleans, LA 70112. Tulane is an Equal Opportunity/Affirmative Action Employer.**

POSTDOCTORAL RESEARCH—Two projects available at Tyndall Air Force Base in Panama City, Florida, for recent (last 3 years preferred) doctoral degree recipients in biochemistry, microbiology, or related discipline. One project involves bacterial degradation of organic pollutants in groundwater. The other involves isolation and characterization of redox proteins in sediments and plant material. Contact: **Postgraduate Research Program/TAFB, Science/Engineering Education Division, Oak Ridge Institute for Science and Education, P.O. Box 117, Oak Ridge, TN 37831-0117, Telephone: (615) 576-3456.**

POSTDOCTORAL POSITION MOLECULAR VIROLOGY

Immediate opening to study the molecular biology of satellite RNA-mediated disease attenuation in virus infected plants with emphasis on satellite RNA binding proteins. A Ph.D. in Virology, Molecular Biology, or related field required. Send résumé and three letters of reference to: **Dr. S. A. Ghabrial, Plant Pathology Department, University of Kentucky, Lexington, KY 40546. An Equal Opportunity Employer.**

POSTDOCTORAL POSITIONS

The Dana-Farber Cancer Institute seeks to fill research positions at the postdoctoral level to study the molecular mechanisms of the development and function of T-cell subsets. Applicants should have a background in cellular immunology and/or molecular biology. Joint appointment to be held in an appropriate department of Harvard Medical School. Send curriculum vitae and 3 references to:

Dr. Harvey Cantor
Laboratory of Immunopathology
Dana-Farber Cancer Institute
44 Binney Street, Boston, MA 02115 USA

Two **POSTDOCTORAL POSITIONS** are available immediately on a NIH Institutional Training Grant in the area of diabetes and hormone action; regulation of insulin secretion in pancreatic beta cells; molecular mechanisms of receptor-based signal transduction pathways. Applicants should have an M.D. or Ph.D. degree and be a U.S. citizen or permanent resident. *Minority applicants are encouraged.* Send curriculum vitae and names of three references to: **Dr. John R. Williamson, Department of Biochemistry and Biophysics, University of Pennsylvania, Philadelphia, PA 19104. FAX: 215-898-9918. Equal Opportunity Employer.**

POSTDOCTORAL POSITIONS available for recent Ph.D. with training in biochemistry, enzymology, biomedical engineering, or other related biochemical areas to work on research projects involving drug removal and delivery. Experience or knowledge in enzyme modification, blood coagulation, thrombolysis, immunology, and animal work are desirable. Ability to work across disciplines essential. Send résumé and three letters of reference to: **Dr. Victor C. Yang, College of Pharmacy, The University of Michigan, Ann Arbor, MI 48109-1065. The University of Michigan is an Affirmative Action/Equal Opportunity Employer.**

POSITIONS OPEN

POSTDOCTORAL RESEARCH SCIENTIST/ STAFF ASSOCIATE

Available immediately to study genetic control of tumor progression in intracranial tumors and tumor-derived cell lines. Projects focus on genomic instability, genetic control of tumor cell invasion, and adenovirus interactions in the brain cells. Expertise in cell culture, gene expression analysis, basic molecular biology, and virology is required. Applicants must be highly motivated. Send curriculum vitae and names of three references to: **Gregory J. Duigou, Ph.D., Department of Neurosurgery, NI-Unit 147, Columbia University, College of Physicians & Surgeons, 710 West 168th Street, New York, NY 10032. Affirmative Action/Equal Opportunity Employer.**

POSTDOCTORAL POSITIONS IN YEAST MOLECULAR GENETICS

Two positions are available to study mechanisms of transcriptional regulation. Projects consist of defining and characterizing:

- components of the general transcriptional apparatus
- components of the heat shock response pathway

Experience in molecular biology is essential. Send curriculum vitae and the names of three references to: **Dr. David S. Gross or Dr. Michael Hampsey, Department of Biochemistry and Molecular Biology, Louisiana State University Medical Center, 1501 Kings Highway, Shreveport, LA 71130-3932. LSUMC is an Equal Opportunity/Affirmative Action Employer.**

RESEARCH ASSOCIATE POSITION to manage the automated DNA sequencing section of the W. M. Keck Facility Biotechnology Resource Laboratory at Yale University. Applicants should have a Ph.D. in biochemistry or a related science and extensive experience with DNA sequencing and molecular biology techniques. Candidates should also have good interpersonal and communication skills. Opportunities will be provided for independent research that may focus on improving DNA sequencing methodology, on human genome mapping or sequencing or on other topics that are complementary to research that is ongoing within the laboratory of **K. Williams** on understanding structure/function relationships in single-stranded nucleic acid binding proteins. The successful applicant will be encouraged to pursue independent grant support as well as to assist in the preparation of shared instrumentation grant proposals. The position will be available this summer and the salary will be commensurate with the level of experience. Curriculum vitae should be sent to: **Ken Williams, Ph.D., W. M. Keck Foundation Biotechnology Resource Laboratory, Boyer Center for Molecular Medicine, 295 Congress Avenue, New Haven, CT 06536-0812. Yale University is an Equal Opportunity Employer.**

RESEARCH ASSOCIATE

Western Psychiatric Institute and Clinic/University of Pittsburgh Medical Center currently seeks qualified applicants for the position of Research Associate in its Pittsburgh Adolescent Research Center.

The incumbent will be responsible for collecting serum samples; using a sep-pac extraction to isolate caffeine/antipyrine; using high performance liquid chromatography for the determination of caffeine levels as well as the use of gas chromatography/mass spectrometry. In addition, the incumbent will run electrophoresis and Bradford protein determination assays. Will also be responsible for database management using DataEase and Quattro to generate linear regression analysis of data.

The successful candidate must have a Bachelor's degree in a Biological Science with a minimum of five years of experience with HPLC, gas chromatography/mass spectrometry and the ability to use data management programs including DataEase and Quattro. Candidate should be familiar with ultraviolet, electrochemical and reactive index detection by HPLC and UV spectrometry. Basic knowledge of statistics is necessary.

The starting salary for this position is \$19,843. We offer a competitive fringe benefit program including a tuition assistance program. Interested candidates send résumés and salary history to: **Andrea Hedegus, Ph.D., WESTERN PSYCHIATRIC INSTITUTE AND CLINIC/UPMC, 3811 O'Hara Street, Pittsburgh, PA 15213. An Equal Opportunity Employer.**

Mitotix, Inc., a well-funded new biopharmaceutical company, is developing cell-cycle based therapeutics for cancer and infectious diseases.

We are looking for creative, highly motivated and enthusiastic **Post-Doctoral Scientists** with a strong record of achievement in either the academic or industrial environment.

Cell geneticists, with experience in expression cloning, cDNA library construction, genetic manipulation of yeast or mammalian cells.

Protein biochemists, with experience in protein purification and characterization and/or peptide chemistry.

Structural biologists, with experience in macromolecular computer modeling and/or protein structure determination by physicochemical methods.

Two-year Fellowships will be awarded, with the possibility of a third year, based on performance. We offer competitive salaries and benefits, a wonderful location in the heart of Cambridge's scientific community, and the chance to work with leading science and business professionals. We are strongly committed to research and encourage participation in scientific meetings and publication of scientific results.

Send a curriculum vitae and the names and addresses of three references to: Giulio Draetta, Vice President for Biological Research, **Mitotix, Inc.**, One Kendall Square, Building 600, Cambridge, MA 02139, USA. An Equal Opportunity Employer.



Mitotix

National Cancer Institute
National Institutes of Health, Public Health Service

CANCER PREVENTION FELLOWSHIP PROGRAM

The Division of Cancer Prevention and Control (DCPC) is accepting applications for the Cancer Prevention Fellowship Program (CPFP). The purpose of this program is to train individuals from a multiplicity of health science disciplines in the field of cancer prevention and control. The program provides for: Master of Public Health training (at accredited university programs); Participation in the DCPC Cancer Prevention and Control Academic Summer Course (open to all physicians and scientists interested in learning the principles and practice of cancer prevention and control); Working at NCI directly with individual preceptors on cancer prevention and control projects; Field assignments in cancer prevention and control programs at other institutions. Funding permitting, as many as ten Fellows will be accepted for up to three years of training, beginning July 1, 1994. Benefits include selected relocation and travel expenses, paid federal holidays, and participatory health insurance.

ELIGIBILITY

M.D., D.D.S., D.O. from a U.S., territorial, or Canadian Medical School. Foreign medical graduates must have current ECFMG/FMGEMS certification and appropriate experience, e.g., one year residency in a training program approved by the Accreditation Council for Graduate Medical Education.

OR

Ph.D., Dr.P.H. or other doctoral degree in a related discipline (epidemiology, biostatistics, and the biomedical, nutritional, public health or behavioral sciences). Foreign education must be comparable to that received in accredited U.S., territorial, or Canadian institutions.

PLUS

U.S. citizenship or resident alien eligible for citizenship within four years.

For details and application catalog send a postcard or letter with your name and home address to:

Douglas L. Weed, M.D., M.P.H., Ph.D.
Director
Cancer Prevention Fellowship Program
Division of Cancer Prevention
and Control
National Cancer Institute
Executive Plaza South, T-41
Bethesda, MD 20892

***Further Inquiries: Mrs. Barbara Redding, (301) 496-8640

DEADLINE FOR RECEIPT OF APPLICATIONS: SEPTEMBER 1, 1993



NIH is an Equal Opportunity Employer



**NATIONAL UNIVERSITY
OF SINGAPORE
DEPARTMENT OF
ORTHOPAEDIC SURGERY**

Applications are invited for teaching appointments in the Department of Orthopaedic Surgery.

Candidates applying for an appointment as **Lecturer** should possess registrable medical degree together with relevant higher professional/academic qualifications.

For short-term appointments as **Fellow/Senior Fellow**, the contract will be for one year in the first instance, with the possibility of further extension. Appointees will carry out research in one of the following areas and be expected to participate actively in the teaching of undergraduates and clinical activities of the Department:

**Spine
Paediatric Orthopaedics
Orthopaedic Research
Adult Reconstructive Surgery**

Laboratory facilities are available for animal surgery, motion analysis, biomechanics, histology and biochemistry related to orthopaedic research.

The commencing salary will depend upon the candidate's qualifications, experience and the appointment offered. Gross annual emoluments range as follows:

Lecturer/Fellow	S\$53,160 - 64,200
Senior Fellow	S\$58,680 - 100,310

(US\$1.00 = S\$1.60 approximately)

In addition, the Professional Fee Scheme will apply to appointments who are accorded clinical appointments by the National University Hospital.

Leave and medical benefits will be provided. Depending on the type of contract offered, other benefits may include: provident fund benefits or an end-of-contract gratuity, a settling-in allowance of S\$1,000 or S\$2,000, subsidised housing or a housing allowance, education allowance for up to three children subject to a maximum of S\$16,425 per annum per child, passage assistance and baggage allowance for the transportation of personal effects to Singapore.

All academic staff have access to the following computer and telecommunication resources: a networked microcomputer (an IBM compatible or Apple Macintosh); an IBM mainframe computer with 16 MIPS of computing power; an NEC SX supercomputer with 650 MFLOPS of computing power; departmental laser printers; a wide spectrum of mainframe and microcomputer software; voice-mail. The campus-wide network, which is based on the high speed optical fibre based FDDI technology, links up all the academic staff and student microcomputers, UNIX workstations and provides access to the mainframe computer, the supercomputer, UNIX hosts, the on-line library catalogue, CD-ROM databases, Televue, Internet and BITNET.

Application forms and further information on terms and conditions of service may be obtained from:

**The Director
Personnel Department
National University
of Singapore
10 Kent Ridge Crescent
Singapore 0511**

**The Director
North America Office
National University
of Singapore
55 East 59th Street
New York, N.W. 10022, U.S.A.
Tel: (212) 751-0331**

Enquiries may also be sent through **BITNET** to: **PERLIMM@NUS3090**, or through **Telefax**: (65) 7783948.

National Institutes of Health • National Institute of General Medical Sciences
Minority Opportunities in Research Programs Branch

**Director, Minority Opportunities in
Research Programs Branch**

This is a civil service position in the Senior Executive Service (SES) with a salary range from \$92,900 to \$107,300.

Serves as the principal advisor to the Director, NIGMS, regarding the overall direction of and approaches to the Institute's minority research and research training programs. Advises NIGMS senior staff and, as appropriate, officials of other NIH ICDs, of NIH as a whole, or of other agencies, as well as members of Congress, on trends and developments concerning these programs as they relate to the missions of the NIGMS, NIH, PHS, DHHS, other Federal agencies, the biomedical research community, and related groups. Keeps the Director, NIGMS, and other officials fully informed of program and related considerations having significant bearing upon the planning, development, and administration of NIGMS minority research and research training programs. Oversees resource allocations and advises the Director, NIGMS, as to distribution among the various minority research and research training mechanisms supported by the Institute as well as priorities in regard to award of specific grants. Serves as a channel of communication with the NIH, other agencies, the Congress, and the extramural community regarding these programs.

Position information and qualifications requirements may be obtained by contacting:

**Howard R. Chernoff, Personnel Officer
National Institute of General Medical Sciences
5333 Westbard Avenue, Room 803, Bethesda, MD 20892
(301) 594-7767**

Application for Federal Employment (SF-171), CV and Bibliography must be submitted to above address and **received no later than July 1, 1993.**

Selection for this position will be based solely on merit, with no discrimination for non-merit reasons such as race, color, religion, sex, national origin, politics, marital status, physical or mental handicap, age, or membership or non-membership in an employee organization.

NIH is an Equal Opportunity Employer

The Numbers Speak for Themselves.

Look at the audited paid circulation
of these two publications:

154,842	Science*
51,306	Nature**

SCIENCE, the global weekly of research.

**For more information, contact:
Janis Crowley, 212-496-7704 (U.S.)
In Europe, contact
Annemarie Vis, +44 223 302 067**

* December 1992 ABC Publisher's Statement

** December 1992 BPA Publisher's Statement

FURTHER YOUR CAREER BY MORE THAN A DEGREE.

SCHOOL OF MEDICINE C.R. ROPER FELLOWSHIP FOR THE PROMOTION OF MEDICAL RESEARCH

Applications are invited for appointment as the C.R. Roper Fellow for research in either clinical or non-clinical areas.

You will possess suitable qualifications in an appropriate and acceptable research field. You should consult with the Head of the appropriate department within the Faculty of Medicine, Dentistry and Health Sciences concerning the acceptability of your research project. Evidence of the department's acceptance must be included with the application. It is anticipated that the appointment will be made in 1993, for two years, and thereafter by negotiation.

Salary: \$41,000-\$48,688 p.a. (Research Fellow Gr 2); \$50,225-\$57,913 (Senior Research Fellow). A grant-in-aid of up to \$4,100 per annum may also be available.

For further information and a position description, phone the Administrative Officer, School of Medicine, on (03) 344 4019; or fax (03) 344 5998.

Applications close: 23 July 1993.

Reference number: B500A9II

Applications should be sent, in duplicate, quoting three referees (including facsimile numbers) to the Director, Personnel Services, The University of Melbourne, Parkville, Victoria, 3052.

THE UNIVERSITY OF MELBOURNE AND THE CRC FOR INDUSTRIAL PLANT POLYMERS SENIOR RESEARCH FELLOW

The Centre for Industrial Plant Biopolymers is a co-operative venture involving The University of Melbourne (Department of Chemical Engineering/School of Botany), CSIRO Division of Food Science and Technology, and a commercial partner Tridan-Bunge Ltd.

The Research and Development Programme is focussed on evaluating the potential of plant cells in culture as a source of plant gums for commercial use. One aspect of this programme is to understand the molecular structure and physico-chemistry of the gum components, their physical interactions and functional properties.

You would be expected to initiate and co-ordinate a basic and strategic research programme to examine the functional properties of these gums and the relationship between structure and function, under the direction of Professor D V Boger.

You must have experience in physico-chemical techniques and their application in polymer systems. Experience in the field of chemical engineering and/or complex carbohydrates would also be an advantage. A capacity to interact with multi-disciplinary research groups and industry is a primary requirement.

The position is for three years in the first instance, with an option of a further two years.

Salary: \$50,225-\$57,913 p.a. (Senior Research Fellow); \$60,475-\$66,625 p.a. (Principal Research Fellow)

For further information and a position description, phone Professor D V Boger on (613) 344 7440, Dr A Basic on (613) 344 5041 or Dr D Hawley on (613) 344 5043; or fax (613) 347 1071.

Applications close: 18 June 1993

Reference number: G/4II/170

Applications should be sent, in duplicate, quoting six referees (including facsimile numbers) to the Director, Personnel Services, The University of Melbourne, Parkville, Victoria, 3052.

The University of Melbourne is an equal opportunity employer and has a smoke-free workplace policy.



THE UNIVERSITY OF MELBOURNE
MORE THAN A DEGREE

BS, MS and PhD SCIENTISTS Drug Metabolism and Disposition Research

give us your best

For more than 115 years, scientists at Eli Lilly and Company have been developing novel, high quality pharmaceutical products. With a current yearly investment of over \$900 million in research and development programs, our continued success in reducing the time required to get new drug candidates to market requires the finest scientific talent available.

To further build our research capabilities, we are seeking self-motivated, innovative BS, MS and PhD level scientists to plan, organize, and manage programs in the area of pre-clinical and clinical drug metabolism.

Successful PhD candidates will establish a laboratory program utilizing basic and applied approaches to study the metabolism and disposition of drug candidates. Applicants must have a PhD degree in biochemistry, analytical chemistry, medicinal chemistry, bioanalytical chemistry, or a related field; and experience in HPLC and other quantitative analytical methods to study absorption, distribution, metabolism, and excretion of drugs in animal models and humans. A strong background in pharmacologic and pharmacokinetic mechanisms as they relate to drug disposition is desirable.

Successful BS and MS scientists are needed to work collaboratively with senior investigators to study chemical transformations in biological systems. Ideal candidates will have a BS or MS degree in analytical chemistry, biochemistry, or in a related discipline; experience in developing and implementing quantitative bioanalytical methods using HPLC and/or GC systems; and excellent organizational and communication skills. Experience with computer data systems and radiochemicals is desirable.

Eli Lilly and Company offers a competitive compensation and benefits package and a highly professional environment. For prompt consideration, please forward your resume to: Eli Lilly and Company, Scientific Recruitment, Dept. DMDS, Lilly Corporate Center, Indianapolis, IN 46285.

We are an equal opportunity employer committed to diversity in the workplace.



POSITIONS OPEN

POSTDOCTORAL POSITIONS available to study molecular mechanisms of mitochondrial biogenesis in *S. cerevisiae*. Projects include (1) studies of *in vitro* splicing of mitochondrial RNA or (2) studies of functions of the *PET117* and *PET191* gene products in cytochrome oxidase assembly. Salary is \$27,700 per year. Send curriculum vitae and names of 3 references to: **Dr. Joan E. McEwen, Department of Molecular Genetics, Beckman Research Institute, City of Hope Medical Center, 1450 East Duarte Road, Duarte, CA 91010.** An Equal Opportunity Employer; Email: Joanm@Microbio.lifesci.ucla.edu.

POSTDOCTORAL POSITION available immediately for a recent Ph.D. with a strong background in protein chemistry to study the biochemistry of plasminogen activators and their roles in fibrinolysis, angiogenesis and tumor migration. Send curriculum vitae and names of three references to: **Dr. J. Liu, Vascular Research Lab, Deaconess Hospital, Harvard Medical School, 185 Pilgrim Road, Boston, MA 02215.** (Email address is liu@mbcrr.harvard.edu). *The Deaconess Hospital is an Equal Opportunity/Affirmative Action Employer.*

MOLECULAR BIOLOGY OF AGING: PRE- AND POSTDOCTORAL POSITIONS

NIH-supported predoctoral position currently is available to study the molecular biology of aging in the Department of Cellular and Structural Biology at the University of Texas Health Science Center at San Antonio. A postdoctoral position will be available as of January 1994. Research interests of the participating faculty range from characterization of transacting proteins to gene regulation in transgenic mice. Interested individuals should write to: **Barbara H. Bowman, Ph.D., Professor and Chair, Department of Cellular and Structural Biology, The University of Texas Health Science Center at San Antonio, 7703 Floyd Curl Drive, San Antonio, TX 78284-7762.** Training Faculty: G.S. Adrian, B.H. Bowman, I.L. Cameron, B. Chatterjee, J.M. Dubinsky, P. Jagadeeswaran, R.J. Klebe, E.B. Kraig, R.J. Leach, E.Y.H.P. Lee, W.H. Lee, W.W. Morgan, S.L. Naylor, J.F. Nelson, R.J. Reiter, A.G. Richardson, A.K. Roy, A.Y. Sakaguchi, C.A. Walter, and F. Yang. *The University of Texas Health Science Center at San Antonio is an Equal Employment Opportunity/Affirmative Action Employer.*

POSTDOCTORAL FELLOW—The Department of Medical Cell Biology at the Alfred I. duPont Institute seeks a postdoctoral fellow to participate in an NIH-funded research project on mechanisms of amino acid and iron nutrition in the mammalian embryo. Candidates should possess a Ph.D. and relevant experience in cell biology or a related field. Send inquiries to: **Department #8801, Attention: Dr. J. B. Lloyd, Director, Department of Medical Cell Biology, ALFRED I. duPONT INSTITUTE, P.O. Box 269, Wilmington, DE 19899.** Equal Opportunity Employer.

POSTDOCTORAL/GRADUATE FELLOWSHIPS in spinal trauma research. Two Predoctoral fellowships immediately available. Strong biology background required. Postdoctoral work requires experience in "evoked potential" recording to be used in clinical work with canines. *Graduate candidates must be U.S. Citizen/National.* Send curriculum vitae/references to: **Dr. R.B. Borgens, Center for Paralysis Research, School of Veterinary Medicine, Purdue University, West Lafayette, IN 47907.** Affirmative Action/Equal Opportunity Employer.

POSTDOCTORAL FELLOW

To work with multidisciplinary group on generation of new tissue equivalents using cultured cells on novel polymer scaffolds. Focus will be on hepatocytes and control of hepatocyte function through matrix interaction. Available immediately. Send curriculum vitae, statement of research interests, and names and addresses of three references to: **Joseph P. Vacanti, M.D., Department of Surgical Research, Children's Hospital, 300 Longwood Avenue, Boston, MA 02115.** *Children's Hospital is an Equal Opportunity Employer.*

POSITIONS OPEN

POSTDOCTORAL SENIOR RESEARCH ASSOCIATE position in collagen pathobiology or biochemistry available immediately. Opportunity to study tendon and ligament repair processes. The successful candidate will supervise lab staff. Send curriculum vitae and references to: **Chukuka S. Enwemeka, Ph.D., Professor and Chairman, Department of Physical Therapy Education, University of Kansas Medical Center, 3901 Rainbow Boulevard, Kansas City, KS 66160-7601.**

APPLIED ECOLOGIST:

3D/Environmental Services, Inc., a rapidly growing, multidisciplinary consulting firm seeks to hire an applied ecologist with a graduate degree and a minimum of 3 years of experience. Experience should emphasize impact assessment, habitat restoration/creation, and project management. A strength in vertebrate community ecology is strongly desired. Experience with endangered species management and multidisciplinary projects is desirable. Strong written and oral skills and analytic ability are essential. Send application materials to: **Dr. Virgil Brack, Jr., 3D/ESI, 781 Neeb Road, Cincinnati, OH 45233.**

FLOW CYTOMETRY TECHNOLOGIST

Applicants should possess a minimum of 3 to 6 years of flow cytometry laboratory experience in a basic research environment. In addition to extensive hands-on experience with the day-to-day operation of a research-grade flow cytometer, the successful candidate should have a comprehensive background in specimen preparation protocols, new methods development and validation, implementation of novel techniques, and instrument troubleshooting and end-user maintenance procedures. Data reduction, statistical analysis, and graphical presentation of analyzed data as well as technical writing skills are a component of the position. Previous experience with Coulter flow cytometry instrumentation and the isolation and functional assessment of immune cells is highly desirable.

Interested applicants should submit current résumé, a list of references, and salary history indicating **POSITION #93-K21-H** to: **KRUG Life Sciences, Inc., Human Resources Department, P.O. Box 58827, Houston, TX 77258-8827.** Employment Eligibility Verification Required. Equal Opportunity Employer, M/F/H/V. Smoke-free workplace.

SUPERVISOR/ELECTRON MICROSCOPY

Supervise and perform day-to-day operations of the Electron Microscopy Facility and assist investigators.

Bachelor's degree including course work in biological and/or physical sciences and at least 2 years of experience in EM, or master's degree and at least 1 year of relevant experience.

Qualifications include comprehensive knowledge of EM and ability to establish harmonious relations.

Qualified applicants should send a résumé and names of references to: **Dr. W.B. Rhoten, Department of Anatomy and Cell Biology, School of Medicine, Marshall University, Huntington, WV 25755-9350.**

For full consideration submit application by June 30, 1993.

MARSHALL UNIVERSITY IS AN AFFIRMATIVE ACTION/EQUAL OPPORTUNITY EMPLOYER. WOMEN AND MINORITIES ARE ENCOURAGED TO APPLY.

RESEARCH SCIENTIST

Position is immediately available to study the structure-function relationship of IL-1 receptors type I and type II. Specific requirements include strong background in molecular biology, including cDNA cloning and sequencing, vector construction, point mutations and PCR. Send résumé, names and addresses of three references and salary requirements to:

David Benjamin, M.D.
1232 James Cancer Hospital and Research Institute
The Ohio State University Hospitals
300 West 10th Avenue
Columbus, OH 43210-1228
Telephone: (614) 293-3716, FAX: (614) 293-3112

POSITIONS OPEN

INTERNATIONAL FELLOWSHIP

The Dan Charitable Trust Fund for Research in Biological Sciences provides financial support for collaborative research between Japan and other countries or participation in international conferences or workshops held in Japan or other countries. A total of 6 fellowships (1- or 3-month duration) will be awarded every year. Applications for fellowships must be submitted to the address listed below by October 31, 1993. For more information, write: **Kiyo Yamauchi, The Dan Charitable Trust Fund for Research in the Biological Sciences, Nippon Trust Bank, 3-1-8 Nihonbashi, Chuoku, Tokyo 103, Japan.** FAX: (03) 3271-2843.

MOLECULAR BIOLOGISTS. Two positions available (Ph.D. and M.S.) for individuals with an interest in applying molecular biology to unique problems in botanically related biosyntheses. Experience with (1) expression of heterologous proteins in *E. coli* or yeast, (2) bioactive compounds derived from plants, and/or (3) organic chemistry is a plus. Ability to work as part of a team is a must. The project is NIST-funded to develop pyrethrins through a marriage of molecular biology and chemistry.

AgriDyne is a biotechnology company dedicated to the development of environmentally compatible crop protection products. Our current products are efficacious, biorational azadirachtin-based insecticides. We are located by the Wasatch Mountains in Salt Lake City with numerous recreational opportunities. Salaries will be commensurate with experience and qualifications. Send curriculum vitae, summary of research experience, and names of three references to: **Ms. Teri Featherstone, Personnel, AgriDyne Technologies Inc., 417 Wakara Way, Salt Lake City, UT 84108.**

NEUROGERONTOLOGY INSTITUTIONAL PHYSICIAN/SCIENTIST PROGRAM

The University of Southern California has recently received an award from the National Institute on Aging for a Physician/Scientist Program for the development of basic and clinical research skills for the study of diseases related to the aging nervous system. This is a five-year salary award with appointments in the Department of Neurology of the School of Medicine and in the School of Gerontology. *Candidate must be a U.S. Citizen or have permanent U.S. Resident status and be board eligible in neurology, psychiatry, neuropathology, or internal medicine.* The first two to three years are spent in basic research at the Andrus Gerontology Center or the Hedco Neuroscience Neural Information and Behavioral Science Program. During the third year, the candidate joins the Department of Neurology as Assistant Professor (tenure-track). He or she continues clinical training in neurogerontology and develops individual research program. Clinical responsibilities are limited to 25% of time and include teaching students, residents, and fellows in neurogerontology.

This position is open immediately. To apply send curriculum vitae and three letters of recommendation to: **Leslie P. Weiner, M.D., Department of Neurology, USC School of Medicine, 1510 San Pablo Street, Los Angeles, CA 90033-4606,** and arrange for two days of interviews. For further information, call: 213/342-5793.

PRODUCT DEVELOPMENT SCIENTIST

Genetic Testing Institute (GTI), a company engaged in the manufacture and distribution of immunodiagnostic reagents and kits, is seeking a scientist to help conceive and develop new products. Preference will be given to candidates with background in immunology and experience in molecular genetics. The successful candidate will have the opportunity for a close interaction with an academic research institute having a worldwide reputation. Ph.D. degree and a minimum of two years of postdoctoral experience required. Curriculum vitae and relevant background information should be sent to:

Jim Tidey, President
GTI
150 North Patrick Boulevard
Brookfield, WI 53045
GTI is an Affirmative Action/Equal Opportunity Employer.

ANNOUNCEMENT

PENNSTATE



Nominations and Applications are Invited for the
**Verne M. Willaman Chairs in Molecular
Biology and the Life Sciences**

Two endowed professorships, with appointment in the Department of Biology or the Department of Molecular and Cell Biology, are available for persons with research interests in molecular biology and related areas of the life sciences, including biomolecular structure and function, gene regulation, developmental genetics, population genetics, and molecular evolution.

For information, contact:

Dr. Robert K. Selander, Life Sciences Search Committee, Box WS, Department of Biology, 208 Mueller Laboratory, Pennsylvania State University, University Park, Pennsylvania 16802-5301. Phone: (814) 234-8997. FAX: (814) 863-4706.

Dr. Donald A. Bryant, Molecular Biology Search Committee, Box WS, Department of Molecular and Cell Biology, 108 Althouse Laboratory, Pennsylvania State University, University Park, Pennsylvania 16802-4500. Phone: (814) 865-1992. FAX: (814) 863-7024. Applications will be accepted until vacancies are filled.

*The University is an Affirmative Action/
Equal Opportunity Employer.
Women and minorities are encouraged to apply.*

Associate Senior Investigator Pharmacokinetics

The specific duties include: (i) design, conduct, analyze and report on human pharmacokinetics and toxicokinetic studies for Phase I through Phase IV drug development in collaboration with clinical research scientists including population pharmacokinetic and pharmacodynamic analysis using appropriate statistical/pharmacokinetic software such as NONMEM; (ii) develop and coordinate comprehensive program of pharmacokinetic studies for worldwide regulatory submission; and (iii) prepare reports of clinical pharmacokinetic and toxicokinetic studies, present research findings to scientific bodies and publish clinical pharmacokinetic studies in scholarly professional journals.

Minimum requirements are a Ph.D. degree in Pharmacy or Pharmaceuticals and either two (2) years of experience in the job offered or two (2) years of experience in Clinical Pharmacy which shall include two (2) years graduate research experience in clinical pharmacokinetics involving (i) the application of basic and advanced clinical pharmacokinetic theories including population pharmacokinetics and pharmacodynamics, (ii) the analyses of population pharmacokinetics data employing nonlinear and mixed effects techniques and (iii) the use of pharmacokinetic/statistical software packages. Must have published in the area of advanced pharmacokinetic methods and population analysis techniques in scholarly professional journals. This experience may be acquired in conjunction with the required graduate education.

Salary of \$55,000 with employee benefits; M-F, 8am-4pm. No fee charged. For prompt and confidential consideration, submit resume or C.V. to The Phila. Job Bank, 444 N. 3rd St. - 3rd Fl., Phila., PA 19123 and refer to Job Order Number 1539.

MAYO CLINIC SCOTTSDALE

POSTDOCTORAL FELLOWS IN CELL AND MOLECULAR BIOLOGY

Positions available in collaborative research effort emphasizing transgenic approaches to study the molecular genetics of murine eosinophil differentiation and the interactions of eosinophils with other components of the immune system. Competitive salary and comprehensive benefits package. Starting date is January 1, 1994.

Send curriculum vitae and names of three references to either:

Dr. James J. Lee or Dr. Nancy A. Lee
Department of Biochemistry and Molecular Biology
Samuel C. Johnson Medical Research Center
Mayo Clinic Scottsdale
13400 E. Shea Blvd.
Scottsdale, AZ 85259



SAMUEL C. JOHNSON RESEARCH CENTER MAYO CLINIC SCOTTSDALE
Mayo Clinic Scottsdale is an Affirmative Action/Equal Opportunity Employer

Structural Biological Chemistry Faculty Positions The University of Texas Medical Branch Galveston, Texas

Multiple tenure-track faculty positions at senior and junior ranks are available in areas involving the application of Nuclear Magnetic Resonance (NMR) to solving structure of biological macromolecules. The University of Texas Medical Branch has made a major commitment to create a strong Structural Biology Program on campus to enhance our existing capabilities. The NMR facility consists of new 400 and 600 MHz Varian spectrometers with a 750/800 MHz instrument contracted for delivery in 1995. Endowed foundations, the Medical Branch and NIH funding have provided excellent equipment, renovation funds, and space in support of Structural Biology. The ultimate composition of the Unit will consist not only of NMR spectroscopists, but also other disciplines relevant to Structural Biology, including computational chemistry and x-ray crystallography.

Senior investigators with well established and productive research program are encouraged to apply. Successful junior candidates must have outstanding potential for independent research with a record and stature in the field of NMR commensurate with the academic rank they are seeking. They will be expected to attract funding from national agencies and to fully participate in graduate education at the departmental level. Affiliation with the Sealy Center for Molecular Science or other relevant academic departments will be available.

Applications should include a complete curriculum vitae, a summary of research interests and names and addresses of at least three references. Review of applications will continue until all positions are filled. Applications should be addresses to:

Dr. James C. Lee
Structural Biology Search Committee
Department of Human Biological Chemistry and Genetics and
The Sealy Center for Molecular Science
University of Texas Medical Branch F-47
Galveston, Texas 77555

UTMB is an equal opportunity M/F/V/H affirmative action employer.
UTMB hires only individuals authorized to work in the United States.
UTMB is a drug-free/smoke-free workplace.



In preparation for the retirement of its current Director General, Dr. Nasrat Fadda, the Board of Trustees invites applications for the post of

DIRECTOR GENERAL

Qualifications should include:

- A distinguished career of professional achievement in any of the disciplines related to agricultural research relevant for dry areas;
- Familiarity with West Asia/North Africa (WANA) Region's national agricultural research institutions and/or international organizations;
- An established record of institutional management at the highest level and of the leadership and motivation of a multi-disciplinary and international staff of senior scientists and professionals, experience in inter-institutional networking and ability to attract funding.

Female candidates are welcome to apply.

ICARDA, based on Aleppo, Syria, is one of 18 international centers belonging to the Consultative Group on International Agricultural Research (CGIAR). It receives support from a large number of national and international donors. It has a professional staff of about 100 and an annual budget of 20 million dollars. The center is engaged in research and research associated training activities to assist national efforts to increase food production and to conserve the natural resource base in the drier regions of West Asia and North Africa. Its research program includes germplasm enhancement of the region's most important food and fodder crops, farm resource management, socio-economics and public policy.

The appointment of the new Director General will be for an initial five year term. Extension for an additional five year term is possible depending upon accomplishments. Salary is open and commensurate with experience and qualifications. It is assumed that the successful candidate will assume the position as at the beginning of 1995.

Further details can be obtained from the address below, where application with full C.V. and the names and addresses of three referees should be received not later than August 15, 1993.

Prof. Dr. Winfried von Urrf
Lehrstuhl fuer Agrarpolitik
D-8050 Freising-Weihenstephan
GERMANY

POSTDOCTORAL FELLOWSHIP

CNS Research

A 2-year postdoctoral position in CNS pharmacology is currently available at ZENECA Pharmaceuticals Group (formerly ICI Pharmaceuticals Group).

Candidate will have a PhD or equivalent in the Biological Sciences. A strong research background in neurophysiology with demonstrated knowledge of animal EEG experimentation is essential. You will be responsible for the implementation of a state-of-the-art EEG laboratory to conduct studies aimed at determining dose-response and duration of action of CNS compounds. Excellent oral and written communication skills and the ability to interact with scientists in a multidisciplinary environment are important.

Interested candidates should submit a c.v. to: **Ron Martin, ZENECA Pharmaceuticals Group, 1800 Concord Pike, Wilmington, DE 19897.**

ZENECA
Pharmaceuticals Group

ZENECA Pharmaceuticals/Stuart Pharmaceuticals
Business Units of ZENECA Inc.
An Equal Opportunity Employer M/F.

RESEARCH SCIENTIST Toxicology

Houghten Pharmaceuticals Inc. (HPI), a San Diego-based drug discovery company, has a challenging opportunity for a scientist to support our rapidly expanding R&D efforts in the Preclinical Development Department.

Responsibilities include establishing a preliminary toxicology and pharmacokinetic/pharmacodynamic in-house facility, generating protocols, monitoring toxicology studies at contract facilities, and providing advice regarding regulatory strategy.

The ideal candidate will have a PhD in Toxicology, preferably ABT certified; experience in an industrial setting, contract laboratory experience a plus; toxicokinetic background; report-writing experience; computer literacy; and excellent communication skills. Pharmacokinetic/pharmacodynamic and regulatory experience are desirable.

HPI offers comprehensive benefits including relocation assistance, and equity participation. For consideration, please submit your resume to:

**HOUGHTEN
PHARMACEUTICALS
INC., SM/SCI/6-4-
93/RS-PC, 3550
General Atomics
Ct., San Diego,
CA 92121. EOE
M/F/D/V.**

Houghten



Pharmaceuticals, Inc.



CHAIRPERSON

SECTION OF PLANT BIOLOGY UNIVERSITY OF CALIFORNIA, DAVIS

The University of California, Davis invites applications and nominations for Professor and Chairperson of the Section of Plant Biology within the newly reorganized Division of Biological Sciences. The chairperson will be responsible for providing academic and administrative leadership to promote excellence in teaching and research in the Section. Candidates must have active research programs with outstanding records of achievement in an area of experimental plant biology such as cell and molecular plant biology, developmental plant biology or physiology and biophysics.

The section offers an undergraduate degree and serves as the administrative core of the Graduate Group in Plant Biology, a campus-wide unit which offers Master's and Ph.D. degrees. Due to recent retirements, there is an opportunity for significant recruitment of new faculty. The section will be moving to a new building in 1996.

For the initial application, candidates should submit a curriculum vita, a statement of their current research program, and a statement of their teaching and administrative experience and philosophy to:

Chair of the Search Committee
Section of Plant Biology
University of California
Davis, CA 95616

Closing Date: Open until filled, but applications must be received before September 1, 1993 to be assured of consideration.

The University of California is interested in candidates who reflect the highest standards of scholarship and professional activities and does not discriminate on the basis of race, color, national origin, religion, sex, disability, age, or sexual orientation.

The University of California is an Equal Opportunity/Affirmative Action Employer.

SYMPOSIUM

Third International Symposium on Combination Therapies

New and Emerging Uses for Biological Response Modifiers in the Treatment of Cancer, AIDS and other Infectious Diseases

October 29-31, 1993 • J.W. Marriott Hotel • Houston, Texas

Symposium Chairpersons

Enrico Garaci, M.D., C.N.R and the University of Rome "Tor Vergata," Rome, Italy
Allan L. Goldstein, Ph.D., The George Washington University School of Medicine, Washington, D.C.
Adan Rios, M.D., OnCol Medical Associates, P.A., Houston, Texas

Presented by:



In collaboration with

OnCol Medical Associates, P.A.
Houston, Texas

George Washington University School of Medicine
Washington, D.C.

University of Rome "Tor Vergata"
Rome, Italy

Consiglio Nazionale Delle Ricerche (C.N.R.)
Rome, Italy

National Institutes of Health/National Institute on Aging
World Health Organization

Symposium Scientific Themes

- Animal Models of Combination Therapies.
- Molecular, cellular and gene approaches.
- Basic and experimental models of novel immuneconjugates and receptor agonists.
- Synergy between new drugs, biological response modifiers, and/or vaccines in combination therapies.
- Clinical application of combination therapies in cancer treatment.
- Combination approaches in the treatment of AIDS and other infectious diseases.
- Future directions/Prospects.

Registration Fees

\$300 Scientist (Industrial Firm)

\$200 Scientist (University, Government or other non-profit organization)

\$100 Student

For further information please contact:

Lynne K. Tiras, CMP or Karen Schmitt International Meeting Managers, Inc.
4550 Post Oak Place, Suite 248 Houston, TX 77027
(713) 965-0566; FAX (713) 960-0488

POSITIONS OPEN

PROJECT ECOLOGIST, Disney Wilderness Preserve, the Nature Conservancy. Scientist needed to design and implement research and monitoring of critical species, natural communities and restoration programs on 10,000 plus-acre preserve. Will also coordinate data analysis, publish research results and develop education training and outreach components of program. Ph.D. preferred with grant writing background and 3 to 5 years of experience. Send résumé and cover letter to: **Jora Young, Department DP, The Nature Conservancy, 2699 Lee Road, Suite 500, Winter Park, FL 32789.**

RESEARCH ECOLOGIST. The Nature Conservancy seeks a broadly trained plant or community ecologist to conduct research and coordinate cooperating scientists on a multidisciplinary longleaf pine ecosystem restoration project. Ph.D. required; knowledge of southeastern United States ecosystems preferred. Position is full-time and expected to last 3 to 5 years. Send applications including curriculum vitae, statement of experience, and 3 letters of reference by July 1, 1993, to: **Jeffrey Hardesty, The Nature Conservancy, 118 Newins-Ziegler Hall, University of Florida, Gainesville, FL 32611.** *The Nature Conservancy is an Equal Opportunity Employer.*

SCIENCES INTERNATIONAL, INC.

A health and environmental sciences consulting company is hiring at all levels. Seeking experts in:

**Air Modeling
Risk Assessment of Hazardous Waste,
Incinerators and Pesticides
Toxicology/Epidemiology
Ecological Risk Assessment
Aquatic Biology**

Individuals wishing to apply should submit their résumés to:

Sciences International, Inc.
1001 19th Street North 7511 Arrowhead
Suite 1500 Suites B and C
Arlington, VA 22209 Kennewick, WA 99336

ASSOCIATE BIO-STATISTICIAN to summarize and statistically analyze clinical trials data. Duties include writing programs in SAS under VAX/VMS to access database, summarizing and analyzing clinical data, and producing customized statistical tables, graphs and data listings. M.S. in Bio-Statistics or related field which includes research activity involving the application of statistical methods to large and complex databases and in communication of statistical applications including methods to answer research questions and the results of those statistical procedures. Must have a working knowledge of SAS software with regard to the creation of SAS data sets and the statistical analysis and summarization of data. Must also have knowledge of formatting data, design of summary tables, graphs and data listings. Salary \$30,000 per year. 40 hours per week. Applicant should apply to nearest Job Service office or submit a résumé to: **Job Service, 700 Wade Avenue, Raleigh, NC 27605.** Refer to Job Order No. NC 7225672 and DOT Code 020.167-026. All résumé must include applicant Social Security Number.

The Biotechnology Patent Examining Group of the Patent and Trademark Office is currently recruiting scientists for positions as **PATENT EXAMINERS**. Individuals with advanced degrees and/or equivalent experience in the fields of immunology, molecular biology, gene therapy, transgenic animals, animal science, biochemistry, protein engineering and microbiology are urged to send a résumé or SF-171 to the following address:

**Patent and Trademark Office
Office of Personnel
Box 171
Washington, DC 20231
K. Clark (180)**

For further information, call (703) 308-1123. U.S. CITIZENSHIP IS REQUIRED FOR EMPLOYMENT.

SCIENCE welcomes placement of line classified ads by FAX. Please include name and telephone number for our confirmation call when transmitting ad to:

FAX NUMBER: 202-682-0816

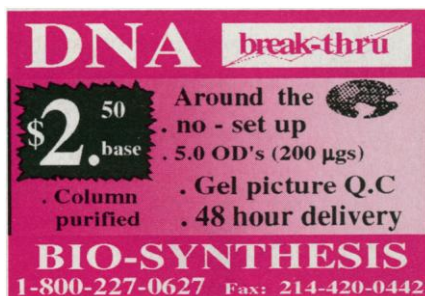
COMPUTER MARKETPLACE

THE NEW STATISTICS -- Free Trial

Take full advantage of the resampling (bootstrap) revolution in statistics. **RESAMPLING STATS** is easy to use, powerful, intuitive. For IBM, MAC. Experts & non-statisticians. Completely transforms the way you'll do confidence intervals, hypothesis tests and more. 30-day trial! \$195 corporate, \$95 personal/academic. Book, videos avail. too. **RESAMPLING STATS, Suite 1406, 612 N. Jackson St., Arlington, VA 22201** CALL FOR INFO: 703-522-2713 Or fax: 703-522-5846

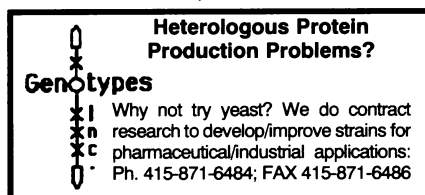
Circle No. 33 on Readers' Service Card

MARKETPLACE



DNA break-thru
Around the no - set up
5.0 OD's (200 µgs)
Column purified . Gel picture Q.C
48 hour delivery
BIO-SYNTHESIS
1-800-227-0627 Fax: 214-420-0442

Circle No. 12 on Readers' Service Card



Heterologous Protein Production Problems?
Genotypes
Why not try yeast? We do contract research to develop/improve strains for pharmaceutical/industrial applications: Ph. 415-871-6484; FAX 415-871-6486

Circle No. 41 on Readers' Service Card



Human Hepatic Microsomes • S9 • Slices
• For the advancement of research
• In compliance with all applicable regulations
• *In vitro* contract testing & consulting services
Not-for-profit
Int'l Institute for the Advancement of Medicine
Phone: (215) 363-3600 Fax: (215) 363-3605

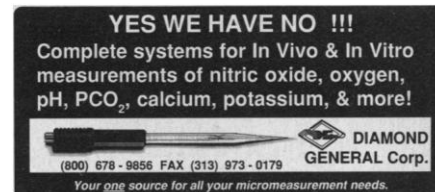
Circle No. 30 on Readers' Service Card



pH Electrodes
GENERAL USE AND RESEARCH
GRADE IN EPOXY OR GLASS
BODIES STARTING AT \$45.00.
SENSORPAX
800 835-4344 FAX 714 895-4344

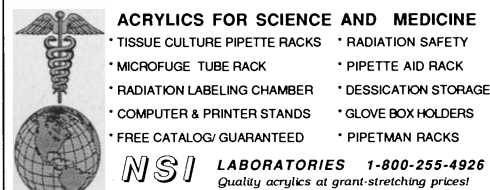
Circle No. 16 on Readers' Service Card

MARKETPLACE



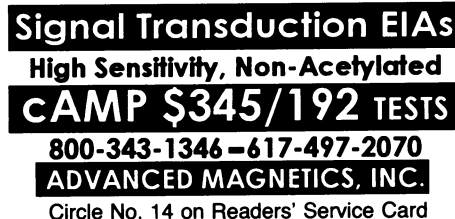
YES WE HAVE NO !!!
Complete systems for In Vivo & In Vitro measurements of nitric oxide, oxygen, pH, PCO₂, calcium, potassium, & more!
DIAMOND GENERAL Corp.
(800) 678-9856 FAX (313) 973-0179
Your one source for all your micromeritment needs.

Circle No. 38 on Readers' Service Card

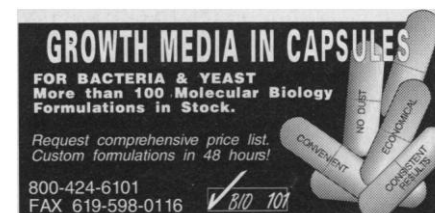


ACRYLICS FOR SCIENCE AND MEDICINE
• TISSUE CULTURE PIPETTE RACKS • RADIATION SAFETY
• MICROFUGE TUBE RACK • PIPETTE AID RACK
• RADIATION LABELING CHAMBER • DESSICATION STORAGE
• COMPUTER & PRINTER STANDS • GLOVE BOX HOLDERS
• FREE CATALOG/ GUARANTEED • PIPETMAN RACKS
NSI LABORATORIES 1-800-255-4926
Quality acrylics at grant-stretching prices!

Circle No. 44 on Readers' Service Card



Signal Transduction EIAs
High Sensitivity, Non-Acetylated
CAMP \$345/192 TESTS
800-343-1346-617-497-2070
ADVANCED MAGNETICS, INC.
Circle No. 14 on Readers' Service Card



GROWTH MEDIA IN CAPSULES
FOR BACTERIA & YEAST
More than 100 Molecular Biology Formulations in Stock.
Request comprehensive price list. Custom formulations in 48 hours!
800-424-6101
FAX 619-598-0116 **BIO 101**

Circle No. 9 on Readers' Service Card



PARTICLE SIZE STANDARDS
NBS traceable calibration standards and controls. Large assortment of diameters from 0.02 to 2000 µm. Microspheres of polystyrene, glass and fluorescent materials. Free catalog available. Toll Free 800-334-3883. In Calif. 415-962-1100. FAX 415-962-0718
Duke Scientific Corporation 1135D SAN ANTONIO ROAD PALO ALTO, CALIF. 94303

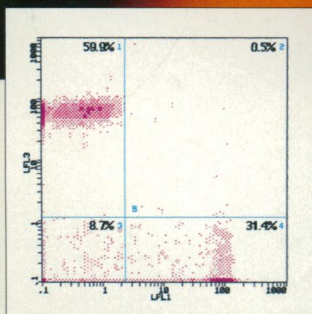
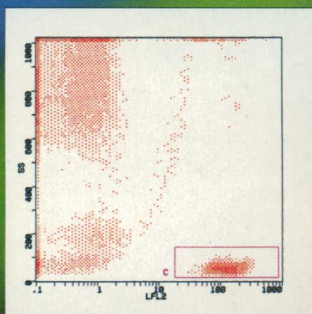
Circle No. 2 on Readers' Service Card



Custom DNA
Purified and Delivered in 48 hours.
\$7.50 per base • Purified
Guaranteed minimum 100 µg DNA
Research Genetics
1-800-533-4363

Circle No. 5 on Readers' Service Card

Three Color Analytical Cytology with Quantum Red™



Simultaneous CD4, CD8 measurements using CD3 cells as the gate criteria. Whole blood was labeled with CD3-PE, CD4-Quantum Red and CD8-FITC in a single tube.

Quantum Red™ tandem dye provides three color capabilities for virtually all flow cytometers. Simultaneous analysis of multiple cell populations or fluorescence gating is now possible.

Quantum Red Offers:

- Lower emissions in PE channel compared to other tandem dyes
- Less compensation required than in previous generation third color dyes

- Equivalent brightness when compared to PE
- Minimal compensation required for two color analysis with FITC labels
- Economical cost

Quantum Red is available conjugated to:

- Streptavidin (Sigma Product No. S 3402)
- Selected CD markers
- Isotype controls

Sigma
Immuno
Chemicals

SIGMA®

Sigma Chemical Company, PO Box 14508, St. Louis, MO 63178, USA. Tel. 1-800-325-3010, Fax 1-800-325-5052.

In Australia: Tel. 008-800-097, Fax 008-800-096

In Belgium: Tel. 078 11 47 47, Fax 078 11 47 45

In France: Tel. 05 21 14 08, Fax 05 03 10 52

In Germany: Tel. (0130) 5155, Fax (0130) 6490

In Great Britain: Tel. 0800 373731, Fax 0800 378785

In Italy: Tel. 1678-27018, Fax (02) 38010737

In The Netherlands: Tel. 06 022 47 48, Fax 06 022 47 45

In Spain: Tel. 900-101376, Fax 91-6619642

In Switzerland: Tel. 081 756 9721, Fax: 081 756 7420

Outside these countries: Tel. 314-771-5750, Fax 314-771-5757

Circle No. 4 on Readers' Service Card



Discover Two New ELISA Kits

Exclusively From BioSource International.

hIL-6R

Soluble IL-6 Receptor may provide significant supplemental information pertaining to IL-6 regulated disease states such as sepsis, inflammation and acute phase responses.

*Recognizes 80kDa moiety of IL-6 Receptor
Sees free receptor and IL-6 complexed receptor
62.5 pg/ml sensitivity
Two Plates, 192 determinations*

hIL-10

IL-10 has been shown to be an inhibitor of cytokine synthesis in T-Cells and may play an important role in inflammation and autoimmune diseases.

*Recognizes mutant and recombinant IL-10
No cross-reactivity with other cytokines
1.0 pg/ml sensitivity
Two Plates, 192 determinations*

Our Two-Plate Format Saves You Money.

Cytoscreen™ ELISA Kits contain two-strip well plates, 192 determinations, for about the price of a comparable one plate kit.

hIL-2	NEW hIL-2R	hIL-6	NEW hIL-6R	NEW hIL-10	hSAA
mSAA	hGM-CSF	hTNF- α	hIFN- α	hIFN- γ	

Other ELISA's available from BioSource International.

hIL-8	ICAM-1	NEW ELAM-1	hTNF- β	hTNF-R (60 kDa)	hTNF-R (75 kDa)*
-------	--------	------------	---------------	-----------------	------------------

Cytoscreen™ Kits Available Soon:

Stem Cell Factor	mIFN- γ	rat IFN- γ	monkey IFN- γ	rat TNF- α
------------------	----------------	-------------------	----------------------	-------------------

All products have been tested for biological activity, purity, and stability. CAUTION: FOR RESEARCH USE ONLY IN LABORATORY ANIMALS OR IN-VITRO TESTING. NOT FOR HUMAN OR DIAGNOSTIC USE.

Cytoscreen™ is a trademark of BIOSOURCE International, Inc. *Available soon.



Circle No. 39 on Readers' Service Card

TAGO IMMUNOLOGICALS™

950 Flynn Road, Suite A, Camarillo, CA 93012

Tel: (800) 242-0607 • Fax: (805) 987-3385