

Electrophysiology Instrument

The GeneClamp 500 amplifier is a multifunctional current-clamp, patch-clamp, and high-compliance voltage-clamp system for use in a wide range of animal- and plant-cell recording techniques. It is designed for two-electrode voltage-clamping and current-clamping in large- and medium-sized cells, such as *Xenopus* oocytes or *Aplysia* neurons. The GeneClamp 500 has built-in signal-conditioning capabilities, automated functions, memory-stored settings, and user-friendly layout. With an optional voltammetry headstage, the unit can be used for applications including fast, cyclic voltammetry (for example, to measure in vivo neurotransmitter concentrations) and amperometry (for example, to measure transmitter release during individual exocytotic events and to monitor analytes in chromatography). **Axon Instruments. Circle 91.**

Mixed Waste Bag

The Mixed Waste Bag is for safely autoclaving infectious, solid, low-level radioactive waste. In the past, steam sterilization has not been used due to the risk of contaminating the air with volatilized radioactive particles. The Mixed Waste Bag, designed to contain radioactive particles generated during steam sterilization, meets the requirements for both steam sterilization and disposal of solid radioactive waste.



The system consists of double transparent polypropylene bags with an attached charcoal vent filter. Absorbent is added to the inner bag to absorb any liquid. Waste material is placed in the inner bag, and liquid is added to improve the efficiency of steam sterilization. A temperature-sensitive label indicates when the material has been adequately processed. **Costar Corp. Circle 92.**

Numeric Software for the Macintosh

NumberCrunch II is a software program for performing numeric scientific calculations on Macintosh computers. Users can work with variables and formulas, arrays, matrices, tensors, and complex numbers and can perform unit conversions. The program can be customized with its own built-in Pascal-like interpreter or with routines that have been written with other computer languages. Data can be graphed interactively in several ways and analyzed using more than 50 specialized routines, such as Fourier transforms and curve fitting. The program requires at least 1 megabyte of memory and system 6.0.7 or later. **Windham Software. Circle 93.**

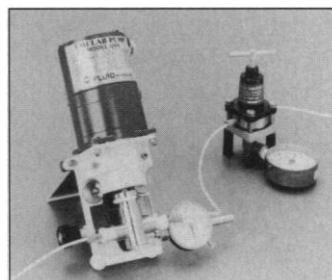
Protein Database

BioAlmanac is a new protein database that can be used to identify unknown proteins and plan protein purification protocols. BioAlmanac contains purification results data as well as biochemical experimental data such as molecular weights, isoelectric points, subunit compositions, carbohydrate contents, biological functions, and amino acid composition. It is integrated with other databases to provide multi-

ple database search capabilities. An IBM-compatible CD-ROM contains both the databases and the search software—no hard disk is required. Release 1.0 focuses on human blood proteins, receptors, DNA-binding proteins, and regulatory proteins. **Blue Lightning Data & Software. Circle 94.**

LC Pump System

This complete preparative liquid chromatography (LC) system includes a pump, dial flow indicator, pulse dampener, low flow fittings, and tubing. All the user provides is the injector valve, column, solvent, and sample. The



Model QSY-1CSC pump is for solvent delivery for preparative chromatographic columns, high-performance prepac columns, and flash chromatography where pressure does not exceed 100 psi. Reducing analysis time 15-fold over hydrostatic pressure methods, the unit provides fully adjustable flow from 0 to 1380 ml/hour. **Fluid Metering Inc. Circle 95.**

PCR Optimizer

PCR Optimizer is a new kit designed to allow researchers to determine the optimal amplification conditions for each primer-template combination in order to maximize the quantity and quality of polymerase chain reaction (PCR) products. The kit permits rapid evaluation of several criti-

cal reaction conditions to identify the optimal conditions for each amplification reaction. It provides reagents for a three-stage evaluation of 32 different buffer conditions and an easy-to-follow matrix to rapidly determine the best amplification conditions in the fewest steps. The parameters evaluated include pH level, magnesium concentration, and the presence or absence of dimethylsulfoxide. **Invitrogen. Circle 96.**

Literature

Monoclonal Antibodies for Immunohistochemistry and Flow Cytometry: Biomedical Research and Histopathology is a 1993 product catalog from Novocastra Laboratories, whose products are distributed in the United States by Vector Laboratories. Novocastra's range of monoclonal and polyclonal antibodies includes those against estrogen receptor, progesterone receptor, oncoproteins, growth factor receptors, oncosuppressor proteins, retinoblastoma gene protein, tumor markers, intermediate filaments, lymphoid markers, cellular adhesion molecules, viral proteins, and neuromuscular disease-associated proteins. **Vector Labs. Circle 97.**

1993 Serotec Product Guide offers a wide range of immunological reagents, including an mRNA isolation kit and an extensive range of conjugated and unconjugated monoclonal antibodies to human leukocytes; cytokine antibodies; and mouse, rat, rabbit, sheep, and bovine leukocyte markers. **Serotec. Circle 98.**

Constant Temperature and Controlled Atmosphere Stage for Microscopy is a brochure about a device with a temperature range from +5° to 55°C. **Micro Devices. Circle 99.**

Metrohm Titrators for the Real World features a line of Metrohm titrators and direct measurement meters. **Brinkmann Instruments. Circle 100.**

Newly offered instrumentation, apparatus, and laboratory materials of interest to researchers in all disciplines in academic, industrial, and government organizations are featured in this space. Emphasis is given to purpose, chief characteristics, and availability of products and materials. Endorsement by *Science* or AAAS is not implied. Additional information may be obtained from the manufacturers or suppliers named by circling the appropriate number on the Readers' Service Card and placing it in a mailbox. Postage is free.

Science

PERSONNEL PLACEMENT

LINE CLASSIFIED ADVERTISEMENTS

- **Deadlines:** Ads are due by Thursday, 10 a.m., 2 weeks prior to the issue date. *Science* is published each Friday, except the last Friday of the year. Call for holiday deadlines. Advertisements must be submitted in writing.
- **How to Submit a Classified Ad:** Prepare double-spaced typewritten copy. Do not include any abbreviations. *Science* will edit and typeset ads according to *Science* guidelines. Include billing information, and desired publication date. Available categories: Positions Open, Meetings, Announcements, Courses and Training.
- **Mail or FAX materials to:**
Science Classified Advertising
 1333 H Street, N.W., Room 814
 Washington, DC 20005
 Telephone: 202-326-6555
 FAX: 202-682-0816
- **Rates:** Ads are \$42 per line; \$420 minimum. One line equals 52 characters and spaces; centered headings equal 32 characters and spaces. A 3% cash discount is granted to all prepaid ads.
- **Ads from Outside the U.S.:** A discount of \$30 will be offered to advertisers making payment in U.S. dollars by checks drawn on U.S. banks. Contact Annemarie Vis at +44 223 424695 (24-hour FAX and phone).
- **Credit Cards:** *Science* accepts MasterCard and VISA. Discount does not apply to credit cards.
- **Cancellations:** Deadline for cancellation is 10 a.m., Tuesday, 10 days prior to issue date.

DISPLAY PERSONNEL ADVERTISEMENTS

For rates and info. about fractional display ads (all ads 1/2 page and larger), contact:

Recruitment Advertising
 Deborah Cummings
 Telephone: 202-326-6541

Janis Crowley, Recruitment
 Advertising Manager
 Telephone: 212-496-7704
 FAX: 202-682-0816

Annemarie Vis
 European Recruitment Advertising
 +44 223 424695
 (24-hour FAX and phone)

CONDITIONS: Personnel advertising is accepted only with the understanding that the advertisers do not discriminate among applicants on the basis of race, sex, religion, age, color, handicap or sexual preference. The AAAS encourages employers to actively recruit and employ underrepresented minority groups. *Science* reserves the right, at its discretion, to decline to publish advertisements submitted to it.

POSITIONS OPEN

MARINE BIOLOGY ASSISTANT PROFESSOR

The Graduate College of Marine Studies seeks to fill a 12-month tenure-track position in marine biology with the Marine Biology-Biochemistry Program at the University of Delaware Hugh R. Sharp Campus in Lewes. We seek an individual with demonstrated competence and ingenuity in applying the tools of **MOLECULAR BIOLOGY** to probing the resonance between marine organisms (plant, animal or microbe) and their environment. The person filling this position will be expected to teach a graduate course in the molecular biology of marine organisms, develop an active research program, and guide graduate students. Respondents should submit a letter of application, current curriculum vitae, a copy of their most pertinent reprint, a brief statement of future research plans, and arrange for three letters of reference to be sent by April 20, 1993, to: **Dr. Herbert Waite, Search Committee Chairman, Graduate College of Marine Studies, University of Delaware, 700 Pilottown Road, Lewes, DE 19958.**

The UNIVERSITY OF DELAWARE is an Equal Opportunity Employer which encourages applications from qualified minority group members and women.

MOLECULAR/CELLULAR BIOLOGIST. Pending budget approval, the Biology Department of Gannon University is seeking a well-qualified candidate to fill a position at the **ASSISTANT PROFESSOR** level. Responsibilities: Instruction of cellular biochemistry, plant science and first semester biology. Upper-level plant biology instruction in alternate years. Directing undergraduate research. Requires: Ph.D. in biology/botany, a commitment to teaching and ability to work successfully with undergraduate students. This appointment is a 9-month, tenure-track position. Position available August 1993. To apply: Send letter of application, curriculum vitae and three letters of recommendation by April 19, 1993, to: **Director of Personnel, Gannon University, University Square, Erie, PA 16541.**

ASSISTANT AND ASSOCIATE PROFESSORS

The Department of Biochemistry at the University of Kentucky has full-time, 12-month, tenure-track positions open at the **ASSISTANT** and **ASSOCIATE PROFESSOR** level. The successful candidates will be expected to pursue independently funded research and to participate in departmental teaching activities. Faculty have access to core research facilities needed for state-of-the-art biological research. Interested persons should submit curriculum vitae, a summary of research interests, and the names of at least three references to: **Faculty Search Committee, Department of Biochemistry, University of Kentucky Medical Center, Lexington, KY 40536-0084.**

An Equal Opportunity/Affirmative Action Employer.

FACULTY POSITIONS (RE-ADVERTISE-MENT): Visual Science Research. The Department of Ophthalmology at the University of Wisconsin-Madison has 3 faculty openings. Candidates must have an M.D., Ph.D., or M.D./Ph.D. with at least 2 years of postdoctoral research experience, and a commitment to developing an independent, extramurally funded research program in the areas of immunology (cell-mediated immune responses, inflammation, and/or the role of cytokines), molecular cell physiology (function of biological responses modifiers, e.g., growth factors), molecular/cellular visual neuroscience (structure and function of cells in the visual system) or human molecular genetics (map and identify genes involved in ocular diseases). Successful candidates need **NOT** have previous experience in the visual system, but must demonstrate an interest in working in this area and fostering collaborative interaction between research and clinical faculty. Forward your résumé with curriculum vitae, description of current research, plans for the future and names of 3 references to: **Curtis R. Brandt, Ph.D., Vice Chair-Research, Department of Ophthalmology, 6630 MSC, 1300 University Avenue, Madison, WI 53706-1532. The University of Wisconsin is an Equal Opportunity Employer. JUNE 1, 1993 APPLICATION DEADLINE. PRIOR AD HAD DIFFERENT QUALIFICATIONS. UW NOT RESPONSIBLE.**

POSITIONS OPEN

ASSISTANT or ASSOCIATE PROFESSORS OF BIOLOGY. The Department of Biology seeks applications for two additional tenure-track positions, a botanist and an animal biologist, beginning September 1, 1993. The botanist should have expertise in cellular or molecular biology. The animal biologist should have expertise in comparative anatomy/physiology or genetics. Faculty are expected to develop strong research programs involving graduate and undergraduate students and to seek grant support. A Ph.D. is required and two years of postdoctoral experience are preferred. Send curriculum vitae, a statement of teaching and research interests, selected reprints and three letters of recommendation by April 16, 1993, to: **Dr. Dorothy E. Pumo, Chairperson, Department of Biology, 114 Hofstra University, Hempstead, NY 11550-1090, Attention: FS#2. Affirmative Action/Equal Opportunity Employer.**

Research Scientist, Ph.D., Division of Nephrology: Rhode Island Hospital/Brown University School of Medicine.

Rhode Island Hospital seeks a Research Scientist with a Ph.D. in molecular and/or cell biology with a minimum of 2 years of postdoctoral research experience to join the full-time faculty staff. Candidates must qualify for appointment as **INSTRUCTOR/ASSISTANT PROFESSOR of Medicine (Research)** at Brown University School of Medicine. The incumbent will participate in the educational and training programs of the Division. Individual must function as an independent but collaborative investigator with other scientists in the Nephrology Research Laboratory. Interested candidates should send curriculum vitae to: **Gary Abuelo, M.D., Co-Chairperson, Search Committee, Rhode Island Hospital, 593 Eddy Street, Providence, RI 02903, by May 15, 1993.** Screening of applicants will begin at that time and continue until a successful candidate is identified or the search is terminated. *Rhode Island Hospital is an Equal Opportunity/Affirmative Action Employer and actively solicits applications from minority and protected groups.*

TENURE AND NON-TENURE-TRACK POSITIONS ASSISTANT/ASSOCIATE PROFESSOR BASIC RESEARCH IN RESPIRATORY RELATED BIOLOGY

The University of Cincinnati College of Medicine is seeking faculty to further their program in basic molecular and cellular biology related to the respiratory system. Candidates should be M.D. or Ph.D. with proven research experience. The current program has several areas of concentration (receptors, asthma, inflammation, structural biology, transgenic models, cystic fibrosis) but candidates with other expertise broadly applicable to lung biology are encouraged to apply. Associate Professor candidates must have independent grant support. We have a progressive partnership with the pharmaceutical industry which can provide additional support for asthma related research.

Interested candidates should send curriculum vitae to: **Stephen B. Liggett, M.D., University of Cincinnati Medical Center, Departments of Medicine (Pulmonary), Molecular Genetics & Pharmacology, 231 Bethesda Avenue, Cincinnati, OH 45267-0564.**

ASSISTANT PROFESSOR, IMMUNOLOGY

The Department of Comparative Medicine, Tufts University School of Veterinary Medicine, is seeking an investigator with established expertise in the immunology of mucosal and systemic responses to enteric infections with emphasis on bacterial and protozoan diseases. Position requirements include the D.V.M. and/or Ph.D. degree, a strong record of research accomplishment and the ability to develop a program focused on the immune status of animals infected with bacterial or parasitic enteric pathogens. Responsibilities include participation in an NIH-sponsored contract, and directing the immunology course given to veterinary students. The appointee will join a program in infectious diseases located in a newly constructed and well equipped laboratory at the School on the Grafton, Massachusetts, campus. Salary and benefits are competitive. Review of applications will begin on May 1, 1993. Applications should include a brief statement of research goals, and experience in teaching and three letters of reference sent to: **Dr. Carol Reinisch, Chairperson, Department of Comparative Medicine, 200 Westboro Road, Grafton, MA 01536. Tufts University is an Equal Opportunity/Affirmative Action Employer.**

**DEPARTMENT OF THE ARMY
SENIOR EXECUTIVE SERVICE OPPORTUNITY
DIRECTOR, U.S. ARMY RESEARCH LABORATORY
ADELPHI, MARYLAND**

The U.S. Army Materiel Command is seeking applicants for the career Senior Executive Service position of Director, U.S. Army Research Laboratory. The position has an annual salary range of \$92,900 to \$115,700 depending upon individual qualifications and salary history. The individual selected will also be eligible to earn performance-related bonuses and awards.

The successful candidate will be expected to:

- Build a world class corporate research laboratory system to meet the needs of the Army and the nation well into the next century.
- Provide line authority and technical direction to 3,000 military and civilian employees who are responsible for basic and applied research and advanced technology conducted at locations throughout the United States.
- Maintain a reputation for scientific leadership and serve as the principal laboratory representative to other government agencies, private industry, academic institutions, and international organizations.

Applicants should possess the following qualifications:

- Ability to develop a high performing R&D organization.
- Ability to recognize and advocate applied research thrusts which further Army mission performance through application of technology.
- Ability to effect domestic technology transfer and transition technology to product development.
- Professional stature as a science or engineering expert.
- PhD or ScD in engineering or physical sciences or an equivalent combination of education and research experience.

Applicants must be U.S. citizens and be able to obtain a top secret clearance.

Interested individuals may obtain a complete application package by calling Mr. Thomas Krones, (703) 274-9415, or by writing to: Commander, U.S. Army Materiel Command, ATTN: AMCPE-CS, 5001 Eisenhower Avenue, Alexandria, Virginia 22333-0001. Applications must be postmarked not later than April 30, 1993.

THE DEPARTMENT OF THE ARMY IS AN EQUAL OPPORTUNITY EMPLOYER

**HEAD, DEPARTMENT
OF FOREST RESOURCES
COLLEGE OF NATURAL RESOURCES
UTAH STATE UNIVERSITY**

The Head is directly responsible to the Dean of the College for planning, coordinating, and directing the affairs of the Department. He or she provides leadership in the recruitment and development of faculty and staff; provides direction for departmental programs; and is responsible for budget development and administration.

Qualifications: an earned doctorate; a record of scholarship in a discipline relevant to forest resources commensurate with the rank of full professor; and demonstrated ability to develop and administer programs of education, research (including the role of extramural funding), and extension.

The Forest Resources Department comprises a faculty of 20, with strong basic and applied programs in the biological and social sciences. It is committed to an interdisciplinary approach to natural resources/environmental management. Utah State University is Utah's land grant university with 16,000 students and 850 faculty.

Applicant screening begins on April 20, 1993, and continues until a suitable candidate is found. Applicants should send a cover letter, vita, and names of four people willing to serve as references to:

**Dr. John Malechek
Search Committee Chair
Department of Range Science
College of Natural Resources
Utah State University
Logan, UT 84322-5230.**

USU is an AA/EEO employer. Applications from women and minorities are particularly encouraged.

THE CHINESE UNIVERSITY OF HONG KONG (founded 1963)

invites applications for:

Senior Lectureship/Lectureship in Physiology (two posts)

Applicants should have a relevant PhD degree or a medical qualification and several years of research and teaching experience in Physiology. The Department's current research interests are in epithelial transport, sensory and central nervous system physiology, cardiovascular physiology, muscle physiology, molecular endocrinology and renal and acid-base physiology. The appointee is expected to assume duty in August 1993 or as soon as possible thereafter.

Annual Salary and Fringe Benefits

Senior Lecturer: HK\$534,000-717,360 by 8 increments

Lecturer: HK\$343,680-389,880 by 2 increments

HK\$413,040-574,140 by 7 increments

(approx. exchange rate: US\$1=HK\$7.8; £1=HK\$11.1)

Starting salary and grade will be commensurate with qualifications and experience.

The University offers a competitive remuneration package. Superannuable appointment benefits include leave with full-pay, medical and dental care, education allowances for children, and where appropriate housing benefit (with appointee contributing 7.5% of salary towards such provision). Appointment may also be made on fixed term contract carrying equivalent benefits including where applicable a contract-end gratuity (15% of basic salary). The University may also consider more flexible terms for suitable candidates subject to mutual agreement.

Application Procedures

Send full resume in duplicate and names and addresses of 3 referees, with copies of academic credentials (in duplicate) and recent publications, to the Personnel Office, The Chinese University of Hong Kong, Shatin, N.T., Hong Kong (Fax: (852)603 5026) before **April 13, 1993**. Quote reference number **18/509/2/93** and mark "Recruitment" on cover.

POSITIONS OPEN

HUMAN ANATOMIST with an active research commitment; pending budget approval, the Biology Department of Gannon University is seeking a candidate at the **ASSISTANT/ASSOCIATE PROFESSOR** level. Position is supported jointly through Gannon University and the Medical College of Pennsylvania of Hamot Medical Center, Erie, Pennsylvania. Responsibilities include instructing human anatomy in baccalaureate health science programs, precepting and participating in research conducted by resident physicians, serving as a Basic Science Research Director for medical students. Requires: Doctoral degree in a Life Science, experience in cadaver dissection, and proven ability to acquire research grants. Four-year appointment with the possibility of extended renewal. Position available August 1993. Application: Send letter of application noting teaching and research interests, curriculum vitae and three letters of recommendation by April 19, 1993, to: **Director of Personnel, Gannon University, University Square, Erie, PA 16541.**

ASSOCIATE DEAN FOR RESEARCH

The University of Kansas School of Medicine announces the search for an Associate Dean for Research. The Associate Dean will be assigned the primary responsibility for maintaining and enhancing the research stature of the School of Medicine and serves as an advocate for the research activities within the School, the Medical Center and the University. The successful candidate must have a doctoral degree, administrative experience in grant acquisition, familiarity with government and non-government grantor general policies, demonstrated scholarly activities/research, must have had a major NSF or NIH grant within the last five years, and have strong interpersonal, organizational and communication skills. Salary will be commensurate with experience. Nominations and/or applications should be forwarded to: **James G. Price, Executive Dean, School of Medicine, The University of Kansas Medical Center, 3901 Rainbow Boulevard, Kansas City, KS 66160-7300. Equal Opportunity/Affirmative Action Employer.**

FORESTRY DEPARTMENT CHAIR RE-ANNOUNCEMENT. Candidates must have: an earned doctorate and a degree in forestry or another renewable natural resource field; strong teaching, research or extension background and an outstanding record of scholarly accomplishments; proven communication skills. Applicants should send résumé, academic transcripts and names and addresses of five references to: **Dr. Robert A. Schmidt, Department of Forestry, University of Florida, Gainesville, FL 32611-0420.** Application deadline: April 30, 1993.

PROFESSOR AND DIRECTOR CENTER FOR SPEECH PROCESSING

The Johns Hopkins University School of Engineering seeks a Director for the newly created Center for Speech Processing. The director will hold a tenured professorship in the School of Engineering. The center will add new computing facilities, as well as graduate student and postdoctoral support to existing speech research activities in the University. It will host visiting scholars, workshops, and the annual Speech Research Symposium. The director will have academic and administrative responsibilities which include center leadership as well as working closely with governmental and industrial partners to insure success and expansion of the interdisciplinary research and education activities in the center. Candidates should be recognized authorities in an area of speech science and technology. Emphasis will be given to the quality and depth of a candidate's academic expertise and leadership record. Nominations and applications (including curriculum vitae, and the names, addresses and telephone numbers of three professional references) should be sent to:

**Center for Speech Processing Search Committee
105 Barton Hall
G. W. C. Whiting School of Engineering
The Johns Hopkins University
Baltimore, MD 21218**

Applications will be accepted until May 15, 1993, or until the position is filled.

The Johns Hopkins University is an Equal Opportunity/Affirmative Action Employer.

POSITIONS OPEN

DEPARTMENT OF BIOLOGY ASSISTANT PROFESSOR POSITION

The Department of Biological Sciences, University of Wisconsin Center System invites applications for a full-time, tenure-track position at the assistant professor level on the Marathon County Campus, Wausau, Wisconsin, beginning August 1993. Quality teaching is emphasized; research and community service activities are expected. Applicants should have a Ph.D. and be qualified to teach microbiology and botany. Opportunities may become available for additional offerings in the candidate's area of interest including microbiology or genetics. Send curriculum vitae, all college transcripts, and three current letters of reference to: **Dr. Arne Salli, Department of Biological Sciences, University of Wisconsin Center-Marathon, 518 South 7th Avenue, Wausau, WI 54401.** Application deadline is April 15, 1993, or until a suitable candidate is identified. *The University of Wisconsin is an Affirmative Action/Equal Opportunity Employer and encourages women and minorities to apply.*

SCIENCE

MAXIMUM ATTENTION MINIMUM COST

Have your ad stand out in the crowd. When you have a position and you don't have the funds for a display ad, place a line ad with a **BOX** and/or **LOGO**. If you choose the boxed ad you will be charged 2 lines for the top and bottom rule and it allows 48 characters instead of 52 characters per line. For a logo we only charge for how many lines it takes up.

For more information on how to place a line ad with a box and/or logo please contact: **Millie Muñoz-Cumming** at (202) 326-6555 or FAX your ad to (202) 682-0816. We will call to confirm your ad and give you an estimated cost.

ASSOCIATE DEAN FOR ACADEMIC AFFAIRS

**College of Agricultural and Life Sciences
University of Wisconsin-Madison**

The University of Wisconsin-Madison College of Agricultural and Life Sciences is seeking nominations of and applications from outstanding and creative individuals with a serious commitment to innovation and excellence in undergraduate, graduate and outreach education. The Associate Dean for Academic Affairs will have responsibility for over 2000 undergraduate students and 1200 graduate students in 23 departments and an instructional budget of over \$10,000,000. The College is noted for the strength and diversity of academic departments in the biological, social, environmental and agricultural sciences. The faculty and administration are committed to excellence and continued leadership in academic instruction, research, and public service.

We seek the greatest possible diversity of applicants and nominees to bring breadth of administrative and academic experience. Candidates must have a record of successful leadership and creative management in addition to a demonstrated record of excellence in instruction, research, and public service.

Applications and nominations will be accepted until May 5, 1993. Applicant review will begin April 15, 1993. Applications should include a letter of interest, résumé, and the names, addresses and telephone numbers of five references and should be sent to: **Dr. Paul Williams, College of Agricultural and Life Sciences, University of Wisconsin-Madison, 1450 Linden Drive, Room 146 Ag Hall, Madison, WI 53706. Telephone: 608/262-4591.**

Note: Unless confidentiality is requested in writing, information regarding applicants and nominees must be released upon request. Finalists cannot be guaranteed confidentiality.

The University of Wisconsin-Madison is an Equal Opportunity Employer.

POSITIONS OPEN

UNIVERSITY OF COLORADO HEALTH SCIENCES CENTER CHAIR, DEPARTMENT OF BIOCHEMISTRY, BIOPHYSICS AND GENETICS

The University of Colorado Health Sciences Center invites applications and nominations for the Chair of the Department of Biochemistry, Biophysics and Genetics. Department members interact strongly with Interdisciplinary Programs in Molecular Biology and Neurosciences. Candidates should have a broad understanding and appreciation of mechanistic and structural biochemistry, particularly related to nucleic acids and proteins. The University seeks an outstanding scientist who has an internationally recognized research program, an excellent record of scientific contributions and a commitment to excellence in teaching of medical and graduate students.

Letters of application or nomination should be sent to: **Dr. Boris Tabakoff, Chairman, Biochemistry, Biophysics and Genetics Chair Search Committee, Department of Pharmacology, Box C-236, University of Colorado Health Sciences Center, 4200 East 9th Avenue, Denver, CO 80262.**

Applications should include curriculum vitae, list of publications, a summary of academic experience and a list of references. Deadline for applications is May 1, 1993.

Applications from women and minority groups are encouraged. The University of Colorado Health Sciences Center is committed to Equal Opportunity and Affirmative Action.

ASSOCIATE DIRECTOR, CLINICAL CHEMISTRY

A tenure-track faculty position is available for a board-certified/board eligible Ph.D. Clinical Chemist at an Instructor/Assistant Professor level. Postdoctoral experience with leadership activity and evidence of research productivity are essential. Service responsibilities are in clinical chemistry and toxicology in the Department of Pathology. Teaching duties include an active postdoctoral program in Clinical Chemistry, Pathology resident training and continuing education for medical technologists. Salary is commensurate with qualifications and experience. Candidates must submit current curriculum vitae and (4) four references to: **Roland Valdes, Jr., Ph.D., Department of Pathology, University of Louisville, Louisville, KY 40292.** *The University of Louisville is an Equal Opportunity/Affirmative Action Employer.*

VISITING LECTURER OF ECOLOGY: The Department of Biology, Northeastern Illinois University, is seeking a Visiting Lecturer of Ecology for fall 1993. Position may become tenure-track contingent upon funding. Ph.D. required. Teaching undergraduate/graduate courses in ecology and general biology expected. Training in systems, community, or molecular ecology desirable. Send curriculum vitae, letter of application, statement of teaching and research interests, and three references to: **Dr. Simon Chung, Chair, Department of Biology, Northeastern Illinois University, Chicago, IL 60625.** Review of applications will begin April 5, 1993. *An Affirmative Action/Equal Opportunity Employer.*

EDUCATION/RESEARCH FACULTY POSITIONS CHEMICAL ENGINEERING

The Department of Chemical Engineering at the University of Delaware invites applications for two tenure-track faculty positions, one at the junior and one at the senior level. Candidates with expertise in the areas of catalysis and kinetics or materials science are preferred. However, applications from outstanding candidates in any field of chemical engineering will be considered. A Ph.D. degree in either chemical engineering or a closely related field is required. Successful applicants will be expected to carry out a vigorous research program, to teach and to advise students at both the undergraduate and graduate levels. The Chemical Engineering Department is well equipped and maintains laboratories and computational facilities for both experimental and theoretical research. Please send a résumé, a description of research and teaching interests, and the names, addresses, and telephone numbers of three references to: **Professor Henry C. Foley, Head of the Search Committee, Department of Chemical Engineering, University of Delaware, Newark, DE 19716-3110.** The deadline for receipt of applications will be June 15, 1993.

The UNIVERSITY OF DELAWARE is an Equal Opportunity Employer which encourages applications from qualified minority group members and women.



University of Otago

Te Whare Wananga o Otago

New Zealand

LECTURER IN PHYSIOLOGY

Applications are invited from suitably qualified physiologists for a full-time lectureship.

The applicant will be expected to initiate or participate in an active programme of research. The present research interests of the Department are in the fields of neurophysiology, cardio-respiratory physiology, epithelial transport and cell volume regulation. However, candidates with experience in any area of physiology will be considered.

The Department teaches physiology to students in the Health Sciences (Medicine, Dentistry, Pharmacy, Physiotherapy) as well as to Science students.

Commencing salary will be dependent on qualifications and experience, and will be made within the following salary range: Lecturer: \$NZ37,440 - \$NZ49,088, with a bar at \$NZ45,448 per annum.

Lecturer (Medically qualified): \$NZ41,600 - \$NZ49,400 per annum.

Further particulars are available from the Secretary-General, Association of Commonwealth Universities (Appointments), 36 Gordon Square, London WC1H 0PF, England or the Registrar, University of Otago, PO Box 56, Dunedin, New Zealand, (Fax. (64) (3) 474-1607).

Applications quoting reference number A93/12 close with the Registrar and in London on 30 April 1993.

Equal opportunity in employment is University policy.

Chairman/Division Head Laboratory Medicine

The University of Texas M. D. Anderson Cancer Center is seeking a Division Head of Laboratory Medicine. The Division of Laboratory Medicine incorporates the Sections of Clinical Chemistry, Special Chemistry, Cytogenetics, General Services, Laboratory Information Systems, Hematopathology, Microbiology, Hematology, Molecular Pathology, Blood Bank, Transfusion Medicine, Laboratory Immunology, Histocompatibility Laboratories, Virology, Stat Laboratory and Satellite Laboratories. Candidates for this position should have significant experience and accomplishments in academic clinical pathology and laboratory medicine and documented progressive evidence of administrative and leadership skills. Certification by the American Board of Pathology is preferred. Dedication to the pursuit of excellence in research, teaching, and clinical service is essential. Applications will be accepted until May 1, 1993.

Qualified applicants should submit a curriculum vitae to: **Dr. David C. Hohn, Interim Vice President for Patient Care, The University of Texas M. D. Anderson Cancer Center, 1515 Holcombe Boulevard, Box 43, Houston, TX 77030** or call (713) 792-7475. An equal opportunity/affirmative action employer. Smoke-free environment.

THE UNIVERSITY OF TEXAS
MD ANDERSON
CANCER CENTER



HARVARD UNIVERSITY-MASSACHUSETTS INSTITUTE OF TECHNOLOGY DIVISION OF HEALTH SCIENCES AND TECHNOLOGY

FACULTY POSITION BIOLOGICAL ENGINEERING/BIOLOGICAL PHYSICS

The Massachusetts Institute of Technology seeks to identify a junior faculty member (tenure track) to work at the interface of cellular/molecular biology and the physical sciences. The candidate's specific research area is flexible, but should represent a blend of modern biology with, for example, physics or engineering. Potential research areas might include molecular biophysics, quantitative cellular physiology, tissue engineering or cell-based artificial organs. The successful candidate must have documented expertise in molecular and cellular biology or physiology as well as in the physical or engineering sciences. Familiarity with the medical sciences and the relevance of research interests to human disease is highly desirable, but an MD degree is not required. In addition to conducting an active independent research program, the individual will have major responsibilities in the education of scientists, engineers, and physicians who expect to work at the forefront of technology and medicine. The appointment will be made in the Harvard-MIT Division of Health Sciences and Technology. A secondary appointment in an MIT department in the candidate's discipline may be possible.

Qualified applicants should send a curriculum vitae, a statement of research and teaching objectives, and three letters of reference to:

**Faculty Search Committee
Attention: Barbara Jaskela
Room E25-519
Massachusetts Institute of Technology
77 Massachusetts Ave.
Cambridge, MA 02139**

The closing date for applications is June 1, 1993. MIT is an Affirmative Action/Equal Opportunity Employer.

**A new Research Centre
of a French Pharmaceutical
Company in the outskirts
of Paris is seeking a**

BEHAVIOURAL PHARMACOLOGIST

Possessing a PhD and preferably significant post-doctoral experience in the fields of operant techniques and experimental models of anxiety, depression and schizophrenia. A knowledge of French would be an advantage but is not essential. Please send a CV together with a hand-written letter and photo to Média-System, 6 impasse des Deux Cousins, 75849 Paris Cedex 17, quoting ref. 40888 on the envelop.

ASSOCIATE DIRECTOR FOR RESEARCH ON WOMEN'S HEALTH

The National Institutes of Health (NIH) invites applications for the position of Associate Director for Research on Women's Health, Office of the Director. This is a Civil Service position in the Senior Executive Service (SES), with a salary ranging from the ES-1 to ES-6 pay level per annum (currently \$92,900 to \$115,700). The person selected may be eligible for a Physicians Comparability Allowance ranging from \$5,000 to \$20,000 per year. A one year probationary period must be served by the individual selected if not currently in the career Senior Executive Service.

The position of Associate Director for Research on Women's Health is responsible for:

- (1) strengthening and enhancing research related to diseases, disorders, and conditions that affect women and for ensuring that research conducted and supported by NIH adequately addresses issues regarding women's health;
- (2) ensuring that women are appropriately represented in biomedical and behavioral research studies supported by the NIH;
- (3) developing opportunities and supporting initiatives for recruitment, retention, re-entry, and advancement of women in biomedical careers;
- (4) coordination of overall policies related to women's health issues;
- (5) liaison with a wide variety of groups and organizations related to women's health.

Applicants must possess biomedical research experience and knowledge of research programs for diseases, disorders, and conditions that are causes of morbidity and mortality in women.

Applicants are required to submit an Application for Federal Employment (SF-171), available at all Federal Job Information Centers and Federal Personnel Offices. Resumes are not acceptable applications. Additionally, applicants may send a curriculum vitae and a bibliography. The vacancy announcement with mandatory/desirable qualifications requirements can be obtained by calling (301) 402-4111. Application material must be sent to the following address:

National Institutes of Health
Office of the Director Personnel Office
ATTN: Ms. Wanda Haney Faux
Building 31, Room 1C-27
9000 Rockville Pike
Bethesda, Maryland 20892

Faxed material cannot be accepted. Public Health Service Commissioned Officers wishing to enter the SES must follow the above procedures. Officers interested in performing the duties of the position within the PHS Commissioned Corps may submit a resume to above address.

APPLICATION MUST BE RECEIVED NO LATER THAN APRIL 14, 1993.

Selection for this position will be based solely on Merit, with no discrimination for Nonmerit reasons such as Race, Color, Religion, Sex, National Origin, Political Affiliation, Marital Status, Handicapping Condition, Age, or Membership or Nonmembership in an Employee organization.



NIH IS AN EQUAL OPPORTUNITY EMPLOYER

Assistant Professor/Atmospheric Chemistry/Air-Sea Exchange

The addition of the Institute for Terrestrial and Planetary Atmospheres (ITPA) to the Marine Sciences Research Center (MSRC) has led to an entry level, tenure track, assistant professor position for September 1993 to enhance collaborative research on the interaction of the oceans with the Earth's atmosphere. Successful candidate will have a doctorate in atmospheric or ocean science or other relevant fields and the ability to develop original research program in atmospheric and/or ocean science and to teach effectively at the graduate and undergraduate level. Preference will be given to candidates whose research interests complement existing research fields in ITPA and MSRC and who can interact well with faculty members in both atmospheric and ocean sciences in areas such as tropospheric chemistry, physics and chemistry of the air-sea exchange, and climate, although those with other specialties are also encouraged to apply. Applicants should send a curriculum vitae, list of publications, statement of research interests, and have three letters of recommendation sent directly to Dr. Dong-Ping Wang, Search Committee, Marine Sciences Research Center, SUNY, Stony Brook, New York 11794-5000. Applications received by April 15 will be given first consideration but position will remain open until suitable candidate is found.

The State University of New York is an Equal Opportunity/Affirmative Action Educator and Employer. Women and minority candidates are strongly encouraged to apply.



STONY BROOK

BIODEGRADATION:

ITS ROLE IN REDUCING TOXICITY AND EXPOSURE TO ENVIRONMENTAL CONTAMINANTS

Conference

April 26-28, 1993

National Institute of Environmental
Health Sciences
Research Triangle Park, North Carolina

Moderators: Lily Young, Jim Spain, Max Häggblom, Ron
Unterman, Fred Pfaender, John Rogers and William Suk

List of Speakers

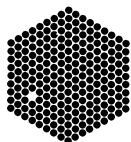
Kenneth Olden, Director of NIEHS

Daniel Abramowicz	David Kosson
Linda Abriola	Thomas Leisinger
Martin Alexander	Ronald Olson
Robert Arnold	Bruce Rittmann
Steven Aust	M. Salkinoja-Salonen
Peter Chapman	Gary Saylor
Carl Camiglia	Kate Scow
Kensuke Furukawa	Jodi Shann
William Ghiorse	Lewis Semprini
F. Peter Guengerich	James Tiedje
Kenneth Hammel	Robert Thomann
Robert Hausinger	Larry Wackett
James Hunt	Stephen Zinder
Dick Janssen	Gerben Zylstra

For Information, please contact:

Lily Young (908) 932-1584 or
Sue Halhcook (919) 541-1403





EMBL

The European Molecular Biology Laboratory, an international research organization situated in Heidelberg, Germany, has a vacancy for a

SOFTWARE ENGINEER

The Protein and Peptide Group at EMBL has developed software for data acquisition and instrument control in the area of protein mass spectrometry. Furthermore, we have started work on programs to scan mass spectrometric results against large sequence databases. We now need a software engineer for the further development and maintenance of these programs. Programming will be on Macintosh computers and the programming language will be C++. The successful candidate will be integrated into a dynamic, multi-disciplinary group.

Candidates should have an MSc degree in Computing Science, Electrical Engineering or an equivalent qualification. Experience in electronics in addition to a software background would be advantageous.

We offer an above-average salary, plus certain allowances depending on personal circumstances.

EMBL
Personnel Section,
Postfach 10.2209
D-6900 Heidelberg
Federal Republic
of Germany

Please write briefly for an application form, quoting ref. no. 92/30.

"MINORITIES IN SCIENCE . . .

A SEARCH FOR SOLUTIONS"

SCIENCE 13 November 1992 Reprint

In a first-time special section, the 13 November issue of **SCIENCE** explores the complex problems and obstacles facing minorities as they work and compete in the scientific community.

Highlights include:

- AFFIRMATIVE ACTION PROGRAMS
- CAREER PROFILES
- BARRIERS FACING MINORITIES
- THE SEARCH FOR SOLUTIONS

To order your copy send \$2.25 per copy plus postage to:

SCIENCE

Attn: Corrine Harris
1333 H Street, NW
Washington, DC 20005

Postage (per copy)

US: \$1.50 first copy,
.60 each add'l. copy
Int'l. Air: \$5.00 first copy,
\$4.00 each add'l. copy
Int'l. Surface: \$1.50 first copy,
\$1.00 each add'l. copy

For more information on orders of 30 or more call (202) 326-6527.
Visa and MasterCard orders accepted.

KUWAIT UNIVERSITY DEPARTMENT OF GEOLOGY FACULTY OF SCIENCE

The Department of Geology is seeking qualified university staff to fill the following posts:

1) Faculty member in Geochemistry and Ore Deposits - minimum qualification required is a Ph.D. degree from a recognized university and at least 5 years of teaching experience.

Selected candidate is expected to teach courses in Ore Deposits and Geochemistry. Experience in Isotope Geochemistry is an advantage. The selected candidate will be required to assist in improving and updating research and teaching laboratories and facilities in Geochemistry.

2) Faculty member in Metamorphic Petrology - minimum qualification required is a Ph.D. degree from a recognized university and at least 5 years of teaching experience.

The selected candidate is expected to teach courses in igneous and metamorphic petrology and assist in improving and updating research and teaching laboratories and facilities in metamorphic petrology.

3) Teaching Assistant in Sedimentary Petrology - minimum qualification required is an M.Sc. degree. Previous teaching experience in Sedimentary Petrology is an advantage.

Selected candidate is expected to assist in teaching and conducting practicums in the Petrology and Sedimentary Rocks (detritals and carbonates) and may be asked to contribute to the teaching of laboratory classes in Physical Geology, Stratigraphy and Mineralogy.

Documents Required: Copies of qualification certificates, research papers, experience certificates, recommendations and names of referees. **Deadline: 5th of July, 1993.**

Application and conditions of service may be obtained from the Kuwait University Office, 3500 International Dr., NW, Washington, DC 20008; Tel# 202/363-8055. All completed applications and documents as well as inquiries about the above positions should be directed to:

Chairman
Department of Geology
Faculty of Science
Kuwait University
P.O. Box 5969
Kuwait - 13060

FAX No. 965/481-6487

POSITIONS OPEN

BIOLOGY INSTRUCTOR. Comparative or Ecological Physiologist. Faculty position, tenure-track, starting fall 1993. Teach introductory courses in plant, environmental and organismal biology and ecology and natural history. Strong commitment to teaching in a community college. M.A. in Biology or related field required. Applications may be obtained from: **Employment Services, Foothill-De Anza Community College District, 12345 El Monte Road, Los Altos Hills, CA 94022. Telephone: (415) 949-6217.** A résumé or curriculum vitae may not be substituted for a completed application. Open until filled with a first review date of April 26, 1993. *Affirmative Action/Equal Opportunity Employer.* Announcement #93050.

VISITING ASSISTANT PROFESSOR OF BIOLOGY

A two-year appointment in introductory biology starting August 1993. Teaching duties include General Zoology, and Introductory Cell/Molecular Biology. Possible other duties include upper-level courses in field of expertise and direction of undergraduate research projects. Applicants must hold the Ph.D. Please send curriculum vitae, three letters of reference, and transcripts by April 25, 1993, to: **Dr. Kenneth Klatt, Department of Biology, Denison University, Granville, OH 43023.** Denison University is an Equal Employment Opportunity/Affirmative Action Employer. We encourage applications from women and minorities.

FACULTY POSITION IN CELL/TUMOR BIOLOGY

In conjunction with the Lombardi Cancer Research Center, the Department of Anatomy and Cell Biology at Georgetown University Medical Center is seeking applications for a tenure-track position at the level of **ASSISTANT** or **ASSOCIATE PROFESSOR**. While preference will be given to research involving tumor biology, individuals working in related areas of cell and/or developmental biology will also be considered. Successful candidates will be expected to develop an independent research program with extramural funding, and participate in teaching one of the anatomical subjects offered at the medical school (histology, gross anatomy, neurobiology, or cell and developmental biology). Interested individuals should include in their applications: (1) curriculum vitae; (2) names, addresses, and telephone numbers of three individuals who may be contacted for references; (3) a brief (less than 2 pages) description of current research interests; and (4) reprints of recent publications. Applications should be sent to: **Dr. Charles Underhill, Department of Anatomy and Cell Biology, Georgetown University Medical Center, 3900 Reservoir Road NW, Washington, DC 20007. (Telephone: (202) 687-1224; FAX: (202) 687-1823).** The selection process will begin on May 14, 1993. Georgetown University is an Equal Opportunity/Affirmative Action Employer.

University of California, Davis, has a full-time position as **ASSISTANT/ASSOCIATE PROFESSOR** for individual BC/E in Internal Medicine and Nephrology with a strong commitment to research in molecular or cellular biology. The individual will participate in all clinical, research and teaching activities of the Division. Research start-up money will be available. Interaction with the active graduate groups on the UC, Davis campus will be encouraged. Address inquiries: **George A. Kaysen, M.D., Ph.D., Nephrology, 4301 X Street, Sacramento, CA 95817.** Opened until filled. No applications accepted after July 30, 1993. Anticipated starting date of January 1, 1994. *The University of California is an Affirmative Action/Equal Opportunity Employer.*

INSTRUCTOR, Department of Zoology at Oregon State University. A fixed-term appointment to teach and coordinate courses in Human Anatomy and Physiology for the 1993-1994 academic year. A Ph.D. is required. Applicants should have teaching and research experience in appropriate disciplines. Salary: \$30,000 annually. Send cover letter, résumé, and names, addresses and telephone numbers of three references to: **Dr. John Ruben, Physiology Search Committee, Zoology Department, 3029 Cordley Hall, Oregon State University, Corvallis, OR 97331-2914.** Closing date: 1 May 1993. *OSU is an Affirmative Action Employer/Equal Opportunity Employer and has a policy of being responsive to needs of dual-career couples.*

POSITIONS OPEN

FACULTY POSITION VERTEBRATE ANATOMY AND PHYSIOLOGY

The Department of Biology invites applications for an anticipated tenure-track position in the fall of 1993. Ph.D. in the field and college-level teaching experience are required. The position requires the teaching of vertebrate anatomy and physiology to biology majors. Other teaching will be required in introductory biology courses and natural science core courses (emphasizing evolution and/or environmental science). The successful candidate is also expected to supervise undergraduate biology majors in carrying out independent research projects. Other areas of responsibility encompass advisement of students, research and scholarship, curriculum development and departmental and college committees.

Dowling College is a fully accredited, independent, coeducational, liberal arts college with outstanding graduate programs in business administration and education. The College is located on the south shore of Long Island, fifty miles from Manhattan.

The College offers excellent benefits along with a competitive salary. Please send a letter of interest and curriculum vitae to: **Director of Human Resources, Dowling College, Oakdale, L.I., NY 11769-1999.** *Equal Opportunity/Affirmative Action Institution.*

INSTRUCTOR, RESEARCH ASSOCIATE AND POSTDOCTORAL FELLOW

The new Division of Cancer Biology of Thomas Jefferson University in Philadelphia is seeking qualified investigators for positions at the level of **POSTDOCTORATE RESEARCH ASSOCIATE** AND **INSTRUCTOR**. Research includes identification and characterization of oncogene rearrangement and DNA binding proteins in the pathogenesis of leukemia and non-Hodgkin's lymphoma. Work also includes quantification of residual disease in hematologic malignancies. Qualified candidates will have a Ph.D. and/or M.D. and expertise in molecular biology. Positions and salary are competitive and commensurate with experience. Please forward curriculum vitae, summary of professional interest and names of three references to: **Jorge J. Yunis, M.D., Professor, Department of Pathology and Cell Biology, Thomas Jefferson University, Room #224 JAH, Philadelphia, PA 19107.** *Equal Opportunity Employer.*

POSTDOCTORAL POSITION available immediately for molecular analysis of virus-plant interactions. Experiments will investigate structure-function relationships between TMV coat protein and host resistance. Experience in molecular biology and plant-pathogen interactions is desired. Send curriculum vitae and names of three references to: **Dr. James Culver, Center for Agricultural Biotechnology, University of Maryland, College Park, MD 20742. FAX: (301) 314-9082.** *The University of Maryland is an Affirmative Action/Equal Opportunity Employer.*

POSTDOCTORAL POSITIONS IN MOLECULAR BIOLOGY

Postdoctoral positions are available to study molecular mechanisms of eukaryotic gene regulation and development using yeast and *Drosophila* as model systems. Candidates should have a recent Ph.D. degree with strong background and research experience in biochemistry, molecular biology or genetics. Interested individuals should send curriculum vitae, a brief statement of research interest, and names and addresses of three references to: **Dr. Jun Ma, Division of Basic Science Research, Children's Hospital Research Foundation, Elland and Bethesda Avenues, Cincinnati, OH 45229-2899. Telephone: 513-559-7977; FAX: 513-559-4317.** *Equal Opportunity Employer.*

POSTDOCTORAL POSITION IN MICROBIAL ECOLOGY

Applicants should have experience working with aquatic or soil microorganisms. Send curriculum vitae and names of three references to: **Dr. Ralph Mitchell, Harvard University, Division of Applied Sciences, 29 Oxford Street, Cambridge, MA 02138.** *Harvard University is an Affirmative Action/Equal Opportunity Employer.*

POSITIONS OPEN

POSTDOCTORAL POSITIONS: available in the Department of Microbiology and Molecular Genetics, the University of Texas Health Science Center, Houston, P.O. Box 20708, Houston, TX 77225. Direct inquiries to:

Dr. S. Kaplan: gene regulation of membrane biosynthesis by oxygen and light, redox control of gene expression, oxyanion reduction, genome organization and membrane assembly in rhodobacter sphaeroides.

Dr. P. Christie: structure/function analyses of the T-DNA/protein complex and its transport from agrobacterium tumefaciens to plant cells.

Dr. K. B. Kaplan: molecular genetic and biochemical studies of cell-cell interactions and signal transduction required for myxococcus multicellular development.

The University of Texas is an Equal Opportunity Employer. Women and minorities are encouraged to apply.

POSTDOCTORAL POSITION available in NIH-funded laboratory to study neurophysiological bases for recovery of motor function following cortical ischemia. Individual will utilize intracortical microstimulation, single and multi-unit recording, spike-triggered averaging and electromyographic recording techniques to study plasticity of cortical motor topography. Ph.D. in neuroscience or related field required. Previous experience in electrophysiology and/or microsurgery is desired. Position is funded for up to 3 years. Send letter of application, curriculum vitae and names of three references to: **Randolph J. Nudo, Ph.D., University of Texas Health Sciences Center, Department of Neurobiology and Anatomy, 6431 Fannin, Houston, TX 77030.** *The University of Texas is an Equal Opportunity Employer. Women and minorities are encouraged to apply.*

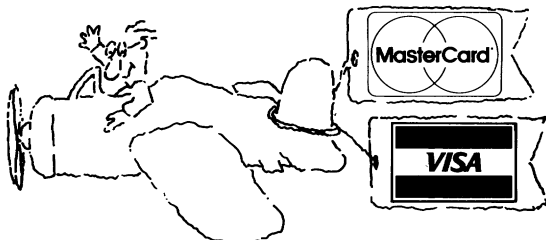
FIVE POSTDOCTORAL POSITIONS: Available June 1993. The **PUERTO RICO TROPICAL MARINE BIOTECHNOLOGY CENTER** consists of three "core areas": Molecular Biology and Pharmacology, Natural Products Chemistry and Marine Metabolites. Positions are available to study: (1) the role of microbial symbionts in the production of bioactive products by host-symbiont consortia, (2) the origin, chemical nature and pharmacological activities of marine toxins, and (3) the isolation of new bioactive compounds from coastal marine biota. Applications including a statement of research interests, curriculum vitae and three letters of reference must be received by 23 April 1993. **T.R. Tosteson, Ph.D., Acting Director, Puerto Rico Tropical Marine Biotechnology Center, c/o Marine Station, Department of Marine Sciences, University of Puerto Rico, P.O. Box 908, Lajas, Puerto Rico.** *An Equal Opportunity Employer.*

POSTDOCTORAL POSITION

As part of an NIH Training Grant (Arnold Schwartz, P.I.) we are recruiting a postdoctoral fellow to study ion channel function and regulation. Emphasis will be on normal, mutant and chimeric cloned channels. Electrophysiological experience is the position available immediately. *Candidates are expected to be U.S. citizens or have a permanent residence.* Applicants should send curriculum vitae and names of three potential references to: **Drs. Atsuko Yatani/Arnold Schwartz, Department of Pharmacology and Cell Biophysics, University of Cincinnati College of Medicine, 231 Bethesda Avenue, Cincinnati, OH 45267-0575.** *The University of Cincinnati is an Equal Opportunity Employer. Applications from women and underrepresented minorities are encouraged.*

POSTDOCTORAL POSITION

Excellent research opportunity available at **Thomas Jefferson University** for an individual to investigate the role of protein-lipid interactions in the functioning of extrinsic membrane proteins (e.g., PKC, Pl_a) and the modulatory effects of drugs and anesthetics. Both model lipid bilayer and cell membrane systems will be investigated. Relevant experience would include previous work with protein-lipid interactions, membrane lipids, fluorescence spectroscopy and protein purification (including the use of molecular biological approaches). This position is available immediately. Qualified candidates may forward curriculum vitae and names of references to: **Dr. C. D. Stubbs, #271 JAH, Thomas Jefferson University, Philadelphia, PA 19107.** *Equal Opportunity Employer.*



ANNOUNCING ANOTHER SERVICE FROM SCIENCE

Now you can pay for your line classified or display recruitment ad with a credit card—we accept MasterCard and VISA.

Please let us know on your ad order that you wish to take advantage of this service, or ask us for further details.

SCIENCE Classified Advertising
Tel: 202-326-6555 FAX: 202-682-0816

Professor and Department Head Geography and Earth Resources Utah State University

Established in the College of Natural Resources in 1988, the Department of Geography and Earth Resources has 12 faculty and an active Master's Program. Physical and social sciences are equally represented. Emphases include geographic and environmental education, remote sensing and GIS, climatology, fluvial processes and geomorphology, international rural development and land use planning, and physical geography and ecology.

The Head is responsible to the Dean of the College for planning, coordinating, and directing the affairs of the Department. He or she provides leadership in recruitment of faculty and staff; provides direction for departmental programs of instruction, research, and extension; and is responsible for budget development and administration.

Qualifications include an earned doctorate in Geography or related discipline; record of scholarship commensurate with the rank of full professor; appreciation of the complete breadth of the human and physical components of geography and earth resources; awareness of the potential contributions of geography to the environmental sciences; environmental policy; and natural resources management; demonstrated ability to develop and administer programs of education, research (supported by extramural funding), and extension; and effective communication and inter-personal skills. International experience or regional specialization desirable. Screening will begin on May 17, 1993 and continue until the position is filled. Send statement of interest and personal evaluation of qualifications, vitae and names of 4 references to:



Dr. Raymond D. Dueser
GER Search Committee Chair
Department of Fisheries and Wildlife
College of Natural Resources
Utah State University
Logan, Utah 84322-5210

USU is an AA/EEO employer. Applications from women and minorities are particularly encouraged.

POSITION: BIOCHEMIST/CELL BIOLOGIST IN NUTRITION. The Department of Food Science and Human Nutrition invites applications for a tenure track position at the Assistant Professor level. Exceptional candidates at the Associate Professor level will be considered. The successful candidate will be expected to develop a strong extramurally funded research program utilizing modern Cell/Molecular Biology approaches to investigate the role of nutrition in gene expression as it relates to normal cell function and disease. Candidates with an interest in the area of lipids are especially encouraged to apply. Candidates will be expected to teach in their area of expertise, advise graduate students, and collaborate with Biochemical Nutrition faculty in areas of mutual interest. Interaction with other faculty in Food Science and Human Nutrition will be encouraged. A competitive package of start up funds is available. Applications should have completed a Ph.D. program in Nutrition, Biochemistry, Physiology or related field and have obtained post-doctoral training in Cell/Molecular Biology. Applicant should have excellent communication skills, and be committed to graduate teaching and advising. Salary is commensurate with professional qualifications, experience, and abilities. Excellent benefits package. Qualified individuals should submit a resume, brief summary of research/teaching accomplishments, brief summary of future research plans, current list of publications, reprints of representative publications and arrange to have three letters of reference sent to Dr. John E. Linz, Department of Food Science and Human Nutrition, 234B Food Science Building, Michigan State University, East Lansing, MI 48824, (517) 353-9624/FAX: (517) 353-8963. Closing date for applications: May 15, 1993 or until position is filled. Michigan State University is an affirmative action/equal opportunity institution. Women and minorities are encouraged to apply.

REQUEST FOR PROPOSALS

The Center for VDT and Health Research at the Johns Hopkins University, School of Hygiene and Public Health, invites investigators to submit proposals for research on the health effects of VDT use. The Center has particular interest in supporting innovative studies of the following issues:

- Methodologies for the measurement of electromagnetic field (EMF) exposures associated with VDTs, and the contribution of VDTs to total field exposures;
- The association between VDT use and reproductive health problems or risks of neoplasia;
- The measurement of physical stresses/forces associated with VDT use and the effects on cumulative trauma disorders (CTDs);
- The moderating influence of psychosocial stress on b) and c) above;
- The biological effects of EMFs at the cellular or subcellular level.

The Center primarily provides support for pilot studies or for additions to existing studies. The average award is approximately \$50,000 per year for direct costs, and indirect costs should not exceed 15%. Funds can be awarded for up to three years, subject to annual review.

Investigators are invited to submit a two page pre-proposal to Dr. Ronald H. Gray, Room 4028, Johns Hopkins University, School of Hygiene and Public Health, 615 North Wolfe Street, Baltimore, MD 21205, (Fax: 410-955-0792). Instructions for preparations of pre-proposals can be obtained on request. Pre-proposals should be received by Friday, June 11, 1993. After review by the Centers' Scientific Advisory Board in July, selected investigators will be asked to submit full proposals by September, for final review and funding.

MOLECULAR BIOLOGY MARKETING TAIWAN

Beckman Instruments Inc., has fast growing operations in its Taiwan branch, in both diagnostics and bioresearch marketing and sales. New product development for researchers in the protein and DNA field requires an outstanding individual to further promote and support our products through the use of workshops and seminars. We require a Ph.D. in Life Sciences, coupled with research focusing on DNA and RNA. The right candidate must be willing to return to Taiwan, and must be fluent in Mandarin, Taiwanese and English. Experience in the following techniques required; DNA Synthesis and Sequencing, and RFLP Analysis. We offer a competitive salary and benefits package. Please send your resume with your date of availability to: **Beckman Instruments, Inc., c/o International Human Resources, 2500 Harbor Blvd., Mail Stop A-40-E, Fullerton, Ca. 92634.** An Affirmative Action Employer.

POSITIONS OPEN

TEMPORARY FACULTY POSITIONS

The T.H. Morgan School of Biological Sciences seeks well-qualified applicants for one-year appointments in the 1993-94 academic year. Primary responsibilities will be instruction of lecture courses in introductory biology. Classroom experience and commitment to undergraduate education are essential. Salary and rank will be commensurate with experience. Submit curriculum vitae and names of three references by April 15, 1993, to: Dr. William Cohen, 101 Morgan Building, University of Kentucky, Lexington, KY 40506-0225.

An Equal Opportunity/Affirmative Action Employer.

TENURE-TRACK FACULTY POSITION AT CARB

STRUCTURAL MOLECULAR BIOLOGY

The Center for Advanced Research in Biotechnology (CARB) is seeking an individual for a tenure-track faculty position with a strong interest and a demonstrated ability for creative research in macromolecule structure and function. Excellent applicants working in the broad areas of biochemistry, structural or molecular biology are invited to apply. We are especially seeking a scientist who is interested in the functional behavior of macromolecules in solution with a focus in one of the following general areas: the biochemistry of membrane proteins, signal transduction, mechanistic enzymology, the structure and function of nucleic acids or nucleic acid binding proteins, theoretical or experimental approaches to drug design, or peptide chemistry as it applies to a biological problem. The successful candidate will be expected to develop a strong, independent, externally funded research program, and to interact with other CARB scientists involved in macromolecular crystallography, high-field NMR spectroscopy, molecular biology, physical biochemistry, protein folding, stability, modeling and engineering.

CARB is a research center of the National Institutes of Standards and Technology (NIST) and the Maryland Biotechnology Institute of the University of Maryland System devoted to fundamental problems of macromolecular structure, function and engineering. Interested candidates should send curriculum vitae, three letters of reference, and a summary of research interests and plans to:

Faculty Search Committee
Center for Advanced Research in Biotechnology
9600 Gudelsky Drive
Rockville, MD 20850, U.S.A.

Review of applications will begin 1 June 1993. CARB is an Equal Opportunity/Affirmative Action Employer.

MOLECULAR BIOLOGIST: St. Mary's College of Maryland, a small, public, liberal arts honors college, seeks a one-year sabbatical leave replacement beginning August 1993. Applicants must have completed a Ph.D. in Molecular Biology or Biology with demonstrated proficiency in a variety of molecular laboratory techniques. Teaching responsibilities include Molecular Biology and Senior Seminar for majors, Contemporary Bioscience for non-majors, and laboratories in Introductory Biology and Genetics. Send letter of application, curriculum vitae, unofficial transcripts, and the names of three references by April 15, 1993, to: Dr. C. Tanner, Division of Natural Science and Mathematics, St. Mary's College of Maryland, St. Mary's City, MD 20686. St. Mary's College of Maryland is an Equal Opportunity/Affirmative Action Employer.

POSTDOCTORAL POSITION available immediately to study *Cryptosporidium parvum* folate biosynthesis; cloning and expression of genes encoding folate biosynthetic enzymes, structure-function analyses to investigate active site, mechanism and expression of drug resistance. Prior experience in molecular biology and enzyme biochemistry (FPLC, kinetics) strongly preferred, experience with parasites unnecessary. Please send or FAX a description of research experience, curriculum vitae and the names, addresses and telephone numbers of three references to: Dr. Richard G. Nelson, Division of Infectious Diseases, San Francisco General Hospital, University of California at San Francisco, Box 0811, San Francisco, CA 94143-0811; FAX: 415-206-6015. UCSF is an Equal Opportunity/Affirmative Action Employer. Women and minorities are encouraged to apply.

POSITIONS OPEN

POSTDOCTORAL POSITION available immediately to study Biochemistry and Physical Biochemistry of protein, nucleic acid, and protein nucleic acid interactions. Experience in Biochemistry, Physical Biochemistry, Chemistry or Physics preferred. Please send current curriculum vitae and three letters of reference to: Dr. Wlodek Bujalowski, Department of Human Biological Chemistry & Genetics, The University of Texas Medical Branch at Galveston, P-53, Galveston, TX 77555-0653. UTMB is an Equal Opportunity/Affirmative Action Employer, M/F/H/V. UTMB is a smoke-free, drug-free work place. UTMB hires only individuals authorized to work in the United States.

TWO POSTDOCTORAL POSITIONS AVAILABLE: (1) Conduct research on the molecular biology of Baculovirus gene expression, virus maturation, and assembly. Successful applicant will study in all aspects of recombinant DNA techniques. In addition, protein function studies using genetic and classical biochemical approaches will be required. (2) Study the molecular biology of polydnavirus gene expression pursuant to determining the mechanism of viral interference with host immune recognition of foreign agents. Successful applicant will study in all aspects of recombinant DNA and viral vector cloning to study the expression of a family of viral genes containing unique structural motifs. Send résumé and three references to: Dr. Max D. Summers, Center for Advanced Invertebrate Molecular Sciences, Texas A&M University, Department of Entomology, College Station, TX 77843-2475. Texas A&M University is an Affirmative Action/Equal Opportunity Employer.

THE CLEVELAND CLINIC RESEARCH INSTITUTE POSTDOCTORAL FELLOWS IN CELL AND MOLECULAR BIOLOGY

Positions available in collaborative research effort with emphasis on mechanisms of cell injury, cell growth regulation and regulation of gene expression of protective cellular enzymes. Competitive salary and fringe benefits.

Send curriculum vitae and names of three references to either:

Dr. Guy Chisolm or Dr. Donna Driscoll
Department of Cell Biology—NC10
The Cleveland Clinic Research Institute
9500 Euclid Avenue
Cleveland, OH 44195

POSTDOCTORAL FELLOWS (2): Plant ecologist to study the role of nitrogen availability in the control of shrubland succession and its effect on interspecific competition by shrubs. Research sites are in central and northern Colorado. Quantitative ecologist to help develop statistical/simulation modeling techniques for ecological risk assessment and use-impact evaluation. Salary is \$27,000 per year. Starting date is 1 June 1993. Send résumé, transcripts, and names of 3 references by 16 April 1993 to: Dr. Terry McLendon, Range Science Department, Colorado State University, Fort Collins, CO 80523. Telephone: 303-491-6541.

Colorado State University is an Equal Opportunity/Affirmative Action Employer.

POSTDOCTORAL NIH FELLOWSHIP in second-messenger signaling pathways in, and secretion by, single gonadal cells. Please send cover letter and curriculum vitae to: Dr. J. D. Veldhuis, Box 202 Department of Internal Medicine, University of Virginia Health Sciences Center, Charlottesville, VA 22908. The University of Virginia is an Affirmative Action/Equal Opportunity Employer.

POSTDOCTORAL FELLOW

Position available to conduct research on the active sites and regulatory sites of enzymes. Approaches used include affinity labeling, site-directed mutagenesis, physicochemical studies of modified enzymes and peptide isolation and characterization. Ph.D. in Biochemistry required. Send curriculum vitae and 3 references to: Dr. Roberta F. Colman, Department of Chemistry and Biochemistry, University of Delaware, Newark, DE 19716. An Equal Opportunity/Affirmative Action Employer.

POSITIONS OPEN

POSTDOCTORAL POSITION Department of Biomedical Research St. Elizabeth's Hospital of Boston

Applications are invited for postdoctoral position to study anion transporter (AE1, band 3) gene expression during erythropoiesis using embryonic stem (ES) cells and homologous recombination techniques. Applicants should have a solid background in molecular biology and strong interest in gene expression during erythropoiesis. Please send curriculum vitae, brief description of research experience, and names of three references to: Employment Office, St. Elizabeth's Hospital of Boston, 736 Cambridge Street, Boston, MA 02135. We are an Equal Opportunity Employer.

POSTDOCTORAL POSITION available to study protein-DNA interactions and protein-protein interactions involved in DNA repair and in the regulation of damage inducible genes in *Saccharomyces cerevisiae*. Previous experience in protein purification and/or modern recombinant DNA technology required. Salary commensurate with experience. Submit curriculum vitae and 3 letters of recommendation to: Dr. Gwendolyn B. Sancar, Department of Biochemistry CB# 7260, School of Medicine, University of North Carolina at Chapel Hill, Chapel Hill, NC 27599-7260. The University of North Carolina is an Equal Opportunity/Affirmative Action Employer.

POSTDOCTORAL FELLOWSHIPS IN NEUROSCIENCE MINORITY FELLOWSHIP PROGRAM

Applicants are invited for support by the Minority Fellowship Program (MFP) in Neuroscience of the American Psychological Association (APA) and the Association of Neuroscience Departments and Programs (ANDP). Supported by the National Institute of Mental Health (NIMH), this competitive program provides postdoctoral research fellowships in mental health sciences at sites selected by the applicant in consultation with the MFP.

Recipients must have a Ph.D. or M.D., with appropriate research experience in neuroscience or in allied disciplines, such as cell or molecular biology or immunology. To request application materials, contact: Minority Fellowship Program (APA/ANDP), Postdoctoral Research, 750 First Street, N.E., Washington, DC 20002-4242; Telephone: (202) 336-6027. Deadline for preliminary application is April 15, 1993.

POSTDOCTORAL FELLOW/RESEARCH ASSOCIATE—Molecular Biology of Mammalian Aging. Research in this new state-of-the-art laboratory focuses on estrogen-dependent and glucose-dependent changes in gene expression during aging and diabetes, under the influence of caloric restriction and enhancement. Of particular interest are mechanisms by which these and other humoral substances appear to exert residual, persistent, and cumulative effects on gene expression which may lead to age-correlated changes in gene expression and physiological function and may mediate effects of dietary restriction on age-correlated impairments. Technical approaches we routinely use include: *in situ* hybridization, PCR, quantitative blots (Northern, Western), 1-D and 2-D electrophoresis, immunocytochemistry, RIA, ELISA, and other techniques as appropriate. Salary range: \$28,000 to \$35,000. Please send curriculum vitae and names of three references to: Dr. Charles Mobbs, Fishberg Center for Neurobiology, Box 1065, The Mount Sinai School of Medicine, One Gustave L. Levy Place, New York, NY 10029-6574. An Equal Opportunity Employer.

POSTDOCTORAL RESEARCH ASSOCIATE COLUMBIA UNIVERSITY, COLLEGE OF PHYSICIANS & SURGEONS

Position available immediately in an interdisciplinary group studying the role of lipoxigenase enzymes in the nervous system. Background in protein purification (particularly microsomal enzymes), molecular biology, and/or lipid biochemistry useful. Send curriculum vitae and the names of three references to: Steven J. Feinmark, Ph.D., Department of Pharmacology, Columbia University, 630 West 168th Street, New York, NY 10032. FAX: (212) 305-8780. Columbia University is an Equal Opportunity/Affirmative Action Employer.

Staff Fellowship Program. Department of Health and Human Services, Public Health Service, Food and Drug Administration, (FDA) Center for Biologics Evaluation and Research, Bethesda, Maryland. The Center for Biologics Evaluation and Research is searching for outstanding physicians and Ph.D. scientists to conduct biomedical research utilizing radionuclides and toxins conjugated to monoclonal antibodies in order to provide a strong basis for the review and regulation of these biological products. This is a unique opportunity to conduct fully supported independent research while participating and influencing the development and approval of radioimmunoimaging and immunotherapy products.

Candidates for this Senior Staff Fellowship must have completed all requirements for a Medical Degree or Ph.D. from an accredited institution and have 3 to 7 years postdoctoral experience. Candidates must be either U.S. citizens or resident aliens eligible for citizenship within four years.

Appointments are for an initial two-year period and may be extended up to a total of seven years. These are tenure track appointments and may lead to recommendation for conversion to a tenured appointment. Salary range for Senior Staff Fellows with a Medical Degree is from \$39,000 to \$73,472 with a Ph.D. the range is from \$33,504 to \$62,293. Salary range for Staff Fellows with a Medical Degree is from \$28,000 to \$48,196; with a Ph.D. from \$28,000 to \$47,013. Salary research support, and level of responsibility are commensurate with education and experience.

Candidate should send a current curriculum vitae, bibliography, a brief statement of research interest, and names of three references to:

Dr. Robert Kozak, FDA/Center for Biologics Evaluation and Research, Building 29A, Room 2A11, 8800 Rockville Pike, Bethesda, Maryland 20892.

For further information, call Dr. Kozak on (301) 496-4792 or Dr. Kathryn Stein on (301) 496-6916.

FDA is an Equal Opportunity Employer and has a smoke free environment.

Postdoctoral Research Fellow Molecular Virology

The PARKE-DAVIS Pharmaceutical Research Division, Warner-Lambert Company, seeks a self-motivated Scientist to conduct studies on Herpes Simplex type 1. This research will investigate selected viral gene expression and protein functionality, and perform mutational analysis for functional domain identification. The research goal is to examine various states of HSV-1 infection for the presence and function of selected viral proteins as well as their interactions with host cellular factors.

Required are a Ph.D. in Molecular Virology, Biochemistry, Microbiology or a related discipline and experience with the fundamental methods of molecular biology. Experience with HSV-1 and protein biochemistry very desirable.

Qualified individuals should send their resume and list of three references to **PARKE-DAVIS, Human Resources, Box JDM-82, PARKE-DAVIS, 2800 Plymouth Road, Ann Arbor, MI 48105. "Smoke-Free Work Environment"**

 **PARKE-DAVIS**
People Who Care

"Equal Opportunity
in Action"

Research Fellow/ Sr. Research Assistant

The Lindsley F. Kimball Research Institute, a division of the New York Blood Center, has a challenging opportunity available for a **Ph.D. Research Fellow or MS degreed Sr. Research Assistant** in Biochemistry or Molecular Biology.

Working under the supervision of the laboratory head in our Cell Biochemistry Lab, you should have experience and publication record demonstrating innovative and independent research accomplishments. Experience in techniques of enzymology (enzyme purification and characterization, kinetic studies, protein chemistry) and Molecular Biology required. (DNA library construction) cloning, screening and mutagenesis necessary.

We offer a competitive salary and a comprehensive benefit package. Send CV to: **Manager of Human Resources/ LFK, The New York Blood Center, 150 Amsterdam Ave, New York, NY 10023.** Equal opportunity employer m/f/d/v.

 **Lindsley F. Kimball**
Research Institute

A Division of the New York Blood Center.
Where concern for the community comes first.

Symposium on Molecular Evolution of Physiological Processes

47th Annual Meeting of the Society of General Physiologists

SEPTEMBER 8-11, 1993

MARINE BIOLOGICAL LABORATORY, WOODS HOLE, MA

Major Sessions: Titles and Participants

Interpretation of Diversity: Homology Testing and Generation of Phylogenetic Trees
Walter Fitch, Ford Doolittle, David Hillis, Mitchell Sogin

Genome Organization and Generation of Diversity
Allan Spradling, William McGinnis, John Schimenti, Peter Parham, David Helfman

Evolution of the Actin and Myosin Families of Cytoskeletal Proteins
Thomas Pollard, Everett Bandman, Holly Goodson, Leslie Leinwand, Eric Fyrberg

Structure, Function, and Evolution of Plasma Membrane Proteins
Robert Guy, Stephen Heinemann, Ching Kung, Meredith Applebury, Thomas Wilkie

Workshop: Demonstrations of Tree-Building Programs
David Swofford, Wayne Maddison

Keynote Addresses
Leroy Hood, Marc Kirschner

For more information please contact:

Society of General Physiologists
P.O. Box 257A, Woods Hole, MA 02543 USA
Telephone: (508) 540-6719; Fax (508) 540-0155

Carolina Workshops
University of North Carolina at Chapel Hill

IN VITRO MUTAGENESIS AND DNA SEQUENCING

June 6-June 19, 1993

This course features the use of randomly mutagenized oligonucleotides to produce "complete" mutant libraries. Streamlined manual DNA sequencing methods necessary for the execution of saturation mutagenesis projects will be emphasized. Use of these rapid sequencing methods in large genomic sequencing projects will also be covered. Students will be introduced to a variety of computer software for the analysis of biological sequence data. Participants who wish to bring materials related to their own research interests should consult the instructors in advance. Tuition is \$2,150. Deadline-April 26, 1993.

Instructors:

Daniel Loeb, Ph.D., Univ. of Wisconsin, Clyde Hutchison, Ph.D., UNC-CH

TRANSCRIPTION

July 18-July 31, 1993

Students will be introduced to mammalian and invertebrate transcription systems. Specific techniques include: nuclear run-on analysis, preparation of transcription extracts, DNA footprinting and mobility shifts, and *in vitro* RNA processing. Tuition is \$2,150. Deadline-May 17, 1993.

Instructors:

William Marzluff, Ph.D., UNC-CH, Jane Azizkhan, Ph.D., UNC-CH, Ryszard Kole, Ph.D., UNC-CH, David H. Price, Ph.D., University of Iowa

CAROLINA WORKSHOPS are a series of intensive hands-on laboratory courses designed to teach cutting edge methods. Many applicants to the Carolina Workshops already hold the M.D. or Ph.D. degree. Our courses are heavy on hands-on contact with the protocols, light on lectures concerning the basics. Applicants unfamiliar with the theoretical basis of molecular biology may profit from reading *Principles of Gene Manipulation* (Fourth Edition) by R.W. Old & S.B. Primrose, Blackwell Scientific Publications, 1990. Ten years experience running these courses indicates that both students with and without any prior hands-on experience with molecular techniques find these courses useful. Experienced students benefit from in-depth interaction with the instructors; novices learn the realities behind the innocent looking protocols. To apply, send a curriculum vitae and a brief letter describing your research interests and their relevance to the Workshop for which you apply. Please indicate your complete mailing address and telephone/fax number. Full consideration will be given to applications received by the indicated deadlines.

Upcoming Courses:

Introduction To Nucleic Acid Techniques - October 1993

Light Microscopy for the Biomedical Sciences - Winter 1994

Making Monoclonal Antibodies - Spring 1994

For further information or to apply, contact:

Dr. Wayne Litaker, Facility Director
Program in Molecular Biology & Biotechnology
402 Taylor Hall CB 7100 S
Chapel Hill, North Carolina 27599-7100
TELEPHONE (919) 966-1730, FAX (919) 966-6821

CHAIR

DEPARTMENT OF BIOLOGY MEMPHIS STATE UNIVERSITY

Applications and nominations are solicited. The University has an enrollment of over 20,000 students, including approximately 500 undergraduate majors and over 70 graduate students in biology. Thirty faculty are housed within two main campus buildings, two buildings on south campus, and at the Meeman Biological Station near the Mississippi River. MS and PhD degrees are offered in disciplines ranging from ecology to molecular biology.

Candidates with a Ph.D. in the biological sciences and a distinguished research record are encouraged to apply. The successful candidate must have demonstrated leadership capabilities, success in extramural funding, and a commitment to excellence in undergraduate and graduate education. Women and minorities are encouraged to apply.

A letter of application, curriculum vitae, statement of research interests and academic philosophy, and names of at least three references should be sent to: Dr. Charles J. Biggers, Biology Chair Search committee, Department of Biology, Memphis State University, Memphis TN 38152 (Phone 901-678-4468). Review of applications will begin April 29, 1993, and will continue until the position is filled. AA/EOE.

Molecular Biosystems, Inc. (MBI), a world leader in the development of contrast agents for medical imaging, including ultrasound, MRI and CT, has an exceptional career opportunity in our Chemistry Department.

Sr. Scientist

The successful candidate will be responsible for the design, development and execution of ligand compound development and supervise a team of organic and inorganic chemists. Experience in ligand compounds development is a necessary qualification. A Ph.D. in Synthetic Organic Chemistry, a minimum of 10 years experience beyond Ph.D. in synthetic organic chemistry preferably within the pharmaceutical industry, and the ability to interact effectively with scientific and management teams.

MBI offers an excellent salary and benefits package, an opportunity to make a significant impact, and an exceptional working environment. For immediate consideration, please send résumé with salary history to:

Molecular Biosystems, Inc.
HR Department A261-93
10030 Barnes Canyon Road
San Diego, CA 92121



An Equal Opportunity Employer

Recruitment Advertisers

SAVE 25%

Running your recruitment advertisement once may not be enough. Place the same ad again within the next eight issues and we will give you 25% off your second insertion.

- Get more attention
- Get more value
- Get more savings
- Get more résumés

Reach the global scientific community you need to maximize your recruitment efforts. SCIENCE does it bigger and better and now SCIENCE does it at greater savings for you.

Call, write, or fax:
SCIENCE Classified Advertising
1333 H Street, N.W.
Washington, D.C. 20005
Phone: 202-326-6541
Fax: 202-682-0816



GLIATECH

SCIENTISTS ALZHEIMER'S DISEASE RESEARCH

Gliatech, Inc., a growing pharmaceutical company dedicated to understanding and utilizing the unique properties of neuroglial cells in treating nervous system disorders, has several openings for research scientists within our expanding Alzheimer's Disease research program. These positions are at the Ph.D., M.S. and B.S. levels, and scientists with training in the areas of molecular neuroscience, pharmacology, biochemistry, or cell biology are encouraged to apply. Prior research in the neurological sciences is highly desirable, but outstanding candidates from other disciplines will be considered. Applicants should be highly motivated investigators who can integrate into a vigorous research team dedicated to the development of therapeutics to slow the progression of Alzheimer's disease.

Gliatech is located in suburban Cleveland in close proximity to Case Western Reserve University and the Cleveland Clinic. Its collaborative interactions with scientists and clinicians at these and other academic institutions provides an exceptional intellectual environment. Gliatech offers a competitive salary and benefits package, and our location allows access to affordable housing as well as an array of cultural and sports activities. Qualified candidates are encouraged to submit their curriculum vitae to: **Gliatech Inc., Corporate Recruiting, 23420 Commerce Park Rd., Cleveland, OH 44122.**

St. Jude Children's Research Hospital Department of Biochemistry

Postdoctoral Fellowships

The Biochemistry Department offers a highly interactive environment for postdoctoral research with a focus on the molecular and cellular biology of signal transduction. The research programs within the Department offer recent Ph.D. or M.D. graduates comprehensive training in a large variety of contemporary molecular and biochemical techniques. Laboratory facilities are housed in a new 220,000 sq. ft. research facility. SJCRH offers competitive salaries and fringe benefits. Current research programs within the Department include:

- George Cheung:** Regulatory properties and biological functions of calmodulin, Ca^{2+} -regulated enzymes and other Ca^{2+} -binding proteins.
- John Cleveland:** *Myc* oncogene control of cell cycle progression, apoptosis and transcription.
- James Ihle:** Mechanisms of hematopoietic stem cell growth regulation, differentiation and transformation.
- Suzanne Jackowski:** Cell cycle regulation of membrane phospholipid biosynthesis.
- Charles Rock:** Role of phospholipid-derived second messengers in growth factor signal transduction.
- Robert Rooney:** Mechanisms of transcription factor regulation by the E1A oncogene.
- Gerard Zambetti:** Function of wild-type and mutant p53 in tumor suppression and oncogenesis.

Applicants should submit a brief statement of research interests, curriculum vitae and the names of three references to:

Biochemistry Departmental Fellowships
The Department of Biochemistry
St. Jude Children's Research Hospital
332 North Lauderdale • Memphis, TN 38101
An Equal Opportunity/Affirmative Action Employer



NATIONAL UNIVERSITY OF SINGAPORE

FACULTY OF MEDICINE

Applications are invited for faculty appointments in one of the following departments:

DEPARTMENT OF BIOCHEMISTRY

Candidates should have either a PhD degree or an approved basic medical degree with a recognized higher academic/professional qualifications. Preference will be given to candidates with teaching and research experience. A proven track record of high calibre, self-directed research in all aspects of eukaryotic (mammalian) molecular and cell biology will be a decided advantage.

DEPARTMENT OF PHYSIOLOGY

Candidates should have an MD or PhD degree or equivalent and have had at least two years of postdoctoral research experience in one of the following areas:

- (a) aspects of cellular and molecular physiology related to the regulation of cell growth and differentiation
- (b) mechanism of action of hormones and hormone antagonists
- (c) cancer cell biology

The appointee will be expected to develop an independent research programme in his/her own area of interest and be able to teach at undergraduate and postgraduate levels.

Gross annual emoluments range as follows:

Lecturer	S\$50,390 - 64,200
Senior Lecturer	S\$58,680 - 100,310
Associate Professor	S\$88,650 - 122,870

(US\$1.00 = S\$1.63 approximately)

The commencing salary will depend on the candidate's qualifications, experience and the level of appointment offered. In addition, appointees who possess and approved basic medical degree and a recognized higher academic/professional qualification will receive a Fixed Specialist Allowance (FSA), the annual rates for which are as follows:

Lecturer	S\$6,000/9,000
Senior Lecturer	S\$15,000
Associate Professor	S\$21,000

Leave and medical benefits will be provided. Depending on the type of contract offered, other benefits may include: provident fund benefits or an end-of-contract gratuity, a settling-in allowance of S\$1,000 or S\$2,000, subsidized housing, education allowance for up to three children subject to a maximum of S\$16,425 per annum per child, passage assistance and baggage allowance for transportation of personal effects to Singapore.

All academic staff have access to the following computer and telecommunication resources: an individual microcomputer (an IBM AT-compatible or Apple Macintosh); an IBM mainframe computer with 16 MIPS of computing power; an NEC SX supercomputer with 650 MFLOPS of computing power; departmental laser printers; a wide spectrum of mainframe and microcomputer software; voice-mail. A campus-wide network, which is based on the high speed optical fibre based FDDI technology, links up all the academic staff and student microcomputers, UNIX workstations and provides access to the mainframe computer, the supercomputer, UNIX hosts, the on-line library catalogue, CD-ROM databases, Televue, Internet and BITNET.

Application forms and further information on terms and conditions of service may be obtained from:

The Director Personnel Department National University of Singapore 10 Kent Ridge Crescent Singapore 0511	The Director North America Office National University of Singapore 55 East 59th Street New York, NY 10022, USA Tel: 202-751-0331
--	---

Enquiries may also be sent through BITNET to: PERLIMM @ NUS3090, or through Telefax: (65) 7783948

POSITIONS OPEN

Quartz Manufacturer Northeast Ohio is seeking a: **SENIOR RESEARCH ENGINEER** to define, verify and implement process improvements to reduce bulk inclusions and lower the dislocation density in single crystal cultured quartz to the levels of world class suppliers. Assist in development relationship with technical and production facilities in Russia, which are of major importance, and just now becoming available for association with U.S. businesses. Longer term—Develop, test, and implement breakthrough ideas to advance the quality and lower production cost of single crystal quartz beyond present limits. Investigate and possibly develop the production of other piezoelectric optical materials, particularly those produced by hydrothermal methods. Ph.D. in Geology with Crystallography as a specialty and at least four years of experience in job described; salary \$52,500 per year.

RESEARCH ENGINEER to define, verify, and implement quartz growing process modifications focusing on the application of computer monitoring and control of the process to obtain precision not now available using manual methods. Select, on the basis of experience, and access relevant Russian language technical publications and translate into English. Use advanced computer modeling techniques to model various aspects of the quartz crystal growth process. For example, growth rate prediction as a function of several process control variables. Master's in Geology with Crystallography as a specialty. Training in C Language computer programming. Three years of experience in job described; salary \$39,000 per year.

Each engineer must speak, read and write Russian. Spend about 10% of time traveling in Russia. 40 hours per week. *Must have proof of legal authority to work indefinitely in the United States. Send résumé in duplicate to: R. Leckler, J.O. #1200992, Ohio Bureau of Employment Services, PO Box 1618, Columbus, OH 43216. NO CALLS, PLEASE.*

SCIENCE recruitment ads reach thousands of scientists in all disciplines, worldwide. Classified Advertising telephone: 202-326-6555. FAX: 202-682-0816.

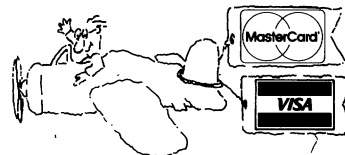
POSITIONS OPEN

POSTDOCTORAL/RESEARCH ASSOCIATE position available immediately for molecular and biochemical studies of the functions of the iron-binding defense protein, lactoferrin. Join an active and well-equipped laboratory in a rapidly expanding, highly collegial, research department. Excellent opportunity for research accomplishment and personal advancement. Molecular biology experience essential. Send complete curriculum vitae to: Dr. Philip Furmanski, Department of Biology, New York University, 1009 Main Building, New York, NY 10003. FAX: 212-995-4015. *NYU encourages applications from women and members of minority groups.*

ASSOCIATE RESEARCH SCIENTIST. Conducts medical research in the Department of Neurosurgery. Will be responsible for the development, design, and production of various devices used in different types of cryosurgical procedures. Analyzes data to determine feasibility of device proposal. Prepares and directs preparation of devices. Plans and develops experimental test programs. The design of such intracavity medical devices, used in ultrasound guided cryosurgery, requires a combination of medical knowledge and engineering ability. Forty hours per week; 9:00 a.m. to 5:00 p.m.; \$36,000 per year. Must have M.D. and 2 years of Residency in Radiology. Experience must reflect research in Ultrasound Guided Cryosurgery. Send Résumé to: Dr. Gary Onik, M.D., Department of Cryomedicine, 14th Floor South Tower, Allegheny General Hospital, Pittsburgh, PA 15212.

FREE PRODUCT INFORMATION SERVICE

Send a letter stating the specifics about your new laboratory and *Science* will put you in touch with the vendors whose products you will need. Write to:
Science New Lab Service Department
1333 H Street, NW
Washington, DC 20005



ANNOUNCING ANOTHER SERVICE FROM SCIENCE

Now you can pay for your line classified or display recruitment ad with a credit card — we accept MasterCard and VISA.

Please let us know on your ad order that you wish to take advantage of this service, or ask us for further details.

SCIENCE Classified Advertising
Tel: 202-326-6555
FAX: 202-682-0816

TARGET YOUR RECRUITMENT EFFORTS!!

SCIENCE offers you more bonus distribution opportunities at scientific meetings and conferences than any other publication in the field - another way to reach the job candidates you're looking for in the hard-to-reach markets you need.

1993 SCIENCE BONUS DISTRIBUTION SCHEDULE

PITTCON (The Pittsburgh Conference)
February 26 Issue - Deadline: Feb. 9

Society of Toxicology
March 5 Issue - Deadline: Feb. 16

ACS (American Chemical Society)
March 12 Issue - Deadline: Feb. 23

Experimental Biology (FASEB)
March 26 Issue - Deadline: March 9

ASM (American Society for Microbiology)
May 7 Issue - Deadline: April 20

For more information on how to make
SCIENCE recruitment ads work for you,
contact Janis Crowley at (212) 496-7704.

AAI/CIS
(American Association of Immunologists/
Clinical Immunology Society)
American Association for Cancer Research
May 14 Issue - Deadline: April 27

ASBMB
(American Society for Biochemistry
and Molecular Biology)
May 28 Issue - Deadline: May 11

International Congress of Virology
July 23 Issue - Deadline: July 6

Science Innovation '93
July 30 Issue - Deadline: July 13

Program Announcement

International Science Foundation

Travel Grant Program

The International Science Foundation announces a program to support travel for scientists from the CIS and the Baltic States to attend professional conferences. Scientists wishing to travel on this program must be actively pursuing research in the fundamental natural sciences and must be formally invited to present papers or poster communication at the conference. Travel grants will include airfare and full or partial reimbursement of subsistence expenses. Applications will be accepted from conferences organizers and not from scientists wishing to travel. For more information about program guidelines please contact:

The International Science Foundation
455 First Avenue
New York, NY 10016
Tel: (212) 576-8450
Fax: (212) 576-8457

Biopharmaceutical Leader

Somatogen, a biopharmaceutical company currently engaged in the Phase I Human Clinical Trials of a recombinant human hemoglobin, has the following exciting opportunities:

Senior Scientist/Scientist III

Responsibilities include directing a group working in the area of Eukaryotic/Viral Transcription Factors. Requires a Ph.D. or MD with at least 5 years experience beyond post-doctoral work. The successful candidate will be an active laboratory scientist with a well established record in the field. Dept. 123.

Senior Research Associate

Responsibilities include analytical method development and validation using HPLC, AA and NIR for analysis of trace contaminants in product/process samples. Requires a BS/MS in Chemistry with a minimum of 5 years experience developing methods for determination of organic and inorganic substances in a protein matrix. GMP experience is desirable. Dept. 512.

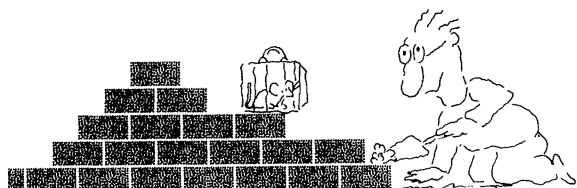
Senior Research Associate

Responsibilities include synthesis and purification of peptides and determination of peptide activity in protein based assays. Requires an MS/BS in Chemistry with a minimum of 5 years experience in peptide synthesis and HPLC of synthetic peptides. Familiarity with peptide analysis and interpretation of analytical data are highly desirable. Dept. 511.

A competitive salary and relocation and benefits package complement these offers. Please send resume indicating Dept. number to: SOMATOGEN, 5797 Central Ave., Boulder, CO 80301. EOE.

SOMATOGEN

We'll Help You Build A New Lab



Let the free Science product information service put you in touch with the vendors whose products you will need.

Simply write us a letter stating the specifics about your proposed lab and the instruments and supplies you need. We will do the rest. Write to:

SCIENCE Magazine
New Lab Service Department, Rm. 830,
1333 H Street, N.W.,
Washington, DC 20005

The Garvey Weekly of Research
SCIENCE

California Institute of Technology The O.K. Earl Postdoctoral Fellowship in Earth and Planetary Sciences

The California Institute of Technology announces a fellowship award from a fund endowed by ORRIN K. EARL, JR. This fellowship carries an annual stipend of \$34,000 and offers a research expense fund of \$1,000 per year and one-way travel to Pasadena. The duration of the appointment will normally be for two years, contingent upon good progress in the first year, and beginning with the 1993-94 academic year. Fellows are eligible to participate in Caltech's health and dental program.

The O.K. Earl Postdoctoral Fellowship has been established to support the research of scientists, typically within two years of receipt of the Ph.D. It is the intent of this program to identify and support innovative and creative work in the earth and planetary sciences, with particular emphasis on interdisciplinary work. Applicants with training in physics, chemistry, biology or computer sciences are urged to apply. The Caltech faculty is currently active in Geology, Geochemistry, Geobiology, Petrology, Geophysics, and Atmospheric and Planetary Sciences. It is expected that the fellowship holder will be hosted by a Division professor who will contribute to the fellowship support both financially and by providing intellectual guidance.

Application forms may be obtained by writing to Prof. D.J. Stevenson, Chairman, Division of Geological and Planetary Sciences, Mail Code 170-25, California Institute of Technology, Pasadena, California 91125.

**COMPLETED APPLICATIONS WITH REFERENCES
SHOULD ARRIVE AT CALTECH BY
FRIDAY, MAY 21, 1993.**

Fellowship candidates will automatically be considered for other available postdoctoral positions at Caltech in their fields of interest. Caltech is an Affirmative Action/Equal Opportunity Employer. Women, minorities, veterans and disabled persons are encouraged to apply.

AWARDS IN THE BIOLOGY OF AGING Call for Nominations from The Gerontological Society of America

The Gerontological Society of America invites nominations for two awards given for research in the biology of aging. These awards will be presented at the Society's 46th Annual Scientific Meeting, November 19-23, 1993 in New Orleans, LA.

The Glenn Foundation Award

For significant research contributions in the biology of aging. A nominee's research contributions must be recent, original and provide a significant addition to the body of knowledge in the biology of aging. Any scientist, regardless of field and nationality is eligible for this award which carries a prize of \$20,000. Nominators must send a nominee's vita; a two-page description of the research contribution to be recognized; reprints of up to five original, peer-reviewed publications based on the contribution; and two letters supporting the significance of the contribution to the address listed below. No self-nominations will be accepted.

The Nathan Shock New Investigator Award

For outstanding biological research in gerontology. Eligible candidates must have a Ph.D., M.D., D.D.S., or equivalent degree and must not be past the seventh postdoctoral year. Nominations should be mailed to the address listed below and must include a curriculum vita indicating the year of the candidate's research, not to exceed 1,000 words; two letters of recommendation; and three reprints of relevant research papers authored by the candidate. This award carries a cash prize of \$1,500. Nominations for both awards must be postmarked no later than May 7, 1993 and mailed to:

Biological Sciences Section Awards Committee
The Gerontological Society of America
1275 K Street, NW, Suite 350
Washington, DC 20005-4006

Research Scientists

GlycoTech Corporation is a biotech company recently incorporated to discover, develop, manufacture, and market new classes of pharmaceutical compounds based on the biological functions of the interactions between glycoconjugates and their receptors. The company has several proprietary positions in the study of Selctins, a unique library of glycoconjugate reagents, and the stability of a long term corporate alliance with a leading pharmaceutical company.

Immediate research positions are available for Ph.D. level biochemists and cell/molecular biologists interested in applying their expertise to study the functions of carbohydrate-protein interactions. GlycoTech offers the unique opportunity to make substantial contributions to the growing field of Glycobiology and to enjoy the personal and financial rewards of becoming a central part of a new and developing biotech company. Company-paid benefits include comprehensive medical insurance, life insurance, dental benefits program, prescription card, vision care program, adoption assistance program, and a 401(k) tax-deferred employee savings plan. If you would like to participate in the excitement and rewards of a growing company that cares for its employees, please send a curriculum vitae to:

GlycoTech Corp.
14915 Broschart Rd., Suite 200
Rockville, Maryland 20850

An Equal Opportunity Employer

GlycoTech

POSITIONS OPEN

POSTDOCTORAL POSITION available at Brigham and Women's Hospital/Harvard Medical School to study the molecular biology of proteolytic enzymes and their role in macrophage differentiation and function. Experience in molecular biology, transgenic models, or homologous recombination required. Apply to: **Dr. Harold A. Chapman, Respiratory Division, Brigham and Women's Hospital, 75 Francis Street, Boston, MA 02115. An Equal Opportunity Employer.**

POSTDOCTORAL/RESEARCH ASSOCIATE

Available immediately to study role of the tyrosine kinase substrate paxillin in intracellular signaling and cytoskeletal organization. Must have Ph.D. or equivalent. Experience in cell biology and/or molecular biology techniques essential. A background in cell adhesion desirable. Send résumé to: **Dr. Chris Turner, Department of Anatomy and Cell Biology, SUNY Health Science Center, 766 Irving Avenue, Syracuse, NY 13210. Curricula vitae will be accepted until position is filled. An Affirmative Action/Equal Employment Opportunity/ADA Employer.**

POSTGRADUATE RESEARCHER (PGR) with experience in molecular biology and retrovirology or herpesvirology to conduct research in AIDS pathogenesis and the role of viral cofactors. Position available immediately for at least 2 years. Salary range based on University of California policy. Send curriculum vitae with a list of three references no later than September 30, 1993, to: **Stephen A. Spector, M.D., Professor, Department of Pediatrics & Center for Molecular Genetics, UCSD, 9500 Gilman Drive, #0672, La Jolla, CA 92093.**

Equal Opportunity/Affirmative Action Employer.

POSTDOCTORAL RESEARCH ASSOCIATE.

Full-time, fixed-term position participating in evaluating mechanisms for biological control of wood staining fungi. Required: Ph.D. in forestry, plant pathology or microbiology with experience handling fungi, protein separation, enzyme analysis. Closing date: April 21, 1993. Contact: **Dr. Jeffrey Morrell, Department of Forest Products, Oregon State University, Corvallis, OR 97331-7402, USA. OSU is an Affirmative Action/Equal Employment Opportunity Employer responsive to dual-career needs.**

RESEARCH ASSOCIATE POSITION is available immediately to conduct experiments on the biodegradation of aromatic hydrocarbons by microorganisms. Requires an M.S. degree in microbiology or biochemistry and further experience in metabolic pathway elucidation, protein biochemistry, gene cloning and expression or cDNA library construction/screening. The selected candidate will work at the U.S. Environmental Protection Agency Environmental Research Laboratory at Gulf Breeze, Florida, in collaboration with Dr. Richard Eaton. Applications including curriculum vitae and list of three references should be submitted to: **Dr. Carl E. Cerniglia, Division of Microbiology (HFT-250), National Center for Toxicological Research, 3900 NCTR Road, Jefferson, AR 72079, Telephone: 501-543-7341.**

RESEARCH ASSOCIATE for university in central Ohio. Designs, conducts and analyzes experiments with *Arabidopsis thaliana* genetic stocks; conducts the growth (in the greenhouse and growth chamber) and preservation of seeds of thousands of mutant genetic lines; observes and analyzes characteristics of individual stocks to ensure purity and quality; distributes seed stocks in response to requests from international research community; maintains records; participates in the development of a comprehensive and interactive database of information on *Arabidopsis* plants; writes and edits publications, including a catalog of stocks, in collaboration with other personnel; supervises undergraduate students. No experience required in above duties but applicants will qualify with M.S. in Agronomy and 2 years of experience in seed technology including seed quality evaluation and seed storage technology; in design, conduct and analysis of experiments with plant genetic stocks; in growing greenhouse plants; and supervisory skills as demonstrated by supervision of at least 2 undergraduate students. Forty hours per week, 8:00 a.m. to 5:00 p.m. Monday to Friday, \$25,000 per year. *Must have proof of legal authority to work permanently in the United States.* Send résumés in duplicate (no calls) to: **G. Maugans, JO#1333266, Ohio Bureau of Employment Services, P.O. Box 1618, Columbus, OH 43216.**

POSITIONS OPEN

POSTDOCTORAL ASSOCIATE MOLECULAR GENETICS

Position available on project concerning the identification of novel genes involved in the etiology or progression of human lung cancer or malignant mesothelioma. Experience with techniques for the analysis of mammalian genomes including strategies for differential cloning preferred. Submit curriculum vitae and names of 3 references to: **Joseph R. Testa, Ph.D., c/o Personnel Department, Fox Chase Cancer Center, 7701 Burholme Avenue, Philadelphia, PA 19111. Equal Opportunity Employer.**

RESEARCH ASSOCIATE for university in north-east Ohio. Managing the new X-ray diffraction (Siemens X-1000 Area Detector) laboratory for materials characterization and research, and writing technical reports. Conducting research on liquid crystals in confined systems; lyotropic liquid crystals in biochemical systems; and the TGB (helical) Smectic-A* phase. Conducting structure studies on many different materials like lyotropic, thermotropic, monomer and polymer liquid crystals, superconductor thin film on substrate, and single crystals. Must have Ph.D. in Physics. Academic program must have included one graduate-level course each in the following areas: Liquid Crystal Physics and Condensed Matter Physics. Must be conversant with both high-resolution and low resolution X-ray diffraction instrumentation; with physical characterization techniques such as Differential Scanning Calorimetry, Microcal MC2 Scanning Calorimeter, High Performance Liquid Chromatography, and Polarizing Microscopy; and monomer and polymer liquid crystal alignment techniques. Also must be able to use Cray YMP supercomputer for scientific work in liquid crystals. (The above-cited skills may be evidenced by academic letters of reference and/or employer testimonials.) Forty hours per week, 8:00 a.m. to 5:00 p.m., \$25,000 per year. *Must have proof of legal authority to work indefinitely in United States.* Send résumé and course transcript in duplicate (no calls) to: **G. Maugans, JO# 1370953, Ohio Bureau of Employment Services, P.O. Box 1618, Columbus, OH 43216.**

ASSOCIATE RESEARCH SCIENTIST. Immediate opening for M.D. or Ph.D. available to study mitochondrial diseases and biogenesis. Experience in molecular biology, OXPHOS enzymology, and cell culture (including cybrid technology) mandatory. Send curriculum vitae and names of references to: **Dr. E. A. Schon, Department of Neurology, Columbia University, 630 West 168th Street, New York, NY 10032. Columbia University is an Equal Opportunity/Affirmative Action Employer.**

NEUROPHARMACOLOGY/DRUG ABUSE LAB COORDINATOR/TECHNICIAN

Annual Salary \$26,000 to \$35,000 plus health benefits. To perform surgical techniques, implant microdialysis probes and measure neurotransmitters by HPLC, under the direction of **Paul Berger, M.D., UCSF.** Past experience with neuroscience research/microdialysis strongly preferred though not required. Please send: (a) letter of application; (b) curriculum vitae; (c) names, addresses and telephone numbers of three (3) references to: **Paul Berger, M.D., UCSF Personnel, Box 0832, San Francisco, CA 94143. Affirmative Action/Equal Opportunity Employer.**

The Agricultural Research Service is accepting applications for a permanent, full-time **RESEARCH PHYSIOLOGIST (Animal)**. The objective of the research will be to conduct fundamental cryobiological studies to achieve successful cryopreservation of swine embryos. Candidates must have a working knowledge of cell biology, cryobiology and reproductive physiology. A Ph.D. in the physiological, biological or animal sciences with emphasis in reproduction is desired. Experience with animals and in cryobiology is essential. *Applicants must be U.S. citizens.* Salary range is \$33,623 to \$52,385. Submit SF-171, curriculum vitae, transcripts, statement of research goals and names and addresses of references to: **J. Harrington, 6305 Ivy Lane, Personnel Division, USDA, ARS, Greenbelt, MD 20770.** Specific questions regarding the position may be directed to: **Dr. L. A. Johnson, Telephone: 301/504-8545. USDA, ARS is an Equal Opportunity/Affirmative Action Employer.** Applications for this announcement should be postmarked by April 12, 1993, and marked No. 3E005.

Directors and Team Leaders

MicroGeneSys is a recognized leader in the development of recombinant vaccines. Rapid growth in our R & D programs has created outstanding opportunities for qualified individuals who thrive in a dynamic, challenging environment.

RESEARCH AND DEVELOPMENT

DIRECTORS and TEAM LEADERS. We are looking for highly motivated individuals to head the Molecular Biology, Immunology and Cell Culture departments and to direct our innovative vaccine and immunotherapeutic programs. Qualifications include an Ph.D. or M.D. with 3 or more years post-doctoral and/or industry experience.

MOLECULAR BIOLOGY Broad experience with expression vector technology, including *E. coli*, mammalian or baculovirus systems. Applicants should have a strong foundation in molecular biology and related techniques including cloning, PCR technology, and oligonucleotide synthesis.

IMMUNOLOGY Strong background in the development of subunit vaccines, T and B cell immunology, adjuvant formulation, and the use of animal models. Candidates should also have hands-on experience in basic immunological and microbiological techniques, immunoassay development, and hybridoma technology.

CELL CULTURE Experience in all aspects of insect cell culture and the baculovirus expression vector system. The position entails leading a strong research effort to understand and optimize the production of recombinant proteins in insect cells and to develop improved cell lines and media formulations.

MicroGeneSys offers competitive salaries and benefits as well as significant growth potential as we expand. Please forward your resume and salary history in complete confidence to:



MicroGeneSys is an
Equal Opportunity Employer

MicroGeneSys, Inc.

Human Resources, Dept. Sci
1000 Research Parkway
Meriden, CT 06450-7159

University of California, Santa Barbara Dean of School of Environmental Science and Management Search Reopened

UCSD seeks a distinguished scholar for the position of Dean for a new School of Environmental Science and Management, scheduled to open in Fall, 1994. Will oversee all academic, instructional, and administrative activities including the long-range planning and program development for the school. Will play an instrumental role in the recruitment and selection of academic personnel and the development of an interdisciplinary, research-oriented curriculum which provides professional training in science and management.

The School will emphasize diagnosis, resolution and management of environmental problems on all scales. Its curriculum will serve students with backgrounds crossing traditional academic boundaries, ranging from the natural sciences and engineering through economics and the social sciences. Degrees offered will include a Master's with emphasis in environmental science or management, with applied training in both; and a Ph.D. with three emphases - earth system studies, applied ecology, and environmental policy and management.

The School will have a full-time faculty of 15 and 5 joint appointments. Appropriate technical, computational and administrative support will be provided.

Deadline of May 3, 1993, or open until filled. Send current vita, representative publications, and names of references to:

Dean Search Committee
School of Environmental Science and
Management
Office of Academic Personnel, Cheadle Hall
5109
University of California
Santa Barbara, CA 93106-2030

UCSD is an Affirmative Action/Equal
Opportunity employer.

MICROBIOLOGICAL ASSOCIATES, INC.

MICROBIOLOGICAL ASSOCIATES, INC. (MA) is a leading international provider of biological and toxicological testing services to the pharmaceutical, personal care and biotechnology industries. The rapid growth of our commercial and contract services businesses has created openings for Ph.D.s to join our technical and management staff.

LABORATORY OPERATIONS DIRECTOR BIOTECHNOLOGY GROUP

We are seeking a manager experienced in all aspects of laboratory operations. This individual will direct MA's biotechnology testing operations under GLP/cGMP compliance standards and will have demonstrated the ability to develop and implement operational plans that meet sales and budget goals. The ideal candidate will have a Ph.D. in Microbiology or Cell Biology and previous experience managing a commercial laboratory.

STUDY DIRECTOR IN VITRO TOXICOLOGY

MA's expanding *in vitro* alternatives program provides the latest *in vitro* techniques for not only skin and eye irritation but also more complex biological toxicities. This position requires a Ph.D. with post-doctoral training and 3-5 years experience in tissue culture or cellular biology. Experience in the cosmetic, personal care products or pharmaceutical industries would be an asset.

For immediate consideration, please send your C.V. or resume to Human Resources Dept.:

MICROBIOLOGICAL ASSOCIATES, INC.
9900 Blackwell Road, Rockville, MD 20850
EOE M/F/H/V

RESEARCH INVESTIGATORS Seattle

The Bristol-Myers Squibb Pharmaceutical Research Institute in Seattle performs research dedicated to pursuing novel approaches to the development of therapeutic products in the areas of immunology, infectious diseases and cancer. Currently, we have the following positions available:

VIROLOGY

This first position will participate and establish research programs aimed at: the understanding of the immunopathogenesis of HIV/SIV infection in humans and relevant primate models; the characterization of cellular immune responses to HIV/SIV antigens; and the development of novel approaches for treatment of HIV infection and diseases. Candidate must possess a PhD in immunology or equivalent. Previous experience in characterizing lymphoproliferative and cytotoxic T-cell responses to HIV/SIV antigens highly desirable. (REF: SLH)

We also have a Postdoctoral assignment involving evaluation of the effect of infection with HIV-1 on CD4+ T-lymphocyte function. We seek a candidate well versed in T-cell biology willing to work in BL-3 facility. Experimental skills desired include:

- Nucleic acid analysis (Southern blot, Northern blot, PCR)
- Protein analysis (Western blot, immunoprecipitation)
- Tissue culture
- Flow cytometry
- Lymphocyte proliferation assays
- Lymphokine secretion assays (REF: OKH)

BIOLOGICAL PROCESS RESEARCH

Develop purification protocols for recombinant proteins and monoclonal antibodies and work with research groups to define structure and activity of purified proteins. The successful candidate will have the ability to interact in a collaborative environment with scientists responsible for expression, fermentation, analysis and formulation. Must have PhD in Biochemistry or related field with minimum of two years postdoctoral experience. (REF: LSP)

We offer a creative research environment, competitive salaries, and excellent benefit package and relocation assistance. Our facility offers open and well-equipped laboratories overlooking beautiful Puget Sound and the Olympic Mountains from our downtown site. Please forward your resume to: **Bristol-Myers Squibb, Human Resources Dept., 3005 First Avenue, Seattle, WA 98121.** Please note the position reference code. Equal Opportunity Employer, M/F/D/V.



Bristol-Myers Squibb Company

POSITIONS OPEN

SHAMAN PHARMACEUTICALS, INC.

VIROLOGIST, Project Leader: The Biological Sciences Laboratory of this innovative San Francisco Bay Area natural products company has immediate need for an interactive and creative virologist who will provide leadership in the company's rapidly expanding discovery programs for the development of novel antiviral pharmaceuticals. Responsibilities include expanding the company's antiviral screening program, developing animal models for medically significant viral diseases, handling regulatory questions pertaining to virology, and leading two established laboratory units. Desirable candidates will have 5 to 10 years of industrial experience, a record of leadership in antiviral R&D, familiarity with animal models of viral disease and the molecular biology of viruses, and knowledge of the regulatory issues in antiviral drug development.

CNS PHARMACOLOGIST, Project Leader: The Biological Sciences Laboratory has immediate need for a productive CNS pharmacologist with industrial experience to build and lead a pharmacology program for the development of novel CNS-active agents (especially analgesics and sedatives) derived from natural sources. Responsibilities include establishing *in vitro* tests for screening of plant extracts and pure compounds; establishing animal and cell models for confirming pharmacological activity; summarizing and interpreting data for IND and NDA submissions, and staffing and supervising group of 3 to 4 scientists. Candidates should have a minimum of 3 to 4 years of industrial experience, demonstrated supervisory ability, and a record of leadership in the area of CNS pharmacology.

Qualified candidates for either position should submit résumé and cover letter by April 10, 1993, to: **Jürgen Weber, Ph.D., c/o BioQuest, Inc., 100 Spear Street, Suite 1125, San Francisco, CA 94105-1522. SHAMAN PHARMACEUTICALS, INC. is an Equal Opportunity Employer. Women and minorities are encouraged to apply.**

ENVIRONMENTAL RESOURCES MANAGER. Salary \$33,000 to \$36,000, depending on qualifications. Administrative work directing the activities of the Environmental Resources Division. Requires: Master's degree in Ecology or related field, three years of experience in design, conduct and direction of scientific research. **APPLY TO: City of Cape Coral, P.O. Box 150027, FL 33915-0027. Equal Opportunity/Affirmative Action Employer.**

MAJOR NATIONAL PATENT LAW FIRM located in New York City seeks highly qualified **Ph.D. SCIENTISTS** in biomedical fields interested in second career opportunities in Intellectual Property Law. Demonstrated technical writing skills essential. Competitive salaries and benefits, and opportunities for challenging assignments. *M/F/V/H, Equal Employer Opportunity.* Send résumé to:

**BOX 27
SCIENCE
1333 H Street, NW
Washington, DC 20005**

Planning and design firm in Boston seeking a **MARINE BIOLOGIST** interested in the development of interpretive programs for public aquariums. Must have good communication skills and demonstrated experience in public outreach or educational programs. Will consider candidates seeking full- or part-time employment. Send résumé, including salary requirements to: **Box 28, SCIENCE, 1333 H Street, NW, Washington, DC 20005.**

POPULATION/COMMUNITY ECOLOGIST

ASSISTANT PROFESSOR (70% teaching, 30% research); tenure-track, 12-month appointment. Earned Ph.D. required; preference given for applicants with wildlife and natural resource expertise and superb teaching skills. Please send résumé and 3 letters of reference to: **Dr. George W. Tanner, Box 110430, Department of Wildlife and Range Sciences, University of Florida, Gainesville, FL 32611.** Application deadline: 15 April 1993. *An Equal Opportunity/Affirmative Action Employer.*

POSITIONS OPEN

TEST DEVELOPER

Test Development—Biological Sciences. Educational Testing Service, the nation's leading educational and measurement organization, seeks an education professional to research, develop and critically review biological science tests.

Specific responsibilities will include performing all procedural steps related to the test development process, including writing test questions, reviewing questions written by colleagues and analyzing overall test content for clarity, accuracy and potential overlapping of content. Diverse duties will range across the entire test development life cycle from test inception through final printing and post-administration activities. Additionally, you will assist senior staff in coordinating program/project activities, including preparing proposals, cost estimates, planning memos and related surveys and studies.

Position requires a Master's degree in the Biological Sciences (or the equivalent combination of education and experience), plus at least 4 years of related experience in teaching and/or testing. A background in measurement and statistics is desirable. Strong analytical and interpersonal skills are a must.

ETS offers a stimulating environment for growth and achievement plus outstanding benefits and salary commensurate with experience. For confidential consideration, please send your résumé, complete with salary requirements, to: **SANDY DeANGELO, EDUCATIONAL TESTING SERVICE, Rosedale Road, Princeton, NJ 08541.**

Equal Opportunity Employer. Women and minorities are encouraged to apply.

ANNOUNCEMENTS

Applications are being accepted for the AlliedSignal Award for Research on Aging. The \$200,000 Award will be given to a researcher or research team in a non-profit institution for an outstanding and innovative project. The 1993 Award topic is CNS aging: cellular, molecular, and gene therapy interventions. **APPLICATIONS ARE DUE MAY 15, 1993.** For a copy of the RFA call 202/293-2856.

MEETINGS

PREDICTING CHEMICAL CARCINOGENESIS IN RODENTS

An International Workshop

will be held May 24 & 25, 1993, at the National Institute of Environmental Health Sciences, Research Triangle Park, North Carolina, USA. The Workshop will assess the strengths and limitations of a variety of different predictive methods, examine areas of consensus in identifying carcinogens, and consider the interplay between predictive carcinogenicity and mechanistic studies. Enrollment is limited. Those desiring additional information or interested in attending the Workshop should contact: **Dr. J. T. Wachsman, NIEHS, MD B3-09, P.O. Box 12233, Research Triangle Park, NC 27709** or FAX: (919) 541-1460 by April 30, 1993.

COMPUTER MARKETPLACE

STATISTICAL SOFTWARE

Accurate, easy to learn. For MS-DOS. Includes t-tests, ANOVA, chi-square tests, DOE, survival analysis, sample size and power analysis, curve fitting, graphics, more. Spreadsheet-style interface. Transfer graphics to other programs. Thousands of users. Base system: \$125. Complete: \$395. Ask for Dr. Hintze (PhD statistician) at (801) 546-0445. FAX: (801) 546-3907. NCSS, 329 North 1000 East, Kaysville, UT. 84037.

Mention this ad to receive 10% discount.

Circle No. 6 on Readers' Service Card

MARKETPLACE

CUSTOM DNA SYNTHESIS

We use Applied Biosystems Synthesizers • Prices from \$2.50 per base plus setup

PAGE and HPLC Purification Available

The Midland Certified Reagent Company

800-247-8766 or FAX 915-694-2387

Circle No. 4 on Readers' Service Card

DNA break-thru

Around the

\$2.50 no - set up

. base . 5.0 OD's (200 µg)

. Column . Gel picture Q.C

purified . 48 hour delivery

BIO-SYNTHESIS

1-800-227-0627 Fax: 214-420-0442

Circle No. 7 on Readers' Service Card

Cell Death Measurement

INCLUDING APOPTOSIS

APO-PAK™ For Research Use Only

ADVANCED MAGNETICS, INC.

1-800-343-1346 617-497-2070 (MA)

Circle No. 8 on Readers' Service Card

GROWTH MEDIA IN CAPSULES

FOR BACTERIA & YEAST

More than 100 Molecular Biology Formulations in Stock.

Request comprehensive price list. Custom formulations in 48 hours!

800-424-6101

FAX 619-598-0116

✓ **8/10 101**

Circle No. 5 on Readers' Service Card

\$3.50/Base Custom DNA Synthesis

No Set-up Fee, Shipped in 24 hours.

KEYSTONE LABORATORIES, Inc

1-800-788-4 DNA

1-800-786-4 DNA Fax

Circle No. 25 on Readers' Service Card

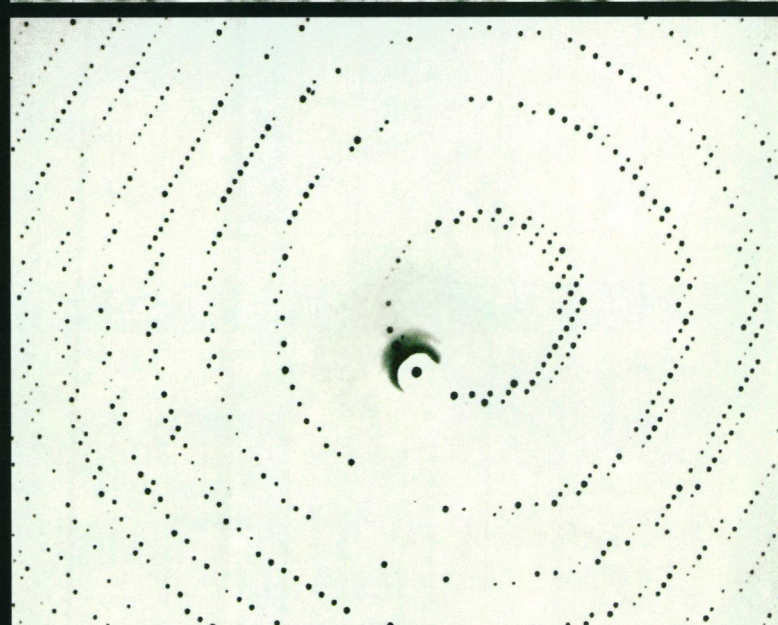
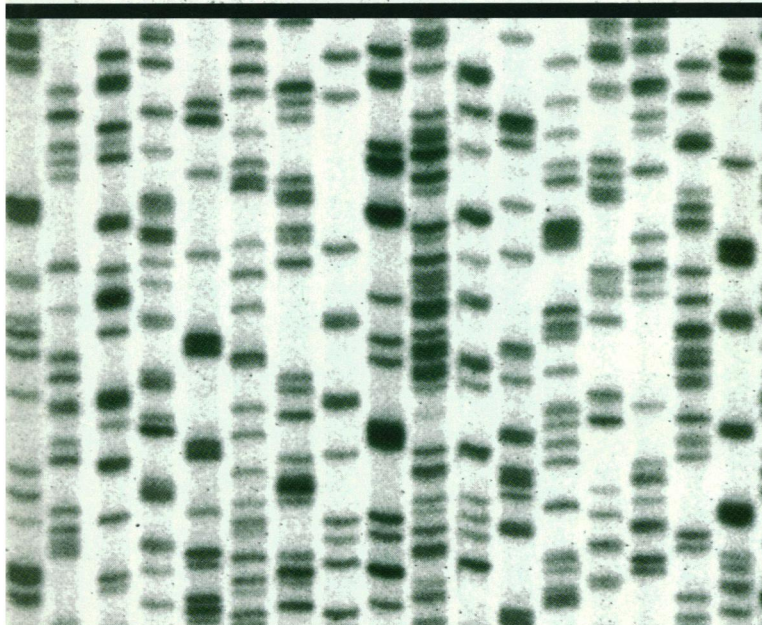
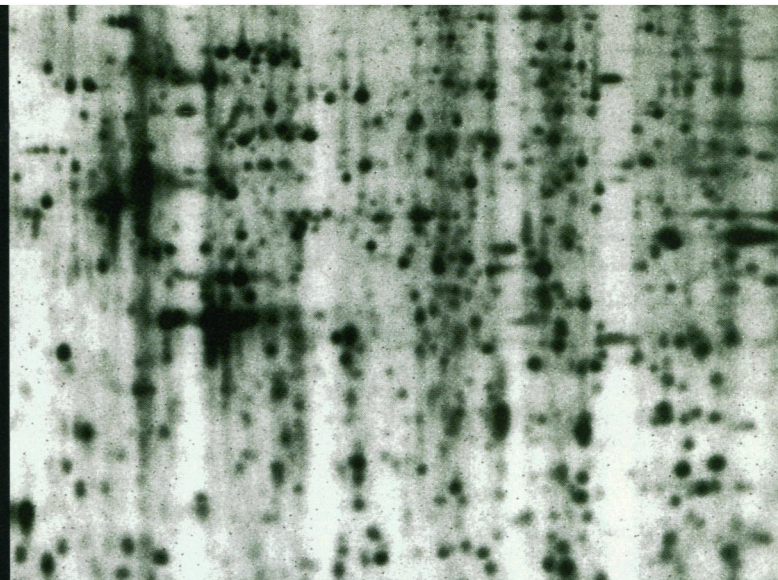
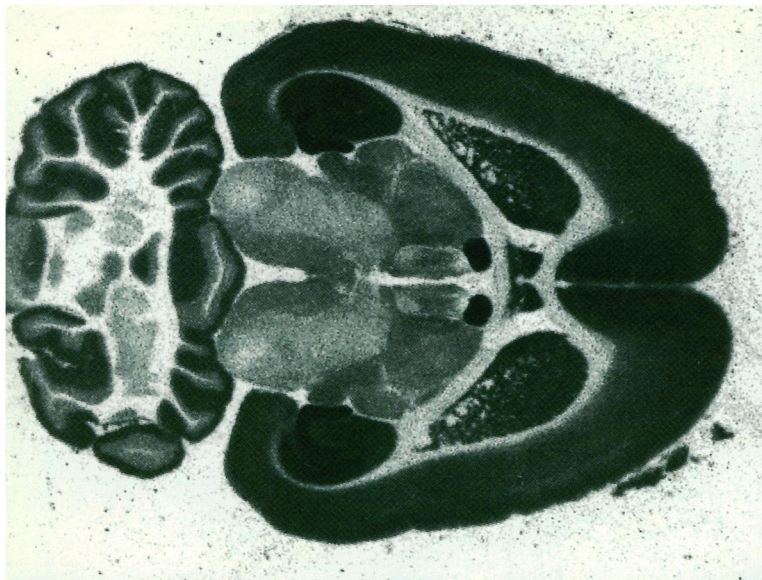
Custom DNA Purified and Delivered in 48 hours.

\$7.50 per base • Purified
Guaranteed minimum 100 µg DNA

Research Genetics

1-800-533-4363

Circle No. 2 on Readers' Service Card



Accepting all applications, no waiting.

We began with a simple concept: make quantitative radiographic analysis fast and easy. The result was the invention of the photostimulable Imaging Plate, the fastest and most accurate way to do autoradiography. We call it Phosphor Autoradiography.™

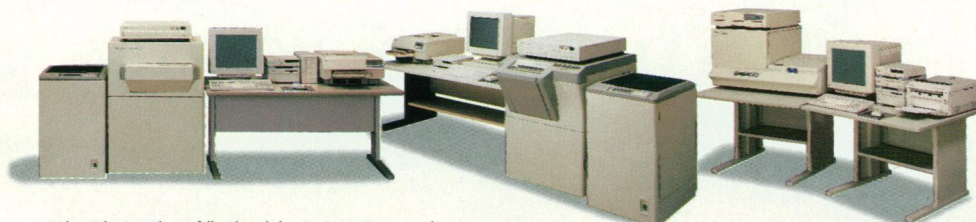
The first systems to utilize the Fuji Imaging Plates were used for x-ray crystallography—the performance

benchmark of this emerging technology. Since then, we have introduced the BAS 2000 for high resolution applications, the BAS 1000 for quantitative molecular biology and the BAS 3000 for fine structure anatomical studies.

The BAS line of Imaging Plate Scanners, with nearly 300 installations worldwide, are well proven analytical tools. These systems

are able to meet your most demanding applications and are supported by the experience of scientists who are committed to finding faster and better ways to do analytical imaging for today and tomorrow.

For information write or call
Fuji Bio-Imaging at: 800-431-1850
(in CT 353-0300), Fuji Medical Systems USA,
Inc., P.O. Box 120035, Stamford, CT 06912.



A new way of seeing things.

Fuji Photo Film Co., Ltd. gratefully acknowledges Dr. Steven Harrison and Dr. Steven Gambelin of Harvard University for providing the x-ray diffraction pattern of TBSV 1.

Anonymous acknowledgement is given for the 2D protein phosphor autoradiogram of an acute leukemic T-cell lysate. © 1993 Fuji Medical Systems USA, Inc.

Circle No. 14 on Readers' Service Card

Effective isolation of poly A tailed mRNA

OLIGO dT CELLULOSE

Specially purified to yield the
highest binding capacities

(typically >100 A₂₆₀ U/g)

Yields generally greater than 2%
of total RNA

1 GRAM ... \$77.00

5 GRAM ... \$290.00

BULK QUANTITIES ALSO AVAILABLE

Catalog No. 750021

Circle No. 17 on Readers' Service Card

Peptides - Fast

8 to 12 mg
of Custom made,
High Quality Peptides
Shipped in 10 days

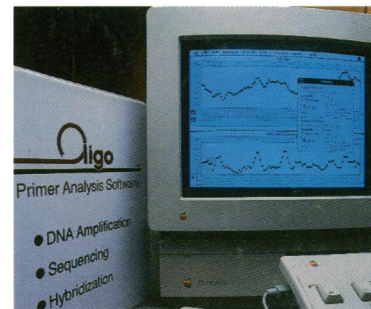
\$30.00 / residue

No set-up charges

Circle No. 18 on Readers' Service Card

OLIGO 4.0

Primer Analysis Software



Macintosh version
Now Available

**Call for free
demonstration disk**

Circle No. 19 on Readers' Service Card

GelMarker™

- Ideal coverage for
PCR[†] products

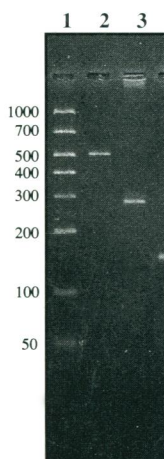
- Estimate yield -
each band
contains 50ng

- Ethidium bromide
stains of each band
with equal intensity

- Ready to load

- Low cost

- Also available with
biotin or digoxigenin
labels



Lanes 1 - GelMarker,
2 - 80 ng of a 500 bp,
and 3 - 40 ng of a 296
bp PCR product.

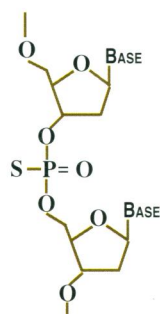
50 applications \$77.00

100 applications \$137.00

Catalog No. 701006

Circle No. 20 on Readers' Service Card

Anti-sense Phosphorothioates



Purified

0.5 mg\$400

1.0 mg\$600

3.0 mg\$1200

up to 24 base in length

- offer stability and specific-
ity for antisense studies
- maintain the polyanionic
characteristic of natural DNA
- compatible with aqueous
media

Circle No. 21 on Readers' Service Card

Custom Peptide Antibodies



\$1195⁰⁰

includes peptide synthesis
and antibody titers

Just supply us with the
peptide sequence and
Research Genetics does the
rest! Your peptide will be
synthesized using the latest
Fmoc solid phase methods
utilizing the MAP resin
technology which increases
the antigenic response.
Antibodies are generated in
two rabbits over a 10 week
period. A total of ~100 ml of
antiserum is shipped
in 15 weeks.

Circle No. 22 on Readers' Service Card

Research Genetics

2130 Memorial Pkwy SW, Huntsville, AL 35801

USA or Canada 1-800-533-4363

UK 0-800-89-1393

FAX 1-205-536-9016

Custom DNA

Purified and Delivered in 48 hours

Research Genetics

1-800-533-4363

GelMarker is a trademark of Research Genetics
* PCR is covered by US patents issued to Cetus Corp and is licensed by Research Genetics