

PCR Product Analysis Kit

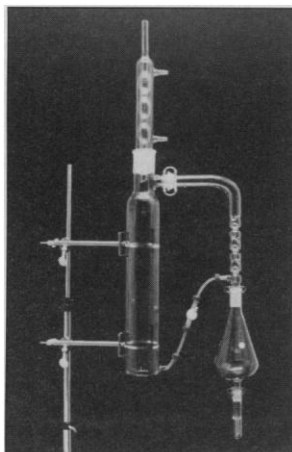
The PCR Purity Plus Kit is a fast system for verifying polymerase chain reaction (PCR) product purity. According to the manufacturer, this gel offers superior resolution, a wider separation range, and enhanced sensitivity over specialty-grade agarose and acrylamide. The kit includes ten disposable cassettes (compatible with all common mini-vertical electrophoresis apparatus), two reusable 14-well combs, a 50 to 2500 base pair molecular weight marker, and a triple-dye loading buffer. **AT Biochem. Circle 89.**

mRNA Differential Display Kit

RNAmapp kit is a complete system for identifying and cloning differentially expressed genes based on the mRNA differential display technology. Each kit contains all the possible oligo(dT) primers and five arbitrary 10mers, enough to display ten mRNA samples in all primer combinations. **GenHunter Corp. Circle 90.**

Continuous Liquid/Liquid Extractor

The new Bevel-Seal continuous liquid/liquid extractor includes two labware innovations. The Bevel-Seal connection with its unique thread, cap, and o-ring configuration replaces tradition-



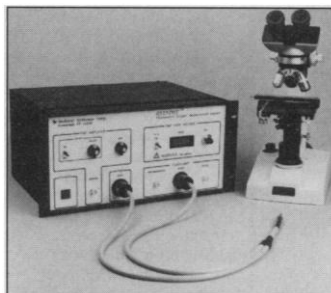
al ball and socket joints while allowing easy assembly and reducing the possibility of leakage with a vacuum-tight seal. A built-in Slow-Dry concentrator permits extraction and concentration with the same apparatus. The concentrator tube incorporates a glass jacket around the constricted bottom portion, creating an insulating air space that shields the sample within the tube and provides a temperature buffer to reduce the risk of overdrying the sample. **Kontes Glass. Circle 91.**

Automated Perfusion System

The ValveBank 4 perfusion system automates solution switching for physiology experiments. The microprocessor-based controller can be programmed to open and close four valves independently with 0.01-s accuracy. The complete system includes solenoid valves, reservoirs, four-into-one manifold with flow regulator, ringstand, and tubing. It comes ready to connect to the user's perfusion chamber. Programs can be downloaded from a Macintosh or IBM-compatible computer using AutoMate's EasyCode graphics software and a serial cable. **AutoMate Scientific. Circle 92.**

Oxygen Mapping System

With the Oxymap system, oxygen concentrations of regions up to 20 mm in diameter can be measured and visually displayed with resolution of 40 μm per pixel. Oxymap features a patented process to measure the quenching of phosphorescence by free oxygen of nontoxic probe molecules. Phosphorescent lifetimes as short as 15 μs are measured and data for a complete map are gathered



in approximately 8 s. Oxygen levels can be measured from saturation levels to less than 0.01 torr. The process can produce quantitative images of vascular oxygen concentrations as well as high-contrast qualitative images of the microvasculature. Applications include studies of oxygen delivery to tissue, metabolism of tissue, animal models of stroke and cardiovascular traumas, wound healing, and hypoxic traumas. **Medical Systems Corp. Circle 93.**

DNA Ladders

A set of molecular weight markers for accurate sizing of polymerase chain reaction products has been quality control-tested and designed for equal band intensity. Three ladders are available for sizing DNA fragments in the ranges of 50 to 1000, 50 to 2000, and 1000 to 3000 base pairs. Unique to the Amersham ladders are the equal band intensities achieved through balancing fragment size and quantity. **Amersham International. Circle 94.**

Automated Biotin Labeling

Biotin Amidite allows automation of the synthesis of a 5' biotin-labeled primer or probe. In the traditional method of biotin labeling, excess biotin must be carefully removed by stringent purification methods, such as pre-

parative high-performance liquid chromatography or polyacrylamide gel electrophoresis. The solid-support chemistry of the Applied Biosystems DNA/RNA Synthesizer allows Biotin Amidite to be washed away. After synthesis, the dimethoxytrityl group on the biotin ring enables efficient, trityl-selective purification by the oligonucleotide purification cartridge to separate labeled from unlabeled products. **Applied Biosystems. Circle 95.**

Literature

PROSEP High Performance Affinity Products is a brochure that provides a comprehensive description of a range of products for affinity purification. **Bioprocessing Corp. Circle 96.**

J. T. Baker 1993/94 Laboratory Reagents and Chromatography Products Catalog contains 400 pages of specifications, applications, and references for some 4000 listings. More than 300 new products include ultrapure bioreagents, returnable high-purity solvent containers, atomic spectral standards, and a new generation of solvent purity for gas chromatography. **J. T. Baker. Circle 97.**

TosoHaas Catalogue features 250 pages of chromatographic columns and media products, including a section on size exclusion chromatography. **TosoHaas. Circle 98.**

JBL Scientific Catalog is a portfolio of high-purity enzyme substrates, diagnostic-grade buffers, and other specialty chemicals; also provided is information on the company's capabilities in peptide synthesis, DNA synthesis, fractional distillations, purification, and custom organic synthesis. **JBL Scientific. Circle 99.**

A Quiet Revolution in Micro Centrifuge Technology describes a line of these instruments. **Taylor Scientific Equipment. Circle 100.**

Newly offered instrumentation, apparatus, and laboratory materials of interest to researchers in all disciplines in academic, industrial, and government organizations are featured in this space. Emphasis is given to purpose, chief characteristics, and availability of products and materials. Endorsement by *Science* or AAAS is not implied. Additional information may be obtained from the manufacturers or suppliers named by circling the appropriate number on the Readers' Service Card and placing it in a mailbox. Postage is free.

Science

PERSONNEL PLACEMENT

LINE CLASSIFIED ADVERTISEMENTS

- **Deadlines:** Ads are due by Thursday, 10 a.m., 2 weeks prior to the issue date. *Science* is published each Friday, except the last Friday of the year. Call for holiday deadlines. Advertisements must be submitted in writing.
- **How to Submit a Classified Ad:** Prepare double-spaced typewritten copy. Do not include any abbreviations. *Science* will edit and typeset ads according to *Science* guidelines. Include billing information, and desired publication date. Available categories: Positions Open, Meetings, Announcements, Courses and Training.
- **Mail or FAX materials to:**
Science Classified Advertising
 1333 H Street, N.W., Room 814
 Washington, DC 20005
 Telephone: 202-326-6555
 FAX: 202-682-0816
- **Rates:** Ads are \$42 per line; \$420 minimum. One line equals 52 characters and spaces; centered headings equal 32 characters and spaces. A 3% cash discount is granted to all prepaid ads.
- **Ads from Outside the U.S.:** A discount of \$30 will be offered to advertisers making payment in U.S. dollars by checks drawn on U.S. banks. Contact Annemarie Vis at +44 223 424695 (24-hour FAX and phone).
- **Credit Cards:** *Science* accepts MasterCard and VISA. Discount does not apply to credit cards.
- **Cancellations:** Deadline for cancellation is 10 a.m., Tuesday, 10 days prior to issue date.

DISPLAY PERSONNEL ADVERTISEMENTS

For rates and info. about fractional display ads (all ads 1/2 page and larger), contact:

Recruitment Advertising
 Deborah Cummings
 Telephone: 202-326-6541

Janis Crowley, Recruitment
 Advertising Manager
 Telephone: 212-496-7704
 FAX: 202-682-0816

Annemarie Vis
 European Recruitment Advertising
 +44 223 424695
 (24-hour FAX and phone)

CONDITIONS: Personnel advertising is accepted only with the understanding that the advertisers do not discriminate among applicants on the basis of race, sex, religion, age, color, handicap or sexual preference. The AAAS encourages employers to actively recruit and employ underrepresented minority groups. *Science* reserves the right, at its discretion, to decline to publish advertisements submitted to it.

POSITIONS OPEN

ASSISTANT PROFESSOR MOLECULAR GENETICS

The Department of Biology at the College of William and Mary invites applications for an entry-level tenure-track faculty position in molecular genetics. This permanent position was made possible, in part, by a grant from the Howard Hughes Medical Institute. The successful applicant will be provided an existing, well-equipped molecular genetics laboratory, and will be expected to establish a vigorous research program involving undergraduate and beginning graduate students. A commitment to excellence in teaching is essential; teaching responsibilities will include a comprehensive, upper-level course in molecular genetics and a companion laboratory course. The university has an enrollment of 7700 students among five schools, of whom 5400 are undergraduate. The department has 21 faculty and offers training through the master's level. Preference will be given to applicants with postdoctoral and teaching experience. Applications should include curriculum vitae with publication list, a statement of teaching and research interests, and the names, addresses, telephone and FAX numbers of three individuals willing to submit letters of reference on request. Application materials should be sent to: **Bruce Grant, Chair, Molecular Genetics Search Committee, Department of Biology, College of William & Mary, Williamsburg, VA 23187.** Evaluation of applications will begin March 15, 1993, and will continue until the position is filled. *The College of William & Mary is an Affirmative Action/Equal Opportunity Employer. Women and members of minority groups are strongly urged to apply.*

TENURE-TRACK ASSISTANT PROFESSOR

A tenure-track assistant professor position is available at the Center for Functional and Metabolic Imaging (CFMI), in the Department of Radiology, University of Pennsylvania. Candidates should have a Ph.D. or M.D. degree with a strong background in neuroanatomy and neuroscience, as well as an ability to work with nonhuman primates in PET, SPECT and MRI imaging procedures. The position will also play a key role in bridging the gap between basic chemistry, pharmacology and clinical research. Working knowledge of image analysis and development of imaging protocols for animals and humans is required. The successful candidate is expected to join the ongoing research program at CFMI and attract extramural funding. *The University of Pennsylvania is an Equal Opportunity Employer; women and minorities are encouraged to apply.* Please send résumé to: **Dr. Hank F. Kung, Room 305, 3700 Market Street, Philadelphia, PA 19104.**

BIOLOGY FACULTY POSITION. The Pennsylvania State University at Erie, the Behrend College. The Division of Science invites applications for a tenure-track position at the ASSISTANT PROFESSOR level for an aquatic biologist/ecologist with a specialization in one or more of the following areas: toxicology, limnology, or aquatic invertebrates. Experience in molecular biology, although not essential, would be helpful. Must have Ph.D. in aquatic biology/ecology or related discipline; teaching experience and postdoctoral experience are preferred. Candidate must be able to teach introductory biology or ecology, limnology, and other advanced courses. Development of a productive externally funded research program involving undergraduates is expected. Send a detailed résumé and letter of application of not more than two pages, commenting on teaching and research interests. Applicants should also arrange to have three letters of reference and all college transcripts sent to: **Dr. R. F. Knacke, Penn State-Behrend, Division of Science, Department BIOL-6, Station Road, Erie, PA 16563-0203.** Application deadline is March 8, 1993, or until a suitable candidate is identified.

*An Affirmative Action/Equal Opportunity Employer.
 Women and Minorities Encouraged to Apply.*

QUANTITATIVE ECOLOGIST

ASSISTANT PROFESSOR, (70% teaching, 30% research); tenure-track, 12-month appointment. Earned Ph.D. required; preference given to applicants with population or community ecology expertise and teaching experience. Please send résumé and 3 letters of reference to: **Dr. George W. Tanner, Box 110430, Department of Wildlife and Range Sciences, University of Florida, Gainesville, FL 32611.** Application deadline: 15 April 1993. *An Equal Opportunity/Affirmative Action Employer.*

POSITIONS OPEN

MOLECULAR NUTRITION SCIENTIST

The Institute for Human Nutrition at Columbia University, together with the Departments of Pediatrics and Physiology, is searching for a tenure-track basic scientist at the ASSISTANT PROFESSOR level to start in fall 1993. Applicants must have a Ph.D. in biological sciences and expertise in lipid, lipoprotein and apoprotein metabolism in heterologous expression systems (e.g. yeast and other genetic systems), and at least 5 years of postdoctoral experience. Candidates must display excellence in lecturing/teaching, ability to guide and direct students, and will place a major emphasis on basic research. Send curriculum vitae, summary of current and future research objectives, three recent relevant reprints and names of 3 references to: **Dr. Richard Deckelbaum, Director, Institute of Human Nutrition, Columbia University, 701 West 168th Street, New York, NY 10032.**

Columbia University is an Affirmative Action/Equal Opportunity Employer.

INORGANIC/ANALYTICAL CHEMIST: Tenure-track ASSISTANT PROFESSOR, beginning fall 1993 and possible non-tenure-track, 1-year. Ph.D. in inorganic, analytical or a closely allied field, research and teaching experience required. See full description in February 22, 1993, issue of *Chemical & Engineering News*. Submit curriculum vitae, three letters of recommendation and a brief statement of teaching and research interests and plans to: **Search Committee, Department of Chemistry, University of Wisconsin-Parkside, Box 2000, Kenosha, WI 53141-2000.** Deadline March 8, 1993. *UWP is an Equal Opportunity, Affirmative Action Employer.*

ASSISTANT PROFESSOR/BIOCHEMISTRY AND MOLECULAR BIOLOGY

The Indiana University School of Medicine at Fort Wayne (IUSM-FW) seeks qualified applicants for a full-time, tenure-track position in Biochemistry. Applicants should have a Ph.D. in Biochemistry and postdoctoral research experience in the area of molecular immunology, microbiology, physiology, or pharmacology. Some teaching experience at medical or graduate school-level is preferred. The successful applicant is expected to participate in the teaching of Medical Biochemistry to first-year medical students and in the teaching of other courses in the individual's specialty (30-40% effort). Development (or continuation) of an active, fundable research program is expected (60-70% effort). The IUSM-FW has outstanding research and teaching facilities and can offer the successful applicant start-up funds, half-time technical assistance, and a competitive salary. Before April 30, 1993, qualified applicants should send curriculum vitae and the names, addresses, and telephone numbers of three references to: **B.H. Ragatz, Ph.D., Assistant Dean and Director, Fort Wayne Center for Medical Education, 2101 Coliseum Boulevard East, Fort Wayne, IN 46805.** *Indiana University is an Equal Opportunity/Affirmative Action Educator, Employer, and Contractor, M/F.*

ASSISTANT PROFESSOR, TENURE-TRACK UC Berkeley, School of Optometry

Expanding group of basic and clinical scientists with interests in the biology of ocular disease seeks individual with M.D., O.D. or Ph.D., postdoctoral experience (or equivalent), and a strong commitment to excellence in teaching and research to begin as early as fall 1993. Duties include teaching at all levels of the School's curriculum and mounting a research program related to eye disease that attracts federal funding. Applicants may be:

- basic scientists who will utilize modern biological approaches to study mechanisms related to ocular disease;
 - clinicians who will utilize similar approaches to conduct patient-based, ocular disease research.
- Send curriculum vitae, names and telephone numbers of three to five references, and a brief statement of research objectives and teaching interests by May 31, 1993, to: **Chair, Faculty Search Committee, School of Optometry, University of California, Berkeley, CA 94720.** *The University of California is an Equal Opportunity/Affirmative Action Employer.*



Human Resources Management in R&D Organisations

This important International Conference will be held in Canberra between 29-31 March 1993 in conjunction with the 1993 Australian Science Festival. The theme of the Conference is:

"Innovative human resources management strategies and best practice for the attraction, development and deployment of creative staff in R&D organisations".

A Program of Plenary and Workshop sessions is planned.

For more information, please contact:

Australian Convention & Travel Services
GPO Box 2200
Canberra ACT 2601, AUSTRALIA
Tel: 61 6 257 3299 Fax: 61 6 257 3256

Sponsored by CSIRO

1539



SENIOR LECTURER/ LECTURER IN BOTANY (Ref. 92/93-57)

Applications are invited for a Senior Lectureship/Lectureship in the Department of Botany, tenable from 1 September 1993, in one of the following areas of expertise: Fermentation Biotechnology or Agricultural Genetics and Biotechnology.

The appointee may be required to contribute to the teaching of basic genetics in addition to the specialised programmes listed above.

Annual salaries (superannuable) are on the scales: Senior Lecturer HK\$534,000 - HK\$717,360 (9 points - approx. US\$69,351 - US\$93,164); Lecturer HK\$343,680 - HK\$574,140 (11 points - approx. US\$44,634 - US\$74,564; US Dollar equivalent as at 26 January 1993). Starting salary will depend on qualifications and experience. At current rates, salaries tax will not exceed 15% of gross income. Children's education allowances, leave and medical benefits are provided; housing or tenancy allowances are also provided in most cases at a charge of 7.5% of salary.

Further particulars and application forms may be obtained from Appointments (41440), Association of Commonwealth Universities, 36 Gordon Square, London WC1H 0PF, UK, or from the Appointments Unit, Registry, The University of Hong Kong, Hong Kong (fax: (852) 559 2058; E-mail: APPTUNIT@HKUVM1.HKU.HK).

Closes 26 March 1993.

RESEARCH OPPORTUNITIES ABROAD FOR U.S. BIOMEDICAL SCIENTISTS

JOHN E. FOGARTY INTERNATIONAL
CENTER

For Advanced Study in the Health Sciences
NATIONAL INSTITUTES OF HEALTH

Senior International Fellowships: 3 to 12 months for use in any foreign country. Applicants must be more than 5 years post doc with a permanent position in the U.S.

Foreign-supported Fellowships (Postdocs): 1 year in Finland, France, Germany, Ireland, Israel, Japan, Norway, Sweden, Switzerland, or Taiwan.

Hitchings-Elion Fellowships (Postdocs): 2 years in the United Kingdom or Ireland and 1 year in the U.S.

Fogarty International Research Collaboration Award (FIRCA): 1-3 years; small research grants for equipment, supplies and travel for collaboration between U.S. investigators and scientists in Central and Eastern Europe, former Soviet Union, or Latin America.

For info: International Research & Awards Branch
Fogarty International Center
National Institutes of Health
Bldg. 31, Rm. B2C39
Bethesda, MD 20892
Tel: (301)496-1653
Fax: (301)402-0779



POSITIONS OPEN

ASSISTANT PROFESSOR—ENTOMOLOGY UNIVERSITY OF MINNESOTA

The Department of Entomology—University of Minnesota is seeking applicants for a 12-month, tenure-track, extension-research position in landscape and structural entomology. Located within a 7-county metropolitan area of 2 million people, this position provides exceptional opportunities for a landscape or structural entomologist. The successful applicant will develop an active extension program, with complementary research, on insect pest management in metropolitan environments. A Ph.D. in entomology or related field and experience in outreach education and IPM research is required. Desired qualifications include: teaching experience in extension, outreach or classroom settings; demonstrated research productivity; experience in landscape or structural entomology; and excellent communication skills. Request a detailed position description. Interested individuals should send a letter of application, a separate statement of career goals, curriculum vitae, transcripts, 3 exemplary research publications plus names and addresses of 5 references by March 19, 1993 to: **Kenneth Ostlie, Search Committee Chair, c/o Department of Entomology, University of Minnesota, St. Paul, MN 55108. Telephone: (612) 624-9272, FAX: (612) 625-5299. The University of Minnesota is an Equal Opportunity Educator and Employer.**

DISTINGUISHED PROFESSOR OF ECOLOGY. The College of Natural Resources, University of Wisconsin-Stevens Point seeks a Distinguished Professor in Quantitative Ecology beginning August 15, 1993. Responsibilities include teaching, statistical consulting, research. Qualifications include senior-level scientist; earned doctorate; experience in biometrics and quantitative ecology, preferably at ecosystem level. GIS experience desirable. Preference given to candidates with experience working with public agencies or natural resource industries to promote ecologically sound resource use and economic development. Application deadline: April 5, 1993. Complete position announcement available from: **Alan Haney, Dean, College of Natural Resources, University of Wisconsin, Stevens Point, WI 54481; (Telephone: 715-346-2955).** To apply send letter of interest, résumé that corroborates the above-mentioned qualifications, 3 letters of recommendation and the names of 3 other references to him. *University of Wisconsin-Stevens Point is an Equal Opportunity Employer.*

VOLLUM INSTITUTE OREGON HEALTH SCIENCES UNIVERSITY FACULTY POSITION

The Vollum Institute is accepting applications for a faculty position equivalent to **ASSISTANT, ASSOCIATE or FULL PROFESSOR.** Applicants should have a strong record in an area of modern biomedical research which will complement existing Institute programs in transcriptional regulation, neurotransmitter/hormone receptors and transporters, ion channel structure and function, synaptic transmission, and signal transduction mechanisms. Submit curriculum vitae and one-page statement of research interests by March 15, 1993, to: **Faculty Search, Vollum Institute L-474, Oregon Health Sciences University, 3181 S.W. Sam Jackson Park Road, Portland, OR 97201. An Equal Opportunity/Affirmative Action Employer. Minorities and women are encouraged to apply.**

The Department of Pharmacology at Temple University School of Medicine is seeking tenure-track members at the **ASSISTANT PROFESSOR** level. Applicant should have a Ph.D. and/or M.D. degree, postdoctoral experience, and demonstrated excellence in research. He/she will be expected to develop a funded research program in molecular pharmacology, interact with other faculty members, and contribute to teaching medical, dental and graduate students. Applicants should submit curriculum vitae, a brief statement of proposed research, and names and addresses of three references to: **Search Committee, Department of Pharmacology, Temple University School of Medicine, 3420 North Broad Street, Philadelphia, PA 19140.** The deadline for applications is July 1, 1993. *Temple University is an Equal Opportunity/Affirmative Action Employer. Applications from women and minorities are encouraged.*

POSITIONS OPEN

ASSISTANT PROFESSOR. Three-year position; start July 1993 with possibility of becoming tenure-track. We are seeking a broadly trained ecologist with strengths in physiology, marine and/or population areas. The Joint Science Department provides science instruction for Claremont McKenna, Pitzer, and Scripps Colleges, three of the Claremont Colleges. Candidates should be interested in teaching majors and non-majors in a selective liberal arts college. Research involving undergraduates expected. Applicants should submit résumé, letter outlining educational philosophy and teaching experience, research interests and needs, and three letters of reference to: **Daniel Guthrie, W. M. Keck Science Center, 925 North Mills Avenue, Claremont, CA 91711. Telephone: (909) 621-8298.** Applicant Review commences March 1, 1993. *The Claremont Colleges are Affirmative Action/Equal Opportunity Employers. Women and minority candidates are strongly encouraged to apply.*

INTER-AMERICAN UNIVERSITY OF PUERTO RICO—POSITION IN HIGHER EDUCATION. Inter American University of Puerto Rico (IAU), Bayamón Campus, a non-profit institution, invites applications for the following position: One (1) full-time **ASSISTANT PROFESSOR of Biology.** The candidate must be able to lecture in Spanish, possess a Doctoral degree in Biological Sciences and have commitment to undergraduate teaching and sciences education. Responsibilities include teaching introductory biology, cellular/molecular biology and microbiology related courses. **DEADLINE:** May 31, 1993. Send curriculum vitae and three letters of reference to: **Inter American University of Puerto Rico, Bayamón Campus, Attn: Dr. Armando Rodríguez Durán, Department of Natural Sciences, Minillas Industrial Park, Bayamón, Puerto Rico 00959. AN EQUAL OPPORTUNITY/AFFIRMATIVE ACTION EMPLOYER, (M/F/H/V).**

LUNG AND VASCULAR BIOLOGY

ASSISTANT PROFESSOR level positions in research areas related to lung and vascular biology at Rush Medical College/Rush-Presbyterian Medical Center. Applications will be considered in the following areas: endothelial biology, epithelial/endothelial cell-cell interactions at the vessel wall, signal transduction mechanisms, matrix biology, and adhesion molecules. Applicants are expected to compete successfully for extramural funding and may have existing grant support. Expertise in cell and molecular biology techniques is essential. Submit curriculum vitae with names of three references to: **A. B. Malik, Chair, Department of Pharmacology, Rush Medical College, 1653 West Congress Parkway, Chicago, IL 60612. Rush Medical College is an Equal Opportunity Employer.**

CELL BIOLOGIST at the **INSTRUCTOR** or **ASSISTANT PROFESSOR** level. Candidates with postdoctoral experience and ability to perform independent research preferred. The Department of Otolaryngology supports a strong multidisciplinary basic research program investigating laryngeal function, vocal fold cell biology and laser-tissue interactions. Please send curriculum vitae and three letters of recommendation to:

Robert H. Ossoff, D.M.D., M.D.
Chairman, Department of Otolaryngology
Vanderbilt University, S-2100 MCN
Nashville, TN 37232-2559
Equal Opportunity/Affirmative Action Employer.

THE NEWMAN H. WATERS CHAIR IN CLINICAL PHARMACOLOGY

The University of Alabama School of Medicine is seeking candidates for the Newman H. Waters Chair in Clinical Pharmacology. Candidates should have a record of significant accomplishments in the field of clinical pharmacology and oncology.

The Waters Chair was established in honor of Mr. Newman Waters, a prominent businessman and philanthropist committed to the advancement of medical education. Nominations and curriculum vitae should be sent no later than March 31, 1993, to:

Antonietta D. Hyche
Director, Academic Support Programs
Medical Education Building, Room 310
University of Alabama School of Medicine
Birmingham, AL 35294-3293
An Affirmative Action/Equal Opportunity Employer.

POSITIONS OPEN

The University of Michigan Department of Ophthalmology is seeking a **FACULTY MEMBER** with particular interest in comprehensive ophthalmology. Appointment will include Veterans Hospital appointment. Applicants must be certified by the American Board of Ophthalmology and must have demonstrated interest and experience in patient care, education and research. Subspecialty fellowship training in glaucoma is preferred. Individuals interested in this position should submit curriculum vitae and bibliography to: **Paul R. Lichter, M.D., F. Bruce Fralick Professor and Chairman, Department of Ophthalmology, W. K. Kellogg Eye Center, 1000 Wall Street, Ann Arbor, MI 48105. The University of Michigan is an Equal Opportunity and Affirmative Action Employer and actively seeks diversity in its applicant pool.**

QUEEN'S UNIVERSITY KINGSTON, ONTARIO, CANADA DEPARTMENT OF BIOCHEMISTRY FACULTY POSITIONS IN THE AREA OF NMR/X-RAY CRYSTALLOGRAPHY

The Department of Biochemistry in the Faculty of Medicine, Queen's University, Kingston, Ontario is seeking applicants for two positions in the area of nuclear magnetic resonance (NMR) and X-ray crystallography. Support for these positions will be sought under the aegis of Phase 2 of a Development Program Grant application to the Medical Research Council of Canada. Under this scheme, MRC will provide salary support for two investigators for up to five years together with operating funds for up to three years and funds to purchase equipment. The Department of Biochemistry is well equipped and has a core facility in protein/DNA sequencing and synthesis which is sponsored by a federally funded Centres of Excellence Program. *In accordance with Canadian Immigration requirements this advertisement is directed to Canadian citizens and permanent residents. Queen's University has an employment equity program and encourages applications from all qualified candidates, including women, aboriginal peoples, people with disabilities and visible minorities.* Closing date for applications is April 15, 1993. Candidates should send detailed curriculum vitae and the names and telephone numbers of three referees to: **Dr. T.G. Flynn, Craine Professor and Head, Department of Biochemistry, Queen's University, Kingston, Ontario, Canada K7L 3N6.**

POSTDOCTORAL ASSOCIATE position available in an NIH-funded physiology laboratory to study the mechanisms responsible for malignant hyperthermia in pigs. Individual will utilize whole cell patch-clamp techniques to study calcium currents and contractile properties of myotubes. Ph.D. in Biological Science plus 1 year of additional research experience required. Previous experience in electrophysiology, muscle physiology and/or computer applications is desirable. Position to start April 1, 1993, application deadline is March 15, 1993. Position is funded for up to 3 years. Send letter of application, curriculum vitae and names of three references to: **Esther M. Gallant, Veterinary Pathobiology, College of Veterinary Medicine, 1988 Fitch Avenue, St. Paul, MN 55108. THE UNIVERSITY OF MINNESOTA IS AN EQUAL OPPORTUNITY EDUCATOR AND EMPLOYER.**

POSTDOCTORAL POSITION

The Agricultural Group of Monsanto Company is recognized for its innovative research in crop improvement. We currently have a postdoctoral position available for a molecular biologist who can contribute to our research in the genetic modification of crops for improved resistance to fungal pathogens. This position is part of a multidisciplinary team leading to commercialization of disease-resistant crops.

The selected candidate will have a Ph.D. in Molecular Biology, Biochemistry or a related field.

Monsanto offers a stimulating and challenging work environment and an excellent compensation and benefits package. Please send curriculum vitae and the names of three references to: **Ms. Marion K. Doyle, Human Resources—03H, Monsanto Company, 800 North Lindbergh Boulevard, St. Louis, MO 63167. Equal Opportunity Employer, M/F/H/V.**

SCIENCE welcomes placement of line classified ads by FAX. Please include name and telephone number for our confirmation call when transmitting ad to:

FAX NUMBER: 202-682-0816

Opportunities for Senior Scientists in Multi-disciplinary Research Program

The U.S. Environmental Protection Agency (EPA) is seeking senior (GS-11/14) scientists with expertise in ecological monitoring and assessment to lead exploratory research activities for the national Environmental Monitoring and Assessment Program (EMAP). EMAP is an innovative, multi-agency program designed to estimate status and trends in the condition of our nation's ecological resources. Applicants should possess technical proficiency in terrestrial, freshwater, marine, and/or landscape ecology. Experience with ecological indicators, monitoring at regional and national scales, and/or multiple-resource integration is highly desirable.

Contracts management responsibilities constitute approximately 25% of the work in these positions. U.S. citizenship is required.

Positions for exemplary scientists will be located at EMAP's technical center in the Research Triangle Park area of North Carolina. EMAP-Center provides a stimulating research environment with many opportunities for scientists:

- Access to area research universities and science facilities
- Interaction with the national and international scientific community
- Research support that allows senior scientists to remain active in their research fields
- Leadership role in an innovative ecological research, monitoring and assessment program
- Competitive salary

Applications will be accepted through March 18, 1993. Please request applications from:

U.S. Environmental Protection Agency
Human Resources Management Division (MD-29)
Research Triangle Park, NC 27711
Attn: Dorothy Carr - EMAP
(919)541-3014

The U.S. EPA is an Equal Opportunity Employer.

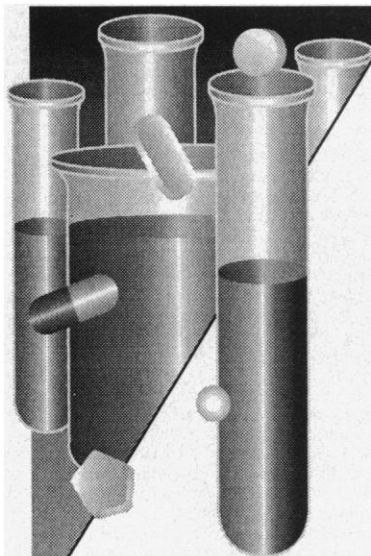
Post Doctoral Research at The Wistar Institute

The Wistar Institute, an independent research organization located on the campus of the University of Pennsylvania, is currently seeking Post Doctoral applicants interested in cancer-oriented research. Wistar has maintained a reputation for pioneering work and ground-breaking accomplishment since its founding nearly 100 years ago.

Fellows can anticipate a stimulating and challenging experience in the tradition of strong interdisciplinary collaboration within an environment utilizing state-of-the-art biotechnology. Wistar's general areas of research interest include: Molecular Genetics, Molecular Virology, Cell & Developmental Biology, Experimental Therapeutics, Cell & Molecular Immunology and Structural Biology.

Interested applicants are requested to send a Curriculum Vitae and the names of three references to:

**Coordinator of Research Training,
THE WISTAR
INSTITUTE,
36th & Spruce
Streets, Phila-
delphia, PA
19104.** Equal
Opportunity
Employer.



A DYNAMIC MISSION

*At the Glaxo Inc.
Research Institute,
Our Priority is
Progress.*

Glaxo Inc., one of the largest pharmaceutical companies in the world, has an established record of developing the highest quality prescription medicines for unmet patient needs. Located in Research Triangle Park, NC, the **Glaxo Inc. Research Institute** is a premier facility which provides a stimulating environment for scientists working in all aspects of discovery and development. We invite you to experience the challenges and accomplishments a future with us holds for you. The following opening is available.

CELLULAR/MOLECULAR BONE RESEARCH SCIENTIST

We seek an outstanding Research Investigator who will provide cellular and molecular biology expertise to a bone research group with established in vivo, cellular, and transgenic capabilities. The ideal candidate is envisioned as a cell biologist with the training and experience to expertly apply molecular biology techniques as needed to establish a research program to address fundamental questions about bone cell signal transduction and cell-cell signaling pathways. A strong desire to discover drugs in the therapeutic area of bone disease and a commitment to excellence in basic science research in cell biology are both prerequisites for this position.

Background must include a Ph.D. in Cell Biology and postdoctoral training in molecular biology, plus 3-5 years of productive experience as an independent investigator. Expertise in the area of bone cell biology is desired, but applications from individuals with relevant training and experience in other areas will receive full consideration.

Join Glaxo and enjoy an excellent salary, flexible benefits, an on-site fitness center, a spirit of enthusiasm and teamwork and outstanding opportunities for career satisfaction. Equally appealing is our world famous scientific, industrial, and academic community in Research Triangle Park, NC. Send your resume, which must include position title and salary history, to: **Job# ASC912701, Human Resources Department, Glaxo Inc., P.O. Box 13398, Research Triangle Park, NC 27709.** (No Phone Calls or Agency Referrals, Please.) An Equal Opportunity Employer M/F/D/V.

Glaxo Inc.

The Time For Achievement Is Now

POSITIONS OPEN

DIRECTOR, CHILDREN'S NUTRITION RESEARCH CENTER

A Center Director for the Baylor College of Medicine/United States Department of Agriculture-Agriculture Research Service Children's Nutrition Research Center is sought. The Center is operated under a Cooperative Agreement between the United States Department of Agriculture and the Baylor College of Medicine, Houston, Texas. The Director will be appointed as a full-time faculty member of the Baylor College of Medicine. Candidates for this position should hold an M.D. or an M.D./Ph.D. degree and be board certified in pediatrics. Experience, research productivity and administrative skills must be such that they would be eligible for appointment at the full professorial level at the Baylor College of Medicine. Interested candidates should respond with curriculum vitae to: **Ralph D. Feigin, M.D., Senior Vice President and Chairman, Department of Pediatrics, Baylor College of Medicine, One Baylor Plaza, Houston, TX 77030. Equal Opportunity Employer.**

POSTDOCTORAL POSITION available immediately to study oxygen radical-induced DNA damage. The project involves mapping of base damage induced by model radical-generating systems by ligation-mediated PCR. Experience with PCR, DNA sequencing and hybridization techniques essential. Send or FAX: (818-301-8233) curriculum vitae to: **Dr. Steven Akman, Department of Medical Oncology, City of Hope, 1500 East Duarte Road, Duarte, CA 91010.**

POSTDOCTORAL POSITION MOLECULAR IMMUNOLOGY

A postdoctoral position in the Laboratory of T Cell Development to study intrathymic selection and T cell development by producing transgenic mice is available immediately. Applicants must possess DNA manipulation and cloning skills. Knowledge of cellular immunology is a plus. Sloan-Kettering Institute offers a stimulating research environment and excellent facilities. Housing assistance may be available.

Please submit curriculum vitae and three letters of reference to: **Janko Nikolic-Zugic, M.D., Head, Laboratory of T Cell Development, Sloan-Kettering Institute, 1275 York Avenue, New York, NY 10021.**

EXPERIMENTAL HEMATOPOIESIS

RESEARCH ASSOCIATE, Ph.D./M.S. to join the newly formed Experimental Hematopoiesis Unit, Center for Cancer and Transplantation Biology, Children's Research Institute. Experienced in the techniques of hematopoietic cell manipulation (e.g. BMT, LAK/ITL, elutriation, cellular immunology, stem cell biology). Will participate in developing novel experimental bone marrow transplantation strategies. Position commensurate with experience.

Interested candidates should submit a letter of interest and curriculum vitae to: **Stephan Ladisch, M.D., Director, Center for Cancer and Transplantation Biology, CRI/CNMC, 111 Michigan Avenue, N.W., Washington, DC 20010; (Telephone: 202/939-3898).**

TEACHER EXPLORATORIUM TEACHER INSTITUTE

The Exploratorium is a museum of science, art, and human perception in San Francisco, California. The Teacher Institute Program provides training and support for middle and high school science and mathematics teachers. **Responsibilities:** Teaching summer institutes, after-school, and weekend workshops. Developing and publishing classroom activities and teaching techniques based on the Exploratorium's hands-on exhibitry. **Qualifications:** Advanced degree or extensive teaching experience in biology, mathematics, physics, earth science, or chemistry. Involvement in multicultural issues as they relate to teaching and learning. Please apply by March 1, 1993, by sending your résumé and letter presenting your pedagogical philosophy and qualifications to: **Department TI-1, Exploratorium, 3601 Lyon Street, San Francisco, CA 94123, Telephone: 415-561-0313. The Exploratorium is committed to the diversity of its staff and encourages applications from people of all sexual orientations, women, people of color and people with disabilities.**

POSITIONS OPEN



DEAN COLLEGE OF SCIENCE

Wayne State University is seeking nominations and applications for the position of Dean of the College of Science. This is a new position, created by the congregation of science departments formerly in the College of Liberal Arts into a new college. The College of Science includes the Departments of Biological Sciences, Chemistry, Communication Disorders and Sciences, Computer Science, Geology, Mathematics, Nutrition and Food Science, Physics and Astronomy, and Psychology. The graduate program of the College has 823 students and there are approximately 2700 undergraduate majors. The full-time faculty numbers 213.

Qualifications for the position include: an earned doctoral degree and a record of scholarship appropriate for an appointment as professor with tenure in a department of the College; academic leadership and administrative capabilities; effective personnel management skills; demonstrated commitment to affirmative action and equal opportunity practices.

The Dean will report to the Provost of the University. The review of candidates will begin March 1, 1993, and continue until the position is filled. The desired starting date for the position is in the period of September 1993 to January 1994.

Letters of nomination and application, which may include curriculum vitae and names of references when appropriate, should be sent to:

George E. Dambach, Ph.D.
Associate Dean for Research & Graduate Programs
School of Medicine, 1261/69 Scott Hall
Wayne State University
Detroit, MI 48201
Office: (313) 577-1455
FAX: (313) 577-8777



DEAN, SCHOOL OF OPTOMETRY

The University of Alabama at Birmingham (UAB) is seeking applications and nominations for the position of Dean of the School of Optometry. The Dean is the chief administrative officer and is responsible to the Vice President for Health Affairs for the administration of all educational and research programs conducted by the School.

The School of Optometry is one of six health professional schools in the UAB Medical Center (the others are Medicine, Dentistry, Nursing, Public Health, and Health Related Professions). The School has numerous interdisciplinary programs and engages in collaborative research supported in part by a Vision Research Center Grant from the National Eye Institute. Programs offered by the School of Optometry include the professional curriculum in optometry, graduate programs (M.S. and Ph.D.) in physiological optics, optometric residency training, continuing education for practicing optometrists, and basic and applied vision research.

Applications and nominations should include curriculum vitae, the names of three references, and any other supporting material deemed appropriate. Screening of applications will begin March 15, 1993. Inquiries, nominations, and applications may be sent to: **Dr. Rachel Z. Booth, Chair, Search Committee for the Dean, School of Optometry, The University of Alabama at Birmingham, 1701 University Boulevard, Birmingham, AL 35294-1210. UAB is an Affirmative Action, Equal Opportunity Employer.**

DIVISION HEAD DIVISION OF INFECTIOUS DISEASES

We are seeking a distinguished physician scientist who is Board certified in Internal Medicine and Infectious Diseases to provide dynamic scientific and clinical leadership to the Division of Infectious Diseases at the State University of New York at Stony Brook. The Division comprises ten physician scientists, one Ph.D. and six fellows who are stationed at Stony Brook and the Northport Veterans Administration Hospital. The Division's faculty are engaged in NIH- and VA-funded research activities as well as State sponsored centers for AIDS and Lyme Disease and active clinical programs. Please send correspondence about this position to: **Dr. Michael Berelowitz, Division of Endocrinology, SUNY at Stony Brook, Stony Brook, NY 11794. SUNY, Stony Brook is an Affirmative Action/Equal Opportunity Educator and Employer.**

POSITIONS OPEN

DIRECTOR—Science Education Academy of the Bay Area. SEABA is a network of organizations in the San Francisco Bay Area that are involved in improving pre-college science education. SEABA functions as an academy without walls to further empower teachers and schools to radically transform the way science is taught in the classroom. SEABA members include county offices of education, universities, Department of Energy national laboratories and science museums. The ideal candidate has demonstrated exceptional skills in administering large programs; implementing current reforms in precollege science education; directing fund-raising efforts; and communicating effectively with diverse audiences. Applications close March 12, 1993. Salary level is \$50,000 to \$60,000. Send a letter of interest, résumé and three references to: **Joan Hukari, Far West Laboratory, 730 Harrison Street, San Francisco, CA 94107. Far West is an Affirmative Action/Equal Opportunity Employer.**

DIRECTOR: International Science Institute. The Nature Conservancy seeks director for institute being created to encourage the use of science and information technologies to inform biodiversity conservation and development decisions. The director will have responsibility for all aspects of the institute, including its strategic planning and growth. Candidates must have a background in biodiversity conservation, the biological sciences and information systems. Requirements: demonstrated leadership skills; experience in managing organizations involved in science and education; capability to generate partnerships with governmental, scientific and academic institutions; international experience; fundraising experience; commitment to conservation. Preference will be given to candidate with a Ph.D. or equivalent advanced degree in biology, ecology or systematics. All inquiries and responses held in confidence. To apply, send curriculum vitae and letter of application to: **The Nature Conservancy, International Headquarters, Human Resources Department, 1815 North Lynn Street, Arlington, VA 22209. Equal Opportunity Employer.**

DIRECTOR

The Glenn T. Seaborg Center for Teaching and Learning Science and Mathematics
Northern Michigan University (NMU)

Applications/nominations are invited for the position of Director of the Glenn T. Seaborg Center. The Center engages in research, curriculum development and educational service activities throughout Michigan and Wisconsin. Complete position description available upon request. Applicant review will begin mid-February for expected July 1, 1993, appointment.

Send letter of interest, complete résumé, and names, addresses, and telephone numbers of five references to:

Michael T. Marsden, Dean
College of Arts and Sciences
c/o Employment Office
204 Cohodas Administrative Center
Northern Michigan University
Marquette, MI 49855-5327

NMU is an Affirmative Action/Equal Opportunity Employer.

GENETIC EPIDEMIOLOGIST FOR NATIONAL HIGH RISK REGISTRY. This is a registry of individuals with multiple family members with cancer. Over 15,000 pedigrees are registered and kept current.

The successful candidate will be expected to establish an independent research program, as well as collaborate with multispecialty members of the Strang-Cornell research team. The applicant must have an appropriate Ph.D. and two or more years of relevant postdoctoral experience. University appointment according to applicant's eligibility. Send résumé to: **Dr. D.G. Miller, Strang Cancer Prevention Center, 428 East 72nd Street, New York, NY 10021.**

An NIH-funded **POSTDOCTORAL POSITION** is available immediately to study mechanisms of resistance to tumor promoters in T-lymphocyte cell lines. Ph.D.'s with backgrounds in biochemistry/molecular biology and an interest in signal transduction via protein phosphorylation are preferred. Please submit curriculum vitae and names of three references to: **Dr. Kathryn E. Meier, Department of Pharmacology, Medical University of South Carolina, 171 Ashley Avenue, Charleston, SC 29425-2251; FAX 803-792-2475. Equal Opportunity/Affirmative Action Employer.**

**POSTDOCTORAL TRAINEESHIPS
IN CANCER BIOLOGY AT
WAYNE STATE UNIVERSITY**

As part of a continuing commitment to excellence in cancer research, WSU is offering postdoctoral training in the following areas:

**BREAST CANCER BIOLOGY
MOLECULAR BIOLOGY
CARCINOGENESIS
TUMOR BIOLOGY
DEVELOPMENTAL THERAPEUTICS**

Trainees will be selected on potential for achievement in cancer research. Salaries are \$23,600-\$30,600 depending upon experience and are funded through individual research departments or the Meyer L. Prentis Comprehensive Cancer Center* of Metro Detroit.

Submit CV by May 1, 1993, together with summary of previous research and statement of areas of current interest along with names of three references to:

**Dr. S. C. Brooks
Dept. of Biochemistry
Wayne State University
School of Medicine
540 E. Canfield
Detroit, MI 48201**



An Affirmative Action Equal Opportunity Employer

*Funding for Comprehensive Cancer Center positions is from a P.H.S. Training Grant restricted to U.S. citizens and permanent residents.

**PRODUCT DEVELOPMENT
SCIENTIST**

Hybritech Incorporated, a \$100 million subsidiary of Fortune 100 Eli Lilly and Company and a recognized leader in the manufacturing and marketing of *in vitro* diagnostic tests utilizing monoclonal antibody technology, has an immediate and challenging opportunity supporting our Diagnostics R&D area.

The successful candidate will have a PhD in Immunology, Biochemistry or related field with 4-7 years' experience developing immunodiagnostic products. Strong technical, communication, teamwork and leadership skills are required. These skills will contribute to a successful track record of product introductions. Experience with sandwich immunoassay product development is desirable.

Hybritech offers a stimulating work environment and competitive salaries and benefits. Please send your resume to: Human Resources, DB/SM/PDS, HYBRITECH INCORPORATED, P.O. Box 269006, San Diego, CA 92196-9006. Equal Opportunity Employer.



GENE EXPRESSION SCIENCES

Postdoctoral Scientist

SmithKline Beecham Pharmaceuticals, one of the largest and most recognized names in healthcare today, is seeking a postdoctoral scientist to design and perform experiments in bacterial molecular genetics and biology for our Gene Expression Sciences Group.

Your responsibilities will include performing experiments to characterize sigma genes in *Streptomyces*, executing independent experimental designs, preparing experimental results for journal publications, presenting research seminars and maintaining laboratory records and equipment.

Your qualifications must include a Ph.D. in Biochemistry or Molecular Biology and 0-2 years current laboratory experience. Experience in cloning techniques, DNA sequencing, oligonucleotide-directed mutagenesis, *Streptomyces* or bacterial genetics, and radioactive compounds is required. Experience with protein purification and statistical methods is desirable. Strong computer skills are also essential.

Our state-of-the-art research facility is located in suburban Philadelphia, near Valley Forge, PA. We offer a highly competitive compensation/benefits/relocation package. For confidential consideration, forward your C.V. to: Senior Employment Administrator, #H011, SmithKline Beecham Pharmaceuticals, P.O. Box 1539, King of Prussia, PA 19406-0939. We are an Equal Opportunity Employer, M/F/D/V.

SB
SmithKline Beecham
Pharmaceuticals

Challenging the natural limits.

National Institutes of Health
National Institute of Environmental Health Sciences
Research Triangle Park, North Carolina

**Cell Proliferation and Eicosanoids
(Molecular Biologist)**

A post-doctoral position is available in the Eicosanoid Biochemistry Workgroup of the Laboratory of Molecular Biophysics to study the epidermal growth factor stimulated formation of oxygenated lipids derived via lipoxygenase and/or prostaglandin H synthase pathways. These studies are focused on determining the role of these lipid mediators in mitogenic signal transduction with particular emphasis on the interaction of oxygenated lipids with tyrosine kinases and phosphatases.

Individuals with a strong background in molecular biology are desired to isolate, clone and sequence relevant genes and to study the regulation of their expression by kinase activity.

FOR PROMPT CONSIDERATION: Send cover letter indicating area of interest, Curriculum Vitae, and three letters of reference by March 26, 1993 to:

**Dr. Thomas Eling
NIEHS, LMB, MD 19-04
P.O. Box 12233
Research Triangle Park, NC 27709
Phone: (919) 541-3911
Fax: (919) 541-7880**



NIH is a Equal Employment Opportunity Employer

POSITIONS OPEN

ASSISTANT or ASSOCIATE RESEARCH FACULTY POSITION

The University of Georgia (UGA) Marine Institute on Sapelo Island, an institution with a 40-year history of coastal research, invites applications for a state-funded position. We seek an individual with either outstanding potential or demonstrated expertise in any of the following areas of estuarine research:

PLANT or ANIMAL COMMUNITY DYNAMICS, EARLY LIFE HISTORY of FISHERIES SPECIES, MICROBIAL ECOLOGY.

Preference will be given to candidates whose research is field- and process-oriented. The natural estuarine environments on Sapelo Island, especially the extensive salt marshes and sand beaches, offer the researcher an uncommon opportunity to conduct field-oriented studies without concern for uninvited human disturbance. The research faculty at the Marine Institute may hold adjunct appointments in academic departments, including the newly formed Department of Marine Sciences, on the main campus of UGA. The position is available as early as 1 July 1993. Salary will be commensurate with experience and qualifications. Interested individuals should send curriculum vitae, statement of research interests and the names and addresses of three potential referees to:

Dr. James J. Alberts
Director
UGA Marine Institute
Sapelo Island, GA 31327

The application deadline is 31 March 1993.
**THE UNIVERSITY OF GEORGIA IS AN
EQUAL OPPORTUNITY/AFFIRMATIVE AC-
TION EMPLOYER.**

ACADEMIC POSITION IN MOLECULAR BIOLOGY

This is a non-renewable academic position available for up to 5 years. We require a developmental biologist with experience in molecular biology to join a group investigating differentiation and transdifferentiation of striated muscle cells to various other cell types in jellyfish.

The candidate should have a Ph.D. and at least one year of postdoctoral experience and publications in molecular biology methods. Especially desirable is PCR experience. His/her work will focus on changes in gene expression in the transdifferentiation process. Interest and experience in general developmental problems will be of advantage. Some teaching duties are included (at the beginning in English, later in German). The salary will be in the range of \$fr. 50,000 to 70,000 per year and will depend on experience and qualifications. Habilitation will be possible.

Starting date: August 1, 1993, or by arrangement.

Applications including curriculum vitae, publication list and the names of two referees should be sent until April 15, 1993 to:

Professor Doctor Volker Schmid
Zoologisches Institut
Rheinsprung 9
CH-4051 Basel
Switzerland

POSTDOCTORAL POSITION p53 ANTIONCOGENE RESEARCH

Position available immediately for study in the biomedical and molecular functions of the p53 antioncogene. Interested individuals should forward curriculum vitae and three letters of reference to: **James L. Sherley, M.D., Ph.D., c/o Personnel Department, Fox Chase Cancer Center, 7701 Burholme Avenue, Philadelphia, PA 19111. Equal Opportunity Employer.**

RADIATION RESEARCH. Applications are invited for a **POSTDOCTORAL POSITION** to study the effects of radiation on the testes of mice. A Ph.D. is required, preferably in Biology or Chemistry. Please send résumé to: **Roger W. Howell, Ph.D., Department of Radiology, UMDNJ, 185 South Orange Avenue, Newark, NJ 07103. FAX: (201) 982-4674. UMDNJ is an Affirmative Action/Equal Employment Opportunity Employer, M/F/H/V, and a member of the University Health System of New Jersey.**

UMD
New Jersey

POSITIONS OPEN

SOFT TISSUE BIOMECHANICS THE UNIVERSITY OF CHICAGO

The Section of Orthopaedics and Rehabilitation Medicine, Department of Surgery, and the Department of Organismal Biology and Anatomy invite applications for a **TENURE-TRACK POSITION**. We seek to recruit a new faculty member as part of a biomechanics research/training initiative between the two departments. We are interested in persons with training in collagen/cartilage biochemistry and cell biology addressing problems of tissue repair and remodeling to complement existing research strengths in bone, joint and gait mechanics and the cell biology of connective tissues. Rank is open. Applicants should send curriculum vitae, statement of research interests, and names of three referees to: **Dr. Andrew A. Biewener, Chair, Orthopaedic Biomechanics Search Committee, Department of Organismal Biology and Anatomy, The University of Chicago, 1025 East 57th Street, Chicago, IL 60637. The University of Chicago is an Affirmative Action/Equal Opportunity Employer.**

POSTDOCTORAL POSITIONS

Postdoctoral positions for an NCI training program in molecular and cellular mechanisms of carcinogenesis are available at the University of Texas M. D. Anderson Cancer Center—Science Park. Research programs focus on the following areas: DNA repair and mutagenesis, carcinogen metabolism and adduct formation, tumor promotion, role of oncogenes and/or tumor suppressor genes in multistage carcinogenesis, normal and tumor cell differentiation, retrovirology, chemoprevention and nutrition in cancer. *Applicants must be U.S. citizens or permanent residents and must have a Ph.D., M.D., or D.V.M. degree.* For application forms, contact: **Dr. Thomas Slaga, Director, U. T. Science Park—Research Division, P.O. Box 389, Smithville, TX 78957, Telephone: (512) 237-2403. We are an Equal Opportunity/Affirmative Action Employer. Women and minorities are encouraged to apply.**

POSTDOCTORAL POSITION, CLINICAL PHARMACOLOGY/PHARMACOKINETIC OF ANTITUMOR AGENTS. Mayo Comprehensive Cancer Center conducts an extensive experimental therapeutics program for the treatment of cancer. Our laboratory characterizes the pharmacology of new agents in conjunction with NCI-sponsored adult Phase I and Phase II clinical trials, and in conjunction with Children's Cancer Group pediatric clinical trials. The laboratory is also funded to conduct preclinical pharmacology and mechanism of action studies with new agents. Candidates should have a strong background in pharmacokinetics and pharmacology. Please forward application including curriculum vitae, summary of research interests and experience, and names of three references to: **Dr. Matthew M. Ames, Chair, Division of Developmental Oncology Research, Department of Oncology, Mayo Clinic and Foundation, Rochester, MN 55905. Mayo Foundation is an Affirmative Action and Equal Opportunity Educator and Employer.**

POSTDOCTORAL POSITION: Available to study pharmacological properties of the suprachiasmatic nucleus *in vitro* using a novel reporter gene system developed in transgenic mice. Applicants with a strong background in neuropharmacology with experience using brain slice techniques are preferred. *Applicants must be U.S. citizens or permanent residents.* Salary commensurate with experience. Send curriculum vitae and names of three references to: **Dr. Gary E. Pickard, Departments of Psychiatry and Neuroscience, University of Pennsylvania, 422 Curie Boulevard, Philadelphia, PA 19104-6141. An Affirmative Action/Equal Opportunity Employer.**

POSTDOCTORAL POSITION available to study photochemical mechanisms of cell membrane damage due to singlet oxygen. Experience with biophysical methods desirable. Send curriculum vitae, statement of research interests and three references to: **Dr. Jeffrey R. Kanofsky, Box 278, Hines DVA Hospital, Hines, IL 60141. U.S. Citizenship required. Equal Opportunity Employer, M/F/H.**

POSITIONS OPEN

POSTDOCTORAL POSITIONS in cancer genetics available immediately to carry out studies aimed at localizing, identifying and characterizing tumor suppression genes involved in the pathogenesis of colorectal and prostate cancer. Preference will be given to candidates with experience in molecular biology. Please submit curriculum vitae, reprints, and three references including telephone numbers to: **Stephen N. Thibodeau, Ph.D., Department of Laboratory Medicine and Pathology, Mayo Clinic/Foundation, Rochester, MN 55905. Mayo Foundation is an Affirmative Action and Equal Opportunity Educator and Employer.**

**POSTDOCTORAL POSITION IN IMMUNOL-
OGY/NEUROIMMUNOPHARMACOLOGY.** A position is open on a training grant from the National Institute on Drug Abuse to study mechanisms of immunosuppression by opioids. *Applicant must be a U.S. citizen or meet the residency requirement of a NIDA Training Grant.* Send curriculum vitae and names of 3 references to: **Dr. Toby K. Eisenstein, Department of Microbiology and Immunology, Temple University School of Medicine, 3400 North Broad Street, Philadelphia, PA 19140; Telephone: (215) 221-3585. Temple University is an Affirmative Action/Equal Opportunity Employer.**

MOLECULAR CELL BIOLOGIST. Two **POSTDOCTORAL POSITIONS** to join a group of 12 investigators exploring hormonal and age-dependent regulation of transcription factors. Ph.D. with experience in the general area of gene expression such as DNA-protein interactions, promoter-reporter function, etc., is required. Stimulating academic environment, generous salary support and excellent living conditions. Send curriculum vitae and names of three referees to: **Arun K. Roy, Ph.D., Professor of Cellular & Structural Biology, The University of Texas Health Science Center at San Antonio, 7703 Floyd Curl Drive, San Antonio, TX 78284-7762. The University of Texas Health Science Center at San Antonio is an Equal Employment Opportunity/Affirmative Action Employer.**

POSTDOCTORAL POSITION at HARVARD MEDICAL SCHOOL RETINOIC ACID RECEPTOR AND ETS TRANSCRIPTION FACTORS IN NORMAL AND LEUKEMIC MYELOID CELLS

Postdoctoral or research associate position available immediately for a Ph.D. in molecular biology to investigate the role of the retinoic acid receptor and ets family transcription factors in the regulation of myeloid (neutrophil, monocyte, and macrophage) genes and to investigate the role of these factors in myeloid differentiation and acute myelogenous leukemia. Extensive experience in transcription factor research and molecular biology required. Fax (or mail) curriculum vitae and three letters of reference to: **Dr. Daniel G. Tenen, Hematology Division, Beth Israel Hospital, 330 Brookline Avenue, Boston, MA 02215; FAX: 617-735-3299.**

POSTDOCTORAL POSITIONS

NIH-funded postdoctoral positions available in two areas: (1) Protein oxidation and proteolysis, and (2) Regulation of gene expression in response to oxidative stress. Both positions require strong training and background in modern methods of Biochemistry and Molecular Biology. You will join a laboratory group of some 12 researchers involved in the above areas, but will have your own project. Our college has great interdisciplinary strength in the areas of oxidative stress, protein degradation, and regulation of gene expression, and offers an excellent environment and facilities. Send curriculum vitae and the names of 3 references to: **Professor Kelvin J. A. Davies, Chairman, Department of Biochemistry & Molecular Biology, The Albany Medical College, Albany, NY 12208. Telephone: 518-262-5364, FAX: 518-262-5689.**

More than
150,000 people
paid to see your ad
in **SCIENCE**.

Classified Advertising Department
Telephone: 202-326-6555
FAX: 202-682-0816

MILES 

Pharmaceutical
Division

Miles Inc., Pharmaceutical Division, is expanding its research program in osteoporosis and is looking for two experienced individuals for its Bone Metabolism section.

RESEARCH SCIENTISTS O S T E O P O R O S I S

The ideal candidate will have a Ph.D. in Cell Biology/Biochemistry with 4 plus years' experience in bone metabolism/osteoporosis. Candidates should have a strong background in the isolation, culture and characterization of bone cells and their precursors as well as in osteodifferentiation and primary cell culture, particularly of mesenchymal tissue. A knowledge of cytokine biology, ligand receptor interactions, and intracellular signalling pathways is desirable.

We offer attractive compensation and benefit programs. Resumes including salary history should be forwarded in confidence to: **Miles Inc., Pharmaceutical Division, Dept. AABZ, 400 Morgan Lane, West Haven, CT 06516.**

An Equal Opportunity Employer M/F/H/V.

RESEARCH SCIENTISTS Central Nervous System Research

The Upjohn Company, a recognized leader in pharmaceutical research and development, is seeking two qualified neurobiologists for our Central Nervous System Research Unit.

The goal of this unit is the discovery of novel and marketable pharmacotherapeutic agents for the treatment of psychiatric and neurobiological disorders. Selected candidates will participate in an interactive and productive drug discovery effort, providing scientific leadership into the 21st century.

Applicants should possess a degree in the neurosciences, preferably neuropharmacology, and one or more years of post doctoral experience. Candidates with training and research orientation toward either the localization of the molecular events involved in neuronal injury via neuro-pathologically significant mechanisms, or the modulation of psychotherapeutically significant receptors and effectors are welcome to apply.

Upjohn offers a stimulating, multi-disciplinary research environment at our headquarters in Kalamazoo (a southwestern Michigan community located midway between Detroit & Chicago). An excellent salary and benefits package is provided. For confidential consideration, please submit your resume to:

THE UPJOHN COMPANY
Corporate Recruiting
Position Code #148
7000 Portage Road
Kalamazoo, MI 49001

We are an equal opportunity employer.

Upjohn

**NYU
Medical
Center**

WORK WITH LEADING AIDS INVESTIGATORS AS A RESEARCH FELLOW

Program Information

New York University, an NIH-designated Center for AIDS Research, invites applications to a multidisciplinary post-doctoral program for training in basic research related to the immunopathogenic mechanisms underlying HIV infection. Trainees will have the opportunity to work with investigators like: Drs. William Borkowsky, David Ho, Wade Parks, Abraham Pinter, Fred Valentine and Susan Zolla-Pazner in labs located at NYU Medical Center, the Aaron Diamond Foundation, Public Health Research Institute, Veterans Administration Medical Center and Bellevue Hospital. Two fellows will be accepted into this NIH-sponsored program for up to two years of training, beginning July 1, 1993.

Eligibility

Individuals with an MD, PhD, or MD/PhD may apply. Women and minority candidates are encouraged to apply. Candidates must be U.S. citizens or permanent residents.

How to Apply

Candidates should submit a curriculum vitae with a summary of past research experience and should include names of three individuals from whom they have requested letters of recommendation. These applications should be addressed to:

Dr. Susan Zolla-Pazner
Professor of Pathology
New York University Medical Center
Department of Pathology
550 First Avenue
New York, New York 10016

California Institute of Technology The James Irvine Foundation Minority Postdoctoral Fellowship

In accordance with the California Institute of Technology's policies to promote diversity among scientists, we announce a grant award from The James Irvine Foundation to support postdoctoral fellowships for American citizens who are members of minority groups. Combined with support from Caltech, this grant provides funding for two fellowships each year, each with an annual stipend of \$38000, and additional research and travel funds. The duration of this appointment will be for no more than three years, beginning with the 1993-94 academic year. Fellows are eligible to participate in Caltech's health and dental program.

The James Irvine Foundation Minority Postdoctoral Fellowship was established to help increase the representation of minorities in the sciences and engineering. It is available to those who have recently received their doctorates in the science or engineering fields of interest to faculty members at Caltech and who are United States citizens and are members of the following groups: Native American, African American, Hispanic, Native Alaskan, or Native Pacific Islander, and who otherwise qualify for Caltech's financial aid program. Irvine Fellows will be selected in accordance with equal opportunity requirements.

Applications should include a letter outlining desired field of research and a curriculum vitae. Three letters of reference should be submitted directly. All correspondence should be addressed to:

James Irvine Fellowship Search Committee
California Institute of Technology
Mail Code 210-31
Pasadena, CA 91125

***Completed applications with references should arrive
at Caltech before May 31, 1993.***

Fellowship candidates will automatically be considered for other available postdoctoral positions at Caltech in their fields of interest.

POSITIONS OPEN

PARASITOLOGY

POSTDOCTORAL POSITION available immediately to study the molecular mechanisms underlying regulation of cell-mediated immunity in snails to infection by the human blood fluke, *Schistosoma mansoni*. Strong background in molecular biology, biochemistry and/or tissue culture desirable. Excellent training opportunity, competitive salary. Send curriculum vitae, description of research background and names of three references to: **Dr. Timothy Yoshino, Department of Pathobiological Sciences, University of Wisconsin, 2015 Linden Drive West, Madison, WI 53706.** *Affirmative Action/Equal Opportunity Employer.*

YALE UNIVERSITY SCHOOL OF MEDICINE POSTDOCTORAL POSITIONS

To investigate molecular mechanisms of papillomavirus pathogenesis using site-directed mutagenesis and an animal model. Please send or FAX: (203-785-7499) curriculum vitae and three letters of reference to: **Janet L. Brandsma, Ph.D., Section of Comparative Medicine, Yale University School of Medicine, 333 Cedar Street, New Haven, CT 06510.** *An Affirmative Action/Equal Opportunity Employer.*

POSTDOCTORAL FELLOW/ RESEARCH ASSOCIATE

Position(s) available immediately in the laboratory of Dr. Harold A. Singer at the Weis Center for Research to identify calcium/calmodulin dependent protein kinase II and protein kinase C isozymes in arterial smooth muscle and to study their functional roles in regulating contractile activity and cell growth. Applicants should have experience with molecular biological and biochemical approaches. Experience in one or more of the following areas is desirable: protein kinases, contractile protein regulation, signalling pathways involved in regulating gene expression and/or cell growth. Send curriculum vitae and the names and addresses of three references to: **Geisinger Human Resources (HS), 100 North Academy Avenue, Danville, PA 17822-1529.** *Equal Opportunity Employer, M/F/H/V.*

POSTDOCTORAL FELLOW IN MOLECULAR BIOLOGY/VIROLOGY:

A postdoctoral position is available in the Laboratory of Molecular Neurobiology, Cornell University Medical College at the Burke Medical Research Institute. The project area is viral gene targeting in the central nervous system. Send curriculum vitae with three references to: **Ms. Maureen McCrum, Molecular Neurobiology, Burke Medical Research Institute, 785 Mamaroneck Avenue, White Plains, NY 10605.**

POSTDOCTORAL FELLOWSHIP

The Pulmonary Biology/Toxicology Program in the Life Sciences Division of the Los Alamos National Laboratory is seeking postdoctoral fellows to perform basic cellular and molecular biological research in the areas of acute lung injury and pulmonary macrophage-fibroblast interactions. Applicants should have received their doctoral degrees within the last 3 years. Postdoctoral appointments are for 2 years. The starting salary range is \$39,660 to \$41,770. For initial consideration, please send curriculum vitae and publications to: **Mary Anne With (MS P280), Human Resources Development Division PD-93-123, Los Alamos National Laboratory, Los Alamos, NM 87545.** For preliminary information, contact: **Bruce E. Lehnert, Ph.D., LS-1, MS M888, Los Alamos National Laboratory, Los Alamos, NM 87545.** Telephone: (505) 667-2753. *Affirmative Action/Equal Opportunity Employer. Los Alamos National Laboratory is operated by the University of California for the U.S. Department of Energy.*

POSTDOCTORAL FELLOW in addictions research for a recent Ph.D. or Ph.D. with 1 to 2 years of postdoctoral experience to conduct studies on: (a) biochemical markers, (b) pharmacotherapy, or (c) detection of alcoholism/heavy alcohol intake. Prefer background in biochemistry, pharmacology of drug actions, or statistical methods, and strong desire to be an independent investigator. Send curriculum vitae, reprints, and research goals to: **Chair, Postdoctoral Search Committee, Research Institute on Addictions, 1021 Main Street, Buffalo, NY 14203.** *Affirmative Action/Equal Opportunity Employer.*

POSITIONS OPEN

POSTDOCTORAL FELLOW

Molecular Hemopoiesis Indiana University School of Medicine

A postdoctoral position is available for research into the regulation of hemopoiesis. Specific areas include: retroviral-mediated gene transfer; hematopoietic stem cell/stromal cell interactions, including the biology of interleukin 11 and Steel factor; ES cell technology and developmental hematopoiesis. Experience in hemopoiesis, cell biology or molecular biology is required. Please send curriculum vitae, reprints, and three letters of reference to: **Dr. David A. Williams, Herman B. Wells Center for Pediatric Research, Indiana University School of Medicine, 702 Barnhill Drive, Indianapolis, IN 46202.** *An Equal Opportunity Employer.*

JAVITS FELLOWSHIP, NEUROIMMUNOLOGY. Two-year research position for M.D. or M.D./Ph.D. with background in neurology, neuropathology, neurosurgery or related area, investigating immune-mediated demyelinating diseases. Projects include role of endothelial cells in EAE (Dore-Duffy and Swanborg); resistance mechanisms in adoptive EAE (Tse); effects of monokines on Schwann cell repair (Lisak); antibodies to glycoconjugates and Schwann cell function (Benjamins). Send résumé and names of 3 references to: **S. Wasmundt, Neurology, Wayne State University School of Medicine, 6E UHC, 4201 St. Antoine Boulevard, Detroit, MI 48201.** *Affirmative Action/Equal Opportunity Employer.*

POSTDOCTORAL ASSOCIATE/RESEARCH SCIENTIST. Positions available immediately for two molecular biologists to join a group dedicated to understanding the structure-function relationship and interaction of human salivary molecules at the molecular level. Projects involve cloning, sequencing and expression of genes and their mutant forms in *E. coli*, and/or baculovirus and mammalian expression systems as well as the purification and functional analysis of recombinant proteins. A strong background in molecular biology is required with additional experience in protein chemistry. Ph.D. or equivalent with up to three years of postdoctoral experience required. Send curriculum vitae and three letters of reference to: **Michael J. Levine, Professor, Department of Oral Biology, State University of New York, 109 Foster Hall, Buffalo, NY 14214.**

The Research Foundation of SUNY/Buffalo is an Affirmative Action/Equal Opportunity Employer.

POSTDOCTORAL RESEARCH ASSOCIATE Department of Biochemistry/Molecular Pathology

Postdoctoral Research Associate position is available to participate in a research project to study the molecular mechanism of regulation of bile acid synthesis and cholesterol homeostasis by purification of cytochrome P450 enzymes in the pathway, gene cloning and sequencing, heterologous expression, and site-directed mutagenesis. Experience in molecular biology, enzymology and tissue culture techniques are prerequisites. Send résumé to: **Dr. John Y.L. Chiang, c/o Human Resources, Northeastern Ohio Universities College of Medicine, 4209 State Route 44, P.O. Box 95, Rootstown, OH 44272-0095.** *Equal Opportunity/Affirmative Action Employer.*

POSTDOCTORAL RESEARCH ASSOCIATE

Position available to Ph.D. or M.D. for studies of T cell tolerance in marrow grafting, focused on the functional interaction between T cells and allogeneic hematopoietic stem cells. Please send curriculum vitae and names of 3 references to: **Dr. Claudio Anasetti, Immunogenetics Program, Division of Clinical Research, Fred Hutchinson Cancer Research Center, 1124 Columbia Street, Seattle, WA 98104.** Or FAX: (206) 667-4648. *We are an Equal Opportunity Employer and provide a smoke-free environment.*

SCIENCE recruitment ads reach thousands of scientists in all disciplines, worldwide. Classified Advertising telephone: 202-326-6555. FAX: 202-682-0816.

POSITIONS OPEN

NEUROLOGICAL INSTITUTE Columbia-Presbyterian Medical Center

RESEARCH ASSOCIATE position for electrical engineer in hospital-based laboratory investigating clinical motor physiology. Applicant must have Master's degree in electrical engineering or equivalent, expertise with data acquisition electronics and programming in the Macintosh operating system. Preference given to candidates with experience in physiological data collection and analysis. Send curriculum vitae and three letters of reference to: **Dr. Seth Pullman, Director, Clinical Motor Physiology Laboratory, The Neurological Institute, Columbia-Presbyterian Medical Center, 710 West 168th Street, New York, NY 10032.** *Columbia University is an Equal Opportunity/Affirmative Action Employer.*

RESEARCH ASSOCIATE

Currently seeking an individual with a master's or Ph.D. to run a lab, under the direction of Dr. Cave, that focuses on the pathogenesis of *Helicobacter pylori* infection. The individual should have 3 to 5 years of laboratory experience and be familiar with separation techniques applicable to bacterial products. The project also involves the use of bioassays and molecular genetics. We offer an excellent compensation and benefits package. Please send résumés to: **Employment Office, St. Elizabeth's Hospital, 736 Cambridge Street, Boston, MA 02135.** *Equal Opportunity Employer.*

RESEARCH ASSOCIATE to conduct research on cellular and molecular basis of tumor suppressor proteins in cell growth regulations, using genes techniques in biochemical, molecular and cell biology and immunology. Ph.D. in Biochemistry; 3 years of experience. Must have published papers. Salary: \$30,000. Position and interview: Los Angeles. Send résumé to: **Job No. NOF 779, P.O. Box 269065, Sacramento, CA 95826-9065** no later than March 8, 1993.

RESEARCH ASSOCIATE Duke University Medical Center

Postdoctoral position available immediately to study the molecular genetics of inherited coagulation disorders and structure-function relationships in coagulation proteins. Experience in molecular biology and biochemistry is desirable. Please send curriculum vitae, list of publications and names of three references to: **Dr. William H. Kane, M.D., Ph.D., Department of Medicine Box 3656, Duke University Medical Center, Durham, NC 27710.** FAX: 919-681-6160. *An Affirmative Action/Equal Opportunity Employer.*

The Biotechnology Patent Examining Group of the Patent and Trademark Office is currently recruiting scientists for positions as **PATENT EXAMINERS.** Individuals with advanced degrees and/or equivalent experience in the fields of immunology, molecular biology, gene therapy, transgenic animals, animal science, biochemistry, protein engineering and microbiology are urged to send a résumé or SF-171 to the following address:

**Patent and Trademark Office
Office of Personnel
Box 171
Washington, DC 20231
K. Clark (180)**

For further information, call (703) 308-1123. U.S. CITIZENSHIP IS REQUIRED FOR EMPLOYMENT.

SUPERVISORY RESEARCH FISHERY BIOLOGIST, or SUPERVISORY RESEARCH WILDLIFE BIOLOGIST, or SUPERVISORY RESEARCH ZOOLOGIST. The U.S. National Marine Fisheries Service announces a permanent interdisciplinary position. Serves as Chief of the Marine Mammal Division, Southwest Fisheries Science Center, La Jolla, California and is responsible for original research related to interactions between marine mammals and U.S. commercial fisheries. Must be familiar with marine mammal biology and research, and must have demonstrated leadership skills. Must have a publication record demonstrating knowledge of the subject matter. Salary: GM-15, \$66,609 to \$86,589 yearly. Application SF-171 and curriculum vitae must be received by close of business on March 8, 1993, at: **WASC, Personnel Division, 7600 Sand Point Way N.E., Seattle, WA 98115-0070.** Enter W/FSC93-075PM on item #1 of SF-171. *Equal Opportunity Employer.*

Domain Coordinators

Public Health • Demographics

The Consortium for International Earth Science Information Network (CIESIN), located in Mid-Michigan, was established to facilitate worldwide access to, use of, and understanding of information about global environmental change.

CIESIN provides data products and services which enable interdisciplinary research to improve our understanding of the human dimensions of global environmental change in conjunction with NASA's Earth Observing System program. One of CIESIN's major goals is to present this data in more useful formats to a broad user community, including both natural and social scientists.

To help in this mission, we have two newly-created opportunities for Domain Coordinators in Public Health and in Demographics to develop CIESIN data and information resources relevant to human dimensions research issues associated with the domain. These positions, which report to the Data & Information Resources Branch Director, will also interact with organizations, agencies and individuals who maintain or contribute related resources, and support needs of customers requiring access, use and understanding of domain data.

Requirements include a Master's of Science degree in a domain-related discipline or Bachelor's degree and five years experience in domain-associated research, working knowledge of global environmental change research, and experience with domain data archives and data analysis. A related PhD and experience and/or training in the use of information technologies, such as DBMS, GIS, visualization, and statistical analysis, are preferred. Familiarity with U.S. GCRP, IGBP, HDP or WCRP, as well as NASA and the EOSDIS program, is a plus.

We offer a competitive salary, comprehensive benefit program, and the excitement of a growing organization. For consideration, please forward your resume and cover letter indicating salary requirements in confidence to:



CIESIN
Human Resources Dept. - DC
2250 Pierce Rd.
University Center, MI 48710

An Equal Opportunity Employer

MOLECULAR BIOLOGY & BIOCHEMISTRY POSITION

The Department of Dermatology, University of Michigan has available a postdoctoral fellow position to study molecular mechanisms of skin activation. The objective of the project is to identify key novel genes that regulate skin growth and inflammation in response to external stimuli. The Department of Dermatology offers a multi-disciplinary research environment, competitive salary, and excellent opportunity for career development.

Send curriculum vitae to:
John J. Voorhees, M.D., Professor and Chairman, Department of Dermatology, University of Michigan, 1301 E. Catherine, Kresge I, R6558, Ann Arbor, Michigan 48109-0528.

The University of Michigan is a non-discriminatory, Affirmative Action employer.



THE UNIVERSITY
OF MICHIGAN
DEPARTMENT OF
DERMATOLOGY

INTERNATIONAL CAREER OPPORTUNITIES

Now **SCIENCE** makes it easy to reach scientists both in the U.S. and abroad! Located in the 26 March recruitment advertising section of **SCIENCE**, this new bannered section will be reserved *exclusively* for international employment opportunities. Each page will be specifically marked for easy reference to ensure that your international employment opportunity will be seen by **SCIENCE's** 155,000 circulation. **No other publication offers such a unique way to target potential U.S. and European candidates.**

BONUS DISTRIBUTION:

Experimental Biology (FASEB) Meeting
March 28–April 1 in New Orleans, LA
Over 10,000 life sciences researchers worldwide
will be attending.

Don't miss this unique opportunity! Call Janis Crowley, Recruitment Advertising Manager, at (212) 496-7704. In Europe: Call or fax Annemarie Vis, European Recruitment Sales Manager in England on +44-223-424-695

SPACE RESERVATION DEADLINE:

MONDAY, MARCH 8, 1993

POSITIONS OPEN

University of California, San Diego (UCSD), Scripps Institute of Oceanography (SIO), California Space Institute (CSI) has one opening for an **ASSISTANT PROJECT SCIENTIST**. Applicants should have a Ph.D. in mechanical engineering or physics.

Past experience with radiative transfer calculations using models based on LOWTRAN to study greenhouse trapping in the atmosphere required. Candidates should be able to perform analyses of surface energy budget and its special characteristics. The chosen Project Scientist should be able to provide leadership in the PI's absence and make original contributions to our project on Instrument Investigation, Clouds and Earth Radiant Energy System (CERES). The project tasks include using a radiation code with spectral resolution of 20cm⁻¹ to model radiances in the infrared spectrum. The successful candidate will compute climatology of the surface radiation budget in the window and non-window channels to determine the relation between window and nonwindow channels. (Assistant) Project Scientist is not a career position; appointment may be made for a maximum of two years at a time; total service in this title is limited to six years. Appointees may not act as sole Principal Investigator, but may serve as co-PI by exception. Applicants should submit a résumé and a list of publications prior to the closing date of March 31, 1993 to:

Hung Nguyen
Scripps Institution of Oceanography
University of California, San Diego
La Jolla, CA 92093-0239

Salary will be commensurate with rank within UC salary scales. *The University of California is an Equal Opportunity/Affirmative Action Employer.*

ENVIRONMENTAL SCIENTIST: 3D/Environmental Services, Inc., a rapidly growing, multidisciplinary consulting firm is seeking experienced individuals at the Ph.D., M.S., and B.S. level. A specialty in forestry and/or plant taxonomy is preferred, but expertise in wildlife biology, soils science, and hydrology will be considered. Experience with habitat restoration/creation, multidisciplinary projects, and project management is required. Strong written and oral skills are essential. Send application materials to: **Dr. Virgil Brack, Jr., 3D/ESI, 781 Neeb Road, Cincinnati, OH 45233.**

BELUGA WHALE POPULATION GENETICS: Molecular population geneticist experienced in sequencing mitochondrial DNA, investigating variability of nuclear DNA, and analyzing molecular population genetic data, to conduct research into the stock structure of beluga whale populations. Position available immediately. Ph.D. or equivalent required. Send applications, including curriculum vitae, publications list, selected reprints, and names and addresses of two professional references to:

Dr. James W. Clayton
Canada Department of Fisheries and Oceans
501 University Crescent
Winnipeg, Manitoba, Canada R3T 2N6
FAX: 204-984-2403

Palo Alto Institute of Molecular Medicine. Non-profit basic research institute seeks **BIOMEDICAL SCIENTISTS** with RO1 or other funding. Work near the birthplace of biotechnology! Send curriculum vitae and research interests to: **Research, Box 294, Redwood City, CA 94064.**

ECOLOGIST

Greenfalk Consultants, a small environmental consulting firm, seeks a broadly trained ecologist (Ph.D. or equivalent) interested in contributing to ongoing research on birds of prey and developing an externally funded research program. Greenfalk currently specializes in studies of impacts on avian species, but plans to expand into studies of other taxa, as well as forest, wetland and aquatic ecology. Population and landscape orientation desirable. Greenfalk encourages development of personal research interests and provides solid support for equipment and computer needs. Send résumé, names and addresses of 3 references, and letter detailing research interests to: **John Marzluff, Greenfalk Consultants, 8210 Gantz Avenue, Boise, ID 83709.**

ANNOUNCEMENTS

REQUEST FOR APPLICATIONS AVAILABLE

The Center for Indoor Air Research, sponsor of scientific research on the full gamut of indoor air topics, has available its 1993 Request for Applications booklet. Applications for January 1, 1994, funding must be received by June 1, 1993. For more information on the Center for Indoor Air Research and/or a copy of the Request for Applications booklet, call or write:

Center for Indoor Air Research
1099 Winterson Road, Suite 280
Linthicum, MD 21090
Telephone: (410) 684-3777
FAX: (410) 684-3729

ALZHEIMER'S DISEASE RESEARCH CENTERS' NATIONAL CELL BANK

The Alzheimer's Disease Research Center's Cell Bank acquires, maintains and distributes lymphocyte cell lines and DNA for use by investigators studying Familial Alzheimer's Disease. Samples are available from numerous individuals with a family history of Alzheimer's Disease, many with autopsy confirmation of AD. Requests for cell lines and DNA should include a brief description of the proposed project along with estimates of the number of samples needed. The Cell Bank is funded by a grant from the National Institute of Aging with support from the National Alzheimer's Association. Recipients are requested to acknowledge the Cell Bank as the source of samples in any publication resulting from use of these cells. Inquiries and requests should be submitted to:

P. Michael Conneally, Ph.D.
Indiana University School of Medicine
Department of Medical and Molecular Genetics
975 West Walnut Street
Indianapolis, IN 46202-5251
Telephone: 800-526-2839

MEETINGS

FOURTH INTERNATIONAL VASOPRESSIN CONFERENCE

Berlin, May 23-27, 1993

Organized by: **Dietmar Richter, Hamburg; Peter Gross, Berlin; Gary Robertson, Chicago.**

The conference will cover a broad area of topics, including:

Molecular biology of vasopressin gene regulation, and vasopressin receptors;
Posttranslational events in vasopressin gene regulation;
Familial disorders of vasopressin;
Vasopressin and oxytocin antagonists;
AVP action and postreceptor events in the kidney;
Water and sodium transport; Renal concentration mechanism;
Vasopressin in clinical disorders; AVP in cardiovascular function;
AVP in the central nervous system.

The abstract deadline is **March 31, 1993.** Registration and abstract materials are available from: **Peter Gross, M.D., Nephrology, Klinikum Steglitz, Hindenburgdamm 30, D-1000 Berlin-45, FRG; FAX: 0049 30 798 4141.**

COMPUTER MARKETPLACE

STATISTICAL SOFTWARE

Accurate, easy to learn. For MS-DOS. Includes t-tests, ANOVA, chi-square tests, DOE, survival analysis, sample size and power analysis, curve fitting, graphics, more. Spreadsheet-style interface. Transfer graphics to other programs. Thousands of users. Base system: \$125. Complete: \$395. Ask for Dr. Hintze (PhD statistician) at (801) 546-0445. FAX: (801) 546-3907. NCSS, 329 North 1000 East, Kaysville, UT. 84037.
Mention this ad to receive 10% discount.

Circle No. 6 on Readers' Service Card

MARKETPLACE

DNA

\$2.⁵⁰ base

break-thru

Around the
no - set up
5.0 OD's (200 µg)

Column purified

Gel picture Q.C

48 hour delivery

BIO-SYNTHESIS

1-800-227-0627 Fax: 214-420-0442

Circle No. 15 on Readers' Service Card

GROWTH MEDIA IN CAPSULES

FOR BACTERIA & YEAST
More than 100 Molecular Biology
Formulations in Stock.

Request comprehensive price list.
Custom formulations in 48 hours!

800-424-6101
FAX 619-598-0116

✓ 810 101

Circle No. 9 on Readers' Service Card

CUSTOM DNA SYNTHESIS

We use Applied Biosystems Synthesizers • Prices from \$2.50 per base plus setup
PAGE and HPLC Purification Available

The Midland Certified Reagent Company
800-247-8766 or FAX 915-694-2387

Circle No. 7 on Readers' Service Card

U.S. RESIDENCE—RESEARCHERS AND PROFESSORS

New INS laws make it easier for you to obtain
U.S. residency (EB-2, EB-1, etc.).
FAX, write or call for free brochure.

LAW OFFICES OF S. BERNARD SCHWARZ
381 PARK AVENUE SOUTH, SUITE 617
NEW YORK, N.Y. 10016
TEL 212/447-0950 FAX 212/447-0804

Former INS Attorney, Professor of Law, nearly 20 years experience

Cell Death Measurement

INCLUDING APOPTOSIS

APO-PAK™ For Research Use Only

ADVANCED MAGNETICS, INC.
1-800-343-1346 617-497-2070 (N.J.)

Circle No. 17 on Readers' Service Card

TISSUE CULTURE MEDIA

CUSTOM PREPARATIONS

1 WEEK

Cell Enterprises • (800) 423-8357

Circle No. 22 on Readers' Service Card

Custom DNA
Purified and Delivered in 48 hours.

\$7.50 per base • Purified
Guaranteed minimum 100 µg DNA

Research Genetics
1-800-533-4363

Circle No. 3 on Readers' Service Card



Are you plugged in yet?

The Online Journal of

CURRENT CLINICAL TRIALSTM

Editor-in-Chief

Edward J. Huth, MD, Editor Emeritus, *Annals of Internal Medicine*

The only peer-reviewed primary medical journal that publishes research findings and clinical studies
48 HOURS AFTER ACCEPTANCE!

The Online Journal of Current Clinical Trials (OJCCT) is the first journal to successfully combine the rigorous editorial standards of the most prestigious primary medical journals with the power and immediacy of online technology.

Rapid electronic access via your telephone to critical information. . .

OJCCT publishes peer-reviewed research reports, review articles, metaanalyses, methodology papers, and editorials on trials of therapies, procedures and other interventions relevant to patient care in all medical specialties. Complete, fully-structured articles with typeset quality graphs, tables, equations, and images—not merely abstracts—are published and distributed electronically within 48 hours of acceptance.

And much more, all for the subscription price of a traditional journal...

- Fax notification to subscribers about new articles in their specified fields
- References in **OJCCT** documents linked automatically at no charge to corresponding *MEDLINE* abstracts
- Linkage of subsequently published documents (e.g., follow-up reports) to the original document
- Reprints

Now available via Internet...

Unlimited online access via Internet, OCLC Network, or Compuserve. **OJCCT** publication is continuous from July 1992 to the present. Subscribers have access from the moment the subscription becomes active to all prior articles that have appeared.

1993 SUBSCRIPTION:
\$120 plus telecommunication charges

We invite you to subscribe and contribute to this revolutionary new journal.

THE ONLINE JOURNAL OF CURRENT CLINICAL TRIALS

1333 H Street, NW
Washington, DC 20005
202-326-6446
202-842-2868 fax

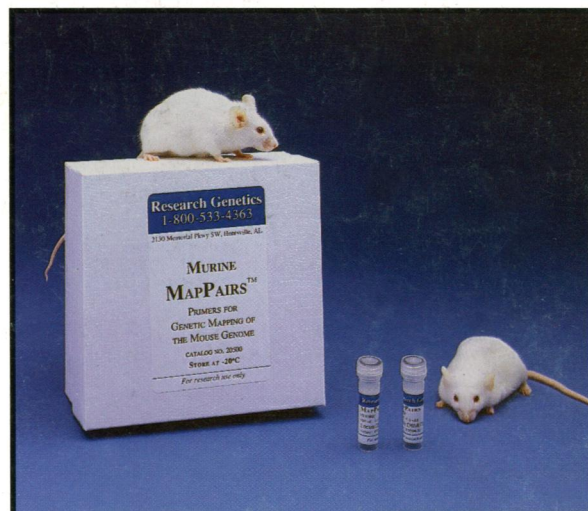


PRIMARY JOURNALS ONLINE

Editorial excellence, technological know-how

A joint venture of the American Association for the Advancement of Science (AAAS) and Online Computer Library Center, Inc. (OCLC)

MARKERS *for* GENOME RESEARCH



MAPPAIRS™

MAPPAIRS™ are microsatellite* markers consisting of a pair of PCR[†] primers which flank a simple sequence repeat which is polymorphic.

**1282 Human, 988 Mouse and 158 Human Y Chromosome
MAPPAIRS™ are in stock**

\$20.00 / Pair

All are supplied in quantities of 200 µl at 6.6 µM

- Rat MAPPAIRS™ are expected to be released in April 1993 •

NEW

Weissenbach Human Linkage Set

Reported in a recent issue of Nature (Weissenbach, et. al., Vol. 359, pp794-801) Research Genetics is pleased to offer this set of 808 microsatellite* markers which covers approximately 90% of the estimated length of the human genome.

Call or FAX to receive a complete list of markers

*The use of polymorphic simple sequence repeats is covered by U.S. Patent 5,075,217 assigned to The Marshfield Clinic. The license for primers, reagents and kits has been assigned to Research Genetics.

Research Genetics

2130 Memorial Pkwy SW, Huntsville, AL 35801

USA or Canada 1-800-533-4363

UK 0-800-89-1393

FAX 1-205-536-9016

Circle No. 2 on Readers' Service Card

Custom DNA

Purified and Delivered in 48 hours

Research Genetics

1-800-533-4363

MapPairs™ is a trademark of Research Genetics

†PCR is covered by patents issued to Cetus Corp. and is licensed by Research Genetics