

### Custom Reporting Chromatography Software

Report Formatting Utility Software for Axxiom 700 Series Chromatography Workstations allows users to create customized reports from standard data files. Reports can include intra- and inter-run statistics and tabulations of selected peaks from multiple injections. The software includes batch file translation utilities that can convert existing chromatogram and report files to various formats compatible with versions of Lotus 1-2-3. The software runs on any Axxiom Chromatography 727, 737, 747, or Remote Editor System. Axxiom Chromatography. Circle 518.

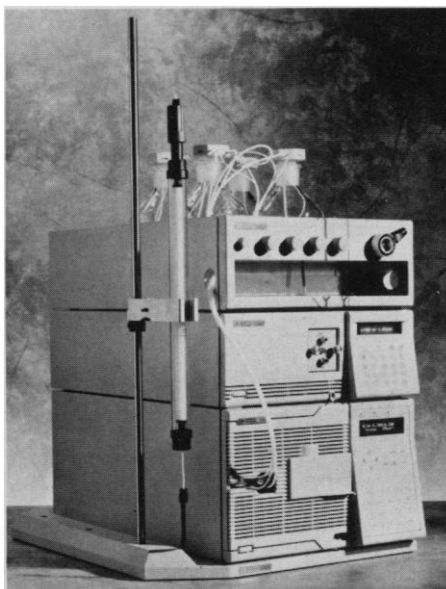
### Vacuum Blotter for Fast Transfers

The Model 785 Vacuum Blotter allows the transfer of nucleic acids in as little as 90 min. The system uses a low vacuum for transfer. A regulator adjusts the source pressure. A complete range of gel sizes can be transferred, ranging from a full-size 20 cm by 25 cm gel to a 7 cm by 10 cm minigel, by using window gaskets of different sizes. The unit is chemically resistant to commonly used acids and bases and is easily assembled and disassembled by means of spring latches on the sealing frame. Bio-Rad Laboratories. Circle 542.

### Corrosion-Resistant HPLC Modules

The HP 1050 Ti Series are titanium alloy versions of high-performance liquid chromatography (HPLC) modules. They are meant for chemical separations that use aggressive solvents, such as the corrosive mobile-phase reagents used in protein purification and ion chromatography. The modules include an isocratic pump, quaternary gradient pump, manual injector, autosampler, and variable wavelength detector. The titanium alloy provides greater resistance to

Newly offered instrumentation, apparatus, and laboratory materials of interest to researchers in all disciplines in academic, industrial, and government organizations are featured in this space. Emphasis is given to purpose, chief characteristics, and availability of products and materials. Endorsement by *Science* or AAAS is not implied. Additional information may be obtained from the manufacturers or suppliers named by circling the appropriate number on the Readers' Service Card and placing it in a mailbox. Postage is free.



solvents than stainless steel. Applications include biological research, in which the choice of chromatographic mode may include ion-exchange or hydrophobic interaction; the purification of hydrophobic proteins, which may require formic acid in the mobile phase; the purification of biologically active material where exposure to iron ions could inactivate the enzymes under study; and ion chromatography, where high salt concentrations may be used to achieve high column sensitivity. Hewlett-Packard. Circle 541.

### Antibodies

Sheep polyclonal antibody to human C2 is available from stock. Serotec. Circle 544.

A range of rat antibodies to oncoproteins include antibodies to: v-Erb B, human c-Myc, c-Mil/c-Raf/v-Mil, v-Myb/human c-Myb, v-Myc, v-Src, c-Fos, c-Fos P3, c-Fos P9, c-Fos P10, c-Fos B, and c-Jun. Caltag Laboratories. Circle 545.

### Genetic Thermal Cycling Systems

New thermal cycling systems offer a modular approach with a choice of two cycler models and a low-temperature cooling module. Both cycler models hold 48 0.5-ml microcentrifuge tubes. They feature microprocessor control and a 0° to 10°C temperature range with  $\pm 0.5^\circ\text{C}$  guaranteed uniformity for consistent, reproducible sample yields. GTC-1 is the base cycler model for routine applications in research or teaching labs. GTC-2 is the deluxe version with a more powerful microprocessor, programmable keypad, alphanumeric liquid-crystal

display readout, RS-232 interface, and programmable autoextension to extend soak points. The low-temperature cooling module can be used with either cycler model and will accommodate more than one cycler unit. Precision Scientific. Circle 557.

### Frozen Sample Holder

KOOL KUP solves the problem of keeping biological samples in microcentrifuge tubes from thawing too rapidly after they have been transferred from the freezer to the bench. KOOL KUP holds assorted sizes from 0.5-ml and 1.5-ml microcentrifuge tubes to larger enzyme tubes. KOOL KUP thaws from  $-20^\circ$  to  $0^\circ\text{C}$  in no less than 40 min when stored in the same freezer as the samples. It is constructed of an insulated aluminum block housed in a rugged outer container with an integral cover that permits stacking. Instruments for Research and Industry. Circle 556.

### Literature

*Hypercarb Guide Book* explains the first commercial porous graphitized high-performance liquid chromatography column. The brochure outlines what Hypercarb is, how it compares with silica and polymeric columns, how it can solve separation problems, and why it should be used for extreme pH conditions and for the separation of closely related compounds. Shandon Scientific Ltd. Circle 574.

*PC Software for Biotechnology and Biochemistry, Spring, 1990*, has more than 30 commercial, scientist-author, shareware, and public domain software programs. The programs can be used to pick the best DNA probes and primers, determine nucleic acid structure, draw restriction maps, make a database of DNA clones, draw molecular models, and more. BioCode Division, Coral Software. Circle 575.

*Hoefer Scientific Instruments* is the company's 1990-91 electrophoresis catalog. New products include a gel dryer that circulates warm air over gels held in frames and a pulsed-field unit that separates high-molecular weight samples by rotating a gel between two stationary electrodes. Hoefer Scientific Instruments. Circle 576.

*Digimetry Instrument Couplers: The Key to Accurate Chromatography* is a four-page brochure describing chromatography instrument couplers, the critical links that turn the output of chromatographs and other analog instruments into the digital signals that can be processed by computers. Beckman Instruments. Circle 434.

# Personnel Placement

**SCIENCE** publishes each Friday, except the last Friday of the year, and is mailed on issue date. Personnel advertising is accepted only with the understanding that the advertiser does not discriminate among applicants on the basis of race, sex, religion, age, color, national origin, handicap, or sexual preference. **SCIENCE** reserves the right, in its discretion, to decline to publish advertisements submitted to it.

## LINE CLASSIFIED ADVERTISEMENTS

**DEADLINE:** Thursday, 10 a.m., 2 weeks prior to issue date. Advertising is accepted only in writing.

**POLICIES:** All classified ads will be edited and typeset according to **SCIENCE** style guidelines. NO ABBREVIATIONS. Any deadline for applications stated in ad must be at least 2 weeks after date of issue in which ad appears.

**CLASSIFICATION:** **SCIENCE** publishes line classified ads under the following headings: **Positions Open, Employment Agencies, Fellowships, Situations Wanted, Courses and Training, Meetings, Announcements, and Marketplace.** Advertisers should specify classification desired; however, **SCIENCE** reserves the right to decline classification requests which it believes may be misleading to readers.

**RATE:** \$41 per line, \$410 minimum, per week. One line equals 52 characters and spaces; centered headings equal 32 characters and spaces per line. No charge for use of blind box number. No agency commission for ads less than 40 lines. To **ESTIMATE** ad cost, structure ad copy on a 52-character line; include any desired heading on 32-character lines. Each line of heading, one line of white space between heading and body of ad, and all partial lines (including centered reply information, if desired) are counted as full lines. Multiply total number of lines  $\times$  \$41 = approximate cost of ad, per week. (This is an approximate cost ONLY. Allow for variation between estimated lines and actual typeset lines and resulting final cost. Purchase orders must allow for some degree of flexibility and/or adjustment. **SCIENCE** cannot provide proofs of typeset ads.)

**PREPAYMENT DISCOUNT:** A 3% cash discount is granted to all prepaid line ads. Prepayment in U.S. dollars by checks drawn on U.S. banks is required for all foreign ads.

**BOXES AND LOGOS:** Any 1-column line classified ad can be boxed and/or published with logo. No extra production charge for use of box or logo. For boxed ads, one line equals 48 characters and spaces; two additional lines will be added to cost of ad to allow for top and bottom rules. Logos are billed according to number of lines needed to accommodate logo.

**SITUATIONS WANTED ADS:** As a service to AAAS members in good standing, **SCIENCE** offers free placement of Situations Wanted ads for individuals seeking full-time or part-time employment. A blind box may be used. Ads must be submitted in writing with text of 20 words or less, not including address or box number, and are limited to two insertions per member in each calendar year. Please enclose **SCIENCE** mailing label including AAAS membership number when submitting ad.

**CANCELLATIONS:** Deadline for cancellations is 10 a.m. Tuesday, 10 days prior to issue date.

Address ad copy or requests for information to:

**SCIENCE Classified Advertising**  
1333 H Street, NW, Room 940  
Washington, DC 20005  
Telephone: 202-326-6555  
FAX: 202-682-0816

## MARKETPLACE AND DISPLAY PERSONNEL ADVERTISEMENTS

For rates, deadlines, and information about fractional display ads (1/6 page and larger) and all **Marketplace** listings of available products and services, contact:

**Scherago Associates, Inc.**  
1515 Broadway  
New York, NY 10036  
Telephone: 212-730-1050  
FAX: 212-382-3725

## RESPONSES TO EMPLOYMENT ADS

Applicants should read Positions Open ads carefully in order to submit all required material when responding, and should especially check for any stated deadline for receipt of applications. **SCIENCE** encourages applicants for positions to investigate employment laws, non-discrimination policies, visa requirements, and cultural differences in the country advertising for employees.

To reply to a blind box ad, address correspondence to:

Box (give number)  
**SCIENCE Classified Advertising**  
1333 H Street, NW, Room 940  
Washington, DC 20005

## POSITIONS OPEN

Several full-time faculty positions are available for **ANATOMIC AND CLINICAL PATHOLOGISTS** in the Department of Pathology at the Wayne State University School of Medicine. Faculty rank to be commensurate with experience and qualifications. Responsibilities will include teaching, research, and hospital service. Candidates must be Board-certified or Board-eligible, licensable in the state of Michigan, and exhibit scholarship potential. Send curriculum vitae and three references to: **John D. Crissman, M.D., Chairman, Department of Pathology, Wayne State University, School of Medicine, 540 East Canfield, Detroit, MI 48201.** An Equal Opportunity/Affirmative Action Employer, M/F.

**ASSISTANT/ASSOCIATE PROFESSOR**, 3-year, renewable, fixed-term appointment in fisheries with the Coastal Oregon Productivity Enhancement (COPE) research program, located in Newport, Oregon. Available 1 November 1990. Responsibilities are to develop and conduct fish habitat/forest management research and continuing education programs as coordinator of an interdisciplinary team. Ph.D. in fisheries or a closely related field; experience in research in aquatic habitat and managed forest relationships desirable. Application closing date: 14 September 1990. A more detailed position description is available. Send inquiries or letter of application, résumé, three letters of recommendation, and transcripts to: **COPE Search Committee, Forest Engineering, Oregon State University (OSU), Corvallis, OR 97331.** An Affirmative Action/Equal Opportunity Employer; complies with Section 504, Rehabilitation Act of 1973. OSU is responsive to dual-career couples.

## ASSISTANT CURATOR FLORA OF CHINA

Missouri Botanical Garden invites applications for a new flora of China position. The position incumbent is eligible for all appropriate garden benefits and is stationed at the Natural History Museum in London, initially for a 3-year period. Primary tasks include reviewing treatments in relation to herbarium specimens, liaison with potential coauthors and reviewers, collaboration with European researchers and travel to other European herbaria. Some time available for research activities, but first priority will be functions outlined herein. Applicants must have a Ph.D. in systematic botany. The most qualified candidates will demonstrate scientific expertise, flexibility, resourcefulness, outstanding communication skills, and possess a high level of energy and ability to work with and lead people.

Interested persons should apply immediately; applications will be accepted until position is filled. Submit your curriculum vitae and three letters of reference to: **Director, Human Resources, Missouri Botanical Garden, P.O. Box 299, St. Louis, MO 63166.**

Equal Opportunity Employer. Minorities and women encouraged to apply.

## URBAN HORTICULTURIST

The Department of Biological Sciences, University of Nevada, Las Vegas (UNLV), and the Department of Plant Science, University of Nevada, Reno (UNR), are seeking to fill a joint 12-month tenure-track position at the **ASSISTANT/ASSOCIATE PROFESSOR** rank in the area of urban horticulture. This position will be located on the UNLV campus, and will be 75% research/25% teaching. The successful candidate will be expected to develop an independently funded research program addressing plant stress physiology in the arid urban environment, and to work closely with existing faculty in the environmental biology Ph.D. program. Ph.D. in plant physiology, horticulture, or a closely related discipline is required, and a strong background in stress physiology or urban horticulture is preferred. Send letter of application, curriculum vitae, a brief statement of research and teaching interests and three letters of recommendation by 10 September 1990 to:

**Dr. Stanley D. Smith, Chair  
Urban Horticulture Search  
Department of Biological Sciences  
University of Nevada, Las Vegas  
Las Vegas, NV 89154**

The University of Nevada, Las Vegas, and the University of Nevada, Reno, are Equal Opportunity/Affirmative Action Employers. UNLV and UNR employ only U.S. citizens and aliens authorized to work in the United States.

## POSITIONS OPEN

### GENETIC TRANSFORMATION OF PLANTS

**ASSISTANT PROFESSOR.** The Department of Plant Pathology and Physiology, Clemson University, announces a tenure-track, 12-month, assistant professor level position to be 75% research, 25% teaching. Research emphasis to be on genetic transformation of plants. A Ph.D. in plant pathology/physiology or associated biological science required. Persons with postdoctoral experience will receive preference. Evidence of publications and promise of securing extramural funding expected. This person will be part of a group of scientists with a common interest in use of molecular genetics to develop pest and pesticide resistance and improved production characteristics of plants. Emphasis will be on plant cell transformation (gene identification, isolation, transfer, and regeneration of transformants). Teaching will include a graduate course stressing physiological/molecular techniques in plant pathology/physiology. Standard benefits. Salary competitive. A letter of application, résumé, transcripts, three letters of evaluation, and a brief statement of goals should be sent to: **Dr. O. J. Dickerson, Department of Plant Pathology and Physiology, Clemson University, Clemson, SC 29634-0377.** Telephone: 803-656-3450. Applications will be received until 1 September 1990. *Clemson University is an Equal Opportunity/Affirmative Action Employer.*

### BIOCHEMIST/PHARMACOLOGIST

Large neuroscience research laboratory seeks biochemist with background/experience in isolation/characterization of novel neurotransmitters/receptors/proteins. To **ASSISTANT PROFESSOR** based on experience/background. Send curriculum vitae and bibliography to: **D. J. Reis/K. Koenig, Division of Neurobiology, Cornell University Medical College, 411 East 69th Street, KB410, New York, NY 10021.** Equal Opportunity/Affirmative Action Employer, M/F/H/V.

### ASSISTANT PROFESSOR RESEARCH TRACK

**NUCLEIC ACID CHEMIST.** To participate in active research group studying free radical-induced DNA damage and repair. Ph.D. in chemistry and postdoctoral experience are required. Prior experience with oligonucleotide synthesis is highly desirable. Applicant will be expected to participate fully in departmental activities and develop an independent research program. Postdoctoral positions are also available.

Please send curriculum vitae and three letters of reference to: **Dr. Susan S. Wallace, Department of Microbiology and Molecular Genetics, University of Vermont, Given Building, Burlington, VT 05405.**

Women and minorities are encouraged to apply. The University of Vermont is an Equal Opportunity/Affirmative Action Employer.

### CARDIOVASCULAR PHYSIOLOGY

The Department of Biology at San Diego State University (SDSU) invites applications for a tenure-track position to be filled in the fall of 1990 at the **ASSISTANT, ASSOCIATE, or FULL PROFESSOR** level. We seek an individual to complement present faculty research and teaching interests in biochemical and molecular studies of cardiovascular function. Desirable areas of research expertise include (i) cardiac specific gene expression and function, (ii) vascular smooth muscle and endothelial cell function, (iii) excitation-contraction/secretion coupling mechanisms in cardiac or smooth muscle, (iv) receptor and/or ion channel structure and function, and (v) lipoprotein and/or cholesterol metabolism. The successful applicant is expected to develop, or continue, an externally funded research program and to participate in a flexible program of teaching undergraduate and graduate (M.S. and Ph.D.) students. Postdoctoral experience is required. By 15 September 1990 send curriculum vitae, selected reprints, a brief statement of professional goals and research interests, and names, addresses, and telephone numbers of three references to: **Chair, Cardiovascular Search Committee, Biology Department, San Diego State University, San Diego, CA 92182-0057.** Applications from women, ethnic minorities, and disabled individuals are especially encouraged. SDSU is an Affirmative Action/Equal Opportunity Employer.

## POSITIONS OPEN

Opening exists in the Dermatology Department for a **CLINICAL PROFESSOR**, must be Board-certified in Dermatology. Board certification in internal medicine, hematology/oncology preferred. Extensive experience in clinical teaching and research. The incumbent will function as Melanoma Program Director/Chief of Dermatology. Salary: \$56,300 to \$101,900. Send applications to: **Bruce U. Wintroub, M.D., 515 Spruce Street, San Francisco, CA 94118**. Filing deadline: 10 August 1990. *The University of California is an Affirmative Action/Equal Opportunity Employer.*

### ASSISTANT PROFESSOR PLANT SYSTEMATICS

Applications are invited for a tenure-track position beginning in the fall semester 1991. Applicants must have an earned doctorate in monographic systematics, preferably followed by postdoctoral experience in macromolecular techniques. The successful candidate will be expected to teach courses in undergraduate and graduate plant systematics, and will be required to develop an innovative and productive research program that utilizes both classical and state-of-the-art molecular biology techniques. Applicants should submit a letter of research goals and teaching interests, a detailed résumé, and a list of five individuals with addresses who might transmit letters of recommendation upon request. Applications are to be addressed to: **Chairman, Selection Committee, Department of Botany, The University of Texas, Austin, TX 78713** so as to arrive before the closing date, 1 October 1990.

### WILDLIFE ECOLOGY

The School of Forestry, Wildlife, and Fisheries seeks applications for a full-time, **ASSISTANT PROFESSOR** tenure-track position in wildlife ecology. Responsibilities include the development of a strong research program that augments existing habitat-oriented programs and participation in undergraduate and graduate teaching and student advising. Qualifications include a Ph.D. (or near completion) in wildlife or related field. Salary is competitive and excellent benefits are available.

Applicants should submit a letter of application, curriculum vitae, official university transcripts, and three letters of reference to: **Dr. Stanley B. Carpenter, Director, School of Forestry, Wildlife, and Fisheries, Louisiana State University, Baton Rouge, LA 70803** (telephone: 504-388-4131) before 8 October 1990.

*Louisiana State University and the Louisiana Agricultural Experiment Station are Equal Opportunity/Affirmative Action Employers.*

### MOLECULAR PARASITOLOGIST ASSISTANT/ASSOCIATE PROFESSOR SEARCH REOPENED

The Department of Zoology at the University of Georgia invites applications for a tenure-track position. Investigators working at the molecular/cellular level in any area of parasitology are encouraged to apply. Special consideration will be given to those with an expertise in areas such as recombinant DNA techniques and molecular separations. Departmental duties will include contributing to current teaching in parasitology to undergraduate students and developing a course in molecular parasitology at the graduate level. The successful candidate will have a prominent role in the Department of Zoology's current NIH training program in the molecular cell biology of parasites and vectors, and will be expected to develop a strong research program complementary to current departmental research which includes immunology, molecular biology, cell biology, biochemistry, and ultrastructure of parasites. Current faculty are engaged in collaborative research in Brazil, Peru, and Chile.

Send curriculum vitae, a statement of career objectives and current and planned research, and the names, addresses, and telephone numbers of three or more references to:

**Dr. Moises Agosin**  
Chair, Search Committee  
Department of Zoology  
University of Georgia  
Athens, GA 30605  
Telephone: 404-542-3439

Applications received by 15 September 1990 are assured of consideration.

*The University of Georgia is an Equal Opportunity/Affirmative Action Employer.*

27 JULY 1990

## POSITIONS OPEN

### CHAIRMAN, DEPARTMENT OF MICROBIOLOGY AND IMMUNOLOGY

Jefferson Medical College of Thomas Jefferson University invites applications and nominations for the position of Chairman of the Department of Microbiology and Immunology. The successful candidate must have a commitment to education, a distinguished record of achievement in a field of research of current importance, and a demonstrated ability for scientific leadership and a record of interdisciplinary cooperation. Under the direction of the new chairman, the department is expected to become a center of research excellence, and a key participant in the cooperative, interdepartmental research programs of the university. New faculty positions will be established, and the department will relocate in September 1991 into significantly expanded facilities in a new research building now under construction. Applications and nominations with curriculum vitae and other supporting information should be forwarded to: **Microbiology and Immunology Search Committee, Office of the Dean, Jefferson Medical College, Thomas Jefferson University, 1025 Walnut Street, Philadelphia, PA 19107-5083**. *An Affirmative Action/Equal Opportunity Employer.*

### CHAIRPERSON DEPARTMENT OF PHARMACOLOGY THE UNIVERSITY OF VIRGINIA HEALTH SCIENCES CENTER

Applications are invited for the position of professor and chairperson of the Department of Pharmacology at the University of Virginia Health Sciences Center. Candidates must have a distinguished record of scholarship and professional achievement, and proven leadership and administrative ability. Curriculum vitae and names and addresses of three or more references should be submitted by 15 September 1990 to the chairman of the search committee:

**Dr. G. Frederick Wooten**  
Department of Neurology, Box 394  
University of Virginia Health Sciences Center  
Charlottesville, VA 22908

*The University of Virginia is an Equal Opportunity/Affirmative Action Employer.*

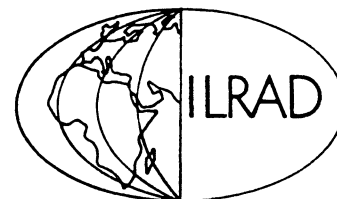
**ASSISTANT DEAN, ENGINEERING/SCIENCE/MATH.** Ocean County College reopens search for this 12-month position. Master's degree required, earned doctorate desired; 5 years of teaching experience in appropriate subject area at postsecondary level and demonstrated leadership in educational administration, preferably at departmental level, required. Competitive salary, outstanding benefits. Position presently open; reporting date to be 15 August 1990, 1 January 1991, or 1 July 1991, as arranged with successful candidate. Search will remain open until position is filled. Send application/resumé to: **Ocean County College, Personnel Department, CN2001, Toms River, NJ 08754**. *Affirmative Action/Equal Opportunity Employer.*

### ZOOLOGY DEPARTMENT HEAD

North Carolina State University invites applications for the position of Head of the Department of Zoology. Professional qualifications include an earned doctorate, background and experience in an area of zoology, demonstrated leadership ability, and a record of teaching, advising, and published scholarly contributions commensurate with the rank of full professor. Completed applications will include: a letter of application that describes the applicant's interests and qualifications for the position; names, addresses, and telephone and fax numbers of four persons who may be contacted as professional references; and curriculum vitae. Only applications that are complete and received by 4 September 1990 will be considered. Materials should be sent to: **L. W. Parks, Chairman, Search Committee for Zoology Head, Department of Microbiology, Box 7615, Raleigh, NC 27695-7615**.

*North Carolina State University is an Equal Opportunity/Affirmative Action Institution, M/F/H/V. Proper documentation of identity and employability will be required before the hiring process can be finalized.*

More than 150,000 people paid to see your ad in **SCIENCE**. Classified Advertising Department telephone: 202-326-6555. FAX: 202-682-0816.



## POSITIONS AVAILABLE

The International Laboratory for Research on Animal Diseases (ILRAD), is an internationally funded, major institution with the mandate of developing improved methods to control two important diseases of livestock, trypanosomiasis and theileriosis. The multidisciplinary research program includes biochemistry, molecular biology, immunology, cell biology, pathology, parasitology, electron microscopy and entomology with appropriate supporting units. Applications are invited for the positions of:

### RESEARCH ASSOCIATE — VACCINE DEVELOPMENT REF: (RA/90/2)

A position is available for a molecular technologist to support a research group involved in the development of subunit vaccines against haemoprotozoan parasites of cattle. The areas of research include the use of prokaryotic and eukaryotic expression systems for the production of recombinant parasite antigens, and the development of antigen delivery systems based on the use of recombinant viruses and bacteria. The successful candidate will be responsible for the maintenance of a recombinant virus facility, and will also have a responsibility for the training and supervision of junior staff. Applicants should have a science degree or an advanced qualification in laboratory technology with at least five years experience in a senior technical position. Preference will be given to candidates with experience in molecular virology and the use of recombinant expression systems.

### RESEARCH ASSOCIATE — IMMUNOCHEMISTRY/MOLECULAR BIOLOGY REF: (RA/90/3)

A position for a Research Associate in immunochemistry/molecular biology is available in a research group engaged in elucidating the bovine immune response to infection with *Theileria parva*. The activities of the group are currently focused on the identification of parasite molecules recognised by antibodies and cytotoxic T lymphocytes from immune cattle. Research Associate would participate in projects aimed at the isolation and characterization of genes encoding parasite antigens, and direct expression cloning in eukaryotic cells of theilerial and bovine lymphocyte surface antigens. Applicants should have a science degree or an advanced diploma in laboratory technology. Extensive experience in techniques in plasmid construction and screening of DNA libraries is essential, while further experience in transfection techniques would be desirable.

These are international staff positions and salaries will be paid in US dollars. Initial salaries will be determined by qualifications and experience. Scientific staff are expected to contribute to the training program. Moving, housing, commutation and education allowances are paid and there are medical and retirement benefits. Applicants should include current curriculum vitae and names and addresses of three referees. Applications, citing the position reference number, should be sent by August 15th to:

**THE CHIEF PERSONNEL OFFICER**  
I.L.R.A.D.  
P.O. Box 40709  
NAIROBI.  
Kenya.

## DEOXYOLIGONUCLEOTIDE ANALOG DEVELOPMENT AND EVALUATION

**Amgen** has emerged as an innovative leader in the research and development of human therapeutics through applied biotechnology. As a result of our continued growth, we have opportunities available in Deoxyoligonucleotide Analog Development and Evaluation in our DNA Therapeutics Group, located in Boulder, Colorado, for the following positions:

### RESEARCH SCIENTIST AND POSTDOCTORAL RESEARCH POSITIONS

The responsibilities of these positions include developing and executing new strategies for the characterization of the biological effects of oligodeoxynucleotide analogs in model systems.

Qualified candidates must have a Ph.D. in Biochemistry, Cell Biology, Virology or a related field. Supervisory experience is advantageous but not required.

**Amgen** offers an excellent compensation and benefits package and the unique opportunity to contribute to significant research programs on the forefront of biotechnology. If you feel that you have the necessary skills, qualifications and motivation and would like to be part of a company that places a high priority on its human resources, send a resume, in confidence, to:

**AMGEN BOULDER, INC.**  
Department 2351  
2045 32nd Street  
Boulder, CO 80301

Equal  
Opportunity  
Employer

# AMGEN

## ANIMAL DEVELOPMENTAL BIOLOGY

CORNELL UNIVERSITY  
COLLEGE OF  
VETERINARY MEDICINE

Applicants are sought for TWO faculty positions (Assistant/Associate Professor) to be part of a campus-wide initiative in Animal Molecular Biology. Individuals in the following areas are invited to apply: Embryo Biology (transgenic animal studies, embryonic stem cells, embryo manipulation); Molecular Genetics (gene regulation in early development, growth factors and oncogenes, genome mapping); and Animal Reproduction (molecular endocrinology, genetic imprinting). The College of Veterinary Medicine at Cornell is undertaking substantial expansion that will permit advanced studies of a wide variety of mammalian and avian species. The Animal Developmental Biology Program will complement existing strengths in reproduction in the Veterinary College, and excellent University programs in basic biology, animal science, genetics and biotechnology. The successful candidates will hold faculty appointments in appropriate departments of the Veterinary College and will participate in its graduate and professional teaching programs. Veterinary qualifications and/or experience with domestic animals are desirable, but not required.

Send a letter of interest with a resume and the names of 3 references to: Dr. Douglas Antczak, James A. Baker Institute for Animal Health, New York State College of Veterinary Medicine, CORNELL UNIVERSITY, Ithaca, New York, 14853, USA. Closing date, 15 September 1990.

**CORNELL**  
UNIVERSITY  
An Affirmative Action/Equal Opportunity Employer

## Biochemist

Pfizer Inc is an international leader in the research and development of health care products. The Department of Metabolic Diseases and General Pharmacology in the Central Research Division is committed to innovative research leading to the discovery of novel therapeutics for the treatment of cardiovascular diseases. Our approach to drug discovery encourages individual creativity as an important element in guiding a team effort toward a therapeutic target. This philosophy results in an environment that is challenging to the individual while enhancing group productivity. Scientific growth and development are stimulated by frequent interactions with prominent scientists in academia and medicine as well as with members of the research community within Pfizer.

Currently there is a position for a research scientist with a PhD and 1-3 years of postdoctoral experience. We are particularly interested if you have experience working in the renin-angiotensin system and one or more of the following areas: enzymology, receptor binding assays, tissue culture and histochemical techniques, peptide identification techniques (HPLC), or the pharmacokinetics of drug disposition. In addition, a knowledge of protein chemistry or computer modeling of enzyme-inhibitor interactions is desirable.

We offer a stimulating research environment and an excellent opportunity for professional recognition and advancement. In addition we provide a competitive salary/benefits package and an opportunity to live in an attractive Connecticut shore community. Qualified applicants should submit their resume and references in confidence to: Dr. Jerry K. Larson, Assistant Director, Employee Resources, Central Research Division, Pfizer Inc, Eastern Point Road, Groton, CT 06340. An equal opportunity employer.



## Biologists/Chemists

The Molecular Diagnostics Group of Baxter Healthcare Corporation is seeking experienced Scientists to participate in nucleic acid research aimed at developing new clinical diagnostic techniques. The following positions are available:

### Staff Scientist - Molecular Biology

Ph.D. in Microbiology/Molecular Biology with 1-2 years post doctoral experience working with thermophilic microorganisms is required. Candidate should be familiar with growth properties of thermophiles and their phages. Experience in the isolation and characterization of genes from this group is desirable.

### Staff Scientist - Chemistry

Ph.D. in Chemistry/Biochemistry with 1-2 years post doctoral experience in organic synthesis, analytical methods (preferably fluorescence and time-resolved spectroscopy) and familiarity with nucleic acid chemistry and enzymology is required.

### Research Associate

BS/BA, MS with minimum 2 years experience in DNA cloning, PCR amplification, nucleic acid sequencing and hybridization required. Expertise in working in isolation of cDNA clones desirable.

If you possess the above qualifications and desire a challenging and responsible position, please send resume outlining professional background in complete confidence to: **Baxter Healthcare Corporation, Diagnostics Group, P.O. Box 11150, Santa Ana, California 92711.** We are an equal opportunity employer m/f/h/v.



## Sigma Chemical Company

The world's leading supplier of research biochemicals needs your talent, vision, and imagination in the field of **PROTEIN CHEMISTRY**.

We're specifically looking for a **PROTEIN CHEMIST** to serve as a product line manager with laboratory experience using gas phase protein sequencing and amino acid analysis techniques. The opportunity available involves product development, quality assurance, technical service, production, and marketing. Strong verbal and written skills a must.

In service, quality, and product lines of unquestioned purity, SIGMA continues to set industries standards. Our people are encouraged to contribute new ideas, resulting in professional growth and advancement based upon accomplishments.

The position is located at our St. Louis facility. If you are interested in your future, contact Thomas Juehne for more information at 1-800-325-3010 ext. 3547, or send your resume to: SIGMA CHEMICAL CO., Thomas Juehne, Supervisor, Standards and Buffers, Position # 47, P.O. Box 14508, St. Louis, MO 63178.

An equal opportunity employer.

**SIGMA**  
CHEMICAL COMPANY

## Ph.D. Organic Chemist

This individual will add synthetic organic expertise to an existing biochemical research effort. The ability to work independently, a Ph.D. with 5+ years experience, and a broad knowledge of organic reactions in aqueous media are required. Familiarity with redox dye chemistry is a plus. Full/part/flex-time options will be considered for this position. RE: R39

## Biochemical Production Supervisor

This individual will direct a biochemical production team involving formulations of chemicals, biochemicals, and enzymes, and the operation of complex, precise production equipment. A M.S. in biochemical engineering or equivalent, 3+ years industrial experience, and supervisory experience are required as is the capacity for day-to-day independent troubleshooting. RE: 31

Enzymatics develops and manufactures a new generation of instrument independent diagnostics utilizing proprietary technology. Come join the excitement. Please send resume, salary history and three references to:

**Enzymatics, Inc.**

355 Business Center Drive  
Horsham, PA 19044

EOE M/F

## RESEARCH VETERINARY PATHOLOGIST

The Upjohn Company, a recognized leader in the research, production and marketing of pharmaceutical, chemical and agricultural products, has an opening for a Veterinary Pathologist in our Drug Development Toxicology Group.

As part of a multi-disciplinary team, this Research Scientist will support and enhance drug development in our human and animal health business; also plan, facilitate and coordinate the execution of studies to support human and target animal safety and human food safety on a worldwide basis. Duties include planning, conducting and facilitating studies to support safety and product registrations and maintaining an active drug safety laboratory for basic and applied research. The successful candidate will be a DVM, Ph.D. and ACVP certified with a minimum of two years of relevant experience in pathology and toxicology. Interest, knowledge and experience in toxicologic pathology is highly desired.

Upjohn offers a competitive compensation and benefits package in addition to a stimulating, multi-disciplinary research environment at our modern laboratories in Kalamazoo, Michigan. In 1989, Upjohn committed over \$400 million to research and development and is currently increasing its main research facility by 50%. Qualified and interested applicants are invited to forward their cv/resume to: THE UPJOHN COMPANY, CORPORATE RECRUITING, KALAMAZOO, MI 49001-0199. Refer to position number 5696-HA in your correspondence. An Equal Opportunity Employer M/F.

Our Commitment to Scientific Excellence Continues...

**Upjohn**

## DIRECTOR OF DNA SEQUENCING OPERATIONS

Lark, a leader in the Biotechnology Services industry, is seeking an aggressive Scientist to direct the operations of a large scale DNA sequencing laboratory. The successful candidate will have a keen interest in pushing the frontiers of the art and science of DNA sequencing.

Lark is affiliated with a major medical school and research center and provides molecular biology services to investigators worldwide. Qualifications include:

- Ph.D. with 3-4 years Post-Doctoral experience.
- Strong skills in molecular biology techniques.

Lark offers an outstanding compensation package including a competitive salary, performance bonus, stock options, liberal benefits and company paid medical insurance. The company will also pay all relocation expenses. Please call or write (fax):

Eric M. Eastman, Ph.D., Director of Operations  
Lark Sequencing Technologies, Inc.  
1709 Dryden, Ste. 604  
Houston, TX 77030-2401  
Tel: (713) 799-9193; Fax: (713) 799-9030

**Lark**  
SEQUENCING  
TECHNOLOGIES  
INC.



## POSTDOCTORAL POSITION IN MOLECULAR BIOLOGY

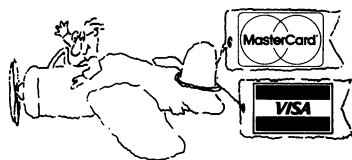
Postdoctoral position available immediately for a molecular biologist, physiologist or immunologist to join an active multi-disciplinary research team to study gene expression, actions of neuropeptides, peptide hormones and cardiac protection in the cardiovascular system. Experience in current techniques such as in situ hybridization, PCR, HPLC, RIA or spectrophotometry is preferred. The candidate should have the ability to write grant proposals and publish manuscripts. He or she should be able to conduct research projects independently, as well as collaborating with other investigators.

Please send resume and names of references to: **Leon Halber, Chairman of the Board, Deborah Research Institute, 1 Trenton Road, Browns Mills, NJ 08015-1799.**



**DEBORAH RESEARCH  
INSTITUTE**

*Equal Opportunity Employer*



## ANNOUNCING A NEW SERVICE FROM SCIENCE

Now you can pay for your line classified ad with a credit card — we accept MasterCard and VISA.

Please let us know on your ad order that you wish to take advantage of this service, or ask us for further details.

**SCIENCE Classified Advertising**  
Tel: 202-326-6555  
FAX: 202-682-0816

## POSITIONS OPEN

### ENVIRONMENTAL MICROBIOLOGY

The Department of Biology at the University of Mississippi invites applications for a tenure-track position in environmental microbiology. Duties: conduct basic and applied research in bioremediation, biodegradation, and biotransformation related to environmental phenomena; develop an extramurally funded collaborative research program; participate in undergraduate and graduate teaching including general microbiology, immunology, and graduate-level courses in microbial physiology/genetics; direct masters and doctoral students; and participate in local and national professional service. Special opportunities exist for participation in the freshwater biology emphasis in the department and at the biological field station. Qualifications: Earned doctorate in an appropriate field; postdoctoral experience preferred with a record of professional accomplishments and publications, preferably in the specialty area; evidence of ability to obtain extramural funding and of a collaborative research orientation. Academic rank is open, salary depends on qualifications. Position available in January 1991. Submit a letter of application, description of current research interests and future research plans, complete curriculum vitae, the names, addresses, and telephone numbers of at least three references to: **James A. Kushlan, Chair, Department of Biology, The University of Mississippi, University, MS 38677.** Deadline for applications is 7 September 1990 or until filled.

*The University of Mississippi is an Equal Opportunity/Affirmative Action Employer.*

### UNIVERSITY OF CALIFORNIA AT SAN FRANCISCO (UCSF) AND BERKELEY FACULTY POSITIONS IN PARASITE BIOLOGY

The Intercampus Program for Molecular Parasitology (IPMP) of the University of California at San Francisco and Berkeley is recruiting junior faculty members with research interests in fundamental aspects of host-pathogen interactions. The IPMP is an interdisciplinary group investigating the biology of protozoan, helminth, and bacterial parasites. The emphasis is on immunology, biochemistry, and molecular biology. Current faculty have appointments in the UCSF School of Medicine or School of Pharmacy and/or UC Berkeley School of Public Health.

Successful applicants are expected to develop independent research programs, with initial support from the John and Catherine MacArthur Foundation. While it is not necessary that applicants work solely on parasites, they are expected to demonstrate a willingness to develop a research focus in this area. Preference will be given to applicants at the junior level and having a solid background in either molecular biology, immunology (cellular or molecular), molecular pharmacology, or protein chemistry.

Applicants should submit their curriculum vitae, a short summary of their research interests (no longer than one page), and arrange to have three letters of reference sent to: **Dr. Nina Agabian, IPMP Recruitment, UCSF School of Pharmacy, Box 1204, San Francisco, CA 94143-1204.**

**FACULTY POSITIONS, MOLECULAR EVOLUTIONARY GENETICS**, The Pennsylvania State University (Penn State). The Department of Biology, in association with its new Institute of Molecular Evolutionary Genetics, seeks to fill several tenure-track positions in evolutionary genetics at the **ASSISTANT OR ASSOCIATE PROFESSOR** level. Research areas of interest are the population genetics of molecular variation, the evolution of genes and regulatory systems, and the application of molecular techniques to the study of morphological evolution and biosystematics. Significant research accomplishments and evidence of potential to develop an outstanding research program will be key considerations. Applicants must have postdoctoral training. Send curriculum vitae, statement of research interests, and three letters of reference to: **Dr. Robert K. Selander, Chairman, Search Committee, Department of Biology and Institute of Molecular Evolutionary Genetics, Box A2, 208 Mueller Laboratory, Penn State University, University Park, PA 16802.** Application deadline: 28 August 1990. *An Affirmative Action/Equal Opportunity Employer. Women and minorities are encouraged to apply.*

## POSITIONS OPEN

The Louisiana State University Medical Center is accepting applications for **HEAD** of the Department of Anatomy. Candidates should have an earned doctoral degree, an established research record, teaching experience, and managerial skills. Applications should be accompanied by curriculum vitae and a list of three individuals who may be contacted as references. Applications should be sent to: **W. P. Newman III, M.D., Professor of Pathology and Chairman, Search Committee, Department of Pathology, Louisiana State University Medical Center, 1901 Perdido Street, New Orleans, LA 70112-1393.**

*Louisiana State University Medical Center is an Equal Opportunity/Affirmative Action Employer.*

**HEALTH PHYSICIST.** Idaho State University (ISU) is immediately seeking an individual to be based in Boise under the direction of the Governor's Appointed Coordinator of the INEL Oversight Program to participate in evaluating environmental radiation programs and monitoring of facilities at the Idaho National Engineering Laboratory. The individual would also review and modify Idaho's Worker Health and Safety Program to address radiological issues. As an adjunct faculty of ISU the person would be expected to participate in faculty matters as time permits. Advanced degree in health physics or equivalent is required. Ph.D. and CHP are desirable. Salary competitive with industry. Send résumé and the names and addresses of three references to: **Dr. B. W. Graham, Campus Box 8288, Idaho State University, Pocatello, ID 83204.** Closing date: 6 August 1990 or until position is filled. *Affirmative Action/Equal Opportunity Employer.*

**FELLOWSHIP IN IMMUNOLOGY.** Immunology program at a New England university health center. Two-year fellowship concentrating on basic research in immunology and molecular biology of vascular and inflammation animal and eye models. Choice of ten collaborating faculty laboratory areas available. Third-year option open. Research interests include plasminogen activator synthesis, vascular endothelial metabolism, integrin-receptor interactions, and diabetes. Position available 1990. Second position early 1991. Send curriculum vitae to: **James O'Rourke, M.D., Co-Director Vision-Immunology Center, Department of Pathology, University of Connecticut Health Center, Farmington, CT 06032.** *University of Connecticut is an Affirmative Action/Equal Opportunity Employer.*

### PHYSIOLOGIST

Physiology Department invites applications for a tenure-track position at the **ASSISTANT OR ASSOCIATE PROFESSOR** level. Applicants must have a Ph.D. or M.D. degree, postdoctoral experience, and a strong commitment to both teaching and research. Applicants conversant with modern cellular approaches to physiological research and with a successful funding record would be preferred. Duties of the position include: teaching gastrointestinal physiology to medical students and participation in the department's training of graduate students. Current faculty have strengths in neuroendocrinology, fluid balance regulation, and perinatal physiology. Candidates should submit curriculum vitae, statement of research experience, and a list of three references by 1 October 1990 to: **Physiology Search Committee, c/o Dr. John A. Resko, Department of Physiology, School of Medicine, Oregon Health Sciences University, 3181 S.W. Sam Jackson Park Road, Portland, OR 97201-3098.** *The Oregon Health Sciences University is an Equal Opportunity Employer.*

### MANAGER/RESEARCH GRANTS PROGRAMS

The American Health Assistance Foundation (AHAF) is seeking a Ph.D. or M.D. to administer all research grant activities for its three research programs for Alzheimer's disease, coronary heart, and glaucoma that annually amount to \$3 to \$4 million. The incumbent will provide leadership in relationships with executive management, peer-review committees, grant applicants, media, and general public concerning the research programs of AHAF. The ideal candidate must have bench research experience with the maturity to communicate effectively. Send curriculum vitae or résumé to: **Janet Michaels, Executive Director, American Health Assistance Foundation, 15825 Shady Grove Road, Suite 140, Rockville, MD 20850.** *AHAF offers an excellent benefit package and is an Equal Opportunity Employer.*

DEPARTMENT OF HEALTH AND HUMAN SERVICES  
PUBLIC HEALTH SERVICE  
Food and Drug Administration  
Center for Food Safety and Applied Nutrition  
Office of Toxicological Sciences

The Division of Toxicological Studies has several positions available for scientists with substantial postdoctorate or equivalent experience in conducting and directing research in toxicology and related sciences.

**Position**

Chief, Metabolism Branch  
Division of Toxicological Studies  
Office of Toxicological Sciences  
Center for Food Safety and Applied Nutrition  
GM-15-Interdisciplinary

Salary \$59,216-\$76,982 per year depending on qualifications.

Work involves managerial responsibility for a multi-discipline branch focusing on pharmacodynamics and pharmacokinetics of food additives, chemical contaminants and other substances added to the food supply. Studies are conducted on rodents, dogs and mini-pigs. Cooperative studies are conducted with other Centers within the Food and Drug Administration.

**Qualifications**

Candidate must have experience in conducting/supervising pharmacodynamic/pharmacokinetic studies.

**Position**

Pharmacokineticist  
Division of Toxicological Studies  
Office of Toxicological Sciences  
Center for Food Safety and Applied Nutrition

Salary \$29,891-\$65,444 per year depending on qualifications.

Work involves conducting research in the pharmacokinetics of food-borne chemical substances and using research data for pharmacokinetic modeling. Background in physiologically-based pharmacokinetics and computer modeling experience using SIMUSOLV.

**Qualifications**

Candidate must have a strong background in pharmacokinetics and mathematics or degree in pharmacology with training in pharmacokinetics.

**Position**

Teratologist  
Division of Toxicological Studies  
Office of Toxicological Sciences  
Center for Food Safety and Applied Nutrition

Salary \$29,891-\$65,444 per year depending on qualifications.

Work involves designing, conducting, and reporting of GLP reproduction/teratology studies, including shorter-term approaches, to evaluate reducing uncertainties in risk assessment, diet-toxicity interactions, early indicators of toxicity attributable to long-term exposures, and the safety of food additives/contaminants and cosmetic ingredients, as required.

**Qualifications**

Candidate must have experience in the conduct of reproduction and/or teratology studies.

**Position**

Toxicologist  
Division of Toxicological Studies  
Office of Toxicological Sciences  
Center for Food Safety and Applied Nutrition

Salary \$29,891-\$65,444 per year depending on qualifications.

Work involves designing, conducting, and reporting of GLP sub-chronic, chronic, and carcinogenesis studies to evaluate reducing uncertainties in risk assessment, diet-toxicity interactions, early indicators of toxicity attributable to long-term exposures, and the safety of food additives/contaminants and cosmetic ingredients, as required.

**Qualifications**

Candidate must have experience in the conduct of *in vivo* toxicology studies.

**U.S. CITIZENSHIP REQUIRED**

CANDIDATES MUST MEET ALL CIVIL SERVICE REQUIREMENTS  
Send curriculum vitae, bibliography and Standard Form 171 (Personal Qualifications Statement) to:

SIDNEY GREEN, PH.D.  
DIRECTOR, DIVISION OF TOXICOLOGICAL STUDIES  
FOOD AND DRUG ADMINISTRATION  
200 "C" Street, S.W. (HFF-160)  
Washington, DC 20204

FDA IS AN EQUAL OPPORTUNITY EMPLOYER  
FDA IS SMOKE FREE

**1991 COMPETITION**



**MERCK - AFCR FOUNDATION  
MD-PhD POSTDOCTORAL  
FELLOWSHIPS**

**FIVE FELLOWSHIPS AVAILABLE**

The Merck Sharp & Dohme Research Laboratories, through its Academic Development Program, and the American Federation for Clinical Research Foundation announce the first competition for the MERCK-AFCR Foundation MD-PhD Postdoctoral Fellowships to support the further training of MD-PhD scientists.

**FELLOWSHIP TERMS**

- The candidate must have completed an MD-PhD educational program and be accepted into a postdoctoral training program.
- Fellowships are intended for independent research in the basic biomedical sciences, including the fields of biological chemistry, cellular, molecular, and structural biology, genetics, microbiology, immunology, pharmacology, physiology, and pathology.
- First-year support consists of a \$40,000 stipend and \$3,000 allowance for travel, journal subscriptions, and society memberships. In addition the university will receive a \$7,000 grant for supplies related to the funded research. Indirect costs will not be allowed.
- The Fellowship is renewable for an additional two years.
- The Fellow should devote 80% of his/her time to research. Each Fellow will spend up to three days in the Merck Research Laboratories during his/her tenure as award recipient and present research results. Travel support will also be provided for the Fellow's mentor. The Fellow will also be expected to attend a Regional or National AFCR meeting each year and submit an abstract.
- Applicants should be citizens of the U.S. or Canada or permanent residents of the United States.

**FELLOWSHIP APPLICATION TERMS**

The applicant should submit originals and 8 copies of the following to the AFCR's address below:

- A curriculum vitae and a one-page abstract of the proposed research;
- A proposal of 8 to 10 pages, including background and references;
- A statement of the applicant's career goals;
- Two letters of recommendation;
- Two reprints of published papers representative of the applicant's research; and
- A letter from the mentor describing how the proposed research will contribute to the development of the applicant as a creative scientist. The letter should state the name of the institution, the department, and its chairperson.

**IMPORTANT DATES**

The deadline for receipt of applications is October 1, 1990. Letters to Fellowship recipients will be mailed by January 1, 1991. The Fellowship will begin the following July 1st unless otherwise agreed.

**SEND APPLICATIONS AND INQUIRIES TO:**

MERCK-AFCR Foundation Postdoctoral Fellowships  
Ms. Jean Haddock, Executive Director  
6900 Grove Road  
Thorofare, NJ 08086  
Tele: (609) 848-7072; Fax: (609) 853-5991

## Analytical Protein Chemist

We are seeking a qualified individual to initiate and direct a protein chemistry group responsible for analytical characterization and formulation of protein and peptides as therapeutic products. The successful candidate will possess a Ph.D. in Chemistry with several years of industrial experience in either medicinal, analytical or protein chemistry. A strong background and practical experience in the determination of molecular structure, size, shape, aggregation status, surface charge and biological activity is essential. Please reply to Audrey McGovern, Human Resources Administrator.

Amylin Corporation  
9373 Towne Centre Drive  
Suite 250  
San Diego, CA 92121  
Tel. (619) 552-2200  
Fax (619) 552-2212

Amylin is an equal opportunity employer.



IMMUNEX RESEARCH & DEVELOPMENT CORPORATION, a Seattle-based biopharmaceutical company committed to research and development of immunological therapeutic products, is currently recruiting for a:

## Staff Scientist Process Development

This position will develop analytical methods to establish identity and purity of recombinant proteins intended for clinical use. The successful candidate will have experience in protein characterization. A Ph.D. in Biochemistry or Chemistry is required. Experience within the pharmaceutical industry highly desirable.

Immunex Research and Development Corporation offers excellent opportunities for career development as well as competitive salaries and an excellent benefits package. For consideration, please submit C.V., names of three references, and list of publications to: Immunex Research and Development Corporation, Human Resources Director, 51 University Street, Seattle, WA 98101. EOE.

**IMMUNEX**

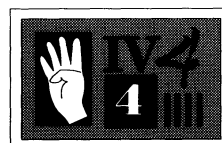
## MANAGING EDITOR SCIENCE Magazine

Prestigious weekly journal of science is seeking Managing Editor to supervise selection, recruitment, editorial processing of manuscripts, & general supervision of editorial department of **SCIENCE**. Position requires strong background in science plus 5 yrs. experience on a scientific journal. At least 3 yrs. supervisory experience required. Candidate expected to have extensive experience with scientific community, manuscript selection & peer review. A working scientist with administrative and journal experience would also be considered.

Interested applicants should send letter of application including minimum salary requirements & resume to:

**AAAS**  
**Debra Wright**  
**1333 H St. NW, Suite 854**  
**Washington, DC 20005**

EOE



## THE SCIENCE RECRUITMENT "FOUR-DAY CLOSE"

**Now you can see your ad  
in SCIENCE four days after submission**

Scientific recruiters can now advertise positions almost as soon as the need arises. Instead of reserving space a month or more in advance, you can now place your ad four days before the magazine mailing date. **SCIENCE** is mailed on the cover date.

Film (right-reading, emulsion face down) or full camera-ready art and insertion order must reach: **SCIENCE, Short Close Desk, 1515 Broadway, New York, NY 10036** by NOON Mondays (except for legal holidays when material must reach New York by NOON Fridays). Because space is limited, the four-day close page will be reserved on a first-come, first-served basis, at a 15% premium.

1/4, 1/2 or full only.

Now you don't have to wait to find the researchers you need immediately, nor must you advertise in a Sunday paper that pans a lot of sand but not much gold. Scientific employers know that **SCIENCE** ads fill the job better. Now they fill it faster too.

You can call it "INSTANT RECRUITMENT."

For further information, telephone Ed Keller, Recruitment Advertising Manager, or Gwen Cantor, Advertising Traffic Manager at **SCIENCE**: 212-730-1050, or write to:

**SCIENCE, 1515 Broadway, NY, NY 10036**  
**CURRENT DISTRIBUTION 160,000**



## Multidimensional Magnetic Resonance Memorial Sloan-Kettering Cancer Center

Sloan-Kettering Institute, Memorial Sloan-Kettering Cancer Center is seeking an individual at the Assistant Member level to establish an independent program in multidimensional magnetic resonance studies of biologically active molecules. While the research activity will be independent, it is expected that the successful candidate will interact with other investigators at the Institute who are concerned with protein, nucleic acid and oligosaccharide structure and conformation. In support of these goals, the Institute will make a significant investment in state-of-the-art magnetic resonance facilities and associated computational resources.

Applicants should provide a curriculum vitae and bibliography, three or more letters of recommendation from knowledgeable senior scientists in the field, and a thorough statement of research goals with some representative specific proposals.

All materials should be sent to:

Richard A. Rifkind, M.D.  
Chairman, Sloan-Kettering Institute  
Memorial Sloan-Kettering Cancer Center  
1275 York Avenue  
New York, New York 10021



*An Equal Opportunity/Affirmative Action Employer*

## B.S./M.S. SCIENTIST Drug Metabolism Environmental Safety

The Animal and Drug Exploratory Drug Metabolism Department at Merck Sharp and Dohme Research Laboratories has an opening for a highly motivated B.S./M.S. chemist/biochemist who is interested in pursuing a career in drug metabolism and environmental studies.

The successful candidate will be involved with in vivo and in vitro metabolism studies of animal health drugs and the determination of their environmental fate and effects. The candidate should have some knowledge in drug metabolism with demonstrated strength in modern analytical techniques such as HPLC. Other desirable qualifications include:

- Experience in the isolation, purification and characterization of metabolites from biological and environmental matrices.
- Experience in handling radiolabeled chemicals.
- Skills in small animal handling techniques.

Merck Sharp & Dohme Research Laboratories is located in Rahway, New Jersey, approximately 25 miles from New York City. Our salaries, benefits, and growth potential are excellent. For consideration, send your resume with the names of three references to **Human Resources Manager, Merck & Co., (MAF-1), P.O. Box 2000, Rahway, New Jersey 07065**. An equal opportunity/affirmative action employer M/F/V/H.



**Merck & Co., Inc.**

### RESEARCH IN CELL TRANSPLANT THERAPY:

**Cell Biotech, Inc.**, is a rapidly growing leader in the development of technology for the treatment of disease by cell transplantation. The initial focus of this biotherapeutic company is in the treatment of insulin-dependent diabetes by transplantation of immunoisolated pancreatic islets. Opportunities exist for outstanding scientists in the following fields to be involved in basic research, product development, and clinical trials:

#### Transplantation Immunologist

Ph.D. in immunology or related area to perform basic research in immune response to allogenic and xenogenic transplants and to synthetic materials used in immunoisolation. Should have experience in cellular transplant immunology, including cytokine response, as well as in complement activation.

#### Cell Biologist

Ph.D. in cell biology or related area to perform basic research in graft function, both in vitro and in vivo. Should have good technique in molecular biology and electron microscopy.

#### Histochemist

Ph.D. in histology, cell biology or related area to perform basic research in the evaluation of transplant function and the response of the host to the transplanted tissues and materials. Should have extensive experience in histology, histochemistry, immunohistochemistry, and electron microscopy.

Successful applicants will have the opportunity to join a stimulating and well-funded multidisciplinary research team of scientists, engineers and physicians in a fast-moving young biotechnology company in the Orange County/Los Angeles area. Please send or fax your curriculum vita and the names of references to Sam Anderson, President & CEO, Cell Biotech, Inc., 2080 Century Park East, Suite 508, Los Angeles, CA 90067; telefax (213) 277-3529. Cell Biotech is an affirmative action/equal opportunity employer.

## RESEARCH ASSOCIATES

Bristol-Myers Squibb Pharmaceutical Research Institute is continuing to expand our efforts in basic biomedical research. New research laboratories are currently under construction at our research headquarters in Princeton, New Jersey. More than at any time in the past, our commitment to basic biomedical research, both at the Institute and through our academic research alliances has never been stronger.

### Receptor Pharmacology

Conduct molecular pharmacology research in the areas of radioligand-receptor binding and membrane signal transduction enzyme activity assays. Dept. #122A

### Receptor Molecular Biology

Primary areas of involvement will include the expression of cloned genes in mammalian cells through transient and stable transfection, library screening and DNA sequencing. Dept. #122B

### Pharmacology

Conduct experiments involving measurement of renal and cardiovascular function. This will entail performing surgery for acute and chronic in vivo models, performing analytical assays, and coordinating details of chronic animal studies. Dept. #122C

Candidates for these positions should possess a BS or MS in a relevant scientific discipline along with several years research experience.

Please forward your resume to (including dept. code #): **Bristol-Myers Squibb Pharmaceutical Research Institute, Human Resources Department, P.O. Box 4000, Princeton, NJ 08543-4000**. An equal opportunity employer.

**Bristol-Myers Squibb  
Pharmaceutical Research Institute**



**Bristol-Myers Squibb Company**

**The Research  
Division in  
RHEUMATOLOGY**

of an important  
pharmaceutical research center  
located in **PARIS suburb**

is looking for

## ***A research worker in cell culture and bone tissue***

*The profile : a graduate from university  
(Ph.D.) if possible  
and Post-Doctorate having good knowledge  
in bone biochemistry.*

*Interested by the creation of  
new molecules, particularly for the  
treatment of osteoporosis.*

*He will take in charge the culture unit  
within a young team of research working  
on bone metabolism.*

Thanks for sending a manuscript letter, C.V. and claims  
to PUBLIVAL/7003 - 27 Route des Gardes,  
92190 MEUDON (FRANCE).

### **Director of the Environmental Criteria and Assessment Office, Cincinnati, Ohio**

The U.S. Environmental Protection Agency is seeking highly qualified candidates for the position of the Director of the Environmental Criteria and Assessment Office, Office of Health and Environmental Assessment, located in Cincinnati, Ohio, a senior executive level position. This Office, a component of EPA's Office of Research and Development, has major responsibilities in the Agency for the scientific assessment of the risks imposed by environmental pollutants on human health and the environment. The Office serves as a focal point for the preparation of scientific risk assessments and for providing data, advice and information to support other Agency Offices which have responsibility for making regulatory decisions regarding the control of environmental hazards in the United States.

Applicants should have a degree in the health or life sciences, medicine, or a related field, and professional experience demonstrating scientific competence and leadership as well as management experience. Experience in human health risk assessment, related research or public health protection is desirable. The submission procedures and the technical and executive qualifications described in the formal Vacancy Announcement must be met. Call or write for a copy of the Announcement to: Chaunta Gladney, EPA Executive Resources Staff, PM--224, 401 M Street, SW, Washington, DC 20460, telephone: 202-382-3328. Applications must be postmarked by September 25, 1990. EPA is an Equal Employment Opportunity Employer.

## **Drug Discovery Biochemist**

We are an established world wide pharmaceutical company seeking a senior level Biochemist for our expanding Molecular and Cell Biology department.

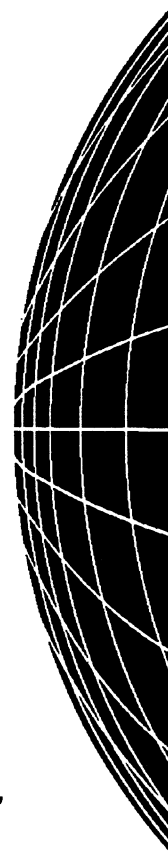
The selected individual will lead a group of scientists in the discovery of new drugs for the treatment of inflammatory and infectious diseases. This individual will actively participate in multidisciplinary project teams, applying their biochemical expertise to the selection of new chemical entities for development as drugs.

Requirements include a Ph.D. or equivalent with 2-5 years of additional experience in an academic or industrial research setting. The successful candidate will have a strong

record of accomplishment in the area of biochemical pharmacology and the selection and implementation of biochemical assays as well as a knowledge of enzyme characterization and kinetics. The ideal applicant will have experience in the areas of inflammation, immunology, infectious diseases, or other biological areas, including familiarity with enzyme isolation. Previous supervisory experience is also preferred.

Please send your resume, in confidence, to: Searle, Human Resources, Dept. PB6, 4901 Searle Parkway, Skokie, IL 60077. An equal opportunity employer M/F/H.

**SEARLE**  
Together, we can do a world of good.



U.S. DEPARTMENT OF ENERGY

## **P**OSTGRADUATE RESEARCH PROGRAMS

<b>Toxicology</b>	<b>Engineering</b>
<b>Fossil Energy</b>	<b>Physical Sciences</b>
<b>Hazardous Wastes</b>	<b>Environmental Sciences</b>
<b>Artificial Intelligence</b>	<b>Life Sciences</b>
<b>Computer Sciences</b>	<b>Risk Analysis</b>

- Research at national laboratories
- Stipends \$20,000 - \$41,000 depending on degree, program, research area
- Recent graduate degree
- U.S. citizens or PRAs eligible

Information and applications:

### **Postgraduate Research Programs**

Science/Engineering Education Division  
Oak Ridge Associated Universities  
P.O. Box 117  
Oak Ridge, TN 37831-0117  
(615) 576-3190



# USE YOUR BACKGROUND SKILLS TO HELP US ACHIEVE OUR GOALS.

We're Anaquest, a division of BOC HEALTH CARE and a recognized leader in the research, development and manufacture of specialized pharmaceutical products. Our position of leadership in our field and unparalleled growth has resulted in unique opportunities for the following professionals:

## Cardiovascular Research

The candidate we seek for this key position will be responsible for managing Bachelor's and Master's level Scientists in several anesthesia related areas. In addition, you will assess hemodynamic and respiratory effects of anesthesia/acute care related drugs. A Ph.D in Pharmacology or other life sciences and a minimum of 3 years of post-doctoral or industrial experience is desired. Experience with *in vivo* systems is preferred.  
(Please address all inquiries to Box RF.)

## Toxicology

The candidate we seek will conduct mechanistic research on *in vivo* and *in vitro* modeling of toxicity and will examine the potential of new chemical entities to produce target organ damage. Additionally, the candidate will serve as Study Director for research conducted at Contract Toxicology Laboratories. An MS in Toxicology or a related discipline and a minimum of two years of relevant experience in animal handling, isolated organ perfusion and/or cell isolation techniques are desired. (Please address all inquiries to Box SW.)

## Vivarium Supervisor

The individual we seek for this key position will direct the daily activities of vivarium. This will involve ordering animals, supervising technicians and maintaining the facility in accordance with current USDA regulations. A Bachelor's degree in Biology, Zoology or related life sciences and 2-4 years of experience supervising animal care are required. AALAS technologist certification is preferred. Familiarity with current federal regulations and animal welfare issues is essential.  
(Please address all inquiries to Box MB.)

## Biochemistry

The individual we seek will perform receptor binding in the biochemistry lab. Additional responsibilities will include enzymology and HPLC with electrochemical detection of catecholamines. A BS/MS in biochemistry or pharmacology and experience in receptor binding are required. Familiarity with radioisotopes is essential.  
(Please address all inquiries to Box CP.)

In return, Anaquest offers a competitive compensation package that includes an excellent salary and comprehensive benefits, as well as a highly professional work environment. For immediate confidential consideration, please send your resume, indicating position of interest and Box number to: **Human Resources, Anaquest, 100 Mountain Avenue, Murray Hill, NJ 07974.** We are an equal opportunity employer M/F/H/V.

**Anaquest**



A BOC Health Care  
Company  
Critical Care  
Worldwide

## POSITIONS OPEN

### IMMUNOLOGY FACULTY POSITION

Applications are invited for a full-time tenure-track faculty position at the ASSISTANT OR ASSOCIATE PROFESSOR level in Molecular/Cellular Immunology in the Department of Microbiology and Immunology at the University of Colorado School of Medicine.

Applicants should have training, interests, and skills in the use of current molecular and cellular techniques for studying the function and/or development of the immune system. Strong preference will be given to those candidates with demonstrated accomplishments in molecular biological approaches to the above areas. Established areas of ongoing research within the department include immunoregulation, autoimmune diseases, programmed cell death, signal transduction, Ig genes, and T cell development.

Successful applicants will be expected to initiate and maintain an active, independent research program, participate in the teaching of immunology to medical students and become an active member in an established graduate training program. Laboratory space and start-up funds will be provided by the department. Candidates with a commitment to excellence in research and teaching are encouraged to send curriculum vitae, a statement of research and teaching interests, and the names of three references by 1 November 1990 to: **Lewis I. Pizer, Ph.D., Professor and Chairman, Department of Microbiology/Immunology, Box B-175, University of Colorado Health Sciences Center (UCHSC), Denver, CO 80262.**

*UCHSC is an Equal Opportunity/Affirmative Action Employer. Women and minorities are encouraged to apply.*

### NEW ZEALAND UNIVERSITY OF CANTERBURY SENIOR LECTURER OR LECTURER IN CIVIL ENGINEERING

Applications are invited for a position, as above, in the Department of Civil Engineering from suitably qualified candidates with a specialized knowledge of environmental engineering. The appointee will be expected to expand the teaching and research in environmental topics, at undergraduate and graduate level. Applicants should have expertise in one or more of the following areas: water and wastewater treatment, solid and hazardous waste management, atmospheric pollution, and wider aspects such as environmental impact assessment. The successful candidate may also be required to contribute to other civil engineering undergraduate courses.

The salary for senior lecturers is on a scale from \$NZ50,000 to \$NZ58,600 per annum (bar), and a range from \$NZ60,800 to \$NZ64,500, and for lecturers is on a scale from \$NZ36,000 to \$NZ43,700 (bar), and from \$NZ45,000 to \$NZ47,200 per annum.

Applications close on 28 September 1990.

Further particulars and conditions of appointment, quoting Position No. CE35, may be obtained from the undersigned to whom applications must be addressed: **A. W. Hayward, Registrar, University of Canterbury, Private Bag, Christchurch, New Zealand.**

*The university has a policy of Equality of Opportunity in Employment.*

### MOLECULAR NEUROBIOLOGY

A position of RESEARCH ASSOCIATE (Ph.D. required) is available in the area of neuropeptide processing and prohormone gene isolation and structure. Ongoing projects include neuropeptide isolation, oligonucleotide probe generation, PCR/MOPAC, and so forth. The successful candidate will have a sound knowledge of current molecular biology and be familiar with protein fractionation and enzyme assay methods. The appointment is for 1 year renewable by mutual agreement. Starting salary: \$29,000 to \$30,000 per annum. For further details and to submit résumé contact:

**Dr. Richard B. Imberski, Department of Zoology  
University of Maryland  
c/o Dr. E. P. Masler  
USDA-ARS-PSI-IRL  
B-306, R-309, BARC East  
Beltsville, MD 20705  
Telephone: 301-344-1732**

*The University of Maryland is an Affirmative Action/Equal Opportunity Employer.*

## POSITIONS OPEN

Stanford University. The Department of Electrical Engineering seeks candidates for one or more tenured or tenure-track FACULTY POSITIONS in the field of electro-magnetics and space electronic systems for remote sensing, as applied to experimental research in one or more areas of planetary (including terrestrial and environmental) studies. A more complete description of the positions can be obtained from: **Professor Joseph Goodman, Chairman, Department of Electrical Engineering, McCullough 150, Stanford University, Stanford, CA 94305-4055. An Affirmative Action/Equal Opportunity Employer.**

**POSTDOCTORAL POSITION.** Available immediately to study the production and characterization of microbially produced surfactants. A Ph.D. in chemistry, biochemistry, or biochemical engineering is required. Experience in isolation of natural products and structure determination by NMR is desirable. Please send résumé and names of references to: **Dr. George Georgiou, Department of Chemical Engineering or Dr. Mukul M. Sharma, Department of Petroleum Engineering, University of Texas, Austin, TX 78712. An Affirmative Action/Equal Opportunity Employer.**

**POSTDOCTORAL POSITION.** Available immediately to study the role of proteases and protease inhibitors in Alzheimer's disease [*Cell* 52, 487 (1988); *Neuroscience* 32, 715 (1989); *Neurobiol. Aging* 11, 123 (1990)]. An NIH training grant is available for U.S. citizens or permanent residents with experience in molecular biology and enzymology. Please send curriculum vitae, relevant reprints, and three letters of recommendation to: **Dr. Carmela R. Abraham, The Arthritis Center, Boston University School of Medicine, K-5, 71 East Concord Street, Boston, MA 02118-2394.**

**POSTDOCTORAL POSITION.** Available for studies on multidrug resistance in human leukemia cell lines. These studies will focus on the isolation and characterization of new drug resistance-related genes and their protein products. Experience in gene cloning technology highly desirable. Send curriculum vitae and names of references to:

**Dr. Melvin S. Center  
Division of Biology, Ackert Hall  
Kansas State University (KSU)  
Manhattan, KS 66506**

*KSU is an Equal Opportunity/Affirmative Action Employer.*

**POSTDOCTORAL POSITION.** Available in September 1990 to study problems of protein structures by UV/visible spectroscopy, circular dichroism, fluorescence, light scattering, and analytical ultracentrifugation. Experience in enzyme kinetics, blood coagulation assays, and 2D-NMR preferred but not necessary. Send curriculum vitae to:

**Dr. German B. Villanueva  
Department of Biochemistry and Molecular Biology  
New York Medical College  
Valhalla, NY 10595**

**POSTDOCTORAL POSITION.** In protein-DNA interactions to investigate a new mechanism of restriction enzyme modulation by DNA [*PNAS* 86, 9707 (1989)] and its application to restriction enzyme cleavage and the control of gene expression. Experience in molecular biology or enzymology desired. Send curriculum vitae and three references to: **Dr. Michael D. Topal, Lineberger Cancer Research Center, CB#7295, University of North Carolina Medical School, Chapel Hill, NC 27599. Equal Opportunity/Affirmative Action Employer.**

**POSTDOCTORAL POSITION** in molecular cardiovascular pharmacology available immediately for a recent Ph.D. in pharmacology, physiology, or biochemistry. Project is related to the molecular pharmacology of purine receptors and the involvement of second messenger systems. Salary NIH level. Experience in receptor and/or molecular biochemistry or pharmacology preferred. Send curriculum vitae and three letters of recommendation by 1 September 1990 to: **Dr. S. Jamal Mustafa, Department of Pharmacology, East Carolina University, Greenville, NC 27858. Federal law requires proper documentation or identity and employability at the time of employment. Affirmative Action/Equal Opportunity Employer.**

## POSITIONS OPEN

**POSTDOCTORAL FELLOWSHIP.** The University of Michigan. Postdoctoral fellowship available for studies of T cell activation, lymphokine production, and subset analysis in aging mice. Experience in cellular immunology and/or cell biology preferred. Send curriculum vitae with names and telephone numbers of three references to: **Richard A. Miller, M.D., Ph.D., Institute of Gerontology, 300 North Ingalls Street, Ann Arbor, MI 48109-2007. A nondiscriminatory, Affirmative Action Employer.**

### PSYCHONEUROIMMUNOLOGY

Two year POSTDOCTORAL (Ph.D. or M.D.) RESEARCH FELLOWSHIP available to study immune mechanisms involved in human psychoneuroimmune interactions. Applicant should have a strong background in immunology with laboratory experience. Competitive salary. Send curriculum vitae and three references to: **Dr. Dana Bovbjerg, Memorial Sloan-Kettering Cancer Center, Box 457, 1275 York Avenue, New York, NY 10021.**

### POSTDOCTORAL FELLOW ENZYMOLGY AND METABOLISM OF VITAMIN-A IN SKIN UNIVERSITY OF MICHIGAN MEDICAL CENTER

The Department of Dermatology is seeking an individual to join a multidisciplinary group to investigate the metabolic transformations of retinoids (vitamin-A metabolites) in skin and to characterize in detail the properties and regulation of the enzymes involved in retinoid metabolism. This information will enable a better understanding of the mechanisms through which retinoids regulate growth and differentiation of skin and the capacity of skin to metabolize exogenous retinoids. Funding is available for at least 3 years with a possibility of long-term employment. Interested persons should send their curriculum vitae to: **John J. Voorhees, M.D., Chairman, Department of Dermatology, University of Michigan Medical Center, 1500 East Medical Center Drive, 1910 Taubman Center, Ann Arbor, MI 48109-0314.**

### WADSWORTH POSTDOCTORAL FELLOWSHIPS IN MOLECULAR BIOLOGY

Applications are invited for postdoctoral positions in the following research areas of molecular biology:

- Molecular pathogenesis of viral-induced pancreatic disease.
- Replication and structure-function analysis of the replication origin of cytomegalovirus.
- Molecular analysis of opportunistic pathogens in HIV infection.

Individuals experienced in the following areas are encouraged to apply: virology, immunology, molecular biology, nucleic acid and/or protein chemistry, genetics.

The Wadsworth Center for Laboratories and Research provides a stimulating research environment, combining excellent facilities with a multidisciplinary and interactive program in molecular biology and genetics. This unique research facility houses the graduate program of the School of Public Health of the State University of New York at Albany. Albany offers the cultural and recreational advantages of an upstate New York community, with ready access to major metropolitan areas (New York, Boston, Montreal).

This position is funded through Health Research, Inc., and salaries are competitive and commensurate with experience.

Interested candidates should forward their curriculum vitae and have three letters of reference sent to:

**Dr. Marlene Belfort  
Chair, Search Committee  
Wadsworth Center for Laboratories and Research  
P.O. Box 509  
Albany, NY 12201-0509**

### YOUR PERSONNEL PLACEMENT AD

in our line classified columns  
can be boxed for higher visibility.  
Call **SCIENCE** at 202-326-6555 for details.

## POSTDOCTORAL ANNOUNCEMENT

Postdoctoral fellowships available for qualified persons to participate in ongoing studies of the biochemical basis of insulin resistance in a diabetes-prone population. Insulin-resistant subjects demonstrate a post-receptor defect in insulin signal transduction that affects the ability of the hormone to regulate activities of a variety of protein kinases and protein phosphatases including S6Kinase, type 1 protein phosphatases, and protein tyrosine phosphatases. Preference will be given to individuals with a recent Ph.D. in biochemistry or a related discipline and with prior experience in protein phosphorylation research.

Send letter of application, curriculum vitae, and contact information of three references to: **James Sommercorn, Ph.D., Clinical Diabetes and Nutrition Section, National Institutes of Health, 4212 N. 16th Street, Room 541, Phoenix, Arizona 85016.**

NIH is an Equal Opportunity Employer



## Scientist

CIBA-GEIGY's Agricultural Division, a leader in genetic engineering, crop improvement and crop protection chemicals, has an outstanding opportunity at our Agricultural Biotechnology Research Unit in **Research Triangle Park, NC**. Primary focus of this position will be the production of monoclonal antibodies and development of immunoassays for detection and quantitation of proteins and haptens in plants.

Qualified candidate must have a BS/MS in biological science with 3-5 years experience in animal cell culture, monoclonal antibody technology and immunochemistry. Basic biochemical techniques such as gel electrophoresis, western blotting and affinity purification are required. Additional experience in biochemical separation and protein chemistry would be helpful.

Our state-of-the-art facilities are conveniently located, with access to several outstanding universities. We offer an excellent salary and benefits package including relocation assistance, and outstanding career advancement opportunities. Please forward your resume with three letters of professional reference and transcripts to: **Dr. Mary-Dell Chilton, CIBA-GEIGY Corporation, PO Box 12257, Research Triangle Park, NC 27709.** We Are An Equal Opportunity Employer M/F/H/V.

Science Serving Mankind

# CIBA-GEIGY

## POSITION ANNOUNCEMENT

### EXTENSION SPECIALIST, SUGAR AND OIL CROPS AND ALTERNATIVE CROPS IN ROTATIONAL SYSTEMS.

The Department of Agronomy and Range Science, University of California, Davis, CA 95616-8515. Academic career-track position, Assistant/Associate Cooperative Extension Specialist. Applied research responsibilities: leadership in activities related to the ecophysiology, genetics, pest management, and soil/plant nutrition of multi-species production systems involving sugar and oilseeds crops and alternative crops in rotational systems. Educational responsibilities: leadership of statewide extension education and information programs related to sugar crops, oil crops, and alternative crops in rotational systems, coordination of work group activities on above crops, service as a teaching resource person for CE County/Area Advisors, preparation of educational materials, and presentation of information at various industry and/or public programs. Responsibility for offering guest lectures and seminars and supervising graduate student research. Provides liaison for research and extension education activities among county advisors, specialists, subject matter departments, industry, governmental agencies, scientific and other groups, individuals, and the public at large. Responsibility for developing programs to meet the needs of underrepresented groups. The program will comply with all applicable federal and state laws and regulations and University, Campus, and Division policies and procedures related to civil rights, affirmative action, and equal employment opportunity. Ph.D. in Crop Science and/or Crop Protection disciplines or related fields. Experience in crop production agriculture is highly desirable. Send a statement of research and extension education interests, curriculum vitae, publication list, reprints of key publications (up to five), copies of undergraduate and graduate transcripts, and the names, addresses, and telephone numbers of at least five professional references by August 31, 1990 to: Lee Jackson, Recruitment Committee Chair, Department of Agronomy and Range Science, University of California, Davis, CA 95616-8515. Telephone: (916) 752-0701 FAX: (916) 752-4361.

## Microbiologist

BP America, the nation's 17th largest industrial corporation and part of the world's third largest energy company, has an immediate opening for a Microbiologist to join a multidisciplinary team of scientists doing important research in oil field, environmental, and related areas of microbiology.

We are looking for an individual with an MSc in Microbiology or a related discipline with 3 or 4 years experience in industry or an academic research environment. You should be able to work with business professionals as well as fellow scientists and technicians as you develop new ideas and test them in a state-of-the-art laboratory setting. Communication skills, particularly in writing reports, are essential.

BP's Warrensville Research Center is located on a wooded 100 acre site in a suburb of Cleveland, Ohio. We value and reward performance with an excellent salary and benefits package, a comprehensive relocation policy, and opportunities for career growth and advancement.

If you are interested and qualified to join a leader in the petroleum industry, send your detailed resume in complete confidence to: **Employee Development; BP Research; 4440 Warrensville Center Rd.; Cleveland, OH 44128.**

An Equal Opportunity Employer  
NO THIRD PARTY INQUIRIES. PLEASE

## BP AMERICA





## GENETIC THERAPY, INC.

### Research Scientists, Group Leaders, Laboratory Directors

**Genetic Therapy, Inc.** is a leader in the field of gene transfer and gene therapy. In collaboration with researchers at the National Institutes of Health, GTI has been associated with the first clinical testing of gene transfer involving the use of retroviral vectors.

As part of an expansion of our R & D activities, GTI is looking for Ph.D. or M.D. scientists at all levels. Scientists or clinicians with expertise and experience in retrovirology, immunology, tumor cell biology, lymphokine research related to cancer treatment, liver cell biology, bone marrow stem cell biology, cell implantation techniques and general recombinant DNA or mammalian cell culture techniques are encouraged to apply.

GTI has state of the art research facilities, and a number of formal collaborations at the nearby National Institute of Health. GTI offers an exciting and stimulating research environment as well as competitive compensation and benefit programs.

Applicants should send their resumes, and the names and addresses of two references to:



**Genetic Therapy, Inc.**  
Human Resources  
19 Firstfield Road  
Gaithersburg, MD 20878

GTI is an equal opportunity employer.



### Director Research Institute

St. Michael's Hospital, a major teaching hospital affiliated with the University of Toronto, has created a new Research Institute and seeks applicants for the post of Director.

The position requires an imaginative, creative and dynamic scientist with excellent leadership skills to:

- ☐ Provide scientific leadership for the Institute, establish new research programs and stimulate multidisciplinary collaboration.
- ☐ Build and lead an internationally recognized program in health research.
- ☐ Shape the future of the Institute through significant new recruitment of both fundamental and clinical scientists.

The Research Institute will include a new facility within St. Michael's Hospital. It will accommodate ongoing research programs. Excellent opportunities exist for interacting with a variety of strong research programs throughout the hospital.

In accordance with Canadian immigration requirements, priority will be given to Canadian citizens and permanent residents.

Applicants should submit a curriculum vitae and the names and addresses of three references by November 30, 1990 to:

Chairman, Search Committee  
for Research Institute Director  
Administration  
St. Michael's Hospital  
30 Bond Street  
Toronto, Ontario M5B 1W8  
Fax: (416) 864-5352

*St. Michael's Hospital is a major Canadian university teaching hospital. St. Michael's is committed to studying the causes, treatment and prevention of disease.*

## PLANT AND ANIMAL ECOLOGISTS

EG&G ENERGY MEASUREMENTS is expanding its staff of research ecologists to support existing Department of Energy environmental programs at the Elk Hills Naval Petroleum Reserve (Bakersfield, California) and Nevada Test Site (Las Vegas, Nevada). Ecologists with B.S., M.S., and PhD degrees with specialties in plant ecology, animal ecology, soil science, reclamation, habitat impact monitoring and mitigation are being recruited. Scientists will participate in:

- \* interdisciplinary community ecology studies
- \* threatened/endangered species studies
- \* impact assessment and mitigation
- \* reclamation

Projects at Elk Hills focus primarily on assessing impacts of development on habitat and population dynamics of the endangered San Joaquin kit fox, blunt-nosed leopard lizard, giant kangaroo rat, and Tipton's kangaroo rat. Reclamation, habitat manipulation, and other mitigation techniques are being tested and implemented.

Projects at the Nevada Test Site evaluate and mitigate impacts of diverse activities on the desert tortoise and protected plant species. Broader impact assessment and mitigation studies on general plant, invertebrate, and vertebrate populations and communities also are being conducted. Populations of interest include reptile, non-game bird, small mammal and insect.

Qualified candidates send resumes, transcripts, and example of written material to the address below. Also, a completed application form is required and can be requested at the address below:



### EG&G ENERGY MEASUREMENTS

Santa Barbara Operations  
Attn: Technical Recruiting  
130 Robin Hill Road  
Goleta, California 93117  
(805) 967-0456

Female and minority applicants are encouraged to apply. A pre-employment physical which includes drug screening and U.S. citizenship required. An equal opportunity employer.



## MOLECULAR BIOLOGIST RESEARCH OPPORTUNITY

Public Health Service  
National Institutes of Health  
National Institute of Environmental Health Sciences  
Research Triangle Park, North Carolina

Position is available in the Eicosanoid Biochemistry Workgroup of the Laboratory of Molecular Biophysics, which studies arachidonic acid and linoleic acid metabolism or prostaglandin H synthase and lipoxygenases in cell culture as related to cell growth. The research involves the application of molecular biology to the study of the structure and function of these enzymes. These studies could require the use of cloning techniques, Northern/Southern analysis, DNA sequencing, site-directed mutagenesis and the expression of cloned genes in suitable cell lines. Expertise in molecular biology preferred. General Requirements: Applicants must have a Ph.D. or equivalent degree in Biochemistry, Cell Biology, Molecular Biology, Physiology, Pharmacology, or closely related field, and show evidence of ability to carry out independent research. Candidates with up to 7 years of postdoctoral research experience will be considered. For more information, contact **Dr. Thomas E. Eling** at (919) 541-3911.

For prompt consideration, send cover letter indicating area of interest, Curriculum Vitae, and three letters of reference by September 24, 1990 to: **Mr. Bruce Wiggins (Code HNV21); NIEHS Personnel Office; P.O. Box 12233; Research Triangle Park, NC 27709.**

NIH is an Equal Opportunity Employer

## Cardiac Physiologist/ Pharmacologist - PhD

Imagine A Pharmaceutical Group  
With Small Company Values &  
Large Corporate Resources

At the pharmaceutical Research Division of Procter & Gamble, Norwich Eaton is making significant progress in a very competitive industry. Innovation is the key to our success. You'll discover a vibrant, highly spirited environment where new ideas are appreciated and individual talent is acknowledged.

We seek a Staff Scientist interested in the area of cardiotonic drug discovery. This position requires the ability to establish new in-vivo models to design, execute and interpret in-vivo cardiovascular experiments. The preferred candidate will have a PhD degree in Cardiovascular Physiology/ Pharmacology with 3-5 years of post doctoral experience.

Bring us your capabilities and expertise, and we'll provide the career advantages of a Fortune 50 organization including a competitive salary, paid relocation, company-paid health, dental and retirement benefits. We're located in a scenic Central New York State community, 200 miles northwest of New York City, with many recreational activities and cultural advantages. Qualified professionals are invited to submit resume to: **Mr. Terry Stark-SS, Norwich Eaton Pharmaceuticals, Inc., 17 Eaton Avenue, Norwich, NY 13815.**

# Norwich Eaton

Norwich Eaton Pharmaceuticals, Inc.  
A Procter & Gamble Company  
An Equal Opportunity Employer

PENNSTATE



College of Medicine • University Hospital  
The Milton S. Hershey Medical Center

### DIRECTOR OF GRANTS AND CONTRACTS

The Pennsylvania State University College of Medicine invites applications for the position of Director of Grants and Contracts. The position reports to the Associate Dean for Academic Affairs, Research and Graduate Studies.

Specific duties and responsibilities of the Director include:

- 1) providing assistance to faculty seeking support for research, education and service programs.
- 2) verifying institutional compliance with University and sponsor policies.
- 3) preparing and submitting applications for grants, contracts, and cooperative agreements to external agencies.
- 4) preparing, reviewing, and negotiating contracts.
- 5) expanding the external funding basis for staff projects.

Excellent skills in working with faculty and administrators throughout the College and a strong management background are required.

The candidate should have extensive experience with grant/contract administration either as a faculty member or a research administrator and have a thorough knowledge of accounting and budgetary requirements of funding agencies. Preference will be given to candidates with doctoral degrees and experience in grant/contract administration at a research university or comparable institution.

Please send a letter summarizing qualifications, a curriculum vitae and names of at least three references to:

C. McCollister Evarts, M.D.  
Senior Vice President for Health Affairs  
and Dean, College of Medicine  
The Milton S. Hershey Medical Center  
The Pennsylvania State University  
College of Medicine  
P.O. Box 850  
Hershey, Pennsylvania 17033

Deadline for receipt of applications is September 30, 1990.

An Affirmative Action/Equal Opportunity Employer.  
Women and minorities encouraged to apply.

## MOLECULAR BIOLOGY PROTEIN CHEMISTRY

**CANJI, INC.**, an emerging Bio-Pharmaceutical company in the San Diego area is engaged in developing cancer therapeutics based on leading-edge tumor suppressor genes research. We have career opportunities in the following disciplines for dedicated, innovative, and enterprising scientists.

**MOLECULAR BIOLOGIST** -- Ph.D. in Molecular Biology/Cell Biology and 2+ years of postdoctoral experience in modern molecular biology. Experience in mammalian and/or insect expression systems is desirable.

**PROTEIN CHEMIST** -- Ph.D. in Chemistry, Biochemistry, or closely related fields and 3+ years of postdoctoral experience. Immunochemistry background is helpful but not essential. The successful candidate will plan and direct efforts in characterization, analysis, and purification of recombinant proteins from bench to fermentor scale.

**RESEARCH ASSISTANTS** -- M.S. or B.S. with 2+ years experience in the laboratory. Experience in using recombinant DNA technology and cell culture techniques, or in applying basic protein chemistry skill to assist in protein purification and characterization.

**CANJI** offers successful candidates competitive compensation and benefit programs. Please send curriculum vitae and name and address of three references to Personnel at:



11077 N. Torrey Pines Road  
La Jolla, CA 92037

## POSITIONS OPEN

**POSTDOCTORAL POSITION** available in neuroendocrinology. Applications are invited from persons with a Ph.D. and/or M.D. for research with a neuroendocrine group investigating the roles played by neuropeptides in central disorders and in small-cell carcinoma. *Position restricted to U.S. citizen or resident.* Send curriculum vitae and three letters of reference to: **Dr. William G. North, Department of Physiology, Dartmouth Medical School, Hanover, NH 03756.** *Dartmouth College is an Equal Opportunity Employer.*

**POSTDOCTORAL POSITIONS AVAILABLE.** The Department of Dermatology, University of Michigan, has openings for the study of growth regulation in human skin. Areas of interest include: receptor tyrosine kinases, growth factor gene regulation, retinoid and steroid receptors, and dermal-epidermal interactions. Ph.D.'s should have experience in molecular and/or cellular biology. M.D.'s desiring molecular biology training are welcome to apply. Send curriculum vitae and two letters of reference to: **James T. Elder, M.D., Ph.D., University of Michigan, C560 MSRB II Box 0672, Ann Arbor, MI 48109-0672.**

*An Equal Opportunity/Affirmative Action Employer.*

## POSTDOCTORAL POSITIONS

Molecular and cellular biologists are invited to apply for postdoctoral positions in the laboratories of Drs. J. F. Gusella, X. O. Breakfield, and R. L. Martuza [Molecular Neurogenetics Unit, Massachusetts General Hospital (Harvard Medical School)]. Successful candidates will join ongoing research directed at: cloning the genes responsible for inherited neurologic and psychiatric diseases; characterization of the molecular mechanisms of neural tumor formation; and the development of gene transfer and grafting techniques in the mammalian nervous system.

Applicants should send curriculum vitae and two letters of recommendation to: **Dr. J. F. Gusella, Director, Molecular Neurogenetics Laboratory, Massachusetts General Hospital—East, Building 149, 13th Street, Charlestown, MA 02129.**

**POSTDOCTORAL ASSOCIATE** position(s) available in a neuroscience laboratory which studies neurotransmitter release due to pain and analgesia, especially with respect to substance P and excitatory amino acids. Experience doing HPLC, receptor binding, electrophysiology, or in vivo microdialysis is desirable. Ph.D. in biological sciences required. Positions available to start between 1 April 1990 and 15 July 1991. Send curriculum vitae as soon as possible and/or before 31 May 1991 to: **Alice A. Larson, Ph.D., Department of Veterinary Biology, University of Minnesota, 1988 Fitch Avenue, St. Paul, MN 55108.** *The University of Minnesota is an Equal Opportunity Educator and Employer and specifically invites and encourages applications from women and minorities.*

## UNIVERSITY OF CALIFORNIA AT SAN FRANCISCO (UCSF) AND BERKELEY GRADUATE STUDENTS AND POSTDOCTORAL FELLOWS IN PARASITE BIOLOGY

The Intercampus Program for Molecular Parasitology (IPMP) of the University of California at San Francisco and Berkeley has several openings for postdoctoral fellows and graduate students interested in research on the basic biology of host-pathogen interactions. The IPMP is an interdisciplinary graduate group studying the biology of protozoan, helminth, and bacterial pathogens. Faculty in the program hold appointments in the Departments of Medicine and/or Pharmaceutical Chemistry at UCSF, and/or in the School of Public Health at UC Berkeley. The program is supported by a grant from the John D. and Catherine T. MacArthur Foundation.

Individuals having an interest in parasite biochemistry, molecular biology, or immunology are especially encouraged to apply. Postdoctoral applicants should submit their curriculum vitae, a short summary of their research interests (no longer than one page), and arrange to have three letters of reference sent to: **Dr. Nina Agabian, IPMP Recruitment, UCSF School of Pharmacy, Box 1204, San Francisco, CA 94143-1204.** Graduate students should either apply through the UC Berkeley School of Public Health, Department of Biomedical and Environmental Health Sciences, or the Department of Pharmaceutical Chemistry at UCSF.

## POSITIONS OPEN

**POSTDOCTORAL ASSOCIATE, NEUROBEHAVIORAL PHARMACOLOGY.** Position available for research on opiate drugs in rodents and small primates. Behavioral assays are used to study drug-receptor interactions relevant to tolerance, dependence, and potential for abuse. Requires recent Ph.D. in pharmacology or related basic science or psychology. Send curriculum vitae, names of three references, and brief statement of interests to: **Stephen G. Holtzman, Ph.D., Department of Pharmacology, Emory University School of Medicine, Atlanta, GA 30322.** *Emory University is an Equal Opportunity/Affirmative Action Employer.*

## U.S. DEPARTMENT OF AGRICULTURE AGRICULTURAL RESEARCH SERVICE

Two postdoctoral research plant molecular and cell biologist GS-11 (\$29,981) positions funded for 2 years will be available after 1 August 1990. One position is to study the structure and regulation of the expression of genes encoding the proteins responsible for sequestering reserve triglycerides in soybean. The other position is to examine developmental and environmental control of expression of these proteins or protein targeting in heterologous systems. Appropriate background is required. Send applications to: **Dr. Eliot M. Herman, Plant Molecular Biology Laboratory, Building 006, USDA/ARS, Beltsville, MD 20705.** Telephone: 301-344-3258. FAX: 301-344-3320. *An Affirmative Action/Equal Opportunity Employer.*

**POSTDOCTORAL POSITION** in molecular entomology available at the University of Illinois at Urbana-Champaign. The laboratory is characterizing and cloning genes for cytochrome P450 monooxygenases involved in metabolizing phytochemicals in host-plants of herbivorous insects. Experience with recombinant DNA technology desirable. Send curriculum vitae and three letters of reference to: **Dr. M. R. Berenbaum, Department of Entomology, University of Illinois, 320 Morrill Hall, 505 South Goodwin Avenue, Urbana, IL 61801-3795.** Telephone: 217-333-7784.

*The University of Illinois is an Equal Opportunity/Affirmative Action Employer.*

## POSTDOCTORAL RESEARCH ASSOCIATE

Opportunities for original research in the Department of Microbiology and Immunology. Available project areas include: the molecular genetics of pathogenesis, antibiotic resistance mechanisms, or novel aspects of metabolism in intestinal anaerobic bacteria; molecular genetics of intermediary metabolism and its regulation in *Pseudomonas*; genetic regulation of lipid metabolism during lymphocyte growth and differentiation; and the molecular biology of oncogene expression and functions in lymphocytes. Applicants should have the Ph.D. degree with experience in modern molecular genetics or biochemistry. Nationally competitive salary plus fringes. Send cover letter, complete curriculum vitae, relevant publication reprints, and names and addresses of three references to: **Dr. Paul V. Phibbs, Department of Microbiology and Immunology, East Carolina University School of Medicine, Greenville, NC 27858-4354.** *East Carolina University is an Affirmative Action/Equal Opportunity Employer. Federal law requires proper documentation of identity and employability at the time of employment. It is requested this documentation be included with your application.*

## SOFTWARE PROFESSIONAL

- Activities include development of real-time data acquisition and motion control software.
- Requirements are good familiarity with DEC VMS. Full knowledge of FORTRAN, and advanced degree (Ph.D. preferred) in physics or related field. Demonstrable knowledge of physical processes required.
- Prefer knowledge of signal and/or image processing, CAMAC, automated motion control, array processors, and computer graphics.

IDM Corporation is an Austin-based manufacturer of process monitoring system.

Interested parties are invited to send a résumé with salary history to:

**International Digital Modeling Corporation  
1901 Rutland Drive  
Austin, TX 78758**

**Attention: Personnel Department**

*An Equal Opportunity Employer.*

## POSITIONS OPEN

## POSTDOCTORAL TRAINING OPPORTUNITIES IN TOXICOLOGY

Duke University and R. J. Reynolds Tobacco Company have established training fellowships honoring the eminent toxicologist, the late Dr. Leon Goldberg. One position is available immediately in neurotoxicology/neuropharmacology with special emphasis on studying nicotinic receptors in the central nervous system. In addition, applications are being considered for NIH training fellowships for the 1990-91 and 1991-92 academic years. The program consists of over 50 faculty members representing a wide variety of disciplines including chemistry, ecotoxicology, biochemistry, cell biology, molecular biology, pathology, and pharmacology. Emphasis is placed on molecular mechanisms of toxicology. A competitive stipend will be offered. Fellows will have the opportunity to spend at least 2 years at Duke University or R. J. Reynolds. Applicants should hold an M.D., Ph.D., or D.V.M. degree and should submit curriculum vitae, a description of current research project, and the names and addresses of three references to:

**Doyle G. Graham, M.D., Ph.D.  
Integrated Toxicology Program, Box 3005  
Duke University Medical Center  
Durham, NC 27710**

*Duke University is an Equal Opportunity Employer.*

**POSTDOCTORAL ASSOCIATE.** Positions (two) available in a molecular-oriented neuroscience laboratory which studies the anatomical and chemical basis of pain transmission and pain modulation focusing on neuropeptide, monoamine, and excitatory amino acid transmitters. Experience doing HPLC, receptor binding, electron microscope, in situ hybridization or in vivo microdialysis is desirable. Ph.D. in biological sciences required. Positions available to start between 1 August 1990 and 15 July 1991. Send curriculum vitae as soon as possible or before 31 May 1991 to: **Alvin J. Beitz, Ph.D., Department of Veterinary Biology, University of Minnesota, 1988 Fitch Avenue, St. Paul, MN 55108.** *The University of Minnesota is an Equal Opportunity Educator and Employer and specifically invites and encourages applications from women and minorities.*

## RESEARCH ASSOCIATE/POSTDOCTORATE

Division of Nephrology, New England Medical Center/Tufts University School of Medicine has a 2-year position immediately available to study regulation of Na, K-ATPase in uremia. Ph.D. or M.D. required, molecular biology experience desirable, will train. Send curriculum vitae and three references to: **Dr. R. Perrone, New England Medical Center, #317, 750 Washington Street, Boston, MA 02111.**

## RESEARCH DEVELOPMENT AWARDS AT THE NATIONAL ZOOLOGICAL PARK

The National Zoological Park (NZP) is offering **RESEARCH FELLOWSHIPS** for scientists to complete a major piece of work in their specialty, and to gain experience in research opportunities specific to zoological parks, particularly in the areas of evolutionary biology, animal behavior, physiological zoology, ecology, socio-biology, reproductive physiology, conservation biology, and veterinary sciences. Applicants with a distinguished record of research contributions and those whose interests complement the NZP's current professional research staff are preferred.

Each award is for a maximum of 3 years; stipends to be commensurate with professional level and experience. Applicants must be at least 3 years postdoctorate. Timing and duration of the fellowships are flexible, but the appointment must be activated within a year of the award and may not exceed a total of 36 months in duration (awards may be divided into several intervals, not less than 6 months each).

Field research is appropriate; however, fellows are to be primarily based at the NZP to maximize interactions and collaborations with NZP staff. Individuals who have received support from or through the NZP for a significant period during the preceding 5 years are ineligible to apply.

For application procedures and information contact: **Devra G. Kleiman, Assistant Director for Research, National Zoological Park, Washington, DC 20008.**

Application deadline is 15 October 1990.

*An Equal Opportunity Employer.*

# Millions of People Want You To Read This Ad.

Biospan Corporation is an exciting and growing biotechnology firm located near San Francisco, a short drive from UC Berkeley, UCSF and Stanford. We are developing novel therapeutics for four autoimmune diseases: rheumatoid arthritis; myasthenia gravis; multiple sclerosis; and insulin dependent diabetes mellitus. Exceptional opportunities exist now in these ground-floor, equity positions.

## SCIENTIST

Will work with small group on R&D projects involving MHC Class II and T-cell receptor genes. Requires PhD or equivalent, experience in genetic engineering, total gene synthesis, expression of heterologous proteins, and skills in associated analytical/preparative molecular biology techniques. Academic or industrial post doctoral experience a definite plus.

## RESEARCH ASSOCIATES

Opportunities exist for an immunologist, molecular biologist, DNA chemist and protein sequencer. Successful candidates will possess a BS/MS degree in biology, biochemistry, molecular biology or equivalent and 2-5 years' related experience.

Biospan is a well-funded organization offering attractive compensation, growth opportunities and equity for the right candidates. For immediate consideration, please forward your resume indicating position of interest to: Joan Shields, BIOSPAN CORPORATION, 301 Penobscot Drive, Redwood City, CA 94063; (415) 361-8901. EOE.

**biospan**  
C o r p o r a t i o n

# STAFF SCIENTISTS & POSTDOCTORAL FELLOWS

## *Molecular Biology & Neurobiology*

Regeneron Pharmaceuticals, a company dedicated to developing therapeutic agents for degenerative and traumatic neurological diseases, is seeking to apply recent advances in the understanding of neuronal growth and regeneration.

Regeneron offers an exciting, collegial environment in which state-of-the-art molecular skills are brought to bear on outstanding problems in neurobiology and medicine. Key projects focus on the discovery, purification and molecular cloning of novel neurotrophic growth factors, and on the assessment of their biological roles as well as therapeutic potentials using innovative cell culture methods and animal models.

*Openings in Molecular and Cell Biology require skills in the areas of:*

- Protein Biochemistry
- Mammalian Expression Vectors
- Molecular Genetics
- Monoclonal Antibodies

*Positions in Neurobiology require expertise in the areas of:*

- Neural Regeneration (PNS/CNS)
- Models of Neuronal Disease

All positions in Neurobiology require a strong neuronatomical background. Experience with receptor autoradiography and/or *in situ* hybridization is desirable.

Regeneron's modern facility is located on a 275-acre wooded campus in Westchester County, 20 miles north of Manhattan, near major universities and medical centers. We offer excellent compensation packages, including generous stock options. Suburban Westchester features attractive and affordable housing, outstanding public schools and recreational facilities along with ready access to the cultural and business centers of New York City.

Please forward your resume, in confidence, to: Ms. Carol Deaken, Regeneron Pharmaceuticals, Inc. 777 Old Saw Mill River Road, Tarrytown, NY 10591-6706. Equal opportunity employer.

**REGENERON**  
Pharmaceuticals, Inc.

## POSITIONS OPEN

Opening exists in the Dermatology Department for an **ASSISTANT RESEARCH BIOCHEMIST/MOLECULAR BIOLOGIST**, M.D. or Ph.D. Responsibilities: Publication, characterization, molecular cloning and biology of human mast cell enzymes, experience with cell culture required. Basic science teaching ability preferred. Salary: \$39,300 to \$49,500. Send applications to: **Bruce U. Wintroub, M.D., Dermatology, 515 Spruce Street, San Francisco, CA 94118**. Filing deadline: 10 August 1990. *The University of California is an Affirmative Action/Equal Opportunity Employer.*

### SENIOR TOXICOLOGIST/ HEALTH (RISK) ASSESSOR

Immediate opening for Chief, Division of Environmental Toxicology and Risk Assessment, Maryland Department of the Environment. Position mainly involves health risk assessments; development of standards and criteria for various toxic agents. Qualifications: doctorate in toxicology or health-related field with a minimum of 2 years of experience in risk assessment, knowledge of federal and state environmental regulations. Salary: \$38,000 to \$50,000. Interested candidates contact: **Dr. Boon P. Lim, 2500 Broening Highway, Baltimore, MD 21224**. Telephone: 301-631-3851.

### SENIOR TOXICOLOGIST WASHINGTON, DC

Coordination and development of testing procedures, selection of laboratories to conduct such testing. The supervision of scientific research regarding the safety of cosmetic ingredients: responsible for providing membership and standing committees with a detailed analysis of research, and for preparation of reports which will make such research and findings understandable to other scientists and laymen engaged in the manufacture, marketing, and distribution of cosmetic products. This position requires an advanced knowledge of toxicology including metabolism, pharmacokinetics, and classic in vivo safety testing. It also requires extensive scientific research experience specifically in the area of toxicology studies, including experience in evaluating toxicity and epidemiology data and extrapolating from animal to man in determining potential hazard and assessment of risks. Ph.D. in biological chemistry/toxicology and 2 years of training in postdoctoral research or 2 years of experience in position offered are required. Forty hours per week, 9:00 a.m. to 5:00 p.m.; salary: \$53,000 per year. *Proof of legal right to work in the United States must be provided.* Send résumé in duplicate to:

**DOES**  
Room 325, 500 C Street  
Washington, DC 20001  
Refer to: Job Order #7821

### VETERINARY RADIATION ONCOLOGIST

The responsibilities of this position will be to provide clinical radiation therapy for animals and to develop a research program in experimental radiation therapy. This program will build on existing grants and contracts to study the effect of radiation alone or in combination with other agents on naturally occurring tumors of animals. The individual will be expected to participate in the teaching program and supervise graduate students. The individual selected will collaborate with members of the Department of Radiology and Radiation Biology and other departments of the university. A D.V.M. or equivalent and training and experience in veterinary radiation therapy is required. A research background including a Ph.D. in radiation biology is desired. The position is a tenure-track appointment. The rank will be at the **ASSISTANT PROFESSOR** level. Salary will be negotiable. Application deadline: 1 December 1990. Send curriculum vitae and three letters of reference to: **Edward L. Gillette, D.V.M., Ph.D., Chairman, Department of Radiology and Radiation Biology, Colorado State University, Fort Collins, CO 80523**. *Colorado State University is an Equal Opportunity/Affirmative Action Employer and complies with all federal and Colorado state laws, regulations, and executive orders regarding Affirmative Action requirements. The Office of Equal Opportunity is located in Room 314, Student Services Building. In order to assist Colorado State University in meeting its Affirmative Action responsibilities, ethnic minorities, women, and other protected class members are encouraged to apply and to so identify themselves.*

## POSITIONS OPEN

### POSITIONS OPEN IN A NEW NMR CENTER

Four junior and senior research positions are available in both magnetic resonance imaging and spectroscopy at a newly established NMR center in the Institute of Biomedical Sciences, Academia Sinica, Taiwan, R.O.C. A Ph.D. or M.D. in the related field is required, although candidates with a bachelor or master's degree who are skillful in NMR operations are also invited to apply for technical positions. The center is equipped with three NMR systems: (i) a 14-Tesla high-resolution NMR system, (ii) a 9.4-Tesla wide-bore high-resolution NMR system with microimaging and solid-state capabilities; and (iii) a 4.7-Tesla NMR imaging/spectroscopy system with a horizontal bore size of 40 cm. Interested candidates should send résumé, a statement of proposed research, and three letters of recommendation directly to: **Dr. Cheng-Wen Wu, Director, Institute of Biomedical Sciences, Academia Sinica, Taipei 11529, Taiwan, R.O.C.**

### THE ERNA AND JAKOB MICHAEL VISITING PROFESSORSHIPS 1991/92 THE JOSEPH MEYERHOFF VISITING PROFESSORSHIPS 1991/92 THE ROSIE AND MAX VARON VISITING PROFESSORSHIPS 1991/92

The Weizmann Institute of Science, Rehovot, Israel, offers a limited number of visiting professorships in the natural and exact sciences.

The visiting professorships are intended for candidates already holding the rank of Full Professor or equivalent and will be for a duration of 2 months to 1 year.

Deadline for submittance of completed applications is: 30 November 1990.

For further information or application forms, please contact: **The Academic Secretary, The Weizmann Institute of Science, Rehovot 76100, Israel**. Telex: 972-8-381300, facsimile: 972-8-471667, Bitnet: **RSMARJOR @ WEIZMANN**.

## ANNOUNCEMENTS

### CAENORHABDITIS GENETICS CENTER

Genetic stocks of *Caenorhabditis elegans* are available for use by investigators initiating or continuing research on this nematode. The center's collection of more than 1300 strains includes at least one allele of each identified gene, all available chromosome rearrangements, and selected multiply mutant stocks useful for genetic mapping. Requests for strains should include a brief statement of the research or training activity for which the stocks are intended. Recipients are asked to acknowledge the center in publications resulting from use of the strains, and to provide the center with reprints of those publications. Inquiries should be addressed to: **Mark L. Edgley, Curator, Caenorhabditis Genetics Center, Division of Biological Sciences, 110 Tucker Hall, University of Missouri, Columbia, MO 65211**.

## COURSES AND TRAINING

### RESEARCH TRAINING IN GERONTOLOGY

The University of Texas Health Science Center at San Antonio announces the availability of **POSTDOCTORAL FELLOWSHIPS** supported by a training grant from the National Institute on Aging. The program is directed toward basic research in gerontology with special emphasis on the nutritional manipulation of the aging processes. Training is available in several general areas and directed by the following faculty: metabolic regulation, endocrinology and neuroendocrinology (Bertrand, Herlihy, Katz, Masoro, Ward); exercise and energy metabolism (McCarter); free radicals and membrane lipid peroxidation (Yu); immunology (Fernandes); cellular calcium and bone metabolism (Kalu); and molecular biology and regulation of gene expression (Chatterjee, Roy). The annual stipend of up to \$25,000 is limited to U.S. citizens and permanent residents. A letter of interest, curriculum vitae, research areas of potential interest, and the names of three references should be sent to: **Dr. Byung P. Yu, Department of Physiology, University of Texas Health Science Center at San Antonio, 7703 Floyd Curl Drive, San Antonio, TX 78284-7756**.

## MARKETPLACE

### DNA SEQUENCING

**Definitive Nucleotide Sequence**  
**\$3/base pair (>2kb)—Second Strand Verified**  
**Primer Extension Sequence Reaction—\$150**  
**(Averages 75¢/base or less)**  
Subcloning, Mapping, In vitro Mutagenesis  
Complete Molecular Biology Services  
**Ambion**  
**1-800-888-8804**

Circle No. 133 on Readers' Service Card

### Custom DNA Purified and Delivered in 48 hours.

\$10.00 a base for the first 15 bases, \$7.50 for each additional base. No additional charges.  
**Research Genetics**  
**1-800-533-4363**

Circle No. 7 on Readers' Service Card

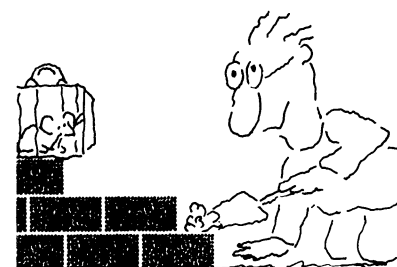
**MONOCLONAL ANTIBODIES TO HHV-6**  
Pan-Data Systems, Inc.™ offers PDS Unibodies™: monoclonal antibodies to four HHV-6 (HBLV) proteins—p41, gp82, gp102, gp116 to the research community for use in diagnostic assays and cellular systems. For more information contact Ms. Christine Owens.  
13 Taft Ct., Rockville MD 20850  
(301) 294-2297 / (301) 294-8095  
**(800) 543-6059**

### NEED DNA FAST?

**Custom Sequencing Primers in 26 hours\***  
Redundancies Methyolphosphonates Phosphorothioates 5'-Phosphorylation  
HPLC or Gel purification • High Quality & Low Prices

\*1-800-247-8766 The Midland Certified Reagent Co.  
FAX 915-694-2387 3112A W. Cuthbert, Midland, TX 79701

## We'll Help You Build A New Lab



Let the free Science product information service put you in touch with the vendors whose products you will need.

Simply write us a letter stating the specifics about your proposed lab and the instruments and supplies you need. We will do the rest. Write to:

**SCIENCE Magazine**  
New Lab Service Department  
1515 Broadway  
New York, NY 10036

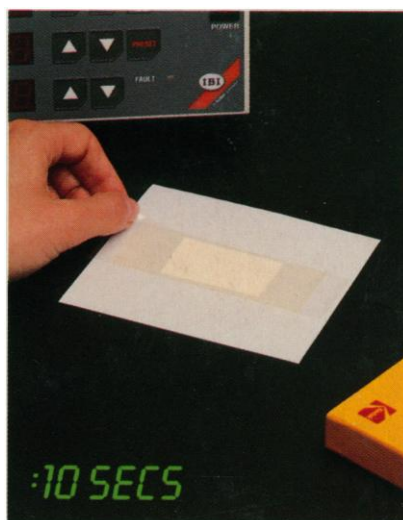
The Global Weekly of Research  
**SCIENCE**



# Now ultra-sensitive detection of Western Blots takes less than a minute.



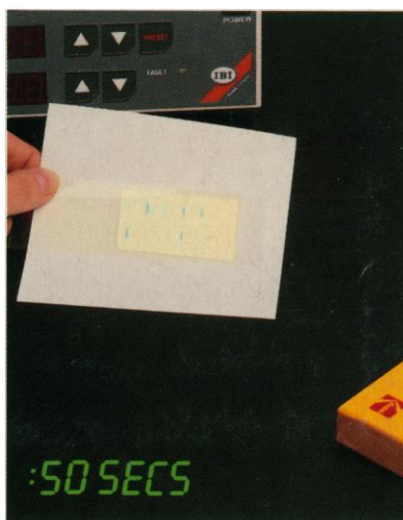
Western hybridized with peroxidase linked antibody.



Overlay web under ordinary room light.



Develop image at lab bench.



Final record.

## IBI introduces Enzygraphic™ Web.\* A revolutionary new detection method without radioactivity.

It's a breakthrough! With new Enzygraphic Web, you just process your Western in the usual manner using peroxidase linked antibody as your secondary probe to localize your target protein.

Then overlay Enzygraphic Web on your Western under ordinary room light for detection and amplification of your target protein in a single step.

The target band rapidly appears on the web by electron transfer via peroxidase linked probe to the unique web detection system. Result: you get ultra-sensitive detection of Westerns in less than a minute without radioactive probes.

### Ultra-Sensitive:

- More sensitive than radioactive methods using  $^{125}\text{I}$  labeled probes.
- More sensitive than existing colorimetric methods using peroxidase or alkaline phosphatase linked probes.

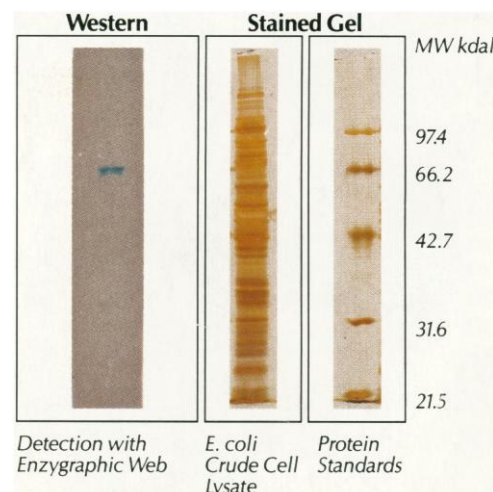
### Ultra-Fast:

- Image development time is reduced from hours to less than a minute.
- Preparation of alkaline phosphatase or peroxidase substrates is eliminated.
- Detection time is much less than with  $^{125}\text{I}$  labeled probes.

### Ultra-Safe:

- Use of radioactive probes is eliminated.

Enzygraphic Web is available in high sensitivity or rapid screening versions in 15-count boxes of 4" x 5" sheets. Order today from our exclusive distributor, VWR Scientific. Or call IBI Technical Services at (800) 243-2555 for more information.



Detection by Enzygraphic Web of fusion protein expressed by the IBI FLAG™ vector.



INTERNATIONAL BIOTECHNOLOGIES, INC.  
Subsidiary of Eastman Kodak Company  
P.O. Box 9558, New Haven, CT 06535

©1990, International Biotechnologies, Inc.  
Kodak and Enzygraphic Web are trademarks of Eastman Kodak Company.  
\*Patent Pending

Circle No. 174 on Readers' Service Card

# THE RESULT OF HUNDREDS OF IDEAS, SLEEPLESS NIGHTS, ENDLESS DEBATES AND WORLD CLASS RESEARCH.



If creating it gave its discoverer a few sleepless nights, that's a small price to pay. Because the Nobel Prize winning work that went into it has also helped to relieve suffering for tens of millions of people around the world. It's called *Tagamet* and it has transformed the way that ulcers are treated.

Of course no one expected our mission of innovative pharmaceutical development to be easy. But in an atmosphere of exhilaration, creativity, challenge and world class research, discovery does happen. The world's first genetically engineered vaccine against hepatitis B, major breakthroughs in the treatment of infections resistant to other oral antibiotics and the first thrombolytic agent which can be given by bolus injection are all proof that our approach is working.

Greater discoveries may require even more sleepless nights. But, at SmithKline Beecham Pharmaceuticals, improving human health on a global scale is a challenge worth pursuing.

Scientists with the following backgrounds are currently being sought: biology, chemistry, biochemistry, biochemical engineering and other life sciences at the Bachelor's, Master's and Doctorate levels. Please respond to: Human Resources

Department, S1, SmithKline Beecham Pharmaceuticals,

P.O. Box 1539, King of Prussia, PA 19406.

We are an Equal Opportunity Employer, M/F/H/V.

  
**SmithKline Beecham**  
Pharmaceuticals