

research. Many papers are extremely readable, and, refreshingly, most are written so that nonspecialists in a particular subdiscipline can readily understand the general implications of the research discussed. The papers by Smith and Juntao on paleontological observations and by Kidd and eight coauthors on geologic mapping deserve special praise for their clarity, descriptions of methodology, and circumspect approach to the interpretation of data.

The participation of so many scientists in the project naturally produced some divergence of interpretation. My favorite example of this stems from the long-standing controversy about how much of the late Tertiary and Quaternary convergence between India and Eurasia is accommodated by eastward extrusion of Tibet: Kidd and Molnar, in their paper on recent faulting along the traverse, argue for a "significant fraction," whereas Dewey *et al.*, discussing the tectonic evolution of the plateau, say "little, if any." I was happy to see such disagreements apparent in the book, but I can't help wondering if they might not confuse a reader who is not well versed in the evolution of modern geologic thought about Tibet. A collection of such diverse papers begs for a summary chapter that clearly and evenhandedly discusses the strengths and weaknesses of the divergent interpretations in various papers. The tectonic evolution paper by Dewey *et al.* is the last offering in the collection, and it may have been intended as a summary. If so, it falls well short of the mark. Although I was pleasantly surprised that many of the earlier papers stressed the dangers of assuming that conclusions based on one geotraverse are applicable to the Tibetan Plateau as a whole, I found the last paper to be filled with the kind of blanket extrapolations that plague so many papers about the Himalayas and Tibet. Many interpretations in this chapter are not required by the data obtained during the geotraverse, and most of the conclusions are unsubstantiated. My greatest fear about *The Geological Evolution of Tibet* is that this general chapter will be widely cited and the preceding, better-conceived papers will be ignored.

On balance, *The Geological Evolution of Tibet* is an important contribution to the geologic literature on Tibet, even if, as a report on reconnaissance, it raises more questions than it answers. Let's hope that the present political difficulties in the region will be resolved in such a way that the geologic community can begin the kind of systematic studies required to truly understand the geological evolution of Tibet.

KIP HODGES

Massachusetts Institute of Technology,
Cambridge, MA 02139

Books Received

- Abortion, Doctors and the Law.** Some Aspects of the Legal Regulation of Abortion in England from 1803 to 1982. John Keown. Cambridge University Press, New York, 1988. xii, 212 pp. \$44.50 Cambridge History of Medicine.
- Acid Rain and Friendly Neighbors.** The Policy Dispute Between Canada and the United States. Jurgen Schmandt, Judith Clarkson, and Hilliard Roderick, Eds. 2nd ed. Duke University Press, Durham, NC, 1989. xvi, 344 pp., illus. \$45. Duke Press Policy Studies.
- Adjustment.** Theory, Research, and Personal Applications. Andrew A. Sappington. Brooks/Cole, Pacific Grove, CA, 1983. xvi, 606 pp., illus. Paper, \$32.50.
- Adolescent Life Experiences.** Gerald R. Adams and Thomas Gullotta. 2nd ed. Brooks/Cole, Pacific Grove, CA, 1989. xx, 503 pp., illus. \$36.50.
- Advances in Applied Fourier Transform Infrared Spectroscopy.** M. W. Mackenzie, Ed. Wiley, New York, 1988. xii, 353 pp., illus. \$95.
- AIDS.** Sexual Behavior and Intravenous Drug Use. Charles F. Turner, Heather G. Miller, and Lincoln E. Moses, Eds. National Academy Press, Washington, DC, 1989. xvi, 589 pp., illus. \$34.95; paper, \$24.95.
- Analysis of Biogeochemical Cycling Processes in Walker Branch Watershed.** Dale W. Johnson and Robert I. Van Hook, Eds. Springer-Verlag, New York, 1989. xviii, 401 pp., illus. \$69. Springer Advanced Texts in Life Sciences.
- The Analysis of Peptides and Proteins by Mass Spectrometry.** C. J. McNeal, Ed. Wiley, New York, 1988. xii, 322 pp., illus. \$89.95. From a symposium, College Station, TX, April 1988.
- Analytical Methods for Pesticides and Plant Growth Regulators.** Vol. 16, Specific Applications. Joseph Sherma, Ed. Academic Press, San Diego, CA, 1988. x, 268 pp., illus. \$65.
- The Beginning of the Age of Dinosaurs.** Faunal Change Across the Triassic-Jurassic Boundary. Kevin Padian, Ed. Cambridge University Press, New York, 1988. xii, 378 pp., illus. Paper, \$34.50. Reprint, 1986 ed.
- The Calcium Channel.** Structure, Function and Implications. M. Morad *et al.*, Eds. Springer-Verlag, New York, 1988. xxviii, 643 pp., illus. Paper, \$84.40. From a symposium, Stresa, Italy, May 1988.
- Carbocycle Construction in Terpene Synthesis.** Tse-Lok Ho. VCH, New York, 1988. xiv, 768 pp., illus. \$125.
- Carbon Dioxide Activation by Metal Complexes.** Arno Behr. VCH, New York, 1988. viii, 161 pp., illus. \$98.
- Carbyne Complexes.** H. Fischer *et al.*, VCH, New York, 1988. xviii, 235 pp., illus. \$88.
- Cell to Cell Communication in Endocrinology.** F. Piva *et al.*, Eds. Raven, New York, 1989. xx, 297 pp., illus. \$84. Sero Symposia Publications from Raven Press, vol. 49. From a symposium, Florence, Italy, Oct. 1987.
- Cerebral Blood Flow.** Mathematical Models, Instrumentation, and Imaging Techniques. Aldo Rescigno and Andrea Boicelli, Eds. Plenum, New York, 1988. viii, 263 pp., illus. \$62.50. NATO Advanced Science Institutes Series A, vol. 153. From an institute, L'Aquila, Italy, June 1986.
- Encyclopedia of Astronomy and Astrophysics.** Robert A. Meyers, Ed. Academic Press, San Diego, CA, 1988. xiv, 807 pp., illus. \$49.95.
- Estimating and Choosing.** An Essay on Probability in Practice. George Matheron. Springer-Verlag, New York, 1989. x, 141 pp., illus. Paper, \$39.80. Translated from the French by A. M. Hasofer.
- The Eurasian Huchen, Hucho hucho.** Largest Salmon of the World. J. Holčík *et al.* Junk, Dordrecht, 1988 (U.S. distributor, Kluwer, Norwell, MA). xiv, 239 pp., illus., + plates. \$125. Perspectives in Vertebrate Science, vol. 5.
- Everybody Counts.** A Report to the Nation on the Future of Mathematics Education. National Research Council. National Academy Press, Washington, DC, 1989. xiv, 114 pp., illus. Paper, \$7.95.
- Far from Equilibrium Phase Transitions.** Luis Garrido, Ed. Springer-Verlag, New York, 1988. viii, 340 pp., illus. \$37.10. Lecture Notes in Physics, vol. 319. From a conference, Barcelona, Spain, June 1988.
- The Farthest Corner.** New Zealand—A Twice Discovered Land. Carol Morton Johnston and Harry Morton. University of Hawaii Press, Honolulu, 1988. xiv, 315 pp., illus. \$25.
- Fibronectin.** Deane F. Mosher, Ed. Academic Press, San Diego, CA, 1988. xviii, 474 pp., illus. \$95. Biology of Extracellular Matrix.

George de Hevesy, 1885–1966. Festschrift. György Marx, Ed. Akadémiai Kiadó, Budapest, 1988. viii, 165 pp., illus. \$19. From a symposium, Budapest, Hungary, Sept. 1985.

Growing Young. Ashley Montagu. 2nd ed. Bergin and Garvey, Granby, MA, 1989. xii, 292 pp., illus. \$49.95; paper, \$14.95.

The Gulf Stream. Encounters with the Blue God. William H. MacLeish. Houghton Mifflin, Boston, 1989. xii, 243 pp., illus. \$19.95.

HTLV-I and the Nervous System. Gustavo C. Román, Jean-Claude Vernant, and Mitsuhiro Osame, Eds. Liss, New York, 1989. xiv, 620 pp., illus. \$120. Neurology and Neurobiology, vol. 51. From a meeting, Fort-de-France, Martinique, April 1988.

Human Immunogenetics. Basic Principles and Clinical Relevance. Stephen D. Litwin, Ed. Dekker, New York, 1989. xvi, 828 pp., illus. \$150. Immunology Series, vol. 43.

Human Life. Its Beginnings and Development. Francisc Abel, Edouard Boné, and John C. Harvey, Eds. Published for the International Federation of Catholic Universities by L'Harmattan, Paris, and CIACO, Louvain-la-Neuve, 1988. 332 pp. Paper, \$20. Catalysts.

Human Tumor Antigens and Specific Tumor Therapy. Richard S. Metzgar and Malcolm S. Mitchell, Eds. Liss, New York, 1988. xx, 366 pp., illus. \$74. UCLA Symposia on Molecular and Cellular Biology, vol. 99. From a symposium, Keystone, CO, April 1988.

Hypersonic and High Temperature Gas Dynamics. John D. Anderson, Jr. McGraw-Hill, New York, 1983. xiv, 690 pp., illus. \$52.95. McGraw-Hill Series in Aeronautical and Aerospace Engineering.

Introduction to String Field Theory. Warren Siegel. World Scientific, Teaneck, NJ, 1988. x, 244 pp., illus. \$24; paper, \$16. Advanced Series in Mathematical Physics, vol. 8.

Ion and Atomic Beams for Controlled Fusion and Technology. M. D. Gabovich, N. V. Pleshchitsky, and N. N. Semashko. Consultants Bureau (Plenum), New York, 1989. x, 231 pp., illus. \$85. Translated from the Russian by Donald H. McNeill.

Ion Chromatography in Water Analysis. O. Shpigun and Yu. A. Zolotov. Philip J. Cox and Mary R. Masson, Translation editors. Horwood, Chichester, U.K., and Halsted (Wiley), New York, 1988. 188 pp., illus. \$59.95. Ellis Horwood Series in Analytical Chemistry.

Lasers, Molecules, and Methods. Joseph O. Hirschfelder, Robert E. Wyatt, and Rob D. Coalson, Eds. Wiley-Interscience, New York, 1989. xviii, 1022 pp., illus. \$125. Advances in Chemical Physics, vol. 73.

Let Newton Be! John Fauvel *et al.*, Eds. Oxford University Press, New York, 1988. vi, 272 pp., illus. \$29.95.

Life Pulse. Episodes from the Story of the Fossil Record. Niles Eldredge. Facts on File, New York, 1989. x, 246 pp., illus. Paper, \$10.95. Reprint, 1987 ed.

Linear Programming with Statistical Applications. Vincent A. Sposito. Iowa State University Press, Ames, 1989. x, 278 pp. \$38.95.

Lipids and Related Compounds. Alan A. Boulton, Glen B. Baker, and Lloyd A. Horrocks, Eds. Humana, Clifton, NJ, 1988. xx, 343 pp., illus. \$64.50. Neuro-methods, vol. 7.

Liposomes in the Therapy of Infectious Diseases and Cancer. Gabriel Lopez-Berestein and Isaiah J. Fidler, Eds. Liss, New York, 1989. xx, 480 pp., illus. \$96. UCLA Symposia on Molecular and Cellular Biology, vol. 89. From a colloquium, Lake Tahoe, CA, Feb. 1988.

Molecular Design of Life. Lubert Stryer. Freeman, NY, 1989. xvi, 215 pp., illus. Paper, \$14.95. Reprinted from *Biochemistry* (New York, 1988), chapters 1–8.

Molecular Biology of RNA. Thomas R. Cech, Ed. Liss, New York, 1988. xviii, 392 pp., illus. \$80. UCLA Symposia on Molecular and Cellular Biology, vol. 94. From a symposium, Keystone, CO, April 1988.

Molecules in Physics, Chemistry, and Biology. Vol. 3, Electronic Structure and Chemical Reactivity. Jean Maruani, Ed. Kluwer, Norwell, MA, 1988. xxii, 431 pp., illus. \$133. Topics in Molecular Organization and Engineering.

Monoclonal Antibodies. Production and Application. Avshalom Mizrahi, Ed. Liss, New York, 1988. xvi, 417 pp., illus. \$96. Advances in Biotechnological Processes, vol. 11.

New Horizons in Amateur Astronomy. Grant Fjermedal. Perigee (Putnam), New York, 1989. 144 pp., illus. Paper, \$11.95.

New Transportation Fuels. A Strategic Approach to Technological Change. Daniel Sperling. University of California Press, Berkeley, 1989. xiv, 532 pp., illus. \$45.

New World, New Mind. Moving Toward Conscious Evolution. Robert Ornstein and Paul Ehrlich. Doubleday, New York, 1989. xii, 302 pp., illus. \$18.95.

Nitrosamines. Toxicology and Microbiology. M. J. Hill, Ed. VCH, New York, 1988. 169 pp., illus. \$125. Ellis Horwood Series in Food Science and Technology.

Patents. A Basic Guide to Patenting in Biotechnology. R. S. Crespi. Cambridge University Press, New York, 1988. viii, 191 pp. Cambridge Studies in Biotechnology, vol. 6.

The Pathobiology of Neoplasia. Alphonse E. Sirica, Ed. Plenum, New York, 1989. xxii, 583 pp., illus. \$85.

Pathways to the Universe. Francis Graham-Smith and Bernard Lovell. Cambridge University Press, New York, 1989. 239 pp., illus. \$24.95.

The Penguin Dictionary of Electronics. Carol Young. 2nd ed. Penguin, New York, 1989. vi, 671 pp., illus. Paper, \$8.95.

Perfumery. The Psychology and Biology of Fragrance. Steve Van Toller and George H. Dodd, Eds. Chapman and Hall (Routledge, Chapman and Hall), New York, 1989. xx, 268 pp., illus. \$49.95.

Pesticide Users' Health and Safety Handbook. An International Guide. Andrew Watterson. Van Nostrand Reinhold, New York, 1988. xii, 504 pp. \$64.95.

Photons and Nonlinear Optics. David N. Klyshko. 2nd ed. Gordon and Breach, New York, 1988. xxii, 415 pp., illus. \$298. Translated from the Russian edition (Moscow, 1980) by Yuri Sviridov.

Physical Property Prediction in Organic Chemistry. C. Jochum, M. G. Hicks, and J. Sunkel, Eds. Springer-Verlag, New York, 1988. x, 554 pp., illus. \$84.40. From a workshop, Schloss Korb, Italy, May 1988.

Physicochemical Hydrodynamics. Interfacial Phenomena. Manuel G. Velarde, Ed. Plenum, New York, 1988. xvi, 1111 pp., illus. \$165. NATO Advanced Science Institutes Series B, vol. 174. From an institute, La Rabida, Spain, July 1986.

The Physics of Solar Flares. Einar Tandberg-Hansen and A. Gordon Emslie. Cambridge University Press, New York, 1988. xiv, 273 pp., illus. \$69.50. Cambridge Astrophysics Series.

The Physics of Submicron Semiconductor De-

vices. Harold L. Grubin, David K. Ferry, and C. Jacoboni, Eds. Plenum, New York, 1988. viii, 736 pp., illus. \$125. NATO Advanced Science Institutes Series B, vol. 180. From an institute, San Miniato, Italy, July 1983.

The Political System Matters. Social Psychology and Voting Behavior in Sweden and the United States. Donald Granberg and Sören Holmberg. Cambridge University Press, New York, and Editions de la Maison des Sciences de l'Homme, Paris, 1988. x, 254 pp., illus. \$49.50. European Monographs in Social Psychology.

Pollution of the North Sea. An Assessment. W. Salomons et al., Eds. Springer-Verlag, New York, 1988. xii, 687 pp., illus. \$113.

Polymer Association Structures. Microemulsions and Liquid Crystals. Magda A. El-Nokaly, Ed. American Chemical Society, Washington, DC, 1989. xii, 362 pp., illus. \$79.95. ACS Symposium Series, vol. 384. From a symposium, New Orleans, LA, Aug.-Sept. 1987.

Power System Design and Applications for Alternative Energy Sources. K. Denno. Prentice Hall, Englewood Cliffs, NJ, 1989. xviii, 237 pp., illus. \$46. Prentice Hall Advanced Reference Series.

The Primate Postcranial Skeleton. Studies in Adaptation and Evolution. Elizabeth Strasser and Marian Dagosto, Eds. Academic Press, San Diego, CA, 1988. iv, 265 pp., illus. \$17.95. Reprinted from *Journal of Human Evolution*, vol. 17, no. 1/2 (1988). Based on a symposium, New York, April 1987.

Principles of Computer Science. Cullen Schaffer. Prentice Hall, Englewood Cliffs, NJ 1988. xviii, 413 pp., illus. \$39.

Random Processes. A First Look. R. Syski. 2nd ed. Dekker, New York, 1989. xxiv, 413 pp. \$49.75. Statistics, vol. 98.

Redox Chemistry and Interfacial Behavior of Biological Molecules. Glenn Dryhurst and Katsumi Niki, Eds. Plenum, New York, 1988. xii, 659 pp., illus. \$115. From a symposium, Honolulu, HI, Oct. 1987.

Relationships of Polymeric Structure and Properties. I. Chudáček, Ed. Steinkopff, Darmstadt, and Springer-Verlag, New York, 1988. viii, 204 pp., illus. \$79. Progress in Colloid and Polymer Science, vol. 78. From a seminar, Prague, Czechoslovakia, April 1987.

Reproductive Laws for the 1990s. Sherrill Cohen and Nadine Taub, Eds. Humana, Clifton, NJ, 1989. x, 472 pp. \$34.50. Contemporary Issues in Biomedicine, Ethics, and Society.

Respiratory Physiology. An Analytical Approach. H. K. Chang and Manuel Paiva, Eds. Dekker, New York, 1989. xviii, 869 pp., illus. \$150. Lung Biology in Health and Disease, vol. 40.

Slow Wave Sleep. Physiological, Pathophysiological, and Functional Aspects. A Wauquier, C. Dugovic, and M. Radulovacki, Eds. Raven, New York, 1989. xviii, 331 pp., illus. \$89. From a symposium, Beersse, Belgium, June 1987.

Sources, Effects and Risks of Ionizing Radiation. United Nations Scientific Committee on the Effects of Atomic Radiation. United Nations, New York, 1988. vi, 647 pp., illus. Paper, \$90.

Soviet Steel. The Challenge of Industrial Modernization in the USSR. Boris Z. Rumer. Cornell University Press, Ithaca, NY, 1989. xii, 251 pp. \$29.95. Studies in Soviet History and Society.

State of the World 1989. A Worldwatch Institute Report on Progress Toward a Sustainable Society. Lester R. Brown et al. xvi, 256 pp. Paper, \$9.95.

Statistical Inference for Spatial Processes. B. D. Ripley. Cambridge University Press, New York, 1988. viii, 148 pp., illus. \$34.50.

Stochastic Processes in Demography and Applications. Suddhendu Biswas. Wiley, New York, 1988. xvi, 359 pp. \$24.95.

Stressful Life Events. Thomas W. Miller, Ed. International Universities Press, Madison, CT, 1989. xvi, 807 pp., illus. \$65. Stress and Health Series, vol. 4.

The Structure and Confirmation of Evolutionary Theory. Elisabeth A. Lloyd. Greenwood, Westport, CT, 1988. x, 235 pp. \$37.95. Contributions in Philosophy, vol. 37.

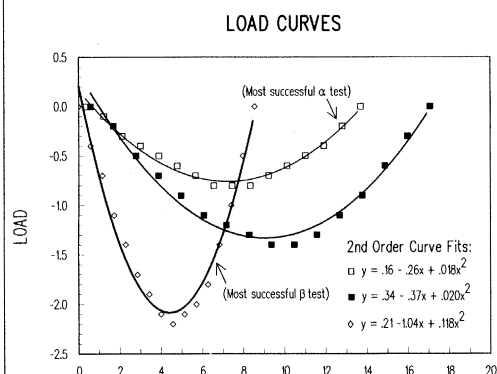
Superconductivity Sourcebook. V. Daniel Hunt. Wiley-Interscience, New York, 1989. x, 308 pp., illus. \$39.95.

Wind Energy—2. B. Rasmussen and G. Caratti, Eds. Harwood, New York, 1988. xiv, 420 pp., illus. \$98. From a meeting, Brussels, Belgium, Nov. 1987.

World Resources, 1988—89. World Resources Institute and International Institute for Environment and Development. Basic Books, New York, 1988. xii, 372 pp., illus. \$32.95; paper, \$16.95.

Yeast Genetics. A Manual of Methods. J. F. T. Spencer, D. M. Spencer, and I. J. Bruce. Springer-Verlag, New York, 1989. viii, 104 pp., illus. Paper, \$22.95. Manuals for the Bench.

Engineers and Scientists Found Plotting Behind Businessmen's Backs!



with
**TECH*
GRAPH*
PAD...**

Plotting and
graphing software
for engineers and
scientists.

100% LOTUS Compatible

Still trying to get engineering & scientific graphs from spreadsheets or business programs? If so, you need TECH*GRAPH*PAD, the industry standard technical graphing & plotting software for engineers & scientists. Directly reads data from Lotus 1-2-3 worksheets, other spreadsheets, & most data acquisition hardware & software. GUARANTEED easy-to-use or your money back!

According to PC MAGAZINE, "TECH*GRAPH*PAD is fast, easy-to-use, and produces good-looking output."



- X-Y, Semi-log, Log/Log, Polar Plots
- Curve Fitting • Data Smoothing
- Full control of Labels & Scale
- Independent X-Y Axes ; Dual Y Axes
- Error Bars • Greek Letters • Symbols
- Laser Printer, Plotter, Printer Output
- IBM PC/XT/AT, PS/2, Apollo, DEC compatible

CALL for FREE Demo Disk
(617) 290-5900

Dealer Inquiries Invited;
International dealers fax (617) 890-1340

binary engineering

400 Fifth Ave. • Waltham, MA 02154 • Tel: (617) 290-5900 • Fax: (617) 890-1340

AAAS Announces a Report on:

Science Policy Careers

Graduate Education and Career Directions in Science, Engineering and Public Policy, by *Albert H. Teich, Barry D. Gold, and June M. Wiaz*

Educational programs and professional practice in the field of science policy are continually evolving, shifting their focus in response to the changing demands of today's society. This study provides an up-to-date and comprehensive assessment of graduate education and career patterns in science policy. Conducted under the auspices of the AAAS Committee on Science, Engineering and Public Policy and supported by AAAS and the National Science Foundation, the project presents empirical data from the programs, graduates, and employers in the field.

...a must for policy makers, students, employers, and anyone interested in gaining insight into science policy programs.

1986; 168 pp.; softcover \$10.00 (\$8.50 for AAAS members).

Order from: AAAS Marketing, Dept. SJ, 1333 H Street, NW, Washington, DC 20005. Please specify AAAS Publication #86-17, add \$2.00 postage & handling, and allow 4-6 weeks for delivery. VISA and MasterCard accepted. For shipments to CA, add applicable sales tax.

**At Synthecell,
We Foresaw the Need . . .
and Responded**

Introducing

S-OLIGOS

Anti-Sense DNA

for Experimentation in Living Cells

S-OLIGOS ARE SULFUR DERIVATIZED OLIGONUCLEOTIDES.

- | | |
|--------------------------|--|
| CHARACTERISTICS - | <ul style="list-style-type: none">• MORE CELL PERMEABLE• RESISTANT TO NUCLEASES |
| RESULT - | <ul style="list-style-type: none">• REPLICATION, TRANSCRIPTION AND TRANSLATION SIGNIFICANTLY BLOCKED |

FOR A BIBLIOGRAPHY ON S-OLIGOS, OR INFORMATION ON OUR OTHER OLIGONUCLEOTIDE PRODUCTS, PLEASE CALL

1-800-336-7455

**SYNTHECCELL
SYNTHECCELL
SYNTHECCELL
SYNTHECCELL
SYNTHECCELL
SYNTHECCELL
CORP.**

2096 Gaither Road, Rockville, MD 20850 USA
Circle No. 17 on Readers' Service Card

Is your Protein Research on Track?

Electrophoresis with Titan® III cellulose acetate is a fast, inexpensive method for monitoring protein research. Separations are complete in minutes and cost just pennies per sample.

Titan III tells you quickly...

- | | |
|----------------------|------------------------------|
| • Identity | • Purity |
| • Binding properties | • Approximate concentrations |

Cellulose acetate electrophoresis is flexible, technically simple and requires tiny sample volumes. Migration is fast — only minutes to separate and stain. Patterns may be enhanced by general staining, immunofixation, transfer to nitrocellulose, autoradiography or many other techniques.

About Titan III Cellulose Acetate

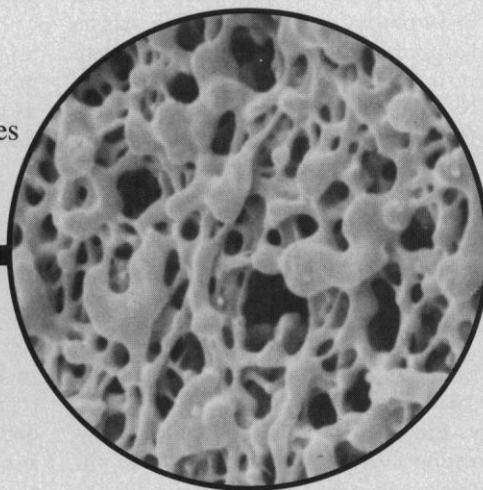
- | | |
|---|------------------------------|
| • Available in several convenient sizes | • Indefinite shelf life |
| • Requires very little storage space | • Stable at room temperature |

Other Applications for Researchers

- Monitoring column chromatography elutions
- Evaluation of samples in protein purification experiments
- Monitoring the progress of protein digestion by tryptic agents
- Assessing contents of cell extracts

For more information and details about packaging and pricing, call toll free 800-231-5663.

In Texas, 800-392-3126.



Helena Laboratories
Beaumont, Texas 77704

Circle No. 249 on Readers' Service Card

Products & Materials

Molecular Modeling System

The CAChe Worksystem is a hardware and software system for molecular design and modeling that is based on an enhanced Macintosh IIx. A molecule can be displayed as a stick diagram, a ball-and-stick model, or a space-filling model; other graphical representations can show highest occupied molecular orbital, positive and negative electrostatic potential surfaces, electron density surfaces, or gradient-mapped electron density surface. The researcher can sketch structures in two dimensions, build structures in three dimensions from individual atoms or molecular fragments, and specify constraints such as bond lengths, bond angles, and dihedral angles. Models can be rotated, scaled, and translated in real time. The CAChe Worksystem comes with a computer, several software programs, a network interface, an accelerator board, a frame buffer card, a 16-inch color monitor, a mouse, and a three-dimensional trackball. Less than \$40,000. Tektronix. Circle 449.

Electrophoresis Staining System

The Pro Blue Staining System stains polyacrylamide gel electrophoresis (PAGE) and isoelectric focusing (IEF) gels. The system is based on a modification of the Neuhaus procedure and may be used with quantitative densitometry of PAGE and IEF gels on solid supports. The kit consists of a concentrated treatment solution and a colloidal blue staining reagent. The colloidal delivery system eliminates the need to destain, increasing sensitivity and decreasing backgrounds. Integrated Separation Systems. Circle 456.

Image Recognition Software

Visilog is a software library of functions for object detection, particle counting, shape and area analysis, and other image processing functions. With its toolbox, the researcher can define the operations to be

Newly offered instrumentation, apparatus, and laboratory materials of interest to researchers in all disciplines in academic, industrial, and government organizations are featured in this space. Emphasis is given to purpose, chief characteristics, and availability of products and materials. Endorsement by *Science* or AAAS is not implied. Additional information may be obtained from the manufacturers or suppliers named by circling the appropriate number on the Readers' Service Card and placing it in a mailbox. Postage is free.

applied to a signal and develop an algorithm without additional programming. Visilog's functions include frame grabbing, image editing, histograms, Fourier transforms, rotation, hole filling, and edge linking and polygonal approximation. Visilog operates on computers with an operating system, such as MS DOS, UNIX, or VMS, that contains a C-language compiler. NOESIS Vision. Circle 457.

Large-Scale Cell Culture Container

The Lifecell Recovery Container is a flexible 25-liter recovery container designed to replace carboys and stainless steel tanks for large-scale cell culture production. It is composed of several layers of nontoxic gas-barrier plastic that is as stable as glass. Empty, the containers take up little space; filled, the containers stack in tote pans. The Lifecell Recovery Container is sterile, nonpyrogenic, unbreakable, ready-to-use upon delivery, and disposable. The container has two tubes with standard Luer connection ports, one for additions and one for extractions. Because the container is flexible, air vents are not necessary. Baxter Healthcare, Biotechnology Systems. Circle 477.

Automatic Titration

The Automatic Digital Burette has six titration speeds. Three volumes, 10, 20, and 50 ml, are available for step additions. The glass cylinder dispenses with 0.01% accuracy based on total volume. When performing a known titration, the initial dose can be programmed and more liquid can then be added slowly until the final endpoint is reached. Whatman LabSales. Circle 485.

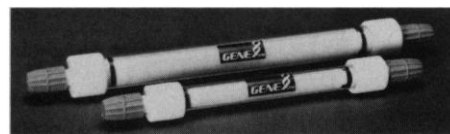
Plasmid Preparation Kits

The Hi Purity Plasmid kits are kits for the purification of plasmid DNA. The kits are based on one-way gravity-flow columns packed with an anion-exchange resin. This resin and all other reagents in the kits are nontoxic. The Hi Purity Plasmid kits are available in three sizes. The Miniprep kit contains enough columns, buffers, and solutions for 25 preparations of 1 to 10 µg of plasmid DNA each. If an overnight culture is available, 12 preparations take 50 min. The Midiprep kit contains supplies for 25 preparations of 1 to 100 µg of plasmid DNA, and the Maxiprep kit contains supplies for 10 preparations of 300 to 500 µg of plasmid DNA in 90 min. Plasmid DNA

prepared with the Hi Purity Plasmid kits contains no contaminating RNA or proteins, and chromosomal DNA, if present, does not exceed 1%. QIAGEN. Circle 475.

Biocompatible Antibody-Purification Column

Metal Free GammaBind G-LC Columns are liquid chromatography (LC) columns that contain recombinant protein G covalently attached to a polymer-coated silica matrix. The protein G has been engineered to bind specifically and only to all subtypes



of immunoglobulin G (IgG). The albumin binding site has been removed. Unlike protein A, this recombinant protein G does not cross react with immunoglobulins M, A, or E or other proteins. The columns are suitable for purifying antibodies from most mammals, including mice, rats, humans, and goats. Metal Free GammaBind G-LC Columns are available as semipreparative columns with a binding capacity of 30 mg of IgG and as preparative columns with a binding capacity of 120 mg of IgG. Genex. Circle 474.

Literature

Chemicals in Small Quantities is a 280-page catalog of 13,000 frequently used laboratory chemicals. Chem Service. Circle 469.

The 1989-1990 *Microfiltration Products Catalog* features polycarbonate screen, silver, silica-free polyvinyl chloride, and nylon membrane filters and related products. Poretics. Circle 470.

Glossary of Microcomputer Data Acquisition Terms is a dictionary of computer-related words and phrases. MetraByte. Circle 471.

Catalog and Price List lists high-performance liquid chromatography and thin-layer chromatography products available from all major manufacturers. ChromHELP. Circle 472.

A New Dimension 1989 is a catalog of restriction endonucleases, nucleic acid-modifying enzymes, DNAs, and other reagents and equipment for molecular biology. Sigma Chemical. Circle 491.

Superconductor Materials is a brochure about materials for high-temperature superconductor research. Atomergic Chemetals. Circle 492.

Personnel Placement

SCIENCE publishes each Friday, except the last Friday of the year. Advertising is accepted only in writing; no abbreviations. Any deadline in ad must be at least 2 weeks after date of issue in which ad appears. Also, personnel advertising is accepted only with the understanding that the advertiser does not discriminate among applicants on the basis of race, sex, religion, age, color, national origin, handicap, or sexual preference. **SCIENCE** reserves the right, in its discretion, to decline to publish advertisements submitted to it.

LINE CLASSIFIED ADVERTISING DEADLINES: Thursday, 10 a.m., 2 weeks prior to issue date (mailed on issue date). For deadlines for display advertising, please contact Scherago Associates.

POSITIONS WANTED: 40¢ per word, plus \$4 for use of box number, per week. \$10 minimum, per week. Prepayment required. This rate is available only to individuals seeking jobs.

LINE CLASSIFIED (POSITIONS OPEN, COURSES, FELLOWSHIPS, MARKETPLACE, and so forth): \$40.00 per line; \$400 minimum, per week (minimum charge covers one inch on a single column; one inch equals 10 lines of 52 characters and spaces per line). No charge for use of box number. No agency commission for ads less than 4 inches. No cash discount. Prepayment required for all foreign ads. Purchase orders and/or cover letter including billing address required for all other advertising.

To ESTIMATE ad cost:

Structure ad copy on a separate page, on lines of 52 characters and spaces. Include any desired heading. Each line of heading, and/or extra line spaces, and all partial lines (including centered reply information) are counted as full lines. Ad titles located within the text are printed in boldface caps and are only 32 characters per line. In ESTIMATING the cost, multiply total lines x \$40.00 = approximate cost of ad. (This is an approximate cost ONLY: Allow for variation between estimated lines and actual typeset lines and the resulting final cost. Purchase orders must allow for some degree of flexibility and/or adjustment.)

CANCELLATION POLICY:

NOTE: Ad cancellations made after Thursday, TWO weeks prior to issue date incur a 10% production charge. Final deadline for cancellations is 12 p.m. Tuesday, ONE week prior to issue date. Cancellations must be in writing.

Send copy for all **Positions Wanted** ads and **Line Classified** ads less than 1/6 page in size (39 lines) to:

SCIENCE Classified Advertising
1333 H Street, NW, Room 940
Washington, DC 20005
Telephone: 202-326-6555

Send copy for **Fractional Display** ads, 1/6 page and larger, and all **Marketplace** ads to:

Scherago Associates, Inc.
1515 Broadway
New York, NY 10036
Telephone: 212-730-1050

Blind ad replies should be addressed as follows:

Box (give number)
SCIENCE
1333 H Street, NW
Washington, DC 20005

POSITIONS WANTED

Biochemist Ph.D. Experience in protein isolation, cloning, chemical modification of proteins. Background in enzymes utilizing lipid substrates. Four years of postdoctoral experience. Seeks academic/industrial research position. Available March 1990. Box 87, **SCIENCE**.

Biopsychologist/Neurophysiologist, Ph.D. UCLA postdoctoral experience; single and multiple unit studies of sensory and memory processes; topographic brain mapping studies of Alzheimer's disease; presently assistant professor at midwest medical school, seeks research position. Box 76, **SCIENCE**.

Clinical Chemist Ph.D./Computer Science A.D. IBM-PC-DOS, Advanced Basic, Cobol, RPG, research in health care, QC, supervisory experience. Hard-working. Seeking a challenging position. Telephone: 804-523-1264 evenings.

POSITIONS WANTED

Entomologist, Ph.D. Equivalent. Seeking positions in industry nationwide. Experience in ecology, honey bee, spider and insect rearing, and supervising. Can travel. Publications, excellent references. Fluent Russian. Telephone: 701-280-2594.

Fish Biologist, Ph.D. 1987. Energetics and Ecology. Experience in energetics modeling. Good publication record. Seeking postdoctoral position. c/o Wei Ge, 3A-9202, 112 Street, Edmonton, Canada T6G 2C5.

Flow Cytometrist/Immunologist, Ph.D. Eight years of experience in flow cytometry, including detection of DNA aneuploidy in human genetic disease, sex determination and quantitative comparison of cellular DNA in numerous species of the major vertebrate classes, quantification of DNA in normal and malignant cells, study of fetal cells in maternal circulation and lymphocyte typing. Strong interest in flow cytometric detection and assay of mutagens and direct quantification of their effects in individuals and populations. Box 63, **SCIENCE**.

Free-Lance Computer Programmer for research laboratories. Reasonable rates. Prefer C on a PC in New York Metro area. Background in neuroscience and behavioral pharmacology. Pat O'Connor, 1649 Springfield Avenue, Maplewood, NJ 07040.

Mass Spectroscopist, Ph.D. Broad and productive research experience applying mass spectrometry in the chemical and biological sciences. Many publications. Excellent writing and interpersonal skills. Experienced in all aspects of NIH grant processes. Seeks interdisciplinary opportunity at the mid to senior professional level in academia, government, or private sector. Box 81, **SCIENCE**.

M.D., early retired (age 55) from drug industry seeks part-time or projects; excellent at data interpretation and medical writing for NDAs, etc. Telephone: 215-794-5581 or Box 86, **SCIENCE**.

Registered Patent Agent. Patent searches, patentability opinions, application preparation and submission. Scott Ramsey, Ph.D., 5253 Even Star Street, Columbia, MD 21044. Telephone: 301-730-9467.

Reproductive Physiologist/Endocrinologist, Ph.D. Seeks position in academia or industry. Research training in reproductive physiology and reproductive endocrinology. Postdoctoral training in reproductive physiology/animal science. Research interests in ovarian physiology. Laboratory experience in radioimmunoassays, receptor assays, tissue and embryo cultures, human in vitro fertilization, and andrology. Excellent teacher and researcher. Box 88, **SCIENCE**.

Systematic Entomologist. Ph.D. 1982. Smithsonian Institution Postdoctoral Fellow 1982-1983. Research associate, Smithsonian-funded project on Indian Cicinellidae 1984-1986. Research experience in Syrphidae, Coccinellidae, other Diptera and Coleoptera. Fifty publications. Editor and publisher of international entomology journal since 1981. Extensive private collection of Indian insects. Seeks research/curatorial position in museum or university. Box 82, **SCIENCE**.

Toxicologist, Ph.D., Board-certified with 10-plus years of industrial experience seeks position in California: chemical, consumer product, pharmaceutical, and hazardous waste site experience. Box 71, **SCIENCE**.

POSITIONS OPEN

The Yale University School of Medicine, Department of Surgery, Section of Neurosurgery, has an epilepsy research position available at the **ASSISTANT PROFESSOR** level. Applicants should have an M.D. or Ph.D. and a background in neurology/neuropharmacology and have particular expertise in the field of cerebral microdialysis.

Submit curriculum vitae by 7 July 1989 to: **Dennis Spencer, M.D., Professor and Chief, Neurological Surgery, Yale University School of Medicine, P.O. Box 3333, New Haven, CT 06510.**

Yale University is an Affirmative Action/Equal Opportunity Employer.

POSITIONS OPEN

AQUATIC ECOLOGY—Postdoctoral position available immediately to investigate benthic-planktonic interactions, the role of chemical signals in aquatic species interactions, or food web theory. Send curriculum vitae, reprints, and names of three references to: **Dr. Stephen Threlkeld, Director, Calder Conservation and Ecology Center, Fordham University, Box 273, Armonk, NY 10504.** *Fordham University is an Equal Opportunity/Affirmative Action Employer.*

ASSISTANT DEVELOPMENT ENGINEER in fusion reactor design. Duties: perform research and development work for the engineering design of fusion reactor core and power conversion for fusion applications; conduct theoretical and computational investigations in heat transfer and fluid flow in fusion reactor environment; perform thermal-hydraulic design of the first wall, blanket, and limiter/divertor plates of fusion reactors; develop and analyze suitable advanced/conventional power conversion systems for fusion applications; write articles and reports for scientific journals and present program in professional meetings and conferences.

Requires: Ph.D. in nuclear engineering with at least 2 years of postdoctoral experience in engineering design of fusion reactors; demonstrated skill in thermal-hydraulic design of the first wall, blanket, and limiter/divertor plates of fusion reactor; experience in developing suitable power conversion systems for fusion applications; extensive knowledge of numerical analysis, code development, and experience with CRAY supercomputers; experience in using thermal-hydraulic and power-cycle codes. Salary: \$35,000 per year. Job location/interview: Los Angeles, California. Send this ad and résumé to: **Job #ET4289, P.O. Box 9560, Sacramento, CA 95823-0560**, no later than 24 June 1989.

ASSISTANT LAB DIRECTOR

The Genetics and IVF Institute invites applications for permanent position with reproductive cryopreservation laboratory. Applicants should have B.S. or M.S. and experience in semen or embryo cryopreservation, artificial insemination, embryo transfer, or IVF procedures. Salary commensurate with experience and education. Send résumé to: **Dr. Edward F. Fugger, Genetics and IVF Institute, 3020 Javier Road, Fairfax, VA 22031.**

ASSISTANT SCIENTIST to investigate sensory innervation and tachykinin receptor activity in normal vascular tissue and surgical grafts using isolated tissue bath techniques. Will supervise laboratory personnel and consult on experimental design, research techniques, data analysis, and proposal and manuscript preparation. Requires Ph.D. or D.V.M. or M.D. in pharmacology or physiology, and 2 years of experience with smooth tissue pharmacology and isolated tissue pharmacology, especially related to autonomic receptors or cardiopulmonary systems and including analysis of drug/receptor interactions in isolated organ baths, performing radioimmunoassays, surgical grafts on experimental animals and harvesting tissue for subsequent analysis. Minimum 40 hours per week, full-time position, salary: \$35,000 per year. Send résumé and three references by 10 July 1989 to: **Ms. Carlyn Waller, Wisconsin Job Service, 206 North Broom Street, Madison, WI 53707.** *Equal Opportunity/Affirmative Action Employer.*

A full-time position in auditory research will be available upon completion in 1990 of a new research building at The Children's Hospital, Boston, Massachusetts. This position will carry an appointment either as **ASSISTANT OR ASSOCIATE PROFESSOR** at the Harvard Medical School in the Department of Otolaryngology and Laryngology. Preference will be given to applicants whose interests are in developmental or genetic aspects of the auditory system. Participation in the teaching of residents and fellows in the Department will be required. Start-up funds are available, but the person chosen is expected to generate grant support. *Minority and women candidates are encouraged to apply.* Applications should be sent by 31 October 1989 to: **Professor Gerald B. Healy, Otolaryngologist-in-Chief, Department of Otolaryngology and Communication Disorders, The Children's Hospital, 300 Longwood Avenue, Boston, MA 02115.**

RESEARCH CHEMIST

(Molecular Immunologist)
Biological Resources Branch
National Institute of Allergy and
Infectious Diseases
National Institutes of Health

Position available immediately for qualified Research Chemist (Molecular Immunologist) to work in the Biological Resources Branch, NIAID, NIH. Candidate should be interested in studies on molecular mechanisms in immunology such as recognition/activation and antigen processing/presentation. Administrative duties include responsibility for peptide synthesis unit for which no experience is required. Support staff for research and peptide synthesis will be provided.

Salary: \$41,121 +

Qualified and interested candidates should send Curriculum Vitae, Application for Federal Employment (SF-171), and names and addresses of three (3) references to:

John E. Coligan, Ph.D.
Chief, Biological Resources Branch
NIAID, NIH
Bldg. 4, Room 413
9000 Rockville Pike
Bethesda, MD 20892
301-496-8247



NIH IS AN EQUAL OPPORTUNITY EMPLOYER
U.S. CITIZENSHIP REQUIRED

CHAIRMAN OF BIOCHEMISTRY AND MOLECULAR BIOLOGY THE UNIVERSITY OF TEXAS M.D. ANDERSON CANCER CENTER

Applications are invited from outstanding Molecular Biologists/Biochemists to chair the Department of Biochemistry and Molecular Biology at The University of Texas M. D. Anderson Cancer Center.

1. The selected candidate will chair an active Department of Biochemistry and Molecular Biology consisting of faculty members who direct excellent and well-funded programs investigating mostly areas of developmental biology and differentiation. We seek a candidate who will lead this highly interactive department.
2. The Chairperson of the Department of Biochemistry and Molecular Biology will play a major role in continuing a successful Graduate Program in Biochemistry and Molecular Biology which in recent years has attracted many excellent students to this department.
3. The Department of Biochemistry and Molecular Biology occupies a central and leading role among several other expanding and interactive basic science departments in Molecular Genetics, Cell Biology, Immunology, and Tumor Cell Biology. In addition, several other departments conduct highly competitive research in various aspects of cell and molecular biology. The Chairman of Biochemistry and Molecular Biology has a crucial role in supporting this intellectually stimulating environment.

Please send inquiries to:

Benoit de Crombrughe, M.D.
Search Committee for the Chair of the
Department of Biochemistry and Molecular Genetics
The University of Texas
M. D. Anderson Cancer Center-11
1515 Holcombe Blvd.
Houston, Texas 77030

THE UNIVERSITY OF TEXAS M. D. ANDERSON CANCER CENTER
IS AN EQUAL OPPORTUNITY EMPLOYER

SCIENTIST

EG&G Idaho, Inc., prime operating contractor for the Department of Energy's Idaho National Engineering Laboratory, has an immediate opening for a Scientist in the Energy Conservation Organization.

The successful candidate will be responsible for assisting with planning and developing of a thermal sciences research facility. Facility will address general flow and heat transfer issues associated with innovative energy conversion technologies, with initial emphasis upon single and multiphase flow in porous media. Incumbent will assist with the application of data derived from the facility to the development and verification of energy conversion system and process computer simulations. Position requires a Ph.D. degree in Mechanical Engineering or closely related discipline. Post-Doctoral experience helpful but not necessary. Active history of publications and on-going, applicable research must be demonstrated. Salary and benefits competitive and based upon experience.

If interested and qualified, please send your resume, references and salary history to: **Employment Services (WLS-56), EG&G Idaho, Inc., P.O. Box 1625, Idaho Falls, Idaho 83415-3127.** Equal Opportunity Employer M/F/H/V. U.S. Citizenship required.



Inflammation Scientist

Pfizer Central Research Department of Immunology and Infectious Diseases is seeking a scientist to join our well-established research team in the discovery of new treatments for inflammatory diseases such as rheumatoid arthritis. In this role you will develop and apply new *in vivo* models of such diseases.

You should possess a BS or MS degree in a relevant field of biology and have hands-on experience with *in vivo* models of inflammation. Familiarity with eicosanoid and cytokine biology, as well as strong written/oral communications skills and computer experience, is desirable.

Pfizer offers a stimulating scientific research environment with the opportunity to interact with scientists from several disciplines. In addition, we offer a competitive compensation/benefits package along with relocation assistance to this southeastern Connecticut shoreline community.

Please send a resume, a description of your research experience, and names of three references to: Mrs. Lorraine C. Corr, Personnel Associate, Pfizer Central Research, Eastern Point Road, Groton, CT 06340. An equal opportunity employer.



RESEARCH SCIENTIST

Fungal Biochemist/Physiologist

For more than a century, scientists at ELI LILLY AND COMPANY have developed innovative, high quality pharmaceutical products. Lilly invests over \$500 million in research-and-development programs annually. More than 3,000 scientists at the company's Lilly Research Laboratories are pursuing creative research programs that involve many important health care needs.

To further build its research capabilities, Lilly is seeking a self-motivated, innovative scientist to plan, organize, and direct a basic research program on the biochemistry and physiology of pathogenic fungi. Qualifications include the following:

- Doctoral-level microbiologist (or related discipline) with relevant postdoctoral experience and/or independent research in the area of fungal biochemistry and physiology.
- Demonstrated ability to conduct basic research on the biochemistry of pathogenic microorganisms and an understanding of molecular biology of lower eukaryotes is highly desirable.
- The investigator will join a multidisciplinary infectious diseases research effort and is expected to develop an independent research program directed toward the identification, verification, and characterization of specific biochemical targets for the design of effective and safe antifungal agents.

In addition, this scientist must have the leadership capabilities needed—technical, communication, interpersonal, and organizational skills—to build a research program.

Eli Lilly and Company is committed to scientific excellence. Lilly provides a stimulating professional atmosphere with many opportunities for collaborative, multidisciplinary research. The company offers an attractive total compensation program. Entry level and salary will be based upon each candidate's experience.

For prompt consideration, please forward your *curriculum vitae* to:

John W. Crooks, Manager
Ph.D. Recruitment (IDR)
Eli Lilly and Company
Lilly Corporate Center
Indianapolis, Indiana 46285



Equal Opportunity Employer



POSITIONS OPEN

The Department of Physiology and Cell Biology of the University of Texas Medical School in Houston invites applications for a tenure-track faculty position at the level of **ASSISTANT OR ASSOCIATE PROFESSOR**. Applicants are expected to have a Ph.D. or M.D., a postdoctoral training experience, and a record of accomplishments indicating that they are capable of pursuing a productive, independent research program. Special consideration will be given to those working in the areas of the cellular and/or molecular biology of gastrointestinal functions and/or membrane transport.

Interested parties should send their curriculum vitae, a statement of present and future research interests, and the names of three references to:

Dr. Stanley G. Schultz
Professor and Chairman
Department of Physiology and Cell Biology
University of Texas Medical School at Houston
P.O. Box 20708
Houston, TX 77225

The University of Texas Health Science Center is an Equal Opportunity Employer. Women and minorities are encouraged to apply.

IR-4 Headquarters, The New Jersey Agricultural Experiment Station, Rutgers, The State University of New Jersey, has the following positions available:

Position 101—ASSISTANT RESEARCH PROFESSOR. Full-time grant-funded nontenured position in the National Office of the IR-4 Project. Duties include evaluating minor use clearance needs; assisting in establishing research programs; preparing research protocols; assisting in Good Laboratory Practice Procedures; reviewing data; and participating in workshops and research planning meetings. An M.S. or Ph.D. degree in biological science with field experience in agricultural pest control research. Salary commensurate with qualifications and experience.

Position 102—ASSISTANT RESEARCH PROFESSOR. Full-time grant-funded nontenured position in the National Office of the IR-4 Project. Duties include reviewing field and laboratory research data, writing petitions for submission to EPA/FDA, and developing research protocols for pesticide clearance research. A Ph.D. or equivalent experience in agricultural sciences, biology or chemistry with a strong background in weed/crop science or entomology, pesticide residue/metabolism, pesticide registration procedures, and microbiology. Salary commensurate with qualifications and experience.

Applicants should state the number of the position they are applying for, and send curriculum vitae and letters of reference to:

(101)—**Dr. R. T. Guest, Co-National Director**

(102)—**Professor G. M. Markle, Co-National Director**

IR-4 Headquarters, NJ AES
Cook College

Rutgers, The State University of New Jersey
New Brunswick, NJ 08903-0231

Rutgers, The State University of New Jersey, is an Equal Opportunity/Affirmative Action Employer.

SEEKING ASSOCIATE DIRECTOR ENVIRONMENTAL RESEARCH LABORATORY UNIVERSITY OF ARIZONA

The Environmental Research Laboratory (ERL) of the University of Arizona (U of A) is an internationally known basic and applied research organization engaged in projects involving biological and engineering technologies, including agriculture and aquaculture, that are oriented toward, but not limited to, ecologically sound, desert coastal communities.

The Associate Director (AD) reports to the Director, serves as Vice Director, and works with other senior staff in the management of ERL. Applicants must have strong managerial skills and proven scientific or technical background. A complete position announcement will be mailed upon request.

Please submit current curriculum vitae including names of three references to: **AD Search Committee, ERL, 2601 East Airport Drive, Tucson, AZ 85706. Telephone: 602-741-1990.** The review of applications will begin 30 June 1989 and continue until the position is filled. *The U of A is an Equal Opportunity/Affirmative Action Employer.*

POSITIONS OPEN

THE JOHNS HOPKINS UNIVERSITY ASSISTANT PROFESSOR OF TOXICOLOGICAL SCIENCES

The Division of Toxicological Sciences of the Department of Environmental Health Sciences is seeking to fill a tenure-track position in the area of molecular toxicology. Candidates should have a background in pharmacology and/or toxicology and at least 2 years of postdoctoral experience. The successful candidate will be expected to develop a vigorous grant-supported research program and to participate in the teaching activities of the Division. Areas of investigation to be given priority include studies on the molecular mechanisms of: (i) carcinogenesis, particularly the role of xenobiotics in tumor promotion; (ii) xenobiotic effects on the regulation of gene expression (e.g., P450s), other xenobiotic processing enzymes, etc.; or (iii) xenobiotic effects on cellular growth regulation but other areas of molecular toxicology will also be considered. Send curriculum vitae, the names of three references, and a brief summary of current research and future research plans to: **James D. Yager, Ph.D., Director, Division of Toxicological Sciences, JHU, School of Hygiene and Public Health, 615 North Wolfe Street, Baltimore, MD 21205.** *The Johns Hopkins University is an Equal Opportunity/Affirmative Action Employer.*

ASSISTANT OR ASSOCIATE PROFESSORS FOUR NEW POSITIONS EXPERIMENTAL PATHOLOGY

As part of a program expansion, the Department of Pathology, University of Oklahoma Health Sciences Center, Oklahoma City, invites applications for four tenure-track positions at the assistant or associate professor level. The positions will be in experimental pathology and we seek candidates in the following areas: molecular basis of diseases, endothelial cell biology, coagulation/clot-lysis, immunology, and tumor biology. The successful candidate will be expected to establish and maintain a vigorous and funded research program and participate in teaching at the graduate level. Candidates should have an M.D., Ph.D., or equivalent and postdoctoral research experience in an area related to his/her planned research program.

Applicants should submit curriculum vitae, a concise description of research interests and goals, and the names, addresses and telephone numbers of three references to: **Dr. Lawrence E. DeBault, Chairman of Search Committee, Department of Pathology, P.O. Box 26901, Oklahoma City, OK 73190.** Deadline for receipt of applications is 30 June 1989. *The University of Oklahoma is an Affirmative Action/Equal Opportunity Employer.*

TRUDEAU INSTITUTE, INC. BASIC RESEARCH SCIENTISTS

The Trudeau Institute is always interested in receiving applications for tenure-track, full-time research staff positions from appropriately trained individuals. Appointments may be made at the assistant, associate, or full member (professor) levels, depending on scientific ability and past performance. Successful applicants will be expected to develop independent research programs in immunology, immunopathology, molecular immunology, or related fields.

The Trudeau Institute is a free-standing, not-for-profit, basic research institute with modern facilities, up-to-date equipment, in-house animal production, efficient management, and an international reputation for excellence. Current staff interests include: cancer immunology, transplantation immunology, immunity to infectious and parasitic diseases, regulation of immune responses, and the production and function of cytokines. Adequate start-up funding for new projects is available from institute resources. Salaries and benefits are competitive, and working conditions are conducive to a productive career in research.

Applications consisting of curriculum vitae, the names and addresses of three references, and a brief description of research interests, should be addressed to:

Dr. Robert J. North, Director
Trudeau Institute, Inc.
P.O. Box 59
Saranac Lake, NY 12983

POSITIONS OPEN

BEHAVIORAL/PSYCHOPHARMACOLOGIST

POSTDOCTORAL POSITION available immediately to work on further development of a nonhuman primate model of Panic Disorder using biochemical, behavioral, and pharmacological techniques. Send application to: **Dr. Leonard Rosenblum, Department of Psychiatry, Box 120, State University of New York, Health Science Center at Brooklyn, 450 Clarkson Avenue, Brooklyn, NY 11203.**

BEHAVIORAL SCIENTISTS

The Behavioral Sciences Department of the Armed Forces Radiobiology Research Institute (AFRRI) announces the following openings:

SUPERVISORY RESEARCH PSYCHOLOGIST/PHARMACOLOGIST (GM-14). Position requires a scientist with a strong research background in behavioral science and experience in supervising a research team of six to ten people. As a project leader the incumbent will direct research utilizing animal models for describing the behavioral effects of ionizing radiation and radioprotectant compounds, delineating the biological mechanisms underlying performance decrements, and developing and evaluating behavioral and biochemical means of reducing deficits and restoring normal function. Minimum requirements for the position include: (i) a Ph.D. in a discipline related to the work, (ii) a superior publication record, and (iii) experience in supervising a research team.

RESEARCH PSYCHOLOGIST/PHARMACOLOGIST (GM-13) and RESEARCH PSYCHOLOGIST (GS-11/12). Positions require research scientists with strong backgrounds in behavioral neuroscience. Candidates will integrate behavioral and neuroscience techniques in order to investigate the neurophysiological and neuropharmacological substrates of behavioral changes following exposure to ionizing radiations. Minimum requirements for the position include: (i) a Ph.D. in a discipline related to the work, (ii) a superior publication record. GM-13 position must also have experience in establishing and managing an independent research program.

POSTDOCTORAL SCIENTISTS: Two positions (GS-11/12) with background in behavioral toxicology, behavioral pharmacology or behavioral neuroscience. These are 1-year temporary positions which may be renewed for up to 4 years.

The Behavioral Sciences Department and the AFRRI provide an excellent supportive environment for the building of a productive research program capable of providing data to meet research requirements of the military services. Specify position(s) of interest. Submit curriculum vitae or SF-171, reprints of current publications, and a statement of research interests to: **AFRRI, Attention: CPO, Bethesda, MD 20814-5145.** For information contact: **Dr. Alan Harris, 301-295-1516, or Dr. Andrew Mickley, 301-295-1367.** Salary can range from: GS-11 (\$28,852 to \$37,510), GS-12 (\$34,580 to \$44,957), GM-13 (\$41,121 to \$53,460), GM-14 (\$48,592 to \$63,172).

U.S. citizenship is required. AFRRI is an Equal Opportunity Employer.

BIOMEDICAL MAGNETIC RESONANCE LABORATORY

Two positions available to manage NMR imaging and spectroscopy laboratories and participate in research and training programs. Salary, in the range \$20,000 to \$35,000, dependent upon education and experience. Send curriculum vitae and names of three references to: **Professor Paul C. Lauterbur, Director, Biomedical Magnetic Resonance Laboratory, University of Illinois, 1307 West Park Street, Urbana, IL 61801. Fax 217-244-1330.** *An Affirmative Action/Equal Opportunity Employer.*

BOTANIST/BIOLOGIST. Findlay College is seeking a botanist/biologist to teach botany courses and part of the general biology curriculum in a dynamic department in a growing institution. Teaching experience desired. Tenure-track position possible; salary dependent on educational background. Ph.D. preferred. *Equal Opportunity Employer.* Send résumé, three references, and transcripts. Applications accepted until 23 June 1989; 1 July 1989 decision date. Contact: **Dr. Edward Erner (419-424-4553), 1000 North Main Street, Findlay, OH 45840.**

POSITIONS OPEN

BIOLOGY—DEVELOPMENTAL BIOLOGY. A TENURE-TRACK POSITION at assistant or associate rank is available at Delaware State College in September 1989. Minimum qualifications include a Ph.D. in biological sciences with strong concentration in developmental biology and demonstrated ability to work effectively with students. The successful candidate will be expected to develop a research program and teach undergraduate and graduate courses in area of expertise. Involvement in undergraduate program will include teaching introductory and/or advanced level courses. Experience supervising master's level students and publication record desirable. Send curriculum vitae, official transcripts, and three letters of reference by 23 June 1989 to: **Dr. Gustav Oforu, Chairperson Search Committee, Department of Biological Sciences, Box 626, Delaware State College, Dover, DE 19901.** *Affirmative Action/Equal Opportunity Employer.*

BONE MARROW TRANSPLANTATION RESEARCH DIRECTOR—The Ohio State University BMT Program seeks a research director. The director should be an experienced bone marrow transplant physician with an established record of achievement in laboratory research. Time will be laboratory-based with 1 to 2 months attending on the BMT service. This position is an academic full-time, tenure-track position at the assistant or associate professor level in the Department of Medicine. The OSU BMT Program is expanding and will be an integral part of the Cancer Hospital and Research Institute. Applicants send curriculum vitae, summary of proposed research, and letters of reference to: **Dr. Peter Tutschka, BMT Search Committee, N1025 Doan Hall, 410 West 10th Avenue, Columbus, OH 43210.** *The Ohio State University is an Affirmative Action/Equal Opportunity Employer.*

GENETICS: The Department of Biology invites applications from geneticists with a research program in evolutionary biology for a tenure-track position at the **ASSISTANT PROFESSOR** level (Ph.D. required). The successful candidate will teach introductory biology courses for majors and nonmajors, genetics and cell biology. The opportunity exists to develop an upper level elective in the applicant's speciality. A commitment to research and publication is expected. The department is especially interested in individuals who would enjoy teaching in a small, selective liberal arts and sciences college and who will include undergraduates in their research.

Please submit curriculum vitae, three letters of recommendation, and transcripts of all college work by 30 June 1989 to: **Dr. Robert A. Martin, Head, Department of Biology, Berry College, Mount Berry Station, Rome, GA 30149.**

Equal Opportunity Employer/Berry College seeks applications from women and minority candidates.

GLOBAL CHANGE. Scripps Institution of Oceanography, University of California at San Diego, invites applications for **ASSISTANT, ASSOCIATE, OR FULL PROFESSOR** (tenure-track or tenured) positions in meteorology, climatology, or atmospheric chemistry, and other fields closely related to the subject of global change. The successful applicants will teach and participate in research programs directed at the physical and chemical bases of natural and anthropogenic global change.

Rank and salary will be commensurate with qualifications and experience based on the University of California pay scale. At the time of appointment the successful candidate(s) must have a Ph.D. in a physical science. The positions will involve teaching, supervision, and support of graduate students, and the development of research programs supported by extramural funds. Associate or full professorial candidates must show evidence of a strong research record; assistant-level candidates will be expected to show evidence of their potential through a publication record appropriate to their experience. Send letter of application including description of research interests, list of publications, résumé of teaching experience, and names of three referees to: **Chairman—GC, Scripps Institution of Oceanography, UCSD, Mail Code A-008, La Jolla, CA 92093, U.S.A.** Closing date for applications is 1 September 1989. *The University of California is an Equal Opportunity/Affirmative Action Employer.*

9 JUNE 1989

Life Science Opportunities

Amersham Corporation, a leading manufacturer of products for the Life Science research market, is expanding its Technical Support and New Market Development Groups. There are immediate openings for:

Manager of Technical Support: Ph.D. level candidate with strong molecular biology background to manage technical phone support and technical communication (lab protocols, seminars, workshops, and newsletters) groups.

Assistant Manager for Biotechnology Market Development: Ph.D. level candidate with strong molecular biology background to determine market needs and manage collaborative development projects.

Laboratory Positions: Candidates will support collaborative product development projects. M.S. with laboratory work or B.S. with extensive laboratory experience.

We offer an attractive starting salary and a comprehensive benefits package which includes dental insurance, a 401K savings plan and a professional work environment. Send your resume in confidence to:

Manager of Employment

AMERSHAM CORPORATION

2636 S. Clearbrook Drive
Arlington Heights, Illinois 60005

Equal Opportunity Employer M/F

Amersham

Research Scientist

Drug Metabolism

Continued expansion of the Parke-Davis Pharmaceutical Research Division of Warner-Lambert has created the need for a versatile Research Scientist in the area of Drug Metabolism.

The successful candidate will design and conduct drug metabolism studies, perform metabolite isolation and identification, evaluate data and write reports (publishing is strongly encouraged). An excellent understanding of drug metabolism concepts and principles along with expertise in chemistry, chemical analysis, metabolite isolation and identification, and radiotracer work is preferred. A knowledge of pharmacokinetics, while not essential, would be of benefit.

Position requirements include a Ph.D. degree or equivalent in drug metabolism or closely related field with strong background in chemistry.

Parke-Davis Pharmaceutical Research Division, Warner-Lambert Company is located in Ann Arbor, Michigan, adjacent to the University of Michigan campus. Qualified candidates may send resume and salary requirements in confidence to: **Ms. S. Hultquist, Human Resources Representative, Parke-Davis Pharmaceutical Research Division, Warner-Lambert Company, 2800 Plymouth Road, Ann Arbor, MI 48105.**

PARKE-DAVIS

DIVISION OF WARNER LAMBERT COMPANY

"Equal Opportunity in Action"

RESEARCH SCHOLAR

Drug Receptors and Metabolism

Research Scholar: Children's Hospital National Medical Center, an academic affiliate of The George Washington University School of Medicine, plans to fund a Research Scholar, beginning July 1, 1989, in the Departments of Laboratory Medicine and Gastroenterology, to conduct research and be part of a team working on drug receptors and metabolism in relationship to hepatic function.

Suitable candidates should have a Ph.D., M.D. or M.D., Ph.D. degree. Preference will be given to candidates with a strong research background in modern biochemical pharmacology, receptor separation techniques and affinity chromatography.

The candidate will hold an academic position at the medical school and will be expected to generate research grants.

Please send a complete curriculum vitae and three (3) recent references to: **Dr. Steven J. Soldin, Department of Laboratory Medicine.**

CHILDREN'S HOSPITAL NATIONAL MEDICAL CENTER

111 Michigan Avenue, NW
Washington, DC 20010

ENDOWED CHAIR

PLANT GENETICS

The University of Florida is pleased to announce the creation of the Lyle C. Dickman Endowed Chair. Applications and nominations will be accepted until Sept. 1, 1989.

The University of Florida seeks candidates for this position who are internationally recognized in plant genetics. The successful candidate will provide leadership in promoting and enhancing outstanding research and scholarly activity in plant genetics. These are the most important criteria in the selection process. The successful candidate will actively interact in the laboratory as well as in the classroom with graduate students. The person must have demonstrated ability to obtain external funds and to attract and work with graduate students and postdoctoral associates. We are particularly interested in persons with skills, experience and a track record in contemporary molecular or cellular genetics. Persons with an interest and/or track record in tomato genetics are especially encouraged to apply.

Applications (CV plus names of five referees) and nominations should be sent to:

**L. C. Hannah, Chairman
Search and Screen Committee
Vegetable Crops Department
1255 Fifield Hall
University of Florida
Gainesville, FL 32611
904-392-7919**

THE UNIVERSITY OF FLORIDA

PLANT MOLECULAR BIOLOGY— FLOWER COLOUR

SENIOR RESEARCH FELLOWSHIP POST DOCTORAL FELLOWSHIP

Two positions (one in each category) are offered in a newly established plant molecular biology laboratory at Levin Horticultural Research Centre, New Zealand.

The major thrust of the research programme is in the genetic modification of flower colour in a variety of ornamental crops. This programme is part of the Plant Biotechnology Science Area which is receiving long-term public funding.

The Levin Horticultural Research Centre, located 100 km north of Wellington, is one of the Ministry of Agriculture and Fisheries' leading horticultural research centres. Therefore the appointees will be expected to interact successfully with other molecular biology groups both inside and outside New Zealand, and also with other plant disciplines within the Ministry of Agriculture and Fisheries.

The appointees will be expected to bring to this programme a range of skills in plant molecular biology. Our requirement is for motivated scientists with a proven track record who are prepared to contribute to scientific direction of the group.

An internationally competitive salary will be offered to the right person, under negotiated conditions of employment. The tenure of each position is negotiable within 1-3 years.

Enquiries to:

**Dr. N K Given
Levin Horticultural Research Centre
Private Bag
Levin
NEW ZEALAND**

ILLINOIS MATHEMATICS AND SCIENCE ACADEMY

"A Pioneering Educational Community"

Science Teaching Positions

The Academy is a three-year residential school which offers college-level courses to high school students highly gifted in mathematics and science. The Academy is forty miles west of Chicago. The three-class student body will total 500 in the Fall of 1989.

BIOLOGY—One Position

Applicants must be able to teach a college-level general biology course as well as two of the three elective courses Ecology, Genetics, and Human Biology.

PHYSICS—Part-time

Part-time position in teaching electronics. Half-time fall, quarter time spring. The course emphasizes laboratory experiences with op amps, transistors, and IC's. Employment beyond half-time is possible if combined with additional duties as an Instructional Program Aide.

CHEMISTRY—One Position

Applicants must be able to teach university chemistry. Course emphasis is on active experimentation and problem solving.

Applications will be reviewed as they become complete and interviews will be scheduled in June and July.

Applications can be obtained from:

Connie Jo Hatcher
Assistant to the Director
Illinois Mathematics and Science Academy
1500 West Sullivan Road
Aurora, Illinois 60506

"An Equal Opportunity Employer"



Deutsches
Krebsforschungszentrum
Stiftung des öffentlichen Rechts

At the German Cancer Research Center
a Position is available as

Head

of a project group

Molecular Biology of Ageing

We wish to appoint a qualified scientist with outstanding records and experience in the field. The position is limited to 5 years with a salary in the range of approximately DM 79.000 per annum. It offers applicants the opportunity for research in a well equipped laboratory. Positions for two postdocs and two technicians will be available.

Applicants should submit their curriculum vitae, a list of publications and references by June 23, 1989 to Prof. H. zur Hausen, wiss. Stiftungsvorstand des Deutschen Krebsforschungszentrum, Im Neuenheimer Feld 280, D 6900 Heidelberg, West Germany.

**Im Neuenheimer Feld 280
D - 6900 Heidelberg**

RJR-LEON GOLBERG MEMORIAL FELLOWSHIPS

Postdoctoral Training Opportunities in Integrated Toxicology

Duke University and RJR Tobacco Company now have established training fellowships honoring the eminent toxicologist, the late Dr. Leon Golberg. The program consists of over 50 faculty members representing a wide variety of disciplines including chemistry, ecotoxicology, biochemistry, cell biology, metabolism, molecular biology, pathology, pharmacokinetics and pharmacology. Emphasis is placed on molecular mechanisms of toxicology, in which this Program is pre-eminent. A competitive stipend will be offered. Fellows will have the opportunity to spend at least 2 years at Duke or RJR, under the guidance of one faculty member and to interact extensively with other faculty members. Interested individuals should send a C.V., a description of their current research project, and the names and addresses of 3 references to:



Doyle G. Graham, M.D., Ph.D.
Integrated Toxicology Program

Box 3712

Duke University Medical Center
Durham, NC 27710

Duke University and RJR Tobacco Company are Equal Opportunity Employers

Visiting Cancer & Inflammatory Disease Scientists

A postdoctoral Visiting Scientist position is available within the Medical Products Department at Du Pont's Glenolden Laboratory in Glenolden, Pennsylvania. The successful candidate will conduct basic research on basic fibroblast growth factor and its receptor in relation to the control of tumor angiogenesis. Candidates should be highly motivated with a strong interest in tumor cell biology, receptor biology and biochemistry. An interest or background in molecular biology is also desired. The appointment will be for one year, renewable for a second year upon mutual agreement.

A postdoctoral Visiting Scientist position is available within the Medical Products Department at Du Pont's Experimental Station in Wilmington, Delaware. The successful candidate will conduct basic research on the *in vivo* effects of cytokines on connective tissue, with particular emphasis on cartilage degradation. Candidates should have a strong interest in connective tissue biochemistry with a background or interest in animal models. The appointment will be for one year, renewable for a second year upon mutual agreement.

At the world renowned Du Pont Company you'll find a stimulating scientific environment in modern research facilities. Du Pont provides competitive compensation and relocation benefits. Our mid-Atlantic locations offer a wide variety of academic, cultural, and recreational activities. Interested candidates should send their resumes and references to: Professional Staffing, Employee Relations Dept., Du Pont Company, Room X-51717, Wilmington, DE 19898



*An Equal Opportunity Employer M/F/H/V
U.S. Citizenship or Permanent Visa Required
and meet other appropriate IRCA requirements*

POSITIONS OPEN

CELL BIOLOGISTS

Genetic Therapy, Inc., a leader in human gene therapy research, is seeking highly motivated individuals with strong backgrounds in cell biology. Preference will be given to individuals with expertise in bone marrow and/or T lymphocytes. Successful candidates will have a M.S., Ph.D., or M.D. qualification, preferably 1 to 2 years of postdoctoral research experience and will be expected to apply the techniques of human gene therapy to marrow and/or T cells. An understanding of molecular biology or virology is preferable but not essential. The ability to interact within a multidisciplinary group is indispensable.

Genetic Therapy, Inc. offers an excellent salary and benefits package. At GTI you will find an exciting research environment with the opportunity to collaborate with many world class academic laboratories.

Please send your curriculum vitae in confidence to:

**Personnel Department
Genetic Therapy, Inc.
19 Firstfield Road
Gaithersburg, MD 20878**

GTI is an Equal Opportunity Employer.

DIRECTOR OF TECHNICAL SERVICES to direct and maintain a functional diagnostic laboratory equipped to perform serology (ELISA, plate agglutination tests), bacteriology (aerobic isolation, identification and antibiotic sensitivity), and complicated bacterial and viral techniques. Deliver technical lectures, present special training programs for clients, and represent the company in scientific and technical meetings, both in the United States and South America. Require M.S. in medical microbiology with 2 years of experience or additional postgraduate education may be substituted for equivalent years of experience. Twenty-five percent travel to South America and fluency in Spanish required. Salary: \$4000 per month. Apply at: **The Texas Employment Commission, Austin, Texas**, or send résumé to: **The Texas Employment Commission, TEC Building, Austin, TX 78778, J.O. #5458026.** Ad paid by an Equal Employment Opportunity Employer.

ENVIRONMENTAL SCIENTIST (EARLY JOB ALERT)

The Pacific Southwest Experiment Station of the USDA Forest Service, Riverside, California, seeks a permanent Ph.D. research scientist with experience in atmospheric deposition effects on forest ecosystems. This position will augment an existing research program conducted in California and other areas of the western United States. Expertise in one or more of the following areas is required: plant physiology, atmospheric chemistry, aquatic ecology, soils, modeling. Experience in the area of effects of air pollutants or global atmospheric changes on natural resources is preferred. Contact or send curriculum vitae to: **Dr. David L. Peterson, USDA Forest Service, 4955 Canyon Crest Drive, Riverside, CA 92507. Telephone: 714-351-6545.** Inquiries from women and minorities are encouraged. **This is not a vacancy announcement; the position will be advertised at a later date.**

MICROBIAL ECOLOGIST

Assistant or Associate Professor. The Department of Biology, Utah State University, Logan, is seeking applicants for a tenure-track microbial ecologist position. A Ph.D. is required and postdoctoral experience is recommended. We seek an individual who will complement and strengthen existing programs in the Ecology Center and the areas of plant-microbe interaction and soil science. Publication and development of an externally funded research program in one of the following areas are expected: nutrient cycling, decomposition, mycorrhizae, nitrogen fixation, genetic exchange or a related area of microbial ecology. Excellence in teaching is expected. The applicant must be able to teach the undergraduate majors course in general microbiology and develop a course in microbial ecology. In addition, an upper division or graduate-level course or seminar in the area of specialty is required in alternate years. Please submit a statement of research and teaching interests, unofficial transcripts, and curriculum vitae and have three letters of recommendation sent to: **Dr. F. J. Post, Department of Biology, Utah State University, Logan, UT 84322-5500.**

Review of applications will begin 1 September 1989. *USU is an Affirmative Action/Equal Opportunity and IRCA Employer.*

POSITIONS OPEN

FACULTY POSITION AT INSTRUCTOR/ASSISTANT PROFESSOR rank depending upon qualifications. Ph.D. in molecular biology and minimally 3 years of postdoctoral research required. Experience in nucleic acid enzymes, proteases and gene expression bacterial and fungal systems highly desirable. Expected to develop independent research program in molecular biology of *Pneumocystis*, *Giardia*, and *Cryptosporidium*. Teaching of graduate students, medical students, and residents in applicable research techniques required. *Women and minorities encouraged to apply.* Send curriculum vitae and names of three references by 26 June 1989 to: **Dr. R. R. Tidwell, Department of Pathology, University of North Carolina, Chapel Hill, CB #7525 Brinkhous-Bullitt, Chapel Hill, NC 27599.** *UNC-CH is an Equal Employment Opportunity/Affirmative Action Employer.*

FACULTY POSITIONS IN CELLULAR AND MOLECULAR PHYSIOLOGY

The Department of Physiology of The Pennsylvania State University College of Medicine is seeking applications for two full-time, tenure-track positions at the assistant/associate professor rank to begin in fall or winter 1989. The Department presently has ten full-time, well-funded faculty who are working in the general area of cellular and molecular physiology. We are seeking candidates with substantial postdoctoral experience in applying molecular biology and recombinant DNA techniques to one or more of the following areas: metabolic regulation, mechanisms of hormone action, membrane receptors, cytoskeletal-membrane interactions, intracellular membrane trafficking, signal transduction, ion channels, control of growth and differentiation, and regulation of expression of eukaryotic genes. Special attention will be given candidates who are able to relate molecular concepts and information to the cell and tissue levels of the organism. Significant research accomplishment and ability to obtain independent funding are essential. Excellent opportunities exist for research collaboration, teaching in a medical school curriculum, and participation in one or more graduate programs. Competitive salaries and start-up funding are available. Applicants should submit, prior to 1 September 1989, curriculum vitae, reprints, statement of current and planned research interests, and letters from at least three references to: **Dr. Leonard S. Jefferson, Chairman, Department of Physiology, College of Medicine, The Pennsylvania State University, P.O. Box 850, Drawer SC, Hershey, PA 17033.** An Affirmative Action/Equal Opportunity Employer. *Women and minorities encouraged to apply.*

INSTRUCTOR—TROPICAL ECOLOGY

The Organization for Tropical Studies (OTS) seeks a tropical biologist to provide leadership and continuity for *Tropical Biology: An Ecological Approach*, an 8-week field course taught in Costa Rica. The half-time position is for 2 years, possibly renewable, with responsibility for coordination of four successive courses beginning as early as January 1990. Research and teaching experience in neotropical biology required; previous experience with OTS courses preferred; candidate must be bilingual to work effectively in Latin America. Send curriculum vitae, names of three referees and a letter of interest to: **Dr. Lucinda McDade, OTS, Box DM, Duke Station, Durham, NC 27706. Telephone: 919-684-5774.** Deadline 15 July 1989. *Equal Opportunity/Affirmative Action.*

University of Pennsylvania. Due to continued expansion, the Department of Pathology and Laboratory Medicine has vacancies for **JUNIOR FACULTY** in several areas of laboratory medicine including coagulation, hematology, immunology, microbiology, and toxicology. Candidates should have a commitment to a research-oriented career and possess M.D. or M.D./Ph.D. degrees and should be Board-eligible or certified in clinical pathology. An interest in basic science is particularly desirable. Applications with curriculum vitae and names of three references should be sent to: **Dr. D. S. Young, Department of Pathology and Laboratory Medicine, Hospital of the University of Pennsylvania, 3400 Spruce Street, Philadelphia, PA 19104-4283.**

The University of Pennsylvania is an Equal Opportunity/Affirmative Action Employer. Women and minority candidates are encouraged to apply.

POSITIONS OPEN

FACULTY POSITIONS IN CELLULAR/MOLECULAR OR STRUCTURAL BIOLOGY

The University of Calgary, Department of Anatomy, invites applications for one or more full-time academic positions. Candidate(s) should have a Ph.D. or M.D. with equivalent research training; at least 2 years of postdoctoral experience; and an established research record in either biological structure, or cellular and molecular biology. A renewable 5-year scholarship will be available upon successful application to the Alberta Heritage Foundation for Medical Research or the Medical Research Council of Canada. Salary and academic rank will be commensurate with experience.

The successful candidate(s) will be affiliated with an appropriate interdisciplinary research group in a well-equipped and expanding research center in the Faculty of Medicine. Collaboration will be encouraged within both Department and Research Group. There will be some undergraduate and graduate teaching, but at least 75% of time will be protected for research.

In accordance with Canadian immigration requirements, priority will be given to Canadian citizens and permanent residents of Canada. The University of Calgary is committed to employment equity.

Please submit curriculum vitae, a statement of research interests, and the names of three references by 30 June 1989 to:

**Dr. Richard Hawkes
Professor and Head
Department of Anatomy
The University of Calgary
3330 Hospital Drive N.W.
Calgary, Alberta T2N 4N1**

INFECTIOUS DISEASES/ MOLECULAR BIOLOGIST TENURE-TRACK FACULTY POSITION

The Department of Pathobiological Sciences is seeking an individual with training in molecular aspects of infectious disease research, preferably bacterial diseases. Salary and rank commensurate with training and experience. Send curriculum vitae and names of at least three references to: **Dr. R. D. Schultz, Professor and Chairman, Department of Pathobiological Sciences, School of Veterinary Medicine, University of Wisconsin-Madison, 2015 Linden Drive West, Madison, WI 53706. Telephone: 608-263-9888.** *Equal Opportunity/Affirmative Action Employer.*

INSECT NEUROBIOLOGIST. Full-time tenure-track appointment at the rank of assistant professor. We seek candidates having research interests in areas such as: integrative functions of the insect CNS, neuroendocrine mechanisms, neurogenetics, neurodevelopment, neuron physiology and pharmacology. Appointee will teach an undergraduate course in general insect physiology and conduct graduate seminars. Applicants should have a Ph.D. and should demonstrate outstanding potential for research and teaching. Applications should include the following: (i) Curriculum vitae, academic transcripts and evidence of teaching skills and experience; (ii) bibliography and selected reprints or manuscripts; (iii) statement of research objectives and approaches proposed; (iv) names and addresses of at least three people who can provide recommendations. Submit all materials by 1 August 1989 to: **D. L. Wood, Chairman Department of Entomological Sciences, 201 Wellman Hall, University of California, Berkeley, CA 94720.** *The University of California is an Equal Opportunity/Affirmative Action Employer.*

INSTRUCTOR—ASSISTANT OR ASSOCIATE PROFESSOR position. The University of Tennessee College of Medicine offers an exciting opportunity for a Board-eligible/certified allergist/immunologist with an internal medicine background to participate in the Division of Allergy and Immunology. Activities include patient care, the teaching of residents, medical students, clinical and/or research fellows, as well as clinical or basic research. *The University of Tennessee is an Equal Employment Opportunity Employer.* All interested candidates may send curriculum vitae and three letters of reference to: **T. J. Yoo, M.D., Ph.D., University of Tennessee, Memphis, Department of Medicine, Division of Allergy and Immunology, 956 Court, Room H-300, Memphis, TN 38163. Telephone: 901-528-6663.**

POSITIONS OPEN

MOLECULAR AND CELLULAR IMMUNOLOGISTS

The Department of Microbiology of the College of Physicians and Surgeons of Columbia University seek highly qualified applicants to fill two tenure-track assistant professor positions in a newly constructed center for molecular immunology. The general focus of this center will be on the elucidation of molecular and cellular mechanisms that influence the generation of antibody and T cell receptor repertoires. We invite applications from molecular or cellular immunologists who are qualified to establish strong, independent research programs in this field. Demonstrated expertise and interest in the molecular aspects of lymphocyte differentiation, the molecular basis of T/B cell interactions, or the molecular basis for lymphocyte-specific signal transduction mechanisms are desirable.

The new positions will include a generous amount of newly constructed laboratory and office space and access to a variety of state-of-the-art core facilities including transgenic mouse and molecular embryology facilities. Interested applicants should send curriculum vitae and four letters of recommendation to: **Dr. Frederick W. Alt, Room 1128 HHSC, Department of Microbiology, College of Physicians & Surgeons of Columbia University, 701 West 168th Street, New York, NY 10032.**

*Columbia University is an Equal Opportunity/
Affirmative Action Employer.*

MOLECULAR BIOLOGIST ENDOCRINOLOGY OR DEVELOPMENTAL BIOLOGY

The University of Pittsburgh School of Medicine invites applications for a tenure-track position at the assistant professor level. Preference will be given to individuals with primary training in molecular biology with research interests in developmental biology and/or female reproductive endocrinology. The successful candidate will be expected to develop an independent research program and to participate in the teaching of medical and graduate students. Primary academic appointment will be in the basic science department most appropriate for the applicant. Laboratory space and start-up funds will be provided by the Department of Obstetrics and Gynecology. Extensive opportunities exist for interactions with other scientists within the University of Pittsburgh interested in reproductive endocrinology and molecular biology.

Applicants should have a Ph.D. and/or M.D. degree and postdoctoral experience. Send curriculum vitae, summary of research interests and names of three references to: **Anthony J. Zeleznik, Ph.D., Department of Physiology, University of Pittsburgh School of Medicine, Magee-Womens Hospital, Forbes Avenue and Halket Street, Pittsburgh, PA 15213.** *The University of Pittsburgh is an Equal Opportunity/Affirmative Action Employer.*

NEUROSCIENCE BAYLOR COLLEGE OF MEDICINE

The Division of Neuroscience was formed in January 1989 as an independent, basic science division of the medical school. We are now embarking on a major program of expansion in the areas of structure and function of the central nervous system. Our initial recruiting efforts will be directed towards neuroscientists investigating aspects of hippocampal anatomy, biochemistry, behavior, electrophysiology, or modeling. Successful applicants will join a faculty working in a highly interactive and congenial environment within a major medical center and will be expected to develop a vigorous research program in their area of specialization. Teaching responsibilities are minimal, and excellent opportunities exist for interactions with scientists in other basic science and clinical departments. Applications are invited for tenure-track positions at the **ASSISTANT AND ASSOCIATE PROFESSOR** levels. Send curriculum vitae, statement of research interests, and names of three references to: **Dr. James Patrick, Head, Division of Neuroscience, Baylor College of Medicine, 1 Baylor Plaza, Houston, TX 77030.** *An Affirmative Action/Equal Opportunity Employer.*

9 JUNE 1989

POSTDOCTORAL OPPORTUNITIES

The Medical Research Division of American Cyanamid Company is recognized internationally as a leader in the research and development of therapeutic compounds. Currently, we are seeking energetic, highly motivated individuals with a background in Molecular Biology, Biochemistry or a related field for our **MOLECULAR BIOLOGY RESEARCH** and **CENTRAL NERVOUS SYSTEM RESEARCH** sections to work on projects concerning:

HUMAN RETROVIRAL RECEPTORS including the interaction of the receptor with virus and the normal function of the receptor;

GROWTH FACTORS AND TRANSCRIPTION FACTORS, involving cloning and characterization of a novel human growth factor and characterization of viral transcription factors.

MOLECULAR NEUROBIOLOGY OF ALZHEIMER'S DISEASE where the characterization of Amyloid gene expression and factors involved with neuronal death and survival will be pursued.

Positions are located at Lederle Laboratories in Pearl River, New York. We offer competitive starting salaries and excellent benefits. Please send your resume and the names of three references to the Professional Employment Office, Lederle Laboratories, Middletown Road, Pearl River, NY 10965. An Equal Opportunity Employer.



**Dedicated People
Dedicated to People
Since 1906**

Toxicology Associate Director, Investigative Toxicology

Smith Kline & French, a leader in Pharmaceutical research, is consolidating and expanding its Safety Assessment Departments. The Department of Toxicology is seeking an experienced senior scientist for the position of Associate Director. This individual will manage and provide scientific leadership to a group focused on short-term toxicologic evaluation of novel pharmaceutical agents and mechanistic investigation of toxicologic effects associated with pharmaceutical agents.

The successful candidate will participate with multi-disciplinary teams in drug discovery and development and will have responsibility for designing and conducting studies to define the toxicologic profile of novel therapeutic agents. The incumbent also would be expected to take a leadership role in the scientific direction of the Department and to identify and investigate new approaches for evaluating toxicity and for defining the underlying mechanisms.

A Ph.D. in Pharmacology, Biochemistry, Toxicology or related field and seven or more years postdoctoral experience is required. The successful candidate will have experience in Pharmaceutical industry based drug development and investigative-mechanistic toxicology including the design, conduct, interpretation and reporting of animal toxicology studies. A proven record of accomplishment in experimental research, demonstrated problem solving skills and a recognizable area of scientific expertise are required. In addition, a history of successful scientific leadership and supervisory experience would be highly desirable.

Based in a modern research facility in suburban Philadelphia near Valley Forge, PA, SK&F provides excellent opportunities for innovative, interdisciplinary research in a stimulating and challenging scientific environment. Attendance at national and international scientific meetings is supported and presentation and publication of scientific work is strongly encouraged. We offer an attractive compensation/benefits and relocation package. For confidential consideration, please forward your C.V. and names of three references to **L. McKendry, L0077, SK&F Laboratories, P.O. 1539, King of Prussia, PA 19406-0939.** Equal Opportunity Employer, M/F/H/V.

SK&F
A SmithKline Beckman Company

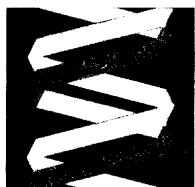
DIRECTOR, OFFICE OF SPONSORED PROGRAMS

The Jackson Laboratory . . . internationally known biomedical research facility, located in Bar Harbor, Maine, surrounded by Acadia National Park . . . is in need of a dynamic individual to serve as the institute's chief grants officer. Responsibilities include supervision of 5 personnel who assist the Research Staff in the timely preparation of applications, interacting with the Research Staff to plan and organize program projects, pre-award and post-award administration of grants, providing advice regarding policies and procedures of granting agencies, representing the Laboratory through external sponsoring agencies (both federal and private) and negotiating sponsored award agreements consistent with the research mission of the Laboratory and its administrative policies.

Bachelor's, master's, or doctoral degree and five years' successful experience in grants development and administration required. Extensive experience and contacts with the National Institutes of Health preferred. Must possess leadership ability, supervisory experience and excellent organizational, writing, and interpersonal skills.

Salary: Competitive — plus excellent benefits package.

To apply, send cover letter & resume as soon as possible to:



Equal Opportunity Employer M/F

The Jackson Laboratory

Attn: Harold R. Wheeler
Employment Manager
600 Main Street
Bar Harbor, ME 04609-0800
207/288-3371

University of Illinois at Chicago Computer Center

The University of Illinois at Chicago is the largest institution of higher learning in the Chicago area, one of the top seventy research universities in the United States, and an increasingly significant center for international education and research.

The Computer Center is the central computation facility for the campus, responsible for all aspects of research and instructional computation and networking. Experienced professionals are being sought for an academic staff position in each of these areas.

Education in Advanced Computation: Manage, support, and continue to develop, an ongoing series of advanced computation and supercomputer application workshops for researchers on campus, from across the country, and from the Chicago area industrial community. The campus has access on site and remotely to a variety of supercomputer architectures, has formal ties with three NSF supercomputer centers, and is interested in developing a strong applied graphics capability based on existing campus research strength in graphics. The position involves development scientific computational software, and direct participation in the research.

User Services: User support, consultation and development of training materials in supercomputing, campus tcp/ip networking, and local area networks.

Systems Programming: Develop local enhancements to VM, install AIX, develop interfaces to the campus network and local area networks.

Requirements: All three positions require at least three years of appropriate experience, an advanced degree is desired, strong written and oral communications skills are necessary.

Interested applicants should submit a cover letter and resume to: George Yanos, Computer Center mc/135, University of Illinois at Chicago, Chicago, Illinois 60680-6998, or to u08208@uicvm.uic.edu. Responses will be accepted until the positions are filled, to assure full consideration, respond before June 30, 1989.

The University of Illinois is an Affirmative Action/Equal Opportunity Employer. Positions are subject to availability of funds.

NASA

Federal Senior Executive

Salary Range: \$68,700 - \$80,700

Location: Greenbelt, Md.

Goddard Space Flight Center is seeking qualified candidates for the position of Chief, Laboratory for Terrestrial Physics. The Laboratory conducts research seeking to advance the state of knowledge in the Earth sciences and aid in the improved management of the resources of the Earth through the application of remote sensing and other space technology. The incumbent will provide leadership in planning, implementing, directing, and coordinating a comprehensive program of Earth sciences research activities in concert with Goddard technology development programs.

Applicants must possess a Doctorate or equivalent experience and demonstrated knowledge in one of the geosciences; e.g., geology, geodynamics, hydrology and/or terrestrial ecosystems, as well as research and development skills in the field of Earth remote sensing, relevant to studies of global geoscience topics. Evidence of research productivity, i.e., a record of publication in technical and scientific journals, is required.

Candidates should submit a resume and/or Application for Federal Employment (SF-171), and a record of publications to the Goddard Space Flight Center, Office of Human Resources, Code 115 FSE, Greenbelt, MD 20771. For additional information and statement of required qualifications contact Ms. Stephanie A. Fontenot at (301) 286-8319. Equal Opportunity Employer. United States Citizenship Required.

BUILDING A NEW LAB?

LET THE SCIENCE FREE PRODUCT
INFORMATION SERVICE PUT YOU IN
TOUCH WITH THE VENDORS WHOSE
PRODUCTS YOU WILL NEED.

SIMPLY WRITE US A LETTER STATING
THE SPECIFICS ABOUT YOUR PROPOSED
LAB AND WE WILL DO THE REST.

WRITE TO:

**SCIENCE MAGAZINE
NEW LAB SERVICE DEPT.
1515 BROADWAY
NEW YORK, N.Y. 10036**

THE SCIENCE RECRUITMENT

"FOUR DAY CLOSE"

NOW YOU CAN SEE YOUR AD IN SCIENCE FOUR DAYS AFTER SUBMISSION

Scientific Recruiters can now advertise positions almost as soon as the need arises. Instead of reserving space a month or more in advance, you can now place your ad four days before the magazine mailing date. SCIENCE is mailed on the cover date.

Film (right-reading, emulsion face down) or full camera ready art and insertion order must reach: SCIENCE, Short Close Desk, 1515 Broadway, New York, NY 10036 by NOON Mondays (except for legal holidays when material must reach New York by Noon Fridays). Because space is limited, the four-day close page will be reserved on a first-come, first-served basis, at a 15% premium. 1/4 and 1/2 page ads only.

Now you don't have to wait to find the researchers you need immediately, nor must you advertise in a Sunday paper that pans a lot of sand, but not much gold. Scientific employers know that SCIENCE ads fill the job better. Now they fill it faster too.

You can call it "INSTANT RECRUITMENT."

For further information, telephone Ed. Keller, Recruitment Advertising Manager, or Donna Rivera, Production Manager at SCIENCE: 212-730-1050, or write to: SCIENCE, 1515 Broadway, NY, NY 10036.

CURRENT DISTRIBUTION 160,000

Industrial Postdoctoral Position Oncogene Research

Monsanto Agricultural Company is seeking a Postdoctoral Scientist to study the role of oncogene activation and expression in our chemical carcinogenesis at our Environmental Health Laboratory in St. Louis, Missouri. Candidates are required to have a PhD with research experience in molecular biology. Previous research experience in oncogenes is preferred. This position is renewable on an annual basis with an anticipated duration of two years. New laboratory facilities are available. External publications and participation in the scientific community will be highly encouraged.

Monsanto provides a generous compensation package relative to your responsibilities and qualifications. Interested candidates, please forward your resume to: C.D.R.; Mail Zone B3NA; MONSANTO COMPANY; 800 N. Lindbergh Blvd.; St. Louis, MO 63167. An Equal Opportunity Employer M/F/H/V.

Careers for people with ideas

Monsanto



CATALYTIC ANTIBODIES

IGEN Inc. is seeking to appoint post-doctoral and Masters level scientists with experience in any of the following areas to join its expanding program of research and development in catalytic antibodies:

- Synthetic organic chemistry
- Computational chemistry
- Molecular Biology
- Biosensors

Candidates with outstanding qualifications in any of these areas are invited to apply.

IGEN Inc. is a biotechnology company located in Maryland, close to Washington, DC and specializing in the development of fundamental new diagnostic technologies and in the pharmaceutical and therapeutic applications of catalytic antibodies (Abzymes™).

For confidential consideration, please send your curriculum vitae to IGEN Inc., Human Resources Manager, 1530 East Jefferson Street, Rockville, MD 20852.

Informal inquiries about any of the above positions should be directed to Dr. Anthony R. Rees, Director of the Catalytic Antibody Program, at 301/984-8000.

POSITIONS OPEN

MOLECULAR BIOLOGISTS

Postdoctoral appointment is available to study the strain-dependent, tissue-specific gene expression of acutely-regulated murine serum amyloid P component. Research project will focus on identification of regulatory regions of the genes and characterization of DNA binding proteins. The ideal candidate should be well versed in recombinant DNA techniques although all applicants will be considered. Salary is \$25,000 to \$30,000. Please forward curriculum vitae to: **Dr. John E. Mole, Department of Biochemistry, University of Massachusetts Medical Center, 55 Lake Avenue North, Worcester, MA 01655.**

The University of Massachusetts Medical Center is an Affirmative Action/Equal Opportunity Employer.

MOLECULAR GENETICIST/ASSISTANT INVESTIGATOR: Conduct research in genetic and biochemical analysis of transcription factors which regulate expression of mammalian cellular and viral genes. Research gene regulation in immune cells, emphasizing isolation of cDNA clones, encoding rare DNA-binding regulatory proteins, their structural and functional analysis. Publish findings in professional journals. Requirements: Ph.D. in biochemistry/molecular and cell biology; must possess minimum of five publications in professional journals of molecular biology and genetics; 3 years of experience in job offered; 40 hours per week; 9:00 a.m. to 5:00 p.m.; \$48,000 per year. Mail résumé to: **Illinois Department of Employment Security, 401 South State Street—3 South, Chicago, IL 60605. Attention: L. Donegan. Reference #9169-D.** An Employer-paid ad.

MOLECULAR/IMMUNO-PARASITOLOGY POSTDOCTORAL/RESEARCH ASSOCIATE positions available in highly interactive group studying host-parasite interactions during schistosomiasis. Ongoing projects include genes and gene products important in female reproductive development, genes and gene products that play a role in immunity, identification and characterization of T and B cell idiotopes on protective anti-idiotypes, studies of T cell-mediated immunity with defined antigens. Initial appointments for 2 years with competitive salary. Respond with curriculum vitae, statement of interests, and names and telephone number of three references to: **Dr. Philip T. LoVerde, Department of Microbiology, School of Medicine, 203 Sherman Hall, State University of New York, Buffalo, NY 14214.** An Affirmative Action/Equal Opportunity Employer.

OB/GYN FACULTY POSITION—POSTDOCTORAL—The Department of Obstetrics and Gynecology, University of Oklahoma Health Sciences Center in Oklahoma City is seeking an individual with research interest in endometriosis. Training in immunology, biochemistry; Ph.D. required. Must be skilled in student and resident teaching, research design, and statistical analysis. Send curriculum vitae and bibliography to: **Robert A. Wild, M.D., Associate Professor, Department of Obstetrics and Gynecology, University of Oklahoma College of Medicine, P.O. Box 26901, 4SP720, Oklahoma City, OK 73190.**

PHYSIOLOGIST: REPRODUCTIVE/DEVELOPMENTAL

The Department of Physiology, University of Kansas Medical Center, Kansas City, Kansas, has a tenure-track position (assistant or associate professor) available 1 July 1989. Applicants should have a strong research background in cellular and molecular aspects relevant to reproduction or developmental biology and will join an established group of six investigators. Applications are sought from individuals with demonstrated scholarly productivity in an active externally-funded research program. The successful candidate will also participate in the teaching activities of the department involving medical and graduate students. Minimal requirements include at least 2 years of postdoctoral experience. Send by 1 August 1989 curriculum vitae, a summary of current and prospective research interests, and the names of three references to: **Dr. Gilbert S. Greenwald, Department of Physiology, University of Kansas Medical Center, Kansas City, KS 66103.** The search will continue until the position is filled. *The University of Kansas is an Equal Employment Opportunity/Affirmative Action Employer.*

POSITIONS OPEN

PALEOLIMNOLOGIST

Analyze paleolimnological data pertaining to effects of acidic deposition on lakes. Work with chemical limnologists and modelers to relate biological and chemical paleolimnological data to output from simple and complex lake acidification models. Prepare reports, scientific papers and proposals for new research in global climate change and other areas of applied paleolimnology. Travel required. This position will be funded for 1 year with extensions possible.

Position requires a background in paleolimnology with application to lake acidification plus a Ph.D. in biology, ecology, limnology, geochemistry, geography, or related field. Excellent oral and written communication skills must be demonstrated by experience and publication record.

Submit application materials by 23 June 1989. Include letter of application relating qualifications to above duties; names, addresses and telephone number of three references; and detailed curriculum vitae to: **Human Resources, NSI Technology Services Corporation, 1600 SW Western Boulevard, Corvallis, OR 97333.** A subsidiary of ManTech International. *Equal Opportunity Employer.*

NSI Technology Services Corporation

PHYSIOLOGY—FACULTY POSITION

Applications are invited for appointment to a tenure-track position, at rank depending upon qualifications, in the Physiology Division of the Department of Biomedical Sciences, Creighton University, Omaha. Research interests can be in any area of physiology but the appointee will be expected to interact with the newly developed Regulatory Peptide Center in the Department.

Application, curriculum vitae, and addresses of referees should be sent to:

**The Chairman
Department of Biomedical Sciences
School of Medicine
Creighton University
2500 California Street
Omaha, NE 68178**

*Creighton University is an Equal Opportunity/
Affirmative Action Employer.*

PLANT MOLECULAR BIOLOGY

POSTDOCTORAL POSITION available January 1990 for 1 year to investigate gene regulation in maize carotenoid biosynthesis. Must have Ph.D. in molecular biology or biochemistry with expertise in recombinant DNA techniques. Send résumé, references, and publications to: **Dr. Eleanore Wurtzel, Biological Sciences, Lehman College of the City University of New York, Bronx, NY 10468.** Telephone: 212-960-8643.

POSTDOCTORAL FELLOW/RESEARCH ASSOCIATE. Conduct studies on the structure and regulation of the choline acetyltransferase gene and its expression in normal and Alzheimer's brain. A Ph.D. in biochemistry, biology or related fields preferred. Stipend commensurate with experience. Send curriculum vitae and names of references to: **Dr. Louis B. Hersch, Biochemistry Department, University of Texas Southwestern Medical School, 5323 Harry Hines Boulevard, Dallas, TX 75235-9038.** An Equal Opportunity University.

POSTDOCTORAL POSITION

Available 1 July 1989 or thereafter, to study protein-primed DNA replication and evolution of DNA polymerases. The research will include the use of site-specific mutagenesis to construct mutant proteins having altered catalytic properties. Candidates should have background in biochemistry/molecular biology or protein chemistry. Send curriculum vitae and the names of three references to:

**Dr. Junetsu Ito
Department of Microbiology and Immunology
College of Medicine
The University of Arizona
Tucson, AZ 85724**

*The University of Arizona is an Equal Opportunity/
Affirmative Action Employer.*

POSITIONS OPEN

POSTDOCTORAL FELLOW/ ASSOCIATE SCIENTISTS

We are seeking postdoctoral fellows or associate scientists to join a molecular biology group. The emphasis of the research is on the regulation of gene expression, with specific focus on the mammalian ribosomal DNA genes. The positions require a Ph.D. with significant experience in protein chemistry and/or molecular biology. Candidates for the position of associate scientist should have at least 2 years of relevant postdoctoral training. Experience in tissue culture methodologies would also be desirable.

The Weis Center for Research offers competitive salaries, a comprehensive benefits program, and the opportunity for advancement. The Research Center is housed in a modern, completely equipped facility. The Research Center is within convenient driving distance of New York City, Philadelphia, and Washington, D.C., and several major universities, yet it still offers the benefits of a small town environment. Interested candidates should send copies of their curriculum vitae and the names of three references to: **Dr. Lawrence Rothblum, Weis Center for Research, Geisinger Clinic, Danville, PA 17822.**

POSTDOCTORAL FELLOW/RESEARCH ASSOCIATE POSITION. Brigham & Women's Hospital, Harvard Medical School seek Ph.D. and/or M.D. candidate for current position with potential for advancement in laboratory to study the physiology and molecular biology of lung development in neoplasia and embryogenesis. Send curriculum vitae, letter of interest and references to: **Mary Sunday, M.D., Ph.D., Department of Pathology, Brigham & Women's Hospital, 75 Francis Street, Boston, MA 02115.**

POSTDOCTORAL POSITION available for Ph.D. in lipoprotein metabolism and atherosclerosis in nonhuman primates under the supervision of **Dr. Rampratap S. Kushwaha**, associate scientist. Applicant should be experienced with methods in protein biochemistry and metabolism. Annual salary ranges upward from \$21,070, with consideration for prior relevant postdoctoral experience. Position is available for 2 years with opportunities for further extension or conversion to a staff position. Please send curriculum vitae, a description of research interests, and names and telephone numbers of three references, including major professor, to: **Personnel Director (6), Southwest Foundation for Biomedical Research, P.O. Box 28147, San Antonio, TX 78284.** *Equal Opportunity Employer M/F.*

Anticipated **POSTDOCTORAL POSITION** for biological science teaching and research. Hughes Foundation program-LSU. Duties include: lecturing in biology, assisting in the coordination of lecture and laboratory sections and participating in the grants administration. Submit curriculum vitae, three letters of reference, and a statement of teaching/research goals to: **Dr. M. D. Sundberg, College of Basic Sciences, Louisiana State University, Baton Rouge, LA 70803** by 10 July 1989. *LSU is an Equal Opportunity Employer.*

POSTDOCTORAL POSITION—available in laboratory using electrophysiological and pharmacological techniques to study the role of the inositol phosphate cascade in phototransduction and energy metabolism of individual photoreceptor cells.

Contact:

**Dr. Alan Fein
Department of Physiology
University of Connecticut Health Center
Farmington, CT 06032**

An Affirmative Action/Equal Opportunity Employer M/W/H.

POSTDOCTORAL POSITION available immediately. Involves site-directed mutagenesis of a dihydrofolate reductase gene, selection of functional second-site revertants of these mutant genes, followed by kinetic characterization of the mutant enzymes. Experience in molecular biology and enzymology desirable. Salary commensurate with experience. This is an NIH-funded position and is available for 1 to 3 years. Please send curriculum vitae and names of three references to: **Dr. Elizabeth Howell, Biochemistry Department, University of Tennessee, Knoxville, TN 37996-0840.** *UTK is an Equal Employment/Affirmative Action/Title IX, Section 504 Employer.*

MOLECULAR BIOLOGIST/BIOCHEMIST

0-2 years Post-Doctoral Experience

PANLABS U.S. Laboratories currently has an opening for a molecular biologist/biochemist. The successful candidate will have the opportunity to work with a variety of industrial microorganisms (fungi, actinomycetes, bacilli, etc.) using state-of-the-art techniques in molecular biology, genetics and biochemistry. Current projects involve genetic engineering of strains to improve the production of specific enzymes and secondary metabolites of industrial importance. Other projects aim to modify enzymes by protein engineering.

PANLABS is a growing international company that has provided R&D services to major pharmaceutical and fermentation companies worldwide for nearly 20 years. PANLABS creates and improves industrial microorganisms by employing the full range of molecular genetic and biochemical technologies.

PANLABS provides an intellectually stimulating, friendly, winning-team atmosphere. PANLABS, located in the high tech corridor north of Seattle, offers competitive salaries with excellent benefits. Please send your resume, including telephone numbers of three references to:



PANLABS, INC.
Attn: Personnel Manager
11804 North Creek Parkway South
Bothell, Washington 98011
An Equal Opportunity Employer

DEPUTY DIRECTOR

DIVISION OF EXTRAMURAL ACTIVITIES
NATIONAL CANCER INSTITUTE
NATIONAL INSTITUTES OF HEALTH

The National Cancer Institute (NCI) is seeking candidates for the position of Deputy Director of the Division of Extramural Activities (DEA). This position is located in Bethesda, Maryland and is a permanent full-time position with a salary range of \$68,700 to \$76,400 per annum commensurate with qualifications. Additional salary incentives are available should a physician be selected for this position.

The Deputy Director, DEA, along with the Director, is responsible for the day-to-day scientific management of the Division which conducts the scientific review and evaluation of grant and cooperative agreement applications and contract proposals in response to the programmatic initiatives of the NCI. The extramural research funded by the NCI supports a broad program of activities designed to increase knowledge of the causes, prevention, control, diagnosis and treatment of cancer with a total budget of approximately \$600 million annually.

Applicants for this Senior Executive Service position must have a doctoral level degree or equivalent in one of the biomedical sciences. Send Applications to:

Ms. Dolores Guido, NCI
Bldg. 31 Rm. 3A19
9000 Rockville Pike
Bethesda, MD 20892



For applications and a copy of the requirements, contact Ms. Guido, at NCI on (301)496-8182.
Deadline for applications is July 10, 1989

NCI IS AN EQUAL OPPORTUNITY EMPLOYER

Research Investigator

Working in our Biosciences Department, you will be responsible for designing and implementing protocols for protein/enzyme purifications. Additional responsibilities include protein characterization using classical biochemical techniques, screening/purifying recombinant proteins, evaluating structure/function relationships, proposing new projects and staying current with scientific literature.

We are seeking an individual with a Ph.D. in Biochemistry or Chemistry (post-doctoral experience desirable), a strong background in protein, biochemistry, and extensive knowledge of isolating, purifying and characterizing proteins. Strong written and oral communication skills in addition to a commitment to working as a member of an interdisciplinary team are required. HPLC experience as well as a broad knowledge of molecular biology, polysaccharide enzymology and lipids a plus.

For immediate consideration, please submit a resume in confidence to: **Personnel Manager, The NutraSweet Company, 601 East Kensington Road, Mt. Prospect, IL 60056.** Equal Opportunity Employer m/f/h/v.

The NutraSweet Company



CARDIOVASCULAR PHARMACOLOGIST

BS/MS

Abbott Laboratories is devoted to the ongoing discovery and development of quality health care products and services worldwide. We currently seek a qualified professional to work within our Pharmaceutical Products Division.

We are now looking for an individual to join our scientific team to develop test systems for the discovery of new cardiovascular agents. Experience with large animal surgery necessary, familiarity with computer systems desirable. The selected candidates should have an M.S. in Pharmacology or a related discipline with relevant laboratory experience, or a B.S. with at least 2-4 years experience.

Abbott Laboratories offers an outstanding career environment with strong growth potential. We also provide an excellent compensation package that includes profit sharing and retirement programs. We are located in an attractive suburban setting approximately 30 miles north of Chicago. For consideration, please send resume with salary history to: **Patricia Handy, Corporate Placement, Dept. SCI/6-9, Job #7613, Abbott Laboratories, 1 Abbott Park Rd., Abbott Park, IL 60064.** (To facilitate the handling of your resume, please indicate the job number on your cover letter or resume.) Abbott is an Affirmative Action Employer.

ABBOTT LABORATORIES



Quality
Health Care
Worldwide
1888-1989

POSITIONS OPEN

POSTDOCTORAL POSITION UNIVERSITY OF CALIFORNIA LOS ANGELES (UCLA)

Available beginning summer/fall 1989, to perform electrophysiologic studies of channel-forming toxins (e.g., diphtheria, tetanus) using lipid bilayer and patch-clamp techniques.

Please send curriculum vitae and three letters of reference to: **Dr. B. L. Kagan, Departments of Physiology and Psychiatry, University of California, 760 Westwood Plaza, Los Angeles, CA 90024. Telephone: 213-825-1963.**

The University of California is an Affirmative Action/Equal Opportunity Employer.

POSTDOCTORAL POSITION

RESEARCH ASSOCIATE (postdoctoral) with background in physical oceanography, large-scale atmosphere/ocean interaction, with emphasis on climate variability. Term of appointment: 1 year, renewable for a second year subject to the approval of the Council. Send curriculum vitae and a list of four references to: **Director, Joint Institute for the Study of the Atmosphere and Ocean, Attention: Ingrid Quertermous, Administrator AK-40, University of Washington, Seattle, WA 98195.** Closing date: 1 August 1989.

An Equal Opportunity/Affirmative Action Employer.

POSTDOCTORAL POSITION IN CELL BIOLOGY

Positions available to study the platelet cytoskeleton or role of lipoproteins in lipid metabolism. Experience with light and electron microscopy required. Send curriculum vitae and three references to:

**Personnel
Gladstone Foundation Laboratories
University of California, San Francisco
P.O. Box 40608
San Francisco, CA 94140-0608**

POSTDOCTORAL POSITION IN IMMUNOGENETICS/AUTOIMMUNE DISEASE, available September 1989. Includes Research Fellow appointment at University of Wisconsin. Prefer background in immunology, genetics, or molecular biology.

Research in laboratory includes basic immunogenetics of the HLA system, and genetics of autoimmunity in humans (current emphasis: genetics of insulin-dependent diabetes). Methods used include, among others: cell culture, ELISA, DNA and RNA dot blots, Southern blots, and DNA cloning and sequencing.

Send curriculum vitae and three letters of reference by 1 July 1989 to: **Michael Sheehy, Ph.D., Scientific Director, American Red Cross Blood Services, 4860 Sheboygan Avenue, Madison, WI 53705.**

POSTDOCTORAL POSITION PLANT MOLECULAR BIOLOGY GENETIC ENGINEERING IN MAIZE

New 2-year position available immediately. Development of exciting novel method for direct DNA transfer to crop plants. Transfer of large RFLPs to identify quantitative traits. Genomic DNA transfer from wild species to domestic varieties. Gene targeting. Mutagenesis. Salary \$25,000 plus 32% benefits. Qualifications: Excellent skills recombinant DNA techniques and enthusiasm for plant systems necessary. Experience with plant cells highly desirable but backup and training provided. Send résumé as soon as possible to: **Dr. J. Stadler, Genetics Department, 8 Curtiss Hall, Iowa State University, Ames, IA 50011. Fax: 515-294-9477.**

POSTDOCTORAL RESEARCH ASSOCIATE

A research associate position is available in the Radio-nuclide and Radiopharmaceutical Research Group of the Medical Department at Brookhaven National Laboratory. Work will involve the synthesis of novel metal chelating agents and the development of conjugation chemistry for radiolabeling monoclonal antibodies. Candidates should have a recent Ph.D. degree in organic or organometallic chemistry. Some prior experience in ligand synthesis would be desirable. Interested candidates should send résumé to: **Dr. A. D. Chanana, Medical Department, Building 490, Brookhaven National Laboratory, Associated Universities, Inc., Upton, NY 11973. Equal Opportunity Employer M/F.**

POSITIONS OPEN

POSTDOCTORAL POSITION MOLECULAR IMMUNOLOGY

Available immediately to study the evolution of immunoglobulin genes by recombinant DNA techniques. Send résumé and the names of three references to: **Dr. Lisa A. Steiner, Department of Biology, Massachusetts Institute of Technology, Cambridge, MA 02139. MIT is an Equal Opportunity/Affirmative Action Employer.**

POSTDOCTORAL POSITIONS IN MOLECULAR GENETICS OF HYPERTENSION are available for the identification and characterization of genes controlling blood pressure in genetically hypertensive rats. Techniques include library construction, cloning, gene regulation, RFLP analysis, and transgenic animals. Applicants must have Ph.D., M.D., D.V.M., or equivalent degrees and be citizens or permanent residents of the United States. Send curriculum vitae to: **Dr. John Rapp, Department of Medicine, Medical College of Ohio, C.S. 10008, Toledo, OH 43699. An Equal Opportunity Employer.**

POSTDOCTORAL OR RESEARCH ASSOCIATE in biochemistry, cell or molecular biology to study the regulation of synthesis and secretion of mucin glycoproteins. Studies will involve characterization of proteins, oligosaccharide chains and glycosyltransferases and metabolic studies with isolated mucus-secreting cells. Recombinant DNA techniques will be utilized to examine the regulation of expression and genes encoding mucin glycoproteins and glycosyltransferases.

Please send curriculum vitae to: **Dr. Joseph Mendicino, Department of Biochemistry, University of Georgia, Athens, GA 30602.**

POSTDOCTORAL RESEARCH ASSOCIATE: Full-time postdoctoral research position is immediately available in the Orthopedic Research Laboratory/Bowman Gray School of Medicine of Wake Forest University. Applicant should hold a Ph.D. and have background and experience in bacteria-biomaterial interface phenomena, adhesins, receptors, adhesive proteins, materials surfaces. Salary negotiable. Qualified candidates should send letter and résumé to: **Anthony G. Gristina, M.D., Section of Orthopedic Surgery, 300 South Hawthorne Road, Winston-Salem, NC 27103. Affirmative Action/Equal Opportunity Employer.**

POSTDOCTORAL/RESEARCH ASSOCIATE

Applications are invited from qualified individuals with an interest in molecular genetics of X-linked diseases or in clinical cytogenetics. Applicant must be Ph.D. trained in cytogenetics, biochemistry, or molecular biology and willing to assist in the direction of a diagnostic laboratory and to develop a related research program. Send curriculum vitae to: **Dr. Nancy J. Carpenter, Director of Genetics, Chapman Research Institute of Medical Genetics, Children's Medical Center, 5300 East Skelly Drive, Tulsa, OK 74135.**

POSTDOCTORAL/RESEARCH ASSOCIATE CELL BIOLOGY—BIOCHEMISTRY

Position available immediately for studies of exocrine pancreas stimulus-secretion coupling in NIH-funded project: hormone receptors—GTP binding proteins-phospholipase C-calcium release. Salary based on NIH guidelines in major Harvard-affiliated hospital. Send curriculum vitae and references to: **Michael Steer, M.D., Department of Surgery, Beth Israel Hospital and Harvard Medical School, 330 Brookline Avenue, Boston, MA 02215.**

PRESIDENT THE ROCKEFELLER UNIVERSITY

Applications are invited for the position of President, The Rockefeller University. An individual of international renown and outstanding scientific accomplishment is sought. Extensive management and administrative experience is preferred. Applications and inquiries should be addressed to: **The Search Committee, The Rockefeller University, 1230 York Avenue, New York, NY 10021.**

The Rockefeller University is an Equal Opportunity/Affirmative Action Employer and does not discriminate in any of its employment policies or practices on the basis of race, color, religion, sex, national origin, handicap or status as a veteran.

POSITIONS OPEN

POSTDOCTORAL POSITION MOLECULAR BIOLOGY OF HUMAN GRANULOCYTES BETH ISRAEL HOSPITAL HARVARD MEDICAL SCHOOL

Grant-funded position available immediately for new Ph.D. or more senior associate, preferably with experience in protein chemistry/cell biology, gene cloning and sequencing. Research involves the cloning, regulation of expression, and structure-function relationships of granule proteins of human eosinophilic and basophilic leukocytes. Send curriculum vitae and three letters of reference to: **Dr. Steven J. Ackerman, Department of Medicine, Beth Israel Hospital, 330 Brookline Avenue, Boston, MA 02215.**

POSTDOCTORAL POSITIONS available in NIH-funded multidisciplinary training program in parasitology/vector biology. Areas of research and faculty include biochemistry/pharmacology of parasitic helminths (**Saz**); immunoparasitology/African trypanosomiasis (**Diffley**); host-parasite relationships/coevolution (**Hellenthal**); insect biochemistry/endocrinology (**Fuchs**); arboviral epidemiology (**Grimstad**); ecological genetics of *Aedes* (**Craig**); and population and molecular genetics/vector competence of *Aedes* (**Rai**). Candidates must be U.S. citizens or permanent residents. Women and minorities encouraged to apply. Send résumé, and three references to: **Dr. K. S. Rai, Department of Biological Sciences, University of Notre Dame, Notre Dame, IN 46556. Telephone: 219-239-8045. An Equal Opportunity/Affirmative Action Employer.**

UNIVERSITY OF ALABAMA AT BIRMINGHAM DEPARTMENT OF PSYCHIATRY

PSYCHIATRIC GENETICIST: M.D. or Ph.D. with interest in genetics of schizophrenia and affective disorders, who will develop and lead a laboratory of genetics with the Department of Psychiatry that would employ molecular genetics/linkage techniques. Laboratory space and other support is available. The Department has a neuropsychiatric brain bank, co-participation in an Alzheimer's Disease Program Project, access to large patient populations and active collaboration with the Department of Cell Biology, and UAB's Program of Medical Genetics.

Salary is commensurate with experience and qualification. Excellent fringe benefit program and faculty practice plan. *Affirmative Action/Equal Opportunity Employer.* Please call or send curriculum vitae, indicating area of interest to: **Dr. David L. Garver, Professor and Chairman, Department of Psychiatry, UAB Station, Birmingham, AL 35294. Telephone: 205-934-4041.**

FOOD AND DRUG ADMINISTRATION REGULATORY PHARMACOLOGISTS REGULATORY TOXICOLOGISTS

FDA seeks pharmacologists and toxicologists to review pharmacology and toxicology data included in Investigational New Drug Applications (INDs) and New Drug Applications (NDAs) as part of FDA regulation of new drug development in the United States. These positions offer an excellent opportunity to attain broad multidisciplinary expertise in pharmaceutical research and development and regulatory affairs. A Ph.D. in pharmacology or toxicology with at least 1 year of postdoctoral experience is highly desirable.

Full-time civil service positions are available in the Washington, D.C., metropolitan area. Salary range \$34,580 to \$53,460 per year, depending upon qualifications.

Commission in the U.S. Public Health Service, and commensurate pay scale, may also be possible.

Send detailed résumé or curriculum vitae with bibliography to:

**Health and Human Services
Public Health Service
Division of Human Resources Management,
Room 4B-18
5600 Fishers Lane
Rockville, MD 20857
Attention: Ramona Litowsky**

Candidates must meet all civil service requirements, including citizenship.

FDA is an Equal Opportunity Employer.

POSITIONS OPEN

POSTDOCTORAL/SABBATICAL POSITION—PLANT CELL OR MOLECULAR BIOLOGY. Available 1 August 1989 for 1 to 3 years to teach one class in plant physiology or cell biology and to conduct research in plant physiology, biochemistry or molecular biology. Send curriculum vitae, names, and telephone numbers of three references and a one-page statement of research interests to: **Dr. Karen Hughes, Head, Department of Botany, University of Tennessee, Knoxville, TN 37996-1100.** *Equal Opportunity/Affirmative Action Employer.*

DEPARTMENT OF PSYCHOLOGY UNIVERSITY OF OTAGO DUNEDIN, NEW ZEALAND PROFESSOR OF PSYCHOLOGY

Applications are invited from suitably qualified women and men for appointment to the position of Professor of Psychology. The main criteria are excellence in research and proven academic leadership. The area of research specialization is open.

The Department supports productive research programs in areas of experimental and applied psychology including behavioral neuroscience, social psychology, cognition, clinical psychology, developmental psychology, operant behavior, human factors and perception. The Department is undergoing a period of growth, and has a high level of research productivity. Well-established links exist with Departments in the Divisions of Sciences, Humanities and Health Sciences, and some members of the Department also belong to the Centre for Research in Neuroscience. The teaching program emphasizes the development of student research skills. In addition to undergraduate and graduate degrees in psychology, the Department offers a 3-year diploma course in clinical psychology. A new masters degree in cognitive science is being proposed for introduction in 1990. Excellent computing and technical facilities support teaching and research programs in the Department. Enquiries may be made to: **The Head of Department, Professor K. G. White, facsimile number 64-24-741607, or by telephoning 64-24-797644 or by electronic mail to syco55%Otago.ac.nz@RELAY.CS.NET**

Salary: Professorial salaries are paid within a range currently \$NZ76,000 to \$NZ95,000 per annum.

Intending applicants should write for further particulars from: **The Registrar, Mr. D. W. Girvan, P.O. Box 56, Dunedin, New Zealand.**

Applications quoting reference number A89/20 close on 15 August 1989.

Equal Opportunity in Employment is University policy.

RESEARCH ASSISTANTSHIP IN AQUATIC ECOLOGY, wet laboratory biologist for university research facility specializing in ecological investigations to design and develop enclosed habitat for environmental studies. Designs and conducts experiments in the use of recirculating test systems and evaluate the safety of genetically engineered microbial pest control agents to non-target fresh water and marine organisms. Cultures shrimp larvae in an experimental hatchery to develop treatment methods for diseases of farmed shrimp. Supervises two to four student workers to care and maintain the colonies on facility. Requirements: Doctoral degree in aquatic ecology and 2 years of environmental research experience. Salary: \$18,601 per calendar year. Total of 40 hours per week with some weekend work required. Qualified applicants send curriculum vitae to: **Arizona DES/Job Service, Attention: 732A Re: 0803080, P.O. Box 6123, Phoenix, AZ 85005.** Job location: Tucson. Employer paid ad; proof of authorization to work in the United States is required if hired.

RESEARCH ASSOCIATE will have responsibility for design, construction and testing of low-light fluorescence microscopy instrumentation—UV/Vis optics, image intensifiers, sources—together with experimentation on real and model biomembranes. Must hold Ph.D. in physics or chemistry, and have at least 3 years of work in optics or spectroscopy, including advanced techniques of optical microscopy. Experience with phospholipids or real biomembranes needed. Salary commensurate with experience, but at least \$24,000. Send curriculum vitae and names of three references, by 20 July 1989 to: **Professor G. W. Feigenson, Section of Biochemistry, Molecular and Cell Biology, 201 Biotechnology Building, Cornell University, Ithaca, NY 14853.** *Cornell University is an Equal Opportunity Employer.*

Hypercholesterolemia/ Atherosclerosis Research

Du Pont's Medical Products Department, Pharmaceuticals Division is expanding its Cardiovascular group and has an immediate opening for a Principal Investigator in its Atherosclerosis program. The successful candidate will hold a doctoral degree or equivalent in Biochemistry, Pharmacology or related discipline with experience in lipoprotein metabolism and animal models of hypercholesterolemia/atherosclerosis. The investigator will have the responsibility for conducting *in vivo* studies to evaluate cholesterol lowering drugs and agents which modulate whole animal lipid metabolism. In addition, the candidate will be required to establish an active, basic research program in the area of hypercholesterolemia/atherosclerosis and interact with a highly motivated research team with expertise in lipid metabolism.

At Du Pont you'll find a stimulating scientific environment in a modern research facility located near Wilmington, DE. Our Mid-Atlantic location offers a wide range of academic, cultural and recreational activities. We provide excellent compensation, benefits, and relocation assistance. Qualified candidates should send a curriculum vitae with three references to: Professional Staffing Section, Employee Relations Dept., Room X-51716, Du Pont Company, Wilmington, DE 19898



*An Equal Opportunity Employer M/F/H/V
U.S. Citizenship or Permanent Visa Required
and meet other appropriate IRCA requirements*

Immunologists

Hawaii Biotechnology Group, Inc. is seeking highly motivated individuals to join its Immunology Group. We are an equal opportunity employer.

Director - Immunology Group

Experienced scientist (Ph.D. or M.D.) to lead and direct immunochemistry research involved in development of immunoassays and immunotoxins, isolation of marine natural products, and development of novel uses for monoclonal antibodies. Hands on involvement expected. Develop new product proposals, contract research and grant proposals. Industry management experience desirable. This position offers an outstanding opportunity to shape the future growth of the business and share in its rewards.

Immunologist

Ph.D. responsible for investigation of immunoconjugates and immune reactions of marine natural products for development of immunoassay, immunoprophylactic and immunotoxin systems. Develop and write new research proposals. Individual must take scientific initiative and responsibility for projects and project development.

Hawaii Biotech offers excellent salary and benefits, opportunities for equity participation, and a location with quality of life second to none. Send your application, resume and three references to:



Tom Humphreys, Ph.D.
Vice President
Hawaii Biotechnology Group, Inc.
99-193 Aiea Heights Drive
Honolulu, Hawaii 96701

POSITIONS OPEN

RESEARCH ASSISTANT PROFESSOR

The Department of Pathobiology at the University of Washington announces an immediate faculty position opening. Applicants must have a Ph.D. with at least 3 years of postdoctoral research experience in molecular biology. This position will involve research on genetic reconstruction and modification of immunoglobulin and cell adhesion molecules and receptors at The Biomembrane Institute. The successful candidate is also expected to participate in teaching and precepting graduate students in the department. Applicants should send a letter of interest, curriculum vitae, and names and addresses of three references to: **Chair, Search Committee, The Biomembrane Institute, 201 Elliott Avenue West, Suite 305, Seattle, WA 98119.** The application deadline for this position is 10 July 1989.

The University of Washington is an Equal Opportunity/Affirmative Action Employer.

CARBOHYDRATE ANALYSIS FACILITY RESEARCH ASSISTANT PROFESSOR UNIVERSITY OF VIRGINIA

Establish and operate a Carbohydrate Analysis Facility to provide structural information on glycoconjugates provided by investigators throughout the university. Postdoctoral experience with the Dionex Bio LC carbohydrate analysis instrument unit preferred. Experience with other techniques of sugar analysis (GC-MS, NMR, FAB, MS) desirable. Applicant should hold a Ph.D. degree and have a strong interest in carbohydrate biochemistry. Available immediately. Send curriculum vitae plus names and addresses of three references to: **Dr. Bill Young, Department of Pathology, Box 214, University of Virginia Health Sciences Center, Charlottesville, VA 22908.** An Equal Opportunity/Affirmative Action Employer.

RESEARCH ASSOCIATE (faculty appointment) and **POSTDOCTORAL POSITION** available immediately in group investigating endothelial-smooth muscle cell interactions in local vascular control. Experience in cell culture, endothelial cell biology, arachidonate metabolism, and cytochrome P450 chemistry desired. Send curriculum vitae and names of three references to: **Roger A. Johns, M.D., Box 238, University of Virginia Health Sciences Center, Charlottesville, VA 22908.**

RESEARCH ASSOCIATE, Department of Neurology, University of Southern California (USC), School of Medicine. Applications invited from individuals with postdoctoral experience in molecular biology. Activities will focus on development of molecular biology approaches to the study of human cerebral vascular disease. Curriculum vitae and names of three references should be sent before 1 August 1989 to:

Mark Fisher, M.D.
Department of Neurology
USC School of Medicine
2025 Zonal Avenue
Los Angeles, CA 90033

RESEARCH ASSOCIATE position available to study phospholipid metabolism in biological membranes, including the role of oxygen-free radical-induced phospholipid peroxidation in cell injury. Requires Ph.D. in biochemistry, and at least 3 years of postdoctoral research experience in lipid biochemistry or oxygen-free radical chemistry. Preference will be given to individuals with experience and publications in the field of free radical-induced cell injury. Send curriculum vitae and the names of three references by 30 June 1989, to: **Dr. Harald H. O. Schmid, The Hormel Institute, University of Minnesota, 801 16th Avenue N.E., Austin, MN 55912.** The University of Minnesota is an Equal Opportunity Educator and Employer and specifically invites and encourages applications from women and minorities.

RESEARCH ASSOCIATE/POSTDOCTORAL position to study neurophysiology of locus coeruleus neurons in waking monkeys. Experience with primate behavior sought. Excellent facilities, salary and benefits. Opportunity for advancement. Telephone: 215-448-8100 or send curriculum vitae to: **Gary Aston-Jones, Division of Behavioral Neurobiology, M.S. 403, Hahnemann University, Broad and Vine, Philadelphia, PA 19102.** Equal Opportunity/Affirmative Action Employer.

POSITIONS OPEN

RESEARCH POSITION available for Ph.D. in biochemistry or related field for project involving purification and characterization of human tumors associated antigens and development of hybridoma monoclonal antisera. Experience with protein purification techniques, tissue culture, radioimmunoassay, immunohistochemical receptor binding and enzymatic techniques are required. Salary: \$22,250. Reply with curriculum vitae to: **Elliot Alpert, M.D., Department of Medicine, Room 533-D, Baylor College of Medicine, Houston, TX 77030.**

Massachusetts Institute of Technology (MIT), Biology Department is seeking a **RESEARCH SCIENTIST** to work on projects requiring extensive experience in: (i) recombinant DNA techniques including isolation of DNA, cloning of DNAs into plasmid and viral vectors, restriction mapping, deletion mapping, DNA sequencing, DNA blot procedures, (ii) oligonucleotide synthesis; (iii) computer analysis of DNA sequences; (iv) protein purification and analysis, and (v) raising antibodies. Candidate must have a Ph.D. degree in biochemistry, at least 2 years of postdoctoral experience in molecular biology, published papers in major refereed journals and experience in teaching and supervising students in the laboratory. Salary range \$30,000 to \$35,000. Please submit résumé and names of at least three references to: **Mr. Kenneth Hewitt, Room E19-230, Personnel Office, MIT, Cambridge, MA 02139.** MIT is an Equal Opportunity/Affirmative Action Employer.

RESEARCH SCIENTIST/SENIOR RESEARCH SCIENTIST: Position for Ph.D. in biochemistry or molecular biology to investigate mechanism of action of tryptophan in normal and neoplastic tissues. Project involves mechanistic studies on nuclear receptors including their isolation and role in transcription and/or post-transcription; purification of these factors and determination of their enzymatic activities; immunohistochemical localization of receptors. Send curriculum vitae and names of three references to: **Dr. H. S. Dransky, Department of Pathology, The George Washington University Medical Center, Washington, DC 20037.** Equal Opportunity Employer.

SCIENTIST/ADMINISTRATOR CONTRACEPTIVE RESEARCH AND DEVELOPMENT (CONRAD) PROGRAM

The CONRAD Program of the Eastern Virginia Medical School, Medical College of Hampton Roads, has an opening in its Extramural Program Office in Arlington, Virginia, for a Scientist/Administrator. CONRAD, which operates under a Cooperative Agreement with the United States Agency for International Development, is responsible for research and development in new or existing contraceptive technology suitable for use in less developed countries. Duties will include program development and project monitoring; (encompassing basic and applied science and clinical trials).

The ideal candidate should have 5 to 10 years of postdoctoral experience in reproductive biology and/or contraceptive development. Knowledge of personal computers is necessary.

Salary is commensurate with experience. Please send curriculum vitae to: **Personnel Office, Medical College of Hampton Roads, P.O. Box 1980, Norfolk, VA 23501.**

MCHR is an Equal Opportunity/Affirmative Action Employer.

TECHNICAL SPECIALIST, ENVIRONMENTAL AND FORENSIC SCIENCE

Responsible for review and evaluation of forensic DNA typing evidence by performing analysis of laboratory records describing RFLP analysis and PCR procedures. Perform qualitative assessment of material evidence of the analysis. Prepare reports and review programs that are in development stage for environment genetics analysis and applications of novel organisms. Requires Ph.D., molecular genetics or biochemistry, and 2 years in job or 2 years as researcher, environmental and forensic science, and verifiable references. Job and interview site: Irvine, California. \$36,800 per year. Send this ad and your résumé to: **Job #BLW 3285, P.O. Box 9560, Sacramento, CA 95823-0560,** no later than 24 June 1989. If offered employment, must show you have legal right to work.

POSITIONS OPEN

The Narragansett Bay Project, a member of the National Estuary Program, has a vacancy for **SENIOR SCIENTIST** with primary responsibility for synthesis of biogeochemical data sets collected from Narragansett Bay. Applicants should have a Ph.D. in analyzing complex data sets and proven writing ability. Salary: \$30,000 to \$35,000. Send curriculum vitae, names of references, and writing samples by 30 June 1989 to:

Project Manager, Narragansett Bay Project
291 Promenade Street
Providence, RI 02908

Rutgers University's Institute for Health, Health Care Policy, and Aging Research seeks an outstanding scholar with a recent Ph.D. and a background in health or aging research for a **TENURE-TRACK POSITION.** Applicants may be from any of several fields, but must have outstanding quantitative skills, particularly in the analysis of large data sets. Applications must be received by 15 July 1989. Please send curriculum vitae to: **Dr. D. Alington, Institute for Health, Health Care Policy, and Aging Research, Rutgers University, 30 College Avenue, New Brunswick, NJ 08903.** Initial correspondence will be held in confidence. Rutgers University is an Equal Opportunity/Affirmative Action Employer.

SYMPOSIUM

Submissions for papers to be read at the **CAMBRIDGE SYMPOSIUM ON MYALGIC ENCEPHALOMYELITIS (M.E.)** are requested. This symposium will be limited to viral induced or associated M.E. only; M.E. is known also as Chronic Immune Dysfunction Syndrome, Postviral Fatigue Syndrome. To be held at Cambridge University, England, on 10 to 12 April 1990.

Topics of both clinical and research interest are solicited including history, etiology, epidemiology, pediatrics, testing, immunology, anatomical and subcellular changes, management, specific research projects, poster sessions.

Editors of proceedings include: **Dr. Len Archard, London; Professor Peter O. Behan, Glasgow; Dr. Gary Holmes, CDC; Dr. Paul Levine, NIH; Professor James Mowbray, London.**

For details contact: **Anne Duncker, The Nightingale Research Foundation, 383 Danforth Street, Ottawa, Canada K2A 0E1.** Send all abstracts to: **Dr. Byron Hyde** at same address.

MARKETPLACE

ANTI-VIRAL DRUG TESTING FOR HIV

Pan-Data Systems, Inc. (PDS) offers assistance in drug testing using freshly isolated monocyte/macrophage cultures and PHA-stimulated leukocytes.
Contact Dr. John Dahlberg, Director of Research, for more information:
13 Taft Ct. Rockville MD 20850
(301) 294-2297/fax (301) 294-8095
(800) 543-6059

ANTI-VIRAL DRUG TESTING FOR HIV

OKRAD Corp. offers testing of anti-HIV activity of any compound by syncytia formation inhibition method, by P24 ELISA, reverse transcriptase activity, *in situ* hybridization, and by cytotoxicity methods in various CD4 and monocyte cell lines.

For further information and prices,
call (609) 486-7750

Custom DNA Purified and Delivered in 48 hours.

\$10.00 a base for the first 15 bases, \$7.50 for each additional base. No additional charges.

Research Genetics

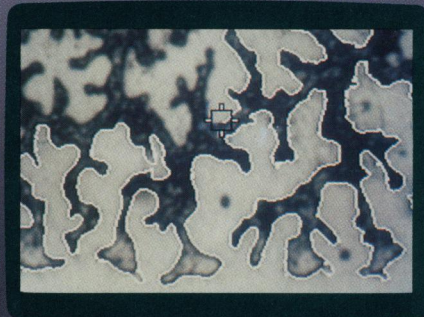
1-800-533-4363

Circle No. 50 on Readers' Service Card

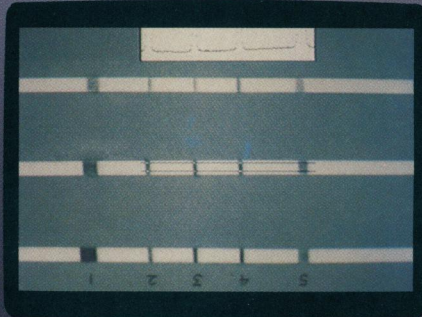
INTRODUCING

JAV[®]

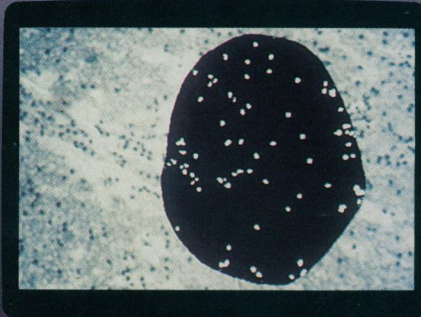
JANDEL VIDEO ANALYSIS SYSTEM



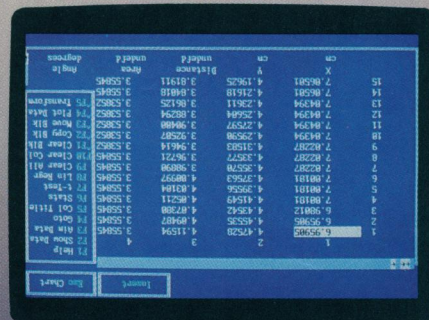
Automatic edge tracking (2x zoom)

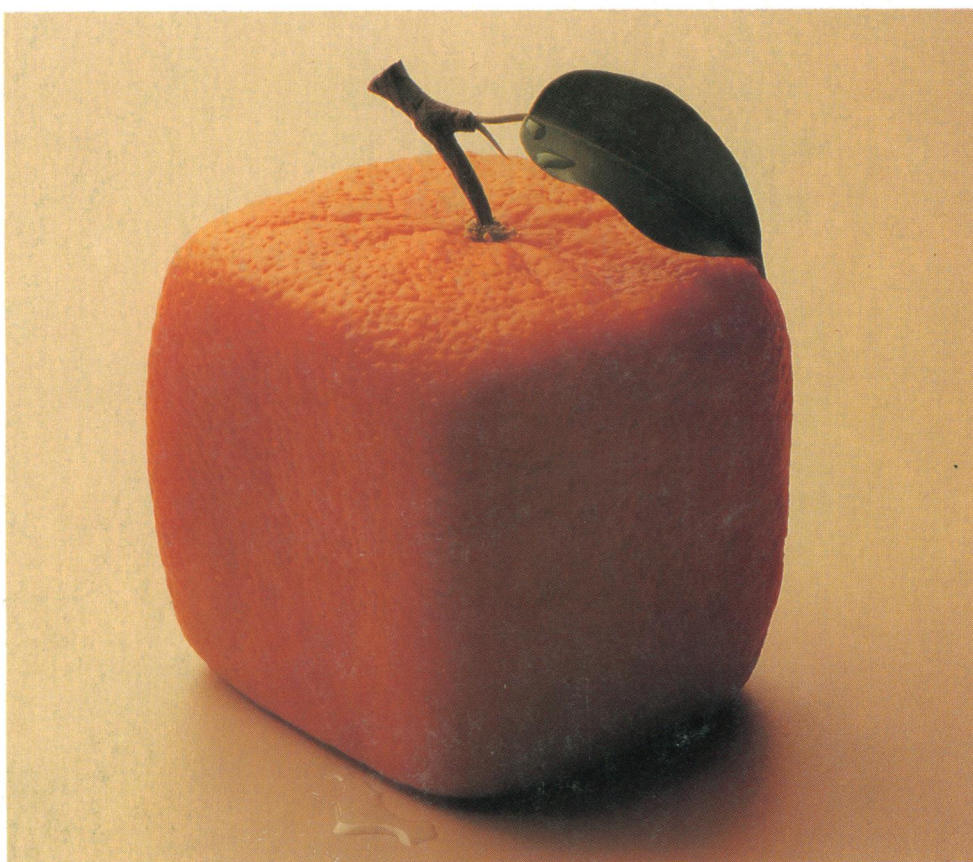


Density along a strip



Automatic object counting





Amino Acid Analysis. Not just results...the right results... HP AminoQuant.

Square oranges? You can see it's not quite right. But in amino acid analysis, it's been difficult to tell what *is* right. At last you can be sure with AminoQuant, the new amino acid analyzer from Hewlett-Packard. Its results meet today's stringent demands for precision and accuracy at a level consistent with the delicacy and significance of your work.

The AminoQuant amino acid analyzer only takes 1 μ l of hydrolysate to precisely quantitate primary and secondary amino acids of most importance to you—even down to the sub-picomole level!

In addition to its remarkable resolution and precision, the AminoQuant analyzer makes the process faster and simpler by fully automating derivatization, sample injection, analysis and reporting.

Detailed research and rigorous customer site testing allow us to warrant an exceptional set of performance specifications. And it's not just a promise. At installation, we verify that your system, in fact, meets that set of specifications. The specially designed reagents, column and necessary methodology are all provided with the AminoQuant analyzer.

HP's AminoQuant sets a new standard of performance for today's demanding and challenging era of biochemical research. Make it *your* standard.

Call toll-free for more information:
1-800-556-1234, ext. 1021. (In CA, **1-800-441-2345, ext. 1021.**)
Or call the HP office listed in your telephone directory white pages.
Ask for the analytical products representative.

*we never stop
asking*

"What if..."

 **HEWLETT
PACKARD**