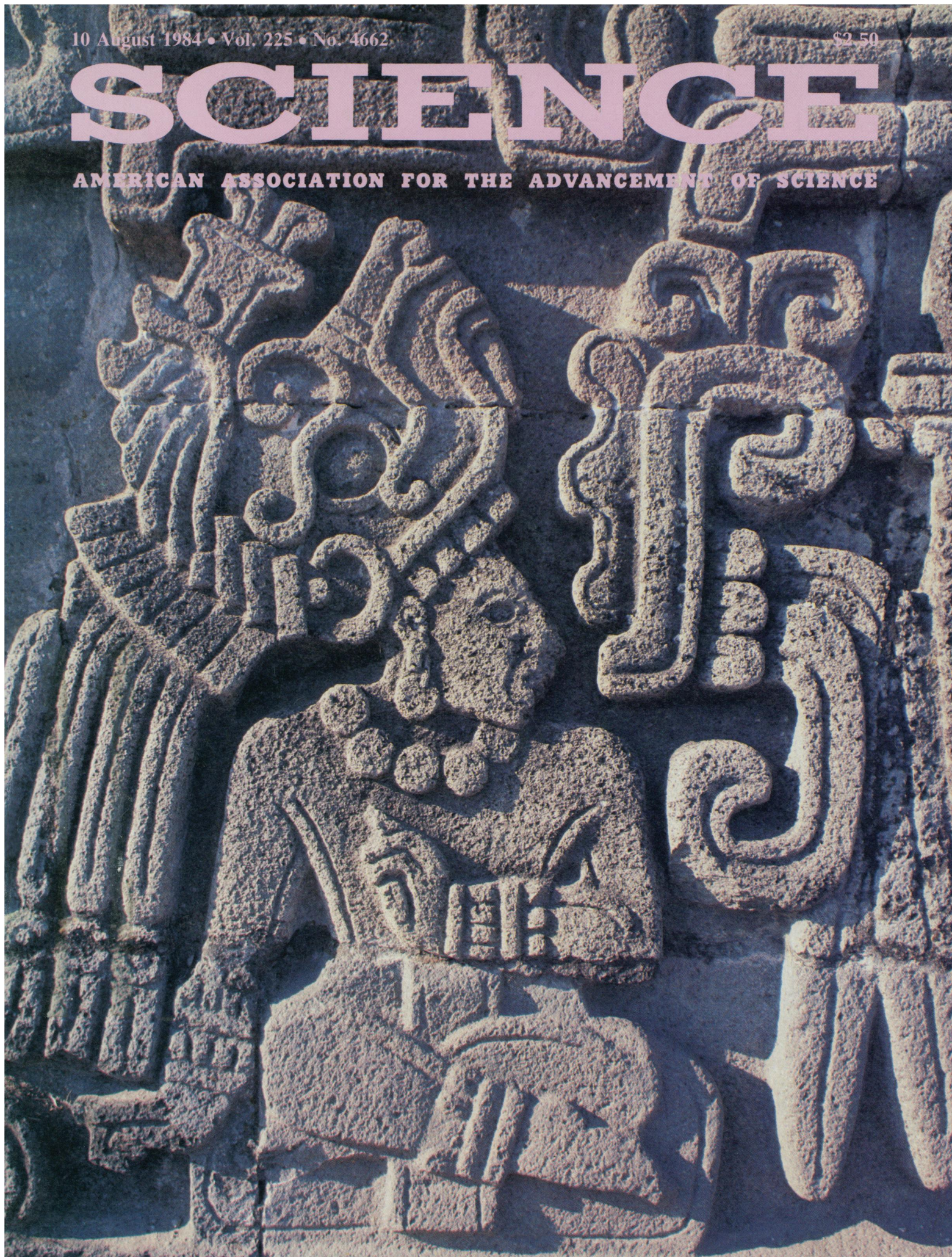


10 August 1984 • Vol. 225 • No. 4662

\$2.50

SCIENCE

AMERICAN ASSOCIATION FOR THE ADVANCEMENT OF SCIENCE



NEW UV/VIS:

Spectrophotometry hasn't been this simple since we invented it.

1941

Dr. Beckman introduces the first practical UV spectrophotometer, the DU. Thousands of these dependable instruments are still in use.

The Beckman Model B offers a low-cost, easy-to-use solution for routine, repetitive testing. This instrument was sold for 25 years.

1949

The 20 Series with digital readout, scanning and modular accessories continues the tradition of affordable, easy-to-use instruments.

1973

1960



1984

Remember the first Beckman Spectrophotometer you used? The simplicity and dependability? The tradition continues.

Behind the simple operation of the new DU-50 Series Spectrophotometers are technological advances that give these instruments incredible capability.

They feature full programmability so you have control of all operations. Once you've

established your test parameters, you simply store them on a simple plug-in Memory-Pac™ module for instant reuse.

And that's that. You save time. You eliminate errors.

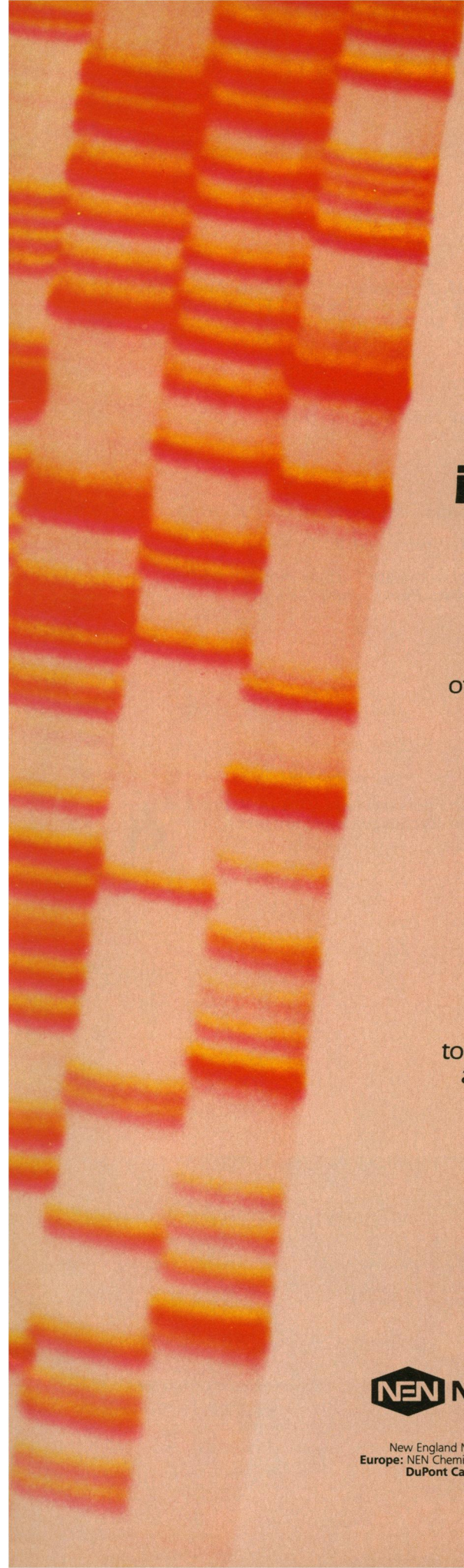
There are four models available offering you the choice of scanning or programmability or both.

All of them deliver the day in, day out dependability we built an industry on.

A utilitarian, functional instrument so simple anyone can run it; so dependable you'll never give it a second thought.

Now is the perfect time to find out about it. For more information, contact your Beckman representative or Beckman Instruments, Inc., Spectroscopy Instruments Operations, Campus Drive at Jamboree Blvd., P.O. Box C-19600, Irvine, CA 92713; (714) 833-0751.

BECKMAN



Let the NEN advantage in molecular biology work for you.

The NEN advantage is the superior performance you get from products at the forefront of biotechnology. In molecular biology especially we offer a variety of innovative products in response to your specific needs. Here are three examples.

Pretested research systems—

We offer three new systems: C-Tailing and Cloning, Southern Cross/Restriction Mapping, and Wheat Germ Translation. That makes 16 systems pioneered by NEN to bring convenience and reproducibility to molecular biology studies.

Autoradiography Enhancers—

We continue to lead the industry with EN³HANCE™ and ENLIGHTNING™, the enhancers that drastically reduce processing time.

³⁵S-Nucleotides

Perhaps the best example of our commitment to biotechnology is our ³⁵S-nucleotides, pioneered by NEN as a superior alternative to the conventional use of ³²P.

The technical and safety advantages of using ³⁵S are widely recognized, and we are collaborating with the research community to develop further applications.

Let the NEN advantage work for you. Ask your NEN Technical Representative to give you more information about these and our other problem-solving products for molecular biology.



New England Nuclear, 549 Albany St., Boston, MA 02118, Toll-Free 800-225-1572, In Mass. and International 617-482-9595, Telex: 94-0996
Europe: NEN Chemicals GmbH, D-6072 Dreieich, W. Germany, Postfach 401240, Tel: (06103) 803-0, Order Entry: (06103) 803113 Telex: 4-17993 NEN D
DuPont Canada (NEN Products): 2453 46th Avenue, Lachine, Quebec H8T 3C9, Tel: 514-636-4971, Telex: 05-821808 © 1984 NEN

Circle No. 166 on Readers' Service Card

LETTERS	National Security and Scientific Training: <i>M. J. Leibowitz</i> ; Crystalline Anisotropy: <i>H. Levine</i> and <i>J. Koplik</i> ; <i>M. Kerszberg</i> ; Irradiated Food: <i>S. T. Friedman</i> ; Soluble Lectins: <i>E. L. Cooper</i> et al.; <i>S. H. Barondes</i>	566
EDITORIAL	Science Is Universal—The Practitioners Are Not: <i>N. Hackerman</i>	577
ARTICLES	Xochicalco: Urban Growth and State Formation in Central Mexico: <i>K. Hirth</i>	579
	Technological Trends in Automobiles: <i>E. J. Horton</i> and <i>W. D. Compton</i>	587
	Structure of the Gene Encoding the Immunodominant Surface Antigen on the Sporozoite of the Human Malaria Parasite <i>Plasmodium falciparum</i> : <i>J. B. Dame</i> et al.	593
NEWS AND COMMENT	Star Wars Chief Takes Aim at Critics	600
	A Dim Future for Weapons Talks.	601
	OSHA Rule Is Curbed by Budget Office	603
	<i>Briefing</i> : House Prepares to Slash Synthetic Fuels Agency; EPA to Repair Leaks in Leaded Gasoline Rules; U.S.–Poland Exchanges Remain Uncertain; Comings and Goings	604
	Test-Tube Embryology in the Dock	606
RESEARCH NEWS	Human Malarial Gene Cloned	607
	Artificial Intelligence in Parallel.	608
	Parks: How Big Is Big Enough?	611

BOARD OF DIRECTORS

ANNA J. HARRISON
Retiring President, Chairman

DAVID A. HAMBURG
President

GERARD PIEL
President-Elect

ROBERT W. BERLINER
LAWRENCE BOGORAD

WALTER E. MASSEY
DOROTHY NELKIN

CHAIRMEN AND SECRETARIES OF AAAS SECTIONS

MATHEMATICS (A)
Gail S. Young
Lynn Arthur Steen

PHYSICS (B)
Chen Ning Yang
Rolf M. Sinclair

CHEMISTRY (C)
Fred W. McLafferty
Jean'ne M. Shreeve

ASTRONOMY (D)
Patrick Palmer
Donat G. Wentzel

PSYCHOLOGY (J)
Gregory A. Kimble
William N. Dember

SOCIAL, ECONOMIC, AND POLITICAL SCIENCES (K)
Robin M. Williams, Jr.
David L. Sills

HISTORY AND PHILOSOPHY OF SCIENCE (L)
Wesley C. Salmon
David L. Hull

ENGINEERING (M)
Raymond L. Bisplingh
W. Edward Lear

EDUCATION (Q)
Marvin Druger
Joseph D. Novak

DENTISTRY (R)
Robert J. Fitzgerald
Harold M. Fullmer

PHARMACEUTICAL SCIENCES (S)
Stuart Feldman
David A. Knapp

INFORMATION, COMPUTING, AND COMMUNICATIONS (T)
Joseph Becker
Madeline M. Henderson

DIVISIONS

ARCTIC DIVISION

John Davies
President

Gunter E. Weller
Executive Secretary

PACIFIC DIVISION

Barbara Wright
President

Alan E. Leviton
Executive Director

SOUTHWESTERN AND ROCKY MOUNTAIN DIVISION

Charles E. Holley, Jr.
President

M. Michelle B.
Executive Dir.

SCIENCE is published weekly on Friday, except the last week in December, by the American Association for the Advancement of Science, 1515 Massachusetts Avenue, NW, Washington, D.C. 20005. Second-class postage (publication No. 484460) paid at Washington, D.C., and at an additional entry. Now combined with **The Scientific Monthly**. Copyright © 1984 by the American Association for the Advancement of Science. Domestic individual membership and subscription (51 issues): \$56. Domestic institutional subscription (51 issues): \$93. Foreign postage extra: Canada \$24, other (surface mail) \$27, air-surface via Amsterdam \$65. First class, airmail, school-year, and student rates on request. Single copies \$2.50 (\$3 by mail); back issues \$3 (\$3.50 by mail); Biotechnology issue, \$5 (\$5.50 by mail); classroom rates on request. **Change of address:** allow 6 weeks, giving old and new addresses and seven-digit account number. Authorization to photocopy material for internal or personal use under circumstances not falling within the fair use provisions of the Copyright Act is granted by AAAS to libraries and other users registered with the Copyright Clearance Center (CCC) Transactional Reporting Service, provided that the base fee of \$1 per copy plus \$0.10 per page is paid directly to CCC, 21 Congress Street, Salem, Massachusetts 01970. The identification code for *Science* is 0036-8075/83 \$1 + .10. **Postmaster:** Send Form 3579 to *Science*, 1515 Massachusetts Avenue, NW, Washington, D.C. 20005. *Science* is indexed in the *Reader's Guide to Periodical Literature* and in several specialized indexes.

AMERICAN ASSOCIATION FOR THE ADVANCEMENT OF SCIENCE

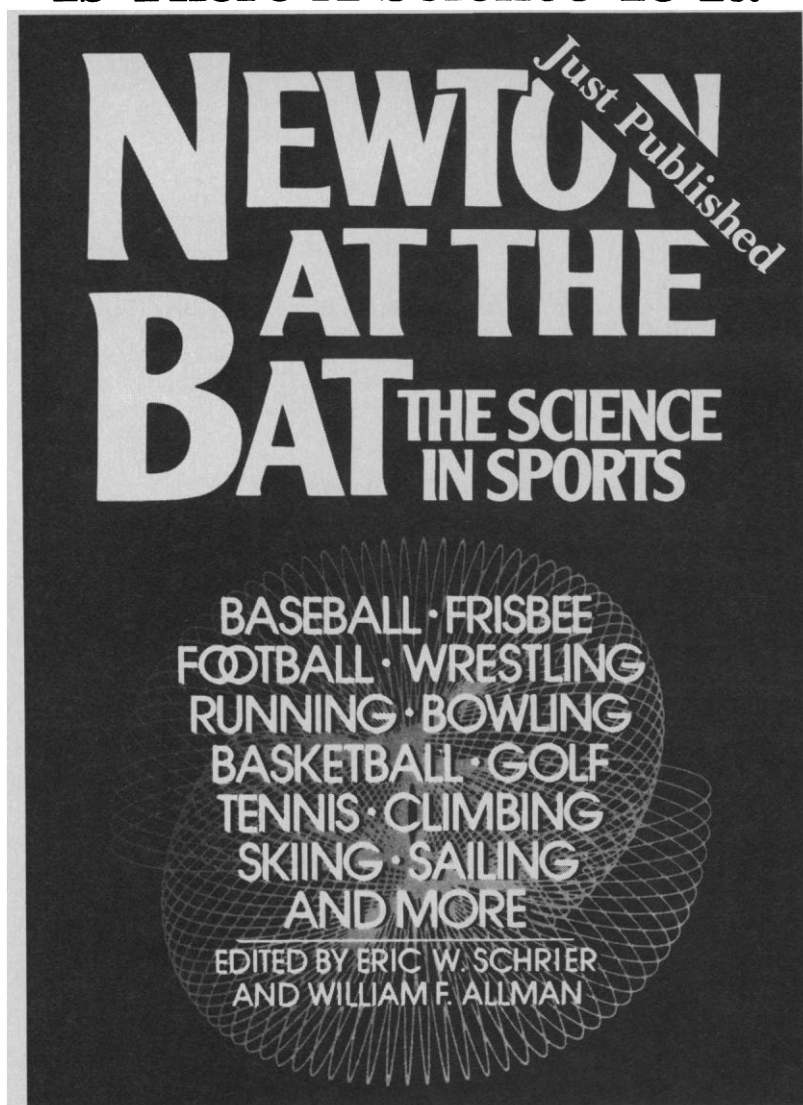
BOOK REVIEWS	The A-Type Stars, reviewed by J. B. Lester; Cerebral Cortex, C. Gilbert; Fish Neurobiology, C. M. Rovainen; A Comparative Atlas of Zooplankton, C. M. Boyd and S. Wilson; Some Other Books of Interest; Books Received.....	613
REPORTS	Multiple Thermal Maxima During the Holocene: O. K. Davis	617
	Uranus: Microwave Images: W. J. Jaffe et al.	619
	The Fine Structure of Fossil Plant Cell Walls: E. L. Smoot and T. N. Taylor	621
	4-Nonylphenol in Sewage Sludge: Accumulation of Toxic Metabolites from Nonionic Surfactants: W. Giger, P. H. Brunner, C. Schaffner.....	623
	Mung Bean Nuclease Cleaves <i>Plasmodium</i> Genomic DNA at Sites Before and After Genes: T. F. McCutchan et al.	625
	DNA Cloning of <i>Plasmodium falciparum</i> Circumsporozoite Gene: Amino Acid Sequence of Repetitive Epitope: V. Enea et al.	628
	Expression of a Retrovirus Encoding Human HPRT in Mice: A. D. Miller et al.	630
	Characterization and Localization of Proopiomelanocortin Messenger RNA in the Adult Rat Testis: J. E. Pintar et al.	632
	Cellular Transformation by Human Papillomavirus DNA in Vitro: S. L. Watts et al.	634
	Transforming Potential of Human c-sis Nucleotide Sequences Encoding Platelet-Derived Growth Factor: S. F. Josephs et al.	636
	Independent Developmental Programs for Two Estrogen-Regulated Genes: A. Elbrecht et al.	639
	Calcium Source for Excitation-Contraction Coupling in Myocardium of Nonhibernating and Hibernating Chipmunks: N. Kondo and S. Shibata	641
	An Activated <i>ras</i> ^N Gene: Detected in Late But Not Early Passage Human PA1 Teratocarcinoma Cells: M. A. Tainsky et al.	643
	Technical Comments: New Radiocarbon Dates on the Cereals from Wadi Kubbaniya: F. Wendorf et al.	645

J. SLAUGHTER E. SAWYER	SHEILA E. WIDNALL LINDA S. WILSON	WILLIAM T. GOLDEN Treasurer	WILLIAM D. CAREY Executive Officer
PHY AND GEOGRAPHY (E) W. Hay ias Dutro, Jr.	BIOLOGICAL SCIENCES (G) Dorothy M. Skinner Walter Chavin	ANTHROPOLOGY (H) James Silverberg Priscilla Reining	
AL SCIENCES (N) A. Good n E. Rhoads	AGRICULTURE (O) John Pesek Ralph J. McCracken	INDUSTRIAL SCIENCE (P) J. Kenneth Craver Robert L. Stern	
TICS (U) A. Bailar J. Wegman	ATMOSPHERIC AND HYDROSPHERIC (W) William W. Kellogg Bernice Ackerman	GENERAL (X) George C. Sponsler Rodney W. Nichols	

COVER

Seated human figure carved in stone on the Pyramid of the Plumed Serpent at Xochicalco. Plumed speech scrolls emanating from the figure's mouth indicated praise to the gods and ordination of man. See page 579. [Kenneth G. Hirth, Department of Anthropology, University of Kentucky, Lexington 40506]

Is There A Science To It?



"You don't have to be a physicist or an athlete or a sports addict to enjoy *Newton at the Bat*: you should delight in it even if your only exercise is mental." —*Washington Post*

For anyone who has ever wondered if a curve ball really drops just before it gets to the batter. Or stared at that little white ball on its tee and asked why it has dimples. Does it really make any difference which running shoe you buy? Will a couple of beers help your dart game? And why, for goodness sake, does the boomerang keep coming back?

Based on the popular "Sports" column of *Science 84* magazine. 192 pages, hardbound, \$14.95. Published by Scribners in cooperation with the American Association for the Advancement of Science.

Science 84 Book Service
1101 Vermont Ave., N.W.
Washington, D.C. 20005

Send me _____ copies of *Newton at the Bat* by return mail @ \$16.70 each including \$1.75 postage and handling. Please allow 4-6 weeks for delivery.

☐ Enclosed is my check payable to *Science 84*.
☐ Please charge my ☐ Visa ☐ MasterCard

Total Cost: \$ _____

No. _____ Expires _____

Signature _____

Name _____

Address _____

City/State/Zip _____

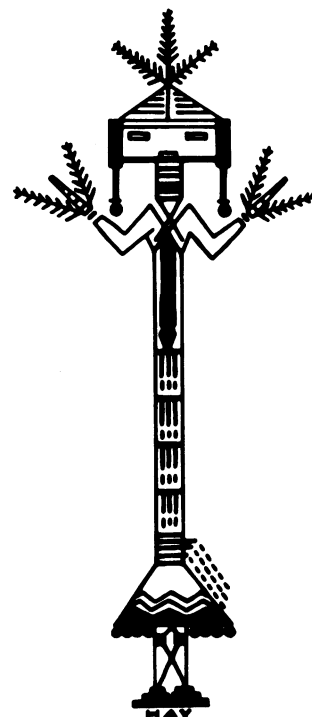
Now Available!

Origin and Evolution of Deserts

Edited by Stephen G. Wells
and Donald R. Haragan

This is the first study to integrate current geosciences research into an overview of four of the world's major deserts: the Sahara, the Great Basin, the Mohave, and the Sonoran. The nine essays discuss geology, vegetation, climate, and land management issues.

1983 Paper \$12.00



Also available

The Reclamation of Disturbed Arid Lands

Edited by Robert A. Wright
1978 Paper \$8.00

Energy Resource Recovery in Arid Lands

Edited by Klaus D. Timmerhaus
1981 Paper \$8.00

All orders must be prepaid.
Send to **M. Michelle Balcomb, Exec. Officer, SWARM/AAAS, Colorado Mountain College, Spring Valley Campus, 3000 County Rd. 114, Glenwood Springs, CO 81601.** Ask for a **free** listing of related titles.

ANNOUNCING . . .

**THE FIFTH ANNUAL CONGRESS FOR
RECOMBINANT DNA RESEARCH**

Co-chairmen: John D. Baxter, University of California, San Francisco
Walter Miller, University of California, San Francisco
Thomas Shenk, Princeton University

**THE FOURTH ANNUAL CONGRESS FOR
HYBRIDOMA RESEARCH**

Co-chairman: Zenon Steplewski, The Wistar Institute
Hilary Koprowski, The Wistar Institute
Joseph Davie, Washington University

held concurrently
FEBRUARY 3-6, 1985
San Francisco, California

Organized by Scherago Associates, Inc.,
in association with Mary Ann Liebert, Inc.

**For further information concerning abstract forms,
registration, and accommodations, contact:**

Edward R. Ruffing
Scherago Associates, Inc.
1515 Broadway
New York, NY 10036
(212) 730-1050

Circle No. 178 on Readers' Service Card

BUYING A FERMENTER?

Two good reasons to choose airlift over stirred tank

1. No moving parts to
damage delicate cells

2. More efficient mass
transfer for higher
yields

For ten more good reasons, as well as a comprehensive discussion of airlift technology, call us today at one of the numbers listed below. Ask for our "Guide to Airlift Fermentation." It's FREE—only from BRL.



BRL

Bethesda Research Laboratories

**Bethesda Research Laboratories
Life Technologies, Inc.**
Gaithersburg, Maryland 20877
Telex: 64210 BRL GARG UW
To Order: (800) 638-8992; (301) 840-8000
Technical Services: (800) 638-4045

Bethesda Research Laboratories SARL
F-95220 Herblay, France
Telex: 695729 FBIMAGRE
To Order/Technical Services: (3) 9788200

Bethesda Research Laboratories
P.O. Box 35
Trident House • Renfrew Road
Paisley PA 3 4EF • Scotland
Tel: 041 889 6100
Telex: 777968 GIBCO G

**Bethesda Research Laboratories
GmbH**
Postfach 210265
D 7500 Karlsruhe 21
Tel: 0721 705006
Telex: 7825957 GIBCO D

Circle No. 165 on Readers' Service Card

ANNOUNCING . . .

**THE SECOND ANNUAL CONGRESS ON
AUTOMATION, SCALE-UP,
AND THE ECONOMICS OF
BIOLOGICAL PROCESS ENGINEERING[©] ***

Chairman: Dr. Gerald Hawk, Zymark Corp.

**FEBRUARY 7 & 8, 1985
San Francisco, California**

There will be invited talks in a number of areas including Synthesis, Sequencing, Automation, Cell & Tissue Culture, Fermentation, Separation & Purification, Economics, and other technologies associated with Scale-up and Biological Processing. In addition, there will be submitted poster talks.

DEADLINE FOR SUBMISSION OF
COMPLETED ABSTRACTS: SEPTEMBER 15, 1984

Organized by Scherago Associates, Inc.

**For further information concerning abstract forms,
registration, and accommodations, contact:**

Edward R. Ruffing
Scherago Associates, Inc.
1515 Broadway
New York, NY 10036
(212) 730-1050

**Copyright © 1984 Scherago Associates, Inc.*

Circle No. 179 on Readers' Service Card

The Case of the Captive Investment

William and Judith Trembath needed some of the extra money they were saving for retirement. "No!" they were told, "You haven't met the conditions for its release." "Conditions?" they asked, "What conditions? We didn't realize that there were any conditions." If only, they thought, there were a way to save extra money for retirement without tying it up.

Finding a way to gain access to your extra savings in a tax-deferred retirement account—without a federal penalty tax—needn't be a mystery. There is a simple solution. Supplemental Retirement Annuities from TIAA-CREF. Or, very simply, SRAs. The flexible tax-deferred annuity plan that can increase your personal retirement savings and reduce your taxes while still giving you access to your money when needed.

Contributions to SRAs are made through your institution's payroll system on a *before-tax* basis. You don't pay any federal taxes on that money, or on the interest and dividends it earns, until you decide to withdraw your funds. And you can withdraw cash from your SRAs even *before* retirement—without paying a federal penalty tax.

Should you ever decide to change jobs, you can take your SRAs with you. You can continue contributions through any of

the 2,700 institutions in the country that make SRAs available.

And you're not locked into receiving your income benefits at retirement. You can begin benefits *before* you retire without paying a federal penalty tax. And you can choose from a number of *lifetime* income options for you and your spouse.

You can enjoy all this freedom and still have the benefit of a low-risk, high-security approach to investing. Funds in TIAA grow at the current effective annual interest rate of 11.50%* and those in CREF share in the investment experience of the Fund's broadly diversified common stock portfolio. And TIAA-CREF have over \$30 billion in assets and 65 years of experience in retirement plan investing for people in education.

So if you want to have access to your extra savings in a tax-deferred retirement account, investigate the advantages of Supplemental Retirement Annuities.



**SRAs—Simple. Reliable.
Accessible. Tax-deferred
annuities. From TIAA-CREF.**

*Effective March 1, 1984 through February 28, 1985 for funds credited January 1, 1982 or later. This interest rate is not guaranteed after February 28, 1985. A 1.5% expense charge is deducted from SRA premiums. If you would like to know more about SRAs, simply mail the coupon below or write TIAA-CREF, 730 Third Avenue, New York, NY 10017.



TIAA-CREF
730 Third Avenue
New York, NY 10017

SCI 8-10-84 2

Yes! I'd like to increase my extra retirement savings and still have access to my money. Please send me your free brochure on solving this and other mysteries of my financial future.

Name

Name of Institution

Address

City

State Zip

BREAKTHROUGH:

*The J-6M:
The Ultra-Dependable
High Tech Centrifuge
with a mind all
your own.*



Beckman again leads the way. With the rugged J-6M, the world's first programmable, 6000-rpm, large capacity, refrigerated centrifuge. After you load the rotor and close the door, the J-6M's microprocessor is ready for *your* command.

You can store 10 programs in memory, so there's no chance for error on the runs you do most often. Or you can manually select run conditions with speed accurate to 10 rpm, time to 1/10 minute and temperature to 1°C. That's precision. And that's what the J-6M's digital logic gives you.

It also gives you an audible end-of-run signal, and a diagnostics readout that signals power failure, rotor imbalance, over-speed and over-temperature.

But all this electronic technology and ease of operation is only part of the story. *The J-6M is inexpensive to maintain.*

The secret is Beckman quality and the Ultra-Smooth, ultra-quiet induction drive — with three year motor warranty! There are no brushes to change. Positive frequency control gets rotors to speed smoothly and fast. And with 10 acceleration/deceleration rates from which to choose, you can reduce run times to a minimum and still be confident of getting high quality separations every time.

The J-6M (and the analog J-6B version) can spin a total of 17 Beckman rotors, including six and four liter rotors and the new JS-2.9 rotor which holds up to 12 blood bags or 12 250-mL bottles. There's



an elutriator rotor, too, for living cell separations.

The J-6M. With 35 years of Beckman centrifuge expertise behind it. For full details, write: Beckman Instruments, Inc., Spinco Division, P.O. Box 10200, Palo Alto, CA 94304.

Circle No. 136 on Readers' Service Card

BECKMAN

If You Think You Know Waveform Acquisition and Analysis, Think Again!



The Data 6000 acquires, stores, displays and analyzes your signal with consummate ease, flexibility and accuracy.

The Data 6000 gives you all the features of the best ☐ *Digital Storage Oscilloscope* ☐ *Waveform/Transient Analyzer* ☐ *Auto/Cross Correlator* ☐ *Spectrum Analyzer* ☐ *Data Acquisition System, Plus Computing Capacity, and much, much more!*

3 Digitizing Input Plug-Ins

You can digitize signals at up to a 100KHz rate (2 or 4 channels) with up to 14 bits of resolution, and up to a 100MHz rate (2 channels) with 8 bit resolution. The isolated A/D converter, manufactured by Analogic Corporation, directly digitizes your input — differential and single-ended.

A Controllable Display

Soft keys simply and accurately display up to 4 channels of data at once, either from input, from local or remote memory, from computational output, or from another instrument. Full pre- and post-trigger, plus expansion and contraction controls, give you virtually unlimited display flexibility.

A Sophisticated Computational Capability

At the press of a button you can perform one or more of the following functions, or chain any series of functions for one-finger control of complex calculations.

Value—to five figures

Period
Frequency
Rise or Fall Time
Pulse Delay or Width
RMS or Average or Mean Value
Energy
Overshoot
Area
Peak or Peak to Peak
Maximum or Minimum
Maximum Slope
Time of Threshold Crossing
Time Between Selected Points

Waveform

Spectrum Analysis both Magnitude and Phase
Auto- & Cross-Correlation
5&9-Point Moving Averages
Record-to-Record Copy
Differentiation
Integration
Total Math: +, -, ×, ÷
Averaging of up to 32,000 Sweeps
Line Segment Expansion

There is no other instrument — or group of instruments — that can give you this capability for less than twice the cost.


Because Data Precision has advanced the state of the art into an entirely new class of instrumentation. This total signal acquisition and analysis instrument combines all the features of a labful of equipment in a single, simple, compact unit.

Plug-in data acquisition modules, and optional floppy disk storage make the Data 6000 so flexible, you never need to consider another instrument.

For a demonstration or additional information, please call:

**1 800 343-8150,
or in Massachusetts 1 800 892-0528**

*Maintaining the Integrity
of Measurement.*

 **DATA PRECISION®**
DIVISION OF ANALOGIC CORPORATION

Data Precision Division of Analogic Corporation, Electronics Avenue,
Danvers, MA 01923, 617 246-1600, TELEX 6817144.

For additional information circle reader service number 118
For a demonstration circle reader service number 119

BETTER CELL VIABILITY AT -100°C AND BELOW.

COLDER IS BETTER.

QUEUE CRYOSTARTM

Viability of stored cells increases dramatically with lower temperatures. As the evidence suggests, the colder the better.

That's why Queue Cryostar cryogenic preservation systems are built to operate comfortably at -100°C to -135°C .

Cryostar creates a precise top to bottom temperature uniformity that even liquid nitrogen vapor systems cannot achieve, and with quicker recovery at lower temperatures than conventional cascade freezers can deliver.

Our unmatched 25 month warranty makes Cryostar the most cost effective biological preservation system you can buy.

Need proof? Contact Queue for a literature portfolio with bibliography and comparative technical data on temperature uniformity and recovery.

Queue

Queue Systems Inc. Box 1901
Parkersburg, WV 26101 USA
Telephone 304/464-5400

Queue Systems International Telex 869424
Queue PKB

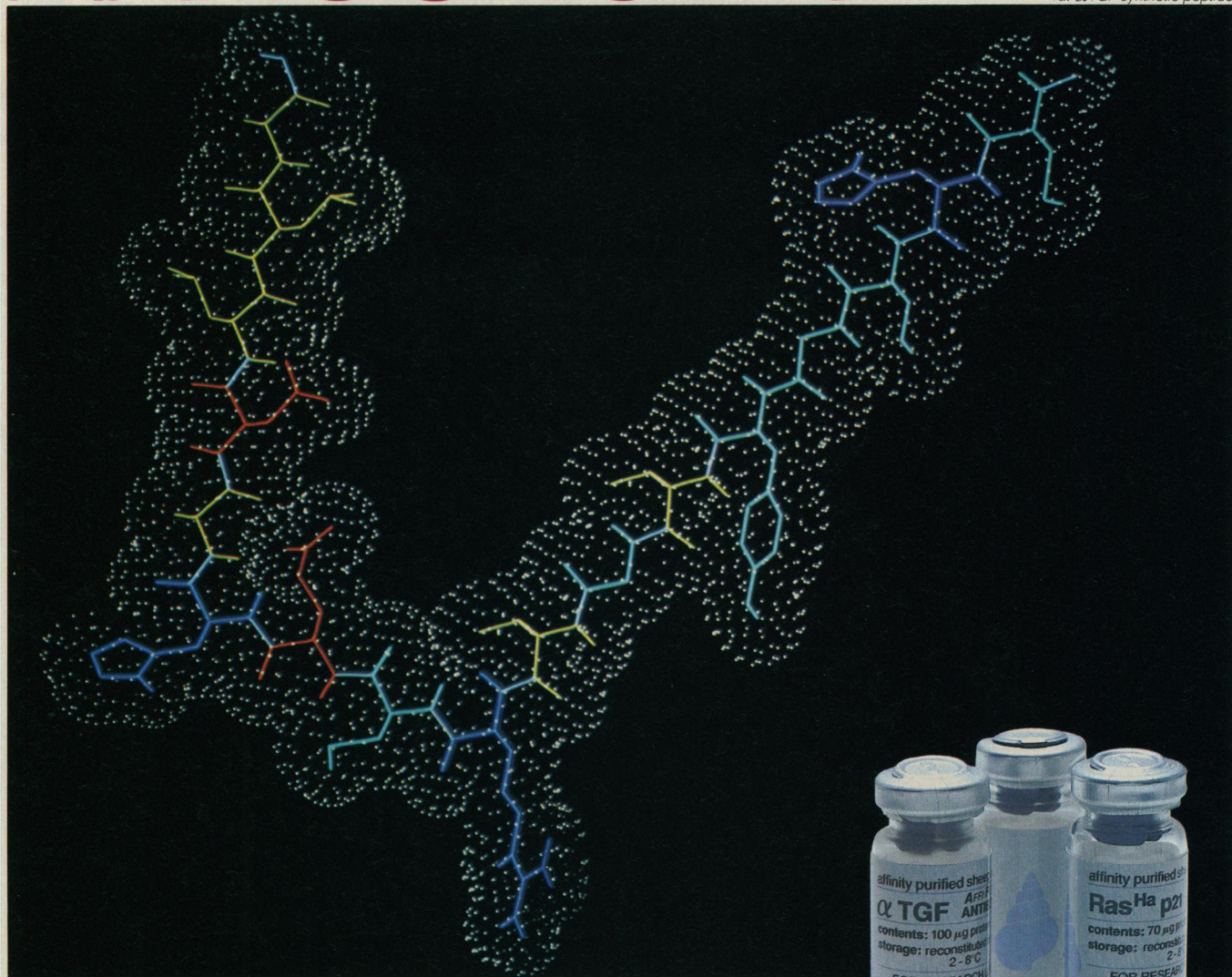
**The More You Understand
Cryogenic Preservation,
The Better We Look.**

Circle No. 174 on Readers' Service Card

© Copyright 1984 Queue Systems Inc.

ANNOUNCING

rat α TGF synthetic peptide



Affinity-Purified Antibodies to Oncogene Proteins and Transforming Growth Factors.

To facilitate studies in the field of oncogene research and transforming growth factors, Triton Biosciences Inc. is now offering:

α TGF AFFIPURE™ ANTIBODY

RasHa p21 AFFIPURE™ ANTIBODY

Each antibody is generated against a synthetic peptide corresponding to an amino acid sequence in the native protein. These antibodies are purified by affinity chromatography, thus reducing nonspecific reactions for clearer, faster results. Western blot and

immunoprecipitation analyses are used to verify their reactivity and specificity.

Applications include: providing semi-quantitative data on oncogene and α TGF expression; localizing oncogene proteins and α TGF in cells using immunofluorescence; purifying antigens

by antibody affinity chromatography; and characterizing structure/function relationships.

Triton Biosciences Inc., a wholly-owned subsidiary of Shell Oil Company, is dedicated to developing products for the human health care field, with special emphasis on cancer.

Our product development program is aggressively committed to providing a continuing source of biological reagents of the highest quality.

For additional information, contact Dr. Tom Sawyer at: Triton Biosciences Inc., 6900 Fannin, Dept. 1130, Houston, Texas 77030. Tel. (713) 796-1227.

Please provide me with additional information on:

☐ α TGF Affipure Antibody

☐ RasHa p21 Affipure Antibody

Name _____ Title _____

Institution _____

Address _____

City _____ State _____ Zip _____

Telephone _____ Research Interest _____



Triton Biosciences Inc.™

AAAS Report IX Research and Development FY 1985

Intersociety Working Group

This timely document analyzes major budget and policy issues relating to R&D in the FY 1985 budget, presents data on federal agency and industry support for R&D, and discusses trends in R&D funding in light of current policy issues. The report looks in detail at the R&D programs of major federal agencies and provides cross-cutting analyses of the budget by several scientific and engineering disciplines.

284 pp.

Paperback \$10.00

Also Available:

R&D in FY 1985: Budgets, Policies, Outlooks. Proceedings of the 1984 AAAS Colloquium on R&D Policy.

Approx. 175 pp. Paperback \$7.00

Congressional Action on R&D in the FY 1985 Budget. Willis H. Shapley, Albert H. Teich, and Jill H. Pace. Fall 1984

Approx. 50 pp. Paperback \$3.00

Books may be purchased by writing to the **AAAS Sales Department, 1515 Massachusetts Avenue, NW, Washington, DC 20005**. Please allow 6-8 weeks for delivery. All orders under \$10 must be prepaid. Visa and MasterCard customers include account number, expiration date, and signature. Past reports in the series are available; contact the Sales Department for more information.

Recent developments in molecular biology, many of which have been described by their authors in *Nature*, are helping to clarify the causes of cancer. With each passing week, more and more people consider that a full understanding of cancer cannot be long delayed. But the implications for physicians and their patients are still entirely unclear.

***Organized and presented by
NATURE, the international
journal of science***

Perhaps the most important international conference you could attend in 1984. Devoted to the recent contributions of molecular biology to the understanding of malignant disease.

**For Research Scientists
and Clinicians**

IN SEARCH OF UNDERSTANDING...

THE MOLECULAR BIOLOGY OF CANCER

This is why NATURE has chosen to devote its third international conference to an occasion when researchers in the life sciences and clinicians can assess the importance of recent developments in molecular biology for the understanding and ultimately for the treatment of cancer.

**SEPTEMBER 10, 11, 12, 1984
BOSTON PARK PLAZA HOTEL**

**Park Plaza at Arlington Street
Boston, MA 02117 U.S.A.**

The conference program has been designed for two groups of people—researchers in the life sciences anxious to learn about and discuss the latest developments in the molecular biology of cancer, and physicians who consider that these developments may eventually affect their own work with patients.

Participation in the conference will be restricted so as to provide opportunities for those participating to mix with and to question those responsible for the latest research.

To this end, the leading scientists making formal presentations will also take part in two-hour round table discussions, providing an ample and unusual opportunity for participants to take part in detailed discussions and to make short presentations of their own.

To take part in this important and novel conference, register now and book your rooms (also limited) at the Boston Park Plaza Hotel and Towers.

TO REGISTER FOR THE CONFERENCE:
Return the form with your check, credit card authorization or an authorized purchase order.
Full 3-day registration fee is \$325.

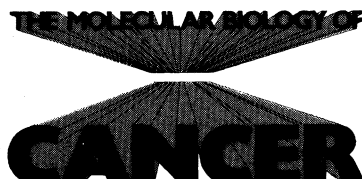
THE SETTING: Boston Park Plaza Hotel and Towers, Boston located at Park Plaza and Arlington Street, just off the famous Boston Public Gardens and Common.

ROOM RESERVATIONS: A large block of rooms has been set aside for attendees, but we do suggest that you reserve your accommodations early, to avoid disappointment. Rooms must be reserved directly with the Hotel, at (617) 426-2000, or 800-225-2008, Telex: 710 321 1088. Be certain to mention your participation in the "Nature Conference", to take advantage of these special lower rates: Singles: \$70, \$80 & \$85; Double: \$85, \$95 & \$100.

CONFERENCE DINNER: The Conference dinner will be held on Tuesday evening, September 11th, in the Imperial Ballroom. TO INSURE SEATING AT THE CONFERENCE DINNER, please include your dinner ticket requirements and payment of \$25 per person with your Registration.

POSTER SESSIONS: Please write with a title and a brief synopsis, to the Posters Editor, Nature Publishing Co. 15 E 26 St., N.Y., NY 10010.

RECRUITMENT CENTER: Private meeting rooms and staff will be provided for recruitment executives and scientists to discuss employment opportunities. Contact: Miss Gene Fein, Recruitment Services Manager, Nature Publishing Co., 15 E 26 St., N.Y., NY 10010, (212) 689-5900.



**Conference Program
September 10-12, 1984
Boston Park Plaza Hotel**

Daily Themes:
DAY 1 - ONCOGENES,
DAY 2 - THE CANCER CELL,
DAY 3 - PROSPECTS/PROBLEMS.

MONDAY, 10 September
Exhibition Viewing: 8:30am — 6:30pm
Recruitment Center: 9:30am — 6:00pm

**DAY 1
ONCOGENES AND GROWTH
FACTORS — WHAT THEY ARE
AND WHAT THEY DO**

9:00 — 9:15	Chairman
9:15 — 10:00	Oncogenes <i>R. Weinberg (MIT)</i>
10:00 — 10:45	Growth factors <i>M. Sporn (NIH)</i>
11:15 — 12:00	HTLV <i>R. Gallo (NIH)</i>
12:00 — 12:30	Clinician's view <i>S. Broder (NIH)</i>
2:00 — 4:00	Round table with morning speakers
4:30 — 5:30	The Steps in Carcinogenesis <i>J. Cairns (Harvard)</i>

DAY 2

TUESDAY, 11 September
Exhibition Viewing: 8:30am — 6:30pm
Recruitment Center: 8:30am — 6:00pm
**THE CANCER CELL — HEREDITARY
CANCER, TUMOR PROMOTERS
AND CARCINOGENESIS**

9:00 — 9:15	Chairman
9:15 — 10:00	Gene regulation <i>P. Leder (Harvard)</i>
10:00 — 10:45	Hereditary cancer <i>R. White (Utah)</i>
11:15 — 12:00	Carcinogens and promoters <i>I.B. Weinstein (Columbia)</i>
12:00 — 12:30	Clinician's view <i>F. Gilbert (Mt Sinai)</i>
2:00 — 4:00	Round table with morning speakers
4:30 — 5:30	The Pattern of Cancer <i>R. Peto (Oxford)</i>

WEDNESDAY, 12 September
Exhibition Viewing: 8:30am — 3:00pm
Recruitment Center: 8:30am — 3:00pm

**DAY 3
PROSPECTS AND PROBLEMS —
DRUG RESISTANCE, MONOCLONAL
ANTIBODIES AND NEW DRUGS**

9:00 — 9:15	Chairman
9:15 — 10:00	Diagnostics and therapeutics <i>G. Todaro (Oncogen)</i>
10:00 — 10:45	Immunotoxins <i>J. Uhr (Texas)</i>
11:15 — 12:00	Drug resistance <i>A. Varshavsky (MIT)</i>
12:00 — 12:30	Clinician's view <i>J. Guterman (Houston)</i>
2:00 — 4:00	Round table with morning speakers
4:00 — 4:45	NCI Program <i>P. Greenwald (NIH)</i>
4:45	Closing remarks

TO REGISTER FOR THE CONFERENCE, mail this form with your payment.

S108

Please reserve my place at

The Molecular Biology of CANCER

I wish to reserve _____ Conference Registration(s) in the names of: (Please print or type)

and _____ Seats at the Tuesday Evening Dinner in the names of:

Name _____ Title _____
Co./Institution _____
Address _____
City, State, Zip _____

I understand that as a paid conference participant, I may attend all sessions, and receive all programs and other materials.

My Check for \$_____ is enclosed.

Charge My Credit Card as Shown:

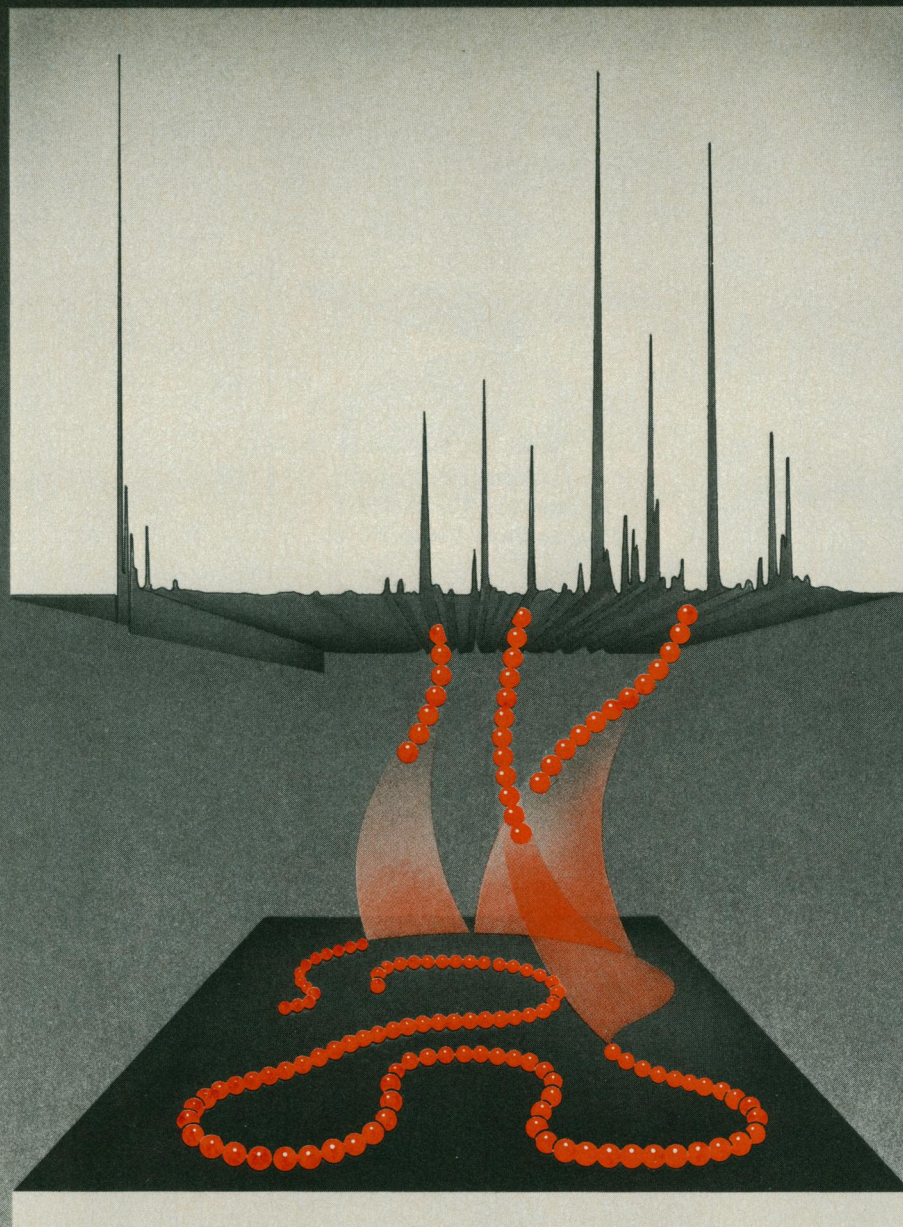
☐ AMEX ☐ VISA ☐ MASTERCARD

Credit Card # _____ Expiration date _____

Signature _____
(as it appears on credit card)

☐ Please Bill Me
☐ Please Bill My Organization

RETURN TO:
The Molecular Biology of CANCER
c/o NATURE PUBLISHING COMPANY
15 E. 26th Street
NEW YORK, NY 10010
Phone: (212) 689-5900



Easy separation of peptides — with the new ZORBAX® Bio Series Peptide Column and comprehensive User's Guide from Du Pont.

The new ZORBAX® reversed-phase peptide column, the first in the versatile new Bio Series, is specifically designed for the successful separation of small proteins and peptides from protein digests. And to help you achieve the best possible separations, DuPont includes a detailed *User's Guide* with every column shipped.

The unique column configuration and packing characteristics of the ZORBAX® Peptide Column permit rapid separation of protein fragments with maximum resolution at normal flow rates and operating pressures. The exclusive ZORBAX® process provides exceptional uniformity of column packing and performance so you can expect your method to yield consistently repeatable results time after time.

To help you work out an effective method, the *User's Guide* clearly outlines specific procedures for developing and controlling reversed-phase separations of peptides with the new ZORBAX® column. Recommendations for selection

of gradient and other parameters are easy to follow and easy to apply to your particular separation challenge.

A *Separation Development Guide*, abstracted from the *User's Guide* and detailing the formulation of optimal separation conditions, is available to you at no charge. To obtain your copy, and for more information on the new ZORBAX® Bio Series, call Du Pont at the following 24-hour toll free-number: (800) 345-8600, Ext. 502, or write: Du Pont Company, Room X40540, Wilmington, DE 19898.



**Du Pont makes HPLC make sense
Liquid Chromatography Columns**



AMERICAN ASSOCIATION FOR THE ADVANCEMENT OF SCIENCE

Science serves its readers as a forum for the presentation and discussion of important issues related to the advancement of science, including the presentation of minority or conflicting points of view, rather than by publishing only material on which a consensus has been reached. Accordingly, all articles published in *Science*—including editorials, news and comment, and book reviews—are signed and reflect the individual views of the authors and not official points of view adopted by the AAAS or the institutions with which the authors are affiliated.

Editorial Board

FREDERICK R. BLATTNER, BERNARD F. BURKE, ARNOLD DEMAIN, CHARLES L. DRAKE, ARTHUR F. FINDEIS, E. PETER GEIDUSCHEK, GLYNN ISAAC, NEAL E. MILLER, FREDERICK MOSTELLER, ALLEN NEWELL, RUTH PATRICK, BRYANT W. ROSSITER, VERA C. RUBIN, WILLIAM P. SLICHTER, SOLOMON H. SNYDER, PAUL E. WAGGONER, JOHN WOOD

Publisher: WILLIAM D. CAREY

Editor: PHILIP H. ABELSON

Editorial Staff

Assistant Managing Editor: JOHN E. RINGLE
Production Editor: ELLEN E. MURPHY
Business Manager: HANS NUSSBAUM
News Editor: BARBARA J. CULLITON
News and Comment: COLIN NORMAN (deputy editor), JEFFREY L. FOX, CONSTANCE HOLDEN, ELIOT MARSHALL, R. JEFFREY SMITH, MAJORIE SUN, JOHN WALSH
European Correspondent: DAVID DICKSON
Contributing Writer: LUTHER J. CARTER
Research News: ROGER LEWIN (deputy editor), RICHARD A. KERR, GINA KOLATA, JEAN L. MARX, THOMAS H. MAUGH II, ARTHUR L. ROBINSON, M. MITCHELL WALDROP
Administrative Assistant, News: SCHERRAINE MACK;
Editorial Assistant, News: FANNIE GROOM
Senior Editors: ELEANORE BUTZ, MARY DORFMAN, RUTH KULSTAD
Associate Editors: MARTHA COLLINS, SYLVIA EBERHART, CAITILIN GORDON, WILLIAM GREAVES, LOIS SCHMITT
Assistant Editors: STEPHEN KEPPEL, LISA MCCULLOUGH, EDITH MEYERS
Book Reviews: KATHERINE LIVINGSTON, *Editor:* LINDA HEISERMAN, JANET KEGG
Letters: CHRISTINE GILBERT
Copy Editor: ISABELLA BOULDIN
Production: JOHN BAKER; HOLLY BISHOP, ELEANOR WARNER; JEAN ROCKWOOD, SHARON RYAN, BEVERLY SHIELDS
Covers, Reprints, and Permissions: GRAYCE FINGER, *Editor:* GERALDINE CRUMP, CORRINE HARRIS
Guide to Scientific Instruments: RICHARD G. SOMMER
Editorial Administrator: SUSAN ELLIOTT
Assistant to the Associate Publisher: ROSE LOWERY
Assistant to the Managing Editor: NANCY HARTNAGEL
Membership Recruitment: GWENDOLYN HUDDLE
Member and Subscription Records: ANN RAGLAND
EDITORIAL CORRESPONDENCE: 1515 Massachusetts Avenue, NW, Washington, D.C. 20005. Area code 202. General Editorial Office, 467-4350; Book Reviews, 467-4367; Guide to Scientific Instruments, 467-4480; News and Comment, 467-4430; Reprints and Permissions, 467-4483; Research News, 467-4321. Cable: *Advancesci*, Washington. For "Information for Contributors," write to the editorial office or see page xi, *Science*, 29 June 1984.
BUSINESS CORRESPONDENCE: Area Code 202. Membership and Subscriptions: 467-4417.

Advertising Representatives

Director: EARL J. SCHERAGO
Production Manager: GINA REILLY
Advertising Sales Manager: RICHARD L. CHARLES
Marketing Manager: HERBERT L. BURKLUND
Sales: NEW YORK, N.Y. 10036: Steve Hamburger, 1515 Broadway (212-730-1050); SCOTCH PLAINS, N.J. 07076: C. Richard Callis, 12 Unami Lane (201-889-4873); CHICAGO, ILL. 60611: Jack Ryan, Room 2107, 919 N. Michigan Ave. (312-337-4973); BEVERLY HILLS, CALIF. 90211: Winn Nance, 111 N. La Cienega Blvd. (213-657-2772); SAN JOSE, CALIF. 95112: Bob Brindley, 310 S. 16 St. (408-998-4690); DORSET, VT. 05251: Fred W. Diefenbach, Kent Hill Rd. (802-867-5581).
ADVERTISING CORRESPONDENCE: Tenth floor, 1515 Broadway, New York 10036 (212-730-1050).

Science Is Universal—The Practitioners Are Not

It is commonplace in the community to approach the debate concerning the level of federal support of science and engineering by emphasizing the importance of research accomplishments. Lost to sight is the great contribution of the research universities in educating scientists and engineers. Usually attention is called to advances made or to shining goals perceived. This is intended to demonstrate the value of basic research in the United States, with the implicit understanding that the major portion of public funds will be used at universities.

The argument is made that the yield of research from educational institutions has been important to the nation and that the continuation of the process is necessary. The system has indeed worked well, and the basic knowledge of nature so developed has been vital in the sequence of science to technology to ultimate use. Unfortunately, the science and engineering communities are finding shortfalls not only in their minimal annual expectations but also in the now widely accepted belief that there is extensive deterioration of the necessary supporting infrastructure—that is, facilities, equipment, and their support.

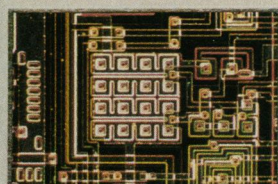
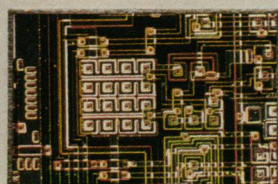
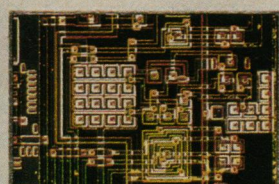
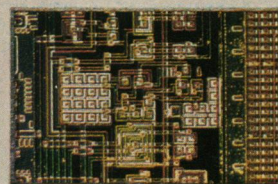
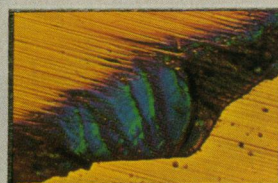
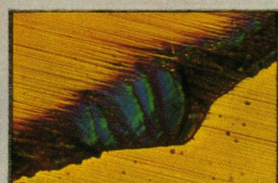
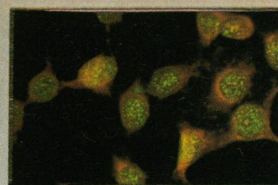
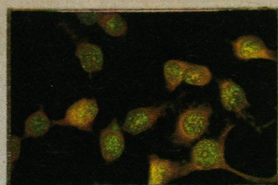
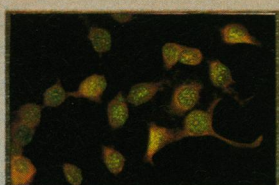
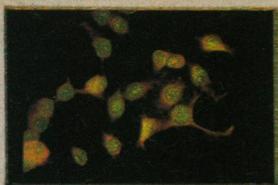
With all these accumulated problems it is surprising that the principal reason for continuing with the arrangement that we use in this country is either left out of the argument or, at best, used only as a secondary item. It is not recognized that although science is universal, scientists and engineers are a national resource.

The world requires technology of an ever higher order just to maintain itself, and the country requires the highest order of technology to maintain its leading position. It follows that the availability of a sufficient number of educated, high-quality scientists and engineers is crucial. Thus, the main reason for the use of pooled public funds (whether federal or more local) to support basic research in universities should be to ensure a steady stream of such people. Our system has done this well and provides good science, too, and it is in the country's best interest that the successful system be properly maintained.

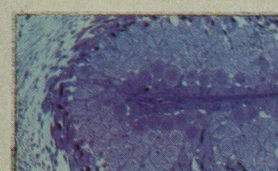
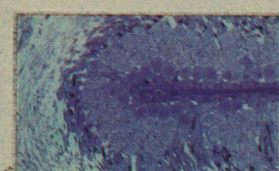
There is currently furor about the inadequacies of our precollege school system, and that furor is based in large part on a perception of a lack of technical capability in the nation. This capability, which involves doing science, understanding science, translating science, and using the translation, must be fostered by an educational system both before and after 12th grade that is able to produce a suitable number of educated scientists and engineers. Past the college level the influx of federal, state, and private funds has done well so far in providing not only a steady stream of educated scientists and engineers but good science as well.

The point at issue here is understood in a recent National Research Council report entitled "Renewing U.S. Mathematics." On the first page the loss of support for mathematics is noted, "There has been declining attention to support of the seminal research," as well as the fact that "opportunities for achievement in mathematical research are at an all-time high." The report does go on to note the paucity of mathematicians, but by the thesis advanced here the order as well as the emphasis would be reversed.

Although we are properly impressed by fine ideas and impressive new salients into our ignorance, we are often bemused by a less rational view of such things as ranking—"number one" and other such competitive trap-pings that develop in a vain desire to simplify evaluation of a complex system. This leads to an exhausting attempt by each field, each institution, each individual, to be number one. I have no interest in stifling ambition but intend rather to suggest that the process of educating individuals, because of the relative anonymity associated with it, has not maintained its proper preeminent position. This has also led to the ambivalent way in which the community has tried to support its legitimate call on tax funds.—NORMAN HACKERMAN, *President, Rice University, Houston, Texas 77251*



PICTURE PERFECT



There's a breakthrough in photomicrography that's the image of perfection, the new Nikon UFX photomicrographic system.

An exclusive Direct Projection System transmits 100% of the available light to the film. The result is drastically shorter exposures, greatly enhanced low

light sensitivity and a striking improvement in contrast. Computer control assures automatic exposure accuracy in either 1% spot or integrated average metering modes. Yet, this system is astonishingly simple to operate.

For the total picture of Nikon's new FX systems for

35mm, Polaroid® and large format photomicrography, write: Nikon Inc., Instrument Division, 623 Stewart Avenue, Garden City, NY 11530. (516) 222-0200.

Nikon
Extending Man's Vision



© 1982 Nikon Inc.

For more information circle reader service number 124
For demonstration circle reader service number 125