

27 August 1982 • Vol. 217 • No. 4562

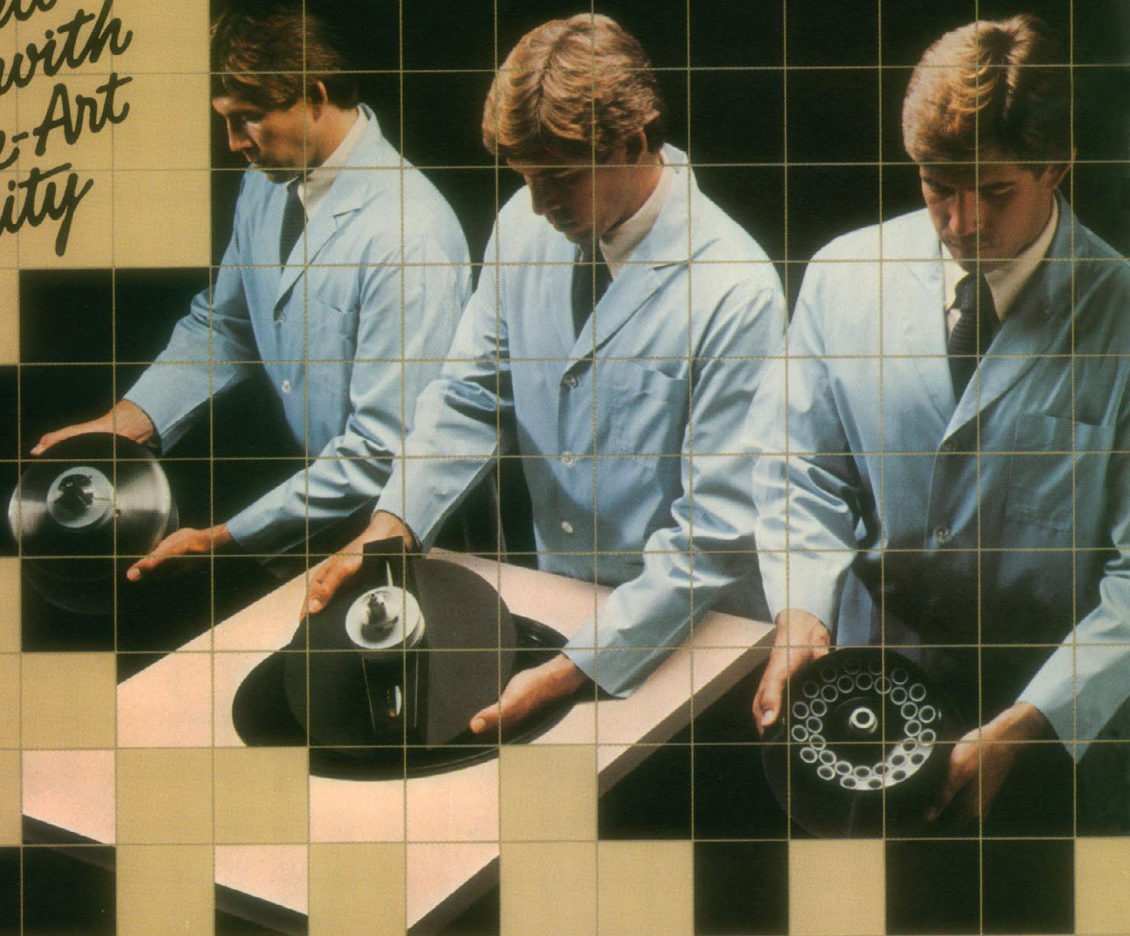
\$2.50

SCIENCE



INNOVATION:

*Now, a
High-Speed
Centrifuge with
State-of-the-Art
Flexibility*



The J2-21M: the microprocessor-controlled, high-speed centrifuge with *brushless* induction drive, a 10-program memory, and a rotor for every application. It's flexible enough for the '80s and beyond.

The J2-21M is fully programmable, so there's no chance for error on repeat runs. Or you can manually set run conditions with unbeatable precision. Speed is accurate to 10-rpm, time to 1/10 minute, temperature to 1°C.

There's an audible end-of-run signal. And a diagnostics readout that signals power failure, rotor imbalance, over-speed and over temperature.



A 2-step accel/decel system reduces run times to a minimum, yet still gives you high quality separations. Every time. You have 10 rates to choose from, and positive frequency control gets rotors to speed smoothly and fast.

Ultra-Smooth induction drive, based on Beckman ultracentrifuge technology, has no brushes to change. So the J2-21M is inexpensive to maintain, and comes with a never-before 3-year motor warranty.

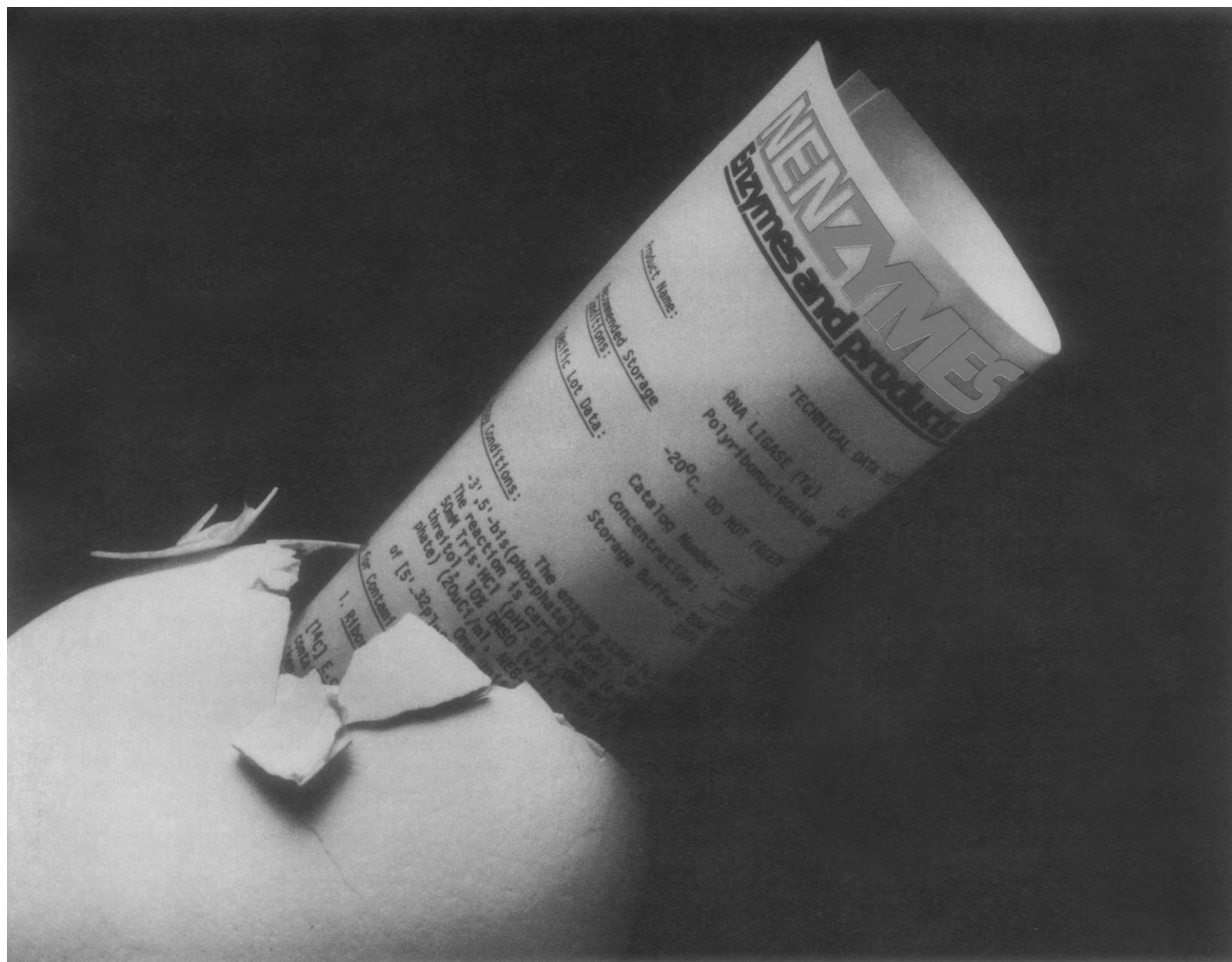
For experimental flexibility, you can spin 11 different rotors. And virtually all of them offer higher forces or volumes than competitive models. There's the JCF-Z continuous flow rotor, and the unique elutriator rotor for gentle, living cell separations.

The J2-21M. With 35 years of Beckman centrifuge expertise behind it. For full details write: Beckman Instruments, Inc., Spinco Division, P.O. Box 10200, Palo Alto, CA 94304.



BECKMAN

Circle No. 217 on Readers' Service Card



Breakthrough in biotechnology

Just when research needed it, NENZYMES™ provided it. Now more and more people doing DNA-RNA studies are using these enzymes — because they are ultra pure. NENZYMES eliminate one variable from the many in molecular biology.

NENZYMES are tested for biological purity in two stages: First, in numerous specific assays of each produced lot (which are recorded for customer inspection); and again when used as integral components in our pre-packaged systems for DNA/RNA research. They have to be trouble-free before they go to you.

RNA Ligase is the latest addition to our line of DNA/RNA modifying enzymes. We also offer restriction enzymes as well as selected nucleic acids — all of the highest quality. Call us toll free for complete information on any of these products.

New England Nuclear, 549 Albany Street, Boston, MA 02118
 Call toll free: 800-225-1572, Telex: 94-0996
 Mass and Internat'l: 617-482-9595
 Europe: NEN Chemicals GmbH, D-6072, W. Germany
 Postfach 401240, Tel. (06103) 803-0, Telex 4-17993 NEN D
 NEN Canada: 2453 46th Avenue, Lachine, Que H8T 3C9
 Tel. 514-636-4971, Telex 05-821808 © 1982 NEN

Circle No. 246 on Readers' Service Card

NEN New England Nuclear®
 a Du Pont company

SCIENCE

LETTERS	Synthetic Elicitors: <i>B. J. Castanho</i> et al.; Mycotoxin Weapons: <i>D. Cullen</i> and <i>R. W. Caldwell</i> ; <i>H. Meisner</i> ; <i>C. J. Mirocha</i> ; Correct Attributions: <i>N. Geschwind</i> ; Related Incidents?: <i>K. T. Paw U</i>	776
EDITORIAL	The High-Technology Fix: <i>B. C. Denny</i>	781
ARTICLES	The Ediacarian Period and System: Metazoa Inherit the Earth: <i>P. Cloud</i> and <i>M. F. Glaessner</i>	783
	Silicon-Mediated Organic Synthesis: <i>L. A. Paquette</i>	793
	Cellular Transforming Genes: <i>G. M. Cooper</i>	801
NEWS AND COMMENT	White House Steps into Lead Fight.....	807
	The Risks of Living Near Love Canal.....	808
	How Safe Is Niagara Falls?.....	809
	<i>Briefing</i> : Laser Wars in Court: Gould v. Bell Telephone; A-21 Rules Take Effect; A Surprise on Pesticides.....	810
	British Universities in Turmoil.....	811
	U.K. in Dilemma over Biotechnology.....	812
RESEARCH NEWS	Fermilab Installing Superconducting Magnets.....	814
	Brookhaven Magnet Progress.....	815
	Long-Awaited Decision on DNA Database.....	817
	Human Skeletal Growth Factor Isolated.....	819
BOOK REVIEWS	Foraging Behavior, reviewed by <i>D. I. Rubenstein</i> ; Insects, Experts, and the Insecticide Crisis, <i>T. R. Dunlap</i> ; Electrons and Valence, <i>R. H. Stuewer</i> ; Electron Transport and Photophosphorylation, <i>W. A. Cramer</i> ; Igneous	

BOARD OF DIRECTORS

D. ALLAN BROMLEY
Retiring President, Chairman

E. MARGARET BURBIDGE
President

ANNA J. HARRISON
President-Elect

LAWRENCE BOGORAD
EDWARD E. DAVID, JR.

NANCIE L. GONZALEZ
DAVID A. HAMBURG

CHAIRMEN AND SECRETARIES OF AAAS SECTIONS

MATHEMATICS (A)
Felix E. Browder
Lynn Arthur Steen

PHYSICS (B)
Donald N. Langenberg
Rolf M. Sinclair

CHEMISTRY (C)
Charles G. Overberger
William L. Jolly

ASTRONOMY (D)
Irwin I. Shapiro
Donat G. Wentzel

PSYCHOLOGY (J)
Eleanor J. Gibson
Bert F. Green

SOCIAL, ECONOMIC, AND POLITICAL SCIENCES (K)
Thomas C. Schelling
David L. Sills

HISTORY AND PHILOSOPHY OF SCIENCE (L) ENGINEERING (M)
Erwin N. Hiebert
David L. Hull
Robert W. Dunlap
W. Edward Lear

EDUCATION (Q)
Elaine W. Ledbetter
Roger G. Olstad

DENTISTRY (R)
Paul Goldhaber
Harold M. Fullmer

PHARMACEUTICAL SCIENCES (S)
Louis A. Luzzi
Robert A. Wiley

INFORMATION, COMPUTING, AND COMMUNICATION (T)
Marilyn C. Bracken
Madeline M. Henderson

DIVISIONS

ALASKA DIVISION

Vera Alexander
President

T. Neil Davis
Executive Secretary

PACIFIC DIVISION

Herbert Baker
President

Alan E. Leviton
Executive Director

SOUTHWESTERN AND ROCKY MOUNTAIN DIVISION

Klaus D. Timmerhaus
President

M. Michelle Balcomb
Executive Officer

SCIENCE is published weekly on Friday, except the last week in December, by the American Association for the Advancement of Science, 1515 Massachusetts Avenue, NW, Washington, D.C. 20005. Second-class postage (publication No. 484460) paid at Washington, D.C., and at an additional entry. Now combined with *The Science Monthly*® Copyright © 1982 by the American Association for the Advancement of Science. Domestic individual membership and subscription (51 issues): \$48. Domestic institutional subscription (51 issues): \$85. Foreign postage extra: Canada \$24, other (surface mail) \$27, air-surface via Amsterdam \$55. First class, airmail, school-year, and student rates on request. Single copies \$2.50 (\$3 by mail); back issues \$3 (\$3.50 by mail); classroom rates on request. Change of address: allow 6 weeks, giving old and new addresses and seven-digit account number. Postmaster: Send Form 3579 to *Science*, 1515 Massachusetts Avenue, NW, Washington, D.C. 20005. *Science* is indexed in the *Reader's Guide to Periodical Literature* and in several specialized indexes.

AMERICAN ASSOCIATION FOR THE ADVANCEMENT OF SCIENCE

	Rocks of the British Isles, <i>S. A. Morse</i> ; Planetary Science, <i>M. J. Drake</i> ; Books Received	820
REPORTS	Trace Fossils from the Athabasca Oil Sands, Alberta, Canada: <i>S. G. Pemberton, P. D. Flach, G. D. Mossop</i>	825
	Magnetostratigraphy of Sediments in Mammoth Cave, Kentucky: <i>V. A. Schmidt</i> .	827
	Selenium in Reducing Waters: <i>G. A. Cutter</i>	829
	Organic Matter in a Coal Ball: Peat or Coal?: <i>P. G. Hatcher et al.</i>	831
	Remote Acoustic Detection of a Turbidity Current Surge: <i>A. E. Hay, R. W. Burling, J. W. Murray</i>	833
	Phosphorylation of Myosin Light Chains in Mouse Fast-Twitch Muscle Associated with Reduced Actomyosin Turnover Rate: <i>M. T. Crow and M. J. Kushmerick</i>	835
	Cardiovascular Actions of Cadmium at Environmental Exposure Levels: <i>S. J. Kopp et al.</i>	837
	Light-Induced Modification of <i>Drosophila</i> Retinal Polypeptides in vivo: <i>H. Matsumoto, J. E. O'Tousa, W. L. Pak</i>	839
	Leukotriene D ₄ : A Potent Coronary Artery Vasoconstrictor Associated with Impaired Ventricular Contraction: <i>F. Michelassi et al.</i>	841
	High-Affinity Choline Transport in Proteoliposomes Derived from Rat Cortical Synaptosomes: <i>E. M. Meyer and J. R. Cooper</i>	843
	Endotoxin-Stimulated Opioid Peptide Secretion: Two Secretory Pools and Feedback Control in vivo: <i>D. B. Carr et al.</i>	845
	Significance of Tissue <i>myo</i> -Inositol Concentrations in Metabolic Regulation in Nerve: <i>D. A. Simmons, A. I. Winegrad, D. B. Martin</i>	848
	Anomalous Patterns in Cultured Cell Monolayers: <i>E. M. Adler et al.</i>	851
	The Carboxy Terminus of the Precursor to Vasopressin and Neurophysin: Immunocytochemistry in Rat Brain: <i>S. J. Watson, N. G. Seidah, M. Chrétien</i>	853
	Amphetamine, Haloperidol, and Experience Interact to Affect Rate of Recovery After Motor Cortex Injury: <i>D. M. Feeney, A. Gonzalez, W. A. Law</i>	855
	Velocity Signals Related to Hand Movements Recorded from Red Nucleus Neurons in Monkeys: <i>N. J. Kohlerman, A. R. Gibson, J. C. Houk</i>	857
	Brain Injury Causes a Time-Dependent Increase in Neuronotrophic Activity at the Lesion Site: <i>M. Nieto-Sampedro et al.</i>	860

WALTER E. MASSEY
JOHN E. SAWYER

SHEILA E. WIDNALL
HARRIET ZUCKERMAN

WILLIAM T. GOLDEN
Treasurer

WILLIAM D. CAREY
Executive Officer

GEOLOGY AND GEOGRAPHY (E)
Arthur A. Socolow
J. Thomas Dutro, Jr.

MEDICAL SCIENCES (N)
Helen M. Tepperman
Leah M. Lowenstein

STATISTICS (U)
Joan R. Rosenblatt
Ezra Glaser

BIOLOGICAL SCIENCES (G)
Carl Gans
Walter Chavin

AGRICULTURE (O)
Duane Acker
Coyt T. Wilson

ATMOSPHERIC AND HYDROSPHERIC
Frederic Sanders
Glenn R. Hilst

ANTHROPOLOGY (H)
John W. Bennett
Priscilla Reining

INDUSTRIAL SCIENCE (P)
Ward J. Haas
Robert L. Stern

GENERAL (X)
Daniel Alpert
S. Fred Singer

COVER

Ediacarian fossil, *Mawsonites spriggi* Glaessner and Wade 1966 (true diameter, 11 to 12.5 centimeters). A distinctive medusoid of the basal Phanerozoic Ediacarian System; from the Ediacara Member of the Rawnsley Quartzite, Pound Subgroup, Ediacara Hills, Flinders Ranges, South Australia. See page 783. [Photo of holotype by Neville Hedge, with his permission and that of the South Australian Museum, Adelaide]

SmithKline

SmithKline Beckman Corporation/World Headquarters



Therapeutics. Combating disease more effectively is, for SmithKline Beckman, a primary commitment. On the heels of our pioneering success against ulcers, a novel anti-arthritis compound will soon be marketed in several countries. Above (left) a scientist tests new cardiovascular agents.

Detection and Measurement. Monitoring ionized substances with great precision is essential for advancements in DNA recombination, diagnostics, energy, food processing and for other technological applications. For that reason, SmithKline Beckman produces sophisticated electrochemical instrumentation for laboratory and plant.

Converging

Beckman

One Franklin Plaza/Philadelphia, PA 19101



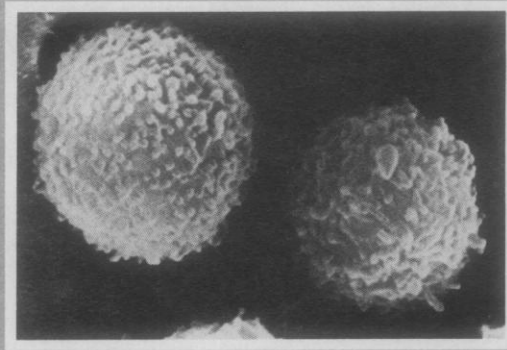
Scientific Analysis. Through ingenuity in applying microprocessor and microcomputer technologies, SmithKline Beckman frees researchers, clinicians and engineers from tedious programming so they can spend more time thinking. One of our many Beckman scientific instruments is the computing spectrophotometer above.

Discovery. Advances in health care and human well-being today demand broad capabilities, so Beckman Instruments and SmithKline have now united. With complementary technologies and scientific skills, we are converging on key discoveries about life processes.

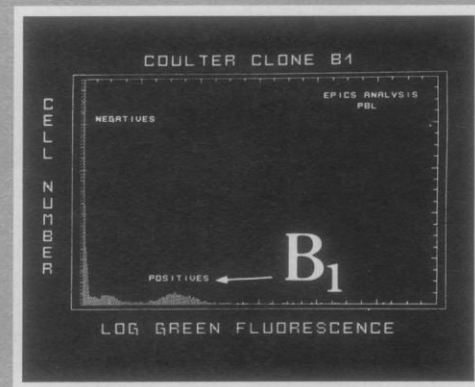
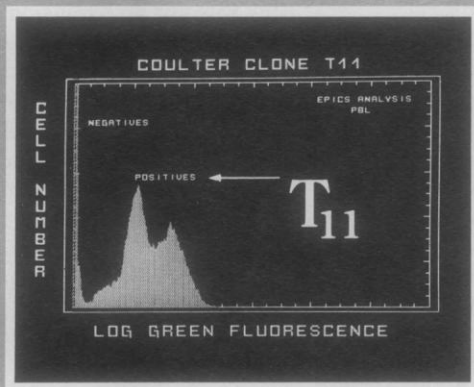
Look into SmithKline Beckman. And look into the future.

Technologies

**T cell
or
B cell?**



COULTER CLONE™ can tell you!



**Now you can have unprecedented specificity
with the highest labeling density available.**

For investigation of:

- T and B lymphocyte subclassifications
- Suppressor/helper ratios
- Immune deficiencies, such as;
agammaglobulinemia, infectious mononucleosis,
Herpes zoster, and measles.
- Autoimmune disorders, such as;
systemic lupus erythematosus, multiple sclerosis,
graft or transplant rejections, hemolytic anemias,
and juvenile rheumatoid arthritis.
- Non-Hodgkins lymphomas
- Monocytic and granulocytic leukemias
- Subgroups of lymphoblastic leukemias
- Multiple myeloma
- Surface and cytoplasmic immunoglobulins

... and much more

Call toll free 800-327-6531 (Ex. 288 or 540 for more
information; Ex. 359 to order.) Or complete and return
the coupon.



COULTER ELECTRONICS, INC.
P.O. Box 2145
Hialeah, FL 33012

S-8/27

Send more information on the COULTER™
CLONES I've circled.

T₁₁, T₈, T₆, T₄, B₁, B₂, I₂, J₅, Mo2, IgD,
IgG, IgM, Kappa, Lambda, GAM-FITC

Name _____

Lab _____

Street Address _____

City _____

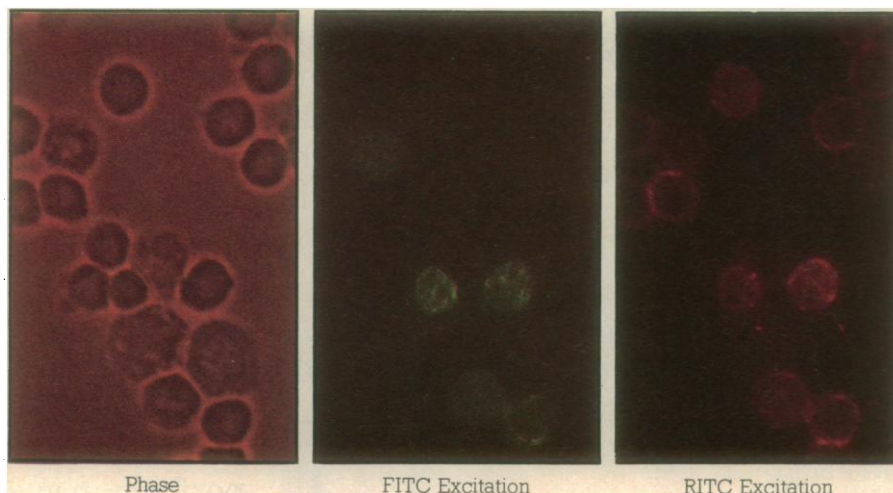
State, Zip _____

Phone _____

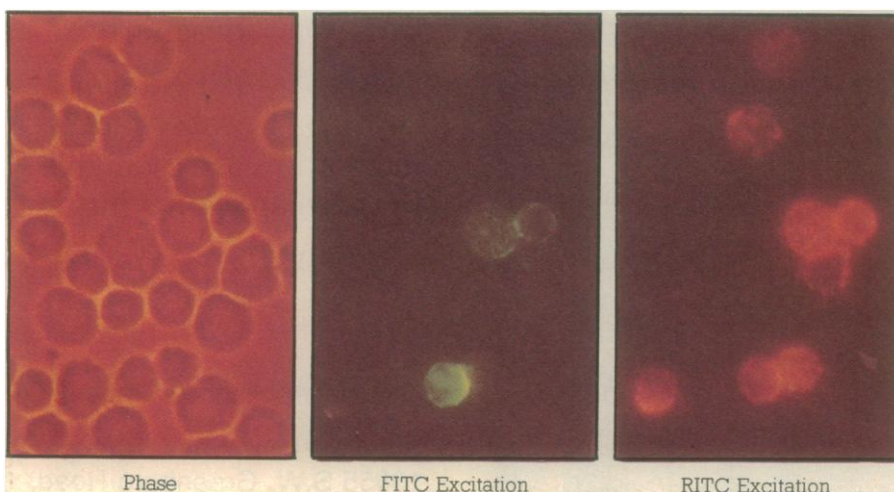
For research only, not for diagnosis.

Circle No. 160 on Readers' Service Card

CONJUGATED MONOCLONAL ANTIBODIES FROM BECTON DICKINSON



Detection of T cytotoxic/suppressor cells with **Anti-Leu-2a** and all T cells with **Anti-Leu-4**.



Comparison of **Leu-7** (HNK-1) and **Leu-2a** bearing cells in normal peripheral blood.

All photos courtesy of John Kearney, Ph.D., University of Alabama in Birmingham.

Two Color Analysis

Our **fluorescein** and **rhodamine** conjugated reagents to human leucocytes make it easy to:

- Detect different antigens on the same cell
- Distinguish different cell types within a population

Becton Dickinson was first to provide directly conjugated monoclonal antibodies in addition to such indirect systems as biotin/avidin and arsanilate/anti-arsanilate. And now we offer you the broadest range of high quality reagents for two color analysis.

Unprecedented features of these reagents:

- Greater than 95% purity
- Quality controlled using a variety of assay systems including 2-D gel electrophoresis, cytotoxicity, immunofluorescence staining with FACS™ analysis
- No reconstitution necessary, ready to use
- One year stability **in solution**, for purified reagents and 6 months for conjugated forms
- Detailed product sheets including normal range, antigen molecular weight, and antibody titer

All reagents are available for immediate delivery. For information, call or write Becton Dickinson, the leader in cell surface analysis.

For research only. Not for use in human diagnostic or therapeutic procedures.

BECTON DICKINSON

Becton Dickinson Monoclonal Center, Inc.
2375 Garcia Avenue
Mountain View, California 94043
Telephone: (415) 968-7744
TWX 910 338 2026

Becton Dickinson Laboratory Systems
Antwerpsesteenweg 277
2800 Mechelen, Belgium
015/29.01.43; Telex 846 72096

Circle No. 177 on Readers' Service Card

Napco® promises you:

No other water jacketed CO₂ incubator can match the new 6000 series.

Over 15 advanced features are making incubator history. Here are a few of them.

More accurate control of chamber temperature.

By positioning sensors not only in the water jacket, *but in each separate chamber*, Napco permits more precise chamber monitoring than other water jacketed incubators.

The only water jacketed CO₂ incubator you can get really clean.



Shelf standards and plenums can be easily removed for cleaning in five minutes. This leaves an empty, perfectly smooth chamber that can be swabbed for easy management of spores and contaminating

organisms.

Unique wet-jet air flow system.

The exclusive wet-jet air flow system provides maximum chamber uniformity and assures the highest relative humidity available in any incubator.

And the list goes on. Feature after feature are designed for your convenience and precision performance. Send for the complete brochure.

All Napco water-jacketed

incubators are available in three space-saving models.



napco

National Appliance Company
Subsidiary of
Heinicke Instruments Company
10855 S.W. Greenburg Road,
Portland, Oregon 97223
800-547-2555 or (503) 639-3161
Telex: 151144

Ask your dealer's salesman today:
American Scientific Products,
Curtin-Matheson, Fisher Scientific Co.,
Preiser, Sargent-Welch, S.G.A. Scientific,
Arthur H. Thomas Co.,
In Canada: Fisher Scientific Co., Ltd.

Napco instruments are designed to work. But if you should ever have an equipment problem, Napco technical service assistance is available, dial toll-free 800-547-2555.

Circle No. 25 on Readers' Service Card

AMERICAN ASSOCIATION FOR THE ADVANCEMENT OF SCIENCE

Science serves its readers as a forum for the presentation and discussion of important issues related to the advancement of science, including the presentation of minority or conflicting points of view, rather than by publishing only material on which a consensus has been reached. Accordingly, all articles published in *Science*—including editorials, news and comment, and book reviews—are signed and reflect the individual views of the authors and not official points of view adopted by the AAAS or the institutions with which the authors are affiliated.

Editorial Board

1982: WILLIAM ESTES, CLEMENT L. MARKERT, JOHN R. PIERCE, BRYANT W. ROSSITER, VERA C. RUBIN, MAXINE F. SINGER, PAUL E. WAGGONER, ALEXANDER ZUCKER

1983: FREDERICK R. BLATTNER, BERNARD F. BURKE, CHARLES L. DRAKE, ARTHUR F. FINDEIS, E. PETER GEIDUSCHEK, GLYNN ISAAC, MILTON RUSSELL, WILLIAM P. SLICHTER, JOHN WOOD

Publisher

WILLIAM D. CAREY

Associate Publisher: ROBERT V. ORMES

Editor

PHILIP H. ABELSON

Editorial Staff

Assistant Managing Editor: JOHN E. RINGLE

Production Editor: ELLEN E. MURPHY

Business Manager: HANS NUSSBAUM

News Editor: BARBARA J. CULLITON

News and Comment: COLIN NORMAN (deputy editor), WILLIAM J. BROAD, LUTHER J. CARTER, CONSTANCE HOLDEN, ELIOT MARSHALL, R. JEFFREY SMITH, MARJORIE SUN, JOHN WALSH

European Correspondent: DAVID DICKSON

Research News: ROGER LEWIN (deputy editor), RICHARD A. KERR, GINA KOLATA, JEAN L. MARX, THOMAS H. MAUGH II, ARTHUR L. ROBINSON, M. MITCHELL WALDROP

Administrative Assistant, News: SCHERRAINE MACK; Editorial Assistants, News: FANNIE GROOM, CASSANDRA WATTS

Senior Editors: ELEANORE BUTZ, MARY DORFMAN, RUTH KULSTAD

Associate Editors: SYLVIA EBERHART, CAITILIN GORDON, LOIS SCHMITT

Assistant Editors: MARTHA COLLINS, STEPHEN KEPPEL, EDITH MEYERS

Book Reviews: KATHERINE LIVINGSTON, Editor; LINDA HEISERMAN, JANET KEGG

Letters: CHRISTINE GILBERT

Copy Editor: ISABELLA BOULDIN

Production: NANCY HARTNAGEL, JOHN BAKER; ROSE LOWERY; HOLLY BISHOP, ELEANOR WARNER; BEVERLY DURHAM, JEAN ROCKWOOD, LEAH RYAN, SHARON RYAN

Covers, Reprints, and Permissions: GRAYCE FINGER, Editor; GERALDINE CRUMP, CORRINE HARRIS

Guide to Scientific Instruments: RICHARD G. SOMMER
Assistants to the Editors: SUSAN ELLIOTT, DIANE HOLLAND

Membership Recruitment: GWENDOLYN HUDDLE

Member and Subscription Records: ANN RAGLAND
EDITORIAL CORRESPONDENCE: 1515 Massachusetts Ave., NW, Washington, D.C. 20005. Area code 202. General Editorial Office, 467-4350; Book Reviews, 467-4367; Guide to Scientific Instruments, 467-4480; News and Comment, 467-4430; Reprints and Permissions, 467-4483; Research News, 467-4321. Cable: Advancesci, Washington. For "Information for Contributors," write to the editorial office or see page xi, *Science*, 25 June 1982.

BUSINESS CORRESPONDENCE: Area Code 202. Membership and Subscriptions: 467-4417.

Advertising Representatives

Director: EARL J. SCHERAGO

Production Manager: GINA REILLY

Advertising Sales Manager: RICHARD L. CHARLES

Marketing Manager: HERBERT L. BURKLUND

Sales: NEW YORK, N.Y. 10036: Steve Hamburger, 1515 Broadway (212-730-1050); SCOTCH PLAINS, N.J. 07076: C. Richard Callis, 12 Unami Lane (201-889-4873); CHICAGO, ILL. 60611: Jack Ryan, Room 2107, 919 N. Michigan Ave. (312-337-4973); BEVERLY HILLS, CALIF. 90211: Winn Nance, 111 N. La Cienega Blvd. (213-657-2772); DORSET, VT. 05251: Fred W. Dieffenbach, Kent Hill Rd. (802-867-5581).

ADVERTISING CORRESPONDENCE: Tenth floor, 1515 Broadway, New York, N.Y. 10036. Phone: 212-730-1050.

The High-Technology Fix

During the current severe recession, business and civic leaders in many communities are desperately seeking means to revive their areas' economies. They also are trying to position themselves to take advantage of the recovery when it comes. A number of regional leaders are pushing high technology as the answer. The models, of course, are Massachusetts, California, and, more recently, North Carolina. "Route 128" and "Silicon Valley" reverberate in the meeting rooms of chambers of commerce and regional economic development commissions across the country.

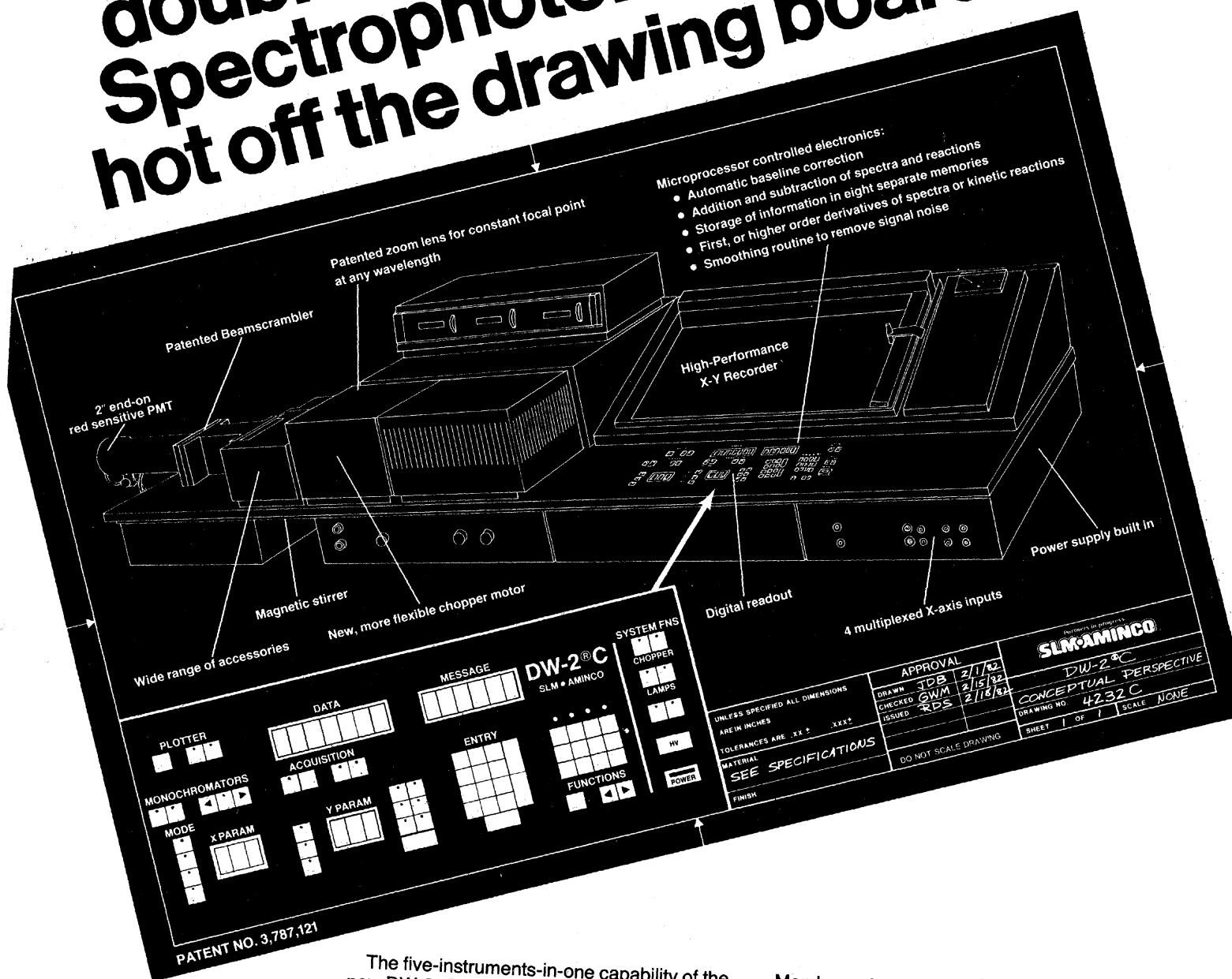
In the Pacific Northwest, for example, there has been extensive discussion by business leaders of the high-technology option for an economy where unemployment is substantially higher than for the nation and where a major public reinvestment in education will be required if the future of the area is to be secure. In these discussions, and surely across the land, the questions have been asked: How many Silicon Valleys and Route 128's can we have? If everyone tries for the high-technology fix, can everyone win? Can every area benefit by trying to be another high-technology area?

The answer to the last two questions is yes. Of course, not every region will achieve the same objective. But every region can benefit from trying, from aggressively adopting those policies and making those public and private investments which could lead to the next Silicon Valley or Route 128. The reason each region or state will benefit lies in the steps it must take to achieve high-technology status and the effects these steps will have.

The actions required are clear. First, there must be a substantial reinvestment by state and local government in quality education from preschool through graduate and professional education, including a new approach to vocational education and to job training programs. This should include strong support for research, as in North Carolina, and major initiatives to upgrade the quality of teaching, particularly in science, mathematics, English, and history. This support must include higher pay for master teachers. Second, the states must adopt tax structures which are progressive, which reward investment and research and development, and which tax consumption and income after profits. Third, there must be substantial reinvestment in urban and rural infrastructure, including transportation, cultural facilities, pollution control, parks, public safety, and institutions. Fourth, there must be corporate philanthropic investment in education and in cultural and charitable programs. Fifth, there must be new public-private-nonprofit cooperation in education, research, and community and industrial development. This must include substantial innovations by organized labor, particularly with respect to selection and reward systems for skilled workers and professionals and to the development of training programs.

The program outlined above, if pursued vigorously in each state and each major economic region, would provide some initial economic stimulus, and some areas would attract the new high-technology industry they seek. More important, however, would be the long-term contribution to building a solid base for a stronger industrial economy. Economic competition is increasingly on an international scale, and local and state as well as national investment is necessary to ensure that this country is competitive. Each region would, of course, develop quite differently. There will be only a few new Silicon Valleys, and just as Route 128 and Silicon Valley are very different from each other, so would be the parts of a revitalized nation. The high-technology fix will work, because it is a strategy of investment in brains and wits as well as a public-private partnership in support of an innovative economy and wise public policies. This fall, candidates for state legislatures and for Congress, who seek good issues to meet the severe economic strains so many regions are feeling, might well try this scenario. Even if they do not have 100 chip factories within 10 years, local business and community leaders can urge such a program with confidence that these bold steps will promote a strong economy.—BREWSTER C. DENNY, *Graduate School of Public Affairs, University of Washington, Seattle 98195*

The new dual-wavelength, double-beam DW-2[®]C UV-VIS Spectrophotometer is hot off the drawing board.



The five-instruments-in-one capability of the new DW-2[®]C UV-VIS Spectrophotometer provides double-beam, dual-wavelength, dual-wavelength scanning, rapid kinetics, and optical derivative operations. The new built-in microprocessor controlled electronics features automatic baseline correction for even greater flexibility and ease of operation.

Members of our staff will be happy to answer any of your questions. For detailed literature and additional information about the new DW-2[®]C UV-VIS Spectrophotometer, write SLM Instruments, Inc./American Instrument Company, 810 West Anthony Drive, Urbana, IL 61801, U.S.A. or call (800) 637-7689 toll-free. TELEX 20-6079.

Partners in progress.

SLM-AMINCO
Performance is the difference.

Copyright © 1982 by SLM Instruments, Inc.

Circle No. 189 on Readers' Service Card