

AAAS Annual Elections

Ballots for the Association's 1981 elections and this announcement should reach AAAS members at about the same time. All members will receive a general-election ballot for president-elect, members of the Board of Directors, and members of the Committee on Nominations. Each member who is enrolled in one of the 21 Electorates corresponding to the AAAS Sections will also receive an electorate-election ballot for Section chairperson-elect, member-at-large of the Section Committee, and members of the Electorate Nominating Committee. The ballots for Electorates J, K, L, M, N, O, and P will, in addition, list candidates for Council delegate.

The 5 June preliminary election announcement included the names of candidates and offered members the opportunity to place additional names in nomination by petition submitted not later than 16 July. No petitions were received.

Biographies of the candidates are given below, following interviews with the candidates for president-elect. The terms of all new officers, Council delegates, and committee members will begin on 9 January 1982.



Fostering a better understanding of the interrelationship of science, technology, and society is a role in which Anna J. Harrison would like to see the AAAS become increasingly involved.

"Our approach to understanding the relationship between science and technology and the whole of society often addresses only one-half of the question, that half is frequently called the 'public understanding' of science. The other half of the question is the 'scientific community understanding' of the role of the total society in determining the direction and the rate of the extension of scientific

knowledge and also in determining the direction and the rate of the development of technology."

Harrison, the 68-year old William R. Kenan, Jr., professor of chemistry at Mount Holyoke College, and a AAAS Board member since 1979, advocates diligence in developing a broader understanding of the implications of scientific and technical innovations. "One of the missing elements in the science/society picture is the general lack of recognition that every technological innovation, regardless of how great its positive impact on society, also brings with it a negative impact. Further, the negative impact may fall on a different subset of society, or in a different time frame. I think the scientific community has been inclined to talk about the positive aspects without recognizing the responsibility of the public to be participants not only in the support of science but in the recognition of negative impacts and the adjustments that minimize those negative impacts."

The process of scientists understanding the role that the public must play in science and technology, affirms Harrison, is a continuous process. She points to the AAAS Annual Meeting as one vehicle for facilitating this understanding. "Symposia address problem areas, speakers are open to questions, and there is opportunity for rebuttal. AAAS is a unique organization in that it brings together scientists from all disciplines and thus provides a forum to address the total social, economic, and political matrix in which all research and development proceeds."

Questions involving the relationship of science and society

also encompass the need for better education, she says. "I'm concerned not only about the quality of education made available to those who become scientists, but to the students whom I describe as the general students—the students who do not have professional plans that require the development of technical competence. There may be a real role for AAAS in encouraging the development of upper-level college courses, and in so doing provide programs in science for students who are going into professions such as law, journalism, business, and elementary education."

Science for the general student, Harrison believes, is an integral part of the "public understanding" of science issue. "When you talk about the 'public understanding' of science, it's confusing. Does the public need to understand the body of knowledge that is science? Does it need to understand processes that are science? Does it need to understand how science and technology merge with society? I suspect the public's need is the third, but I don't see how you can arrive at that without some background in some body of science, some awareness of the knowledge and the methods of science. The public needs a knowledge of the manner in which scientific results are validated. We all need an understanding of the powers and limitations of science."

"There are other approaches to science education," states Harrison, "where AAAS can make major contributions. AAAS has impressive natural resources. *Science 81*," Harrison (a *Science 81* editorial board member) notes, "is one of these. It can be made more useful in a classroom situation with the publication of materials for the teacher. This is being worked on now."

"Another powerful AAAS resource is its capacity to convene. The AAAS can provide the opportunity for various scientific societies, already involved in science education problems, to meet, to share problems, and to find ways in which their programs can complement each other."

"At the precollege level, one of the primary problems is the reward system for teachers. It's bad not only in terms of salaries, but in working conditions, the prestige granted these individuals in the communities in which they work, and also the prestige granted by their own professional societies. AAAS, just by its announced intent and endeavor to strengthen science education, recognizes the value of those who teach at the precollege level."

The AAAS should not avoid involvement in issues of controversy, according to Harrison. But she urges that it understand the role it endeavors to play. "There are essentially three levels at which scientists become involved in issues. The scientist may be an expert because of his or her training and experience; the scientist may be involved in providing

informed judgment; or the scientist may become involved in questions which are value questions. In the last, the scientist acts as a member of the total public—not as an expert.”

She points to the current budget controversy and the AAAS R & D Colloquium as an example of how AAAS might best contribute to a policy issue. “The Colloquium, together with the analysis of the budget that precedes it, is a perfect forum. It provides expertise in pulling together that which one needs to have in hand. It provides an opportunity for debate. The forum is a most significant contribution in enabling individuals and affiliated societies to take informed positions.

“The value judgment propositions I find very interesting. I think there’s sometimes a basic assumption in a discussion of the public understanding of science that if all individuals understood the science, they would arrive at the same conclusions as to appropriate courses of action. This is not true. Decisions affecting the quality of life are based to a large degree on the value system of the individual.”

An area where scientific responsibility and the public’s interest converge, and where Harrison sees a need for more AAAS action, is in the premature release of experimental results. “Many problems arise from the release of experimental results through channels that are not subject to peer



“Our society currently is at the crossroad in terms of science. There is serious danger that the future of science in general, and certain areas of science in particular, will be damaged to an extent where it will be decades or longer before we can recover.” Gardner Lindzey, AAAS president-elect candidate, believes the present and future funding of research and the status of science education are the most critical questions facing the scientific community. “I think the plight of high school students is serious. They’re not being trained in science, and they’re not being given the inducements and intellec-

tual opportunities that will permit them to become scientists in another 5, 10, or 15 years. I also think that investigators, young and old, are not being provided with the essentials for sustained programs of research and it will take decades to restore these programs and laboratories if they are permitted to decay or are never started.

“I see the AAAS, more than any other single organization, as being in a position to exert a significant impact in terms of guaranteeing the next generation of scientists. Science teaching in public schools and colleges has to be improved if we’re going to have a generation of scientists, 10 to 20 years from now that will correspond to the generation we now have and have had in the past, and at the same time we must develop and sustain talented investigators in all areas of basic and applied science.”

Lindzey, the 60-year old director and president of the Center for Advanced Studies in the Behavioral Sciences, counts the broadly based membership of the AAAS as one reason why the Association can and should address such large

review. I’m particularly concerned when preliminary results are announced before they have been validated by the investigator. Where these have to do with questions of public health and the environment, they often provoke an emotional response which makes it difficult to have a rational assessment of the suggested problem. The whole question is complicated by regulatory acts that require reporting in a time frame that does not allow for peer review.”

While strongly endorsing the activities of the AAAS in the field of international affairs, Harrison expresses some misgiving. “The free exchange of information is essential but I sometimes feel uncertain about the degree that we should become involved in human rights issues in other countries. I hope we’re equally concerned about human rights problems in our own country.” Here, she points to the Office of Opportunities in Science as providing excellent, nonemotional efforts in the field of access to science. “Many of the questions in reference to minorities, women, and the handicapped going into scientific professions undoubtedly have to do with the perceptions of young people about what professions are open to them. In the Opportunities in Science program, there is a very definite effort to identify barriers and then get leverage on them. It’s a very important role for the AAAS to play.”

national issues as support of science education and research.

“It is a society which has, from the beginning, been devoted to communication among scientists, across disciplines, but also to a much broader audience—indeed anyone who is interested in science can join the AAAS.”

This broader concept of science is reflected in both AAAS publications, *Science* and *Science 81*, says Lindzey (a former *Science* editorial board member). “*Science 81* is very readable, and is making a real contribution to a general appreciation of what’s going on in science and technology. I’m most impressed by *Science* because it is so interdisciplinary. It’s the only journal that I know of where I can talk to almost any one of my colleagues, whether they’re biological scientists, physical scientists, or behavioral scientists, and they’re aware of the journal and a very large number of them read it. That presents a tremendous opportunity for communication among scientists.”

The AAAS candidate has doubts about *Science* aligning itself too closely with any one policy issue. “I think that *Science* should present an opportunity for political statements or strong policy statements, which it has done not only in the editorial, but also in lead articles, and in News and Comment, where what is being reported is factual in nature but has policy implications. The notion of *Science* setting out to make a case for—take for instance the social sciences—embarking upon a campaign to persuade the general public, congressional staff, Congress, agency heads, and so on that what they were doing in regard to these sciences is a mistake (which I think it is), would be unfortunate. Individuals writing editorials is fine, but if *Science* became aligned with only a single cause, it seems to me it would lead to the detriment of the publication and of the Association because there are many other special interests that merit support. There are just too many legitimate causes.”

This does not mean, however, that Lindzey thinks the Association should avoid involvement in controversy. Arranging meetings to air issues of current scientific concern, he says, could be a worthwhile contribution to the public’s understanding of science. “It would be very beneficial if the AAAS could step in and arrange to have a series of confer-

ences/meetings/discussions that would deal with the whole question of not only genetic engineering, but also the implications of genetic engineering for higher education. How will science departments with no significant history of commercial involvement deal with problems that have plagued professional schools for decades? Aside from the ethics of genetic experimentation, what will the impact of such developments be on our great universities? It's a good example of the kind of thing where AAAS could play a significant role. It would find an audience very interested in having a public examination of the ethical, financial, and scientific issues involved."

The area of equal opportunities in science (women, minorities, and the handicapped), Lindzey believes, is an important one for AAAS involvement. He points to his record at the Center, where under his directorship, an increasing number of fellowships have been awarded to women, minorities, and those from under-represented institutions.

"Issues of affirmative action—from sexual harassment to minority hiring—are concerns about which I have strong feelings and commitments. I think it's an area where the AAAS should be very active and very concerned."

International ties also, Lindzey notes as critical. "I do see as one of the many flaws of our current Administration, their lack of appreciation for the international components of science. Science is not limited by state, by nation, by religion, or by other distinctions. The mode should be a free exchange

of information. Anything that AAAS does to reduce ideological or national barriers is important." So too, affirms Lindzey, is the cause of international human rights. "The international support of scientists whose careers are being jeopardized for political beliefs is something where the AAAS, the National Academy of Sciences, the American Academy of Arts and Science, and other professional scientific associations, should do all they can to relieve the individuals involved, including finding them positions in this country when that becomes an issue."

As for the budget cuts in science, "the plight of the social sciences," Lindzey insists, "is ultimately the plight of all sciences. AAAS, as an interdisciplinary association, in so far as it defends the social sciences, should not defend the 'social sciences' but 'science.' We need to ensure that the biologists, and the physicists, and the chemists, and the engineers believe that this is an attack from which they are not necessarily immune. Because what is today an attack on the social sciences can tomorrow be an attack on any area of science. You don't take a chunk and say—we don't want astronomy because it's not experimental, or we don't want evolutionary biology because it goes against the Bible, or we don't support social science because it smacks of socialism. The important premise is that the whole scientific enterprise is continuous, and that every element that is of high scientific quality should be supported."

General Election

Terms of office are as follows: president-elect, 3 years (the second year as president, the third year as retiring president and chairman of the Board); members of the Board of Directors, 4 years; members of the Committee on Nominations, 2 years.

President-Elect (one to be elected).

Anna J. Harrison
Gardner Lindzey

Anna J. Harrison

Anna J. Harrison (chemistry), 1912; A.B., 1933, B.S.Ed., 1935, M.A., 1937, and Ph.D., 1940, University of Missouri. With Mount Holyoke College since 1945; professor emeritus of chemistry since 1979. Additional past positions with Tulane University, University of Missouri, Corning Glass Works, Cambridge University, National Research Council (Canada), USAID Banaras Hindu University, and U.S. Naval Academy (distinguished visiting professor). Frank Forest Award, American Ceramic Society, 1949; Sarah Berliner fellowship, American Association of University Women, 1952–53; Citation of Merit, University of Missouri College of Arts and Sciences, 1960; first president, Mount Holyoke College Chapter, Sigma Xi, 1967; Award in College Chemistry Teaching, Manufacturing Chemists Association, 1969; James Flack Norris Award for Outstanding Achievement in Teaching of Chemistry, Northeastern Section, American Chemical Society, 1977; chairman, Board of Publications, *Journal of Chemical Education*, 1964–65, Council 1964–69,

1973–, chairman, Division of Chemical Education, 1971, and Board of Directors, 1976–79, ACS; National Science Board, 1972–78; Editorial Boards, *Chemical and Engineering News* and *Journal of College Science Teaching*, 1976–78; president, ACS, 1978; Phi Beta Kappa visiting scholar, 1979–80; Committee on Hazardous Substances in the Laboratory, National Research Council, 1979–81. Current activities: chairman, Subcommittee on Regulatory Practices, ACS; U.S. National Committee, International Union of Pure and Applied Chemistry; Committee for a Study of the Federal Role in College Science Education of Nonspecialists, National Research Council. AAAS activities: Board of Directors, Council, and Editorial Advisory Board, *Science* 81, 1979–82.

Gardner Lindzey

Gardner Lindzey (psychology, academic administration), 1920; A.B., 1943, Pennsylvania State University; M.S., 1945, and Ph.D., 1949, Harvard University. Director and president, Center for Advanced Study in the Behavioral Sciences, since 1975; professor of psychology, Stanford University, since 1976. Previously with Pennsylvania State University, Western Reserve University, Harvard University, University of Minnesota, and University of Texas. Fellow, American Academy of Arts and Sciences, American Philosophical Society, and Institute of Medicine; Distinguished Alumnus Award, Pennsylvania State University, 1975; president, Division of Social and Personality Psychology, 1963–64, and Division of General Psychology, 1970–71, American Psychological Association; president, APA, 1966–67. Current activities: president, Society for Study of Social Biology; vice president, American Academy of Arts and Sciences; Council, Institute of Medicine; director, Social Science Research Council,

Russell Sage Foundation, and Society for Study of Social Biology; National Academy of Sciences–National Research Council: Committee on Basic Research in the Behavioral and Social Sciences, chair, Committee on Substance Abuse and Habitual Behavior and Panel on National Needs for Biomedical and Behavioral Research Personnel, co-chair, Committee on Study of Quality of Graduate Education; Committee on Problems and Policy, Social Science Research Council; Commission on Future of Academic Psychiatry, Josiah Macy, Jr., Foundation; Publications Board, APA. AAAS activities: Committee of Judges, AAAS Socio-Psychological Prize, 1962–63; Editorial Board, *Science*, 1972–73; Section Committee, Section on Psychology (J), 1975; Electorate Nominating Committee, Section J, 1980–82.

Board of Directors (two to be elected).

Lawrence Bogorad
Thelma Estrin
Sheila E. Widnall
J. Tuzo Wilson

Lawrence Bogorad



Lawrence Bogorad (biology), 1921; B.S., 1942, and Ph.D., 1949, University of Chicago. With Harvard University since 1967; Maria Moors Cabot professor of biology, Biological Laboratories, since 1980. Previously with University of Chicago. Member, National Academy of Sciences; fellow, Ameri-

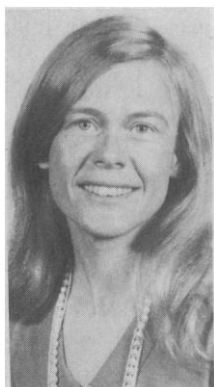
can Academy of Arts and Sciences; foreign member, Royal Danish Academy of Sciences and Letters; Merck NAS-NRC fellow, 1951-53; Fulbright research scholar, 1960; National Science Foundation senior postdoctoral fellow, 1960-61; president, American Society of Plant Physiologists, 1968-69; chairman, Botany Section, NAS, 1974-77. Current activities: Joint Council on Food and Agricultural Sciences; Committee on Science and Public Policy, NAS; Board on International Organizations and Programs, NAS-NRC; Assembly of Life Sciences, National Research Council; Editorial Boards, *Journal of Molecular and Applied Genetics*, *Plant Cell Reports*, and *Plant Molecular Biology*. AAAS activities: member-at-large of the Section Committee, Section on Biological Sciences, 1977-80.

Thelma Estrin



Thelma Estrin (biomedical engineering), 1924; B.S.E.E., 1948, M.S.E.E., 1949, and Ph.D., 1952, University of Wisconsin, Madison. With University of California, Los Angeles, since 1960; professor of engineering, Computer Science Department, since 1980; research engineer in anatomy since 1968; member, Brain Research Institute, since 1962. Previously with Institute for Advanced Study, Neurological Institute (New York City), and Weizmann Institute of Science. Fellow, Institute of Electrical and Electronics Engineers; Fulbright fellow, 1963; Distinguished Service Citation, University of Wisconsin College of Engineering, 1976; Outstanding Engineer of the Year Merit Award, University of Southern California Institute for the Advancement of Engineering, 1979; Achievement Award, Society of Women Engineers, 1981; Boards of Directors, Biomedical Engineering Society, 1975-78, Association for the Advancement of Medical Instrumentation, 1976-79, and IEEE, 1979-80; president, IEEE Engineering in Medicine and Biology Society, 1977; vice president, Publications Board, IEEE, 1979-80. Current activities: Board of Trustees, Aerospace Corporation; Administrative Council, International Federation for Medical and Biological Engineering; Long-Range Planning Committee, Transnational Relations Committee, and Committee on Professional Opportunities for Women, IEEE.

Sheila E. Widnall



Sheila E. Widnall (aeronautical engineering, fluid dynamics), 1938; S.B., 1960, S.M., 1961, and Sc.D., 1964, Massachusetts Institute of Technology. With MIT since 1964; professor of aeronautics and astronautics since 1974. Previously with U.S. Department of Transportation (director of university research). Lawrence Sperry Award, Amer-

ican Institute of Aeronautics and Astronautics, 1972; Achievement Award, Society of Women Engineers, 1975; Board of Directors, AIAA, 1972-75; Aeronautics and Space Engineering Board, National Academy of Engineering, 1975-78. Current activities: chairman of the faculty, MIT; chairman, Board of Visitors, U.S. Air Force Academy; Advisory Committee, Department of Mechanical and Aerospace Engineering, Princeton University; Executive Committee, Division of Fluid Dynamics, American Physical Society.

J. Tuzo Wilson

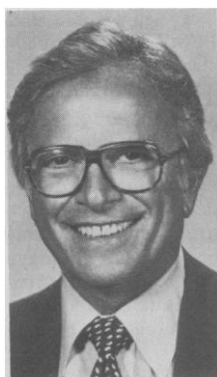


J. Tuzo Wilson (educational sciences), 1908; B.A., 1930, University of Toronto; B.A., 1932, and Sc.D., 1950, Cambridge University; Ph.D., 1936, Princeton University. Director general, Ontario Science Centre, since 1976. Previously with Geological Survey of Canada, Canadian Army, and University of Toronto. Fellow, Royal Society of Canada, Geological Society of America, and Royal Society (London); foreign associate, National Academy of Sciences; companion, Order of Canada, 1974; J. J. Carty Medal, National Academy of Sciences, 1976; Vetlesen Prize, Columbia University, 1978; Penrose Medal, Geological Society of America; Gold Medal, Royal Canadian Geographical Society; Bucher and Ewing Medals, American Geophysical Union; president, International Union of Geodesy and Geophysics, 1957-60, and Royal Society of Canada, 1972-73. Current activities: president, AGU; trustee, Institute for Research on Public Policy; Science Council of Canada; Board, Association of Science and Technology Centres. AAAS activities: Committee of Judges, AAAS-Newcomb Cleveland Prize, 1970-72; co-chairman, 1981 Annual Meeting, Toronto.

Committee on Nominations (four to be elected).

Jordan J. Baruch
Robert W. Berliner
Phyllis L. Kahn
William Kruskal
William F. Nelson
Rolf M. Sinclair
A. K. Solomon
Linda S. Wilson

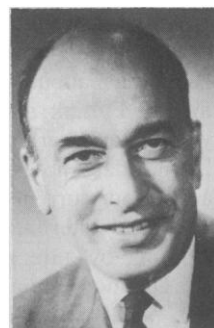
Jordan J. Baruch



Jordan J. Baruch (electrical engineering), 1923; B.S., 1947, M.S., 1948, and Sc.D., 1950, Massachusetts Institute of Technology. Consultant, Jordan Baruch Associates, Inc., beginning in 1981. Previously with Massachusetts Institute of Technology, Bolt Beranek & Newman, Inc., General Electric, Educom (presi-

dent), Harvard University, Dartmouth College, and U.S. Department of Commerce (assistant secretary for science and technology). Member, National Academy of Engineering; fellow, Institute of Electrical and Electronics Engineers, Acoustical Society of America, American Academy of Arts and Sciences, New York Academy of Sciences; Armstrong Cork fellowship in acoustics, 1949; Celotex fellowship in acoustics, 1950; Eta Kappa Nu Award (outstanding young electrical engineer), 1956. Current activities: chair, Board on Minorities in Engineering, National Research Council. AAAS activities: Council, 1972-73; chairman, Section on Information, Computing, and Communication, 1973.

Robert W. Berliner



Robert W. Berliner (physiology, internal medicine), 1915; B.S., 1936, Yale University; M.D., 1939, Columbia University. Dean and professor of physiology and medicine, Yale University School of Medicine, since 1973. Previously with Goldwater Memorial Hospital, New York University, Columbia University, National Institutes of Health, George Washington University, and Georgetown University. Member, National Academy of Sciences and Institute of Medicine; HEW Distinguished Service Award, 1962; Homer W. Smith Award in Renal Physiology, 1965; Alumni Award for Distinguished Achievement, 1966, Bicentennial Medal, 1967, and Joseph Mather Smith Prize, 1978, Columbia University; *Modern Medicine's* Distinguished Achievement Award, 1969; American Heart Association's Research Achievement Award, 1970; A. Ross McIntyre Award, University of Nebraska Medical Center, 1974; president, American Society for Clinical Investigation, 1959, American Physiological Society, 1967, and American Society of Nephrology, 1968; Committee on Science and Public Policy, NAS, 1973-77; Executive Committee, Assembly of Life Sciences, 1973-78, and chairman, Division of Medical Sciences, 1976-78, National Research Council. Current activities: Editorial Board, *Circulation*; Council, NAS. AAAS activities: chairman, Section on Medical Sciences, 1972 and 1977; Council, 1971-72, 1974-75, and 1978; Committee on Council Affairs, 1974-75; AAAS-ABA National Conference of Lawyers and Scientists, 1974-76.

Phyllis L. Kahn



Phyllis L. Kahn (public policy), 1937; B.A., 1957, Cornell University; Ph.D., 1962, Yale University. State representative, House of Representatives, State of Minnesota, since 1972. Previously with Yale University and Princeton University (postdoctoral fellow), and Department of Genetics and Cell Biology, Univer-

sity of Minnesota. Government/Politics Outstanding Achievement Award, YWCA Leader Lunch II, 1979. Current activities: Committee on Science and Technology, National Conference of State Legislatures; Appropriations Committee (chair, State Departments Division, and chair, Subcommittee on Telecommunications and Information Systems), Energy and Utilities Committee, Environment and Natural Resources Committee, and chair, House Task Force on Legislative Information Systems, Minnesota House of Representatives; Board of Directors, American Lung Association of Hennepin County; Board of Directors, Freeport West; Board of Visitors, University of Minnesota Press; Minnesota Women's Political Caucus. AAAS activities: Committee on Science, Engineering, and Public Policy, 1978-.

William Kruskal



William Kruskal (statistics), 1919; S.B., 1940, and M.S., 1941, Harvard University; Ph.D., 1955, Columbia University. With University of Chicago since 1950; Ernest DeWitt Burton distinguished service professor since 1973; dean, Division of the Social Sciences, since 1974. Fellow, Center for Advanced Study

in the Behavioral Sciences, 1970-71; National Science Foundation senior postdoctoral fellow, 1970-71; Guggenheim fellow, 1979-80; S. S. Wilks Memorial Medal, 1978; president, Institute of Mathematical Statistics, 1970-71; vice president, American Statistical Association, 1972-74; director, Social Science Research Council, 1975-78; Ronald A. Fisher memorial lecturer, 1978. Current activities: president-elect, ASA; National Science Foundation Advisory Council; ASA Advisory Committee to the Bureau of the Census; Educational Advisory Board, John Simon Guggenheim Memorial Foundation; Panel on Survey Measurement of Subjective Phenomena, Committee on National Statistics, National Research Council.

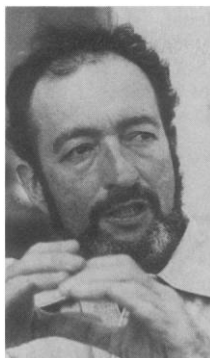
William F. Nelson



William F. Nelson (physics), 1924; B.S., 1948, and M.S., 1949, University of Akron; Ph.D., 1956, Washington State University. With GTE Laboratories since 1969; associate director of research and director, Advance Technology Laboratory, since 1977. Previously with Ohio Edison Company, Douglas Aircraft Company, Owens-Ill-

inois, Inc., and University of Toledo; taught on a part-time basis at University of Akron, Long Beach City College, Washington State University, and University of California, Los Angeles. Fellow, American Physical Society. Current activities: research associate, Nutrition Sciences Department, Massachusetts Institute of Technology; chairman, GTE-Technical Advisory Council.

Rolf M. Sinclair



Rolf M. Sinclair (physics, archaeoastronomy), 1929; B.S., 1949, California Institute of Technology; M.A., 1951, and Ph.D., 1954, Rice University. Program director, Physics Division, National Science Foundation, since 1969; NSF representative, U.S. Solar Eclipse Expedition, India, 1980. Previously with Westing-

house Research Laboratories, University of Hamburg, University of Paris, Princeton University, and Culham Laboratory (England). Rice Institute fellow, 1950-53; fellow, American Physical Society and Sigma Xi. Current activities: secretary, U.S. Interagency Committees on Atomic and Molecular Physics and Plasma Physics; Advisory Committees, U.S. Department of Energy Fusion Program; Panel on Public Affairs and Divisional Program Committees, American Physical Society; secretary, the Anasazi Project. AAAS activities: Council, 1972-73; secretary, Section on Physics (B), 1972-; chairman, Electorate Nominating Committee, Section B, 1974-76; Committee of Judges, Newcomb Cleveland Prize, 1975-79 (chairman, 1978).

A. K. Solomon



A. K. Solomon (biophysics), 1912; A. B., 1934, Princeton University; A.M., 1935, and Ph.D., 1937, Harvard University; D.Phil., 1947, Cambridge University. With Harvard Medical School since 1946; professor of biophysics since 1968. Previously with Cavendish Laboratory, British Ministry

of Supply, British Admiralty, Massachusetts Institute of Technology, and Peter Bent Brigham Hospital. Order of Andres Bello, Government of Venezuela; fellow, American Academy of Arts and Sciences; Executive Committee, Committee on Growth, National Research Council, 1954-57; Executive Board, Biophysical Society, 1958-62; Radiation Study Section, 1960-63, Biophysics Science Training Committee, 1963-68 (chairman, 1966-68), National Institutes of Health; secretary general, International Union for Pure and Applied Biophysics, 1961-72; Executive Committee, International Council of Scientific Unions, 1966-72. Current activities: Harvard Committee on Higher Degrees in Biophysics (chairman, 1959-80). AAAS activities: representative to U.S. National Commission for UNESCO, 1968-74.

Linda S. Wilson

Linda S. Wilson (academic/research administration, chemistry), 1936; B.A., 1957, Tulane University; Ph.D., 1962, University of Wisconsin, Madison. Associate vice chancellor for research and associate dean of the Graduate College, University of Illinois at Urbana-Champaign, since 1975. Previously



with University of Maryland, University of Southampton, University of Missouri at St. Louis, and Washington University. Selected as "one of 100 emerging academic leaders" by American Council on Education and *Change*, 1978; National Commission on Research, 1978-80. Current activities:

Director's Advisory Council, National Science Foundation; Advisory Council, Division of Research Resources, National Institutes of Health; Board of Visitors, Air Academy.

Electorate Elections

Terms of office are as follows: Council delegates, 3 years; Section chairpersons-elect, 3 years (the second year as chairpersons, the third year as retiring chairpersons); members-at-large of the Section Committees, 4 years; members of the Electorate Nominating Committees, 3 years.

Section A-Mathematics

Chairperson-Elect (one to be elected).

Lipman Bers
James B. Serrin

Lipman Bers (mathematics), 1914; Dr. Renum Naturalium, 1938, University of Prague. Davies professor of mathematics, Columbia University, since 1964; chairman, Department of Mathematics, 1972-75. Previously with Brown University, Syracuse University, Institute for Advanced Study, and New York University. Steele Prize, 1975; past president, American Mathematical Society; member, National Academy of Sciences; fellow, American Academy of Arts and Sciences. Current activities: chairman, Committee on Human Rights, NAS. AAAS activities: member-at-large of the Section Committee, Section on Mathematics (A), and Council, 1969-71; chairman, Section A, 1973.

James B. Serrin (mathematics), 1926; Ph.D., 1951, Indiana University. With University of Minnesota since 1954; professor since 1959. Previously with Princeton University and Massachusetts Institute of Technology; past visiting professor, University of Chicago, Johns Hopkins University, University of Sussex, Mittag-Leffler Institute (Stockholm), and University of Naples. George David Birkhoff Prize, American Mathematical Society, 1973; president, Society for Natural Philosophy, 1969-70; Council, AMS, 1971-73; member, National Academy of Sciences. Current activities: co-editor, *Archive for Rational Mechanics and Analysis*; Editorial Boards, *Communications in Partial Differential Equations*, *Bulletin of the American Mathematical Society*, *Rendiconti Circolo Matematico di Palermo*, and *Journal of Differential Equations*.

Member-at-Large of the Section Committee (one to be elected).

Mary W. Gray
Branko Grünbaum

Mary W. Gray (mathematics, statistics, law), 1939; A.B., 1959, Hastings College; M.A., 1962, and Ph.D., 1964, University of Kansas; J.D., 1979, Washington College of Law. With American University since 1968; currently chair and professor, Department of Mathematics, Statistics and Computer Science. Previously with University of Kansas, National Bureau of Standards (summers), University of California, Berkeley, and California State University, Hayward. Fulbright grant (Germany), 1959–60; NDEA fellow, 1960–63; National Science Foundation fellow, 1963–64; Council, 1972–75, and vice president, 1975–78, American Mathematical Society; founding president, Association for Women in Mathematics. Current activities: Committee on Academic Freedom, American Association of University Professors; chair, Joint Committee on Women, AMS; visiting lecturer, Mathematical Association of America; general counsel, AWM.

Branko Grünbaum (mathematics), 1929; M.Sc., 1955, and Ph.D., 1958, Hebrew University. Professor of mathematics, University of Washington, since 1966. Previously with Institute for Advanced Study and Hebrew University; past visiting professor, Michigan State University. Lester R. Ford Award, 1975, and Carl B. Allendoerfer Award, 1978, Mathematical Association of America.

Members of the Electorate Nominating Committee (two to be elected).

Donald L. Burkholder
Patricia James Eberlein
Barbara Lee Keyfitz
Steve Smale

Donald L. Burkholder (mathematics), 1927; B.A., 1950, Earlham College; M.S., 1953, University of Wisconsin; Ph.D., 1955, University of North Carolina. With University of Illinois since 1955; professor of mathematics since 1964; professor, Center for Advanced Study, since 1978. Past visiting positions, University of California, Berkeley, University of London, and Rutgers University. President, Institute of Mathematical Statistics, 1975–76. Current activities: member-at-large of the Council, American Mathematical Society.

Patricia James Eberlein (computer science, mathematics), 1925; B.S., 1945, University of Chicago; Ph.D., 1955, Michigan State University. With State University of New York, Buffalo, since 1967; professor of computer science since 1974. Previously with Wayne State University, Institute for Advanced Study, and University of Rochester. Board of Directors, Signum-Association for Computing Machinery, 1970–73; Council, 1971–77, Council representative to Board of Trustees, 1976–77, and chairman, Visiting Lectureship Program, 1974–80, Society for Industrial and Applied Mathematics; member-at-large, Conference Board of the Mathematical Sciences, 1973–76. Current activities: Editorial Board, *SIAM Journal on Algebra and Discrete Structures*.

Barbara Lee Keyfitz (mathematics), 1944; B.Sc., 1966, University of Toronto; M.S., 1968, and Ph.D., 1970, New York University. Associate professor, Arizona State University, since 1979. Previously with Columbia University and Princeton University.

Steve Smale (mathematics), 1930; B.A., 1952, M.A., 1953, and Ph.D., 1956, University of Michigan. Professor of mathematics, University of California, Berkeley, since

1964. Previously with University of Chicago, Institute for Advanced Study, and Columbia University. Fields Medal, International Union of Mathematics, 1966; Veblen Prize, American Mathematical Society, 1966; member, National Academy of Sciences. Current activities: Council, AMS.

Section B—Physics

Chairperson-Elect (one to be elected).

Fay Ajzenberg-Selove
James A. Krumhansl

Fay Ajzenberg-Selove (physics), 1926; B.S.E., 1946, University of Michigan; M.S., 1949, and Ph.D., 1952, University of Wisconsin. With University of Pennsylvania since 1970; professor of physics since 1973. Previously with Smith College, California Institute of Technology, Massachusetts Institute of Technology, Boston University, and Haverford College; visiting staff member, Los Alamos National Laboratory, 1971–. Smith-Mundt fellow, 1955; Guggenheim fellow, 1965–66; national lecturer, Sigma Xi, 1973–74; chairman, Division of Nuclear Physics, American Physical Society, 1973–74; DOE/NSF Nuclear Sciences Advisory Committee, 1977–80. Current activities: chairman, Commission on Nuclear Physics, International Union of Pure and Applied Physics; Nominating Committee, APS; Editorial Board, *Physical Review C*; Committee on Public Education and Information, American Institute of Physics. AAAS activities: Council, 1974–79; Committee on Council Affairs, 1977–78.

James A. Krumhansl (solid state physics), 1919; B.S., 1939, University of Dayton; M.Sc., 1940, Case Institute of Technology; Ph.D., 1943, Cornell University. With Cornell University since 1948; professor of physics since 1959. Previously with Stromberg Carlson, Brown University, and Union Carbide (Parma) Research Center; past visiting fellow, All Souls College (Oxford); assistant director, National Science Foundation, 1977–79. Guggenheim fellow, 1959–60; NSF senior postdoctoral fellow, 1966–67; Fulbright lecturer, 1976; chairman, Division of Solid State Physics, 1968–69, Council, 1970–74, and Long-Range Planning study, 1972–73, American Physical Society; Governing Board, American Institute of Physics, 1973–77. Current activities: adjunct professor of physics, University of Pennsylvania; Board of Directors, Allied Chemical Corporation; fellow, Los Alamos Scientific Laboratory.

Member-at-Large of the Section Committee (one to be elected).

Ralph A. Alpher
Nina Byers

Ralph A. Alpher (physics), 1921; B.S., 1943, M.S., 1945, and Ph.D., 1948, George Washington University. Physicist, General Electric Research and Development Center, since 1955. Previously with Naval Ordnance Laboratory, U.S. Naval Bureau of Ordnance, and Applied Physics Laboratory, Johns Hopkins University; adjunct professor, Rensselaer Polytechnic Institute, 1958–63. Fellow, American Physical Society; IR-100 Award, 1968; Magellanic Premium, American Philosophical Society, 1975; Prix Georges Vanderlinden, Belgian Royal Academy of Science, Letters and Fine Arts, 1975; John Price Wetherill Medal, Franklin Institute, 1980; Man-

power Panel, American Physical Society, 1976–79. Current activities: Panel on Public Affairs, councillor-at-large, and Executive Committee, APS.

Nina Byers (theoretical physics), 1930; B.A., 1950, University of California, Berkeley; M.S., 1953, and Ph.D., 1956, University of Chicago; M.A., 1967, Oxford University. With University of California, Los Angeles, since 1961; currently professor of physics. Previously with University of Birmingham (England) and Stanford University; member, School of Mathematics, Institute for Advanced Study, 1964–65; faculty lecturer, 1967–68, Janet Watson visiting fellow (Somerville College), Science Research Council senior visiting scientist, 1973–74, and SRC fellow, 1978, Oxford University. Guggenheim fellow, 1963–64; Executive Committee, Federation of American Scientists, 1974–76 and 1978–80; councillor-at-large, American Physical Society, 1977–81. Current activities: National Council, FAS; Committee on Opportunities in Physics, Panel on Public Affairs, and vice chairman-elect, Forum on Physics and Society, APS. AAAS activities: Electorate Nominating Committee, Section on Physics, 1977–79 (chairperson, 1979).

Members of the Electorate Nominating Committee (two to be elected).

Bernard L. Cohen
Edward Gerjuoy
Donald F. Holcomb
Roger G. Newton

Bernard L. Cohen (physics), 1924; B.S., 1944, Case Institute of Technology; M.S., 1947, University of Pittsburgh; D.Sc., 1950, Carnegie-Mellon University. With University of Pittsburgh since 1958; currently professor of physics. Previously with Oak Ridge National Laboratory. Bonner Prize, American Physical Society, 1981; National Council, American Association of Physics Teachers, 1972–77; chairman, Division of Nuclear Physics, APS, 1974–75. Current activities: chairman, Division of Environmental Sciences, American Nuclear Society.

Edward Gerjuoy (physics), 1918; B.S., 1937, City College of New York; Ph.D., 1942, University of California, Berkeley; J.D., 1977, University of Pittsburgh. Professor of physics, University of Pittsburgh, since 1964. Previously with Columbia University Division of War Research, University of Southern California, General Atomics, and RCA Laboratories. Fellow, American Physical Society and Institute for Physics (Great Britain); Board of Editors, *Physical Review*, 1965–69; Advisory Committee on Health Physics, Oak Ridge National Laboratory, 1967–73; chairman, Committee on Physical Sciences, American Bar Association Section of Science and Technology, 1976–77. Current activities: Committee on International Freedom of Scientists (chairman, 1979–80) and chairman, Panel on Public Affairs, APS; editor-in-chief, *ABA Jurimetrics Journal of Law, Science and Technology*; Council, ABA Section of Science and Technology; hearing examiner (on a consulting basis), Commonwealth of Pennsylvania Environmental Hearing Board.

Donald F. Holcomb (physics), 1925; A.B., 1949, DePauw University; Ph.D., 1954, University of Illinois. With Cornell University since 1954; professor of physics since 1962; director, Laboratory of Atomic and Solid State Physics, 1964–68. Previously with University of Illinois; Science Research Council

senior visiting fellow, University of St. Andrews, 1978. Sloan fellow, 1955–57; Guggenheim fellow, 1968–69. Current activities: Board of Trustees, Cornell University.

Roger G. Newton (theoretical physics), 1924; A.B., 1949, A.M., 1950, and Ph.D., 1953, Harvard University. With Indiana University since 1955; distinguished professor of physics since 1978. Previously with Institute for Advanced Study. Fellow, American Physical Society; Bowdoin Prize, Harvard University, 1948; Eastman Kodak fellow, 1952–53; Jewett fellow, 1953–55; National Science Foundation senior postdoctoral fellow, 1962–63; CNRS fellow, University of Montpellier, 1971–72; associate editor, *Journal of Mathematical Physics*, 1967–70 and 1973–76.

Section C—Chemistry

Chairperson-Elect (one to be elected).

Murray Goodman
Lester C. Krogh

Murray Goodman (teaching, research), 1928; B.S., 1949, Brooklyn College; Ph.D., 1952, University of California, Berkeley. Professor of chemistry, University of California, San Diego, since 1971; chairman, Department of Chemistry, since 1976. Previously with Massachusetts Institute of Technology and Polytechnic Institute of Brooklyn; National Research Council fellow, Cambridge University, 1955–56. Distinguished Alumnus Medal, Brooklyn College, 1965; Innovative Projects in University Instruction Award, University of California, 1973–74; Scoffone Medal, Biopolymer Research Center, University of Padova, 1980. Current activities: editor, *Biopolymers*; Editorial Board, *International Journal of Peptide and Protein Research*; Steering Committee on Long-Term Antifertility Drugs, World Health Organization; U.S. National Committee, International Union of Pure and Applied Chemistry.

Lester C. Krogh (organic chemistry), 1925; B.S.Ch.E., 1945, and M.S., 1948, University of Nebraska; Ph.D., 1952, University of Minnesota. With 3M Company since 1953; R & D vice president, Industrial and Consumer Sector, beginning in 1981. Councilor, Minnesota Section, 1961–72, Constitution and Bylaws Committee, 1965–70 (chairman, 1969–70), President's Ad Hoc Committee on Professionalism, 1971–72, Council Policy Committee, 1971–73 (vice chairman, 1973), Joint Board Council Long-Range Planning Committee, 1972–73, Joint Board Council Committee to Study Revenues, 1972–73, chairman, Centennial Finance Committee, 1972–76, and Joint Board Council Committee on Chemistry and Public Affairs, 1974–78, American Chemical Society; director, Minnesota Academy of Sciences, 1971–74; Study on Experimental Incentive Program, National Science Foundation, 1972. Current activities: chairman of the Board, National Home Fashions League Educational Foundation; Sciquest Task Force, ACS.

Member-at-Large of the Section Committee (one to be elected).

Barbara Roth
Paul V. Smith, Jr.

Barbara Roth (organic chemistry), 1916; B.S., 1937, Beloit College; M.S., 1939, and Ph.D., 1941, Northwestern University. With

Burroughs Wellcome Company since 1955; group leader, Organic Chemistry, since 1970. Previously with American Cyanamid Company and Gillette Company; adjunct professor, School of Pharmacy, University of North Carolina, 1971–. Director, 1963–65 and 1968–69, secretary, 1965–66, and chairman, 1968–69, Westchester Subsection, New York Section, American Chemical Society; councilor, New York Section, ACS, 1969–71; treasurer, 1971–74, secretary, 1975–76, and chairman, 1977, Division of Medicinal Chemistry, ACS; national treasurer, Sigma Delta Epsilon, 1960–61; president, New York Chapter, SDE, 1962–63. Current activities: advisor, Meetings Coordinating Committee, ACS.

Paul V. Smith, Jr. (organic chemistry), 1921; A.B., 1942, Miami University; M.S., 1943, and Ph.D., 1945, University of Illinois. With Exxon Research and Engineering Company since 1960; manager, educational and professional society relations, beginning in 1981. President's Award, American Association of Petroleum Geologists, 1955. Current activities: Board, councilor ex officio, Committee on Long-Range Planning (chairman, 1980), Committee on Budget and Finance, chairman, Committee on Chemical Abstracts Services, and chairman, ADL Task Force, American Chemical Society; Board, vice president for finance, Executive Committee, and Advisory Board of CACHE, American Society for Engineering Education; Board of Directors, Junior Engineering Technical Society; Advisory Board, Washington Center for Learning Alternatives; Advisory Board, Engineering Education Project, American Association of Engineering Societies; National Study Committee for the U.S.A., International Association for the Evaluation of Educational Achievement.

Members of the Electorate Nominating Committee (two to be elected).

Rodney N. Hader
Eddie Hedaya
Norman Rabjohn
Bradford R. Stanerson

Rodney N. Hader (chemistry, chemical engineering), 1922; B.S., 1944, University of Illinois. With American Chemical Society since 1950; secretary since 1970; chief operations officer beginning in 1981. Previously with Firestone Plastics. Honor Scroll Award, District of Columbia Institute of Chemists, 1980. Current activities: secretary, Board of Directors, Executive Committee, Council, and Council Policy Committee, American Chemical Society; Council and Board Special Committee on Pensions, American Chemical Society; Board of Directors, Centcom, Ltd.

Eddie Hedaya (organic chemistry), 1936; A.B., 1958, Columbia College; Ph.D., 1962, University of California, Los Angeles. With Union Carbide Corporation since 1962; research fellow since 1977. Past visiting professor, Israel Institute of Technology; adjunct professor, Rockefeller University, 1974–. Editorial Board, *Accounts of Chemical Research*, 1972–74; Chemistry Advisory Panel, National Science Foundation, 1974–77.

Norman Rabjohn (organic chemistry), 1915; B.S., 1937, University of Rochester; M.S., 1939, and Ph.D., 1942, University of Illinois. With University of Missouri since 1948; professor since 1952. Previously with Eastman Kodak Company, University of Illinois, and Goodyear Tire and Rubber Company. Secretary, Editorial Board, *Organic Syntheses*,

1950–59; Publications Committee, American Chemical Society, 1965–70. Current activities: Board of Directors, treasurer, and Advisory Editorial Board, *Organic Syntheses*.

Bradford R. Stanerson (chemistry), 1907; B.S., 1930, M.S., 1931, and Ph.D., 1940, Iowa State University. Retired; residing in Silver Spring, Maryland. Previously with Dowling College, Iowa State University, Texaco, American Chemical Society, and Scientific Research Society of America (executive director, 1970–73). Honor Award, Washington Chapter, American Institute of Chemists, 1967; Professional Service Award, Washington Chapter, Alpha Chi Sigma Fraternity, 1974; vice president, 1956–57, and president, 1959, Scientific Manpower Commission. Current activities: Pension Committee, American Chemical Society.

Section D—Astronomy

Chairperson-Elect (one to be elected).

Paul W. Hodge
C. R. O'Dell

Paul W. Hodge (astronomy), 1934; B.S., 1956, Yale University; Ph.D., 1960, Harvard University. With University of Washington since 1965; professor since 1969. Previously with Harvard University, Mount Wilson and Palomar Observatory, California Institute of Technology, University of California, Berkeley, and Smithsonian Astrophysical Observatory. Beckwith Prize, Yale University, 1956; Bart J. Bok Prize, Harvard University, 1962; Board of Directors, 1968–74, and vice president, 1974–75, Astronomical Society of the Pacific. Current activities: Organizing Committee, Commission 28, International Astronomical Union; Smithsonian Foreign Currency Program, Advisory Council on Astrophysics and Earth Science. AAAS activities: chairperson, Section on Astronomy, 1978; Council, 1979.

C. R. O'Dell (astronomy), 1937; B.S.Ed., 1959, Illinois State University; Ph.D., 1962, University of Wisconsin. Project scientist-Space Telescope/TA02, Marshall Space Flight Center, since 1972; associate director-science, 1976–80. Previously with Mount Wilson Observatory, University of California, Berkeley, and University of Chicago (director, Yerkes Observatory, 1966–72). Gold Medal of the Order of Merit (Poland), 1978; Alumni Achievement Award, Illinois State University, 1981. Current activities: Astronomy Panel, COSPAR; Technical Committee on Space and Astronomy, American Institute of Aeronautics and Astronautics; International Halley Watch Steering Group, National Aeronautics and Space Administration.

Member-at-Large of the Section Committee (one to be elected).

Clark R. Chapman
Gary L. Grasdalen

Clark R. Chapman (planetary astronomy), 1945; A.B., 1967, Harvard University; M.S., 1968, and Ph.D., 1972, Massachusetts Institute of Technology. Research scientist, Planetary Science Institute (Tucson), since 1972. Chairman, Publications Subcommittee, 1971–74, Program Committee, 1976–77, and Nominating Committee, 1977, Division for Planetary Sciences, American Astronomical Society; University Space Research Association Lunar and Planetary Science Council, 1975–

79; Organizing Committee, Commission 15, International Astronomical Union, 1976-79; Committee on Planetary Exploration, Space Science Board, National Academy of Sciences, 1977-80; Editorial Board, *Icarus*, 1978-80. Current activities: vice president, Commission 15, IAU; Leonard Medal Committee, Meteoritical Society. AAAS activities: Electorate Nominating Committee, Section on Astronomy, 1978-80 (chairman, 1980).

Gary L. Grasdalen (physics, astronomy), 1945; A.B., 1967, Harvard University; M.S., 1970, and Ph.D., 1972, University of California, Berkeley. With University of Wyoming since 1977; associate professor of physics since 1980. Previously with University of California, Berkeley, and Kitt Peak National Observatory. Current activities: Committee on Space Astronomy and Astrophysics.

Members of the Electorate Nominating Committee (two to be elected).

Loren W. Acton
Martha Stahr Carpenter
Julie Lutz
Catherine A. Pilachowski

Loren W. Acton (solar physics), 1936; B.S., 1959, Montana State University; Ph.D., 1965, University of Colorado. Senior staff scientist, Lockheed Palo Alto Research Laboratory, since 1964; temporarily on leave at NASA Goddard Space Flight Center. Previously with University of Hawaii; past visiting scientist, Arbeitsgruppe fuer Physikalische Weltraumforschung, Freiburg. Organizing Committees, Commission 10, 1973-76, and Commission 44, 1976-79, International Astronomical Union; chairman, Solar Physics Division, American Astronomical Society, 1978-80. Current activities: AURA Visiting Committee for KPNO, SPO, and CTIO; payload specialist candidate for the SPACELAB 2 mission of the space shuttle.

Martha Stahr Carpenter (astronomy), 1920; B.A., 1941, Wellesley College; M.A., 1943, and Ph.D., 1945, University of California, Berkeley. With University of Virginia since 1968; associate professor since 1970. Previously with Wellesley College and Cornell University; past visiting lecturer, Sweet Briar College. Alumna Citation, Hood College, 1957. Current activities: Advisory Screening Committee in Astronomy, Council for International Exchange of Scholars.

Julie Lutz (astronomy), 1944; B.S., 1965, San Diego State University; M.S., 1968, and Ph.D., 1972, University of Illinois. With Washington State University since 1972; associate professor since 1978; associate provost, 1981-82. Past visiting scientist, Kitt Peak National Observatory; research astronomer, Lick Observatory; and research fellow, University College (London). Current activities: Annie J. Cannon Prize Committee and Harlow Shapley lecturer, American Astronomical Society; Cerro Tololo Interamerican Observatory Allocation Review Committee.

Catherine A. Pilachowski (astronomy), 1949; B.S., 1971, Harvey Mudd College; M.S., 1973, and Ph.D., 1975, University of Hawaii. Assistant support scientist, Kitt Peak National Observatory, since 1979. Previously with University of Washington. Fellow, American Association of University Women, 1974-75. Current activities: Board of Directors and chair, Committee on the Status of Women, American Astronomical Society.

Section E-Geology and Geography

Chairperson-Elect (one to be elected).

Léo F. Laporte
Daniel F. Merriam

Léo F. Laporte (geology, paleontology, stratigraphy), 1933; B.A., 1956, and Ph.D., 1960, Columbia University. Professor of earth sciences, University of California, Santa Cruz, since 1971; dean, Natural Sciences Division, 1975-76. Previously with Brown University and New York State Geological Survey; past visiting professor, Yale University. President's Award, American Association of Petroleum Geologists, 1968; Alumni Award for Distinguished Teaching, University of California, Santa Cruz, 1980; fellow, California Academy of Sciences and Geological Society of America; Research Committee, 1968-70 (chairman, 1970), and councilor for paleontology, 1979-81, Society of Economic Paleontologists and Mineralogists; Committee on Geological Sciences, National Academy of Sciences-National Research Council, 1971-72; visiting scientist, American Geological Institute, 1971-72. Current activities: Editorial Boards, *Paleobiology* and *Environmental Geology*.

Daniel F. Merriam (geology), 1927; B.S., 1949, M.S., 1953, and Ph.D., 1961, University of Kansas; M.Sc., 1969, Leicester University. Jessie Page Heroy professor of geology, Syracuse University, since 1971; chairman, Department of Geology, 1971-80. Previously with Union Oil Company of California, University of Kansas, and Kansas Geological Survey; past visiting positions, Stanford University, Wichita State University, and Ecole des Mines de Paris. Fulbright-Hays fellow (United Kingdom), 1964-65; fellow, Geological Society of America, Geological Society of London, and Sigma Xi; Esso distinguished lecturer (Australia), 1979; secretary general, 1972-76, and president, 1976-80, International Association for Mathematical Geology; executive secretary, 1972-77, and president, 1977-78, New York State Geological Association; past member or chairman of numerous boards and committees. Current activities: Committees on Computer Applications in Geology and on Membership, American Association of Petroleum Geologists; Publications Committee, Society of Economic Paleontologists and Mineralogists; Program Committee, Geoscience Information Society; chairman, Advisory Board on Publication, International Union of Geological Sciences; Board of Directors, NYSGA; U.S. National Commission for UNESCO; editor-in-chief, *Computers & Geosciences*; various editorial boards. AAAS activities: Electorate Nominating Committee, Section on Geology and Geography, 1978-80.

Member-at-Large of the Section Committee (one to be elected).

James Frazier Davis
O. T. Hayward

James Frazier Davis (geology), 1931; M.A., 1953, University of Virginia; M.S., 1956, and Ph.D., 1965, University of Wisconsin. State geologist and chief, Division of Mines and Geology, State of California, since 1978. Previously with Canadian Geological Survey, U.S. Forest Service, U.S. Steel Corporation, and New York State Geological Survey. W. A. Tarr Award; Z Award; Knapp Memorial fellow; fellow, Geological Society of America; president, State University of New York

at Albany Chapter, Sigma Xi, 1975-76; chairman, 1972-73, and Board, 1974-75, Northeastern Section, Geological Society of America. Current activities: chairman, California Earthquake Prediction Evaluation Council, and Threat Assessment Committee, Governor's Earthquake Preparedness Task Force; Board, Southern California Earthquake Preparedness Project; Liaison Committee, American Association of State Geologists.

O. T. Hayward (geology), 1921; B.S., 1945, University of Kansas; M.S., 1951, Stanford University; Ph.D., 1957, University of Wisconsin. With Baylor University since 1955; professor since 1960. Previously with Phillips Venezuelan Oil Company, Phillips Petroleum Company, Gulf Oil Corporation, and California Company. Fellow, Geological Society of America; executive director, Council on Education in the Geological Sciences, American Geological Institute, 1964-66; president, National Association of Geology Teachers, 1979-80; past member of various committees. Current activities: Education Committee, American Association of Petroleum Geologists; chairman, Nominating Committee, NAGT. AAAS activities: Section Committee, Section on Geology and Geography, 1979-.

Members of the Electorate Nominating Committee (two to be elected).

Robert E. Boyer
Randolph W. Bromery
Raymond E. Crist
Joseph E. Schwartzberg

Robert E. Boyer (geology), 1929; B.A., 1951, Colgate University; M.A., 1954, Indiana University; Ph.D., 1959, University of Michigan. With University of Texas, Austin, since 1957; currently dean, College of Natural Sciences, and professor of geological sciences and education. Special Service Award, University of Texas Geology Foundation Advisory Council, 1980; Neil A. Miner Award, National Association of Geology Teachers, 1980; president, Texas Academy of Science, 1968, NAGT, 1974, Austin Geological Society, 1975, and Gulf Coast Association of Geological Societies, 1976; chairman, Executive Committee, University of Texas Geology Foundation, 1971-80. Current activities: councilor, Geological Society of America; executive director, College of Natural Sciences Foundation, University of Texas, Austin; publications chairman, GCAGS.

Randolph W. Bromery (geophysics, geology), 1926; B.S., 1956, Howard University; M.S., 1962, American University; Ph.D., 1968, Johns Hopkins University. With University of Massachusetts, Amherst, since 1967; Commonwealth professor of geophysics since 1979; chancellor, 1971-79. Previously with U.S. Geological Survey. Special Service Award, USGS; Special Commendation, Republic of Liberia; Excellence in Earth, Physical, and Atmospheric Sciences, NCBPD. Current activities: Advisory Council, National Aeronautics and Space Administration; Committee of Committees, Geological Society of America; vice chairman, Coalition for Economic and Social Change; Boards of Directors, Exxon Corp., Singer Co., and New England Telephone Co.; corporation member, Woods Hole Oceanographic Institution, Boston Museum of Science, and Babson Institute; trustee, Talladega College.

Raymond E. Crist (cultural geography), 1904; B.A., 1925, University of Cincinnati; Docteur es Lettres, 1937, University of Gre-

noble. With University of Florida since 1951; research professor of geography emeritus since 1975. Previously with University of Illinois, University of Puerto Rico, and University of Maryland; Fulbright research professor (Toulouse), 1959. McKibbin Medal Award, University of Cincinnati, 1925; Guggenheim fellow, 1940-41; Fermat Medal, Académie des Sciences, Inscriptions et Belles-Lettres de Toulouse, 1967; past member, Educational Advisory Board and Selection Committee for Latin Americans, John Simon Guggenheim Memorial Foundation. Current activities: Editorial Board, *American Journal of Economics and Sociology*.

Joseph E. Schwartzberg (geography), 1928; B.A., 1949, Brooklyn College; M.A., 1951, University of Maryland; Ph.D., 1960, University of Wisconsin. With University of Minnesota since 1964; professor, Department of Geography and South Asian Studies, since 1970. Previously with University of Pennsylvania; past visiting Fulbright professor, Jawaharlal Nehru University. Social Science Research Council fellow, 1958-60 and 1974; American Institute of Indian Studies fellow, 1962-63; Watumull Prize, American Historical Association, 1980; S. Asia Regional Council, Association for Asian Studies, 1967-70. Current activities: trustee, Board of Directors, and Executive Council, AIIS; South Asian Fulbright Selection Committee.

Section G—Biological Sciences

Chairperson-Elect (one to be elected).

John O. Corliss
Charlotte P. Mangum

John O. Corliss (zoology, protozoology), 1922; B.S., 1944, University of Chicago; B.A., 1947, University of Vermont; Ph.D., 1951, New York University. Professor and chairman, Department of Zoology, University of Maryland, since 1970. Previously with Yale University, University of Illinois, and National Science Foundation; past visiting research professor, University College (London) and Université de Genève. President, Society of Protozoologists, 1965, American Microscopical Society, 1966, Society of Systematic Zoology, 1970, and American Society of Zoologists, 1972; chairman, Council of Biology Editors, 1969; co-president, First International Congress of Systematic and Evolutionary Biology, 1970-74; chairman, U.S. National Committee, International Union of Biological Sciences, 1971-73. Current activities: commissioner, International Commission on Zoological Nomenclature; trustee, Chesapeake Research Consortium and American Type Culture Collection; managing editor, *Journal of Protozoology*; member of numerous committees. AAAS activities: Section Committee, Section on Biological Sciences, 1974-75.

Charlotte P. Mangum (comparative physiology), 1938; A.B., 1959, Vassar College; Ph.D., 1963, Yale University. With College of William and Mary since 1964; professor since 1974. Previously with Marine Biological Laboratory and University of Aarhus. Member-at-large, Executive Committee, 1974-76, and chairman, Division of Comparative Physiology and Biochemistry, 1978-79, American Society of Zoologists; member-at-large, Governing Board, American Institute of Biological Sciences, 1977-80. Current activities: secretary, U.S. National Committee, International Union of Physiological Sciences; chairman,

Section of Comparative Physiology and Biochemistry, Division of Zoology, International Union of Biological Sciences; Editorial Boards, *Physiological Zoology* and *Marine Biology Letters*. AAAS activities: Electorate Nominating Committee, Section on Biological Sciences, 1978-80.

Member-at-Large of the Section Committee (one to be elected).

Peter W. Frank
John H. Ryther

Peter W. Frank (population ecology), 1923; A.B., 1944, Earlham College; Ph.D., 1951, University of Chicago. With University of Oregon since 1957; professor of biology since 1962. Previously with University of Missouri. Seessel fellow, Yale University, 1951-52; aquatic editor, *Ecology*, 1965-70. Current activities: associate editor, *Annual Review of Ecology & Systematics*. AAAS activities: Council and Section Committees, Sections on Biological Sciences and on Atmospheric and Hydrospheric Sciences, 1972-73.

John H. Ryther (biological oceanography), 1922; A.B., 1947, M.A., 1950, and Ph.D., 1951, Harvard University. With Woods Hole Oceanographic Institution since 1951; senior scientist since 1963; director, Coastal Research Center, since 1979. Fellow, American Academy of Arts and Sciences. Current activities: Scientific Advisory Committees, International Atlantic Salmon Foundation and New England Aquarium; Visiting Committee, Department of Applied Science, Brookhaven National Laboratory; Committee on Mariculture, International Council for the Exploration of the Sea; Advisory Panel on Polar Programs, National Science Foundation.

Members of the Electorate Nominating Committee (two to be elected).

Paula T. Beall
Ronald R. Hoy
Jeffrey B. Mitton
Palmer Rogers

Paula T. Beall (biophysics, cell biology), 1946; B.S., 1968, Rice University; M.S., 1970, and Ph.D., 1976, University of Texas. With Baylor College of Medicine since 1974; assistant professor, Department of Physiology, since 1977. Previously with Pitt Memorial Hospital, East Carolina Medical School, and Office of Naval Research. Robert Welch Foundation graduate fellow, 1968-70; national secretary, Association for Women in Science, 1976-78; chair, Public Relations Committee, Tissue Culture Association, 1978-80; Executive Board, Biophysical Society, 1979-80. Current activities: Council, Nominating Committee, Public Policy Committee, Professional Opportunities for Women Committee, and chair, Committee on Awards and Honors, Biophysical Society; national secretary and Science Task Force, Federation of Organizations for Professional Women.

Ronald R. Hoy (zoology, neurobiology), 1939; B.S., 1962, Washington State University; Ph.D., 1968, Stanford University. With Cornell University since 1973; associate professor of neurobiology and behavior since 1977. Previously with State University of New York, Stony Brook. Current activities: instructor-in-charge, neural systems and behavior course, and member of the Corporation, Marine Biological Laboratory.

Jeffrey B. Mitton (biology, ecology, evolution), 1947; B.A., 1969, University of Con-

necticut; Ph.D., 1973, State University of New York, Stony Brook. With University of Colorado since 1973; associate professor, Department of Environmental, Population, and Organismic Biology, since 1980. National Institutes of Health postdoctoral fellow, University of California, Davis, 1973-74; visiting research scientist, Marine Biological Laboratory, 1980-81. Current activities: secretary, Society for the Study of Evolution.

Palmer Rogers (microbiology, biochemistry), 1927; B.S., 1950, Yale University; Ph.D., 1957, Johns Hopkins University. With University of Minnesota since 1962; professor of microbiology since 1969. Previously with Johns Hopkins University, National Institutes of Health, Oak Ridge National Laboratory (American Cancer Society fellow), and Ohio State University. NIH special fellow, Max Planck Institute for Medical Research, 1972-73; Nominating Committee, Physiology Section, American Society for Microbiology, 1970. Current activities: panels, Ad Hoc Member NATO Fellowship, NIH Microbial Genetics, and Department of Energy, Biological Energy Research; Editorial Board, *Journal of Bacteriology*.

Section H—Anthropology

Chairperson-Elect (one to be elected).

Richard A. Gould
Douglas W. Schwartz

Richard A. Gould (anthropology), 1939; B.A., 1961, Harvard University; Ph.D., 1965, University of California, Berkeley. Professor of anthropology, Brown University, beginning in 1981. Previously with American Museum of Natural History and University of Hawaii. National Science Foundation fellow, 1964-65; Social Science Research Council fellow, 1966-67; Scientific Grants and Awards Committee, Explorers Club (New York), 1969-76; regional and book review editor, *Asian Perspectives*, University of Hawaii, 1971-81; chairman, Committee on Ethics, American Anthropological Association, 1976-77; Hawaii Committee for the Humanities, 1979-81. AAAS activities: Electorate Nominating Committee, Section on Anthropology, 1978-80 (chairman, 1980).

Douglas W. Schwartz (anthropology, archaeology), 1929; B.A., 1950, University of Kentucky; Ph.D., 1955, Yale University. President, School of American Research, since 1967. Previously with University of Oklahoma and University of Kentucky. Award for outstanding contribution in the field of historical publications (*Conceptions of Kentucky Prehistory*), American Association for State and Local History, 1968; president, Society for American Archaeology, 1973-74; president, Board of Trustees, Santa Fe Preparatory School, 1976; chairman, Secretary of the Interior's Advisory Board on National Parks, 1977-78. Current activities: president, Witter Bynner Foundation for Poetry; vice chairman, Harvard University Overseers' Committee on Peabody Museum; trustee, Jane Goodall African Wildlife Research Institute; Council, National Park Service Advisory Board; Public Broadcasting Associates Advisory Board.

Member-at-Large of the Section Committee (one to be elected).

Carol Kramer
John E. Yellen

Carol Kramer (anthropology, archaeology), 1943; B.A., 1964, City College, City University of New York; Ph.D., 1971, University of Pennsylvania. With City University of New York since 1971; associate professor of anthropology, Graduate Center, since 1972, and Lehman College, since 1974. Committee on the Status of Women, American Anthropological Association, 1973-75; trustee-at-large, American Institute of Iranian Studies, 1978-81. Current activities: Nominations Committee and Executive Committee, AIIIS; Executive Committee, Doctoral Program in Anthropology, and Anthropology Review Panel, University Committee on Research, CUNY.

John E. Yellen (anthropology), 1942; B.A., 1964, Hobart College; M.A., 1966, and Ph.D., 1974, Harvard University. Director, Anthropology Program, National Science Foundation, since 1977; research associate, Smithsonian Institution, since 1974; assistant research professor, George Washington University, since 1975. National Graduate fellow; fellowships and research awards from British Institute of History and Archaeology in East Africa, 1966, Wenner Gren Foundation, 1969, Smithsonian Institution, 1972-74, National Geographic Society, 1973, and NSF, 1975-77; Program Committee, Society for American Archaeology, 1974.

Members of the Electorate Nominating Committee (two to be elected).

Mary Elizabeth King
Ruthann Knudson
Michael E. Moseley
Jeffrey R. Parsons

Mary Elizabeth King (anthropology), 1929; A.B., 1951, Cornell University; M.A., 1958, Columbia University; Ph.D., 1965, University of Arizona. Keeper of collections, University Museum, and adjunct professor, University of Pennsylvania, since 1978. Previously with Textile Museum (Washington, D.C.), University of Arizona, Arizona State Museum, Howard University, and Texas Tech University. Fellow, American Anthropological Association and Royal Anthropological Institute; chairman, Committee to Study the Training of Curators of Anthropology, 1975-79, and Board member, 1977-79, Council for Museum Anthropology; chairman, Task Force on Ethics, Curators' Committee, 1977-80, and chairman, Curators' Committee, 1979-81, American Association of Museums. Current activities: vice president, Association for Field Archaeology; Executive Board, ICME; Committee on the Status of Women in Anthropology, AAA; Membership and Professional Practices Committees, AAM; chairman, Program Committee, Society for American Archaeology.

Ruthann Knudson (anthropological archaeology, cultural resource management), 1941; B.A., 1963, and M.A., 1966, University of Minnesota; Ph.D., 1973, Washington State University. Senior project scientist/cultural resource management, Woodward-Clyde Consultants (San Francisco), beginning in 1981. Previously with University of Northern Colorado, Washington State University, and University of Idaho; past visiting assistant professor, Wright State University. National Science Foundation fellow, 1971; National Conference of State Historic Preservation Officers Award, 1981; Executive Boards, Idaho Advisory Council of Professional Archaeologists, 1974-80, and American Society for Conservation Archaeology, 1979-81. Current

activities: Board of Directors, Preservation Action; legislative coordinator, Society for American Archaeology; Political Action Committee, Society of Professional Archaeologists.

Michael E. Moseley (anthropology, archaeology), 1941; B.A., 1963, University of California, Berkeley; M.A., 1965, and Ph.D., 1968, Harvard University. Associate curator, Field Museum of Natural History, since 1976. Previously with Harvard University; visiting professor, University of Chicago, 1980-. Hilltop Foundation fellow, 1961-63; Harvard University fellow, 1963-64 and 1965-66; Doherty Foundation traveling fellow, 1966-67; A. L. Kroeber Award in Anthropology, 1963.

Jeffrey R. Parsons (anthropology, archaeology), 1939; B.S., 1961, Pennsylvania State University; Ph.D., 1966, University of Michigan. With University of Michigan since 1966; professor of anthropology and curator of Latin American archaeology since 1976. Current activities: Subcommittee for Anthropology, Advisory Committee for Behavioral and Neural Sciences, National Science Foundation.

Section J-Psychology

Council Delegates (three to be elected).

Roger Brown
James G. Greeno
Gregory A. Kimble
Edith D. Nelmark
John A. Swets
Allan R. Wagner

Roger Brown (psychology), 1925; B.A., 1948, M.A., 1949, and Ph.D., 1952, University of Michigan. With Harvard University since 1962; John Lindsley professor of psychology since 1974. Previously with Massachusetts Institute of Technology. Guggenheim fellow, 1966-67; Outstanding Achievement Award, University of Michigan, 1969; Distinguished Scientific Achievement Award, 1971, and G. Stanley Hall Award in developmental psychology, 1973, American Psychological Association; member, National Academy of Sciences; president, New England Psychological Association, 1965-66, Division 8, APA, 1965-66, and Eastern Psychological Association, 1971-72. Current activities: Board of Consultants, *Arete Encyclopedia*; Editorial Boards, *Applied Psycholinguistics*, *Journal of Psycholinguistic Research*, *Cognition*, *Discourse Processes*, *First Language*, and *International Journal of Psycholinguistic Research*.

James G. Greeno (psychology), 1935; B.A., 1957, M.A., 1958, and Ph.D., 1961, University of Minnesota. With University of Pittsburgh since 1976; currently University professor of psychology. Previously with Indiana University and University of Michigan; past visiting associate professor, Stanford University, and visiting scientist, Oxford University. Guggenheim fellow, 1973-74; fellow, Divisions of Experimental and Educational Psychology, American Psychological Association; Governing Board, 1975-80 (chair, 1980), and Committee on Publications, 1976-80 (chair, 1980), Psychonomic Society; president, Midwestern Psychological Association, 1977-78; Council of Representatives, APA, 1977-79; Executive Committee, 1977-80, and president, 1980, Society for Mathematical Psychology. Current activities: secretary-treasurer, Society of Experimental Psychologists; Board of Scientific Affairs, APA.

Gregory A. Kimble (experimental psychology), 1917; B.A., 1940, Carleton College; M.A., 1942, Northwestern University; Ph.D., 1945, State University of Iowa. Professor and chairman, Department of Psychology, Duke University, since 1977. Previously with Brown University, Yale University, and University of Colorado. President, Division of Experimental Psychology, American Psychological Association, 1963-64, and Rocky Mountain Psychological Association, 1974-75. Current activities: editor, *Journal of Experimental Psychology: General*; Board of Directors, APA; president, Division of General Psychology, APA, beginning in 1982. AAAS activities: member-at-large of the Section Committee, Section on Psychology, 1975-78.

Edith D. Nelmark (psychology), 1928; B.A., 1949, Skidmore College; M.A., 1952, and Ph.D., 1953, Indiana University. With Douglass College, Rutgers University, since 1964; currently professor. Previously with Tulane University, Goucher College, U.S. Air Force Research and Training Center, and New York University. President, Rutgers Chapter, American Association of University Professors, 1972-73; Executive Committee, at large member, Division 3, 1976-78, and Membership Committee, 1978-80, American Psychological Association; Council, Eastern Psychological Association, 1976-78. Current activities: Board of Directors, Jean Piaget Society. AAAS activities: Electorate Nominating Committee, Section on Psychology, 1976-78.

John A. Swets (psychology), 1928; B.A., 1950, and Ph.D., 1954, University of Michigan. With Bolt Beranek and Newman, Inc., since 1963; chief scientist since 1975. Previously with University of Michigan and Massachusetts Institute of Technology; past visiting research fellow, Instituut voor Perceptie Onderzoek, and regents' professor, University of California. Fellow, Acoustical Society of America and American Psychological Association; chairman, Technical Committee on Psychological and Physiological Acoustics, 1964-66, and member, Executive Council, 1968-70, ASA; past member, Ad Hoc Communications Committee, APA. Current activities: Vision Committee and Committee on Hearing and Bioacoustics, National Research Council; Editorial Board, *Medical Decision Making*; Committee on Quantitative Sciences in the Medical Area, Harvard University.

Allan R. Wagner (experimental psychology), 1934; B.A., 1956, M.A., 1958, and Ph.D., 1959, University of Iowa. With Yale University since 1959; professor, Department of Psychology, since 1970. National Science Foundation fellow, 1958-59; National Institute of Mental Health special fellow, 1963-64; fellow, American Psychological Association; Experimental Psychology Research Review Committee, NIMH, 1968-71; past associate editor, *Learning and Motivation* and *Animal Learning and Behavior*; Behavioral Science Cluster, President's Panel on Biomedical and Behavioral Research, 1975-76; chairman, Membership Committee, Division of Experimental Psychology, APA, 1976-77; Panel on Scientific Awards, APA, 1979. Current activities: editor, *Journal of Experimental Psychology: Animal Behavior Processes*; Council of Editors, APA.

Chairperson-Elect (one to be elected).

Leo M. Hurvich
Janet T. Spence

Leo M. Hurvich (sensory psychology), 1910; B.A., 1932, Harvard College; M.A., 1934, and Ph.D., 1936, Harvard University. With University of Pennsylvania since 1962; professor emeritus of psychology since 1979. Previously with Harvard University, Eastman Kodak Company, and New York University. Guggenheim fellow, 1964–65; Howard Crosby Warren Medal, 1971; Distinguished Scientific Contribution Award, Society of Experimental Psychologists, 1972; I. H. Godlove Award, American Psychological Association, 1973. Current activities: associate editor, *Journal of the Optical Society of America*; visiting committee, Department of Psychology, Massachusetts Institute of Technology; APA delegate, ISCC.

Janet T. Spence (psychology), 1923; A.B., 1945, Oberlin College; Ph.D., 1949, University of Iowa. With University of Texas, Austin, since 1964; currently Ashbel Smith professor of psychology and educational psychology. Previously with Northwestern University and Veterans Administration Hospital (Iowa City); fellow, Center for Advanced Study in the Behavioral Sciences, 1978–79. Gold Medal, Hollins College, 1968; Ford Foundation fellow, 1974–75; president, Southwestern Psychological Association, 1971; Board of Directors, American Psychological Association, 1976–79. Current activities: Board of Governors, Psychonomic Society; Publications and Communications Board, Commission on Organization, and chair, Insurance Trust, APA; Committee on Ability Testing, National Research Council. AAAS activities: member-at-large of the Section Committee, Section on Psychology (J), 1976–79; Electorate Nominating Committee, Section J, 1975–77 and 1979–81.

Member-at-Large of the Section Committee (one to be elected).

Lewis P. Lipsitt
Marian Radke Yarrow

Lewis P. Lipsitt (psychology), 1929; B.A., 1950, University of Chicago; M.S., 1952, University of Massachusetts; Ph.D., 1957, University of Iowa. With Brown University since 1957; professor of psychology since 1966 and professor of medical science since 1974. Fellow, Center for Advanced Study in the Behavioral Sciences, 1979–80. U.S. Public Health Service fellow, 1966 and 1972; Guggenheim fellow, 1973; fellow, American Psychological Association; Council of Representatives, 1971–74, and Boyd McCandless Young Scientist Award Committee, 1977–78, Division on Developmental Psychology, APA. Current activities: president, Division 7, APA; chairman, North American Membership Committee, International Society for the Study of Behavioral Development. AAAS activities: Section Committee, Section on Psychology, 1971–; Council, 1971–73, 1976–78.

Marian Radke Yarrow (psychology), 1918; B.A., 1939, University of Wisconsin; M.A., 1941, and Ph.D., 1944, University of Minnesota. With National Institute of Mental Health since 1953; chief, Laboratory of Developmental Psychology, since 1974. Previously with Massachusetts Institute of Technology, Queens College, University of Denver, and HumRRO, George Washington University. Superior Service Award, U.S. Department of Health, Education, and Welfare; Senior Executive Performance Award, U.S. Department of Health and Human Services; secretary, 1958–61, and president, 1962–63, Division 7, American Psychological Association;

secretary, Society for Research in Child Development, 1961–65; president, Assembly of Scientists, NIMH and National Institute of Neurological and Communicative Disorders and Stroke, 1975–76. Current activities: Board of Scientific Counselors, National Institute of Aging; Selection Committee, Fogarty International Scholars, National Institutes of Health; Behavioral Science Review Committee, NIMH; Board of Directors, Foundations Fund for Research in Psychiatry; Editorial Boards, *Child Development* and *Developmental Review*.

Members of the Electorate Nominating Committee (two to be elected).

Kay Deaux
Richard J. Herrnstein
Robert A. Rescorla
Richard F. Thompson

Kay Deaux (social psychology), 1941; B.A., 1963, Northwestern University; Ph.D., 1967, University of Texas, Austin. With Purdue University since 1970; currently professor of psychology. Previously with Wright State University; past visiting professor, New York University. Fellow, American Psychological Association (Divisions 8, 9, and 35); Executive Committee, Society of Experimental Social Psychology, 1975–78; Executive Committee, Division 8, APA, 1978–81. Current activities: president and Council, Midwestern Psychological Association; Editorial Boards, *Journal of Social Issues*, *Journal of Applied Social Psychology*, and *Sex Roles*.

Richard J. Herrnstein (experimental psychology), 1930; A.B., 1952, City College of New York; Ph.D., 1955, Harvard University. With Harvard University since 1958; professor of psychology since 1967. Previously with Walter Reed Army Institute of Research and University of Maryland. Guggenheim fellow, 1977–78; editor, *Psychological Bulletin*, 1975–81; fellow, American Psychological Association.

Robert A. Rescorla (psychology), 1940; B.A., 1962, Swarthmore College; Ph.D., 1966, University of Pennsylvania. Professor of psychology, University of Pennsylvania, beginning in 1981. Previously with Yale University. Current activities: Executive Committee, Division 3, American Psychological Association; Governing Board, Psychonomic Society.

Richard F. Thompson (psychology), 1930; B.A., 1952, Reed College; M.S., 1953, and Ph.D., 1956, University of Wisconsin. Professor of psychology and human biology, Stanford University, since 1980. Previously with University of Oregon Medical School, Harvard University, and University of California, Irvine. Member, National Academy of Sciences; Research Scientist Career Award, National Institute of Mental Health; Distinguished Scientific Contribution Award, American Psychological Association, 1977; Council, Society of Neuroscience, 1972–76; chair, Governing Board, Psychonomic Society, 1975–76. Current activities: Executive Committee, Assembly of Behavioral and Social Sciences, National Research Council; Biological Sciences Training Committee and Mental Health Research Education Review Committee, NIMH; editor, *Physiological Psychology*; Editorial Boards, *Brain Research* and *Neurological Research*; regional editor, *Behavioral Brain Research* and *Physiology & Behavior*.

Section K—Social, Economic, and Political Sciences

Council Delegate (one to be elected).

Suzanne Keller
Patricia Kendall

Suzanne Keller (sociology), 1929; Ph.D., 1953, Columbia University. Professor, Department of Sociology, Princeton University, since 1968. Previously with Brandeis University, Vassar College, and Graduate School of Ekistics, Athens (Fulbright professor). Guggenheim fellow, 1972; vice president, American Sociological Association, 1975–76. Current activities: editor, ASA Arnold and Caroline Rose Monograph Series; chair, Board of Directors, Center for Research on the Acts of Man (Philadelphia); Jerusalem Committee; Board, Teleprompter Corporation; Site Visiting Committee, Department of Sociology, and Ad Hoc Selection Committee, Harvard University.

Patricia Kendall (sociology), 1921; A.B., 1942, Smith College; Ph.D., 1954, Columbia University. With City University of New York since 1965; currently professor of sociology, Queens College and Graduate School. Previously with Columbia University. Smith College Alumnae fellow, 1942–43; Rockefeller fellow, 1943–44; University fellow of Columbia University, 1944–45; associate fellow, New York Academy of Medicine; numerous offices in American Sociological Association, 1960–80, and Eastern Sociological Society, 1965–80 (vice president, 1980).

Chairperson-Elect (one to be elected).

Kenneth J. Arrow
Robin M. Williams, Jr.

Kenneth J. Arrow (economics, operations research), 1921; B.Sc., 1940, City College of New York; M.A., 1941, and Ph.D., 1951, Columbia University. Joan Kenney professor of economics and professor of operations research, Stanford University, since 1979. Previously with University of Chicago and Harvard University. John Bates Clark Medal, American Economic Association, 1957; Nobel Memorial Prize in Economic Sciences, 1972; president, Econometric Society, 1956, Institute of Management Sciences, 1963, and AEA, 1972; member, National Academy of Sciences. Current activities: president, Western Economic Association; vice president, American Academy of Arts and Sciences; Selection Committee for the Waterman Award, National Science Foundation; Faculty Advisory Board and Faculty Senate, Stanford University.

Robin M. Williams, Jr. (sociology), 1914; B.S., 1933, and M.S., 1935, North Carolina State University; M.A., 1939, and Ph.D., 1943, Harvard University. With Cornell University since 1946; Henry Scarborough professor of social science since 1967. Previously with University of Kentucky and U.S. War Department; visiting professor at various universities. President, 1958, secretary, 1965–67, and editor, Arnold and Caroline Rose Monograph Series, 1976–79, American Sociological Association; president, Sociological Research Association, 1958, and Eastern Sociological Society, 1966–67; fellow, Institute of Society, Ethics and the Life Sciences. Current activities: Committee on Child Development Research and Public Policy, National Research Council; chair, Committee on Awards Policy, ASA; Committee on Professional Opportuni-

ties in Applied Sociology; chair, Nominations Committee, III, American Philosophical Society.

Member-at-Large of the Section Committee (one to be elected).

Kenneth Prewitt
Karl Schuessler

Kenneth Prewitt (social science), 1936; B.A., 1958, Southern Methodist University; M.A., 1959, Washington University; Ph.D., 1963, Stanford University. President, Social Science Research Council, since 1979. Previously with Washington University and University of Chicago; past visiting professor, Stanford University, and visiting research fellow, University of Nairobi. Fellow, American Academy of Arts and Sciences; Council, American Political Science Association, 1970-72. Current activities: trustee, National Opinion Research Center; Governing Board, International Center for Insect Physiology and Ecology (Nairobi); Conference Board of Associated Research Councils; Board of Directors, SSRC; various editorial boards.

Karl Schuessler (sociology), 1915; B.A., 1936, Evansville College; M.A., 1939, University of Chicago; Ph.D., 1947, Indiana University. With Indiana University since 1947; distinguished professor of sociology since 1976. Previously with Vanderbilt University; past visiting professor, University of California, Los Angeles and Berkeley, and University of Washington. Advisory Panel on Sociology, National Science Foundation, 1962-63; Behavioral Section, National Institutes of Health, 1964-68; Social Science Research Study Section, 1968-69, and Social Science Training Study Section, 1969-73, National Institute of Mental Health; member, National Research Council.

Members of the Electorate Nominating Committee (two to be elected).

David Gold
Warren O. Hagstrom
Charles Perrow
Robert S. Weiss

David Gold (sociology), 1924; B.A., 1947, and M.A., 1948, University of Iowa; Ph.D., 1953, University of Chicago. Professor of sociology, University of California, Santa Barbara, since 1963. Previously with University of Iowa; past visiting professor, University of California, Berkeley. Fellow, Center for Advanced Study in the Behavioral Sciences, 1954-55; faculty research fellow, Social Science Research Council, 1957-60; editor, *Social Problems*, 1969-75; president, Pacific Sociological Association, 1976-77; past member of numerous committees, American Sociological Association. Current activities: editor, *Pacific Sociological Review*; Executive Council, PSA.

Warren O. Hagstrom (sociology), 1930; B.A., 1952, and M.A., 1954, University of Minnesota; Ph.D., 1963, University of California, Berkeley. With University of Wisconsin, Madison, since 1962; professor since 1968; chairman, Department of Sociology, 1973-76. Previously with University of California, Berkeley. Advisory Panel on Sociology and Social Psychology, National Science Foundation, 1969-71; National Research Council advisory committees, 1969-73; president, Society for Social Studies of Science, 1976-78. Current activities: consultant-evaluator, North Central Association of Colleges and Secondary Schools.

Charles Perrow (sociology), 1925; B.A., 1953, M.A., 1955, and Ph.D., 1960, University of California, Berkeley. Professor, Department of Sociology, State University of New York, Stony Brook, since 1970. Previously with University of Michigan, University of Pittsburgh, and University of Wisconsin; past visiting professor, University of California, Berkeley, and London Graduate School of Business Studies. Past member, Editorial Boards, *Administrative Science Quarterly*, *Administration and Society*, and other journals; Council, Section on Professions and Organizations, American Sociological Association, 1969-70; Sociology Panel, National Science Foundation, 1973-76; vice president, Eastern Sociological Society, 1974-75. Current activities: Human Factors Committee, National Research Council.

Robert S. Weiss (sociology), 1925; B.A., 1949, University of Buffalo; M.A., 1952, and Ph.D., 1955, University of Michigan. Professor, Department of Sociology, University of Massachusetts, Boston, since 1973; lecturer, Department of Psychiatry, Harvard Medical School, since 1964. Previously with University of Michigan, University of Chicago, and Brandeis University. Research Scientist Development Award (senior), National Institute of Mental Health, 1969-73; Guggenheim fellow, 1980-81. Current activities: Nominating Committee, American Orthopsychiatric Association.

Section L—History and Philosophy of Science

Council Delegate (one to be elected).

David Gruender
Arthur L. Norberg

David Gruender (philosophy of science), 1927; A.B., 1951, Antioch College; A.M., 1953, University of Chicago; Ph.D., 1957, University of Wisconsin. With Florida State University since 1967; professor since 1971; chairman, Department of Philosophy, 1972-78. Previously with Kansas State University and Case Institute of Technology. Current activities: chairman, Organizing Committee, Tenth Interamerican Congress of Philosophy; chairman, Committee on Teaching, Research, and Publication, American Association of University Professors; editor, *Synthese*.

Arthur L. Norberg (history of science and technology), 1938; B.S., 1959, Providence College; M.S., 1962, University of Vermont; Ph.D., 1974, University of Wisconsin. Manager, Ethics and Values in Science and Technology Program, National Science Foundation, since 1979. Previously with St. Michael's College, Westinghouse Electric Company, Wisconsin State University, and University of California, Berkeley; NSF science faculty fellow, 1971-72; Smithsonian Institution fellow, 1972-73. Executive Committee, Council, and treasurer, History of Science Society, 1976-80. Current activities: Advisory Council and delegate to American Council of Learned Societies, Society for the History of Technology; chairman, Long-Range Planning Committee, HSS.

Chairperson-Elect (one to be elected).

Daniel J. Kevles
Wesley C. Salmon

Daniel J. Kevles (history of science), 1939; B.A., 1960, and Ph.D., 1964, Princeton University. With California Institute of Technology since 1964; professor of history since 1978;

executive officer for humanities, 1978-81. Past visiting research fellow, University of Sussex, and visiting professor, University of Pennsylvania. National Historical Society Prize in American History, 1979; American Book Award nominee, 1980; president, West Coast Branch, History of Science Society, 1978-80. Current activities: senior fellow, National Endowment for the Humanities; Council, HSS; advisory editor, *Isis*; Advisory Committee, Sloan Foundation Program in Scientific Autobiography.

Wesley C. Salmon (philosophy of science), 1925; M.A., 1947, University of Chicago; Ph.D., 1950, University of California, Los Angeles. Professor of philosophy, University of Pittsburgh, beginning in 1981. Previously with University of California, Los Angeles, Washington State College, Brown University, Indiana University, and University of Arizona; several visiting professorships. President, Philosophy of Science Association, 1971-72, and Pacific Division, American Philosophical Association, 1977-78; fellow, American Academy of Arts and Sciences. Current activities: first vice president, Division of Logic, Methodology and Philosophy of Science, International Union of History and Philosophy of Science.

Member-at-Large of the Section Committee (one to be elected).

George Basalla
Richard M. Burian

George Basalla (history of technology and science), 1928; B.A., 1952, Pennsylvania State University; M.A., 1955, Columbia University; Ph.D., 1963, Harvard University. Associate professor, Department of History, University of Delaware, since 1970. Previously with Harvard University and University of Texas, Austin. Advisory Council, Society for the History of Technology, 1974-78. Current activities: Executive Council, SHOT. AAAS activities: secretary, Section on History and Philosophy of Science (L), 1974-78; Section Committee, Section L, 1978-.

Richard M. Burian (philosophy of science), 1941; B.A., 1963, Reed College; Ph.D., 1971, University of Pittsburgh. Associate professor of philosophy, Drexel University, since 1977. Previously with Brandeis University and Harvard University; past visiting positions, Florida A&M University and University of Pittsburgh. Past member of several committees of the American Philosophical Association and Philosophy of Science Association. Current activities: Editorial Board, *Philosophy of Science*.

Members of the Electorate Nominating Committee (two to be elected).

June Z. Fullmer
Edwin T. Layton, Jr.
Vivien Brodtkin Shelanski
Linda Wessels

June Z. Fullmer (history of science), 1920; B.Sc., 1943, and M.S.Chem., 1945, Illinois Institute of Technology; Ph.D., 1948, Bryn Mawr College. With Ohio State University since 1965; currently professor of history. Previously with Hood College, Chatham College, and Newcomb College, Tulane University. Carnegie fellow, 1946-48; Sarah Berliner fellow, 1948-49; American Council of Learned Societies fellow, 1960-61; Guggenheim fellow, 1963-64; chairman, History of Chemistry Division, American Chemical Society, 1970-71; Council, History of Science

Society, 1970-75; president, Mid-West Junto for the History of Science, 1975.

Edwin T. Layton, Jr. (history of technology), 1928; B.A., 1950, M.A., 1953, and Ph.D., 1957, University of California, Los Angeles. Professor of history of science and technology, University of Minnesota, since 1974. Previously with University of Wisconsin, Ohio State University, Purdue University, and Case Western Reserve University. Dexter Prize, Society for the History of Technology, 1971. Current activities: History and Philosophy of Science Panel and EVIST, Continuing Grants Panel, National Science Foundation; advisory editor, *Isis* and *Technology and Culture*; Editorial Board, *Journal of Business and Professional Ethics*.

Vivien Brodtkin Shelanski (science and public policy), 1942; A.B., 1964, Bryn Mawr College; Ph.D., 1970, University of Chicago. Editor, Rockefeller University Press, beginning in 1981. Previously with Marymount College, National Science Foundation, Organization for Economic Cooperation and Development, and *Science, Technology & Human Values* (Harvard University). Current activities: consultant in science and public policy to government agencies, research organizations, and universities; consulting editor, *Science, Technology & Human Values*.

Linda Wessels (history and philosophy of science), 1942; B.A., 1964, and M.A., 1966, University of Iowa; Ph.D., 1975, Indiana University. Associate professor, Indiana University, since 1976. Previously with University of Minnesota, College of St. Scholastica, and University of Wisconsin, Milwaukee; research fellow, University of Pittsburgh, 1981. Advisory Panel, History and Philosophy of Science, National Science Foundation, 1977-79; Governing Board, Philosophy of Science Association, 1977-79.

Section M-Engineering

Council Delegates (three to be elected).

Peter Elias
Edward W. Ernst
Frederick C. Nelson
Ronald F. Probst
Theodore S. Saad
F. Karl Willenbrock

Peter Elias (information theory), 1923; S.B., 1944, Massachusetts Institute of Technology; M.A., 1948, E.Eng.Sci., 1949, and Ph.D., 1950, Harvard University. With MIT since 1953; Edwin S. Webster professor of electrical engineering since 1974. Past visiting professor, Harvard University, and visiting scholar, Imperial College of Science and Technology. Lowell Prize fellow, 1950-53; fellow, Institute of Electrical and Electronics Engineers and American Academy of Arts and Sciences; member, National Academy of Sciences and National Academy of Engineering; chairman, Information Theory Group, IEEE, 1960; Shannon lecturer, IEEE, 1977. Current activities: Editorial Boards, *Information & Control* and *Proceedings of the IEEE*.

Edward W. Ernst (electrical engineering), 1924; B.S., 1949, M.S., 1950, and Ph.D., 1955, University of Illinois. With University of Illinois since 1958; professor since 1968; associate head, Department of Electrical Engineering, since 1970. Previously with General Electric Company and Stewart-Warner Electronics. President, 1964, and chairman of the Board, 1966, National Electronics Conference; fellow, Institute of Electrical and Elec-

tronics Engineers. Current activities: vice president for electrical activities, Board of Directors, Executive Committee, and chairman, Educational Activities Board, IEEE; Educational Affairs Council, American Association of Engineering Societies; IEEE alternate to Board of Directors, Engineering Accreditation Commission, and vice chairman, EAC, Accreditation Board for Engineering and Technology.

Frederick C. Nelson (mechanical engineering), 1932; B.S., 1954, Tufts University; M.S., 1955, and Ph.D., 1961, Harvard University. With Tufts University since 1955; professor of mechanical engineering since 1971; dean, College of Engineering, since 1980; chairman, Department of Mechanical Engineering, 1969-80. Past visiting research fellow, University of Southampton, and visiting professor, Institut National des Sciences Appliquées de Lyon. Fellow, Acoustical Society of America; Centennial Medallion, American Society of Mechanical Engineers, 1980; chairman, Boston Section, 1972, and chairman, 1979 Vibration Conference, ASME; president, Massachusetts Engineers Council, 1977-79. Current activities: Vibration and Sound Committee, ASME; Shock and Vibration Committee, ASA.

Ronald F. Probst (mechanical engineering), 1928; B.M.E., 1948, New York University; M.S.E., 1950, A.M., 1951, and Ph.D., 1952, Princeton University. Professor of mechanical engineering, Massachusetts Institute of Technology, since 1962. Previously with New York University, Princeton University, and Brown University; past distinguished visiting professor, University of Utah. Guggenheim fellow, 1960-61; Freeman Award in Fluids Engineering, American Society of Mechanical Engineers, 1971; member, National Academy of Engineering; fellow, American Academy of Arts and Sciences, American Institute of Aeronautics and Astronautics, and American Physical Society. Current activities: Assembly of Engineering, National Research Council; senior partner, Water Purification Associates; Editorial Boards, *Desalination* and *Environmental Sciences and Technology* Series.

Theodore S. Saad (microwave engineering), 1920; B.S., 1941, Massachusetts Institute of Technology. Chairman of the Board and president, Sage Laboratories, Inc., since 1955. Previously with Sylvania Company, MIT Radiation Laboratory, Submarine Signal Company, Microwave Development Laboratories, and Sylvania Electric Products, Inc. Fellow, Institute of Electrical and Electronics Engineers; national lecturer, Microwave Theory and Techniques Society, 1972. Current activities: Electro Board of Directors, Public Relations Committee, and Technical Activities Board, IEEE; Administrative Committee, MTT-S.

F. Karl Willenbrock (engineering), 1920; Sc.B., 1942, Brown University; M.A., 1947, and Ph.D., 1950, Harvard University. Cecil H. Green professor of engineering, Southern Methodist University, since 1976; dean, School of Engineering and Applied Science, 1976-81. Previously with Harvard University, State University of New York, Buffalo, and National Bureau of Standards. Gold Medal Award, U.S. Department of Commerce, 1975; member, National Academy of Engineering; fellow, Institute of Electrical and Electronics Engineers; director, 1962-72, and president, 1969, IEEE; Board of Directors, American Society for Testing and Materials, 1971-74. Current activities: Long-Range Planning

Committee and vice president and director, Engineering Index, IEEE; Council and various study groups, NAE; Advisory Committee for the Directorate of Engineering, National Science Foundation; vice chairman, Committee on Research and Technical Planning, ASTM; 1981 Engineering Deans Institute Technical Program Committee. AAAS activities: Editorial Board, *Science*, 1977-80; Electorate Nominating Committee, Section on Engineering, 1980-82.

Chairperson-Elect (one to be elected).

Jan A. Rajchman
Eric A. Walker

Jan A. Rajchman (electronics), 1911; E.E., 1935, and Dr.Tech.Sciences, 1938, Swiss Federal Institute of Technology. President, Jan Rajchman, Inc. (consulting company), since 1978. Previously with RCA Research Laboratories; past visiting McKay professor, University of California, Berkeley; government and industry consultant, 1977-78. Levy Medal, Franklin Institute, 1947; Liebmann Award, 1960, and Edison Medal, 1974, Institute of Electrical and Electronics Engineers; Harold Pender Award, University of Pennsylvania, 1977; Francis Darne Medal, Society of Information Display, 1981; fellow and past member of various committees, IEEE; member, National Academy of Engineering. Current activities: Awards Board, Edison Medal Awards Committee, and USAB Task Force, IEEE.

Eric A. Walker (electrical engineering), 1910; B.S., 1932, M.S., 1933, and D.Sc., 1935, Harvard University. President emeritus, Pennsylvania State University. Previously with Tufts College, University of Connecticut, Harvard University, and ALCOA. Presidential Citation for Distinguished Civilian Service; Golden Omega Award, Institute of Electrical and Electronics Engineers; Navy Distinguished Civilian Award; fellow, IEEE; Benjamin Franklin fellow, Royal Society of the Arts; president, American Society for Engineering Education, 1961-62, Engineers' Joint Council, 1962-63, and National Academy of Engineering, 1966-70; chairman of the Board, National Science Foundation, 1964-66. Current activities: Boards of Directors, Armstrong World Industries, Salem Corporation, and Institute for Defense Analyses (chairman). AAAS activities: Electorate Nominating Committee, Section on Engineering, 1977-79 (chairman, 1979).

Member-at-Large of the Section Committee (one to be elected).

John G. Truxal
Leo Young

John G. Truxal (electrical engineering), 1924; A.B., 1944, Dartmouth College; B.S., 1947, and D.Sc., 1950, Massachusetts Institute of Technology. With State University of New York, Stony Brook, since 1972; distinguished teaching professor since 1977. Previously with Purdue University and Polytechnic Institute of Brooklyn. Education Medal, Instrument Society of America; George Westinghouse Award, American Society for Engineering Education; Education Medal, Institute of Electrical and Electronics Engineers; member, National Academy of Engineering; fellow, IEEE; president, ISA, 1965. Current activities: Committee on Public Understanding of Technology and Education Medal Committee, IEEE; Research Advisory Council, Ford Motor Company. AAAS activities: Sec-

tion Committee, Section on Engineering, and Council, 1967-69; Committee on Industry, Technology, and Society, 1972-74; chairman, Committee on Public Understanding of Science, 1979-.

Leo Young (electrical engineering), 1926; B.A. (math), 1945, B.A. (physics), 1947, and M.A., 1950, Cambridge University; M.S., 1956, and Dr.Eng., 1959, Johns Hopkins University. Staff consultant, Naval Research Laboratory, since 1973. Previously with Bradford University (England), A. C. Cosser, Ltd. (London), Decca Radar (Surrey), Westinghouse Electric Corporation, and Stanford Research Institute; past visiting professor, Technion (Israel). Fellow, Institute of Electrical and Electronics Engineers; Microwave Prize, 1963; president, Microwave Theory and Techniques Society, 1969; Board of Directors, 1971-74 and 1979-, executive vice president, 1979, and president and chairman of the Board, 1980, IEEE; Board of Governors, American Association of Engineering Societies, 1980. Current activities: Commissions A and E, U.S. National Committee, and Organizing Committee of the XXth General Assembly, International Union of Radio Science; Executive Committee and chairman, Nominations and Appointments Committee, IEEE.

Members of the Electorate Nominating Committee (two to be elected).

Bernard Budiansky
Nathan Cohn
Richard M. Emberson
Anthony B. Giordano

Bernard Budiansky (engineering), 1925; B.C.E., 1944, City College of New York; Sc.M., 1948, and Ph.D., 1950, Brown University. With Harvard University since 1955; professor of structural mechanics since 1961. Previously with National Advisory Committee for Aeronautics. Dryden research lecturer, American Institute of Aeronautics and Astronautics, 1970; member, National Academy of Sciences and National Academy of Engineering; fellow, AIAA and American Society of Mechanical Engineers. Current activities: Space Systems and Technology Advisory Committee, National Aeronautics and Space Administration; Materials Research Council, Defense Advanced Research Projects Agency.

Nathan Cohn (instrumentation, automatic control), 1907; S.B., 1927, Massachusetts Institute of Technology. General partner and senior associate, Network Systems Development Associates (Jenkintown, Pennsylvania), since 1979. Previously with Leeds & Northrup Company. Member, National Academy of Engineering; Lamme, Wetherill, and Sperry Medals, 1968; Pennsylvania Engineer of the Year, 1969; Scientific Apparatus Makers Association Award, 1978; president, Instrument Society of America, 1963, and SAMA, 1970-71; chairman, Fellow Committee, 1974-76, and Awards Board, 1977-78, Institute of Electrical and Electronics Engineers. Current activities: Board of Managers, Franklin Institute (chairman, 1971-74); chairman, ASME/ASCE/AIME/IEEE Hoover Medal Board of Award; 1984 Centennial Task Force, IEEE; Committees on Computers and Social Effects of Automation, International Federation of Automatic Control; vice president, Eagleville Hospital and Rehabilitation Center.

Richard M. Emberson (engineering, physics), 1914; A.B., 1931, M.A., 1932, and Ph.D.,

1936, University of Missouri. Retired; residing in Eugene, Oregon. Previously with Harvard College Observatory, University of Pittsburgh, Massachusetts Institute of Technology, Naval Research Laboratory, U.S. Department of Defense, Associated Universities, Inc., and Institute of Electrical and Electronics Engineers (general manager and executive director). Fellow, American Physical Society and IEEE; secretary, Nuclear Science Society, IEEE, 1955-56; Interunion Committee on Allocation of Frequencies for Scientific Research and U.S. Committee for the International Telecommunications Union-Consultative Committee on Radio Science, 1960-66. Current activities: Long-Range Planning Committee, Awards and Recognition Policy Committee, and director emeritus, IEEE; Awards Committee and chairman, Constitution and Bylaws Committee, American Association of Engineering Societies.

Anthony B. Giordano (electrical engineering), 1915; B.E.E., 1937, M.E.E., 1939, and D.E.E., 1946, Polytechnic Institute of Brooklyn. With Polytechnic Institute of New York since 1939; professor of electrical engineering since 1953; dean of graduate studies since 1964. Concurrent positions with General Electric Company, National Defense Research Committee, and Microwave Research Institute. Meritorious Award, Council of Long Island Technical Societies, 1967; Distinguished Wisdom Award, Wisdom Society, 1970; Meritorious Award, Communication Society, Institute of Electrical and Electronics Engineers, 1976; fellow, IEEE; vice president, American Society for Engineering Education, 1974-75; past member or chairman of various boards and committees. Current activities: Awards Board and chairman, Education Medal Committee, IEEE; Board of Trustees, MIT Radio Astronomy Observatory; chairman, Awards Committee, IEEE Education Society; chairman, Senior Research Awards Committee and Graduate Studies Division, ASEE; Board of Directors, Engineering Foundation; Hoover Medal Award Committee.

Section N-Medical Sciences

Council Delegates (seven to be elected).

Walter H. Abelmann
William B. Bean
Gerald S. Berenson
Nemat O. Borhani
Anne M. Briscoe
Robert W. Day
H. Jack Geiger
Bernard Holland
Sidney H. Ingbar
Louis Lasagna
Edmund D. Pellegrino
Jonathan E. Rhoads
Jonas Salk
Ernest Saward
Jay Tepperman

Walter H. Abelmann (medicine, cardiology), 1921; A.B., 1943, Harvard University; M.D., 1946, University of Rochester. With Harvard Medical School since 1953, professor of medicine since 1972; professor of medicine, Harvard-MIT Division of Health Sciences and Technology, since 1974; director, Cardiovascular Research, Beth Israel Hospital, since 1979. Previously with Thorndike Memorial Laboratory and Boston City Hospital. Paul Dudley White Award, Massachusetts

Affiliate, American Heart Association, 1979; president, New England Heart Association, 1964, Massachusetts Heart Association, 1966-67, Association of University Cardiologists, 1972-73, and Medical Care and Education Foundation (Tri-State Regional Medical Programs), 1972-76. Current activities: Board of Directors, Massachusetts Affiliate, AHA; trustee and chairman, Bethesda Committee, American College of Cardiology; Council of Cardiomyopathies, International Society of Cardiology.

William B. Bean (medical humanities, internal medicine), 1909; B.A., 1932, and M.D., 1935, University of Virginia. Sir William Osler professor of medicine emeritus, University of Iowa. Previously with Harvard University, University of Cincinnati, Cincinnati General Hospital, and University of Texas Medical Branch. John Horsley Memorial Prize, University of Virginia, 1944; Groedel Medal, American College of Cardiology, 1961; Harold Swanberg Award, American Medical Writers Association, 1969; McCollum Award, American Society for Clinical Nutrition, 1974; master, American College of Physicians; fellow, American Medical Association, American Heart Association, American College of Chest Physicians, New York Academy of Sciences, Royal Society of Medicine, AMWA, and ACC; Phi Beta Kappa Bicentennial fellow; past president, Iowa Heart Association, Central Society for Clinical Research, American Osler Society, ASCN, and American Clinical and Climatological Association; past member or chairman of various committees and boards. Current activities: Board of Governors, AOS; Editorial Boards, *Medicine*, *Perspectives in Biology and Medicine*, and others. AAAS activities: chairperson, Section on Medical Sciences (N), 1957; Council, 1957 and 1979-81; Committee of Judges, Theobald Smith Award in the Medical Sciences, 1961; Electorate Nominating Committee, Section N, 1975-77.

Gerald S. Berenson (medicine, cardiovascular disease, research), 1922; B.S., 1943, and M.D., 1945, Tulane University. With Louisiana State University School of Medicine since 1954; professor since 1963; director, Specialized Center of Research-Arteriosclerosis, since 1972; head, Cardiology Section, since 1975. Previously with Tulane University School of Medicine. U.S. Public Health Service fellow, 1952-54; chairman, Biochemistry Society, New Orleans, 1956; president, New Orleans Academy of Internal Medicine, 1966, Southern Society for Clinical Investigation, 1969, Louisiana Heart Association, 1971, and Musser-Burch Internal Medicine Society, 1980; vice president, American College of Nutrition, 1977. Current activities: Council on Cardiovascular Disease in the Young, Committee on Atherosclerosis and Hypertension in Childhood, Council on Epidemiology, and Council of Arteriosclerosis, American Heart Association.

Nemat O. Borhani (epidemiology), 1926; B.A., 1945, American College of Teheran; M.D., 1949, University of Teheran; M.P.H., 1960, Johns Hopkins University. Professor and chairman, Department of Community Health, University of California, Davis, since 1968. Previously with Johns Hopkins Hospital and California State Department of Public Health; staff, President's Commission on Heart Disease, Cancer and Stroke, 1964; past visiting professor, University of Santo Tomas (Philippines). Theodore and Susan B. Cummings Humanitarian Award, American Col-

lege of Cardiology, 1974 and 1976; Lasker Foundation Award for outstanding medical research, 1980; fellow, ACC, American College of Chest Physicians, American College of Angiology, International College of Angiology, American Heart Association, and International Society for Studies of Twins.

Anne M. Briscoe (biochemistry), 1918; M.A., 1945, Vassar College; Ph.D., 1949, Yale University. Assistant professor of medicine, College of Physicians and Surgeons, Columbia University, since 1956. Previously with University of Pennsylvania and Cornell University Medical College; past adjunct assistant professor, Hunter College, City University of New York. Sterling fellow, 1947-48; fellow, American Institute of Chemists, New York Academy of Sciences, and Yale Science and Engineering Association. Current activities: Board of Governors and chair, Women in Science Committee, New York Academy of Sciences; New York City Commission on the Status of Women; Advisory Council, Institute of Nuclear Power Operations; president, Association for Women in Science Educational Foundation; secretary, New York Chapter, AIC; vice president, Yale Graduate School Association; Association for Women in Science representative to the United Nations. AAAS activities: Section Committee, Section on Medical Sciences, 1976-.

Robert W. Day (public health), 1930; M.D., 1956, University of Chicago; M.P.H., 1958, and Ph.D., 1962, University of California, Berkeley. With University of Washington since 1968; professor and dean, School of Public Health and Community Medicine, since 1972. Previously with University of California, Los Angeles and Berkeley, California Department of Public Health, and University of California, San Francisco; past visiting associate professor, University of Michigan. Fellow, American Public Health Association and American College of Preventive Medicine; secretary, 1979-80, and chairman, Committee on Education, 1979-80, Association of Schools of Public Health; president, Washington State Public Health Association, 1976; vice president, General Preventive Medicine, ACPM, 1975-76. Current activities: president, American Public Health Association; Board, Planned Parenthood Center of Seattle-King County; Title IX (Medicaid) Advisory Committee, State of Washington; Board of Directors, Fred Hutchinson Cancer Research Center; Editorial Committee, *Annual Review of Public Health*.

H. Jack Geiger (community medicine), 1925; M.D., 1958, Case Western Reserve University School of Medicine; M.Sci.Hyg., 1960, Harvard School of Public Health. Arthur C. Logan professor of community medicine, City College of New York, since 1978; also, professor, Tufts University School of Medicine. Previously with Harvard University and State University of New York, Stony Brook. Milbank faculty fellow, 1966-71; National Health Achievement Award in Community Medicine, Blue Cross-Blue Shield; Rosenhaus Award, American Public Health Association, 1973; Distinguished Service Award, Mississippi Association for Community Health for the Poor, 1973; Governing Council, APHA, 1974-80. Current activities include: Board of Sponsors and chairman, Policy Committee, Physicians for Social Responsibility; Board of Trustees, National Medical Fellowships; Boards of Directors, Scientists' Institute for Public Information and Council for the Advancement of Science

Writing; Committee on Health Policy, National Association of Community Health Centers; Executive Committee, National Coalition to Save Public General Hospitals. AAAS activities: Committees on the Social Aspects of Science, 1957-58, on Science in the Promotion of Human Welfare, 1959-62, on Environmental Alterations, 1969-73, and on Nominations, 1976-77.

Bernard Holland (psychiatry), 1916; B.S., 1939, and M.D., 1943, Emory University. Professor and chairman, Department of Psychiatry, Emory University, since 1958. Previously with Duke University and Columbia University. Advisory Committee, National Library of Medicine, 1964-67; chairman, Committee on Medical Education, 1967-69, and Council on Medical Education and Career Development, 1969-72, American Psychiatric Association; National Advisory Mental Health Council, National Institute of Mental Health, 1968-72; examiner, American Board of Psychiatry and Neurology, 1980; Residency Review Committee (psychiatry), 1980. Current activities: Board of Scientific Advisors, Yerkes Regional Primate Center.

Sidney H. Ingbar (medicine, endocrinology), 1925; M.D., 1947, Harvard University. With Harvard Medical School since 1974, William Bosworth Castle professor of medicine since 1976 and director, Thorndike Laboratory, since 1974; director of research and chief, Division of Endocrinology and Metabolism, Beth Israel Hospital, since 1974. Previously with Boston City Hospital, University of California, San Francisco, and Veterans Administration Hospital, San Francisco. Ernest Oppenheimer Award, 1965, and Distinguished Leadership Award, 1979, Endocrine Society; various lectureships; councilor, 1971-75, and president, 1976-77, American Thyroid Association; past member or chairman of various committees and boards, including chairman, Endocrinology Study Section, National Institutes of Health, 1971-73, Board of Scientific Counselors, National Institute of Arthritis, Metabolism, and Digestive Diseases, 1973-75, Board of Governors, American Board of Internal Medicine, 1976-77, and chairman, Advisory Group, NIH Evaluation of Research Needs in Endocrinology and Metabolic Diseases, 1977-79.

Louis Lasagna (clinical pharmacology), 1923; B.S., 1943, Rutgers University; M.D., 1947, Columbia University. Professor of pharmacology and toxicology and professor of medicine, University of Rochester, since 1970. Previously with Harvard University and Johns Hopkins University. Modern Medicine Award, 1973; Oscar B. Hunter Award, 1975; Award for Experimental Therapeutics, American Society for Pharmacology and Experimental Therapeutics, 1976; past member of various boards and committees. Current activities: Science Advisory Board, Environmental Protection Agency; chairman, Committee on Substance Abuse and Habitual Behavior, National Academy of Sciences. AAAS activities: Council and Committee on Council Affairs, 1979-81.

Edmund D. Pellegrino (academic administration, medicine), 1920; B.S., 1941, St. John's University; M.D., 1944, New York University. President and professor of philosophy and biology, Catholic University of America, and professor of clinical medicine and community medicine, Georgetown University, since 1978. Previously with New York University, Homer Folks Tuberculosis Hospital, Hunterdon Medical Center, Univer-

sity of Kentucky, State University of New York, Stony Brook, University of Tennessee, and Yale University. Fellow, American College of Physicians, American College of Chest Physicians, and New York Academy of Medicine; member, Institute of Medicine, National Academy of Sciences; St. John's Presidential Medal and Achievement in Life Award, *Encyclopedia Britannica*, 1979; president, Society for Health and Human Values, 1969-70; past member or chairman of numerous committees. Current activities include: Board of Directors, Institute of Human Values in Medicine, SHHV; National Board of Consultants, National Endowment for the Humanities; Board, American Association for the Advancement of the Humanities; chairman, Task Force on Policy Concerning Ethical Issues, National Board of Medical Examiners; Presidential Commission on a National Agenda for the '80's; Editorial Boards, *Journal of Medicine and Philosophy*, *Drug Therapy*, *Journal of Health Policy and Education*, and others.

Jonathan E. Rhoads (surgery, surgical physiology), 1907; B.A., 1928, Haverford College; M.D., 1932, Johns Hopkins University; Dr. Med. Sc., 1940, University of Pennsylvania. With University of Pennsylvania since 1934; professor of surgery since 1972; provost emeritus since 1977. Fellow, American Medical Writers Association, American Philosophical Society, and American Cancer Society; Roswell Park Medal; recipient of medals from American Surgical Association, American Trauma Society, Papanicolaou Institute, Pennsylvania State Medical Society, and Societe Internationale de Chirurgie; Goldberger Award; Sheen Award, American Medical Association; president, International Surgical Club, 1958-59, Society of Clinical Surgery, 1958-60, College of Physicians of Philadelphia, 1958-60, Society of Surgical Chairmen, 1966-68, Society for Surgery of the Alimentary Tract, 1967-68, ACS, 1969-70, American College of Surgeons, 1971-72, and American Surgical Association, 1972-73; past member or chairman of various committees. Current activities: president, APS, and International Federation of Surgical Colleges; Council, American Academy of Arts and Sciences.

Jonas Salk (medicine, immunology), 1914; B.S., 1934, College of the City of New York; M.D., 1939, New York University. Founding director and resident fellow, Salk Institute for Biological Studies; adjunct professor of health sciences, University of California, San Diego, since 1970. Previously with New York University College of Medicine, Mt. Sinai Hospital, University of Michigan, and University of Pittsburgh. National Research Council fellow, 1942-43; Presidential Citation, Congressional Gold Medal, and Criss Award, 1955; Albert Lasker Award, 1956; Howard Taylor Ricketts Award and Albert Gallatin Award, 1957; Gold Medal Award, National Institute of Social Sciences, 1959; Robert Koch Medal, 1963; Truman Commendation Award, 1966; Mellon Institute Award, 1969; Jawaharlal Nehru Award for International Understanding, 1976; Presidential Medal of Freedom, 1977; fellow, American Public Health Association and American Academy of Arts and Sciences. Current activities: Expert Advisory Panel on Virus Diseases, World Health Organization.

Ernest Seward (medicine), 1914; A.B., 1936, Colgate University; M.D., 1939, University of Rochester. Professor of social medicine and of medicine, University of

Rochester, since 1970. Previously with Hanford Engineering Works (Manhattan Project) and Kaiser Medical Care Program (Portland, Oregon); fellow, Center for Advanced Study in the Behavioral Sciences, and visiting professor, Stanford University, 1978-79. Member, Institute of Medicine, National Academy of Sciences; Distinguished Service Award, Group Health Association of America, 1976; Board of Medicine, NAS, 1967-70; Council, Institute of Medicine, 1970-73; chairman, Health Insurance Benefits Advisory Council, 1972-79, and National Professional Standards Review Council, 1973-76, U.S. Department of Health, Education, and Welfare; past member or chairman of various boards and committees. Current activities: New York State Hospital Review and Planning Council; Visiting Committee, Harvard University (Health Services); Board of Directors, GHAA; chairman, Board, Monroe Community Hospital.

Jay Tepperman (experimental medicine), 1914; A.B., 1933, University of Pennsylvania; M.D., 1938, Columbia University. With State University of New York Upstate Medical Center since 1946; professor since 1953. Previously with Mary Imogene Bassett Hospital, Yale University, and Army Chemical Center, Edgewood Arsenal; past visiting professor, Japan. J. E. Purkinje Medal, Czechoslovakian Medical Society, 1975. Current activities: Council, Society for Experimental Biology and Medicine; Board, *Journal of Lipid Research*; faculty exchange scholar, SUNY. AAAS activities: member-at-large of the Section Committee, Section on Medical Sciences, 1956-59; Council, 1979-81.

Chairperson-Elect (one to be elected).

Saul J. Farber
Norman Kretchmer

Saul J. Farber (medicine), 1918; A.B., 1938, and M.D., 1942, New York University. With New York University School of Medicine since 1948, Frederick H. King professor of medicine since 1978, acting dean since 1979, dean for academic affairs since 1978; concurrently, director of medicine, Bellevue and University Hospitals. Medical Alumni Achievement Award, NYU School of Medicine Alumni Association, 1966; Great Teacher Award, NYU Alumni Association, 1973; Distinguished Internist of the Year, American Society of Internal Medicine, 1976; Alumni Association Achievement Award, NYU Washington Square College of Arts and Science, 1978; master, American College of Physicians; member, Institute of Medicine, National Academy of Sciences; fellow, New York Academy of Medicine; president, Harvey Society, 1968-69, Association of Professors of Medicine, 1973-74, and New York Heart Association, 1973-75; chairman, American Board of Internal Medicine, 1973-76; past member or chairman of numerous boards and committees. Current activities include: chairman, Publications Committee, ACP; Medical Advisory Board, Foundation for the Study of Wilson's Disease, Inc.; Committee for a Two-Year Study of Nursing, Institute of Medicine; president and Board of Directors, Russell Sage Institute of Pathology; Board of Governors, Tel Aviv University; editor, *American Journal of the Medical Sciences*. AAAS activities: chairperson, Section on Medical Sciences, 1974.

Norman Kretchmer (pediatrics), 1923; B.S., 1944, Cornell University; M.S., 1945, and Ph.D., 1947, University of Minnesota; M.D.,

1952, State University of New York. Director, National Institute of Child Health and Human Development, since 1974. Previously with University of Minnesota, University of Vermont, Long Island College of Medicine, Brooklyn College, Cornell University, and Stanford University; past visiting professor, University of Lagos; acting director, National Institute on Aging, 1974-75. Commonwealth Fund fellow, 1952-53, 1957, and 1965-66; Henry L. Moses Alumni Prize, 1955-56; E. Mead Johnson Award, 1958, and Borden Award, 1969, American Academy of Pediatrics; Alumni Medallion for distinguished service to American medicine, College of Medicine, New York Downstate Medical Center, 1969; Guggenheim fellow, 1973-74; Superior Service Award, U.S. Department of Health, Education, and Welfare, 1977; past president, American Pediatric Society. Current activities include: Executive Committee, International Pediatric Association; Board of Scientific Counselors, Children's Nutrition Research Center, Baylor University; Board of Trustees, Heart International Foundation; Editorial Board, *Monographs in Pediatrics*; president, International Organization for the Study of Human Development.

Member-at-Large of the Section Committee (one to be elected).

Daniel X. Freedman
Helen M. Ranney

Daniel X. Freedman (psychiatry), 1921; B.A., 1947, Harvard University; M.D., 1951, Yale University. Louis Block professor and chairman, Department of Psychiatry, University of Chicago, since 1966. Previously with Yale University, Yale-New Haven Community Hospital, and National Institute of Mental Health. William C. Menninger Award; McAlpin Medal for Research Achievement; Van Gieson Award, New York State Psychiatric Institute; Vestermark Award, American Psychiatric Association/NIMH; fellow, American Academy of Arts and Sciences; member, Institute of Medicine, National Academy of Sciences. Current activities: Committee on Substance Abuse and Habitual Behavior, National Research Council-NAS; Scientific Advisory Board, Schizophrenic Research Foundation, Scottish Rite; Board of Directors, Medicine in the Public Interest, Inc.; chairman-elect, Council of Academic Societies, Association of American Medical Colleges; Executive Council, AAMC; chief editor, *Archives of General Psychiatry*; Editorial Boards, *Biochemical Pharmacology*, *Journal of Youth and Adolescence*, *Psychosomatic Medicine*, and *Progress in Neuro-Psychopharmacology*.

Helen M. Ranney (internal medicine), 1920; A.B., 1941, Barnard College; M.D., 1947, Columbia University. Professor and chairperson, Department of Medicine, University of California, San Diego, since 1973. Previously with Presbyterian Hospital, Columbia University, Yeshiva University, Albert Einstein College of Medicine, and State University of New York, Buffalo. Joseph Mather Smith Prize, 1955; Dr. Martin Luther King, Jr., Medical Achievement Award, 1972; Gold Medal, College of Physicians and Surgeons Alumni Association, Columbia University, 1978; Distinguished Alumna Award, Barnard College, 1980; master, American College of Physicians, 1980. Current activities: Councils, Association of American Physicians and Institute of Medicine, National Academy of

Sciences; Advisory Board and Committee on Public Information, American Society of Hematology; Board of Directors, Squibb Corporation; Board of Trustees, Population Council. AAAS activities: member-at-large of the Section Committee, Section on Medical Sciences, 1978-81.

Members of the Electorate Nominating Committee (two to be elected).

Daniel L. Azarnoff
Henry Blackburn
M. Jean McManus
Scott N. Swisher

Daniel L. Azarnoff (clinical pharmacology), 1926; B.S., 1947, and M.S., 1948, Rutgers University; M.D., 1955, University of Kansas. With G. D. Searle & Company (Chicago) since 1978, president, Research and Development, since 1979; professor, Northwestern University Medical School, since 1978; professorial lecturer, University of Chicago Medical School, since 1979. Previously with Washington University, St. Louis University, and University of Kansas; past visiting scientist (Fulbright scholar), Karolinska Institute. Ginsburg Award in physical diagnosis, University of Kansas Medical Center, 1953; Ciba Award for gerontologic research, 1958; Rector's Medal, University of Helsinki, 1968; member, Institute of Medicine, National Academy of Sciences; fellow, American College of Physicians and New York Academy of Sciences; councilor, Society for Experimental Biology and Medicine, 1976-80; past member or chairman of various committees. Current activities: Executive Committee, Clinical Pharmacology Division, American Society of Pharmacology and Experimental Therapeutics; secretary, Clinical Pharmacology Section, International Union of Pharmacologists; Editorial or Advisory Boards, *Current Topics in Drug Therapeutics*, *Pharmacology for Physicians*, *Journal of the American Medical Association*, and others.

Henry Blackburn (cardiovascular medicine), 1925; B.S., 1947, University of Miami; M.D., 1948, Tulane University; M.S., 1957, University of Minnesota. With University of Minnesota since 1953; currently professor and director, Laboratory of Physiological Hygiene, School of Public Health, and professor of medicine, School of Medicine. Previously with American Hospital of Paris and U.S. Public Health Service (Vienna and Munich); past visiting professor, University of Geneva. Thomas Francis Award, University of Michigan, 1975; Naylor Dana Award in preventive medicine, American Health Foundation, 1976; Louis Bishop Award, American College of Cardiology, 1979; member, Royal Academy of Medicine, Belgium; past member or chairman of various committees and boards. Current activities: Committee on Prevention of Cardiovascular Disease, ACC; Standing Committee on Trials, Council on Prevention, International Society of Cardiology; Committee on Food Consumption Patterns, Food and Nutrition Board, National Academy of Sciences; Editorial Boards, *Journal of Chronic Diseases*, *American Journal of Cardiology*, *American Heart Journal*, *Circulation*, and *Journal of Cardiac Rehabilitation*.

M. Jean McManus (endocrinology, oncology), 1925; B.Sc., 1946, and M.Sc., 1947, McGill University; Ph.D., 1952, University of Western Ontario. With Michigan State University since 1970; postdoctoral research associate, Department of Anatomy, College of

Human Medicine, since 1975. Previously with Atomic Energy of Canada, Ltd.

Scott N. Swisher (internal medicine, hematology, immunohematology), 1918; B.S., 1943, M.B., 1944, and M.D., 1945, University of Minnesota. Professor, Michigan State University, since 1967; associate dean for research, College of Human Medicine, since 1978. Previously with University of Rochester School of Medicine and Dentistry. Emily Cooley lecturer, American Association of Blood Banks, 1962; secretary-treasurer, 1957-58, and Advisory Board, 1968-71, American Society of Hematology. Current activities include: Board of Directors, New York Blood Center; Task Force on Manpower and Training, Association of Professors of Medicine; Medical Sciences Panel, American Institute of Biological Sciences; Board of Governors, American National Red Cross; Panel on Clinical Sciences, Committee on a Study of National Needs for Bio-Medical and Behavioral Research Personnel, Commission on Human Resources, National Research Council; Board of Directors, National Society for Medical Research.

Section O-Agriculture

Council Delegate (one to be elected).

Keith Huston

Ralph J. McCracken

Keith Huston (dairy science), 1926; B.S., 1949, M.S., 1950, and Ph.D., 1951, University of Wisconsin. Director-at-large, North Central Regional Association of State Agricultural Experiment Station Directors, and adjunct professor, Ohio State University, since 1979. Previously with Virginia Polytechnic Institute and State University, Kansas State University, and University of Minnesota. Order of Archers; Distinguished Service Award, Theta Xi Fraternity; past chairman or member of numerous committees. Current activities include: chairman, Experiment Station Committee on Organization and Policy; cochairman, International Science and Education Research Committee; Joint Council on Food and Agriculture; trustee, Jules Robert Foundation; advisor, NC-141-National Atmospheric Deposition Program. AAAS activities: Electorate Nominating Committee, Section on Agriculture, 1978-80 (chairperson, 1980).

Ralph J. McCracken (soil science), 1921; A.B., 1942, Earlham College; M.S., 1951, Cornell University; Ph.D., 1956, Iowa State University. With U.S. Department of Agriculture since 1973; currently deputy chief, Soil Conservation Service. Previously with North Carolina State University and North Carolina Agricultural Experiment Station. Fellow, American Society of Agronomy and Soil Science Society of America; Meritorious Executive Award, Federal Civil Service; president, SSSA, 1970, and Agricultural Research Institute, 1978-79. AAAS activities: Electorate Nominating Committee, Section on Agriculture, 1977-79.

Chairperson-Elect (one to be elected).

William P. Flatt

Walter I. Thomas

William P. Flatt (agricultural research and administration), 1931; B.S., 1952, University of Tennessee; Ph.D., 1955, Cornell University. With University of Georgia since 1969; dean and coordinator, College of Agriculture,

beginning in 1981. Previously with U.S. Department of Agriculture. Presidential Citation for outstanding contribution to greater economy, 1965; USDA Superior Service Award, 1967; co-winner, Hoblitzell National Award, 1968; University of Tennessee Block & Bridle Club Outstanding Alumnus Award, 1976; Honorary Fellow, American Society of Animal Science.

Walter I. Thomas (agronomy), 1919; B.S., 1949, M.S., 1953, and Ph.D., 1955, Iowa State University. Administrator, Cooperative Research, Science and Education Administration, U.S. Department of Agriculture, since 1979. Previously with Iowa State University and Pennsylvania State University. Fellow, American Society of Agronomy and Soil Science Society; past member or chairman of various committees and boards. Current activities include: Joint Council on Food and Agriculture; chairman, Steering Committee on Planning and Coordination, JCFA; Board of Directors, Council for Agriculture and Science Technology; Advisory Board, National Soybean Crop Improvement Council; Board of Directors, North Central Rural Development Center; McIntire-Stennis Forestry Board; Experiment Station Committee on Organization and Policy. AAAS activities: Electorate Nominating Committee, Section on Agriculture (O), 1978-80; member-at-large of the Section Committee, Section O, 1981-84.

Member-at-Large of the Section Committee (one to be elected).

Charles O. Gardner

William E. Larson

Charles O. Gardner (plant genetics, breeding), 1919; B.Sc., 1941, and M.S., 1948, University of Nebraska; M.B.A., 1943, Harvard University; Ph.D., 1951, North Carolina State University. With University of Nebraska since 1957; Foundation professor of agronomy since 1970. Previously with North Carolina State University and University of Wisconsin. Fellow, American Society of Agronomy; Gamma Sigma Delta International Award for Distinguished Service to Agriculture, 1977; Crop Science Award, Crop Science Society of America, 1978; Award for Outstanding Research and Creative Activity, University of Nebraska, 1981; president, CSSA, 1975. Current activities: president-elect, ASA; National Plant Genetics Resources Board; National Corn Research Coordinating Committee; Executive Committee and Board of Directors, ASA; NCR-21 Quantitative Genetics Technical Committee; Editorial Boards, *Brazilian Journal of Genetics* and *Egyptian Journal of Genetics and Cytology*.

William E. Larson (soil science), 1921; B.S., 1944, and M.S., 1946, University of Nebraska; Ph.D., 1949, Iowa State University. With U.S. Department of Agriculture since 1950; research leader, USDA Science and Education Administration, University of Minnesota, St. Paul, since 1967. Previously with Iowa State University. Fellow, American Society of Agronomy, Soil Conservation Society of America, and Soil Science Society; Soil Science Award, 1973; USDA Superior Service Award, 1975; Crops and Soils Award, 1975; Outstanding Service Award, SSSA, 1980; past president, SSSA. Current activities: Executive Committee ASA; chairman, Editorial Advisory Committee, *Soils and Tillage Research*; chairman, Awards Committee, Organization and Policy Committee, SSSA.

Members of the Electorate Nominating Committee (two to be elected).

Raymond R. Allmaras

Dale E. Baker

Donald N. Duvick

William D. Pardee

Raymond R. Allmaras (soil science), 1926; B.S., 1952, North Dakota State University; M.S., 1956, University of Nebraska; Ph.D., 1960, Iowa State University. With U.S. Department of Agriculture since 1952; research leader, Columbia Plateau Conservation Research Center, since 1972. Fellow, American Society of Agronomy and Soil Science Society of America; associate editor, SSSA, 1964-70, and *Agronomy Journal*, 1974-80; ASA and SSSA Budget and Finance Committees, 1971-74; chairman, Division S-6, SSSA, 1974. Current activities: Board of Directors, ASA.

Dale E. Baker (agronomy, soil chemistry), 1930; B.S., 1957, M.S., 1958, and Ph.D., 1960, University of Missouri. With Pennsylvania State University since 1961; professor of soil chemistry since 1970. Previously with University of Missouri and University of Minnesota. Fellow, American Society of Agronomy and Soil Science Society of America; visiting scientist, 1965-67, and Research Award, N.E. Branch, 1972, ASA; Research Award, Gamma Sigma Delta, 1970; past chairman, Division S-2, SSSA. Current activities: Board of Directors and Publication Committee, SSSA; Nomination of Fellows Committee, ASA.

Donald N. Duvick (plant breeding, genetics), 1924; B.S., 1948, University of Illinois; Ph.D., 1951, Washington University. With Pioneer Hi-Bred International, Inc., since 1951; director, Plant Breeding Division, since 1975. Fellow, American Society of Agronomy; chairman, Crop Breeding, Genetics and Cytology Division (C-1), 1976, and Preservation of Plant Germplasm Committee (C851), 1979, Crop Science Society of America. Current activities: Editorial Board, *Annual Review of Plant Breeding*.

William D. Pardee (plant breeding, agronomy), 1929; B.A., 1951, Dartmouth College; Ph.D., 1960, Cornell University. Professor since 1966 and chairman, Department of Plant Breeding and Biometry, since 1979, Cornell University. Previously with University of Illinois. Fellow, American Society of Agronomy; Board of Directors, Crop Science Society of America, 1970-76; past chairman, Northeast Corn Improvement Committee, Northeast Forage Improvement Conference. Current activities: Boards of Directors, American Society of Agronomy and Association of Official Seed Certifying Agencies; chairman, National Certified Grass Variety Review Board; member and/or chairman of numerous committees, CSSA, ASA, and AOSCA.

Section P-Industrial Science

Council Delegate (one to be elected).

John D. Caplan

Herbert I. Fushfeld

John D. Caplan (chemical engineering), 1926; B.S., 1949, Oregon State University; M.S., 1955, Wayne State University. With General Motors Research Laboratories since 1949; executive director since 1969. Crompton-Lanchester Medal, Institute of Mechanical Engineers, 1964; member, National Acad-

emy of Engineering; fellow, American Institute of Chemical Engineers; chairman, Vehicle Emission Committee, 1962-65, and Horning Memorial Board of Award, 1976-77, Society of Automotive Engineers; president, Coordinating Research Council, 1975-77. Current activities: Boards of Directors, CRC, Detroit Science Center (vice president), and Directors of Industrial Research (secretary, 1980-81); Ethics Committee, American Association of Engineering Societies; Pollution Control Processes Peer Review Panel, U.S. Environmental Protection Agency. AAAS activities: Electorate Nominating Committee, Section on Industrial Science (P), 1978-81; chairperson, Section P, 1980; Council, 1981.

Herbert I. Fusfeld (research physics), 1921; B.A., 1941, Brooklyn College; M.A., 1945, and Ph.D., 1950, University of Pennsylvania. Director, Center for Science and Technology Policy, New York University, since 1978. Previously with Frankford Arsenal, American Machine and Foundry Company, and Kennecott Copper Corporation. Governing Board, American Institute of Physics, 1967-70; Numerical Data Advisory Board, National Research Council, 1970-75; president, Industrial Research Institute, 1973-74; Board of Trustees, American Management Association, 1974-75; chairman, Advisory Panel, Institute for Materials Research, National Bureau of Standards, 1974-78; U.S.-U.S.S.R. Joint Commission for Scientific and Technological Cooperation, 1974-79; National Materials Advisory Board, 1976-78; Board on Science and Technology for International Development, National Academy of Sciences, 1977-79. Current activities: Board of Directors, Hazeltine Corporation; Advisory Committee on International Investment, Technology and Development, U.S. Department of State; Advisory Committee on Technology and Economic Growth, Organization for Economic Cooperation and Development; Advisory Committee, School of Materials Science, University of Pennsylvania; Advisory Council, National Science Foundation. AAAS activities: Section Committee, Section on Industrial Science (P), 1974-79; Council, 1976-78 and 1980; chairperson, Section P, 1979.

Chairperson-Elect (one to be elected).

J. Kenneth Craver
Nat C. Robertson

J. Kenneth Craver (chemistry, futures research, planning), 1915; B.Ed., 1937, Southern Illinois University; M.S., 1938, Syracuse University. President and director, Futuresearch, since 1979. Previously with Monsanto Company. Alumni Achievement Award, Southern Illinois University, 1978; chairman, Paint, Plastics, and Printing Ink Division, 1957, and Chemical Marketing and Economics Division, 1975, and Science Commission, 1979, American Chemical Society; chairman, Commercial Chemical Development Association, 1965; chairman, "Chemistry and Physics of Pulp and Paper," and "Chemistry and Physics of Coatings and Films," Gordon Research Conferences, 1966. Current activities: Science Committee, Divisional Activities Committee, Divisional Officers Conference, and Council, ACS; trustee, Institute for the Future; organizing chairman, Corporate Planners Round Table. AAAS activities: member-at-large of the Section Committee, Section on Industrial Science, 1977-80.

Nat C. Robertson (physical chemistry), 1919; A.B., 1939, Emory University; Ph.D., 1942, Princeton University. Corporate direc-

tor and technical advisor on research management since 1977. Previously with Standard Oil Company, Celanese Corporation of America, National Research Corporation, Escambia Chemical Corporation, Spencer Chemical Company, and Air Products and Chemicals, Inc. (senior vice president and director). President, Research Foundation of Kansas, 1963-66; Board of Directors, Industrial Research Institute, 1975-78. Current activities: Boards of Directors, Marion Laboratories, Inc., and C. H. Kline and Company; U.S.-U.S.S.R. Working Group on Science Policy. AAAS activities: member-at-large of the Section Committee, Section on Industrial Science, 1976-79.

Member-at-Large of the Section Committee (one to be elected).

Julius J. Harwood
Lawrence M. Kushner

Julius J. Harwood (materials science and engineering), 1918; B.S., 1939, City College of New York; M.S., 1953, University of Maryland. With Ford Motor Company since 1960; director, Material Sciences Laboratory, since 1975. Previously with U.S. Naval Gun Factory and Office of Naval Research. Fellow, American Society for Metals and The Metallurgical Society of the American Institute of Mining, Metallurgical and Petroleum Engineers; member, National Academy of Engineering; John H. Shoemaker Award for Distinction, ASM, 1977; Orton lecturer, American Ceramic Society, 1978; president, TMS, 1973; past member, Board of Directors, and president, 1976, AIME; past consultant, National Science Foundation and Office of Technology Assessment. Current activities: National Materials Advisory Board (chairman, 1977-79); Board of Control, Michigan Technological University; chairman, Engineering Advisory Committee, Rensselaer Polytechnic Institute; Advisory Committee on Science, City College of New York.

Lawrence M. Kushner (physical chemistry), 1924; B.S., 1945, Queens College; A.M., 1947, and Ph.D., 1949, Princeton University. Senior staff scientist, MITRE Corporation, since 1980. Previously with National Bureau of Standards and U.S. Consumer Product Safety Commission (commissioner). Students Medal, American Institute of Chemists, 1945; Gold Medal, U.S. Department of Commerce, 1978; USDC science and technology fellow, 1964-65; chairman, Board of Governors, Scientific Research Society of America, 1971-74; Governor of Maryland's Science Advisory Council, 1972-75; national president, Sigma Xi, 1976. Current activities: Board of Directors and Long-Range Planning Committee, Sigma Xi. AAAS activities: Electorate Nominating Committee, Section on Chemistry, 1974-76; member-at-large of the Section Committee, Section on Industrial Science, 1978-81; Committee on Nominations, 1979-80.

Members of the Electorate Nominating Committee (two to be elected).

Mario L. Garcia
William P. Hettinger, Jr.
Charles F. Larson
W. Keith Meyer

Mario L. Garcia (hair and skin products research), 1940; Doctorate in Chemistry, 1964, University of Havana. With Clairrol, Inc., since 1966; associate director, chemical research, since 1979. Previously with Sugar

Cane Derivatives Research Institute and University of Havana.

William P. Hettinger, Jr. (petroleum processing, heterogeneous catalysis and research management), 1922; B.S., 1947, Purdue University; Ph.D., 1951, Northwestern University. With Ashland Petroleum Company since 1977; vice president and director, Research and Development and Product Application Departments, since 1980. Previously with Sinclair Research Laboratories, Inc., Nalco Chemical Company, W. R. Grace & Company, Baltimore City Hospitals, National Institute of Child Health and Human Development, Georgia Kaolin Company, Engelhard Minerals and Chemicals Corporation, N L Industries, Inc., and Arthur D. Little, Inc. President, Association of Research Directors of New York, 1976-77; founder and president, Tri-State Catalyst Club, 1978-80. Current activities: Catalysis Society representative, Tri-State Catalyst Club; alternate representative, Industrial Research Institute.

Charles F. Larson (mechanical engineering), 1936; B.S., 1958, Purdue University; M.B.A., 1972, Fairleigh Dickinson University. Executive director, Industrial Research Institute, since 1975. Previously with Combustion Engineering and Welding Research Council. Executive secretary, Pressure Vessel Research Committee, 1960-75; chairman, Pressure Vessels and Piping Division, 1969-70, associate editor, *Journal of Pressure Vessel Technology*, 1973-75, and National Nominating Committee, 1973-75, American Society of Mechanical Engineers; chairman, Honors Committee, Pressure Vessels and Piping Division, ASME, 1973-76; Editorial Advisory Board, *American Men and Women of Science* (14th edition). Current activities: Committee on Management of the Engineering Process, ASME; Council of Engineering and Scientific Society Executives.

W. Keith Meyer (physical chemistry), 1929; B.S., 1951, Morningside College; Ph.D., 1958, Michigan State University. With Gulf Research and Development since 1958; research associate, Gulf Science and Technology Company, since 1968.

Section Q-Education

Chairperson-Elect (one to be elected).

Hans O. Andersen
I. Joyce Swartney

Hans O. Andersen (science education), 1935; B.Ed., 1959, University of Wisconsin, Whitewater; M.S., 1960, University of Michigan; Ed.D., 1966, Indiana University. With Indiana University since 1966; currently professor of science and environmental education; director, Division of Instruction and Curriculum, 1974-78. Previously with Niles Township Community High School, Skokie, Illinois; UNESCO senior expert in education techniques, Bangkok, 1972. Boards of Directors, Hoosier Association of Science Teachers, 1975-78, Association for the Education of Teachers in Science, 1977-80, and National Science Teachers Association, 1980-81; elect, presiding, and past president, AETS, 1979-82. AAAS activities: Electorate Nominating Committee, Section on Education, 1977-79.

I. Joyce Swartney (science education), 1935; B.S., 1958, University of Detroit; M.S., 1961, University of Pennsylvania; Ph.D., 1968, University of Wisconsin. With Buffalo State Uni-

versity College since 1968; currently professor, Department of Geoscience, Physics and Interdisciplinary Science. On leave (1981) at the U.S. Department of Education, Pre-College Teacher Development in Science Program. Previously with Hamtramck public schools and Air Force dependent schools. Shell Merit fellow, 1965; U.S. Office of Education fellow, 1966-68; president, Eastern Region, Association for the Education of Teachers in Science, 1973-74; secretary and secretary-treasurer, AETS, 1977-79. Current activities: Western New York Teacher Center Policy Board; Buffalo State University College Secondary Education Academy; Teacher Education Professional Services Committee, New York State United Teachers. AAAS activities: Electorate Nominating Committee, Section on Education, 1978-80 (chairperson, 1980).

Member-at-Large of the Section Committee (one to be elected).

Jack L. Carter
George T. O'Hearn

Jack L. Carter (botany, science education), 1929; M.S., 1955, Emporia State University; Ph.D., 1960, University of Iowa. Professor of biology, Colorado College, since 1968. Previously with Northwestern Junior College, Simpson College, Emporia State University, and Biological Sciences Curriculum Study. Editor, *The American Biology Teacher*, 1970-74; president, National Association of Biology Teachers, 1977. Current activities: Governing Board, American Institute of Biological Sciences; Board of Directors, BSCS. AAAS activities: Section Committees, Section on Education, 1973-, and Section on Biological Sciences, 1976-; Council, 1973 and 1978.

George T. O'Hearn (science education), 1934; B.S., 1957, M.S., 1959, and Ph.D., 1964, University of Wisconsin, Madison. Professor of science education since 1968 and director of educational development, University of Wisconsin, Green Bay. Previously with University of Wisconsin, Madison. Current activities: Board of Directors, Wisconsin Society of Science Teachers; president, Northeastern Wisconsin, Phi Delta Kappa. AAAS activities: Electorate Nominating Committee, Section on Education, 1979-81.

Members of the Electorate Nominating Committee (two to be elected).

Rodger W. Bybee
Frank X. Sutman
Michael Szabo
Thomas G. Teates

Rodger W. Bybee (science education, psychology), 1942; B.A., 1966, and M.A., 1969, University of Northern Colorado; Ph.D., 1975, New York University. Assistant professor of education, Carleton College, since 1972. Previously with Greeley, Colorado, public schools, University of Northern Colorado, and New York University. Outstanding Earth Science Teacher, National Association of Geology Teachers, 1971; Leader of American Education, 1971; Outstanding Science Educator of the Year, 1979. Current activities: Executive Board, Minnesota Chapter, National Committee for Prevention of Child Abuse; Editorial Board, *Journal of Research in Science Teaching*.

Frank X. Sutman (science education), 1927; A.B., 1949, and A.M., 1953, Montclair State College; Ed.D., 1956, Columbia University.

Professor of science education since 1962 and director, Multicultural Education Resource Information and Training Center, since 1976, Temple University. Previously with New Jersey schools, William Paterson College, Inter-American University of Puerto Rico, and State University of New York, Buffalo; several visiting professorships. President, Association for the Education of Teachers in Science, 1963; president, vice president, and Board member, National Association for Research in Science Teaching, 1967-71. Current activities: coordinator, four bilingual education science activities for National Science Teachers Association; advisory editor, *Education in the 80's: Science*. AAAS activities: member-at-large of the Section Committee, Section on Education, 1971-74; Council, 1971-73.

Michael Szabo (technology of instruction), 1938; B.S., 1962, Taylor University; M.S., 1967, and Ph.D., 1969, Purdue University. Manager, Instructional Systems and PLATO Services, and associate professor, University of Alberta, beginning in 1981. Previously with Pennsylvania State University; director, Instruction Support Center, 1978-81. AECT Research Paper Selection Award, 1981. Current activities: editor, ADCIS SIG-CBT.

Thomas G. Teates (science education), 1934; B.S., 1957, Lebanon Valley College; M.S., 1959, University of Delaware; Ph.D., 1970, Florida State University. With Virginia Polytechnic Institute and State University since 1970; associate professor since 1973; division director, Curriculum and Instruction, since 1979. Previously with National College and Longwood College; project staff, Chemical Board Approach Project, 1962. Secretary, 1973, and president, 1977, Virginia Science Supervisors' Association; president, Mid-Atlantic Region, Association for the Education of Teachers in Science, 1974; Membership Committee, National Association for Research in Science Teaching, 1975-76. Current activities: Executive Committee and chairman, Long-Range Needs Committee, VSSA.

Section R-Dentistry

Chairperson-Elect (one to be elected).

Lois K. Cohen
Erling Johansen

Lois K. Cohen (sociology), 1938; B.A., 1960, University of Pennsylvania; M.S., 1961, and Ph.D., 1963, Purdue University. With National Institutes of Health since 1970; special assistant to the director, National Institute of Dental Research, since 1976. Previously with U.S. Public Health Service. President, Behavioral Scientists in Dental Research, 1971-72; Board of Directors, 1976-77, and chairman, Committee on Health Promotion, 1978-79, International Association for Dental Research; Subcommittee on Dental Health, Committee on International Health, Institute of Medicine, National Academy of Sciences, 1977-78; chairman, Nominating Committee, and member, Board of Directors, 1980-81, American Association for Dental Research. Current activities: chairman, Membership Committee, and counselor, Behavioral Science Group, AADR; Executive Committee, BSDR; chairman, International Relations Committee, IADR; Technical Review Board for Office of Management and Budget Clearance, National Institute of Mental Health; Committee on Employment, Eastern Sociological Society. AAAS activities: Section Committee, Section on Dentistry (R), and

Council, 1971-72; member-at-large of the Section Committee, Section R, 1974-75.

Erling Johansen (dentistry), 1923; D.M.D., 1949, Tufts College Dental School; Ph.D., 1955, University of Rochester. Dean, Tufts University School of Dental Medicine, since 1979. Previously with University of Rochester. Fellow, American College of Dentists and International College of Dentists; ICD traveling scholar, Asian Pacific countries, 1970; Award of Merit, Rochester Academy of Medicine, 1977; chairman, Rochester Section, 1962-65, member and chairman, Hatton Awards Committee, 1968-73, and member, Board of Directors, 1974-75, International Association for Dental Research; chairman, Section on Advanced Education, 1969-70, and vice president, Advanced Education Programs, 1970-74, American Association of Dental Schools; chairman, Western New York Section, ACD, 1977; past member of various additional committees. Current activities: secretary-treasurer, Board of Directors, and Finance and Publications Committees, AADR; chairman, Council on Scientific Research, Massachusetts Dental Society. AAAS activities: member-at-large of the Section Committee, Section on Dentistry (R), 1964-67 and 1973-76; Council, 1966-67 and 1973-77; Section Committee, Section R, 1974-76.

Member-at-Large of the Section Committee (one to be elected).

Andrew D. Dixon
John F. Goggins

Andrew D. Dixon (dentistry), 1925; B.D.S., 1949, M.D.S., 1953, and D.Sc., 1965, Queen's University; Ph.D., 1958, University of Manchester. Professor, University of California, Los Angeles, Center for Health Sciences, since 1973. Previously with University of Manchester and University of North Carolina; past visiting associate professor, University of Iowa. Nuffield Foundation fellow, 1953-54; Fulbright senior fellow, 1959-61; Commonwealth Fund fellow, 1961; fellow, American College of Dentists and International College of Dentists; member, Institute of Medicine, National Academy of Sciences; past member or chairman of various boards and committees. Current activities: Council on Scientific Affairs and Research, California Dental Association; immediate past president, Western Conference of Dental Deans and Examiners. AAAS activities: Electorate Nominating Committee, Section on Dentistry (R), 1974-75; member-at-large of the Section Committee, Section R, 1978-81.

John F. Goggins (dental research), 1933; D.D.S., 1958, and M.S., 1965, Marquette University. With National Institute of Dental Research since 1965; currently associate director for collaborative research. Previously with U.S. Air Force and Marquette University School of Dentistry and in private practice. U.S. Public Health Service Commendation Medal; USPHS fellow, 1965-66. Current activities: member of several NIH boards and committees.

Members of the Electorate Nominating Committee (two to be elected).

Harold Loe
Hannelore T. Loevy
A. H. Melcher
Jerry D. Niswander

Harold Loe (dentistry, academics), 1926; D.D.S., 1952, and Dr. Odontology, 1961, Oslo University. Dean, University of Connecticut

School of Dental Medicine, since 1974. Previously with Oslo University, Norwegian Institute for Dental Research, Royal Dental College (Denmark), and University of Michigan; past visiting professor, Hebrew University. Fulbright fellow, 1957-58; International Award, American Society of Preventive Dentistry, 1972; William J. Gies Award, 1978; fellow, American College of Dentists and International College of Dentists; president, International Association for Dental Research, 1979-81. Current activities: editor, *Journal of Periodontal Research*; Editorial Boards, *Acta Odontologica Scandinavica*, *Journal of Preventive Dentistry*, and *Journal of Community Dentistry and Oral Epidemiology*; Coordinating Committee on Long-Range Research Plan, National Institutes of Health; Professional Advisory Panel on Preventive Dentistry, Johnson & Johnson; Awards Committee, American Academy of Periodontology; Board of Directors, IADR.

Hannelore T. Loevy (teratology, clinical genetics, pedodontics), 1932; D.D.S., 1952, University of São Paulo; M.S., 1959, and Ph.D., 1961, University of Illinois. With University of Illinois since 1968; associate professor of pediatric dentistry since 1972. Previously with University of São Paulo and Northwestern University. Pan American Union fellow, 1958-60; U.S. Public Health Service fellow, 1962-63; treasurer, 1975-76, secretary, 1976-77, and president, 1977-78, Chicago Section, American Association for Dental Research; director, 1975-78, and president, 1980-81, Craniofacial Biology Group, International Association for Dental Research; past member, Editorial Boards, *Oral Research Abstracts* and *Journal of Dental Research*. Current activities: Editorial Advisory Board, *Acta Odontologica Pediatrica*; councilor, Chicago Section, AADR.

A. H. Melcher (dental science), 1927; B.D.S., 1949, H.D.D., 1958, and M.D.S., 1960, University of the Witwatersrand; Ph.D., 1964, University of London. Professor of dentistry since 1969 and director, Medical Research Council Group in Periodontal Physiology, since 1973, University of Toronto. Previously in private practice and with University of the Witwatersrand, University of London, Royal College of Surgeons of England, and Imperial Cancer Research Fund (London). African Oxygen Medal for Anaesthetics, 1949; Committee for Dental Sciences, Medical Research Council of Canada, 1972-75. Current activities: scientific officer, Committee for Dental Sciences, and member, Ad Hoc Committee on Clinician-Scientists, MRCC; Council of Scientific Advisors, National Institute of Dental Research.

Jerry D. Niswander (dentistry), 1930; D.D.S., 1955, and M.S., 1962, University of Michigan; Cert. Orthodontics, 1976, University of Maryland. With National Institute of Dental Research since 1963; acting chief, Craniofacial Anomalies Program, beginning in 1981. Previously with U.S. Public Health Service and University of Michigan.

Section S-Pharmaceutical Sciences

Chairperson-Elect (one to be elected).

Klaus Florey
Stanley A. Kaplan

Klaus Florey (pharmaceutical analysis), 1919; Ph.D., 1954, University of Pennsylvania. With E. R. Squibb & Sons since 1954;

director, Analytical R&D Department, Squibb Institute for Medical Research, since 1959. Previously with Bayer (Germany) and Merck & Company. Chairman, Pharmaceutical Analysis and Control Section, 1967-68, member-at-large, Executive Committee, 1974-77, and president, 1980-81, Academy of Pharmaceutical Sciences; fellow, APS. Current activities: U.S. Pharmacopeia Committee of Revision; editor, *Analytical Profiles of Drug Substances*; World Health Organization Expert Advisory Panel, International Pharmacopeia & Pharmaceutical Preparation. AAAS activities: member-at-large of the Section Committee, Section on Pharmaceutical Sciences, 1981-84.

Stanley A. Kaplan (pharmaceutical sciences), 1938; B.S., 1959, and M.S., 1961, Columbia University; Ph.D., 1965, University of California, San Francisco. With Hoffmann-La Roche, Inc., since 1966; director, Department of Pharmacokinetics and Biopharmaceutics, since 1979. National Institutes of Health postdoctoral fellow (London), 1965-66; fellow, American Institute of Chemists and APhA Academy of Pharmaceutical Sciences. Current activities: Committee on Drug Metabolism/Biopharmaceutics, Pharmaceutical Manufacturers Association; vice chairman, Committee on Regulations and Standards, APS; Editorial Advisory Board, *Journal of Pharmacokinetics and Biopharmaceutics*; Editorial Boards, *Clinical Pharmacology and Therapeutics* and *Journal of Biopharmaceutics and Drug Disposition*; lecturer at numerous symposia and universities. AAAS activities: Electorate Nominating Committee, Section on Pharmaceutical Sciences, 1978-80 (chairperson, 1980).

Member-at-Large of the Section Committee (one to be elected).

Betty-ann Hoener
Thomas F. Patton

Betty-ann Hoener (pharmaceutics), 1946; B.S., 1970, University of Cincinnati; Ph.D., 1974, Ohio State University. Assistant professor of pharmacy and pharmaceutical chemistry since 1974 and vice chairwoman, Department of Pharmacy, since 1978, University of California, San Francisco. National Science Foundation predoctoral trainee, Ohio State University, 1970-74. Rho Chi Medal, 1970; Long Foundation Prize for Excellence in Teaching and Academic Senate Distinguished Teaching Award, University of California, San Francisco, 1979; editor, Pharmacist Society of San Francisco, 1978-80; executive councilor, Rho Chi, 1979-81. Current activities: grand deputy councilor, Kappa Psi.

Thomas F. Patton (pharmaceutics), 1948; B.S., 1971, M.S., 1973, and Ph.D., 1975, University of Wisconsin. With University of Kansas since 1975; associate professor of pharmaceutical chemistry and pharmacy practice since 1979. Past visiting professor, Victorian College of Pharmacy (Melbourne). Rennebohm Teaching Award, University of Wisconsin, 1973. Current activities: executive councilor, Region VI, Rho Chi Society; Review Panels for 6th and 7th editions, *APhA Handbook of Non-Prescription Drugs*.

Members of the Electorate Nominating Committee (two to be elected).

Walter D. Conway
Janis J. MacKichan
K. Sandy Pang
Edward G. Rippie

Walter D. Conway (chemistry), 1931; B.S., 1952, Rensselaer Polytechnic Institute; Ph.D., 1956, University of Rochester. With State University of New York, Buffalo, since 1967; associate professor of pharmaceuticals since 1971 and of medicinal chemistry since 1975. Previously with Esso Research and Engineering Company, National Cancer Institute, Sterling Winthrop Research Institute, and National Heart Institute. Distinguished Service Award, Society for Applied Spectroscopy, and Analytical Group, Western New York Section, American Chemical Society, 1979; secretary, 1971-73, and chairman, 1974-76, Analytical Group, WNY Section, ACS; program chairman, 1976, and chairman, 1978, WNY Section, ACS. Current activities: Executive Committee, Northeast Regional Chromatography Discussion Group; U.S. Pharmacopeia Committee of Revision.

Janis J. MacKichan (pharmacy), 1951; B.S., 1975, and Pharm.D., 1977, University of Michigan. Assistant professor of pharmacy, Ohio State University, since 1979. Previously with State University of New York, Buffalo. Outstanding Young Woman of America Award, 1980; publication prize, American College of Gastroenterology, 1980; "Young Investigator" Award, Central Ohio Heart Association, 1981. Current activities: Ad Hoc Committee, American College of Clinical Pharmacology, to standardize pharmacokinetic nomenclature; chairperson, Editorial Panel for Drug Assay Technology, *Drug Intelligence and Clinical Pharmacy*.

K. Sandy Pang (pharmacokinetics), 1947; Ph.D., 1976, University of California, San Francisco. Assistant professor of pharmaceuticals, University of Houston, since 1978; adjunct assistant professor, Baylor College of Medicine, since 1978. Previously with National Institutes of Health (visiting fellow). J. J. Jury Award (Canada), 1970; Undergraduate Pharmaceutical Award (Canada), 1970; Visiting Scholar Award, Medical Research Foundation, FUNGO (Netherlands), 1980; past member, Committee on Selection of Best Paper for DRM, American Society for Pharmacology and Experimental Therapeutics. Current activities: Radiation Safety Committee, Admissions Committee, and Reading Committee, University of Houston.

Edward G. Rippie (pharmacy), 1931; B.S., 1953, M.S., 1956, and Ph.D., 1959, University of Wisconsin. With University of Minnesota since 1959; professor of pharmaceuticals since 1966. Fellow, Academy of Pharmaceutical Sciences; chairman, Conference of Teachers of Graduate Instruction, American Association of Colleges of Pharmacy, 1967; U.S. Pharmacopeia Committee of Revision, 1970-80. Current activities: Editorial Advisory Board, *Journal of Pharmaceutical Sciences*.

Section T-Information, Computing, and Communication

Chairperson-Elect (one to be elected).

Robert Lee Chartrand
Belver C. Griffith

Robert Lee Chartrand (information science, policy, and technology), 1928; B.A., 1948, and M.A., 1949, University of Missouri, Kansas City. With Congressional Research Service, Library of Congress, since 1966; senior specialist in information policy and technology since 1977. Previously with U.S. Navy,

Central Intelligence Agency, Thompson-Ramo-Wooldridge, Inc., IBM Corporation, and Planning Research Corporation. Fulbright-Hays lectureship, 1968; Certificate of Appreciation, 1976, and Test of Time Award, 1979, Interagency Committee on Automatic Data Processing; chairman, Bicentennial Conference, American Society for Information Science, 1976; Advisory Committee for White House Conference on Library and Information Services, 1979. Current activities: adjunct professor, American University; Advisory Board, Chemical Abstracts Service; Editorial Boards, *Law and Computer Technology* and *The Information Society*; Executive Board, Interagency Committee on Automatic Data Processing; Advisory Committee on International Investment, Technology and Development, U.S. Department of State.

Belver C. Griffith (information science), 1931; B.A., 1951, University of Virginia; M.A., 1953, and Ph.D., 1957, University of Connecticut. Professor, School of Library and Information Science, Drexel University, since 1969. Previously with Bell Telephone Laboratories, Edward R. Johnstone Training and Research Center, American Psychological Association, and University of Pennsylvania. Drexel University Research Achievement Award, 1980; Biomedical Communications Study Section, National Institutes of Health, 1976; Board of Directors, National Information Retrieval Colloquium, 1976; Awards Committee, American Society for Information Science, 1979. Current activities: consultant, Scientific Affairs Division, North Atlantic Treaty Organization.

Member-at-Large of the Section Committee (one to be elected).

Davis B. McCarn
Robert S. Taylor

Davis B. McCarn (computers, mathematics), 1928; B.A., 1951, Haverford College. Director, Computerized Bibliographic Services, H. W. Wilson Company (Bronx), since 1980. Previously with Defense Intelligence Agency, Lister Hill National Center for Biomedical Communications, National Library of Medicine, and Online Information International, Inc. (president). William A. Jump Memorial Award, 1962; Superior Service Award for development of Medline, U.S. Department of Health, Education, and Welfare, 1976.

Robert S. Taylor (information science), 1918; B.A., 1940, Cornell University; M.S., 1950, Columbia University; M.A., 1954, Lehigh University. Professor and dean, School of Information Studies, Syracuse University, since 1972. Previously with Lehigh University and Hampshire College. Fulbright lecturer, Delft Techniska Hogeschool, 1954-57; president, American Society of Information Science, 1968. Current activities: Advisory Board, Associated Information Managers; Advisory Council, Educational Resources Center/Information Resources; Editorial Board, *Information Processing and Management*. AAAS activities: Council, 1975-80; Committee on Fellows, 1976-78.

Members of the Electorate Nominating Committee (two to be elected).

Ted Brandhorst
Dennis D. McDonald
M. Lynne Neufeld
Linda C. Smith

Ted Brandhorst (information science), 1933; B.A., 1955, and M.L.S., 1957, University of California, Berkeley. With ORI, Inc., since 1960; director, Eric Processing and Reference Facility, since 1970; director, Information Systems Division, since 1973. Previously with Library of Congress. Committee for the Coordination of National Bibliographic Control, 1975-79; Council, 1977-79, and chairman, Intersociety Cooperation Committee, 1979-80, American Society for Information Science. Current activities: Standards Committee, ASIS; Executive Council, American National Standards Committee Z39.

Dennis D. McDonald (information science), 1949; B.A., 1971, Ohio State University; M.L.S., 1973, and Ph.D., 1979, University of Maryland. Vice president, King Research, Inc., since 1975. Previously with Westat Research, Inc. Current activities: Professional Leadership Development Conference and chairman, Public Affairs Committee, American Society for Information Science.

M. Lynne Neufeld (information science), 1939; B.Sc., 1959, University of Alberta; M.S., 1972, Drexel University. Executive director, National Federation of Abstracting and Indexing Services, since 1979. Previously with Research Council of Alberta, University of Pennsylvania, Franklin Institute, Institute for Scientific Information, and Auerbach Associates. Gold Medal in Science, University of Alberta, 1959; past secretary, Delaware Valley Chapter, American Society for Information Science. Current activities: Committees on Marketing, Intersociety Cooperation, and Professionalism, ASIS; American National Standards Committee Z39; Membership Committee, Association of Information and Dissemination Centers. AAAS activities: Section Committee, Section on Information, Computing, and Communication, 1979-.

Linda C. Smith (information science), 1949; B.S., 1971, Allegheny College; M.S., 1972, University of Illinois; M.S., 1975, Georgia Institute of Technology; Ph.D., 1979, Syracuse University. Assistant professor, Graduate School of Library Science, since 1977, and research assistant professor, Coordinated Science Laboratory, since 1979, University of Illinois, Urbana-Champaign. Previously with Washington University and Georgia Institute of Technology. Rittenhouse Award, Medical Library Association, 1973. Current activities: secretary, Special Interest Group on Information Retrieval, Association for Computing Machinery; chairman, Special Interest Group on User-Online Interaction, editor of monograph/series, and Editorial Board, *Journal of the American Society for Information Science*, ASIS; student relations officer, Special Libraries Association.

Section U-Statistics

Chairperson-Elect (one to be elected).

Fred C. Leone
Lincoln E. Moses

Fred C. Leone (statistics), 1922; B.A., 1942, Manhattan College; M.S., 1943, Georgetown University; Ph.D., 1949, Purdue University. Executive director and secretary-treasurer, American Statistical Association, since 1973. Previously with Case Western Reserve University and University of Iowa; past professorial fellow, University of California, Berkeley; past Fulbright professor, University of São Paulo. Fellow, ASA and American Socie-

ty for Quality Control; editor, *Technometrics*, 1963-68; chairman, Gordon Research Conference on Statistics in Chemistry and Chemical Engineering, 1972. Current activities: treasurer, Council of Professional Associations on Federal Statistics; Board of Trustees, Federal Statistics Users' Conference (chairman, 1976); Council, Bernoulli Society; Board of Directors, ASA. AAAS activities: Electorate Nominating Committee, Section U, 1981-83.

Lincoln E. Moses (statistics), 1921; A.B., 1941, and Ph.D., 1950, Stanford University. With Stanford University since 1952; currently professor of statistics; dean of graduate studies, 1969-75. Previously with Columbia University; administrator, Energy Information Administration, U.S. Department of Energy, 1978-80. Member, Institute of Medicine; Guggenheim fellow, 1960-61; L. L. Thurstone Memorial fellow, 1968-69; fellow, Center for Advanced Study in the Behavioral Sciences, 1975-76; Medal of the U.S. Department of Energy, 1980; Council, Institute of Mathematical Statistics, 1964-66, and American Statistical Association, 1966-67 and 1970-71; Committee on Fellows, ASA, 1964-69 (chairman, 1969); president, Biometrics Society, Western North American Region, 1968-69. Current activities: Ad Hoc Committee on Energy Statistics, ASA; Committee on Energy and Behavior and Committee on Quality of Research-Doctorate Programs, National Academy of Sciences-National Research Council.

Member-at-large of the Section Committee (one to be elected).

Ramanathan Gnanadesikan
J. Kiefer

Ramanathan Gnanadesikan (statistics), 1932; B.Sc., 1952, and M.A., 1953, University of Madras; Ph.D., 1957, University of North Carolina. With Bell Telephone Laboratories since 1959; currently head, Statistics and Data Analysis Research Department. Previously with Procter & Gamble Company; past visiting/adjunct faculty positions, Courant Institute, Imperial College, Princeton University, and others. Fellow, American Statistical Association, Institute of Mathematical Statistics, and Royal Statistical Society; president, Cincinnati Chapter, ASA, 1959; Council, IMS, 1975-79, and International Association for Statistical Computing, 1977-79. Current activities: president-elect, IASC; Committee on Statistics in the Physical Sciences, Bernoulli Society; vice chairman, Publications Committee, ASA; Committee on Applied and Theoretical Statistics, National Academy of Sciences-National Research Council.

J. Kiefer (statistics), 1924; B.S. and M.S., 1948, Massachusetts Institute of Technology; Ph.D., 1952, Columbia University. Professor of statistics, University of California, Berkeley, since 1979. Previously with Cornell University. Guggenheim fellow, 1962-63; member, National Academy of Sciences; president, Institute of Mathematical Statistics, 1969-70. Current activities: Council, IMS; Committee for Army Research Recommendations, National Research Council; Editorial Boards of several journals.

Members of the Electorate Nominating Committee (two to be elected).

Robert E. Bechhofer
Agnes M. Herzberg
Samuel Karlin
I. Richard Savage

Robert E. Bechhofer (statistics), 1919; A.B., 1941, Columbia College; Ph.D., 1951, Columbia University. With Cornell University since 1953; professor, School of Operations Research and Industrial Engineering, since 1957. Previously with Aberdeen Proving Ground and Columbia University; past visiting professor and research associate, Stanford University; past visiting professor, Cambridge University and Imperial College. Fellow, American Statistical Association, Institute of Mathematical Statistics, and Royal Statistical Society; National Science Foundation faculty fellow, 1962–63; past member or chairman of various committees and boards, ASA and IMS. Current activities: Committee on Applied and Theoretical Statistics, National Research Council; Regional Conferences Panel, Conference Board of the Mathematical Sciences; Ad Hoc Committee on Energy Statistics, ASA.

Agnes M. Herzberg (statistics), 1938; B.A., 1961, Queen's University; M.A., 1963, and Ph.D., 1966, University of Saskatchewan. Lecturer, Department of Mathematics, Imperial College of Science and Technology, University of London, since 1968. Past visiting associate professor, University of California, Berkeley, University of Washington, and University of Wisconsin. Past associate editor, *Biometrika* and *Annals of Statistics*; Program Committee, 1976–81, and secretary, Multivariate Study Group Committee, 1979–80, Royal Statistical Society; chairman, Nominating Committee, Institute of Mathematical Statistics, 1978. Current activities: editor, *Short Book Reviews*; associate editor, *Journal of Statistical Planning and Inference* and *Canadian Journal of Statistics*; Committee on International Relations in Statistics, American Statistical Association.

Samuel Karlin (mathematics), 1924; B.S., 1944, Illinois Institute of Technology; Ph.D., 1947, Princeton University. Professor of mathematics, Stanford University, since 1956. Previously with California Institute of Technology; past visiting assistant professor, Princeton University. Proctor fellow, 1945; Bateman research fellow, 1947–48; Guggenheim fellow, 1959–60; fellow, Institute of Mathematical Statistics and International Statistical Institute; member, National Academy of Sciences; NAS Award in Applied Mathematics, 1973; president, IMS, 1978–79. Current activities: senior editor, *Theoretical Population Biology* and *Journal D'Analyse*; associate editor, *Journal of Applied Probability*, *Journal of Multivariate Analysis*, *Journal of Mathematical Biosciences*, *SIAM Journal of Mathematical Analysis*, and others. AAAS activities: Section Committees, Sections on Mathematics and on Biological Sciences, 1981–.

I. Richard Savage (statistics), 1925; B.S., 1944, University of Chicago; M.S., 1945, University of Michigan; Ph.D., 1953, Columbia University. Professor of statistics, Yale University, since 1974. Previously with National Bureau of Standards, University of Minnesota, and Florida State University; past visiting professor, Harvard Business School, Yale University, and Imperial College; research fellow, Center for Advanced Study in the Behavioral Sciences, 1970–71; consultant, Office of Population Censuses and Surveys, London, 1979. Fellow, American Statistical Association and Institute of Mathematical Statistics; past editor, *Journal of the American Statistical Association* and *Annals of*

Statistics; Committee on National Statistics, 1972–77, and Assembly of Behavioral and Social Sciences, 1977–80, National Research Council. AAAS activities: Committee on Opportunities in Science, 1978–80.

Section W—Atmospheric and Hydrospheric Sciences

Chairperson-Elect (one to be elected).

Kristina B. Katsaros
Hans A. Panofsky

Kristina B. Katsaros (atmospheric sciences), 1938; B.S., 1960, and Ph.D., 1969, University of Washington. With University of Washington since 1962; research associate professor since 1977. Previously with Luftundersökningsgruppen and Chalmers Tekniska Högskola (Göteborg). National Defense Title IV fellow, 1963–65; president of Council, Pacific Northwest Region, 1972–73, and National Committee on Constitution and By-laws, 1974–78, American Geophysical Union. Current activities: Committee on Interactions of Sea and Air (chairperson, 1978–80) and Committee on Nominations, American Meteorological Society; Planning Group for Storm Transfer and Response Experiment (STREX); Experiment Teams "Scanning Multichannel Microwave Radiometer" on Seasat A and Nimbus 7. AAAS activities: Electorate Nominating Committee, Section on Atmospheric and Hydrospheric Sciences, 1980–82.

Hans A. Panofsky (meteorology), 1917; A.B., 1938, Princeton University; Ph.D., 1941, University of California, Berkeley. With Pennsylvania State University since 1951; Evan Pugh professor of atmospheric sciences since 1966. Previously with Wilson College and New York University; past visiting professor, University of Washington, University of Minnesota, and Naval Postgraduate School. Guggenheim fellow, 1960–61; Meisinger Award, 1965, Rossby Gold Medal, 1976, and Council, 1958–61, American Meteorological Society. Current activities: Advisory Committee, FOF, National Center for Atmospheric Research; Visiting Committee, Brookhaven National Laboratory; Advisory Board, *Handbook of Meteorology*. AAAS activities: member-at-large of the Section Committee, Section on Atmospheric and Hydrospheric Sciences, 1980–83.

Member-at-Large of the Section Committee (one to be elected).

H. Frank Eden
Barry Saltzman

H. Frank Eden (geosciences), 1934; B.Sc., 1956, University of Durham (United Kingdom); Ph.D., 1959, University of Newcastle (U.K.). With National Science Foundation since 1970; senior science associate, Directorate for Astronomical, Atmospheric, Earth and Ocean Sciences, since 1980. Previously with National Physical Laboratory (U.K.), University of Newcastle, Massachusetts Institute of Technology, and Arthur D. Little, Inc. State scholar, U.K., 1953–56; Outstanding Performance Award, NSF, 1979; program chairman for meteorology, American Geophysical Union Annual Meetings, Washington and San Francisco, 1975.

Barry Saltzman (meteorology), 1931; B.S., 1952, City College of New York; M.S., 1954,

and Ph.D., 1957, Massachusetts Institute of Technology. Professor of geophysics, Yale University, since 1968. Previously with MIT and Travelers Research Center, Inc. Fellow, American Meteorological Society; president, CCNY Branch, 1951–52, Nominating Committee, 1965, and Committee on Climatic Change, 1970–76 (chairman, 1972–73), AMS; associate editor, *Journal of Geophysical Research*, 1971–74. Current activities: editor, *Advances in Geophysics*; chairman, Advisory Committee for Atmospheric Science and Biometeorology, Yale University. AAAS activities: Electorate Nominating Committee, Section on Atmospheric and Hydrospheric Sciences, 1974–76.

Members of the Electorate Nominating Committee (two to be elected).

William R. Holland
Andrew P. Ingersoll
Clayton A. Paulson
Warren M. Washington

William R. Holland (physical oceanography), 1938; A.B., 1960, University of California, Los Angeles; M.S., 1961, Massachusetts Institute of Technology; Ph.D., 1966, University of California, San Diego. Senior scientist and head, Oceanography Section, National Center for Atmospheric Research, since 1974. Previously with Geophysical Fluid Dynamics Laboratory, National Oceanographic and Atmospheric Administration. National Science Foundation postdoctoral fellow, Cambridge University, 1966–67; NCAR Outstanding Publication Award, 1980. Current activities: co-chief editor, *Journal of Physical Oceanography*; SCOR Working Groups 34 (Internal Dynamics of the Ocean) and 68 (North Atlantic Circulation); GARP Climate Dynamics Panel.

Andrew P. Ingersoll (planetary atmospheres), 1940; B.A., 1960, Amherst College; A.M., 1961, and Ph.D., 1965, Harvard University. With California Institute of Technology since 1966; professor of planetary science since 1976. Research fellow, Harvard University, 1965–66. Mariner Jupiter Orbiter Science Working Group, 1975; chairman, Science Working Group for NASA's Climate Plan, 1976–77; chairman, Task Group on Long-Range Climate Change, Atmospheric Research Review, Committee on Atmospheric Sciences, National Academy of Sciences, 1978. Current activities: Committee on Earth Sciences, Space Science Board, NAS; Space and Terrestrial Applications Advisory Committee, NASA Advisory Council; Editorial Board, *Icarus*.

Clayton A. Paulson (air-sea interaction), 1938; B.A., 1960, Augsburg College; Ph.D., 1967, University of Washington. With Oregon State University since 1971; professor of physical oceanography since 1979. Previously with University of Washington and Risø National Laboratory, Denmark (NATO associate in meteorology and Danish AEC fellow). Current activities: NATO Special Program Panel on Air-Sea Interaction; SCOR Working Group 58 (Arctic Ocean Heat Budget); User Advisory Group, Satellite Remote Sensing Facility, Scripps Institution of Oceanography; Ad Hoc Panel to Review the Sea-Air Exchange Program, National Science Foundation.

Warren M. Washington (atmospheric science), 1936; B.S., 1958, M.S., 1960, and Ph.D., 1964, Oregon State University. With

National Center for Atmospheric Research since 1963; head, Climate Section, beginning in 1981. Previously with Stanford Research Institute and Pennsylvania State University; past adjunct associate professor, University of Michigan. Fellow, American Meteorological Society; past member of various AMS, National Science Foundation, and National Academy of Sciences-National Research Council committees; Governor's Science and Technology Advisory Council, State of Colorado, 1975-78. Current activities: President's National Advisory Committee on Oceans and Atmosphere; U.S. National Committee, International Union of Geodesy and Geophysics; chairman, Subcommittee for International Association of Meteorology and Atmospheric Physics. AAAS activities: chairman, Youth Council, 1970; Committee on AAAS Meetings, 1970-72; Committee on Minorities in Science, 1971-72; Committee on Opportunities in Science, 1973-78 (chairman, 1976-78); chairman, Panel on Black Scientists, 1973-78; Committee on Nominations, 1980-81.

Section X-General

Chairperson-Elect (one to be elected).

Harold P. Green
Lora Mangum Shields

Harold P. Green (law), 1922; A.B., 1942, and J.D., 1948, University of Chicago. With Fried, Frank, Harris, Shriver & Kampelman since 1961; professor of law emeritus, George Washington University, since 1979. Director, GWU Law, Science and Technology Program, 1964-79; chairman, Artificial Heart Assessment Panel, National Heart and Lung Institute, 1972-73; chairman, U.S. Department of Energy Environmental Advisory Committee, 1979-80. Current activities: American Bar Association Special Committee on Energy Law (chairman, 1976-79); Council, ABA Section of Science and Technology; founding fellow and director, Institute of Society, Ethics and the Life Sciences (Hastings Center). AAAS activities: Committee on Scientific Freedom and Responsibility, 1976-79.

Laura Mangum Shields (ecology, health), 1912; B.S., 1940, and M.S., 1942, University of New Mexico; Ph.D., 1947, University of Iowa. Visiting professor, Navajo Community College, since 1978; research associate, Navajo Health Authority, since 1980; professor emeritus of biology, New Mexico Highlands University. Phi Sigma Award, University of New Mexico, 1941; Scientist of the Year, New Mexico Academy of Science, 1965; Certificate of Merit, Desert and Arid Zones Research, Southwestern and Rocky Mountain Division, AAAS, 1979; past president and treasurer, New Mexico Academy of Science;

past vice president, Ecological Society of America; past president, National Association of Academies of Science. Current activities include: Rural Health Initiative Board, Navajo Health Service Unit; Editorial Board, *New Mexico Academy of Science Journal*. AAAS activities: Executive Committee, 1958-61, president, 1959-60, and executive officer, 1978-79, Southwestern and Rocky Mountain Division; Council, 1960-73 and 1979; Section Committee, Section X-General, 1960-; Committee on Population Explosion and Birth Control, 1966-67; Committee on Nominations and Elections, 1972-73; Commission on Science Education, 1973-74; Committee on Arid Lands, 1974-80; member-at-large of the Section Committee, Section X, 1976-79; Committee on Council Affairs, 1979.

Member-at-Large of the Section Committee (one to be elected).

Dean Abrahamson
Rosemary Clark

Dean Abrahamson (public affairs), 1934; B.A., 1955, Gustavus Adolphus College; M.A., 1958, University of Nebraska; M.D. and Ph.D., 1967, University of Minnesota. With University of Minnesota since 1970; professor, Humphrey Institute of Public Affairs, since 1973. Previously with Babcock and Wilcox Company and Honeywell, Inc.; advisor, Swedish Energy Commission, 1977-78. Past member or chairman of various boards and committees; Special Inquiry Group on Three-Mile Island Accident, "Peer Review" Panel, U.S. Nuclear Regulatory Commission, 1979-80. Current activities: Board of Trustees, Natural Resources Defense Council; Advisory Board of Theory and Methodology, National Council for the Public Assessment of Technology; Advisory Committee, Project Environment, Sierra Club; Advisory Board, Center for Science in the Public Interest. AAAS activities: chairman, Power Task Force, Committee on Environmental Alterations, 1970-72; Electorate Nominating Committee, Section X-General, 1981-83.

Rosemary Chalk (science policy), 1948; B.A., 1970, University of Cincinnati. Staff officer, AAAS Committee on Scientific Freedom and Responsibility, since 1976. Previously with Congressional Research Service. Current activities: candidate for Council, Federation of American Scientists. AAAS activities: Electorate Nominating Committee, Section X-General, 1979-81 (chairperson, 1981).

Members of the Electorate Nominating Committee (two to be elected).

William S. Friedlander
Rae Goodell
Alan H. McGowan
Walter A. Rosenblith

William S. Friedlander (chemistry), 1930; A.B., 1952, Dartmouth College; M.S., 1952, and Ph.D., 1954, University of Illinois. With 3M Company since 1954; managing director, Minnesota 3M Research Ltd., Harlow, England, since 1976. Hazeltine Prize, Dartmouth College, 1951; chairman, Minnesota Section, American Chemical Society, 1968-69.

Rae Goodell (public understanding of science), 1944; B.A., 1967, Pomona College; Ph.D., 1975, Stanford University. With Massachusetts Institute of Technology since 1975; associate professor of science writing, beginning in 1981. Current activities: Council for the Advancement of Science Writing; Science Writing Educators Group, Association for Education in Journalism. AAAS activities: Committee on Public Understanding of Science, 1981-.

Alan H. McGowan (science policy, administration), 1935; B.E., 1957, Yale University. President, Scientists' Institute for Public Information, since 1973. Previously with American Electric Power Service Corporation, Pace College, and Washington University; secondary school teacher, 1960-69. Teacher Recognition Award, American Association of Physics Teachers, 1968; past member or chairman of various boards and committees; trustee and vice president, Institute for Environmental Education, 1971-79. Current activities: New York State Energy Research and Development Authority; Advisory Committee, Institute for Environmental Education; New York City Mayor's Energy Policy Group. AAAS activities: Youth Council, 1970-72 (chairperson, 1971-72); Commission on Science Education, 1971-72; Committee on Regional Centers, 1971-73.

Walter A. Rosenblith (biophysics), 1913; Ingénieur Radiotélégraphiste, 1936, University of Bordeaux; Ingénieur Radioélectricien, 1937, Ecole Supérieure d'Electricité. With Massachusetts Institute of Technology since 1951; professor since 1957; institute professor since 1975. Previously with New York University, University of California, Los Angeles, South Dakota School of Mines and Technology, and Harvard University. Member, National Academy of Sciences, National Academy of Engineering, and Institute of Medicine; fellow, Acoustical Society, Institute of Electrical and Electronic Engineers, and Society of Experimental Psychologists; past member or chairman of various boards and committees. Current activities include: Editorial Boards, *Biological Cybernetics* and *Linguistic Inquiry*; Corporation, Boston Museum of Science; Committee on Scholarly Communication with the People's Republic of China; Board of Trustees, Brandeis University; Advisory Committee, Center for Advanced Study in the Behavioral Sciences. AAAS activities: Section Committee, Section X-General, and Council, 1964-71.