

**I**n fluorography, *high resolution*  
*Is a justly admired institution.*  
*So, get beautiful bands*  
*Without spoiling your hands:*  
 Use EN<sup>3</sup>HANCE,<sup>™</sup> *it's the perfect solution.*

Faster <sup>3</sup>H, <sup>14</sup>C, <sup>35</sup>S visualization in gels without DMSO.  
 Send for free Guide to Autoradiography Enhancement.



**New England Nuclear**

549 Albany Street, Boston, Mass. 02118  
 Call toll-free: 800-225-1572 Telex: 94-0996  
 (In Massachusetts and International: 617-482-9595)

NEN Chemicals GmbH: D-6072 Dreieich, W. Germany, Postfach 401240, Tel. (06103) 85034, Telex 4-17993 NEND; NEN Canada: 2453 46th Avenue, Lachine, Que. H8T 3C9, Tel. 514-636-4971, Telex 05-821808



Circle No. 277 on Readers' Service Card

# Bridging The Gap!

R & D MEXICO bridges the information gap between scientists, specialists and business decision-makers. Inside every issue you'll find valuable information on developments from Mexico affecting industry, technology, and science — domestic and foreign. Now's the time to get up-to-date with R&D MEXICO at these SPECIAL CHARTER DISCOUNTS.

A publication of the National Council of Science and Technology CONACYT

Circle No. 306 on Readers' Service Card



**R&D MEXICO**  
 P.O. Box 992, Farmingdale, NY 11737

☐ YES, let's bridge the gap. Send me the latest on science, industry, business and more with R&D MEXICO.

☐ Enter my 1 year subscription, 11 issues, just \$12\* (33% Charter Discount)

☐ Enter my 2 year subscription, 22 issues, just \$21\* (41% Charter Discount)

☐ Bill me later ☐ Payment enclosed

Name \_\_\_\_\_ Title \_\_\_\_\_

Company \_\_\_\_\_

Address \_\_\_\_\_

☐ Home ☐ Office

Signature \_\_\_\_\_

CHARTER GUARANTEE: 100% satisfaction or full refund on unmailed copies. 010509

\* All rates in U.S. funds. Add \$5 (U.S.) per year for distribution outside Mexico and U.S.

## Books Reviewed in Science

16 May 1980 through 8 May 1981

- Adaptive Radiations in Prehistoric Panama*, O. F. Linares and A. J. Ranere, Eds., 27 Mar. 1981, 1412
- Advances in Bryozoology*, G. P. Larwood and M. B. Abbott, Eds., 13 June 1980, 1255
- Aesthetics and Science*, 16 May 1980, 726
- The Age of Birds*, A. Feduccia, 13 Mar. 1981, 1153
- Alfred Wegener und die Drift der Kontinente*, M. Schwarzbach, 8 Aug. 1980, 681
- American Science and Modern China, 1876-1936*, P. Buck, 14 Nov. 1980, 779
- Animal Genetics and Evolution*, N. N. Vorontsov and J. M. van Brink, Eds., 27 Feb. 1981, 932
- Animal Sonar Systems*, R.-G. Busnel and J. F. Fish, Eds., 2 Jan. 1981, 49
- Appropriate Technology and Social Values*, F. A. Long and A. Oleson, Eds., 3 Apr. 1981, 38
- Aquatic Oligochaete Biology*, R. O. Brinkhurst and D. G. Cook, Eds., 13 Feb. 1981, 697
- Arch Bridges and Their Builders, 1735-1835*, T. Ruddock, 16 May 1980, 727
- Aspects of Animal Movement*, H. Y. Elder and E. R. Trueman, Eds., 27 Mar. 1981, 1415
- Aspects of Vertebrate History*, L. L. Jacobs, Ed., 30 Jan. 1981, 475
- Asteroids*, T. Gehrels, Ed., 11 July 1980, 267
- At Odds*, C. N. Degler, 1 Aug. 1980, 584
- Atomic and Molecular Collisions*, H. Massey, 16 May 1980, 727
- Atomic Structure*, E. U. Condon and H. Odabasi, 31 Oct. 1980, 531
- Baboon Mothers and Infants*, J. Altmann, 6 Feb. 1981, 573
- Ball Lightning and Bead Lightning*, J. D. Barry, 1 May 1981, 535
- Bastardy and Its Comparative History*, P. Laslett, K. Oosterveen, and R. M. Smith, Eds., 28 Nov. 1980, 1003
- Behavior of Marine Animals*, vol. 4, J. Burger, B. L. Olla, and H. E. Winn, Eds., 10 Apr. 1981, 156
- Behavioral Mechanisms in Ecology*, D. H. Morse, 20 Mar. 1981, 1341
- Behind Every Successful Man*, M. R. Fowlkes, 28 Nov. 1980, 1004
- Benjamin Thompson, Count Rumford*, S. C. Brown, 16 May 1980, 704
- The Biochemistry of Glycoproteins and Proteoglycans*, W. J. Lennarz, Ed., 29 Aug. 1980, 1010
- The Biochemistry of Plants*, vol. 1, N. E. Tolbert, Ed., 5 Dec. 1980, 1119
- Biofeedback and the Modification of Behavior*, A. J. Yates, 6 Mar. 1981, 1039
- The Biology and Physiology of the Living Coelacanth*, J. E. McCosker and M. D. Lagios, Eds., 22 Aug. 1980, 917
- Biophysics and Physiology of Carbon Dioxide*, C. Bauer, G. Gros, and H. Bartels, Eds., 21 Nov. 1980, 892
- Birth and Fortune*, R. A. Easterlin, 13 Feb. 1981, 695
- Botany in China*, A. Thorhaug, Ed., 20 June 1980, 1361
- Brazil*, M. L. Margolis and W. E. Carter, Eds., 18 July 1980, 386
- The Britannia Bridge*, N. Rosenberg and W. G. Vincenti, 16 May 1980, 727
- The Cancer Mission*, K. E. Studer and D. E. Chubin, 23 Jan. 1981, 378
- Cardiovascular Risk Factors in Children*, G. S. Berenson et al., 30 Jan. 1981, 474
- Catalog of Hymenoptera in America North of Mexico*, K. V. Krombein, P. D. Hurd, Jr., D. R. Smith, and B. D. Burks, 16 May 1980, 721
- The Cell Surface*, S. Subtelny and N. K. Wessells, Eds., 3 Oct. 1980, 57
- Cellular Interactions in Symbiosis and Parasitism*, C. B. Cook, P. W. Pappas, and E. D. Rudolph, Eds., 5 Sept. 1980, 1113
- A Centennial History of the American Society of Mechanical Engineers, 1880-1890*, B. Sinclair, 31 Oct. 1980, 529
- Climates Throughout Geologic Time*, L. A. Frakes, 27 Mar. 1981, 1414
- Close Binary Stars*, M. J. Plavec, D. M. Popper, and R. K. Ulrich, Eds., 2 Jan. 1981, 48
- Clouds and Storms*, F. H. Ludlam, 29 Aug. 1980, 1010
- Coherence and Correlation in Atomic Collisions*, H. Kleinpoppen and J. F. Williams, Eds., 7 Nov. 1980, 632
- A Cold Look at Warm-Blooded Dinosaurs*, R. D. K. Thomas and E. C. Olson, Eds., 15 Aug. 1980, 797
- Comparative Biology and Evolutionary Relationships of Tree Shrews*, W. P. Luckett, Ed., 20 Feb. 1981, 813
- Comparative Mechanisms of Cold Adaptation*, L. S. Underwood, L. L. Tieszen, A. B. Callahan, and G. E. Folk, Eds., 18 July 1980, 385
- Comparative Physiology: Primitive Mammals*, K. Schmidt-Nielsen, L. Bolis, C. R. Taylor, P. J. Bentley, and C. E. Stevens, Eds., 13 Mar. 1981, 1154
- Comparative Studies of the Courtship and Mating Behavior of Tropical Araneid Spiders*, M. H. Robinson and B. Robinson, 5 Sept. 1980, 1112
- The Computer Age*, M. L. Dertouzos and J. Moses, Eds., 18 July 1980, 384
- Conservation Biology*, M. E. Soulé and B. A. Wilcox, Eds., 11 July 1980, 267
- Cosmic Landscape*, M. Rowan-Robinson, 14 Nov. 1980, 780
- Cosmologie Physique*, R. Balian, J. Audouze, and D. N. Schramm, Eds., 10 Apr. 1981, 154
- Cretaceous/Tertiary Boundary Events*, T. Birkelund, R. G. Bromley, and W. K. Cris-tensen, Eds., 6 Feb. 1981, 571
- Developmental Biology of Prokaryotes*, J. H. Parish, Ed., 20 June 1980, 1362
- Diversity and Adaptation in Fish Behavior*, M. H. A. Keenleyside, 10 Oct. 1980, 182
- DNA Replication*, A. Kornberg, 16 May 1980, 723
- The Early Postglacial Settlement of Northern Europe*, P. Mellars, Ed., 12 Sept. 1980, 1235
- The Early Years*, P. Robertson, 9 Jan. 1981, 158
- Earthquake Engineering and Hazards Reduction in China*, P. C. Jennings, Ed., 19 Dec. 1980, 1340
- Echinoderms: Present and Past*, M. Jangoux, Ed., 24 Apr. 1981, 436
- The Ecological Approach to Visual Perception*, J. J. Gibson, 15 Aug. 1980, 799
- Ecology of a Subarctic Mire*, M. Sonesson, Ed., 5 Dec. 1980, 1118
- The Ecology of Vision*, J. N. Lythgoe, 26 Sept. 1980, 1508
- Effects of Acid Precipitation on Terrestrial Ecosystems*, T. C. Hutchinson and M. Havas, Eds., 18 July 1980, 384
- Electron-Molecule Scattering*, S. C. Brown, Ed., 28 Nov. 1980, 1005
- Energy Future*, R. Stobaugh and D. Yergin, Eds., 16 May 1980, 701
- Energy in America's Future*, S. H. Schurr, J. Darmstadter, H. Perry, W. Ramsay, and M. Russell, 16 May 1980, 701
- Energy: The Next Twenty Years*, 16 May 1980, 701
- The Engineering Drawings of Benjamin Henry Latrobe*, D. H. Stapleton, Ed., 3 Oct. 1980, 56
- Entropy*, J. Rifkin, 20 Mar. 1981, 1340
- Environmental Chemistry of the Elements*, H. J. M. Bowen, 16 Jan. 1981, 272
- Enzymatic Basis of Detoxication*, W. B. Jakoby, Ed., 20 Feb. 1981, 812
- Evolution and Ecology of Zooplankton Communities*, W. C. Kerfoot, Ed., 1 May 1981, 534
- Evolution in Age-Structured Populations*, B. Charlesworth, 10 Apr. 1981, 154
- The Evolution of Culture in Animals*, J. T. Bonner, 25 July 1980, 487
- Evolutionary Biology of Parasites*, P. W. Price, 12 Dec. 1980, 1240
- Evolutionary History of the Primates*, F. S. Szalay and E. Delson, 16 May 1980, 720
- The Evolutionary Synthesis*, E. Mayr and W. B. Provine, Eds., 20 Feb. 1981, 810
- Experimental Determination of Stone Tool Uses*, L. H. Keeley, 3 Oct. 1980, 58
- Exploring the City*, U. Hannerz, 24 Apr. 1981, 434
- Eyewitness Testimony*, E. F. Loftus, 16 May 1980, 712
- Farmers in the Forest*, P. Kunstadter, E. C. Chapman, and S. Sabhasri, Eds., 16 May 1980, 733
- The Fates of Nations*, P. Colinvax, 20 Mar. 1981, 1339
- Field Theoretical Methods in Particle Physics*, W. Rühl, Ed., 10 Oct. 1980, 180
- The First Americans*, W. S. Laughlin and A. B. Harper, Eds., 19 Dec. 1980, 1339
- The First Century of Experimental Psychology*, E. Hearst, Ed., 16 May 1980, 715
- Fisheries Ecology of Floodplain Rivers*, R. L. Welcomme, 8 Aug. 1980, 680

# 2',3'-Dideoxynucleoside 5'-Triphosphates

## DNA Sequencing Reagents (Chain—Terminators)

- 4831** 2', 3'-Dideoxythymidine 5'-Triphosphate  
Pkg. Sizes and Prices:  
5 mg ..... \$45.00    25 mg ..... \$195.00
- 4823** 2', 3'-Dideoxycytidine 5'-Triphosphate  
Pkg. Sizes and Prices:  
4  $\mu$ moles ... \$65.00    5x4  $\mu$ moles ... \$295.00
- 4819** 2', 3'-Dideoxyadenosine 5'-Triphosphate  
Pkg. Sizes and Prices:  
4  $\mu$ moles ... \$65.00    5x4  $\mu$ moles ... \$295.00
- 4817** 2', 3'-Dideoxyguanosine 5'-Triphosphate  
Pkg. Sizes and Prices:  
4  $\mu$ moles ... \$65.00    5x4  $\mu$ moles ... \$295.00
- 4865** Dideoxynucleoside Triphosphate Kit  
One micromole of each of the four  
dideoxynucleoside triphosphates    1 Kit ... \$90.00

Available from stock

excellence in biochemistry



**PL biochemicals, inc.**

1037 WEST MCKINLEY AVENUE, MILWAUKEE, WIS. 53205

® Call 414/347-7442 TWX 910-262-1111

Circle No. 254 on Readers' Service Card

An altogether fitting approach to low pressure chromatography

**CHEMINERT®**  
LIQUID CHROMATOGRAPHY ACCESSORIES

The Cheminert® L.C. system designer with a full array of non-metallic fittings and accessories. The components connected to form a total low pressure chromatography system.

- fittings, adapters, tees and crosses
- slider, pneumatic and rotary valves
- sample injection valves
- solvent metering pumps
- glass and teflon® columns

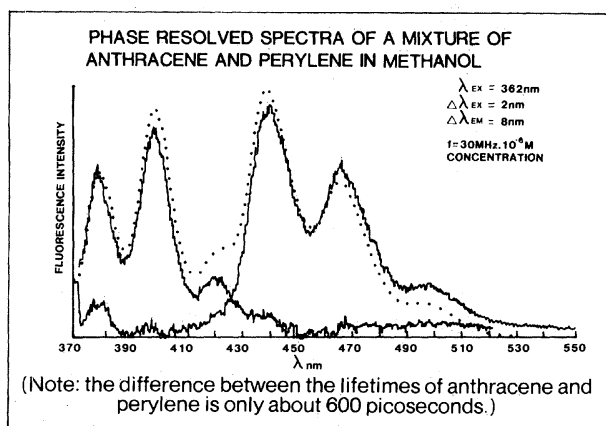
Write for New Catalog

Cheminert is a registered trademark of Laboratory Data Control. Teflon is a registered trademark of E.I. du Pont Co.

LDC LIQUID CHROMATOGRAPHS  
**LABORATORY DATA CONTROL**  
Division of Milton Roy Co.  
P.O. Box 10235  
Riviera Beach, FL 33404  
Telephone: (800) 327-6182  
Telex: 513479

Circle No. 22 on Readers' Service Card

# A NEW DIMENSION IN FLUORESCENCE MULTICOMPONENT ANALYSIS



Subnanosecond phase resolved spectroscopy is a new fluorescence technique being introduced by SLM Instruments, Inc. This technique provides researchers with the ability to identify individual components in a sample containing a mixture of fluorophores.

Stop by the SLM booth at the American Society of Biological Chemists meeting in St. Louis, June 1-4. We'll be happy to discuss this new breakthrough in fluorescence spectroscopy.

STOP BY BOOTHS C5 AND C6 AT THE AMERICAN SOCIETY OF BIOLOGICAL CHEMISTS MEETING. WE'LL SHOW YOU HOW WE DO IT.

**SLM INSTRUMENTS, INC.**

810 West Anthony Drive, Urbana, Illinois 61801 USA Phone: 217-384-7730  
SLM sells worldwide. Contact us for the name of your nearest representative.

Circle No. 281 on Readers' Service Card

28.086

**14 Si**

**For  
organo-  
silicon  
specialties—  
contact  
Petrarch today**

Over 700  
organosilanes  
are available  
from Petrarch,  
among them:  
**synthetic reagents  
derivatizing agents  
blocking agents  
surface treating agents  
reactive intermediates  
monomers  
prepolymers  
silicone fluids**

Custom syntheses  
too—if it contains  
silicon, we almost  
certainly can make it.

Petrarch puts out a  
110 page catalog that  
presents data on  
hundreds of organo-  
silicon compounds  
available from stock.  
Four chapters discuss  
use of organosilanes  
in synthesis. Useful  
notes provide informa-  
tion on polymers, lab  
and industrial applica-  
tions. Send for your  
copy today—it's free.



**PETRARCH SYSTEMS, INC.**

Bartram Road  
Bristol, PA 19007  
215:781-9255

In the Far East:  
Chisso Corp., Tokyo.

PET 7A

Circle No. 282 on Readers' Service Card

*The Fossil Hunters*, H. N. Andrews, 17 Oct. 1980, 316

*Fossils in the Making*, A. K. Behrensmeier and A. P. Hill, Eds., 7 Nov. 1980, 631

*The Founders of Science at the British Museum, 1753-1900*, A. E. Gunther, 17 Apr. 1981, 319

*Gauge Fields*, L. D. Faddeev and A. A. Slavnov, 9 Jan. 1981, 160

*Gems Made by Man*, K. Nassau, 13 Mar. 1981, 1156

*General Relativity and Gravitation*, A. Held, Ed., 12 Sept. 1980, 1234

*Genetic Models of Sexual Selection*, P. O'Donald, 11 July 1980, 268

*Genetic Recombination*, F. W. Stahl, 17 Oct. 1980, 316

*The Genetics of Altruism*, S. A. Boorman and P. R. Levitt, 7 Nov. 1980, 633

*Genome Organization and Expression in Plants*, C. J. Leaver, Ed., 31 Oct. 1980, 532

*Geography Yesterday and Tomorrow*, E. H. Brown, Ed., 23 Jan. 1981

*The Great Dismal Swamp*, P. W. Kirk, Jr., Ed., 16 May 1980, 738

*A Guide to the Culture of Science, Technology, and Medicine*, P. T. Durbin, Ed., 27 Feb. 1981, 930

*Health, Medicine and Mortality in the Sixteenth Century*, C. Webster, Ed., 13 June 1980, 1253

*The Historical Development of the Calculus*, C. H. Edwards, Jr., 6 June 1980, 1139

*A History of Biochemistry*, part 5, M. Florkin, 16 May 1980, 722

*A History of Computing in the Twentieth Century*, N. Metropolis, J. Howlett, and G.-C. Rota, Eds., 1 May 1981, 536

*A History of Control Engineering, 1800-1930*, S. Bennett, 6 June 1980, 1141

*A History of Industrial Power in the United States, 1780-1930*, vol. 1, L. C. Hunter, 27 June 1980, 1451

*The Human Biology of Circumpolar Populations*, F. A. Milan, Ed., 1 Aug. 1980, 585

*The Human Condition*, W. H. McNeill, 20 Mar. 1981, 1339

*Human Genetics*, F. Vogel and A. G. Motulsky, 15 Aug. 1980, 798

*Human Inference*, R. Nisbett and L. Ross, 16 May 1980, 713

*Human Science and Social Order*, M. Hale, Jr., 16 May 1980, 714

*Hydrophobic Interactions*, A. Ben-Naim, 20 June 1980, 1363

*Inca Architecture*, G. Gasparini and L. Margolies, 14 Nov. 1980, 779

*John Milne*, L. K. Herbert-Gustar and P. A. Nott, 6 Mar. 1981, 1038

*The Kung San*, R. B. Lee, 21 Nov. 1980, 890

*Landau*, A. Livanova, 9 Jan. 1981, 158

*The Languages of Native America*, L. Campbell and M. Mithun, Eds., 17 Oct. 1980, 315

*The Large-Scale Characteristics of the Galaxy*, W. B. Burton, Ed., 13 June 1980, 1256

*The Large-Scale Structure of the Universe*, P. J. E. Peebles, 3 Apr. 1981, 38

*The Lattice Dynamics and Statics of Alkali Halide Crystals*, J. R. Hardy and A. M. Karo, 16 Jan. 1981, 272

*Liposomes in Biological Systems*, G. Gregoriadis and A. C. Allison, Eds., 19 Dec. 1980, 1342

*Living Archaeology*, R. A. Gould, 5 Dec. 1980, 1117

*Living without Oxygen*, P. W. Hochachka, 1 Aug. 1980, 586

*Lower Wenlock Faunal and Floral Dynamics*, V. Jaanusson, S. Laufeld, and R. Skoglund, Eds., 20 Feb. 1981, 813

*Macroevolution*, S. M. Stanley, 16 May 1980, 716

*Managerial Hierarchies*, A. D. Chandler, Jr., and H. Daems, Eds., 30 May 1980, 1023

*Marine Benthic Dynamics*, K. R. Tenore and B. C. Coull, Eds., 13 Mar. 1981, 1155

*Maternal Effects in Development*, D. R. Newth and M. Balls, Eds., 12 Sept. 1980, 1236

*Mathematical Population Genetics*, W. J. Ewens, 13 June 1980, 1253

*The Mathematical Theory of Quantitative Genetics*, M. G. Bulmer, 17 Apr. 1981, 320

*La Matière Mal Condensée*, R. Balian, R. Maynard, and G. Toulouse, Eds., 30 May 1980, 1025

*Membrane Transduction Mechanisms*, R. A. Cone and J. E. Dowling, Eds., 11 July 1980, 269

*Membrane Transport in Erythrocytes*, U. V. Lassen, H. H. Ussing, and J. O. Wieth, Eds., 6 Feb. 1981, 573

*Memory Organization and Structure*, C. R. Puff, Ed., 20 June 1980, 1361

*Mesozoic Mammals*, J. A. Lillegraven, Z. Kielan-Jaworowska, and W. A. Clemens, Eds., 16 May 1980, 718

*Microtubules*, K. Roberts and J. S. Hyams, Eds., 3 Oct. 1980, 57

*Migrant Birds in the Neotropics*, A. Keast and E. S. Morton, Eds., 3 Apr. 1981, 39

*Mr. Peale's Museum*, C. C. Sellers, 16 May 1980, 706

*Monoclonal Antibodies*, R. H. Kennett, T. J. McKearn, and K. B. Bechtol, Eds., 17 Oct. 1980, 317

*The Nature of Thought*, P. W. Jusczyk and R. M. Klein, Eds., 1 May 1981, 536

*Neuropsychology of Left-Handedness*, J. Herron, Ed., 16 May 1980, 709

*Ninth Texas Symposium on Relativistic Astrophysics*, J. Ehlers, J. J. Perry, and M. Walker, Eds., 30 Jan. 1981, 475

*Nitrogen Fixation*, W. E. Newton and W. H. Orne-Johnson, Eds., 23 Jan. 1981, 379

*Nocturnal Malagasy Primates*, P. Charles-Dominique, H. M. Cooper, A. Hladik, C. M. Hladik, E. Pages, G. F. Pariente, A. Petter-Rousseaux, and A. Schilling, 13 Feb. 1981, 697

*Noguchi and His Patrons*, I. R. Plesset, 24 Apr. 1981, 434

*Nonradial and Nonlinear Stellar Pulsation*, H. A. Hill and W. A. Dziembowski, Eds., 20 Mar. 1981, 1341

*Nutation and the Earth's Rotation*, E. P. Fedorov, M. L. Smith, and P. L. Bender, Eds., 27 Feb. 1981, 932

*Nutrition and Growth*, D. B. Jelliffe and E. F. P. Jelliffe, Eds., 29 Aug. 1980, 1011

*Objects of High Redshift*, G. O. Abell and P. J. E. Peebles, Eds., 28 Nov. 1980, 1005

*Olfaction in Mammals*, D. M. Stoddart, Ed., 10 Apr. 1981, 155

*Oort and the Universe*, H. van Woerden, W. N. Brouw, and H. C. van de Hulst, Eds., 16 Jan. 1981, 272

*The Origin*, I. Stone, 16 Jan. 1981, 270

*The Origin of Major Invertebrate Groups*, M. R. House, Ed., 16 May 1980, 717

*The Origin of the Gulf of Mexico and the Early Opening of the Central North Atlantic Ocean*, R. H. Pilger, Jr., Ed., 15 Aug. 1980, 798

*The Origins and Early Development of the Heavy Chemical Industry in France*, J. G. Smith, 22 Aug. 1980, 916

*The Paleobiology of Plant Protists*, H. Tapan, 27 Mar. 1981, 1413

*Paul Broca*, F. Schiller, 27 June 1980, 1452

*Peptides*, F. E. Bloom, Ed., 17 Apr. 1981, 320

*Petroleum in the Marine Environment*, L. Petrakis and F. T. Weiss, Eds., 12 Dec. 1980, 1241

*Philosophers at War*, A. Rupert Hall, 24 Oct. 1980, 417

*Phylogenetic Patterns and the Evolutionary Process*, N. Eldredge and J. Cracraft, 12 Dec. 1980, 1239

*Physics of Magmatic Processes*, R. B. Hargraves, Ed., 8 May 1981, 656

*The Physiology of Thirst and Sodium Appetite*, J. T. Fitzsimons, 16 May 1980, 711

*Plant Membrane Transport*, R. M. Spanswick, W. J. Lucas, and J. Dainty, Eds., 26 Sept. 1980, 1508

*Plasma Membranes and Disease*, D. F. H. Wallach, 22 Aug. 1980, 918

*Plasticity of Muscle*, D. Pette, Ed., 20 Feb. 1981, 812

*Pollution and Reform in American Cities, 1870-1930*, M. V. Melosi, Ed., 2 Jan. 1981, 47

*Pollution Ecology of Estuarine Invertebrates*, C. W. Hart, Jr., and S. L. H. Fuller, Eds., 1 Aug. 1980, 586

*Pollution, Politics, and International Law*, R. M. McGonigle and M. W. Zacher, 13 Feb. 1981, 696

*Polyploidy*, W. H. Lewis, Ed., 26 Sept. 1980, 1507

*Population Dynamics*, R. M. Anderson, B. D. Turner, and L. R. Taylor, Eds., 3 Apr. 1981, 40

*Population Malthus*, P. James, 16 May 1980, 703

*Portraits of "the Whiteman,"* K. H. Basso, 16 May 1980, 731

*Pre-Columbian Metallurgy of South America*, E. P. Benson, Ed., 24 Apr. 1981, 435

*Prehistoric Hunters of the High Andes*, J. W. Rick, 25 July 1980, 488

*The Prehistory of Europe*, P. Phillips, 31 Oct. 1980, 530

*Probing Hadrons with Leptons*, G. Preparata and J.-J. Aubert, Eds., 8 May 1981, 656

*Proceedings of the Eighth Hawaii Topical Conference in Particle Physics*, V. Z. Peterson and S. Pakvasa, Eds., 13 Mar. 1981, 1153

*Proceedings of the Symposium on Drought in Botswana*, M. T. Hinchey, Ed., 16 May 1980, 736

*Progress in Biomass Conversion*, vol. 1, K. V. Sarkanen and D. A. Tillman, Eds., 22 Aug. 1980, 917

*Progress in Social Psychology*, vol. 1, M. Fishbein, Ed., 26 Sept. 1980, 1509

*Protein Folding*, R. Jaenicke, Ed., 24 Oct. 1980, 420

*Protein Methylation*, W. K. Paik and S. Kim, 18 July 1980, 385

*The Psychology of Eyewitness Testimony*, A. D. Yarmey, 16 May 1980, 712

*The Puuc*, H. E. D. Pollock, 6 Feb. 1981, 582

*Quantitative Toxicology*, V. A. Filov, A. A. Golubev, E. I. Liublina, and N. A. Tolokontsev, 24 Oct. 1980, 418

*R. A. Fisher: An Appreciation*, S. E. Fienberg and D. V. Hinkley, Eds., 10 Oct. 1980, 180

*Radiation Effects on Aquatic Organisms*, N. Egami, Ed., 21 Nov. 1980, 891

*The Rainmakers*, C. C. Spence, 2 Jan. 1981, 46

*Receptors for Neurotransmitters, Hormones and Pheromones in Insects*, D. B. Sattelle et al., Eds., 13 Feb. 1981, 698

*The Red Fox*, E. Zimen, Ed., 2 Jan. 1981, 48

*Relativistic Particle Physics*, H. M. Pilkuhn, 30 May 1980, 1025

*Reproduction in Flowering Plants*, 10 Oct. 1980, 181

*Robert Maillart's Bridges*, D. P. Billington, 16 May 1980, 727

*Robert Oppenheimer: Letters and Recollections*, A. K. Smith and C. Weiner, Eds., 16 May 1980, 698

*Rotatoria*, H. J. Dumont and J. Green, Eds., 6 Mar. 1981, 1037

*A Safe Cigarette?*, G. B. Gori and F. G. Bock, Eds., 9 Jan. 1981, 160

*Scaling Concepts in Polymer Physics*, P.-G. de Gennes, 6 June 1980, 1140

*Science at the White House*, E. J. Burger, Jr., 6 Mar. 1981, 1037

*The Sciences in the American Context*, N. Reingold, Ed., 16 May 1980, 705

*Seabrook and the Nuclear Regulatory Commission*, D. W. Stever, Jr., 24 Oct. 1980, 419

*Secondary Plant Products*, E. A. Bell and B. V. Charlwood, Eds., 5 Sept. 1980, 1113

*Seeds of Famine*, R. W. Franke and B. H. Chasin, 30 Jan. 1981, 473

*Selected Papers of Léon Rosenfeld*, R. S. Cohen and J. J. Stachel, Eds., 27 Feb. 1981, 931

*Senescence in Plants*, K. V. Thimann, 6 Feb. 1981, 574

*Serengeti*, A. R. E. Sinclair and M. Norton-Griffiths, Eds., 27 June 1980, 1450

*Seven Countries*, A. Keys et al., 6 June 1980, 1138

*Seven Decades That Changed America*, R. E. Stewart, 31 Oct. 1980, 529

*Shang Civilization*, K.-C. Chang, 8 Aug. 1980, 679

*Sir Joseph Banks*, C. Lyte, 17 Apr. 1981, 319

*Sisters and Wives*, K. Sacks, 16 May 1980, 730

*The Sky Explored*, D. J. Warner, 7 Nov. 1980, 632

*Social Exchange*, K. J. Gergen, M. S. Greenberg, and R. H. Willis, Eds., 21 Nov. 1980, 891

*Some Adaptations of Marsh-Nesting Blackbirds*, G. H. Orians, 8 Aug. 1980, 682

*Splendid Isolation*, G. G. Simpson, 16 May 1980, 719

*Star Clusters*, J. E. Hesser, Ed., 12 Sept. 1980, 1234

*Stephen Hales*, D. G. C. Allan and R. E. Schofield, 16 Jan. 1981, 271

*Survival or Extinction*, H. Synge and H. Townsend, Eds., 16 May 1980, 739

*Symposium on Glacier Beds*, 19 Dec. 1980, 1341

*The Terrestrial Environment and the Origin of Land Vertebrates*, A. L. Panchen, Ed., 8 May 1981, 657

*Theory of Meson Interactions with Nuclei*, J. M. Eisenberg and D. S. Koltun, 12 Dec. 1980, 1241

*Theory of Stellar Pulsation*, J. P. Cox, 5 Dec. 1980, 1119

*Thule Eskimo Culture*, A. P. McCartney, Ed., 16 May 1980, 732

*Toward the Endless Frontier*, K. Hechler, 16 May 1980, 703

*The Triumph of Evolution*, H. Cravens, 30 May 1980, 1024

## The Nature of Matter

Edited by J. H. MULVEY. The discoveries made in the search for the answers to the questions, "what is matter made of and how do the parts hold together?" have transformed the material basis and structure of society. Written for the general reader, this book gives an overall picture of the present state of this quest and the directions it might take in the future. The contributors are: D. H. Wilkinson, R. E. Peierls, C. H. Llewellyn Smith, D. H. Perkins, A. Aslam, J. Ellis, J. B. Adams, and M. Gell-Mann.

July 1981 200 pp.; 50 illus.; 12 halftone plates \$14.95

## The State of the Universe

Edited by GEOFFREY BATH. The story of the history of the Universe over the whole electromagnetic spectrum and what is happening within it is presented by eight scientists involved in recent discoveries. The book covers the origin of the Universe, the structure and evolution of galaxies, the origin of the chemical elements, determination of the fundamental properties of stars, the properties of black holes, X-ray observations of galactic and extra-galactic X-ray sources, exploration of the planets by planetary fly-bys and probes, and a survey of the whole electromagnetic spectrum which emphasizes the importance of each spectral region.

1980 200 pp.; 53 plates; 12 color plates; 61 line diagrams \$24.95

## The Science of Human Progress

ROBIN HOLLIDAY. The author here looks at the future of biological science and considers the possible consequences for the study of man, especially in providing a better understanding of brain and behavior. He presents the results of modern research in the biological sciences and the prospects in the longer term, stressing the importance of pursuing fundamental research and building a case for rationalism. This book is of interest to the non-scientist who wishes to learn of past and future achievements in the biological sciences and to scientists and science policymakers.

1981 112 pp. \$22.00

Prices and publication dates are subject to change.

OXFORD UNIVERSITY PRESS  
200 Madison Avenue, New York, N.Y. 10016





*The Universe at Large Redshifts*, J. Kalckar, O. Ulfbeck, and N. R. Nilsson, Eds., 14 Nov. 1980, 781

*The Uses and Abuses of Forecasting*, T. Whiston, Ed., 27 June 1980, 1449

*Vertebrate Ecology in the Northern Neotropics*, J. F. Eisenberg, Ed., 25 July 1980, 488

*Volcanic Activity and Human Ecology*, P. D. Sheets and D. K. Grayson, Eds., 16 May 1980, 736

*Warfare in a Fragile World*, Stockholm International Peace Research Institute, 29 Aug. 1980, 1009

*Wave Instabilities in Space Plasmas*, P. J.

Palmadesso and K. Papadopoulos, Eds., 25 July 1980, 490

*Who Gets Ahead?*, C. Jencks *et al.*, 16 May 1980, 707

*Wilhelm Wundt and the Making of a Scientific Psychology*, R. W. Rieber, Ed., 23 Jan. 1981, 378

*Wolfgang Pauli: Wissenschaftlicher Briefwechsel mit Bohr, Einstein, Heisenberg, u.a.*, vol. 1, A. Hermann, K. v. Meyenn, and V. F. Weisskopf, Eds., 16 May 1980, 724

*Wundt Studies*, W. G. Bringmann and R. D. Tweney, Eds., 23 Jan. 1981, 378

*Zoogeography and Diversity of Plankton*, S. van der Spoel and A. C. Pierrot-Bults, Eds., 5 Sept. 1980, 1112

## Books Received

*Advances in Biological and Medical Physics*. Vol. 17. John H. Lawrence, John W. Gofman, and Thomas L. Hayes, Eds. Academic Press, New York, 1980. xii, 474 pp., illus. \$55.

*Advances in Cryogenic Engineering*. Vol. 25. K. D. Timmerhaus and H. A. Snyder, Eds. Plenum, New York, 1980. xvi, 852 pp., illus. \$59.50.

*Advances in Enzymology and Related Areas of Molecular Biology*. Vol. 51. Alton Meister, Ed. Interscience (Wiley), New York, 1980. viii, 318 pp., illus. \$29.50.

*Birds of Africa*. John Karmali. Viking, New York, 1980. 192 pp., illus. \$25.

*Bit-Slice Design*. Controllers and ALUs. Donna-maie E. White. Garland STPM Press, New York, 1980. xii, 148 pp., illus. \$24.50.

*The Boreal Ecosystem*. James A. Larsen. Academic Press, New York, 1980. xvi, 200 pp., illus. \$45.

*Boron Chemistry—4*. Robert W. Parry and Goji Kodama, Eds. Pergamon, New York, 1980. viii, 162 pp., illus. \$49.50.

*Building a Career*. The Effect of Initial Job Experiences and Related Work Attitudes on Later Employment. Joseph A. Raelin. Upjohn Institute for Employment Research, Kalamazoo, Mich., 1980. xiv, 178 pp. Cloth, \$7; paper, \$4.50.

*Captopril and Hypertension*. David B. Case, Edmund H. Sonnenblick, and John H. Laragh, Eds. Plenum, New York, 1980. xii, 236 pp., illus. \$23.50.

*Care and Education of Young Children in America*. Policy, Politics, and Social Science. Ron Haskins and James J. Gallagher, Eds. Ablex, Norwood, N.J., 1980. viii, 216 pp., illus. \$19.95.

*Diffusion in Gases and Porous Media*. R. E. Cunningham and R. J. J. Williams. Plenum, New York, 1980. xxiv, 276 pp., illus. \$37.50.

*Disturbances of Amino Acid Metabolism*. Clinical Chemistry and Diagnosis. Hans J. Bremer, Marinus Duran, Johannes P. Kamerling, Hildegard Przyrembel, and Sybe K. Wadman. Urban & Schwarzenberg, Baltimore, 1981. xii, 526 pp., illus. \$54.

*Dyslexia*. A Solution to the Riddle. Harold N. Levinson. Springer-Verlag, New York, 1980. xii, 398 pp., illus. \$24.80.

*Earthworks*. Ten Years on the Environmental Front. Mary Lou Van Deventer. Friends of the Earth, San Francisco, 1980. 256 pp., illus. Paper, \$8.95. Reprinted from *Not Man Apart*.

*Electrochemistry at Semiconductor and Oxidized Metal Electrodes*. S. Roy Morrison. Plenum, New York, 1980. xiv, 402 pp., illus. \$45.

*Electronics Math*. Bill Deem. Prentice-Hall, Englewood Cliffs, N.J., 1981. xvi, 576 pp., illus. \$19.95.

*The Encyclopedia of Ancient Civilizations*. Arthur Cotterell, Ed. Mayflower, New York, 1980. 368 pp., illus. \$29.95.

*Estuarine Perspectives*. Victor S. Kennedy, Ed. Academic Press, New York, 1980. xxii, 534 pp., illus. \$29.50.

*Ethical Issues in Sex Therapy and Research*. Vol. 2. William H. Masters, Virginia E. Johnson, Robert C. Kolodny, and Sarah M. Weems, Eds. Little, Brown, Boston, 1980. xx, 436 pp. \$22.50.

*Evaluation in Education*. Foundations of Competency Assessment and Program Review. Richard M. Wolf. Praeger, New York, 1980. xiv, 220 pp. \$18.95.

*Evaluation of Early Human Activities and Remains in the California Desert*. Emma Lou Davis, Kathryn H. Brown, and Jacqueline Nichols, Eds. Great Basin Foundation, San Diego, 1980. xii, 408 pp., illus. Spiral bound, \$14.50.

*Evolution and Mineralization of the Arabian-Nubian Shield*. Vols. 3 and 4. Published for the Institute of Applied Geology, King Abdulaziz University by Pergamon, New York, 1980. Vol. 3, x, 164 pp., illus. \$30. Vol. 4, x, 168 pp. \$34. I. A. G. Bulletin No. 3.

*Fetal Liver Transplantation*. Current Concepts and Future Directions. Guido Lucarelli, Theodor M. Flidner, and Robert Peter Gale, Eds. Excerpta Medica, Amsterdam, 1980 (U.S. distributor, Elsevier/North-Holland, New York). viii, 326 pp., illus. \$61.

*Glossary of Acarological Terminology*. (Glossaire de la Terminologie Acarologique). Vol. 1, General Terminology. L. van der Hammen, Ed. Junk, The Hague, 1980 (U.S. distributor, Kluwer Boston, Hingham, Mass.). viii, 244 pp. \$60.

*Group Theory and the Interaction of Composite Nucleon Systems*. P. Kramer, G. John, and D. Schenzle. Vieweg, Wiesbaden, Germany, 1981. viii, 224 pp. DM 86. Clustering Phenomena in Nuclei, vol. 2.

*Les Groupes en Crise? Eléments pour une Etude Comparée des Problèmes de la Psychosociologie d'Expression Française*. Roger Rondeau. Mardaga, Brussels, 180. 212 pp. Paper, 390 BF.

*Harmonic Analysis and Representations of Simple Lie Groups*. J. A. Wolf, M. Cahen, and M. de Wilde, Eds. Reidel, Boston, 1980 (distributor, Kluwer Boston, Hingham, Mass.). viii, 496 pp. \$66. Mathematical Physics and Applied Mathematics, vol. 5.



Disperse  
Emulsify  
Homogenize

Shred  
Blend  
& Cut

**300 microliters to 300 gallons of process flow  
with one of Tekmar's Super Dispax Homogenizers**

**Mechanical, high frequency units operate on high shear and impact principle; widely used in biomedical, analytical, pilot plant and process areas.**

**Widest selection of Rotor-stator generators available anywhere.** Rotor-stator generators are available in diameters of 8mm, 10mm, 18mm, 30mm, 45mm, and 65mm; capable of particle size reduction, dispersions, cell membrane disruption of static sample-volumes of less than 1ml to 50 liters.

**Solid-state control for Tisumizer and Super Dispax Model SD45.** Thyristor speed control matched directly to the output of the SDT Tisumizer and the SD45 provide constant speed/torque at selected RPM regardless of load. Our Tisumizer Control Module features a high torque motor speed control, dual range electronic timer, and temperature readout with selectable over-temperature controllability.

**Continuous flow-through units.** Glass flow-through accessories for all laboratory sized units assist in controlling aerosols or to determine scale up data for specifying one of our larger laboratory, continuous pilot plant and/or process units.

**All models competitively priced, easily cleaned and serviced.** Laboratory units are routinely available from our Cincinnati stock. All homogenizers disassemble for ease of cleaning and repairing. Tool sets and complete instructions supplied with all apparatus.



Wide range of rotor-stator generators—diameters from 8mm to 65mm shown. Choose appropriate one for varying sample volumes from less than 1ml to 50 liters.

Tekmar®

TEKMAR COMPANY / P.O. Box 37202 / Cincinnati, OH 45222 / (800) 543-4461  
In Ohio call collect (513) 761-0633 / Telex No. 21-4221

# Think less.

Nalgene FILMWARE® Scintillation Tubes cost less to buy, less to use.

Think about all your scintillation counting costs.

Now look at Nalgene FILMWARE Scintillation Tubes and see how they can cut *all* those costs dramatically.

Ours is a *flexible* plastic tube that gives you more for less.

Lower initial cost of the tubes.

\$60 to \$250 less per 1000 samples.

Less cocktail needed. As much as 75% less.

Less disposal volume. As much as 75% less.

Less chance of toluene inhalation.

Lower background count. As low as 7 cpm.

And no breakage or wall adsorption.

So start thinking "less", and you'll think more of us. Let us prove why the Nalgene FILMWARE Scintillation system belongs in your lab.

## Free.

Ask for our illustrated brochure. Contact your labware dealer, or write:  
Nalge Company, P.O. Box 365,  
Rochester, New York 14602.

## SYBRON | Nalge

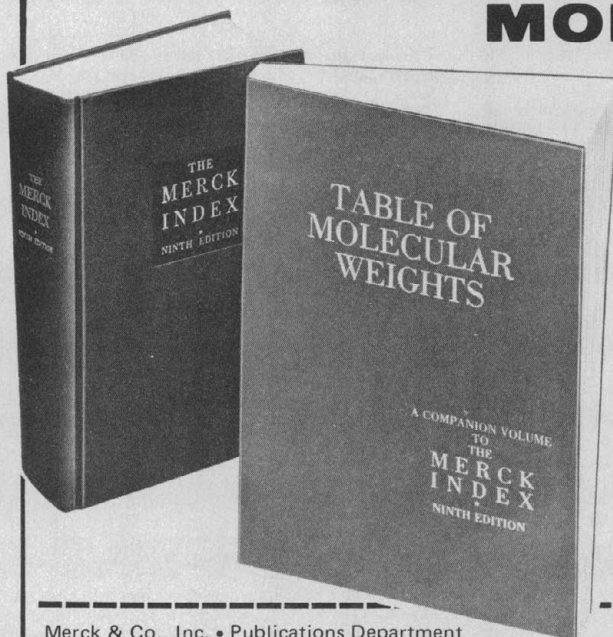
Circle No. 207 on Readers' Service Card

## Now Available! TABLE OF MOLECULAR WEIGHTS

*A Companion Volume to*  
**THE MERCK INDEX (9TH ED.)**

The *Table of Molecular Weights* is a 300-page listing of more than 9,000 chemical compounds — pharmaceuticals, pesticides, industrial chemicals, solvents, and common reagents — in increasing order of molecular weight. Each chemical is referenced, for full encyclopedic information, to The Merck Index, 9th Edition. In addition to the molecular weights, reported to six decimal places, this volume gives the empirical formula for each compound named. It also contains a table of masses and abundances of naturally occurring isotopes. Page size is 6-7/8" x 9-7/8", in durable, gold-stamped Lexotone® cover. Mass spectroscopists, chemists, biochemists, pharmacists, botanists, physicists, chemical engineers, and other life scientists will find the *Table of Molecular Weights* an important addition to their reference library. A new edition is not planned before 1983.

The Merck Index, Ninth Edition is an encyclopedia of chemicals, drugs, and biologicals, complete with a cross-index of 50,000 synonyms, formula index, Chemical Abstracts registry numbers, and a variety of valuable information. Of some 10,000 monographs, more than half are illustrated with stereochemical structural formulas, and 7,500 offer information on uses and toxicity.



Merck & Co., Inc. • Publications Department  
P.O. Box 2000 • Rahway, New Jersey 07065

Please send on approval

- ☐ TABLE OF MOLECULAR WEIGHTS . . . . \$12.00 (U.S.)  
☐ THE MERCK INDEX, 9TH ED., 1976 . . . . \$18.00 (U.S.)

- ☐ Payment enclosed (Merck pays shipping and any sales tax).  
☐ Bill me for book(s) plus shipping and any tax.

Name \_\_\_\_\_

Address \_\_\_\_\_

City \_\_\_\_\_

State \_\_\_\_\_ Zip \_\_\_\_\_

SC 51

# Resources for the Future, Inc.

## ENERGY STRATEGIES FOR DEVELOPING NATIONS

Joy Dunkerley, William Ramsay,  
Lincoln Gordon,  
and Elizabeth Cecelski

Current problems of energy availability and cost are particularly severe for the world's developing nations. High oil prices — the most dramatic manifestation of these difficulties — have accelerated inflation, depressed growth, and generated balance-of-payment crises. In this book, four specialists on the impact of energy on the economies of the developing world address both immediate petroleum supply and price crises and the transition to a future not dominated by oil.

Given the reality of continuing dependence on petroleum — at least for the foreseeable future — the authors suggest energy technologies, policy prescriptions, and social and institutional arrangements that can help developing countries cope with current problems and prepare for the future.

\$24.00 hardcover  
\$9.50 paperback

and also available

## ENERGY IN AMERICA'S FUTURE

The Choices Before Us

A Study Prepared for the RFF National Energy  
Strategies Project

Sam H. Schurr (director),  
Joel Darmstadter, Harry Perry,  
William Ramsay, and Milton Russell

"The best energy study yet to come along. It is a veritable bible of information on energy, ticking off the advantages and disadvantages of the choices available. . . . [It] deserves the widest possible attention."

— *Washington Post*

\$30.00 hardcover  
\$10.95 paperback

published by

 **Johns Hopkins**

The Johns Hopkins University Press  
Baltimore, Maryland 21218

**A Heat Transfer Textbook.** John H. Lienhard with a chapter by Roger Eichhorn. Prentice-Hall, Englewood Cliffs, N.J., 1981. xii, 516 pp., illus. \$24.95.

**Introduction to Pseudodifferential and Fourier Integral Operators.** François Trèves. Plenum, New York, 1980. Two volumes. Vol. 1, Pseudodifferential Operators. xxviii, 300 pp. + appendix. \$29.95. Vol. 2, Fourier Integral Operators. xiv + pp. 301-650 + appendix. \$35.

**Introduction to the Magnetic Properties of Solids.** A. S. Chakravarty. Wiley-Interscience, New York, 1980. xviii, 696 pp., illus. \$65.

**Kuru.** Early Letters and Field-Notes from the Collection of D. Carleton Gajdusek. Judith Farquhar and D. Carleton Gajdusek, Eds. Raven, New York 1981. xxviii, 338 pp. + plates. \$32.

**Life-Span Development and Behavior.** Vol. 3. Paul B. Baltes and Orville G. Brim, Jr., Eds. Academic Press, New York, 1980. xviii, 412 pp., illus. \$35.

**A Literature Survey and Design Study of Fume-Cupboards and Fume-Dispersion Systems.** D. Hughes. Science Reviews, Leeds, England, 1980. vi, 82 pp., illus. Paper, £7.50. Occupational Hygiene Monograph No. 4.

**Load-Bearing Fibre Composites.** Michael R. Pigott. Pergamon, New York, 1980. x, 278 pp., illus. Cloth, \$35; paper, \$15.

**Long-Term and Short-Term Screening Assays for Carcinogens.** A Critical Appraisal. International Agency for Research on Cancer, Lyon, 1980 (U.S. distributor, WHO Publications Centre USA, Albany, N.Y.). 426 pp., illus. Paper, \$25. IARC Monographs, Supplement 2.

**Macromolecular Chemistry.** Vol. 1, A Review of the Literature Published during 1977 and 1978. A. D. Jenkins and J. F. Kennedy, Senior Reporters. Royal Society of Chemistry, London, 1980. xx, 484 pp., illus. \$108.

**Marihuana.** The First Twelve Thousand Years. Ernest L. Abel. Plenum, New York, 1980. xii, 290 pp. \$17.95.

**Molecules, Cells, and Parasites in Immunology.** Carlos Larralde, Kaethe Wilms, Librado Ortiz-Ortiz, and Michael Sela, Eds. Academic Press, New York, 1980. xiv, 232 pp., illus. \$19.50.

**Morphogenesis and Malformation of the Ear.** Robert J. Gorlin, Robert J. Ruben, Harold F. Schuknecht, Natalie W. Paul, and Florence Dickman, Eds. Liss, New York, 1980. xii, 356 pp., illus. \$36. Birth Defects: Original Article Series, Vol. 16, No. 4.

**A Museum to Instruct and Delight.** William T. Brigham and the Founding of Bernice Pauahi Bishop Museum. Roger G. Rose. Bishop Museum Press, Honolulu, 1980. viii, 78 pp., illus. Paper, \$6.50. Bernice P. Bishop Museum Special Publication 68.

**Natural Gas.** The New Energy Leader. Ernest J. Oppenheimer. Pan and Podium Productions, New York, 1980. 160 pp. Paper, \$7.50.

**Neural Regulatory Mechanisms during Aging.** Richard C. Adelman, Jay Roberts, George T. Baker III, Steven J. Baskin, and Vincent J. Cristofalo, Eds. Liss, New York, 1980. x, 236 pp., illus. \$21. Modern Aging Research, vol. 1.

**New Developments with Human and Veterinary Vaccines.** A. Mizrahi, I. Hertzman, M. A. Klingberg, and A. Kohn, Eds. Liss, New York, 1980. xviii, 426 pp., illus. \$130. Progress in Clinical and Biological Research, vol. 47.

**The New Environmental Handbook.** Garrett De Bell, Aubrey Wallace, and David Ganther, Eds. Friends of the Earth, San Francisco, 1980. viii, 352 pp. Paper, \$5.95.

**The Oceans.** Robert Barton. Facts On File, New York, 1980. 336 pp., illus. \$19.95.

**Our Energy.** Regaining Control. A Strategy for Economic Revival through Redesign in Energy Use. Marc H. Ross and Robert H. Williams. McGraw-Hill, New York, 1980. viii, 354 pp., illus. \$16.95.

**Oxocarbons.** Robert West, Ed. Academic Press, New York, 1980. xii, 236 pp., illus. \$32.

**Parmana.** Prehistoric Maize and Manioc Subsistence along the Amazon and Orinoco. Anna Curtenius Roosevelt. Academic Press, New York, 1980. xvi, 320 pp., illus. \$29.50.

**Perspectives in Clinical Endocrinology.** Walter B. Essman, Ed. SP Medical and Scientific Books, New York, 1980. xvi, 426 pp. \$45.

**Pest and Disease Control Handbook.** Nigel Scopes and Michael Ledieu, Eds. BPC Publications, Croydon, England, 1979 (U.S. distributor, ISBS, Forest Grove, Ore.). Various pages. \$35.

**The Pesticide Manual.** A World Compendium. Charles R. Worthing, Ed. British Crop Protection Council, Croydon, England, ed. 6, 1979 (U.S. distributor, ISBS, Forest Grove, Ore.). x, 656 pp., illus. \$59.95.

**The Physical Behaviour of Macromolecules with Biological Functions.** S. P. Spragg. Wiley, New York, 1980. xvi, 202 pp., illus. \$40.50.

**Physics.** A General Course. I. V. Savelyev. Translated from the Russian edition (1977/1978) by G. Leib. Mir, Moscow, 1980 (U.S. distributor, Imported Publications, Chicago). Vol. 1, Mechanics, Mo-

lecular Physics. 440 pp., illus. \$9. Vol. 2, Electricity and Magnetism, Waves, Optics. 508 pp., illus. \$9.

**Physics for Technical Education.** Dale Ewen and LeRoy Heaton. Prentice-Hall, Englewood Cliffs, N.J., 1981. xiv, 608 pp., illus. \$19.95.

**The Renal Papilla and Hypertension.** Anil K. Mandal and Sven-Olof Bohman, Eds. Plenum, New York, 1980. xxiv, 238 pp., illus. + plates. \$27.50.

**Reviews of Plasma Physics.** Vol. 8. M. A. Leontovich, Ed. Translated from the Russian edition (Moscow, 1974) by Dave Parsons. Herbert Lashinsky, Transl. Ed. Consultants Bureau (Plenum), New York, 1980. xii, 460 pp., illus. \$42.50.

**Ritual Kinship.** The Structure and Historical Development of the Compadrazgo System in Rural Tlaxcala. Vol. 1. Hugo G. Nutini and Betty Bell. Princeton University Press, Princeton, N.J., 1981. xvi, 496 pp. Cloth, \$28.50; paper, \$11.50.

**The Role of Peptides in Neuronal Function.** Jeffery L. Barker and T. G. Smith, Jr., Eds. Dekker, New York, 1980. xvi, 768 pp., illus. \$95.

**Saccharin.** Morris F. Cranmer. American Drug Research Institute, Tippecanoe, Ind., 1980. xiv, 586 pp., illus. \$28.

**Schistosoma mansoni.** The Parasite Surface in Relation to Host Immunity. Diane J. McLaren. Research Studies Press (Wiley), New York, 1980. xvi, 230 pp., illus. \$54. Tropical Medicine Research Studies Series, 1.

**Selective Electrodes in Analytical Chemistry.** Vol. 2. Henry Freiser, Ed. Plenum, New York, 1980. xii, 292 pp., illus. \$35.

**Skywatchers of Ancient Mexico.** Anthony F. Aveni. University of Texas Press, Austin, 1980. xiv, 356 pp., illus. \$30.

**Social Darwinism and English Thought.** The Interaction between Biological and Social Theory. Greta Jones. Harvester Press, Brighton, Sussex, England, and Humanities Press, Atlantic Highlands, N.J., 1981. xiv, 234 pp. \$30.

**Strategies of Social Research.** The Methodological Imagination. H. W. Smith. Prentice-Hall, Englewood Cliffs, N.J., ed. 2, 1981. xviii, 510 pp. \$16.95.

**Structures.** Fundamental Theory and Behavior. Richard M. Gutkowski. Van Nostrand Reinhold, New York, 1980. xiv, 512 pp., illus. \$34.50.

**Stylistic Variation in Prehistoric Ceramics.** Design Analysis in the American Southwest. Stephen Plog. Cambridge University Press, New York, 1980. viii, 160 pp., illus. \$19.95.

**Superposition and Interaction.** Coherence in Physics. Richard Schlegel. University of Chicago Press, Chicago, 1980. xii, 302 pp., illus. \$22.50.

**Surface Structure.** The Interface of Autonomous Components. Robert Fiengo. Harvard University Press, Cambridge, Mass., 1980. x, 214 pp. \$22.50.

**Symposium on Health Aspects of Automotive Emissions.** New York Academy of Medicine, New York, 1980. vi + pp. 753-992, illus. Paper, \$3. *Bulletin of the New York Academy of Medicine*, vol. 56, No. 9.

**Symposium on Uveal Melanomas.** On the Occasion of the Snellen Medal Presentation to Dr. W. A. Manschot. A. Hamburg, Ed. Junk, The Hague, 1980 (U.S. distributor, Kluwer Boston, Hingham, Mass.). 122 pp., illus. \$31.50. *Documenta Ophthalmologica Proceedings Series*, vol. 24. Reprinted from *Documenta Ophthalmologica*, vol. 50, No. 1.

**Synapsida.** A New Look into the Origins of Mammals. John C. McLoughlin. Viking, New York, 1980. xii, 148 pp., illus. \$14.95.

**Tumor Cell Surfaces and Malignancy.** Proceedings of a symposium, Keystone, Colo., Mar. 1979. Richard O. Hynes and C. Fred Fox, Eds. Liss, New York, 1980. xvi, 962 pp., illus. \$44. Progress in Clinical and Biological Research, vol. 41.

**Utilization of Reject Heat.** Michael Olszewski, Ed. Dekker, New York, 1980. xiv, 190 pp., illus. \$29.50. Energy, Power, and Environment, 9.

**The Vocabulary of Organic Chemistry.** Milton Orchin, Fred Kaplan, Roger S. Macomber, R. Marshall Wilson, and Hans Zimmer. Wiley-Interscience, New York, 1980. xii, 610 pp., illus. \$35.

**Volcanoes.** Robert Decker and Barbara Decker. Freeman, San Francisco, 1981. xii, 244 pp., illus. Cloth, \$17.95; paper, \$8.95. A Series of Books in Geology.

**Waste Energy Utilization Technology.** Yen-Hsiung Kiang. Dekker, New York, 1981. x, 252 pp., illus. \$29.75. Energy, Power, and Environment, 10.

**Water and Metal Cations in Biological Systems.** Papers from a symposium, Nagoya, Japan, Nov. 1978. Bernard Pullman and Kunio Yagi, Eds. Japan Scientific Societies Press, Tokyo, 1980 (U.S. distributor, ISBS, Forest Grove, Ore.). viii, 272 pp., illus. \$42.

**Water Resource Systems Planning and Analysis.** Daniel P. Loucks, Jerry R. Stedinger, and Douglas A. Haith. Prentice-Hall, Englewood Cliffs, N.J., 1981. xvi, 560 pp., illus. \$29.95.

**World Atlas of Geology and Mineral Deposits.** Duncan R. Derry. Mining Journal Books, London, and Halsted (Wiley), New York, 1980. 110 pp. \$61.95.





## Aging from Birth to Death

### Interdisciplinary Perspectives

edited by Matilda White Riley



Reviews existing knowledge in the field of aging; identifies interrelated social, biological, and psychological events affecting the aging process; and seeks convergences among disciplines.

214 pp. 1979 0-89158-363-7  
Vol. 30 \$18.00

## Westview Press

5500 Central Avenue • Boulder, Colorado 80301  
Frederick A. Praeger, Publisher



**Head Office and Plant**  
6814 Cadempino - TI (Switzerland)  
P. O. Box 6812  
Tel. 091-56 43 51  
Telex: lph 79 386

We are pleased to inform you, that we are in the position to provide commercially a specially purified group of proteins.

**Ultrapure Nerve Growth Factor** from Mouse Submaxillary Gland (MSG-NGF) NGF Antiserum - Purified NGF Antibodies.

**Ultrapure Epidermal Growth Factor** from Mouse Submaxillary Gland (MSG-EGF) EGF Antiserum - Purified EGF Antibodies.

Therefore we are offering you a product whose biological effect is sure and not polluted by «side-effects». The guaranteed sterility makes the use of these substances easy for every type of experimental investigation.

#### Sterile Products

Code no.	Size	Price \$
<b>NERVE GROWTH FACTOR - NGF -</b>		
0101	0.020 mg	75
0102	0.050 mg	165
0103	0.100 mg	300
<b>NGF PURIFIED ANTIBODIES</b>		
0301	0.100 mg	60
0302	0.200 mg	110
<b>EPIDERMAL GROWTH FACTOR - EGF -</b>		
1101	0.020 mg	46
1102	0.050 mg	105
1103	0.100 mg	190
<b>EGF PURIFIED ANTIBODIES</b>		
1301	0.100 mg	60
1302	0.200 mg	110

#### Antisera

<b>NGF ANTISERUM</b>		
0201	1 ml	50
0202	2 ml	90
<b>EGF ANTISERUM</b>		
1201	1 ml	50
1202	2 ml	90

**N.B.** For higher sterile or non sterile quantities, please apply to our Marketing Department.

Circle No. 46 on Readers' Service Card

## LIFETIMES COUNT

PRA understands how important fluorescence lifetime measurements are. Use the ONE technique that gives you the highest confidence in your results.

# PRA

**UNITED STATES:**  
Photochemical Research Assoc.  
100 Tulsa Road,  
Oak Ridge, Tennessee, 37830  
(615) 483-3433

**INTERNATIONAL:**  
Photochemical Research Assoc. Inc.  
45 Meg Drive,  
London, Ontario, CANADA N6E 2V2  
(519) 686-2950 Telex 064-7597

# Personnel Placement

SCIENCE publishes each Friday, except the last Friday of the year. Advertising closing for a particular Friday issue is Wednesday, 3 1/2 weeks before. Advertising is accepted only in writing; no abbreviations. Also, personnel advertising is accepted only with the understanding that the advertiser does not discriminate among applicants on the basis of race, sex, religion, age, color, national origin, or handicap.

**POSITIONS WANTED:** 40¢ per word, plus \$4 for use of box number, per insertion. \$10 minimum, per insertion. Prepayment required. This rate is available only to individuals seeking jobs:

**DISPLAY (POSITIONS OPEN, COURSES, FELLOWSHIPS, MARKETPLACE, and so forth):** \$8 per millimeter; \$200 minimum, per insertion (minimum charge covers 25 millimeters on a single column; 25 millimeters equals 10 lines of 50 spaces per line). No charge for use of box number. No agency commission for ads less than 103 millimeters (4 inches). No cash discount. Prepayment required for all foreign ads. Purchase orders and billing information required for all other advertising.

Send copy for all **Positions Wanted** ads and **Display** ads less than 1/6 page in size (125 millimeters) to:

SCIENCE, Room 207  
1515 Massachusetts Ave., NW  
Washington, D.C. 20005  
Telephone: 202-467-4456

Send copy for **Display** ads 1/6 page and larger to:

Scherago Associates, Inc.  
1515 Broadway  
New York, N.Y. 10036  
Telephone: 212-730-1050

Blind ad replies should be addressed as follows:

Box (give number)  
SCIENCE  
1515 Massachusetts Ave., NW  
Washington, D.C. 20005

## POSITIONS WANTED

**Biochemist/Neurochemist.** Ph.D. 1971. Experience in purification and characterization of proteins, enzymes and polypeptides, intraneuronal transport of materials, calmodulin and calmodulin associated processes. Publications. Grants. Seeks research position. Box 40206, Indianapolis, Indiana 46240. X

**High School Biology Teacher** (B.S., M.S., currently Ph.D. candidate, all in biology) seeks summer part-time college instructor position in the New York Tri-State area. Can teach biochemistry, microbiology, botany, ecology, others. Box 114, SCIENCE. X

**Marine Biochemical/Physiological Ecologist.** Research assistant professor at medical school seeks research/teaching position in liberal arts institution. Postdoctoral research, teaching experience, grants, publications. Box 110, SCIENCE. 5/15, 22, 29

**Microbiologist** (Ph.D.). Contemplating early retirement. Seeks challenging position to utilize administrative skills. Broad experience with pathogens; genetic control of specialized fermentations; and management of bacteriological laboratory. Extensive experience in federal grants and contract administration; supervision of microbiologists, chemists, information specialists, and systems analysts. Health excellent. Box 111, SCIENCE. X

**Pesticide Residue Chemist/Agronomist—Ph.D.** Experience includes pesticide residue analysis of feed, animal tissue, soil and water, adsorption and characterization studies of agricultural wastes by soils and analysis of priority pollutants. Experience in GC, GPC, AA, NMR, and wet analysis. Seeks industrial/academic position. Box 107, SCIENCE. 5/15, 29; 6/12, 26

**Synthetic Organic Chemist.** Ph.D. Experienced in synthesis and isolation work. Strong background in food, flavor, and aroma chemicals. Box 115, SCIENCE. X

## POSITIONS OPEN

**Assistant to the Director of the Institute of Materials Science—Supervises large laboratory complex including laboratory maintenance, safety, and security. Maintains equipment and supply inventory, prepares and publishes technical reports, organizes technical meetings, and so forth. Minimal qualifications: M.S. in science and years of laboratory experience. Salary negotiable. Apply by 29 May to: L. V. Azaroff, Director, Institute of Materials Science, University of Connecticut, Storrs, Conn. 06268. An Equal Opportunity Employer.**

### ASSISTANT DIRECTOR—MARINE RESEARCH LABORATORIES

A Ph.D. candidate is required to head up dynamic research programs.

Must be able to plan, establish, and pursue major goals in marine biology. Experience must include management of a scientific staff and demonstrated ability to write and publish, develop and obtain research grants, and raise funds for programs. Responsibilities include active liaison with Aquarium operating staff.

Salary very attractive, as well as a broad benefit package. Send résumé to: **Box 116, SCIENCE.**

*An Equal Opportunity Employer*

### CURATOR/AQUARIUM

Candidates need an advanced degree in marine biology. Experience and ability to handle the management and exhibition of diverse aquatic animals, principally fresh and salt water species from all parts of the world. Must be able to write for technical and popular audiences; take charge of projects; manage animal-care staff; establish care and feeding techniques; design exhibits; and identify and label species.

Attractive salary, based on experience, and excellent benefit program.

Send résumé to: **Box 117, SCIENCE.**

*An Equal Opportunity Employer*

**ASSISTANT PROFESSOR OF BIOLOGY** (1-year replacement with possible year extension, beginning 24 August 1981), Ph.D. or equivalent required. To offer courses in plant physiology, molecular and cell biology, and seminar(s) in mutually acceptable areas. The department offers a broad course selection to undergraduates and is equipped to support modest research programs. Send résumé and a statement of interest, and have three letters of recommendation sent by 20 June to: **Search Committee, Biology Department, St. Lawrence University, Canton, New York 13617. An Affirmative Action/Equal Opportunity Employer.**

**ASSISTANT PROFESSOR, FOOD SCIENCE.** To conduct research in food science with emphasis on fruit and vegetable processing at the University of Georgia Agricultural Experiment Station, Experiment (Griffin), Ga. 30212. Ph.D. required. Available now; closing date: 15 July 1981. Send résumé, transcripts, and three letters of reference to: **Dr. Tommy Nakayama, Head, Department of Food Science, University of Georgia Experiment Station, Experiment, Ga. 30212. The University of Georgia is an Equal Opportunity/Affirmative Action Institution.**

### TWO ASSISTANT PROFESSORS Section of Neuroanatomy Yale University School of Medicine

**NEUROPHYSIOLOGIST** interested in CNS development, plasticity, or higher cortical function in primates. **NEUROANATOMIST** interested in ultrastructural, histochemical, and immunocytochemical analyses of developing brain. Both positions involve some teaching of medical and graduate students. Submit résumé and names of references to: **Dr. Pasko Rakic, Chairman, Section of Neuroanatomy, Yale University School of Medicine, 333 Cedar Street, New Haven, Conn. 06510. Yale University is an Equal Opportunity/Affirmative Action Employer.**

**ASSOCIATE RESEARCHER** to assist the Arthritis Institute's research team investigate mycoplasmas and other microbial agents as causative in rheumatoid arthritis. To use applicant's knowledge in both medicine and microbiology, to develop and apply microbial and immunological technique to both animal and human host systems to determine and control infectious hypersensitivity disease mechanisms. Combined experience and knowledge of both microbial-immunological techniques and human host responses very helpful. Forty hours/\$400 per week. Ph.D. in immunology plus 2 years of experience. Take this ad and apply to: **Virginia Employment Commission, 6320 Castle Place, Falls Church, Virginia 22044. Job Order Number 312027.**

## POSITIONS OPEN

### CELL BIOLOGIST—ANATOMIST

Tenure-track position at the beginning assistant professor level available 1 January 1982. Teaching responsibilities will include participation in team taught courses in histology for dental students and anatomy for the allied health professions. Applicants should hold the M.D. or Ph.D. degree in anatomy, cell biology, or related discipline, and have at least 2 years of relevant postdoctoral research experience. Preference will be given to individuals capable of establishing an active, independently funded research program in cellular endocrinology, excluding endocrinology of steroids. Submit curriculum vitae and research plans, and arrange for three letters of reference to be sent prior to 1 July 1981 to: **Dr. Jerome Sutin, Chairman, Department of Anatomy, Emory University School of Medicine, Atlanta, Georgia 30322. Emory University is an Equal Opportunity/Affirmative Action Employer.**

### CHAIRMAN DEPARTMENT OF INTERNAL MEDICINE QUILLEN-DISHNER COLLEGE OF MEDICINE EAST TENNESSEE STATE UNIVERSITY

Candidates are being sought for the position of chairperson of the Department of Internal Medicine of the Quillen-Dishner College of Medicine, a community-based, VA-affiliated, primary care-oriented school, which is scheduled to graduate its first class in May 1982. The department has 22 full-time faculty, an active research program, an established faculty practice plan, and an approved residency program in the Veterans Administration Hospital and community hospitals in Johnson City, Kingsport, and Bristol, Tennessee. The College of Medicine is located in a prosperous, beautiful, Southern Appalachian Mountain area, with a population base of one million in the immediate referral area. Candidates should be Board-certified with experience in teaching and administration, preferably in a community-based program. Interested applicants should contact: **Dr. Philip Coogan, Chairman of the Internal Medicine Search Committee, Department of Pathology, Quillen-Dishner College of Medicine, P.O. Box 19, 540A, Johnson City, Tennessee 37614.**

*East Tennessee State University offers Equal Opportunity in its employment, admissions, and educational activities and is an Affirmative Action Employer.*

### CHAIRPERSON—BIOCHEMISTRY

The School of Medicine of the University of Southern California (USC) is seeking a chairperson to head the Department of Biochemistry. The department has strong research programs in a number of areas of biochemical research which the new chairperson will be expected to enhance. Teaching responsibilities are in the School of Medicine and the Graduate School. Interested applicants are invited to submit curriculum vitae and references to: **Donald J. Marsh, M.D., Chairman, Department of Physiology and Biophysics, USC School of Medicine, 2025 Zonal Avenue, Los Angeles, Calif. 90033. USC is an Equal Opportunity Employer.**

**DIAGNOSTIC RADIOLOGY** position available 1 July 1981. Candidate should have academic background to develop and implement clinical, educational, and research programs in a broad-based Radiology Department serving a comprehensive cancer center and community hospital, Philadelphia, Pa. *An Equal Opportunity/Affirmative Action Employer.* Send curriculum vitae to:

**Box 118, SCIENCE**

**EXPERIMENTAL ATMOSPHERIC CHEMIST.** To conduct independent research likely to include marine measurements, tropospheric and stratospheric sampling, global chemical cycles and related areas, and management of research group. Requires majority of: Ph.D. or equivalent in chemistry, oceanography, atmospheric science, or related discipline; extensive experience with laboratory and/or field measurements relevant to atmospheric chemistry; outstanding skill in experimental techniques for gas measurements; recognized publication record; demonstrated skill at supervising experimental scientists and interacting productively with theorists. Level and term of appointment will depend on qualifications. Minimum term: 5 years; salary range: \$34,400 to \$56,800. Apply by submitting résumé and publication list. For more information or to apply, contact: **Margareta Domecki, NATIONAL CENTER FOR ATMOSPHERIC RESEARCH, P.O. Box 3000, Boulder, Colorado 80307. Telephone: 303-494-5151, extension 581. An Equal Opportunity/Affirmative Action Employer.**

## POSITIONS OPEN

The Department of Biochemistry, Brandeis University, has a current opening for **DIRECTOR OF LABORATORIES**. Responsibilities include overseeing the academic and research budget of 18 full-time faculty as well as the development of funding from both federal and private sources. The director will also supervise ancillary departmental services as well as maintain liaison with other university administration and service departments.

A strong background in science as well as administrative experience are minimum requirements. A knowledge of current federal regulatory problems would be preferred. The ability to communicate with people is necessary and, most important, the director must be able to manage problems affecting the research of active scientists.

Please submit résumé and three letters of reference to:

**Dr. Robert H. Abeles, Chairman**  
Department of Biochemistry  
Brandeis University  
Waltham, Mass. 02254

*Brandeis University is an Equal Opportunity/Affirmative Action Employer.*

## DEPARTMENT OF ZOOLOGY UNIVERSITY OF WASHINGTON

**FACULTY MEMBER, RESEARCH ASSOCIATE.** Applications are invited for a position in the Department of Zoology. Responsibilities include: teaching graduate students and postdocs the theory and practical aspects of molecular cytogenetic techniques; preparing bibliographies and leading discussions in cellular/developmental biology seminars; presenting papers at regional/national meetings; conducting independent research and publishing results in recognized journals; and collecting and/or maintaining breeding populations of local and foreign amphibians. Applicants must have a Ph.D.; at least 2 years of postdoctoral experience in cellular/molecular biology; experience in the operation and maintenance of electron microscopes and auxiliary equipment, phase-contrast microscopes, ultracentrifuges, and recombinant DNA technology; experience in microdissection and injection of living cells; and an adequate publication record. Preferred research interest: correlation of chromosome structure and function during gametogenesis. Send curriculum vitae and three letters of recommendation by 12 June 1981 to: **Dr. A. H. Bakken, Department of Zoology, University of Washington, Seattle, Wash. 98195.** *An Affirmative Action/Equal Opportunity Employer.*

## FACULTY POSITIONS/PHYSIOLOGY

Applications are invited for two research faculty positions at the level of assistant professor. Preference given to individuals working in the areas of invertebrate neurophysiology and/or membrane biophysics. One position is presently funded; one requires the applicant to provide grant support. Send letter of interest together with current curriculum vitae to:

**Dr. Brian Salzberg**  
Department of Physiology/Pharmacology  
School of Dental Medicine  
University of Pennsylvania  
4001 Spruce Street  
Philadelphia, Pennsylvania 19104

*An Affirmative Action/Equal Opportunity Employer*

## GEORGE MASON UNIVERSITY (GMU)

GMU is the state university in northern Virginia, and presently has a four-person staff in **GEOLOGY** (separate department is anticipated in 1982). Applications are invited for the following positions:

1) A one- or two-semester, full-time position, starting 1 September 1981, to teach lower-level undergraduate courses and possibly courses in his/her specialty.

2) A full-time, tenure-track position at the assistant professor level, starting 15 January 1982 or 1 September 1982. Applicants for this position must have a Ph.D. and have research or industrial experience in one or more of the following: economic geology, engineering geology, hydrogeology, and geophysics. The successful applicant will teach introductory geology courses and upper-level courses in his/her specialty, and will be involved in research.

Applicants for these positions should submit (by 1 July) curriculum vitae, statement of teaching and research interests, and the names of three references to: **Dr. Rick Diecchio, Department of Chemistry and Geology, George Mason University, Fairfax, Va. 22030.** *Affirmative Action/Equal Opportunity Employer.*

The Merck Institute for Therapeutic Research is seeking innovative and creative scientists for the following two positions:

## CNS NEUROCHEMIST/ BIOCHEMICAL PHARMACOLOGIST

This person will join a multidisciplinary group involved in developing new drugs for treating mental and nervous system diseases. The applicant we seek should have a doctorate degree, postdoctoral training, a strong record of publication.

Prior research experience should include studies involving neurotransmitters in the CNS. A familiarity with HPLC and RIA is desirable. Published work should reflect the ability to perform creative and independent research.

## GASTROINTESTINAL PHARMACOLOGIST

The selected individual will lead research in gastrointestinal pharmacology. The applicant we seek should have a doctorate degree, postdoctoral training, a strong record of publication and the ability to direct the research of both senior (doctorate) and junior associates.

Published work should reflect the ability to perform creative and independent research. Previous experience relating to the discovery and development of new therapeutic agents is desirable, but not essential.

The Merck Institute has always provided an exceptional environment for research, which includes, among other things, adequate laboratory space, modern equipment and technical support. Our research facilities are located in a rural setting, 25 miles NW of Philadelphia.

Please send Curriculum Vitae complete with publication record to:

**MR. DONAL E. JACKSON**  
ASSISTANT PERSONNEL MANAGER

**Merck Sharp & Dohme**  
Research Laboratories

West Point, PA 19486

EEO/AA/VH/EMPLOYER

# PRODUCT ISOLATION CHEMIST

Merck Sharp & Dohme Research Laboratories, a recognized leader in pharmaceutical research is seeking an organic chemist to join the Natural Products Isolation Department. High potential opportunity requires professional qualified to detect, isolate and characterize a large variety of biological compounds from microbial sources.

Successful candidate should have PhD with 1-3 years post-doctoral experience in the isolation of natural products employing

modern techniques of isolation chemistry. Experience with spectroscopic analyses and the most modern methods of chromatography as well as utilization of computers for handling laboratory data and analytical systems required.

Salary and benefits are excellent. Send resume to Mrs. S. Jenkins, Merck & Co., Inc., P.O. Box 2000, Rahway, NJ 07065. An equal opportunity employer, m/f.



**MERCK & CO., INC.**

# NUCLEAR SCIENTISTS

The Lawrence Livermore National Laboratory is an applied science R&D facility engaged in basic and applied research and development, operated by the University of California for the U.S. Dept. of Energy. We're located in a rural community in the San Francisco Bay Area, where our nearly 7,300 employees enjoy an excellent work environment conducive to exceptional work.

Our Nuclear Chemistry Division has openings for experimental and theoretical nuclear scientists to conduct basic and applied research in a variety of nuclear physics and nuclear chemistry areas with emphasis on problems related to nuclear weapons design and testing, including basic diagnostic development to evaluate the performance of nuclear weapon devices. These positions involve collaboration and close interaction with colleagues within the Division.

A PhD or equivalent in physics or chemistry is required. Knowledge of computer programming, electronic instrumentation and a strong mathematical background are highly desirable.

We invite you to submit your resume in confidence to: **Ted Wilson, Employment Division, Lawrence Livermore National Laboratory, P.O. Box 808, L-425, KSC-051, Livermore, CA 94550.**

An equal opportunity employer, U.S. Citizenship Required.

University of California



**Lawrence Livermore  
National Laboratory**

# PHARMACOLOGIST Neurochemical

We are the US subsidiary of ICI Ltd. (UK) whose research introduced the first beta blocker, clofibrate, halothane, tamoxifen citrate, and chlorhexidine. Our STUART Division is the manufacturing and marketing arm for discoveries which promise to place us in a leading position among research-intensive drug firms in the US.

PhD to join multi-disciplinary drug discovery program in CNS area. Training/experience should demonstrate competence in transmitter synthesis and release, as well as drug actions at the receptor level. Opportunity to integrate into existing research programs and for independent research.

Campus setting, 25 miles south of Philadelphia, within walking distance or short commute of choice residential communities. Competitive salaries/benefits include deferred tax-sheltered investment program. Please submit detailed CV in confidence. Principals only.

**C. T. Brodigan, Employee Relations**



**ICI Americas Inc.**

**Wilmington, Delaware 19897**

**An Equal Opportunity Employer M/F**

## POSITIONS OPEN

### FACULTY POSITION IN POSTHARVEST PHYSIOLOGY

The University of California, Davis, Department of Vegetable Crops, invites applications for a tenure-track faculty position at the assistant professor level; 25 percent teaching, 75 percent research. Ph.D. in plant physiology, horticulture, biochemistry, or other closely related disciplines, and a background in plant science. Research program in physiology of senescence in relation to quality and useful life of harvested vegetables. The research and teaching are expected to be part of an interdepartmental effort in postharvest biology of horticultural commodities. Send curriculum vitae, including list of publications and teaching experience, academic transcript, reprints, statement of career goals, and name of at least three referees to: **Dr. L. Rappaport, Chair, Department of Vegetable Crops, University of California, Davis, California 95616**, prior to 1 September 1981. *We are an Equal Opportunity/Affirmative Action Employer and invite applications from all qualified individuals.*

### FACULTY POSITION IN PEDOLOGY UNIVERSITY OF CALIFORNIA, BERKELEY

The Department of Plant and Soil Biology is recruiting a tenure-track assistant professor of pedology. Applicants should have a Ph.D. with a strong background in soil genesis, morphology, and soil mineralogy, and also should have field experience. The appointee, who will have an 11-month appointment, will be expected to develop a research program in pedology with an orientation to plant-soil studies. Undergraduate and graduate teaching responsibilities will include participation in a summer field course. Submit curriculum vitae, bibliography, two-page outline of teaching interests and research objectives, and names of three references to:

**Dr. E. A. Paul, Chair  
Department of Plant and Soil Biology  
108 Hilgard Hall  
University of California  
Berkeley, Calif. 94720**

Closing date: 1 July 1981.

*The University of California is an Equal Opportunity/Affirmative Action Employer.*

### FACULTY POSITION IN PLANT BIOCHEMISTRY UNIVERSITY OF CALIFORNIA, BERKELEY

The Department of Plant and Soil Biology is recruiting a tenure-track assistant professor of plant biochemistry. Applicants should have a Ph.D. and will be expected to develop a research program concerned with the structural, functional, or developmental aspects of plant membranes. The appointee will have an 11-month appointment which will include undergraduate and graduate teaching responsibilities. Submit curriculum vitae, bibliography, a two-page outline of teaching interests and research objectives, and names of three references to:

**Dr. E. A. Paul, Chair  
Department of Plant and Soil Biology  
108 Hilgard Hall  
University of California  
Berkeley, Calif. 94720**

Closing date: 1 July 1981.

*The University of California is an Equal Opportunity/Affirmative Action Employer.*

### FACULTY POSITION IN PLANT BIOPHYSICS/PLANT PHYSIOLOGY UNIVERSITY OF CALIFORNIA, BERKELEY

The Department of Plant and Soil Biology is recruiting a tenure-track assistant professor with training in plant biophysics/plant physiology and a background in mathematics and physics. Applicants should have a Ph.D. and are expected to develop a research program concerned with transport processes in plants. The appointee will have an 11-month appointment which will include undergraduate and graduate teaching responsibilities including development of a course in plant-water relations. Submit curriculum vitae, bibliography, two-page outline of teaching interests and research objectives, and names of three references to:

**Dr. E. A. Paul, Chair  
Department of Plant and Soil Biology  
108 Hilgard Hall  
University of California  
Berkeley, Calif. 94720**

Closing date: 1 July 1981.

*The University of California is an Equal Opportunity/Affirmative Action Employer.*



## POSITIONS OPEN

### FACULTY POSITION IN BIOLOGICAL CHEMISTRY

Position available as assistant or associate professor in the Department of Biological Chemistry, Washington University. Applicants should have a strong research background. Preference will be given to investigators interested in the study of gene expression, particularly in developmental systems. Interested applicants for this position should submit curriculum vitae and a brief description of their research plans, and make arrangements for three letters of reference to be sent to the Search Committee. All correspondence should be addressed to: **Dr. Luis Glaser, Department of Biological Chemistry, Washington University School of Medicine, 660 South Euclid Avenue, Box 8094, St. Louis, Missouri 63110.** *Washington University is an Equal Opportunity/Affirmative Action Employer, M/F/H/V.*

**HEAD, DEPARTMENT OF OCEANOGRAPHY AND OCEAN ENGINEERING.** The Florida Institute of Technology seeks an individual to head a multidisciplinary department of scientists and engineers. The department conducts research and offers degrees through the Ph.D. Position to commence as early as September 1981. Candidates must possess a Ph.D. degree and have demonstrated meritorious scientific work in oceanography and/or ocean engineering with interest and experience in teaching, research, and administration. Send résumé, including names of references, to: **Chairman of Search Committee, Department of Oceanography and Ocean Engineering, Florida Institute of Technology, Melbourne, Florida 32901; telephone: 305-723-3701.** *An Equal Opportunity Employer.*

### HUMAN BIOCHEMICAL GENETICS

**Postdoctoral position** is available in a program studying the biochemistry and molecular genetics of Huntington's disease. Studies use cell cultures to analyze the role of GABA in peripheral non-neuronal tissues and to determine the chromosomal location of the HD gene(s). Experience in cell hybridization and mammalian molecular genetics desirable. Send résumé and names of three references to: **Peter N. Gray, Department of Biochemistry and Molecular Biology, University of Oklahoma Health Sciences Center, P.O. Box 26901, Oklahoma City, Oklahoma 73190.**

*An Equal Opportunity/Affirmative Action Employer*

The Department of Pathology of Northwestern University is now recruiting for a **JUNIOR POSITION** in its Clinical Chemistry Section. Candidates must have experience in all aspects of clinical chemistry and a proven record of independent research. Preference will be given to candidates interested in basic research. A letter describing training, experience, research interests, curriculum vitae, and references should be sent to: **Dr. D. Scarpelli, Chairman, Department of Pathology, Northwestern University, Ward Building, Room 6-206, 303 East Chicago Avenue, Chicago, Illinois 60611.** *Equal Opportunity/Affirmative Action Institution.*

**MICROBIOLOGIST/IMMUNOLOGIST/MEDICAL TECHNICIAN ADVISOR.** Assistant professor rank. Ph.D. qualified to teach immunology to medical technician majors, human physiology to nurses, epidemiology to allied health students, plus course of choice in specialty. Other duties include advising and recruiting medical technician majors, supervising student placement in hospitals, serving as liaison with area hospitals, and maintaining an active research program. Individuals specializing in areas other than immunology will be considered. Salary commensurate with qualifications. Apply before 15 June 1981, and start August 1981. Send curriculum vitae, transcripts, and five letters of recommendation to: **Dr. P. A. Winter, Department of Biology, The University of West Florida, Pensacola, Fla. 32504.** *The University of West Florida is an Equal Opportunity/Affirmative Action Employer.*

**MOLECULAR BIOLOGY.** Tenure-track assistant professor for Ph.D. in biochemistry or molecular biology. Evidence of research activity and productivity is necessary. A strong commitment to research is expected. Teaching involves both medical and graduate students. Send curriculum vitae and a brief statement of research plans, and have three letters of recommendation sent by 1 July 1981 to: **Dr. Guilford Rudolph, Head, Department of Biochemistry, Louisiana State University Medical Center, Box 33932, Shreveport, La. 71130.** *Equal Opportunity Employer.*

## POSITIONS OPEN

**TWO POSTDOCTORAL BIOCHEMISTS.** The first vacancy is for a project involving triglyceride metabolism with emphasis on enzyme determinations. The second is to develop drug assays utilizing HPLC, GC, and GC-MS techniques. Salaries negotiable. Applications with full curriculum vitae and three references should be addressed to: **Dr. D. M. Goldberg, Biochemist-in-Chief, The Hospital for Sick Children, 555 University Avenue, Toronto, Ontario, Canada M5G 1X8.**

## POSITIONS OPEN

**POSTDOCTORAL FELLOW;** Experience in the field of purification of enzymes, characterization, enzyme kinetics, mechanisms. To investigate mechanisms of action of oxidases and oxigenases using contemporary techniques. Available 1 July 1981. Salary NIH-PD scale starting at \$13,380. **Dr. Howard Mason, University of Oregon Health Sciences Center, Biochemistry, 3181 South West Sam Jackson Park Road, Portland, Oregon 97201.**

**POSTDOCTORAL POSITION** available immediately for a research program involving enzyme catalyzed group transfer reactions and energy-transducing ATPases. Background in enzyme reaction mechanisms or organic reaction mechanisms desirable. Send curriculum vitae with names of three references to: **Michael J. Gresser, Department of Chemistry, Simon Fraser University, Burnaby, British Columbia, Canada V5A 1S6.**

# Environmental Coordinator

## Turn ARCO Coal's position in Western coal and synfuels to your immediate and long-term career advantage.

As one of the fastest growing of Atlantic Richfield's operating units, ARCO Coal Company is continuing to strengthen its Environmental Department in Denver.

We have extensive coal holdings, and are rapidly becoming one of the nation's largest producers of low-sulfur Western coal. We also have over a decade of research and experience in synthetic fuels, including oil shale and coal conversion.

We have an immediate opportunity for an Environmental Coordinator to provide geochemistry input into our R&D program for in-situ coal gasification. You'll be involved in groundwater program planning, selection of analytical equipment and contractors, contract administration, and possibly other company projects where similar experience and background are needed.

Qualified applicants must have an MS degree with at least 1 year experience, or a PhD with geochemistry background. Experience with petrochemicals or synfuels and a knowledge of water chemistry and geohydrology are necessary.

In addition to a fully commensurate salary, we'll provide top benefits, relocation assistance, and the growing room afforded by one of the nation's top ten energy companies. Send resume and salary history to: **C. E. Reed, ARCO Coal Company, P.O. Box 5300, Denver, CO 80217.**

## ARCO Coal Company

Division of AtlanticRichfieldCompany



An equal opportunity employer

## DIRECTOR, ELECTRONIC AND SOLID STATE SCIENCES PROGRAM

The Office of Naval Research is seeking an outstanding individual to serve in this Senior Executive Service position.

The Director, Electronic and Solid State Sciences Program, supervises a staff of senior Scientific Officers in the management of a \$20M contract R&D program directed toward enhancing Navy and Marine Corps operational effectiveness. Scientific and technical areas of concern include electronic structure and excitations, electron transport, semiconductor electronics, surface and interface electronics, microwave devices and materials, superconducting electronics, systems theory, antennas, and electromagnetic wave propagation (including solar, magnetospheric, ionospheric, and atmospheric effects.)

Candidates must have Ph.D. or equivalent in Physics or EE plus high accomplishments in the performance and management of R&D.

Salary dependent upon qualifications; however, current Federal pay caps limits salary to \$50,112.50.

Interested persons should send a Standard Form 171, Personal Qualifications Statement (available at Federal Job Information Centers), by 30 June 1981 to:

**OFFICE OF NAVAL RESEARCH  
Civilian Personnel Division  
Ballston Tower #1, Room 823  
Arlington, Virginia 22217  
Announcement #81-30 S**

For further information and required supplemental forms, call (202) 696-4705.

U.S. Citizenship Required

An Equal Opportunity Employer

## DIRECTOR MATERIAL SCIENCES DIVISION

The Office of Naval Research is seeking a highly qualified individual to serve in this Senior Executive Service position.

The Material Sciences research program is directed toward a better understanding in Chemistry, Metallurgy and Ceramics, Power and Propulsion, and Structural Mechanics, with the ultimate objective of improving the effectiveness of Navy and Marine Corps operations.

The Director of the Material Sciences Division plans, directs, coordinates and manages the applied and basic contract research program devoted to Material Science activities of the Office of Naval Research.

Candidates must have Ph.D. or equivalent experience in fields related to Material Sciences research or development efforts and management.

Salary is dependent upon qualifications; however, current Federal pay caps restrict salary to \$50,112.50.

Interested persons should send a Standard Form 171, Personal Qualifications Statement (available at Federal Job Information Centers), by 15 June 1981 to:

**OFFICE OF NAVAL RESEARCH  
Civilian Personnel Division  
Ballston Tower #1, Room 823  
800 North Quincy Street  
Arlington, Virginia 22217  
Announcement #81-22 S**

For further information and required supplemental forms, call (202) 696-4705.

U.S. Citizenship Required

An Equal Opportunity Employer

## POSITIONS OPEN

### Neuropharmacologist/ Electrophysiologist

WYETH LABORATORIES, in suburban Radnor, is seeking a Ph.D. neuropharmacologist with 2-3 years postdoctoral training in electrophysiology to join a multidisciplinary research team engaged in the development of new CNS drugs. The successful candidate is expected to be competent in the study of bioelectrical signals of the nervous system (e.g. EEG, spontaneous and evoked single neuron potentials). A good knowledge in neuroanatomy is desirable.

For consideration  
Please send resume to:  
JOHN W. PINKERTON

**Wyeth LABORATORIES**  
P.O. Box 8299  
Philadelphia, Pa. 19101

Equal Opportunity Employer, M/F/H

**PATHOLOGIST—ACADEMIC POSITION.** The Department of Pathology, University of South Carolina School of Medicine, invites application for appointment at the level of assistant or associate professor. Applicants must have M.D. degree or equivalent. The position involves teaching medical students and establishing an active research program. Send replies and curriculum vitae to: **Dr. J. B. Caulfield, Chairman, Department of Pathology, University of South Carolina, Columbia, S.C. 29208.** An Affirmative Action/Equal Opportunity Employer.

**PHYSIOLOGIST.** Ph.D. Immediate opportunity to teach physiology in professional curriculum at National College of Chiropractic. Area of interest should be cardiovascular or neurophysiology. Research encouraged. Credentials and experience should warrant rank and salary at assistant professor level.

Send curriculum vitae, official transcripts of all undergraduate, graduate, and or professional education, and at least three letters of reference to:

**Helen R. Zasadny**  
Chairman, Department of Physiology  
National College of Chiropractic  
200 East Roosevelt Road  
Lombard, Ill. 60148

**POSTDOCTORAL FELLOW, NEUROPHARMACOLOGY.** The study of mechanisms by which cannabinoids protect against vomiting encountered in anticancer therapy will serve as the focus of a 1-year research effort. Aspects will include consideration of brainstem processes which normally modulate emesis. Position available immediately. Ph.D. or M.D. required with training in experimental neurosurgery, stereotaxy, classical experimental neurology, and electrophysiology desirable. Send résumé and names of three references to: **L. E. McCarthy, Ph.D., Department of Pharmacology, Dartmouth Medical School, Hanover, N.H. 03755.**

**POSTDOCTORAL POSITION** available immediately on studies of molecular mechanism of transport catalyzed by mitochondrial phosphate transport protein. Research program encompasses studies on structure of protein including DNA sequencing techniques, function in mitochondrial and artificial membranes and its interaction with membranes during biosynthesis. Salary minimum: \$13,567, depending on experience. Send curriculum vitae and two references to: **Dr. Hartmut Wohlhab, Department of Cell Physiology, Boston Biomedical Research Institute, 20 Staniford Street, Boston, Mass. 02114.** Equal Opportunity/Affirmative Action Employer.

## Director Clinical Institute

The Addiction Research Foundation of Ontario is seeking applications for the position of Director of the Clinical Institute. The Clinical Institute is a specialized teaching hospital of the University of Toronto which has been established by the Foundation to facilitate treatment research and clinical investigation relevant to addictions.

The Director will report to the President of the Addiction Research Foundation and the Board of the Clinical Institute, and will assume responsibility for planning, developing and managing the Institute's programs in socio-behavioural and bio-medical research, treatment and education. The Director will participate in senior executive functions and will ensure the maintenance of good working relationships and collaborative activities with other divisions of the Foundation as well as with universities, hospitals, government departments and relevant programs and organizations.

Applicants should possess a medical degree with clinical experience, accomplishments in research and research management, a commitment to the field of addictions, and proven management and organizational abilities. The successful candidate will be qualified for a senior University appointment.

Excellent remuneration and benefits are offered.

Applicants are invited to forward a curriculum vitae no later than June 30th to:

Secretary, Search Committee  
Addiction Research Foundation  
33 Russell Street  
Toronto, Ontario, Canada  
M5S 2S1



## Post-Doctoral Fellows

### Molecular Biology

Genentech, Inc., located on the San Francisco peninsula, is a rapidly expanding research company pioneering recombinant DNA technology. We are currently accepting applications for our Post-Doctoral training program in Molecular Biology. The fellowships are for two years and include competitive salaries and excellent benefits.

The research environment at Genentech can provide Post-Doctoral Fellows opportunities to gain expertise in applied and basic research aspects of recombinant DNA technology. Genentech has an excellent record of scientific achievement and encourages publication in scientific journals.

For consideration please send curriculum vitae and three references to **J. Robertson, Professional Employment**. Refer to Position #11-102 when applying.

## Genentech, Inc.

460 Point San Bruno Blvd.  
South San Francisco, CA 94080

We are an equal opportunity employer m/f



## RECOMBINANT DNA MICROBIAL GENETICIST

P-L BIOCHEMICALS, INC. has an immediate opening for a Ph.D. Microbial Geneticist with two or more years of experience in recombinant DNA cloning methodology. Gene product isolation and characterization experience helpful. Bacterial and yeast system background desirable. This is an opportunity to do creative work in a successful company devoted to service to the life sciences. Send your letter of interest, curriculum vitae and list of three references (with phone numbers) to Dr. James E. Willis, Vice President and Technical Director Enzymes.

## RECOMBINANT DNA MOLECULAR BIOLOGIST

Excellent opportunity for individual with B.S. in molecular biology, biochemistry or microbiology to work with Ph.D. Microbial Geneticist. Experience in recombinant DNA methodology, nucleic acid chemistry and protein isolation required. Send letter, curriculum vitae and list of three references (with phone numbers) to Dr. James E. Willis, Vice President and Technical Director Enzymes.

## TECHNICAL SALES—U.S.A.

Our continued growth has created a need to expand our technical sales force. We are now seeking an individual with an M.S. or Ph.D. in biochemistry, biology or related science and one or more years research laboratory experience. Sales experience desired. Send your resume and salary requirements to Mr. Melvin E. Ebeling, Vice President Marketing.

## TECHNICAL SALES—EUROPE

We have established a European distribution center in West Germany and are seeking a qualified technical sales representative to be based in Sankt Goar (on the Rhine near Frankfurt). College graduate with B.S., M.S. or Ph.D. degree in biochemistry or related field required. Experience in molecular biology research desired. Must be fluent in German and English. Excellent opportunity to participate in all aspects of marketing. Send your resume and salary requirements to Dr. Jack M. Siegel, Senior Vice President.

excellence in biochemistry



**P-L biochemicals, inc.**

1037 WEST MCKINLEY AVENUE, MILWAUKEE, WIS 53205

Call 414/347-7442

Equal opportunity employer M/F

## POSITIONS OPEN

### POSTDOCTORAL POSITION

Postdoctoral position available immediately in cellular immunology to study the antigen specific and nonantigen specific factors involved in lymphocyte activation and proliferation. Must have Ph.D. Experience in cell culture and immunological assays desirable. Salary range: \$13,380 to \$17,040 per year. Send curriculum vitae and names of references by 29 May to: **Dr. Richard W. Dutton, Biology Department, M-001, University of California, San Diego, La Jolla, Calif. 92093. The University of California is an Equal Opportunity/Affirmative Action Employer.**

### POSTDOCTORAL RESEARCH ASSOCIATE

Biochemical pharmacologist, cellular pharmacologist, or biochemist to study mechanisms of drug resistance, drug-DNA interactions, and drug-membrane effects in human malignant cells. Background in cell culture desirable. Position available now in established and expanding cancer center. Salary competitive. Two-year appointment, renewable. Send résumé and names of three references to:

**Dr. Edward J. Modest**  
Professor of Biochemistry  
Associate Director for Pharmacology and  
Experimental Therapeutics  
Oncology Research Center  
Bowman Gray School of Medicine  
300 South Hawthorne Road  
Winston-Salem, North Carolina 27103

*An Equal Opportunity/Affirmative Action Employer*

**PROJECT SUPERVISOR, CELL CULTURE/HYBRIDOMA FACILITY.** Maintenance of cell lines, hybrid selection, cloning. Supervision of technicians, instruction of research investigators. At least 6 years of cell culture including at least 3 years of hybridoma work; supervisory experience. Full-time; 40-hour week, minimum. B.S. preferred; applicants with advanced technical training will be considered. Salary: \$16,000 to \$17,500, depending on experience. Send résumé and names of three references to: **B. Houser, Zoology Department, University of Wisconsin, Madison, Wis. 53706. Telephone: 608-262-1171. The University of Wisconsin is an Equal Opportunity/Affirmative Action Employer.**

## Administrative Judge (Environmental or Seismic Scientist)

Serves as an Administrative Judge (Permanent Member-Environmental or Seismic Scientist) of the Atomic Safety and Licensing Board Panel performing adjudicatory duties pursuant to the Energy Reorganization Act of 1974 and Sections 189 and 191 of the Atomic Energy Act. As one of three members of an adjudicatory hearing board, decisions constitute, subject to internal appellate review, final NRC action on nuclear generating plants and related facilities.

Requires comprehensive knowledge of environmental or seismic problems and scientific expertise related to the procedures and issues involved in the licensing of nuclear facilities. An ability to function within the framework of formal administrative adjudicatory proceedings is essential within the context of a three person multidiscipline hearing board--and the environment of a public hearing.

These two career positions are under the NRC Scientific and Technical Schedule (STS), (a special salary schedule comparable to the supergrade pay system), \$50,113 per annum.

Mail employment application form (SF-171) (available at most federal offices) or resume to the address below:



U. S. Nuclear Regulatory Commission  
ATTN: Mr. Charles Fitti, ASLBP  
Washington, DC 20555

*An Equal Opportunity Employer: M/F/hdcp.  
U. S. Citizenship Required*

## POSITIONS OPEN

### PLANT BIOCHEMICAL SYSTEMATIST

The New York Botanical Garden (NYBG) invites applications for a full-time, assistant curatorship in the Harding plant chemistry laboratory. Applicants should have a Ph.D. in either chemistry or botany and experience in the application of natural products chemistry to plant taxonomic research. The appointee will develop a research program emphasizing the analysis of New World plant groups. Duties will include collaboration with the taxonomic research staff, instruction of graduate students in the NYBG/Lehman College (City University of New York) program, and development of course curricula in biochemical systematics and related fields. Preference will be given to applicants with experience in flavonoid or alkaloid research and with secondary interests in chemical ecology. Send curriculum vitae and three letters of recommendation to: **Dr. Fred Seaman, Search Committee Chairman, Charles B. Harding Laboratory, New York Botanical Garden, Bronx, N.Y. 10458, by 15 July 1981.**

Salary range: \$16,000 to \$20,000, depending on experience. *The New York Botanical Garden is an Equal Opportunity Employer.*

### PLANT MOLECULAR BIOLOGIST

Assistant professorship (\$17,985 to \$26,944) available 1 September 1981. Undergraduate general molecular biology and graduate plant molecular biology. Active participation in the Lehman College-New York Botanical Garden Specialization in Plant Science, a part of The City University of New York (CUNY) doctoral program in biology. Required: doctorate, active research in plant molecular biology, and willingness to supervise doctoral theses research. Send curriculum vitae and three letters of reference to:

**Dr. C. Robert Jones, Chair**  
Department of Biological Sciences  
Herbert H. Lehman College/CUNY  
Bedford Park Boulevard West  
Bronx, New York 10468

*Equal Opportunity/Affirmative Action Employer*

**MIT, POSTDOCTORAL ASSOCIATE IN BIOLOGY.** The Biology Department of the Massachusetts Institute of Technology (MIT) is seeking a postdoctoral associate to perform research into very early development of chicken and mouse embryos, with particular emphasis on the inhibiting effects of transforming viruses on the developmental process. Preparation and cloning of transformed embryonic cells will be followed by studies of the regulation of protein, DNA and RNA synthesis. A Ph.D. in biology and cell culture and biochemical experience is required. Knowledge of animal virology is desirable. Please submit résumé (attention: Job Number C034) to: **MIT Personnel Office, E19-239, 77 Massachusetts Avenue, Cambridge, Mass. 02139. MIT is an Equal Opportunity/Affirmative Action Employer.**

**POSTDOCTORAL POSITION** available to study nitrate, nitrite, ammonium, and urea assimilation by plants. Applicants must have experience in N assimilation by plants. Strong background in plant physiology and biochemistry required.

Send curriculum vitae and names of three references to:

**R. C. Huffaker**  
Plant Growth Laboratory  
University of California  
Davis, Calif. 95616

*In compliance with federal and state laws and University policy, the University of California does not discriminate on the basis of race, color, national origin, religion, sex, handicap, age, or against disabled veterans or veterans of the Vietnam era. The University of California is an Affirmative Action/Equal Opportunity Employer.*

**PROJECT ASSOCIATE** Ph.D., full-time, 40 hours per week minimum, with a minimum of 2 years of postdoctoral training in structural analysis of carbohydrates. Expertise in biochemical separation techniques, the use of lectins for isolation of glycoproteins, and with enzymes involved in the synthesis and degradation of glycoconjugates necessary. Experience in the handling of embryonic material essential. Starting salary: \$16,236. Please send résumé and names of three references to: **Barbara Houser, University of Wisconsin, Zoology Research Building, 1117 West Johnson Street, Madison, Wis. 53706. Telephone: 608-262-1171. The University of Wisconsin is an Equal Opportunity/Affirmative Action Employer.**

## POSITIONS OPEN

**POSTDOCTORAL POSITION** available immediately in laboratory investigating the biochemistry of mammalian spermatogenic cell membranes with emphasis on the synthesis of surface glycoproteins. Applicant with experience in membrane and protein biochemistry preferred. Send curriculum vitae and three letters of reference to: **Dr. Clarke F. Millette, Laboratory of Human Reproduction and Reproductive Biology, Harvard Medical School, 45 Shattuck Street, Boston, Mass. 02115. Harvard is an Equal Opportunity Employer.**

### PROFESSOR AND CHAIRPERSON Department of Pathology and Laboratory Medicine

University of Texas Medical School at Houston

The University of Texas Medical School at Houston invites applications (and nominations) for the position of professor and chairperson of the Department of Pathology and Laboratory Medicine. The candidate should have a vital commitment to academic excellence, national recognition for scholarly accomplishments, and a strong background in medical education and administration. Interested persons should send their curriculum vitae and other pertinent information to:

**Dr. Stanley G. Schultz, Professor and Chairman**  
Department of Physiology and Cell Biology  
University of Texas Medical School at Houston  
P.O. Box 20708  
Houston, Texas 77025

*The University of Texas is an Affirmative Action/Equal Opportunity Employer.*

## PROFESSEUR RÉGULIER EN OCÉANOGRAPHIE PHYSIQUE À L'UNIVERSITÉ DU QUÉBEC À RIMOUSKI

**Professeur régulier en océanographie physique.** Le département d'Océanographie de l'Université du Québec à Rimouski sollicite des candidatures pour un poste de professeur régulier en océanographie physique. Le titulaire de ce poste dispensera des activités d'enseignement en océanographie physique au niveau des études avancées en océanographie et sera appelé à diriger des étudiants gradués. Il pourra aussi être appelé à donner des cours de premier cycle dans les domaines reliés à sa compétence, et il devra poursuivre des projets de recherche en océanographie physique dynamique. La langue de travail est le français. Date d'entrée en fonction: 1er septembre 1981. Exigences: Le candidat devra obligatoirement posséder un Ph.D. ou un D.Sc. en océanographie physique, ou en physique, ou en génie physique ou dans une discipline connexe. Le domaine de spécialisation et le domaine privilégié de recherche devront être en dynamique des fluides. Traitement: Selon la convention collective en vigueur. Les intéressés doivent faire parvenir leur curriculum vitae avant le 15 juin 1981. Toute candidature sera traitée confidentiellement. Faites parvenir votre inscription à: Monsieur Jean-Rock Brindley, directeur Département d'Océanographie, Université du Québec à Rimouski, 310, avenue des Ursulines, Rimouski, Québec G5L 3A1.

**RESEARCH ASSOCIATE** position available for synthesis and structure-function studies of biologically active peptides and of mechanism of hormone action. Ph.D. in biochemistry, organic chemistry, or related areas desired. Please send résumé and three letters of recommendation to: **Professor V. J. Hruby, Department of Chemistry, University of Arizona, Tucson, Arizona 85721. An Equal Opportunity/Affirmative Action Employer.**

**RESEARCH ASSOCIATE** for study on biochemistry and reaction mechanisms of coagulation factors XI and high molecular weight kininogen. Ph.D. in biochemistry or related field with experience in protein isolation, characterization; coagulation experience desirable. Send curriculum vitae and amplifying letter to: **Dr. Sandra Schiffman, University of Southern California Medical School, 2025 Zonal Avenue, Los Angeles, California 90033.**

## ARE YOU INTERESTED IN WORKING IN SPACE BIOLOGY?

NASA is offering several **RESEARCH ASSOCIATE AWARDS** for scientists to work in NASA-funded laboratories or laboratories capable of providing scientific training relevant to space biology. The Awards will vary from \$14,000 to \$16,000, based on experience. They are planned for a 6- or 12-month period with the possibility of renewal. Proposals are due 1 April for 1 July funding and 1 October for 1 January funding. Eligible are postdoctoral U.S. citizens. For information or application forms (specify which award date you are applying for) contact: **Dr. X. J. Musacchia (NASA Grant), Graduate School, University of Louisville, Louisville, Ky. 40292.**



**DIRECTOR**  
**W. ALTON JONES**  
**CELL SCIENCE CENTER,**  
**INC.**

**LAKE PLACID, NEW YORK**

The W. Alton Jones Cell Science Center, Inc., of Lake Placid, N.Y., seeks an individual with a background in research and education in cell biology, who, as director of the Center, will take overall responsibility for its administration and lead its growth and development in education and research. Please address inquiries to: **Philip G. Cole, Chairman, Search Committee, c/o W. Alton Jones Cell Science Center, Old Barn Road, Lake Placid, N.Y. 12946.**

*An Affirmative Action/Equal  
Opportunity Employer*

**Microbiologist**

We paved the way for fast identification of endogenous substances, therapeutic and abused drugs with the EMIT® homogenous enzyme immunoassay system. Our accelerated growth and dedication to innovative approaches in medical diagnostics has made us a recognized leader in clinical chemistry.

We are looking for an innovative individual who will organize and direct a research program for the detection of specific microorganisms. The studies will be directed toward the development of rapid immunochemical methods for detection, identification, and monitoring of pathogens.

A Ph.D and a minimum of five years' experience are required. The successful candidate should be capable of independent work and should have a proven record of accomplishments in virology and bacteriology of infectious diseases. A working knowledge of immunology and biochemistry is desirable.

Send a resume and references to Syva Company, Personnel Dept., P.O. Box 10058, Palo Alto, CA 94303. We are committed to an equal opportunity employment hiring policy m/f/h.



**A Syntex Company**

**GENETIC ENGINEERING**  
**SENIOR SCIENTISTS, SCIENTISTS**  
**AND TECHNICIANS**

Aggressive, young genetic engineering firm based in Boston/Cambridge area seeks highly motivated, resourceful individuals with outstanding scientific credentials and capabilities to join its research staff. Broadly based research program entails many diverse applications of genetic engineering and related technologies. Specifically, Company seeks individuals with experience and expertise at all levels in the following areas: recombinant DNA technology, protein chemistry, fermentation, biochemistry, enzymology, intermediary metabolism, bacteriology, tissue culture, microbial genetics, protein purification, and organic chemistry.

Please send CV in confidence, together with statement of interest, to:

**Applied Genetics, Inc.**  
**Box 1200**  
**104 Charles Street**  
**Boston, Massachusetts 02114**

**AAAS Memberships  
and Subscriptions**

• Whenever you write us about your membership or subscription, please attach a Science address label to ensure prompt service.

• **Mail to:** Membership and Subscription Records, AAAS, 1515 Massachusetts Ave., NW, Washington, D.C. 20005.

☐ **Change of Address:** Please provide 6 weeks' notice. Paste an address label from a recent issue in the space provided. Print new address below.

☐ **Query:** If you have a question, place your address label here and attach this form to your letter.

• **To join or subscribe:** Mail this form with your payment, mark the appropriate boxes, and print your name and address in the space below. (For renewals, attach label.)

☐ **Membership rates** (individual only)

☐ \$38 USA ☐ \$62 Canada, PUAS  
☐ \$93 air-surface delivery via Holland

☐ \$65 Foreign

☐ **Subscriber rates**

☐ \$76 USA ☐ \$100 Canada, PUAS  
☐ \$131 air-surface delivery via Holland

☐ \$103 Foreign

**ATTACH  
LABEL  
HERE**

☐ Payment enclosed ☐ Bill me later

Name Please print

Address

City State Zip

**MW05**

## POSITIONS OPEN

The Department of Neurology, Memorial Sloan-Kettering Cancer Center, is seeking a fully trained **RADIOCHEMIST** to produce short-lived cyclotron and generator-produced radionuclides for use in positron emission tomography (PET). The applicant should be well versed in both physical and organic chemistry; experience in "hot atom" chemistry is also desirable. Further, the applicant must demonstrate his/her ability to mount an effective PET radiochemistry program and eventually to attract outside grant support. Academic appointments and salary are negotiable. For further information, contact: **Dr. Jerome B. Posner, Chairman, Department of Neurology, Memorial Sloan-Kettering Cancer Center, 1275 York Avenue, New York, N.Y. 10021. Telephone: 212-794-7047. Equal Opportunity Employer, M/F.**

**RESEARCH ASSISTANT I**—Cancer research, available immediately.

To evaluate the mutagenicity and toxicity of environmental chemicals on human epithelial cells. Applicants should have at least a bachelor's degree, preferably in chemistry or biochemistry, and 2 years of experience in human primary cell and tissue culture. Background in immunology desirable. Modern facilities in new research building.

Send curriculum vitae and supporting letters to: **The Comprehensive Cancer Center, Suite 302, 410 West 12 Avenue, The Ohio State University, Columbus, Ohio 43210, c/o Dr. L. David Tomel.**

**RESEARCH ASSISTANTS.** Immediately. One in St. John's for cytogenetic investigation of segregation of inversion chromosomes in mice, humans. One in Stephenville area, to organize and implement genetic screening of population with a high frequency of inversion 3 and 8 carriers. M.Sc., Ph.D., genetic associate, or equivalent experience in mouse, human genetics. Send résumé and names of three referees to:

**Dr. Penelope Witte Alderdice  
Professor and Director, Cytogenetics Laboratory  
Room 4354, Health Science Center  
Memorial University of Newfoundland  
St. John's, Newfoundland, Canada A1B 3V6**

**RESEARCH ASSOCIATE: Nuclear-Medicine Imaging.** The University of Arizona, Radiology Department, is seeking a postdoctoral research associate for work on an NCI Program Project grant under the direction of Dr. H. H. Barrett. The position is available immediately and renewable annually through 1983 and involves research in novel imaging system and detectors for nuclear medicine. Experience with scintillation detectors and nuclear instrumentation systems is highly desirable. Address applications with names of three references to: **Dr. William Swindell, Radiology Department, Arizona Health Sciences Center, University of Arizona, Tucson, Arizona 85724. The University of Arizona is an Equal Opportunity/Affirmative Action Employer.**

**RESEARCH POSITION** to study the horizontal and vertical circulation of the Norwegian-Greenland Sea. Applicants should have a background in the physical oceanography of high latitudes, experience in work at sea, and a Ph.D. or equivalent. Position support by extramural funding. Salary: \$21,600 to \$22,500 per year, commensurate with experience. Submit résumé, including names of three references, before 10 June 1981 to: **Director, Marine Life Research Group, A-030, Scripps Institution of Oceanography, La Jolla, Calif. 92093. The University of California is an Equal Opportunity/Affirmative Action Employer.**

### MONASH UNIVERSITY DEPARTMENT OF PSYCHOLOGY TUTORS/SENIOR TUTORS

One position assisting in the conduct of a second year subject for Faculty of Arts students with emphasis on developmental psychology and cognition. The second position involves assisting in the conduct of a Faculty of Science third year subject including psychopathology, physiological psychology, and statistical methods. Applicants with background in experimental psychology in these general areas preferred. Salary—senior tutor: A\$15,901 to A\$18,216 per annum; tutor: A\$13,112 to A\$15,438 per annum. Travel and removal allowance. Temporary housing assistance. Superannuation (senior tutor). Applications, including reference number 31213, qualifications, experience, and two references, to: **Registrar, Monash University, Clayton, Victoria 3168, Australia, by 5 June 1981.**

## POSITIONS OPEN

**RESEARCH ASSISTANT** (postdoctoral). To study mammalian sperm motility using cinematography, video, or other quantitative techniques. Position will provide an opportunity to interact with laboratories investigating a variety of problems in reproductive biology. Salary up to \$17,000, depending upon qualifications. Send curriculum vitae and names of three references to: **Dr. David M. Phillips, The Population Council, The Rockefeller University, 1230 York Avenue, New York, N.Y. 10021.**

**RESEARCH OPPORTUNITIES IN MOLECULAR BIOLOGY, ASSOCIATES AND ASSISTANTS. RESEARCH ASSOCIATES:** Two positions available at the level of associate; junior faculty appointment, not tenure-track, for work on several projects involving DNA tumor viruses; molecular biology of malignant transformation and gene expression. Ph.D. required. Substantial experience in recombinant DNA technology required. Salaries commensurate with experience, up to \$20,000. **Research involves** working with mammalian cell genetics, in vitro chemical carcinogenesis, genetic transformation, and DNA cloning and sequencing. Relevant experience in tissue culture and malignant transformation techniques desirable, but will train the right candidates. **RESEARCH ASSISTANTS:** Research involves working with animal viruses, nucleic acids, DNA sequencing and cloning, and development of new techniques for in vivo and in vitro genetic manipulation. Bachelor's degree in relevant science required. Similar experience desired, but will train the right candidates. Superbly equipped, stimulating and rapidly growing department; 10 miles from downtown Manhattan and minutes from pleasant suburbs. Send résumé to: **Dr. G. di Mayorca, Professor and Chairperson, Department of Microbiology, College of Medicine and Dentistry of New Jersey, 100 Bergen Street, Newark, N.J. 07103. An Equal Opportunity/Affirmative Action Employer.**

### RESEARCH POSITION

Available immediately at level of assistant professor at  
**INSTITUTE FOR RESEARCH IN MOLECULAR BIOLOGY (CNRS)  
and UNIVERSITY OF PARIS**

For 2 years with a likely 3-year extension. Molecular biologist with experience in cloning and DNA sequencing. Salary range: 8000 to 9000 FF per month. Application and further details: **A. D. Strosberg, Molecular Immunology Laboratory, IRBM, Jussieu 2, Paris 75251, France.**

### RESEARCH SCIENTIST (Remote Sensing) University of Nebraska—Lincoln

A fully supported, permanent faculty level research position with associated academic responsibilities and located within the Remote Sensing Center. Remote sensing orientations sought are either a **LAND RESOURCES FOCUS** upon research into innovative mechanisms for technology transfer of remote sensing or a **GEOINFORMATION SYSTEM FOCUS** upon research into the technical aspects of the development and implementation of spatial land resource information systems.

The Center is located within the Conservation and Survey Division of the Institute of Agriculture and Natural Resources. This division also contains the State Geological Survey, Water Survey, Soil Survey, and NCIC Map Information Center. The Institute is responsible for all University academic and research programs in agriculture and natural resources.

Applicants from a wide variety of remote sensing backgrounds are encouraged to apply. Ph.D. degree preferred, but equivalent experience may be substituted. Rank, tenure, and salary based on qualifications and experience. Résumé by 15 June to: **Lee D. Miller, University of Nebraska—Lincoln, 113 Nebraska Hall, Lincoln, Nebraska 68588.**

*Affirmative Action/Equal Opportunity Employer*

## CALL FOR PAPERS

### CALL FOR PAPERS

**Third International Ocean Disposal Symposium, 12 to 16 October 1981; Alfred C. Redfield Auditorium, Woods Hole Oceanographic Institution, Woods Hole, Mass. 02543. Abstracts due 1 July 1981.** For abstract and manuscript requirements, accommodations, student travel awards, and other inquiries, contact: **Dr. Iver W. Duedall, Symposium Chairman, Marine Science Research Center, State University of New York, Stony Brook, N.Y. 11794.**

## REQUEST FOR PROPOSALS

### REQUEST FOR PROPOSALS AVAILABLE

Metropolitan Dade County, Florida, is seeking proposals to obtain baseline data in Biscayne Bay for the following areas: circulation, sources of turbidity, benthic community ecology, water epidemiology and pathology, fisheries resources, and fish pathology. Parties interested in receiving requests for proposals should telephone: **Cori Zywotow at 305-579-2760, no later than 1 June 1981. Final proposals due 15 June 1981. Dade County Department of Environmental Resources Management, 909 Southeast First Avenue, Room 494, Miami, Florida 33131.**

## TRAINEESHIPS

**TRAINEESHIP, CANCER RESEARCH,** University of Miami Comprehensive Cancer Center. Opportunities for M.D.'s to obtain 2 years of research in broad range of disciplines related to cancer. Competitive stipends. U.S. citizens and permanent residents. Reply by letter with résumé to: **Dr. Marylou Ingram, Comprehensive Cancer Center (D8-4), University of Miami, School of Medicine, P.O. Box 016960, Miami, Fla. 33101.**

**NIH PRE- AND POSTDOCTORAL TRAINEESHIPS IN REPRODUCTIVE BIOLOGY.** Traineeships will be sponsored by the Departments of Anatomy and Physiology at the University of Oregon Health Sciences Center and the Oregon Regional Primate Research Center. Applications from pre- and postdoctoral students with backgrounds in all basic science areas are welcome; applicants must be U.S. citizens or permanent residents. Deadline for fall 1981 is 1 August 1981; for fall 1982, 1 March 1982. Send inquiries to: **Nancy J. Alexander, Ph.D., Oregon Regional Primate Research Center, 505 Northwest 185 Avenue, Beaverton, Oregon 97006; telephone: 503-645-1141. Equal Opportunity Employers.**

## FELLOWSHIPS

### POSTDOCTORAL FELLOWSHIP

Postdoctoral fellowship available 1 July 1981 in the Research Laboratory for Calcium Metabolism, Departments of Orthopedic Surgery and Medicine, University of Zurich, to participate in research on parathyroid hormone, calcitonin, and D-vitamins. Send résumés and names of two references to: **Jan A. Fischer, M.D., Orthopädische Universitätsklinik Balgrist, Forchstrasse 340, 8008 Zurich, Switzerland.**

### CARDIAC ELECTROPHYSIOLOGY

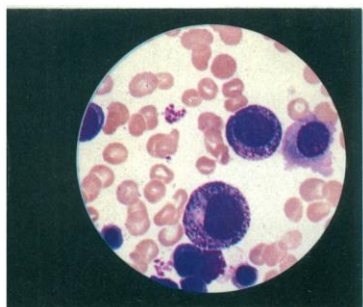
Postdoctoral research positions (two) to study electrophysiology and pharmacology of normal and diseased human cardiac tissues and animal models of disease and dysrhythmia. Definition of changes resulting from disease and which might be expected to predispose to dysrhythmia are stressed. Studies employ standard glass microelectrode, ion selective electrode, and voltage clamp techniques. Experience with glass microelectrode methodology highly desirable. Excellent facilities and environment. Send curriculum vitae and three professional references to: **Dr. D. H. Singer, Department of Pharmacology, Northwestern University Medical School, 320 East Superior Street, Chicago, Ill. 60611.**

**POSTDOCTORAL FELLOWSHIP IN DEVELOPMENTAL NEUROBIOLOGY.** Available in September to investigate formation of synapses in skeletal muscle and specificity of regeneration of invertebrate synapses in vitro. Applicants must have experience in neurophysiology or biochemistry/immunology applicable to the nervous system. Appointment for 1 year; renewal for additional years. Send curriculum vitae with description of research experience and arrange for two or three letters to be sent directly to: **Wesley Thompson, Department of Zoology, University of Texas, Austin, Texas 78712.**

## MARKETPLACE

**EQUIPMENT AVAILABLE FOR FINANCIAL CONSIDERATION.** Variable energy-variable particle sector focused cyclotron constructed in late 1960's, 100-inch pole diameter ( $Q = 160 Z^2/A$  MeV). Also beam transport magnets and supplies. Interested parties should contact: **Dr. P. G. Roos, Department of Physics and Astronomy, University of Maryland, College Park, Maryland 20742. Telephone: 301-454-4152.**

# NIKON VISIONS



## NIKON LABOPHOT OFFERS UNPARALLELED PERFORMANCE IN A LABORATORY MICROSCOPE.

Blood specimen photographed with Nikon NCG CF 100x Plan Apochromat. CF 5x photo eyepiece.

### INSTRUMENTATION

Nikon Labophot Microscope.

### SIGNIFICANCE

Nikon's exclusive CF optical system delivers resolution and contrast previously unattainable in this price range.

### SPECIFICS

The Nikon CF system produces a completely usable field with total edge-to-edge sharpness. The enhanced image makes the most subtle characteristics of specimens stand out vividly.

This research level optical system is incorporated into the rugged, easy-to-use Labophot. The instrument has a highly rigid, stable base and a brilliant 20 watt halogen Koehler illumination system which requires no adjustment over the entire magnification range. The precision rack and pinion focusing mechanism is so accurate it can be quickly focused on a blood slide using only the coarse adjustment, yet it should require no maintenance or adjustment under normal use. A wide choice of objectives, accessories and photomicrographic systems is available and the Labophot is backed by a 5 year full warranty.

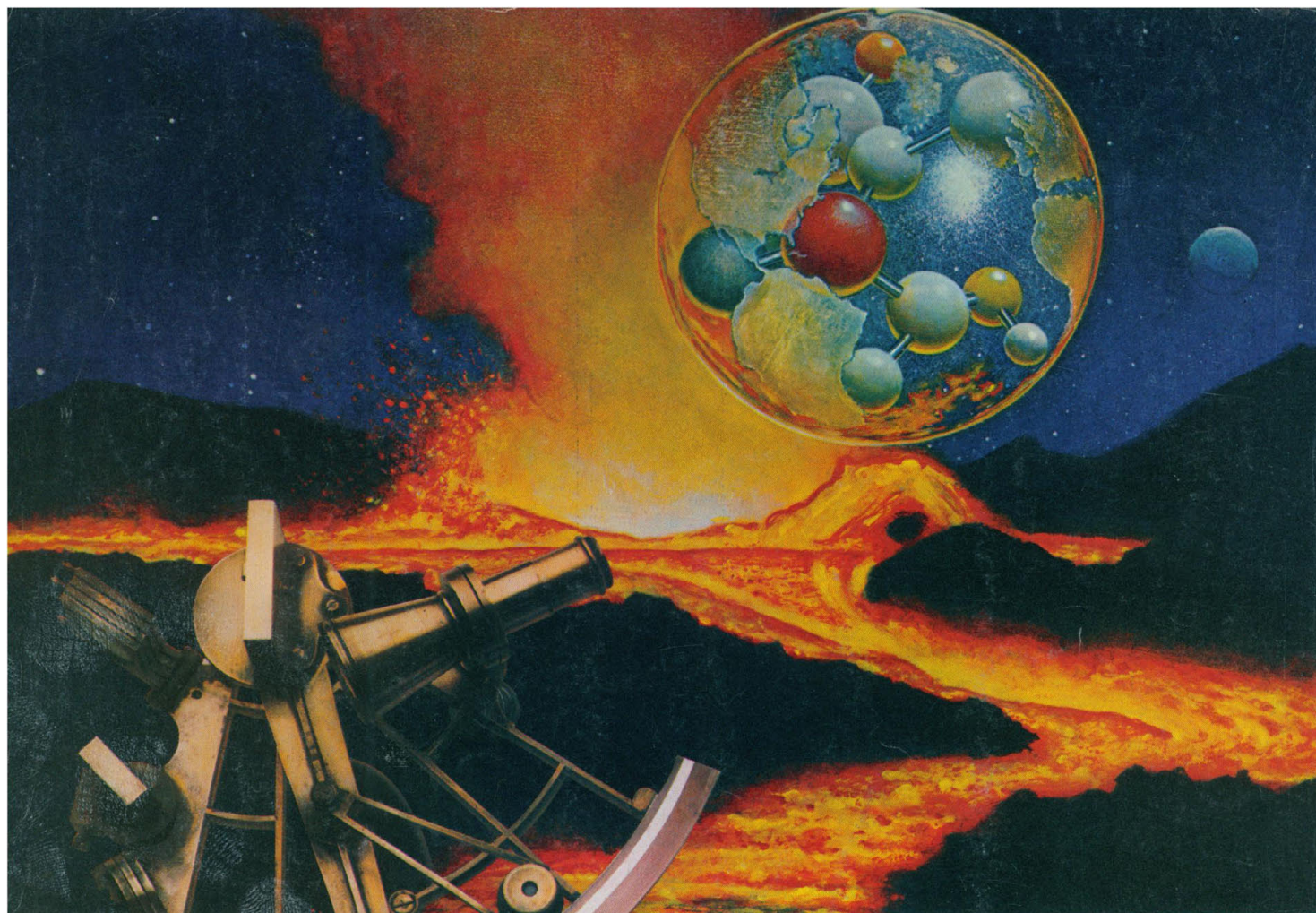
Extend your vision with the Labophot. Write: Nikon Visions, Nikon Incorporated, Instrument Division, 623 Stewart Avenue, Garden City, N.Y. 11530 (516) 222-0200.

**Nikon**  
*Extending Man's Vision*

Circle No. 263 on Readers' Service Card







**A new guide to one of the world's most creative sources** of laboratory chemicals is here from Kodak. The new KODAK Laboratory Chemicals, Catalog No. 51, describes our thousands of organic, hundreds of inorganic, and even biochemicals—all available through our dealers. If you don't already have a free copy, ask. Let it guide your imagination.



### **The creative source.**

**The ready source**—dealers handling KODAK Laboratory Chemicals: American Scientific & Chemical; American Scientific Products; Bioclinical Laboratories NJ; BCL/New York; Brand-Nu Laboratories, Inc.; Bryant Laboratory, Inc.; CAMX Scientific; Fisher Scientific; Mays Chemical; Midland Scientific, Inc.; North-Strong Division; Preiser Scientific; Sargent-Welch Scientific; Scientific & Industrial Sales & Service, Inc.; Specialty Chemicals, Inc.; VWR Scientific Inc.; Ward's Natural Science Establishment, Inc.

© Eastman Kodak Company, 1981. Kodak Laboratory and Specialty Chemicals, Rochester, NY 14650

Eastman Kodak Company, Kodak Laboratory and Specialty Chemicals  
Dept. 412-L, Rochester, NY 14650.

I have not received my free copy of KODAK Laboratory Chemicals, Catalog No. 51. Please send me one.

NAME \_\_\_\_\_ TITLE \_\_\_\_\_  
FIRM \_\_\_\_\_  
ADDRESS \_\_\_\_\_  
CITY \_\_\_\_\_ STATE \_\_\_\_\_ ZIP \_\_\_\_\_  
FIELD OF WORK \_\_\_\_\_

