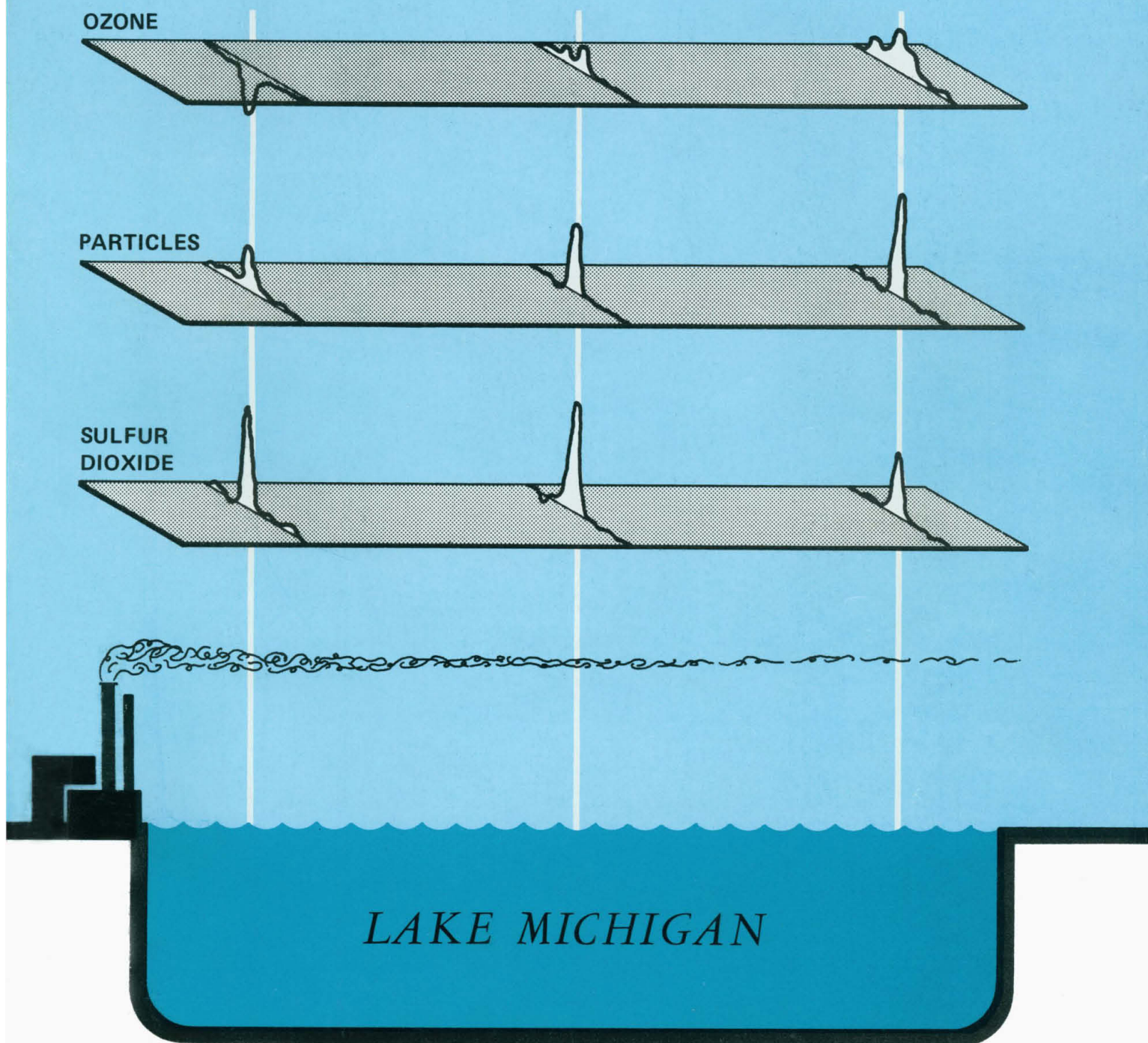


15 December 1978 • Vol. 202 • No. 4373

\$1.50

SCIENCE

AMERICAN ASSOCIATION FOR THE ADVANCEMENT OF SCIENCE





New L-5B Ultracentrifuges with Dry Cycle, Automatic/Manual Operation, 0 to 40°C Capability, and 8 Billion Revolution Drive.

The new Beckman Model L-5B ultracentrifuges have improvements you'll readily appreciate. They will save you time in the Automatic mode—yet give you the flexibility of manual operation whenever you wish.

The Dry Cycle keeps moisture out of the rotor chamber. As a result, these new ultracentrifuges are always ready to run—the next hour or the next day. There is no time lost pumping the chamber dry.

0 to 40°C operation lets you run physiological samples at body temperature, increasingly important in a variety of research. And the Beckman L-5B drive—powerful and efficient with its DC electric design—

is so reliable we warrant it for 8×10^9 revolutions.

Four models are available: the L5-75B for 75,000 rpm, L5-65B for 65,000 rpm, L5-50B for 50,000 rpm, and the L5-50E economy model. All with major improvements for your research needs.

Write for Brochure SB-540 to Beckman Instruments, Inc., Spinco Division, 1117 California Avenue, Palo Alto, CA 94304.



BECKMAN®

Circle No. 148 on Readers' Service Card

BIO-RAD BREAKTHROUGH!

ANNOUNCING THE WORLD'S MOST VERSATILE LARGE CAPACITY...

HORIZONTAL ELECTROPHORESIS CELL.

The applications listed below barely do justice to the variety of separations that can be performed with Bio-Rad's new Model 1415 Cell. Note that it has an extra large 125×430 mm cooling platform. Another unique feature: a condensation coil in the lid that keeps moisture off the gel. So versatile is the Model 1415 that it very well could be the only cell of its type that you'll need for a long, long time.

Analytical Electrofocusing in Thin Layer Gels. Focus up to 40 protein samples across the platform using two 125×200 mm glass plates and two pairs of 200 mm electrofocusing electrodes. Or use 110 mm electrodes to run samples lengthwise up to 40 cm.

Preparative Electrofocusing in Granulated Bed. Use the Model 1415 Cell to produce sharp sep-

aration of up to several hundred milligrams of protein by preparative electrofocusing lengthwise in 110×300 mm tray.

Immuno-electrophoresis. The extra large cooling platform of the Model 1415 Cell allows you to run four 100×100 mm glass plates (or larger numbers of smaller plates) simultaneously under identical conditions. Excellent for 2-D, "rocket" or Grabar-Williams immuno-electrophoresis and counterimmuno-electrophoresis.

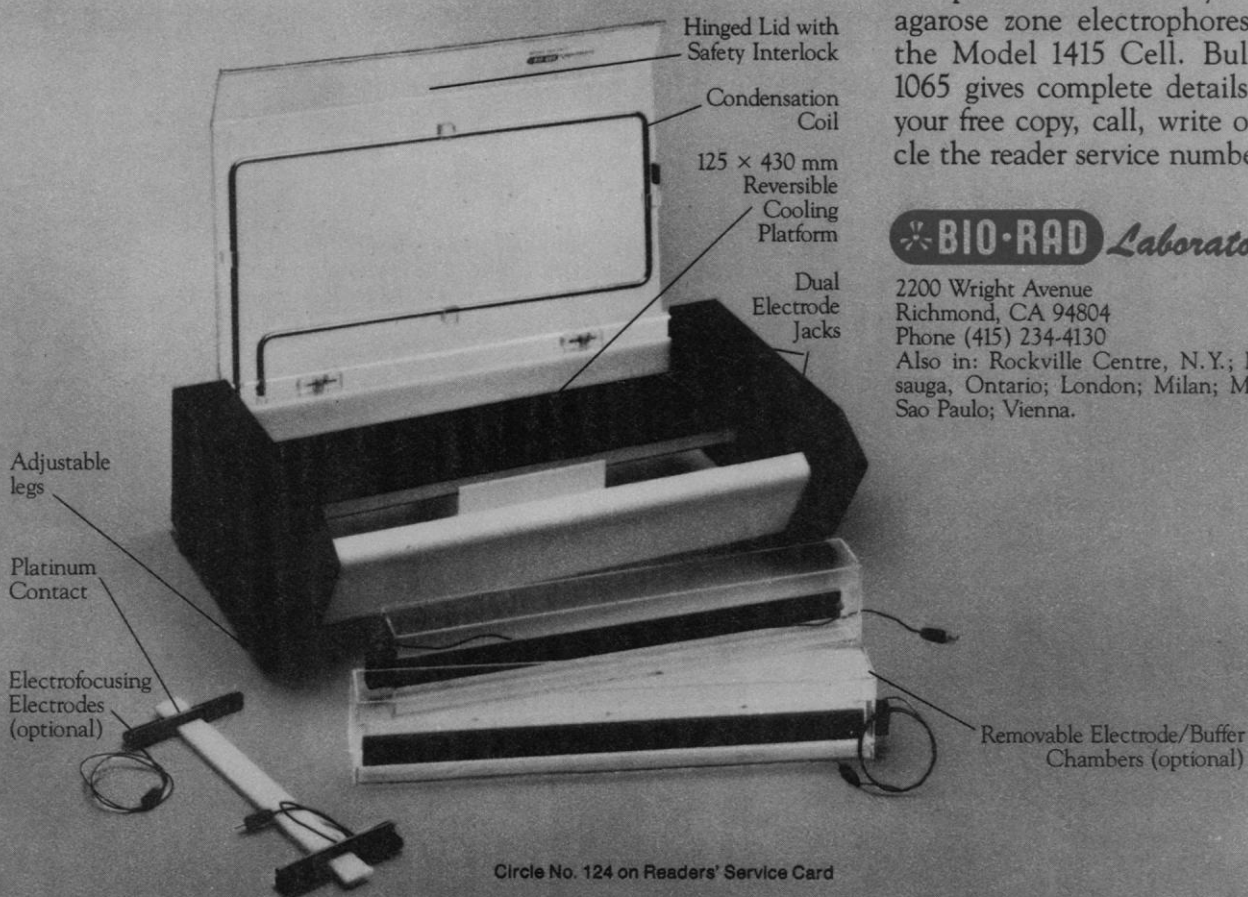
DNA Separation in Thick Agarose Gels. Rapid preparative separation of nucleic acid strands can be accomplished with the Model 1415 equipped with one to four 105 mm wide by 200 mm long agarose bridges running across the platform.

Zone Electrophoresis. Up to 30 samples can be analyzed by agarose zone electrophoresis in the Model 1415 Cell. Bulletin 1065 gives complete details. For your free copy, call, write or circle the reader service number.

BIO-RAD Laboratories

2200 Wright Avenue
Richmond, CA 94804
Phone (415) 234-4130

Also in: Rockville Centre, N.Y.; Mississauga, Ontario; London; Milan; Munich; Sao Paulo; Vienna.



Circle No. 124 on Readers' Service Card

SCIENCE

LETTERS	Radwaste Policy: <i>P. Montague</i> ; ESP Research: <i>C. T. Tart</i> ; <i>H. E. Puthoff</i> and <i>R. Targ</i> ; <i>P. Diaconis</i> ; The Numbers Game: <i>W. A. Thomas</i>	1145
EDITORIAL	Honoring Albert Einstein: <i>E. Q. Daddario</i>	1149
ARTICLES	Iron Ore: Energy, Labor, and Capital Changes with Technology: <i>P. J. Kakela</i>	1151
	Loss of Division Potential in vitro: Aging or Differentiation?: <i>E. Bell et al.</i>	1158
NEWS AND COMMENT	Is Founder of Modern Anatomy Subject of Mysterious Portrait?	1164
	Dioxins Have Been Present Since the Advent of Fire, says Dow	1166
	Anti-Semitism Alleged in Soviet Mathematics	1167
	<i>Briefing</i> : Utility Industry Is Cool to Voltage Reduction Project; Nader Queries Handler on Status of CONAES Study; Energy Facility Siting Seen in Need of Reform	1170
RESEARCH NEWS	Doppler Radar: New Look into Violent Weather	1172
	The 1978 Nobel Prize in Chemistry: <i>F. M. Harold</i>	1174
	Lawsuit Points up Debate over Exercise Electrocardiograms	1175
BOOK REVIEWS	Infancy, reviewed by <i>S. Goldberg</i> ; Plant Life in Anaerobic Environments, <i>S. M. Siegel</i> ; Chromatin, <i>K. E. Van Holde</i> ; The Chemistry of the Atmosphere and Oceans, <i>J. W. Winchester</i> ; Books Received and Book Order Service	1177

BOARD OF DIRECTORS

EMILIO Q. DADDARIO
Retiring President, Chairman

EDWARD E. DAVID, JR.
President

KENNETH E. BOULDING
President-Elect

ELOISE E. CLARK
MARTIN M. CUMMINGS

RENÉE C. FOX
BERNARD GIFFORD

CHAIRMEN AND SECRETARIES OF AAAS SECTIONS

MATHEMATICS (A)
Mark Kac
Ronald Graham

PHYSICS (B)
D. Allan Bromley
Rolf M. Sinclair

CHEMISTRY (C)
William E. McEwen
William L. Jolly

ASTRONOMY (D)
Paul W. Hodge
Donat G. Wentzel

PSYCHOLOGY (J)
Brenda Milner
Meredith P. Crawford

SOCIAL AND ECONOMIC SCIENCES (K)
Kurt W. Back
Gillian Lindt

HISTORY AND PHILOSOPHY OF SCIENCE (L)
Robert S. Cohen
Diana L. Hall

ENGINEERING (M)
Robert B. Beckmann
Donald E. Marlowe

EDUCATION (Q)
Marjorie H. Gardner
James T. Robinson

DENTISTRY (R)
Sholom Pearlman
John Termine

PHARMACEUTICAL SCIENCES (S)
John G. Wagner
Raymond Jang

INFORMATION, COMPUTING, AND COMMUNICATION (T)
Eugene Garfield
Madeline M. Henderson

DIVISIONS

ALASKA DIVISION

Donald H. Rosenberg
President

Keith B. Mather
Executive Secretary

PACIFIC DIVISION

Glenn C. Lewis
President

Alan E. Leviton
Secretary-Treasurer

SOUTHWESTERN AND ROCKY MOUNTAIN DIVISION

James W. O'Leary
President

Lora M. Shields
Executive Officer

SCIENCE is published weekly, except the last week in December, but with an extra issue on the third Tuesday in September, by the American Association for the Advancement of Science, 1515 Massachusetts Ave., NW, Washington, D.C. 20005. Now combined with *The Scientific Monthly*. Second-class postage paid at Washington, D.C., and additional entry. Copyright © 1978 by the American Association for the Advancement of Science. Member rates on request. Annual subscriptions \$65; foreign postage: Canada \$10; other surface \$13; air-surface via Amsterdam \$30. Single copies \$1.50; \$2 by mail (back issues \$3) except *Guide to Scientific Instruments* \$6. School year subscriptions: 9 months \$50; 10 months \$55. Provide 6 weeks' notice for change of address, giving new and old addresses and postal codes. Send a recent address label, including your 7-digit account number. Postmaster: Send Form 3579 to Science, 1515 Massachusetts Avenue, NW, Washington, D.C. 20005. Science is indexed in the *Reader's Guide to Periodical Literature* and in several specialized indexes.

AMERICAN ASSOCIATION FOR THE ADVANCEMENT OF SCIENCE

REPORTS	Early Deglaciation of the Labrador Shelf: <i>G. Vilks and P. J. Mudie</i>	1181
	Carbon Flow in Four Lake Ecosystems: A Structural Approach: <i>J. E. Richey et al.</i>	1183
	Ozone Formation Related to Power Plant Emissions: <i>D. F. Miller et al.</i>	1186
	Polychlorinated Biphenyls: Transfer from Microparticulates to Marine Phytoplankton and the Effects on Photosynthesis: <i>L. W. Harding, Jr.,</i> <i>and J. H. Phillips, Jr.</i>	1189
	Phanerozoic Peridotitic and Pyroxenitic Komatiites from Newfoundland: <i>H. D. Upadhyay</i>	1192
	Intracellular Calcium: Its Release from Granules During Bursting Activity in Snail Neurons: <i>E. Sugaya and M. Onozuka</i>	1195
	Ion Shower Milling: Its Application to Cell Membrane Removal: <i>E. Sugaya and M. Onozuka</i>	1197
	The Pineal Gland: A Biological Clock in vitro: <i>S. A. Binkley, J. B. Rieberman,</i> <i>K. B. Reilly</i>	1198
	r and K Selection in Experimental Populations of <i>Escherichia coli</i> : <i>L. S. Luckinbill</i>	1201
	Calcium Entry Leads to Inactivation of Calcium Channel in <i>Paramecium</i> : <i>P. Brehm and R. Eckert</i>	1203
	Transient Synapses in the Embryonic Primate Spinal Cord: <i>E. Knyihar,</i> <i>B. Csillik, P. Rakic</i>	1206
	Intraventricular Alloxan Eliminates Feeding Elicited by 2-Deoxyglucose: <i>S. C. Woods and L. D. McKay</i>	1209
	Short-Term Memory: The "Storage" Component of Human Brain Responses Predicts Recall: <i>R. M. Chapman, J. W. McCrary, J. A. Chapman</i>	1211
	Exponential Decrease During Aging and Random Lifetime of Mouse Spermatogonial Stem Cells: <i>N. Suzuki and H. R. Withers</i>	1214
	<i>Technical Comments: 6-Hydroxydopamine and Anticholinergic Drugs:</i> <i>S. T. Mason and H. C. Fibiger; T. Schallert et al.; Age Affect and</i> <i>Replicative Life-Span of Fibroblasts of Diabetic, Prediabetic, and</i> <i>Normal Donors: Another Look at the Data: R. E. Gleason and S. Goldstein;</i> <i>Carnivoran Jaw Shape: W. L. Hylander; S. J. Olsen and J. W. Olsen</i>	1215

MIKE MC CORMACK
FREDERICK MOSTELLER

RUSSELL W. PETERSON
CHEN NING YANG

WILLIAM T. GOLDEN
Treasurer

WILLIAM D. CAREY
Executive Officer

GEOLOGY AND GEOGRAPHY (E)
Gerald M. Friedman
Ramon E. Bisque

MEDICAL SCIENCES (N)
Leon O. Jacobson
Leah M. Lowenstein

STATISTICS (U)
Samuel W. Greenhouse
Era Glaser

BIOLOGICAL SCIENCES (G)
Ursula K. Abbott
Walter Chavin

AGRICULTURE (O)
James B. Kendrick
Coyt T. Wilson

ATMOSPHERIC AND HYDROSPHERIC
SCIENCES (W)
Kenneth C. Spengler
Glenn R. Hilst

ANTHROPOLOGY (H)
June Helm
Priscilla Reining

INDUSTRIAL SCIENCE (P)
David B. Hertz
Robert L. Stern

GENERAL (X)
Allen V. Astin
Joseph F. Coates

COVER

Concentration profiles of gases and particles that resulted when a power plant's emissions reacted in a polluted atmosphere under solar radiation. In the near field of the plume, ozone diminished relative to the ambient concentration, but further downwind ozone rose above the ambient level. See page 1186. [Artwork by Dean Kette and Dean McCandlish, Battelle Columbus Laboratories, Columbus, Ohio]

The American Association for the Advancement of Science was founded in 1848 and incorporated in 1874. Its objects are to further the work of scientists, to facilitate cooperation among them, to foster scientific freedom and responsibility, to improve the effectiveness of science in the promotion of human welfare, and to increase public understanding and appreciation of the importance and promise of the methods of science in human progress.

HOUSTON

Symposia
Exhibits
Science Film
Festival
Tours

For details about the Meeting program, as well as housing and registration forms, see the Preconvention issue of *Science*, 24 November 1978

or write

AAAS Meetings Office—Suite 600
1776 Massachusetts Avenue, NW
Washington, D.C. 20036



Annual Meeting
HOUSTON
3-8 January 1979

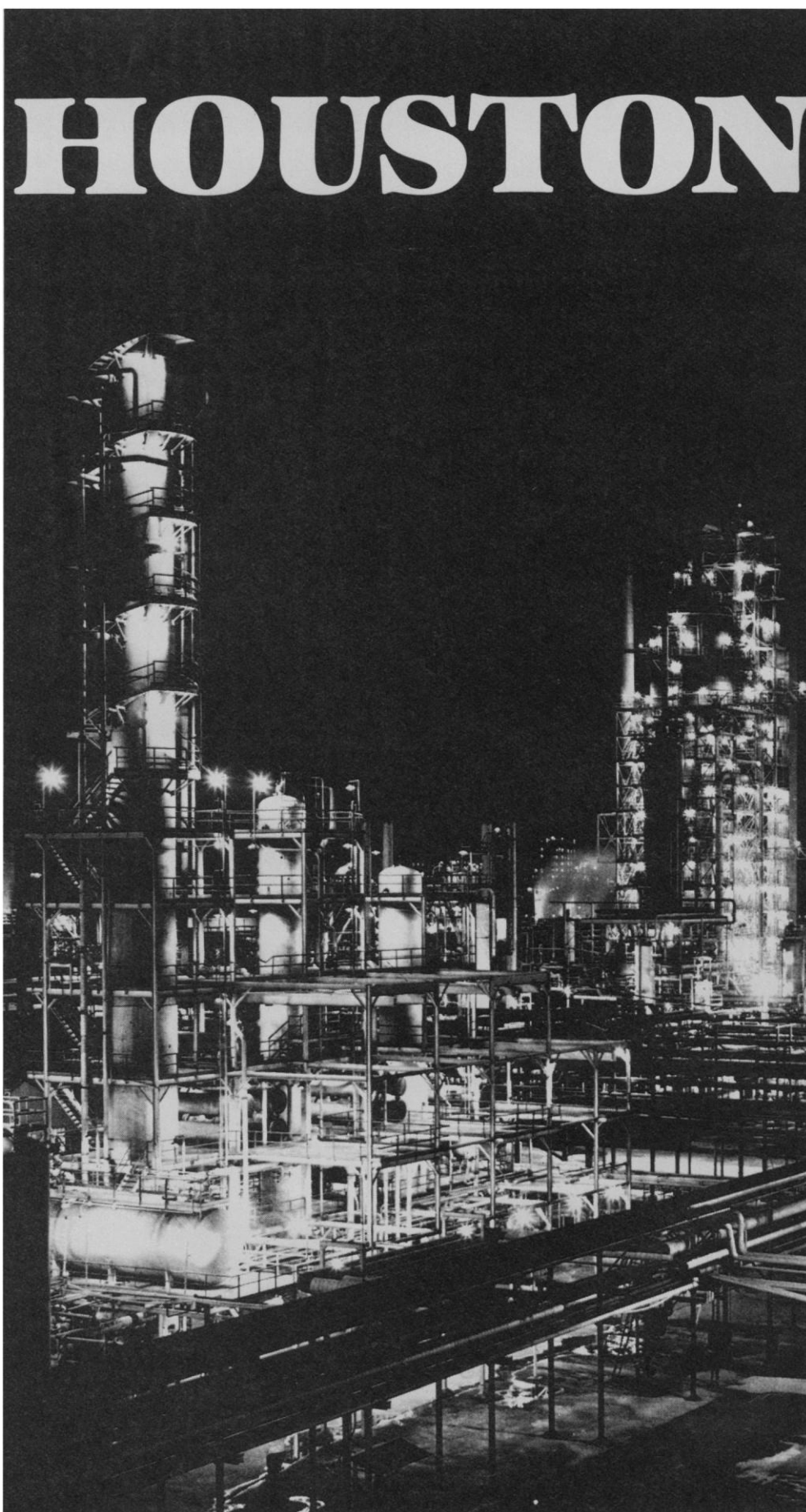


Photo courtesy of Exxon Company, USA.

The Mitchell Prize

\$100,000 In Cash Awards

THE THIRD OF FIVE INTERNATIONAL COMPETITIONS TO ENCOURAGE ANALYSIS,
POLICY DEBATE, AND DESIGNS FOR SUSTAINABLE SOCIETIES

To be awarded at the Third Biennial Woodlands Conference on Growth Policy, October 28-31, 1979,
The Woodlands, Texas

The Mitchell Prize, established by George and Cynthia Mitchell of Houston, Texas, is awarded every two years to those individuals demonstrating the highest degree of creativity in designing workable strategies to achieve sustainable societies. For the third biennial competition, \$100,000 will be awarded for original contributions toward this effort.

\$50,000 in cash will be presented for the best ideas generated through the competition outlined in this announcement:

- One first award of \$10,000
- Eight second awards of \$5,000 each.

Another \$50,000 will be given for commissioned papers on various themes directly related to the agenda of the Woodlands Conference. These awards will be for papers commissioned by the conference sponsors.

"We can now come closer to seeing the transition we are in. We are moving toward a scientifically responsible, ecologically aware, information-rich, option-maximizing pluralistic society,

whose citizens work as a matter of right and gain — also as a matter of right — lifelong learning in a global and future-oriented perspective.

"Such a society is bound to move away from 'growth' defined as quantitative product irrespective of what and whom it is for. Such a society is bound to consider basic human needs a first charge on available resources. Such a society is bound to bestow its highest priority on the development of human resources — on enhancement of the human environment."* It is to this integrative theme that entrants may address their work.

The initial entry must be in the form of a summary of not more than 2,500 words outlining the contestant's ideas and recommendations. First round entries must be postmarked by February 28, 1979. Fifty summaries will be chosen for the final round of judging. The summaries should contain the following information:

- (1) Title of the proposal.
- (2) Central theme and working

hypotheses of the analysis.

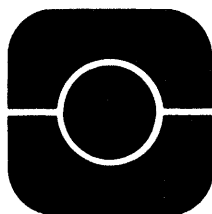
- (3) Areas to be explored. Types of data to be utilized.
- (4) Relevance to the growth policy debate.
- (5) Implications in policy and action.
- (6) Form in which material will be presented, i.e., audio/visual, paper, etc.

The nine final round winners will receive their awards at the Third Biennial Woodlands Conference on Growth Policy. This international assembly of scientists, corporate leaders, academics, and policymakers will be held October 28-31, 1979, at The Woodlands, Texas.

1979 Mitchell Prize guidelines and application forms are available from: Woodlands Conference Office, University of Houston Central Campus, 312 C & O, Houston, Texas, 77004; telephone (713) 749-7478.

*Harlan Cleveland and Thomas W. Wilson, Jr., *Humangrowth: An Essay on Growth, Values and the Quality of Life*, (Aspen Institute for Humanistic Studies, 1978), pp. 28-29.

Sponsors: University of Houston, Mitchell Energy & Development Corp., Aspen Institute for Humanistic Studies, the Center for Integrative Studies



Introducing HP's System 35.



Under its friendly exterior lurks the power of a minicomputer.

The new System 35 delivers minicomputer performance while retaining those friendly characteristics of a desktop computer. Consider these features:

Big Memory—you choose from 64K to 256K bytes of internal read/write memory, of which all but 12K bytes are available for your programs and data. With 256K bytes, System 35 can manage an array of over 30,000 12-digit floating-point numbers. That's big problem-solving capacity.

Enhanced BASIC Language possesses some powerful, convenient features you'd normally find only in FORTRAN or APL. It's the same HP enhanced BASIC used with System 45 so you can step up to a bigger system without having to rewrite your programs.

Assembly Language is an option for those who are skilled assembly programmers to provide increased power and speed for data acquisition and control applications. **Real-time I/O performance** makes System 35 an extremely powerful desktop controller. With direct memory access, buffered I/O, 15 levels of priority interrupt, built-in I/O drivers and standard interface options, System 35 handles data acquisition and control tasks with ease.

Yet with all its built-in performance, System 35 remains a friendly, easy-to-use computer. It integrates essential functions such as alphanumeric display—your choice of 24-line CRT or single line LED—typewriter-like keyboard, and a 217K byte magnetic tape drive in one trim, portable package. If needed, you can easily plug in external HP peripherals such as printers, plotters and floppy discs which, for convenience, use the same mass-storage commands as the built-in tape.

For immediate information on System 35, call your local HP desktop computer representative. For literature, send us the coupon, which will expedite its return, or circle our reader service number.



3404 E. Harmony Road, Fort Collins, Colorado 80525

For assistance call: Washington (301) 948-6370, Chicago (312) 255-9800, Atlanta (404) 955-1500, Los Angeles (213) 877-1282.
Ask for an HP Desktop Computer representative.

- ☐ Please have an HP desktop computer representative call.
- ☐ Please send me general literature.
- ☐ I am interested in data acquisition and control. Please send the technical supplement.
- ☐ I am interested in assembly language programming. Please send the technical supplement.

Name _____

Title _____ Phone _____

Organization _____

Address _____

City/State/Zip _____

3404 E. Harmony Road, Fort Collins, Colorado 80525

S-12/15/78

Houston Tapes

Annual Meeting
HOUSTON
3-8 January 1979

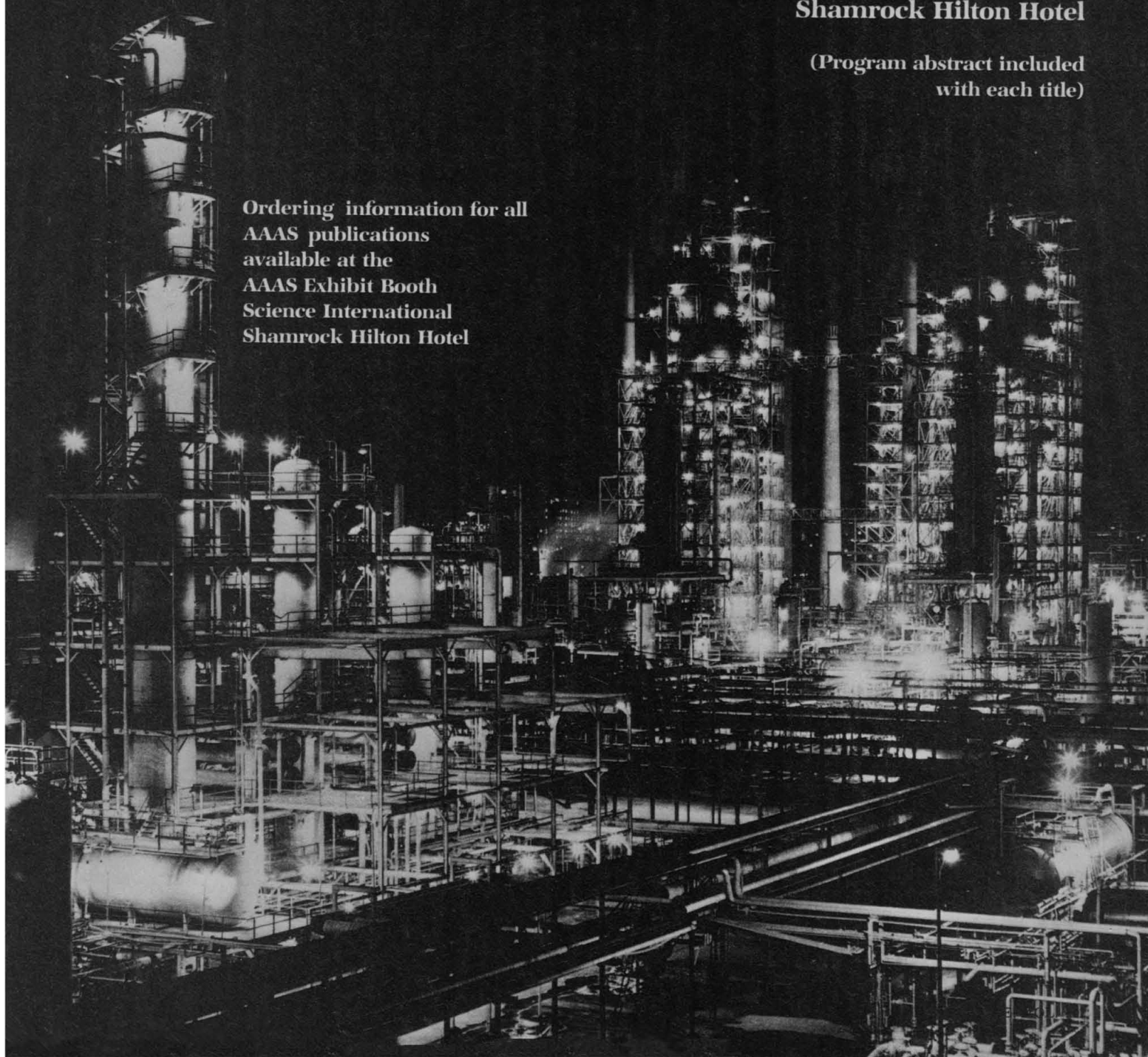


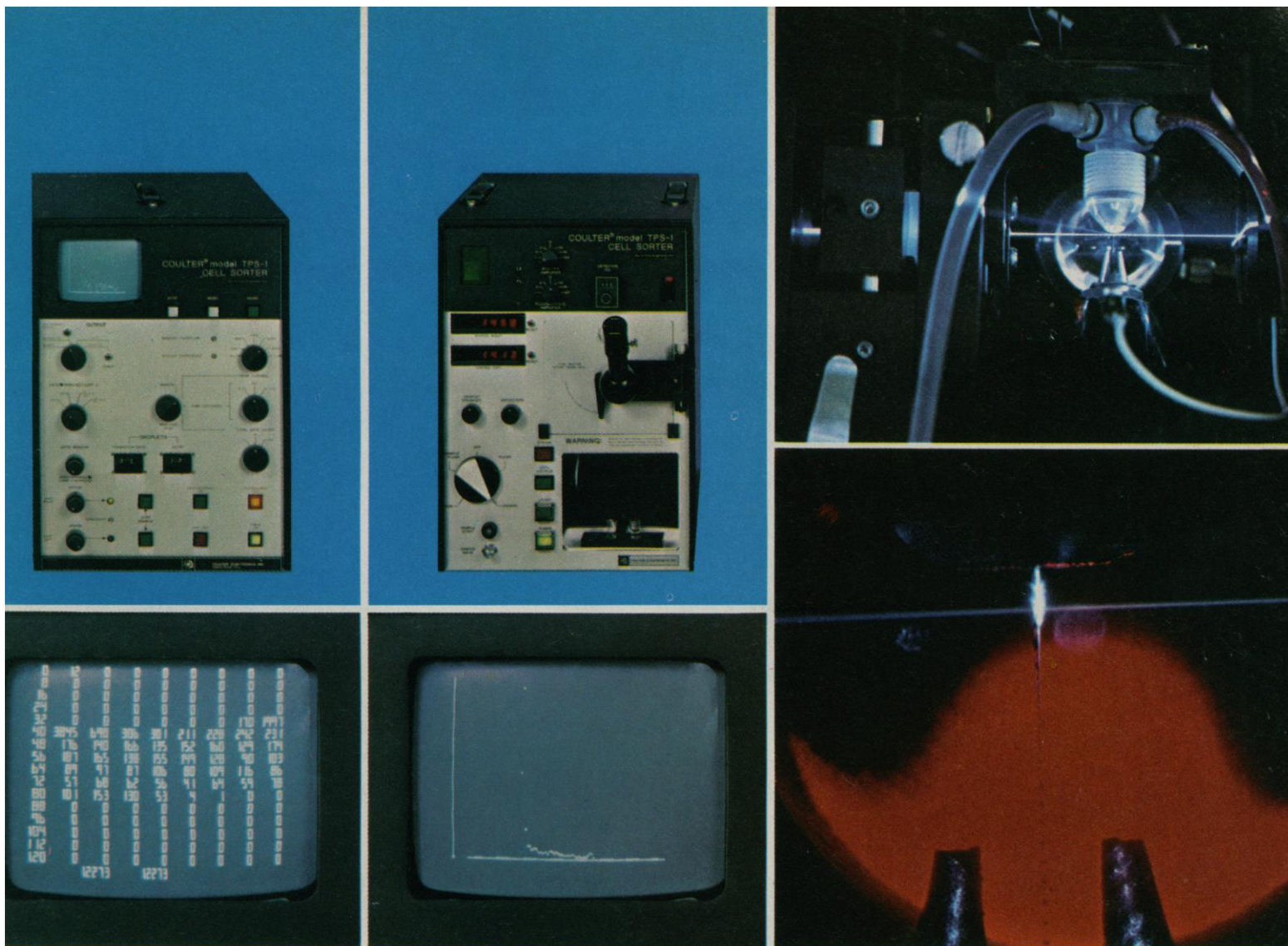
For a list of those sessions
taped at this year's Annual Meeting,
visit the

CEBAR Sales Desk
AAAS Registration Area
Shamrock Hilton Hotel

(Program abstract included
with each title)

Ordering information for all
AAAS publications
available at the
AAAS Exhibit Booth
Science International
Shamrock Hilton Hotel





Fluorescence, light scatter, cell sorting.

Coulter has a family of compact, reliable instruments that can help you investigate a wide range of cytochemical, histochemical and immunological characteristics. They are the COULTER® Model TPS Cell Sorters.

Select from 5 watt, 2 watt, or 0.1 watt lasers, one or two color analysis, UV capability and other features to meet your research needs.

Study immunological response, the DNA or protein content of a cell, its surface structure, whether it is alive or dead, how big it is and many other things based on laser-induced fluorescence and/or light scattering.

TPS Systems analyze at rates up to 10,000 cells per second. They also physically sort out cells of interest based on operator-selected parameters at rates up to 4,000 cells per second.

Let us demonstrate the TPS System's flexibility and simplicity in your lab.

For a demonstration or more information on the COULTER® TPS family, just fill out the coupon below and return it to us, or call the Coulter office nearest you.

Yes, I am interested in hearing more about the COULTER® TPS Cell Sorters.

- ☐ Please arrange a demonstration in my laboratory.
- ☐ Send me more information right away.

Name _____

Lab _____

Institution _____

Address _____

City _____ State _____

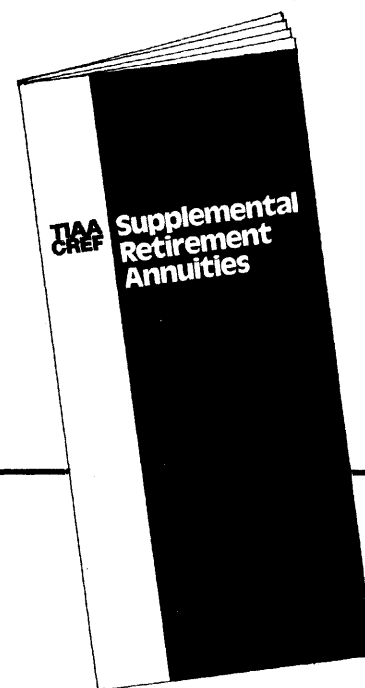
Zip _____ Phone _____

Coulter Electronics, Inc.
590 West 20th Street, Hialeah, FL 33010



Circle No. 199 on Readers' Service Card

TIAA-CREF Supplemental Retirement Annuities



for tax-deferred annuity programs

Supplemental Retirement Annuities (SRA's) are new forms of TIAA and CREF contracts designed expressly for use by persons who want to set aside tax-deferred retirement funds over and above amounts being accumulated under their institution's basic retirement plan. They are available for employees of colleges, universities, private schools and certain other nonprofit educational organizations with tax-deferred annuity (salary-or-annuity option) programs. Through a properly drawn agreement with their institution, staff members may divert part of their compensation before taxes to the purchase of these new contracts.

And SRA's are cashable at any time. This means that if the money accumulated by salary reduction is needed before retirement, the SRA contracts can be surrendered for their cash value. Benefits, whether payable in cash or as income, are taxable as ordinary income when received.

For more information and answers to questions send for your copy of the booklet on Supplemental Retirement Annuities.

Send me a booklet describing
TIAA-CREF Supplemental Retirement Annuities.



Name _____ Date of Birth _____

Address _____
Street

City _____ State _____ Zip _____

Nonprofit
Employer _____

Teachers Insurance and Annuity Association
730 Third Avenue, New York, New York 10017

wi

Resolution at the limits of light microscopy.



Normal human chromosome, #2
mag.: 12,500X on print
250X in microscope
Taken with Zeiss Photomicroscope III

Circle No. 157 on Readers' Service Card

Check the point-to-point resolution in this photomicrograph taken with a Zeiss Photomicroscope III. The laws of physics are such that you'll never see any better in light microscopy.

The chromosome, supplied by Dr. Carl B. Mankinen, was taken using a 63X/1.4 N.A. oil planapochromat with bright-field illumination and a green and yellow filter combination. The chromosome spread was stained with Leishman's stain and G-banded. The film was Kodak High Contrast Copy film using a DIN setting of about 13.

If you would like more information on Photomicroscope III and Zeiss optics, fill in the coupon and mail to Zeiss.

ZEISS

THE GREAT NAME IN OPTICS



WEST GERMANY

Carl Zeiss, Inc.
444 Fifth Avenue
New York, N.Y. 10018
Attn: Mrs. E. B. Vasco

Name _____

Title _____

Affiliation _____

Street _____

City _____

State _____

Zip _____

Phone _____

I saw this ad in _____

(Magazine)

THE NEW BREED

Simplifies large area distribution studies

We have not come as far as the zipper, yet... but with the LKB 2250*) PMV Cryo-Microtome we are getting close. When combined with whole-body autoradiography this Cryo-Microtome makes it easier than ever to investigate the fate of drugs, chemicals and other biochemically interesting compounds.

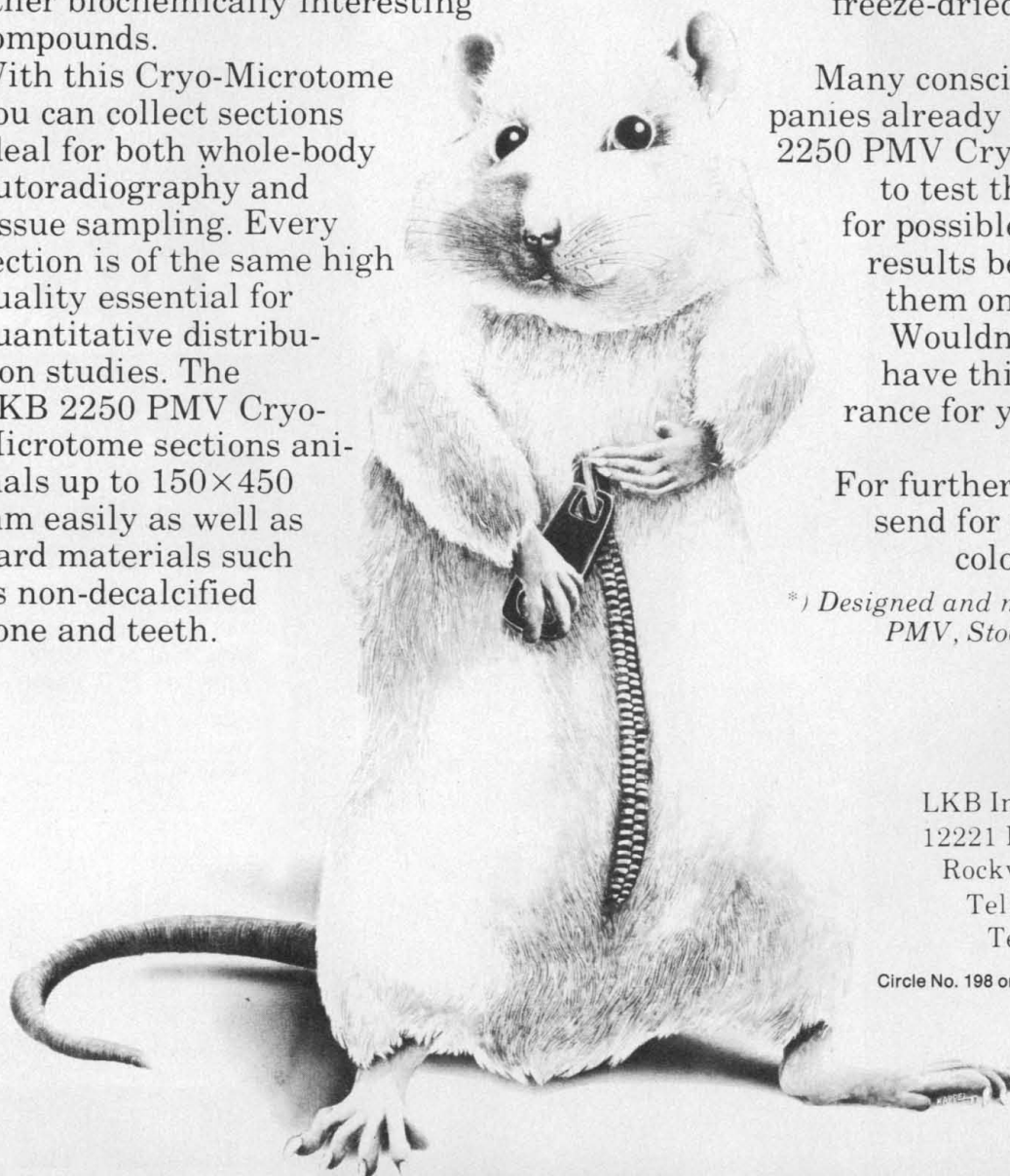
With this Cryo-Microtome you can collect sections ideal for both whole-body autoradiography and tissue sampling. Every section is of the same high quality essential for quantitative distribution studies. The LKB 2250 PMV Cryo-Microtome sections animals up to 150×450 mm easily as well as hard materials such as non-decalcified bone and teeth.

Automatic specimen-trimming plus a unique automatic cleaning system provides safety and efficiency. The extremely high temperature-stability enables you to cut section after section without interruptions. Afterwards the sections can be completely freeze-dried right in the cryostat.

Many conscientious companies already use the LKB 2250 PMV Cryo-Microtome to test their products for possible unexpected results before putting them on the market. Wouldn't you like to have this extra insurance for your products too?

For further information send for the new full-colour brochure.

**) Designed and manufactured by PMV, Stockholm, Sweden*

**LKB**

LKB Instruments, Inc.
12221 Parklawn Drive
Rockville, Md. 20852
Tel: (301) 881-2510
Telex: 230 89 682

Circle No. 198 on Readers' Service Card

**"Mirror, mirror, on the wall,
who's the fastest one of all?"**



9830A/B* USERS... FAIRY TALES DO COME TRUE.

This may sound like a fairy-tale but it's not. With Infotek's FP-30 Fast Processor your 9830 will be **twice** as fast as the 9831, 9835 or the 9845.

With the FP-30, you will increase the speed of your 9830 software without buying a new computer, without replacing any peripherals, and without rewriting a single line of your tried-and-proven software.

Minutes after the FP-30 arrives, your 9830 will run your programs at least **8 times faster**.

WHY 8 TIMES . . . Because transcendental functions run 11 times faster, math functions run 9 times faster, interpretive operations run 8 times faster and I/O operations run 6 times faster.

AND MORE . . . For the 9880 user, a 5-fold speed increase in data transfer rate.

AND STILL MORE . . . For the advanced programmer, the option to incorporate 15 ROMs of instructions in a program.

You already own HP's most versatile desk-top computer.

You know your software works, so if you need speed, the FP-30 is your answer . . . **Twice** the speed of the new machines at a fraction of the cost, and no software problems.

Time is too valuable to spend waiting for a machine. Call Infotek. Your machine can be waiting for you!



**Infotek
Systems**

1400 North Baxter Street
Anaheim, Calif. 92806
Phone: (714) 956-9300
TWX 910-591-2711

* The 9830 A/B is a product of the Hewlett Packard Company.

Circle No. 184 on Readers' Service Card



VAX-“An implementor’s dream.”

—Dr. Brian Ford, Director, Numerical Algorithms Group
Oxford, England/Downers Grove, Illinois

For the Numerical Algorithms Group, the plain fact is this: “Software implementation was faster on the VAX-11/780 than on 25 other major machines.”

Before VAX, Dr. Ford’s staff had implemented NAG’s complex FORTRAN Mark 6 Library on 25 major machines ranging from minis to mainframes, including the Burroughs 6700, CDC 7600,

Univac 1100, and IBM 370. The average implementation time was 13 man-weeks.

VAX took five.

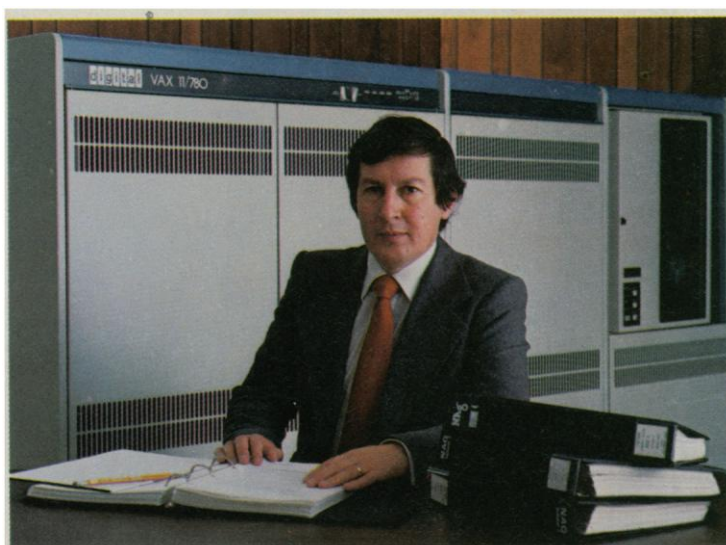
In Dr. Ford’s words, “The NAG FORTRAN Mark 6 Library consists of 345 subroutines covering the major areas of numerical mathematics and statistics. It’s used in applications such

as structural design, nuclear physics, economic modeling, and academic research.

"A successful implementation requires the correct functioning of the 345 library routines to a prescribed accuracy and efficiency in execution of NAG's suite of 620 test programs. Whilst the activity is a significant examination of a machine's conformity to the ANSI standard of the FORTRAN compiler, its main technical features are file creation, file comparison, file manipulation and file maintenance."

And then there was the record of VAX reliability: "No problems were encountered in the VAX/VMS software even though approximately 3000 files were being handled. The operational availability time for the machine was close to 100%, an outstanding statistic for new hardware and a new operating system."

What all this demonstrates is that some of the most sophisticated FORTRAN routines in the world implement easily on VAX. That VAX capability exceeds that of many machines far more expensive. That the VAX-11/780 is more



than the most powerful 32-bit computer in its price range. That VAX is truly "an implementor's dream."

For more information, simply clip the coupon.

- ☐ Please send me your new VAX-11/780 color brochure.
- ☐ Please send me your detailed Technical Summary.
- ☐ Please contact me. S-12-15-8

Name _____ Title _____

Company _____

Address _____

City _____ State _____ Zip _____

Telephone _____

My application is:

Education _____ Government _____

Medical _____ Resale _____

Laboratory _____ Other _____

Engineering _____

Send to: Digital Equipment Corporation, NR-2/2,
Communication Services, 146 Main St.,
Maynard, MA 01754. Tel. 617-481-9511, ext. 6885.

VAX. Ask any user.



Circle No. 177 on Readers' Service Card

digital



We deliver a lot more than nucleotides.

We deliver performance: Every lot is tested to verify its biological activity.

We deliver quality: Highest specific activity, based on an exclusive mass determination procedure developed at NEN, and reported with each shipment.

We deliver more often: Numerous new lot dates have been added to our schedule. (See table below.)

We deliver fast: Now even West Coast and European customers can have Monday delivery of Friday's new lots twice a month.

Request our ^{32}P nucleotides schedule.

	Specific Activity at Shipment (Ci/mmol)	New Lots	Tested for Biol. Activity	Specific Activity Based on Mass Determination
ATP [γ - ^{32}P]	>5500	2x/mo.	Polynucleotide kinase*	yes
ATP [γ - ^{32}P]	1000–3000	6x/mo.	Polynucleotide kinase	yes
dTTP [α - ^{32}P]	>450	4x/mo.	"Nick" translation**	yes
dATP [α - ^{32}P]	>450	4x/mo.	"Nick" translation	yes
dCTP [α - ^{32}P]	>450	4x/mo.	"Nick" translation	yes
dGTP [α - ^{32}P]	>450	4x/mo.	"Nick" translation	yes
dATP [α - ^{32}P]	1000–3000	1x/mo.	"Nick" translation	yes
dCTP [α - ^{32}P]	1000–3000	1x/mo.	"Nick" translation	yes

(Not for use in humans or clinical diagnosis.)

*Method of Maxam, A.M., and Gilbert, W., *Proc. Nat'l Acad. Sci. USA*, 74, 560–564 (1977).

**Method of Rigby, P.W.J., Dieckmann, M., Rhodes, C., and Berg, P., *J. Mol. Biol.*, 113, 237–251 (1977)



New England Nuclear

549 Albany Street, Boston, Mass. 02118

Call toll-free: 800-225-1572

(In Massachusetts and International: 617-482-9595)

NEN Chemicals GmbH: D-6072 Dreieich, W. Germany
Postfach 401240, Telephone (06103) 85034. Telex 4-17993 NEN D

NEN Canada Ltd., 2453 46th Avenue, Lachine, Que H8T 3C9.
Telephone 514-636-4971. Telex 05-821808

Circle No. 136 on Readers' Service Card

CONTINUED LEADERSHIP
IN RADIONUCLIDES



**HAS NEVER BEEN SO PURE
... AND WE'LL PROVE IT.**

ICN has successfully developed a new process which produces the highest purity $\text{H}_3^{32}\text{PO}_4$ commercially available. The quality control specifications for ICN's new ENZYME GRADE $\text{H}_3^{32}\text{PO}_4$ include:

- Enzymatic exchange reaction with ^{32}P
- I.B.B. — Molybdate complex extraction method
- Thallium activated sodium iodide crystal in conjunction with a multi-channel analyzer

And the proof:

**FREE
SAMPLE**

We are so confident that you will obtain maximum $\text{H}_3^{32}\text{PO}_4$ incorporation that, if you pay the shipping charges, we'll give you your first 10 mCi FREE.

CALL US TODAY.
800-854-0530

In California
(714) 833-2500 Collect



CHEMICAL & RADIOISOTOPE DIVISION
2727 Campus Drive
Irvine, California 92715
THE FIRST STEP IN QUALITY RESEARCH

Circle No. 172 on Readers' Service Card

1

The **AAAS Calendar for 1979**, the second in an annual series, is beautifully adorned by color and black & white covers from Science. In a new 12" x 13" format, the **1979 Calendar** presents high quality reproductions on a heavy, glossy paper stock.

9

Order your **Calendar** today and be prepared for the year ahead!

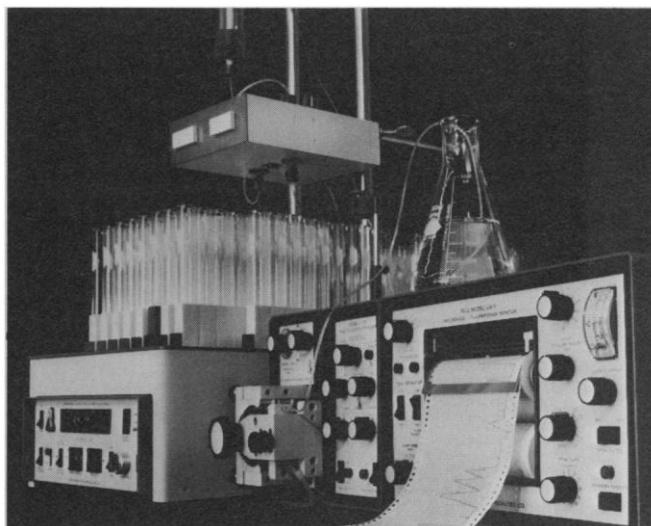
7

For your copy of the **1979 AAAS Science Cover Calendar**, which will be mailed in November, send your name and address, plus \$5.00* per calendar, to

9

AAAS Calendar
1515 Massachusetts Avenue, NW
Washington, D.C. 20005

*AAAS members deduct 10% off retail price



Column chromatography with a difference

ISCO instruments save you time, simplify your work, and often give you results you can't get in any other way.

The Model UA-5 is a sensitive, reliable, easy to use absorbance/fluorescence monitor with built-in calibration standards and recorder. Automatic scale expansion keeps oversized peaks on scale. A selection of 13 wavelengths (one or two at a time), 16 different flow cells, and an optional fluorescence optical unit provide impressive versatility. Absorbance peaks can even be deposited into separate test tubes when the UA-5 is used with an ISCO fraction collector.

ISCO fraction collectors hold 10 to 25 mm diameter test tubes and 28 mm scintillation vials in removable self-standing racks. They're available in large and small sizes, linear and circular configurations, and refrigerated versions.

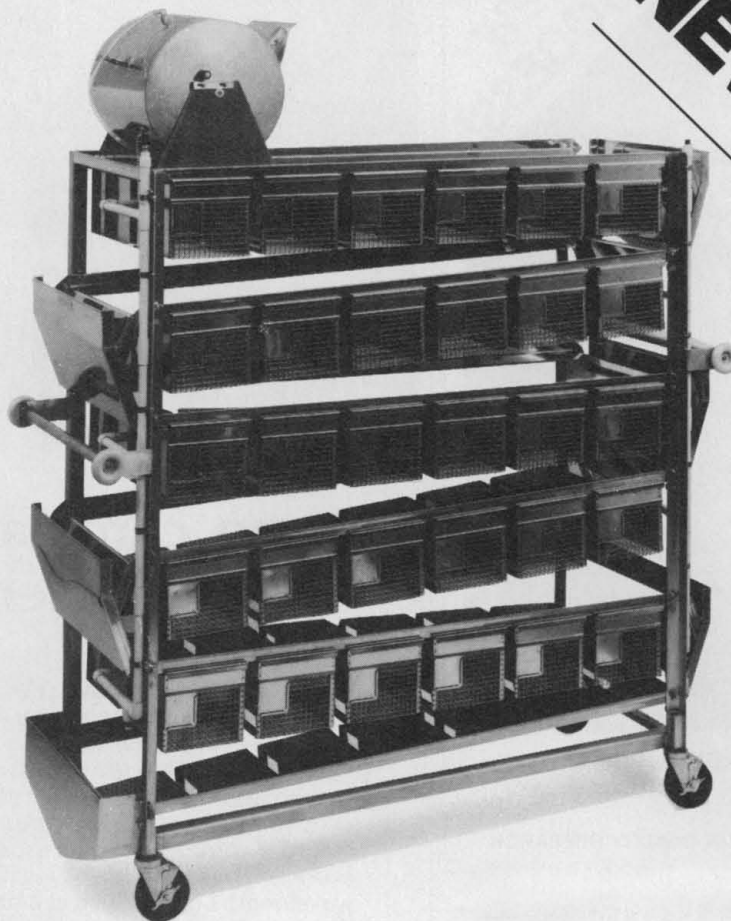
Six ISCO metering and gradient pumps provide flow rates to 2500 ml/hr and pressures to 200 kg/cm². We also have all the accessories you need to make everything work right. And we can supply a complete high performance liquid chromatograph, too.

Send for your free catalog today. Or dial direct, toll free (800) 228-4250 (continental U.S.A. except Nebraska). Instrumentation Specialties Company, P.O. Box 5347, Lincoln, Nebraska 68505.



Instruments with a difference

Circle No. 112 on Readers' Service Card



NEW PRODUCT

This Auto Flush™ animal housing system automatically flushes away animal waste and sixteen other things...

- (1) The unpleasantness and boredom of frequent excreta pan cleaning.
- (2) The time required for (1) above.
- (3) The cost incurred for (1) above.
- (4) The need for weekend and holiday caretaker maintenance.
- (5) The cost of bedding materials.
- (6) The need to store bedding materials.
- (7) The cost of distributing bedding materials.
- (8) Airborne litter dust.
- (9) Microbial transmission on airborne litter dust.
- (10) Room odors.
- (11) Excrement fermentation.
- (12) Complex electromechanical components.
- (13) The need for expensive wiring associated with (12) above.
- (14) Cage locking problems.
- (15) "Freezing" leveling casters that cease to function.
- (16) Rusting problems.

Note: This system is also available with automatic watering.

For more information about Auto-Flush™ and/or the complete Lab Products catalog, please call, write, or use the coupon.
Lab Products, Inc., 365 W. Passaic Street, Rochelle Park, New Jersey 07662. 201/843-4600.

Lab Products, Inc.
365 W. Passaic Street
Rochelle Park, New Jersey 07662

☐ I'm interested in more information about your Auto-Flush™ system.

☐ I'd appreciate a copy of your complete catalog.

Name

Title

Dept.

Organization

Address

Phone area number ext.

lab products
inc a **BioMedic** company

365 West Passaic Street Rochelle Park, N.J. 07662

Lab Products...not just plastic cages, metal cages, custom fabrication, laminar flow systems, bedding, automatic watering systems, accessories...

AMERICAN ASSOCIATION FOR THE ADVANCEMENT OF SCIENCE

Science serves its readers as a forum for the presentation and discussion of important issues related to the advancement of science, including the presentation of minority or conflicting points of view, rather than by publishing only material on which a consensus has been reached. Accordingly, all articles published in *Science*—including editorials, news and comment, and book reviews—are signed and reflect the individual views of the authors and not official points of view adopted by the AAAS or the institutions with which the authors are affiliated.

Editorial Board

1978: RICHARD E. BALZHISER, JAMES F. CROW, HANS LANDSBERG, EDWARD NEY, FRANK W. PUTNAM, MAXINE SINGER, PAUL E. WAGGONER, F. KARL WILLENBROCK

1979: E. PETER GEIDUSCHEK, WARD GOODENOUGH, N. BRUCE HANNAY, MARTIN J. KLEIN, FRANKLIN A. LONG, NEAL E. MILLER, JEFFREY J. WINE

Publisher

WILLIAM D. CAREY

Editor

PHILIP H. ABELSON

Editorial Staff

Managing Editor ROBERT V. ORMES
Business Manager HANS NUSSBAUM
Assistant Managing Editor JOHN E. RINGLE
Production Editor ELLEN E. MURPHY

News and Comment: BARBARA J. CULLITON, *Editor*; WILLIAM J. BROAD (intern), LUTHER J. CARTER, CONSTANCE HOLDEN, ELIOT MARSHALL, DEBORAH SHAPLEY, R. JEFFREY SMITH, NICHOLAS WADE, JOHN WALSH. *Editorial Assistant*, SCHERRAINE MACK

Research News: ALLEN L. HAMMOND, *Editor*; RICHARD A. KERR, GINA BARI KOLATA, JEAN L. MARX, THOMAS H. MAUGH II, WILLIAM D. METZ, ARTHUR L. ROBINSON. *Editorial Assistant*, FANNIE GROOM

Associate Editors: ELEANORE BUTZ, MARY DORFMAN, SYLVIA EBERHART, JUDITH GOTTLIEB

Assistant Editors: CAITILIN GORDON, RUTH KULSTAD, LOIS SCHMITT, DIANE TURKIN

Book Reviews: KATHERINE LIVINGSTON, *Editor*; LINDA HEISERMAN, JANET KEGG

Letters: CHRISTINE KARLIK

Copy Editor: ISABELLA BOULDIN

Production: NANCY HARTNAGEL, JOHN BAKER; YA LI SWIGART, ELEANOR WARNER; JEAN ROCKWOOD, LEAH RYAN, SHARON RYAN

Covers, Reprints, and Permissions: GRAYCE FINGER, *Editor*; CORRINE HARRIS, MARGARET LLOYD

Guide to Scientific Instruments: RICHARD SOMMER

Assistant to the Editors: RICHARD SEMIKLOSE

Membership Recruitment: GWENDOLYN HUDDLE

Member and Subscription Records: ANN RAGLAND

EDITORIAL CORRESPONDENCE: 1515 Massachusetts Ave., NW, Washington, D.C. 20005. Area code 202. General Editorial Office, 467-4350; Book Reviews, 467-4367; Guide to Scientific Instruments, 467-4480; News and Comment, 467-4430; Reprints and Permissions, 467-4483; Research News, 467-4321; Cable: *Advances*, Washington. For "Instructions for Contributors," write the editorial office or see page xi, *Science*, 29 September 1978.

BUSINESS CORRESPONDENCE: Area Code 202. Business Office, 467-4411; Circulation, 467-4417.

Advertising Representatives

Director: EARL J. SCHERAGO

Production Manager: MARGARET STERLING

Advertising Sales Manager: RICHARD L. CHARLES

Marketing Manager: HERBERT L. BURKLUND

Sales: NEW YORK, N.Y. 10036: Steve Hamburger, 1515 Broadway (212-730-1050); SCOTCH PLAINS, N.J. 07076: C. Richard Callis, 12 Unami Lane (201-889-4873); CHICAGO, ILL. 60611: Jack Ryan, Room 2107, 919 N. Michigan Ave. (312-DE-7-4973); BEVERLY HILLS, CALIF. 90211: Winn Nance, 111 N. La Cienega Blvd. (213-657-2772); DORSET, VT. 05251: Fred W. Dieffenbach, Kent Hill Rd. (802-867-5581)

ADVERTISING CORRESPONDENCE: Tenth floor, 1515 Broadway, New York, N.Y. 10036. Phone: 212-730-1050.

Honoring Albert Einstein

There is a small piece of land that runs diagonally across the front corner of the National Academy of Sciences. From it, you can see the Lincoln Memorial, the Washington Monument, and, in the late autumn, a glimpse of the Jefferson Memorial. At any particular time some of our most gifted scientists walk by it to meet in the monumental Academy building. When L'Enfant planned his original system for the District of Columbia, the land was part of Upper Water Street and led to the C & O Canal. As the canal traffic died down the street lost its usefulness, and Charles D. Walcott, president of the Academy, was able to have it closed off in 1923 so that the site for the new Academy building could be squared off. Title did not pass, however, and the use of the land was restricted to "the construction of a low wall on the B Street side of the public ground and the improvement of the area with walks and shrubbery."

Casual events occasionally fall into place as part of a grand design. For it is on that land that the Academy is planning a memorial for Albert Einstein on the 100th anniversary of his birth, and at the request of Philip Handler, president of the Academy, the U.S. government has consented. What better place could be chosen than there, where we have in cluster so many heroes of our past? The memorial that the Academy has planned will add a further sense of character to our nation's Capital.

The texture of greatness is not easily captured, and perhaps least readily in the sciences, where knowledge is the sum of bits contributed by many. This memorial is as much a signature to the leaping inspiration which sets science in new directions as it is a tribute to Einstein himself. It is to remind all who pass by that there is more to life than Holmes's attributes of action and passion, and that what survive are the quality and the reach of thought. Old Europe understood this, and there is hardly a park or a plaza that is not graced by a remembrance of the poets, composers, writers, philosophers, and explorers whose work civilized and brightened their times and the centuries that came after. This new memorial will give expression again to the wonder of the force of intelligence concentrated on comprehending the cosmic puzzle, with Albert Einstein as its instrument. It speaks not to the dash and drama of science, but to the reverence for learning and discovery that marks science.

In the city that belongs to the nation, where the archives of the past and the enigma of the future run together, the value of perspective is not to be underestimated. Washington is the mecca for an endless American pilgrimage in search of the meanings of the collective experience. That experience, past and future, is touched profoundly by science and, in no small way, by Einstein the scientist.

The monument, featuring a bronze figure of Einstein three times life size, is being created and executed by Robert Berks, a distinguished sculptor. The cost of the finished monument, including landscaping, will be of the order of \$1.5 million. In principle, it would be practical and feasible to induce one or more wealthy donors to provide the total sum. Were this course to be followed, only a few individuals would participate personally. In contrast, were a substantial number of people to contribute, the monument would take on enhanced meaning both to the donors and to the public at large.

It is my feeling that this monument should be in substantial measure a gift from the scientific community and its friends to the American people, whose support has made possible the world's greatest scientific enterprise. In this endeavor the membership of the AAAS should join hands with the National Academy of Sciences. Individual and voluntary contributions would allow us to share in the building of the Albert Einstein Memorial on that parcel of land which seems to have been saved for a higher purpose.*

—EMILIO Q. DADDARIO

*Contributions should be sent to Einstein Memorial Fund, National Academy of Sciences, 2101 Constitution Avenue, NW, Washington, D.C. 20418.

Now you can weigh with analytical precision (0.1mg) on a fully automatic electronic top-loader, or on a fully automatic electronic suspended-pan balance, as the weighing situation or your personal preference dictates.

The new top-loader that weighs with analytical precision is our Model 1201MP. Compact and very affordable, this addition to our popular 1200 Series has a capacity of 30g and weighs to 0.1mg at the touch of a button. Its many advanced

features include a built-in micro-processor, instant electronic taring, memory and weight recall, BCD output for printer connection, and a large, bright digital display with reading stability indicator. Pan access is provided from the top and both sides of the glass enclosed weighing chamber.

For 0.1mg precision in an electronic analytical balance, we offer our new Model 2003MP. Fully automatic push-button operation and other features are similar to our

electronic top-loaders. In addition, a door-activated switch blocks display of the last digit except when both chamber doors are closed, thereby preventing air current-induced instability of the readout. With a capacity of 166g, larger pan and larger weighing chamber, the 2003MP is more versatile and somewhat more costly.

For literature write: Sartorius Balances, Division of Brinkmann Instruments, Inc., Cantiague Road, Westbury, N.Y. 11590.

Sartorius introduces an electronic top-loader with the same precision (0.1mg) as our new electronic analytical balance.



FULLY AUTOMATIC
ELECTRONIC
TOP-LOADING
BALANCE WITH
0.1mg PRECISION,
MODEL 1201MP



FULLY AUTOMATIC
ELECTRONIC
ANALYTICAL
BALANCE WITH
0.1mg PRECISION,
MODEL 2003MP



sartorius

Circle No. 111 on Readers' Service Card

When you buy Agarose...



Marine Colloids offers more products...

REPRESENTATIVE ANALYSIS TABLE*

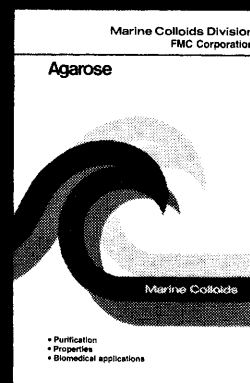
	Sulfate %	Moisture %	Gel Strength g/cm ²		Gel Temperature °C	Electroendosmosis —m _r
			Kobe† 1.5%	MCI 1.0%		
SeaKem Agarose (LE)	<0.35	<10	>1900	>800	36	0.10-0.15
SeaKem Agarose (ME)	<0.35	<10	>1900	>800	36	0.16-0.19
SeaKem Agarose (HE)	<0.50	<10	>1400	>600	36	0.23-0.26
SeaKem HEEO Agarose	<0.30	<10	>1100	>450	36	>0.3
SeaKem HGT Agarose	<0.30	<10	>2250	>800	42	<0.1
SeaKem HGT (P) Agarose	<0.15	<10	>2700	>1000	42	<0.1
SeaPlaque Agarose	<0.15	<10	>500	>150	Static — will not gel at 37°C overnight. Dynamic (0.5°C/min. cooling rate) < 30°C.	<0.15

*Analytical methods available on request.

†Not standardized by this method. Values derived by extrapolation.

with the properties you've asked for... because we have the experience that wrote the book.

To order product, dial 24 hr. toll-free: 1-800-341-1574
(Continental USA, except Maine)



FMC

FMC Corporation
Marine Colloids Division

Bio Products Rockland, Maine USA 04841 (207) 594-4436

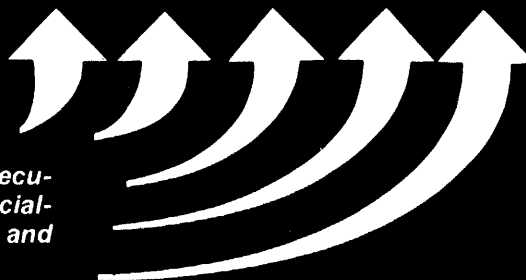
Call or write for our complete catalog and price list or for a copy of the monograph shown here.

announcing...



ROBERT HARROW ASSOCIATES, INC.

The nation's leading and most experienced executive search/management consultant firm specializing in all aspects of occupational health and safety.




We will be launching a comprehensive executive recruiting campaign for our major clients at the AAAS Convention in Houston, Texas January 3rd thru 8th.

You are invited to come, have coffee and a little informal, confidential conversation with us at our Warwick Hotel suite, 5701 Main Street, (713) 526-1991.

If you wish to contact us ahead of time to arrange an appointment call us COLLECT at (213) 652-4485.

Personnel resumes and inquiries from employer companies are invited. Prompt, effective action is assured. Address Robert Harrow Associates, Suite 1002, 8500 Wilshire Blvd., Beverly Hills, CA 90211.



**If you use agarose
or polyacrylamide gels
for electrophoresis...**

**...Put them on Marine Colloids'
GelBond™ film and see the difference**

Manufactured for Marine Colloids by 3M Company.

GelBond™ is a transparent, flexible, specially-treated polyester film to which freshly prepared agarose, agar, and polyacrylamide gels adhere and remain adhered during use. Its primary advantages are convenience, permanence and firm adhesion of the gels throughout staining, destaining, drying and storage. Gone is the hassle of gels sliding off glass plates. It is

now possible to have a permanent, unbreakable record of test results which can be projected, attached to medical records or conveniently filed. Applications include: Immunoelectrophoretic procedures (IEP, CEP, EIA, etc.); other gel immunoassays such as AGD, RID. Beyond these, a number of other applications have been reported including polyacryl-

amide for isoelectric focusing.

You'll never know how convenient and useful GelBond film is until you try it. We'll be happy to send you an introductory sample. Write FMC Corporation, Marine Colloids Division, Bio Products, Rockland, Maine 04841. To order GelBond, dial 24 hr. toll-free: 1-800-341-1574 (Continental USA, except Maine)

FMC

Marine Colloids is a division of FMC Corporation

Circle No. 182 on Readers' Service Card

New Varian instruments help you solve

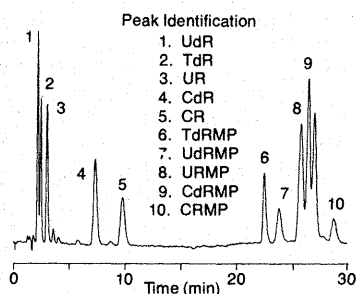


tough problems in the biological science lab

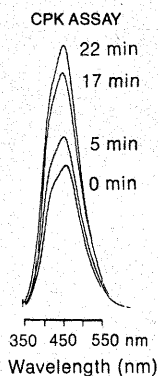
When solutions to biological problems require the latest in quality instruments, consider Varian. Here are some of the newest research and analytical instruments available. Plus some of the application areas they can help you with.

Separate nucleosides, nucleotides, PTH-amino acids and fatty acids with the new microcomputer-CRT-based **Model 5000 Liquid Chromatograph**. You can even separate nucleosides and nucleotides in the same run, (see chromatogram).

SEPARATION OF RIBO AND DEOXYRIBONUCLEOSIDES AND MONOPHOSPHATE NUCLEOTIDES
Column: MicroPak AX-10, 4 mm x 30 cm



The 5000 will store nine complete separation methods in memory for instant call-up. Saves time. Makes method development easy. For details circle **Reader Service No. 63**.



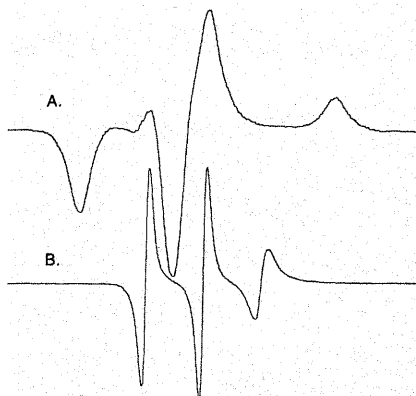
Ex = 340 nm, slit = 10 nm
Em = 465 nm, slit = 20 nm
Temperature 27°C

Do enzyme assays on micro-samples with the new **SF-330 Spectrofluorometer**. It gives you broad bio-analytical capability at modest cost.

The SF-330's special microflow cell also lets you measure PNAs, vitamins, drugs and amino acids after separation by liquid chromatography. For information circle **Reader Service No. 64**.

Investigate drug metabolism, study the topography of binding sites, enzymatic reactions, membrane structure, and the effects of anesthetics with the **E-109E EPR Spectrometer System**.

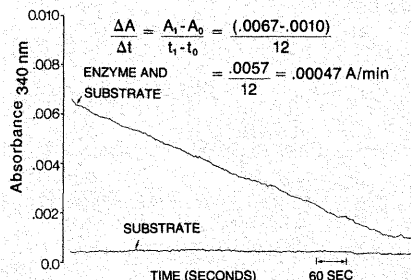
By using spin-labeled analogues or by identifying indigenous free radicals associated with cells, tissues, proteins, etc., the E-109E provides important structural and environmental information — often not obtainable by other methods. This information can be



Before (A) and after (B) administration of anesthetic.

stored by the E-900 EPR data system for future comparison and manipulation. For further information, circle **Reader Service No. 65**.

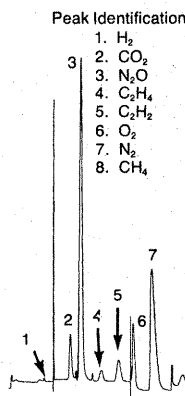
Measure enzyme activity at 0.0005 A/min with the new **Model 219 UV/Vis Spectrophotometer**. You don't have to concentrate your column fractions when the activity is low and you don't have to dilute your samples when highly turbid material is present. The Model 219 will handle them all.



And Model 219 has routine sampling kinetics systems that will sip a 500 μ l sample and in 15 seconds measure its kinetics at 20°, 25°, 30°, 32° or 37°C. To make interpretation easy, the 219 will print all results on its microprocessor-based Smart Printer. For details circle **Reader Service No. 66**.

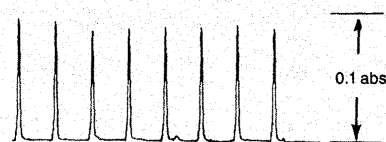
Analyze for soil gases, for haloforms in drinking water, for steroids, lipids and carbohydrates in body fluids, for drugs and drug metabolites in blood. Do it with **Model 3700 Gas Chromatograph**. The modular, fully automatable 3700 lets you choose exactly what you need for your application.

New element-specific detectors and a new easy-to-use capillary system give you extra capability. For details circle **Reader Service No. 67**.



Use atomic absorption to **measure electrolytes in tissues, cells, and fluids;** determine toxicity; nutrient and metabolic activities; therapeutic effects of some 67 elements. Extreme sensitivity of the AA technique enables characterization of microliter samples.

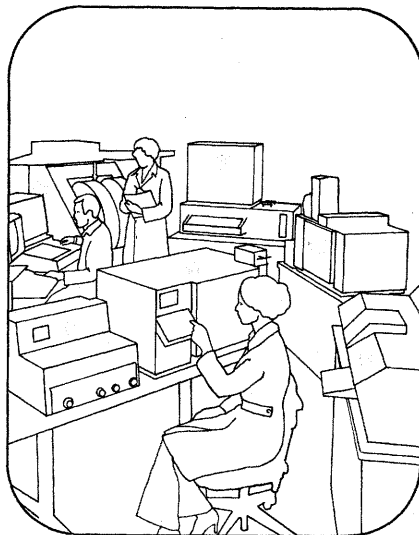
The new **AA-775 Atomic Absorption Spectrophotometer's** advanced microprocessor collects and computes analytical data, enhancing accuracy and precision. Calibration routines allow automatic weight compensation, calibration by standard additions, and up to 5-point curve correction. For more information circle **Reader Service No. 68**.



Replicate measurements of lead in blood-acid solution, using carbon rod atomizer. Sample volume 2 μ l. Lead level 400 pg. Relative standard deviation 3.2%.

Varian also makes **NMR Spectrometers (Reader Service No. 69)** and **Mass Spectrometer/Gas Chromatograph Systems (Reader Service No. 70)**.

To have a representative contact you about any Varian instrument, circle **Reader Service No. 71**.



varian

varian/instrument division
611 hansen way, palo alto, california 94303 u.s.a.

1180E

New Sorvall® RC-3B superquietness, 6,000 rpm



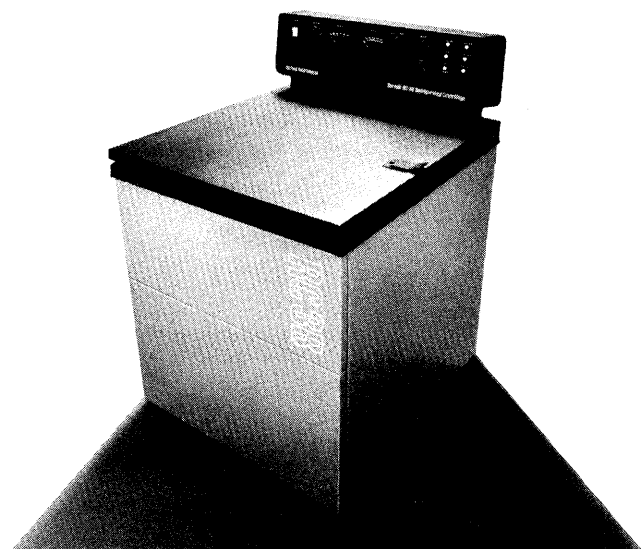
The first thing this new automatic refrigerated centrifuge offers you is the proven reliability that earned its predecessor, the Sorvall® RC-3, a reputation as the workhorse to depend on. Along with this reliability are new features that make the RC-3B the best choice for a wide range of applications in life science research, clinical laboratories, blood processing and industry.

- With its higher capacity, higher speed, and centrifugal forces to 7,120 x g, the RC-3B is unsurpassed in performance among general-purpose floor-model centrifuges.
- Its exceptional quietness lets you place it in any convenient lab area.
- Faster acceleration and deceleration save time.
- New self-aligning spindle simplifies and speeds rotor mounting.
- New indicators warn immediately of rotor imbalance, oven temperature deviation, worn brushes.
- The Sorvall® Gyro-Action Drive is unmatched for start-to-stop smoothness.
- A wide selection of rotors, tubes, bottles, adaptors and other accessories is available from our comprehensive line.

combines 6-liter capacity, & time-tested reliability.



Sorvall® RC-3B Refrigerated Centrifuge



Get our new brochure.

For details on all the advantages of the new Sorvall® RC-3B centrifuge, write to DuPont Instruments, Room 36900, Wilmington, DE 19898.

Sorvall® Centrifuges

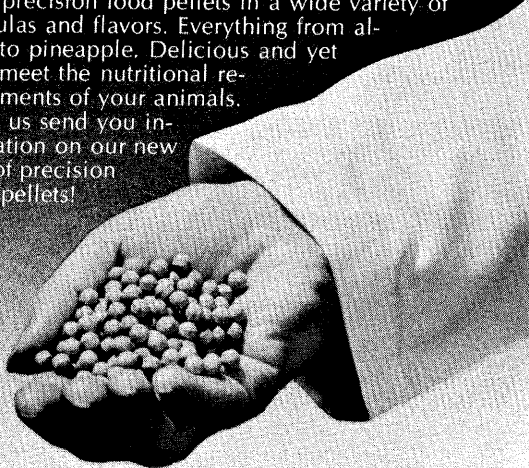


Circle No. 193 on Readers' Service Card

Yummy Orange!

For over a decade we have been leaders in purified and semi-purified biological test diets for laboratory animals. Now, for behavioral studies, we are introducing a complete line of standard size, precision food pellets in a wide variety of formulas and flavors. Everything from alfalfa to pineapple. Delicious and yet they meet the nutritional requirements of your animals.

Let us send you information on our new line of precision food pellets!



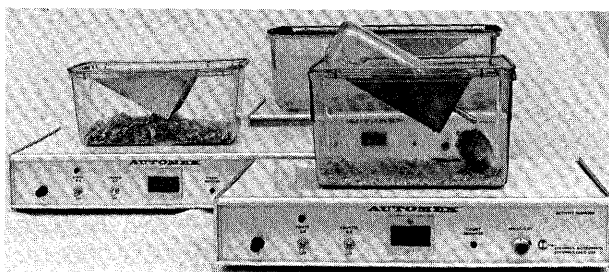
BIO SERVICE

P.O. BOX B.S., FRENCHTOWN, NEW JERSEY 08825/201-996-2155

Circle No. 190 on Readers' Service Card

"AUTOMEX"

AUTOMATIC ANIMAL ACTIVITY MONITOR
FOR 1 TO 24 GROUPS



- Completely insensitive to bedding, urine, feces, light or noise
- Extremely stable. Does not change sensitivity during long experiments.
- Measures combined vertical and horizontal movements of one or a group of animals.
- Highly sensitive to the smallest animals.
- One instrument equal to another; can be combined in systems of 1 to 24 cages.

Also available:

"Opto-Varimex Ultimate in accuracy.

Activity Meter on infrared beams principle. Measures distance animals travel and plots pattern of movements.



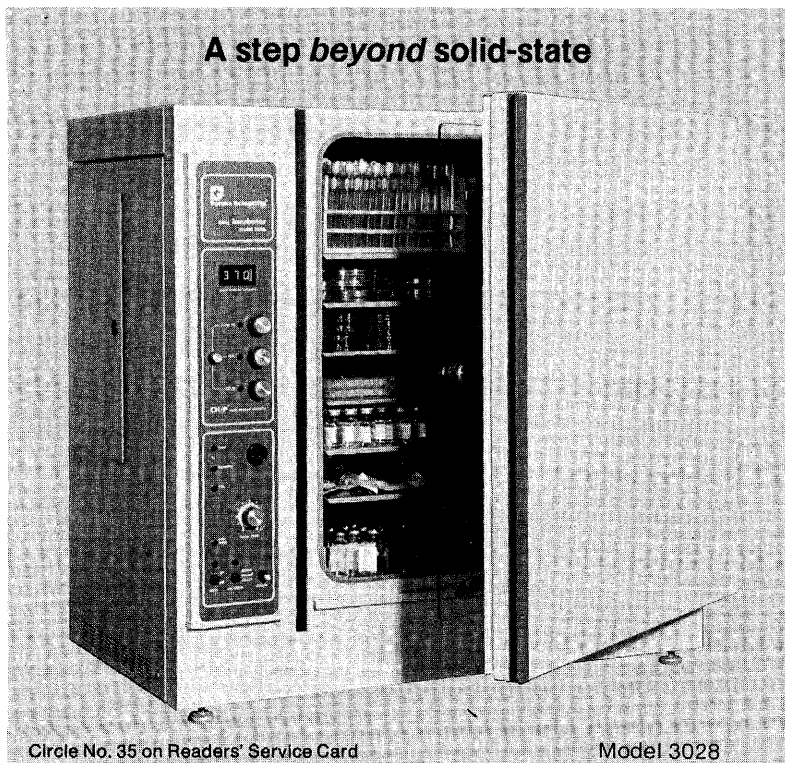
COLUMBUS INSTRUMENTS

950 NORTH HAGUE AVENUE
COLUMBUS, OHIO 43204
PHONE (614) 488-6176

Circle No. 197 on Readers' Service Card

If it isn't Forma, it isn't CH/P™

A step beyond solid-state



Circle No. 35 on Readers' Service Card

Model 3028

Forma incubators are the only incubators with the CH/P mini-computer—a multi-channel controller that delivers direct digital setpoint and digital display of temperature, CO₂, and relative humidity.

CH/P eliminates obsolete hot-wire CO₂ sensors prone to corrosion in high humidity. A unique CO₂ Deviation Alarm guards against CO₂ drift from setpoint.

We've done away with outdated wet/dry bulb humidity probes; CH/P computes and controls *independent* heat sources to balance RH% against temperature setpoint.

Temperature in tenths of a degree; CO₂ and RH% in tenths of a percent. Only with CH/P. And only from Forma.



Forma Scientific

DIVISION OF MALLINCKRODT, INC.

BOX 649 MARIETTA, OHIO 45750 TELEX 24-5394
TOLL FREE USA 800-848-3080. OHIO 614-373-4763

To Keep Ahead Tomorrow, Keep Up-to-Date Today.



Serving your need for knowledge
in the health professions

**McGraw-Hill makes it easier for you—
just fill out and mail the attached card right now
to get FREE 30-day trial copies of these helpful
laboratory references. There's no risk—no obligation
to buy anything.**

1. PRINCIPLES OF BIOCHEMISTRY, 6th Ed. Abraham White, Ed.-in-Chief This massive data stockpile gives you full benefit of the sweeping discoveries made since 1972: 75% of the 15,000 + facts here are new or revised to reflect them.

Concentrates throughout on medical aspects, with new material on blood composition, plasma, clotting, hemoglobin and leukocyte structure and function, insulin, genetics, electrolytes, and hormones. You'll also have five brand new chapters on prostaglandins, viruses, immunoglobulins, complement, and the role of the thymus.

Also outlines effective separation and purification methods, and gives a 110-page index for fast location of formulas, structures, tables, diagrams, and chemical properties. **1978, 1492 pp., \$36.00**

2. HEMATOLOGY, 2nd ED. William J. Williams, Ed.-in-Chief Answers questions quickly by yielding instant access to the combined expertise of 96 experts. Blankets the entire field and gives lab test interpretation guidelines for almost every disorder. Also details 43 different lab test procedures, covering equipment, reagents, techniques, and typical results. Hundreds of illustrations, color photos, micrographs. **1977, 1755 pp., \$43.00**

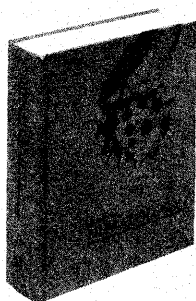
3. HARRISON'S PRINCIPLES OF INTERNAL MEDICINE, 8th ED. George W. Thorn, Ed.-in-Chief Fully up-dated problem-oriented practitioner's reference gives brand new chapters on endoscopy, CAT scanning, coronary bypass, echocardiograms, fiber-optic bronchoscopy, URI disorders, and covers hundreds of other topics and techniques. Includes tables for lab values of clinical importance. **1977, 2196 pp., \$39.50**

4. THE METABOLIC BASIS OF INHERITED DISEASE, 4th ED. John B. Stanbury, Ed.-in-Chief Helps trace clinical symptoms directly to altered metabolic pathways. For each disorder, you'll have full data on the known physiology, pathology, biochemistry, genetics, metabolism, inheritance patterns, and therapies for hundreds of disorders along with clinical descriptions helping you pinpoint their tell-tale symptoms.

Also covers newly discovered disorders and variants of well-established syndromes. Chapters on chromosomal aberrations, diabetes mellitus, and other topics are revised and rewritten to incorporate latest research findings. Gives thousands of references to detailed studies, laboratory methods for detection and investigation, abbreviations. **1978, 1755 pp., \$65.00**

5. LABELLED ANTIBODIES IN BIOLOGY AND MEDICINE by Aurel Feteanu Outlines apparatus, solutions, buffers, and techniques to obtain, isolate and purify antibodies for labelling. Describes methods using fluorochromes, radioactive isotopes, ferritine, and enzymes and explains their medical application. 60 photos—over 200 in full color. **1978, 410 pp., \$39.50**

6. BENZENE TOXICITY: A CRITICAL EVALUATION Ed. by the late Sidney Laskin and Bernard D. Goldstein The only book describing benzene effects in detail. Contains expert's opinions on available data and research literature. Covers analytical techniques for industrial gases, organic solvents, air and water; animal and human toxicity including leukemia, pancytopenia, and blood disease; cytogenetics; in vitro biochemical effects; metabolism; routes of exposure. **1977, 148 pp., \$20.00**



Use these references FREE for 30 days. See how they put essential facts right at your fingertips to save valuable time and produce accurate results faster. Send no money now—you pay nothing for them unless you decide to keep them permanently, so fill out the card and mail it right now.

Use any reference FREE for 30 days—Just mail this card right now. No stamps needed—simply indicate your choices and drop in the mail.

☐ Please send me the references I have checked below to use FREE for 30 days. When I decide to keep them, I'll send along payment for the amounts indicated plus a small charge for postage, handling, and my state's sales tax. Otherwise, I'll simply return any or all of them with my unpaid invoice within 30 days after I get them and pay nothing, owe nothing for those I return.

☐ Bill me ☐ Bill my organization

- | | | |
|---|----------|---------|
| <input type="checkbox"/> 1. Prin. Biochemistry, 6th Ed. | 069759-0 | \$36.00 |
| <input type="checkbox"/> 2. Hematology, 2nd Ed. | 070376-0 | \$43.00 |
| <input type="checkbox"/> 3. Harr. Prin. Int. Med. 8th Ed. | 064518-3 | \$39.50 |
| <input type="checkbox"/> 4. Metabolic Basis, 4th Ed. | 060725-7 | \$65.00 |
| <input type="checkbox"/> 5. Labelled Antibodies | 020643-0 | \$39.50 |
| <input type="checkbox"/> 6. Benzene Toxicity | 036507-5 | \$20.00 |
| <input type="checkbox"/> 7. Immunology | 053411-X | \$ 9.95 |
| <input type="checkbox"/> 8. Atlas of Histology | 017230-7 | \$32.50 |
| <input type="checkbox"/> 9. Microbiology & Inf. Dis. | 007910-2 | \$23.00 |
| <input type="checkbox"/> 10. Histology, 4th Ed. | 069091-X | \$33.50 |

☐ I'd like to prepay my order: McGraw-Hill will pay my postage and handling charges. Same return privilege applies: full refund guaranteed for books I return with my unpaid invoice within 30 days after receipt. (Note: we normally ship within 3 days of your order. If we cannot ship your prepaid order within 90 days, your payment will be automatically refunded. If you prepay, this card *must* be attached to your purchase order or check to assure prompt and proper handling.)

- | | | |
|--|----------|---------|
| <input type="checkbox"/> 11. Basic Tech. Med. Lab. 2nd Ed. | 037948-3 | \$18.95 |
| <input type="checkbox"/> 12. Cell Biology | 025965-8 | \$14.95 |
| <input type="checkbox"/> 13. Microbiology, 4th Ed. | 049229-8 | \$19.50 |
| <input type="checkbox"/> 14. Intro to Immunology | 036108-8 | \$14.50 |

Name

Organization

Address

City/State/Zip

Offer valid only in U.S. Orders subject to acceptance by McGraw-Hill. All prices subject to change without notice. 72-U078-0175-2

McGraw-Hill makes it easier to keep yourself up-to-date.



Serving your need for knowledge
in the health professions.

**Use these lab references FREE for 30 days—
just fill out the attached card and mail it
right now.**

7. IMMUNOLOGY: A SELF-INSTRUCTIONAL APPROACH
by Katherine E. Roese Presents principles and clinical applications in convenient self-teaching format. Covers parasites, B and T cells, antigens, antibodies, immunoglobulins, allergy, transplants, complement, immune disorders and the lab tests used in diagnosis. **1978, 272 pp., paperbound, \$9.95**

8. ATLAS OF HISTOLOGY by Everett E. Dodd All-new reference crammed with time-saving illustrations of healthy and diseased tissues, plus scores of full-color photos to aid in faster, more accurate diagnosis. **1979, 384 pp., \$32.50**

9. MICROBIOLOGY AND INFECTIOUS DISEASE by Bernard A. Briody Helps evaluate clinical evidence of infection and then trace it to organism types in natural diagnostic sequence. Covers allergy, immune response, bacterial food poisoning, venereal disease, chemotherapies, and localized infections in every major body system. **1974, 768 pp., \$23.00**

10. HISTOLOGY, 4th ED. Ed. by Leon Weiss and Roy O. Greep An aid to pinpointing changes in virtually every type of body tissue with over 1,000 high-quality drawings and photos, many of them in full color. **1977, 1209 pp., \$33.50**

11. BASIC TECHNIQUES FOR THE MEDICAL LABORATORY, 2nd ED. by Jean J. Linne and Karen M. Ringsrud Detailed handbook now updated to bring you latest lab techniques and procedures. Upgrades skill and efficiency in specimen collection, blood tests, urinalysis, photometry, pipetting, titration, calculations, and proper use of microscopes, glassware, reagents, balances, and more. **1979, 624 pp., \$18.95**

12. CELL BIOLOGY by Seong Han and Jan O.V. Holmstedt Easy to use at your own pace: no instructor needed. Overview of structure and function with a chapter on each major tissue type. Plus objectives and self-tests. **1979, 320 pp., \$14.95**

13. MICROBIOLOGY, 4th ED. Michael J. Pelczar, Ed.-in-Chief Details bacteria cultivation and growth, genetic mutations and manipulation, viruses, chemical and physical controls, antibiotics, immune response, enzyme regulation, influenza, venereal disease, and much more. **1977, 960 pp., \$19.50**

14. AN INTRODUCTION TO IMMUNOLOGY Eugene M. Lance, Ed.-in-Chief A collection of expert explanations for basic orientation in a complex, rapidly changing field. Discusses topics such as clinical implications of transplants, tumor immunity, and immunological disease. **1977, 172 pp., \$14.50**



Business Reply Mail

No postage necessary if mailed in the United States

Postage will be paid by:

**McGraw-Hill
Book Company**

P.O. Box 400
Hightstown,
New Jersey 08520

FIRST CLASS
PERMIT NO. 42
HIGHTSTOWN, N.J.

Use these lab references FREE for 30 days—

- to upgrade output quality
- to broaden your background
- to pick up valuable techniques
- to qualify for increased responsibility

You pay only for those you really want to keep for permanent reference. There's no obligation to buy anything, so mail the card right now.

A page of information on flow cytometry from Ortho.

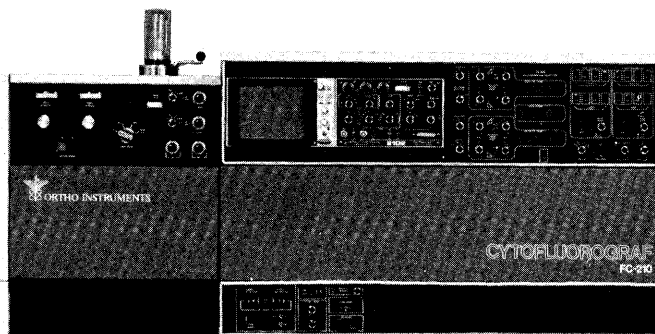
State-of-the-art cell sorting and analysis

Ortho announces the most powerful, precise, and versatile instrument for cell sorting and analysis ever available commercially: the Ortho Cytofluorograf™ System 50. It combines a rapid cell sorter (based on the electrostatic droplet deflection principle) with a flexible, wide-ranging analysis package in a single versatile unit.

Ortho System 50 for analysis.

Its dual-laser excitation system provides three modes of excitation. There are two single individual-excitation sources for different purposes: a .8 milliwatt helium-neon laser for ultra-high-precision scatter measurements, and a 4-watt argon laser for fluorescence measurements.

There are four detectors: two are photomultiplier tubes for broad visible-range response, two are solid-state photo sensors for axial light loss and narrow forward-



with the Cytofluorograf System 50

angle scatter. A photomultiplier tube provides for measuring wide-angle scatter.

12 measurement parameters.

The System 50 Cytofluorograf permits for the first time the yielding of morphological information by a flow cytometric instrument. Because pulse height analysis, pulse area analysis, and pulse width analysis can be selected for every detector output, a total of 12 distinct measurement parameters is available with the

System 50. Other features of the system include two bi-dimensional regions of interest, dual histogram multi-channel analyzer with cytogram mode, ultra-sensitive optics, and easy sample entry.

Complete details of System 50 are available in a new brochure available from your Ortho Instruments representative or direct from Ortho Instruments.

Protocols No. 25 describes discrimination of mitotic phases by cytofluorographic analysis.

We would like to bring your attention to an application note: *Discrimination of G_0 , G_1 , S , G_2 and M phases by Cytofluorographic Analysis* contributed by Z. Darzynkiewicz, Ph.D. of Memorial Sloan Kettering Cancer Center, New York, No. 25 in the Ortho Protocols series.

It includes some interesting computer-drawn histograms in its description of how to distinguish mitotic cells from cells in interphase based on differences in chromatin structure. Methods and results are described, with discussion and references.

For a copy of Protocols No. 25, write or call Ortho Instruments

New brochure available on Ortho Cytofluorograf™ systems for flow cytometry.

Complete details are given on Ortho Cytofluorograf systems in a new brochure. It lists and describes the different combinations of Cytofluorograf modules that permit

you to build a flow cytometry system that precisely meets your present needs and can be modified to suit any future requirements.

With both mercury-arc and dual-laser illumination measurement modules, the new Ortho Cytofluorograf systems offer resolution, sensitivity and versatility unmatched by any other commercially available flow cytometric equipment.

For a copy of this new brochure, phone or write Ortho Instruments.

For any of the information offered on this page, or for additional data about Ortho Cytofluorograf instruments, accessories, and technology, write or phone the Research Instruments Division.



ORTHOM INSTRUMENTS
410 UNIVERSITY AVE., WESTWOOD, MA 02090

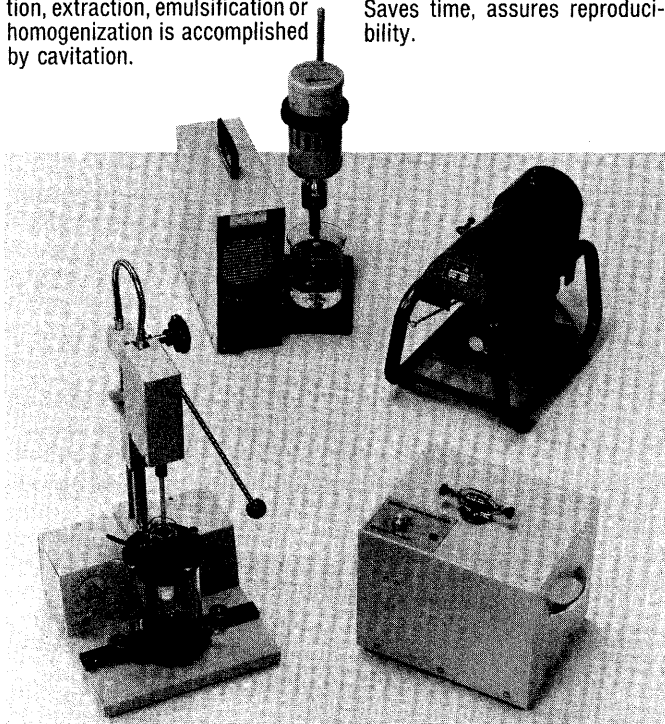
CYTOFLUOROGRAF

Homogenizers?

ROUGH to GENTLE,
take your pick

Braun-Sonic 1510. The most versatile of the B. Braun Homogenizers. This ultrasound unit provides gentle to super-efficient action. An extremely low or high power level can be brought to bear on your sample with precise wattmeter control. Cell disruption, extraction, emulsification or homogenization is accomplished by cavitation.

B. Braun Potter S. A motorized, speed-monitored Potter-Elvehjem system that allows gentle disintegration of soft samples. It self-adjusts its speed to compensate for excessive drag on pestle and vial, and flashes overload condition to operator. Saves time, assures reproducibility.



B. Braun Cell Homogenizer MSK. The "Mauler" handles the toughest kinds of disruption or extraction with ease. Uses ex-centric orbiting motion with flask containing glass beads and medium. Disrupts suspended yeast enzymes, bacterial cells 80% to 99% in a minute or two.

B. Braun Mikro Dismembrator. Very efficient lateral shaking motion at high speeds, together with high gravity steel balls, disrupts most any sample rapidly. Especially designed for small samples and fast processing.

B. Braun's three mechanical homogenizers and one ultrasound homogenizer make it a simple matter to match the instrument to your research application. For complete details on these well-proven, quality instruments, contact:

**B. BRAUN
INSTRUMENTS**



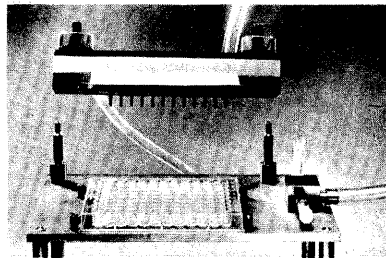
805 Grandview Drive
South San Francisco, CA 94080/Phone (415) 589-9217

Circle No. 130 on Readers' Service Card

1180L

LINCA SCIENTIFIC INSTRUMENTS

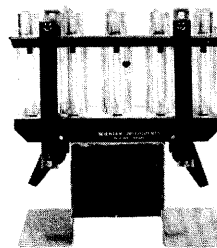
TUBINGLESS CELL HARVESTER - 92.070



A new inexpensive and clog-free device for the rapid harvesting of cells from micro-culture plates.

Pat. Pending.

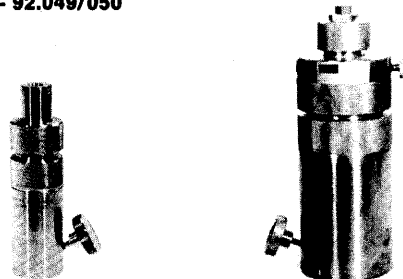
MULTIPLE MEMBRANE FILTERS - 92.051/052



Instruments for rapid processing of a large number of radioactive samples for collection of filtrates and/or precipitates.

U.S.A. Patent No. 3,888,770.

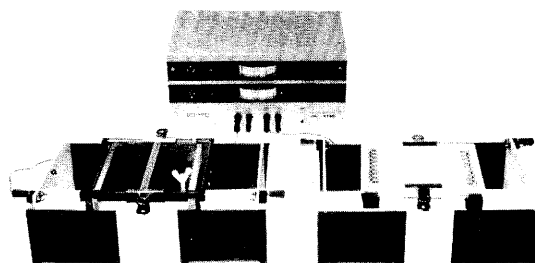
YEDA PRESS - 92.049/050



Devices for the controlled disruption of biological material under conditions which maintain biological activity. 28 ml. and 250 ml.

U.S.A. Patent No. 3,679,139.

ELECTROPHORESIS INSTRUMENTS AND POWER SUPPLIES



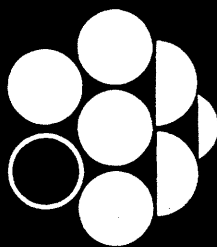
Flat plate and other electrophoresis instruments. Interesting range of stabilized power supplies, 0-500 VDC. Also "constant" power supply.

Linco Lamon Instrumentation Co., Ltd.

(under licence from YEDA at the Weizmann Institute)
P. O. Box 3138 Tel-Aviv, Tel. (03)234121, Cables: COLINCA, Tel-Aviv
United States: Joan P. Amitay, P. O. Box 61, Lincroft, N.J., 87738
Tel. (201)544-1296

Circle No. 38 on Readers' Service Card

SCIENCE, VOL. 202



**LTB Chemicals,
Inc.**

LTB Chemicals, Inc., has developed an extremely sensitive hTSH antiserum which is appropriate for use in dot screening programs as well as in standard RIAs. We have developed an hGH antiserum of equal quality. These reagents may be used at titers of more than 1:1,000,000 and will detect as little as 0.02 micro-units hTSH per tube, or 5 picograms hGH per tube.

Write for the brochure describing these products. Included with it will be *Iodination Techniques* detailing new, reliable, quantified iodination procedures using enzymatic action.

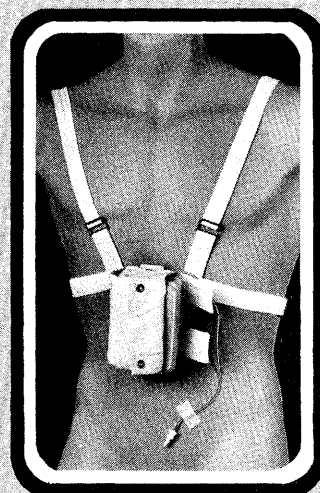
LTB Chemicals, Inc.
P.O. Box 616
Santa Monica, California 90406
Phone (213) 828-2320

Circle No. 119 on Readers' Service Card

MOBILE infusion pumps

CORMED Mobile Infusion Pumps, allow patient mobility while receiving continuous intra-arterial drug infusion in the hospital, home or at work.

- Accurate and safe
- Lightweight and self-contained
- Rechargeable 7-day operation
- Adjustable flow rates
- Sterile disposable reservoir bag and tubing set



***Continuous Chemotherapy for
Ambulatory Patients from...***

CORMED Inc.

CORMED, INC., 1008 N. Main Street, Middleport, New York 14105
(716) 735-7957

Circle No. 34 on Readers' Service Card

The Advantages of Kewaunee Laminar Flow Safety Cabinets

Kewaunee Laminar Flow Biological Safety Cabinets provide a true vertical air flow of sterile air for protection against contaminants. The cabinets are ideal for biological research experiments, or other hazardous work where there is a necessity to control airborne microorganisms or particulates 0.3 microns or larger.

Cabinet design is based on specifications developed by the National Cancer Institute (NCI) and the standards set forth by the National Sanitation Foundation (NSF).

Stainless steel work surfaces are easy to clean and corrosion resistant. Vibration-free fans provide quiet, reliable performance. Sterile air flow is approximately 50 ft./min.

Kewaunee Laminar Flow Safety Cabinets have a vertical operating sash of 1/4" thick laminated safety glass. Each comes with remote controlled service fittings and an exterior light source.

Cabinet design permits convenient operator access to the work area and front access to HEPA filters and plenum chambers.

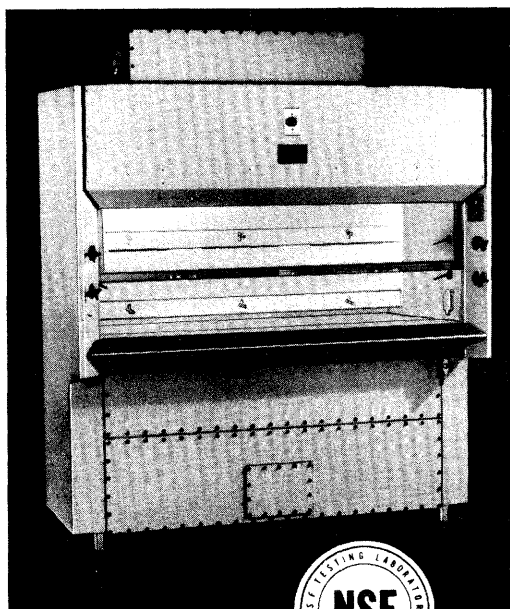
Additional models are available. For more information call or write for a copy of our brochure describing Kewaunee's complete line of Laminar Flow Cabinets, or contact your local Kewaunee representative.



kewaunee

Kewaunee Scientific Equipment Corporation

Special Products Division
Adrian, MI 49221 (517) 263-5731
Lockhart, TX 78644



Model No. 2C6006
Kewaunee Laminar Flow
Biological Safety Cabinet



The all-new Sorvall[®] gives ultra-precision

The new Sorvall[®] MT/5000 ultramicrotome provides unparalleled accuracy and reproducibility of specimen advance, plus a new level of control and ease in bringing knife and block together for sectioning. Less time is required to get the first section, and fewer sections need to be cut to get desired results, significantly increasing your microtomy output.

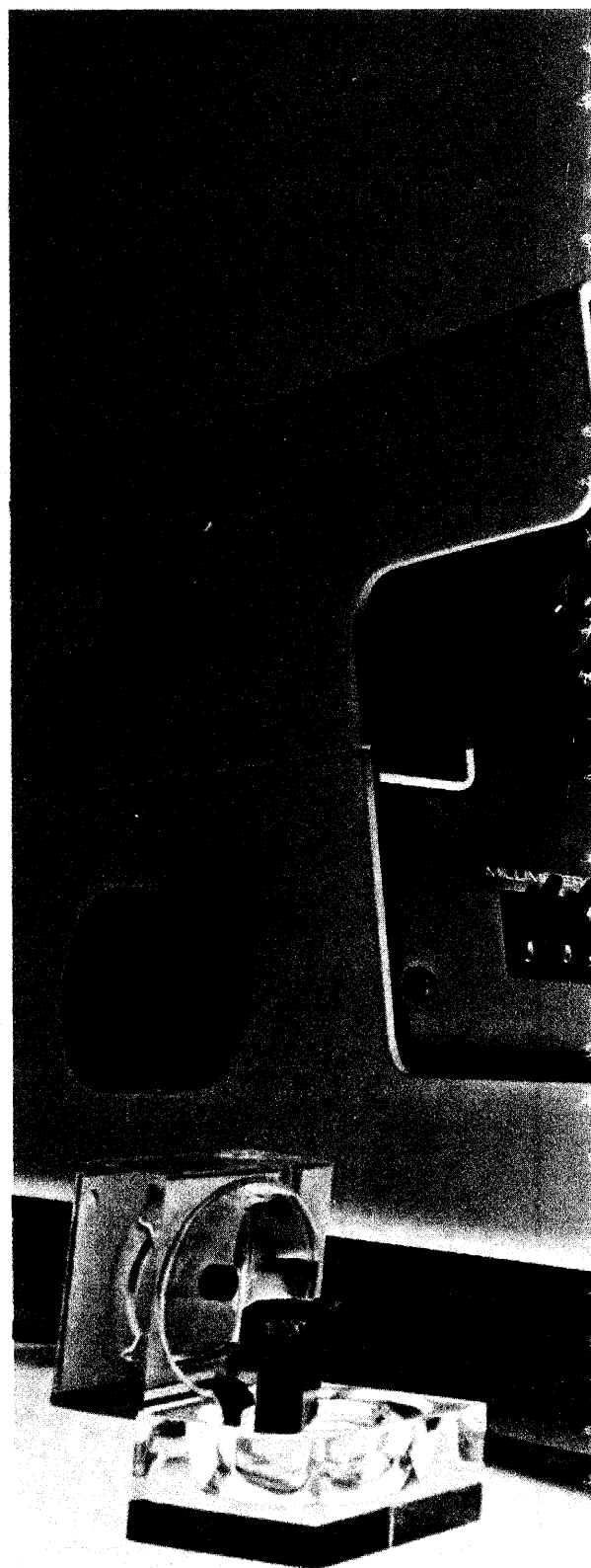
The MT/5000 is the first microprocessor controlled ultramicrotome. It incorporates many new features—digital speed and thickness controls, programmable jog function, a fiber optics approach lighting system, highly effective vibration damping and the unique Sorvall Visutrak feature which enables you to program the shortest possible cutting zone for maximum productivity.

DuPont's new Diamond Knife, shown at left of the MT/5000, offers a new level of cutting performance as the result of a breakthrough in manufacturing technology. Delivery times are also vastly improved. New boat features include greater capacity for floating sections and easier cleaning.

Send for our new brochure.

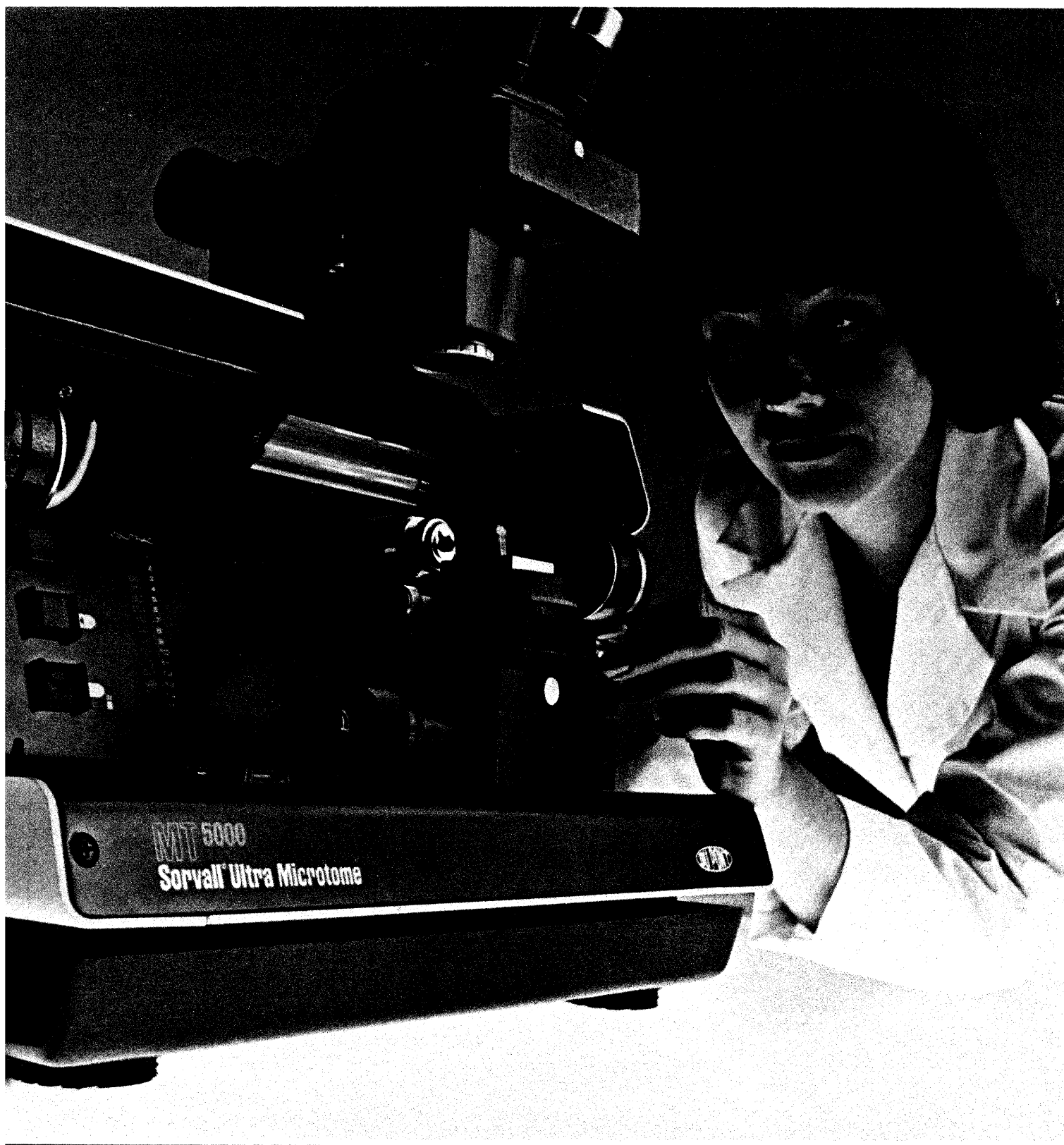
Drop a note to DuPont Instruments, Room 36790, Wilmington, DE 19898. Or phone, toll free, 800-441-7493 (in Delaware, 772-5958).

Circle No. 165 on Readers' Service Card



Sorvall[®] Microtomy Products

ultramicrotome with ease.



An important, timely report on one of America's major—and most neglected—medical problems

CHRONIC PAIN:

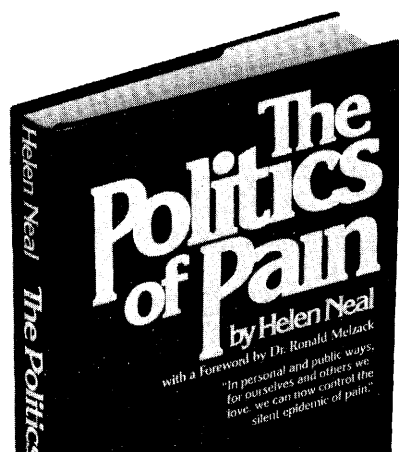
35 to 40 million Americans endure persistent pain as a way of life. And the cost of this silent epidemic in medical care, lost job productivity, litigation, and compensation payments is estimated at \$40 to \$50 billion a year. Yet, little has been done to alleviate the suffering.

In this, the first book on the subject, Helen Neal reveals why—until recently—the medical profession, government health agencies, and research scientists have virtually ignored pain management. She discusses the psychology and nature of pain; its mystical, cultural, and religious aspects; physicians' attitudes; and patient/family need for a pain-control policy. Finally, she tells how you can get relief from pain—through pain clinics, innovative methods of treatment, and new research into the human body's ability to manufacture its own "anesthetics."

"Excellent . . . A practical, sound, much-needed book that offers information and hope to chronic sufferers." —*Publishers Weekly*

"I strongly recommend this important and fascinating book not only to patients and their families, but to physicians, nurses, psychologists, and others on the health team." —

John J. Bonica, M.D., Professor and Chairman Emeritus, Department of Anaesthesiology, and Pain Center Director, University of Washington.



At your bookstore or use this coupon
McGraw-Hill Book Company Rev. 09

Dept. PL, 35th Floor
 1221 Avenue of the Americas
 New York, N.Y. 10020

Please send me _____ copy(ies) of *The Politics of Pain* @ \$9.95

Name _____

Address _____

City _____

State _____ Zip _____

Check or money order enclosed.
 Please add applicable taxes.

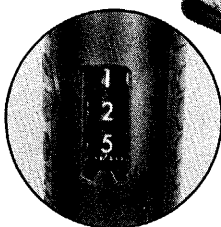
SM

Circle No. 183 on Readers' Service Card

1180P

With the new tm **PIPETMAN**

You're all
 set . . .



... DIGITALLY

Set ANY VOLUME (even odd volumes like 11.5 μ l, 113.6 μ l or 2,254 μ l) with micrometer precision and pipette with consistent accuracy — better than 0.2 to 1.0% of full range.

Four digital microliter pipettes, continuously adjustable over their entire range, permit optimal accuracy and reproducibility in critical pipetting. Each model can replace 30 or more fixed range units.

Comfort-contoured body of high impact plastic has low thermal coefficient insuring excellent repeatability even with long-term, hand-held operation.

Now
 Available
 from
 Stock

Built-in Tip Ejector (Models P-20, 200, 1000) permits safe, non-contact disposal.

Model No.	Recommended Ranges	Price
P-20D	0 - 20 μ l	\$110.00
P-200D	20 - 200 μ l	110.00
P-1000D	200 - 1000 μ l	110.00
P-5000D	500 - 5000 μ l	137.50

All models supplied with 10 disposable tips.

RAININ
 INSTRUMENT CO. INC.

94 Lincoln Street • Brighton, MA 02135
 1-800-225-4590 • TELEX 94-0687

Circle No. 135 on Readers' Service Card

SOLAR ENERGY IN AMERICA

William D. Metz
 Allen L. Hammond

An authoritative book that documents our progress in tapping the ultimate energy source. Detailing the diverse technologies that depend upon the sun for their energy, **SOLAR ENERGY** is a useful publication for solar enthusiasts as well as skeptics, for students as well as policy analysts.

SOLAR ENERGY IN AMERICA—a broad and thorough perspective.

256 pp., 7" x 10", fully illustrated and indexed;
 0-87168-301-6 (cloth), \$18.50*;
 0-87168-238-9 (paper), \$8.50*

November 1978

To order your copy, send name, address and remittance to

AAAS

Department ES-3
 1515 Massachusetts Avenue, NW
 Washington, D.C. 20005
 Please allow 6-8 weeks for delivery.

*AAAS members deduct 10 percent.



**American Association for
 the Advancement of Science**

SCIENCE, VOL. 202

WRIGHT'S RAPID STAIN FROM MC/B

**Lets you spend your time
analyzing slides rather
than preparing them**

Now you can cut your preparation time as much as 90% with new Wright's Rapid Stain. Forget about the muss and fuss you used to have with regular Wright's Stain. With Wright's Rapid Stain, there's:

- No preparative fixation. The fixative is in the solution.
- No mixing. It comes in one, ready-to-use solution.
- No waiting. Slides are stained in 8 to 10 seconds.
- No need for a special rinsing solution. Just use regular tap water.
- No uncertainty. Deeper staining results in improved differentiation of organelles.
- Greater color stability. Wright's Rapid lasts days, even weeks longer than regular Wright's Stain.

Start spending your time where it counts the most. Analyzing your slides rather than preparing them. With Wright's Rapid Stain, from MC/B.

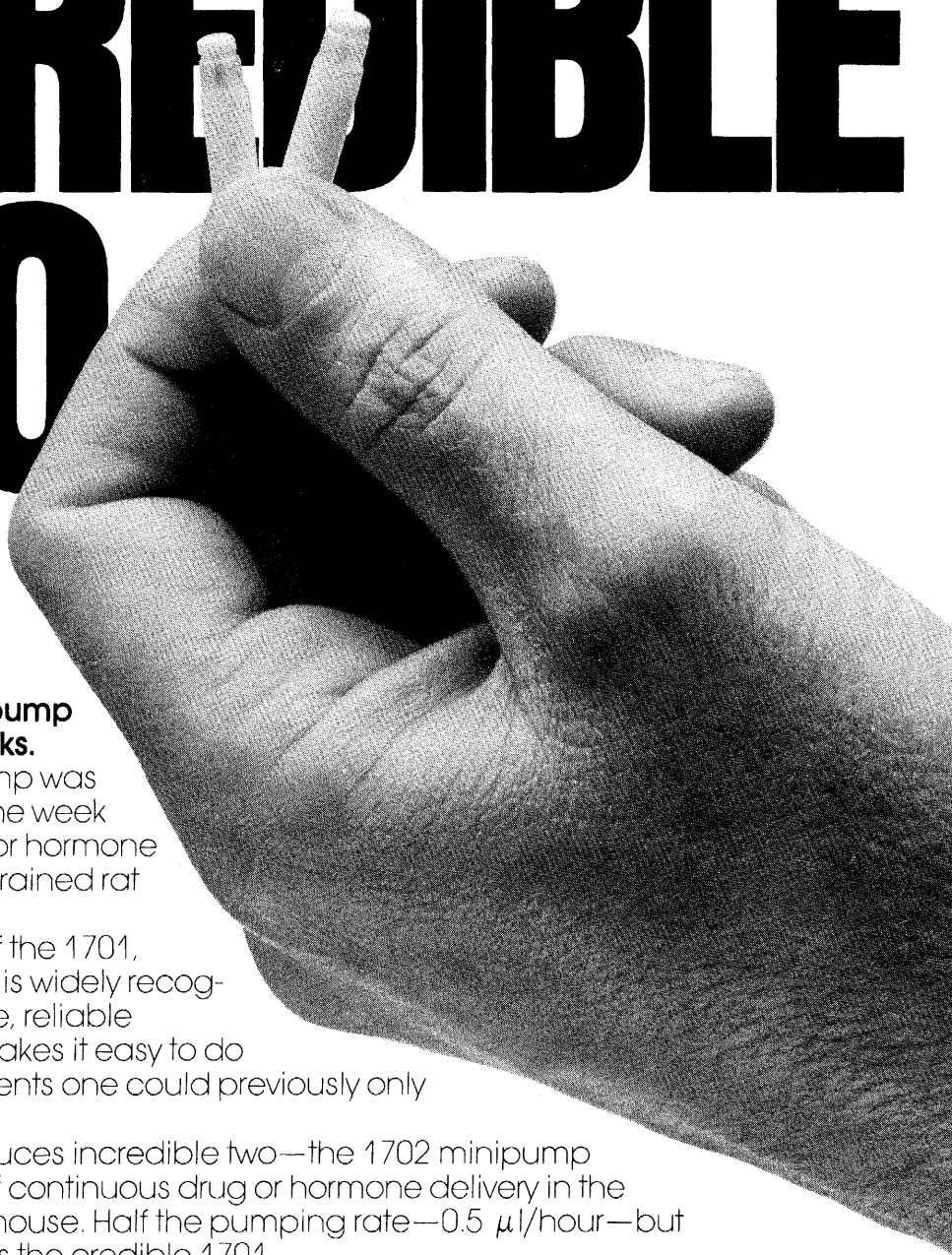
For more information on Wright's Rapid Stain for In Vitro Diagnosis and laboratory use, as well as our complete line of dyes, stains, and indicators and for the location of your nearest MC/B distributor, write MC/B Manufacturing Chemists, Inc., 2909 Highland Avenue, Cincinnati, Ohio 45212.



Associate of E. Merck, Darmstadt, Germany
Histological Solvents Organic Reagents

Circle No. 170 on Readers' Service Card

INCREDIBLE TWO



Now the Alzet® minipump works up to two weeks.

The first minipump was incredible—up to one week of continuous drug or hormone delivery in the unrestrained rat or mouse.

The credibility of the 1701, 1 μ l/hour minipump is widely recognized; it is the unique, reliable research tool that makes it easy to do the kinds of experiments one could previously only dream about.

Alza now introduces incredible two—the 1702 minipump—up to two weeks of continuous drug or hormone delivery in the unrestrained rat or mouse. Half the pumping rate—0.5 μ l/hour—but twice the duration as the credible 1701.

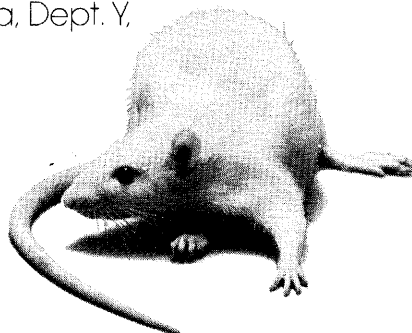
It is ideal for studies of centrally mediated drug or hormone action or for studies where local microperfusion of drugs or hormones can be used to test for local effects. It is also the tool to consider for steady state tracer studies.

Request technical information from Alza, Dept. Y,
3170 Porter Drive, Palo Alto, California
94304. Phone 415/494-5323.

Please send me the following:
☐ Technical information on the Alzet® osmotic minipump.
☐ Add me to your mailing list.

Name _____
Affiliation _____
Address _____
City _____ State _____ Zip _____

alzet®
OSMOTIC MINIPUMP



Circle No. 123 on Readers' Service Card

SOLAR ENERGY IN AMERICA

William D. Metz
Allen L. Hammond

An authoritative book that documents our progress in tapping the ultimate energy source. Detailing the diverse technologies that depend upon the sun for their energy, **SOLAR ENERGY** is a useful publication for solar enthusiasts as well as skeptics, for students as well as policy analysts.

SOLAR ENERGY IN AMERICA—a broad and thorough perspective.

256 pp., 7" x 10", fully illustrated and indexed; 0-87168-301-6 (cloth), \$18.50*; 0-87168-238-9 (paper), \$8.50*

November 1978

To order your copy, send name, address and remittance to **AAAS**

Department ES-4
1515 Massachusetts Avenue, NW
Washington, D.C. 20005

Please allow 6-8 weeks for delivery.

*AAAS members deduct 10%.

T3/rT3/T4 DAILY SHIPMENT

- Each lot tested for binding and displacement in a specific radioimmunoassay
- *n*-Propanol solvent provides clear, easy-to-read chromatographs
- Guaranteed <3% free iodide; <1% labeled organic impurities
- Radiochromatogram included

T3 Triiodothyronine, L-3,5,3'-[¹²⁵I]-

NEX-110 100-150 μCi/μg
NEX-110H 750-1250 μCi/μg

rT3 Triiodothyronine, L-3,3',5'-[¹²⁵I]-(reverse T3)

NEX-109 750-1250 μCi/μg

T4 Thyroxine, L-[¹²⁵I]-

NEX-111 100-150 μCi/μg
NEX-111H 750-1250 μCi/μg

Higher specific activities available.
Request our ¹²⁵I products brochure.

Not for use in humans or clinical diagnosis.

NEN New England Nuclear

549 Albany Street, Boston, Mass. 02118
Call toll-free: 800-225-1572
(In Massachusetts and International: 617-482-9595)

NEN Chemicals GmbH, Dreieich, W. Germany; NEN Canada Ltd., Lachine, Quebec

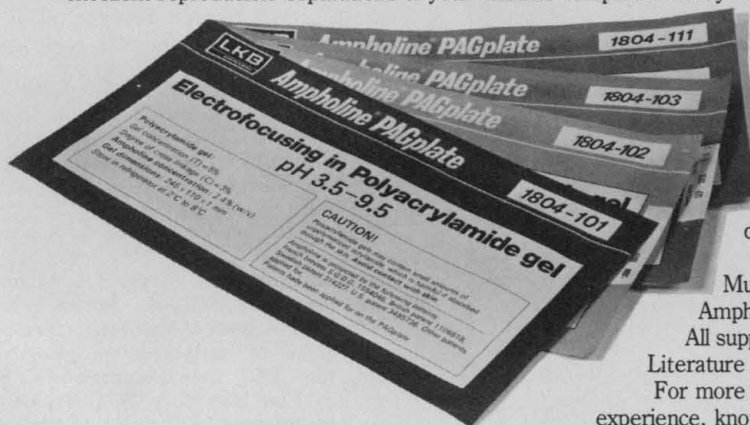
Circle No. 185 on Readers' Service Card

LKB Ampholine® PAGplate.

Ready-made for electrofocusing of 48 samples in under 3 hours.

Your time and samples are too valuable to lose with home-made gels for analytical electrofocusing. Use Ampholine PAGplates instead.

Ampholine PAGplates bring you both convenience and speed. We make them under controlled conditions so that you get excellent reproducible separations of your valuable samples in every run.



Use each PAGplate whole for analyzing up to 48 samples simultaneously under identical conditions, or, for fewer samples, cut off the amount you need and store the rest until the next run.

Ampholine PAGplates come in four pH ranges: 3.5 to 9.5 (LKB catalog no. 1804-101); 4.0 to 6.5 (1804-102); 5.5 to 8.5 (1804-103); 4.0 to 5.0 (1804-104). After use, fix and stain your PAGplates, dry them, and store for future reference.

LKB offers the complete system for electrofocusing: Multiphor, LKB 2103 Power Supply, Ampholine® and Ampholine® PAGplates — your standards in electrofocusing. All supported by LKB Application Notes and *Acta Ampholinæ* Literature Reference List.

For more information write to LKB: the only complete source of experience, knowledge and equipment for electrofocusing.

LKB Instruments Inc., 12221 Parklawn Drive, Rockville, MD 20852; (301) 881-2510; Telex 89-682.

LKB

Circle No. 36 on Readers' Service Card

HPLC Fluorescence Detection...

...Something old, something new.

Schoeffel applies classical fluorescence techniques to HPLC via the innovative design of the FS 970 Spectrofluoro Monitor.

The Schoeffel FS 970 has been designed — from the ground up — for exclusive use as an HPLC detector. Unconventional? Yes!

- A cell volume of only 5 μ l provides for the detection of compressed peaks produced by today's more efficient micro columns.
- The unique, patented 2π Steradian Cuvette maximizes emission energy collection efficiency.
- 190-700nm continuously variable excitation wavelength with provision for

background discriminating spectral scanning permits superior qualitative and quantitative analyses.

- For UV excitation, the unusual choice of a Deuterium source provides stable energy into the lower UV where improved quantum efficiencies often result in increased sensitivity and selectivity.
- The FS 970 is easily interfaced with your liquid chromatograph.

Take a close look at the FS 970. With it, measurements 10^2 - 10^3 more sensitive than standard absorption techniques are often possible.

Schoeffel — we've built our reputation on new ideas in HPLC detection.

U.S.A.: 24 Booker Street, Westwood, New Jersey 07675

(201) 664-7263, Telex 134356

EUROPE: 2351 Trappenkamp, Celsiusstrasse 5, W. Germany

(04323) 2021, Telex 299660

KRATOS Inc.

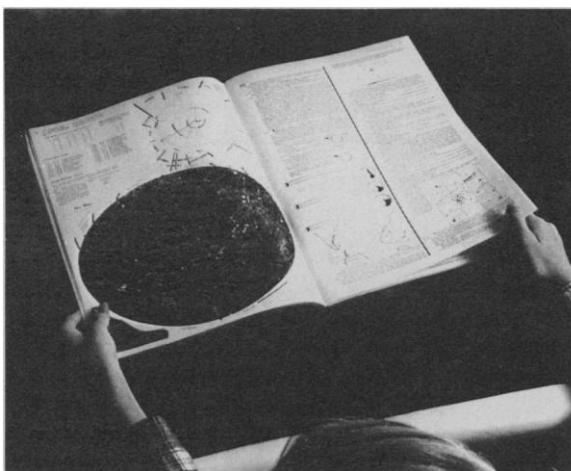
SCHOEFFEL
INSTRUMENT DIVISION

Circle No. 159 on Readers' Service Card

"Highly recommended since it is full of helpful information, is much more than a calendar, and is well worth the price." — *Journal of the Assoc. of Lunar and Planetary Observers*

ASTRONOMICAL CALENDAR 1979

by Guy Ottewell



This large, clear, attractive, multi-level book will show you what can be seen in the sky now—the date when you want to look. It is a self-teaching guide to the constellations, the movements of planets and comets, the satellites of Jupiter, meteor-showers, eclipses, double stars in their orbits, star lore, space exploration, and a great deal else. It is an ideal Christmas gift.

The previous annual volumes are in use in 60 countries, by several thousand colleges, schools, observatories, planetariums, nature centers, and clubs, and by a devoted public ranging from young beginners to skilled observers.

\$6.00 plus 75¢ shipping (bulk, dealer, and air rates on request) from Astronomical Calendar, Department of Physics, Furman University, Dept. SC, Greenville, S.C. 29613, U.S.A. Please make check payable to Astronomical Calendar.

Name _____

Address _____

City _____

State _____ Zip _____

BOOKS RECEIVED AND

BOOK ORDER SERVICE

(Continued from page 1180)

lus. \$21.50. Advanced Book Program. To order this book circle No. 422 on Readers' Service Card

Hierarchical Analyses of Water Resources Systems. Modeling and Optimization of Large-Scale Systems. Yacov Y. Haimes. McGraw-Hill, New York, 1977. xviii, 478 pp., illus. \$39.50. McGraw-Hill Series in Water Resources and Environmental Engineering. Advanced Book Program. To order this book circle No. 423 on Readers' Service Card

High-Power Lasers and Applications. Proceedings of a colloquium, Munich, June 1977. K.-L. Kompa and H. Walther, Eds. Springer-Verlag, New York, 1978. x, 230 pp., illus. \$24. Springer Series in Optical Sciences, vol. 9. To order this book circle No. 424 on Readers' Service Card

Hot Electrons in Semiconductors International Conference. Denton, Tex., July 1977. D. G. Seiler and A. E. Stephens, Eds. Pergamon, New York, 1978. iv, 324 pp., illus. Paper, \$30. Special issue of *Solid-State Electronics*, vol. 21, No. 1. To order this book circle No. 413 on Readers' Service Card

Integration and Coordination of Metabolic Processes. A Systems Approach to Endocrinology. J. H. U. Brown. Van Nostrand Reinhold, New York, 1978. xvi, 236 pp., illus. \$15.95. To order this book circle No. 425 on Readers' Service Card

An Introduction to Chemical Metallurgy. In SI/Metric Units. R. H. Parker. Pergamon, New York, ed. 2, 1978. xiv, 362 pp., illus. Cloth, \$35; paper, \$12.50. International Series on Materials Science and Technology, vol. 26. To order this book circle No. 426 on Readers' Service Card

Introduction to General Toxicology. E. J. Ariens, A. M. Simonis, and J. Offermeier. Academic Press, New York, ed. 2, 1978. viii, 252 pp., illus. \$17.50.

Introduction to World Vegetation. A. S. Collinson. Allen and Unwin, Boston, 1978. 202 pp., illus. Cloth, \$16.25; paper, \$8.75.

Invariant Wave Equations. Proceedings of a school, Erice, Italy, June 1977. Giorgio Velo and Arthur S. Wightman, Eds. Springer-Verlag, New York, 1978. vi, 418 pp., illus. Paper, \$18.50. Lecture Notes in Physics, vol. 73. To order this book circle No. 427 on Readers' Service Card

Modern Methods in Partial Differential Equations. An Introduction. Martin Schechter. McGraw-Hill, New York, 1977. xvi, 246 pp. \$28.50. Advanced Book Program. To order this book circle No. 428 on Readers' Service Card

Modified Cellulosics. Papers from a symposium, Chicago, Aug. 1977. Roger M. Rowell and Raymond A. Young, Eds. Academic Press, New York, 1978. xiv, 362 pp. \$23.

Molecular Aspects of Membrane Transport. Proceedings of a symposium, Keystone, Colo., Mar. 1977. Dale Oxender and C. Fred Fox, Eds. Liss, New York, 1978. xiv, 596 pp., illus. \$58. Progress in Clinical and Biological Research, vol. 22. To order this book circle No. 415 on Readers' Service Card

Population Regulation. Robert H. Tamarin, Ed. Dowden, Hutchinson and Ross, Stroudsburg, Pa., 1978 (distributor, Academic Press, New York). xvi, 390 pp., illus. \$27.50. Benchmark Papers in Ecology, vol. 7.