

AAAS Annual Elections

Ballots for the Association's 1978 elections and this announcement should reach AAAS members at about the same time. All members will receive a general-election ballot for president-elect, members of the Board of Directors, and members of the Committee on Nominations. Each member who is enrolled in one of the 21 Electorates corresponding to the AAAS Sections will also receive an electorate-election ballot for Section chairperson-elect, member-at-large of the Section Committee, and members of the Electorate Nominating Committee. The ballots for Electorates J, K, L, M, N, O, and P will, in addition, list candidates for Council delegate.

The 2 June preliminary election announcement included the names of candidates and offered members the opportunity to place additional names in nomination by petition submitted not later than 17 July. No petitions were received.

A ballot for amendment of Constitution Article VII is being mailed with the election ballots. Assuming that a majority of AAAS members (or two thirds of the members who return ballots) ratify the proposed amendment, each Section Committee will henceforth be represented on the Council by the retiring Section chairperson rather than by a representative of an affiliated organization. The ballot also requests that members cast a straw vote on the question of whether or not AAAS should continue to elect Fellows.

Biographies of the candidates are given below, following interviews with the candidates for president-elect. The terms of all new officers, Council delegates, and committee members will begin on January 9, 1979.

Recognizing that "there are major social and academic problems that the learned societies . . . have to deal with," cultural anthropologist Ernestine Friedl, 58, agreed to run for president-elect of AAAS. After spending most of her professional life affiliated with Queens College in New York City, in 1973 she became professor and head of the anthropology department at Duke University, on whose tree-shaded campus this interview took place.

It was Friedl's multifaceted involvement with the social sciences, as an anthropological field-worker, professor, and elected society official, that helped to make her aware of some of the needs facing scientific organizations and society in general. For example, during Friedl's presidency of the American Anthropological Association (AAA) in 1974-75, she found that the "AAA was shifting from a total emphasis on scholarly concerns to public policy and professional concerns. When I began to realize how wide ranging these professional concerns were, I became convinced that each individual association really couldn't handle most of these problems on its own—that some kind of consortium or association of these societies was needed. Clearly, AAAS is one such consortium; it's there; it exists already."

The overall issue as she sees it is the "awareness that we are all in a crisis situation. The United States needs to establish some kind of priorities for the allocation of its scientific and technical resources. Political forces and public needs have already led to a reallocation in the direction of applied science. It is very important for the scientific community to strengthen its influence on the reorganization process. Its members can do so only by respecting and understanding the constraints under which policy-makers operate, and by learning to balance these against the internal requirements of science."



Other concerns she believes need attention include improving the position of women and minorities, dealing with shrinking student populations in colleges and universities, reorganizing science in some fashion so that its funding can exist without too much governmental control, and developing public understanding of science.

There was another basic reason why Friedl agreed to run for this AAAS office. "I had a sense that the social scientists' contribution to the scientific community needed to be increased. . . . The technical problems that are developing in the public policy issues are all in the long run concerned with getting human beings to change in some fashion. The process by which people do change is something we don't know very much about and is an important part of the efforts that need to be made to develop science policy. . . ."

Friedl is especially interested in international activities, which is not surprising for a scientist who has done much of her field work in Greece, where she has studied change in Greek villages and the adaptation of rural migrants to the cities. She regularly visits Greece, not only because of her professional interests but also because she has become very fond of the country, its people, and its culture. This experience has helped her to become quite concerned about what she views as the trend in the United States toward greater isolation of scientists. Specifically, she suggests that we have a tendency to look at our energy problems and our social and technical problems exclusively in terms of the United States and its interests.

She also points to Americans' "hopeless" lack of knowledge of foreign languages as a serious problem because "we need to have access to primary publications of science in other countries or it will diminish our ability to function properly. . . . We are missing the chance to understand what other people are doing and to use it in some fruitful way." Among the countries she feels provide "obvious areas for greater interaction" are the Soviet Union and China, as well as those of Southern Europe and Latin America.

Meshing her natural interests in both the international and educational arenas, Friedl stresses the importance of training students so that they're aware of possible developments in other parts of the world in which they're interested so that "what you contribute is not redundant." She thinks that AAAS Section Q (Education) could play a logical role here by including in any white paper "this specific concern with inter-

national relations in science as part of the training of students."

Friedl believes that the AAAS is "most valuable as a disseminator of information to the scientific community and to the non-scientific community insofar as the stories from *Science* get picked up and used. . . . Each year the annual meeting provides a climax to these (communication) activities." In discussing *Science*, she goes on to describe the magazine as a "monument to AAAS and an enormous service to the country because its reporting is the best I know."

Decision-makers are in special need of information, according to Friedl, to help them make informed judgments. As the "most practical first step," AAAS can try to reach these people to ensure that "the decisions they make will be based on better knowledge of the issues and, more importantly, of the possible consequences of their actions." In the long run, however, she is convinced that AAAS must be concerned with the broad general public, who need to have some understanding of the basis of decisions affecting their lives. Otherwise, "we are leaving their education to the politicians, advertisers, and special interest groups."

Friedl is particularly concerned about the forms of scientific information the public receives, especially the "conflicting

messages" presented in magazines and on television. She points to articles in women's magazines on proper nutrition appearing alongside cake recipes and discussions of America's heavy reliance on drugs juxtaposed with "one television commercial after another" on drug products. "The real issue is that the public is bombarded with these conflicting messages and the messages that deal with consumption that affects lifestyles adversely are much more efficient . . . the advertisers do a much better job than we do." She believes AAAS could help to create an interest in the problem by encouraging studies of the impact of these kinds of conflicting messages and of how people make decisions in the face of such messages.

However, Friedl has some concern with distortions and with AAAS trying to "sell" science in the way that advertisers do products. "By the means that you use you . . . obscure your ends. . . . You want people to take a rational look at themselves and what they're doing. If you use irrational methods, you are undermining your main goals."

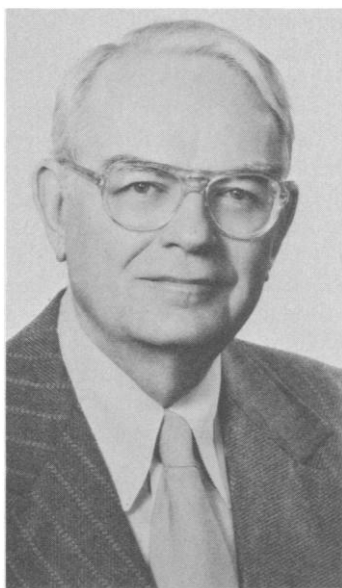
Aware that science education of the public is expensive to do well, Friedl sees financing as one major issue. Another problem is how to provide good information and yet not distort the message. "Maybe the mission of the AAAS," she observes, "should be to work harder on these particular issues."

A statistician whose professional experience ranges from health and medicine to engineering and social science, Frederick Mosteller has been affiliated with Harvard University for 32 years. He currently is chairman of its Department of Biostatistics. His work in science policy gives the 62-year-old member of the Board of Directors "an additional interest in the kind of things that AAAS is trying to do. I also have a few ideas of my own that I'd like to see take shape."

Of his nomination to candidacy for president-elect of AAAS, Mosteller says that it is "a great honor to be asked, one any scientist would find difficult to decline. The challenge comes during a period of exciting developments for AAAS." As chairman of Section U (Statistics) and later as a member of the Board, he has been involved in many developing projects.

A major policy issue appropriate for AAAS involvement, says the AAAS candidate, is the employment of scientific human resources. He sees a joint effort by the Office of Opportunities in Science, the Scientific Manpower Commission, and various AAAS affiliates, "to ask ourselves whether we will be able to take advantage of the research potentialities of the young scientists whom we've already trained and discover whether new programs ought to be developed at a national level . . . to make sure that young scientists actually do contribute as much to the advancement of science and technology . . . as they can."

"Although a recent National Research Council survey gives encouraging news about the high employment rate of scien-



tists in science related posts," Mosteller points out, "the high nonresponse to the survey raises questions. Nonrespondents may be less often employed in posts for which they are trained. It is important that we get better information about employment, and AAAS can, on behalf of all scientists, see that further work is done. Whatever the situation now, we can expect a much tighter science labor market because of reduced college enrollment in the 1980's and 1990's due to the delayed impact of the lowered birth rate. Preparation for these troublesome developments should begin soon."

For Mosteller, a primary function of AAAS, and one at which it excels, is to serve as "a center for communication about matters of interest to scientists as a whole and also to society." Communication, he notes, has "the key role in relating science to society and scientists to one another." He cites *Science*, the publication programs, the annual meeting, regional meetings, and special symposia like the annual R & D review, as especially effective tools in the Association's "huge" communication effort.

Scientists themselves, however, are not the only audience at which the Association must aim its efforts: "We have several targets. I think of three, besides scientists themselves. The first is youth who may well take up science as a career; a second group is young people who ought to be concerned with science because as future citizens they're going to have to deal with science issues more and more. . . . I would like us to bring a 'science and the citizen' program to young people who will have to make important decisions about science as adults." Mosteller would like to see the AAAS Office of Science Education expand its programs to meet this goal.

Adult citizens, the third group, also need a "large-scale educational program" in science. The development of such a program would depend on the cooperation of scientists (and he is confident that many would be glad to participate) as well as that of "outside leadership"—legislators and policy-makers in cities and towns and in school districts, "people who have to decide on rules and regulations, and who have to debate issues like 'shall there be nuclear facilities,' and 'when shall we permit the use of various kinds of chemicals,' and 'what kinds of

steps can be taken to improve health and safety?' We should be able to help them know the risks, benefits, and trade-offs in such problems.

"National polls tell us that physicians, scientists, and engineers are the three highest prestige occupations," Mosteller observes. "Too often we tell one another what the public thinks about science without asking them. The public reports itself generally favorable toward science and expects good things from it."

One important message must be incorporated into efforts to improve public understanding of science, Mosteller notes: "How we support the scientific effort and how we employ science involve complex decisions and consequences . . . we're not likely to wind up with simple answers to the questions that people raise. . . . All of us want simple answers to hard questions . . . but it's not reasonable to expect them. AAAS has an obligation to communicate the complexity of science policy to all citizens, and to try to outline options and tradeoffs and provide understanding of the differences in policies. We need to produce information for informed public debates."

There are complexities in science that scientists themselves need to explore, Mosteller feels. An appropriate long-term project for AAAS, he suggests, would be one "parallel to, but very different from our annual R & D project." It would examine, through a series of conferences, the process of research and development in terms of what a nation can expect from funding research in science. "We do not yet understand the relations between the input to basic research, the outcome . . . , or the interplay between findings and technological development," he says. "We need to extend the work of Comroe and Dripps on the interplay between basic research and advances in technology. We also need to find out something about the rate at which we ought to expect im-

provements." Mosteller does not see AAAS' role as actually conducting research to provide answers to specific questions such as, "What's the best way to allocate resources to R & D?" Rather, AAAS should act in a convenor capacity, bringing together groups of people to define the needs and describe the problems of understanding the research process and its results.

When AAAS' involvement in controversial scientific issues is mentioned, Mosteller is quick and enthusiastic in his response. Has AAAS followed the Committee on Future Directions' 1977 recommendation that the Association address controversial subjects? "Certainly. At the annual meeting, we have regularly had symposia on controversial issues, and I assume we will continue . . . if we open up last year's annual meeting program, we find a bundle of symposia on controversial issues, and I think we've delivered these well." He points out that some of his own recommendations for future AAAS activities, such as a national science education program and an opinion study, could identify and explore the types of controversial subjects people want to know about.

Of the Association's membership structure, Mosteller comments that he would like to see increasing representation of the business and engineering sectors and increased participation of individual members through special interdisciplinary projects developed by the Sections. He is concerned also with the strengthening of ties between AAAS and its affiliated organizations, and explains that those projects he favors—the monitoring of unemployment and human resources, expanded public education programs, studies of the research and development process—"would require us to become closer to our affiliated organizations," whose constituencies such projects would affect.

General Election

Terms of office are as follows: president-elect, 3 years (the second year as president, the third year as retiring president and chairman of the Board); members of the Board of Directors, 4 years; members of the Committee on Nominations, 2 years.

President-Elect (one to be elected).

Ernestine Friedl
Frederick Mosteller

Ernestine Friedl

Ernestine Friedl (anthropology), 1920; B.A., Hunter College, 1941; Ph.D., Columbia University, 1950. Professor, chairman, and director of graduate studies, Department of Anthropology, Duke University, since 1973. Previously with Brooklyn College, Wellesley College, Queens College, and City University of New York. Fellow, American Academy of Arts and Sciences; secretary-treasurer, 1950–52, vice president, 1966, president, 1967, American Ethnological Society; vice president, 1970, president, 1971, Northeastern Anthropological Association; president, American Anthropological Association, 1974–75; Committee on Advanced Anthropology Test,

Educational Testing Service, 1970; Advisory Screening Committee in Anthropology, Committee on International Exchange of Persons (Fulbright Program), 1972–75; Special Fellowship Panel, American Council of Learned Societies, 1973–75; Executive Board, Modern Greek Studies Association, 1975–78; Social Science Panel, National Endowment for the Humanities; chair, Committee on the Status of Women Anthropologists, AAA. Author of *Vasilika: A Village in Modern Greece*; *Women and Men: An Anthropologist's View*.

Frederick Mosteller

Frederick Mosteller (statistics), 1916; B.Sc., 1938, M.Sc., 1939, Carnegie Institute of Technology; A.M., 1941, Ph.D., 1946, Princeton University. With Harvard University since 1946; professor of mathematical statistics since 1951; chairman, Department of Biostatistics. Previously with Princeton University, Applied Mathematics Panel, and University of California, Berkeley (Miller research professor). Fund for the Advancement of Education fellow, 1954–55; Guggenheim fellow, 1969–70; National Teacher, Continental Classroom, National Broadcasting Company, 1961; member, National Academy of Sciences; president, Psychometric Society, 1957–58, American Statistical Association, 1967, Institute of Mathematical Statistics, 1974–75; chairman, Board of Directors, Social Science Research Council, 1965–69; chairman, Joint American Statistical Association–National Council of Teachers of Mathematics

Committee on Curriculum in Statistics and Probability, 1968–72; Executive Committee, Assembly of Behavioral and Social Sciences, NAS, 1974–75; director, Council of Applied Social Research, Inc., 1976–; Committees on Health Science Policy and on Health Services Research, Institute of Medicine; Report Review Committee and Committee on National Statistics, NAS-NRC; National Advisory Council on Equality of Educational Opportunity; Board of Trustees, Russell Sage Foundation and Carver Research Foundation; U.S. National Committee on Vital and Health Statistics; Steering Committee, Undergraduate Mathematics Applications Project, Mathematical Association of America. AAAS activities: member-at-large of the Section Committee, Section on Statistics (U), 1963–65; chairman, Section U, 1973; Council, 1972–73, 1975–78; Section Committee, Section U, 1974–; Board of Directors, 1975–78.

Board of Directors (two to be elected).

Harold E. Dregne
Bernard R. Gifford
Anna J. Harrison
John C. Sawhill

Harold E. Dregne

Harold E. Dregne (soil science), 1916; B.S., University of Wisconsin–Stevens Point, 1938; M.S., University of Wisconsin–Madison, 1940; Ph.D., Oregon State University, 1942. With Texas Tech University since 1969; Horn

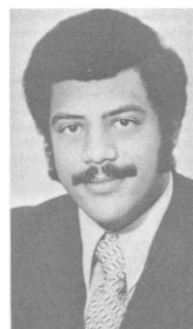
distinguished professor since 1972; director, International Center for Arid and Semi-Arid Land Studies, since 1976. Previously with University of Idaho, Washington State University, and New Mexico State University. Distinguished Service Award, New Mexico State University, 1967;



Certificate of Merit Award, Southwestern and Rocky Mountain Division, AAAS, 1972; Gamma Sigma Delta Award for Teaching and Research, 1974; president, Western Society of Soil Science, 1958-59; NAS Advisory Committee on Technology Innovation; NAS Study on U.N. Conference on Science and Technology for Development; U.S. Directorate, UNESCO Man and the Biosphere Program. AAAS activities: president, Southwestern and Rocky Mountain Division, 1967; Council, 1966-67, 1972-73; chairman, Committee on Arid Lands, 1970-75; Section Committee, Section on Agriculture (O), 1972-73; chairman, Advisory Committee on Desertification, 1976-.

Bernard R. Gifford

Bernard R. Gifford (policy analysis), 1943; M.S., 1968, Ph.D., 1971, University of Rochester. Resident scholar, Russell Sage Foundation, since 1977; adjunct lecturer in public policy, J.F.K. School of Government, Harvard University. Previously with University of Rochester Medical School, FIGHT, New York Rand Institute, and New York City Board of Education. U.S. Atomic Energy Commission fellow, 1965-66, 1969-71; Kennedy fellow, 1971-72; Loeb fellow, 1971-72; Boards of Directors or Trustees, New York University, Long Island University, and German Marshall Fund of the United States of America; Commission on Sociotechnical Systems, NRC; Editorial Board, *Urban Affairs Quarterly*, New York Affairs. AAAS activities: Committee on Environmental Alterations, 1973-74; Board of Directors, 1977-78; Council, 1977-78.



Anna J. Harrison

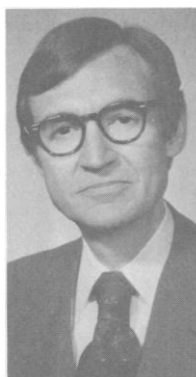
Anna J. Harrison (physical chemistry), 1912; B.A., 1933, B.Sc., 1935, M.A., 1937, Ph.D., 1940, University of Missouri. With Mount Holyoke College since 1945; William R. Kenan, Jr., professor of chemistry since 1976. Previously with Tulane University; USAID Banaras Hindu University, 1968. Frank Forest Award, American Ceramic Society, 1949; Citation of Merit, College of Arts and Sciences, University of Missouri, 1960; MCA Award in College Teaching, 1969; James Flack Norris



Award in Teaching, Northeastern Section, American Chemical Society, 1977; Sarah Berliner fellow, American Association of University Women, 1952-53; Board of Publication, *Journal of Chemical Education*, 1959-60, 1970-73, chairman, 1964-65; president, Mount Holyoke College Chapter, Sigma Xi, 1967; chairman, Division of Chemical Education, ACS, 1971, Board of Directors, ACS, 1976-, president, ACS, 1978, chairman, Council Policy Committee; National Science Board; Editorial Boards, *Journal of College Science Teaching* and *Chemical and Engineering News*; Committee on Chemistry and Public Affairs, chairman, Subcommittee on Regulatory Practices.

John C. Sawhill

John C. Sawhill (economics), 1936; A.B., Princeton University, 1958; Ph.D., New York University, 1963. President and professor of economics, New York University, since 1975. Previously with Commercial Credit Company, McKinsey and Company, Office of Management and Budget, and Federal Energy Administration (administrator). Trustee and Executive Committee, Commission on Independent Colleges and Universities; director, Council on Financial Aid to Education, Phelps-Stokes Fund, and Whitehead Medical Research Institute; trustee, Urban Institute and World Peace Foundation; co-chairman, Committee on Energy, Aspen Institute for Humanistic Studies; trustee, Committee for Economic Development and Common Cause; New York State Emergency Financial Control Board; Energy Advisory Committee, Office of Technology Assessment; director, Energy Study Group, Trilateral Commission.



Committee on Nominations (four to be elected).

Robert D. Allen
William A. Fowler
Frank E. Horton
Lawrence M. Kushner
Arlo U. Landolt
Gardner Lindzey
Robert A. Ragotzkie
Byron D. Tapley

Robert D. Allen

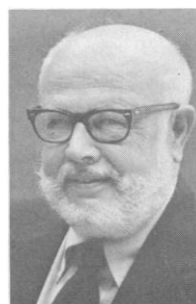
Robert D. Allen (biological sciences), 1927; A.B., Brown University, 1949; Ph.D., University of Pennsylvania, 1953. Professor of biology and chairman, Department of Biological Sciences, Dartmouth College, since 1975. Previously with University of Pennsylvania, University of Michigan, Princeton University, and State University of New York at Albany; vis-



iting professor, Japan Society for the Promotion of Science, 1974. U.S. Public Health Service fellow, 1951-54; Guggenheim fellow, 1961, 1966; treasurer, 1963-65, president, 1973-74, Society of General Physiologists; Bioengineering Study Section, 1967-69, chairman, Optics Study Section (ad hoc), 1969-71, National Institute of General Medical Science; Council, American Society for Cell Biology, 1973-75; Organizing Committee, First International Congress of Cell Biology, 1976; member of the Corporation, Marine Biological Laboratory, Woods Hole; scientific adviser to Jules Power International Productions; associate editor, *Journal of Mechanochemistry and Cell Motility*. AAAS activities: Council, 1977-79; Council Committee on Fellows, 1977-78; reviewer of scientific films.

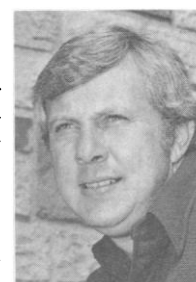
William A. Fowler

William A. Fowler (physics), 1911; B.Eng.-Phys., Ohio State University, 1933; Ph.D., California Institute of Technology, 1936. With California Institute of Technology since 1936; Institute professor of physics since 1970. Fulbright lecturer, Cambridge University, 1954-55; Guggenheim fellow, 1954-55, 1961-62; President's Medal for Merit, 1948; Ohio State University Lammé Medal, 1952; Liège Medal, University of Liège, 1955; California Co-Scientist of the Year, 1958; Barnard Medal for Meritorious Service to Science for 1965, Columbia University; Apollo Achievement Award, NASA, 1969; 1970 Tom W. Bonner Prize, American Physical Society; G. Unger Vetlesen Prize, Columbia University, 1973; National Medal of Science, 1974; member, National Academy of Sciences; fellow, American Academy of Arts and Sciences; president, American Physical Society, 1976; Naval Research Advisory Committee, 1962-70; National Science Board, 1968-74; Space Science Board, NAS, 1970-73, 1977-80; Council, NAS, 1974-77; chairman, Nuclear Science Advisory Committee, NSF/DOE, 1977-79; Visiting Committee for NRAO, 1977-81.



Frank E. Horton

Frank E. Horton (geography), 1939; Ph.D., Northwestern University, 1966. Professor and vice president, Academic Affairs and Research, Southern Illinois University, Carbondale, since 1975. Previously with Lake Forest College and University of Iowa. Various committees, National Highway Research Board, NRC, 1967-76; chairman, Remote Sensing Commission, Association of American Geographers, 1969-71; Earth Observations Committee, Study on Space Science and Earth Observations Priorities, Space Science Board, NAS, 1970-71; chairman, Membership Committee, Midwestern Association of Graduate Schools, 1972-75; Steering Committee for NSF Urban Studies Project, AAG, 1972-76; Committee



on Internal Graduate Program Evaluation, Council of Graduate Schools, 1973-75; Cost of Graduate Education Task Force, CGS-NIH, 1974-75; Editorial Advisory Board, *Transportation*; Long Range Planning Committee and chairman, Finance Task Force, AAG; Committee on External Graduate Degrees, National Association of State Universities and Land-Grant Colleges, AAAS activities: Section Committee, Section on Social and Economic Sciences (K), 1973-; Council, 1973, 1976-78; Council Committee on Fellows, 1976-77.

Lawrence M. Kushner

Lawrence M. Kushner (physical chemistry), 1924; B.S., Queens College, 1945; A.M., 1947, Ph.D., 1949, Princeton University. Coordinator for policy development, National Bureau of Standards, since 1977. Previously with NBS (1948-73) and U.S. Consumer Product Safety Commission (commissioner). Department of Commerce science and technology fellow, 1964-65, Gold Medal, 1968; Meritorious Service Award, American National Standards Institute, 1973; Board of Directors, Washington Academy of Sciences, 1958-59, 1968-70; national chairman, Scientific Research Society of America, 1971-74; Governor of Maryland's Science Advisory Council, 1972-75; Board of Directors, Sigma Xi, 1973-77, national president, 1976, Executive Committee and Long Range Planning Committee. AAAS activities: Electorate Nominating Committee, Section on Chemistry (C), 1974-76; member-at-large of the Section Committee, Section on Industrial Science (P), 1978-81.



Arlo U. Landolt

Arlo U. Landolt (astronomy), 1935; B.A., Miami University, 1955; M.A., 1960, Ph.D., 1962, Indiana University. With Louisiana State University since 1962; professor since 1968; director, LSU Observatory, since 1970. Program director, Astronomy Section, National Science Foundation, 1975-76; member, first wintering-over party at International Geophysical Year Amundson-Scott South Pole Station, Antarctica, 1957. AAAS activities: secretary, Section on Astronomy (D), 1970-77; Council, 1970-73; AAAS-Newcomb Cleveland Prize Committee of Judges, 1975-76.



Gardner Lindzey

Gardner Lindzey (psychology, educational administration), 1920; Ph.D., Harvard University, 1949. Director, Center for Advanced Study in the Behavioral Sciences, since 1975. Previously with Pennsylvania State University, Western Reserve University, Harvard University, Syracuse University, University of

Minnesota, and University of Texas. Distinguished Alumnus Award, Pennsylvania State University; fellow, American Academy of Arts and Sciences, Institute of Medicine; president, American Psychological Association, 1967; director, Society for the Study of Social Biology; chairman, Committee on Substance Abuse and Habitual Behavior; cochairman, Committee on Assessment of Quality of Graduate Education, Assembly of Behavioral and Social Sciences, NAS-NRC; Committees on Biological Bases of Social Behavior and on Work and Personality in the Middle Years, Social Science Research Council; Committee on Waterman Award, NSF. AAAS activities: AAAS Sociopsychological Prize Committee of Judges, 1962-63; Editorial Board, *Science*, 1972-73; Section Committee, Section on Psychology (J), 1975-.



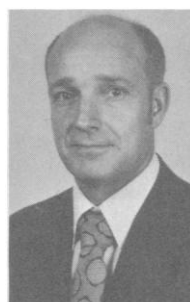
Robert A. Ragotzkie

Robert A. Ragotzkie (physical oceanography, limnology), 1924; B.S., 1948, M.S., 1950, Rutgers University; Ph.D., University of Wisconsin, 1953. With the University of Wisconsin-Madison since 1959; professor since 1965; director, Marine Studies Center (since 1967) and Sea Grant College Program (since 1968). Previously with University of Georgia. Board of Directors, International Association for Great Lakes Research, 1969-72, president, 1971-72; president, National Sea Grant Association (1972-73) and Society of Sigma Xi (1976-77); associate editor, *Journal of Great Lakes Research*; Program Committee, American Society of Limnology and Oceanography; chairman, Budget Committee, National Council of Sea Grant Directors; Wisconsin Coastal Management Council; chairman, Joint Committee on Marine Resources, Land Grant and Sea Grant Associations. AAAS activities: Section Committee, Section on Atmospheric and Hydrospheric Sciences (W), 1976-.



Byron D. Tapley

Byron D. Tapley (aerospace engineering, engineering mechanics), 1933; B.S., 1956, M.S., 1958, Ph.D., 1960, University of Texas. With University of Texas since 1958; W. R. Woolrich professor of engineering since 1974. Executive Committee (Astrodynamics), American Society of Mechanical Engineers, 1967-68; ECPD EEA Committee, vice chairman, Region IV, 1973-74, chairman, 1975; chairman, Technical Committee on Astrodynamics, American Institute of Aeronautics and Astronautics, 1975-77; AIAA Educational Activities Committee, 1974-76; ECPD Executive



Council, 1975-78; SEASAT-A Science Steering Group, 1976-78; NASA Earth Dynamics Advisory Subcommittee, 1977-78; NASA OA Earth Dynamics Advisory Committee; Organizing Committee, U.S.-Brazilian Bi-Lateral Workshop in Dynamical Astronomy; editor, *Celestial Mechanics Journal*. AAAS activities: Section Committees, Sections on Physics (B), Engineering (M), and Information, Computing, and Communication (T), 1968-69; Council, 1968-69, 1971-73; member-at-large of the Section Committee, Section M, 1971-78; chairman, Section M, 1974.

Electorate Elections

Terms of office are as follows: Council delegates, 3 years; Section chairpersons-elect, 3 years (the second year as chairpersons, the third year as retiring chairpersons); members-at-large of the Section Committees, 4 years; members of the Electorate Nominating Committees, 3 years.

Section A-Mathematics

Chairperson-Elect (one to be elected).

Herbert B. Keller
Calvin C. Moore

Herbert B. Keller (mathematics), 1925; B.E.E., Georgia Institute of Technology, 1945; Ph.D., New York University, 1954. With California Institute of Technology since 1965; professor of applied mathematics since 1967. Previously with Georgia Institute of Technology, Sarah Lawrence College, and New York University. Executive Committee, Division of Mathematical Science, NRC, 1970-71; Council, Conference Board of the Mathematical Sciences, 1971-74, American Mathematical Society, 1974-77; Applied Mathematics Advisory Panel, National Bureau of Standards, 1973-76; president, Society for Industrial and Applied Mathematics, 1975-77; editor, *Journal of Computer and Systems Sciences*; Editorial Board, *SIAM Journal on Applied Mathematics*; Council, SIAM; Policy Committee, National Resource for Computation in Chemistry.

Calvin C. Moore (mathematics), 1936; A.B., 1958, M.A., 1959, Ph.D., 1960, Harvard University. With University of California, Berkeley, since 1961; professor since 1966. Previously with University of Chicago. Sloan Foundation fellow, 1965-67; chairman, Committee to Review Society Activities, American Mathematical Society, 1970; Council, AMS, 1970-72, Executive Committee, 1970-71; Executive Committee, Mathematics Division, NRC, 1972-74; chairman, Board of Trustees, AMS; associate editor, *Pacific Journal of Mathematics*; Editorial Board, *Advances in Mathematics*.

Member-at Large of the Section Committee (one to be elected).

Donald S. Cohen
F. C. Hoppenstein

Donald S. Cohen (applied mathematics), 1934; Sc.B., Brown University, 1956; M.S., Cornell University, 1959; Ph.D., New York University, 1962. With California Institute of Technology since 1965; professor of applied

mathematics since 1971. Previously with Columbia University and Rensselaer Polytechnic Institute. Society for Industrial and Applied Mathematics visiting national lecturer, 1971-74; chairman, American Mathematical Society-SIAM National Committee on Applied Mathematics; editor, *SIAM Review*; Editorial Board, *SIAM Journal on Applied Mathematics*.

F. C. Hoppensteadt (mathematics), 1938; Ph.D., University of Wisconsin, 1965. Professor of mathematics, University of Utah, since 1977; professor of mathematics, Courant Institute of Mathematical Sciences, New York University, since 1968. Previously with Michigan State University; senior visiting fellow, Oxford University, 1974. Editor, *Studies in Mathematical Biology*; chairman, Joint American Mathematical Society/Society for Industrial and Applied Mathematics Committee on Applied Mathematics; Editorial Board, *SIAM Journal on Applied Mathematics*.

Members of the Electorate Nominating Committee (two to be elected).

Leonard D. Berkovitz
Albert A. Blank
James A. Donaldson
Harold Grad

Leonard D. Berkovitz (mathematics), 1924; B.S., 1946, M.S., 1948, Ph.D., 1951, University of Chicago. With Purdue University since 1962; currently professor and head, Department of Mathematics. Previously with Stanford University (Atomic Energy Commission postdoctoral fellow), California Institute of Technology (research fellow), and Rand Corporation. Associate editor, *Journal of Optimization Theory and Applications*; editor, *SIAM Journal on Control and Optimization*.

Albert A. Blank (mathematics), 1924; A.B., Brooklyn College, 1944; M.S., Brown University, 1946; Ph.D., New York University, 1951. Professor, Carnegie-Mellon University. Previously with David Taylor Model Basin, New York University, Columbia University, University of Illinois, and University of Tennessee. Chairman, Film Projects Advisory Committee, Mathematical Association of America; Committee on Educational Media, MAA. AAAS activities: Commission on Science Education, 1963-65.

James A. Donaldson (mathematics), 1941; A.B., Lincoln University, 1961; M.S., 1963, Ph.D., 1965, University of Illinois. Professor and chairman, Department of Mathematics, Howard University. Previously with University of Illinois, Chicago Circle, and University of New Mexico (postdoctoral research fellow); visiting member, Courant Institute of Mathematical Sciences, 1976-77. Member-at-large, Council, American Mathematical Society.

Harold Grad (applied mathematics), 1923; Ph.D., New York University, 1948. With New York University since 1944; professor since 1957; founder, Magneto-Fluid Dynamics Division, Courant Institute, and director since 1960. Member, National Academy of Sciences; Boris Pregel Award, New York Academy of Sciences, 1970; chairman, Fluid Dynamics Division, 1963, and Plasma Physics Division, 1968, American Physical Society; Board of Directors, Society of Engineering Sciences, 1963-74; Advisory Committee, Fusion Energy, Oak Ridge National Laboratory, 1964-67, 1973-76; Editorial Boards, *Physics of Fluids*, *Journal of Statistical Physics*, and *Journal of Engineering Science*.

Section B-Physics

Chairperson-Elect (one to be elected).

William M. Fairbank
Melba Phillips

William M. Fairbank (low temperature physics), 1917; B.A., Whitman College, 1939; M.S., 1947, Ph.D., 1948, Yale University. Professor of physics, Stanford University, since 1959. Previously with University of Washington, MIT Radiation Laboratory, Yale University, Amherst College, and Duke University. Sheffield fellow, 1945-46; California Scientist of the Year, 1962; Oliver E. Buckley Prize in Solid State Physics, 1963; Research Corporation Award, 1965; Wilbur Lucus Cross Medal, Yale Graduate School, and Fritz London Award, 1968; member, National Academy of Sciences; Board of Overseers, Whitman College; Committee on Physics and Society, American Institute of Physics; Editorial Board, *Journal of Low Temperature Physics*; Organization Committee, Institute de la Vie; Low Temperature Commission, International Union of Pure and Applied Physics; Alfred P. Sloan Foundation Fellowship Program Committee.

Melba Phillips (physics), 1907; A.B., Oakland City College, 1926; M.A., Battle Creek College, 1928; Ph.D., University of California, Berkeley, 1933. Professor emeritus, University of Chicago; currently residing in New York City. Previously with Battle Creek College, University of California, Berkeley, Connecticut College, Brooklyn College, University of Minnesota, Washington University, State University of New York, Stony Brook, and American Association of Physics Teachers (acting executive officer). Whiting fellow, 1932-33; Helen Huff research fellow, 1935-36; American Association of University Women (Margaret E. Maltby) fellow, 1936-37; Oersted Medal, AAPT, 1973; Commission on College Physics, 1962-68; Governing Board, American Institute of Physics, 1965-68, 1975-77; president, AAPT, 1966-67; chairman, Advisory Committee, AAPT Issue-Oriented Module Project; Committee on the History of Physics, AIP. AAAS activities: Council, 1977-79; Section Committee, Section on Physics, 1977-; Council Committee on Fellows, 1978-79.

Member-at-Large of the Section Committee (one to be elected).

Peter L. Bender
Judy R. Franz

Peter L. Bender (physics), 1930; B.S., Rutgers University, 1951; Ph.D., Princeton University, 1956. Physicist, National Bureau of Standards, since 1956; staff member, Joint Institute for Laboratory Astrophysics, Boulder, since 1962; professor adjoint, Department of Physics, University of Colorado, since 1964. Fulbright scholar, 1951-52; Samuel Wesley Stratton Award, NBS, 1962; chairman, Division of Electron and Atomic Physics, American Physical Society, 1970-71; Council, APS, 1973-77; Space Science Board, National Academy of Sciences; Ad Hoc Committee on Gravitational Physics, NAS/SSB; chairman, Committee on Earth Sciences, NAS/SSB. AAAS activities: Electorate Nominating Committee, Section on Physics, 1974.

Judy R. Franz (solid state physics), 1938; B.A., Cornell University, 1959; M.S., 1961, Ph.D., 1965, University of Illinois. With Indiana University since 1968; associate profes-

sor since 1974. Previously with IBM Research Laboratory, Zurich. Indiana University Amoco Foundation Teaching Award, 1978; Humboldt research fellow, Technical University, Munich, 1978-79; Danforth Foundation associate; NRC Panels to select National Science Foundation graduate fellowship recipients (1973) and to select research associates, National Laboratories (1977-78); Committee on the Status of Women, American Physical Society.

Members of the Electorate Nominating Committee (two to be elected).

Kenneth W. Ford
Margaret Galland Kivelson
Eugen Merzbacher
Jay Orear

Kenneth W. Ford (physics), 1926; A.B., Harvard University, 1948; Ph.D., Princeton University, 1953. President, New Mexico Institute of Mining and Technology, since 1975. Previously with Indiana University, Brandeis University, University of California, Irvine, and University of Massachusetts. Distinguished Service Citation, American Association of Physics Teachers, 1976; Board of Editors, *Physical Review*, 1960-62; president, American Association of Physics Teachers, 1972; Governing Board, American Institute of Physics, 1972-75; associate editor, *American Journal of Physics*, 1974-77.

Margaret Galland Kivelson (physics), 1928; A.B., 1950, A.M., 1951, Ph.D., 1957, Radcliffe College. With the University of California, Los Angeles, since 1967; research geophysicist and professor in residence (space physics) since 1977. Scholar of the Radcliffe Institute, 1965-66; Guggenheim fellow, 1973-74; treasurer, UCLA Chapter, Sigma Xi, 1976-78; president, Association of Academic Women, 1977-78; Overseer, Harvard College; Atmospheric and Space Physics Management Operations Working Group, NASA; Working Group on Basic Research in the Department of Energy, Office of Science and Technology Policy.

Eugen Merzbacher (theoretical physics), 1921; M.A., 1948, Ph.D., 1950, Harvard University. With University of North Carolina, Chapel Hill, since 1952; Kenan professor since 1969; chairman, Department of Physics and Astronomy, since 1977. Previously with Institute for Advanced Study; visiting professor, Duke University, University of Washington, and University of Frankfurt. Thomas Jefferson Award, University of North Carolina, 1972; U.S. Senior Scientist Humboldt Award, 1977; president, University of North Carolina, Chapel Hill, Chapters of Sigma Xi (1962-63), and American Association of University Professors (1977-78); chairman, Southeastern Section, American Physical Society, 1971-72, and APS Committee on Education, 1975; member-at-large, APS Council, 1972-76; chairman, Advisory Committee on Manpower, American Institute of Physics, 1974-76; associate editor, *Atomic Data and Nuclear Data Tables*; NRC Committee on Atomic and Molecular Science.

Jay Orear (high energy physics), 1925; Ph.D., University of Chicago, 1953. With Cornell University since 1958; currently professor of physics. Previously with University of Chicago and Columbia University. Chairman, Federation of American Scientists, 1967-68; Executive Committee, Forum on Physics and Society, American Physical Society, 1970-73.

Section C—Chemistry

Chairperson-Elect (one to be elected).

H. S. Gutowsky
Robert W. Parry

H. S. Gutowsky (chemistry), 1919; A.B., Indiana University, 1940; M.S., University of California, Berkeley, 1946; Ph.D., Harvard University, 1949. With the University of Illinois since 1948; professor since 1956; head, Department of Chemistry, and director, School of Chemical Sciences, since 1970. Guggenheim fellow, 1954–55; Irving Langmuir Award in Chemical Physics, 1966, Midwest Award, St. Louis Section, 1973, and Peter Debye Award in Physical Chemistry, 1975, American Chemical Society; International Society of Magnetic Resonance Prize, 1974; National Medal of Science, 1977; member, National Academy of Sciences; chairman, Chemistry Panel, NSF, 1965–66, Division of Physical Chemistry, ACS, 1966, Board of Trustees, Gordon Research Conferences, 1971–72, Division of Chemical Physics, American Physical Society, 1973, Committee on Professional Training, ACS, 1974–77, and Panel on Atmospheric Chemistry, NAS, 1975–76; Committee on Science and Public Policy, NAS, 1972–75; Council, ACS; Board of Trustees, Argonne Universities Association; Illinois Board of Natural Resources and Conservation. AAAS activities: Council, 1971–72, 1977–79; Editorial Board, *Science*, 1972–77; member-at-large of the Section Committee, Section on Chemistry, 1975–78.

Robert W. Parry (chemistry), 1917; B.S., Utah Agricultural College, 1940; M.S., Cornell University, 1942; Ph.D., University of Illinois, 1946. Distinguished professor of chemistry, University of Utah, since 1969. Previously with University of Michigan. Phi Lambda Upsilon Distinguished Faculty Award, 1960; American Chemical Society Award for Distinguished Service in Organic Chemistry, 1965, Award in Chemical Education, 1977; Manufacturing Chemists Award for Excellence in the Teaching of College Chemistry, 1972; member, National Research Council; chairman, Inorganic Division, 1965, Division of Chemical Education, 1972, ACS; Board of Directors, Gordon Research Conferences, 1965–72, chairman, 1968; president, Inorganic Synthesis, Inc., 1969; Chemistry Panel, NSF, 1969–72; Board of Directors, ACS, chairman, Board of Publications, Division of Chemical Education; Selection and Scheduling Committee, GRC; U.S. National Committee, International Union of Pure and Applied Chemistry; chairman, IUPAC Committee on Chemical Education; Board of Editors, *Inorganic Chemistry and Advances in Chemistry Series*.

Member-at-Large of the Section Committee (one to be elected).

Herbert A. Laitinen
Harry S. Mosher

Herbert A. Laitinen (analytical chemistry), 1915; B.Ch., 1936, Ph.D., 1940, University of Minnesota. Graduate research professor, University of Florida, since 1975. Previously with University of Illinois; visiting scholar, University of Birmingham; visiting scientist, Technische Hochschule, Munich. Shevlin fellow, 1939–40; Guggenheim fellow, 1953, 1962; Fisher Award in Analytical Chemistry, 1961; Minnesota Outstanding Alumni Achievement

Award, 1964; SOCMA Medal for Outstanding Achievement in Environmental Chemistry, 1975; past secretary, Commission on Electrochemical Data, IUPAC; editor, *Analytical Chemistry*; NRC Committee on Analytical Chemistry.

Harry S. Mosher (chemistry), 1915; B.A., Willamette University, 1937; M.S., Oregon State College, 1939; Ph.D., Pennsylvania State College, 1942. With Stanford University since 1947; professor since 1955. Previously with Willamette University and Pennsylvania State College; visiting professor, Vrije Universiteit, Amsterdam. U.S. Public Health Service special research fellow, 1959–60; Distinguished Alumni Award, Willamette University, 1966; American Chemical Society PRF International Faculty Award, 1968–69; chairman, Committee on Professional Training, ACS; Council ACS.

Members of the Electorate Nominating Committee (two to be elected).

Rodney N. Hader
Anita H. Lewin
Blaine C. McKusick
H. Harry Szmant

Rodney N. Hader (chemical engineering), 1922; B.S., University of Illinois, 1944. With the American Chemical Society since 1956; secretary since 1977. Committee on Pensions, Board of Trustees, Group Insurance Plans for ACS Members, Council (ex officio), ACS; secretary, Board of Directors, Council, Executive Committee of Board of Directors, and Council Policy Committee, ACS.

Anita H. Lewin (chemistry), 1935; B.S., 1959, Ph.D., 1963, University of California, Los Angeles. Senior chemist, Chemistry and Life Sciences Division, Research Triangle Institute, since 1975. Previously with University of Pittsburgh and Polytechnic Institute of Brooklyn; visiting professor, Tel Aviv University.

Blaine C. McKusick (organic chemistry), 1918; B.Ch.E., University of Minnesota, 1940; Ph.D., University of Illinois, 1944. With the E. I. du Pont de Nemours & Company since 1945; assistant director, Haskell Laboratory for Toxicology and Industrial Medicine, since 1974. Guggenheim fellow, 1950; Board of Directors, *Organic Syntheses* and *Organic Reactions*; Corporation Associates Committee and Committee on Chemistry and Public Affairs, American Chemical Society.

H. Harry Szmant (chemistry), 1918; B.A., Ohio State University, 1940; Ph.D., Purdue University, 1944. Professor and chairman, Department of Chemistry and Chemical Engineering, University of Detroit, since 1968; associate dean for science, College of Engineering and Science, since 1976. Previously with Monsanto Chemical Company, Duquesne University, University of Oriente (where he founded the Center of Chemical Studies), University of Puerto Rico, and Puerto Rico Nuclear Center. Leonardo Igaravidez Award, Puerto Rico Section, American Chemical Society, 1976; councillor, Detroit Section, ACS; Council Committees on Public Relations and International Activities, ACS.

Section D—Astronomy

Chairperson-Elect (one to be elected).

Tobias Owen
Elske v.P. Smith

Tobias Owen (astronomy), 1936; B.A., 1955, B.S., 1959, M.S., 1960, University of Chicago; Ph.D., University of Arizona, 1965. With State University of New York, Stony Brook, since 1970; professor since 1972. Previously with IIT Research Institute; visiting associate in planetary sciences, California Institute of Technology. NASA Group Achievement Award, Lunar Orbit Experiments Team, 1971; NASA Medal for Exceptional Scientific Achievement, 1977; Medal of the Aero-Club of Cairo, 1977; AAAS-Newcomb Cleveland Prize (jointly with all *Viking Science* authors), 1978; president, Commission 16, International Astronomical Union; chairman, Task Group on Outer Solar System Nomenclature, IAU; associate editor, *Icarus*; Editorial Committee, *Annual Review of Astron. Astrophys.*; participant in Viking, Voyager, and IUE projects, NASA.

Elske v.P. Smith (astronomy), 1929; B.S., 1950, M.S., 1951, Ph.D., 1955, Radcliffe College. With University of Maryland since 1963; currently professor of astronomy and assistant provost, Division of Mathematical and Physical Sciences and Engineering. Previously with Sacramento Peak Observatory and Joint Institute for Laboratory Astrophysics; visiting professor, American Astronomical Society. Treasurer, Solar Physics Division, AAS, 1970–74; vice president and president, Gamma of Maryland, Phi Beta Kappa, 1974–75; Visiting Committee, Association of Universities for Research on Astronomy; Council, AAS; chairman, U.S. National Committee, International Astronomical Union.

Member-at-Large of the Section Committee (one to be elected).

Anthony F. Aveni
Alar Toomre

Anthony F. Aveni (astronomy), 1938; A.B., Boston University, 1960; Ph.D., University of Arizona, 1965. With Colgate University since 1963; professor of astronomy since 1973. Visiting professor and acting director of the Observatory, University of South Florida, 1974–75. Board of Directors and Education Committee, New York Astronomical Society.

Alar Toomre (theoretical astronomy, applied mathematics), 1937; S.B., Massachusetts Institute of Technology, 1957; Ph.D., University of Manchester, 1970. With MIT since 1960; professor of applied mathematics since 1970. Visiting fellow, Institute for Advanced Study, 1962–63. Marshall scholarship, 1957–60; Guggenheim fellow, 1969–70; Fairchild scholar, 1975. CTIO Telescope Assignment Committee; university committees.

Members of the Electorate Nominating Committee (two to be elected).

Richard C. Henry
Torrence V. Johnson
Hugh H. Kieffer
Nancy D. Morrison

Richard C. Henry (astronomy), 1940; B.Sc., 1961, M.A., 1962, University of Toronto; Ph.D., Princeton University, 1967. Deputy director, Astrophysics Division, NASA. With Johns Hopkins University since 1968; professor of physics since 1977; currently on leave. Previously with Institute for Advanced Study and Naval Research Laboratory. Royal Astronomical Society of Canada Gold Medal, 1961; Alfred P. Sloan research fellow, 1971–75; editor-in-chief, *Astrophysical Letters*; Space Science Steering Com-

mittee, Office of Space Science, National Aeronautics and Space Administration.

Torrence V. Johnson (planetary astronomy), 1944; B.S., Washington University, 1966; Ph.D., California Institute of Technology, 1970. With Jet Propulsion Laboratory since 1971; group supervisor, Optical Astronomy Group, Planetary Atmospheres Section, since 1974. Previously with Massachusetts Institute of Technology. Secretary-treasurer, DPS; project scientist, Project Galileo (Jupiter Orbiter with Probe mission).

Hugh H. Kieffer (planetary science), 1939; B.S., 1961, Ph.D., 1968, California Institute of Technology. With University of California, Los Angeles, since 1969; associate professor of planetary physics since 1975. Previously with California Institute of Technology, NASA Exceptional Scientific Achievement Award; NASA Mars Science Steering Group.

Nancy D. Morrison (stellar astronomy), 1946; B.A., Radcliffe College, 1967; Ph.D., University of Hawaii, 1975. Postdoctoral research associate, Joint Institute for Laboratory Astrophysics, University of Colorado. Chairman, Publications Committee, Astronomical Society of the Pacific.

Section E—Geology and Geography

Chairperson-Elect (one to be elected).

Doris Malkin Curtis
Milton B. Dobrin
Philip E. LaMoreaux

Doris Malkin Curtis (geology, sedimentology), 1914; B.A., Brooklyn College, 1933; M.A., 1934, Ph.D., 1949, Columbia University. With Shell Development Company since 1959; currently staff geologist. Previously with Fohs Oil Company, Shell Oil Company, University of Houston, Scripps Institute of Oceanography, and University of Oklahoma. Secretary-treasurer, Society of Economic Paleontologists and Mineralogists, 1964–66, president, 1978–79; Membership Committee, Geological Society of America; Board of Governors, American Geological Institute; Advisory Council (ex officio), American Association of Petroleum Geologists; Council (ex officio), SEPM.

Milton B. Dobrin (geophysics), 1915; B.S., Massachusetts Institute of Technology, 1936; M.S., University of Pittsburgh, 1941; Ph.D., Columbia University, 1950. Professor of geology, University of Houston, since 1969. Previously with Gulf Research and Development, Naval Ordnance Laboratory, Mobil Oil, BP Oil and Gas, and United Geophysical Company; Exxon visiting lecturer, University of Sydney. Best Paper Award, Society of Exploration Geophysicists, 1965; first vice president, 1961–62, president, 1969–70, SEG; chairman, Geophysics Division, Geological Society of America, 1977–78; Governing Committee, Consortium for Continental Reflection Profiling, Continuing Education Panel.

Philip E. LaMoreaux (geology, hydrology), 1920; B.A., Denison University, 1943; D.Sc., University of Alabama, 1949. President and hydrogeologist, P. E. LaMoreaux and Associates, Inc., since 1961; professor of geology, University of Alabama, Tuscaloosa, since 1966. Previously with U.S. Geological Survey and Geological Survey of Alabama; visiting lecturer, College Programs, American Geological Institute, 1961–71, and American Geophysical Union, 1961–, and Alabama Acad-

emy of Science High School Program, 1961–. Distinguished Alumni Award, Denison University; past president, Association of State Geologists and American Geological Institute; vice chairman, Interstate Oil Compact Commission, 1963; chairman, Hydrogeology Group, 1963, and O. E. Meinzer Award Committee, 1965, Geological Society of America; delegate, House of Delegates, American Association of Petroleum Geologists, 1970–72; NAS National Committee for the International Hydrological Decade; Committee for the Development of the Appalachian Region; State (Alabama) Resources Management Committee, Department of Civil Defense; Alabama Industrial Advisory Committee; chairman, Governor's Committee on Off-shore Drilling for Gas and Oil.

Member-at-Large of the Section Committee (one to be elected).

Samuel P. Ellison, Jr.
William B. Heroy, Jr.
Charles J. Mankin

Samuel P. Ellison, Jr. (geology), 1914; A.B., University of Kansas City, Missouri, 1936; M.A., 1938, Ph.D., 1940, University of Missouri-Columbia. With University of Texas-Austin since 1948; Deussen professor of energy resources since 1972. Previously with University of Missouri-Rolla and Stanolind Oil and Gas Company. Gregory graduate fellow, 1938–39; Alumnus of the Year Award, University of Kansas City, 1955; Teaching Excellence Award, University of Texas Students Association, 1963; C. H. Pander Society Award, 1977; Distinguished Service Award, American Association of Petroleum Geologists, 1977; secretary-treasurer, Society of Economic Paleontologists and Mineralogists, 1953–58, president, 1959–60; Council, Geological Society of America, 1963–66; vice president, National Association of Geology Teachers, 1963–64, president, 1964–65; president, Austin Geological Society, 1967–68; vice president, AAPG, 1972–73; Committees on Conventions and on Public Affairs, AAPG.

William B. Heroy, Jr. (geological sciences), 1915; A.B., Dartmouth College, 1937; Ph.D., Princeton University, 1941. With Southern Methodist University since 1970; professor since 1976. Previously with Texaco, Geotech, and Teledyne. President, Dallas Geophysical Society, 1962–63; vice president-finance, American Geological Institute, 1965–68, president, 1968–69; Council, Geological Society of America, 1969–72; treasurer, American Association of Petroleum Geologists, 1970–72; Space Applications Board, 1972–77; treasurer, GSA; trustee, The Hockaday School; director, Garland Memorial Hospital.

Charles J. Mankin (geology), 1932; B.S., 1954, M.A., 1955, Ph.D., 1958, University of Texas. With University of Oklahoma since 1959; professor of geology since 1964; director, Oklahoma Geological Survey, since 1967; and interim director, Energy Resources Center, since 1978. Previously with California Institute of Technology. National secretary-treasurer, Sigma Gamma Epsilon, 1967–; vice chairman, 1968, chairman, 1969, South-Central Section, Geological Society of America; secretary-treasurer, vice president, president, Association of American State Geologists, 1968–76; president, Oklahoma Academy of Science, 1973, American Geological Institute, 1978; vice chairman, Board on Mineral and Energy Resources, National Academy of Sci-

ences; Commission on Natural Resources, NAS; U.S. National Committee on Geology; Organizing Committee, 9th International Carboniferous Congress; Committee on Correlation of Stratigraphic Units of North America, American Association of Petroleum Geologists; Energy Advisory Council, Gulf Universities Research Consortium.

Members of the Electorate Nominating Committee (two to be elected).

Allen F. Agnew
Priscilla C. Grew
Ursula B. Marvin
John C. Maxwell

Allen F. Agnew (geology), 1918; A.B., 1940, M.S., 1942, University of Illinois; Ph.D., 1949, Stanford University. With Congressional Research Service, Library of Congress, since 1974; senior specialist in environmental policy. Previously with Illinois State Geological Survey, U.S. Geological Survey, University of Alabama, South Dakota Geological Survey, University of South Dakota, Indiana University, and Washington State University. Robert Peele Award for Technical Writing, American Institute of Mining Engineers, 1961; chairman, Technical Division, National Water Well Association, 1963; vice chairman, Hydrogeology Division, Geological Society of America, 1965; editor, American Institute of Professional Geologists, 1975–76; chairman, Committee on Geology and Public Policy, GSA; Committee on Geoscience Public Information, American Geological Institute; Committee on Legislation and Regulation, Association of Professional Geological Scientists; Executive Committee, Council on Economics, D.C. Section, AIME.

Priscilla C. Grew (geology), 1940; B.A., Bryn Mawr College, 1962; Ph.D., University of California, Berkeley, 1967. Director, California Department of Conservation, since 1977; assistant research geologist, Institute of Geophysics and Planetary Physics, University of California, Los Angeles (on leave). Previously with Boston College; visiting professor, University of California, Davis. NSF graduate fellow, 1962–66; secretary, Geosciences Advisory Panel, Los Alamos Scientific Laboratory, 1972–75; Nominations Committee, Geological Society of America, 1974; chairman, California Mining and Geology Board, 1976–77, and California Geothermal Resources Task Force, 1977; chairman, California Geothermal Resources Board; Geothermal Advisory Committee, California Energy Commission; secretary, Working Group 5, Inter-Union Commission on Geodynamics.

Ursula B. Marvin (geology), 1921; B.A., Tufts College, 1943; M.A., Harvard-Radcliffe Colleges, 1946; Ph.D., Harvard University, 1969. Geologist, Smithsonian Astrophysical Observatory, since 1961; lecturer, Department of Geological Sciences, Harvard University, since 1974. Previously with University of Chicago, Union Carbide Ore Company, and Tufts University. Treasurer, 1967–72, first vice president, 1973–74, and president, 1975–76, Meteoritical Society; president, 1972–73, Executive Board, 1974–76, Harvard-Radcliffe Chapter, Sigma Xi; NASA Lunar Sample Analysis Planning Team; NSF Meteorite Working Group; Women Geoscientists Committee, American Geological Institute; Board of Trustees, Tufts University.

John C. Maxwell (geology), 1914; B.A., Depauw University, 1936; M.A., University of Minnesota, 1937; Ph.D., Princeton University,

ty, 1946. William Stamps Farish professor of geological sciences, University of Texas, since 1970. Previously with Sun Oil Company and Princeton University. Fulbright scholar, 1952-53; NSF senior postdoctoral fellow, 1961-62; University of Minnesota Outstanding Achievement Award, 1972; president, American Geological Institute, 1971, and Geological Society of America, 1973; reporter, Plate Margins Group, U.S. Geodynamics Committee; Executive Committee, COCORP; chairman, Advisory Panel, Earth Sciences Division, National Science Foundation; Committee on Nominations, GSA.

Section G—Biological Sciences

Chairperson-Elect (one to be elected).

V. G. Dethier
Thomas Eisner

V. G. Dethier (chemoreception, animal behavior), 1915; A.B., Harvard College, 1936; A.M., 1937, Ph.D., 1939, Harvard University. Gilbert L. Woodside professor of zoology, University of Massachusetts, since 1975. Previously with John Carroll University, Ohio State University, Johns Hopkins University, University of Pennsylvania, and Princeton University. Belgian-American Education Foundation fellow, 1952; Fulbright fellow, 1954; Guggenheim fellow, 1964, 1972; member, National Academy of Sciences; president, American Society of Zoologists, 1968; Editorial Boards, *Journal of Comparative Physiological Psychology*, *American Naturalist*, and *Journal of Experimental Zoology*; U.S. National Committee, International Union of Biological Sciences. AAAS activities: chairman, Section on Zoological Sciences, and Council, 1968.

Thomas Eisner (insect behavior, chemical communication), 1929; B.A., 1951, Ph.D., 1955, Harvard University. With Cornell University since 1965; Jacob Gould Schurman professor of biology since 1976. Previously with Harvard University; visiting centennial professor, Texas A & M University, 1976. AAAS-Newcomb Cleveland Prize (shared with E. O. Wilson), 1968; Founder's Memorial Award, Entomological Society of America, 1969; Professor of Merit Award, Cornell University, 1973; member, National Academy of Sciences; Editorial Boards, *Chemical Ecology*, *Journal of Comparative Physiology*, and *Behavioral Ecology and Sociobiology*; Advisory Board, *Cornell Review*; Ad Hoc Committee to Save the Big Thicket of Texas; Council, Federation of American Scientists; Amnesty International. AAAS activities: Editorial Board, *Science*, 1970-71; Holiday Science lecturer, 1970; Annual Meeting lecturer, 1970, 1978.

Member-at-Large of the Section Committee (one to be elected).

Michael J. Greenberg
Jack W. Hudson

Michael J. Greenberg (comparative invertebrate physiology), 1931; A.B., Cornell University, 1953; M.A., Florida State University, 1955; Ph.D., Harvard University, 1958. With Florida State University since 1965; professor, Department of Biological Sciences, since 1974; scientific director, FSU Marine Laboratory, since 1978. Previously with University of Illinois and Marine Biological Laboratory, Woods Hole. National Science Foun-

dation fellow, 1964-65; chairman, Division of Comparative Physiology and Biochemistry, American Society of Zoologists, 1976-77; president, Tallahassee, Sopchoppy and Gulf Coast Marine Biological Association; Editorial Boards, *Comparative General Pharmacology* and *Physiological Zoology*; Life Sciences Advisory Screening Committee, Council for International Exchange of Scholars; cochairman, Task Force on Comparative Physiology, American Physiological Society.

Jack W. Hudson (comparative physiology), 1926; B.A., 1948, M.A., 1950, Occidental College; Ph.D., University of California, Los Angeles, 1960. With Cornell University since 1967; professor of zoology since 1971. Previously with El Camino College, Occidental College, Rice University, and National Science Foundation; visiting professor, University of New South Wales, 1974, 1978. Allied Chemical and Dye fellow, 1954-55; Danforth Teacher, 1957-58; secretary-treasurer, Society of Sigma Xi, Rice University, 1965-66; program officer, Division of Comparative Physiology and Biochemistry, American Society of Zoologists.

Members of the Electorate Nominating Committee (two to be elected).

Alan Gelperin
Ann E. Kammer
Alan J. Kohn
Linda H. Mantel

Alan Gelperin (neurophysiology, behavior), 1941; Ph.D., University of Pennsylvania, 1966. Associate professor of biology, chairman, Interdepartmental Program in Neuroscience, since 1974, and director of graduate studies, Department of Biology, Princeton University, since 1976; course director, Neural Systems and Behavior, Marine Biological Laboratory, Woods Hole, since 1977. AAAS-Newcomb Cleveland Prize, 1971; Guggenheim fellow, 1973.

Ann E. Kammer (neurobiology), 1935; B.S., State University of New York, Albany, 1956; M.S., University of New Hampshire, 1958; Ph.D., University of California, Berkeley, 1966. Associate professor, Division of Biology, Kansas State University, since 1972. Previously with University of California, Davis, University of Saarland, and University of Koln. Program officer, Division of Comparative Physiology and Biochemistry, American Society of Zoologists, 1973-74; Task Force on Comparative Physiology, ASZ-APS, 1976-77; Program Advisory Committee, American Physiological Society. AAAS activities: Section Committee, Section on Education, 1978-.

Alan J. Kohn (zoology), 1931; A.B., Princeton University, 1953; Ph.D., Yale University, 1957. With University of Washington since 1961; professor of zoology since 1967. Previously with Florida State University. W. W. Anderson fellow, 1958; Guggenheim fellow, 1974-75; treasurer, American Society of Zoologists, 1971-74, chairman, Division of Invertebrate Zoology, 1966; president, University of Washington Chapter, Sigma Xi, 1971-72; Editorial Boards, *American Naturalist* and *Malacologia*; Great Barrier Reef Committee; Aldabra Research Committee, Royal Society; Mollusk Advisory Committee, Smithsonian Oceanographic Sorting Center. AAAS activities: Section Committee, Section on Biological Sciences, and Council, 1971-73.

Linda H. Mantel (invertebrate physiology, endocrinology), 1939; B.A., Swarthmore Col-

lege, 1960; M.S., 1962, Ph.D., 1965, University of Illinois. With City College of New York since 1968; associate professor of biology since 1975. With American Museum of Natural History since 1965; research associate since 1968. Previously with University of Illinois. U.S. Public Health Service fellow, 1965-66; founder and president, Crustacean Club, American Society of Zoologists, 1972; vice president and program chairman, New York Association for Women in Science, 1975-76; program chairman, Committee on Women in Science, New York Academy of Science; Committee on Public Affairs, ASZ.

Section H—Anthropology

Chairperson-Elect (one to be elected).

Edward I. Fry
James Silverberg

Edward I. Fry (anthropology), 1924; B.A., 1949, M.A., 1950, University of Texas; Ph.D., Harvard University, 1958. Professor of anthropology, Southern Methodist University, since 1966. Previously with Antioch College and University of Nebraska. Fulbright fellow, 1953-54, 1963-64; secretary-treasurer, American Association of Physical Anthropologists, 1969-73, president, 1973-75; Committee on Ethics, American Anthropological Association. AAAS activities: Section Committee, Section on Anthropology, and Council, 1969-73.

James Silverberg (anthropology), 1921; B.S., 1947, M.S., 1950, Ph.D., 1962, University of Wisconsin-Madison. With University of Wisconsin-Milwaukee since 1956; professor of anthropology since 1967. Previously with Columbia University, American University, and Universidad Central de Venezuela; field director in Mexico, University of Wisconsin-Madison/Rockefeller Foundation, Social Use of Solar Energy Field Project, 1962. Ford Foundation fellow, 1951-52; Invitado Especial, Vth Latin American Congress of Sociology, Caracas, 1961, VIth, Bogota, 1964; Executive Board, 1969-72, chairperson, Nominations Committee, 1969-71, Society for Applied Anthropology; Executive Board, Central States Anthropological Society, 1969-72. AAAS activities: Section Committee, Section on Anthropology, 1972-; Council, 1972-79; Council Committee on Fellows, 1978-79.

Member-at-Large of the Section Committee (one to be elected).

J. Lawrence Angel
William H. Davenport

J. Lawrence Angel (physical anthropology), 1915; A.B., 1936, Ph.D., 1942, Harvard University. Curator of physical anthropology, Smithsonian Institution, since 1962. Previously with Harvard University, University of California, Berkeley, University of Minnesota, and Jefferson Medical College. Guggenheim fellow; president, Philadelphia Anthropological Society, 1946-48, Archaeological Institute of America Philadelphia Society, 1949-50, and Anthropological Society of Washington, 1974-75; secretary-treasurer, American Association of Physical Anthropologists, 1952-56, vice president, 1959-60. AAAS activities: Section Committee, Section on Anthropology, 1950-51, 1955-56, 1975-77; member-at-large of the Section Committee, Section on Anthropology, 1963-66; Council, 1950-51, 1955-56, 1963-66.

William H. Davenport (anthropology), 1922; B.A., University of Hawaii, 1952; Ph.D., Yale University, 1956. Professor and curator for oceanica, Department of Anthropology, University of Pennsylvania, since 1972. Previously with Yale University and University of California, Santa Cruz. Fellow, Center for Advanced Study in the Behavioral Sciences, 1971-72; Council, Smithsonian Institution.

Members of the Electorate Nominating Committee (two to be elected).

Robert E. Ackerman
Alexander Alland, Jr.
Arthur J. Jelinek
Jane B. Lancaster

Robert E. Ackerman (anthropology), 1928; A.B., 1950, M.A., 1951, University of Michigan; Ph.D., University of Pennsylvania, 1961. With Washington State University since 1961; currently professor, Department of Anthropology. Previously with Eastern Pennsylvania Psychiatric Institute and University of Delaware. U.S.A. senior exchange scholar to U.S.S.R., NAS, 1976; symposium organizer, Khabarovsk Congress, U.S.S.R., for 1979.

Alexander Alland, Jr. (cultural anthropology), 1931; B.S., University of Wisconsin, 1954; M.S., University of Connecticut, 1958; Ph.D., Yale University, 1963. With Columbia University since 1964; currently professor, Department of Anthropology. Previously with Vassar and Hunter Colleges. Guggenheim fellow, 1976-77; chairman, Ethics Committee, American Anthropological Association, 1976. AAAS activities: Section Committees, Sections on Anthropology and on Information, Computing, and Communication, and Council, 1970-72.

Arthur J. Jelinek (prehistoric archaeology), 1928; B.A., University of New Mexico, 1952; M.A., 1955, Ph.D., 1960, University of Michigan. Professor of anthropology, University of Arizona, since 1967. Previously with Beloit College (Logan Museum fellow), University of Chicago, and University of Michigan. Executive Committee, Society for American Archaeology, 1971-73, Nominating Committee, 1967 and 1977; editor, Viking Fund Publications in Anthropology, 1973-77.

Jane B. Lancaster (physical anthropology), 1935; Ph.D., University of California, Berkeley, 1967. Assistant professor, Department of Anthropology, University of Oklahoma, since 1977. Previously with University of California, Berkeley, and Rutgers University. Standing Committee on Biosocial Science, Social Science Research Council; Planning Committee on Research in Human Origins, National Science Foundation.

Section J—Psychology

Council Delegates (three to be elected).

Rachel Keen Clifton
Robert M. Gagné
Herschel W. Leibowitz
Lewis P. Lipsitt
M. Brewster Smith
Bernice M. Wenzel

Rachel Keen Clifton (developmental psychology), 1937; B.A., Berea College, 1959; M.A., 1960, Ph.D., 1963, University of Minnesota. With University of Massachusetts since 1968; professor of psychology since 1976. Previously with University of Iowa. NIMH fellow, 1960-63; NICHD fellow, 1963-66; consulting and associate editor, *Psycho-*

physiology, 1969-74; consulting editor, *Developmental Psychology*, 1974-76; Experimental Psychology Study Section, NIH, 1974-77; Board of Directors, Society for Research in Psychophysiology, 1975-78; associate editor, *Child Development*; consulting editor, *Infant Behavior and Development*; Social and Behavioral Sciences Research Advisory Committee, National Foundation.

Robert M. Gagné (psychology), 1916; A.B., Yale University, 1937; M.Sc., 1939, Ph.D., 1940, Brown University. Professor of instructional design, Florida State University, since 1969. Previously with Pennsylvania State University, Connecticut College, U.S. Air Force, Princeton University, American Institutes for Research, and University of California, Berkeley; fellow, Center for Advanced Study in the Behavioral Sciences, 1972-73. Eminent Lectureship Award, Society of Engineering Education, 1970; AERA-Phi Delta Kappa Award for Distinguished Educational Research, 1972; E. L. Thorndike Award in Educational Psychology, 1974; John Smyth Memorial Award, Victorian Institute of Educational Research, 1976; president, Division of Military Psychology, 1960-61, and Division of Educational Psychology, 1967-68, American Psychological Association; president, American Educational Research Association, 1970-71; consulting editor, *Journal of Educational Psychology* and *Instructional Science*. AAAS activities: Section Committee, Section on Psychology (J), 1963; Council, 1963, 1966-68, 1970-71; Commission on Science Education, 1963-67; member-at-large of the Section Committee, Section J, 1965-68; chairman, Section J, 1966; Section Committee, Section on Education (Q), 1970-71.

Herschel W. Leibowitz (experimental psychology), 1925; B.A., 1948, University of Pennsylvania; M.A., 1950, Ph.D., 1951, Columbia University. With Pennsylvania State University since 1962; Evan Pugh professor of psychology since 1977; currently on leave at Department of Neurology, University of Freiburg. Previously with University of Wisconsin and IBM; earlier visiting appointments at University of Michigan, Massachusetts Institute of Technology, Institute for Perception (Netherlands), Florida State University, University of Freiburg, and University of Florida. Guggenheim fellow, 1957; senior awardee, Alexander von Humboldt Foundation, 1976-78; Board of Scientific Affairs, American Psychological Association, 1967-71; Executive Council, NRC Vision Committee, 1972-75. AAAS activities: Electorate Nominating Committee, Section on Psychology, 1977-79.

Lewis P. Lipsitt (experimental child psychology), 1929; B.A., University of Chicago, 1950; M.S., University of Massachusetts, 1952; Ph.D., University of Iowa, 1957. With Brown University since 1957; currently professor of psychology, professor of medical science, and director, Child Study Center. Visiting professor, University of California, Los Angeles, 1960, and University of Washington, 1962. Guggenheim fellow, 1972-73; Executive Committee, Division of Developmental Psychology, American Psychological Association, 1967-70; Board of Governors, Brown University Chapter, Sigma Xi, 1967-70; Experimental Psychology Study Section, NIH, 1968-72; Council, APA, 1971-74; Social and Behavioral Sciences Research Advisory Committee, National Foundation for the March of Dimes; Publications Committee, Society for Research in Child Development; Young Scientist Award Committee, APA; editor, *Infant Behavior and Development*.

AAAS activities: Section Committee, Section on Psychology, 1971-; Council, 1971-73, 1976-78.

M. Brewster Smith (psychology), 1919; B.S., 1939, M.A., 1940, Stanford University; Ph.D., Harvard University, 1947. Professor of psychology, University of California, Santa Cruz, since 1970. Previously with Harvard University, Vassar College, Social Science Research Council, New York University, University of California, Berkeley, and University of Chicago. Fellow, Center for Advanced Study in the Behavioral Sciences, 1964-65; senior fellow, National Endowment for the Humanities, 1975-76; Allport Memorial Lecturer, Harvard University, 1978; vice president, Joint Commission on Mental Illness and Health, 1955-60; president, Society for the Psychological Study of Social Issues, 1958-59, and American Psychological Association, 1978; Problems and Policy Committee, Committee on Life-Course Perspectives on Middle- and Old-Age, Social Science Research Council; Advisory Board, Population Resource Center; Scientific Advisory Committee, Henrietta Szold Institute. AAAS activities: Committee of Judges, AAAS Sociopsychological Prize, 1968-69.

Bernice M. Wenzel (physiological psychology), 1921; A.B., Beaver College, 1942; A.M., 1943, Ph.D., 1948, Columbia University. With University of California, Los Angeles, since 1956; currently professor and assistant dean, Department of Physiology, School of Medicine. Previously with Tulane University and Columbia University. NIMH fellow, 1957-59; Woman of Science, UCLA Medical Center Auxiliary; program chair, Division of Physiological and Comparative Psychology, American Psychological Association; Research Committee, San Diego Zoological Society. AAAS activities: member-at-large of the Section Committee, Section on Psychology, 1974-77.

Chairperson-Elect (one to be elected).

Lloyd G. Humphreys
Harriet L. Rheingold

Lloyd G. Humphreys (psychology), 1913; B.S., University of Oregon, 1935; M.A., Indiana University, 1936; Ph.D., Stanford University, 1938. Professor of education and psychology, University of Illinois, since 1971. Previously with Northwestern University, University of Washington, Stanford University, U.S. Air Force, and National Science Foundation. National Research Council fellow, 1938-39; Carnegie fellow, 1941-42; president, Division of Military Psychology, 1957-58, and Division of Evaluation and Measurement, 1960-61, American Psychological Association; president, Psychometric Society, 1959-60; Organizing Committee, Psychonomic Society, 1959-60, chairman, Governing Board, 1962-63; editor, *Psychological Bulletin*, 1964-69; Board of Directors, APA, 1975-78; Illinois Governor's Blue Ribbon Committee on Licensing Practices, 1977-78; editor, *American Journal of Psychology*. AAAS activities: Section Committee, Section on Psychology (J), 1957-60; Council, 1957-60, 1963, 1974-78; member-at-large of the Section Committee, Section J, 1961-64; chairman, Section J, 1963; Council Committee on Fellows, 1976-77.

Harriet L. Rheingold (developmental psychology), 1908; A.B., Cornell University, 1928; M.A., Columbia University, 1930; Ph.D., University of Chicago, 1955. Research professor, Department of Psychology, Uni-

versity of North Carolina, Chapel Hill, since 1964. Previously with Illinois Institute for Juvenile Research, Rockford College, and National Institute of Mental Health; visiting professor, University of Texas and Allegheny College. Research Career Award, National Institute of Child Health and Human Development, 1964-; fellow, Center for Advanced Study in the Behavioral Sciences, 1967; G. Stanley Hall Award, American Psychological Association, 1977; Council of Representatives, APA, 1966-69, 1970-73; president, Division 7, APA, 1972-73; chairman, Ethics Committee, Society for Research in Child Development, 1971; President's Biomedical Research Panel, 1975; president, University of North Carolina Chapter, Sigma Xi; Mental Retardation Research Committee, NICHD; Advisory Board, *Journal of Child Psychology and Psychiatry*.

Member-at-Large of the Section Committee (one to be elected).

Nancy S. Anderson
Sheldon J. Korchin

Nancy S. Anderson (psychology), 1930; B.A., University of Colorado, 1948; M.A., 1953, Ph.D., 1956, Ohio State University. With University of Maryland since 1959; professor since 1966. Previously with IBM Research Center. NSF fellow, 1964-65; consulting editor, *Journal of Experimental Psychology*, 1964-75; Board of Directors, Eastern Psychological Association, 1974-76; secretary-treasurer, Division of Experimental Psychology, American Psychological Association, 1975-78; Council of Representatives, APA. AAAS activities: Council, 1974-78; Council Committee on Fellows, 1974-75; Committee on Council Affairs, 1976-77; Section Committee, Section on Psychology, 1977-.

Sheldon J. Korchin (psychology), 1921; B.A., Brooklyn College, 1942; M.A., Clark University, 1943; Ph.D., Harvard University, 1946. Professor of psychology, University of California, Berkeley, since 1963. Previously with New York State Psychiatric Institute, Harvard University, VA Mental Hygiene Clinic (Philadelphia), Princeton University, Michael Reese Hospital (Chicago), Northwestern University, University of Genoa (Fulbright professor), and National Institute of Mental Health. NIMH Visiting Scientist Award, 1959-60; NIMH fellow, 1969-70; Ford Foundation Travel Study Award, 1969-70; Fulbright research scholar, 1976-77; Award for Distinguished Contribution to the Science and Profession of Clinical Psychology, Division of Clinical Psychology, American Psychological Association, 1978; Clinical Projects Research Review Committee, NIMH, 1972-76; advisory editor, *Psychiatry*; chairman, California Conference on Clinical Psychology.

Members of the Electorate Nominating Committee (two to be elected).

Jacob Beck
Howard H. Kendler
John I. Lacey
Janet T. Spence

Jacob Beck (experimental psychology), 1929; Ph.D., Cornell University, 1958. With University of Oregon since 1966; professor of psychology since 1967. Previously with University of Pennsylvania, Harvard University, and National Science Foundation. NATO senior fellow in science, 1977; Advisory Panel for Psychobiology, NSF, 1968-71; Committee

on Vision, National Research Council, 1973-75; consulting editor, *Journal of Experimental Psychology: Human Perception and Performance*; chairman, Membership Committee, Division of Experimental Psychology, American Psychological Association.

Howard H. Kendler (psychology), 1919; A.B., Brooklyn College, 1940; M.A., 1941, Ph.D., 1943, University of Iowa. Professor of psychology, University of California, Santa Barbara, since 1963. Previously with University of Iowa, Office of Scientific Research and Development, University of Colorado, and New York University; visiting professor, University of California, Berkeley, and Hebrew University. President, Division of Experimental Psychology, 1964-65, and Division of General Psychology, 1967-68, American Psychological Association; chairman, Governing Board, Psychonomic Society, 1968-69; fellow, Center for Advanced Study in Behavioral Sciences, 1969-70; president, Western Psychological Association, 1970-71; Executive Committee, Society of Experimental Psychologists, 1971-73. AAAS activities: Section Committee, Section on Psychology, and Council, 1956-57, 1961-62.

John I. Lacey (psychology), 1915; A.B., 1937, Ph.D., 1941, Cornell University. With Fels Research Institute, School of Medicine, Wright State University, since 1946; Fels professor in psychiatry and chief, Section on Behavioral Physiology, since 1977. Previously with Queens College and Antioch College. Award for Distinguished Contributions in Psychophysiology, Society for Psychophysiological Research, 1970; Distinguished Scientific Contribution Award, American Psychological Association, 1976; Johns Hopkins University Centennial Scholar, 1976; president, SPR, 1962; president, Division of Physiological and Comparative Psychology, APA, 1969-70; Council of Directors, American Psychosomatic Society, 1960-62; Board of Directors, SPR, 1965-68, APA, 1974-77; Policy and Planning Board and chairman, Committee on Scientific Awards, APA; Panel on Neurological Devices, Food and Drug Administration; Program Committee, Society for Neuroscience; Board of Scientific Counselors, National Institute on Aging; secretary, Chapter of Engineering in Medicine and Biology Society.

Janet T. Spence (psychology), 1923; A.B., Oberlin College, 1945; M.A. and Ph.D., 1949, University of Iowa. Professor of psychology and educational psychology, University of Texas, since 1964. Previously with Northwestern University and VA Hospital, Iowa City. Gold Medal Award, Hollins College, 1968; chair, Board of Scientific Affairs, American Psychological Association, 1972; president, Southwestern Psychological Association, 1972; Board of Directors, Social Science Research Council, 1974-76; Council of Representatives, APA, 1974-76; Committee on Abilities Testing, National Research Council; Board of Directors, APA; editor, *Contemporary Psychology*. AAAS activities: Electorate Nominating Committee, Section on Psychology (J), 1975-77; member-at-large of the Section Committee, Section J, 1976-79.

Section K—Social and Economic Sciences

Council Delegates (two to be elected).

Judith Blake
Duncan MacRae, Jr.
Charles Perrow
Charles Tilly

Judith Blake (demography, sociology), 1926; Ph.D., Columbia University, 1961. Fred H. Bixby professor of population policy, University of California, Los Angeles, since 1976. Previously with Conservation Foundation, University of California, San Francisco, and University of California, Berkeley. Population Council fellow, 1954; Guggenheim fellow, 1976-77; chairman, Committee on Classification, American Sociological Association, 1969-71; Executive Committee, Sociological Research Association, 1975-78, president, 1977-78; NAS-NRC Commission on Human Resources; Academic Advisory Board, RAND Graduate Institute; Scientific Advisory Panel, Joint Center for Studies of Health Programs, UCLA School of Public Health, University of Copenhagen Institute of Social Medicine; Irene B. Taeuber Memorial Award Committee, Population Association of America; Committee on World Sociology, ASA.

Duncan MacRae, Jr. (political science, sociology), 1921; A.B., Johns Hopkins University, 1942; M.A., 1943, Ph.D., 1950, Harvard University. William Rand Kenan, Jr., professor of political science and sociology, University of North Carolina, Chapel Hill, since 1973. Previously with MIT Radiation Laboratory, Princeton University, Harvard University, University of California, Berkeley, and University of Chicago. Fulbright research scholar, 1956-57; Auxiliary Research Award, Social Science Research Council, 1958; Woodrow Wilson Award, American Political Science Association, 1968; president, Policy Studies Organization, 1974-75; Editorial Board, *Social Forces*.

Charles Perrow (complex organizations, technology and social change), 1925; B.A., 1953, M.A., 1955, Ph.D., 1960, University of California, Berkeley. Professor of sociology, State University of New York, Stony Brook, since 1970. Previously with University of Michigan, University of Pittsburgh, University of California, Berkeley, and University of Wisconsin; visiting professor, London Graduate School of Business. U.S. Public Health Service special fellow, 1969; Council, Section on Professions and Organizations, American Sociological Association, 1969-70; Sociology Panel, National Science Foundation, 1973-76; vice president, Eastern Sociological Society, 1974-75; Editorial Board, *Administration and Society*.

Charles Tilly (sociology, history), 1929; A.B., 1950, Ph.D., 1958, Harvard University. Professor of sociology and professor of history, University of Michigan, since 1969; director, Center for Research on Social Organization, since 1973; directeur d'études associé, Ecole des Hautes Etudes en Sciences Sociales, since 1974. Previously with University of Delaware, Princeton University, Harvard University, and University of Toronto. Guggenheim fellow; cochairman, History Panel, SSRC-NAS Survey of the Behavioral and Social Sciences, 1967-69; Council, Inter-University Consortium for Political and Social Research, 1971-74; chairman, Committee on Mathematics in the Social Sciences, Social Science Research Council.

Chairperson-Elect (one to be elected).

Kingsley Davis
Heinz Eulau

Kingsley Davis (demography), 1908; A.B., 1930, M.A., 1932, University of Texas; M.A., 1933, Ph.D., 1936, Harvard University. Distinguished professor of sociology, University

of Southern California. Previously with Smith College, Clark University, Pennsylvania State University, Princeton University, Columbia University, and University of California, Berkeley. Berkeley Citation for Distinguished Achievement and for Notable Service to the University, 1976; member, National Academy of Sciences, chairman, Behavioral Science Division, 1966-68, Ad Hoc Committee on Genetic Factors in Human Performance, 1969-70, and Advisory Committee on Demographic, Economic, and Social Trends in the Western Pacific, 1969-70; trustee, Population Reference Bureau, 1952-70; president, American Sociological Association, 1959, Sociological Research Association, 1960, and Population Association of America, 1962-63; chairman, U.S. National Committee, International Union for the Scientific Study of Population, 1967-68; National Advisory Committee on Vital and Health Statistics, 1969-70; Council, NAS, 1970-73, Executive Committee, 1970-71; chairman, Advisory Committee on Population, U.S. Bureau of Census, 1975-76; NASA Advisory Council. AAAS activities: member-at-large of the Section Committee, Section on Social and Economic Sciences (K), 1959-62; vice president, chairman of Section K, and Council, 1963.

Heinz Eulau (political science), 1915; A.B., 1937, M.A., 1938, Ph.D., 1941, University of California, Berkeley. William B. Munro professor of political science, Stanford University, and senior fellow, Hoover Institution. Previously with Antioch College and Center for Advanced Study in the Behavioral Sciences. President, American Political Science Association, 1971-72; chairman, Political Science Panel, Behavioral and Social Science Survey, Social Science Research Council, 1967-69; Executive Committee, Behavioral Sciences Division, National Research Council, 1969-72; chairman, Board of Overseers, National Election Studies, Center for Political Studies, University of Michigan; associate director, Inter-University Consortium for Political and Social Research. AAAS activities: member-at-large of the Section Committee, Section on Social and Economic Sciences, 1965-68; Council, 1966-68.

Member-at Large of the Section Committee (one to be elected).

David Mechanic
Nicholas C. Mullins

David Mechanic (sociology), 1936; B.A., City College of New York, 1956; M.A., 1957, Ph.D., 1959, Stanford University. With University of Wisconsin since 1960; John Bascom professor of sociology and director, Center for Medical Sociology and Health Services Research, since 1973. Member, Institute of Medicine, National Academy of Sciences; fellow, Center for Advanced Study in the Behavioral Sciences, 1974-75; Guggenheim fellow, 1977-78; chairman, Epidemiologic Studies Review Committee, National Institute of Mental Health, 1970-72, and President's Commission on Mental Health Panel on Problems, Scope, and Boundaries, 1977-78; Council, American Sociological Association; Institute of Medicine Advisory Committee, Division of Health Sciences Policy; Committee for a Study of National Needs for Biomedical and Behavioral Research Personnel, Commission on Human Resources, NAS-NRC.

Nicholas C. Mullins (sociology), 1939; B.S., 1962, M.A., 1963, Cornell University; Ph.D., Harvard University, 1967. With Indiana Uni-

versity since 1971; professor since 1977. Previously with Vanderbilt University, Harvard University, and Dartmouth College. Faculty fellow, Dartmouth College, 1971; Council, Society for Social Studies of Science, 1974-78; Committee on Postdoctoral Research, Fellows and Doctoral Research Staff, NRC; Panel on Sociology, National Science Foundation.

Members of the Electorate Nominating Committee (two to be elected).

Blanche Geer
David A. Goslin
Mary E. W. Goss
William M. Mason

Blanche Geer (sociology), 1920; B.A., Mount Holyoke College, 1942; M.Ed., 1953, Ph.D., 1956, Johns Hopkins University. Professor, Northeastern University, since 1968. Previously with Brandeis University and Syracuse University. Chair, Committee on Standards of Research and Teaching, Society for the Study of Social Problems, 1968-69, Committee on C. Wright Mills Award, 1970; Council, 1970-72, vice president, 1972-73, Committee on Merit Award, 1974-76, and Committee on Nominations, 1977, Eastern Sociological Society; former associate editor, *Social Problems*, *Sociology of Education*, and *American Sociological Review*; Committee on Committees, American Sociological Association; associate editor, *Symbolic Interaction*.

David A. Goslin (sociology), 1936; B.A., Swarthmore College, 1958; M.A., 1959, Ph.D., 1962, Yale University. Executive director, Assembly of Behavioral and Social Sciences, National Academy of Sciences, since 1975. Previously with Southern Connecticut State College, New York University, Russell Sage Foundation, Columbia University, and Hunter College; visiting professor, London School of Economics and Political Science. Committee on Papers, Eastern Sociological Society; Advisory Committee on Special Projects, Center for Advanced Study in the Behavioral Sciences; Board of Directors, Science Service; Advisory Committee on Social Indicators.

Mary E. W. Goss (sociology), 1926; B.A., 1947, M.A., 1948, State University of Iowa; Ph.D., Columbia University, 1959. With Cornell University Medical College since 1959; professor since 1973. Previously with Smith College, University of Massachusetts, Columbia University, and New York Hospital-Cornell Medical Center. Gilder fellow, 1951-52; Council, Medical Sociology Section, American Sociological Association, 1974-77; former associate editor, *American Sociological Review* and *Social Problems*; editor, *Journal of Health and Social Behavior*; Publications Committee, ASA; Falk Lecture Committee and Papers Committee, Eastern Sociological Society.

William M. Mason (sociology), 1941; Ph.D., University of Chicago, 1970. With University of Michigan since 1973; associate professor and research associate, Population Studies Center, since 1976. Previously with University of Chicago and Duke University. Bobbs-Merrill Award in Sociology, 1964; Advisory and Planning Committee, Social Science Research Council Center for Coordination of Research on Social Indicators; associate editor (applications), *Journal of the American Statistical Association*; associate editor, *Sociological Methods and Research*.

Section L—History and Philosophy of Science

Council Delegate (one to be elected).

Stephen Jay Gould
Roger H. Stuewer

Stephen Jay Gould (paleontology, evolutionary theory, history of science), 1941; A.B., Antioch College, 1963; Ph.D., Columbia University, 1967. With Harvard University since 1967; professor since 1973. Schuchert Award, Paleontological Society, 1975. AAAS activities: member-at-large of the Section Committee, Section on Biological Sciences, 1973-75; Council 1973-78; Committee on Council Affairs, 1976-77.

Roger H. Stuewer (history of physics), 1934; B.S., 1958, M.S., 1964, Ph.D., 1968, University of Wisconsin. With University of Minnesota since 1967; professor since 1974. Previously with Boston University. Secretary, History of Science Society, 1972-77; Executive Committee, Conference of Secretaries, American Council of Learned Societies, 1972-77; U.S. National Committee, International Union of the History and Philosophy of Science; National Council, American Studies Association, president, Minnesota-Dakotas Chapter; Advisory Board, Harvard University *Newsletter on Science, Technology, and Human Values*; Committee on the History of Physics, American Institute of Physics.

Chairperson-Elect (one to be elected).

Brooke Hindle
Wilfrid Sellars

Brooke Hindle (history), 1918; A.B., Brown University, 1940; M.A., 1942, Ph.D., 1949, University of Pennsylvania. With National Museum of History and Technology, Smithsonian Institution, since 1974; currently senior historian. Previously with Institute of Early American History and Culture and New York University. Guggenheim fellow, 1964-65; secretary, History of Science Society, 1958-60; Board of Trustees, Eleutherian Mills-Hagley Foundation; Board of Overseers, Faculty of Arts and Sciences, University of Pennsylvania; Advisory Committee, Yale University Center for American Art and Material Culture; vice president, Society for the History of Technology. AAAS activities: member-at-large of the Section Committee, Section on History and Philosophy of Science, 1973-76; Council, 1973.

Wilfrid Sellars (philosophy), 1912; M.A., Oxon University, 1940. University professor of philosophy and research professor of the philosophy of science, University of Pittsburgh, since 1963. Previously with University of Iowa, University of Minnesota, and Yale University. Carnegie Reflective Year fellow, 1966; John Lacke lecturer, Oxford University, 1967; vice president, 1969, president, 1970, and Carus lecturer, 1978, American Philosophical Association.

Member-at-Large of the Section Committee (one to be elected).

John J. Beer
Marjorie Grene

John J. Beer (history of science and technology), 1927; A.B., Earlham College, 1950; M.S., 1952, M.A., 1954, Ph.D., 1956, University of Illinois. Associate Professor, University of Delaware. Previously with Hanover College, Eastern Illinois University, and Oklaho-

ma State University. Fulbright fellow, 1954-55.

Marjorie Grene (philosophy), 1910; B.A., Wellesley College, 1931; M.A., 1934, Ph.D., 1935, Radcliffe College. Professor emeritus, University of California, Davis. Previously with Monticello College, University of Chicago, University of Manchester, University of Leeds, and Queen's University; visiting professor, University of Texas, Boston University, and University of Gottingen. Lucy Martin Donnelly fellow, 1960-61; president, Pacific Division, American Philosophical Association, 1971-72, and Metaphysical Society of America, 1975-76; chairman, Program Committee, APA; Governing Board, Philosophy of Science Association. AAAS activities: Electorate Nominating Committee, Section on History and Philosophy of Science, 1975-77, chairman, 1977.

Members of the Electorate Nominating Committee (two to be elected).

John G. Burke
Carroll Pursell
Marx W. Wartofsky
Patricia Woolf

John G. Burke (history of science), 1917; B.S., Massachusetts Institute of Technology, 1938; M.A., 1960, Ph.D., 1962, Stanford University. With University of California, Los Angeles, since 1962; professor of history since 1971. Previously with Bethlehem Steel Company, Cummins Diesel Engines, Inc., and Dry Ice Converter Corporation. Abbott Payson Usher Award, Society for the History of Technology, 1967; treasurer, History of Science Society, 1972-76; National History and Heritage Committee, American Society of Mechanical Engineers; Advisory Committee, Historic American Engineering Record, U.S. Department of the Interior; Executive Council, SHOT.

Carroll Pursell (history of technology), 1932; B.A., 1956, Ph.D., 1962, University of California; M.A., University of Delaware, 1958. With University of California, Santa Barbara, since 1965; currently professor. Previously with Case Institute of Technology and Lehigh University. Secretary, Society for the History of Technology, since 1975; editorial advisor, *Newsletter on Science, Technology, and Human Values*; Conference of Secretaries, American Council of Learned Societies.

Marx W. Wartofsky (philosophy), 1928; A.B., Columbia College, 1948; M.A., 1949, Ph.D., 1952, Columbia University. With Boston University since 1957; professor since 1967. Visiting professor, Brandeis University, Calgary University, and Clark University. Pulitzer scholar, 1945-48; Adam LeRoy Jones fellow, 1948-50; NSF science faculty fellow, 1965-66; Faculty Publication Award, Boston University, 1969; secretary-treasurer, Eastern Division, American Philosophical Association, 1967-70; Board of Officers, APA, 1967-70; chairman, National Council Committee on Discrimination, 1972-73, and Resolutions Committee, 1973, American Association of University Professors; Editorial Committees, *Synthese*, *Journal of Medicine and Philosophy*, *Journal of Value Inquiry*, and *Teaching Philosophy*; editor, *The Philosophical Forum*.

Patricia Woolf (scientific communication, sociology of science), 1934; M.S., University of Washington, 1961; Ph.D., Johns Hopkins University, 1973. Currently adjunct assistant professor, University of Pennsylvania. Previously with Johns Hopkins University and

Princeton University. Council, Society for Social Studies of Science; Executive Council, New Jersey Committee for Humanities.

Section M-Engineering

Council Delegates (three to be elected).

Marie Elizabeth Albrecht
Anne M. Briscoe
Robert F. Cotellessa
Frederic A. L. Holloway
Margaret W. Fanning
John C. Martin

Marie Elizabeth Albrecht (architecture); B.S., Purdue University, 1957; M.Arch., University of Washington, 1975. Project administrator, Richard F. McCann and Company, since 1977. Previously with Commonwealth Associates, King Seely Corporation, Argus Camera Company, American Metal Products, and Business Space Design. Student Chapter Officer, Tau Sigma Delta, 1974-75.

Anne M. Briscoe (biochemistry), 1918; M.A., Vassar College, 1945; Ph.D., Yale University, 1949. With College of Physicians and Surgeons, Columbia University, since 1956; currently assistant professor of medicine; concurrently, director, Biochemistry Laboratory, Harlem Hospital Center. Previously with Cornell University Medical College and Hunter College. Sterling junior fellow, 1947-48; U.S. Public Health Service fellow, 1949-50; president, Association for Women in Science, 1974-76; chair, Women in Science Committee, New York Academy of Sciences; Long-Range Planning Committee, American Institute of Chemists; national correspondent, Federation of American Societies for Experimental Biology; Executive Council, Federation of Organizations for Professional Women. AAAS activities: Section Committee, Section on Medical Sciences, 1976-.

Robert F. Cotellessa (electrical engineering), 1923; M.E., 1944, M.S., 1949, Stevens Institute of Technology; Ph.D., Columbia University, 1962. Professor and chairman of electrical and computer engineering, Clarkson College of Technology, since 1968. Previously with Allen B. Dumont Laboratories and New York University. Clarkson Chapter Tau Beta Pi Faculty Award, 1969; president, Group on Education, 1972, vice president for publication activities, 1973, vice president for technical activities, 1974-75, executive vice president, 1976, Institute of Electrical and Electronics Engineers; vice chairman, U.S. Activities Board, and member of Committees on Member Conduct, Long-Range Planning, and Credentials, IEEE; Advisory Panel, Electrical Sciences and Analysis Section, National Science Foundation. AAAS activities: Section Committee, Section on Engineering, 1976-.

Frederic A. L. Holloway (chemical engineering), 1914; B.S., Georgia Institute of Technology, 1935; Sc.D., Massachusetts Institute of Technology, 1939. With Exxon Corporation (formerly Standard Oil Company of New Jersey) since 1939; currently vice president, Science and Technology Department. Vice president and chairman, American Section, Society of Chemical Industry; treasurer and Council, National Academy of Engineering; Advisory Board, MIT Energy Laboratory; Governing Board, National Research Council. AAAS activities: Council, 1977-78.

Margaret W. Fanning (engineering), 1950;

B.A., Mount Holyoke, 1972; currently enrolled in M.S. program at Dartmouth College. Previously with Creare, Inc., Hanover, N.H., and Dyad Engineering, Lebanon, N.H.

John C. Martin (earth science, engineering), 1925; B.S., Clemson University, 1946; M.S.E.E., 1950, M.S. Eng. Math., 1951, North Carolina State University. With Chevron Oil Field Research Company since 1962; currently senior engineering associate. Previously with RCA, NACA, U.S. Army, and Creole Petroleum Corporation. Editorial Committee, 1969, and Thermal Recovery Report Committee, 1971, Society of Petroleum Engineers; Geothermal Research Engineering Review Task Force, Lawrence Berkeley Laboratory.

Chairperson-Elect (one to be elected).

H. Norman Abramson
Wesley A. Kuhrt

H. Norman Abramson (engineering mechanics), 1926; B.S., 1950, M.S. 1952, Stanford University; Ph.D., University of Texas, 1956. With Southwest Research Institute since 1956; vice president, Engineering Sciences Division, and director, Department of Mechanical Sciences, since 1972. Previously with Stanford University, Chance Vought Aircraft, and Texas A & M University; visiting professor, Incarnate Word College of San Antonio. Distinguished Service Award, American Institute of Aeronautics and Astronautics, 1973; Ship Research Committee, NAS-NRC, 1969-73; Board of Directors, Society of Engineering Science, 1971-73; chairman, Advisory Panel on Engineering Mechanics, NSF, 1975-76; vice president, Basic Engineering, American Society of Mechanical Engineers; technical director, AIAA; Publications Committee, AIAA; U.S. Coast Guard Research Advisory Committee; International Scientific Committee 5th SMIRT; Report Review Committee, NAS-NAE-NRC; Mechanical Engineering Peer Group, NAE; Papers and Publications Committee, Society for Experimental Stress Analysis; associate editor, *Applied Mechanics Reviews*; Editorial Advisory Board, *Journal of Computers and Structure*. AAAS activities: Section Committees, Sections on Physics (B), Engineering (M), Information, Computing and Communication (T), and Atmospheric and Hydro-spheric Sciences (W), and Council, 1968-69.

Wesley A. Kuhrt (aeronautical engineering), 1917; B.S., 1939, M.S., 1940, Massachusetts Institute of Technology. With United Technologies Corporation since 1939; vice president, Technology, since 1974. Honorary fellow, American Institute of Aeronautics and Astronautics; Board of Trustees, Barrington College.

Member-at-Large of the Section Committee (one to be elected).

Robert M. Saunders
Patricia A. Sweet

Robert M. Saunders (electrical engineering), 1915; B.S.E.E., 1938, M.S., 1942, University of Minnesota; D.Eng., Tokyo Institute of Technology, 1971. Professor of electrical engineering, University of California, Irvine, since 1964. Previously with Electric Machinery Manufacturing Company, University of Minnesota, and University of California, Berkeley; visiting associate professor, Massachusetts Institute of Technology. Simon fellow, 1960; first and second prizes, Industrial,

Power, and General Applications Paper Contest, San Francisco Section, American Institute of Electrical Engineers; Outstanding Educator in America, 1972; secretary, 1963-64, chairman, 1965-66, Electrical Division, American Society for Engineering Education; vice president, Regional Affairs, Institute of Electrical and Electronics Engineers, 1975-76; president, IEEE, 1977; Advisory Committee for Engineering, NSF, 1968-71; Educational Activities Board, 1969-74, chairman, 1973-74, Intersociety Relations Committee, 1970-75, IEEE; Engineering Education and Accreditation Committee, 1965-71, chairman, 1969-70, Board of Directors, 1970-75, ECPD; Board of Directors, Executive Committee, Nominations and Appointments Committee, and Long-Range Planning Committee, IEEE; Rotating Machinery Committee, AIEE and IEEE; Secretary of the Navy's Advisory Board on Education and Training.

Patricia A. Sweet (engineering science and mechanics), 1955; cooperative education student trainee (engineering), NASA-Johnson Space Center; currently attending Georgia Institute of Technology. Group Achievement Awards, ASTP (1976) and SMD III (1977); secretary, Society of Engineering Science, 1973-75; Education Committee, Toastmasters International.

Members of the Electorate Nominating Committee (two to be elected).

Linda Brann
Catherine E. Little
Michael Michaelis
Donald B. Sinclair

Linda Brann, lecturer and postdoctoral fellow, Department of Anatomical Science, State University of New York, Stony Brook. (Biographical information was not supplied by the candidate.)

Catherine E. Little, associate director of operations, Assembly of Engineering, National Academy of Sciences. (Biographical information was not supplied by the candidate.)

Michael Michaelis (management, engineering), 1919; B.S., University of London, 1941. With Arthur D. Little, Inc., Washington, D.C., since 1963; senior consultant since 1974. Previously with General Electric Company, United Kingdom Atomic Energy Authority, Arthur D. Little, Inc. (Cambridge), and Office of the President's Science Adviser. Vice chairman, Committee on International Affairs, Atomic Industrial Forum, 1958-60; chairman, Committee on Government-Industry Relations in Science and Technology, U.S. Chamber of Commerce, 1963-64; Commerce Technical Advisory Board; Executive Director, Research Management Advisory Committee, U.S. House of Representatives Committee on Science and Technology; director, World Future Society and Interdisciplinary Communications Associates.

Donald B. Sinclair (electrical engineering), 1910; S.B., 1931, S.M., 1932, Sc.D., 1935, Massachusetts Institute of Technology. Consultant. Previously with MIT and General Radio Company. President's Certificate of Merit, 1948; member, National Academy of Engineering; director, 1945-55, 1958-60, treasurer, 1949-51, president, 1952, Institute of Radio Engineers; secretary-treasurer, Massachusetts Science and Technology Foundation; director, Massachusetts Engineers Council; Awards Board and History Committee, Institute of Electrical and Electronics Engineers.

Section N—Medical Sciences

Council Delegates (eight to be elected).

Julian L. Ambrus
Robert E. Anderson
William B. Bean
Monique C. Braude
Horace W. Davenport
Ruth M. Henderson
Thomas N. James
Jean E. Johnson
George B. Koelle
Louis Lasagna
Kenneth L. Melmon
Paul L. Munson
Jacob Robbins
Mildred T. Stahlman
James H. R. Sutherland
Jay Tepperman

Julian L. Ambrus (medicine, hematology-oncology), 1924; M.D., University of Zurich, 1949; Ph.D., Jefferson Medical College, 1954. With Roswell Park Memorial Institute since 1955; director of cancer research (pathophysiology) since 1975. Also with State University of New York, Buffalo, since 1955; currently professor of internal medicine and experimental pathology. Previously with Philadelphia College of Pharmacy and Science. Nelson Hackett Medal, University of California, Davis, 1972; Advisory Board, Food and Drug Administration; consultant, World Health Organization; Medical Advisory Board, Hemophilia Center of Western New York; International Study Group for Anticoagulant Control; Science Advisory Board, U.S. Red Cross, Buffalo Area Regional Blood Banks; editor-in-chief, *Journal of Medicine and Hematologic Reviews*; Editorial Board, *Haemostasis*.

Robert E. Anderson (pathology), 1931; B.A., College of Wooster; M.D., Case Western Reserve University. With University of New Mexico since 1964; professor and chairman, Department of Pathology, since 1968. Previously with Case Western Reserve University and University of California, Los Angeles; visiting research professor, Walter and Eliza Hall Institute of Medical Research, Melbourne; visiting research scientist, Radiation Effects Foundation, Hiroshima and Nagasaki. Markel scholar in academic medicine, 1966-72; International Agency for Research on Cancer traveling fellow, 1974; secretary-treasurer, American Association of Pathologists, 1976-77; president, Association of Pathology Chairmen, 1976-77; Council, AAP, APC, and Universities Associated for Research and Education in Pathology; Pathology Consultant Panel, Veterans Administration; Board of Directors, Los Alamos Meson Physics Facility Users Groups, Inc.; Radiation Oncology Coordination Subcommittee, Division of Cancer Treatment, National Cancer Institute.

William B. Bean (medical humanities, internal medicine), 1909; B.A., 1932, M.D., 1935, University of Virginia. Harris Kempner professor and director, Institute for the Medical Humanities, University of Texas Medical Branch, since 1974; Sir William Osler professor of medicine, University of Iowa College of Medicine, since 1970. Previously with Thorndike Memorial Laboratory, Harvard University, University of Cincinnati, and Cincinnati General Hospital. John Horsley Memorial Prize, University of Virginia, 1944; Groedel Medal, American College of Cardiology, 1961; Harold Swanberg Award for Distinguished Service to Biomedical Communica-

tions, American Medical Writers Association, 1969; McCollum Award, American Society for Clinical Nutrition, 1974; president, Central Society for Clinical Research, 1950-51, Iowa Chapter, Archaeology Institute of America, 1955-57, American Society for Clinical Nutrition, 1962-63, and American Clinical and Climatological Association, 1967; first president, American Osler Society, 1970-71; chairman, Section of Internal Medicine, American Medical Association, 1958-59, Section of Internal Medicine, Iowa State Medical Society, 1958-59, and Board of Regents, National Library of Medicine, 1960-61; Editorial Boards, *Medicine and Perspectives in Biology and Medicine*. AAAS activities: vice president and chairman, Section on Medical Sciences (N), and Council, 1957; Committee of Judges, Theobald Smith Award in the Medical Sciences, 1961; Electorate Nominating Committee, Section N, 1975-77.

Monique C. Braude (pharmacology, toxicology), 1925; Pharmacist Diploma, University of Paris, 1948; M.S., Ohio State University, 1956; Ph.D., University of Maryland, 1963. Acting chief, Preclinical Pharmacology, Biomedical Branch, Division of Research, National Institute on Drug Abuse, since 1974. Previously with Laboratories Blaque (Paris), University of Maryland, Food and Drug Administration, and National Institute of Mental Health. Committee on Non-Psychiatric Use of Drugs, American Society for Pharmacology and Experimental Therapeutics; DHEW Committee to Coordinate Toxicology and Related Programs; editor, *Pharmacology of Marijuana, Narcotic Antagonists, and Interactions of Drugs of Abuse*.

Horace W. Davenport (physiology), 1912; B.S., 1935, Ph.D., 1939, California Institute of Technology; B.A., 1937, B.Sc., 1938, M.A., 1960, D.Sc., 1961, Oxford University. With University of Michigan since 1956; currently professor of physiology. Previously with University of Pennsylvania, Harvard Medical School, and University of Utah; visiting professor, Mayo Foundation. Alumni Distinguished Service Award, California Institute of Technology, 1966; president, American Physiological Society, 1961-62; member, National Academy of Sciences.

Ruth M. Henderson (pharmacology), 1925; B.S., 1946, M.S., 1947, Ph.D., 1956, University of Minnesota. With University of Alberta since 1963; currently associate professor, Department of Pharmacology. Previously with American Collegiate Institute (Igmir, Turkey), University of Minnesota, National Institute of Arthritis, Metabolism, and Digestive Diseases, and George Washington University. Social Policy Committee, Pharmacological Society of Canada.

Thomas N. James (internal medicine, cardiology), 1925; B.S., 1946, M.D., 1949, Tulane University. With University of Alabama Medical Center since 1968; currently Mary Gertrude Waters professor of cardiology and chairman, Department of Medicine, and physician-in-chief, University of Alabama Hospitals. Previously with U.S. Army Medical Corps, Ochsner Clinic, Tulane University, and Henry Ford Hospital. Numerous invited lectureships, including 1977 distinguished faculty lectureship, UAMC, and 1978 World Congress of Cardiology; president, Association of University Cardiologists; governor for Alabama, American College of Physicians; Editorial Boards, *Circulation*, *American Journal of Cardiology* (associate editor), and

American Heart Journal; Board of Trustees and Awards Committee, American College of Cardiology; Publications Committees, ACP and American Heart Association; Council, Southern Society for Clinical Investigation; Advisory Council, National Heart, Lung and Blood Institute; Subspecialty Board CV Disease.

Jean E. Johnson (nursing, psychology), 1925; B.S., Kansas State University, 1948; M.S.N., Yale University, 1965; Ph.D., University of Wisconsin, Madison, 1971. With Wayne State University since 1971; professor and director, Center for Health Research, College of Nursing, since 1974. Previously with schools of nursing in Iowa, Kansas, and Colorado; Swedish Hospital (Englewood, Colorado); General Rose Hospital; and Yale University. Member, National Institute of Medicine, NAS; Board of Governors Faculty Recognition Award, Wayne State University, 1975; chairperson, American Nurses' Association Council for Nurse Researchers; Editorial Boards, *Nursing Research*, *Research in Nursing and Health*, and *Evaluation and the Health Professions*; Steering Committee, Study of Medical Injury Compensation, Institute of Medicine, NAS; Convention Program Committee, Health Research Section, American Psychological Association.

George B. Koelle (pharmacology), 1918; B.Sc., Philadelphia College of Pharmacy and Science, 1939; Ph.D., University of Pennsylvania, 1946; M.D., Johns Hopkins University, 1950. With University of Pennsylvania Medical School since 1952; professor and chairman, Department of Pharmacology, since 1959. Previously with Johns Hopkins University and Hospital and Columbia University College of Physicians and Surgeons. Abel Prize in Pharmacology and Borden Undergraduate Award, 1950; Annual Alumni Award, Philadelphia College of Pharmacy and Science, 1961; president, American Society for Pharmacology and Experimental Therapeutics, 1965-66; secretary general, 1966-69, and vice president, 1969-72, International Union of Pharmacology; member, National Academy of Sciences; Board of Managers, Wistar Institute; Board of Trustees, Philadelphia College of Pharmacy and Science; chairman, Membership Committee, IUPHAR; Editorial or Advisory Boards, *Handbook of Experimental Pharmacology*, *General Pharmacology*, *Journal of Histochemistry and Cytochemistry*, *Journal of Neurosci. Research*, *International Encyclopedia of Pharmacology*, *International Archives of Pharmacology*, and *Experimental Medicine*. AAAS activities: member-at-large of the Section Committee, Section on Medical Sciences (N), 1967-70; vice president and chairman, Section N, 1971; Council, 1967-71.

Louis Lasagna (clinical pharmacology), 1923; B.S., Rutgers University, 1943; M.D., Columbia University, 1947. Department chairman, professor of pharmacology and toxicology, and professor of medicine, University of Rochester School of Medicine and Dentistry, since 1970. Previously with Maimonides Hospital, Johns Hopkins University, Boston University, Massachusetts General Hospital, and Harvard University. Modern Medicine Award, 1973; Oscar B. Hunter Award, 1975; Award for Experimental Therapeutics, American Society for Pharmacology and Experimental Therapeutics, 1976; Boards of Directors, American Society for Clinical Pharmacology and Therapeutics and Foundation for Innovation in Medicine; NAS Com-

mittee on Substance Abuse and Habitual Behavior; Assembly of Behavioral and Social Sciences, NRC; Medical Advisory Council, Sophie Davis Center for Biomedical Education; Policy Board for Cooperative Coronary Drug, National Heart Institute; Committee on Cooperating Clinics, American Rheumatism Association; Editorial Board, *Methods of Medical Information*; Advisory Board, *Journal of Chronic Disease*; International Advisory Board, *Psychological Medicine*.

Kenneth L. Melmon (molecular and clinical pharmacology), 1934; A.B., Stanford University, 1956; M.D., University of California Medical School, 1959. With University of California, San Francisco, since 1965; currently director, Division of Clinical Pharmacology, senior staff, Cardiovascular Research Institute, and professor of medicine and pharmacology. Previously with National Heart Institute and University of Washington. Burroughs Wellcome clinical pharmacology scholar, 1966-71; Guggenheim fellow, 1971; NIH special fellow, 1971-72; National Councils, American Federation for Clinical Research, 1968-73, and Perinatal Research Society, 1970-74; president, American Federation for Clinical Research, 1973-75, and American Society for Clinical Investigation, 1978-79; Editorial Boards, *Western Journal of Medicine* and *Journal of Clinical Investigation*; chairman, Executive Committee, Clinical Pharmacology Division, American Society for Pharmacology and Experimental Therapeutics, and Joint Commission on Prescription Drug Use.

Paul L. Munson (pharmacology, endocrinology), 1910; B.A., Antioch College, 1933; M.A., University of Wisconsin, 1937; Ph.D., University of Chicago, 1942. With University of North Carolina, Chapel Hill, since 1965; currently Sarah Graham Kenan professor of pharmacology and endocrinology, School of Medicine. Previously with Yale University School of Medicine and Harvard University School of Dental Medicine. Koch Award, Endocrine Society, 1976; Councils, International Association for Dental Research, 1957-59, Endocrine Society, 1963-66, American Society for Pharmacology and Experimental Therapeutics, 1970-73; secretary-treasurer, ASPET, 1971-72; Executive Committee, 1971-73, secretary, 1972-73, president, 1974-76, Association for Medical School Pharmacology; editor, *Pharmacological Reviews*; co-editor, *Vitamins and Hormones*; Editorial Boards, *Biochemical Medicine*, *American Journal of Chinese Medicine*, and *Calcified Tissue Research*; chairman, Task Force to Report to National Institutes of Health on Research on Endocrinology and Metabolism of Bone and Mineral.

Jacob Robbins (endocrinology), 1922; A.B., 1943, M.D., 1947, Cornell University. With National Institute of Arthritis, Metabolism and Digestive Diseases since 1954; chief, Clinical Endocrinology Branch, since 1963. Previously with Memorial-Sloan Kettering Cancer Center, Sloan-Kettering Institute, and Cornell University; visiting scientist, Carlsberg Laboratory, Copenhagen; Lilly visiting professor, Stellenbosch University, Cape-town. Polk Prize for Research, 1946; Van Meter Award, American Thyroid Association, 1955; editor-in-chief, *Endocrinology*, 1968-72; director, ATA, 1969-76, president, 1974-75; Education Committee, ATA; Public Affairs Committee, Endocrine Society.

Mildred T. Stahlman (pediatrics), 1922; B.A., 1943, M.D., 1946, Vanderbilt University.

With Vanderbilt University since 1951; currently head, Division of Neonatology, director, Newborn Lung Center, and professor of pediatrics. Lederle Medical Faculty Award, 1961-63; president, Southern Society for Pediatric Research, 1961; Council, Perinatal Society, 1972; president, University Senate, 1975; Board of Directors, Middle Tennessee Heart Association, 1976; Council, National Institute of Child Health and Human Development; Tennessee State Perinatal Advisory Board; Committees on Goals and Governance and on Medical Ethics, Vanderbilt Medical Center; Basic Research Advisory Committee, National Foundation.

James H. R. Sutherland (pharmacology), 1923; A.B., 1948, Ph.D., 1956, University of California, Berkeley. With Medical College of Georgia since 1956; professor of pharmacology since 1964. President, Health Science Communications Association, 1970-71. AAAS activities: chairman, Electorate Nominating Committee, Section on Medical Sciences, 1974-76.

Jay Tepperman (experimental medicine), 1914; A.B., University of Pennsylvania, 1933; M.D., Columbia University, 1938. With State University of New York Upstate Medical Center, Syracuse, since 1946; currently professor of experimental medicine. Purinkye Medal, Czechoslovakian Medical Society, 1975; Editorial Boards, *Journal of Nutrition*, *Journal of Lipid Research*, *Perspective Biology and Medicine*, *Clinical Pharmacology and Therapeutics*, *Research Communications in Chemical Pathology and Pharmacology*; site visitor and ad hoc study section member, National Institute of Arthritis, Metabolism, and Digestive Diseases. AAAS activities: member-at-large of the Section Committee, Section on Medical Sciences, 1956-59.

Chairperson-Elect (one to be elected).

Philip K. Bondy

Julius R. Krevans

Philip K. Bondy (medicine, endocrinology, oncology), 1917; A.B., Columbia College, 1938; M.D., Harvard University, 1942; M.A., Yale University, 1961. Professor of medicine, Yale University School of Medicine, and associate chief of staff for research and development, West Haven VA Hospital since 1977. Previously with U.S. Army Medical Corps, Grady Hospital, Emory University, Institute of Cancer Research (London), and Royal Marsden Hospital (London). Edward Sutcliffe Brainard Prize, Columbia University, 1938; Sigma Xi Award, Emory University, 1949; editor-in-chief, *Journal of Clinical Investigation*, 1957-62; chairman, project committee of the NIH, Arthritis and Metabolic Disease Program, 1963-68; Council, Endocrine Society, 1964-68, chairman, Publications Committee, 1969-72; Breast Cancer Task Force, Experimental Biology Section, National Cancer Institute, 1973-76; vice president, Section of Oncology, Royal Society of Medicine, 1973-77; Editorial Boards, *Yearbook of Medicine*, *Clinic in Endocrinology*, *Merck Manual*, and *Cancer Topics*.

Julius R. Krevans (medicine), 1924; A.B., 1944, M.D., 1946, New York University. Professor and dean, School of Medicine, University of California, San Francisco, since 1971. Previously with Queens General Hospital, Flushing Hospital, Baltimore City Hospitals, and Johns Hopkins University School of Medicine; numerous guest professorships. Medalla de Plata, La Asamblea Suprema de la

Cruz Roja Espanola, 1960; member, Institute of Medicine, National Academy of Sciences; Committee on Blood and Transfusion Problems, NAS-NRC, 1963-65; Medical Advisory Committee, National Board of Trustees, Leukemia Society, Inc., 1965-71; Executive Committee, 1970-76, secretary-treasurer, 1975-76, American Board of Internal Medicine; National Blood Resource Program Advisory Committee, NIH, 1969-72; Committee on Graduate Medical Education, Association of American Medical Colleges, 1972-74; National Advisory Committee on Health, American Hospital Association, 1974-76; Board of Governors, Robert Wood Johnson Foundation National Clinical Scholars Program; Ad Hoc Committee to Study Clinical Investigation and Education in Naval Hospitals, NRC; chairman, Council of Deans, AAMC; Board of Trustees, Alta Bates Hospital (Berkeley), Regional Tumor Treatment Center Foundation of San Francisco, and Dermatology Foundation; director, James Picker Foundation; Commission on Public-General Hospitals, AHA.

Member-at-Large of the Section Committee (one to be elected).

Richard J. Havel
Ruth Pick

Richard J. Havel (metabolism), 1925; B.A., Reed College, 1946; M.S. and M.D., 1949, University of Oregon. With the University of California School of Medicine, San Francisco, since 1956; currently professor of medicine, director, Cardiovascular Research Institute, director, Special Center of Research on Arteriosclerosis, and chief, Metabolism Division, Department of Medicine. Previously with University of Oregon, Cornell University, and National Heart Institute; established investigator, American Heart Association, 1959-61. U.S. Public Health Service special research fellow, 1962-63; Theobald Smith Award, AAAS, 1960; president, American Federation for Clinical Research, 1965-66; faculty research lecturer, University of California, 1969; chairman, Council on Arteriosclerosis, American Heart Association; Board of Directors, AHA; Board of Scientific Counselors, National Heart, Lung, and Blood Institute.

Ruth Pick (cardiology, internal medicine), 1913; M.D., German University of Prague, 1938. With Michael Reese Hospital and Medical Center since 1949; currently chief, Experimental Atherosclerosis Laboratory, Cardiovascular Institute. Also professor of medicine and pathology, University of Chicago, since 1971. Previously with several hospitals in Czechoslovakia; established investigator, American Heart Association, 1958-64. Board of Governors, Chicago Heart Association. AAAS activities: member-at-large of the Section Committee, Section on Medical Sciences, 1975-78.

Members of the Electorate Nominating Committee (two to be elected).

Alfred P. Fishman
Neil C. Moran
Estelle R. Ramey
Marjorie Price Wilson

Alfred P. Fishman (medicine), 1918; A.B., 1938, M.S., 1939, University of Michigan; M.D., University of Louisville, 1943. William Maul Measey professor of medicine, University of Pennsylvania, since 1969. Previously

with Columbia University and University of Chicago; resident Litchfield lecturer, Oxford University; Zyskind honorary visiting professor, Ben Gurion University. National Advisory Heart and Lung Council, NIH, 1968-71; World Health Organization Expert Advisory Panel; chairman, Publications Board, American Physiological Society; Executive Committee, American Heart Association Research Committee; chairman, Research Committee, Governor's Advisory Committee on Respiratory Disease in Coal Miners; special consultant to director of Heart Division, National Heart, Lung, and Blood Institute.

Neil C. Moran (pharmacology), 1924; A.B., 1949, M.D., 1950, Stanford University. Professor and chairman, Department of Pharmacology, Emory University, since 1962. Previously with Stanford University, U.S. Public Health Service, and National Heart Institute; visiting scientist, Karolinska Institute. Senior research fellowship and research career development award, NIH, 1957-62; Editorial Service Citation, 1972, and Citation for Distinguished Service to Research, 1974, American Heart Association; Medal for Meritorious Service, Georgia Heart Association, 1975; chairman, Research Committees, AHA, 1973-74, and Georgia Heart Association, 1973-75; Research Committee A, National Heart, Lung, and Blood Institute; Editorial Boards, *Circulation Research*, *Archives Internationales de Pharmacodynamie et de Therapie*, and *Journal of Cardiovascular Research*.

Estelle R. Ramey (physiology), 1917; B.A., Brooklyn College, 1937; M.A., Columbia University, 1940; Ph.D., University of Chicago, 1950. Professor, Department of Physiology and Biophysics, Georgetown University Medical School, since 1956. Previously with Queens College, University of Tennessee, and University of Chicago. Mergler scholar in physiology, University of Chicago; U.S. Public Health Service postdoctoral fellow; Distinguished Alumna of the Year, University of Chicago, 1972; Executive Advisory Panel, Chief of Naval Operations; Commission on Human Resources, NAS. AAAS activities: Committee on Nominations, 1976-77.

Marjorie Price Wilson (medicine), 1924; M.D., University of Pittsburgh, 1949. Director, Department of Institutional Development, Association of American Medical Colleges, since 1970. Previously with Veterans Administration, National Institute of Arthritis and Metabolic Diseases, Office of Director of NIH, and National Library of Medicine. DHEW Superior Service Honor Award, 1970; member Institute of Medicine, NAS; Board of Visitors, University of Pittsburgh School of Medicine; Board of Trustees, Analytic Services, Inc.; Governing Board, Robert Wood Johnson Health Policy Fellowships Program.

Section O—Agriculture

Council Delegate (one to be elected).

William F. Hueg, Jr.
Roy L. Lovvorn

William F. Hueg, Jr. (agronomy), 1924; B.S., Cornell University, 1948; M.S., 1954, Ph.D., 1959, Michigan State University. With University of Minnesota since 1957; professor since 1962; deputy vice president and dean, Institute of Agriculture, Forestry, and Home Economics, since 1974. Previously with New York State Agricultural Extension Service,

State University of New York, and Michigan State University. Editor, *Journal of Agronomic Education*, American Society of Agronomy, 1970-73; Governing Board, Agricultural Research Institute, 1971-74; chairman, North Central Directors Association, 1972-74; Governor's Pesticide Advisory Committee; Board of Directors, Minnesota Agrigrowth Council; Governor's Rural Development Council; Board of Directors, National Science Foundation.

Roy L. Lovvorn (agronomy), 1910; B.S., Auburn University, 1931; A.M., University of Missouri, 1933; Ph.D., University of Wisconsin, 1942. Professor emeritus, crop science, North Carolina State University. Previously with U.S. Department of Agriculture (administrator, Cooperative State Research Service). Man of Year in Service to North Carolina Agriculture, 1959; Gamma Sigma Delta International Award for Distinguished Service, 1968; Citation of Merit for Outstanding Achievement and Meritorious Service in Agriculture, Missouri Alumni Association, 1971. AAAS activities: member-at-large of the Section Committee, Section on Agriculture (O), 1957-60; chairman, Section O, 1972-73; Council, 1972-78.

Chairperson-Elect (one to be elected).

Frederick E. Hutchinson
Roger L. Mitchell

Frederick E. Hutchinson (university administration), 1930; B.S., 1953, M.S., 1958, University of Maine; Ph.D., Pennsylvania State University, 1966. With University of Maine since 1963; vice president for research and public service since 1975 and professor of soil sciences since 1967. NE American Society of Agronomy Teaching Award, 1971; chairman, Northeast Agricultural Experiment Station Directors, 1974-75; chairman, Joint Research Committee, Board for International Food and Agricultural Development; International Affairs Committee, National Association of State Universities and Land-Grant Colleges; Scholarship Committee, Soil Conservation Society of America.

Roger L. Mitchell (agronomy, crop physiology), 1932; B.S., 1954, Ph.D., 1961, Iowa State University; M.S., Cornell University, 1958. Vice President for agriculture, Kansas State University since 1975. Previously with Iowa State University and University of Missouri. President, Crop Science Society, 1976; Council of Administrative Heads of Agriculture; Executive Committee, Division of Agriculture, National Association of State Universities and Land-Grant Colleges; Board of Directors, American Society of Agronomy.

Member-at-Large of the Section Committee (one to be elected).

Orville G. Bentley
Bernard J. Liska

Orville G. Bentley (agricultural education administration), 1918; B.S., South Dakota State College, 1942; M.S., 1947, Ph.D., 1950, University of Wisconsin. Dean, College of Agriculture, University of Illinois, since 1965. Previously with University of Wisconsin, Ohio State University, and South Dakota State University. American Feed Manufacturer's Award, 1958; Distinguished Alumnus Award, South Dakota State University, 1967; first president, Midwest Section, American Society of Animal Science, 1963; secretary, ESCOP, 1964; chairman, Council, U.S. Uni-

versities for Rural Development in India, 1969; chairman, Board of Directors, Midwest Universities Consortium for International Activities, 1974-75; chairman, Executive Committee, Council of Administrative Heads of Agriculture, National Association of State Universities and Land-Grant Colleges; Board of Trustees, American University of Beirut; Board for International Food and Agricultural Development. AAAS activities: member-at-large of the Section Committee, Section on Agriculture (O), 1971-74; Council, 1971-73; chairman, Section O, 1976.

Bernard J. Liska (food science), 1931; B.S., 1953, M.S., 1956, Ph.D., 1957, University of Wisconsin. With Purdue University since 1959; currently associate dean of agriculture and director, Indiana Agricultural Experiment Station. Previously with University of Florida. Vice chairman, Expert Panel on Food Safety, Institute of Food Technologists, 1974-76; scientific editor, *Journal of Food Science*.

Members of the Electorate Nominating Committee (two to be elected).

Roy G. Creech
William P. Flatt
Jarvis E. Miller
Johnny W. Pendleton

Roy G. Creech (genetics, plant breeding), 1935; B.S., Stephen F. Austin State University, 1956; M.S., 1958, Ph.D., 1960, Purdue University. Professor and head, Department of Agronomy, Mississippi State University, since 1972. Previously with Pennsylvania State University; visiting professor, University of Illinois. SFA Chemistry Achievement Award, 1953; Purdue Biological Society Award for Graduate Research, 1959; Gamma Sigma Delta Award for Research, Pennsylvania State University Chapter, 1971; president-elect, Crop Science Society of America; secretary-treasurer, Mississippi Section, American Society of Agronomy; Advisory Board, National Soybean Crop Improvement Advisory Council; Agricultural Meteorological Study Panel, Agricultural Research Institute; Southern Regional Soil Research Committee; chairman, Southern Regional Task Force on New Crops and Minor Oilseeds; Board of Directors, Council for Agricultural Science and Technology; S-105 Technical Committee on Host Plant Resistance in Cotton.

William P. Flatt (animal nutrition), 1931; B.S., University of Tennessee, 1952; Ph.D., Cornell University, 1955. With University of Georgia since 1969; director, Agricultural Experiment Stations, since 1970. Previously with U.S. Department of Agriculture and Rowett Research Institute. NSF fellow, 1953-55; Presidential Citation, 1965, Superior Service Award, 1968, USDA; Hoblitzelle National Award, 1968; Board on Agriculture and Renewable Resources, National Academy of Sciences; chairman, Legislative Subcommittee, Experiment Stations Committee on Organization and Policy.

Jarvis E. Miller (agricultural economics), 1929; B.S., Texas A & M University, 1950; M.S., 1951, Ph.D., 1954, Purdue University. With Texas A & M University since 1955; president since 1977. Chairman, Association of Southern Agricultural Experiment Station Directors; chairman, Experiment Station Section, National Association of State Universities and Land-Grant Colleges; Joint Research Committee, Board for International Food and Agricultural Development.

Johnny W. Pendleton (agronomy), 1922;

B.S., University of Tennessee, 1948; M.S., 1951, Ph.D., 1955, University of Illinois. Chairman, Department of Agronomy, University of Wisconsin, since 1971. Previously with University of Illinois. Phi Sigma Research Award, 1951; Northrup King Distinguished Scientist Award, 1970; Korean Agriculture Service Award, 1976; chairman, Division C-3, American Society of Agronomy, 1961; Board of Directors, Crop Science Society of America, 1960-63, 1973-76; president, American Society of Agronomy; Executive Committee and chairman, Budget and Finance Committee, Council of Agricultural Science and Technology; Advisory Board, National Soybean Crop Improvement Council.

Section P-Industrial Science

Council Delegate (one to be elected).

Philip M. Arnold
Aaron J. Gellman

Philip M. Arnold (engineering), 1911; B.S., 1932, Ch.E., 1941, Washington University. Retired; currently residing in Bartlesville, Oklahoma. Previously with Phillips Petroleum Company (vice president, Research and Development, 1964-76). Distinguished Alumnus, Washington University, 1969; Professional Recognition Award, Southwest Chapter, American Institute of Chemists, 1970; Hanlon Award, Gas Processors Association, 1975; member, National Academy of Engineering; president, Industrial Research Institute, 1964-65, and Coordinating Research Council, 1969-71; Board, Atomic Industrial Forum, 1966-69; Bureau, International Union of Pure and Applied Chemistry, 1969-75; Committee on Scholarly Communication with the People's Republic of China. AAAS activities: member-at-large of the Section Committee, Section on Industrial Science, 1975.

Aaron J. Gellman (economics, transportation, technology utilization), 1930; B.A., University of Virginia, 1950; M.B.A., University of Chicago, 1951; Ph.D., Massachusetts Institute of Technology, 1968. President, Gellman Research Associates, Inc., and adjunct professor of transportation and regional science, University of Pennsylvania. Previously with North American Car Corporation and Budd Company. National Standards Policy Advisory Committee; Council on Trends and Perspective, Chamber of Commerce of the United States; Transportation Research Forum; Group I Council, Transportation Research Board; Technical Advisory Board, U.S. Department of Commerce; director, Railweight, Inc. AAAS activities: Council, 1974-78; Council Committee on Fellows, 1977-78.

Chairperson-Elect (one to be elected).

John D. Caplan
Nat C. Robertson

John D. Caplan (industrial R & D, chemical engineering), 1926; B.S., Oregon State University, 1949; M.S., Wayne State University, 1955. With General Motors Research Laboratories since 1949; currently executive director, Crompton-Lanchester Medal, Institute of Mechanical Engineers, 1964; member, National Academy of Engineering; president, Coordination Research Council, 1975-77; Plans and Policies Committee, Materials Resources Subcommittee, and Federal Science

and Technology Committee, Industrial Research Institute; Ethics Committee, Engineers' Council for Professional Development; Society of Automotive Engineers/ECPD Relations Committee; Board of Directors and Finance Committee, CRC. AAAS activities: Electorate Nominating Committee, Section on Industrial Science, 1978-80.

Nat C. Robertson (chemistry, research management), 1919; A.B., Emory University, 1939; Ph.D., Princeton University, 1942. Director and scientific advisor, Marion Laboratories, Inc. Previously with Standard Oil Company (New Jersey), Celanese Corporation, Escambia Chemical Corporation, Spencer Chemical Company, Gulf Research and Development Company, and Air Products and Chemicals, Inc. Governor's Science Advisory Council (Missouri), 1961-63; president, Research Foundation of Kansas, 1963-66; director, C. H. Kline & Company and Industrial Research Institute; trustee, Midwest Research Institute; Advisory Council, Department of Chemical Engineering, Princeton University. AAAS activities: member-at-large of the Section Committee, Section on Industrial Science, 1976-79.

Member-at-Large of the Section Committee (one to be elected).

John Diebold
Jean E. Scott

John Diebold (automation, business management), 1926; B.S., U.S. Merchant Marine Academy, 1946; B.A., Swarthmore College, 1949; M.B.A., Harvard University, 1951. Chairman of the Boards, Griffenhagen-Kroeger, Inc., Diebold Group, Inc., Diebold Europe S.A., Management Science Training Institute, John Diebold, Inc., Diebold Venture Capital Corporation, DCL, Inc., Gemini Computer Systems, Inc., and Genesco; president, Diebold Institute for Public Policy Studies. Secretary of Labor's Advisory Committee on Manpower and Automation, 1962-66; Advisory Council on Japan-U.S. Economic Relations, 1972-74; trustee, treasurer, Executive Committee, National Committee on U.S.-China Relations; Council on Foreign Relations; trustee, Committee for Economic Development, Carnegie Institution of Washington, and National Planning Association; vice chairman, American Council on Germany; Board of Directors, Academy for Educational Development; Advisory Committee on Ethical and Human Values of Science and Technology, NSF; director, International Cybernetics Association. AAAS activities: member-at-large of the Section Committee, Section on Industrial Science, 1976-78. (From *Who's Who in America*, 39th edition, 1976-1977.)

Jean E. Scott (health and safety engineering), 1921; B.S., 1959, M.S., 1962, California State College; Dr. of Public Health, University of California, Los Angeles, 1972. Environmental health and safety specialist engineer, Northrop Corporation, since 1977. Previously with Lockheed Aircraft Corporation, U.S. Department of Labor, California State University at Northridge, and West Coast Insurance Group.

Members of the Electorate Nominating Committee (two to be elected).

Mildred A. Hastbacka
Joseph P. Martino
Elaine S. Oran
John F. Socolofsky

Mildred A. Hastbacka (physical chemistry), 1947; B.S., Massachusetts Institute of Technology, 1969; Ph.D., Brown University, 1973. With Uniroyal, Inc., since 1973; currently technical manager, Industrial Products Division. Undergraduate Award in Analytical Chemistry, American Chemical Society, 1969; Potter Prize for a Thesis of Outstanding Merit, Brown University, 1973; president, Uniroyal Chapter, Sigma Xi, 1976-77; Board of Directors, MIT Club of New Haven; program chairman, Uniroyal Chapter, Sigma Xi.

Joseph P. Martino (operations research), 1931; A.B., Miami University, 1953; M.S., Purdue University, 1955; Ph.D., Ohio State University, 1961. Research scientist, Research Institute, University of Dayton. Previously with U.S. Air Force (1953-75); assignments included Office of Scientific Research, Advanced Research Projects Agency, Office of Research Analysis, and Air Force Avionics Laboratory. Vice president, Military Operations Research Society, 1971; secretary, 1973, vice chairman, 1974, chairman, 1975, Dayton Chapter, Engineering Management Society; secretary, College of R & D, Institute of Management Sciences; Administrative Committee, EMS.

Elaine S. Oran (physics), 1946; A.B., Bryn Mawr College, 1966; M.Ph., 1968, Ph.D., 1972, Yale University. Research physicist, Laboratory for Computational Physics, Naval Research Laboratory, since 1974. Previously with Plasma Physics Division, NRL, and Science Applications, Inc.

John F. Socolofsky (chemistry), 1917; B.S., University of Kansas, 1941. With Mobil Oil Company since 1941; manager, Products Research and Technical Service Division, Mobil Research and Development Corporation, since 1971. Certificate of Appreciation, Society of Automotive Engineers, 1978; past member of various technical committees, American Petroleum Institute, Coordinating Research Council, and SAE; chairman, SAE Passenger Car and Light-Duty Vehicle Fuel Economy Measurements Committee; SAE Advisory Committee, U.S. Department of Transportation Truck and Bus Fuel Economy Study; Tribology Data Panel, ASME-RCL Advisory Board on Energy Conservation through Tribology.

Section Q—Education

Chairperson-Elect (one to be elected).

Ann C. Howe
Joseph D. Novak

Ann C. Howe (science education), 1924; B.A., University of Richmond, 1945; M.A., University of North Carolina, 1949; Ph.D., University of Texas, 1969. With Syracuse University since 1970; currently associate professor, Department of Science Teaching. Previously with University of Puerto Rico, University of North Carolina, Clarkson College, University of Chicago, and University of Texas. Boards, National Association for Research in Science Teaching and Association for Education of Teachers of Science; Editorial Board, *Journal of Research in Science Teaching*.

Joseph D. Novak (science education), 1930; B.S., 1952, Ph.D., 1958, University of Minnesota. Professor of science education and biological sciences, Cornell University, since 1967. Previously with University of Minnesota, Kansas State Teachers College, and

Purdue University. Tozer Foundation and Lydia and Alexander Anderson scholarships, 1958; secretary-treasurer, 1962-67, president, 1968-69, National Association for Research in Science Teaching; president, Association of Midwestern College Biology Teachers, and vice president, National Association of Biology Teachers, 1963-64; coordinator, Shell Merit Programs in Science Education, 1968-72; director, Science Facilities Study, National Science Teachers Association; editor, Learning Section, *Science Education*; Year Book Writing Team, Association for Education of Teachers of Science; "What Research Says to Teachers" Writing Team, NSTA. AAAS activities: member-at-large of the Section Committee, Section on Education, 1960-63, 1968-71; Council, 1968-71.

Member-at-Large of the Section Committee (one to be elected).

O. Roger Anderson
Marvin Druger

O. Roger Anderson (biology, science education), 1937; A.B., 1959, M.A., 1961, Ed.D., 1964, Washington University. With Columbia University since 1964; professor of natural sciences, Teachers College, and senior research associate, Biological Oceanography, Lamont-Doherty Geological Observatory, since 1970. Editor, *Journal of Research in Science Teaching*, 1970-74; president, National Association for Research in Science Teaching, 1976.

Marvin Druger (biology, genetics, science education), 1934; B.S., Brooklyn College, 1955; M.A., 1957, Ph.D., 1961, Columbia University. With Syracuse University since 1962; professor of biology and science education since 1971. Fulbright lecturer, University of Sydney, 1969-70; James Howard McGregor Prize for Teaching, Columbia University, 1959; Science Teaching Achievement Recognition Award, 1968, and Gustav Ohaus Award for Innovations in College Science Teaching, 1978, National Science Teachers Association; Outstanding Achievement Award, Syracuse University, 1973; president, Syracuse Chapter, Sigma Xi, 1970-71; Executive Board, National Association for Research in Science Teaching, 1973-76; Board of Directors, Eastern Region, Association for the Education of Teachers in Science; chairman, Education Committee, Genetics Society of America. AAAS activities: Section Committee, Section on Education, and Council, 1973.

Members of the Electorate Nominating Committee (two to be elected).

J. Dudley Herron
George T. O'Hearn
H. Craig Sipe
Thomas G. Teates

J. Dudley Herron (science education), 1936; A.B., University of Kentucky, 1958; M.S., University of North Carolina, 1960; Ph.D., Florida State University, 1964. With Purdue University since 1965; professor of science education since 1977. Previously with Woodford County Schools (Kentucky), Kaiserslautern American High School (Germany), and Florida State University; training advisor, Regional Educational Center, Penang, Malaysia, 1972-73 (on leave). Kappa Delta Pi Outstanding Teacher Award, 1971; Editorial Board, *Journal of Research in Science Teaching*, 1970-74, JRST Award, 1978.

George T. O'Hearn (science education),

1934; B.S., 1957, M.S., 1959, Ph.D., 1964, University of Wisconsin-Madison. With University of Wisconsin-Green Bay since 1968; professor of science education since 1970 and director, Educational Research and Development, since 1975. Previously with University of Wisconsin-Madison.

H. Craig Sipe (science education), 1917; A.B., Bethany College, 1937; M.A., University of Virginia, 1938; Ph.D., George Peabody College, 1952. Professor of science education, State University of New York, Albany. Previously with Winchester (Virginia) public schools, O'Sullivan Rubber Company, Staunton Military Academy, Bethany College, Woodberry Forest School, Massachusetts Hill College, Florence State University, Indian Springs School, and George Peabody College. Jessie H. Jones scholar, 1950-52; director, National Science Teachers Association, 1961-63; president, National Association for Research in Science Teaching, 1965-66; chairman, Patron Activities Committee, NARST; Policy Board, SUNYA; Consortium on Teacher Education. AAAS activities: member-at-large of the Section Committee, Section on Education, 1961-64.

Thomas G. Teates (science education), 1934; B.S., Lebanon Valley College, 1957; M.S., University of Delaware, 1959; Ph.D., Florida State University, 1970. With Virginia Polytechnic Institute and State University since 1970; currently associate professor and acting division director, Curriculum and Instruction. Previously with National College (Kansas City, Missouri), Longwood College, and Florida State University. Secretary, 1973, president, 1977, Virginia Science Supervisor's Association; president, Mid-Atlantic Region, Association for the Education of Teachers of Science, 1974; membership coordinator, AETS, 1975-77; Membership Committee, National Association for Research in Science Teaching, 1975-76; Executive Committee and chairman, Long Range Needs Committee, VSSA.

Section R—Dentistry

Chairperson-Elect (one to be elected).

Robert J. Genco
Marie Ussing Nylen

Robert J. Genco (dentistry), 1938; D.D.S., State University of New York at Buffalo, 1963; Ph.D., University of Pennsylvania, 1967. With State University of New York at Buffalo since 1967; professor since 1974; chairman, Department of Oral Biology, since 1977. Basic Science Award, International Association for Dental Research, 1975; chairman, Periodontal Research Group, IADR, 1976; Editorial Boards, *Infection and Immunity*, *Immunochemistry*, *Journal of Dental Research*, and *Journal of Periodontal Research*; chairman, Committee on Research, American Academy of Periodontology; National Dental Caries Program Advisory Committee, NIH.

Marie Ussing Nylen (dental research), 1924; D.D.S., Royal Dental College, Copenhagen, 1947. With National Institute of Dental Research since 1955; director of intramural research since 1976. Professional lecturer in anatomy, Georgetown University, since 1970. Previously with Royal Dental College and Rockefeller Institute, Copenhagen. U.S. Public Health Service fellow, 1950-51; DHEW Superior Service Honor Award, 1969; Award

for Basic Research in Biological Mineralization, 1970, and Isaac Schour Memorial Award, 1977, International Association for Dental Research; Federal Woman's Award, 1975; secretary-treasurer, Washington Society for Electron Microscopy, 1962-65; president, Washington Section, IADR, 1971-72, and American Chapter, Mineralized Tissue Group, 1974-75; vice president, American Association for Dental Research; associate editor, *Scandinavian Journal of Dental Research*, *Oral Sciences Reviews*, and *Journal of Dental Research*. AAAS activities: Electorate Nominating Committee, Section on Dentistry, 1976-78, chairperson, 1978.

Member-at-Large of the Section Committee (one to be elected).

James W. Bawden
Barbara Griswold Mills

James W. Bawden (dentistry, pedodontics), 1930; M.S., 1960, Ph.D., 1961, University of Iowa. With University of North Carolina since 1961; alumni distinguished professor, Department of Pedodontics, Dental Research Center, since 1977. Previously with U.S. Navy Dental Corps and University of Lund. U.S. Public Health Service fellow, 1958-61; chairman, Council of Deans, American Association of Dental Schools, 1970; Council on Dental Education, American Dental Association, 1971-74; president, Southern Conference on Dental Deans and Examiners, 1972-74.

Barbara Griswold Mills (bone metabolism, physiology), 1924; A.B., 1946, M.S., 1948, University of Nebraska; M.D., University of Chicago, 1954. With University of Southern California since 1967; associate professor, School of Dentistry, since 1976. Previously with Presbyterian-St. Luke's Hospital and Winsor Memorial Heart Research Foundation. Physicians Recognition Award, American Medical Association, 1970-73, 1974-77, 1978-80; Mortar Board Outstanding USC Professor Award, 1978; Cancer Research Committee, USC; Professional Opportunities for Women Committee, American Institute of Chemists.

Members of the Electorate Nominating Committee (two to be elected).

Charles J. Burstone
Poul Grøn
Harold V. Jordan
Marjorie L. Swartz

Charles J. Burstone (dentistry), 1928; D.D.S., Washington University, 1950; M.S., Indiana University, 1955. Professor and head, Department of Orthodontics, School of Dental Medicine, University of Connecticut, Farmington, since 1970; professor, Department of Mechanical Engineering, University of Connecticut, Storrs, since 1975; consultant, Haskins Laboratories, since 1972. Previously with Indiana University. President, Great Lakes Society of Orthodontists and Indiana State Society of Orthodontists, 1967-68, and Indiana Chapter, Omicron Kappa Upsilon, 1969-70; chairman, Section on Orthodontics and Oral Development, American Dental Association, 1967-68; House of Delegates, American Association of Orthodontists, 1967-70; chairman, Committee for Orthodontic Materials, AAO; consulting editor, *Journal of Biomechanics*.

Poul Grøn (oral mineralized tissues), 1927; D.D.S., Royal Dental College, Copenhagen,

1950; D.M.D., Tufts University, 1958. Senior staff member, Forsyth Dental Center, since 1964; director, Infirmary Division, since 1969. With Harvard University School of Dental Medicine since 1963; associate clinical professor since 1976. Previously with Royal Dental College. Vice president, president, and councillor, Boston Chapter, American Association for Dental Research, 1969-71; president, Mineralized Tissues Group, AADR; Board of Governors, NEDS.

Harold V. Jordan (microbiology), 1924; B.S., University of New Hampshire, 1949; M.S., 1952, Ph.D., 1956, University of Maryland. Senior staff member, Forsyth Dental Center, since 1969. Associate clinical professor, Harvard University School of Dental Medicine, since 1976. Previously with National Institute of Dental Research and U.S. Public Health Service; visiting scientist, Royal Dental School, Malmo. Editorial Board, *Journal of Dental Research*, 1973-75; regional editor, *Archives of Oral Biology*; Scientific Advisory Committee, Center for Oral Health, University of Pennsylvania.

Marjorie L. Swartz (dental materials), 1924; B.S., Butler University, 1946; M.S., Indiana University, 1959. With Indiana University since 1946; professor of dental materials, School of Dentistry, since 1969. Wilmer Souder Award; co-winner, Chicago Dental Society Research Award, 1957; past president of Dental Materials Group, International Association for Dental Research, of Indiana Section, American College of Dentists, and of Theta Theta Chapter, Omicron Kappa Upsilon; Souder Award Committee, IADR.

Section S-Pharmaceutical Sciences

Chairperson-Elect (one to be elected).

Grover C. Bowles, Jr.
David A. Knapp

Grover C. Bowles, Jr. (hospital pharmacy), 1920; B.S., University of Tennessee, 1942; Sc.D. (honorary), Philadelphia College of Pharmacy and Science, 1968. Director of pharmacy, Baptist Memorial Hospital, and associate professor, University of Tennessee College of Pharmacy, since 1955. Previously with U.S. Navy Hospital Corps, University of Michigan Hospital, Strong Memorial Hospital, University of Rochester, and Memorial Hospital Association of Kentucky. H. A. K. Whitney Lecture Award, 1962; Remington Honor Medal, 1973; president, American Society of Hospital Pharmacists, 1952, and American Pharmaceutical Association, 1965; treasurer, APhA, since 1967; Tennessee Board for the Licensing of Health Facilities since 1961. AAAS activities: Electorate Nominating Committee, Section on Pharmaceutical Sciences, 1974.

David A. Knapp (pharmacy administration), 1938; B.S., 1960, M.S., 1962, Ph.D., 1965, Purdue University. Researcher, Division of Intramural Research, National Center for Health Services Research, DHEW (on leave). With University of Maryland since 1971; currently professor and chairman, Department of Pharmacy Administration. Previously with Ohio State University. American Foundation for Pharmaceutical Education fellow, 1962-64; National Center for Health Services Research special fellow, 1970-71; World Health Association traveling fellow, 1974; Volwiler Award Committee and Administrative Board, Council of Faculties, American Association

of Colleges of Pharmacy; Advisory Council, American Society of Hospital Pharmacists Research and Education Foundation; Publications Committee, Academy of Pharmaceutical Sciences, APhA.

Member-at-Large of the Section Committee (one to be elected).

M. Robert Blum
Louis A. Luzzi

M. Robert Blum (pharmacokinetics), 1938; B.S., University of California, Berkeley, 1960; Pharm.D., 1965, Ph.D., 1974, University of California, San Francisco. Head, Pharmacokinetics Laboratory, Wellcome Research Laboratories, Burroughs Wellcome Company. With University of North Carolina since 1972; adjunct associate professor, School of Pharmacy, since 1978, and member, Cancer Center. Best Instructor Award, School of Pharmacy, University of North Carolina, 1975; consultant, National Institute of Environmental Health Sciences.

Louis A. Luzzi (pharmacy, pharmaceuticals), 1932; B.S., 1959, M.S., 1964, Ph.D., 1966, University of Rhode Island. Professor and dean, School of Pharmacy, West Virginia University, since 1974. Previously with University of Rhode Island and University of Georgia. Executive secretary-treasurer, Conference of Teachers, 1969-73, chairman, Program Committee, 1969-72, Nominating Committee, 1972 and 1975, and Section of Continuing Education, 1973-74; chairman, Publications Committee, *American Journal of Pharmaceutical Education*, 1973; Council of Deans and Council of Teachers, American Association of Colleges of Pharmacy; chairman, State of West Virginia Commission on Pharmaceuticals and Related Matters; task force member to Minister of Health, Egypt; chairman and co-director, 4th International Symposium on Microencapsulation.

Members of the Electorate Nominating Committee (two to be elected).

William H. Golod
Arthur R. Mlodozeniec
Richard H. Reuning
Arthur B. Straughn

William H. Golod (pharmacy), 1933; Ph.D., Purdue University, 1958. With Medical University of South Carolina since 1958; professor and dean, College of Pharmacy, since 1965. Previously with Purdue University. President, Charleston County Pharmaceutical Association, 1961, and South Carolina Society of Hospital Pharmacists, 1962-63; chairman, Charleston County Drug Abuse Commission, 1971-73; Advisory Board, Charleston County Substance Abuse Commission; Board of Directors, Sea Island Comprehensive Health Care Corporation.

Arthur R. Mlodozeniec (pharmacy, physical chemistry), 1937; B.S., Fordham University, 1959; Ph.D., University of Wisconsin, 1964. With Hoffman-La Roche, Inc., since 1968; manager, Research and Diagnostic Products, Quality Control Department, since 1977. Previously with Upjohn Company. New York State Pharmaceutical Association Award and Merck Pharmaceutical Chemistry Award, 1959; Executive Committee, Kalamazoo Section, American Chemical Society, 1966-68; Executive Committee, Academy of Pharmaceutical Sciences, 1972-73 and 1976-81; chapter officer, Sigma Xi, 1975-76; chairman, Community Affairs Drug Abuse Task Force;

chairman, Industrial Pharmaceutical Technology Section, APS; chairman, Mission and Scope, Awards, Fellow Selection, and Nominating Committees, IPT Section, APS.

Richard H. Reuning (pharmacokinetics), 1941; B.S., 1963, Ph.D., 1968, State University of New York, Buffalo. With Ohio State University since 1970; associate professor, College of Pharmacy, since 1974. Previously with University of Missouri. U.S. Public Health Service fellow, 1967-69; Lyman Award, American Association of Colleges of Pharmacy, 1975.

Arthur B. Straughn (biopharmaceutics, pharmacokinetics), 1944; B.S., University of North Carolina, 1972; Pharm.D., University of Tennessee, 1974. With University of Tennessee since 1973; currently assistant professor and head, Clinical Section, Division of Biopharmaceutics and Pharmacokinetics, Department of Medicinal Chemistry, College of Pharmacy. Previously with University of North Carolina. Lederle Pharmacy Faculty Award, 1976.

Section T—Information, Computing, and Communication

Chairperson-Elect (one to be elected).

Henry M. Kissman
Jesse H. Shera

Henry M. Kissman (information science), 1922; B.S., Sterling College, 1944; M.S., University of Cincinnati, 1948; Ph.D., University of Rochester, 1950. Associate director, Specialized Information Services, National Library of Medicine, since 1970. Previously with National Heart Institute, Lederle Laboratories, and Food and Drug Administration. DHEW Superior Service Award, 1973; National Library of Medicine Director's Honor Award, 1974; Alumni Award for Distinguished Achievement, Sterling College, 1974; chairman, Chemical Documentation Committee, Chemical Literature Division, American Chemical Society, 1965-68; chairman, Special Interest Group, Biomedicine and Chemistry, American Society for Information Science, 1969; chairman, President's Office of Science and Technology Task Force to Study Environmental Quality Information Programs in the Federal Government, 1969-71; Committee on Chemical Information, National Academy of Sciences, 1969-72; Editorial Board, *Drug Information Journal*; chairman, Toxicology Information Subcommittee, DHEW Committee to Coordinate Toxicology and Related Programs; Interagency Toxic Substances Data Committee; Scientific Advisory Committee, International Register of Potentially Toxic Chemicals, U.N. Environment Programme.

Jesse H. Shera (library and information science), 1903; A.B., Miami University, 1925; M.A., Yale University, 1927; Ph.D., University of Chicago, 1944; LL.D., Ball State University, 1976. With Case Western Reserve University since 1952; currently dean emeritus, School of Library Science. Previously with Miami University, Scripps Foundation for Research in Population Problems, Library of Congress, Office of Strategic Services, and University of Chicago. Beta Phi Mu Award in library education, 1965; Melvil Dewey Medal, 1968, and Lippincott Award, 1974, American Library Association; Distinguished Service Award, American Society for Information Science, 1974; Kaula Medal for Con-

tributions in Information Science, 1976; various offices in divisions of American Library Association, 1945-70; editor, *American Documentation*, 1953-60; president, Association of American Library Schools, 1964-65; President's Committee on Employment of the Handicapped.

Member-at-Large of the Section Committee (one to be elected).

Charles H. Davis
Marshall C. Yovits

Charles H. Davis (information science, chemistry), 1938; B.S., 1960, M.A., 1966, Ph.D., 1969, Indiana University. Dean, Faculty of Library Science, University of Alberta, since 1977. Previously with Chemical Abstracts Service, Aerospace Research Applications Center, ERIC Clearinghouse on Reading, Drexel University, and University of Michigan. German Government fellow, 1960-61; chairman, Indiana Chapter, 1968-69, and Michigan Chapter, 1974-75, American Society for Information Science; chairman, Library Research Round Table, American Library Association; chairman, Research Committee, Association of American Library Schools; chairman, Western Canada Chapter, ASIS.

Marshall C. Yovits (computer and information science), 1923; B.S., 1944, M.S., 1948, Union College; M.S., 1950, Ph.D., 1951, Yale University. Professor and chairman, Department of Computer and Information Science, Ohio State University, since 1966. Previously with National Advisory Committee for Aeronautics, Union College, Yale University, Johns Hopkins Applied Physics Laboratory, and Office of Naval Research. Atomic Energy Commission fellow, 1950; Navy Outstanding Performance Award, 1961; Navy Superior Civilian Service Award, 1964; Curriculum Committee on Computer Science, Accreditation Committee, and Education Board, Association for Computing Machinery; Computer Science Board, chairman, 1973; AFIPS Education Committee.

Members of the Electorate Nominating Committee (two to be elected).

Carlos M. Bowman
Charles M. Goldstein
Julie A. C. Virgo
Harold Wooster

Carlos M. Bowman (use of computers in chemical R & D), 1935; B.S., 1954, Ph.D., 1957, University of Utah. With Dow Chemical Company since 1957; director, Computation Laboratory, since 1968. Treasurer, 1966, secretary, 1967, chairman, 1968, Midland Branch, Sigma Xi-RESA; chairman, Chemical Notation Association, 1969; chairman, Division of Chemical Information, 1969, Committee on Divisional Activities, 1975, American Chemical Society; chairman, NAS-NRC Committee on Chemical Information, 1971-74; chairman, Gordon Research Conference on Scientific Information, 1976; councilor and chairman, Long Range Planning Committee, ACS; NAS-NRC Committee on Data Needs.

Charles M. Goldstein (computer technology), 1929; B.S., 1953, M.S., 1954, Purdue University. Chief, Computer Technology Branch, Lister Hill National Center for Biomedical Communications, National Library of Medicine, since 1974. Previously with NASA Lewis Research Center and Informa-

tics, Inc. Fulbright scholar, 1954-55; Directors Award, National Institutes of Health, 1977; chairman, SIG/IAC, American Society for Information Science, 1969-70; ASIS Standards Committee; Board of Directors, Health Education Network, Inc.; ADP Advisory Group, National Library of Medicine; New Technology Committee, National Federation of Abstracting and Indexing Services.

Julie A. C. Virgo (librarianship), 1944; M.A., 1968, Ph.D., 1974, University of Chicago. Executive secretary, Association of College and Research Libraries, since 1977; lecturer, Graduate Library School, University of Chicago, since 1968. Previously with Repatriation Department, Adelaide, South Australia, and Medical Library Association. National Library of Medicine fellow, 1967-69; HEA Title IIB fellow, 1969-72; Doctoral Dissertation Award, American Society for Information Science, 1975; Education Committee, ASIS; Continuing Library Education Network and Exchange Board of Directors; Exam. Devel. Committee, Medical Library Association.

Harold Wooster (information science), 1919; A.B., Syracuse University, 1939; M.S., 1941, Ph.D., 1943, University of Wisconsin. With National Library of Medicine since 1970; special assistant for program development, Lister Hill National Center for Biomedical Communications, since 1974. Previously with University of Wisconsin, University of Chicago, University of Pennsylvania, Mellon Institute of Industrial Research, and Air Force Office of Scientific Research. Past president, Aerospace Technology Branch, Scientific Research Society of America; past chairperson, Potomac Valley Chapter, American Society for Information Science.

Section U—Statistics

Chairperson-Elect (one to be elected).

Yvonne M. Bishop
Oscar Kempthorne

Yvonne M. Bishop (biostatistics), 1925; B.A., University of London, 1947; M.Sc., 1961, Ph.D., 1967, Harvard School of Public Health. With Harvard School of Public Health since 1962; associate professor, Department of Biostatistics, since 1971. Previously with Sidney Farber Cancer Institute. President, Biometric Society, Eastern North American Region, 1978; Board of Scientific Counselors, NIEHS; Panel on Legislative Impact on the Courts, National Research Council. AAAS activities: Electorate Nominating Committee, Section on Statistics, 1974-76.

Oscar Kempthorne (statistics), 1919; B.A., 1940, M.A., 1943, Sc.D., 1960, Cambridge University. With Iowa State University since 1947; professor of statistics since 1951; distinguished professor in sciences and humanities since 1964. Previously with Rothamsted Experimental Station. Iowa State University Alumni Association Faculty Citation, 1977; past president, Biometric Society, Eastern North American Region; past director, American Statistical Association; national director, Mu Sigma Rho; Advisory Board, *Journal of Statistical Computation and Simulation*; International Advisory Board of *Journal, Communications in Statistics*; Editorial Board, *Journal of Statistical Planning and Inference*; associate editor, *Biometrics* and *Theoretical Population*.

Member-at-Large of the Section Committee (one to be elected).

Morris H. DeGroot
Ramanathan Gnanadesikan

Morris H. DeGroot (statistics), 1931; B.S., Roosevelt University, 1952; M.S., 1954, Ph.D., 1958, University of Chicago. With Carnegie-Mellon University since 1957; currently professor. Professor, European Institute for Advanced Studies in Management, Brussels, 1971. Former associate editor, *Annals of Statistics*; theory and methods editor, *Journal of the American Statistical Association*; Committee on National Statistics, National Research Council; Council, Institute of Mathematical Statistics.

Ramanathan Gnanadesikan (statistics), 1932; B.Sc., 1952, M.A., 1953, University of Madras; Ph.D., University of North Carolina, 1957. With Bell Telephone Laboratories since 1959; currently head, Statistics and Data Analysis Research Department. Previously with Procter and Gamble Company, Courant Institute of New York University, Imperial College of Science and Technology, and Princeton University. President, Cincinnati Chapter, American Statistical Association, 1958-59; Council, Institute of Mathematical Statistics; Publications Committee, ASA.

Members of the Electorate Nominating Committee (two to be elected).

Peter J. Bickel
K. O. Bowman
William H. Lawton
Donald W. Marquardt

Peter J. Bickel (statistics), 1940; Ph.D., University of California, Berkeley, 1963. With University of California, Berkeley, since 1963; currently professor and chairman, Department of Statistics. Guggenheim fellow, 1970; Council, Institute of Mathematical Statistics, 1972-75.

K. O. Bowman (statistics), 1927; B.S., Radford College, 1960; M.S., 1961, Ph.D., 1963, Virginia Polytechnic Institute and State University. With Union Carbide Corporation, Nuclear Division, since 1963; research staff member, Mathematics and Statistics Research Department, Computer Sciences Division, since 1971. International Editorial Board, *Communications in Statistics: Part B, Simulation and Computation*; associate editor, *Journal of Statistical Computation and Simulation*; Panel, Women in Science Program, National Science Foundation; liaison scientist, Office of Naval Research.

William H. Lawton (statistics), 1937; A.B., 1959, M.A., 1962, Ph.D., 1965, University of California, Berkeley. With Eastman Kodak Company since 1962; supervisor, Corporate Services, Management Services Division, since 1977. Visiting senior scientist, Mathematics Research Center, University of Wisconsin, 1978-79. Previously with University of California, Berkeley. Shewell Award, American Society for Quality Control, 1970; Wilcoxon Award, *Technometrics*, 1971, 1974; chairman-elect, Section on Physical and Engineering Sciences, American Statistical Association; National Research Council Review Panel of the Applied Mathematics Section of the National Bureau of Standards.

Donald W. Marquardt (statistics), 1929; A.B., Columbia University, 1950; M.A., University of Delaware, 1956. With E. I. du Pont de Nemours and Company since 1953; currently consultant manager, Engineering De-

partment. Youden Award, American Society for Quality Control, 1975; branch president, Sigma Xi-RESA, 1962; associate editor, *Technometrics*; International Editorial Board, *Communications in Statistics*; Z-1 Committee on Quality Assurance, American National Standards Institute.

Section W-Atmospheric and Hydrospheric Sciences

Chairperson-Elect (one to be elected).

Edward S. Epstein
Edwin Kessler

Edward S. Epstein (meteorology), 1931; A.B., Harvard University, 1951; M.B.A., Columbia University, 1953; M.S., 1954, Ph.D., 1960, Pennsylvania State University. With National Oceanographic and Atmospheric Administration since 1973; director, U.S. Climate Program Office, since 1978. Previously with U.S. Air Force and University of Michigan; consultant to Assistant Secretary for Science and Technology, U.S. Department of Commerce, 1962-64 (on leave); visiting scientist and chairman of department, University of Stockholm, 1968-69 (on leave). Associate editor, *Journal of Geophysical Research*, 1964-67; editor, *Journal of Applied Meteorology*, 1971-73; councillor, American Meteorological Society, 1973-76; chairman, Committee on Meteorological Statistics, 1968-69, and Board on Human Resources, 1976-78, AMS; trustee, University Corporation for Atmospheric Research, 1972-73; Publications Commission, AMS; Advisory Council, Department of Geological and Geophysical Sciences, Princeton University.

Edwin Kessler (meteorology), 1928; A.B., Columbia University, 1950; S.M., 1952, Sc.D., 1957, Massachusetts Institute of Technology. Director, National Severe Storms Laboratory, and adjunct professor, University of Oklahoma. Previously with Air Force Cambridge Research Center and Travelers Research Center; visiting professor, MIT, 1975-76. NOAA Distinguished Authorship Award, 1971; president, Boston Chapter, American Meteorological Society, 1960-61; AMS Committees on Weather Radar, 1961-69 (chairman, 1968-69), Hurricanes and Tropical Meteorology, 1963-65, and Severe Storms, 1965-68; National Council, AMS, 1966-69; associate editor, *Journal of Applied Meteorology*, 1967-77; Executive Committee, University of Oklahoma Research Institute; Advisory Panel, Convective Storms Division, National Center for Atmospheric Research; Steering Committee, Project SESAME.

Member-at-Large of the Section Committee (one to be elected).

Franklin A. Gifford, Jr.
Walter A. Lyons

Franklin A. Gifford, Jr. (meteorology), 1922; B.S., New York University, 1947; M.S., 1954, Ph.D., 1955, Pennsylvania State University. With National Oceanographic and Atmospheric Administration since 1950; currently director, Atmospheric Turbulence and Diffusion Laboratory. Previously with U.S. Air Force and Northwest Airlines. Air Medal, 1944; Edgar S. Gorrell Award, Air Transport Association, 1948; Department of Commerce Gold Medal, 1963; associate editor, *Journal of Meteorology*, 1965-68; chairman, Committee on Turbulence and Diffusion, American Meteorological Society, 1966-67; con-

sultant, U.S. Advisory Committee on Reactor Safety (member, 1958-68, chairman, 1962).

Walter A. Lyons (meteorology), 1943; B.S., St. Louis University, 1964; M.S., 1965, Ph.D., 1970, University of Chicago. President, MESOMET, Inc., and adjunct professor, Department of Mechanical Engineering, University of Minnesota. Previously with University of Wisconsin, Milwaukee. Hertz Foundation fellow, 1965-69; Macelwane Prize, American Meteorological Society, 1963; Special Service Award, NOAA, 1976; Committee on Meteorological Aspects of Air Pollution (past chairman), Board of Education in Schools and Popular Meteorological Education, and Board for Radio and Television Weathercasting, AMS; Field Observing Facility Advisory Panel, National Center for Atmospheric Research; Committee on Remote Sensing Programs for Earth Resource Surveys, National Academy of Sciences.

Members of the Electorate Nominating Committee (two to be elected).

Donna Wells Blake
Kinsell L. Coulson
Rosa G. de Pena
Richard S. Greenfield

Donna Wells Blake (atmospheric dynamics), 1944; B.A., 1965, M.S., 1969, University of Colorado; Ph.D., University of Chicago, 1973. Assistant professor, Department of Meteorology, Florida State University. Committee on the Upper Atmosphere and Undergraduate Awards Committee, American Meteorological Society; University Relations Committee, University Corporation for Atmospheric Research.

Kinsell L. Coulson (meteorology), 1916; B.A., Northwest Missouri State Teachers College, 1942; M.A., 1952, Ph.D., 1959, University of California, Los Angeles. Professor of meteorology, University of California, Davis, since 1965. Previously with U.S. Weather Bureau, United Nations, U.S. Navy, UCLA, Stanford Research Institute, and General Electric Space Sciences Laboratory. Outstanding Service Award, Northern California Solar Energy Association, 1976; president, NCSEA, 1975-76; Board of Directors, Solar Energy Advocates, 1975-77; NAS Review Panel for NOAA, 1976-77; Committee on Radiation Energy, American Meteorological Society; acting chairperson, Division of Solar Radiation, American Section, International Solar Energy Society; Board of Directors, American Section, ISES; Editorial Board, *Solar Energy*; Nimbus Satellite Experiment Team.

Rosa G. de Pena (meteorology), 1921; Ph.D., University of Buenos Aires, 1950. With Pennsylvania State University since 1969; associate professor of meteorology since 1973. Previously with University of Buenos Aires. Hail Prevention Experiment Team (Mendoza, Argentina), 1958-62; Argentine National Council for Scientific and Technological Research fellow, 1963-64.

Richard S. Greenfield (meteorology), 1933; B.S., 1955, M.S., 1962, Ph.D., 1966, New York University. Program director, Global Atmospheric Research Program, National Science Foundation. Previously with Center for the Environment and Man, Inc., Travelers Research Center, Inc., New York University, and U.S. Air Force. New York University Founders Day Award, 1967; president, Connecticut Valley Chapter, American Meteorological Society, 1968-69.

Section X—General

Chairperson-Elect (one to be elected).

Vera Kistiakowsky

Gordon James Fraser MacDonald

Vera Kistiakowsky (experimental particle physics), 1928; A.B., Mount Holyoke College, 1948; Ph.D., University of California, Berkeley, 1952. With Massachusetts Institute of Technology since 1963; professor of physics since 1973. Previously with U.S. Naval Radiological Defense Laboratory, Columbia University, and Brandeis University. Centennial Alumnae Award, Mount Holyoke College, 1972; chairwoman, Committee on Women in Physics, 1971, Committee on Committees, 1974, Committee on Constitution and Bylaws, 1975–76, and Audit Committee, 1977, American Physical Society; Panel on NSF Fellowships, NAS-NRC, 1973–75, chairwoman, 1976; Councils, APS, 1974–77, Association for Women in Science, 1976–78; chairwoman, Panel on Physics GRE, Educational Testing Service, 1976–78; Committee on the Education and Employment of Women in Science and Engineering, NAS-NRC; Panel on Public Affairs, APS. AAAS activities: Electorate Nominating Committee, Section X-General, 1975–77.

Gordon James Fraser MacDonald (geophysics), 1929; A.B., 1950, A.M., 1952, Ph.D., 1954, Harvard University. Distinguished visiting scholar, Mitre Corporation; concurrently, Henry R. Luce Third Century professor of environmental studies and policy and director, Environmental Studies Program, Dartmouth College, since 1972. Previously with Massachusetts Institute of Technology, University of California, Los Angeles, Institute for Defense Analyses, University of California, Santa Barbara, and Council on Environmental Quality. Fulbright fellow, 1962; Monograph Prize, American Academy of Arts and Sciences, 1959; James B. Macelwane Award, American Geophysical Union, 1965; Man of Science, 1966; Board of Directors, Environmental Law Institute and Institute for Congress; Board of Trustees, Mitre Corporation; Advisory Council, Gas Research Institute. AAAS activities: Committee on Public Understanding of Science, 1963–65; Editorial Board, *Science*, 1965–68; AAAS-Newcomb Cleveland Prize Committee of Judges, 1967–69; AAAS-Westinghouse Science Writing Awards Committee of Judges, 1968; Electorate Nominating Committee, Section X-General, 1974–76; chairman, Section X, 1976.

Member-at-Large of the Section Committee (one to be elected).

T. Keith Glennan

S. Fred Singer

T. Keith Glennan (educational and scientific/engineering administration), 1905; B.S.E.E., Yale University, 1927. Retired; consultant to State and Commerce Departments since 1972. Previously with Western Electric Company, Paramount Pictures and Sam Goldwyn Studios, U.S. Navy Underwater Sound Laboratory, AnSco, Case Institute of Technology, U.S. Atomic Energy Commission (commissioner), NASA (administrator), Associated Universities (president), Urban Coalition, and International Atomic Energy Agency (U.S. ambassador). U.S. Medal for Merit, 1946; NASA Distinguished Service Medal, 1966; State Department Distinguished Honor Award, 1973; emeritus member, National Academy of Engineering; Weather Modification Advisory Board, NOAA/Commerce; NAS Advisory Committee for International Institute of Applied Systems Analysis.

S. Fred Singer (geophysics), 1924; B.E.E., Ohio State University, 1943; A.M., 1944, Ph.D., 1948, Princeton University. Professor of environmental sciences, University of Virginia, since 1972. Previously with Johns Hopkins Applied Physics Laboratory, Office of Naval Research, University of Maryland, Department of Commerce, University of Miami, Department of the Interior (deputy assistant secretary), and Environmental Protection Agency (deputy assistant administrator). Presidential Citation for Earth Satellites; Gold Medal, Department of Commerce; Science Medal, British Interplanetary Society; chairman, Publications Committee, 1970–72, and Environmental Quality Committee, 1972–76, American Geophysical Union; consultant, General Accounting Office and Office of Technology Assessment; Research Council, Center for Strategic International Studies, Georgetown University; president; Section on Environmental Health Sciences, Pan American Medical Association. AAAS activities: member-at-large of the Section Committee, Section on Atmospheric and Hydro-spheric Sciences, 1969–71; Council, 1969–71, 1973, 1975–77; Committee on AAAS Meetings, 1969–72, chairman, 1971–72; Commission on Population and Reproduction Control, 1970–71; Committee on Council Affairs, 1971–73; organizing secretary, Section X—General, 1973; Electorate Nominating Committee, Section X, 1974–75.

Members of the Electorate Nominating Committee (two to be elected).

Rosemary A. Chalk

Thomas F. Jones

Chauncey Starr

Carroll Louis Wilson

Rosemary A. Chalk (science policy), 1948; B.A., University of Cincinnati, 1970. Staff of-

ficer, Committee on Scientific Freedom and Responsibility, AAAS, since 1976. Previously with Science Policy Research Division, Congressional Research Service, Library of Congress; Program of Science and Public Policy, George Washington University; and AAAS Office of Special Programs. "C-ring" Award, University of Cincinnati, 1970.

Thomas F. Jones (electrical engineering), 1916; B.S., Mississippi State University, 1939; S.M., 1940, Sc.D., 1952, Massachusetts Institute of Technology. Vice president for research (since 1975) and professor (since 1977), Massachusetts Institute of Technology. Previously with Naval Research Laboratory, Purdue University, and University of South Carolina. U.S. Navy Meritorious Civilian Service Award, 1946; member, National Academy of Engineering; National Science Board, 1966–72; vice president for education, Institute of Electrical and Electronics Engineers, 1975; National Science Foundation Advisory Council; NSF Research Applications Policy Advisory Committee; Board of Directors, Industrial Nucleonics Corporation and Technical Education Research Center.

Chauncey Starr (engineering), 1912; Ph.D., Rensselaer Polytechnic Institute, 1935. With Electric Power Research Institute since 1974; vice chairman since 1978. Previously with Harvard University, Massachusetts Institute of Technology, Rockwell International, and University of California, Los Angeles. Member and past vice president, National Academy of Engineering; founder and past president, American Nuclear Society; Energy Advisory Committee, Office of Technology Assessment; U.S./U.S.S.R. Joint Committee on Cooperation of Peaceful Uses of Atomic Energy; Energy Subcommittee, U.S.-Israel Bi-National Advisory Council for Industrial Research and Development; U.S. National Committee, World Energy Conference. AAAS activities: member-at-large of the Section Committee, Section X—General, 1974–76; Board of Directors, 1974–77; Council, 1974–77.

Carroll Louis Wilson (energy and economic development), 1910; S.B., Massachusetts Institute of Technology, 1932. Mitsui professor emeritus on problems of contemporary technology, Sloan School of Management, MIT. Previously with Office of Scientific Research and Development, U.S. Atomic Energy Commission, Climax Uranium Company, and Metals and Controls Corporation. Office of the British Empire Medal for Merit; director, Council on Foreign Relations; chairman, Board of Trustees, World Peace Foundation; Trilateral Commission; UNA Policy Studies Committee and Economic Policy Council; director, Workshop on Alternative Energy Strategies.