

Press, New York, 1977. xviii, 410 pp., illus. \$41. International Biological Programme 13.

Progress in Gastroenterology. Vol. 3. George B. Jerzy Glass, Ed. Grune and Stratton, New York, 1977. xviii, 1052 pp., illus. \$88.50.

Progress in Medical Virology. Vol. 23. Joseph L. Melnick, Ed. Karger, Basel, 1977. viii, 212 pp., illus. \$53.

Psychological Research. Controlled Interpersonal Interaction. Kenneth R. Graham. Brooks/Cole, Monterey, Calif., 1977. xii, 258 pp., illus. Paper, \$8.95.

Psychology in the Legal Process. Papers from a meeting, Chicago, Sept. 1975. Bruce Dennis Sales, Ed. Spectrum, New York, 1977 (distributor, Halsted [Wiley], New York). xii, 292 pp. \$20.

Quantum Mechanics, a Half Century Later. Papers from a colloquium, Strasbourg, May 1974. José Leite Lopes and Michel Paty, Eds. Reidel, Boston, 1977. x, 312 pp., illus. \$38. Episteme, vol. 5.

Radio Astronomy and Cosmology. Papers from a symposium, Cambridge, England, Aug. 1976. David L. Jauncey, Ed. Reidel, Boston, 1977. xx, 398 pp., illus. Cloth, \$38; paper, \$19.50. International Astronomical Union Symposium No. 74.

Religion and Scientific Method. George Schlesinger. Reidel, Boston, 1977. viii, 204 pp. \$22. Philosophical Studies Series in Philosophy, vol. 10.

R. I. Watson's Selected Papers on the History of Psychology. Josef Brožek and Rand B. Evans, Eds. University of New Hampshire, Durham, 1977 (distributor, University Press of New England, Hanover, N.H.). xiv, 394 pp. \$18.50.

Scattering Theory in Quantum Mechanics. Physical Principles and Mathematical Methods. Werner O. Amrein, Joseph M. Jauch, and Kalyan B. Sinha. Benjamin Advanced Book Program, Reading, Mass., 1977. xxvi, 694 pp. Cloth, \$29.50; paper, \$17.50. Lecture Notes and Supplements in Physics, 16.

Schadwirkung der Kleinen Kohlfliege (Phorbia brassicae Bouché) und Möglichkeiten zur Reduzierung des Insektizidaufwandes bei der Bekämpfung. Gerhard Maack, Biologische Bundesanstalt für Land- und Forstwirtschaft, Berlin-Dahlem, 1977. 136 pp., illus. Paper, DM 17. Mitteilungen aus der Biologischen Bundesanstalt für Land- und Forstwirtschaft, Heft 177.

Scientific and Technical Information Sources. Ching-chih Chen. MIT Press, Cambridge, Mass., 1977. xxxii, 520 pp. \$24.95.

Scientists and World Order. The Uses of Technical Knowledge in International Organizations. Ernst B. Haas, Mary Pat Williams, and Don Babai. University of California Press, Berkeley, 1978. xii, 368 pp. \$17.50.

Solar Energy Books. International Compendium (Solar Science Industries), Beltsville, Md., 1977. ii, 118 pp., illus. Paper, \$4.50.

The Solar House. A Guide to Solar Energy Utilisation in Domestic, Industrial and Commercial Building. P. R. Sabady. Translated from the German edition by P. A. Cummins, I. F. R. Dickinson, Ed. Newnes-Butterworths, Boston, 1978. xii, 116 pp., illus. \$14.95.

Solution of Differential Equation Models by Polynomial Approximation. John Villadsen and Michael L. Michelsen. Prentice-Hall, Englewood Cliffs, N.J., 1978. xviii, 446 pp. \$24.95. Prentice-Hall International Series in the Physical and Chemical Engineering Sciences.

Spectrochemical Analysis of Pure Substances. Kh. I. Zil'bershtein. Translated from the Russian edition (Leningrad, 1971) by J. H. Dixon. Crane, Russak, New York, and Hilger, Bristol, England, 1977. xvi, 436 pp., illus. \$49.50.

Spontaneous Apprentices. Children and Language. George A. Miller. Seabury Press, New York, 1977. xxviii, 188 pp. \$9.95. The Tree of Life. A Continuum Book.

Sport Pedagogy. Content and Methodology. Papers from a symposium, Karlsruhe, Germany, Sept. 1975. Herbert Haag, Ed. University Park Press, Baltimore, 1978. xiv, 268 pp. \$19.50. International Series on Sport Sciences, vol. 4.

Star Formation. Papers from a symposium, Geneva, Sept. 1976. T. de Jong and A. Maeder, Eds. Reidel, Boston, 1977. xiv, 296 pp., illus. Cloth, \$30; paper, \$18. International Astronomical Union Symposium No. 75.

Statistics. Donald J. Koosis in consultation with Arthur P. Coladarci. Wiley, New York, ed. 2, 1977. xii, 282 pp., illus. Paper, \$4.95. A Self-Teaching Guide.

Stratégies et Choix dans la Recherche. A propos des Travaux sur le Sommeil. G. Le-maine, M. Cléménçon, A. Gomis, B. Pollin, and B. Salvo. Mouton, The Hague, 1977. xii, 218 pp. Paper, 48 F. Maison des Sciences de l'Homme, Paris, Publications, 5.

The Structure of Appearance. Nelson Goodman. Reidel, Boston, ed. 3, 1977. i, 294 pp. Cloth, \$32; paper, \$11. Boston Studies in the Philosophy of Science, vol. 53. Synthese Library, vol. 107.

System Mensch. Beispiele aus der psychologischen Fachliteratur. Wolfgang Schönplugh, Ed. Klett-Cotta, Stuttgart, 1977. 180 pp., illus. Paper, DM 17.

Systems Neuroscience. Jacqueline Metzler, Ed. Academic Press, New York, 1977. x, 272 pp., illus. \$12.

Test Methods for Vertebrate Pest Control and Management Materials. Papers from a symposium, Monterey, Calif., Mar. 1976. W. B. Jackson and R. E. Marsh, Eds. American Society for Testing and Materials, Philadelphia, 1977. viii, 258 pp., illus. \$26. ASTM Special Technical Publication 625.

The Testis. Vol. 4, Advances in Physiology, Biochemistry, and Function. A. D. Johnson and W. R. Gomes, Eds. Academic Press, New York, 1977. xxiv, 638 pp., illus. \$49.50.

Transportation. The Domestic System. Robert C. Lieb. Reston (Prentice-Hall), Reston, Va., 1978. xii, 436 pp. \$15.95.

Twenty Years of Science and Mathematics Curriculum Development. The Tenth Report of the International Clearinghouse. J. David Lockard, Charlene Pritzker, and Susan Snyder, Eds. University of Maryland Science Teaching Center, College Park, 1977. xxxii, 516 pp. Paper, \$10.

Tzeltal Folk Zoology. The Classification of Discontinuities in Nature. Eugene S. Hunn. Academic Press, New York, 1977. xlv, 368 pp., illus. \$39.50. Language, Thought, and Culture.

The Value of Medicine. Philip Rhodes. Allen and Unwin, Boston, 1978. 160 pp. \$10.95.

Water-in-Plants Bibliography. Vol. 1, 1975. J. Pospisilová and J. Solárová, Eds. Junk, The Hague, 1977. viii, 88 pp. Paper, Dfl. 35.

Zur Biologie, Ökologie und Ethologie der Chalcidoidea (Hym.). Margot Bendel-Janssen. Biologische Bundesanstalt für Land- und Forstwirtschaft, Berlin-Dahlem, 1977. x, 164 pp. Paper, DM 19.20. Mitteilungen aus der Biologischen Bundesanstalt für Land- und Forstwirtschaft, Heft 176.



How to count gammas without a gamma counter

¹²⁵I-labeled samples of cAMP, cGMP, or proteins can be counted with precision and accuracy in a liquid scintillation counter. The counts obtained are from secondary emissions at rates about 75% of those by direct counting in a gamma counter. The procedures take a little more work, but a lot less gamma counter.

We have documented this technique in our LSC Applications Laboratory, not only in counting cAMP and cGMP, but in simultaneous counting of two isotopes; namely, ¹²⁵I-labeled binding proteins with ³H-, ³⁵S-, or ¹⁴C-labeled substrates. Send for the reports, LSC Application Notes #13, #24, and #25, by Dr. Yutaka Kobayashi.

NEN New England Nuclear

549 Albany Street, Boston, Mass. 02118
Call toll-free: 800-225-1572
(In Massachusetts and International: 617-482-9595)

NEN Chemicals GmbH: D-6072 Dreieich, W. Germany.
Daimlerstrasse 23. Postfach 401240.
Telephone: (06103) 86034. Telex: 4-17993 NEN D

NEN Canada Ltd.: 2453 46th Avenue,
Lachine, Que. H8T 3C9.
Telephone: 514-636-4971. Telex: 05-821808

Personnel Placement

Personnel advertising is accepted only with the understanding that the advertiser does not discriminate among applicants on the basis of race, sex, religion, age, color, national origin, or handicap.

Positions Wanted: 40¢ per word; \$4 extra for use of box number. \$10 minimum charge, per insertion. Prepayment required. This rate is available only to individuals; personnel agencies, companies, colleges, and universities take display rate for all advertising.

Display (Positions Open, Market Place, and so forth): \$5.80 per millimeter; \$145 minimum charge, per insertion (covers 25 millimeters on single column; 25 millimeters equals 10 lines of 50 spaces per line). No charge for use of box number. No agency commission for ads under 103 millimeters (4 inches). No cash discount. Prepayment required for foreign advertising. Purchase orders and billing information required for all other ads.

SCIENCE is published weekly, on Friday. Copy must be received in writing by Wednesday, 3½ weeks before Friday issue date required. Send copy for all positions wanted ads and display ads under 5 inches to:

SCIENCE, Room 207
1515 Massachusetts Ave., NW
Washington, D.C. 20005
Telephone: 202-467-4456

Send copy for display ads, 1/6 page and larger, to:

Scherago Associates, Inc.
1515 Broadway
New York, N.Y. 10036
Telephone: 212-730-1050

Blind ad replies should be addressed as follows:

Box (give number)
SCIENCE
1515 Massachusetts Ave., NW
Washington, D.C. 20005

POSITIONS WANTED

Anatomist/Gross. Excellent teacher. Competent also in neuroanatomy, histology, embryology. Experience with medical and dental students. D.D.S., M.S. (oral pathology). M.A. (anatomy) qualifications. Highest references. Desires stable position. Box 179, SCIENCE. X

Biochemist/Cell Biologist/Molecular Biologist. Ph.D. 1971, also training in chemistry, diverse interests, experience, and training in physical biochemistry, protein/enzyme purification, DNA, RNA purification, characterization, metabolism, nick translation of DNA, transcription, translation, molecular hybridization, chromatin structure/composition, virology, hormone receptor; familiar with cell culture, cell fractionation; basic science/medical teaching; postdoctoral experience, grants, publications; currently working in a teaching medical center. Seeks academic/industrial position. Box 225, SCIENCE. X

Biology Teacher. M.S. Seeks position at community college. Diverse, in-depth course background with focus on general biology, ecology, protozoology, and parasitology. Outstanding résumé and references. D. Murawska, 8725 Ridge Street, River Grove, Illinois 60171. X

Botanist/Electron Microscopist. Ph.D. 1977. Postdoctoral research. Extensive TEM/SEM operation and maintenance experience. Leaf surface, seed germination ultrastructure research. Publications. Seeks research/teaching position. Box 223, SCIENCE. X

Cell Biologist. Ph.D. Experienced researcher (8 years) in cell and tissue culture, cell cycle kinetics, virology, and biochemistry. Seeks position in industry or government with interest in pharmaceutical R & D and development of in vitro drug and toxicological test systems. Box 222, SCIENCE. X

Geologist/Oceanographer. Ph.D., 8 years of research, 11 years of teaching experience, wide variety of geology/oceanography courses. Seeking teaching or other position. Box 224, SCIENCE. X

Zoologist/Ecologist. M.S., botany, Ph.D., entomology. More than 2 years experience as environmental consultant; laboratory and field research in entomology and ichthyology; experience in preparation of research bibliographies. Desires research, consulting, or environmental education position. Available August 1978. Résumé and references on request. Box 221, SCIENCE. X

POSITIONS WANTED

Physiologist/Neuroscientist. Ph.D. 1974. Graduate and postdoctoral training in neurochemistry/neurobiology. Experience in nerve regeneration/degeneration, synaptic mechanisms, neurotoxins. Seeking assistant professor position in medical school or university or research position in government or industry. Available summer 1978. G. S. Tobias, 5633 Gulf Stream Row, Columbia, Maryland 21044; telephone: 301-295-1346. X

Science Editor/Writer. Free-lance editing: technical journals or texts. Chemistry Ph.D., with many years of college teaching and industrial R & D experience. Box 204, SCIENCE. X

POSITIONS OPEN

AQUATIC ECOLOGIST

Research-teaching assistant professorship in the Biology Department with an adjunct appointment in the Center for Environmental Studies. Specific teaching assignments will depend on applicant's background. Research will involve various environmental effects of steam-electric power plants on aquatic ecosystems. Experience with (i) temperature and chlorine avoidance studies with fish, and (ii) coal ash influence on aquatic food chains mandatory. Experience with (i) fish entrainment and impingement, and (ii) population dynamics of fouling organisms highly desirable. Preference will be given to someone with experience in supervising site specific studies carried out by graduate students and technicians. Report writing and publication experience essential. This is part of a larger program in which teamwork is essential. *An Affirmative Action/Equal Opportunity Employer.* Please send résumé and three references to:

Dr. John Cairns, Jr.
Biology Department
Virginia Polytechnic Institute and State University
Blacksburg, Virginia 24061

Applications received until 15 August 1978.

Candidates for ASSISTANT PROFESSORIAL rank. Board-certified with subspecialty training in medical oncology. Clinical excellence, laboratory interest, and demonstrated proficiency by publications and research accomplished. Apply to: **James F. Holland, M.D., Professor and Chairman, Department of Neoplastic Diseases, THE MOUNT SINAI SCHOOL OF MEDICINE, One Gustave Levy Place, New York, N.Y. 10029.** *An Equal Opportunity Employer.*

ASSISTANT PROFESSOR—BIOPHARMACEUTICS

The University of Colorado School of Pharmacy has a tenure-track position in biopharmaceutics-pharmacokinetics starting 1 September 1978. Applicants must have an undergraduate degree in pharmacy, a Ph.D. degree in one of the pharmaceutical sciences, and demonstrable experience and research interests in biopharmaceutics. The successful candidate will be expected to develop a vigorous research program and to teach on both the undergraduate and graduate levels. The school is expanding and can offer excellent research facilities and a salary commensurate with the qualifications of the candidate.

Application, including curriculum vitae and names of three references, should be sent by 20 July to:

Dean V. Gene Erwin
School of Pharmacy
University of Colorado
Boulder, Colo. 80309

The University of Colorado is an Equal Opportunity/Affirmative Action Employer.

ASSISTANT PROFESSOR OF FOREST SCIENCE (75 percent) AND STATISTICS (25 percent); consultant on forest biology research, primarily experimental design and analysis; teaching and research in statistics applied to forestry problems. Tenure-track position; salary range: \$18,000 to \$22,000 per annum. Applications close 1 July 1978. Position available 1 September 1978. To apply send transcripts, résumé, and three letters of reference to:

John Gordon, Head
Department of Forest Science
School of Forestry
Oregon State University
Corvallis, Oregon 97331

Oregon State University is an Affirmative Action/Equal Employment Opportunity Employer and complies with Section 504 of the Rehabilitation Act of 1973.

POSITIONS OPEN

ASSISTANT/ASSOCIATE PROFESSOR

The Department of Physiology has an opening for an assistant or associate professor with a strong background in the use of large chronic animal (including primates) preparations in physiological research. Persons applying for this position should provide evidence of knowledge of the surgical preparation and long-term maintenance of such animals. In addition, they should provide evidence of experience in the development and use of biomedical instrumentation needed to chronically measure cardiovascular variables. Please reply to: **Chairman, Department of Physiology, Michigan State University, East Lansing, Mich. 48824.**

An Equal Opportunity/Affirmative Action Employer

UNIVERSITY OF MINNESOTA

ASSISTANT PROFESSOR, ANTHROPOLOGY. 1978-1979 academic year. Temporary 1-year position: Ph.D. required. Interest in social-structural-symbolic theory and/or economic organization. Salary: \$14,000 to \$17,500, depending on qualifications. Send letter, curriculum vitae, reprints, graduate transcripts, and names of three references to: **William Rowe, Chairperson, Search Committee, 215 Ford Hall, University of Minnesota, Minneapolis, Minn. 55455.** Deadline for applications is 15 July 1978. *The University of Minnesota is an Equal Opportunity/Affirmative Action Employer.*

ASSISTANT PROFESSOR—CELLULAR IMMUNOLOGY

Applications are invited from candidates with a strong background in cellular immunology to study the virus-host and tumor-host relationship in bovine leukemia virus-infected cattle. Minimum qualifications are a Ph.D. or D.V.M. degree. Applicants should submit curriculum vitae, copies of representative publications, and the names of three referees to:

Dr. J. F. Ferrer
Chief, Section of Viral Oncology
University of Pennsylvania
School of Veterinary Medicine
New Bolton Center
R.D. 1
Kennett Square, Pa. 19348

The University of Pennsylvania is an Equal Opportunity Employer.

ASSISTANT PROFESSOR OF PHYSIOLOGY

The Department of Physiology is seeking a candidate holding an M.D. or a Ph.D. degree with experience and interest in membrane transport processes. Field of interest can include theoretical, artificial model, cellular, or epithelial membrane transport systems.

Opportunities are available for both collaborative and independent research and for graduate and medical student teaching.

Please send complete curriculum vitae, including publications and the names and addresses of three references to:

Chairman, Membrane Transport Search Committee
Department of Physiology
Yale University School of Medicine
333 Cedar Street, SHM B-109
New Haven, Conn. 06510

Applications from women and members of minority groups are encouraged. An Equal Opportunity/Affirmative Action Employer.

ASSOCIATE DIRECTOR OF CLINICAL MICROBIOLOGY. Department of Pathology, University of California, Los Angeles (UCLA), School of Medicine and Hospital and Clinics. Applications are invited from well-qualified persons with a doctorate degree who possess adequate experience in clinical microbiology. The applicant will share the responsibilities of supervising a large academic- and service-oriented clinical microbiology laboratory; teaching medical, graduate, postgraduate, and medical technology students; and will be required to develop own program of microbiological research. Salary range commensurate with an academic appointment at the junior level. Applicants should send curriculum vitae, bibliography, and the names and addresses of three references to: **Dr. William J. Martin, Professor and Head, Microbiology Section, Department of Pathology, UCLA School of Medicine, Los Angeles, California 90024.** Applications will be considered early in August 1978. *UCLA is an Equal Opportunity/Affirmative Action Employer. Women and minority candidates are encouraged to apply.*

POSITIONS OPEN

UNIVERSITY OF CALIFORNIA, BERKELEY, MECHANICAL ENGINEERING DEPARTMENT, postdoctoral position as **ASSISTANT RESEARCH ENGINEER**, to carry out experimental studies of the interaction of turbulence with propagating flow fronts, primarily by optical diagnostic techniques. Salary range: \$17,500 to \$22,900 per annum, depending on qualifications. This is a 2-year research position but may be renewable depending on granting situation. Applicants should send curriculum vitae and three letters of reference by 31 July 1978 to: **Professor Lawrence Talbot, Department of Mechanical Engineering, University of California, Berkeley, California 94720.** *The University of California is an Affirmative Action Employer.*

ASSOCIATE CHIEF OF STAFF FOR RESEARCH—M.D. or M.D./Ph.D. Cincinnati Veterans Administration Hospital/University of Cincinnati Medical Center. Emphasis on continuing their own area of independent clinical/basic research, helping develop new programs, and assisting in development of other investigators. Limited time available for other clinical interests. Send curriculum vitae to: **Richard J. Kozera, M.D., Chief, Medical Service, Veterans Administration Hospital, Cincinnati, Ohio 45220.** *An Equal Opportunity/Affirmative Action Employer.*

BIOCHEMISTRY OF TRACE METALS

The **DEPARTMENT OF ENVIRONMENTAL HEALTH, of the COLLEGE OF MEDICINE, UNIVERSITY OF CINCINNATI**, is seeking a leader for its research unit concerned with the metabolic, nutritional, toxicologic, and other biologic aspects of trace metals. The program is broad in scope and has focused on a variety of environmental health programs. The appointment will be at the academic rank of **ASSOCIATE or FULL PROFESSOR**. A joint appointment in the Department of Biochemistry may be available. Please address all inquiries to: **Dr. E. C. Foulkes, Department of Environmental Health, University of Cincinnati Medical Center, 3223 Eden Avenue, Cincinnati, Ohio 45267.** *An Affirmative Action/Equal Opportunity Employer.*

UNIVERSITY OF HONG KONG

Applications are invited for the following posts in the Department of Psychology. Applicants should possess relevant working and teaching experience and hold appropriate postgraduate and professional qualifications.

LECTURESHIP/ASSISTANT LECTURESHIP IN CLINICAL PSYCHOLOGY

The appointee is required to teach courses leading to the degree of M.Soc.Sc. in the field of Clinical Psychology, recognized by the British Psychological Society. A special interest in psychodiagnostics in psychological, medical and educational settings, and in its devolution, would be an advantage.

LECTURESHIP/ASSISTANT LECTURESHIP IN DEVELOPMENTAL PSYCHOLOGY (WITH SPECIAL REFERENCE TO COGNITIVE DEVELOPMENT)

The appointee would be expected to contribute to the teaching of both undergraduate and graduate courses.

Annual salaries (superannuable) are:—Lecturer: HK\$59,340 × 4,020 = 67,380 BAR 71,400 × 4,020 = 79,440 × 3,960 = 99,240; Assistant Lecturer: HK\$43,260 × 4,020 = 55,320. (£1 = HK\$8.50 approx). Starting salary will depend on qualifications and experience.

Further particulars and application forms may be obtained from the Association of Commonwealth Universities (Appts), 36 Gordon Square, London WC1H 0PF, or the Assistant Secretary (Recruitment), University of Hong Kong, Hong Kong.

Closing date for applications is 31 July 1978.

POSITIONS OPEN

ASSISTANT PROFESSOR, TOXICOLOGY

Applications are invited from individuals wishing to make a career commitment to pulmonary toxicology. Formal training should be at the Ph.D. level, preferably in the fields of biochemical pharmacology and/or experimental pathology. The appointment is in the Department of Environmental Health, where there is considerable expertise in aerosol technology and occupational respiratory diseases. At least 2 years of relevant postdoctoral experience is highly desirable. Applicants are asked to submit curriculum vitae and to have three letters of recommendation sent to: **Dr. P. B. Hammond, Department of Environmental Health, University of Cincinnati Medical Center, 3223 Eden Avenue, Cincinnati, Ohio 45267.** *An Affirmative Action/Equal Opportunity Employer.*

BIOCHEMISTRY RESEARCH ASSOCIATE

Two positions available for Ph.D. or M.D. for project on enzyme therapy and introduction of foreign enzymes and drugs into cells. Experience with red cells, membranes, lipids, or cell culture helpful. Position may lead to faculty appointment. Send curriculum vitae and names of references to:

**Dr. Garret Ihler
Professor and Head
Department of Medical Biochemistry
Texas A & M College of Medicine
College Station, Texas 77843
Equal Employment Opportunity
through Affirmative Action**

BIOLOGIST. Private liberal arts college seeks a Ph.D. with competence in cell biology, developmental biology, and comparative anatomy, who will also share teaching duties in the introductory program. Permanent position beginning August 1978. Starting salary from \$12,000. Application, résumé, transcripts, and recommendations must be sent by 10 July to: **Dr. J. A. Buxton, Department of Biology, Catawba College, Salisbury, North Carolina 28144.** *An Equal Opportunity/Affirmative Action Employer.*

NATIONAL SCIENCE FOUNDATION (NSF) Senior Policy Analyst

The Innovation Processes and Their Management Group of the Division of Policy Research and Analysis at the National Science Foundation has an opening for a senior policy analyst who will serve as group leader. The appointment to the position will be made outside the competitive Civil Service, under NSF's excepted hiring authority. However, federal employee benefits are applicable. Successful candidates should be selected in July or August 1978.

The successful candidate will lead a multidisciplinary policy research group evaluating issues relating to innovation processes and management and their national policy implications. He or she will direct and manage professionals who prepare research agendas, evaluate research proposals submitted for NSF funding, monitor funded projects, and evaluate reports generated by those projects. The group leader will also direct and contribute to analyses of policy issues requested by such Executive Branch agencies as the Office of Science and Technology Policy and the Office of Management and Budget.

The position and the experience needed are:
• **Senior Policy Analyst (Announcement # EX-78-6).** Salary equivalents to GS-16, \$42,423 to \$47,500 per year, depending on experience. Qualifications: research experience in social or behavioral science and a strong background in social science methods are required. Applicants must have policy orientation, preferably in science and technology policy areas, concerning innovation or technological change. Ph.D. in social or behavioral science is preferred. Experience in managing groups of professionals engaged in research is highly desirable.

Applications accepted until position filled. For information **telephone: 202-632-4118.** To apply, send a full biographical summary or Form 171, specifying the Announcement Number, to: **Division of Personnel and Management, National Science Foundation, 1800 G Street, NW, Washington, D.C. 20550; Attention: Section A.** *NSF is an Equal Opportunity/Affirmative Action Employer.*

POSITIONS OPEN

BIOCHEMIST, with postdoctoral experience and publications in protein and nucleic acid chemistry, to join an interdisciplinary team of five working on virus replication and mitogen-cell interaction. Permanent position. Well-equipped and endowed laboratory, set in beautiful New England area, within 15 minutes of three colleges. Send curriculum vitae and bibliography to **Box 226, SCIENCE.**

THE PIKE CHAIR IN ALCOHOL STUDIES

Neuropsychiatric Institute, University of California, Los Angeles (UCLA), School of Medicine, seeks appropriate candidates for the Thomas P. and Katherine K. Pike Chair in Alcohol Studies, a newly endowed professorship for a distinguished investigator committed to research and teaching in the field of alcoholism. *Equal Opportunity/Affirmative Action Employer.* Send curriculum vitae, bibliography, and five references to:

**Dr. Carmine D. Clemente, Chairman
Pike Search Committee
Brain Research Institute
UCLA School of Medicine
Los Angeles, California 90024**

UNIVERSITY OF BRITISH COLUMBIA HEAD OF DEPARTMENT OF GEOPHYSICS AND ASTRONOMY

Applications and nominations are invited for the above position to be filled by 1 July 1979. The department with a faculty of eight geophysicists and five astronomers is responsible for undergraduate instruction in both fields. Graduate and research programmes are actively pursued in most areas of geophysics, solar-terrestrial physics, and astronomy. Applicants must have a distinguished scientific record in one of the relevant disciplines and administrative experience. Enquiries and applications with curriculum vitae, list of publications, and names of three referees should be sent before 15 August 1978 to: **Dean G. M. Volkoff, Faculty of Science, University of British Columbia, Vancouver, B.C., Canada V6T 1W5. Telephone: 604-228-3337.** *The University of British Columbia offers Equal Opportunity of employment to qualified male and female candidates.*

UNIVERSITY OF OTAGO Faculty of Medicine Wellington Clinical School of Medicine Wellington, New Zealand

LECTURER/SENIOR LECTURER OR ASSOCIATE PROFESSOR IN PATHOLOGY (Anatomical Pathology)

Applications are invited for two positions in the Department of Pathology in the newly established Wellington Clinical School of the Faculty of Medicine in the University of Otago.

One post is a senior one to which an appointment of a suitably qualified applicant at the level of Associate Professor will be considered. The second position is in Histopathology.

Salary: Lecturer NZ\$13,139-\$15,921; Senior Lecturer NZ\$18,022-\$23,302; Associate Professor NZ\$24,494-\$27,896 p.a. An allowance for clinical responsibilities may be paid to Senior Lecturers in the light of status and duties performed.

Further particulars are available from the Association of Commonwealth Universities (Appts), 36 Gordon Square, London WC1H 0PF, from the Registrar, PO Box 56, Dunedin, New Zealand, or from the Dean, Wellington Clinical School, Wellington Hospital, Wellington 2, New Zealand.

Applications close on 15 July 1978.

POSITIONS OPEN

CHAIRPERSON FOR OBSTETRICS/GYNECOLOGY

East Tennessee State University invites applications from qualified individuals for the position of chairperson of obstetrics/gynecology in the developing College of Medicine which is affiliated with the Mountain Home Veterans Administration and three community hospitals in Eastern Tennessee. Letters of application should include a curriculum vitae and three personal and professional references.

Candidates should possess Board-certification. Previous academic and administrative experience is helpful but not mandatory. Responsibilities will include the planning and development of a new department in addition to assisting the dean, his staff, and the faculty in the overall development of the college. Consideration of applications is ongoing and will continue until the position is filled.

Correspondence should be sent to:

**Dr. Frank Shepard, Chairman
Search Committee, Obstetrics/Gynecology
East Tennessee State University
College of Medicine
Box 19, 840A
Johnson City, Tennessee 37601**

East Tennessee State University offers Equal Opportunity in its employment, admissions, and educational activities and is an Affirmative Action Employer, M/F.

The Cary Arboretum of the New York Botanical Garden has an opening for a **research scientist** in either **ECOLOGY** or **FOREST PATHOLOGY-MYCOLOGY**. Persons with research interests relating to the problems of man's interaction with temperate zone plants in the modern environment are encouraged to apply. The mycologist should have a strong background in forest pathology problems and research interests in mycological studies. The ecologist should have research interests in temperate species and utilize existing analytical laboratory facilities (including GC, mass spectrophotometer, and so forth). Physiological and/or chemical ecologists are encouraged to apply. Salary is commensurate with qualifications and experience. Nominations and applications are invited. Applicants please send résumé, representative publications, and names of three references to: **Dr. David F. Karnosky, Chairman, Search Committee, Cary Arboretum, Box AB, Millbrook, New York 12545** by 1 August 1978. *The Cary Arboretum is an Equal Opportunity/Affirmative Action Employer.*

FACULTY POSITION

Undergraduate teaching position in physiology and anatomy available beginning 1 September 1978. Ph.D. required, preferably in physiology or related area. Must have high motivation for teaching; experience desirable. Responsibilities include instructing students of health sciences in human anatomy and physiology and upper-division course in vertebrate physiology; possible involvement in general biology program. *Women and minorities especially encouraged to apply.* Application deadline: 30 June 1978. Send résumés to: **Dr. Halit M. Kosar, Dean, Science and Engineering Division, Gannon College, Erie, Pa. 16501.** *Gannon College is an Equal Opportunity/Affirmative Action Employer.*

TWO FACULTY POSITIONS. Assistant or associate professor beginning fall 1978. **BIOMETRICS.** Primary teaching responsibility in statistics and population dynamics. Experience in management of groundfish desirable. **CHEMISTRY.** Primary teaching responsibility in general and organic chemistry and quantitative analysis. Ancillary area in biology desirable. Ph.D. required. Salary range: \$2536 to \$3475 per month. Send curriculum vitae and three letters of reference by 10 July to: **Dr. Richard Gard, Fisheries Division, University of Alaska, Box 1447, Juneau, Alaska 99802.** *An Equal Opportunity Employer.*

PHYSIOLOGY—FACULTY POSITION

Tenure-track position available 1 January 1979. Individual should have Ph.D. or M.D. and two or more years of postdoctoral experience. Subspecialty interests sought are muscle, gastrointestinal, or transport mechanisms. Strong research and teaching interests are essential. Send résumé and names, addresses, and telephone numbers of three references to: **Norman Briggs, Chairman, Department of Physiology, Medical College of Virginia, Box 608 MCV Station, Richmond, Va. 23298.** *An Affirmative Action/Equal Opportunity Employer.*

POSITIONS OPEN

FACULTY AND RESEARCH POSITIONS

The College of Mineral and Energy Resources (COMER) of West Virginia University, Morgantown, West Virginia, anticipates approximately 15 openings starting 1 July 1978, for faculty and faculty equivalent research positions in the following fields:

**Mining Engineering
Health and Safety Engineering
Petroleum Engineering
Mineral Processing Engineering
Extractive Metallurgy
Environmental Engineering
Rock Mechanics
Explosive Engineering
Mineral Resources Science
Mineral Economics
Geophysical Engineering**

Candidates should possess an earned doctorate or equivalent in industrial/research experience. Openings exist in all ranks at salaries ranging between \$15,000 and \$40,000 per annum. *Equal Opportunity Employer.* Send résumé to: **Syd S. Peng, Chairman, Faculty Search Committee, COMER, West Virginia University, White Hall, Morgantown, W.Va. 26506.**

FACULTY POSITIONS CLINICAL DEPARTMENTS

The Wright State University School of Medicine has faculty positions open in clinical departments. The school has a commitment to excellence in primary care education utilizing several community hospitals and two federal hospitals for its programs. Faculty are expected to participate in teaching, research, and patient care activities.

Faculty rank will be based on qualifications and experience; opportunities for administrative activities at the dean's staff level can be considered based upon interest, appropriate experience, and need. The successful candidate must be Board-certified, eligible for an Ohio Medical License, and committed to the school's goals. Relevant experience in a medical school environment is preferred. Nominations or letters of application (including curriculum vitae and names of three references) should be sent to: **Robert E. Jewett, M.D., Associate Dean for Academic Affairs, Wright State University School of Medicine, P.O. Box 927, Dayton, Ohio 45401.**

An Equal Opportunity/Affirmative Action Employer

UNIVERSITY OF MICHIGAN MEDICAL SCHOOL DEPARTMENT OF RADIOLOGY

Position available 1 July 1978 for **INSTRUCTOR, ASSISTANT PROFESSOR, ASSOCIATE PROFESSOR, or PROFESSOR.** Entering level commensurate with qualifications and experience. Must be Board-eligible or Board-certified. The physician will take part in the programs of patient care, teaching, and research carried on in the Department of Radiology. He/she will supervise the activities of the resident staff and aid in the teaching of residents and medical students. Reply to: **Box 227, SCIENCE.** Code 1100FO. *A nondiscriminatory, Affirmative Action Employer.*

NEUROBIOLOGIST. Position of research associate or assistant professor commensurate with experience. Background in aging research, experience in tissue culture, electron microscopy, and histochemistry advantageous. Send curriculum vitae and references to: **Leopold Liss, M.D., Office of Geriatric Medicine, Ohio State University, Upham Hall, Columbus, Ohio 43210.** *Ohio State University is an Equal Opportunity/Affirmative Action Employer.*

PHYSIOLOGIST. Ph.D. or M.D. needed to fill tenurable position in active medical school department. Proven research/teaching ability and steady funding record is more important than field of interest. Apply with curriculum vitae and brief outline of future research plans to: **Dr. Martin D. Rayner, Department of Physiology, University of Hawaii, 1960 East West Road, Honolulu, Hawaii 96822.** *An Equal Opportunity Employer.*

POSTDOCTORAL POSITIONS available for new Ph.D.'s in biological sciences to join ongoing program dealing with mechanisms which underlie molecular conversations between cells with special emphasis on membrane-located oscillating switches and cyclic nucleotide metabolism. Applicants may apply to: **Dr. Mark W. Bitensky, Professor of Pathology, Yale School of Medicine, New Haven, Conn. 06510.** Please include curriculum vitae and three letters of reference.

POSITIONS OPEN

CHAIRMAN DEPARTMENT OF BIOCHEMISTRY AND BIOPHYSICS

The Loyola University Stritch School of Medicine seeks a distinguished individual to serve as professor and chairman of the Department of Biochemistry and Biophysics. Candidates should have an outstanding record of scholarly research and a clear commitment to medical and graduate education. Applications, including curriculum vitae, bibliography, and three to five references, should be sent to:

**Dr. Clarence N. Peiss, Associate Dean
Biochemistry Search Committee
Stritch School of Medicine
2160 South First Avenue
Maywood, Ill. 60153**

Equal Opportunity/Affirmative Action Employer

LIBRARIAN, BIOMEDICAL LIBRARY, UCLA. Rank: associate university librarian. Available: 1 January 1979. Salary: from \$28,400. Responsible for overall administration of the library, including planning, direction, and coordination of programs and operations, budgeting, and space utilization. Reports directly to the university librarian and informally to the deans of the schools served by the Biomedical Library. Also serves as director of the Pacific Southwest Regional Medical Library Service. Applicants wishing to be considered for this position should write to: **Anthony Greco, Assistant University Librarian (Personnel), University Research Library, University of California, Los Angeles, California 90024.** Letters should include a complete statement of qualifications, a full résumé of education and relevant experience, and the names of at least five persons who are knowledgeable about the applicant's qualifications for the position. Closing date for receipt of applications is 10 August 1978. *An Equal Opportunity/Affirmative Action Employer.*

PLANT PATHOLOGIST/MYCOLOGIST

Assistant or associate professor, 85 percent research, 15 percent teaching, Ph.D. required, to assume responsibility for research on etiologic and genetic factors that influence corn and sorghum diseases, with emphasis on stalk rots. Send professional biography and personal data sheet, transcripts, reprints, and three letters of recommendation by 15 August to: **Dr. James E. Partridge, Department of Plant Pathology, The University of Nebraska-Lincoln, Lincoln, Nebraska 68583.** *Equal Opportunity/Affirmative Action Employer.*

POSTDOCTORAL ASSOCIATE POSITION available starting September 1978 at Boyce Thompson Institute at Cornell University. Required training: Ph.D. in biochemistry-molecular biology or molecular genetics and research experience in recombinant DNA technology. Send curriculum vitae and two references to: **Dr. A. A. Szalay, Department of Biochemistry, Molecular and Cell Biology, Wing Hall, Cornell University, Ithaca, N.Y. 14853.** *Boyce Thompson Institute is an Equal Opportunity/Affirmative Action Employer.*

POSTDOCTORAL POSITION— MOLECULAR VIROLOGY AVAILABLE IMMEDIATELY

Ph.D.'s with training in nucleic acid structure and synthesis with interest in RNA animal viruses contact:

Judith A. Lesnaw, School of Biological Sciences, University of Kentucky, Lexington, Ky. 40506.

Applicants should send résumés, including statement of research interest and references.

POSTDOCTORAL POSITION available immediately for synthesis and application of new spin-labeled reagents for studying membrane proteins. Experience in synthesis required. Send résumé and list three references who may be contacted to: **Dr. Betty J. Gaffney, Department of Chemistry, The Johns Hopkins University, Baltimore, Maryland 21218.**

POSTDOCTORAL RESEARCH

Applicants are invited for a position in immunochemistry of human cancers. Good background in glycoprotein and glycolipid biochemistry essential. Excellent salary and benefits. Send curriculum vitae, list of publications, and references to:

**Department of Immunochemistry Research
Evanston Hospital
2650 Ridge Avenue
Evanston, Illinois 60201**

An Equal Opportunity Employer

Technical Director

Public Law, PL-313
\$47,500

Responsible for line management, coordination and direction of the Office of Naval Research's research and technology directorates and assisting the Chief of Naval Research in the management and technical control of ONR Laboratories and Branch Offices.

Requires PhD or equivalent in life, engineering, physical or environmental sciences. Managerial experience in multidisciplinary research and development environment; leadership capability and ability to interact.

Send resume or SF-171 by 30 June 1978 to:

Office of Naval Research (7212)
800 North Quincy Street
Arlington, Virginia 22217
Attn: M. Talbot 78-37

Equal Opportunity Employer

New, Exclusive Adenosine [2,8,5'-³H] 50-70Ci/mmol

Adenosine, [2,8,5'-³H]-
50-70Ci/mmol
Ethanol:water, 1:1, in dry ice.
NET-584 1mCi 5mCi

Also: **Adenosine, [8-¹⁴C]-**
40-60mCi/mmol Ethanol:water, 1:1.
NEC-524 10μCi 50μCi 250μCi

Adenosine, [2-³H]-
10-20Ci/mmol Sterile aqueous solution.
NET-354 1mCi 5mCi

Adenosine, [2,8-³H]-
30-50Ci/mmol Sterile aqueous solution.
NET-064 1mCi 5mCi

Not for use in humans or clinical diagnosis



New England Nuclear

549 Albany Street, Boston, Mass. 02118
Call toll-free: 800-225-1572
(In Massachusetts and International: 617-482-9595)

NEN Chemicals GmbH, Dreieich, W. Germany; NEN Canada Ltd., Lachine, Quebec

Circle No. 232 on Readers' Service Card

NATIONAL SCIENCE FOUNDATION (NSF) Policy Analyst Positions

The Environment, Energy, and Resources Group of the Division of Policy Research and Analysis at the National Science Foundation has openings for three policy analysts. Appointments to the positions will be made outside the competitive Civil Service, under NSF's excepted hiring authority. However, federal employee benefits are applicable. Successful candidates should be selected before September 1978, and begin work around September 1978. Applications may be for permanent employment or on a 1- to 3-year rotation.

Successful candidates will join a multidisciplinary policy-research group assessing issues relating to environment, energy, and resources, and their national science and technology policy implications. They will carry out research on selected topics in their disciplines, prepare research agendas, evaluate research proposals submitted for NSF funding, manage funded projects, and evaluate project reports. In addition to its ongoing research program the group responds to requests for analysis of policy issues from such Executive Branch agencies as the President's Office of Science and Technology Policy.

The positions and the experience needed are:

- **Policy Analyst (Environment) (Announcement # EX-78-3).** Salary equivalent to GS-13, \$26,022 to \$33,825 per year, or GS-14, \$30,750 to \$39,975, depending on experience, with potential to GS-15, \$36,171 to \$47,025, without further competition. Applicant should hold a Ph.D. in chemistry or the physical or biological sciences, but equivalent experience may be substituted. Applicant must have a wide range of experience in environmental policy research and analysis, with some emphasis on testing or control of toxic substances. At least 2 years of experience beyond the Ph.D. or equivalent is required.

- **Policy Analyst (Nuclear) (Announcement # EX-78-4).** Salary equivalent to GS-13, \$26,022 to \$33,825 per year, or GS-14, \$30,750 to \$39,975, depending on experience, with potential to GS-15, \$36,171 to \$47,025, without further competition. Applicant must hold a Ph.D. in nuclear physics or engineering and have broad experience in such areas as nuclear technology and nuclear applications of laser technology. Applicant should have performed policy-oriented analyses in these or related areas, and be prepared to conduct and direct assessments of such issues as nuclear waste management, plasma- and laser-fusion options, and related topics.

- **Policy Analyst (Fossil Fuels) (Announcement # EX-78-10).** Salary equivalent to GS-11, \$18,258 to \$23,739 per year, or GS-12, \$21,883 to \$28,444, depending on experience. Applicant must hold an engineering degree, have at least 3 years of professional engineering experience in coal gasification and liquefaction, and be familiar with technologies for direct combustion and cleaning of coal. Advanced-degree applicants preferred.

Applications accepted until positions filled. For information telephone: 202-632-4118. To apply, send a full biographical summary or Form 171, specifying the Announcement #, to: **Division of Personnel and Management, National Science Foundation, 1800 G Street, NW, Washington, D.C. 20550; Attention: Section A.** NSF is an Equal Opportunity/Affirmative Action Employer.

GEOPHYSICIST U.S. GEOLOGICAL SURVEY Geologic Division Woods Hole, Massachusetts

The U.S. Geological Survey's Branch of Atlantic-Gulf of Mexico Geology at Woods Hole, Massachusetts, is seeking a research geophysicist to plan and conduct pioneering research investigations into advanced seismic techniques for multichannel reflection, wide-angle reflection and refraction seismic methods on continuation shelves, slopes, and rises. These will include deepwater deconvolution methods, source signature enhancement, array techniques, migration depth conversion, and other imaging techniques. Candidates must possess sound theoretical training in wave propagation, seismic array design, and advanced digital signal processing techniques. Applicants must have a proven research record in developing advanced acquisition or processing techniques in exploration seismology. It is desirable that expertise in exploration seismology be demonstrated through either advanced graduate work, equivalent to Ph.D., or through several years of recent experience as an exploration seismologist.

This position is in the permanent federal career service with all Civil Service benefits. Publication opportunities are assured. Position may be filled at either GS-12 level (\$21,883), GS-13 level (\$26,022), GS-14 level (\$30,750), or GS-15 level (\$36,171) per annum. Position will be located in either Woods Hole, Massachusetts, or Lakewood, Colorado. Selectee for this position will be subject to conflict of interest regulations relating to holding certain interests in federal lands and in private mineral enterprises, and will not be permitted to perform surveys or examinations for private individuals or corporations.

Interested applicants should submit Personal Qualifications Statement, SF-171, obtainable at U.S. Civil Service Commission offices (résumé will substitute for SF-171), and transcripts by 15 October 1978, to:

**Chief, Recruitment and Placement Section
U.S. Geological Survey—MS 215 (1p)
12201 Sunrise Valley Drive
Reston, Virginia 22092**

All inquiries will be considered confidential. *An Equal Opportunity Employer.*

POSITIONS OPEN

BAYLOR COLLEGE OF MEDICINE MOLECULAR VIROLOGIST

The Department of Cell Biology at Baylor College of Medicine, a large multidisciplinary department, has a position available for an independent investigator interested in studying the regulation of viral gene expression in animal cells. Preference will be given to individuals with prior training in molecular biology, cell culture, and/or perhaps with ancillary experience in electron microscopy who are involved in studying viral RNA processing. This appointment will be at a faculty level commensurate with experience and qualifications. Please send résumé and names of three references to: **Dr. Jeffrey Rosen, Committee Chairman, Department of Cell Biology, Baylor College of Medicine, 6720 Bertner Drive, St. Luke's Tower, 25th Floor, Houston, Texas 77030. Affirmative Action/Equal Opportunity Employer.**

POSTDOCTORAL POSITIONS available immediately. One person with appropriate background in cellular immunology and lymphocyte differentiation will join a research team investigating biochemical mechanisms and immunotherapy of primary immunodeficiency disorders. One person with appropriate background in immunology and molecular virology will work on characterization of two retroviruses under current study. Send curriculum vitae and three letters of recommendation to: **Lance E. Perryman, Department of Veterinary Microbiology and Pathology, Washington State University, Pullman, Wash. 99164. Washington State University is an Affirmative Action/Equal Opportunity Employer.**

POSTDOCTORAL RESEARCH FELLOW IN BACTERIAL GENETICS AND PHYSIOLOGY. Position available from September 1978 on. For background see: *BioScience* 26:548, 1976, and *J. Bacteriol.* 130:832, 1977. Stipend according to NIH guidelines. Address specifics to: **E. C. C. Lin, Department of Microbiology and Molecular Genetics, Harvard Medical School, 25 Shattuck Street, Boston, Mass. 20115.**

PROFESSOR—SENIOR SCIENTIST

Applications are invited for a senior-level faculty position in the rank of professor. Michigan Tech has over 600 students enrolled in three degree programs (forestry, wood and fiber utilization, and land surveying) and there are 25 on the Faculty of Forestry. The position will permit cooperative work in the person's area of research interest and will require participation in building the graduate program in one of the three academic areas. There will be limited teaching responsibilities in upper-division and graduate courses. Applicants must have a Ph.D. and be recognized nationally in their field and have demonstrated competence in research in an area of forestry, forest biology, or forest products utilization. Salary commensurate with experience and demonstrated abilities. Position available immediately. Applications may be obtained by contacting: **Gene A. Hesterberg, Department of Forestry, Michigan Technological University, Houghton, Michigan 49931; telephone: 906-487-2454. Michigan Technological University is an Equal Opportunity Educational Institution/Equal Opportunity Employer.**

RESEARCH TECHNOLOGISTS. Two positions are available beginning in September: (i) an individual is needed in **HISTOCHEMISTRY** to supervise the Special Techniques Laboratory. Other primary duties will include the development of methods and training of histology technicians. M.S. degree with experience in special stains, immunohistochemistry and/or radioautography, and (ii) an individual is needed in the **ELECTRON MICROSCOPY** laboratory. Duties include preparation of tissues from animals on toxicological studies for electron microscopic examination. B.S. in biology and knowledge of histology desirable. Experience in ultrastructural techniques essential. Send by 1 August, résumé, transcripts, and two letters of reference to: **Administrative Assistant, University of Arkansas Pathology Services Project, (HFT-230), National Center for Toxicological Research, Jefferson, Ark. 72079. Equal Opportunity Employer.**

TUMOR IMMUNOLOGY—IMMUNOGENETICS

Position available immediately for someone with a strong background in tumor immunology, immunogenetics, and virology to join a group commencing research on Rous sarcoma immunogenetics in genetically defined chickens. Send curriculum vitae and names of three references to:

**Raymond A. McBride, M.D.
Department of Pathology
Baylor College of Medicine
Texas Medical Center
Houston, Texas 77030**

An Affirmative Action/Equal Opportunity Employer

POSITIONS OPEN

VERTEBRATE HISTOLOGIST OR EMBRYOLOGIST. Visiting assistant professor. One-year appointment; to teach histology and one other biology course in the fall, and embryology and one other biology course in the spring. Ph.D. required. Salary competitive. Closing date for applications is 7 July 1978. Send curriculum vitae and three letters of reference to: **Dr. Hayden N. Pritchard, Department of Biology, Williams Hall #31, Lehigh University, Bethlehem, Pa. 18015. An Equal Opportunity/Affirmative Action Employer.**

VISITING FACULTY POSITION available in the Department of Physics at Kansas State University starting September 1978. A Ph.D. required, postdoctoral experience preferred in either experimental or theoretical physics. Send curriculum vitae and names of three references prior to 15 July 1978 to: **C. E. Hathaway, Department of Physics, Kansas State University, Manhattan, Kansas 66506.**

ANNOUNCEMENTS

The National Cancer Institute has compiled a projection data base for two-dimensional computerized reconstruction. Copies of this library are available free of charge. For further information contact: **Judith M. S. Pre-witt, National Institutes of Health, Building 12A, Room 2053, Bethesda, Md. 20014. Telephone: 301-496-1247 or 1248.**

The Metrek Division of The MITRE Corporation is under contract with the Department of Energy, Division of Inertial Confinement (Laser) Fusion, to identify program development issues and alternatives involved in the future commercialization of laser fusion power for electricity production and industrial use. A panel of invited experts will consider these issues and alternatives at a meeting at Metrek on 28, 29, and 30 June 1978. Anyone wishing to submit views or material bearing on this topic for consideration by the panel is urged to do so in writing, to be received by 10 a.m., 27 June 1978, to:

**Dr. Richard S. Greeley
The Metrek Division of
The MITRE Corporation
1820 Dolley Madison Boulevard
McLean, Virginia 22101**

SCIENCE PRIZE

THE NATIONAL SCLERODERMA CLUB presents THE 1978 BARLET SCIENCE PRIZE FOR SCLERODERMA

Nominations are invited for the above prize from members of the scientific and medical communities. The prize of \$2500 will be awarded to the individual judged to have made the most significant contribution to the understanding and/or treatment of scleroderma.

Assisting in the judging of the nominees are: **Arthur Scherbel, M.D., Head, Department of Rheumatic Diseases, Cleveland Clinic, Cleveland, Ohio 44106,** and **J. Peter Bentley, Ph.D., Professor of Biochemistry, University of Oregon Health Sciences Center, Portland, Oregon 97201.**

Copies of the nominee's résumé and pertinent publications should be sent to Dr. Scherbel before 1 August 1978. The winner will be notified by 1 September 1978 and will receive the prize at the annual scleroderma banquet in New Castle, Pennsylvania, on 7 October 1978.

COURSES

TRANSMISSION ELECTRON MICROSCOPY 17 to 21 July 1978

This course is designed to provide readily useful information on sample preparation techniques. Suitable for beginners or technicians who wish to expand their scope, sessions emphasize procedures minimizing distortion and preparation time. In-class laboratory sessions are included. Topics include negative staining, heavy-metal shadowing, rapid embedding techniques, and thin sectioning. Contact: **Dr. William Sawyer, Electron Microscopy Laboratory, Department of Physics, Elmhurst College, Elmhurst, Ill. 60126. Telephone: 312-279-4100, extension 476.**

TRAINING PROGRAM

POSTDOCTORAL TRAINING in the area of metabolic, hormonal, and hemodynamic alterations in shock. Both in vivo and in vitro studies in experimental shock models. Training program is supported by NIH National Research Service Award. Send curriculum vitae to: **John J. Spitzer, M.D., Professor and Head, Department of Physiology, Louisiana State University Medical Center, 1542 Tulane Avenue, New Orleans, Louisiana 70112.**

TRAINEESHIPS

POSTDOCTORAL TRAINEESHIP BIOSTATISTICS—INSTRUMENTATION

One traineeship available 1 July 1978 at the Donner Laboratory, Lawrence Berkeley Laboratory, University of California, for research in the area of lipoprotein methodologies and biomedical applications. The National Research Service Awards pay \$10,000 to \$13,000 per annum, depending on experience. Training and research experience will be carried out in the context of an NIH program project which covers the areas of basic research in lipoprotein structure and metabolism, including: lipoprotein analytic ultracentrifugation, enzymology, electron microscopy, and clinical and basic research in lipoprotein metabolism.

The four participating professionals include: **Doctors T. Forte, R. Krauss, F. Lindgren, and A. Nichols.**

Background in statistics programming, instrumentation, and biomedical sciences desired. U.S. citizens or permanent residents are eligible to apply. Send résumé, transcripts, and names and phone numbers of two references to:

**Dr. Trudy Forte
Donner Laboratory
Lawrence Berkeley Laboratory
University of California
Berkeley, California 94720
Telephone: 415-843-2740, extension 5567
An Affirmative Action/Equal Opportunity
Employer, M/F**

FELLOWSHIPS

A RESEARCH FELLOWSHIP, tenable 2 to 3 years, is available for work on the role of endogenous RNA C-type viruses in leukemia and normal lymphocyte function. Salary in accordance with the Swiss National Foundation. (Travel costs will be partly covered.) Candidates, preferably with experience in on-corna virology, immunology, or nucleic acid biochemistry, should send application (curriculum vitae, list of publications) to: **Dr. Ch. Moroni, Friedrich Miescher-Institut, P.O. Box 273, CH-4002 Basel, Switzerland.**

FELLOWSHIP—TUMOR IMMUNOLOGY

There is an immediate opening for a 1- or 2-year postdoctoral fellowship in tumor immunology. Emphasis will be placed on chemical carcinogenesis, the effects of adjuvant immunotherapy, and underlying mechanisms in tumor progression and regression. Minimum requirements are 1-year residency training in veterinary pathology or an advanced degree in immunology with special emphasis on neoplastic disorders. Please direct inquiries, together with curriculum vitae, three letters of reference, and a statement of research interests, to:

**Gary A. Cockerell, D.V.M., Ph.D.
Department of Pathology
New York State College of Veterinary Medicine
Cornell University
Ithaca, New York 14853
Affirmative Action/Equal Opportunity Employer**

MARKET PLACE

AUTHORS WANTED BY NEW YORK PUBLISHER

Your book can be published, promoted, distributed by a reliable company on a subsidized basis. Fiction, non-fiction, poetry, scholarly, scientific and even controversial manuscripts welcomed. For free booklet, write: **Vantage Press, Dept. SC, 516 W. 34 St., New York 10001.**



It's tough to make it with nothing more than a face lift.

Trying to cover up an unsuitable product with cosmetic surgery is tricky business in the freezer business.

But that doesn't stop a lot of people from trying.

Too many manufacturers take their home-style freezers, slap on a new label and a new coat of paint, and try to pawn them off as laboratory models.

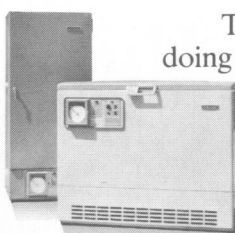
And when they succeed, they've made it possible for you to fail.



As you well know, blood and other bio-medical samples are far too important to entrust to anything less than the finest laboratory freezer system money can buy.

That's why Revco has become the number one name in laboratory freezers. Because our laboratory line is our only line, not a sideline.

And it's the most professional, most complete, most dependable line available anywhere.



That's the way we've been doing business for 40 years now, and we expect to keep on doing it the same way.

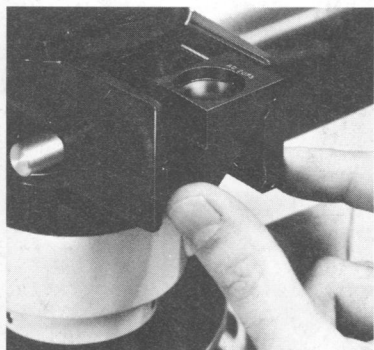
For further information and a copy of our new full-color catalog just call or write us at 1100 Memorial Drive, West Columbia, S.C. 29169. Area Code 803/796-1700. TWX: 810-666-2103. Cable: Revco.

REVCO

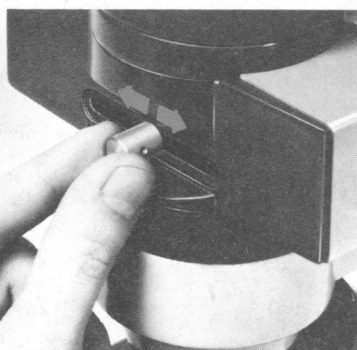
The world's leader in ULtra-Low® temperature equipment.

AO

The new AO[®] FLUORESTAR[®] microscope makes fluorescence more convenient with Fluor Clusters.



Matched filter combinations in interchangeable Fluor Clusters.



Switch from Fluor Clusters to brightfield with convenient lever.



The all-new FLUORESTAR microscopes have an advanced Fluor Cluster system that greatly simplifies operation and makes fluorescence faster and more efficient. Matched barrier, exciter and dichroic filter combinations are precisely aligned in interchangeable clusters. A single lever positions the desired filter combination. The same lever switches the microscope to transmitted brightfield.

Objectives also serve as the condenser to assure full use of the numerical aperture. You get full field coverage even with 10X objective and 10X wide-field eyepiece.

An advanced illumination system is something else you get with the new AO FLUORESTAR microscope. A 100w tungsten-halogen or 50w mercury

vapor lamp assures intense excitation regardless of specimen thickness or density.

See your AO dealer or representative for a demonstration. Or write for a detailed brochure. American Optical, Scientific Instrument Division, Buffalo, NY 14215.

Circle No. 242 on Readers' Service Card

AO[®]
American
Optical