

BOOKS RECEIVED

(Continued from page 107)

Liberty Press, Indianapolis, ed. 2, 1977. 380 pp. \$8.

Family Formation in an Age of Nascent Capitalism. David Levine. Academic Press, New York, 1977. xiv, 194 pp. \$14.50.

The Foot Book. Healing the Body through Foot Reflexology. Davaki Berkson. Funk and Wagnalls, New York, 1977 (distributor, Crowell, New York). xii, 212 pp., illus. \$10.

Fundamentals of Quark Models. Proceedings of a NATO Advanced Study Institute, St. Andrews, Scotland, Aug. 1976. I. M. Barbour and A. T. Davies, Eds. SUSSP Publications, Edinburgh, 1977. xx, 588 pp., illus. £12.

Genera of the Eastern Plants. Wade T. Batson. Wiley, New York, ed. 3, 1977. iv, 204 pp., illus. Paper, \$5.50.

Guide to Fitness after Fifty. Raymond Harris, Lawrence J. Frankel, and Sara Harris, Eds. Plenum, New York, 1977. xvii, 356 pp., illus. \$24.50.

Icebound. Journeys to the Northwest Sea. J. M. Scott. Gordon and Cremonesi, London, 1977 (U.S. distributor, Atheneum, New York). vi, 156 pp. + plates. \$16.95.

Inter-relationships of the Evolutionary Systems. Bahman K. Shahrokh. Binford and Mort, Portland, Ore., 1977. xvi, 304 pp., illus. \$16.50.

Language Development and Neurological Theory. Sidney J. Segalowitz and Frederic A.

Gruber, Eds. Academic Press, New York, 1977. xvi, 376 pp., illus. \$19.50. Perspectives in Neurolinguistics and Psycholinguistics.

Legacy of Flight. The Guggenheim Contribution to American Aviation. Richard P. Hallion. University of Washington Press, Seattle, 1977. xvi, 292 pp. + plates. \$15.

Liquid Semiconductors. Melvin Cutler. Academic Press, New York, 1977. xii, 226 pp., illus. \$19.50.

Mehinaku. The Drama of Daily Life in a Brazilian Indian Village. Thomas Gregor. University of Chicago Press, Chicago, 1977. xvi, 382 pp., illus. \$24.

Metabolic Diseases of Bone. Jenifer Jowsey. Saunders, Philadelphia, 1977. xiv, 312 pp., illus. \$22. Saunders Monographs in Clinical Orthopaedics, vol. 1.

Methods in Cell Biology. David M. Prescott, Ed. Vol. 16, Chromatin and Chromosomal Protein Research, I. Gary Stein, Janet Stein, and Lewis J. Kleinsmith, Eds. Academic Press, New York, 1977. xx, 494 pp., illus. \$38.

Monitoring Underground Nuclear Explosions. Ola Dahlman and Hans Israelson. Elsevier, New York, 1977. x, 440 pp., illus. \$49.

A Nature Conservation Review. The Selection of Biological Sites of National Importance to Nature Conservation in Britain. Derek Ratcliffe, Ed. Cambridge University Press, New York, 1977. Two volumes. Vol. 1. xvi, 402 pp. + plates. \$69.50. Vol. 2, Site Accounts. viii, 320 pp. \$49.50.

Nongonococcal Urethritis and Related Infections. Proceedings of a workshop, Lake Placid, N.Y., 1976. Derek Hobson and King K. Holmes, Eds. American Society for Microbiology, Washington, D.C., 1977. xvi, 392 pp., illus. \$14.

Nutrition of the Chicken. Milton L. Scott, Malden C. Nesheim, and Robert J. Young. M. L. Scott and Associates, Ithaca, N.Y., ed. 2, 1976. 556 pp., illus. \$19.

The Obelisks of Egypt. Skyscrapers of the Past. Labib Habachi. Charles C. Van Siclen III, Ed. Scribner, New York, 1977. xvi, 204 pp., illus. \$12.95.

The Origin and Early Evolution of Animals. Earl D. Hanson. Wesleyan University Press, Middletown, Conn., 1977. x, 670 pp., illus. \$35.

Parasite Invasion. Papers from a symposium, London, Oct. 1976. Angela E. R. Taylor and Ralph Muller, Eds. Blackwell, Oxford, 1977 (U.S. distributor, Lippincott, Philadelphia). viii, 156 pp., illus. Paper, \$13. Symposia of the British Society for Parasitology, vol. 15.

A Passion for Equality. George Wiley and the Movement. Nick Kotz and Mary Lynn Kotz. Norton, New York, 1977. 372 pp., illus., \$8.95.

Pesticide Management and Insecticide Resistance. Papers from a congress, Washington, D.C., Aug. 1976. David L. Watson and A. W. A. Brown, Eds. Academic Press, New York, 1977. xx, 638 pp., illus. \$26.

Through the Keyhole at Gifted Men and Women. A Study of 159 Adults of High IQ. Joanne Decker Denko. Published for Mensa Education and Research Foundation by University Microfilms International, Ann Arbor, Mich., 1977. xvi, 380 pp. Paper, \$20.

Topics in Cognitive Development. Vol. 1, Equilibration: Theory, Research, and Application. Papers from two symposia, 1971 and 1972. Marilyn H. Appel and Lois S. Goldberg, Eds. Plenum, New York, 1977. xvi, 220 pp. \$18.50.

Great little centrifuge



The reliable little Microfuge™ centrifuge is indispensable when it comes to spinning down small samples fast—average run times are less than 60 seconds and it holds tube sizes of 250 µl, 400 µl, and 1.5 ml.

Use the Microfuge when sample volume is limited, as in pediatrics or geriatrics. Or when time affects the validity of results, as in enzyme work, or in binding studies involving radioactively labeled material. Or simply to help conserve reagents.

For references to more than 200 applications of this sturdy microcentrifuge, write on your letterhead for our new Microfuge Bibliography. Also, ask for a free sample of our new 1.9-ml, chemical-resistant Microfuge tube—the finest microtube available. Beckman Instruments, Inc., Box 10200, Palo Alto, CA 94304.

BECKMAN®

Circle No. 69 on Readers' Service Card

Coming
Soon

the tool for
selecting all your
science books

Science Booklist Supplement

1970 - 1977



MARINE BIOLOGIST

A senior technical position for a Ph.D. in marine biology with a specialization in benthic ecology. Duties include experimental design, community and population dynamics analyses. Management experience desirable.

TECHNICAL MANAGER

Position requires Ph.D or equivalent technical experience in physical discipline. Duties will include supervision of physical sciences and engineering group, direction and management of professional multidisciplinary programs and business development. Several years professional management experience required.

Both positions headquartered in southern New Hampshire.

Send resume with salary history to:

Dr. W. S. Bosworth,
Vice-President-Operations

NORMANDEAU ASSOCIATES, INC.
Nashua Road,
Bedford, N. H. 03102



An equal opportunity employer, M/F

STEREO MICROSCOPE ZOOM WITH RINGLIGHT



H/I Stereozoom
Ratio 6.5:1

Now you can dispense with hot little lamps on wiggly arms and fluorescent tubes that seem to fade as you zoom up.

Enjoy the brilliance, high color temperature of a 150 watt halogen source conveyed and concentrated by fiber-optic ring lamp. Vertical adjustment produces subtle variations in illumination and corresponding "revelations" of specimen surface structure.

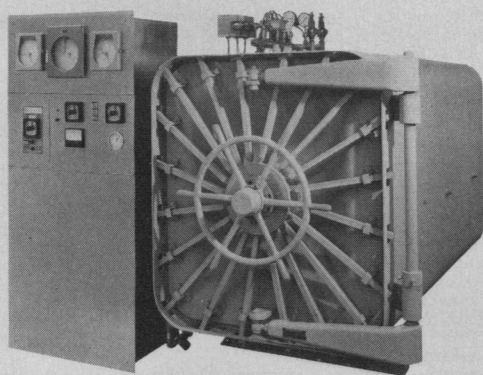
Supplied for H/I Stereozoom and similar instruments. Applications limited only by your imagination.



Box 657, Fairfield,
New Jersey 07006
(201) 226-8450

Circle No. 53 on Readers' Service Card

Custom remanufactured sterilizers...



...can save you as much as 40% off the list price of a new steam or ethylene oxide unit.

Engineered to your specifications, with custom remanufactured vessel and door, new controls, operating parts, steam generator and fittings specified for your applications. Three year performance warranty—longest in the industry.

We have a model, size and type to meet every sterilizer need, plus a line of new bulk sterilizers. Call or write for our brochure.



Scientific Industries, Inc.

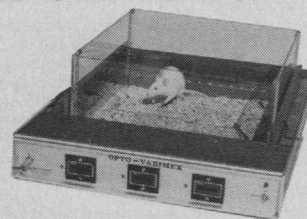
70 Orville Drive, Airport International Plaza, Bohemia, New York 11716, 516/567-4700

Circle No. 75 on Readers' Service Card

"OPTO-VARIMEX"

Ultimate Animal Activity Meter
DIGITALLY MEASURES TRAVELED
DISTANCE, PLOTS PATTERN OF
MOVEMENTS.

Measures
Animal
Respiration
and Tremors



- * Measures horizontal activity by interruption of invisible infrared beams criss-crossing animal cage 1" above the bottom.
- * Measures rearing and jumping activity by means of two adjustable light curtains.
- * Plots pattern of animal movements on X-Y chart recorder by decoding position of animal from interrupted IR beams.
- * Completely insensitive to urine bedding or feces as IR beams cross the cage 1" above bottom.
- * Large 15" x 15" transparent plastic cage—not attached to the instrument.
- * Measures tremors and respiration by proximity sensor.



for more information call or write:
COLUMBUS INSTRUMENTS

950 NORTH HAGUE AVENUE
COLUMBUS, OHIO 43204, U.S.A.
PHONE (614) 488-6176

Circle No. 1 on Readers' Service Card

Personnel Placement

Personnel advertising is accepted only with the understanding that the advertiser does not discriminate among applicants on the basis of race, sex, religion, age, color, or national origin.

Positions Wanted: 40¢ per word; \$4 extra for use of box number. \$10 minimum charge, per insertion. Prepayment required. Rate available only to individuals; personnel agencies, companies, colleges, and universities take display rate for all advertising.

Display (Positions Open, Market Place, and so forth): \$5.80 per millimeter; \$145 minimum (covers 25 millimeters on single column; 25 millimeters equals 10 lines of 50 spaces per line), per insertion. No charge for use of box number. Rates net. No agency commission for ads under 4 inches. No cash discount. Prepayment required for foreign advertising. Purchase orders and billing information required for all other ads.

SCIENCE is published weekly, on Friday. Copy must be received in writing by Wednesday, 3½ weeks before Friday issue date required. Send copy for all positions wanted ads and display ads under 5 inches to:

SCIENCE, Room 207
1515 Massachusetts Ave., NW
Washington, D.C. 20005
Telephone: 202-467-4456

Send copy for display ads, 1/6 page and larger, to:

Scherago Associates, Inc.
1515 Broadway
New York, N.Y. 10036
Telephone: 212-730-1050

Blind Ad replies should be addressed as follows:

Box (give number)
SCIENCE
1515 Massachusetts Ave., NW
Washington, D.C. 20005

POSITIONS WANTED

Anatomist-Histologist-Embryologist. Ph.D. 1973. Seeks teaching-research position. Three years of postdoctoral experience. Broad research background. Box 7, SCIENCE. 1/13, 20

Biochemist. Ph.D. Desires biomedical product design, quality control, waste analysis, laboratory management, computer applications. Experience in instrumentation, protein chemistry. Clear thinker, neat worker. San Francisco Bay area only. Box 8, SCIENCE. X

Biologist, Botanist. Ph.D. Main interest in plant physiology and morphology. Seeking position in 4-year Catholic liberal arts college. Thirteen years at secondary level plus 6 years at college level. J. Bara, 209 South 11th Street, Olean, N.Y. 14760. X

Medical Microbiologist. Ph.D., SM-AAM. Seeks challenging research/clinical/teaching/industrial position. Eight years of academic/hospital and research experience. Extensive clinical, diagnostic, undergraduate, and graduate teaching experience, specializing in mycology and bacteriology. Predoctoral, postdoctoral fellowships. Two-year residency in medical microbiology at CDC, Atlanta. Publications. Box 9, SCIENCE. X

Medicinal Chemist/Toxicologist. Ph.D. 1974. Three-year postdoctoral at NIH. Experience in wide variety of biochemical analytical techniques; isolation, characterization of drug metabolites. Available immediately. Salary, location open. Box 10, SCIENCE. X

POSITIONS OPEN

ACADEMIC SURGICAL PATHOLOGIST
The University of Chicago, Department of Pathology, is seeking a Board-certified (or eligible) surgical pathologist at a junior level to join an active and progressive laboratory. The applicant will participate in diagnostic surgical pathology and medical student and resident instruction. Ample time is available for research. Send inquiries and curriculum vitae to: **Dr. W. H. Kirsten, Professor and Chairman, Department of Pathology, The University of Chicago, 950 East 59 Street, Chicago, Illinois 60637.** The University of Chicago is an Affirmative Action/Equal Opportunity Employer.

POSITIONS OPEN

ANATOMY WASHINGTON UNIVERSITY

Applications are invited for a tenure-track faculty position in the Department of Biomedical Science, School of Dental Medicine. The individual must be qualified to teach gross anatomy, and have demonstrated a strong research capability. Preference given to someone with interests in craniofacial embryology, biomechanics, or bone and mineral metabolism. Rank and salary are negotiable.

Please forward résumé, the name of three referees, and a brief statement of research activities and plans to: **Dr. A. J. Kahn, Search Chairman, Washington University, School of Dental Medicine, 4559 Scott Avenue, St. Louis, Missouri 63110.** An Equal Opportunity Employer.

ANATOMY FACULTY POSITIONS. Applications are invited from anatomists experienced in teaching gross anatomy and embryology who have active research programs or interests. Send curriculum vitae, lists of publications, and supporting references to: **Personnel/Manpower Division, School of Medicine, Uniformed Services University of the Health Sciences (USUHS), 4301 Jones Bridge Road, Bethesda, Maryland 20814.** USUHS is an Equal Opportunity Employer.

AQUATIC ECOSYSTEM SCIENTISTS. Argonne National Laboratory, Environmental Impact Studies Division. Two positions. Exceptional opportunities at the assistant professor level for Ph.D.'s with expertise in applied aquatic ecology including freshwater benthic invertebrates, phytoplankton (eutrophication and water quality), zooplankton, fish and ichthyoplankton, ecosystem health, and water quality. Knowledge of data analysis and report preparation, and familiarity with federal and state regulations desirable. Projects are energy related (for example, coal, oil, uranium, power facilities, and energy storage) and there will be participation in programs identifying the regional and generic impact of energy technologies on freshwater resources. Responsibilities will include preparing independent environmental assessments, writing environmental impact statements, and acting as expert witnesses at federal hearings. Some research opportunities available. Salaries are fully commensurate and benefits are excellent. Apply by sending résumé to: **Walter McFall, Argonne National Laboratory, 9700 South Cass Avenue, Argonne, Ill. 60439.** An Equal Opportunity Employer, M/F/Handicapped.

ASSISTANT PROFESSOR. Williams College Biology Department has two positions for fall 1978: a **comparative animal physiologist** and a **cellular plant physiologist**. Teaching duties for the comparative physiology position include courses in endocrinology and comparative physiology, and instruction in an advanced tutorial for senior biology majors. Teaching duties for the plant physiology position include a course in general biochemistry, a course in plant physiology that will alternate every other year with an introductory plant biology course, and instruction in an advanced tutorial for senior biology majors. Both appointments are for 3 years at the assistant professor level and require a Ph.D. in the area of the appointment. Completed application must contain résumé, description of research interests, and three letters of recommendation to: **Dr. W. DeWitt, Chairman, Biology Department, Williams College, Williamstown, Mass. 01267.** Application deadline: 15 February.

Equal Opportunity/Affirmative Action Employer

ASSISTANT PROFESSOR—ANATOMY

One position for Ph.D. or M.D. to develop research and graduate program and to teach medical gross anatomy. Preference given for postdoctoral experience and active, quality research. Submit résumé and letters of recommendation to: **Dr. D. E. Kelly, Department of Anatomy, University of Southern California, School of Medicine, 2025 Zonal Avenue, Los Angeles, California 90033.** Applications from women and minority groups especially welcome. An Equal Opportunity/Affirmative Action Employer.

ASSISTANT OR ASSOCIATE PROFESSOR OF BIOCHEMISTRY. Position available 1 July 1978 for candidates with interests and postdoctoral research experience in areas related to biochemistry of membranes or cell surfaces. Departmental instructional programs serve medical students, graduate students, and undergraduates. Send curriculum vitae and names of three references to: **R. L. Lester, Department of Biochemistry, University of Kentucky, Lexington, Kentucky 40506.** (Closing date: 10 February 1978.) An Affirmative Action/Equal Opportunity Employer.

POSITIONS OPEN

ASSISTANT PROFESSOR

Amherst College seeks an assistant professor in the area of ecology to begin 1 July 1978. Doctorate required. Responsibilities during the first year include teaching a general ecology course (with laboratories) jointly with another ecologist, teaching an additional beginning or advanced undergraduate course and developing an active research program, including supervision of one or two senior research projects. During the second year participation in a third introductory or advanced course will be expected. Three-year, renewable contract with tenure decision at 6 years. Applicants should send a curriculum vitae, copies of publications, and arrange to have three letters of reference sent to: **Chairman, Biology Department, Amherst College, Amherst, Mass. 01002.** The deadline is 1 March 1978. An Equal Opportunity/Affirmative Action Employer.

MICHIGAN TECHNOLOGICAL UNIVERSITY Department of Biological Sciences

Invites applications from all qualified persons for the following anticipated positions at rank of **assistant professor**:

MICROBIOLOGIST to teach in areas of general and medical microbiology. Ph.D. required and experience preferred.

VERTEBRATE BIOLOGIST to teach in the area of vertebrate anatomy and physiology, and develop a research program in area of specialty. Ph.D. required and postdoctorate preferred.

CELL BIOLOGIST to teach senior level courses in cell biology and related areas. Ph.D. required and experience preferred.

Salaries are dependent on qualifications. Send curriculum vitae and three letters of recommendation to: **Dr. Robert C. Stones, Head, Department of Biological Sciences, Michigan Technological University, Houghton, Michigan 49931.**

Michigan Technological University is an Equal Opportunity Educational Institution/Equal Opportunity Employer.

POSITION IN BOTANY

Applications are invited for a position as **assistant professor of botany** with teaching emphasis in plant physiology and anatomy. Additional responsibilities will include general biology and other courses consistent with the individual's expertise. Research in the primary discipline is required. Send three letters of reference, undergraduate and graduate transcripts, a curriculum vitae, and a statement of research interests to: **Dr. G. L. Bintz, Department of Biology, Eastern Montana College, Billings, Montana 59101.** Application deadline is 15 February 1978. Eastern Montana College is an Equal Opportunity Employer.

ASSISTANT VICE PRESIDENT FOR ACADEMIC PROGRAMS. The University of Louisville invites qualified applicants for the position of assistant vice president for academic programs. Applicants for the position should possess one of the following degrees: M.D., D.D.S., D.M.D., Ph.D., or other earned doctorate. The successful applicant will have experience in academic planning, educational research and resource areas that support education in a Health Sciences Center. This is an excellent career opportunity. Submit curriculum vitae with salary history to:

**Chairman
Assistant Vice President for Academic Programs
Search Committee
University of Louisville
Health Sciences Center
Louisville, Kentucky 40202**

An Equal Opportunity/Affirmative Action Employer

ASSOCIATE CHIEF OF STAFF FOR EDUCATION to direct the Office of Education in a 1591-bed teaching hospital for the VA and the University of California, Irvine—California College of Medicine. The appointee will also serve as director of the Southwest Regional Medical Education Center based at the VA Hospital, Long Beach, Calif. Qualifications must include M.D. degree, Board-certification in a specialty, strong academic credentials, and administrative experience. The physician selected will be appointed to the faculty in his/her discipline. Equal Opportunity—women and minorities invited to apply. Please contact: **Chief of Staff and Assistant Dean, University of California, Irvine—California College of Medicine, 5901 East 7 Street, Long Beach, Calif. 90822.**

POSITIONS OPEN

ASSISTANT PROFESSOR OF BIOCHEMISTRY: biochemist or molecular or cell biologist with strong background in either physical biochemistry or protein chemistry. Applicants should send curriculum vitae, bibliography, list of referees, and outline of research program to: **Dr. Jacques R. Fresco, Chairman, Department of Biochemical Sciences, Princeton University, Princeton, N.J. 08540.** *An Affirmative Action/Equal Opportunity Employer.*

ASSISTANT PROFESSOR OF BIOLOGY

The Department of Biology at Saginaw Valley State College is seeking a full-time faculty member at the assistant professor level, beginning September 1978. Salary competitive. Requirements: Ph.D., 2 years of full-time teaching experience at the college level in cell biology, demonstrated excellence in teaching, and a strong commitment to community service. Candidate expected to teach cell biology for majors, participate in the general biology course, and develop electives in areas of expertise. Applicants must submit letter of application and résumé before 15 February 1978 to: **Lawrence K. Fitzpatrick, Director of Personnel, Saginaw Valley State College, 2250 Pierce Road, University Center, Michigan 48710.** *SVSC is an Equal Opportunity/Affirmative Action Employer.*

WEST VIRGINIA UNIVERSITY SCHOOL OF MEDICINE

Assistant or associate professor of physiology. New vacancy to be filled after spring 1978. Assistant professor candidates must have postdoctoral research experience; associate professor candidates must have an established research program of high quality. Responsibilities include teaching of graduate, medical, and other health science students. Send curriculum vitae, brief description of research interests, and names of three references to: **Dr. George A. Hedge, Professor and Chairman, Department of Physiology and Biophysics, West Virginia University Medical Center, Morgantown, W.Va. 26506.** *West Virginia University is an Equal Opportunity/Affirmative Action Employer.*

ASSOCIATE DIRECTOR FOR TECHNICAL SERVICES

International research organization has immediate vacancy for experienced manager with responsibility for policy and administration of computer programming, word processing, and graphics services. The Technical Services Department has a staff of 40 and hardware including a Burroughs B6700 and an integrated mini-based word processing/typesetting system. A major area of emphasis will be expansion of services to the commercial market. Salary range: \$30,000 to \$50,000. Send résumé to:

**Personnel Services Division
International Fertility Research Program
Research Triangle Park, N.C. 27709**

ASSOCIATE OR ASSISTANT PROFESSOR. Position available subject to budget constraints, to teach both advanced management theory, and also R & D management (management of science and technology) at the graduate level. Doctorate required, and also practical experience and academic training in R & D management (management of science and technology) is desired.

George Washington University is an Equal Opportunity/Affirmative Action Employer.

Send résumé to:

**Professor Dan Roman
Department of Management Science
School of Government and Business Administration
The George Washington University
Washington, D.C. 20052**

ATMOSPHERIC PHYSICIST POSITION UNIVERSITY OF COLORADO AT BOULDER

Invites applications for a research position in the Laboratory for Atmospheric and Space Physics. Responsibilities will be to provide leadership in a research program in upper atmospheric physics in which remote sensing data will be used in an investigation of the physical and chemical properties of the upper atmosphere. The preferred candidate would have experience in data analysis and in devising computer models of the stratosphere and mesosphere. Applicants should please send curriculum vitae and a description of research interests to: **Professor Gary E. Thomas, Laboratory for Atmospheric and Space Physics, University of Colorado, Boulder, Colorado 80309.**

The University of Colorado is an Equal Opportunity/Affirmative Action Employer.

POSITIONS OPEN

The Department of Mathematics at the University of Tennessee has a tenure-track **ASSISTANT** (possibly associate) **PROFESSORSHIP** for an **APPLIED MATHEMATICIAN** with research interest in mathematical biology. Participation in expansion of mathematical biology program and interaction with area research institutions expected. Preference given to those applicants whose interests are in mathematical ecology. Applicants should have strong research and teaching qualifications. Reply to: **Dr. Thomas G. Hallam, Mathematics Department, University of Tennessee, Knoxville, Tenn. 37916.** *The University of Tennessee is an Equal Opportunity/Affirmative Action Employer.*

ASSISTANT PROFESSOR IN-RESIDENCE

The University of California, Irvine, Department of Pathology, is recruiting for a faculty position at the assistant professor level. Required: M.D., Board-eligible in clinical pathology. Duties: service and administrative responsibilities in blood banking and cellular immunology, teach medical students and house staff, research. *All qualified candidates welcome; minorities and women encouraged to apply.* Send curriculum vitae and references to: **Dr. Edward R. Arquilla, University of California, Irvine, Department of Pathology, 101 City Drive South, Orange, Calif. 92668,** by 31 January 1978.

ASSOCIATE PROFESSOR OF ENGINEERING THERMODYNAMICS, TRANSFER PROCESSES, FLUID MECHANICS DARTMOUTH COLLEGE

Applications are invited from outstanding individuals with an interest in, and commitment to, high-quality undergraduate as well as graduate teaching and research in a small interdisciplinary engineering school. Experience should include the fundamental thermal and fluid sciences and their application to engineering problems. We have a growing interest in energy-oriented studies with ongoing projects in solar energy, two-phase flows in nuclear reactors, conversion of biomass into liquid fuels, large-scale energy systems and policies. The candidate should be capable of initiating and supervising substantial, externally funded, research projects with a strong experimental and/or hardware component. Preference will be given to candidates with energy-oriented research interests and experience but other relevant areas in the thermal and fluid sciences are not excluded. Doctorate required. Industrial experience desirable.

Applicants are requested to submit a complete résumé, including a list of publications, a summary of grant support, a brief statement outlining present and projected teaching and research, and four letters of reference. Apply before 13 February 1978 to: **Professor B. Sonnerup, Thayer School of Engineering, Dartmouth College, Hanover, N.H. 03755.**

Equal Opportunity/Affirmative Action Employer

ATMOSPHERIC CHEMISTRY UNIVERSITY PROFESSOR

The Departments of Chemical Sciences and Geophysical Sciences at Old Dominion University will have a joint position for a university professor, a senior level appointment for an outstanding and nationally recognized scientist, available beginning fall 1978. Candidates should have extensive research experience in atmospheric chemistry and air pollution meteorology. The appointee will have a reduced teaching load and be expected to develop a strong research program to advance existing graduate programs in atmospheric and chemical sciences. The university is a state-supported, urban institution with over 14,000 students in its B.S., M.S., and Ph.D. programs. The combined faculty of the two departments includes 43 members, many of whom are engaged in research related to atmospheric pollution. Salary is negotiable. Send résumé by 28 February 1978 to: **Dr. Earl Kindle, Department of Geophysical Sciences, Old Dominion University, Norfolk, Va. 23508.** *An Affirmative Action/Equal Opportunity Employer.*

CHEMIST/NEUROBIOLOGIST

Postdoctoral position available immediately for a synthetic organic/photochemist interested in learning neurobiology. Our electrophysiological experiments employ photosensitive compounds as probes for the molecular pharmacology of biological membranes. For further information refer to H. A. Lester [*Sci. Am.* 236 (No. 2), 106-118 (February 1977)]. Send curriculum vitae and references to: **Dr. H. A. Lester, Division of Biology 156-29, California Institute of Technology, Pasadena, Calif. 91125.** *An Equal Opportunity/Affirmative Action Employer, M/F/H.*

POSITIONS OPEN

ASSOCIATE VICE PRESIDENT UNIVERSITY RESEARCH AND DEVELOPMENT CALIFORNIA STATE UNIVERSITY FULLERTON

Applications are invited for the position of associate vice president, university research and development. This office facilitates individual and cooperative faculty research and obtains extramural support for university development, education, and research. Qualifications include the doctorate, 5 years on a university faculty, 3 years of administrative experience, and a record of success in securing extramural support money. Appointment effective 1 August 1978. Salary \$29,748 to \$35,976.

Application deadline: 1 February 1978. Send letter of intent, résumé, and names of four references to: **Dr. J. A. Ryan, Chair, Associate Vice President Search Committee, S-263, California State University, Fullerton, Fullerton, California 92634.**

An Affirmative Action/Equal Opportunity Employer

BIOCHEMIST. Assistant professor, tenure-track position, starting September 1978. Teaching duties include undergraduate course in biochemistry and participation in graduate teaching. Postdoctoral experience and a strong background in biochemistry are required. Expected to develop independent research program and supervise graduate students. Send curriculum vitae, reprints, brief statement of research interests, and names of at least three references to: **Dr. Peter Abramoff, Biology Department, Marquette University, Milwaukee, Wis. 53233.**

CARDIOLOGIST. The Division of Cardiovascular Disease of the Department of Medicine and the Cardiovascular Research and Training Center at the University of Alabama in Birmingham has available a position at the professor level. This position is open to qualified individuals at a senior level fulfilling three criteria. First, the individual must have expertise in the care and management of patients with cardiovascular disease, particularly hypertension. Second, the individual must have a firm commitment to teaching programs oriented to medical students, graduate students, house officers, and fellows. Finally, the individual should have a hypertension research background with capabilities for studying control of the peripheral circulation. Apply to: **Division of Cardiovascular Disease, Department of Medicine, University of Alabama Medical Center, Birmingham, Alabama 35294 (Attention: Ms. Norma McSweeney, Administrative Officer).** Telephone: 205-934-3285. *An Equal Opportunity/Affirmative Action Employer.* Expiration date for receipt of applications: 31 January 1978.

CHAIRPERSON, Department of Pathology, University of Pennsylvania School of Medicine. Application is invited from highly qualified individuals to head the Department of Pathology of the University of Pennsylvania School of Medicine. **PATHOLOGY SEARCH COMMITTEE, Dean's Office, School of Medicine, University of Pennsylvania, Philadelphia, Pa. 19104.** *Equal Opportunity Employer.*

DUKE UNIVERSITY

DIRECTOR, Center for Resource and Environmental Policy Research. Planning and directing research in policies related to renewable resources and environmental problems at a multidisciplinary center. Requires experience in managing research efforts by faculty from many disciplines and demonstrated ability to develop cooperative research programs. Center represents expertise in business, ecology, economics, education, engineering, forestry, geology, political science, law, resource management, and resource policy. Applicants must have a Ph.D. and significant professional accomplishments. Position can be filled at tenured, full professor level.

NATURAL RESOURCE MANAGEMENT. Senior faculty appointment with primary responsibilities in directing programs in forest and related natural resource management and administering joint degree programs with business administration. Appropriate commitments to research and graduate level instruction are expected. Doctorate required with at least one degree in forestry or related natural resource area.

Applicants should submit a curriculum vitae, transcripts, and names of at least three references to: **Dr. Benjamin A. Jayne, School of Forestry and Environmental Studies, Duke University, Durham, N.C. 27706.** Positions available 1 September 1978.

Duke University is an Equal Opportunity/Affirmative Action Employer.

POSITIONS OPEN

Harvard University seeks a **BIOLOGICAL ANTHROPOLOGIST** with a specialization in paleoanthropology and human evolution, as well as a specialization in human anatomy. This is for a permanent position as a full professor beginning in September 1978. The appointment is to be made jointly by the Department of Anthropology and the Department of Anatomy in the Harvard Medical School. Applicants must have a Ph.D. as well as teaching and research interests in these fields.

Kindly send curriculum vitae, references, and publications to: **Mary Clare Gubbins, Peabody Museum, 54A, Harvard University, Cambridge, Massachusetts 02138. Harvard University is an Equal Opportunity/Affirmative Action Employer.**

CHAIRPERSON DEPARTMENT OF BIOCHEMISTRY

The Albany Medical College of Union University seeks a highly qualified individual for the position of chairperson and professor of biochemistry. Ph.D. and/or M.D. required. A commitment to teaching and a record of accomplishment in research essential.

Applicants should send curriculum vitae, bibliography, and names of three references to:

**Dr. Lawrence A. Caliguiri, Chairman
Biochemistry Search Committee
Albany Medical College of Union University
Albany, New York 12208**

An Equal Opportunity/Affirmative Action Employer

CHAIRMAN DEPARTMENT OF INTERNAL MEDICINE EAST TENNESSEE STATE UNIVERSITY COLLEGE OF MEDICINE

Qualified candidates are being sought to direct this department at a developing new Veterans Administration and community hospital affiliated medical college. Chairperson will be responsible for recruitment of faculty, establishing a referral practice center for the geographic area, continuing the implementation of the newly approved residency program, developing and implementing an undergraduate medical student education program, implementing a medical service plan, and managing the overall teaching, research, and service functions of the department. Candidates should be Board-certified, have teaching and research experience, and some experience and/or interest in administration. Consideration of applications will begin on 1 February 1978, and continue until the position is filled. Apply to:

**Dr. Jack E. Mobley, Dean
College of Medicine
East Tennessee State University
P.O. Box 23,320A
Johnson City, Tennessee 37601**

East Tennessee State University offers Equal Opportunity in its employment, admissions, and educational activities and is an Affirmative Action Employer.

CHEMICAL OCEANOGRAPHER

Faculty position open at the assistant or associate professor level for a chemical oceanographer/marine geochemist in the Department of Oceanography, Florida State University. Some preference will be given to candidates with experience and interest in the chemistry of the water column or organic geochemistry in order to complement existing research programs in marine and atmospheric chemistry. Send inquiries to: **Dr. John W. Winchester, Search Committee Chairman, Department of Oceanography, Florida State University, Tallahassee, Florida 32306. Telephone: 904-644-6700. Florida State University is an Equal Opportunity/Affirmative Action Employer.**

CLINICAL PHARMACOLOGY

The Department of Pharmacology and Toxicology, School of Medicine, University of Louisville, invites applications for a full-time faculty position at the assistant or associate professor level. Applicants must have an M.D. degree and clinical training in an appropriate clinical specialty; they will be judged on their ability to conduct independent, notable research, to teach medical pharmacology, and to facilitate clinical applications of pharmacology.

Send curriculum vitae and three letters of recommendation to: **William J. Waddell, M.D., Chairman, Department of Pharmacology and Toxicology, School of Medicine, Health Sciences Center, University of Louisville, P.O. Box 35260, Louisville, Kentucky 40232.**

The University of Louisville is an Equal Opportunity/Affirmative Action Employer.

POSITIONS OPEN

DISTINGUISHED CHAIR IN THE SCIENCES (CHEMISTRY)

St. Andrews Presbyterian College, a small 4-year, coeducational, liberal arts college, announces the establishment of an endowed chair in the sciences and seeks for appointment a teacher-scholar currently building a national reputation for undergraduate teaching and research.

The ideal candidate will balance disciplinary competence with interest in interdisciplinary approaches to science education in the context of humane values. Competence in biochemistry or analytical chemistry is preferred, but well qualified applicants in other areas will be considered.

The College will appoint a teacher-scholar whose personal commitments are compatible with higher education in the Christian context.

Nominations and inquiries should be sent by 30 January 1978.

**Dr. Ronald C. Crossley
Dean of the College
St. Andrews Presbyterian College
Laurinburg, North Carolina 28352**

Equal Opportunity/Affirmative Action Employer

CLINICAL MICROBIOLOGIST—ASSISTANT TO ASSOCIATE PROFESSOR. CLINICAL CHEMIST—ASSISTANT PROFESSOR. The Center for Advanced Medical Technology at San Francisco State University is seeking applicants for two tenure-track positions to begin fall 1978. Applicants must have earned Ph.D. and postdoctoral clinical experience. The center is a department within the School of Science which offers an M.S. in clinical science (emphasis in clinical chemistry, immunology and microbiology) as well as a university-based, post-baccalaureate clinical laboratory technologist training program. Seeking individuals with commitment to develop active research program involving supervision of graduate student thesis research and to develop graduate courses in area of expertise. Assistant: \$14,256 to \$15,624; associate: \$17,940 to \$19,692. Send curriculum vitae and three letters of recommendation by 1 February 1978 to: **Frank T. Bayliss, Ph.D., Director, Center for Advanced Medical Technology, San Francisco State University, San Francisco, Calif. 94132. Affirmative Action/Title IX Employer.**

Elsevier's Science Division, Amsterdam, the Netherlands, plans to expand its senior management team with the appointment of a

CO-DIRECTOR

Elsevier's Science Division, a part of the Elsevier group, is made up of important scientific book and journal publishing houses in Europe, North and South America. Its imprints include Elsevier, North-Holland, and Excerpta Medica.

We are looking for a person with a scientific background, top management experience, entrepreneurial instinct, creativity, and a proven knowledge of scientific information transfer. Publishing experience would be an asset.

His or her principal task will be to stimulate the development of new product related to scientific information exchange and to assist in the coordination of existing publishing activities. The position is located in Amsterdam, the Netherlands.

Please write in confidence, including curriculum vitae, to: **The Chairman of the Board of Managing Directors of Elsevier's Science Division, New York Office, 52 Vanderbilt Avenue, New York, N.Y. 10017.**

CONSERVATION SCIENTIST who can provide technically competent analysis of museum artifacts by x-ray fluorescence.

Familiarity with the physics of x-ray generation and stabilization, with selection of instrumental conditions appropriate to a specific task, with energy and frequency-dispersive detection, with calibration; for application: first to qualitative and quantitative analyses of unmodified museum objects under restrictions insisted upon by curators, or of samples taken from them. Original thinking and creativity to adapt standard methods and techniques to museum objects are needed. Familiarity with x-ray fluorescence energy dispersive spectrometer (Siemens) modified by addition of the Edax analyzer, with mini-computers, peripherals, and computer programming will be advantageous. Ability to write lucid, coherent, and timely reports is essential. Salary within the scale for GS-9 or -11: \$15,090 to \$18,258. Application forms and details may be obtained from: **Robert M. Organ, Conservation Analytical Laboratory, Room AB070 HTB, Smithsonian Institution, Washington, D.C. 20560.** Closing date for applications: 1 February 1978.

An Equal Opportunity Employer

POSITIONS OPEN

DEAN, DENTAL SCHOOL. The University of Louisville is seeking a dean for the School of Dentistry within its Health Sciences Center. Candidates should be leaders in dentistry, holding a D.M.D. or D.D.S. degree, and having had significant personal experience in patient dental care. Candidates should also have a record of substantial scholarly achievement and a background of accomplishment in dental education. Knowledge, understanding, and appreciation of the basic sciences are expected. Previous experience should include administrative responsibilities, leadership roles, capability in recruitment and development of faculty and staff, an understanding of the role of dentistry in relation to other components of a major health sciences center, and a record of participation in professional dental organizations. A fundamental component of the school is the education of general dental practitioners. Candidates should be academically qualified for appointment as a professor with tenure. Administrative responsibility is directly to the vice president for health affairs. Salary is competitive with similar appointments in the United States. Submit curriculum vitae to:

**Dr. John M. Yancey, Chairman
Dean Search Committee
University of Louisville
School of Dentistry
Health Sciences Center
P.O. Box 35260
Louisville, Kentucky 40232**

An Equal Opportunity/Affirmative Action Employer

DEAN, TUFTS UNIVERSITY, SCHOOL OF DENTAL MEDICINE. Founded as the Boston Dental College in 1868 and merged with Tufts in 1899, the school was one of the first in the country to have a university's academic base; it is now an integral part of the Tufts-New England Medical Center, with the Tufts School of Medicine, a major teaching hospital, an emerging federal nutrition research center, and a developing school of veterinary medicine. Among the school's unique features are its year-round curriculum, hospital clerkships, and externship program. Housed in a modern nine-story building, the school enrolls 465 undergraduate students, 66 full-time graduate and postgraduate students, and puts on a wide-ranging program of continuing education and of clinical service. One in three dentists practicing in New England is a Tufts graduate. Research accomplishments in care of periodontal disease, in orthodontics, and in preventive measures have been substantial. Tufts-trained dental educators hold positions of importance nationally. The search committee seeks candidates who have demonstrated ability to be an effective leader of, and participant in, a community of scholars; who give evidence of substantial achievement in research and practice; who have shown imagination and competence in organizing dental education programs; and who can develop and administer the school's programs and secure support for them. Position available 1 July 1978. Send nominations and applications before 10 March 1978 to: **Provost Kathryn A. McCarthy, Chairman, Dental Dean Search Committee, Ballou Hall, Tufts University, Medford, Mass. 02155. An Equal Opportunity/Affirmative Action Employer.**

INTERIM DEAN FOR VETERINARY PROGRAMS. Tufts University seeks an experienced academic leader for the planning and development of a proposed School of Veterinary Medicine. The school is conceived as an integral part of an academic health center and as a medical, agricultural, and scientific resource for New England. It will join the Tufts University Schools of Medicine and Dental Medicine, the New England Medical Center Hospital, and a major nutrition research center at the Tufts Boston campus, and will share and strengthen existing basic science departments. The school will have its own clinical campus and will also provide clinical education at a number of eminent associated institutions throughout New England. Specialties are expected to develop in comparative medicine, laboratory animal medicine, nutrition, public health, toxicology, pathology, and aquatic animal and equine medicine. Candidates for the interim deanship should be veterinarians who have extensive and successful experience in the planning, administration, and support of veterinary institutions or health sciences programs. Distinguished research accomplishments and teaching and clinical experience are also important. Position available immediately. Send nominations and applications to: **President Jean Mayer, TUFTS UNIVERSITY, Medford, Mass. 02155. An Equal Opportunity/Affirmative Action Employer.**

UNIVERSIDAD AUTONOMA DE CIUDAD JUAREZ

ESCUELA DE MEDICINA

PROGRAMA ACELERADO BILINGUE PARA DOCTORADOS
(Accelerated Bilingual Program for PhD's)

APARTADO POSTAL 231 TELEFONO 2-75-60 CD. JUAREZ, CHIH., MEXICO

The Universidad Autonoma de Ciudad Juarez School of Medicine has established an additional route to the M.D. qualification whereby selected candidates who already hold a Ph.D. degree in biological, physical, or engineering science can enter an accelerated course of study. Social sciences may be considered provided there is a strong background in the physical, chemical, or biological sciences.

The Ph.D.-M.D. Program is now considering applications for the 4th. Class which will commence sessions on June 5, 1978. Successful students will complete the M.D., training within 25 months. Social service of 12 months will be required and probably be devoted to research and clinical service.

LANGUAGE:

Spanish Language instruction will be given during June 5 to December 20, 1978 during the afternoon following basic sciences instruction. Proficiency in Spanish must be achieved by January 5, 1979.

APPLICATIONS:

Inquiries for the Ph.D.-M.D. Program and requests for standard application forms should be addressed to:

ROBERTO MORENO RAZO, M.D.
Chairman, Admissions Committee
Ph.D.-M.D. Program or:
Mr. JUAN DENA ROBLES
Administrator
Universidad Autonoma de Ciudad Juarez
Apartado Postal 231
Cd. Juarez, Chihuahua, MEXICO

The Admissions Committee will not accept applications postmarked after March 15, 1978 for the 1978 Program.

TUITION AND FEES:

Tuition is \$6000 for each of the two academic segments. Spanish Language tuition is \$600. Fees include a registration fee of \$15 and an application fee of \$50. The application fee must accompany each application and is non-refundable. Checks should be made payable to the Universidad Autonoma de Ciudad Juarez School of Medicine Ph.D.-M.D.

RESEARCH ASSISTANT

We currently have an opening in the Cardiovascular Research group for someone who has completed a BS/MS degree in Pharmacology or Physiology and has at least 2 years post graduate research experience in Cardiovascular research. The individual should be able to plan research, interpret results and communicate research findings in both oral and written forms. Considerable technical experience in either of the above areas is desirable.

We have an excellent salary and benefits package. Please send your resume and salary history in confidence to:

Robert W. Moberg,
Director Placement and Development
MERRELL-NATIONAL LABORATORIES
A Division of Richardson-Merrell, Inc.

Merrell

110 East Amity,
Cincinnati, Ohio 45215

An Equal Opportunity Employer M/F/H

The MARINE BIOLOGICAL LABORATORY (MBL)
WOODS HOLE, MASSACHUSETTS
COURSES, SUMMER 1978

Graduate and advanced undergraduate courses range from 6 to 12 weeks.

NEURAL SYSTEMS AND BEHAVIOR (18 June to 29 July—Formal Course Program; 31 July to 28 August—Post-Course Research): examination of general principles of nervous system function relevant to information processing, control of motor output, and the neural basis of behavior. Subject matter of integrative neurophysiology and behavior will be presented in lectures, seminars, intensive laboratory exercises, and field trips. Staff: A. Gelperin, Princeton University (director of course); J. L. Gould, Princeton University; R. Hoy, Cornell University; W. Kristan, Jr., University of California, San Diego; J. Nicholls, Stanford Medical School; F. Nottenbohm, Rockefeller University; D. J. Prior, University of Kentucky; others to be appointed. *A new offering.*

EMBRYOLOGY (19 June to 25 August): the theme will be "Localization, Pattern Formation and Morphogenesis" with a focus on the nature of initial asymmetries in cell or cell groups which appear to direct steps in evolving complexity until definitive adult structures are attained. Laboratory exercises will utilize marine embryos available locally. Staff: T. Humphreys, University of Hawaii and J. V. Ruderman, Harvard Medical School (codirectors); S. V. Bryant, University of California, Irvine; G. L. Freeman, University of Texas; C. B. Levinthal, Columbia University; E. R. Macagno, Columbia University.

EXPERIMENTAL MARINE BOTANY (11 June to 29 July—Formal Course Program; 31 July to 26 August—Post-Course Research): a tutorial program in "Comparative Biology and Biochemistry of Algae." A series of coordinated seminars in algal physiology, biochemistry, genetics, development, ecology, macro, micro, and molecular morphology and related subjects with evolution as the unifying concept serves to introduce problems of current importance and future potential. Staff: J. A. Schiff (director), Brandeis University; J. Fiore, Suffolk University; H. Lyman, State University of New York, Stony Brook; D. Mauzerall, Rockefeller University; R. F. Troxler, Boston University School of Medicine.

MARINE ECOLOGY (11 June to 20 July): a lecture, laboratory, and field course on marine populations and ecosystems with emphasis on topics of current interest, from theory to human affairs. Research oriented, the course involves reading original literature, lectures and laboratory on recent methods, field and shipboard work. Staff: I. Valiela, Boston University Marine Program and J. M. Teal, Woods Hole Oceanographic Institution (directors); J. Hobbie and C. A. S. Hall, Marine Biological Laboratory; T. Fenchel, University of Aarhus; W. Odum, University of Virginia; K. Porter and J. Porter, University of Michigan; R. Strickler, Yale University; C. Van Raalte, Hampshire College. Special lectures.

MICROBIAL ECOLOGY (19 June to 28 July; Post-Program Research, 31 July to 29 August): a Research Training Program, conducted in cooperation with the Woods Hole Oceanographic Institution, will focus on the physiological and biochemical basis of interactions between microorganisms and their natural environment. Staff: H. W. Jannasch, Woods Hole Oceanographic Institution and E. R. Leadbetter, Amherst College (codirectors); J. Gibson, Cornell University; R. E. Hungate, University of California, Davis; A. Keynan, The Hebrew University, Jerusalem. Visiting instructors: J. S. Poindexter, City University of New York; J. G. Ferry, Virginia Polytechnic Institute, Blacksburg. Consultants: H. O. Halvorson, Brandeis University; J. Hastings and E. O. Wilson, Harvard University; R. Y. Stanier, Institut Pasteur, Paris.

NEUROBIOLOGY (19 June to 26 August): a lecture and laboratory course that will demonstrate both the diversity of experimental preparations used to study the nervous system, and that various techniques can be combined in the approach to research problems. Staff: E. A. Kravitz, Harvard Medical School (director); J. B. Cohen, G. D. Fischbach, E. J. Furshpan, J. G. Hildebrand, S. C. Landis, P. R. MacLeish, M. C. Nelson, and D. D. Potter, all of Harvard Medical School; J. Heuser, San Francisco University Medical School; Paul O'Lague, University of California, Los Angeles; T. S. Reese, NINDS.

PHYSIOLOGY (11 June to 21 July; Post-Course Program, 22 July to 1 September): a lecture and laboratory course centered on the structure and processes of the eukaryotic cell. Physical and chemical techniques will be taught as an integral part of the course. Staff: K. E. Van Holde, Oregon State University (director); R. Stephens, Marine Biological Laboratory; M. Mooseker, Harvard Medical School; J. Brown, University of Virginia; T. Baldwin, University of Illinois; S. Astrid, Institute for Cancer Research, Philadelphia. Special lecturers.

TUITION: \$600 for all except ecology, embryology, and neurobiology; \$250 for post-course research; and \$850 for ecology, embryology, and neurobiology.

ROOM, including **BOARD** for 6 days: from \$47 per week.

SCHOLARSHIP: limited funds are available.

For further information and application forms write to: **Admissions Office, Marine Biological Laboratory, Woods Hole, Mass. 02543.** Deadline for applications is 1 March. *MBL admits students of any race, color, and national or ethnic origin.*

POSITIONS OPEN

DEAN OF GRADUATE STUDIES AND RESEARCH

California State Polytechnic University, Pomona, California, located 30 miles east of metropolitan Los Angeles, announces the position of dean of graduate studies and research. Responsibilities include planning, developing, evaluating, and coordinating graduate programs; coordinating the university's program of external grants, contract development, and funding. A doctorate degree from an accredited college or university and college or university teaching and administrative experience are required. Experience in research is desirable. Compensation currently ranges from \$29,748 to \$35,976. Send applications or letters of intent accompanied by a résumé and letters of reference to: **Dr. Kenneth H. Anderson, University Dean for Academic Affairs, California State Polytechnic University, Pomona, 3801 West Temple Avenue, Pomona, Calif. 91768, attention: Janet Kelly**, by 28 February 1977. *California State Polytechnic University, Pomona, is a member of the California State University and Colleges system and is an Affirmative Action/Equal Opportunity Employer.*

DEVELOPMENTAL BIOLOGIST

Applications are invited for an assistant professor (tenure stream) having molecular and/or cellular research interests. Teaching duties will include participation in introductory developmental biology course and advanced courses in area of research interest. Starting date: 1 September 1978. Applications, including a curriculum vitae, the names of three referees, and a one-page statement of future research plans should be received by 15 February 1978. **Developmental Biology Search Committee, E. Mader, Biology Department, McGill University, 1205 McGill Avenue, Montreal, Quebec, Canada H3A 1B1.**

ECOLOGIST

Applications are invited for an appointment, subject to the availability of funds, of an assistant professor (tenure stream), beginning between May and September 1978. Applications in population biology are particularly welcomed. Applications, including a curriculum vitae, the names of three referees, and a one-page statement of what the applicant considers to be important questions in ecology and his/her research plans should be received by 1 February 1978. **Ecology Search Committee, E. Mader, Biology Department, McGill University, 1205 McGill Avenue, Montreal, Quebec, Canada H3A 1B1.**

DIRECTOR OF IMMUNOLOGY NEW PRODUCT DEVELOPMENT

To direct the development of new products and new product lines. A Ph.D. with heavy emphasis in humoral antibody work is a must. Also, a candidate should have a proven record of new product and/or method development.

Direct inquiries to:

**Personnel Department
Helena Laboratories
P.O. Box 752**

Beaumont, Texas 77704

Equal Opportunity Employer

TWO ECOLOGISTS

Arizona State University (ASU) invites applications for two positions at the level of assistant professor: (i) **THEORETICAL ECOLOGIST** or **PHYSIOLOGICAL ECOLOGIST** (higher vertebrates) to teach ornithology, animal ecology, and team-teach in general ecology; and (ii) **WILDLIFE ECOLOGIST** to participate in wildlife program and teach wildlife management, general biology, and a course in specialty. Send letter of interest stating future research plans, curriculum vitae, undergraduate and graduate transcripts, and three letters of recommendation to: **Gerald A. Cole, Department of Zoology, Arizona State University, Tempe, Arizona 85281**. Deadline: 15 February 1978. *ASU is an Equal Opportunity/Affirmative Action Employer.*

ELECTRON MICROSCOPIST. The Department of Biology, State University of New York at Stony Brook, expects to make a 1-year appointment at the assistant professor level, effective 1 September 1978. Expertise in teaching electron microscopy is essential, and some teaching and research experience with higher plant systems is desirable. Applicants should send curriculum vitae, copies of publications, and names of references to: **Dr. A. D. Krikorian, Department of Biology, State University of New York at Stony Brook, Stony Brook, New York 11794**. *Equal Opportunity/Affirmative Action Employer.*

POSITIONS OPEN

DIRECTOR OF RESEARCH for a large mental health-mental retardation organization. Must have Ph.D. or equivalent, minimum of 5 years' experience, multidisciplinary background, population and medical genetics, psychiatry, epidemiology, advanced statistics, and some computer programming. Publications required, both as senior author and in edited journals. Exciting challenge with close university participation. Send résumé to: **Director of Personnel, Box 388, Louisville, Ky. 40201.**

DIVISION DIRECTOR EARTH AND PHYSICAL SCIENCES THE UNIVERSITY OF TEXAS AT SAN ANTONIO

Candidates are sought for the position of division director and professor beginning 1 June 1979, to guide the continuing development of a multidisciplinary science segment of an expanding new university. The Division of Earth and Physical Sciences includes chemistry and applied science, comprised of a preengineering, applied physics, applied geology, polymer science, and food technology. The director is administratively responsible for all activities within the division and reports to the dean of the College of Sciences and Mathematics comprising mathematics, computer science and systems design, allied health and life sciences, and earth and physical sciences. The multidisciplinary interests of the faculty within the division create the opportunity for innovation in research and educational programs to match the needs of South Texas.

Individuals of senior rank applying for the position should have a record of significant research and academic achievement in any of the above disciplines. Equally important are demonstrated administrative and leadership abilities. The director will be expected to continue the expansion of all the undergraduate programs, to develop new disciplines, and to stimulate the growth of research and graduate programs.

Those interested should send a curriculum vitae and letters of recommendation before 1 March 1978 to:

**Dean
College of Sciences and Mathematics
The University of Texas at San Antonio
San Antonio, Texas 78285**

The University of Texas at San Antonio is an Equal Opportunity/Affirmative Action Employer.

ECOLOGIST-ASSOCIATE DIRECTOR, UCLA

Applications are invited from highly qualified ecologists to become chief of Division of Environmental Biology and associate director of the Laboratory of Nuclear Medicine and Radiation Biology. The position carries a joint appointment, presumably at the full professor level, in the Department of Biology, and undergraduate and graduate teaching responsibilities. Research interests should be in quantitative ecology and applicants should be interested in resolving environmental problems related to energy technologies because the laboratory's research is funded primarily by the Department of Energy (formerly ERDA). Send letters of inquiry or application, including curriculum vitae, description of research and teaching interests, and names and addresses of three references before 15 February 1978 to: **Director's Office, Laboratory of Nuclear Medicine and Radiation Biology, University of California, 900 Veteran Avenue, Los Angeles, California 90024**. *An Equal Opportunity/Affirmative Action Employer.*

ELECTRONIC INSTRUMENTATION SPECIALIST: immediate Chemistry Department opening for an individual to operate, maintain, and repair a state-of-the-art ft-NMR; some additional responsibilities with other electronic research instrumentation; opportunities for research collaboration can develop; good future in a progressive department; excellent benefits. Diagnostic and troubleshooting experience necessary; familiarity with radio frequency and microwave circuitry and computers helpful. Submit résumé, reprints, references, and salary history to: **E. W. Miles, University Personnel Services, University of Louisville, 105 West Brandeis, Louisville, Kentucky 40208**.

An Equal Opportunity Employer

FACULTY OPENING—NUTRITION

Assistant or associate professor of nutrition. Candidates should have strong training in experimental nutrition or nutritional biochemistry and be prepared to undertake teaching and research on the metabolic aspects of ruminant nutrition. Send curriculum vitae, list of publications, and names of three referees to: **Dr. H. H. Draper, Chairman, Department of Nutrition, College of Biological Science, University of Guelph, Guelph, Ontario, Canada N1G 2W1.**

POSITIONS OPEN

ENDOCRINE LABORATORY DIRECTOR

The Diagnostic Laboratory of the New York State College of Veterinary Medicine at Cornell University is seeking a Ph.D., D.V.M./Ph.D., or M.D./Ph.D. endocrinologist with experience and/or a strong interest in reproductive biology to establish and direct a hormone assay service laboratory for clinical and research applications. Opportunities for independent and cooperative research with Animal Science Physiology, Theriogenology, and Clinical Science Departments will be encouraged. The individual that fills this tenure-track position must have extensive training and experience in the development, validation, and quality control of radioimmunoassay procedures for both steroid and peptide-protein hormones, a desire to work in a university-based laboratory environment, and an interest in applied aspects of veterinary endocrinology in several species. Previous postdoctoral, supervisory, administrative, and data processing experience are desirable. The level of academic appointment and salary will be commensurate with professional experience. Please send curriculum vitae, personal bibliography, and references to: **Dr. R. H. Cypess, Director, Veterinary Diagnostic Laboratory, New York State College of Veterinary Medicine, Cornell University, Ithaca, New York 14853**. *Affirmative Action/Equal Opportunity Employer.*

THE UNIVERSITY OF MICHIGAN DIVISION OF BIOLOGICAL SCIENCES

announces a position in

EXPERIMENTAL MICROBIOLOGY

Assistant Professorship
effective September 1978

Applicants must have demonstrated competence in experimental biology of prokaryotes. Postdoctoral experience is required. The successful applicant will be expected to develop a strong research program. Teaching responsibilities will include a course in the area of the appointee's specialty and, during the second term, in the area of introductory microbiology or biology.

Applications will be considered upon receipt of: (i) curriculum vitae, (ii) detailed statement of academic and research interests, (iii) reprints of relevant publications, and (iv) three letters of recommendation.

Applications will be accepted through 15 February 1978. They should be addressed to:

**Chairman, Microbiology Search Committee
Division of Biological Sciences
University of Michigan
Ann Arbor, Mich. 48109**

The University of Michigan is a nondiscriminatory, Affirmative Action Employer.

FACULTY POSITIONS

Two tenure-track positions, one in **analytical chemistry** and one in **biochemistry** at the assistant professor level beginning fall 1978. Applicants must have the Ph.D. degree and postdoctoral experience. Teaching experience desirable. Deadline for applications: 10 February 1978. Application materials must include curriculum vitae, academic transcripts, reprints of representative publications, a brief statement of proposed research program contemplated, and three letters of recommendation. Send applications to: **Dr. Andrew P. Stefani, Chairman, Department of Chemistry, The University of Mississippi, University, Miss. 38677**. *The University of Mississippi is an Equal Opportunity Employer.*

HEALTH PHYSICS FACULTY POSITION. Tenure-track position for assistant professor or above beginning July 1978. Duties: teaching graduate-level courses in basic radiation physics and applied health physics; developing health physics research program; enhancing ongoing service program. Minimum requirements are doctoral degree and several years' experience in operational health physics and/or teaching. Emphasis on occupational and environmental aspects of radiation protection preferred. Send curriculum vitae to: **Dr. Niel Wald, Chairman, Department of Radiation Health, Graduate School of Public Health, University of Pittsburgh, Pittsburgh, Pa. 15261**.

IMMUNOLOGIST: immediate opening for full-time, Ph.D. research position. Join a team of virologist, biochemist, electron microscopist, and clinical immunologist studying human and experimental cancers. Background in tumor immunology desirable but not essential. Pleasant suburban hospital (non-profit) setting. Good schools. Easy access to university. Send curriculum vitae to: **M. Gokcen, M.D., Ph.D., 4141 Golden Valley Road, Minneapolis, Minn. 55422**.

Neuropharmacologist

Candidates should have a Ph.D. in Pharmacology or Physiology with a major interest or preferably experience in evaluation of analgesics. Primary responsibility is in further development of an established program designed to develop new agents for the treatment of pain and to investigate the site and mechanism of action of these drugs. Secondary responsibility will include contributing to the programs designed to develop better drugs for the treatment of disorders of the nervous system. An interest in the role of peptides in brain function is desirable.

This opportunity is available with Wyeth Laboratories, a leading pharmaceutical firm located in Suburban Philadelphia. We are offering an excellent salary along with a comprehensive benefits plan. If you have an interest and are qualified for this position, please submit your curriculum vitae including salary requirements to:

John W. Pinkerton
PERSONNEL DEPARTMENT

Wyeth **WYETH**
LABORATORIES INC.
P.O. Box 8299
Philadelphia, Pa. 19101

Equal Opportunity Employer, M/F/H



Research Scientists

The General Foods Technical Center has several immediate openings in the basic sciences area.

SR. TOXICOLOGIST

Ph.D. degree in Toxicology or Pharmacology with 3-5 years experience in the design, supervision and conduct of acute/chronic toxicological screening of chemicals in lab animals.

SR. POLYSACCHARIDE CHEMIST

Ph.D. with experience in the physical properties of polysaccharides or other biopolymers. Will conduct research in a broadly defined area of Carbohydrate Chemistry.

ASSOCIATE BIOLOGIST

BS/MS in biology, metabolism or toxicology plus 3-5 years experience preferably in metabolism. Analytical and isotope instrumentation essential. Will assist Sr. Metabolism Specialist in carrying out lab animal studies.

Good written and oral communications are essential as well as ability to supervise junior personnel. You will enjoy excellent growth potential in a professionally stimulating environment. Our modern facility just north of New York City offers attractive living and working conditions. Compensation is competitive with excellent fringe benefits. Send resume and salary expectations to: PERSONNEL ASSOCIATE D-25

GENERAL FOODS CORPORATION TECHNICAL CENTER

555 South Broadway, Tarrytown, New York 10591

WESTERN AUSTRALIA PLANT BREEDER DEPARTMENT OF AGRICULTURE POSITION NO. 01 3238

SALARY: A\$14,736 to A\$16,033.

QUALIFICATIONS: Four-year university degree in agricultural science or approved equivalent plus at least 5 years' postgraduate experience. Ph.D. in plant breeding desirable.

DUTIES: Carry out a programme of wheat breeding and plant introduction for low rainfall areas in Western Australia at an experienced professional level.

CONDITIONS OF SERVICE: Three-month-long service leave after 7 years of continuous service, 4 weeks' annual leave plus 13 statutory public holidays, generous cumulative sick-leave entitlements, superannuation benefits, and other general conditions applicable to permanent public servants.

TRANSPORT AND REMOVAL ASSISTANCE: The cost of economy class air fares incurred by the appointee, spouse, and dependent children under the age of 16 years, plus a reasonable amount for removal of essential personal and household effects, subject to the appointee entering into an agreement to remain in the employ of the state for 1 to 3 years, according to assistance given. A single appointee will receive the cost of economy class air fare. Some assistance toward the cost of removal of personal effects will be granted.

LOCATION: South Perth with country travel.

APPLICATIONS: To state age, citizenship, qualifications, and experience to the:

Chairman
Public Service Board
111 St. George's Terrace
Perth 6000, Western Australia

from whom further information is available on request.

Closing: 27 January 1978.

DIRECTOR

Division of Cancer Cause and Prevention, National Cancer Institute

The National Cancer Institute is recruiting for a scientist who will direct, coordinate, and conduct:

- *A nationwide program of laboratory, field, biometric, and epidemiologic research on the cause and natural history of cancer and the means for preventing cancer through an intramural and collaborative program.
- *A program that serves as the focal point for the Federal Government on the synthesis of clinical, epidemiological, and experimental data relating to cancer cause and prevention.
- *A program that evaluates mechanisms of cancer induction by viruses, environmental carcinogenic hazards and the natural history of neoplasms.
- *The research work of a professional and support staff of 590 employees.

Candidates for this position should have an advanced professional degree (Ph.D., M.D., or equivalent) in a medical, biological, physical or related health science, and at least three years of professional specialized experience in Biomedical Science administration involving two or more scientific disciplines (e.g. chemistry, biology, microbiology, etc.) The candidate's professional experience must demonstrate the successful program planning, evaluation, and administration of high caliber biomedical research or clinical programs relating to human disease problems, and extensive experience as an independent investigator in clinical, basic, applied, developmental, or epidemiological research activities. Candidates will be evaluated on their scientific leadership and experience, scientific recognition, training and education, and honors and awards. The filling of this position is subject to the approval of the Civil Service Commission.

This is a career Civil Service position at the Supergrade level with liberal government benefits and salary ranging from \$42,423 to \$47,500. Appointment may also be made through the Commissioned Corps of the U.S. Public Health Service.

Submit Curriculum Vitae, Bibliography and Personal Qualifications Statement (SF-171) by February 10, 1978 to: Mrs. Elizabeth W. Stroud, NCI Personnel Office, National Institutes of Health, Public Health Service, 9000 Rockville Pike, Building 31, Room 3A19, Bethesda, Md. 20014. An Equal Opportunity Employer M/F.

NATIONAL INSTITUTES OF HEALTH

POSITIONS OPEN

DEPARTMENT OF NUTRITION AND FOOD SCIENCE MASSACHUSETTS INSTITUTE OF TECHNOLOGY FACULTY POSITION

The department, a large multidisciplinary teaching and research unit with activities in all principal areas of nutrition and food science, is seeking an applicant to fill the following faculty position:

An M.D., with research training and preferably with a Ph.D. degree and experience and a major interest in human and clinical nutrition. The appointee will be expected to teach graduate-level courses concerned with human and clinical nutrition, to develop a vigorous research program, and become actively involved in the research programs of the MIT Clinical Research Center.

The appointment will be at the assistant or associate professor rank, depending upon the qualification of the successful applicant.

Curriculum vitae, together with representative publications, and the names of five referees should be submitted before 1 February 1978 to: **Dr. V. R. Young, Chairman, Search Committee, Room 56-331, Massachusetts Institute of Technology, Cambridge, Mass. 02139.**

MIT is an Equal Opportunity Employer. Representatives of minority groups are urged to apply.

FACULTY POSITION IN ANATOMY

Applications are invited for two positions in the Department of Anatomy. The appointments will be at the assistant and associate professor levels with primary teaching commitment being in the area of human gross anatomy. Demonstrated commitment and excellence in research and teaching are essential and one or more years of experience after the doctorate is required at the associate professor level. Send complete curriculum vitae including a statement of research interests and names of at least three references to:

Dr. Herbert Schapiro
Department of Anatomical Sciences
Eastern Virginia Medical School
P.O. Box 1980
Norfolk, Virginia 23507

Closing date for applications is 1 February 1978. *Eastern Virginia Medical School is an Equal Opportunity Educator and Employer.*

FACULTY POSITION: BIOLOGIST/NUTRITIONIST

The Department of Nutrition at Rutgers University invites applications for a tenure-track, 12-month position at the assistant professor level. Candidates must have a Ph.D. and strong training in biology, biochemistry, and nutrition and a desire to establish a vigorous and creative research program in experimental nutrition. The duties of the position include participation, as a member of a team, in teaching introductory biology as well as participation in the other teaching efforts of the nutrition department. Applicants should send curriculum vitae, including bibliography and brief description of research interests and teaching experience, to: **Chairman, Search Committee, Department of Nutrition, Rutgers University, New Brunswick, N.J. 08903. An Equal Opportunity/Affirmative Action Employer.**

JUNIOR FACULTY or POSTDOCTORAL POSITION available 1 January 1978 at the University of Michigan, with collaborative research in Ann Arbor and with Dr. K. Yasunobu at the University of Hawaii, Honolulu, on sequencing cytochrome P-450. Previous experience in protein sequencing essential. Rank and salary dependent upon experience. Send credentials to: **Dr. M. J. Coon, Professor and Chairman, the University of Michigan, Department of Biological Chemistry, Ann Arbor, Mich. 48109. An Equal Opportunity/Affirmative Action Employer.**

MARINE BIOLOGIST. The Naval Biosciences Laboratory has a research position open in the area of marine biology with emphasis on aquatic pollutants. The candidate should have a Ph.D. (or equivalent) and experience with the effects of marine pollutants such as hydrocarbons and heavy metals on marine organisms. The position, which is open immediately, requires independent and team research and coordination with sponsoring agencies. Salary range: \$18,200 to \$22,900 per year. Send résumé with list of publications and references to: **Director, Naval Biosciences Laboratory, Naval Supply Center, Oakland, California 94725. An Equal Opportunity/Affirmative Action Employer. Women and minorities are urged to apply.**

POSITIONS OPEN

FACULTY POSITION IN GEOLOGY-GEOPHYSICS

California State University, Northridge, Department of Geosciences, invites applications for the following anticipated position:

Faculty position: Full-time position in geology or geophysics. This position is a tenure-track position at the rank of assistant professor in **geophysics** (marine, applied geophysics, or seismology). We will also consider applicants in the following specialties: **economic geology** (metallurgy) or **micropaleontology** (Late Quaternary and marine emphasis).

Interested persons with Ph.D. should respond with a letter of application, résumé, supporting documents, and three letters of recommendation by 1 April 1978. **Department of Geosciences, California State University, Northridge, California 91324.**

FOOD SCIENTIST

Assistant professor: Ph.D. in food science; demonstrated capabilities in teaching and research. Responsibilities include teaching courses in the consumer aspects of food, food science, and food processing; conducting research; advising students; and participating on committees. Position available 1 September 1978; salary open. Send résumé, official transcripts, and names of four referees before 15 February 1978 to:

Dr. Mir N. Islam
Chairperson, Search Committee
Food Science and Human Nutrition
University of Delaware
Newark, Delaware 19711
Telephone: 302-738-8407

The University of Delaware is an Equal Opportunity Employer.

INHALATION TOXICOLOGIST

International Research and Development Corporation (IRDC) is a rapidly expanding contract research laboratory located near Kalamazoo, Michigan. We have a position available as assistant director in inhalation toxicology. You will assist in teaching and supervising laboratory technicians in conducting toxicological experiments. Prefer a Ph.D. with inhalation toxicology experience and report-writing ability. Must have experience in using analytical instruments and operating exposure equipment. Starting salary commensurate with qualifications. Send résumé to:

J. M. Ragen, Director, Personnel
International Research and Development Corporation
Mattawan, Michigan 49071
Equal Opportunity Employer

CHEMISTRY LIBRARIAN LIBRARIAN II OR III

Available 1 July 1978. Responsible for the management and operation of the Chemistry/Biochemistry Library. Advanced degree or relevant experience in the subject field and M.L.S. preferred; relevant library experience desirable. Salary in a range having base of \$13,000 (L-II) or \$15,100 (L-III) but without a ceiling. Send résumé, three letters of recommendation, and transcripts by 15 February 1978 to:

Chemistry Librarian Search Committee
Maria G. Larson
Princeton University Library
Princeton, N.J. 08540
Equal Opportunity/Affirmative Action Employer

PHYSIOLOGIST. Ph.D. or M.S. with research experience. Training in biochemistry or pharmacology desirable. Basic and applied research in fish physiology related to uptake, biotransformation, and elimination of chemicals and effects of chemicals on metabolic and physiological functions of fish. Applicants should file SF-171—Application for Federal Employment plus personal qualifications statement, transcripts, and list of publications to: **Director, National Fisheries Research Laboratory, Box 818, La Crosse, Wisconsin 54601. Telephone: 608-784-9666. An Equal Opportunity Employer**

POSTDOCTORAL FELLOW (MOLECULAR BIOLOGY). Position requires a Ph.D. Work experience should be in either biochemistry, chemistry, or pharmacology. Applicant will conduct investigations of metabolic capacity of intestinal mucosa with respect to colon-specific chemical carcinogens. Submit résumé to: **Department MB, American Health Foundation, Naylor Dana Institute for Disease Prevention, Dana Road, Valhalla, New York 10595. An Equal Opportunity Employer, M/F.**

POSITIONS OPEN

DEPARTMENT OF RADIOLOGICAL SCIENCES UNIVERSITY OF CALIFORNIA, IRVINE

The Department of Radiological Sciences invites applications for the position of **MEDICAL PHYSICIST** in the Radiation Therapy Division. This appointment will be at the assistant or associate professor level. Applicants must have a Ph.D. degree, extensive experience in radiation therapy physics including all aspects of treatment planning, equipment monitoring and record keeping, and the teaching of residents and technologists.

The successful candidate will work closely with clinicians in radiation oncology, will have a major commitment to the teaching program, and will be expected to develop an independent research program and to supervise one or more graduate students in the Radiological Sciences Graduate Program. Remodeling of the radiation therapy facilities is planned and the candidate will have a significant voice in developing these new facilities. *Applications from all qualified candidates are welcome; minorities and women are encouraged to apply.* If you are interested in this position, please write to the address below enclosing a curriculum vitae and autobiographical letter.

Closing date: 15 February 1978.

Eric N. C. Milne, M.B., Ch.B., F.F.R.
Professor and Chairman
Department of Radiological Sciences
University of California, Irvine
College of Medicine
Irvine, California 92717

MEMBRANE CHEMISTRY. Postdoctoral position available July 1978 for individual with strong background in carbohydrate and/or membrane chemistry to study membrane-soluble protein interactions in lens tissue. **CELL AND MOLECULAR BIOLOGIST.** Staff associate position available immediately for studies upon transcriptional and translational control mechanisms in the lens utilizing cell culture techniques.

Candidates should submit résumés, bibliographies, and three reference letters by 1 February to: **Dr. Abraham Spector, Biochemistry and Molecular Biology Laboratory, Department of Ophthalmology, College of Physicians and Surgeons, Columbia University, New York, N.Y. 10032. Equal Opportunity/Affirmative Action Employer.**

MICROBIOLOGICAL ECOLOGIST, Ph.D., assistant professor level beginning fall 1978. Postdoctoral experience preferred. The successful candidate will be expected to develop an active research program and participate in undergraduate and graduate teaching. Send résumé, names and addresses of three references, and a brief outline of research and teaching interests by 1 February 1978 to: **Chairman, Search Committee, Department of Biology, New Mexico State University, Las Cruces, New Mexico 88003. New Mexico State University is an Equal Employment Opportunity/Affirmative Action Employer.**

ORAL PHYSIOLOGIST-PHARMACOLOGIST at the level of assistant professor in multidisciplinary department. Available 1 July 1978. Requirements include teaching physiology and pharmacology and developing and pursuing active research program. Ph.D. required and interest in one or more of the following areas preferred: oral physiology, neurophysiology, neuropharmacology, and dental therapeutics. Send curriculum vitae and names of three references to: **Dr. W. Sprague, Chairman, Department of Oral Biology, University of Nebraska College of Dentistry, 40th and Holdrege, Lincoln, Nebraska 68583, by 1 March 1978.**

Equal Opportunity/Affirmative Action Employer.

PHYSIOLOGIST

DEPARTMENT OF BIOLOGY, UNIVERSITY OF CALIFORNIA, LOS ANGELES, wishes to fill a position in physiology at the assistant professor level beginning 1 July 1978. Applicants should be committed to excellence in undergraduate and graduate teaching and have a record of independent research performance. Postdoctoral experience is desirable. Research and teaching interests should be in the area of cell-cell interactions or organismic physiology. Qualified applicants should send curriculum vitae, names of references, a statement of present and past research activities, and other pertinent information to: **Chairman, Search Committee, Department of Biology, University of California, Los Angeles, Los Angeles, California 90024.** Closing date for application is 31 January 1978.

An Equal Opportunity/Affirmative Action Employer

THE UNIVERSITY OF PAPUA NEW GUINEA (PORT MORESBY)

Applications are invited for the following posts to be taken up in July 1978.

TUTOR/SENIOR TUTOR IN BIOCHEMISTRY, DEPARTMENT OF HUMAN BIOLOGY. The Department is responsible for teaching an integrated course to Medical and Dental students. Subjects taught include Human Structure, Physiology, Biochemistry, Genetics, Nutrition, Clinical Biochemistry, and Pharmacology. Varied research programmes are being carried out. The appointee should have a higher degree in Biochemistry or a related field. The ability to participate in the teaching of more than one subject area would be an advantage. Further information regarding the department's teaching aims and research may be obtained by writing to the Chairman of the department.

SALARIES: Senior Tutor Grade 1 : K8,883-K9,863pa. Tutor : K7,113-K8,127pa. In addition, an allowance of K1,300 per annum if single is payable. An extra K1,000 Marriage Allowance and K156 per child Child Allowance may also be payable. Applications should include detailed curriculum vitae, a recent small photograph and the names and addresses of three referees. Conditions include provision of housing, annual leave fares, study leave and FSSU. In some cases it may be possible to make an appointment on secondment. Further details and the conditions of appointment are available from the Secretary, Box 4820, University P.O., Papua New Guinea, with whom applications close on 20 January, 1978. Applicants resident in UK should also send one copy of application to Inter-University Council, 90/91 Tottenham Court Road, London W1P 0DT.

Neuroscientist

Wyeth Laboratories, a leading pharmaceutical firm located in suburban Philadelphia, is seeking a Ph.D. specialist in neuroanatomy and/or neurochemistry interested in collaborative relationships with biopsychologists and psychopharmacologists. Applicant should have post doctoral experience and capabilities in several methodologies (including histofluorescence, immunohistochemistry, horseradish peroxidase, microdissection or radiotracer assays, receptor assays, extraction and isolation of biogenic amines and neuropeptides).

Wyeth offers an excellent salary commensurate with experience along with a comprehensive benefits plan. Interested individuals should submit curriculum vitae, salary requirements and references to:

Dr. Larry Stein

**Wyeth WYETH
LABORATORIES INC.**
P.O. Box 8299
Philadelphia, Pa. 19101

Equal Opportunity Employer, M/F/H

Conference on Pollutants and High Risk Groups

A Conference on the Effects of Pollutants on High Risk Groups will be held on June 5 and 6, 1978 at the University of Massachusetts, Amherst, MA. The Conference will focus on identifying biological factors which predispose toxicity and/or carcinogenicity in individuals. Among the several factors considered are developmental considerations, genetic deficiencies, nutritional status, and pre-existing disease conditions. In addition, panel discussions will consider, 1) the role of high risk groups in occupational health policies and practices, 2) the role of high risk groups in the formation of environmental (community) and occupational health standards. Invited participants in alphabetical order include:

Roy Albert N.Y.U.	Lauren Kerr United Mine Workers	Lynne Reid Children's Hospital Boston, MA
Nicholas Ashford MIT	Kaye Kilburn N.Y.U.	Jerry Rice NCI
Delbert Barth EPA	D. Jack Killian Dow Chemical	Jack Sheehan United Steel Workers
Louis Beliczky United Rubber Workers	Paul Kotin Johns Manville	Carl Shy University of North Carolina
Michael Bennett Boston University	Richard Kouri Microbiological Assoc.	Frances Silverman Gage Research Institute Toronto
Eula Bingham OSHA	Orville Levander U.S. Dept. Agriculture	M.R. Spivey Fox FDA
Edward Calabrese University of Massachusetts	Gerald Lower University of Wisconsin	Richard Stewart University of Wisconsin
Mott Corn University of Pittsburgh	George Lucier NIEHS	Robert Tuthill University of Massachusetts
Bertram Dinman Alcoa	Katherine Mahaffey FDA	Michael Utidjian Equitable Environmental Health, Inc.
Robert Dixon NIEHS	Edward McCabe University OF Wisconsin	G. von Nieding Federal Republic of Germany
M.A. El Batawi WHO	Daniel Menzel Duke University	V.B. Vouk WHO
Hugh Evans Brooklyn Jewish Hospital	Paul Nettesheim Oakridge National Lab.	Joseph Wagoner OSHA
John Finklea NIOSH	Vaun Newill Exxon	
Donald Gardner EPA	David Rall NIEHS	

Examples of specific topics include:

- Immature enzyme detoxification systems (as in fetuses and neonates)
- The effects of age on immune function in terms of chemical induced cancers.
- Transplacental carcinogenicity.
- Age and sensitivity to lead toxicity.
- Serum alpha₁ antitrypsin deficiency and susceptibility to emphysema.
- Aryl hydrocarbon hydroxylase induction, smoking, and bronchogenic carcinoma.
- Genetic susceptibility to aromatic amine induced bladder cancer.
- Vitamin A deficiency and susceptibility to respiratory cancer.
- Vitamin E and oxidant stress.
- Lead toxicity and nutritional deficiencies.
- Heart disease and carbon monoxide.
- Asthma and respiratory irritants.
- The effects of NO₂ on bronchitis.

For further information concerning attendance at the Conference, please contact Edward J. Calabrese, Ph.D., Conference Director, Division of Public Health, University of Massachusetts, Amherst, MA 01003.

POSITIONS OPEN

Photochemistry Researchers—Ph.D.'s

Two openings exist in the following areas:

- Photochemical and spectroscopic behavior of artificial photosynthetic systems, including photoactive membranes and vesicles containing chlorophyll and other pigments.
- Photochemical solar energy conversion/laser-induced photochemistry in condensed phases.

Requires ability to conduct and develop state-of-the-art research programs in either of the areas specified above.

Please forward confidential résumé to: L. G. Hill, Manager of Employment



Battelle

An Equal Opportunity Employer

Columbus Laboratories

505 King Avenue

Columbus, Ohio 43201

The Department of Biology, University of North Dakota, seeks a **PHYSIOLOGIST/ENDOCRINOLOGIST** to fill tenure-track teaching/research position at assistant professor level. Appointment begins 15 August 1978. Expected salary range \$13,500 to \$15,500. Responsibilities include teaching an undergraduate physiology course at cellular and organ/system level, development of graduate level endocrinology course, participation in team-taught introductory biology course, and development of graduate research program. Send curriculum vitae, transcripts, and three letters of evaluation to: **Dr. Lewis Oring, Department of Biology, University of North Dakota, Grand Forks, N.D. 58202.** Apply before 15 February 1978. *Affirmative Action/Equal Opportunity Employer.*

PLANT BREEDER/GENETICIST. Assistant professor, available 1 July 1978. Candidates should be prepared to teach undergraduate plant breeding/genetics, develop a graduate plant genetics course, and establish a research program in his/her area of specialty. Research experience with corn genetics/breeding is described. Applicants should send curriculum vitae, transcripts, and three letters of reference to: **Dr. Hugh Frick, Search Committee Chairman, Plant Science Department, University of Delaware, Newark, Del. 19711** before 1 March 1978. *The University of Delaware is an Affirmative Action/Equal Opportunity Employer.*

PLANT ECOLOGIST AND PLANT MORPHOLOGIST

Department of Plant Sciences, University of California, Riverside, announces two positions at assistant professor level, available 1 July 1978. Eleven-month appointments in the Agricultural Experiment Station and the College of Natural and Agricultural Sciences. Ph.D. required; postdoctoral experience preferred, but all qualified candidates will be considered. Send curriculum vitae and official transcripts and arrange to have at least three letters of recommendation sent to the indicated search committee chairman, **Department of Plant Sciences, University of California, Riverside, Calif. 92521.** Application deadline: 15 February 1978. *An Affirmative Action/Equal Opportunity Employer.*

1) **PLANT ECOLOGIST.** Expected to contribute to the undergraduate teaching program and to develop an upper division/graduate course in plant ecology. Plant ecologist or crop ecologist with a research commitment to the application of basic research to solving agricultural problems. Send application to: **Dr. R. T. Leonard.**

2) **PLANT MORPHOLOGIST.** Expected to contribute to the undergraduate teaching program and to develop an upper division/graduate course in vascular plant morphology. Research in basic developmental plant morphology and its application to solving agricultural problems. Send application to: **Dr. R. K. Soost.**

POSTDOCTORAL POSITIONS available 1 July 1978, for Ph.D. with training in anatomy, pathology, biochemistry, or cell or molecular biology to join ongoing research in atherosclerosis dealing with biochemical and molecular events of arterial wall in various stages of the disease and study of factors affecting cholesterol balance. Applicant should have a strong background either in enzyme histochemistry at both light and electron microscopic levels, or in biochemical determination of enzyme activity at the subcellular level. Annual stipend \$10,000 to \$13,200, depending upon years of relevant experience. Hospitalization coverage. One or 2 years. Send résumé to: **Dr. K. T. Lee, Professor of Pathology, Albany Medical College, Albany, New York 12208.**

POSITIONS OPEN

POSTDOCTORAL FELLOW interested in genetic diseases, gene expression, intermediary metabolism, and immune disease. Strong background in cell biology and biochemistry desirable. Please send curriculum vitae to: **M. Kerans, Personnel Department, NEW YORK UNIVERSITY MEDICAL CENTER, 568 First Avenue, New York, N.Y. 10016.** *An Equal Opportunity/Affirmative Action Employer, M/F.*

POSTDOCTORAL POSITION available immediately. Qualified individual with experience in cell biology and/or cell membrane study is required. Send résumé and references to: **J. K. Reddy, M.D., Department of Pathology, Northwestern University Medical School, 303 East Chicago Avenue, Chicago, Illinois 60611.** *An Affirmative Action/Equal Opportunity Employer.*

POSTDOCTORAL POSITION REPRODUCTIVE RESEARCH LABORATORY ST. LUKE'S EPISCOPAL HOSPITAL

and
**DEPARTMENT OF OBSTETRICS
AND GYNECOLOGY
BAYLOR COLLEGE OF MEDICINE
HOUSTON, TEXAS 77030**

A Ph.D., D.V.M., or M.D. fellow with a physiology of reproduction background is sought for a 2-year fellowship in the area of reproductive tract receptor research with primary emphasis on the biochemistry of the placenta. Thus, some advanced chemistry and biochemistry courses are essential.

Salary range is in keeping with experience. *We are an Equal Opportunity Employer.* There are currently eight other postdoctoral fellows in the department and 39 residents. This individual joins a research team already active in reproductive research and should send their résumé to **Paige K. Besch, Ph.D., Professor and Director,** at the above address.

PREDOCTORAL POSITIONS in oncology, immunology, microbiology, virology, and molecular and cellular biology. Available: July to September 1978. Prerequisites: United States citizenship, B-plus average, high GRE scores. Inquiries to: **Dr. Sheldon Dray, Head, Department of Microbiology, University of Illinois Medical Center, P.O. Box 6998, Chicago, Illinois 60680.**

RESEARCH ASSOCIATE: a postdoctoral position is open for experimental and/or theoretical work on the circular dichroism of biopolymers. Please send curriculum vitae and references to: **W. Curtis Johnson, Department of Biochemistry and Biophysics, Oregon State University, Corvallis, Oregon 97331.** Closing date is 21 January 1978. *An Affirmative Action/Equal Opportunity Employer, the university complies with Section 504 of the Rehabilitation Act of 1973.*

RESEARCH CHEMIST, GRADE 12

Location: Agricultural Research Service, Barley Malt Laboratory, Madison, Wisconsin. **Salary:** \$21,883 per year. **Description:** Responsible for conducting basic and applied biochemical research on brewing quality of barleys and improving malting and brewing quality evaluation methods. The work is part of the research program of the Barley and Malt Laboratory, Madison, Wisconsin. The incumbent identifies, separates, and quantitates specific biochemical constituents of malt, its associated microflora, or wort that contribute to the quality of beer. Technical contact: **Dr. Warren C. Burger, telephone: 608-262-3355.** Send application to: **James P. Campbell, USDA-ARS-NCRAO-Personnel, 2000 West Pioneer Parkway, Peoria, Illinois 61614.** Telephone: 209-671-7132.

POSITIONS OPEN

POSTDOCTORAL RESEARCH

Applications are invited for a position involving studies on immunological aspects of solid cancers. Background in biochemical and immunochemical techniques required. Experience with radioimmunoassay desirable. Excellent salary and benefits. Send curriculum vitae and references to:

**Department of Immunochemistry Research
Evanston Hospital
2650 Ridge Avenue
Evanston, Illinois 60201**

An Equal Opportunity Employer

RESEARCH FACULTY POSITION IN BIostatISTICS at research assistant professor or research associate professor level depending on qualifications. Applicant should have doctorate in biostatistics or applied statistics with experience in biomedical or epidemiological research. Duties involve design, coordination, and analysis of data from major cancer clinical trials. Submit curriculum vitae, bibliography, and names of three references to:

**Dr. Carol K. Redmond
Department of Biostatistics
318 Parran Hall
Graduate School of Public Health
University of Pittsburgh
Pittsburgh, Pa. 15261**

An Equal Opportunity/Affirmative Action Employer

SENIOR FACULTY POSITION—AQUEOUS OR SEDIMENTARY GEOCHEMISTRY. The Colorado School of Mines, Department of Chemistry and Geochemistry, invites applications for a full professor position in aqueous or sedimentary geochemistry beginning 28 August 1978. The applicant should have an established active and productive graduate research program, a strong interest in teaching, and a desire to immediately pursue research opportunities appropriate to the Rocky Mountain Region.

Send résumé, statement of teaching and research interests, and at least three letters of reference by 1 February 1978 to: **Dr. George H. Kennedy, Head, Department of Chemistry and Geochemistry, Colorado School of Mines, Golden, Colorado 80401.** *An Equal Opportunity/Affirmative Action Employer.*

STAFF BIOLOGIST-SPECIALIST IN MARINE POPULATION DYNAMICS

Biologist wanted: must possess advanced degree in the population dynamics of living marine resources and have wide and varied field experience in the marine fisheries. Position involves in-depth biological analyses of various resource management options and strategies designed for the conservation and rehabilitation of the living marine resources. Incumbent will report to a senior biologist and will participate in the preparation of, and subsequent monitoring of biological aspects of, the fishery management plans developed by the New England Regional Fishery Management Council. Salary is negotiable, based on training and experience. Work is demanding in nature but is performed in a small congenial group of diversified technical and administrative interests. Our employees have been advised of this advertisement. Qualified individuals should submit a detailed résumé to: **Executive Director, New England Regional Fishery Management Council, 1 Newbury Street, Peabody, Mass. 01960.** *The Council is an Equal Opportunity Employer.*

STAFF ECONOMIST-SPECIALIST IN LIVING MARINE RESOURCES


Economist wanted: must possess advanced degree in the economics of marine resources and have wide experience in applied fisheries economic research. Position involves preparation of in-depth economic impact analyses of various resource management options and strategies designed for the conservation and rehabilitation of the living marine resources. Incumbent will report to senior economist and will participate in the preparation of, and subsequent monitoring of, economic aspects of the fishery management plans developed by the New England Regional Fishery Management Council. Salary is negotiable, based on training and experience. Work is demanding in nature but is performed in a small congenial group with diversified technical and administrative interests. Our employees have been advised of this advertisement. Qualified individuals should submit a detailed résumé to: **Executive Director, New England Regional Fishery Management Council, 1 Newbury Street, Peabody, Mass. 01960.** *The Council is an Equal Opportunity Employer.*

Virologist

A Research Scientist position is open for a PH.D. Virologist interested in Human Virus Vaccine Development. Experience in mechanisms and techniques for the isolation and immunological evaluation of viral antigens from human viral pathogens will be helpful. Responsibilities include collaboration with present group, the development of original programs, and ability to demonstrate scientific and administrative leadership.

These opportunities are available with Wyeth Laboratories, a leading pharmaceutical firm located in Suburban Philadelphia. We are offering an excellent salary along with a comprehensive benefits plan. If you have an interest and are qualified for this position, please submit your curriculum vitae including salary requirements and references to:

John W. Pinkerton
Personnel Department

 **WYETH**
LABORATORIES
P.O. Box 8299
Philadelphia, Pa. 19101

An Equal Opportunity Employer, M/F/H

ENVIRONMENTAL AND INDUSTRIAL TOXICOLOGISTS

ENVIROSPHERE COMPANY, a division of Ebasco Services Incorporated, seeks senior and junior level candidates for positions in toxic substances analysis and management. These positions will include responsibilities in: review and evaluation of toxicological data, development and design of an expanding environmental toxicology program, and assessment of effects from energy and energy-related projects.

Industrial experience is preferred, and an MS or PhD in Toxicology or a related field is essential. Other experience requirements are: research and development, analytical methods (statistics and system analysis) and expertise in biology and chemistry. Multi-disciplinary interaction will occur, and effective oral and written communication skills are required.

We offer salaries commensurate with your experience, plus comprehensive benefits. For prompt, confidential consideration, send resume, including salary history and requirement, to:
P. Domingo, Professional Employment, Dept.104.



envirosphere company

A Division of Ebasco Services Incorporated
Two Rector Street, New York, N.Y. 10006
An equal opportunity employer M/F

IMMUNOTHERAPIST/ CHEMOTHERAPIST

Laboratory of Chemical Pharmacology

The Laboratory of Chemical Pharmacology, Division of Cancer Treatment, National Cancer Institute has an opening for an immunotherapist/chemotherapist to conduct both independent and collaborative research concerning the use of immuno-stimulation and chemotherapeutic agents for treatment and prevention of cancer. Applicants should have a Ph.D. and/or M.D., plus experience and relevant publications in the area of immunology and particularly of immuno-stimulation for treatment of tumors and techniques for evaluation of immuno-suppression by chemotherapeutic agents. The position will be filled at a level and salary commensurate with training and experience of selected candidate, within a salary range of \$19,740-\$35,559 per annum, and may be filled through either the NIH Staff Fellowship Program of competitive Civil Service. Interested applicants should send a Curriculum Vitae and Bibliography, plus three letters of reference by January 20, 1978 to Mrs. Janie R. Lacy, Personnel Management Specialist, National Cancer Institute, National Institutes of Health, Public Health Service, Building 31, Room 3A27, 9000 Rockville Pike, Bethesda, Maryland 20014. An Equal Opportunity Employer.

NATIONAL INSTITUTES OF HEALTH

CHEMISTS HISTOCHEMISTRY —All Levels—

Major histology equipment manufacturer located in pleasant suburban New York community seeking Chemists at all levels for immediate openings in our advanced development area.

Successful candidates must demonstrate thorough knowledge in chemistry, material science and histochemistry to qualify for a spot with our interdisciplinary team. Assignments involve working on reagents, materials and equipment for the Histology & Cytology laboratory.

Positions afford professional recognition, salaries commensurate with experience and generous company-paid benefits. Send resume in confidence to:

Box SM 1551, 810 7th Ave, NY 10019

An Equal Opportunity Employer M/F

POSITIONS OPEN

HONEYWELL, INC. RESEARCH SCIENTISTS

The Corporate Technology Center of Honeywell, Inc., located in Minneapolis, has several outstanding opportunities for research scientists in our Material Sciences Center. These positions will be involved in research into semiconductor materials and devices in the areas of silicon compound semiconductors, solar cells, and mm wave devices and research into fabrication techniques and properties of materials for infrared optics, electronic micropackaging, and thin film sensor applications.

These positions require a Ph.D. or equivalent in physics, chemistry, electrical engineering, materials science, or a related discipline. We offer excellent income, comprehensive benefits, and a refreshing life-style in the heart of one of America's most famous recreational and modern metropolitan areas.

Direct your letter of application with a résumé to:

Ron Heinz
Honeywell, Inc.
Honeywell Plaza
Minneapolis, Minnesota 55408

An Equal Opportunity Employer, M/F

TEACHING OVERSEAS: BIOLOGY, CHEMISTRY, MATHEMATICS, PHYSICS, at American University of Beirut, Lebanon, starting October 1978. Assistant professorships for Ph.D.'s with teaching and research experience. Specialties sought—**Biology Department:** zoology, ecology, developmental biology, plant physiology, cell biology; **Chemistry Department:** analytical (instrumentation), inorganic (coordination and physical), organic (natural products), physical (spectroscopy); **Mathematics Department:** statistics, topology, computer sciences; and **Physics Department:** solid-state, theoretical nuclear. Usual contract is for 3 years, round-trip travel, plus fringe benefits. Send résumé and letters of recommendation via airmail to: **Chairman (of appropriate department), American University of Beirut, Beirut, Lebanon.** Affirmative Action/Equal Opportunity Employer.

TEACH SCIENCE IN AN INDEPENDENT SCHOOL

A number of excellent opportunities at middle school and secondary school levels in independent (private) schools throughout the United States. Positions in chemistry, physics, biology, earth sciences, and general science (as well as math). Please write, if possible enclosing résumé, to: **Independent Educational Services, 80 Nassau Street, Princeton, N.J. 08540.** (A nonprofit corporation.)

TOXICOLOGY

The Department of Pharmacology and Toxicology, School of Medicine, University of Louisville, invites applications for a full-time faculty position at the instructor or assistant professor level. Applicants must have either an M.D. or a Ph.D. in toxicology and an interest in a career in academic toxicology; experience in the use of GC/MS techniques is highly desirable.

Send curriculum vitae and three letters of recommendation to: **William J. Waddell, M.D., Chairman, Department of Pharmacology and Toxicology, School of Medicine, Health Sciences Center, University of Louisville, P.O. Box 35260, Louisville, Kentucky 40232.**

The University of Louisville is an Equal Opportunity/Affirmative Action Employer.

VISION SCIENTISTS

The Department of Physiological Optics of the School of Optometry is seeking two faculty members with O.D./Ph.D.'s or Ph.D.'s, working in the area of vision science. One position is open for an individual with a background and interest in the area of color vision and psychophysics. The second position is available for a person working in the area of biochemistry/pharmacology. Responsibilities will include teaching courses within the physiological optics curriculum to both optometry students and graduate students and conducting research.

Evidence of scholarly research activities in the form of published articles in refereed journals and papers presented at professional meetings will be heavily weighted, as will evidence of teaching ability. Postdoctoral research experience is desirable.

Rank and salary commensurate with experience. Résumés will be accepted until 15 February 1978. Send curriculum vitae and the names of three professional references to: **Dr. Jerry L. Christensen, Department of Physiological Optics, School of Optometry/Health Center, University of Alabama in Birmingham, Birmingham, Alabama 35294.** Equal Opportunity/Affirmative Action Employer.

ASSISTANTSHIPS

GRADUATE ASSISTANTSHIPS are available for study in beautiful Hawaii. Full complement of latest research instrumentation. Twenty-two faculty members are conducting research in analytical, inorganic, organic, and physical chemistry, and many include studies which utilize Hawaii's unique volcanic and marine environment. Apply before 1 March to: **Graduate Selection Committee, Department of Chemistry, University of Hawaii, Honolulu, Hawaii 96822.** An Equal Opportunity Employer.

FELLOWSHIPS

PREDOCTORAL FELLOWSHIPS in physiology and biophysics. Training in cardiovascular, cell, endocrine, muscle, neuro-, renal, and respiratory physiology. Applicants must submit GRE scores (verbal, quantitative, and one advanced test). Deadline for application is 15 April 1978. For application material, write: **Department of Physiology and Biophysics, West Virginia University Medical Center, Morgantown, W. Va. 26506.**

A POSTDOCTORAL FELLOWSHIP IN REPRODUCTIVE BIOLOGY

Is available. Applicants should be interested in the physiology and biochemistry of mammalian embryos. Apply with curriculum vitae to: **R. L. Brinster, Laboratory of Reproductive Physiology, School of Veterinary Medicine, University of Pennsylvania, Philadelphia, Pennsylvania 19104.**

POSTDOCTORAL FELLOWSHIP is available immediately for a 2-year period for Ph.D. in biophysics or biochemistry to work on the structure of photoreceptor membrane and bacteriorhodopsin. Please send résumé and recommendations to: **Dr. K. J. Rothschild, Boston University School of Medicine, Physiology Department, 80 East Concord Street, Boston, Mass. 02118.**

Equal Opportunity Employer

GRADUATE STUDY

GRADUATE STUDY IN ENVIRONMENTAL HEALTH SCIENCES AND ENGINEERING

School of Public Health
Harvard University

Traineeships and fellowships available for graduate studies in air pollution control, industrial hygiene and occupational health, environmental health management, radiation protection, and medical radiological physics. Deadline for completed applications: 1 February 1978. For details contact: **Dr. Dade W. Moeller, Harvard School of Public Health, 665 Huntington Avenue, Boston, Massachusetts 02115.** Applications from women and members of minority groups are encouraged.

NEUROSCIENCES AT BAYLOR COLLEGE OF MEDICINE

An interdepartmental Program in the Neurosciences is offered at Baylor College of Medicine for students interested in advanced study leading to the Ph.D. in neuroscience or the combined degree of M.D.-Ph.D. The faculty of the program has common interests in neurobiology and strive to promote collaborative research efforts to maximize the interdisciplinary nature of the student's education. Applications must be completed by 15 March. Applicants are notified regarding admission and financial support by 15 April. Information regarding the graduate curriculum, research activities in the program, and application procedures may be obtained from:

Ernest J. Peck, Jr., Ph.D.
Director, Neuroscience Graduate Studies
Baylor College of Medicine
Texas Medical Center
Houston, Texas 77030

CONFERENCE

INVITATION AND CALL FOR PAPERS CAPON SPRINGS CONFERENCE No. 2 POPULATION AND FOOD POLICY

22 to 24 February 1978
International Inn, Washington, D.C.

Deadline for abstracts: 1 February 1978. For further information contact: **Population/Food Fund, Box 255 University Station, Grand Forks, North Dakota.** Telephone: 701-777-3594.

SYMPOSIUM

International Symposium on GENETIC ENGINEERING: Scientific Developments and Practical Applications Milan, Italy—29 to 31 March 1978

Sponsored by: Fondazione Giovanni Lorenzini (Milan, Italy) and World Health Organization (Geneva, Switzerland).

International Advisory Board: A. A. Baev (Moscow, U.S.S.R.), G. Bernardi (Paris, France), P. H. Hofschneider (Münich, F.R.G.), G. Magni (Milan, Italy), G. J. V. Nossal (Melbourne, Australia), V. Sgarbetta (Pavia, Italy), and C. Weissman (Zürich, Switzerland).

Organizing Secretariat: **Fondazione Giovanni Lorenzini, Via Monte Napoleone, 23, 20121 Milan, Italy.** Telephone: 783.868-702.267. Cable: Lorenzfound.

COURSES

MARINE BIOLOGICAL LABORATORY (MBL) Woods Hole, Massachusetts announces

COMPUTER RECONSTRUCTION OF THREE-DIMENSIONAL BIOLOGICAL STRUCTURES FROM SERIAL SECTIONS

a residential laboratory course
28 May to 3 June 1978

The use of computer graphics allows two-dimensional information in sections to be efficiently gathered and interpreted in three dimensions. Application of computer reconstruction, especially of neuronal structures, has resulted in significant new qualitative and quantitative information. This course is intended to provide, to active investigators in the anatomical sciences, a working knowledge of computer reconstruction techniques. No more than 12 students will be accepted. Experience in microtomy and electron microscopy is required. Optional instruction in these techniques will be offered before the main program. In addition, an optional post-course session, designed to meet individual instructional needs, will be available. Faculty will include Eduardo Macagno, Cyrus Levinthal, and Peter Sterling. Additional information and application materials may be obtained from: the **Director of Admissions, Marine Biological Laboratory, Woods Hole, Massachusetts 02543; telephone: 617-548-3705.** MBL admits students of any race, color, and national or ethnic origin.



In order to obtain a 10-day free trial copy of any book listed, circle the number appearing below it on the Reader's Service Card (pages 126A and 206A). All publishers represented reserve the right to bill for books not returned within 10 days after receipt.

FIRST ENGLISH EDITION

The Rise of Modern Judaism—

An Intellectual History of German Jewry
1650-1942: Heinz Mosche Graupe
Orig. German edition 1969, First English
edition 1978. 394 pp. \$19.50

Robert E. Krieger Publishing Co., Inc.
645 New York Ave.
Huntington, N.Y. 11743 U.S.A.

To Order This Book
Circle No. 129 on Readers' Service Card

MARKET PLACE

PO₂ MEASUREMENTS

■ Microelectrodes, 2- μ m tip diameter, for intracellular studies. Reliable in moving solutions.

■ 22-gauge Needle Electrodes for extracellular PO₂.

■ O₂ Meter, Calibration Cell, Other Accessories.

Call 313/769-1900 or write:

TG TRANSIDYNE GENERAL CORPORATION
903 Airport Dr. • Ann Arbor, MI 48106

Circle No. 131 on Readers' Service Card



An Obelia, a microscopic marine animal found in tidal pools, in the medusa stage of its life cycle.

Photomicrograph by Dr. Robert F. Smith N.Y. State College of Veterinary Medicine

Look to Nikon

With a tireless dedication to the creation of superior optics, Nikon aids the scientist in his pursuit of truth. But superb optics are not enough. The complete Nikon system—attachments, accessories, options, flexibility of design, broad instrument line—frees the researcher to cross the most distant frontiers. For optical instrumentation as varied as man's quest for knowledge, look to Nikon.

人類のあくなき知識の追求に必要なあらゆる光学機器使用にはニコンとご用命下さい。

ニコンとご用命下さい

Blicken Sie auf Nikon

Mit unermüdlicher Hingabe zur Erzeugung einer überlegenen Optik unterstützt Nikon den Wissenschaftler bei seiner Suche nach der Wahrheit. Aber hervorragende Optik allein genügt nicht. Das komplette Nikon-System—Zusatzgeräte, Zubehör, Auswahl, Flexibilität der Konstruktion und ein reiches Sortiment an Instrumenten—ermöglicht dem Forscher entfernteste Grenzen zu überqueren. Für eine Ausstattung mit optischen Geräten, die so vielseitig wie das Trachten des Menschen nach Kenntnis ist, blicken Sie auf Nikon.

Nikon Nikon Inc., Instrument Division, Ehrenreich Photo-Optical Industries, Inc., Garden City, New York 11530 U.S.A.

Circle No. 48 on Readers' Service Card

No other ultramicrotome ever looked like this. Nor cut like it.

AO presents the ULTRACUT™. A completely new ultramicrotome with sleek, modern lines that reflect the special attention the designers gave to human engineering.

All the operating controls are within easy reach. You don't have to take your eyes from the microscope while making a cut.

When you operate the ULTRACUT Ultramicrotome, you will readily see the superior performance that has been built into the instrument.

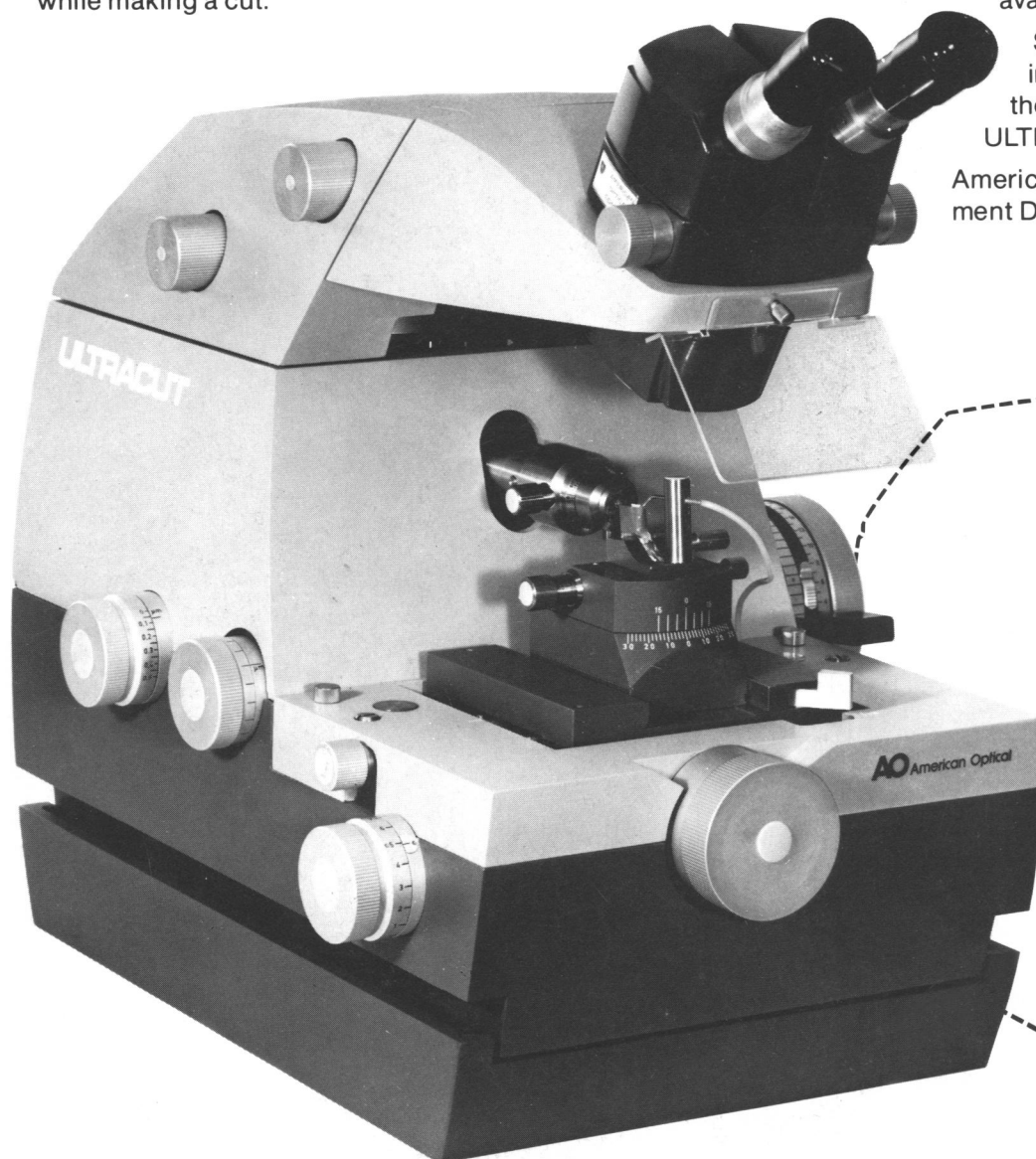
Exclusive reliability and time-saving conveniences include: darkfield knife alignment; built-in Reflexomat to maintain proper liquid level in

knife boat; audible and visual warning signals when approaching end of specimen or knife advance; unique insulated hull construction to protect key feed and drive mechanism from thermal and mechanical disturbances.

The ULTRACUT Ultramicrotome is available with or without table.

Sectioning is easier for the inexperienced and faster for the professional with the AO ULTRACUT Ultramicrotome.

American Optical, Scientific Instrument Division, Buffalo, NY 14215.



AO
American
Optical

I would like to know more about the New AO ULTRACUT Ultramicrotome.

- ☐ Please send detailed brochure.
- ☐ Please have sales representative call.

Name _____

Title _____

Firm or Institution _____

Address _____

City _____

State _____ Zip _____