



**THE MAYFLIES, OR EPHEMEROPTERA, OF ILLINOIS**, by B. D. Burks. Invaluable reference for aquatic entomologists and ecologists, treating 48 genera and 222 species (15 new) of North Central U.S. and adjacent Canada. Nomenclature modernized by Dr. George F. Edmunds, Jr. (1953), reprint 1975. viii + 216 p., 395 figs., 6 halftones. \$15.00.  
**ENTOMOLOGICAL REPRINT SPECIALISTS**  
 To order this book  
 Circle No. 222 on Readers' Service Card

**THE WHITE CELL**, by MARTIN J. CLINE, M.D. A comprehensive and critical account of the leukocytes. Provides a unified review of granulocytes, lymphocytes, and monocytes, both as individual cell types and as an integrated system. More than 200 electron micrographs, photomicrographs, diagrams, and drawings. Harvard University Press, *Commonwealth Fund*, 1975, 608 pp., \$35.00.  
 To order this book  
 Circle No. 322 on Readers' Service Card

**ECOLOGY AND EVOLUTION OF COMMUNITIES**, edited by MARTIN L. CODY and JARED M. DIAMOND. Eighteen major, original papers by leaders in the field, all associates of the late Robert MacArthur, these contributions offer new models for ecological processes, new applications of theoretical and quantitative techniques, and new methods for analyzing and interpreting a wide variety of empirical data. *Belknap Press of Harvard University Press*, 1975, 624 pp., \$29.50.  
 To order this book  
 Circle No. 323 on Readers' Service Card

**ANATOMY OF THE GUINEA PIG**, by GAIL COOPER, M.D., and ALAN L. SCHILLER, M.D. This first complete and accurate anatomy of the guinea pig has been standardized according to the *Nomina Anatomica Veterinaria* and the dissections correlated with the published literature on guinea pig anatomy. Beautifully illustrated with more than 400 drawings. Harvard University Press, *Commonwealth Fund*, 1975, 432 pp., \$40.00.  
 To order this book  
 Circle No. 324 on Readers' Service Card

**MATHEMATICS AND COMPUTERS IN ARCHAEOLOGY**, by F. R. DORAN and J. E. HODSON. The first survey of mathematical, statistical, and computing techniques in archaeology, this introductory guide written especially for students and archaeologists illuminates principles and applications of the new methods. Harvard University Press, 1975, 371 pp., \$18.00.  
 To order this book  
 Circle No. 325 on Readers' Service Card

**PATTERNS OF HUMAN VARIATION: The Demography, Genetics, and Phenetics of Bougainville Islanders**, by JONATHAN SCOTT FRIEDLAENDER. Tests the influence of natural selection through analysis of the relationship between biological and cultural variation in a human population. 62 photographs and 40 graphs. Harvard University Press, 1975, 288 pp., \$20.00.  
 To order this book  
 Circle No. 326 on Readers' Service Card

**PRENATAL DIAGNOSIS AND SELECTIVE ABORTION**, by HARRY HARRIS. One of the world's leading medical geneticists discusses the promise and the limitations of the new techniques for identifying and aborting fetuses with certain genetic abnormalities. Harvard University Press, 1975, 112 pp., \$6.00.  
 To order this book  
 Circle No. 327 on Readers' Service Card

**Harvard University Press**  
 Cambridge, Massachusetts 02138

**PARENT BIRDS AND THEIR YOUNG**, By Alexander F. Skutch.

The only up-to-date worldwide survey of the family life and reproductive behavior of birds, from the formation of pairs to the young birds' attainment of independence. Topics include age of first breeding, pair formation, duration of the pair bond, territory, nesting seasons, nest types, eggs, and methods of incubation. 503 pp., 116 photos, \$27.50. University of Texas Press.

To order this book  
 Circle No. 208 on Reader's Service Card

Cy A. Adler:

## ECOLOGICAL FANTASIES:

### DEATH FROM FALLING WATERMELONS

A DEFENSE OF INNOVATION,  
*science & rational approaches to environmental problems.*

350 Pages \$11.95

"... effectively pricks some overblown environmental balloons." (*Library Journal*); "... long overdue ... the book should be read and taught." (*J. Amer. Water Wks.*); "... humorous but serious look at persistent environmental myth." (*Environmental Science & Technology*)

GREEN EAGLE PRESS

99 Nassau St., New York City 10038

To order this book  
 Circle No. 179 on Readers' Service Card

### Structural Stability and Morphogenesis

René Thom

"Thom's work is called 'catastrophe theory' because it describes phenomena (not necessarily disasters) that jump abruptly from one form of behavior to a radically different one. The theory has been hailed as an 'intellectual revolution' in mathematics — the most important development since calculus." — *Newsweek*. Applications of the theory are made to developmental biology and the humanities, as well as to mathematics. "Thom's book is immensely stimulating and imaginative; it sets out a major intellectual advance of the century which no reader, even moderately versed in mathematics, can ignore." — C. W. Kilmister, *Times Higher Education Supplement*. W. A. Benjamin, Inc./Advanced Book Program, 1975, 348 pp., pb. \$13.50.

To order this book  
 Circle No. 328 on Readers' Service Card

**The Delphi Method: Techniques and Applications**, Harold A. Linstone, Murray Turoff, eds.

Covers two of the far-reaching applications of the Delphi method: employment of Delphi surveys to provide judgemental input data for use in studies in the social-science area; application of Delphi to process of gathering expert opinion. "These uses of Delphi, to supply 'soft data' in the social sciences and to provide decisionmakers with ready access to specialized expertise, are of great potential importance. This volume will provide professional designers and users of Delphi surveys with much-needed background information." — from the Foreword by Olaf Helmer. Addison-Wesley/Advanced Book Program, 1975, 620 pp., pb. \$16.50.

To order this book  
 Circle No. 329 on Readers' Service Card

**Space Structures: Their Harmony and Counterpoint**, A. L. Loeb, Harvard

"This book has a simple fundamental quality of viewpoint and treatment that gives it an unusually widespread applicability. It is not just for mathematicians and crystallographers ... (but) biologists, artists, architects, sociologists, and others—brought together by a common interest in the underlying patterns of interaction between things. Most considerations of structure in the past have overemphasized polyhedra, unit cells, and symmetry. Arthur Loeb emphasizes valency, the number of connections pertaining to each structural feature." — from the Foreword by Cyril Stanley Smith, M.I.T. Addison-Wesley/Advanced Book Program, 1976, c. 200 pp., illus., pb. \$9.50.

All 3 vols. also available in hardbound.

To order this book  
 Circle No. 330 on Readers' Service Card

This special page is designed to provide SCIENCE readers with a rapid means of ordering the books advertised below. In order to obtain a 10-day free trial copy of any book listed, circle the number appearing below it on the Readers' Service Card (pages 994A and 1090A). All publishers represented reserve the right to bill for books not returned within 10 days after receipt.

**CHROMOSOMAL VARIATION IN MAN: A Catalog of Chromosomal Variants and Anomalies**, by Digamber S. Borgaonkar. The most complete catalog of the literature on human chromosomal variants and anomalies is a standard reference for cytogeneticists and clinicians. It includes structural variations and anomalies, numerical anomalies, and the chromosomal breakage syndromes that are non-specific for a single chromosome. **The Johns Hopkins University Press**, Baltimore, Md. 21218. 1975, 256 pp. \$15.00.

To order this book  
 Circle No. 292 on Readers' Service Card

**THE LONG-RUN AVAILABILITY OF PHOSPHORUS: A Case Study in Mineral Resource Analysis** by Frederick J. Wells. Will known potential supplies of phosphorus, a nonrenewable resource essential to life, be exhausted by the end of the 21st century? In answering this question the author examines the methodology of resource availability studies and estimates exhaustion times on a different set of assumptions. **A Resources for the Future book**. Published by **The Johns Hopkins University Press**, 1976, 144 pp., \$9.50.

To order this book  
 Circle No. 271 on Readers' Service Card

JUST RELEASED	Epstein:	281 pp.	12.50
	Partial Differential Equations: An Introduction		
	Fisher:	214 pp.	10.95
	The Identification Problem in Econometrics		
	Murray-Miller:	154 pp.	7.50
	Existence Theorems for Ordinary Differential Equations		
	Schenkman:	289 pp.	15.25
	Group Theory		
	Valentine:	323 pp.	14.00
	Convex Sets		



ROBERT E. KRIEGER publishing co. inc.

P.O. Box 542  
 Huntington, N.Y. 11743

To order this book  
 Circle No. 96 on Readers' Service Card

**MOLECULAR EVOLUTION: FRANCISCO J. AYALA, EDITOR.** This book reviews, evaluates and integrates recent advances in the modern theory of evolution at the molecular level. The authors: J. C. Avise, F. J. Ayala, R. J. Britten, M. E. Chamberlin, E. H. Davidson, Th. Dobzhansky, W. M. Fitch, G. Galau, M. Goodman, L. D. Gottlieb, R. Hinegardner, B. R. Hough, G. B. Johnson, R. K. Selander, M. Soulé, J. W. Valentine, and A. C. Wilson. Published by **Sinauer Associates**.  
 March 1976 288 pages \$10.00

To order this book

Circle No. 315 on Readers' Service Card

**THE GENETICS OF BEHAVIOR: LEE EHRMAN AND PETER A. PARSONS.** This book presents the interface between the mechanisms of genetics and the role of behavior in evolution. Genetic principles are applied to behavioral traits controlled by single genes, chromosomes, and many genes. A phylogenetic discussion of behavioral genetics from bacteria to vertebrates, with emphasis on *Drosophila*, rodents and man, precedes a discussion of future trends. Published by **Sinauer Associates**.  
 April 1976 384 pages \$17.50

To order this book

Circle No. 316 on Readers' Service Card

# PRODUCTS and MATERIALS

## Cardiac Data Acquisition

MEDDARS is an acronym for medical display analysis and recording system. The system (Fig. 1) features microprocessor control of signals from physiological sensors and display, analysis, and recording of data. The display unit will monitor up to six parameters at once. It graphs up to three sets of one parameter as a function of another. It offers scale expansion and automatic switching from one time frame to another. An alphanumeric keyboard may be used to enter notes on the display in one mode and to control the system in another mode. A full sequence of tests and calibrations may be performed rapidly. Up to eight procedures may be programmed to be performed at a keystroke. Most applications are in the catheterization laboratory for diagnosis and in cardiac surgery and intensive care facilities for physiologic monitoring of cardiac function. A printer produces hard copy of the data as it is displayed, if it is desired for storage or reference or for more leisurely study. The system's modular design facilitates creation of custom units and servicing and repair. Honeywell, Test Instruments Division. Circle 801.

## Atomic Absorption Spectrophotometer

The IL X51-Tek-31 combines any of several spectrophotometers with a programmable calculator. The combination, which yields data in alphanumeric on a paper tape, offers expanded capabilities in analysis. Peak height and peak area are routinely and simultaneously analyzed. Analytical working curves for flame and flameless samplers are straightened statistically. As the operator selects from among two to ten standards, the calculator com-

putes the mean absorbance value for each standard and uses the mean to construct and correct the curve. Instrumentation Laboratories. Circle 813.

## Strip Chart Recorders

The OMNIGRAPHIC HR-40 line features three- and four-pen recorders. They have a 250-millimeter recording span and each pen covers the total chart width. Writing distance between channels is 2 millimeters. Full-scale response is 0.25 second. These recorders use disposable fiber-tipped cartridges available in four colors. The paper drive offers 16 chart speeds in English or metric units. Two pen-axis modules are interchangeable. One is 12-range, from 1 millivolt to 10 volts; the other is 18-range, from 0.5 millivolt to 200

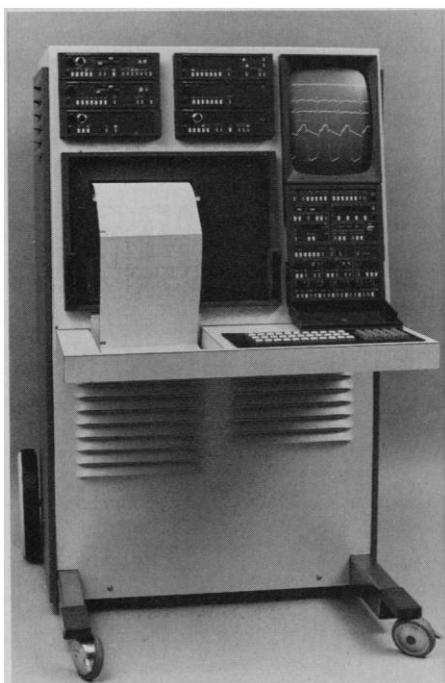


Fig. 1. MEDDARS is a modular instrument for use in heart surgery, diagnosis, and intensive care. The display and hard copy features up to six channels, any two of which may be graphed as functions of one another. The alphanumeric keyboard enables the operator to test and calibrate the instrument, select functions, annotate records, and control the system.

volts. Both offer continuously overlapping span adjustment and zero suppression. Houston Instrument. Circle 806.

## Analytical Electron Microscope

The CORA has a double-field condenser—objective lens which provides probe sizes down to 250 angstrom units and yet can operate as a conventional objective lens for normal imaging purposes. With a high-resolution, solid state x-ray detector, optimum collimation, and light element shielding, CORA offers high elemental sensitivity and low noise levels. The design offers all conventional transmission electron microscopy facilities, including multi-specimen holders for rapid comparison; it also offers a high x-ray take-off angle from the specimen. This maximizes elemental detection. AEI Scientific Apparatus. Circle 811.

## Heat Shrinkable Tubing Connectors

Plastic connectors are available for glass, metal, and plastic apparatus. They are made of fluorocarbon and are designed not to swell, soften, or be contaminated by liquid contents. They eliminate inconvenience of frozen joints and the requirement of lubrication. Rigid or flexible models are available. Push-on models are also available in addition to those that are heat-shrinkable. Penntube Plastics. Circle 809.

## Computing Radiometer

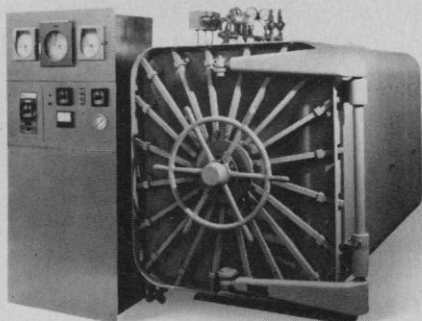
The CR-1 has an internal microprocessor that performs control and processing functions simultaneously. It eliminates zero and dark current controls by automatic digital subtraction of these components. Signal averaging and signal rate sensing are routinely used. The processor uses a keyboard to apply correction factors, store readings, perform logarithmic conversion, compute ratios, take reciprocals, and multiply by stored constants. It may be interfaced with other data processing devices. Gamma Scientific. Circle 810.

## Conference Microscope System

The Balplan microscope system may now be adapted to conference use. As many as five may view a specimen simultaneously. Even at full capacity, a camera mounting may be used to record specific views. This system offers advantages in teaching, consultation, and research specialties. Each head has focusing and eye-

Newly offered instrumentation, apparatus, and laboratory materials of interest to researchers in all disciplines in academic, industrial, and government organizations are featured in this space. Emphasis is given to purpose, chief characteristics, and availability of products and materials. Endorsement by *Science* or AAAS is not implied. Additional information may be obtained from the manufacturers or suppliers named by circling the appropriate number on the Readers' Service Card (on pages 994A and 1090A) and placing it in the mailbox. Postage is free. —RICHARD G. SOMMER

# Custom rebuilt sterilizers...



... can save you as much as 40% off the list price of a new steam or ethylene oxide unit. Engineered to your specifications. Vessel and door are completely reconditioned. All new operating parts, controls, fittings and steam generator are added. Performance is guaranteed for a full year.

We have a model, size and type to meet every sterilizer need. Call or write for our new brochure.

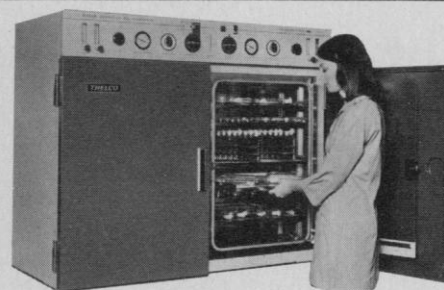


**Scientific Industries, Inc.**

70 Orville Drive, Airport International Plaza, Bohemia, New York 11716, 516/567-4700

Circle No. 220 on Readers' Service Card

GCA/PRECISION SCIENTIFIC



## Thelco® Water Jacketed CO<sub>2</sub> Incubators More for your money!

**More capacity! More convenience! More performance!** Two chambers of double-door model give 13 cu. ft. capacity; has 12 shelves with over 4,000 sq. in. working area. Single-door unit has 6.5 cu. ft. chamber and 6 shelves with over 2,000 sq. in. area. Solid-state temperature control system has dual push buttons; one factory-set at 37°C; the other variable at 70°C. Triple wall construction, with 2 inches of glass wool insulation between interior water jacket and outer wall, minimizes heat loss and improves efficiency. Uniformity  $\pm 0.5^\circ\text{C}$  at 37°C. CO<sub>2</sub> range, 0 to 20%. Entire unit is designed to minimize energy consumption—unattended operation of single-door model for a week would cost only 40¢; double-door, just 76¢.

Ask your GCA/Precision Scientific Dealer or write us. GCA/Precision Scientific, 3737 W. Cortland St., Chicago, IL 60647. Sales offices in principal cities.

Circle No. 314 on Readers' Service Card



A Photomicrograph of a Newt Triturus Viridescens taken with the new Olympus Series BH System Microscope and automatic camera, Model PM-10-A.

Olympus, the company that set the standards in microscopy, salutes the men and women who set the standards in laboratory research. It is our responsibility to back up their research with the finest instruments, in hopes of making their work easier and extending their vision into areas never before reached.

With the new Olympus Series BH System Microscope, we've done just that. It incorporates all of the most modern design concepts into one microscope. Others have included some of these advances, none have ever included them all. Until the Olympus Series BH System Microscope. Focusing is simpler. The Olympus Series BH System Microscope features planetary gear focusing with a 40mm coarse and fine focusing range and a pre-focusing lever to prevent contact between objective and specimen. We've conquered bulb centration and contact problems. The il-

luminator bulb is precentered, bulb and socket are made as one unit.

Electrical maintenance is no longer a problem. The transformer and all electrical components are mounted on the easily removable base plate. Specially coated prisms double light transmission and the light collecting system in the base allows Koehler type illumination from 4x to 100x objectives without changing condensers or adding condenser lenses. Depending upon your requirements, accessories for Brightfield, Darkfield, Photomicrography, Fluorescent Light, Polarized Light, Phase Contrast, and Differential Interference Contrast (Nomarski System) for transmitted and reflected light are available.

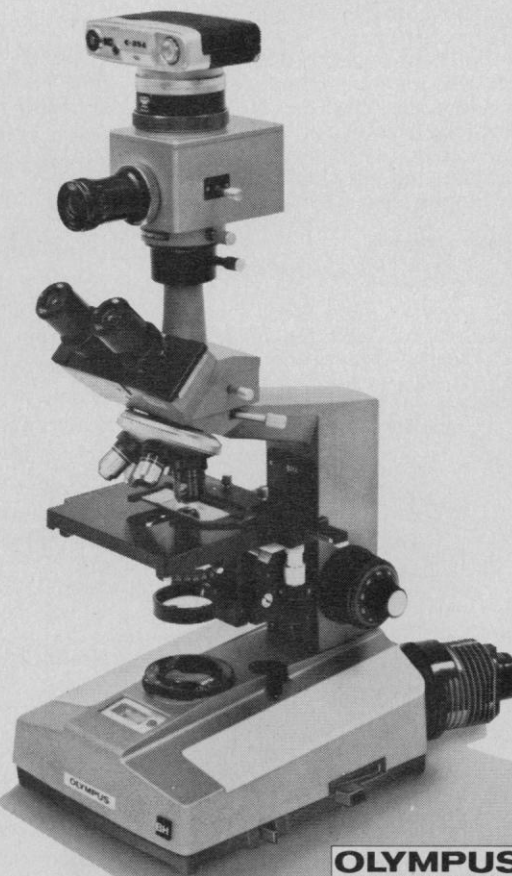
The unique modular design of the Olympus Series BH System Microscope enables the user to easily adapt the instrument to a virtually limitless variety of functions.

The Olympus Series BH System Microscope is not just a better microscope than you have seen before, it will stay better longer. It is made with space age components that make it virtually maintenance free, which makes the Olympus Series BH System Microscope more economical to buy. And to Keep.

The Olympus Series BH System Microscope is a remarkable instrument. We'd like to give you a demonstration right in your own lab.

Write: Olympus Corporation of America, 2 Nevada Drive, New Hyde Park, N.Y. 11040

In Canada: W. Carson Co., Ltd., 321 Don Park Rd., Markham, Ontario, L3R 1C2, Canada.



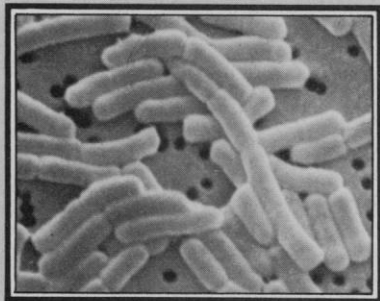
# OLYMPUS, THE STANDARD.

**OLYMPUS**  
SEEING BEYOND MAN'S VISION

# The SEM doesn't lie!

It proves the superiority of Uni-Pore™ membranes from Bio-Rad

The SEM micrograph on this page dramatically illustrates the superiority of Uni-Pore polycarbonate membranes from Bio-Rad, compared to the cellulose types.



Note the uniform pores of the 0.4 µm Uni-Pore membrane. Almost as if they were drilled. And note the smooth, flat, counter-like surface which provides the ideal specimen background for SEM and TEM analysis. It's a surface that will give you virtually 100% recovery.

In addition to these advantages, Uni-Pore membranes offer superior strength (you can bend them and fold them) and chemical/thermal stability. Sizes: 8.0 down to 0.015 µm, in discs 13 to 293 mm, plus sheets and filter cartridges.

Request Bulletin 1036, which, in addition to full product descriptions and prices, describes Uni-Pore applications for virus purification and concentration, exfoliative cytology, particulate analysis, chemotaxis and many other uses.

**BIO-RAD Laboratories**

32nd & Griffin Avenue  
Richmond, California 94804  
Phone (415) 234-4130

Also in: Rockville Centre, N.Y.;  
Mississauga, Ontario; London;  
Milan; Munich; Sao Paulo.



piece adjustments for acuity and interpupillary distance. Each head rotates through 360 degrees and offers control of the instrument's pointer. All of the component options regularly offered with the system are available for the conference set-up as well. Bausch & Lomb. Circle 803.

## Magnetic Tape Recorder

The FM-4 tape system provides four channels for biomedical monitoring, vibration analysis, or communication system testing. It uses a tape cassette in the Phillips format and a pushbutton-operated deck that has a digital tape counter. It provides 30 minutes of recording time at a frequency of direct current up to 2000 hertz. Longer record times are available at reduced bandwidth. Voice annotations may be recorded through automatic circuitry by activating the voice-interrupt circuit. Dallas Instrument. Circle 812.

## Tethered Current Meter

The type 174 for hydrographic measurement in situ is a tape-recording device. An automatic trim adjustment eliminates the need to record instrument tilt. The reversible ducted impeller and mooring tether combine to eliminate much of the error inherent in Savonius rotor current meters operating in a wave zone. An activity sensor may be used on site to ensure that data are being recorded. The neutrally buoyant unit may be easily installed by a diver. Environmental Devices. Circle 802.

## Ultraviolet-Visible Detector

The model 153 detector offers 0.005-angstrom unit sensitivity with typical noise of 1 percent. Features include double-beam optics, peak detector option, cold room heater, and 15 fixed-wavelength kits from 254 to 700 nanometers. It is available with flow cells with path lengths of 0.2, 0.5, or 10 millimeters and volumes of from 8 to 100 microliters. Altex Scientific. Circle 815.

## Grating Monochromator

The H-10 holographic grating monochromator measures 5 by 4 by 3.5 inches. It uses a type IV aberration-corrected concave holographic grating. It offers an F/3.5 aperture, a range from 200 to 800 nanometers, and maximum exclusion of stray light. J-Y Optical Systems. Circle 807.

## Blood Collection Capillary

### Centrifuge Tube

A disposable plastic container is useful for work with blood, serum, or plasma. A trumpet-shaped capillary with a capacity of 300 microliters is packaged within a centrifuge tube. The capillary is removed from the stoppered outer vessel. The capillary is filled, capped, and replaced in the centrifuge tube, which is then stoppered. The combined unit may be centrifuged and the contents removed with a standard micro-pipette. Walter Sarstedt. Circle 814.

## Allergy Testing

The E-Quip Kit is designed as a screening tool for allergy sufferers who may exhibit increased concentrations of serum immunoglobulin E. Ten-well plates are designed to assay serum immunoglobulin E at concentrations of 1500 to 6000 international units per milliliter. The kit requires 10 microliters of sample per test and results are available in 24 hours. This radial immunodiffusion technique offers advantages in allergy screening programs. Helena Laboratories. Circle 808.

## Widefield Spotting Scopes

Terrestrial and astronomic applications may be served with spotting scopes that feature an 80-millimeter achromatic coated objective. The objective is air-spaced for superior correction and to prevent strain under temperature change. The aluminum tube has a precise helical focusing mechanism. All models are furnished with a clamp for tripod mounting. A 45-degree revolving turret accommodates four eyepieces: 20, 30, 40, and 60 power. Unitron Scientific. Circle 804.

## Secondary Ion Mass Spectrometer

The model 610 SIMS is a useful accessory to a scanning electron microscope. Successive angstrom-depth layers may be photographed and probed for specific elements with this combined system. This combination confirms not only the presence of a given constituent but also its location within a layer. Model 610 includes a quadrupole mass spectrometer energy filter combination, a SIMS control console, a quadrupole control console, radio frequency generator, electronic function switching device, and power supplies. The system is adaptable to several brands of electron microscope. 3M. Circle 805.



## Literature

**High Temperature Strain Recording** apparatus is listed in a four-page catalog. Hitec. Circle 798.

**High Voltage Power Supply Catalog** includes illustrations, design specifications, and general information. Spellman High Voltage Electronics. Circle 799.

**Periodic Listing of Used Instrumentation** describes apparatus at relatively low cost. International Instrument Exchange. Circle 800.

**Electron Microscopy Specimen Preparation Equipment** is described in a 6-page manual. Vacuum evaporation and accessories are included. Denton Vacuum. Circle 816.

**Atomic Absorption Spectrophotometer** is devoted to the Dial-Atom III and its specifications. Fisher Scientific. Circle 817.

**Flarefit Chromatography Fittings** are illustrated in a brochure devoted to these and other miniature tubing components. Durum Chemical. Circle 818.

**Vapor Recovery Systems** includes precipitation techniques, structural features and other details of system components. Tenney Engineering. Circle 819.

**Fourier Transform Disk Accessory for the XL-100A NMR Spectrometer** describes the expanded analytical capabilities of the spectrometer so equipped. Varian Instrument Division. Circle 820.

**Infrared-Stop Filters** is devoted to four types of filter to absorb heat while visible light is passed. Fish-Schurman. Circle 821.

**Data System for Mass Spectrometers** details a high-speed digital system designed to detect, measure, and store data at a rate of 1000 peaks per second and perform calculations at about 60 peaks per minute. Columbia Scientific Industries. Circle 822.

**Relative Humidity and Temperature Control and Measurement Instrumentation** describes the Humitemp line of indicator-controllers. Phys-Chemical Research. Circle 823.

**Wavelength Scanner-Reference Compensator** are spectrophotometer accessories illustrated in a brochure that also lists applications and operating features. Gilford Instrument Laboratories. Circle 824.

**Analytical Balances** with sensitivities from 0.01 to 1 milligram and capacities from 0.2 to 200 grams are described. Digmatic. Circle 826.

**Sterilizing Gas Mixtures** are the subject of a brochure that lists advantages of various mixtures. Matheson Gas Products. Circle 828.

**Glassworking Lathe Catalog** includes many of the standard models in current use in research facilities. Accessories are included. Wale Apparatus. Circle 829.

# Wherever Visual Input Is Required For Judgement, Analytical Analyses or Quality Control

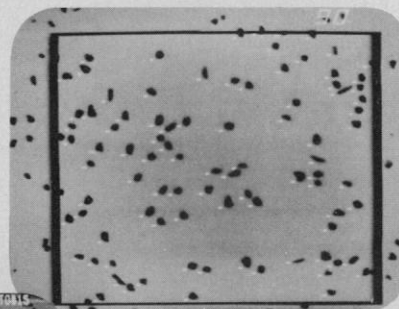
**..an OMNICON™ system increases capability, speed, accuracy and reproducibility.**

Products or parts, gross specimens, photographs, optical microscopes, SEM's, TEM's—all serve as system input. OMNICON instantly quantifies and precisely extracts reproducible information.

Images are presented on a T.V. monitor; the operator selects the desired parameters—such as size, shape, gray level or orientation. OMNICON automatically provides measurements, counts and statistical analyses such as size distributions—as required.

OMNICON systems are modular, beginning with a simple Feature Analysis System and building to the powerful, computerized Pattern Analysis System.

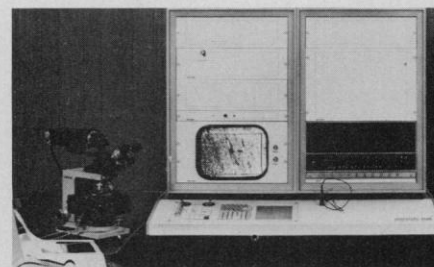
We'll be happy to send you complete information or arrange a demonstration at your convenience. You're also welcome to discuss your needs with our Applications Laboratory experts and to send us your samples for evaluation, without obligation, of course.



Classification of particle sizes from a sieve analysis.



Size distribution of elongated inclusions in a steel sample in accordance with their curved lengths.



**BAUSCH & LOMB**  
ANALYTICAL SYSTEMS DIVISION

For complete details, write Bausch & Lomb, Analytical Systems Division,  
71-03-29 Linden Avenue, Rochester, New York 14625  
Phone (716) 385-1000

# Personnel Placement

Only those employers and individuals who do not discriminate on the basis of race, sex, religion, age, color, or national origin should submit Personnel Placement advertising.

**POSITIONS WANTED:** 40¢ per word; use of Box Number counts as 10 additional words. Minimum charge \$10. Prepayment required. This rate applies to individuals only; personnel agencies, companies, colleges, and universities take display rate for all advertising.

**DISPLAY (POSITIONS OPEN, MARKET PLACE, AND SO FORTH):** \$130 per inch, minimum, per insertion (1 inch is equivalent to 11 lines of 52 spaces each). Ads over 1 inch billed to nearest quarter inch. No charge for Box Number. Rates net. No agency commission allowed for ads under 4 inches. No cash discount. Prepayment required for foreign advertising. Purchase orders and billing information must accompany all other advertising.

COPY for ads must reach SCIENCE by Wednesday, 3-½ weeks before issue date (Friday of each week) requested. Send copy for all positions wanted ads and display ads under 5 inches to:

SCIENCE, Room 207  
1515 Massachusetts Ave., NW  
Washington, D.C. 20005

Send copy for display ads, 1/6 page and larger, to:

Scherago Associates, Inc.  
11 West 42nd Street  
New York, N.Y. 10036

BLIND AD replies should be addressed as follows:

Box (give number)  
SCIENCE  
1515 Massachusetts Ave., NW  
Washington, D.C. 20005

## POSITIONS WANTED

**Anatomy** (gross) teaching position. Research interests in cell differentiation and growth; ultrastructure; publications. Box 84, SCIENCE. X

**Biological Oceanographer**, M.S. 1974. Have degree, will travel. Box 119, SCIENCE. X

M.S. in biological sciences, experienced in studio and darkroom procedures, seeks position as **Biological Photographer**. Prefers mid-Atlantic or Midwest. D. R. Knowlton, 227-5 Arnold Drive, West Lafayette, Indiana 47906. X

**Biophysicist**, Ph.D. 1972. NIH fellow (experience in carbohydrate chemistry and spectroscopy) desires position involving physical chemistry of neuronal function, vision, hormone action, or photosynthesis. Box 120, SCIENCE. X

**Ecologist**; anatomy, behavior, invertebrate zoology, general biology, senior reading symposium; research in intertidal zones; tennis coaching. Box 121, SCIENCE. X

**Gross Anatomist**. Experienced teacher, medical and dental schools. D.D.S., M.S., M.A. Competent also in neuroanatomy, histology, and embryology. Box 122, SCIENCE. 3/12, 19

**Immunologist**, Ph.D., desires research and/or teaching position. Over 20 years of experience, many publications and honors. Box 109, SCIENCE. X

**Insect Physiologist**. British Ph.D. 1971. Five years of teaching experience in Canadian universities. Current interests: (i) digestive physiology and (ii) microbial symbiosis. Publications. Seeks teaching, research, or industrial position. Box 123, SCIENCE. 3/12, 19

**Medical Microbiologist**. Ph.D. 1971, graduate from ABMM approved postdoctoral clinical microbiology program this July. Twelve publications. Teaching, infectious disease, epidemiology, and quality control experience. Desires a responsible position in a hospital microbiology laboratory or public health laboratory with some research facilities. Prefers location in South. Box 124, SCIENCE. X

## POSITIONS WANTED

**Microbiology**, medical and general mycology, plant pathology; Ph.D., postdoctorate, senior postdoctorate; experience teaching (tenured), administration, publications, research in government/universities/industry in the United States and abroad; seeks responsible, respectable position. Box 125, SCIENCE. 3/12, 19

**Natural Resource**. Degrees: watershed, wildlife, geology. Experience: environmental monitoring; trans-Alaska pipeline construction; impact assessments; federal, state agencies. Desires multidisciplinary team, independent impact research, and/or introductory teaching. Versatile. Reply: S.R.A. 4078, Anchorage, Alaska 99502. 3/12, 26

**Neurophysiologist/Behavior**, M.Sc., 2 years of experience primate operant, project administration and management, stereotaxic surgery and recording, and electrode implantation. Additional experience in physiology, abdominal and thoracic surgery, respiratory physiology, and cardiovascular physiology and pharmacology. Thesis topic: Electrographic Evaluation of the Neurotoxicity of Mirex (analog of kepone). Seeks industrial, government, or academic position. Available immediately. Please mail all inquiries directly to Box 126, SCIENCE. X

**Pharmaceutical Microbiologist/Technologist**. Ph.D. Seeks challenging position. Many years of experience in physicochemical, packaging, and all microbiological aspects of pharmaceutical and analytical development. Interests include antimicrobial and sterile products, preservation, analytical microbiology. Supervision and IND/NDA's. Box 127, SCIENCE. X

Excellent **Physics Teacher**, Ph.D., 8 years of experience in college teaching; seeks teaching or administrative position (college, junior college, or high school). Prefers Delaware Valley area. Box 128, SCIENCE. X

**Physiologist**, Ph.D. (cardiovascular/pulmonary). Extensive teaching and research experience, established medical physiology course. Cardiac output measurement, blood oxygenation, regulation of respiration, computer programming. Seeks research and/or teaching position. Box 114, SCIENCE. X

**Plant Morphologist/Anatomist/Paleobotanist**, Ph.D. Seeks college faculty appointment; strong zoology, geology background; teaching experience, also teach general biology, botany, phycology, physical and historical, geology, evolution; research experience and publications. D. A. Medlyn, Department of Botany, Brigham Young University, Provo, Utah 84602. X

**Vertebrate Ecologist**, Ph.D. 1971. Desires position at 4-year institution. Teaching experience; general biology, ecology, vertebrate biology, mammalogy. Returned from Indonesia; 3 years directing research; ecology of bubonic plague (rats and fleas). Publications (350 pages). R. W. Turner, Natural History Museum, University of Kansas, Lawrence, Kansas 66045. 3/12, 19

## POSITIONS OPEN

The Department of Biological Sciences, San Jose State University, San Jose, California 95192, an Equal Opportunity Employer, announces three tenure-track openings for **ASSISTANT PROFESSORS**: (i) molecular geneticist-general biologist; (ii) medical microbiologist-virologist; and (iii) medical mycologist. Effective 30 August 1976. Teaching and research in these and allied fields. Graduate student advising. Send curriculum vitae to **Joseph H. Young, Chairman**.

### ASSISTANT PROFESSOR

Applications are invited for undergraduate teaching position to begin 15 August 1976. Ph.D. required with specialties in field biology, ecology, and general zoological sciences. Applicant must be broadly trained and have firm commitment to undergraduate teaching; small liberal arts college. Salary negotiable upon previous experience. Send résumé and names of three references to **Dr. Jeanne Stuart, Department of Biology, Belmont Abbey College, Belmont, N.C. 28012**. An Affirmative Action/Equal Opportunity Employer.

## POSITIONS OPEN

University of New Brunswick, Department of Biology. Applications are invited for a possible 1-year appointment at the **ASSISTANT PROFESSOR** level starting 1 July 1976 or as soon as possible thereafter but before 1 September 1976. Qualifications: Ph.D. with some teaching/research experience. Salary: at, or near, the floor of that of an assistant professor. Responsibilities: to teach a 1-year course in vertebrate physiology to students in nursing and to contribute to the teaching of other courses within his/her field of interest. Applications, including curriculum vitae and names of three referees, should be sent as soon as possible to: **Dr. M. D. B. Burt, Chairman, Department of Biology, University of New Brunswick, Fredericton, N.B., Canada, E3B 5A3**. The University reserves the right to make an appointment as soon as a suitable candidate is found.

Applications are invited for the position of **ASSISTANT PROFESSOR** in the Department of Physiology at Rush Medical College. Preference will be given to candidates with a research interest and demonstrated research productivity in the electrical properties of excitable cells. The position involves teaching medical and nursing students but allows substantial time for research.

Every encouragement will be given the candidate to pursue independent or collaborative research and ample facilities and support are available.

Please send curriculum vitae, bibliography, and the names and addresses of references to:

**Dr. Robert S. Eisenberg**  
Department of Physiology  
Rush Medical College  
1725 West Harrison Street  
Chicago, Illinois 60612

*Rush Medical College is an Equal Opportunity/Affirmative Action Employer.*

### ASSISTANT PROFESSORS IN ANATOMY

The Department has two openings at the assistant professor level. Teaching duties for both positions will be in the field of gross anatomy. Considerable experience necessary. The applicants should have postdoctoral training or equivalent experience as demonstrated by publications either in the area of developmental biology or neuroscience. Applicants should submit curriculum vitae, list of publications, and reference letters to: **Jan Langman, M.D., Ph.D., Department of Anatomy, Medical School, University of Virginia, Jordan Building, Charlottesville, Va. 22901**.

*The University of Virginia is an Equal Opportunity/Affirmative Action Employer.*

### AUTOPSY PATHOLOGIST

Faculty position available 1 July 1976, Department of Pathology, University of California, San Francisco, for a Board-certified anatomic pathologist as director of Autopsy Service. Duties will consist of organizing and supervising postmortem examinations to provide maximum utilization of material for teaching and correlation at all levels and for quality control, assessment of the effectiveness of therapeutic protocols, determination of accuracy of new diagnostic procedures, and basic as well as clinical research. The director will also assist in surgical pathology, teach in undergraduate courses, and engage in research. California medical license or eligibility required. Address curriculum vitae to: **Search Committee, Department of Pathology, University of California, San Francisco, Calif. 94143**. An Equal Opportunity/Affirmative Action Employer.

Saginaw Valley State College **BIOLOGY DEPARTMENT** expects to have available two faculty positions for the fall of 1976. Appointments will be made at the assistant or the associate professor level. All applicants should have a Ph.D. in an appropriate area of biology and a strong interest in undergraduate teaching. One position is for a **molecular biologist** to teach cell physiology; the other position is for an **invertebrate biologist** with a strong developmental background to teach invertebrate zoology and developmental biology. Both positions will entail teaching a number of other undergraduate biology courses. Interested persons are invited to submit by 19 March 1976 a letter of application, curriculum vitae, and the names of three references to: **Larry Fitzpatrick, Director of Personnel, Saginaw Valley State College, University Center, Michigan 48710**. Saginaw Valley State College is an Equal Opportunity Employer.

## POSITIONS OPEN

### ASSISTANT PROFESSOR—ANATOMY

The University of Wisconsin, Anatomy Department, is seeking qualified anatomists to fill positions in the group responsible for teaching gross human anatomy to allied health and medical students. Necessary qualifications for these positions include a positive long-term commitment to teaching gross human anatomy, a major involvement in research, and interest in training Ph.D. candidates. Interested and qualified persons are invited to correspond directly with: **Professor David B. Slautterback, Anatomy Department, 1255 Linden Drive, University of Wisconsin, Madison, Wisconsin 53706.**

*An Equal Employment Educational Institution Title IX/Title VI*

### McMASTER UNIVERSITY BIOLOGY DEPARTMENT

Applications are invited for an **ASSISTANT PROFESSORSHIP**. Applicants should hold a Ph.D. in vertebrate biology with a special interest in physiology, neurophysiology, or development. The successful applicant will be expected to teach at undergraduate and graduate levels and to engage in research. Minimum salary for 1975-76 is \$14,300. Applications, including a detailed curriculum vitae and the names of at least two referees, should be sent as soon as possible to **Dr. D. Davidson, Chairman, Department of Biology, McMaster University, 1280 Main Street West, Hamilton, Ontario, Canada L8S 4K1.**

### ASSISTANT RESEARCH PHYSIOLOGIST

Supported by research grant. To participate in intracellular studies of transduction processes in, and interactions between, vertebrate photoreceptors. Qualifications should include several years of postdoctoral training, demonstrated ability to do intracellular research in vertebrate photoreceptors, and a strong background in physics. Desirable additional qualifications include training in visual psychophysics and in the application of anatomical techniques to retinal physiology. Send résumé to **Kenneth T. Brown, Department of Physiology, University of California, San Francisco, California 94143**, before 9 April 1976.

*An Affirmative Action/Equal Opportunity Employer*

The **DEPARTMENT OF BIOLOGY**, Northern Michigan University, is seeking a person to teach in one or more of the following disciplines: **human anatomy, human physiology, or microbiology**. The appointment begins 25 August 1976. Candidates should have a Ph.D. and a strong interest in teaching; research activity is encouraged. Curriculum vitae, transcripts, three letters of recommendation, and a brief statement of research interests should be sent to: **Dr. J. Kirwin Werner, Chairman, Department of Biology, Northern Michigan University, Marquette, Mich. 49855.** *Equal Opportunity Employer.*

**BIOLOGIST**, assistant professor, starting September 1976. Candidates will be sought whose primary interest lies in invertebrate behavioral physiology, and who would teach courses in introductory biology, comparative animal physiology, invertebrate zoology, and contribute to studies in neuroscience. The appointee will be expected to sustain an active research program in which undergraduates will become involved. Salary competitive. Send résumé, undergraduate and graduate transcripts, publications, and three letters of reference to: **Dr. N. C. Maravolo, Chairman, Department of Biology, Lawrence University, Appleton, Wisconsin 54911.**

*Lawrence University is an Equal Opportunity/Affirmative Action Employer.*

**BIOLOGY DEPARTMENT.** Permanent faculty opening September 1976 at the instructor or assistant professor rank. Salary range: \$10,500 to \$12,750. Primary duty includes teaching vertebrate anatomy for biology majors and nursing students; ancillary duties include directing M.S. students in vertebrate morphology/evolution/paleontology, advising undergraduates, and serving on academic committees. Ph.D. in area of vertebrate morphology or closely related field required. Postdoctoral experience desired. Some college or university level teaching required. Send applications to **Dr. Henry H. Vallowe, Biology Department, Indiana University of Pennsylvania, Indiana, Pa. 15701**, by 30 March 1976.

*An Affirmative Action/Equal Opportunity Employer*

## POSITIONS OPEN

Boston University has an opening for an **assistant professor in computer science** for fall 1976. Data base management and systems modeling preferred, but all strong applicants will be considered. Ph.D. and teaching credentials required. Send résumé to **Professor Robin Esch, Mathematics Department, 264 Bay State Road, Boston, Massachusetts 02215.** *An Equal Opportunity/Affirmative Action Employer.*

**ASSISTANT PROFESSOR OF MOLECULAR BIOLOGY** sought for September 1976. Must teach basic genetics and advanced courses in areas of specialization to undergraduates, direct graduate students, and conduct active research program. Ph.D. required, postdoctoral experience preferred. Apply to **R. F. Nunnemacher, Chairman, Department of Biology, Clark University, Worcester, Mass. 01610.** *An Equal Opportunity/Affirmative Action Employer.*

## POSITIONS OPEN

### DEPARTMENT OF PHYSICS GEORGE MASON UNIVERSITY FAIRFAX, VIRGINIA 22030

**Assistant professor**, Ph.D. preferred, starting September 1976, to teach lecture and labs of elementary physics courses. Expected to be responsible for maintaining and updating elementary physics labs. Please send résumé by 30 March 1976 to **Professor D. A. Papaconstantopoulos, Department of Physics, George Mason University, Fairfax, Va. 22030.** *Equal Opportunity/Affirmative Action Employer.*

### BIOLOGIST

Catholic liberal arts college is looking for biologist for September 1976. Long working hours, low pay, but serious students. Send curriculum vitae to **Dr. Peter V. Sampo, Magdalen College, Bedford, New Hampshire 03102.**



## U.S. ENVIRONMENTAL PROTECTION AGENCY DIRECTOR OF CLINICAL RESEARCH DIVISION

The U.S. Environmental Protection Agency, Health Effects Research Laboratory, is seeking a physician, board-certified in Internal Medicine, Pediatrics or Preventive Medicine to serve as Director of Clinical Studies in Chapel Hill, North Carolina. Responsibilities will include management of the conduct of human studies under controlled conditions to detect and define effects of environmental pollutants on human health. These studies help form the basis for much of the environmental control policy in this country. One of the most sophisticated controlled environmental laboratories in the country is nearing completion in Chapel Hill. Affiliation with adjacent University of North Carolina affords opportunity for teaching and involvement in the research programs there. Candidate must have demonstrated excellence as an investigator in some aspect of environmental medicine. Administrative experience in organizing and directing medical research programs is highly desirable.

This position may be a competitive Civil Service Appointment or Commission in the Public Health Service depending on qualifications and/or eligibility. Salary open.

Inquiries or applications should be addressed to:

**Director  
Health Effects Research Laboratory (MD-51)  
Environmental Protection Agency  
Research Triangle Park, North Carolina 27711**

*An Equal Opportunity Employer*

## POSITIONS OPEN

### ASSISTANT/ASSOCIATE RESEARCH SCIENTIST

Position available immediately for Ph.D. in biochemistry or related area with interest and expertise in melanoma, tumor antigen, isolation, and characterization. Submit curriculum vitae, statement of research interest, bibliography, and three references to: **Dr. J. C. Bystryn, Department of Dermatology, New York University School of Medicine, 550 First Avenue, New York, N.Y. 10016. An Equal Opportunity/Affirmative Action Employer, M/F.**

### LAURENTIAN UNIVERSITY BIOLOGY POSITIONS

Applications are invited for two faculty positions in the Department of Biology at the rank of assistant professor, effective 1 July 1976. Ph.D. required. In addition to teaching undergraduate courses in the fields noted below, successful applicants will have sufficient research experience and expertise to enable them to supervise graduate research in an M.Sc. program having a strong ecological orientation. Bilingual applicants (English/French) preferred.

**AVIAN/WILDLIFE ECOLOGIST.** To teach courses in general zoology, comparative chordate anatomy, animal ecology, or animal behavior.

**VERTEBRATE PHYSIOLOGIST.** To teach courses in human anatomy, human physiology, endocrinology, or genetics.

Salary range is \$15,855 to \$23,655 (1975-76). Applications, accompanied by a curriculum vitae, a list of publications, and the names of three referees should be forwarded to:

**Dr. J. R. Morris, Chairman  
Department of Biology  
Laurentian University**

**Sudbury, Ontario, Canada P3E 2C6**

Appointments subject to budget approval.

### CARDIOVASCULAR PHYSIOLOGY

The Department of Physiology and Biochemistry of the Medical College of Pennsylvania is seeking an **assistant professor of physiology** whose research is in the cardiovascular field. The position is a permanent one and includes opportunities for training graduate students. It will be available after 1 July 1976. Send a complete curriculum vitae including the names of at least three references to **Dr. Julian B. Marsh, The Medical College of Pennsylvania, 3300 Henry Avenue, Philadelphia, Pa. 19129.**

*The Medical College of Pennsylvania is an Equal Opportunity Employer and encourages applications from women and members of minority groups.*

**CARDIOVASCULAR OR RESPIRATORY PHYSIOLOGIST.** Applications are invited from mammalian cardiorespiratory physiologists with the Ph.D. and/or M.D. degree for appointment to a faculty position as an assistant or associate professor. Applicants should have a proven research ability and teaching experience at undergraduate and graduate levels. A curriculum vitae including a complete list of publications and the names of three referees should be sent to **Dr. D. B. Jennings, Chairman of the Selection Committee, Department of Physiology, Queen's University, Kingston, Ontario, Canada, K7L 3N6.**

**CHAIRPERSON.** Applications are being accepted for position of Chairperson, Department of Pharmacology, University of Kentucky College of Medicine, Lexington, Kentucky. Qualified applicants should submit a current curriculum vitae, along with list of persons who are qualified to assess applicant's teaching, research, and administrative capabilities. Send information to: **Arnold M. Ludwig, M.D., Department of Psychiatry, MN 368 University of Kentucky Medical Center, Lexington, Kentucky 40506. University of Kentucky is an Equal Opportunity/Affirmative Action Employer.**

### FACULTY POSITION IN BIOLOGY

Assistant professor, Ph.D., beginning September 1976. Developmental anatomist with primary teaching responsibilities to include comparative anatomy, histology, and general biology to undergraduates. Research encouraged. Send curriculum vitae and names of three references by 31 March 1976 to: **Dr. G. Douglas Crandall, Chairman, Department of Biology, Emmanuel College, Boston, Mass. 02115. An Equal Opportunity/Affirmative Action Employer**

## POSITIONS OPEN

### THE UNIVERSITY OF TORONTO DEPARTMENT OF BOTANY

Applications are invited for three faculty positions in the Department of Botany. Applicants should have an interest in one of the following fields: experimental taxonomy/ecological genetics, fungal physiology, plant virology, and soil microbial ecology. At least one of the appointments will be in the tenure stream, the others will be filled on an annual contractual basis. The appointments normally will be at the assistant or associate professor level, at a starting salary of between \$13,000 to \$20,000. However, an appointment may be made at a higher level in the case of exceptionally well qualified applicants.

Further particulars can be obtained from **Professor J. Dainty, Chairman, Department of Botany, University of Toronto, Toronto, Ontario, M5S 1A1, Canada**, to whom applications and the names and addresses of three references should be sent before 15 April 1976.

### CLINICAL INSTRUCTOR

Board-certified in internal medicine, eligible in medical oncology. Duties: clinical care and research in chemotherapy of solid tumors. Send curriculum vitae and references to **Director, Wisconsin Clinical Cancer Center, 701C University Hospitals, Madison, Wisconsin 53706.**

*An Equal Opportunity/Affirmative Action Employer*

### DEAN, RUSH COLLEGE OF HEALTH SCIENCES

Rush University, the academic component of Rush-Presbyterian-St. Luke's Medical Center, seeks candidates for dean of the newly formed College of Health Sciences and Vice President for Scientific Affairs. The College, organized in parallel with Rush Medical College and Rush College of Nursing, includes the offices of biological and behavioral sciences and services, related health science programs, and multidisciplinary centers; the graduate school is part of the College. Applications should reach the selection committee as soon as possible. *Rush-Presbyterian-St. Luke's Medical Center has a continuing program of Affirmative Action in the area of Equal Employment Opportunity.* Address inquiries to:

**Dr. Friedrich Deinhardt  
Department of Microbiology  
Rush-Presbyterian-St. Luke's Medical Center  
1753 West Congress Parkway  
Chicago, Illinois 60612**

### DEVELOPMENTAL BIOLOGIST

The Department of Anatomy, Case Western Reserve University School of Medicine, invites applications for the position of assistant professor, to begin about September 1976. Primary appointment will be in anatomy, with a joint appointment to the developmental biology center. Applicants should have strong training and research and teaching interests in developmental biology. The appointee will be expected to carry a modest teaching load in the medical and departmental graduate curriculum, and in addition to develop an active research program. Applicants should send curriculum vitae, a summary of research interests, and names of three references (please do not send letters of recommendation) to **Dr. Joseph Ilan, Department of Anatomy, Case Western Reserve University School of Medicine, Cleveland, Ohio 44106.**

*Case Western Reserve University is an Equal Opportunity/Affirmative Action Employer and encourages applications from women and members of minority groups.*

### FACULTY POSITION

Faculty appointment as assistant professor in the Department of Medical Microbiology, College of Medicine, University of California, Irvine. Responsibilities include teaching both graduate and medical students. Substantial training and research experience in several areas of biochemistry, genetics, and microbiology, or immunology are preferred. Preference given to candidates who would develop a strong research program in some biochemical or molecular aspect of immunology. Postdoctoral experience is required. *Applications from qualified individuals are welcome; minorities and women are encouraged to apply.* The application deadline is 1 May 1976. A curriculum vitae and three letters of reference should be sent to **Dr. Paul S. Sypherd, Department of Medical Microbiology, College of Medicine, University of California, Irvine, Irvine, Calif. 92717.**

## POSITIONS OPEN

**CHAIRPERSON**—Psychology Department, Colby College. The chairperson is responsible for leadership of a department of 6 faculty members and 60 majors in an undergraduate college with an enrollment of 1600. Appointment at the associate professor level beginning September 1976. Preferred area of specialization: general/experimental psychology. Candidates should have demonstrated competence in teaching and research, and a strong commitment to liberal arts education. Evidence of administrative ability is highly desirable. Computer and research facilities in a new science complex. Competitive salary and fringe benefits. Apply to: **Paul G. Jensen, Vice-President for Academic Affairs, Colby College, Waterville, Maine 04901. An Equal Opportunity/Affirmative Action Employer.**

### HEMATOLOGY LABORATORY DIRECTOR

Barnes Hospital and the Division of Laboratory Medicine of the Departments of Pathology and Medicine, Washington University School of Medicine, are seeking an academically oriented M.D. to be director of the clinical hematology laboratory. The individual would be responsible for the service, research, and teaching activities of this laboratory. This laboratory performs cellular and biochemical hematology testing for the 1200-bed teaching hospital complex. Coagulation and blood banking are in other separate laboratories within laboratory medicine, each with its own full-time medical doctor. The hematology laboratory is well equipped and staffed and will be moving in 1977 into a new 3000-square-foot facility which will include a research laboratory for the director. It is expected that the individual be capable of carrying on an independent research program. An independent 4-year training program in laboratory medicine (clinical pathology) provides excellent young trainees. It is anticipated that a specialty postdoctoral program in laboratory will be initiated. Interested candidates should have clinical and/or research training in hematology (internal medicine) or hematopathology (clinical pathology) with proven research experience. Academic appointment and salary will depend on experience. Send correspondence, curriculum vitae, and bibliography to:

**Leonard Jarett, M.D.  
Professor and Head  
Division of Laboratory Medicine  
and Director of Laboratories  
Barnes Hospital  
St. Louis, Missouri 63110**

*An Equal Opportunity Employer*

Department of Physiology, Meharry Medical College, Nashville, Tennessee, has **FACULTY OPENINGS** (Ph.D. or M.D.) at the assistant professor level. Teaching and research ability are of primary consideration. Research areas: cardiovascular, respiration, neurophysiology, or endocrinology. Teaching responsibilities include medical, dental, and graduate students. The individual should be able to effectively teach areas other than the primary research interest. Salaries are negotiable. The Department has new and well-equipped quarters in a new basic science building. Send curriculum vitae and three letters of reference to: **Clem Russ, Ph.D., Professor and Chairman, Department of Physiology, Meharry Medical College, Nashville, Tennessee 37208. Meharry Medical College is an Affirmative Action/Equal Opportunity Employer.**

Applications are invited for faculty positions in the Department of Biological Sciences, Wright State University, in the following disciplines:

**ECOLOGIST** (population, community, systems—terrestrial plant and animal ecology)

**BACTERIAL GENETICIST/PHYSIOLOGIST** (environmental orientation)

**HISTOLOGIST/PHYSIOLOGIST** (vertebrate)

**AQUATIC BIOLOGIST/TOXICOLOGIST**

All positions involve teaching at undergraduate and graduate levels and strong commitment to research is expected. Ph.D. required. Salaries competitive. Appointments at the rank of assistant professor beginning September 1976.

Applications, including curriculum vitae, list of three references, and statement describing professional goals should be submitted by 9 April 1976 to **Chairman, Department of Biological Sciences, Wright State University, Dayton, Ohio 45431.**

*An Equal Opportunity/Affirmative Action Employer*



## POSITIONS OPEN

**ENVIRONMENTAL ENGINEERING OR APPLIED ENVIRONMENT SCIENCE**—With experience in applied interdisciplinary research or project management. Research and teaching at graduate and undergraduate levels including in the master of science in environmental science program.

Relevant practical experience in addition to strong academic credentials is preferred. Applications are sought from junior, intermediate, and senior persons. Interested applicants should send a curriculum vitae to: **Faculty and Staff Search Committee, School of Public and Environmental Affairs, Poplars Research and Conference Center, Room 409, 400 East 7 Street, Bloomington, Indiana 47401. An Equal Employment/Affirmative Action Employer.**

**FACULTY POSITION** (nontenured, nonladder). Half-time support. Assistance given in finding additional support. The successful candidate will have expertise in environmental policy analysis or a related field and will work with an interdisciplinary group of scientists and engineers. Duties: graduate teaching in an interdisciplinary problems course, research, and some administration. A Ph.D. or equivalent is a requirement. Candidates should send a curriculum vitae and three recommendations to **C. S. Foote, Environmental Science and Engineering, 3677 Geology, University of California, Los Angeles, California 90024.** Deadline for receipt of all materials is 1 April 1976. *Equal Opportunity/Affirmative Action Employer.*

The School of Public Health of the University of Texas Health Science Center in Houston is seeking candidates for **FACULTY POSITIONS** in nutrition and epidemiology. These are regular academic appointments, involving teaching, research, and community service; and academic rank will depend upon the training and experience of a candidate. Please send a curriculum vitae to **Dr. R. A. Stallones, Dean, University of Texas School of Public Health, P.O. Box 20186, Houston, Texas 77025.**

*University of Texas is an Equal Opportunity/Affirmative Action Employer.*

### ARIZONA STATE UNIVERSITY Department of Geology

Applications are invited for two 1-year positions starting 15 August 1976 and ending 15 May 1977. (i) Person desired in sedimentology or sedimentology/stratigraphy at the assistant professorship level but rank could be negotiated; must have Ph.D. and research interest; graduate and undergraduate teaching. (ii) Instructor to handle general elementary courses and physical geology laboratories. Ph.D. or near completion of Ph.D. desired. Interested persons should send applications, including curriculum vitae and three letters of reference, to: **Dr. Troy L. Péwé, Chairman, Department of Geology, Arizona State University, Tempe, Arizona 85281.** Deadline for applications, 15 April 1976. *Arizona State University is an Equal Opportunity/Affirmative Action Employer.*

### GROSS AND MICROSCOPIC ANATOMY

Applications are invited for two junior positions available 1 July 1976. Responsibilities include instruction of students in the health sciences and the pursuit of independent research. Applicants must have a Ph.D. and should submit a curriculum vitae and the names of three references to: **Dr. Marilyn L. Zimny, Department of Anatomy, Louisiana State University Medical Center, 1542 Tulane Avenue, New Orleans, Louisiana 70112.**

### ENTOMOLOGY, DEPARTMENT HEAD

Administer teaching, research, extension, and international agricultural programs in a diversified department in the College of Agriculture. Cooperate in the interdisciplinary crop protection curriculum. Manage budgetary and financial matters. Administer strong graduate and undergraduate programs. Ph.D. with experience in teaching, research, and/or extension is required. Experience should indicate outstanding administrative and leadership potential. Detailed curriculum vitae, transcripts of academic preparation, and references requested. Salary competitive. Available 1 July 1976. Deadline for application is 26 March 1976. Address correspondence, nominations, and applications to **R. J. Elzinga, Chairman of Search Committee, Department of Entomology, Kansas State University, Manhattan, Kansas 66506. An Equal Opportunity Employer.**

## RADIATION SAFETY OFFICER

Northwestern University is seeking applicants for the position of University Radiation Safety Officer. The Radiation Safety Officer is responsible for making recommendations on policies and procedures for a broad program in radiation safety and is to implement those programs and policies approved by the Radiation Safety Committee and the University administration. The RSO serves as the Director of the Radiation Protection Office; is responsible for supplying advice and assistance on all matters involving the use of radioactive materials or radiation sources; issues authorization for the use of radioactive materials or radiation sources with the approval of the Radiation Safety Committee; is responsible for maintaining necessary records relating to the use of radioactive materials or sources; maintains the University NRC licenses and State of Illinois registrations. The University maintains a Broad General Medical License which covers two campuses (Evanston and Chicago) and two teaching hospitals. In addition to a range of radiographic equipment and extensive nuclear medicine programs, the University has X-ray diffraction facilities, electron accelerators, a subcritical reactor and a broad range of isotope users with sources ranging from kilocurie to microcurie quantities.

**QUALIFICATIONS:** The successful applicant must have a broad knowledge of all aspects of radiation safety and requirements of the NRC with regard to maintaining a broad license. The applicant should have a Ph.D. in related field, and/or have Board certification. In addition, the applicant must have personal, managerial, and financial skills which permit him or her to successfully operate the Radiation Protection Office and deal effectively with faculty, staff and administration.

**SALARY and BENEFITS:** The Salary is open and depends on the background and experience. Faculty appointment is available to qualified individuals.

**RESUMES,** along with the names of at least three references or inquiries should be directed to:

David Mintzer  
Vice President for Research  
**Northwestern University**  
633 Clark Street, Evanston, IL. 60201  
An Equal Opportunity Employer



### U.S. ENVIRONMENTAL PROTECTION AGENCY

#### SENIOR EPIDEMIOLOGIST

The U.S. Environmental Protection Agency, Health Effects Research Laboratory, is seeking an Epidemiologist with an advanced degree in epidemiology to assist in the management of Population Studies in the Research Triangle Park, North Carolina. Responsibilities will include management of the design and conduct of studies to quantitate the adverse effects of environmental pollutants on human health or to assess the impact of improvements in environmental quality on the health and welfare of man. Candidate must have demonstrated excellence as an investigator in some aspect of environmental epidemiology. Administrative experience in organizing and directing a research organization is highly desirable.

This position may be a competitive Civil Service Appointment or Commission in the Public Health Service depending on qualifications and/or eligibility. Salary open.

Inquiries should be addressed to:

Director  
Health Effects Research Laboratory (MD-51)  
Environmental Protection Agency  
Research Triangle Park, North Carolina 27711

An Equal Opportunity Employer

## POSITIONS OPEN

# Drug Metabolism Research Radioimmunoassay

We are seeking a creative individual to direct a small group in the design of hap-  
pens, development of antisera and analysis of biological fluids for experimental  
drugs. The position requires a Ph.D. or equivalent training in immunochemistry,  
biochemistry or related field with 1-5 years experience in radioimmunoassay work.

The Sterling-Winthrop Research Institute is the research division of Sterling  
Drug Inc., employing about 650 people engaged in a very active research program.  
The Institute is located near Albany, on a plateau overlooking the Hudson River  
Valley. Salary open. Travel and moving expenses paid. Excellent employee bene-  
fits.



Write qualifications to: **Director of Personnel**

## STERLING-WINTHROP RESEARCH INSTITUTE

RENSSELAER, NEW YORK 12144

An Equal Opportunity Employer

The University of California, Irvine, Department of  
Psychiatry and Human Behavior, invites applicants  
for four full-time **FACULTY POSITIONS**. M.D. de-  
gree, 3 years of accredited psychiatric residency,  
California licensure, and evidence of scholarly pro-  
ductivity required. (i) Assistant professor level, fam-  
ily therapy and liaison with family medicine (training  
in family therapy preferred), (ii) assistant professor  
level, adolescent and child psychiatry (child psychia-  
try training preferred), (iii) associate professor level  
to serve as Chief of Psychiatric Services, respon-  
sible for overall teaching and service program includ-  
ing adult, adolescent, child, emergency, and consul-  
tation services (additional training in administration  
or inpatient psychiatry preferred), (iv) assistant pro-  
fessor level to coordinate undergraduate psychiatry  
curriculum, didactic, clinical, and cognate basic sci-  
ences at medical student level. *Applications from all  
qualified candidates are welcome; minorities and  
women are encouraged to apply.* Send curriculum  
vitae and names of three references to **Dr. E. Man-  
sell Pattison, University of California, Irvine, Calif.  
92717**, before 15 March 1976.

### HEAD—CHESAPEAKE BIOLOGICAL LABORATORY

The University of Maryland invites nominations  
and applications for the position of head of the  
Chesapeake Biological Laboratory, Solomons,  
Maryland. We are seeking an experienced educator  
with significant research accomplishments to pro-  
vide leadership for a vigorous program of teaching  
and research. The Chesapeake Biological Labora-  
tory staff presently numbers 100 and its operating bud-  
get is in the range of \$1.5 to \$2 million, with signifi-  
cant growth in staff and budget expected over the  
next 10 years. All applications received before 1  
April 1976 will receive full consideration. Qualified  
applicants should forward curriculum vitae, bibliog-  
raphy, and names of referees to **Chairman, Appoint-  
ment Committee, c/o Department of Microbiology,  
University of Maryland, College Park, Maryland  
20742**. *An Equal Opportunity/Affirmative Action Em-  
ployer.*

### MOLECULAR ENDOCRINOLOGIST

Applications are invited for the position of assist-  
ant or associate professor in the Banting and Best  
Department of Medical Research, University of Tor-  
onto. Candidates should have demonstrated ability  
to carry out independent research in molecular and  
cellular endocrinology. Preference will be shown  
toward those working in molecular aspects of hor-  
mone action, or in the role of hormones in gene ex-  
pression. The beginning date is negotiable but must  
be arranged before 1 September 1976. Candidates  
should send a curriculum vitae and have three letters  
of recommendation sent to:

**Search Committee Chairman  
Banting and Best Department of Medical Research  
University of Toronto  
112 College Street  
Toronto, Ontario M5G 1L6, Canada**

## POSITIONS OPEN

### HEAD, DEPARTMENT OF ANATOMY LOUISIANA STATE UNIVERSITY MEDICAL CENTER NEW ORLEANS, LA.

Louisiana State University Medical Center invites  
applications for the position of head of Department  
of Anatomy of the Medical Center. The Department  
of Anatomy has responsibility of teaching in five  
schools of the Medical Center. It is a well-estab-  
lished department and outstanding applicants should  
send their curriculum vitae to **Dr. J. M. Chadha,  
Chairman, Search Committee, 1100 Florida Avenue,  
New Orleans, Louisiana 70119**. *Louisiana State Uni-  
versity is an Equal Opportunity/Affirmative Action  
Employer.*

**HISTORY OF MEDICINE**. Level of appointment:  
open. Status: tentative, subject to budgetary approv-  
al, beginning fall 1976. Description: primary respon-  
sibility will be to develop courses and a program of  
an interdisciplinary nature that will service history,  
premed, and medical school students and dealing pri-  
marily with the modern and early modern European  
or American traditions. *Applications from qualified  
blacks, other minority groups, and women are en-  
couraged.* Contact: **Nicholas H. Steneck, Department  
of History, The University of Michigan, Ann Arbor,  
Michigan 48109**. *A nondiscriminatory Affirmative Ac-  
tion Employer.*

Open position in the **HISTORY OF SCIENCE**, He-  
brew University of Jerusalem, Faculty of Mathemat-  
ics and Natural Sciences.

The appointee will teach elementary general  
courses to undergraduates in the history of science,  
ancient and modern, and conduct graduate courses  
and seminars in his/her fields of interest. Preference  
will be given to applicants either working in the his-  
tory of physics, or with some background in physics.  
Rank will be determined according to the appoint-  
ee's academic standing. Ph.D. is necessary. Under  
University regulations, new appointments below the  
rank of full professor are not tenured. The awarding  
of tenure will be considered after 3 years, or on next  
promotion. There is also a possibility of starting on a  
1 year's visiting position for 1976-77 leaving all op-  
tions open.

Candidates should apply to the **Department of His-  
tory and Philosophy of Science, The Hebrew Universi-  
ty of Jerusalem, Jerusalem, Israel.**

**PHARMACOLOGIST**. Faculty position available  
1 July 1976 in pharmacology. Ph.D. required, post-  
doctoral training preferred but not essential. Rank  
and salary commensurate with qualifications. This a  
full-time teaching position with possibilities for an  
aggressive person to develop his/her own research  
area. Please send letter of application with curricu-  
lum vitae to **Dr. Hodge, Chairman, Division of Basic  
Medical Sciences, New York College of Podiatric Med-  
icine, 53 East 124 Street, New York, New York 10035**.  
*We are an Equal Opportunity/Affirmative Action Em-  
ployer.*

## POSITIONS OPEN

The University of Minnesota Medical School, Min-  
neapolis, invites nominations and applications for  
the position of **PROFESSOR AND HEAD** of the De-  
partment of Anatomy. This position requires an aca-  
demic anatomist holding the Ph.D. and/or the M.D.  
degree with substantial, demonstrated teaching, re-  
search, and administrative abilities to provide lead-  
ership for continued excellence in an academic basic  
science department in a large University Health Sci-  
ences Center. Inquiries, including a curriculum  
vitae, should be sent to **Dr. David M. Brown, Chair-  
man, Search for Anatomy Headship Committee, De-  
partment of Laboratory Medicine and Pathology,  
Mayo Box 491, University of Minnesota Medical  
School, Minneapolis, Minnesota 55455**. *An Equal Op-  
portunity/Affirmative Action Employer.*

**DEPARTMENT HEAD, BIOLOGICAL SCIENCES:**  
Applicants should possess a doctorate in one of the  
life sciences, have demonstrated scholarship in  
teaching and research, and have shown evidence of  
administrative and leadership capabilities. Appli-  
cations must be received by 15 April. Position to be-  
gin 1 September 1976. Submit curriculum vitae and  
four letters of recommendation to:

**Dr. Richard F. Nelson  
Attention: Chairman, Screening Committee  
Biological Sciences Department  
California Polytechnic State University  
San Luis Obispo, California 93407**

*An Equal Opportunity/Affirmative Action Employer*

### ORGANIC MARINE CHEMIST

The Rosenstiel School of Marine and Atmospheric  
Science of the University of Miami is seeking can-  
didates for a position as assistant or associate profes-  
sor in the chemical oceanography division. Teaching  
and research duties in the general area of organic  
compounds in marine systems. Send curriculum  
vitae and names of references to:

**Chairman, Division of Chemical Oceanography  
RSMAS, University of Miami  
4600 Rickenbacker Causeway  
Miami, Florida 33149**

*The University of Miami is an Equal Opportunity/Af-  
firmative Action Employer.*

### PHARMACOLOGY

The Department of Pharmacology and Therapeu-  
tics, Schools of Medicine and Dentistry, State Uni-  
versity of New York at Buffalo, invites applications  
for a full-time faculty position in the area of clinical  
pharmacology as assistant professor or, if especially  
qualified, associate professor. Candidates must have  
an M.D. degree and sufficient clinical training to per-  
mit joint appointment in the Department of Pharma-  
cology and Therapeutics and the appropriate clinical  
department. Joint appointments require approval by  
both participating departments. Duties include teach-  
ing, research, and care of patients within an academ-  
ic environment.

Send curriculum vitae and also request that three  
letters of recommendation be sent to: **Dr. Edward A.  
Carr, Jr., 122 Farber Hall, Box M, State University of  
New York at Buffalo, Buffalo, N.Y. 14214**.

*An Equal Opportunity/Affirmative Action Employer.*

### PHYSICIANS (MULTIPLE OPENINGS) FDA/BUREAU OF DRUGS

Immediate career Civil Service openings for physi-  
cians to evaluate clinical data of new drugs. Physi-  
cians function as leaders of multidisciplinary review  
teams reviewing New Drug Applications (NDA's)  
and Notices of Claimed Investigations Exemptions  
for New Drugs (IND's). They participate in formulat-  
ing policy and developing standards and guidelines  
for the study of new drugs. Positions are available in  
most specialties with most immediate needs in fields  
of endocrinology, cardiology, gastroenterology,  
rheumatology, psychiatry, and anesthesia.

The positions require judgment, ability to plan and  
organize work, effectiveness in writing, speaking,  
and interpersonal skills. The positions provide secu-  
rity, good salary, comprehensive fringe benefits, on-  
going contacts with professional colleagues, and pro-  
vision for maintaining clinical expertise. Must be  
U.S. citizens. Eligibility based on Civil Service regu-  
lations. Salary approximately \$33,126 to \$37,800 a  
year. *Equal Opportunity Employer.* Send résumé to:  
**FDA Personnel (Frank Mischou), Room 4B-44, 5600  
Fishers Lane, Rockville, Maryland 20852**.

## POSITIONS OPEN

### THE MAX-PLANCK-INSTITUTE FOR MOLECULAR GENETICS AT BERLIN PLASMID GROUP

Applications are invited for two research positions in the newly formed Molecular Biology of Plasmids Group. Excellent research facilities are available and some technical assistance will be provided. Candidates should have interests in DNA replication or some other aspect of the molecular biology of small closed-circular DNA molecules. Applicants with backgrounds in prokaryotic and eukaryotic systems are equally welcome. Experience in in vitro synthesis systems, electron microscopy, or enzymology preferred but not essential.

The positions which are available from 1 June 1976 will be at the levels of research associate (wissenschaftlicher assistent; BAT IIa/Ib), with a salary scale ranging from 40,000 to 43,000 DM per annum; and postdoctoral fellow, with a salary scale ranging from 18,000 to 25,000 DM according to experience.

Applications to **Dr. K. Timmis, Department of Medicine, Stanford University, Stanford, California 94305**, should include curriculum vitae, description of qualifications and experience, list of publications, and names and addresses of three referees.

**POSTDOCTORAL POSITION.** Research cytogeneticist or somatic cell geneticist interested in genetic parameters of aging utilizing diploid cell model. Available immediately. Send résumé including research experience to: **Dr. Warren W. Nichols, Institute for Medical Research, Copewood Street, Camden, N.J. 08103.** An Equal Opportunity/Affirmative Action Employer.

### POSTDOCTORAL RESEARCH POSITION

Position available immediately involving studies on the biochemistry of hard and soft connective tissues. Experience in immunochemistry or previous work associated with collagen chemistry desirable. Send curriculum vitae and names and addresses of three referees to **Dr. D. J. Carmichael, Department of Oral Biology, University of Alberta, Edmonton, Alberta, Canada, T6G 2N8.**

## POSITIONS OPEN

**POSTGRADUATE RESEARCHER** in molecular biophysics. Spectroscopic studies (natural and magnetic circular dichroism, fluorescence, phosphorescence, action, and difference spectroscopy) of cytochrome P-450 and other proteins. The position also involves participation in the department's teaching program. *Applications from qualified candidates are welcome; women and minorities are encouraged to apply.*

Send curriculum vitae to **Dr. J. C. Sutherland, Department of Physiology, College of Medicine, University of California, Irvine, Irvine, California 92717.**

The University of Missouri-Columbia Medical Center is inviting applications for the position of **PROFESSOR AND CHAIRMAN** of its Department of Microbiology. An applicant for this position should be an established recognized productive investigator, should have a strong interest in teaching medical and graduate students, and should have demonstrated administrative ability. Interested applicants please correspond with **Dr. Murray Heimberg, Chairman, Microbiology Search Committee, c/o Department of Pharmacology, University of Missouri School of Medicine, Columbia, Missouri 65201.** The University of Missouri is an Equal Opportunity, Affirmative Action Institution.

**VASCULAR PLANT TAXONOMIST:** Botany and Plant Pathology of the Illinois Natural History Survey has an opening in taxonomy. Applicant must be interested in the flora of Illinois and be willing to maintain the herbarium. The position provides an excellent opportunity to develop an independent research program. Candidate must have a Ph.D.; a broad training in botany, especially ecology; and demonstrate achievement in research. Salary is competitive and commensurate with qualifications and experience. Applications received after 15 April 1976 are not assured consideration. Send curriculum vitae, bibliography, reprints, and list of references to **Dr. Claus Grunwald, Head, Section of Botany and Plant Pathology, Illinois Natural History Survey, Urbana, Illinois 61801.**

## POSITIONS OPEN

**SIX POSSIBLE POSITIONS** starting approximately 1 April for 1 year or less. One assistant research biologist I—\$1316 per month (Ph.D. required) and five specialists—salary range \$851 to \$1170 per month. Possibility of future funding. Research will involve doing baseline studies of nesting seabirds on offshore islands of California and Alaska; some positions will require camping on islands for 3 to 4 months. Requirements include identification and knowledge of California seabirds and/or experience in conducting research on seabird reproductive behavior and ecology, handling small boats, and administrative and writing ability is required for senior positions. Applicants should provide, by 20 March 1976, a complete résumé and three letters of recommendation. Address all application materials to **Dr. George Hunt, Department of Ecology and Evolutionary Biology, University of California, Irvine, Calif. 92717.** If possible, telephone in person: 714-833-6322. *Applications from all qualified candidates are welcome; minorities and women are encouraged to apply.*

**POSTDOCTORAL RESEARCH ASSOCIATES** for calcium transport studies with strong background in protein biochemistry. Send letters of application including names of references to **Dr. Felix Bronner, Department of Oral Biology, University of Connecticut Health Center, Farmington, Connecticut 06032.** An Equal Opportunity and Affirmative Action Employer.

## THE LATEST DATA THE HEALTH EFFECTS OF PLUTONIUM AND RADIUM

Proceedings of a symposium, October, 1975, Sun Valley, Idaho

Edited by Webster S. S. Jee, Ph.D.  
University of Utah College of Medicine

The volume contains animal and human data pertaining to human health risks of plutonium. It contains 68 articles on plutonium in animals, plutonium in man, radium in animals, radium in man, plutonium and radium relationships, bone and bone marrow as target tissues, cancer "models," and high LET effects.

**CONTRIBUTORS ARE:** Pfuderer, Smith, Green, Sikov, Finkel, Atherton, Stevens, Stover, Kimmel, Holland, Slau-son, Dagle, Williams, Rundo, Holtzman, Schlenker, Brues, Sharpe, Lloyd, Loutit, Taylor, Spiers, Auzier, Arnold, Whitehouse, Rothstein, Cuddihy, Grube, Bruenger, Guil-mette, Bhattacharyya, Popplewell, McInroy, Norwood, Durbin, Larson, Rowland, Durbin, Mays, Stannard, Fisher, Momeni, Patt, Wilson, Hashimoto, Walsh, Roesch, Taylor, Vaughan, Frazier, Marshall, Huth, Goldman, Brooks and Hoegerman. (820 pages). \$20.00

Other volume: Radiobiology of Plutonium, 1972, edited by B. J. Stover and W. S. S. Jee. (552 pages). \$10.00

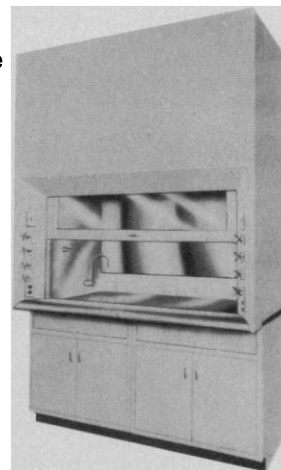
Order from:

**J. W. Press, Radiobiology Division  
2C-110 Medical Center  
University of Utah, College of Medicine  
Salt Lake City, Utah 84132**

## NEW ENERGY SAVER LABORATORY FUME HOOD IS ALSO SELF-CLEANING...

Revolutionary new energy saver laboratory fume hoods cut down the use of energy by consuming up to 70% less heated or cooled air, and operate at maximum efficiency. For perchloric acid radio chemical and toxic chemical fume hoods an optional self-cleaning system, eliminates the dangerous job of cleaning the hood, blower and duct system.

The hoods have a built-in system that discharges supplementary air around the entire outside face of the hood at a very low velocity. This avoids high velocity air streams blasting at the front of the hood, prevents bothersome drafts to the hood operator and eliminates unsafe air turbulence inside the hood. The optional self-cleaning radio chemical and toxic chemical fume hoods are equipped with a washdown system that cleans the hood blower and duct system at the turn of a small valve.



**LAB FABRICATORS COMPANY**  
Cleveland, Ohio 44103

## POSITIONS OPEN

**POSTDOCTORAL POSITION** (2 years) to participate in research on endocrine control of circadian rhythms in cartilage and bone tissues. Experience in morphological, biochemical, and physiologic aspects of hard tissue metabolism desired. Available 1 March 1976. Send curriculum vitae, summary of current research, and two letters of recommendation to **Dr. David J. Simmons, Division of Orthopedic Surgery, Washington University School of Medicine, St. Louis, Missouri 63110. An Equal Opportunity/Affirmative Action Employer.**

### POSTDOCTORAL RESEARCH ASSOCIATE

To work on the molecular basis of a metabolic control in *Escherichia coli* K12.

Applicant will need experience in enzymology and interest in the regulation of bacterial metabolism.

Position to start any time up to July 1976; salary \$9500 Canadian. Send curriculum vitae and two names of references or ask referees to write to **Dr. E. B. Newman, Department of Biological Sciences, Concordia University (Sir George Williams Campus), Montreal, Quebec, Canada H3G 1M8.**

**REPRODUCTIVE ENDOCRINOLOGIST.** Full time, Ph.D. in physiology, endocrinology, or biochemistry at the assistant professor/researcher level. Position is partially supported by federal funds and will involve research, some teaching. At least 2 years of postdoctoral experience is required in reproductive endocrinology, preferably of the sheep, in organ transplantation techniques in the sheep, and in assay techniques for steroid and pituitary hormones. Apply to **Director, Pacific Biomedical Research Center, University of Hawaii, 1993 East West Road, Honolulu, Hawaii 96822.**

### RESEARCH ASSOCIATE—RENAL PHYSIOLOGY

Position available beginning June 1976 to participate in micropuncture research in renal physiology in collaboration with M.D. at Tufts University School of Medicine. Familiarity with micropuncture methodology desirable but not essential. Send curriculum vitae and names of three references to **Dr. F. John Gennari, Box 56, Tufts-New England Medical Center, 171 Harrison Avenue, Boston, Massachusetts 02111.**

**RESEARCH ASSOCIATE POSITION** available immediately for recent Ph.D. interested in biochemical toxicology. Studies will center on the role of glutathione transferases in the metabolism and toxicity of pesticides in mammals. Send curriculum vitae and two letters of recommendation to:

**Dr. R. M. Hollingworth  
Department of Entomology  
Purdue University  
West Lafayette, Indiana 47907**

*Purdue University is an Equal Access/Equal Opportunity Employer.*

Opening exists for **RESEARCH OCEANOGRAPHER** in coastal processes for regional study of sediment supply to coastline. Ph.D. required with knowledge and experience in physical processes of the nearshore environment including waves, currents, and sand transport. Position will involve both technical and administrative tasks associated with the project. Send inquiries for further information with curriculum vitae and list of publications to: **Dr. Douglas L. Inman, A-009, Ocean Research Division, Scripps Institution of Oceanography, La Jolla, California 92093. The University of California is an Equal Opportunity/Affirmative Action Employer. Women and minorities are encouraged to apply.**

**TOXICOLOGIST.** Regulatory activities function of medium-sized chemical company based in Chicago is seeking a Ph.D. toxicologist. Minimum of 2 years of experience is required in pesticides and/or related chemicals. Knowledge of, and preferably experience with, governmental regulatory requirements is needed plus some experience with in vivo assessment testing of biologically active chemicals in various animal and microbial systems. Recognized leader in agricultural chemicals manufacturing with widespread domestic and foreign distribution. Competitive employee benefits program includes company-paid pension plan. Send résumé with salary requirements to **Box 129, SCIENCE.**

## POSITIONS OPEN

**POSTDOCTORAL POSITION** is immediately available to apply micropeptide mapping and sequencing techniques to an enzyme from human tissue culture cells. Send résumé to:

**Dr. Gregory Milman  
Department of Biochemistry  
University of California  
Berkeley, California 94720**

*An Equal Opportunity Employer*

**POSTDOCTORAL POSITION** available for a physical or organic chemist with biochemistry experience to participate in an enzymology group. Send résumé to:

**S. K. Chatt  
Room 106 Cook Administration  
Rutgers University  
New Brunswick, N.Y. 08903  
Telephone: 201-932-9758**

### RESEARCH POSITION—ELECTROPHYSIOLOGY

Immediately available, research position studying evolved potentials in human head trauma patients. Doctorate in physiology, psychology, or suitable biomedical engineering background necessary. Should have computer experience and training in electrophysiological recording. Starting salary \$12,000. Send complete résumé and letters of reference to:

**Dr. Richard Greenberg  
Division of Neurosurgery  
Medical College of Virginia  
Box 758  
Richmond, Virginia 23298**

## FELLOWSHIPS

**GRADUATE ASSISTANTSHIPS AND FELLOWSHIPS** are available for Ph.D. study in environmental science, environmental and resource engineering, resource management and policy, silviculture, chemistry, and environmental and forest biology. Academic and full-year stipends include partial tuition waiver. Applicants should submit application form, transcripts, GRE scores. Deadline for receipt is 1 May 1976 for fall semester. Write to: **Dr. William E. Graves, Academic Programs Office, State University of New York College of Environmental Science and Forestry, Syracuse, New York 13210.**

**POSTDOCTORAL FELLOWSHIP IN GEOCHEMISTRY.** The School of Oceanography, Oregon State University, announces a position in geochemistry with specialty in rare-gas mass spectrometry and research interests in one of the following fields: noble gases of meteorites or terrestrial materials,  $^{40}\text{Ar}/^{39}\text{Ar}$  geochronology, or potassium-argon geochronology. Excellent opportunities for scientific interactions with ongoing studies of geochronology of oceanic islands, deep-sea volcanics, and pelagic sediments, as well as investigations of the noble gases of mantle-derived rocks. Initial appointment for 12 months. \$12,000. Send a comprehensive résumé including summary of research interests, graduate courses, and names and addresses of at least two references before 1 May 1976 to: **Dr. Jack Dymond, School of Oceanography, Oregon State University, Corvallis, Oregon 97331. An Affirmative Action/Equal Opportunity Employer.**

**PREDOCTORAL FELLOWSHIPS** in immunology and microbiology. A number of state graduate stipends (\$3960 per annum) are available for highly qualified applicants for study leading to the Ph.D. in immunology, virology, and microbiology. For information write to **Dr. H. H. Fudenberg, Professor and Chairman, Department of Basic and Clinical Immunology and Microbiology, Medical University of South Carolina, Charleston, S.C. 29401. An Equal Opportunity Employer.**

**POSTDOCTORAL FELLOWSHIPS.** Postdoctoral fellowships in environmental health sciences will be available beginning in the summer of 1976. Areas of research include: thermoregulatory physiology, sensory psychophysics, effect of air pollutants on airway smooth muscle. Applications should include résumé, three letters of recommendation, a description of research interest, and should be addressed to: **Dr. J. A. J. Stolwijk, John B. Pierce Foundation, 290 Congress Avenue, New Haven, Conn. 06519, before 15 March 1976.**

## FELLOWSHIPS

**PRE- AND POSTDOCTORAL FELLOWSHIPS IN RESPIRATORY AND CARDIOVASCULAR PHYSIOLOGY.** Areas available to candidates desiring careers in research and teaching include acid-base balance, cerebral circulation, control mechanisms in respiration and circulation, gas exchange, heart, respiratory and circulatory mechanics, respiratory and circulatory neurophysiology. Applicants should send curriculum vitae and names of three references to: **Dr. Robert Fitzgerald, Department of Environmental Medicine, Johns Hopkins University, 615 North Wolfe Street, Baltimore, Maryland 21205.**

**POSTDOCTORAL TRAINING FELLOWSHIPS IN MEDICAL GENETICS,** available to individuals with advanced degrees altering career objectives toward medical genetics, stipend \$10,000 to \$13,000 per year. Write **Dr. James V. Neel, Department of Human Genetics, University of Michigan Medical School, Ann Arbor, Michigan 48109. Equal Opportunity/Affirmative Action Employer.**

**POSTDOCTORAL INTERNE FELLOWSHIP IN ECOLOGY** to carry out a 2-year environmental inventory of a large as yet undeveloped industrial park near Savannah under the direction of **Dr. E. P. Odum** with an overall purpose of assisting industry in the design of future waste-management systems so as to achieve a more harmonious coupling of man's fuel-powered and nature's solar-powered systems. Field experience or training in hydrology, soil science, mineral cycling, or wetland study desirable. **E. P. Odum, Institute of Ecology, University of Georgia, Athens, Georgia 30602.**

### ROCHE RESEARCH INSTITUTE OF MARINE PHARMACOLOGY

Fellowships in basic and applied research are available at the Roche Research Institute of Marine Pharmacology in the areas of marine biology, organic chemistry, pharmacology, and microbiology. Applications are invited from recent Ph.D. graduates and from experienced research scientists. Awards are normally available for a period of not less than 6 months nor greater than 2 years, although in specific cases shorter periods of tenure may be negotiated. The fellowship stipend may be supplemented by a travel allowance to cover the fellow's transportation to the Institute and return.

Application forms may be obtained by writing to the **Director, Roche Research Institute of Marine Pharmacology, P.O. Box 255, Dee Why, N.S.W. 2099, Australia.**

## SUMMER INSTITUTES

**SIX-WEEK SUMMER INSTITUTE ON NERVE, MUSCLE, AND RECEPTOR CELL PHYSIOLOGY.** 6 July to 12 August 1976, at Boulder, Colorado. The Institute is designed to introduce graduate students and postdoctoral fellows to the literature, theory, and experimental methodology of nerve, muscle, and receptor cell physiology. Faculty: **L. D. Peachey, R. H. Adrian, M. Dubin, D. Moran, S. Roper, R. Martin.** For application and information, write to: **P. Van Tuijl, Department of Molecular, Cellular, and Developmental Biology, University of Colorado, Boulder, Colorado 80309.**

## MARKET PLACE

*Do You Need...*

### OXYGEN-18?

$\text{H}_2\text{O}^{18}$ 99.5 atom % $\text{O}^{18}$	1 gram	\$425
Oxygen Gas, 99 atom % $\text{O}^{18}$	100 ml	195
Carbon Dioxide 99 atom % $\text{O}^{18}$	100 ml	165
Carbon Monoxide 99 atom % $\text{O}^{18}$	100 ml	165

In stock for immediate delivery.

Call Isotope Sales at: (415) 234-4130

**BIO-RAD Laboratories**

32nd & Griffin Ave., Richmond, CA 94804

Circle No. 356 on Readers' Service Card



# A New 8 Liter Version Of The Most Reliable Freeze Dryer Ever Built

After a decade of dependability — *a new Unitrap* — with extra capacity and convenience! A new front panel mounted visible condenser lets you see what's happening throughout the processing cycle. Smooth stainless steel cylindrical condenser walls and a new rapid defrost give *fast* turnaround — the entire 8 liter ice plug slides out in less than 30 minutes!

You get an ultra reliable Copelametic compressor and spring suspended, shock mounted Hyvac 7 in a compact 29" cabinet with stainless work surface. Thermocouple vacuum gauge, and electric condenser, shelf and product temperature readouts are standard.

Many options — including 14 changeable chambers and manifolds and a built in shell freezer — allow all around versatility, so you can process in ampoules, serum bottles, flasks, petri dishes and trays.

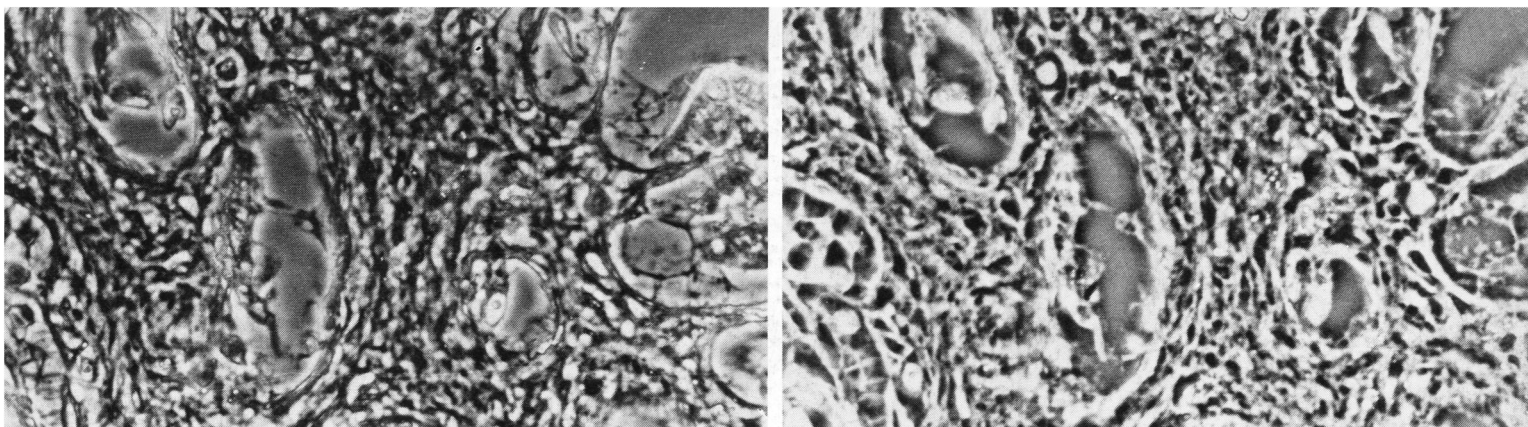
Automatic freeze drying has never been easier or more convenient. After a decade of dependability — and a year in the field for the new model — Unitrap II is available *now*.

Virtis Company P.O. Box V318  
Gardiner, N.Y. 12525

WORLD LEADER IN FREEZE DRYING



## UNITRAP II



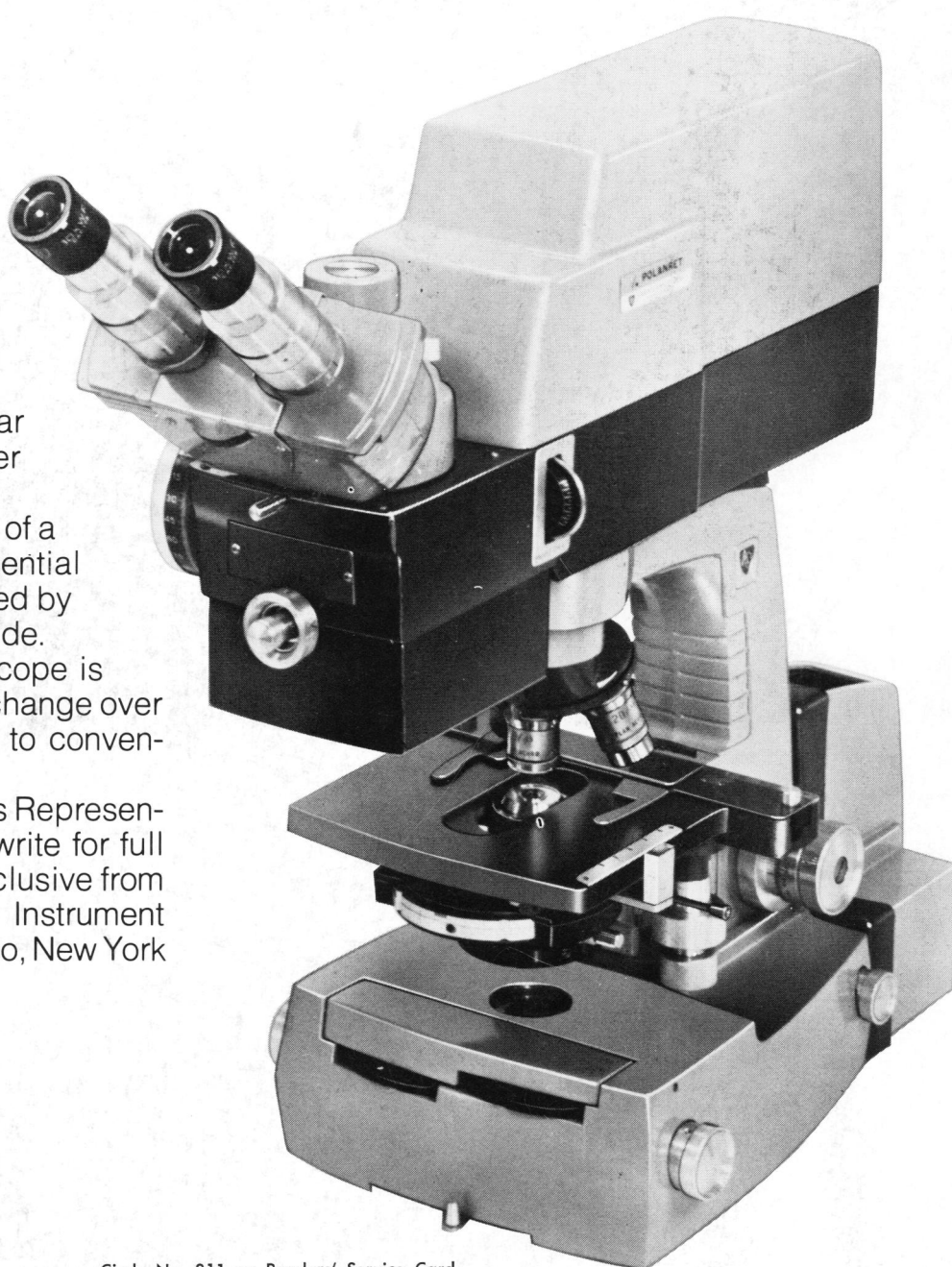
# See Phase Contrast from Dark to Bright and Everything in Between with the AO<sup>®</sup> POLANRET<sup>™</sup> Microscope

Now you can see living, unstained, transparent or low contrast specimens as never before. Continuously variable phase and amplitude contrast is a dramatic improvement over fixed phase contrast microscopes.

Detail can be made to appear progressively brighter or darker in enhanced contrast to your individual preference at a turn of a knob. Even obstructions to essential detail may be readily eliminated by varying the contrast or amplitude.

The AO POLANRET Microscope is easy to use and allows quick change over from variable phase contrast to conventional brightfield microscopy.

Ask your AO Dealer or Sales Representative for a demonstration or write for full color brochure on this new exclusive from American Optical, Scientific Instrument Division, Eggert Road, Buffalo, New York 14215.



**AO**<sup>®</sup>  
American  
Optical

Circle No. 311 on Readers' Service Card