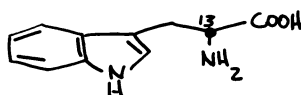


NEW ^{13}C , ^{15}N COMPOUNDS FROM KOCH ISOTOPES



TRYPTOPHAN-2- ^{13}C

Our research effort in synthetic methods recently made possible production of Tryptophan [$2\text{-}^{13}\text{C}$] in multi-gram quantities. It is now available at a sensible price, not a custom synthesis price.

This same effort is enabling us to supply a growing family of ^{13}C , ^{15}N , ^{18}O and D compounds as standard catalog items.

For stable isotope labeled compounds, deuterated solvents or custom synthesis, try Koch—you will find us responsive to your needs. Write for our new catalog, listing a number of currently interesting new compounds.

Koch Isotopes, Inc.

72 Rogers St., Cambridge MA 02142
Telephone: 617-868-4450

Circle No. 165 on Readers' Service Card

POPULATION: Dynamics Ethics and Policy

The ethical issues of choice . . . the interrelationships of population size and economic development . . . the consequences of population growth . . . such are the issues debated in *Population: Dynamics, Ethics, and Policy*, a new compendium now available from AAAS. It contains a selection of articles, research reports, and policy debates that originally appeared in *Science* during a 10-year time span beginning in 1966. Together these papers provide a close look at population research as conducted and reported by American scientists, as well as a glimpse at the continuing debate between those who advocate the dissemination of contraceptives and those who advocate more drastic methods of population control.

If you are involved in population research or policy planning, be sure to have a copy of this compendium in your library. Retail price \$12.95 casebound, \$4.95 paperbound; AAAS member price \$11.95 casebound, \$4.45 paperbound.

Send orders to Dept. PC-3
**AMERICAN ASSOCIATION for the
ADVANCEMENT of SCIENCE**
1515 Massachusetts Avenue, N.W.
Washington, D. C. 20005

1975. xii, 420 pp. \$22.50. The Child Psychology Series.

Subunit Enzymes. Biochemistry and Functions. Kurt E. Ebner, Ed. Dekker, New York, 1975. xii, 332 pp., illus. \$24.50. Enzymology, vol. 2.

Surface Physics. M. Prutton. Clarendon (Oxford University Press), New York, 1975. x, 118 pp., illus. \$7.75. Oxford Physics Series, 11.

Survival Distributions. Reliability Applications in the Biomedical Sciences. Alan J. Gross and Virginia A. Clark. Wiley, New York, 1975. xviii, 332 pp., illus. \$19.95. Wiley Series in Probability and Mathematical Statistics.

Tantalum Thin Films. W. D. Westwood, N. Waterhouse, and P. S. Wilcox. Academic Press, New York, 1975. xiv, 436 pp., illus. \$39.75.

The Telescope Handbook and Star Atlas. Neale E. Howard. Crowell, New York, ed. 2, 1975. xii, 226 pp. \$14.95.

Theories and Experiments in High-Energy Physics. Papers from a meeting, Coral Gables, Fla., Jan. 1975. Arnold Perlmutter and Susan M. Widmayer, Eds. Plenum, New York, 1975. x, 486 pp., illus. \$39.50. Studies in the Natural Sciences, vol. 9.

Theory of Motivation. Robert C. Bolles. Harper and Row, New York, ed. 2, 1975. viii, 568 pp., illus. \$15.95. Harper's Experimental Psychology Series.

3500 Years on One City Block. San Buenaventura Mission Plaza Project Archaeological Report, 1974. Roberta S. Greenwood, Ed. City of San Buenaventura Redevelopment Agency, Ventura, Calif., 1975. viii, 474 pp., illus. Paper, \$4.50.

Time Research. 1172 Studies. Irving Zelkind and Joseph Sprug. Scarecrow Press, Metuchen, N.J., 1974. vi, 248 pp. \$8.50.

Topics in Stochastic Processes. Robert B. Ash and Melvin F. Gardner. Academic Press, New York, 1975. viii, 324 pp. \$34.50. Probability and Mathematical Statistics, vol. 27.

To Save a Bird in Peril. David R. Zimmerman. Coward, McCann and Geoghegan, New York, 1975. 286 pp., illus. \$9.95.

Trace Elements in Soil-Plant-Animal Systems. Proceedings of a symposium, Glen Osmond, Australia, Nov. 1974. D. J. D. Nicholas and Adrian R. Egan, Eds. Academic Press, New York, 1975. xiv, 418 pp., illus. \$19.50.

Transform Techniques for Probability Modeling. Walter C. Giffin. Academic Press, New York, 1975. xiv, 234 pp. \$24.50. Operations Research and Industrial Engineering.

Treasures from the Earth. The World of Rocks and Minerals. Benjamin M. Shaub. Illustrated by Benjamin M. Shaub and Mary S. Shaub. Crown, New York, 1975. 224 pp. \$15.95. A Rutledge Book.

UNESCO and World Politics. Engaging in International Relations. James P. Sewell. Princeton University Press, Princeton, N.J., 1975. xii, 390 pp. \$18.50.

Unified Field Theory. Ramon Prasad. Geometria Press, London, 1975. vi, 70 pp. Paper, \$8.

The Use and Abuse of Social Science. Behavioral Research and Policy Making. Irving Louis Horowitz, Ed. Transaction Books, New Brunswick, N.J., ed. 2, 1975. xxvi, 510 pp. Paper, \$8.95.

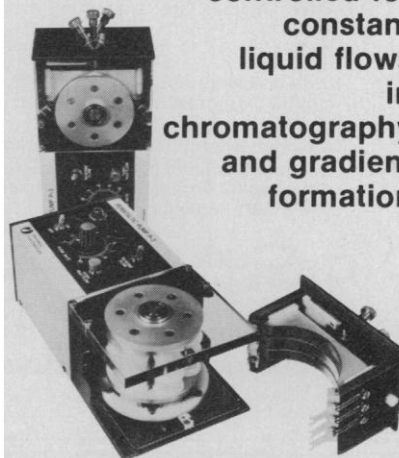
Villa Taina de Boqueron. The Excavation of an Early Taino Site in Puerto Rico. R. Christopher Goodwin and Jeffrey B. Walker. Inter American University Press, San Juan, P.R., 1975. x, 112 pp. + plates. Cloth, \$15; paper, \$6.50.

Wind Loading on Buildings. Angus J. MacDonald. Halsted (Wiley), New York, 1975. x, 220 pp., illus. \$23.50.

NEW

Pharmacia Peristaltic Pump P-3

A compact pump
electronically
controlled for
constant
liquid flows
in
chromatography
and gradient
formation



You can

- obtain three different flow rates at the same time through the three individually tensioned pumping channels
- change tubes in seconds with the snap-in cassette
- forget about pulsation thanks to the large driven rollers
- rely on a constant motor speed, electronically compensated for load and temperature
- use any flow rate between 0.6 and 400 ml/h per channel with the same gear box
- reverse the flow instantly
- push for maximum flow and clear pump lines rapidly

For free descriptive literature,
write or call:

Pharmacia Fine Chemicals Inc.
800 Centennial Avenue
Piscataway, New Jersey 08854
Phone (201) 469-1222



Pharmacia
Fine Chemicals

Circle No. 18 on Readers' Service Card

Calumet is



Supercold Freezers

- Complete line of supercold freezers including upright, bench top and low profile chest models.
- Frost resistant sealed and insulated inner doors on upright models.
- Chest models are countertop height for ease of access.
- Temperatures to -100°C ; capacities to 23 cubic feet.

Write today for our descriptive literature on freezers, incubators, growth chambers, and environmental rooms.

Calumet is professional photographic equipment. Calumet Scientific also offers you the highest quality professional photographic equipment at direct-from-the-factory savings.



**Calumet
scientific, inc.**

1590 Touhy Ave., Elk Grove Village, Ill. 60007
312/439-9330

New York
Suite 3502, Empire State Bldg.
10001, 212/695-4780
Los Angeles
434 North La Brea
90036, 213/933-5735

Circle No. 115 on Readers' Service Card

"Alprenolol [^3H]"

Current lot: 32 curies/mmol

Biologically active
High specific activity
Optically pure

For the investigation of β -adrenergic receptors as described by Lefkowitz, et al¹.

levo-Dihydroalprenolol [propyl-2, 3- ^3H]

25-50 Ci/mmol

Ethanol solution

NET-507 \$55/250 μCi \$133/1mCi \$400/5mCi

Also available:

NET-478 DL-Propranolol hydrochloride [$^3\text{H}(\text{G})$]

1. Lefkowitz, R.J., C. Mukherjee, M.G. Caron and M. Coverstone. J. Biol. Chem. 250, 13, 7/10/75.



New England Nuclear

549 Albany Street, Boston, Massachusetts 02118
Customer Service 617-482-9595

NEN Canada Ltd., Lachine, Quebec; NEN Chemicals GmbH, Dreieichenhain, W. Germany.

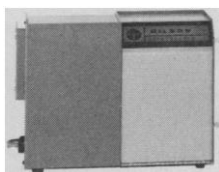
Circle No. 38 on Readers' Service Card

Gilson Spectra/Glo Fluorometer

—for liquid chromatography
column monitoring of
Fluorescamine-labeled compounds

- MUCH GREATER SENSITIVITY
- SPECIFICITY OF MEASUREMENT
- CHEMICAL STABILITY

More specific method of measurement because fewer compounds exhibit fluorescing property



More sensitive measurement than UV or visible absorption monitoring • **Fluorophors** resulting from Fluorescamine are stable for several hours • **As little as 10 to 40 nanograms** of protein can be detected • **Economically priced** at \$1375 • **Call or write Department SB, Gilson Medical Electronics, Inc., Box 27, Middleton, WI 53562 • Phone 608/836-1551 • Telex: 26-5478**

214

Circle No. 3 on Readers' Service Card

Challenging opportunity at the General Foods Technical Center to carry out absorption, distribution, biotransformation, excretion, and kinetic studies of food additives in laboratory animals.

Metabolism Specialist

We seek a PhD biochemist, pharmacologist or medicinal chemist with three to six years experience in the areas of drug or chemical metabolism and pharmacokinetics. Knowledge of radioisotopes techniques, separation and purification, isolation and structural analysis of metabolites is essential.

Position provides commensurate salary and full range of benefits. Our Westchester County location, just a short distance from New York City, offers very attractive living and working conditions. Reply fully with resume (please do not phone) and salary requirements. Address replies to: Personnel Associate,



**GENERAL FOODS
CORPORATION**

555 South Broadway
Tarrytown, New York 10591

An Equal Opportunity Employer, M/F

SCIENCE, VOL. 191

Personnel Placement

Only those employers and individuals who do not discriminate on the basis of race, sex, religion, age, color, or national origin should submit Personnel Placement advertising.

POSITIONS WANTED: 40¢ per word; use of Box Number counts as 10 additional words. Minimum charge \$10. Prepayment required. This rate applies to individuals only; personnel agencies, companies, colleges, and universities take display rate for all advertising.

DISPLAY (POSITIONS OPEN, MARKET PLACE, AND SO FORTH): \$130 per inch, minimum, per insertion (1 inch is equivalent to 12 lines of 48 characters each). Ads over 1 inch billed to nearest quarter inch. No charge for Box Number. Rates net. No agency commission allowed for ads under 4 inches. No cash discount. Prepayment required for foreign advertising. Purchase orders and billing information must accompany all other advertising.

COPY for ads must reach SCIENCE by Wednesday, 3-1/2 weeks before issue date (Friday of each week) requested. Send copy for all positions wanted ads and display ads under 5 inches to:

SCIENCE, Room 207
1515 Massachusetts Ave., NW
Washington, D.C. 20005

Send copy for display ads, 1/6 page and larger, to:

Scherago Associates, Inc.
11 West 42nd Street
New York, N.Y. 10036

BLIND AD replies should be addressed as follows:

Box (give number)
SCIENCE
1515 Massachusetts Ave., NW
Washington, D.C. 20005

POSITIONS WANTED

Anatomy teaching position with research opportunities desired by Canadian British-trained surgeon, recently visiting assistant professor of anatomy at a Canadian university; with interests in gross anatomy and neurobiological research. Box 12, SCIENCE. 1/16, 23, 30

Biochemist-Chemist. Ph.D. 1966. Broad research and teaching experience. Publications. Lipid biochemistry, neurochemistry, membranes, proteins. Research in diabetes and metabolism. Natural product chemistry. Strong background in analytical methodology and radioisotopes. For last 6 years on medical school faculty. Seeks challenging research/teaching position. Box 16, SCIENCE. X

Biochemist/Immunologist. Ph.D. Four years of postdoctoral training; research in immunology, bacterial endotoxins, cell membranes, protein and carbohydrate chemistry; publications; presently research associate at major institute; seeks teaching and/or research position. Box 17, SCIENCE. X

Biochemist/Medical Microbiologist. Ph.D./M.S., 2 1/2 years of postdoctoral; experienced in protein and myelin chemistry, electron microscopy, virology, brain organ culture, immunochemistry; 11 publications; desires teaching/research position. Interested in possible research collaboration with neurologists, neuropathologists interested in multiple sclerosis research. Box 18, SCIENCE. X

Immunobiologist/Immunopathologist. Ph.D. (pathology; minors, immunology and anatomical sciences), M.S. (medical microbiology and immunology), 2 1/2 years of postdoctoral experience. Seeks teaching and research position for 1 July 1976. Box 20, SCIENCE. 1/16, 23

Mammalian Cytogeneticist. Ph.D. (January 1976). Experience: karyology, banding, chromosome aberration analysis, clonal culture; graduate school teaching. Seeks postdoctorate or research position. Available immediately. Box 8, SCIENCE. X

POSITIONS WANTED

Building or remodeling a department? Six or seven faculty members (assistant and associate professor levels) at a leading Ivy League medical school seek positions either singularly or as a package. Broad teaching and research experience in biochemistry and biophysics. All are recipients of national awards and are recognized internationally. Overlapping areas of expertise include: cell biology; membrane structure and function; bioenergetics and photosynthesis; enzymology and protein structure; and magnetic resonance, spectrophotometric, fluorescence, and x-ray and neutron techniques. Box 19, SCIENCE. X

Mammalian Neurophysiologist/Computer Scientist. Ph.D. Broad background in theoretical as well as experimental studies of neural systems. Experienced in course development and program organization. Seeks challenging teaching/research position. Box 21, SCIENCE. 1/16; 2/6

Two Senior Research Scientists desire opportunity to expand research program on in vitro chemical carcinogenesis in a university or in a nonprofit or commercial laboratory. Have extensive publications, teaching experience, and excellent funding records. Box 22, SCIENCE. 1/16, 23

POSITIONS OPEN

ASSISTANT PROFESSOR OF BIOLOGY

The individual to be appointed must be prepared to teach our general bacteriology course and to participate in biochemistry in addition to courses in vertebrate morphology /or/ immunology /or/ parasitology /or/ medical microbiology. Ph.D. required. The position is not expected to lead to tenure. Appointment will be effective September 1976. Send curriculum vitae, three letters of reference, and representative reprints to: **Frederic A. Giere, Department of Biology, Lake Forest College, Lake Forest, Illinois 60045. Lake Forest College is an Equal Opportunity Employer and applications from minority groups and women are encouraged.**

ASSISTANT PROFESSORSHIPS Department of Zoology Oregon State University

This Department will make appropriate additions to its faculty starting 15 September 1976. Candidates must show evidence of ability and intent to initiate and sustain a productive, high-quality research program and show enthusiasm and skill for teaching zoology at undergraduate and graduate levels. Postdoctoral research and experience in teaching and solicitation of grant support are desirable.

Intertidal Ecologist with research accomplishments in field studies of marine populations and communities. Teach courses in marine ecology and invertebrate zoology and develop course in area of specialty.

Functional Vertebrate Morphologist with research accomplishments in functional morphology. Teach comparative vertebrate anatomy and vertebrate structure and develop graduate courses in area of specialty.

Comparative Physiologist with background in sensory physiology, neurophysiology, or physiology of immune systems. Develop courses in the applicant's area of expertise in consultation with existing faculty.

Cell Biologist with research experience in areas such as cell ultrastructure, cell cycle analysis, or molecular cytology. Teach courses in cell structure and function. Preference given to applicants desirous of assuming stewardship of existing electron microscope facility.

Developmental Biologist with research experience and interest in (i) regulation of cell differentiation or morphogenesis, preferably at the gene level, or (ii) development of mechanisms underlying behavioral responses. Share teaching in vertebrate embryology and developmental biology and design course in area of expertise.

Oregon State University is an Equal Opportunity and Affirmative Action Employer. We invite applications from all qualified individuals, especially women and members of minority groups.

The following must be received by 29 February 1976: curriculum vitae, reprints, brief description of research and teaching interests, and at least three letters of recommendation.

Search Committee
Department of Zoology
Oregon State University
Corvallis, Oregon 97331

POSITIONS OPEN

ASSISTANT PROFESSORSHIPS

Division of Cell and Molecular Biology
State University of New York at Buffalo

We are expecting two additions to the faculty in September 1976. Candidates should have at least 2 to 3 years of postdoctoral experience in their specialty, exhibit promising capability for the establishment of independent research programs, and have ability and enthusiasm to develop undergraduate and graduate courses in their areas.

Cellular Immunology. Ph.D. degree and experience in the field of immunology including cell surface antigens, membrane biology, theory of antibody formation, and so forth.

Molecular Evolution. Ph.D. degree and experience in comparative studies of protein and nucleic acid structures and their genetic control.

Applicants should provide curriculum vitae, including concise description of their research and teaching background, current interests, and the names of three referees from whom references can be requested.

Send materials to:

Dr. O. P. Bahl, Director
Division of Cell and Molecular Biology
102 Cary Hall
State University of New York at Buffalo
Buffalo, New York 14214

State University of New York is an Equal Opportunity and Affirmative Action Employer.

ASSISTANT PROFESSOR, BIOCHEMISTRY

The Department of Biochemistry at Michigan State University has an opening for an assistant professor with research interests in an area of plant biochemistry or in analytical biochemistry relevant to research in agriculture. Candidates should hold the Ph.D. or equivalent degree and have had some postgraduate experience. They will be expected to establish an independent program of research in the area of their specialty and to teach in the undergraduate and graduate programs of the Department.

Applicants should send a complete curriculum vitae, the names of at least three references, and a brief statement concerning their future research interests to **Dr. Robert Barker, Chairman, Department of Biochemistry, Michigan State University, East Lansing, Michigan 48824.**

Michigan State University is an Equal Opportunity/Affirmative Action Employer.

ASSISTANT PROFESSORSHIPS BIOCHEMISTRY AND MOLECULAR BIOLOGY

Applications are solicited for two faculty positions at the assistant professorship level in the Department of Biochemistry and Molecular Biology to begin after 1 June 1976. Candidates are being sought with strong backgrounds in biochemistry and with research interests in the following general areas: (i) the molecular biology of eukaryotic systems and (ii) the biochemistry of cell surface components. Responsibilities will include teaching medical students and graduate students and organizing an independent research program. Applicants should submit curriculum vitae and supporting material by 1 February 1976 to **Dr. J. A. DeMoss, Department of Biochemistry and Molecular Biology, University of Texas Medical School, 6400 West Cullen, Houston, Texas 77025. An Equal Opportunity/Affirmative Action Employer.**

UNIVERSITY OF CALIFORNIA SANTA BARBARA

ASSISTANT PROFESSOR OF PHYSICS to participate in and possibly to supervise our master's program in scientific instrumentation. The candidate should have broad familiarity with modern integrated circuits and transducers. Familiarity with medical, oceanographic, or materials science instrumentation is desirable since many thesis projects are in these areas.

The candidate will be expected to conduct research leading to publications. We will give preference to proposed research in scientific instrumentation, medical physics, surface physics, molecular physics, or solid state physics. Candidates should send a curriculum vitae and a brief outline of proposed research. In addition, they should have three letters of reference sent to **Paul Barrett, Chairman of the Search Committee, Physics Department, University of California at Santa Barbara, Santa Barbara, Calif. 93106.** The deadline for receipt of all materials is 15 February 1976.

An Equal Opportunity Employer/Affirmative Action Employer.

POSITIONS OPEN

BIOLOGY, ASSISTANT PROFESSOR. Teach introductory microbiology to upperclassmen. Second course in own specialty. Assist introductory biology to total 12 contact hours weekly. Ph.D. or equivalent. Apply with credentials by 1 March to **Dr. G. R. Horst, State University of New York, Box 620, Potsdam, N.Y. 13676.** *An Equal Opportunity/Affirmative Action Employer.*

The University of San Diego, an independent Catholic university, is seeking qualified applicants for the positions of:

1) **ASSISTANT PROFESSOR OF DEVELOPMENTAL BIOLOGY** with adjunct responsibilities in the teaching of human anatomy, and

2) **TECHNICAL ASSISTANT**, preferably someone with an M.S. degree in biology who has an aptitude for the care of laboratory instruments and is willing to help teach in undergraduate laboratories.

Applicants should submit their curriculum vitae and at least three letters of reference. In addition, a statement of teaching and research interests is required of applicants for the professorial position. Applications should be filed with the **Chairman, Department of Biology, University of San Diego, Alcalá Park, San Diego, Calif. 92110.** Applications will be accepted until the positions are filled. *University of San Diego is an Equal Opportunity Employer.*

The University of Delaware invites applications for a position as **ASSISTANT PROFESSOR IN PHYSICAL CHEMISTRY.** Preference will be for those with research programs in the physical chemistry of surfaces or the physical chemistry of polymers. However, the specific area is less important than the candidate's promise for making significant contributions to the research and teaching missions of the department. Candidates should submit curriculum vitae, bibliography, a detailed research proposal (including an estimate of the costs of the proposed research), and the names of three references to: **Professor Joseph H. Noggle, Physical Chemistry Search Committee, Department of Chemistry, University of Delaware, Newark, Delaware 19711.** Applications should be sent by 10 February 1976 to assure consideration. *The University of Delaware is an Equal Opportunity/Affirmative Action Employer.*

The Department of Biological Science, California State University, Fullerton, is seeking applicants for three positions to begin 1 September 1976.

CELL PHYSIOLOGY: Capabilities in electron microscopy are desirable.

MARINE INVERTEBRATE ZOOLOGY: Experience in marine ecology or with marine zooplankton is preferable.

PLANT PHYSIOLOGY: Candidates should be active in the area of organismic plant physiology.

All candidates will be expected to conduct an active research program and advise graduate students in their area of specialization. Teaching duties will include upper-division and graduate courses in the area of specialization and participation in lower-division courses.

Positions will be filled preferentially at the assistant professor level although consideration will be given to all qualified candidates. *California State University, Fullerton, as an Equal Opportunity Employer, is committed to an Affirmative Action Policy which involves positive action in the hiring of ethnic minorities and women.* Applicants should submit by 16 February a curriculum vitae, reprints of published works, and a statement of teaching and research interests, as well as arrange to have three letters of recommendation forwarded to: **Dr. Steven N. Murray, Acting Chairman, Department of Biological Science, California State University, Fullerton, California 92634.**

DEPARTMENT OF BIOLOGY BOSTON UNIVERSITY MICROBIOLOGIST AND GENETICIST

One position in each of the broad areas of microbiology and genetics open at the rank of assistant professor. Teaching at the introductory, advanced, and graduate levels required. Preference given to candidates with teaching experience, postdoctoral training, and publications. Please submit a curriculum vitae and three letters of recommendation to **Dr. Ernest H. Blaustein, Chairman, Departmental Search Committee, Department of Biology, Boston University, 20 Cummings Street, Boston, Massachusetts 02215.** *The University is an Equal Opportunity/Affirmative Action Employer.*

POSITIONS OPEN

ASSISTANT PROFESSOR OF PHYSIOLOGY

The Department of Physiology is seeking a neurobiologist, preferably one whose work relates to function of the vertebrate central nervous system. The position involves medical and graduate student teaching, and makes available considerable time for research.

Please send curriculum vitae, bibliography, and names and addresses of three references to:

**Chairman
Neurobiologist Search Committee
Department of Physiology
Yale University School of Medicine
333 Cedar Street, B-121 SHM
New Haven, Conn. 06510**

Applications from women and members of minority groups are encouraged. An Equal Opportunity/Affirmative Action Employer.

Applications should be received before 15 February 1976.

FACULTY POSITION

The Department of Physiology has a faculty position available for which applications are invited. Preference will be given to candidates holding an M.D. or Ph.D. degree with experience and interest in membrane transport processes. Faculty rank (assistant, associate, or full professor) is negotiable depending upon qualifications. Field of interest can include theoretical, artificial model, cellular, or epithelial membrane transport systems.

Opportunities are available for both collaborative and independent research and for graduate and medical student teaching.

Please send complete curriculum vitae including publications and the names and addresses of three references to: **Chairman Membrane Transport Search Committee, Department of Physiology, Yale University School of Medicine, 333 Cedar Street, SHM B-106, New Haven, Conn. 06510.**

Applications from women and members of minority groups are encouraged. An Equal Opportunity/Affirmative Action Employer.

Applications should be received before 15 February 1976.

ASSISTANT PROFESSOR SECTION OF THERAPEUTIC RADIOLOGY UNIVERSITY OF CALIFORNIA, IRVINE ORANGE COUNTY MEDICAL CENTER

Applications are invited for a post at the assistant professor level in the Section of Therapeutic Radiology at the University of California, College of Medicine, Irvine. This will be a full-time position with responsibilities for teaching at undergraduate and graduate levels and for clinical research and service in the Orange County Medical Center.

The applicant should be a Board-certified radiologist preferably with a minimum of 3 years of experience in therapeutic radiology in a university medical school, and preferably be prepared to engage in ongoing research and to develop new research protocols.

Applications from all qualified candidates are welcome; minorities and women are encouraged to apply.

Applications, including a short biography, and copies of any publications should be sent to: **H. Vermund, M.D., Professor of Radiology, Orange County Medical Center, Section of Therapeutic Radiology, 101 City Drive South, Orange, California 92668.**

Closing date: 15 February 1976.

DEPUTY HEAD OF PHARMACOLOGY

A leading Spanish pharmaceutical company situated in the Mediterranean city of Barcelona invites applications from senior pharmacologists for this post in the expanding Pharmacology Department of our Research Division. The person we appoint will have a good honors degree in an appropriate discipline, a Ph.D. in pharmacology, and extensive experience in the pharmaceutical industry.

Knowledge of Spanish is not initially essential but the successful candidate must be prepared to acquire adequate fluency in this language over a period of 2 years.

The initial salary will be within the range of \$18,000 to \$20,000 per year, tax-free, but could be subject to negotiation in exceptional circumstances. Transportation and resettlement expenses will be paid.

Applications in writing, with full curriculum vitae, should be addressed to:

**LABORATORIO
Apartado de Correos 1583
Barcelona, Spain**

POSITIONS OPEN

ASSISTANT PROFESSOR—PHYSIOLOGY: Ph.D. required with strong physiology background. Must have leadership potential to develop an outstanding research program in stress physiology and management of dairy cattle. Will be involved in graduate and undergraduate teaching. Applicant should send résumé, including list of publications, transcript of academic training, summary of teaching and research experience, and names of five references to **Dr. H. H. Van Horn, Chairman, Dairy Science Department, University of Florida, Gainesville, Florida 32611.** *An Equal Opportunity Employer.*

BIOMEDICAL ANATOMIST

The Department of Biomedical Anatomy of the University of Minnesota School of Medicine at Duluth is seeking a professional anatomist at the assistant professor level who is interested in and capable of teaching human microscopic and gross anatomy. This appointment will begin on or about 1 July 1976. The individual will be expected to teach anatomy to medical and undergraduate science students. Candidates should be capable of establishing or continuing an independent and high-quality research program. To be strongly considered, an applicant should have interests and experience in transmission and scanning electron microscopy. A curriculum vitae and a detailed statement of academic/research interests should be submitted by 15 February 1976 to **T. J. Leppl, Department of Biomedical Anatomy, University of Minnesota School of Medicine, 2205 East 5 Street, Duluth, Minnesota 55812.** *The University of Minnesota is an Equal Opportunity/Affirmative Action Employer.*

CHAIRMAN OF PATHOLOGY: Major midwestern medical school seeks a head of pathology for a large university-affiliated medical center. Progressive teaching program. Excellence is our major concern. Initiative and organizational ability are indispensable assets. Salary and academic rank are negotiable.

Box 14, SCIENCE

CLINICAL PHARMACIST: The University of Alabama, College of Community Health Sciences, is seeking a clinical pharmacist having an advanced degree and experience or interest in "team-oriented" medical education. Instructional responsibilities will be for residents, clinical medical student rotations, and fifth-year pharmacy students. Forward résumés to **F. D. Scutchfield, Box 6291, University, Alabama 35486,** by 1 February 1976. *The University of Alabama is an Affirmative Action/Equal Opportunity Employer.*

CURATOR OF BIRDS

Lincoln Park Zoological Gardens, Chicago, Illinois. To be responsible for the bird collection. Send curriculum vitae to

**Dr. Lester E. Fisher
Lincoln Park Zoo
100 West Webster Avenue
Chicago, Illinois 60614**

The National Science Foundation is seeking qualified applicants for 2-year appointments to the positions of **DIRECTOR, DIVISION OF ASTRONOMICAL SCIENCES; DIRECTOR, DIVISION OF ATMOSPHERIC SCIENCES; AND DIRECTOR, DIVISION OF OCEAN SCIENCES.** The incumbents of these positions will be expected to exercise scientific leadership in guiding the administration of the Foundation's support of research in their disciplines, and to play a major role in developing input from the U.S. scientific community in the planning of future Foundation support of research in these fields.

Applicants must be recognized authorities in astronomy, oceanography, or the atmospheric sciences, and must have demonstrated national and international leadership in their field of expertise. The positions will have an initial tenure of 2 years and carry salaries of \$37,800 per year. Persons who are in a position to take a 2-year leave of absence from their current scientific or science management responsibilities may find these appointments both challenging and interesting.

Those interested in being considered for such positions should forward current résumés to the **Assistant Director for Astronomical, Atmospheric, Earth, and Ocean Sciences, National Science Foundation, Washington, D.C. 20550.** Applications are being solicited from qualified individuals in the National Science Foundation, the government, and the scientific community at large. *The National Science Foundation is an Equal Employment Opportunity/Affirmative Action Employer.*

POSITIONS OPEN

DEAN OF THE LEWIS COLLEGE OF SCIENCE AND LETTERS OF THE ILLINOIS INSTITUTE OF TECHNOLOGY (IIT)

Nominations and applications are invited for the position of Dean of IIT's largest college. With a combined faculty of 115, the college comprises the Departments of Biology, Chemistry, Computer Science, Mathematics, Physics, Humanities, Social Sciences, and Psychology. A wide range of undergraduate and graduate programs is offered in every department. The dean will be active in developing a highly qualified faculty; administering, developing, and evaluating academic programs at all levels; and developing and allocating resources to support the college's programs of education and research.

Qualifications for the position include national recognition beyond that required to merit a full professorship in one of the academic disciplines represented in the College of Science and Letters. In addition, the successful candidate should have administrative experience in which leadership has been amply demonstrated.

Inquiries, applications, and nominations for the deanship are invited. Applicants should send a résumé and the names of at least three references to:

Professor Harold Weinstock
Chairman, Search Committee
for Dean of the Lewis College
Department of Physics
Illinois Institute of Technology
Chicago, Illinois 60616
Telephone: 312-567-3387

IIT is an Equal Opportunity and Affirmative Action Employer.

DIRECTOR CENTER FOR GREAT LAKES STUDIES THE UNIVERSITY OF WISCONSIN- MILWAUKEE

For this position, to be filled in September 1976, the principal qualification sought is an outstanding record of (i) innovative research in one or more branches of lake or ocean science or technology and (ii) proven leadership in research management, including interdisciplinary endeavors. Duties will be academic (teaching and research) and administrative, including scientific leadership and development of programs enabling faculty and students university-wide to engage in research in natural, social, and interdisciplinary sciences related to the Great Lakes. The director will also have administrative responsibility for the Great Lakes Research Facility (regional laboratories and research vessel base) on behalf of the whole University of Wisconsin system. Salary will be commensurate with qualifications and duties.

Send applications or nominations before 1 April 1976 to:

Chairman, Search Committee
Center for Great Lakes Studies
The University of Wisconsin-Milwaukee
Milwaukee, Wisconsin 53201
Telephone: 414-963-4196
An Equal Opportunity Employer

DIRECTOR OF IMMUNOPATHOLOGY M.D. OR Ph.D.

Highly rewarding career opportunity with one of the largest worldwide research institutes. Position involves responsibility for three or four Ph.D.-supervised immunology sections; it requires a proven record of scientific achievement plus the leadership ability necessary to run a creative and enthusiastic department. This is a challenging position, offering scientific latitude as well as the opportunity for publication and academic affiliation. Please send résumé including salary requirements to:

Box 515, SCIENCE

Equal Opportunity Employer M/F

POSITIONS OPEN

DEVELOPMENTAL NEUROBIOLOGIST

The Department of Anatomy, Case Western Reserve University Medical School, is recruiting for a full-time faculty position at the assistant or associate professor level to begin September 1976 or before. Candidates must have a Ph.D. and/or M.D. and postdoctoral experience. Neurobiologists now in the anatomy department use techniques of anatomy, electrophysiology, and biochemistry. Their interests include development, trophic functions, axonal transport, physiologic basis of plasticity and learning in invertebrates, and regeneration. Successful applicant would be expected to launch a research program and to teach in the Medical School and in developmental and neurobiology graduate courses. Please send curriculum vitae, relevant papers (including dissertation summary), statement of research plan and teaching interests, and three letters of recommendation to **Dr. Norman Robbins, Chairman of Search Committee for Developmental Neurobiologist, Department of Anatomy, Case Western Reserve University, Cleveland, Ohio 44106. An Equal Opportunity/Affirmative Action Employer.**

DIRECTOR OF MORPHOLOGY LABORATORY, UCLA. Division of Head and Neck Surgery (otolaryngology), with experience in the field of inner ear ultrastructure, to teach students and residents and conduct research in the structure and function of inner ear receptors. Send curriculum vitae and the names of three references to **Paul H. Ward, M.D., Chief, Division of Head and Neck Surgery, University of California, Los Angeles, California 90024. UCLA is an Equal Opportunity/Affirmative Action Employer.**

EXPERIMENTAL PSYCHOLOGISTS. The Psychology Department, Northeastern University (Boston, Mass. 02115) is seeking the three best experimental psychologists who are interested in joining its ranks beginning fall 1976. The candidates will normally have expertise in quantitative methods and computer applications; they will be expected to contribute to undergraduate and graduate instruction, to pursue a program of research, and to supervise doctoral students. The candidate's interests should relate to one or more current departmental foci in learning and behavioral analysis, sensation and perception, neuropsychology, psycholinguistics, and personality. Some specializations of particular interest to the Department in this year's search are perception and psychophysics, language and communication, social psychology, and personality. The rank and salary of the appointment are negotiable. A brochure describing the faculty of the Department and their research is available on request. Interested scholars are invited to send curriculum vitae to **Harlan Lane, Chairman. We are an Equal Opportunity/Affirmative Action Employer.**

AMERICAN HEALTH FOUNDATION seeks the following professionals for new research facility. The Naylor Dana Institute for Disease Prevention, 30 miles north of New York City.

POSTDOCTORAL BIOCHEMIST/PHARMACOLOGIST for metabolism studies of drugs and chemicals. Salary open. Position available immediately. Send curriculum vitae to: **Personnel Department C, American Health Foundation, 1370 Avenue of the Americas, New York, New York 10019.**

POSTDOCTORAL BIOLOGIST for 2 years' work on action of chemical carcinogens on cultured epithelial cells, experienced in cell cultures. Salary open. Position available immediately. Send curriculum vitae to: **Personnel Department D, American Health Foundation, 1370 Avenue of the Americas, New York, New York 10019.**

An Equal Opportunity Employer

PREDOCTORAL GRADUATE ASSISTANT-SHIPS. Applications are invited from qualified students for graduate study in the basic health sciences. Programs of study include anatomical sciences, microbiology, oral biology and pathology, pathology, pharmacological sciences, and physiology and biophysics. Prerequisites: B.S. degree in biological or one of the physical sciences, with "B" average or better. Assistantships are available with minimum stipends of \$4200 plus full tuition waiver. Inquiries should be addressed to: **Dr. Madeline Fusco, Dean, School of Basic Health Sciences, Health Sciences Center, State University of New York at Stony Brook, Stony Brook, New York 11794. Full consideration will be given to all qualified candidates in accordance with the University's Affirmative Action Program.**

POSITIONS OPEN

STANFORD UNIVERSITY DIRECTOR, HOPKINS MARINE STATION

A search initially advertised in *Science* during 1973 has been reactivated. Candidates should be outstanding biological scientists with nationally recognized excellence in scholarship involving marine organisms, a commitment toward quality teaching at undergraduate and graduate levels, a keen desire to remain active in research, and a capacity to recruit and to lead an expanded faculty at HMS. We are anxious to receive applications from women and members of minority groups. Persons who applied earlier and desire to have their files updated may send additional materials. Director will also be appointed professor of biology in the department of biological sciences.

Deadline for application is 15 February 1976. Send curriculum vitae, reprints of major publications, and list of references to: **Dr. Donald Kennedy, Department of Biological Sciences, Stanford University, Stanford, Calif. 94305.**

ELECTRON MICROSCOPY TECHNICIAN, experienced in embedding and sectioning of animal and human tissues. To start immediately. Salary negotiable. References necessary. Contact **F. E. Cuppage, M.D., University of Kansas Medical Center, Rainbow Boulevard at 39 Street, Kansas City, Kansas 66103. An Equal Opportunity/Affirmative Action Employer.**

FACULTY POSITION SCHOOL OF PUBLIC HEALTH

To develop a new program in research and education in quality assurance and/or health planning. Rank and salary dependent on experience. Should be able to coordinate and lead research program with several research disciplines and with clinicians as well as teach graduate students. *Minority or women candidates are encouraged to apply.*

Educational and work preferences: M.D. degree with research in health services and administrative experience.

Send curriculum vitae to:

Robert J. Haggerty, M.D.
Roger I. Lee Professor of Public Health
(Health Services and Pediatrics)
Harvard School of Public Health—
Harvard Medical School
677 Huntington Avenue
Boston, Massachusetts 02115

TWO FACULTY POSITIONS

AQUATIC BIOLOGIST/LIMNOLOGIST with research potential in water quality interpretation and some additional training with benthic organisms. **ANIMAL BEHAVIORIST/ETHOLOGIST** with training and ability to teach introductory mammalian physiology. For either position, should have strong interest in teaching natural resource conservation and/or natural history courses. Both positions (Ph.D. required) available fall 1976 as assistant professors (tenure track). Expected to direct master's programs in their specialty. Applicants should send résumés, transcripts, and research interests by 1 March 1976 to **Dr. L. Koehler, Chairman, Department of Biology, Central Michigan University, Mt. Pleasant, Michigan 48859. Central Michigan University is an Equal Opportunity/Affirmative Action Employer.**

GENETICIST

The Department of Biology, Syracuse University, anticipates an opening for a geneticist at the level of assistant or associate professor for fall 1976. Ph.D. required. Postdoctoral experience desirable; up to 3 years of prior teaching will be credited toward tenure. Three-year renewable appointment. Appointee is expected to teach undergraduate and graduate courses in genetics and conduct a vigorous research program. Submit three letters of recommendation and a short synopsis of research plans to **Search Committee, Department of Biology, 206 Lyman Hall, Syracuse University, Syracuse, New York 13210, by 31 January 1976. An Affirmative Action/Equal Opportunity Employer.**

HEAD, VETERINARY RESEARCH LABORATORY

D.V.M., Ph.D. to head the Veterinary Research Laboratory and the Department of Veterinary Science at Montana State University. Please send curriculum vitae and references to **L. L. Myers, Veterinary Research Laboratory, Montana State University, Bozeman, Montana 59715. An Equal Opportunity/Affirmative Action Employer.**

POSITIONS OPEN

UNIVERSITY OF MELBOURNE DEPARTMENT OF PHYSIOLOGY EXPERIMENTAL PSYCHOLOGIST SENIOR RESEARCH OFFICER

The Sensory Processes Laboratory of the Department of Physiology is working on the coding and transmission of stimulus information within somatic afferent pathways of the primate. This investigation is based on parallel neurophysiological studies in monkeys and psychophysical studies on human subjects. The laboratory contains two neurophysiology laboratories and two psychophysics laboratories serviced by a time-sharing computer system.

The appointee will be responsible for the design and execution of psychophysical experiments on cutaneous discriminative behavior in human subjects, and will work in collaboration with Professor I. Darian-Smith, Dr. K. Johnson, and Dr. A. W. Goodwin. Previous experience with psychophysical investigation is essential, and experience with a laboratory computer is desirable. It is anticipated that the appointee will have a Ph.D. degree or equivalent qualification.

Salary range up to \$A13,365 per annum depending on experience and qualifications.

Date of appointment: 1 March 1976 or as soon as possible thereafter.

Further information is available from Professor I. Darian-Smith, Department of Physiology, University of Melbourne, Parkville, Victoria, 3052, Australia.

Details of application procedure and conditions of appointment are available from the Registrar, University of Melbourne, Parkville, Victoria, 3052, Australia. Applications referring to Position Number 536300 should be addressed to the Registrar and include curriculum vitae, details of qualifications, and research experience. Applications close 6 February 1976.

GENETICIST

Arizona State University invites application for a position as full professor in the Department of Zoology. We are seeking an experienced educator with significant research accomplishments and reputation in eukaryotic genetics. The Department has a broad range of research facilities. Salary negotiable. Address inquiries by 15 March 1976 to:

Dr. David I. Rasmussen
Chairman of the Search Committee
Department of Zoology
Arizona State University
Tempe, Arizona 85281

Arizona State University is an Equal Opportunity/Affirmative Action Employer.

HORTICULTURIST/PLANT PHYSIOLOGIST

Research position, assistant or associate professor, University of Idaho Research and Extension Center, Parma. Requirements include but are not limited to Ph.D. in plant sciences (emphasis in horticulture and plant physiology). Responsible for initiating and leading research in vegetable and vegetable seed crops with primary emphasis on solving grower problems to include crop rotation, mineral nutrition, and plant/soil water relations. Final date for receiving applications and supportive materials is 15 March 1976. Request application forms from **W. J. Kochan, University of Idaho Research and Extension Center, Parma, Idaho 83660**. When applying refer to R-1-PSS.

The University of Idaho is an Equal Opportunity/Affirmative Action Employer.

The Psychology Department at the University of Illinois, Urbana-Champaign Campus, is seeking a **DEPARTMENT HEAD** for fall 1976. The department has about 60 faculty, and is organized in seven divisions (Biological; Clinical; Developmental; Experimental; Personality and Social Ecology; Quantitative; and Social), each of which has active research and instructional programs at the undergraduate, master's, and doctoral levels.

Candidates must have demonstrated scholarly achievement and some administrative experience.

Applications will be considered until 1 March 1976. Applications, inquiries, and nominations should be addressed to:

Professor Neal Rothman
Chairman, Search Committee
376 Altgeld Hall
University of Illinois
Urbana, Illinois 61801

The University of Illinois is an Equal Opportunity/Affirmative Action Employer.

POSITIONS OPEN

UNIVERSITY OF MICHIGAN DEPARTMENT OF SURGERY INSTRUCTOR

Candidate must have had 1 year of basic surgical training in an accredited hospital in Canada or the United States, and has to have had 5 years of continuous neurosurgical training in one neurosurgical training program. Candidate must have demonstrated some teaching experience, not only in neurosurgery but in the neuroscience area such as neuroanatomy or neuropathology. The applicant must be a well-organized, effective neurosurgeon who has demonstrated ability to treat all types of intracranial, spinal, and peripheral nerve lesions. He/she must provide exemplary patient care, an ability to teach medical students and residents, and be able to do independent research in the Neurosurgical Laboratory. Training-wise the applicant must be eligible to eventually take the American Board of Neurosurgery examination for accreditation. Code #300FO. Send résumé to **Box 23, SCIENCE**.

A Nondiscriminatory, Affirmative Action Employer

MANAGER OR DIRECTOR MOLECULAR VIROLOGY LABORATORY

Experience in viral oncology
essential

Send résumé to:

Dr. Vincent Groupé
Scientific Director
Life Sciences Research Laboratories
2900 72 Street North
St. Petersburg, Florida 33710
An Equal Opportunity Employer

MEDICAL ENTOMOLOGIST

A permanent appointment in medical entomology at the assistant or associate professor level is available on or about 1 August 1976 for an outstanding scientist with proven abilities in any subdiscipline of medical entomology. Applicants must have a Ph.D. degree with postdoctoral or equivalent experience. Duties include teaching a one-semester course in medical entomology for undergraduates and graduates, a course in an area of specialization, and research. Salary is negotiable between \$14,000 and \$16,000 depending upon experience. Submit curriculum vitae, publications, and plans for teaching and research by 15 February 1976 and have at least three letters of reference sent to **Dr. P. W. Price, Chairman, Search Committee, Department of Entomology, 320 Morrill Hall, University of Illinois, Urbana, Illinois 61801. Telephone: 217-333-2910. The University of Illinois is an Affirmative Action/Equal Opportunity Employer and encourages applications from members of minority groups and women.**

MICROBIOLOGIST/BIOCHEMIST RESEARCH ASSOCIATE. Grant-supported position for Ph.D. with experience in microbial genetics-nucleic acid chemistry to participate in a study of nitrogen fixation. Proposal development and team effort. Send curriculum vitae, publications, two letters of recommendation, interests, and background to **Dr. E. C. Juenge, Fort Valley State College, Box 609, Fort Valley, Georgia 31030. An Equal Opportunity/Affirmative Action Employer.**

NATURAL SCIENTIST with strong interest in technology assessment or science policy to fill key position in the Clark Program on Science, Technology and Society. The Program currently involves a unique science-based undergraduate major and substantial research by collaborating faculty in physics, geography, chemistry, biology, and economics. Expected of the successful candidate are: (i) teaching or coordination of problem oriented courses on the undergraduate level and (ii) initiation of multidisciplinary research at the graduate level, linked to faculty at Clark or nearby institutions. The candidate should have an established research and publication record in a disciplinary or multidisciplinary context and the ability to find extramural funding. The appointment is planned at the associate professor level and carries with it the expectation of tenure. Please send a letter of intent, résumé, and several references to **C. Hohenemser, Chairman, Program on Science, Technology and Society, Clark University, Worcester, Mass. 01610.**

POSITIONS OPEN

NEUROBIOLOGIST

Applications are invited from neurobehavioral biologists to carry out research in a long-term, ongoing, interdisciplinary program project dealing with maternal protein restriction and mental retardation. The person chosen will head the section on neurobehavior and is expected to interact closely with the neurophysiology and neurochemistry sections. Accordingly, scientists with a background not only in behavior, but also in other neurobiological disciplines, are especially encouraged to apply. This is a full-time research position dealing with the developmental neurobiological aspects of mental retardation. Ample opportunity exists at the Worcester Foundation for carrying out independent research projects of a related nature. Send curriculum vitae and a brief description of research experience, together with three letters of recommendation to: **Ashton Gibbons, Ph.D., Director of Personnel, Worcester Foundation for Experimental Biology, 222 Maple Avenue, Shrewsbury, Massachusetts 01545.**

An Equal Opportunity/Affirmative Action Employer

OCCUPATIONAL RESEARCH

The National Institute for Occupational Safety and Health has a vacancy in the Cincinnati laboratory for a person trained in biomechanical engineering, ergonomics, or a related discipline to participate in research on safety in materials handling and in machine operation. This involves planning such research and conducting laboratory and field studies to develop methods for job analyses. This is a career position in the Federal Civil Service, starting salary \$16,255. Liberal fringe benefits apply. Candidates must have professional experience and/or advanced education directly related to these duties. Please describe pertinent research publications and assignments. Send applications to **Mr. Jon Ruse, NIOSH Personnel Office, Federal Office Building, Room 9510, 550 Main Street, Cincinnati, Ohio 45202.**

An Equal Opportunity Employer

PEDIATRIC ORTHOPEDIST

Children's Hospital of Michigan and Wayne State University invite applications for a position now open as Chief of Pediatric Orthopedic Surgery at Children's Hospital.

Candidates may contact **Robert H. Gregg, M.D., President, Children's Hospital of Michigan, 3901 Beaubien, Detroit, Michigan 48201. Telephone: 313-494-5303 or 313-884-6843.**

An Equal Opportunity/Affirmative Action Employer

Immediate opening for **FOUR RECENT Ph.D.'s** in biochemistry, with experience in lipids, enzymology, DNA damage and repair, intermediary carbohydrate metabolism or chemical transformation of cells in culture. Salary negotiable. *We are an Equal Opportunity Employer and encourage applications from women and minority groups.*

Send curriculum vitae and three references to:

Ronald W. Hart, Director
Radiation Research Division
Ohio State University Hospitals
410 West 10 Avenue, N-212
Columbus, Ohio 43210

PHYTOPLANKTON BIOCHEMIST/ECOLOGIST

required to supervise research programs into the mechanism of photosynthesis in marine phytoplankton. Laboratory experience of algal metabolism and enzymology and field experience with natural phytoplankton populations essential. Proven productivity in these research areas and administrative experience desirable. Own funding (partial) preferred. Please send résumés to the **Bigelow Laboratory, West Boothbay Harbor, Maine 04575. Attention: Mr. Kerschner.**

POSTDOCTORAL. Research on transfer RNA structure and function using NMR. Applicants should have experience in transfer RNA or nucleic acid chemistry and be interested in learning NMR methods; alternatively, experience in the latter and interest in the former would also be acceptable. Available March 1976. Salary \$10,000 to \$11,000 depending on experience. Send applications with curriculum vitae and two references to: **Professor Brian R. Reid, Biochemistry Department, University of California, Riverside, California 92502.**

An Equal Opportunity/Affirmative Action Employer

Join Parke-Davis as a Malariologist

An excellent opportunity has developed for a scientist who has had laboratory experience with mammalian plasmodia. Successful candidates should have a Ph.D. or B.S./M.S. degree with 4-6 years related experience. Practical background in tissue culture helpful but not required.

The assignment involves assisting with the design and implementation of programs for the propagation, identification and enumeration of malaria parasites in tissue cultures and laboratory animals.

Position is located in our modern, well-equipped research laboratories in Detroit, Michigan. Attractive compensation benefits package.

Please send curriculum vitae including salary history in confidence to:

W. R. Sturgeon
Professional Recruiting Specialist
PARKE, DAVIS & COMPANY
P.O. Box 118
Detroit, Michigan 48232

An Equal Opportunity Employer M/F

PARKE-DAVIS

The National Institutes of Health Grants Peer Review Study Team

Dr. Ruth L. Kirschstein, Chairperson

ANNOUNCE

Public Hearings and Solicitation of Information on

- adequacy of present peer review system including scientific review, Council review, priority rating system
- impact of Freedom of Information Act, Privacy Act, Federal Advisory Committee Act
- recommendations to improve present system

Hearings to be held as follows:

- February 12, Chicago, 219 S. Dearborn Street, Room 204A
- February 19, San Francisco, 555 Battery Street, Room 503
- February 26, Bethesda, NIH, Building 1, Wilson Hall

Send written comments and requests to present statements or attend the hearings to Dr. Mathilde Soloway, Executive Secretary, NIH Grants Peer Review Study Team, Room 4A35, Building 31, NIH, Bethesda, Md., 20014 by February 1.

Establishment of the study team was announced in the Federal Register on September 4, 1975

R&D PHARMACEUTICAL

Searle Laboratories, the midwest pharmaceutical division of G. D. Searle & Co., has 2 immediate openings in the Pharmaceutical Research and Development area for individuals experienced in the development of dosage forms, primary solids.

SUPERVISOR, PHARMACEUTICAL R&D

You will need a PhD in pharmacy or equivalent with at least 4 years pharmaceutical dosage form development experience. Responsibilities include supervising in all aspects of formulations, process development and scale-up of new compounds.

SENIOR FORMULATOR

A BS or MS in pharmacy, pharmaceutical chemistry, or chemical engineering plus at least 2 years industrial pharmaceutical formulation experience are required. You will be responsible for the formulation of stable, efficacious solid dosage forms for new and line extension products.

Searle is offering an unusual opportunity for personal growth and participation for aggressive individuals. Our salary is competitive and we offer a full range of fringe benefits. Please reply with a comprehensive resume, including salary requirements, to:

Carol L. Bernacchi
Employment Counselor

SEARLE

G. D. Searle & Co.

Box 5110, Chicago, Illinois 60680

Equal Opportunity...

A Practice, Not Just A Policy

HUMAN RESOURCE AGENCY POSITIONS

The Department of Social and Health Services, State of Washington, Olympia. Two full time positions offer many opportunities for innovative program planning or research in mental health, developmental disabilities, alcoholism, drug abuse, aging, juvenile rehabilitation, income maintenance, adult corrections, vocational rehabilitation, and general social services. Salaries up to \$26,124 depending on qualifications.

CHIEF OFFICE OF RESEARCH

PhD and five years experience in applied program research including two years at the administrative level plus publication of five research articles in professional journals. Successful candidate will head research office for human services programs.

CHIEF OFFICE OF PLANNING

PhD and four years administrative experience in human services planning. Position serves as planning office head for human resources program planning.



Please send curriculum vitae and professional references to: Ralph Littlestone, Director, Planning and Research Division, Mail Stop 320, Department of Social and Health Services, Olympia, Washington 98504.

an equal opportunity employer m/f



THE AMERICAN
COLLEGE OF CARDIOLOGY

Announces an Opening on Its Staff

for

Director, HEART HOUSE Learning Center

The College will soon be occupying HEART HOUSE, home for its new Learning Center and administrative offices in Bethesda, Maryland.

Qualifications for the Learning Center Director

The responsibilities require an educational scientist with a bibliography documenting accomplishment in the area of medical education. The Director's educational background and degree level must be adequate to permit serving as a principal investigator in research activities.

The candidate should have experience in working with physicians.

The position is open at this time and will be filled no later than July 1, 1976.

For further information concerning the HEART HOUSE Learning Center and the American College of Cardiology, please write to:

William D. Nelligan, Executive Director
American College of Cardiology
9650 Rockville Pike
Bethesda, Maryland 20014

INFORMATION SPECIALIST

Miles Laboratories, Inc., a leader in pharmaceuticals, food technology, chemicals, and clinical diagnostic test systems, has an excellent opportunity for an Information Specialist in the Miles' Library Resources and Services Department.

The candidate must have a Science degree at the Master's level or above and a degree or training in Information Science. This person must also have at least five years experience with manual and computer information systems.

Broad responsibilities include the supervision of a program to collect, organize, evaluate and disseminate information from the scientific literature relevant in the Miles' product line. Consultation with divisional and corporate staff in all scientific disciplines on literature needs and applicability is required.

Located in Elkhart, Indiana, a community of 50,000 population, we offer excellent recreational and educational opportunities as well as convenient accessibility to the Chicago area. Excellent starting salary commensurate with experience, plus a superior benefits program. Relocation expenses paid by the company. Please send complete resume, including expected salary, in confidence to:

Curtis A. Brown,
Senior Placement Representative Dept. 799



MILES LABORATORIES, INC.

ELKHART, INDIANA 46514

An Equal Opportunity Employer

Cardiovascular- Renal Pharmacologists/ Physiologists

Intensive involvement in Cardiovascular-Renal Pharmacology provides opportunity for qualified motivated PhDs (with varying degrees of experience) to increase professional stature. Lederle Laboratories is a pace-setting pharmaceutical manufacturer offering intellectually stimulating environment, attractive community permitting urban or suburban living, competitive base salary complemented by comprehensive benefit plans.

PhD GROUP LEADER ANTIHYPERTENSIVE PROGRAM:

Requires several years in-depth experience in Antihypertensive Research, including some experience in an industrial environment. Candidate should be familiar with all development phases of new antihypertensives, and have the intellectual and supervisory capability to provide motivation and guidance to 8-10 experienced scientists (Ph.D., MS, BS) and other technical personnel.

PhD ANTIANGINAL/ ANTIARRHYTHMIC PROGRAM:

Expertise in Cardiac Pharmacology or Physiology required to effectively contribute to the development of animal models. Will also participate in in-depth evaluations of new drugs in the Antianginal and Antiarrhythmic area.

PhD DIURETIC PROGRAM:

Broad-scoped responsibilities involving all aspects of development of potential new diuretics. Background in Renal Pharmacology or Physiology essential.

Please send credentials with salary history and requirements to
Mr. C. L. Hill,



AMERICAN CYANAMID CO.
Pearl River, NY 10965

An Equal Opportunity Employer M/F

POSITIONS OPEN

CHEMIST TECHNICAL REPRESENTATIVE

Major clinical chemistry company located in South Florida has an opening in Laboratory Systems. Requires M.S. in chemistry or biochemistry and experience in customer relations and clinical laboratory procedures. Must have supervisory experience. Excellent salary and benefits. Send résumé and salary history in confidence to:

**PERSONNEL DEPARTMENT
COULTER
DIAGNOSTICS, INC.**
740 West 83 Street
Hialeah, Florida 33014

An Equal Opportunity Employer M/F

PHYSICAL OCEANOGRAPHER/ LIMNOLOGIST UNIVERSITY OF WISCONSIN-MADISON

The Marine Studies Center of the Institute for Environmental Studies has a new faculty position for a physical oceanographer/limnologist at the assistant professor level. This position is for a person interested in teaching both undergraduate and graduate courses, and in conducting research on either coastal oceanic or Great Lakes problems. Applicants should be familiar with both field and theoretical approaches, and interested in conducting joint research with biologists, chemists, and geologists.

Send curriculum vitae, list of references, teaching and research interests by 1 March 1976 to:

Dr. T. Green
Marine Studies Center
University of Wisconsin-Madison
1225 West Dayton Street
Madison, Wis. 53706
An Equal Opportunity Employer

PLANT PHYSIOLOGIST DUKE UNIVERSITY Assistant Professor beginning 1 September 1976

Teaching both at the undergraduate and graduate levels with primary research emphasis in plant metabolism. Applications must include a full curriculum vitae, transcripts, reprints, and letters from three referees. Send material to **Professor Aubrey W. Naylor, Chairman of the Search Committee, Department of Botany, Duke University, Durham, N.C. 27706**, by 15 February 1976. *Duke is an Equal Opportunity Employer.*

PLANT TAXONOMIST

A position is available at the assistant or associate professor level beginning August 1976 for an individual qualified to teach introductory plant taxonomy and an advanced course in phylogeny and biogeography, and to develop a strong research program in the systematics of flowering plants.

Submit complete résumé including a brief summary of proposed research interests and three letters of reference to: **F. A. Bazzaz, Department of Botany, 289 Morrill Hall, University of Illinois, Urbana, Illinois 61801.**

Closing date 10 March 1976.

The University of Illinois is an Affirmative Action/Equal Opportunity Employer and encourages applications from members of minority groups and women.

POPULATION ECOLOGIST

To teach population biology, human ecology, direct undergraduate research, 1976-77, Ph.D.; research activity expected. Send résumé by 1 March to

D. L. Wise, Chairperson
Department of Biology
College of Wooster
Wooster, Ohio 44691

Affirmative Action/Equal Opportunity Employer

POSITIONS OPEN

POSTDOCTORAL FELLOW—DRUG METABOLISM. Opportunity to carry out studies of mutual interest on the metabolism of drugs, or of toxic environmental contaminants; considerable flexibility is possible. Appointment is for 1 year with the opportunity for renewal and the potential of permanent appointment to the staff. Competitive salary and fringe benefits. Require recent Ph.D. with analytical organic background, direct experience with drug or related metabolism studies, familiarity with instrumental techniques, particularly mass spectrometry, and with radio and mass labeling techniques. Please send résumé to: **Jack Katzenberger, Personnel Supervisor, IIT Research Institute, 10 West 35 Street, Chicago, Illinois 60616.** *An Equal Opportunity Employer, M/F.*

POSTDOCTORAL POSITION

Research on molecular properties and regulation of adrenergic and other membrane receptors. Two or 3 years, starting around June 1976. Ph.D. in biochemistry or pharmacology.

Send résumé and references to:

Dr. Robert J. Lefkowitz
Departments of Medicine and Biochemistry
P.O. Box 3325
Duke University Medical Center
Durham, North Carolina 27710
*Equal Opportunity Employer/
Affirmative Action M/F*

POSTDOCTORAL POSITION available as research associate beginning January 1976 for individual interested in research on biomonitoring of aquatic systems. Candidates should have interest and experience in fish or invertebrate physiology and should have capabilities in statistics, computer science, and basic electronics. Send curriculum vitae and three letters of recommendation to:

Dr. Kenneth L. Dickson
Center for Environmental Studies
Virginia Polytechnic Institute and State University
Blacksburg, Virginia 24061
An Equal Opportunity Employer

POSTDOCTORAL POSITION in biophysics available immediately. Research involves the study of the visual pigments using the resonance Raman effect. Applicants should have a background in spectroscopy and biochemistry sufficient to handle these samples. Send curriculum vitae and letters of recommendation to **Professor Robert Callender, Physics Department, City College of New York, New York, N.Y. 10031.**

POSTDOCTORAL RESEARCH ASSOCIATE position available presently for studies on lipid metabolism in mammals with emphasis on phospholipases. Background in enzymology and/or lipid chemistry is essential and knowledge of membrane biophysics desirable. Send recommendations and curriculum vitae to **Moseley Waite, Ph.D., Department of Biochemistry, Bowman Gray School of Medicine, Winston-Salem, N.C. 27103.** *An Equal Opportunity/Affirmative Action Employer.*

PSYCHOLOGIST-APPLIED PHYSIOLOGIST

The Kinesiology Department at Simon Fraser University has an opening for an assistant professor. Applicants should have a Ph.D. and developed research interests in motor learning, human factors, and applied physiology. The ideal applicant will be expected to teach undergraduate and graduate courses in motor learning and man-machine systems or ergonomics and to act as a focus for interdisciplinary research on man-machine systems and the psychophysiological effects of environmental stress. To apply, send full curriculum vitae and the names of three referees to **Dr. T. W. Calvert, Chairman, Department of Kinesiology, Simon Fraser University, Burnaby, B.C., Canada, V5A 1S6**, from whom further details can be obtained.

RESEARCH STATISTICIAN for radiological branch. Requires B.S. or B.A. in mathematics or statistics; minimum of 1 year of experience in experiment design and sampling statistics; demonstrated ability to utilize statistical computer software; and experience in computer programming. Minimum starting salary \$11,000. Application deadline 30 January 1976. Starting date 1 March 1976. Work location Las Vegas. Send résumé to: **Center for Water Resources Research, Desert Research Institute, University of Nevada System, Building 3700, Room 121, Stead Campus, Reno, Nevada 89507.** *Affirmative Action/Equal Opportunity Employer.*

Upjohn

DEVELOPMENTAL SCIENTIST DIAGNOSTIC PRODUCTS

The Upjohn Company requires a creative person (Ph.D. level) to develop and produce radiochemical diagnostic kits and reagent products. Besides developmental aspects, principal accountabilities include coordinating clinical evaluation and field testing of diagnostic products, providing technical and marketing support to customers in this specialty field and screening and evaluating new technology for diagnostic products.

The position requires a Ph.D. or equivalent training in chemistry, biochemistry or a related field with three or more years experience in the development and production of clinical diagnostic test kits and reagents. Experience in radioimmunoassay essential.

Location: Kalamazoo, a medium-sized community in Southwestern Michigan with ample lakes and recreational areas. Excellent benefits and living and working conditions. Salary negotiable.

Send complete resume with transcripts and references to:

Dennis A. Nevala
Employment Representative,
Dept. S

Upjohn begins with you. **The Upjohn Company**

Upjohn

7171 Portage Road
Kalamazoo, Michigan 49001
*Equal opportunity
employer m/f*

Upjohn

PATENT LIASON SPECIALIST

Excellent opportunity with our growing company, a leader in the pharmaceutical health care field, for a Ph.D. with extensive training in biochemistry and organic chemistry and additional training and/or experience in one or more of the following fields: microbiology, immunology, oncology, and virology. Industrial research experience desirable.

You'll provide assistance to scientists, patent attorneys, and members of management in matters relating to detection of inventions, initiation of patent action on new developments, filing and prosecution of patent applications worldwide, and monitoring communications leaving the company.

Excellent salary and benefits. Living in Kalamazoo, a mid-size southwestern Michigan community, means no commuting, immediate access to an excellent mix of cultural-recreational pursuits including lakes, nearby colleges, a four-season climate and more. Send resume with salary requirement in confidence to: **Dennis Nevala, Employment Representative Dept. S.**

Upjohn begins with you. **The Upjohn Company**

Upjohn

7171 Portage Road
Kalamazoo, Michigan 49001
*Equal opportunity
employer m/f*

POSITIONS OPEN

PUBLISHING: New York-based publisher of advanced scientific books and journals has opening for **acquisition editor** responsible for life sciences, earth sciences, and adjoining subjects. M.Sc., production and marketing experience desirable. Résumé/transcripts to **Box 11, SCIENCE**.

The Michigan Cancer Foundation, a private university-affiliated research foundation, has immediate openings for postdoctoral **RESEARCH ASSOCIATES** with molecular biology backgrounds for the in vitro chemical carcinogenesis program to study the effect of DNA repair on mutagenesis and oncogenic transformation of human cells in culture. Send applications, including complete curriculum vitae, reprints, and list of references, to: **Dr. V. M. Maher, Michigan Cancer Foundation, 110 East Warren Avenue, Detroit, Mich. 48201.**

SENIOR FACULTY POSITION IN MEDICAL COMPUTER SCIENCE

The Georgia Institute of Technology is seeking applicants for a senior faculty position in its Graduate Program in Biomedical Information and Computer Science, offered through its School of Information and Computer Science jointly with Emory University School of Medicine. An excellent opportunity exists for a qualified person to guide this already established and funded doctoral program of about ten Ph.D. students. The primary research thrust of the program is the design of advanced techniques and systems for computer-aided decision-making in clinical practice and research, and their use in medical education. Individuals possessing the M.D. or Ph.D. degree, having a strong research record in appropriate areas (such as artificial intelligence, data base management, computer processing of natural language, and so forth) and extensive knowledge of the health environment are invited to send their résumés and list of publications to: **Dr. V. Slamecka, Director, School of Information and Computer Science, Georgia Institute of Technology, Atlanta, Georgia 30332. An Equal Opportunity/Affirmative Action Employer.**

URBAN SCIENTIFIC/TECHNICAL POSITION

The Institute of Urban Studies, The University of Texas at Arlington, invites applicants for a new research and teaching position effective 1 June 1976. The position is in the Institute's Research and Service Division. However, the incumbent may rotate to a faculty position after at least 1 year of service. The initial appointment will be nontenure earning. It may lead to a tenure-earning status after rotation into an Institute academic division. The individual filling the position should have a scientific/technical background, preferably in the general area of environmental or related issues, and demonstrated applied policy research experience. Teaching experience and interest are expected. The individual selected will work closely with public officials, Institute staff and faculty, and faculty members in other units of the University. An earned Ph.D. is required. Salary to be offered will be in the low to mid-\$20,000 range for 12 months. Interested applicants should submit a résumé and letter outlining their interests to **Dr. Frank Anderson, Chairperson, Search Committee, Institute of Urban Studies, The University of Texas at Arlington, Arlington, Texas 76019. University of Texas at Arlington is an Equal Opportunity/Affirmative Action Employer.**

VERTEBRATE BIOLOGY. A one- or two-semester opening is expected during the academic year 1976-77 to replace a staff member on leave. Competence in the areas of comparative anatomy and evolution is desired. Rank and salary depend upon qualifications and experience. Applicants should submit a curriculum vitae by 15 February 1976, and have three letters of reference sent to **Dr. Anna Ruth Brummett, Chairman, Department of Biology, Oberlin College, Oberlin, Ohio, 44074. Equal Opportunity/Affirmative Action Employer.**

VIROLOGISTS

Two postdoctoral positions are immediately available to study biochemical aspects of influenza and parainfluenza virus replication as well as antigenic variation in influenza viruses. Inquiries and curriculum vitae should be sent to **Dr. R. G. Webster and Dr. D. W. Kingsbury, Department of Virology, St. Jude Children's Research Hospital, P.O. Box 318, Memphis, Tennessee 38101.**

An Equal Opportunity/Affirmative Action Employer

POSITIONS OPEN

Two **ZOOPLANKTON TECHNICIAN POSITIONS** available. Duties will include field and laboratory studies on life history, distribution, abundance, and behavior of marine zooplankton in a coastal lagoon and nearshore waters. Bachelor's or master's degree and some experience required. Familiarity with microzooplankton, meroplankton, or ichthyoplankton helpful. Salary commensurate with qualifications. Send résumé to: **Dr. Marsh J. Youngbluth, Harbor Branch Foundation, Inc., RFD 1, Box 196, Ft. Pierce, Fla. 33450.**

COURSES

ENVIRONMENTAL PHYSIOLOGY AND BIOCHEMISTRY MARINE BIOLOGICAL LABORATORY

"Environmental Physiology and Biochemistry" will be the topic of the **Experimental Invertebrate Zoology** course during the summer of 1976. A formal 6-week program (13 June to 24 July) including lectures, laboratory, and field trips, will be followed by a post-course research period for selected students (26 July to 28 August). The course is aimed primarily at graduate students and advanced undergraduates familiar with invertebrate taxonomy and morphology.

The focus will be on adaptations of cell and organ-system function to the habit and habitat of the animal, and on the homeostatic mechanisms by which organisms adjust to their environments. Subject matter will include: feeding, digestion, and nutrition; water and ion regulation; nitrogen excretion; metabolism, respiration and circulation, temperature adaptation; neural, effector, and behavioral mechanisms; and population genetics. Taxonomy and ecology of Cape Cod invertebrates will be surveyed.

Instructors will include: S. H. Bishop (Baylor College of Medicine); J. H. Crowe (University of California, Davis); M. J. Greenberg (director, Florida State); R. L. Pardy (University of California, Irvine); S. K. Pierce, Jr. (University of Maryland); David Prior (University of Kentucky); and T. J. M. Schopf (University of Chicago).

Tuition is \$600 for the formal course and \$250 for the post-course period. Dormitory, including board for 6 days, is from \$42 per week. For additional information and application forms write: **Admissions Office, Marine Biological Laboratory, Woods Hole, Mass. 02543.** Applications close 1 March.

Marine Biological Laboratory admits students of any race, color, and national or ethnic origin.

FELLOWSHIPS

POSTDOCTORAL FELLOWSHIPS IN EPIDEMIOLOGY

The Department of Epidemiology of the Johns Hopkins University School of Hygiene and Public Health announces an expanded program of postdoctoral fellowship opportunities in chronic disease epidemiology with major emphasis on cardiovascular diseases and cancer. Programs lead to a master's or doctorate degree and postdoctoral training without a degree goal is also available. There is also an approved residency program in preventive medicine. Stipend support at established NIH postdoctoral levels is available for qualified candidates. For information write **Leon Gordis, M.D., Professor and Chairman, Department of Epidemiology, Johns Hopkins University School of Hygiene and Public Health, 615 North Wolfe Street, Baltimore, Maryland 21205.**

FELLOWSHIPS

Postdoctoral research fellowships in cardiovascular, endocrine, and renal physiology. Candidates must have M.D. or Ph.D. degree and be U.S. citizens. Applicants should send curriculum vitae and names of three references to **Chairman, Department of Physiology, Dartmouth Medical School, Hanover, New Hampshire 03755.**

POSTDOCTORAL RESEARCH FELLOWSHIP

Available 1 July 1976 in photoreceptor electrophysiology or structural/functional organization of the retina at the Jules Stein Eye Institute, University of California at Los Angeles. The salary range is \$10,000 to \$14,000 per year, depending on experience, for U.S. citizens and permanent residents only. Submit curriculum vitae and statement of research interests to **Dr. William K. Stell or Dr. Gordon L. Fain, Jules Stein Eye Institute, UCLA Center for Health Sciences, Los Angeles, Calif. 90024. An Equal Opportunity/Affirmative Action Employer.**

FELLOWSHIPS

HARVARD UNIVERSITY PUBLIC POLICY PROGRAM JOHN F. KENNEDY SCHOOL OF GOVERNMENT

Seeks a very limited number of highly qualified candidates from scientific fields who would like to pursue a public service career. The program provides training enabling graduates to address a wide variety of public policy questions. The core of the program consists of courses in economics, quantitative and analytic methods, and political analysis. Applicants should have strong academic backgrounds and be able to demonstrate an interest in a public service career.

For further information or application forms write to: **Harvey Brooks, Ph.D., Benjamin Pierce Professor of Technology and Public Policy, Division of Engineering and Applied Physics, Pierce Hall 217, Harvard University, Cambridge, Massachusetts 02138.**

POSTDOCTORAL FELLOWSHIP RESEARCH ASSOCIATE CANCER BIOLOGY

A postdoctoral position is immediately available for research in somatic hybridization of malignant and normal cells, utilizing cell culture, chromosome banding, transplantation, cloning, electron microscopy, and immunological techniques. Candidates must have adequate experience in cell culture and cell fusion methods. Academic advancement possible. Send curriculum vitae and list of three references before 1 February 1976 to: **Dr. D. M. Goldenberg, Department of Pathology, University of Kentucky Medical Center, Lexington, Kentucky 40506.**

An Equal Opportunity Employer

SUMMER RESEARCH FELLOWSHIPS AT THE MARINE BIOLOGICAL LABORATORY

For the summer of 1976, funds are available to help defray laboratory fees and/or housing costs for a limited number of postdoctoral investigators (up to \$4500 each). Applications are encouraged from investigators with from 1 to 5 years of postdoctoral experience whose research requires marine organisms or the Laboratory's special facilities. For applications and further information, write the **Admissions Office, Marine Biological Laboratory, Woods Hole, Mass. 02543. MBL admits students of any race, color, and national or ethnic origin.**

POSTDOCTORAL FELLOWSHIPS

Two (2) NRSA postdoctoral fellowships available in vision research. Appointments could begin August 1975 to June 1976. Preference given to candidates with a strong background in biochemistry, developmental biology, electron microscopy, or neurobiology. Two-year appointment, \$10,000 per annum. Send statement of background and research interest with three references to: **Dr. Gunter K. von Noorden, Department of Ophthalmology, Baylor College of Medicine, Houston, Texas 77025.**

PREDOCTORAL FELLOWSHIPS AND TRAININGS: Graduate student stipends (\$4150 plus tuition and fees for first year) are available for highly qualified students interested in an interdisciplinary program in **molecular cell biology**. Major areas of research by large (40) faculty include animal virology, bacterial, viral and somatic cell genetics, molecular and cell biology, biochemistry, cancer biology, cellular and developmental immunology, membrane biology, connective tissue immunochromatography and mucopolysaccharide metabolism, and x-ray crystallography. Contact: **Director of Molecular Cell Biology Graduate Program, Department of Microbiology, University of Alabama Medical Center, Birmingham, Alabama 35294. An Equal Opportunity Employer.**

PROGRAMS

GRADUATE PROGRAM

The Department of Anatomy is seeking well-qualified candidates for its doctoral program. Research interests include the areas of neuroendocrinology, electron microscopy, anatomy of the visual system, and fluorescence neuroanatomy of aminergic systems. Stipends are available. Application should be made before 15 February to **Department of Anatomy, University of Rochester Medical Center, Rochester, N.Y. 14642.**

TRAVENOL.

we're going to win
the human race.

Even if it takes hundreds of minds to do it, we're going to win. Somehow. We're already on our way. We've created I.V. solutions that enable people who can't eat to have substitute food. We've built artificial kidney machines. We've designed heart-lung oxygenators to take over the functions of the heart and lungs during surgery. We've created heart valves. We've made diagnostic reagents to identify diseases. We've devised disposable medical gloves. We've produced disposable dialysis products. We've developed a whole spectrum of precision medical instruments.

Right now, we're working on more. And we're looking for more new people to come and join our battle. People who think fighting disease is something worth doing. Maybe you're one of them. If you are, and if you have a talent in sales, or accounting, or engineering, or data processing to offer, call us. We're very interested.

What you get in this life is one chance to do something that matters. And we're going to win the human race. That's all there is to it.

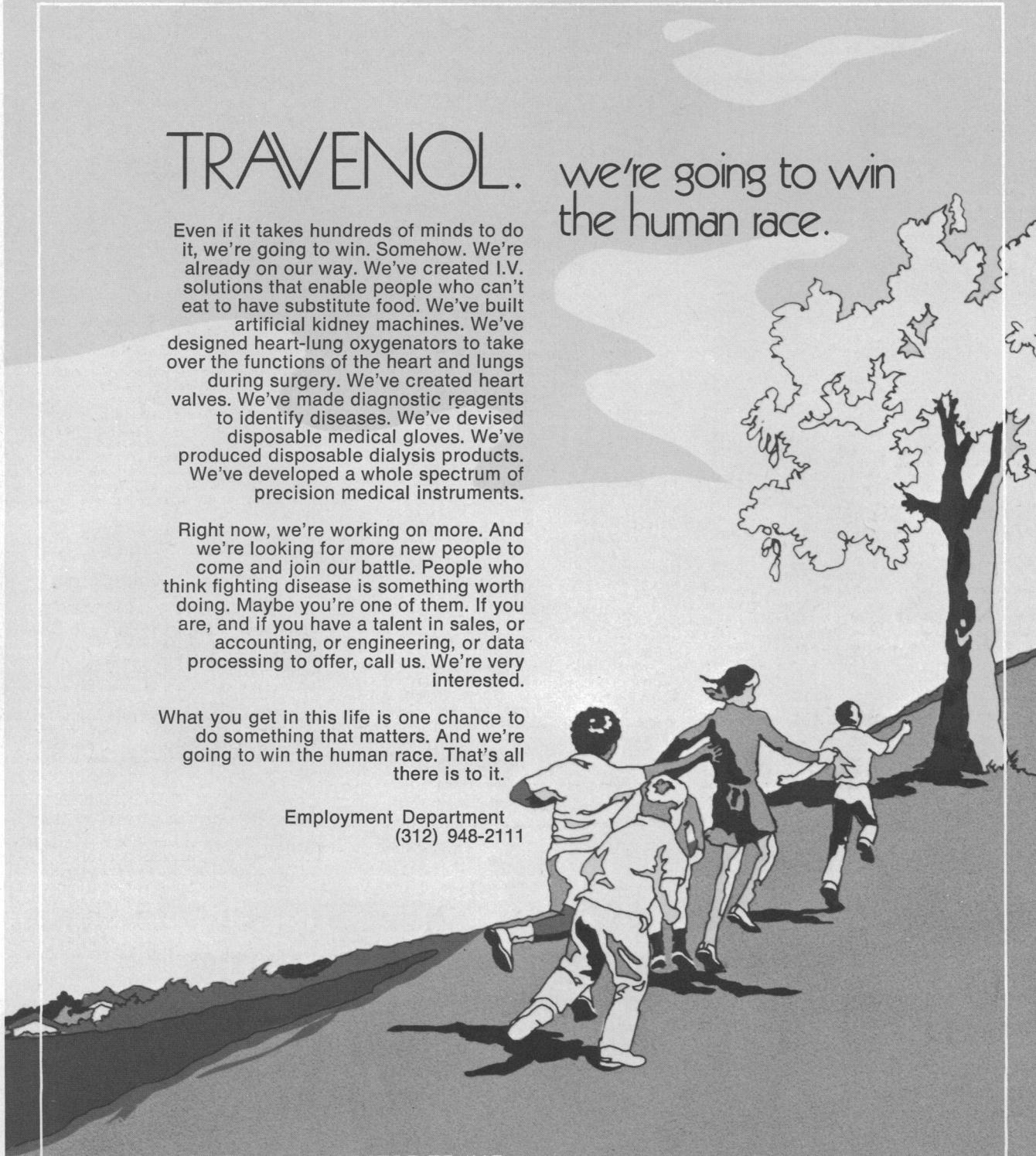
Employment Department
(312) 948-2111

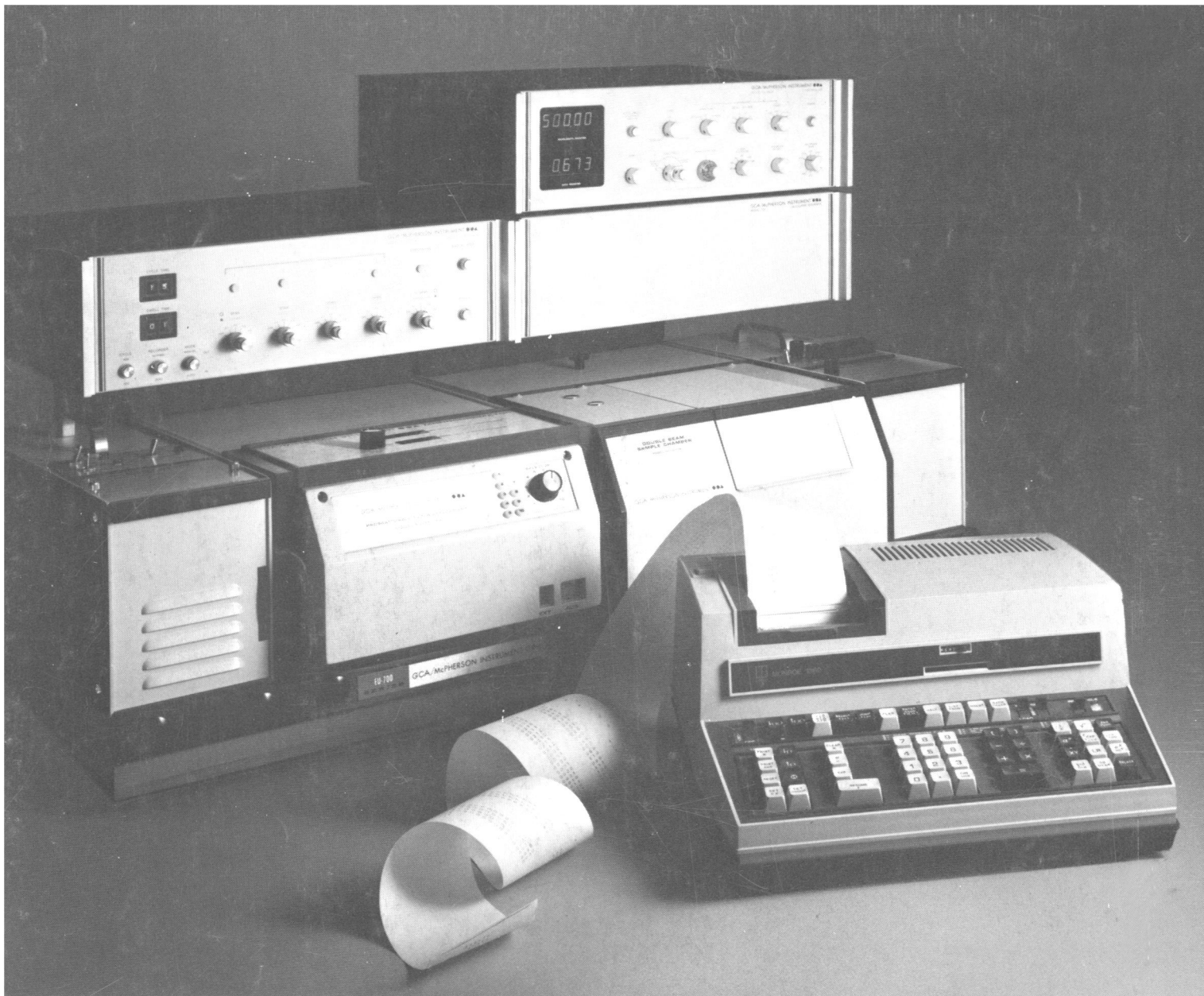
TRAVENOL LABORATORIES, INC.



A subsidiary of
BAXTER LABORATORIES, INC.
Deerfield, Illinois 60015

An Equal Opportunity/Affirmative
Action Employer





Introducing the only spectrophotometer designed to free you for designing experiments.

The Super 700: A moderately priced digital UV-Visible spectrophotometer automatically controlled by a programmable desk-top calculator.

Here at last is a fully automated and programmable spectrophotometer that allows you to spend your time designing experiments rather than running them.

The Super 700 from GCA/McPherson.

It's the only spectrophotometer system that allows true and easy interaction between man and machine.

And it's available for a price that's surprisingly reasonable. Especially when you consider all that it offers.

The Super 700 combines the advantages of a powerful statistical calculator with a superior UV-Visible spectrophotometer.

It's equipped with magnetic card input/output.

Library programs are available.

And you can easily write your own programs because no special language is required.

The calculator has a number of useful functions: logarithms, exponentiation, factorial, standard deviation, linear regression, t-statistic, chi-square, z-statistic, and more.

And when the calculator is in control, The Super 700 can start, stop, and slew the monochromator in both directions. And control, monitor, and record either total elapsed time or programmable intervals.

This calculator control feature is truly unique. It allows complex experimental tasks to be performed automatically and unattended. Which means far more efficiency than manual operation permits.

Applications for The Super 700 include kinetics, melting point studies, gel scanning, stop-flow, flame photometry, integration, and the programming of quality control techniques.

The possibilities, however, are endless.

If you'd like more information on this remarkable new system, call or write GCA/McPherson Instrument, 530 Main Street, Acton, Massachusetts 01720. Phone: 617-263-7733. Telex: 928435.ANS: GCA/McPHER ACTO.

GCA/McPHERSON INSTRUMENT ●●▲
THE SPECTROSCOPY PEOPLE