

## BOOKS RECEIVED

(Continued from page 456)

**Digital Filters and the Fast Fourier Transform.** Bede Liu, Ed. Dowden, Hutchinson and Ross, Stroudsburg, Pa., 1975 (distributor, Halsted [Wiley], New York), xiv, 424 pp., illus. \$30. Benchmark Papers in Electrical Engineering and Computer Science, vol. 12.

**Disease in a Minor Chord.** Being a Semi-historical and Semibiographical Account of a Period in Science When One Could Be Happily Yet Seriously Concerned with the Diseases of Lowly Animals without Backbones, Especially the Insects. Edward A. Steinhaus. Ohio State University Press, Columbus, 1975. xx, 488 pp. \$20.

**Dopaminergic Mechanisms.** Papers from a symposium, Neuilly, France, May 1974. Donald Calne, Thomas N. Chase, and André Barbeau, Eds. Raven Press, New York, 1975. xviii, 428 pp., illus. \$26.50. Advances in Neurology, vol. 9.

**Effective Use of ANS COBOL Computer Programming Language.** Laurence S. Cohn. Wiley-Interscience, New York, 1975. xiv, 178 pp. Spiral bound, \$10.95. Business Data Processing.

**Encyclopedia of Explosives and Related Items.** PATR 2700. Vol. 6. Basil T. Fedoroff and Oliver E. Sheffield assisted by the Franklin Institute Research Laboratories. Picatinny Arsenal, Dover, N.J., 1974 (available from the National Technical Information Service, Springfield, Va.). Various pages. \$37.50.

**Environment.** A Bibliography of Social Science and Related Literature. Denton E. Morrison, Kenneth E. Hornback, and W. Keith Warner. U.S. Environmental Protection Agency, Washington, D.C., 1974 (available from the Superintendent of Documents, Washington, D.C.). viii, 862 pp. Paper, \$7.45. Socioeconomic Environmental Studies Series. EPA-600/5-74-011.

**Evolutionäre Erkenntnistheorie.** Angeborene Erkenntnisstrukturen im Kontext von Biologie, Psychologie, Linguistik, Philosophie und Wissenschaftstheorie. Gerhard Vollmer. Hirzel, Stuttgart, 1975. xii, 210 pp. Paper, DM 26.

**Fatu-Hiva.** Back to Nature. Thor Heyerdahl. Doubleday, Garden City, N.Y., 1975. x, 276 pp. + plates. \$10.

**First Impressions.** The Psychology of Encountering Others. Chris L. Kleinke. Prentice-Hall, Englewood Cliffs, N.J., 1975. xii, 148 pp. Cloth, \$8.95; paper, \$2.95. A Spectrum Book.

**Group Theory and Its Applications.** Vol. 3. Ernest M. Loebl, Ed. Academic Press, New York, 1975. xvi, 480 pp. \$49.50.

**Handbook of Veterinary Drugs.** A Compendium for Research and Clinical Use. Irving S. Rossoff. Springer, New York, 1975. xxii, 730 pp. \$42.50.

**Intracranial Pressure II.** Proceedings of a symposium, Lund, Sweden, June 1974. N. Lundberg, U. Pontén, and M. Brock, Eds. Springer-Verlag, New York, 1975. xxiv, 530 pp., illus. \$31.

**Introduction au Groupe de Renormalisation et à Ses Applications.** Phénomènes Critiques des Transitions de Phase et Autres. Gérard Toulouse and Pierre Pfeuty. Presses Universitaires de Grenoble, Grenoble, 1975. 278 pp. Paper, \$18.

**Jaundice.** Proceedings of a symposium, Montreal, May 1974. C. A. Goresky and M. M. Fisher, Eds. Plenum, New York, 1975. x, 422 pp., illus. \$29.50. Hepatology, vol. 2.

**Kurzer Grundriss der Evolutionstheorie.** N. V. Timofeeff-Ressovsky, N. N. Voroncov, and A. V. Jablovskoy. Translated from the Russian edition (Moscow, 1969). Fischer, Jena, East Germany, 1975. 360 pp., illus. Paper, 36 M. Genetik, Beitrag 7.

**Lads before the Wind.** Adventures in Porpoise Training. Karen Pryor. Harper and Row, New York, 1975. x, 278 pp., illus. \$8.95.

**Losing Ground.** John G. Mitchell. Sierra Club Books, San Francisco, 1975. xii, 228 pp. \$8.95.

**Lymphoreticular Malignancies.** Epidemiologic and Related Aspects. N. J. Vianna. University Park Press, Baltimore, 1975. viii, 136 pp., illus. \$24.50.

**Macromolecules in Solution.** Herbert Morawetz. Wiley-Interscience, New York, ed. 2, 1975. xx, 550 pp., illus. \$27.50. High Polymers, vol. 21.

**Nonlinear Evolution Equations and Potential Theory.** Papers from a summer school, Podhradí, Czechoslovakia, Sept. 1973. Josef Král, Ed. Plenum, New York, 1975. 146 pp. \$22.90.

**On the Prehistory of Marriage.** Totemism, Group Marriage, Mother Right. Josef Kohler. Translated from the German edition (1897) by R. H. Barnes and Ruth Barnes. R. H. Barnes, Transl. Ed. University of Chicago Press, Chicago, 1975. x, 298 pp., illus. \$13. Classics in Anthropology.

**Preventability of Perinatal Injury.** Proceedings of a symposium, New York, 1974. Karlis Adamsons and Howard A. Fox, Eds. Alan R. Liss, New York, 1975. x, 230 pp., illus. \$17.50. Progress in Clinical and Biological Research, vol. 2.

**Primate Behavior.** Developments in Field and Laboratory Research. Vol. 4. Leonard A. Rosenblum, Ed. Academic Press, New York, 1975. xii, 408 pp., illus. \$29.50.

**Primate Models of Neurological Disorders.** Papers from a symposium, London, Aug. 1974. B. S. Meldrum and C. D. Marsden, Eds. Raven Press, New York, 1975. xvi, 362 pp., illus. \$24.50. Advances in Neurology, vol. 10.

**Principles of Wood Science and Technology.** Vol. 2, Wood Based Materials. Franz F. P. Kollmann, Edward W. Kuenzi, and Alfred J. Stamm. Springer-Verlag, New York, 1975. xii, 704 pp., illus. \$51.60.

**The Problem of Chemical and Biological Warfare.** A Study of the Historical, Technical, Military, Legal and Political Aspects of CBW, and Possible Disarmament Measures. Vol. 6, Technical Aspects of Early Warning and Verification. Stockholm International Peace Research Institute (SIPRI). Almqvist and Wiksell, Stockholm and Humanities Press, New York, 1975. 308 pp., illus. \$22.50.

**A Rational Finite Element Basis.** Eugene L. Wachspress. Academic Press, New York, 1975. xiv, 332 pp., illus. \$15. Mathematics in Science and Engineering, vol. 114.

**Statistical Properties of Scattered Light.** Bruno Crosignani, Paolo Di Porto, and Mario Bertolotti. Academic Press, New York, 1975. x, 226 pp. \$19.50. Quantum Electronics.

**Stochastic Processes and Related Topics.** Proceedings of an institute, Bloomington, Ind., July 1974. Vol. 1. Madan Lal Puri, Ed. Academic Press, New York, 1975. xiv, 316 pp. \$17.50.

**The Stoneflies, or Plecoptera, of Illinois.** Theodore H. Frison. Entomological Reprint Specialists, Los Angeles, 1975. vi + pp. 281-472, illus. \$15. Reprint of the 1935 edition.

**Studies in the Psychological Foundations of Exceptionality.** Jean K. Dissinger and Carole R. Arnold. Eds. Brooks/Cole, Monterey, Calif., 1975. x, 316 pp., illus. Paper, \$9.95.

**The Viscosity of the Earth's Mantle.** Lawrence M. Cathles, III. Princeton University Press, Princeton, N.J., 1975. xxii, 386 pp., illus. \$25.

**World Resource Management.** Key to Civilizations and Social Achievement. J. Edwin Becht and L. D. Belzung. Prentice-Hall, Englewood Cliffs, N.J., 1975. xii, 330 pp., illus. + index. \$11.95.

## CHARLES C THOMAS • PUBLISHER

**OPPORTUNISTIC FUNGAL INFECTIONS: Proceedings of the Second International Conference** edited by Ernest W. Chick, *Univ. of Kentucky Medical School, Lexington*; Albert Balows, *Center for Disease Control, Atlanta, Georgia*; and Michael L. Furcolow, *Univ. of Kentucky Medical School, Lexington.* (34 Contributors) Fungi which may be considered opportunistic are those once thought to be largely saprophytic but which under certain conditions may become lethal pathogens. Such conditions include certain broad-spectrum antibiotics, corticosteroid administration, immunosuppressive therapy, and irradiation. Included is a discussion of areas within fungal opportunism which are poorly understood and where improved technology is greatly needed. '75, 376 pp., 55 il., 34 tables, \$22.50

**CANCER EPIDEMIOLOGY AND PREVENTION: Current Concepts** edited by David Schottenfeld, *Memoorial Sloan-Kettering Cancer Center, New York.* (23 Contributors) A broad conceptual review of cancer epidemiology and prevention is provided in this book. The introductory section is concerned with historical landmarks in cancer epidemiology, the magnitude of cancer, and principles of the epidemiologic method and the concept of cause. Subsequent sections include chapters on etiologic agents in man, the epidemiology of cancers of specific tissues, screening and early detection, and prevention of disability in the cancer patient. '75, 592 pp. (6 3/4 x 9 3/4), 148 il., 86 tables, \$45.50

**ELEMENTS OF RADIATION PROTECTION** by Ronald V. Scheele and Jack Wakley, *both of Univ. of Virginia School of Medicine, Charlottesville.* Information in this textbook includes atomic structure, ionizing radiation, interaction of radiation with matter, sources of radiation exposure, biological manifestation of radiation exposure, permissible dose limits, principles of radiation protection and monitoring devices. Several chapters of the book deal with federal performance standards and Atomic Energy Commission regulations. '75, 112 pp., 15 il., 10 tables, \$7.95, paper

Prepaid orders sent postpaid, on approval

301-327 EAST LAWRENCE  
SPRINGFIELD • ILLINOIS • 62717

# Personnel Placement

Only those employers who will not discriminate on the basis of race, sex, religion, age, color, or national origin should submit Personnel Placement advertising.

**POSITIONS WANTED:** 40¢ per word; use of Box Number counts as 10 additional words. Minimum charge \$10. Prepayment required. This rate applies to individuals only; personnel agencies and companies take display rate for all advertising.

**DISPLAY (POSITIONS OPEN, MARKET PLACE, AND SO FORTH):** \$110 per inch, minimum (1 inch is equivalent to 12 lines of 48 characters each). Ads over 1 inch billed to nearest quarter inch. No charge for Box Number. Rates net. No agency commission allowed for ads under 4 inches. No cash discount. Prepayment required for foreign advertising. Purchase orders and billing information must accompany all other advertising.

COPY for ads must reach SCIENCE by Wednesday, 3-1/2 weeks before issue date (Friday of each week) requested. Send copy for all positions wanted ads and display ads under 5 inches to:

SCIENCE, Room 207  
1515 Massachusetts Ave., NW  
Washington, D.C. 20005

Send copy for display ads, 1/6 page and larger, to:

Scherago Associates, Inc.  
11 West 42nd Street  
New York, N.Y. 10036

BLIND AD replies should be addressed as follows:

Box (give number)  
SCIENCE  
1515 Massachusetts Ave., NW  
Washington, D.C. 20005

## POSITIONS WANTED

**Biochemist, Ph.D.,** 5 years of postdoctoral research experience. Academic and industrial, amino acid biochemistry, enzymology, protein biosynthesis, good background in microbiology/organic chemistry. Prefers research position in United States or Canada. Box 446, SCIENCE. X

**Broadly trained Cell Physiologist/Biochemist, Ph.D.,** 5 years of postdoctoral research, 7 years of teaching/research. Seeks permanent position teaching and/or research. Prefer small western U.S. college or university with emphasis on quality teaching. Available January 1976. Box 448, SCIENCE. X

**Clinical Associate: M.S., Ph.D., M.T. (ASCP) (CDH).** Full service experience in clinical and anatomical pathology, medical research, automated systems, data processing, and clinical instruction. Seeks responsible position in training clinical laboratory and allied health personnel. Box 449, SCIENCE. X

**Embryologist** with large teaching and research experience (numerous publications on developmental genetics of *Xenopus*) seeks academic position. Languages: German, English, French. Box 427, SCIENCE. X

**Neuroanatomist/Electron Microscopist, Ph.D.** Experienced teacher and investigator seeks academic position. Research in neurocytology with extensive experience in transmission and scanning EM. Publications. Strong commitment to teaching; presently head of interdisciplinary medical neuroscience course. Also teach gross and microscopic anatomy. Box 450, SCIENCE. X

**Physical/Solid-State Surface Chemist: Ph.D.** 1975; 2 years of college teaching; publications; 3 years of administrative experience; research interests in heterogeneous catalysis; seeking academic or industrial position; will relocate; available June 1976. Box 451, SCIENCE. X

**Physiologist, Ph.D.,** 1974. Desires teaching position. Academic interests: systemic physiology, physiological chemistry, hepatology, pharmacology; 1 year postdoctoral; research experience; bilirubin/bile acid metabolism, glucose/FFA, radio-tracer techniques, G-6-PD kinetics. Prefer Northwest or abroad. Salary negotiable. Box 444, SCIENCE. X

**Physiologist, Ph.D.** 1972. Research and publications in acid-base and lung mechanics. Seeks academic research and/or teaching position in respiration physiology. Box 452, SCIENCE. 10/31; 11/14

## POSITIONS OPEN

### ACAROLGY University of California, Berkeley Assistant Professor of Entomology

Position available. Research and teaching in acarology. Ph.D. required with broad training in acarology and a general entomological background. Expertise in the systematics, biology, and ecology of the Acarina is essential. Assignment will include management of mites of agricultural importance. An interest in evolutionary biology of mites is a desirable additional option. Send curriculum vitae, all official transcripts, copies of any publications or manuscripts, and the names of three qualified referees to: **Dr. Evert I. Schlinger, Chairman, Division of Entomology and Parasitology, University of California, Berkeley, California 94720. The University of California is an Equal Opportunity, Affirmative Action Employer.** Women and minority candidates are urged to apply.

### ASSISTANT PROFESSOR

**Duties:** Research and teaching in human genetics with little or no responsibility for clinical determinations.

**Training:** Doctorate and experience in human biochemical genetics, especially in the area of pyrimidine metabolism.

Candidates should send curriculum vitae, publication reprints, and three letters of reference to **Dr. Robert S. Krooth, Chairman, Department of Human Genetics and Development, College of Physicians and Surgeons, 630 West 168 Street, New York, N.Y. 10032. Equal Opportunity/Affirmative Action Employer.**

The Department of Biology, Harvard University, has openings for nontenured **ASSISTANT PROFESSORS** for the forthcoming year. The program in cellular and developmental biology invites applicants in the broad area of control of eukaryotic gene expression (for example, including developmental genetics, endocrinology, and so forth), and in the area of neurobiology. The program in organismic and evolutionary biology invites applicants in the systematics of marine ichthyology. Preference will be given to candidates with records of research accomplishments, postdoctoral training, and teaching experience.

*The University is an Equal Opportunity Employer,* women and members of minority groups are specifically encouraged to apply. Please have three professional persons who are well acquainted with your work write directly to us concerning you and send your résumé, outline of research goals, and copies of your most significant publications to the **Chairman of the Appropriate Search Committee, Department of Biology, 16 Divinity Avenue, Cambridge, Mass. 02138,** prior to 15 November.

### GENETICS/PLANT PATHOLOGY ASSISTANT PROFESSOR

The Genetics and Plant Pathology Departments at the University of California at Berkeley seek to appoint a **somatic cell plant geneticist**, effective 1 February 1976. Training in genetics and molecular or cell biology is essential.

Responsibilities include undergraduate and graduate teaching and a research commitment to plant somatic cell genetics (for example, selection of agronomically important mutants in haploids, host-pathogen/pest interactions, and so forth). A research program balanced between fundamental and applied problems in agriculture is desired. Send curriculum vitae, transcripts, reprints, brief statement of research plans, and have three letters of reference sent to: **Michael Freeling, Co-Chairperson of the Search Committee, Genetics Department, University of California, Berkeley, California 94720. Deadline for completed applications: 31 December 1975.**

*The University of California is an Affirmative Action/Equal Opportunity Employer.*

**ASSOCIATE CHIEF OF STAFF FOR RESEARCH—TUCSON VA HOSPITAL.** This position has become available. Candidates must be physicians with a strong research record and capable of qualifying for appropriate faculty rank in the affiliated University of Arizona College of Medicine. Incumbent administers research programs of 35 investigators with total annual funding of more than \$600,000. Apply to **Henry A. Perlmutter, M.D., Chief of Staff, VA Hospital, Tucson, Ariz. 85723. Tucson VA Hospital is an Equal Opportunity Employer.**

**BIOCHEMIST**—Opening at the assistant or associate professor level to begin September 1976. Physical biochemistry background preferred. *Equal Opportunity Employer, M/F.* Send résumé and three letters of reference to **Search Committee, Department of Chemistry, Temple University, Philadelphia, Pa. 19122.**

## POSITIONS OPEN

**ANIMAL PHYSIOLOGISTS:** Two positions, assistant professor level, starting 1 September 1976. Circulatory, respiratory, or renal physiologists preferred, but all outstanding candidates will be considered. Candidates should be prepared to teach a lecture or laboratory course in physiology to upper-level undergraduate biology or allied health science majors and a course in their own specialty at the graduate level; direct Ph.D. and M.S. candidates in their thesis research; and develop their own independent research program. For further information, send curriculum vitae and statement of current interests to **Dr. B. E. Piacsek, Department of Biology, Marquette University, 530 North 15 Street, Milwaukee, Wisconsin 53233.**

*An Equal Opportunity/Affirmative Action Employer*

The University of California, Irvine, Department of Pathology is recruiting for a full-time faculty position at the **ASSISTANT PROFESSOR** level. Candidates must be M.D.'s and be Board-qualified in anatomical pathology. Teaching responsibilities involve instructing medical students, interns, and residents. Some teaching experience is desirable. Service responsibilities include surgical, cytology, and autopsy pathology. Expected to develop independent research activities.

*Applications from all qualified candidates are welcome.* Minorities and women are encouraged to apply. Send curriculum vitae before 1 December 1975 to:

**Dr. Edward R. Arquilla**  
University of California, Irvine  
Department of Pathology  
Irvine, California 92664

The University of California, Irvine, Department of Pathology is recruiting a full-time **ASSOCIATE OR FULL PROFESSOR** who will also serve as Chief of Clinical Pathology Services at the Orange County Medical Center. Candidates must be M.D.'s and clinical Board-certified. Service administrative responsibilities include direction and operation of clinical laboratory. Teaching responsibilities involve medical students, House Officers, and paramedical training programs. Develop a House Officer training program in clinical pathology. Expected to develop independent research activities. Experience in operation of clinical laboratory is necessary prerequisite. *Applications from all qualified candidates are welcome.* Women and minorities are encouraged to apply. Send curriculum vitae before 1 December 1975 to:

**Dr. Edward R. Arquilla, Chairman**  
University of California, Irvine  
Department of Pathology  
Irvine, California 92664

### DEPARTMENT OF MOLECULAR BIOPHYSICS AND BIOCHEMISTRY YALE UNIVERSITY

An **assistant professor** opening in this department will be filled for the coming academic year. Candidates should have exceptional qualifications in research and in teaching. *Yale is an Equal Opportunity Employer* and applications from women and minority groups are encouraged. Applicants should send, before 30 January 1976, a curriculum vitae, list of publications, and names and addresses of three referees to: **Franklin Hutchinson, Chairman, Department of Molecular Biophysics and Biochemistry, Yale University, Box 1937, Yale Station, New Haven, Conn. 06520.**

### BIOCHEMIST—TISSUE CULTURE

Research position for Ph.D. biochemist with extensive experience in culture of mammalian cells. Position involves full-time research on methods for long-term culture of mammalian cells, and their biochemical characterization. In addition, the candidate will be required to participate in implantation of islets of Langerhans, obtained either from adult donors or from cultured cells. Rank and salary negotiable. Send applications with curriculum vitae to **Daniel H. Mintz, M.D., Chief, Division of Endocrinology and Metabolism, University of Miami School of Medicine, P.O. Box 520875, Biscayne Annex, Miami, Florida 33152. An Equal Opportunity Employer.**

**BIOLOGIST,** assistant or associate professor level, to teach an undergraduate invertebrate course, supervise graduate students, and conduct independent research. Persons with an interest in teaching introductory biology will receive positive consideration. Appointment can be made by September 1976. All interested persons are invited to apply. Send curriculum vitae, a description of research interests, and addresses of three suggested references to **S. A. Wainwright, Invertebrate Search Chairman, Zoology Department, Duke University, Durham, N.C. 27706. An Equal Opportunity/Affirmative Action Employer.**

## POSITIONS OPEN

The Department of Physiology in the College of Medicine, University of California, Irvine, is recruiting for an **ASSOCIATE PROFESSOR**.

Candidates should have proven teaching ability of high quality, including the capability of presenting cardiovascular physiology to medical students, evidence of having made significant contributions to the biophysics of muscle function, and proven ability to conduct and direct independent research.

Applications from qualified candidates are welcome; minorities and women are encouraged to apply. Send names of four references and curriculum vitae to **Dr. Peter F. Hall, Chairman, Department of Physiology, University of California, Irvine, California 92664**. Either M.D. or Ph.D. required. Applications must be received by 1 December 1975.

## BIOLOGY

College of Wooster seeks instructor/assistant professor, 1 January 1976, comparative animal physiologist/vertebrate morphologist for upper-level courses in these areas and introductory courses including service courses in human anatomy and physiology to fulfill certification requirement in physical and elementary education. Expected to direct independent study undergraduate research. Ph.D., continuing research expected. Send curriculum vitae and references to **Donald Wise, Biology Department, College of Wooster, Wooster, Ohio 44691**. *Equal Opportunity/Affirmative Action Employer.*

**CHAIRPERSON, DEPARTMENT OF BIOLOGY.** Associate or full professor level. To offer courses in genetics or invertebrate zoology and administer seven-member department. Must demonstrate commitment to undergraduate teaching and continued research as a part of that commitment. Send résumé and names of referees to: **Search Committee, Department of Biology, Bates College, Lewiston, Maine 04240**, by 1 December 1975. *An Equal Opportunity/Affirmative Action Employer.*

Vacancy: **CHEMICAL OCEANOGRAPHY FACULTY POSITION**—assistant or associate professor rank. Please send all inquiries to:

**K. S. Price, Director  
University of Delaware  
Marine Studies Center  
Lewes, Del. 19958**

*The University of Delaware is an Equal Opportunity/Affirmative Action Employer.*

## DEAN GRADUATE SCHOOL TULANE UNIVERSITY

Applicants must be qualified to administer a quality graduate division and to develop plans for promoting and funding graduate research programs.

Interested candidates should respond by 15 November 1975 with a résumé and a list of references.

Nominations and applications should be sent to:

**Dr. Robert E. Preston  
Chairman, Search Committee  
Tulane University  
Room 218, Gibson Hall  
New Orleans, La. 70118  
*An Equal Opportunity/Affirmative Action Employer***

## DIRECTOR LABORATORY ANIMAL SCIENCES

At leading New England medical school and clinical center. Responsible for clinical veterinary care and the development of research and teaching programs in Director's field of expertise. Please send applications and curriculum vitae to **Box 453, SCIENCE**.

*An Equal Opportunity Employer, M/F*

## POSITIONS OPEN

**DEAN OF THE COLLEGE.** Seeking candidates who possess leadership ability and competence in academic administration. Candidate should be eligible for a senior faculty appointment in college on the basis of demonstrated performance in teaching and research. *Equal Opportunity/Affirmative Action Employer.* Submit credentials with curriculum vitae, references, and official transcripts to: **Dr. Margaret Haupt, Chairwoman, Dean Search Committee, Coe College, Cedar Rapids, Iowa 52402**. Deadline for applications is 31 December 1975.

## ECOLOGIST

Presently we have six faculty members working in the areas of ecology, evolutionary biology, animal behavior, and population genetics. We seek an additional member, probably but not necessarily at the assistant professor level, for 1 July 1976. Preference will be given to applicants with postdoctoral experience and research interests in population or community ecology and who will encourage interest in fieldwork. The appointee will participate in undergraduate and graduate teaching and must be capable of maintaining a high quality research program. Each applicant should send (before 21 November 1975) the names of three referees and a curriculum vitae with enough data for and adequate preliminary evaluation of his/her potential in both teaching and research to **Professor Struther Arnott, Head, Department of Biological Sciences, Purdue University, West Lafayette, Indiana 47907**. *Purdue University is an Equal Opportunity/Affirmative Action Employer.*

## ELECTRON MICROSCOPIST AND ELECTRON MICROSCOPY TECHNICIAN

A multidisciplinary group investigating immunologic injury of a wide range of tissues (lung, kidney, tumors) requires ultrastructural support of the highest technical quality. One individual each is needed at the technical and professional levels. Demonstrated experience with scanning and freeze-fracture is desired, in addition to full range of techniques associated with TEM. Processing of large, plastic-embedded specimens with Sorvall JB-4 microtome will be emphasized. Respondents should be willing to interact closely with other members of research group. Please reply with full particulars including experience, salary expectations, curriculum vitae, publications, references, and date of availability to **Box 456, SCIENCE**.

**FACULTY POSITION** available for applicants with an interest in teaching and research activities related to **design and analysis of mechanical systems**. Candidates should have good familiarity with optimum design and computer-aided design techniques and be able to interact with other members of the department who are active in the design and control of physical systems, fluid/thermal systems, and bioengineering. Ph.D. degree or equivalent is required along with a strong emphasis toward engineering design; an ability to conduct independent research; and preferably an interest in experimental activities. Please submit complete résumé with references to **Dr. Gerald P. Francis, Chairman, Department of Mechanical Engineering, State University of New York at Buffalo, Buffalo, New York 14214**. *State University of New York at Buffalo is an Equal Opportunity Employer.*

**FACULTY POSITION IN QUANTITATIVE POPULATION ECOLOGY.** In keeping with our mission of finding solutions to agricultural pest problems, we are seeking a person whose primary responsibility will lie in the area of research in quantitative population ecology. This staff member will be expected to elucidate principles of population dynamics relating to strategies of pest management in field crop ecosystems. The position offers the opportunity for the individual to complement the Department of Entomology's team efforts in ongoing pest management programs, as well as develop a program within his or her own area of interest. Education and training should include experience in the life sciences or agriculture, with a strong quantitative background in modeling, mathematics, statistics, and theory of population dynamics. Salary and rank will be commensurate with education and experience.

Applicants for this position should submit a complete résumé, six references, and request three letters of recommendation be sent to **Dr. Eldon E. Ortman, Head, Department of Entomology, Purdue University, West Lafayette, Indiana 47907**, by 20 November 1975. *Purdue University is an Equal Opportunity Employer.*

# INDUSTRIAL ENVIRONMENTAL TOXICOLOGIST

San Francisco Bay Area



Stanford Research Institute's Center for Occupational and Environmental Safety and Health is seeking an Industrial Environmental Toxicologist to participate in its activities in contract research and consulting research and consulting services for government and commercial clients.

Initial assignments will be associated with the Center's activities in the preparation of NIOSH criteria documents for recommended occupational health standards in SRI's Washington, D.C. office; and in support of a contract with the National Cancer Institute in Environmental Carcinogenesis in SRI's main office at Menlo Park, California. Successful applicants will have solid background in inhalation toxicology and the toxicological aspects of Industrial Hygiene.

Emphasis will be given in evaluating applicants for their ability to critically review the biomedical literature and develop statements to support proposed standards. Previous experience is desirable but can be substituted by unusually strong academic background.



Send resume in confidence to:

## STANFORD RESEARCH INSTITUTE

**Center for Occupational and  
Environmental Safety and Health  
333 Ravenswood Avenue  
Menlo Park, CA 94025**

SRI is an equal opportunity employer

## Food and Drug Administration Bureau of Foods

Our Division of Toxicology has openings for Senior Scientists with substantial postdoctorate or equivalent experience in conducting and directing research in toxicology and related sciences. Demonstrated supervisory ability essential.

To direct laboratory units engaged in biological/toxicological research involving food and cosmetics.

Salary \$29,818 per year (Salary increase of 5% to 8.6% pending).

### U.S. CITIZENSHIP REQUIRED

Send curriculum vitae, bibliography and Standard Form 171 (Personnel Qualifications Statement) to:

**Albert C. Kolbye, Jr., M.D., M.P.H.**  
Associate Director for Sciences  
Bureau of Foods (HFF-100) (S-1)  
200 "C" Street, S.W.  
Washington, D.C. 20204

FDA/An Equal Opportunity Employer

## BIOMEDICAL ULTRASOUND Senior Researcher

### San Francisco Bay Area

Candidates should have extensive experience in this field and must be capable of conducting independent research and directing the research of others.

Specific areas of investigation will include the bioeffects of low-intensity ultrasound and the application of ultrasonic imaging to medical diagnosis. Prefer candidates with Ph.D. in one of the following areas: Biology, Biophysics, Physiology, Bioengineering.

Please send curriculum vitae to:  
J. R. McDonald

### STANFORD RESEARCH INSTITUTE

333 Ravenswood Ave.  
Menlo Park, CA 94025  
An Equal Opportunity Employer

## POSITIONS OPEN

### MISSISSIPPI STATE UNIVERSITY DEPARTMENT OF ENTOMOLOGY

Faculty position: Assistant professor, Department of Entomology, College of Agriculture, and Mississippi Agricultural and Forestry Experiment Station. Required: Ph.D. in entomology, demonstrated competence in research and teaching. Preference for research experience in field crop entomology. Qualified applicants should write to: **Professor C. A. Wilson, Acting Head, Department of Entomology, Mississippi State University, Drawer EM, Mississippi State, Miss. 39762.**

*Mississippi State University is an Equal Opportunity Employer.*

**DEPARTMENT HEAD:** Nominations and applications are invited for head of Ph.D.-granting Department of Chemistry. Teaching experience and proved research ability as well as earned doctorate. Appointment will be at rank of full professor with salary and teaching load negotiable. *Equal Opportunity Employer.* Send résumé and references to:

**H. David Lipsich, Chairman**  
Search Committee  
Office of the Dean  
McMicken College of Arts and Sciences  
University of Cincinnati  
Cincinnati, Ohio 45221

### IMMUNOLOGIST-MICROBIOLOGIST

Assistant professor, fall 1976, to establish an active research program in cellular immunology and to teach courses in immunology and elementary or pathogenic microbiology. Postdoctorate and/or teaching experience preferred. Salary commensurate with training and experience. Send curriculum vitae, transcripts, and names of three references by 15 December to: **Search Committee, c/o Dr. J. B. Clark, Department of Botany and Microbiology, University of Oklahoma, Norman, Oklahoma 73069.**

*An Equal Opportunity/Affirmative Action Employer*

### INSECT PHYSIOLOGIST DEPARTMENT OF ENTOMOLOGY THE OHIO STATE UNIVERSITY

Applications are invited for the above position at the rank of **assistant professor**. Candidates should have broad interest and training in insect physiology and have superior competence in teaching and research. Ph.D. required, salary competitive. Deadline for applications: 30 November 1975. Send curriculum vitae, all college transcripts, and names of five references to: **Chairman, Insect Physiologist Search Committee, Department of Entomology, The Ohio State University, Columbus, Ohio 43210.**

*An Equal Opportunity/Affirmative Action Employer*

### UNIVERSITY OF LOUISVILLE CANCER CENTER

**MEDICAL SOCIOLOGIST**—Associate professor. Salary \$22,000 (12 months). Responsible for the implantation of a data collection system on the psychosocial rehabilitation section of the vinyl chloride project. Must know sociological epidemiology and have a proven track record in research. Prefer some cancer-related experience. Send résumés or inquiries to: **Cancer Center Planning Office, University of Louisville, School of Medicine, Health Sciences Center, Walnut and Preston Streets, Louisville, Ky. 40201.**

*An Equal Opportunity/Affirmative Action Employer.*

### POSTDOCTORAL BIOCHEMIST

Interested in enzymology and the neurosciences. Research opportunity in medical school department of large medical center.

### BIOCHEMIST

Postdoctoral level for research program on enzyme regulation of lipid biosynthesis and cells in culture.

Send curriculum vitae to: **Miss M. Kerans, Personnel Department,** indicating which position you are applying for:

### NEW YORK UNIVERSITY MEDICAL CENTER

587 First Avenue, New York, N.Y. 10016

*An Equal Opportunity/Affirmative  
Action Employer, M/F*

## POSITIONS OPEN

**EXPERIMENTAL PATHOLOGIST** requirements: M.D. or D.V.M., and Ph.D.; U.S. citizen; experience in rodent pathology and carcinogenesis; pathology Board eligibility; ACVP certification desirable. Rank and salary determined by qualifications/experience. Send résumé and three references to **Project Director, University of Arkansas Pathology Services Project, National Center for Toxicological Research, Jefferson, Arkansas 72079.** *Equal Opportunity Employer.*

### INSTRUCTOR

#### University of Michigan Medical School

Position available in Primary Care/Community Medicine-Pediatrics, University of Michigan Medical School. Candidate must be Board-certified or -eligible pediatrician, with interest in primary care practice, education of house officers and students, investigations of problems of health care delivery, and development of prepaid comprehensive health care plan. Code #300HO. Send résumé to **Box 457, SCIENCE, A Non-discriminatory, Affirmative Action Employer.**

### MICROBIOLOGIST, BOTANIST, GENERAL BIOLOGIST

Two positions open in small liberal arts college starting September 1976, as replacements for retiring staff. At present bacteriology, nurses' microbiology, research techniques, plant morphology, plant classification, general botany, and a year of general biology are taught, some in alternate years by the retiring staff. Allocation of teaching responsibility not definite. Opportunity to develop a course in cell biology is a possibility.

Ph.D. required; salary and rank dependent upon experience.

Send application materials to **Dean Charles M. Lindsay, Coe College, Cedar Rapids, Iowa 52402.**

*Coe College is an Equal Opportunity/Affirmative Action Employer.*

### NEUROBIOLOGIST

Applications are invited from neurobehavioral biologists to carry out research in a long-term, ongoing, interdisciplinary Program Project dealing with maternal protein restriction and mental retardation. The person chosen will head the section on neurobehavior and is expected to interact closely with the neurophysiology and neurochemistry sections. Accordingly, scientists with a background not only in behavior but also in other neurobiological disciplines are especially encouraged to apply. This is a full-time research position dealing with the developmental neurobiological aspects of mental retardation. Ample opportunity exists at the Worcester Foundation for carrying out independent research projects of a related nature. Send curriculum vitae and a brief description of research experience, together with three letters of recommendation, to: **Ashton Gibbons, Ph.D., Director of Personnel, Worcester Foundation for Experimental Biology, 222 Maple Avenue, Shrewsbury, Mass. 01545.**

*An Equal Opportunity/Affirmative Action Employer*

### POSTDOCTORAL POSITIONS

Department of Biochemistry, Rice University, announces the immediate availability of several postdoctoral positions. Previous experience in the fields of enzymology, particularly of membrane-bound and/or electron transfer enzymes, or cell culture is an advantage.

Prospective candidates should submit résumés together with the names of three individuals familiar with their research accomplishments to: **Department of Biochemistry, Rice University, Houston, Texas 77001.**

*Rice University is an Equal Opportunity/Affirmative Action Employer.*

### POSTDOCTORAL RESEARCH TRAINEESHIP IN DIGESTIVE DISEASES

Openings are available for research training in digestive diseases (NIH-supported). Applicants should have either an M.D. degree with appropriate postdoctoral clinical training or have a Ph.D. degree in basic science. Training period is for 1 to 3 years depending upon the needs of the applicant. Areas of training include characterization and regulation of intestinal digestive enzymes, study of gastrointestinal hormone receptors, hepatic lipid and lipoprotein metabolism, hormone radioimmunoassay, and controlled clinical trials in liver disease. Applicants should call or send curriculum vitae to **Gary M. Gray, M.D., Division of Gastroenterology, Stanford University School of Medicine, Stanford, California 94305.** Telephone: 415-497-4588.

## POSITIONS OPEN

**POSTDOCTORAL POSITION** available for research on membrane electrode probes for biological systems. Qualified applicants write:

**Professor G. Rechnitz, Chemistry Department, State University of New York, Buffalo, New York 14214.**

**POSTDOCTORAL POSITION** for biologist with a good background in physical chemistry. Study of the state of water in biological systems by NMR and other physical methods. Experience in muscle, cell biology, and NMR desirable but not an absolute necessity. Send curriculum vitae and two letters of recommendation to: **Dr. B. M. Fung, Department of Chemistry, University of Oklahoma, Norman, Oklahoma 73069. The University of Oklahoma is an Equal Opportunity/Affirmative Action Employer.**

### POSTDOCTORAL TRAINING IN DENTAL CARIES RESEARCH

Positions available in 5-year NIH-supported multidisciplinary program in cariology. Ph.D., D.D.S., M.D., or equivalent degree required. Training will involve integrated studies in selected combinations of areas including: epidemiology and clinical trials; microbiological, biochemical, and immunological investigations on the microbial etiology of caries; animal research involving experimentally produced caries; oral anatomy and physiology studies; saliva function including saliva composition and protection against caries. Program involves 19 faculty members with expertise in anatomy, biochemistry, biostatistics, genetics, health ecology, microbiology, oral biology, oral pathology, and physiology. Appointments for up to 3 years with starting stipends ranging from \$10,000 to \$13,200. Send résumé or requests for additional information to:

**Dr. Charles F. Schachtele  
18-228 Health Sciences Unit A  
School of Dentistry  
University of Minnesota  
Minneapolis, Minnesota 55455**

## POSITIONS OPEN

### POSTDOCTORAL RESEARCH POSITION

Position available immediately involving studies on immunological aspects of experimental and human solid tumors. Experience in cellular immunology required. Send letter indicating research interest and curriculum vitae with three references to: **Dr. George Sorenson, Department of Pathology, Dartmouth Medical School, Hanover, New Hampshire 03755. Equal Opportunity/Affirmative Action Employer.**

**PREDOCTORAL (one) AND POSTDOCTORAL (two) POSITIONS:** Available immediately, training opportunities in nutritional biochemistry and oral biology, offered through the Department of Biochemistry and the Institute of Dental Research in the School of Dentistry. Predoctorals may seek a Ph.D. degree in biochemistry. Postdoctoral candidates (D.M.D., M.D., or D.V.M.) may choose a research program from various nutrition areas (folic acid metabolism, trace elements, vitamin A and protein interrelationship, and so forth). Predoctoral stipends: \$3,900 per year; Postdoctoral stipends: \$10,000 to 12,000 depending on experience. For information write to: **Dr. Juan M. Navia, Director of Research Training, University of Alabama in Birmingham, University Station, Birmingham, Alabama 35294. The University of Alabama in Birmingham is an Equal Opportunity/Affirmative Action Employer.**

### PROFESSOR OF NUTRITION

The Tulane University School of Public Health and Tropical Medicine invites applications and nominations to fill the vacant Chair of Nutrition. Candidates would need to be physicians, eligible for licensure in Louisiana, and have had experience in teaching and research and be interested in both national and international nutritional problems.

*The University is an Equal Opportunity Employer.* Qualified women and members of ethnic minority groups are encouraged to apply.

Correspondence should be addressed to the **Dean, School of Public Health and Tropical Medicine, 1430 Tulane Avenue, New Orleans, Louisiana 70112.**

## POSITIONS OPEN

### PRESIDENT AND CHIEF EXECUTIVE OFFICER

An important Northeast science and museum institute is seeking a President to serve as Chief Executive Officer. Qualifications include an appreciation and general understanding of the natural sciences, demonstrated executive ability, and willingness to assist in fund-raising activities from public and private sources.

All replies held in strict confidence by the institute's search committee.

**Box 455, SCIENCE**

**RESEARCH ASSOCIATE** in the field of human auditory evoked responses, to work in basic and clinical research. Ph.D. required, with emphasis in auditory physiology and psychoacoustics or equivalent experience. Deadline for applications is 15 November 1975. Indication of ethnicity and sex for Affirmative Action statistical purposes is requested but not required. Send current curriculum vitae to:

**Chairperson  
Communication Disorders Search Committee  
The University of Texas at Dallas  
P.O. Box 688, Station 15H  
Richardson, Texas 75080**

*The University of Texas at Dallas is an Affirmative Action/Equal Opportunity Employer.*

## Food and Drug Administration Bureau of Foods

Our Division of Toxicology has challenging nonlaboratory positions to evaluate industry submitted toxicological and safety data on food chemicals, residues in animal tissues derived from feed additives, and cosmetics. Additional responsibilities may include input in planning related scientific programs, interaction with laboratory personnel and contact monitoring.

Several openings for scientists with substantial postdoctorate or equivalent experience in toxicology with background in pharmacology, or biochemistry and related sciences.

One opening requires background in endocrinology and reproductive physiology to evaluate safety considerations related to hormonally active compounds.

One opening requires background in dermal, ocular and/or inhalation toxicology to evaluate safety consideration related to cosmetics.

Salary \$18,463-\$25,581 per year depending on qualifications. (Salary increase of 5% to 8.6% pending.)

### U.S. CITIZENSHIP REQUIRED

Send curriculum vitae, bibliography and Standard Form 171 (Personal Qualifications Statement) to:

**ALBERT C. KOLBYE, JR., M.D., M.P.H.  
ASSOCIATE DIRECTOR FOR SCIENCES  
BUREAU OF FOODS (HFF-100) (S-2)  
FOOD AND DRUG ADMINISTRATION  
200 "C" STREET, S.W.  
WASHINGTON, D.C. 20204**

FDA/AN EQUAL OPPORTUNITY EMPLOYER

## Chief, Treatment, Rehabilitation and Continuing Care Branch

Salary: \$29,818 to \$36,000 per annum (dependent on qualifications)

The National Cancer Institute, Division of Cancer Control and Rehabilitation, seeks a person with a medical degree and with training and experience in one of three modalities of cancer treatment: chemotherapy, radiation or surgery.

The selected candidate will assume responsibility for directing the activities of the Treatment, Rehabilitation and Continuing Care Branch, DCCR. These responsibilities include program planning and development, scientific direction and evaluation and assessment of activities related to treatment, rehabilitation and continuing care in the control of cancer. These responsibilities are carried out through the use of grants and contracts; therefore, a knowledge of grants and contracts within the Federal Government is desired.

This is an opportunity for a professional person specializing in the cancer field to make a meaningful contribution to the National Cancer Program, and particularly, the Cancer Control aspect of the program for which the National Cancer Institute has leadership responsibility.

Please send your resume no later than December 15, 1975 to:

**Mrs. Ellen Dowd  
Personnel Management Specialist, NCI  
NATIONAL INSTITUTES OF HEALTH  
Public Health Service  
Building 31, Room 3A-25  
Bethesda, Maryland 20014  
(a suburb of Washington, D.C.)  
An Equal Opportunity Employer**



## POSITIONS OPEN

**RESEARCH ASSOCIATE POSITION** available immediately for recent Ph.D. to study enzymology and protein chemistry of blood coagulation factors. Prior research experience in serine proteases is desirable but not essential. This position has a term of 2 years. Send curriculum vitae and names of three references to **Dr. Robert L. Smith, Department of Biochemistry and Molecular Biology, Louisiana State University School of Medicine in Shreveport, P.O. Box 3932, Shreveport, Louisiana 71130.**  
*An Equal Opportunity/Affirmative Action Employer*

**POSITIONS FOR RESEARCH PHYSICIANS** with training in nuclear medicine, endocrinology, or hematology, at Donner Laboratory, Lawrence Berkeley Laboratory, University of California, California medical license needed. Clinical responsibility and medical school or hospital affiliations optional. Send résumé to **James L. Born, M.D., or Thomas F. Budinger, M.D., Ph.D., 467 Donner Laboratory, Lawrence Berkeley Laboratory, University of California, Berkeley, California 94720.** *An Equal Opportunity Employer.*

### SENIOR TERRESTRIAL ECOLOGIST UNIVERSITY OF GUELPH

The Department of Zoology offers a faculty position for a terrestrial ecologist. It is anticipated that the post will be filled at a senior rank. Candidates should have a strong research background, preferably in the area of mammalian population biology, and will be expected to teach at the graduate and undergraduate level.

Applications should include a curriculum vitae and names of two referees, and be sent to the **Chairman, Department of Zoology, College of Biological Science, University of Guelph, Guelph, Ontario, Canada N1G 2W1.**

### SOCIOMEDICAL SCIENTIST

To develop models of health indicators for children. Background in sociology and public health. Ph.D. or near Ph.D. Send résumé and salary requirements to: **Sociomedical Sciences, Columbia University, 630 West 168 Street, New York, N.Y. 10032.**  
*An Equal Opportunity/Affirmative Action Employer*

### VERTEBRATE MORPHOLOGIST

The Department of Zoology, University of Wisconsin-Milwaukee, invites qualified Ph.D.'s to apply for a position of **assistant professor**, with special training in comparative anatomy and human anatomy. *Duties* include (i) teaching course in comparative anatomy for undergraduates, (ii) teaching course in human anatomy for advanced medically oriented students, (iii) teaching graduate seminar or course in applicant's specialty, (iv) cooperation with the Medical College of Wisconsin in undergraduate medical education, and (v) conducting active research program in applicant's specialty. Starting date is 1 September 1976. *Salary* is competitive, depending on qualifications. Applicants should send curriculum vitae, transcripts, three references, and reprints *before 1 January 1976* to **Dr. John E. Minnich, Chairman, Search Committee, Zoology Department, University of Wisconsin-Milwaukee, Milwaukee, Wisconsin 53201.** Minorities and women are encouraged to apply.

*An Equal Opportunity Employer*

**VIROLOGIST**—Position available for research assistant professor to work on genetic and biochemical characterization of human respiratory RNA viruses. Applicants should have experience in cell culture and contemporary methods of molecular virology. Address inquiries with résumés to: **Dr. R. W. Simpson, Waksman Institute of Microbiology, Rutgers University, New Brunswick, New Jersey 08903.**  
*An Equal Opportunity Employer.*

### WATER QUALITY MODELER

Environmental consulting firm is seeking a water quality modeler with experience in the mathematical modeling of aquatic systems, with emphasis on fresh water. Background in sanitary engineering preferred. Must be able to work closely with a multidisciplinary group. M.S. or Ph.D. preferred.

Please forward résumés to: **Roger L. Hogan, Project Manager, Normandeau Associates, Inc., 686 Mast Road, Manchester, New Hampshire 03102.**

*An Equal Opportunity Employer*

## FELLOWSHIPS

### FELLOWSHIPS FOR STUDY AND/OR RESEARCH AT GRADUATE OR POSTDOCTORAL LEVELS IN 1976-77

at the Hebrew University of Jerusalem  
and at the Technion-Israel Institute of Technology, Haifa  
**THE LADY DAVIS FELLOWSHIP TRUST**

#### Eligibility and Tenure

Lady Davis Fellows will be selected on the basis of demonstrated excellence in their studies, promise of distinction in their chosen fields of specialization, as well as qualities of mind, intellect, and character.

All fellowship awards are subject to the candidate's being accepted by the respective institution.

The fellowships are tenable for a period of 1 or 2 years. In special circumstances the award may be extended for a third year. The grant is intended to defray the cost of the Fellow's travel and tuition fees and to meet reasonable living expenses.

#### Application

Graduate candidates may apply during their senior academic year, or after they have undertaken study in a graduate school. Postdoctoral candidates may apply at any stage of their professional careers.

All candidates, including Israelis abroad, may obtain application forms from the **Lady Davis Fellowship Trust, P.O. Box 1255, Jerusalem, Israel.**

Completed applications must reach the office of the Trust not later than 1 January 1976.

### AMERICAN RED CROSS POSTDOCTORAL FELLOWSHIPS

The American Red Cross offers postdoctoral fellowships in its Blood Research Laboratory located in Bethesda, Maryland. A stipend of \$10,000 per year is granted with additional awards for previous postdoctoral experience and for dependents. Fellowships are available in the areas of membrane biochemistry (Dr. G. A. Jamieson), cryobiology (Dr. H. T. Meryman), biomedical engineering (Dr. L. Friedman), physical biochemistry (Dr. K. Ingham), plasma fractionation (Dr. M. Wickerhauser), enzyme kinetics (Dr. D. Kosow), coagulation (Dr. D. Triantaphyllopoulos), and virology (Dr. S. Mazzur). Send curriculum vitae and bibliography to:

**Research Director  
The American National Red Cross  
Blood Research Laboratory  
9312 Old Georgetown Road  
Bethesda, Md. 20014**

**POSTDOCTORAL FELLOWSHIP** from 1976 to 1978 for biochemist, virologist, geneticist, or microbiologist to study mammalian cell genetics, SV40 transformation of human cells, and somatic cell hybridization. Send curriculum vitae to:

**Dr. Jean-Paul Thirion  
Microbiology Department  
Medical School  
University of Sherbrooke  
Sherbrooke, Quebec, Canada J1H 5N4**

### PROGRAMS

Ongoing private marine biological facility seeks relationship with educational institution to develop **MARINE SCIENCE PROGRAM**. Northeastern Gulf of Mexico, waterfront location, diverse habitats, docking and animal holding facilities, running seawater. Staff includes well-known naturalist/writer, M.S. in biological oceanography, expert marine collectors. Reply to

**Box 439, SCIENCE**

### SYMPOSIUM

#### MICHAEL KASHA SYMPOSIUM ON ENERGY TRANSFER IN ORGANIC, INORGANIC, AND BIOLOGICAL SYSTEMS

An international, 80-participant symposium covering theoretical aspects of radiationless transitions, picosecond and double resonance studies, and other studies on the mechanisms of energy transfer processes in organic, inorganic, and biological systems will be held on 8 to 10 January 1976 at the **Chemistry Department, Florida State University, Tallahassee, Fla. 32306.** Two- to three-page (double-spaced) typed abstracts are now being solicited until **20 November**. For more information contact **Professor W. Rhodes** at Florida State University. Telephone: 904-644-1227.

### GRADUATE STUDY

**GRADUATE ASSISTANTSHIPS IN BIOMEDICAL ENGINEERING.** Research assistantships at the Ph.D. level in cardiovascular research beginning January 1976. Stipends are \$3650 for 9 months. Summer support is also available. For further information contact **Dr. Jaron, Department of Electrical Engineering, University of Rhode Island, Kingston, R.I. 02881.** Telephone: 401-792-2505. *An Equal Opportunity/Affirmative Action Employer.*

### ANNOUNCEMENTS

As one means of encouraging carcinogenesis research projects presently impeded by limitations in available analytical techniques for *N*-nitroso compounds, the Carcinogenesis Program of the National Cancer Institute is considering the loan of a small number of nitrosamine-selective detectors (Thermal Energy Analyzers) to other laboratories. Those wishing to receive such a detector, which can be interfaced with a gas chromatograph as well as used in the direct injection mode, should communicate their reasons for requesting such an instrument to **Dr. Marcia Litwack (Manager, Information and Resources Segment, CG, DCCP, NCI, Landow Building, Room 3A06, Bethesda, Maryland 20014)** before 15 December 1975. The initial communication should address at least the following points:

- 1) Nature of the research program in which the detector would be used, and its relevance to cancer cause and prevention;
- 2) Ability of the recipient laboratory's staff to maintain and operate a prototype analytical instrument which is still under development;
- 3) Freedom of the recipient laboratory to unconditionally release all information obtained using the detector to the NCI; and
- 4) Percentage of detector program time which could be made available for collaborative efforts involving the NCI and other laboratories.

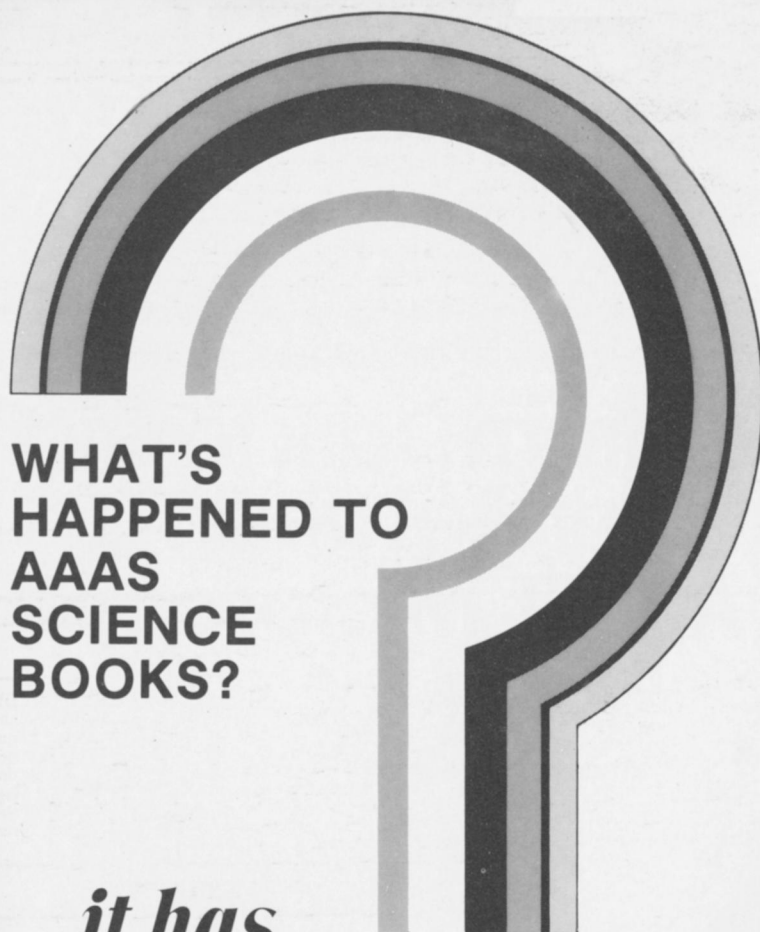
### MARKET PLACE

#### USED ELECTRON MICROSCOPE

Eight-year-old AEI EM6B Transmission. Excellent condition (being used presently), complete with Hakreth water chiller recirculator; decontamination device; 24-plate camera; double condenser, each variable; accessory plate drying vacuum pump (96 plates); stabilizing transformer; high voltage assembly (Gun, cable, HV tank) recently rebuilt. For further details, contact **Dr. Dan H. Moore, Institute for Medical Research, Camden, N.J. 08103.** Telephone: 609-966-7377.

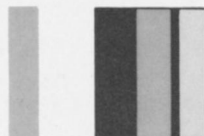
## CARY 60

**SPECTROPOLARIMETER FOR SALE  
IN EXCELLENT CONDITION  
WRITE FOR DETAILS TO  
Box 445, SCIENCE**



**WHAT'S  
HAPPENED TO  
AAAS  
SCIENCE  
BOOKS?**

*...it has  
become AAAS Science Books & Films*



Are you among the thousands who have been depending upon *AAAS Science Books* as your quick, reliable source for the evaluation of the latest science books? If not, join them. But get even more information now with this new, expanded publication offered by AAAS. In addition to book reviews, you can read reviews of the new science education *films* produced each year by commercial firms, universities, and government agencies in the new *AAAS Science Books & Films*.

In its quarterly issues, SB&F will review approximately 1,000 new science books and approximately 200 films per year — an average of close to 300 items per issue. Using this single selection tool, you will find good science information sources for readers and viewers at all levels — from kindergarten through college.

Think about this. SB&F not only saves you valuable time. It can save actual cash, if you are now choosing science materials without adequate guidance. It can easily save you more than the subscription costs each year (\$15.00 for members, \$16.00 nonmembers). Why not subscribe today?

**ORDER FORM**

**AAAS Science Books & Films** sounds valuable to me.

Please enter my one-year subscription for SB&F now.

- |  |  |
|--|--|
| <input type="checkbox"/> \$15.00 for AAAS members.   | <input type="checkbox"/> (\$26.00 / 2 yr.) |
| <input type="checkbox"/> \$16.00 for nonmembers.   | <input type="checkbox"/> (\$28.00 / 2 yr.) |
| <input type="checkbox"/> Check enclosed. (Make payable to A.A.A.S.) <input type="checkbox"/> Please bill me. |  |

Name & Title \_\_\_\_\_

Institution \_\_\_\_\_

Address \_\_\_\_\_

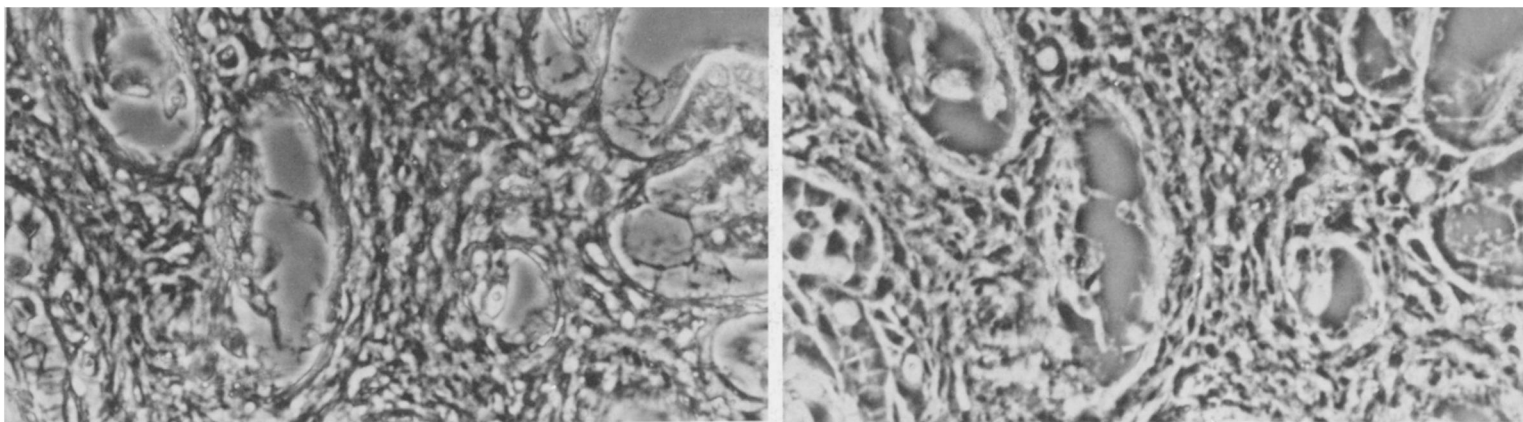
City \_\_\_\_\_ State \_\_\_\_\_ Zip \_\_\_\_\_

**American Association for the Advancement of Science**

Attn: Keith Rath, Dept. KW-3

1515 Massachusetts Avenue, N.W.

Washington, D.C. 20005



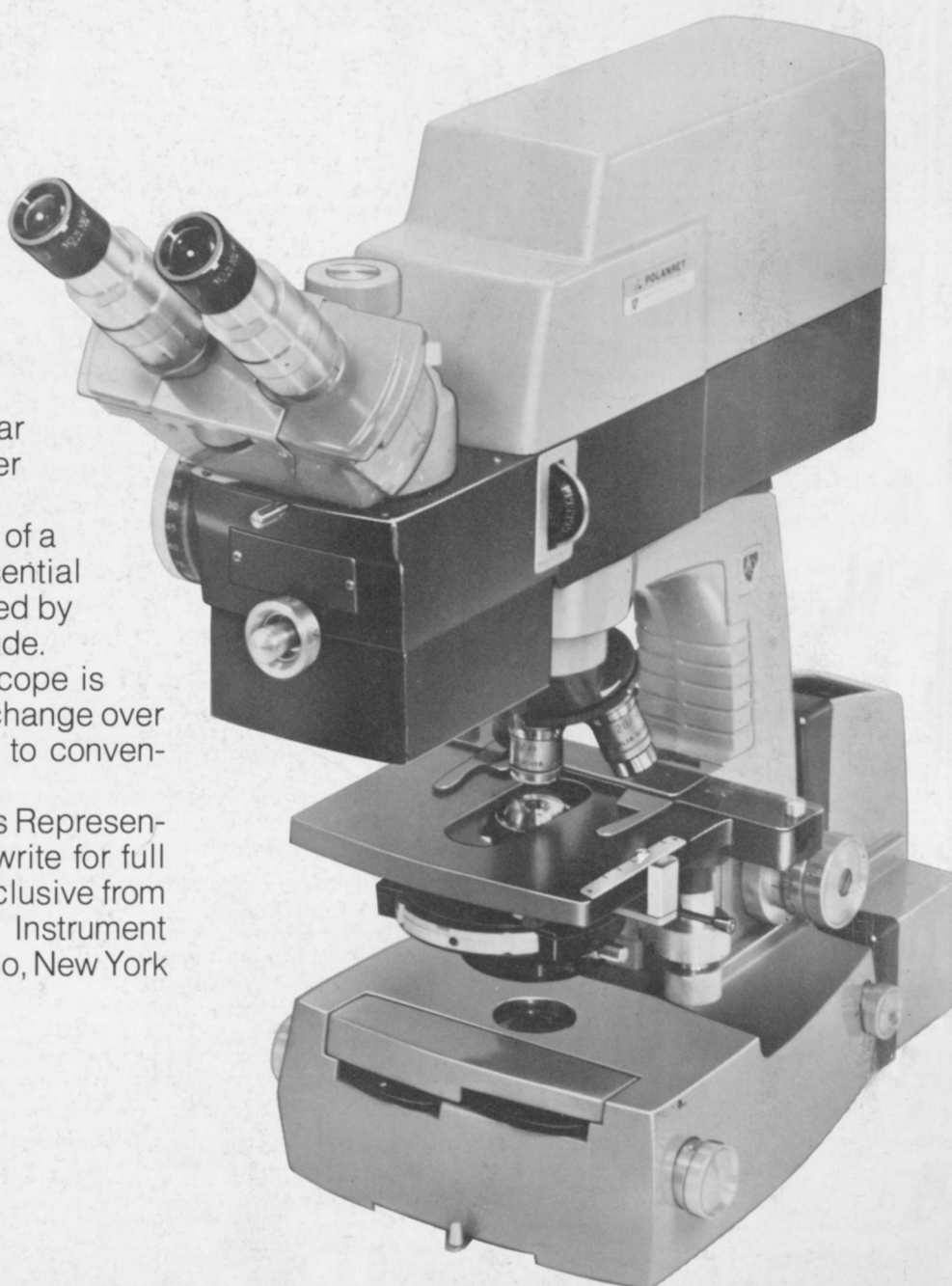
# See Phase Contrast from Dark to Bright and Everything in Between with the AO<sup>®</sup> POLANRET<sup>™</sup> Microscope

Now you can see living, unstained, transparent or low contrast specimens as never before. Continuously variable phase and amplitude contrast is a dramatic improvement over fixed phase contrast microscopes.

Detail can be made to appear progressively brighter or darker in enhanced contrast to your individual preference at a turn of a knob. Even obstructions to essential detail may be readily eliminated by varying the contrast or amplitude.

The AO POLANRET Microscope is easy to use and allows quick change over from variable phase contrast to conventional brightfield microscopy.

Ask your AO Dealer or Sales Representative for a demonstration or write for full color brochure on this new exclusive from American Optical, Scientific Instrument Division, Eggert Road, Buffalo, New York 14215.



**AO**<sup>®</sup>  
American  
Optical