

Management. Milton M. Snodgrass and L. T. Wallace. Prentice-Hall, Englewood Cliffs, N.J., 1975. xiv, 522 pp., illus. \$13.95.

Aims and Methods of Vegetation Ecology. Dieter Mueller-Dombois and Heinz Ellenberg. Wiley, New York, 1974. xxii, 548 pp., illus. \$12.95.

Assessment of Nutritional Status and Food Consumption Surveys. Proceedings of a symposium, Warsaw, Apr. 1972. J. C. Somogyi and A. Szczygiel, Eds. Karger, Basel, 1974. viii, 198 pp., illus. Paper, \$34.25. Bibliotheca "Nutritio et Dieta", No. 20. Series of the Institute for Nutrition Research, vol. 20.

Coupling of Land and Water Systems. Papers from a symposium, Leningrad. Arthur D. Hasler, Ed. Springer-Verlag, New York, 1975. xviii, 310 pp., illus. \$24.80. Ecological Studies, vol. 10.

Crop Physiology. Some Case Histories. L. T. Evans, Ed. Cambridge University Press, New York, 1975. viii, 374 pp., illus. \$23.50.

Federal Health Spending 1969-74. Louise B. Russell, Blair Bagwell Bourque, Daniel P. Bourque, and Carol S. Burke. National Planning Association, Washington, D.C., 1974. xii, 138 pp. Paper, \$3.

Food and Nutrition Research. Report of the ARC/MRC Committee. Agricultural Research Council and Medical Research Council. Her Majesty's Stationery Office, London, and Elsevier, New York, 1974. xvi, 212 pp. Paper, \$15.20.

Food Co-ops. An Alternative to Shopping in Supermarkets. William Ronco.

Beacon, Boston, 1974. xx, 188 pp., illus. \$9.95.

Food for Nought. The Decline in Nutrition. Ross Hume Hall. Harper and Row Medical Department, Hagerstown, Md., 1974. xiv, 292 pp., illus. Paper, \$7.95.

Healthier Living Highlights. Health Education/Health Science Text in Personal and Community Health. Justus J. Schiffores and Louis J. Peterson. Wiley, New York, ed. 2, 1975. viii, 290 pp. + plates. Paper, \$7.95.

Industry and Tropical Health VIII. Proceedings of a conference, Boston, Apr. 1973. Published for the Industrial Council for Tropical Health by the Harvard School of Public Health, Boston, 1974. 198 pp., illus. \$15.

Man, Food, and Nutrition. Strategies and Technological Measures for Alleviating the World Food Problem. Miloslav Rechcigl, Jr., Ed. CRC Press (Chemical Rubber Co.), Cleveland, 1973. viii, 344 pp., illus. \$29.95.

Microorganisms in Foods. Vol. 2, Sampling for Microbiological Analysis: Principles and Specific Applications. International Commission on Microbiological Specifications for Foods. University of Toronto Press, Toronto, 1974. xii, 214 pp. \$25.

Nutrition, Growth and Development. Papers from a symposium, Valencia, May 1973. Cipriano A. Canosa, Ed. Karger, Basel, 1975. x, 272 pp., illus. \$39.50. Modern Problems in Paediatrics, vol. 14.

Nutritional Improvement of Food Legumes by Breeding. Proceedings of a

symposium, Rome, July 1972. Max Milner, Ed. Wiley-Interscience, New York, 1975. xvi, 400 pp., illus. \$20.95.

Plant Growth and Development. A. Carl Leopold and Paul E. Kriedemann. McGraw-Hill, New York, ed. 2, 1975. xiv, 546 pp., illus. \$17.95. McGraw-Hill Series in Organismic Biology.

Plant Propagation. Principles and Practices. Hudson T. Hartmann and Dale E. Kester. Prentice-Hall, Englewood Cliffs, N.J., ed. 3, 1975. x, 662 pp., illus. \$17.25.

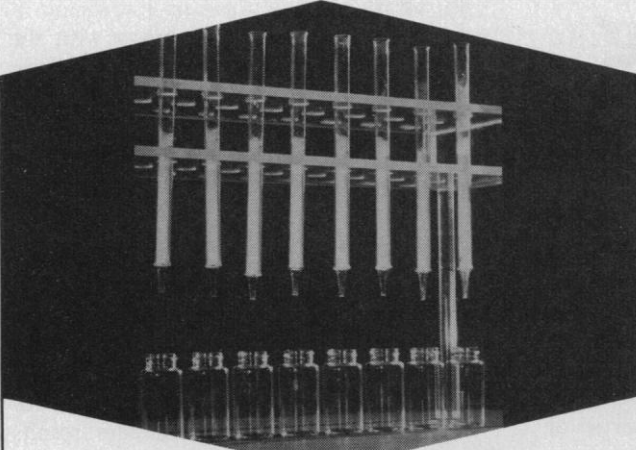
The Political Economy of Agrarian Change. An Essay on the Green Revolution. Keith Griffin. Harvard University Press, Cambridge, Mass., 1974. xvi, 264 pp. \$11.

Principles of Plant Infection. J. E. Van der Plank. Academic Press, New York, 1975. xiv, 216 pp., illus. \$16.

Protein-Calorie Malnutrition. Papers from a symposium, Chiang Mai, Thailand, Jan. 1973. Robert E. Olson, Ed. Academic Press, New York, 1975. xxvi, 468 pp., illus. \$29.50. Nutrition Foundation Monograph Series.

Surface Irrigation. L. J. Booher. Food and Agriculture Organization of the United Nations, Rome, 1974 (U.S. distributor, Unipub, New York). xiv, 160 pp., illus. Paper, \$5. FAO Agricultural Development Paper No. 95.

Vitamins and Hormones. Advances in Research and Applications. Vol. 32. Robert S. Harris, Paul L. Munson, Egon Diczfalussy, and John Glover, Eds. Academic Press, New York, 1975. xiv, 576 pp., illus. \$20.



Minicolumns

- Rapid and economical sample separation.
- May be utilized with various packings.
- Unique glass construction, designed to support a filter disc, conical elution tip.

DIMENSIONS: 18cm x 1cm I.D., supplied unfilled.

Order Minicolumns, **NEA-050**: \$31/15 columns, \$57/30 columns.

NEN New England Nuclear
575 Albany Street, Boston, Mass. 02118
Telephone (617)-482-9595

NEN Canada Ltd., Dorval, Quebec; NEN Chemicals GmbH, Dreieichenhain, W. Germany.

Circle No. 267 on Readers' Service Card

Introducing the Gould 110 strip chart recorder—with a thermal writing pen guaranteed for life.

There isn't another strip chart recorder on the market today that can match the Gould 110's performance, ruggedness, versatility and writing dependability.

The new hot-tip thermal writing system produces clear, sharp, highly reproducible blue traces **with no smudges, no smears, no skips and no puddles.**

Before you buy, check out the remarkable Gould 110. Contact your nearest Gould sales engineer for a demonstration. Or write Gould Inc., Instrument Systems Division, 3631 Perkins Avenue, Cleveland, Ohio 44114.



GOULD

Circle No. 288 on Readers' Service Card

When you must know what the others
in the field are doing...



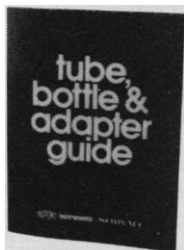
and the field is chemistry or chemical engineering.
What do you do?

You do what hundreds of others throughout the world do. You contact an Information Center that provides services based on files licensed from Chemical Abstracts Service. The Center's staff will analyze your particular information requirements and work with you to develop methods of satisfying them. Whatever the approach, they will locate the information you need and you will pay only for the service you receive.

For a list of the Information Centers, write to
Chemical Abstracts Service,
Department 3-C,
The Ohio State University,
Columbus, Ohio 43210

Circle No. 26 on Readers' Service Card

FREE. 1975 Catalog of Tubes, Bottles and Adapters.



Listings include plastic, glass and stainless steel tubes and bottles for Du Pont Instruments/SORVALL and other centrifuge rotors. Charts and tables contain useful data on rotor applications, characteristics of various tube materials, and chemical resistance properties of plastic tubes.

For a free copy, send coupon to Du Pont Instruments, Room 23704B, Newtown, CT 06470.

DU PONT Instruments | **SORVALL**

☐ DR.
☐ MR.
NAME ☐ MS. _____
DEPT. _____
INSTITUTION _____
ADDRESS _____
CITY _____ STATE _____ ZIP _____

Circle No. 28 on Readers' Service Card

CHARLES C THOMAS • PUBLISHER

NUTRITION AND OUR OVERPOPULATED PLANET by Sohan L. Manocha, *Yerkes Regional Primate Research Center, Emory Univ., Atlanta, Georgia.* Directed toward thinking people of all socioeconomic strata in all countries, rich and poor, this book highlights the nutritional requirements of various age groups and the relationship between the available food supply and the number of mouths which lay claim to it. The author proposes that the ultimate solution to these problems lies in halting explosive population growth, better programs of nutrition education and more equitable distribution of food. Educated laymen as well as students of sociology, anthropology, nutrition, medicine, biology, political science and history should find this book both interesting and informative. '75, 448 pp., 6 il., 11 tables, cloth-\$24.50, paper-\$16.75

HUMAN NUTRITION: Its Physiological, Medical and Social Aspects. A Series of Eighty-Two Essays (2nd Ptg.) by Jean Mayer, *Harvard Univ., Boston, Massachusetts.* While the essentials of nutrition can be learned from a textbook, it is often difficult to capture the flavor of the daily problems which beset the physician, nutritionist or dietitian. Here, in a series of vivid essays, one of the best known nutritionists of this era grapples with the scientific, clinical and administrative aspects of nutrition and its relation to health, poverty, war and technology. Doctor Mayer brings to this book incomparable experience. '74, 740 pp., 5 il., \$12.95

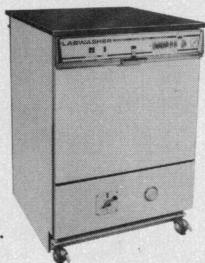
PROTEIN NUTRITION edited by Henry Brown, *Harvard Medical School, Boston, Massachusetts.* (17 Contributors) Newer rapid, solid phase methods for peptide and protein synthesis are clearly presented with meaningful data to compare results with older classic methods of organic chemistry. Complementing these basic studies is a detailed review of specific methods for synthesis of a globin peptide, data concerning the amount of amino acid required for proper nutritional balance, and a discussion of the importance of microflora to adequate protein utilization among numerous other timely topics. '74, 256 pp., 62 il., 36 tables, \$16.75

Prepaid orders sent postpaid, on approval

301-327 EAST LAWRENCE
SPRINGFIELD • ILLINOIS • 62717

Circle No. 290 on Readers' Service Card

The CRC Labwasher: Save when you buy it, Save when you use it.



Save Money

Priced 15-30% lower.
And save on reduced
glassware breakage.

Save Time

Pays for itself in less than
6 months in an average
three-man laboratory.

Save Labor

Accommodates glassware
requirements of as many
as 10 personnel.

Efficiency Plus

Distilled or tap water rinse on
any or all three rinse cycles
with booster heater to raise
water temperature to 70°C
(160°F) during final rinse.
Drying time variable, 0-60
minutes. Under counter, free
standing or mobile models
available with 15 stainless
steel racks.

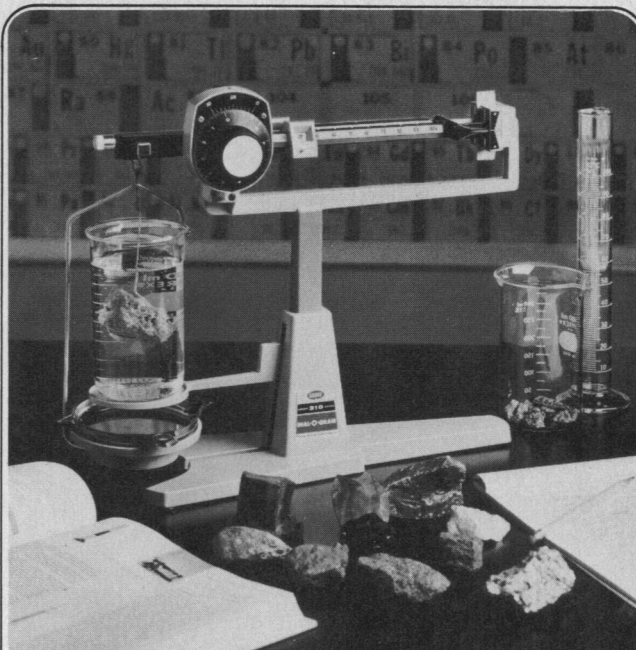
The CRC Labwasher

Division/The Lab Apparatus Co.

18901 Cranwood Parkway, Cleveland, Ohio 44128

Get all the information. Request Bulletin A-505

Circle No. 148 on Readers' Service Card



Dial-O-Gram 310: direct reading, engraved dial and vernier, magnetic damping, center indicating, windowed poises and only 2 tiered beams provide very high speed, accurate readings. Send for FREE Catalog!

OHAUS

Ohaus Scale Corporation
29 Hanover Road
Florham Park, New Jersey 07932
201-377-9000

The Measurement People.

Circle No. 307 on Readers' Service Card

THE CHAMP ...PICTURE TAKER



Visual images are fleet-
ing—so, for the record,
... you need pictures.
No telling when or how
often they can prove
invaluable.

That's why so many
of your peers are rou-
tinely snapping pic-
tures while looking at
specimens and samples
with Bausch & Lomb's
StereoZoom 7 visual-
photographic system.
The Champ's superb op-
tical system which gives
unbeatable visuals will
put the images on film
right while you're look-
ing. And they will be

available as often as
you want to refresh
your memory, make
comparisons, prove
points.

There's a choice of
most camera formats
with the new Integrat-
ed Cameras, Series II
with optional exposure
meter. They're integral,
but do not interfere with
the optical system
and interchange to fit
varying needs.

**Be ready. Write for
our new Stereomicro-
scope catalog 31-15
and our free demon-
stration offer.**

BAUSCH & LOMB

SCIENTIFIC OPTICAL
PRODUCTS DIVISION

20817 Bausch Street, Rochester, N.Y. 14602

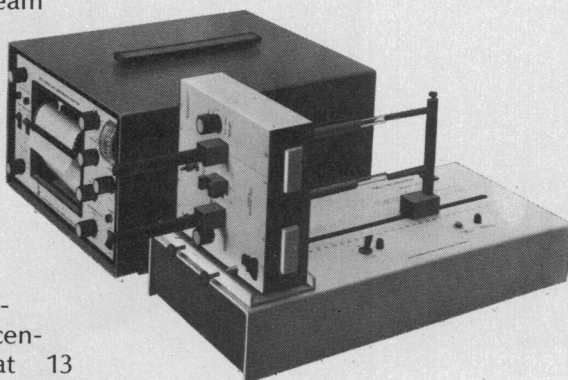
StereoZoom, Reg. T.M.
Bausch & Lomb.

Circle No. 220 on Readers' Service Card

Gels polymerized and electrophoresed in UV-transparent tubes up to 10' long can be scanned in the same tubes at 280 nm without staining. Stained tubular or slab gels can be scanned at visible wavelengths with sensitivity and resolution equal to gel-scanning spectrophotometers. Dual beam scanning subtracts ampholyte absorbance in isoelectrically focused gels.

The scanner is a low cost accessory for an ISCO absorbance monitor, which also scans chromatographic effluents and centrifuged gradients at 13 wavelengths over 8 sensitivity ranges.

Send for our general catalog describing the ISCO scanner and other electrophoresis equipment as well as a complete line of L/C instrumentation.



ISCO

BOX 5347
PHONE (402) 464-0231

LINCOLN, NEBRASKA 68505
TELEX 48-6453

Circle No. 318 on Readers' Service Card

Ealing

New C. F. Palmer Instrumentation for the Life Sciences

Biological Amplifiers
Complete Electrophysiology
Laboratory
Animal Ventilators
Homeothermic Blanket
System
Programmable Controllers
Student Spirometer
Syringe Pumps
Student Recorder

write for your **FREE** catalog

Circle No. 361 on Readers' Service Card
The Ealing Corporation, 2225 Mass. Avenue
Cambridge, Mass. 02140 Tel: (617) 491-5870
Ealing Scientific Ltd. 9649 Côte de Liesse
Dorval H9P 1A3 Quebec • Ealing Beck Ltd.
Greycaine Rd., Watford WD2 4PW, England

Interested in Preserving Science?

If your copies of *Science* are piling up in the corner, getting dog-eared and torn, then you need our attractive binders to keep your copies in good condition, and available for quick easy reference. Simply snap the magazines in or out in a few seconds—no punching or mutilating. Sturdily constructed, each maroon imitation-leather binder stamped in gold leaf holds one three-month volume of *Science*. They sell for just \$6.00 each; four binders for \$22.00. For orders outside the United States add 60¢ per binder. Imprint: name of owner, year of issues, etc., add \$1.00 per binder.

Send orders to Dept. V-1

AAAS

AMERICAN ASSOCIATION for the
ADVANCEMENT of SCIENCE
1515 Massachusetts Avenue, N.W.
Washington, DC 20005

Beckman Peptides



Luteinizing Hormone Releasing Hormone • Parathyroid Hormone (bovine 1-34 peptide) • Angiotensin Peptides • Somatostatin • Neurotensin • Thyrotropin Releasing Hormone • Bradykinin • Tuftsin • analogs of Oxytocin, Vasopressin, Vasotocin • and many others.

Beckman — the source you can count on for peptides of the highest purity and consistently uniform activity. Enjoy the convenience of off-the-shelf availability of twenty-five different peptides, with more being added all the time. For a complete listing, request Catalog PL-464

from Beckman Instruments, Inc., Bioproducts Department, 1117 California Ave., Palo Alto, CA 94306. Or call us at (415) 326-1970 ext. 280.



Beckman®

The Source for Synthetic Peptides

Circle No. 270 on Readers' Service Card

Dajac

LABORATORIES

Diagnostic Reagents and Research Chemicals

Years of experience in developing chemicals for medical research and biochemical testing. Specialty reagents for histochemical research and clinical testing in such areas as enzymes, amino acids, steroids, vitamins and other biochemical fields.

New Catalog available on request.

HAVEN CHEMICAL

DIVISION OF HAVEN INDUSTRIES, INC.
5000 LANGDON STREET • PHILADELPHIA, PENNSYLVANIA 19124
TELEPHONE: (215) 533-0900/(215) 288-8229
CABLE: HavenChem



Circle No. 306 on Readers' Service Card



HELLMA

... tomorrow's designs today!

OS® QH® QS® OF® QU® QI®

Hellma—the largest assortment of highest precision glass and quartz cells. Standard • Flow-through • Constant-temperature Anaerobic • Special Designs. Also available—ULTRAVIOLET LIGHT SOURCES Deuterium Lamps • Mercury Vapor Lamps Hollow Cathode Lamps • Power Supplies

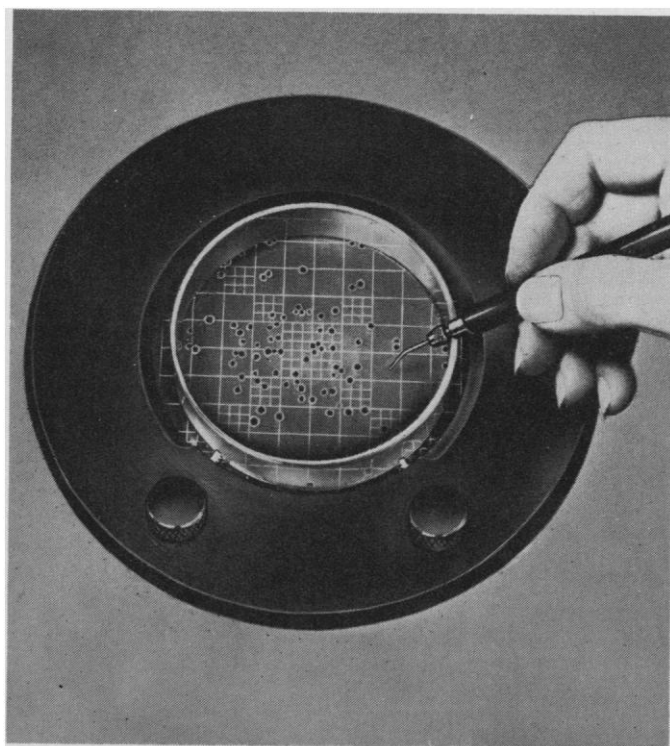
HELLMA

CELLS, INC.

Write for literature
Box 544
Borough Hall Station
Jamaica, New York 11424
Phone (212) 544-9534

Circle No. 29 on Readers' Service Card

Count Colonies *Automatically!*



Bacterial colonies can be recorded quickly and accurately in a *single* probing action with the Bactronic Colony Counter, which marks as it counts automatically in open and closed petri dishes. An electronic probe picks up radio impulses on contact with *any* agar medium, actuates the counting mechanism, and leaves an identifying puncture in the agar. If puncturing is undesirable, a plug-in marking pen or grease pencil can be used to mark the back of the plate as it counts. A special system of illumination floods the plate with uniform, glare-free light that accentuates colonies in bold relief. Even pin-point colonies are clearly discerned. This transistorized instrument is equipped with a Sterilizing Probe Well, automatic numerical reset to zero and magnifying lens.



Send for Catalog C110-S/575



NEW BRUNSWICK SCIENTIFIC CO., INC.

1130 Somerset Street, New Brunswick, N.J. 08903 • 201/846-4600
With NBS, Advanced Technology is a Way of Life.

Circle No. 108 on Readers' Service Card

Personnel Placement

Only those employers who will not discriminate on the basis of race, sex, religion, color, or national origin should submit Personnel Placement advertising.

POSITIONS WANTED: 40¢ per word; use of Box Number counts as 10 additional words. Minimum charge \$10. Prepayment required. This rate applies to individuals only; personnel agencies and companies take display rate for all advertising.

DISPLAY (POSITIONS OPEN, MARKET PLACE, AND SO FORTH): \$110 per inch, minimum (1 inch is equivalent to 12 lines of 48 characters each). Ads over 1 inch billed to nearest quarter inch. No charge for Box Number. Rates net. No agency commission allowed for ads under 4 inches. No cash discount. Prepayment required for foreign advertising. Purchase orders and billing information must accompany all other advertising.

COPY for ads must reach SCIENCE by Wednesday, 3½ weeks before issue date (Friday of each week) requested. Send copy for all positions wanted ads and display ads under 5 inches to:

SCIENCE, Room 207
1515 Massachusetts Ave., NW
Washington, D.C. 20005

Send copy for display ads, ½ page and larger, to:

Scherago Associates, Inc.
11 West 42 Street
New York, N.Y. 10036

BLIND AD replies should be addressed as follows:

Box (give number)
SCIENCE
1515 Massachusetts Ave., NW
Washington, D.C. 20005

POSITIONS WANTED

Analytical Chemist, Ph.D. 1971. Strength: medicinal chemistry, instrumental methods of analysis. Specialty in development of drug assay and drug metabolism study. Two years of NIH postdoctoral experience in aerotoxicology. Seeking industrial or government position. Box 208, SCIENCE. X

Clinical Biochemist, Ph.D. Sixteen years of experience including design, organization, and direction of laboratories in community hospitals; university medical center and government health agency; planning and conducting training/research in medical technology and doctoral programs. Automation, microchemistry, and nutritional clinical chemistry. Publications. Desires position in active laboratory with research/development opportunities. Box 196, SCIENCE. 5/9

Clinical Pharmacologist, 33-year-old M.D., ABIM diplomate seeking position as assistant professor in clinically oriented university or VA program on West Coast or in Southwest. Available 1 November 1975. Box 209, SCIENCE. X

Environmental Health Scientist—Air Pollution Engineer: M.H.S., B.S.Ch.E., P.E. Experience in AP health effects; development of dose-response curves and AP abatement cost/benefit analysis. Familiar with atmospheric photochemistry; air quality management, modeling, and regulations. Fossil fuel industry and environmental consulting management background. Can develop dynamic heterogeneous wind speed/direction contoured-space complex urban AQ mathematical model. Interested in population at risk oriented zonal air quality concept development and management. Seeks loose affiliation or responsible independent position in progressive environment. Box 210, SCIENCE. X

Molecular Biologist—Geneticist, Ph.D. Extensive research and teaching experience of 15 years in microbial, molecular, and developmental genetics. Several current research grants. Numerous publications. Desires relocation. Box 211, SCIENCE. X

POSITIONS WANTED

Molecular Immunologist—Microbiologist seeks employment. Wide experience. Research emphasis has been on the structure and function of immunoglobulins. Able researcher and teacher. Prefer near Northwest and Northeast. Box 205, SCIENCE. 5/9, 16, 23

Physical Biochemist, Ph.D. in physical chemistry. Postdoctoral research: histone conformational changes and histone complexing, nonhistone chromosomal proteins, chromatin, flavoproteins. Publications. Seeks research or academic position. Box 212, SCIENCE. X

Physiology, Ph.D. Postdoctoral in tumor immunology. Undergraduate and graduate teaching. Research experience: immunology, tissue culture, histology, histochemistry, microscopy—light and EM, protein/carbohydrate chemistry. Small animal surgery. Lab management experience. Seeks industrial or academic position. Box 213, SCIENCE. X

Plant Physiologist/Botanist/Agricultural Scientist, Ph.D. 1970, 8 years of teaching and research experience. Seeks challenging position in industry, research, academia, extension, or sales. Dr. H. Curtis, Route 6, Statesboro, Georgia 30458. X

Vertebrate Ecologist, Ph.D. Specializing in quantitative methods including multivariate analysis. Seeks teaching/research position. Publications. Box 214, SCIENCE. X

POSITIONS OPEN

ANATOMIST, to teach human anatomy to undergraduates and graduates majoring in applied anatomy and physiology and health professions. Expected to develop personal research program attractive to graduate students. 9-month academic year, starting 1 September 1975. Encourage applicants with an appreciation for the relationship of basic science to health science and the health professions. Applicants should send letter of interest, curriculum vitae, and list of references to: **Chairperson, Department of Health Sciences, Sargent College of Allied Health Professions, Boston University, Boston, Mass. 02215.** Affirmative Action/Equal Opportunity Employer.

ANATOMY/ASSISTANT DEPARTMENT DIRECTOR HARVARD UNIVERSITY MEDICAL SCHOOL

Requires Ph.D. or equivalent academic/research experience in Biology or Anatomy with sufficient teaching experience to organize the Department Teaching Aids Program and to coordinate it with that of the Medical School. In addition, the Assistant Director, in collaboration with the Chairman, will develop and administer an imaginative departmental program emphasizing communication and cooperation among faculty members, employees, students, and administrators, and will directly supervise the departmental nonteaching staff. Please submit résumé to: **Personnel Office, Harvard University Medical Area, 25 Shattuck Street, Boston, Mass. 02115.** An Affirmative Action/Equal Opportunity Employer.

ASSISTANT PROFESSOR, immediate opening in unique, internationally known department for research and teaching in science and technology of fermented products, wine, and brandy, especially production and engineering aspects. Ph.D. with qualifications in chemical or biochemical engineering required. Food or fermentation science or related fields are of supporting value, but wine expertise may be learned later. Send résumé and references to **Dr. A. D. Webb, Chairman, Department of Viticulture and Enology, University of California, Davis, California 95616.** The University of California is an Equal Opportunity Employer. We encourage applications from persons regardless of sex, ethnic, or racial background. Applications received after 31 July 1975 are not assured consideration.

ASSISTANT RESEARCH SCIENTIST IN IMMUNOLOGY

Full-time position for Ph.D. to direct modern immunology laboratory in multidisciplinary environment and develop research program in the immunopathological mechanisms of dental caries or periodontal disease. Salary commensurate with preparation and experience. Send résumé including publications and names of references to: **Dr. Don B. Clewell, The University of Michigan Dental Research Institute, Ann Arbor, Michigan 48104.** A Nondiscriminating Affirmative Action Employer.

POSITIONS OPEN

ASSISTANT PROFESSOR, M.D. or Ph.D. to take part in a project pursued in the Department of Physiology in cooperation with the hematology section of the Department of Medicine to apply modern physiological and biochemical methods to the investigation of the membrane characteristics of normal and abnormal red blood cells. M.D. applicants should have completed clinical training in order to undertake clinical responsibilities in the hematology section. All applicants should have a strong background and interest in the metabolic and physiological properties of red cells. Starting date negotiable. Send curriculum vitae and names of persons who may be requested to supply references to **Department of Physiology, Yale University, 333 Cedar Street, New Haven, Conn. 06510.**

Applications from women and members of minority groups are encouraged.

ASSISTANT PROFESSOR: BIOCHEMISTRY

A faculty position at the rank of Assistant Professor will be available on or after 1 September 1975. The primary requirement is promise of excellence in teaching and research, but preference will be given to applicants with demonstrated competence in some aspect of the molecular genetics of eukaryotes.

Applicants should submit a curriculum vitae and list of publications, a brief description of their proposed research, and the names of three references to **Chairman of Search Committee, Department of Biochemistry, Duke University Medical Center, Durham, North Carolina 27710.**

Duke University is an Equal Opportunity/Affirmative Action Employer.

ASSISTANT PROFESSOR OF PLANT PATHOLOGY

The Department of Plant Pathology, University of California, Berkeley, announces a faculty position for scientist with a Ph.D. in Plant Pathology with training and/or experience in soil microbiology. Research emphasis will include ecology of soilborne plant pathogens and mycorrhizal fungi and their impact on crop health and productivity. Applicants should send curriculum vitae, publications, and the names of three references to **Dr. D. E. Schlegel, Chairman, Department of Plant Pathology, University of California, Berkeley, California 94720,** by 30 June 1975. The University of California is an Affirmative Action/Equal Opportunity Employer. Women and minority candidates are encouraged to apply.

ASSISTANT PROFESSOR OF PLANT PATHOLOGY

The Department of Plant Pathology, University of California, Berkeley, announces a faculty position to teach and conduct research with broad responsibility in the area of plant virus diseases. A unique opportunity exists to develop a coordinated program on comparative virology with others in the College of Natural Resources. Applicants should have a Ph.D. in Plant Pathology or Virology with training and/or experience in Plant Pathology. Send curriculum vitae, publications, and the names of three references to **Dr. D. E. Schlegel, Chairman, Department of Plant Pathology, University of California, Berkeley, California 94720,** by 30 June 1975. The University of California is an Affirmative Action/Equal Opportunity Employer. Women and minority candidates are encouraged to apply.

BIOMEDICAL RESEARCH IN IRAN

Plans are being made for the establishment in the next few years of a new institute for fundamental research in the biomedical sciences in Iran. The senior professional staff members will carry out research programs of their own choosing. They will be responsible for training junior postdoctoral colleagues in the institute, but will not have routine teaching responsibilities for undergraduate or medical students.

Openings may be available for senior and junior professional staff members and for postdoctoral appointments. Candidates with the Ph.D. and/or M.D. degree and with experience in research are invited to apply as soon as possible. Please forward curriculum vitae and list of publications, and describe areas of research interest.

All replies held in strict confidence by major private U.S. university. Box 199, SCIENCE.

BOTANIST-ECOLOGIST

Applications are invited for a teaching position with course responsibilities in botany, ecology, plant taxonomy, and evolution. The rank will be Assistant Professor, Associate Professor, or Professor, and Chairperson of the Department. Ph.D. is required, and applications are especially encouraged from women and minority group members. Send curriculum vitae and three letters of recommendation to: **Dr. J. W. Edwards, Chairperson, Department of Biology, Salem College, Winston-Salem, North Carolina 27108.**

Salem College is an Equal Opportunity/Affirmative Action Employer.

POSITIONS OPEN

ASSISTANT OR ASSOCIATE PROFESSOR OF INSECT (INVERTEBRATE) PATHOLOGY

Position available for 1 September 1975 for qualified person with relevant Ph.D. to develop and teach new courses in insect pathology. Also must be capable of developing new basic and applied research program on insect viruses of importance in crop protection. Must have strong background in pathology and virology and be adaptable to doing research in an Agricultural Experiment Station situation. Postdoctoral experience preferred. Closing date for applications is 20 May 1975. Send résumé with names of five references to **Dr. P. L. Adkisson, Head, Department of Entomology, Texas A&M University, College Station, Texas 77843. An Affirmative Action/Equal Opportunity Employer.**

ASSISTANT PROFESSOR

The Department of Physiology, New Jersey Medical School, seeks to fill two faculty positions at the level of Assistant Professor. Applicants must have training in the areas of excitation-contraction coupling of smooth muscle or electrolyte transport across excitable membranes and a strong commitment to teaching and research. Interested candidates should have three letters of recommendation regarding their teaching and research and a curriculum vitae sent to:

**Chairman, Department of Physiology
COLLEGE OF MEDICINE AND
DENTISTRY OF NEW JERSEY
MEDICAL SCHOOL
100 Bergen St.
Newark, New Jersey 07103**

Affirmative Action/Equal Opportunity Employer

DEAN—COLLEGE OF AGRICULTURE

The University of Minnesota is seeking candidates with a strong academic background as well as a broad understanding of teaching, research, and continuing education.

Candidates should have administrative experience with a strong orientation to the teaching mission of the College.

Nominations and applications including a résumé should be sent to:

**R. Paul Marvin, Chairman
Advisory Selection Committee
130 Classroom Office Building
University of Minnesota
St. Paul, Minnesota 55108**

An Equal Opportunity/Affirmative Action Employer

The University of Washington is seeking a **DIRECTOR OF THE QUATERNARY RESEARCH CENTER**, an interdisciplinary unit of the Graduate School involving a number of different departments. The position is open to an individual from one of the disciplines related to Quaternary research. The position is a full-time faculty appointment with tenure, and the person appointed will be expected to continue research in his/her field as well as to direct the Center. An earned doctorate and a strong record of research and teaching in Quaternary science are required. Salary is negotiable.

Applicants should mail a curriculum vitae to **Dr. James S. Bethel, Chairman of QRC Search Committee, Dean of College of Forest Resources, University of Washington, Seattle, Washington 98195.**

Equal Opportunity/Affirmative Action Employer

FACULTY POSITIONS IN MEDICAL INFORMATION SCIENCE

The University of California, San Francisco, is seeking applicants for positions in its Graduate Program in Medical Information Science. Positions will be available after 1 May 1975. One appointment will be made at the Assistant or Associate Professor level, depending upon the applicant's qualifications and background, and will require the M.D. degree with additional experience or training in computer applications in medicine, particularly in record-keeping, health services research, communications, or natural language processing. Previous clinical experience preferred.

Another vacancy exists for an Assistant Professor. Ph.D. in Computer Science (or equivalent) is required and experience or interest in software engineering, data base management, artificial intelligence, or natural language processing is preferred. Previous experience in medical or health care applications is essential. Teaching and research will be equally involved in both positions. Applicants should send their curriculum vitae and list of publications to **Dr. M. S. Blois, Medical Information Science, Room A-16, University of California, San Francisco, California 94143. An Equal Opportunity/Affirmative Action Employer.**

9 MAY 1975

POSITIONS OPEN

Opening for **ASSISTANT PROFESSOR OF PATHOLOGY**, Board certified eligible in Anatomic Pathology. Teaching and research responsibilities also required. All candidates will be reviewed without regard to race, color, creed, or sex. *University of California is an Equal Opportunity Employer.* Send résumé to: **Julien L. Van Lancker, M.D., Professor and Chairman, Department of Pathology, University of California, Los Angeles, Calif. 90024.**

A vacancy exists for a **LECTURER IN AQUATIC BIOLOGY (ZOOPLANKTON)** at the University of Tromsø.

The position will be allotted to the Aquatic Group, within the Institute of Biology and Geology. Interests of the Aquatic Group include fisheries biology and marine biology; the Group has 25 positions of which 16 are academic staff and 9 technical staff. The Group is responsible for teaching of undergraduate and graduate students in aquatic biology, including fisheries biology. The person appointed must be willing to do research on pelagic secondary production and associated population problems. Applicants must document qualifications in zooplankton research. Teaching experience is of importance. Further information may be obtained by writing to:

**University of Tromsø
P.O. Box 235
9001 Tromsø
Norway**

PHARMACOLOGICAL RESEARCH

Assistant Department Head

We are a major, Fortune 500, pharmaceutical company located in the East. A new position is now available in our rapidly growing Division of Pharmacology.

Requirements for this position include a Ph.D. in Pharmacology plus five or more years of broad pharmacology experience within the ethical pharmaceutical industry. We would prefer a candidate who has had some supervisory experience at the Group Leader level. This position will be responsible for technical direction over several research groups and also involve IND and NDA preparation. Our Research Staff is aware of this position.

Send curriculum vitae including current earnings in confidence to **Box 207, SCIENCE.**

An Equal Opportunity Employer (M/F)

CHIEF, SURGICAL NEUROLOGY BRANCH

The National Institutes of Health invites nominations and applications for the position of Chief of the Surgical Neurology Branch, National Institute of Neurological and Communicative Disorders and Stroke (NINCDS), Public Health Service, Department of Health, Education, and Welfare. This Institute is one of 12 biomedical research institutes within the National Institutes of Health. The Surgical Neurology Branch conducts, fosters, and coordinates clinical research on human diseases, involving the nervous system, in the NINCDS Intramural Research Program located in Bethesda, Maryland.

Applicants must be neurosurgeons who have demonstrated achievement and stature in the field of neurosurgery. Applicants must also have a high degree of scientific experience and judgment, and demonstrated leadership and management ability.

The position may be filled in either the Civil Service or Commissioned Corps of the Public Health Service with a salary range between \$34,000 and \$42,000 per annum. Salary is negotiable depending on length and breadth of experience.

Letter of application with curriculum vitae and lists of publications and references should be sent to the Chairman of the Search Committee:

**Dr. Donald B. Calne
Clinical Director
National Institute of
Neurological and Communicative
Disorders and Stroke**

NATIONAL INSTITUTES OF HEALTH

**Building 10, Rm 6D-20
Bethesda, Maryland 20014**

An Equal Opportunity Employer

POSITIONS OPEN

EXPLORATION GEOLOGIST

Assistant Professor, starting fall 1975. One-year appointment with possibility of permanent position. Ph.D. required. Specialty areas: petroleum geology, exploration geophysics, statistical and computer applications. Industrial experience preferred. Send résumé, transcripts, and the names of three referees to **A. J. Ehlmann, Chairman, Geology Department, Texas Christian University, Fort Worth, Texas 76129. TCU is an Equal Opportunity/Affirmative Action Employer.**

POSITIONS OPEN

DEAN COLLEGE OF MEDICINE

The University of South Alabama invites nominations and applications for the position of Dean of the College of Medicine. The Dean reports directly to the President of the University and is the chief academic and administrative officer of the College of Medicine; he is responsible for planning, development, and implementation of curricula; the coordination of the health care delivery and biomedical research programs; and supervision of student affairs and admissions. He must be capable of effectively relating to and representing the faculty of the College of Medicine, of interacting with the administrative heads of other University units, and must be sensitive to issues which involve the College of Medicine and other health care delivery units in the community. Qualifications include: M.D. degree, academic and administrative experience, previous experience in medical education and biomedical research, understanding and knowledge of health care delivery, and proven leadership qualities. Send curriculum vitae and nominations to:

**Dr. Robert Kreisberg, Chairman,
Search Committee
c/o Mr. Ted Ferguson, Director
Personnel Relations
University of South Alabama
Mobile, Alabama 36688**

Equal Employment Opportunity (M/F) Employer

IMMUNOLOGIST-MICROBIOLOGIST- BIOCHEMIST

Extraordinary opportunity as Laboratory Manager with leading manufacturer in its field. Position requires a creative, goal-oriented, Ph.D.-level scientist familiar with the above disciplines with emphasis in Immunology.

Must be willing to participate as well as manage and assume responsibility for all facets of reagent kit development, production, and quality control.

Requires complete familiarity with immunosorption, column chromatography, antiserum production, and antigen growth and purifications. Knowledge of all current serological techniques helpful.

Salary commensurate with experience and background. Fringe benefits, profit sharing, and so forth.

Send résumé in confidence to:

**Vice President
Dynatech Laboratories Incorporated
900 Slaters Lane
Alexandria, Virginia 22314**

IMMUNOLOGY RESEARCH

POSTDOCTORAL FELLOWSHIP
Position for Ph.D. Immunologist, with 0 to 5 years of Postdoctoral experience, to work in the area of Immunostimulation and Cellular Immunology Research. For further information and consideration, please direct your correspondence or a résumé of your qualifications to: **Schering Research Center, 60 Orange Street, Bloomfield, New Jersey 07003.**

SCHERING-PLOUGH CORPORATION

An Equal Opportunity Employer

**THE UNIVERSITY OF CALGARY
DEPARTMENT OF BIOLOGY REQUIRES AN
INVERTEBRATE EMBRYOLOGIST.** Applications are invited for the position of *Instructor* or *Assistant Professor*, beginning 1 July 1975, to develop a comparative course in descriptive embryology and to participate in teaching Invertebrate Biology and Introductory Zoology. Successful candidate will be expected to develop an active research programme. Ph.D. required. Send curriculum vitae and three letters of reference to: **Dr. D. Parkinson, Head, Department of Biology, The University of Calgary, 2920 24th Avenue, NW, Calgary, Alberta T2N 1N4, Canada.**

POSITIONS OPEN

LABORATORY-SUPERVISOR CYTOGENETICS RESEARCH LAB

(i) Tissue Culture, (ii) Cytogenetics, especially banding techniques, (iii) Photo Microscopy, and (iv) Amniocentesis. Research position open for individual with solid experience in above areas. M.S. or Ph.D. in human genetics. Supervisory experience a plus. We offer excellent salary and comprehensive benefit program. Contact Miss Smulski at 212-240-1284.

**JEWISH HOSPITAL &
MEDICAL CENTER
555 Prospect Place
Brooklyn, N.Y. 11238**

PATHOLOGIST: M.D. Board certified in anatomic pathology, California license desirable. Prefer teaching experience and research in infectious diseases, oncology, or environmental health. Salary negotiable. *Minority and women candidates are urged to apply.* Submit curriculum vitae and names of references to **Professor S. H. Madin, School of Public Health, University of California, Berkeley, Calif. 94720.**

PLANT PHYSIOLOGIST

Recent Ph.D. desired as Assistant Professor to teach introductory plant physiology, to help team-teach a course in molecular biology, and to develop a graduate-level course. Research interest in algae or aquatic plants preferred. Send résumé, names of three references whom you are asking to provide recommendations, and transcripts to: **Eddie Basler, School of Biological Sciences, Oklahoma State University, Stillwater, Oklahoma 74074. An Equal Opportunity/Affirmative Action Employer.**

POSTDOCTORAL POSITION. Current opening for biochemist with experience in enzyme purification, assay, and crystallization to collaborate with physicist and chemist to study nuclear hyperfine interactions in crystalline metalloenzymes by EPR and perturbed angular correlation of gamma emission. Send résumé to **Dr. James S. Vincent, Department of Chemistry, University of Maryland Baltimore County, 5401 Wilkens Avenue, Catonsville, Maryland 21228. Telephone: 301-455-2531. UMBC is an Affirmative Action/Equal Opportunity Employer.**

POSTDOCTORAL POSITION, 1 July 1975, for study of ultrastructural and pharmacological development of fetal motoneurons. Applicant should have experience and/or interest in learning conventional electron microscopy techniques. Salary \$9450 for a 1-year appointment. Send résumé to: **Dr. Henry J. Wehman, Department of Biology, King's College, Wilkes-Barre, Pennsylvania 18702. King's College is an Equal Opportunity Employer**

POSTDOCTORAL POSITION available immediately for the study of the structure and function of eukaryotic RNA polymerases. Candidate should have a Ph.D. in biochemistry or related area and be well trained in molecular biology or enzymology. Send curriculum vitae and three letters of recommendation to:

**Dr. M. E. Dahmus
Department of Biochemistry and Biophysics
University of California
Davis, California 95616**

POSTDOCTORAL or RESEARCH ASSISTANT— SMOOTH MUSCLE RESEARCH

Department of Respiratory Diseases seeking recent Ph.D. (or M.S.) in pharmacology, emphasis biochemistry or immunology. Salary negotiable. Curriculum vitae to

**Dr. Earle B. Weiss
St. Vincent Hospital
Worcester, Mass. 01610
Equal Opportunity Employer**

POSTDOCTORAL RESEARCH POSITION (postgraduate research) for biological and biochemical studies on DNA repair, especially photoreactivation, in mammalian cells. Recent Ph.D. required. Send curriculum vitae and three letters of reference to **Dr. Betsy M. Sutherland, Department of Molecular Biology and Biochemistry, University of California, Irvine, California 92664. Applications from all qualified candidates are welcome; women and minorities are encouraged to apply.**

POSITIONS OPEN

PLANT CYTOGENETICIST

The Departments of Agronomy and Range Science, and Vegetable Crops, University of California at Davis, invite applications for a cytogeneticist position with rank equivalent to Assistant Professor. A Ph.D. and interest in the genetic improvement of crop plants are required. Duties will include research, direction of graduate students, and teaching in cytogenetics and plant breeding.

Applicants should submit a curriculum vitae with a list of publications, reprints, transcripts, and three references to **M. Allen Stevens, Department of Vegetable Crops, University of California, Davis, California 95616, by 1 July 1975.**

The University of California is an equal opportunity employer with an affirmative action program.

POSTDOCTORAL RESEARCH

Applications are invited for postdoctoral research positions related to the action of cyclic nucleotides on nuclear protein kinases and RNA synthesis. Salary is \$10,000 for 12 months. Applicants should submit a curriculum vitae and have two letters of recommendation sent by a referee to **Dr. Richard A. Jungmann, Department of Biochemistry, Northwestern University Medical School, 303 East Chicago Ave., Chicago, Illinois 60611.**

RESEARCH APPOINTMENTS UNIVERSITY OF DENVER RESEARCH INSTITUTE

Immediate openings in a client-oriented, university-based research institute.

Senior Researcher, Technology Policy, Planning, and Management. Serve as deputy director on program to stimulate technological innovation. Major opportunity to develop own work. Knowledge required of federal science and technology policy, technological innovation process, government/industry/university relationships, and the design and evaluation of social experiments. Demonstrated competency in (i) planning, developing, promoting, and securing sponsored research; and (ii) managing complex research projects. Minimum of 5 years of experience in profit or nonprofit contract research organization required; industry and/or government experience helpful. Minimum education: B.S. in science or engineering and M.S. in business, management, or policy-related area. Compensation: \$22,000 to \$30,000, depending upon qualifications.

Communication Scientist. Responsible for assisting on selected communication research projects currently under way and for participating in the preparation of proposals to conduct future communication projects. Professional survey research experience for governmental and/or commercial sponsors required. Demonstrated writing ability necessary. Minimum education: advanced degrees in mass communications and information science and technology. Compensation: \$15,000 to \$20,000, depending upon qualifications.

Reply in writing with complete résumé and references to: **Industrial Economics Division, University of Denver Research Institute, Denver, Colorado 80210. An Equal Opportunity/Affirmative Action Employer.**

SCIENTIFIC INSTRUMENTS SALES REPRESENTATIVE

For Texas, to be based in Houston. Experience in the sale of scientific instruments required. Background in health sciences preferred. Products include microscopes, related optical instruments, and clinical laboratory equipment sold to hospitals, clinical laboratories, universities, and medical and industrial research facilities. Submit résumé, including educational background, salary history, and requirement, to **Personnel Department, E. LEITZ, INC., Link Drive, Rockland, New Jersey 07647. An Equal Opportunity/Affirmative Action Employer.**

SCIENTISTS AND ENGINEERS. Positions are available at a distinguished private, nonprofit organization for executive director-level professionals to head and/or coordinate projects dealing with the scientific and engineering issues relating to energy. Typical projects could include the technology of drilling for energy resources, advanced energy storage systems, the breeder reactor, and assessments of unconventional energy sources. Applicants should be mid-career or senior scientists, social scientists, engineers, or R & D managers experienced in energy policy, science policy, R & D management, experienced in administration, writing and reviewing reports, and supervision of supporting staff. *An Equal Opportunity Employer.* Send curriculum vitae to **Box 215, SCIENCE.**

BOTANIST- ECOLOGIST

Nalco, an international leader in the field of water treatment, chemistry and technology, maintains its advanced position through constant research. Our unending quest for improved technology and new answers calls for a highly qualified staff with matching dedication. At this time we are seeking to augment our Terrestrial Ecology staff at Northbrook, Illinois.

As our botanist your involvement will include ecological and taxonomical interests in the area of environmental consulting. A background in research is essential; with an M.S., Ph.D. or equivalent. A technical writing capability is required.

This position offers an excellent starting salary, generous company paid benefits including profit sharing and unusual potential to advance professionally. Send your resume with salary history in confidence to:

Personnel Office

NALCO ENVIRONMENTAL SCIENCES

1500 Frontage Road
Northbrook, Illinois 60062

An Equal Opportunity Employer

PhD Coagulation

Challenging Research!

Join the research staff of an innovative Medical Products Company located in Orange County, California.

The individual we are seeking will not only be engaged in basic and applied research in a broad area of coagulation but will interface extensively with Quality Control and Manufacturing in reviewing existing product specification and initiation of new product procedures. This individual will also be responsible for approximately eight technicians.

The qualified candidate will have a PhD in Bio-Chemistry, Physiology or Pathology with 2-4 years industrial or 3-4 years post-doctoral experience in coagulation.

- Factor assays
- Plasminogen and plasmin assays
- Platelete function

In addition, experience in fractionation of human plasma as well as Good Manufacturing Practice would be desirable.

We offer relocation, excellent salary and benefits program. Please submit resume with salary history in confidence, to:

Box # 226
Science

An equal opportunity/ affirmative action employer

Senior Pharmacologist

Anti-Inflammatory Research ENGLAND

Applications are invited for a senior post in our Pharmacology Department in Welwyn Garden City, Hertfordshire, England. The department is responsible for carrying out research and screening work aimed at the development of new drugs in which pharmacologists participate in the research programmes of interdisciplinary groups. The senior pharmacologist we appoint will be responsible for directing the work of a team of pharmacologists engaged in anti-inflammatory research. Applicants should have a Ph.D. qualification and preferably some postdoctoral experience in anti-inflammatory research.

Our Pharmacology Department is located in new laboratories where the facilities and working conditions are excellent. Conditions of service are above average and, in appropriate cases, generous assistance with relocation will be available.

Roche Products Limited is a part of a major international pharmaceutical firm and is itself one of the leaders in the industry in the United Kingdom.

If you would like to apply, please write for further information to:

ROCHE PRODUCTS LIMITED

Welwyn Garden City, Hertfordshire, England
an equal opportunity employer M/F

AAAS Memberships and Subscriptions

- Whenever you write us about your membership or subscription, please attach a **Science** address label to assure prompt service.
- Mail to: Membership and Subscription Records, AAAS, 1515 Massachusetts Ave., NW, Washington, D.C. 20005.
- ☐ **Change of Address:** Please provide 6 weeks' notice. Paste an address label from a recent issue in the space provided. Print new address below.
- ☐ **Query:** If you have a question, place your address label here and attach this form to your letter.
- **To join or subscribe:** Mail this form with your payment, mark the appropriate boxes, and print your name and address in the space below. (For renewals, attach label.)

ATTACH
LABEL
HERE

- ☐ **Membership rates** (individual only)
 - ☐ \$25 USA ☐ \$31 Canada, PUAS ☐ \$32 Foreign
 - ☐ \$55 Airlift to Europe, North Africa, Near East
- ☐ **Subscriber rates**
 - ☐ \$50 USA ☐ \$57 Canada, PUAS ☐ \$58 Foreign
 - ☐ \$80 Airlift to Europe, North Africa, Near East

- ☐ Payment enclosed ☐ Bill me later

Name Please print

Address

City State Zip MT05

POSITIONS OPEN

RESEARCH ASSOCIATE POSITIONS are available for applicants with doctoral degrees with research experience in the following areas: **Growth**—(i) speech as related to malocclusion and cleft palate; (ii) androgen metabolism and binding in submaxillary gland; and (iii) SEM and TEM of normal and pathological orofacial embryology; organ culture. **Neural**—sensory mechanisms and pain control. **Immunology**—immunochimistry, cellular, transplantation and tumor immunology; cellular interactions. **Mineralization**—light and TEM of calcified tissues; crystallography and polarizing microscopy. **Hemostasis**—biochemistry and pathophysiology of blood coagulation. **Biomaterials**—(i) characterization and investigation of dental and biomedical metallic materials and (ii) modification and characterization of dental polymer restorative materials. *The University of North Carolina is an Equal Opportunity/Affirmative Action Employer.* Address curriculum vitae to: **Mr. Albert C. Windham, Executive Officer, Dental Research Center, University of North Carolina, Chapel Hill, North Carolina 27514.**

TECHNICIAN: BEHAVIORAL GENETICS

Position available immediately. Qualifications should include experience working with small mammals and a knowledge of genetics and statistics. Ability in computer programming would be helpful. Duties involve primarily data collection and analysis as well as supervision of animal facilities. Starting salary is \$8000 per year. Send résumé to: **Dr. Carol B. Lynch, Department of Biology, Wesleyan University, Middletown, Connecticut 06457.**

TISSUE CULTURE TECHNOLOGIST

Experienced tissue culture technologist with M.S. degree in Biology or Biochemistry. Salary negotiable. Send résumé or curriculum vitae to **O. M. Rennert, University of Florida, Department of Pediatrics, Gainesville, Fla. 32610. An Equal Opportunity/Affirmative Action Employer.**

TOXICOLOGIST

The Consumer Product Safety Commission has an immediate opening for an experienced Toxicologist with a desire to make important contributions in the area of regulatory toxicology. The toxicology function is in the Bureau of Biomedical Science, located in Bethesda, Maryland.

Our toxicology program is conducted on both in-house and extramural contract basis with commercial and university laboratories. Classes of materials include consumer products covered by the Consumer Product Safety Act and the transferred functions. Much of our work is regulatory in nature—drawing upon current laboratory studies, historical research, and wide contracts in all phases of toxicology.

The individual we need should have a Ph.D. in Toxicology or a related discipline, at least 5 years' experience in toxicology research plus a definite proficiency in written and oral communications. Some travel will be required.

Qualified applicants are requested to send a detailed résumé and personal qualifications statement (Standard Form 171) plus any Civil Service Commission rating to:

**Consumer Product Safety Commission
Bureau of Biomedical Science, Room 712
Westwood Towers Building
5401 Westbard Avenue
Bethesda, Maryland 20207**

Salary range from \$21,816 to \$36,000.

VERTEBRATE FIELD BIOLOGIST

Appointment at Assistant Professor level beginning 1 September 1975. Ph.D. required. Responsibilities include undergraduate teaching and course development in environmental program. Area of field specialty open. Application deadline is 23 May 1975. Send complete résumés and three letters of recommendation to **Chairperson, Biology Search Committee, Division of Natural Sciences, University of Pittsburgh at Johnstown, Johnstown, Pa. 15904. UPJ is an Affirmative Action/Equal Opportunity Employer.**

ZOOLOGIST/GENETICIST

Windham College in Putney, Vermont, is searching for an Assistant Professor with a Ph.D. whose teaching duties will include introductory biology and genetics. Other areas of specialization could be either cell and tissue culture or mammalogy and ornithology.

Send curriculum vitae, publications, and three letters of reference direct to **Dr. Anne M. Stewart, Chairwoman, Department of Biology, Windham College, Putney, Vermont 05346. Windham College is an Equal Opportunity/Affirmative Action Employer.**

COURSES

THE MARINE BIOLOGICAL LABORATORY
Woods Hole, Massachusetts 02543
Announces Courses for 5 to 30 January 1976
for Advanced Undergraduates and Beginning Graduate Students.

DEVELOPMENTAL BIOLOGY. Marine Biological Laboratory (MBL). An intensive study of developmental processes and principles employing marine invertebrates and selected vertebrates. Major emphasis will be placed on the roles of genes and on regulatory mechanisms. Emphasized will be problems of oogenesis, spawning, and fertilization; cellular affinities; differentiation of tissues; molting and metamorphosis; regeneration; and hormonal controls. Plant and animal development will be compared and contrasted. There will be opportunity to pursue individual projects. *Faculty:* Walter S. Vincent (Instructor-in-Charge), University of Delaware, and James D. Ebert, Carnegie Institution of Washington and MBL; other faculty to be appointed. Special Lecturers.

ECOLOGY. The Ecosystems Center, MBL. A lecture, laboratory, and field course on the structure, function, and interactions of ecosystems. Lectures will focus on the history, evolution, successional patterns, metabolism, productivity, and nutrient budgets of major ecosystems. The cycling of nutrients, radionuclides, and other toxins through ecosystems will be considered. Laboratory work will deal with analyses of selected segments of ecosystems and will include field sampling expeditions to local terrestrial and marine communities. *Faculty:* George M. Woodwell (Instructor-in-Charge), Daniel Botkin, and Charles Hall, The Ecosystems Center; Special Lecturers include I. Valiela, Boston University Marine Program; J. Teal, K. O. Emery, J. Ryther, and H. Jannasch, Woods Hole Oceanographic Institution; R. H. Whittaker, Cornell University; F. E. Smith, Harvard University; and others.

BEHAVIOR. Boston University Marine Program and MBL. An intensive, largely ethological, approach to the biology of terrestrial and marine animal behavior. Seminars, lectures, and laboratory and library work will cover topics such as sensory physiology, orientation, biological rhythms, communication, learning, sociobiology, and behavioral ecology. Laboratory work will consist of open-ended exercises utilizing vertebrate and invertebrate organisms, culminating in individual and independent student projects. Films will be shown. *Faculty:* Robert L. Jeanne (Instructor-in-Charge) and Jelle Atema, Boston University; Adrianus Kalmijn, Woods Hole Oceanographic Institution. Special Lecturers include D. R. Griffin, Rockefeller University; C. Moore and J. Hatch, University of Massachusetts (Boston); A. M. Stuart, University of Massachusetts (Amherst); G. Michel, Boston University; and others.

NEUROBIOLOGY. Boston University Marine Program and MBL. An intensive study of selected topics including lectures, seminars, and laboratory experiments with living material. Lectures will deal with elementary electricity, electrophysiological techniques; neuron doctrine; diffusion, resting and action potentials; synaptic transmission; principles of sensory physiology; and photoreception. Laboratory experiments will center on methods in electrophysiology. Live materials will include insect mechanoreceptors, frog sciatic nerve and sartorius muscle, lobster giant axons and neuromuscular systems, and the *Limulus* eye. *Faculty:* Fred Lang (Instructor-in-Charge), Boston University Marine Program; Edward F. MacNichol, Jr., and Alan Fein, MBL. Special Lecturers.

Prerequisites: Introductory biology, general physics, and general chemistry. Students who come equipped with a basic competence in biology or physical sciences will benefit most from the courses. The Behavior course welcomes psychology majors.

Facilities: Laboratories in the Loeb Teaching Building are equipped with fresh running seawater and aquariums. Electrophysiological, stimulating, and recording equipment are available as well as facilities for biochemical, histological, and histochemical study. The MBL is within easy reach of terrestrial, aquatic, intertidal, and marine field sites; MBL vessels are used for local marine sampling expeditions. The Lillie Building houses one of the finest marine biological libraries in the world.

Costs: Tuition \$400. Room and board \$220. A limited number of full and partial scholarships are available. Students may apply for financial aid in the space provided on the course application.

Credits: The MBL does not grant credits for courses; students must arrange to receive the four recommended credits from their home institutions. Upon request, certificates of satisfactory completion will be issued.

Application: Write to **Admissions Office, Marine Biological Laboratory, Woods Hole, Mass. 02543**, or call 617-548-3705, Ext. 212. Enrollment closes 1 November 1975; applicants will be notified by 1 December.

ANNOUNCEMENT

MARINE BIOLOGICAL LABORATORY (MBL)
Woods Hole, Massachusetts
offers

A YEAR IN SCIENCE AT THE MBL

In the fall of 1975 a selected group of undergraduate and graduate students will have the opportunity to arrange a distinctive curriculum of study and research throughout the academic year at the Marine Biological Laboratory. Individual programs will be arranged in consultation with George M. Woodwell of the Ecosystems Center and staff of the Laboratory of Sensory Physiology at the MBL; the Boston University Marine Program; the Woods Hole Oceanographic Institution; and the Laboratory of the National Marine Fisheries Service. Students will have the opportunity to participate in the various semester-long courses and seminars offered through the year by the MBL, including the well-known January courses. A special offering during the academic year 1975-76 will be a **SEMINAR ON THE BIOSPHERE**, a two-semester course in ecology that will examine the structure and function of ecosystems. Scholarships up to 50 percent of total costs are available.

For application blanks and further information write to **Admissions Office, Marine Biological Laboratory, Woods Hole, Massachusetts 02543**, or call 617-548-3705, Ext. 212. Deadline for applications: 1 June 1975; applicants will be notified by mid-June. For those who wish to be in residence for the spring semester only, the deadline is 1 September 1975, with notification by mid-September.

FELLOWSHIPS

POSTDOCTORAL FELLOWSHIPS

Positions available from time to time for M.D. or Ph.D. to conduct research as member of group in either of the following areas of regulatory biology: (1) Cell/Molecular biology, (2) Reproductive biology, (3) Endocrine biology, (4) Neurobiology. Applications are invited from persons trained in molecular biology, microbiology, virology, physiology, biology, organic chemistry, biochemistry, pharmacology, biophysics or other related specialties. Applicants are expected to be familiar with advanced research techniques relevant to the area of interest and must have strong academic background. Stipend range from \$10,000-\$14,000 depending upon postdoctoral experience. Send résumé and three letters of reference to **Dr. Ashton Gibbons, Director of Personnel, Worcester Foundation for Experimental Biology, 222 Maple Avenue, Shrewsbury, Massachusetts 01545.**

An equal opportunity/affirmative action employer

POSTDOCTORAL RESEARCH TRAINING FELLOWSHIPS IN SENSORY NEUROPHYSIOLOGY

Positions available 1 July 1975 providing multidisciplinary research training in audition, vision, somesthesia, and the chemical senses. Initial appointment is for 1 year, renewable for two additional years; beginning stipend \$10,000. Candidates must be pursuing a career which includes, as an important component, research in sensory neurophysiology. Applicants should submit a letter outlining career plans, curriculum vitae, and two letters of reference to **J. E. Hind, Chairman, Department of Neurophysiology, Room 283, University of Wisconsin Medical School, Medical Sciences Building, Madison, Wisconsin 53706. An Equal Opportunity/Affirmative Action Employer.**

MARKET PLACE

AQUARIUS ELECTRONICS

Pioneers in reliable biofeedback systems.



EEG, EMG, ESP
Precision instrumentation for educators and researchers. Custom design services also available.

P.O. Box 96 S,
Albion, Calif. U.S.A. 95410

Circle No. 190 on Readers' Service Card

CONSTRUCT & REPAIR LAB APPARATUS

GLASSBLOWING KITS
with instruction manuals
\$195—345

WALE APPARATUS CO. Hellertown, Pa.

Circle No. 178 on Readers' Service Card

the housing authority

Plastic cages, animal bedding, covers, metal cages, total housing systems, laminar flow systems. Plus a complete line of accessories ranging from water bottles through restraining cages to portable metabolism cages. All these laboratory animal care products, and more, are available from Lab Products, Inc.

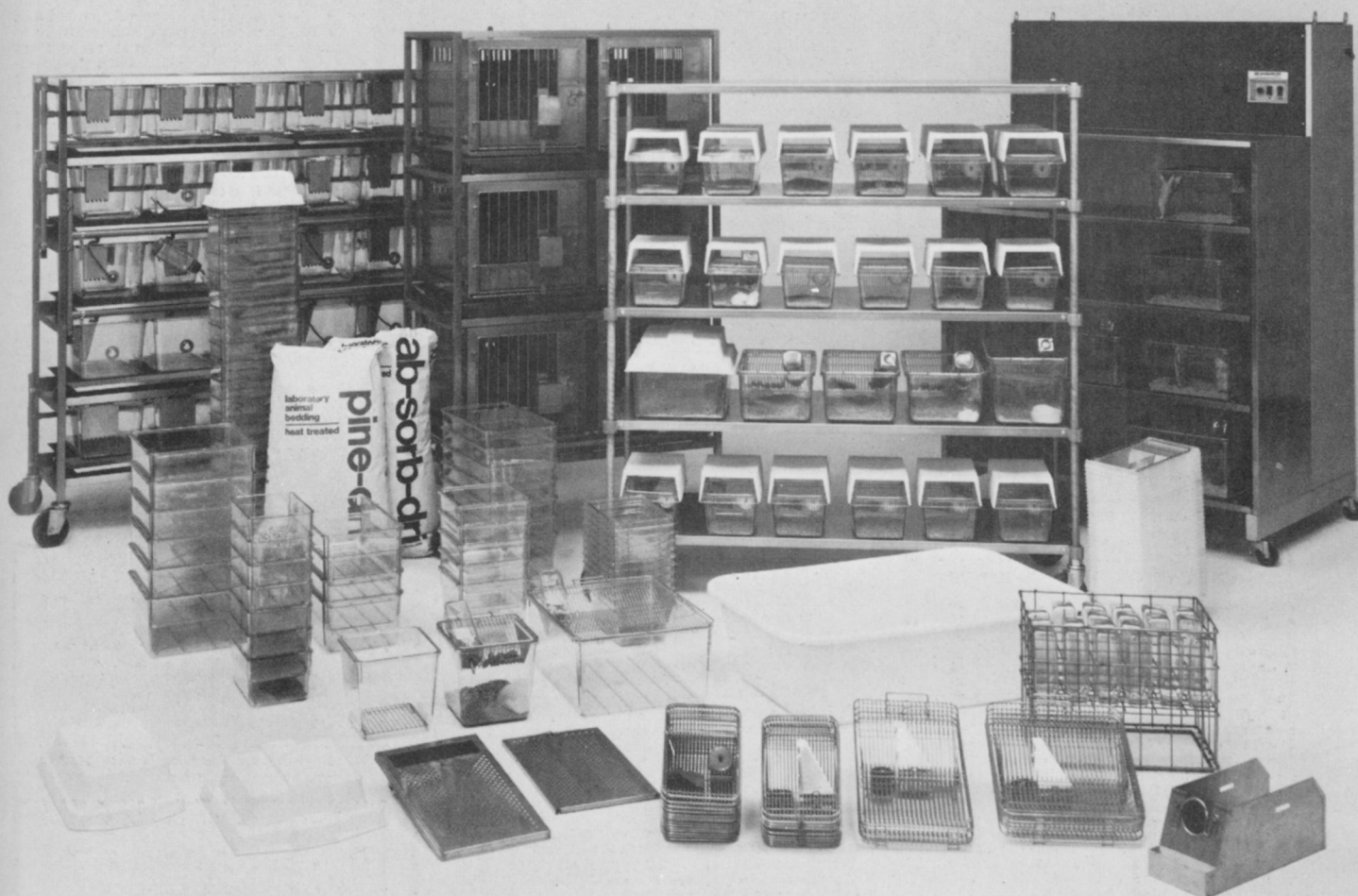
What's more, if you don't see exactly what you need in our new catalog, let us know. Our experienced designers can help you create a system to your exact requirements.

All are completely detailed in our new 64 page catalog. Please write us on your institutional or company letterhead for a copy,

or call; you'll soon know why we say The Housing Authority. Lab Products, Inc., 635 Midland Ave., Garfield, N.J. 07026 (201) 478-2535.

Quality Animal Care Products From

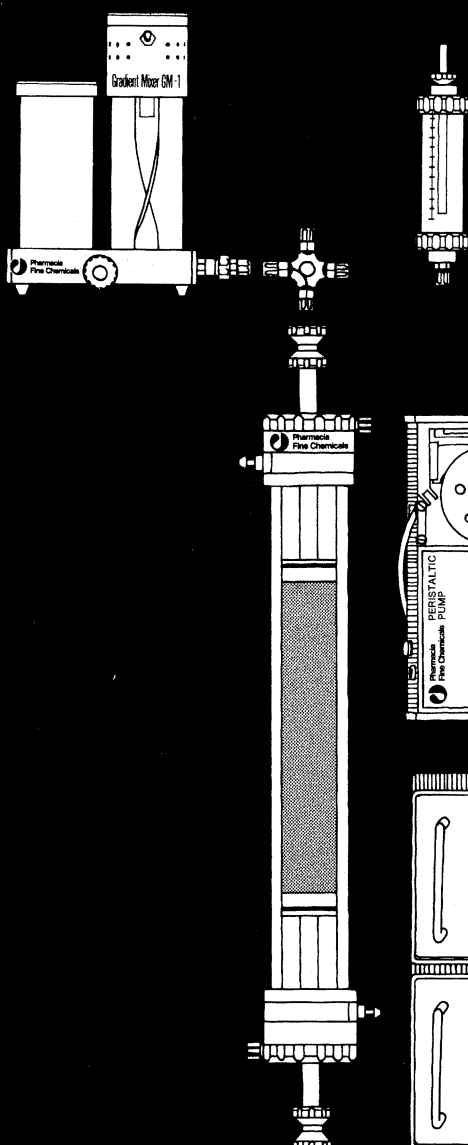
**lab products
inc** • a **bioMedic** company



© 1975 **bioMedic** corporation

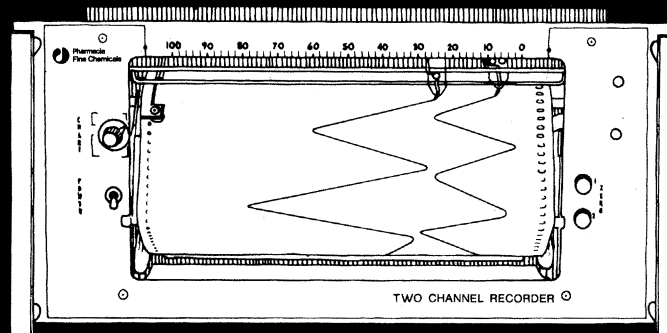
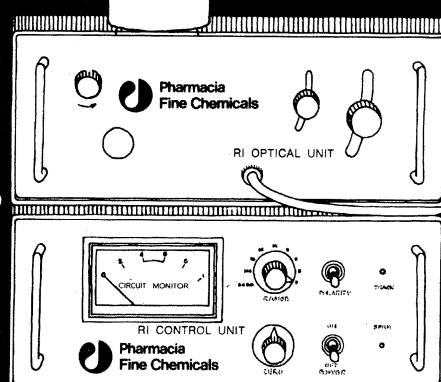
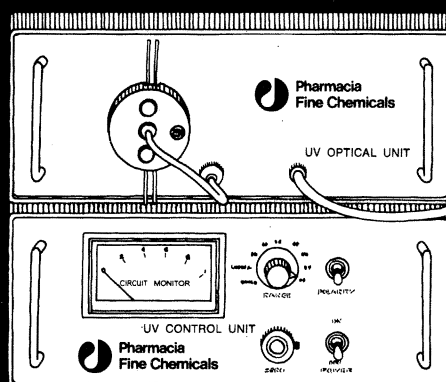
ab-sorb-dri™ • pine-dri™ • stay-clean™ • iso-cap™ • iso-lid™ • iso-system™ • enviro-gard™ • see-through™

Circle No. 204 on Readers' Service Card



Modular components for liquid chromatography systems

Gradient Mixer GM-1
Valve LV-3
Reservoir R-9
Flow Adaptor A-26
Column K-26
Peristaltic Pump P-3
UV Monitor
RI Monitor
Two Channel Recorder



Monitors and
Recorders
available only
in U.S.A.
and Canada.

Pharmacia Fine Chemicals Inc
800 Centennial Avenue
PISCATAWAY
New Jersey 08854
Phone (201) 469-1222

Pharmacia (Canada) Ltd.
2044 St. Regis Boulevard
Dorval, Quebec, Canada
(514) 684-8881

 **Pharmacia
Fine Chemicals**

For additional information write or call PHARMACIA FINE CHEMICALS INC., Piscataway, New Jersey.