

(Continued from page 135)

cratic Party's energy task force, which is headed by former White House aide Harry McPherson and which met in Washington in late February. This new superagency would include most of USGS, NOAA, the Environmental Protection Agency, the Coast Guard, and parts of the Army Corps of Engineers. Both the Democratic task force plan and the Hollings bill would leave BLM in Interior and separate OCS development from regulation.

The DEO notion has been floating around in the bureaucracy and on Capitol Hill for some time. Staffers give it a chance of becoming reality only if the Ford Administration deep-sixes a competing superagency proposal, the long discussed Department of Energy and Natural Resources. In that case, it might support the DEO idea.

A less original solution has been put forward by a scientific advisory committee, the National Advisory Committee on Oceans and Atmosphere (NACOA). In response to a request from Senator Hollings, NACOA wrote its own position paper on the OCS leasing, which ventured that the whole issue had become so entangled that normal governmental processes could not unravel it. Only a blue-ribbon commission would be able to come up with a blueprint for action that could be acceptable to all sides.

NACOA's strong views on the OCS issue are a reminder that ocean policy has been nearly the exclusive province of oceanographers for the last several years. But the oceanographers seem about to be edged over by other, more powerful groups whose interests in the oceans are somewhat less than scholarly. A memo proposing DEO to the Democratic task force put the challenge to the oceanographers thus:

"Over the last few decades the oceans have emerged from the laboratories and research vessels of a few hundred oceanographers and marine scientists out into the rough and tumble company of the oil and gas industry, the recreational developers, the increasingly wide-ranging fishermen of all nations and even the United Nations.

"No longer can the United States afford to regard the oceans as a matter for academia. Ocean-related conflicts and controversies have become critical policy matters for the Federal government."—DEBORAH SHAPLEY

RECENT DEATHS

Edwin J. Anderson, 74; professor emeritus of apiculture, Pennsylvania State University; 3 December.

Ralph C. Blaney, 75; professor emeritus of agricultural extension, Pennsylvania State University; 31 December.

J. Lawrence Botsford, 67; professor emeritus of mathematics, University of Idaho; 27 December.

Theophil F. Buehrer, 82; professor emeritus of agriculture, University of Arizona; 5 December.

Hermann N. Burian, 68; professor of ophthalmology, University of North Carolina School of Medicine; 25 November.

Darrell J. Drickey, 40; associate professor of physics, University of California, Los Angeles; 10 December.

Erwin R. Gaertner, 63; chairman, nuclear engineering division, Rensselaer Polytechnic Institute; 19 November.

Joseph G. Hoffman, 65; retired professor of physics and biophysics, State University of New York, Buffalo; 8 December.

Claude A. Levengood, 64; chairman, department of life science, University of Tulsa; 15 January.

Michael A. Lorenzo, 49; associate professor of biology, Loyola College; 6 December.

F. H. MacDougall, 91; former professor of chemistry, University of Minnesota; 21 November.

Edward J. Martin, 82; retired head, physics department, General Motors Research Laboratories; 16 December.

James McCormack, 64; former chairman, Communications Satellite Corporation; 3 January.

H. T. Person, 71; former president, University of Wyoming; 13 December.

Walter F. Pond, 89; former Tennessee state geologist, and geologist, Mississippi state geological survey; 25 October.

George W. Slaughter, 70; associate professor of clinical urology, New York University; 14 January.

William F. Strauss, 45; vice president, Bio-dynamics, Inc., New Jersey; 6 January.

Claire E. Turner, 84; former professor of public health, Massachusetts Institute of Technology; 27 November.

George D. Van Dyke, 76; former professor of physics, Earlham College; 28 November.

Personnel Placement

Only those employers who will not discriminate on the basis of race, sex, religion, color, or national origin should submit Personnel Placement advertising.

POSITIONS WANTED: 40¢ per word; use of Box Number counts as 10 additional words. Minimum charge \$10. Prepayment required. This rate applies to individuals only; personnel agencies and companies take display rate for all advertising.

DISPLAY (POSITIONS OPEN, MARKET PLACE, AND SO FORTH): \$110 per inch, minimum (1 inch is equivalent to 12 lines of 48 characters each). Ads over 1 inch billed to nearest quarter inch. No charge for Box Number. Rates net. No agency commission allowed for ads under 4 inches. No cash discount. Prepayment required for foreign advertising. Purchase orders and billing information must accompany all other advertising.

COPY for ads must reach SCIENCE by Wednesday, 3½ weeks before issue date (Friday of each week) requested. Send copy for all positions wanted ads and display ads under 5 inches to:

SCIENCE, Room 207
1515 Massachusetts Ave., NW
Washington, D.C. 20005

Send copy for display ads, ½ page and larger, to:

Scherago Associates, Inc.
11 West 42 Street
New York, N.Y. 10036

BLIND AD replies should be addressed as follows:

Box (give number)
SCIENCE
1515 Massachusetts Ave., NW
Washington, D.C. 20005

POSITIONS WANTED

Biochemist, Ph.D. 1970. Endocrinology. Biochemical actions of estrogens in uterus and DMBA-induced breast tumors. Steroid-protein interactions. Enzyme studies. Bioassays. RIA. Desires position in industry or hospital-based laboratory, after May 1975. Box 154, SCIENCE. X

Biochemist, Ph.D. 1972. Three years of post-doctoral research in nucleic acid chemistry and metabolism. Publications. Seeks research/teaching position. Box 155, SCIENCE. X

Ph.D. Biochemistry. Experience in enzymes, lipids, parasite biochemistry, nutrition, biochemical pathology, and membranes. Presently medical school faculty. Prefers research/teaching. Box 170, SCIENCE. X

A recent Ph.D. **Bioengineer**, currently a research associate, seeks teaching/research faculty position; several publications to credit; experience with modeling of circulatory systems and biomechanics; interests fill the entire domain of physiological sciences. Country of employment and geographical location are open. **Dr. N. P. Reddy, P.O. Box 643, College Station, Texas 77840.** X

Biologist/Plant Physiologist. M.S. 1975. Research experience in plant growth regulators, tissue culture methods. Publications. Good background in genetics. Industrial, academic opportunities? Box 171, SCIENCE. X

Two **Cellular Immunologists**, Ph.D.'s, experienced, funded. Backgrounds, pharmacology, microbiology. Interests include tumor immunology, ontogeny, reproductive biology, stimulation and suppression of immune response. Seek teaching/research, medical center, assistant/professor level. Box 172, SCIENCE. X

Ichthyologist, M.S. Eight years of experience. Research and publications concerning effects of thermal discharges on estuarine fish. Administrative experience. Seeking government, academic, or industrial position. Box 174, SCIENCE. X

UNIVERSITY OF PAPUA

Applications are invited for the post of a) SENIOR LECTURER or b) LECTURER in PHYSICS. The appointee will be expected to combine research with teaching of about 12 hours per week. Most of the teaching will be to students in their preliminary or first undergraduate years. The research interests of the department are in the fields of geomagnetism, ionospheric and upper atmospheric studies, meteorology, cloud electrification processes and micrometeorology including evapotranspiration. It is hoped the appointee will be able to assume duties in July 1975. The appointment will initially be for up to three years. Salary scales: a) A\$11,603—A\$13,284 p.a. b) A\$8,674—A\$11,362 p.a. (£ sterling = A\$1.78). In addition, an allowance of A\$1,300 p.a. if single is payable. An extra A\$1,000 Marriage Allowance and A\$156 per child Child Allowance may also be payable. Conditions include provision of housing, study leave, annual leave fares, FSSU type superannuation. In some cases it may be possible to make an appointment on secondment. Applications should be in duplicate and include a curriculum vitae, the names and addresses of three referees, a recent small photograph and an indication of estimated starting date. Further details and the conditions of appointment are available from The Secretary, P. O. Box 4820, University, Papua, New Guinea. Applications should be returned as soon as possible.

UNIVERSITY OF PAPUA, NEW GUINEA (PORT MORESBY)

Applications are invited for the post of RESEARCH FELLOW IN AGRICULTURE. The appointee will have a Ph.D. in plant breeding, with experience in maize and sorghum breeding. Duties will include the production of high-yielding, early-maturing varieties of sorghum and maize for various altitudes and rainfall regions in Papua, New Guinea; agronomic studies on the new varieties of sorghum and maize; and the training of graduate students and field staff in the techniques of breeding and agronomy of sorghum and maize. Salary scale: A\$8,674—A\$11,362 p.a. (£1 sterling = A\$1.78). In addition, an allowance of A\$1,300 p.a. if single is payable. An extra A\$1,000 Marriage Allowance and A\$156 per child Child Allowance may also be payable. Conditions include provision of housing, study leave, annual leave fares, FSSU type superannuation. In some cases it may be possible to make an appointment on secondment. Applications should be in duplicate and include a curriculum vitae, the names and addresses of three referees, a recent small photograph and an indication of estimated starting date. Further details and the conditions of appointment are available from The Secretary, P. O. Box 4820, University, Papua, New Guinea. Applications should be sent as soon as possible.

POSITIONS WANTED

Chemist-Endocrinologist. Ph.D. 1971. Three years postdoctoral in Department of Endocrinology-Metabolism. Experienced in analytical instrumentation, gel chromatography, mass spectroscopy, amino acid analyzer, radioimmunoassay, tracer techniques, and small animal surgery. Desire academic, industrial, or government position. Box 173, SCIENCE. X

Former associate professor in central Europe with diversified **Industrial R&D Experience** in United States, desires assignment in Europe. Multilingual **Organic-Polymer Chemist**, Ph.D., D.Sc., patents, publications, honors, industrial products. Box 169, SCIENCE. X

Pathologist. Ph.D., M.D. Seeks active senior faculty position. Background in academic pediatric, and forensic pathology with research and teaching experience. Available in July 1975. Curriculum vitae upon request. Box 175, SCIENCE. 4/18

Vertebrate Biologist-Ecologist: Ph.D. Seven years of college teaching experience in vertebrate biology/zoology, ecology, and physiological ecology. Research concerned with ecology of small mammals. Publications. Desires teaching/research appointment. Box 176, SCIENCE. X

Zoologist. Ph.D. Seeks teaching or teaching-research position. Interests include invertebrate zoology, invertebrate physiology, parasitology. Box 54, SCIENCE. 4/11

POSITIONS OPEN

ANATOMY. Position open 1 September 1975 for an Assistant Professor to teach Human Anatomy and Neuroanatomy. Candidates should have a Ph.D. in Anatomy or expect degree prior to 1 September 1975. Qualified applicants should send a curriculum vitae including transcripts, publications and three letters of recommendation to: **Ormond G. Mitchell, Chairman, Dept. of Anatomy, Brookdale Dental Center, New York University College of Dentistry, 421 First Ave., New York 10010.** A Nondiscriminatory Affirmative Action Employer.

AQUATIC ECOLOGIST

Position for Assistant Professor to participate in Environmental Studies and ecology program. An algal ecologist with postdoctoral experience preferred. Regular 9-month appointment. Send curriculum vitae, reprints, and three letters of recommendation by 1 May 1975 to **Dr. Kenneth Armitage, Chairman, Aquatic Ecology Search Committee, Division of Biological Sciences, The University of Kansas, Lawrence, Kansas 66045.** An Equal Opportunity/Affirmative Action Employer.

ASSISTANT PROFESSOR. Ph.D. Environmental Engineer to work at a Maryland Eastern Shore laboratory. Research in waste disposal, shellfish aquaculture, and other environmental problems. Contact

Prof. Paul Winn
University of Maryland Center for
Environmental and Estuarine Studies
P.O. Box 775
Cambridge, Maryland 21613

by 1 June 1975. An Equal Opportunity/Affirmative Action Employer.

Applications are invited for positions as **ASSISTANT PROFESSOR** from research-oriented teachers qualified in **General Biology, Microbiology, Immunobiology, or Terrestrial Ecology.** Send résumés to: **Chairman, Biology Department, Adelphi University, Garden City, N.Y. 11530.** Affirmative Action Employers.

ASSISTANT PROFESSOR

Biochemistry. Fall 1975. Ph.D. with teaching interests in lipid biochemistry and/or nutritional biochemistry. Joint appointment at Miami University and Wright State University School of Medicine. Position requires undergraduate and graduate (M.S., M.D., and Ph.D.) teaching and research. Research involvement mandatory. Qualified persons should send curriculum vitae, detailed outlines of research and teaching interests, and three letters of recommendation to: **Gilbert Gordon, Chemistry Department, Miami University, Oxford, Ohio 45056 or H. Ira Fritz, Department of Biological Chemistry, School of Medicine, Wright State University, Dayton, Ohio 45431.** Deadline 1 May. Equal Opportunity/Affirmative Action Employer.

POSITIONS OPEN

VISITING ASSISTANT PROFESSOR OF BIO-CHEMISTRY. Temporary appointment for the 1975-76 academic year. Ph.D. in Biochemistry required. Interest in enzymology and/or clinical biochemistry preferred. Teaching duties will include introductory and/or advanced biochemistry courses. Research time available. Curriculum vitae and three letters of recommendation to: **J. M. Shively, Head, Department of Biochemistry, Clemson University, Clemson, South Carolina 29631.** Clemson University is an Equal Opportunity/Affirmative Action Employer.

ASSISTANT PROFESSOR OF PHARMACOLOGY

One or more faculty positions for Ph.D. in pharmacology or equivalent with postdoctoral training and/or teaching experience. Research experience and interest in cardiovascular pharmacology preferred. Send curriculum vitae and references to: **Dr. Joanne Moore, Chairman, Department of Pharmacology, University of Oklahoma Health Sciences Center, P.O. Box 26901, Oklahoma City, Oklahoma 73190.** An Equal Opportunity/Affirmative Action Employer.

ASSISTANT PROFESSOR IN DEPARTMENT OF PHYSICS at Michigan State University. Ph.D. required. Experience and significant accomplishments (publications) in experimental nuclear physics. Contact:

Truman O. Woodruff, Chairman
Department of Physics
Michigan State University
East Lansing, Michigan 48824
An Equal Opportunity Employer

The Department of Biological Sciences, San José State University, San José, Calif. 95192, an Equal Opportunity Employer, announces an opening for **ASSISTANT PROFESSOR OF POPULATION BIOLOGY OR PHYSIOLOGICAL ECOLOGY AND WILDLIFE MANAGEMENT**, 30 August 1975. Teaching in these and allied fields. Graduate student advising. Send curriculum vitae to **Joseph H. Young, Chairman.** The department also announces temporary positions for one and two semesters, 1975-76 academic year, in cell biology, human anatomy and physiology, zoology, microbiology, and general biology.

ASSISTANT PROFESSOR OF OCEANOGRAPHY. Position available September 1976 (possibly as early as September 1975). Ph.D. with special competence in chemical oceanography or marine geochemistry. Applicants should have qualifications to teach undergraduate and graduate courses. Applicants will be judged on teaching and research potential. Send complete résumé and four letters of reference to **Dr. Larry Larsen, Chairman of Faculty Recruitment Committee, Department of Oceanography, University of Washington, Seattle, Washington 98195.** The University is an Equal Opportunity/Affirmative Action Employer.

ASSISTANT PROFESSOR OF SOCIOLOGY

The Department of Human Ecology and Social Sciences in a multipurpose college with a "Man and Environment" theme has an opening for a person to teach introductory sociology; other undergraduate courses appropriate for interdisciplinary curricula related to environmental problems, and graduate courses in sociology. Some work required also in assisting Cooperative Extension Faculty to develop programs and evaluate their social impact. Ph.D. required. Salary: \$11,710 per annum. Initial appointment will be for 3 years. Applications, with curriculum vitae and at least three letters of reference, should be sent to: **Dr. Carmel Schrire, Chairman, Department of Human Ecology and Social Sciences, Cook College, Rutgers University, P.O. Box 231, New Brunswick, New Jersey 08903.** Rutgers University is an Equal Opportunity/Affirmative Action Employer.

BIOLOGIST

Applications are invited for a faculty position at the Instructor or Assistant Professor level. Applicants must have a Ph.D. and be capable of teaching General Biology, Botany, and Ecology (molecular orientation preferred) in a small, private, liberal arts college environment. Research encouraged; adequate facilities and equipment available. Salary range \$9,000 to \$10,500 for 9 months. Submit curriculum vitae, transcripts, and three letters of reference by 2 May 1975 to: **Chairman, Department of Biology, King's College, 133 North River Street, Wilkes-Barre, Pennsylvania 18711.** Equal Opportunity Employer.

POSITIONS OPEN

ASSOCIATE DEAN FOR EDUCATION. A Medical School in the Northeast invites applications and nominations for this major position which would be responsible for undergraduate medical education, the Ph.D. and the M.D.-Ph.D. programs, admissions, continuing education, interdisciplinary aspects of house staff training, and so forth. This is an essentially full-time position, but the several operational functions could be delegated to members of the faculty and staff. Curriculum vitae should be submitted to **Box 166, SCIENCE**. We are an Equal Opportunity Employer.

UNIVERSITY OF MASSACHUSETTS AMHERST DEPARTMENT OF BIOCHEMISTRY

Recent Ph.D. in Biochemistry. A 2-year appointment is available for research in areas of membrane biochemistry with some participation in the departmental teaching program. Send curriculum vitae and inquiries to **Personnel Office, Code T24A, 161 Whitmore, Amherst, Mass. 01002**. An Affirmative Action/Equal Opportunity Employer.

The Department of Biology at Creighton University announces two Assistant Professor positions for August 1975.

BEHAVIORIST. Ph.D. with broad background in general biology, to teach introductory biology, undergraduate animal behavior, and possible graduate offerings, including directing research.

ANIMAL HISTOLOGY. Ph.D., 1-year appointment, to teach introductory biology and undergraduate course in histology. Candidates with completed Ph.D.'s (as of August 1975) should send curriculum vitae, transcripts, and three letters of reference to **Dr. Robert Belknap, Chairman, Biology, Creighton University, Omaha, Nebraska 68178**.

BIOLOGIST

A position at the instructor level for one academic year will be available 2 September 1975. Duties will include teaching sections of introductory biology and coordination of the AVT laboratory. A Master's degree in Biological Sciences and previous experience with AT techniques are minimum requirements. Salary \$9000. Send curriculum vitae, transcripts, and three references to: **Dr. G. Hartmann, Chairman, Department of Biology, Rhode Island College, Providence, R.I. 02908**.

CELL BIOLOGIST

Postdoctoral or research associate level. Experienced in cell culture and an interest in chemical carcinogenesis and mutagenesis and tumor virology. Submit detailed résumé to:

**Ms. Sandy D'Ambrosio
The Wistar Institute
36th and Spruce Streets
Philadelphia, Pa. 19104**

CHAIRMAN, OBSTETRICS-GYNECOLOGY UNIVERSITY OF TENNESSEE-MEMPHIS

The University of Tennessee College of Medicine is seeking a chairman of its Department of Obstetrics and Gynecology. Candidate should present evidence of clinical and academic competence to direct a department of 9 full-time faculty members with 21 residents in training. Interested individuals should contact **William C. North, M.D., Chairman, Search Committee, University of Tennessee College of Medicine, Memphis, Tenn. 38163**. An Equal Opportunity/Affirmative Action Employer.

CHEMICAL OCEANOGRAPHER POSITION

The University of California at Santa Cruz invites applications for a joint faculty appointment in the Division of Natural Sciences and College VII. The successful candidate's duties will include teaching at both undergraduate and graduate levels. We are interested in candidates whose research interests center around coastal geochemical processes. A knowledge of chemical tracer and other analytical techniques such as radionuclide and heavy metal and analysis is desirable. The appointment is at the Assistant Professor level. Candidates should submit an extended curriculum vitae detailing past and future research teaching interests as well as the names of at least three references. Deadline for applications is 20 April 1975. Write: **Kenneth S. Norris, Coordinator/Administrator, Coastal Marine Laboratory, University of California, Santa Cruz, California 95064**. The University of California is an Equal Opportunity/Affirmative Action Employer.

11 APRIL 1975

POSITIONS OPEN

The Faculty of Medicine, Memorial University of Newfoundland, St. John's, Newfoundland, will be making additional appointments in **CELL SCIENCES** in anticipation of its move to a new Sciences Complex. Research-oriented individuals with background in Cell Physiology and/or Developmental Biology are invited to apply in one of the following research areas: (i) Membrane Studies; (ii) Microbial, Molecular, and Cytogenetics; (iii) Immunology; (iv) Growth, Development, and Regulation; (v) Neurosciences; and (vi) Cardiovascular Studies.

Successful candidates will be expected to participate in teaching Cell Physiology, Histology, or Embryology in the first 2 years of the medical program.

Applications will be received by **Dr. B. H. Sells, Chairman, Cell Sciences Search Committee, Faculty of Medicine, Memorial University of Newfoundland, St. John's, Newfoundland, Canada A1C 5S7**, until 20 April 1975 and should be accompanied by a curriculum vitae and names of three referees.

CHAIRPERSON, INSTRUCTIONAL DEVELOPMENT SERVICES

Responsibilities are planning, coordinating, and providing (via staff) instructional and faculty development. Minimal qualifications are an M.S. degree, experience as instructional technologist and 3 years' experience in industry and/or education. The salary is open. Send résumé and references to **Dr. Clay G. Johnson, Manager of Instructional Development and Evaluation, Texas State Technical Institute, Waco, Texas 76705**.

CHAIRPERSON, DEPARTMENT OF HEALTH SCIENCES. Available September 1975. Desire person with doctorate in health-related discipline, established reputation as a scholar, and evidence of ability for administrative and professional leadership. Department provides human anatomy and physiology courses for professional programs and has graduate programs in health sciences, nutrition, applied anatomy, and physiology. Undergraduate programs in applied physiology, cardiopulmonary rehabilitation, and dance/movement therapy proposed for 1975-76. Submit letter of interest, curriculum vitae, and references with any inquiries to: **Mary B. McCann, M.D., Sargent College of Allied Health Professions, Boston University, Boston, Mass. 02215**. Affirmative Action/Equal Opportunity Employer.

CHAIRPERSON BIOLOGICAL SCIENCES

Nominations and applications are being accepted for the position of chairperson for a department of approximately 30 faculty and 80 Ph.D. and M.S. graduate students. Individual must have had an active research career as evidenced by publications, work with graduate students, and success in obtaining grants. Strong preference will be given to an individual with previous administrative experience such as a departmental chairperson. Rank and salary open. Send curriculum vitae and three letters of recommendation to: **Dr. Richard Crang, Chairman, Search Committee, Department of Biological Sciences, Bowling Green State University, Bowling Green, Ohio 43403**.

CHEMIST-BIOCHEMIST

Dynamic midwestern radiopharmaceutical manufacturer seeks Ph.D. or M.S. with 2 to 5 years of experience for a position in R&D. Must have working knowledge in radiolabeling—T-3, T-4, and steroids; experience with thin-layer, column, and liquid-liquid chromatography, familiarity with organic synthesis, and RIA procedures desirable. Competitive salary, benefits and opportunities. **Box 177, SCIENCE**.

FACULTY POSITION (ASSISTANT PROFESSOR) IN ANIMAL SCIENCE: 50 percent teaching, 50 percent Extension Program emphasis—livestock system evaluation, undergraduate, extension teaching, and advising. Ph.D. required with advanced training in statistics, livestock production, and computer usage. Contact **S. A. Ewing, 101 Kildee Hall, Iowa State University, Ames, Iowa 50010**. Iowa State University is an Equal Opportunity/Affirmative Action Employer.

FRESHWATER ECOLOGIST

Wanted freshwater ecologist, limnologist, or environmental scientist with experience in biological science to work on development of stability indicators for freshwater ecosystems. Ph.D. in a biological science required. Please send résumé to **John Harte or Don Levy, Lawrence Berkeley Laboratory, University of California, Berkeley, Calif. 94720**. Or phone 415-843-2740, ext. 6119. An Equal Opportunity Employer.

Immunopharmacologist

Candidates should have a Ph.D. in pharmacology or a related discipline with interest and preferably some experience in immune mechanisms of disease. Primary responsibility is in the evaluation of agents useful in immediate hypersensitivity diseases, but there is considerable overlap with delayed hypersensitivity and inflammation. Interested persons should send a résumé of education and research experience to:

**CHARLES L. SMITH
Research Administrator**

WYETH LABORATORIES, INC.

P.O. Box 8299
Philadelphia, Pa. 19101

Equal Opportunity Employer

**Wyeth WYETH
LABORATORIES, INC.**

Biostatisticians NEW DRUG EVALUATION

We need urgently to add several experienced biostatisticians to our Corporate Experimental Biometrics Department. They will provide experimental design and data analysis direction to our pharmacological and clinical candidate drug studies, pointing towards New Drug Applications. Preference will be given applicants who have prior experience in this area of biometrics either through industry or government work. Excellent supporting staff and computer facilities available.

Location is at our headquarters in rural-suburban Lake County, Illinois . . . 40 miles north of Chicago. Contact **Dr. Kenneth J. Frederick, Director of Research Data Operations, at the Atlantic City Federation Meeting, Lombardy Motel, (609) 344-8131, 13-16 April**, or send résumé, with salary history to:

**N. C. Warner
Professional Employment**

ABBOTT
NORTH CHICAGO, ILL. 60064
An Equal Opportunity Employer M/F

POSITIONS OPEN

DIRECTOR, FLORIDA SOLAR ENERGY CENTER

The State of Florida has established a Solar Energy Center located at Cape Canaveral, adjacent to the Kennedy Space Center. Activities of the Center will include solar energy utilization, development, and research and will provide a coordinated statewide approach in cooperation with public and private universities, industries, and governmental agencies. The Director must be capable of working effectively with university faculty and administrators; the business community; design professionals; federal, state, and local governmental agencies; and with outside funding agencies. It is expected that candidates for this position will have earned doctorates in the physical sciences or engineering and demonstrated experience and capability in working with industry, government, and universities, in energy-related contexts.

Send nominations and applications by 1 May 1975 to: **Dr. William B. Phillips, Director of Science and Engineering, Florida Board of Regents, 107 West Gaines Street, Tallahassee, Florida 32304.** *An Equal Opportunity/Affirmative Action Employer.*

DIRECTOR—THE BREHM LABORATORY WRIGHT STATE UNIVERSITY DAYTON, OHIO

The Brehm Laboratory is a 25,000-square-foot science facility designed for multi- and interdisciplinary research and instruction in environmental and related areas. The Director shall stimulate and aid in the establishment of appropriate research projects and in developing external funding for the Laboratory; manage resources and facilities; and continue to personally pursue his own research.

Address replies to **David Karl, Chairman, Brehm Search Committee, Wright State University, Dayton, Ohio 45431.** *An Equal Opportunity/Affirmative Action Employer.*

GEOCHEMIST/GEOCHRONOLOGIST

The Geology Department of Brooklyn College, City University of New York, has an opening for an individual whose primary research responsibility will be potassium-argon geochronology and who has a strong commitment to undergraduate teaching. Research equipment includes an M.S. 10 mass spectrometer for gas work and a solid source mass spectrometer. Position is as Assistant Professor and a Ph.D. is required. Send curriculum vitae promptly to **Chairman, Department of Geology, Brooklyn College, Brooklyn, N.Y. 11210.** *Brooklyn College is an Affirmative Action/Equal Opportunity Employer.*

GEOLOGICAL OCEANOGRAPHERS—Three Positions.

1) Faculty graduate-level research and teaching in micropaleontology and sedimentology of biogenous pelagic sediments with application to paleo-oceanography.

2) Faculty graduate-level research and teaching in marine sedimentology, sediment transport, and mineralogy or sediment geochemistry with application to the pelagic realm.

3) Research associate in mineralogy or marine sediments and marine sedimentology. Must be able to secure own research funds and interface with existing research programs.

All positions require broad oceanographic background and postdoctorate research experience. Send letters, curriculum vitae, names of three references, and bibliographies to the **Dean, School of Oceanography, Oregon State University, Corvallis, Ore. 97331.** *Affirmative Action/Equal Opportunity Employer.* Applications will be received until 15 June 1975.

GEOPHYSICAL RESEARCH. Research staff position with responsibility for implementing a dual processor PDP-11 geophysical data acquisition, processing, and reduction system aboard an oceanographic research vessel. Involves modification of manufacture-supplied real-time operating systems, design and construction of a data acquisition system, and assistance in overall reduction of geophysical data.

Bachelor's in Engineering, Physics, or Mathematics plus 3 to 4 years of experience required. Prior assembly language programming experience on the PDP-11 an asset. Send résumé to: **Dr. A. B. Watts, Lamont-Doherty Geological Observatory (of Columbia University), Palisades, N.Y. 10964.** *An Equal Opportunity Employer, M/F.*

POSITIONS OPEN

HUMAN ANATOMY; GENERAL PHYSIOLOGY. Two positions open at Assistant Professor or Associate Professor level; Ph.D. required. Primary duties will be teaching undergraduates and master's degree graduate students; research opportunities available and research activity encouraged.

Send résumé and three letters of recommendation to **Dr. Ann Bond, Chairperson, Department of Biological Sciences, Chicago State University, 95th and King Dr., Chicago, Ill. 60628.** *An Affirmative Action Employer.*

HUMAN BIOLOGY

Assistant or associate professor (\$11,316 to \$18,432) starting September 1975. Primary instructional duties in Human Anatomy and Physiology (majors and nonmajors) and Developmental Genetics (graduate). Ph.D. in Physiology or Anatomy preferred, with training in human development and genetics and strong interest in teaching. Application deadline is 2 May 1975. Applications should be addressed to: **Dr. Carol Lydon, Department of Biological Science, California State College, Dominguez Hills, 1000 East Victoria Street, Dominguez Hills, Calif. 90747.**

Memorial University of Newfoundland, Faculty of Medicine, has an opening for a specialist in **HUMAN NUTRITION**, M.D. or Ph.D. with interests and experience in teaching and research required. Rank and salary to be negotiated. Please send curriculum vitae and names and addresses of three referees to **Dr. Carl Pfeiffer, Faculty of Medicine, Memorial University of Newfoundland, St. John's, Newfoundland, Canada.**

IMMUNOLOGIST

A private company interested in research and development is looking for an immunologist with 3 to 5 years of experience in general immunology, with a background in animal work. Reply

Box 178, SCIENCE

INSTRUCTOR IN PHYSICAL THERAPY

The University of Michigan is seeking an individual, preferably with a master's degree, eligible for licensure as a physical therapist in Michigan. Appropriate clinical experience in physical therapy, as well as academic and/or clinical teaching experience. Major responsibilities will include teaching Physical Agents, planning programs for continuing education, and participating in various curriculum activities. Code #100HO. Send résumé to **Box 179, SCIENCE.** *A Nondiscriminatory Affirmative Action Employer.*

SIX INSTRUCTOR POSITIONS

Available in the Department of Radiology, University of Michigan Medical School. Board eligible or Board certified. Physician will take part in the programs of patient care, teaching, and research carried on in the Department of Radiology. Physician will supervise the activities of the resident staff and aid in teaching residents and medical students. Send résumé to **Box 180, SCIENCE.** *A Nondiscriminatory, Affirmative Action Employer.*

Iowa State University seeks applicants in **MOLECULAR BIOLOGY** for a faculty position in the Department of Biochemistry and Biophysics. The appointment probably will be made at the level of Assistant Professor and is effective 1 July 1975. Duties involve teaching and establishment of an imaginative research program. Send résumé and names of three references to: **Dr. Donald Graves, Department of Biochemistry and Biophysics, Iowa State University, Ames, Iowa 50010.** *An Equal Opportunity/Affirmative Action Employer.*

QUEEN'S UNIVERSITY KINGSTON, ONTARIO, CANADA DEPARTMENT OF PHYSIOLOGY

NEUROPHYSIOLOGIST applications are invited from mammalian physiologists with the Ph.D. and/or the M.D. degree for appointment to a faculty position as Assistant Professor. Applicants should have an interest in sensory/motor physiology, proven research ability, and teaching experience at undergraduate and graduate levels. Applications to **Dr. V. C. Abrahams, Chairman, Selection Committee, Department of Physiology, Queen's University, Kingston, Ontario, Canada K7L 3N6,** should include curriculum vitae and names of three referees.

POSITIONS OPEN

NEPHROLOGIST—The Division of Nephrology in the Department of Medicine at the University of Alabama in Birmingham has available a position at the Assistant Professor or the Associate Professor level. The position is open to qualified individuals at a senior level fulfilling three criteria. First, the individual must have expertise in the care and management of patients with renal disease and in the operation of a hemodialysis unit. Second, the individual must have a firm commitment to teaching programs oriented to medical students, graduate students, house officers, and fellows. Finally, the individual should have a research background and be able to carry out independent research, preferably in renal microcirculation. Apply to the **Division of Nephrology, University Station, Birmingham, Alabama 35294.** Telephone: 205-934-3585. *An Equal Opportunity/Affirmative Action Employer.* Expiration date for receipt of applications: 1 June 1975.

PEDIATRIC NEUROLOGIST. A large university program for developmentally handicapped children, involved in interdisciplinary training of students from a dozen professional disciplines, primarily at the graduate and postgraduate levels, desires a fully qualified pediatric neurologist to head its pediatrics and neurology section. While this will be the primary setting, the incumbent will also spend a major portion of his time teaching in the clinics and wards of the university hospital and will hold academic appointments in the Departments of Pediatrics and of Neurology. Excellence in teaching and research potential will be primary considerations. Position is available 1 July 1975. **Harrie R. Chamberlin, M.D., Director, Division for Disorders of Development and Learning, Child Development Institute, University of North Carolina, Chapel Hill, N.C. 27514** (Telephone: 919-966-4417). *An Equal Opportunity/Affirmative Action Employer.*

PLANT ECOLOGIST—ASSISTANT PROFESSOR. Full-time faculty position beginning fall 1975. Ph.D. and publications required. Duties involve: teaching introductory general ecology course, plant ecology, and either phycology or limnology; supervision of master's level graduate students and development of active research program. Salary competitive. Send curriculum vitae and three letters of recommendation to: **Chairman, Biology Department, Western Michigan University, Kalamazoo, Michigan 49008.** *An Equal Opportunity Employer.*

POSTDOCTORATE BIOCHEMIST

Suburban Philadelphia, Pa., pharmaceutical manufacturer has available immediately a postdoctorate opening for a biochemist or chemist specializing in protein chemistry. Knowledge of modern isolation, purification, characterization, and radiolabeling techniques desired. Send résumé and references to Employment Manager.

McNEIL LABORATORIES, INC. Fort Washington, Pa. 19034

An Equal Opportunity Employer

POSTDOCTORAL POSITION

To work on eukaryotic gene regulation. Biochemist with experience in enzymology and protein-nucleic acid interactions is desirable. Salary is \$10,500 or more depending on experience. Please send curriculum vitae to:

Dr. Arthur P. Bollon
Department of Biochemistry
University of Texas Southwestern Medical School
5323 Harry Hines Blvd., Dallas, Texas 75235

POSTDOCTORAL POSITION

Postdoctoral position available 1 May 1975 for research in developmental neurobiology. Neuronal patterning and specificity are being studied in the vertebrate nervous system. Experience in microsurgical, microinjection, and electrophysiological techniques is desirable. Send curriculum vitae and names of three references to **Dr. Howard Nornes, College of Veterinary Medicine and Biomedical Sciences, Department of Anatomy, Colorado State University, Fort Collins, Colo. 80521.**

ECOLOGISTS, REGIONAL PLANNERS, RADIATION BIOLOGISTS, SYSTEMS ANALYSTS, DATA MANAGERS

PhD or Equivalent Experience

The Environmental Sciences Division of Oak Ridge National Laboratory works in conjunction with other ORNL divisions, other National Laboratories, and a broad spectrum of agencies and institutions to conduct interdisciplinary research aimed at assessing local, regional and national impacts of both fossil and nuclear energy systems. All aspects of environmental effects of fuel cycles are being addressed. New positions are available in the following areas:

- Energy facility siting at local and regional scales
- Analyses of ecosystem and health effects of pollutants from energy technologies
- Evaluation of potential environmental impacts from new energy systems
- Ecological pathways and biogeochemical cycling of elements in ecosystems
- Regional environmental systems analysis and computer simulation
- Numeric data information systems
- Ecological benefit/cost assessment of energy systems
- Land use and natural resource characterization

Send inquiries to: Dr. J. J. Pinajian
Employee Relations Division
Oak Ridge National Laboratory
P. O. Box X
Oak Ridge, TN 37830



An Equal Opportunity Employer
U. S. Citizenship Required

BIOMEDICAL PROGRAM

The Oak Ridge National Laboratory announces an opening for an individual with diversified training and interests. Candidates with doctorate and postdoctoral research training in programs such as biochemistry, pharmacology, or toxicology will be considered. The duties entail developing research projects involving the design, synthesis, and testing of unique radiopharmaceuticals to be used in nuclear medicine and biological research. The position is with the Isotopes Division and involves collaboration with the Biology Division and other divisions of the Laboratory and interaction with the clinical nuclear medicine programs in the surrounding area.

The Oak Ridge National Laboratory offers excellent working conditions and is located less than 10 miles from Oak Ridge and is only 20 miles west of Knoxville, Tenn., population 200,000, in the heart of east Tennessee's mountain and lake region. The Laboratory is operated by the Nuclear Division of Union Carbide for the Energy Research and Development Administration.

Send detailed résumé including salary requirements and transcripts to:

Dr. J. J. Pinajian
Employee Relations Division
Oak Ridge National Laboratory
P. O. Box X
Oak Ridge, Tenn. 37830



An Equal Opportunity Employer

A SYMPOSIUM MOLECULAR STUDY OF EVOLUTION

Organized by Francisco J. Ayala
at the University of California, Davis
June 17-18, 1975

sponsored by:

The Society for the Study of Evolution
The American Society of Naturalists

I. June 17 A.M. Chaired by R.W. Allard
R.K. Selander: *Genetic Variation in Populations*
M. Soule: *Patterns of Protein Variation*
G. Johnson: *Genetic Polymorphisms: Enzyme Functions*
J.W. Valentine: *Genetic Strategies of Adaptation*

II. June 17 P.M. Chaired by T.H. Jukes
J. Avise: *Genetic Differentiation During Speciation*
L. Gottlieb: *Speciation in Plants*
M. Goodman: *Use of Protein Sequences in Phylogeny*
W. Fitch: *Protein Changes as Evolutionary Clock*

III. June 18 A.M. Chaired by Eric Davidson
R.T. Hinegardner: *The Evolution of Genome Size*
G. Galau: *Evolution of Repetitive Sequences of DNA*
A. Wilson: *Structural Genes Vs. Gene Regulation*

Registration Fee: \$10.00, Regular, \$5.00 Student
Send Registration Fee to, and request additional
information from: Ms. Carolyn Norlyn
Conferences and Campus Services
University of California
Davis, California 95616

AAAS Memberships and Subscriptions

- Whenever you write us about your membership or subscription, please attach a *Science* address label to assure prompt service.
- Mail to: Membership and Subscription Records, AAAS, 1515 Massachusetts Ave., NW, Washington, D.C. 20005.
- ☐ **Change of Address:** Please provide 6 weeks' notice. Paste an address label from a recent issue in the space provided. Print new address below.
- ☐ **Query:** If you have a question, place your address label here and attach this form to your letter.
- **To join or subscribe:** Mail this form with your payment, mark the appropriate boxes, and print your name and address in the space below. (For renewals, attach label.)

As of 1 May the following rates will be in effect:

- ☐ **Membership rates (individual only)**
 - ☐ \$25 USA ☐ \$31 Canada, PUAS ☐ \$32 Foreign
 - ☐ \$55 Airlift to Europe, North Africa, Near East
- ☐ **Subscriber rates**
 - ☐ \$50 USA ☐ \$57 Canada, PUAS ☐ \$58 Foreign
 - ☐ \$80 Airlift to Europe, North Africa, Near East

- ☐ Payment enclosed ☐ Bill me later

Name Please print

Address

City State Zip MT04

ATTACH
LABEL
HERE

POSITIONS OPEN

POSTDOCTORAL INVESTIGATOR BIOCHEMICAL PARASITOLOGY

Mechanisms of drug action on African trypanosomes (drug binding to DNA and RNA polymerases; lysosomal enzyme studies). Requires Ph.D., preferably in biochemistry. Salary: \$10,200 + fringes. USAMRDC contract. Renewal possible. Reply deadline is 12 May 1975. Starting date: 1 July 1975. Send applications to **Prof. A. C. Zahalsky, Department of Biological Sciences, Southern Illinois University at Edwardsville, Edwardsville, Ill. 62025. Telephone: 618-692-2411 or 3467.** *An Equal Opportunity and an Affirmative Action Employer.*

POSTDOCTORAL POSITION (\$10,500 per annum) available for protein biochemist. Research on collagen and elastin, beginning April to September 1975. Send curriculum vitae, three letters of recommendation, and information requests to:

Dr. N. R. Davis
Department of Oral Biology
University of Alberta
Edmonton, Alberta, Canada

POSTDOCTORAL/RESEARCH ASSOCIATE. Position available July 1975. Research projects in membrane biophysics and basic electrophysiological studies relating to multiple sclerosis. Desire Ph.D. in physiology or pharmacology with training in electrophysiological techniques. Send curriculum vitae and names of three references to **Dr. C. L. Schaaf, Department of Neurological Sciences, Rush Medical College, Chicago, Illinois 60612.** *Applications from qualified women and minority candidates are encouraged.*

RESEARCH ASSOCIATE (Ph.D. or M.D.)

With experience in cellular neurophysiology to participate in epilepsy research program and neuroscience training program. Send curriculum vitae and names of referees to **David A. Prince, M.D., Professor and Chairman, Department of Neurology, Stanford Medical Center, Stanford, California 94305.** *Stanford University is an Equal Opportunity Employer.*

RESEARCH ASSOCIATE

Muscle Biology Group invites applications from individuals with experience in electron microscopy, light microscopy, and histological techniques. Training in antibody techniques and protein chemistry desirable. B.S. or M.S. in biological sciences or chemistry required. Send résumé and names of three references to: **Dr. Darrel E. Goll, Muscle Biology Group, Iowa State University, Ames, Iowa 50010.** *Iowa State University is an Equal Opportunity/Affirmative Action Employer.*

Ph.D. or M.D. RESEARCH ASSOCIATE position in pathology department available immediately for experienced behavioral pharmacologist with background knowledge in neurophysiology and psychology to study the effects of organomercury compounds on primates and rodent adults and newborns. Preferably familiar with testing for behavioral interactions, temporal discrimination, and operant conditioning. Salary up to \$15,000 commensurate with training and experience. Applicants accepted until 15 April 1975. Send curriculum vitae and bibliography to **N. Karle Mottet, M.D., Professor of Pathology, University of Washington School of Medicine, Seattle, Washington 98195.** *An Equal Opportunity Employer.*

RESEARCH BIOCHEMIST

Division of Dermatology, Department of Medicine, Duke University Medical Center, is seeking a Biochemist, at least 2 years post Ph.D., with experience in protein purification, enzymology and proteinase chemistry. Salary \$18,000; faculty rank commensurate with experience. Inquire **Gerard S. Lazarus, M.D., Montefiore Medical Center, 111 East 210 St., Bronx, N.Y. 10467.**

TEACHING POSITION—AIR RESOURCES

Effective September 1975. Doctorate required, or within 1 year of completion, in Natural Resources or related field. Will teach undergraduate and graduate course in air resources plus undergraduate introductory environmental course.

Send résumé and credentials prior to 1 May 1975, to **Dr. Clyde Hibbs, Chairman, Department of Natural Resources, Ball State University, Muncie, Indiana 47306.** *An Equal Opportunity/Affirmative Action Employer.*

POSITIONS OPEN

PROFESSOR AND CHAIRMAN ENTOMOLOGY AND NEMATOLOGY DEPARTMENT

Applications are invited from candidates with capabilities in administration, research, teaching, and extension to provide leadership and to administer the affairs of an unusually large and highly diversified department. In close cooperation with fellow professionals (on campus and around the state), our goal is to foster an unsurpassed center of excellence in entomology and nematology. Send correspondence with résumé and names of three references to **Dr. S. H. Kerr, Search Committee Chairman, Entomology and Nematology Department, McCarty Hall, University of Florida, Gainesville, Fla. 32611.** Detailed information about the department is available on request. *An Equal Opportunity/Affirmative Action Employer.*

THE U.S. ENERGY RESEARCH AND DEVELOPMENT ADMINISTRATION (DIVISION OF BIOMEDICAL AND ENVIRONMENTAL RESEARCH) supports the Mid-Pacific Marine Laboratory on Enewetak Atoll as an extension of the Hawaii Institute of Marine Biology. The laboratory has been reorganized and expanded to a year-round operation, with special interest in programs related to the distribution of radionuclides and other materials in the environment, the cycling of materials through the system, and possible implications to man. Interested researchers contact **Dr. Stephen V. Smith, Director Mid-Pacific Marine Laboratory, P.O. Box 1346, Kaneohe, Hawaii 96744.**

SEDIMENT CHEMIST to work cooperatively in estuarine environmental and pollution-related studies. Required to supervise existing staff in continued monitoring of nutrients and pollutants in the water column and to carry out original research on flux of materials between seawater and sediments. A holistic approach to environmental problems, willingness to participate in coordinated multidisciplinary research programs essential. Ph.D. or equivalent. Send résumé, research interests, and goals to **Dr. H. A. Fehlmann, Smithsonian Institution, RFD 1, Box 194-C, Fort Pierce, Fla. 33450.**

California State University, Chico. Two temporary positions available 1975-76: (i) **METEOROLOGY-ASTRONOMY**, Assistant/Associate Professor to teach lab course in meteorology plus seminar plus astronomy labs; (ii) **GEOLOGY**, Assistant Professor to teach lithology, optical petrology, plus others. For details write to: **Dr. P. A. Lydon, Department of Geology and Physical Science, California State University, Chico, Calif. 95929.** *All persons, regardless of race, national origin, sex, or religion, are urged to apply.*

VETERINARY PATHOLOGIST. Independent contract research laboratory has an immediate opening for a pathologist experienced in gross and microscopic pathology of dogs, primates, and rodents. Specific experience in toxicologic pathology desirable. Salary commensurate with experience. We are located in a very desirable area of southwestern Michigan just 10 miles from Kalamazoo which offers excellent living conditions and cultural activities. Send detailed résumé to: **J. M. Ragen, Director, Personnel, International Research and Development Corp., Mattawan, Michigan 49071.** *An Equal Opportunity Employer.*

VIROLOGISTS. Two positions immediately available for junior staff (Research Assistant Professor) to work on genetic and biochemical characterization of human respiratory RNA viruses including mutants being considered for vaccine use. Applicants should have experience in cell culture and contemporary methods of molecular virology. Address inquiries with résumés to: **Dr. R. W. Simpson, Waksman Institute of Microbiology, Rutgers University, New Brunswick, New Jersey 08903.** *An Equal Opportunity Employer.*

FELLOWSHIPS

POSTDOCTORAL FELLOWSHIPS IN BIOCHEMISTRY

NIH sponsored fellowships are available for 1975-76. Broadly based training program with research on basic and human disease oriented problems. Chemistry or biology degree required. Inquiries to **Dr. Thomas E. Cotover, Department of Biological Chemistry, Hahnemann Medical College, 230 North Broad St., Philadelphia, Pennsylvania 19122.**

FELLOWSHIPS

POSTDOCTORAL FELLOWSHIPS IN ONCOGENESIS

Biologists, biochemists, or biophysicist to collaborate on cell and animal studies of the mechanism of oncogenesis. Studies will emphasize, but will not be restricted to, transformation by radiation (ionizing and nonionizing). Salary starts at \$950 per month plus fringe benefits. Send curriculum vitae, three references, and statement of research interests to: **R. A. Johns, Argonne National Laboratory, Department 100-D, 9700 South Cass Avenue, Argonne, Illinois 60439.** *An Equal Opportunity Employer, M/F.*

POSTDOCTORAL FELLOWSHIPS FOR RESEARCH TRAINING in the social, psychological and physiological aspects of aging are now available from the Duke University Center for the Study of Aging and Human Development. The fellowships will run for 1 or 2 years and are open to those who hold the M.D. or Ph.D. degree by fall 1975. Inquiries to:

Dr. Gail R. Marsh
Box 3003
Duke University Medical Center
Durham, N.C. 27710

SUMMER STUDY

NEW YORK OCEAN SCIENCE LABORATORY *Marine Archaeology*, 27 May-14 June (Drs. N. Stavrolakes and H. Moeller). *Reproduction and Development Marine Organisms*, 16 June-11 July (Drs. J. Morrill and J. Wourms). *Workshop: Mathematical Modeling of Marine Environment*, 14-18 July (Dr. L. Thatcher). *Marine Geochemistry*, 21 July-8 August (Drs. E. Catanzaro and J. Alexander). *Chemistry and Pharmacology of Marine Organisms*, 11-29 August (Drs. E. Prezmuzic, A. Goldberg, G. Ruggieri, M. Stempien, R. Nigrelli, F. Johnson, A. Marderosian et al.). Application deadline: 3 weeks prior to above dates. Write: **Dr. J. P. Wourms, Education Coordinator, New York Ocean Science Laboratory, Montauk, N.Y. 11954.**

PROGRAM

DOCTORAL PROGRAM IN ENVIRONMENTAL SCIENCE-PHYSICS TEACHING ASSISTANTSHIPS AVAILABLE

This multidisciplinary program is designed to provide an opportunity for students interested in an academic graduate physics program to participate in environment-related research. Formal course work emphasizes sound training in physics coupled with seminar and course work designed to familiarize students with problems of the environment. *We encourage applications from women and members of minority groups.*

Appointments effective: Fall 1975.

Contact **Dr. Mark Gurevitch, Chairman, Department of Physics, Portland State University, P.O. Box 751, Portland, Oregon 97207.**

PAPERS SOLICITED

CALL FOR SCIENTIFIC PAPERS

The 1975 fall meeting of the Eastern Psychiatric Research Association (EPRA) will be held in New York in October 1975. Previous EPRA meetings include Genetics (Kallmann); Schizophrenia: Current Concepts and Research (Sankar); Hallucinations (Keup) and more recently Mental Health in Children. The fall 1975 meeting is on **Neurophysiology in Psychiatry—Recent Research and Clinical Applications.** Original scientific offerings and papers are invited for consideration for inclusion in this program. Papers based on definitive and competent research are only invited. The deadline for the abstracts is 1 May 1975. The full paper must be sent to **Dr. D. V. Siva Sankar, President, Eastern Psychiatric Research Association, Queens Child Psychiatric Center, Bellerose, N.Y. 11426,** by 15 August 1975.

MARKET PLACE

AQUARIUS ELECTRONICS

Pioneers in reliable biofeedback systems.



EEG, EMG, ESP
Precision instrumentation for
educators and researchers.
Custom design services also
available.
P.O. Box 96 S,
Albion, Calif. U.S.A. 95410

Circle No. 189 on Readers' Service Card

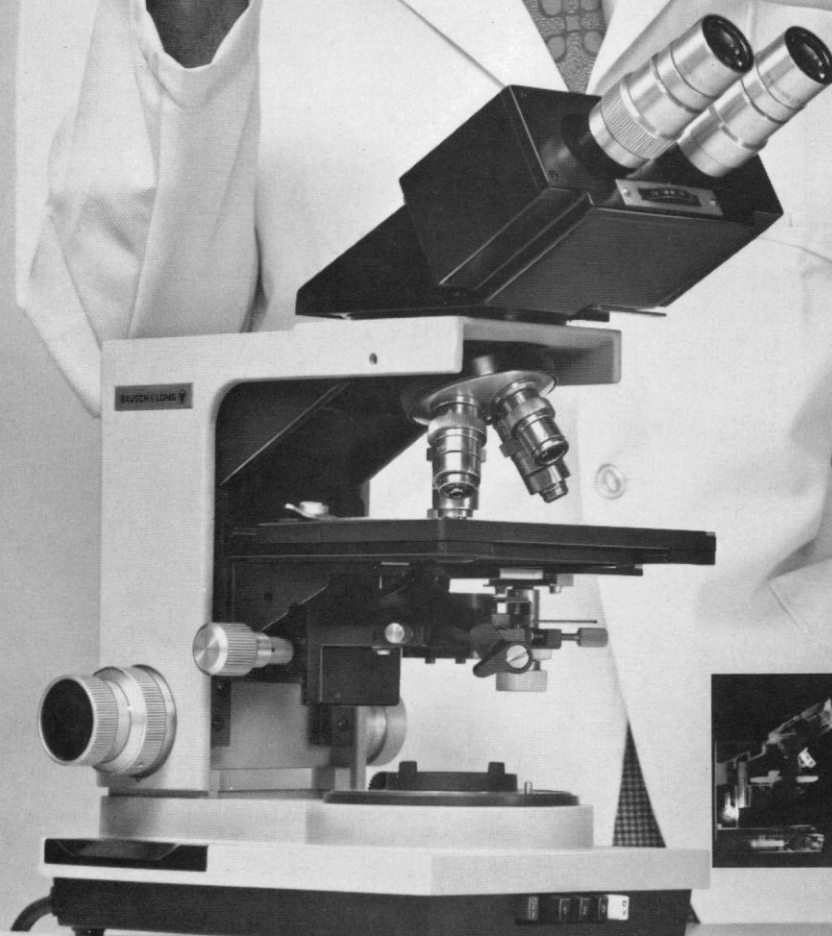
"I looked AT THE BEST MICROSCOPES MONEY CAN buy AND bought A Balplan[®]"

No other research quality laboratory microscope gives you so much for so little. You see better, you see more because of Balplan's flat field, infinity-corrected optical system. Crisp, sharp image definition extends edge to edge over the entire, large 20mm field of view. Contrast, resolution and color correction are the best obtainable due to new fluorite optical elements and newly developed vacuum coatings. Photomicrography is richly rewarding when you're using Balplan. And Balplan's exclusive suspended inner arm insures vibration-free images with positive stability. There is never any image drift.

Balplan offers unprecedented versatility for a multitude of uses because of its modularity. Design your own personal Balplan for clinical, research and educational applications from a comprehensive selection of illuminators, stages, objectives, nosepieces, viewing heads and camera formats.

Add or subtract a wide selection of components to fit your specific needs in biology, pathology, hematology, cytology and bacteriology.

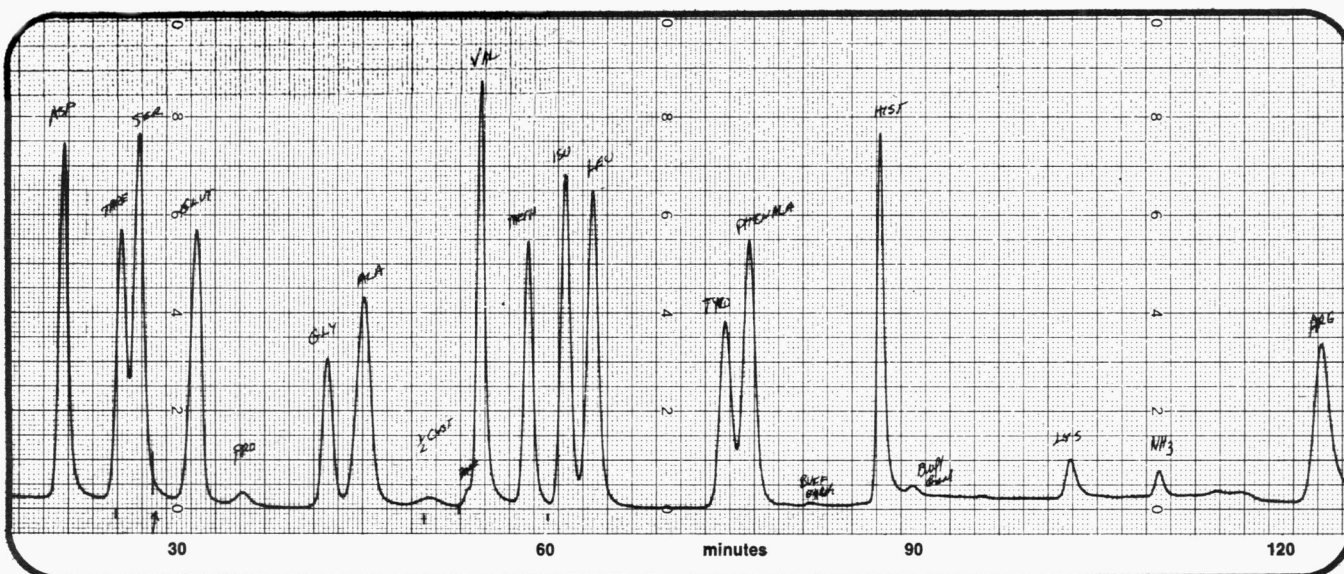
The Balplan experience is truly exciting. See for yourself. Write for a free Balplan catalog (#31-2411) and a free demonstration in your lab with your own specimens. There is no obligation.



BAUSCH & LOMB 
Balplan[®]
MICROSCOPE

Write to Bausch & Lomb, Scientific Optical Products Division, 20716 Bausch Street, Rochester, N.Y. 14602.

Circle No. 134 on Readers' Service Card



AMINALYZER[®] system

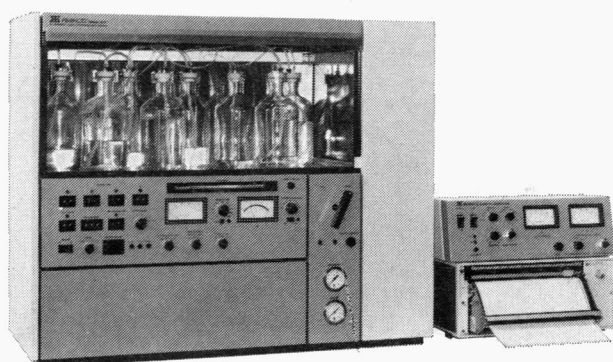
A fluorometric liquid chromatography system with picomole sensitivity for amino acid analysis including proline or hydroxyproline

The AMINCO AMINALYZER Fluorometric Liquid Chromatography System is a high-speed, high resolution instrument designed specifically for the fluorometric determination of amino acids, peptides, and proteins at picomole levels, utilizing Fluram* (fluorescamine), a new high-sensitivity fluorogenic reagent or o-phthalaldehyde (OPA)**.

The new AMINALYZER system can separate, detect, and quantify samples as small as 10^{-11} to 10^{-12} moles.

The AMINALYZER system consists of a counter-top ion exchange chromatograph utilizing single-column, high-pressure amino acid separation techniques, and a new ratio filter fluorometer which functions as a detector.

Fluorescence assay of the column effluent is automated by means of precision pumps adjusted to deliver reagents, buffer, and sample solution in appropriate proportions. Reaction time and temperature are closely controlled for maximum sensitivity and stability.



Features of the chromatographic portion of the AMINALYZER system include: single-column methodology for amino acids; fully adjustable automatic buffer programming for up to four buffers; fully adjustable column re-equilibration; automatic instrument turn-off for unattended operation; high-pressure operation with capabilities up to 5,000 psig; thermostated air bath column oven, with front panel temperature display; loop valve sample introduction; solid state pressure detector, and over-pressure protection; glass lined steel columns or 316 stainless steel columns.

The detection methodology is based on the Fluram or the OPA procedure. The fluorometer-detector is specifically responsive to amino acids, peptides, proteins and other compounds having primary amine functional groups.

Features of the detector include:

- Ratio filter fluorometer for freedom from drift, variations in sensitivity, and source fluctuations;
 - Low dead-volume flow-cell for high resolution, high-speed separations;
 - New all solid-state photometer with the latest data handling techniques to give excellent signal-to-noise ratio which ensures picomole detection levels;
 - Direct interfacing with modern digital data processors.
- For further information, contact AMINCO.

* Roche Diagnostics
** Marc Roth, U.S. Patent No. 3,718,432

Booth H-110 at FASEB

AMINCO[®]
AMERICAN INSTRUMENT COMPANY
DIVISION OF TRAVENOL LABORATORIES, INC., Silver Spring, Maryland 20910

Circle No. 136 on Readers' Service Card

DIVISION OF TRAVENOL LABORATORIES, INC., Silver Spring, Maryland 20910

Circle No. 136 on Readers' Service Card