

Your Lab is More Efficient with
TIME PHOTO-LAB LABELS



Pressure-sensitive Time Photo-Lab Labels provide you with a convenient way to record and store your photo's and slides.

METRIC SCALE LABELS. A calibrated scale label of 3cm or 6cm relates size of specimen or subject at a glance. Supplied in convenient rolls with removable adhesive, these convenient labels stick tightly yet won't mar surface when removed.

TIME INCH SCALE LABELS. Calibrated scale of 6 inches is imprinted on pre-cut self-sticking labels.

TIME PHOTO SLIDE LABELS. Printed with a red dot to assure proper placement in projector or carriage. Available in two sizes for either 2" x 2" mounts or lantern slides.

Write us for free samples and literature on these and other Time Products for the laboratory. We will also send the name of your nearest dealer.

NOTE: NEW ADDRESS. We have recently moved into new facilities; enlarged and automated to serve you better.



PROFESSIONAL TAPE COMPANY, INC.
DEPARTMENT 12
144 TOWER DR., BURR RIDGE (HINSDALE), ILL. 60521

Glucocorticoid Binding Studies

High specific activity,
tritiated steroids for
sensitive measurements
of glucocorticoid binding.

Dexamethasone [1, 2, 4-³H(N)] NET-415

30-50Ci/mmol \$45/250 μ Ci \$85/1mCi \$320/5mCi

Prednisolone [6, 7-³H(N)] NET-406

40-60Ci/mmol \$47/250 μ Ci \$90/1mCi \$350/5mCi

Corticosterone [1, 2-³H(N)] NET-182

40-60Ci/mmol \$32/250 μ Ci \$72/1mCi \$215/5mCi

Corticosterone [1, 2, 6, 7-³H(N)] NET-399

80-105Ci/mmol \$43/250 μ Ci \$85/1mCi \$235/5mCi

Hydrocortisone [1, 2-³H(N)] NET-185

40-60Ci/mmol \$32/250 μ Ci \$72/1mCi \$215/5mCi

Hydrocortisone [1, 2, 6, 7-³H(N)] NET-396

80-100Ci/mmol \$43/250 μ Ci \$85/1mCi \$235/5mCi

Packaging: Benzene:ethanol solution, 9:1, in combi-vial.



New England Nuclear

575 Albany Street, Boston, Mass. 02118
Customer service 617-482-9595

NEN Canada Ltd., Dorval, Quebec; NEN Chemicals GmbH, Dreieichenhain, Germany.

Schwarz/Mann Bulletin Board



**High specific activity
deoxynucleotides available
from Schwarz/Mann**

Cat. No.		0.25mC	1.0mC	5.0mC	25mC
2433-58	Deoxyguanosine 5' Triphosphate (8- ³ H) Li.	\$51.50	\$123.50	\$391.50	
2433-56	Deoxyguanosine 5' Triphosphate (8- ³ H) Na.	\$51.50	\$123.50	\$391.50	
	Specific Activity 10-c/mM				
2433-94	Thymidine 5' Triphosphate (Methyl- ³ H) Li.	\$51.50	\$125.00	\$391.00	
2433-95	Thymidine 5' Triphosphate (Methyl- ³ H) Na.	\$51.50	\$125.00	\$391.00	
	Specific Activity 40-60c/mM				

Also available at high specific activities

2533-98	Thymidine (Methyl- ³ H)	\$12.50	\$ 35.00	\$100.00	\$400.00
	Specific Activity 40-60c/mM				
1533-90	Uridine (5, 6- ³ H)	\$15.50	\$ 40.00	\$105.00	\$345.00
	Specific Activity 40-60c/mM				

Immediately available from stock

Please write to Schwarz/Mann
Division of Becton, Dickinson and Company (B.D.)
Orangeburg, New York 10962
Telephone 914-359-2700

AAAS SOCIO-PSYCHOLOGICAL PRIZE

Through the generosity of the late Arthur F. Bentley, the AAAS offers an annual prize of \$1000 for a meritorious essay that furthers understanding of the psychological-social-cultural behavior of human beings.

The AAAS Socio-Psychological Prize is intended to encourage studies and analyses of social behavior based on explicitly stated assumptions or postulates leading to conclusions or deductions that are tested by systematic empirical research or, stated in other terms, to encourage in social inquiry the development and application of the kind of dependable methodology that has proved so fruitful in the natural sciences.

Entries should present a completed analysis of a problem, the relevant data, and an interpretation of the data in terms of the postulates with which the study began.

Unpublished manuscripts and manuscripts published after 1 January 1972 are eligible. The deadline for receipt of entries in the 1973 contest is 1 September. For instructions on how to submit an entry, write to: **Socio-Psychological Prize Contest, 1515 Massachusetts Ave., NW, Washington, D.C. 20005.**

Personnel Placement

POSITIONS WANTED

Aquatic Ecologist, M.S. 1972. Seeks teaching and/or research position. Experience in teaching, environmental microbiology, pesticide toxicology, field biology, biostatistics. Interest—monolayer and pesticide interactions with trophic relationships in marshes. Also curriculum development in general biology courses specifically. Please reply to Box 255, SCIENCE. X

Astrophysicist, 29, Ph.D. Active research and publications in cosmology, relativity. Experience in teaching physics and astronomy and in developing extensive liberal arts astronomy and space science program in previously nil astronomical environment. Seeks college or university faculty position with opportunity for research and course development. Box 256, SCIENCE. X

Biochemist/Neurochemist. Biochemical basis of mental disease, psychoactive drug effects on brain. Established research program, publications. Seeks research-oriented position. Box 257, SCIENCE. X

Cardiovascular Physiologist-Pharmacologist. Experienced teacher/researcher, age 38. Desires position in medical school, industry, or government. Published in area of congestive heart failure. Box 216, SCIENCE. 5/4, 11

POSITIONS OPEN

BIOCHEMIST

Ph.D. or M.D. Basic research in postnatal development of enzymes and/or biochemistry of reproduction. Research laboratories of Department of Obstetrics and Gynecology, Columbia University-affiliated hospital. Send résumé to Box 258, SCIENCE.

Equal Opportunity Employer M/F

DIRECTOR OF CLINICAL IMMUNOLOGY LABORATORIES OF THE RUSH MEDICAL CENTER

The Department of Immunology of Rush-Presbyterian-St. Luke's Medical Center is seeking a qualified individual to supervise its hospital laboratories. The procedures involved include radioimmunoassay, immunofluorescence, hemagglutination, immunoprecipitation, complement consumption, protein separation, cellular immunology, and so forth, with the supervision of 10 to 20 people. Individuals with doctoral degrees in medicine, microbiology, biochemistry, physiology or engineering should respond to the address indicated below for further information. The individual selected will contribute to the teaching programs of the medical center, have facilities for investigation, and will receive appropriate rank in the Rush Medical College. For further information write the **Chairman, Department of Immunology, Rush Medical Center, 1753 West Congress Parkway, Chicago, Illinois 60612.**

THE AUSTRALIAN NATIONAL UNIVERSITY is inviting applications for appointment to the post of **Professor and Head of a Department of Genetics** in the Research School of Biological Sciences. The principal interest of the department is in attempting to interpret mechanisms of adaptation and evolution in terms of molecular genetics. Salary currently \$A16,369 per annum. (Academic salaries expected to increase during 1973.) Essential that prospective applicants obtain further information from the **Academic Registrar, P.O. Box 4, Canberra, A.C.T., 2600, Australia.** Applications close on 28 May 1973.

MAMMALIAN PHYSIOLOGIST

Applications are invited for 1-year position as Assistant Professor of Zoology to teach two quarter Upper Division Mammalian Physiology courses and one additional service course. Ph.D. desired. Position to replace faculty member on sabbatical. Curriculum vitae, reprints, three letters of recommendation should be submitted by 1 June to **Dr. Lee H. Metzgar, Chairman, Search Committee, University of Montana, Missoula, Montana 59801.**

An Equal Opportunity Employer

4 MAY 1973

RESEARCH AND DEVELOPMENT IN PHARMACEUTICAL FORMULATIONS

Corporate Research Center

Continued expansion of the vigorous and productive research effort at Schering provides opportunities favorable to career advancement, satisfying professional growth and achievement. We emphasize an environment that utilizes the fullest use of your abilities, providing excellent facilities and support services. Our location with easy access to all the New York area's educational, cultural, recreational and other resources offers desirable suburban or urban living.

Please direct resume or vitae in full confidence to Research Personnel, for immediate consideration.



SCHERING CORPORATION

60 Orange St., Bloomfield, N.J. 07003

Applicants of all races are encouraged to apply
Female-Male

SOLIDS

Ph.D. in Pharmaceutics

Industrial or academic experience in the development of solid dosage forms, using sophisticated approaches to tablet research (including optimization methods). Supervisory experience and speaking knowledge of French or Spanish desirable.

TOPICALS/AEROSOLS

M.S. in Pharmaceutics

At least two years of experience in the development of topical and aerosol formulations is required.

STERILE FORMS

M.S. in Pharmaceutics

Strong chemistry background, with industrial experience and training in Biopharmaceutics. Focus on the development of ophthalmic, otic and parenteral sterile dosage forms.

PHARMACEUTICAL RESEARCH PHYSICIAN

An innovative medical scientist is needed to assist in current biomedical and technical projects and help spark the exploratory research section of a major pharmaceutical company located in the Eastern United States.

The position offers a stimulating career for an M.D. with a Ph.D. degree interested in new biomedical and technological solutions to medical problems. Salary is negotiable.

Send curriculum vitae to:

Box S 1587,
810 7th Ave.,
NYC 10019

An Equal Opportunity
Employer M/F

WORLD HEALTH ORGANIZATION

HEALTH HAZARDS OF THE HUMAN ENVIRONMENT

Prepared by

100 specialists in 15 countries

The volume consists of four parts:

- I The community environment
- II Chemical contaminants and physical hazards
- III Surveillance and monitoring
- IV Public health principles and practices of intervention

387 pages \$11.00

Orders may be addressed to:

World Health Organization
Distribution and Sales
1211 Geneva 27, Switzerland

POSITIONS OPEN

CHAIRMAN, ENTOMOLOGY DEPARTMENT

Applications are invited for the position of chairman of the Department of Entomology, The American Museum of Natural History. Required: Doctorate, proven excellence in systematic research, some administrative experience. Rank and salary open. Send curriculum vitae, names of suggested references, letter detailing research interests and plans, and copies of research papers to **Acting Chairman, Department of Entomology, The American Museum of Natural History, Central Park West at 79th Street, New York, N.Y. 10024.**

An Equal Opportunity Employer M/F

CHAIRPERSON

Department of Environmental Health; seeking candidate who has strong interest in research, administrative capabilities, and ability to work with outside agency and legislative personnel. Minority and women candidates encouraged. Write **Betty S. Gilson, M.D., Associate Dean and Chairperson, Search Committee, School of Public Health and Community Medicine, University of Washington, Seattle, Washington 98195.**

CITRUS PHYSIOLOGIST AND BIOCHEMIST Ph.D. and minimum of 3 years' experience in pre- and post-harvest physiology and biochemistry of citrus fruit. Knowledge of methods for detection and control of pollutants in citrus packinghouse and processing plant effluents mandatory. Send résumé and references to **Personnel Director, P.O. Box 148, Lakeland, Florida 33802.**

THE AUSTRALIAN NATIONAL UNIVERSITY is inviting applications for **Field Director of the North Australian Research Unit.** This is a new unit concerned with interdisciplinary research in northern Australia on mainly socio-economic but also biological and ecological problems. Precise conditions of appointment will be determined in relation to qualifications and experience of appointee. Salary probably in the range \$A11,234 to \$A13,172 per annum. (Academic salaries expected to increase during 1973.) Appointment for 5 years with possible extension. Essential that prospective applicants obtain further particulars from the **Academic Registrar, P.O. Box 4, Canberra, A.C.T., 2600, Australia.** Applications close on 15 June 1973.

NEUROENZYMOLOGIST. Postdoctoral Fellowship (1 to 2 years). To study enzyme systems involved in metabolism of brain glycolipids. Experience in all aspects of enzyme chemistry essential.

Location: New York Metropolitan area in a well-equipped University-affiliated Hospital Research Institute.

Salary: \$13,000 (plus liberal fringe benefits). Send curriculum vitae and two references to: **Box 254, SCIENCE**

NEUROLOGIST with strong academic background in clinical neurology and basic neurological science (neurochemistry/neuropharmacology preferred) for appointment to full-time faculty position available 1 July 1973 or later. Opportunities to participate in training program in clinical neurology and basic neurological sciences and to develop independent research program. Send curriculum vitae and names of three referees to **David Prince, M.D., Chairman, Department of Neurology, Stanford University School of Medicine, Stanford, Calif. 94305.** Stanford University has a faculty affirmative action program.

DEPARTMENT OF PHYSIOLOGY HARVARD MEDICAL SCHOOL

This department is considering candidates in the fields of mammalian and cell physiology for a faculty appointment. Appointee will be expected to do independent research and to participate in the departmental teaching program. Interested persons should send their résumés, copies of their most significant publications, and the names of two references to **Dr. Elwood Henneman, Chairman, Department of Physiology, Harvard Medical School, Boston, Mass. 02115.** Harvard University is an equal opportunity employer.

PHYSICAL OCEANOGRAPHER

Applications are invited for the position of Associate Professor or Full Professor to teach and carry out research in physical oceanography starting August 1973, or thereafter. Applicants must have a Ph.D. and 6 to 10 years of relevant post-Ph.D. experience. Fields of interest could be geophysical hydrodynamics, turbulence, waves, tidal theory, numerical modeling, or other.

The Institute operates a 65-foot vessel, is housed in new quarters (20,000 square feet), and is focused on continental shelf and shallow water areas. A chair in Oceanography is presently vacant.

Applications should be sent to: **Dr. John C. Ludwick, Director, Institute of Oceanography, Old Dominion University, Norfolk, Virginia 23508.**
An Equal Opportunity Employer

POSITIONS OPEN

SCRIPPS INSTITUTION OF OCEANOGRAPHY

invites application for position at the Assistant Professor through Professor level in **physical oceanography.** Candidates should have demonstrated an outstanding ability in research in broad fields encompassing dynamical, experimental or descriptive aspects of physical oceanography and in communicating current knowledge of oceanography to Ph.D. students and others. Applicants should send résumés and lists of publications to **Dr. J. R. Curry, Chairman, Graduate Department, Scripps Institution of Oceanography, University of California, San Diego, Box 109, La Jolla, California 92037** before 1 June 1973. The University of California is an affirmative action employer.

TWO FACULTY OPENINGS The Center for Genetics The University of Illinois

Illinois Medical Center in Chicago
1) **RESEARCH ASSOCIATE** interested in laboratory animal medicine and tissue culture. Must have D.V.M. or equivalent.
2) **HUMAN BIOCHEMICAL GENETICIST** interested in polymorphic systems. Must have experience in human genetic counseling. Ph.D. or equivalent required.

Applications, including a curriculum vitae, selected reprints of published papers, three letters of reference, and a statement of current research interests, should be sent to: **Director, The Center for Genetics, University of Illinois Medical Center, 1853 West Polk Street, Chicago, Illinois 60612.** [The University of Illinois has an Affirmative Action Program. Women and minority persons are encouraged to apply.]

RESEARCH IMMUNOLOGIST

Growth of leading ethical veterinary drug company requires permanent addition of doctorate in Immunology to our Research and Development staff. Right candidate must be able to plan and conduct immunological research, as well as advise and consult other R & D staff throughout the company. Recent Ph.D.'s acceptable, prefer some postdoctoral experience. Salary open and commensurate with experience. Top facilities, work environment, and benefit program. You are invited to submit résumé including expected earnings in strict confidence to:

**NORDEN LABORATORIES, INCORPORATED
ATTN: J. P. JUDT, PERSONNEL
P.O. BOX 80809
LINCOLN, NEBRASKA 68501**

Subsidiary of Smith Kline and French Laboratories, Philadelphia, Pa.

VICE PRESIDENT Research & Development

American Hospital Supply Corporation, one of the world's largest providers of medical products to the health care industry, has an outstanding, top-level opportunity at McGaw Laboratories, one of the most rapidly expanding international, multi-plant divisions, producing intravenous solutions, medical devices and other products for the world hospital market. You are invited to inquire about this executive position if you are a Ph.D. in one of the chemical or biological sciences or engineering.

Responsibilities include directing research and development of intravenous drugs, their containers and devices, for their administration to the patient. An understanding of plastics and their bio-compatibility, parts design and manufacturing processes would be helpful.

If you are interested in leading an aggressive and innovative group charged with creating new and meaningful products with a recognized leader in this field, write to me. Successful performance will lead to a Divisional Vice Presidency. Promotion of our current Vice President of Research and Development makes this position available shortly. Send confidential resume to Director of Personnel.

McGAW LABORATORIES

1015 Grandview Ave.

Glendale, Ca. 91201

*An equal opportunity employer
m/f*

POSITIONS OPEN

SENIOR SOCIAL SCIENCE FACULTY POSITIONS

Available in the new environmentally oriented George H. Cook College, Rutgers University, scheduled to open September 1973. Please send curriculum vitae to: **Dr. Andrew P. Vayda, Acting Associate Dean, CAES, Rutgers University, P.O. Box 231, New Brunswick, N.J. 08903.** A Nondiscriminatory Affirmative Action Employer.

SYSTEMS ECOLOGIST

Applications are invited for position of Assistant Professor effective 1 September 1973. Post includes teaching a large undergraduate course in introductory ecology. A research interest in systems modeling is desirable.

Applicants should submit curriculum vitae and the names of three references by 15 July 1973 to: **Dr. W. G. Barker, Chairman, Selection Committee, Department of Botany and Genetics, University of Guelph, Guelph, Ontario, Canada N1G 2W1.**

TEACHING ASSOCIATE: Duties include teaching in veterinary physiology but permit graduate study toward M.S. and Ph.D. Salary dependent on experience and percentage of time devoted to graduate study. Position available immediately. Direct inquiries to **Dr. A. R. Twardock, College of Veterinary Medicine, University of Illinois, Urbana, Ill. 61801.** *An equal opportunity employer.*

VERTEBRATE PHYSIOLOGIST

Position available September 1973 to teach animal and human physiology, occasionally biochemistry, Ph.D. and strong biochemical background required. Commitment to undergraduate education essential; evidence of excellence in teaching desirable; research encouraged. Rank of Assistant Professor; salary competitive. Submit curriculum vitae and three letters of reference before 25 May to **Dr. William H. Gotwald, Jr., Coordinator, Department of Biology, Utica College of Syracuse University, Utica, New York 13502.** An Equal Opportunity and Affirmative Action Employer.

GRADUATE STUDY

PREDOCTORAL ASSISTANTSHIPS IN PHYSIOLOGY

Excellent opportunities for graduate students leading to the Ph.D. Stipends and free tuition. Training and research in cardiovascular, cellular, endocrine, gastrointestinal, energy metabolism, neurophysiology, respiration and transport physiology. Write for details to **Head, Department of Physiology, School of Basic Medical Sciences, University of Illinois at the Medical Center, P.O. Box 6998, Chicago, Illinois 60680.**

FELLOWSHIP

POSTDOCTORAL FELLOWSHIP PROGRAM CLINICAL AND LABORATORY IMMUNOLOGY RUSH MEDICAL COLLEGE

The Department of Immunology of Rush Medical College is offering 1- and 2-year fellowships to individuals interested in clinical and laboratory immunology and research in the role of the immune response in inflammation and certain diseases.

Problems currently under investigation include developmental, clinical, and experimental biology of the complement and kinin systems; humoral and cellular responses in the acute phase of inflammation; immunological injury in nephritis, hepatitis, chronic infections, and rheumatoid and collagen diseases; and transplantation and cancer immunology.

For further information write the **Chairman, Department of Immunology, Rush Medical College, 1753 West Congress Parkway, Chicago, Illinois 60612.**

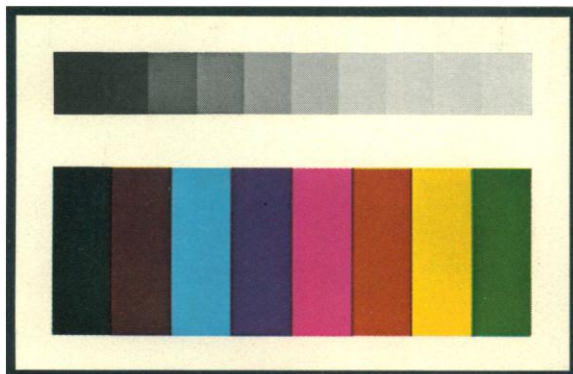
MARKET PLACE

A FIELD GUIDE TO THE BIRDS OF MEXICO

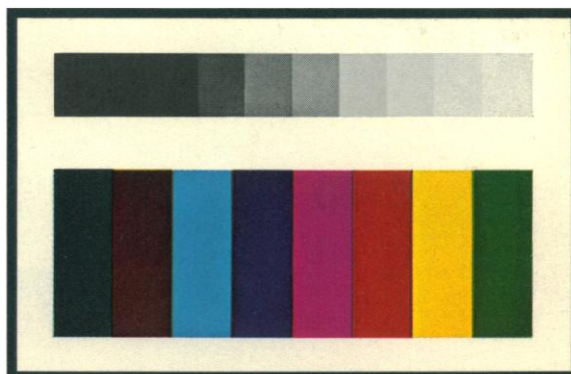
By Ernest P. Edwards. Color illustrations of 450 birds not found in the U.S.A. Details of plumage, habits, distribution and habitat of all of Mexico's birds. Also Spanish description of each bird. 300 pages, waterproof paper cover, \$8.50. Order from Ernest Edwards, Box AQ, Sweet Briar, Va. 24595.

We want to be useful...and even interesting

Film to please and film to differentiate



A swatch of inks as rendered by Kodak color slide films that maximize consumer satisfaction with the greenness of grass, the blueness of sky, and the healthy glow of complexions.



The same swatch photographed on the new KODAK Photomicrography Color Film 2483,* our first designed not for mere pleasure but for accentuating the ability of biological stains to differentiate structures visually indistinguishable without artifice. Note on the neutral step tablet the fewer greys between black and white. In photography for pleasure this high gradient would make most pictures harsh; in photography to inform and teach, this high contrast, along with the 100-line/mm resolving power for 1.6:1 test-object contrast—remarkable resolution for a color film—brings out detail more conspicuously than do our other films.

No unusual processing is required. KODAK Process E-4 is easily run in any darkroom and routine with commercial labs. The film comes in 36-exposure 135 magazines, 35mm x 125-foot rolls, and 4 x 5-inch sheets in packages of 25. Many dealers in professional photographic supplies stock it. An inquiry to Kodak, Dept. 916, Rochester, N.Y. 14650 will bring help if needed in locating one.

*If the package happens to be labeled "SO-456," please forgive us. It's the same product.



Properly exposed,
but the flower color is wrong.



Badly underexposed,
but the flower color is approximately right.
(What Dr. Rickett considers approximate
would strike others as rather close.)

◀ Right and wrong

H. W. Rickett of the New York Botanical Garden, author of the monumental and magnificent multi-volume *Wild Flowers of the United States*, made these two exposures of *Eupatorium coelestinum* on Kodachrome-X film.

What is right and what is wrong in color reproduction is intimately bound up not only with what goes on in the individual human head but with the physical conditions of viewing the original and the reproduction. Between a projected image in a darkened room and a piece of paper or plastic in the hand or on the wall the objective differences seem almost too much for subjective comparison. But not really. Kodak scientists have spent whole careers in putting subjective color phenomena on an objective basis. Their work, though published, is little known to many who might find it useful. To follow it calls for a bit of mental concentration by a newcomer to this field, but the human intellect is known to be capable of leaping higher hurdles.

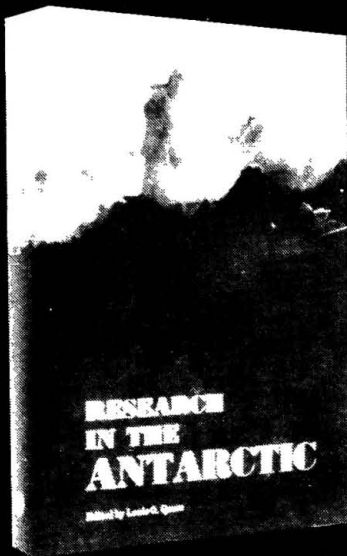
With this warning, we would be pleased to send a reprint of a paper entitled "Objectives in Color Reproduction," by R. W. G. Hunt of the Research Laboratories of Kodak Limited in Harrow, England. Address request to Dept. 55W, Kodak, Rochester, N.Y. 14650.



Colorful



BIOLOGICAL STUDIES
GLACIOLOGY
SNOW MEASUREMENTS
CLIMATE AND ATMOSPHERE
OCEANOGRAPHY
CONJUGATE PHENOMENA
AURORAL STUDIES
GONDWANALAND AND CONTINENTAL DRIFT



The first single-volume report of the extensive research conducted in the Antarctic since the International Geophysical Year

Edited by Louis O. Quam
Director of the Office of Polar Programs of the
National Science Foundation

700 pages, hundreds of illustrations and tables, a comprehensive index,
52" x 48" full color wall map of Antarctica

Member's price (with check accompanying order): \$19.95
Regular price: \$24.95



Orders to the Publication Sales Office,
AMERICAN ASSOCIATION FOR THE ADVANCEMENT OF SCIENCE
1515 Massachusetts Avenue, N.W., Washington, D.C. 20005