

*This is neither an offer to sell nor a solicitation of an offer to buy these securities.
The offer is made only by the Prospectus.*

January 21, 1971

110,000 Shares

Charles River  FROM THE
BREEDING LABORATORIES, INC. HAND OF THE
TO RESEARCH VETERINARIAN

Common Stock
(\$1 Par Value)

Price \$23.75 per Share

Copies of the Prospectus may be obtained in any State in which this announcement is circulated only from such of the underwriters, including the undersigned, as may lawfully offer these securities in such State.

Kidder, Peabody & Co.
Incorporated

Loeb, Rhoades & Co.

W. E. Hutton & Co.

Tucker, Anthony & R. L. Day

Shearson, Hammill & Co.
Incorporated

White, Weld & Co.

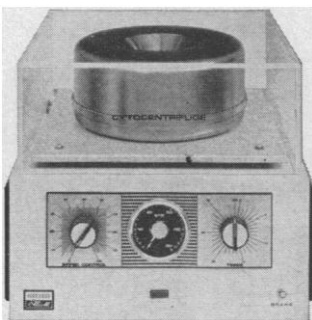
Shields & Company
Incorporated

G. H. Walker & Co.
Incorporated

CYTOLOGISTS: now prepare more slides in less time, with less fluid

The Shandon Cyto-Centrifuge employs a unique cell concentrating and distributing technique permitting you to prepare a large quantity of microscope slides using a smaller amount of human blood plasma, synovial fluid, peritoneal exudates, seminal or other body fluids. Centrifugation and slide preparation are performed simultaneously, which eliminates prior centrifugation and saves you time. Improved head design ensures safety when working with pathogenic organisms.

The Shandon Cyto-Centrifuge produces a monolayer of cells and does not damage individual cell structure. Also, processed slides can be rapidly scanned using a preset high power objective without adjustment between slides. Get the full story on the Cyto-Centrifuge and other quality scientific tools . . . write Shandon Scientific Company, Inc., 515 Broad Street, Sewickley, Pa. 15143 (Pittsburgh District).



SHANDON

PITTSBURGH • LONDON • FRANKFURT

port and coordination. It was also emphasized that as acceptable microbial control may prove more difficult to achieve with respect to vectors than to many agricultural pests, it would be unwise to extrapolate experience from economic entomology directly to public health entomology. Insect pathologists thus require guidance from public health entomologists with respect to conditions of vector suppression necessary to interrupt the transmission of various diseases.

It was unanimously agreed that pending the development of practical microbial and integrated techniques of vector control we must continue to depend heavily upon carefully used pesticides. Notwithstanding this, it was pointed out that at least some alternatives to chemical control are already on hand—in particular the use of larvivorous fish in ecologically acceptable ways and “old-fashioned” sanitational methods. Until we have effective microbial procedures and other essentially novel control techniques, every effort should be made to ensure that full advantage is taken of these immediately available supplements and alternatives to chemical pesticides, in the interest of moving positively toward methodologies combining maximum vector suppression and interruption of vector-borne disease transmission with the least possible harm to the environment.

MARSHALL LAIRD

*Department of Biology, Memorial
University of Newfoundland,
St. John's, Newfoundland, Canada*

Notes

1. The term vectors is broadly interpreted herein as meaning “arthropods of public health importance.”
2. Among participants the following made brief presentations as indicated: J. D. Briggs (international coordination), E. U. Canning (protozoa), H. C. Chapman (field trials of entomopathogens), C. M. Ignoffo (industrial production), M. Laird, chairman (fungi), E. L. Reeves (bacteria), D. W. Roberts (fungal toxins), T. W. Tinsley (viruses), C. Vago (viruses), and H. E. Welch (nematodes).
3. They may even perhaps contribute to auto-cidal control, through disease-induced sterility or lowering of fecundity.

Forthcoming Events

March

8–12. **Pollution Control** Exposition and Conf., Los Angeles, Calif. (G. D. Clayton, Soc. of Manufacturing Engineers, 20501 Ford Rd., Dearborn, Mich. 48128)

13–17. **California Medical Assoc.**, Anaheim. (R. L. Thomas, CMA, 693 Sutter St., San Francisco, Calif. 94102)

14–17. **International Anesthesia Re-**

search Soc., 45th, Bal Harbour, Fla. (B. B. Sankey, 3645 Warrenville Center Rd., Cleveland, Ohio 44122)

14-17. American Assoc. of **Dental Schools**, Chicago, Ill. (B. F. Miller, III, AADS, Room 1610, 211 E. Chicago Ave., Chicago 60611)

14-17. National Conf. on **Higher Education**, 26th annual, Chicago, Ill. (K. Smith, American Assoc. for Higher Education, 1 Dupont Circle, NW, Washington, D.C. 20036)

15-16. **Aerospace Electronics Symp.**, Canadian Aeronautics and Space Inst., Toronto, Ont. (The Secretary, CASI, 77 Metcalfe St., Ottawa 4, Ont.)

15-17. **Neutron Cross Sections and Technology**, 3rd annual, Knoxville, Tenn. (J. A. Harvey, Oak Ridge National Lab., P.O. Box X, Oak Ridge, Tenn. 37830)

15-17. **Physical Electronics Conf.**, Gaithersburg, Md. (R. Klein, Chief of Surface Chemistry Section, Natl. Bureau of Standards, Washington, D.C. 20234)

15-17. American College of **Surgeons** (sectional) joint mtg. for doctors and nurses, New Orleans, La. (Communications Div., ACS, 55 E. Erie St., Chicago, Ill. 60611)

15-18. American **Radium Soc.**, Mexico City, Mexico. (J. M. Vaeth, 1600 Divisadero St., San Francisco, Calif. 94115)

15-19. **Medical Engineering and Automation**, intern. exhibition, London, England. (Secretary, Inst. of Physics and the Physics Soc., 47 Belgrave Sq., London, S.W.1)

15-19. American Soc. for **Neurochemistry**, 2nd annual, Hershey, Pa. (A. Rosenberg, Milton S. Hershey Medical Center, Pennsylvania State Univ., Hershey 17033)

15-19. **Reprography**, 3rd annual intern. congr., London, England. (T. Hampshire, Inst. of Reprographic Technology, c/o IEL, Argyll St., London, W.1)

16-17. Conference on the **Effectiveness of On-Line Biomedical Computing**, Los Angeles, Calif. (M. J. Miller, Assoc. for the Advancement of Medical Instrumentation, 9650 Rockville Pike, Bethesda, Md. 20014)

16-17. **Plastics in Appliances**, Louisville, Ky. (J. L. Isaacs, Plastics Lab., General Electric Co., Appliance Park, 5-249, Louisville 40225)

16-18. **Electrical Safety in Hazardous Environments**, London, England. (Secretary, Inst. of Physics and the Physical Soc., 47 Belgrave Sq., London, S.W.1)

17-24. Clinical Conf. on the **Treatment of Emotional Problems in Medical Practice, Family Therapy**, New York, N.Y. (H. Gershman, American Inst. for Psychoanalysis, 329 E. 62 St., New York 10021)

18. **Ultrasonic Bubble Chambers**, Berkshire, England. (Meetings Officer, Inst. of Physics and the Physical Soc., 47 Belgrave Sq., London, S.W.1, England)

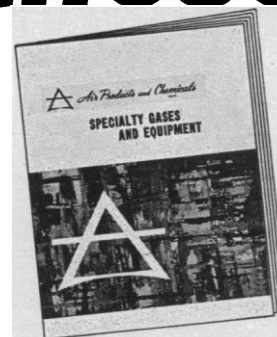
18-20. National Council of **Teachers of Mathematics**, Wichita, Kan. (NCTM, 1201 16th St., NW, Washington, D.C. 20036)

18-21. **Clinical Pharmacology**, 2nd annual intern. symp., Regensburg, Germany. (U. Smahel, P.O. Box 345, D-84 Regensburg 1)

18-21. International Assoc. for **Dental Research**, 49th annual, Chicago, Ill. (A. R. Frechette, 211 E. Chicago Ave., Chicago 60611)

If you use any of these gases

SEND FOR NEW SPECIALTY GASES & EQUIPMENT CATALOG FROM AIR PRODUCTS



Acetylene	Deuterium	Iodine Pentafluoride	1,3 Pentadiene
Air	Dimethylamine	Isobutane	Perfluorobutene-2
Allene	Dimethyl Ether	Isobutylene	Perfluoropropane
Ammonia	2,2-Dimethylpropane	Krypton	Phosgene
Argon	Doping Gases		Phosphine
			Phosphorus Pentafluoride
Boron Trichloride	Ethane	Methane	Propane
Boron Trifluoride	Ethyl Acetylene	Methyl Acetylene	Propylene
Bromine Pentafluoride	Ethyl Chloride	Methyl Bromide	
Bromine Trifluoride	Ethyl Fluoride	2-Methylbutene-1	Research Grade Gases
Bromotrifluoroethylene	Ethylene	2-Methylbutene-2	
1,3 Butadiene	Ethylene Oxide	3-Methylbutene-1	Silane
Butane		Methyl Chloride	Silicon Tetrafluoride
1-Butene	Fluorine	Methyl Fluoride	Sulfur Dioxide
cis-2-Butene		Methyl Mercaptan	Sulfur Hexafluoride
trans-2-Butene	Halocarbon—	Monoethylamine	Sulfur Tetrafluoride
	11, 12, 13, 13B1,	Monomethylamine	Sulfuryl Fluoride
cis- and trans-2-Butene	14, 21, 22, 23, 113,		
Carbon Dioxide	114, 114B2, 115,	Neon	Tetrafluorohydrazine
Carbon Monoxide	116, 142B, 152A,	Nickel Carbonyl	Trifluoromethyl iodide
Carbonyl Fluoride	C-318, 1132A	Nitric Oxide	Trimethylamine
Carbonyl Sulfide	Helium	Nitrogen	
Carrier Gases	Hexafluoropropene	Nitrogen Dioxide	Vinyl Bromide
Chlorine	Hydrogen	Nitrogen Trifluoride	Vinyl Chloride
Chlorine Trifluoride	Hydrogen Bromide	Nitrogen Trioxide	Vinyl Fluoride
Chlorotrifluoroethylene	Hydrogen Chloride	Nitrosyl Chloride	Vinyl Methyl Ether
Cyanogen	Hydrogen Fluoride	Nitrous Oxide	
Cyclopropane	Hydrogen Iodide	Oxygen	Xenon
	Hydrogen Sulfide		Zero Gases

... Plus customer specified gas mixtures and a complete line of regulators, valves, flowmeters and other accessory equipment.

(Detach and mail this convenient order form today)

S-21

Air Products and Chemicals, Inc.
Specialty Gas Department
733 W. Broad Street, Emmaus, Pennsylvania 18049

Please send new 104-page Specialty Gases and Equipment Catalog No. 5068 listing the industry's largest selection of specialty gases, gas mixtures, and gas handling equipment . . . available nationally from convenient stock points and 65 district offices.

Name/Title _____

Company _____

Address _____

City/State _____ Zip _____



Air Products and Chemicals
INC.

Total Capability and Product Integrity

18-21. Association for the Advancement of **Medical Instrumentation**, 6th annual, Los Angeles, Calif. (M. J. Miller, AAMI, 9650 Rockville Pike, Bethesda, Md. 20014)

19-20. **Brief Psychotherapy, "Behavior Therapy,"** 3rd annual, Chicago, Ill. (J. Cowen, Dept. of Psychiatry and Behavioral Sciences, Chicago Medical School, 2020 W. Ogden Ave., Chicago 60612)

19-22. Association of University of **Anesthetists**, Miami, Fla. (R. M. Epstein, 622 W. 168 St., New York 10021)

21-24. American **Orthopsychiatric** Assoc., 48th annual, Washington, D.C. (M. F. Langer, AOA, 1790 Broadway, New York 10019)

21-26. National Assoc. of **Corrosion Engineers**, Chicago, Ill. (D. Miller, 2400 W. Loop South, Houston, Tex. 77027)

22-24. **Biomathematics and Computer Science in the Life Sciences**, 9th annual symp., Houston, Tex. (S. Zimmerman, 6723 Bertner, Texas Medical Center, Houston 77025)

22-24. Institute of **Management Sciences**, Washington, D.C. (S. W. Hess, Wharton School, Univ. of Pennsylvania, Philadelphia 19104)

22-25. Institute of **Electrical and Electronics Engineers**, Inc., New York, N.Y. (J. M. Kinn, IEEE, 345 E. 47 St., New York 10017)

22-26. Australian Institution of **Engineers**, Adelaide. (Secretary, Institution of Engineers, Australia Science House, Gloucester and Essex Sts., Sydney, NSW 2000)

22-26. **Plasma Physics**, Bochum, Ger-

many. (Secretary, Inst. of Physics and the Physical Soc., 47 Belgrave Sq., London, S.W.1, England)

22-27. Conference on **Geophysics**, Karlsruhe, Germany. (Secretary, Inst. of Physics and the Physical Soc., 47 Belgrave Sq., London, S.W.1, England)

22-2. **Thermodynamics and Statistical Mechanics**, Chicago, Ill. (Secretary, Inst. of Physics and the Physical Soc., 47 Belgrave Sq., London, S.W.1, England)

23-24. **Combustion** Inst., Central States section, Ann Arbor, Mich. (D. J. Patterson, Automotive Engineering Lab. 309, Dept. of Mechanical Engineering, Univ. of Michigan, North Campus, Ann Arbor 48104)

23-24. Symposium on **Instrumentation**, Southampton, England. (Secretary, Inst. of Physics and the Physical Soc., 47 Belgrave Sq., London, S.W.1, England)

23-24. Symposium on **Plastics**, 13th annual, Mainz, Germany. (Secretary, Inst. of Physics and the Physical Soc., 47 Belgrave Sq., London, S.W.1, England)

23-25. **Electro-Optical Systems Design**, Brighton, England. (Secretary, Inst. of Physics and the Physical Soc., 47 Belgrave Sq., London, S.W.1, England)

23-25. **Symbolic and Algebraic Manipulation**, 2nd annual symp., Los Angeles, Calif. (J. Moses, Project MAC, Massachusetts Inst. of Technology, 545 Technology Sq., Cambridge 02139)

23-26. **Fluid Sealings**, 5th intern. conf., Reading, England. (Secretary, Inst. of Physics and the Physical Soc., 47 Belgrave Sq., London, S.W.1, England)

23-26. **Information Industry** Assoc., 3rd

annual, Lancaster, Pa. (P. G. Zurkowski, IIA Washington, 1025 15th St., NW, Washington, D.C. 20005)

23-26. **Moon Symp.**, Newcastle-upon-Tyne, England. (Secretary, Inst. of Physics and the Physical Soc., 47 Belgrave Sq., London, S.W.1, England)

23-26. **Negative Ions**, Liverpool, England. (Meetings Officer, Inst. of Physics and the Physical Society, 47 Belgrave Sq., London, S.W.1, England)

24. Association for the Advancement of **Psychoanalysis**, New York, N.Y. (A. Apolito, 80 Undercliff Rd., Montclair, N.J. 07042)

24-26. Midwest **Benthological** Soc., 19th annual, Notre Dame, Ind. (C. I. Weber, FWQA, 1014 Broadway, Cincinnati, Ohio 45202)

24-26. American **Surgical** Assoc., Boca Raton, Fla. (G. T. Shires, ASA, 5323 Harry Hines Blvd., Dallas, Tex. 75235)

24-26. **Thin Films, Structure and Growth of Thin Films**, 5th annual conf., Southampton, England. (Secretary, Inst. of Physics and the Physical Soc., 47 Belgrave Sq., London, S.W.1, England)

24-27. American **Fertility** Soc., New Orleans, La. (H. H. Thomas, 944 S. 18 St., Birmingham, Ala. 35205)

25-26. National Conf. on **Rural Health**, 24th, Atlanta, Ga. (B. L. Bible, American Medical Assoc., 535 N. Dearborn St., Chicago, Ill. 60610)

25-27. American Soc. for **Engineering Education**, Gulf Southwest section, Ruston, La. (Mrs. L. Hitch, ASEE, Suite 400, 1 Dupont Circle, Washington, D.C. 20036)

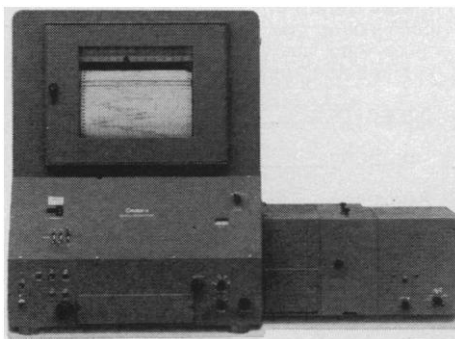
The Cary 14, 15, 16S and 17 Recording

In the whole world, there just isn't another group of comparable recording spectrophotometers.

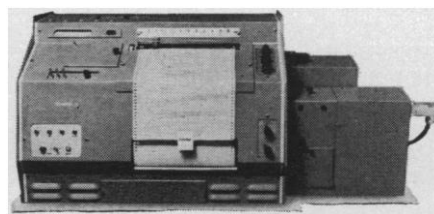
Each has been thoughtfully designed with a proven double monochromator and dual-beam photometric system. Each is precisely engineered throughout and meticulously tested. And each is the best recording spectrophotometer you can buy for the price.

First the venerable workhorse, the Cary 14. Using a prism-grating monochromator, the 14 rapidly and accurately records spectra in the ultraviolet, visible and near infrared from 186 to 2650 nm. Measures absorbance and transmittance directly. Adapts with accessories for reflectance, fluorescence, scattered transmission, and fixed-wavelength kinetics. Price: \$19,600.*

Next, the Cary 15. Reliable, proven performer in such fields as the life sciences, pharmaceuticals, and industrial research and quality control. Utilizes a double monochromator with two prisms to give exceptional UV penetration. Covers the UV-VIS range (185-800 nm). Features dual detectors to insure maximum photometric accuracy when measuring at high absorbances. Price: \$12,950.*



CARY 14



CARY 15

Circle No. 53 on Readers' Service Card

25-27. American Assoc. of Colleges of **Pharmacy**, San Francisco, Calif. (C. W. Bliven, AACP, 850 Sligo Ave., Silver Spring, Md. 20910)

25-27. **Seismological Soc. of America**, Riverside, Calif. (D. Tocher, P.O. Box 826, Berkeley, Calif. 94701)

26-27. **South Carolina Acad. of Science**, Charleston. (L. H. Stevenson, Univ. of South Carolina, Columbia)

26-28. **American Soc. of Internal Medicine**, Denver, Colo. (W. R. Ramsey, Third at Market, San Francisco, Calif. 94103)

26-29. **National Assoc. of Boards of Pharmacy**, San Francisco, Calif. (F. T. Mahaffey, NABP, 77 W. Washington, Chicago, Ill. 60602)

26-30. **National Science Teachers Assoc.**, Washington, D.C. (R. H. Carleton, NSTA, 1201 16th St., NW, Washington, D.C. 20036)

27-1. **American College of Allergists**, San Francisco, Calif. (E. Bauers, 2100 Da'n Tower, Minneapolis, Minn. 55402)

27-2. **American Pharmaceutical Assoc.**, San Francisco, Calif. (W. S. Apple, APA, 2215 Constitution Ave., NW, Washington, D.C. 20037)

28. **American Soc. of Hospital Pharmacists**, San Francisco, Calif. (J. A. Oddis, ASHP, 4630 Montgomery Ave., Bethesda, Md. 20014)

28-1. **American Soc. of Maxillofacial Surgeons**, Miami Beach, Fla. (D. Goulian, Jr., 116 E. 68 St., New York 10021)

28-1. **American Soc. of Mechanical Engineers**, Gas Turbine Conf. and Products

Show, Houston, Tex. (A. B. Conlin, 345 E. 47 St., New York 10017)

28-2. **Engineering Foundation Conf. on Building Systems**, Pacific Grove, Calif. (H. D. Greiner, EF, United Engineering Center, 345 E. 47 St., New York 10017)

28-2. **American Chemical Soc.**, Boston, Mass. (F. T. Wall, ACS, 1155 16th St., NW, Washington, D.C. 20036)

28-2. **American College of Physicians**, Denver, Colo. (E. C. Rosenow, ACP, 4200 Pine St., Philadelphia, Pa. 19104)

29-31. **Society of Economic Paleontologists and Mineralogists**, Houston, Tex. (Mrs. R. Tener, Box 979, Tulsa, Okla. 74101)

29-31. **International Conf. on Non-Ionizing Radiation Safety**, Cincinnati, Ohio. (P. Dehner, Children's Hospital Research Foundation, Cincinnati 45229)

29-31. **American Assoc. of Petroleum Geologists and Soc. of Economic Paleontologists and Mineralogists**, Houston, Tex. (E. W. Ellsworth, AAPG, Box 979, 144 S. Boulder, Tulsa, Okla. 74101)

29-31. **New Development in Reactor Mathematics and Applications**, Idaho Falls, Idaho. (J. C. Haire, Idaho Nuclear Corp., P.O. Box 1845, Idaho Falls 83401)

29-2. **Psychosomatic Medicine in Obstetrics and Gynecology**, 3rd annual intern. congr., London, England. (Intern. Congr. Coordinator Center, Travel Dept., 9 E. 38 St., New York 10016)

29-2. **Symposium on the Use of Radiation and Radioisotopes for Genetic Improvement of Industrial Microorganisms**, Vienna, Austria. (J. H. Kane, Div. of

Technical Information, U.S. Atomic Energy Commission, Washington, D.C. 20545)

29-2. **International Conf. on Space and Communications**, Paris, France. (M. Bignier, 16, rue de Presles, Paris)

29-2. **International Union of Pure and Applied Physics, Conf. on Statistical Mechanics**, Chicago, Ill. (S. A. Rice, James Franck Inst., Univ. of Chicago, 5640 Ellis Ave., Chicago 60637)

29-3. **American College of Radiology**, St. Louis, Mo. (W. C. Stronach, ACR, 20 N. Wacker Dr., Chicago, Ill. 60606)

30. **External Non-Prescription Products**, San Francisco, Calif. (D. E. Prescott, American Pharmaceutical Assoc., 2215 Constitution Ave., NW, Washington, D.C. 20037)

30-2. **European Earth and Planetary Physics Colloquium**, Reading, England. (Secretary, Inst. of Physics and the Physical Soc., 47 Belgrave Sq., London, S.W.1, England)

30-2. **European Semiconductor Devices Research Conf.**, Munich, Germany. (Secretary, Inst. of Physics and the Physical Soc., 47 Belgrave Sq., London, S.W.1, England)

31-1. **Grain Boundary Sliding in High Temperature Deformation**, London, England. (C. A. P. Horton, Materials Div., Central Electric Research Labs., Kelvin Ave., Leatherhead, Surrey, England)

31-2. **Reliability Physics Symp.**, Las Vegas, Nev. (O. D. Trapp, Fairchild Semiconductor, 313 Fairchild Dr., Mountain View, Calif. 94040)

spectrophotometry's awesome foursome.

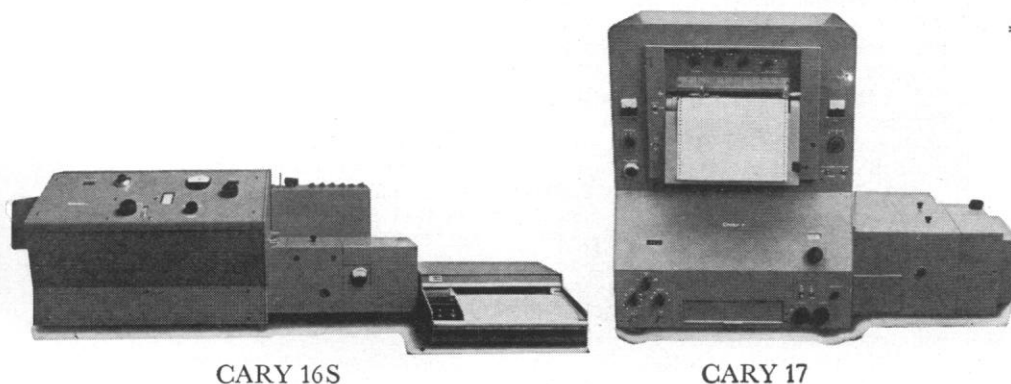
Then, the modular Cary 16S. A recording version of our renowned Cary 16 manual spectrophotometer. Designed for scanning and recording applications in the UV-VIS range where high stability and photometric accuracy are essential. To tailor a 16S system to specific requirements, pick and choose from a large group of modular accessories. Price of basic system: \$10,970.*

Finally, the solid state Cary 17. It delivers all the performance of the Cary 14 plus such built-in extras as digitally coupled scan and chart drive, meters to indicate when operating conditions are optimum, and a multi-zero/multi-range slidewire. Does anything any spectrophotometer can. But better. Plus, it's completely computer-compatible for future closed loop operation. Range: 186-2650 nm. Price: \$24,950.*

(We might also mention that for each of these instruments there's a SpectroSystem 100. A dedicated computer system for immediate processing of all spectral data.)

That's a brief look at Cary recording spectrophotometers. One just right for your work. And your budget. For complete specifications and prices, simply write Cary Instruments, a Varian subsidiary, 2724 South Peck Road, Monrovia, Calif. 91016. Ask for data file E101-21.

*Domestic only, slightly higher elsewhere.

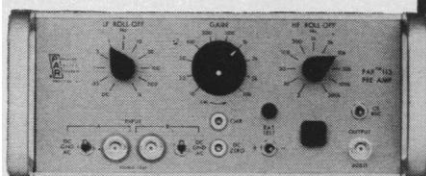


CARY 16S

CARY 17

cary instruments

The Quiet Preamp...



How quiet? At 10 Hz, with a 2 M Ω source resistance, it has a noise figure of less than 0.3 dB. Shorted input noise from dc to 100 kHz is typically 1 μ V referred to the input.

Model 113 also offers:

- Ac or dc coupling
- Single ended or differential input
- High common mode rejection
- Low- and high-frequency rolloffs
- 100 M Ω input impedance
- Gain continuously variable 10 to 25,000
- Battery operation
- Price \$795. Off-the-shelf-delivery.

Ask us to demonstrate our Model 113 Preamplifier for you now. Call or write Princeton Applied Research Corp., Box 565, Princeton, N.J. 08540; telephone (609) 452-2111.



**PRINCETON APPLIED
RESEARCH CORPORATION**
Box 565, Princeton, New Jersey 08540

Gentlemen:

- ☐ Please arrange Model 113 demonstration.
☐ Please send more data on Model 113.

Name

Title

Organization

Address

City

State Zip

Phone

117

Circle No. 89 on Readers' Service Card

April

1-2. American Soc. for **Engineering Education**, Midwest section, Rolla, Mo. (Mrs. L. Hitch, ASEE, Suite 400, 1 Dupont Circle, NW, Washington, D.C. 20036)

1-2. Southern **Water Resources and Pollution Control** Conf., 20th annual, Chapel Hill, N.C. (C. M. Weiss, Dept. of Environmental Sciences and Engineering, Univ. of North Carolina, Chapel Hill 27514)

1-3. Alabama **Acad. of Science**, University. (T. Denton, Samford Univ., Birmingham, Ala.)

1-4. **British Medical** Assoc., clinical mtg., Aberystwyth, England. (BMA, BMA House, Tavistock Sq., London, W.C.1, England)

1-4. American Soc. of **Group Psychotherapy and Psychodrama**, 29th annual, New York, N.Y. (R. W. Siroka, 215 Park Ave., South, New York 10003)

2-3. National Congr. on the **Socio-Economics of Health Care**, 5th annual, Las Vegas, Nev. (C. N. Theodore, Div. of Health Services, American Medical Assoc., 535 N. Dearborn St., Chicago, Ill. 60610)

2-4. American **Psychosomatic** Soc., 28th annual, Denver, Colo. (P. H. Knapp, APS, 265 Nassau Rd., Roosevelt, N.Y. 11575)

2-6. American **Pharmaceutical** Assoc., with the Hawaii Pharmaceutical Assoc., Honolulu. (D. E. Prescott, APA, 2215 Constitution Ave., NW, Washington, D.C. 20037)

3. New Jersey **Acad. of Science**, Princeton. (A. Hall, Princeton Univ., 70 Washington Rd., Princeton 18540)

3-5. National Assoc. of **Blue Shield** Plans, San Francisco, Calif. (J. W. Castellucci, 211 E. Chicago Ave., Chicago, Ill. 60611)

4-6. Symposium on **Energy, the Environment, and Education**, Tucson, Ariz. (R. L. Seale, Dept. of Nuclear Engineering, Univ. of Arizona, Tucson 85721)

4-6. **Vacuum Equipment** Conf., Sussex, England. (Secretary, Inst. of Physics and the Physical Soc., 47 Belgrave Sq., London, S.W.1, England)

4-9. American **Chemical** Soc., 161st annual, Boston, Mass. (Meetings Manager, 1155 16th St., NW, Washington, D.C. 20036)

5-6. American Assoc. of **Planned Parenthood Physicians**, Kansas City, Mo. (W. C. Rogers, Planned Parenthood-World Population, 810 Seventh Ave., New York 10019)

5-6. **System Theory**, 3rd annual symp., Atlanta, Ga. (C. O. Alford, Inst. of Electrical and Electronics Engineers, Inc., 345 E. 47 St., New York 10017)

5-7. **Durability and Symmetry in Hadron Physics**, Tel-Aviv, Israel. (Secretary, Inst. of Physics and the Physical Soc., 47 Belgrave Sq., London, S.W.1, England)

5-7. Conference on **Elementary Particle Physics**, Lancaster, England. (D. Newton, Dept. of Physics, Nuclear Physics Div., Univ. of Lancaster, Bailrigg, Lancaster)

5-7. **Fabrication of Advanced Materials** Symp., Milwaukee, Wis. (W.G. Gibbons, Sunstrand Aviation, 4747 Harrison Ave., Rockford, Ill. 61101)

5-7. American College of **Surgeons**,

Montreal, Canada. (ACS, 55 E. Erie St., Chicago, Ill. 60611)

5-8. National **Atomic and Molecular Physics** Conf., 3rd annual, York, England. (Inst. of Physics and the Physical Soc., 47 Belgrave Sq., London, S.W.1, England)

5-8. National **Educational Technology** Conf., New York, N.Y. (Conference Manager, Educational Technology, Englewood Cliffs, N.J. 07632)

5-8. **Low Mobility Materials** Conf., Eliat, Israel. (D. S. Tannhauser, Dept. of Physics, Technion, Haifa, Israel)

6-7. **Advanced Composites** Symp., 5th annual, St. Louis, Mo. (E. V. N. Schuyler, Washington Univ. School of Continuing Education, Box 1048, St. Louis 63130)

6-8. Methods in **Air Pollution and Industrial Hygiene** Studies, 12th annual, Los Angeles, Calif. (E. Jeung, Air and Industrial Hygiene Lab., California State Dept. of Public Health, 2151 Berkeley Way, Berkeley 94704)

6-9. **Optical** Soc. of America, 55th, Tucson, Ariz. (M. E. Warga, OSA, 2100 Pennsylvania Ave., NW, Washington, D.C. 20037)

7. American Soc. of **Clinical Oncology**, Chicago, Ill. (R. R. Ellison, Roswell Park Memorial Inst., Buffalo, N.Y. 61420)

7-14. Management of **Acute Psychological Emergency**, New York, N.Y. (H. Gershman, American Inst. for Psychoanalysis, 329 E. 62 St., New York 10021)

8-10. American Assoc. for **Cancer Research**, Inc., 62nd annual, Chicago, Ill. (H. J. Creech, AACR, Inst. for Cancer Research, Fox Chase, Philadelphia, Pa. 19111)

8-10. Southern Soc. for **Philosophy and Psychology**, 63rd annual, Athens, Ga. (D. Browning, Dept. of Philosophy, Univ. of Miami, Coral Gables, Fla.)

8-10. U.S. Natl. Committee/Intern. Union of **Radio Science** and Inst. of **Electric and Electronics Engineers**, spring mtg., Washington, D.C. (J. V. Evans, USNC/URSI, Lincoln Lab., Massachusetts Inst. of Technology, Lexington 02173)

12-14. Symposium on **Nonlinear Functional Analysis**, Chicago, Ill. (G. G. Moran, U.S. Army, Mathematics Research Center, Univ. of Wisconsin, Madison 53706)

12-15. **Air and Stream Improvement**, 6th annual conf., Quebec City, P.Q., Canada. (D. H. Paterson, Canadian Pulp and Paper Assoc., 2300 Sun Life Bldg., Montreal, 110, P.Q., Canada)

12-15. National **Telemetry** Conf. and Exposition, 21st annual, Washington, D.C. (H. B. Riblet, Johns Hopkins Univ., Applied Physics Lab., 8621 Georgia Ave., Silver Spring, Md. 20910)

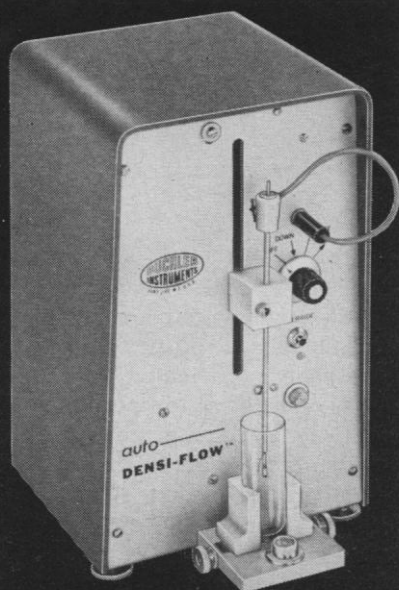
12-16. Federation of the American Societies for **Experimental Biology**, Chicago, Ill. (J. F. A. McManus, 9650 Rockville Pike, Bethesda, Md. 20014)

12-16. American **Geophysical** Union, 52nd annual, Washington, D.C. (G. D. Mead, Lab. for Space Physics, NASA Goddard Space Flight Center, Greenbelt, Md. 20771)

12-16. American Assoc. of **Immunologists**, Chicago, Ill. (H. Metzger, AAI, 9650 Rockville Pike, Bethesda, Md. 20014)

12-17. American Soc. for **Experimental Pathology**, Chicago, Ill. (R. E. Kuntti,

**GREAT FOR DEPOSITS
AND WITHDRAWALS...**



**AND YOU CAN
BANK ON IT!**

NEW FROM BUCHLER Auto DENSI-FLOW™ for density gradients

The Auto Densi-Flow is ideal for depositing generated gradients or in the automatic withdrawal of centrifuged samples. It eliminates the need to push up the formed gradient with a heavy solution which might cause diffusion of bands and a spoiled experiment. This new automated instrument also deposits a generated gradient in a linear fashion into all commercially available centrifuge tubes.

Additional advantages are: speed of operation; elimination of piercing of centrifuge tubes and compatibility with all types of centrifuge tubes without the need for adapters. Write today for complete information on the Auto Densi-Flow—the modern tool for density gradient work.

Request Bulletin S2-5160A

**BUCHLER INSTRUMENTS DIVISION
NUCLEAR-CHICAGO CORP.**

A SUBSIDIARY OF G. D. SEARLE & CO.

1327 SIXTEENTH ST., FORT LEE, N. J. 07024

Circle No. 85 on Readers' Service Card

ASEP, 9650 Rockville Pike, Bethesda, Md. 20014)

12-17. American Inst. of Nutrition, Chicago, Ill. (J. Waddell, AIN, 9650 Rockville Pike, Bethesda, Md. 20014)

12-17. American Soc. for Pharmacology and Experimental Therapeutics, Chicago, Ill. (E. B. Cook, ASPET, 9650 Rockville Pike, Bethesda, Md. 20014)

12-17. American Physiological Soc., Chicago, Ill. (R. G. Daggs, APS, 9650 Rockville Pike, Bethesda, Md. 20014)

13-15. Frontiers in Education, Atlanta, Ga. (B. J. Dasher, College of Engineering, Georgia Inst. of Technology, Atlanta 30332)

13-15. Microwave Research Inst., 21st annual intern. symp., New York, N.Y. (J. Fox, Polytechnic Inst. of Brooklyn, 33 Jay St., Brooklyn, N.Y. 11201)

13-16. International Magnetism Conf., 9th annual, Denver, Colo. (G. Bate, IBM Corp., P.O. Box 1900, Boulder, Colo. 80302)

14-16. American Soc. for Engineering Education, Southeastern section, Clemson, S.C. (Mrs. L. Hitch, ASEE, Suite 400, 1 Dupont Circle, NW, Washington, D.C. 20036)

14-16. National Pollution Control Conf. and Exposition, 4th annual, Detroit, Mich. (B. Reeves, 1107 S. Loop West, Houston, Tex. 77021)

14-16. Symposium on Prescribed Burning in Forests of the Southeastern Coastal Plain, Charleston, S.C. (Director, Southeastern Forest Experiment Station, P.O. Box 2570, Asheville, N.C. 28802)

14-16. Current Research in Crystallography, Manchester, England. (Secretary, Inst. of Physics and the Physical Soc., 47 Belgrave Sq., London, S.W.1, England)

14-17. American Gynecological Soc., Phoenix, Ariz. (B. M. Peckham, University Hospital, 1300 University Ave., Madison, Wis. 53706)

14-17. Microanalysis and Micromorphology of Thin Films, Bremen, Germany. (Secretary, Inst. of Physics and the Physical Soc., 47 Belgrave Sq., London, S.W.1, England)

15-17. Association of Southeastern Biologists, Richmond, Va. (D. C. Bliss, Box 278, Randolph-Macon Woman's College, Lynchburg, Va. 24504)

15-17. American Assoc. of Physical Anthropologists, Boston, Mass. (E. L. Fry, Dept. of Anthropology, Southern Methodist Univ., Dallas, Tex. 75222)

15-17. Eastern Psychological Assoc., New York, N.Y. (W. W. Cumming, 353 Schermerhorn Hall, Columbia Univ., New York 10027)

15-17. Joint meeting of Northwest Scientific Assoc., Idaho Acad. of Science, and Washington State Entomological Soc., Moscow, Idaho. (L. W. Roberts, Dept. of Biological Sciences, Univ. of Idaho, Moscow 83843)

15-21. American Leprosy Missions, 12th annual, Carville, La. (O. W. Haselblad, 297 Park Ave., South, New York 10010)

16-17. Idaho Acad. of Science, Moscow, Idaho. (M. A. Fisher, Dept. of Physics and Mathematics, College of Southern Idaho, Twin Falls)

16-17. American Burn Assoc., San Antonio, Tex. (J. A. Bostwick, Jr., 1825 W. Harrison St., Chicago, Ill. 60612)

NEW LABELLED AMINO ACIDS

The following labelled amino acids are now available from stock. This unique group of new products reflects Amersham/Searle's unequalled selection of radiochemicals for research.

S-Adenosyl-L-methionine(carboxyl-C14)

Order No.: CFA-477

Specific Activity: >45mCi/mmol

Prices: 10uCi...\$45 50uCi...\$175

4-Amino-n-butyric acid-C14(U)

Order No.: CFB-148

Specific Activity: 4-6mCi/mmol

Order No.: CFB-151

Specific Activity: >150mCi/mmol

Prices: 50uCi...\$30 0.25mCi...\$110

L-Arginine-5-H3 monohydrochloride

Order No.: TRK-368

Specific Activity: >5,000mCi/mmol

Order No.: TRA-368

Specific Activity: 100-500mCi/mmol

Prices: 0.25mCi...\$40
1mCi...\$100 5mCi...\$300

DL-Carnitine(methyl-C14) hydrochloride

Order No.: CFA-475

Specific Activity: >45mCi/mmol

Prices: 50uCi...\$75 0.25mCi...\$290

L-Cystathionine-S35

Order No.: SJ-200

Specific Activity: 1-50mCi/mmol

Prices: 1mCi...\$375 then \$75/mCi

L-3(3,4-Dihydroxyphenyl)alanine-1-C14

Order No.: CFA-473

Specific Activity: 1-5mCi/mmol

Prices: 50uCi...\$140 2x50uCi...\$275

(Glycyl-1-C14)glycine hydrochloride

Order No.: CFA-478

Specific Activity: 10-20mCi/mmol

Prices: 50uCi...\$45 0.5mCi...\$300

L-Methionine-S35

Order No.: SJ-204

Specific Activity: 5,000-20,000mCi/mmol

Prices: 0.5mCi...\$70 1mCi...\$95
5mCi...\$250

L-Valine-2, 3-H3

Order No.: TRK-327

Specific Activity: >10,000mCi/mmol

Order No.: TRA-327

Specific Activity: 500-2000mCi/mmol

Prices: 0.25mCi...\$20
1mCi...\$50 5mCi...\$150

OUR SPECIFIC ACTIVITY IS SERVICE



Amersham/Searle

AMERSHAM / SEARLE CORPORATION:
An Activity of G. D. Searle & Co. and the Radiochemical Centre

2636 S. Clearbrook Drive
Arlington Heights, Illinois 60005

Telex: 72-6444

Telephone: (312) 593-6300

Circle No. 90 on Readers' Service Card

16-17. American Soc. for **Engineering Education**, North Central section, Pittsburgh, Pa. (L. Hitch, ASEE, 1 Dupont Circle, NW, Washington, D.C. 20036)

16-17. Northwest **Scientific Assoc.**, Moscow, Idaho. (G. H. Deitschman, U.S. Forest Service, P.O. Box 469, Moscow 83843)

16-17. American Assoc. of **University Professors**, Philadelphia, Pa. (B. H. Davis, AAUP, 1785 Massachusetts Ave., NW, Washington, D.C. 20036)

18-19. Montana **Acad. of Sciences**, Butte. (R. E. Juday, Univ. of Montana, Missoula 59801)

18-21. **Diesel and Gas Engine Power** Conf. and Exhibit, American Soc. of Mechanical Engineers, Toronto, Ont., Canada. (A. B. Conlin, 345 E. 47 St., New York 10017)

18-21. Association of American **Geographers**, Boston, Mass. (J. W. Nystrom, AAG, 1146 16th St., NW, Washington, D.C. 20036)

18-21. **Neutron Sources and Application**, Augusta, Ga. (C. Ice, Savannah River Lab., Aiken, S.C. 29801)

18-21. **Off-Shore Technology** Conf. Houston, Tex. (H. S. Field, Geophysical Research Corp., 136 Mohawk Blvd., Tulsa, Okla. 74106)

18-21. International **Systems Meeting**, Chicago, Ill. (R. L. Irwin, Systems and Procedures Assoc., 24587 Bagley Rd., Cleveland, Ohio 44138)

18-22. American Assoc. of **Cereal Chemists**, Dallas, Tex. (R. J. Tarleton, 1821 University Ave., St. Paul, Minn. 55104)

18-22. Illinois Acad. of **General Practice**, 23rd annual, Arlington Park. (H. M. Robinson, 14 E. Jackson Blvd., Chicago, Ill. 60604)

18-22. **Industrial Medical Assoc.**, Atlanta, Ga. (H. N. Schulz, IMA, 150 N. Wacker Dr., Chicago, Ill. 60606)

18-22. American Assoc. of **Neurological Surgeons**, 38th annual, Houston, Tex. (M. I. O'Connor, AANS, 428 E. Preston St., Baltimore, Md. 21202)

18-23. American Assoc. of **Anatomists**, 84th annual, Philadelphia, Pa. (J. C. Finerty, Louisiana State Univ. School of Medicine, 1542 Tulane Ave., New Orleans)

18-23. **Geoscience Electronics Symp.**, Inst. of Electrical and Electronics Engineers, Inc., Washington, D.C. (Office of the Technical Activities Board, IEEE, 345 E. 47 St., New York 10017)

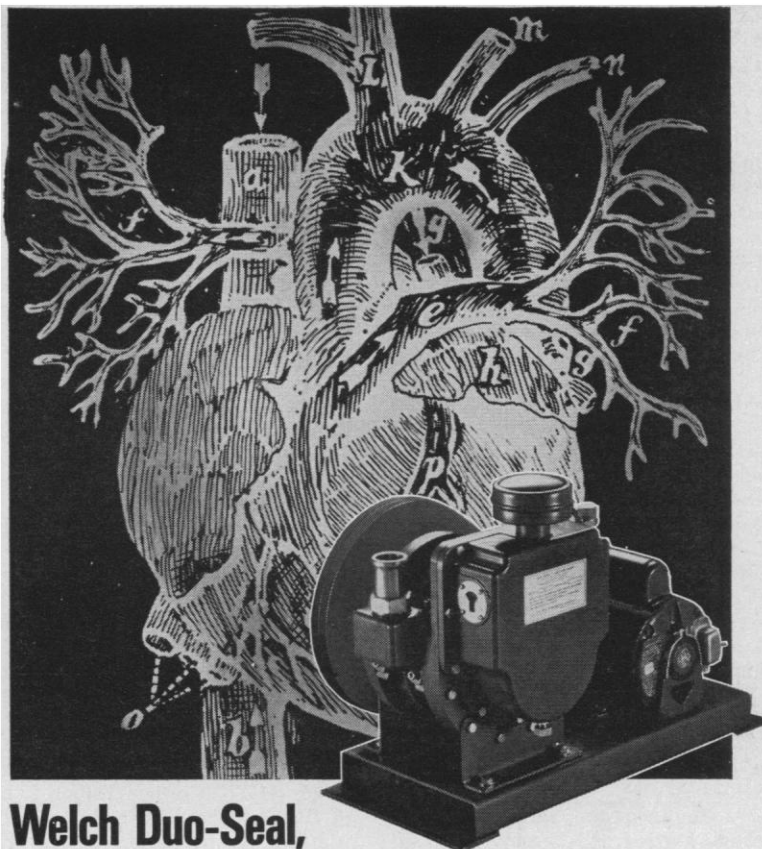
18-24. **Dentistry Assoc.**, 25th annual, Sao Paulo, Brazil. (M. S. Marcal, Associacao Odontologica De Ribeirao Preto, Rua Alvares Cabral, 575 C.P. 457, Ribeirao Preto, Sao Paulo)

18-24. Council for **Exceptional Children**, 49th annual, Miami Beach, Fla. (A. Gialas, CEC, 1411 S. Jefferson Davis Hwy., Arlington, Va. 20036)

18-25. North American **Clinical Dermatology Soc.**, Ocho Rios, Jamaica. (E. F. Finnerty, 510 Commonwealth Ave., Boston, Mass. 02215)

19-20. American Soc. for **Artificial Internal Organs**, Chicago, Ill. (E. F. Leonard, Dept. of Chemical Engineering, Columbia Univ., New York 10027)

19-20. Symposium on **Excited States of Matter**, Lubbock, Tex. (J. N. Marx, Dept. of Chemistry, Texas Technological Univ., P.O. Box 4260, Lubbock 79409)



Welch Duo-Seal, THE HEART OF THE VACUUM SYSTEM

If you look into a high or ultra-high vacuum system, the odds are greatly in favor of seeing a Welch Duo-Seal pump in use as the fore pump, the "heart" of the system. Why? Because size for size, Duo-Seals are preferred by vacuum engineers over all other makes combined. They have long been recognized by research and industry for superior performance. Now, more than 250,000 Duo-Seal pumps are in service, some since they were first manufactured in 1935, never returned for repair and still meeting their original vacuum guarantee.

Welch Duo-Seal, oil-sealed rotary vacuum pumps are manufactured to the industry's highest standards, in the largest, most modern, best equipped vacuum pump plant in the world. They boast exclusive high quality features such as the unique Duo-Seal design and the most precise running clearances in the industry, features which make Duo-Seal pumps longer lasting and more efficient—giving faster pump down to the low millitorr range, faster repump down in cycling applications.



Call 312/677-0600 or write for
the new Welch Duo-Seal catalog which
fully describes and illustrates the entire
line of Duo-Seal vacuum pumps.



SARGENT-WELCH SCIENTIFIC COMPANY
7300 N. LINDER AVENUE • SKOKIE, ILLINOIS 60076
SPRINGFIELD, N.J. • SAN CARLOS, CAL. • WESTON, ONT.

DUO-SEAL—the dependable pump

Circle No. 32 on Readers' Service Card

19-20. Institute of Electrical and Electronics Engineers, **Power Conditioning Specialists Conf.**, 2nd annual, Pasadena, Calif. (J. Dunlop, COMSAT Laboratories, Box 115, Clarksburg, Md. 20734)

19-20. American **Social Health Assoc.**, Detroit, Mich. (E. G. Lippincott, 1740 Broadway, New York 10019)

19-21. **Ocean Technology** and Research, Houston, Tex. (P. Drummond, American Soc. of Mechanical Engineers, 345 E. 47 St., New York 10017)

19-21. National **Open Hearth and Basic Oxygen Steel Conf.**, American Inst. of Mining, Metallurgical and Petroleum Engineers, 54th, Pittsburgh, Pa. (Meetings Officer, AIMMPE, 345 E. 47 St., New York 10017)

19-21. **Railroad Conf.**, Inst. of Electrical and Electronics Engineers, Inc., and American Soc. for Mechanical Engineers, New York, N.Y. (Meetings Officer, ASME, 345 E. 47 St., New York 10017)

19-21. **Structural Dynamics, and Materials**, 12th annual symp., American Inst. of Aeronautics and Astronautics and American Soc. of Mechanical Engineers, Anaheim, Calif. (A. E. Johnson, Jr., Tele-dyne Materials Research, 303 Bear Hill Rd., Waltham, Mass. 02154)

19-22. Southeastern **Surgical Congr.**, Miami Beach, Fla. (A. H. Letton, SSC, 340 Boulevard, NE, Atlanta, Ga. 30312)

19-22. Southwestern **Surgical Congr.**, Las Vegas, Nev. (J. A. Barney, SSC, 301 Pasteur Bldg., Oklahoma City, Okla.)

19-23. European **Nuclear Energy Agency**, 5th annual, Munich, Germany.

(H. Smets, ENEA, 38, Blvd. Suchet, Paris, 14° France)

19-23. International **Solvent Extraction Conf.**, The Hague, Netherlands. (Soc. of Chemical Industry, 14 Belgrave Sq., London, S.W.1, England)

19-23. **Space Congr.**, Canaveral Council of Technical Soc., 8th annual, Cocoa Beach, Fla. (N. A. Stein, McDonnell Douglas Astronautics Co., Box 600, Titusville, Fla. 32780)

19-23. **Structural Engineering**, American Soc. of Civil Engineers, Baltimore, Md. (W. H. Wisely, ASCE, 345 E. 47 St., New York 10017)

20-21. **Electric Process Heating in Industry**, Milwaukee, Wis. (F. Pycroft, Philadelphia Electric Co., 211 S. Broad St., Philadelphia, Pa. 19105)

20-21. Association for the Advancement of **Psychoanalysis**, New York, N.Y. (A. Apolito, 80 Undercliff Rd., Montclair, N.J. 07042)

20-21. Institute of Electrical and Electronics Engineers, Inc.-American Soc. of Technical Engineers joint **Railroad Conf.**, New York, N.Y. (F. Farinella, Public Service Electric & Gas Co., Room 8339, 80 Park Pl., Newark, N.J. 07011)

20-22. **Composite Materials: Testing and Design**, 2nd annual conf., American Soc. for **Testing and Materials**, Anaheim, Calif. (H. T. Corten, Talbot Lab., Univ. of Illinois, Urbana 61801)

20-22. **Power Conf.**, Inst. of Electrical and Electronics Engineers, Inc., and American Soc. of Mechanical Engineers, Chicago, Ill. (Office of the Technical Activi-

ties Board, IEEE, 345 E. 47 St., New York 10017)

20-23. **Acoustical Soc. of America**, Washington, D.C. (B. H. Goodfriend, ASA, 335 E. 45 St., New York 10017)

21-23. Society of **Aerospace Material and Process Engineers**, 16th annual, Anaheim, Calif. (J. E. Gott, 1519 Padres Court, San Jose, Calif. 95125)

21-23. **Biometric Soc.**, eastern North American regional, University Park, Pa. (F. B. Cady, Jr., Dept. of Statistics, Univ. of Kentucky, Lexington 40506)

21-23. German **Concrete Conf.**, Berlin. (Deutscher Beton-Verein, Bahnhofstr., 61, 6200 Wiesbaden, Germany)

21-23. **Nondestructive Evaluation in Aerospace, Weapons Systems, and Nuclear Applications**, 8th annual symp., San Antonio, Tex. (C. G. Gardner, P.O. Drawer 28510, San Antonio 78228)

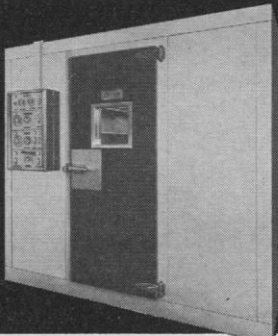
21-23. Conference of the Soc. of **Photographic Scientists and Engineers**, Chicago, Ill. (C. S. Heinmiller, Research Lab. Bldg. 81, Kodak Park, Eastman Kodak Co., Rochester, N.Y. 14650)

21-23. **Technical Conf.**, Waynesboro, Va. (L. Rebenfeld, P.O. Box 625, Princeton, N.J. 08540)

21-23. Symposium on **Testing for Prediction of Material Performance in Structures and Components**, Anaheim, Calif. (R. S. Shane, Natl. Materials Advisory Board, Natl. Academy of Sciences, 2101 Constitution Ave., NW, Washington, D.C. 20418)

21-24. **Southwestern and Rock Mountain Div.**, AAAS, Tempe, Ariz. (M. G.

From the most experienced source for
Environmental Rooms



- Long, dependable operating life
- Over 500 standard sizes and temperature models for new construction and existing installations. Others on request.
- Modular construction for maximum flexibility and economy
- Standard and custom units for temperature, humidity, vacuum and pressure applications
- Factory service available locally, immediately
- Widely used in medical schools, pharmaceutical and chemical companies for storage and research

Call or write today for information to:

Relialab
by **Tenney**
ENGINEERING, INC.

1090 Springfield Rd., Union, N. J. 07083 • (201) 686-7870

Oldest and largest manufacturer of environmental facilities in the world.

Circle No. 102 on Readers' Service Card

NEW! HIGH EFFICIENCY, ALL-PURPOSE ULTRASONIC CLEANER



ONLY \$99.50

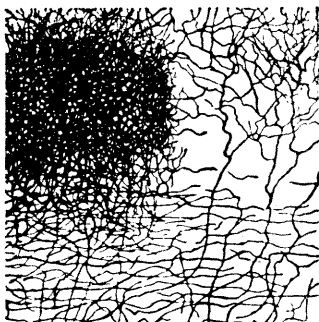
The generator in Blackstone's new SP-103 compact ultrasonic cleaner produces 100 watt peak (50 watt average) electrical output. A unique, patented piezoelectric transducer converts up to 90% of this electrical power to high intensity acoustical power for maximum ultrasonic cleaning action.

All Purpose Cleaner: Ideal for electronic applications, scientific, medical, optical and dental labs, research and development, and jewelry. Contact Blackstone for all your Ultrasonic requirements. Send for descriptive literature on the SP-103*.

* Conforms to Federal Communications Commission requirements on R.F.I.

BLACKSTONE ULTRASONICS, INC.
Jamestown, N.Y. 14701

Circle No. 101 on Readers' Service Card



The Rockefeller University Press

ANNOUNCES

THE NEUROSCIENCES:

SECOND STUDY PROGRAM

FRANCIS O. SCHMITT, Editor-in-Chief

The MIT Neurosciences Research Program held a three-week Intensive Study Program during the summer of 1969 in Boulder, Colorado. Eighty-seven leading scientists presented the papers now collected in this 1100-page volume. Below are the book's eight main subdivisions and their editors.

- Evolution of Brain and Behavior *Gardner C. Quarton*
Development of the Nervous System *M. V. Edds, Jr.*
Determinants of Neural and Behavioral Plasticity *Robert Galambos*
Complex Psychological Functions *Gardner C. Quarton*
Neural Subsystems and Physiological Operations *Theodore H. Bullock*
Communication and Coding in the Nervous System *José P. Segundo*
Aspects of Molecular Neurobiology *F. O. Schmitt*
Recognition and Control at the Molecular Level *G. M. Edelman*

This is a *companion volume* to *The Neurosciences: A study Program*, published in 1967 for the Neurosciences Research Program's *first* study program (now in its fourth printing).

1100 pages 607 Illustrations Indexes 8½ x 11

Reference Edition \$60. Professional Edition \$30.

Also announcing

OLFACTION AND TASTE

Edited by Carl Pfaffman

Proceedings of the Third International Symposium

664 pages 336 Illustrations Index 6¾ x 10 \$23.

Order from THE ROCKEFELLER UNIVERSITY PRESS

Order Service, New York 10021

Anderson, P.O. Box 3 AF, Las Cruces, N.M. 88001)

21-1. Society of Motion Picture and Television Engineers, 109th annual, Los Angeles, Calif. (M. Denison, 9 E. 41 St., New York 10017)

22-23. Fiber Soc., annual spring technical conf., Chattanooga, Tenn. (L. Rebenfield, Box 625, Princeton, N.J.)

22-23. Future Technology of the Rubber Industry, Leamington, England (Secretary, Inst. of Physics and the Physical Soc., 47 Belgrave Sq., London, S.W.1, England)

22-23. American Pediatric Surgical Assoc., Hamilton, Bermuda. (T. M. Holder, 39th and Rainbow, Kansas City, Kan. 66103)

22-23. American Assoc. of Railway Surgeons, Chicago, Ill. (C. Y. Werelius, 5800 Stony Island Ave., Chicago 60637)

22-23. Institution of the Rubber Industry, Leamington, England. (R. H. Craven, IRI, 4 Kensington Palace Gardens, London, W.8, England)

22-24. Illinois State Acad. of Science, Peoria. (K. H. Harmet, Dept. of Biology Sciences, Northern Illinois Univ., De Kalb 60115)

22-24. American Cleft Palate Assoc., Pittsburgh, Pa. (K. R. Bzoch, Dept. of Communicative Disorders, College of Health Related Professions, Univ. of Florida, Gainesville 32601)

22-24. Conference on Electronic Crime Countermeasures, Lexington, Ky. (J. S. Jackson, Dept. of Electrical Engineering, Univ. of Kentucky, Lexington 40506)

22-24. Michigan Acad. of Science, Arts and Letters, Kalamazoo. (T. G. Overmire, 2117 Washtenaw Ave., Ann Arbor, Mich. 48104)

22-24. Ohio Acad. of Science, Akron. (J. H. Melvin, OAS, 505 King Ave., Columbus, Ohio 43201)

22-24. Population Assoc. of America, Washington, D.C. (A. L. Ferriss, P.O. Box 14182, Benjamin Franklin Sta., Washington, D.C. 20044)

22-25. Association of Clinical Scientists, spring mtg., Hartford, Conn. (F. W. Sunderman, ACS, 2 Holcomb St., Hartford 06112)

23-24. Georgia Acad. of Science, Carrollton. (E. A. Stanley, Dept. of Geology, Univ. of Georgia, Athens 30601)

23-24. Iowa Acad. of Science, Dubuque. (R. W. Hanson, Dept. of Chemistry, Univ. of Northern Iowa, Cedar Falls 50613)

23-24. Louisiana Acad. of Sciences, Natchitoches. (G. W. Cobb, Dept. of Biological Sciences, McNeese State Univ., Lake Charles, La. 70601)

23-24. Mississippi Acad. of Science, Hattiesburg. (C. Q. Sheely, Drawer CQ, State College, Miss. 39762)

23-24. American Soc. for Engineering Education, Rocky Mountain section, Laramie, Wyo. (L. Hitch, ASEE, Suite 400, 1 Dupont Circle, NW, Washington, D.C. 20036)

23-24. American Geriatrics Soc., Chicago, Ill. (E. Henderson, 10 Columbus Circle, New York, N.Y. 10019)

24-29. American Ceramic Soc., 73rd annual mtg. and exposition, Chicago, Ill. (A. J. Metzger, Dept. of Ceramic Engineering, Ohio State Univ., 2401 N. College Rd., Columbus 43210)

25-28. Society for **Economic Botany**, Chicago, Ill. (L. Williams, New Crops Research Branch, U.S. Dept. of Agriculture, Beltsville, Md. 20705)

25-30. Symposium on **Control of Quality in Construction**, Pacific Grove, Calif. (Secretary, Engineering Foundation, United Engineering Center, 345 E. 47 St., New York 10017)

26-27. **Combustion Inst.**, Western States section, spring mtg., Denver, Colo. (W. Unterberg, Western States section, Combustion Inst., 13433 Galewood St., Sherman Oaks, Calif. 91403)

26-28. **Frequency Control**, 25th annual symp., Atlantic City, N.J. (J. M. Stanley, Dept. of the Army, Headquarters U.S.A., Electronics Command, Fort Monmouth, N.J. 07703)

26-28. Association of **Iron and Steel Engineers**, spring conf., Cincinnati, Ohio. (W. C. Friesel, AISE, 1010 Empire Bldg., Pittsburgh, Pa. 15222)

26-28. Canadian Inst. of **Mining and Metallurgy**, 73rd annual, Quebec City, P.Q. (G. F. Skilling, 906-117, St. Catherine St., West, Montreal 2, P.Q., Canada)

26-28. **Radio Technical Commission for Marine Services**, Montreal, P.Q., Canada. (RTCMS Secretariat, P.O. Box 19087, Washington, D.C. 20036)

26-28. **Thermophysics**, 6th annual conf., American Inst. of Aeronautics and Astronautics, Tullahoma, Tenn. (E. Fried, General Electric Co., P.O. Box 8555, Philadelphia, Pa. 19101)

26-28. American Assoc. of **Thoracic Surgery**, Atlanta, Ga. (A. Hanvey, 7710 Carondelet Ave., St. Louis, Mo. 63105)

26-29. **Aerospace Medical Assoc.**, Houston, Tex. (M. H. Goodwin, Aerospace Medical Assoc., Washington National Airport, Washington, D.C. 20001)

26-29. Society of **Automotive Engineers**, air transportation mtg., New York, N.Y. (W. I. Marble, 2 Pennsylvania Pl., New York 10001)

26-29. **Civil Aviation Medical Assoc.**, Houston, Tex. (G. E. Henning, International Airport, San Antonio, Tex. 78216)

26-29. Conference on the **Management of Transmission and Distribution Systems**, London, England. (Inst. of Electrical and Electronics Engineers, Inc., Savoy Place, London, W.C.2)

26-30. Institute of **Environmental Sciences**, 17th annual, Los Angeles, Calif. (R. T. Nichols, IES, 940 E. Northwest Hgwy., Mount Prospect, Ill. 60056)

26-30. Society of **Manufacturing Engineers**, Philadelphia, Pa. (R. W. Taylor, SME, 20501 Ford Rd., Dearborn, Mich. 48128)

26-30. European Organization of **Nuclear Research**, Geneva, Switzerland. (J. Baardi, Health Physics, EONR, 1211 Geneva 23)

26-30. International Congr. on the **Protection against Accelerator and Space Radiation**, Geneva, Switzerland. (Inst. of Physics and the Physical Soc., 47 Belgrave Sq., London, S.W.1, England)

26-30. International Congr. on **Spastic Care**, Arnhem, Netherlands. (Congr. Secretariat, c/o Holland Organizing Centre, 16 Lange Voorhout, The Hague, Netherlands)

26-30. Association for **Research in Vision and Ophthalmology**, Sarasota, Fla. (H. E. Kaufman, Dept. of Ophthalmology,

Sepharose® 

**Now—
the whole field of
agarose gel filtration
covered by**

**Sepharose
6B-4B-2B**

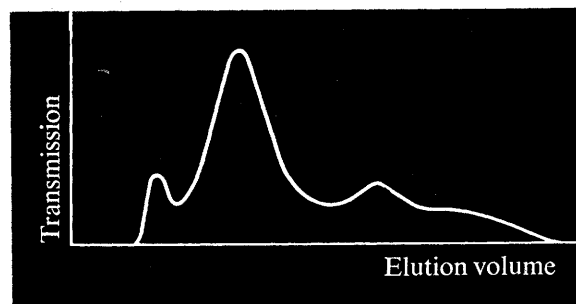
**for the separation of high
molecular weight proteins and polysaccharides,
nucleic acids and viruses**

☐ The beaded form of the agarose gel—Sepharose—ensures high flow rate and excellent resolution.

☐ New Sepharose 6B, a rigid gel with superior flow properties, is especially suitable for separation in and above the upper fractionation range of Sephadex G-200.

Please ask for further information.

Approx. exclusion limits MW		
	polysaccharides	proteins
Sepharose 6B <i>New!</i>	1×10^6	4×10^6
Sepharose 4B	5×10^6	20×10^6
Sepharose 2B	20×10^6	40×10^6



Purification of commercially available thyroglobulin on Sepharose 6B.

Pharmacia Fine Chemicals Inc.
800 Centennial Avenue
PISCATAWAY
New Jersey 08854

 **Pharmacia
Fine Chemicals**

Pharmacia (Canada) Ltd. 110 Place Crémazie, Suite 412, Montreal 11, P. Q.
(Inquiries outside U.S.A. and Canada should be directed to PHARMACIA FINE CHEMICALS, Uppsala, Sweden.)
Circle No. 33 on Readers' Service Card

this instrument can make the gradient

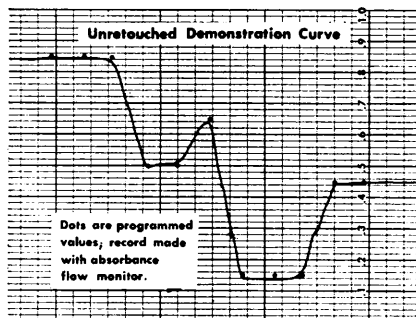


FOR
CHROMATOGRAPHIC ELUTION
OR FILLING ZONAL ROTORS

With a capacity of 3200 ml/hr, the Model 380 DIALAGRAD Programmed Gradient Pump is especially suited for filling zonal rotors as well as forming liquid chromatographic elution gradients and similar applications. Almost any two component gradient can be formed by simply setting a series of dials. There are no cams to cut or multiple solutions to mix at estimated concentrations. The shape of the curve is determined by setting eleven 0 to 100% dials which represent the initial, final, and nine evenly spaced intermediate ratios. This gives 10 program intervals, each of which are automatically subdivided by five linear interpolations to produce a smooth gradient.

Calibrated flow rates from 1 to 3200 ml/hr and program durations from 5 minutes to 16 days are set with positive stop switches. The DIALAGRAD will produce linear or curved gradients with equal accuracy and the program will be perfectly reproducible run after run. The instrument takes but a few minutes to program and requires no attention during a program run.

For more information, please request Brochure DP 37.



**INSTRUMENTATION
SPECIALTIES COMPANY**
4700 SUPERIOR LINCOLN, NEBRASKA 68504
PHONE (402) 434-0231 CABLE: ISCOLAB LINCOLN
Circle No. 84 on Readers' Service Card

604

Univ. of Florida, College of Medicine, Gainesville 32601)

26-30. American **Welding Soc.**, San Francisco, Calif. (Meetings Officer, AWS, 345 E. 47 St., New York 10017)

26-1. American Acad. of **Neurology**, New York, N.Y. (S. A. Nelson, AAN, 4005 W. 65 St., Minneapolis, Minn. 55435)

26-8. Lindauer, **Psychotherapy Week**, 21st annual, Lindau, Germany. (H. Stolze, Adalbert-Stifter-Str. 31, D-8, Munich 81, Germany)

27-28. National **Relay Conf.**, 19th annual, Stillwater, Okla. (D. D. Lingelbach, School of Electrical Engineering, Oklahoma State Univ., Stillwater)

27-30. American **Chemical Soc.**, Div. of Rubber Chemistry, Miami, Fla. (F. M. O'Connor, Harwick Standard Chemical Co., 60 S. Seiberling St., Akron, Ohio)

27-30. American **College Health Assoc.**, San Francisco, Calif. (J. W. Dilley, 2807 Central St., Evanston, Ill. 60201)

28. **Habitability in Space Stations**, Aerospace Medical Assoc. and American Inst. of Aeronautics and Astronautics, Houston, Tex. [C. C. Johnson, Spacecraft Design Office (EW), NASA Manned Spacecraft Center, Houston 77058]

28-1. **Geology of Industrial Minerals**, 7th annual, Tampa, Fla. (H. S. Puri, Board of Conservation, Geology Div., Box 631, Tallahassee, Fla. 32302)

28-1. Society of **Pediatric Research**, Atlantic City, N.J. (R. E. Greenberg, Dept. of Pediatrics, Stanford Univ. School of Medicine, Stanford, Calif. 94305)

29-30. Kansas **Acad. of Science**, Manhattan. (J. Weis, Div. of Biology, Kansas State Univ., Manhattan 66502)

29-1. Southwestern **Anthropological Assoc.** and the American **Ethnological Soc.** Tucson, Ariz. (P. Nash, AES Program, 540 N St., SW, Washington, D.C. 20024)

29-1. **Geological Soc. of America**, Northcentral section, Lincoln, Neb. (F. Handy, GSA, P.O. Box 1719, Boulder, Colo. 80302)

29-1. American Assoc. for the **History of Medicine**, Colorado Springs, Colo. (C. W. Bodemer, Dept. of Biomedical History, Univ. of Washington, School of Medicine, Seattle 98105)

29-3. American **Psychoanalytic Assoc.**, Washington, D.C. (B. E. Moore, APA, 150 E. 73 St., New York 10021)

30. Oklahoma **Acad. of Science**, Broken Bow. (J. T. Self, Dept. of Zoology, Oklahoma Univ., Norman 73069)

30-1. Minnesota **Acad. of Science**, Winona. (M. I. Harrigan, MAS, 3100 38th Ave., South Minneapolis, Minn. 55406)

30-1. Nebraska **Acad. of Science**, Lincoln. (C. B. Schultz, 101 Morrill Hall, University Museum, Univ. of Nebraska, Lincoln 68508)

30-1. North Carolina **Acad. of Science**, Winston-Salem. (J. A. Yarbrough, Meredith College, Raleigh, N.C. 27602)

30-1. North Dakota **Acad. of Sciences**, Fargo. (B. G. Gustafson, Univ. of North Dakota, Grand Forks 58201)

30-2. Society of **Biological Psychiatry**, Washington, D.C. (C. Shagass, Eastern Pennsylvania Psychiatric Inst., Henry Ave. and Abbottsford Rd., Philadelphia 19129)

30-2. American Acad. of **Psychoanalysis**, Washington, D.C. (J. B. Miller, 510 E. 86 St., New York 10028)

Accurate Within $\pm 3\%$



HOLTER™ Precision Roller Pumps

A combination of small size, light weight, and precision flow rates makes the Series 900 Holter pump a versatile answer to both laboratory and field applications. Fourteen models offer virtually non-pulsatile performance with variable flow rates from .33 cc/hr to 1300 cc/hr. Two separate channels permit two dissimilar fluids to be pumped simultaneously, at the same or different flow rates, depending on pumping chamber selection.

Unique design features in both portable and non-portable models include: silicone pumping chambers which maintain accuracy and elasticity for their full pumping life of up to 2,000 hours; solid state circuitry for reliability; safety locking device to assure against accidental change in flow rates.

All pumps operate on 110V or 220V AC power. Portable models also feature a nickel cadmium battery which operates up to 13 hours without recharging... for quick, easy set-up in field application.

All models measure 5½" x 4¼" x 2⅞" and weigh only 27 ounces. They may be operated in refrigerated areas and are gas sterilizable.

Typical uses include:

- ☐ Liquid Chromatography
- ☐ Bio-medical Applications
- ☐ Organ Perfusion
- ☐ Pharmacological Research
- ☐ Precipitation Analysis
- ☐ Solubility Determination
- ☐ Food and Chemical Processing
- ☐ Water Pollution Monitoring

For further information, call or write:

EXTRACORPOREAL MEDICAL SPECIALTIES, INC.
Church Road, Mt. Laurel Township, N.J. 08057 (609) 235-7530



Circle No. 88 on Readers' Service Card